

# ILLINOIS CHESS BULLETIN

Official Publication of the Illinois Chess Association, a USCF Affiliate

---

February-March, 1983

bimonthly

VOL. VI, No. 1

---



**BILL  
MARTZ  
1945-  
1983**



# ILLINOIS CHESS BULLETIN

EDITOR: David Sprenkle  
302 S. Busey, 203  
Urbana, IL 61801  
217-328-7271

GAMES EDITOR: Albert Chow  
2433 N. Sawyer  
Chicago, IL 60647

PROBLEM EDITOR: David Brown  
204 Irving Ave.  
Rockford, IL 61103  
\*\*\*\*\*

#### ICA OFFICERS:

President: Helen Warren, Box 70, Western Springs 60558  
312-246-6665  
Metro-VP: Fred Gruenberg, 2035 W. 110th Place, Chicago  
60643. 312-779-3360  
Downstate VP: Bill Naff, 4200 N. Knoxville, Peoria 61614  
309-266-6674  
Secretary: Erv Sedlock, 224 Dodson, Geneva 60134  
312-232-1320  
Treasurer: Jim Warren, Box 70, Western Springs 60558  
312-246-6665  
Immediate Past Pres.: Chris Musgrave, 1127 S. Humphrey,  
Oak Park 60304. 312-386-5124

#### USCF DELEGATES (by virtue of their USCF posts)

Tim Redman, USCF President, 5923 N. Wayne, Chicago 60626  
Frank Skoff, Delegate-at-Large, 1402 W. Warner, Chicago  
60613  
Richard Verber, Regional VP, 749 W. Cornelia, Chicago  
60657  
Walter Brown, Regional VP, 811 Elrose Ct. Crest Hill  
60435  
Harold Winston, Policy Board Member-at-Large, 1450 E.  
55th Pl., Chicago 60637

#### USCF DELEGATES (appointed by the ICA)

Helen Warren	Mike Zacate
Fred Gruenberg	Jim Warren
Chris Musgrave	

#### ALTERNATE DELEGATES (USCF Voting Members)

Bill Naff	John Menke
Erv Sedlock	John Tomas
David Sprenkle	Jim Brotsos
Kevin Bachler	Tom Knoedler
Larry Stilwell	Ruth Ashmore
Winston Fuik	Newton Berry
Wayne Palmquist	

#### ALTERNATE VOTING MEMBERS

Bill Wilkinson	Tom Fineberg
Gary Sargent	Judge George Leighton
Eric Schiller	Gene Scott
Guy Gruenberg	Josette Donnelly
Sheldon Gelbart	Bob Bain
Shizuko Fuik	Dick Temple
Tim Just	Ted Ehara
Tom McCormick	Al Chow
Norbert Leopoldi	Jules Stein
Frank Cunnea	Randy Lewis
Jim Condron	Mark Szewczyk
Eric Johnson	

## PATRONS

Helen Warren	Western Springs	IL
Jim Warren	Western Springs	IL
Walter M. Brown, Jr.	Crest Hill	IL
Michael E. Zacate	Mokena	IL
Tom Kirke	Crystal Lake	IL
Tim Redman	Chicago	IL
Richard Verber	Chicago	IL
Thomas A. Fineberg	Chicago	IL
Louis Wenner	Evanston	IL
James M. Butler	Calumet City	IL
Roy Benedek	Westmont	IL
Leroy Dubeck	Cherry Hill	NJ
John Deutsch	Chicago	IL
Lawrence Goch	Chicago	IL
Sam Naylor VI	Carthage	IL
Gregory A. Fischer	Des Plaines	IL
Bill Smythe	Chicago	IL
Fred Gruenberg	Chicago	IL
Thomas B. Knoedler	Springfield	IL
Albert Hoyle	Downers Grove	IL
Michael Belovesick	Chicago	IL
Shizuko Fuik	Skokie	IL
Irwin Rothschild	Park Forest	IL
Tom McCormack	Countryside	IL
J. G. Crowell	Galesburg	IL
Esmond Coopwood, Sr.	Matteson	IL
Leonid Kaushansky	Chicago	IL
Edward A. Frumkin	Brooklyn	NY
Orlando D. Ferla	Melrose Park	IL
Kenneth N. Marshall	Oak Park	IL
Eric V. Gutmanis	Chicago	IL
Jesse W. Smith II	Chicago	IL
Guy Gruenberg	Conry Cld Hills	IL
Harland S. Holsington	Chicago	IL
Ray D. Satterlee	Wheaton	IL
Cloverline, Inc.	Chicago	IL
Vivian S. Schmucker	Goshen	IN
So Ill Chess League	Mt. Vernon	IL
Walter Milbratz	Chicago	IL
David Sprenkle	Urbana	IL
Midmir Stevanovic	Lincolnwood	IL
Arthur C. Sinclair	Lake Forest	IL
Angelo Sandrin	Chicago	IL
Creed Outland, Jr.	Oak Park	IL
Edward Scott Lozano	Chicago	IL
Jules Stein	Chicago	IL
Gerard J. Jendras	Chicago	IL

#### IL CHESS LEAGUE DIRECTOR:

Walter Brown  
811 Elrose Ct.  
Crest Hill, IL 60435

Cover Photo:  
Henry Meifert

#### METRO CLEARINGHOUSE:

Fred Gruenberg  
2035 W 110th Place  
Chicago, IL 60643  
312-779-0306 (home), 312-779-3360 (office)

#### DOWNSTATE CLEARINGHOUSE:

Bill Naff  
4200 N. Knoxville  
Peoria 61614

#### DEADLINE FOR NEXT ISSUE: March 20

The ICB is published six times a year by the Illinois Chess Association. Membership is \$7 a year for adults, \$5 for juniors, \$15 for affiliates, and \$25 for Patron Members. Affiliates and Patrons receive the ICB by 1st. Class Mail. Checks should be made payable to the ICA and sent to Jim Warren, ICA Membership Secretary, Box 70, Western Springs IL 60558. Foreign Memberships: \$8.50

ADVERTISING RATES: Full page or 4/5ths of back cover: \$60; half page inside: \$36; quarter page inside: \$21. Flyer inserts \$25. 10% discount for multiple months of run. ICA affiliates get 1/3rd discount. Average Circulation (paid): 750+. Mailed from Urbana, IL on Bulk Permit no. 137. Checks for advertising should be sent to Jim Warren.

For recorded phone announcements of tournaments in and around the Chicago area call:  
312-"IL-CHESS" or 312-233-8500

# EDITOR'S PAGE

## APOLOGIES

...to the readers who received battered or torn copies of the ICB last issue. I experimented with lighter paper to try and cut postage costs. Not a bad idea, but this time I'll cleverly use a heavier cover and save the lighter stuff for the inside. Let me know if you received a cruddy copy so I can replace it for you!

### PICK FOUR! (with apologies to the IL State Lottery)

The Candidates Matches will be starting soon, and the pairings seem to guarantee hard fought matches. By the end of the year a challenger for World Champion Karpov will have emerged. Will it be Gary Kasparov, the young Soviet sensation? Or will perennial challenger Viktor Korchnoi win through again? Lajos Portisch wants to qualify while he is still in his prime, but Alexander Beliavsky would like to step out of the shadow of his more distinguished Soviet colleagues. Robert Hubner wants to prove he has the psychological stamina to go all the way. Zoltan Ribli is just hitting his stride at age 30, while Eugenio Torre would like to silence doubters who believe he doesn't belong. Finally, there is the sentimental favorite Vassily Smyslov, who was World Champion before I was born!

Everyone has their opinion. Now's the chance to cash in on your wisdom by entering our prediction contest.

To enter, simply pick the winner of the four first round matchups,

Beliavsky-Kasparov	Hubner-Smyslov
Korchnoi-Portisch	Ribli-Torre

AND predict the match score\* then send me a postcard with your guesses by MARCH 15th. Remember to include your name and address!

Helen Warren and American Postal Chess Tournaments have generously donated prizes for our more skilled prognosticators. Picking all 4 match winners earns you a random paperback chess book ("potluck!" as Helen says). No prob, right? Furthermore, if you pick 3 of the 4 scores EXACTLY you get a \$10 coupon for APCF books, equipment, or services instead. And if you are the shade of Nostradamus and somehow nail all 4 scores EXACTLY, you get a chess clock (and a career in Vegas, if you play your cards right).

Send your entries to:

David Sprenkle  
302 S. Busey, No. 203  
Urbana, IL 61801

\* Matches last 10 games, or until at least 5 1/2 pts. are scored by one player to clinch the match. Extra playoff games will settle ties; to simplify things just indicate a "5 to 5" result if you think the match will be decided in a playoff. But remember to indicate the eventual winner for full credit!

### RESULTS OF THE ILLINOIS CHESS QUESTIONNAIRE

by Fred Gruenberg

Well, after spending an entire Sunday going through the questionnaires and watching a few football games I think I need about a quart of Visine eye drops. There were really no big surprises, as it seems that everyone's favorite TD, playing site, or whatever is close to their particular location.

Walter Brown was the big winner for Favorite TD with Tim Just garnering second. One of the reasons Tim is so well liked is because he doesn't allow the Kaisha clock, which many of you seemed to protest in the questionnaire. But everyone got a few votes, including Jules Stein, Erv Sedlock, Wayne Palmquist, Tim Redman, Ruth Ashmore, and John Menke. The three biggest reasons for everyone's choices were (1) Rounds starting on time (2) Complete control (3) Knowledge of chess rules.

The favorite site was Chicago's Palmer House although there were a few complaints about parking downtown. Many players liked the facilities and the good lighting there. The second favorite was Chicago's Morgan Park Church, probably because the "Put the Fun Back Into Chess" event was the unanimous winner for Favorite Tournament. Evidently chess players like FREE food!

One of the complaints that appeared often enough to mention is that chess clocks should be required to face the aisles, not the walls. Organizers take note!

The ICB seems to be everyone's favorite! Many of you said you liked it even better than Chess Life! Following are some of the things we will be looking at to improve the ICB:

- (1) A glossy or heavier cover.
- (2) More detailed tournament announcements, even to listing secondary time controls.
- (3) Darker print.
- (4) More on Illinois Chess history.
- (5) An Illinois rating list, once a year.

As far as time controls, there was no clear cut favorite; except over 20% favored more one day events. The most complaints were simply that tournament entry fees are too high! And as for smoking, 96% preferred No Smoking, 2% had no preference, and you can figure out the rest.

Thank you again everyone for your cooperation. I hope that you will soon be seeing some of the results of your suggestions and complaints.

\*\*\*

### IN THIS ISSUE...

President's Page, Warren.....	pg. 4
Illinois Chess Tour Page.....	pg. 6
Chicago 5th at Pan Am, Winston.....	pg. 8
State News.....	pg. 8-9
On the Legality of the Kaisha Chess Clock, Bachler.....	pg. 6
Midwest Masters, Sprenkle.....	pg. 10-12
Under the Microscope, Chow.....	pg. 12-14
From the Other Side of the Board, Warren.....	pg. 14
Hotline, Bachler.....	pg. 15
Review: Specialty Opening Books, Watson.....	pg. 15-16
Postal Page, Warren.....	pg. 16
Problem Page, Brown.....	pg. 17
IL Class Crosstables.....	pg. 18-19
ICA Affiliate List.....	pg. 19
Tournament Calendar.....	pg. 20

### SUMMARY OF THE MINUTES FOR THE DECEMBER 5 ICA MEETING

Secretary: Richard Verber

Present were: Chris Musgrave, Helen Warren, Richard Verber, Jim Warren, Tim Redman, Fred Gruenberg, Frank Skoff, Winston Fulk, Erv Sedlock, Larry Stilwell, Wayne Palmquist, Walter Brown, John Tomas, Newton Berry, Harold Winston, Jim Brotsos, Sheldon Gelbart, Guy Gruenberg, Tom McCormack, Tom Fineberg, Mark Szweczyk, Kevin Bachler, Tim Just, plus a number of no-Voting Member visitors.

1. Minutes waived for Oct. 17 meeting
2. Secretary's Election Report. Of the 740 ICA members who received ballots to vote, 490 returned ballots. The Board voted unanimously to discard 3 ballots where the number on the envelope had been removed. The Board then unanimously certified the results (which appeared in the last ICB-Ed.)
3. Fred Gruenberg indicated that he and Newton Berry had met to try to resolve their differences and that they were co-authoring a letter to be published in the Illinois Chess Bulletin (see page 3 of the last issue).

(cont. on pg. 17)

## PRESIDENT'S PAGE

Helen Warren, ICA President

### ANNOUNCEMENTS

#### THREE-TIERED ICA MEMBERSHIP PLAN ADOPTED BY ICA OFFICERS...

The old adage "You get what you pay for" holds true for just about everything from a suit of clothes, dinner in a restaurant--and a state chess association. ICA adopted the policy of a *paid editor* last year for the first time in its history. Plain arithmetic will tell you that this financial obligation means we must raise funds in addition to the modest annual dues. If chess is as important to our membership as they say it is, this shouldn't be a difficult feat. How much do we need? Your officers have estimated that we will need \$2,000 to continue the present level of quality with a paid editor; we also need to think about expenditures in other areas: the development of a scholastic program, upgrading of the Illinois Tour, and another Futurity. Last month at the ICA Officers Appreciation tournament one ICA member thanked me for the great time he had and said, "Helen, we know you and other officers work hard for chess; how can I help? Tell me what you need--within reason!--and you've got it!" "Here's what I'd like," I said. "Become a Gold Card ICA Member. That will mean \$50. In return you'll be listed as a special ICA supporter in the ICB, get your ICB by first class mail, and we'll send you an ICA T-shirt, too." In two minutes, I had his check in my hand.

The ICA has been able to do what it has done because many members have made an extraordinary contribution of TIME, ENERGY, WORKABLE IDEAS--and hard cash. We KNOW what chess contributes to your lives as a stimulating and satisfying hobby/game/art/sport. Now I am appealing to you to give something back to chess.

THE PATRON MEMBERSHIP PLAN will cost you \$25. We think there are fifty of you who can afford this type of membership painlessly. If chess holds special captivation, we think a dollar a week--\$50 a year -- is affordable. For \$50 you become a GOLD CARD ICA MEMBER, first class mailing is yours, and you receive an ICA T-shirt with special listing in the ICB. We think we can reasonably expect a dozen members to become Gold Card members. And finally, the professional among us for whom charitable contribution to favorite causes is an established practice is invited to support ICA as a CENTURY CLUB MEMBER with a contribution of \$100. What do you get for this? First class mailing of your ICB, special listing in the ICB, and, you will be ICA's guest at our annual Awards Banquet in November held in conjunction with the Illinois Class. We are reserving a Century Club Table for our Century Club members as a mark of special distinction.

Many state associations wait until they are on the brink of bankruptcy to solicit funds, seldom asking their members to support realistic programs, but appealing for dollars to "bail themselves out". Your ICA officers are asking you for financial backing so that we can continue the proud record of support for chess started in Illinois six years ago.

Your president just wrote a check for a Century Club ICA membership. Will you consider one of the three special tiers of ICA membership for 1983?

DOES YOUR CHESS CLUB RUN AN ANNUAL TOURNAMENT WITH FEWER THAN 70 PLAYERS? YOU CAN ENTER YOUR EVENT ON THE ICA TOUR AS A MINI-TOUR TOURNAMENT, ENHANCE ITS CHANCE OF SUCCESS--AND SUPPORT THE ICA! Call the ICA president for details.

#### WHAT ELSE IS HAPPENING...

ILLINOIS CHESS TOUR STARTS NEW SEASON...elsewhere in this issue you'll find an outline of a NEW and EXPANDED ICA Tour. We hope you like it! The prize fund has been increased--and class prizes are now a feature. But we need more events, and that's where you can help. Ask your club to sponsor an ICA event. Bidding on ICA events is now open. This means the IL OPEN, IL CLASS, TL JUNIOR INVITATIONAL, and IL SPEED CHAMPIONSHIP all need organizing in 1983. Bid forms have been sent to organizers statewide.

#### ICA WILL BE FEATURED IN CHESS LIFE....

Editor of Chess Life, Frank Elley, has invited the ICA president to submit a feature article on our state association for later in 1983. If you would like to participate in preparation of such a feature, contact the president.

#### THE ICA ANNUAL PICNIC ON THE DRAWING BOARD FOR SEPTEMBER....

Erv Sedlock reports that a beautiful site is under consideration for the annual (we hope!) ICA picnic in St. Charles at Pontowatone Park. It will be a family event with recreational facilities and food available--or you can bring your own picnic lunch. A boat ride will be included in the package. You'll be hearing from Erv about it in coming months. Firm date has not been set, but the month will definitely be SEPTEMBER.

AVAILABLE MARCH 1...the games booklet from the Midwest Masters, 1982. We have spent many hours on a really excellent games booklet from the strong Midwest Masters with ALL games from the five-round event. In addition to the usual data you would expect--crosstable, etc--we have over a dozen photos. This major tournament was won by Bass, Prooks, and Kaushansky. This will be a limited and numbered printing with the profit, if any, going to an ICA Futurity fund. Cost: \$3.50 postpaid, or \$3.00 each if you order five or more copies. This booklet would be a great prize for club events. Order from ICA president Helen Warren.

#### FAREWELL TO BILL MARTZ...

Many in the chess world were stunned to learn of the death of IM William Martz of Milwaukee. Bill died of cancer at the age of 37 on January 17. He was in every good sense the embodiment of the midwest master: dogged in his pursuit of the title that eventually was his, at home in the heartland where he toured for many years entertaining at malls with simultaneous exhibitions, and perennial player in North Centrals, Western Opens, and Illinois events. Just this past year Bill won the co-champion's title with Andy Soltis in St. Paul at the U.S. Open. Illinois players will recall that he was highest scorer at the Master Challenge III, and of course many of us know about his organizational and financial commitment to the historic Cloverline International held in Lincolnwood. Those of us who knew Bill will remember him in a way unique to us personally. My own lasting impressions of him are twofold: a tournament game I played with him in the sixties and the many delightful hours of conversation we shared, mostly on non-chess topics, at the Chess and Humanities Symposium in Lincoln, Nebraska in 1978. Bill's commitment to master chess invariably concentrated on *playing conditions* rather than huge prizes, yet he was in every sense a *grass roots* master. He lived and died with dignity; his friends in Illinois will miss him.

\*\*\*\*\*

A NATIONAL EVENT

# 1983 NATIONAL OPEN

(Dedicated to the Memory of E.B. Edmondson)

## March 11-12-13, Las Vegas



*By popular demand, a triumphant return  
to Las Vegas after seven years!*



• **\$8500 IN PRIZES** •

*Make Your Las Vegas Vacation Plans Now!*

**\$1500-\$1000-\$700-\$500\*-\$300**

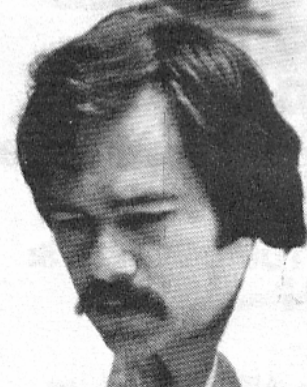
\*Note prize increase

Generous Class Prizes: Candidate Master,  
and Categories I, II, III each \$500-\$250-\$100,  
IV \$300-\$200-\$100, V \$200-\$100,  
Unr. \$200-\$100.

Every year at the National Open, a replica of  
the Edmondson cup will be awarded to the  
first-place finisher.



**GM Walter Browne will Play!**



Five-time U.S. Champion Browne  
has won every U.S. Championship he has played in.

*At the Grandest Hotel of them all!*

### **The MGM Grand Hotel**

Tremendous savings on the most elegant of  
all Las Vegas hotels: \$48 for a double room!  
Bring your family and friends for a 3-day  
weekend of fun; Friday, Saturday and Sun-  
day. Room rates at the MGM will be extend-  
ed prior to and after the tournament (if you  
wish to spend an extra couple of days). Call  
toll free: East of Arizona, 1-800-634-3434;  
Arizona and west, including California,  
Idaho, Oregon, Utah, 1-800-634-6363.

### *Additional Information*

6-Round Swiss, 45/2. Entry Fee: only \$45 if mailed to USCF before February 25. Co-sponsored by  
USCF and RAE PRODUCTS & CHEMICAL CORP. OF CHICAGO, Mr. Fred Gruenberg. Chess sets  
will be provided by USCF—Please bring your chess clock if possible.

For special \$198 round trip air-fare from Chicago,  
call "Joe" at American Travel: 312-238-9787

Tournament Director: Tim Redman; Assistant TD's: Myron Lieberman,  
Mike Falkenstein & Walter Brown.



**CHESS ASSOCIATION**

**The Illinois Chess Association proudly announces**

# **1983 ILLINOIS CHESS TOUR \$1650 IN PRIZES!**

**Note: Prizes have been increased by \$400 this year!**

## **CHAMPIONSHIP PRIZES    CLASS PRIZES**

**1st - \$300**

**2nd - \$200**

**3rd - \$150**

**4th - \$100**

**5th - \$70**

**A: \$150—100**

**B: \$140—70**

**C: \$130—60**

**D: \$100—50**

**E: Chess Computer**

### **GAIN POINTS BY PLAYING THE FOLLOWING TOURNAMENTS:**

1. GREATER CHICAGO OPEN -- CHICAGO PALMER HOUSE -- APRIL 16-17
2. MASTER CHALLENGE OPEN -- OAK PARK CHESS CLUB -- JUNE 24-26
3. ILLINOIS OPEN -- (site pending) -- SEPT. 3-5, LABOR DAY WEEKEND
4. LAKE COUNTY OPEN -- WAUKEGAN or ZION -- SEPTEMBER 24-25
5. ILLINOIS CLASS CHAMPIONSHIP -- (site pending) -- NOV. 25-27 THANKSGIVING
6. PUT FUN INTO CHESS 1983 -- MORGAN PARK METHODIST CHURCH -- Autumn

Plus the following Mini-Tour events which award half as many IL TOUR points:

7. SPECTACULAR AMERICANA OPEN -- CHGO. CHESS CENTER -- JULY 2-3
8. ST. CHARLES OPEN -- ST. CHARLES CHESS CLUB -- (dates pending)
9. MORGAN PARK MARATHON -- MORGAN PARK METHODIST CHURCH -- dates ??

Participation in 3 or more TOUR tournaments is required to win TOUR PRIZES.  
ICA membership is required for participation in all of the above-listed ICA TOUR events.

Phone ICA President Helen Warren (246-6665) for details regarding the 1983 TOUR!

**Improve your chess! Watch the masters!**

**\$500 IN PRIZES**

**ILLINOIS MASTERS INVITATIONAL**

**SATURDAY MARCH 6 - SUNDAY MARCH 7**

**Hours: 10 a.m. to 7 p.m.**



**16 top Illinois Masters will compete!**



**Spectators are invited! \$2 per day.**

**CHICAGO CHESS CENTER, 2666 N. HALSTED, CHICAGO**

**For details: phone Dick Verber, 935-8316**

**Chicago's best playing conditions at the Palmer House Hotel**

# **1983 CHICAGO CITY CHESS CHAMPIONSHIP**

**APRIL 16-17 • \$1500 GUARANTEED**

**Prizes: \$300, 180, 100 • \$150 top expert**

**Class A: \$140, 80    Class B: \$130, 75**

**Class C: \$120, 65    D-E: \$100, 60**

**Entry fee: \$25 if mailed by March 25**

**Dedicated to the memory of Bill Martz, 1945-1983**

CHICAGO 5th AT PAN AM

by Harold Winston

Four Illinois teams went to Columbus, Ohio for the Pan American Intercollegiate December 26-30, but unfortunately a strong University of Illinois team was unable to participate. The University of Chicago sent 3 teams (more than any school except host Ohio State who fielded 6) and Northwestern entered one team. The field of 62 teams (272 players) included 33 masters and 4 IMs: Joel Benjamin (Yale), Vince McCambridge (Berkeley), Walter Morris (Cornell), and Bryon Nickoloff (Toronto). A record 7 teams had average ratings in the master class topped by Berkeley (2306) and Cornell (2258), while University of Chicago A was ranked 8th at the start, led by masters Ken Larsen and Eric Schiller, and former Alabama Champion Steve Hudson. Northwestern (2014), led by master Larry Chachere began in 24th spot on the wallcharts, while Chicago B (1682) and the Univ. of Chicago College team (1809) were lower down and thinking of class prizes. When the smoke cleared 3 of the 4 Illinois teams had won prizes.

Chicago A and Northwestern both started slowly, but then became contenders for the top prizes. After a first round win against Akron (1815) 3-1, Chicago A was surprised by Duke (2049) and ended up on the wrong end of another 3-1 decision. Illinoisan Peter Gilruth (2235) scored a key win for Duke on first board. UC rallied for three straight match wins: 3-1 vs. Kentucky (1924), 3-1 vs. Rhode Island A (2100), and 3.5-0.5 vs. Brooklyn B (1711). Chicago A had now moved into a 7 way tie for 2nd. at 4-1, a full point behind defending champs Toronto.

Northwestern had also redeemed a weak start and had also scored 4 out of 5. After being tied by lower rated Potsdam (1590) in the first round the Wildcats fought hard in every match. Northwestern knocked off Ohio St. C (1808) 3-1, tied a powerful UCLA team (2158) that placed in the top ten, upset Purdue A (2097) 2.5-1.5, and scored a big win over Cal Poly at Pomona (2156). Northwestern now faced Chicago A, which team would stay tied for second? Neither. The match ended in a tie when Chachere beat Larsen on first board. After six rounds Northwestern remained undefeated.

Northwestern's streak came to an end against 2nd. ranked Cornell 3.5-0.5 although Chachere drew IM Morris (2424). In the finale Northwestern drew Rhode Island (2100) and finished with 5-3, good enough to win the trophy for top team in the 2000s. This was NU's best showing in many years thanks to the play of Larry Chachere (4-4), Brian Ruggiero (2.5-5.5), Steve Fenic (5-3), and Dan Winslow (5.5-2.5).

While Northwestern fell to Cornell in round 7 Chicago A had a hard struggle with Georgia Tech (2051). The Maroons kept improving their positions and that match became a 3.5-0.5 win for Chicago. With one round left Toronto held first with 6.5-0.5, having been tied only by Brooklyn A (2208) while Berkeley, Brooklyn, and Chicago shared 2nd with 5.5-1.5. Toronto had already beaten Berkeley and tied Brooklyn, so Chicago A moved to top board for the finale. As the round began Toronto and Chicago shared the record for most Pan Am victories at 5 apiece. If Chicago could beat Toronto (2229), the Maroons would share first place money, but lose the Pan Am title on tiebreak if Berkeley or Brooklyn won, and lose the US title on tiebreak if Berkeley and Brooklyn both won. So if Chicago could beat Toronto and neither Berkeley nor Brooklyn could win Chicago would be both Pan Am co-champs and sole US champs. However if Chicago lost they would probably rank near the bottom of the top ten teams. Chicago drew the match after about 1 1/2 hours of play, and Berkeley and Brooklyn both won to share the US title. Like Northwestern, Chicago A only lost one match. Chicago sent 5 players and all contributed: Ken Larsen (3.5-3.5), Eric Schiller (4.5-2.5), Steve Hudson (4.5-1.5), Matt Morris (4-3), and Tom Kang (4.5-0.5). This was Chicago's best showing since it took 2nd place at Los Angeles, 1979 with Ove Kroll on first board.

Chicago B also distinguished itself. Seven times out of eight Chicago they faced higher-rated teams, but the B team refused to be awed and came away with a fine 4-4 score. Three key match wins allowed them to share the prize for top team rated in the 1600s: they upset Rose Hulman (1852) 3-1, downed Saginaw Valley (1853) 2.5-1.5 and in the finale they edged Washington University (1906) 2.5-1.5. Brendan Henry (5-3) was high scorer for Chicago B and key games were also won by Richard Smiley (2-6), Pierre Cambresier (3-5), and Leonid Sagalovsky (3-5). The College team had a disappointing result, 3-5 in matches, but 4 of its 5 losses were by the narrowest possible margin (1.5-2.5). David Yuen starred on board 4 for them, with a fine 6.5-1.5. Two College team members, Il Byun and Marcus Asner, helped get the funds to send the 3 teams to the Pan Am.

Other Illinoisans were prominent at the Pan Am. David Greenstein won the Board 4 prize with a superb 6.5-0.5 score and sparked the Univ. of Pennsylvania to 4th place overall. Peter Gilruth scored 7-1 for Duke on first board, but lost the Board 1 prize to Joel Benjamin (7.5-0.5). Ken Mann held down top board for Worcester Polytech (3.5-3.5). Paul Cooke of Granite City scored 3.5-1.5 on Berkeley's US co-champions. ICLA Historian Harold Winston was given the title "Dean of College Chess" by the annual meeting of the Intercollegiate Chess League of America. Two nearby colleges made the top twenty: St. Louis University placed 14th (5-3), and Wisconsin was 17th (4.5-3.5).

The Pan Am was organized by Dean Croshoure and directed by Larry Paxton assisted by Dale Sharp, Grant Perks, Roger Blaine, and Kay Martin with part time help from Bob Sutter and Harold Winston. Jon Frankle of Berkeley won the Speed Championship (8-0). GM Edmar Mednis gave lectures and analysis thanks to help from the American Chess Foundation. Eric Schiller judged prizes donated by American Chess Promotions for Best Game (shared by Randy Schain of Berkeley and Fidel Salas of UCLA) and Best Innovation (shared by Joel Benjamin of Yale and Ian Findlay of Toronto)

\*\*\*\*\*

ILLINOIS OPEN

Kevin Bachler, Joe Hill, and Dave Schofield topped a field of 52 players at Tim Just's Illinois Open, held Jan. 8-9 at Lakehurst Shopping Mall in Waukegan. Each scored 4 1/2 out of 5. Kevin Schmutzgerow and Wallace Bates split the Cat. I prize with 4-1. Kenneth Kirby took Cat. II and Skip Martin won Cat. III with 3-2 scores. Mike Ginsburg was the Cat. IV/V/UNK winner with 2 1/2. Dennis Grant directed for the Lake County Chess Association.

SOUTHERN ILLINOIS

The So. Ill. Invitational Quads were held Nov. 7 at the Giant City Grade School, slightly south of Carbon-dale. John Menke reports the slights were a bit inadequate for his 250 pounds, so I guess it's a good thing Dick Verber wasn't playing! The winners:

1st. Quad-Ron Manning, 2nd.-Toby Brixey, 3rd.-Tom Lawry, 4th.-Duncan Koch and Graden Hoover, 5th-Jackson Dunn and Richard Brayfield.

GOMPERS PARK-OAK PARK

Oak Park Chess Club lost a challenge match at Gompers Park CC on Dec. 10th by a 5-3 score. A return match is being planned this Spring at Oak Park.

GP-OP

Bd. 1	Sweig-Sillars	1-0
2	Czerniecki-Schroeder	0-1
3	Wolf-Musgrave	1-0
4	Pokorny-Fischer	1-0
5	Dahlstrom-Machuca	1-0
6	Carpenter-Campbell	0-1
7	Guettl-Schremser	0-1
8	Napetschnig-Lafleur	1-0



# ICA Officers Appreciation Tourney

198 ATTEND ICA OFFICERS APPRECIATION EVFNT AT MORGAN PARK...

And all in one room! The Morgan Park Methodist Church's custodial staff had to hustle extra tables, chairs, and hot dogs, but we managed to run a super event in five classes on January 29. The mild Chicago winter helped to attract the unexpectedly large crowd. A raffle--books, a chess clock, and credit slip for points earned in the tournament--was held before the second round. ICA officers (and former officers) organized, directed, and donated the prize fund and raffle premiums.

It was a long day, especially for the hard working TDs, but the players enjoyed it--and that's what counts! Chief TD Tim Redman was assisted by Erv Sedlock, Helen Warren, and Kurt Gruenbere. Prize winners, story, and photos will be in our next issue.

WEST AURORA INVITATIONAL  
by TD Larry Stilwell

Evanston and Proviso West dominated the field of 21 varsity eight-man teams and 19 five-man junior varsity teams that competed in the largest high school tournament before the state meet. Mike Adolf's tournament was held Jan. 8th.

Like last year's state meet, Evanston and Proviso West came together in the final round. In this tournament the tables were turned as Evanston, with everyone returning from last year's second place finish, was victorious. Although Chris Firestone, David Rose, and Mark Mockus were winners for Proviso West and Mike West drew Michael Samson, Tim Macejak, Curtis Ikeuchi, Peter Farbman, and Harold Frostick carried the day for Evanston. Lincoln-Way won the third place varsity trophy.

Proviso West won the first place J-V trophy on tie-break over Ottawa while Evanston was third.

Proviso West also won the sweepstakes trophy with 433 1/2 points in the entire tournament, while Evanston had 397 1/2 and Rock Island 349.

Steve Szpisjak of Marmon was the individual tournament champion on board 1.

## ON THE LEGALITY OF THE KATSHA CHESS CLOCK

by Kevin L. Bachler for the Lake County Chess Association

The KATSHA chess clock has caused some controversy in the world of USCF tournament chess.

While the increased use of digital clocks in the future is a near certainty, and while digital clocks do offer certain advantages, we must wonder if the KATSHA clock in particular has not caused more problems than it attempts to solve.

The need for a good, highly portable digital clock seems to be one of the main reasons for the creation of the KATSHA. Players, particularly those who have a habit of getting into time pressure, like to know exactly how much time they have left.

The KATSHA, with its extremely portable size, and longer battery life than previous digital clocks, was the first attempt at a clock that would be perfect: it would run silently, be portable, and display the exact amount of time left.

However, the KATSHA also created several problems. A switch-pak was soon devised to let the player who was away from his board know when it was his turn to move. But other problems have generated numerous complaints.

If we examine Article 21 of the Official Rules of Chess, a FIDE interpretation, commenting on the standards of chess equipment, says the following about chess clocks:

"Chess clocks should have a device signaling precisely when the hour hand indicates full hours. They should have the flag fixed at the figure 12, or at some other figure, but always so that its fall can be clearly seen, helping the arbiters and players to check the time. The clock should have no shine making the flag poorly

More news from Hillside reported by Larry Stilwell:

10th ILLINOIS HIGH SCHOOL CHESS EVENTS TOURNAMENT  
(held Nov. 20 at Proviso West High School)

Undefeated performances by Mark Wisniewski and Robert Michalak in the championship section, and by John Clingan in the sophomore section led Tinley Park to first place with 20 points. Other trophy winning teams were Hinsdale South 18 1/2, Proviso West 15, Chicago Vocational 14, and Fenwick 11 1/2. James Tsugawa of Hinsdale South, Chris Firestone of Proviso West, and James Champion of Morton East won the senior section. Followed by Mark Stroermer of Fenwick. John Ohr and James Mauritzen won both junior trophies for Hinsdale South. Trophy winners from Proviso West were Mark Mockus, second sophomore, and Steve Slagle, second freshman. David Rajendran of Fenwick was the freshman champion.

6th ILLINOIS SCHOLASTIC TEAM TOURNAMENT  
(also held 11/20 at Proviso West)

Komarek school of North Riverside led the field by five points as they prepared for the grade school championship to be held at Proviso West high school on March 19. Erik Stolzer won on board 2, Chris Pankey on board 3, and Billy Fricke on board 4. Tournament champion Joe Owano led Albright Middle School of Villa Park to the second place trophy. Carwe Middle School of Chicago finished a point behind, led by defending state champion Dwayne Falls. Heritage school of Lansing was fourth. John Cunnea won the open section.

11th HILLSIDE CHESS CLUB CHAMPIONSHIP

Greg Bungo won all five games to take the championship for the third time. Defending champion Sheldon Gelbart served as tournament director.

visible. It should work as silently as possible, in order not to disturb the players during play."

Furthermore, USCF Tournament Rule Article 21 (1) begins: "The standards of chess equipment for FIDE tournaments are applicable also to USCF tournaments."

Of course, the FIDE interpretation was written for mechanical clocks. However, it is equally possible to determine the spirit of this article, and apply it to digital clocks. Our contention is that the KATSHA falls short of this rule.

Clearly, while the KATSHA does not have a flag, it does include a LCD, showing that no time remains. The clock runs silently, although some players have found it somewhat loud when the clock is punched somewhat disturbing.

The other major items of this article seem to be that the clock, and particularly the flag, be clearly visible. It is here that the KATSHA falls short. Many players feel that the size of the numbers in the LCD (Liquid Crystal Display) the visual angle, the distance of the LCD from the clock casing--often causing shadows, and a not uncommon shine on the clock casing above the LCD, not to mention the fact that LCD visibility can be diminished by very bright or very dull light, or visual angle, often make the LCD, and thus KATSHA's 'flag', very difficult to see. This is particularly true for a TD watching for time pressure.

As such, we find the KATSHA to be in violation of FIDE Article 21, and USCF Tournament Rule Article 21 (1).

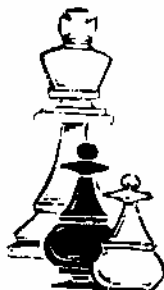
Therefore, while we have not banned the KATSHA in our past tournaments, we ask that players not use it in our tournaments.

Furthermore, we hereby request USCF to do one of the following:

(cont. on pg. 19)

RAE PRODUCTS & CHEMICALS  
MIDWEST INVITATIONAL

# MIDWEST MASTERS



## by DAVE SPRENKLE

	PLAYER	ST	PRE RTNG	POST RTNG	POST					TOT
					1	2	3	4	5	
1	BASS, LEONID	WI	2538	2540	W34	W10	D-9	D-3	W11	4.0
2	BROOKS, MICHAEL A	MO	2436	2443	D13	W23	W29	W-9	D-3	4.0
3	KAUSHANSKY, LEONID	IL	2426	2439	W26	W18	W14	D-1	D-2	4.0
4	CHOW, ALBERT C	IL	2292	2294	L27	W26	D32	W19	W23	3.5
5	BACHLER, KEVIN L	IL	2170	2215	D11	D17	W30	W10	D-7	3.5
6	GOGEL, DENNIS V	IN	2363	2353	D24	L13	W35	D17	W26	3.0
7	MARTINOVSKY, EUGEN	IL	2362	2348	D21	D24	D13	W25	D-5	3.0
8	TENNANT, STEVEN	IL	2343	2326	L32	W22	D19	D20	W28	3.0
9	ROSE, JOHN T	IA	2306	2317	W35	W32	D-1	L-2	D13	3.0
10	DANDRIDGE, MARVIN	IL	2304	2307	W28	L-1	W27	L-5	W24	3.0
11	RUBIN, DAVID E	IL	2286	2296	D-5	W33	W15	D14	L-1	3.0
12	LAWTON, CHARLES	MO	2283	2280	D19	D20	D24	W32	D14	3.0
13	SCHILLER, ERIC	IL	2219	2245	D-2	W-6	D-7	D23	D-9	3.0
14	GILES, MORRIS C	IL	2203	2224	W36	W27	L-3	D11	D12	3.0
15	SPRENKLE, DAVID C	IL	2350	2329	D20	W21	L11	D24	D18	2.5
16	JONES, KENNETH E	MO	2321	2302	D31	D19	D20	D28	D17	2.5
17	SAVAGE, ALLAN G	IA	2304	2291	D22	D-5	D28	D-6	D16	2.5
18	CHACHERE, LAWRENCE	IL	2230	2235	W25	L-3	L23	W30	D15	2.5
19	MOHR, KEN C	IL	2211	2223	D12	D16	D-8	L-4	W31	2.5
20	RHINE, FREDERICK S	IL	2176	2197	D15	D12	D16	D-8	D25	2.5
21	SANDRIN, ANSELD	IL	2162	2172	D-7	L15	L22	W27	W32	2.5
22	REDMAN, TIMOTHY P	IL	2103	2135	D17	L-8	W21	W29	U--	2.5
23	SZPISJAK, STEVEN J	IL	2081	2115	W30	L-2	W18	D13	L-4	2.5
24	STEVANOVIC, MIOMIR	IL	2235	2239	D-6	D-7	D12	D15	L10	2.0
25	VAN METER, LESTER	MI	2220	2208	L18	D35	W31	L-7	D20	2.0
26	FRIEDMAN, EDWARD	RI	2192	2196	L-3	L-4	W36	W34	L-6	2.0
27	KARKLINS, ERIK	IL	2159	2159	W-4	L14	L10	L21	W35	2.0
28	POPEL, STEPHAN ANT	ND	2152	2165	L10	W34	D17	D16	L-8	2.0
29	KORNFEID, ALLEN I	IL	2257	2239	D33	W31	L-2	L22	U--	1.5
30	KUS, CHRISTOPHER	IL	2239	2200	L23	W36	L-5	L18	D33	1.5
31	WALLACH, KEN	IL	2169	2155	D16	L29	L25	W36	L19	1.5
32	KRAMER, CHARLES W	IL	2146	2143	W-8	L-9	D-4	L12	L21	1.5
33	SAGE, J TIMOTHY	IL	2135	2129	D29	L11	L34	D35	D30	1.5
34	LARSEN, KENNETH C	AZ	2248	2223	L-1	L28	W33	L26	U--	1.0
35	SANDRIN, ALBERT	IL	2182	2155	L-9	D25	L-6	D33	L27	1.0
36	GRATZ, GLEN E	IL	2138	2098	L14	L30	L26	L31	U--	.0

This is the second straight year Chicago's Palmer House has hosted a big money, small entry fee invitational. Last year's edition was billed as the Illinois Invitational, and featured virtually every top Illinois player in the 20 man field. This year the event's two moving forces, Fred Gruenberg and Helen Warren, decided to be even more ambitious. The result was a Midwest Invitational, with bigger prizes, more players (36), and a judicious selection of out-of-state strength, including IM Leonid Bass from Milwaukee and FM Michael Brooks from St. Louis.

A look at the crosstable will reveal no massive surprises. The top three seeds (Bass, Brooks, and last year's co-champ Leonid Kaushansky) shared first place, and 1982 IL Player of the Year Albert Chow shared 4th with Kevin Bachler. Kevin's pre-tournament rating wasn't so impressive, but most of us realized he had been playing good chess recently. Only his proclivity for "accidents" has kept him from the master title, but here he let his opponents make the mistakes.

Illinois' young players did not humiliate themselves by any means. Larry Cachere, Fred Rhine, and Steve Szpisjak (easily the lowest rated entry) all broke even in this tough field, and Fred's 5(!) draws should net him the master title. When Fred starts to play more fiercely he'll get even better.

Just like last year, there were some beautiful moves played, but there were some dreadful blunders too. Tartakower's cliché about making the last blunder was tested in many of the games. Occasional bad moves are inevitable even at this rarified level, due to fatigue, nerves, carelessness, and "bio-rhythms". The rest of you can take heart!

### ROUND ONE

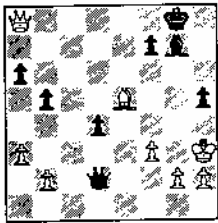
(Brooks-Schiller, Gogel-Stevanovic, Karklins-Chow, and Kus-Szpisjak are examined in Al Chow's "Under the Microscope" elsewhere in this issue)

K Larsen	0	-	L Bass	1
M Brooks	1/2	-	E Schiller	1/2
E Friedman	0	-	L Kaushansky	1
E Gogel	1/2	-	M Stevanovic	1/2
AN Sandrin	1/2	-	E Martinovsky	1/2
D Sprenkle	1/2	-	F Rhine	1/2
AL Sandrin	0	-	J Rose	1
C Lawton	1/2	-	K Mohr	1/2
C Kramer	1	-	S Tennant	0
K Jones	1/2	-	K Wallach	1/2
F Karklins	1	-	A Chow	0
A Kornfeld	1/2	-	T Sage	1/2
K Bachler	1/2	-	D Rubin	1/2
M Giles	1	-	G Gratz	0
S Popel	0	-	M Dandridge	1
L Van Meter	0	-	L Chachere	1
T Redman	1/2	-	A Savage	1/2
C Kus	0	-	S Szpisjak	1

Of course the talk of the round was Al Chow's sensational loss to Erik Karklins. Win or lose, Al plays interesting games! Bass and Kaushansky had no problems with the Morra Gambit, and John Rose won in a similar fashion by repulsing Al Sandrin's desperate attack. Half the games in this round were drawn, but the players were generally not peacefully inclined. The games Sprenkle-Rhine and Redman-Savage were rather bloodless, but the higher-rated player stood worse in each case and didn't want to push his luck.

Eugene Martinovsky often plays for a win when he has no real advantage. Here it almost backfires:

MARTINOVSKY



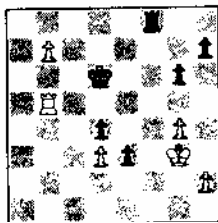
ANGELO SANDRIN

White has been checking at a8 e4 as Black has moved his king between g8 and h7. Here Gene avoided a draw by three-move repetition by playing 40... Bf87, no doubt hoping his passed d-pawn would prove to be dangerous. Angelo took Gene's word about the endgame which would have arisen after 41 Bd6 Qh6 42 Qxf8+ Qxf8 43 Bxf8 Kxf8 44 Kg3, but after White plays Kf2-e2-d3 can't he win with his outside passed pawn?

Angelo played 41 Qd8! which is also strong, since it forces the win of the d-pawn after 41...d3 42 Bd6 Qh6 43 Bxf8 Qxf8 44 Qxd3. But he didn't make a concerted effort to win, and after 44...Qg7 45 Qc3 Qg5 46 Qc8+ Kg7 47 g3 f6 48 Qc7+ Kg6 49 Qc2+ Kg7 50 Qe4 Qc1 51 Qe7+ Kg6 52 Qe8+ Kh6 53 Qh8+ Kg6 54 Qe8+ Kh6 55 Qh8+ a draw was agreed. 45 Qd8+ Kh7 46 Qd5! would have given White excellent winning chances.

If you didn't believe me when I talked about blunders in this event, just look at what a rusty Steve Tennant did to himself:

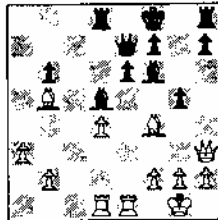
TENNANT



KRAMER

In the travel fatigue department, Misourian Ken Jones had his auto-pilot malfunction versus young Ken Wallach, but the visitor got a gift half point in the end anyway. Watch how Black activates his poorly placed pieces and gets back into the game:

WALLACH



JONES

Black is down a pawn, and his king and king's rook don't seem particularly well-placed. 22 Qh6+ (or 22 Bd21, since 22...Bxd4 loses to 23 Bb4 Bc5 24 Bc3! f6 25 b4 Bd6 26 Rxd5 Bxh2+ 27 Kxh2 Rxd5 28 Rxe6) 22...Kg8 23 Be5 (This eases Black's task. 23 Bd2! Bxd4 24 Qxg5+ Kf8-- 24...Qxg5 25 Bxg5 f6 26 Rxd4 fxg5 26 Rxe6 -- 25 Bb4 Bc5 26 Qh6+ Kg8 27 Bc3 still loses. 23...Kc8 is a better response to the threat of 24 Bb4, but White is in command) 23...Bxe5 24 dxe5 Rf8 25 Re3 (25 Rcl) 25...f5 26 Rg3 (White is not content with 26 exf6 Qxf6 27 Qxf6 Rxf6, and plays to win another pawn instead. Unfortunately this only serves to free Black's dead wood) 26...g4 27 h3 Qg7! 28 Qxg7+ (Queen moves are met by 28...h5) 28...Kxg7 29 hxg4 fxg4 30 Rxg4+ Kf7 31 Rf4+ (31 Rcl Rc8) 31...Ke7 32 Rxf8 Rxf8 33 Rcl Rg8! 34 g3 Rg5 35 Bc6 (Black's bishop was the best piece on the board!) 35...Rxe5 36 Bxd5 exd5 37 Rc6? (White is still a pawn up and it seems he should win, but Black now gets maximum utility from his passed d-pawn. White must make his king useful; 37 Kf1! Kd6 38 Rcl Rf5 39 Ke2 does the trick) 37...d4! 38 Kf1 d3 39 Rcl Kd6 40 Rdl Rd5 41 f4 (White seems shell-shocked. This allows Black's king to penetrate) 41...Kc5 42 Kf2 Kd4 43 g4 Rc5 44 f5 h5! 45 Kf3 hxg4+ 46 Kxg4 Ke3 47 f6 Ke2 48 f7 Rc8 49 Rh1 d2 50 Kg5 d1/Q 51 Rdl Kdl (what a turnaround!) 52 a4 Kc2 53 b4 Kb3 54 a5

42...Kc7 43 Rb4 e2 44 Rbl Re8 45 Kf2 (A draw is rapidly approaching, isn't it?) 45...g5?? (45...Kb8! 46 Rel Rf8+ is simply dead drawn) 46 b8/Q+ Rxb8 47 Rxb8 Kxb8 48 Kxe2 Kc7 49 Kf3 Kd6 50 Ke4 (Oops! Steve explained after the game that he somehow thought the d-pawns were at d4 and d5 when he allowed the rook trade!) Kc5 d1 Ke5 1-0

42...Kc7 43 Rb4 e2 44 Rbl Re8 45 Kf2 (A draw is rapidly approaching, isn't it?) 45...g5?? (45...Kb8! 46 Rel Rf8+ is simply dead drawn) 46 b8/Q+ Rxb8 47 Rxb8 Kxb8 48 Kxe2 Kc7 49 Kf3 Kd6 50 Ke4 (Oops! Steve explained after the game that he somehow thought the d-pawns were at d4 and d5 when he allowed the rook trade!) Kc5 d1 Ke5 1-0

After trying to annotate the Suzuki-Dandridge game from last year's IL Invitational I swore I wouldn't touch any of Marvin's weirder efforts ever again! I'll leave this one unannotated: 1 Nf3 Nf6 2 d4 e6 3 c3 c5 4 e3 cxd4 5 exd4 Be7 6 Bd3 b6 7 O-O Bb7 8 Rel O-O 9 Ng5 d6 10 Nbd2 Nbd7 11 Qa4 a6 12 Rad1 Rc8 13 h3 h6 14 Bh4 b5 15 Qc2 Nb6 16 Bg3 Nbd5 17 Qbl Nh5 18 Bh2 Nhf4 19 Bf1 Qd7 20 Rcl f5 21 a4 Rf6 22 axb5 axb5 23 g3 Rg6 24 Kh1 Nh5 25 Qd3 Bc6 26 Bg2 Bg5 27 Ral Qb7 28 Nng5 hxg5 29 Bf3 Rh6 30 Kgl Nhf6 31 Rxe6 g4 32 Bg2 gxh3 33 Bf3 Qd7 34 Rael g6 35 R6e2 g5 36 Reb Qg7 37 Qxf5 Rf8 38 Rxd6 Ne4 39 Qxe4 Rxd6 40 Qd3 g4 41 Bh1 QF7 42 f4 gx4 43 Kf2 Nf6 0-1

\*\*\*



Ken Jones looks on as Chuck Kramer and Steve Tennant practice "j'adoubing".

\*\*\*\*\*

ROUND TWO

(Bass-Dandridge, Kaushansky-Chachere, Chow-Friedman, Wallach-Kornfeld, and Gratz-Kus are in "Under the Microscope")

L Bass(1)	1 - Dandridge(1)	0
Kaushansky(1)	1 - Chachere(1)	0
Rose(1)	1 - Kramer(1)	0
Karklins(1)	0 - Ciles(1)	1
Szpisjak(1)	0 - Brooks(1/2)	1
Schiller(1/2)	1 - Gogel(1/2)	0
Martinovsky(1/2)	1/2 - Stevanovic(1/2)	1/2
AN Sandrin(1/2)	0 - Sprengle(1/2)	1
Rhine(1/2)	1/2 - Lawton(1/2)	1/2
Mohr(1/2)	1/2 - Jones(1/2)	1/2
AL Sandrin(0)	1/2 - Van Meter(0)	1/2
Rubin(1/2)	1 - Sage(1/2)	0
Savage(1/2)	1/2 - Bachler(1/2)	1/2
Tennant(0)	1 - Redman(1/2)	0
Chow(0)	1 - Friedman(0)	0
Wallach(1/2)	0 - Kornfeld(1/2)	1/2
Gratz(0)	0 - Kus(0)	1
Popel(0)	1 - Larsen(0)	0

Again, Bass and Kaushansky had a relatively easy time of it. Giles also reached 2 points when Karklins blundered a piece.

Kramer permitted Rose a killing stock sacrifice:  
 1 c4 e5 2 Nc3 Nf6 3 g3 e6 4 Nf3 b6 5 Bg2 Bb7 6 O-O  
 Be7 7 d4 cxd4 8 Nxd4 Bxg2 9 Kxg2 a6 10 b3 O-O 11  
 Bb2 Qc7 12 f3 Nc6 13 e4 d6 14 Rcl Rfd8? 15 Nd5!  
 exd5 16 cxd5 Qd7 17 Rxc6 b5 18 Qc2 Kdc8 19 Rcl Rxc6  
 20 Qxc6 Qxc6 21 Rxc6 g6 22 Ba3 Ne8 23 e5 dxe5 24  
 Bxe7 exd4 25 d6\*d3 26 Kf2 d2 27 Ke2 1-0

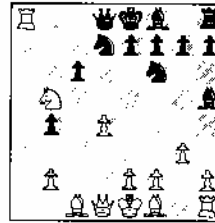
Eric Schiller made the most of the pawn he was given in the opening, while Kornfeld gave Wallach a lesson in the Modern Benoni and Kus managed to trap Gratz's queen in the middle of the board. Friedman let Chow back into the tournament by spurning a draw and getting mated instead.

Szpisjak and Sage showed how NOT to play the opening at the master level.

Szpisjak-Brooks: 1 b3 Nf6 2 Bb2 d6 3 f4?! e5! (This improvised gambit seems quite strong) 4 fxe5 dxe5 5 Bxe5 Ng4 6 Bg3 (6 Nf3? Nxe5 7 Nxe5 Qd4; 6 Bb2 Bd6 threatening 7...Qh4+, and if 7 Nf3 Nxe2!) 6...Bd6 7

Nc3 (7 Bxd6 Qxd6 8 Nf3 Nxe2!) Bxg3+ (During the game Steve Tennant suggested that 7...Nxe2 was stronger, but after 8 Bf2 Ng4 9 Nf3 White isn't dead yet) 8 hxg3 Qd6 9 Ne4 Qd4 10 d3 f5 11 Nf3 Qe3 12 Nfg5 fxe4 13 Nxe4 Bf5 and Black won.

Rubin-Sage: 1 Nf3 Nf6 2 d4 d5 3 c4 dxc4 4 Nc3 a6 5 a4 Bg4? (Not a logical move. The bishop will soon be wondering what it's owner sent it out here for) 6 Ne5 Bh5 7 g3 Nbd7 8 Nxc4 b5? (Wow. Black must have missed White's shot at move 13) 9 axb5 axb5 10 Na5 b4 11 Nb5 Rxa5 12 Rxa5 c6 13 Ra8!



(The rest is mopping up) 13... Nb8 14 Bf4 e5 15 Bxe5 Nfd7 16 Ndb+ Bxd6 17 Bxd6 Qb6 18 Bh3 Qb5 19 Qd3 Qd5 20 Qe3+ 1-0

## UNDER THE MICROSCOPE

By Albert Chow

This issue features games from the recently concluded Midwest Masters Invitational. As can be expected, this event produced some great fighting games and some theoretically interesting openings. I have looked at all the games and I think lower rated players will be glad to know there were also quite a few gross blunders and elementary mistakes. But almost without exception, all the games were interesting in one way or another.

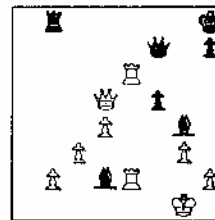
Before moving on to the games, here's an addition to the analysis of last issue's Kogan-Kornfeld game. After Black's brilliant move 32...Rf5!!, reader Jules Stein of the Chicago Chess Center pointed out that I neglected to mention an interesting defensive move, 33 Qb1. The point occurs when Black plays the natural continuation 33...Rf1? 34 Qf1 Qh3 35 Bh2 and Black is lost! Black can't defend his bishops and f7 at the same time. But he can draw by playing 33...Bg2! 34 Kg2 Qd5 35 Kh2 Qd2 36 Kh1 Qd5 with perpetual check. Or Black can try to win with 33...Qd5! 34 Rc2 Rg5! If White avoids this with 34 Rb7 then after 34...Rf1 35 Qf1 Qb7 White must defend a difficult ending a pawn down.

The following four games are from Round 1 of the Midwest Masters Invitational.

Eric Karklins(2154)-Albert Chow(2269) Ruy Lopez

1 e4 e5 2 Nf3 Nc6 3 Bb5 a6 4 Ba4 Nf6 5 O-O Be7 6 Re1 b5 7 Bb3 O-O 8 c3 (In a game played at the Chicago Chess Center Angelo Sandrin played 8 a4 against me and the game continued 8...Bb7 9 c3?! d5 10 ed?! Nd5 11 Ne5? Ne5 12 Re5 Nf4 13 f3 Nd3 14 Re2 Bc5 15 Kf1 Qh4 16 g3 Qh3 17 Rg2 Rae8 0-1) 8...d5!? (The Marshall Gambit. Is it sound? I think Black's active pieces and kingside play compensate for the pawn sacrificed. 8...d6 is the solid alternative that usually leads to the closed variation after 9 h3) 9 ed Nd5 10 Ne5! (Accepting the pawn is the only way to test this gambit. In an Illinois Chess League match game Ray Satterlee played 10 d4?! against me and the game continued 10...ed 11 Nd4 Nd4 12 Bd5? Qd5 13 Re7? Bh7 14 Qg4 Ne2! 0-1) 10...Ne5 11 Re5 c6 12 d4 Bd6 13 Re1 Qh4 14 g3 Qh3 15 Be3 Bg4 16 Qd3 Rae8 17 Nd2 Re6 18 a4 f5 19 Qf1 Qh5 20 f4 ba 21 Ra4 g5?! (Since this is still known book analysis, each player had used only about ten minutes on the clock. But after I played 21...g5?! Karklins thought over an hour! "He can't figure out the complications!", I thought to myself. "My opening surprise is a complete success!" But Karklins told me the next day he was simply recalling a refutat-

ion he worked out years ago! Since Karklins convincingly crushes 21...g5?!, in the future I will play 21...Rb8!, which gives black plenty of play) 22 Ra6! (After 22 fg, 22...f4 is strong) 22...gf 23 Bf4! (I was expecting 23 Rc6! Rh6! 24 Bd5 Kh8 25 Qg2! fe with complications, but Karklins avoids such nonsense) 23...Bf4 24 Re6! (A major improvement over a game between Tal and Geller! That game continued 24 Rc6! Be3 25 Re3 Re3 26 Bd5 Kh8 27 Qf4 Re1 28 Nf1 Bh3 29 Bc4 Qd1 30 d5 Bf1 31 Bf1 Qd5 Draw) 24...Bd2 (Now Black has two pieces for a rook and two pawns. Now if 25 Rac6 then 25...f4 is very strong) 25 Re5! (This quiet move in a sharp position had to be foreseen on move 24. White stops ...f4 and threatens Rc6. After this move it was my turn to think over an hour!) 25...Rb8? (I didn't play 25...Kh8! because I didn't like variations such as 26 Bd5 cd 27 Qf2 Bg5 28 Rd5, or 26 Qf2 Bg5 27 Rc6 Nf6 28 Bc2 when White has the three connected passed pawns. Black's bishop pair gives him some counter chances though, so 25...Kh8! is the only move) 26 Rc6! Rb3 27 Qc4! (White's heavy artillery dominate the board) 27...Rb8 28 Qd5 Qf7 29 Rce6! (The ending is good too, but this wins quickly. Black must now face moves like Re8 or Qd6) 29...Kh8 (Hoping for 30



Re8? Qe8! 31 Re8 Re8) 30 Re2! 1-0 (30...Be2 31 Qe5. 30...Rb2 31 Qe5 followed by 32 Re8. 30...Rg8 31 Qe5 Qg7 32 Rd2. And 30...Bf4 31 gf Be2 32 Qe5 Qg7 33 Qg7 Kg7 34 Re2 is disgusting. A super game by Karklins)

Position after 30 Re2!

Mike Brooks(2450)-Eric Schiller(2224) Ruy Lopez

1 e4 e5 2 Nf3 Nc6 3 Bb5 f5!? (The Schliemann variation, considered somewhat dubious by theory, but Schiller thinks it is better than its reputation and White doesn't refute it in this game) 4 Nc3 fe 5 Ne4 Nf6 (Black avoids the complications of 5...d5 6 Ne5 de 7 Nc6 Qd5 or 7...Qg5) 6 Qe2 d5 7 Nf6 gf 8 d4 e4 9 Nh4 Qe7 10 Bf4 Be6 11 O-O f5 12 g3 Bg7 13 c3 O-O (Black can be happy with his position from the opening) 14 Ng2 Nd8 15 Qh5 c6 16 Be2 Bd7 17 f3 Ne6 18 fe fe 19 Be3 Be8 20 Rf8 Nf8 21 Qh4 Qh4 22 Nh4 Bd7 23 Rf1 Ng6 24 Ne5 Rf8 25 Bg4 Rf7 26 Bh3 Bf8 27 Bg5 b6 28 Bd8 Kh8 29 g4 Kg8 30 g5 c5 31 Bf6 h5! 32 Kg2 Kh7 33 Kg3 Bb5 34 Rf2 e3! 35 Ne3 Bd6 36 Be5 Ne5 37 de Be5 38 Kg2 Rf2 39 Kf2 d4 40 Bf5 Kg7 41 cd cd 42 Nf1 Bf1 43 Kf1 Bh2 44 Ke2 Bf4 45 Kd3 Bg5 46 Kd4 Bf6 47 Ke3 Bb2 48 Kf3 Kf6 49 Bh7 Bc3 50 a4 h4 Draw

(Although I would continue playing if I were Black, White can draw easily by moving his king to h1 and sacrificing his a-pawn and bishop in return for Black's queenside pawns because Black's bishop is the wrong color)

Dennis Gogel(2377)-Miomir Stevanovic(2210) King's Indian

1 c4 Nf6 2 Nc3 g6 3 e4 d6 4 d4 Bg7 5 Be2 O-O 6 Bg5 (Averbakh's system which prevents 6...e5 because of 7 de de 8 Qd8 Rd8 9 Nd5) 6...Nbd7 7 Qd2 e5 8 d5 Nc5 9 f3 Bd7! (9...a5 is more common. If White now tries to trap Black's bishop he gets into trouble after 10 b4 Na4! 11 Na4 Ba4 12 b5? a6) 10 h4 Qe8! 11 g4 h5! (This is the point of Black's whole system beginning with 9...Bd7!?) 12 b4 (This move is new. In Informant 33, game number 713, G. Agzamov-Kuprejck, 12 O-O was played, but Black got a good position after 12...hg 13 Bf6 Bf6 14 fg Qd8 15 Qel?! Bg7 16 Nh3 f5!. And Black doesn't win a pawn with 12 Bf6 Bf6 13 gh because Black has 13...Qe7! similar to the game continuation) 12... Na4 13 Na4 Ba4 14 Bf6 Bf6 15 gh Qe7! 16 hg Bh4 17 Kf1 fg 18 Qh6 g5 19 Qg6 (on 19 Nh3 Black doesn't play 19...g4? 20 Nf2!, but instead 19...Rf6 20 Qh5 Qf7) 19...Qg7 20 Qg7 Kg7 21 Bd1 Bd7 22 Kg2 a5 23 b5 Rf6 24 Ne2 Kxf8 25 Nc3 b6 26 a4 Rf4 27 Ra3 Rh8 (Black misses his chance for 27...g4! when White can risk 28 fg Rf2 29 Kh3 Rh8, or try 28 Rh4 gf 29 Kg3 Rh4 30 Kh4 f2 31 Be2 fl/Q 32 Bf1 Rf1 when Black has the edge because of his active rook and White's weak pawns) 28 Ne2 Rf6 29 Nc1 Rhh6 30 Nd3 Rfg6 31 Ra2 g4 32 f4! e4 33 Nf4 Rf6 34 Nd3 Bc8 35 e5 de 36 Ne5 Rf4 37 Rh4! Rh4 38 Kg3 Re4 39 Rh4 Re5 40 Re2 Kf6 41 Rf2 Rf5 42 Rd2 Rf1 43 d6! cd 44 Rd6 Ke7 45 Rd4 Rh1 46 Kg3 Rh3 47 Kf2 Draw

Chris Kus(2229)-Steve Szplisjak(2060) Sicilian

1 e4 c5 2 Nf3 Nc6 3 d4 cd 4 Nd4 Nf6 5 Nc3 e5 6 Ndb5 d6 7 Bg5 a6 8 Bf6 gf 9 Na3 b5 10 Nd5 f5 11 ef Bf5 12 c3 Bg7 13 Ncz Bep 14 nec3 we7 (black fights for control of d5. I prefer to play 14...O-O, but there is nothing wrong with 14...Ne7) 15 a4 (Black is able to ignore this move because of his lead in development. 15 Ne7?! Qe7 16 Nd5? Qb7 gives Black the advantage. White should develop with 15 Be2 or else fight for light squares with 15 g4!?) 15...Nd5 16 Nd5 O-O! 17 Be2 (17 ab? ab only helps Black. 18 Bb5 would lose to 18...Ral 19 Qal Bd5, and 18 Ra8 Qa8 19 Nc7 could be similar to the game after 19...Qc6, but Black might try 19...Qa2) 17...e4 18 ab?! (This doesn't lead anywhere. 18 O-O is stronger. White meets 18...Be5 with 19 f4 ef 20 Bf3 with a complex game) 18...ab 19 Ra8 Qa8 20 Nc7? (20 Nb4 is stronger. 20 Ne3? d5! 21 Bb5 Rb8 gives Black too much) 20...Qc6 (20...Qa2 is still possible) 21 Ne6 (21 Nb5 Rb8 leads to the following variations which all favor Black: 22 Nd6? Rd8; 22 Nd4 Bd4 and 23...Rb2; 22 Qd6 Qd6 23 Nd6 Rb2 24 Ne4 f5) 21...fe 22 Qb3 d5 23 O-O (23 Qb5 Qb5 24 Bb5 Rb8 is the game continuation down one tempo for White. And 23 Bb5? Qb6 loses material for White since if White defends f2 with 24 O-O he loses the bishop after 24...Rb8 25 c4 dc) 23...Qc5 (There is nothing wrong with 23...Rb8, but Black prefers to keep the pressure on f2) 24 Qb5 (24 Bb5 still loses to 24...Rb8 and White has no other useful moves) 24...Qb5 25 Bb5 Rb8 26 Bd7 (26 c4 Bb2 is also good for Black) 26...Kf7! 27 b4 (27 Rbl Bc3) 27...Bc3 28 b5 Kf6 (Despite material equality and opposite colored bishops Black has a won game because his rook and bishop coordinate better than White's, his passed pawn is more mobile, and his king is a fighting piece) 29 Bc6 Ke5 30 Rd1 Bd4 31 Rd2 (Trying to reach the a-file, but allowing a decisive break) 31...e3 32 Re2 Ke4 33 fe Kd3 34 Ra2 Ke3 35 Kf1 (Loses, but how can White defend against ...Kd3, ...Rf6, and the eventual advance of the d-pawn?) 35...Rf8 36 Kel (36 Kgl Kd3) 36...Bc3 37 Kd1 Kd3 O-1

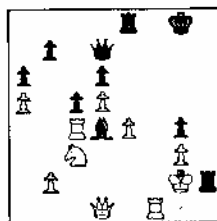
The following five games are from round two.

Leonid Kaushansky(2417)-Lawrence Chachere(2209) Sicilian

1 e4 c5 2 Nf3 d6 3 d4 cd 4 Nd4 Nf6 5 Nc3 a6 6 g3 (A Kaushansky trademark against the Sicilian) 6...e5 7 Nde2 Nbd7 (7...b5! is the way to insure queenside play) 8 a4 b6 9 Bg2 Bb7 10 O-O b5?! (10...Be7 11 h3 b5! Improves since Be7 is more important than h3) 11 ab ab 12 Ra8 Ba8 13 Nb5 Nc5 (Black will regain his pawn, but will be behind in development) 14 Nec3 (14 f3? Qb6) 14...Nfe4? (14...Nce4 keeps White's knight off d5) 15 Nd5! Bd5 16 Qd5 Qb6 17 c4 Nf6 18 Qa8 Ke7 (18...Qd8 19 Bc6 Nbd7 20 Qa7 Be7 21 Rdl wins for White too) 19 Bc3 g6? 20 b4 1-0

Ken Wallach(2169)-Allen Kornfeld(2269) Benoni

1 d4 Nf6 2 c4 e6 3 g3 c5 4 d5 ed 5 cd d6 6 Nc3 g6 7 Bg2 Bg7 8 Nf3 O-O 9 O-O Re8 10 Re1 (Both 10 Nd2 and 10 Bf4 are stronger) 10...ab 11 a4 Nbd7 12 Bf4 Qc7 13 e4?! (13 h3 prevents Black's maneuver) 13... Ng4! 14 Bh3? (No reason to exchange this piece. 14 h3 or 14 Qc2 improve) 14...Nde5 15 Ne5 Ne5 16 Bc8 Rac8 (White now has no active possibilities and Black threatens ...e4 followed by ...Nd3) 17 Kg2 Re7 18 Qe2 Rce8 (Instead of ...c4, Kornfeld prefers e-file press-

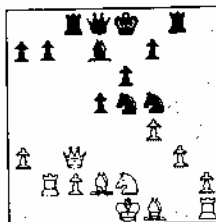


Position after 30...Rh2!

ure) 19 a5? (Black wasn't threatening b5, and now White must defend another weakness) 19...h6 20 Be5 Be5 21 Qc4 Bd4 22 Ra4 f5 (Sooner or later) 23 f3 Qd7 24 Qb3 g5 (Black will hit White's central pawn chain at it's base) 25 h3 h5 26 Rc4 g4 27 hg hg 28 Qd1 Rh7 29 fg fg 30 Rf1? Rh2! 0-1 (31 Kh2 Qh7 and Qh3)

Glen Gratz(2140)-Chris Kus(2229) French

1 e4 e6 2 d4 d5 3 Nc3 Bb4 4 e5 c5 5 a3 Bc3 6 bc Ne7 7 Qg4 Qc7 8 Qg7 Rg8 9 Qh7 cd 10 Ne2 (10 Kdl!?) 10...dc 11 14 Nbc6 12 Qd3 Bd7 13 Qc3 (13 Nc3, 13 h4, 13 Rbl, 13 h3, 13 Ng3, 13 g3, and 13 Be3 are all alternatives!) 13...Nf5 (13...O-O-O!?) 14 g3 (14 Rbl!) 14... Qb6 15 Ra2? (A clumsy way to drive the queen away. 15 Bg2 or 15 Bh3 improve) 15...Rc8 16 Rb2 Qd8 17 Bd2? (17 Rbl seems the best way to avoid Black's trap. But then Black gets a strong position with 17...Na5. 17 Rb7 loses to 17...Na5) 17...Ne5!



Position after 17...Ne5!

(Black unexpectedly grabs a pawn and White's game crumbles. On 18 Qe5 f6 traps the queen and 18 Qb3 Nc4 is almost as bad) 18 fe Rc3 19 Nc3 (White has a rook and bishop for a queen, but his pieces are disorganized and his king is unsafe, so he can prolong the inevitable) 19... Qc7 20 Kdl Bc6 21 Bf4 d4 22 Nb5 Qd7 23 Kgl a6 24 Nd6 Nd6 25 ed f6 26 Bc4 Kd8 (26...Rh8 is better) 27 Re1 (27 Bxb1?) 27...Re8 28 Ba6 e5 (The beginning of the end) 29 Bd2 Kc8 30 Bfl Qd6 31 Bh3 Kb8 32 Bb4 Qd5 33 Rfl Rh8 34 Bg4 Rh2 35 Rf6 Rh1 36 Bel Qe4 37 Be2 Ka7 38 Rb3 Ba4 39 Rd3 Bc2 40 Kc2 Qe2 0-1

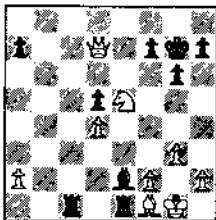
Leonid Bass(2546)-Marvin Dandridge(2276) Queen's Gambit

1 d4 Nf6 2 c4 e6 3 Nc3 d5 4 Bg5 Nbd7 5 cd ed 6 e3 Be7 7 Bd3 c6 8 Qc2 O-O 9 Nge2 Re8 10 O-O (10 O-O-O followed by a kingside attack is interesting) 10...Nf8 11 Bf6 (Another way to prepare b4 is 11 Rbl. 11 Ng3 followed by f3 aiming at a future e4 may also be possible) 11...Bf6 12 b4 (It's now a race between White's minority attack and Black's kingside play) 12...Be7 13

b5 Bd6 (13...c5!?) 14 bc bc 15 Qa4 Re6 (Typical Dan-  
 dridge, sharp and aggressive. I would have played the  
 less ambitious, but also more solid 15...Bd7) 16 g3 (16  
 Qc6?? Bh2) 16...Rh6 17 e4! (Opening the center to dis-  
 tract Black's attack) 17...Bh3 18 Rfel Ng6? (Missing  
 his chance for 18...Ne6!, for example 19 e5 Ng5! 20 ed  
 Nf3 21 Khl Bf1! 22 h4 Qh4! If White plays 19 ed or 19  
 Qc6 Black still plays 19...Ng5. And if White tries to  
 keep the knight off g5 with 19 f4 Black can try either  
 19...Nf4! or 19...Bf4!) 19 e5! Ng4 (19...Bf8 is very  
 unattractive, but may be best) 20 gh Qh4 21 Ng3 Bg4  
 (If 21...Bd7 White gets away with 22 ed! Qh2 23 Kfl  
 Bh3 24 Ke2 Re8 25 Kd2 Qf2 26 Nge2) 22 Nf1 f5 (desp-  
 eration) 23 Qc6 Rf8 24 Qd5 Kh8 25 ed f4 26 d7 Bh5  
 27 Re8! Be8 28 d8/Q Qg4 29 Khl Rhf6 30 Rel Bc6 31  
 Qf8 Rf8 32 Qc6 0-1

Albert Chow(2269)-Ed Friedman(2218) Queen's Gambit

1 d4 d5 2 c4 e6 3 Nc3 Nf6 4 Bg5 Be7 5 e3 0-0 6 Nf3  
 Nbd7 7 cd (7 Rcl) 7...ed 8 Bd3 c6 9 Qc2 Ke8 10 0-0  
 (10 0-0-0) 10...Nf8 11 Bf6 (11 Rab1) 11...Bf6 12 b4  
 Be6 (12...Bg4 was played in game 31 of the 1978 World  
 Championship. White won) 13 Kabl Rc8 14 Rfel g6 (14...  
 Be7; 14...Qd6) 15 Na4 Bg7 16 Nc5 Qe7 17 Qd2 b6 18  
 Nb3 Nd7 19 Rc2 c5! 20 Ba6 Rb8 (20...Rc7 21 bc bc 22  
 Nc5 Nc5 23 dc Nc5 24 Rb7 is good for White) 21 bc bc  
 22 dc Nc5 23 Rc5 Qc5?! (Friedman has defended excell-  
 ently, but now goes wrong trying to win. 23...Rb3! 24  
 Rbcl Rb2 25 Qa5 d4! gives Black equal chances) 24 Nc5  
 Rb1 25 Bfl (25 Nel is also possible) 25...Rc8 26  
 Nd3?! (26 Ne6! Rccl 27 g3 Rfl 28 Kg2 fe 29 Ng5! Rgl  
 30 Kh3 Rb6 31 Qa5 is strong since White will win at  
 least one pawn and keep the initiative. But I am very  
 greedy and wanted to keep all my extra material) 26...  
 Bf5 27 g3 (Good moves are becoming scarce. 27 Nfel Bc3  
 28 Qe2 Bel 29 Nel Rccl is no good. 28 Qc2 Rel is worse.  
 27 Ndel Bc3 is no different. 27 Nd4 Bd4 28 ed Bd3 29  
 Qd3 Rccl leads to a drawn pawn ending) 27...Be4 (27...  
 Bh3 28 Nfel) 28 Nd4? (If either knight moves to e1,  
 28...Rc3 is still good. And not 28 Kg2? Bf3 or 28...  
 Rfl!?. But 28 Ng5 keeps some advantage after 28...Bd3  
 29 Qd3 Rccl 30 Qd5 or 28...h6 29 Ne4 de 30 Nf4 Rccl  
 31 Qd5!) 28...Bd4 29 ed Rc4? (29...Bd3 30 Qd3 Rccl is  
 a draw. Is Black trying to win?) 30 Ne5! Rccl 31 Qe2  
 Rel (White keeps the advantage after 31...Rfl 32 Qf1  
 Rfl 33 Kfl, but Black may be able to draw in theory)  
 32 Qa6 Bf3 (32...Bf5 is met by 33 Kg2 Rfl 34 Kf3! Kb2  
 35 Kf4! Rff2 36 Ke5!, but not 34 Qf1? Bh3! or 34 Qa7?  
 Bg4!) 33 Nd7! (weird counterplay based on Qc8 check!  
 Black can still go for the inferior ending by taking on  
 f1) 33...Rbcl (33...Kg7 34 Qf6. Black doesn't play  
 33...Rccl because then he doesn't threaten Be2) 34 Qb5!  
 (Now counterplay comes from Qb8) 34...Kg7? (Black can  
 force a draw with 34...Rbl 35 Qa6 Rbcl. Now the best  
 he can get is the inferior bishop versus knight ending)  
 35 Ne5! Be2? (35...Rfl is the only hope. Some players  
 thought the minor piece ending should be drawn, but I  
 think in practice I could win it) 36 Qd7!



36...Rfl (36...Bfl 37 Qf7 Kh6  
 38 Qf8 is no better) 37 Kg2  
 Rgl 38 Kh3 Rgd1 (There is no-  
 thing better) 39 Qf7 Kh6 40  
 Qf8 Kh5 (40...Kg5 41 Qf4 Kh5  
 42 Qh4 mate) 41 g4 Bg4 42 Ng4  
 Rc3 (Spite check) 43 f3 1-0  
 Wild!

Position after 36 Qd7!

More games from this tournament next issue. Please  
 send any games, analysis, comments, or complaints to:  
 Albert Chow, 2433 N. Sawyer, Chicago IL 60647

DOWNERS GROVE CHESS CLUB FORMED

It meets 6:30-10pm Thursdays at Lincoln Center,  
 935 Maple Ave., Downers Grove. Call George Offner at  
 852-6139 for more information.

FROM THE OTHER SIDE OF THE BOARD

by Helen Warren

The Midwest Masters Invitational was born on a  
 727 at 30,000 feet midway between Chicago and  
 New York, somewhere, I'd say, over Toledo.  
 Fred Gruenberg asked me, "Helen, what do you  
 have in mind for a masters' event this year?"  
 He didn't have the final word out of his mouth  
 before I had outlined for him an event that  
 would try to bring together some of the strong-  
 est players, not only in Illinois, but in the  
 midwest. It was a tournament I had been  
 thinking about and mentally planning for as  
 early as 1980; now finally the finances seemed  
 at hand.

An invitational is no piece of cake of organize.  
 Unlike an open to which players come unannounced  
 and often at the last minute, an invitational is  
 successful only if there is decent planning and  
 hard commitments from potential participants.  
 My aim was to have a 2/3 Illinois-1/3 out of  
 state field, an attractive prize fund that would  
 lure some strength from out of state, good facil-  
 ities, top direction, and the opportunity to do a  
 game book from the event.

We started three months in advance to work with  
 letters of invitation to strong players from out  
 of state; our field from outside of Illinois was  
 set fully two weeks ahead of the first move. As  
 usual, some last minute bugaboos developed, and  
 I was fortunate--and relieved--when Les Van Meter  
 of Indiana and Glenn Gratz from Urbana stepped in  
 to fill some shoes.

The opportunity for our Illinois players to meet  
 IM Leonid Bass and FM Michael Brooks doesn't come  
 often. For most, even in a tournament like this  
 one, it doesn't come at all. But it did for some  
 at least. Senior Master Leonid Kaushansky, who  
 tied Brooks and Bass, proved that he is now among  
 the top echelon players in the midwest. Illinois  
 Champion Albert Chow, struggling to the money  
 spot after a shaky start, must regard this event  
 as among his better outings. Kevin Bachler gave  
 proof to the old saw that persistence pays off.

The performance of Fred Rhine, Steve Szpisjak,  
 Larry Cachere indicates that Illinois has a bright  
 future. Our thanks to the players from Missouri,  
 Iowa, Wisconsin, Indiana who came to make this a  
 truly midwest premier event.

We are now in the process of preparing a games  
 booklet with all contests from this event. It  
 will be ready in about a month. We think you'll  
 enjoy this booklet, especially since it will serve  
 as a companion to the coverage provided by Editor  
 Sprenkle and Games Editor Chow. "The play's  
 the thing," you know, and the artistry and  
 talent of best are yours for the asking, to  
 enjoy and applaud.

I must give special thanks to Fred Gruenberg  
 whose unstinting support of master chess in  
 the past several years has been the yeast  
 making the bread rise. My thanks, too, in a  
 special way to Dick Verber whose advice proved  
 invaluable. And to Walter Brown from whom we  
 have grown to expect a velvet job. Most of all,  
 my thanks to our players who again and again  
 demonstrate that they will produce excellent  
 chess when the opportunity to play is there.

Just as the early seventies produced chess  
 talent in Illinois in abundant richness--De  
 Fotis, Chellstorp, Verber, Formanek, Karklins  
 --, so this decade now, after a long arid spell  
 when we lost our best because there were no  
 tournaments, no competition, no incentives, now  
 we have a real opportunity with our Chows,  
 Rubins, Rhines, Bachlers, and Szpisjaks to  
 find our way again.

There is a thief in ICA! Someone stole all of the analysis you guys sent me over the past month. I figure its some booked-up monkey who wants to be certain that no one in ICA springs a surprise on him. He probably also wants to steal everyone else's ideas, and *will never submit anything because he wants to keep his own theoretical novelties top secret!*

Actually, the real reason that I haven't seen any analysis yet, is that most of you would have had about a week to get it to me.

So, while you guys are preparing your analysis, (it's not hard-20 minutes with a pen, paper, envelope, and a stamp) I'll give you a couple of more ideas to think about.

**FOR AL CHOW:** In the Closed Ruy Lopez, after 1 e4 e5 2 Nf3 Nc6 3 Bb5 a6 4 Ba4 Nf6 5 O-O Be7 6 Re1 b5 7 Bb3 d6 8 c3 O-O 9 d4 Bg4 10 d5 Na5 11 Be2 c6 12 h3 Bxf3 13 Qxf3 exd5 14 exd5 Hübner has often played 14...Qc7 with = after 15 Nbd2. But why not 15 Bg5!? with at least some chances of advantage for White? (DIAGRAM 1) If

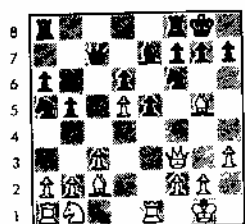
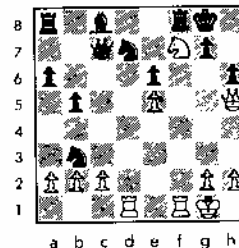


DIAGRAM 1 After 15 Bg5

**FOR DAVE SPRENKLE** (who likes this line, I think) and **CHUCK KRAMER** (who enjoys Gaveman chess): Some of you may recall Bachler-Morris from Janerville, 1980: 1 e4 e5 2 Nf3 d6 3 d4 cxd4 4 Nxd4 Nf6 5 Nc3 a6 6 Re4 e6 7 Bb3 b5 8 O-O Re7 9 f4 O-O 10 e5 dxe5 11 fxe5 Nf4? 12 Qh5 Be5 13 Be3 Bxd4 14 Bxd4 Ne6 15 Rad1 (Actually, this whole line may be busted. White may have to try

15 Be3!?) Qc7 16 Ne4 Nxd4 17 Ng5 h6 18 Kxf7 when Morris played 18...Ke5 and lost quickly. But what about 18...Nxb3? (DIAGRAM 2) As Gelbart pointed out, my idea of 19 Rf3 doesn't appear good enough. But does White win after 19 Qg6!? Does White win then? The threat is obvious--an example: 19...Bb7? 20 Kxh6+ Kh8 21 Nf7+ Kg8 (21...Kxf7? 22 Qh5+ Kg8 23 Qxf7+ Kh8 24 Rxd7!)?? Qh5+tt. What about 19...Rxf7!?

**FOR KEN** (I haven't been studying lately, so my play is wimpy) **WALLACH:** I'm going to reveal one of our pet variations: After 1 e4 e6 2 d4 d5 3 Nc2 Nf6 4 e5, what's wrong with 4...Ng8!? Many have said that the move simply wastes a tempo, but no one has really proven that. The defense is more flexible, since the Knight may go to either h6 or e7. The question is, does the extra tempo of Nd2 in what is now an Advance Variation, make any difference? Black



can still blockade the Q-side. (DIAGRAM 2 After 18...Nxb3 after e5-e4: see Stein-Bagirov USSR 1963, in Schwarz' French book. And there is another idea which I tried against Kramer once: ...f6!?. This also allows some tactical tricks: 1 e4 e6 2 d4 d5 3 Nd2 Nc6 4 e5 Ng8 5 Bb3 c5 6 e3 Nxe4 7 Ne2. Against Kramer I played 7...Qc7 8 O-O f6! and got equality. However, 7...f6 may also be playable, since 8 f4? allows 8...cxd4 9 exd4 fxe5 10 fxe5 Nxd4. Like any good French player, Black grabs a pawn and tries to play rope-a-dope. If 11 Nxd4 Qh4+ and Black can grab on d4 since Bb5+ will not win the Queen, unlike many similar positions. This is due to White's extra tempo-the Knight on d2.

Now listen-serp material! This column has a very short life-span if it doesn't eat. Send uag quantities. You'll eat faster and start writing! It's hungry!

*Remember, send your unreal winning analyses, (or any crap you've being around) to:*

Kevin "Lawman" Bachler, 529 N. Genesee Apt. 417, Bankogan, IL 60085.

**SPECIALTY OPENING BOOKS**

reviewed by IM John L. Watson

**The Benoni for the Tournament Player**, by John Nunn; B.T. Batsford, 1982; 149 pages; Algebraic Notation. **Reti Opening 1 Nf3 d5**, by Viacheslav Osnos; B.T. Batsford, 1982; 88 pages; Algebraic Notation. Contact David and Charles, North Ombret, VT 05053 for distribution information.

Batsford's decision to go with shorter, more practical opening books shouldn't surprise anyone who's been following chess theory. Whereas 10 years ago you could put out a 300-page book on the King's Indian Defence and claim to have covered the subject, Geller's 1980 work on q3 Systems barely scratches the surface in 130 pages, and his 160-page K10: 4.e4 would have to be at least four times as long to do a fairly thorough job on just the currently important lines. To emphasize the point, one could extrapolate from my 109-page 6...Nc6 Samisch Variation and estimate that approximately 2500 pages would be needed for a "complete" King's Indian book!

Nor would that opening be unique. My 784 pages on the English were the result of much editing, but there's double the material available today. So let's not even contemplate what would come from e.g. "The Sicilian Defence"! Specialization has become both necessary and desirable in today's chess world.

Taking such realities into consideration, John Nunn's The Benoni for the Tournament Player is a four de force, just about as fine a work as one could hope for in 150 pages. As one who used to be exclusively a Benoni player, I was pleased to see that Nunn's practice

of the most modern lines by no means precluded a careful and often suprisingly original analysis of the older options. In several instances, a seemingly off-hand suggestion refutes outright some conventional assessment which has stood for years. Nunn also seems to have the knack for separating what is currently important or even potentially important from the rest of the material (also evidenced in the excellent Najdorf Variation book just out which he and Stean co-authored). Interestingly for a Black-point-of-view book, several White systems simply come out better for the first player after all is said and done. This objectivity, coupled with up-to-date research, makes the book useful to high-rated as well as average players.

A comment should be made on the ubiquity of Nunn's own games in his book: more power to him?! One could make the case that this is the most valuable thing an author brings to his book; too many publications are just re-hash of old games and notes. But an AUTHOR'S games almost inevitably bring out new ideas in a variation. At the very least, they indicate that real thought has accompanied the writing.

I can't think of a single objection to this book. By all means add it to your library.

Viacheslav Osnos has been around the chess world for a long time, and is a competent, experienced player. Yet his Reti Opening 1 Nf3 d5 suffers from the typical problems of Russian opening books and articles. It gives us nothing new. Quite the opposite: what does the reader gain from this book except a rewrite of Talman-

(cont. on next page)

# Postal Chess

by Helen Warren, TD

As the crosstable below suggests, the 1980 ICA Championship is going right down to the wire.

## 80 ICA-F PLAYERS Prelim 1 2 3 4 5 6 7 8 9 10 11 12 13 SCORE

1	N Berry	5-1	♙	1	0	1/2	1/2	0	1	1	0	1/2	1		
2	W Harris	6-0	0	♙	1/2	1	0	0	1	0	1	0	0	1	
3	T Just	4 1/2-1 1/2	1	1/2	♙	0	0	1	1	0	1	0	1/2	1	
4	C Musgrave	5 1/2-1 1/2	1/2	w	1	♙	w	1/2	w	w	1	w	w	1	w
5	J Roecker	5-1		1	1	1	♙	1/2	1	0	1		0	1	
6	L Sims	5 1/2-1 1/2	1	1	0	1/2	1/2	♙	1	0	1	0	1/2	1	1
7	V Swanson	4 1/2-1 1/2	0	0	0	1	0	0	♙	0	1		0	1	
8	D Taylor	4 1/2-1 1/2		1	1	1	1	1	1	♙	1	1/2	1	1	
9	J Tomas	4 1/2-1 1/2	0	0	0	0	0	0	0	0	♙	0	0	0	0
10	D Walhout	5-1	1	1	1	1		1		1/2	1	♙		1	
11	J Warren	4 1/2-1 1/2	1/2	1	1/2	1	1	1/2	1	0	1		♙	1	
12	P Sholl	5-1	0	0	0	0	0	0	0	0	1	0	0	♙	0
13	W Brown	4 1/2-1 1/2				1		0			1			1	♙

We have assigned the 1981 ICA Finals with the chance of two or three other qualifiers entering upon completion of their prelim. Assigned thus far are: are those listed in the last issue plus Allan Anderson, Fred Bender, Jerry Leqq, and J Warren.

I am awaiting several entries from Iowa postalites in order to make up the eighth and last section of the 82 ICA and Region VII Postal Championship. You'll notice that our Missouri and Iowa participants are now entered in the rating list.

AMELING, A ( )	800	POPE, R ( )	842
ANDERSON, A ( )	896	REARDON, J ( )	840
ARCHER, L ( )	701	RUECKER, J ( )	915
BACH FR, K ( )	905	ROTHKILLD, J ( )	846
BAUMANN, H ( )	716	RYDRERG, S ( )	760
BELTCS, G ( )	800	SANDR, D ( )	746
BFNDLR, F ( )	906	SCHREMSER, T ( )	680
BERRY, N ( )	920	SCORZA, S ( )	800
BLIHFI, R ( )	800	SEDLACK, E ( )	800
BROCK, B ( )	800	SHOLL, P ( )	678
BROWN, W ( )	914	SIMS, I ( )	959
CATINO, C ( )	800	SMITH, M ( )	680
COHEN, S ( )	853	SOGIN, L ( )	838
CONNOR, P ( )	800	SPIITZAGEL, L ( )	760
CROWLL, J ( )	686	STEIN, K ( )	680
DAVIES, J ( )	800	STOLLR, R ( )	747
DEAKIN, J ( )	400	SWANSON, V ( )	782
DEMAURO, J ( )	906	SWICEGOOD, J ( )	840
ECKER, D ( )	800	TAYLOR, D ( )	1087
ELLENWOOD, D ( )	720	TAYLOR, K ( )	840
FAMBUSH, G ( )	929	TAYLOR, K ( )	998
FIFLD, D ( )	800	WALHOUT, D ( )	740
GLASCOCK, D ( )	800	WARREN, H ( )	740
GRAIZ, G ( )	800	WARREN, J ( )	1005
HARNACH, C ( )	751	WEISS, M ( )	800
HARPER, R ( )	800	WERNLR, L ( )	785
HARRIS, W ( )	851	WHITE, G ( )	800
HERNANDEZ, H ( )	724	WOLF, P ( )	800
JABLONKOW, V ( )	800	YOUNG, I ( )	800
JAMASON, R ( )	860	ZACATE, M ( )	640
JAMISON, L ( )	700	ZAVANELLI, M ( )	820
JOHNSON, B ( )	820		
JUST, F ( )	865		
KAPELA, R ( )	736		
LADD, R ( )	600		
LAROSE, M ( )	820		
LEGG, J ( )	831		
LFWIS, S ( )	800		
LIFF, A ( )	848		
LOOMIS, H ( )	800		
LUTHER, R ( )	800		
MARCONNET, J ( )	558		
MARTINDALE, J ( )	862		
MCKINNEY, C ( )	717		
MILBRATZ, W ( )	800		
MIZESKO, H ( )	735		
MUSGRAVE, H ( )	922		
NAFF, W ( )	860		
NAMURA, K ( )	740		
NARMI, R ( )	800		
O'HLEARN, J ( )	771		
O'KEEFE, M ( )	681		
OLIFMAN, T ( )	800		
PETERSON, P ( )	800		

### TOP TEN

Dave Taylor.....	1082
Jim Warren.....	1005
Don Walhout.....	998
Larry Sims.....	959
George Fawbush..	929
Newton Berry....	920
John Roecker....	915
Walter Brown....	914
Fred Bender.....	906
Jos. DeMauro....	906

### Postal Games

80 ICA-F Colle System  
Donald Walhout-Dave Taylor

1 P-Q4 N-KB3 2 N-KB3 P-KN3 3 P-K3 B-N2 4 B-Q3 P-Q3  
5 O-O O-O 6 QN-Q2 N-B3 7 P-B3 P-K4 8 PXP NXP 9 NxN  
PxN 10 Q-B2 P-N3 11 P-K4 B-N2 12 N-B3 Q-K2 13 B-KN5  
P-KR3 14 B-Q2 KR-Q1 15 QR-Q1 R-Q3 16 N-K1 R/1-Q1 17  
P-B3 Q-Q2 18 B-K3 P-B4 19 P-QB4 N-K1 20 R-B2 N-B2  
21 R/2-Q2 N-K3 22 B-B1 N-Q5 23 Q-N1 K-R2 24 P-QN3  
B-KB3 25 P-N3 Q-K2 26 BxN KxB 27 B-Q3 B-N4 28 K-K2  
K-N2 29 P-KR4 B-KB3 30 N-N2 Q-Q2 31 R/2-Q2 P-KR4 32  
N-K3 K-R1 33 N-Q5 B-N2 34 R-KN2 B-KR3 35 K-B2 P-B4  
Draw

81 ICA-1 Nimzo-Indian  
Hector Hernandez-Jack DeMauro

1 d4 Nf6 2 c4 e6 3 Nc3 Bb4 4 a3 O-O 5 Ne3 d5 6 Bd3  
b6 7 O-O Bb7 8 cxd5 exd5 9 Ne5 Nbd7 10 f4 c5 11  
Qf3 Re8 12 Ne2 Nf8 13 a3 Ba5 14 Rb1 Qe7 15 g4 c4  
16 Bf5 b5 17 g5 Ne4 18 Ng3 Nxe3 19 Qxe3 Be8 20 Be2  
Be7 21 Bd2 a5 22 b4 Bd7 23 h4 axb4 24 Bxb4 Bg6 25  
Qg2 Bxb4 26 axb4 Qd6 27 h5 Ra6 28 Re3 Rea8 29 f5  
Ra1 30 f6 R8a2 31 fxg7 Rxb1+ 32 Kh2 Rbb2 33 gxf8/Q+  
Qxf8 34 Bxh7+ Kxh7 0-1

(WATSON, from last page)

ov's Slavische bis Reti-Eröffnung (which is out-of-date) and parts of ECO? Indeed, ECO is considerably more thorough. Osnos' game references tend to be old ones, and the notes, apart from being threadbare, are extremely rare. Nowhere, in fact, does Osnos pause in his recital of game references to make a considered suggestion of his own with supporting analysis of any depth. In fact, the author's chess personality is hidden entirely from our view.

81 ICA-2 Queen's Gambit Declined  
Allan Anderson-Kevin Reardon

1 d4 d5 2 c4 e6 3 Nc3 Nf6 4 Bg5 Be7 5 e3 O-O 6 Nf3  
h6 7 Bh4 b6 8 cxd5 Nxd5 9 Bxe7 Qxe7 10 Nxd5 exd5  
11 Be2 Be6 12 O-O e5 13 b3 Nc6 14 Rcl Rac8 15 Qd2  
Rfd8 16 Rc3 Na5 17 dxc5 bxc5 18 Rfel Rc7 19 R3c2  
Nb7 20 Nd4 Nd6 21 Qel Ne4 22 Qa5 Rcc8 23 Nxe6 Qxe6  
24 Qxa7 Ra8 25 Qb7 Rdb8 26 Qc7 g5 27 h3 Ke8 28 Qh2  
Ra7 29 Bd3 Rla8 30 Bxe4 dxe4 31 Rxe5 Rxa2 32 Qe5  
Qxe5 33 Rxe5 Rb2 34 Rxe4 Raa2 35 Ra4 Rxl2 36 Kxa2  
Rxa2 37 Rb1 Re2 38 b4 Rxe3 39 b5 Re7 40 b6 Rb7 41  
g4 Kf8 42 Kf2 Ke7 43 Ke3 Kd7 44 Ke4 Ke8 45 Rcl+ Kd7  
46 Rbl Ke8 47 Kf5 Kb8 48 Kf6 Rd7 49 Bb3 Kb7 50 Kg7  
f5+ 51 Kxh6 fxg4 52 hxg4 Rd5 53 Kh5 Ka5 54 Rf3 Kxb6  
55 Rf5 Ra8 56 Rxe5 Kc6 57 Kg6 1-0

Alas, I even have complaints about the research. For one thing, it covers very few of the key games since 1970. In addition, about 20% of the book covers the Reti/English line where White double fianchettoes and Black plays ...d5, ...e6, ...Nf6, ...Be7 etc.. This material was covered much more thoroughly in Volume 4 of my English series, and yet Osnos has not bothered to look at that volume, as evidenced by his printing analysis which I have corrected or improved greatly upon. Yet we are publishing with the same company! I think it's very likely that, as with so many other Russian books published in the West, Reti Opening was written quite a few years ago. It was then "revised" (4 or 5 examples added without notes), and allowed to "go West" because it was harmless (i.e. useless). This had happened to the analysis and writings of Geller, Botvinnik, Bronstein, and Gufeld, to name a few.

At any rate, I cannot recommend this book.



# Problem Page

David L. Brown  
204 Irving Ave.  
Rockford, IL 61103

## SOLUTIONS TO NOS. 185-192:

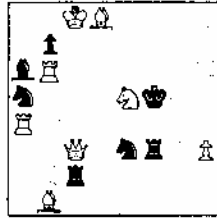
- No. 185 McQueen. 1.En2. Twelve variations from the black rook, sorry keys often accompany such tasks.
- No. 186 Petrovic. 1.Pxg8S. Combining an Albino (wPg2), a Fickaninny (bFe7) and a W-king battery, the composer specializes in many similar wild tasks and has never been bashful using unconventional keys.
- No. 187 Nanning. 1.Pc5+. An amazing feat, the B-king mated on 8 squares!
- No. 188 Adabasev. 1.Fg8S. Six black selfblocks alone is not the task, rather the ensuing mates can interfere on formerly useful guards of white line-pieces.
- No. 189 Stal. 1.Sd4 with all seven black knight moves met by distinct replies. A frequent subject for tasks.

No.201  
William Barclay  
"Christian Sci. Mon."  
1st Prize, 1966



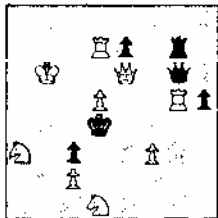
#2

No.202  
Frederick Gamage  
"Christian Sci. Mon."  
1st Prize, 1942



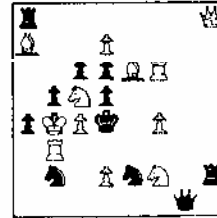
#2

No.203  
J. Savournin  
Nice Olympics  
2nd Prize, 1974



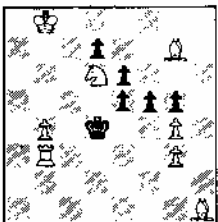
#2

No.204  
Julius Buchwald  
Fink Memorial  
2nd Prize, 1966-68



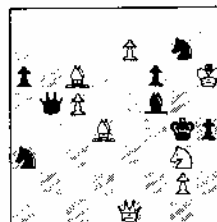
#2

No.205  
George N. Cheney  
"Brooklyn Standard"  
1860



#3

No.206  
William Meredith  
"Maryland Ch. Rev."  
1875



#3

No. 190 Densmore. 1.Pa8B Bd5/e4/f3, 2.Bxb; 1... Bxa8, 2.Pb7. Not 1.Pa8? Be4! Catching a few solvers, the key introduces some nice battery effects. Darso Densmore was the son-in-law of Sam Loyd.

No. 191 Havel. 1.Kc6! threat 2.Rd2+. 1...Pg5, 2.Qe2. Four model mates by a master of the model and the Bohemian School.

No. 192 Bondarenko. 1.Qd8+ Rd6, 2.Qb7+ Kc6, 3.Qa5+ and so on, the dame duo dances around the BK until the BF can't move sideways! Almost self-solving and bringing some novel comments.

VIC GLAZER has won a year's subscription to the ICB for heading the solver's ladder thru No. 184. With some confusion in changing to the amended deadline dates, this slipped by. Although still out of sync the ladder prize will be given every three issues, as usual, to the leading scorer.

### ACTIVE LADDER SCORES THRU No. 192:

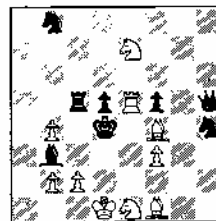
Paul Cripe.....41  
Lawrence Cohen.....63  
Vic Sleser.....18  
Chuck Harnach.....188  
Eric Hassberg.....201  
Edgar Holladay.....118  
Marvin Johnson.....22

Chuck Kramer.....24  
Mary Lyle.....41  
Fred Mihalek.....90  
Helen Wizesko.....78  
Gary Sargent.....127  
Richard Smiley...51  
Lou Sogin.....203  
Vito Vitkauskas...21

DEADLINE FOR SOLUTIONS THIS ISSUE is 30 days after receiving it. Mail only the keys to each problem.

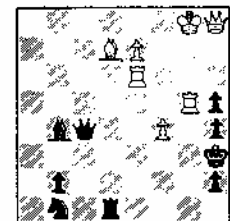
ABOUT THE PROBLEMS: In #201 how correct can the threat 2.Qd5 be? #202-3 have unpins of the w.k. In 204 white tries vacate b3 and e6 (for the c5S) and close a line of the black queen & rooks. The two old-time 3-ers are typical of the single "shocking" move. In #207 note the effects when black captures on c2 and f3. In #208 white's need to unpin the e6R will not be easily met.

No.207  
Claude Goumondy  
"Schach"  
1st Prize, 1972



#3

No.208  
Milan Vukceovich  
"Problemblad"  
2nd Prize, 1972



#4

### (MINUTES, cont. from pg. 3)

- Discussion of Newton Berry's campaign letter of Oct. 30. Fred Gruenberg disputed Newton's statement concerning lack of proper notice in the ICB of the 1980 ICA elections. The Board voted 17-3-1 that Newton's view was in error, that there had been full notice.
- Harold Winston's motion to "deplore Richard Verber's letter of Nov. 7 with its personal attacks on Newton Berry" was defeated 9-4-4.
- Discussion of creating a standing ICA Ethics Committee to investigate disputes. Motion to create such a committee was defeated after lengthy debate.

- Further discussion criticizing campaign letters was tabled.
- Illinois Chess League. Larry Stilwell proposed that "every team shall have an opportunity to qualify for this year's finals of the ICL if so stated in this year's published rules entitled 'Play Offs'". Tim Redman urged Larry to trust in League Director Walter Brown's judgement.

IL. CLASS CHAMP. 1982/CLASS 8

PLAYER	ST	RTNG	PRE	POST	1	2	3	4	TOT	
1 SPRENKLE, DAVID C	IL	2337		2350	011	012	0-6	0-5	3.5	
2 CHOU, ALBERT C	IL	2265		2292	013	017	0-9	0-3	3.0	
3 MARTINOVSKY, EUGEN	IL	2363		2362	012	011	010	0-2	3.0	
4 GILES, MORRIS C	IL	2100		2203	016	019	0-8	014	3.0	
5 CUMAI, KEVIN	MI	2223		2226	018	010	014	0-1	2.5	
6 MOHR, KEVIN	IL	2203		2211	015	014	0-1	0-9	2.5	
7 SPIJSJAK, STEVEN J	IL	2056		2081	019	015	018	010	2.5	
8 WACHTEL, HOWARD K	MI	2259		2238	014	013	0-4	018	2.0	
9 CHACHERE, LAWRENCE	IL	2236		2230	007	004	0-2	0-6	2.0	
10 SANDRINI, ANGELO	IL	2176		2162	019	005	0-3	0-7	1.5	
11 BERRY, VINCE M	IL	2094		2107	001	0-3	0-3	019	0-0	1.5
12 REDMAN, TIMOTHY P	IL	2085		2103	003	0-3	0-1	015	0-0	1.5
13 MAMCORMET, JOHN A	IL	2085		2081	002	0-2	0-0	016	019	1.5
14 CHRISTENSEN, KAYNE	IL	2079		2087	008	0-0	0-6	0-5	0-4	1.5
15 BURKE, JOHN F	IL	2014		2015	006	0-7	0-7	012	016	1.5
16 BROWN, JR, WALTER M	IL	2106		2076	004	0-0	0-0	013	015	1.5
17 WATSON, ALAN L	IL	2078		2070	000	0-0	0-0	0-0	0-0	0.5
18 SWYTHE, BILL	IL	2036		1947	005	019	0-7	0-8	0-5	0.5
19 ASH, ROBERT B	IL	1994		1963	010	010	010	011	013	0.5

IL. CLASS CHAMP. 1982/CLASS 4

PLAYER	ST	RTNG	PRE	POST	1	2	3	4	5	TOT
1 HUGHES, JR, ARTHUR	IL	2000		2009	005	014	013	0-4	0-3	4.5
2 SCOTT, GENE	IL	1989		2010	008	013	010	012	0-4	3.5
3 WISNIERSKI, MARK	IL	1985		2017	010	0-0	0-9	011	0-1	3.5
4 HICKMAN, ROGER	IL	1966		2001	019	0-3	0-6	0-1	0-2	3.5
5 NACHUCA, VIRGILIO	IL	1845		1917	001	0-7	017	013	0-6	3.5
6 FORU, SAOUEL M	IL	2012		2021	000	0-0	0-0	0-4	0-9	3.0
7 DOTSON, JOHN B	IL	2007		2004	014	0-5	015	018	011	3.0
8 KEARNEY, TODD D	IL	1878		1904	002	016	019	014	012	3.0
9 SCHMUEGGER, KEVIN	IL	1989		1974	015	017	0-3	0-6	010	2.5
10 SEDLOCK, ERVIN F	IL	1956		1948	003	019	0-2	018	017	2.5
11 KIEWKER, KEITH A	IL	1917		1919	018	015	0-6	0-3	0-7	2.5
12 SPLINIER, JOE C	IL	1965		1929	013	020	014	0-2	0-8	2.0
13 SMITH, CHARLES L	OH	1927		1946	012	0-2	0-1	0-5	0-0	2.0
14 FLYNN, MICHAEL F	IL	1881		1880	007	0-1	0-12	0-8	0-9	2.0
15 WATTS, BRADLEY S	IL	1871		1860	009	011	0-7	017	012	2.0
16 GOLLA, ROMAN	IL	1960		1915	017	0-6	011	010	0-9	1.5
17 REDDICK, JIM HAROLD	IL	1750		1762	016	0-0	0-5	015	010	1.5
18 POSTHUMUS, JAY A	MI	1816		1791	011	0-8	0-0	0-7	0-5	1.0
19 RAUPH, WILLIAM C	IN	1814		1769	004	0-4	0-0	0-0	0-0	1.0
20 PRADZINSKI, TIM W	IL	1635		1651	000	0-0	0-0	0-0	0-0	0.0

TIED PLAYERS ARE LISTED IN ORDER OF PRE-TOURNAMENT RATINGS  
W-WIN, L-LOSS, D-DRAW, X-FORFEIT WIN, F-FORFEIT LOSS  
Z-FORFEIT DRAW, M-1/2 PT WYE, B-BYE, U=UNPLAYED

IL. CLASS CHAMP. 1982/CLASS 8

PLAYER	ST	RTNG	PRE	POST	1	2	3	4	5	TOT
1 MICHALAK, ROBERT	IL	1804		1882	032	024	0-7	0-6	0-2	4.5
2 COOP, BEE BEE	IL	1803		1869	023	017	025	0-9	0-1	4.0
3 PASSATER, TONY	IN	1745		1790	007	019	011	021	0-9	4.0
4 MULRES, JEFFREY A	IL	1732		1831	017	025	0-5	013	0-8	4.0
5 TORRES, DONALD	IL	1725		1824	000	023	0-4	0-7	013	3.5
6 MC AKA, JAMES	IL	1722		1784	011	032	0-0	024	012	3.5
7 FIRESTONE, CHRIS	IL	1706		1802	003	016	0-1	0-5	014	3.5
8 LIFE, ADAM	IL	1647		1879	016	011	013	0-1	0-4	3.0
9 GOLEC, FRANK J	IL	1776		1789	020	015	021	0-2	0-3	3.0
10 SANDERS, ROBERT L	IL	1750		1771	004	016	020	012	015	3.0
11 KROBIL, CREDLY	IL	1674		1717	006	0-8	0-3	028	020	3.0
12 KAPINEZ, RAFAEL E	IL	1655		1696	022	013	028	010	0-6	3.0
13 LOVE, CALLAS	IL	1754		1770	029	012	0-8	0-4	0-5	2.5
14 JUNG, BERARD J	IL	1720		1714	015	030	028	014	0-7	2.5
15 ABRAHAM, SCOTT R	IL	1599		1715	012	0-9	0-0	025	010	2.5
16 MEDVICK, BERNADETTE	IL	1694		1695	008	010	0-0	031	021	2.5
17 SZENCZYK, MARK	IL	1654		1677	000	0-2	023	032	024	2.5
18 KOK, ALCOL	IL	1601		1642	019	0-7	022	014	025	2.5
19 MICHALAK, JI	IL	1743		1720	016	028	030	020	031	2.0
20 MYCER, JR, STEVE	IL	1658		1624	030	027	0-9	0-3	014	2.0
21 FLYNN, MICHAEL M	IL	1614		1653	009	028	032	019	011	2.0
22 SORNA, ALTON S	IL	1794		1624	012	031	014	0-0	0-0	1.5
23 MELSON, PHILIP M	IL	1773		1779	002	0-5	017	0-0	0-0	1.5
24 TAYLOR, CHARLES	IL	1679		1666	028	0-1	014	0-0	0-0	1.5
25 KRAFT, CHIP	MI	1760		1665	034	0-0	0-0	030	0-0	1.0
26 WALTON, LILLIAN C	IL	1760		1777	000	0-0	0-0	0-0	0-0	1.0
27 EDWARDS, JOHN K	IL	1722		1711	011	021	0-0	0-0	0-0	1.0
28 GRAVES, WILLIAM E	IL	1707		1676	024	021	012	011	0-0	1.0
29 PRADZINSKI, TIM W	IL	1631		1610	013	0-0	0-0	0-0	0-0	1.0
30 GAYES, CALVIN ELIGE	IL	1591		1580	021	014	019	026	032	1.0
31 MALLOTT, TON J	IL	1571		1541	027	022	034	016	019	1.0
32 SCHUCKER, SYLVIAN	IL	1648		1562	001	0-6	0-6	0-7	0-5	0.0
33 GROE, BERGFREUD	IL	1602		1598	025	0-0	0-0	0-0	0-0	0.0
34 MORTEL, BERNARD	IL	1333		1326	000	0-0	0-0	031	000	0.0

IL. CLASS CHAMP. 1982/CLASS 8

PLAYER	ST	RTNG	PRE	POST	1	2	3	4	5	TOT
1 SCHUMSER, TUDU	IL	1708		1744	010	020	0-8	0-3	0-0	4.5
2 HUSSON, CATHARIEL	IL	1441		1538	012	0-5	022	017	0-0	4.0
3 ALLEN, KRISTINE T	IL	1630		1649	015	0-0	024	010	0-1	3.5
4 CROLEY, LENE	IL	1502		1601	017	0-3	0-6	0-7	0-5	3.5
5 POPE, MARYGARD	IL	1552		1601	024	0-2	010	013	0-4	3.5
6 GUTIERREZ, CLARK	IL	1544		1577	024	0-7	0-4	0-1	010	3.5
7 WEANINGER, ROBERT	IL	1534		1573	021	0-6	016	0-4	012	3.5
8 WYOBEN, MARK	IL	1551		1576	019	016	0-1	0-9	0-2	3.0
9 JELLE, JAMES LAUREN	IL	1527		1545	019	010	0-0	0-9	015	3.0
10 FERKIE, DAVID M	IL	1455		1520	011	0-9	0-5	0-3	020	3.0
11 KOZIC, ELLIP	IL	1619		1620	010	019	025	0-0	017	2.5
12 KACHER, JR, LEO ARD	IL	1528		1511	000	023	017	020	0-7	2.5

13 SPONTAK, ROBERT	IL	1719/14	1675	L16	#18	#21	L-5	U-1	2.0
14 KASERGA, ANTHONY	IL	1598	1577	L-1	L21	#19	#16	U-1	2.0
15 CARSON, DAVID L	IL	1474	1462	L22	#23	#19	L-9	U-1	2.0
16 JONES, BYRON E	IL	1472	1479	#13	L-8	L-7	L14	#18	U-1
17 GURDON, PATRICK F	IL	1540	1518	L-4	#25	O12	L-2	L11	U-1
18 ANDREWS, DAVID H	IL	1522	1493	L-8	L13	H-1	#25	L16	U-1

IL. CLASS CHAMP. 1982/CLASS C

19 BROON, CHARLES E	IL	1431	1422	L-9	O11	L14	L15	#25	U-1
20 NELSON, HERMAN H	IL	1779	1766	U-1	U-1	U-1	#12	L10	U-1
21 STONE, GEORGE G	IL	1542	1534	L-7	#14	L13	F-1	U-1	U-1
22 VOLTZ, GEORGE A	IL	1447	1441	L24	#15	L-2	F-1	U-1	U-1
23 NYBENSKY, ADJARE	IL	1423	1393	L-6	L12	L15	H-1	U-1	U-1
24 ALGUARCZYK, GEORGE	IL	1369	1397	#22	L-1	L-3	U-1	U-1	U-1
25 CANNELL, MYRON J.	IL	1459	1411	O-5	L17	L11	L14	L19	U-1

IL. CLASS CHAMP. 1982/CLASS D

PLAYER	ST	RTNG	PRE RTNG	POST RTNG	1	2	3	4	5	TOT
1 ROGERS, RATHANIEL	IL	1392	1473	#-5	#-9	#-6	#-7	#-2	4.5	
2 NATHAN, ANTHONY	IL	1362	1430	#-6	#-8	#-7	#-5	L-1	4.0	
3 RANTALA, R. L.	IL	1356	1375	L-7	L-6	#10	#-6	#-5	3.0	
4 MONTIEL, BERNARD	IL	1326	1333	L-5	L-9	H-1	#10	#-7	3.0	
5 KLUMPP, EDWARD	IL	1453	1451	#-4	D-1	A-8	L-2	L-3	2.5	
6 DAY, ILLIE LEE	IL	1325	1343	L-2	#-3	L-1	#-9	D-8	2.5	
7 KRASS, RAYMOND	IL	1317	1331	#-3	O10	L-2	L-1	L-4	2.0	
8 LEWIS, ROY	IL	1322/14	1309	#10	L-2	L-5	L-3	U-6	1.5	
9 MUNCZ, ALBERTO J	IL	1251	1247	L-1	#-9	H-1	#-6	L10	1.5	
10 REODICK, SM HAROLD	IL	1434	1359	L-8	L-7	L-3	L-4	#-9	1.0	

IL. CLASS CHAMP. 1982/CLASS E-1000

PLAYER	ST	RTNG	PRE RTNG	POST RTNG	1	2	3	4	5	TOT
1 SAUVAGEAU, PIERRE	IL	1720/7	1732	#-2	#-9	O-4	#-8	#-5	4.5	
2 GAUDRY, WILLIAM	IL	1640	1644	L-1	#14	#13	#12	#-4	4.0	
3 HILL, MELVIN L	IL	U	1412	#12	#11	#10	L-4	#-8	4.0	
4 RAJENDRAN, DAVID	IL	1547	1565	#-5	#-6	D-1	#-3	L-2	3.5	
5 MC FADUEY, DONALD	IL	1041/5	1196	L-4	#13	#-9	#10	L-1	3.0	
6 CHEKOBETH, BRUCE C	IL	U	1268	#14	L-4	L-8	#-9	#-7	3.0	
7 PROFF, CURTLEND J	IL	1527/4	1265	L-9	L12	#14	#11	L-6	2.0	
8 BRON, ALDUIS A	IL	1124	1122	#-1	L10	#-6	L-1	L-3	2.0	
9 SEDLOCK, HEATHER L	IL	1006	1037	#-7	L-1	L-5	L-6	#14	2.0	
10 PERRY, III R JAMES	IL	U	1195	#13	#-8	L-3	L-5	U-1	2.0	
11 LEVIS, LARRY	IL	U	1111	H-1	H-1	H-1	L-3	U-1	1.5	
12 CICHOMACKI, GREGOR	IL	U	1131	L-3	#-7	H-1	L-2	L11	1.5	
13 RALPHAR, RYAN	IL	1059/15	1014	L10	L-5	L-2	L14	H-1	1.0	
14 PASSAATEN, LEIGH J	IL	978	971	L-6	L-2	L-7	#13	L-9	1.0	

# ICA AFFILIATES

American Postal	Chess Tournaments	APCI	P. O. Box 305	Western Springs
Batavia Senior HS	Chess Club	1200 W. Wilson		IL 60558-0305
Belleville	Chess Club	c/o Randall D Lewis	112 So 59th St	IL 60510-
Bowen High School	Chess Club	c/o John D'Heary	8131 So. Maplewood	IL 62223-
Central Lake County	Chess Club	c/o Harley Yoder, Jr	4970 Ridge Dr	IL 60652-
Chess Mates, Ltd.	Chess Club	517 Dempster St.		IL 60031-
Chicago	Chess Association	c/o Richard Verber	749 W. Connelia	IL 60201-
Chicago	Chess Center	2666 N Halsted		IL 60657-
Chicago Industrial	Chess League	c/o Jim Brotos	6963 N. Tahoma	IL 60614-
Chicago Lawn	Chess Association	c/o Frank Gunnea	8559 South Knox Ave.	IL 60646-
Donovan High School	Chess Club	c/o Dr Paul E Clark		IL 60656-
Gompers Park	Chess Club	4224 W. Foster Ave.		IL 60931-
Greater Peoria	Chess Federation	Bradley Univ Stud Ct	901 Elmwood	IL 60630-
Homewood-Flossmoor	Chess Club	c/o Newton Benny	16743 Orchard Ridge	IL 61606-
Lake County	Chess Association	c/o Timothy W. Just	1521 Circle St.	IL 60428-
Lake Shore	Chess Club	c/o Tom Howell	3300 N Lake Shore Dr	IL 60085
McHenry County	Chess Association	c/o Tom Kirke	61 N Caroline	IL 60657-
Oak Park/Forest Park	Chess Club	c/o Chris Musgrave	1127 S Humphrey	IL 60014-
Park Forest	Chess Club	c/o Wayne Palmquist	228 S Orchard	IL 60304-
RAE Products & Rockford	Chemicals Corp.	10926 S. Western Ave		IL 60466-
St. Charles	Chess Club	c/o Roy Ervin	2920 Ashbrook Dr	IL 60643-
Twin Counties	Chess Club	c/o Erv Sedlock	224 Dodson	IL 61109-
Univ. of Chicago	Chess Club	P. O. Box 1004		IL 60134-
87th Street	Chess Club	Ida Noyes Hall	1212 E. 59th St.	IL 62968-
		c/o Thomas Fineberg	7321 S. Shore Drive	IL 60637-
				IL 60649-

(KAISHA, from pg. 9)

- 1) Not to allow the KAISHA in future events.
- 2) At least allow a player to refuse to use a KAISHA, preferably whether or not another clock is available, but at least if another clock is available.

Also, we request that the Illinois Chess Association adopt one of the above rules for all tournaments sponsored by ICA, as well as any tournament sanctioned by ICA.

We have received a great deal more positive than negative response to our request that players not use KAISHA's in our events. As the USCF presently endorses the product, we do not feel that we should completely ban it. However, we must ask, was this endorsement made for any reason other than monetary considerations?

Finally, in support of our claim that many players do not like to use the KAISHA, we have often noticed (and have had other players comment to us) that many (I AM NOT SAYING ALL) KAISHA owners practically run to

their board and whip out their KAISHA just to make sure that they can use their clock. This action seems to indicate that a KAISHA owner is aware that many players would prefer not to use this device. In the past few years I have witnessed more 'debates' over the use of a KAISHA than over the use of any other piece of chess equipment.

We do have two suggestions to the manufacturers of the KAISHA which we feel will greatly improve their clock and alleviate these problems:

- 1) Get rid of the mechanical beep. It is unnecessary if the clock is made visible. Consideration should be given to displaying seconds throughout the time control.
- 2) Build the clock with a flip up top, which should probably open to an angle of about 100 to 110 degrees. Then using larger LCD's, place the LCD's on the inside of this flip up top. Thus, when the top is open, the displays should be very visible. The clock will still be very compact and portable.

# TOURNAMENT CALENDAR

Abbreviations: RR-round robin, SS-swiss system, TL-time limit, EF-entry fee, \$\$-prize fund, b/-based on ( ) entries. All phone numbers are area code 312 unless noted otherwise.

March 5,12,19 Park Forest-Freedom Hall  
3-RR Quads; EF:\$5; TL:45/90; \$\$:10 to 1st, 5 2nd in each section. Call Wayne Palmquist at 747-2120.

March 5 March Swiss Chess Mates, 517 Dempster, Evanston. 3-SS; EF:\$4; TL:40/60,30/30. Call Ted Ehara at 869-4100.

March 12 March Quads Chess Mates(address above)  
3-SS; EF:\$4; TL: 40/60; \$\$:\$30 1st in each quad. Call Ted Ehara at 869-4100.

March 12 March Open Springfield  
4-SS; call Tom Knoedler (217)-786-6546

March 12-13 FOX VALLEY OPEN St. Charles Chess Club  
5-SS; EF:\$15, \$20 at site (\$1 off to ICA members); TL: 40/100; \$\$:600-Cat I 60-30, Cat II+III 50-25, Cat IV+V 40-20, UNR 40-20. Call Erv Sedlock at 232-1320.

March 19 IL Grade School Championship, IL High School Classic. Call Larry Stilwell at 449-9364.

March 19-20 Discovered Checks Chicago Chess Center, 2666 N. Halsted. Two one-day events, 4-SS; EF:\$15, \$17 at site; TL:40/1; \$\$:300 b/30, 120-60, B+C 40, D/E/UNR 40. Call Jules Stein at 929-7010.

April 2-3 Chicago Chess Center (same format as March 19-20). Call Jules Stein 929-7010.

April 7,14,21 Park Forest-Freedom Hall  
3-RR; EF:\$5; TL:45/90; \$\$:10-5 each quad. Call Wayne Palmquist at 747-2120.

April 9-10 Tim Just's Memorial to Clarence Moylan  
Holiday Inn, Illinois Beach State Park, Sheridan Rd. at Wadsworth Rd., Zion. 5-SS; EF:\$16, \$11 Jrs (\$5 more at site); TL:40/100,25/1; \$\$:485 b/50, 150-100-75, Cat I, II,III,IV,V,UNR 40 b/7 in class. Call Tim Just at 815-223-4349.

April 9-10 Midwest Womens Open  
5-SS; EF:\$12 (\$15 at site); TL:40/90; \$\$:250 guar. plus trophies, 100-50-30, top 1400-1599 and 1200-1399 24 each, UNR 22. Call Harold Winston at 947-0503.

April 9-10 April Swiss Chess Mates(address above)  
4-SS; EF:\$4; TL:40/100, Sun 40/2. Call Ted Ehara at 869-4100.

April 16 Peoria 2nd Quarter Novice  
4-SS; EF:\$5; TL:30/45; limited to under 1500 or UNR.  
Call Bill Wilkinson at 309-673-9455.

April 16-17 GREATER CHICAGO OPEN Palmer House  
An Illinois Tour Event. \$1500 guaranteed prizes. See ad in this issue. Call Dick Verber at 935-8316.

April 23 Caissa Open Rockford  
4-SS; EF:\$5, \$7 at site; TL:40/1; \$\$:Trophies to 1st, top UNR. Call Gary Sargent at 815-397-9186.

April 23-24 Chicago Chess Center(same format as March 26-27). Call Jules Stein at 929-7010.

April 24 5th South Suburban Open  
Dolphin Lake Park, 183rd Governors Hwy, Homewood. 4-SS; EF: \$10, \$12 at site; \$\$:210 b/30. Call Bob Bain at 349-6918.

MORE DETAILS NEXT ISSUE:

April 30-May 1 Chess Mates, Evanston

May 7 Peoria Spring Tornado

May 7-8 Chicago Chess Center

May 14-15 Chess Mates, Evanston

May 21 Rockford

May 21-22 Chicago Chess Center

May 28 Springfield

May 28-29 Chess Mates, Evanston

June 4-5 Greater Peoria Open

June 4-5 Chicago Chess Center

June 11-12 Chicago Chess Center

June 24-26 MASTER CHALLENGE V, an IL tour event

July 2-3 CHESS SPECTACULAR-AMERICANA, Chicago Chess Center, an IL mini-tour event.

July 16 Springfield

July 16-17 Potzers Paradize, Chicago Chess Center

August 8-20 US Open, Los Angeles CA

Sept. 10 Springfield

Sept. 24 LAKE COUNTY OPEN, an IL tour event

For recorded phone announcements of tournaments in and around the Chicago area call:  
312-"IL-CHESS" or 312-233-8500

Look for the Southern Illinois Championship, coming soon!

ILLINOIS CHESS BULLETIN  
David Sprenkle, Editor  
302 S Busey, #203  
Urbana, IL 61801

DATED MATERIAL INSIDE  
SPEEDY DELIVERY APPRECIATED

Bulk Rate  
U.S. Postage PAID  
Permit No. 138  
Urbana, IL 61801