

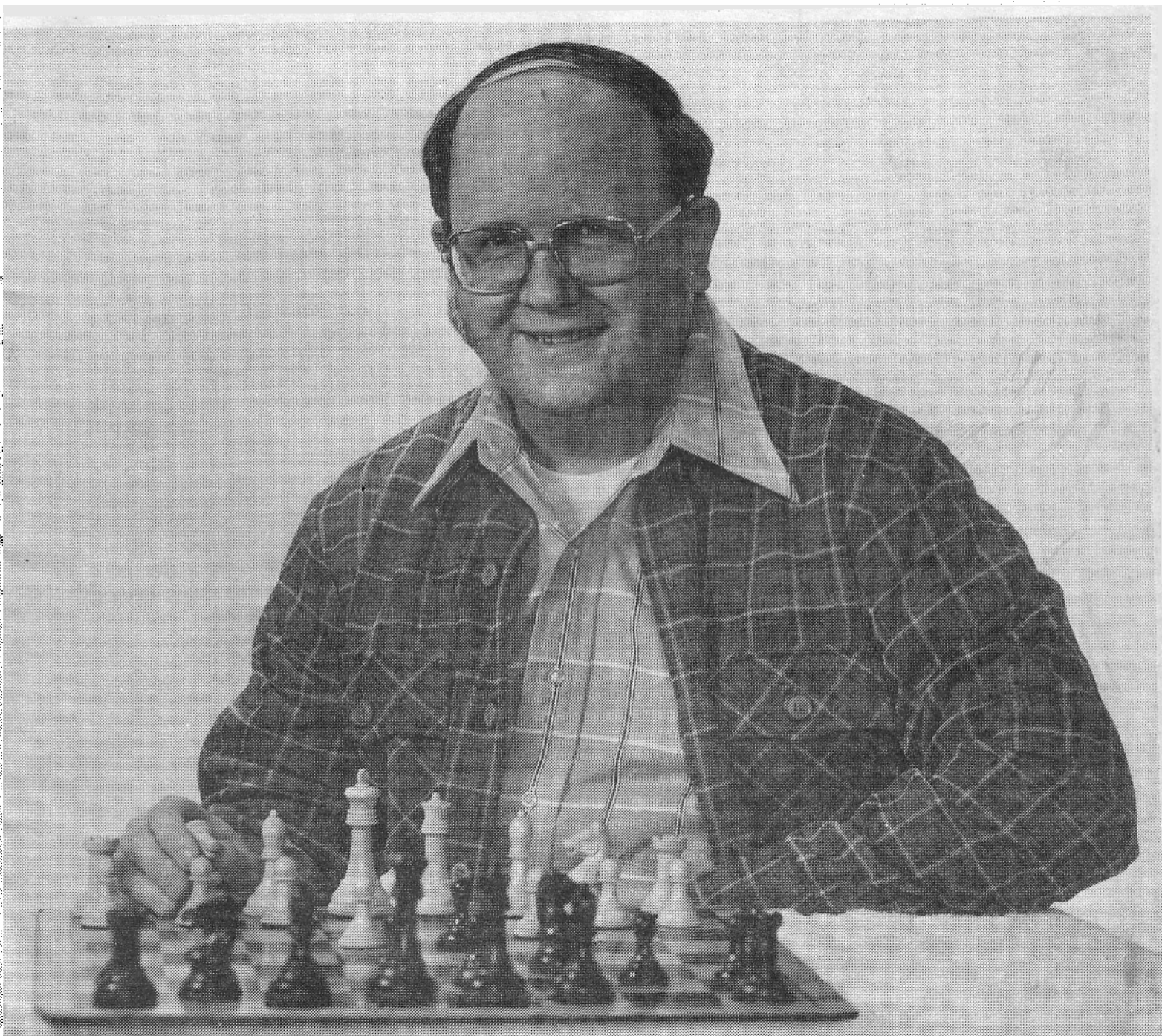
# ILLINOIS CHESS BULLETIN

Official Publication of the Illinois Chess Association, a USCF Affiliate

June-July, 1983

bimonthly

VOL. VI, No. 3



**David Taylor, ICA Postal Champ**

EDITOR: David Sprenkle  
302 S. Busey, 203  
Urbana, IL 61801  
217-328-7271

GAMES EDITOR: Albert Chow  
2433 N. Sawyer  
Chicago, IL 60647

PROBLEM EDITOR: David Brown  
204 Irving Ave.  
Rockford, IL 61103  
\*\*\*\*\*

ICA OFFICERS:

President: Helen Warren, Box 70, Western Springs 60558  
312-246-6665  
Metro-VP: Fred Gruenberg, 2035 W. 110th Place, Chicago  
60643. 312-779-3360  
Downstate VP: Bill Naff, 4200 N. Knoxville, Peoria 61614  
309-266-6674  
Secretary: Erv Sedlock, 224 Dodson, Geneva 60134  
312-232-1320  
Treasurer: Jim Warren, Box 70, Western Springs 60558  
312-246-6665  
Immediate Past Pres.: Chris Musgrave, 1127 S. Humphrey,  
Oak Park 60304. 312-386-5124

USCF DELEGATES (by virtue of their USCF posts)

Tim Redman, USCF President, 6923 N. Wayne, Chicago 60626  
Harold Winston, Policy Board Member-at-Large, 1450 E.  
55th Pl., Chicago 60637.  
Frank Skoff, Delegate-at-Large, 1402 W. Warner, Chicago  
60613  
Richard Verber, Regional VP, 749 W. Cornelia, Chicago  
60657  
Walter Brown, Regional VP, 811 Elroae Ct. Crest Hill  
60435

USCF DELEGATES (appointed by the ICA)

Helen Warren  
Fred Gruenberg  
Chris Musgrave

Mike Zacate  
Jim Warren

Fred Cramer

HONORARY PATRON

Mequon WI

ALTERNATE DELEGATES (USCF Voting Members)

Bill Naff  
Erv Sedlock  
David Sprenkle  
Kevin Bachler  
Larry Stilwell  
Winston Fulk  
Wayne Palmquist

John Menke  
John Tomas  
Jim Brotsos  
Tom Knoedler  
Ruth Ashmore  
Newton Berry

ALTERNATE VOTING MEMBERS

Bill Wilkinson  
Gary Sargent  
Eric Schiller  
Guy Gruenberg  
Sheldon Gelbart  
Shizuko Fulk  
Tim Just  
Tom McCormick  
Norbert Leopoldi  
Frank Cunnea  
Jim Condron  
Eric Johnson

Tom Fineberg  
Judge George Leighton  
Gene Scott  
Josette Donnelly  
Bob Bain  
Dick Temple  
Ted Ehara  
Al Chow  
Jules Stein  
Randy Lewis  
Mark Szewczyk

CENTURY CLUB

Helen Warren Western Springs IL  
Jim Warren Western Springs IL  
Walter M. Brown, Jr. Crest Hill IL  
Fred Gruenberg Chicago IL  
Michael Belovevick Chicago IL  
Jeff Hvland Oak Park, IL

GOLD CARD

Harland S. Hoisington Chicago IL  
Richard Verber Chicago IL  
Tim Redman Chicago IL  
Jim Condron Hinsdale IL  
Lawrence Goch Chicago IL  
Mitchel J. Sweig Evanston IL  
Kevin Kaufhold Belleville IL  
Chuck Kramer III Dolton IL  
George Leighton Chicago IL

PATRON

Michael E. Zacate Mokena IL  
Tom Kirke Crystal Lake IL  
Thomas A. Fineberg Chicago IL  
Louis Werner Evanston IL  
James M. Butler Calumet City IL  
Roy Benedek Westmont IL  
Leroy Dubeck Cherry Hill NJ  
John Deutsch Chicago IL  
Sam Naylor VI Carthage IL  
Gregory A. Fischer Des Plaines IL  
Bill Smythe Chicago IL  
Thomas B. Knoedler Springfield IL  
Albert Hoyle Downers Grove IL  
Shizuko Fulk Skokie IL  
Jova Mihajlovic Bensenville IL  
Irwin Rothschild Park Forest IL  
Tom McCormack Countryside IL  
J. G. Crowell Galesburg IL  
Esmond Coopwood, Sr. Matteson IL  
Leonid Kaushansky Chicago IL  
Edward A. Frumkin Brooklyn NY  
Kenneth N. Marshall Oak Park IL  
Eric V. Gutmanis Chicago IL  
Guy Gruenberg Cntry Clb Hills IL  
Ray D. Satterlee Wheaton IL  
Cloverline, Inc. Chicago IL  
Vivian S. Schmucker Goshen IN  
So. Ill Chess League Mt Vernon IL  
Walter Milbratz Chicago IL  
David Sprenkle Urbana IL  
Midmir Stevanovic Lincolnwood IL  
Arthur C. Sinclair Lake Forest IL  
Angelo Sandrin Chicago IL  
Greed Dutiland, Jr. Oak Park IL  
Edward Scott Lozano Chicago IL  
Jules Stein Chicago IL  
Gerard J. Jendres Chicago IL  
William Grosboll East St Louis IL  
Aaron L. Meyers Chicago IL  
Charles J. Hendricks Chicago IL  
Bill Buttny Downers Grove IL  
Armin Kussworn Chicago IL  
Stacy Van Petten Oak Brook IL  
Nik Goncharoff Hoffman Estates IL  
Helen E. Hendricks Chicago IL  
Albert Sandrin Chicago IL  
Frank Tegel Wood Dale IL  
Jim Brotsos Chicago IL  
John Tums Oak Park IL  
William Graves Chicago IL  
Fred Cramer Mequon WI  
James W. McNamara Riverside IL  
Evanston Township HS Evanston IL  
Harold Winston Chicago IL  
David Shane A.C.S.W. Macomb IL  
Norbert Leopoldi Chicago IL  
Keith Esses Chicago IL  
Max Zavanelli Park Ridge IL  
Philip Wong Evanston IL

METRO CLEARINGHOUSE:

Fred Gruenberg  
2035 W 110th Place  
Chicago, IL 60643  
312-779-0306 (home), 312-779-3360 (office)

DOWNSTATE CLEARINGHOUSE:

Bill Naff  
4200 N. Knoxville  
Peoria, IL 61614

MEMBERSHIP SECRETARY:

Jim Warren  
Box 70  
Western Springs, IL 60558

ICA PUBLICITY DIRECTORS:

Kevin Bachler and Tim Just

# EDITOR'S PAGE

THE LONG CHESS SUMMER

## RIGGED CONTEST

Our Candidates Match prediction contest ended with a wimper, as none of the 22 entrants could even guess all four winners! The Hubner-Smyslov match threw 21(!) of the 22, as almost nobody could predict that Smyslov would win the roll of a roulette wheel with the match deadlocked at 7-7. Helen Warren (yes, she entered her own contest!) was the only person who predicted Smyslov to win, but she had the Portisch-Korchnoi result wrong.

For the record, here are the first round results:  
Kasparov 6 Beliavsky 3 Smyslov 7 Hubner 7  
Korchnoi 6 Portisch 3 Ribli 6 Torre 4

Next contest we'll arrange to actually give out some prizes!

## K VERSUS K IN LA

There's a bonus awaiting you if you plan to attend the US Open in Los Angeles this August. The Korchnoi-Kasparov semifinal Candidates match will be hosted by the organizers of the US Open, and is due to start July 28th. What's in it for me, you ask? Well, if you can't make it to LA, you might get to see Kasparov in Chicago. Negotiations are under way for a Kasparov simul after the Candidates match, at the price of \$20 a board. Naturally the date of the simul will be unknown until the match ends, but if you are interested (and who wouldn't be?) call Dick Verber at 312-935-8316 to get on the waiting list.

I am grieved to report the death of Timothy Esposito in an auto accident on April 22, 1983. Tim was one of the outstanding juniors in Illinois. His achievements include:

- 1979 US Junior Class D champion
- 1979 US Open Class C champion
- 1979 Heraldica Class C Champion
- 1980 and 81 Oak Park Chess Club champion
- 1981 Top Junior in Illinois (selected as the outstanding junior from IL by the USCF)
- 1982 Illinois Junior co-champ
- 1983 Member of the Hillside Illinois Chess League championship team

He was an altruistic individual who believed in sharing his talent by teaching other youngsters. He coached Albright Middle School's chess team which recently finished 14th in the nation at Terre Haute, Indiana.

Tim was one of my best students and a close friend. He will be sorely missed by the west suburban chess community.

Sheldon M Gelbart

DEADLINE FOR NEXT ISSUE: July 20

The ICB is published six times a year by the Illinois Chess Association. Membership is \$7 a year for adults, \$5 for juniors, \$15 for affiliates, and \$25 for Patron Members. Affiliates and Patrons receive the ICB by 1st Class Mail. Checks should be made payable to the ICA and sent to Jim Warren, ICA Membership Secretary, Box 70, Western Springs IL 60558. Foreign Memberships: \$8.50

ADVERTISING RATES: Full page or 4/5ths of back cover: \$60; half page inside: \$36; quarter page inside: \$21. Flyer inserts \$25. 10% discount for multiple months of run. ICA affiliates get 1/3rd discount. Average Circulation (paid): 750+. Mailed from Urbana, IL on Bulk Permit no. 137. Checks for advertising should be sent to Jim Warren.

For recorded phone announcements of tournaments in and around the Chicago area call:

312-"IL-CHESS" or 312-233-8500

As the weather heats up, the level of chess activity in Illinois is picking up accordingly. This years Illinois Chess Tour will be building a head of steam with numerous summer events. The US Class Championships return to the Palmer House July 23-24, and the popular Put the Fun Back Into Chess event is scheduled for August 27-28. Last but not least, Eric Schiller is bringing the prestigious World Youth Team Championships to the University of Chicago August 23-September 3!

It is also not too early to look ahead to the hectic early fall schedule, with the Illinois Open in Peoria over Labor Day, the ICA Picnic in St. Charles, the inaugural Southern Illinois Open in Belleville, and quite a few more tour events. This is the summer to pull out all the stops and wallow in chess!

## MAYBE IT WOULD HELP IF WE WOULD SPIKE OUR QUEEN AFTER MATING OUR OPPONENT by Kevin L. Bachler

After my articles on Kaisha clocks, someone is undoubtedly wondering what I am mouthing off about now. PUBLICITY.

Chess doesn't get any. Or at least-the least. Why? The answer is simple, and typical. Money.

What advertiser is going to spend money advertising during a chess event-if no one is going to be watching it? What TV news show, or newspaper, or radio station, is going to cover chess, when it isn't going to sell more advertising?

The media simply believed that no one watches chess. They don't seem to know that Heraldica runs tournaments with \$100,000 prize funds and 1,000+ entrants. They've never, or barely, heard of the World Open, U.S. Open, or the U.S. Championship.

They covered Fincher because he was news to anyone. Not just chessplayers. And-it was the good old U.S. of A. versus Lucha dirty little Russian Commies. Makes for a good story that anyone can pay attention to.

What chess needs now is to get the attention of the media. To do this, at least four things must be done.

1) The United States needs chess heroes. Articles like 'Fischer, That's My Baby', which appeared in Sports Illustrated, do help. But we need some contenders for the World Championship. Right now, the best solution to this may be prayer. However, not all heroes must be national heroes. In the Chicago area press, Chow, Rubin, and Kaushansky (I'm sorry if I left someone out) are natural attempts due to their strength and age.

2) Gimicks. We need promotional gimmicks to help get the press interested. In the past, this has included high school tournaments (the youth angle), Korchnoi (the Russian defector vs. those dirty commies angle), and Al Sandrin (the gutsy guy who beats the odds angle). Future attempts could include: the let's set a world record or die trying angle (Chow vs. Rubin for 200+ consecutive hours in order to set the longest time record), the When Was The Last Time Chicago Held A World Championship Angle?, brought to us by Eric Schiller and The World Youth Team Championship (Eric-we need a slogan!), or perhaps we could try an old idea used in Chicago during the Fischer boom: the 5 masters take on the City of Chicago in a huge simul one day downtown? Items such as these cannot be used to

(cont. on pg. 15)

\*\*\*\*\*

## IN THIS ISSUE...

President's Page, Warren.....	pg. 4
Greater Chicago Open, Verber.....	pg. 6-7
Illinois Chess Tour Page.....	pg. 8
ICA Crowns Postal Champ, Warren.....	pg. 9
World Youth Team Champ., Schiller.....	pg. 10
State News.....	pg. 12
Under the Microscope, Chow.....	pg. 14-15
Postal Chess, Warren.....	pg. 16
Problem Page, Brown.....	pg. 18
Tournament Calendar.....	pg. 19

# TOWARD OUR GOAL....

Our ICA Fund Drive has moved into high gear. With 1983 less than half spent, ICA finds itself over 75% of the way around the track toward the \$2000 finish line. YOU have made the difference with your contribution, large or small. I'm banking on announcing to you that we've gone over the top in our next issue in August.

## LOOK WHAT'S COMING UP!!

The warm weather has whetted our appetite for chess: travel is easier, the economy looks brighter, and exciting things are happening in Illinois. Our ILLINOIS CHESS TOUR is off to a great start. We've added new tournaments to the tour calendar and welcome still more (see Tour Page). Master Challenge will see its 5th running just about the time you receive this issue. Our mini-tours have added the SO. IL OPEN as well as the CENTRAL IL OPEN and the Chess Mates Old Fashioned Swiss brings the number of minis to seven.

In July the U.S. Class repeats its visit to our city for the second year in a row. Organizer Richard Verber has increased the prize fund, so the prospects of a bigger and better event are promising. Moreover, this year's U.S. Class is special for ICA members: Verber will give a cash grant of \$300 to the ICA from tournament proceeds. Here's a chance to prove you're REALLY better than your rating! See you at the Palmer House on July 22-24.

As Editor Sprenkle reminded you on his page, the KASPAROV-KORCHNOI MATCH will be held in Los Angeles in July; the prospect of a visit to Chicago by a future world champion is exciting, indeed. Many of us recall with nostalgia the 1963-1964 swing through the midwest of another future world champion, Bobby Fischer. Could be you'll have a chance to see and play the man who will succeed Karpov.

PUT-FUN-BACK INTO-CHESS moves to a new date this year: August 27-28. Organizer/ICA V-P Fred Gruenberg has some unique surprises in store for participants. Don't miss it! And just a short week later, over the Labor Day holiday week-end, comes the ILLINOIS OPEN, this year in Peoria. We visited the Greater Peoria Open a few weeks back and had a chance to inspect the site for this year's state championship, the Ramada Inn. It's spacious and comfortable. What's more--it's reasonably priced at \$35 for FOUR. Beat that one if you can!

Our ICA picnic (see enclosed flyer) will be held in Sedlock country, just a stone's throw from metro-Chicago. Relax, have fun with your chess friends and their families, play some speed chess, and enjoy the outdoors at Pottotomie State Park in St. Charles. Car pools will be organized for BOTH the Labor Day IL Open in Peoria and the ICA picnic in St. Charles. Call me at (312) 246-6665 or Fred Gruenberg at 779-0306.

## WHEN THE LEAVES START TO TURN....

You can expect the chess action to continue in Illinois right through the fall. A new season will start for a reconstructed and revitalized Illinois Chess League; the Illinois Tour continues with a flurry of tournaments. In October the ICA will introduce a new scholastic package for junior and senior high school students (elementary school kids welcome as well): the ICA SCHOLASTIC CHESS CLINIC, a two-day event on October 1-2 at PROVISIO WEST HIGH SCHOOL in Hillside. We'll have one day of chess classes for our young people conducted by our own Illinois masters on everything from openings to coverage of the Candidates matches. Classes will be geared for the beginner, the intermediate, and the advanced learner. Already enlisted as instructors for this day of instruction are Masters John Tomas, Richard Verber, Al Chow, Ken Mohr, Dave Rubin--and we hope others as well. Day Two will concentrate on playing--a three round tornado for students who are USCF members and an unrated beginners' tournament for the newcomers to the game. We are keeping the cost of this event down to rock bottom: \$5 for the Saturday clinic and \$5 for the Sunday tourney, or \$9 for both. ICA will contribute free memberships to juniors who participate. Juniors, this is your chance to get BETTER, hike your rating, and have fun.

## SPEAKING OF JUNIORS...

JULY 9-10 is right around the corner--dates for the IL JUNIOR INVITATIONAL. (See ad elsewhere). We're hoping for our state's strongest to compete in this one. We have some super added prizes, a convenient location, and a free chess book and certificate for all who finish their schedule. Come on, juniors, rated over 1600! We will look for you at the Mohr Center on July 9! Tim Just of Waukegan has graciously donated a free entry to his BEACH BLANKET OPEN on July 16-17 as an added prize.

## PRESIDENT'S PAGE Helen Warren

### SCHOLARSHIP AND CHESS....

At our June 19 ICA board of directors meeting, we will announce a new program of chess grants for Illinois juniors. FIVE \$100 grants will be offered to individuals whose interest in chess warrants recognition. These grants will not come from the ICA treasury, but will be financed by ICA Metro-VP Fred Gruenberg's outside fund raising, contributions to chess programs from business and from Fred himself. You should know that Fred Gruenberg has contributed all profits from his hugely successful National Open in Las Vegas to this cause. You'll be hearing more about this program in months ahead. The first series of grants will be presented in MARCH, 1984.

### LOOKING FORWARD TO...

The 2nd MIDWEST MASTERS INVITATIONAL. We've scheduled it for DECEMBER 9-11 and will announce further details when site is fixed. Game booklets for 1982 MMI still available.

CONGRATULATIONS TO....our newest Illinois master Chuck Kramer of Dolton! Chuck's USCF rating vaulted over the 2200 mark, a result of super efforts out of state.

A NEW EDITOR SOUGHT.... Editor Dave Sprenkle will call the AUG. ICR his finale after a year of dedicated service. He will spend more time on the tournament trail, but will continue as a regular columnist/analyst. No one knows better than another editor what it takes to produce a quality magazine. The ICA thanks David for a job well done. Like to be the next ICB editor? Call us: 246-6665.

### ICA FUND DRIVE PROGRESS REPORT: JUNE 15, 1983

In addition to contributors listed in our last issue, the following have made our fund drive move into high gear:

#### CENTURY CLUB

Jeff Hyland, Oak Park

#### GOLD CARD

Kevin Kaufhold, Belleville  
Chuck Kramer, Dolton  
George Leighton, Chicago

#### PATRONS

Evanston Twp. High School  
Harold Winston, Chicago  
David Shane, McComb  
Norbert Leopoldi, Chicago  
Keith Esses, Chicago  
Max Zavanelli, Park Ridge  
Jova Mihaljovic, Bensenville  
Shizuko Fulk, Skokie  
Phil Wong, Evanston

#### BOOSTER

A Anderson

TOTAL TO DATE: \$1524

Complete list of contributors on page 2. Will you help us go over the top in 1983?

The ICA...serving chess in Illinois. We need YOU!

	GOAL	OVER THE TOP!
# 2000		
# 1800		
# 1600		
# 1400		
# 1200		
# 1000		
# 800		
# 600		
# 400		
# 200		

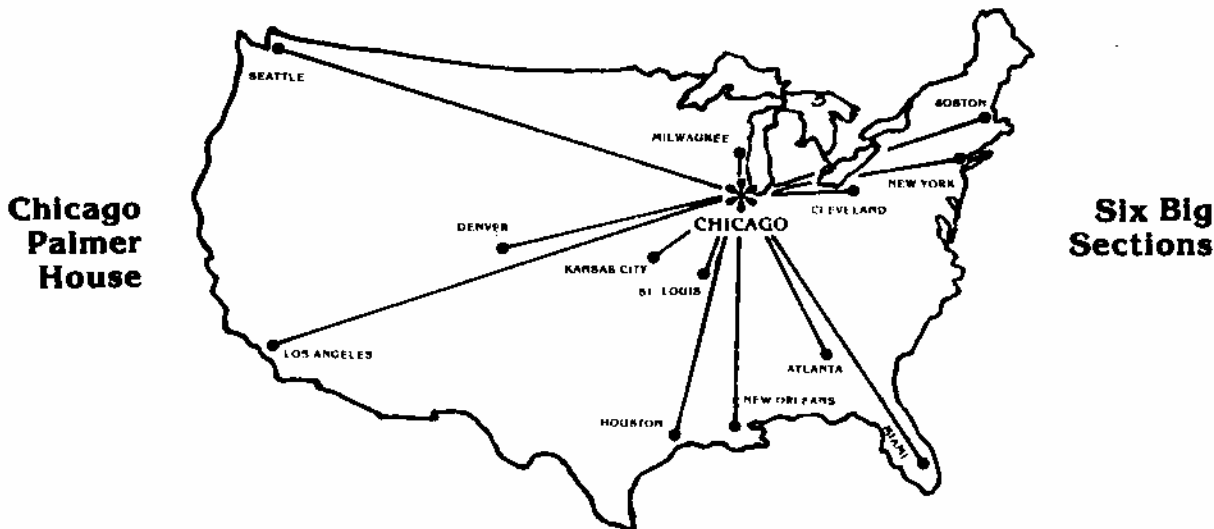
\$1524

ICA FUND RAISING DRIVE



**Biggest Class Prizes  
ever awarded  
in the U.S. Class Championship!**

# 1983 U.S. Class Championship



**\$\$ 8600 in Prizes • July 22-24**

*This famous National Tournament returns to the Midwest by popular demand*

## **SIX BIG SECTIONS:**

Master-Expert: **\$\$ 800-450-300-200-100**, <sup>Expert</sup> bonus **400**

Class A: **\$\$ 700-350-200-150-100**

Class B: **\$\$ 650-350-200-150-100**

Class C: **\$\$ 600-350-200-150-100**

Class D/E: **\$\$ 600-350-200-150-100**, <sup>E/below</sup> bonus **250**

Unrated: **\$\$ 200-150**

*This USCF National Tournament is co-sponsored by USCF and the Chicago Chess Assn. The tournament consists of 6 sections, 5 rounds per section, time limit 45/2, at the Chicago Palmer House Hotel. EF: \$45 if postmarked to USCF by June 25, \$48 if postmarked by July 12 — \$7 more at tournament site. REGISTRATION: 4-7 p.m. Friday, July 22. First round at 8 p.m. ½-pt. bye is available Friday if requested beforehand. CHESS SETS ARE PROVIDED BY USCF. PLEASE BRING YOUR CHESS CLOCK IF POSSIBLE. Make your hotel reservations early by writing directly to the Palmer House: \$45.00 single, \$55.00 double. For further details see Tournament Life Notice on page 46 of the July CHESS LIFE.*

**ENTRY FEE IS \$45.00 IF POSTMARKED TO USCF BY JUNE 25!**

Pd. adv.

# Al Chow Wins 185 Player City Championship at Palmer House

## Off To Good Start in Illinois Chess Tour

Twenty-year-old Al Chow swept to a seemingly effortless 5-0 victory in becoming 1983 Chicago City Champion. A large field of 185 players competed at the Palmer House Hotel over the April 16-17 weekend.

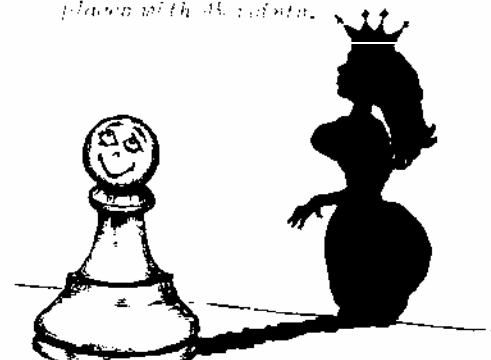
Although this year's Chicago Championship drew a much larger attendance than in 1982, a few big names were missing: most notably GM Roman Dzingshavi and Senior Master Leonid Kaushansky. Grandmaster "Dzingi" has returned to New York and is no longer living in Chicago; Kaushansky has started a new job and decided at the last minute not to play. Nonetheless, the field included a number of well-known masters in addition to Al Chow: David Sprenkle, John Tomas, Steve Hudson, Ken Mohr, Mario Spinosa, Karl Panzner, and Morris Giles.

Al Chow was very convincing this year. His last round win against Keith Esses demonstrated considerable maturity as he combined sparkling tactics with very precise endgame technique. In recent months Chow has suffered a few disappointing results -- perhaps as a result of playing in too many fast-time-limit weekend tournaments. But it appears that he has now returned to his winning ways. Last year Al Chow won the Illinois Chess Tour by a mile and it looks as though he is off to a good start this year as well.

Keith Esses lost to Al Chow in the last round and thus finished out of the money. But his play in earlier rounds showed promise. His deft defense against John Tomas' not-quite-sound attack in round four was quite impressive. Esses has gradually developed better positional judgment during the past year or so.

The tournament was directed by Mike Zacate and Walter Brown in their usual professional manner. The next big tournament at the Palmer House will be the 1983 U.S. Class Championship July 22-24 with a prize fund of \$8600.

*Ed. note: ...The award certificate for the 185 Player City Championship was given to Al Chow. He did not have a previous title; he will assume the title of City Champion and defend it in future years with the 185 player.*



### PRIZE WINNERS

- \*\*\*\*\* *to go*
- 1st Place -- AL CHOW -- 5 pts
  - 2-4 -- Mario Spinosa --- 4 1/2  
S. Fridgeirsson -- 4 1/2  
Ken Mohr ----- 4 1/2
  - Top A -- Cliff Wallach -- 4 1/2
  - 2-3 A -- Bob Marcowka - 4  
Chris Firestone 4
  - Top B -- Bob Kaminsky - 3 1/2
  - Top C -- Paul Madey -- 3
  - 3-way tie Sam Thompson 3  
Mike Adler -- 3
  - Top D-E James Lee ---- 3 1/2
  - 2-5 --- Bernard Mortel 3  
Jack Simunic 3  
Roy Levin 3  
Louis Bond 3
  - Unrated - Robert Suomals 3 1/2

	PRE	POST						
	ST RTNG	RTNG	1	2	3	4	5	
1 CHOW, ALBERT C	IL 2258	2275	W-47	W-11	W107	X---	W--8	5.0
2 SPINOSA, MARIO	IL 2183	2200	W-97	W-26	W115	D--3	W-23	4.5
3 FRIDGEIRSSON, SIGV	IL 2009	2107	W102	W148	W-42	D--2	W-18	4.5
4 WALLACH, CLIFF M	IL 1968	2029	W154	W-21	D-70	W-78	W-20	4.5
5 HUDSON, STEVEN M	IL 2201	2203	L-34	W-35	W154	W-55	W-44	4.0
6 CHACHERE, LAWRENCE	IL 2171	2177	L-44	W-34	W-61	W-50	W-37	4.0
7 KARKLINS, ERIK	IL 2158	2172	W-98	W-46	W-40	W-56	L-14	4.0
8 ESSES, KEITH A	IL 2152	2171	W-52	W153	W118	W-43	L--1	4.0
9 BURKE, JOHN F	IL 2103	2102	L-56	W-38	W156	W-57	W-49	4.0
10 WASHINGTON, RONALD	IL 2070	2079	W-50	L-74	W-62	W-58	W-52	4.0
11 BUERGER, EDWARD W	IL 2003	2028	W-58	L--1	W106	W-82	W-56	4.0
12 MARCOWKA, ROBERT	IL 1930	1959	W-60	L-18	W-67	W105	W-66	4.0
13 FIRESTONE, CHRIS	IL 1876	1910	L-17	W116	W120	W-71	W-45	4.0
14 MOHR, KEN C	IL 2215	2226	D152	W-44	W133	F---	W--7	3.5
15 SANDRIN, ANGELO	IL 2183	2164	L-49	D-37	W136	W-72	W-76	3.5
16 SAGE, J TIMOTHY	IL 2166	2155	L-35	D-36	W167	W-88	W-70	3.5
17 SZPISJAK, STEVEN J	IL 2147	2140	W-13	D-31	D-82	W-54	D-33	3.5
18 REDMAN, TIMOTHY P	IL 2135	2138	W172	W-12	H---	W-32	L--3	3.5
19 AKIN, MARC A	CA 2123	2117	L-36	W-49	W-63	W102	D-34	3.5
20 CZERNIECKI, K A	IL 2110	2120	W-53	W-30	H---	W-36	L--4	3.5
21 HOISINGTON, HARLAN	IL 2057	2056	W100	L--4	Z---	W108	W-77	3.5
22 AGEE, LARRY J	IL 2038	2008	L-81	W-85	D108	W-89	W-79	3.5
23 LEOPOLDI, NORBERT	IL 2035	2031	D133	W101	W-91	W-76	L--2	3.5
24 BRASLAVSKY, JONATH	IL 2031	2031	W-51	L-43	W-65	D-81	W-80	3.5
25 KAMEN, DAN	IL 1999	1992	D-82	W-81	W142	D-39	D-38	3.5

26 HICKMAN, ROGER IL 1994  
 27 SMYTHE, BILL IL 1990  
 28 ZABELL, SANDY L IL 1986  
 29 SAYEEDI, MANI IL 1981  
 30 THOMPSON, WALT IN 1973  
 31 GOMEZ, AUGUSTIN R WI 1972  
 32 GERBER, ROBERT C IL 1957  
 33 KINNAIRD, RODNEY M IL 1944  
 34 WATTS, BRADLEY S IL 1879  
 35 MUENCH, DEAN T IL 1877/4  
 36 SMITH, CHARLES L IL 1870  
 37 JENDRAS, GERARD J IL 1861  
 38 WEISZ, PIERRE IL 1858  
 39 HUTSON, TERRY VONZ IL 1805  
 40 KAMINSKY, ROBERT M IL 1585  
 41 LEE, JAMES IL 1308  
 42 SUOMALA, ROBERT L IL 1109/4  
 43 THOMAS, JOHN S IL 2310  
 44 KROM, JR JOHN M IL 2030  
 45 FORD, SAMUEL M IL 2017  
 46 SOLLANO, E D IL 1993  
 47 RUGGIERO, BRIAN T IL 1928  
 48 KIEPKER, KEITH A IL 1919  
 49 CALHAMER, ALLAN H IL 1898  
 50 REARDON, KEVIN IL 1895  
 51 WALKER, EUGENE IL 1872  
 52 JUNGMAN, GERARD J IL 1841  
 53 DEJMEK, MARK W IL 1839  
 54 NELSON, HERMAN H IL 1806  
 55 FOGEC, THOMAS G WI 1799  
 56 GLICK, ROBERT S IL 1774  
 57 FARKAS, KALMAN WI 1758  
 58 GOLEC, FRANK J IL 1746  
 59 LAWSON, KEVIN W IN 1744  
 60 HANSEL, MARK IL 1711  
 61 SAGLUVSKY, LEONID IL 1710  
 62 BOWEN, ROGER S IL 1693  
 63 ROTHSCHILD, IRWIN IL 1657  
 64 WODKE, KURTIS WI 1647  
 65 JOINTER, JR WILLIAM WI 1616  
 66 THOMPSON, SAMUEL E WI 1607  
 67 MADEY, PAUL W IL 1595  
 68 ADLER, MIKE IL 1522  
 69 LEVIN, ROY IL 1450  
 70 MONTIEL, BERNARD IL 1414  
 71 SIMUNIC, JACK N IL 1347  
 72 HOND, LOUIS A IL 1094  
 73 PANZNER, KARL IL 2318/6  
 74 BERRY, VINCE W IL 2111  
 75 KIRBY, KENNETH G IL 1802  
 76 KAVESH, DAVID IL 1788  
 77 SCHREMSER, TODD IL 1769  
 78 DECMAN, STEPHEN J IL 1764  
 79 DELI, IMRE IL 1753  
 80 GAUDRY, WILLIAM IL 1738  
 81 ADAMS, SCOT R. IL 1725  
 82 SCHERER, JAMES A IL 1722  
 83 ALLISON, ROGER D IL 1714  
 84 KANANO, JOHN IL 1704  
 85 BELOVESICK, MICHAEL IL 1669  
 86 ALLEN, KRISTINE T IL 1668  
 87 TAYLOR, CHARLES IL 1666  
 88 BRONFELD, ASHER IL 1629  
 89 GRUENBERG, FRED IL 1594  
 90 HEINRICH, JOEL G IL 1590  
 91 HOBSON, NATHANIEL IL 1567  
 92 SCHUMACHER, CARL E IL 1539  
 93 TURNER, KEITH IL 1518  
 94 BARTOCCI, MARIO PR IL 1420  
 95 RADONJIC, NENAD IL 1416  
 96 ROSE, DAVID IL 1279  
 97 LORING, STEVE W IL 1968  
 98 GOLLA, ROMAN IL 1897  
 99 LOVELY, THOMAS A IL 1810/5  
 100 MC NAMARA, JAMES IL 1809  
 101 BROADIE, RICHARD IL 1785  
 102 CHANDLER, PAUL A MI 1781  
 103 READ, RHY S IL 1773  
 104 LYSANDROU, MICHAEL IL 1734

2005 W-77 L--2 W-64 W-60 D-39 3.5  
 1981 W104 L-54 W116 D-83 W-84 3.5  
 1975 L-59 D-84 W-93 W-81 3.5  
 1976 D-57 D-39 W109 D-77 W-78 3.5  
 1973 W-61 L-20 W114 W107 D-42 3.5  
 1995 W-75 D-17 W-72 D-70 D-40 3.5  
 1958 D103 W-62 W137 L-18 W-83 3.5  
 1958 L-43 W-65 W-68 W115 D-17 3.5  
 1924 W--5 L--6 W119 W131 D-19 3.5  
 1989 W-16 L--5 H--- W110 W-86 3.5  
 1921 W-19 D-16 W-86 L-20 W-94 3.5  
 1899 X--- D-15 W127 W-74 L--6 3.5  
 1884 W151 L--9 W124 W130 D-25 3.5  
 1887 W150 D-29 W-69 D-25 D-26 3.5  
 1690 W169 W-51 L--7 W-97 D-31 3.5  
 1333 D-93 L127 W-75 X--- X--- 3.5  
 1628 W105 W103 L--3 W-98 D-30 3.5  
 2305 W-33 W-24 W-54 L--8 U--- 3.0  
 2045 W--6 L-14 W139 W118 L--5 3.0  
 2036 W-55 W107 W-71 F--- L-13 3.0  
 1969 W-80 L--7 L105 W158 W106 3.0  
 1914 L--1 W109 W159 L-66 W115 3.0  
 1896 L148 L107 W182 W139 W116 3.0  
 1915 W-15 L-19 W122 W123 L--9 3.0  
 1893 L-10 W113 W-92 L--6 W111 3.0  
 1858 L-24 L-40 W161 X--- W113 3.0  
 1845 L--8 W-88 W158 W112 L-10 3.0  
 1826 L-20 D-91 W174 W142 D-69 3.0  
 1875 W-73 W-27 L-43 L-17 W117 3.0  
 1821 L-45 W157 W-99 L--5 W118 3.0  
 1829 W--9 W151 W130 L--7 L-11 3.0  
 1776 D-29 W114 H--- L--9 W119 3.0  
 1753 L-11 W-68 W121 L-10 W122 3.0  
 1832 W-28 W152 W155 F--- U--- 3.0  
 1714 L-12 W145 W165 L-26 W120 3.0  
 1734 L-30 W125 L--6 W-99 W131 3.0  
 1728 W149 L-32 L-10 W124 W112 3.0  
 1675 W124 L149 L-19 W125 W123 3.0  
 1642 L143 W169 L-26 W121 W129 3.0  
 1620 W185 L-33 L-24 W160 W130 3.0  
 1670 W183 L102 W149 W-47 L-12 3.0  
 1634 W155 L100 L-12 W164 W-98 3.0  
 1553 W181 L-58 L-33 W168 W100 3.0  
 1548 W110 D106 L-39 W137 D-53 3.0  
 1534 W-89 W178 U--4 D-31 L-16 3.0  
 1436 W166 W136 L-45 L-13 W105 3.0  
 1219 W182 W174 L-31 L-15 W109 3.0  
 2249 L-54 H--- F--- W138 W128 2.5  
 2110 Z--- W-10 W-84 L-37 U--- 2.5  
 1766 L-31 D-94 L-41 W174 W141 2.5  
 1808 W179 D150 W-94 L-23 L-15 2.5  
 1774 L-26 W117 W164 D-29 L-21 2.5  
 1771 Z--- W139 W-96 L--4 L-29 2.5  
 1727 L134 D123 W126 W146 L-22 2.5  
 1731 L-46 W119 D129 W143 L-24 2.5  
 1756 W-22 L-25 W160 D-24 L-28 2.5  
 1734 D-25 W158 D-17 L-11 D-92 2.5  
 1721 L153 W-92 W162 D-27 L-32 2.5  
 1720 W122 D-28 L-74 W145 L-27 2.5  
 1678 W120 L-22 H--- W127 U--- 2.5  
 1686 W184 D171 L-36 W-96 L-35 2.5  
 1663 L-94 W162 D132 D129 D-95 2.5  
 1647 W-99 L-52 H--- L-16 W143 2.5  
 1604 L-70 W182 Z--- L-22 W145 2.5  
 1561 L112 L121 Z--- W175 W146 2.5  
 1588 W160 D-53 L-23 L-28 W144 2.5  
 1554 W178 L-83 L-50 X--- D-82 2.5  
 1511 D-41 L130 L-28 W169 W134 2.5  
 1455 W-87 D-75 L-76 X--- L-36 2.5  
 1481 L115 D173 D152 W156 D-87 2.5  
 1325 Z--- W126 L-78 L-86 W142 2.5  
 1953 L--2 W156 W113 L-40 F--- 2.0  
 1868 L--7 W135 W141 L-42 L-67 2.0  
 1661 L-88 W168 L-55 L-61 W165 2.0  
 1780 L-21 W-67 H--- D117 L-68 2.0  
 1755 W132 L-23 L131 L119 W160 2.0  
 1799 L--3 W-66 W125 L-19 U--- 2.0  
 1757 D-32 L-42 D150 L120 W161 2.0  
 1701 L-27 L118 W183 L122 W155 2.0

105 RUZIC, NFIL P IN 1684 2.0  
 106 ROBINSON, HARRISON IL 1683 2.0  
 107 PRADZINSKI, TIM N IL 1610 2.0  
 108 HOWELL, BILL IL 1574 2.0  
 109 KLAISEK, PETER IL 1574 2.0  
 110 POPE, RAYMOND W IL 1569 2.0  
 111 SHELTON, ROBERT IL 1566 2.0  
 112 GERKE, DOUGLAS IL 1559 2.0  
 113 RAJENORAN, DAVID IL 1537 2.0  
 114 NORINI, DAVE WI 1530 2.0  
 115 SOPOCIA, ROGER R IL 1523 2.0  
 116 SMELTZER, PHIL W IN 1513 2.0  
 117 MARRS, WARREN G IL 1503 2.0  
 118 BOLTON, MATT W IL 1494 2.0  
 119 HOYNE, JOHN IL 1488 2.0  
 120 KLUMPP, EDWARD IL 1473 2.0  
 121 HARN, MICHAEL W IL 1463 2.0  
 122 FOSTER, JAMES IL 1459 2.0  
 123 WEILAND, TIM J IL 1427 2.0  
 124 TRASS, JR JOSHUA J IN 1420 2.0  
 125 ALLMON, BILLY M IN 1381 2.0  
 126 ABBOTT, JAMES M IL 1362 2.0  
 127 FRANDBSEN, ERIC IL 1349 2.0  
 128 JOHNSON, HENDERSON IL 1326 2.0  
 129 ZACATE, MATTHEW O IL 1277 2.0  
 130 MUNOZ, ALBERTO J IL 1247 2.0  
 131 HORTON, III THOMAS IL 0 2.0  
 132 FRAZIER, THOMAS IL 2024 1.5  
 133 IKUECHI, CURTIS X IL 1814 1.5  
 134 BOLDEN, ROGER IL 1770 1.5  
 135 LINN, DAVID O IL 1709 1.5  
 136 GROVE, JAMES S IL 1686 1.5  
 137 LEGG, WILBUR S IL 1672 1.5  
 138 PARKS, FRED H CA 1666 1.5  
 139 WENZ, WILLIAM WI 1648 1.5  
 140 BELOVESICK, JR MIC IL 1615 1.5  
 141 KAST, BYRON IL 1554 1.5  
 142 KUSCEVICH, MICHAEL IL 1541 1.5  
 143 CANNELL, MYRON J. IL 1480 1.5  
 144 MADISON, EUGENE A IL 1214 1.5  
 145 PRIEST, ERIC IL 0 1.5  
 146 MYERS, WILLIAM H IL 0 1.5  
 147 SPRENKLE, DAVID C IL 2352 1.0  
 148 GILES, MORRIS C IL 2332 1.0  
 149 GEHLHOFF, FRED W WI 2037 1.0  
 150 PEDERSEN, N ERIC IL 2036 1.0  
 151 HOWELL, RODNEY IN 2018 1.0  
 152 MELWIN, STEVE IL 1966 1.0  
 153 MACHUCA, VINGILJO IL 1890 1.0  
 154 EDWARDS, JOHN R IL 1708 1.0  
 155 DORRZYNSKI, WITOLD IL 1649 1.0  
 156 CIACOBBE, MICHAEL IL 1648 1.0  
 157 PAPAS, GREGORY S IL 1547 1.0  
 158 CARSON, DAVID L IL 1458 1.0  
 159 ANDREWS, DAVID H IL 1436 1.0  
 160 PAVONE, FRANK P IL 1371 1.0  
 161 LEE, BYUNG IL 1367 1.0  
 162 WHIGHT, LA JUAN IL 1316 1.0  
 163 BURKE, J MARCELLUS IL 1298 1.0  
 164 CORNERO, ROWLAND IL 1295 1.0  
 165 MCKUS, MARK IL 1270 1.0  
 166 HUGHES, NATHANIEL IL 1188 1.0  
 167 SLAGLE, STEVE S IL 1187 1.0  
 168 PEKNY, ALAN IL 1120 1.0  
 169 BEONO, DAVID IL 0 1.0  
 170 GRAY, ANTHONY IL 0 1.0  
 171 WILLARD, GARY D IL 1935 .5  
 172 LEE, TYRONE D IL 1852 .5  
 173 IRONS, ROBERT R IL 1727 .5  
 174 GRANT, CHARLES IL 1438 .5  
 175 CHENOWETH, BRUCE C IL 1276 .5  
 176 CHRISTENSEN, WAYNE IL 2121 .0  
 177 BROCK, WILLIAM IL 2083 .0  
 178 REYNOLDS, JAMES L IL 1627 .0  
 179 WARREN, HELEN E IL 1591 .0  
 180 BREWER, N R IL 1497 .0  
 181 WATKINS, MICHAEL IL 1377 .0  
 182 NICHOLS, JOHN IL 1368 .0  
 183 REUTER, JOHN WI 1317 .0  
 184 PARKER, ROBERT S IL 1288 .0  
 185 DOUGLAS, FINIS IL 1020 .0

# 1983 ILLINOIS CHESS TOUR

## \$1650 IN PRIZES!

### GAIN POINTS BY PLAYING THE FOLLOWING TOURNAMENTS:

### CHAMPIONSHIP PRIZES CLASS PRIZES

<b>1st - \$300</b>	<b>A: \$150-100</b>
<b>2nd - \$200</b>	<b>B: \$140-70</b>
<b>3rd - \$150</b>	<b>C: \$130-60</b>
<b>4th - \$100</b>	<b>D: \$100-50</b>
<b>5th - \$70</b>	<b>E: Chess Computer</b>

plus Award Certificates  
to top 20 winners to top 30 winners

Prizes will be awarded at the end of the tour by ICA to the top twenty (20) championship point winners and to the top thirty (30) class point winners (6 in each class) based upon the total number of points amassed during the tour. Players must play in at least three tour events to be eligible for prizes. Points are split in case of ties.

Points awarded in each tour tournament are as follows:

Championship Points			Class Points				
	Maxi-tour	Mini-tour	Class	1st	2nd	1st	2nd
1st	30	15	A	20	10	10	5
2nd	20	10	B	16	8	8	4
3rd	10	5	C	12	6	6	3
			D	8	4	4	2
			E	4	2	2	1

Tour points accumulate for a player whose rating moves UP to a higher class, and the player remains eligible for prizes in the lower class based on points earned prior to moving into the higher class. Tour points DO NOT accumulate DOWNWARD from one class to another. For purposes of tour points, a player's rating is that which is used for the particular tournament.

Example 1: Player X wins in order, 1st place in Class D, 1st in Class C, 2nd in Class B, 2nd in Class B, and 2nd in Class A (this is highly unlikely, but the example is simply to show the mechanics of the system.) His/her eligibility toward tour point prizes at the end of tour would be those which are asterisked on the left below:

Example 1:	Points from event	Cumulative points	Example 2:	Points from event	Cum. pts.
D	+8	8*	D	+8	8*
C	+12	20*	C	+12	20*
B	+8	28	B	+8	28
B	+8	36*	B	+8	36
A	+10	46*	A	+10	46*
			B	+16	52*

Example 2: Same as one except that in an additional tournament he/she had dropped to Class B and wins 1st. Eligibility would then be as asterisked on the right above. Note that the Class A points do not carry down to Class B.

#### ICA MAXI-TOUR TOURNAMENTS:

GREATER CHICAGO OPEN--April 16-17  
 MASTER CHALLENGE--Oak Pk--June 24-26  
 PUT THE FUN BACK INTO CHESS--Morgan Pk.,  
 Aug. 27-28  
 ILLINOIS OPEN, Peoria, Sept. 3-5 LABOR DAY  
 LAKE CO OPEN, Waukegan--Sept. 24-25  
 ILLINOIS CLASS--(site pending) --Nov. 25-27

+++++

#### ICA MINI-TOUR TOURNAMENTS:

SPECTACULAR AMERICANA--Chess Center--July 2-3  
 3rd ANNUAL PARK FORST OPEN--Sept. 17-18  
 CENTRAL IL OPEN--Urbana--Oct. 1-2  
 SO IL OPEN--Bellefonte--Oct. 15-16  
 MORGAN PARK MARATHON (dates pending)  
 CHESS MATES Nov. 19-20 "Old Fashioned Swins"  
 ST CHARLES OPEN--St. Charles--(dates pending)

### TOUR STANDINGS MAY 25, 1983

#### CHAMPIONSHIP LEADERS:

1	Al Chow	30
2-5	Ken Mohr	7 1/2
2-5	Mario Spinosa	7 1/2
2-5	S. Fridgeirsson	7 1/2
2-5	Ken Wallach	7 1/2

#### CLASS A LEADERS:

1	Ken Wallach	20
2-3	Bob Marcowka	5
2-3	Chris Firestone	5

#### CLASS B LEADERS:

1	Bob Kaminsky	16
2-12	K Lawson	8/11
2-12	Tom Fojeck	8/11
2-12	Herman Nelson	8/11
2-12	Kelman Parkas	8/11
2-12	Frank Golec	8/11
2-12	Mark Hansel	8/11
2-12	Roger Bowen	8/11
2-12	Leonid Sagalovsky	8/11
2-12	Irwin Rothschild	8/11
2-12	Curtis Wodke	8/11
2-12	William Jointer, Jr.	8/11

#### CLASS C LEADERS:

1-3	Paul Madey	6
1-3	Sam Thompson	6
1-3	Mike Adler	6

#### CLASS D LEADERS:

1-3	Jack Simunic	2 2/3
1-3	Bernard Mortel	2 2/3
1-3	Roy Levin	2 2/3

#### CLASS E LEADERS:

1	James Lee	4
2	Louis Bond	2





## David Taylor Wins 1980 ICA Postal!

by Helen Warren

**C**orrespondence chess veteran Dave Taylor from Kankakee, Illinois has won the first Illinois Chess Association Postal Championship with room to spare. The eighteen game-two round event was started in October, 1980 and ended for the top two finishers less than three years later. It was the 41-year old Taylor's best postal performance in a two decade career of playing through the mails.

Dave started in less than stellar fashion in his preliminary, losing to River Grove postalite Vic Swanson and drawing with always tough Newton Berry. But he got down to business in the thirteen-player Finals section, stringing eleven victories in some challenging company. His lone half point came in his game with Donald Walhout.

Taylor and his wife work for the Illinois Department of Labor. His two year-old daughter April moves the pieces with accuracy and aplomb, while his son Keith is a freshman at Northern Illinois University and himself a postal player in ICA competition. Keith is now competing in the 1980 ICA Consolation Finals. Among Dave's hobbies are duplicate bridge and tennis.

Dave is no stranger to over-the-board play. His USCF rating is an inactive 2188, but he competed for the Homewood-Flossmoor B team in the Illinois Chess League last year where he led his team on first board to a 5-0 season, upsetting the favored Homewood-Flossmoor A team as well as the powerful Park Forest A contingent.

"I much prefer postal play," says Dave. "Perhaps I'm a slow thinker, but I believe in postal play the quality of play is generally much higher than can be achieved under the pressure of OTB clock-ticking.

"In the 1980 ICA Finals I played no 'brilliant' games, but did play several 'well-played' games. A number of my efforts from this event have been in past ICBs. I chose my win over Larry Sims for this piece. The opening may be of interest to some Caro-Kann players."

CONGRATULATIONS TO ICA'S FIRST POSTAL  
CHAMPION, DAVID TAYLOR OF KANKAKEE!!

\*\*\*\*\*

Who finished second? We might call him a "man for all seasons." Donald Walhout: scholar, teacher, philosopher, writer--and a rough customer through the mails! Our 55-year old native of Muskegon, Michigan, with a short stop at Yale University, now calls Rockford home. In spite of a busy schedule as head of the department of philosophy and religion at Rockford College, Don manages to find time for a modest postal load. Judging from his impressive results in the 1980 ICA event, Don's blindness hasn't deterred him in the least from playing a solid game.

Don's prelim was marred only by a loss to Larry Sims. In the Finals Don racked up a sturdy 10-2 score, losing to John Roecker, and yielding draws to Taylor and Jim Warren. Once again,

Dave Taylor-Larry Sims      Caro-Kann      Notes by D Taylor

1 e4 c6 2 d3 d5 3 Md2 de 4 de e5 5 Nqf3 Bc5 6 Nxe5!?

Bxf2+ 7 Kxf2 Qd4+ 8 Ke1 Qxe5 9 Nc4 *White has given up his right to castle and will also sacrifice his pawn on e4. In return White will obtain the Bishop pair on the open board plus the threat of the disorienting Nd6+ 9...Qxe4+ 10 Be2 Qh4+ 10...Qf6 and 10...Qg2 are alternatives. In either of these lines, White would have to prove he has compensation for the pawn(s).* 11 g3 Qd8 12 Qxd6+ *White could play 12 Nd6+ with a speculative attack. However, 12 Qxd8+ wins the pawn back. White ends up with the two Bishops and the better pawn structure. "A bird in the hand..."* 12...Kxd8 13 Md6 Be6 14 Nxb7+ Ke7 15 b3 Nd7 16 Ba3+ Ke8 17 Rd1 Rb8 18 Nc5 Nxc5 19 Bxc5 Ne7 20 Rd4 Rd5 21 Rf1 f6 22 Ra4 Nc8 23 Rg4 Kf7 24 Bxc8 Rbxc8 25 Rxa7+ *White has translated the positional plus of the two Bishops and better pawn structure into the win of a pawn. Black has little chance for a draw because the rooks are still on the board, White has a 3-1 majority on the Q-side, and White has a well posted rook on the seventh.* 25...Kg6 26 Rf4 Rhe8+ 27 Kf2 Re4 28 Rxe4 Bxe4 29 c3 Re8 30 a4 Bd3 31 Be3 h5 32 a5 Rb8 33 b4 Bb5 34 Re7 Rg8 35 Kf3 Kf5 36 Bd4 Bc4 37 Ke3 g5 38 Bb6 *White can now play Kd4 and Ke4.* 38...Ba6 39 Kd4 Kq4 40 Kc5 Rc8 41 Bc7 and Black resigned. *Black might have continued for a few moves, but the end is assured. (See Postal Chess page for crosstable.)*

Larry Sims provides the competition for an illustrative game from the Finals:

Donald Walhout-Larry Sims      Dutch

1 d4 f5 2 g3 e6 3 Nf3 Nf6 4 Bg2 Be7 5 0-0 0-0 6 c4 d5 7 Nc6 c6 8 b3 Ne4 9 Bb2 Nd7 10 cd ed 11 Ne5 Nxc3 12 Bxc3 f4 13 lld3 fg 14 fg Nf6 15 Qc2 g6 16 Nf2 Bf5 17 e4 de 18 Nxe4 Nd5 19 Bd2 Qb6 20 Qc4 Bxe4 21 Bxe4 Rad8 22 Bh6 Rfe8 23 Rae1 Qc7 24 Bxd5+ Rxd5 25 Re5 b5 26 Qxc3 Rxe5 27 dxe5 Bf8 28 Rxf8+ Rxf8 29 Bxf8 Kxf8 30 Qf3+ Kg7 31 Of6+ Kh6 32 Qf8+ Kh5 33 e6 Qe5 34 Qf4 Qa1 35 Kg2 g5 36 Qf7+ Kh6 37 e7 Resigns



DONALD WALHOUT AND COMPANION KATHY.....

# World Youth Team Chess Championship

Chicago, Illinois

August 22 to September 3, 1983

BY ERIC SCHILLER

The first official FIDE world championship event ever held in the United States will take place August 22-September 3, 1983 in Chicago. International House, on the campus of the University of Chicago, will host the 4th World Youth Team Chess Championship. Teams of players under 26 years of age will gather from all over the globe to compete for the title. The event promises to include a number of top Grandmasters. The tournament was offered to the United States after federations which had options to organize the event declined to exercise those options. A call from FIDE President Compañeros to Eric Schiller started the ball rolling, and the USCF and ICA quickly agreed to exercise this unique opportunity.

This is a rather new event, but it may be thought of as a replacement for the Student Olympiad, which has not been held in recent years. Many of the world's top players first came to international attention at this tournament. At the Student Olympiad in Graz, 1972, we first encountered such players as Karpov, Tukmakov, Sax Hubner, Hug, Adorjan, Ljubojevic, and Vaganian, all of whom went on to greater glory and fame. Who knows what future Grandmasters might be taking part this year? Altogether, 118 federations have been invited to participate. The United States will be fielding two teams as the host country. We expect that some of America's finest young talent will be on display.

The format of the event (round-robin or swiss) can not be determined until all the entries are in, but each match will pit four members of each team against the opposing side. Norms and titles are at stake, so the competition is lively. Many exciting and important games will be played, and we will have a master analyst on hand to give a blow-by-blow description.

But there is more to this event than just watching other people push wood. We will be organizing non-stop chess tournaments of infinite (well, almost) variety to allow visitors to get the most out of their trip to Chicago. Not only that, but there will be a special discount rate of \$20 per day for single room and complete board (a few double rooms might be available, call after July 10 for information). Those preferring to sample Hyde Park's restaurants can obtain a single room without food for just \$12.50 a day! It's easy to get to the International House, which is located just a few block's from Chicago's Lake Shore Drive, on the Midway. The Illinois Central Railroad stops just one block away at 59th Street.

We welcome all ICA members to join us at this event. We would also appreciate all the help we can get. If you can donate time or money to this prestigious event, we will be able to make it a smashing success and the first in a series of FIDE events in Illinois. We are receiving generous assistance from the USCF, American Chess Foundation, and the Illinois Chess Association, but our budget exceeds \$30,000 and every little bit will help us to reach this goal. Help is needed with the organization and running of the tournament as well, from hosts (and hostesses) to assistant tournament directors and bulletin editors. Fund raising is a critical area in which all ICA members can get involved. This event will be publicised around the world, and sponsors will get wide exposure in return for their contribution to the cause of bringing young people together. For individual donors, we are offering a beautiful poster by Chicago artist Phil Cotton, especially commissioned

for the occasion. Anyone who donates \$10 or more will receive a copy of this limited edition artwork.

This is our chance to show the rest of the country (and the rest of the world!) that Illinois is capable of staging a major international event. It is also a chance to help ourselves locally, by focusing the attention of the media on chess and chessplayers. More media exposure means more sponsorship, and that benefits all of us. That is why we ask that you give generously in support of the World Youth Team Championship. We want to make the best possible impression on the participants and visitors alike. This means real Midwest hospitality, which costs a bit of money to provide. Every contribution makes a real difference.

A full schedule of events will be ready in mid-July. In addition to the main event, which takes place from 1-6 pm in the Assembly Hall (with adjournments continued from 8-10 pm), there will be open events for all classes, speed tournaments, master analysis sessions, beginner instruction, and a well-stocked bookstall. In addition to chess, there will be free movies nightly, video games, sports (on the Midway), and visits by leading scholars at the University of Chicago. Hyde Park is famous for its architecture (Frank Lloyd Wright's Robie House, Rockefeller Chapel, etc.) and its other attractions include the Museum of Science and Industry. The Loop is just 15 minutes away. Don't miss this chance to get involved with chess and provide a great time for the whole family. Join us August 22-September 3 for a great chess vacation!

To donate funds to the tournament, make checks payable to World Youth Team Championship and send to Jim Warren, Box 70, Western Springs IL 60558. To volunteer services or for more information contact Eric Schiller, Tournament Director, 1414 East 59th St. No.407, Chicago IL 60637. Please enclose a SASE if possible, as it will speed the reply. Information is also available from Mr. Schiller by phone at (312)-753-0140 from noon to 5pm daily.

\*\*\*\*\*

Grand Prix  
II Minitour  
St Prix

1983

**Southern  
Illinois  
Open**

October 15-16

A  
TITLE  
EVENT

ICA MEMB. RD.  
OF IL RES.



# CHESS

## SPECTACULAR

## AMERICAN

**JULY 2-3**

**pawnography** • 2 day event 5ss 40/90 rds 1-3 40/2 rds 4-5

this is an illinois **mini tour event** • \$20 in advance \$22 at site

\$475 b/35 5/class \$115.80 A-70 B-70 C-70 d/e/unr 70

reg 9-9:45 rds. 10-1:30 • 5 / 11-3:30 L.S. special prizes...

1600 and above 1599 and below • best game prizes \$25 each

donated by fred gruenberg • metro vice president ICA

this is an illinois **mini tour event** • ICA membership required

membership includes 6 issues of illinois chess bulletin

\$7<sup>00</sup> for adults \$5<sup>00</sup> for juniors

**JULY 4**

**pawndemonium** • 1 day event 4ss 40/1

EF \$12 \$200 b/30 \$50.30 A-30 B-30 • C-30 d/e/unr 30

4/class reg 9-9:45 rds • 10-12:30 • 3-5:30

\$20 best game prize 1650 and below • donated by

angelo sandrin / chess expert USCF life member

# CHICAGO CHESS CENTER

2666 n. halsted / telephone 929 • 7010 / chicago 60614

# NATIONAL JUNIOR HIGH

South Vigo High School in Terre Haute, Indiana hosted this years National Junior High School Championships on April 23 and 24. The 556 entries set a new record for this event. Play was divided into two sections, one for ninth grade and below and one for eighth grade and below.

In the ninth and below section, Mike Fodel of State College, PA won outright with 7.5-0.5. Thorin Lau of Minnesota and Adam Lief of New Trier High School in Northfield, IL each scored 7-1, Lau edging Lief on tiebreaks. Vaux school from Philadelphia won the team competition for the 6th year out of the last 7. No Illinois school finished in the top 15.

Adam Lief now has an expert's rating at the tender age of 14, and is Illinois' hottest young prospect. He finished 5th in this competition last year.

Marco Robert and Danny Edelman, both from New York, were co-champs in the eighth grade and under section. 12 year-old Mike Giacobbe of Komarek Grade School in North Riverside, IL finished 5th. Pulaski school from Virginia was the top team. Komarek finished 8th, and was coached by Dick Temple with assistance from Sheldon Gelbart. 14th place was taken by Albright Middle School from Villa Park, IL, coached by Gerry Esposito, assisted by Tim Esposito.

(Information supplied by Sheldon Gelbart and a USCF press release)

Adam Lief(New Trier)-Harris(Vaux) French

1 e4 e6 2 d4 d5 3 Nd2 Nf6 4 e5 Nfd7 5 Bd3 c5 6 c3 Nc6 7 Ne2 Qb6 8 Nf3 cxd4 9 cxd4 Qb4+ 10 Kf1 Qb6 11 g3 Be7 12 h4 Nb4 13 Bb1 Qc7 14 a3 Nc6 15 Kg2 b6 16 Bd3 a5 17 Nc3 Ba6 18 Bxa6 Rxa6 19 Nb5 Qb8 20 Qd3 Ra8 21 Bg5 Na7 22 Bxe7 Nxb5 23 Bg5 Na7 24 Rhc1 Qb7 25 b4 axb4 26 axb4 0-0 27 b5 Rfc8 28 Bd2 Rxc1 29 Rxc1 Rc8 30 Ng5 Nf8 31 Rxc8 Qxc8 32 Bb4 g6 33 h5 Qd8 34 Bd2 f6 35 Nh3 Qe7 36 Bh6 e5 37 Qb3 Qd7? 38 Qa3! Qf7 39 Ng5 Nxb5 40 Qb4 Qe8 41 Bxf8 Qxf8 42 Qxb5 Qe7 43 hxg6! hxg6 (43...Qxg5 44 Qe8+ Kg7 45 Qf7+ leads to mate) 44 Nf3 g5 45 Qxb6 g4 46 Ncl Kg7 47 Qd6 Qf7 48 Nd3 Qa7 49 Nf4 Kh7 50 Qxe6 Qxd4 51 Qf7+ Kh8 52 Ng6 mate

I have sketchy information on the INSA State Team and Individual Championships. In class AA, Evanston High School (Eric Meyer, Tim Macejak, Curtis Ikeuchi, Peter Farbman, Harold Prostick, Mike Samson, Ken Ham, and Tim Werland, coached by McKinley Alford) took first with a 6-0 score in a field of 62 8-player teams. Hinsdale South finished 2nd, and New Trier was 3rd. In class A Sherrard finished in 1st place, followed by North Boone and Urbana Uni High.

At the Individual meet held in Rantoul April 23-24, Evanston's Tim Macejak took the AA title. Eugene Walker of Carver was 2nd, and Chris Firestone of Proviso West was 3rd. Expert Steve Szpisjak of Marmion dominated the class A competition with a perfect 5-0 score, followed by Kevin Gensler of Marion Central Catholic in 2nd place and Alex Wong of Urbana Uni High in 3rd.

## MT. VERNON SUNSHINE OPEN

16 entries played in two sections on April 2. Ron Torregrossa took the top section, and Robert Goldman had a perfect 3-0 in the bottom section. Mike Hensley directed.

## S. ILL. ALMOST SPRING OPEN

33 players showed in Giant City on March 20 for this 3 round swiss. Numerous upsets kept the top 6 rated players from winning a prize! Dr. Timoteo Castro and John Roberts split first with identical 3-0 scores. Tom Lawry and Jeff Gilbert were top B, Jay Zapp and Mike Hensley took class C, Ron Kirchner won D, class E went to Charles G. Ashmore, and Jeff Higgins was top Unrated. Ruth Ashmore directed.

## RUDOLPH WINS 5TH MIDWEST WOMENS OPEN

by Harold Winston

Coming all the way from Tacoma, Washington, Alexy Rudolph convincingly won the 5th Midwest Womens Open April 9-10 at the Chicago Chess Center with a perfect 5-0 score. Ranked 8th in the nation, the 17 year old Rudolph, a senior at the University of Puget Sound, became the first person to win the Midwest Womens Open twice (she also won the 1981 event). Alexey(2034) met and beat all her top rivals including two of Illinois' top women: Lucy Guysinsky(1993) and Mila Zelenkovsky (1806). Defending champion Guysinsky placed second on tiebreak after drawing Zelenkovsky in the finale. Guysinsky, the 13th highest rated woman in the nation, is a student at the University of Illinois Chicago Circle campus. Helene Raupp of Westland, Michigan, a nuclear medicine technician, finished third on tiebreak.

The field of 15 women from 4 states included the 14 year old Michigan Womens champ Terri Shaler of Saginaw, who won the C prize with a fine 3-2 score. Only rated 1482 at the time of the tournament, Terri seems a sure prospect to hit the Womens top 50 list soon. Sandra Goldberg of Chicago won the D/E prize with a 2.5-2.5 score, and Sara Shields of Maple City, Michigan was 2nd D/E with 2-3. ICA Patron Member Vivian Schmucker of Goshen, Indiana, recently acknowledged by CHESS LIFE as the nation's most active women player in 1982, scored 2-3 and lost a tough game to Shaler. Kris Allen of Chicago and South Bend, Indiana had one of her best results to date, finishing 5th and facing Rudolph in the finale. It is encouraging that Zelenkovsky returned to tournament play after an absence of over a year. Once again the American Chess Foundation aided the tournament. Harold Winston organized and directed, and Bart Shields of Michigan served as Assistant TD.

## CLARENCE MOYLAN MEMORIAL

Master Kevin Bachler scored 5-0 to take first place and \$100 over a field of 31 players in Tim Just's Memorial to Clarence Moylan, held April 9-10 at the Illinois Beach State Park Holiday Inn just north of Waukegan. The result gives Bachler 26 consecutive rated games without a loss.

Candidate Master Arthur Hughes took clear second with a score of 4-1, suffering his only loss in the last round to Bachler. Hughes received \$75.

Several players finished with 3½ points to tie for third or take first in their class.

CM's Dave Schofield and Kevin Schmuggerow drew their last round game to split third place money along with CI's Wallace Bates and Cliff Wallach, who also split the C1 prize. These four players were awarded \$21.25 each.

CII was taken by Tim Just, who had a very fine result of 3½-1½, including wins over CI's Wallace Bates, and Lynn Crewse, and a draw with CI Nikolia Goncharoff. This result should take Tim well on the way to CI.

CIII was taken by Kirnes Holland, with a score of 2½-2½. Holland's games since his recent return to tournament play have shown that he is well on the way to CII.

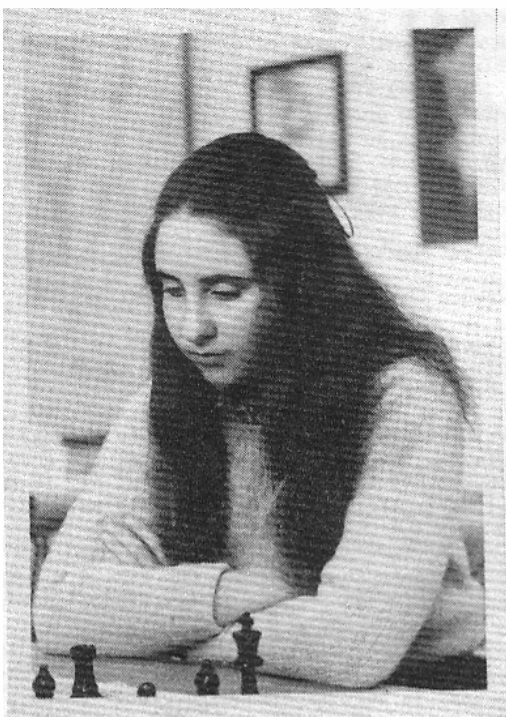
The biggest surprise of the tournament was undoubtedly Dan Kurth, who entered the event rated only 1304. Dan won the CIV/V/Unr. prize by scoring 3½-1½, including wins over CII's Rodney Draves and William Jontner Jr., and a draw with CI Cliff Wallach, to finish a full point ahead of the next highest finisher in his category.

The tournament was sponsored by the Lake County Chess Association in Memory of Clarence Moylan, who died in December, 1982. Clarence was a dear friend to many of us, and a stalwart of Lake County Chess. I know he will be missed.

The event was directed by Dennis Grant.

## PEORIA SPRING TORNADO

Irving Rosenfeld and Ron Torregrossa shared first place at this May 7 event. Dean Lybarger was top B. Wayne Zimmerle, David Shane, and Dick Stotler split class C, while Chris Knisley was top D/E/UNR. Bill Wilkinson directed for the Greater Peoria Chess Fed.

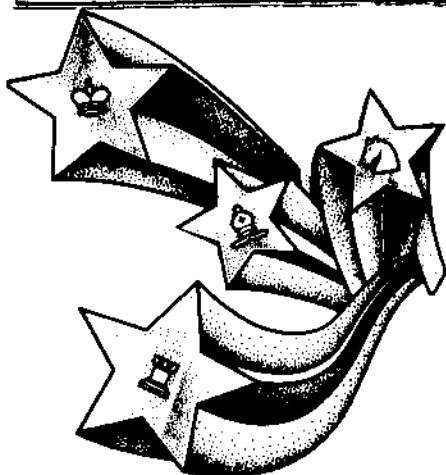


ALEXEY RUDOLPH

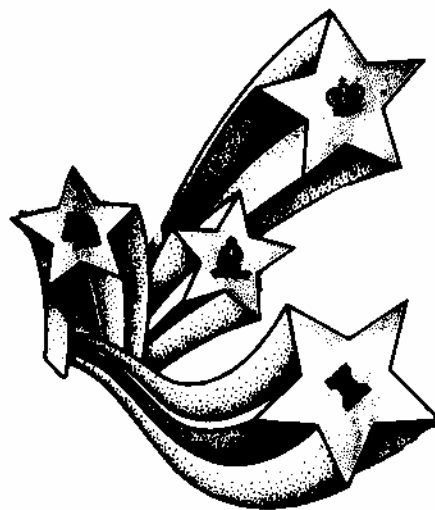


LUCY GUYSINSKY

(Photos by Deborah Borrowdale)



**FOREST  
CITY OPEN  
\$1,000 PRIZE FUND\*JULY 16-17**



**SITE:** Howard Johnson Motor Lodge  
3909 11th (U.S. 51 South)  
Rockford, Illinois

**PRIZES:** First \$250  
Second \$150  
Third \$100

**ENTRY FEE:** \$23 if received by July 13  
\$28 at site  
Masters half price  
RCC/ICA \$3 off  
USCF Membership Required

Class prizes based on distribution of entries.

- \* ICA Membership for best game by player over 1400
- \* Book Prize for brilliancy by player under 1400

Registration 8:30 - 9:45 a.m. July 16      5 ROUND SWISS 50/2  
Send entries to: Gary N. Sargent, 2764 Panorama Dr., Rockford, IL 61109

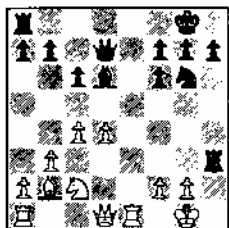
# UNDER THE MICROSCOPE

By Albert Chow

For the past few issues the games in this column have all been between players with either Expert or Master ratings. This issue you'll see several games where the higher-rated opponent fails to win against a player rated hundreds of points lower! Why are upsets so fun to see? Because we all occasionally lose to someone lower-rated, and it's nice to know we aren't the only chessplayers in the world who sometimes make absurd moves.

ICA Officers Appreciation Tournament  
Vince Berry(2180)-Marvin Dandridge(2304) Caro-Kann

1 e4 c6 2 d4 d5 3 Nc3 de 4 Ne4 Nd7 (If Black doesn't mind doubled pawns he can play 4...Nf6 when after 5 Nf6 both recaptures give Black active pieces as compensation. A third alternative is 4...Bf5) 5 Nf3 (5 Bc4, 5 Qe2!?) 5...Ngf6 6 Nf6 (6 Ng3 is probably the strongest move because Black would have problems developing his queen's bishop) 6...ef1? (Recapturing with the knight equalizes with little trouble [Karpov has won some nice games with 7 Ne5!-Ed.] It's also more logical because Black could have played 4...Nf6 and if White captured, Black's knight wouldn't be committed to d7. Of course Dandridge knew all this, but he probably decided to unbalance the game and take his opponent out of the book) 7 Be2 (White should keep Black's bishop off d6 with 7 Bf4. Black can later challenge the bishop by moving the knight and playing Bd6, but White should welcome exchanges because the king and pawn ending is a win for White. Black can try 7...g5?! hoping for 8 Bg3 f5? 9 h3? f4, but 9 Qe2! wins Black's g-pawn and 8 Qe2 is good too) 7...Bd6 8 0-0 0-0 9 b3 Re8 10 c4 Nf8 11 Ne1?! (This piece must stay on the kingside where Black is aiming his pieces. 11 Bb2 or 11 Be3 would have been better, but Black has probably equalized anyway) 11...Bf5 12 Bd3 Be4 13 Be4 (Now Black's rook becomes active. 13 f3 is an improvement, although e3 is slightly weakened) 13...Re4 14 Nc2? (Black was threatening 14...Rd4, but White needs the knight for kingside defence. 14 Bb2 Ng6 15 Nf3 was better) 14...Ng6 15 Bb2 Qd7 16 Re1? (The last chance was 16 Qf3) 16...Rh4! 17 h3 (17 g3 Qh3! isn't any better) 17...Rh3!!



After 17...Rh3!!

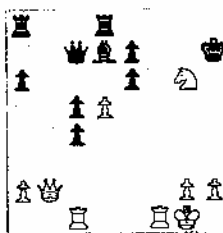
a winning endgame with 23...Qh1 24 Kf2 Qg2 25 Ke3 Re8 26 Kd3 Re2 27 Re2 Qg6 28 Kc3 h5. And finally, 21 Ke2 Re8 22 Kd3 Qg3! 23 Ne3 Nf4 24 Kd2 Bb4 or similarly 23 Re3 Nf4 24 Kd2 Bb4! 25 Nb4 Qe3 26 Kc2 Qf2) 20...Nf4 21 Ne3 (21 Re2 Qf3 or 21 Qd2 Qf3) 21...Qh4 22 Kg1 Nh3 0-1

The following two games are from the 1983 Greater Chicago Open.

Roger Hickman(1994)-Mark Hansel(1711) Grunfeld

1 d4 Nf6 2 c4 g6 3 Nc3 d5 4 cd Nd5 5 e4 Nc3 6 bc Bg7 7 Bc4 0-0 8 Ne2 c5 9 0-0 Nc6 10 Be3 Qc7 11 Rcl Rd8 12 Qd2 Na5? (12...Qa5 or 12...Ne5) 13 Bd3 Be6? (13...b6) 14 d5 Bd7 15 c4 b6 16 Bf4 Qc8 17 Bh6 Qc7?

(17...Bh8) 18 Bg7 Kg7 19 f4 a6 20 Qb2 Kg8 21 f5 b5 22 e5 Nc4 23 Bc4 bc 24 e6 fe? (24...Be8) 25 fg hg 26 Nf4 Kh7 27 Ng6!



After 27 Ng6!

Lawrence Chachere(2208)-Bradley Watts(1880) QGD

1 d4 e6 2 c4 Nf6 3 Nc3 d5 4 Bg5 Be7 5 e3 0-0 6 Qc2 Nbd7 7 cd ed 8 Bd3 h6? (Weakens the kingside. 8...c6 or 8...Re8) 9 Bf4! c6 10 Nf3 Ne8? (10...Nh5 11 g4! Nf4 12 ef gives White a strong attack. 10...Re8 is best although 11 g4! would still be strong) 11 g4 g5? (This further weakening accelerates the end) 12 Bg3 Ndf6 13 h4! Bg4 14 Na5 Bh5 15 hg hg 16 Kd2! Ng7 17 Rag1 Nd7? (17...c5) 18 Ng4 Bg4? 19 Bh7 Kh8 20 Bg8! 1-0

1982 Illinois Chess League, Oak Park B vs. Hillside A  
John Burke(2014)-Sheldon Gelbart(2245) Budapest

1 d4 Nf6 2 c4 e5?! 3 de Ng4 4 e4 (4 Bf4 is also good) 4...Ne5 5 f4 Ng6 (5...Nec6) 6 Be3 (The g1-a7 diagonal is very important) 6...Bb4 7 Nc3 (7 Nd2 Qe7 8 Qc2 Bc5 and 7 Kf2 Qf6! 8 e5 Qe7 give Black good counterplay) 7...Bc3! 8 bc Qe7 9 Bd3 b6? (Black can try for weird counterplay with 9...f5! 10 Qc2 fe 11 Be4 Nf4! 12 Bf4 d5! 13 cd Bf5. Avoiding this with 10 e5? d6 is no good, but 12 0-0-0 might be) 10 Nf3 Bb7 11 0-0 0-0? (Now White crashes through. 11...Be4 had to be played although 12 Rcl leaves White with a dangerous initiative) 12 f5 Ne5 13 Ne5 Qe5 14 Bd4 Qd6 15 f6 Nc6 (15...g6 16 e5 Qc6 17 Qd2) 16 e5! Ne5 17 Bh7 Kh7 18 Qh5 Kg8 19 fg! f6 20 Qf/Q Rf8 21 Be5 Qe5 22 Qh6 Kh8 23 Rf5 1-0

1982 Pan-American Intercollegiate  
Lawrence Chachere(2201)-Loren Schmidt(2421) Benko

1 d4 Nf6 2 c4 c5 3 d5 b5 4 cb a6 5 ba Ba6 6 Nc3 g6 7 Nf3 d6 8 e4 Bf1 9 Kf1 hg7 10 g3 0-0 11 Kg2 Nhd7 12 h3 Qb6 13 Rel Qb7 14 Re2 Nb6 15 Wb1 Nfd7 16 Bf4 Nc4 17 Qc1 Rfb8 18 h4 Qb4 19 Rc2 Nde5 20 Ne5 Ne5 21 Qd2 Rb7 22 Be5 Be5 23 Rel Qa5 (Threatens 24...Rb2!) 24 Qcl Rb4 25 Ree2 Qa6 26 h5 Rab8 27 hg hg 28 f4 Bc3 29 bc Rbl 30 Qd2 Qc4 31 f5 Kg7 32 fg f6 33 Qe3 Rdl 34 Rcd2 Rcl 35 Rc2 Rdl 36 Rcd2 0.5-0.5

1982 Illinois Class Championship  
Vince Berry(2135)-David Sprenkle(2348) Sicilian

1 e4 c5 2 Nf3 Nc6 3 d4 cd 4 Nd4 Nf6 5 Nc3 d6 6 Bg5 (the Richter-Rauzer variation) 6...Bd7 (6...e6) 7 Qd2 Rc8 8 0-0-0 Nd4 9 Qd4 Qa5 10 Bd2! (10 f4 Rc3! or 10...e6 give Black counterplay. 10 Bd2! prevents most exchange sacs on c3 and embarrasses Black's queen) 10...e5 11 Qe3 (11 Qd3 is better since it controls d5) 11...a6 12 Kbl (12 a3 is better because after 12 Kbl Be6 Black threatens Rc3 and Qa2 at some point) 12...Be6 13 Nd5?! (This gives Black the initiative. 13 a3) 13...Qa4 14 Nf6 gf 15 b3 Qc6 16 c4 d5! 17 ed Bd5 18 f4! Be4 19 Kb2 Bc5 20 Qg3 (White seems to have enough resources to hold the game) 20...Qd6 (20...Rd8 21 Be2! Bg2 22 Rhel is ok for White) 21 Be2 ef 22 Qh3 Bd4 23 Bc3 Bc3 24 Qc3 Qe5 25 Bg4 Qc3 26 Kc3 f5 27 Rdel! (27 Rhel Rd8 allows Black to keep his extra pawn) 27...0-0 28 Re4 0.5-0.5 (After 28...fe 29 Bc8 Rc8 30 Rf1 e3! 31 Rf4 Rd8 the rook ending is drawn)

1982 Greater Chicago Open  
Eric Karklins(2125)-John Krom(1823) Ruy Lopez

1 e4 e5 2 Nf3 Nc6 3 Bb5 a6 4 Ba4 Nf6 5 0-0 Be7 6 Re1 b5 7 Bb3 d6 8 c3 0-0 9 h3 Re8 (The Flohr-Zaitsev variation, a favorite of Karpov's) 10 Ng5 (This should only be played if White wants to draw, since once Black defends f7 the knight is misplaced on g5 and should retreat to f3) 10...Rf8 11 d4 Bb7 12 f4? (At first this looks good, but it is probably the losing move! 12 Nf3 Re8 13 Nbd2 fights for the advantage, or if both players want they can draw with 13 Ng5 Rf8 14 Nf3 Re8 etc) 12...ef 13 Bf4 Na5 14 Bc2 Nd5! 15 ed Bg5 16 Qh5 h6 17 Bg5 (17 Bg3 g6 18 Qf3 Nc4 is also bad) 17...Qg5 18 Qg5 hg 19 Be4 (19 Re7 Rfe8 20 Rc7 Bd5 is no better since Black threatens Re2 and can meet 21 Kf2 with 21...Bg2) 19...Nc4 20 b3 Nb6 21 Nd2 Bd5 22 c4 Be4 23 Re4 Rfe8 24 Rael Kf8 25 Kf2 bc 26 bc Re4 27 Re4 Re8 28 Rg4 f6 29 Rg3 d5!? 30 c5 (30 cd Nd5 31 Ra3 Nf4) 30...Nc4 31 Nc4 dc 32 Rc3 Rb8 33 a3 (33 Rc2 c3) 33...Rb3 34 Rc4 Ra3 35 d5 Ke7 (Black's technique is good. Not 35...Rd3? 36 d6 ed 37 c6) 36 Ke2 Kd7 37 h4 Rg3 38 hg? (38 Kf2) 38...Rg2 39 Ke3 Rg3 40 Kf4 Rg5 41 Rd4 a5 42 Rd3 a4 43 Ke4 Rg4 44 Kf5 Rg5 45 Ke4 g6 46 Kf4 a3 47 Ra3 Rd5 48 Ra6 c6 49 Ra5 Ke6 50 Ke4 Rh5 51 Kd4 Rh4 52 Kd3 Kd5 0-1

Three games played at the Chicago Chess Center:

Bruce McNeill(2111)-Vivian Schmucker(1656) QGD

1 Nf3 d5 2 d4 Nf6 3 c4 e6 4 Nc3 Nbd7 5 Bf4 (5 Bg5) 5...c6 6 cd ed 7 e3 Be7 8 Bd3 0-0 9 Qc2 Re8 10 h3 (This should only be played if White plans to castle queenside) 10...Nf8 11 Ne5? (This knight does nothing except get exchanged off. 11 0-0-0) 11...Bd6 12 0-0 Qc7 13 b4 Nbd7 14 Rfc1 Ne5 15 de Be5 16 Nd5 Qd6 17 Be5 Re5 18 Nf4 h6? (Why not 18...Qb4?) 19 Rab1 Bd7 20 Rd1 Qe7 21 Qb3 Nc6 22 Bc4 Rf8 23 Nd3 Rg5 24 g4? (White blunts his kingside apart trying to trap Black's rook) 24...h5! 25 Be6 Be6 26 Qb2 h5! 27 f4 Rd5 28 e4 Rd6 29 Qg2 hg 30 hg Rfd8 31 Nf2 Ba2 32 Ral Rd1 33 Nd1 Bb3 34 Nc3 Qb4 35 Ra7? Qc5 0-1

(BACHLER, from pg. 3)

hold the interest of the press, but they can be used to get the attention of the media, and the public, particularly in order to promote a specific upcoming event. For example: a huge simul around the 4th of July could promote the U.S. Chess held July 22-24 (I hope I've got those dates right!) which could in turn be used to help promote the World Youth in August. Chicago has a chess summer!

3) A basic problem. Organizers, on a local, state, and national level must simply inform the media better. Don't tell the media all the wonderful reasons why they should cover chess, just let them know that an event of interest is occurring, and they will cover it. Make certain that the winner of your club championship gets a write-up in the local paper. ICA should probably compile a list of major Illinois papers and send a monthly or bi-monthly news release to them. (If people will send me names & addresses of newspapers, I will do this). The media will better cover a topic, if they are informed about it.

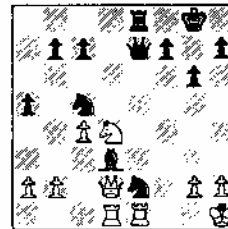
4) We must let the media know that we are interested in coverage of chess events, and that we do watch for such coverage. The best way of doing this?

I feel that the best solution is for the average player to write and ask for coverage, or commend a station or paper for the coverage they gave. After all, a station will be more likely to give chess coverage, if they know that people will be watching that coverage.

Therefore, I ask that Illinois chessplayers write their local media and ask for chess coverage, chess columns, etc., and also write and ask the major metro-media for more coverage. And if these guys give us coverage, please write and tell them that you watched!

Bill Smythe(1865)-Bruce Ferrie(1214) King's Indian

1 d4 Nf6 2 c4 g6 3 Nc3 Bg7 4 e4 d6 5 f4 0-0 6 Nf3 Nbd7 (6...c5) 7 Be2 e5 8 d5 (8 fe de 9 d5 is strongest) 8...a5 9 0-0 Nc5 10 Qc2 ef 11 Bf4 Qe7 12 e5 de 13 Be5 Bf5 14 Qd2 Rad8 15 Rad1 Nd5? 16 Bg7? (16 Nd5 wins) 16...Nc3 17 Bf8? (17 Qc3 Qe2 18 Bf8 wins a clear exchange) 17...Ne2 18 Kh1 Rf8 19 Rfel Bd3 20 Nd4 Re8



21 Ne2 Be2 22 Qd4 Qf8 23 Rd2 Bc4! 24 Rcl Ba2! 25 Rf1 Nb3 26 Qf4 Nd2 27 Qd2 Bc4 28 Rcl Qb4! 29 Qf2 Re2 30 Qh4 Qb2! 31 Rgl Rg2! 32 Qd8 Kg7 33 Rg2 Qb1 34 Rgl Qe4 35 Rg2 Bd5 0-1

After 20...Re8

Wayne Christenson(2075)-Bill Graves(1765) Caro-Kann

1 e4 c6 2 d4 d5 3 Nc3 de 4 Ne4 Nf6 5 Nf6 gf 6 Bc4 Bf5 7 Ne2 Nd7 8 Ng3 Bg6 9 c3 Qc7 10 h4 h5 11 Be3 e6 12 0-0? 0-0-0 13 Qf3 Bd6 14 a4 Rdg8 15 Rfel Bh7 16 a5? Bg3 17 fg Rg3 18 Bf4 Rf3 19 Bc7 Rg8 20 Bd6 Rh3 21 Re6? fe 22 Be6 Rh4 23 Bg8 Bg8 24 Re1 Kd8 25 Be7 Kc7 0-1

Want to increase the chance of having your game published? Please remember to include BOTH players' first and last names, the name of the tournament, both players' ratings when the game was played, and print as legibly as possible. When you've done all that, send your games, analysis, comments, or complaints to:

Albert Chow  
2433 N. Sawyer  
Chicago IL, 60647

Below are the address of some of the major metro-media.

Chicago Sun Times 401 N. Wabash Chicago, Illinois	Chicago Tribune 435 N. Michigan Avenue Chicago, Illinois
WLS-TV 190 N. State St. Chicago, Illinois	WTTW 5400 N. St. Louis Ave. Chicago, Illinois
WGN TV & Radio 2501 W. Bradley Pl. Chicago, Illinois	WMAQ TV & Radio Merchandise Mart Plaza Chicago, Illinois
WLS Radio 360 N. Michigan Ave. Chicago, Illinois	WBBM TV & Radio 630 N. McClurg Ct. Chicago, Illinois

Over the past two years, WLS-TV covered the Cloverline, the Illinois High School Championship, and the Midwest Masters. Generally, they were looking for an angle, which non-chessplayers could appreciate.

The Chicago Tribune ran a full-page article on GM Walter Browne after the Cloverline. They also ran a not too flattering article on the Olympiad, in April.

The Chicago Sun-Times co-sponsored a human vs. machine tournament for high school students, with Fidelity Electronics. They also recently ran pictures from the Greater Chicago Open.

As for the title of this article-another gimmik?

(Kevin Bachler and Tim Just are the ICA Publicity Directors. Kevin is currently working on news release forms which organizers can use with their local media. Write Kevin at 520 N. Genesee Apt. 417, Waukegan IL 60085.)

# Postal Chess

by Helen Warren

The big news in postal chess this month, of course, is the crowning of the first ICA Postal Champion, Dave Taylor of Kankakee. (See news feature elsewhere this issue.) Third place in the 1980 event is still being contested; both John Roecker of Peoria and Jim Warren of Western Springs have chances, with Roecker being the favorite due to better prelim points. The two games with Walt Brown will tell the tale.

Our next issue will announce the fourth ICA Postal Championship which will also be the Second Region VII event with players from Missouri and Iowa also competing. We will hold entries open for the period July 1-through December 1; all assignments will be mailed on December 1. This will permit us to balance prelim sections by rating as well as by geography. The entry and prize fund will remain the same as our 1982 event.

Some games from ICA postal competition:

Donald Walhout-Jim Warren 80 ICA-F Caro-Kann

1 e4 c6 2 d4 d5 3 exd5 cxd5 4 c4 Nf6 5 Nc3 e6 6 Nf3 Be7 7 cxd5 Nxd5 8 Bd3 Nc6 9 O-O O-O 10 Re1 Bf6 11 Be4 Nce7 12 Ne5 g6 13 Qf3 Bg7 14 h4 f6 15 Nd3 Nxc3 16 bac3 Qc7 17 Ne5 Rb8 18 Bc2 e5 19 Bb3+ Kh8 20 Ne6 Bxe6 21 Bxe6 f5 22 Bb2 Qd6 23 Bb3 e4 24 Qe2 Nd5 25 g3 b5 26 a4 b4 27 Bxd5 Qxd5 28 cxb4 Rfd8 29 b5 Kg8 30 Racl Rdc8 31 Rxc8+ Rxc8 32 Qd1 Rd8 33 Qc2 Bxd4 34 Bxd4 Qxd4 35 Qc6 Bb7 36 a5 Qd2 37 Qc7+ Rd7 38 Qe5+ Kf7 39 Qa1 Rd5 40 Rcl e3 41 Rc7+ Ke6 42 Rc6+ Rd6 43 Rxd6+ Kxd6 44 Qa3+ Kd5 45 Qxe3 Qxa5 46 Qf3+ Kd4 47 Qb7 Qe1+ 48 Kh2 Qxf2+ 49 Kh3 Qf1+ 50 Kh2 Qf2+ 51 Kh3 Qf1+ 52 Kh2 Qf2+ 0.5-0.5

John Roecker-Donald Walhout 80 ICA-F Trompovsky

1 d4 Nf6 2 Bg5 Ne4 3 Bh4 g5 4 Bg3 d6 5 Nd2 Nhg3 6 hxg3 Bg7 7 e3 c5 8 c3 cxd4 9 exd4 Nc6 10 Bd3 h6 11 Nh3 Qb6 12 Nc4 Qc7 13 Qd2 e5 14 dxe5 dxe5 15 Ne3 Be6 16 Bf5 Rd8 17 Qe2 Bd5 18 Qb5 Be6 19 Qe2 Bxf5 20 Nxf5 Bf6 21 O-O Qd7 22 Ne3 Be7 23 Rd1 Qe6 24 Rxd8+ Bxd8 25 Rd1 h5 26 Nd5 f6 27 Qc4 Kf7 28 f3 Be7 29 Ne3 Qxc4 30 Nxc4 Ke6 31 Kf1 g4 32 Nf2 f5 33 Ke2 gxf3+ 34 gxf3 Rg8 35 Nh1 b5 36 Ne3 f4 37 gxf4 exf4 38 Nd5 Bd6 39 Nf2 h4 40 Nf6 Rg7 41 N6e4 Be7 42 Kf1 Rg8 43 Nh3 Rf8 44 Ke2 Ne5 45 Rg1 Kf5 46 Rg7 Re8 47 Nhf2 Nd7 48 Ng4 Ke6 49 Kf2 Nc5 50 Nxc5 Bxc5+ 51 Kf1 Be7 52 Rg6+ Kf5 53 Ra6 Ra8 54 a4 bxa4 55 Ra5+ Ke6 56 Rxa4 Rb8 57 Re4+ Kd6 58 b4 Rf8 59 Kg2 Bd8 60 Kh3 Kc6 61 c4 Kb6 62 Re6+ Kb7 63 Ne5 Rf6 64 Rxf6 Bxf6 65 Nd3 Be7 66 Kg4 Kc7 67 Kxf4 Kd7 68 Kg4 Ke6 69 Nf4+ Kd7 70 Nd5 Bd8 71 f4 Kd6 72 Nc3 Ke6 73 b5 Kd7 74 Ne4 Kc7 75 c5 Kb7 76 Nd6+ Kb8 77 f5 a5 78 bxa6 Ka7 79 c6 Kxa6 80 f6 1-0

Fred Bender-Dave Taylor 81 ICA-F Ruy Lopez

1 e4 e5 2 Nf3 Nc6 3 Bb5 a6 4 Ba4 Nf6 5 O-O Nxe4 6 d4 b5 7 Bb3 d5 8 dxe5 Be6 9 Nbd2 Nc5 10 c3 d4 11 Ng5 Qxg5 12 Qf3 O-O-O 13 Bxe6+ fxe6 14 Qxc6 Qxe5 15 b4 Qd5 16 Qxd5 exd5 17 bxc5 dxc3 18 Nb3 d4 19 Ba3 Be7 20 Bb4 Bf6 21 a4 Kd7 22 axb5 axb5 23 Rfd1 Ke6 24 Racl Kb7 25 Kf1 c6 26 Ke2 Rd5 27 Kd3 Rhd8 28 Re1 1-0

Robert Bethel-Peter Wolf 82 ICA-3 French

1 e4 e6 2 d4 d5 3 Nc3 Nf6 4 Bg5 Be7 5 e5 Nfd7 6 h4 c5 7 Bxe7 Kxe7 8 f4 cxd4 9 Qxd4 Nc6 10 Qd2 Qb6 11 O-O-O f5 12 h5 Nc5 13 Nf3 Bd7 14 Qe1 Be8 15 Rxd5! Nb4 16 Qh4+ Kf8 17 Rd6 Qa5 18 a3 Nd5 19 Nxd5 exd5 20 h6 Ne4 21 hxg7+ Kxg7 22 Re6 Rc8 23 Re7+ Bf7 24 e6 Rxc2+ 25 Kxc2 Qa4+ 26 b3 Qc6+ 27 Bc4 1-0

AMFLUNG, A (MO)	800	D'HEARN, J (OR)	724
ANDERSON, A (IL)	911	D'KEFFE, M (IL)	681
ARCHER, L (WI)	708	DLTMAN, T (IL)	810
BACHLER, K (IL)	949	PETERSON, P (IL)	819
BAUMANN, H (IL)	700	POPE, R (IL)	818
BELECS, G (MO)	799	REARDON, J (IL)	840
BENDER, F (IL)	855	ROECKER, J (IL)	951
BERRY, M (IL)	908	ROTHSCHILD, I (IL)	860
BETHEL, R (IL)	819	RYDBERG, S (IL)	760
BROCK, B (IL)	859	SANDER, D (IL)	746
BROWN, J (IA)	800	SCHREMSE, T (IL)	680
BROWN, W (IL)	912	SCORZA, S (IA)	800
CATTINO, C (IL)	800	SELOOCK, E (IL)	800
COHEN, S (IL)	827	SEXTON, C (IA)	800
CONNOR, P (IL)	855	SHOLL, P (IL)	678
CROUSE, T (IA)	800	SIMS, L (IL)	959
DAVIES, J (MO)	816	SMITH, M (IL)	680
DEAKIN, J (IL)	781	SOGIN, L (IL)	775
DEMAURO, J (IL)	925	SPITZNAGEL, L (IL)	760
ECKERT, D (MO)	858	STOTLER, R (IL)	732
EICHHORN, G (IA)	800	SWANSON, V (IL)	758
EILENWOOD, D (IL)	720	SWICEGOOD, J (IL)	826
FAWBUSH, G (MO)	974	TAYLOR, D (IL)	1067
FIELD, D (IA)	800	TAYLOR, K (IL)	858
GLASCOCK, D (OK)	820	VANDERLINDEN, E (IA)	800
GRATZ, G (IL)	761	WALHOUT, D (IL)	999
HARNACH, C (IL)	751	WARREN, J (IL)	1013
HARPER, R (MO)	800	WEISS, M (IA)	800
HARRIS, W (IL)	874	WERNER, L (IL)	785
HEIMBAUGH, M (IA)	800	WHITE, G (MO)	799
HERNANDEZ, H (IL)	724	WOLF, P (IL)	761
HEUSINKVELD, W (IA)	782	YOUNG, L (IL)	821
JABLONKOW, V (IL)	800	ZAVANELLI, M (IL)	879
JAMASON, R (IL)	819		
JAMISON, L (IL)	700		
JOHNSON, B (IL)	820		
JOHNSON, J (IA)	800		
JUST, T (IL)	865		
KAPELA, R (IL)	636		
LAROSE, M (IL)	805		
LEGG, J (IL)	824		
LEMKE, D (IA)	800		
LEWIS, S (MO)	800		
LIEF, A (IL)	849		
LOOMIS, H (MO)	800		
LUTHER, R (MO)	780		
MARTINDALE, J (IL)	845		
MCKINNEY, C (IL)	737		
MILBRATZ, W (IL)	800		
MIZFRATZ, H (IL)	705		
NAFF, W (IL)	860		
NICKS, J (MO)	800		
NOMURA, K (IL)	740		
NIRMI, R (IA)	800		

## ICA TOP TEN

Dave Taylor (IL).....	1067
Jim Warren (IL).....	1013
Don Walhout (IL).....	999
Larry Fawbush (MO)...	974
Gerry Sims (IL).....	959
John Roecker (IL)....	951
Kevin Bachler (IL)...	949
Joe DeMauro (IL).....	925
Walter Brown (IL)....	912
A Anderson (IL).....	911

## PLAYERS 1 2 3 4 5 6 7 8 9 10 11 12 13 SCORE

1	Newton Berry	1	0	1/2	1/2	0	1	0	1	0	1/2	1	1/2	6-6
2	William Harris	0	1	0	0	1	0	1	0	0	1	1	5 1/2-6 1/2	
3	Tim Just	1	1/2	1	0	0	1	1	0	1	0	1	0	6-6
4	Chris Musgrave	1/2	0	1	1	0	1	0	1	0	0	1	0	4-3
5	John Roecker	1/2	1	1	1	1	1	0	1	1	0	1		
6	Larry Sims	1	1	0	1/2	1/2	1	0	1	0	1/2	1	1	7 1/2-4 1/2
7	Vic Swanson	0	0	0	1	0	0	1	0	1	0	1	0	3-9
8	Dave Taylor	1	1	1	1	1	1	1	1	1	1	1	1	11 1/2-1 1/2
9	John Tomas	0	0	0	0	0	0	0	0	1	0	0	0	0-12
10	Don Walhout	1	1	1	1	0	1	1	1/2	1	1	1	1	10-2
11	Jim Warren	1/2	1	1/2	1	1	1/2	1	0	1	1/2	1	1	
12	Paul Sholl	0	0	0	0	0	0	0	0	1	0	0	1	1-11
13	Walt Brown	1/2	0	1	1		0	1	0	1	0	1	1	

Dave Taylor-Steve Cohen 81 ICA-F French

1 e4 e6 2 d4 d5 3 Nc3 Nf6 4 Bg5 Bb4 5 exd5 Qxd5 6 Bxf6 Bxc3+ 7 bxc3 gxf6 8 Qg4 Qg5 9 Qxg5 fxg5 10 h4 b6 11 hxg5 Bb7 12 f4 Nd7 13 Bd3 O-O-O 14 Nf3 Rdg8 15 Kf2 f5 16 Rh6 Rg6 17 Rahl Rxb6 18 Rxb6 Nf8 19 Ne5 Rg8 20 Bc4 1-0

## PLAY IN AN ILLINOIS TOUR EVENT THIS MONTH!

For recorded phone announcements of tournaments in and around the Chicago area call:  
312-"IL-CHESS" or 312-233-8500

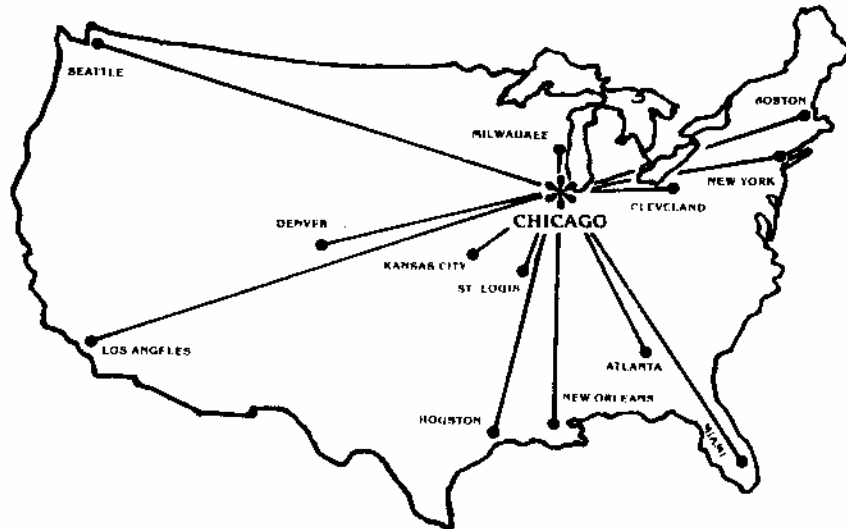




**Biggest Class Prizes  
ever awarded  
in the U.S. Class Championship!**

# 1983 U.S. Class Championship

**Chicago  
Palmer  
House**



**Six Big  
Sections**

**\$\$ 8600 in Prizes • July 22-24**

*This famous National Tournament returns to the Midwest by popular demand*

## **SIX BIG SECTIONS:**

Master-Expert: **\$\$ 800-450-300-200-100**, <sup>Expert</sup> bonus **400**

Class A: **\$\$ 700-350-200-150-100**

Class B: **\$\$ 650-350-200-150-100**

Class C: **\$\$ 600-350-200-150-100**

Class D/E: **\$\$ 600-350-200-150-100**, <sup>E/below</sup> bonus **250**

Unrated: **\$\$ 200-150**

*This USCF National Tournament is co-sponsored by USCF and the Chicago Chess Assn. The tournament consists of 6 sections, 5 rounds per section, time limit 45/2, at the Chicago Palmer House Hotel. EF: \$45 if postmarked to USCF by June 25, \$48 if postmarked by July 12 — \$7 more at tournament site. REGISTRATION: 4-7 p.m. Friday, July 22. First round at 8 p.m. 1/2-pt. bye is available Friday if requested beforehand. CHESS SETS ARE PROVIDED BY USCF. PLEASE BRING YOUR CHESS CLOCK IF POSSIBLE. Make your hotel reservations early by writing directly to the Palmer House: \$45.00 single, \$55.00 double. For further details see Tournament Life Notice on page 46 of the July CHESS LIFE.*

**ENTRY FEE IS \$45.00 IF POSTMARKED TO USCF BY JUNE 25!**

Pd. adv.

SOLUTIONS TO NOS. 201-204:

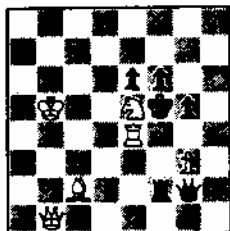
**Problem Page**

David L. Brown  
204 Irving Ave.  
Rockford, IL 61103

- No. 201 Barclay. 1. Sc2? Rb7! 1. Sf7? Se6! 1. Se4? Sf4! or 1. Sc4/1? Sb7! all threaten 2. d5? but only the waiting move 1. Sc6! covers everything.
- No. 202 Gamage. 1. Sg6 (2. Sb4?) Four ways the black pieces interfere on the c-file with unpins of the Q, 1... Sg2 allows a nice pinmate 2. Sc5?.
- No. 203 Savournin. Noting the three set unpins 1... xc2/xd3/xg5, after the key 1. Sc6! all are changed! The same goes for ... xc4. 1. Kd1? xe6!
- No. 204 Buchwald. 1. Rg3? xf2! 1. Ra3? Rxf2! 1. Sg4? xf2! 1. Sb3? Rxf2! 1. Sa4! A perfectly controlled cycle. Good non-thematic tries include 1. Re3? Rxa7! 1. Sxd5? fxc4! 1. Sf5? fxc4! and 1. Ad3? Sxd3+!
- No. 205 Cheney. 1. Sa5! Fxg4, 2. Ab7! Kd5 3. Ra3 and the key has nothing in common with the mate. 1... Pf4, 2. Re4.

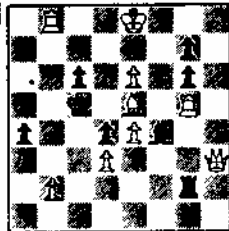
All by P. Wenman, "200 Assorted Problems", 1945 (no individual data)

No. 218



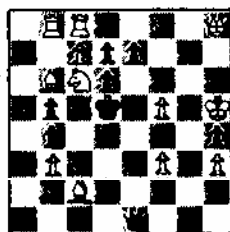
#2

No. 219



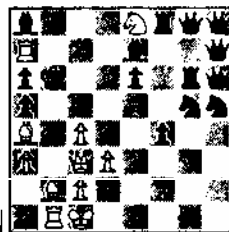
#2

No. 220



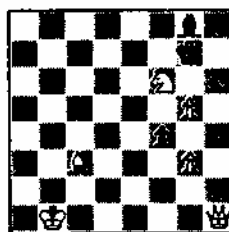
#2

No. 221



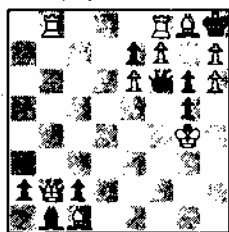
#2

No. 222



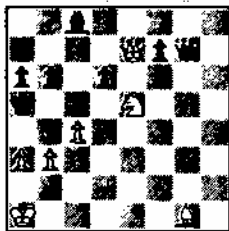
#3

No. 223



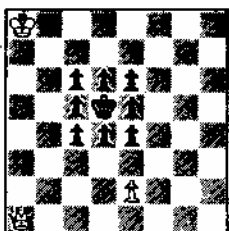
#3

No. 224



#3

No. 225



#4

- No. 206 Meredith. 1. Sf3? Ag4 is plain crummy until you see the magnificent 3. Re5! Early problems often had this kind of personality.
- No. 207 Comandy. The hot 1... axc2/Lac2+, 2. axc5+ axc2+ and 1... axf3/Lxf3+, 2. axf5+ axf3+ exchange replies and change cases, after 1. g2! (1. g3?), doubling of the pure theme.
- No. 208 Anceevich. 1. g5! and now 1... axc3 Lxc3? g4+, 3. Re4+ or 1... Rxc3 Pg5? g4+ 3. Re4+. Holzhausen interferences on d3. 1... Re4. Trics: 1. Re7? ch! and 1. Re7? cc! are prescience.

I've recently found the above solutions while on the hot sands of Florida and even got a two-point lead on the solving ladder. This earns him six and a half percent and a 1-year 1945 subscription. Sorry guys!

LADDER SOLVED thru No. 200	Mary Lyle.....#41
Lawrence Coen.....#53	Fred Fihelick...#62
Vic Glazer.....#97	John Senko.....#71
Chuck Barnach.....#200	Helen Wiszsko...#76
Eric Hassberg.....#221	Mary Lambert...#160
Edgar Holladay.....#116	Richard Smiley...#51
Marvin Johnson.....#53	Lou Corbin.....#223
Chuck Kramer.....#65	Vito Vituskas...#25

All the problems in this issue are by P. Wenman, Scottish Champion player and author of several books on games, endings and problems. His comments were terse, and indicative of the thematic depth of these works. Like most players he was attracted to the striking abruptness of the key, seemingly unconcerned with unprovided checks, flights (even taking them!), variations or tight construction. Grades on most of his problems would be fairly low, and are given here to show the contrast with often quoted classics and the not-so-simple differences in taste. MAIL SOLUTIONS within 30 days.

As promised, here is the crosstable from the Illinois Invitational.

PLAYER	PRE RING	POST RING	1	2	3	4	TOT
1 MARTINOVSKY, EUGEN	IL 2348	2376	W10	W=8	W=4	D=3	3.5
2 SPRENKLE, DAVID C	IL 2324	2340	W18	D=3	D=5	F=9	3.0
3 STEIN, KURT W	IL 2270	2295	W16	D=2	W=6	D=1	3.0
4 KAUSHANSKY, LEONID	IL 2432	2428	W14	W=5	L=1	D=7	2.5
5 DANDRIDGE, MARVIN	IL 2316	2324	W=7	L=4	D=2	W10	2.5
6 CHOW, ALBERT C	IL 2243	2253	D15	W12	L=3	F14	2.5
7 CRIFE, PAUL G	IL 2189	2217	L=5	W14	W=8	E=4	2.5
8 STEVANOVIC, MIOGIR	IL 2239	2233	W17	L=1	L=7	X=	2.0
9 SMALL, GREGG H	IL 2257	2243	D12	D11	D10	L=2	1.5
10 HUDSON, STEVEN H	IL 2203	2201	L=1	W16	D=9	L=5	1.5
11 RUBIN, DAVID E	IL 2295	2289	U=	D=9	D12	U=	1.0
12 KARKLINS, ERIK	IL 2159	2158	D=9	L=6	D11	U=	1.0
13 SANDHIN, ANGELO	IL 2152	2166	U=	W18	U=	U=	1.0
14 GILES, MORRIS C	IL 2285	2246	L=4	L=7	D16	L=6	.5
15 RHINE, FREDERICK S	IL 2197	2199	D=6	U=	U=	U=	.5
16 FRIEDMAN, EDWARD	RI 2196	2178	L=3	L10	D14	F=	.5
17 VERBEK, RICHARD WI	IL 2377	2360	L=8	U=	U=	U=	.0
18 CHACHERE, LAWRENCE	IL 2208	2186	L=2	L13	U=	U=	.0

**HOTLINE**

...WILL RETURN NEXT ISSUE

## TOURNAMENT CALENDAR

Abbreviations: RR-round robin, SS-swiss system, TL-time limit, EF-entry fee, \$\$-prize fund, b/-based on ( ) entries. All phone numbers are area code 312 unless otherwise noted.

Every Friday night at 7 pm: Speed Tournament  
Chicago Chess Center, 2666 N. Halsted. EF:\$2. Call  
Jules Stein at 929-7010.

July 2-4 CHESS SPECTACULAR AMERICANA A Mini-Tour event  
Chicago Chess Center, 2666 N. Halsted. Two events. See  
page 11 for more details.

July 9 Peoria Summer Tornado  
4-SS; EF:\$10, \$13 at site; TL:30/1; \$\$:175, 100 1st, B,  
C,D/E/UNR each 25. Call Bill Wilkinson at 309-673-9455.

July 9-10 ILLINOIS JUNIOR INVITATIONAL  
5-SS; EF:\$15, \$18 at site; TL:40/100 Sat., 45/2 Sun.;  
\$\$:415, 150-100-75, A 30-20, B25-15, trophies to top 3,  
book prizes to player coming furthest distance, best  
game, upset. Limited to those under 21 who are IL  
residents at date of event with ratings over 1600. Call  
Helen Warren at 246-6665.

July 9-10 July Swiss Chess Mates, 517 Dempster, Evan-  
ston. Two one-day events. 3-SS; EF:\$3, \$4 at site; TL:  
40/1, 30/30. Call Ted Ehara at 869-4100.

July 16 Springfield July Tornado  
4-SS; EF:9; TL:30/1; \$\$:210 b/30, 75-35-25, A,B,C,D/E,  
UNR each 15. Call Tom Knoedler at 217-786-6546.

July 16-17 Beach Blanket Swiss Zion  
5-SS; EF:\$16 (\$11 jr), \$5 more at site; TL:40/100, 25/1;  
\$\$:485 b/50(7 per class), 150-100-75, A,B,C,D/E/UNR  
each 40. Call Tim Just at 244-7954.

July 16-17 Forest City Open Rockford  
5-SS; EF:\$23, \$28 at site; TL:50/2; \$\$:1000 b/60(top 3  
guar.), 250-150-100, class prizes per entries. Call  
Gary Sargent at 815-397-9186.

July 16-17 Potzers Paradise Chicago Chess Center,  
2666 N. Halsted. 5-SS; EF:\$16, \$18 at site; TL:40/90  
Sat., 40/2 Sun.; \$\$:350 b/30, 200-100, D/E/UNR 50. Open  
to 1686 and below. Call Jules Stein at 929-7010.

July 23-24 US CLASS CHAMPIONSHIPS Palmer House  
For full details see page 5.

July 23-24 July Quads Chess Mates, 517 Dempster,  
Evanston. 3-RR; EF:\$9, \$10 at site; TL:40/1, 30/30; \$\$:  
30 to 1st each quad. Call Ted Ehara at 869-4100.

July 30-31 Rend Lake Outdoor Open  
4-SS; EF:\$15, \$20 at site; TL:40/100, 25/1; \$\$:400, 250  
1st in Open section, 150 1st in Under 2000 section.  
Call John Menke at 618-244-1173.

August 6-7 August Swiss Chess Mates, 517 Dempster,  
Evanston. Two one-day events. 3-SS; EF:\$3, \$4 at site;  
TL:40/1, 30/30. Call Ted Ehara at 869-4100.

August 13 Bradley Summer Open Peoria  
4-SS; EF:\$10, \$13 at site; TL:30/1; \$\$:200, 75-50, B,C,  
D/E/UNR each 25. Call Bill Wilkinson at 309-673-9455.

August 13-14 A Queen for the Knight Chicago Chess  
Center, 2666 N. Halsted. 5-SS; EF:\$20, \$22 at site; TL:  
40/100 Sat., 40/2 Sun.; \$\$:475 b/35, 5/class, 115-80,  
A,B,C,D/E/UNR each 70. Call Jules Stein at 929-7010.

August 20 Illiana Fun IV Georgetown High School  
4-SS; EF:\$10, \$12 at site; TL:35/1; \$\$:130 b/20, 60-40-  
30.

August 20 August Pawnsnatcher Homewood  
4-SS; EF:\$6, \$8 at site; TL:30/1; \$\$:150 b/30, 50-25,  
B,C,D each 20, E/UNR 15. Call Bob Bain at

August 20 Springfield Chess Association. Call Tom  
Barnard at 217-438-6271.

August 20-21 August Quads Chess Mates, 517 Dempster,  
Evanston. Two one-day events. 3-RR; EF:\$10; TL:40/1;  
\$\$:30 1st in each quad. Call Ted Ehara at 869-4100.

August 20-21 Saturday Typhoon/Sunday Twister Chicago  
Chess Center, 2666 N. Halsted. Two one-day events.  
4-SS; EF:\$10, \$12 at site; TL:rds 1-3 40/1, rd 4 30/1;  
\$\$:200 b/30, 4/class, 50-30, A,B,C,D/E/UNR each 30.  
Call Jules Stein at 929-7010.

August 27-28 PUT THE FUN BACK INTO CHESS IV  
An Illinois Tour Event. 5-SS; EF:\$15, \$20 at site; TL:  
40/90 Sat., 45/2 Sun.; \$\$:1500, 300-200-100, Ex 95-60,  
A 94-59, B 93-58, C 92-57, D 91-56, E/UNR 90-55. Also  
50 free raffle prizes and a free gourmet lunch on Sat.  
Free USCF memberships to new members. Call Fred Gruen-  
berg at 779-3360 (office) or 779-0306.

Sept. 3-4 The Mating Call Chicago Chess Center, 2666  
N. Halsted. Two one-day events. 4-SS; EF:\$16; TL:rds 1-  
3 40/1, rd 4 30/1; \$\$:330 b/30, 5/class, 80-50, A,B,C,  
D/E/UNR each 50. Call Jules Stein at 929-7010.

Sept. 3-5 ILLINOIS OPEN Peoria  
An ICA Championship Event and Illinois Tour Event.  
6-SS; EF:\$22.50, \$25 at site; TL:40/2; \$\$:1300, 300-  
200-100, Ex 100, A,B,C each 100-50, D/E 70-30, UNR 50.  
Call Bill Wilkinson at 309-673-9455.

Sept. 10 Springfield Fall Open  
4-SS; EF:\$9; TL:30/1; \$\$:210 b/30, 75-35-25, A,B,C,D/E/  
UNR each 15. Call Tom Knoedler at 217-786-6546.

Sept. 11 ICA PICNIC, St. Charles

Sept. 17 Illiana Fun V Georgetown High School  
4-SS; EF:\$10, \$12 at site; TL:35/1; \$\$:130 b/20, 60-40-  
30.

Sept. 17-18 The Mating Season Chicago Chess Center,  
2666 N. Halsted. Two one-day events. 4-SS; EF:\$16; TL:  
30/1 Sat., 40/1 Sun.; \$\$:330 b/30, 5/class, 80-50, A,B,  
C,D/E/UNR each 50. Call Jules Stein at 929-7010.

Sept. 17-18 3rd Annual Park Forest Open  
5-SS; EF:\$16, \$18 at site; TL:45/90 Sat., 40/100 Sun.,  
\$\$:375 b/40, 5/class, 100-75, A,B each 50, C,D/E each  
35, UNR 30. Call Wayne Palmquist at 747-2120.

Sept. 24 Peoria Cash Novice  
Open to under 1500. 4-SS; EF:\$5, \$6 at site; TL:30/45;  
\$\$:60, 30 1st, 30 to classes per entries. Call Bill  
Wilkinson at 309-673-9455.

Sept. 24-25 LAKE COUNTY OPEN VI Zion  
An Illinois Tour Event. 5-SS; EF:\$20, \$25 at site; TL:  
40/100, 25/1; \$\$:1000 b/100, 15/class, 250-150-100, Ex,  
A,B,C,D/E/UNR each 100. Call Tim Just at 244-7954.

Sept. 24-25 3rd Southern Illinois Fall Open

Oct. 1-2 Scholastic Chess  
Lessons by local masters and experts and a 3 round  
tornado. Proviso West High School, Hillside. Call Helen  
Warren at 246-6665.

MORE DETAILS NEXT ISSUE:

Oct. 1-2 CENTRAL ILLINOIS OPEN, Urbana  
Oct. 8 Springfield Chess Association  
Oct. 8-9 St. Charles Open  
Oct. 15 Illiana Fun VI, Georgetown  
Oct. 15-16 SOUTHERN ILLINOIS OPEN, Belleville  
Oct. 29 Peoria Fall Tornado  
Nov. 5 Illiana Fun VII, Georgetown  
Nov. 6 Southern Illinois Sunday Quads  
Nov. 12 Springfield Chess Club  
Nov. 20 Belleville Sunday Swiss  
Nov. 25-27 ILLINOIS CLASS CHAMPIONSHIP  
Dec. 3 Illiana Fun VIII, Georgetown

THE ILLINOIS CHESS ASSOCIATION announces....  
THE 1983 ILLINOIS JUNIOR INVITATIONAL CHAMPIONSHIP

JULY 9-10

at the MOHR COMMUNITY CENTER, DesPlaines & Jackson, Forest Park, IL

5-SS Sat: 9, 1, & 5; Sund.: 9 & 2 Time Control: Saturday: 40/100  
Sunday: 45/2 hrs.

OPEN TO ALL ILLINOIS JUNIORS WHO ARE UNDER 21 AT THE TIME OF THE START OF  
THE TOURNAMENT WITH USCF RATINGS OVER 1600.

PRIZE FUND: \$150 - 1st TOP A: \$30, \$20 Trophy to top three  
\$100 - 2nd TOP B: \$25, \$15 scorers.  
\$75 - 3rd Book prizes for: Best  
Game, Upset, & player  
coming farthest.

Certificates to ALL who complete their playing schedules.

Entry: \$15 until 6/30; \$18 thereafter & at door Registration: 8-8:45 AM  
Saturday

Entries to: Helen Warren ICA MEMBERSHIP REQUIRED: \$5  
PO Box 70  
Western Springs, IL 60558 Checks should be made payable to ICA.

PLUS TWO GREAT ADDED PRIZES FROM THE SOFTWARE MANUFACTURERS OF  
CHESS PROGRAMS FOR THE APPLE II, APPLE II PLUS, AND ATARI 48K SYSTEMS:

The Atkin-Slate Chess Program  
(valued at \$70 each)

The Mohr Community Center is the site of the Master Challenge tournament and the home of the Oak Park-Forest Park Chess Club. It is convenient to reach by public transportation from Chicago, by car (one block off the Eisenhower Expv.), by bus (the Greyhound Station is only a block away), and by suburban bus lines. Motel information available upon request. BRING SETS, BOARDS, AND CLOCKS.

Organizer: Helen Warren

TD: Bob Bain

If more than 36 enter, accelerated pairings will be used in the first two rounds.

ILLINOIS CHESS ASSOCIATION  
PO BOX 70  
Western Springs, IL 60558

Dated material. Speedy  
delivery appreciated.

Bulk Mail Permit  
No. 1 PAID at  
Western Spgs.,  
IL 60558