

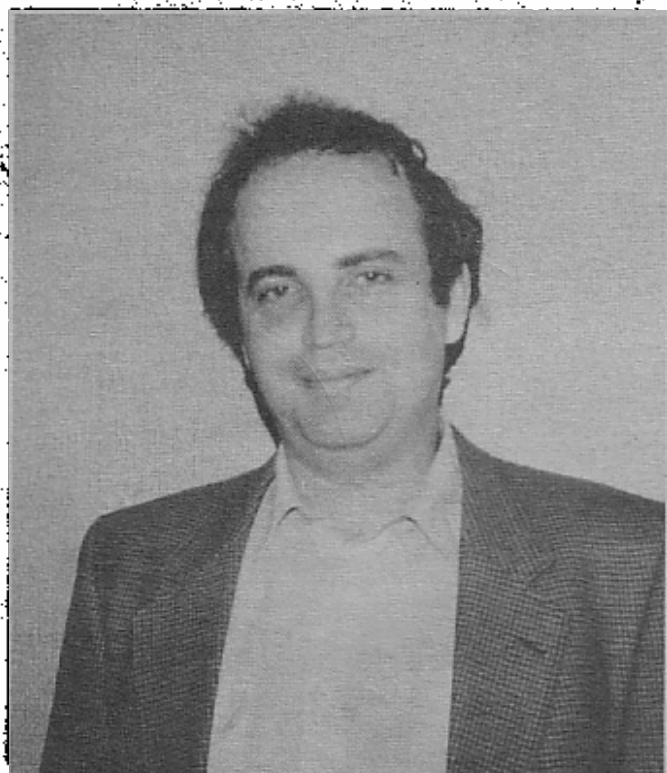
ILLINOIS CHESS BULLETIN

Official Publication of the Illinois Chess Association a U.S.C.F. Affiliate
A Not For Profit Organization

MAY 1987

BIMONTHLY

VOLUME 10, NO. 2



**CHOW FALTERS. SZMETAN AND GRUCHACZ
CONQUER ILLINOIS TOURNAMENT OF CHAMPIONS**

**BIDS FOR 1989 U.S. OPEN
50TH ANNIVERSARY OF FOUNDING USCF IN CHICAGO**



RICHARD VERBER, EDITOR

4531 N. Lakewood #2
Chicago IL 60626
(312) 764-1404

BILL SMYTHE, ASSOCIATE EDITOR

6945 N. Ashland #F3
Chicago IL 60626-3312
(312) 761-2455

Submit articles, photos, crosstables, games, and other publishable material to the Technical Editor. Publication deadline for the next issue is May 15.

AL CHOW, GAMES EDITOR

SUBSCRIPTIONS: The Illinois Chess Bulletin (ICB) is published bimonthly by the Illinois Chess Association. ICA membership includes a subscription to the ICB.

ANNUAL MEMBERSHIP RATES:

Century Club: \$190.00
Gold Cards \$50.00
Patrons \$25.00
Regulars \$10.00
Junior (under 18): \$6.00

Century, Gold, and Patron members receive their ICB by first-class mail. Remit to:
Illinois Chess Association
PO Box 267947
Chicago IL 60626-7947

ADDRESS CHANGES AND CORRECTIONS should also be sent to the above post office box.

ICA AFFILIATION: Chess clubs and other organizations which promote chess activity may affiliate with ICA. Affiliate benefits include a copy of each ICB by first-class mail, a listing (if desired) under Where to Play Chess in each issue, discounted ICB advertising rates, three-line tournament announcements in the Tournament Calendar, and the right to run ICA Tour events. ICA affiliation costs \$15.00 per year; please remit to the address shown above under Annual Membership Rates. Include your club meeting times, the name of a contact person, and other useful information in the format shown in Where to Play Chess on page 4 of this issue.

ADVERTISING RATES:

Full page \$60.00
Half page \$36.00
Quarter page \$21.00

10% discount for same ad in consecutive issues. 1/3 discount for ICA affiliates. All advertising must be camera ready to qualify for these rates. Add 20% if you wish layout done. Please note that the ICB is paged up or left-justified; therefore, half-page ads should be 11 across by 7 down, quarter-page 5.5 across by 7 down. Full-page ads may be either 11x14 or B.S.I.I. ICA reserves the right to reject advertising.

CHESS PHONE 971-3666

Call (312) 971-3666 for recorded tournament announcements and results. ChessPhone is now the official voice of the Illinois Chess Association.

Metro tournament clearinghouse:

Harold Winston
1567 Ridge Ave #601
Evanston IL 60201
(312) 475-7022

Downstate tournament clearinghouse:

Bill Naff
212 W Vail Ct
Peoria IL 61614
(309) 691-4624

ICA ELECTED OFFICERS:

Tim Just, President
1521 Circle Ct, Naukegan IL 60083

Harold Winston, Metro Vice-President
1567 Ridge Ave #601, Evanston IL 60201

Bill Naff, Downstate Vice-President
212 W Vail Ct, Peoria IL 61614

Glenn Panner, Secretary
14300 S Ridge, Orland Park IL 60462

Bill Smythe, Treasurer
6945 N Ashland #F3, Chicago IL 60626

Walter Brown, Immediate Past President
811 Elrose Ct, Crest Hill IL 60435

USCF DELEGATES by virtue of their USCF rank:

Helen Warren, Pol...
Fred Gruenberg, National Vice-President
Jim Warren, Regional Vice-President
Frank Skoff, President

ICA APPOINTED USCF DELEGATES:

Tim Just
Todd Barre
Harold Winston
Bill Smythe
Richard Verber

ICA APPOINTED USCF VOTING MEMBERS:

Tom Fineberg
Bill Naff
Walter Brown
Erv Sedlock
Glenn Panner
Wayne Palequist

Bill Stowell
Mike Knoidler
Robert Bain
Bobby Fish...

ICA APPOINTED USCF ALTERNATE VOTING MEMBERS:

Chris Musgrave
Eric Schiller
Bill Wilkinson
Mike Zecate
Jim Condron
Kevin Bachler
Jim Bratsos
Angela Sandrin

John Barstad
Dan Kamin
Albert Opat
David Sprinkle
Mike Belovick
Philip Wang
Burton Vincent
Larry Rock

Editor's Page

RICHARD VERBER



A record-size 40-page ILLINOIS CHESS BULLETIN and the transition to a new Editor have conspired to bring this issue of the ICB to you a couple weeks later than expected. We ask your indulgence as we return to a timely bi-monthly schedule. Deadline for submission of material for the next ICB is May 15, and the next issue will be in your mailbox the first week of June.

Let us start by thanking Bill Smythe for his stint as ICB Editor. During the past year and a half Bill has restored the ICB to its status as one of the best state chess magazines in the country. Bill's witty style and balanced coverage of master and amateur chess have contributed to a creative period in Illinois chess. Last year the Association of Chess Journalists recognized Bill's achievement by conferring upon the ICB awards in 6 major categories. The only chess magazine to receive a greater number of citations was the outstanding Massachusetts publication CHESS HORIZONS. Bill's new full-time programming job in Skokie makes it impossible for him to continue shouldering ICB editorial responsibilities of 120 hours per issue (!), but Bill has offered to stay on as Technical Editor providing crosstables, chess diagrams, and computer printing of games scores. The Illinois chess community owes Bill Smythe a continuing debt of gratitude.

Every new Editor brings to the job his own conception of what a state chess magazine should be. Our own viewpoint can be glimpsed in this first issue. Many Illinoisans will agree with us that the ICB reached its zenith in 1981-82 during the editorship of Helen Warren. The ICB of that period was frequently better than CHESS LIFE! Helen's ICB combined good graphics, a news-oriented approach, and some of the most fascinating interviews ever to appear in a chess publication. This Editor's goal is to fuse good graphics and a wide range of newsy columns with Bill Smythe's penchant for abundant crosstables and in-depth master-annotated games. Likewise, we look toward increased coverage of chess in the clubs and scholastic chess. If Illinois is ever going to produce a grandmaster, we will need to put more emphasis on Junior chess.

The first four months of 1987 have witnessed a boom in Illinois chess activity unprecedented in recent years. A few days before the start of the year, the University of Chicago "Maroon Knights" distinguished themselves by winning the Pan American Intercollegiate Champion-

ship. February saw Senior Masters Ricardo Szmetan and Robert Gruchacz dominate the first-ever Illinois Tournament of Champions, a 10-man round-robin with an average rating over 2400. Thanks to ICA Vice-President Harold Winston's organizational skills, February also brought 32 teams to the Hyatt Regency O'Hare to compete in the Midwest division of the U.S. Team Championships. March was another banner month courtesy of Helen Warren's Midwest Masters which bestowed on our top masters the opportunity to sharpen their skills in battle with the cream of American chess, GMs Joel Benjamin, Dmitry Gurevich, Sergei Kudrin, Leonid Shamkovich, and Arthur Bisguier. In recognition of Helen Warren's dedicated commitment to the cause of Master Chess in Illinois, we are dedicating this issue to her. Keep up the good work, Helen!

The "Illinois Chess Boom" will continue this summer with a generous \$7150 prize fund at the Midwest Class Championships July 17, 18, 19. Although the last few years have brought about a virtual Renaissance in local master chess, Class events with Big Prizes have been sorely missing. Chicago's top organizer, Fred Gruenberg, is joining with us to remedy this situation, and you can look forward to big regional and national tournaments in the future!

On another positive note, the Chicago bid for the 1989 U.S. Open is making good progress, and we plan to submit our bid to USCF at this year's U.S. Open in Portland. Because of my past experience as the Chairman of the 1973 and 1979 U.S. Opens, the ICA officers have asked me to take over the job of running the '89 Open. Fred Gruenberg has agreed to back the tournament financially with a \$3000 guarantee-against-loss and ICA President Tim Just has done an outstanding job in lining up the prestigious Hyatt O'Hare as the host hotel.

The credit for the growth of Illinois chess belongs largely to the joint efforts of the many chess organizers who devote time and energy to make things happen, running chess clubs, holding tournaments, spreading chess news. If you can contribute your time, phone ICA President Tim Just (244-7954) to volunteer. If your time is too limited, the best way to make a contribution is by becoming a Century Club or Gold Card member of ICA. This magazine and many of the activities which ICA sponsors depend heavily upon the financial support of our Patrons. You can help Illinois chess by joining with us in a team effort! Please send your Patron membership to ICA Treasurer Bill Smythe, 6945 N. Ashland, Chicago 60626.

MIDWEST CLASS CHAMPIONSHIPS
\$7150 IN PRIZES...JULY 17, 18, 19

WHERE TO PLAY CHESS: ICA CLUB AFFILIATES

AMERICAN POSTAL CHESS TOURNAMENTS sponsors postal events of various kinds, and sells chess books and equipment. Contact Jim or Helen Warren, PO Box 305, Western Springs 60558. (312) 246-6665.

CENTRAL LAKE COUNTY CHESS CLUB meets Fridays, 7:15 pm to midnight, College of Lake County, Bldg 1, Washington at Route 45, Grayslake. Contact Dennis Grant, 1657 McKay, Waukegan 60087. (312) 336-5188.

CHICAGO CHESS ASSOCIATION organizes major tournaments at the Holiday Inn O'Hare. Also master chess lessons, \$40 / 3 hr. Contact Dick Verber, 6531 N Lakewood, Chicago 60626. (312) 764-1404.

CHICAGO CHESS CENTER meets for casual chess 7 days a week, 6 pm to 1 am, 2923 N Southport, Chicago 60657. Also sponsors rated tournaments on selected weekends. Contact Jules Stein, (312) 929-7010.

CHICAGO INDUSTRIAL CHESS LEAGUE organizes frequent competition among commercial/government teams with awards, ratings, and special events. Contact Jim Brotsos, (312) 775-5054, or Bruce McNeil, (312) 742-5195.

DOWNERS GROVE PARK DISTRICT CHESS CLUB meets every Thursday, 6:30-10 pm, Lincoln Center, 935 Maple Ave, Downers Grove. Affiliated with USCF and ICA. For further information, contact George Uffner, (312) 910-0421.

GREATER PEORIA CHESS FEDERATION meets Mondays, 7 to 11 pm, Bradley Student Center Cafeteria, 901 N Elwood, Peoria. Contact Bill Wilkinson, 905 N Rebecca Pl, Peoria 61606. (309) 673-9455.

ILLINOIS VALLEY CHESS CLUB meets 1st and 3rd Sundays, 2-6 pm, and 2nd and 4th Mondays, 6-10 pm. Grace United Methodist Church, 1345 Chartres St, LaSalle. Byron Pappas, 432 Creve Coeur, LaSalle IL 61301. (815) 224-2869.

LAKE COUNTY CHESS ASSOCIATION sponsors rated tournaments in the Grayslake/Zion area. Contact Jim Just, 1521 Circle Ct, Waukegan 60085. (312) 244-7954.

MIDWEST CHESS ASSOCIATION organizes major tournaments for masters and experts. Contact Helen Warren, PO Box 305, Western Springs 60558. (312) 246-6665.

NORTH BOONE HIGH SCHOOL CHESS CLUB, 17641 Poplar Grove Rd, Poplar Grove 61065. Contact Guenter Wohlfarth, sponsor. (815) 765-3311.

OAK PARK / FOREST PARK CHESS CLUB meets Tuesdays, 6:45 pm to midnight, Mohr Community Center, Jackson & DesPlaines, Forest Park. Contact Chris Musgrave, 1127 S Humphrey, Oak Park 60304. (312) 386-5124.

ORLAND PARK CHESS CLUB meets Fridays, 7 to 11 pm, George Brown Commons, 15045 West Ave, Orland Park. Contact Glenn Panner, 14300 S Ridge, Orland Park 60462. (312) 460-3111.

PARK FOREST CHESS CLUB meets Thursdays, 7 to 10:30 pm, Freedom Hall, Orchard & Lakewood, Park Forest. Contact Wayne Palmquist, 10605 Southwest Hwy #1F, Worth 60482. (312) 361-2571.

RAE PRODUCTS AND CHEMICALS, 10926 S Western, Chicago 60643. Contact Fred Gruenberg, (312) 779-3360.

ST CHARLES CHESS CLUB meets Thursdays at 7 pm, Baker Community House, 101 S 2nd (Route 31), St Charles. Contact Ery Sedlock, 6 N 307 Old Homestead Rd, St Charles 60174. (312) 377-7995.

TULEY PARK CHESS CLUB meets Saturdays, 1 to 5 pm, Tuley Park Fieldhouse, 501 E 90th Pl, Chicago. Contact Thomas Fineberg, 7321 S South Shore Dr, Chicago 60649. (312) 721-3979.

OAK PARK - FOREST PARK CHESS CLUB

» proudly presents «

MASTER CHALLENGE

JUNE 12, 13, 14

\$ 3175 **GUARANTEED**

Mohr Community Center

7650 Jackson Blvd., Forest Park, Ill.

A GRAND PRIX & ILLINOIS TOUR EVENT

Send entries to Chris Musgrave,

1127 S. Humphrey, Oak Park, Illinois.

Info: 386-5124

presidential ponderings

By ICA President Tim Just

WHY IS IT?

The USCF calculates your rating differently than you do.

The ICA calculates your Illinois Tour points differently than you do.

Several ounces of wire, plastic, and transistors can beat you at chess.

None of your opponents play the book lines you have studied.

The Tournament Director always makes the critical pairings differently than you would have.

The first round of a weekend swiss never starts on time.

The rating you got when you changed your opening system is not the one you expected.

The most recent GM emigre will end up as your next unrated opponent.

Just as you make the best move of your life, you and your opponent see an obvious one move refutation.

Please look at your mailing label on the back page to see if it's time to renew your membership!

CENTURY CLUB MEMBERS

| | | |
|--------------------|------------|----|
| Michael Belovesick | Elmhurst | IL |
| Walter Brown | Crest Hill | IL |
| Fred Cramer | Mequon | WI |
| Lawrence Goch | Chicago | IL |
| Fred Gruenberg | Chicago | IL |
| Bill Saythe | Chicago | IL |
| Burton Vincent | Chicago | IL |
| Philip Wong | Evanston | IL |

GOLD CARD MEMBERS

| | | |
|--------------------|-----------------|----|
| Bill Buttny | Downers Grove | IL |
| Thomas Fineberg | Chicago | IL |
| Harland Hoisington | South Ogden | UT |
| Charles Kramer | Dalton | IL |
| James Norris | Naperville | IL |
| Michael Pratts | Chicago | IL |
| Irwin Rothschild | Park Forest | IL |
| Albert Sandrin | Chicago | IL |
| Angelo Sandrin | Chicago | IL |
| Mitchel Sweig | Evanston | IL |
| Richard Verber | Chicago | IL |
| Jim Warren | Western Springs | IL |
| Louis Werner | Evanston | IL |

PATRON MEMBERS

| | | |
|-------------------|-------------------|----|
| Bob Ash | Urbana | IL |
| Todd Barre | Westmont | IL |
| John Barstad | Carol Stream | IL |
| Roy Benedek | Oak Park | IL |
| Bill Brock | Chicago | IL |
| Tyrone Brooks | Chicago | IL |
| Jim Brotsos | Chicago | IL |
| Brian Chapman | Arlington Heights | IL |
| Lynn Crewse | Arlington Heights | IL |
| Leroy Dubeck | Cherry Hill | NJ |
| Robert Glick | Lincolnwood | IL |
| Jon Gotz | West Chicago | IL |
| William Graves | Chicago | IL |
| Guy Gruenberg | Matteson | IL |
| Walter Henry | Naperville | IL |
| Jeffery Hyland | Berwyn | IL |
| Robert Irons | Chicago | IL |
| Tim Just | Waukegan | IL |
| Dan Kaenen | Wheeling | IL |
| Leo Kaushansky | Chicago | IL |
| Thomas Knoedler | Springfield | IL |
| Ed Marschall | South Barrington | IL |
| Kenneth Marshall | Lombard | IL |
| James McNamara | Riverside | IL |
| Piatek Mieczyslaw | Chicago | IL |
| Patrick Moran | Wilmette | IL |
| Peter Pelts | Chicago | IL |
| Kevin Reardon | Urbana | IL |
| Tim Redman | Lina | OH |
| Ray Satterlee | Wheaton | IL |
| Vivian Schaecker | Goshen | IN |
| Tony Sillars | Chicago | IL |
| Arthur Sinclair | Evanston | IL |
| David Sprenkle | Urbana | IL |
| Miomir Stevanovic | Lincolnwood | IL |
| David Taylor | Kankakee | IL |
| Don Townsend | Chicago | IL |
| Helen Warren | Western Springs | IL |
| Douglas White | Evanston | IL |
| Harold Winston | Evanston | IL |
| Sandy Zabell | Chicago | IL |
| Michael Zacate | Mokena | IL |
| Max Zavanelli | Park Ridge | IL |

U.S. OPEN

CHESS CHAMPIONSHIP

August 2-14, 1987

PORTLAND, OREGON



"See you at the U.S. Open"

THE TD TABLE

BY TODD BARRE

Senior Tournament Director

The idea of writing a semi-regular column for the Illinois Chess Bulletin has always been somewhat intriguing to me. But until recently, I never could come up with a semi-regular topic to write about. However, after years of tournament directing, I have come to the sad conclusion that a surprisingly substantial number of players are unfamiliar with many of the rules of tournament play. This is not to say that the majority of players don't know the rules -- that is not the case. The point is that most players have never sat down and gone through the rulebook in sufficient detail to extract the many fine points of the rules of tournament play.

Thus we come to the raison d'être for this column. In the months to come, I hope to discuss some of the more misunderstood rules of tournament play. Hopefully, this will be educational for both the new tournament player and the experienced one. But more than anything, I would like to use this column to answer reader questions about tournament directing, rules of the game, tournament rules or whatever. Often it is impossible for a TD to give a full and complete answer to a player's question in the middle of a tournament. Hopefully, this column will provide a better opportunity to answer these questions.

So let's get those checks and letters rolling in, folks! Although I would like all letters to be signed, I will withhold the writer's name if so requested (you too, Miraseg!). Send your meaty questions to:

The TD Table
c/o Todd Barre
821 S Williams St #A503
Westmont IL 60559

NEW NUMBER OF ILLINOIS

CHESS PHONE 971-3666

TODD BARRE



A smiling Ricardo Szmetan last September receiving his Illinois Champion's trophy from T.D. Todd Barre. Szmetan also had good reason to smile this February after repeating at the Tournament of Champions!

CHESS LESSONS

WITH RICARDO SZMETAN

CURRENT ILLINOIS STATE CHAMPION

CO WINNER, 1987 ILLINOIS TOURNAMENT OF CHAMPIONS

PHONE 869 - 3440

What's New

NEW NUMBER OF ILLINOIS

CHESS PHONE 971-3666



Thanks to Fred Gruenberg for more than 3 years as the brains and voice of Chess Phone. Chess Phone was Fred's idea, and he ran it on his own as a service to chess for 3 years. Fred recently asked ICA to take over the effort, and our new Chess Phone voice is Todd Barre. Call 971-3666 for up-to-date news of chess in Illinois.

Midwest Masters' Draws Grandmasters to Chicago!

Grandmasters Joel Benjamin, Sergei Kudrin, and Leonid Shamkovich were the victors at the 85-player Midwest Masters held March 8-10 at the Hyatt Lincolnwood Hotel. In the absence of an annual U.S. Masters Tournament, that is just about what Helen Warren's tournament has become! Congratulations, Helen!

SZMETAN & GRUCHACZ WIN ILLINOIS TNMT. OF CHAMPIONS

Last Autumn organizer and chess master Richard Verber suggested the idea of a "Tournament of Champions" to determine the best player in Illinois. Well, Dick held his tournament as a 10-man round-robin in early February, and the winners tied at 6-3 were Ricardo Szmetan and Robert Gruchacz. The all-star-cast sported an average USCF rating of 2404. Contributing to the generous prize fund, sponsors included the American Chess Foundation, Fred Gruenberg, the Illinois Chess Association, USCF, Norbert Leopoldi, Jules Stein, and the Oak Park Chess Club. Helen Warren contributed a free entry for the Midwest Masters. Dick Verber promises to continue this "Illinois-top-10" tournament on an annual basis.

GRUENBERG CHALLENGE \$500 FOR FIRST 2500 RATING!

With 7 Illinois Senior Masters rated above 2400, it's clearly time for these guys to make THE BIG PUSH and get themselves into that really beautiful territory the other side of 2500! As an incentive, Fred Gruenberg will pay a \$500 REWARD to the first current USCF Illinois resident to achieve a 2500-plus published rating before December 31, 1988.

ICA members in Indiana within 20 miles of the Illinois border are also eligible (Yes, that means you, Billy!). Ratings must be based upon play in open tournaments, not upon matches and the \$500 winner must reside in Illinois-Indiana throughout the period. LET'S GET GOING Bob, Ricardo, Morris, Greg, Eugene, Andrew, Albert, David, Dick, Leonid! And YOU too!

32 Midwest teams compete at Hyatt Regency O'hare

Organizer Harold Winston and sponsoring ICA did a fine job with the U.S. Amateur Team Midwest February 14-16 at the luxurious Hyatt Regency O'hare. Winner with 5 match victories was the cleverly-named team from Columbus, Ohio, "4.5 MIL OR THE PREACHER GETS IT." A half point behind the winner, there was a 4-way tie, 2 of the teams from Illinois and 2 from Missouri. "COMPROMISING POSITIONS" consisted of Chicagoans Bob Gruchacz (2469), Kurt Stein, Allen Coffey, Paul Szustowski, and Gary Willard. A like-minded Chicago team named "THE FORE PLAYING KNIGHTS" was composed of Peter Pelts (2370), Warren Kreckler, Brian Schuman, and Rhys Read. The heroes of the two teams were Bob Gruchacz and Brian Schuman each of whom helped their teams with impressive scores of 5 wins and one draw. Congratulations are in order for both Gruchacz and Schuman! The tournament staff was headed by ICA President Tim Just, Todd Barre, and Walter Brown on behalf of the sponsoring ICA.

What's New

CHICAGO BIDS FOR 1989 U.S. OPEN 50TH ANNIVERSARY OF FOUNDING USCF IN CHICAGO

The Chicago Bid for the 1989 U.S. Open will be presented to USCF this August. It has been 8 years since the U.S. Open has been in Chicago. Likewise, it's been a while since the Open has been in the Midwest. 1989 is just the right year for a U.S. Open to return to Chicago since USCF will be celebrating the 50th Anniversary of the founding of USCF, which took place here in Chicago in 1939.

CHICAGO & HARVARD 1-2 AT INTERCOLLEGIATE

The University of Chicago distinguished itself by sharing 1st place at the 1986 Intercollegiate held December 26-30 in Providence, Rhode Island. 53 teams participated.

Congratulations, Fred! Record-breaking 948 player National Open in Las Vegas

The 1987 National Open with many of the biggest names in American chess competing saw GM Maxim Dlugy champion on tie-break over fellow GMs Walter Browne, Joel Benjamin, Sergei Kudrin, and 2497-player Cyrus Lakwadala. What organizer Fred Gruenberg has done with the Las Vegas National Open during the past 5 years is nothing short of sensational! When Fred took over in 1983 the Las Vegas National Open had never seen a turnout above 250 -- although our 1981 National open in Chicago brought 343 entrants.

Now the National Open is real competition for the World Open and the New York Open. Many participants stated that the '87 National Open was the best-run tournament that they had ever seen. And the most fun.

USCF ELECTIONS THIS JULY HAROLD WINSTON, CANDIDATE FOR USCF PRESIDENT

USCF elections are scheduled for early July. Of the 340 USCF electors, 21 reside in Illinois. Most of the people who have the vote in these 3-year elections are chess organizers who have been appointed by the local state affiliate. Harold Winston, the organizer of the recent U.S. Team Championship Midwest and a prominent Chicago organizer for the past 20 years, has announced his candidacy for the post of USCF President. Harold's opposition for the USCF presidency has more of a reputation for playing chess than organizing chess: namely U.S. Champion Yasser Seirawan. Good luck, Harold.

GM JOEL BENJAMIN SIMUL AT OAK PARK CC

On the Tuesday between Helen Warren's Midwest Masters and Fred Gruenberg's National Open in Las Vegas (March 10, to be exact) 23-year-old grandmaster Joel Benjamin gave a 31 board Simul exhibition at the Oak Park Chess Club. Joel took only 4 hours to win 28 games and give up only 3 draws. The proud owners of the 3 draws were Bill Buttny, Paul Madey, and George Uffner. Ken Marshall reports that Benjamin was in serious trouble in only one game, against Expert Tony Schroeder. In the next issue of the ICB we will publish an interesting and perhaps somewhat controversial interview with Joel Benjamin.

KEN MARSHALL ELECTED PRES. AT OAK PARK

Saying that he needs a year's rest, Chris Musgrave has stepped down as President of the Oak Park-Forrest Park Chess Club. Taking Chris' place at the helm of the area's biggest chess club is Ken Marshall who was elected President at the April 14th meeting. There's a lot of work captaining a club the size of Oak Park C.C., so we're not sure whether to offer Ken congratulations or condolences.

What's New

URBANA HIGH SCHOOL TOPS IHSA CHAMPIONSHIP MAMMOTH 544 TURNOUT!

March 20-21 saw 68 high school chess teams from throughout Illinois converge on Evergreen Park H.S. for the annual IHSA Team Chess Championship. T.D.s Mike Zacate and Walt Brown had their hands full dealing with 544 students and presumably 68 coaches. Urbana High scored a perfect 6-0 to take the High School crown from defending-champion Proviso West. Proviso had to settle for a big 2nd to 8th place tie along with East St. Louis Senior High, Lane H.S. of Chicago, Downers Grove South, Kenwood H.S. of Chicago, Oak Park-River Forest, and Lindbloom H.S. of Chicago. In the next issue of the ICB, we will have a full report courtesy of Mike Zacate.

GM SHAMKOVICH MOVING TO CHICAGO!?

Eric Schiller reports that his friend and co-author GM Leonid Shamkovich may be moving to Chicago this summer. Shamkovich's presence would be a great boon for Illinois chess, since he is a renowned chess teacher and could help our top masters to make it over that next big hurdle at 2500. If Shamkovich does come to Chicago, an effort will be launched to utilize his great talent and experience.

NEWS FLASH! SZMETAN WINS GREATER PEORIA SPRENKLE TIES FOR 2ND

Peoria organizer Bill Naff reports that Ricardo Szmetan has done it again, winning clear 1st at the Greater Peoria Open in late March. Richard Vlastnik and David Sprenkle were tied for 2nd. The Peoria organizers were pleased with the 62-player turnout, almost double last year's entry. Apparently the March date is an improvement. Bill Naff also had good reason to be happy with his own result since again this year he defeated Indiana master Lester Van Meter! Bill seems to be Lester's Nemesis. Bill Wilkinson was the T.D.

HILLSIDE AND PARK FOREST TOP ILLINOIS CHESS LEAGUE

This has certainly been the year of the HILLSIDE CHESS CLUB. The Hillside Club dominated all 3 sections this year, placing 1st in the West and South divisions as well as the Booster Section. Illinois Chess League Director Wayne Palmquist reports that on January 17th HILLSIDE SOUTH was victorious in the Playoffs between the top 4 teams, the top 2 from the South and West divisions. The HILLSIDE SOUTH TEAM was captained by Paul Hosvay and featured quite a strong line-up: Alan Watson (2155), Greg Bungo (2242), Frank Tegel (2102), Vesely (2025), and Gary Willard (1845). Ray Satterlee (2134) was top board for HILLSIDE WEST. Park Forest A placed 2nd in the finals on January 17th.

\$7150 IN PRIZES . JULY 17, 18, 19 MIDWEST CLASS CHAMPIONSHIPS

MASTER: \$1000, 600, 300, 200 B: \$600, 300, 150
EXPERT: \$600, 300, 200 C: \$600, 300, 150
CLASS A: \$600, 300, 200 D-E: \$300, 200, 100

Holiday Inn O'HARE 7 SEPARATE SECTIONS
5440 North River Road, Rosemont, Illinois 60018

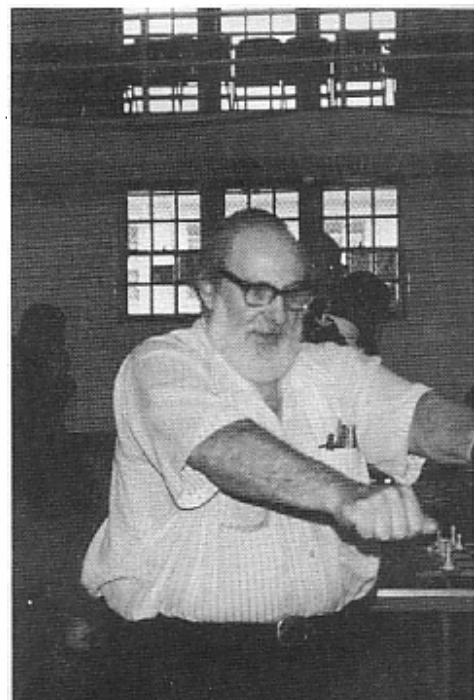
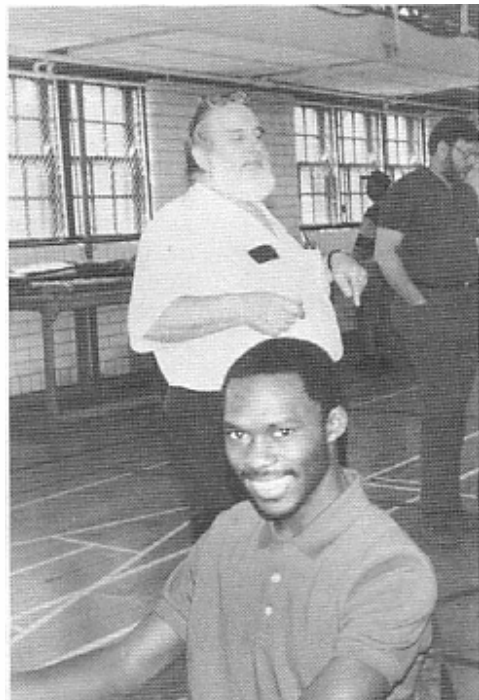
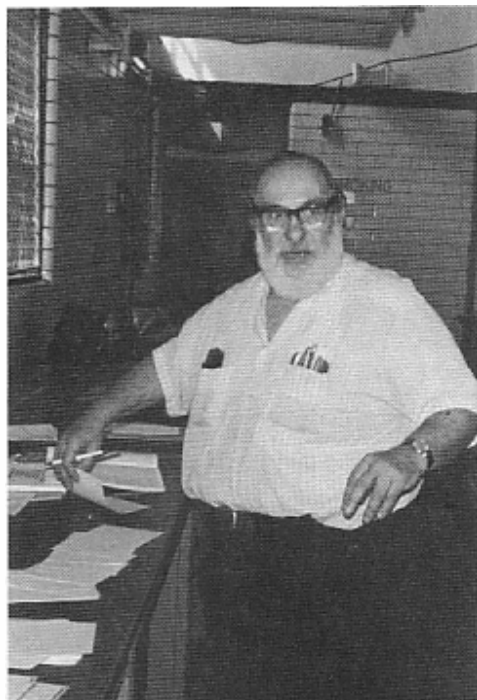


STEINITZ



CHESS RETIREE EXTRAORDINAIRE!

TOM FINEBERG AT TULEY PARK C.C.



I only wish the T.V. programs "This is your Life" or "Someone you should Know" were still on the air! There's a Chicago chess organizer who has been active in the community for over 30 years and he's certainly "Someone you should Know". He never asks for much, only rarely gets a Thank You or applause, but he's always there to help people to enjoy playing chess. Many of you know him, some of you play chess BECAUSE of him. He looks like a big Teddy Bear or a Santa Claus.

Tom Fineberg has been active in chess since the early '60's, first teaching a chess class at Fenger High School and up to a few years ago at C.V.S. Tom is retired now, but that hasn't dampened his love of chess any. At 64, Tom still runs the Tuley Park Chess Club and teaches chess on a voluntary basis three days a week at Harlan High School. Tom loves the inner-city kids and has sponsored many of them in local, state, and national high school events. Over the years, he has had a number of successful prodigies including 2300-rated Marvin Dandridge, Gene Scott, Tom Fagen, and Angelo Armistead.

BY FRED GRUENBERG

Tom's a confirmed advocate of Blitz chess and he was active in the movement to have the new 30-minute complete game or "Smash 30 time-control" rated by USCF. Tom and his wife Maxine, who is a strong Bridge player, have attended the last 6 Delegates Meetings at the U.S. Open lobbying for passage of the Smash 30 time-control. He has finally gotten his wish this year!

It was indeed fitting that Tom Fineberg held Chicago's first rated Smash 40 tournament on Saturday, April 11th at Tuley Park Chess Club. 27 of us turned out for Tom's tournament. The entry fee was only \$4, but Tom very generously paid out \$160 in prizes. Not a bad deal! Don't you agree? Expert Darren Bolden, pictured above, won clear 1st with 4-0.

If you like fast chess, give Tom Fineberg a phone call (721-3979) and he'll put you on his mailing list. **TOM FINEBERG IS SOMEONE YOU SHOULD KNOW!**

Illinois Tournament of Champions

CHOW FALTERS. SZMETAN AND GRUCHACZ CONQUER ILLINOIS TOURNAMENT OF CHAMPIONS

| | | | | | | | | | | | | |
|-----------------------|------|---------------|---------------|---------------|---------------|---------------|---------------|---------------|---------------|---------------|---------------|---------|
| 1. Ricardo Szmetan | 2433 | x | $\frac{1}{2}$ | 1 | 1 | 0 | $\frac{1}{2}$ | $\frac{1}{2}$ | 1 | $\frac{1}{2}$ | 1 | 6-3 |
| 2. Robert Gruchacz | 2469 | $\frac{1}{2}$ | x | 0 | $\frac{1}{2}$ | 1 | 1 | $\frac{1}{2}$ | 1 | $\frac{1}{2}$ | 1 | 6-3 |
| 3. Gene Martinovsky | 2427 | 0 | 1 | x | $\frac{1}{2}$ | 1 | 0 | 0 | 1 | 1 | 1 | 5.5-3.5 |
| 4. Andrew Karklins | 2374 | 0 | $\frac{1}{2}$ | $\frac{1}{2}$ | x | $\frac{1}{2}$ | 1 | 0 | 1 | 1 | 1 | 5.5-3.5 |
| 5. Albert Chow | 2431 | 1 | 0 | 0 | $\frac{1}{2}$ | x | 1 | $\frac{1}{2}$ | 0 | 1 | 1 | 5-4 |
| 6. Morris Giles | 2437 | $\frac{1}{2}$ | 0 | 1 | 0 | 0 | x | $\frac{1}{2}$ | 1 | 1 | 1 | 5-4 |
| 7. Greg DeFotis | 2427 | $\frac{1}{2}$ | $\frac{1}{2}$ | 1 | 1 | $\frac{1}{2}$ | $\frac{1}{2}$ | x | 0 | $\frac{1}{2}$ | 0 | 4.5-4.5 |
| 8. Peter Pelts | 2360 | 0 | 0 | 0 | 0 | 1 | 0 | 1 | x | $\frac{1}{2}$ | $\frac{1}{2}$ | 3-6 |
| 9. Eric Schiller | 2326 | $\frac{1}{2}$ | $\frac{1}{2}$ | 0 | 0 | 0 | 0 | $\frac{1}{2}$ | $\frac{1}{2}$ | x | $\frac{1}{2}$ | 2.5-6.5 |
| 10. Leonid Kaushansky | 2362 | 0 | 0 | 0 | 0 | 0 | 0 | 0 | 1 | $\frac{1}{2}$ | $\frac{1}{2}$ | 2-7 |

Dick Verber

It was last September in the ILLINOIS CHESS BULLETIN that I suggested the idea of organizing an annual "ILLINOIS TOURNAMENT OF CHAMPIONS". I reasoned that with 7 Senior Masters rated over 2400 and another 4 Masters rated 2350-plus, Illinois was more than ready for a FIDE-rated round-robin of this type. The 5-round Swiss format common these days rarely provides our top players the chance to meet more than 1 like-rated foe per tournament, and it's tough for a Senior Master to improve in Chicago without regular experience against top-flight competition. For a strong master, 5-round Swisses may actually have a negative impact, promoting laziness or superficiality.

Frankly, I had another reason for wanting to see an "Illinois Tournament of Champions": I WAS CURIOUS WHO WAS THE STRONGEST PLAYER IN ILLINOIS? I knew that Bob Gruchacz (2459) had the highest rating, but his play against other Senior Masters was something of a mystery because of his infrequent play. Greg DeFotis was Chicago's strongest master 12 years ago, but raw talent takes a person only so far; Greg has many other interests nowadays. Al Chow had devoted a lot of time studying chess and was the

only real "chess professional" -- and he knew opening theory from A to Z. Morris Giles was the master of tactics, but sometimes the victim of his own talent, or carelessness. These were my own predicted "favorites" and I regarded Andrew Karklins as a possible "dark horse" to win.

After toying with the idea of asking ICA to organize this tournament (which would have been the easiest course for me personally), I decided that the best way to get something done is to do it yourself. The other "top-10" players in Illinois were eager for a "Tournament of Champs" and encouraged me to begin the arrangements. At the outset, my good friend Fred Gruenberg offered to contribute the Palmer House Hotel as the tournament site (\$300). Thanks to ACF's Allen Kaufman and Jim Sherwin, the American Chess Foundation matched Fred with a generous \$300 contribution to the prize fund. These donations were followed by \$150 from ICA, \$100 from USCF, \$100 Norbert Leopoldi, \$50 Jules Stein, and \$50 Oak Park-Forest Park Chess Club. Helen Warren promised a free entry to the MIDWEST MASTERS to the winner.

The tournament was designed as a "top-10" round-robin to be held the last weekend of January and the first weekend of February. The prizes were \$ 500, \$ 300, \$ 200, \$ 150. Unfortunately, David Sprengle (2392) and this writer (Richard Verber -- 2369) were unable to play because of job-related responsibilities, and Billy Colias (2360) had to cancel due to extreme illness. At the last moment, Peter Pelts (2360) agreed to serve as the replacement for Colias.

In addition to the generous support of the contributors, the Tournament of Champions was made possible by many experienced T.D.s who donated their services. I would like to take this opportunity to thank on behalf of the masters Walter Brown, Todd Barre, Tim Just, Helen Warren, Dennis Grant, and John Tomas.

TWO TORTOISES AND A HARE by R. Verber

At the end of the first weekend, everyone agreed that Al Chow was on his way to winning the first TOURNAMENT OF CHAMPIONS in convincing fashion. After all, Chow's 4-0 score was a full point ahead of his nearest competitor (Dr. Martinovsky - 3-1) and he had already notched impressive victories against Ricardo Szmecan and Morris Giles.

No one could have guessed what Caissa held in store for Al Chow the following weekend. Not a single win, only 2 draws in 5 games. Ricardo Szmecan and Bob Gruchacz made the most of their chances and finished strong, passing Chow by. So did Martinovsky and Karklins. The Fates certainly did not smile on Chow. But when you are 22, there is always THE NEXT TIME !

Now that the TOURNAMENT OF CHAMPIONS is history, I have a few observations. First, let me say that Ricardo Szmecan is stronger than I thought ! His play is a good blend of tactics and positional understanding. Bob Gruchacz could know his openings better, but he is a real fighter, especially dangerous in a clutch. Martinovsky and Karklins played very well and clearly deserved their prizes. Chow needs to work on his late-middle-game play -- he threw away a number of winning positions. Morris Giles has a wonderful flair for tactics; greater discipline could carry him past the 2500-mark. Greg DeFotis went 3-1 against the 4 prize winners, better than anyone else in the tournament ! But he fell down by scoring a single draw against the bottom 3 ! -- Greg was clearly out-of-practice. Leo Kaushansky is a very strong master, but he was far from his past form. Peter Pelts did reasonably well against this strong field and can expect to profit from the experience.

A PARTICIPANT'S VIEW

by Ricardo Szmecan

It was one of the finest tournaments I ever played. The hotel room and the organization were nice; when Richard Verber is behind a tournament, you can be sure that good conditions are there. I hope that he will organize (and even play!) in more tournaments, because the idea of organizing closed tournaments in Chicago is a very good idea indeed. I hope also there will be a future tournament with one hour for each player, as is happening in Europe. My only complaint is that not enough information was given to the public, so we played without the public; that is not good for the Champions.

I am quite satisfied with my score (6-3); in the last game I had a winning position with Gruchacz, but I was so tired that although I saw the winning variation I played otherwise. He was very happy when I offered him the draw; I can understand that! He suffered enough pressure during the game.

This tournament could have been won by almost 5 persons: Martinovsky, who was irregular; if he played better openings he would beat almost everybody. The same with Karklins, but he has problems with the horses, he moves them too often in the openings! His ideas are interesting, but sometimes quite bizarre. Gruchacz is a well-prepared player; I hope he will play more often in the future. In the hands of Al Chow is the future of chess in Chicago; he deserved to win this tournament, but his inexperience played a big role in his final three losses. Why not three draws? About myself, it is very difficult to study for the Ph.D. in Spanish Literature (Cervantes) and play good games. Nevertheless, I will annotate for you three games that I consider not too bad.

MASTER CHALLENGE

Mohr Community Center.
7650 Jackson Blvd., Forest Park, Ill.

JUNE 12, 13, 14

\$ 3175 GUARANTEED

Space limitations cause us to hold Ricardo Szmetan's annotated games for the next issue of the ICB -- which you will receive in a few weeks. Whereas the current issue of the ICB is heavy with news and crosstables, the next ICB will be loaded with games from both the TOURNAMENT OF CHAMPIONS and the MIDWEST MASTERS.

Editor



White: R. Szmetan (2433).
Black: E. Martinovsky (2427).

Gruenfeld Defense.
Annotated by Richard Verber.

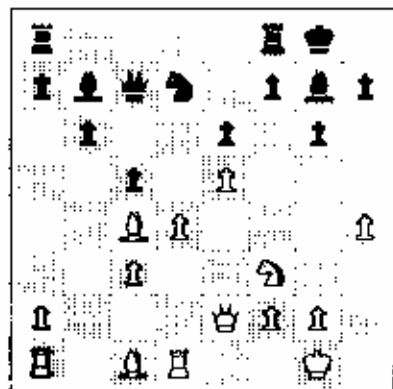
| | | |
|---|------|------|
| 1 | d4 | Nf6 |
| 2 | c4 | g6 |
| 3 | Nc3 | d5 |
| 4 | Nf3 | Bg7 |
| 5 | e3 | O-O |
| 6 | cxd5 | Nxd5 |
| 7 | Bc4 | e6? |

This is too passive. The correct idea is 7....Nb6 with dynamic piece play for Black. There are a number of good plans following 8 Bb3, the most common beingNa6-c5. Dr. Martinovsky is an excellent master, but sometimes he is ill-prepared in the openings.

| | | |
|----|------|------|
| 8 | O-O | b6 |
| 9 | Qe2 | c5 |
| 10 | Rd1 | Nxc3 |
| 11 | bxc3 | Qc7 |
| 12 | e4 | Bb7 |
| 13 | h4! | |

Bravo! Initiating a strong Kingside attack.

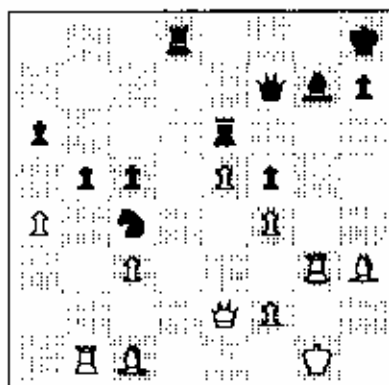
| | | |
|----|------|-----|
| 13 | | Nd7 |
| 14 | e5! | |



Very strong. This prevents Dr. Martinovsky's Knight from reaching f6 where it could help defend the Kingside.

| | | |
|----|-------|--------|
| 14 | | Bxf3!? |
| 15 | gx f3 | aRe8 |
| 16 | h5! | gxh5 |

| | | |
|----|-------|------|
| 17 | f4 | f5 |
| 18 | d5 | exd5 |
| 19 | Bxd5+ | Kh8 |
| 20 | Qxh5 | b5 |
| 21 | Rd3 | Nh6 |
| 22 | Bg2 | Re6 |
| 23 | Rg3 | Nc4 |
| 24 | Ge2 | Rd8 |
| 25 | Bh3 | Gf7 |
| 26 | Rb1 | a6 |
| 27 | a4! | |



Black's b- and f-Pawns are both in trouble.

| | | |
|----|------|-------|
| 27 | | Qd7?! |
|----|------|-------|

This desperate bid for counterplay fails, but more restrained defenses such asRb8,Rb6, andNd6 are also hopeless.

| | | |
|----|-------|-------|
| 28 | axb5 | Qd1+ |
| 29 | Qxd1 | Rxd1+ |
| 30 | Kg2 | Na3 |
| 31 | Bxa3! | Rxb1 |
| 32 | Bxf5 | Rb3 |
| 33 | Bxe6 | Rxa3 |
| 34 | b4! | Ra1 |
| 35 | Rd3! | h5 |
| 36 | b7 | 1-0 |



W: Peter Felts (2360).
B: Robert Gruchacz (2469).

Annotated by Richard Verber.

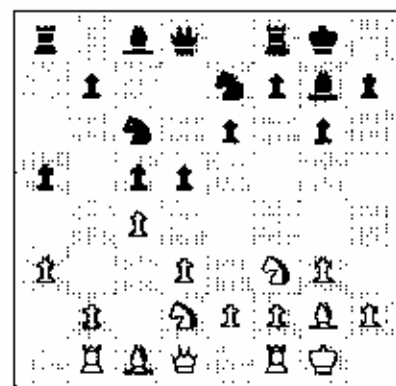
| | | |
|---|-----|------|
| 1 | Nf3 | c5 |
| 2 | c4 | g6 |
| 3 | g3 | Bg7 |
| 4 | Bg2 | Nc6 |
| 5 | O-O | e6 |
| 6 | d3 | gNe7 |

Bobby Fischer played this system with great success during the late 60s, winning beautiful games against both Smyslov and Petrosian, the two great English Opening cognoscents of the period.

| | | |
|---|--------|--|
| 7 | bNd2?! | |
|---|--------|--|

A poor square for the h-Knight. 7 Nc3 is correct.

| | | |
|---|------|-----|
| 7 | | db |
| 8 | Rb1 | O-O |
| 9 | a3 | e5! |

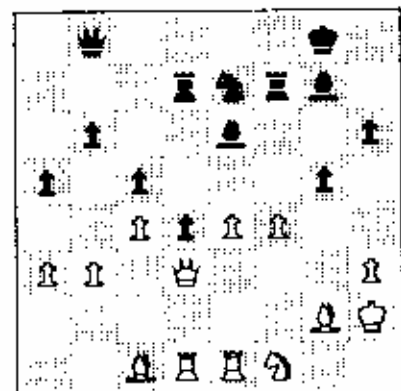


Gruchacz has the advantage since his pieces work together harmoniously and White's attempt at opening the Queenside is prevented.

| | | |
|----|------|------|
| 10 | Qc2 | b6 |
| 11 | e4 | Ra7 |
| 12 | Re1 | dxe4 |
| 13 | dxe4 | e5! |
| 14 | h3 | f5 |
| 15 | b3 | h6 |
| 16 | Kh2 | Be6 |
| 17 | Bb2 | f4 |
| 18 | bRd1 | Rd7 |
| 19 | Nf1 | Nd4! |
| 20 | Nxd4 | exd4 |
| 21 | qxf4 | Rxf4 |
| 22 | Bc1 | Rf7 |
| 23 | f4 | Qb8! |

Those White Pawns are weak and Gruchacz wants to win them!

| | | |
|----|-----|-----|
| 24 | Qd3 | g5! |
|----|-----|-----|



| | | |
|----|------|-------|
| 25 | e5 | gx f4 |
| 26 | Re4 | Ng6 |
| 27 | Qe2 | Bxe5! |
| 28 | Bf3 | Bf5 |
| 29 | Nd2 | Bxe4 |
| 30 | Qxe4 | Rg7 |
| 31 | Bh5 | Nh4 |
| 32 | Bg4 | dRe7 |
| 33 | Qd5+ | Kh8 |
| 34 | Nf3 | Nxf3+ |
| 35 | Bxf3 | Gd6 |
| 36 | Qe4 | Gg6 |
| 37 | Qxg6 | Rxg6 |
| 38 | Re1 | Bd6 |
| 39 | Rxe7 | Bxe7 |
| 40 | Bxf4 | Bd6 |
| 41 | O-1 | |

| | | | | | | | | | | | |
|----|------------------|----|------|------|-----|-----|-----|-----|-----|-----|--------------------------------------|
| 61 | SCHUMAN Brian | IL | 2234 | 2252 | W23 | D15 | L17 | - | - | 1.5 | |
| 62 | DEENDAHL Steven | MD | 2533 | 2505 | W20 | L29 | D36 | L13 | - | 1.5 | |
| 63 | GINSBURG Jeff | OH | 2196 | 2193 | W44 | L12 | L32 | L43 | D66 | 1.5 | Dick Verber |
| 64 | BURKE John | IL | 2168 | 2176 | L32 | W83 | D24 | L36 | - | 1.5 | Another top-notch performance |
| 65 | GILES Morris | IL | 2467 | 2454 | L10 | W79 | D40 | - | - | 1.5 | was turned in by Chicago Master |
| 66 | UMEZINWA George | IL | 2234 | 2223 | D 3 | D38 | L47 | L51 | D63 | 1.5 | Greg Small, who seems destined to |
| 67 | HARIGAN Craig | OH | 2169 | 2174 | L33 | D57 | W56 | L37 | - | 1.5 | become the area's next 2400-player. |
| 68 | DANDRIDGE Marvin | IL | 2307 | 2293 | L51 | D58 | W80 | - | - | 1.5 | In addition to defeating GM Arthur |
| 69 | THOMAS Kenneth | IL | 2193 | 2183 | D72 | L37 | L26 | D76 | D73 | 1.5 | Bisguier and Morris Giles (2467), |
| 70 | TYEHIMBA Ben | NY | 2244 | 2228 | L21 | L23 | D60 | W79 | L40 | 1.5 | Greg posted draws with 2564-rated |
| 71 | GARCES Diego | OH | 2202 | 2197 | L17 | L42 | D76 | W74 | - | 1.5 | Kamran Shirazi and Senior Masters |
| 72 | MILLER Todd | IL | 2315 | 2268 | D69 | L49 | L53 | L60 | W79 | 1.5 | Ed Formanek and Al Chow. |
| 73 | ACOSTA Mariano | IL | 2231 | 2213 | L35 | L39 | D82 | D77 | D69 | 1.5 | |
| 74 | RONNEBERG Erik | IL | 2063 | 2064 | L40 | D81 | L28 | L71 | W82 | 1.5 | |
| 75 | BUNGO Gregory | IL | 2191 | 2183 | L47 | L43 | W78 | L27 | - | 1 | The '87 Midwest Masters was con- |
| 76 | LUKOWIAK William | MA | 2232 | 2199 | L 4 | L45 | D71 | D69 | L58 | 1 | ducted in an attractive and well- |
| 77 | MULTHOPP Hans | OH | 2129 | 2116 | L29 | L20 | D57 | D73 | L59 | 1 | lighted room at the Lincolnwood |
| 78 | VAN METER Lester | IN | 2310 | 2266 | L 9 | L25 | L75 | W83 | L45 | 1 | Hyatt Hotel with very able supervis- |
| 79 | GOLDMAN Jonathan | IL | 2077 | 2060 | D37 | L65 | L20 | L70 | L72 | 0.5 | ion by the dynamic T.D. duo of |
| 80 | BACHLER Kevin | IL | 2164 | 2159 | D19 | L18 | L68 | - | - | 0.5 | Todd Barre and Tim Just. Helen |
| 81 | WALLACH Cliff | IL | 2147 | 2144 | - | D74 | - | - | - | 0.5 | Warren did a superb job organizing |
| 82 | LOVE David | NY | 2206 | 2163 | L48 | L54 | D73 | L56 | L74 | 0.5 | the Masters, receiving compliments |
| 83 | PICKARD Sid | TX | 2282 | 2238 | L 5 | L64 | L59 | L78 | - | 0 | from players and spectators alike. |
| 84 | KRECKLER Warren | IL | 2270 | 2251 | L14 | L55 | - | - | - | 0 | |
| 85 | GRUCHACZ Robert | IL | 2482 | 2469 | L50 | - | - | - | - | 0 | |

PHOTOS : (top left) GM Joel Benjamin celebrated his 23rd birthday while in Chicago. (right) Helen Warren, creating a Renaissance in MASTER CHESS. (bottom left) GM Sergei Kudrin, and (right) Leonid Shamkovich, GM.



Following are three games from the '87 MIDWEST MASTERS. Our next issue of the ICB will feature a number of games by Illinois masters annotated by Al Chow and Dick Verber.



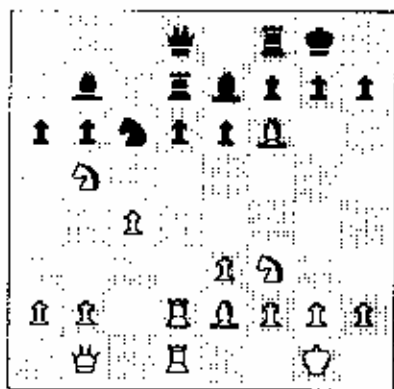
White: Joel Benjamin (2637).
Black: Jas. Rizzitano (2549).

Midwest Masters, round 5.
Annotated by Richard Verber.

| | | |
|----|-------|------|
| 1 | d4 | Nf6 |
| 2 | c4 | e6 |
| 3 | Nc3 | Bb4 |
| 4 | Qc2 | O-O |
| 5 | Bg5 | c5 |
| 6 | dxcc5 | Nc6 |
| 7 | Nf3 | Bxc5 |
| 8 | e3 | b6 |
| 9 | Kd1 | Be7 |
| 10 | Be2 | Bb7 |
| 11 | O-O | Rc8 |
| 12 | Qb1 | d6 |
| 13 | Rd2! | |

A powerful move after which it becomes apparent that Black's backward d-Pawn is vulnerable. The White Knights are poised to exert strong control over key white squares such as d5, b5, and e4.

| | | |
|----|-------|-----|
| 13 | | Rc7 |
| 14 | fRd1 | Rd7 |
| 15 | Nb5 | a6 |
| 16 | Bxf6! | |

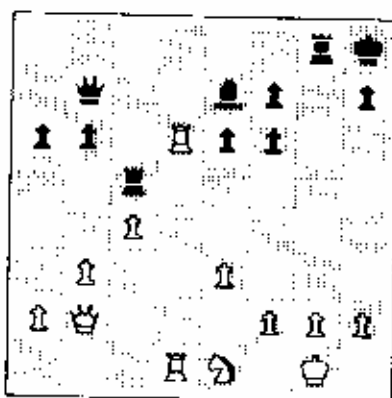


By forcing the recapture with the Pawn, White wrecks Black's Kingside Pawn structure and leaves him with a bad Bishop.

| | | |
|----|------|------|
| 16 | | gxf6 |
| 17 | bNd4 | Kh8 |
| 18 | Nxc6 | Bxc6 |
| 19 | Nd4 | Qc7 |
| 20 | b3 | Rg8 |
| 21 | Bf3 | |

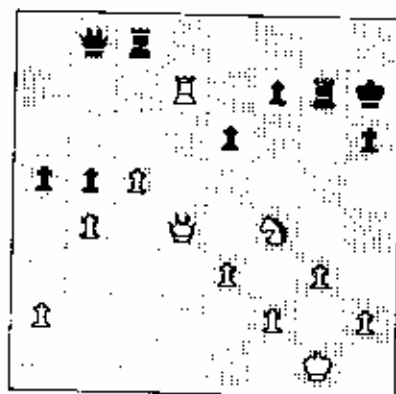
This trade establishes a lasting advantage of good Knight versus bad Bishop plus a better Pawn structure. The absence of the c-Bishop limits Black's counterplay.

| | | |
|----|-------|------|
| 21 | | Bxf3 |
| 22 | Nxf3 | Qb7 |
| 23 | Ne1 | Rc7 |
| 24 | Qb2 | Rc5? |
| 25 | Rxd6! | |



This pretty shot serves to tie the Rooks in knots. From here on Benjamin has an overwhelming positional bind.

| | | |
|----|-------|------|
| 25 | | Bxd6 |
| 26 | Qxf6+ | Rg7 |
| 27 | Rxd6 | Rc8 |
| 28 | g3 | Qc7 |
| 29 | Qd4 | b5 |
| 30 | c5 | h6 |
| 31 | Nd3 | Kh7 |
| 32 | b4 | a5 |
| 33 | Rd7 | Qb8 |
| 34 | Nf4 | |



Threatening to win with Nh5. Black could justifiably resign. Benjamin controls the only open file and his Knight is stronger than the g-Rook.

This entire game is a beautiful example of good Knight versus bad Bishop, and eventually, good knight versus bad Rook! 22-year-old GM Joel Benjamin may well become a World Championship contender within the next few years.

| | | |
|----|-------|------|
| 34 | | e5 |
| 35 | Qe4+ | Kh8 |
| 36 | Nh5 | f5 |
| 37 | Qxf5 | Rxd7 |
| 38 | Qxd7 | Qc7 |
| 39 | Qe6 | axb4 |
| 40 | Bxh6+ | Kg8 |
| 41 | Nf6+ | Kf7 |
| 42 | Ne4 | 1-0 |



White: Sergey Kudrin (2584).
Black: V. McCambridge (2550).

Midwest Masters, round 5.
Annotated by Richard Verber.

| | | |
|---|------|-----|
| 1 | e4 | e5 |
| 2 | Nf3 | Nc6 |
| 3 | Bc4 | Nf6 |
| 4 | d3 | h6 |
| 5 | O-O | Bc5 |
| 6 | c3 | Qe7 |
| 7 | b4 | Bb6 |
| 8 | bNd2 | d6 |
| 9 | Bb3! | |

A subtle retreat that prepares Nc4 followed by a4-a5.

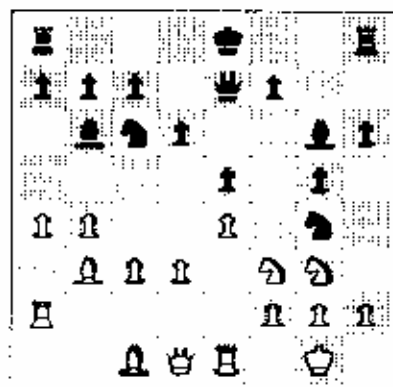
| | | |
|---|------|------|
| 9 | | Bg4? |
|---|------|------|

....Bb6 is more reasonable, anda6, preparing a retreat square for the Bishop, also makes sense. This game was played in the final round, however, and both players needed to gamble for a win in order to take home prize money.

| | | |
|----|-----|-----|
| 10 | Re1 | g5? |
|----|-----|-----|

Consistent, but speculative. Black is willing to create weak squares like f5 in order to launch a Kingside attack.

| | | |
|----|------|-----|
| 11 | Nf1 | Bh5 |
| 12 | Ng3 | Bg6 |
| 13 | a4 | Ng4 |
| 14 | Ra2! | |



Nicely played. Black's Kingside counterplay is less important than his weakness on white squares d5 and f5. Kudrin's exploitation of these weaknesses is most instructive.

| | | |
|----|------|-----|
| 14 | | a5 |
| 15 | b5 | Nb8 |
| 16 | d4 | Nd7 |
| 17 | Nd2! | |

A surprise attack on the Knight allows the transfer of the White f-Knight to the strong c4 square.

| | | |
|----|-------|-------|
| 17 | | h5 |
| 18 | Nc4 | O-O-O |
| 19 | Nxb6+ | Nxb6 |
| 20 | Bd2! | |

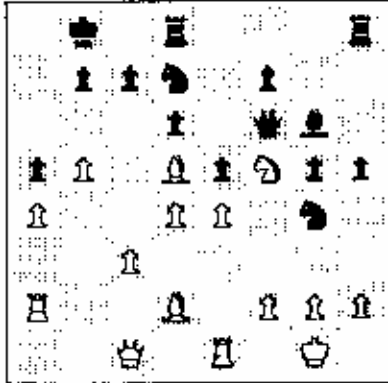
Which Black Pawn is weaker, the a-Pawn or the g-Pawn?

1987 Midwest Masters
March 6-8

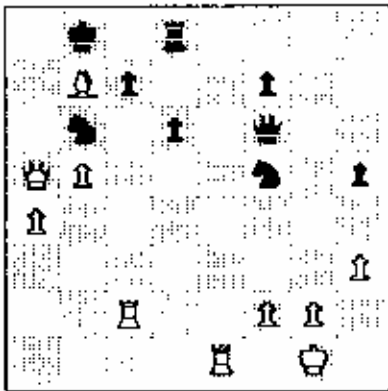
Kudrin vs. McCambridge

20 Nd7
21 Bd5 Kb8
22 Nf5 Qf6
23 Qc1!

Winning the Exchange.



23 Bxf5
24 Bxg5 Qg7
25 Bxd8 Rxd8
26 exf5 exd4
27 cxd4 Qxd4
28 Qd2 Qf6
29 h3 Nh6
30 Qxa5 Nxf5
31 Rc2 Nb6
32 Bxb7!



Black cannot recapture or he allows a quick mate:

32....Kxb7? 33 Rxc7+ Fxc7
34 Qa7+ Kc8 35 Rc1+.

32 Nd4
33 Bc6

The Rook on c2 is immune because of the threat Qa6 with forced mate.

33 Gf5
34 Qa6 Qc8
35 Qxc8+ Rxc8
36 Ra2 f5
37 a5 Nc4
38 Bd5 Ne5
39 Rd1 Nxb5
40 Rb2 c6
41 Bxc6 Rxc6
42 Rxb5+ Ka7
43 Rb6 1-0



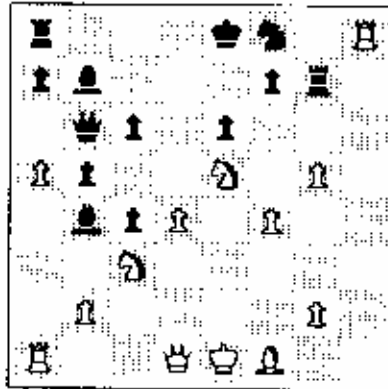
White: Jay Whitehead (2565).
Black: Edward Formanek (2435).

Midwest Masters, round 4.
Annotated by Richard Verber.

1 d4 Nf6
2 c4 e6
3 Nf3 d5
4 Nc3 c6
5 Bg5 dxc4
6 e4 b5
7 a4 Bb4
8 e5 h6
9 exf6 hxg5
10 fxg7 Rg8
11 h4 Rxg7
12 hxg5 Nd7
13 Rh8+ Nf8
14 Ne5!

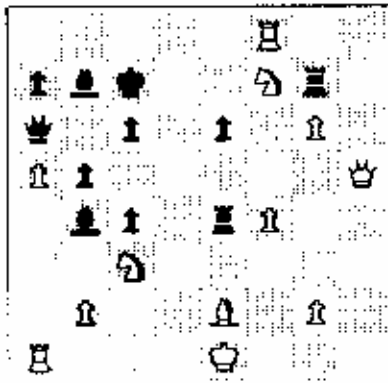
Black's pieces are disorganized.

14 Bb7
15 f4 Qb6
16 a5!



The winning move!Bxa5 loses the Queen to Rxf8+ followed by Nd7+. Instead Formanek is forced to bury his Queen on a6 sinceQc7 would allow White the crushing reply a6.

16 Qa6
17 Qh5! 0-0-0
18 Qh6 Rg6
19 Qh5 Rg7
20 Nxf7! Rxd4
21 g6 Re4+
22 Be2 Kc7
23 Rxf8!



This clever combination eliminates every active Black piece. Black will be in virtual Zugzwang!

23 Rxe2+
24 Kxe2 Bxf8
25 Qe5+ Kc8
26 Qxe6+ Kc7
27 Qe5+ 1-0

With mate in three.



The 1986 Midwest Masters continued in the tradition of growth, increase in prize fund, and strength of field. Seventy-six participants from sixteen states, including twelve titled players, contested for over \$7000 in prizes and 60 GP points. IM (now GM) Joel Benjamin, GM Sergey Kudrin, and GM Yehuda Gruenfeld shared the honors; the Hyatt Lincolnwood Hotel served as host site.

This year the Midwest Masters again was held at the Hyatt Lincolnwood, and once again boasted a prestigious field of titled professional participants. Eighty-five players from eighteen states played for \$4500 in prizes and 80 Grand Prix points.

The importance of the Midwest Masters as the area's premier swiss event can best be proven when we consider that the number of rated masters in Illinois alone has grown from fewer than a dozen a decade ago to over 40. More than 80% of the state's active masters appear in this year's cross-table, a testimonial to the place this event enjoys in the judgment of the Illinois master for whom it was originally designed.

The 1988 version of the Midwest Masters will be held on March 5-7 at the Hyatt Lincolnwood.

-- Helen Warren

IN PEORIA, CHESS IS A TRADITION

MURREL RHODES

IN PEORIA, CHESS IS A TRADITION

by Murrel Rhodes

Peoria has been the host to a U.S. Open and to numerous Illinois Opens. In fact, Peoria has been the only downstate host of the Illinois Open in this writer's memory. We currently run two Opens with histories of over 20 consecutive years of play.

Our organized Chess League play pre-dates the Chicago Industrial Chess League. The Peoria Chess League has been continuously active except for a few years in the early 60s.

Bradley University has been a willing partner to the Greater Peoria Chess Federation since the mid-sixties when Bradley and Kingsmen Chess Club meetings were merged. Currently our strongest player is Tim McEntee, a Bradley senior who will probably make master with his next strong showing.

Traditionally, our largest event has been the Greater Peoria Open, generally held in spring. The GPO has been held every year for the past 21 years and will soon gain recognition as a USCF heritage event. It has been won by many famous names easily recognizable by any ICA member. Chicagoans Steven Tennant, Dick Verber and Leonid Bass, and downstaters Ross S Prague, Charles Van Buskirk and David S prenkle are counted among our champions. And of course, we are most proud of our Peoria champions Tom Mabee, John Lutes, Bruce Gardner and, in 1974, yours truly.

Our longest running tournament is the Bradley Summer Open, begun in 1964. Our quarterly novices have become a tradition for the developing player. Held four times a year since their inception in 1969, they have served as testing grounds for many strong players.

More recently, Bill Naff has introduced the Spring and Fall Tornados to our tournament calendar. These are Illinois Tour events and are part of our efforts to provide our players with ICA competition. We intend to provide at least three Tour events this year so that our more successful players will be able to qualify in the minimum number of events for Tour prizes.

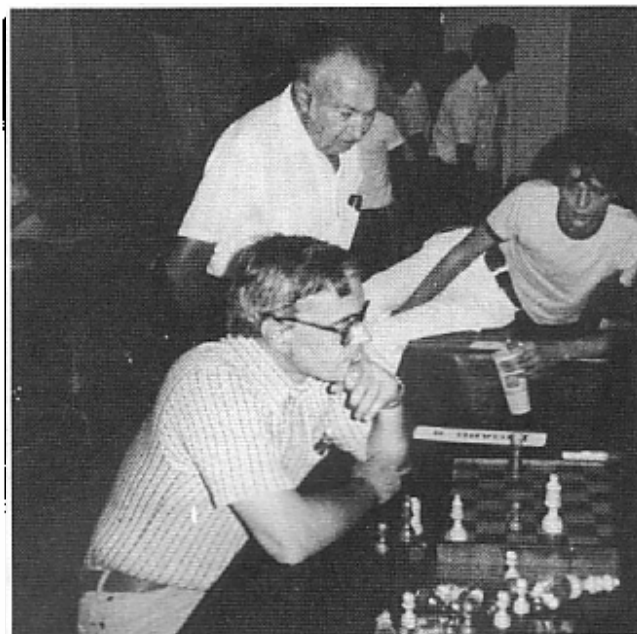
The Peoria area also supports its youth with a chess program which is continually expanding. Gene Menz has directed a chess league for grade schools in Washington, Illinois for over ten years. Tazewell County sponsors a tournament in the spring of each year for all grade schoolers in the county. This tournament draws 200 to 300 participants annually.

If you'd like to know more about what's happening here, send \$6 to Wayne Zimmerle, 2811 Springfield Rd, East Peoria IL 61611. He's the editor of our newsletter, Chess Mate, which began in January 1965 and is currently produced nine times a year.

Peoria Tornado

January 31, 1987

| | | | | | | | |
|----|-------------------|------|-----|-----|-----|-----|-----|
| 1 | MC ENTÉE Tim | 2197 | W15 | W14 | W 6 | D 2 | 3.5 |
| 2 | ANDERSON Phil | 1940 | W26 | W11 | W10 | D 1 | 3.5 |
| 3 | FELDSTEIN Robert | 1993 | W20 | D 4 | W18 | W 7 | 3.5 |
| 4 | BRITT Jeff | 1806 | W25 | D 3 | W12 | WF | 3.5 |
| 5 | SCOTT Winfield | 1844 | D19 | D18 | W20 | W11 | 3 |
| 6 | PUKEL Bernard | 1879 | W27 | W13 | L 1 | D 8 | 2.5 |
| 7 | JARRETTE Phil | 1933 | W17 | D12 | W19 | L 3 | 2.5 |
| 8 | VERD Carl | 1802 | W23 | L10 | W16 | D 6 | 2.5 |
| 9 | WALTON Clarence | 1670 | L13 | W27 | D14 | W19 | 2.5 |
| 10 | IKEUCHI Curtis | 1971 | W16 | W 8 | L 2 | LF | 2 |
| 11 | BLAIR Charles | 1797 | W28 | L 2 | W17 | L 5 | 2 |
| 12 | ZIMMERLE Wayne | 1701 | W24 | D 7 | L 4 | D14 | 2 |
| 13 | WILKINSON William | 2030 | W 9 | L 6 | W15 | - | 2 |
| 14 | BOURGERIE Dennis | 1852 | W21 | L 1 | D 9 | D12 | 2 |
| 15 | MARTINDALE Joseph | 1675 | L 1 | W25 | L13 | W23 | 2 |
| 16 | HALL John | 1586 | L10 | W23 | L 8 | W24 | 2 |
| 17 | HIERONYMUS Kent | 1580 | L 7 | W24 | L11 | W22 | 2 |
| 18 | STAFFORD Jerry | 1689 | W22 | D 5 | L 3 | - | 1.5 |
| 19 | GRAHAM J Ross | 1314 | D 5 | W21 | L 7 | L 9 | 1.5 |
| 20 | PROSTERMAN Keith | 1609 | L 3 | W28 | L 5 | D21 | 1.5 |
| 21 | MOORE Rod | 1414 | L14 | L19 | W26 | D20 | 1.5 |
| 22 | ROSENBERG Steve | - | L18 | D26 | D27 | L17 | 1 |
| 23 | MC KOWY Michael | 1127 | L 8 | L16 | W28 | L15 | 1 |
| 24 | LEBO Steve | - | L12 | L17 | W25 | L16 | 1 |
| 25 | CAIN Dennis | 1190 | L 4 | L15 | L24 | W28 | 1 |
| 26 | KIRKPATRICK Don | 1580 | L 2 | D22 | L21 | - | 0.5 |
| 27 | LYBARGER Dean | 1535 | L 6 | L 9 | D22 | - | 0.5 |
| 28 | FOLKS Kevin | - | L11 | L20 | L23 | L25 | 0 |



Peoria Tournament Director & Organizer BILL WILKINSON (seated) is also a rated Expert.

No Illinois city has been more supportive of the Illinois Chess Association than Peoria. Our continued thanks go to the many fine Peoria organizers who labor on behalf of Illinois chess.

ST. CHARLES CHESS CLUB

20 YEARS OLD AND GOING STRONG!

The St. Charles Chess Club recently celebrated its 20th anniversary. The Club was originally founded in 1966 by 6 players looking for a nearby site to play chess on a regular basis. Myron Cannell was one of those "founding-fathers" and he is still a familiar face at tournaments in the Chicagoland area. Al Vermeersch was our first club president. There were frequent tournaments, matches with other clubs, and we had teams in the Northeastern Illinois Chess League. The Club grew and prospered, but when Al Vermeersch moved away the Club almost died. A few loyal members continued to show up since the Club was sponsored by the St. Charles Park District and the site was free.

In 1979, the Club was virtually "re-born" when current Club president Ery Sedlock moved into the area and with the help of a few hangers-on began to reorganize and rebuild the Club. Today the Club has grown to approximately 40 members who enjoy a variety of activities. St. Charles conducts at least 2 major USCF tournaments each year and we have sponsored such statewide events as the 1982 Illinois State Championship, two ICA State Picnics, and an Illinois Speed Championship. The St. Charles Club enters 2 teams in the Illinois Chess League each year and we conduct frequent matches with neighboring chess clubs.

One of our major chess promotions is an annual "Chess Challenge" to the public at a St. Charles mall on National Chess Day or at a local park during our "Taste of St. Charles" celebration. For "Chess Challenge" we set up a dozen chess boards and challenge all comers. Anyone who wins earns a free Club membership! We also pass out back issues of CHESS LIFE and other chess literature.

One of our favorite chess activities is to organize GM simulms. We are proud to have brought to St. Charles GMs Lev Alburt, Arthur Bisguier, Anatoly Lein, and most recently Dimitry Gurevich. We also hold a Club Championship early in the year and we have a year-round Club ladder tournament which is very popular.

Our Club has always taken an interest in the advancement of Junior chess and we have a few members who coach grammar school and high school chess teams. We like to believe that the area's chess masters of the future will be coming out of the St. Charles Club!

The St. Charles Club membership ranges in age from youngsters to senior citizens and our abilities range from near-beginner to master. Membership dues are \$12 for adults, with a discount for students and senior citizens. Weekly meetings are at 7 PM Thursdays at the Baker Community House, 101 South 2nd (which is Route 31), St. Charles, Illinois. For information phone Club president Ery Sedlock at 377-7995.



ST. CHARLES HOSTS GRANDMASTER GUREVICH

Helen Warren's MIDWEST MASTERS CHAMPIONSHIP is a boon for Chicago-area chess in more ways than one. Not only does it allow our Illinois Masters experience playing America's top grandmasters, but it also provides local chess clubs the opportunity for GM simulms at bargain rates. Frequently, the GMs are happy to give exhibitions in order to help pay travel and hotel expenses to Chicago.

St. Charles was the happy recipient of one of these GM simulms on Thursday, March 5th -- the day before the start of the MIDWEST MASTERS. Our sincere appreciation goes to Helen for helping us to bring 2655-rated GM Dimitry Gurevich to the St. Charles Club.

Of the 22 loyal Club members who sat down to play Grandmaster Gurevich, 19 scored goose eggs. But 3 players were in good form and managed to hold off the grandmaster. Club President Ery Sedlock, who has recently joined the ranks of the experts for the first time, set a good example for the rest of the Club by drawing Gurevich -- as did fellow expert Jeff Wiewel. The only player able to defeat GM Gurevich was Dan Pradt, a new member of the Club just returned to active play after a hiatus of some years. Not a bad way to resume play!

126 GROUNDHOGS AT HYDE PARK!

CHICAGO CHESS TRIVIA

An interesting coincidence:

Chicago's official groundhog in charge of weather-predictions dwells at Lincoln Park Zoo and his name is "WINSTON"!!

Truth is stranger than fiction.



ground hog.

WOODCHUCK (20 in. long)

ground hog, a woodchuck.

ground-hog (or groundhog) day, February 2, Candlemas Day, when the ground hog is said to come out of hibernation; if he sees his shadow, he will supposedly return to his hole for another six weeks of winter weather.

ACOSTA, STEIN, CONDRON WIN AT HYDE PARK

by Harold Winston

Hyde Park Open and Groundhog Swiss

Feb 1, 1987

TWELFTH HYDE PARK OPEN

| | | | | | |
|---------------------|------|-----|-----|-----|-----|
| 1 ACOSTA Mariano | 2238 | W10 | W15 | W 6 | 3 |
| 2 STEIN Peter | 2196 | W16 | W 8 | W 5 | 3 |
| 3 CONDRON James | 2088 | W25 | W12 | W 4 | 3 |
| 4 SMALL Greg | 2306 | W20 | W13 | L 3 | 2 |
| 5 ROSS Edward | 1980 | W17 | W19 | L 2 | 2 |
| 6 HOLZMUELLER Keith | 1999 | W23 | W18 | L 1 | 2 |
| 7 HOWELL Thomas | 1697 | W22 | D14 | D 9 | 2 |
| 8 SMITH Wayne | 1768 | W27 | L 2 | W19 | 2 |
| 9 FALLS Dwayne | 1425 | D24 | W22 | D 7 | 2 |
| 10 OBERWEIS James | 1693 | L 1 | W28 | W21 | 2 |
| 11 MARAN Edward | 1669 | L14 | W26 | W24 | 2 |
| 12 GASAWAY Harold | 1508 | WF | L 3 | W20 | 2 |
| 13 MADDEX William | 1964 | WF | L 4 | W18 | 2 |
| 14 BAIN Robert | 2028 | W11 | D 7 | - | 1.5 |
| 15 JORDAN Roland | 1925 | W28 | L 1 | D16 | 1.5 |
| 16 FAGAN James | 1673 | L 2 | W27 | D15 | 1.5 |
| 17 FINEBERG Thomas | 1639 | L 5 | D25 | W26 | 1.5 |
| 18 PORTER John | 1681 | W21 | L 6 | L13 | 1 |
| 19 BERTAND Paul | 1658 | W26 | L 5 | L 8 | 1 |
| 20 JOHNSON Paul | 1732 | L 4 | W24 | L12 | 1 |
| 21 READ Rhys | 1984 | L18 | W23 | L10 | 1 |
| 22 RONNEBERG Erik | 2104 | L 7 | L 9 | W25 | 1 |
| 23 CLARK Lawrence | 1648 | L 6 | L21 | W27 | 1 |
| 24 NICHOLSON Donn | 1779 | D 9 | L20 | L11 | 0.5 |
| 25 JOHNSON Robert | 1872 | L 3 | D17 | L22 | 0.5 |
| 26 WITT John | 2011 | L19 | L11 | L17 | 0 |
| 27 FORD Matthew | 1085 | L 8 | L16 | L23 | 0 |
| 28 TERBELL William | 1417 | L15 | L10 | - | 0 |

ELEVENTH GROUNDHOG SWISS, SECTION A

| | | | | | |
|------------------|------|-----|-----|-----|-----|
| 1 BOLDEN Darren | 2057 | W 4 | W 5 | W 2 | 3 |
| 2 SHIELDS Philip | 1936 | W 7 | W 6 | L 1 | 2 |
| 3 KRUPICKA Mike | 1216 | L 5 | W 7 | W 6 | 2 |
| 4 JACOBSEN Egil | - | L 1 | D 8 | WF | 1.5 |
| 5 DECMAN Stephen | 1832 | W 3 | L 1 | - | 1 |
| 6 DAMON Robert | 1741 | W 8 | L 2 | L 3 | 1 |
| 7 KINT Randy | - | L 2 | L 3 | W 8 | 1 |
| 8 LANE Jess | - | L 6 | D 4 | L 7 | 0.5 |

ELEVENTH GROUNDHOG SWISS, SECTION B

| | | | | | |
|------------------------|------|-----|-----|-----|-----|
| 1 ALVARADO Miguel | 1503 | W 6 | W 3 | D 2 | 2.5 |
| 2 VLACHOS Nicholas | 1400 | W 8 | W 5 | D 1 | 2.5 |
| 3 KEMPNER Robert | 1485 | W 4 | L 1 | W 5 | 2 |
| 4 NASON Darell | - | L 3 | W 7 | W 6 | 2 |
| 5 NAPIER Rudolph | - | W 7 | L 2 | L 3 | 1 |
| 6 LEWIS Richard | - | L 1 | W 8 | L 4 | 1 |
| 7 MARSHALL Christopher | 1354 | L 5 | L 4 | W 8 | 1 |
| 8 MOORE Kerr | - | L 2 | L 6 | L 7 | 0 |

ELEVENTH GROUNDHOG SWISS, SECTION C

| | | | | | |
|------------------|------|-----|-----|-----|-----|
| 1 SMITH Orlan | 1347 | W 7 | W 3 | D 2 | 2.5 |
| 2 ALBERT Steven | 1302 | W 8 | W 5 | D 1 | 2.5 |
| 3 ROGERS James | - | W 4 | L 1 | W 6 | 2 |
| 4 JONES Anthony | 1289 | L 3 | W 7 | W 5 | 2 |
| 5 WILLIAMS Keith | - | W 6 | L 2 | L 4 | 1 |
| 6 TERBELL Tracy | 1108 | L 5 | W 8 | L 3 | 1 |
| 7 PEQUES Calvin | - | L 1 | L 4 | W 8 | 1 |
| 8 PLUMMER Floyd | - | L 2 | L 6 | L 7 | 0 |

The twelfth Hyde Park Open and Scholastic and 11th Groundhog Swiss drew 126 players to the University of Chicago's Cobb Hall on February 1. Mariano Acosta (2238), Pete Stein (2196), and Jim Condron (2088) each scored 3-0 to share first in the Open trapping a field that included two masters and five experts. In the finale Condron knocked off top-rated Gregg Small (2306) to win a share of first place.

Upsets were plentiful. Two of the experts scored a total of one point in six games. Keith Holzmueller, Ed Ross, and Bill Maddex shared the A money with 2-1 while Wayne Smith, Tom Howell, Jim Oberweis, and Ed Maran divided the B money with the same score. Howell (1697), returning to tournament chess, was impressive, with a win and a draw against two experts. Harold Gasaway and Dwayne Falls shared the C prize, also 2-1. Falls' fine performance included a win against an opponent 679 points higher.

Darren Bolden (2057) scored a perfect 3-0 to win the top section of the Groundhog Swiss. Miguel Alvarado and Nicholas Vlachos (each 2.5) shared first in the next section as did Orlan Smith and Steven Albert (both 2.5) in the third section.

Albright Dominates Scholastic

A record nine teams and 73 players entered the Hyde Park Scholastic. Albright School, coached by Jerry Esposito, scored 14.5-1.5 to take the top team trophy. Flinn School in Rockford, coached by Joe Drennan, gave Albright its toughest competition, but even with a 3-1 score in the finale Flinn had to settle for second with 13. Minooka School (11), Wilson School (10.5), Carver (10), and Powell School (9) won the remaining team trophies.

Tim Nessel of Albright had a perfect 4-0 score and took first place individual trophy on tiebreak. Grant Cain of Minooka and Jaspal Sodhi of Albright also achieved 4-0 and placed second and third respectively. Hugh Freestrom of Albright scored 3-1 and won the trophy for top student in grade 6 or below; Hugh is in 5th grade. Jeff Jensen led Flinn to its second place showing with 3.5-0.5.

Harold Winston and Tri Nguyen organized and directed the Hyde Park events for the University of Chicago Chess Club.

MIDWEST TEAM CHAMPIONSHIPS

32 TEAMS COMPETE AT HYATT REGENCY OHARE

TOP TEAM IN THE MIDWEST

by Harold Winston

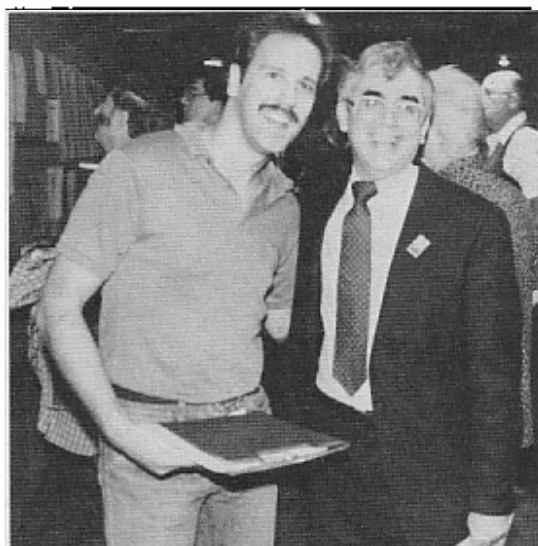
The U.S. Amateur Team Midwest, held February 14-16 at the Hyatt Regency O'Hare, drew 32 teams and 143 players from seven states for a weekend of fun and tough competition. Team captains received restaurant lists and surveys as well as rule sheets, and most players participated in the voting for best team name. The tournament was strong (six teams rated over 2140) and had a lot of young players (six teams of high school age or younger), including the MITCHELLVILLE ROOKIES, a team of Iowa 6th graders and under. The GREEN BAY SAC ATTACK wore T-shirts with Green Bay Packer colors that inspired them to score 3.5-1.5 in the first 5 rounds. Max "The Axe" Zavanelli used a different kind of visual leadership, appearing in top hat and tuxedo.

The Race for First

Last year the Midwest winner, the PITTSBURGH GATEWAY STARS, had gone on to win the national title in the phone playoffs. Four strong Illinois teams entered determined to take first. Peter Pelts organized a powerful FORE PLAYING KNIGHTS (2197) which was second-rated with two other masters, Warren Kreckler and Brian Schuman. Steve Surak also put together a three-master team, APCT'ERS (2195), naturally with backing from Helen Warren. Chuck Kraemer, Mariano Acosta, and Greg Bungo led the APCT'ERS. COMPROMISING POSITIONS (2186), Kurt Stein's team, was the last to enter but included the only IM in the tournament, Robert Gruchacz. Ranked 5th at the start was our Pan Am Intercollegiate co-championship team from University of Chicago who had also been seeded 5th at the Pan Am. John Tomas, Ed Friedman, and Ken Thomas led the U.C.-ROOKS (pronounced "you crooks"), who were rated 2171. Two out-of-state teams also looked in the running: top-ranked 4.5 MIL DR THE PREACHER GETS IT (a comment on Oral Roberts), who came from Columbus, Ohio with a master and 3 high experts, and 6th rated GOTCHA BY THE SHORT ONES (2149) from St. Louis, led by masters Terry Niehoff and Charles Lawton.

Only three teams had a shot at first as the finale began; all three had their pictures taken for a possible Chess Life cover. FORE PLAYING KNIGHTS (4.5-0.5) faced 4.5 MIL (4-0) at top table and Rhys Read put the KNIGHTS ahead with the first win. Unfortunately for home team fans the Ohioans scored on the top two boards to end with a 2.5-1.5 triumph. Brian Schuman held the draw to clinch the Board 3 prize with an excellent 5.5-0.5 record. On second table APCT'ERS (4-0) fought hard against COMPROMISING POSITIONS (3.5-0.5) but, handicapped by Kraemer's absence, lost in the longest match of the round 3.5-0.5.

Our TD team did a super job: Walt Brown, Tim Just, and Todd Barre ran a smooth tournament with all rounds on time. The Hyatt provided a fine site and Tim Just will hold the Illinois Open there Labor Day weekend. Many people helped me put this together for ICA. Tim Just inspected the site with me and was always available for advice, Todd Barre coordinated supplies, Fred Gruenberg designed the flyer and had many good suggestions, Helen Warren got quick Policy Board action on our bid, Bill Smythe spent a Sunday stuffing envelopes with me, and Dick Verber took time off from work to get our bulk mailing to the post office.



Harold Winston (right) organizer of the Team Championship and candidate for the post of USCF President, chats with a friend.



Bob Gruchacz (lower right), 1st board for COMPROMISING POSITIONS faces APCT's Mariano Acosta in the last round. To the left of Gruchacz FOREPLAYING KNIGHTS Rhys Read, Brian Schuman, and Warren Kreckler.

pre post

| | | | | | | | | | | | | | |
|--|------------------|----|-----------|------|------|------|------|------|------|--|--|-----|--|
| 1 4.5 MIL OR THE PREACHER GETS IT | | | | | | | | | | | | | |
| average team rating 2204 | | | | W15 | L12 | W19 | W16 | W 2 | W 4 | | | 5.0 | |
| 1a | DIEBERT Charles | OH | 2330 2384 | W15a | W12a | W19a | W16a | W 2a | W 4a | | | 6.0 | |
| 1b | HAYES John | OH | 2127 2151 | W15b | L12b | W19b | W16b | L 2b | W 4b | | | 4.0 | |
| 1c | BATH John | OH | 2211 2224 | W15c | D12c | W19c | W16c | W 2c | D 4c | | | 5.0 | |
| 1d | WEITTHOFF Jim | OH | 2148 2119 | W15d | L12d | W19d | W16d | D 2d | L 4d | | | 3.5 | |
| 2 GOTCHA BY THE SHORT ONES | | | | | | | | | | | | | |
| average team rating 2162 | | | | W32 | W16 | W 7 | D 3 | L 1 | W14 | | | 4.5 | |
| 2a | NIEHOFF Terence | MO | 2312 2318 | W32a | W16a | D 7a | D 3a | L 1a | W14a | | | 4.0 | |
| 2b | LAWTON Charles | MO | 2294 2316 | W32b | W16b | W 7b | D 3b | W 1b | W14b | | | 5.5 | |
| 2c | JUENDEL Daniel | MO | 2059 2090 | WF | W16c | W 7c | D 3c | L 1c | W14c | | | 4.5 | |
| 2d | SUTTER Robert | MO | 1981 2020 | W32d | D16d | W 7e | D 3d | D 1d | W14d | | | 4.5 | |
| 3 COMPROMISING POSITIONS | | | | | | | | | | | | | |
| average team rating 2186 | | | | W14 | W11 | W12 | D 2 | L 4 | W 7 | | | 4.5 | |
| 3a | GRUCHACZ Robert | IL | 2469 2482 | W14a | W11a | W12a | D 2a | W 4a | W 7b | | | 5.5 | |
| 3b | STEIN Kurt | IL | 2253 2256 | W14b | W11b | D12b | D 2b | L 4b | W 7c | | | 4.0 | |
| 3c | COFFEY Allen | IL | 2014 2033 | W14c | L11c | W12c | D 2c | L 4c | W 7d | | | 3.5 | |
| 3d | SZUSTOWSKI Paul | IL | 2009 2002 | L14d | W11e | W12e | D 2d | D 4d | D 7e | | | 3.5 | |
| 3e | WILLARD Gary | IL | - - | - | - | - | - | - | - | | | 0.0 | |
| 4 THE FORE PLAYING KNIGHTS | | | | | | | | | | | | | |
| average team rating 2212 | | | | D25 | W 5 | W13 | W 8 | W 3 | L 1 | | | 4.5 | |
| 4a | PELTS Peter | IL | 2370 2342 | L25a | D 5a | W13a | W 8a | L 3a | L 1a | | | 2.5 | |
| 4b | KRECKLER Warren | IL | 2279 2270 | L25b | W 5b | W13b | W 8b | W 3b | L 1b | | | 4.0 | |
| 4c | SCHUMAN Brian | IL | 2208 2234 | W25c | W 5c | W13d | W 8c | W 3c | D 1c | | | 5.5 | |
| 4d | READ Rhys | IL | 1989 2006 | W25d | W 5d | WF | L 8d | D 3d | W 1d | | | 4.5 | |
| 5 GREAT SACS ALL KNIGHT LONG | | | | | | | | | | | | | |
| average team rating 1989 | | | | W30 | L 4 | W22 | D12 | W 8 | W11 | | | 4.5 | |
| 5a | WITTE Andrew | MO | 2133 2155 | W30a | D 4a | W22a | D12b | W 8b | D11a | | | 4.5 | |
| 5b | SIMONS David | MO | 1985 1991 | W30b | L 4b | W22b | D12c | L 8c | W11b | | | 3.5 | |
| 5c | ESSIG George | MO | 2032 2064 | W30c | L 4c | W22d | W12d | W 8d | W11c | | | 5.0 | |
| 5d | TOM Matthew | MO | 1805 1812 | W30d | L 4d | W22e | L12e | D 8e | W11e | | | 3.5 | |
| 6 U.C. -ROOKS | | | | | | | | | | | | | |
| average team rating 2175 | | | | W24 | D29 | D 9 | L13 | W25 | W15 | | | 4.0 | |
| 6a | TOMAS John | IL | 2215 2213 | W24a | D29a | D 9a | - | - | D15a | | | 2.5 | |
| 6b | FRIEDMAN Ed | IL | 2194 2183 | W24b | - | W 9b | L13a | L25a | W15b | | | 3.0 | |
| 6c | THOMAS Ken | IL | 2222 2193 | W24c | L29b | D 9c | L13b | WF | W15c | | | 3.5 | |
| 6d | GOLDMAN Jonathan | IL | 2068 2077 | W24d | D29d | - | D13c | W25c | W15d | | | 4.0 | |
| 6e | MADDEX Bill | IL | 2100 2087 | - | WF | L 9d | W13d | W25d | - | | | 3.0 | |
| 7 APCT'ERS | | | | | | | | | | | | | |
| average team rating 2207 | | | | W19 | W18 | L 2 | W 9 | W13 | L 3 | | | 4.0 | |
| 7a | KRAMER Charles | IL | 2317 2327 | W19a | W18a | D 2a | D 9a | - | - | | | 3.0 | |
| 7b | ACOSTA Mariano | IL | 2252 2231 | L19b | - | L 2b | W 9b | W13a | L 3a | | | 2.0 | |
| 7c | BUNDO Gregory | IL | 2202 2191 | W19c | W18b | L 2c | W 9c | D13b | L 3b | | | 3.5 | |
| 7d | SLURAK Steve | IL | 2058 2031 | - | W18c | - | L 9d | D13c | L 3c | | | 1.5 | |
| 7e | SEDLOCK Ervin | IL | 1999 2005 | W19d | W18d | L 2d | - | W13d | D 3d | | | 3.5 | |
| B BE RETI WITH A DRYING TAL | | | | | | | | | | | | | |
| average team rating 2137 | | | | W28 | D 9 | W29 | L 4 | L 5 | W19 | | | 3.5 | |
| 8a | LEVINE David | IL | 2324 2323 | - | W 9a | W29a | L 4a | - | D19a | | | 2.5 | |
| 8b | STREETS David | IL | 2233 2127 | W28a | D 9b | D29b | L 4b | L 5a | L19b | | | 2.0 | |
| 8c | BOLDEN Darren | IL | 2071 2084 | W28b | L 9c | W29d | L 4c | W 5b | W19c | | | 4.0 | |
| 8d | BERRY Gregory | IL | 1919 1946 | W28c | D 9d | W29e | W 4d | L 5c | W19d | | | 4.5 | |
| 8e | DEDMAN Stephen | IL | 1820 1824 | W28d | - | - | - | D 5d | - | | | 1.5 | |
| 9 GREATER PEORIA CHESS FEDERATION | | | | | | | | | | | | | |
| average team rating 2032 | | | | W27 | D 8 | D 6 | L 7 | W18 | D13 | | | 3.5 | |
| 9a | MC ENTEE Tim | MO | 2212 2214 | W27a | L 8a | D 6a | D 7a | W18a | D13a | | | 3.5 | |
| 9b | RHODES Murrel | IL | 1947 1925 | W27b | D 8b | L 6b | L 7b | L18b | L13b | | | 1.5 | |
| 9c | ANDERSON Phil | IL | 2036 2097 | W27c | W 8c | D 6c | L 7c | W18c | W13c | | | 4.5 | |
| 9d | BOSSAERS Phil | IL | 1932 1968 | W27d | D 8d | W 6e | W 7d | D18d | D13d | | | 4.5 | |
| 10 RAIDER CHESS REVISITED | | | | | | | | | | | | | |
| average team rating 1599 | | | | L18 | L19 | W31 | W17 | D24 | W22 | | | 3.5 | |
| 10a | NIESSEN Bowen | IL | 1812 1832 | W18a | L19a | W31a | L17a | D24a | D22a | | | 3.0 | |
| 10b | MILLER Mark | IL | 1774 1828 | L18b | D19b | W31b | D17b | W24b | W22b | | | 4.0 | |
| 10c | BOZARTH Jay | IL | 1706 1786 | L18c | W19c | W31c | W17c | D24c | W22c | | | 4.5 | |
| 10d | SCHUEFELE Brian | CO | 1103 1132 | L18d | L19d | W31d | W17e | L24d | L22e | | | 2.0 | |
| 11 ATTACKAMANIA | | | | | | | | | | | | | |
| average team rating 2032 | | | | W26 | L 3 | W20 | W25 | D14 | L 5 | | | 3.5 | |
| 11a | SHIELDS Paul | IL | 2106 2078 | D26a | L 3a | - | - | L14a | D 5a | | | 1.0 | |
| 11b | BAILEY Gregory | MI | 2010 2012 | W26b | L 3b | W20a | W25a | D14b | L 5b | | | 3.5 | |
| 11c | JOHNSON Richard | MI | 2035 2034 | W26c | W 3c | D20b | D25b | W14c | L 5c | | | 4.0 | |
| 11d | SHIELDS Philip | IL | 1976 1991 | - | - | W20c | W25c | - | - | | | 2.0 | |
| 11e | RAFTSKOL Warren | MI | 1812 1771 | W26d | L 3d | D20d | D25d | D14d | L 5d | | | 2.5 | |

U.S. Amateur Team Midwest

PRIZE LIST:

First:
4.5 MIL OR THE
PREACHER GETS IT
Charles Diebert
John Hayes
John Bath
Jim Weithhoff
5-1

Second:
THE FORE PLAYING
KNIGHTS
Peter Pelts
Warren Kreckler
Brian Schuman
Rhys Read
4.5-1.5

Third:
COMPROMISING
POSITIONS
Robert Gruchacz
Kurt Stein
Allen Coffey
Paul Szustowski
4.5-1.5

1800-1999:
GREAT SACS ALL
KNIGHT LONG
Andrew Witte
David Simons
George Essig
Matthew Tom
4.5-1.5

1600-1799:
"M" SQUAD
Roger Allison
David Black
Donn Nicholson
Thomas Howell
2-4

1400-1599:
RAIDER CHESS
REVISITED
Bowen Miessen
Mark Miller
Jay Bozarth
Brian Schuele
3.5-2.5

Under 1400:
ALL THE KINGS' MEN
Roger Hoover
Thomas Totten
Kevin Eberle
Harold Hardebeck
2-4

12 ZPR KNIGHTS

| | | | | | | | | | |
|---------------------|----------------|--------------|------|------|------|------|------|------|-----|
| average team rating | | 2058 | W23 | W 1 | L 3 | D 5 | L15 | W21 | 3.5 |
| 12a | ABRAMS Richard | PA 2219 2180 | W23a | L 1a | L 3a | - | L15a | L21a | 1.0 |
| 12b | ZAVANELLI Max | IL 2138 2150 | - | W 1b | D 3b | D 5a | D15b | W21b | 3.5 |
| 12c | CREWSE Lynn | IL 1964 1960 | D23b | D 1c | L 3c | D 5b | - | W21c | 2.5 |
| 12d | SKINNER James | IL 1912 1931 | W23c | W 1d | - | L 5c | D15c | - | 2.5 |
| 12e | SIRUTIS Alfred | NY 1888 1892 | W23d | - | L 3d | W 5d | D15d | W21d | 3.5 |

13 BEST TEAM NAME

| | | | | | | | | | |
|---------------------|-------------------|--------------|------|------|------|------|------|------|-----|
| average team rating | | 2018 | W31 | W17 | L 4 | W 6 | L 7 | D 9 | 3.5 |
| 13a | SCHROEDER Anthony | IL 2130 2134 | W31a | D17a | L 4a | W 6b | L 7b | D 9a | 3.0 |
| 13b | HOLZMUELLER Keith | IL 2067 2107 | W31b | D17b | - | W 6c | D 7c | W 9b | 4.0 |
| 13c | MUSGRAVE Chris | IL 1979 1989 | W31c | W17c | L 4b | D 6d | D 7d | L 9c | 3.0 |
| 13d | SCHREMSER Todd | IL 1895 1884 | W31e | W17d | L 4c | L 6e | L 7e | D 9d | 2.5 |
| 13e | PLUHAR Jeff | IL - - | - | - | LF | - | - | - | 0.0 |

Board 1:
Charles Diebert
6-0

14 GREEN BAY SAC ATTACK

| | | | | | | | | | |
|---------------------|------------------|--------------|------|------|------|------|------|------|-----|
| average team rating | | 1860 | L 3 | W26 | W18 | W28 | D11 | L 2 | 3.5 |
| 14a | LUDWIG Luke | WI 2103 2126 | L 3a | W26a | W18a | W28a | W11a | L 2a | 4.0 |
| 14b | DE ROSIER Steve | WI 1818 1806 | L 3b | W26b | L18b | L28b | D11b | L 2b | 1.5 |
| 14c | BULK Jeff | WI 1820 1807 | L 3c | W26c | W18c | WF | L11c | L 2c | 3.0 |
| 14d | HERNANDEZ Miquel | WI 1699 1753 | W 3d | W26d | D18e | W28d | D11e | L 2d | 4.0 |

Board 2:
Charles Lawton
5.5-0.5

Board 3:
Brian Schuman
5.5-0.5

15 MURDER BY NUMBERS

| | | | | | | | | | |
|---------------------|--------------------|--------------|------|------|------|------|------|------|-----|
| average team rating | | 1998 | L 1 | D25 | W21 | W27 | W12 | L 6 | 3.5 |
| 15a | HELRUNG David | MO 2221 2222 | L 1a | L25a | W21a | W27a | W12a | D 6a | 3.5 |
| 15b | COGGINS Shaun | MN 1952 1915 | L 1b | L25b | L21b | W27b | D12b | L 6b | 1.5 |
| 15c | MC DONALD Jim | MO 1994 1993 | L 1c | W25c | W21d | W27c | D12d | L 6c | 3.5 |
| 15d | AUGSBURGER Leonard | MO 1823 1836 | L 1d | W25d | W21e | W27d | D12e | L 6d | 3.5 |

Board 4:
Robert Sutter
4.5-1.5

16 CICLOR

| | | | | | | | | | |
|---------------------|------------------|--------------|------|------|------|------|------|------|-----|
| average team rating | | 2023 | W22 | L 2 | W23 | L 1 | L19 | W27 | 3.0 |
| 16a | TEGEL Frank | IL 2102 2092 | W22a | L 2a | W23a | L 1a | L19a | W27a | 3.0 |
| 16b | BUERGER Edward | IL 2018 2006 | W22b | L 2b | W23b | L 1b | L19b | W27b | 3.0 |
| 16c | LEONG Gee | IL 2007 1969 | W22c | L 2c | W23c | L 1c | L19c | W27c | 3.0 |
| 16d | UNDERWOOD Wesley | IL 1966 1977 | W22d | D 2d | W23d | L 1d | W19d | W27d | 4.5 |

Best College Team:
U.C.-ROOKS
John Tomas
Ed Friedman
Ken Thomas
Jonathan Goldman
Bill Maddex
4-2

17 SAHOVSKI UNINFORMED

| | | | | | | | | | |
|---------------------|-------------------|--------------|------|------|------|------|------|------|-----|
| average team rating | | 2041 | W20 | L13 | L25 | L10 | W26 | W24 | 3.0 |
| 17a | GENSLER Kevin | IL 2094 2104 | W20a | D13a | L25a | W10a | W26a | W24a | 4.5 |
| 17b | DITRICHS Raymond | IL 2120 2117 | W20b | D13b | D25b | D10b | - | W24b | 3.5 |
| 17c | BASENSPILER Larry | IL 2000 1961 | W20c | L13c | D25c | L10c | LF | - | 1.5 |
| 17d | ORTIZ Javier | IL - 1750 | W20d | L13d | - | - | W26c | D24c | 2.5 |
| 17e | SCHAFFER Walt | IL - 1194 | - | - | L25d | L10d | W26d | L24d | 1.0 |

Best HS Team:
DON'T HOLD US WE'RE
NOT IN THE MOOD
John Nielsen
Christopher Gray
Jason Frost
Armon Haynee
Jason Brawka
2.5-3.5

18 QUEENS KNIGHTS

| | | | | | | | | | |
|---------------------|-------------------|--------------|------|------|------|------|------|------|-----|
| average team rating | | 1960 | W10 | L 7 | L14 | W23 | L 9 | W25 | 3.0 |
| 18a | SZPISJAK Steven | IL 2118 2060 | L10a | L 7a | L14a | W23a | L 9a | L25a | 1.0 |
| 18b | ROGAN Marvin | IL 2106 2115 | W10b | L 7c | - | - | W 9b | W25c | 3.0 |
| 18c | FELDBSTEIN Robert | IL 2058 2038 | W10c | L 7d | W14b | D23b | L 9c | - | 2.5 |
| 18d | JOMP John | IL 1558 1589 | W10d | L 7e | L14c | W23c | D 9d | W25d | 3.5 |
| 18e | WINSTON Harold | IL 1956 1953 | - | - | D14d | W23d | - | WF | 2.5 |

2nd HS Team:
LANE TECH INDIANS
Eddie Ortiz
Brent Yurschak
Robert Carpenter
Minh Nguyen
Matt Stojack
2.5-3.5

19 CHESS DVS'S

| | | | | | | | | | |
|---------------------|-----------------|--------------|------|------|------|------|------|------|-----|
| average team rating | | 1968 | L 7 | W10 | L 1 | W26 | W16 | L 8 | 3.0 |
| 19a | BURKE John | IL 2189 2168 | L 7a | W10a | L 1a | L26a | W16a | D 8a | 2.5 |
| 19b | FORBIS Robert | IL 2020 2072 | W 7b | D10b | L 1b | W26b | W16b | W 8b | 4.5 |
| 19c | MC NAMARA James | IL 1836 1837 | L 7c | L10c | L 1c | W26c | W16c | L 8c | 2.0 |
| 19d | SEFCHECK Mark | IL 1827 1794 | L 7e | W10d | L 1d | W26d | L16d | L 8d | 2.0 |

20 TULEY PARK "C" TEAM

| | | | | | | | | | |
|---------------------|-----------------|--------------|------|------|------|------|------|------|-----|
| average team rating | | 1626 | L17 | W31 | L11 | D22 | L21 | W30 | 2.5 |
| 20a | FAGAN James | IL 1720 1706 | L17a | W31a | L11b | L22a | L21a | W30a | 2.0 |
| 20b | CLARK Lawrence | IL 1700 1720 | L17b | W31b | D11c | W22b | L21b | W30b | 3.5 |
| 20c | FINEBERG Thomas | IL 1671 1681 | L17c | W31c | L11d | W22c | W21c | W30c | 4.0 |
| 20d | KNIGHT Jerry | IL 1413 1424 | L17d | W31d | D11e | L22e | D21d | D30d | 2.5 |

Industrial Team:
ZPR KNIGHTS
Richard Abrams
Max Zavanelli
Lynn Crewse
James Skinner
Alfred Sirutis
3.5-2.5

21 DON'T HOLD US, WE'RE NOT IN THE MOOD

| | | | | | | | | | |
|---------------------|------------------|--------------|------|------|------|------|------|------|-----|
| average team rating | | 1591 | L29 | D24 | L15 | W31 | W20 | L12 | 2.5 |
| 21a | NIELSEN John | IL 1762 1840 | L29a | W24a | L15a | W31a | W20a | W12a | 4.0 |
| 21b | GRAY Christopher | IL 1567 1618 | L29b | L24b | W15b | W31b | W20b | L12b | 3.0 |
| 21c | FROST Jason | IL 1480 1497 | L29d | W24c | - | - | L20c | L12c | 1.0 |
| 21d | HAYNES Armon | IL 1555 1541 | W29e | L24d | - | L15c | W31c | D20d | 2.5 |
| 21e | BRAWKA Jason | IL 1353 1357 | - | - | L15d | W31e | - | - | 1.0 |

Best Team Name:
BE RETI WITH A
CRYING TAL

22 LANE TECH INDIANS

| | | | | | | | | | |
|---------------------|------------------|--------------|------|------|------|------|------|------|-----|
| average team rating | | 1414 | L16 | W32 | L 5 | D20 | W28 | L10 | 2.5 |
| 22a | ORTIZ Eddie | IL 1460 1540 | L16a | D32a | L 5a | W20a | D28a | D10a | 2.5 |
| 22b | YURSHAK Brent | IL 1463 1511 | L16b | W32b | L 5b | L20b | W28b | L10b | 2.0 |
| 22c | CARPENTER Robert | IL 1433 1424 | L16c | WF | - | L20c | WF | L10c | 2.0 |
| 22d | NGUYEN Minh | IL 1301 1398 | L16d | W32d | L 5c | - | - | - | 1.0 |
| 22e | STOJACK Matt | IL 1158 1283 | - | - | L 5d | W20d | W28d | W10d | 3.0 |

23 KNIGHT MOVES

| | | | | | | | | | |
|---------------------|----------------|--------------|------|------|------|------|------|------|-----|
| average team rating | | 1892 | L12 | W30 | L16 | L18 | D27 | W28 | 2.5 |
| 23a | PUKEL Bernard | IL 1932 1925 | L12a | W30a | L16a | L18a | W27a | W28a | 3.0 |
| 23b | GRAFT Donald | IL 1929 1907 | D12c | W30b | L16b | D18c | W27b | D28b | 3.5 |
| 23c | BOYLE Sean | IL - 1316 | L12d | D30c | L16c | L18d | L27c | L28d | 0.5 |
| 23d | REEGER Matthew | IL - 1380 | L12e | L30d | L16d | L18e | L27d | WF | 1.0 |

CONGRATULATIONS, FRED GRUENBERG!

948-PLAYER NATIONAL OPEN BREAKS ALL RECORDS!

GM MAXIM DLUGY CHAMPION ON TIEBREAK



The happy winners of the National Open in Las Vegas emerge from the elevator at the Imperial Palace Hotel. Pictured (from left to right) are grandmasters Joel Benjamin, Maxim Dlugy, Sergei Kudrin, and Walter Browne. Each of the winners took home \$1800 --- a very respectable paycheck for 3 days of work!

ILLINOISANS 2, SHIRAZI 0 AT NATIONAL OPEN

The Las Vegas National Open has pretty obviously become USCF's most popular vacation tournament. The Federation's annual August U.S. Open tends to draw 500-600 players, while Fred Gruenberg's Vegas-based National Open races ahead by leaps and bounds. 726 last year, 948 this year, how many do you guess next year?

**BILL GOICHBERG AND JOSE CUCHI MOVE OVER!
FRED GRUENBERG IS COMING!**

It may seem difficult to understand why 948 chess players would go to Las Vegas for a \$20,000 prize fund when they could instead zero-in on that big \$180,000 Jose Cuchi prize fund at the New York Open a month later. The answer must be that the majority of the players are in it for the fun, not the money! And fun is surely what they get in Vegas. Between the gambling, the shows, and a hundred different types of entertainment, it's a wonder that the chess play is as good as it is.

Again this year, the National Open was a 6-round, 3-day tournament. Chicago was the beneficiary of the National Open in that four of the grandmasters traveling to Vegas stopped in Chicago to play in the Midwest Masters. The first round began in Las Vegas Friday, March 14th.

As usual, there were quite a few familiar Illinois faces at this year's National Open. T.D.s Tim Redman, Walt Brown, Dick Verber, Todd Barre, Tim Just, Bill Smythe, and Dennis Grant, plus the entire Gruenberg Clan were in Vegas to oversee the tournament, and there were another 35-40 Illinoisans there to play. The highest rated members of the Illinois contingent were Senior Masters Bob Gruchacz and Dr. Eugene Martinovsky.

Two very conspicuous Illinois players were experts Maz Zavanelli and Peter Connor. Max was conspicuous for a couple reasons: For one thing, he was hard to miss in his tuxedo and top hat. For another, he was conspicuous for beating Kamran-2590-rated-Shirazi! Pete Connor had to settle for being conspicuous beating Shirazi! Yes, that's right. Two Illinois experts picked on poor Shirazi in Las Vegas.



Chicago Expert Max Zavanelli in full uniform!

White: Peter Connor (2113).
Black: Kamran Shirazi (2590).

Sicilian Defense.
Annotated by Richard Verber.

A lot of people dream of beating a 2590 player in the first round of a national tournament. Pete Connor manages to do it in Las Vegas.

| | | |
|---|------|------|
| 1 | e4 | c5 |
| 2 | Nf3 | e6 |
| 3 | d4 | cxd4 |
| 4 | Nxd4 | a6 |
| 5 | Bd3 | Nf6 |
| 6 | Nc3 | Bb4 |

A hyper aggressive move aimed at avoiding draws with 2100 players in the first round. Shirazi has the reputation of favoring sharp tactical play.Qc7 ord6 are the safe and sound alternatives.

| | | |
|---|-----|-----|
| 7 | Q-O | Qc7 |
| 8 | Bd2 | |

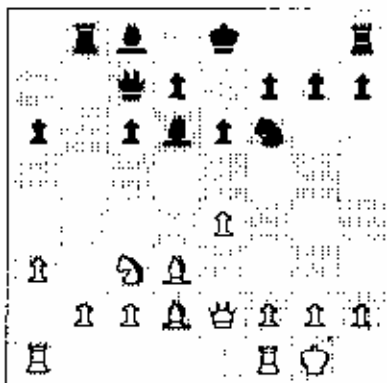
Connor defends the Knight and threatens 9 cNb5!

| | | |
|----|------|------|
| 9 | | Nc6 |
| 10 | Nxc6 | bxc6 |
| 11 | Qe2 | Rb8? |

Shirazi's game is already critical since White plans e5 with a kingside attack, and Shirazi's Bishop has accomplished less than nothing on b4. 10....e5 is best.

| | | |
|----|----|------|
| 11 | a3 | Bd6? |
|----|----|------|

From the frying pan into the fire. This is hardly the moment to go Pawn-hunting.



| | | |
|----|-----|-------|
| 12 | f4! | Rxb2? |
|----|-----|-------|

A blunder that loses the Exchange. For better or for worse, Shirazi had to trye5!7 with two-edged play.

| | | |
|----|------|------|
| 13 | Na4! | Be7 |
| 14 | Nxb2 | Ob6+ |
| 15 | Be3! | |

In order to be able to force the trade of Queens.

| | | |
|----|------|------|
| 15 | | Oxb2 |
| 16 | fRb1 | Qc3 |
| 17 | Bd2! | |

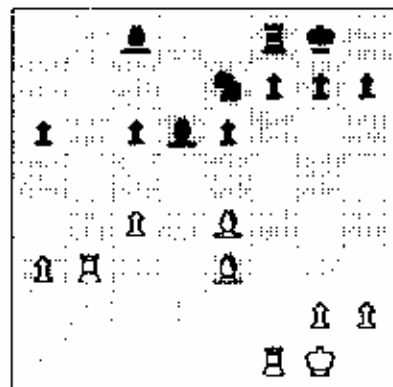
The material advantage gains importance with the Queens off the board.

| | | |
|----|-------|------|
| 17 | | Bxd2 |
| 18 | Bxd2 | d5 |
| 19 | exd5! | |

Much better than 19 e5. Connor is wise to open lines for his Rooks.

| | | |
|----|------|------|
| 19 | | Nxd5 |
| 20 | RbB | O-O |
| 21 | Be4 | Bd6 |

| | | |
|----|------|------|
| 22 | Rb3 | Nxf4 |
| 23 | Rf1 | Nd5 |
| 24 | c4 | Ne7 |
| 25 | Be3! | |



For the moment Shirazi has two Pawns for the Exchange, but his pieces are inactive.

| | | |
|----|------|-----|
| 25 | | f5 |
| 26 | Bf3 | f4 |
| 27 | Bf2 | c5 |
| 28 | Rd1 | Nf5 |
| 29 | Rxd6 | |

Poetic justice! Connor wins the game by returning the Exchange.

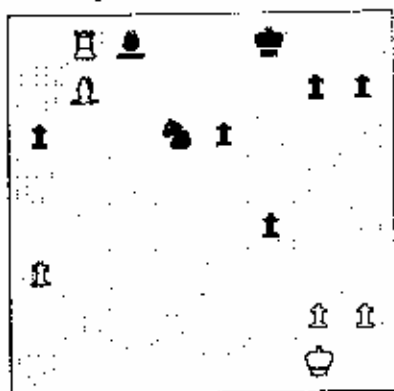
| | | |
|----|------|------|
| 29 | | Nxd6 |
| 30 | Bxc5 | Nxc4 |

30....Rd8 loses a piece to 31 Bxd6 Rxd6 32 RbB RdB 33 Bb7.

| | | |
|----|------|------|
| 31 | Bxf8 | Kxf8 |
| 32 | Rb8 | Nd6 |

(continued)
 Pete Connor vs. Kamran Shirazi
 1987 National Open

33 Bh7!
 Winning a piece!



| | | |
|----|-------|------|
| 33 | ---- | Nxb7 |
| 34 | Rxc8+ | Kf7 |
| 35 | Rc7+ | 1-0 |



Photos courtesy of Guy Gruenberg.



(Top) The man who makes it all happen in Las Vegas, Fred Gruenberg, with friends GM Arthur Bisguier on the right and Past USCF President Tim Redman on the left.

(Above left) Fred and a little friend, the youngest entrant at age 8!

(Above) USCF Executive Director Gerry Dullea congratulates Cyrus Lakdawala, who tied for 1st with the four grandmasters.

(Left) 1985 U.S. Champ Lev Alburt concedes 3-game \$500 Blitz Match to 1986 U.S. Champ Yasser Seirawan. Yasser triumphed with a 2-1 score.

SZMETAN WINS AGAIN!

RECORD 73 PLAYERS IN TIM JUST'S WINTER LAKE COUNTY OPEN

LAKE COUNTY CHESS CLUB

HOME OF CAVEMAN CHESS



TIM JUST'S WINTER
OPEN/RESERVE

by Tim Just

On January 3-4, 1987 the Illinois Beach Resort and Conference Center hosted the ICA's annual first four tournament of the year. The \$2000 guaranteed prize fund made 10 Grand Prix points available to the winner(s) of this event, and enticed 73 players to participate in the largest event in Lake County chess history.

Ricardo Szmétan's 4.5-0.5 allowed him to take sole possession of first place in the 36-player Open section. Szmétan vanquished Bernard Pukel, Region VII Postal Champ Craig Sandford, Wisconsinite Michael LaBudde (back from the European chess wars), and 1986 Illinois Tour co-winner Morris Giles. Ricardo's efforts gave him a \$300 paycheck. Wisconsinite David Penkalski was the only player to manage a draw with Ricardo, in the last round.

Tim Just's Winter Open

January 3-4, 1987

| OPEN SECTION | pre | post | | | | | | | | |
|-----------------------|------|------|------|-----|------|-----|-----|--|--|-----|
| 1 SZMETAN Ricardo | 2396 | 2409 | W24 | W21 | W11 | W 9 | D 2 | | | 4.5 |
| 2 PENKALSKI David | 2252 | 2275 | W28 | W23 | D 9 | W 7 | D 1 | | | 4 |
| 3 ZABELL Sandy | 2121 | 2136 | D32 | W22 | W16 | W10 | D 5 | | | 4 |
| 4 WALLACH Ken | 2268 | 2271 | W27 | L 7 | W13 | W21 | W12 | | | 4 |
| 5 KAMEN Dan | 2123 | 2149 | Dbye | W20 | W33 | W 6 | D 3 | | | 4 |
| 6 TAMEZ Isidro | 1806 | 1937 | W33 | W18 | D10 | L 5 | W16 | | | 3.5 |
| 7 HOLZMUELLER Keith | 2060 | 2070 | W19 | W 4 | Dbye | L 2 | W17 | | | 3.5 |
| 8 SMYTHE Bill | 1943 | 1992 | D22 | D32 | W23 | W11 | D 9 | | | 3.5 |
| 9 GILES Morris | 2459 | 2443 | W14 | W12 | D 2 | L 1 | D 8 | | | 3 |
| 10 BROCK William | 2094 | 2097 | W25 | W29 | D 6 | L 3 | D15 | | | 3 |
| 11 LA BUDDÉ Michael | 2133 | 2137 | W31 | W15 | L 1 | L 8 | W24 | | | 3 |
| 12 WALLACH Cliff | 2100 | 2112 | W35 | L 9 | W14 | W26 | L 4 | | | 3 |
| 13 SPIEGEL Leonard | 1825 | 1914 | W29 | D17 | L 4 | D18 | W26 | | | 3 |
| 14 COHEN Lawrence | 1904 | 1953 | L 9 | W31 | L12 | W32 | W21 | | | 3 |
| 15 BENSLEER Kevin | 2119 | 2119 | Dbye | L11 | W30 | W20 | D10 | | | 3 |
| 16 SAX Robert | 1956 | 1961 | D30 | W25 | L 3 | W28 | L 6 | | | 2.5 |
| 17 JASILIENAS Leonard | 2124 | 2096 | L23 | D13 | W19 | W22 | L 7 | | | 2.5 |
| 18 SCHNUGGEROW Kevin | 2205 | 2173 | W36 | L 6 | L20 | D13 | W25 | | | 2.5 |
| 19 GRAVES William | 1839 | 1869 | L 7 | D27 | L17 | W36 | W32 | | | 2.5 |
| 20 MAC ZOLLEK Edward | 1954 | 1973 | Dbye | L 5 | W18 | L15 | W31 | | | 2.5 |
| 21 SANDFORD Craig | 2011 | 2014 | W34 | L 1 | W24 | L 4 | L14 | | | 2 |
| 22 SCHMUCKER Vivian | 1782 | 1812 | D 8 | L 3 | W34 | L17 | D27 | | | 2 |
| 23 COHEN Howard | 1832 | 1854 | W17 | L 2 | L 8 | L24 | W35 | | | 2 |
| 24 PUKEL Bernard | 1962 | 1956 | L 1 | W35 | L21 | W23 | L11 | | | 2 |
| 25 BALE Leslie | 1892 | 1905 | L10 | L16 | W27 | W33 | L18 | | | 2 |
| 26 MAC ZOLLEK Norbert | 1918 | 1916 | Dbye | D30 | W32 | L12 | L13 | | | 2 |
| 27 HERNANDEZ Hector | 1911 | 1892 | L 4 | D19 | L25 | W35 | D22 | | | 2 |
| 28 KREISMAN Bruce | 1865 | 1869 | L 2 | W34 | Dbye | L16 | D29 | | | 2 |
| 29 JONAITIS Algis | 1924 | 1918 | L13 | L10 | Dbye | W34 | D28 | | | 2 |
| 30 MONTNEY Russ | 1922 | 1912 | D16 | D26 | L15 | D31 | - | | | 1.5 |
| 31 CORNELISON Paul | 1842 | 1841 | L11 | L14 | W36 | D30 | L20 | | | 1.5 |
| 32 FISCHER Greg | 1936 | 1905 | D 3 | D 8 | L26 | L14 | L19 | | | 1 |
| 33 SHIELDS Philip | 2016 | 1981 | L 6 | W36 | L 5 | L25 | - | | | 1 |
| 34 BOUTON Barry | 1882 | 1836 | L21 | L28 | L22 | L29 | W36 | | | 1 |
| 35 WALDOCH Bert | 1788 | 1750 | L12 | L24 | Dbye | L27 | L23 | | | 0.5 |
| 36 MORE Eric | 1865 | 1802 | L18 | L33 | L31 | L19 | L34 | | | 0 |

Tim Just's Winter Open

January 3-4, 1987

| RESERVE SECTION | pre | post | | | | | | | | |
|----------------------|------|------|-----|------|-----|-----|-----|--|--|-----|
| 1 MARSHALL James | 1765 | 1832 | W22 | W19 | W10 | W 9 | D 3 | | | 4.5 |
| 2 HAMADANI Davar | 1770 | 1806 | W24 | D16 | W 7 | W 5 | W 9 | | | 4.5 |
| 3 MARTIN Don | 1822 | 1848 | W13 | W11 | D 5 | W17 | D 1 | | | 4 |
| 4 HAMEDANI Bakhshali | 1683 | 1711 | W14 | W25 | L 9 | W12 | W10 | | | 4 |
| 5 FLORES Joshua | 1700 | 1719 | W28 | W23 | D 3 | L 2 | W11 | | | 3.5 |
| 6 GRUENBERG Fred | 1642 | 1645 | W30 | W20 | L17 | D18 | W21 | | | 3.5 |
| 7 ZELINSKI Daryl | 1458 | 1493 | D26 | W29 | L 2 | W28 | W16 | | | 3.5 |
| 8 SMITH Colin | 1482 | 1527 | L10 | W34 | W32 | D15 | W17 | | | 3.5 |
| 9 ZABLOTSKY Edgardo | 1887 | 1868 | W18 | W32 | W 4 | L 1 | L 2 | | | 3 |
| 10 ROCKWELL David | 1729 | 1723 | W 8 | W35 | L 1 | W23 | L 4 | | | 3 |
| 11 HOLLAND Kirnes | 1681 | 1680 | W27 | L 3 | W16 | W24 | L 5 | | | 3 |
| 12 KERMAN Mark | 1573 | 1566 | L20 | W26 | W27 | L 4 | W24 | | | 3 |
| 13 KUHR Olaf | 1560 | 1557 | L 3 | L21 | W36 | W25 | W26 | | | 3 |
| 14 LANDAU Paul | 1444 | 1454 | L 4 | L33 | W34 | W29 | W23 | | | 3 |
| 15 SHAH Nirav | 1617 | 1610 | L25 | Dbye | W20 | D 8 | W18 | | | 3 |

| | | | | | | | | |
|---------------------|------|------|------|------|------|------|-----|-----|
| 16 ZIMMER Mike | 1362 | 1427 | W33 | D 2 | L11 | W19 | L 7 | 2.5 |
| 17 KITTSLY Scott | 1635 | 1642 | W21 | Dbye | W 6 | L 3 | L 8 | 2.5 |
| 18 HENDERSON Dale | 1485 | 1493 | L 9 | W30 | W25 | D 6 | L15 | 2.5 |
| 19 RANDLE Frank | 1626 | 1609 | W36 | L 1 | D28 | L16 | W27 | 2.5 |
| 20 CLARK Stephen | - | 1483 | W12 | L 6 | L15 | D22 | W35 | 2.5 |
| 21 BIEZYNSKI Stan | 1369 | 1403 | L17 | W13 | Dbye | W32 | L 6 | 2.5 |
| 22 BROWN Kevin | 1443 | 1442 | L 1 | L27 | W31 | D20 | W28 | 2.5 |
| 23 KEMPNER Robert | 1439 | 1421 | W34 | L 5 | W35 | L10 | L14 | 2 |
| 24 CALLAHAN Gerard | 1417 | 1434 | L 2 | W36 | W33 | L11 | L12 | 2 |
| 25 BRUENBERG Guy | 1191 | 1223 | W15 | L 4 | L18 | L13 | W34 | 2 |
| 26 SUARES Edward | 1462 | 1389 | D 7 | L12 | D29 | W30 | L13 | 2 |
| 27 BRODDE Jeff | 1349 | 1360 | L11 | W22 | L12 | W35 | L19 | 2 |
| 28 GINSBERG Mike | 1438 | 1412 | L 5 | W31 | D19 | L 7 | L22 | 1.5 |
| 29 JONES Thomas | - | 1129 | Dbye | L 7 | D26 | L14 | D31 | 1.5 |
| 30 WILLIAMS Robert | 1351 | 1313 | L 6 | L18 | Dbye | L26 | W36 | 1.5 |
| 31 SONG Richard | 948 | 1010 | L32 | L28 | L22 | Dbye | D29 | 1.5 |
| 32 RIFFLE James | 1558 | 1497 | W31 | L 9 | L 8 | L21 | - | 1 |
| 33 FAHRENHOLZ Steve | 1621 | 1589 | L16 | W14 | L24 | - | - | 1 |
| 34 JACOBS Darryl | 1054 | 1118 | L23 | L 8 | L14 | W36 | L25 | 1 |
| 35 ZOLLNER Matthew | 1138 | 1121 | WF | L10 | L23 | L27 | L20 | 1 |
| 36 BURTON Bill | 1299 | 1240 | L19 | L24 | L13 | L34 | L30 | 0 |
| 37 | - | - | LF | - | - | - | - | 0 |

The Reserve section of 37 players was topped by a first-second place tie between Jim Marshall and Davar Al Hamadani with 4.5-0.5 each. Their efforts allowed them to take home \$200 each.

This event also kicked off the start of a new system for calculating Illinois Tour Points. Every ICA member who participates in an Illinois Tour event and scores more than zero will get four points. The more events you play in, the more points you get. You no longer have to take first or second place in the various classes to win Tour points. See the January-February issue for details.

CHOW AND SMALL AT CHESS CENTER

CHOW, SMALL WIN
CHESS CENTER PAWNOGRAMA

by Bill Smythe

Chicago Chess Center Grand Prix Pawnorama Jan 3-4, 1987

| | | | | | | | |
|----------------------|------|-----|------|-----|------|------|-----|
| 1 CHOW Albert | 2431 | W30 | W 8 | W 9 | W 5 | D 2 | 4.5 |
| 2 SMALL Greg | 2306 | W16 | W14 | W15 | W 3 | D 1 | 4.5 |
| 3 MARTINOVSKY Eugene | 2415 | W15 | W18 | W14 | L 2 | W 8 | 4 |
| 4 HOSHOR Mark | 2292 | W27 | W13 | L 5 | W12 | W10 | 4 |
| 5 UMEZINWA George | 2232 | W29 | W11 | W 4 | L 1 | D 6 | 3.5 |
| 6 SCHILLER Eric | 2326 | W21 | L12 | W17 | W 7 | D 5 | 3.5 |
| 7 DANDRIDGE Marvin | 2303 | W20 | W10 | D12 | L 6 | D11 | 3 |
| 8 ACOSTA Mariano | 2238 | W24 | L 1 | W19 | W13 | L 3 | 3 |
| 9 CHACHERE Lawrence | 2273 | W19 | W17 | L 1 | L10 | W12 | 3 |
| 10 RONNEBERG Erik | 2104 | W25 | L 7 | W27 | W 9 | L 4 | 3 |
| 11 COLIAS Bill | 2366 | W28 | L 5 | D21 | W16 | D 7 | 3 |
| 12 STEIN Peter | 2196 | W31 | W 6 | D 7 | L 4 | L 9 | 2.5 |
| 13 CONDRON James | 2088 | W23 | L 4 | W18 | L 8 | D14 | 2.5 |
| 14 SCOTT Gene | 2116 | W26 | L 2 | L 3 | W18 | D13 | 2.5 |
| 15 BERNAL Luis | 2045 | L 3 | W22 | L 2 | W23 | D17 | 2.5 |
| 16 FORRO Virgilio | 1926 | L 2 | Dbye | W25 | L11 | W24 | 2.5 |
| 17 GOLDMAN Jonathan | 2071 | W32 | L 7 | L 6 | D19 | D15 | 2 |
| 18 JOHNSON Paul | 1732 | W22 | L 3 | L13 | L14 | W25 | 2 |
| 19 NICHOLSON Donn | 1779 | L 9 | W29 | L 8 | D17 | D20 | 2 |
| 20 JORDAN Roland | 1925 | L 7 | D25 | W24 | L22 | D19 | 2 |
| 21 GAZMEN Bert | 1998 | L 6 | W31 | D11 | Dbye | - | 2 |
| 22 TOMAS John | 2247 | L18 | L15 | W30 | W20 | - | 2 |
| 23 HICKS Charles | - | L13 | L27 | W32 | L15 | W29 | 2 |
| 24 WATKINS Michael | 1591 | L 8 | W30 | L20 | D26 | L16 | 1.5 |
| 25 LYDN Mark | - | L10 | D20 | L16 | W29 | L18 | 1.5 |
| 26 CARSON Dave | 1406 | L14 | L28 | L29 | D24 | Dbye | 1.5 |
| 27 STAPAY Tim | 1829 | L 4 | W23 | L10 | LF | - | 1 |
| 28 NAYLOR Sam | 2005 | L11 | W26 | - | - | - | 1 |
| 29 ADKINS James | - | L 5 | L19 | W26 | L25 | L23 | 1 |
| 30 PAULSEN Brian | - | L 1 | L24 | L22 | - | - | 0 |
| 31 UNTERHYER Abraham | 1540 | L12 | L21 | - | - | - | 0 |
| 32 PICL Bill | - | L17 | - | L23 | - | - | 0 |

Due to some minor negligence on the part of one organizer and some unnecessary stubbornness on the part of another, Illinois chess players were forced to choose between two fine events on the weekend of January 3-4, 1987. One of these, the Tim Just Winter Open, is covered elsewhere in this issue. The other, the Chicago Chess Center Grand Prix Pawnorama, attracted eleven masters, seven experts, nine lettered players, and five unratets to the Chess Center on Chicago's north side.

Albert Chow and Greg Small split top money, drawing their last round game after vanquishing all other pretenders. Dr. Eugene Martinovsky and Mark Hoshor followed at 4-1. Top Expert was Erik Ronneberg, who lost to Hoshor and to the dangerous and unpredictable Marvin Dandridge.

Virgilio Forro took home the A prize, while class B saw a split between Paul Johnson and co-tossing Donn Nicholson. That these players won class B with scores of 2-3 testifies to the strength of the tournament.

Jules Stein organized while Ray Socha directed. Ratings shown here are those displayed on the wallchart at the tournament.

CHUCK KRAMER & DR. MARTINOVSKY TIE WITH GRANDMASTERS IN MILWAUKEE

William E. Martz Memorial

33rd NORTH CENTRAL OPEN

| ENO | RNK | PLAYER'S NAME | ST | RTG. | 1 | 2 | 3 | 4 | 5 | 6 | 7 | TOT | PRIZE MON |
|-----|-----|-------------------------|----|------|-------|-------|-------|-------|-------|-------|-------|-----|------------------|
| | 001 | DZINDZICHASHVILI, ROMAN | DC | 2613 | W-076 | W-091 | W-014 | D-008 | W-020 | W-003 | D-002 | 6.0 | Tie 1-5 545.00 |
| | 002 | BASS, LEONID | NY | 2530 | W-043 | W-036 | W-069 | D-008 | W-066 | W-007 | D-001 | 6.0 | Tie 1-5 545.00 |
| | 003 | BISCUIER, ARTHUR | NY | 2415 | W-045 | W-079 | W-023 | W-019 | W-011 | L-001 | W-012 | 6.0 | Tie 1-5 545.00 |
| | 004 | MARTINOVSKY, EUGENE | IL | 2431 | W-056 | W-034 | L-019 | W-065 | W-013 | W-033 | W-006 | 6.0 | Tie 1-5 545.00 |
| | 005 | KRAMER, CHARLES | IL | 2310 | W-059 | L-057 | W-114 | W-015 | W-091 | W-040 | W-030 | 6.0 | Tie 1-5 545.00 |
| | 006 | ZLOTNIKOV, MIKHAIL | NJ | 2371 | W-102 | W-024 | W-026 | D-001 | W-008 | W-011 | L-004 | 5.5 | Tie 6-7 150.00 |
| | 007 | ZELKIND, EDUARD | MN | 2343 | W-046 | D-025 | W-039 | W-009 | W-028 | L-002 | W-032 | 5.5 | Tie 6-7 150.00 |
| | 008 | BREIDER, JONATHAN | WI | 2199 | W-036 | W-125 | W-115 | D-002 | L-006 | W-070 | W-027 | 5.5 | 1-2 2100 137.50 |
| | 009 | LJASCHENKO, GEORGE | WI | 2120 | W-081 | W-114 | D-085 | L-007 | W-106 | W-035 | W-020 | 5.5 | 1-2 2100 137.50 |
| | 010 | PENKALSKI, DAVID | WI | 2265 | W-056 | W-015 | L-011 | D-032 | D-035 | W-049 | W-036 | 5.0 | |
| | 011 | PLAGEMANN, TODD | IL | 2124 | W-107 | W-060 | W-010 | D-040 | L-003 | W-065 | D-017 | 5.0 | |
| | 012 | VAN HETER, LESTER | IN | 2350 | W-064 | L-021 | W-055 | W-024 | W-050 | W-034 | L-003 | 5.0 | |
| | 013 | YOUNKER, JR., LARRY | WI | 2127 | W-067 | L-039 | W-043 | W-054 | L-004 | W-042 | W-034 | 5.0 | |
| | 014 | STEIN, PETER | MN | 2185 | W-066 | W-137 | L-001 | L-035 | W-045 | W-039 | W-051 | 5.0 | |
| | 015 | YOUNGLE, DOUGLAS | WI | 2088 | W-067 | L-010 | W-089 | L-005 | W-046 | W-090 | W-041 | 5.0 | 1st 2000 175.00 |
| | 016 | TRUELSON, NELS | MN | 2325 | D-061 | W-092 | W-072 | W-041 | L-017 | D-036 | W-033 | 5.0 | |
| | 017 | KOVALIC, JEFF | WI | 1824 | W---- | W-136 | W-031 | W-022 | W-016 | L-006 | D-011 | 5.0 | 1st 1800 175.00 |
| | 018 | MOORE, THOMAS S. | WI | 2346 | D-063 | D-042 | W-060 | W-115 | L-033 | W-056 | W-050 | 5.0 | |
| | 019 | BLANKENAU, MIKE | NE | 2157 | W-096 | W-035 | W-004 | L-003 | L-040 | D-060 | W-072 | 4.5 | |
| | 020 | ANGOS, ALEX | WI | 2267 | W-104 | W-046 | D-041 | W-051 | L-001 | W-025 | L-009 | 4.5 | |
| | 021 | JASUNIENAS, LEONARD | WI | 2095 | W-136 | W-012 | D-066 | D-085 | W-037 | L-030 | D-026 | 4.5 | 2nd 2000 14.28 |
| | 022 | HOLLIMAN, BOB | MO | 2136 | W-086 | W-052 | D-040 | L-017 | W-072 | L-027 | W-060 | 4.5 | |
| | 023 | ZELKIND, MIKE | MN | 2160 | W-122 | W-064 | L-003 | D-039 | D-042 | W-052 | D-024 | 4.5 | 1st Junior 50.00 |
| | 024 | GENLMOFF, FRED | WI | 2099 | W-099 | L-006 | W-046 | L-012 | W-064 | W-086 | D-023 | 4.5 | 2nd 2000 14.28 |
| | 025 | GOMEZ, AUGUSTIN | WI | 2073 | W-062 | D-007 | W-066 | L-066 | W-063 | L-020 | W-056 | 4.5 | 2nd 2000 14.28 |
| | 026 | MAC ARTHUR, JOHN | NE | 2126 | W-116 | W-055 | L-006 | D-047 | D-039 | W-078 | D-021 | 4.5 | |
| | 027 | KNUTSON, GREG | NI | 2029 | W---- | W-108 | W-063 | D-037 | D-069 | W-022 | L-008 | 4.5 | 2nd 2000 14.28 |
| | 028 | GEMSLER, KEVIN | IL | 2149 | W---- | W-061 | W-106 | W-057 | L-007 | L-032 | W-055 | 4.5 | |
| | 029 | GEDER, JOHN | WI | 2046 | W-126 | L-068 | L-038 | W-088 | D-059 | W-104 | W-067 | 4.5 | 2nd 2000 14.28 |
| | 030 | BRASKET, CURT | MN | 2344 | L-065 | W-141 | W-080 | X---- | D-036 | W-021 | L-005 | 4.5 | |
| | 031 | BEHM, DONALD | WI | 2036 | W---- | W-101 | L-017 | W-088 | D-066 | D-037 | W-083 | 4.5 | 2nd 2000 14.28 |
| | 032 | HORTIMER, GERALD | SO | 2039 | W---- | W-142 | W---- | D-010 | W-063 | W-028 | L-007 | 4.5 | 2nd 2000 14.28 |
| | 033 | COOPER, JEFF | WI | 2116 | W-105 | L-065 | W-045 | W-090 | W-016 | L-004 | L-016 | 4.0 | |
| | 034 | OREIDER, MICHAEL | NE | 2102 | W-094 | L-004 | W-084 | W-129 | W-085 | L-012 | L-013 | 4.0 | |
| | 035 | PALMQUIST, WAYNE | IL | 1987 | W-110 | L-019 | W-113 | W-014 | D-010 | L-009 | D-037 | 4.0 | 1-2 1900 45.83 |
| | 036 | SCHROEDER, TONY | IL | 2112 | W-133 | L-002 | W-053 | W-044 | D-030 | D-016 | L-010 | 4.0 | |

How many Illinois chess players can still remember those days back in the 1950s when the Milwaukee tournaments consistently dwarfed the biggest Chicago events? It was only after the 1963 U.S. Open in Chicago that Illinois chess began to come of age.

The annual Thanksgiving weekend NORTH CENTRAL OPEN dates back to the 1950s and frequently draws an attendance of 130-140 players from throughout the Midwest. This past North Central was dubbed the Bill Martz Memorial (in honor of Wisconsin's strongest master ever) and the prize fund was increased to a very attractive \$5225 thanks to a contribution from the Martz family.

The tournament was held in Downtown Milwaukee at the Howard Johnson's Motel and drew 137 players, including a number of grandmasters and senior masters looking to share in the loot. Illinois was well represented with about 20 entrants from our state.

Illinois masters Chuck Kramer and Dr. Martinovsky were very successful at the NORTH CENTRAL and we offer them our congratulations! Following are 2 of Chuck Kramer's games against Minnesota Champ Curt Brasket and Illinois Senior Master Andrew Kar-klins. Very impressive!

White: Curt Brasket (2344).
Black: Chuck Kramer (2310).

North Central Open / Martz Memorial, November 1986, round 7. Annotated by Kramer.

1 d4

In earlier rounds Brasket played 1 c4 which gives White the chance to slip into the Queen's Gambit Declined while avoiding the Queen's Gambit Accepted. Of course, Brasket is also well versed in the English opening.

1 Nf6
2 c4 e6
3 Nc3 Bb4
4 Qc2 O-O
5 Bg5

In the same round Board 1 saw Bass-Dzindzichashvili continue with the more popular 5 a3 Bxc3+ 6 Qxc3 and the game was eventually drawn.

5 h6
6 Bh4 b6!?

6....c5 gives Black easy equality but I was interested in a more complex position.
7 a3 Bxc3+
8 Qxc3 Bb7
9 f3!?

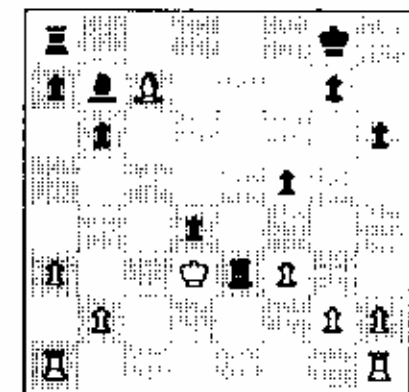
10 e3 bNd7
11 Bd3 Re8
12 Ne2 e5!
13 cxd5 Nxd5
14 Bxd8 Nxc3
15 Bxc7?!

Better is 15 bxc3 to bolster the White center.

15 Nxe2
16 Kxe2

Not 16 Bxe3 exd4 17 exd4 Ba6.

16 exd4
17 e4 f5
18 e5
Not 18 Bb5 fxe4!
18 Nxe5
19 Kd2 Nxd3!
20 Kxd3 Re3+



21 Kxd4
If 21 Kd2 Ba6! and Black penetrates decisively to the seventh rank. White's attempts to cover e2 lose material, such as 22 (either) Re1 Rd3+ 23 Kc2 (23 Ke2 Rc3+) Rc8 24 Re7 Re3! 25 Rd7 (25 Re1 Rxe1) Bb5 26 Rd8+ Re8! 27 Rxe8+ Bxe8.

21 Re2
22 hRg1 Rc8
23 aRc1 Rxb2
24 h4 Rb3
25 Bd6 Rd8
26 Ke5 Kb5+
27 Ke6 BcB+
28 Ke7

28 Rxc8 is best, but the ending is completely hopeless. White prefers to die with his boots on.

28 Rd7+
29 Ke8

I was hoping for 29 Ke6 Rc7 mate!

29 Rxd6
30 0-1



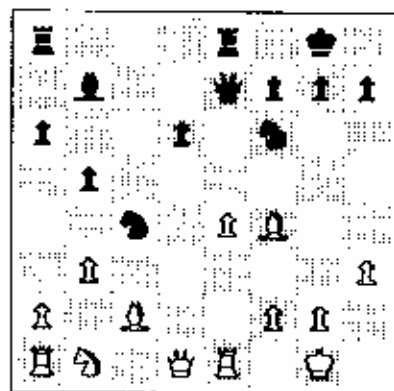
White: Chuck Kramer (2310).
Black: Andrew Karklins (2372).

North Central Open / Martz Memorial, November 1986, round 6. Annotated by Kramer.

1 e4 e5
2 Nf3 Nc6
3 Bb5 a6
4 Ba4 Nf6
5 O-O Be7
6 Re1 b5
7 Bb3 d6
8 c3 O-O
9 h3 Na5
10 Bc2 c5
11 d4 cxd4
12 cxd4 exd4!?

This is one of Karklins' provocative, home-cooked opening variations which he uses so frequently. He used it to beat me at the Chess Center Grand Prix in October.

13 Nxd4 Bb7
14 Nf5 Re8
15 Bf4 Nc4
16 Nxe7+ Qxe7
17 b3



17 Ne5

Karklins used nearly an hour before deciding on this obvious move. Why? He was calculating the consequences of sacking either of the minor pieces on e4 and following up withQf6 hitting the a-Rook. It seems in most lines that Black emerges with a Rook and several Pawns for two minor pieces. However, when the smoke clears the White minor pieces become very strong. Karklins and I (along with Dzindzi) spent some time looking at it and never did completely sort out the complications. Perhaps that chess animal Miroseq Zog could show us the light.

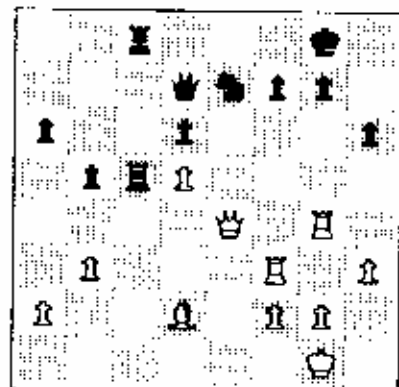
18 Nc3 aRc8
19 Nd5 Bxd5
20 exd5 Qb7
21 Be4 Rc5
22 Be3 Rc7

Not 22....Nxe4 23 Bxc5 Nxc5 24 f4!

23 Bg5 Nxe4
24 Rxe4 eRc8
25 Qd4 Rc5
26 Rd1 Ng6
27 Rd3 Ne5
28 Rd1 Ng6
29 Rd3 h6?

Karklins thought very hard before deciding to avoid the draw by repetition. But the move chosen weakens the Black Kingside and White quickly builds a crushing attack. Also, Black has only 14 minutes left for his final 16 moves.

30 Bd2 Ne7
31 Rg4 Nf5
32 Qe4 Qd7
33 Rf3 Ne7



Chuck Kramer vs. Andrew Karklins
(continued)

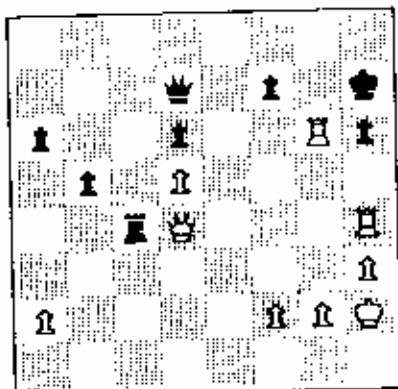
34 Bxh6?

A very stupid mistake!!
Correct is 34 Rxg7+!! Kxg7
35 Qd4+ and Black gets mated
in all lines because of his
weak dark squares. I saw this
during the game but with time
growing short I was unable to
verify all of the lines 100%.
So instead I chose the safe
(and stupid!) 34 Bxh6.

34 Ng6
35 Qd4??

An incredible blunder!! I
simply forgot the Bishop was
hanging and continued to work
on the weak dark squares
around the Black King. This
can be directly attributed to
my confusion on the previous
move. Now White has nothing
better than to attack and try
to confuse Black, who has only
4 minutes for his next 11
moves!

35 gxh6
36 Rf6 Kh7
37 Rh4! Rc1+
38 Kh2 BRc4
39 bxc4 Rxc4
40 Rxc6!



The position is now equal and
the game should have continued
40....fxg6 41 Qf6 Rxf6
42 Bxh4 with a drawn ending.
Instead, with only 80 seconds
left for his next 6 moves,
Black walks into a snap mate.
Karklins told me he thought I
was trying for perpetual
check. Indeed, after
40....Rxd4 41 gRxh6+ Kg7
42 Rh7+ Black must allow the
perpetual because moving the
King away gives White a
winning ending after
42....Kf8 43 Rxd4. So it
seems Black missed the mate
threat because he thought
White had achieved a drawn
position. Oh well, he who
blunders last always blunders
worst.

40 Rxd4???
41 hRxh6+ mate

U.S. SENIOR OPEN

June 14-19, 1987

San Diego Princess — A Princess Cruises Resort

\$13,000 Cash Prizes Guaranteed

**Plus 19 Trophies, Six Master Quartz Clocks
And Kolty's Latest Book *In The Dark***

- National titles awarded in all classes
- Open to all 50 or older by June 14
- Entry Fee \$50 if rec'd by 5/13.
- Excellent room rates - single or double \$55
reserve by 5/13; 1-800-344-2626

ATTENTION MIDWEST SENIORS!

During the six years the U.S. Senior Open
has been in existence, the Midwest has produced
a champion on two occasions. The very first
U.S. Senior Open Champion was Rea Hayes of
Cincinnati Ohio and in 1985 the honor went to
Dr. Eugene Martinovsky of Oak Brook, IL. Will
the 1987 Champion come again from the Midwest?

This year the event will be held from June
14 to 19 at the luxurious San Diego Princess,
a Princess Cruises Resort.

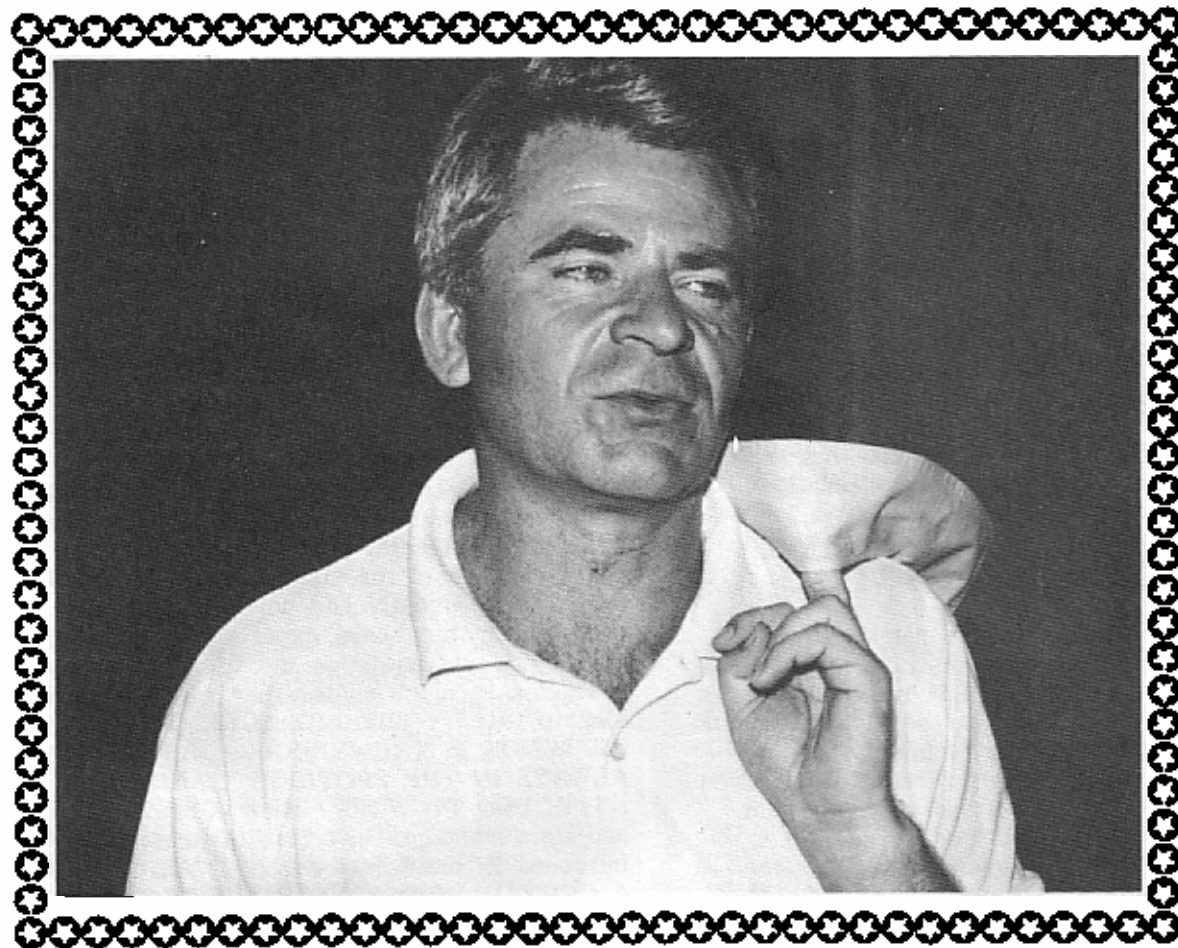
The prize fund will be a whopping \$13,000
with a grand prize of \$1500 and a first place
prize of \$1,000 in each class, a novel approach.
In addition there will be 13 first and second
place trophies in each class plus another
innovation -- trophies for best performance in
six age groups! Six Master Quartz Clocks will
be awarded to the biggest upset in each class
and the first and second place brilliancy
prizes in each round will be George Koltanowski's
latest book, *In The Dark*. Everyone will have
an opportunity to win a prize! Never before
has a prize fund for the U.S. Senior Open been
this large -- it is more than six times that
of any previous Senior event. This was made
possible thanks to a special gift from George
W. Church, Jr.

Now a few words about the site. The San Diego
Princess is located on Vacation Isle on Mission
Bay. It's 43 acres are covered with lush tropical
greenery, colorful flowers and blue lagoons.
The villas and suites have garden, lagoon or
Bay settings. There are 8 tennis courts, 5 out-
door swimming pools and a spa, sailing, cycling
and jogging paths and a mile of beach on which
to relax. It is 10 minutes from the airport
and within a short distance of Sea World and
many other tourist attractions. The villas
normally rent for \$95, but we were fortunate to
get a special rate of \$55. for single or double!

BORIS SPASSKY

AT OAK PARK CHESS CLUB

BY KEN MARSHALL



With an exuberant "e4 on every board" former World Chess Champion Boris Spassky began his simultaneous exhibition against 42 opponents at the Oak Park-Forest Park Chess Club Tuesday evening August 19th, 1986. Seven hours later, at 2:30 AM Spassky emerged with 34 wins, 8 draws, 0 losses. Obviously, Spassky takes the business of winning these simul games very seriously! Although he had taken only one 5-minute break, Spassky finished strong and in good spirits, even engaging in some intricate post-mortems with his last few opponents.

Preliminary contact for the Oak Park Simul took place at the New Jersey-based U.S. Open in early August. Boris was scheduled to be in Los Angeles a week after the Open ended, so he was thus able arrange a stop in Chicago on his way to the West Coast. Club President Chris Musgrave and Boris' agent reached a satisfactory financial agreement, and the Ex-World Champion arrived at O'Hare Airport on the evening of August 18th. Because I have

not only an extra room but also an understanding wife, I was elected to host Spassky at my home in Lombard during his two and one-half day visit. This arrangement promised to save the Club hotel and per diem expenses and also facilitate the media coverage that I had orchestrated. I wondered how Boris would react to staying in a private home and to the presence of our two young children, but my uneasiness vanished when I met him. Spassky turned out to be a very easy-going, friendly, and cultivated man. Boris indicated that after two weeks at the hotel in New Jersey he was glad to be staying with us. Boris has a 6-year-old son and he immediately took to my son Steven, who is 4.

As you may know, Spassky and his wife and son live in France. Boris said that the most difficult part of his 6 week American sojourn was being separated from his family. "My son knows how to play chess, but he prefers to go skiing. Whether or not he wants to become more involved with chess is

strictly up to him." Boris said that his major reason for playing in the U.S. Open and giving a number of American simulms was to help finance a vacation home which the Spasskys are building in the French Alps.

Spassky arrived weary from his participation at the U.S. Open where he tied for 2nd. He was less than eager for the media interviews which I had arranged over the following two days, but Chris Musgrave and I explained how important this media publicity could be for chess in our area. In view of the rarity of the visits to Chicago of internationally renowned chess personalities, Spassky decided to go ahead with the interviews tired-or-not. The result was a lengthy article in both the CHICAGO TRIBUNE and the SUN TIMES and a "live" interview on radio station WBBM. Smaller newspapers in the Western suburbs also had long articles complete with photos. Television coverage was provided by WBBM-TV Channel 2, which aired video tape of the simul on its 10 PM newscast.

Spassky was surprised to hear that we were charging \$30 for the simul. It seems that the Los Angeles simulms were charging \$65 and \$100 per board! We explained to Boris that we were holding the simul not as a money-making venture, but as a service to the chess community. We certainly wanted to avoid making the Spassky appearance a "rich man's simul" by setting the entry fee any higher than necessary. We learned from Boris that the \$1400 fee that we were paying is considerably less than he usually receives in a big European or American city.

SPASSKY: THE SIMUL

On Tuesday Boris prepared for the evening simul by playing Tennis before resting for a few hours. He also did the TRIBUNE and WBBM-radio interviews Tuesday afternoon. We arrived at the Mohr Community Center at 6:30 PM for the pre-simul press conference. Watching the grandmaster being interviewed by a flock of reporters, many of the players began to gather around, hoping to ask Spassky questions. Spassky decided to let the players join in, and he cheerfully answered queries regarding Fischer, Kasparov, Karpov, and his life in France.

At the outset of the simul Chris Musgrave and I pointed out to Spassky those of his opponents sporting master and expert ratings. An hour and a half later Spassky offered his first draw of the evening to Master Greg Bungo. Other players who eventually drew were Luis Bernal, Nelson Campbell, Bob Stoltz, Jesus Halido, Warren Polleck, and Jim Warren. Jim Warren's draw was the latest in a streak which includes similar results with Bobby Fischer, Tigran Petrosian, and Pal Benko!

Spassky is a slow and deliberate simul player compared with many other grandmasters and on several occasions he spent 3 or 4 minutes studying complicated positions. At various points Spassky seemed to be losing 2 or 3 games, but he made a good comeback and managed to stave off defeat in every case. His closest call was against A-player Jeff Pluhar. Spassky finally had equalized the game at about 2:15 in the morning when Pluhar "fell asleep and blundered his queen". In sportsmanlike manner, Spassky refused to take the queen and offered Jeff the draw.



Chris Musgrave offers Spassky a word of advice: "Watch out for Greg Bungo; he's a Master."

SPASSKY: THE MAN

The day after the exhibition Spassky turned down my invitation to tour Chicago, preferring to spend his time playing tennis, resting, and reading. He devoted several hours to the OXFORD COMPANION TO CHESS which he apparently had not seen before. He also talked about his chess experiences and other chess topics. Boris said that his life as a former world champion is much easier than when he held the championship title. "THE PRESSURE ON THE WORLD CHAMPION IS TREMENDOUS. AS CHAMPION, I WAS ALWAYS IN THE SPOTLIGHT, AND I WAS ALWAYS EXPECTED TO WIN". Being Champion, however, had its advantages in terms of prestige and political influence in the Soviet Union. "AS CHAMPION, I HAD A CERTAIN AMOUNT OF FREEDOM NOT NORMALLY GRANTED TO OTHER SOVIET GRANDMASTERS. I WAS ABLE TO TAKE CERTAIN STANDS WITHOUT FEAR OF POLITICAL REPRISAL," Spassky cited his refusal to sign "open letters" condemning western ideas and policies. Boris also mentioned his attempts to protect Ludek Pachman, the Czech grandmaster who was active in the "Prague Spring" political liberalization of 1967-1968. who found himself in serious political trouble after the Soviet invasion of Czechoslovakia in August of 1968.

"AS LONG AS I WAS WORLD CHAMPION, I WAS RELATIVELY IMMUNE TO POLITICAL PRESSURES. ONCE I LOST THE TITLE, HOWEVER, THE SOVIET ESTABLISHMENT PRESENTED ME WITH A BILL. AS THE PRICE FOR MY IDEOLOGICAL INDEPENDENCE. I PAID THIS BILL BY BEING KEPT FROM COMPETING IN INTERNATIONAL TOURNAMENTS FOR 9 MONTHS. THIS PUNISHMENT WAS DIFFICULT TO TAKE, SINCE THE ONLY REAL REMEDY FOR A DEFEAT SUCH AS I SUFFERED AT THE HANDS OF BOBBY FISHER IS TO KEEP PLAYING STRONG COMPETITION, SO THAT DISCOURAGEMENT DOESN'T SET IN AND COMPETITIVE EDGE BE LOST."



Spassky studies the position against expert Alan Watson as Ray Pope and other spectators look on. Simul organizer Ken Marshall is deep in thought (lower right corner).

Spassky hasn't seen Fischer since 1972, but he keeps in touch with Fischer periodically by phone and they correspond by mail. Spassky was hoping to meet with Fischer for dinner while in Los Angeles.

Boris had some interesting advice regarding how to play chess well: According to Boris, the key element in playing a game of chess is knowing when "THE CRITICAL MOMENT" is at hand. "IN EVERY GAME THERE IS A TIME WHEN THE CORRECT PLAN ABSOLUTELY MUST BE ADOPTED, AND THE CORRECT MOVE MUST BE MADE. THE ABILITY TO BE ABLE TO RECOGNIZE THAT MOMENT -- TO KNOW WHEN THE GAME IS ON THE LINE -- IS FUNDAMENTAL TO SUCCESS IN CHESS."

Although Boris does not care for speed chess, he agreed to play a few games with Chris Musgrave and myself. He trounced us so easily that

I was actually happy that it took him 80 or 90 seconds on his clock to beat me in one of the games!

Boris feels that in tournament play he has lost some of the "competitive-edge" of his youth. "AT THE U.S. OPEN, I DID NOT HAVE THE WILL TO WIN EVERY GAME. I PLAYED A FEW SHORT DRAWS, SOMETHING I WOULD NEVER HAVE DONE IN MY YOUNGER DAYS."

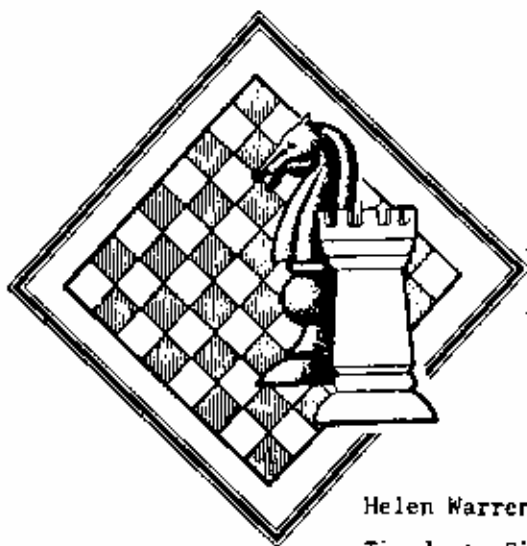
Spassky at age 49 is still in excellent physical and mental shape. "I TRY TO STAY ACTIVE, AND I ENJOY SKIING AND PLAYING TENNIS. TO PLAY CHESS AT THE GRANDMASTER LEVEL, GOOD PHYSICAL CONDITION IS AS IMPORTANT AS TALENT AND CHARACTER." Boris Spassky may have to work at it to stay physically fit, but he clearly continues to exhibit the personality, character, and talent of a "world-class" grandmaster.

MASTER CHALLENGE

JUNE 12, 13, 14

Mohr Community Center,
7650 Jackson Blvd., Forest Park, Ill.

\$ 3175 GUARANTEED



Postal Chess

Helen Warren, Director
Tim Just, Dir., 1984

REGION VII TOP TEN

DAVE TAYLOR (IL).....1126
ANDY AMELUNG (MO).....1112
MAX ZAVANELLI (IL).....1104
ADAM LIEF (CA).....1068
DAVID FIELD (IA).....1065
MITCH WEISS (IA).....1008
WALTER MILBRATZ (CA).....1003
JIM WARREN (IL)..... 975
FRED BENDER (WI)..... 968
LON WALHOUT (IL)..... 950

| | | | |
|--------------------|------|--------------------|------|
| AMELUNG, A (MO) | 1112 | MURMI, R (IA) | 727 |
| ANDERSON, A (IL) | 859 | OLTMAN, T (IL) | 818 |
| ANDERSON, R (NE) | 841 | PETERSON, P (IL) | 787 |
| BACHLER, K (IL) | 872 | POPE, R (IL) | 741 |
| BAUMANN, H (IL) | 747 | PRAY, R (IA) | 778 |
| BELICS, D (MO) | 818 | RAKIREZ, E (IL) | 781 |
| BENDER, F (IL) | 868 | REARDON, J (IL) | 840 |
| BETHEL, R (IL) | 788 | ROTHSCHILD, I (IL) | 894 |
| BOZZELL, V (IA) | 821 | SANDER, O (IL) | 746 |
| BROWN, J (IA) | 800 | SANDFORD, C (IL) | 937 |
| BUSTAMANTE, A (IL) | 789 | SCHREMSER, T (IL) | 768 |
| CHANEY, R (IA) | 810 | SCORZA, S (IA) | 828 |
| COLLISTER, C (IL) | 847 | SEDLACK, S (IL) | 851 |
| CONNOR, P (IL) | 830 | SEXTON, C (IA) | 769 |
| CROUSE, T (IA) | 782 | SILONETS, A (NE) | 839 |
| DANGDY, F (IL) | 763 | SMITH, M (IL) | 680 |
| DAVIES, J (MO) | 808 | SMITH, R (NE) | 778 |
| DEAKIN, J (IL) | 778 | SOGIN, L (IL) | 700 |
| EICHORN, G (IA) | 883 | SPITZNAGEL, L (IL) | 774 |
| EWALT, E (MO) | 768 | STEVENSON, D (NE) | 827 |
| FIELD, D (IA) | 1085 | SWICEGOOD, J (IL) | 808 |
| FISHER, B (IL) | 783 | TAYLOR, D (IL) | 1126 |
| FOLEY, J (IL) | 738 | THOMPSON, M (IA) | 843 |
| GAPUZ, W (IL) | 850 | URGONA, C (IL) | 728 |
| GENSLER, K (IL) | 789 | WALHOUT, D (IL) | 950 |
| GLASCOCK, D (OK) | 837 | WALHOUT, P (IL) | 881 |
| GOTZ, J (IL) | 884 | WARREN, H (IL) | 730 |
| GUSTAFSON, G (IL) | 848 | WARREN, J (IL) | 975 |
| HAGEMANN, W (MO) | 738 | WEISS, M (IA) | 1008 |
| HARPER, R (MO) | 708 | WERNER, L (IL) | 825 |
| HEALY, S (IL) | 689 | WHITE, D (MO) | 800 |
| HEIMBAUGH, M (IA) | 728 | WHITE, D (MO) | 800 |
| HINTERLONG, D (IL) | 800 | YOUNG, L (IL) | 780 |
| HOBSON, H (IL) | 717 | ZAVANELLI, M (IL) | 1104 |
| HOUSH, K (IL) | 788 | ZIEGLER, K (IL) | 763 |
| JABLONOV, V (IL) | 820 | | |
| JAMASON, R (IL) | 845 | | |
| JAMISON, L (IL) | 700 | | |
| JOHNSON, B (IL) | 764 | | |
| JOHNSON, J (IA) | 815 | | |
| JONES, M (IL) | 732 | | |
| JUST, T (IL) | 833 | | |
| KLAUS, J (IA) | 768 | | |
| LAROSE, M (IL) | 722 | | |
| LAWRENCE, B (IL) | 800 | | |
| LENKE, D (IA) | 770 | | |
| LEWIS, S (MO) | 742 | | |
| LIEF, A (CA) | 1068 | | |
| LOONIS, H (MO) | 740 | | |
| LOVEN, D (IL) | 811 | | |
| MARTIN, D (IL) | 704 | | |
| MCKINNEY, C (IL) | 737 | | |
| MILBRATZ, W (IL) | 1003 | | |
| NICKS, J (MO) | 784 | | |

1984 Region VII Postal Championship
By Tim Just, tournament director

The results for the 1984 Preliminaries are now in and the results can be seen in the crosstables below.

Winners of the 3 sections were Max Zavanelli, David Taylor, and Adam Lief. The top 2 finishers move into the Finals.

Partial results todate in the Finals follow.

| 84-1 PLAYERS | 1 | 2 | 3 | 4 | 5 | 6 | 7 | SCORE |
|----------------|---|---|-----|---|---|-----|---|---------|
| 1 Zavanelli, M | | 1 | 1 | 1 | 1 | 1 | 1 | 6-0 |
| 2 Martin, D | 0 | | 0 | 0 | 0 | 0 | 0 | 0-6 |
| 3 Klaus, J. | 0 | 1 | | 1 | 0 | 1/2 | 1 | 3.5-2.5 |
| 4 Pray, R. | 0 | 1 | 0 | | 0 | 0 | 0 | 1-5 |
| 5 Fawbush, G. | 0 | 1 | 1 | 1 | | 1 | 1 | 5-1 |
| 6 Peterson, P. | 0 | 1 | 1/2 | 1 | 0 | | 0 | 2.5-3.5 |
| 7 Warren, H. | 0 | 1 | 0 | 1 | 0 | 1 | | 3-3 |

| 84-2 PLAYERS | 1 | 2 | 3 | 4 | 5 | 6 | 7 | SCORE |
|---------------|-----|---|-----|---|---|-----|---|--------|
| 1 Taylor, D. | | 1 | 1 | 1 | 1 | 1/2 | 1 | 5.5-.5 |
| 2 Bethal, R. | 0 | | 1 | 0 | 0 | 1 | 0 | 2-4 |
| 3 Stotler, R. | 0 | 0 | | 0 | 0 | 1/2 | 0 | .5-5.5 |
| 4 Amelung, A. | 0 | 1 | 1 | | 1 | 1 | 1 | 5-1 |
| 5 Baumann, H. | 0 | 1 | 1 | 0 | | 0 | 0 | 2-4 |
| 6 Gotz, J. | 1/2 | 0 | 1/2 | 0 | 1 | | 0 | 2-4 |
| 7 Walhout, P. | 0 | 1 | 1 | 0 | 1 | 1 | | 4-2 |

| 84-3 PLAYERS | 1 | 2 | 3 | 4 | 5 | 6 | 7 | SCORE |
|------------------|---|-----|-----|---|---|-----|-----|---------|
| 1 Hageman, W. | | 0 | 0 | 0 | 0 | 0 | 0 | 0-6 |
| 2 Warren, J. | 1 | | 0 | 1 | 1 | 1/2 | 0 | 3.5-2.5 |
| 3 Walhout, D. | 1 | 1 | | 1 | 1 | 0 | 1/2 | 4.5-1.5 |
| 4 Bustamante, A. | 1 | 0 | 0 | | 1 | 1 | 0 | 1-5 |
| 5 Just, T. | 1 | 0 | 0 | 0 | | 0 | 0 | 1-5 |
| 6 Lief, A. | 1 | 1/2 | 1 | 1 | 1 | | 1 | 5.5-.5 |
| 7 Field, D. | 1 | 1 | 1/2 | 1 | 1 | 1 | | 7.5-1.5 |

| 84-F PLAYERS Finals | 1 | 2 | 3 | 4 | 5 | 6 | 7 | SCORE |
|---------------------|---|-----|---|-----|---|-----|---|-------|
| 1 Zavanelli -- 1104 | | 1 | | | | | 1 | |
| 2 Taylor -- 1126 | 0 | | | 1/2 | | 0 | 1 | |
| 3 Field -- 1035 | | | | | | | 1 | |
| 4 Lief -- 1068 | | 1/2 | | | | 1/2 | 1 | |
| 5 Walhout -- 950 | | | | | | | 1 | |
| 6 Amelung -- 1112 | | 1 | | 1/2 | | | 1 | |
| 7 BYE | 0 | 0 | 0 | 0 | 0 | 0 | | 0-6 |

CHESS LESSONS

WITH RICARDO SZMETAN

CURRENT ILLINOIS STATE CHAMPION

CO WINNER, 1987 ILLINOIS TOURNAMENT OF CHAMPIONS

PHONE 869 - 3440

UNIVERSITY OF CHICAGO & HARVARD 1-2 AT PAN-AM INTERCOLLEGIATE

**CONGRATULATIONS TO THE U. OF C. MAROON KNIGHTS:
ERIC SCHILLER, KEN THOMAS, ED FRIEDMAN, JON GOLDMAN, BILL MADDEX AND JON HANEN**

The University of Chicago has once again proven that it ranks among the top chess colleges in the nation.

The 1986 Intercollegiate Championship was held at the Biltmore Hotel in Providence, Rhode Island December 26-30 with 53 teams entered. In the final round the U. of C. defeated the defending champion, Rhode Island College, thus becoming 1986 co-champions with Harvard. Harvard's performance featured a last round victory over the strong team from the University of California at Berkeley. In an unofficial playoff for the 1st place trophy the U. of C. defeated Harvard.

Over the years the University of Chicago has won the Intercollegiate many times. Past Chicago teams have included well known masters such as Ed Formanek, Dick Verber, Mitch Sweig, and John Tomas.

The current University of Chicago Champions are doing an excellent job of upholding a proud tradition. Congratulations to Eric Schiller, Ken Thomas, Ed Friedman, John Goldman, William Maddex, and John Hanen!



"Upholding a proud tradition"
U. of C. top-board, Master Eric Schiller

MIDWEST CLASS CHAMPIONSHIPS
\$7150 IN PRIZES...JULY 17, 18, 19



U.S. CHESS
FEDERATION

U.S. SENIOR OPEN

JUNE 14-19
SAN DIEGO PRINCESS
\$ 13,000 CASH PRIZES

plus: 19 TROPHIES
6 MASTER QUARTZ CLOCKS
Kolty's latest book, "IN THE DARK"

AN HISTORIC EVENT

JOIN GEORGE KOLTANOWSKI AND HIS PAL ARTHUR DAKE FOR A WEEK OF CHESS AND FUN AT THE LUXURIOUS SAN DIEGO PRINCESS, A PRINCESS CRUISES RESORT.

SAN DIEGO WILL BE KOLTY'S LAST HURRAH. DON'T MISS IT!

CHALLENGE 77 YEAR OLD INTERNATIONAL GRANDMASTER ARTHUR DAKE IN HIS SIMULTANEOUS EXHIBITION.

EXCELLENT ROOM RATES:

Single or Double \$55 [reg \$95]
Suites \$150

RESERVATIONS: 1-800-344-2626
By May 13 for guaranteed availability.

For further details contact:

Alina Markowski (619) 743-3044
David Saponara (619) 420-7436
Balboa Club/SDCC (619) 239-7166

NATIONAL TITLES AWARDED IN ALL CLASSES

OPEN TO ALL 50 YEARS OR OLDER BY JUNE 14, 1987

Pre-entry: \$50 if paid by May 13.

ALSO AT THE SAME SITE:

SAN DIEGO CLASS CHAMPIONSHIPS

JUNE 20,21

\$7450 GUARANTEED PRIZES

In nine classes

see TOURNAMENT LIFE for details

**NEW NUMBER OF ILLINOIS
CHESS PHONE 971-3666**



ILLINOIS TOURNAMENT CALENDAR

Call ChessPhone, (312) 971-3666, for recorded tournament announcements and results, often more up-to-date than Chess Life or the ICB. The official ICA ChessPhone voice is Todd Barre.

Unless otherwise noted, all tournaments require USCF membership. ICA Tour events also require ICA membership. All phones are area (312) unless otherwise noted.

Regional Events and Events by ICA and its Affiliates

May 7: Tulley Park IV, game/40. Tulley Park Fieldhouse, 501 E 90th Pl, Chicago. Tom Ginsberg, 721-3979.

May 9-10: Perpetual Checks. Two one-day events, Chicago Chess Center, 2923 N Southport, Chicago. Jules Stein, 929-7010.

May 16: Peoria Cash Novice (under 1500) and Open (over 1499). IL Central College, Rt 24, East Peoria. Bill Mikinson, (309) 673-9400.

May 16-17: Checks for Checks. Two one-day events, Chicago Chess Center, 2923 N Southport, Chicago. Jules Stein, 929-7010.

May 23-25: 3rd PRAIRIE STATE MASTERS/EXPERTS. \$1500-guar, incl 1-2-3 \$400-380-225. EF \$57 by 5/19, \$47 at site. For masters, experts, & former masters and experts. College of Lake County, Grayslake. Helen Harro, 244-6665.

May 23-25: \$400 Guarantee, for players 1999 and below. Chicago Chess Center, 2923 N Southport, Chicago. Jules Stein, 929-7010.

Jun 6-7: Nightwork. Two one-day events, Chicago Chess Center, 2923 N Southport, Chicago. Jules Stein, 929-7010.

Jun 6-7: 9th Midwest Women's Open. Morris Center, 1999 Sheridan, Evanston. V Scheucker, (219) 533-2096, or H Winston, 475-7022.

Jun 12-14: MASTER CHALLENGE IX, \$3175 guaranteed. Optional Fri pm or Sat am round. EF \$31 by 6/7, \$38 at door. Mohr Community Center, Jackson & Desplaines, Forest Park. Ken Marshall, 932-1455. AN ICA TOUR MAIL-EVENT.

Jun 13-14: For the Penny Pinching Pawn Pusher. Two one-day events, Chicago Chess Center, 2923 N Southport, Chicago. 929-7010.

Jun 20-21: Saturday Dycione, Sunday Squall. Two one-day events, Chicago Chess Center, 2923 N Southport, Chicago. Jules Stein, 929-7010.

Jun 27-28: Fox Valley Open, St Charles. \$425 based on 40 players. Ery Badger, N 307 Old Homestead Rd, St Charles 60174. 577-7995.

MASTER CHALLENGE

JUNE 12, 13, 14

Mohr Community Center.

1200 Jackson Blvd., Forest Park, ILL

\$3175 GUARANTEED

NEW NUMBER OF
ILLINOIS CHESS PHONE 971-3666



MIDWEST CLASS CHAMPIONSHIPS
\$\$7150 IN PRIZES...JULY 17, 18, 19
AT OHARE HOLIDAY INN!

7 SEPARATE SECTIONS

MASTER: \$1000, 600, 300, 200

EXPERT: \$600, 300, 200

CLASS A: \$600, 300, 200

CLASS B: \$600, 300, 150

CLASS C: \$600, 300, 150

CLASS D-E: \$300, 200, 100

FOR DETAILS: PHONE DICK VERBER 764-1484

ILLINOIS CHESS ASSOCIATION
Box 267847
Chicago, Illinois 60666

Dated Material, Speedy Delivery
Appreciated

Postage
PAID
Chgo., IL 60680
Permit No. 8823