

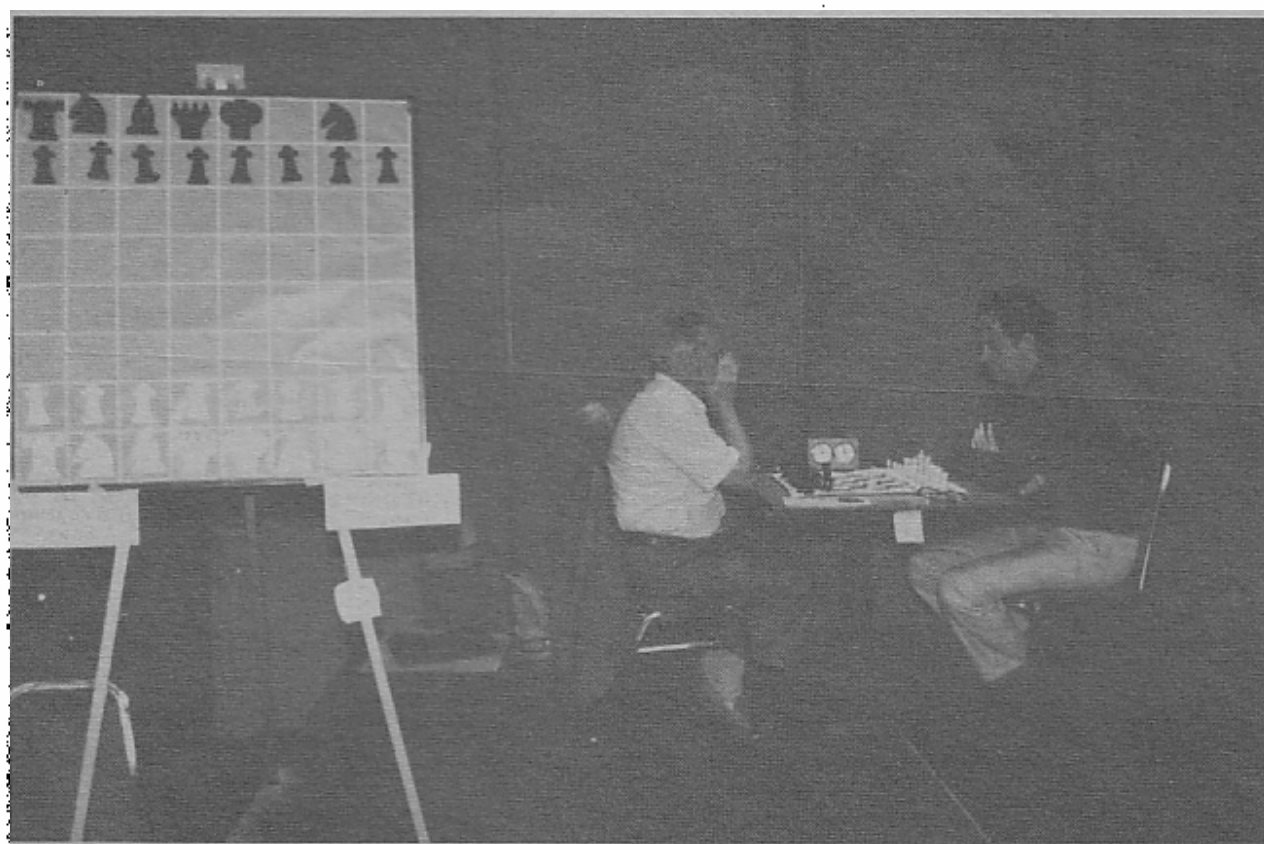
# ILLINOIS CHESS BULLETIN

Official Publication of the Illinois Chess Association a U.S.C.F. Affiliate  
A Not For Profit Organization

AUGUST - SEPTEMBER

BI-MONTHLY

VOLUME X, NO. IV



SHALKOVICH AND STATE CHAMP SZMETAN —  
2 OF THE WINNERS AT 278-PLAYER MIDWEST CLASS

**278 PLAYER MIDWEST CLASS!**  
Biggest Chicago Tournament Since 1983.



## CHESS PHONE 971-3666

Call (312) 971-3666 for recorded tournament announcements and results. ChessPhone is now the official voice of the Illinois Chess Association.

### RICHARD VERBER, EDITOR

3735 West 84th Street, Chicago 60652  
Phone: 434-3110

**NEW EDITOR** is Ken Marshall  
357 West Grove, Lombard, Illinois  
Phone: 932-1866

Please send material for the next issue of the ILLINOIS CHESS BULLETIN to Ken.  
Deadline for the next issue is October 18.

### ASSOCIATE EDITOR KEN MARSHALL

## NEW EDITOR FOR ICB

**SUBSCRIPTIONS:** The Illinois Chess Bulletin (ICB) is published bi-monthly by the Illinois Chess Association. ICA membership includes a subscription to the ICB.

#### ANNUAL MEMBERSHIP RATES:

Century Clubs	\$100.00
Gold Cards	\$50.00
Patron	\$25.00
Regular	\$10.00
Junior (under 18):	\$6.00

Century, Gold, and Patron members receive their ICB by first-class mail. Remit to:  
Illinois Chess Association  
PO Box 267847  
Chicago IL 60626-7847

ADDRESS CHANGES AND CORRECTIONS should also be sent to the above post office box.

**ICA AFFILIATION:** Chess clubs and other organizations which promote chess activity may affiliate with ICA. Affiliate benefits include a copy of each ICB by first-class mail, a listing (if desired) under where to play chess in each issue, discounted ICB advertising rates, three-line tournament announcements in the Tournament Calendar, and the right to run ICA tour events. ICA affiliation costs \$15.00 per year; please remit to the address shown above under Annual Membership Rates. Include your club meeting time, the name of a contact person, and other useful information in the format shown in Where to Play Chess on page 4 of this issue.

#### ADVERTISING RATES:

Full page	\$60.00
Half page	\$36.00
Quarter page	\$21.00

10% discount for same ad in consecutive issues. 1/3 discount for ICA affiliates. All advertising must be camera ready to qualify for these rates. Add 20% if you wish layout done. Please note that the ICB is pasted up on 11x14 originals; therefore, half-page ads should be 11 across by 7 down, quarter-page 5.5 across by 7 down. Full-page ads may be either 11x14 or 8.5x11. ICA reserves the right to reject advertising.

While Harold Winston is convalescing after recent surgery, Please send all Tournament Clearinghouse material to:

Tim Just, 1521 Circle Court, Waukegan, Illinois 60085. Or phone Tim at 244-7854.

#### Downstate tournament clearinghouse:

Bill Naff  
212 W Veil Ct  
Peoria IL 61614  
(309) 691-4624

#### ICA ELECTED OFFICERS:

Tim Just, President  
1521 Circle Ct, Waukegan IL 60085

Harold Winston, Metro Vice-President  
46 Robin Hill Dr, Naperville IL 60564

Bill Naff, Downstate Vice-President  
212 W Veil Ct, Peoria IL 61614

Ken Marshall, Secretary  
357 W Grove, Lombard IL 60148

Bill Saythe, Treasurer  
6945 N Ashland #F3, Chicago IL 60626

Walter Brown, Immediate Past President  
811 Hirose Ct, Crest Hill IL 60433

#### USCF DELEGATES by virtue of their USCF ranks:

Helen Warren, Policy Board Member  
Todd Barre, Regional Vice-President  
Jim Warren, Regional Vice-President  
Frank Skoff, Past President

#### ICA APPOINTED USCF DELEGATES:

Tim Just  
Todd Barre  
Harold Winston  
Bill Saythe  
Richard Verber

#### ICA APPOINTED USCF VOTING MEMBERS:

Tom Fineberg	Ken Marshall
Bill Naff	Dennis Grant
Walter Brown	Lawrence Stille
Erv Sedlock	Tom Knuedler
Blenn Panner	Robert Bain
Wayne Palmquist	Barry Fisher

#### ICA APPOINTED USCF ALTERNATE VOTING MEMBERS:

Chris Musgrave	John Barstad Sr
Eric Schiller	Dave Kadan
Bill Wilkinson	Albert Chow
Mike Zacate	David Sprenkle
Jim Condon	Mike Belovenick
Kevin Bachler	Philip Wong
Jim Brotsom	Barton Vincent
Angelo Sandrin	Larry Koch



Every ICA member is invited to attend the annual ICA General Membership Meeting and ICA Director Meeting scheduled for 1 P.M. Sunday, October 18 at the Holiday Inn O'Hare, 5440 N. River Road, Rosemont, Illinois. Whether you are a Class D player or a master, a grammar school organizer or an adult chess organizer new to Illinois chess, we urge you to attend this ICA Meeting and to contribute your ideas. ICA President Tim Just will call the Meeting to order at 1 P.M. sharp.

In January-February when Bill Smythe resigned as ICB editor, I offered my services as an interim editor until a permanent replacement could be found. It was my original proposal to edit 2 issues. As things turned out, I have produced 3 issues. During this period I received a number of compliments on ICB content and graphics, but none that I remember on punctuality. Fortunately, ICA Secretary Ken Marshall is now ready to assume the responsibilities of editorship. Ken and his wife recently purchased a Leading Edge Personal Computer and they will devote their combined journalistic skills to producing the ILLINOIS CHESS BULLETIN. I am sure that the entire chess community joins me in wishing them well in this important undertaking.

As I depart as ICB editor, I look forward to having more time to play chess and to devote to chess projects of special interest to me, in particular, my goal of organizing big-prize-fund national tournaments in Chicago -- hopefully, a \$15,000-\$20,000 National Open in March of 1988, a \$10,000 Midwest Class next July, and a \$30,000 Chicago U.S. Open in 1989. The time is long overdue for Chicago to hold tournaments like those in Philadelphia, New York, and Las Vegas.

Let me take this opportunity to thank a few of the people who have helped me with the ICB, most notably Bill Smythe, John Tomas, Tim Just, and Ken Marshall -- all of whom have actually helped type copy and/or prepare chess diagrams. Also, a word of thanks for the excellent photos to Guy Gruenberg, Fred Gruenberg, Dennis Grant, and Helen Warren. I personally prefer a chess mag-

azine with many photos, since they greatly contribute to the human-interest side of chess. Though chessplayers can sometimes be a trifle contentious (me, too), I like chessplayers.

Kindly send material for the next issue of the ICB to Ken Marshall, 357 W. Grove, Lombard, IL 60148 before October 18th. Chess articles and master annotated games which did not see print in this issue will be passed on to Ken for likely publication next time. Organizers are asked to phone Ken at 932-1455 regarding submission of tournament reports and crosstables, Club and League activities, etc. Last-minute material can be given to Ken in person at the October 18th ICA Meeting.

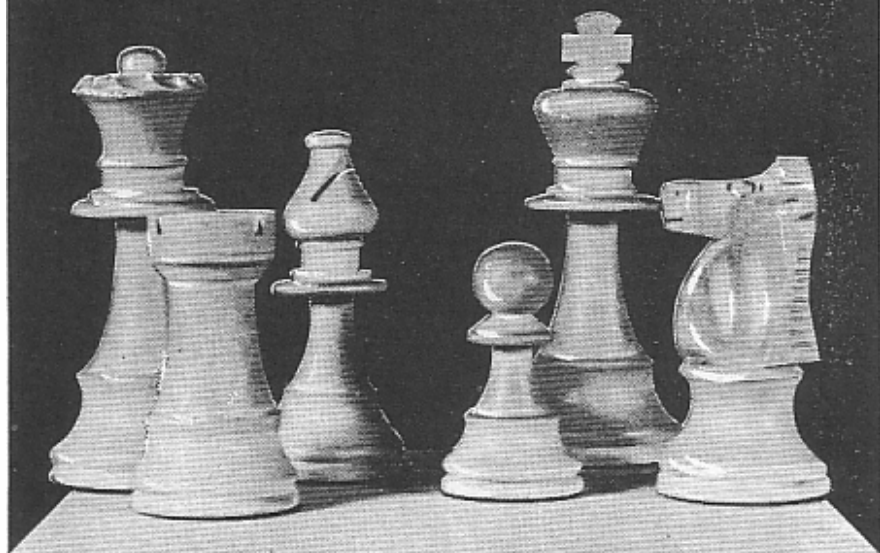
#### DATES TO MARK ON YOUR CHESS CALENDAR \*\*\*\*\*

- Oct. 10-11 : \$ 2800 Grand Prix at the Chicago Chess Center
- Oct. 17 : ICA Tour event in LaSalle, Illinois
- Oct. 18 : ICA Membership Meeting at the Holiday Inn O'Hare -- 1 P.M.
- Oct. 19 : Illinois Chess League play begins
- Oct. 23 : Illinois Tournament of Champions at Lincolnwood Hyatt Hotel -- Spectators are welcome.
- Nov. 21-22 : Illinois Class Championship at the Morgan Park Academy -- \$ 1500
- Nov. 26-29 : \$ 5000-plus Martz Memorial in Milwaukee
- Jan. 9 : Midwest Active Chess Championship -- \$ 1100 -- 30 minutes for all of your moves

**TOURN. OF CHAMPIONS II**  
Starts Oct. 23  
Spectators Invited

**ANNUAL ICA MEMBERSHIP MEETING**  
Sunday, Oct. 18 At Holiday Inn O'Hare

**Make your  
best move . . .**



**Join your local Chess Club!**

## WHERE TO PLAY CHESS: ICA CLUB AFFILIATES

**AMERICAN POSTAL CHESS TOURNAMENTS** sponsors postal events of various kinds, and sells chess books and equipment. Contact Jim or Helen Warren, PO Box 305, Western Springs 60558. (312) 246-6665.

**CENTRAL LAKE COUNTY CHESS CLUB** meets Fridays, 7:15 pm to midnight, College of Lake County, Bldg 1, Washington at Route 45, Grayslake. Contact Dennis Grant, 1657 McKay, Waukegan 60087. (312) 336-5188.

**CHICAGO CHESS ASSOCIATION** organizes major tournaments at the Holiday Inn O'Hare. Also master chess lessons, \$40 / 3 hr. Contact Dick Verber, 6531 N Lakewood, Chicago 60626. (312) 764-1404.

**CHICAGO CHESS CENTER** meets for casual chess 7 days a week, 6 pm to 1 am, 2923 N Southport, Chicago 60657. Also sponsors rated tournaments on selected weekends. Contact Jules Stein, (312) 929-7010.

**CHICAGO INDUSTRIAL CHESS LEAGUE** organizes frequent competition among commercial/government teams with awards, ratings, and special events. Contact Jim Brotsos, (312) 775-5054, or Bruce McNeil, (312) 742-5195.

**DOWNERS GROVE PARK DISTRICT CHESS CLUB** meets every Thursday, 6:30-10 pm, Lincoln Center, 935 Maple Ave, Downers Grove. Affiliated with USCF and ICA. For further information, contact George Uffner, (312) 910-0421.



The **HILLSIDE CHESS CLUB** meets Friday evening at the Hillside Baptist Church. Hillside is a many-time winner of the Illinois Chess League. Pictured above, Dr. Martinovsky accepts the League Trophy from ICA Vice-President **HAROLD WINSTON**.

**GREATER PEORIA CHESS FEDERATION** meets Mondays, 7 to 11 pm, Bradley Student Center Cafeteria, 901 N Elmwood, Peoria. Contact Bill Wilkinson, 905 N Rebecca Pl, Peoria 61606. (309) 673-9455.

**ILLINOIS VALLEY CHESS CLUB** meets 1st and 3rd Sundays, 2-6 pm, and 2nd and 4th Mondays, 6-10 pm. Grace United Methodist Church, 1345 Chartres St, LaSalle. Byron Pappas, 432 Creve Coeur, LaSalle IL 61301. (815) 224-2869.

**LAKE COUNTY CHESS ASSOCIATION** sponsors rated tournaments in the Grayslake/Zion area. Contact Tim Just, 1521 Circle Ct, Waukegan 60085. (312) 244-7954.

**MIDWEST CHESS ASSOCIATION** organizes major tournaments for masters and experts. Contact Helen Warren, PO Box 305, Western Springs 60558. (312) 246-6665.

**NORTH BOONE HIGH SCHOOL CHESS CLUB**, 17641 Poplar Grove Rd, Poplar Grove 61065. Contact Guenter Wohlfarth, sponsor. (815) 765-3311.

**DAK PARK / FOREST PARK CHESS CLUB** meets Tuesdays, 7 pm to midnight, Mohr Community Center, Jackson and DesPlaines, Forest Park. Contact Ken Marshall, 757 W Grove, Lombard 60149. (312) 932-1455.

**ORLAND PARK CHESS CLUB** meets Fridays, 7 to 11 pm, George Brown Commons, 15045 West Ave, Orland Park. Contact Glenn Panner, 14300 S Ridge, Orland Park 60462. (312) 460-5111.

**PARK FOREST CHESS CLUB** meets Thursdays, 7 to 10:30 pm, Freedom Hall, Orchard & Lakewood, Park Forest. Contact Wayne Palmquist, 10605 Southwest Hwy #1F, Worth 60482. (312) 361-2571.

**RAE PRODUCTS AND CHEMICALS**, 10926 S Western, Chicago 60643. Contact Fred Gruenberg, (312) 779-3360.

**ST CHARLES CHESS CLUB** meets Thursdays at 7 pm, Baker Community House, 101 S 2nd (Route 31), St Charles. Contact Erv Sedlock, 6 N 307 Old Homestead Rd, St Charles 60174. (312) 377-7995.

**TULEY PARK CHESS CLUB** meets Saturdays, 1 to 5 pm, Tuley Park Fieldhouse, 501 E 90th Pl, Chicago. Contact Thomas Fineberg, 7321 S South Shore Dr, Chicago 60649. (312) 721-3979.

# What's New

## CHICAGOAN HAROLD WINSTON ELECTED USCF PRESIDENT

We are happy to report that Chicago chess organizer Harold Winston has been elected USCF President. Harold won in a landslide (207-123) over charismatic U.S. chess champion Yasser Seirawan. Apparently the voters felt that Harold's record of 20 years chess organizing EXPERIENCE constituted better credentials for the USCF presidency than Yasser's obvious PLAYING STRENGTH. Chalk up another victory for the chess ORGANIZERS! (Incidentally, almost all

of the 350 voters appointed by the state chess associations are -- YOU GUESSED IT! -- chess organizers). As USCF President, Harold will continue to reside in Illinois and will serve as Chairman of the 7-person Policy Board that oversees decision-making and sets policy for the paid staff who work at the USCF Business Office in New Windsor, New York. Congratulations, Harold! We wish you every success.

## JIM RIZZITANO OUR NEW STATE CHAMP! Rizzitano (2562) Sweeps Illinois Open!

The ICB salutes International Master Jim Rizzitano who moved to Illinois from Massachusetts this August and got off to a good start by winning the 1987 Illinois State Championship with a commanding 5-0 over the Labor Day Weekend.

Rizzitano's 2562-rating places him more than 100 points higher than any other master in Illinois, and it will certainly be interesting to see to what degree Jim comes to dominate the Illinois chess scene.

During the past year, the struggle for top billing in Illinois has been a fairly evenly-matched contest with Szmetan, Chow, Martinovsky, Gilles, and Gruchacz each taking turns at winning major tournaments. WILL RIZZITANO BE ABLE TO VANQUISH ALL RIVALS? ONLY TIME WILL TELL. The next big test comes at the Illinois Tournament of Champions II, which starts October 23rd at the Lincolnwood Hyatt Hotel. Spectators are welcome: phone 246-6665. Welcome to Illinois, Jim.

## LET'S SEND CHOW TO EUROPE! Help Support Our Most Talented Young Master

As you may know, 23-year-old Senior Master Al Chow is trying to make a living in Chicago as a chess professional -- NO EASY TASK. Al is a personable young fellow, and although his "Punk-Amish" garb may raise an occasional eyebrow, Chow is very well-liked in the Chicago chess community. He is widely known as one of the most friendly and approachable of the top masters, frequently willing to look at a position or offer a helpful opinion. In order to put bread on his table, Al gives chess lessons and simulms (Phone 248-8976) and plays in almost every important Illinois tournament. He is very much a product of Chicago and he deserves encouragement & support.

In order to survive for long as a chess professional, Chow will need to earn an International Master Title from FIDE, the World Chess Organization. The best and easiest way to earn that IM title is by playing in Europe in FIDE events. If Chow is to make gen-

uine progress in his chess career, he will need about \$2500-\$3000 so that he can spend 3-4 months in Europe (next summer) playing in FIDE-MASTER Tournaments.

### LET'S START AN ILLINOIS DRIVE TO SEND CHOW TO EUROPE!

Please send your contribution to Sandy Zabell, 1451 East 55th St., Chicago 60637, & make your check payable to: Committee to send Chow to Europe. We ask chess clubs to try to contribute \$50 or \$100 and individuals what you can.

The major reason for the success of chess in Russia is that they support chess talent. We need to do likewise if chess is to thrive in America. A decade ago Chicago missed an opportunity to help a considerable talent named Greg DeFotis to become a Grandmaster. Let's not make the same mistake with Chow.

# ILLINOIS CHESS LEAGUE

## Begins Week Of Oct. 19

Illinois Valley Tornado

June 20, 1987

Illinois Chess League Director Wayne Palmquist ( Phone # 361-2571 ) has announced the start of League play for the week of October 19th. Although the deadline for entries ended September 25th, you can phone Wayne for information. This season will feature a 3-section format with Championship, Reserve, and Booster sections. Time limit is 30/1 and Sudden-Death/40. Most of the Team Captains who met at the Hillside Chess Club this past July 12th preferred the sudden-death approach rather than adjudications. League play is expected to end with the Final Championship matches probably January 24th.

### RAY SATERLEE TIES FOR 1st AT 1987 SENIOR OPEN! MARTINOVSKY ALSO 1st

Congratulations to Ray Saterlee and Eugene Martinovsky on tying for 1st at this year's Senior Open in California. Dr. Martinovsky also won the 1985 Senior Open and this year he won on tie-break over Ray Saterlee and 6 others. Especially impressive was Ray Saterlee's performance: this is perhaps his best result ever. Ray just turned 50 this year, and it appears that being a "Senior" agrees with him.

1	BONDART	Cyrus	2092	W18	W14	D 4	W 3	3.5
2	FRENCH	Kevin	1848	W27	W15	D 6	W 9	3.5
3	MC GOWAN	Andrew	2072	W22	W13	W10	L 1	3
4	ULTCH	Douglas	2013	W24	W16	D 1	D 5	3
5	STEELE	Robert	1956	W12	W23	D 9	D 4	3
6	SFEIN	Peter	2236	D19	W18	D 2	W13	3
7	JOHNSON	Bruce	1798	W25	L 9	W24	W15	3
8	SIMMONS	Ron	1272	L13	W22	W16	W14	3
9	VLASTNIK	Richard	2040	W17	W 7	D 5	L 2	2.5
10	STEELE	David	1984	W21	W11	L 3	D12	2.5
11	KALEEL	David	1675	W28	L10	D20	W19	2.5
12	BURNS	Jim	1434	L 5	W29	W23	D10	2.5
13	PANNER	Glenn	1806	W 8	L 3	W21	L 6	2
14	BORRI	Craig	1852	W20	L 1	W17	L 8	2
15	CONDON	James	2084	W30	L 2	W19	L 7	2
16	PAPPAS	Byron	1740	W29	L 4	L 8	W20	2
17	JOHNSON	Jeff	1495	L 9	W27	L14	W26	2
18	CORDTS	William	1590	L 1	L 6	W27	W24	2
19	FROSTERMAN	Keith	1600	D 6	W30	L15	L11	1.5
20	DODD	Randy	1388	L14	W26	D11	L16	1.5
21	PADILLA	Rudy	1441	L10	W28	L13	D22	1.5
22	ANDERSON	Richard	1510	L 3	L 8	W29	D21	1.5
23	GRUENBERG	Fred	1649	W26	L 5	L12	-	1
24	SAMOLITIS	Tim	1471	L 4	W25	L 7	L18	1
25	PARSONS	Greg	1174	L 7	L24	W30	L27	1
26	TAYLOR	Steven	-	L23	L20	W28	L17	1
27	FERRONI	George	1312	L 2	L17	L18	W25	1
28	BOEDTIGHEIMER	Bryan	1132	L11	L21	L26	Wbye	1
29	SUAREZ	Kon	-	L16	L12	L22	D30	0.5
30	POWERS	Ed	1521	L15	L19	L25	D29	0.5

#### ILLINOIS VALLEY FALL TORNAOO--AN ICA MINI-TOUR EVENT

\*\*\*\*\*

WHEN: Saturday, October 17, 1987

\*\*\*\*\*

WHERE: Grace United Methodist Church, 1345 Chartres, LaSalle, IL 61301

\*\*\*\*\*

WHAT: 4 round Swiss

TIME LIMIT: 30/60. 10/20 thereafter.

AN ICA TOUR EVENT!

\*\*\*\*\*

MEMBERSHIPS REQUIRED: USCF & ICA

GUARANTEED CASH PRIZES: \$75 First. \$50 Second.

CLASS PRIZES: Class A: \$25. Class B: \$25. Class C/Unrated: \$25.

REGISTRATION: 8:00-8:45 AM

ROUND TIMES: 9:00, 12:00, 3:00, 6:00

NO SMOKING ALLOWED IN THE CHURCH

ADVANCE ENTRIES: Byron Pappas, 432 Crove Coeur, LaSalle, IL 61301  
(815) 224-2869

PLEASE BRING SETS, BOARDS, & CLOCKS AS NONE WILL BE SUPPLIED.



# ILLINOIS CHESS BULLETIN

## presidential ponderings

Because of the lateness of this ICB, Tim Just's President's Page article is no longer timely. So, we're pulling that article and replacing it with another dated Tim Just piece on the Lake County Chess Club. Have you ever wondered where the term "Caveman Chess" came from?

EDITOR

### CAVEMAN CHESS

The Central Lake County Chess Club, the home of caveman chess, has 39 members that meet on Friday nights (Thursday nights in June, July, and August) at the College of Lake County, Building 1, Route 45 and Washington St., Grayslake, Illinois from 7:30 PM to ?. The club offers a variety of chess activities: One game per week Rated Tournaments, Skittles, Unrated Events, Speed Tournaments, Lectures, and Simuls to name a few.

The club also is directly or indirectly involved with all of the major weekend events offered in Lake County such as the Caveman Tim's Open/Reserve, Lake County Open, and Tim Just's Winter Open/Reserve.

Why is this club called the home of Caveman Chess? Legend has it that Al Chow was watching Kevin Bachler analyze a position. Al remarked how he was "losing rating points just watching--it was like watching cavemen play chess". From that time on we became the home of Caveman Chess! Thank you Al Chow!

The club officers, Tim Just, Kevin Bachler, Dennis Grant, Don Martin, and Dave Sjolholm, are currently looking forward to the Pick-A-Pairing Summer. We will arrange rated matches, quads, games, etc. for the cost of \$.25 per player per game. All of the rated results will be forwarded to USCF at the end of the Summer. Club TD Don Martin (546-0291) has the details.

The club also provides the site for the Memorial Day Master-Expert event, the Prairie State Open.

The dues of \$10 per year (\$5 for half a year) allow club members to receive discounted USCF membership (\$20 per year), discounted ICA membership (\$7 per year), the Caveman Club Newsletter, plus members are charged only the early entry fee to all club sponsored tournaments. Dues are less for seniors and juniors. They also receive special ICA and USCF discounts. For further information, call Tim Just at 244-7954.

Please look at your mailing label on the back page to see if it's time to renew your membership!

### CENTURY CLUB MEMBERS

Michael Reinesick	Elmhurst	IL
Fred Cramer	Mequon	WI
Lawrence Goch	Chicago	IL
Fred Gruenberg	Chicago	IL
Bill Smythe	Chicago	IL
Burton Vincent	Chicago	IL
Philip Wong	Evanston	IL

### GOLD CARD MEMBERS

Bill Buttny	Dowlers Grove	IL
John Deutsch	Chicago	IL
Thomas Fineberg	Chicago	IL
Harland Hoisington	South Ogden	UT
Charles Kramer	Dolton	IL
Ed Marshall	South Barrington	IL
James Norris	Naperville	IL
Michael Pratts	Chicago	IL
Irwin Rothschild	Park Forest	IL
Albert Sandrin	Chicago	IL
Angelo Sandrin	Chicago	IL
Mitchel Sweig	Evanston	IL
Richard Verber	Chicago	IL
Jim Warren	Western Springs	IL
Louis Werner	Evanston	IL

### PATRON MEMBERS

Bob Ash	Urbana	IL
Todd Barre	Westmont	IL
John Barstad	Carol Stream	IL
Roy Benedek	Oak Park	IL
Bill Brock	Chicago	IL
Iyrone Brooks	Chicago	IL
Jim Britson	Chicago	IL
Brian Chapman	Arlington Heights	IL
Lynn Crewse	Arlington Heights	IL
Leroy Dubeck	Cherry Hill	NJ
Robert Glick	Lincolnwood	IL
Jon Gotz	West Chicago	IL
William Graves	Chicago	IL
Guy Gruenberg	Matteson	IL
Walter Henry	Naperville	IL
Jeffery Hyland	Berwyn	IL
Robert Irons	Chicago	IL
Tim Just	Waukegan	IL
Dan Kamen	Wheeling	IL
Leo Kaushansky	Chicago	IL
Thomas Knodler	Springfield	IL
Kenneth Marshall	Lombard	IL
James McNamara	Riverside	IL
Piatek Mieczyslaw	Chicago	IL
Patrick Moran	Wilmette	IL
Peter Felts	Chicago	IL
Kevin Reardon	Urbana	IL
Tim Redman	Lima	OH
Ray Satterlee	Wheaton	IL
Vivian Schmucker	Goshen	IN
Tony Sillars	Chicago	IL
Arthur Sinclair	Evanston	IL
David Sprenkle	Urbana	IL
Miomir Stevanovic	Lincolnwood	IL
David Taylor	Kankakee	IL
Don Townsend	Chicago	IL
Helen Warren	Western Springs	IL
Douglas White	Evanston	IL
Harold Winston	Naperville	IL
Sandy Zabell	Chicago	IL
Michael Zacale	Mokena	IL
Max Zavanelli	Park Ridge	IL



**OCT. 10.11**

**CHICAGO CHESS CENTER**

**\$\$\$G 2800**

**GRAND PRIX CLASS**

**5 SS · SAT. 40/100 · SUN. 40/2**



**MASTERS 500·200**

**EXPERTS 500·200**

**CLASS A 500·200**

**CLASS B 500·200**

**EF \$95 IF REC'D BY 10/6 \$105 BY PHONE \$115 AT SITE**

**PROJECTED PRIZE FUND BEYOND INITIAL \$2800 GUARANTEE**

**IF 12 ENTRIES PER CLASS 600·300·100**

**IF 15 ENTRIES PER CLASS 700·300·200**

**IF 20 ENTRIES PER CLASS 800·400·300**

Limit of 80  
players,

**REG 9-9:45 RDS 10-2:30-7 10-3 LS NC**

**CHICAGO CHESS CENTER**

**2923 n. southport/telephone 929-7010/chicago 60657**

Latest official *Chess Life* label OK. Ent: address above. LS. NC.



# ILLINOIS CHESS TOUR 1987

## STATE CHAMPION SZMETAN STILL IN THE LEAD



1986 Illinois State Champion Szmetan has moved to Pennsylvania, but he is still eligible to win the 1987 Tour.

Eight Tour events are included in this issue's computations:

- Tim Just Winter Open/Reserve (MAXI event, January)
- Peoria Winter Tornado (mini event, January)
- Caveman Saturday Spectacular (mini event, March)
- Greater Peoria Open (MAXI event, March)
- Peoria Spring Tornado (mini event, April)
- Caveman Jim's Open/Reserve (mini event, April)
- Master Challenge IX (MAXI event, June)
- Illinois Valley Tornado (mini event, June)

For players who have participated in fewer than three Tour events, the number of events is given in parentheses. To win a Tour prize, a player must have competed in at least three Tour events by year-end.

### Master Tour Points:

SZMETAN Ricardo	40
WALLACH Ken	32
BONDARI Cyrus	24 (2)
CHOW Albert	16 (1)
MC ENTEE Tim	16
ZINGHEIM	16 (1)
SURAK Steve	15
ADOSTA Mariano	13.5
ANDERSON Phil	13
PUKEL Bernard	12.5
IKEUCHI Curtis	12
STEIN Peter	12
KAMEN Dan	11 (2)
ZABELL Sandy	11 (2)
GRAVES William	10.5
VLASTNIK Richard	10.5 (2)
BRITT Jeff	9.5 (2)
FRENCH Kevin	9.5 (2)
GENSLER Kevin	9.5
CHACHERE Lawrence	8 (1)
FEDERL Alan	8 (1)
FELDSTEIN Robert	8 (1)
GOTZ Jon	8
HARRIS Thomas	8 (1)
KARKLINS Andrew	8 (1)
KARKLINS Erik	8 (1)
PENKALSKY David	8 (1)
SCOTT Winfield	8 (2)
SOLLAND E D	8 (1)
SPRENKLE David	8 (1)
LIMEZINWA George	8 (1)
VEGH Carlos	8 (2)
JONAITIS Algis	7.5
MC GOWAN Andy	7 (2)
WALLACH Cliff	7 (2)
BLTCH Douglas	6.5 (2)
ZABLOTSKY Edgardo	6.5
STEELE Robert	5.5 (2)
WALTON Clarence	5 (2)

### Expert Tour Points:

BONDARI Cyrus	24 (2)
SURAK Steve	15
ANDERSON Phil	13
PUKEL Bernard	12.5
IKEUCHI Curtis	12
MC ENTEE Tim	12
KAMEN Dan	11 (2)
ZABELL Sandy	11 (2)
GRAVES William	10.5
VLASTNIK Richard	10.5 (2)
BRITT Jeff	9.5 (2)
FRENCH Kevin	9.5 (2)
GENSLER Kevin	9.5
FELDSTEIN Robert	8 (1)
GOTZ Jon	8
HARRIS Thomas	8 (1)
SCOTT Winfield	8 (2)
SOLLAND E D	8 (1)
VEGH Carlos	8 (2)
JONAITIS Algis	7.5
MC GOWAN Andy	7 (2)
WALLACH Cliff	7 (2)
BLTCH Douglas	6.5 (2)
ZABLOTSKY Edgardo	6.5
STEELE Robert	5.5 (2)
WALTON Clarence	5 (2)

### Class D Tour Points:

BIEZYNSKI Stan	4.5 (2)
SIMMONS Ron	4 (1)
SMITH Colin	4 (1)
SCHALLBERG Scott	3.5 (2)
LANDAU Paul	3 (1)

### Class B Tour Points:

HAMADANI Davar	16 (2)
MARSHALL James	16 (1)
HAMEDANI Bahshah	11 (2)
DENNIS Mike	8 (2)
MARTIN Don	8 (2)
ZELINSKI Daryl	8
JUST Tim	6
LALLAHAN Gerard	5 (2)
GRUENBERG Fred	5 (2)
WALTON Clarence	5 (2)

### Class C Tour Points:

ZELINSKI Daryl	8
LALLAHAN Gerard	5 (2)
BIEZYNSKI Stan	4.5 (2)
BRDWIN Kevin	4 (2)
MADILLA Rudy	4
SIMMONS Ron	4 (1)
SMITH Colin	4 (1)
ANDERSON Richard	3.5 (2)
SCHALLBERG Scott	3.5 (2)
HARKENHOLZ Steve	3 (2)
HENDERSON Dale	3 (2)
ERMAN Mark	3 (1)
SOHR Cliff	3 (1)
LANDAU Paul	3 (1)

## CHESS TOUR PRIZES

**MASTER: \$300 - \$200 - \$150 - \$100**

**EXPERT: \$150 - \$100**

**CLASS A: \$140 - \$90**

**CLASS B: \$130 - \$60**

**CLASS C: \$120 - \$50**

**D-E: \$100 - \$40**

### Class A Tour Points:

PUKEL Bernard	12.5
ANDERSON Phil	10.5
GRAVES William	10.5
BRITT Jeff	9.5 (2)
FRENCH Kevin	9.5 (2)
FELDSTEIN Robert	8 (1)
SCOTT Winfield	8 (2)
VEGH Carlos	8 (2)
JONAITIS Algis	7.5
ZABLOTSKY Edgardo	6.5
STEELE Robert	5.5 (2)
WALTON Clarence	5 (2)

**CHICAGO**

- Prestigious Playing Site
- I.C.A. Maxi-Tour Event
- Free Parking

# 1987 ILLINOIS CLASS CHAMPIONSHIPS

**NOVEMBER 21ST & 22ND**

*(THE WEEK-END BEFORE THANKSGIVING)*

**ONLY  
2 GAMES  
A DAY**

**\$1,500 IN PRIZES**

**ONLY  
2 GAMES  
A DAY**

Master/Expert: \$400, \$200, \$100

Class A: \$100, \$60, \$30

Class B: \$100, \$60, \$30

Class C: \$100, \$60, \$30

D/E/UNR: \$80, \$40, \$10

**MORGAN PARK ACADEMY — ALUMNI HALL**

2153 West 111th Street • Chicago, Illinois

*(Just Behind the "Beverly Art Center")*

**4 ROUND SWISS: EF: MASTER/EXPERT — \$25.00**

**CLASSES A,B,C — \$20.00**

**D/E/UNR — \$15.00**

**— BY NOVEMBER 17TH —**

**All entries are \$5.00 more at the door!**

**TIME CONTROLL:** 45/2; **ROUNDS:** 10-4, 11/21 & 11/22.

**REGISTRATION:** Saturday, November 21, 8:30 a.m. - 9:30 a.m.

ILLINOIS CHESS ASSOCIATION membership required of Illinois residents, neighboring state membership OK.

Players may play in their class or ONE class above.

Latest supplement used for ratings; NO SMOKING.

1/2 point bye rounds 1, 2, or 3 if requested in advance.

**— EASY TO GET TO — SEE OTHER SIDE FOR DETAILS —**

**PLEASE BRING YOUR CHESS CLOCK & CHESS SET!**

# 278 PLAYER MIDWEST CLASS!

## Biggest Chicago Tournament Since 1983.

### SHAMKOVICH, SZMETAN, GINSBURG, CHOW, & CHACHERE TOP MIDWEST CLASS

#### Master Section

PLAYER	ST	PRE RTNG	POST RTNG	POST					TOT
				1	2	3	4	5	
1 GINSBURG, MARK	MD	2508	2515	W16	W29	D-6	D-5	W10	4.0
2 SHAMKOVICH, LEONID	NY	2500	2509	W12	W-8	D15	W14	D-3	4.0
3 SZMETAN, RICARDO	IL	2447	2458	W14	W10	D-5	W15	D-2	4.0
4 CHOW, ALBERT C	IL	2415	2426	W21	D18	D11	W17	W-6	4.0
5 CHACHERE, LAWRENCE	IL	2347	2379	W36	W37	D-3	D-1	W15	4.0
6 MARTINOVSKY, ELGEN	IL	2434	2440	W13	A-9	D-1	W18	L-4	3.5
7 FEDERL, ALAN W	IL	2354	2367	H--	W20	L18	W19	W16	3.5
8 OMEZINWA, GEORGE U	IL	2292	2310	W26	L-2	W36	D-4	W20	3.5
9 BARDWIDGE, MARVIN	IL	2278	2295	W35	L-6	W25	D-8	W18	3.5
10 WALLACH, KEN T	IL	2338	2344	W27	L-5	W31	W11	L-1	3.0
11 WEBSTER, PETER B	WI	2276	2290	W38	D14	D-4	L10	W24	3.0
12 SANDRIN, ANGELO	IL	2249	2292	L-2	D32	D22	W37	W25	3.0
13 TOMAS, JOHN S	IL	2226	2238	L-6	W26	W35	D23	D17	3.0
14 DE FOTIS, GREG S	IL	2417	2418	W24	D11	W29	L-2	D--	2.5
15 KARKLINS, ANDREW	IL	2394	2385	W30	W33	D-2	L-3	L-5	2.5
16 BONDARI, SIAMACK	IA	2309	2295	L-1	W34	D27	W33	L-7	2.5
17 KARKLINS, ERIC	IL	2306	2287	D34	D25	W37	L-4	D13	2.5
18 SCHILLER, ERIC	IL	2272	2291	W39	D-4	W-7	L-6	L-9	2.5
19 BLANKENAU, MIKE P	NE	2257	2251	L-3	D22	W34	L-7	W31	2.5
20 BOSTROM, NIELS ROB	NY	2245	2237	H--	L-7	W38	W27	L-8	2.5
21 HUNGD, D GREGORY	IL	2188	2181	L-4	L35	W26	D22	W32	2.5
22 FORBIS, ROBERT E	IL	2107	2126	L10	D19	D12	D21	W33	2.5
23 KRAMER, CHARLES W	IL	2293	2276	D25	D31	D33	D13	D--	2.0
24 HEURUNG, DAVID D	MO	2249	2227	L14	L27	W30	W35	L11	2.0
25 ZABELL, SANDY L	IL	2156	2166	D23	D17	L-9	W28	L12	2.0
26 GENSLE, KEVIN M	IL	2080	2070	L-8	L13	L21	W40	W38	2.0
27 ASH, ROBERT B	IL	2044	2069	L33	W24	D16	L20	D28	2.0
28 ZINGHEIM, SCOTT	IL	2312	2258	L37	L36	W32	L25	D27	1.5
29 PELTS, PETER	IL	2309	2296	W32	L-1	L14	D31	D--	1.5
30 THOMAS, KENNETH P	IL	2183	2154	L15	L38	L24	D34	W37	1.5
31 SCHROEDER, ANTHONY	IL	2148	2144	H--	D23	L10	D29	L19	1.5
32 BURAK, STEVE S	IL	2141	2128	L29	D12	L28	W38	L21	1.5
33 FRIEDMAN, EDWARD	RI	2112	2105	W27	L15	D23	L16	L22	1.5
34 ROBISON, BRUCE H	MI	2028	2032	D17	L16	L19	D30	D35	1.5
35 READ, RHYS	IL	2006	2012	L-9	W21	L13	L24	D34	1.5
36 WATSON, ALAN L	IL	2162	2165	L-5	W28	L-8	D--	D--	1.0
37 KAUFMAN, KEN	MN	2082	2074	W28	L-5	L17	L12	L30	1.0
38 DUHD, JOSEPH	GH	1999	1989	L11	W30	L20	L32	L26	1.0
39 ARDAMAN, HILES F	FL	2483	2471	L18	D--	D--	D--	D--	.0
40 LIU, CHIEN	MA	1807	1801	D--	D--	D--	L26	D--	.0



Grandmaster Shamkovich defeated 3 strong masters and drew 2 others to coast easily to a 1st place tie.



Larry Chachere turned in one of his best performances to date, finishing at the top tied with a Grandmaster and 3 Senior Masters.

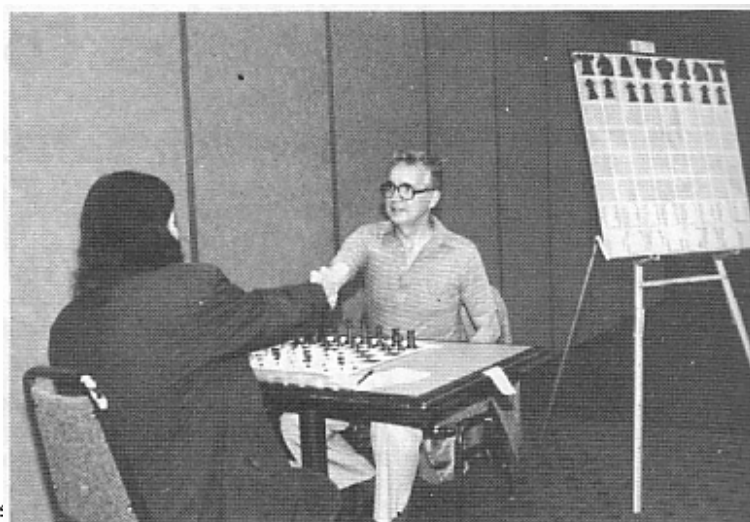
#### Expert Section

PLAYER	ST	PRE RTNG	POST RTNG	POST					TOT
				1	2	3	4	5	
1 BURKE, JOHN F	IL	2209	2230	W25	W22	D-4	W12	D-3	4.0
2 ZAVANELLT, MAX E	IL	2198	2217	W15	W21	D-3	W-5	D-4	4.0
3 FLAGA, KRZYSZTOF	IL	2165	2198	W11	W-8	D-2	W13	D-1	4.0
4 SCOTT, GENE	IL	2042	2100	H--	W26	D-1	W23	D-2	4.0
5 MOTE, DAVID B	IL	2166	2180	H--	W30	W10	L-2	W19	3.5
6 MAZUCHOWSKI, THOMA	MI	2112	2136	D28	L16	W30	W18	W12	3.5
7 BONDARI, CYRUS	IL	2148	2145	L14	W24	D26	D-8	W23	3.0
8 YUUNKLE, DOUGLAS R	WI	2103	2112	H--	L-3	D21	D-7	W16	3.0
9 VLASTNIK, RICHARD	IL	2087	2086	D27	L23	W28	W26	D10	3.0
10 SIMONS, DAVID A	MO	2048	2087	D13	W17	L-5	W22	D-9	3.0
11 HUNTER, JEFFREY T	MO	2032	2052	L-3	D15	D20	W27	W19	3.0

# 278 PLAYERS ATTEND MIDWEST CLASS



Board 1: GM Shamkovich vs. State Champ Szmecan



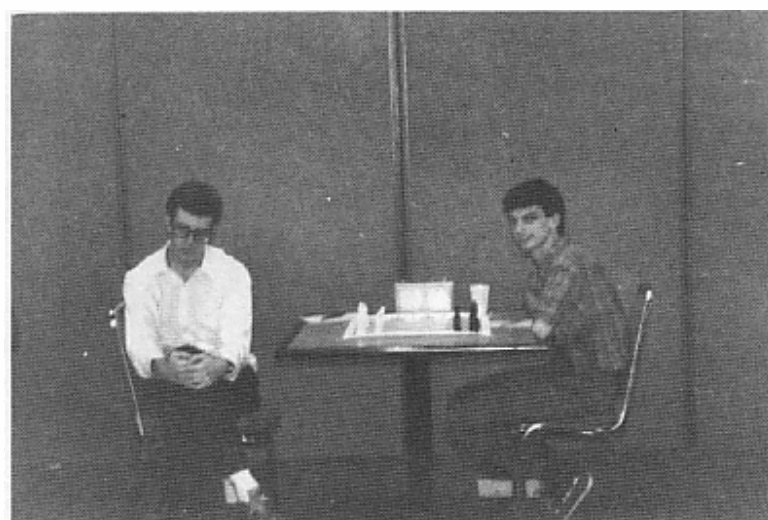
Board 2: Al Chow versus Dr. Martinovsky



Mark Sefcheck smiles for the camera!



ALL QUIET IN THE TOURNAMENT HALL.



Board 3: 2500-rated Ginsburg vs. Ken Wallach



Board 4: Chachere versus Andrew Karklins

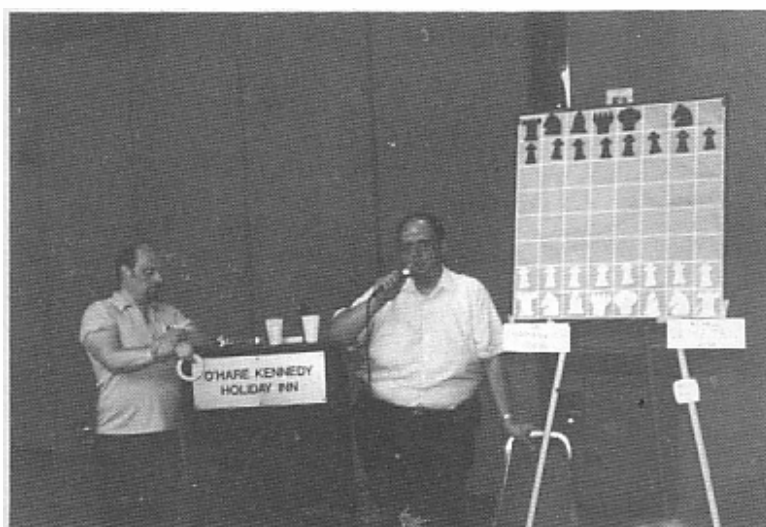
**\$2800 GRAND PRIX! OCT. 10-11**  
Chicago Chess Center, 2923 N. Southport

# 278 PLAYERS ATTEND MIDWEST CLASS

## EXPERT SECTION -- continued

12	WACHTEL, HOWARD K	MN	2205	2188	010	W14	W18	L-1	L-6	2.5
13	KULMAN, GENE L	IL	2199	2206	010	W20	W16	L-3	U--	2.5
14	LEE, TYRONE D	CA	2036	2058	A-7	L12	U25	W21	L-5	2.5
15	HOGAN, TIMOTHY J	IL	1874	1893	L-2	U11	U29	U17	B--	2.5
16	GINSBURG, JEFFREY	OH	2268	2252	U20	W-6	L13	U25	L-8	2.0
17	JAKSTAS, KAZIMIERA	IL	2182	2146	H--	L10	L27	U15	W29	2.0
18	WALLACH, CLIFF H	IL	2146	2122	U23	W27	L12	L-6	U26	2.0
19	SANDWIN, ALDEKT	IL	2122	2088	L26	W28	U23	U29	L11	2.0
20	SCHMIDT, RANDY	WI	2115	2100	U16	L13	U11	U24	U28	2.0
21	SOLLANO, E U	IL	2111	2091	W24	L-2	U-8	L14	U27	2.0
22	BOLDEN, DARREN	IL	2090	2075	W29	L-1	H--	L10	U24	2.0
23	SIMMONS, CURTIS	CO	2081	2074	U18	W-9	U19	L-8	L-7	2.0
24	BOSSAERS, PHIL J	IL	2070	2046	L21	L-7	B--	U20	U22	2.0
25	GAZMEN, ETHELHERT	IL	2044	2044	L-1	X--	U14	U16	U--	2.0
26	STINSON, MARCUS E	IL	1988	2001	W19	L-8	U-7	L-9	U18	2.0
27	FUKRO, VIRGILIO M	IL	1960	1976	U-9	L18	W17	L11	W21	2.0
28	LOGSOFF, ALAN N	IL	1923	1922	U-6	L19	L-4	X--	U20	2.0
29	JANKAUSKAS, KAZYS	IL	2001	1980	L22	F--	U15	U19	L17	1.0
30	LURING, STEVE N	IL	2011	1998	U12	L-5	L-6	F--	U--	.5

Hopefully, crosstables for sections A, B, C, D-E, and Unrated will appear in the next ICB.



T.D. Tim Just waits patiently at the podium as Midwest Class organizer Dick Verber finishes an announcement.



This attractive Ballroom of the Holiday Inn O'Hare is also the proposed site of a possible NATIONAL OPEN next March 17-20! Suggested Prize Fund: \$15,000-- \$20,000!

## \$ 7150 PRIZE FUND DRAWS CHESS PLAYERS TO CHICAGO

Richard Verber

The 278-player attendance at our 1st big Midwest Class is both an encouragement and a preview of coming attractions. Next time the prize fund will be \$10,000 or more, and the goal is to continue expanding the Midwest Class into one of the biggest tournaments in the U.S. What Chicago definitely needs are Prize Funds big enough to foster interest in Chess, big enough to attract the best grandmasters to Chicago. Class tournaments as well as Master tournaments.

## GRANDMASTER SHAMKOVICH TIES FOR 1ST

Grandmaster Shamkovich was in good form as he defeated masters Greg DeFotis, Angelo Sandrin, and George Umizinwa and drew Andy Karklins and Ricardo Szmetan. The GM's resulting 4-1 score was good enough to tie for 1st with Mark Ginsburg, Ricardo Szmetan, Al Chow, and Larry Chachere. The exciting final round in the Master Section saw Chow defeating Dr. Martinovsky, Chachere playing excellent positional chess to overcome Karklins, and Ginsburg taking the point from rising young master Ken Wallach.

## PRIZE WINNERS

### EXPERT SECTION :

John Burke, Max Zavanelli, K. Flaga, & Gene Scott Tied for 1st thru 4th --- each at 4-1

### CLASS A SECTION :

Raul Mancillas -- clear 1st with a perfect 5-0. Mark Sefcheck & Stan Jarosz 2nd-3rd with 4 1/2.

### CLASS B SECTION :

Andy Berger & Charles Kwon 1-2 with 4 1/2 pts. Paul Madey & Tony Brown 3-4 with 4-1.

### CLASS C SECTION :

Jim Burns, Steve Fahrenholz, & Lynn Schmidt tied for 1st-3rd with 4 1/2 pts.

### CLASS D-E SECTION :

Ilya Malamud clear 1st with a perfect 5-0 score. Steve Lebo, Dave Lodewyck, and Arthur Dupee 2nd-4th with 4-1 scores.

### UNRATED SECTION :

Ed Bocren clear 1st with a perfect 5-0 score.

Sincere thanks to Guy Gruenberg for all of the PHOTOS!

# MASTER CHALLENGE IX

## CHOW & ZINGHEIM WIN MASTER CHALLENGE

Albert Chow and Scott Zingheim topped a field of 112 players to tie for first place in the five round Master Challenge tournament held June 12-14, 1987 at the Mohr Community Center in Forest Park. Twenty masters and 25 experts participated in the ninth edition of the Oak Park-Forest Park Chess Club's annual event, which lived up to its tradition of featuring plenty of fighting chess. The winners, who drew their final round game, each took home \$587.50 by scoring 4-1/2 points. Chow, a chess professional whose livelihood depends in part on prize money, numbered a master and two experts among his victims. Zingheim's march to the top included a victory over current Illinois state champion Ricardo Szmetan who, playing for a win himself, pressed too hard in a drawish position.

Four points earned Thomas Harris and Ely Sollano the top expert money. Phil Bossaers and Bob Yakich shared class "A" honors with 3-1/2 points, while Roger Allison and Michael Dennis led class "B" with the same score. First place in the "C/Below" category went to Steve Fahrenholz for his 3 points, with Michael Kaminski, Evan Rynes, and Theodore Gantos following at 2 points. George Thomas scored 2-1/2 points to take the "Unrated" prize money and trophy.

Master Challenge IX ran smoothly under the supervision of Brv Sedlock, who, ably assisted by Chris Musgrave, directed with his usual efficiency and fairness. The Oak Park Forest Park Chess Club is already planning to make Master Challenge X a fitting celebration of the tenth anniversary of what has become one of the Chicago area's top yearly chess events.

## MIDWEST ACTION CHESS CHAMPIONSHIP — JAN. 9

### \$1100 GUARANTEED AT HOLIDAY INN O'HARE

If you enjoy Fast Chess, this news item is for you. Mark your calendar for Saturday, January 9th, the date of the \$1100 MIDWEST ACTIVE CHESS CHAMPIONSHIP at the Holiday Inn O'Hare. Time-Limit is smash-30: all of your moves in 30 minutes. The generous prize fund is \$250, \$150, \$100 plus hundreds of dollars in Class Prizes. The Championship is a 5-round Swiss and will be USCF rated. Phone 246-6665 for details. EF: \$18 if mailed by 12/31.

## BILLY COLIAS NAMED CHESS DIRECTOR IN NORTH CAROLINA

Congratulations to Billy Colias on his recent appointment as Director of Chess Education in Charlotte, N. Carolina! Billy has already left Munster, Indiana to take over his duties teaching chess in the Carolina school system. Good luck, Billy, and we hope you'll come back to Chicago occasionally to pay us a visit!

## TOURNAMENT OF CHAMPIONS II

### OCT. 23, 24, 25 OCT. 31, NOV. 1

Earlier this year organizer Richard Verber provided our leading players the unique opportunity to face each other in a 10-man round-robin. Only against top-flight competition do our best players really test and develop their skills. Helen Warren has organized the 2nd in this series of Championship round-robins for the last 2 weekends in October and has invited the top 10 masters in Illinois. The tournament site is the Lincolnwood Hyatt Hotel, 4500 West Touhy Ave. ICA, ACF, Fred Gruenberg, and the Warrens are among the generous contributors to this fine event and the chess public is welcome to spectate. For round-times and other information, phone Mrs. Warren at 246-6665. See you there!

### Master Challenge IX

June 12-14, 1987

1 CHOW Albert	2371	W 21	W 26	W 25	W 4	D 2	4.5
2 ZINGHEIM Scott	2268	W 11	W 83	W 67	W 3	D 1	4.5
3 SZMETAN Ricardo	2409	W 33	W 29	W 13	L 2	W 12	4
4 UMEZINWA George	2240	W 61	W 30	W 65	L 1	W 31	4
5 KARLINS Andrew	2410	W 32	D 18	W 9	W 64	D 6	4
6 CHALHEKE Lawrence	2298	W 48	D 17	W 52	W 15	D 5	4
7 KARLINS Eric	2294	W 35	D 16	W 47	W 42	D 8	4
8 WALLACH Ken	2301	W 62	D 28	W 45	W 43	D 7	4
9 HARRIS Thomas	2120	W 67	W 14	L 5	W 66	W 59	4
10 FEDERL Alan	2350	W 11	D 12	D 28	W 30	W 37	4
11 SOLLANO E D	2076	L 2	W 66	W 77	W 65	W 26	4
12 THOMPSON Dexter	2180	W 63	D 10	W 20	W 24	L 3	3.5
13 STEIN Peter	2236	W 49	W 19	L 3	D 32	W 47	3.5
14 SMALL Greg	2306	W 107	L 9	W 38	W 33	D 21	3.5
15 WALLACH Cliff	2144	D 47	W 34	W 68	L 6	W 46	3.5
16 IREUCHI Curtis	2111	W 39	D 7	L 24	W 52	W 42	3.5
17 GENSLEK Kevin	2104	W 22	D 6	L 66	W 90	W 57	3.5
18 SANDRIN Angelo	2203	W 53	D 5	L 42	W 60	W 49	3.5
19 BOSSAERS Phil	1968	W 59	L 13	W 75	D 29	W 44	3.5
20 ALLISON Roger	1753	W 92	D 61	L 12	W 88	W 48	3.5
21 MATUCHOWSKI Thomas	2148	L 1	W 85	W 76	W 70	D 14	3.5
22 YAKICH Robert	1902	L 17	W 89	W 78	W 28	D 24	3.5
23 DENNIS Mike	1696	L 85	W 96	Dbye	W 87	W 45	3.5
24 COLIAS Bill	2349	W 31	D 43	W 16	L 12	D 22	3
25 CREAM Colin	1941	W 58	W 44	L 1	L 37	W 72	3
26 ELLIS James	2172	W 103	L 1	W 85	W 53	L 11	3
27 FAHRENHOLZ Steve	1509	W 101	D 63	D 74	D 48	D 32	3
28 TURKENGROSSA Ron	2120	W 87	D 8	D 10	L 22	W 50	3
29 BUNGO Gregory	2191	W 70	L 3	W 101	D 19	D 39	3
30 REYES Catalino	2046	W 91	L 4	W 72	L 10	W 66	3
31 ZABELL Sandy	2136	L 24	W 84	W 73	W 69	L 4	3
32 SURAK Steve	2041	L 5	W 60	W 98	D 13	D 27	3
33 GOTZ Jon	2036	L 3	W 54	W 97	L 14	W 81	3
34 DE BROTA Steve	1846	W 41	L 15	L 59	W 97	W 78	3
35 GAZMEN Ethelbert	2067	L 7	W 73	W 55	-	W 71	3

# CHOW & ZINGHEIM WIN MASTER CHALLENGE

36	ILDSVAY Paul	1883	W 82	L 74	L 44	W 93	W 65	3
37	KAMEN Dan	2149	Dbye	D 46	W 71	W 25	L 10	3
38	JOHNSON Robert	1890	L 68	W104	L 14	W 86	W 75	3
39	JONAITIS Algis	1918	L 16	W 93	Dbye	W 68	D 29	3
40	MAREMA David	1673	L 67	L 50	W 96	W 85	W 70	3
41	HAMEDANI Bahshal	1711	L 34	W109	L 49	WF	W 69	3
42	STAPAY Timothy	1827	W100	D107	W 18	L 7	L 16	2.5
43	ZAVANELLI Max	2150	W 88	D 24	W 95	L 8	-	2.5
44	ACOSTA Mariano	2231	W 56	L 25	W 36	D 49	L 19	2.5
45	BOLDEN Darren	2084	W 80	D 64	L 8	W 84	L 23	2.5
46	HEIMRICH Joel	1850	W112	D 37	L 64	W 83	L 15	2.5
47	FISCHER Gregory	1934	D 15	W 51	L 7	W 95	L 13	2.5
48	VESELY Peter	2089	L 6	W 76	W 54	D 27	L 20	2.5
49	JORDAN Roland	1975	L 13	W 98	W 41	D 44	L 18	2.5
50	THOMAS George	-	L 98	W 40	W 80	D 74	L 28	2.5
51	OELRICH Tom	1775	W109	L 47	D 83	D 62	D 56	2.5
52	BUTINY William	1859	D 86	W111	L 6	L 16	W 89	2.5
53	FORRO Virgilio	1968	L 18	W 97	W100	L 26	D 55	2.5
54	LUTZKE Rick	1767	W105	L 33	L 48	W 79	D 62	2.5
55	FRONEK Randy	1757	W 79	L 62	L 35	W108	D 53	2.5
56	BECKER Sidney	1969	L 44	W 72	W 99	L 59	D 51	2.5
57	ENDICHS James	1761	D 89	L 69	W107	W 61	L 17	2.5
58	JONES Joe	2149	L 25	W 71	D 84	W 67	-	2.5
59	MYERS Hugh	2230	L 19	D 67	W 34	W 56	L 9	2.5
60	WALHOUT Peter	1890	D 93	L 32	W 91	L 18	W 84	2.5
61	ROSS Edward	1999	L 4	D 20	W106	L 57	W 95	2.5
62	READ Rhys	2006	L 8	W 55	Dbye	D 51	D 54	2.5
63	DLK Bill	1915	L 12	D 27	L 86	W 94	W 90	2.5
64	MILLS James	2260	Dbye	D 45	W 46	L 5	-	2.5
65	RYNES Evan	1542	W 81	W103	L 4	L 11	L 36	2
66	HAMADANI Davar	1806	W 96	L 11	W 17	L 9	L 30	2
67	KREISMAN Bruce	1869	W 40	D 59	L 2	L 58	D 68	2
68	MARSHALL Ken	1696	W 38	D 87	L 15	L 39	D 67	2
69	WHEATLEY Daniel	1930	L 9	W 57	W108	L 31	L 41	2
70	GRAVES William	1922	L 29	W106	W 79	L 21	L 40	2
71	PETERSEN Mark	1840	W 99	L 58	L 37	W 82	L 35	2
72	SWANSON Victor	1722	W108	L 56	L 30	W 80	L 25	2
73	STGLIZ Robert	1827	W110	L 35	L 31	W 99	-	2
74	KRAMER Charles	2336	L 83	W 36	D 27	D 50	-	2
75	KAMINSKI Michael	1565	L 84	W 81	L 19	W 76	L 38	2
76	OSTERLUND Russell	1817	W 94	L 48	L 21	L 75	W105	2
77	SANDERS Robert	1743	L 78	W110	L 11	W104	-	2
78	DIXON Frank	-	W 77	L 90	L 22	WF	L 34	2
79	GANTOS Theodore	1312	L 55	W 82	L 70	L 54	W 97	2
80	HERNANDEZ Hector	1892	L 45	W 86	L 50	L 72	W 91	2
81	MAYNORM Barry	1777	L 65	L 75	W109	W 92	L 33	2
82	BROWN Tony	1676	L 36	L 79	W105	L 71	W108	2
83	KIHLINGER Tom	2092	W 74	L 2	D 51	L 46	-	1.5
84	SCANLON John	1827	W 75	L 31	D 58	L 45	L 60	1.5
85	WALHOUT Don	1828	W 23	L 21	L 26	L 40	D 96	1.5
86	SHAFFER Thomas	1629	D 52	L 80	W 63	L 38	-	1.5
87	HICKMAN Roger	1927	L 28	D 68	W 89	L 23	-	1.5
88	BERRY Gregory	1946	L 43	D 95	W 94	L 20	-	1.5
89	PADILLA Rudy	1415	D 57	L 22	L 87	W106	L 52	1.5
90	FREEMAN David	1854	L 97	W 78	Dbye	L 17	L 63	1.5
91	DARFSTADT Jeffrey	-	L 30	D 94	L 60	W110	L 80	1.5
92	CARSON David	1400	L 20	L100	W112	L 81	D 93	1.5
93	JUST Tim	1720	D 60	L 39	Dbye	L 36	D 92	1.5
94	WOLF William	1685	L 76	D 91	L 88	L 63	W110	1.5
95	GOLDSBERT Brian	1708	WF	D 88	L 43	L 47	L 61	1.5
96	BROWN Kevin	1442	L 66	L 23	L 40	WF	D 85	1.5
97	BERDICH Michael	1715	W 90	L 53	L 33	L 34	L 79	1
98	COLE Marvin	1735	W 50	L 49	L 32	LF	-	1
99	BROADIE Richard	1696	L 71	W105	L 56	L 73	-	1
100	BELDOVICIK Michael	1693	L 42	W 92	L 53	-	-	1
101	NICHOLSON Donn	1843	L 27	W112	L 29	LF	-	1
102	FINEBERG Tom	1639	-	W108	-	-	-	1
103	COHEN Lawrence	1912	L 26	L 65	W110	-	-	1
104	BALES Robert	1140	D106	L 38	Dbye	L 77	-	1
105	HAINES Joseph	1403	L 54	L 99	L 82	Wbye	L 76	1
106	WILHELM John	1707	D104	L 70	L 61	L 89	-	0.5
107	LORING Steve	2091	L 14	D 42	L 57	-	-	0.5
108	MUNOZ Alberto	1295	L 72	L102	L 69	L 55	L 82	0
109	MC LAREN John	1493	L 51	L 41	L 81	-	-	0
110	WYNKOOP Walker	1548	L 73	L 77	L103	L 91	L 94	0
111	BERNAL Luis	2021	L 10	L 52	-	-	-	0
112	JOHNSON Henderson	1625	L 46	L101	L 92	LF	-	0

## NATIONAL OPEN IN CHICAGO?

Keep your fingers crossed! We may have the 1988 National Open here in Chicago next March! Chicago organizer Richard Verber has submitted a bid to the USCF to hold a \$15,000 to \$20,000 National Open March 17-20, 1988 at the Chicago Holiday Inn O'Hare. The Illinois Chess Association is backing the bid and will aid in publicizing and organizing this great national event. This would easily be the biggest and largest prize fund tournament in Chicago since the 1979 U.S. Open. The USCF Policy Board is scheduled to take up the question of the 1988 National Open when they meet here in Chicago the weekend of Oct. 10-11.

## SZMETAN, SPRENKLE, SMALL DEPART ILLINOIS

Illinois lost 3 of our top players this summer, including 1986 Illinois State Champion Ricardo Szmetan. Szmetan has moved to Pennsylvania but promises to return to Chicago to compete in our larger tournaments. Greg Small has taken a job in Texas and may not be seeing us again in Illinois for a time. David Sprenkle is now living in Tennessee, but is likely to return to compete in our master events. Good luck David, Ricardo, and Greg!

## TOP 12 IN ILLINOIS

1. Jim Rizzitano ----- 2562
2. Morris Giles ----- 2449
3. Bob Gruchacz ----- 2434
4. Dr. Martinovsky --- 2434
5. Al Chow ----- 2426
6. Greg DeFotis ----- 2418
7. Andrew Karklins -- 2383
8. Larry Chachere --- 2379
9. Richard Verber ---- 2376
10. Alan Federl ----- 2367
11. Ken Wallach ----- 2344
12. Leo Kaushansky --- 2343

# ANNOTATIONS BY JOHN TOMAS



## MASTER CHALLENGE IX

June 12-14, 1987

R. Szmetan (2453) - S. Zingheim (2296)

Queen Pawn Game

Annotated by John Tomas

If you don't take chances you can't win against good players; if you take too many, you can easily lose to much weaker players. Here Szmetan tries to play for a win with an unpretentious system, and runs into a buzz saw.

```

1 d4 Nf6
2 Nf3 c5
3 c3 ...
    
```

Szmetan is a graduate student in Comp Lit at Northwestern, and he no longer has the time to study chess. Otherwise, he might very well allow Zingheim his inevitable Benko Gambit with 3 d5 b5?? since 1 Bg5 has scored extremely well recently.

```

3 ... d5
4 dxc5 e6
5 b4? ...
    
```

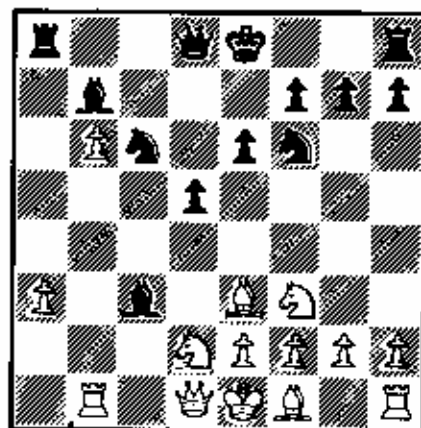
The problem with playing for wins with the unpretentious openings Szmetan often favors is that you often must take chances to try to win. However, there are reasonable chances and unreasonable chances, and trying to keep the pawn here is of the second variety. Black is already better.

```

5 ... a5
6 Be3 b6!
7 cxb6 axb4
    
```

```

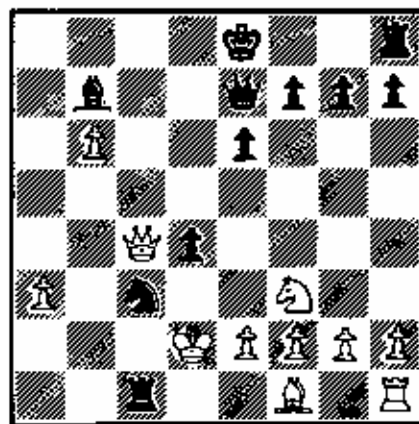
8 cxb4 Bxb4+
9 Nbd2 Nc6
10 a3 Bc3
11 Rb1 Bb7
    
```



It's easy to see that White is lost: his pawn structure is a mess and he is behind in development - all for a measly pawn.

```

12 Qb3 Ne4
13 Rc1 d4!
14 Bf4 Qe7
15 Rxc3 Nxc3
16 Nc4 Na5
17 Nxa5 Rxa5
18 Bc1 Rb5
19 Qc4 Rb1
20 Kd2 Rxc1!
    
```



A pretty move, but not very hard to see. Zingheim has conducted the execution with admirable energy.

```

21 Kxc1 Qxa3+
22 Kc2 0-0
    0-1
    
```

White has the choice of losing his Queen and then getting mated or saving his Queen and getting mated. Not surprisingly he takes a third way out.



# GRAMMAR SCHOOL CHESS

ILLINOIS CHESS CHAMPIONS OF THE FUTURE!

BY RUTH JACOBSEN

It isn't a secret! No, not at all. But neither is it generally known within the local chess community that Illinois is developing another nationally-known group of chess-players. These Champions are listed among USCF's Top 50 -- and their names are Jason Betts, Matthew Cain, Grant Cain, Hugh Freestrom, Anna Jacobsen, Mickey Jacobsen, Ravi Patel, and Cory Schroeder.

Perhaps you don't know their names yet, but give them a few years and you will. They are kids here in Illinois aged eight to twelve who have made it onto USCF's list of top children in the U.S.

Thanks to devoted organizers like Ery Sedlock and John Barstad, there are Illinois grammar school tournaments for them to compete in. Thanks to school coaches like Jerry Esposito and Lewis Betts, there are clubs in which they learn to play well and honorably. Thanks to their parents, who often devote a half or a whole weekend escorting them to tournaments, they learn that chess and thinking are very worthwhile activities.

Hundreds of these children came to East Peoria for the State Grammar School Championship this past March. And eleven schools sent teams to the National Scholastic Championships in Terre Haute, Indiana during April.

The schools hold assemblies where all the children see the chess-players lauded. And School Districts announce chess news to hundreds of families in their purview. Local newspapers honor winners for their achievement. So, it really isn't a secret!

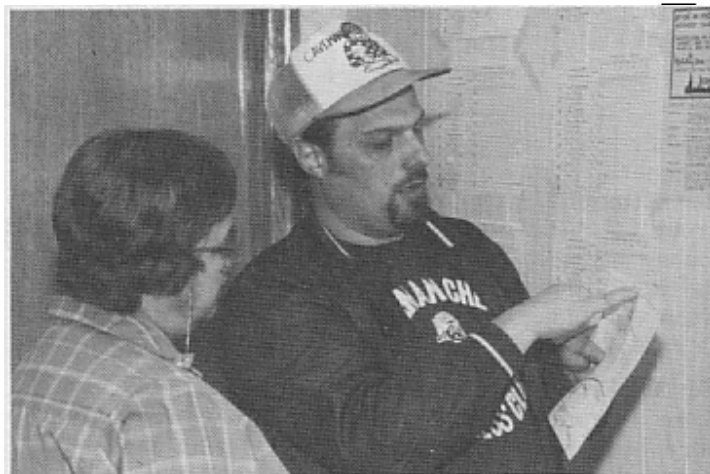
THANKS TO RUTH JACOBSEN FOR THIS REPORT ON ILLINOIS GRAMMAR SCHOOL CHESS! Editor



**ANNUAL ICA MEMBERSHIP MEETING**  
Sunday, Oct. 18 At Holiday Inn O'Hare

**LET'S SEND CHOW TO EUROPE!**  
Help Support Our Most Talented Young Master

# DR. MARTINOVSKY WINS PRAIRIE STATE MASTERS & EXPERTS



Tournament Winner Dr. Martinovsky and Scott Zingheim, who tied for 1st at Master Challenge IX, do a post-mortem.

Organizer Helen Warren and T.D. Tim Just examine a pairing. Helen treated the players to cookies, cakes, pizza, soda pop, coffee, you-name-it.

3rd Prairie State Master-Expert Invitational May 23-25, 1987

1	MARTINOVSKY Eugene	2401	W11	D40	W34	W 7	W 3	D 2	5
2	SZMETAN Ricardo	2409	W36	W29	W13	D 3	D 5	D 1	4.5
3	CHOW Albert	2371	W20	W49	W 6	D 2	L 1	W13	4.5
4	ZELKIND Ed	2311	W53	W23	D14	W 8	D 9	D 5	4.5
5	COLIAS Bill	2349	W17	D24	W40	W14	D 2	D 4	4.5
6	HILLS Jim	2260	W19	W50	L 3	W23	W22	D 9	4.5
7	ZINGHEIM Scott	2268	W55	W16	D 9	L 1	W14	W21	4.5
8	SANDRIN Angelo	2203	W10	Dbye	W47	L 4	W34	W15	4.5
9	KARKLINS Andrew	2410	W18	W41	D 7	D12	D 4	D 6	4
10	SURAK Steve	2044	L 8	W11	W30	W41	D12	D16	4
11	CROWDER M Scott	2102	L 1	L10	W27	W35	W42	W26	4
12	LONOFF Marc	2310	W46	W39	D28	D 9	D10	-	3.5
13	KARKLINS Erik	2294	W48	W35	L 2	W17	D15	L 3	3.5
14	CARLIN Robert	2152	W37	W15	D 4	L 5	L 7	W31	3.5
15	KRAMER Chuck	2336	W31	L14	W16	W28	D13	L 8	3.5
16	GOTZ John	2057	W30	L 7	L15	W45	W33	D10	3.5
17	DREIGER Michael	2094	L 5	W27	W35	L13	D29	W34	3.5
18	BABCOCK Thomas	2125	L 9	D42	W38	W44	L21	W32	3.5
19	FORBIS Robert	2072	L 6	W51	L22	W43	D24	W36	3.5
20	KITCHIN Mark	2095	L 3	D43	W51	L34	W37	W29	3.5
21	PELTS Peter	2342	L23	Dbye	W39	W26	W18	L 7	3.5
22	MALLACH Ken	2324	W32	L28	W19	W29	L 6	-	3
23	BONDARI Cyrus	2092	W21	L 4	W25	L 6	D30	D24	3
24	WONG Philip	2179	W52	D 5	Lbye	D40	D19	D23	3
25	KEARNEY Todd	1992	L28	W56	L23	D31	W48	D33	3
26	LEE David	2037	D51	Dbye	W49	L21	W44	L11	3
27	ASH Robert	2038	L49	L17	L11	Wbye	W46	W42	3
28	ZAVANELLI Max	2150	W25	W22	D12	L15	-	-	2.5
29	STEIN Peter	2236	W38	L 2	W31	L22	D17	L20	2.5
30	ZELKIND Mike	2235	L16	W55	L10	W47	D23	Lbye	2.5
31	MAC ARTHUR John	2092	L15	W37	L29	D25	W38	L14	2.5
32	WEISENSTEIN Rick	2092	L22	W52	L41	D39	W43	L18	2.5
33	TUTUSH Dusan	2163	D47	L34	D42	W52	L16	D25	2.5
34	CONDON James	2084	Dbye	W33	L 1	W20	L 8	L17	2.5
35	GUSTAFSON Dale	2008	W44	L13	L17	L11	D51	W48	2.5
36	GENSLER Kevin	2104	L 2	D38	L43	W53	W47	L19	2.5
37	DOTSON John	1995	L14	L31	W46	D48	L20	W51	2.5
38	SZPISJAK Steve	2060	L29	D36	L18	W51	L31	W47	2.5
39	SHEFIELD Dave	1982	Wbye	L12	L21	D32	D45	D44	2.5

## ILLINOIS CHESS

PHONE 971-3666

For the most up-to-date news of chess in Illinois, call ICA's CHESS PHONE: 971-3666.

USCF Tournament Announcements, Tournaments results, Club News, etc. CALL CHESS PHONE.

## LAKE COUNTY CHESS CLUB

HOME OF CAVEMAN CHESS



# ANNOTATIONS BY DR. MARTINOVSKY

40 ACOSTA Mariano	2231	W43	D 1	L 5	D24	-	-	2
41 UMEZINWA George	2240	W42	L 9	W32	L10	-	-	2
42 RUNNING Jeff	2071	L41	D18	D33	W49	L11	L27	2
43 LORING Steve	2054	L40	D20	W36	L19	L32	D45	2
44 RAMLI Asnaqi	2154	L35	D48	W53	L18	L26	D39	2
45 ZABELL Sandy	2136	L50	D53	D48	L16	D39	D43	2
46 GAZMEN Ethelbert	2087	L12	L47	L37	W55	L27	W57	2
47 SANDFORD Craig	2014	D33	W46	L 8	L30	L36	L38	1.5
48 JACOBSEN David	2081	L13	D44	D45	D37	L25	L35	1.5
49 SCOTT Gene	2187	W27	L 3	L26	L42	-	-	1
50 GRUCHACZ Robert	2482	W45	L 6	-	-	-	-	1
51 FRIEDMAN Ed	2183	D26	L19	L20	L38	D35	L37	1
52 BERNAL Luis	2021	L24	L32	W55	L33	-	-	1
53 VESELY Peter	2089	L 4	D45	L44	L36	-	-	0.5
54 BACHLER Kevin	2164	Dbye	-	-	-	-	-	0.5
55 JASTLIWENAS Leonard	2077	L 7	L30	L52	L46	-	-	0
56 DAVIS Mike	1808	-	L25	-	-	-	-	0
57 SOLLANO E D	2070	-	-	-	-	-	L46	0



## MARTINOVSKY TOPS 3RD PRAIRIE STATE OPEN

BY TIM JUST

ALL ALONE IN 1ST PLACE ATOP A FIELD OF 57 PLAYERS, FROM ILLINOIS, WISCONSIN, MISSOURI, MINNESOTA, KANSAS AND INDIANA, IN THIS 3RD ANNUAL PRAIRIE STATE OPEN FOR MASTERS & EXPERTS AT GRAYSLAKE, ILLINOIS WAS DR. EUGENE MARTINOVSKY. HIS SCORE OF 5-1 CONTAINED NO LOSSES. ON HIS WAY TO THE TOP HE DEFEATED M. SCOTT CROWDER, JAMES CONDRON, SCOTT ZINGHEIM, AND AL CHOW. HE DREW WITH MARIANO ACOSTA AND RICARDO SZMETAN.

NOT ALL ALONE IN A TIE FOR 2ND-3RD WITH 4.5-1.5 WAS RICARDO SZMETAN, AL CHOW, BILLY COLIAS, ED ZELKIND, SCOTT ZINGHEIM, JIM MILLS, AND ANGELO SANDRIN. WITH ANGELO'S EXCELLENT SCORES AT THIS EVENT AND THE MIDWEST MASTERS, IT LOOKS LIKE HIS LONG CHESS CAREER IS IN HIGH GEAR.

M. SCOTT CROWDER, FROM ST. LOUIS, MISSOURI, SCORED 4-2 TO TAKE FIRST PLACE IN THE 2100-2199 DIVISION.

THE 2000-2099 FIRST PLACE PRIZE WENT TO STEVE SURAK WITH A SCORE OF 4-2. STEVE BEAT 2 MASTERS (MIKE ZELKIND AND GEORGE UMEZINWA) AND DREW ANOTHER (MARC LONOFF) IN HIS QUEST FOR FIRST PLACE. THIS WAS ONE OF THE FINEST PERFORMANCES OF STEVE'S CHESS CAREER.

HELEN WARREN'S MIDWEST MASTERS TOURNAMENT PROVIDES AN OPPORTUNITY FOR LOCAL TALENT TO TEST THEMSELVES AGAINST A TOP IM OR GM. HER PRAIRIE STATE TOURNAMENTS PROVIDE AN OPPORTUNITY FOR EXPERTS TO TEST THEMSELVES AGAINST MASTERS; FURTHERMORE, THERE IS ALWAYS THE CHANCE TO GAIN A LEG UP ON A FIDE RATING.

MANY THANKS TO CHIEF ORGANIZER HELEN WARREN FOR PROVIDING THE \$1500 GUARANTEED PRIZE FUND, FOOD, AND FUN.

Prairie State Open; Grayslake, IL.

May 23 - 25, 1987

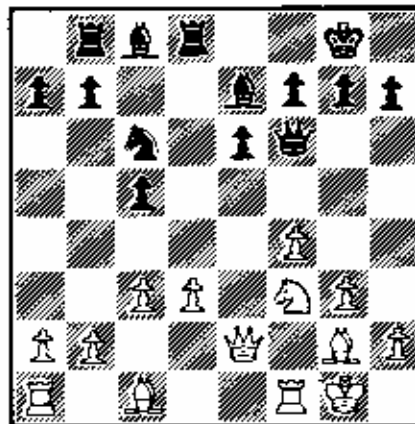
Dr. E Martinovsky - J. Condron

Sicilian Defense

Annotated by Dr. Eugene Martinovsky

In the last game Condron and I played. I had troubles playing as White against the Leningrad Dutch, and this time I decided to avoid this opening.

1	e4	c5
2	f4	e6
3	Nc3	d5
4	Nf3	dxe4
5	Nxe4	Nf6
6	Kxf6+	Qxf6
7	g3	Nc6
8	Bg2	Be7
9	0-0	0-0
10	d3	Rd8
11	Qe2	Rb8
12	c3	...



# ANNOTATIONS BY DR. MARTINOVSKY

We have transposed to a reversed Leningrad Dutch. Now I am playing the Dutch! His Queen is somewhat displaced and I'll try to take advantage of this.

12 ... Qg6  
13 Nc1!

Normally, I don't like to retreat my pieces, but this retreat is different. My Knight move opens a diagonal for my bishop, protects my weak d pawn, prevents b5 and threatens f5.

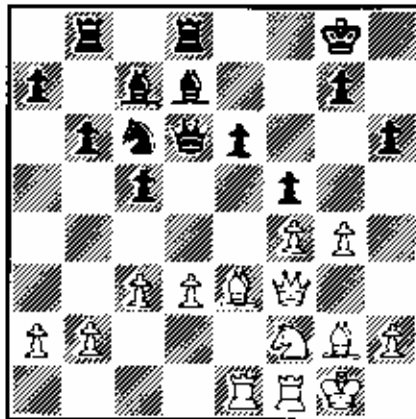
13 ... Qf6  
14 Be6 Bd7  
15 g4! Bd6  
16 f3 b6  
17 Ng5 Qe7  
18 Rae1 Bc7  
19 Qf3 h6

This weakening is necessary sooner or later.

20 Ne4 f5!

This is a weakening, but it also chases the rook from e1 and stops White's K-side pawns from marching. It also provides grounds for Black's threats on the diagonal b8-h2, as you'll see.

21 f2 Qd6!



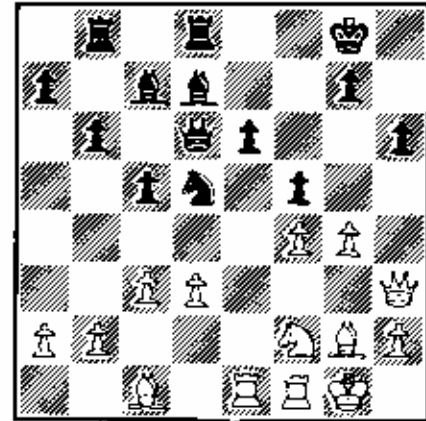
Now 22 g5? is not possible because of 22 ... hxg5 23 fxg5 Qxh2 mate! It is not easy to defend this square or pawn on h2. Black also begins to threaten e6-e5 and unleash his powerhouse Qd6, Re7, Bd7, Nc6 on my King.

22 Bc1 Ne7

This Knight threatens to further attack the pawn on f1 and subsequently enable Black to hit h2.

23 Qh3 Sd6?

This move looks perfectly logical but is the losing move! 23 ... Ng6! would keep the game just about even - in a dynamic equilibrium. It is amazing how fast Black's game collapses after my next move!



24 Re5! ...

This exchange sacrifice stops Black's threats on the diagonal b8-h2, and now White's attack penetrates rapidly. The immediate threat is 25 gxh5 and Bxd5

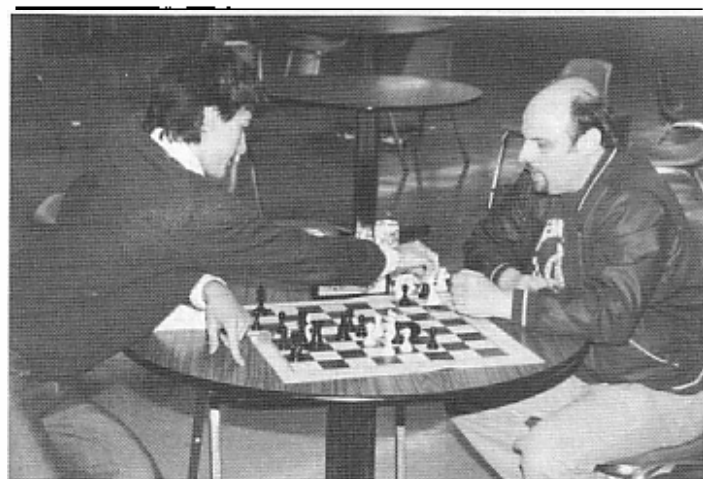
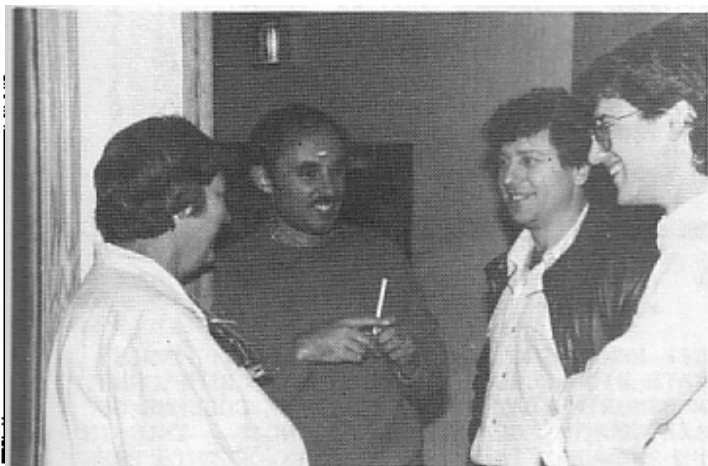
24 ... Qf8  
25 gxh5! Bxh5  
26 f4xe5 Ne7  
27 f6 gxh5  
28 Ng4! 1-0

A possible continuation is 28 ... f5 29 Bxh6 Qf7 30 Nf6 Kh8 31 Bxf8 Qh7 32 Qxh7 mate.

**ILLINOIS CLASS CHAMPIONSHIP**  
Nov. 21-22 At The Morgan Park Academy

# LAKE COUNTY CHESS CLUB

PRAIRIE STATE MASTERS & EXPERTS -- MAY 23-25 -- Photos courtesy Dennis Grant  
Thanks to Dennis Grant for these memories of a wonderful tournament!



**\$2800 GRAND PRIX!**  
OCT. 10-11 AT CHESS CENTER  
2923 N. SOUTHPORT, CHICAGO

**ILLINOIS CHESS LEAGUE**  
Begins Week Of Oct. 19



Vivian Schmucker (left) with Alexey Rudolph

#### RUDOLPH WINS MIDWEST WOMENS

by Harold Winston

Twenty one year old Alexey Rudolph (1934), a graduate student from Tacoma, Washaton, won her 5th Midwest Womens title by scoring 5-0 at Northwestern University's Norris Center on June 6-7. ICA Patron Member Vivian Schmucker (1796) from Goshen, Indiana, scored 4-1 to capture 2nd for the 2nd straight year. The 9th D&C drew 13 women from 4 states, including a record 7 from Michigan! Once again the support of the American Chess Foundation proved invaluable.

Rudolph played all the other top finishers; her key win came in the finale when she used tactics to wipe out a two pawn deficit to Lorraine Schroeder (1293) of Ann Arbor, who gained about +0 rating points for her fine showing. Illinois women had a rough time; Jackie Newman Schwalm (1243) was our high scorer with the help of an upset last round win against famed Michigan portal player Chris Rosenfield (1360). Michigan Womens Champ Jackie Branscum, a 9th grader from Detroit took the C prize; Lorraine Schroeder and Robin Henderson shared the D prize. The two youngest players, 11 year old Dawn Jones and Jarlene Stinson took the E prize. Bill Smythe did his usual smooth directing job. Vivian Schmucker and Harold Winston shared the organizing work.



Erik Ronneberg (front left) top high school player.

		1	2	3	4	5	6	TOT	
1.	ERIK RONNEBERG	2063	XX	.5	.5	1	1	1	4.0
2.	ANDREW PAYNE	1833	.5	XX	0	1	1	1	3.5
3.	GLENN PANNER	1806	.5	1	XX	0	.5	1	3.0
4.	JOHN NIELSON	1840	0	0	1	XX	0	1	2.0
5.	MIKE DAVIS	1808	0	0	.5	1	XX	0	1.5
6.	MARK PETERSEN	1840	0	0	0	0	1	XX	1.0

#### RONNEBERG ICA HIGH SCHOOL CHAMP AGAIN!

BY TIM JUST

ERIK RONNEBERG WON THE 1987 ICA ILLINOIS STATE HIGH SCHOOL INVITATIONAL CHAMPIONSHIP ON MEMORIAL DAY WEEKEND AT THE COLLEGE OF LAKE COUNTY, GRAYSLAKE, ILLINOIS. THIS IS THE 2ND YEAR IN A ROW HE HAS WON THIS EVENT.

SIX OF THE TOP NINE RATED HIGH SCHOOL STUDENTS IN ILLINOIS ACCEPTED THE ICA'S INVITATION TO COMPETE IN THIS ROUND ROBIN TOURNAMENT ON MAY 23-24, 1987.

THE ICA WILL GIVE ERIK A ROUND TRIP TICKET TO PORTLAND TO COMPETE IN THE DENKER TOURNAMENT OF CHAMPIONS. THE DENKER EVENT BRINGS TOGETHER ONE HIGH SCHOOL CHAMPION FROM EACH STATE. THEY COMPETE DURING THE DAYTIME OF THE U.S. OPEN FOR A \$1000 SCHOLARSHIP. EACH PARTICIPANT WILL ALSO RECEIVE \$200 IN PORTLAND TO HELP DEFRAY THE COST OF ATTENDING THIS FINE EVENT.

MANY THANKS TO HELEN WARREN FOR ALLOWING THE ICA TO HOLD THIS EVENT IN GRAYSLAKE, ILLINOIS CONCURRENTLY WITH THE PRAIRIE STATE MASTER-EXPERT INVITATIONAL. TIM JUST WAS THE TD.

EDITOR'S NOTE: Further congratulations are due Erik for his excellent 4th place tie at the Denker Tournament of Champions in Portland, Oregon!

# GAMES FROM THE TOURNAMENT OF CHAMPIONS

The 2nd ILLINOIS TOURNAMENT OF CHAMPIONS, featuring our state's top 10 Masters is set to begin Friday, Oct. 23rd at the Lincolnwood Hyatt Hotel. Spectators are welcome to attend and should phone Helen Warren at 246-6665 for details. As with the 1st TOURNAMENT OF CHAMPIONS held this past February, the tournament will be a 10-man Round-Robin over 2 weekends: each master will face all 9 of his fellow masters during the tournament. The average rating of this 2nd TOURNAMENT OF CHAMPIONS is expected to exceed 2425!

And now for a sampling of the beautiful chess played at CHAMPIONS 1.

W: Ricardo Szmetan (2433).  
B: Albert Chow (2315).

Annotated by Richard Verber.

This is my favorite game from the Illinois Tournament of Champions. Played in the third round when Al Chow was on his way to amassing an impressive 4-0 lead, the game shows Chow in his best form. A top grandmaster could not have improved upon Al's play.

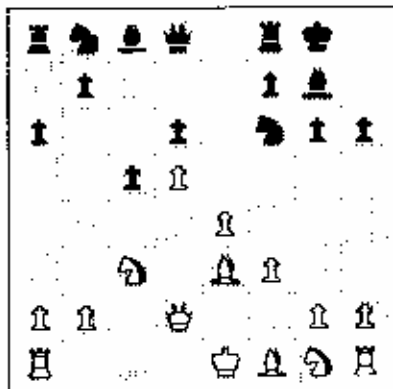
1 d4 Nf6  
2 c4 g6  
3 f3 c5  
4 d5 Bg7  
5 e4 d6  
6 Nc3 B-D  
7 Bg5

7 Be3 is common, but Szmetan wants to provoke the Kingside Pawn weakness ....h6.

7 .... h6!

It's better to put up with a slight weakening of the Kingside rather than the Bishop pin.

8 Be3 e6  
9 Qd2 exd5  
10 cxd5 a6!



Very clever. White has a surprise in store if he tries to win a Pawn with 11 Bxb6, since Chow responds 11....Nxe4! and 12....Qh4+ winning the Bishop (plus control of the black squares).

11 a4

Absolutely necessary in order to prevent Chow's ....b5 with a mobile Queenside Pawn majority.

11 .... h5

A useful move which restricts Szmetan's chances for a Kingside attack.

12 gNe2 bNd7  
13 Nc1 Ne5  
14 Be2 Nh7!

This may strike many people as a bizarre square for the Knight, but it's actually very strong. The Knight is helpful in defending the Kingside, and the stage is set to gain active counterplay with ....f5.

15 0 0 f5  
16 exf5 Bxf5  
17 h3 Qe7  
18 f4 Nf7

The Knight begins its journey to f5 where it will dominate key black squares. Chow has an excellent sense of Pawn structure weakness.

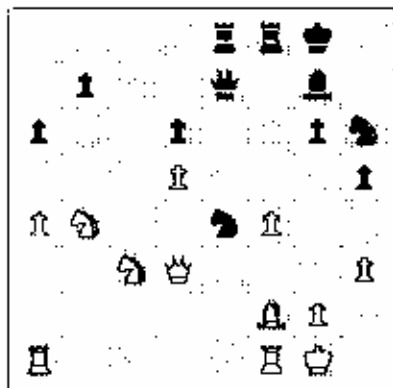
19 Bd3 Nh6  
20 Bf2 Nf6

Less innocuous than it might appear. White's isolated d-Pawn is weak and the e4 square is beginning to look like a port of entry for the Black pieces. The worst problem with the White position is that his g-Knight belongs on c4, not c1. This game is a good reason not to play the Saemisch variation (3 f3) against the Benoni.

21 1Na2

21 Nb3 looks more reasonable.

21 .... aRe8  
22 b4 rxb4  
23 Nxb4 Bxd3  
24 Qxd3 Ne4!



Szmetan's a-, d-, and f-Pawns are weak.

25 Nxe4 Qxe4  
26 aRb1 a5!

Even better than winning the f-Pawn. ....a5 forces the win of both the a- and d-Pawns and brings the Black Rooks to commanding squares.

27 Qxe4 Rxe4  
28 Nd3 Rf5!

Beautifully played! Chow goes after the most important Pawn first, realizing that the a-Pawn can wait.

29 Rxb7 Rxd5  
30 Rb3 Rxa4

Two passed Pawns and aggressively placed pieces constitute a winning endgame for Black.

31 Re1 Ral  
32 Rxa1 Bxa1  
33 Be1 Nf5  
34 Ra3 Bd4+  
35 Kf1 Bb6  
36 Rb3 a4!

Offering to simplify into an easily won ending following the exchange of Bishop for Knight.

37 Ra3 Ne3+  
38 Ke2

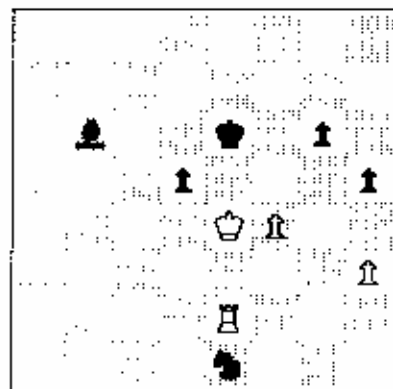
Szmetan gives up the g-Pawn rather than lose the Rook to a discovered check.

38 .... Nxb2  
39 Rxa4

Szmetan allows Chow to win two pieces for the Rook, but what else can he try?

39 .... Rxd3!  
40 Kxd3 Nxe1+  
41 Ke4 Kf7  
42 f5

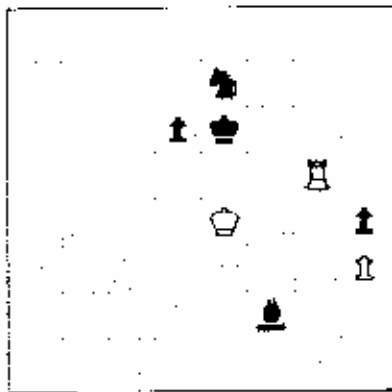
Why not trap the Black Knight with 42 Ra2 and 43 Re2....? Because that idea walks into a cute mate, when Chow answers 42....Ke6 and 43....d5+ mate!



Position after the hypothetical 43....d5+ mate!



42	....	Ng2
43	PaR	Nh4
44	fxg6+	Kxg6
45	Rg8+	Kf6
46	Rg3	Bc5
47	Rd3	Ng6
48	Rf3+	Ke6
49	Rf5	h4
50	Rh5	Bf2
51	Rg5	Ne7



52	Rh5	d5+
53	Kf3	Rg3
54	Rh6+	Ke5
55	Rh7	Ng6
56	Rh5+	Kd4
57	Rf5	Nc5+

Chow is doing a good job of driving back Szmetan's King and at the same time protecting his own King from Rook checks.

58	Ke2	Ke4
59	Rf8	d4
60	Re8	d3+
61	Kd2	Bf4+
62	Kd1	Kf3
63	Rf8	Nc4

Now the passed Pawn will cost White his Rook.

64	Rd8	Nb2+
65	Ke1	d2+
66	Rxd2	Bxd2+
67	Kxd2	Kg3
68	Ke3	Nd1+
69	Ke2	Nf2
70	Ke1	Kg2
71	O-1	



White: Albert Chow (2431),  
Black: Morris Giles (2437).

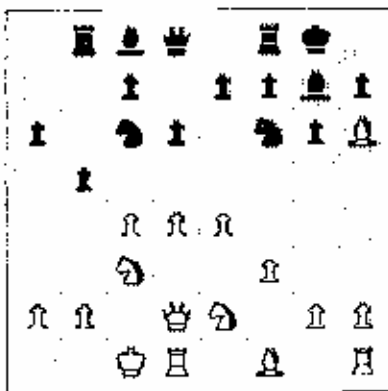
Annotated by Albert Chow.

1	d4	Nf6
2	c4	g6
3	Nc3	Pg7
4	e4	d6
5	f3	U-D
6	Be3	Nc6
7	gNe2	a6
8	Od2	Rb8
9	U-D-U	b5

Here Black might investigate 9...ReB with the idea of avoiding the exchange of the important fianchetto Bishop after 10 Sh5 Bh8. This variation of the King's Indian Saemisch has similar characteristics with another opening, the Sicilian Defense, Dragon variation, Yugoslav Attack! In both lines White and Black have an exciting goal: attack and whoever checkmates first wins.

10 Rh6

With the above ideas in mind, 10 g4 and 10 h4 also make sense.



10 .... bxc4

In this complicated position it is difficult to say what is the best move. There were alternatives in 10...Bxh6, 10...Na5, 10...e5, etc.

11 h4 e6

Giles covers d5 and prepares to defend with his Queen along the seventh rank. Another idea is 11...Nb4.

12 hb! Qe7+

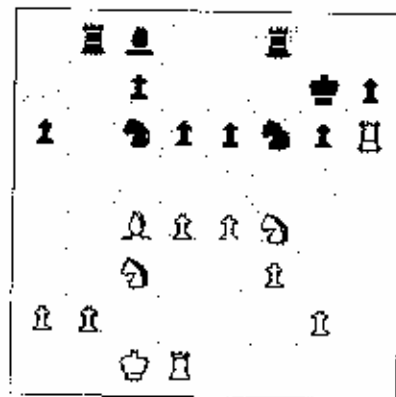
12...Nnh5 is punished by 13 g4 Nf6 14 Bxg7 Kxg7 15 Qh6+ Kg8 16 e5.

13 Bxg7 Kxg7

14 hxg6?

This opens black's seventh rank defense and prematurely takes all the pressure off Black. After 14 g4! White maintains a dangerous initiative.

14	....	fxg6
15	Qh6+	Kg8
16	Nf4	Dg7
17	Bxc4	Osh6
18	Rxh6	Kg7!



19 Rh7!

With this move an equal ending arises. Not 19 dKh7 Nh5!, or 19 hRh7 Nxe4!, or 19 Rh4 g5.

19 .... Nxe4

Put this may not be best. 19...Nxd4 20 Nxg6! fxg6 is equal.

20 Nxe6+ Bxe6

21 Bxc6 Nc7

Perhaps this exchange should be avoided since it strengthens White's central Pawns.

22 bxc7

Although material is reduced, White has an advantage because in some open positions such as this the Bishop's long range ability causes problems for the Knight. As the next few moves show, this is probably a critical moment for Black to play accurately. 22...h5 or 22...a5 could draw with careful defense.

23 .... Nd8?

The losing move. After surviving White's mating attack, Giles may have underestimated the danger in the endgame. But now with forced moves White wins a Pawn, and the rest is clear.

24 Bc4 a5

25 Re1 c6

26 Re7+ Kf6

27 hRsh7 d5

28 Bd3 Ne6

29 Rd7 Nf4

30 Rd6+ Kf5

31 Bc2 fRe8

32 g3 Ne2+

33 Kd2 Nc3

34 Rg6+ Kf4

35 Rf7+ Nf5

36 Kxf5 1-0



# GAMES ANALYSIS BY ANDREW KARKLINS



W: Morris Giles (2437).  
B: Andrew Karklins (2374).

Annotated by Karklins.

1 e4 e5  
2 f4 Qh4+

This move is given in the Encyclopedia of Chess Openings Vol. C. However, I arrived at this idea about a year ago without knowing that it had been tried originally by Tartakover. The idea is to weaken White's Kingside and to attempt to leave his position somewhat drafty. The loss of time involved may not be serious for Black as White gains only Pawn moves.

3 g3 Qe7  
4 fxe5

White has several moves at this point: 4 Nc3, 4 Qe2, or 4 d3. The text is the safest apparently playing straightforwardly and without risk.

4 .... d6  
Of course not 4....Qxe5?  
5 Nc3 and 6 Nf3.

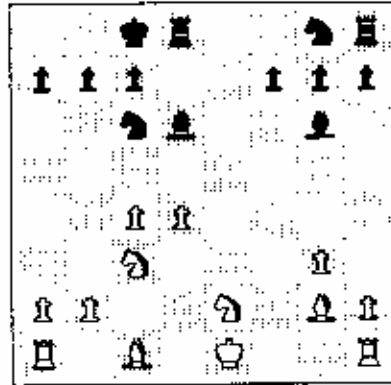
5 exd6 Qxe4+  
6 Qe2 Qxe2+  
7 Nxe2 Bxd6  
8 Bg2 Nc6  
9 d4

9 0-0 is probably necessary as now 9....Bf5 is strong.

9 .... Bf5  
10 c4

10 c3 is passive but more solid. White now can meet 10....Nb4 with 11 0-0! and after 11....Bd3 12 Na3! since on 12....Bxe2 13 Re1 regains the piece.

10 .... 0-0-0  
11 bNc3 Bg6



Now White can't castle as there would follow 12....Nxd4! 13 Nxd4 Bc5. Also a mistake is 12 Be3 Nb4 etc. White's position is drafty as his King lacks shelter in a middlegame without Queens.

12 Bg5

The idea is to provoke 12....f6 preventing Black's g-Knight from developing on this ideal square.

12 .... f6  
13 Bd2 h5

Preparing to develop the Knight to f4 or f5 via h6 where it will strike at many points in White's position. All of Black's minor pieces are active, being at most one square away from threatening White's many weak points. The h-Pawn may also be played to h4 in some variations.

14 c5

If 14 0-0-0 Nb4! is too strong as White can't prevent 15....Nd3+ 15 Nf4 Bxf4 and 16....Nd3! wins the Exchange!

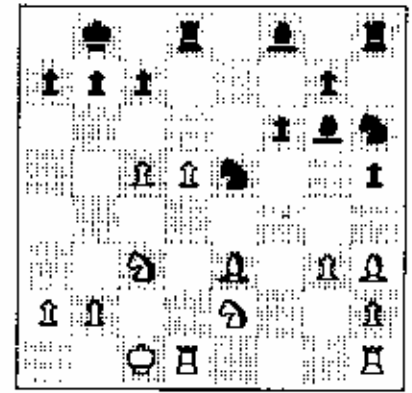
14 .... Bf8  
15 Bh3+ Kb8  
16 0-0-0 Nh6

Here 16....Nb4 can be met with 17 Nf4.

17 d5

This gives Black's c-Knight the beautiful e5 square with clear advantage for Black as White is overextended with weaknesses everywhere. The most plausible alternative is 17 Nf4 Bf7 18 d5 Ne5 19 Be3 but after 19....hNg4 White will have to lose his dark-square Bishop [20 Bd4 or Bg1, Nf3] while his position would remain drafty.

17 .... Ne5  
18 Ke3



18 .... hNg4

Black saw that he could win the Exchange here with 18....Nd3+ 19 Kxd3 [19 Kd2 Nxc5 or ....Nxb2] 19....Bxd3 but decided that White would get compensation after 20 Bg6 followed by 21 Nf4. White's minor pieces and central Pawns would then not be easy to dislodge. The decision between this line (winning material) and the text was difficult. The text doesn't win any material but gives great positional advantage. Black thought this was more promising.

19 Bxg4

On 19 e-Bishop moves, 19....Nd3+ would win as White would have no compensation for his material loss.

19 .... hxg4  
20 Nf4 Bf5  
21 b4

Black had calculated on move 18 that if 21 Ne6 Bxe6 22 dxe6 Be7 23 Nd5 dRe8! and it seemed that White would have to lose his weak e-Pawn while the others would remain weak on c5 and h2.

21 .... Be7  
22 hRf1

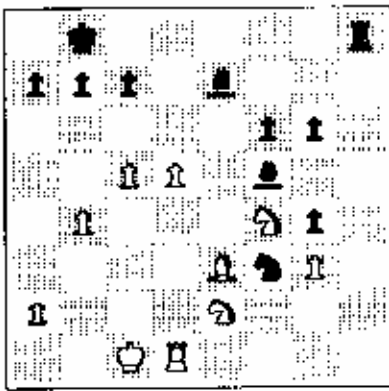
White does his best to scare up counterplay. The threat is 23 d6! cxd6 24 fNd5! winning a piece. However, Black has time to take on h2 and only then to worry about this threat.

22 .... Rxh2  
23 Rd7 Rxd2  
24 Bxd2 g6

This simple move defends everything. If now 25 Rh1? Nd3+ wins the Rook no matter where the King moves. Black will now occupy the h-file with a winning position. Yet the game is unusual, continuously demanding calculation and original thought. Black was now experiencing mild time pressure.

25 Be3 Rh8  
26 cNe2 Nf3  
27 Rd1

# GAMES ANALYSIS BY ANDREW KARKLINS



27 .... Rd8  
 27....Rh2! would have tied White in knots threatening 28....g5 to which there appears to be no defense. After 28 d6 cxd6 29 cxd6 Bd8 White is lost. However, with the clock ticking away Black decides to play it safe. "Why give White a passed Pawn? He might find some resource." Thus a fairly good game by Black gets marred due to time pressure. It is only partly true that Black has only himself to blame. It is at least equally true that there are often games which objectively require more time than others due to their intrinsic difficulty in all stages. This one required considerable thought already from the 8th move onward. Thus the chance that a good product or creation could be ruined in time pressure was strong. In short, for serious high-class chess frequently 40 in 2-1/2 hours is mandatory (40/2 being minimal.)

28 Rh1 Kc8  
 29 Nc3 Ne5  
 30 Rh7 Re8  
 31 d6

Black is merely waiting for the time control having balked on move 27. White seeks to mix it up as best he can but succeeds only when Black errs again in time pressure.

31 .... cxd6  
 32 fNd5 Bd8  
 33 cxd6 g5  
 34 Rg7 Nd7

Having taken most of the few minutes remaining on his clock Black has an internal hallucination and proceeds on a path of self-immolation. He calculated over and over again the natural sequence 34....Nc4 35 Bxa7 Re1+ 36 Nd1 wondering at the fact that there was nothing with which to finish off White's King. He completely forgot to look backward at the simple 36....Nd6 when Black should still win

After the text Black not only ruined his position but had also squandered his time. He had only about a minute left for his remaining 6 moves.

35 Bxa7 b6  
 36 a4 Kb7  
 37 Nb5 Rh8  
 38 Ne3 Rh1+  
 39 Kd2 Kh2+  
 40 Kc3

A decisive but natural error. The trap is almost too concealed if one is playing quickly. Any other king move wins easily. Black now made his last move with only a second left on his clock (digital).

40 .... Be6  
 41 Nd4 f5

Now suddenly it is clear that White is lost. There is no defense against 42....Bf6.

42 Nxe6 Bf6+  
 43 Kc4 Bxg7  
 44 Nxf7 f4  
 45 Nxf4 fxg3  
 46 Ne3 g2  
 47 Nxf2 Rxf2  
 48 Kd5 Re2  
 49 0-1

## ILLINOIS CLASS Nov. 21-22

W: Leo Kaushansky (2362).  
 B: Andrew Karklins (2374).

Annotated by Karklins.

1 e4 e5  
 2 Nc3 Rc5

Capablanca played thus (vs Kahn, Moscow 1936). The other two moves in the position are 2....Nf6 and 2....Nc6. All have their pros and cons.

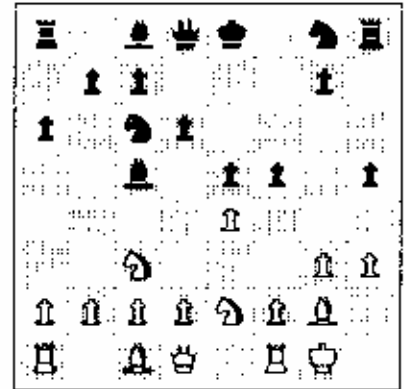
3 g3 a6

Since White is developing slowly Black takes time to assure that his Bishop does not get exchanged by an eventual Na4.

4 Bg2 d6  
 5 gNe2 Nc6  
 6 0-0

This may be premature leading to a difficult position for White. It will soon become clear that he has "castled into it."

6 .... h5  
 7 h3 f5



Piece sacrifices on g4 after ....h4 do not work, e.g. 7....h4 8 g4 Bxg4 9 hxg4 h3 10 Bf3! Inot 10 Bh1? h2+ 11 Kg2 Qh4 wins! and White's king finds a haven on h1. Or 7....Nf6 8 d3 h4 9 g4 Nxf4 10 hxg4 Bxg4 11 Kh2! and again White is safe.

The text was found only after considering all of the sacrificial possibilities and then also rejecting variations like 7....Bc6 8 Nd5 cNe7 9 c3! with 10 d4 to follow.

The idea behind 7....f5 is simple. The immediate threat is 8....h4 and after the almost forced 8 exf5 Bxf5 Black develops with gain of time (on White's h3). After castling Queenside his King will be far safer than White's.

8 exf5 Bxf5  
 9 Nd5

9 Ne4 is probably better but Black has the better game after 9....Ba7.

9 .... Nf6  
 10 Ne3 Bxe3

After 10....Be6 White would play 11 c3! threatening 12 d4 and 13 d5. The text is efficient as Black proceeds with gain of time.

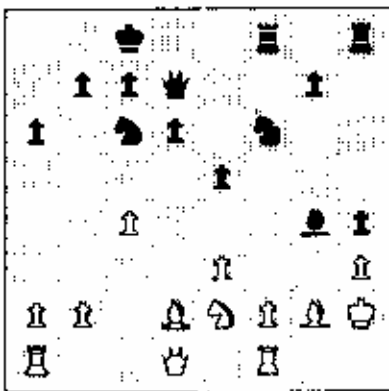
11 dxe3 Qd7  
 12 Kh2 0 0 0

Perhaps stronger is 17....d5 first. However, Black had already used more than an hour and didn't feel he could consider any more fine points. Another move that could have been considered is 12....g5.

13 c4 dRf8

Preparing 14....h4 15 g4 B: g4! when the f-Rook enables Black to mount winning threats. Perhaps White should now have decided on passive defense with 14 f3 or 14 f4.

14 Bd2 h4  
 15 g4 Bxg4



16 f4

If 16 hxg4 Nxq4+ 17 Kg1 h3  
18 Rd5 h2+ [unclear is  
18...Nxf2 19 Rxf2 Qg4+  
20 Kf1 Rxf2+ 21 Kxf2 Rf8+  
22 Nf4 Qb4+ 23 Kg1 exf4]  
19 Kh1 Nxf2+ 20 Rxf2 Rxf2  
21 Qe1 Rf6 22 b4 Ne7! 23 Bg2  
Qg4 threatening 24...Nf5  
and 25...Qxe2!.

16 .... Bh5  
17 b4 exf4  
18 b5 f3

This is based on the following  
variations: 19 bxc6 Qxc6  
20 Nd4 fxg2 21 Nxc6 Bxd1  
22 Ne7+ Kd7 with a winning  
ending.

19 Rxf3 Bxf3

Hoping for possible play on  
the long diagonal for the  
Bishop which bears down on the  
Black Queenside. After  
19 Bxf3 Bxf3 20 Rxf3 Ne5 it  
would be fairly easy for  
Black.

20 Bxf3 Ne5  
21 Bh1

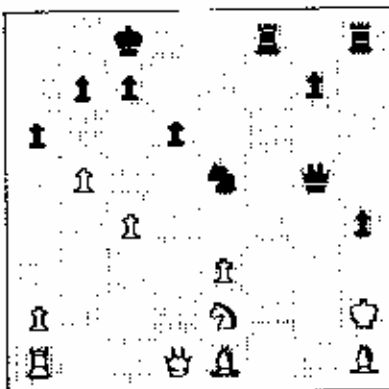
If 21 Bg2 fNg4+ 22 hxg4  
[24 Kg1 Nf3+] 22...Ng4+  
23 Kg1 h3 wins White's Queen  
or mates shortly.

21 .... fNg4+  
22 hxg4 Qxg4

In time pressure Black thought  
that this was the easiest win.  
However, very simple was  
22...Nng4+ 23 Kg1 Nf2!  
followed by 24...Qg4+ with  
a rout.

23 Be1 Qg5

Not 23...Nf3+ 24 Bxf3 Rxf3  
25 Ng1! which turns the  
tables. This is what Black  
overlooked when playing  
22...Qxg4.



24 Nf4

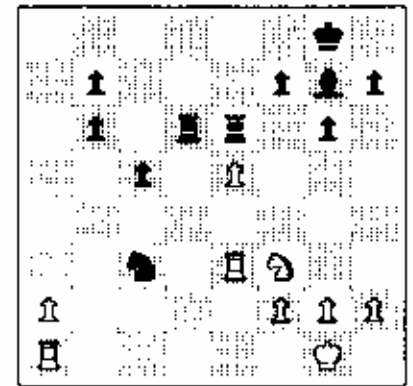
This loses quickly. The best  
try was 24 Qd5 Qxe3! (but  
not 24...Ng4+ 25 Kh3 Qxe3+  
26 Kxg4 Qxe2+ 27 Kh3 and  
White probably holds)  
25 Qxb7+ Kd8! 26 Qe4 Nf3+  
27 Bxf2 Rxf2 28 Qxe3 Rxe3  
for Black.

24 .... Ng4+  
25 Kh3 Nxe3  
26 Qf3 Rf5+  
27 Kh2 Oxf4+  
28 0-1

15 .... Bxc4  
16 fRe1 Re6  
17 e5 Nd5  
18 b3 Nxc3  
19 bxc4 Ra4!

Winning the c-Pawn is more  
important than the a-Pawn,  
since Black acquires dangerous  
passed Pawns after the c-Pawn  
goes.

20 Re3 Rxc4  
21 Nd2 Rd4  
22 Nf3 dRxd6!



Black gains a Bishop and two  
aggressive Pawns for the  
Exchange. Likewise, the White  
a-Rook and a-Pawn are weak.

23 exd6 Rxd6  
24 Re8+ Bf8  
25 Rb8 c4  
26 Kf1 Na4  
27 Ke2 Nc5  
28 Ne1 Kg7  
29 Nc2 b5  
30 Ne3 Ra6  
31 Nc2 Bd6  
32 Rd8 Be5  
33 Rc1 Rxa2  
34 Kd1 Nd3  
35 Rb1 Nxf2+  
36 Kd2 c3+  
37 0-1

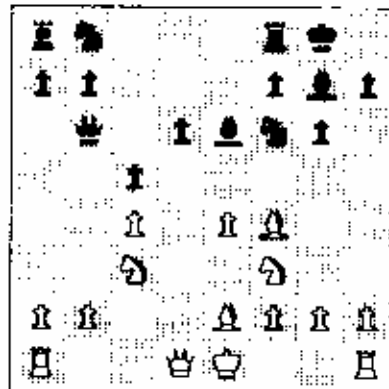
White: Peter Pelts (2360).  
Black: R. Szmétan (2433).

Benoni Defense.  
Annotated by Richard Verber.

1 d4 Nf6  
2 Nf3 c5  
3 d5 d6  
4 c4 g6  
5 Nc3 Bg7  
6 e4 0-0  
7 Be2 e6  
8 dxe6?

This weak move is rarely seen  
in master play, but if Black  
does not know why it is fishy,  
it can spell serious trouble  
for the backward d-Pawn.

8 .... Bxe6!  
9 Bf4 Qb6!



Black sacrifices the d-Pawn to  
open the d-file for his Rooks.  
A brilliant strategy.

10 Qb3 Nc6  
11 Bxd6 fRe8  
12 0-0 Nd4!

The reputation of White's game  
plan. Now Black will recover  
the sacrificed Pawn with the  
better ending.

13 Qxb6 Nxe2+  
14 Nxe2 axb6  
15 Nc3

15 e5 is no improvement.  
Black answers 15...Ne4  
threatening both ...Nxd6 and  
...Bxc4.

White: R Szmétan (2433).  
Black: Leo Kaushansky (2362).

Slav Defense.  
Annotated by Richard Verber.

1 d4 d5  
2 c4 c6  
3 e3 Bf5  
4 Nc3 e6  
5 Nf3 Nd7  
6 Bd3 Bxd3  
7 Qxd3 gNf6  
8 0-0 Be7  
9 e4 dxe4  
10 Nxe4 0-0

Black does well to trade off a  
set of Knights before  
castling.

11 Bf4 c5

Again, Black should trade  
Knights with ...Nxe4 and  
...Nf6.

12 aRd1 Qb6

# AL CHOW ANNOTATES

Szmetan-Kaushansky -- Tourn. of Champs I

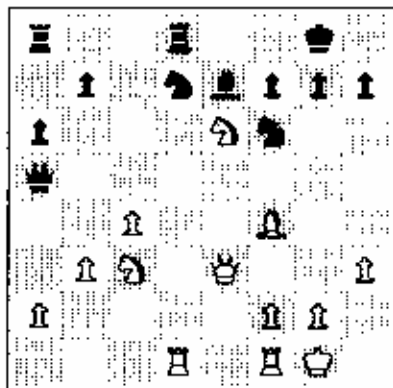
13 Nc3'

An excellent move which maintains the advantage. White's b-Pawn is immune and the Black pieces remain awkward. This simple move is impressive.

13 .... cxd4  
14 Qxd4 Nc5?

Leonid underestimates White's chances. The best idea is to trade Queens and challenge the d-file as quickly as possible.

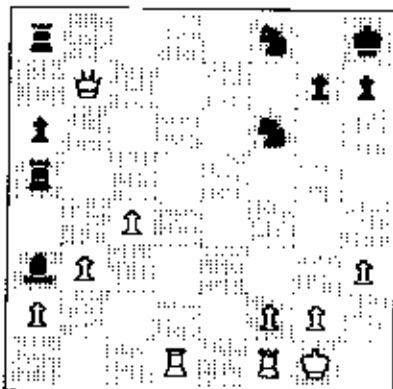
15 b3 fRd8  
16 Qe3 Qa5  
17 h3 a6  
18 Nd4 cNd7?  
19 Nxe6'



19 .... fxe6  
20 Qxe6+ Kh8  
21 Nd5 Ba3  
22 Bc7 Nf8  
23 Qf7 Rxd5

Black has more than enough material for the Queen but the pieces are hopelessly disorganized.

24 Bxa5 Rxa5  
25 Qxb7



25 .... Re8  
26 fRe1 Rxe1+  
27 Rxe1 Rf5  
28 b4 a5  
29 Qc8 q6  
30 Bxf8+ l-0

TOURNAMENT OF CHAMPIONS II begins Oct. 23rd at the Hyatt Hotel Lincolnwood -- Spectators invited Phone Helen Warren at 246-6665 for round times --



White: E. Martinovsky (2255).  
Black: Morris Giles (2320).

Annotated by Albert Chow.

1 d4 Nf6  
2 Nf3 g6  
3 g3 Bg7  
4 Bg2 0-0  
5 0-0 c5

5....d5 is another way to maintain equality, but Giles decides not to copy.

6 c4 Nc6  
7 d5

Advancing and gaining space and even hitting the Knight with tempo!

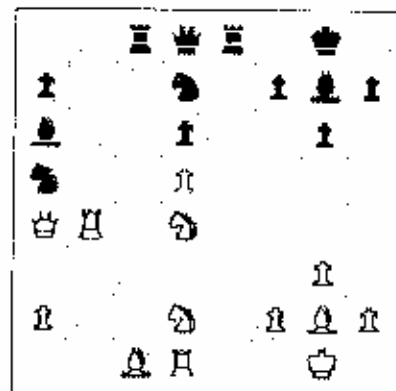
7 .... Na5

Now Black's a-Knight is on the rim of the board....sounds grim! But if everything is so easy for White this variation would be busted and how bad can any system be if it has been played by both Fischer and Kasparov? Now White's c-Pawn must be protected and the natural move B b3? is a blunder....it seems there are some tactical problems to solve! What is the best way to protect? B Qd3, B Qr2, B Na3, B (either) Nd7, B Qa4, wait a second, this is too much to calculate! Could the Knight on a5 be powerfully placed? A variation with difficult problems for both players to solve, where one slip could be fatal.

8 Qc2 d6  
9 fNd2 e6  
10 Nc3 exd5  
11 cxd5 Re8  
12 Rb1? b5!  
13 b4! cxb4  
14 Nxb5?!

Now White loses the e-Pawn and Black's pieces become very active. Instead 14 Rxb4 was good and Black's b-Pawn could be a target.

14 .... Rxe2  
15 Nd4 Re8  
16 Rxb4 Ba6  
17 Rd1 Rc8  
18 Qa4 Nd7



19 Nc6?

Martinovsky believes this is a bad move and he is right. Around move 23 it becomes clear that White is losing the Exchange! I'm sure many Illinois players know from experience the feeling of swimming in the complicated Giles mess! A good improvement pointed out by Martinovsky is 19 2Nb3 which covers c5 and after 19....Nxb3 20 Nxb3 the battle for the initiative continues.

19 .... Nc6  
20 dxc6 Nc5  
21 Qa3 Re2  
22 Re1 a5!  
23 Rb7

After 23 Rf4! Nd3 24 Rxe2! Rxe2! 25 Qxd3 Re1+ 26 Nf1 Rxc1 27 Bd5 Kc7 28 Qb5 Kh8! White also does not have enough compensation for the Exchange.

23 .... Nxb7  
24 cxb7 Rb8  
25 Rh2 Ba6  
26 Rxe8+ Qxe8  
27 Rg7 Kxg7  
28 Qb2+ Qe5  
29 Qb6 Qe1+  
30 Nf1 Bf1  
31 Bxf1 Qb4  
32 Bb5 Qb1+  
33 Kg2 Qe4+  
34 0-1

TOURNAMENT OF CHAMPIONS II  
October 23-24-24 & Oct. 31, Nov. 1  
Spectators are invited -- 246-6665



W: Eugene Martinovsky (2477).  
 B: Robert Gruchacz (2469).

Annotated by Albert Chow.

- 1 d4 e6
- 2 c4 Nf6
- 3 Nf3 c5
- 4 e3 d5
- 5 Nc3 cxd4
- 6 exd4 Bb4
- 7 Bd3 dxc4
- 8 Bxc4 O-O
- 9 O-O b6
- 10 Bg5 Bb7

This position can be reached with different move orders, for example 1 d4 Nf6 2 c4 e6 3 Nc3 Bb4 4 e3 O-O 5 Rd3 d5 6 Nf3 c5 7 O-O cxd4 8 exd4 dxc4 9 Bxc4 b6 10 Rg5 Bb7. White's pieces have good attacking mobility but Black has the more solid Pawn structure. A complex game with chances for both sides.

- 11 Qe2 h6
- 12 Bh4 bNd7

12...Nc6? runs into trouble after 13 d5! but Black has a sound alternative in 12...Be7.

- 13 Ne5

Possibly threatening 14 Nxd7 Qxd7 15 Bxf6 busting open Black's Kingside. Perhaps the simplest idea is 13...Be7.

- 13 .... Bxc3

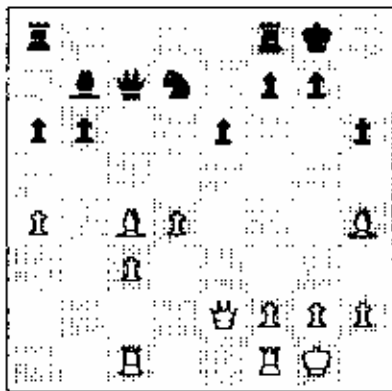
An interesting choice. White is left with hanging c- and d-Pawns but also with the Bishop pair. This minor piece exchange is thematic to most Nimzo positions.

- 14 bxc3 Qc7
- 15 Nxd7

Black has good counterplay against 15 Bg3 Nxe5 16 Bxe5 Qc6 or 15 Nxf7? Rxf7 16 Qxe5 Nf8.

- 15 .... Nxd7
- 16 aRc1 a6
- 17 a4

Martinovsky decides to gambit his a-Pawn, believing the time Gruchacz loses with its capture brings enough compensation.

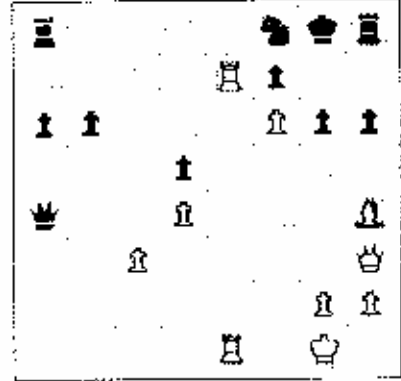


- 17 .... Qc6
- 18 f4 Qxa4
- 19 f5 Bd5
- 20 Bxd5 exd5
- 21 f6 g6
- 22 Qe3 Kh7
- 23 Qh3

Threatens 24 Bg5 h5 26 g4.

- 23 .... Rh8
- 24 cRe1 Kg8
- 25 Re7 Nf8
- 26 fRe1

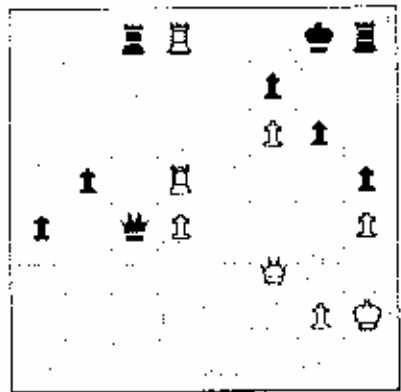
Threatens 27 Rxf7!.



- 26 .... Rh7
- 27 Qf3 Qc6
- 28 Bg3 Rc8
- 29 fRe5 Rd8

White has compensation for the Pawn, but probably nothing more. Gruchacz has defended well, although it may have cost him valuable thinking time off the clock.

- 30 h4 a5
- 31 Re1 Rc8
- 32 Kh2 a4
- 33 Ra7 Nd7
- 34 Be5 h5
- 35 c4 Nxe5
- 36 Rxe5 Qxc4
- 37 Rxd5 h5
- 38 aRd7 Rh8
- 39 Rd8+



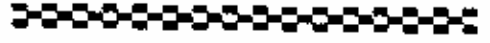
- 39 .... Kh7??

A blunder on the last move before time control. After 39...Rxd8 40 Rxd8+ Kh7 41 Rxb8+ Kxh8 42 Qa8+ Kh7 43 Qf8 Qc7+ the game would end in a draw by perpetual check.

- 40 Rxb8+ 1-0



1987 has been a very good chess year for Dr. Martinovsky, whose rating has risen to almost 2450.



W: Greg DeFotis (2427).  
 B: Andrew Karklins (2374).

Annotated by Albert Chow.

- 1 c4 Nf6
- 2 g5 e6
- 3 Bg2 d5
- 4 d4 dxc4
- 5 Qa4+ Rd7
- 6 Qxc4 Rc6

Fighting fire with fire. Karklins challenges DeFotis on the long diagonal.

- 7 Nf3 bNd7
- 8 O-O Be7

Karklins continues development. Black could have attacked White's Queen and then freed his c-Pawn for the equalizing advance c7-c5. For example 8...Nb6 9 Qb3 Bd5 10 Qc2 Re4 11 Qd1 c5 12 Nc3 Bc6.

- 9 Nc3 O-O
- 10 Rd1 Rb8?

A passive move without any active idea. [The cause of future problems -- R. Verber] Black could fight for central light squares with 10...Nb6 11 Qd3 Bb4.

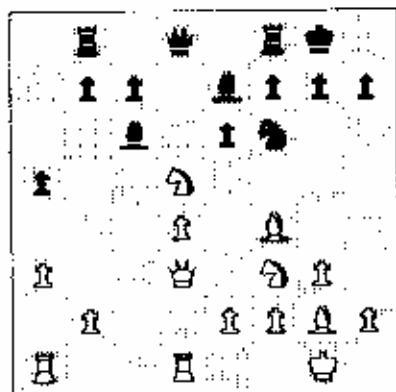
- 11 a3 a5
- 12 Bf4

DeFotis continues development. White could have retreated his Queen and then gained more space in the center with 12 Qd3 followed by 13 e4 when Black is cramped.

- 12 .... Nb6
- 13 Qd3 bNd5
- 14 Nxd5

**HELP SUPPORT ILLINOIS CHESS BY BECOMING AN ICA ANGEL!**  
**CENTURY MEMBER: \$100      GOLD CARD: \$50      PATRON: \$25**  
 Please mail your contribution to the Illinois Chess Association,  
 Bill Smythe, Treasurer, 6945 N. Ashland, Chicago 60626.

DEFOTIS versus KARKLINS -- from the ILLINOIS TOURNAMENT OF CHAMPIONS  
 annotated by Al Chow  
 ILLINOIS CHAMPIONS II begins October 23 -- Spectators welcome : 246-6665



14 .... exd5  
 Now Karklins' light-squared Bishop is bad, but alternatives also leave White in control of the initiative: 14...Nxd5 15 Bd2 with ideas such as aRc1, Ne5, e4, etc. 14...Bxd5? 15 Qc3! and White wins a free Pawn.

15 dRc1 Bd6  
 16 Ne5 Be8  
 17 Qd2 Ra8

It seems this Rook was better off on its previous post after all.

18 Bg5 c6  
 19 Nd3 h6  
 20 Bf4 Bxf4  
 21 Qxf4 Bd7  
 22 Nc5 Rc8?

White's pressure can't be shaken with passive moves. White's knight and Queen occupy excellent squares and should be challenged. 22...Ob8 is good. Another defense more active than the game is 22...h6. In both of these lines Black should welcome the trade of White's annoying knight for Black's bad Bishop.

23 b3 Re8  
 24 Ra2 Qe7  
 25 Rc3 g5?

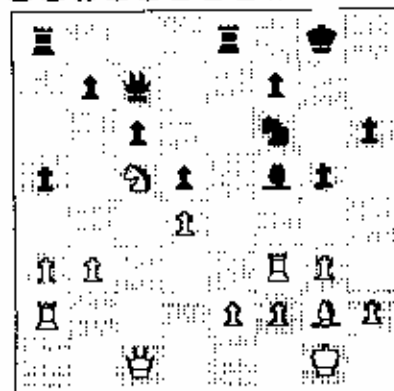
When it rains, it pours! It's not easy to defend for hours against a senior master, but weakening the Kingside Pawns is worse than defense. Better was 25...Bc6 or 25...Nd7.

26 Qc1  
 Now 27 h4 is a potential threat, so 26...Kq7 may be correct.

26 .... Bf5  
 27 Re3 Qc7?

The decisive mistake. Since other Queen moves lose the b-Pawn, the only move is 27...Be6.

29 Rf3



This simple move wins material and DeFotis does the rest. 28...Qc8 29 Nxb7! is also winning for White.

28 .... Bg4  
 29 Kxf6 Kg7  
 30 Rf3 Bxf3  
 31 Bxf3 Re7  
 32 Qc2 b6  
 33 Nd3 f6  
 34 Bh5 Rg8  
 35 b4 axb4  
 36 Nxb4 Kh8

If 36...Rc8 37 Bg4 or 36...Re6 37 Nxd5. Both players were now in time pressure.

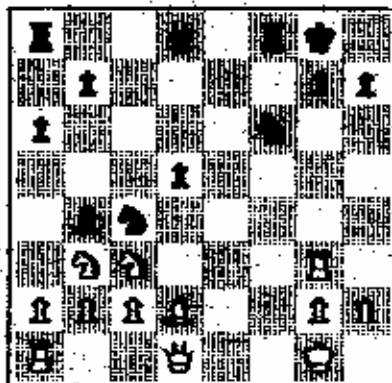
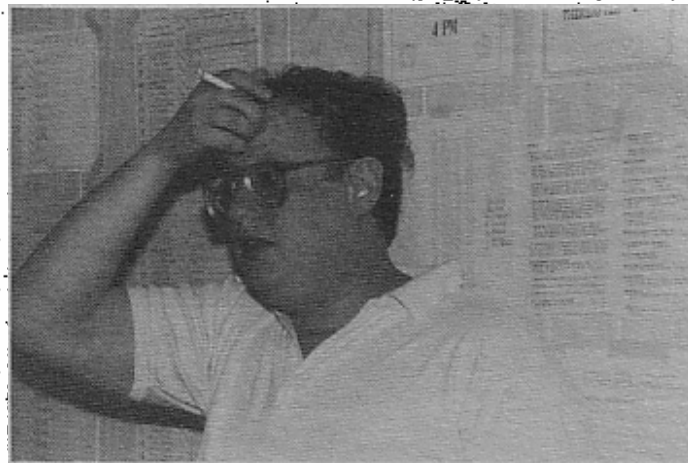
37 Qxc6 Qxc6  
 38 Nxc6 Rc7  
 39 Nb4 g4  
 40 Nxd5 Rc1+  
 41 Kg2 Rg5  
 42 Bf7 Kg7  
 43 Be6 h5  
 44 Kb2 Rc6  
 45 Nf4 Ra5  
 46 d5 Kd6  
 47 Nxb5+ 1-0

**\$2800 GRAND PRIX! OCT. 10-11**  
 Chicago Chess Center, 2923 N. Southport

**ANNUAL ICA MEMBERSHIP MEETING**  
 Sunday, Oct. 18 At Holiday Inn O'Hare



Two of our top Chicago Masters, both of whom are rated over 2400 -- MORRIS GILES (left) and BOB GRUCHACZ (right)



Gruchacz has the advantage since his pieces are more aggressively placed.

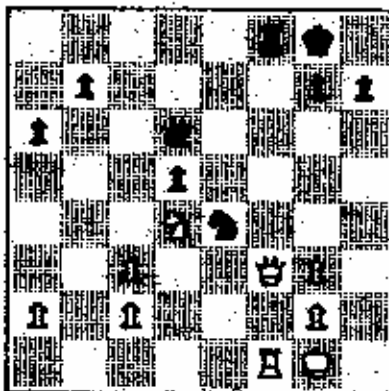
- 17 Bg5 Qb6+
- 18 Kh1 Bxc3!

This exchange, giving White doubled Pawns, is a frequent plan in the O'Kelly.

- 19 bxc3 aRd8
- 20 Nd4 Ne4

Giving White another set of doubled Pawns, this time on the g-file.

- 21 Bxd8 Nxd3+
- 22 fxd3 Rxd8
- 23 Bf3 Qd6+
- 24 Kg1 Nd2
- 25 Qd3 Ne4
- 26 Rf1 Qd6
- 27 Bf3 Rf8



The White Pawn structure is so bad that the ending after the trade of Queen and Rook is lost.

- 28 Nf3 Qc5+
- 29 Kh2 g6
- 30 Bg4 Kg8

- 31 Nc3 Nc1
- 32 Nf1 Qc3
- 33 Qd4 Qc6
- 34 Qd5 Kc8
- 35 Nc3 Nf6
- 36 Qd7 N5!
- 37 Kg1 B5
- 38 Qd5 Kf7
- 39 Bf4 Qd7
- 40 Qd6 Qd1

Gruchacz is making steady progress while trying to avoid weaknesses.

- 41 Nf1 Ng5
- 42 Qf4+ Rf5
- 43 Qc7+ Kg8
- 44 Nc2?

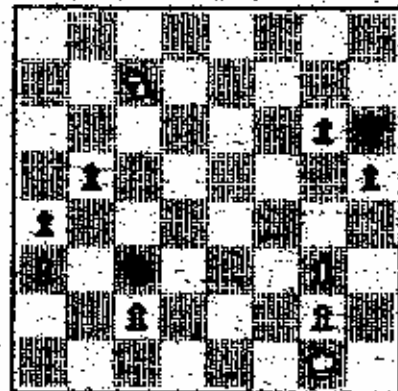
A time-scrabble blunder, allowing ...Qf2+ and mate.

- 44 ... Qe3?
- 45 Nf3 Qf6
- 46 Qc5+ Kg7
- 47 Qd7+ Kf6
- 48 Qd4 Qd8
- 49 Nxd4 Nd5
- 50 Nc4 Nc3

The Knight-and-Pawn ending wins for Black.

- 51 Nc7 B5
- 52 a3 a4!

Threatening ...b4, winning.



- 53 Nc6 Nc4
- 54 Kf2 Nc6
- 55 Nc4 Nc1
- 56 Nc3 Nc5
- 57 f3 Kf5
- 58 Kf3 Kf5
- 59 Nc1 Nc1
- 60 Nc2 a3
- 61 Q-1



Opp. Morris Giles (2437).  
Opp. Robt. Gruchacz (2469).

Sicilian Defense.  
Notated by Richard Verber.

1 e4 c5  
2 Nf3 e6  
3 ... called O'Kelly Sicilian named after its inventor, Belgian grandmaster Kelly de Billorey. Since Kelly was not as well known as many other GMs of the 1930s and 40s, this variation never became as popular as its close relative, the Najdorf Sicilian.

- 3 d4 cxd4
- 4 Nxd4 Nf6
- 5 Nc3 e5
- 6 Nc3

7 ... is more enterprising, and leads to sharp tactics. The next move is the usual ...e3 in the Sicilian.

8 ... Bb4 transposes to the O'Kelly. The main point of the O'Kelly Sicilian is to use the Bishop aggressively.

- 7 Bd2 Nc6
- 8 ... e6 is the main alternative, planning ...b7, ...b5, and ...Qb7 attacking the White e-Pawn.

- 8 Bc4 O-O
- 9 Bb5 d6
- 10 O-O Bc6
- 11 f4 exf4
- 12 Bxc6 fxc6
- 13 Rxf4 g5!
- 14 exd3 exd3
- 15 Bf3 Nc5
- 16 Rg3 Nc4!

# \$2800 GRAND PRIX! OCT. 10-11

## Chicago Chess Center, 2923 N. Southport

Chgo. Chess Center events the weekends of Oct. 3-4, 10-11, 17-18, 24-25, Oct. 31-  
Nov. 1, Nov. 7-8, etc. (you get the idea!): Phone Jules Stein at 929-7010 for details.

## ILLINOIS TOURNAMENT CALENDAR

Call ChessPhone, (312) 971-3666, for  
recorded tournament announcements and  
results, often more up-to-date than  
Chess Life or the ICB. The official  
ICA ChessPhone voice is Todd Barra.

Unless otherwise noted, all tournaments  
require USCF membership. ICA Tour events also  
require ICA membership. All phones are area  
(312) unless otherwise noted.

### ILLINOIS CHESS LEAGUE Begins Week Of Oct. 19

OCT. 10-11: \$2800 GRAND PRIX  
Chicago Chess Center, 2923 N. Southport, Chgo.  
This is the big Autumn Tmt. in Chgo.!!  
See the full-page ad in this issue of the ICB  
or phone Jules Stein at 929-7010.

## ILLINOIS CLASS CHAMPIONSHIP Nov. 21-22 At The Morgan Park Academy

### TOURN. OF CHAMPIONS II Starts Oct. 23 Spectators Invited

OCT. 17: ILLINOIS VALLEY FALL TORNADO  
An ICA Tour event! in LaSalle, Illinois.  
Byron Pappas: 815-224-2869. See the 1/2  
page ad in this ICB.

OCT. 24-25: OAK PARK CC AUTUMN CLASSIC  
Phone Club President Ken Marshall: 932-1455

OCT. 31: PEORIA 4TH QUARTER QUAD  
BRI Wilkinson: 309-673-9455

NOV. 14: FOREST CITY OPEN in Rockford  
\$450 based on 40. G. Sargent, 2764 Panorama  
Drive, Rockford, IL 61109

NOV. 21-23: ILLINOIS CLASS CHAMPIONSHIP  
An ICA Tour event! The big ICA event of the  
season at the Morgan Park Academy. \$1800  
Guaranteed. See the full-page ad in ICB.

NOV. 26-29: BILL MARTZ MEMORIAL  
in Milwaukee. Thanksgiving Weekend. More  
than \$5000 in Prizes. See you in Milwaukee!

ILLINOIS CHESS ASSOCIATION  
Box 287847  
Chicago, Illinois 60690

Delayed Material, Speedy Delivery  
Appreciated

Bulk Rate  
U.S. POSTAGE  
PAID  
Chgo., IL 60690  
Permit No. 6585