



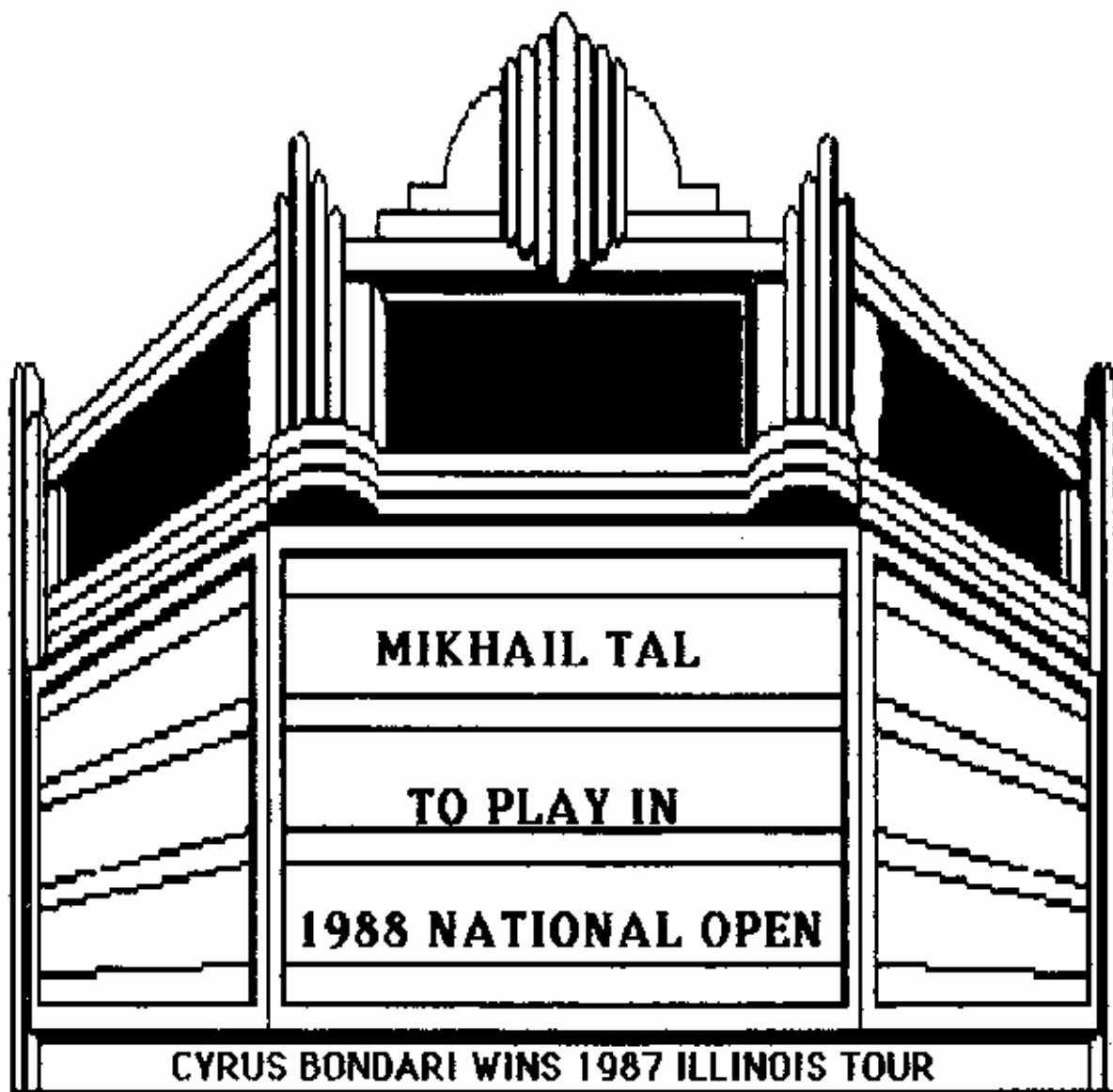
ILLINOIS CHESS BULLETIN

Official Publication of the Illinois Chess Association a U.S.C.F. Affiliate
A Not For Profit Organization

JANUARY - FEBRUARY, 1988

VOLUME XI, NO. 1

BI - MONTHLY \$2.00





ILLINOIS CHESS BULLETIN

EDITOR:
KEN MARSHALL
 357 W. Grove
 Lombard, Illinois 60148
 (312) 932-1455

TECHNICAL EDITOR:
MARY GAITHER MARSHALL

GAMES EDITOR:
AL CHOW

SUBSCRIPTIONS:
 The Illinois Chess Bulletin (ICB) is published bimonthly by the Illinois Chess Association. ICA membership includes a subscription to the ICB. (Century, Gold, and Patron members receive their ICB by first-class mail.)

ANNUAL MEMBERSHIP RATES:

Century Club:	\$100.00
Gold Card:	50.00
Patron:	25.00
Regular:	10.00
Junior (under 18):	6.00

Subscriptions, Address Changes, and Corrections should be sent to:

Illinois Chess Association
 P.O. Box 267847
 Chicago, IL 60626-7847

SUBMISSIONS:
 Submit articles, photographs, crosstables, games, and other publishable materials to the Editor. Publication deadline for the next issue is March 22, 1988.

ADVERTISING RATES:

Full page	\$60
Full page (back cover)	\$80
Half page	\$36
Quarter page	\$21

10% discount for the same ad in consecutive issues. 1/3 discount for ICA affiliates. All advertising must be camera ready to qualify for these rates. ICA reserves the right to reject advertising

FROM THE EDITOR	1
WHERE TO PLAY CHESS / CLUB AFFILIATES	2
PRESIDENTIAL PONDERINGS	3
LETTERS TO THE EDITOR	4
WHAT'S NEW	6
TOURNAMENT OF CHAMPIONS II	7
TD NIGHTMARE QUIZ	9
READERS' SHOWCASE	10
LETTER TO GAMES EDITOR	11
ALBRIGHT SCHOLASTIC TOURNAMENT	12
GRADE SCHOOL CHAMPIONSHIP	13
TOURNAMENT CROSSTABLES	13
ILLINOIS TOUR	14
TIM JUST WINTER OPEN/RESERVE	18
CHOW/MARTINOVSKY GAMES	20
HIGH SCHOOL/GRADE SCHOOL CROSSTABLES	23
KROM ANNOTATES	24
HIGH SCHOOL CHESS: RONNEBERG	25
ERRORS AND OMISSIONS	27

ICA AFFILIATION: Chess clubs and other organizations which promote chess activity may affiliate with ICA. Affiliate benefits include a copy of each ICB by first-class mail, a listing (if desired) under "Where to Play Chess" in each issue, discounted ICB advertising rates, three-line tournament announcements in the "Tournament Calendar", and the right to run ICA Tour events. ICA affiliation costs \$15 per year; please remit to address shown under "Annual Membership Rates". Include your club meeting times, name of contact person, and other useful information in the format shown in "Where to Play Chess" on page 2.

From the Editor's Desk

This ICB is being mailed on February 12, one week later than planned. I hate missing a deadline (even a self-imposed one), but occasionally a seemingly acceptable reason for doing so appears. In the present case, word came at the end of January that former world champion Mikhail Tal, the tactical wizard who first dazzled the chess world with his attacking play while in his late teens more than 30 years ago, would definitely be in Chicago for the National Open. Tournament organizer Richard Verber thought this development merited an ICB story, and I agreed. Verber advised that an article of two to four pages on Tal's chess career would be written and delivered to me on February 1. I had planned to go to press with this issue on that day, but said I would wait for the aforesaid material.

To get to the point. I was later given February 3, 5, and 6, respectively, as the dates that the Tal story would be ready. By the night of the 6th, no story had been submitted. I was now nearly a week behind schedule, and had nothing to show for the delay except aggravation. I took this ICB to the printer on February 8, picked it up three days later, and sent it out February 12.

What did I learn from this misadventure? I will never again hold up the magazine for a proposed story on the hope that it will be delivered as promised. While I am editor, the ICB is going to come out on time.

"Readers' Showcase" debuts in this issue. Nearly a dozen games were submitted for consideration. Space limitations permitted only one to be published now. If you have sent in a game, do not despair; I hope to print most (if not all) contributions over the next several months. If you have not sent in a game, why not consider doing so? Al Chow suggests that recent games from newsworthy events he requested I would rather leave the field open to any games played under tournament conditions. I only ask that the game be interesting, if it is from a recent tournament, or features an opening novelty, a nice combination, or some end game artistry, so much the better. (I would prefer games which have not been published elsewhere, however.) Address your submission to: Readers' Showcase, Illinois Chess Bulletin, 357 W. Grove, Lombard, Ill. 60148.

The general public (and most chess players) consider chess a serious game; indeed, it is, as any tournament veteran will attest. But chess also has a lighter side, as shown in this issue by David Wulatin's "The TD Nightmare Quiz". Wulatin, an 18 year old Oak Park resident, has the insight to find the humor inherent in many aspects of "the royal game" and the ability to present that humor with wit and style. "The kid has talent", as the saying goes. You will see more of his work in future ICBs. (An active player, Wulatin scored 4-0 to take the top "C" prize in the 1987 Illinois Class.)

Increased coverage of scholastic chess begins in this issue with crosstables from Proviso West's November, 1987 grade and high school events, two annotated games from Illinois high school champion Erik Ranneberg, and stories on the January, 1988 Albright Scholastic Tournament and the upcoming March 5-6, 1988 Illinois Grade School State Championship. I will be at the grade school event in West Chicago, and at the Illinois High School Association Team Championship in Evergreen Park on March 25-26. I cannot attend every scholastic tournament, however. Grade school and high school organizers, coaches, and players. send me match results, cross tables, stories, etc. I will print whatever time and space considerations allow.

I also would like to publish more about Illinois chess clubs. In this regard, I plan to inaugurate a column, "The Club Scene", in the next ICB. The column will feature news items (tournament results, upcoming events, etc.) from any club which submits such information, as well as an occasional "in depth" look at particularly active or otherwise noteworthy clubs. Club presidents. put me on your newsletter mailing list. I can't print club news which I don't have.

(Continued on page 27)

WHERE TO PLAY CHESS: ICA CLUB AFFILIATES

AMERICAN POSTAL CHESS TOURNAMENTS

sponsors postal events of various kinds, and sells chess books and equipment. Contact Jim or Helen Warren, P.O. Box 305, Western Springs 60558. (312) 246-6665

CENTRAL LAKE COUNTY CHESS CLUB

meets Fridays, 7:15 p.m. to midnight, College of Lake County, Bldg. 1, Washington at Route 45, Grayslake. Contact Dennis Grant, 1657 McKay, Waukegan 60087. (312) 336-5188.

CHICAGO CHESS ASSOCIATION

organizes major tournaments at the Holiday Inn O'Hare. Also master chess lessons, \$40/3hr. Contact Dick Verber, 2725 W. 84th St., Chicago, 60652. (312) 434-2118

CHICAGO CHESS CENTER

meets for casual chess 7 days a week, 6 p.m. to 1 a.m., 2923 N. Southport, Chicago 60657. Also sponsors rated tournaments on selected weekends. Contact Jules Stein, (312) 929-7010

CHICAGO INDUSTRIAL CHESS LEAGUE

organizes frequent competition among commercial/government teams with awards, ratings, and special events. Contact Jim Brotsos, (312) 775-5054, or Bruce McNeil, (312) 742-5195.

DOWNERS GROVE PARK DISTRICT CHESS

CLUB meets every Thursday, 6:30-10 p.m., Lincoln Center, 935 Maple Ave., Downers Grove. Affiliated with USCF and ICA. Contact George Uffner, (312) 910-0421.

FRED REINFELD CHESS CLUB

meets Sunday afternoons from 2-6 p.m. at Coslow's, 200 E. Johns St., Champaign. Speed chess is emphasized. Contact Barry Fisher, 2112 Cyprus, Champaign, IL 61821. (217) 333-9083.

GREATER PEORIA CHESS FEDERATION

meets Mondays, 7 to 11 p.m., Bradley Student Center Cafeteria, Wilkinson, 901 N. Elmwood, Peoria. Contact Bill Wilkinson, 905 N. Rebecca Pl., Peoria 61606. (309) 673-9455.

ILLINOIS VALLEY CHESS CLUB

meets Thursdays, 6-10 p.m. Grace United Methodist Church, 1345 Chartres St., LaSalle. Contact Byron Pappas, 432 Creve Coeur, LaSalle, IL 61301. (815) 224-2869.

LAKE COUNTY CHESS ASSOCIATION

sponsors rated tournaments in the Grayslake/Zion area. Contact Tim Just, 1521 Circle Ct., Waukegan 60085. (312) 244-7954

OAK PARK / FOREST PARK CHESS CLUB

meets Tuesdays, 7 p.m. to midnight, Mohr Community Center, Jackson and DesPlaines, Forest Park. Contact Ken Marshall, 357 W. Grove, Lombard 60148. (312) 932-1455.

PARK FOREST CHESS CLUB

meets Thursdays, 7 to 10:30 p.m., Freedom Hall, Orchard & Lakewood, Park Forest. Contact Wayne Palmquist, 10605 Southwest Hwy #1F, Worth 60482. (312) 361-2571

SOUTHERN ILLINOIS CHESS LEAGUE

sponsors rated tournaments throughout southern Illinois. Contact John Tonkinson, 105A Manor Court, Alton 62002. (618) 462-5732.

ST. CHARLES CHESS CLUB

meets Thursdays at 7 p.m., Baker Community House, 101 S. 2nd (Route 31), St. Charles. Contact Ery Sedlock, 6 N. 307 Old Homestead Rd., St. Charles 60174. (312) 377-7995

TULEY PARK CHESS CLUB

meets Saturdays, 1 to 5 p.m., Tuley Park Fieldhouse, 501 E. 90th Pl., Chicago. Contact Thomas Fineberg, 7321 S. South Shore Dr., Chicago 60649. (312) 721-3979.

TWIN CITY CHESS CLUB

meets Monday evenings, Parks & Rec. Bldg., 611 S. Linden, Normal, except 1st Monday/month, Garcia's, Watterson Place. Speed tournaments 50 cents/game. Andy McGowan, 520 E. Chestnut, Bloomington 61701. (309) 827-7892

CHESS PHONE
(312) 971-3666

PRESIDENTIAL PONDERINGS

By ICA President Tim Just

GOLF, TENNIS, CHESS, & TV

Uri Ustovitch stopped by our club recently. He plays P-QR4 as his first move. Regardless of whether he has black or white, regardless of what his opponent does, Uri always opens with P-QR4. Uri was the club champion four times in a row back in the 1970s.

Clearly, he had something on his mind.

"Uri, glad you came by. You're just in time to sign up for the club championship!"

"Not right now. First I want to talk to you about chess and TV."

"Yep, I'm disappointed too. I called as ICA president. Harold Winston called as USCF president. But Channel 11 and Channel 20 still had no interest in broadcasting that program on the World Chess Championship match in Spain."

"No, that's not what I'm talking about!"

"Well, what's the story?"

"A few years ago, didn't you predict that chess was going to be the next big time TV sport?"

"Look, you don't have to get sarcastic just because I'm no Kreskin and pro wrestling hit big on TV first. Besides, Hulk Hogan, Rick Flair, and Kurt Henning have little in common with Gary Kasparov."

"Don't get so excited. I'm not concerned with your ability as a prophet."

"Ok, what is your point?"

"Chess as a big time television sport?"

"Why not? Just look at what corporate sponsorship, full time promoters, and full time professional players have done for golf and tennis on TV."

"So!?"

"With that same kind of backing, chess can't miss. You have to admit chess is much more interesting and intricate than golf or tennis."

"I think you have missed something important here."

"Like what?"

"Like chess at the present time just might not be the television success that golf and tennis have been."

"Why not?"

"Anyone over the age of five who watches a golf or tennis match has some idea of what is going on after only a few minutes."

"Huh?"

"A person can easily see, without understanding a lot of rules, that in one case you just keep hitting the ball until you get it into the hole you are aiming at, and in the other case you just keep hitting the ball in a certain area until someone misses it."

"I still don't see your point."

"The first time someone sees golf or tennis on TV, he can instantly understand the basic idea of the sport. You just can't do that with chess. It's difficult to imagine a person unfamiliar with chess coming across the game on TV and not changing stations five minutes later."

"How can you say there is no place for chess on TV?"

"I didn't say that! I'm just pointing out that an individual seeing chess for the first time on TV will not grasp the basic concept of the game in the same way he will with golf or tennis."

"There, you said it again!!"

"Pay attention. I am simply stating that a person's first exposure to chess should not be by means of television. The game still has a place on the tube."

(Continued on Page 4)

PRESIDENTIAL PONDERINGS

(Continued From Page 3)

"If, as you claim, people are not going to watch chess on television, then what place can the game possibly have there?"

"The key is to educate people about chess BEFORE putting it on TV. That way you'll have a built in audience when you do hit the airwaves."

"So before chess is televised, people should learn about the game in places like their local schools."

"Now you have the right idea!"

"So the man who expounds the virtues of P-QR4 as an opening move also thinks that I have to educate the public if I want chess to be a big hit on TV."

"Now who is being sarcastic? Still, you might want to look into advertising on the next Wrestlemania telecast."

ILLINOIS CHESS ASSOCIATION MEETING - FEBRUARY 21

The next ICA meeting will take place at 1:30 p.m. on Sunday, February 21, 1988, at the Morgan Park Methodist Church, 11030 So. Longwood Dr., Chicago. The church, the site of Fred Gruenberg's "Put the Fun Back into Chess" tournaments, is located about two blocks from the 111th St. exit from the Dan Ryan Expressway. Compliments, complaints, comments - come and have your say about the ICA and the ICB on February 21

Letters to the Editor



I had intended to write you back in the summertime when you published your interview with Joel Benjamin in the ICB for June-July but somehow my other activities kept me from doing so. The interview was excellent and deserves to be entered for a journalism award for the year 1987. You asked all the right questions, and Benjamin answered them frankly and sincerely, giving a clear picture of the difficulties which an American GM must face today.

I fully agree with your objection to having your Spassky article rewritten by the previous editor, whose job it was to reproduce the article exactly, not rewrite (censor?) it.

Now that you are the editor, keep up the fine work.

Frank Skoff
Chicago, IL

[EDITOR'S NOTE. Thank you for the kind words. I do not agree that an editor must publish an article exactly as submitted, however. Rather, he should edit the material, keeping in mind that he is the editor, not the author. The difference between editing and rewriting can be subtle, but it is significant. I objected to the complete rewriting of a story which was then published under my name. In doing so, I did not state (or mean to imply) that the story was censored, or that the editor had no right to make any changes whatsoever in it.]

Congratulations on turning out two ICBs in just two months and getting the ICB back on a regular schedule. I hope all ICA members realize that this took tremendous hard work and dedication by you and Mary.

The December issue was chock full of Illinois chess. I was particularly pleased to see your steady stream of news and crossables from central and southern Illinois. I thought the Benjamin simul game provided a nice touch.

Keep up the fine work!

Harold Winston
USCF President

Having grown up in the Chicago area, I find it refreshing that the Midwest (especially Illinois and Iowa) continues to thrive as a chess arena or proving ground for our talented younger players and for all players of expert strength and above.

I have played over all of the games in the November-December ICB. In my humble opinion, the Greg Defotis-Andrew Karklins contest was notable for its strategy and positional understanding. Greg has been a chess devotee for a long time. It is a pity that he decided not to go after the grandmaster title. People have gotten a lot of enjoyment from playing over his better games.

John Popovich
Evergreen Park, IL

US  CHESS
THE FEDERATION

&

Chess Association of  CHICAGO

Proudly Announces

1988 National Open

MARCH 18-19-20 IN CHICAGO

Join the Grandmasters in Chicago



GM Robert Byrne



GM Dimitri Gurevich



U.S. Champ Joel Benjamin



GM Maxim Dlugy



GM Arthur Bisguier

Previous Winners
 Joel Benjamin
 Pal Benko
 Arthur Bisguier
 Walter Browne
 Robert Byrne
 Maxim Dlugy
 Larry Evans
 Dimitri Gurevich
 Sergey Kudrin
 Tony Miles
 Samuel Reshevsky
 James Tarjan

For the Chess Vacation of the Year.

\$16,000 PRIZE FUND

CHAMPIONSHIP SECTION - OPEN TO ALL

EF: Chmp-
 \$65 in advance
 \$75 at door

\$3500 - \$2000 - \$1000 - \$800 - \$700 - \$500

EXPERT: \$800 - \$400 - \$200

CLASS A: \$800 - \$400 - \$200

EF: Res-
 \$60 in advance
 \$70 at door

Round Times Both Sections: Fri-1 and 7 pm; Sat/Sun-10am & 5pm

RESERVE SECTION - OPEN TO 1799 AND UNDER

\$1000 - \$500 - \$300 - \$200 - \$150

CLASS C: \$700 - \$350 - \$200

CLASS D-E: \$600 - \$300 - \$200

Join the Grandmasters in Chicago for an affordable 3 or 4 day Chess Vacation at the beautiful Holiday Inn O'Hare featuring 3 swimming pools and the magnificent HOLIDOME. See for yourself why the Holiday Inn O'Hare has become the most popular tournament site in the Chicago area. This prestigious USCF National Tournament is co-sponsored by USCF and the Chicago Chess Association. For additional information, see the Tournament section of CHESS LIFE, or write Organizer Richard Verber, 2725 W. 84th St., Chicago, IL 60652. The 1987 National Open in Las Vegas was one of the most successful tournaments of the year, attracting an amazing total of 948 players from throughout the U.S.! Since we expect to fill the Holiday Inn O'Hare from March 17 - 20, we urge you to make your hotel reservations early to assure yourself the discount chess rate. Please phone the hotel at 312-671-6350. Many special events are scheduled for Thursday evening, March 17 before the Friday afternoon start of the National Open. Don't miss the guest appearance and simul by U.S. Chess Champion Joel Benjamin and the fascinating \$500 BENJAMIN-DLUGY 3-game BLITZMATCH!

Don't miss this Exciting Tournament

(Make your reservations early)

What's new

MIKHAIL TAL TO COMPETE IN NATIONAL OPEN IN CHICAGO

Former world champion Mikhail Tal, the Soviet Grandmaster and attacking genius who won the world title in 1960 at age 23, will play in the 1988 National Open at the Holiday Inn O'Hare on March 18-20. Tal's participation was approved by the USSR Chess Federation in late January. He joins American GMs Arthur Bisguier, Walter Brown, Maxim Dlugy, Dmitry Gurevich, Sergey Kudrin, and Leonid Shamkovich as confirmed entrants in what will be the biggest chess event held in Chicago since the 1979 U.S. Open. GM and U.S. co-champion Joel Benjamin, who will contest a three game \$500 Blitz Match with Dlugy at the Holiday Inn on the evening of March 17, may also take part in the tournament.

BROOKS, FINEGOLD, KAUSHANSKY SHARE MIDWEST ACTION TITLE

Senior Masters Michael Brooks and Ben Finegold and Master Leonid Kaushansky each scored 5.5-5 to tie for the top three places in the 1988 Midwest Action Chess Championship, held January 9 at the Holiday Inn O'Hare. The 112 player tournament, organized by Helen Warren, set an attendance record for "action chess" (30 minutes/game) events. A full story on the Midwest Action tournament will appear in the next ICB.

PEORIA TO HOST 1989 NATIONAL JUNIOR HIGH CHAMPIONSHIP

The USCF Policy Board has accepted the bid of the Greater Peoria Chess Federation to organize the 1989 National Junior High School Championship. The tournament will take place on May 14-15, 1989.

GM Walter Browne and the International Blitz Chess Association
present the

IBCA Blitz Spectacular - Tuesday, March 15, 1988 - 8:00 p.m.

at the Oak Park-Forest Park Chess Club, Mohr Community Center, 7640 Jackson Blvd., Forest Park
(Jackson and Desplaines, just north of the Desplaines "E1" stop and the Eisenhower Expy.)

\$220 Guaranteed Prize Fund (1st, \$100; 2nd, \$40; under 2200, \$40; under 1900, \$40)
Higher prizes if more than 25 entries

Entry Fee: \$10 (IBCA members), \$14 (nonmembers), \$18 (includes one year IBCA membership, with "blitz" rating, bimonthly magazine, EF discounts in future IBCA events, etc.)

More than 25 players: preliminaries and finals

25 or fewer players: round robin

GM Walter Browne will play (as may other GMs in Chicago for the Midwest Masters and the National Open tournaments) in this 5 minute/game tournament. FOR MORE INFORMATION: Ken Marshall (312) 932-1455

(Paid Advertisement)

ILLINOIS TOURNAMENT OF CHAMPIONS II

By Helen Warren

If there is a "story" hidden in this tournament, it can't be the strong performance of Albert Chow. He was certainly a favorite, and his temporary lapse in the first ITC last year (wherein he finished tied for 5th -6th) was more a fluke than a failure. The real exclamation points belong after the name Larry Chachere! His result places him on the threshold of the senior master rank -- and his play indicates that he'll walk across and continue up the stairs. Only settling for draws after showing an understandable reluctance to press better positions for wins kept him from reaching SM status -- and then some. Chachere along with Chow went undefeated in this formidable event.

For Albert the ITC II was a "make-up test". This time he proved what almost everyone in Illinois has known for some time now: he is the strongest master in the state. Solid play characterized Andy Karklins' games as he tied with Chachere and Morris Giles for 2nd-4th. Andy lost but one game -- to Greg DeFotis. Morris has been relatively inactive of late, but now may come out of the bunker and return to the chess wars. He plays exciting chess, no doubt about it.

While Alan Federl and Ken Wallach finished with minus scores in their ITC debuts, 3-1/2 in a field of this calibre is certainly no embarrassment. Keep

your eyes on these relative newcomers to premier chess circles in Illinois; you'll be hearing more from them. Veterans Eugene Martinovsky and Greg DeFotis provided the tournament with experience and muscle in finishing in the middle ranks, but for Leonid Kaushansky and Billy Colias the climate was unkind. The commute for Billy from Charlotte, NC to Chicago didn't enhance his chances, to be sure, and ultimately the strain told in his play. (IM Jim Rizzitano was unable to compete because of job responsibilities and IM Bob Gruchacz never responded to his invitation.)

Round robin tournaments are scarce, and for obvious reasons: raising a prize fund, underwriting a site, relying on volunteer tournament directors. Yet these events are essential testing grounds for our masters. They provide the opportunity for serious and rigorous play game after game.

My thanks to the volunteer TDs who contributed their professional skills: Todd Barre, Tim Just, Walter Brown, Richard Verber, and John Tomas. Special thanks to Fred Gruenberg for financial help and to the Illinois Chess Association, the American Chess Foundation, and Dr. Martinovsky for their contributions.

Our hope is for another ITC in 1988. We'll see.

PLAYER	PRE		POST										TDT	
	ST	RTNG	RTNG	1	2	3	4	5	6	7	8	9		10
1 CHOW, ALBERT C	IL	2422	2439	*	D	D	D	W	D	W	D	D	W	6.0
2 GILES, MORRIS C	IL	2449	2451	D	*	D	L	W	D	W	L	W	*	5.5
3 KARKLINS, ANDREW	IL	2382	2405	D	D	*	D	W	L	D	D	W	W	5.5
4 CHACHERE, LAWRENCE	IL	2365	2397	D	W	D	*	D	D	D	D	D	W	5.5
5 MARTINOVSKY, EUGEN	IL	2428	2427	L	L	L	D	*	W	W	W	D	W	5.0
6 DE FOTIS, GREG S	IL	2418	2411	D	D	W	D	L	*	L	D	W	D	4.5
7 FEDERL, ALAN R	IL	2367	2350	L	L	D	D	L	W	*	W	L	D	3.5
8 WALLACH, KENNETH T	IL	2340	2333	D	W	D	D	L	D	L	*	D	L	3.5
9 KAUSHANSKY, LEONID	IL	2361	2335	D	L	L	D	D	L	W	D	*	L	3.0
10 COLIAS, BILLY	IN	2358	2333	L	L	L	L	L	D	D	W	W	*	3.0

ILLINOIS TOURNAMENT OF CHAMPIONS II

OCTOBER-NOVEMBER, 1987

White: Albert Chow (2422)

Black: Eugene Martynovsky (2428)

Queen's Gambit

Annotated by Albert Chow

- 1 d4 Nf6
- 2 c4 e6
- 3 Nc3 d5
- 4 Bg5 Be7
- 5 e3 h6
- 6 Bb4 0-0
- 7 Nf3 h6
- 8 Qb3 c6

Instead of 8...Bb7, Martynovsky's move looks very solid since if White plays cxd Black may recapture with his c pawn.

- 9 Bd3 Nbd7
- 10 0-0 Bb7
- 11 cxd exd

Of Black's three possible recaptures, this is the one I least expected. 11...cxd would be consistent with Black's 8th move; after 11...Nd5 it's not easy for White to avoid equalizing exchanges.

- 12 Rfd1 Kh8

A mysterious and probably unnecessary king move.

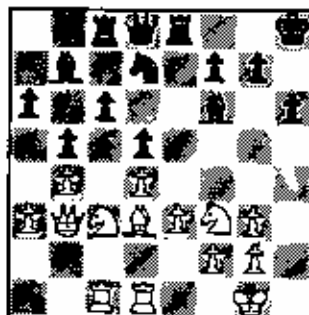
- 13 Qc2 Re8
- 14 Bg3 Nh5
- 15 a3 Nxf3
- 16 Bxf3 Bf6
- 17 b4 ...

Now White has the initiative and at least a slight advantage. The Black bishop pair remains passive because of White's aggressive pawn structure. On the previous move Black might have improved his chances with 16...a5, hindering White's b4 and preparing a possible ...Ba6.

- 17 ... Rc8
- 18 Qb3 a6

19 Ra1 b5

Martynovsky prepares an interesting queenside stonewall defense. His backward c pawn could be blocked by ...Nb6, ...Nc4. Then an eventual ...Ra8, ...Bc8 helps bring the bad bishop back, with maybe ...a5 and great chances! But it's White's turn, so White's attacking ideas can be put into action.



20 Bf5 ...

It was tempting to pin but doing so drives Black's rook to where it belongs and also leaves White's bishop exposed later. The most accurate move was 20 e4! with play similar to the game but with White not wasting time.

- 20 ... Ra8
- 21 e4 Nb6

White's advantage increases if Black opens lines with 21...dxe 22 Nxd4.

- 22 e5 Bg5
- 23 Nxf3 Qxf6
- 24 Bb3 ...

He hits me and I've got to run away!

- 24 ... f6
- 25 exf6 Qxf6
- 26 Ne2 Nc4
- 27 Nf4 Bc8

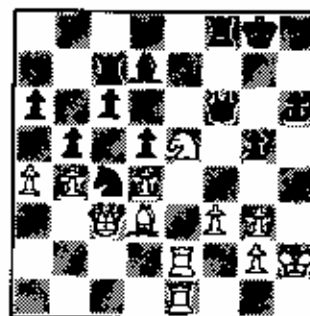
Black reanimates his bishop, with help from my 20th move. But White is still able to maintain the initiative with a sequence of accurate moves thanks to his better development and more flexible pawns.

- 28 Ng6+ Kg8
- 29 Re1 Bb7
- 30 Qc3 Rac8

The continuing pressure had pushed my opponent into time trouble. He could have tried to create complications with 30...a5. Martynovsky may have wanted to play it safe until he reached the time control, but White's game continues to improve, creating new problems for Black.

- 31 Rc4! Bg4
- 32 Ra1 Bb5
- 33 Ne5 Re7
- 34 a4 Rf8
- 35 f3 Bc8
- 36 Kh2 g5
- 37 Re2 Rc7
- 38 Ra1 Bb7?

Black at last leaves a hole in his stubborn defense!



- 39 Nxd7 Rxd7
- 40 Re6 Qd8
- 41 Rxb6 ...

41 Rxc6 would have been even better; then my king wouldn't later have to worry about the open h file!

- 41 ... Rb6
- 42 Ree6 ...

42 Bb5! threatening 43 Qc1 would have won faster.

- 42 ... Rxc6
- 43 Rxc6 Rf6
- 44 Qe1 Kf7
- 45 Re2 ...

White has to keep his rook to try to win. Since Black's king has little pawn shelter White needs the heavy artillery to create attacking chances. The winning idea is to open lines, break through, penetrate. White's king will be safe on f2.

THE TD NIGHTMARE QUIZ

By David Wulatin

Most of you have seen the controversies which occasionally arise at chess tournaments. Have you ever thought that you could handle such situations better than the guys in charge? Now you can find out by taking this tournament director quiz!

1. Player A pushes his pawn to the eighth rank. He grabs the queen and is about to replace the pawn with it when he realizes that doing so would cause a stalemate. He puts the queen down and promotes the pawn to a rook instead. Player B protests, arguing that the "touch-move" rule should also apply to captured pieces. What is your decision?

A) "Player A can touch any piece he wants to as long as the piece is off the board. The underpromotion stands."

B) "Because a captured piece may re-enter the game, the touched piece must be used if possible. The game is a stalemate."

C) "Hey, I just remembered that Chow and Martinovsky are heading for an adjournment. I'd better give them the sealed-move envelopes. Todd, take care of this, will you?"

2. You are presiding over a tournament being played on a luxury ocean liner. The first round is scheduled for Saturday. Player A's opponent, B, fails to appear, so you award A a forfeit victory. When B shows up the next day, he protests his loss. He tells you that the ship has just passed over the international date line, and that today is Saturday. Furthermore, B demands that A forfeit the game for starting B's clock twenty-four hours early. What do you decide?

A) "I rule in favor of player B."

B) "I rule in favor of player A."

C) "Did I just hear someone yell, 'Man overboard?' I'd better go check it out. Todd, you straighten this one out, okay?"

3. Your otherwise normal weekend Swiss has been made interesting by the entry of a player from

Italy (Vinnie Franchetto) who is on vacation with his family. All goes smoothly until the fourth and final round, when Vinnie gets the white pieces for a third time. He and his two steroid-enriched brothers "discuss" the color system with you.

"I must admit that I'm somewhat puzzled by your attitude, Mr. Franchetto", you reply. "Most players would be happy to have white three times."

"Whatsa matta with ya?" asks Mr. Franchetto. "I grew up on th' streets of Sicily learnin' how to defend myself. Now how am I supposed to play th' Sicilian Defense without th' black pieces, huh?"

"Sorry, Mr. Franchetto, that's just the way the pairings work out sometimes."

"Oh, really? Well maybe my family an' I should show ya how we work out. Oh, look, my brothers bench-pressed your table and your pairings list fell on the dirty floor. Hey, now ya can make a new, clean list with my name under th' right color!"

"Uhhhhh . . ."

"You've run a real smooth tournament so far. Be a real shame if anything else happened to spoil it."

What do you say now?

A) "Well, I've always said that cleanliness is next to godliness. I think I'll write up a brand new pairings sheet."

B) "Sorry, Mr. Franchetto, but I don't change pairings for anyone, not even . . . hey! How come you're kissing me on the cheek like that?"

C) "I'd love to stay and chat, Mr. Franchetto, but around this time I usually check to see if anyone needs change for the soda machine. I'm sure Todd will be more than happy to discuss this with you."

That wasn't so bad, was it? But wait - what would you do if Todd was nowhere to be found?

CHESS PHONE

(312) 971-3666

ICB READERS' SHOWCASE

"The following contest is from a 'game/30 minutes' practice tournament John Krom, Jr., Tim Bogan, Steve Monti and I held the weekend before the recent Midwest Action Chess Championship", writes John Scanlon.

"The practice proved effective: the three of us who played in the Midwest Action (John Krom did not) all took home prize money."

January, 1968

"Game/30" Practice Tournament

White: John Scanlon (1823)
Black: John Krom, Jr. (2214)

Annotated by John Scanlon and
Albert Chau

1 d4 Nf6
2 Nf3 ...

JS: I'm determined to remain solid.

2 ... g6
3 e3 ...

JS: MCO puts its stamp of approval on five moves - b3, Bf4, g3, c3, and Nd2.

AC: Other White third moves also deserving the 'stamp of approval' are 3 c4, 3 Nc3, and 3 Bg5.

3 ... Bg7
4 Bd3 d5
5 0-0 0-0
6 c3 Bg4

AC: Black has easily equalized thanks to White's unenterprising opening. Other ideas include 6...c5, 6...b6, 6...Bf5, and 6...Ne4.

7 b3 ...

JS: After the game my opponent suggested 7 Nd2 and 8 Qh3.

7 ... Bxf3
8 Bxf3 Nc6

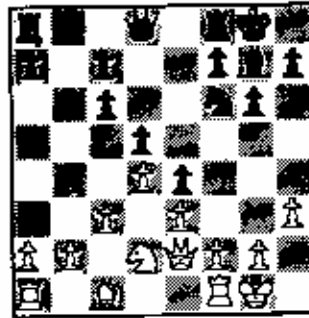
JS: Black is out to get his bishop back.

AC: Black supports the pawn advance ...e5 when he could take the initiative in the center. But White's response shows that Black's Nc6 could be slightly misplaced. Most flexible was 8...Nd7 covering both e5 and c5 when 9 Bb5? c6 would be a complete waste of time.

9 Bb5 ...

JS: I was looking at what a great outpost c5 would be, and my king does look perfectly safe, doesn't it? Well, doesn't it?

9 ... e5
10 Bxc6 e4
11 Qe2 bxc6
12 Nd2 ...



AC: It would have been most accurate to play 12 b3 first. By attacking one move earlier, White would slow down Black's natural kingside attack plan ...f5, ...f4 before Black can get organized. For example, 12 b3 Nf5 13 Ba3 Re8 and the rook moves off the f file; or 12 b3 Ne8 13 Ba3 Nd6 and Black's pinned knight cannot support f4.

12 ... Nf5
13 b3 ...

JS: If 13 c4, then ...dxc4 14 Nxc4 c5! and the pawn sac (if you can call giving up one of a doubled isolated pawn pair a sacrifice!) will open up the diagonal for Black's bishop and result in severe development problems for White.

AC: 13 c4 is not a bad move, but in response 13...dxc? is not only bad - it's ugly! After simply 14 Nxe4 all three of Black's c pawns will be weak and vulnerable. Black would instead prefer 13 c4 f5 etc.

13 ... f5
14 Ba3 Rf7
15 Qe6 ...

AC: This is a mistake. 15 g3 is very logical, hindering...f4. Note Black cannot yet play ...g5 since his Nf5 hangs. This would be consistent if White is indeed "determined to remain solid". It's not a good idea to risk king

safety, as the further course of this game proves. If White wanted the initiative, he should have been aggressive earlier.

15 ... Qf6

JS: Everything on to the attack. The locked center will shut out White's pieces active on the queenside for a while, and Black's attack certainly won't take forever to mount.

16 Qh7 ...

JS: The die is already cast.

16 ... Re8
17 Qxa7 f4
18 Rael Bg5

AC: Threatening 19...f3 20 g3 Kxg3.

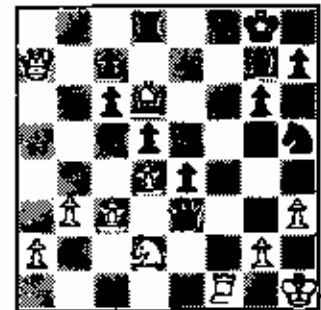
19 Kh2 ...

JS: The only move.

19 ... fxe3
20 fxe3 ...

JS: Again the only move. If 20 Rxe2, then ...Rxf2 21 Rxf2 Qxe3.

20 ... Bg3+
21 Kh1 Rxf1+
22 Rxf1 Qxe3
23 Qd6!! ...



JS: I'd been racking my brains for a move to survive ...Ng3+, and I wasn't using the bishop for such else.... 23...cx46, 24 Qf7+ mates.

23 ... Qxd2

JS: Best was probably 23...Ng3+ anyway; after 24 Bxg3 Qxg3, the Black queen protects c7 and has a beeline on White's queenside pawns.

AC: White's last move may have disturbed Black's senses! White has two pieces hanging and it's tempting to capture one of them. Black could still win, however, with 23...Ng3 24 Bxg3 Bxg3 with a passed e pawn and the threat of 25...Bf8 followed by 26...Bd6.

24 Bxc7 Nf6
25 Bxc6 Rb8
26 Be7 ...

JS: John was expecting 26 Bc7, when he would then play Rxd6.

2b ... e3
27 Be6+ Kh8
28 Bxf6 ...

JS: No time to take the rook.

28 ... e2
29 Bxg7+ ...

JS: Sadly, there's no mate!

29...Kxg7, 30 Bf6+ Kb6 31 Qh4+ etc.
Bra

TOURNAMENT OF CHAMPIONS (Continued from page 8)

45 ... bxa

I was very happy to see this. The queenside is busted open and the required technique is straightforward. Stronger defense was possible with 45...Rh6 46 Kgl Bf6 47 Bc2 Qh8 when White can choose from 48 Kf2, 48 axb, and 48 Bc4. White would have a clear advantage, but maybe not a decisive one.

46 Bxc4 dxc4
47 Bc3 a3

47 ...Bd5 is also met by 48 Re5,

48 Re5 ...

This covers the blockade square d5, attacks g5, and prepares for Ra5

when all of Black's a and c pawns are weak. Perhaps Eugene overlooked this multipurpose move centralization when he played 45...bxa.

48 ... a2
49 Ra5 ...

One last pitfall to avoid! I almost played 49 Bc4+ when suddenly I realized 49...Qd5! 50 Rxd5 Rh6+ 51 Kgl a1-Q+ 52 Kf2 cxd5 would be very embarrassing!

49 ... Qh8+
50 Kgl Rh6
51 Bxc4+ Ke7
52 Rxa2 Rh1+
53 Kf2 Qh2
54 Re2+ Kd7
55 Bf7+ Kd6
56 Re6+ l-o

LETTER TO GAMES EDITOR

Games Editor Albert Chow:

I've enjoyed lots of your annotations in the ICB, and for the first time note an obvious slip. In Rizzitano-Levine, on page 20 of the November-December issue, from the diagram and note at the top of column three: if 30 Nd5, then 30...b5 is fatal for Black because of 31 Ne7+. On the other hand, 30...Bxd5 seems to win at least a pawn, and probably more if White avoids exchanging queens.

Our Bulletin is a top-notch product, and you are one reason why!

Sincerely,

Lou Werner

[ALBERT CHOW REPLIES: You are indeed correct about the blunder I made in my notes to the Rizzitano-Levine game. (Would you believe that I did this on purpose just to check if anyone reads my notes??? NO...just kidding!) Rizzitano must have had a reason for rejecting 30 Nd5; as you indicate, the simple 30...Bd5 is Black's winning answer. Thank you for pointing out my error. I hope to do better.]



Albert Chow (left foreground) faces Ken Vailash while Alan Federl (left background) takes on Merris Giles at the Rhode Tournament of Champions II.

ALBRIGHT SCHOLASTIC TOURNAMENT ATTRACTS 152 ENTRIES

By Ken Marshall

Albright Middle School Chess Coach Jerry Esposito expected about 100 players at the scholastic event scheduled for January 16, 1988, at his Villa Park school. When 152 grade school and junior high school students appeared, Esposito, Chief Tournament Director Ery Sedlock, and Assistant TDs Jeff Wiewel, John Barstad, Sr., and John Barstad, Jr., although pleasantly surprised, handled the situation well (Mike Krupicka also helped out. Krupicka, a high school junior, had written a computer program which was used to print out pairing sheets.) "The new USCF scholastic membership helped achieve this big turnout", said Sedlock. Tim Just, Illinois Chess Association president who was at the tournament, added, "This is the fourth or fifth year that Jerry Esposito has organized a scholastic event at Albright. Other chess coaches know the quality of Jerry's tournaments, and always try to bring teams to them."

Esposito said that the large number of players showed that tournaments for junior high and grade school students are in demand. "There are simply not enough scholastic chess events", he stated. "Organizers like Ery Sedlock, John Barstad, and Larry Stilwell work hard promoting chess in the schools and organizing scholastic tournaments. I wish more people would get involved in such activities." According to Esposito, he decided to host an annual tournament at his school several years ago. "I coach a chess team, but found few chess events available for team members. So I thought I would try organizing a tournament myself."

The 1988 Albright event consisted of two sections, one for grades 6 through 8 and one for grade 5 and below. The tournament was an open one, with the top four players from each school competing as a team.

Brad Stevens (Wilson Middle School, Rockford), Larry Strain (Flinn Middle School, Rockford), and Bradley Crawford (Fairmont School, Downers Grove) each scored 4-0 to finish first through third (based on tie breaks) in the Grade 6-8 section. Top eighth grade honors were taken by Richard Lewis (Flinn) with 4 points, while Jamie Getchius (Haines Junior High, St. Charles) went 3-1 to win the seventh grade prize. Hugh Freestrom (Albright) was first sixth grader, also with a 3-1 score. In team competition, Wilson and Flinn tied with 13-3 records, with Wilson being awarded first place on tie breaks. Albright came in third at 12.5-3.5.

First place in the five round Grade 5 and below section was taken by Alex Sparagna (Benjamin Franklin School, Glen Ellyn) on tie breaks over fellow Benjamin Franklin players Mickey Jacobsen and Anna Jacobsen. All had 5-0 scores. Jason Bitner (District 50, Washington, Ill.) won the fifth grade trophy, John Sheehan (Albright) was top fourth grader, and Michael Levin (University of Chicago Lab School) finished first among players in third grade and below. The team competition was dominated by Benjamin Franklin (coached by Ruth Jacobsen), which scored 19-1. King School (Rockford) took second place with 13 points, followed by Albright with 12.



Round four begins at the Albright Scholastic Tournament.

WEST CHICAGO TO HOST ILLINOIS GRADE SCHOOL CHESS CHAMPIONSHIP

The 1988 Illinois Grade School State Chess Championship tournament will take place on March 5 and 6, 1988, at the Benjamin School in West Chicago. The seven-round event, open to Illinois students only and featuring a time control of 40 moves in one hour, will be divided into three sections: Junior High (8th grade, 7th grade, 6th grade and under), Elementary (5th grade, 4th grade and under), and Primary (3rd grade, 2nd grade, 1st grade and under). Prizes will include 42 trophies and 56 ribbons, with trophies being awarded to the state champion in each section, the top three players in each grade (1st through 8th), and the top five school teams in each section. (The four top individual scores of all players from a school will constitute that school's team score.) For additional information, please call John Barstad at (312) 231-6075, or write to him at 707 Fox Court, Carol Stream, Ill. 60188.

Last Chance Mini-Tour

December 12, 1987

PLAYER	ST	RTAG	PRE	POST			TOT
			RTAG	1	2	3	
1 UMEZIMA, GEORGE O	IL	2313	2323	W15	W18	W15	3.0
2 SANDRIN, ANGELO	IL	2213	2238	W19	W17	W18	3.0
3 SAX, ROBERT	IL	1958	1988	W17	D10	W11	2.5
4 CHON, ALBERT C	IL	2436	2428	W10	W11	L2	2.0
5 LEE, DAVID	IL	2118	2126	W14	W12	L1	2.0
6 GAZMEN, ETHELBERT	IL	2022	2033	W19	F--	W14	2.0
7 BALE, LESLIE	IL	1983	1982	W20	L2	W16	2.0
8 JORDAN, ROLAND V	IL	1939	1974	W16	L1	W13	2.0
9 GAPUZ, WILFREDO C	IL	1736	1765	L2	W20	W12	2.0
10 PUKEL, BERNARD B	IL	1966	1965	L4	D3	W18	1.5
11 GENSLER, KEVIN M	IL	2188	2169	W13	L4	L3	1.0
12 READ, RIKYS	IL	2042	2003	W18	L5	L9	1.0
13 LYON, MARK A	IL	1917	1903	L11	W17	L8	1.0
14 FRONEK, RANDY J	IL	1847	1839	L5	W19	L6	1.0
15 ALLISON, ROGER D	IL	1834	1811	L1	L16	W20	1.0
16 OSANYINJOBI, TOKS	IL	1665	1679	L8	W15	L7	1.0
17 WHITE, DAVID JAMES	IL	1443/5	1537	L3	L13	W19	1.0
18 PADILLA, RUDY R	IL	1411	1409	L12	B--	L10	1.0
19 POPE, RAYMOND W	IL	1603	1579	L6	L14	L17	.0
20 DAVIS, JOHN	IL	1294/5	1353	L7	L9	L15	.0

Champaign Mini-Tour

December 12, 1987

1 NAFF William	2180	W13	W5	W9	D2	3.5
2 COHEN Lawrence	1852	W22	W10	W8	D1	3.5
3 MARSHALL James	1849	W23	D7	W17	W10	3.5
4 BARGERSTOCK Daniel	1726	W20	W17	L7	W8	3
5 BOLITHO Thomas	1803	W19	L1	M11	W7	3
6 CHLOUPEK Frank	1656	L8	W18	W13	W12	3
7 COOKE Paul	2243	W12	D3	W4	L5	2.5
8 MARTIN Jonathan	-	W6	W16	L2	L4	2
9 BLAIR Charles	1852	W18	W11	L1	-	2
10 WOLF William	1705	W21	L2	W14	L3	2
11 MEYER William	1670	W15	L9	L5	W19	2
12 BARDNER Keith	1650	L7	W23	W21	L6	2
13 KLEIN Robert	1587	L1	W19	L6	W18	2
14 LERO Steve	1494	L17	W20	L10	W22	2
15 EINHUSEN L	-	L11	W22	L16	W23	2
16 CROMBE Matthew	1846	Mbye	L8	W15	D17	2
17 SCOTT Winfield	1856	W14	L4	L3	D16	1.5
18 POMELL Frank	1420	L9	L6	W23	L13	1
19 CAIN Dennis	1226	L5	L13	W22	L11	1
20 DOND Gail	1204	L4	L14	Mbye	-	1
21 O'CONNOR Thomas	1019	L10	Mbye	L12	-	1
22 ZEVNIK Lawrence	1423	L2	L15	L19	L14	0
23 TIARKS Richard	1374	L3	L12	L18	L15	0

Peoria Winter Tornado

January 16, 1988

1 VAN BUSKIRK Douglas	2056	W20	W15	W4	W2	4
2 ANDERSON Phil	2109	W13	W17	W3	L1	3
3 SCHOLL Paul	2013	W7	W10	L2	W6	3
4 BURGARDNER Gerald	1877	W11	W16	L1	W10	3
5 VERO Carl	1887	W19	L9	W16	W11	3
6 INGRAM Randy	1559	D12	W13	W9	L3	2.5
7 FATHAUER Terry	1671	L3	W14	D12	W13	2
8 BOSSAERS Phil	2071	L16	W12	D15	W9	2.5
9 MOORE Rod	1458	W21	W5	L6	L8	2
10 BEASLEY Ronald	1813	W14	L3	W18	L4	2
11 STOTLER Richard	1608	L4	W20	W17	L5	2
12 MURPHY Greg	1869	D6	L8	D7	W18	2
13 BOLITHO Tom	1803	L2	L6	W20	W19	2
14 LERO Steve	1494	L10	L7	Mbye	W21	2
15 CHRISTIANSEN William	1732	W21	L1	D8	L7	1.5
16 WHEELER Stephan	1704	W8	L4	L5	D17	1.5
17 SCOTT Winfield	1856	W18	L2	L11	D16	1.5
18 DODD Randy	1530	L17	W19	L10	L12	1
19 MEYER William	1670	L5	L18	W21	L13	1
20 MOODAY Cleo	1693	L1	L11	L13	Mbye	1
21 EINHUSEN Laurel	-	L15	L9	L19	L14	0

1988 ILLINOIS TOUR

By Bill Smythe

The 1988 Illinois Tour is just underway, and will continue through December. Tour regulations and methods of calculation are the same as in 1987, with a couple of exceptions.

There are two types of Tour events, maxi- and mini-. Major events such as the Tim Just Winter Open/Reserve, Greater Peoria Open, Master Challenge, Illinois Open, and Illinois class are likely to be maxi-events, with the remainder (frequently one-day events) being mini-events.

Tour points are awarded in six rating classes:

Master:	2200 and up	Class B:	1600-1799
Expert:	2000-2199	Class C:	1400-1599
Class A:	1800-1999	Class D:	below 1400

Tour points are awarded according to score. Maxi-events award 32 points for a perfect score, mini-events 16. For each half-point below a perfect score, the Tour award is cut in half. When this halving would result in the point award being less than the score, the score itself is used instead. No Tour points are awarded for a score of zero.

The above formula works out as follows for 3-, 4-, 5-, 6-, and 7-round Tour events:

<3-round event>			<4-round event>			<5-round event>		
score	maxi	mini	score	maxi	mini	score	maxi	mini
3	32	16	4	32	16	5	32	16
2.5	16	8	3.5	16	8	4.5	16	8
2	8	4	3	8	4	4	8	4
1.5	4	2	2.5	4	2.5	3.5	4	3.5
1	2	1	2	2	2	3	3	3
0.5	1	0.5	1.5	1.5	1.5	2.5	2.5	2.5
0	0	0	1	1	1	2	2	2
			0.5	0.5	0.5	1.5	1.5	1.5
			0	0	0	1	1	1
						0.5	0.5	0.5
						0	0	0

<6-round event>			<7-round event>		
score	maxi	mini	score	maxi	mini
6	32	16	7	32	16
5.5	16	8	6.5	16	8
5	8	5	6	8	6
4.5	4.5	4.5	5.5	5.5	5.5
4	4	4	5	5	5
3.5	3.5	3.5	4.5	4.5	4.5
3	3	3	4	4	4
2.5	2.5	2.5	3.5	3.5	3.5
2	2	2	3	3	3
1.5	1.5	1.5	2.5	2.5	2.5
1	1	1	2	2	2
0.5	0.5	0.5	1.5	1.5	1.5
0	0	0	1	1	1
			0.5	0.5	0.5
			0	0	0

Each rated player receives Tour points in all rating classes from his own up through the rating class of the highest-rated player in the tournament or section.

=====

EXAMPLES:

1. Kathy Knight, an A player, scores 4-1 in a 5-round maxi-event. According to the chart, she has earned eight Tour points. The tournament was a single-section event, open to all, and at least one Master participated. Kathy's eight Tour points are awarded in all classes from A through Master: she earns eight A points, eight Expert points, and eight Master points.

2. Benjamin Bishop, a B player, scores 4.5-0.5 in a 5-round maxi-event. The chart reveals that he has earned sixteen Tour points. However, he played in the under-2000 section of the tournament. Since no Experts or Masters played in that section, his Tour points are awarded only in classes A and B: he receives sixteen A points and sixteen B points.

=====

Notice the wording, "...up through the rating class of the highest-rated player...". This is a change from 1987, when the rule was "...up through the upper rating limit of the tournament or section." One effect of this change is to make it impossible for an Expert to win Master points in a tournament in which no Masters actually participate, even if the event is open to Masters.

All Illinois residents participating in ICA Tour events must be or become ICA members. Out-of-staters who are members of their home state chess associations need not join ICA, but cannot accumulate Tour points at tournaments in which they are not ICA members.

At the end of the year, cash prizes are awarded to those ICA members who have accumulated the greatest Tour point total in each class. 1988 Tour prizes are as follows:

Master:	\$300 - \$200 - \$140
Expert:	\$150 - \$75
Class A:	\$120 - \$60
Class B:	\$90 - \$45
Class C:	\$60 - \$30
Class D:	\$30

Cash prizes are awarded only to those players who have played in at least three Tour events during 1988. Prizes that would have been won by players with only 1 or 2 events will be re-distributed to those next in line.

Unrated players cannot accumulate Tour points. However, their tournaments count toward the three-event minimum; this may help them cash in on Tour points won later in the year when they become rated. 15

1987 ILLINOIS TOUR

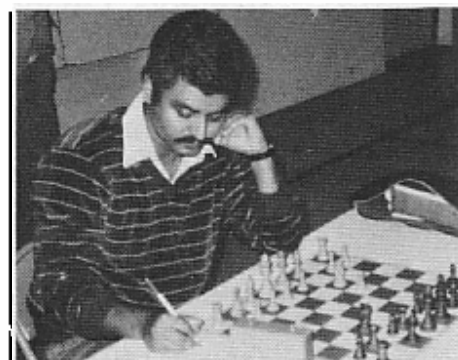
By Bill Smythe

Cyrus Bondari, Ken Wallach, George Umezina, and Ricardo Szmétan have garnered the top places in the Master section of the 1987 Illinois Tour. First-place Bondari finished just one Tour point ahead of runner-up Wallach when the latter declined to participate in the Last Chance Mini Tornado. Bondari must have had a crystal ball as he, too, stayed away from a December event, the concurrent Champaign Mini-Tour. Third-place Umezina's perfect score in the Last Chance propelled him past the fourth winner, Ricardo Szmétan, who moved back to Pennsylvania in August and has not played in Illinois since.

In the Expert section, the Tour rule against winning more than one prize benefitted Bill Naff and Phil Anderson, the eventual recipients of the top two prizes when Cyrus Bondari and Lawrence Cohen garnered first in Master and class A, respectively. Anderson barely beat out a trio of hot pursuers by a scant 1.5 Tour points.

The A winners were the aforementioned Cohen and super-active Bernard Pukel, who has gained 300 rating points in the last two years. In classes B and C, the two highest finishers missed the boat by playing in fewer than the minimum required three Tour events during the year. These prizes go to the next in line, Steve Fahrenholz and Randy Fronck in class B, and Daryl Zelinski and David Sjöholm in C. In class D, only two of the top 13 finishers satisfied the three-tournament minimum. The lucky winners are Arthur Dupee and Ron Simmons.

	<u>Place:</u>	<u>Tour Points:</u>
Master:	1st: Cyrus Bondari	60
	2nd: Ken Wallach	59
	3rd: George Umezina	44
	4th: Ricardo Szmétan	40
Expert:	1st: Bill Naff	28
	2nd: Phil Anderson	21
Class A:	1st: Lawrence Cohen	26.5
	2nd: Bernard Pukel	21
Class B:	1st: Steve Fahrenholz	20
	2nd: Randy Fronck	18.5
Class C:	1st: Daryl Zelinski	23
	2nd: David Sjöholm	17
Class D:	1st: Arthur Dupee	7
	2nd: Ron Simmons	4



Tour Winner Cyrus Bondari

Listed on the following pages are all players who accumulated 5 or more Tour points (3 or more in class D) during 1987. For details on how Tour points were calculated, refer to the January-February 1987 issue of the ICB.

Tim Just's Winter Open/Reserve, January	MAXI
Peoria Winter Tornado, January	mini
Caveman Saturday Spectacular, March	mini
Greater Peoria Open, March	MAXI
Peoria Spring Tornado, April	mini
Caveman Tim's Open/Reserve, April	mini
Master Challenge IX, June	MAXI
Illinois Valley Tornado, June	mini
Illinois Valley Tornado, August	mini
Twin Cities Summer Tornado, August	mini
Illinois Open, September	MAXI
Bradley Summer Open, September	mini
Lake County Open Reserve X, September	mini
Illinois Valley Fall Tornado, October	mini
Illinois Class, November	MAXI
Last Chance Mini-Tornado, December	mini
Champaign Mini-Tour, December	mini

TOUR POINT LISTINGS BY CLASS, IN ORDER BY SCORE - 1987 ILLINOIS TOUR

When the number of tournaments is less than 3,
the number is given in parentheses.

Master Tour Points:

BONDARI Cyrus	60
WALLACH Ken	59
UNEZINNA George	44
SZMETAN Ricardo	40
RIZZITANO James	32 (1)
CHOW Albert	28
NAFF Bill	28
STEIN Peter	28
SANDRIN Angelo	26
COHEN Lawrence	24.5
ZINGHEIM Scott	24
ANDERSON Phil	21
GENSLER Kevin	19.5
PUKEL Bernard	19.5
VLASTNIK Richard	19.5
MC ENTEE Tim	18.5
GRAVES William	17.5
SURAK Steve	17
BOHANNON Mark	16 (1)
DANDRIDGE Marvin	16 (1)
KAUSHANSKY Leo	16 (1)
MARTINOVSKY Eugene	16 (1)
ZABELL Sandy	15
BLAIR Charles	14.5
IKUECHI Curtis	14.5
ULICH Douglas	14
ACOSTA Mariano	13.5
SAX Robert	13
CHACHERE Lawrence	12 (2)
KRECKLER Warren	12 (2)
SCOTT Winfield	12
WALLACH Cliff	12
MARSHALL James	11.5
KAMEN Dan	11 (2)
MC GOWAN Andy	11
JORDAN Roland	10.5
GAZMEM Ethelbert	10
JONAITIS Algis	10
BRITT Jeff	9.5
FRENCH Kevin	9.5(2)
MAZUCHOWSKI Thomas	9.5
STEELE Robert	9.5
SDTZ Jon	9
LEE John David	9
SNYTHE Bill	8.5
STEELE David	8.5
BERNAL Luis	8 (2)
FEDERL Alan	8 (1)
FELDSTEIN Robert	8 (1)
HARRIS Thomas	8 (1)
KARKLINS Andrew	8 (1)
KARKLINS Erik	8 (1)
KROM John	8 (2)
PENKALSKY David	8 (1)
PLUM Marc	8 (1)
REPERT Victor	8 (1)
SIMMONS Ron	8
SOLLAND E O	8 (1)
SPRENKLE David	8 (1)
VEGH Carlos	8 (2)
BORRI Craig	7
TORREGROSSA Ron	7 (2)
VERO Carl	7
CROUSE Matthew	6.5
STAFFORD Jerry	6.5
ZABLITSKY Edgardo	6.5
ALLISON Roger	6
BALE Leslie	6 (2)
BUNGO Gregory	6 (2)
GARDNER Keith C	6
MARTINDALE Joseph	6 (2)
READ Rhys	6
BOLITHO Thomas	5.5
HEINRICH Joel	5.5(2)
KREISMAN Bruce	5.5
PADILLA Rudy	5.5
WOLF William	5.5

BACHLER Kevin	5.5(2)
BOLITHO Thomas	5.5
HEINRICH Joel	5.5(2)
KREISMAN Bruce	5.5
PADILLA Rudy	5.5
WOLF William	5.5
BOUTON Barry	5
FORBIS Robert	5
GILES Morris	5 (2)
LEBO Steve	5
SANDFORD Craig	5
WALTON Clarence	5 (2)

Expert Tour Points:

BONDARI Cyrus	60
NAFF Bill	28
COHEN Lawrence	24.5
ANDERSON Phil	21
GENSLER Kevin	19.5
PUKEL Bernard	19.5
VLASTNIK Richard	19.5
SANDRIN Angelo	18
GRAVES William	17.5
SURAK Steve	17
BOHANNON Mark	16 (1)
ZABELL Sandy	15
BLAIR Charles	14.5
IKUECHI Curtis	14.5
ULICH Douglas	14
SAX Robert	13
MC ENTEE Tim	12
SCOTT Winfield	12
WALLACH Cliff	12
MARSHALL James	11.5
KAMEN Dan	11 (2)
MC GOWAN Andy	11
JORDAN Roland	10.5
GAZMEM Ethelbert	10
JONAITIS Algis	10
BRITT Jeff	9.5
FRENCH Kevin	9.5(2)
MAZUCHOWSKI Thomas	9.5
STEELE Robert	9.5
GOTZ Jon	9
LEE John David	9
SNYTHE Bill	8.5
STEELE David	8.5
BERNAL Luis	8 (2)
FELDSTEIN Robert	8 (1)
HARRIS Thomas	8 (1)
KROM John	8 (2)
REPERT Victor	8 (1)
SIMMONS Ron	8
SOLLAND E O	8 (1)
VEGH Carlos	8 (2)
BORRI Craig	7
TORREGROSSA Ron	7 (2)
VERO Carl	7
CROUSE Matthew	6.5
STAFFORD Jerry	6.5
ZABLITSKY Edgardo	6.5
ALLISON Roger	6
BALE Leslie	6 (2)
BUNGO Gregory	6 (2)
GARDNER Keith C	6
MARTINDALE Joseph	6 (2)
READ Rhys	6
BOLITHO Thomas	5.5
HEINRICH Joel	5.5(2)
KREISMAN Bruce	5.5
PADILLA Rudy	5.5
WOLF William	5.5

BOUTON Barry	5
FORBIS Robert	5
LEBO Steve	5
SANDFORD Craig	5
WALTON Clarence	5 (2)

Class A Tour Points:

COHEN Lawrence	26.5
PUKEL Bernard	21
WHEATLEY Daniel	18 (2)
GRAVES William	17.5
CRENSE Lynn	16 (1)
SAX Robert	15
BLAIR Charles	14.5
SCOTT Winfield	12
MARSHALL James	11.5
ANDERSON Phil	10.5
OSTERLUND Russell	10.5(2)
COHEN Howard	10 (2)
JONAITIS Algis	10
BRITT Jeff	9.5
FRENCH Kevin	9.5(2)
STEELE Robert	9.5
SNYTHE Bill	8.5
STEELE David	8.5
BERNAL Luis	8 (2)
FELDSTEIN Robert	8 (1)
HERNANDEZ Hector	8
SIMMONS Ron	8
VEGH Carlos	8 (2)
BUTTNY William	7.5
BORRI Craig	7
VERO Carl	7
BOUTON Barry	6.5
CROUSE Matthew	6.5
STAFFORD Jerry	6.5
ZABLITSKY Edgardo	6.5
ALLISON Roger	6
BALE Leslie	6 (2)
GARDNER Keith C	6
MARTINDALE Joseph	6 (2)
BOLITHO Thomas	5.5
HEINRICH Joel	5.5(2)
NICKMAN Roger	5.5(2)
KREISMAN Bruce	5.5
PADILLA Rudy	5.5
WOLF William	5.5
LEBO Steve	5
WALTON Clarence	5 (2)

WOLF William	8.5
ASBURY Clarence	8 (1)
BARGERSTOCK Dan	8 (2)
BERLAND Paul	8 (1)
BRITT Jeff	8
DENNIS Mike	8
MADERA Bill	8 (2)
MARTIN Don	8 (2)
PALS Randall	8 (1)
SIMMONS Ron	8
CHLOUPEK Frank	7 (2)
LEBO Steve	7
PROSTERMAN Keith	7
STAFFORD Jerry	6.5
CALLAHAN Gerard	6
MARTINDALE Joseph	6 (2)
BURKE Marcellus	5 (2)
HENDERSON Dale	5
LYON Mark	5 (2)
PANPEL William	5 (2)
WALTON Clarence	5 (2)

Class C Tour Points:

BURGESS Fred	33.5(2)
MULATIN David	33.5(2)
ZELINSKI Daryl	23
SJOHOLM David	17
ADKINS James	16 (1)
MADERA Bill	12 (2)
PADILLA Rudy	12
KEMPNER Robert	8.5
WILLIAMS Doug	8 (1)
CALLAHAN Gerard	7
LEBO Steve	7
BERKHEIMER Ed	6 (2)
HENDERSON Dale	5
RYNES Evan	5

Class B Tour Points:

CHENOWETH Bruce	16 (1)
RAINO Robert	16 (1)
MADERA Bill	8 (2)
DUPEE Arthur	7
GRUENBERG Guy	6 (2)
BIEZYNSKI Stan	4.5(2)
CIESLIK David	4 (1)
SIMMONS Ron	4
SMITH Colin	4 (1)
STYPINSKI Andrew	4 (1)
CHAKIMO Bruce	3.5(2)
SCHALLBERG Scott	3.5(2)
BAILEY Theodore	3 (1)
CAIN Dennis	3
FERRONT George	3
LANDAU Paul	3 (1)

CHES PHONE
(312) 971-3666

CHOW WINS 1988 TIM JUST WINTER OPEN/RESERVE

By Tim Just

Senior Master Albert Chow topped a field of 30 players to take first place (and \$225 in prize money) in the Open section of the fifth annual Tim Just Winter Open/Reserve. The tournament, held at the the Illinois Beach Resort and Conference Center in Zion on January 2-3, 1988, was the first Illinois Maxi-Tour event of the new year. Chow scored 4.5-.5 to finish ahead of Lawrence Chachere and Steve Surak, who each pocketed \$137.50 by tying for second and third at 4-1. Chachere drew his game with Chow, while Surak's effort also earned him the top Expert prize.

Sandy Zabel and Milwaukee's Nathaniel Butke won \$50 apiece as they split the second place Expert money with 3.5-1.5 scores. Lynn Crewse followed up his tie for first in Class A at the 1987 Illinois Class by garnering 3.5 points to take the \$125 first prize in his class. Finishing second in Class A was Robert Sax at 3-2. Although Sax won \$100, his third round draw with Illinois State Champion Jim

Rizzitano (in a game Rizzitano could well have lost) will probably be what he remembers most about his performance.

Colin Smith, rated 1515 and fifteenth on the 33 player Reserve section wall chart, scored 4.5-.5 on his way to the Reserve championship and its \$225 prize. Smith began pushing pawns as a freshman at Glenbrook North High School. He credits his high school coach, the late Phil Pilgrim, with having inspired and encouraged his interest in chess.

Splitting the \$150 second place Reserve prize were Wisconsin resident Mike Dennis and Barry Bouton, both with 4-1 efforts. James Riffle, Fred Burgess, and Charles Fenner shared \$225 in Class C money by scoring 3-2. First place (and \$125) in Class D/E went to Rudy Padilla, one of Illinois' most active players, for his 3.5-1.5 total. Guy Gruenberg and Wisconsin's Gerald Knutson finished 2-3 to earn \$50 each in D/E cash. Scores of 3-2 enabled Herbert Butler and Anthony Dzurny to tie for the \$50 Unrated prize. Tim Just and Dennis Grant directed.



Colin Smith (left background) beat David Rockwell in their Reserve section battle for first place. Mike Dennis (right foreground) defeated Tony Brown to tie for second place in the Reserve

Tim Just Winter Open

January 2-3, 1988

OPEN SECTION

1	CHOW Albert	2418	W28	W 3	W 4	D 2	W13	4.5
2	CHACHERE Lawrence	2365	W25	W15	W10	D 1	D 4	4
3	SURAK Steve	2147	W 6	L 1	W22	W 8	W10	4
4	WALLACH Ken	2340	W27	W 5	L 1	W 7	D 2	3.5
5	ZABELL Sandy	2137	W29	L 4	W27	D14	W12	3.5
6	CREWSE Lynn	1922	L 3	W28	W15	D10	W11	3.5
7	BUTKO Nathaniel	2072	Dbye	W23	W11	L 4	W14	3.5
8	SAX Robert	1938	W 9	D18	D16	L 3	W17	3
9	HUZUCHOWSKY Tom	2163	L 8	W19	D21	D17	W20	3
10	GENSLER Kevin	2153	W20	W12	L 2	D 6	L 3	2.5
11	TUTUSH Dusan	2145	W30	D16	L 7	W21	L 6	2.5
12	SATTERLEE Ray Doyle	2070	W26	L10	D13	W18	L 5	2.5
13	GROELLER William	2172	D19	D21	D12	W23	L 1	2.5
14	FAHRENHOLZ Steven	1827	L15	W25	W24	D 5	L 7	2.5
15	HELMUELLER Keith	2107	W14	L 2	L 6	D19	W23	2.5
16	RIZZITANO James	2573	W17	D11	D 8	-	-	2
17	HARRISON William	1987	L16	W30	D18	D 9	L 8	2
18	ACOSTA Mariano	2189	D23	D 8	D17	L12	D21	2
19	COHEN Larry	1943	D13	L 9	W26	D15	-	2
20	JONAITIS Algis	1929	L10	W26	L23	W27	L 9	2
21	BASENSPIELER Larry	2025	Dbye	D13	D 9	L11	D18	2
22	BEASLEY Leonard	1954	Dbye	L24	L 3	WF	D25	2
23	GRAVES William	1945	D18	L 7	W20	L13	L15	1.5
24	KAMEN Dan	2123	Dbye	W22	L14	-	-	1.5
25	SMYTHE Bill	1949	L 2	L14	D28	D26	D22	1.5
26	SCHMUCKER Vivian	1754	L12	L20	L19	D25	W27	1.5
27	PUKEL Bernard	1947	L 4	W29	L 5	L20	L26	1
28	COHEN Howard	1955	L 1	L 6	D25	-	-	0.5
29	ALLISON Roger	1838	L 5	L27	Dbye	-	-	0.5
30	OSTERLUND Russell	1843	L11	L17	-	-	-	0

Tim Just Winter Open

January 2-3, 1988

RESERVE SECTION

1	SMITH Colin	1515	W30	W19	Dbye	W 8	W 4	4.5
2	BOLTON Barry	1772	W25	L 4	W15	W13	W10	4
3	DENNIS Mike	1750	W13	L 8	W22	W18	W 5	4
4	ROCKWELL David	1716	W27	W 2	D 5	W 7	L 1	3.5
5	BROWN Tony	1721	W32	W20	D 4	W 9	L 3	3.5
6	BARGERSTOCK Dan	1726	W22	D 9	D18	D12	W11	3.5
7	PADILLA Rudy	1389	Dbye	W16	W31	L 4	W19	3.5
8	GRUENBERG Fred	1698	W21	W 3	D10	L 1	D16	3
9	CHLOUPEK Frank	1665	W33	D 6	W17	L 5	D12	3
10	MARSHALL Ken	1750	D14	W11	D 8	W21	L 2	3
11	DZURNY Anthony	-	W23	L10	W14	W19	L 6	3
12	BITLER Herbert	-	W26	L15	W20	D 6	D 9	3
13	RIFFLE James	1497	L 3	W29	W30	L 2	W21	3
14	BURGESS Fred	1459	D10	D28	L11	W30	W23	3
15	FENNER Charles	1428	L17	W12	L 2	W28	W20	3
16	ROBINSON Harrison	1662	Dbye	L 7	W26	W17	D 8	3
17	PAMPEL William	1725	W15	D18	L 9	L16	W29	2.5
18	ZELINSKI Daryl	1669	W29	D17	D 6	L 3	-	2
19	KURFMAN David	1722	W24	L 1	W25	L11	L 7	2
20	OMRECKI Roger	1505	W31	L 5	L12	W22	L15	2
21	KNUTSON Gerald	1322	L 8	W23	W28	L10	L13	2
22	KEMPNER Robert	1454	L 6	W33	L 3	L20	W30	2
23	LOPEZ Eugene	1567	L11	L21	W27	W24	L14	2
24	HENDERSON Dale	1421	L19	L30	W33	L23	W32	2
25	GRUENBERG Guy	1223	L 2	Dbye	L19	D32	D28	2
26	BAYER Dyane	1575	L12	D27	L16	W33	-	1.5
27	BERKHEIMER Ed	1404	L 4	D26	L23	L29	W33	1.5
28	KITTSLEY Scott	1682	Dbye	D14	L21	L15	D25	1.5
29	WILLIAMS Robert	1313	L18	L13	Dbye	W27	L17	1.5
30	WEBSTER Jim	-	L 1	W24	L13	L14	L22	1
31	FRAATS Daniel	1773	L20	W32	L 7	-	-	1
32	BRODDE Jeff	1416	L 5	L31	Dbye	D25	L24	1
33	DUPEE Arthur	1287	L 9	L22	L24	L26	L27	0

CHOW - MARTINOVSKY RIVALRY
FEATURES "FIGHTING" CHESS

Readers of this magazine know Senior Masters Albert Chow and Eugene Martinovsky as valued contributors of many of the ICB's annotated games. Some also know them as frequent participants in Illinois Tour events and other tournaments. When these two players meet over the board, the result is usually a memorable battle. Here are two of their 1987 contests, each annotated by its winner. Another 1987 game - Chow's win in the Illinois Tournament of Champions II - appears elsewhere in this ICB. (As this issue goes to press, plans for a proposed Chow-Martinovsky match remain incomplete.)

Prairie State Invitational

May 23-25, 1987

White: Albert Chow

Black: Eugene Martinovsky

Gruenfeld Defense

Annotated by Eugene Martinovsky

- 1 d4 Nf6
- 2 c4 g6
- 3 Nc3 d5
- 4 cxd5 Nxd5
- 5 e4 Nxc3
- 6 bxc3 Bg7
- 7 Bc4 Nc6

I did not want to play regular lines with 7...c5. I had seen Al play Sokolsky's Attack - sacrificing the exchange on a1 - on several occasions and I was not in a mood to defend such a position.

- 8 Ne2 0-0
- 9 0-0 e6

The book move here is 9...b6 and

then 10 Be3 Na5 11 Bd3 c5 12 Rcl Bb7 13 d5 c4! 14 Bc2 e6 15 dxe6 fxe6 16 Qxd8 Rxd8=. Uhlmann gives 16 f4! with a minimal advantage for White. The aforesaid moves are not obligatory, however, and many different positions may occur.

- 10 Be3 b6
- 11 Qd2 Re8?

I did this to avoid trading off the black squared bishops. I thought that after 12 Bb6 and bishop exchange, White can play on weak black squares around my king and pull an attack with f4, etc. Chow criticized this move in our post-mortem, and I now agree with him. The move allowed certain finesses later on and was more of a waste of time than good.

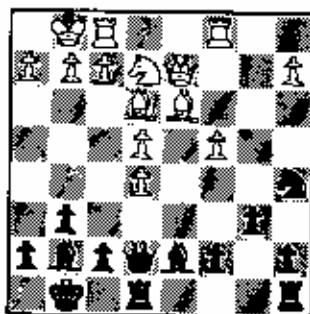
- 12 Bb5! Bd7

This bishop belongs on b7, but Chow forced me to put it here.

- 13 Bd3 Na5
- 14 Rac1 Qe7

White has gotten an advantage. He threatens c3-c4-c5 and other action in the center. Black's counterplay is a tempo or two behind schedule. Here I prepared e6-e5 as my response since my rook is already on e8.

- 15 c4 e5
- 16 dxe5 ...

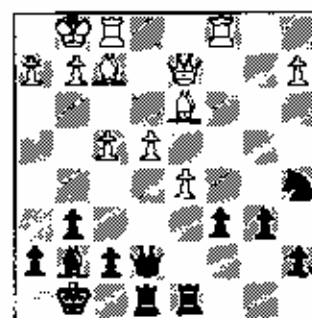


16 d5 is also good.

- 16 ... Rxe5
- 17 f4 Bg7
- 18 Nc3 Bc6!

Everything else is worse: 18...c6 19 c5 b5 20 Nxb5. In any event, the White knight may get to c6 if I play d6.

- 19 Nd5 Bxd5
- 20 cxd5 Rad8!
- 21 Bf2 c6!



The last couple of moves saved my game and equalized, and maybe even secured some advantage for me.

- 22 dxc6 Nxc6
- 23 Rxc6 ...
- 23 Qe2 Nd4 was also possible.
- 23 ... Qd7!

This is the key to the whole defense.

- 24 Rfcl Qxd3
- 25 Qxd3 Rxd3
- 26 e5 Bf8

Here I thought I stood better, particularly due to my 2 to 1 Queenside pawn majority. In retrospect, however, I see that I overestimated my chances. My only real advantage was on the clock. Chow had some 15-20 minutes left, while I had a whole hour remaining. This seems to have been decisive. (Instead of the text I could have tried 26...g5.)

- 27 Kf1 ...
- 27 Bb4 was better.
- 27 ... g5?!

A double-edged move; when I made it, I rather expected White to collapse soon. If 28 g3 gxf4 29 gxf4 Rf3, White loses the f4 pawn. 28 Rc8! ...

An excellent response. Chow is not obligated to make bad moves! Now I say that after 28...Rxc8 29 Rxc8 gxf? 30 Bb4! I would be losing! The back rank threats and the maneuver Bf2-B4-f6 are difficult to neutralize. Once again I am on the defensive. Here I spent half an

hour and came up with the following defense.

28 ... Rxc8
29 Rxc8 Rd1+
30 Kx2 Rd5

This way I did not lose my pawn on g5, and I am not about to be mated! Time remaining on the clocks: White, 0:10, Black, 0:25, still some advantage for me.

31 Re8 Kg7
32 f5 ...

Chow is again trying to win.

32 ... Bb4
33 Be3? ...

33 g4! was better.

33 ... Rc3
34 f6+ ...

This is too hazardous in time trouble. White should have played for a safe draw with 34 Bxg5 or 34 e6. After the text move, in the heat of battle, I was in time trouble too - and I believed I was lost! I thought that after 34...Kg6 35 e6 Kxf6 36 e7 Kf5 37 Rc8 I would lose the bishop on c3 and if 35 ...Bf6 36 e7 Kf5 37 Rc8! I also lose. I did not see that after 34...Kg6 35 e6 my best move is 35...fxe6!, and I am a pawn up. So I was very happy to see Chow giving me check with his rook.

34 ... Kg6
35 Rg8+ Kf5
36 Rxg5+ Ke6

Now I thought I was winning, and Chow's flag was hanging dangerously.

37 Rh5 Rxe5

Here Chow lifted his rook, then started thinking, and before he took my pawn on h7 his flag fell! Chow could have made the position a simple draw many times. Also, I did not understand why, while in time trouble, he thought so long about simple moves such as 35 Rg8+ and the upcoming 38 Rsh7.

38 f4g

0-1

Considerable analysis showed the final position to be between a win for Black and a draw. The best move for Black would have been 38...Ra5. But in time pressure anything could have happened.

Midwest Class Championships

July 17-19, 1987

White: Albert Chow

Black: Eugene Martinovsky

Queen's Gambit Declined

Annotated by Albert Chow

1 d4 d5
2 c4 e6
3 Nf3 Nf6
4 Nc3 Bc7
5 cxd5 exd5
6 Bf4 c6
7 e3 Bf5

Now a normal continuation would be 8 Bxd3 Bxd3 9 Qxd3 etc. Instead, I risk an aggressive idea.

8 h3!? Nbd7
9 g4 Bg6

The ideas behind White's attacking formation are not new to me. A couple of years ago I tried the QGD against Lester Van Meter. He used his kingside pawns to push the black pieces into disarray, and I lost. Now I was very curious - what method of defense would Martinovsky use?

10 Bg2 h5!?

Fighting fire with fire! The battle on the kingside is becoming very sharp. For example, 11 g5 Ne4 looks quite good for Black. 11 Ne5 is possible, with unclear consequences.

11 Nh4 Be4

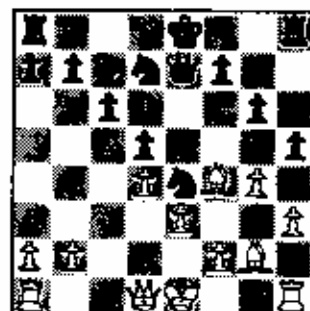
If 11...Bh7, White could choose between 12 Nf5 or 12 g5 Ne4 13 Bh5 with complications. Another possible move was 11...Nf6.

12 Nxe4 Nxe4
13 Nf5 g6

This is already a critical decision. After 13...Bb4 14 Kf1 the game is an unclear mess of possibilities. Black could play 14...Qf6; or should he instead go in for 14...g6 15 Bxe4!? dxe4 16

Bb6 threatening 17 Ng7 mate? But maybe White would respond to 14...g6 with 15 Ng3.

14 Nxe7 Qe7



15 Qc2 h4g4
16 h4g4 Rxb1+
17 Bxb1 g5
18 Bb2 Qb4+

After the game, Martinovsky said he was not happy with this check. I believe most chess players would find it hard to resist, however, since it prevents White from castling. The alternative 18...0-0-0 19 0-0-0 leads to a middle game battle between White's bishops and Black's knights. Which do you prefer?

19 Kf1 0-0-0
20 Rc1 Rb8

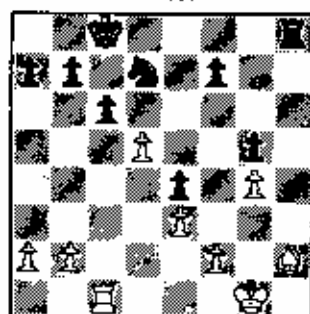
On the surface it seems that Black is in no danger. The truth is very deceptive.

21 Kg1 Qe7
22 Bxe4! Qxe4!

An important decision. White will have the superior ending, but the text is better for Black than 22...dxe4 23 Ba4, threatening both 24 Qxa7 and 24 Rc6! The best defense is 23...Qe6 but after 24 Qxa7 White wins against either 24... Qxg4+ with 25 Bg3 or 24...Rxb2 with 25 Kxh2 Qxg4 26 Qa8+.

23 Qxe4 dxe4

24 d5 ...



ILLINOIS CHESS ASSOCIATION MEETING - FEBRUARY 21, 1988
 1:30 P.M. - MORGAN PARK METHODIST CHURCH
 11030 SO. LONGWOOD, CHICAGO

With accurate technique, White has a comfortable advantage. In this position the bishop has fantastic power and will work together with White's rook to terrorize all of Black's pawns.

24 ... c5

After 24...Rb6 25 Rc4! Nb6 26 Re4 Nd5 27 ReB+ Kd7 White's advantage becomes larger.

25 b4 b6

26 bxc5 bxc5

26...Nxc5 27 Bd6 is also very good for White.

27 Rc4! Rh4

28 Rxe4 Nf6

29 Re7 Rxc4+

30 Kf1 Nxd5

31 Re5! Nb4

32 Rxc5+ Kb7

If 32...Kd8 33 a3 the knight must move to the a file, and then White plays 34 Ra5.

33 a3 Nc6

34 Rf5 Nd8

35 Rd5 Kc8

36 Rc5+ Kb7

37 Rc7+ Kb6

38 Rd7 Nc6

39 Rxf7 Rh4

40 Kg2 Ra4

With this move Martinovsky reached the time control. White is a pawn ahead, however, and Black will have a problem protecting his g pawn. The doctor puts up a stubborn resistance, but White's win is never in doubt.

41 Bd6 Na5!

42 Rg7 Nc4

43 Re7 Nxa3

44 Rxc5 Nc4

45 Rc5+ Kc6

46 Bd4 a5

47 f4 Ra2+

48 Kg3 Nd2

49 Re5! a4

50 f5 Nf1+

51 Kf3 Nh2+

52 Ke4 Rf2

53 Ra5 Nf1

54 Ke5 Ng3

55 Ke6 a3

56 f6 a2

57 f7 Ne4

58 Ke7 Nd6

59 f8=Q 1-0



Make Your Vacation Plans Now
 For the Big USCF
 National Event of the Year!

1988 NATIONAL OPEN IN CHICAGO!

Thursday through Sunday, March 17-20, 1988

Don't miss the guest appearance and simul by our new U.S. Chess Champion Joel Benjamin! And some more great news: We have invited former WORLD CHAMPION Mikhail Tal to play in the National Open! This may turn out to be the most sensational National Open yet!

**Join the Grandmasters in Chicago
 for the biggest Chicago event since 1979!**

Twice the fun at half the price! Compare!

FORMER WORLD CHAMPION MIKHAIL TAL
 WILL GIVE THREE SIMULTANEOUS EX-
 HIBITIONS IN THE CHICAGO AREA IN
 MARCH. SEE THE TOURNAMENT CALENDAR
 IN THIS ISSUE FOR MORE INFORMATION.

PROVISO WEST 14TH ILLINOIS HIGH SCHOOL

CHESS EVENTS TOURNAMENT - NOVEMBER 21, 1987

PLAYER	POST					TOT
	RTNG	1	2	3	4	
1 SKOGSTPETERSE, ANTO	1544	w-4	w-2	w-2	w-4	3.5
2 SCOTT, JIM	1418	w-4	w-2	w-4	w-6	3.5
3 COLLINS, DAVE W	1539	w-7	w-4	w-15	w-6	3.0
4 LUBENYCK, DAVID	1424	w-1	w-3	w-8	w-10	3.0
5 FURTHAN, FRED	1347	w-9	w-8	w-20	w-19	3.0
6 WHITE, HARVEY L	1284	w-5	w-8	w-14	w-2	3.0
7 SHAW, NISITH	1170	w-10	w-30	w-18	w-20	3.0
8 SUTER, DAN	1491	w-21	w-15	w-8	w-13	3.0
9 FIELDS, ILLI IRVIN	1563	w-5	w-17	w-2	w-1	2.5
10 DAVIS, ANTHONY	1269	w-7	w-24	w-16	w-4	2.5
11 RAMOS, TONY	1123	w-18	w-21	w-31	w-23	2.5
12 ADAMS, MARK	1309	w-32	w-1	w-23	w-25	2.5
13 BRIER, TIM	1201	w-17	w-29	w-28	w-6	2.0
14 AVELAN, CARLOS	1254	w-22	w-3	w-6	w-29	2.0
15 ANDERSON, BRIAN	1206	w-26	w-8	w-3	w-31	2.0
16 BAKER, ROBIN	1130	w-31	w-26	w-10	w-3	2.0
17 PAE, SAIG	1080	w-13	w-9	w-19	w-26	2.0
18 WHITEHEAD, EDDIE	1220	w-11	w-5	w-7	w-27	2.0
19 KEMUR, BOB	1157	w-23	w-32	w-17	w-5	2.0
20 SNOXALIE, SCOT	1174	w-31	w-25	w-5	w-7	2.0
21 WILLIAMS, APRILE	1312	w-8	w-11	w-24	w-28	2.0
22 BANSTAD, JOHN R	1762	w-14	w-2	w-1	w--	1.5
23 NEVEITT, WILLIAM	1173	w-19	w-4	w-12	w-11	1.5
24 SCOTT, JASPAL	1622	w-2	w-10	w-21	w--	1.0
25 MONTAGUE, DENISE	1034	w-6	w-20	w-29	w-12	1.0
26 KEMENGA, MARK	1008	w-15	w-16	w-32	w-17	1.0
27 GUONG, BRIAN	993	w-3	w-29	w-30	w-18	1.0
28 SICH, DAVID	976	w-30	w-6	w-13	w-21	1.0
29 HSU, LAURENCE	903	w-13	w-27	w-25	w-14	1.0
30 ANANDALAI, PALAN	873	w-28	w-7	w-27	w-32	1.0
31 HAYES, KEN	684	w-20	w-18	w-11	w-15	.0
32 FORTER, JENNIFER	578	w-12	w-19	w-26	w-30	.0

PLAYER	POST					TOT
	RTNG	1	2	3	4	
1 FRANKLIN, ALBERT	1620	w-2	w-11	w-4	w-7	4.0
2 YONTE, BRADY	1479	w-1	w-6	w-11	w-3	3.0
3 FRIEL, SPENCER L	1413	w-9	w-4	w-6	w-2	3.0
4 GUYEN, MINH	1373	w-5	w-3	w-8	w-11	3.0
5 GLASER, TONY	1309	w-4	w-7	w-10	w-8	3.0
6 JUNGSH, KEVIN	1416	w-8	w-2	w-3	w-10	2.0
7 COHEN, BRIAN	1394	w-11	w-5	w--	w-1	2.0
8 LOURE, STACEY	1162	w-6	w-10	w-4	w-5	1.0
9 KEEBAVY, MIKE	991	w-3	w-10	w-1	w--	1.0
10 INLE, HINCHITO	1040	w-4	w-8	w-5	w-6	1.0
11 LAURENT, DAVID W	1315	w-7	w-1	w-2	w-4	.0

PLAYER	POST					TOT
	RTNG	1	2	3	4	
1 STOJACK, MATT J	1391	w-8	w-9	w-7	w-4	4.0
2 SMITH, LEON	1626	w-7	w-3	w-9	w-5	4.0
3 LEUTHOLD, GREGORY	1349	w-10	w-2	w-4	w-4	2.5
4 STELING, DUFFY W	1319	w-6	w-10	w-3	w-1	2.5
5 RUSALES, PEDRO	1215	w-11	w-7	w-8	w-2	2.0
6 BAYFON, BARRON G	973	w-4	w-8	w--	w-10	2.0
7 MANESS, JAMES A	1204	w-2	w-5	w-1	w-8	1.5
8 PINKUS, VIACE P	1025	w-1	w-6	w-5	w-7	1.5
9 DE LA CRUZ, ELMER	1327	w-11	w-1	w-2	w-3	1.0
10 KOZAFFAR, OMER	968	w-3	w-4	w-11	w-6	1.0
11 BROOKS, TOM	720	w-9	w-5	w-10	w--	1.0

PLAYER	POST					TOT
	RTNG	1	2	3	4	
1 ROMBERG, ERIK	2108	w-8	w-5	w-4	w-2	4.0
2 LEUTHOLD, KEVIN	1757	w-11	w-4	w-6	w-1	3.0
3 STAMUS, WILLIAM W	1472	w-6	w-10	w--	w-11	2.5
4 ATKINS, FRED	1644	w-7	w-2	w-1	w-9	2.0
5 YURCHAK, BRENT	1513	w-10	w-1	w-7	w-6	2.0
6 BABINSKI, CHUCK	1481	w-3	w-11	w-2	w-5	2.0
7 SHARGAVA, VINAY	1453	w-4	w-9	w-5	w-10	2.0
8 DOUGLINS, JIMMY	1166	w-1	w-9	w-11	w--	2.0
9 ANCO, JOE	1391	w-6	w-7	w-10	w-4	2.0
10 ZAROSKI, JOE	1309	w-5	w-3	w-9	w-7	1.0
11 SHAW, KUPESH	1556	w-2	w-6	w-8	w-3	.5

PLAYER	POST					TOT
	RTNG	1	2	3	4	
1 WALSH, BILL	1396	w-6	w-8	w-9	w-8	4.0
2 LIM, JAE	1370	w-10	w-8	w-3	w-9	3.5
3 ANNAMALAI, MANIK	1051	w-4	w-7	w-2	w-10	3.0
4 KEAVER, HERMAN LEE	1275	w-3	w-1	w-8	w-7	2.0
5 ALVAREZ, JORGE	986	w-9	w-10	w--	w-6	2.0
6 BURNING, BOB	1212	w-1	w-9	w-11	w-5	2.0
7 RUSSELL, BENSON	1142	w-11	w-3	w-10	w-4	2.0
8 FORD, MATTHEW	1145	w-11	w-2	w-4	w-1	1.5
9 MONTAGUE, MARK	1266	w-5	w-6	w-1	w-2	1.0
10 KOVACEVIC, VLADAN	1012	w-2	w-5	w-7	w-3	1.0
11 SCHULZ, BOB	714	w-8	w-7	w-6	w--	1.0

PLAYER	POST					TOT
	RTNG	1	2	3	4	
1 ORTIZ, EDDIE	1631	w-10	w-6	w-7	w-5	4.0
2 CARROLL, MALCOLM	1761	w-11	w-3	w-5	w-6	3.5
3 GORDON, KELTH	1462	w-7	w-2	w-6	w-9	3.0
4 FRANCEL, JIM	1171	w-5	w-10	w--	w-11	2.5
5 HUPLENSKI, DAN J	1391	w-4	w-11	w-2	w-1	2.0
6 BERLAND, PAUL	1750	w-4	w-1	w-3	w-2	1.5
7 KALYAS, TOM	1309	w-3	w-9	w-1	w-10	1.5
8 GILLETTE, STEVE	947	w-6	w-9	w-11	w--	1.5
9 PLISCH, MONICA	1182	w-6	w-7	w-10	w-3	1.5
10 GUGO, P C	1233	w-1	w-4	w-9	w-7	1.5
11 AUGUSTYNIAK, TIM	1020	w-2	w-5	w-8	w-8	.5

PLAYER	POST					TOT
	RTNG	1	2	3	4	
1 MICHAEL, ROA	1410	w-3	w-2	w-8	w-5	4.0
2 THOMPSON, ROBERT K	1387	w-9	w-1	w-6	w-4	3.0
3 TANAS, ANDREI	1399	w-1	w-10	w-11	w-8	3.0
4 PLUMMER, CHRISTOPH	1279	w-7	w-6	w-5	w-2	2.0
5 MONTAGUE, DAVE	1204	w-10	w-7	w-4	w-1	2.0
6 MYRICK, NATAE	1212	w-8	w-4	w-2	w-11	2.0
7 JURAK, BOB	1134	w-4	w-5	w-9	w-10	2.0
8 LE, ANN DIA	1289	w-6	w-11	w-1	w-3	2.0
9 MURPHY, PAT	766	w-2	w-11	w-7	w--	1.0
10 JACKSON, DION	830	w-5	w-3	w--	w-7	1.0
11 FREDLUND, ERIC	956	w-9	w-8	w-3	w-6	1.0

PLAYER	POST					TOT
	RTNG	1	2	3	4	
1 KARASTICK, DAVE	1538	w-8	w-4	w-6	w-3	3.0
2 CARPENTER, ROBERT	1458	w-5	w-3	w-9	w-4	3.0
3 GUGELIM, JULIEN	1353	w-7	w-2	w-4	w-1	3.0
4 MITCHELL, CORNELIU	1529	w-9	w-1	w-3	w-11	3.0
5 MORAN, FRANCISCO	1423	w-2	w-10	w-11	w-9	2.5
6 CARP, ANDY	1494	w-10	w-8	w-1	w-2	2.0
7 ABRAMSON, SUE	1002	w-3	w-11	w-8	w--	2.0
8 CEGZA, ROBERT	1273	w-1	w-6	w-7	w-10	2.0
9 MCNICAT, BRIAN	1207	w-4	w-11	w-2	w-5	1.5
10 MACHOUEZ, JULIO	1002	w-6	w-5	w--	w-4	1.0
11 KUCHIS, MIKE	1091	w-7	w-9	w-5	w-4	1.0

PLAYER	POST					TOT
	RTNG	1	2	3	4	
1 MC CORMICK, DAMON	1407	w--	w-6	w-5	w-3	4.0
2 PEACOCK, JOHN	1525	w-8	w-5	w-9	w-10	3.0
3 BRADY, MATTHEW	1339	w-7	w-9	w-4	w-1	3.0
4 WILL, ART	1233	w-2	w-10	w-3	w-7	3.0
5 CHANG, THOMAS	1421	w-6	w-2	w-1	w-9	2.0
6 TRINCHI, ATUL	1222	w-3	w-1	w-8	w--	2.0
7 SCHOTT, HUGOEN	1103	w-3	w--	w-10	w-4	2.0
8 PRYOR, BRAD	882	w-9	w-10	w-6	w--	1.0
9 RAFFELLS, STAN	1111	w-6	w-5	w-2	w-5	1.0
10 SIMS, MIKE	1029	w-8	w-8	w-7	w-2	1.0

PROVISO WEST GRADE SCHOOL TOURNAMENT

NOVEMBER 21, 1987

PLAYER	POST	RTAG	1	2	3	4	TOT
1 CHANG, JAMES	1664	N14	N17	N40	N3		2.0
2 MOKANGA, KAYLIN	1424	N27	D11	N10	N15		3.5
3 CHANG, LOUIS	1316	N-5	N22	N14	L-1		3.0
4 JALEEL, OMAN	1224	N12	N-8	L-1	N13		3.0
5 SAIGAT, BRET	1065	L-3	N26	N19	N11		3.0
6 TEMPLE, RICK	1022	N20	L-9	N16	N21		3.0
7 SINGH, NAVI	1262	N16	N18	L-9	N20		3.0
8 SPROCK, JOSH	1193	N24	L-4	N17	D-9		2.5
9 SHEEHAN, JOHN	1085	L15	N-6	N-7	D-6		2.5
10 FILANTHES, JASON	1090	N28	D23	L-2	N24		2.5
11 TENZER, K.T.	1044	N25	D-2	N23	L-5		2.5
12 RUTZEN, BRIAN	1215	L-4	D24	N26	N25		2.5
13 BLUTT, BEN	1195	N22	L14	N15	L-6		2.0
14 TERRACCIANO, MIKE	1193	L-1	N13	L-3	N30		2.0
15 MADDOEN, JOEL	1114	N-9	N21	L13	L-2		2.0
16 LEWIS, RANDY	1044	L-7	N19	L-6	N27		2.0
17 TOKH, AARON	1050	N30	L-1	L-8	N26		2.0
18 YOREL, ERIC	815	L19	L-7	N31	N29		2.0
19 DARRISH, RANZY	1082	N18	L16	L-5	N23		2.0
20 WHITTAKER, ANDREW	1110	L-6	N31	N27	L-7		2.0
21 FRANKING, ERIC	1090	N31	L15	N26	L-6		2.0
22 MARIYAPPA, JAY	1119	L13	L-3	N31	N28		2.0
23 KAHAB, FASIAL	992	D10	N30	L11	L19		1.5
24 SULLIVAN, BRIAN	1009	L-8	D12	N29	L10		1.5
25 LEHR, TOBY	961	L11	D27	N30	L12		1.5
26 DARNISH, NABEEL	905	N29	L-5	L21	L17		1.0
27 COOT, BENJAMIN	788	L-2	D25	L20	L16		.5
28 TOLCH, BOSHAMMA	810	L10	D29	L12	L22		.5
29 MADDOEN, KATIE	705	L26	D28	L24	L18		.5
30 WALTERS, MIKE	679	L17	L23	L25	L14		.0
31 TUEGEL, JIMMY	634	L21	L20	L18	L22		.0

PLAYER	POST	RTAG	1	2	3	4	TOT
1 FREESINGH, JAMES	1645	N-4	N-3	N-2	L-2		3.0
2 SEVICK, JEREMY	1400	N-3	N-4	L-1	N-1		3.0
3 KRUSACK, MATTHEW	1465	L-2	L-1	N-4	N-4		2.0
4 STREAMS, NICKY	1219	L-1	L-2	L-3	L-3		.0

PLAYER	POST	RTAG	1	2	3	4	TOT
1 FREESTON, HUGH J	1418	N-3	N-2	D-4	D-4		3.0
2 JACOBSEN, MICKEY	1368	L-8	L-1	L-3	N-3		3.0
3 BARSTAD, DANIELLE	1277	L-3	N-4	L-2	L-2		1.0
4 STRZALKA, STEVE	1219	L-2	L-3	D-1	D-1		1.0

PLAYER	POST	RTAG	1	2	3	4	TOT
1 O'BRIEN, ROBBIE	1442	N-4	N-3	L-2	N-2		3.0
2 KALLUSCH, KANL	1148	N-3	N-4	N-1	L-1		3.0
3 SPARAGNA, ALEX	1228	L-2	L-1	N-4	D-4		1.5
4 CARBONE, JIMMY J	1163	L-1	L-2	L-3	D-3		.5

PLAYER	POST	RTAG	1	2	3	4	TOT
1 BERTALANI, BOB	1337	N-4	N-2	N-3	L-3		3.0
2 JACOBSEN, ANNA LIS	1260	N-3	L-1	N-4	N-4		3.0
3 COLEMAN, B. J.	1012	L-2	N-4	L-1	N-1		2.0
4 HANSEN, AARON	888	L-1	L-3	L-2	L-2		.0

KRON TAKES EXPERT PRIZE AT 1987 ILLINOIS CLASS

John Kron Jr.'s name was inadvertently left off the list of Illinois Class prize winners which appeared in the November-December ICB. Kron won the Expert prize with a score of 3-1, a result which included draws with two masters. Coming after his tie for 1st-5th places in the Expert section of the 1987 Illinois Open and his victory in a Chicago Chess Center event, Kron's Illinois Class finish enabled him to enter the master ranks for the first time. Here is one of his wins from the Illinois Open.

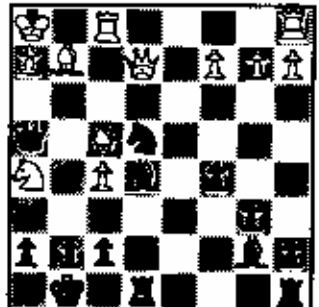
White: Alan Losoff (1934)
 Black: John Kron, Jr. (2129)
 Annotated by John Kron, Jr.

- 1 e4 c5
- 2 d3 e6
- 3 Nc2 d5
- 4 g3 Nc6
- 5 Bg2 Nf6
- 6 Nh3 Be7
- 7 0-0 0-0
- 8 f4 Nf8
- 9 Kh1 dxe4
- 10 dxe4 b6

Black has played passively against White's unusual opening, and now by 11 e5 followed by 12 Ne4 White could cramp his opponent considerably. Instead he starts a pawn storm which weakens his position and give Black a chance to regroup.

- 11 g4 Be7
- 12 f5 exf5
- 13 gxh5 Ne5
- 14 Qe2 Bf6
- 15 Nf3 Ng6
- 16 Nxe5 Bxe5
- 17 Nf4 Re8

18 Nh5? ...
 Here 18 Qg4 was certainly a better try (Losoff). But it appears that 18...Bxe4 keeps Black on top. One interesting line is 19 Nh5 Bxf5 20 Bxf5 Nxf5 21 Qxf5 Qh4 22 Qh3 Be4 23 Bf1 Rad8 winning.
 18 ... Qh4
 19 Bf4 Bxe4



- 20 Bxe4 Bxf4
- 21 Rxf4 Rxe4
- 22 Rxb4 Rg4+

HIGH SCHOOL CHESS: DESPERATION AND PERSPIRATION = INSPIRATION?

By Erik Ronneberg

[Editor's Note: Now rated 2164, Erik Ronneberg, a senior at Chicago's Kenwood High School, is Illinois' strongest high school chess player. He won both the 1986 and 1987 Illinois State High School Invitational Championship (an annual round robin event sponsored by the Illinois Chess Association for the state's six highest rated high school players) and finished tied for 4th place at the 1987 Denker Tournament of (High School) Champions.]

When high school chess players meet, stand back and watch the action. Except for the last round, draws are rare in high school events. The chess is often wild and crazy (and even unsound!). Games are decided by tactics, not subtle positional strategy. Witness the following two contests.

This game is from the fourth round of the May, 1987 Illinois High School Invitational Championship. Andrew Payne and I had just adjourned a difficult ending. Payne had won his other games, while I had been nickered for a draw by Glenn Panner. I knew I had to win this game if I hoped to finish first in the five round event.

White: John Nielson (1840)
Black: Erik Ronneberg (2063)

1 e4 e6
2 d4 d5
3 Nc3 ...

Nielson is going for the win too and avoids the Exchange French.

3 ... Bb4
4 e5 c5
5 Qg4 Ne7
6 Nf3 Nbc6

6...cxd4 is better.

7 Bb2 cxd

Now 7... 0-0 is better.

8 Nxd4 Nxd4
9 Qxd4 Bxc3
10 Bxc3 0-0
11 Bd3 Nc6
12 Bg4 d4
13 Qe4 g6
14 Bd2 f5

15 exf6(ep) Qxf6
16 0-0-0! ...
White's two bishops give him the advantage.

16 ... e5
17 f3 ...

17 h4 saves a tempo; 17 g4! stops 17...Bf5.

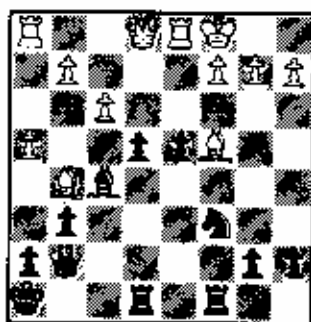
17 ... Bf5
18 Qc4+ Kh8?

Gaining a tempo is not worth the danger the king faces on h8. 18...Be6 is much better.

19 Qe1 Rac8
20 Bh6 Rfe8
21 h4 e4?

This is too slow. 21...b5! is strong. For instance, 22 Bxb5 Nd4 or 22 Bb3 d3 followed by 23...Nd4 gives Black the initiative.

22 Bg5 Qg7?



22...Bd6 gets off the long diagonal. Now h5-h6 gains White a tempo.

23 h5 Ne5

23 h5 or Be6 are better. I am already lost because 24 Bh4 is unstoppable.

24 Qh4! Nf7
25 Bb3 ...

White has a strong attack and his king is completely safe.

25 ... exf3

25...Be6 is certainly better, since

exf3 is a forced loss.

26 N6! Qe5

The only way to stop 27 Qxd4.

27 Rhe1! Qd6

f6 must be covered.

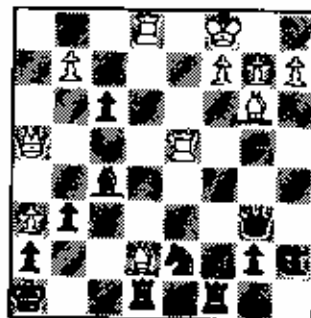
28 Be7 ...

White overlooks 28 Rxe8+ Rxe8 29 Rxd4, and Rxd7 followed by Bf6. Mate cannot be avoided.

28 ... Bb6

29 Rxd4 ...

Not 29 Qxd4+? Qxd4 30 Rxd4 f2! and Black wins.



29 ... Rxe7

A desperation move. 29...Bxb3 was my other choice, but it does not work. But for the text move, White's Rxd7 is unstoppable.

30 Qxe7?? ...

Perhaps White did not see that my 31st move is possible. 30 ...

Qxd4

31 Qe8+ ...

31 Rd1 Qf4+ then ...Qxh6 saves Black.

31 ... Nf8

32 Qf7 Qf4+

Now I am winning.

33 Re3 ...

33 Kh1 or Kd1, and ...Bxc2+ wins.

33... Qxe3+

34 Kd1 Bxc2+

34 Qe2+ is quicker.

35 Bxc2 Qe2+

36 Kc1 Qxc2 Mate.

The next game took place in round five of the 1987 Denker Tournament of (High School) Champions. Danny Edelman, a strong player and the winner of the 1986 Denker event, went on to finish second (in part because of this game) in 1987. I was 3-1 at this point, having come back from a second round loss to win my next two games. In 1986 I lost to Edelman when I tried for a win instead of taking a draw by perpetual check. Now Edelman, who had already drawn with an expert, needed a victory to catch Vivek Rao, the tournament leader.

White: Danny Edelman (2420)
Black: Erik Ronneberg (2089)

1 e4 e6
2 d4 d5
3 e5 c5
4 c3 Nc6
5 Nf3 Bd7(?)

I wanted to avoid the main line, 5...Qb6.

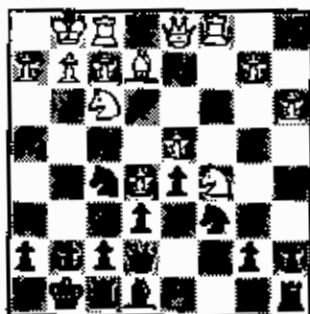
6 Be2 Qb6?

Now I changed my mind. But it is too late to transpose. 6...f6 is the right move.

7 O-O cxd
8 cxd Nb6
9 Nc3 ...

9 Bxb6? Qxb2 wins a pawn.

9 ... Nf5
10 Na4 Qa5
11 Bd2 Bb4
12 Bxb4 Qxb4
13 a3 Be7
14 Rc1 O-O
15 Nc5 Be8



White has a clear edge in space. My bishop is bad, but ...f6 and ...Nb5 will improve it. Edelman

plays accurately to neutralize this positional threat.

16 b4 a6

Allowing White to get in b5 gives up too much space. [17 Re1! f6

18 Bd3! ...

Edelman plays the moves I feared he would. I was starting to sweat.

18 ... fxe

19 Nxe5!? ...

19 Bxf5 results in a good knight versus a bad bishop, but may not be enough to win.

19 ... N6xd4

19...Nxe5 20 Rxe5 or 19...Nfxd4 20 Nxc6 Nxc6 21 Nxe6 Rf6 22 Bxh7+ followed by Ng5 win for White.

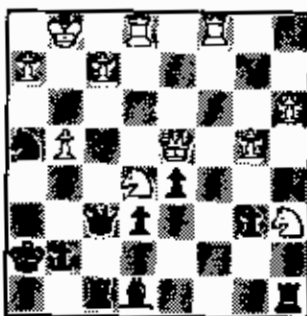
20 g4 b6

To cause complications. Now 21 Nb3 and Na4 are no good. 21 Bxf5 bxc5 22 Bb1 Qh4 results in problems as neither 23 Rc2 nor Re2 work. Also, 23 Bd2 Nf3+ 24 Nxf3 Qxg4 25 Kf1 Qxf3 looks winning for Black.

21 Nxa6 Nh4

22 Bxh7+ Kxh7

23 Qxd4 Qf6



I now considered my position lost.

24 b5 Bg6

25 Rc3 Be4

This well placed bishop and the f file give me some compensation.

26 Rh3? ...

After the game Edelman pointed out that 26 Nb4 saves a tempo and holds the c file. He wanted to have the option of sacrificing the exchange for the knight or the bishop. [26... Kg8

27 Nh4 Rac8

28 Nbc6 ...

28 Qxb6 Rb8 29 Qe3 Qxe5 30 Rxb4

Rxb5 wins for White. 28 Qxb6 Qxe5 29 Rxb4 Rc3 is unclear.

28 ... Rxc6!

Otherwise White is completely consolidated.

29 bxc6 Ng6

30 Rh5 ...

I was expecting 30 Nxc6 Qxd4 31 Rb8+ Kf7 32 Rxf8+ Krg6 33 c7. When we looked at this position after the game, Edelman said it was even, since 33...Qc3 34 Rxe4 Qxc7 35 Rxe6+ Kg5 looks equal. However, after 36 f3 and Kg2-g3 White is better. [30... Nf4

31 f3 ...

31 g5 Qf5 32 Rh4 Qxg5+ 33 Rg4 Ne2+! 34 Kf1 Qxg4 and ...Nxd4 wins for Black.

31 ... Nrh5

32 gxf5 ...

32 fxe4 Nf4 is strong.

32 ... Bxf3?

I saw that this led to a draw so I went for it. But 32...Bg5+ is better. 33 Kh1 Rxf3 wins, and 33 Kf1 Bxf3 or 33 Kf2 Qh4+ are good for Black also.

33 Nxf3 Qxf3

34 c7 e5

35 Bxe5 Draw

```

#####
#
#
#          1988 NATIONAL OPEN
#
#    MARCH 18 - 20, 1988
#
#    HOLIDAY INN O'HARE
#
#    $16,000 PRIZE FUND
#
#
#    FORMER WORLD CHAMPION NIKHAIL TAL
#          WILL PLAY
#
#    BENJAMIN - BLUZY BLITZ MATCH
#
#    JOIN THE GRANDMASTERS AT THE
#    BIGGEST CHICAGO TOURNAMENT OF 1988
#
#
#####

```

FROM THE EDITOR

(Continued from Page 1)

To most Midwest residents, the coming of March means spring is on the way. But to an ever increasing number of the best chess players in the Midwest (and in the rest of the United States as well), March means the Midwest Masters Invitational. Helen Warren, who first organized this annual event in 1983, has made her creation one of the top master events in the country. This year's tournament will be from March 11 through March 13 at the Hyatt Lincolnwood, 4500 W. Touhy, Chicago/Lincolnwood. Spectators are welcome. Come and see some of the biggest names in American chess battle for \$4800 in guaranteed prizes. (Local masters will have an added incentive: a \$300 prize for the highest scoring Illinois player.)

Warren sponsors the Midwest Masters out of love for chess; she has yet to break even, much less make money, on the event. You can help her ensure the continuation of this important tournament by sending a contribution to the Midwest Masters Invitational, c/o the Midwest Chess Association, P.O. Box 305, Western Springs, Ill. 60558

The June-July, 1987 ICB contained an interview with Joel Benjamin in which the grandmaster strongly criticized the editing of a letter he had sent to the editor of CHESS LIFE. Larry Parr, CL editor at the time the aforesaid letter was published, has now responded with a lengthy letter of his own (complete with three appendixes). Parr's correspondence (and possibly a rebuttal from Benjamin) will appear in the next ICB.

If you are an Illinois Chess Association member, but are not receiving the ICB, you almost certainly have moved but have not informed the ICA of your new address. Unless you are a Century Club, Gold Card, or Patron member, your ICB is sent third class mail and will not be forwarded. It is up to you to keep the ICA advised of your current whereabouts. Send address changes and corrections to: Illinois Chess Association, P.O. Box 267847, Chicago, Ill. 60626-7847.

ERRORS AND OMISSIONS

[Editor's Note: I wish that this feature did not have to appear. Despite my best efforts, however, mistakes are going to be made, I can only promise to try to keep them to a minimum. With regard to the November-December ICB, I learned the fairly obvious lesson that staying up all night to meet a publication deadline results in less than clear thinking the following morning when I inadvertently submitted a draft version rather than the final version of the "Illinois Tournament Calendar" to the printer. The result was the publication of a schedule which neglected to mention many January and February, 1988 events. I managed to somewhat limit the mistake by spending several hours preparing and then pasting on 700 labels containing information about the Midwest Action Chess Championship; that was not fun. As Al Chow notes in another context in this issue, "I'll try to do better."

(I should point out, however, that I did not prepare the full page Midwest Action and National Open ads which appeared in the last ICB. The fact that the Midwest Action ad did not list the tournament date and the National Open ad did not mention entry fees or round times reflects decisions made by the respective organizers of those events, not by me.)

The following items represent corrections and/or additions involving the November-December ICB:

The "Illinois Tournament Calendar" is as current and correct as information available at press time permits.

The correct site of the Midwest Masters Invitational (as noted in this issue's calendar) is the Hyatt Lincolnwood Hotel (4500 W. Touhy, Chicago/Lincolnwood).

John Krom, Jr. took top Expert honors at the 1987 Illinois Class Championships. Krom is now one of Chicago's newest masters. He has annotated one of his games for this ICB. (Coincidentally, Krom is also involved in this issue's "Readers' Showcase" contest, which was submitted by his opponent.)

The Affiliate, Century Club, Gold Card, and Patron lists have all been updated with information supplied by ICA Membership Secretary Bill Smythe.

ILLINOIS TOURNAMENT CALENDAR (Continued)

March 5-6: Greater Peoria Open, at Ramada Hotel in Peoria. Bill Wilkinson: (309) 673-9455

March 5-6: Illinois Grade School State Chess Championship, at Benjamin School in Chicago. J. Barstad: 231-6075

March 6 and March 21: Mikhail Tal Simultaneous Exhibitions at Holiday Inn O'Hare in Rosemont. Dick Verber: 434-2118

Mar. 11-13: 1988 Midwest Masters Invitational VI, at Hyatt Lincolnwood in Chicago/Lincolnwood. Helen Warren: 246-6665.

Mar. 12: 3rd North Boone Membership Tournament, at North Boone High School in Poplar Grove. Carl Simonson: 524-2280

Mar. 12: The Swiss March, at Rockford College/Burpee Center in Rockford. Gary Sargent, 2764 Panorama Dr., Rockford, IL 61109

March 12, 13, 26, 27: Chicago Lawn Chess Association 1-day events. 476-5716.

March 15: Grandmaster Walter Brown's World Blitz Chess Association Blitz (Five Minute) Tournament, at Mohr Community Center in Forest Park. Ken Marshall: 932-1455. SEE QUARTER PAGE AD IN THIS ICB

March 17: Mikhail Tal Simultaneous Exhibition at Freedom Hall in Park Forest. Wayne Palmquist: 361-2571.

March 17: Joel Benjamin and Maxim Dlugy Simultaneous Exhibitions, at Holiday Inn O'Hare in Rosemont. Dick Verber: 434-2118.

March 18-20: 1988 National Open, at Holiday Inn O'Hare in Rosemont. Dick Verber: 434-2118. SEE FULL PAGE AD IN THIS ICB.

March 19: Illinois Valley Quad. #1, at Grace United Methodist Church, LaSalle. Byron Pappas: (815) 224-2869.

April 9: Rockford's Chess/Go Tournament II, at Rockford College/Burpee Center. Gary Sargent (815) 229-3273

PATRON MEMBERS CONTINUED

Daniel Pradt	Glen Ellyn, IL
Tim Redman	Lima, OH
Harrison Robinson	Chicago, IL
Ray Satterlee	Wheaton, IL
Vivian Schmucker	Goshen, IN
Mark Sefcheck	Naperville, IL
Tony Siliars	Chicago, IL
Arthur Sinclair	Evanston, IL
Richard Smiley	Chicago, IL
David Sprengle	Knoxville, TN
Miomir Stevanovic	Lincolnwood, IL
David Taylor	Kankakee, IL
Don Townsend	Chicago, IL
John Tums	Oak Park, IL
Helen Warren	Western Springs, IL
Bill Wenz	Milwaukee, WI
Douglas White	Schaumburg, IL
Harold Winston	Naperville, IL
Marvin Winston	Old Bridge, NJ
Sandy Zabel	Chicago, IL
Max Zavanelli	Park Ridge, IL

HELP SUPPORT ILLINOIS CHESS BY BECOMING AN ICA BENEFACTOR:

CENTURY MEMBER \$100,
GOLD CARD \$50; PATRON \$25.
Please mail your contribution to:
Illinois Chess Association
Bill Smythe, Treasurer
6945 N Ashland #F3
Chicago, IL 60626

TOURNAMENT CLEARINGHOUSE MATERIAL

Harold Winston has resumed handling the Tournament Clearinghouse. Please send all material to:

Harold Winston
46 Robin Hill Dr.
Naperville, IL 60540
(312) 244-7954.

Please send Downstate Tournament Clearinghouse material to:

Bill Naff
212 W. Vail Ct.
Peoria, IL 61614
(309) 691-4624.

CENTURY CLUB MEMBERS

Michael Belovesick	Elmhurst, IL
Fred Cramer	Mequon, WI
Tom Fineberg	Chicago, IL
Fred Gruenberg	Chicago, IL
Marc Lunoff	Northbrook, IL
Albert Sandrin	Chicago, IL
Angelo Sandrin	Chicago, IL
Bill Smythe	Chicago, IL
Burton Vincent	Chicago, IL

GOLD CARD MEMBERS

Bill Butty	Downers Grove, IL
John Deutsch	Chicago, IL
Harland Hoisington	South Ogden, UT
Ed Marshall	South Barrington, IL
Michael Prattis	Chicago, IL
Irwin Rothschild	Park Forest, IL
Mitchel Sweig	Evanston, IL
Richard Verber	Chicago, IL
Jim Warren	Western Springs, IL
Louis Werner	Evanston, IL

PATRON MEMBERS

Bob Ash	Urbana, IL
Todd Barre	Westmont, IL
John Barstad, Sr	Carol Stream, IL
Roy Benedek	Oak Park, IL
Bill Brock	Chicago, IL
Tyrone Brooks	Chicago, IL
Jim Bratsos	Chicago, IL
Sam Caldwell	Chicago, IL
Lynn Crewse	Arlington Heights, IL
Leroy Dubeck	Cherry Hill, NJ
Gerard Garino	Evanston, IL
Jon Gotz	West Chicago, IL
Donald Graft	Wheaton, IL
William Graves	Chicago, IL
Guy Gruenberg	Matteson, IL
Walter Henry	Naperville, IL
Jeffery Hyland	Mount Prospect, IL
Robert Irons	Chicago, IL
Tim Just	Waukegan, IL
Leo Kaushansky	Chicago, IL
Thomas Knodler	Springfield, IL
Walter Kocjan	Northlake, IL
John Krom, Jr	Chicago, IL
Eugene Lopez	Elk Grove, IL
Alan Losoff	Morton Grove, IL
Kenneth Marshall	Lombard, IL
Eugene Martinovsky	Oak Brook, IL
James McNamara	Riverside, IL
Piatek Mieczyslaw	Chicago, IL
Patrick Moran	Wilmette, IL
Peter Pelts	Chicago, IL

ICA ELECTED OFFICERS:

Tim Just, President
1521 Circle Ct., Waukegan, IL 60085

Harold Winston, Metro Vice-President
46 Robin Hill Dr., Naperville, IL 60540

Bill Naff, Downstate Vice-President
212 W. Vail Ct., Peoria, IL 61614

Ken Marshall, Secretary
357 W. Grove, Lombard, IL 60148

Bill Smythe, Treasurer
6945 N. Ashland #F3, Chicago IL 60626

Walter Brown, Immediate Past President
811 Elrose Ct., Crest Hill, IL 60435

USCF DELEGATES

by virtue of their USCF posts:

Harold Winston, President
Helen Warren, Policy Board Member
Todd Barre, Regional Vice-President
Jim Warren, Regional Vice-President
Frank Skoff, Past President

ICA APPOINTED USCF DELEGATES:

Tim Just	Ken Marshall
Fred Gruenberg	Richard Verber
Tom Fineberg	

ICA APPOINTED USCF VOTING MEMBERS

Bill Smythe	Bill Naff
Walter Brown	Erv Sedlack
Wayne Palmquist	Dennis Grant
Larry Stilwell	Tom Knodler
Bob Bain	Barry Fisher
Mike Zacate	

ICA APPOINTED USCF ALTERNATE VOTING MEMBERS:

Glen Panner	Chris Musgrave
Byron Pappas	Eric Schiller
John Tonkinson	Bill Wilkinson
Jim Condon	Kevin Bachler
Jim Bratsos	Angelo Sandrin
John Barstad, Sr.	Dan Kamen
Al Chow	Mike Belovesick, Sr
Philip Wong	Burton Vincent
Larry Goch	

ILLINOIS TOURNAMENT CALENDAR

Call Chess Phone, (312) 971-3666, for all recorded tournament announcements and results, often more up-to-date than CHESS LIFE or the ICB. The ICA Chess Phone voice is Todd Barre.

Unless otherwise noted, all tournaments require USCF membership. ICA Tour events also require ICA membership. All phone numbers are area code 312 unless otherwise noted.

Feb. 20-21: Chicago Chess Center \$520 Grand Prix Guarantee. Jules Stein: 929-7010.

Feb. 27, 28: Chicago Chess Center 1-day events. Jules Stein: 929-7010

Feb. 20: Springfield After the Blizzard Open, at Washington Park Pavilion in Springfield. Thomas Knoedler: (217) 523-7265, after 6 p.m.

Feb. 27: 9th Illinois High School Classic, 4th Illinois Grade School Class; 4th Alumni Tournament, in Hillside. Lawrence Stilwell: 963-6799.

Feb. 21: Peoria 1st Quarter Cash Novice and Quad, at Garrett Center in Peoria. Bill Wilkinson: (309) 673-9455.

Feb. 27, 28: Chicago Lawn Chess Association 1-day events: 476-5716.

Feb. 21: Illinois Chess Association Meeting at 1:30 p.m. at Morgan Park Methodist Church, 11030 S Longwood Dr., Chicago. Ken Marshall: 932-1455

March 5, 6; March 12, 13; March 19, 20; March 26, 27: Chicago Chess Center 1-day events. Jules Stein: 929-7010

(Continued on Page 28)

1988 National Open

MARCH 18-19-20 IN CHICAGO

\$16,000 PRIZE FUND

ILLINOIS CHESS BULLETIN
357 W. GROVE
LOMBARD, ILLINOIS 60148

Speedy Delivery Appreciated

Bulk Rate
U.S. Postage Paid
Lombard, IL 60148
Permit No. 248