



ILLINOIS CHESS BULLETIN

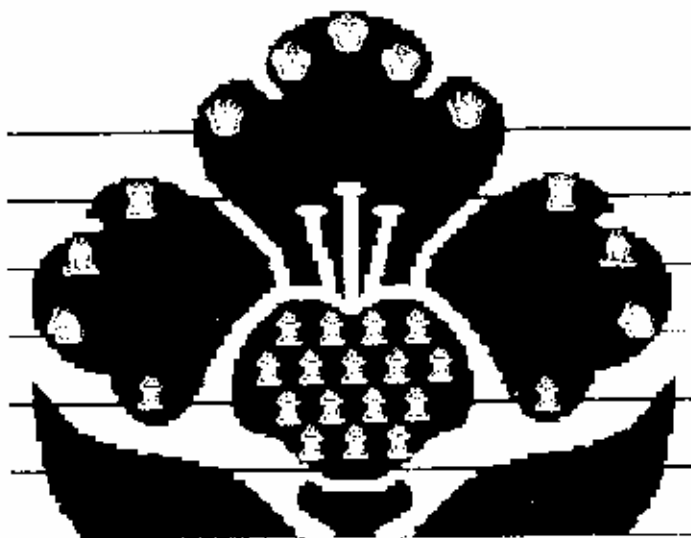
Official Publication of the Illinois Chess Association - U.S.C.F. Affiliate
A Not For Profit Organization

MARCH - APRIL, 1988

VOLUME X1, NO. 2

BI-MONTHLY

\$2.00



SPRING IN ILLINOIS: ALIVE WITH CHESS

MIDWEST MASTERS

NATIONAL OPEN

GRADE & HIGH SCHOOL CHAMPIONSHIPS
GREATER PEORIA OPEN



ILLINOIS CHESS BULLETIN

EDITOR:

KEN MARSHALL

357 W. Grove
Lombard, Illinois 60148
(312) 932-1455

TECHNICAL EDITOR:

MARY GAITHER MARSHALL

ASST. TECHNICAL EDITOR:

ALAN LOSOFF

GAMES EDITOR:

AL CHOW

SUBSCRIPTIONS:

The Illinois Chess Bulletin (ICB) is published bimonthly by the Illinois Chess Association. ICA membership includes a subscription to the ICB. (Century, Gold, and Patron members receive their ICB by first-class mail.

ANNUAL MEMBERSHIP RATES:

Century Club:	\$100.00
Gold Card:	50.00
Patron:	25.00
Regular:	10.00
Junior (under 18):	6.00

Subscriptions, Address Changes, and Corrections should be sent to:

Illinois Chess Association
P.O. Box 267847
Chicago, IL 60626-7847

SUBMISSIONS:

Submit articles, photographs, crosstables, games, and other publishable materials to the Editor.

Publication deadline for the next issue is May 24, 1988.

ADVERTISING RATES:

Full page	\$60
Full page (back cover)	\$80
Half page	\$36
Quarter page	\$21

10% discount for the same ad in consecutive issues. 1/3 discount for ICA affiliates. All advertising must be camera ready to qualify for

TABLE OF CONTENTS

FROM THE EDITOR	1
WHERE TO PLAY CHESS / CLUB AFFILIATES	2
PRESIDENTIAL PONDERINGS	3
LETTERS TO THE EDITOR	4
WHAT'S NEW	6
NATIONAL OPEN	7
HOW TO PLAY IN THE BIG TOURNAMENTS	13
MIDWEST MASTERS	14
TOURNAMENT CROSSTABLES	18
GRADE SCHOOL CHAMPIONSHIP	20
MIDWEST ACTION CHESS CHAMPIONSHIP	22
GREATER PEORIA OPEN	24
ILLINOIS TOUR	26

these rates. ICA reserves the right to reject advertising.

ICA AFFILIATION: Chess clubs and other organizations which promote chess activity may affiliate with ICA. Affiliate benefits include a copy of each ICB by first-class mail, a listing (if desired) under "Where to Play Chess" in each issue, discounted ICB advertising rates, three-line tournament announcements in the "Tournament Calendar", and the right to run ICA Tour events. ICA affiliation costs \$15; please remit to address shown under "Annual Membership Rates". Include your club meeting times, name of contact person, and other useful information in the format shown in "Where to Play Chess" on page 2.

CHESS PHONE
(312) 971-3666

DOWNSTATE CHESS PHONE
(309) 655-0618

From the Editor's Desk

"Nonstop action" may be the best way to describe the Illinois chess scene in March of 1988. The month included the Greater Peoria Open, the Illinois Grade School State Chess Championship, the Midwest Masters, the National Open, and the Illinois High School AA and A Team Championships, to name only the tournaments at which I was able to spend some time. Nearly 1,750 players (including 700 at the National Open, almost 700 at the High School Team and almost 200 at the Grade School events), ranging from world class grandmasters to seven year old beginners, brought varying degrees of skill but similar enthusiasm to their games.

And games there were - more than 9,000 of them. I therefore decided to give much of this ICB over to tournament stories, crosstables, and game scores. Most of the games are from the National Open, involve the play of either grandmasters or Illinois players, and are unannotated. (This issue's deadline made it impossible to obtain annotated Open games in time for publication.) The others are from the Midwest Masters, Helen Warren's annual event for America's top players. Even more games from these two tournaments - as well as annotated versions of several of the unannotated ones contained herein - should appear in the next ICB. ♠

In order to make way for the "tournament extravaganza", many articles have been pushed back to the May - June issue. Stories on former world champion Mikhail Tal's visit (including Wayne Palmquist's "An Evening with Mikhail Tal") and three simultaneous exhibitions will appear next time. "Reader's Showcase" will return, and "The Club Scene" will debut with a twice postponed feature on Byron Pappas and the Illinois Valley Chess Club. An article on 1987 Illinois Tour winner Cyrus Bondari will also be published, as will a thoughtful piece by Helen Warren on organizing and master chess. Annotated games by Albert Chow and Eugene Martinovsky (including a win by the latter in a Norwegian tournament) will again be presented. Crosstables from the Midwest Masters and the National Open will be available. The debate on whether or not a separate rating system for "Action Chess" should be established will also be examined.

A few words about the National Open: Richard Verber made it happen. At times the event ran smoothly, at other times it appeared to approach chaos - but it drew 700 players (the largest turnout for a Chicago chess event since the Verber-organized 1973 U.S. Open) and put Chicago back on the big national tournament map. Dick made mistakes, as did some of his staff (on which I served), but they did most things right. The two dozen or so players I asked said they were glad they had played, although none were happy about the several late starting rounds. Lessons learned in putting together the National Open should help Dick in his preparations as organizer of the 1989 U.S. Open.

The cleaner and more readable appearance of the present ICB is due in large part to the efforts of Alan Losoff, who, in joining the ICB staff as Assistant Technical Editor, made available both his computer expertise and his access to laser printers in helping to produce this issue. Alan, an active player whose rating moves back and forth over the 2000 mark, provided invaluable assistance. His continuing help will ensure that the ICB's "new look" remains intact.

One or more of this issue's "Letters to the Editor" may provoke some controversy, or at least some discussion. Doing so is perhaps the major reason for having a "Letters" section. Certainly a dialogue on issues of concern to the Illinois chess community has a place in the state chess magazine. While I welcome correspondence on such issues, I will not allow the "Letters" to degenerate into a chronicle of "who hates whom in Illinois chess". Opinions on Illinois chess issues and on any aspect of the ICB (such as Larry Parr's letter, which deals with a non-Illinois matter brought up in a prior ICB article) almost certainly will see print. Personal attacks or letters regarding matters only marginally related to the Illinois chess scene almost certainly will not.

(Continued on page 26)



WHERE TO PLAY CHESS: ICA CLUB AFFILIATES



AMERICAN POSTAL CHESS

TOURNAMENTS sponsors postal events of various kinds, and sells chess books and equipment. Contact Jim or Helen Warren, P.O. Box 305, Western Springs 60558. (312) 246-6665.

AUBURN HIGH SCHOOL CHESS CLUB, 4273 Straw Lane, Roscoe 61073. Contact James G. Boyer, sponsor. (815) 623-8148.

CENTRAL LAKE COUNTY CHESS CLUB meets Fridays, 7:15 p.m. to midnight, College of Lake County, Bldg. 1, Washington at Route 45, Grayslake. Contact Dennis Grant, 1657 McKay, Waukegan 60087. (312) 336-5188.

CHICAGO CHESS ASSOCIATION

organizes major tournaments at the Holiday Inn O'Hare. Also master chess lessons, \$40/3hr. Contact Dick Verber, 2725 W. 84th St., Chicago, 60652. (312) 434-2118.

CHICAGO CHESS CENTER meets for casual chess 7 days a week, 6 p.m. to 1 a.m., 2923 N. Southport, Chicago 60657. Also sponsors rated tournaments on selected weekends. Contact Jules Stein, (312) 929-7010.

CHICAGO INDUSTRIAL CHESS

LEAGUE organizes frequent competition among commercial/government teams with awards, ratings, and special events. Contact Jim Brotsos, (312) 775-5054, or Bruce McNeil, (312) 742-5195.

DECATUR CHESS CLUB meets every Thursday evening from 7:00 p.m. to midnight at the Sheraton Inn, 450 E. Pershing, Decatur. Contact: Bill Meyer, 2265 Esther, Decatur, IL 62521, (217) 864-4797.

DOWNERS GROVE PARK DISTRICT

CHESS CLUB meets every Thursday, 6:30 -10 p.m., Lincoln Center, 935 Maple Ave., Downers Grove. Affiliated with USCF and ICA. Contact George Uffner, (312) 910-0421.

FRED REINFELD CHESS CLUB meets Sunday afternoons from 2-6 p.m. at Coslow's, 200 E. Johns St., Champaign. Speed chess is emphasized. Contact Barry Fisher, 2112 Cyprus, Champaign, IL 61821. (217) 333-9083.

GREATER PEORIA CHESS

FEDERATION meets Mondays, 7 to 11 p.m., Bradley Student Center Cafeteria, 901 N. Elmwood, Peoria. Contact Bill Wilkinson, 901 N. Rebecca Pl., Peoria 61606. (309) 673-9455.

ILLINOIS VALLEY CHESS CLUB meets Thursdays, 6-10 p.m. Grace United Methodist Church, 1345 Chartres St., LaSalle. Contact Byron Pappas, 432 Creve Coeur, LaSalle, IL 61301. (815) 224-2869.

LAKE COUNTY CHESS ASSOCIATION sponsors rated tournaments in the Grayslake/Zion area. Contact Tim Just, 1521 Circle Ct., Waukegan 60085. (312) 244-7954.

OAK PARK / FOREST PARK CHESS CLUB meets Tuesdays, 7 p.m. to midnight, Mohr Community Center, Jackson and DesPlaines, Forest Park. Contact Ken Marshall, 357 W. Grove, Lombard 60148. (312) 932-1455.

PARK FOREST CHESS CLUB meets Thursdays, 7 to 10:30 p.m., Freedom Hall, Orchard & Lakewood, Park Forest. Contact Wayne Palquist, 10605 Southwest Hwy. #1F, Worth 60482. (312) 361-2571.

SOUTHERN ILLINOIS CHESS LEAGUE

sponsors rated tournaments throughout southern Illinois. Contact John Tonkinson, 105A Manor Court, Alton 62002. (618) 462-5732.

ST. CHARLES CHESS CLUB

meets Thursdays at 7 p.m., Baker Community House, 101 S. 2nd (Route 31), St. Charles. Contact Erv Sedlock, 6 N. 307 Old Homestead Rd., St. Charles 60174. (312) 377-7995.

TULEY PARK CHESS CLUB

meets Saturdays, 1 to 5 p.m., Tuley Park Fieldhouse, 501 E. 90th Pl., Chicago. Contact Thomas Fineberg, 7321 S. South Shore Dr., Chicago 60649. (312) 721-3979.

TWIN CITY CHESS CLUB

meets Monday evenings, Parks & Rec. Bldg., 611 S. Linden, Normal, except 1st Monday/month, Garcia's, Matterson Place. Speed tournaments 50 cents/game. Andy McGowan, 520 E. Chestnut, Bloomington 61701. (309) 827-7892.

CHESS PHONE

(312) 971-3666

PRESIDENTIAL PONDERINGS

by ICA President Tim Just

NEWS - - RUMORS - - GOSSIP

Welcome to new Illinois Chess Association Treasurer Guy Gruenberg. We are glad that Guy could find time in his schedule to contribute his business expertise to the treasurer's post, which he took over from Bill Smythe on March 15, 1988.

Bill's recent service in the ICA is legendary: Treasurer, Membership Secretary, Tour Director, Illinois Chess Bulletin editor. Each of these tasks is time consuming; Bill did them all while holding down a full time professional position. Now, in order to maintain both his sanity and the high level of service that ICA members expect and deserve, Bill has decided to focus his energies on the Membership Secretary and Tour Director jobs.

Murrel Rhodes and the Greater Peoria Chess Federation have landed the 1989 National Junior High School Championship. Congratulations to one of the top chess organizations in Illinois for bringing this event to our state. We can all now start preparing our junior high students to play in it.

Who was the first U.S. chess player to contest a game against FIDE (World Chess Federation) President Florencio Campomanes on Leisure Link, the computerized communication network? Illinois master Kevin Bachler. Kevin was playing speed chess on the system with New York International Master Vince McCambridge. Campomanes dropped by Vince's apartment. The rest is history. (The winner? Ask Kevin?!)

Waukegan's Shimer College is making chess news. The college will host the Illinois High School Invitational Championship in both 1988 and 1989. (The winner of this event receives a trip to the Denker Tournament of (High School) Champions, held annually in connection with the U. S. Open.) Shimer will provide free housing for participants in the Illinois event, as well as scholarships to the college for the three top finishers. Shimer is also offering two chess scholarships [Editor's Note: See

"What's New" in this ICB] and is bidding for the U.S. Junior Chess Championship. It is great to see Shimer College getting involved in the chess community.

The 1988 Illinois Open may be held in Peru, Illinois. That site is ideally located for players from both downstate and the Chicago area. It is only a few miles from LaSalle, where the Illinois Valley Chess Club's now familiar ICA Tour events have been played. (Coincidentally, I was born and raised in Peru.)

Help prevent a dues increase: get a friend to join the ICA. Like everything else, the cost of running the ICA has gone up over the last few years. Publishing the ICB alone is a tremendous expense; but the more ICBs that are printed, the lower the cost per individual magazine. This means that as more people join the ICA, costs go down. If membership does not increase, other methods of balancing the ICA budget will have to be found. Unfortunately, raising dues is one of those methods, although that should be the very last to be considered. Help avoid the possibility of higher ICA dues by signing up a fellow chess player as an ICA member today.

How to win on the ICA's Illinois Tour: it is easy. Tour points are earned by every player in a Tour event who scores more than 0. Winning the tournament, or even taking a class prize, is not necessary to garner points - but the higher the finish, the more points obtained. Simply playing in more Tour events thus leads to the accumulation of more Tour points (assuming a higher than 0 score in those events). To win a 1988 Tour prize, a player must participate in at least three Tour tournaments and earn more points than any other Tour players in his or her class.

A downstate (Peoria area) Chess Phone is now operational. The number is (309) 655-0618.

Letters to the Editor



When the idea of holding a US Open in Chicago was first brought up at an ICA meeting, I expressed strong skepticism that our local organizers (not excluding myself!) could cooperate in a venture which requires a great deal of teamwork. I remember how disappointed I was at the 1983 World Youth Team championship, when only a few of our talented organizers fulfilled their promises to assist.

At a time when we need to work together if the US Open is to succeed, an unfortunate situation is arising which threatens to create further divisions in the ranks. I refer to the proposed plan to hold a major tournament just one week after the traditional Midwest Masters date in March of 1989. The proposal, as it stands, threatens to destroy the Midwest's finest tournament. There is no reason for such a conflict, and I put forward the following proposal to resolve the scheduling problem.

The Midwest Masters should continue in its traditional format on its traditional dates. The proposed class tournament should be modified so that there is no Master event -- only class events below 2200. Instead of the master section, a select group of Grandmasters (4-6) can be invited to participate in a small event, perhaps including some local players (say, the best Illinois performers in the Midwest Masters or qualifiers from one of the Illinois Tournament of Champions events).

In this way the participants will get to see their favorite stars and the prestige of the class event will be maintained. The cost of such an "exhibition" is far less than the loss that is customarily a

result of "subsidizing" the top section of an open event. The masters lose nothing -- because the Midwest Masters will be available for them as usual. The Grandmasters get a double benefit -- in addition to decreased competition for the prizes, they can play in both Chicago events!

By means of a compromise along these lines, it will be possible to avoid a dangerously confrontational situation which threatens to spill over and destroy the 1989 United States Open.

Eric Schiller
International Arbiter

I note with chagrin ICA President Tim Just's exhortation of chess organizers to run more tournaments at "Hotel Row" in Rosemont [November-December 1987 ICB]. During last fall's Illinois State Championship I had the misfortune of staying for two nights at the Hyatt Regency O'Hare, a mistake I do not intend to repeat.

The lone hotel restaurant is notable for slow service, a limited menu, and outrageous prices. The bizarre building design ensures noisy conventioners on the main floor a 24-hour captive audience throughout the sleeping rooms. Lobby-bound patrons on the middle floors find it impossible to gain access to the four tiny, crowded elevators. On the main floor, the long trek between meeting rooms and washrooms eats valuable time off the clock.

The Holiday Inn O'Hare, though a big improvement over the Hyatt, shares with it the disadvantages of overpriced food and inconvenient public transportation. To get to

Hotel Row from anywhere but the northwest side, one must go downtown and then double back.

How much better it would be if tournaments were held downtown! Getting there is a snap, and inexpensive eating places abound. To be sure, those who drive must pay to park, but this cost is repaid many times over on one's first meal outing.

There seems to be a misconception on the part of some organizers that attendance will be better at the airport hotels. This fallacy no doubt stems from the phenomenal success of the 1985 Illinois Open at O'Hare, followed by the dismal showing a year later at the Palmer House. This comparison overlooks the long hours, tremendous enthusiasm, and generous publicity provided by Fred Gruenberg in 1985, compared with some last-minute, half-hearted organizing the following year. If further proof is needed, just look at the 1987 event at O'Hare, where attendance was only marginally higher than at the Palmer House despite greatly improved publicity.

Please, Master Challenge, resist the presidential cry to follow the sheep to Hotel Row! Stay in Forest Park or move downtown. Other organizers, consider the rest of us and remember the advantages of a central location!

Bill Smythe
Chicago

[Editor's Note: Master Challenge X will take place at its traditional site at the Mohr Community Center in Forest Park on June 24, 25, and 26, 1988.]

(Letters to the Editor
continued on Page 5)

(Letters -- Continued
from Page 4)

[Editor's Note: As submitted, the following letter from Larry Parr, former editor of CHESS LIFE, was more than 500 words long and was accompanied by three appendixes. Space limitations forced me to cut about 20% of the letter and to omit the appendixes. (I changed none of the wording that does appear.) I trust that Mr. Parr will agree that my action did not affect the tone or the point of his correspondence.]

In the June-July [1987] issue of the ILLINOIS CHESS BULLETIN, GM Joel Benjamin criticizes my editing of a letter of his which appeared in CHESS LIFE. "I think it is outrageous," he opined, "to edit letters to the editor. A letter which I sent to the magazine appeared in the March 1987 issue. It was not, however, the letter which I wrote. Two subtle editing changes made my argument appear weaker, and resulted in substantial changes in meaning. Tampering with the language of a letter to the editor in such a fashion is intolerable."

Alas, Mr. Benjamin has problems

with his "facts." To begin, his letter appeared in the April 1987 CL and not the March issue. [Appendix one omitted.] Secondly, in his original letter [Appendix two omitted], Mr. Benjamin incredibly fails to give the title of the article that he is attacking. Still, he does give the page number and the date of the issue. So there's no problem, right?

Wrong! He manages to give the wrong page number for the article ... [Appendix three omitted]. Oh, yes, he also refers disapprovingly to something he calls "Alburt's proposal" without informing the reader precisely what that proposal happens to be. I did so in about eight words.

So, a recapitulation is in order. GM Benjamin pens a letter about a subject that he does not define precisely; he attacks an article that he does not name; and he refers the reader to a page where the unnamed article is nowhere to be found. I corrected all of these obvious and embarrassing deficiencies.

The letter itself ... is an attack on an article that I

wrote. [I favored letting GM Gulko into the 1986 U.S. Championship, and Mr. Benjamin opposed it. As for GM Alburt, he proposed to surrender his position in favor of Mr. Gulko....

Other things could be mentioned (e.g., pace GM Benjamin, letters to the editor are among the most heavily altered items in almost any publication), but I believe that a fair reading of the original and edited letters leads to an inescapable conclusion: I aided GM Benjamin in attacking an article that I wrote. As an editor, I did not expect his thanks, though I also did not anticipate an attack for cleaning up what was otherwise a weakminded polemic. Readers of the ICB may now decide if GM Benjamin is a deeply wronged letter writer or a pretty nasty little snip.

Larry Parr

[Editor's Note: When asked if he wished to respond to Mr. Parr's letter, GM Benjamin declined, stating that he has no interest in feuding with the former CL editor and noting that both he and Mr. Parr have now been heard.]

PEORIA SPRING TORNADO -- AN ICA MINI-TOUR EVENT

WHEN: Saturday, June 11, 1988

WHERE: Garrett Center, 824 N. University, Peoria, IL 61606

WHAT: 4 round Swiss

MEMBERSHIPS REQUIRED: U.S.C.F. & I.C.A.

TIME LIMIT: 30/60. 15/30. 30/Sudden Death thereafter

GUARANTEED CASH PRIZES: \$75 First. \$50 Second.

Class A: \$25 Class B: \$25 Class C/Under: \$25. (based on 6 per Class)

ENTRY FEE: \$11 in advance. \$13 at the site.

REGISTRATION: 8:00-8:45 A.M.

ROUND TIMES: 9:00, 12:15, 3:30, 6:45

ADVANCE ENTRIES: Bill Naff, 212 Vail Ct., Peoria, IL 61614

NO SMOKING ALLOWED -- PLEASE BRING BOARDS & CLOCKS.

What's new

Martinovsky Makes International Master Norm at Hastings

Eugene Martinovsky, one of the best and most active tournament players in Illinois, scored 6-4 in the Challengers section of the January, 1988 Hastings International in England to earn his first International Master norm. In order to obtain the IM title, Dr. Martinovsky must gain two more norms within the next three years.

Shimer College Offers Two Chess Scholarships

Shimer College in Waukegan has announced the creation of the Paul Morphy Chess Scholarships. The college will sponsor two scholarships of up to \$2000 apiece, based on the student's academic potential, achievement as a chess player, and financial need. More information is available from the Office of Admissions, Shimer College, P.O. Box A500, Waukegan, Ill. 60079 (telephone number (312) 623-8400).

Browne, Rizzitano Top World Blitz Chess Association Event

Grandmaster Walter Browne and International Master (and Illinois State Champion) Jim Rizzitano scored 21-2 to tie for first and second in the 24 player, round robin, five minute/ game WBCA tournament held at the Oak Park-Forest Park Chess Club on March 15, 1988. FIDE Master Curt Brasket, who defeated both winners in individual games, finished third at 20.5-2.5. The event attracted six players rated over 2300, as well as ten others rated over 2000.

Kenwood High School, Illinois Math and Science Academy Win Illinois High School Association Team Chess Championships

Chicago's Kenwood High School achieved a perfect 6-0 score to take the AA (large school) title at the IHSA Team Chess Championships at Evergreen Park High School on March 25 and 26, 1988. Lane Tech of Chicago and Urbana High School came in at 5-1 to finish second and third on tiebreaks in the 95 team event. The A (small school) crown was won by the Illinois Math and Science Academy of Aurora, also with a 6-0 result. This 25 team tournament saw Chicago's Hales Franciscan and Westmont High School each garner 4.5 points to earn second and third place honors on tiebreaks. [Editor's Note: A full story on this event, as well as on the upcoming IHSA Individual Chess Championship being held in Rock Island on April 22 and 23, 1988, will appear (along with crosstables) in the next ICB.]

700 PLAYERS COMPETE IN 1988 NATIONAL OPEN

Six Share Championship Section Title

Three Tie for First in Reserve

By Ken Marshall

Former World Champion Mikhail Tal and Illinois State Champion James Rizzitano were among six players who scored 5.5 - .5 to top the 1988 National Open. The tournament, held at the Holiday Inn O'Hare March 18-20, 1988, attracted 700 players, making it the largest Illinois chess event since the 1973 U.S. Open. Seven grandmasters and one woman grandmaster were among the 380 players in the Championship (Open) Section.

Grandmaster Sergey Kudrin, GM Leonid Shamkovich, International Master Calvin Blocker, and FIDE (World Chess Federation) Master Michael Brooks finished first along with GM Tal and IM Rizzitano (who drew their individual game). Each winner earned \$1,417. Brooks won the championship trophy on tiebreaks.

Four Illinois players joined three others in sharing expert honors at 4.5 - 1.5. Anthony Schroeder, Steve Surak, Alan Watson, and 1987 Illinois Tour winner Cyrus Bondari took home \$200 apiece, as did Flaga Krzysztof, David McTavish, and Joseph Welch. Illinois' Steve Loring scored 4.5 - 1.5 to earn the \$800 first prize in Class A, followed by Bruce Kreisman, Craig Stauffer, Chua Teck-Joo, Murray Newcomb, and Vernon Vix, each with a 4-2 result.

In Reserve play, Chicago residents Imre Deli and Frank Fullmer, along with Edsel Pena, went 6 - 0. Deli and Pena made \$850 apiece, while Fullmer, an unrated player competing in his first tournament, won the unrated prize of \$200. Among the other Reserve Section prize winners were William Joints and B. Michael Williams, who each earned \$425 for finishing 5.5 - .5, and Eric Blackmon, who garnered \$600 in Class D/E money with a 4-2 score. Special Reserve prizes went to Paul Berland (5-1, best high school player [on tiebreaks]), Ari

Spiro (4.5 - 1.5, top grade school player), and Morton East (Cicero, Ill.) High School student Vince Pinkus (upset prize, 414 point rating difference).

Richard Verber organized the event, which was sponsored by the Chicago Chess Association, the Illinois Chess Association, and the United States Chess Federation. Eric Schiller and Carol Jarecki served as arbiters. Bill Snead, Walter Brown, and Tim Just directed, assisted by Chris Musgrave, Ery Sedlock, Dennis Grant, and David Hater. Bill Smythe, William Moushey, Steve Erbach, and Ken Marshall also served on the tournament staff.

Steve Erbach labored long each day (and into each night) to produce a tournament bulletin, THE NATIONAL NEWS. The following contests, featuring the play of grandmasters, Illinois players, and HITECH (the 2374 rated computer program which lost only to GM Kudrin while scoring 5 - 1), are taken from the NEWS (with the permission of Verber and Erbach) and represent only a fraction of the 124 (!) games Erbach managed to print in the five issues he published during the three day tournament. More games (some of them annotated), as well as features on Mikhail Tal's three simultaneous exhibitions and on other activities related to the National Open, will appear in the next ICB.

The first three games are those contested by current U.S. Co-champion GM Joel Benjamin (age 24) and GM Maxim Dlugy (age 22), America's two best young players, in their "Blitz Match" (10 minutes/game) held on March 17, 1988, the night before the Open began. (These game scores and the accompanying paragraph are also reproduced from THE NATIONAL NEWS.)

[Games begin on Page 8]

Benjamin-Dlugy Match

The games scores in the Benjamin-Dlugy blitz match were recorded by John Meyer of Arlington, Virginia and Moshe Khaterina of Pensacola, Florida. Both players are USCF masters but they found that rapid penmanship was more valuable than analytical skill for this particular assignment.

Here are the scores of all three games in the match which ended in a 1 1/2 - 1 1/2 tie.

GRUENFELD DEFENSE [D94/2]

W: Joel Benjamin
B: Maxim Dlugy

Game 1

1. d4 Nf6 2. c4 g6 3. Nc3 d5 4. Nf3 Bg7 5. e3 0-0 6. Bd2 c6 7. Rcl Bg4 8. cxd5 Nxd5 9. Be2 Nxc3 10. Bxc3 Nd7 11. 0-0 Nb6 12. h3 B36 13. b3 h6 14. Qc2 a5 15. Rfd1 a4 16. b4 Qd5 17. Rd2 Bf5 18. Bd3 Bxb3 19. b5 Bg4 20. Ne5 Bd7 21. Bb4 cxb5 22. Be4 Qe6 23. Bxb7 Rab8 24. Nxd7 Nxd7 25. Qc7 Qb6 26. Bf3 Rfc8 27. Qxc8+ Rxc8 28. Rxc8+ Kh7 29. Rdc2 e5 30. R2c6 Qa7 31. R8c7 Qb8 32. Rxd7 exd4 33. exd4 Qf4 34. R6c7 Qf5 35. Rxf7 Qb1+ 36. Kh2 Qxb4 37. Rxc7+ Kh8 38. Rh7+ 1-0.

KING'S INDIAN E90/3(15)

W: Dlugy
B: Benjamin

Game 2

1. d4 Nf6 2. c4 c5 3. d5 d6 4. Nc3 g6 5. e4 Bg7 6. Bd3 0-0 7. Ne3 e6 8. 0-0 exd5 9. exd5 Re8 10. h3 Nh5 11. Be3 Nd7 12. Be2 a6 13. a4 f5 14. Qd2 Bxc3 15. bxc3 Ndf6 16. Bd3 Ne4 17. Bxe4 Rxc4 18. Bg5 Qf8 19. Rfe1 Bd7 20. Rxe4 fxe4 21. Nh2 b5 22. cxb5 axb5 23. a5 Qg7 24. Ra2 Qe5 25. Ng4 Bxg4 26. hxg4 Nf6 27. Bxf6 Qxf6 28. a6 Ra7 29. Qe2 Qxc3 30. Qxc4 Kg7 31. Qe6 b4 32. Re2 Qa1+ 33. Kh2 Qxa6 34. g5 Rf7 35. Re3 c4 36. Rh3 Qb7 37. Qe4 c3 38. Qd4+ Kg8 39. Re3 Re7 40. Rxe7 Qxe7 41. Qxb4 c2 42. Qb8+ Kg7 43. Qc8 Qe5+ 44. g3 Qf5 45. Qc7+ Kg8 46. Qd8+ Kf7 47. Qc7+ Ke8 48. Qb8+ Kd7 and, apparently, both flags were down so the game was declared drawn (1/2 - 1/2).

GRUENFELD DEFENSE [D94/8]

W: Benjamin
B: Dlugy

Game 3

1. d4 Nf6 2. c4 g6 3. Nc3 d5 4. Nf3 Bg7 5. e3 0-0 6. Bd2 c6 7. Qb3 dxc4 8. Bxc4 Nbd7 9. 0-0 Nb6 10. Be2 Be6 11. Qc2 Rc8 12. Rfd1 Qc7 13. e4 Bc4 14. Bg5 Bxc2 15. Qxc2 h6 16. Bh4 Nh5 17. e5 Nf4 18. Qe4 Ne6 19. Rac1 Rfd8 20. Bg3 Rd7 21. h4 Qd8 22. h5 g5 23. b3 Nd5 24. Na4 Rdc7 25. Nc5 Nxc5 26. dxc5 e6 27. Nd2 Rd7 28. Qe1 Nb4 29. Ne4 Nd3 30. Rxd3 Rxd3 31. Nd6 Rc7 32. Qc2 Rd5 33. b4 Rd7 34. f3 a5 35. a3 axb4 36. axb4 Qa8 37. Qb2 R7xd6 38. cxd6 Rxd6 39. Qa1 Qxa1 40. Rxa1 Rd5 41. Ra8 Kh7 42. Rc8 Rb5 43. Rc7 Kg8 44. Rc8+ Bf8 45. Bf2 Kg7 46. f4 Bxb4 47. fxg5 hxg5 48. Kh2 Bc3 49. Bg3 Bxc5 50. Bxe5 Rxe5 51. g4 Rc3 52. Rc7 Rb3 53. h6+ Kxh6 54. Rxf7 Kg6 55. Re7 Kf6 56. Rc7 Kc5 57. Rg7 Kf4 0-1.

W: GM Dmitry Gurevich (2574)

B: Barry Fisher (2008)

1. d4 Nf6 2. c4 e6 3. Nc3 d5 4. Bg5 Be7 5. e3 0-0 6. Rcl c6 7. Nf3 Nbd7 8. a3 h6 9. Bh4 dc4 10. Be4 Nd5 11. Bg3 N7b6 12. Ba2 Nc3 13. Rc3 Nd5 14. Rcl Qa5 15. Nd2 Bd7 16. 0-0 b6 17. Nc4 Qa6 18. Ne5 Qb7 19. Qf3 Rad8 20. Rfd1 Bf6 21. Nc4 Be7 22. Bd6 Be8 23. e4 Nf6 24. Be5 Nd7 25. Bg3 Nf6 26. Nd6 Bd6 27. Bd6 c5 28. Bf8 Kf8 29. d5 e5 30. Qf5 Qe7 31. d6 (1-0)

W: GM Arthur Bisguier (2452)

B: Bruce Kreisman (1999)

1. e4 Nf6 2. Nc3 d5 3. e5 d4 4. ef6 dc3 5. fg7 cd2 6. Qd2 Qd2 7. Bd2 Bg7 8. 0-0-0 0-0 9. Bc4 Nd7 10. Nf3 Nb6 11. Bd3 Bg4 12. Rde1 Bf3 13. gf3 e6 14. Rhg1 Kh8 15. Rg3 Rad8 16. Rh3 Rd3 17. cd3 Na4 18. Kc2 Rd8 19. Rh4 Rd4 20. Rd4 Bd4 21. b3 Nb6 22. Be3 Bg7 23. a4 a6 24.

Bb6 cb6 25. f4 Bd4 26. f3 Kg7 27. Re4 Bc5 28. d4 Bd6 29. Kd3 Kf6 30. f5 Kf5 31. Rh4 Kg6 32. Rg4 Kf6 33. h3 h5 34. Rg8 Kf5 35. Rd8 Bh2 36. Rd7 Kf4 37. Rf7 Kg3 38. Ke2 Kh3 39. Kf2 h4 40. Rb7 Bg3 41. Kf1 (1-0)

W: Mark McCue (1999)

B: Morris Giles (2443)

1. d4 Nf6 2. c4 g6 3. Nc3 Bg7 4. e4 d6 5. f3 0-0 6. Be3 a6 7. Qd2 Nc6 8. h4 h5 9. 0-0-0 e5 10. Ngc2 b5 11. d5 Na5 12. Ng3 Nc4 13. Bc4 bc4 14. Bh6 Rb8 15. Bg7 Kg7 16. Qg5 c6 17. dc6 Qb6 18. Qf6 Kf6 19. Nd5 Ke6 20. Nb6 Rb6 21. f4 Rc6 22. Rhf1 Ke7 23. f5 Rg8 24. f6 Kd8 25. Ne2 Bg4 26. Rd2 Be2 27. Re2 Ke7 28. Kc2 Ke6 29. Rd2 Rb8 30. Kc3 Rb5 31. Rfd1 Ra5 32. a3 Rb5 33. Kc2 Rb3 34. Rd5 Re3 (0-1)

W: GM Mikhail Tal (2700)

B: Joseph Eversole (2011)

Round 1

1. e4 Nf6 2. e5 Nd5 3. Nc3 Nc3 4. bc3 d5 5. Ra3 Bf5 6. Nf3 Nd7 7. Nd4 e6 8. Bxf8 Nf8 9. Rb1 Qc8 10. c4 Be4 11. Qg4 Rg8 12. cd5 Bd5 13. Bb5 c6 14. c4 h5 15. Qh3 Be4 16. d3 Qd7 17. Qc3 0-0-0 18. Qe4 Qd4 19. Bc6 Qc3 20. Ke2 Rd4 21. Bb7 Kb8 22. Qc3 Ng6 23. Rhc1 Nf4 24. Kf3 g5 25. Rc3 g4 26. Kg3 h4 27. Kh4 (1-0)

W: Gregory Wichman (1988)

B: HITECH (2374)

Round 1

1. e4 e5 2. Nf3 Nc6 3. Bb5 a6 4. Bc6 dc6 5. h3 Nf6 6. Nc3 Bc5 7. 0-0 Qd6 8. d3 Bd7 9. a3 0-0-0 10. Bg5 h6 11. Bh4 g5 12. Bg3 Rbc8 13. Ne2 Nh5 14. Qd2 Ng3 15. Ng3 g4 16. hg4 Bg4 17. Nh4 Rc6 18. Ngf5 Qf8 19. Ne3 Qg8 20. b4 Bd4 21. c3 Qg5 22. Nh5 Be3 23. fe3 h5 24. d4 h4 25. Rf2 h3 26. Qd3 Bf3 27. Kh2 Bg2 28. Raa2 Rg8 29. d5 Be4 30. Qc4 Qg1 31. Kh3 Rh6 (0-1)

GAMES FROM THE NATIONAL OPEN

W: Lawrence Chachere (2397)

B: Tim Taylor (1991)

Round 1

1.c4 Nf6 2.Nc3 e5 3.g3 c6 4.Nf3 e4
5.Nd4 Bb4 6.Bg2 Bc3 7.dc3 O-O 8.O-O
h6 9.Bf4 d6 10.Qd2 Qc7 11.Rad1
Bd7 12.Nc2 d5 13.Nc3 Bc6 14.cd5 cd5
15.Be5 Nbd7 16.Bd4 b6 17.f4 ef3
18.ef3 Rad8 19.Rfe1 Qd6 20.Qc2 Nh7
21.f4 f6 22.Nf5 Bf5 23.Qf5 Rfe8
24.Qd5 Qd5 25.Bd5 (1-0)

W: Fred Gruenberg (1706)

B: Larry Blum (1421)

Round 1, Reserve

1.e4 e6 2.d3 d5 3.Nd2 Nd7 4.Ngf3 Be7
5.g3 Ngf6 6.Bg2 O-O 7.O-O c6 8.Qc2
Qc7 9.Re1 dxc4 10.dxc4 Ne5 11.Nxe5
Qxc5 12.Nf3 Qc7 13.e5 Nd5 14.a3 Qd7
15.c4 Nc7 16.Bd2 Rd8 17.Rad1 b6
18.Bg5 Qe8 19.Rxd8 Bxd8 20.Bf4 a5
21.Rd1 Rb8 22.Qd3 Ba6 23.Ng5 g6
24.Ne4 Qf8 25.Nd6 e5 26.Bc6 Bc7
27.b3 Bd8 28.Qc3 Be7 29.Bh6 Qd8
30.Qf3 Bxd6 31.Rxd6 (1-0)

W: William Maddex (2137)

B: GM Mikhail Tal (2700)

Round 2

1.e4 c5 2.Nf3 e6 3.b3 b6 4.Bb2 Bb7
5.Nc3 Nf6 6.c5 Nd5 7.Nd5 Bd5 8.c4
Bb7 9.Be2 Nc6 10.O-O Qc7 11.Re1 d6
12.d4 cxd4 13.Nxd4 dxc5 14.Nb5 Qd8
15.Bf3 Bb4 16.Re3 O-O 17.Rd3 Qh4
18.Qc2 Rfd8 19.Rad1 Bc5 20.g3 Qe7
21.Bxc6 Rxd3 22.Rxd3 Bxc6 23.Qxc5
f6 24.Qc7 Bxb5 25.Qxe7 Bxc7 26.cxb5
Rd8 27.Rxd8+ Bxd8 28.a4 e5 29.Kf1
Kf7 30.Bc3 Ke6 31.Ke2 Kd5 32.f3 f5
33.h3 h5 34.Bb2 Be7 35.Bc3 g6 36.Bd2
Kd4 37.a5 Kc5 38.axb6 axb6 39.Ke3
Bd6 40.Bc3 Kxb5 41.f4 Bc5 42.Ke2
Bd4 43.Bd2 Kc5 44.fxc5 Bxc5 45.Kf3
b5 46.g4 Kd4 (0-1)

W: GM Maxim Dlugy (2670)

B: Mark Bohannon (2131)

Round 2

1.d4 Nf6 2.c4 g6 3.Nc3 Bg7 4.e4 d6 5.f3
Nc6 6.Nge2 O-O 7.Be3 a6 8.Qd2 Re8
9.a3 Rb8 10.b4 b5 11.cxb5 axb5 12.d5
Nc5 13.Nd4 Bd7 14.Be2 e6 15.O-O

exd5 16.exd5 Qc8 17.Ndb5 Nxd5
18.Nxd6 NNxc3 19.Nxc8 Nxc2+
20.Qxc2 Bb5 21.Qc2 Rbxc8 22.Rad1
Bxf1 23.Rxf1 Nc4 24.Qxc4 Rxc3 25.a4
Rc3 26.Qd5 c5 27.b5 Bd4+ 28.Kh1
Be3 29.b6 c4 30.b7 Rf8 31.Rb1 Rd3
32.Qxd3 cxd3 33.b8=Q Rxb8
34.Rxb8+ Kg7 35.Rd8 d2 36.g3 Kf6
37.Kg2 h5 38.Kf1 h4 39.Ke2 Bg1
40.Rxd2 Bxh2 41.gxh4 Bc7 42.Rd7
Bb8 43.a5 Kc6 44.Rb7 Bc5 45.a6 (1-0)

W: Morris Giles (2443)

B: Jon Gotz (2105)

Round 2

1.e4 c5 2.Nf3 Nc6 3.d4 cxd4 4.Nxd4
Nf6 5.Nc3 e6 6.Nxc6 bxc6 7.Bd3 c5
8.O-O Be7 9.f4 d6 10.Qf3 Bd7 11.Kh1
Qc7 12.Bc4 Rd8 13.Bc3 O-O 14.h3
Qc8 15.Rad1 Nxe4 16.Qxc4 d5
17.Bxd5 Bf5 18.Qf3 cxd5 19.Nxd5 Bc5
20.b4 e4 21.Qe2 Bd6 22.c4 Qb7 23.c5
Bb8 24.c6 (1-0)

W: Eugene Martinovsky (2435)

B: Virgilio Reyes (2102)

Round 2

1.e4 e5 2.f4 d6 3.Nf3 Bg4 4.Bc4 Nf6
5.d3 Nc6 6.c3 Be7 7.Qb3 O-O 8.Qxb7
Na5 9.Qa6 c6 10.b4 Nxc4 11.Qxc4
Bxf3 12.gxf3 Qb6 13.fxc5 Ng4 14.fxg4
Bh4+ 15.Kd1 Qf2 16.Nd2 dxc5
17.Kc2 Bg5 18.Qc5 Qe2 19.Qxc5 Bxd2
20.Bxd2 Rad8 21.Qg3 h5 22.h3 h4
23.Qc3 (1-0)

W: GM Mikhail Tal (2700)

B: Herman Chiu (2264)

Round 3

1.e4 c5 2.Nf3 Nc6 3.Bb5 g6 4.c3 Bg7 5.d4
cxd4 6.cxd4 Qb6 7.Nc3 Nxd4 8.Nd5 Nxf3
9.Qxf3 Qd8 10.Bf4 e5 11.Be3 Ne7
12.Bg5 f6 13.Nxf6 Bxf6 14.Qxf6 Rf8
15.Qxe5 Qa5+ 16.Kf1 Qd8 17.Bh6 Rg8
18.Bc4 d6 19.Qf6 d5 20.exd5 Nf5
21.Re1+ Kd7 22.Bb5+ Kc7 23.Re1+
Kb8 24.Bf4+ (1-0)

W: Dan Fraats (1812)

B: George Leighton (1954)

Round 3

1.e4 e6 2.d4 d5 3.Nd2 Nf6 4.c5 Nfd7

5.Bd3 c5 6.c3 Nc6 7.Ne2 Qb6 8.Nf3 cxd4
9.cxd4 Bc7 10.O-O h6 11.a3 a5 12.Rb1 g5
13.Be3 Rg8 14.Qd2 a4 15.Rbd1 Na5
16.Nc1 Qc6 17.Ne1 Nb6 18.f4 Nac4
19.Qe2 Nxe3 20.Bb5 Nbc4 21.Bxc6+
bxc6 22.Ncd3 gxf4 23.Nxf4 Bg5 24.Ncd3
Ba6 25.Rf2 Nxd1 26.Qxd1 Bb5 27.Qh5
Ra7 28.h4 Bxf4 29.Nxf4 Ne3 30.Nxc6
Ng4 31.Rf4 Ne3 32.Nc5 Nrg2 33.Rg4
Rrg4 34.Qrg4 Nc1 35.Qg8+ Kc7
36.Qb8 Rd7 37.Nxd7 Kxd7 38.Qd6+
Kc8 39.Qxh6 Nf3+ 40.Kf2 Nxd4 41.h5
Nc6 42.Qh8+ Nf8 43.Kc3 c5 44.h6 d4+
45.Kd2 Ke7 46.Qf6+ Kc8 47.Qb6 Bd7
48.Qxc5 Ne6 49.Qd6 Ng5 50.Qb8+ Ke7
51.Qg8 Nf3+ 52.Kd1 Nxe5 53.h7 Ng6
54.Qrg6 (1-0)

W: HYTECH (2374)

B: William Breidenthal (2170)

Round 3

1.e4 c5 2.Nf3 Nc6 3.d4 cxd4 4.Nxd4 Nf6
5.Nxc6 bxc6 6.Bd3 d5 7.Qe2 Be6 8.cxd5
cxd5 9.Bb5+ Nd7 10.Bc6 Bc7 11.Bxa8
Qxa8 12.O-O O-O 13.Re1 Bf6 14.Nd2 c5
15.Nf3 Rb8 16.c3 g6 17.Bf4 Rb6 18.Qd2
Qb7 19.b3 Bg7 20.Bh6 Bh8 21.Ng5 Nf6
22.Qf4 Qc8 23.Rac1 Bf5 24.Re7 Be6
25.Qc7 Bg7 26.Qxc8+ Bxc8 27.Bxg7 (1-0)

W: John Meyer (2382)

B: GM Mikhail Tal (2700)

Round 4

1.d4 d6 2.c4 e5 3.de5 de5 4.Qd8 Kd8
5.Nc3 Be6 6.e3 Nd7 7.Nf3 f6 8.Be2 c6
9.O-O Kc7 10.b3 Nh6 11.Bb2 Rd8
12.Rf1 Bb4 13.a3 Bc3 14.Bc3 Nc5 15.b4
Na4 16.Rd8 Rd8 17.Rc1 Nc3 18.Rc3 Nf5
19.Kf1 a5 20.Kel ab4 21.ab4 Ra8 22.Bd1
Ra1 23.Nd2 Nh4 24.Nb3 Ng2 25.Kd2
Ra2 (0-1)

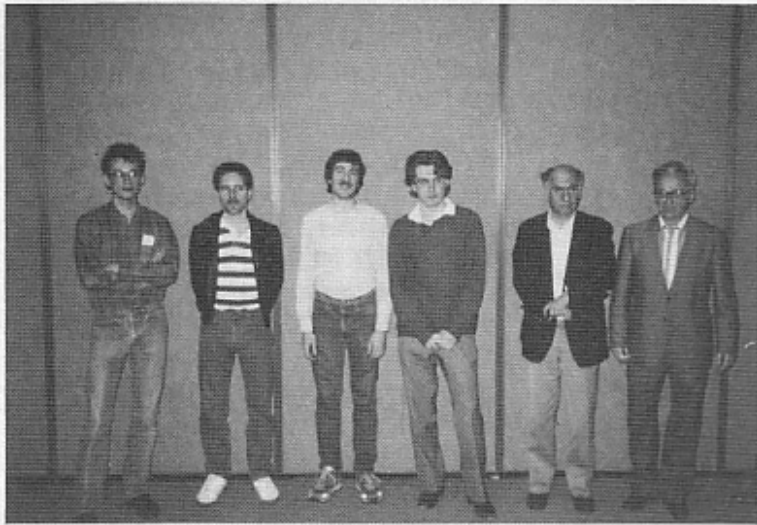
W: IWGM Maria Ivankova (2343)

B: FM Michael Brooks (2564)

Round 4

1.c4 Nf6 2.Nf3 g6 3.b3 Bg7 4.Bb2 O-O
5.g3 d6 6.Bg2 e5 7.d3 Nbd7 8.O-O a6
9.Qc2 Rb8 10.Nbd2 Qe7 11.Rfe1 Re8
12.c4 h6 13.d4 Nh7 14.de5 de5 15.Nf1
Ng5 16.Ng5 hg5 17.Nc3 c6 18.a4 a5
19.Ba3 Nc5 20.b4 ab4 21.Bb4 Bf8 22.Qc3
Qc7 23.a5 Ne6 24.Bf8 Rf8 25.c5 Nd4
26.Nc4 g4 27.Kh1 Be6 28.Nd6 Qe7
29.Rab1 Kg7 30.Red1 Qf6 31.Rb2 Rh8
32.Nb7 Nb5 33.Rb5 cb5 34.c6 Rh5
35.Kg1 Rbh8 36.h3 b4 37.Qe3 gh3
38.Bf3 h2 39.Kh1 R5h7 40.c7 Ra8
41.Be2 Rhh8 (0-1)

NATIONAL OPEN



The winners. Michael Brooks, Calvin Blocker, James Rizzitano, Sergey Kudrin, Mikhail Tal, and Leonid Shamkovich.



Arbiter Eric Schiller looks on as organizer Richard Verber makes an announcement.



Former World Champion Mikhail Tal and Illinois State Champion James Rizzitano played to a draw



Grandmaster Walter Browne (left) defeated Chicago master Angelo Sendrin



Grandmaster Maxim Dlugy (left) and Joel Benjamin drew their three game "Blitz Match".



Woman Grandmaster Maria Ivanka (right) was the highest rated female player.

GAMES FROM THE NATIONAL OPEN

W: HITTECH (2374)

B: GM Sergey Kudrin (2640)

Round 4

1.e4 c5 2.Nf3 Nc6 3.d4 cd4 4.Nd4 g6
5.Nc3 Bg7 6.Be3 Nf6 7.Bc4 O-O 8.Bb3 d6
9.f3 Bd7 10.Qd2 Rc8 11.O-O-O Ne5
12.g4 b5 13.g5 Nh5 14.Ncb5 Nf3 15.Nf3
Bb5 16.Ba7 Bc4 17.Qe3 Bb3 18.Qb3 Nf4
19.e5 Qd7 20.Bb6 Rb8 21.Qe3 Qa4
22.Kb1 Rfc8 23.b3 Qc6 24.Ba7 Ra8 25.c4
Ng2 26.Qf2 Qe4 27.Kc1 Ra7 28.Qg2 Be5
29.Rhe1 Bf4 30.Kb2 Ra2 31.Ka2 Ra8
32.Kb2 Be5 33.Nc5 Qg2 (0-1)

W: GM Walter Browne (2634)

B: Mitchell Weiss (2330)

Round 4

1.d4 Nf6 2.c4 d6 3.Nc3 Nbd7 4.e4 e5 5.d5
Nc5 6.f3 a5 7.Be3 Be7 8.Qd2 O-O 9.Nge2
h6 10.g3 Nh7 11.Bg2 f5 12.O-O fe4 13.f4
ef4 14.Nf4 Bf5 15.Bc5 dc5 16.Be4 Qd7
17.Qd3 Ng5 18.Bf5 Qf5 19.Qf5 Rf5
20.h4 Nh7 21.Ne6 Rf1 22.Rf1 Bd6
23.Ne4 b6 24.Nd6 cd6 25.Nc7 Rd8
26.Nb5 Nf6 27.Kg2 Ng4 28.Rc1 Rf8
29.Re2 Rf6 30.Nc7 Rf5 31.Ne8 Re5
32.Kf3 Re8 33.Re8 Kf7 34.Rc6 Ne5
35.Re5 dc5 36.Ke4 Kf6 37.h5 a4 38.a3
(1-0)

W: Gregory Hoffman (2113)

B: James Marshall (1870)

Round 4

1.c4 g6 2.Nc3 Bg7 3.d4 d6 4.e4 e5 5.d5
Na6 6.Be2 f5 7.c5 g5 8.Bh5 Kf8 9.Nge2
Qh4 10.Ng3 Qc4 11.Be2 Qd4 12.Bd2
Nf6 13.Qb1 e4 14.Be3 Qe5 15.Qd1 Nb4
16.Bd4 Qd4 17.a3 Qd1 (0-1)

W: Virgilio Forro (1976)

B: Gary Colvin (2126)

Round 4

1.e4 g6 2.d4 Bg7 3.Nf3 d6 4.Be3 Nf6
5.Nc3 c6 6.h3 b5 7.a3 O-O 8.Qd2 Nbd7
9.Be2 Nb6 10.b3 d5 11.Bd3 dxe4 12.Bxc4
Nxc4 13.Nxc4 Nd5 14.O-O Nxc3
15.Qxc3 Qd5 16.Nc5 Bf5 17.c3 Rfc8
18.Rfc1 h5 19.Ra2 Rad8 20.Rac2 Bc8
21.Qf4 a5 22.Rxe7 Rxe7 23.Rxe7 Kf8
24.Rc7 Bf5 25.g4 hrg4 26.hrg4 Bc8
27.Ng5 f5 28.gxf5 gxf5 29.Nh7+ Kg8
30.Qg5 (1-0)

W: IM James Rizzitano (2563)

B: Peter Pelts (2307)

Round 4

1.d4 Nf6 2.c4 c5 3.d5 e5 4.Nc3 d6 5.e4
Bc7 6.Bd3 Nbd7 7.Be3 a6 8.h3 h5 9.Qd2
Nf8 10.Nf3 Ng6 11.O-O-O h4 12.Kb1
Bd7 13.Nc2 b5 14.Ng5 O-O 15.g3 Nh7
16.Nh7 Kh7 17.f4 bc4 18.Bc4 f5 19.Bd3
ef4 20.gf4 Bf6 21.Rhg1 Rb8 22.b3 a5
23.c5 dc5 24.Bc5 Re8 25.fe5 Ne5 26.Nd4
Qc7 27.Nf5 Nd3 28.Qd3 Qc5 29.Ng7
Kh8 30.Qg6 Qc3 31.Qh6 Kg8 32.Ne6 (1-
0)

W: Alan Losoff (1954)

B: Howard Stern (2109)

Round 5

1.e4 e5 2.Nf3 Nc6 3.Bc4 Bc5 4.c3 Nf6 5.d4
ed4 6.cd4 Bb4 7.Nc3 Ne4 8.O-O Bc3 9.d5
Ne5 10.bc3 Nc4 11.Qd4 f5 12.Qc4 d6
13.Nd4 O-O 14.f3 Nc5 15.Re1 Kh8 16.Ne6
Be6 17.de6 Re8 18.h4 h6 19.Ba3 b6 20.Qd5
Qf6 21.Re3 Ne6 22.Rae1 Qh4 23.Re6 Qe1
24.Rc1 Rc1 25.Kh2 Rae8 26.Qf5 Rlc5
27.Qd3 Ra5 28.e4 Rxc5 29.Bb2 Rh5
30.Kg1 Ra2 31.Qc3 Rg5 32.f4 Rg4 33.f5
Rb2 34.Qb2 Rc4 35.f6 Kg8 36.Qd2 Rc5
37.Qa2 Drawn

W: Kevin Schmuiggerow (2152)

B: Andrew Karklins (2410)

Round 5

1.e4 e5 2.Bc4 Nf6 3.Nf3 Nc6 4.Ng5 d5
5.cd5 Nd4 6.c3 b5 7.cd4 bc4 8.Qa4 Nd7
9.Qc6 Qg5 10.Qa8 Nb6 11.Qc6 Bd7
12.Qc7 Qg2 13.Qe5 Be7 14.Rf1 Bh3
15.Qe2 Nd5 16.f4 O-O 17.Nc3 Bh4 18.Kd1
Bg4 (0-1)

W: Doug McClintock (2439)

B: GM Walter Browne (2634)

Round 5

1.d4 Nf6 2.c4 e6 3.Nc3 Bb4 4.e3 c5 5.Bd3
Nc6 6.Ne2 cxd4 7.exd4 d5 8.cxd5 Nxd5
9.O-O O-O 10.Bc2 Re8 11.Qd3 g6 12.Rd1
Bf8 13.Qg3 Bg7 14.h4 Qc7 15.Qf3 Nxc3
16.bxc3 b6 17.Bg5 Bb7 18.Qh3 Rac8 19.h5
Ne7 20.Ba4 Bc6 21.Bb3 Nf5 22.hrg6 hrg6
23.Nf4 Bd7 24.g4 Nd6 25.Rd3 Nc4 26.Qh4
f6 27.Rh3 frg5 28.Qh7+ Kf7 29.Qrg6+
Ke7 30.Qrg7+ Kd6 31.Ng6 Bb5 32.Qf6
Rg8 33.Rc1 Rce8 (1-0)

W: GM Leonid Shamkovich (2517)

B: Jim McLaughlin (2270)

Round 5

1.e4 e5 2.Nf3 Nc6 3.Bb5 Nf6 4.O-O Nxc4
5.d4 a6 6.Ba4 b5 7.Bb3 d5 8.dxe5 Be6 9.c3
Nc5 10.Be2 Bg4 11.Qc2 Be7 12.Rd1 O-O
13.Nbd2 Qd7 14.Nf1 Rad8 15.Nc3 Nxc5
16.Rxd5 Bxf3 17.gxf3 Qe6 18.Bf5 Qf6
19.Ng4 Nxc4 20.Rxd8 Rxd8 21.frg4 g6
22.Bc2 Nc6 23.Be3 Bd6 24.Rf1 Bf4 25.Rd1
Rxd1+ 26.Bxd1 Bd6 27.Qf3 Qe5 28.h3
Kg7 29.Bb3 c5 30.Bd5 Qh2+ 31.Kf1 Nf4
32.Bb7 Qxh3+ 33.Qxh3 Nzh3 34.Bxc6 b4
35.a4 bxa3 36.bxa3 Nf4 37.Bc4 Kf6 38.a4
Ke7 39.a5 Kd7 40.Bxf7 Kc6 41.Bc4 h5
42.g5 h4 43.Kg1 h3 44.Bd2 Nd5 45.Bd3
Bf4 46.Bxf4 Nxf4 47.Be4+ Nd5 48.Bxd5+
(1-0)

W: Angelo Sandrin (2268)

B: FM Curt Brasket (2319)

Round 5

1.d4 d6 2.e4 g6 3.Be3 Bg7 4.Bc4 Nf6 5.f3 d5
6.Bd3 dxe4 7.Bxc4 Nxc4 8.fxe4 c5 9.c3 cxd4
10.Bxd4 e5 11.Bf2 Qg5 12.g3 O-O 13.Nf3
Qe7 14.O-O Bh3 15.Re1 Bg4 16.Be3 Rd8
17.Nbd2 Nd7 18.Qb3 Nc5 19.Qa3 b6
20.Rf1 Rd3 21.Rae1 Qd7 22.Nc4 Re8
23.Bxc5 hxc5 24.Ne3 Bh3 25.Rf2 Bh6
26.Rfe2 Qc6 27.Nh4 Qxe4 28.Nef5 gxf5
29.Rxe4 fxe4 30.Qa4 Rcd8 31.Qxe4 Bd2
32.Re2 f6 33.Kf2 f5 34.Qxc5 Bg4 35.Qe6+
Kg7 36.Qe7+ Kg8 37.Qe6+ Kg7
38.Nxf5+ Bxf5 39.Qxf5 Rf8 40.Re7+ Kg8
41.Re8 Bc1+ 42.Ke2 Rxe8+ 43.Kxd3
Rd8+ 44.Kc4 Re8 (1-0)

W: GM Sergey Kudrin (2640)

B: Eugene Martinovsky (2435)

Round 5

1.e4 c6 2.d4 d5 3.Nc3 de4 4.Ne4 Nf6 5.Nf6
ef6 6.c3 Bd6 7.Bd3 O-O 8.Ne2 Qc7 9.Qc2
h6 10.Be3 c5 11.dxc5 Bxc5 12.Bf4 Qb6
13.O-O Nc6 14.Bg3 Ne5 15.Bh7+ Kh8
16.Be4 Be6 17.Nf4 Rad8 18.Nxc6 fxc6
19.Bxc5 fxe5 20.Rae1 Rd7 21.Re2 Rdf7
22.g3 a5 23.Kg2 Qa6 24.Rd2 Be3 25.Re2
Bc5 26.h4 b5 27.Qd1 Qc8 28.Rd2 Be3
29.Rc2 Qc4 30.f3 Bb6 31.Rd2 Qxa2
32.Qe2 Qc4 33.Bd3 Qc6 34.Bxb5 Qc5
35.Bd3 g5 36.hrg5 hrg5 37.Qe4 Re7
38.Bc4 Rfe8 39.Rd5 Qc3 40.Rh1+ Kg8
41.Qxc3 Bxc3 42.Rxc5 Bb6 (1-0)

GAMES FROM THE NATIONAL OPEN

W: GM Mikhail Tal (2700)
B: James Rizzatano (2563)

Round 5

1.e4 c5 2.Nf3 d6 3.d4 cd4 4.Nd4 Nf6 5.Nc3
a6 6.f4 c5 7.Nf3 Nbd7 8.a4 Be7 9.Bd3 O-O
10.O-O exf4 11.Kh1 Ne5 12.Bxf4 Qc7
13.Qd2 Be6 14.Nd4 Rac8 15.Ncc2 Rfe8
16.Bg5 Nfd7 17.Bxe7 Rxe7 18.Nf4 Qc5
19.Be2 Nf6 20.Qc3 Nc4 21.Bxc4 Bxc4
22.Nd3 Ng4 23.Qg1 Qc7 24.b3 Be6 25.Nf4
Nf6 26.Nf6e6 fxe6 27.Qc3 Qc3 28.Rae1
Qxc3 29.Rxe3 Ng4 30.Rg3 Ne5 31.Rd1 g6
32.Kg1 Rce8 33.e4 Kf7 34.Rh3 Rh8 35.Kf1
Ke7 36.Ke2 Rcf8 37.Nf3 Nxf3 38.Rxf3
Rxf3 39.Kxf3 Drawn

W: Calvin Blocker (2544)
B: GM Maxim Dlugy (2670)

Round 5

1.e4 c5 2.Nf3 Nc6 3.d4 cxd4 4.Nxd4 Nf6
5.Nc3 d6 6.Bg5 e6 7.Qd2 a6 8.O-O-O h6
9.Bf4 Bd7 10.Nxc6 Bxc6 11.f3 d5 12.Qe1
Bb4 13.a3 Ba5 14.exd5 Nxd5 15.Bd2 Qc7
16.Nxd5 Bxd2+ 17.Rxd2 Bxd5 18.Qc3 Rc8
19.Bd3 Qc5 20.Qxc5 Rxc5 21.e4 Rc7
22.Rc2 Bc6 23.b3 Ke7 24.Rd1 g5 25.Kb2
Rg8 26.Rc2 Rd7 27.Bc2 Rxd1 28.Bxd1 f5
29.b4 g4 30.Rd2 gxf3 31.Bxf3 Bxf3 32.gxf3
Rg1 33.c5 Rf1 34.Rd3 Rf2+ 35.Kb3 Rxb2
36.Ka4 Rg2 37.Ka5 Rg7 38.c6 bxc6
39.Kxa6 e5 40.Kb7 e4 41.fxe4 fxe4 42.Rd1
Rg3 43.a4 Ra3 44.a5 c5 45.a6 cxb4 46.Rd4
Kf6 47.Rxc4 h5 48.Rxb4 Kg5 49.Kb6
Rxa6+ 50.Kxa6 h4 51.Rb8 Drawn

W: Robert O'Donnell (2249)
B: David Levine (2308)

Round 5

1.c4 e5 2.Nc3 d6 3.d4 cxd4 4.Qxd4 Nf6 5.g3
Nc6 6.Qd2 g6 7.b3 Bg7 8.Bb2 O-O 9.Bg2
a5 10.Nh3 Re8 11.Nf4 Bf5 12.O-O Ne4
13.Nxc4 Bxc4 14.f3 Bf5 15.Bxg7 Krg7
16.Qb2+ f6 17.Rad1 Qd7 18.e4 Be6
19.Rf2 Ne5 20.Qc3 a4 21.Rfd2 arb3
22.arb3 Ra3 23.Qb4 Ra7 24.Nd5 Qf7 25.f4
Nc6 26.Qc3 Rea8 27.b4 Ra3 28.Qb2 R3a4
29.b5 Na5 30.Rc2 Nxc4 31.Qc1 c6 32.Rxc4
Rxc4 33.Qxc4 cxd5 34.exd5 Bg4 35.Rc1
Rc8 36.Qd4 Rc5 37.h3 Bc8 38.b6 h5
39.Rc3 Qf8 40.Kh2 Qd8 41.Qb2 Bd7
42.Qc2 Kf8 43.Rh3 Bf5 44.Rb2 Qc7
45.Qd2 Kf7 46.Qd1 Qc3 47.Rc2 Rcl
48.Rxc3 Rxd1 49.Rc3 Rel 50.Rc7+ Re7
51.Rxc7+ Kxc7 Drawn

W: Albert Chow (2428)
B: Wayne Wheeler (2163)

Round 5

1.d4 Nf6 2.c4 g6 3.Nc3 d5 4.Nf3 Bg7 5.Qb3
dxc4 6.Qxc4 O-O 7.e4 Na6 8.Qa4 c5 9.d5
Qb6 10.Bxa6 bxa6 11.O-O e6 12.d6 Nd7
13.Rd1 Ne5 14.d7 Bb7 15.Bg5 Nxf3+
16.gxf3 f6 17.Be3 Rfd8 18.Qc4 Qc6
19.Qxc5 Rxd7 20.Qxc6 Bxc6 21.Rxd7 Bxd7
22.Rd1 Be8 23.Rd6 Bb5 24.Nxb5 arb5
25.Ra6 Kf7 26.Rxa7+ Rxa7 27.Bxa7 Bf8
28.Kf1 Ke8 29.Ke2 Kd7 30.Kd3 Kc6 31.h3
Bd6 32.Bd4 f5 33.b3 Ba3 34.Be3 Bb4 35.a4
bxa4 36.bxa4 Be1 37.Kc4 Ba5 38.Ba7 Bd2
39.Kd4 Kd6 40.Bb8+ Kd7 41.Kc5 Be1
42.Kb6 Bxd2+ 43.Kb7 g5 44.a5 h5 45.Bc7
g4 46.hxg4 fxg4 47.fxg4 hxg4 48.a6 Bd4
49.Bg3 (1-0)

W: GM Maxim Dlugy (2670)
B: GM Arthur Bisguier (2452)

Round 6

1.c4 e5 2.Nc3 Bb4 3.Qc2 Nf6 4.a3 Bxc3
5.Qxc3 Nc6 6.c3 O-O 7.d3 d5 8.cxd5 Nxd5
9.Qc2 a5 10.b3 f5 11.Bb2 f4 12.e4 Nb6
13.Nf3 Qd6 14.h3 Nd4 15.Nxd4 exd4
16.Rcl c6 17.Qc5 Qxc5 18.Rxc5 Rd8
19.Be2 Be6 20.Bdl Nd7 21.Rcl c5 22.Bg4
Kf7 23.Kd2 b6 24.Bxe6+ Kxe6 25.a4 Ne5
Drawn

W: GM Sergey Kudrin (2640)
B: FM Michael Brooks (2564)

Round 6

1.e4 e5 2.Nf3 Nc6 3.Bc4 Bc5 4.c3 Nf6 5.d3
O-O 6.O-O d6 7.Bb3 a6 8.Rcl Be6 9.Nbd2
Brb3 10.Qxb3 Kh8 11.Nf1 Ng4 12.Rc2
Qd7 13.Ng3 Bb6 14.h3 Nf6 15.Bg5 Ng8
16.Rd1 f6 17.Bcl Nge7 18.d4 Ng6 19.Qc2
Qf7 20.a3 Rad8 21.d5 Nce7 22.b4 c6
23.dxc6 bxc6 24.c4 d5 25.c5 Drawn

W: James Rizzatano (2563)
B: Peter Bereolos (2309)

Round 6

1.c4 e5 2.Nf3 Nc6 3.Bb5 a6 4.Ba4 Nf6 5.O-O
Be7 6.Rcl b5 7.Bb3 d6 8.a4 Bb7 9.c3 O-O
10.d4 h6 11.Nbd2 Qd7 12.Qc2 exd4
13.cxd4 Nb4 14.e5 Nfd5 15.Ne4 bxa4
16.Rxa4 Qb5 17.Qd1 Qd3 18.Bd2 dxe5
19.Ra3 Qb5 20.Nxe5 Nf6 21.Nc3 Qe8
22.Ng6 Nbd5 23.Nxd5 Nxd5 24.Bxd5
Bxd5 25.Nxc7+ (1-0)

W: GM Walter Browne (2634)
B: Angelo Sandrin (2268)

Round 6

1.d4 Nf6 2.c4 e6 3.Nf3 Bb4+ 4.Nbd2 b6
5.a3 Bxd2+ 6.Qxd2 Bb7 7.e3 Ne4 8.Qc2 O-O
9.Bd3 f5 10.O-O Qe8 11.b4 d6 12.Nd2
Qg6 13.f3 Nf6 14.c5 dxc5 15.dxc5 Nd5
16.Nc4 hxc5 17.bxc5 Nc6 18.Bb2 Ba6
19.Rae1 Rab8 20.Rf2 Qg5 21.Bal Qc7
22.Ne5 Bxd3 23.Nxd3 Rb7 24.Qa4 Qd7
25.e4 Nf6 26.Bxf6 Rxf6 27.Rd1 e5 28.Nb4
Qc6 29.Nd5 Nd4 30.Nxf6 gxf6 31.exf5
Qxf5 32.f4 Rb1 33.fxe5 Qd3 34.Qe8+ Kg7
35.exf6+ Kh6 36.Rxb1 Qxb1+ 37.Rf1 (1-0)

W: HITECH (2374)
B: John Burke (2230)

Round 6

1.e4 c6 2.d4 d5 3.Nc3 de4 4.Ne4 Nf6 5.Nf6
gxf6 6.c3 Bf5 7.Bc4 e6 8.Ne2 Bd6 9.Bh6
Nd7 10.Ng3 Bg6 11.Nh5 Qa5 12.Ng7+
Ke7 13.Qe2 Rae8 14.Nxe8 Rxe8 15.b4 b5
16.Bb3 b4 17.c4 Qh5 18.Qxh5 Bxh5 19.c5
Bb8 20.Ba4 e5 21.Bxc6 cxd4 22.Kd2 Rg8
23.Rhel+ Kd8 24.Bxd7 Kxd7 25.g3 Be5
26.Rae1 Kc6 27.Rc4 a5 28.b3 Bf3 29.Kd3
Rg4 30.Rc2 Bd5 31.Rccl Kb5 32.Bf8 Be6
33.Bd6 Bf5+ 34.Kd2 Bxd6 35.cxd6 d3
36.Rc8 Rd4 37.Rb8+ Ka6 38.Rc6+ Ka7
39.Rb5 Be6 40.Rxa5+ Kb7 41.Raa6 Bf5
42.Rcb6+ Kc8 43.Ra7 (1-0)

W: Eugene Martinovsky (2431)
B: George Umczinwa (2299)

Round 6

1.d4 Nf6 2.Nf3 b5 3.g3 e6 4.Bg2 Bb7 5.O-O
Be7 6.c3 a6 7.Nbd2 d6 8.Rcl Nbd7
9.Nb3 c5 10.Nh4 Bxg2 11.Nxg2 O-O 12.e4
Qc7 13.Bf4 Qb6 14.d5 cxd5 15.exd5 Rfe8
16.Qf3 Bf8 17.Ne3 a5 18.g4 Ne5 19.Bxc5
Rxe5 20.Nf5 Nd7 21.Rc3 Rae8 22.Rae1 g6
23.Ng3 Bb6 24.Rc4 Qd8 25.Kg2 Qa8
26.Rd1 Rxe4 27.Nxe4 a4 28.Nxd6 Ne5
29.Qe4 arb3 30.Nxe8 bxa2 31.Qxe5 a1=Q
32.Rxa1 Qxa1 33.Nf6+ Kg7 34.Nd7+ f6
35.Qc7+ (1-0)

HOW TO PLAY IN THE BIG TOURNAMENTS

By David Wulatin

Well, the National Open has come and gone, and most of you may be wondering, "Why did I play so poorly? I almost always do okay in the local weekend tournaments". Yes, but you were probably unprepared for the type of opponent that you meet in a big national event.

"Unprepared? Dave, I studied every book I have! I even listened to the rap version of Modern Chess Openings on cassette while I slept." ("Results with the Tarrasch can be bright as dawn, as long as you don't mind an isolated pawn. P-p-p-p-pawnnnn.")

No, that's not what I mean. In a major tournament like the National Open, you're going to face a wide variety of opponents. If you can't make the transition from clubbing a fellow Caveman to dueling an out-of-stater, you won't get very far. Listed below are the most common types of "big tournament" players and how to handle them.

1. **THE RINGER.** Boy, you sure didn't expect to play a 1328 in the Open section, especially after winning your first two games. During a brief conversation with him you learn that he hasn't played tournament chess for five years because he couldn't find his chess clock. He assures you that his wins over Benjamin and Dlugy were "just lucky."

HOW TO HANDLE HIM: At least make him think that you're underrated, too. When he's within earshot, yell "Hey, TD! How long before that first place finish in the Midwest Masters is reflected in my rating?"

2. **THE PRODIGY.** You saw the little nine year old worm strut into the tournament hall with his doting mother and his 2200+ rating. You remember that in a recent CHESS LIFE article he was called America's last hope for winning the world championship in this century.

HOW TO HANDLE HIM: For all of his skill, he is still financially dependent on and subject to his beaming parents. Sit down at the board with two king size Snickers bars. Before the game starts, unwrap the first one and eat it very slowly.

When you see his little mouth start to water, take the second one and pretend to offer it to him. When he reaches for it, say, "On second thought, I'll save this one for just before my bedtime, which is whenever the hell I feel like it." This is guaranteed to frustrate the little tyke to no end.

3. **THE FOREIGNER.** Such a nice man, the little unrated player from Europe. Doesn't understand much English, but very cheerful. Don't be fooled for a second. Underneath that smiling facade lurks a FIDE rating that slipped by the tournament director.

HOW TO HANDLE HIM: Few things are more annoying than being spoken to in a language that you don't understand. Start a "friendly" conversation with him, raising your voice and repeating questions until most of the players at the table are staring at him. If he gives you the silent treatment, ask him if he's a communist. Remind him to say "adjust" in English because "You're in America now, bud".

4. **WOMEN.** It is entirely possible that you have never played a woman in a rated event. Your chances of being paired with one in a big tournament will be increased, albeit slightly.

HOW TO HANDLE THEM: With a career score of 1.5-1.5 against women, I'm the wrong person to ask. If you do end up with a female opponent, just tell yourself that all of the spectators watching the game are more interested in the positional subtleties than in seeing if she'll beat you. You might even believe it.

5. **THE BLIND PLAYER.** You can't help but admire such an individual and his ability to picture the entire game simply by touch.

HOW TO HANDLE HIM: If his method of play distracts you, just look at your own board, not his. Make sure you pronounce your moves clearly to avoid confusion. Finally, be aware of the unwritten rule which states, "Any jerk insensitive enough to say 'Touch move!' while the blind player feels his touch-sensitive board shall be force fed all of the pieces he captured during the tournament."

IM VICTOR FRIAS WINS MIDWEST MASTERS

1988 MIDWEST MASTERS (11 March 1988 - 13 March 1988) by Eric Schiller

The Sixth Midwest Masters Invitational was held at the Lincolnwood Hyatt Hotel in Chicago. Helen Warren has once again provided impeccable organization for the premiere Masters-only event in the country. In order to participate, one must be USCF or foreign Master, or have been one at one time. A few exceptions are made for talented juniors, in order to encourage their chess development. This year the event was not quite as strong as usual. The unfortunate scheduling conflict with the National Open, also being held in Chicago, has kept a few regulars away. The pre-tournament favorites were GM Walter Browne, IM Victor Frias, IM Kamran Shirazi, GM Dmitry Gurevich, FM Michael Brooks, IM Jim Rizzitano, IM Calvin Blocker, FM Joseph Bradford, IM John Donaldson and GM Arthur Bisguier. Local players expected to make an impact were Morris Giles, FM Eugene Martinovsky, FM Al Chow, FM Greg DeFotis and FM Andrew Karklins. Among the 79 players there were only three juniors: Tim Rademacher, Igor Shtern and David Lee. The low turnout among the young players was a great disappointment. Many of the most promising players are taking their college studies seriously, but one or two opted to try to win local events where the competition was weaker. They have lost a few friends here, as this is a tournament which draws strong loyalty.

What makes this event so special that players feel a debt of gratitude to organizer Helen Warren? To begin with, the playing conditions are superb - well lit, clean, and quiet. The staff, headed by the experienced Todd Barre, never makes a mistake, and the appeals committees rarely meet. Rounds start on time, and there is always plenty of fresh coffee and fruit, sometimes accompanied by fresh baked goodies. When the event is over, Helen arranges to have all of the games carefully proofread and printed in an attractive booklet. Jim Warren always has a display of books authored by participants. (I have never

won any prize money, but have certainly added to my royalties!).

The expansion of the event to six rounds has increased the pleasure. The high and mighty get no respect from the young upstarts, and in round one Blocker lost to Brian Schuman, while Bradford was dropped by Keith Hayward. Jim Rizzitano had to part with a half-point against Maurice Broome.

In the second round Bradford drew again, this time to Robert O'Donnell, while GM Browne was nicked for a half point by Richard Horwitz. Shirazi and Donaldson also drew, against FM Bruce Leverett and David Levine respectively.

The third round saw Browne draw again, this time against Martinovsky. Frias defeated Bisguier to become the sole leader at 3-0.

Round 5 saw Victor Frias survive his final serious test, holding with the Black pieces against GM Gurevich, while the other top two boards were also drawn. Martinovsky joined the second place group by defeating Blocker, and Browne moved back to respectability. Gurevich (3.5) drew Frias (4) Brooks (3.5) drew Giles (3.5) Schuman (3) drew Horvitz (3.5) Blocker (3) lost to Martinovsky (3) and among the massive group with 2.5: Shirazi drew Weiss Brasket drew Bradford Donaldson lost to Leverett Bisguier defeated Levine Stone drew Wycle Bertolos lost to McClintock Lonoff defeated Chow Lindsay defeated Blankenau Heurung defeated Karklins Shtern lost to Pelts Chachere (2) lost to Schiller (2.5)

Round Six Victor Frias became the first sole winner in the history of the Midwest Masters when he dumped Michael Brooks. Gurevich cruised to clear second by defeating Gene Martinovsky. Walter Browne won against Leverett, but finished at 4.5, while the other GM, Art Bisguier, had to settle for a 4-2 mark when he drew with Pelts. Brian Schuman topped off his amazing performance by upsetting McClintock. Frias (4.5) defeated Brooks

(4) Martinovsky (4) lost to Gurevich (5)
Giles (4) drew Horvitz (4) Leverett (3.5)
lost to Browne (3.5) Pelts (3.5) drew
Bisguier (3.5) Lonoff (3.5) drew Stone
(3.5) Schumann (3.5) defeated McClintock
(3.5) Schiller (3.5) lost to Lindsay (3.5)

Final (plus) Scores and Prizes:

1st **Victor Frias** (\$2200)
2nd **Dmitry Gurevich** (\$1100)
3rd-7th **Walter Browne, Fred Lindsay, Morris Giles, Richard Horvitz, Brian Schuman** \$250 each plus \$150 to Schuman and Giles as best Illinois players.
8th-14th **Blocker, Stone, Lonoff, Pelts, Bisguier, Bisguier, Brooks**
15th-21st **Rademacher** (\$100 as top junior), **Leverett, Schiller, Moulin, Nedved, Friedman, Chow**

Selected Games:

Heurung - Lukowiak, Catalan 1 d4 d5 2 Nf3 Nf6 3 g3 Bf5 4 Bg2 c6 5 c4 e6 6 Qb3 Qb6 7 Nc3 Nbd7 8 o-o Be7 9 c5 Qxb3 10 axb3 e5 11 dxe5 Ng4 12 h3 Nge5 13 Nd4 g6 14 f4 Bc5 15 Be3 f6 16 Nf5 1-0.

Stone - Levine, Dutch Modern Stonewall 1 d4 e6 2 c4 f5 3 g3 Nf6 4 Bg2 d5 5 Nf3 c6 6 o-o Bd6 7 b3 Qe7 8 Bb2 o-o 9 Nbd2 b6 10 Ne5 Bb7 11 e3 Nbd7 12 cxd5 exd5 13 f4 Rac8 14 Qf3 Ne4 15 Nxe4 dxe4 16 Qe2 Rfd8 17 g4 Nf6 18 gxf5 c5 19 Nc4 Ba6 20 Rac1 cxd4 Drawn.

Donaldson - Bereolos, Modern Defense 1 d4 g6 2 c4 Bg7 3 e4 d6 4 Nc3 Nc6 5 d5 Nd4 6 Be3 c5 7 Nge2 Nxe2 8 Bxe2 Nf6 9 Qd2 b5 10 cxb5 Qa5 11 o-o a6 12 e5 Ng4 13 exd6 exd6 14 Bxg4 Bxg4 15 Bh6 Be5 16 Qg5 Bf5 17 Rfel Kd7 18 Rxe5 dxe5 19 Qf6 Qc7 20 d6 Qxd6 21 Rd1 Bd3 22 Rxd3 Qxd3 23 Qc6+ Ke7 24 Nd5+ 1-0.

Fischvogt - Friedman, Sicilian Najdorf 1 e4 c5 2 Nf3 d6 3 d4 cxd4 4 Nxd4 Nf6 5 Nc3 a6 6 f4 Qc7 7 Bd3 g6 8 Nf3 Nbd7 9 o-o Bg7 10 Qe1 e5 11 Kh1 o-o 12 Qh4 b5 13 fxe5 dxe5 14 Bh6 Bb7 15

Ng5 Nh5 16 Bxg7 Kxg7 17 Rxf7+ Rxf7 18 Ne6+ Kh6 19 Qh5 mate.

Zumbrunnen - Martinovsky, Caro-Kann Tartakower 1 e4 c6 2 d4 d5 3 Nc3 dxe4 4 Nxe4 Nf6 5 Nxf6+ exf6 6 c3 Bd6 7 Bd3 o-o 8 Ne2 Qc7 9 h3 c5 10 o-o Nc6 11 a3 cxd4 12 cxd4 Rd8 13 b4 Be6 14 Bb2 Qd7 15 Qc2 h6 16 Rad1 Rac8 17 Qb1 Ne7 18 Nc3 Bxh3! 19 gxh3 Qxh3 20 f4 Qg3+ 21 Kh1 Qh3+ 22 Kg1 Qg3+ 23 Kh1 Bxf4 24 Rxf4 Rxc3 25 Re4 Rd5 26 Re5 fxe5 27 Bxc3 exd4 0-1.

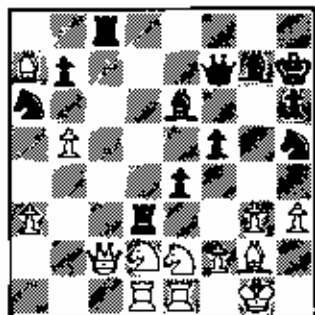
McClintock - Broomes, Anti-Gruenfeld 1 d4 Nf6 2 c4 g6 3 f3 c5 4 d5 e5 5 Nc3 Nh5 6 Nh3 d6 7 g4 Qh4+ 8 Nf2 Nf4 9 e3 Bg7 10 exf4 o-o 11 Bd3 exf4 12 Bxf4 Re8+ 13 Kf1 Bd4 14 Bg3 Qe7 15 Nb5 Bf2 16 Kxf2 a6 17 Nd6 1-0.

Rizzitano - Sandrin, Sicilian Accelerated Fianchetto 1 e4 c5 2 Nf3 Nc6 3 d4 exd4 4 Nxd4 g6 5 c4 Bg7 6 Be3 Nf6 7 Nc3 Ng4 8 Qxg4 Nxd4 9 Qd1 Ne6 10 Rc1 Qa5 11 Qd2 b6 12 Bd3 Bb7 13 h4 h5 14 o-o Bd4 15 Bxd4 Nxd4 16 Qe3 Ne6 17 a3 d6 18 Nb5 Bc6 19 b4 Qa6 20 f4 Qb7 21 f5 Nc7 22 e5 Nxb5 23 Qxb5 Bxg2 24 exd6 e6 25 Rf2 Bd5 26 Rc7 Qb8 27 fxxg6 1-0.

Schiller - Wallach, French Classical 1 e4 e6 2 d4 d5 3 Nc3 Nf6 4 e5 Nfd7 5 Nf3 b6 6 Bg5 Be7 7 Bxe7 Qxe7 8 Bd7 Bb7 9 o-o Nc6 10 a3 g5 11 Nb5 o-o-o 12 Be2 Rhg8 13 Ne1 Rg6 14 a4 a6 15 Na3 f6 16 exf6 Nxf6?! 17 Bd3 Rh6?! 18 c3 Nh5 19 b4 Qd6 20 g3 a5 21 bxa5 Nxa5 22 Nf3 Rg8 23 Ne5 Qf8 24 Ng4 Nf6 25 Nxh6 Qxh6 26 Re1 N e4 27 Qg4! Nb3 28 Ra2 Kb8 29 Rb2 Na5 30 Nb3 Rf8 31 f3 Nf6 32 Qxe6 Re8 33 Qxe8+! Nxe8 34 Rxe8+ Bc8 35 Bf5 c6 36 Rxc8+ Kb7 37 Re2 cxb5 38 Re7+ 1-0.

Chachere - Schiller, Janowski Indian 1 d4 Nf6 2 c4 d6 3 Nc3 Bf5! The Janowski-Indian, a current favorite of IM Kamran Shirazi. 4 Nf3 g6 4...Nbd7 is also playable. 5 g3 Bg7 6 Bg2 c6 Also playable is 6...o-o 7 Nh4 Bc8 (7...Bd7!? 8 o-o c6.) 8 o-o c6 9 b3 Qa5 10 Bb2 Na6 11 e4 e5 12 d5 cd 13 ed

Nc5 14 Re1 and Black had nothing to worry about in Salov - Vasiukov, Ivano-Frankovsk 1982. 7 o-o o-o 8 Nh4 Bg4 8...Bc8 can transpose to Salov - Vasiukov, above. 9 h3 Bd7 10 e4 e5 11 Nf3 Qe7 11...Re8 reaches, by transposition with a move less for each side, Portisch - Larsen, Rotterdam 1977. Play continued 11 h3 Na6 12 Re1 ed 13 Nxd4 Qb6 14 Nb3 with a slight edge for White. 12 Bg5 h6 13 Be3 Na6 14 Qc2 Nh5 15 Re1 Nb4 15...Nc7!? was probably more accurate, but it seemed a bit passive. My idea was to play Pa7-a5 and then drop the knight back, but I overlooked that White's next move attacks my h-pawn. 16 Qd2! Kh7 17 a3 Best. If 17 c5 then 17...dxc5 is unclear, though the massive exchanges along the pawn chain (17...exd4 18 cxd6 dxe3 19 dxe7 exd2 20 exf8=N+ Rxf8 21 Re2) favor White. 17...Na6 18 Rad1 Rad8 A pawn sac is coming. I played this move quickly, hoping for the odd chance that my opponent might allow 19 dxe5 dxe5 20 Bxa7 Bxh3, but the a-pawn is a goner anyway. 19 b4 f5 20 exf5 gxf5 21 dxe5 dxe5 22 Qc2 22 Qe2!? was an interesting alternative. The idea is that 22...f4 23 Nh4 fxe3 24 Bxe4+ is followed by 25 Qxh5. On other moves, 23 Ng5+ is a threat. 22...e4 23 Bxa7 Qf7 24 Nd2 Be6 In return for his pawn, Black has excellent coordination of his pieces and will be able to sweep the queenside. 25 Ne2 25 Bf1 was more logical. 25...Rd3! 26 b5 cxb5 27 cxb5 Rc8! This is the zwischenzug White missed! Now he is in serious trouble.



28 Qa4 28 Qb1 Ba2! is exceedingly embarrassing. 28...Nc5 Unfortunately, 28...Qd7 fails to 29 Nxe4! 29 Bxc5 Rxc5 30 Nxe4? A tempting sacrifice, but one which meets with a powerful

zwischenzug which forces the win of a piece for two pawns. 30 g4 was perhaps the best try, although Black might then invest a piece in 30...e3 31 fxe3 fxe4, e.g. 32 hxg4 Rxe3 33 gxh5 Rg5 with a strong attack. 30...Rc4! 31 Qa8 Rxd1 32 Nf6+ I am not sure that this desperado move is best. On the one hand it keeps Black from having a strong pawn at e4, but on the other hand the Black knight will find a pleasant home there. 32...Nxf6 33 Rxd1 Ne4 34 Qd8 White must keep control of d4. 34...Rc8 34...Nc3 35 Nxc3 Rxc3 36 Qa8 is not so simple. 35 Qb6 Bb3 Just to drive the rook from the open file. 36 Re1 Rc4 37 Qe3 Rc2!?! In Chachere's time trouble (he had two minutes left), I played for complications, unable to find anything clear here. 38 g4! A surprise, exposing the White king. I had underestimated this move. 38...Nc3! 39 gxf5 Bd5 40 f6?! The last move of the time control is always a dangerous place. 40 Qd3!? 40...Nxe2+ 41 Rxe2 Qg6 42 f3 Forced. 42...Rxe2 43 Qxe2 Bxf6 44 a4 b6 The stage is now set for an endgame which is not as easy as it looks. 45 Qe3 Bg7?! The correct plan was probably to get the bishop to c5 as quickly as possible. Therefore a king move, to g7 or h8, comes into consideration. 46 Kh2 h5 47 Bf1 Qc2+ 48 Kg1?! I felt that 48 Kh1 was pretty much forced. Then 48...Qd1 would probably have been played. I had full confidence in the endgame which now arises. 48...Qc5! 49 Bd3+ Kg8 50 Qxc5 bxc5 51 Kf2 Bd4+ 52 Ke2 Bc3 53 Be4 Bc4+! 53...Bb3 is not as good, because with 54 b6! Bxa4 55 Kd3! Be5 56 Kc4 Bd6 57 b7 White can eventually force an exchange of b-pawn for Black's c-pawn, and then cover up with Bg4, after which Black can only win the White h-pawn at the cost of exchanging light-squared bishops, after which the remaining bishop is of the wrong color. Of course Black might be able to set up a mating net, or lock the king out, but on, say, 57...Kf8 58 Bg6 h4 59 f4! this is not very likely. 54 Ke3 Ba5 55 Bc2 Kg7 56 Ke4 Kf6 57 f4 Be6 58 Bd1 h4 59 f5! This move offers the most resistance. It is clear that

White will have to sacrifice his bishop for one of Black's remaining pawns, but if he can get the b6 pawn out of the way, then his connected passed pawns will tie up the black bishops on the queenside and the win will take some time. 59...Bxf5+ 59...Ba2 60 Kf4! c4 61 Kg4 c3 62 Bc2 was hardly promising. At this point the play was becoming forced. 60 Kd5 Bxb3 61 Kxc5 Bg2 62 Bg4 h3 63 Bxb3 Bxb3 The growing crowd of spectators at the board made me a bit uneasy. Surely two bishops can handle two measely pawns. I must admit that I hadn't done much calculation, except to make sure that my king was close enough to help out the clerics. 64 b6 Kc7 65 Kb5 The alternative was 65 Kc6, but after 65...Kd8 the Black king will work its way to b8 and then the rest is simple. 65...Bd2 66 Kc6 Bg2+ 67 Kc7? This makes it easy. 67...Ba5! And now the pawns drop, so White resigned. It's been a while since I dropped 3 Masters in a row!

Helen Warren is to be congratulated on another fine tournament, and Todd Barre and Michael J. Gosselin were perfect arbiters. The appeals committee (Lindsay, Bisguier, Schiller) never met, the single dispute having been laid to rest before it ever required full discussion. A book of the games will be produced, as usual.

This was a classy event, and we hope that MWM VII will be free from the scheduling conflicts that hampered this year's attendance and forced the organizers to dig into their pockets more deeply than usual. Those who appreciate this event might want to help out by buying the games booklet or by making a contribution. All correspondence should be addressed to the Midwest Chess Association, PO Box 305, Western Springs, IL 60558. The success of the MWM has generated interest in the Northeast, where a "clone" will appear on the scene at the end of May.

© 1988 by Leisure LINC. Used with permission.

Authors note: this article was prepared the evening of the final day, when only a few game scores were available to me. Below is a sample of the 6th round play. More games will appear in the next issue.

Frias - Brooks, English Opening

1 Nf3 Nf6 2 c4 g6 3 g3 Bg7 4 Bg2 o-o
5 o-o d6 6 Nc3 Nbd7 7 d3 c6 8 Rb1 a5
9 a3 d5 10 cxd5 cxd5 11 Bf4 d4 12 Nb5
Nd5 13 Nbx4 Nxf4 14 gxf4 e5 15 fxe5
Nxe5 16 Nxe5 Qd4 17 Nf3 Qd5 18 Qd2
Bg4 19 h3 Bh5 20 d4 Rad8 21 Rbd1
Qd7 22 Qf4 Qb5 23 Rd2 Rfe8 24 e3 h6
25 Rcl g5 26 Qc7 b6 27 d5 g4 28 hxg4
Bxg4 29 Bcl Qd7 30 Qxd7 Rxd7 31 Nh2
Rd6 32 Nxg4 Rg6 33 Bc2 h5 34 Rc4
hxg4 35 Rxg4 Rd6 36 a4 Kf8 37 Bb5
Red8 38 Rg5 Rc8 39 Kg2 Rcl 40 f4 Rb1
41 Kf3 Rxb2 42 Rxb2 Bxb2 43 e4 Rd8
44 Rg2 Bal 45 Kg4 Ke7 46 Rc2 Bd4 47
Rc7+ Kf8 48 Bc4 b5 49 axb5 a4 50 e5
a3 51 d6 Ra8 52 Rxf7+ Ke8 53 d7+ Kd8
1-0.

Martinovsky - Gurevich, Queen's Pawn Game

1 d4 Nf6 2 Nf3 e6 3 g3 b5 4 Bg2 Bb7 5
o-o c5 6 c3 Be7 7 a4 b4 8 Nbd2 o-o 9
Re1 Na6 10 e4 bxc3 11 bxc3 cxd4 12
cxd4 Nb4 13 e5 Nfd5 14 Ne4 Rc8 15
Ne4 Rc8 16 Bg5 f6 17 exf6 Nxf6 18
Nfd2 Bd5 19 Nb3 Nxe4 20 Bxe7 Qxe7
21 Bxe4 Bxe4 22 Rxe4 Nd5 23 Rh4 Nc3
24 Qd3 g5 25 Rg4 Nxb1 26 Qxb1 Rf5
27 h4 Qb4 28 Qa2 Qe1+ 29 Kg2 h5 30
Rxc5 Rxc5 31 hxg5 Qe4+ 32 Kg1 Rc2
33 Qal Qf3 34 Qe1 Qxb3 35 Qe4 Qb1+
0-1.

Friedman - Bereolos, King's Gambit Accepted (Cunningham Variation)

1 e4 e5 2 f4 exf4 3 Nf3 Be7 4 Bc4 Nf6
5 Nc3 o-o 6 o-o Nxe4 7 Nxe4 d5 8 Bd3
dxe4 9 Bxe4 c6 10 d4 Bd6 11 c3 Nd7 12
Be2 Nf6 13 Qe1 Nh5 14 Ne5 g5 15 Qe2
Ng7 16 g3 Bxe5 17 dxe5 f5 18 gxf3 g4
19 Be3 Qe7 20 Rfd1 Be6 21 Rd6 Rfd8
22 Rad1 Rxd6 23 exd6 Qf7 24 Bd4 Re8
25 Bxg7 Kxg7 26 Qe5+ Kg8 27 Re1
Qd7 28 Bb3 Kf7 29 Qxf5+ 1-0.

TOURNAMENT CROSSTABLES

Tuley Park Action Chess Open

December 5, 1987

1	DANDRIDGE Marvin	2295	W17	W 6	W 2	W 5	W 8	5
2	RUBIN David	2270	W15	W 3	L 1	W 8	W 5	4
3	MILLER J A	1853	W14	L 2	W16	D 4	W 9	3.5
4	FAGAN James	1770	L 9	W20	W 7	D 3	W10	3.5
5	ZABELL Sandy	2162	W16	W13	W 9	L 1	L 2	3
6	JORDAN Roland	2023	W10	L 1	W13	L 9	W14	3
7	LEE David	2198	L13	W12	L 4	W11	W15	3
8	CONDON James	2068	W20	D 9	W11	L 2	L 1	2.5
9	UMEZINWA George	2338	W 4	D 8	L 5	W 6	L 3	2.5
10	GRABINSKI John	1240	L 6	D17	W12	W18	L 4	2.5
11	SMITH Wayne	1796	Dbye	W18	L 8	L 7	W13	2.5
12	HUGHES Nathaniel	1596	Dbye	L 7	L10	W21	W18	2.5
13	CLARK Larry	1684	W 7	L 5	L 6	W20	L11	2
14	LUNDIN Brian	-	L 3	W15	L18	W17	L 6	2
15	LESTER Michael	1599	L 2	L14	W17	W16	L 7	2
16	BUTLER Herb	-	L 5	W21	L 3	L15	W20	2
17	COGDELL Lamond	1609	L 1	D10	L15	L14	W21	1.5
18	PEACOCK John	1654	Dbye	L11	W14	L10	L12	1.5
19	JOHNSON Marvin	1809	W21	-	-	-	-	1
20	ROBERTSON James	1373	L 8	L 4	W21	L13	L16	1
21	TAPPAN Dan	-	L19	L16	L20	L12	L17	0

Illinois High School Chess Classic February 27, 1988

1	PRUDE Sedrick	1450	W27	W42	W15	W 6	4
2	NGUYEN Danny	-	W47	W10	W38	W26	4
3	FAGAN James	1886	W31	W41	W19	W 9	3.5
4	HUGHES Nathaniel	1606	W11	W38	W34	W 7	3.5
5	DUNNG P C	1233	D34	W16	W21	W41	3.5
6	LOR Kok	1350	W17	W35	W22	L 1	3
7	NELSON Pat	-	W48	W42	W28	L 4	3
8	ANNONILAI Palan	873	W46	W12	L26	W27	3
9	BHARGAVA Vinay	1486	D38	W31	W41	D 3	3
10	NANESS James	1204	W30	L 2	W36	W23	3
11	TOMAS Andrei	1399	W39	L 4	W43	W20	3
12	EVANS Darryl	1211	W44	L 8	W37	W21	3
13	RIFKIN Jay	1366	L41	W24	W20	W19	3
14	MOORE Stacey	1162	L23	W51	W29	W25	3
15	SCHOTT Roger	1103	W45	W36	L 1	W38	2.5
16	ALVAREZ Jorge	1349	D18	L 5	W47	W35	2.5
17	FORTMAN Fred	1347	L 6	W49	D35	W34	2.5
18	FIELDS Irv	1583	W16	L34	W51	W24	2.5
19	MORAN Frank	1423	W50	W26	L 3	L13	2
20	MC COOL Rob	-	W40	W23	L13	L11	2
21	FREEMARLE Geoff	-	W48	W49	L 5	L12	2
22	ANNANZLAT Navik	1187	W32	W29	L 6	L31	2
23	O'NEIL John	1102	W14	L20	W45	L10	2
24	KHAN Salman	-	W33	L13	W44	L18	2
25	PINKUS Vince	1025	W43	L26	W39	L14	2
26	HINTON Christopher	1300	L19	W25	W 8	L 2	2
27	GLASSON Tony	1309	L 1	W53	W50	L 8	2
28	JACKSON Bobbie	1266	L39	W48	W40	L 7	2
29	SAMEEN Samad	-	W51	L22	L14	W44	2
30	VIATOR Mike	1021	L10	W52	L31	W45	2
31	YOU Chan	1405	L 3	L 9	W30	W22	2
32	LEE Hyun	-	L22	L44	W49	W43	2
33	MARCO John	-	L24	L43	W52	W42	2
34	SCOTT Jim	1418	D 5	W18	L 4	L17	1.5
35	FOLLES Michael	984	W50	L 6	W17	L16	1.5
36	COLEMAN Michael	-	W53	L15	L10	D39	1.5
37	EDWARDS John	-	W52	L42	L12	W40	1.5
38	KNABLE Carl	1299	W 9	D 4	L 2	W15	1.5
39	MAC SHANE Dan	1616	L11	W28	L25	D36	1.5
40	FURTELE Jennifer	678	L20	W46	L28	D37	1.5
41	COLLINS Dave	1539	W13	L 3	L 9	L 5	1
42	JEFFRIES Andre	1033	W37	L 1	L 7	L33	1
43	PACHNEISER Matt	1027	L25	W33	L11	L32	1
44	WILL Art	1233	L12	W52	L24	L29	1
45	MC COOL Michael	-	L15	W47	L23	L30	1
46	SPEARLING Stern	-	L 8	L40	W53	L50	1
47	MARSHALL Fred	1019	L 2	L45	L16	W52	1
48	NEALY Nadia	-	L21	L28	L 7	W53	1
49	PAGE Angela	-	L21	L17	L32	W51	1
50	ABERCROMBIE Jim	924	L19	L35	L27	W46	1
51	WILBURN Anthony	-	L29	L14	L18	L49	0
52	KLISZ Lucy	-	L37	L30	L33	L47	0
53	SAMIR Patel	-	L36	L27	L46	L48	0

TOURNAMENT CROSSTABLES

Chicago Chess Center Grand Prix

February 20-21, 1988

1	FREEMAN David	1836	W 5	W18	W 9	L 3	W10	4
2	PELTS Peter	2307	W21	W10	D14	W 8	D 3	4
3	ZABELL Sandy	2142	W30	D 6	W15	W 1	D 2	4
4	CHACHERE Lawrence	2397	L15	W31	W13	W12	W 6	4
5	LEE Jon David	2198	L 1	W34	W20	W 9	W 8	4
6	SHIELDS Philip	1948	W28	D 3	W16	W14	L 4	3.5
7	RONNEBERG Erik	2188	W24	L 8	D17	W21	W16	3.5
8	KREISMAN Bruce	1999	W22	W 7	W11	L 2	L 5	3
9	MAZUCHOWSKI Tom	2163	W17	W13	L 1	L 5	W20	3
10	PRYZGODA Leon	2031	W33	L 2	W23	W11	L 1	3
11	TUTUSH Dusan	2165	W26	W12	L 8	L10	W15	3
12	READ Rhys	2003	W23	L11	W22	L 4	W21	3
13	JORDAN Roland	1974	W25	L 9	L 4	W24	W26	3
14	GODFREY Jonathan	2055	W32	W20	D 2	L 6	-	2.5
15	MARQUEZ Tony	1943	W 4	D16	L 3	W18	L11	2.5
16	SOLLAND Ely	2060	W27	D15	L 6	W17	L 7	2.5
17	BRENZA Lindley	1641	L 9	W25	D 7	L16	W28	2.5
18	PUKEL Bernard	2009	Dbye	L 1	W28	L15	W22	2.5
19	SUCHA Ray	2115	W34	W32	-	-	-	2
20	FAGAN James	1886	W29	L14	L 5	W23	L 9	2
21	GOLLA Roman	1873	L 2	W33	W29	L 7	L12	2
22	BERKHEIMER Ed	1420	L 8	W24	L12	W27	L18	2
23	CARSON David	1437	L12	W26	L10	L20	W31	2
24	ROBINSON Harrison	1663	L 7	L22	W31	L13	W32	2
25	CARDINALE Michael	1359	L13	L17	D27	D31	W30	2
26	BARGERSTOCK Dan	1768	L11	L23	WF	W30	L13	2
27	JOINTER William	1619	L16	L29	D25	L22	W33	1.5
28	CHORAZY Michael	1288	L 6	D30	L18	Mbye	L17	1.5
29	UMEZINWA George	2336	L20	W27	L21	-	-	1
30	MULATIN David	1641	L 3	D28	Dbye	L26	L25	1
31	WATKINS Michael	1585	Dbye	L 4	L24	D25	L23	1
32	POPE Ray	1593	L14	L19	Dbye	D33	L24	1
33	WHITE David	1443	L10	L21	Dbye	D32	L27	1
34	BAYER Duane	1574	L19	L 5	LF	-	-	0

Alcoa Tournament

February 27, 1988

1	WATSON Alas	2165	W 7	W10	W 4	W 2	4
2	POPE Raymond	1593	D 3	W 9	W 7	L 1	2.5
3	SAJKOWSKI Daniel	1825	D 2	W 8	W 5	L 4	2.5
4	UNDERWOOD Wesley	1976	W 6	D 5	L 1	W 3	2.5
5	MOLZYENT Maurice	1551	W12	D 4	L 3	W 9	2.5
6	SHAFFER Thomas	1639	L 4	D12	W10	W 8	2.5
7	FINEBERG Thomas	1686	L 1	W11	L 2	W10	2
8	NOWIECKI Brian	1208	D 9	L 3	W11	L 6	1.5
9	WINGAUER Don	1312	D 8	L 2	W12	L 5	1.5
10	CANTU Joe	1446	W11	L 1	L 6	L 7	1
11	MARINO George	1314	L10	L 7	L 8	W12	1
12	BALES Robert	1296	L 5	D 4	L 9	L11	0.5

ALBRIGHT, BENJAMIN FRANKLIN, ROBEIN SCHOOLS WIN TEAM TITLES AT ILLINOIS GRADE SCHOOL CHESS CHAMPIONSHIPS

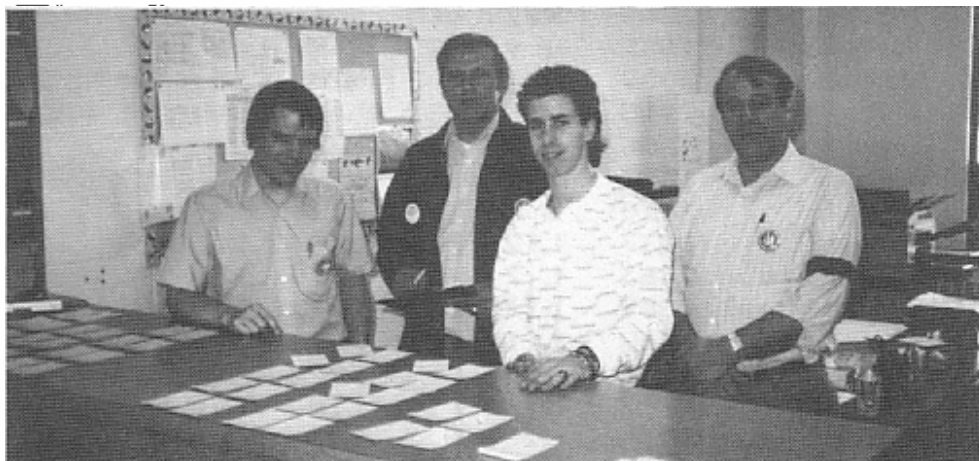
By John Barstad

West Chicago's Benjamin School hosted the 1988 Illinois Grade School Chess Championships on March 5 and 6, 1988. The three section event drew 90 Junior High (8th grade and under), 66 Elementary (5th grade and under), and 40 Primary (3rd grade and under) entries. The four best individual scores by a school's students were combined to form that school's team score.

In the Junior High section, Albright Middle School (Villa Park) and its top board James Freestrom repeated last year's results by taking the Team and Individual Championships. Benjamin Franklin School (Glen Ellyn) dominated the Elementary competition with a host of strong players, but no one could manage even a draw with Adrian Ingram of Stevenson School (Bloomington), who earned the Individual title with the only 7-0

record in the tournament. The Primary Team Championship was won by Robein School (East Peoria), which had finished fifth in 1987 in its first year in the event. Minoaka's Matt Cain, after losing one game early, beat AnnaLiss Jacobsen (Benjamin Franklin) in the sixth round to win the Individual Championship on tie break.

Benjamin School District #25 and Donna Barstad did a marvelous job of organizing. Volunteers from the school put in many hours of work and planning, and their labors were reflected in the excellent facilities and in the efficient manner in which the tournament progressed. Ery Sedlock and Jeff Wiewel directed admirably for the fourth straight year, while Mike Krupicka and his computer program provided printed pairing sheets. Several volunteers from participating schools assisted with record keeping and scoring, and acted as stewards. A number of members of the St. Charles Chess Club gave their weekend to the event as assistant TDs and stewards. The efforts of all of these people resulted in an exceptionally well run and memorable tournament.



Jeff Wiewel, John Barstad, Mike Krupicka, and Ery Sedlock (l. to r.) helped make the event a success.



Forty-two trophies were among the prizes.

1988 ILLINOIS GRADE SCHOOL STATE CHAMPIONSHIPS

Award winners from the 196 individual entrants (40 + 66 + 90) and 28 teams.

PRIMARY SECTION

School Teams (four best scores)

- 1st Robein School, East Peoria, (19 points)
- 2nd Benjamin Franklin, Glen Ellyn, (18 points)
- 3rd Oakland School, Bloomington, (17.5 points)
- 4th Minooka Grade School, Minooka (17 points)
- 5th Evergreen School, Carol Stream, (11 points)

Individual State Champion, Primary Section

Matt Cain, (1422) Minooka Grade Schl. Minooka (6)

Third Grade Individual Awards

- 1st AnnaLies Jacobsen, (1260) B.Frkl., G.E. (6)
- 2nd David Schoolman, (1205) Oakland, Blmtn. (5.5)
- 3rd Michael Levin, (1153) U.C. Lab., Chicago (5)
- 4th Benjamin King, (1057) Robein, E. Peoria (5)
- 5th Mark Vershaw, (1100) Robein, E. Peoria (5)
- 6th Dan Ely, (1012) Minooka Gr. Schl., Minooka (5)
- 7th Anthony Mathile, (1214) Oakland, Blmtn. (4)
- 8th Josh Handbury (unr) B. Frkl., G. Ellyn (4)
- 9th Sarah Hasty, (1061) Jefferson, Norton (4)
- 9th Chuck Hasty, (987) Jefferson, Morton Il. (4)
- 9th Josh Sprock, (1143) B. Frkl., Glen Ellyn (4)
- 9th Jason Jenkins, (unr) Robein, E. Peoria (4)
- 9th Kurt Marsden, (unr) Oakland, Bloomington (4)

Second Grade Individual Awards

- 1st Philip Rajkowski, (1161) Robein, E. Peo. (5)
- 2nd Ben Blott, (1193) Ben. Franklin, G. Ellyn (4)
- 3rd Adam Havens, (1073) Oakland, Bloomington (4)
- 4th Rick Temple (1022) Ben. Franklin, G.E. (4)
- 5th John Rauschenberger, (unr) Oakland (3.5)
- 6th Nabeel Darwish, (905) B. Franklin, G.E. (3)
- 7th Luke Hogan, (unr) Oakland, Bloomington (3)
- 8th Joe Oberweis, (unr) Holy Angels, Aurora (3)
- 9th Blair Machaj (unr) Evergreen, Carol Str. (3)

First Grade and Under Individual Awards

- 1st Craig Cochran, (Kdg) Chic. Jr. Schl., Elgin (5)
- 2nd Emilee Rauschenberger, (Kdg) Oakland, B. (3)
- 3rd Michael Strawn, (Kdg) Evergreen, C.S. (2.5)
- 4th Krista Vogel, (1st) Oakland, Blmtn. (1.5)
- 5th Kimberly Mathile, (1st) Oakland, Blmtn. (1)

ELEMENTARY SECTION

School Teams (four highest scores)

- 1st Benjamin Franklin, Glen Ellyn, (23 points)
- 2nd Oakland School Bloomington, (17.5 points)
- 3rd Americana School, Glendale Hts. (17 points)
- 4th Albright School, Villa Park, (16.5 points)
- 5th M.L. King Jr. School, Rockford, (16 points)

Individual State Champion, Elementary Section

Adrian Ingram, (1355) Stevenson, Bloomington (7)

Fifth Grade Individual Awards

- 1st Micky Jacobsen, (1368) B.Frkl., G. Ellyn (6)
- 2nd Alex Sparagna, (1228) Ben. Frkl., G.E. (6)
- 3rd Ravi Singh, (1282) B. Frkl., G. Ellyn (6)
- 4th Jason Bitner, (1332) Beverly Manor, Wash. (5)
- 5th Chris Wilkerson, (1046) Americana, G.Hts. (5)
- 6th Joel Madden, (1114) Benj.#25, West Chic. (5)
- 7th David Ely, (1113) Minooka Grade School (5)
- 8th Julie Oberweis, (884) Holy Angels, Aurora (5)

Fifth Grade Individual Awards (cont)

- 9th William Standish, (1234) Churchill, G.E. (4.5)
- 10th Josh Friday, (1533) M.L. King Jr., Rkfd. (4)

Fourth Grade Individual Awards

- 1st Omar Jaleel, (1274) Albright, Villa Park (5)
- 2nd Jeffrey Havens (1340) Oakland, Blmtn. (5)
- 3rd Matthew Krusack, (1465) Ben. Frkl., G.E. (5)
- 4th Mike Nichols, (1478) Oakland, Blmtn. (4.5)
- 5th Greg Becker, (1036) Ben. Frkl., G.E. (4.5)
- 6th Matt Uftring, (997) Washington Gr.Schl. (4.5)
- 7th Marvin Moraga, (1424) Albright, Villa Pk. (4)
- 8th Mike Coon, (unr) Americana, Glendale Hts. (4)
- 8th Payam Moazzaz, (unr) Americana, Glendale Hts. (4)
- 10th John Sheehan, (1085) Albright, Villa Pk. (4)

JUNIOR HIGH SECTION

School Teams (four highest scores)

- 1st Albright School, Villa Park, (20.5 points)
- 2nd Wilson Mdl. School, Rockford, (19.5 points)
- 3rd Flinn Mdl. School, Rockford, (18.5 points)
- 4th M.L. King Jr. School, Rockford, (18 points)
- 5th District #50, Washington, Ill. (18 points)

Individual State Champion, Jr. High Section

James Freestrom, (1605) Albright, 8th Grd (6.5)

Eighth Grade Individual Awards

- 1st Dan Venske, (1404) Grace School, Chicago (6)
- 2nd Brad Crawford, (1536) O'Neill, Dnr.Gr. (5.5)
- 3rd Jim Oberweis, (1402) Holy Angels, Aurora (5.5)
- 4th Brad Stevens, (1434) Wilson, Rockford, (5)
- 5th Rich Lewis, (1404) Flinn MS., Rockford, (5)
- 6th Ryan Betts, (1431) Dist.#50, Washington, (5)
- 7th Mark Kerr, (1432) Dist.#50, Washington, (5)
- 8th Larry Strain, (1471) Flinn, Rockford, (4.5)
- 9th Ravi Patel, (1574) Glenside, Gl. Hts. (4.5)
- 10th Brandon Buzzell, (unr) Wilson, Rkfd. (4.5)
- 10th Matt Creemeens, (1192) Olympia, Stanford (4.5)
- 10th Steve Tiller (unr) Steger Central, (4.5)

Seventh Grade Individual Awards

- 1st Scott Rifkin, (1335) Wilson, Rockford, (6)
- 2nd Cory Schanes, (unr) Flinn MS., Rockford. (5)
- 3rd Jamie Getchius, (1455) Maines, St. Charles (4.5)
- 4th Grant Barrick, (unr) Im. Luth. Belvidere (4)
- 5th Mason Wehrle, (unr) Steger Central, Steger (4)
- 6th Danielle Barstad, (1277) Benj., W.Chic. (3.5)
- 7th Matt Cain, (unr) Wilson MS., Rockford (3.5)
- 8th Phil Haning, (1209) Olympia, Stanford (3)
- 9th Jason Briscoe, (1209) Minooka Jr. High (3)
- 10th Jerod Perry, (1088) Im. Luth., Belvidere (3)

Sixth Grade Individual Awards

- 1st Hugh Freestrom, (1418) Albright, Villa Pk. (6)
- 2nd Jeremy Sevoik, (1442) St.Mary's, L. P. (5.5)
- 3rd Doug Coddling, (1272) Oakland, Bloomington (5)
- 4th Grant Cain, (1548) Minooka Jr., Minooka (5)
- 5th Zach Nelson, (1234) M.L. King Jr. Rkfd. (5)
- 6th Jason Betts, (1539) Dist.#50, Washington (5)
- 7th Phil Brennan, (1396) M.L. King Jr. Rkfd. (4.5)
- 8th Wayne Bailey, (1637) M.L. King Jr. Rkfd. (4.5)
- 9th Robbie O'Brien, (1442) Albright, Villa Pk. (4)
- 10th Sean Elder, (1188) Oakland, Bloomington (4)

MIDWEST ACTION CHESS CHAMPIONSHIP ATTRACTS 112 ENTRIES

BROOKS, FINEGOLD, KAUSHANSKY TOP RECORD "ACTION CHESS" FIELD

By Ken Marshall

"Action Chess", the 30 minute/game cross between speed chess and slow tournament play, came to Illinois in a big way on January 9, 1988, when 112 players contended for the Midwest Action Chess Championship at the Holiday Inn O'Hare. The six round tournament, organized by Helen Warren and the Midwest Chess Association, drew entrants rated from 2570 to 923 and set an American record for "Action Chess" attendance, bettering the 106 players at a 1987 Los Angeles event.

FIDE (World Chess Federation) Master Michael Brooks (2570) and National Master Benjamin Finegold (2499) drew their last round game to finish at 5.5-.5 and share first place with NM Leonid Kaushansky (2335). Only the top rated Brooks and the 19 year old Finegold were undefeated going into the final round. Kaushansky, having earlier drawn with International Master (and Illinois State Champion) James Rizzitano (2550), won his final game against Ronald Burnett (2451) to earn a share of the top honors.

Other prize winners included Darren Bolden, whose 4.5-1.5 result took the top Expert prize ahead of eight others who scored 4-2, and seven players who garnered 4 points and split the Class A prizes: Leslie Bale, Leonid Sagalovsky, James Marshall, Timothy Bogan, Mark Stein, John Scanlon, and Mike Chorazy. Alone atop Class B was Kent Hieronymus at 3.5-2.5. Six players ended up with 3 points to tie for first through sixth in the Class C and below category.

The "Action" format resulted in some hair-raising time scrambles as players battled the clock as well as each other. The fifth round Brooks - Albert Chow (2441) and the sixth round Rizzitano - Calvin Blocker (2544) contests were among the most exciting in this regard. Each attracted dozens of spectators as the players ran short of time. Brooks defeated Chow in a game marked by middle game complications; Rizzitano accepted Blocker's draw offer with seconds left on both clocks after

each player had made more than 20 moves in his final minute. (The exciting conclusion of this game, the last to finish in round four, drew applause from onlookers.)

Many players mentioned the excitement of "fast" chess and the fact that all rounds were played in one day as reasons for entering the Midwest Action Chess Championship event. Others noted that they wanted to "try something new", having never played in an "Action" tournament before, and referred to the good location and the excellent publicity which are the hallmarks of any event sponsored by Helen Warren. But a number of the players indicated that they would not "risk rating points" in future "Action" competition, pointing to the 30 minute "sudden death" time control as the cause of "unbelievable blunders".

Warren indicated that she organized the tournament for a number of reasons. "No major 'Action Chess' event had yet been held in the Midwest", she said. "I saw this as an opportunity to find out if Midwestern players were interested in and would support one". Warren also noted that she seems to have (and that she resents) the reputation for sponsoring only "elitist tournaments", and that holding the Midwest Action Chess Championship should help put that reputation to rest. "This is the first time one of my tournaments has ever finished in the black", Warren added. "But whether or not I hold more 'Action Chess' events may depend upon what the United State Chess Federation does about the rating system".

[Editor's Note: Warren is among those who strongly favor the creation of a separate rating system for "Action Chess" events, a sentiment which I share. More on this subject will appear in the May-June ICB.]

Noting that every round started within five minutes of its scheduled time, Warren credited tournament directors Tim Just, Walter Brown, and Dennis Grant with avoiding the delays and confusion which could have arisen as 112 players went through six rounds in one day. "The directors did a good job in keeping control of the event, especially considering that they had no previous experience with a large 'Action Chess' tournament", she said.

MIDWEST ACTION CHESS CHAMPIONSHIP



A crowd watched Michael Brooks beat Albert Chow in a "lime scramble."



Calvin Blocker (left) and Jim Rizzitana conduct a post mortem after fighting to a draw.

Photos by Ken Marshall

PLAYER	ST	RTNG	POST						TOT	
			RTNG	1	2	3	4	5		6
1 BROOKS, MICHAEL A	MO	2570	2579	W-68	W-47	W-15	W-9	W-5	D--2	5.5
2 FINEGOLD, BENJAMIN	OH	2499	2517	W-56	W-24	W-35	W-7	W-10	D--1	5.5
3 KAUSHANSKY, LEONID	IL	2335	2360	W102	W-52	W-45	D--4	W-32	W-13	5.5
4 RIZZITANO, JAMES A	IL	2550	2552	W-69	W-23	W-43	D--3	W-14	D-10	5.0
5 CHOW, ALBERT C	IL	2441	2445	W-70	W-51	W-60	W-17	L--1	W-16	5.0
6 WALLACH, KENNETH T	IL	2355	2367	W-59	W-37	W-46	L-10	W-17	W-18	5.0
7 LEVINE, DAVID H	IL	2306	2316	W-60	W-28	W-63	L--2	W-46	W-27	5.0
8 PELTS, PETER	IL	2307	2299	L104	W-75	W-68	W-47	W-48	W-29	5.0
9 UNEZINVA, GEORGE O	IL	2282	2299	W-71	W-53	W-81	L--1	W-19	W-15	5.0
10 BLOCKER, CALVIN	OH	2544	2543	W-31	W-22	W-34	W--6	L--2	D--4	4.5
11 STEIN, KURT V	IL	2214	2211	W-42	D-40	W-38	L-36	W-60	W-33	4.5
12 BOLDEN, DARREN	IL	2051	2083	W111	D-61	W-74	L-14	W-73	W-36	4.5
13 BURNETT, RONALD WA	NY	2431	2431	W-65	W-26	L-17	W-61	W-36	L--3	4.0
14 LOROFF, HARC J	IL	2308	2297	W-86	W-39	D-36	W-12	L--4	D-21	4.0
15 KEISLER, THOMAS D	WI	2182	2194	W103	W-27	L--1	W-57	W-30	L--9	4.0
16 THOMPSON, DEXTER	MI	2174	2171	L-73	W-63	W-55	W-22	W-49	L--5	4.0
17 WHEELER, WAYNE W	IL	2163	2166	W-72	W-54	W-13	L-5	L--6	W-52	4.0
18 ACOSTA, MARIANO A	IL	2158	2161	L-61	W-90	W-31	W-51	W-24	L--6	4.0
19 TUTUSH, DUSAN	IN	2137	2121	W-89	L-83	W-56	W-41	L--9	W-55	4.0
20 LEE, DAVID	IL	2134	2106	L-58	L-84	W111	W-93	W-72	W-50	4.0
21 WALLACH, CLIFF R	IL	2130	2119	D-74	W-97	L-61	W-89	W-40	D-14	4.0
22 BLANK, DAVID	IL	2036	2031	W-63	L-10	W104	L-16	W-85	W-58	4.0
23 COFFEY, ALLEN F	IL	2007	2025	W-77	L--4	W-71	D-73	D-61	W-56	4.0
24 SZUSTOMSKI, PAUL F	IL	2002	2038	W-76	L--7	W-47	W-43	L-18	W-62	4.0
25 BALE, LESLIE	IL	1982	1979	L-67	W-92	L-62	W-57	W-87	W-43	4.0
26 BAGALOVSKY, LEONID	IL	1966	1981	W-93	L-13	L-60	W105	W-71	W-61	4.0
27 MARSHALL, JAMES A	IL	1914	1984	W-57	L-15	W-98	W-60	W-34	L--7	4.0
28 BOGAN, JANDOTH J	IL	1888	1914	W109	L--7	W-96	L-35	W-92	W-46	4.0
29 STEIN, MARK S	IL	1833	1917	W112	L-34	W-64	W-45	W-35	L--8	4.0
30 SCANLON, JOHN G	IL	1823	1899	W-79	L-35	W-93	W-44	L-15	W-47	4.0
31 CHORAZY, MIKE	IL	0	2199	L-10	W-65	L-15	W-67	W-44	W-49	4.0
32 KARXLINS, ANDREW	IL	2410	2400	W-82	D-38	W-73	W-33	L--3	U--1	3.5
33 SANDRIN, ANDELO	IL	2218	2212	W--	W-67	W-40	L-32	W-39	L-11	3.5
34 NONKEBERG, ERYK P	IL	2188	2180	W-62	W-29	L-10	W-37	L-27	D-41	3.5
35 THOMAS, KENNETH P	IL	2154	2144	W-68	W-30	L-12	W-28	L-29	D-37	3.5
36 WATER, DAVID A	OK	2008	2039	W-90	W-64	D-14	W-11	L-13	L-12	3.5
37 LAND, CHRIS	IL	1968	1993	W-94	L-6	W-58	L-34	W-63	D-35	3.5
38 BERRY, GREGORY P	IL	1967	1985	W106	D-32	L-11	D-50	D-42	W-60	3.5
39 MARQUEZ, ANTHONY	IL	1943	1950	W-99	L-14	D-72	W-74	L-33	W-73	3.5
40 ABBOTT, JAMES H	IL	1933	1951	W108	D-11	L-33	W-79	L-21	W-68	3.5
41 WATSON, TERRY D	IN	1921	1940	W120	L-43	W-84	L-19	W-64	D-34	3.5
42 HIERONYMUS, KENT P	IL	1682	1726	L-51	W108	L-24	W-96	D-38	W-69	3.5
43 FEIG, JORDAN	IL	2177	2147	W-87	W-41	L--4	L-24	W-54	L-23	3.0
44 STERN, HOWARD W	IL	2109	2064	W-92	L-73	W-70	L-30	L-31	W-89	3.0
45 MAYKA, TOM R	IL	2092	2053	W-63	W104	L--3	L-29	L-55	W-72	3.0
46 SOLLANO, E O	IL	2080	2065	W-84	W-58	L--6	W-54	L--7	L-28	3.0
47 JORDAN, ROLAND V	IL	2036	2026	W-78	L--1	W-86	L--8	W-82	L-30	3.0
48 CONDRON, JAMES X	IL	2023	2012	L-64	W-77	W-82	W-83	L--6	U--1	3.0
49 SCHUSCHL, HANS	IL	2011/11	1946	L-98	W-91	W-89	W-62	L-16	L-31	3.0
50 LEDNE, GEE Y	IL	1973	1946	W--	L-74	W-88	D-36	W-70	L-20	3.0
51 KARCONKA, ROBERT	IL	1968	1947	W-66	L--5	W-87	L-18	L-62	W-92	3.0
52 SHIELDS, PHILIP R	IL	1946	1941	W107	L--3	W103	L-13	W-69	L-17	3.0
53 COOPER, JR JAMES R	IL	1934	1897	W100	L--9	L-89	W110	L-58	W-84	3.0
54 PARARES, JORIL S	IL	1862	1870	W101	L-17	W-67	L-46	L-43	W-91	3.0
55 JOHNSON, HARVIN J	IL	1810	1829	W105	L-80	L-16	W109	W-45	L-19	3.0
56 HONTY, STEVEN	IL	1764	1785	L--2	W-76	L-19	W-86	W-81	L-23	3.0
57 BUTLER, HERB M.	IL	1735	1729	L-27	L103	W-78	L-25	W-90	W-97	3.0
58 ADKINS, JAMES	IL	1725	1795	W-20	L-46	L-37	W103	W-53	L-22	3.0
59 DELT, JIMRE	IL	1721	1730	L--6	W-94	L-49	L-64	W-79	W-93	3.0
60 FINEBERG, THOMAS A	IL	1686	1732	L--7	W109	W-26	W-81	L-11	L-38	3.0
61 KELLY, DAVE	MO	1636	1780	W-18	D-12	W-21	L-13	D-23	L-26	3.0
62 DIXON, FRANK	IL	1645/10	1742	L-34	W112	W-23	L-49	W-51	L-24	3.0
63 STERLING, AARON D	IL	1591/8	1696	L-45	L-16	W107	W104	L-37	W-81	3.0
64 CRAWFORD, BRAD	IL	1536	1637	W-48	L-36	L-29	W-59	L-41	W-85	3.0
65 WHITE, DAVID JAMES	IL	1489	1539	L-22	L-31	W112	L-83	W-93	W-62	3.0
66 HAINES, JOSEPH	IL	1408	1439	L-31	L-70	W105	X--	W104	W-87	3.0
67 FRELAND, BOB	IL	1405	1523	W-25	L-33	L-54	L-31	W103	W-86	3.0
68 FABAN, JAMES B	IL	1886	1867	L--1	W-78	L--8	D-93	W-97	L-40	2.5
69 SEEG, JR ROY A	WI	1800	1800	L--4	D111	W-97	L-72	W-74	L-42	2.5
70 OBERWETS, JAMES D	IL	1772	1760	L--5	W-66	L-44	W-76	L-50	D-77	2.5
71 PARADAN, L O	IL	1714	1715	L--9	W100	L-23	W-84	L-26	D-76	2.5
72 HYNES, EVAN	IL	1678	1708	L-17	W101	D-39	W-69	L-20	L-45	2.5
73 MARKOVIC, MILAN M	WI	1672	1760	W-16	W-44	L-32	D-23	L-12	L-39	2.5
74 ORTIZ, EDDIE	IL	1633	1664	D-21	W-50	L-12	L-39	L-69	W-99	2.5
75 WATKINS, MICHAEL	IL	1555	1547	H--	L--8	L-79	L-84	W106	W100	2.5
76 FENNER, CHARLES E	IL	1536	1561	L-24	L-56	W101	L-70	W-86	D-71	2.5
77 KICKS, CHARLES A	IL	1524	1519	L-23	L-48	W109	W107	W103	D-70	2.5
78 KOSTECKA, KEITH	IL	1439	1476	L-47	L-68	L-57	D-99	W111	W-96	2.5
79 IMPERATO, JOSEPH P	IL	0	1637	L-30	D-68	W-75	L-40	L-59	W-98	2.5
80 BROCK, WILLIAM	IL	2127	2125	W-96	W-55	L--5	L-27	U--	U--	2.0
81 THOMAS, GEORGE	IL	2022/3	1849	W-91	W-98	L--9	L-60	L-56	L-63	2.0
82 LYON, MARK A	IL	1845	1814	L-32	W106	L-48	W-91	L-47	L-65	2.0
83 LOZANO, ED S	IL	1805	1828	W-95	W-19	L--7	L-48	U--	U--	2.0
84 OSANYINJOBI, TOKS	IL	1716	1713	L-46	W-20	L-41	L-71	W108	L-53	2.0
85 MUSSER, SIEGFRIED	IL	1710	1698	L-13	L-93	W-94	W-65	L-22	L-64	2.0
86 FRALEY, EDWIN	IL	1692	1646	L-14	W-89	L-47	L-92	L-76	W109	2.0
87 HARTWIG, MICHAEL	IN	1644	1617	L-43	W110	L-31	W100	L-25	L-66	2.0
88 WJ, XEK H	IL	1618/5	1650	L-35	D-79	L-30	W-75	D-93	L-67	2.0
89 BAYEN, DUANE K	IL	1546	1581	L-19	W-95	W-53	L-21	L-52	L-44	2.0
90 VANDRE, CLIFTON ER	IL	1542	1526	L-36	L-18	W108	W-94	L-57	W101	2.0
91 LEV, HOWARD J	IL	1523/8	1517	L-81	L-49	W108	L-82	W110	L-54	2.0
92 BANNON, JOSEPH E	IL	1506	1530	L-44	L-25	W-99	W-86	L-28	L-31	2.0
93 BRODDE, JEFF G	IL	1385	1435	L-26	W-25	L-30	D-68	D-68	L-59	2.0
94 BOYLE, SEAN	IL	1307	1314	L-37	L-58	L-85	L-90	W107	W110	2.0
95 MOHR, JOHN J	IL	0	1508	L-83	L-88	W106	L-20	L-65	W108	2.0
96 MASTERS, ROBERT W	IL	1625	1586	L-80	W105	L-28	L-42	D100	L-78	1.5
97 BARTOCZY, HANSO PH	IL	1602	1597	W--	L-21	L-69	W111	L-68	L-57	1.5
98 STARR, WILLIAM G	IN	1509	1511	W-49	L-81	L-27	L-56	D101	L-79	1.5
99 WOODRUFF, PHILIP K	IL	1327	1324	L-39	L-66	L-92	D-38	W109	L-74	1.5
100 YURK, RUSS	WI	2266/6	1366	L-53	L-71	W-80	L-87	D-96	L-75	1.5
101 FRANKOWSKI, RICHAR	IL	0	1391	L-54	L-72	L-76	W106	D-98	L-90	1.5
102 IRONS, ROBERT R	IL	1727	1728	L--3	W107	U--	U--	U--	U--	1.0
103 ROBINSON, HARRISON	IL	1689	1687	L-15	W-37	L-52	L-58	L-67	U--	1.0
104 WOLF, WILLIAM P	IL	1682	1671	W--8	L-45	L-22	L-63	L-66	U--	1.0
105 JUTOVSKI, MARK	IL	1438/8	1404	L-55	L-96	W-66	L-26	L-77	W106	1.0
106 OBERWETS, JIM	IL	1418	1388	L-38	L-62	L-95	L101	L-73	W105	1.0
107 REBER, MATTHEW	IL	1328/9	1306	L-52	L102	L-63	L-77	L-94	H--	1.0
108 CREENEKS, MATTHEW	IL	1192	1180	L-40	L-42	L-81	H--	L-84	L-93	1.0
109 SONG, RICHARD	IL	1010/8	1188	L-28	L-60	W-77	L-35	L-99	L-86	1.0
110 ABERCROMBIE, TIM	IL	923	916	L-41	L-87	H--	L-53	L-91	L-94	1.0
111 POPE, RAYMOND W	IL	1671	1627	L-12	D-69	L-20	L-97	L-78	U--	.5
112 CHODACKI, RICHARD	IL	1388/6	1428	L-29	L-62	L-65	F--	U--	U--	.0

CHOW TOPS GREATER PEORIA OPEN

By Ken Marshall

Senior Master Albert Chow scored 4.5-.5 to win the 21 player Open section of the 1988 Greater Peoria Open, an Illinois Maxi-Tour event held March 5-6, 1988 at the Ramada Inn in Peoria. In taking the \$250 first prize, Chow, the tournament's highest rated player, yielded a draw to 1987 Illinois Tour winner Cyrus Bondari only after a 70 move, six hour struggle. Bondari finished alone in second place at 4-1, while Wesley Underwood, Matthew Crouse, and Thomas Bolitho shared top honors in Class A with scores of 3.5-1.5.

Unrated Vladimir Zafirin outdistanced 35 other Reserve section competitors to capture first place with 4.5 points. Randy Crum, Robert Sphar, and

Keith Gardner followed with 4-1 scores. Class C prize money was split by David Shane, Judd Tudor, and Rod Moore, all of whom garnered 3 points. Scores of 3-2 won Class D/Under honors for Bradley Bennett and Dave Madsen.

The GPO was again directed by Bill Wilkinson and sponsored by the Greater Peoria Chess Federation. This tournament, a mainstay of the Illinois Tour in central Illinois, is but one of the many rated events sponsored each year by the GPCF. For further information about this active Illinois Chess Association affiliate, see "Where to Play Chess" on page two of this ICB.

Greater Peoria Open

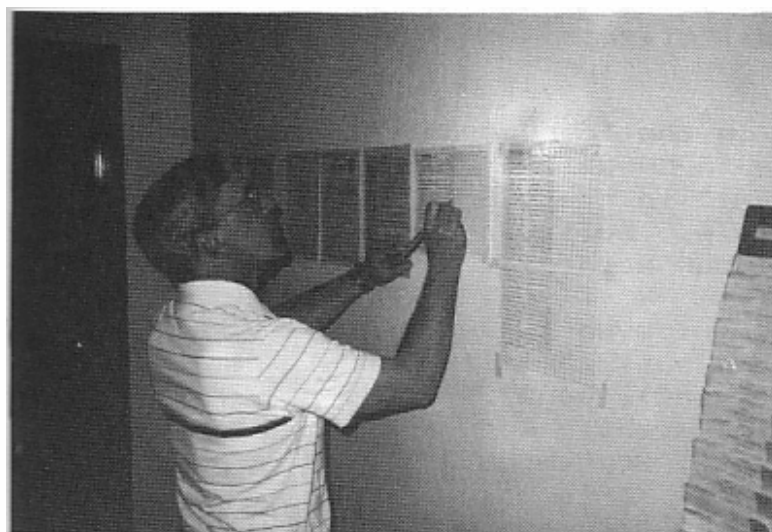
March 5-6, 1988

OPEN SECTION	Score:	Tour:
1 CHOW Albert 2428 W 8 W12 W 9 D 2 W 7	4.5	16 M
2 BONDARI Cyrus 2182 W15 W10 W 7 D 1 D 3	4	8 M, X
3 VLASTNIK Richard 2085 D13 W14 W17 D 4 D 2	3.5	4 M, X
4 UNDERWOOD Wesley 1976 D17 W18 W12 D 3 D 6	3.5	4 M, X, A
5 CROUSE Matthew 1846 W21 L 7 W16 D 9 W12	3.5	4 M, X, A
6 BOLITHO Thomas 1803 Wbye L 9 W21 W13 D 4	3.5	4 M, X, A
7 VAN BUGKIRK Douglas 2102 W19 W 5 L 2 W10 L 1	3	3 M, X
8 PUKEL Bernard 2009 L 1 W13 L10 W19 W 9	3	3 M, X
9 NAFF William 2174 W16 W 6 L 1 D 5 L 8	2.5	2.5M, X
10 COHEN Lawrence 1908 W20 L 2 W 8 L 7 D11	2.5	2.5M, X, A
11 BUNGARDNER Gerald 1883 L12 D15 D20 W16 D10	2.5	2.5M, X, A
12 ANDERSON Phil 2109 W11 L 1 L 4 W14 L 5	2	2 M, X
13 BRUEHNER Don 1841 D 3 L 8 W18 L 6 D14	2	2 M, X, A
14 LUNDQUIST Douglas 1809 D18 L 3 W15 L12 D13	2	2 M, X, A
15 RHODES Murrel 1999 L 2 D11 L14 D18 W19	2	2 M, X, A
16 GRAVES William 1938 L 9 W19 L 5 L11 Wbye	2	2 M, X, A
17 MC ENTEE Tim 2186 D 4 W20 L 3 - -	1.5	1.5M, X
18 SLATER Michael 2051 D14 L 4 L13 D15 - -	1	1 M, X
19 VERO Carl 1887 L 7 L16 Wbye L 8 L15	1	1 M, X, A
20 TORREGROSSA Ron 2146 L10 L17 D11 - -	0.5	0.5M, X
21 SANDBOTHE William 2070 L 5 Dbye L 6 - -	0.5	0.5M, X

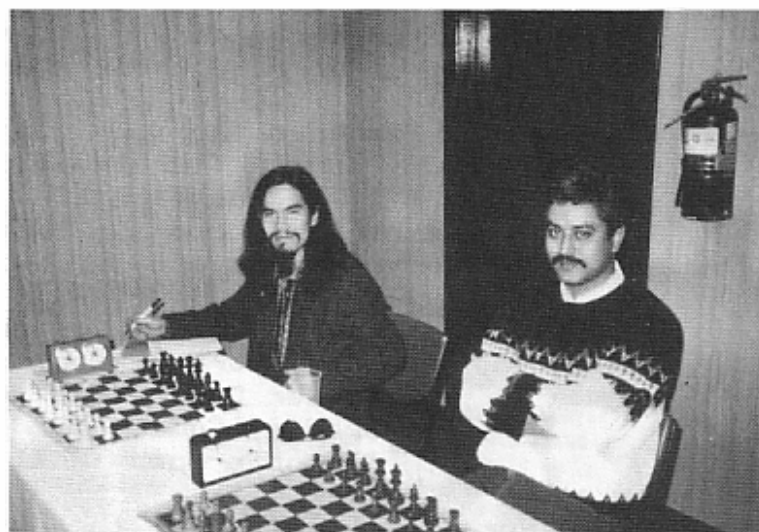
DOWNSTATE CHESS PHONE
(309) 655-0618

GREATER PEORIA OPEN

RESERVE SECTION				Score:	Tour:
1	ZAFRIN Vladimir	-	W23 D 8 W29 W 5 W 2	4.5	0
2	GARDNER Keith	1683	W30 W22 W20 W 3 L 1	4	B B
3	CRUM Randy	1697	W34 W18 W 6 L 2 W 8	4	B B
4	SPHAR Robert	1691	L19 W34 W24 W12 W 9	4	B B
5	MEYER William	1671	W25 W30 W21 L 1 D 7	3.5	4 B
6	STOTLER Richard	1615	W31 W 9 L 3 W21 D11	3.5	4 B
7	BURSE Rodney	1776	L22 W32 W26 W10 D 5	3.5	4 B
8	KAPTONAK Robert	1646	W14 D 1 D10 W18 L 3	3	3 B
9	WASHINGTON Kenneth	1773	W36 L 6 W22 W13 L 4	3	3 B
10	MOORE Rod	1435	W15 D17 D 8 L 7 W22	3	3 B,C
11	FATHAHER Terry	1671	W12 L20 D14 W26 D 6	3	3 B
12	BENNETT Bradley	1315	L11 W28 W23 L 4 W20	3	3 B,C,D
13	TUDOR Judd	1495	L17 W15 W27 L 9 W23	3	3 B,C
14	MADSEN Dave	1259	L 8 W33 D11 D16 W25	3	3 B,C,D
15	STAFFORD Jerry	1692	L10 L13 W36 W27 W21	3	3 B
16	SHANE David	1563	Dbye L29 W28 D14 W19	3	3 B,C
17	WELLS J Edward	1745	W13 D10 L19 W20	-	2.5B
18	CALIENDO Anthony	1202	W28 L 3 W35 L 8 D26	2.5	2.5B,C,D
19	ZEVNIK Larry	1423	W 4 Dbye W17	-	2.5B,C
20	RIGEL Mark	-	W33 W11 L 2 L17 L12	2	0
21	MOORE Allen D	1785	W32 W24 L 5 L 6 L15	2	2 B
22	LEBO Steven	1524	W 7 L 2 L 9 W34 L10	2	2 B,C
23	INGRAM Randy	1559	L 1 W31 L12 W24 L13	2	2 B,C
24	RYLANDER Lyle	1447	W27 L21 L 4 L23 W35	2	2 B,C
25	CAIN Dennis	1267	L 5 L34 W33 W29 L14	2	2 B,C,D
26	ANDERSON William	1381	Dbye W35 L 7 L11 D18	2	2 B,C,D
27	UPPER Steve	1739	L24 W36 L13 L15 Wbye	2	2 B
28	UPPER Stan	1593	L18 L12 L16 W36 W30	2	2 B,C
29	DZURNY Anthony	-	D35 W16 L 1 L25	-	1.5
30	BERKHEIMER Ed	1415	L 2 L 5 Dbye W35 L28	1.5	1.5B,C
31	MILLER Earl	1216	L 6 L23 Dbye D32 D33	1.5	1.5B,C,D
32	KIRKPATRICK Donald	1543	L21 L 7 Dbye D31 D36	1.5	1.5B,C
33	GRONIGER Louis	1581	L20 L14 L25 Wbye D31	1.5	1.5B,C
34	CARSON David	1437	L 3 L 4 W25 L22	-	1 B,C
35	RASMUSSEN Kirk	1593	D29 L26 L18 L30 L24	0.5	0.5B,C
36	DONLEY Ryan	1539	L 9 L27 L15 L28 D32	0.5	0.5B,C



Bill Wilkinson directed the Illinois Maxi-Tour Event



Albert Chow (left) finished first and Cyrus Bondari second in the Open Section

FROM THE EDITOR'S DESK

(Continued from page 1)

Speaking of "the Illinois chess scene" - readers of the last three ICBs may have noticed the almost total exclusion of non-Illinois chess from those issues. That exclusion was intentional. I regard the ICB's primary mission as reporting on chess activity in this state. Given my limited time and the ICB's limited space and limited budget, I intend to concentrate on that primary mission, and leave coverage of subjects such as the World Chess Festival and the New York Open to CHESS LIFE or other magazines (except to report on how Illinois players fare in those events).

CHESS PHONE

(312) 971-3666

Helen and Jim Warren have again demonstrated their unstinting support for Illinois chess by donating \$100 to fund a fourth place prize in the Master section of the 1988 Illinois Tour. (The Warrens made a similar donation in 1987.) Tour prizes now total \$1400. (Full information on the 1988 Illinois Tour is set out in the January - February 1988 ICB.)

Central Illinois now has its own Chess Phone, funded by the ICA and maintained by the Greater Peoria Chess Association. The number is (309) 655-0618.

Eric Schiller originally wrote his article on the Midwest Masters for Leisure LINC, Inc. I appreciate the permission of Eric and of the LINC to use a slightly longer version of the story in this ICB. John Barstad prepared the page containing the Grade School Championships results. Bill Smythe supplied the Tour page and all of the crosstables other than that for the Midwest Action Chess Championship, which came from the USCF.

1988 ILLINOIS TOUR

By Bill Smythe

The following Tour events have been held so far in 1988:

Tim Just's Winter Open/Reserve
Peoria Winter Tornado
Greater Peoria Open

Listed on the facing page are all players with Tour points in one or more of these events.

Watch for upcoming Tour events in the Tournament Calendar in the ICB, and in Tournament Life in Chess Life. Tour events will be listed as "ICA TOUR EVENT" in the ICB, or as "ICA membership required" in Chess Life. Following is a tentative schedule of upcoming Tour events:

Peoria Summer Tornado (mini-event), June 11
Tuley Park Action (mini-event), June 18
Master Challenge (MAXI event), June 24-26
Bradley Summer Open (mini event), August 6
Illinois Open (MAXI event), September 3-5

For a description of the difference between MAXI and mini events, and for full details on the 1988 Illinois Tour, see the January-February issue of the Illinois Chess Bulletin.

Listed below are all players with four points so far in 1988. The number in parentheses is the number of four events the player has attended.

To be eligible for Tour prizes at year end, a player must have played in at least three Tour events and be an ICA member. ICA membership is required of all Illinois residents participating in Tour events. Out-of-staters need not join ICA if they are member of their home state chess associations; however, they cannot accumulate Tour points or win Tour prizes unless they are ICA members.

Master Tour Points:

CHOW Albert	32 (2)
BONDARI Cyrus	8 (1)
CHACHERE Lawrence	8 (1)
SURAK Steve	8 (1)
COHEN Lawrence	4.5(2)
BOLITHO Thomas	4 (2)
BUTKO Nathaniel	4 (1)
CRENSE Lynn	4 (1)
CROUSE Matthew	4 (1)
PUKEL Bernard	4 (2)
UNDERWOOD Wesley	4 (1)
VLASTNIK Richard	4 (1)
MALLACH Ken	4 (1)
LABELL Sandy	4 (1)
GRAVES William	3.5(2)
MAZUCHOWSKI Tom	3 (1)
SAX Robert	3 (1)
VAN BUSKIRK Douglas	3 (2)
BUMGARDNER Gerald	2.5(2)
FARENHOLZ Steven	2.5(1)
GENSLER Kevin	2.5(1)
GROELLER William	2.5(1)
HARRISON William	2.5(1)
HOLZMUELLER Keith	2.5(1)
NAFF William	2.5(1)
RIZZITANO James	2.5(1)
SATTERLEE Ray Doyle	2.5(1)
TUTUSH Dusan	2.5(1)
ACOSTA Mariano	2 (1)
ANDERSON Phil	2 (2)
BASENSPIELER Larry	2 (1)
BEASLEY Leonard	2 (1)
BRUENNER Don	2 (1)
JONAITIS Algis	2 (1)
LUNDQUIST Douglas	2 (1)
RHOSES Murrel	2 (1)
KAMEN Dan	1.5(1)
MC EATEE Tim	1.5(1)
SCHMUCKER Vivian	1.5(1)
SNYTHE Bill	1.5(1)
SLATER Michael	1 (1)
VERO Carl	1 (2)
ALLISON Roger	0.5(1)
COHEN Howard	0.5(1)
SANDBOTHE William	0.5(1)
TORREGROSSA Ron	0.5(1)

MAZUCHOWSKI Tom	3 (1)
SAX Robert	3 (1)
BOSSAERS Phil	2.5(1)
FARENHOLZ Steven	2.5(1)
FATHAUER Terry	2.5(2)
GENSLER Kevin	2.5(1)
GROELLER William	2.5(1)
HARRISON William	2.5(1)
HOLZMUELLER Keith	2.5(1)
INGRAM Randy	2.5(2)
NAFF William	2.5(1)
SATTERLEE Ray Doyle	2.5(1)
TUTUSH Dusan	2.5(1)
ACOSTA Mariano	2 (1)
BASENSPIELER Larry	2 (1)
BEASLEY Leonard	2 (1)
BEASLEY Ronald	2 (1)
BRUENNER Don	2 (1)
JONAITIS Algis	2 (1)
LEBO Steven	2 (2)
LUNDQUIST Douglas	2 (1)
MOORE Rod	2 (2)
MURPHY Greg	2 (1)
RHOSES Murrel	2 (1)
STOTLER Richard	2 (2)
CHRISTIANSEN William	1.5(1)
KAMEN Dan	1.5(1)
MC EATEE Tim	1.5(1)
SCHMUCKER Vivian	1.5(1)
SCOTT Winfield	1.5(1)
SNYTHE Bill	1.5(1)
WHEELER Steven	1.5(1)
DODD Randy	1 (1)
MEYER William	1 (2)
MOODAY Cleo	1 (1)
SLATER Michael	1 (1)
ALLISON Roger	0.5(1)
COHEN Howard	0.5(1)
SANDBOTHE William	0.5(1)
TORREGROSSA Ron	0.5(1)

Class A Tour Points:

BUMGARDNER Gerald	6.5(2)
BOLITHO Thomas	6 (2)
VERO Carl	5 (2)
COHEN Lawrence	4.5(2)
CRENSE Lynn	4 (1)
CROUSE Matthew	4 (1)
UNDERWOOD Wesley	4 (1)
GRAVES William	3.5(2)
SAX Robert	3 (1)
FARENHOLZ Steven	2.5(1)
FATHAUER Terry	2.5(2)
HARRISON William	2.5(1)
INGRAM Randy	2.5(2)
BEASLEY Leonard	2 (1)
BEASLEY Ronald	2 (1)
BRUENNER Don	2 (1)
JONAITIS Algis	2 (1)
LEBO Steven	2 (2)
LUNDQUIST Douglas	2 (1)
MOORE Rod	2 (2)
MURPHY Greg	2 (1)
RHOSES Murrel	2 (1)
STOTLER Richard	2 (2)
CHRISTIANSEN William	1.5(1)

SCHMUCKER Vivian	1.5(1)
SCOTT Winfield	1.5(1)
SNYTHE Bill	1.5(1)
WHEELER Steven	1.5(1)
DODD Randy	1 (1)
MEYER William	1 (2)
MOODAY Cleo	1 (1)
PUKEL Bernard	1 (2)
ALLISON Roger	0.5(1)
COHEN Howard	0.5(1)

Class B Tour Points:

SMITH Colin	16 (1)
STOTLER Richard	10 (2)
BOUTON Barry	8 (1)
BURSE Rodney	8 (1)
CRUM Randy	8 (1)
DENNIS Mike	8 (1)
GARDNER Keith	8 (1)
SPHAR Robert	8 (1)
FATHAUER Terry	5.5(2)
MEYER William	5 (2)
MOORE Rod	5 (2)
INGRAM Randy	4.5(2)
BARGERSTOCK Dan	4 (1)
BROWN Tony	4 (1)
LEBO Steven	4 (2)
PADILLA Rudy	4 (1)
ROCKWELL David	4 (1)
BENNETT Bradley	3 (1)
BERKMEYER Ed	3 (2)
BURGESS Fred	3 (1)
CHLOUPEK Frank	3 (1)
FENNER Charles	3 (1)
GRUENBERG Fred	3 (1)
KAPTONAK Robert	3 (1)
MOUSEN Dave	3 (1)
MARSHALL Ken	3 (1)
RIFLE James	3 (1)
ROBINSON Harrison	3 (1)
SHANE David	3 (1)
STAFFORD Jerry	3 (1)
TUDOR Judd	3 (1)
WASHINGTON Kenneth	3 (1)
CALLENDO Anthony	2.5(1)
PANFEL William	2.5(1)
NELLS J Edward	2.5(1)
ZEVNIK Larry	2.5(1)
ANDERSON William	2 (1)
CAIN Dennis	2 (1)
GRUENBERG Guy	2 (1)
HENDERSON Dale	2 (1)
KENPNER Robert	2 (1)
KNUTSON Gerald	2 (1)
KURFHAM David	2 (1)
LOPEZ Eugene	2 (1)
MOORE Allen B	2 (1)
OPPER Stan	2 (1)
OPPER Steve	2 (1)
OMIECKI Roger	2 (1)
RYLANDER Lyle	2 (1)
ZELINSKY Daryl	2 (1)
BAYER Duane	1.5(1)
CHRISTIANSEN William	1.5(1)
BONLEY Ryan	1.5(1)
GRUENEGER Louis	1.5(1)

KIRKPATRICK Donald	1.5(1)
KITTSLEY Scott	1.5(1)
MILLER Earl	1.5(1)
RASMUSSEN Mark	1.5(1)
SCHMUCKER Vivian	1.5(1)
SCOTT Winfield	1.5(1)
WHEELER Steven	1.5(1)
WILLIAMS Robert	1.5(1)
BRODDE Jeff	1 (1)
CARSON David	1 (1)
DODD Randy	1 (1)
FRANTS Daniel	1 (1)
MOODAY Cleo	1 (1)

Class C Tour Points:

SMITH Colin	16 (1)
MOORE Rod	5 (2)
INGRAM Randy	4.5(2)
LEBO Steven	4 (2)
PADILLA Rudy	4 (1)
BENNETT Bradley	3 (1)
BERKMEYER Ed	3 (2)
BURGESS Fred	3 (1)
CHLOUPEK Frank	3 (1)
FENNER Charles	3 (1)
GRUENBERG Fred	3 (1)
MOUSEN Dave	3 (1)
RIFLE James	3 (1)
SHANE David	3 (1)
TUDOR Judd	3 (1)
CALLENDO Anthony	2.5(1)
ZEVNIK Larry	2.5(1)
ANDERSON William	2 (1)
CAIN Dennis	2 (1)
GRUENBERG Guy	2 (1)
HENDERSON Dale	2 (1)
KENPNER Robert	2 (1)
KNUTSON Gerald	2 (1)
LOPEZ Eugene	2 (1)
OPPER Stan	2 (1)
OMIECKI Roger	2 (1)
RYLANDER Lyle	2 (1)
BAYER Duane	1.5(1)
BONLEY Ryan	1.5(1)
GRUENEGER Louis	1.5(1)
KIRKPATRICK Donald	1.5(1)
MILLER Earl	1.5(1)
RASMUSSEN Mark	1.5(1)
WILLIAMS Robert	1.5(1)
BRODDE Jeff	1 (1)
CARSON David	1 (1)
DODD Randy	1 (1)

Class D Tour Points:

PADILLA Rudy	4 (1)
BENNETT Bradley	3 (1)
MOUSEN Dave	3 (1)
CALLENDO Anthony	2.5(1)
ANDERSON William	2 (1)
CAIN Dennis	2 (1)
GRUENBERG Guy	2 (1)
KNUTSON Gerald	2 (1)
MILLER Earl	1.5(1)
WILLIAMS Robert	1.5(1)

Expert Tour Points:

VAN BUSKIRK Douglas	19 (2)
BONDARI Cyrus	8 (1)
SURAK Steve	8 (1)
BUMGARDNER Gerald	6.5(2)
ANDERSON Phil	6 (2)
BOLITHO Thomas	6 (2)
VERO Carl	5 (2)
COHEN Lawrence	4.5(2)
BUTKO Nathaniel	4 (1)
CRENSE Lynn	4 (1)
CROUSE Matt	4 (1)
PUKEL Bernard	4 (2)
SCHULL Paul	4 (1)
UNDERWOOD Wesley	4 (1)
VLASTNIK Richard	4 (1)
LABELL Sandy	4 (1)
GRAVES William	3.5(2)

ILLINOIS TOURNAMENT CALENDAR (Continued)

May 28 - 30: Fourth Prairie State Open for Masters and Experts, at the College of Lake County in Grayslake. Helen Warren: 246-6665.

June 4, 5: 1 day events at the Chicago Chess Center. Jules Stein: 929-7010.

June 11: Peoria Spring Tornado, at the Garrett Center in Peoria. AN ICA ILLINOIS TOUR MINI-EVENT. Bill Naff: (309) 691-4624. SEE HALF PAGE AD IN THIS ICB.

June 11, 12: 1 day events at the Chicago Chess Center. Jules Stein: 929-7010.

June 11 - 12: St. Charles Open, at the Kane County Extension Service building in St. Charles. Ery Sedlock: 377-7995.

June 11 - 12: Illinois Junior, in Waukegan. Kevin Bachler: 680-8693.

June 12: Mt. Vernon Open Championship, at the Holiday Inn in Mt. Vernon. John Tonkinson: (618) 462-5732.

June 18: Tuley Park Action Chess Tournament, at 501 E. 90th Place in Chicago. AN ICA ILLINOIS TOUR MINI-EVENT. Tom Fineberg: 721-3979.

June 24 - 26: Master Challenge X, at the Mohr Community Center in Forest Park. AN ICA ILLINOIS MAXI-TOUR EVENT. Ken Marshall: 932-1455.

June 25, 26: 1 day events at the Chicago Chess Center. Jules Stein: 929-7010.



CHES PHONE
(312) 971-3666

DOWNSTATE CHES PHONE
(309) 655-0618

PATRON MEMBERS CONTINUED

Daniel Pradt	Glen Ellyn, IL
Tim Redman	Lima, OH
Harrison Robinson	Chicago, IL
Ray Satterlee	Wheaton, IL
Vivian Schmucker	Goshen, IN
Mark Sefcheck	Naperville, IL
Tony Sillars	Chicago, IL
Arthur Sinclair	Evanston, IL
Richard Smiley	Chicago, IL
David Sprenkle	Knoxville, TN
Miomir Stevanovic	Lincolnwood, IL
David Taylor	Kankakee, IL
Don Townsend	Chicago, IL
John Tums	Oak Park, IL
Jim Warren	Western Springs, IL
Bill Wenz	Milwaukee, WI
Douglas White	Schaumburg, IL
Harold Winston	Naperville, IL
Marvin Winston	Old Bridge, NJ
Sandy Zabell	Chicago, IL
Max Zavarelli	Park Ridge, IL

HELP SUPPORT ILLINOIS CHESS BY BECOMING AN ICA BENEFACTOR:

CENTURY MEMBER \$100;
GOLD CARD \$50; PATRON \$25.
Please mail your contribution to:
Illinois Chess Association
Guy Gruenberg
P.O. Box 353
Olympia Fields, IL 60461

TOURNAMENT CLEARINGHOUSE MATERIAL

Please send all Tournament Clearinghouse material to:

Harold Winston
46 Robin Hill Dr.
Naperville, IL 60540
(312) 244-7954.

Please send Downstate Tournament Clearinghouse material to:

Bill Naff
212 W. Vail Ct.
Peoria, IL 61614
(309) 691-4624.

CENTURY CLUB MEMBERS

Michael Belovesick	Elmhurst, IL
Fred Cramer	Mequon, WI
Tom Fineberg	Chicago, IL
Fred Gruenberg	Chicago, IL
Marc Lunoff	Northbrook, IL
Albert Sandrin	Chicago, IL
Angelo Sandrin	Chicago, IL
Bill Smythe	Chicago, IL
Burton Vincent	Chicago, IL

GOLD CARD MEMBERS

Bill Buttny	Downers Grove, IL
John Deutsch	Chicago, IL
Harland Hoisington	Ogden, UT
Ed Marschall	South Barrington, IL
Michael Pratts	Chicago, IL
Irwin Rothschild	Park Forest, IL
Mitchel Sweig	Evanston, IL
Richard Verber	Chicago, IL
Louis Werner	Evanston, IL

PATRON MEMBERS

Bob Ash	Urbana, IL
Todd Barre	Westmont, IL
John Barstad, Sr	Carol Stream, IL
Roy Benedek	Western Springs, IL
Bill Brock	Chicago, IL
Tyrone Brooks	Chicago, IL
Jim Brotsos	Chicago, IL
Sam Caldwell	Chicago, IL
Lynn Crewse	Arlington Heights, IL
Leroy Dubeck	Cherry Hill, NJ
Gerard Garino	Evanston, IL
Jon Gotz	West Chicago, IL
Donald Graft	Wheaton, IL
William Graves	Chicago, IL
Guy Gruenberg	Matteson, IL
Walter Henry	Naperville, IL
Jeffery Hyland	Mount Prospect, IL
Robert Irons	Chicago, IL
Tim Just	Waukegan, IL
Dan Kamen	Wheeling, IL
Leo Kaushansky	Chicago, IL
Thomas Knoedler	Springfield, IL
Walter Kocjan	Northlake, IL
John Krom	Chicago, IL
Eugene Lopez	Elk Grove, IL
Alan Losoff	Morton Grove, IL
Kenneth Marshall	Lombard, IL
Eugene Martinovsky	Oak Brook, IL
James McNamara	Riverside, IL
Piatek Mieczyslaw	Chicago, IL
Patrick Moran	Wilmette, IL
Bill Naff	Peoria, IL
Peter Pelts	Chicago, IL

ICA ELECTED OFFICERS:

Tim Just, President
1521 Circle Ct., Waukegan, IL 60085

Harold Winston, Metro Vice-President
46 Robin Hill Dr., Naperville, IL 60540

Bill Naff, Downstate Vice-President
212 W. Vail Ct., Peoria, IL 61614

Ken Marshall, Secretary
357 W. Grove, Lombard, IL 60148

Guy Gruenberg, Treasurer
P.O. Box 353, Olympia Fields, IL 60461

Walter Brown, Immediate Past President
811 Elrose Ct., Crest Hill, IL 60435

USCF DELEGATES

by virtue of their USCF posts:

Harold Winston, President
Helen Warren, Policy Board Member
Todd Barre, Regional Vice-President
Jim Warren, Regional Vice-President
Frank Skoff, Past President

ICA APPOINTED USCF DELEGATES:

Tim Just	Ken Marshall
Fred Gruenberg	Richard Verber
Tom Fineberg	

ICA APPOINTED USCF VOTING MEMBERS:

Bill Smythe	Bill Naff
Walter Brown	Erv Sedlock
Wayne Palmquist	Dennis Grant
Larry Stilwell	Tom Knoedler
Bob Bain	Barry Fisher
Mike Zacate	

ICA APPOINTED USCF ALTERNATE VOTING MEMBERS:

Glen Panner	Chris Musgrave
Byron Pappas	Eric Schiller
John Tonkinson	Bill Wilkinson
Jim Condran	Kevin Bachler
Jim Brotsos	Angelo Sandrin
John Bardstad, Sr.	Dan Kamen
Al Chow	Mike Belovesick, Sr.
Philip Wong	Burton Vincent
Larry Goch	

ILLINOIS TOURNAMENT CALENDAR

Call Chess Phone, (312) 971-3666, for all recorded tournament announcements and results, often more up-to-date than CHESS LIFE or the ICB. The ICA Chess Phone voice is Todd Barre.

Unless otherwise noted, all tournaments require USCF memberships. Illinois Tour events also require ICA membership. Phone numbers are area code 312 unless a different area code is listed. Announcements of ICA affiliates receive more space in the Tournament Calendar than do those of non-affiliates.

Apr. 23: Peoria 2nd Quarter Cash Novice & Quad, at the Garrett Center in Peoria. Bill Wilkinson: (309) 673-9455.

Apr. 23: Spring Showers of 1988 Open, at the Washington Park Pavilion in Springfield. Thomas Knoedler: (217) 523-7265.

Apr. 23, 24: For the Penny Pinching Pawn Pusher, 1 day events at the Chicago Chess Center. Jules Stein: 929-7010.

Apr. 23, 24: Chicago Lawn Chess Assn. events. 476-5716.

Apr. 30: Chicago Lawn Chess Assn. event. 333-4298.

Apr. 30 - May 1: Oak Park-Forest Park Chess Club Spring Open, at the Mohr Community Center in Forest Park. Ken Marshall: 932-1455.

April 30, May 1: Chess Center Mod Quad, 1 day events at the Chicago Chess Center. Jules Stein: 929-7010.

May 7, 8: What Time Are the Rounds?, 1 day events at the Chicago Chess Center. Jules Stein: 929-7010.

May 7, 8: Chicago Lawn Chess Assn. events. 476-5716.

May 14, 15: What's the Time Control?, 1 day events at the Chicago Chess Center. Jules Stein: 929-7010.

May 15: Alton Connection Open #10, at the Ramada Inn in Alton. John Tonkinson: (618) 462-5732.

May 21: Tuley Park 1 day event, at 501 E. 90th Place, Chicago. Tom Fineberg: 721-3979.

May 21: Illinois Valley Quad #2, at the Grace United Methodist Church in LaSalle. Byron Pappas: (815) 224-2869.

May 21, 22: Pins and Forks, 1 day events at the Chicago Chess Center. Jules Stein: 929-7010.

May 21, 22: Chicago Lawn Chess Assn. events. 476-5716.

May 28: Chicago Lawn Chess Assn. event. 333-4298.

May 28, 29: Rook and Roll, 1 day events at the Chicago Chess Center. Jules Stein: 929-7010.

(Continued on Page 28)

ILLINOIS CHESS BULLETIN
357 W. GROVE
LOMBARD, ILLINOIS 60148

Speedy Delivery Appreciated

Bulk Rate
U.S. Postage Paid
Lombard, IL 60148
Permit No. 248