



# **ILLINOIS CHESS BULLETIN**

Official Publication of the Illinois Chess Association a U.S.C.F. Affiliate  
A Not For Profit Organization

JANUARY-FEBRUARY, 1989 VOLUME XII, NO. 1 BI-MONTHLY \$2.00



**ILLINOIS TOUR IN THE LAND OF  
LINCOLN:**

**GREATER PEORIA OPEN: MARCH 11-12**

**LINCOLN LAND MINI-TOUR OPEN  
(SPRINGFIELD): APRIL 22**

# ILLINOIS CHESS BULLETIN

**EDITOR:**

**KEN MARSHALL**  
357 W. Grove  
Lombard, Illinois 60148  
(312) 932-1455

**TECHNICAL EDITOR:**

**MARY GAITHER MARSHALL**

**ASST. TECHNICAL EDITORS:**

**DON WINSAUER & ALAN LOSOFF**

**GAMES EDITOR:**

**LAWRENCE CHACHERE**

**SUBSCRIPTIONS:**

The Illinois Chess Bulletin (ICB) is published bimonthly by the Illinois Chess Association. ICA membership includes a subscription to the ICB. (Century, Gold, and Patron members receive their ICB by first-class mail.)

**ANNUAL MEMBERSHIP RATES:**

Century Club:	\$100.00
Gold Card:	50.00
Patron:	25.00
Regular:	10.00
Junior (under 18):	6.00

Subscriptions, Address Changes, and Corrections should be sent to:

Alan Losoff, ICA Membership Secretary  
P.O. Box 157  
Morton Grove, IL 60053-0157

**SUBMISSIONS:**

Submit articles, photographs, crosstables, games, and other publishable materials to the Editor. Publication deadline for the next issue is March 20, 1989.

**ADVERTISING RATES:**

Full page	\$80
Half page	\$50
Quarter page	\$30
Eighth page	\$20

10% discount for the same ad in consecutive issues. 1/3 discount for ICA affiliates. All advertising must be camera ready to qualify for these rates. The ICA and the ICB reserve the right to reject advertising.

## TABLE OF CONTENTS

FROM THE EDITOR'S DESK	1
WHERE TO PLAY CHESS / CLUB AFFILIATES	2
FROM THE PRESIDENT	3
LETTERS / ALBRIGHT SCHOLASTIC	4
WHAT'S NEW	6
TIM JUST WINTER OPEN	7
HOW TO PLAY A GM IN A SIMUL	9
1989 ILLINOIS TOUR RULES	10
1989 ILLINOIS TOUR STANDINGS	11
GUREVICH-PELTS MATCH	12
SICILIAN: CHEKHOVER VARIATION	14
ILLINOIS / MIDWEST TOURNAMENT OF CHAMPIONS III	16
CANDIDATES MATCHES RESULTS	18
MIDWEST ACTION CHESS CHAMPIONSHIP	19
NO BONES MINI TOUR /GAMES FROM RECENT EVENTS	21
TOURNAMENT CROSSTABLES	22
ILLINOIS CHESS LEAGUE / CLUB SCENE	23

**ICA AFFILIATION:**

Chess clubs and other organizations which promote chess activity may affiliate with ICA. Affiliate benefits include a copy of each ICB by first-class mail, a listing (if desired) under "Where to Play Chess" in each issue, discounted ICB advertising rates, three-line tournament announcements in the "Tournament Calendar", and the right to run ICA Tour events. ICA affiliation costs \$15; please remit to address shown under "Annual Membership Rates". Include your club meeting times, name of contact person, and other useful information in the format shown in "Where to Play Chess" on page 2.

# From the Editor's Desk

The Illinois Chess Association's 1989 Illinois Tour returns to the heartland with the maxi-tour Greater Peoria Open (March 11-12) and the Land of Lincoln Mini-Tour Open (Springfield, April 22). These events give downstate players the opportunity to earn Tour points close to home. Historically, about half the Tour events each year have been held outside the Chicago area; when January's Bradley Winter Open is included, three of the six 1989 Tour tournaments scheduled before May 1 are set in either Peoria or Springfield. Decatur's Cyrus Bondari won the 1987 Illinois Tour primarily because of strong performances in downstate events. (Bondari finished third in 1988; other downstaters also won Tour prizes last year.) In sum: the Illinois Tour is not the "Chicago Area Tour". ICA members all over the state can and do seek out Tour events, and can and do win Tour prizes. But you can't win if you don't play (to coin a phrase). The 1989 Tour rules and Tour standings are on pages 10 and 11 of this issue, respectively.

\*\*\*\*\*

The next Illinois Chess Association Board meeting is scheduled for 1:00 p.m. on February 26, 1989, at the Hyatt Regency O'Hare Hotel in Rosemont, the location of the 1989 U.S. Open. The meeting is open to all ICA members. Come and meet the new ICA officers and check out the U.S. Open site.

\*\*\*\*\*

An old tradition will be revived on March 19, 1989, when the ICA holds its Awards Banquet at 1:30 p.m. at the Greek Islands Restaurant, 200 So. Halsted St., Chicago.

The affair will feature the presentation of awards to Illinois' outstanding chess players, organizers, and patrons. All ICA members (and their spouses, friends, etc.) are invited to attend. See the flier in this ILLINOIS CHESS BULLETIN for full details.

\*\*\*\*\*

Attention, organizers: the ICA's two major tournaments, the Illinois Open and the Illinois Class, are being put out for bid. The bidding deadlines are coming up fast: March 1 for the Open and April 15 for the Class. Helen Warren's "From the President" column has further details.

\*\*\*\*\*

Membership Secretary Alan Losoff reports that the ICA membership records are now in good shape. Please examine the mailing label on this ICB to make sure that the address and expiration date are accurate. Corrections should be sent to Alan Losoff, ICA Membership Secretary, P.O. Box 157, Morton Grove, IL 60053-0157.

\*\*\*\*\*

Unfortunately, the proposed story on Senior Master Peter Pelts has fallen victim to scheduling and space problems, and so is not in this issue. I am blocking out several pages for it in the March-April ICB, however, and will make every effort to publish it therein.

\*\*\*\*\*

I welcome games (annotated or not) from all chess players. I do ask, however, that score sheets be 1) legible, and 2) accurate. Many of the hours I spend on each ICB involve putting game scores into my computer; it is frustrating to come to move 37 on a score sheet and find that it is either unreadable or illegal. Although I can usually puzzle out the correct move, I had to drop several interesting games from this issue because the score sheets became incomprehensible.

\*\*\*\*\*

Last issue I stated that the Hillside and Springfield Chess Clubs had recently affiliated with the ICA for the first time. In fact, those clubs were ICA affiliates some years ago. I apologize for the error and welcome both clubs back.

\*\*\*\*\*

Don Winsauer has joined the ICB staff as an Assistant Technical Editor. Don, a computer expert who belongs to the Oak Park-Forest Park Chess Club, contributed much time and effort (as well as access to laser printers) to the production of this issue.

\*\*\*\*\*

Next time: a report on World Champion Garry Kasparov's brief visit to Chicago, the Peter Pelts story (really), an interesting article by Cyrus Bondari on games which got away from him during his opponent's time pressure, results and games from the Midwest Masters and Greater Peoria Open, etc.

**MOVING?**  
♟️♟️♟️♟️♟️♟️♟️♟️♟️♟️♟️♟️♟️♟️♟️♟️

Send address changes and corrections to:  
Alan Losoff  
ICA Membership Secretary  
P.O. Box 157  
Morton Grove, IL 60053-0157



## WHERE TO PLAY CHESS: ICA CLUB AFFILIATES



AMERICAN POSTAL CHESS TOURNAMENTS sponsors postal events and sells chess books and equipment. Contact Jim or Helen Warren, P.O. Box 305, Western Springs 60558. (312) 246-6665.

AUBURN HIGH SCHOOL CHESS CLUB, 4273 Straw Lane, Roscoe 61073. Contact James G. Boyer, sponsor. (815) 623-8148.

CENTRAL LAKE COUNTY CHESS CLUB meets Fridays, 7:15 p.m. to midnight, College of Lake County, Bldg. 1, Washington at Route 45, Grayslake. Contact Dennis Grant, 1657 McKay, Waukegan 60087. (312) 336-5188.

CHICAGO CHESS ASSOCIATION organizes major tournaments. Also master chess lessons, \$40/3hr. Contact Dick Verber, 1261 W. Loyola, Chicago 60626. (312) 262-9100 after 3 p.m.

CHICAGO CHESS CENTER meets for casual chess 7 days a week, 6 p.m. to 1 a.m., 2923 N. Southport, Chicago 60657. Also sponsors rated tournaments. Contact Jules Stein, (312) 929-7010.

CHICAGO CHESS MATES CLUB AND BOOKSTORE sponsors tournaments and group lessons, sells chess books and equipment, weekdays 4 p.m.-11 p.m., weekends 10 a.m. - 9 p.m. (closed Mondays), 1261 W. Loyola, Chicago, 60626. Contact Richard Verber or Al Chow (312) 262-9100 or (312) 262-8050.

CHICAGO INDUSTRIAL CHESS LEAGUE organizes frequent competition among commercial/government teams with awards, ratings, and special events. Contact Jim Brotsos, (312) 775- 5054, or Bruce McNeil, (312) 742-5195.

DECATUR CHESS CLUB meets Thursdays, 7:00 p.m. to midnight, Sheraton Inn, 450 E. Pershing, Decatur. Contact Bill Meyer, 2365 Esther, Decatur 62521 (217) 864-4797.

DOWNERS GROVE PARK DISTRICT CHESS CLUB meets Thursdays, 6:30-10 p.m., Lincoln Center, 935 Maple Ave., Downers Grove. Affiliated with USCF and ICA. Contact George Uffner, (312) 960-9382.

EVANSTON TOWNSHIP HIGH SCHOOL CHESS CLUB meets Fridays, 3:30-6:00 p.m, Beardsley Student Center. Contact Ken Lewandowski. (312) 492-7943.

FRED REINFELD CHESS CLUB meets Sunday afternoons from 2-6 p.m. at Coslow's, 200 E. Johns St., Champaign. Speed chess is emphasized. Contact Barry Fisher, 2112 Cyprus, Champaign 61821. (217) 333-9083.

GREATER PEORIA CHESS FEDERATION meets Mondays, 7 to 11 p.m., Garrett Center, 824 N. University, Peoria. Contact Bill Wilkinson, 901 N. Rebecca Pl., Peoria 61606. (309) 673-9455.

HILLSIDE CHESS CLUB meets Fridays, 7:30 p.m. to midnight, Hillside Baptist Church, 5152 Butterfield (just east of Taft), Hillside. Contact Larry Stiiwell, 4705 Elm, Lisle 60532. (312) 963-6799.

ILLINOIS VALLEY CHESS CLUB meets Thursdays, 6-10 p.m., Grace United Methodist Church, 1345 Chartres St., LaSalle. Contact Byron Pappas, 432 Creve Coeur, LaSalle 61301. (815) 224-2869.

LAKE COUNTY CHESS ASSOCIATION sponsors rated tournaments in the Grayslake/Zion area. Contact Tim Just, 37165 Willow Ln., Gumee 60031. (312) 244-7954.

MIDWEST CHESS ASSOCIATION organizes major tournaments for masters and experts. Contact Helen Warren, P.O. Box 305, Western Springs, 60558. (312) 246-6665.

OAK PARK / FOREST PARK CHESS CLUB meets Tuesdays, 7 p.m. to midnight, Mohr Community Center, Jackson and DesPlaines, Forest Park. Contact Ken Marshall, 357 W. Grove, Lombard 60148. (312) 932-1455.

PARK FOREST CHESS CLUB meets Thursdays, 7 to 10:30 p.m., Freedom Hall, Orchard & Lakewood, Park Forest. Contact Wayne Palmquist, 9820 S. 51st Ave. Oak Lawn 60453 (312) 857-8150.

SOUTHERN ILLINOIS CHESS LEAGUE sponsors rated tournaments throughout southern Illinois. Contact John Tonkinson, 105A Manor Court, Alton 62002. (618) 462-5732.

SPRINGFIELD CHESS CLUB meets Wednesdays, 6-10 p.m., Washington Park Pavilion, Park Ave. and South Grand Ave. West, Springfield. Contact Tom Knoedler, (217) 523-7265, or James Larson, (217) 529-0781.

ST. CHARLES CHESS CLUB meets Thursdays at 7 p.m., Baker Community House, 101 S. 2nd (Route 31), St. Charles. Contact Erv Sedlock, 6 N. 307 Old Homestead Rd., St. Charles 60174. (312) 377-7995.

TULEY PARK CHESS CLUB meets Saturdays, 1-5 p.m., Tuley Park Fieldhouse, 501 E. 90th Pl., Chicago. Contact Thomas Fineberg, 7321 S. South Shore Dr., Chicago 60649. (312) 721- 3979.

TWIN CITY CHESS CLUB meets Monday evenings, Parks & Rec. Bldg., 611 S. Linden, Normal, except 1st Monday/month, Garcia's, Waterson Place. Speed tournaments 50 cents/game. Contact Andy McGowan, 520 E. Chestnut, Bloomington 61701. (309) 827-7892.

**ICA Board Meeting  
February 26, 1989 - 1 p.m.  
Hyatt O'Hare in Rosemont**

**CHESS PHONE: (312) 325-3666**

**DOWNSTATE CHESS PHONE:  
(309) 655-0618**

# FROM THE PRESIDENT

by Helen Warren

## THE LURE OF THE TOUR

The ICA Tour got off to a rousing start with FOUR events in January alone. Two maxi- and two mini-tournaments in Waukegan, Rosemont, Wheeling, and Peoria respectively gave ICAers chances to earn tour points in abundance. We hope the coming months will see tour tournaments highlighting the calendar.

In 1988 nine events composed the tour, so if January is any indication of things to come, we're in for a windfall. An interesting statistic: five of the eleven money winners in the 1988 ICA tour were from OUT of the Chicago area! Congratulations to all the winners!

Organizers, hear this! It takes very little to run an ICA mini-tour. Your chess club is an ideal site; a tour event will introduce your club to many newcomers eager to compete for tour points--and the cost is minimal. Consider it an investment that will pay dividends in membership increase. Let's hear from you if you'd like more details.

## OPEN FOR BIDDING

ICA officers have endorsed placing our two major events out for bidding. Interested organizers should submit their bid, including dates, site, prize fund, proposed entry fee, proposal for profit sharing with ICA to the president. The officers will consider your bid and contact you. Should bids be judged unacceptable, the ICA will run the events as it has in the past.

Deadline for submitting bids for the Illinois Open, traditionally held over Labor Day week-end, is March 1. The Illinois Class has been held recently on the week-end before Thanksgiving. Deadline for receipt of IL Class bids is April 15.

## ICA BANQUET IS BACK

The Annual Awards banquet is scheduled for the fabulous GREEK ISLANDS RESTAURANT in Chicago! It's our opportunity to recognize our Tour winners with a check and our chess volunteers for their hard work throughout the year. See the enclosed flyer for details--and let's see you on March 19. Bring your spouse or a friend and enjoy the afternoon's festivities--good food, good friends, and a holiday free of competition (for a change!) Club members will want to take advantage of the multiple ticket discount: five tickets for \$60.

## NEW FACES...

Well, not really "new". Al Losoff has been membership secretary now for some time, but he takes on additional duties come February 18. Guy Gruenberg is forced to resign his post as ICA secretary due to increased business duties and travel. Al Losoff will succeed Guy as the chief money-man. Our thanks to Guy for his service to ICA in the past, especially during the difficult months September-December last year. He is committed to lending a hand with U.S. Open tasks in the coming months.




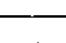
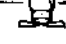

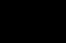
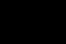

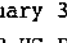
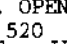
## GUREVICH 2nd IN NOVAG GRAND PRIX 1988!

Congratulations to Illinois resident Grandmaster Dmitri Gurevich! He has taken second place in the 1988 Novag Grand Prix race, winning \$2,500. Dmitri finished behind IM Igor Ivanov who pocketed \$5,000. A surprising third place finish: SM Michael Brooks of KC, MO.

## HONOR ROLL OF CONTRIBUTORS TO U.S. OPEN FUND

TOM FINEBERG, Chicago  
TODD BARRE, Clarendon Hills  
CHICAGO CHESS CENTER (Jules Stein)  
ST CHARLES CHESS CLUB (Erv Sedlock)  
TOM KNOEDLER, Springfield  
CHGO. INDUSTRIAL CHESS LEAGUE (J Brotsos)  
LAKE CO. CHESS CLUB (T Just)  
1989 NATIONAL OPEN (F Gruenberg)  
AMER. POSTAL CHESS TOUR. (J Warren)  
MIDWEST CHESS ASSOCIATION (H Warren)  
HAROLD WINSTON, Naperville  
SPARKY FULK, Skokie  
RICHARD ANDERSON, Elmhurst  
R BALES, Aurora  
DAVID COULTER, Villa Park  
EDGAR RUDZITIS, Chicago

As of 1/30/89

	\$5,000	OUR GOAL!
	4,500	
	4,000	
	3,500	
	3,000	
	2,500	
	2,000	
	1,500	
	1,000	
	500	
	0	

Total donated to U.S. Open Fund as of January 30: \$1,200+.

HELP US REACH OUR GOAL WITH A CHECK TO  
U.S. OPEN TREASURER, TODD BARRE,  
16W 520 59th St., #16C, Clarendon  
Hills, IL 60514-1753.

JOIN US IN THE KING HUNT WITH A  
CONTRIBUTION TO THE 1989 U.S. OPEN  
FUND!

# Letters to the Editor



You are doing a terrific job with the ILLINOIS CHESS BULLETIN. I can't single out any outstanding section of the magazine - it is all interesting and informative. I hope you continue as Editor for a long time. Please give my regards to your highly competent staff as well. ... I greatly appreciate the space you make available to southern Illinois chess activities.

John Tonkinson  
Alton, Ill.

[Editor's Note: John Tonkinson is the president of the Southern Illinois Chess League, which sponsors monthly rated tournaments, primarily in Alton and Mt. Vernon. Information about the SICL (in which the \$7 annual membership includes a subscription to the quarterly SICL BULLETIN) can be obtained by contacting Mr. Tonkinson at 105A Manor Court, Alton, IL 62002 (Phone: (618)462-5732)]

I have been a member of the Illinois Chess Association for a number of years now, and I look forward to receiving my copy of the ILLINOIS CHESS BULLETIN every couple months. I find, however, that my interest is piqued more by the tournament listings than by the actual content of the magazine.

I understand that being the Editor is a very difficult job, and I'm sure that you are doing the best that you can. However, in order to do a good job, you need input from your readers, and you need help from your contributing editors. This is why I'm writing.

Regarding the first point, I would like to see more instructional articles and more annotated games in the ICB. While game scores are always nice, I believe the lower rated players would benefit more from notes and comments about why moves were played, where mistakes were made, etc. I think you could sacrifice a couple

crosstables for games on a more educational note. As for lighter pieces, I really enjoy David Wulatin's column and would like to see more articles like it, in addition to profiles of local masters. Tell the casual chess fan something about the Chows, Dandridges, and Marinovskys! What do they do for a living? How did they get interested in chess? Etc.

Secondly, I realize that a magazine is only as good as its contributions; I am enclosing an article on an offbeat Sicilian line for your consideration. This is the type of instructional article I would like to see in the ICB, so I figured I might as well try my hand at one. After all, what right do I have to criticize if I can't do one myself?

In any case, I hope you enjoy the article. It would be nice to see other experts and masters share their opening secrets in a feature like "Opening of the Month." Give it some thought!  
Mark S. Siwek  
Park Ridge, Ill.

[Editor's Note: Thanks for your comments. I agree that annotated games are important, and I use virtually all such games from Illinois events which I receive from masters and experts. This ICB contains analysis by Grandmaster Dmitry Gurevich, Illinois State Champion Peter Pelts, Senior Master Greg DeFotis, and ICB Games Editor Lawrence Chachere, among others. I have asked several more top Illinois players to annotate games, and I hope to publish that analysis in future issues. Unsolicited annotated games are always appreciated.

Given the ICB's space limitations, I am somewhat reluctant to print instructional pieces. Books and articles on opening analysis, endgame technique, etc. are widely available elsewhere; stories about and crosstables from Illinois tournaments are not. I nevertheless will consider

publishing any instructional articles submitted (and will probably use them if they are as well done and interesting as yours, which appears in this issue).

Profiles of a number of Illinois masters (e.g., Albert Chow) have appeared in ICBs of years past. I would welcome contributions in this area; finding the time to do such stories myself is a problem at present. (I do plan to present an article on Peter Pelts in the next ICB.)

As you note, the key to the ICB is input from readers, be they organizers, directors, club officers, or simply enthusiastic chess players. Annotated games, crosstables, articles on tournaments and local masters, club news, etc. - all are of interest, but I cannot print them if I do not have them. Readers: send me material!]

## ALBRIGHT SCHOLASTIC TOURNAMENT ATTRACTS 227 ENTRIES

Junior high and grade school chess players from all over Illinois came to Villa Park's Albright Middle School on January 21, 1989, for a two section scholastic event organized by Jerry Esposito. Wilson Middle School (Rockford) won the four round Grade 6-8 competition with a 14-2 result, followed by Albright Middle School (11.5-4.5) and Hadley Middle School (Glen Ellyn) (11-5). Posting perfect 4-0 scores were Scott Rifkin (Wilson), Jeremy Sevock (St. Mary's, Lake Forest), Mickey Jacobsen (Hadley), Jamie Getchius (Haines, Naperville), and Phil Drennan (Wilson).

Benjamin Franklin School (Glen Ellyn) finished 20-0 to top the five round Grade 5-Below event,

(Continued on page 15)

1989

GREATER PEORIA OPEN

1989

March 11-12

GRAND PRIX & IL MAXI-TOUR EVENT

TWO SECTIONS

<u>OPEN</u>		<u>RESERVE - 1799 &amp; Below</u>	
First Prize	\$300	First Prize	\$150
Second Prize	\$150	Second Prize	\$75
Top Under 2000	\$150, \$50	Class C	\$75, \$50
		Class D/Under	\$75, \$50

Optional 1/2 point  
bye available in  
any one of the  
first 3 rounds

5 Round Swiss

Signature Inn  
4112 N. Brandywine  
Peoria, IL 61614  
(309) 685-2556  
Rooms: \$40 Single, Double,  
or Triple  
Take I-74 to War Memorial Drive (East)

Time Control:  
Sat. 50/2, 30/1  
Sun. 40/2, 25/1

Sat., March 11:  
Registration: 8:30 - 9:30  
Rounds: 10, 2:30, 7:00  
Sun., March 12:  
Rounds: 9:30, 2:30

Entry Fee: \$25 advance  
\$30 at site  
\$3 Jr. Discount

ALL PRIZES GUARANTEED

ENTRIES TO:

ICA Membership Required

Bill Wilkinson  
905 N. Rebecca Pl.  
Peoria, IL 61606  
(309) 673-9455

Regular \$10.00  
Junior \$ 6.00

# What's new

## **CHOW AND MARTINOVSKY DRAW EIGHT GAME MATCH**

Senior Masters Albert Chow and Eugene Martinovsky, long time rivals who have been among the half dozen best chess players in Illinois for years, battled to a 4-4 tie in an eight game match played at the Chicago Chess Center between January 15 and January 22, 1989. Each player had two wins to go with four draws. More details about (and possibly some games from) this match should appear in the next ICB.

## **BONDARI TAKES BRADLEY WINTER OPEN**

Cyrus Bondari started his quest for the 1989 Illinois Tour title by winning the 29 player January 28, 1989 Bradley Winter Open with a perfect 5-0 score. The 1987 Tour champion was followed by Rich Vlastnik (4-1). Larry Cohen (3.5-1.5) topped Class A, Paul Mills, Bob Sphar, and Doug Mohr (3.5.1.5) shared Class B honors, and Larry Zevnik (2.5-2.5) took the Class C/Under prize.

## **MIDWEST BLITZ CHAMPIONSHIP MAY FEATURE FOUR GRANDMASTERS**

The Midwest Blitz Championship, a World Blitz Chess Association event, will take place on March 2, 1989, at 8 p.m. at the Hyatt Lincolnwood Hotel. This event, open to all WBCA members (nonmembers can join at the site), may feature the four grandmasters (Maxim Dlugy, Dmitry Gurevich, Sergey Kudrin, and Soviet visitor Eduard Gufeld) who have indicated that they intend to play in the Midwest Masters on March 3-5. For further details, call Helen Warren at 246- 6665.

## **GRANDMASTER MAXIM DLUGY TO PRESENT SIMUL IN FOREST PARK**

Maxim Dlugy, at 23 one of America's youngest and strongest Grandmasters, will play up to 40 boards at a simultaneous exhibition at the Oak Park-Forest Park Chess Club (Jackson & DesPlaines in Forest Park) at 7:45 p.m. on March 7, 1989. Dlugy was the 1985 World Junior Champion; his recent wins include both the 1988 World Open and the 1988 World Open Blitz tournaments, as well as the 1988 U.S. Open Blitz Championship. Playing fee will be \$15 in advance, \$17.50 at the door; spectator's fee will be \$2. To reserve a board send a check, payable to the OP-FP CC, to OP-FP CC President Ken Marshall, 357 W. Grove, Lombard, IL 60148. (For more information, call Marshall at 932-1455 between 6 p.m. and 10 p.m.)



# MARTINOVSKY WINS 1989 TIM JUST WINTER OPEN

## ROCKWELL TOPS RESERVE SECTION

By Tim Just

Since their January, 1986 Super Bowl victory, the Chicago Bears have lost playoff games three years in a row on the same weekend that the Tim Just Winter Open has been held. Coincidence? Perhaps - but who is going to tell Bears Coach Mike Ditka?

Senior Master Dr. Eugene Martinovsky scored 4.5-.5 to take first place in the Open section of this sixth annual event on January 7-8, 1989. The 57 player tournament, held at the Illinois Beach Resort in Zion, featured \$1,700 in guaranteed prizes and maintained its traditional place as the first Illinois Maxi-Tour event of the new year. Martinovsky finished on top by defeating Master Tony Schroeder in a tactical battle which ended with a spectacular time scramble. Spectators crowded around this last round game as Schroeder, who had won a piece early, struggled to bring home his attack in the face of both Martinovsky's counteroffensive and tremendous time pressure. With seconds left on his clock, Schroeder blundered and was mated three moves short of the time control (40 moves in 100 minutes).

Members of the Central Lake County Chess Club (the home of "caveman chess") did well. Cavemen Kevin Gensler (an Expert who nicked Martinovsky for a half point in Round 4) and Master Ken Wallach played a 37 move draw in the final round on their way to 4-1 scores and a tie for second and third places in the 28 player Open section. Gensler's fine play, which also included a victory over Master Eric Schiller, garnered him top Expert honors.

Robert Sax, who usually has good results in Lake County tournaments, ended up 3.5-1.5 to share the second Expert prize with piano-playing Dan Kamen. Howard Cohen, Jeff Holmes, and Downers Grove South High School freshman Brad Crawford each scored 3-2 to split the Class A money.

In one of his finest tournament performances ever, caveman David Rockwell went 4.5-.5 to take clear first ahead of 28 other Reserve section players (including Illinois Chess Association President Helen Warren and Metro Vice President Fred Gruenberg, busy chess organizers who found some time to enjoy a little wood pushing of their own). William Wolf, Kevin Solcich, and another Caveman Chess Club member, Class C winner Daryl Zelinski, followed with 4-1 scores. Second prize in Class C was shared by Thomas Shaffer, Wisconsin's Stan Biezynski, and Robert Kempner, all at 3-2. (Shaffer used part of his winnings to become an Illinois Chess Association Patron member.)

Wisconsin resident Gerald Knutson, Robert Bales, Jr., and Anthony Caliendo tied for Class D/E honors with 2.5-2.5 results. Terry Terrance and Cameron Felner posted 3-2 marks to top the Unrated players.

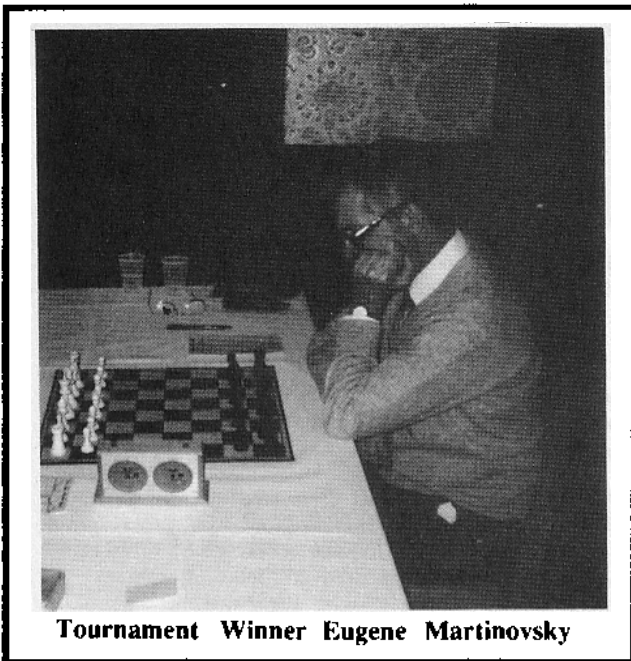
Tim Just was the chief tournament director, assisted by the two cavemen Dennises (Dennis Grant and Wisconsinite Mike Dennis). Just, Grant, and Don Martin organized the tournament on behalf of the Lake County Chess Association.

### Tim Just Winter Open

January 7-8, 1989

OPEN SECTION		USCF		score		tour				
	pre/post									
1	MARTINOVSKY Eugene	2436/2441	W14	W12	W16	D 2	W 6	4.5	16	M
2	GENSLER Kevin	2152/2197	W13	W20	W19	D 1	D 3	4	8	MX
3	MALLACH Ken	2296/2304	W10	W 7	Dbye	W 4	D 2	4	8	#
4	SAX Robert	2044/2083	W11	D 6	W18	L 3	W13	3.5	4	MX
5	KAMEN Dan	2126/2142	Dbye	W15	D 6	W17	D 7	3.5	4	MX
6	SCHROEDER Tony	2242/2237	W 9	D 4	D 5	W12	L 1	3	3	M
7	MARREN Jim	2063/2077	W26	L 3	D 9	W15	D 5	3	3	MX
8	SNYTHE Bill	2009/2014	W24	L16	D13	W22	D 9	3	3	MX
9	CRAWFORD Brad	1951/1987	L 4	W21	D 7	W18	D 0	3	3	MXA
10	COHEN Howard	1961/1991	L 3	W26	L23	W20	W17	3	3	MXA
11	HOLMES Jeffrey	1809/1849	L 4	Dbye	D14	W23	D12	3	3	MXA
12	BROCK Bill	2107/2095	W25	L 1	W22	L 6	D11	2.5	2.5	MX
13	REYES Virgilio	2021/2018	L 2	W27	D 8	W14	L 4	2.5	2.5	MXA
14	PIWEL Bernard	2025/2022	L 1	W25	D11	L13	W18	2.5	2.5	MX
15	COHEN Lawrence	2025/2019	W27	L 2	W17	L 10	D24	1.5	1.5	MXA
16	SCHNUGBEROW Kevin	2174/2161	W17	W 8	L 1	-	-	2	2	MX
17	FISHER Gregory	1941/1945	L16	W24	W20	L 5	L10	2	2	MXA
18	REYES Virgilio	2012/2012	W21	D19	L 4	L 9	L14	1.5	1.5	MX
19	SCHILLER Eric	2330/2308	W23	D18	L 2	-	-	1.5	1.5	MX
20	MARSHALL James	2006/1961	W27	L 2	L17	L10	D24	1.5	1.5	MX
21	SCHNUCKER Vivian	1900/1880	L18	L 9	W24	D25	L15	1.5	1.5	MXA
22	MARTIN Don	1798/1812	Dbye	W23	L12	L 8	-	1.5	1.5	MXA
23	SURAK Steve	2058/2058	L19	L22	W10	L11	D25	1.5	1.5	MX
24	GRAVES William	1910/1888	L 8	L17	L21	W26	D20	1.5	1.5	MXA
25	JONAITIS Algis	1871/1864	L12	L14	Dbye	D21	D23	1.5	1.5	MXA
26	BARBERSTOCK Dan	1882/1837	L 7	L10	L15	L24	Dbye	1	1	MXA
27	DENNIS Mike	1783/1770	L20	L13	-	-	-	0	0	

RESERVE SECTION		USCF		score		tour				
	pre/post									
1	ROCKWELL David	1762/1804	W26	W12	W 4	W 2	D 3	4.5	16	B
2	WOLF William	1821/1836	W29	W25	W20	L 1	W 5	4	8	B
3	SOLCICH Kevin	1711/1747	W14	D 5	W 9	W 8	D 1	4	8	B
4	ZELINSKI Daryl	1594/1635	W28	W 8	L 1	W14	W 6	4	8	BC
5	BAYER Duane	1690/1711	W17	D 3	W13	W20	L 2	3.5	4	B
6	TERRANCE Terry	1506/1541	W11	L13	W27	W21	L 4	3	3	BC
7	KEMPNER Robert	1432/1491	W15	L20	W25	D16	D 9	3	3	BC
8	BURGESS Fred	1745/1719	W19	L 4	W18	L 3	W21	3	3	B
9	SHAFFER Thomas	1594/1606	D10	W24	L 3	W15	D 7	3	3	BC
10	FELTNER Cameron	- /1634	D 9	L16	W24	D12	W23	3	3	BC
11	BIEZYNSKI Stan	1483/1513	L 6	W23	Dbye	D13	W20	3	3	BC
12	MARREN Helen	1624/1606	W27	L 1	D15	D10	D18	2.5	2.5	B
13	GRANT Dennis	1627/1627	D22	W 6	L 5	D11	D14	2.5	2.5	B
14	FENNER Charles	1465/1482	L 3	W17	W26	L 4	D13	2.5	2.5	BC
15	MC ALISTER Kelvin	1600/1574	L 7	W19	D12	L 9	W22	2.5	2.5	B
16	OWIECKI Roger	1684/1682	Dbye	W10	D21	D 7	-	2.5	2.5	B
17	BALES Robert	1285/1306	L 5	L14	W28	Dbye	W24	2.5	2.5	BCD
18	CALIENDO Anthony	1351/1378	L25	W 6	L 8	W26	D12	2.5	2.5	BCD
19	KNUTSON Gerald	1371/1365	L 8	L15	Dbye	D22	W28	2.5	2.5	BCD
20	SWANSON Vic	1660/1660	W23	W 7	L 2	L 5	L11	2	2	B
21	FADILLA Rudy	1544/1535	Dbye	W22	D16	L 6	L 8	2	2	BC
22	WILLIAMS Robert	1336/1336	D13	L21	Dbye	D19	L15	1.5	1.5	BCD
23	GRANT Dennis	1383/1364	L20	L11	Dbye	W28	L10	1.5	1.5	BCD
24	WALLER Ronald	1487/1442	Dbye	L 9	L10	W 6	L17	1.5	1.5	BC
25	GRUENBERG Fred	1690/1658	W18	L 2	L 7	-	-	1	1	B
26	EDWARDS Tom	1522/1476	L 1	W28	L14	L18	-	1	1	BC
27	DUPEE Arthur	1236/1229	L12	Dbye	L 6	L 6	L 6	1	1	BCD
28	HARRON Ellen	1137/1089	L 4	L26	L17	L23	L19	0	0	
29	CHAKUMB Bruce	1465/1461	L 2	LF	-	-	-	0	0	



Tournament Winner Eugene Martinovsky

**GAMES FROM THE 1989  
TIM JUST WINTER OPEN**

**White: Anthony Schroeder (2230) Black: Eugene Martinovsky (2454)** 1.Nf3 Nf6 2.d4 g6 3.Bf4 Bg7 4.e3 O-O 5.c4 d6 6.Be2 Nbd7 7.h3 c6 8.Nc3 Re8 9.O-O Qb6 10.Qc2 e5 11.Bh2 Nh5 12.Rad1 f5 13.c5 dxc5 14.Na4 Qd8 15.dxc5 Kh8 16.g4 fxg4 17.hxg4 Qe7 18.gxh5 b5 19.e6 Qxe6 20.Nxc5 Nxc5 21.Qxc5 Qg4+ 22.Kh1 Qe4 23.Qg5 Bh3 24.Rg1 Rf8 25.Rg3 Bf5 26.hxg6 hxg6 27.b3 Kg8 28. Qh4 Qc2 29.Ng5 Rfd8 30.Re1 Rd2 31.Rgg1 Rxe2 32.Qh7+ Kf8 33. Bd6+ Ke8 34.Qxg7 Be4+ 35.Nxe4 Qxe4+ 36.Kh2 Qh4+ 37.Kg2 Rxf2++ 0-1

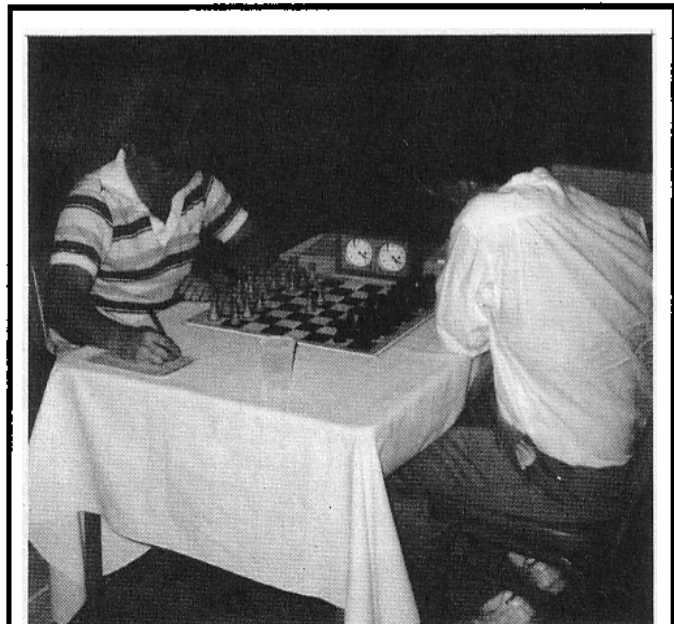
**White: Eric Schiller (2262) Black: Kevin Gensler (2152)** 1.e4 c5 2.Nf3 d6 3.d3 Nc6 4.g3 g6 5.Bg2 Bg7 6.O-O Nf6 7.c3 O-O 8. Na3 Rb8 9.Be3 b5 10.e5 Nd5 11.exd6 Qxd6 12.Qd2 Nxc3 13.Qxc3 h6 14.Rad1 Be6 15.Nd2 f5 16.Nb3 Bxb3 17.axb3 e5 18.Nc2 b4 19. c4 Rbd8 20.Ra1 Nd4 21.Nxd4 cxd4 22.Qf3 e4 23.dxe4 d3 24.e5 Qxe5 25.Rxa7 d2 26.Qd1 Rd3 27.Bd5+ Kh7 28.Rd7 Kh8 29.Kg2 Re8 30.h3 Bf6 31.Kh2 Qe2 32.Be6 Rxd7 33.Bxd7 Qxf1 34.Qxf1 Re1 35. Qg2 d1=Q 36.Qa8+ Kg7 37.Bc6 Qd2 38.Qa7+ Re7 39.Qc5 Qd4 40. Qxb4 Qxf2+ 41.Bg2 Re1 0-1

**White: William Wolf (1783) Black: David Rockwell (1762)** 1.e4 e6 2.d4 d5 3.Nc3 Bb4 4.e5 Ne7 5.a3 Bxc3+ 6.bxc3 c5 7.Nf3 Qa5 8.Bd2 Nbc6 9.a4 O-O 10.Bd3 f5 11.exf6 Rxf6 12.Bxh7+ Kxh7 13. Ng5+ Kg6 14.h4 Rf5 15.g4 Rxg5 16.hxg5 Bd7 17.Qf3 Rg8 18.Qh3 Kf7 19.c4 Qe7 20.cxd5 Nxd4 21.dxe6+ Bxe6 22.O-O-O Qc6 23.Bc3 Ne2+ 24.Kb1 Nxc3+ 25.Qxc3 Qxa4 26.Qf3+ Ke8 27.g6 Qa2+ 28.Kc1 Bd5 29.Qf4 Qa1+ 30.Kd2 Qd4+ 31.Qxd4 cxd4 32.Rhe1 Kd7 33.Kd3 Nc6 34.g5 Rf8 35.Rf1 Rf3+ 36.Kd2 Rf5 37.f4 Nd8 38.Ra1 a6 39. Ra3 Nc6 40.Rh3 Bg2 41.Rhf3 Bxf1 42.Rxf1 Rxf4 43.Rh1 Rf5 0-1

**White: Daryl Zelinski (1592) Black: Charles Fenner (1460)** 1. e4 c5 2.Nf3 d6 3.Bd3 Nf6 4.c3 e6 5.O-O Be7 6.Re1 O-O 7.Bc2 Nc6 8.d3 Re8 9.h3 a6 10.Be3 Ne5 11.Nbd2 Bd7 12.Nxe5 dxe5 13. Nf3 Qc7 14.Rc1 Red8 15.Qe2 b6 16.d4 Bd6 17.Bg5 cxd4 18.cxd4 Bb5 19.Bd3 Bxd3 20.Qxd3 Qb8 21.Bxf6 gxf6 22.Rc2 Re8 23.Ree1 Rxc2 24.Rxc2 Qb7 25.dxe5 Bxe5 26.Nxe5 fxe5 27.Qg3+ Kf8 28. Qxc5 Kg8 29.f3 Rd8 30.Rc7 1-0

**White: Greg Fischer (1941) Black: Howard Cohen (1972)** 1.e4 e6 2.d4 d5 3.Nc3 Nf6 4.e5 Nfd7 5.f4 c5 6.Nf3 a6 7.f5 cxd4 8.fxe6 fxe6 9. Qxd4 Nc6 10. Qg4 Ndx5 11.Qg3 Qc7 12.Bf4 Bd6 13.O-O-O Nd3+ 14.Kb1 Nxf4 15.Ng5 Bd7 16.Nf7 Kxf7 17.Bd3 Nxd3 18.Qxd3 Ne5 19.Rhf1+ Ke7 20.Qd4 h6 21.Rde1 Rxf8 22.Rxf8 Rxf8 23.Qh4+ Rf6 24.g4 Qc4 25.Qh3 Nf3 26.Rd1 Be5 0-1

**White: Helen Warren (1624) Black: Cameron Feltner (Unr)** 1.d4 d5 2.c4 c6 3.Nf3 Bf5 4.Nc3 Nf6 5.e3 e6 6.cxd5 cxd5 7.Bb5+ Nc6 8.Ne5 Qb6 9.Qa4 Re8 10.O-O Bd6 11.Bxc6+ bxc6 12.Nf3 O-O 13. Nh4 Bd3 14.Rd1 Qa6 15.Qxa6 Bxa6 16.Nf3 c5 17.dxc5 Rxc5 18.e4 Bc7 19.exd5 Nxd5 20.Nxd5 Rxd5 21.Be3 Bb6 22.Rxd5 exd5 23.Bxb6 axb6 24.Ne5 Re8 25.Re1 f6 26.Nf3 Rxe1+ 27.Nxe1 d4 28.Nf3 d3 29.Nd2 Kf7 30.f4 Ke6 31.Kf2 Kd5 32.Ke3 f5 33.h4 h5 34.Nb3 Bc4 35.Nc1 d2 36.Kxd2 Ke4 37.Ne2 g6 38.b3 Ba6 39.a4 Bd3 40.b4 Bc4 41.a5 bxa5 42.bxa5 Bd3 43.Nc3+ Kd4 44.Ne2+ Ke4 45.Nc3+ Kd4 46.Ne2+ Ke4 47.Nc3+ Kd4 48.Ne2+ 1/2-1/2



Reserve Champion David Rockwell (left) defeated Kevin Solcich in the last round

# HOW TO LOSE TO A GRANDMASTER IN A SIMUL (WITHOUT GETTING YOUR BUTT KICKED)

By David Wulatin

Heads up, campers! Today we have a real game with real (sort of) annotations! (And you thought I didn't take chess seriously.) This is one of twenty games from a simultaneous exhibition given by 1988 U.S. Open Champion Dmitry Gurevich at the Oak Park-Forest Park Chess Club on January 24, 1989.

White: Grandmaster Dmitry Gurevich (26-something)  
Black: David Wulatin (a mere 900 points lower)  
Three passes allowed

HINT #1: Prepare your opening. Before the simul I studied the French (against e4) and the Nimzo (against d4), so I'm ready for anything.

1.Nf3

Except the Reti. SonovaS\*#@&#!

1...d5 2.c4 Nf6?! 3.cxd5 Nxd5 4.d4 b6 5.c4 Nf6 6.Nc3 Bb7 7.Bd3 g6 8.0-0 Bg7

Can Black's fianchettoed Bishops overcome White's strong center? Of course not. White's a grandmaster, remember?

9.h3 0-0!!!!

HINT #2: To boost your morale, always give yourself credit for a spectacular move.

10.Be3 Nbd7 11.Qe2 Re8

Gee, if I didn't know better I'd say that Dmitry thinks centralization is important. No immediate threats yet, but that's the trouble with playing a grandmaster: it's like having the role of Sexually Active Teenager #2 in a slasher movie. You know you're going to get your throat cut, but you don't know when.

12.Rfd1 c5 (1st pass)

HINT #3: Use your passes! Too often a player saves his passes "for later", and by the time he uses them his position is hopeless. I needed time to make sure that there weren't any nasty discovered attacks with White's

Knight if the d-file opens.

13.d5 Ne8 14.Rac1 Ne5 15.Nxe5 Bxe5

Time to take stock. I'm cramped as hell, but I'm not down material, I actually have a decent piece (my dark squared Bishop), and I'm not the first person to resign! Meanwhile, spectators are looking at my game with interest and murmuring "Hey, he's holding his own!"

16.Ba6 Qc7

Black does not fear 17.Nb5? Bxa6.

17.a4 Nd6!

Best. Black blockades White's Pawn center and contests the white squares on the Queenside.

18.Bh6 Rfd8 19.Bxb7 Qxb7 20.b3 a6!?

A double-edged move. On the plus side, I begin to think about ...b5, ...c4 with the idea of using my Queenside pawn majority to create a passed pawn. On the minus side, this move triggers something in my subconscious, and suddenly the entire soundtrack from "Grease" is running through my head ("Tell me more, tell me more/Was it love at first sight?/Tell me more, tell me more/Did she put up a fight?/ Da da de de de da da").  
AAAAHHHHHHHHHHHHHHHHHHHHH!!!

HINT #4: Concentrate!

21.Qf3! b5 22.axb5 axb5 23.Bf4 Bxf4 24.Qxf4

Suddenly White is menacing my Kingside. I never do get my Queenside passer.

24...f6 25.e5 Ne8 26.Ne4 Rxd5 27.exf6 exf6 28.Nxf6+ Nxf6 29.Qxf6 Rxd1?

Not a good move, but I was panicking. I considered doubling Rooks on the d-file until I saw 30.Qxd8+! Rxd8 31.Rxd8+; I didn't like the idea of having the Queen in a two Rooks vs. Queen ending. There's probably a better move, but I

foolishly disregarded Hint #3 (Use your passes!) and rushed into the Rook trade. If any alert readers find a game-saving continuation for Black, don't tell me. I don't want to bang my head against the wall, crying "If only I had played ...!"

30.Rxd1 Qc7 31.Qe6+ Kh8 32.Rd7

Simple, obvious and completely overlooked by me when I played 29...Rxd1?

32...Qf4 33.g3 Qc1+

I played this to gain time. I saw two mate threats on the seventh rank, and even if I stopped them, I had to contend with Rxh7+, winning a couple of pawns. But how to stop the mate? Sure, it looks easy to you, sitting in your armchair munching Doritos, but with just five people still playing, and a grandmaster walking over to my board NOW ...

34.Kg2 Qh6!

HINT #5: When the GM takes a long time at your board, revel in his frustration. Mock him in your head. HAHAAHAHA! No mate here, Dmitry! You'll have to find another fish to fry!

35.Rxh7+ Kxh7 36.Qxc8 Qg5 37.Qd7+ Kh6 38.Qxb5 Qd5+ 39.Kg1 Qd1+ 40.Qf1 Qc2 41.Qc4! Qd1+ 42.Kg2 Kh7 (2nd pass)

I took the pass to determine if this endgame was as hopeless as I thought it was. It was.

43.h4 Qb1 44.g4 Qd1 45.Qc4 Qxb3 46.h5 Qf7 47.hxg6+ Qxg6 48.Qxg6 Kxg6 49.Kf1 Kg5 50.f3 Resigns

HINT #6: Know when to quit. I've seen guys who play until mate when they're down six pieces. I've also seen guys who would make Dmitry queen the pawn in this game. Show some class. Making it to move 50 only a pawn down is not bad. Now, it's time to surrender.

# 1989 ILLINOIS TOUR RULES

By Bill Smythe

The Illinois Tour, a year long series of tournaments sponsored by the Illinois Chess Association and featuring cash prizes for top performers in six categories from Master to Class D, is underway, and will continue through December. The Tour rules and methods of calculation set out below are the same which were used in 1988.

There are two types of Tour events, maxi- and mini. Major tournaments such as the Tim Just Winter Open, Greater Peoria Open, Master Challenge, Illinois Open, etc. are likely to be maxi-events, while others (often one-day tournaments) will be mini-events.

Tour points are awarded in six rating classes: Master (2000 and up); Expert (2000-2199); Class A (1800-1999); Class B (1600-1799); Class C (1400-1599); Class D (Below 1400).

Players earn tour points according to score. Maxi-events award 32 points for a perfect score, mini-events 16. For each half-point below a perfect score, the Tour award is cut by half. When this halving would result in the points awarded being less than the score, the score itself is used instead. No Tour points are awarded for a score of zero.

The above formula works out as follows for three, four, and five round Tour tournaments:

3 Round Event		
Score	Maxi	Mini
3	32	16
2.5	16	8
2	8	4
1.5	4	2
1	2	1
0.5	1	0.5
0	0	0

4 Round Event		
Score	Maxi	Mini
4	32	16
3.5	16	8
3	8	4
2.5	4	2.5
2	2	2
1.5	1.5	1.5
1	1	1
0.5	0.5	0.5
0	0	0

5 Round Event		
Score	Maxi	Mini
5	32	16
4.5	16	8
4	8	4
3.5	4	3.5
3	3	3
2.5	2.5	2.5
2	2	2
1.5	1.5	1.5
1	1	1
0.5	0.5	0.5
0	0	0

Each rated player receives Tour points in all rating classes from his own up through the rating class of the highest rated player in the tournament or section.

## EXAMPLES:

1. Kathy Knight, an A player, scores 4-1 in a five round maxi-event. According to the chart, she has earned eight Tour points. The tournament was a single-section event, open to all, and at least one Master participated. Kathy's eight Tour points are awarded in all classes from A through Master: she earns eight A points, eight Expert points, and eight Master points.

2. Benjamin Bishop, a B player, scores 4.5-.5 in a five round maxi-event. The chart shows that he has earned 16 Tour points. He played in the Under 2000 section of the tournament, however. Because no Experts or Masters played in that section, Benjamin's Tour points are awarded only in classes A and B: he receives 16 A points and 16 B points.

All Illinois residents playing in Illinois Tour events must be Illinois Chess Association members. Out-of-staters who are members of their home state chess associations need not join the ICA, but cannot accumulate Tour points at tournaments in which they are not ICA members.

At the end of the year, cash prizes are awarded to those ICA members who have accumulated the greatest Tour point totals in each class. The 1989 Illinois Tour prizes are as follows:

Master:	1st: \$300	2nd: \$200	3rd: \$140
Expert:	\$150	\$75	
Class A:	\$120	\$60	
Class B:	\$90	\$45	
Class C:	\$60	\$30	
Class D:	\$30		

Cash prizes will be awarded only to those players who play in at least three Tour events in 1989. Prizes which would have been won by players who participate in only one or two such events will be distributed to those next in line.

Unrated players cannot accumulate Tour points. Events they play in, however, do count toward the three event minimum: this may help them cash in on Tour points won later in the year when they become rated.

# 1989 ILLINOIS TOUR - THE RACE IS ON

By Ken Marshall

Bidding to repeat his 1988 first place finish, Albert Chow has taken the early lead in the 1989 Illinois Tour. Chow, who played in two of January's four Tour tournaments, has garnered 34.5 Tour points, putting him slightly ahead of Illinois's resident grandmaster, Dmitry Gurevich, who earned his 32 points with a 5-0 score in one maxi-tour event.

Steven Szpisjak's 4-0 mini-tour result catapulted him to the top of the Expert class, where he is followed by Richard Vlastnik, Steve Surak, and Kevin Gensler. Brad Crawford and Bill Graves set the pace in Class A, with Larry Cohen and John Porter only a half point behind. David Rockwell has a comfortable Class B lead, while Daryl Zelinski and Robert Bales are out in front in Classes C and D, respectively.

Tour participants who have now compiled 3 or more points (2.5 or more in Class D) are set out below. This list, which was prepared by Tour Director Bill Smythe, is current through February 15, and reflects the following Tour events: Tim Just Winter Open, Midwest Action Chess Championship, No Bones Mini-Tour, and Bradley Winter Open.

The next scheduled Tour tournaments are the Greater Peoria Open (Maxi-Tour: March 11-12) and the First Lincoln Land Mini-Tour Open (April 22).

REMEMBER: YOU MUST PLAY IN AT LEAST THREE TOUR TOURNAMENTS IN ORDER TO BE ELIGIBLE FOR TOUR PRIZES. Complete Tour rules, regulations, and prize fund information appear on page 10 of this ICB.

## Master Tour Points:

CHOW Albert	34.5(2)
GUREVICH Dmitry	32 (1)
MARTINOVSKY Eugene	24 (2)
BONDARI Cyrus	16 (1)
SZPISJAK Steven	16 (1)
VLASTNIK Richard	12 (2)
MALLACH Ken	12 (2)
SURAK Steve	11.5
GENSLER Kevin	10.5(2)
SCHILLER Eric	9.5(2)
CRAWFORD Brad	8.5
GRAVES Bill	8.5
COHEN Larry	8
COLIAS Bill	8 (1)
CONDON James	8 (1)
LEVINE David	8 (1)
PELTS Peter	8 (1)
PORTER John	8 (1)
SATTERLEE Ray Doyle	8 (1)
UMEZINWA George	8 (1)
MC NAMARA Jim	7 (2)
SMYTHE Bill	7 (2)
BOUTON Barry	6 (2)
SAX Robert	6 (2)
BROCK Bill	5.5(2)
WARREN Jim	5.5(2)
FISCHER Gregory	5 (2)
MAYKA Tom	5 (2)
MARTIN Don	4.5
PANPEL William	4.5(2)
ALLISON Roger	4 (2)
BERRY Greg	4 (1)
FULK Winton	4 (1)
JARRETTE Phil	4 (1)
KAMEN Dan	4 (1)
LONGOFF Marc	4 (1)
REYES Ruben	4 (1)
REYES Virgilio	4 (2)
SEFCHECK Mark	4 (1)
STEIN Peter	4 (1)
ZUMBRUNNEN Randy	4 (1)
MILLS Paul	3.5(1)
MOORE Allen D	3.5(1)
SLATER Michael	3.5(1)
SPHAR Robert	3.5(1)
BALE Leslie	3 (1)
BARGERSTOCK Dan	3 (2)
BOGAN Tim	3 (1)
BOLITHO Thomas	3 (1)

BRITT Jeffery	3 (1)
COHEN Howard	3 (1)
DE FOTIS Greg	3 (1)
EATON Jonathan	3 (1)
FINEBERG Tom	3 (1)
FORD Sam	3 (1)
GARDNER Keith C	3 (1)
HARRIS Lonnie	3 (1)
HERNANDEZ Hector	3 (1)
HIERONYMUS Kent	3 (1)
HOLMES Jeffrey	3 (1)
KING Wayne	3 (1)
LA FRANA Arthur	3 (1)
MANNARELLI Bruno	3 (1)
NAFF Bill	3 (1)
SANDRIN Angelo	3 (1)
SCHROEDER Tony	3 (1)
STERN Howard	3 (1)
TAMEZ Isidro	3 (1)
YARMULNIK Alex	3 (1)

## Expert Tour Points:

SZPISJAK Steven	16 (1)
VLASTNIK Richard	12 (2)
SURAK Steve	11.5
GENSLER Kevin	10.5(2)
CRAWFORD Brad	8.5
GRAVES Bill	8.5
COHEN Larry	8
CONDON James	8 (1)
PORTER John	8 (1)
SATTERLEE Ray Doyle	8 (1)
MC NAMARA Jim	7 (2)
SMYTHE Bill	7 (2)
BOUTON Barry	6 (2)
SAX Robert	6 (2)
BROCK Bill	5.5(2)
WARREN Jim	5.5(2)
FISCHER Gregory	5 (2)
MAYKA Tom	5 (2)
MARTIN Don	4.5
PANPEL William	4.5(2)
ALLISON Roger	4 (2)
BERRY Greg	4 (1)
FULK Winton	4 (1)
JARRETTE Phil	4 (1)
KAMEN Dan	4 (1)
REYES Ruben	4 (1)
REYES Virgilio	4 (2)
SEFCHECK Mark	4 (1)

MILLS Paul	3.5(1)
MOORE Allen D	3.5(1)
SLATER Michael	3.5(1)
SPHAR Robert	3.5(1)
BALE Leslie	3 (1)
BARGERSTOCK Dan	3 (2)
BOGAN Tim	3 (1)
BOLITHO Thomas	3 (1)
BRITT Jeffery	3 (1)
COHEN Howard	3 (1)
EATON Jonathan	3 (1)
FINEBERG Tom	3 (1)
FORD Sam	3 (1)
GARDNER Keith C	3 (1)
HARRIS Lonnie	3 (1)
HERNANDEZ Hector	3 (1)
HIERONYMUS Kent	3 (1)
HOLMES Jeffrey	3 (1)
KING Wayne	3 (1)
LA FRANA Arthur	3 (1)
MANNARELLI Bruno	3 (1)
NAFF Bill	3 (1)
SANDRIN Angelo	3 (1)
STERN Howard	3 (1)
TAMEZ Isidro	3 (1)
YARMULNIK Alex	3 (1)

## Class A Tour Points:

CRAWFORD Brad	8.5
GRAVES Bill	8.5
COHEN Larry	8
PORTER John	8 (1)
MC NAMARA Jim	7 (2)
BOUTON Barry	6 (2)
FISCHER Gregory	5 (2)
MARTIN Don	4.5
PANPEL William	4.5(2)
ALLISON Roger	4 (2)
BERRY Greg	4 (1)
FULK Winton	4 (1)
JARRETTE Phil	4 (1)
SEFCHECK Mark	4 (1)
MILLS Paul	3.5(1)
MOORE Allen D	3.5(1)
SPHAR Robert	3.5(1)
BALE Leslie	3 (1)
BARGERSTOCK Dan	3 (2)
BOGAN Tim	3 (1)
BOLITHO Thomas	3 (1)
BRITT Jeffery	3 (1)

COHEN Howard	3 (1)
EATON Jonathan	3 (1)
FINEBERG Tom	3 (1)
GARDNER Keith C	3 (1)
HARRIS Lonnie	3 (1)
HERNANDEZ Hector	3 (1)
HIERONYMUS Kent	3 (1)
HOLMES Jeffrey	3 (1)
KING Wayne	3 (1)
LA FRANA Arthur	3 (1)
MANNARELLI Bruno	3 (1)
TAMEZ Isidro	3 (1)

## Class B Tour Points:

ROCKWELL David	16 (1)
PORTER John	8 (1)
SOLCICH Kevin	8 (1)
WOLF William	8 (1)
ZELINSKI Daryl	8 (1)
SHAFFER Thomas	5 (2)
PANPEL William	4.5(2)
BAYER Duane	4 (1)
BALES Robert	3.5(2)
MILLS Paul	3.5(1)
MOORE Allen D	3.5(1)
SPHAR Robert	3.5(1)
BIEZYNSKI Stan	3 (1)
BRITT Jeffery	3 (1)
BURGESS Fred	3 (1)
FINEBERG Tom	3 (1)
GARDNER Keith C	3 (1)
GRUENBERG Fred	3 (2)
HARRIS Lonnie	3 (1)
HIERONYMUS Kent	3 (1)
KENPNER Robert	3 (1)
LA FRANA Arthur	3 (1)
PADILLA Rudy	3 (2)

## Class C Tour Points:

ZELINSKI Daryl	8 (1)
SHAFFER Thomas	5 (2)
BALES Robert	3.5(2)
BIEZYNSKI Stan	3 (1)
KENPNER Robert	3 (1)
PADILLA Rudy	3 (2)

## Class D Tour Points:

BALES Robert	3.5(2)
CALIENDO Anthony	2.5(1)
KNUTSON Gerald	2.5(1)

# GUREVICH WINS MATCH WITH PELTS

## GRANDMASTER DEFEATS ILLINOIS STATE CHAMPION 3-0

[Editor's Note: In yet another demonstration of their long standing support for Illinois chess, Fred Gruenberg and Helen Warren recently sponsored a match between International Grandmaster Dmitry Gurevich, the 1988 U.S. Open Champion, and Senior Master Peter Pelts, the 1988 Illinois State Champion. The four game match featured a prize fund of \$500.00 (half of which was donated by each sponsor), with the winner taking home \$400.00. As one of the match conditions, the players agreed to annotate their victories for the ILLINOIS CHESS BULLETIN. Gurevich won the first three games, so the fourth was not played. The grandmaster's analysis of the second and third contests appears below. Although Gurevich took the first game also, it was decided that Pelts would annotate that game, since he had a winning position before losing his way in time pressure.]

Match Game #1 -  
November 15, 1988

White: Senior Master Peter  
Pelts (2412)

Black: International  
Grandmaster Dmitry  
Gurevich (2642)

1.d4 Nf6 2.c4 e6 3.g3 c5 4.Nf3 cxd4  
5.Nxd4 Qc7

Other moves here are 5...a5,  
5...Nc6, or 5...Bb4+. 5...Qc7 puts  
immediate pressure on the c4 pawn,  
trying to inhibit normal  
development of White's pieces.

6.Bg2

This is inaccurate, and allows  
Black to grab a pawn after a few  
move without falling behind in  
development. Possible is 6.Nd2 a6  
7.Bg2 Nc6 (underlining the  
misplaced Knight on d2) 8.Nb3 Be7  
9.0-0 d6 and White's Knights are in  
each other's way. Better is 6.Nc3 a6  
(6...Qxc4 7.e4 Qb4 8.a3 Qb6 9.Be3  
Qd8 [9...Qxb2 10.Ndb5 and Rb1]  
10.e5 and Black is in trouble) 7.Bg5  
Be7 (7...Bb4 is possible, but  
weakens Black's King side after  
8.Bxf6 Bxc3+ 9.bxc3 (or fe3  
unreadable) gxf6 10.Qd3; if 7...Qc4,  
8.Rc1 with an attack) 8.Rc1 d6 Bg2  
9.Nbd7 10.0-0 and White has more  
space in the center  
(Yusupov-Psakhis, Erevan, 1982).

6...a6

6...Qxc4 7.Bg5 Be7 8.Nc3 Nc6  
9.Ndb5, or 6...Qxc4 7.Bg5 Bb4+  
8.Nxc3 Bxc3 9.bxc3 Qxc3 10.Kf1 0-0  
11.Bxf6 gxf6 12.Nb5 and Nd6 with  
initiative for White; or 6...Qxc4  
7.Nc3 Be7 8.Ndb5 0-0 9.b3 Qg4  
10.Nd6 ±.

7.0-0 Qxc4!?

Quite justifiable in the absence  
of Nb5.

8.Nc3 Nc6 9.Nxc6

9.Nb3 d5 ♞ or 9.Be3 Be5 or  
9...Ng4 ♞.

9...bxc6 10.Bg5 Be7 11.Bxf6 gxf6

This unnecessarily weakens the  
King side. After 11...Bxf6 12.Ne4  
Qd4 (12...Be7 13.Nd6 Bxd6 14.Qxd6  
±; Black is behind in development)  
13.Nxf6 Qxf6 14.Qd6 Qe7 15.Qc7  
White is okay if he can block the  
pawn on d7.

12.Qd2 (aiming at the weak King  
side) Rb8 13.Rac1 Qb4?! (better is  
13...Qg4 in view of White's next  
move) 14.Qh6 Qg4

The only move to defend against  
15.Qg7-Qh7; obviously, 14...Qb2  
loses to 15.Rb1.

15.Ne4 f5

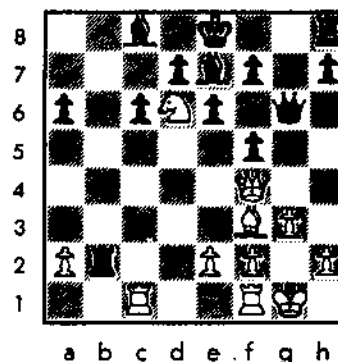
The alternative 15...Qg6 16.Qf4  
Bb2 17.Nd6 Bxd6 18.Qxd6 with  
threats like Rxc6, Bxc6, and Rfd1  
leads to too many problems for  
Black.

16.Bf3

White pushes the Black Queen  
away from the action in the center  
and prepares penetration of the  
dark squares. 16.Nf6+ Bxf6 17.Qxf6  
0-0 and Black is all right.

16...Qg6 17.Qf4 Rxb2 18.Nd6+ +-

Black's position is hopeless. Of  
course, not 18.Qe5 f6 19.Qxb2 fxe4  
±.



18...Kd8

If 18...Bxd6, then 19.Qxd6 and  
the threats of Qd4, Bxc6, Rxc6 are  
decisive.

19.Nxc8 Bg5

19...Kxc8 loses after 20.Bxc6  
dxc6 21.Rxc6+ Kb7 22.Qc7 and Ra6  
or 21...Kd8 22.Rd1+ and Rc8.

20.Qd4?!

This still wins, but 20.Qd6  
would wrap it up in a few moves,  
e.g., 20...Bxc1 21.Rxc1 Kxc8  
22.Bxc6, etc., or 20...Rd2 21.Qb8  
with numerous threats.

20...Qf6 21.Qxf6

Better is 21.Qa7 Bxc1 22.Bxc6  
Kxc8 23.Qd7 Kb8 24.Qd6 Kc8 25.Rc1  
+- or 22...dxc6 23.Nb6 Rxb6  
24.Qxb6 Ke7 25.Qc5 Kd7 26.Rd1 Kc7  
27.Qa7 and Rd7 [23...Ke8 24.Qb8  
Ke7 25.Qc7 Ke8 26.Qc6 Ke7 27.Qc7  
Ke8 28.Rc1 +-] and White gets an  
extra piece and winning chances.

21...Bxf6 22.Nd6 Ke7 23.Rfd1 Rxa2  
24.Rb1 (trying to seize the only

open file) Rb2 25.Rxb2 Bxb2 26.Nc4 Rb8 27.Rb1

White loses his advantage in time pressure. 27.Nxb2 Rxb2 28.Ra1 Rb6 29.e3 and Be2 taking the a6 pawn was better.

27...Be5 28.Rxb8 Bxb8 29.Kf1 d5 (The Black pawn mass is unstoppable) 30.Nd2 c5 31.Ke1 c4 32.Kd1 (better 32.e3, 33.Bd1 blocking the a pawn) Be5 33.Kc2 a5 34.e3 a4 35.Bd1 (35.Nb1 puts up more resistance) a3

Black's pawns are well advanced and now his active King and Bishop will help them get to the first rank. 36.Kb1 Bc3 37.Nf1 e5 38.Ka2 Bb4 39.Be2 Kd6 40.f3 Kc5 41.f4 d4 42.exd4 cxd4 43.Bf3 d3 44.Ne3 Kd4 45.Nf1 Kc3 46.Ne3 Bc5 47.Nf1 Kd4 48.Bd1 c3 49.Kb3 Bb4 0-1

White has no defense against 50...a2 51.Kxa2 c2 52.Bxc2 dxc2 53.Kb2 Kd3 and Ba3.

Match Game Two -  
January 17, 1989

White: Grandmaster  
Dmitry Gurevich (2642)

Black: Senior Master Peter  
Pelts (2412)

Nimzo-Indian Defense

Annotated by Dmitry Gurevich

1.d4 Nf6 2.c4 e6 3.Nc3 Bb4 4.e3 0-0 5.Bd3 c5 6.Ne2 d5 7.cxd5 Nxd5

If Black wanted to avoid the upcoming variation, he should have played 7...cxd4.

8.a3 cxd4 9.axb4!?

This move probably does not give White much, but from this moment Black is on his own. 9.exd4 sets up a well known position.

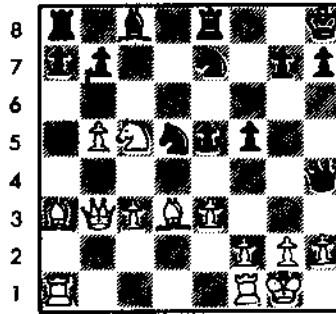
9...dxc3 10.bxc3 e5!? 11.Ba3 Re8 12.Qc2 Qh4! 13.Ng3 Nc6

13...Nf6 is interesting.

14.b5 Nce7 15.0-0 Be6 16.Ne4 f5?

After 16...b6 Black is okay.

17.Nc5! Bc8 18.Qb3 Kh8?



a b c d e f g h

Maybe it is necessary to play 18...b6, although 19.Be4 bxc5 20.Bxd5+ Nxd5 21.Qxd5+ Bc6 leaves White with an extra pawn following 22.Qc5. After 18...Kh8, however, Black may well be lost!

19.Bc4 Nb6 20.Bf7! Rf8

If 20...Rd8 then 21.Rad1 +-.

21.Rfd1!

Not 21.Ne6?! Rxf7 22.Nd8 Rf8 21.Nf7 Rxf7 22.Qxf7 Ng8 oo.

21...Qf6 22.Bh5 g6 23.Bf3 e4?

This loses at once, but it is difficult to suggest any reasonable alternative.

24.c4! Kg8

Or 24...Nxc4 25.Qxc4 exf3 26.Ra2 +-.

25.Bb2 Qg5

With the idea 26.Qc3 Qh6, but ...

26.Bxe4! fxe4 27.Nxe4 1-0

Black resigns because of 27...Qh6 (27...Qf5 28.Qc3) 28. c5+ Nbd5 29.Nf6+ Rxf6 30.Bxf6 Be6 31.Bxc7 Nf4 37.Qb2 Nxc2 33.Qe5.

Match Game #3 - January  
22, 1989

White: Senior Master Peter  
Pelts (2412)

Black: International  
Grandmaster Dmitry  
Gurevich (2642)

English Opening

Annotated by Dmitry Gurevich

1.Nf3 c5 2.c4 b6 3.g3 Bb7 4.Bg2 g6 5.0-0 Bg7 6.d4

The usual move order is 6.Nc3 Nf6 7.d4 cxd4 and then either 8.Qxd4 or 8.Nxd4.

6...cxd4 7.Nxd4 Bxg2 8.Kxg2 Qc8 9.Qd3?

After 9.b3 Black would not have anything better than 9...Qb7+ 10.f3 11.Nc3 d6 12.e4, resulting in a well-known position. [Hungarian Grandmaster Andras] Adorjan has had successes from this position as Black, but he is just a great player and White is certainly okay.

9...Nc6!

Black now has the better game. White will not be able to put his Knight on c3.

10.Nb5 Nf6 11.Bf4 0-0 12.N1a3 Nh5 13.Bc1?

After 13.Rab1 Nxf4 14.gxf4 Black's position is simply more pleasant, that's all. After the text move, White will have a lot of trouble, mainly because of his weak c-pawn.

13...a6 14.Nc3 Ne5 15.Qe4 f5 16.Qh4?

White had to play 16.Qd4! with the idea 16...Qb7 17.Qd5.

16...Qc6+ 17.Kg1 e6! 18.Rd1 Rf7 19.Be3 Raf8

Black's initiative will cost White his c4 pawn because allowing 20...f4 would be even worse.

20.Bd4 Bf6 21.Qh3 Nxc4 22.Bxf6 Nxf6 23.Nxc4 Qxc4 24.Qh6

Or 24.Ra1 Re8.

24...Ne4 25.Qc3

(Continued on page 15)

## 4. Qxd4 IN THE SICILIAN--THE CHEKHOVER VARIATION

By Mark Siwek

[Editor's Note: Mr. Siwek submitted the following article along with a "Letter to the Editor" which also appears in this ICB.]

Not that many tournaments ago, my rating was 1838; today, it's 2027.

How did I improve that much in a short period of time? I studied openings-not major variations, but little known book lines. Some were sound, and some were not, but all had the effect of negating my opponent's opening preparation and making him "play in my court."

For instance, consider the Gruenfeld Defense. Even the lowest rated Class player knows the Exchange Variation (1.d4 Nf6 2.c4 g6 3.Nc3 d5 4.cxd5 Nxd5 5.e4), and most serious players are aware of the Russian System (4.Qb3). But how many players are familiar with the lines against 4.Nf3, 4.Bf4, or 4.Bg5? I suspect that the answer is "very few".

The Gruenfeld is only one example. I've also won some nice games against the Nimzo-Indian with the Leningrad Variation (1.d4 Nf6 2.c4 e6 3.Nc3 Bb4 4.Bg5), against the Ruy Lopez with Bird's Defense (1.e4 c5 2.Nf3 Nc6 3.Bb5 Nd4), and against the Sicilian with the Chekhover Variation (1.e4 c5 2. d4 d6 3.d4 cxd4 4.Qxd4), which is the subject of this article.

Most players automatically play 4.Nxd4 in the Sicilian line cited above, without giving 4.Qxd4 a thought. In fact, some of my major opening reference books don't even mention 4. Qxd4. This is unfortunate, as the Queen capture is a potent weapon, particularly against an unsuspecting opponent. Some of the key variations are explored below.

1.e4 c5 2.Nf3 d6 3.d4 cxd4 4.Qxd4. In the Chekhover Variation, White centralizes his Queen in preparation for 0-0-0 and early domination of the Queen file. He will now give up a Bishop for a Knight in exchange for control of the central squares.

4...Nc6. Black's main alternatives are 4...a6 and 4...Bd7. Though some books recommend 4...a6 as the most flexible, I've found it to be the easiest to play against, keying on b6: 5. Be3 Nf6 6.Nc3 Ne6 7.Qb6 Qxb6 8.Bxb6 g6 9.0-0-0 Bb6+ 10.Kh1 0-0 11.Nd4 etc. Other White plans against the a-pawn advance are 5.c4 Nc6 6.Qd2 g6 7.Nc3 followed by b3 and Bb2, and 5.Bg5 Nc6 6.Qd2 h6 7.Bh4 Nf6 8.Nc3 Bd7 9.Bc4 e6 10.Rd1 as in the game Kajkamdzozov-Bobekov, Sofia 1952.

The intent of 4...Bd7 is to avoid the subsequent pin and chase White's Queen from the center. White's best is probably 5.c4 Nc6 6.Qd2 when play could continue either 6...g6 7.b3 Bg7 8.Bb2 Bxb2 9.Qxb2 Nf6 10.Nbd2 0-0 11.Be2 or 6...Nf6 7.Nc3 g6 8.b3 Bg7 9.Bb2 0-0 10.h3 a6 11.Bd3, both to White's advantage.

5.Bb5 Bd7. Black's other alternatives to the thematic pin are: 1) 5...e6 6.0-0 Ne7 7.c4; 2) 5...a6 6.Bxc6+ bxc6 7.0-0; and 3) 5...Bg4?! 6.Nbd2 e5 7.Qd3 Nf6 8.Nc4 Be7 (8...h6 9.b3 followed by Ba3 and Rad1) 9.Bg5 0-0 10.Bxf6 gxf6 11.Nc3. Also possible is 5...Qa5+.

6.Bxc6 Bxc6. The recapture 6...bxc6 7.c4 leads to White's advantage after either 7...Qb6 8.Qd3 e6 9.0-0 Nf6 10.Nc3 Be7 11.e5 dxe5 12.Nxe5 or 7...e5 8.Qd3 Be7 9.0-0 Qc7 10.Nc3 Nf6 11.Bg5.

7.Nc3. 7.c4 Nf6 8.Nc3 has also been tried: 1) 8...g6 9.0-0 Bg7 10.Qd3 0-0 11.Be3 a6 12.Rfd1 Rc8 13.Bd4 as in Damjanovic-Gligoric, Ljubljana 1969; or 2) 8...e6 9.Bg5 (or 9.0-0 Be7 10.b3 0-0 11.Bb2) Be7 10.0-0 0-0 11.Rfe1 h6 12.Bh4 a6 13.Rad1 Qa5 14.Qd2 Qb6 15.Nd4 Rac8 16.Re3 as in Schweber-Najdorf, Buenos Aires 1970.

7...Nf6 8.Bg5 e6 9.0-0-0. Thematically consistent. 9.0-0 Be7 10.Rad1 0-0 11.Rfe1 is a recognized alternative, however. Possible variations are 11...Qc7 12.Bxf6 gxf6 13. Ne2 Qa5 14.a3 Qc5 15.c4; 11...Qa5 12.h3 a6 13.a3 Rac8 14.Qd2;

and Boleslavsky's 11...Qb6 12.Qxb6 axb6.

9...Be7 10.Rhe1. The game has now reached a crossroads. Besides the text, White has a major alternative in 10.e5 dxe5 11.Qxc5 when Black's defenses are 11...Qc8 12.Nd4 0-0 13.h4 h6 14.Kb1 Rd8 15.f3 hxg5! 16.hxg5 Bd6 17.Qe1 Ne8 18.Qh4 Kf8 19.Nf5 exf5 20.Rae1 Qe6! (Perez-Fischer, 1960 Olympiad), or, for those not blessed with Bobby's talent, 11...Qb8, and play could continue 12.Qe3 Qc7 13.Ne5 0-0 14.Nxc6 Qxc6 15.f3 Rfc8 or 12.Qe2 0-0 13.Ne5 Qc7 14.Rd3 Nd5 (14...Rfd8) 15.Bd2 Rac8 16.Rh3.

10...0-0. My favorite variation in this whole line is 10...Qc7? 11.Bxf6 gxf6 12.Nd5! Qd8 13.Nxe7 Kxc7 14.e5 with advantage. I'll leave the analysis of this fun position as an exercise for the reader.

11.Kb1. Inadvisable is 11.Bxf6 Bxf6 12.Qxd6 Bxc3 13.bxc3 (13.Qxd8 Bxb2+) Qa5. The text is a standard adjustment, though 11.Qd2 and 11.e5 could also be considered. A draw was agreed in the game Vasyukov-Tal, Skopje 1972, after 11.e5 dxe5 (11...Bxf3 12.exf6 gxf6 13.Bh6 Bxd1 14.Rxd1 Kh8 15.Bxf8) 12.Qh4 Qc7 13.Nxe5 Rfd8 14.Ng4 Nxe4 15.Bxe7 Rxd1+ 16.Rxd1 Ne5 17.Bd6 Ng6 18.Qg3 Qd8 19.f3 Qa5 20.Bb8.

11...Qa5. On 11...Qc7 12.Bxf6 Bxf6 13.Qxd6 Qb6 White can continue either 14.Qd2 Bxc3 15.Qxc3 Qxf2 or 14.e5 Rad8 15.Qa3 Bxf3 16.gxf3.

12.Qd2 Kh8?!. Black defends against 13.Nd5 Qd8 14.Nxe7+ Qxe7 15.Qxd6. MCO-12 gives 12...Qb6 13.Nd4 Rfd8 14.f3 Be8 15.g4 Qc7 16.h4 b5 though probably best is 12...Rfd8. After 12...Rfd8 White can still play 13.Nd5 Qxd2 14.Nxe7+ Kf8 15.Nxd2 (or 15.Rxd2) or 13.Nd4 h6 (13...Kh8 14.f4 h6 {better is 14...Rac8} 15.h4 Rac8 16.g4 with a good attack) 14.Bh4 Qh5 15.Bg3 Qg6 16.Qd3 d5 with equality, as in Lutikov-Cherepkov, 1955.



## CHEKOVER

(Continued from page 14)

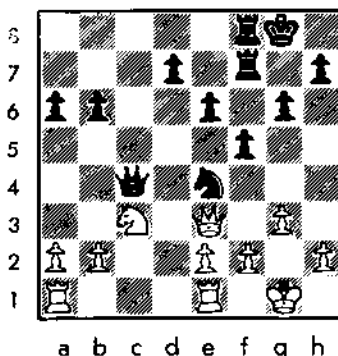
13.Nd4 Rac8. In Ciric-Diaz, Vmjacka Banja 1976, Black moved the other Rook, but to no avail:  
 13...Rfd8 14.f4 h6 15.h4!? hxg5  
 16.hxg5 Nxe4 17.Rh1+ Kg8 18.Qd3  
 Nxc5 19.fxc5 Bxc5 20.Qh7+ Kf8  
 21.Nxe6+ fxe6 22.Rfd1+ Ke8 23.Qxg7  
 Bc7 24.Rh7 Kd7 25.Qxe7+ Kc8  
 26.Qxe6+ Kb8 27.Rf8! 1-0

14.f4 h6 15.h4!. Two possible finishes are: 1) 15...Nxe4 16.Rxe4  
 hxg5 17.Nxc6 Rxc6 18.hxg5 Qf5  
 19.g4! Qg6 (19...Qxg4 20.Rh1+ Kg8  
 21.Nd5 Bd8 22.Qh2 f6 23.Ne3 Qf3  
 24.g6) 20.Rh1+ Kg8 21.Qh2 f5  
 22.Rxe6! Qxe6 23.Qh7+ Kf7 24.gxf5  
 1-0 Benko- Harrison, 1985  
 Australian Open; and 2) 15...hxg5  
 16.hxg5 Nxe4 17.Qd3 Bxc5 18.Nxe4  
 Bxc4 19.Rxc4 Bh6 20.g4 f5 21.Rxc6  
 Bxf4 22.Nxf5 1-0 Tal-Byrne, Biel  
 1976. Best is 15...Rfd8 16.f5.

In conclusion, as is evident from this brief survey, Black must play very accurately to meet the Chekover Variation, which makes it a potent weapon against an unprepared opponent. Try it ... you'll like it!

## MATCH

(Continued from page 13)



Black is winning here and, after some technical difficulties, he goes on to take the full point.

25...Nxc3 [25...Qc5!?] 26.bxc3 f4  
 27.gxf4 Rxf4 [27...Qxf4!?] 28.Rd4

White's last mistake. The only try is 28.Rxd7 Qc6! [28..Rg4+ 29.Kh1 Qc6+ 30.f3] 29.Rd4 30.Qxf2 Rxf2 31.Kf2 Qc3 32.Rad1 Kg7. White may be lost, but recently in the Cardinal Open I was able to save this type of position. After 28.Rd4 White will lose sooner or later because Black has a better pawn structure as well as an extra pawn.

28..Rg4+ 29.Kh1 Rxd4 30.cxd4 b5  
 31.f3 Rc8?! 32.Rg1 Rf8 33.a3 Qc7  
 34.Kg2 Qd6 35.Rc1 Rf4 36.Rc8+ Kg7  
 37.d5 exd5 38.Rd8 Rh4! 39.Kf1 Rxd2  
 40.Qd4 [Qe8 Rh1+ 41.Kf2 Qc5+] Kh6  
 41.Qe3 g5 42.Ke1 Rh1+ 43.Kd2 Qc7  
 0-1

After losing from a winning position in Game 1, Peter did not do so well in games 2 and 3, probably because he was psychologically upset. In short matches the first decisive game usually determines the eventual match winner.

## ALBRIGHT

(Continued from page 4)

with Glen Hill School (Glendale Heights) (17-3) coming in second and Martin Luther King School (Rockford) (14-6) third. Travis Bridges (Glen Hill) and Josh Handbury, Annalis Jacobsen, Brian Cleeman, and Ben Blott (all from Benjamin Franklin) posted 5-0 marks in this section.

## FIRST LINCOLN LAND ICA MINI-TOUR OPEN

WHEN: Saturday, April 22, 1988

WHERE: Washington Park Pavilion (North of Intersection of Park Ave. and South Grand Ave., West), Springfield, Ill.

WHAT: 3 Round Swiss

TIME CONTROL: 30/60, 30/60, SD/30

MEMBERSHIPS REQUIRED: USCF & ICA

CASH PRIZES: \$112 (based on 8 players /section) 1st: \$62 2nd: \$30 + 1 year ICA membership 3rd: \$20

ENTRY FEE: \$16 in advance (by 4/12/89); \$18 at site

ROUND TIMES: 9:15, 1:45, 6:15

INFORMATION AND ADVANCE ENTRIES: Thomas B. Knoedler, 2104 So. Fourth St., Springfield, IL 62703 (217) 523-7265 (after 6 p.m.)

SMOKING ALLOWED -- NO COMPUTERS -- WHEELCHAIR ACCESS

## ILLINOIS/MIDWEST TOURNAMENT OF CHAMPIONS III REVISED

[Editor's Note: Helen Warren's story on the Illinois/Midwest Tournament of Champions III, along with 11 games and the event's cross table, appeared in the November-December, 1988 ICB. Another eight games, including two annotated by Senior Master Greg DeFotis and one by ICB Games Editor Lawrence Chachere, are presented in this issue.]

More Games from the Illinois/Midwest Tournament of Champions III October 28-30 and November 5-6, 1988

White: Greg DeFotis (2399)

Black: Albert Chow (2449)

English Opening

Annotated by Greg DeFotis

1.g3 e5 2.Bg2 d5 3.c4 c6

Black had other options here; 3...d4 and 3...dxe5 would lead to Reverse Benoni or Sicilian formations, respectively. Al's move is Keres' Defense in the English.

4.Qc2(?)

Played solely for the purpose of leaving "book"; the move itself, while not bad, contributes little to White's strategy of pressuring the Black central pawns.

4...Nf6 5.Nf3?! e4 6.Ne5

I had originally intended Nd4, but noticed that 6...dxc4 7.Qxc4 b5! 8.Qc3 b4 9.Qe4 Ba6 wins the Knight. 6.Ng5, intending a future relocation to f4 via h3, was also possible, but seemed too slow and artificial.

6...Bd6 7.d4 0-0

If instead 7...exd(e.p.) 8.Nxd3, Black has virtual equality; but not 7...Bxe5 dxe5 Ng4 9.Nc3 Nxe5? 10.cxd5 cxd5 11.Nxd5!+. Al's move is natural and probably best.

8.Nc3 h6!?

Black spent quite some time on this move, directed against the development of White's Queen Bishop to f4 or g5. There are many possibilities. Again 8...Bxe5 is bad because of 9.dxe5 Ng4 10.Bf4 Re8 11.Rd1. If 8.Nbd7, 9.Bf4 with the threat of Nxc6 would almost obligate Black to allow an exchange of the dark squared Bishops, a minor success for White.

8...Re8 is well met by 9.Bg5 as 9...Bxe5 10.dxe5 Rxe5 11.Bxf6 gxf6 (not 11...Qxf6 12.cxd5 cxd5 13.Nxd5) 12.Rd1 f5 now fails because of the double capture on d5 with the c8 Bishop hanging; otherwise it seems Black's d or e pawn must fall and White would have an edge. Instead of 9.Bg5 White might also reply to 8...Re8 with 9.Bf4; unclear complications would now result from 9...Nh5 10.Be3 f6 11.g4 fxe5 12.dxe5, or 10...c5 11.Nxf7! Kxf7 12.cxd5.

9.f4 exf(e.p.) 10.Bxf3 dxc4(?)  
11.Nxc4 Be7

In the last three moves the nature of the position has changed from a battle over White's e5 Knight to one revolving around his hanging center pawns. While 9...exf(e.p.) seems correct, 10...dxc4 seems to be an unnecessary concession of central influence. As Black I would have preferred any of 10...Nbd7, 10...Na6, 10...Bh3, or 10...Re8. For various tactical reasons White cannot win the d pawn in any of these variations, and the maintenance of the central tension inhibits White's smooth development. Also, after 10...dxc(?) 11.Nxc4, 11.Be7 might have been more accurate. I was very happy with my position at this point; interestingly, Al later noted that he was also satisfied with his chances.

12.Qd3 Bh3 13.Bf4 Na6 14.a3 Re8  
15.Ne5?

Here simply 15.0-0 is stronger. White is well developed, Black does not have the means available to attack White's center, and if tactical counterpunches are not quickly effective, Black will find himself getting smothered.

15...Nc7 16.e4?

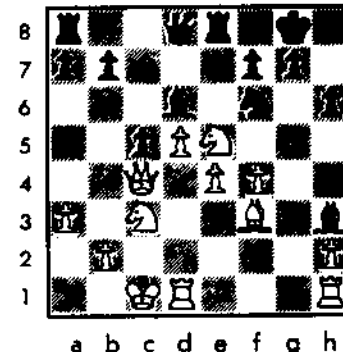
Again, 16.0-0 is better. I wanted to prevent Black from playing Ncd5 and easing his cramp with some exchanges, but 16.e4? allows very strong counterplay. Already the clock was becoming a factor for both sides.

16...c5! 17.Qc4

White has kept his King on the e file too long. Now 17.d5 would fail because of 17...Bd6 18.Nc4 Bxf4 19.gxf4 Nfxd5. 17.Qc4 forces Black to close the e file, but costs White his dark squared Bishop, whereupon his center is in danger of collapsing. On 17.0-0-0, cxd4 18.Qxd4 Qxd4 19.Rxd4 g5! with 20...Be5 to come is very strong.

17...Ne6 18.d5 Nxf4 19.gxf4 Bd6  
20.0-0-0

20.Nd3 would fail to 20...Nxe4!  
21.Nxe4 f5 22.0-0-0 fxe4 23.Bxe4 b5!



20...Bxe5?

Al misses 20...Nd7!. The f pawn hangs with check on an exchange of Knights, and 21.Nd3 is not good on account of 21...Nb6, 22.Qa2 c4.

21.fxe5 Nd7(?)

One move too late. Time pressure aside, Al would have sensed danger and simply played 21...Rxe5; then, after 22.Qxc5, White's central pawns inhibit his own minor pieces more than those of

his opponent, and Black's control of the dark squares in front of the pawns ensures him a good game.

22.c6! fxc6 23.Rhg1!

Now White's pieces spring to life, and some of the drawbacks in Black's game become apparent: e.g., his loosened King side, offside Bishop, and lack of central influence.

23...exd5?

This is almost suicidal. Black must play 23...Ne5; then, after 24.Qe2 Rf8 25.Bh5 (not 25.Rg3? Rxf3!) matters are not very clear.

24.Nxd5 Kh7 5-5

Al originally intended 24...Be6 but then saw that 25.Qc3! is almost unanswerable; 25...g5 26.h4 and Black is not long for the world. Each player now had less than five minutes to complete his first 40 moves. When Al offered a draw with his 24th move, I accepted, not seeing anything clearly decisive after 25.Qc3 Ne5. Later analysis, however, showed White to have a large advantage.

Too many mistakes? Yes, quite a few. Even strong players will lose their way in uncharted waters. As for White's agreement to a draw, allow me to lobby for a return, at least in Master level events, to a time control of 40 moves in two and one-half hours.

The preceding game saw White err in the use of his central "hanging" pawns. Whereas those pawns could have been a powerful force there, they show up as pure weaknesses in the following contest.

Illinois/Midwest Tournament of Champions III

October - November 1988

White: Fred Lindsay (2394)

Black: Greg DeFouis (2399)

Annotated by Greg DeFouis

1.Nc3 d5 2.e4 d4 3.Nce2 c5

Theory (if one can use that term in connection with this opening)

considers only 3...e5 and 3...d3?! 3...c5 seems stronger.

4.f4 Nc6 5.Nf3 Nf6 6.Ng3

6.e5 would be bad for White after 6...Nd5 7.c4?! Ncb4! 8.d3 Ne3 9.Bxc3 dxc3 10.Ng3 (10.Nc3 Bf5 11.Ne4 Qa5) Qa5!; 6.d3 seems a little more flexible than 6.Ng3, however.

6...Qc7 7.d3 e5!

Now White faces two poor alternatives. After 7.f5, Black's space advantage in the center and on the Queen side, coupled with White's badly placed g3 Knight, bodes well for the second player. White's actual move concedes the e5 square to the Black pieces, and White's g3 Knight will be useless after Black plays g6.

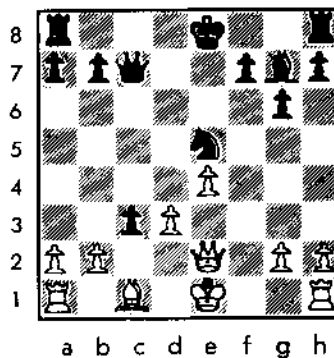
8.fxe5 Ng4

This ensures that the eventual occupant of e5 will be a Black Knight.

9.Be2 g6 10.c3

White does not like his position and attempts to tactically nip in the bud Black's impending pressure on the central dark squares. Tactics often only flow from positional considerations, however, and White's efforts backfire. Simply 10.0-0 was probably best, though after 10...Bg7, and an eventual capture on e5, Black has a clear advantage.

10...Bg7 11.Nxd4(?) cxd4 12.Bxg4 Bxg4 13.Qxg4 Nxe5 Qe2 dxc3



The situation is now clarifying. White has gained no material, his

g3 Knight is a complete spectator, and Black's minor pieces and Queen (and soon also his Rooks) will bring enormous pressure to bear against White's central pawns. If White tries to mobilize with 15.d4, 15...cxb2 16.Bxb2 Qa5+ adds problems with his King to those he will have in maintaining his center.

15.0-0 Rd8!

Clearly best. Now 16.Rd1 is met by 16...c2 17.Rd2 Qb6+ 18.Kh1 (18.Qf2? Nf3+!) Nc6! and White must surrender at least the exchange to avoid strangulation.

16.bxc3 Rxd3

16...Nxd3 is equally strong. Black's pieces dominate the board; White's e and c pawns are extremely weak, and he has no absolutely counterplay. From a positional standpoint, the game is already decided.

17.Bf4 Rd7 18.Qb5 0-0 19.Rab1 a6 20.Qb3 Qc6 21.Rbd1 Nd3 22.Be3 Qxc3

First fruits - but not the last.

23.Qb1 Rfd8 24.Ne2 Qc4 25.Bb6 Re8 26.Rf3 Ne5 27.Rxd7 Nxd7 28.Qb3 Rxe4

The rest is very simple technique.

29.Qxc4 Rxc4 30.Rb3 Rc2 31.Kf1 Rxa2 32.Bf2 Ra1+ 33.Be1 Nc5 34.Re3 Bh6 35.Re8+ Kg7 36.Rd8 Ne4 37.Ng3 0-1

In this hopeless position, White's flag fell.

#####

Illinois/Midwest Tournament of Champions III

October - November 1988

White: Lawrence Chachere (2363)

Black: Greg DeFouis (2399)

Annotated by Lawrence Chachere

1.e4 c5 2.Nf3 d6 3.d4 cxd4 4.Nxd4 Nf6

5.Nc3 a6 6.Bg5 e6 7.f4 Be7 8.Qf3 Qc7  
9.0-0-0 Nbd7 10.g4 h6

I prefer the main line, 10...b5.

11.Bxf6 Bxf6!?

This leaves "book", and seems better than 11...Nxf6 12.h4 followed by g4-g5-g6.

12.h4 Qb6 13.Nde2 g5?

Black may have a decent game after 13...g6. I had planned to play Bg2, with g5 in mind.

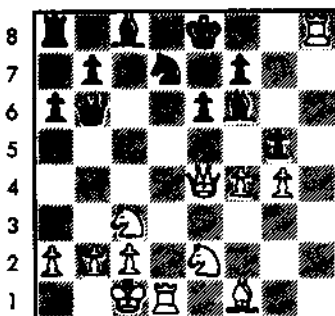
14.e5!

This prevents Black's Knight from occupying e5.

14...dxe5 15.hxg5 e4

This opens the diagonal; otherwise White plays Ne4 and threatens Nd6+, putting pressure on f7.

16.Qxe4 hxg5 17.Rh8+



a b c d e f g h

White now has a huge advantage, since Black will have problems sheltering his King and mobilizing his pieces.

17...Bxh8

18.fxg5 Nf8 19.Nd4 Qa5 20.Nf5! Ng6

20...Bxc3 also does not work; after 21.Nd6+ Ke7 22.Nf5+ Ke8 23.bxc3, Black cannot castle and the threat on f7 is strong.  
21.Nd5 Kf8 22.Nf6 Bxf6

If 22...gxf5, 23.Qe8+!

23.gxf6 Bd7 24.Rxd7 exf5 25.Qxb7 Qe1+ 26.Rd1 Qe3+ 27.Kb1 Re8 28.gxf Ne5 Qh1 1-0

**White: Morris Giles (2475)**

**Black: Eugene**

**Martinovsky (2457)** Round 2  
1.e4 e5 2.f4 exf 3.Nf3 h6 4.Bc4 d6 5.d4  
g5 6.0-0 Bg7 7.Nc3 Nc6 8.Kh1 Bg4  
9.Ne2 Nf6 10.g3 Ne4 11.gxf Bh3  
12.Bd5 Bxf1 13.Qxf1 Nf6 14.Bxc6+  
bxc6 15.fxg hxg 16.Bg5 Qd7 17.Ng3  
Qg4 18.Re1+ Kf8 19.Bxf6 Qxg3  
20.Be7+ Kg8 21.Re2 Qf4 22.Bg5 Qf5  
23.Qg2 f6 24.Bh4 Kf8 25.Rf2 Qe4  
26.Re2 Qf5 27.Rf2 Qe4 28.Re2 Qd5  
29.Re7 Rg8 30.Qe2 Qh5 31.Rxc7  
Re8 32.Qf2 Bh6 33.Bg3 Bf4 34.Bf4  
Qxf3+ 35.Qxf3 Re1+ 0-1

**White: Peter Pelts (2412)**

**Black: Andrew Karklins**

**(2407)** Round 3 1.Nf3 Nf6 2.c4 e6  
3.g3 d5 4.d4 dxc 5.Bg2 c5 6.Qa4+ Bd7  
7.Qxc4 b5 8.Qc2 Be6 9.dxc Nbd7  
10.0-0 Bxc5 11.Be3 Be4 12.Qb3 Bd5  
13.Qxb5 Bxe3 14.fxe Rb8 15.Qd3 Rb2  
16.Nc3 Ba8 17.e4 Qb6+ 18.Kh1 Nc5  
19.Qd1 Nfxe4 20.Nxe4 ~~Nxe4~~ ~~0-0~~  
22.Nd3 Nc3 23.Qc1 Bxg2+ 24.Kxg2  
Rxe2+ 25.Rf2 Qc6+ 26.Kg1 Rxf2  
27.Kxf2 Rd8 0-1

**White: Alan Federl (2360)**

**Black: Morris Giles (2475)**

Round 4 1.c4 g6 2.Nc3 Bg7 3.d4 Nf6  
4.e4 d6 5.f3 0-0 6.Be3 a6 7.Nge2 c6  
8.g4 b5 9.g5 Nfd7 10.cxb axb 11.Ng3  
b4 12.Na4 Qa5 13.b3 Nb6 14.Nxb6  
Qxb6 15.h4 e5 16.Ne2 d5 17.Qd2 Qa5  
18.dxe Bxe5 19.Bd4 dxe 20.f4 Bxd4  
21.Qxd4 Qd5 22.Qxb4 e3 23.Rh2 Rd8  
24.Nc3 Qf3 25.Ne4 Na6 26.Qe7 Be6  
27.h5 Qxe4 28.hxg Qxg6 29.Bxa6 Rd7  
30.Qb4 Qg7 31.Rc1 Rxa6 32.Qb8+  
Qf8 33.Qe5 Qb4+ 34.Qc3 Qxf4 0-1

**White: Eduard Zelkind**

**(2350) Black: Lawrence**

**Chachere (2363)** Round 7 1.e4  
e5 2.Nc3 Nc6 3.g3 g6 4.Bg2 Bg7 5.d3  
d6 6.f4 Rb8 7.Nf3 Nh6 8.0-0 f5 9.Rb1  
0-0 10.Kh1 Kh8 11.a3 b5 12.Nd5 a5  
13.b3 e6 14.Ne3 d5 15.exd exd  
16.Nxd5 Bb7 17.c4 Nd4 18.Nxd4 Bxd4  
19.h3 Re8 20.Bd2 Ng8 21.Re1 b4  
22.axb axb 23.Be3 Bxe3 24.Nxe3 Nf6  
25.Qd2 Bxg2+ 26.Kxg2 Kg8 27.Rbd1  
Qd4 28.Nc2 Qb2 29.Rb1 Qa2 30.Ra1  
Qxb3 31.Reb1 Qc3 32.Qxc3 bxc3  
33.Rxb8 Rxb8 34.Ra3 Rb1 35.Ne3  
Rb7+ 36.Kf3 c2 37.Rc3 Rb3 38.Rxc2  
Rxd3 39.Ke2 Ra3 40.Rb2 Nh5  
41.Rb8+ Kg7 42.Rb7+ Kh6 43.g4  
Nxf4+ 44.Kd2 Rd3+ 0-1

**White: Andrew Karklins**

**(2407) Black: Alan Federl**

**(2360)** Round 8 1.e4 c5 2.Nf3 Nc6  
3.d4 cxd 4.Nxd4 Nf6 5.Nc3 e6 6.g3 d5  
7.exd exd 8.Bg2 Qb6 9.Nxc6 bxc  
10.0-0 Be7 11.b3 0-0 12.Bb2 a5 13.Rel  
Be6 14.Na4 Qa7 15.Qd4 c5 16.Qe5  
Rfd8 17.Rad1 h6 18.Bxd5 Rxd5  
19.Rxd5 Bxd5 20.Qxe7 Re8 21.Qxe8  
Nxe8 22.Rxe8+ Kh7 23.Re5 Ba8  
24.Re3 Qd7 25.Rd3 Qe6 26.Bc3 e4  
27.Re3 Qd5 28. f3 Qd8+ 29.Kf2  
Qxc2+ 30.Re2 Qf5 31.f4 cxb 32.axb  
Qd5 33.Rb2 Bc6 34.Kc3 Qf3+ 35.Kd2  
Bb5 36.Rc2 Qd5+ 37.Kc1 Qxb3  
38.Nc5 Qa3+ 39.Bb2 Qe3+ 40.Kb1  
Bd3 41.Nxd3 Qxd3 42.Kc1 a4  
43.Rc3 Qf1+ 44.Kc2 Qg2+ 45.Kb1  
Qxh2 46.Ka2 Qe2 47.Ka3 Qh5 48.Ka2  
Qb4 49.Ba1 h5 50.f5 f6 51.Bb2 Qe4  
52.Ka3 Qxf5 53.Kxa4 g5 54.Kb3 h4  
55.gxh gxh 56.Re3 h3 57.Bxf6 Qb5+  
58.Kc2 Qc5+ 0-1

### Results of the Quarter-Final World Championship Candidates Matches

Jonathan Speelman (ENG) 3.5  
Nigel Short (ENG) 1.5

Anatoly Karpov (USSR) 3.5  
Johann Hjartarson (ISD) 1.5

Artur Yusopov (USSR) 5  
Kevin Spraggett (CAN) 4

Jan Timman (NLD) 3.5  
Lajos Portisch (HUN) 2.5

**Semi-Final Pairings**  
(Matches to take place in  
August, September, or  
October of 1989 in  
London)

Karpov  
vs.  
Yusopov

Speelman  
vs.  
Timman



**CHESS PHONE**  
(312) 325-3666

# GUREVICH, CHOW ARE PERFECT AT MIDWEST ACTION

By Todd Barre

Ninety two players invaded Rosemont's Holiday Inn O'Hare on January 14, 1989 to compete for \$1,200 in guaranteed prizes at the second annual Midwest Action Chess Championship. The impressive field (median rating: 1868) included International Grandmaster Dmitry Gurevich (2642), three senior masters (Eugene Martinovsky, Albert Chow, and Illinois State Champion Peter Pelts), nine masters, and 17 experts. After five rounds in 7-1/2 hours, Gurevich and Chow emerged with perfect 5-0 scores to share first and second places. Each won \$275, a figure which included a \$50 "perfect score" bonus (courtesy of Fred Gruenberg).

Gurevich's road to victory included wins over Dan Bargerstock, expert Bill Smythe, and national masters Randy Zumbunnen, Marc Lonoff, and Bill Colias. Chow defeated Wayne Ellice, Greg Berry, expert Richard Vlastnik, and national masters George Umezina and Eric Schiller.

With no player able to garner 4.5 points, there was a 10 way tie for third through twelfth. The list of 4-1 finishers included Martinovsky, Pelts, Colias, Umezina, Schiller, national master David Levine, Vlastnik, experts Ray Doyle Satterlee and Steve Surak, and Class B first prize winner John Porter. (Porter, ranked 60th on the wall chart at 1763, knocked off two Class A players and an expert.)

The tournament, organized by Helen Warren for the Midwest Chess Association, was directed by Walter Brown, Tim Just, and Todd Barre. Warren donated the small profit to the 1989 U.S. Open Fund.

## 1989 MIDWEST ACTION CHESS CHAMPIONSHIP PRIZE WINNERS

1st-2nd: Dmitry Gurevich, Albert Chow, 5-0

3rd-8th: Eugene Martinovsky, Peter Pelts, Bill Colias, George Umezina, David Levine, Eric Schiller, 4-1

Expert 1st-3rd: Richard Vlastnik, Ray Doyle Satterlee, Steve Surak, 4-1

Class A 1st-4th: Greg Berry, Winton Fulk, Brad Crawford, Mark Sefcheck, 3.5-1.5

Class B 1st: John Porter, 4-1; 2nd-5th: Tom Fineberg, William Pampel, Arthur LaFrana, Lonnie Harris, 3-2

Class C 1st-4th: Joseph Bannon, Tim Ballweg, Dave Coulter, Jack Heller, 2-3

### 1989 Midwest Action Championship

	score	tour		score	tour				
1 CHOW Albert	2438	W51	W17	W10	W 5	W 4	5	32	M
2 GUREVICH Dmitry	2642	W57	W16	W15	W13	W 3	5	32	M
3 COLIAS Bill	2356	W20	W50	W23	W 7	L 2	4	0	M
4 SCHILLER Eric	2262	W59	W28	W25	W22	L 1	4	0	M
5 UMEZINA George	2332	W36	W37	W24	L 1	W27	4	0	M
6 MARTINOVSKY Eugene	2454	W71	W33	D14	W45	D 8	4	0	M
7 SATTERLEE Ray Doyle	2110	W52	W53	W11	L 3	W26	4	0	MI
8 LEVINE David	2302	D10	W80	W47	W21	D 4	4	0	M
9 SURAK Steve	2099	W30	W12	L22	W35	W32	4	0	MI
10 VLASTNIK Richard	2139	W61	W29	L 1	W51	W24	4	0	MI
11 PELTS Peter	2412	W35	W81	L 7	W44	W14	4	0	M
12 PORTER John	1763	W56	L 9	W37	W20	W23	4	0	MIAB
13 LONOFF Marc	2356	W34	W19	W43	L 2	D16	3.5	4	M
14 MALLACH Ken	2256	W54	W26	D 6	W46	L11	3.5	4	M
15 ZUMBUNNEN Randy	2229	W60	W39	L 2	W25	D17	3.5	4	M
16 SMYTHE Bill	2010	W72	L 2	W59	W34	D13	3.5	4	MI
17 BERRY Greg	1976	W83	L 1	W53	W54	D15	3.5	4	MI
18 SEFCHECK Mark	1809	D 0	W42	L45	W47	W46	3.5	4	MI
19 FULK Winton	1951	W65	L13	D62	W40	W30	3.5	4	MI
20 CRAWFORD Brad	1835	L 3	W76	W55	D43	W90	3.5	4	MI
21 REYES Ruben	2154	W56	W66	W31	L 8	W43	3.5	4	MI
22 DE FOTIS Greg	2399	W56	W49	W 9	L 4	-	3	3	M
23 MAYKA Tom	2071	W40	W78	L 3	W56	L12	3	3	MI
24 BOSAN Tina	1930	W91	W79	L 5	W30	L10	3	3	MI
25 BALE Leslie	1884	W68	W55	L 4	L15	W61	3	3	MI
26 FANEZ Isidro	1935	W92	L14	W64	W52	L 7	3	3	MI
27 YARMOLNIK Alex	2006	D67	D64	W60	W36	L 5	3	3	MI
28 FISCHER Gregory	1941	W86	L 4	W61	L12	W60	3	3	MI
29 BOITON Barry	1913	W90	L10	W40	L30	W52	3	3	MI
30 HARRIS Lonnie	1642	L33	W71	W57	W29	L19	3	3	MIAB
31 STERN Howard	2077	D64	W67	L21	W62	D42	3	3	MI
32 FJNEBERG Tom	1766	L79	W91	W50	W49	L 9	3	3	MIAB
33 FORD Sam	2036	W50	L 6	L34	W85	W44	3	3	MI
34 EATON Jonathan	1834	L13	W65	W33	L16	W70	3	3	MI
35 GRAVES Bill	1848	L11	W70	W70	L 9	W65	3	3	MI
36 KING Wayne	1813	L 5	W80	W41	L27	W49	3	3	MI
37 MC NAMARA Jim	1954	W88	L 5	L12	W82	W54	3	3	MI
38 PAMPEL William	1676	L 9	W89	W74	L24	W57	3	3	MIAB
39 HERMANDEZ Hector	1922	W84	L15	L52	W78	W53	3	3	MI
40 LA FRANA Arthur	1658	L23	W87	L29	W58	W51	3	3	MIAB
41 BROCK Bill	2107	L44	W82	L36	W64	W59	3	3	MI
42 SANDRIN Angelo	2184	D56	L18	W66	W50	D31	3	3	MI
43 WARREN Jim	2063	W82	W63	L13	D20	L21	2.5	2.5	MI
44 PARAGAN Lideraan	1689	W41	D47	W79	L11	L33	2.5	2.5	MIAB
45 GENSLER Kevin	2152	W69	D50	W18	L 6	-	2.5	2.5	MI
46 BUTKO Nathaniel	2080	D66	W40	W50	L14	L18	2.5	2.5	MI
47 REYES Virgilio	2079	W85	D44	L 0	L18	W60	2.5	2.5	MI
48 MIELKE Keith	1695	D56	L46	W67	L19	W75	2.5	2.5	MIAB
49 GURNAMEY Anil	1961	W75	L22	W69	L32	L36	2	2	MI
50 BAETZ John	1902	W73	D45	L46	L42	D66	2	2	MI
51 ELLICE Wayne	1850	L 1	W83	W63	L10	L40	2	2	MI
52 BUTLER Herb	1692	L 7	W68	W39	L26	L29	2	2	MIAB
53 DELI Iare	1764	W77	L 7	L17	W90	L39	2	2	MIAB
54 THOMAS George	1797	L14	W92	W81	L17	L37	2	2	MIAB
55 HOLZMUELLER Keith	2126	W62	L25	L20	W69	-	2	2	MI
56 MARTIN Don	1837	L22	W75	W80	L23	-	2	2	MI
57 BARGERSTOCK Dan	1878	L 2	W72	L30	W83	L38	2	2	MI
58 COHEN Lawrence	1978	W76	L 3	L32	L40	W83	2	2	MI
59 ALLISON Roger	1803	L 4	W86	L16	W84	L41	2	2	MI
60 DIXON Frank	1774	L15	W84	L27	W63	L28	2	2	MIAB
61 JOHNSON Eric	1755	L10	W90	L28	W79	L25	2	2	MIAB
62 FLORES Joshua	1702	L55	W77	D19	L31	D67	2	2	MIAB
63 BALLWEG Tim	1929	W74	L43	L51	L60	W85	2	2	MIAB
64 GRUENBERG Fred	1462	D31	D27	L26	L41	W84	2	2	MIAB
65 BANNON Joseph	1529	L19	L34	W87	W71	L35	2	2	MIAB
66 BRADFELD Asher	1671	D46	L21	L42	W88	D50	2	2	MIAB
67 MARSHALL Ken	1632	D27	L31	L40	W77	D62	2	2	MIAB
68 HELLER Jack	-	L25	L52	W76	W89	L47	2	2	MI
69 MONTI Steven	1762	L45	W73	L49	L55	W84	2	2	MIAB
70 ITZEN Richard	1636	L81	L35	W90	W74	L34	2	2	MIAB
71 WORTINGER John	1858	L 6	L30	W86	L65	W78	2	2	MI
72 BOCHIM Gary	1639	L16	L57	L84	W91	W80	2	2	MIAB
73 COULTER Dave	1336	L50	L69	L83	W82	W82	2	2	MIAB
74 LOSOFF Alan	1934	L63	W85	L30	L70	D76	1.5	1.5	MI
75 ISAAC Theodore	1570	L49	L56	D77	W87	L48	1.5	1.5	MIAB
76 IRELAND Bob	1606	L58	L20	L68	W92	D74	1.5	1.5	MIAB
77 BROWNING Don	1312	L53	L62	D75	L67	W89	1.5	1.5	MIAB
78 REANES James	1571	W89	L23	L35	L39	L71	1	1	MIAB
79 KROM John	2207	W52	L24	L44	L61	-	1	1	MI
80 BALES Robert	1315	W87	L 8	L56	L53	L72	1	1	MIAB
81 BUTTNY Bill	2011	W70	L11	L54	-	-	1	1	MI
82 TRBOJEVIC George	1652	L43	L41	W91	L37	L73	1	1	MIAB
83 STOVER Eric	1596	L17	L51	W73	L57	L58	1	1	MIAB
84 CHARLES Michael	1382	L39	L60	W72	L59	L64	1	1	MIAB
85 SIMONIC Jack	1668	L47	L74	W92	L33	L63	1	1	MIAB
86 MOHR John	1508	L28	L59	L71	W90	L69	1	1	MIAB
87 NENOGIJA Patricia	-	L80	L40	L65	L75	W91	1	1	MI
88 TERBELL William	1559	L37	L36	D89	L66	-	0.5	0.5	MIAB
89 LOBO Edgardo	1971	L78	L30	D88	L68	L77	0.5	0.5	MI
90 ARCHER Len	1372	L29	L61	L70	L86	L20	0	0	MI
91 PALMER Ken	1419	L24	L32	L82	L72	L87	0	0	MI
92 FENNER Charles	1461	L26	L54	L85	L76	-	0	0	MI



Organizer Helen Warren is flanked by Midwest Action Chess Co-Champions Dmitry Gurevich (left) and Albert Chow

### Games from the 1989 Midwest Action Chess Championship

White: Ray Doyle Satterlee (2118)

Black: Peter Pelts (2412)

Annotated by Ray Doyle Satterlee

The 1989 Midwest Action Chess Championship was my first "Action Chess" event. I have always felt that chess would be more interesting if luck played a somewhat larger role; perhaps Action Chess is the answer! I won my first two games against Class B players, and then faced the brilliant Illinois State Champion, Peter Pelts. I was pleased with this pairing; although I had lost our four earlier encounters, all were interesting, competitive games. On more than one occasion I thought I had him beaten, only to see him come up with a magnificent reply from his uncanny bag of tricks. (Anyone who has played Peter will know what I mean!)

1.e4

I had to play fast. I was already short of time!

1...c5

Peter was also in time trouble.

2.Nf3 Nc6 3.d4 cxd4 4.Nxd4 Nf6 5.Nc3 Qb6

This is an unusual move, probably designed to take the game off the beaten path.

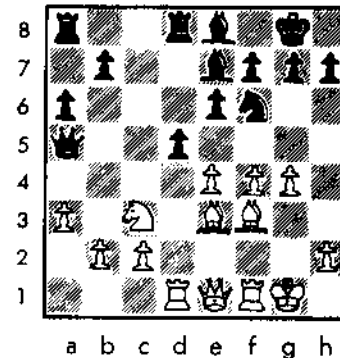
6.Nb3 (Playing it safe.) e6 7.Be3 (Exploiting the weakness of Qb6.) Qc7 8.a3 (I don't like the pin his Bb4 would produce.) Be7 9.Be2 0-0 10.0-0 a6 11.f4 d6 12.Bf3 Bd7 13.g4 (In the Sicilian White must be aggressive.) Rfd8 14.Qe1 Be8

Peter is superb at shuffling his minor pieces around on the back ranks to great effect.

15.Rd1 Na5?

The fast pace creates such errors. Luck was with me this time.

16.Nxa5 Qxa5



17.Nd5! Qxe1 (Forced.) 18.Nxe7+

A game winning intermezzo.

18...Kf8 19.Rfxe1 Kxe7 20.e5 (A tough move to handle.) Nd5 21.exd6+ Kd7 22.Bxd5 exd5 23.Rxd5 Rdc8 24.c3 Rc4 25.Bd4 Kc6 26.Rde5 Bd7 27.b3 Rxd4 28.cxd4 Kxd6 29.f5 Bc6 30.Rc1

I am not sure that this is a very logical move.

30...Bd5 31.b4 b6 32.Kf2 Rh8 33.Rce1 Rc8 34.Re8 Rc2+ 35.R1e2 Rc3 36.Rd8+ 1-0

If 36...Kc6, 37.Rc8+ wins the Rook. This was my first win over a Senior Master. I always knew I should have specialized in Parchessi!

White: Roger Allison (1803) Black: Eric Schiller (2262) Round 1 (Analysis by Eric Schiller) 1.b3 e6 2.Bb2 d5 3.g3 c6 4.Bg2 f5 5.Nh3 Nf6 6.0-0 Bd6 7.d3 Qe7 8.a3 0-0 9.Nd2 e5 10.e4?! fxe4 11.dxe4 Bg4! (11...dxe4 12.Nxe4 Nxe4 13.Bxe4 Bxh3 14.Qh5!) 12.Qe1 Qd7 13.Ng5 h6 14.f3 hxg5 15.fxg4 Nxg4 16.b4? (16.Rxf8+ =) Rxf1+ 17.Bxf1 Bc7 18.c4 Na6 19.Be2?! (19.c5!?) Bb6+ 20.c5 Nxc5 21.bxc5 Bxc5+ 22.Kh1 Nf2+ 23.Kg1 Nd3+ 24.Kh1 Nxe1 and Black won.

## SZPISJAK WINS NO BONES MINI-TOUR EVENT

Dan Kamen reports that Steve Szpisjak won the January 28, 1989 No Bones Mini-Tour Tournament. Szpisjak's 4-0 performance, which apparently made him Illinois' newest master, included an upset of Albert Chow in the final round. James Condron (3.5-.5) finished second in the 23 player field. Sharing the A/B prize were Jim McNamara, Bill Graves, and Phil Jarrette (3-1). Unrated Bhavesh Shah (2.5-1.5) took C/D/Unrated honors. Fourteen year old Brad Crawford, who has raised his rating from Class C to Expert in less than one year, drew Chow in Round 2. [Kamen predicts that Crawford, who plays in a tournament almost every weekend and is a "regular" at the Oak Park-Forest Park Chess Club, will be a master before the end of 1989.]

Here are four games from the event.

White: Albert Chow (2438) Black: Brad Crawford (1971)  
 1.d4 Nf6 2.c4 c5 3.d5 e5 4.Nc3 d6 5.e4 Be7 6.Bd3 O-O 7.Nf3  
 Ne8 8. h3 Nd7 9.Qc2 a6 10.g4 Rb8 11.Rg1 g6 12.Bh6 Ng7  
 13.O-O-O Nf6 14.Rg3 Bd7 15.Kb1 Qa5 16.Bd2 b5 17.Rdg1  
 Qb6 18.Nd1 bxc4 19. Bxc4 Bb5 20.Ne1 Bxc4 21.Qxc4 Qb5  
 22.Rc3 Bd8 23.Rc2 Nd7 24.Ne3 Nb6 25.Qc3 Bg5 26.f3 Rfc8  
 27.Nf5 gxf5 28.Bxg5 f4 29.Bh4 c4 30.Qa3 Ne8 31.Rgg2 Na4  
 32.Rge2 Ne5 33.Red2 Na4 34.Re2 c3 35. b3 Nb6 36.Qc1 Nc4  
 37.Ka1 Nc3 38.Rxe3 fxe3 39.Qxe3 Qf1 40.Rc1 f6 41.Bf2  
 .5-.5

White: Don Martin (1937) Black: Bill Graves (1848) 1.e4  
 c6 2.d4 d5 3.Nd2 dxe4 4.Nxc4 Nf6 5.Nxf6+ gxf6 6.Nf3 Bg4  
 7.Be2 e6 8.Bf4 Nd7 9.Qd2 Nb6 10.b3 Nd5 11.Bd3 Bb4 0-1

									score	tour
1	SZPISJAK Steven	2078	W16	W 4	W 9	W 7	4	16	NI	
2	CONDRON James	2020	W19	B 3	W14	W10	3.5	8	NI	
3	STEIN Peter	2247	W13	B 2	B11	W 9	3	4	NI	
4	MC NAMARA James	1924	W22	L 1	W15	W20	3	4	NIA	
5	JARRETTE Phil	1899	W 9	L 9	W16	W11	3	4	NIA	
6	GRAVES Bill	1848	W21	L10	W17	W15	3	4	NIA	
7	CHOW Albert	2438	-	W17	B14	W10	L 1	2.5	2.5M	
8	SHAH Bhavesh	-	L 5	W22	B20	W12	2.5			
9	SURAK Steve	2099	W18	W 5	L 1	L 3	2	2	NI	
10	SAX Robert	2044	W12	W 6	L 7	L 2	2	2	NI	
11	MAYKA Tom	2071	B15	W20	B 3	L 5	2	2	NI	
12	MC ALISTER Kevin	1633	L10	W19	W21	L 8	2	2	NIAA	
13	ALLISON Roger	1764	L 3	L15	W19	W21	2	2	NIAA	
14	CRAWFORD Brad	1971	W23	B 7	L 2	-	1.5	1.5MIA		
15	PANPEL William	1674	B11	W13	L 4	L 6	1.5	1.5MIA		
16	JUST Tim	1710	L 1	W10	L 5	-	1	1	NIAA	
17	MARTIN Don	1837	L 7	W23	L 6	-	1	1	NIA	
18	IRONS Robert	1720	L 9	L16	W23	-	1	1	NIAA	
19	HAYES Mike	1620	L 2	L12	L13	W22	1	1	NIAA	
20	PADILLA Rudy	1504	Wbye	L11	B 8	L 4	1	1	NIAAC	
21	KISS Csaba	-	L 6	Wbye	L12	L13	1	1		
22	DUPEE Arthur	1235	L 4	L 8	Wbye	L19	1	1	NIAACB	
23	MURIAN David	1598	L14	L17	L18	-	0			

White: Jim McNamara (1924) Black: Steven Szpisjak  
 (2078) 1. e4 Nf6 2.c5 Nd5 3.d4 d6 4.c4 Nb6 5.f4 dxe5 6.fxe5  
 Nc6 7.Be3 Bf3 8.Nc3 e6 9.Nf3 Qd7 10.d5 Nb4 11.Nd4 exd5  
 12.a3 Bg4 13.e6 Bxc6 14.axb4 Nxc4 15.Bxc4 dxc4 16.Qf3  
 c6 17.b5 cxb5 18.Ncxb5 Bb4+ 19.Kf2 O-O 20.Nc7 Bg4  
 21.Qf4 Bd6 22.Qg5 f5 23.Ndb5 h6 24.Qh4 f4 25.Nxd6  
 fxe3+ 26.Kxc3 Qxd6 27.Qxg4 Qd3++ 0-1

White: Albert Chow (2438) Black: Steven Szpisjak  
 (2078) 1.d4 Nf6 2.c4 e6 3.Nf3 d5 4.Nc3 Be7 5.Bf4 O-O 6.c3  
 c5 7.dxc5 Qa5 8.a3 dxc4 9.Bxc4 Rd8 10.Qc2 Nc6 11.O-O  
 Qxc5 12.b4 Qh5 13.b5 Nb8 14.e4 Qg4 15.Bc7 Rd7 16.h3  
 Qh5 17.Bh2 a6 18.Na4 Bd8 19.Rfcl axb5 20.Bxb5 Nc6  
 21.Nc5 Nd4 22.Nxd4 Rxd4 23.Qe3 e5 24. Be2 Qh6 25.Qxh6  
 gxh6 26.Bxe5 Rd2 27.Bd3 Nd7 28.Bc3 Nxc5 29. Bxd2  
 Nxd3 30.Rc3 Bf6 31.Rxd3 Bxal 32.Bxh6 Be6 33.f4 Kh8  
 34.f5 Bc4 35.Rd7 Bg7 36.Bf4 b5 37.e5 Re8 38.f6 Bf8 39.Rc7  
 0-1

## Games from Recent Events

"My opponent played the opening timidly and allowed me to quickly obtain the initiative", writes Robert Irons. "The combination beginning at move 16 leads to a won endgame and is probably the best I've played in a tournament".

Chicago Chess Center Tournament-1988 White: Khasim Karriem (Unr) Black: Robert Irons (1730) 1.d4 Nf6 2.e3  
 g6 3.Nf3 Bg7 4.Be2 O-O 5.O-O d5 6.b3 c5 7.dxc5 Ne4 8.c3  
 Nd7 9.Bb2 Ndx5 10.Qc2 e5 11.Nbd2 Bf5 12.Nxe4 dxe4  
 13.Nd2 b5 14.Rfd1 Qg5 15.Nc4 Nd3 16.f3 Ne1 17.Rxe1 exf3  
 18.Bd3 Bxd3 19.Qf2 Bxc4 20.bxc4 Qxg2+ 21.Qxg2 fxg2  
 22.Kxg2 Rfd8 23.Re2 e4 24.Rf1 Rac8 25.Ref2 f5 26.Kg3  
 Rxc4 27.Kf4 Bh6+ 28.Kg3 Bxe3 29.Rg2 Rd3 30.Kh4 Kf7  
 31.Kg3 Bg5+ ("In time pressure I overlooked 31...Bcl+  
 32.Kh4 e3+", notes Irons.) 32.Kf2 Rd2+ 33.Kg1 Rxg2+  
 34.Kxg2 Bd2 35.Rd1 e3 36.Kf3 g5 37.Bcl g4+ 38.Ke2 Bxc1  
 39.Rxc1 Re4 40.c4 Ke6 41.Rc3 Ke5 42.c5 f4 43.e6 bxc6  
 44.Rxc6 f3+ 45.Ke1 Kd5 46.Rc2 Rc4 47.Rb2 Rc1+ 0-1

"This contest is from the November 19, 1988 "DustBowlOpen", Springfield Chess Club President Thomas Knoedler writes. "While neither player is a master, the game's brevity (ten moves!) should be a pleasant change of pace".

White: Randy Ingram (1667) Black: James Larson (1502) 1.Nf3 d6 2.d4 Nf6 3.g3 Nc6 4.Bg2 e5 5.c3 e4 6.Ng5  
 d5 7.c4 dxc4 8.d5 Nxd5 9.Bxe4 Bb4+ 10.Kf1 Ne3+ 0-1



**CHESS PHONE**  
 (312) 325-3666

**DOWNSTATE CHESS PHONE**  
 (309) 655-0618





# ILLINOIS CHESS LEAGUE PLAYOFF RESULTS

Hillside edged Orland Park 6.5-5.5 to win the Championship section [average team rating from 2100 to 1800] of the Illinois Chess League playoffs at Proviso West High School in Hillside on January 28, 1989. The six man teams played two matches, with the combined results determining the champion. Hillside took the first match 4-2, and Orland Park the second, 3.5-2.5. Hillside's team was made up of Alan Watson, Greg Bungo, Frank Tegel, Peter Vesely (the top four boards in both matches), and Paul Szustowski, Marty Franek, Paul Ilosvay, and Gary Willard (each of whom played in one match).

Hillside's reserve team defeated Tuley Park 9-3 for the Reserve section [1800-1500] title. The winning team's members were Bill Buttny, Greg Fischer, Steve Decman, John Dowse, Art LaFrana, and Maurice Mozayeni. Hillside fielded the only Booster section [1500-1200] team, and so took that section also. Team members included Bob Ireland, Joe Moore, Dean Watson, Al McWilliams, Ken Diehl, and Dudick.

The following games are from the Championship section. (Editor's Note: game scores were supplied by

White: Alan Watson (2222) Black: Johnathon Godfrey(2066) 1.d4 Nf6 2.c4 g6 3.Nc3 Bg7 4.e4 d6 5.Be2 O-O 6.Nf3 Nc6 7.O-O e5 8.d5 Ne7 9.Ne1 Nd7 10.Be3 f5 11.f3 f4 12.Bf2 g5 13.Nb5 Nf6 14.c5 a6 15.Na3 b5 16.cxb6 cxb6(e.p.) 17.Nc4 Rb8 18.Qb3 b5 19.Qb4 Ne8 20.Na5 h5 21.Rc1 Rf6 22.Nd3 Rg6 23.Kh1 g4 24.Bh4 g3 25.Nc6 Nxc6 26.Bxd8 Flag 1-0

White: Paul Szustowski (1999) Black: Joaquim Godfrey (1852) 1.e4 e5 2.Nf3 Nc6 3.d4 exd4 4.Bc4 Nf6 5.e5 d5 6.Bb5 Nc4 7.Nxd4 Bd7 8.Bxc6 bxc6 9.O-O Bc5 10.Be3 Bxd4 11.Qxd4 O-O 12.f3 Ng5 13.Nd2 Ne6 14.Qc3 f5 15.f4 Qe7 16.Nb3 g5 17.Nc5 d4 18.Bxd4 Nxf4 19.Rae1 Be6 20.Nd3 Nd5 21.Qxc6 Rfd8 22.c3 f4 23.Nc5 Bf5 24.Qh6 Bg6 25.Ne4 Bxe4 1-0

White: Greg Bungo (2179) Black: Jim Burns (2061) 1.e4 d6 2. d4 Nf6 3.Nc3 g6 4.f3 Bg7 5.Be3 O-O 6.Qd2 Nbd7 7.O-O-O e5 8.Nge2 a5 9.g4 Qe7 10.h4 h5 11.g5 Ne8 12.Bh3 Nb6 13.Bxc8 Rxc8 14.d5 Nc4 15.Qd3 Nxe3 16.Qxe3 Qd7 17.Kb1 b5 18.Qd3 Rb8 19.Ng3 b4 20.Nce2 c5 21.Nf1 Nc7 22.Ne3 Rb5 23.Nc4 Rfb8 24.Nc1 a4 25. b3 Ra8 26.Rd2 Rb7 27.c3 Nb5 28.cxb4 cxb4 29.Ne2 axb3 30.axb3 Rba7 31.Rc1 Na3+ 32.Nxa3 Rxa3 33.Rb2 Qh3 34.Rc6 Ra1+ 35.Kc2 Rf1 36.Qh1 Qc7 37.Rb2 Raa1 38.Rxd6 Qh1 39.Qb5 Rfcl+

Larry Stilwell.]

40.Kd2 Qe1+ 0-1


## The Club Scene

### Club Bits and Pieces ...

Grandmaster Dmitry Gurevich, the 1988 U.S. Open Champion, won 17 of 20 games at a January 24, 1989 simultaneous exhibition the Oak Park-Forest Park Chess Club, losing only to George Uffner (the president of the Downers Grove Chess Club) and drawing with Joe Litwin and Patricia Mendoza .... Bill Buttny won the 1988 OP-FP CC Speed Chess Championship [Information supplied by OP-FP CC President Ken Marshall] ....

Jeff Wiewel (6.5-.5) finished first in the St. Charles Chess Club's Knight's Cup Round Robin, followed by Jon Gotz (5.5- 1.5) and Erv Sedlock, Joe Splinter, and Barry Bouton (4-3); Roger Allison (5-0) won a concurrent Club Round Robin .... the St. C CC Championship will be held on five consecutive Thursdays (2/23/89 through 3/23/89) [Information supplied by St. C CC Secretary Jeff Wiewel].... Al Jonaitis won the Central Lake County Chess Club Championship for the second year in a row .... Roger Owiecki is the 1988 CLC CC Speed Chess Champion .... Club hexagonals begin on 2/17/89 [Information supplied by CLC CC President Tim Just] ....

The Elk Grove Village Chess Club meets Fridays, 7 p.m. to 10 p.m., at the Al Hauendorf Center, 225 E. Elk Grove Blvd.; contact Gary Janssen, (312) 894-0996 (evenings) .... Chess Northwest meets the second and fourth Fridays of each month at the Schaumburg Public Library, 32 Library Ln.; contact Elmer Linden, (312) 882-2382 (evenings).



**MISSOURI CHESS ASSOCIATION**

PROUDLY PRESENTS

100

**MISSOURI OPEN STATE CHAMPIONSHIP**

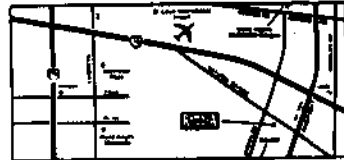
APRIL 22&23, 1989

A USCF HERITAGE EVENT

---

**Remain/St. Louis International Airport**

**SITE:** 9630 NATURAL BRIDGE ROAD, ST. LOUIS, MO 63134  
1-314-426-4700 or 1-800-272-6232  
Sleeping Rates: \$18-30-44-50



---

**PRIZE FUND: \$1650.00 (based on 100 entries)**

MISSOURI OPEN STATE CHAMPION: \$300 PLUS TROPHY (NO RESIDENT ONLY)

<p>2ND PLACE: \$150.00 PLUS TROPHY</p> <p>1ST EXPERT: \$200.00 PLUS TROPHY</p> <p>2ND EXPERT: \$100.00 PLUS TROPHY</p> <p>1ST "A": \$200.00 PLUS TROPHY</p> <p>2ND "A": \$100.00 PLUS TROPHY</p> <p>1ST "B": \$200.00 PLUS TROPHY</p> <p>2ND "B": \$100.00 PLUS TROPHY</p> <p>1ST "C": \$200.00 PLUS TROPHY</p> <p>2ND "C": \$100.00 PLUS TROPHY</p> <p>1ST "D-E": \$200.00 PLUS TROPHY</p>	<p>(TIE-BREAKING SYSTEM FOR TROPHIES)</p> <ol style="list-style-type: none"> <li>1. SOLIDIFY</li> <li>2. AVERAGE OPPOSITION</li> <li>3. OPPOSITION'S PERFORMANCE</li> <li>4. 5-MINUTE BLITZ GAME</li> </ol> <p>DIRECTOR: JOHN DAVID TOMLINSON ASSOCIATE NATIONAL TD</p> <p>(1ST UPRATED) CHESS SET AND BOARD</p>
---------------------------------------------------------------------------------------------------------------------------------------------------------------------------------------------------------------------------------------------------------------------------------------------------------------------------------------------------------------------------------------------	----------------------------------------------------------------------------------------------------------------------------------------------------------------------------------------------------------------------------------------------------------------------------------------------------------------------

---

**FORMAT:**

5 ROUND SWISS SYSTEM PAIRINGS.

TIME LIMIT: RDS 1-3: 40/90 THEN 30/1.

RDS 4&5: 50/2 THEN 30/1.

NO SMOKING IN THE PLAYING AREAS.

1/2 PT BYES AVAILABLE IN RDS 1-4.

CURRENT 1989 RATING SUPPLEMENT USED.

**SCHEDULE:**

REGISTRATION: 8-9 AM SATURDAY.

ROUNDS: 9:30, 1:00 & 4:30 SATURDAY.  
8:00 and 1:30 SUNDAY.

**ENTRY FEE:**

\$25.00 IF RECEIVED BY 4-21-88 (MAIL)

\$27.00 BY PHONE (BY 4-21-88)

\$30.00 AT THE DOOR.

MCA MEMBERSHIP REQUIRED AND CAN BE PURCHASED AT THE DOOR.

**ENTRIES & INQUIRIES**

JOHN D. TOMLINSON  
105A RANDOL COURT.,  
ALTON, IL 62002 (312)-818-462-5732

ILLINOIS TOURNAMENT CALENDAR  
(Continued)

Mar. 19: Illinois Chess Association Awards Banquet, at the Greek Islands Restaurant in Chicago. Helen Warren: 246-6665.

Mar. 21: WBCA Blitz Tournament, at the Mohr Community Center in Forest Park. Ken Marshall: 932-1455.

Mar. 25-26: How Many Points for Beating a Master?, 1 day events, at the Chicago Chess Center. Jules Stein: 929-7010.

Apr. 1-2: For the Penny-Pinching Pawn Pusher, 1 day events, at the Chicago Chess Center. Jules Stein: 929-7010.

Apr. 8-9: Ransom for the King, 1 day events, at the Chicago Chess Center. Jules Stein: 929-7010.

Apr. 15-16: Grand Prix Class, at the Chicago Chess Center. Jules Stein: 929-7010.

Apr. 22: First Lincoln Land Mini-Tour Open, at the Washington Park Pavilion in Springfield. AN ICA ILLINOIS MINI-TOUR EVENT. Tom Knoedler: (217) 523-7265 SEE HALF PAGE AD IN THIS ICB.

April 22-23: Missouri Open State Championship, at Ramada Inn in St. Louis. John Tonkinson: (618) 462-5732.

April 29-30: Oak Park-Forest Park Chess Club Spring Open, at the Mohr Community Center, in Forest Park. Ken Marshall: 932-1455.

**HELP SUPPORT ILLINOIS CHESS BY  
BECOMING AN ICA BENEFACTOR:**

CENTURY MEMBER \$100;  
GOLD CARD \$50; PATRON \$25.  
Please mail your contribution to:  
Illinois Chess Association  
P.O. Box 157  
Morton Grove, IL 60053-0157

PATRON MEMBERS  
(CONTINUED)

Thomas Knoedler	Springfield, IL
Walter Kocjan	Northlake, IL
John Krom	Chicago, IL
Peter Kuhn	Des Plaines, IL
Marc Lunoff	Northbrook, IL
Eugene Lopez	Elk Grove, IL
Alan Losoff	Morton Grove, IL
Ken Marshall	Lombard, IL
Donald Martin	Round Lake Beach, IL
Eugene Martinovsky	Naperville, IL
James McNamara	Riverside, IL
Earl Miller	El Paso, IL
Patrick Moran	Wilmette, IL
Bill Naff	Peoria, IL
Wayne Palmquist	Oak Forest, IL
Peter Pelts	Chicago, IL
Mieczyslaw Piatek	Chicago, IL
John Popovich	Evergreen Park, IL
Tim Redman	Lima, OH
Frederick Rhine	Chicago, IL
Ray Satterlee	Wheaton, IL
Vivian Schmucker	Goshen, IN
Mark Sefcheck	Naperville, IL
Tom Shaffer	Chicago, IL
Tony Sillars	Chicago, IL
Arthur Sinclair	Evanston, IL
Leonard Spiegel	Naperville, IL
David Sprenkle	Knoxville, TN
Peter Stein	Naperville, IL
David Taylor	Kankakee, IL
William Terbell	Glen Ellyn
Douglas White	Schaumburg,, IL
Harold Winston	Naperville, IL
Marvin Winston	Old Bridge, NJ
David Wulatin	Oak Park, IL
Sandy Zabell	Chicago, IL
Max Zavanelli	Park Ridge, IL

Please send Chicago metropolitan area  
Tournament Clearinghouse material to:

Fred Gruenberg  
Box 43336, Chicago, IL 60643  
(312) 396-1984 (D) (312) 779-0306 (N)

Please send Downstate Tournament  
Clearinghouse material to:

Garrett Scott  
202 Foster Dr., Normal, IL 61761  
(309) 452-8116

**CENTURY CLUB MEMBERS**

Michael Belovesick	Elmhurst, IL
Fred Cramer	Mequon, WI
Tom Fineberg	Chicago, IL
Fred Gruenberg	Chicago, IL
Albert Sandrin	Chicago, IL
Angelo Sandrin	Chicago, IL
Bill Smythe	Chicago, IL
Burton Vincent	Chicago, IL
Helen Warren	Western Springs, IL
Jim Warren	Western Springs, IL

**GOLD CARD MEMBERS**

Bill Buttny	Downers Grove, IL
Harland Hoisington	Ogden, UT
Ed Marschall	South Barrington, IL
Daniel Pradt	Glen Ellyn, IL
Michael Pratts	Chicago, IL
Irwin Rothschild	Park Forest, IL
Mitchel Sweig	Evanston, IL
Don Townsend	Chicago, IL
Bill Wenz	Milwaukee, WI
Louis Werner	Evanston, IL

**PATRON MEMBERS**

Faneuil Adams	New York, NY
Bob Ash	Urbana, IL
Todd Barre	Clarendon Hills, IL
John Barstad, Sr.	Carol Stream, IL
Roy Benedek	Western Springs, IL
Timothy Bogan	Chicago, IL
Barry Bouton	Sandwich, IL
Bill Brock	Chicago, IL
Tyrone Brooks	Chicago, IL
Jim Brotsos	Chicago, IL
Walter Brown	Crest Hill, IL
Fred Burgess	Oak Forest, IL
Anthony Caliendo	Aurora, IL
Jim Condron	Downers Grove, IL
Lynn Crewse	Arlington Heights, IL
David Cromer	Iowa City, IA
John Deutsch	Chicago, IL
Leroy Dubeck	Cherry Hill, NJ
Keith Esses	Chicago, IL
Gerard Garino	Evanston, IL
Jon Gotz	West Chicago, IL
Donald Graft	Wheaton, IL
William Graves	Chicago, IL
Guy Gruenberg	Matteson, IL
Walter Henry	Naperville, IL
Charles Hicks	Naperville, IL
Keith Holzmüller	Evanston, IL
Jeffery Hyland	Mount Prospect, IL
Robert Irons	Chicago, IL
Tim Just	Gurnee, IL
Dan Kamen	Wheeling, IL
Leo Kaushansky	Chicago, IL
Scott Kittsley	Shorewood, WI

**ICA ELECTED OFFICERS:**

Helen Warren, President  
P.O. Box 305 Western Springs, IL 60558  
(312) 246-6665

Fred Gruenberg, Metro Vice-President  
2035 W. 110th Pl., Chicago, IL 60643  
(312) 779-0306

Garrett Scott, Downstate Vice-President  
202 Foster Dr. Normal, IL 61761  
(309) 452-8116

Tim Just, Secretary  
37165 Willow Ln., Gurnee, IL 60031  
(312) 244-7954

Guy Gruenberg, Treasurer  
P.O. Box 353, Olympia Fields, IL 60461  
(312) 747-3444

**USCF DELEGATES**

by virtue of their USCF posts:

Harold Winston, President  
Todd Barre, Regional Vice-President  
Tim Just, Regional Vice-President  
Frank Skoff, Past President  
Helen Warren, Life Voting Member

**ICA APPOINTED USCF DELEGATES:**

Fred Gruenberg	Guy Gruenberg
Ken Marshall	Tom Fineberg

**ICA APPOINTED USCF VOTING MEMBERS:**

Bill Naff	Dennis Grant
Walter Brown	Mike Zacate
Alan Losoff	Jim Warren
Garrett Scott	Bob Bain
Erv Sedlock	Tom Knoedler
Wayne Palmquist	

**ICA APPOINTED USCF  
ALTERNATE VOTING MEMBERS:**

Larry Stilwell	Al Chow
Bill Smythe	John Tonkinson
Larry Cohen	Byron Pappas
Jim Condron	Chris Musgrave
Angelo Sandrin	Jim Brotsos
Bill Wilkinson	Eric Schiller
Glen Panner	Barry Fisher
John Barstad	Kevin Bachler

## ILLINOIS TOURNAMENT CALENDAR

Call Chess Phone, (312) 325-3666, for recorded tournament announcements and results, often more up-to-date than CHESS LIFE or the ICB. The ICA Chess Phone voice is Todd Barre.

Unless otherwise noted, all tournaments require USCF membership. Illinois Tour events also require ICA membership. Phone numbers are area code 312 unless a different area code is listed. Announcements of ICA affiliates receive more space in the Tournament Calendar than do those of non-affiliates.

Feb. 25-26: What's the Name of this Tournament?, 1 day events, at the Chicago Chess Center. Jules Stein: 929-7010.

Feb. 26: Illinois Chess Association Board Meeting, at the Hyatt O'Hare Hotel, in Rosemont. Tim Just: 244-7954.

Mar. 2: Midwest Blitz Championship (sanctioned by the World Blitz Chess Association), at the Hyatt Lincolnwood Hotel. Open to everyone; WBCA membership required (available at site). Helen Warren: 246-6665.

Mar. 3-5: Midwest Masters VII, at the Hyatt Lincolnwood Hotel. Helen Warren: 246-6665.

Mar. 4-5: Illinois Grade School Championship, at Bloomington High School in Bloomington. Garrett Scott: (309) 452-8116.

Mar. 4-5: For the Penny-Pinching Pawn Pusher, 1 day events, at the Chicago Chess Center. Jules Stein: 929-7010.

Mar. 11: 4th North Boone Membership Tournament, at North Boone High School in Popular Grove. Carl Simonson: 816-7550.

Mar. 11-12: Greater Peoria Open, at the Signature Inn in Peoria. AN ICA ILLINOIS MAXI-TOUR EVENT. Bill Wilkinson: (309) 673-9455. SEE FULL PAGE AD IN THIS ICB.

Mar. 11-12: Can I Have a One Point Bye in Round One-No!, 1 day events, at the Chicago Chess Center. Jules Stein: 929-7010.

Mar. 11-12: Illinois High School Association Team Tournament, in Rock Island. Mike Zacate: 479-9380.

Mar. 12: 8th Southern Illinois Winter Open, at Salem High School in Salem. Mark Oestreich, 1252 N. Poplar, Centralia, IL 62801.

Mar. 18: Illinois Valley Swiss Open, at the Grace United Methodist Church in LaSalle. Byron Pappas: (815) 224-2869.

Mar. 18: Shimer College Tornado, in Waukegan. Kevin Bachler: 249-8778.

Mar. 18-19: Do You Have an Extra Clock?, 1 day events, at the Chicago Chess Center. Jules Stein: 929-7010.

(Continued on Page 24)

ILLINOIS CHESS BULLETIN  
357 W. GROVE  
LOMBARD, ILLINOIS 60148

SPEEDY DELIVERY APPRECIATED