



ILLINOIS CHESS BULLETIN

Official Publication of the Illinois Chess Association a U.S.C.F. Affiliate
A Not For Profit Organization

JULY - AUGUST 1989 VOLUME XII, NO. 4 BI-MONTHLY \$2.00



OPEN SEASON IN ILLINOIS

U.S. OPEN: AUGUST 5-13

BRADLEY SUMMER OPEN: AUGUST 19

ILLINOIS OPEN: SEPTEMBER 2-4

LAKE COUNTY OPEN: SEPTEMBER 16

ST. CHARLES OPEN: SEPTEMBER 23-24



ILLINOIS CHESS BULLETIN

EDITOR:
KEN MARSHALL
357 W. Grove
Lombard, Illinois 60148
(312) 932-1455

TECHNICAL EDITOR:
MARY GAITHER MARSHALL

ASST. TECHNICAL EDITOR:
DON WINSAUER

SUBSCRIPTIONS:

The Illinois Chess Bulletin (ICB) is published bimonthly by the Illinois Chess Association. ICA membership includes a subscription to the ICB. (Century, Gold, and Patron members receive their ICB by first-class mail.)

ANNUAL MEMBERSHIP RATES:

Century Club:	\$100.00
Gold Card:	50.00
Patron:	25.00
Regular:	10.00
Junior (under 18):	6.00

Subscriptions, Address Changes, and Corrections should be sent to:

Alan Losoff, ICA Membership Secretary
P.O. Box 157
Morton Grove, IL 60053-0157

SUBMISSIONS:

Submit articles, photographs, crosstables, games, and other publishable materials to the Editor. Publication deadline for the next issue is September 10, 1989.

ADVERTISING RATES:

Full page	\$80
Half page	\$50
Quarter page	\$30
Eighth page	\$20

10% discount for the same ad in consecutive issues. 1/3 discount for ICA affiliates. All advertising must be camera ready to qualify for these rates. The ICA and the ICB reserve the right to reject advertising.

TABLE OF CONTENTS

FROM THE EDITOR'S DESK	1
WHERE TO PLAY CHESS / CLUB AFFILIATES	2
FROM THE PRESIDENT	3
WHAT'S NEW	4
PRAIRIE STATE MASTERS / EXPERTS	6
PRAIRIE STATE ACTION UNDER 2000	10
DAVID WULATIN'S COLUMN	11
ONES THAT GOT AWAY	12
MASTER CHALLENGE XI	14
ILLINOIS PLAYERS / NATIONAL OPEN	17
1989 ILLINOIS TOUR STANDINGS	18
CHACHIERE ANNOTATES	19
ILLINOIS HIGH SCHOOL INVITATIONAL	20
GAMES OF ICA MEMBERS	21
ICA MINUTES / CLUB SCENE	22
CROSSTABLES	23

CHESS PHONE: (312) 325-3666

**DOWNSTATE CHESS PHONE:
(309) 655-0618**

ICA AFFILIATION: Chess clubs and other organizations which promote chess activity may affiliate with ICA. Affiliate benefits include a copy of each ICB by first-class mail, a listing (if desired) under "Where to Play Chess" in each issue, discounted ICB advertising rates, three-line tournament announcements in the "Tournament Calendar", and the right to run ICA Tour events. ICA affiliation costs \$15; please remit to address shown under "Annual Membership Rates". Include your club meeting times, name of contact person, and other useful information in the format shown in "Where to Play Chess" on page 2.

From the Editor's Desk

The U.S. Postal Service willing, most Illinois Chess Association members should receive this ILLINOIS CHESS BULLETIN before the U.S. Open begins on August 5. America's oldest and most prestigious national chess tournament is back in Chicago for the first time in ten years; whether it (or any other major national event) returns within the next ten years may depend in large part upon this year's attendance. The Midwest in general (and Illinois in particular) is rich in chess activity and talent; here is the chance to demonstrate this to the rest of the country. Don't miss the opportunity to play some serious chess, see (and possibly be paired with) some of the country's top Grandmasters, and join in the celebration of the 50th anniversary of the founding of the United States Chess Federation. [Prior ICBs and the July and August issues of CHESS LIFE contain information about the Open tournament; see page 9 of this ICB for details regarding daytime chess events from August 5 through 13.]

A 20 tournament Illinois Chess Association 1989 Illinois Tour -- seemingly impossible, given 1988's nine event lineup -- now is a reality. Twelve Tour tournaments have already taken place, and at least eight more are scheduled:

the Bradley Summer Open (Peoria, August 19, Mini-Tour); the Lake County Open (Shimer College/Waukegan, September 16, Mini-Tour); the St. Charles Open (St. Charles, September 23- 24, Mini-Tour); the Peoria Fall Tomado (Peoria, October 14, Mini-Tour); the Oak Park-Forest Park Chess Club Autumn Action (Forest Park, October 21, Mini-Tour); the Champaign-Urbana Open (Champaign, October 21-22, Open and Under 1900 Sections, MAXI-TOUR [Under 1500 section not on Tour]); Illinois Open (Peoria, September 2-4, MAXI-TOUR); and Illinois Class (Chicago, November 18-19, MAXI-TOUR).

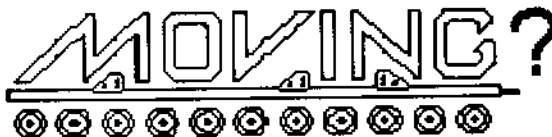
But why stop at 20? With organizers becoming increasingly aware that placing their events on the Illinois Tour means free ICB ads and greater attendance by players hunting for Tour points, I suspect that another 1989 Tour tournament or two (including perhaps a "last chance" Mini-Tour event late in the year?) may yet be scheduled in early November or in December. [Organizers who are unfamiliar with the Tour can call either ICA President Helen Warren ((312) 246-6665) or ICB Editor Ken Marshall ((312) 932-1455) for information.]

The Champaign-Urbana Chess League and the Hammond (IN) Chess Club have affiliated with the

ICA. The C-U CL has scheduled monthly tournaments from August through December, including a three section event on October 21-22 with a \$1200 prize fund guaranteed by Micro Resales. (As noted above, the Open and Under 1900 sections of this tournament are Illinois Maxi-Tour Events.) The H CC is sponsoring tournaments in August, September, and December. [See page 2 of this ICB for information about these and other ICA club affiliates.]

In my capacity as President of the Oak Park - Forest Park Chess Club, I would like to thank the players who took part in Master Challenge XI on June 23-25. The 119 player turn out, the largest in the last four years, assured that there will be a Master Challenge XII, complete with a healthy guaranteed prize fund, in June of 1990.

Long time Wisconsin resident and former USCF President Fred Cramer died on April 18, 1989. Though perhaps most famous as Bobby Fischer's manager during the 1972 World Championship Match, Cramer was active in local, state, and national chess organizations for more than 30 years. He also served as FIDE (World Chess Federation) Vice President from 1967 to 1975. Cramer funded the American Chess Foundation's Cramer Magazine Grants to, in the words of ACF Executive Director Allen Kaufman, "identify and assist excellent local [chess] publications". (The ICB received a number of those Grants over the last several years.) Chess in general, and chess journalism in particular, has lost a good friend.



Send address changes and corrections to:

Alan Losoff
Membership Secretary
P.O. Box 157
Morton Grove, IL 60053

CHESS PHONE: (312) 325-3666

**DOWNSTATE CHESS PHONE:
(309) 655-0618**



WHERE TO PLAY CHESS: ICA CLUB AFFILIATES



AMERICAN POSTAL CHESS TOURNAMENTS sponsors postal events and sells chess books and equipment. Contact Jim or Helen Warren, P.O. Box 305, Western Springs 60558. (312) 246-6665.

AUBURN HIGH SCHOOL CHESS CLUB, 4273 Straw Lane, Roscoe 61073. Contact James Boyer, sponsor. (815) 623-8148.

CENTRAL COMETS CHESS CLUB, Steger Central Junior High School, c/o D. DeVore, 19 W. 33rd St., Steger, IL 60475.

CHAMPAIGN-URBANA CHESS LEAGUE sponsors rated tournaments in the Champaign-Urbana area. Contact Tom Worley, 2106 Zuppke, Urbana 61801. (217) 367-4744.

CENTRAL LAKE COUNTY CHESS CLUB meets Fridays, 7:15 p.m. to midnight, College of Lake County, Bldg. 1, Washington at Route 45, Grayslake. Contact Dennis Grant, 1657 McKay, Waukegan 60087. (312) 336-5188.

CHESS NORTHWEST meets the second and fourth Friday evenings of each month, Schaumburg Public Library, 32 Library Lane, Schaumburg. Contact Elmer Linden, 1325 Dennison Rd., Hoffman Estates, IL 60195. (312) 882-2382.

CHICAGO CHESS CENTER meets for casual chess 7 days a week, 6 p.m. to 1 a.m., 2923 N. Southport, Chicago 60657. Also sponsors rated tournaments. Contact Ray Socha, (312) 929-7010.

CHICAGO CHESS MATES CLUB AND BOOKSTORE sponsors tournaments and group lessons, sells chess books and equipment, weekdays 4 p.m.-11 p.m., weekends 10 a.m.-9 p.m. (closed Mondays), 1261 W. Loyola, Chicago, 60626. Contact Richard Verber (312) 262-9100 or (312) 262-8050.

CHICAGO INDUSTRIAL CHESS LEAGUE organizes frequent competition among commercial/government teams with awards, ratings, and special events. Contact Jim Brotsos, (312) 775-5054, or Bruce McNeil, (312) 742-5195.

CLOVERLINE STUDENT CHESS PROGRAM offers free chess lessons for high school and grammar school students, Tuesdays, 3 to 6 p.m. at Revere Park Field House, 2509 W. Irving Park, Chicago 60618. Contact Richard Verber (312) 262-8050.

DOWNERS GROVE PARK DISTRICT CHESS CLUB meets Thursdays, 6:30-10 p.m., Lincoln Center, 935 Maple Ave., Downers Grove. Affiliated with USCF and ICA. Contact George Uffner, (312) 960-9382.

ELK GROVE VILLAGE CHESS CLUB meets Fridays, 7 p.m. to 10 p.m., at the Al Hattendorf Center, 225 East Elk Grove Blvd., Elk Grove Village. Contact Gary Janssen, (312) 894-0996 (evenings).

EVANSTON TOWNSHIP HIGH SCHOOL CHESS CLUB meets Fridays, 3:30-6:00 p.m. Beardsley Student Center. Contact Ken Lewandowski. (312) 492-7943.

GREATER PEORIA CHESS FEDERATION meets Mondays, 7 to 11 p.m., Garrett Center, 824 N. University, Peoria. Contact Bill Wilkinson, 901 N. Rebecca Pl., Peoria 61606. (309) 673-9455.

HAMMOND (IN) CHESS CLUB meets Thursdays, 7:00 p.m. to ?, at Hammond Public Library, Howard Branch, 171st and Grand, Hammond, IN. Contact Les Kistler, 719 E. 12th St., Hobart, IN 46342. (219) 942-8815.

HILLSIDE CHESS CLUB meets Fridays, 7:30 p.m. to midnight, Hillside Baptist Church, 5152 Butterfield (just east of Taft), Hillside. Contact Larry Stilwell, 4705 Elm, Lisle 60532. (312) 963-6799.

LAKE COUNTY CHESS ASSOCIATION sponsors rated tournaments in the Grayslake/Zion area. Contact Tim Just, 37165 Willow Ln., Gurnee 60031. (312) 244-7954.

MIDWEST CHESS ASSOCIATION organizes major tournaments for masters and experts. Contact Helen Warren, P.O. Box 305, Western Springs, 60558. (312) 246-6665.

OAK PARK / FOREST PARK CHESS CLUB meets Tuesdays, 7 p.m. to midnight, Mohr Community Center, Jackson and DesPlaines, Forest Park. Contact Ken Marshall, 357 W. Grove, Lombard 60148. (312) 932-1455.

PARK FOREST CHESS CLUB meets Thursdays, 7 to 10:30 p.m., Freedom Hall, Orchard & Lakewood, Park Forest. Contact Lawrence Cohen, 135 Westwood, Park Forest 60466. (312) 748-5911.

SPRINGFIELD CHESS CLUB meets Wednesdays, 6-10 p.m., Washington Park Pavilion, Park Ave. and South Grand Ave. West, Springfield. Contact Tom Knoedler, (217) 523-7265, or James Larson, (217) 529-0781.

ST. CHARLES CHESS CLUB meets Thursdays at 7 p.m., Baker Community House, 101 S. 2nd (Route 31), St. Charles. Contact Erv Sedlock, 6 N. 307 Old Homestead Rd., St. Charles 60174. (312) 377-7995.

TULEY PARK CHESS CLUB meets Saturdays, 1-5 p.m., Tulcy Park Fieldhouse, 501 E. 90th Pl., Chicago. Contact Thomas Fineberg, 7321 S. South Shore Dr., Chicago 60649. (312) 721-3979.

TWIN CITIES CHESS CLUB meets Monday evenings, Parks & Rec. Bldg., 611 S. Linden, Normal, except 1st Monday/month, Garcia's, Watterson Place. Speed tournaments 50 cents/game. Contact Andy McGowan, 520 E. Chestnut, Bloomington 61701. (309) 827-7892.

<p>CHESS PHONE: (312) 325-3666</p> <p>DOWNSTATE CHESS PHONE: (309) 655-0618</p>

FROM THE PRESIDENT

by Helen Warren, ICA President

PLAYING IN PEORIA...

Bill Wilkinson and Bill Naff, the tireless Peoria duo, have organized a great state championship for us over Labor Day. The Signature Inn has made special rates available for chess players and the prize fund of \$2000 plus 15 GP points are bonus features. In addition, of course, this is an ICA Maxi-Tour event. Let's get behind this effort by our downstate organizers.

++++

U.S. OPEN TIME...

We write this just a matter of two weeks before the U.S. Open at the Hyatt Regency O'Hare. If my telephone is any indication, we should have a fine turnout.

This is an opportunity for me to thank the many volunteers who assisted in this effort. They are acknowledged in the players program as supporter-patrons. It looks like we have just surpassed our goal of \$5,000 in local fund raising!

U.S. OPEN NOTES...

With two weeks ahead until Chief TD Walter Brown tells us to start our clocks, the following grandmasters are confirmed participants in the U.S. Open:

GM Maxim Dlugy	GM Walter Browne
GM Robert Byrne	GM Michael Wilder
GM Sergey Kudrin	GM Arthur Bisguier
GM Dmitri Gurevich	GM John Fedorowicz
GM Michael Rohde	

We are also expecting numerous IMs.

Of special note are the U.S. Open daytime events described elsewhere this issue. If you can't make the Open, play in one of the Action Tournaments, the 30/30, or participate in one of the simulms.

COMING IN NOVEMBER AT THE MORGAN PARK ACADEMY: THE ILLINOIS CLASS! BE THERE!

U.S. OPEN 89 PATRONS

FIDELITY CORPORATION

DRUEKE COMPANY

AMERICAN CHESS FOUNDATION

MIDWEST CHESS ASSOCIATION

AMERICAN POSTAL CHESS TOURNAMENTS

ALBERT SANDRIN

ANGELO SANDRIN

BILL SMYTHE

DR. MARK SEFCHECK

TODD BARRE

ST CHARLES CHESS CLUB

CHICAGO INDUSTRIAL CHESS LEAGUE

TOM FINEBERG

JULES STEIN

1989 NATIONAL OPEN

HAROLD WINSTON

CLARENCE MOORE

E STEVEN DOYLE

CHARLES HICKS

GUY GRUENBERG

OAK PARK-FOREST PARK CHESS CLUB

MULTI-GAMES, INC.

PETER PELTS

EPIC METALS CORP.

ILLINOIS INSULATION SUPPLY CO.

PRO FASTENING SYSTEMS, INC.

RYERSON STEEL CO.

CORRUGATED METALS, INC.

INSIDE CHESS

CHARLES HICKS

BILL BUTTNY

ARTHUR SINCLAIR

WOODY HARRIS

IRWIN ROTHSCHILD

R DOYLE SATTERLEE

TOM KNOEDLER

JON GOTZ

MICHAEL BELOVESICK

MARVIN ROGAN

TIM JUST

JAMES CONDRON

MARSHALL ROHLAND

KEN MARSHALL

RICHARD GEARON

LOUIS WERNER

WALTER KOCJAN

RANDALL PALS

ALEX & CHRISTINE PEHAS

LAKE COUNTY CHESS ASSOCIATION

CENTRAL LAKE COUNTY CHESS CLUB

RICHARD ANDERSON

DAN KUMRO

NEWMAN GUTTMAN

MICHAEL ZACATE

FRANK SKOFF

WINTON FULK

EDGARS RUDZITIS

JOHN TUMS

KEITH FERRAL

RICHARD BALES

DAVID COULTER

WAYNE ELLICE

ERIK KARLINS

MARIANO ACOSTA

WE COULDN'T HAVE DONE IT WITHOUT YOU!

What's new

NINE GRANDMASTERS CONFIRMED FOR U.S. OPEN

Nine Grandmasters, including 1989 U.S. Champion Michael Wilder, 1989 New York Open Champion John Fedorowicz, 1988 U.S. Open Champion Dmitry Gurevich, and 1988 World Open Champion Maxim Dlugy, have indicated they will play the 1989 U.S. Open at the Hyatt Regency O'Hare from August 5 to 13. The other GMs are Arthur Bisguier, Walter Browne, NEW YORK TIMES chess columnist Robert Byrne, Sergey Kudrin, and Michael Rohde.

PEORIA TO HOST ILLINOIS OPEN OVER LABOR DAY WEEKEND

Peoria's chess activity continues at a torrid pace with the 1989 Illinois Open and State Championship, scheduled for September 2-4 at the Signature Inn, the site of this year's Greater Peoria Open. The six round Open will be one of at least six Illinois Tour events set in Peoria in 1989.

GARDNER, STEIN TOP "PRELUDE TO OPEN"

Bruce Gardner and Peter Stein each scored 3.5-.5 to tie for first and second at the 25 player "Prelude to an Open", an Illinois Mini-Tour event held July 15, 1989, in Park Forest. Third place was shared by Robert Beelman, Frank Chloupek, and Robin Cunningham (3-1). Beelman and Chloupek split the Class A prize, Mack Lyons (2-2) garnered Class B honors, Kelvin McAlister (2-2) topped Class C, and Steven Dudnick and Richard Rector (1-3) finished best in Classes D/E/Unrated. Brad Crawford was the top Junior. McAlister, rated 1578, won the Upset prize with a victory over an 1884-rated opponent.

BONDARI, MCGOWAN WIN PEORIA ACTION OPEN

1987 Illinois Tour champion Cyrus Bondari and Andy McGowan led a field of 27 to capture the top places at the Illinois Mini-Tour Peoria Action Open on July 8, 1988. The winners each finished 4.5-.5. Phil Anderson and David Mote shared Class A honors at 3.5-1.5, Doug Mohr scored 3.5-1.5 for the best Class B result, and unrated Choonmun Lau went 3-2 to take the Class C and Under prize.

1989 ILLINOIS STATE CHAMPIONSHIP

September 2nd, 3rd, and 4th

GRAND PRIX and ILLINOIS MAXI-TOUR EVENT

ALL PRIZES GUARANTEED

TWO SECTIONS

<u>OPEN</u>		<u>RESERVE - 1799 & Below</u>	
First	\$500	First	\$300
Second	\$200	Second	\$125
Third	\$100	Third	\$50
Expert	\$150, \$75	Class C	\$100, \$50
Under 2000	\$150, \$75	Class D/Under	\$75, \$50

\$100 for perfect score (either section)

Optional 1/2 point bye available in any one of the first four rounds.

WHERE

Signature Inn
4112 N. Brandywine Dr.
Peoria, IL 61614
(309)685-2556
I-74 to War Memorial Drive (East)
Hotel Room \$46

ENTRY FEE

\$25 if postmarked by 8-22
\$30 if postmarked by 8-28
\$35 at site

ICA Membership Required: Regular \$10; Junior \$6

TIME CONTROL: 40/2, 25/1

REGISTRATION: September 2 11:00, 5:00
September 3 10:00, 4:00
September 4 9:00, 3:00

Complimentary snacks, soda, cookies and coffee.

Chess Books and Equipment available for Sale.

NO SMOKING

ENTRIES TO:

Bill Wilkinson
905 N. Rebecca Place
Peoria, IL 61606
(309)673-9455

CHOW, MARTINOVSKY, ZELKIND SHARE TOP PRAIRIE STATE HONORS

EVENT ATTRACTS 42 PLAYERS FROM SEVEN STATES

By Tim Just

Albert Chow (2418), Eugene Martinovsky (2443), and Eduard Zelkind (2351) each scored 5-1 to tie for first through third at the fifth annual Prairie State Masters/Experts Invitational, held on May 27-29, 1989, at the College of Lake County in Grayslake, Illinois. Chow, the 1988 Prairie State champion, started out with four wins, including victories over Andy Karklins (2379) and Illinois State Champion Peter Pelts (2390). He then lost to Martinovsky, but came back to beat Ken Wallach (2308). Martinovsky, who drew with Cyrus Bondari in the second round, and Zelkind, who split a point with Bruce Kriesman (2091) in round 1, battled to a standoff in their last round contest.

Andy Karklins and Marc Lonoff (2344) shared fourth and fifth places at 4.5-1.5, while Greg Bungo (2179), Kevin Gensler (2179), and Jamie Gregory (2053) finished 4-2 as the top 2100-2199 players. Lawrence Cohen (1973, but, as a former expert, eligible to play) garnered the Under 2100 prize with a 3.5-2.5 performance. (Cohen played six rated games on May 27: he took a half point bye in the first round of this event in order to participate in the concurrent Prairie State Action Under 2000 tournament, in which he ended up 3-2).

Helen Warren and the Central Lake County Chess Club again organized the Prairie State Invitational. Tim Just was the Chief Tournament Director, assisted by David Shiner. Dennis Grant and Don Martin worked when needed. The tournament ran smoothly; when a thunderstorm-related power failure blacked out the site at the start of round 5, the playing tables were moved closer to the windows in order to provide adequate light. (Fortunately, power was restored prior to the last round, so the prospect of "games by candlelight" did not arise.)

RANK	PLAYER	ST	PRE		POST							TOT
			RTNG	RTNG	1	2	3	4	5	6		
1	MARTINOVSKY, EUGEN	IL	2437	2449	W11	D17	W-8	W-5	W-2	D-3	5.0	
2	CHOW, ALBERT C	IL	2428	2445	W21	W18	W16	W-4	L-1	W-7	5.0	
3	ZELKIND, EDUARD	MN	2329	2358	D40	W37	W17	W14	W-6	D-1	5.0	
4	KARKLINS, ANDREW	IL	2382	2388	W29	W35	W25	L-2	W-9	D-6	4.5	
5	LONOFF, MARC J	IL	2328	2343	W33	D27	W20	L-1	W18	W13	4.5	
6	COLIAS, BILLY	IN	2434	2425	W32	W-9	D14	W27	L-3	D-4	4.0	
7	WALLACH, KENNETH T	IL	2306	2310	W41	L14	W31	W22	W16	L-2	4.0	
8	BONDARI, SIAMACK	IA	2259	2262	W22	D31	L-1	D32	W34	W20	4.0	
9	BUNGO, D GREGORY	IL	2179	2200	W28	L-6	W40	W24	L-4	W23	4.0	
10	GENSLER, KEVIN M	IL	2178	2197	W42	L16	D34	W31	W27	D12	4.0	
11	GREGORY, JAMMIE	IL	2053	2117	L-1	W30	W12	L16	W24	W17	4.0	
12	BLANKENAU, MIKE P	NE	2295	2273	W34	L25	L11	W40	W15	D10	3.5	
13	MARTIN, ROGER	IL	2276	2268	H--	W29	L27	W25	W14	L-5	3.5	
14	TORREGROSSA, RON W	IL	2186	2211	W24	W-7	D-6	L-3	L13	W26	3.5	
15	COHEN, LAWRENCE S	IL	1998	2051	H--	L20	W33	W26	L12	W27	3.5	
16	PELTS, PETER	IL	2375	2365	W26	W10	L-2	W11	L-7	U--	3.0	
17	BONDARI, CYRUS	IL	2221	2211	W30	D-1	L-3	D34	W32	L11	3.0	
18	KARKLINS, ERIK	IL	2191	2187	W23	L-2	D26	W35	L-5	D25	3.0	
19	MAZUCHOWSKI, THOMA	MI	2152	2150	H--	D40	U--	W41	L23	W34	3.0	
20	REPPERT, VICTOR E	IL	2148	2141	D38	W15	L-5	D23	W22	L-8	3.0	
21	SILLARS, TONY K	IL	2142	2132	L-2	L22	D30	W37	D25	W35	3.0	
22	BOCK, MAURICE R	MD	2082	2090	L-8	W21	X--	L-7	L20	W32	3.0	
23	CRAWFORD, BRAD	IL	2059	2077	L18	D32	W38	D20	W19	L-9	3.0	
24	GUSTAFSON, DALE L	MN	2009	2037	L14	W41	W39	L-9	L11	W33	3.0	
25	CHEN, MATTHEW S	IL	1992	2049	W39	W12	L-4	L13	D21	D18	3.0	
26	WONG, PHILIP	IL	2175	2157	L16	W42	D18	L15	W28	L14	2.5	
27	MARCONNET, JOHN A	IL	2141	2141	W36	D-5	W13	L-6	L10	L15	2.5	
28	ASH, ROBERT B	IL	2114	2097	L-9	D33	L35	W29	L26	W37	2.5	
29	JUNGMAN, GERARD J	IL	2096	2090	L-4	L13	W36	L28	W42	D30	2.5	
30	FORBIS, ROBERT E	IL	2035	2031	L17	L11	D21	D38	W31	D29	2.5	
31	SPLINTER, JOSEPH C	IL	2028	2022	B--	D-8	L-7	L10	L30	W42	2.5	
32	TUTT, BRYCE R	TX	2125	2110	L-6	D23	W37	D-8	L17	L22	2.0	
33	HUNTER, JEFFREY T	AZ	2090	2054	L-5	D28	L15	W36	D35	L24	2.0	
34	LUNDQUIST, DOUG E	IL	2071	2069	L12	W36	D10	D17	L-8	L19	2.0	
35	REICHMOND, MD M BAR	IL	2019/8	2020	H--	L-4	W28	L18	D33	L21	2.0	
36	RYES, VIRGILIO T	IL	2026	2012	L27	L34	L29	L33	B--	D38	1.5	
37	LORING, STEVE W	IL	2015	1992	H--	L-3	L32	L21	W38	L28	1.5	
38	RUDLOFF, MICHAEL D	MD	1960	1943	D20	L39	L23	D30	L37	D36	1.5	
39	BACHLER, KEVIN L	IL	2159	2130	L25	W38	L24	U--	U--	U--	1.0	
40	KRIESMAN, BRUCE S	IL	2035	2036	D-3	D19	L-9	L12	U--	U--	1.0	
41	CONDON, JAMES K	IL	2033	2028	L-7	L24	W42	L19	U--	U--	1.0	
42	MARQUEZ, ANTHONY	IL	2015	1954	L10	L26	L41	B--	L29	L31	1.0	

GAMES FROM THE PRAIRIE STATE

[Editor's Note: The following games are from Prairie State score sheets provided by Chief TD Tim Just.]

W: Eugene Martinovsky (2437) - B: Jamie Gregory (2053) Round 1 1.e4 e5 2.d4 exd4 3.c3 dxc3 4.Bc4 Nf6 5.Nxc3 Bb4 6.Bxf7+ Kxf7 7.Qb3+ d5 8.Qxb4 Na6 9.Qa3 Re8 10.Bg5 dxe4 11.Nge2 Qe7 12.Qb3+ Qe6 13.Qd1 Bd7 14.O-O Rad8 15.Nf4 Qe5 16.Qb3+ Be6 17.Nxe6 Rxe6 18.Bxf6 gxf6 19.Qxb7 Nc5 20.Qxa7 Ra6 21.Qxa6 Nxa6 22.Rae1 f5 23.Re2 Nc5 24.h3 Nd3 25.g3 Nxb2 26.Rxb2 Qxc3 27.Rb5 Kc6 28.Rfb1 e3 29.f4 Rd5 30.R5b3 Qc5 31.Kf1 Rd2 32.Re1 Rf2+ 33.Kg1 e2 0-1

W: Albert Chow (2418) B: Tony Sillars (2142) Round 1 1.e4 e5 2.Nf3 Nc6 3.Bb5 a6 4.Bxc6 dxc6 5.O-O f6 6.d4 exd4 7.Nxd4 c5 8.Ne2 Qxd1 9.Rxd1 Bd6 10.Bf4 Bxf4 11.Nxf4 Ne7 12.Nc3 Bd7 13.Ncd5 Nxd5 14.Rxd5 b6 15.Rad1 O-O-O 16.f3 Rhe8 17.Kf2 Re7 18.h4 Rde8 19.g4 Ba4 20.R1d2 Bh5 21.a3 Bc4 22.Rf5 Re5 23.Rxc5 Rxc5 24.Nh5 Re7 25.g5 fxg5 26.hxg5 Re5 27.Nxg7 Rxc5 28.Nf5 Be6 29.Ne3 Re5 30.Kg3 c4 31.c3 b5 32.Rh2 Bg4 33.Nxg4 Re6 34.e5 Rg6 35.Rh6 Kd8 36.Kf4 Kc7 37.Nf6 Kf7 38.Rxc6 hxg6 39. Kg5 1-0

W: Bruce Kreisman (2091) B: Eduard Zelkind (2351) Round 1 1.Nf3 Nf6 2.g3 g6 3.b4 d6 4.Bb2 e5 5.d3 Bg7 6.Bg2 O-O 7.Nbd2 Re8 8.e4 Nbd7 9.O-O c6 10.h3 Nf8 11.Rb1 Qc7 12.Re1 Be6 13.a4 Rad8 14.c4 Bc8 15.Qc2 Nh5 16.e5 d5 17.b5 f6 18.d4 exd4 19.exd5 Bf5 20.d6 Qd7 21.Qc4+ Kh8 22.Rbc1 Bxh3 23.Re7 Qg4 24.Qf7 Bxg2 25.Kxg2 Nf4+ 26.Kg1 Ne2+ 27.Kg2 Nf4+ 28.Kg1 Ne2+ 29.Kh2 Rxc7 30.dxe7 Re8 31.exf8=Q+ Rxf8 32.Qxb7 Nxc1 33.Bxc1 cxb5 34.c6 bxa4 35.Qxa7 h5 36.Qxa4 Re8 37.Qxd4 Rxc6 38.Bb2 Qxd4 39.Nxd4 Rh6 40.Bc3 Kh7 41.Ne4 Kg8 42.Kg2 f5 43.Ng5 Rd6 44.Nb5 Rb6 1/2-1/2

W: Kevin Gensler (2179) B: Anthony Marquez (2015) Round 1 1. Nf3 Nf6 2.e4 d6 3.Nc3 g6 4.d4 Nbd7 5.e4 e5 6.Be2 Bg7 7.O-O O-O 8.Re1 e6 9.Bf1 Re8 10.Rb1 exd4 11.Nxd4 Nc5 12.f3 a5 13.Be3 h6

14.Qd2 g5 15.Rbd1 Nh5 16.Nde2 Be6 17.Qxd6 Na6 18.Qxd8 Rxd8 19.Nd4 Nf4 20.Nxe6 Nxe6 21.Rxd8+ Rxd8 22.Rd1 Rxd1 23.Nxd1 Nb4 24.a3 Nc2 25.Bf2 Kf8 26.Bd3 Ncd4 27.Be3 Be5 28.Kf2 Nf4 29.Bb1 Ke7 30.g3 Nfe6 31.Bd2 Nb3 32.Bc3 Ned4 33.Ke3 Kd6 34.f4 Bg7 35.e5+ Kc5 36.Nf2 Kxc4 37.Bxd4 Nxd4 38.Be2 Nb3 39.Ne4 a4 40.Nd6+ Kd5 41.Nxf7 gxf4+ 42.gxf4 c5 43.Nd6 b6 44.Nb5 c4 45.Nc3+ Kc6 46.Nxa4 b5 47.Nc3 Nc5 48.Bb1 h5 49.Be4+ Kb6 50.h4 Bh6 51.Nd5+ Ka5 52.Bf5 Ka4 53.Kd4 Nb3+ 54.Kc3 Nc5 55.e6 Bg7+ 56.Kc2 Nh7 57.e7 Nd6 58.Nb6+ Ka5 59.Nc8 Ne8 60.Bg6 1-0

W: Eugene Martinovsky (2437) B: Cyrus Bondari (2242) Round 2 1.e4 c5 2.f4 Nc6 3.Nf3 g6 4.Bc4 Bg7 5.O-O e6 6.Qe1 Nge7 7.Nc3 a6 8.d3 b5 9.Bb3 Nd4 10.Nxd4 Bxd4+ 11.Kh1 d6 12.f5 Nc6 13.Bh6 Ra7 14.Nd1 Be5 15.c3 Rg8 16.fxc6 Bxc6 17.Nc3 g5 18. Bxc6 fxc6 19.Qe2 Qe7 20.Qh5+ Kd8 21.g3 Kc8 22.Rf2 Nd8 23.Raf1 Rg6 24.Ng4 Bg7 25.Bxg7 Qxg7 26.Rf8 Re7 27.Nc3 g4 28.R8f4 Rg5 29.Qh4 h5 30.Rf8 Kc7 31.d4 Qg6 32.Kg1 Rg7 33.R1f4 cxd4 34.cxd4 Nc6 35.R8f6 Qh7 36.Nc2 Kd7 37.Qxg5 Rxc5 38.Rf7+ Qxf7 39.Rxf7+ Kd8 40.Kf2 b4 41.Rb7 Ra5 42.Nxb4 Nxb4 43.Rxb4 Rxa2 44.Ke3 c5 45.dxc5 dxc5 46.Rb7 a5 47.Rb5 a4 48.Rxc5 Rxb2 49.Rxb5 a3 50.Ra5 a2 51.Kf4 Rxb2 52.Kxg4 Ke7 53.Kf4 Rf2+ 54.Ke5 Rg2 55.Ra7+ Kd8 56.Kf4 Ke8 57.g4 Rf2+ 58.Kg5 Kf8 59.e5 Re2 60.Kf6 Rf2+ 61.Ke6 Rb2 62.g5 Rb6+ 63.Kf5 Rb2 64.e6 Re2 65.Kf6 Rf2+ 66.Kg6 Re2 67.c7+ Ke8 68.Kh6 Rh2+ 69.Kg7 Re2 70.Kf6 Re6+ 71.Kf5 Rxe7 72.Rxa2 Kf7 73.Kg4 Re1 74.Ra7+ Kg6 75.Ra6+ Kg7 76.Rf6 Rg1+ 77.Kf5 Rf1+ 78.Ke6 Re1+ 1/2-1/2

W: Eric Karklins (2191) B: Albert Chow (2418) Round 2 1.e4 c5 2.Nf3 Nc6 3.d4 cxd4 4.Nxd4 Nf6 5.Nc3 e5 6.Ndb5 d6 7.Bg5 a6 8. Bxf6 gxf6 9.Na3 b5 10.Nd5 Bg7 11.Bd3 Ne7 12.Nxe7 Qxe7 13.O-O f5 14.e4 O-O 15.exf5 e4 16.Qe2 Bxf5 17.Rae1 Rfe8 18.Bb1 bxc4 19.Nxc4 d5 20.Ne3 Be6 21.Qh5 Qd7 22.f3 f5 23.fxe4 fxe4 24. b3 Rf8 25.Kh1 Kh8 26.g4 Qb5 27.Nf5 Ra7 28.Kg2 Raf7 29.Qh3 Be5 30.a4 Qd7 31.Rd1 Qc8 32.Re1 Qd7 33.Rcd1 Qa7 34.Qe3 Qxe3 35.Nxe3 Rxf1 36.Rxf1 Rxf1 37.Kxf1 Bxh2 38.b4 d4 39.Nf5 d3 40.Ke1 Bd7 41.a5 b5 0-1

W: Eduard Zelkind (2351) B: Steve Loring (2015) Round 2 1.e4 c6 2.d4 d5 3.Nc3 dxc4 4.Nxe4 Bf5 5.Ng3 Bg6 6.Nf3 Nd7 7.b4 h6 8.h5 Bh7 9.Bd3 Bxd3 10.Qxd3 Qc7 11.Bd2 e6 12.O-O-O Ngf6 13.c4 b5 14.cxb5 cxb5+ 15.Kb1 Qb7 16.Rde1 Be7 17.Nh4 Qd5 18.Nhf5 Be5 19.Qe3 Kd8 20.dxc5 exf5 21.c6 Qxc6 22.Bb4 Kc8 23.Nxf5 Qc4 24.Qg3 Ng4 25.Bc3 f6 26.Rh4 1-0

W: Albert Chow (2418) B: Peter Pelts (2390) Round 3 1.d4 Nf6 2.e4 c5 3.Nf3 cxd4 4.Nxd4 e5 5.Nb5 d5 6.cxd5 Be5 7.e3 O-O 8. N5c3 e4 9.Nd2 Qe7 10.a3 Rd8 11.b4 Bd6 12.Nc4 Nbd7 13.Nxd6 Qxd6 14.Qd4 Nb6 15.Nxc4 Nxe4 16.Qxe4 Be6 17.Bd3 Nxd5 18.Qxh7+ Kf8 19.Bb2 Nf6 20.Qh8+ Ke7 21.Qxg7 Ng4 22.Qg5+ f6 23.Qg7+ Bf7 24.Bd4 Ne5 25.Be2 b6 26.f4 Nc6 27.Be4 Rf8 28.Rd1 Rad8 29.O-O Nxd4 30.Rxd4 Qc7 31.Re4+ 1-0

W: Siamack Bondari (2259) B: Eugene Martinovsky (2437) Round 3 1.e4 e5 2.Nf3 Nf6 3.Nc3 Nc6 4.Bc4 Bc5 5.d3 d6 6.Be3 Bxe3 7.fxc3 Na5 8.Bb3 Nxb3 9.axb3 Ng4 10.Qe2 O-O 11.O-O c6 12.Nd1 Qe7 13.Nf2 Nh6 14.Nh1 Bd7 15.Ng3 g6 16.Ne1 Kg7 17.Rd1 Rae8 18.Ra1 a6 19.Qd2 Be8 20.Ra5 Ng4 21.Nf3 h5 22.h3 Nh6 23.Qf2 Rh8 24.Ne2 Re8 25.Nh4 Rhg8 26.Raa1 f5 27.exf5 gxf5 28.Kh1 Kh7 29.e4 fxe4 0-1

W: Cyrus Bondari (2242) B: Eduard Zelkind (2351) Round 3 1.e4 e5 2.Nc3 Nf6 3.Nf3 Nc6 4.d3 Bb4 5.Bd2 O-O 6.e4 d6 7.h3 Ne7 8.a3 Bxc3 9.Bxc3 Ng6 10.g3 Re8 11.Bg2 e6 12.O-O Qc7 13.Rc1 Bd7 14.Ne1 Rad8 15.Bd2 h6 16.b4 Be8 17.a4 Qb8 18.Qb3 d5 19.exd5 cxd5 20.c5 Be6 21.Qb2 d4 22.b5 Bd5 23.Nf3 Re8 24.Bb4 Qc7 25.Nd2 Bxg2 26.Kxg2 Qd7 27.Nc4 Qd5+ 28.f3 Re6 29.Nd6 Rc7 30.a5 Ne8 31.b6 axb6 32.axb6 Rd7 33.Nc4 Ne7 34.Ba3 Nc6 35.Rce1 f5 36.Nd2 Nf6 37.Ne4 Nh5 38.Kh2 Rg6 39.Nd6 Nxc3 40.Rf2 Re7 41.Rg1 f4 42.Nf5 Rec6 43.Nxc3 fxg3+ 44.Rxc3 Rxc3 45.Kxc3 Kh7 46.Qe2 e4 47.fxe4 Rg6+ 48.Kh2 Qe5+ 49.Kh1 Qg3 50.Qf1 Ne5 51.Bb2 Qe3 52.Bc1 Qxd3 53.Qxd3 Nxd3 54.Rc2 Nb4 55.Rc4 Nc6 56.Bf4 Rf6 57.Bd6 Rf1+ 58.Kg2 Re1 59.e5 d3 0-1

GAMES FROM THE PRAIRIE STATE

W: Bruce Kreisman (2091)

B: Greg Bungo (2179) Round
3 1.Nf3 g6 2.g3 Bg7 3.Bg2 d6 4.O-O
c5 5.d3 f5 6.e4 Nf6 7.Nc3 O-O 8.Bd2
Nc6 9.a3 h6 10.b4 Ne7 11.Rb1 Rb8
12.e5 Be6 13.cxd6 cxd6 14.Be1 g5
15.Nd2 d5 16.Na4 b6 17.Bb2 Ng6
18.Rc1 Qd7 19.e3 f4 20.Nc3 Bh3
21.Re1 Bxg2 22.Kxg2 Ng4 23.exf4
exf4 24.Re2 N6e5 25.Nf3 Nxf3
26.Kxf3 Nxb2+ 27.Kg2 f3+ 28. Kxb2
fxe2 29.Qxc2 Rbe8 30.Qe2 Qf7 31.Rf1
Bd4 32.Nd1 Bxb2 33.Qxb2 Qf3
34.Qd4 g4 35.Nc3 Rf5 0-1

**W: Kevin Gensler (2179) B:
Doug Lundquist (2071)**

Round 3 1.d4 d5 2.c4 e6 3.Nc3 Nf6
4.Bg5 Be7 5.e3 c6 6.Nf3 Nbd7 7.Bd3
dxc4 8.Bxc4 Nd5 9.Bxe7 Qxe7
10.O-O Nxc3 11.bxc3 O-O 12.e4 c5
13.Qe2 cxd4 14.cxd4 b6 15.Rfcl Bb7
16.Ba6 Nf6 17.Bxb7 Qxb7 18.c5 Nd5
19.Qe4 h6 20.g4 Qe7 21.Re1 Rae8
22.g5 hxg5 23.Qg4 f5 24.Qxg5 Qxg5+
25.Nxg5 1/2-1/2

W: Andrew Karklins (2379)

B: Albert Chow (2418)

Round 4 1.e4 e6 2.d4 d5 3.Nc3 Bb4
4.Nge2 Nf6 5.Bg5 dxe4 6.Qd2 O-O
7.O-O-O Nbd7 8.Qe3 b6 9.Nxe4 Bh7
10.N2g3 h6 11.h4 hxg5 12.hxg5 Nxe4
13.Nxc4 Bxe4 14.Qxe4 Qxg5+ 15.f4
Nf6 16.Qf3 Qg4 17.Qf2 Ne4 18.Qe3
Bd6 19.g3 Nxg3 20.Bd3 Nxb1
21.Rxb1 g6 22.Kb1 Kg7 23.f5 exf5
24.Qh6+ Kf6 25.Rf1 Rh8 26.Qd2
Qxd4 27.c3 Rh2 28.Qd1 Qe3 29.Bxf5
gxf5 30.Qd5 f4 0-1

W: Eugene Martinovsky

(2437) B: Marc Lonoff

(2344) Round 4 1.d4 Nf6 2.c4 g6
3.Nc3 d5 4.cxd5 Nxd5 5.e4 Nxc3
6.bxc3 Bg7 7.Bc4 O-O 8.Ne2 Ne6
9.O-O Na5 10.Bd3 b6 11.Bg5 Qd7
12.Rc1 Bb7 13.Qd2 c5 14.d5 e4 15.Be2
e6 16.dxe6 Qxe6 17.Nd4 Qd7 18.Rcd1
Rae8 19.Rfcl a6 20.Qcl Qc7 21.Bf4
Be5 22.Bh6 Bxb2+ 23.Kh1 Be5
24.Bxf8 Bf4 25.Qa3 Rxf8 26.Nf3 f5
27.exf5 Qg7 28.Qe7 Qh6+ 29.Qh4
Qxb4+ 30.Nxb4 g5 31.Nf3 Bxf3
32.gxf3 Nc6 33.Rd5 h5 34.Re6 Nb8
35.a4 bxa4 36.Bxa4 h5 37.Kg2 Kg7
38.Rg6+ Kf7 39. Rh6 h4 40.Rh7+ Kf6
41.Kh3 Be5 42.Kg4 Bxc3 43.Rh6+
Kg7 44.Rg6+ Kf7 45.Rc5 Bf6 46.Rc7+
Be7 47.Re6 1-0

**W: Albert Chow (2418) B:
Eugene Martinovsky**

(2437) Round 5 1. d4 d5 2.c4 dxc4
3.e4 e5 4.Nf3 exd4 5.Bxc4 Bb4+
6.Nbd2 Nc6 7. O-O Nf6 8.e5 Nd5
9.Nb3 Nb6 10.Bg5 Be7 11.Bxc7 Qxc7
12.Bb5 Bd7 13.e6 fxe6 14.Bxc6 Bxc6
15.Ne5 Rd8 16.Nxc6 bxc6 17.Qh5+ g6
18.Qe5 O-O 19.Nxd4 Rd6 20.Racl
Qd7 21.Nb3 Rf5 22.Qe2 Nd5 23. Ne5
Nf4 24.Qc3 Qe7 25.g3 Nd5 26.Qa3
Rd8 27.Qxa7 Nb6 28.Nb3 c5 29.Qb7
c4 30.Na1 Rd2 31.b3 Qc5 32.Qg2 c3
33.Rc2 Nd5 34.Rxd2 Rxd2 35.Rd1
Qd4 36.Qf1 Nc3 37.Nc2 Qd7 38.Ne3
Rf8 39.Nc4 Nxd1 40.Qxd1 Rd8 41.Kf1
Qd3+ 42.Kg2 e5 43.Kg1 e4 44.Nc3 h5
45.Kg2 Kh7 46.h3 Rd6 47.Kh2 Rf6
48.Kg1 Qc3 49.Kg2 Rf3 50.Qc2 Rxc3
51.fxc3 Qc2 0-1

W: Eduard Zelkind (2351)

B: Billy Colias (2437) Round

5 1.e4 c5 2.Nc3 Nc6 3.g3 g6 4.Bg2 Bg7
5.d3 d6 6.Be3 e6 7.Qd2 Nd4 8. Nd1
Nf6 9.c3 Nc6 10.Bh6 O-O 11.Bxg7
Kxg7 12.f4 d5 13.e5 Ng8 14.Nf3 h6
15.O-O Bb7 16.Nf2 Qc7 17.Rfcl Rad8
18.Re2 Nce7 19. g4 h5 20.d4 Bc8
21.Nd3 c4 22.Ne5 Nh6 23.h3 Rh8
24.b4 Bd7 25. f5 exf5 26.e6 fxe6
27.Ng5 Qxc5 28.dxc5 fxg4 29.Rxc6
Nef5 30. Qxd5 Nf7 31.Nxf7 Bxc6
32.Qxd8 Bxf7 33.Qd7 1-0

W: Peter Pelts (2390) B:

Ken Wallach (2308) Round 5

1.Nf3 Nf6 2.c4 b6 3.g3 Bb7 4.Bg2 e6
5.b3 Be7 6.Bb2 O-O 7.O-O c5 8.d4 d6
9.Nc3 a6 10.d5 e5 11.Nh4 g6 12.Bh3
Ne8 13.Ng2 Be8 14.Bxc8 Qxc8 15.f4
Nd7 16.f5 gxf5 17.Rxf5 Ng7 18.Rf1 f5
19.e4 Qc8 20. Qc2 Qg6 21.Rael Bg5
22.Rf3 Nf6 23.Qd3 Nxe4 24.Nxe4 fxe4
25. Rxe4 Rxf3 26.Qxf3 Rf8 27.Qg4
Nf5 28.h4 Bh6 29.Qxg6+ hxg6 30. g4
Ng3 31.Re1 Bd2 32.Rd1 Ne2+ 33.Kh2
Bf4+ 34.Kh3 Bg3 35.Rd3 Rf1 36.g5
Bf4 37.Kg4 e4 38.Rc3 Nxc3 39.Bxc3
Be1 0-1

W: Eugene Martinovsky

(2437) B: Eduard Zelkind

(2351) Round 6 1.d4 Nf6 2.c4 g6
3.Nc3 Bg7 4.Nf3 d6 5.Bg5 Nbd7 6.e3
c6 7. Be2 O-O 8.O-O Re8 9.h3 e5
10.Qc2 Qc7 11.Racl Nf8 12.Rfd1
N6d7 13.e4 exd4 14.Nxd4 Bxd4
15.Rxd4 Ne6 16.Qd2 Nxd4 17.Qxd4 f6
18.Bxf6 Nxf6 19.Qxf6 Be6 20.Rd1
Rad8 21.Qg5 Rf8 22.b3 Qg7 23. Rd3
Qe5 24.Qh4 Rd7 25.f3 Kg7 26.Kh1 a6
27.Qf2 b5 28.cxb5 axb5 29.Qe3 g5
30.Qd2 h6 31.Nd1 Ra8 32.Rc3 d5
33.Rxc6 dxe4 34.Qc2 exf3 35.Bxf3

Rad8 36.Nf2 Bf5 37.Qe5 Qxc5
38.Rxc5 Rd2 39.Rxf5 Rxf2 40.Rxb5
Rxa2 41.Rb7+ Kf6 42.Rb6+ Kf7
43.Rb7+ Kg8 44.b4 Rb2 45.Rb6 Kg7
46.Rb7+ 1/2-1/2

W: Billy Colias (2437) B:

Andrew Karklins (2379)

Round 6 1. d4 Nf6 2.c4 e6 3.Nf3 b6
4.Nc3 Bb7 5.Bg5 Bb4 6.e3 h6 7.Bh4 g5
8.Bg3 Ne4 9.Nd2 Nxc3 10.bxc3 Bxc3
11.Rc1 Bxd2+ 12.Qxd2 d6 13. c5 O-O
14.h4 g4 15.Bf4 Qf6 16.cxd6 cxd6
17.Bxd6 Rd8 18.Bg3 Nd7 19.Rc7 Be4
20.Bb5 Bxg2 21.Rg1 Qf5 22.Bxd7
Rxd7 23.Rxg2 Rxc7 24.Bxc7 Rc8
25.Qcl Qf3 26.Kf1 Rxc7 27.Rxg4+
Qxg4 28.Qxc7 Qd1+ 29.Kg2 Qg4+
30.Kf1 Qxb4 31.Qxa7 Qh1+ 32.Ke2
Qc6 33.Qb8+ Kh7 34.Qf4 f5 35.f3
Qc2+ 36.Kf1 Qb1+ 37.Kg2 Qxa2+
38.Kh3 Qa8 39.e4 Qc8 40.exf5 exf5
41.d5 Qd7 42.d6 Kg6 43.Qd4 b5
44.Qc5 Kf6 45.f4 Kf7 46.Kh4 Ke6
1/2-1/2

W: Ken Wallach (2308) B:

Albert Chow (2418) Round 6

1.Nf3 g6 2.e4 Bg7 3.d4 c5 4.Nc3 cxd4
5.Nxd4 Nc6 6.Be3 Nf6 7.Bc4 O-O 8.
Bb3 d6 9.f3 Bd7 10.Qd2 Rc8
11.O-O-O Ne5 12.Bh6 Bxb6 13.Qxb6
Rxc3 14.bxc3 Qc7 15.Kd2 Rc8 16.Qe3
a5 17.a3 Ba4 18.Ke2 Be8 19.Rb1 Qc5
20.f4 Neg4 21.Qd3 Bc6 22.Nxc6 Qf2+
23.Kd1 Rxc6 24. Qf3 Qxf3+ 25.gxf3
Nf2+ 26.Kd2 Nxb1 27.Rxb1 Rc5
28.Rg1 Kf8 29. Rg5 e5 30.fxe5 dxe5
31.Bd5 h6 32.Rg1 Nxd5 33.exd5
Rxd5+ 34. Ke3 Ke7 35.Rb1 b5 36.a4
hxa4 37.Ra1 Rc5 38.Rxa4 Rxc3+
39.Ke4 Ke6 0-1

W: Roger Martin (2275) B:

Marc Lonoff (2344) Round 6

1.d4 Nf6 2.c4 g6 3.Nc3 d5 4.cxd5
Nxd5 5.e4 Nxc3 6.bxc3 Bg7 7.Bc4
O-O 8.Ne2 Nc6 9.O-O b6 10.Be3 Bb7
11.h4 Na5 12.Bd3 c5 13.h5 Rc8
14.hxg6 hxg6 15.e5 e6 16.Nf4 cxd4
17.cxd4 Qh4 18.Qe2 Rfd8 19.Nh3 Rd7
20.Rad1 Bh6 21.Qd2 Qg4 22.f4 Nc4
23.Bxc4 Rxc4 24. Rf2 Rdc7 25.Rdf1
Qg3 26.Ng5 Rc2 27.Qe1 Qxg2+
28.Rxg2 Rxg2+ 29.Kh1 Rcc2 30.Rf3
Rh2+ 31.Kg1 Rcg2+ 32.Kf1 Ba6+ 0-1

(Continued on page 13)

1989 U.S. OPEN DAY TIME CHESS ACTIVITIES

Following activities are in addition to U.S. Open evening round
Entry for all events below at site, or call organizer Helen Warren (312) 246-6665

U.S. OPEN CHESS EVENTS, Aug. 5-13

1. The Drueke/USCF U.S. Open Speed Championship with a guaranteed first prize of \$1,000. WBCA rated.
Prelims: Sunday, Aug. 6 10 AM
Finals: Monday, Aug. 7 11 AM
2. The Arnold Denker High School Tournament of Champions 5 SS, one rd. daily, 9 AM
Sunday, August 6 through Thursday, August 10 with prize presentation immediately following last round.
3. Midwest 30/30 Quads, Monday, Aug. 7 9 AM 3-SS; four man sections by rating Entry: \$16 for U.S. Open players; \$20 for non-Open players \$50 to winner of each quad.
4. Hall of Fame Classic, Tues., Aug. 8 9 AM 5-SS, Game/30, Entry: \$16 for U.S. Open players; \$20 others. \$b/30: 130-70-25, U2300 30-15; U2100/1800/1600 each 40-20 (If fewer than 30 entries, 70% of entry fees will be returned.)
5. Max Dlugy Simul, Tues., Aug. 8 11 AM Bds. \$15, limited to first 40 entrants
Players who win receive a set of tournament bulletins; those who draw receive 3 rds. of free bulletins.
6. Arthur Bisguier Lecture: A Chess Retrospective Tickets: \$8 for U.S. Open players; "\$10 others"
"Fifty Years of U.S. Chess", Tues., Aug. 8 3 PM
7. 50th Anniversary Commemorative 4-SS, Game/45, Entry: \$16 for U.S. Open players; \$20 others
Wed., Aug. 9 9 AM Prize fund as in Hall of Fame Classic (above)
8. Dmitry Gurevich Simul, Wed., Aug. 9 11 AM Bds. \$15, limited to first 40 entrants.
9. Walter Brown Lecture: Games from the Calgary Blitz Tournament Tickets: \$8 for U.S. Open players; \$10 for others
Wed., Aug. 9 3 PM
10. Windy City Classic, Thurs., Aug. 10 9 AM 5-SS, Game/30 (Entry & Prizes as with Hall of Fame Classic)
11. The Chicago Premier, Fri., Aug. 11 5-SS, Game/30 "

CHESS RELATED ACTIVITIES

- USCF Election Ballot Count: Wed., Aug. 9, 10 AM USCF Membership Meeting, Fri., Aug. 11 4 PM
USCF Video Show: Wed., Aug. 9, 1 PM USCF Delegates Meetings, Sat., Aug. 12 8 AM-5PM; Sunday, 8-12
Policy Board Forum, Fri., Aug. 11, 3 PM

ANNUAL AWARDS BANQUET, 50th ANNIVERSARY CELEBRATION, AND HALL OF FAME INDUCTION, Sat., Aug. 12, Noon

Scrabble and bridge tournaments for non-playing spouses will be organized daily if interest warrants.

UPSETS MARK PRAIRIE STATE ACTION UNDER 2000

DZURNY (5-0) TAKES TOP PRIZE IN 32 PLAYER EVENT

By David Shiner

Quick quiz: what causes nervous tension, heart palpitations, and brain strain, and never lasts longer than one hour? The Prairie State Action Under 2000, held May 27, 1989 at the College of Lake County in Grayslake, provided the answer: "action" chess! Competing for nearly \$700 in prizes, 32 entrants played some wild and woolly games, with many contests in each of the five rounds ending in hair-raising time scrambles.

The first round showed that the wall chart would be of little use in predicting the winners. The tournament's highest rated player, Howard Cohen (1991), lost -- and in the second round he lost again! (After defeating his next opponent, Cohen happily noted that "At least I can still win a game of chess!" He went on to score two more victories, but did not take home a prize.)

The most exciting moments of the event occurred in Round 4 as second-ranked Hector Hernandez (1980) and the tournament sleeper, Anthony Dzurny (1777), hooked up in an incredible finish. With both flags hanging, Hernandez had a King, Rook, Knight, and five pawns against Dzurny's lone pawn and King. Pieces went flying as the Rook and Knight chased the opposing monarch around the board. Mate was still several moves away when Hector's flag fell. Because Anthony technically still had mating material, he was awarded the full point. The loss was a tough one for Hernandez, who drew his final game and finished out of the money.

Dzurny stood alone at 4-0 as the last round began. He went on to complete a "dream" tournament with a pretty win over Jim McNamara (1935):

W: Anthony Dzurny (1777) B: Jim McNamara (1935) 1.e4 c5 2.Nf3 Nc6 3.d4 exd 4.Nxd4 g6 5.Nxc6 bxc 6.Qd4 Nf6 7.e5 Nd5 8.c4 Qb6 9.Qxb6 Nxb6

10.a4 a5 11.Bc3 Rb8 12.Nd2 Bg7 13.f4 Ba6 14.Bxb6 Rxb6 15.c5 Bxf1 16.cxb Bxg2 17.Rg1 Bd5 18.b4 axb 19.a5 0-0 20.a6 d6 21.a7 c5 22.Nb3 dxe 23.Nxc5 exf 24.0-0-0 Rc8 25.Rxd5 e6 26.b7 Rxc5+ 27.Rxc5 Bd4 1-0

Dzurny's 5-0 result, which included victories over four 1900+ players, gave him clear first and the \$150 top prize. Tying for second and third at 4-1 were two of the highest-rated players, Lawrence Cohen (1973) and Winton "Sparky" Fulk (1955). A former Expert who lost only to Dzurny, L. Cohen also was eligible for, and competed in, the Prairie State Masters/Experts Invitational; he took a half point bye in the first round of that event [in which he finished 3.5-2.5] so he could play in the Under 2000.) Fulk, a long time veteran of the Illinois chess scene, played remarkably steady chess throughout the tournament.

Tom Friske (3.5-1.5) finished first in Class B, while Joshua Flores and John Gossage (each 2.5-2.5) shared the second place "B" prize. Class C was led by Mark Engelen (3-2) and Terry Terrance (3-2). Todd Dittsworth (2-3) and Glenn Rosing (2-3) were the top Class D/E/Unrated players. Helen Warren organized the event, which was directed by David Shiner, assisted by Dennis Grant and Don Martin.

Here is another game from the tournament:

W: Terry Terrance (1577) B: Marvin Johnson (1830) 1.d4 Nf6 2.e3 e6 3.Bd3 d5 4.f4 c5 5.e3 Nc6 6.Nd2 Be7 7.Ngf3 O-O 8.Ne5 Nd7 9.O-O f6 10.Bxh7+ Kxh7 11.Qh5+ Kg8 12.Ng6 Re8 13.Nf3 Nf8 14.Qh8+ Kf7 15.Nge5+ fxe5 16.Nxe5+ Nxe5 17.fxe5+ Kg6 18.Qg8 Bg5 19.Qf7+ Kh7 20.Qh5+ Kg8 21.e4 Bxc1 22.Raxc1 Re7 23.Rf4 Qc8 24.Qh3 Nh7 25.Rcf1 Qg6 26.R1f3 Bd7 27.Rg4 Ng5 28.Rxg5 Qxg5 29.Rg3 Qc1+ 30.Kf2 dxe4 31.Rxg7+ Rxg7 0-1

PLAYER	POST					TOT	
	RTNG	1	2	3	4		
1 DZURNY, ANTHONY A	1961	W33	W10	W-2	W-4	W-5	5.0
2 COHEN, LAWRENCE S	1998	W21	W19	L-1	W20	W14	4.0
3 FULK, WINTON D	1979	W22	W18	D17	W-6	D-4	4.0
4 HERNANDEZ, HECTOR	1985	W23	W12	W20	L-1	D-3	3.5
5 MC NAMARA, JAMES	1956	W26	D16	W15	W17	L-1	3.5
6 JARRETTE, PHIL	1901	D13	W32	W16	L-3	W17	3.5
7 BALE, LESLIE	1886	W14	L17	W28	D-8	W10	3.5
8 FRISKE, THOMAS G	1774	L10	W33	W12	D-7	W16	3.5
9 COHEN, HOWARD	1947	L17	L14	W31	W26	W21	3.0
10 LEONG, SEE Y	1944	W-8	L-1	W21	W19	L-7	3.0
11 GRAVES, WILLIAM E	1848	W28	L20	W22	L14	W23	3.0
12 BOUTON, BARRY R	1831	W30	L-4	L-8	W22	W24	3.0
13 TERRANCE, TERRY	1633	D-6	L15	D25	W18	W19	3.0
14 ENGELLEN, MARK	1622	L-7	W-9	W18	W11	L-2	3.0
15 JOHNSON, MARVIN J	1781	H--	W13	L-5	L16	W26	2.5
16 FLORES, JOSHUA	1784	W27	D-5	L-6	W15	L-8	2.5
17 GOSSAGE, JOHN L	1806	W-9	W-7	D-3	L-5	L-6	2.5
18 SPHAR, ROBERT L	1782	W24	L-3	L14	L13	W30	2.0
19 FINEBERG, THOMAS A	1776	W31	L-2	W24	L10	L13	2.0
20 DENNIS, MICHAEL T	1741	W25	W11	L-4	L-2	U--	2.0
21 DWIECKI, ROGER	1711	L-2	W31	L10	W25	L-9	2.0
22 GRUENBERG, FRED	1673	L-3	W27	L11	L12	W31	2.0
23 RABOVSKY, BARRY R	1658	L-4	L24	W27	W30	L11	2.0
24 DITTSWORTH, TODD	1618	L18	W23	L19	W28	L12	2.0
25 ROSING, GLENN C	1567	L20	D26	D13	L21	W32	2.0
26 KEYES, RICHARD A	1650	L-5	D25	W32	L-9	L15	1.5
27 MATTHEWS, ADAM L	1528	L16	L22	L23	W33	D28	1.5
28 ALLISON, MIKE	1356	L11	W30	L-7	L24	D27	1.5
29 MARTIN, JR DONALD	1783	U--	U--	U--	U--	W33	1.0
30 SCHALLBERG, SCOTT	1356	L12	L28	W33	L21	L18	1.0
31 BALES, JR ROBERT J	1335	L19	L21	L-9	W22	L22	1.0
32 PADILLA, RUDY R	1502	H--	L-6	L26	L31	L25	.5
33 MARX, FRED L	1258	L-1	L-8	L30	L27	L29	.0

AN OUT OF TOWNER'S GUIDE TO THE U.S. OPEN

By David Wulatin

If you're planning to spend nine days in Chicago, you'll probably want to do more than play chess. For the real scoop on where to go and what to see, read on:

Q. Can you give me the names of some of the better restaurants in Chicago?

A. Forget it, pal. You're forty minutes from downtown Chicago when you stay at the Hyatt O'Hare. Of course, eating at the hotel is an option, if you don't mind munching seven dollar sandwiches. If I were you, I'd stock up on dry goods before I left home.

Q. What time do the Cubs' games start?

A. Whoa, there! There are two teams in Chicago, you know. The White Sox will play home games Aug. 8-10. Sure, the Cubs have a better record this year, but you'll have to watch the game with thirty thousand Cub fans, the most annoying fans in baseball. On the other hand, if you go to Comiskey Park, you'll have your choice of seats and an easier time finding vendors. ("Good evening, my name is Rick, and I'll be serving you tonight. May I recommend the kosher hot dogs?")

Q. I'm a swinging single. Where are the hottest spots to *cherchez les femmes*?

A. Forget about the nightclubs, and head straight to the Kluczinski Federal Building. In the wake of the recent controversy over the Supreme Court decision on abortions, both pro-choice and pro-life groups have made this THE spot to protest. Suggested pick-up line for the pro-lifers: "How can those liberals be more concerned about the lives of convicted murderers than the rights of the unborn?" For pro-choice women: "I'm beginning to think that Margaret Atwood was being prophetic when she wrote 'The Handmaid's Tale'."

Q. I understand that a trip to Great America is being organized. What's the main attraction?

A. Rumor has it that some of our local masters, frustrated by the idea of grandmasters winning all the top prizes, have decided to increase their odds by making sure that at least one GM goes home empty-handed:

Top U.S. grandmaster: Boy, it's really nice of the four of you to take me to Great America, especially after I beat all of you in the first four rounds.

Chew: Oh, it's our pleasure.

Guiles: Really, you deserve this.

Majortomsky: After all, it's only a game.

Co-alias: Hey, what say we all take a ride on the Eagle now?

GM: That's not a roller coaster, is it? I get sick for days after riding a roller coaster, you know.

Co-alias: Yeah, we know.

Majortomsky: The Eagle? A roller coaster?

Guiles: It's just a big hill. You go up real slow, you get a great view of the park, and you come down real slow the same way.

Chew: You'll love it. Trust us.

(Minutes later, the merry quintet is strapped into the coaster.)

Guiles: See? This isn't so bad.

GM: You're right. This is a great view. But if it just goes back down the same way, why is there so much excess track? (Chew chuckles maliciously.)

Co-alias: It's just decoration. (The cars begin to lurch forward.)

GM: Wait a minute! It's going down the other side! FAST!

Majortomsky: Gee, it's not supposed to do that.

Chew: Oh, no! We're all gonna die!

Guiles: Well, I can kiss that adjournment goodbye.

GM: BLEEEEEEEEEAAAAARRRRRRRRRRRRRR
GGGGGGGGHHHHHHH.

Majortomsky: Hey! Not on my chess clock!

Co-alias: Don't worry, GM. We told the TD you'd probably withdraw before the next round.

Q. How does this tournament compare with, say, the National Open?

A. Well, at the U.S. Open you can't blunder away \$1500 at some stupid blackjack table!

Q. That's right, I heard about your trip. How could you be dumb enough to ...

A. Well, it appears that I've run out of space. See you at the Hyatt!

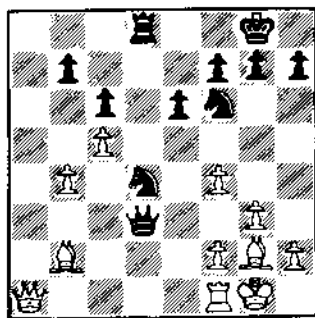
THE ONES THAT GOT AWAY -- DURING MY OPPONENT'S TIME PRESSURE

By Cyrus Bondari

[Editor's Note: National Master Cyrus Bondari, a Decatur resident, is one of downstate Illinois' strongest and most active players. Bondari finished third in the 1988 Illinois Tour after winning the Tour in 1987. Although he submitted this article months ago, space limitations kept it out of earlier ICBs.]

I normally spend a fair amount of time studying games I have lost. Though sometimes painful, reviewing these games allows me to identify my mistakes and weak points and helps me to improve my chess. One area in which I have made little progress, however, is finding the winning technique when my opponent is in severe time pressure. When the other player is in serious time trouble and you have a slight advantage, what should you do to win? Four possibilities (not all of which contradict each other) present themselves: 1) Avoid exchanges and keep the game complicated (forcing him to use his time to find the right move); 2) Aim for wilder complications, even if unsound (trying to win on time at any cost); 3) Move as quickly as possible (denying him the use of time on your clock); 4) Take your time, refuse to think about his clock, and look for the best move (figuring that the best move should lead to victory in any event).

I have tried different approaches on occasions when my opponent has been desperately short of time. The following position occurred after Black's 24th move at the 1988 Illinois Open. White: Cyrus Bondari (2241) Black: Ron Cusi (2440):



James had less than five minutes for the next 18 moves, while I had about 30 minutes.

23.Nxe6? (23.Rac1 was better) Rxe6
24.Rac1 Qb7 25.a4 Nd8 26.Bd3 Qe7
27.Nb5 Bb4

Now James was extremely short of time. He started playing very quickly and stopped writing down his moves.

28.Nc7 Rxe3 29.Bxh7+ Kxh7 30.Nxa8

After the game, James told me that several times he wanted to offer me a draw, but that he did not have the time to do it! In his time pressure, I started moving fast, hoping that his flag would fall. In this mad scramble I was the one who blundered and lost.

30...Rc2 31.Qh4+ Kg8 32.Ba1 Qe3+
33.Kh1 Ne6 34.Nb6 Nf8 35.Rc8 Ne4
36.Nxd5?? Ng3+. I resigned on move 63.

In my attempts to win these "nail biters" I allowed my opponent's time pressure to work against me, and I ended up without even a half point to show for my efforts. The lesson here -- at least for me -- is this: trying to "blitz" your opponent when he is in time trouble

can easily cost you a win. More often than not, the wisest course may be to take your time and find the best move. While this will permit your opponent to think on your time, it could keep you from throwing away the game by making a move which a little thought of your own would show is a bad one.

PRAIRIE STATE

(Continued from page 8)

W: Jamie Gregory (2053) B:

Cyrus Bondari (2242) Round
6 1.e4 c5 2.Nc3 Nc6 3.g3 g6 4.Bg2 Bg7
5.d3 d6 6.Be3 e5 7.f4 Nf6 8.h3 Nh5
9.Nge2 Nd4 10.f5 Nf6 11.g4 h6 12.Ng3
g5 13.Nd5 Nc6 14.Qd2 Ne7 15.Nxf6+
Bxf6 16.Nh5 Ng8 17.Nxf6+ Qxf6
18.O-O-O Bd7 19.h4 gxh4 20.g5 hxg5
21.Bxg5 Qg7 22.Kh1 f6 23.Bxh4
O-O-O 24.Bf3 Ne7 25.Rdgl Qf7
26.Bf2 Bc6 27.Rh6 Rxh6 28.Qxh6 Rg8
29.Rxg8+ Nxg8 30.Qh8 Be8 31.b3 b5
32.Bh5 Qf8 33.Bxe8 Qxe8 34.Bh4 Qd8
35.Qg7 Kb8 36.Qh8 Kc8 37.Kc1 a5
38.Qg7 Kb8 39.Qh8 Kc7 40.Qg7+ Kb6
41.a3 b4 42.a4 Ka6 43.Qf7 Kb6
44.Kb2 Ka6 45.Qg7 Kb6 46. Kc1 Ka6
47.Qh8 Kb7 48.Bxf6 Qxf6 49.Qxg8
Qh6+ 50.Kb2 Qd2 51. Qc4 Kc7 52.f6
Qf2 53.f7 Kd7 54.Qb5+ Kc7 55.Qc8+
1-0

**W: Lawrence Cohen (1973)
B: John Marconnet (2152)**

Round 6 1. c4 g6 2.g3 Bg7 3.Bg2 c5
4.Nf3 f5 5.d3 Nc6 6.Nc3 a6 7.O-O Nf6
8.Bg5 d6 9.Re1 h6 10.Bxf6 Bxf6
11.Rc1 O-O 12.Qd2 Kh7 13.e3 e5
14.Kh1 Bd7 15.Nc2 g5 16.Rf1 Qe8
17.b3 Nd8 18.d4 cxd4 19.exd4 e4
20.Nfg1 g4 21.Rod1 Ne6 22.Qb4 Qb8
23.Rfe1 a5 24.Qc3 Qa7 25.Qd2 Ng5
26.Bf1 Rae8 27.Nf4 Nf3 28.Nxf3 exf3
29.Nd5 Bg5 30. Qd3 h5 31.h4 Bd8
32.Rxc8 Rxe8 33.Nf4 Kh6 34.Qd2
Kh7 35.Nxh5 d5 36.c5 Qb8 37.Qf4 Qc8
38.Bd3 Qc6 39.Bxf5+ Bxf5 40.Qxf5+
Qg6 41.Qxg6+ Kxg6 42.Nf4+ Kf5
43.Nxd5 Rc2 44.Kg1 Rxa2 45.Ne3+
Ke4 46.Nxg4 Rb2 47.h5 Kf5 48.Nh2
Rxb3 49.d5 a4 50.c6 a3 51.Nf1 bxc6
52.dxc6 Bf6 53.c7 Rc3 54.Ne3+ Ke6
55.Nd5 Rc2 56.Nxf6 Kxf6 57.Ra1 a2
58.Rxa2 Rxc7 59.Ra3 Kg5 60.Rxf3
Kxh5 61.Kg2 Kg4 62.Rf4+ Kg5 63.f3
Rc2+ 64.Kh3 Ra2 65.Rb4 Ra5 66.f4+
Kh5 67.g4+ Kh6 68.Rb6+ Kg7 69.Kh4
Rc5 70.f5 Rc7 71.Kg5 Ra7 72. Rg6+
Kh7 73.Rh6+ Kg7 74.f6+ Kg8 75.Kg6
Rg7+ 76.Kf5 Ra7 77.Rh2 Ra4 78.Re2
Kf7 79.g5 Ra1 80.Re7+ Kf8 81.Kg6
Ra8 82.Rh7 1-0

MICRO RESALES CHAMPAIGN-URBANA OPEN

CHESS TOURNAMENT

OCTOBER 21-22, 1989

BEST WESTERN PARADISE INN, 1001 N DUNLAP, SAVOY, ILL. 2 1/2 MI. SOUTH OF CHAMPAIGN ON HWY 54

\$1200 IN PRIZES GUARANTEED!!!

THREE SECTIONS:

OPEN SECTION: (OPEN TO 1500 AND ABOVE)

FOUR-ROUND SWISS-SYSTEM TOURNAMENT. TIME CONTROL: TWO AND 1/2 HOURS PER PLAYER PER GAME.
ENTRY FEE: \$34. \$580 IN PRIZES GUARANTEED BY MICRO RESALES:
FIRST, \$250 ... SECOND, \$125 ... UNDER 2100, \$125 ... UNDER 1950, \$80.
SCHEDULE OF ROUNDS: SATURDAY, 10 A.M., 4 P.M.; SUNDAY, 9 A.M., 3 P.M.

UNDER 1900 SECTION:

SIX-ROUND SWISS-SYSTEM TOURNAMENT. TIME CONTROL: 100 MINUTES PER PLAYER PER GAME.
ENTRY FEE: \$25. \$405 IN PRIZES GUARANTEED BY MICRO RESALES:
FIRST, \$125 ... SECOND, \$100 ... UNDER 1750, \$100 ... UNDER 1600, \$80.
SCHEDULE OF ROUNDS: SATURDAY, 9:40 A.M., 1:40 P.M., 5:40 P.M.; SUNDAY, 9 A.M., 1 P.M., 5 P.M.

OPEN & UNDER 1900 SECTIONS ARE ILLINOIS CHESS ASSOCIATION MAXI-TOUR EVENTS:
ILLINOIS CHESS ASSOCIATION MEMBERSHIP REQUIRED FOR ILLINOIS RESIDENTS: \$10 (\$6 UNDER AGE 18)

UNDER 1500 SECTION:

TWELVE-ROUND, MODIFIED-PAIRING TOURNAMENT. TIME CONTROL: 45 MINUTES PER PLAYER PER GAME.
ENTRY FEE: \$15. \$215 IN PRIZES GUARANTEED BY MICRO RESALES:
FIRST, \$100 ... SECOND, \$65 ... UNDER 1350, \$30.
SCHEDULE OF ROUNDS: SATURDAY, 10:20 A.M., 12:10 P.M., 2 P.M., 3:50 P.M., 5:40 P.M., 7:30 P.M.
SUNDAY, 9 A.M., 10:50 A.M., 12:40 P.M., 2:30 P.M., 4:20 P.M., 6:10 P.M.
ILLINOIS CHESS ASSOCIATION MEMBERSHIP NOT REQUIRED FOR UNDER 1500 SECTION.

ALL SECTIONS:

ABOVE ENTRY FEES ARE IF RECEIVED IN ADVANCE. ALL ARE \$6 MORE AT THE SITE.

REGISTRATION IS SATURDAY MORNING, 8:30 - 9:20 A.M.

HALF-POINT BYES ARE AVAILABLE ANY AND ALL ROUNDS.

UNRATEDS MAY WIN ANY PRIZE EXCEPT UNDER 1350.

NO SMOKING IN THE PLAYING ROOMS. LATEST RATINGS USED.
HOTEL RATES AT THE PARADISE INN: \$32, \$34 OR \$44, \$46, \$48 FOR 1, 2, 3, 4 IN A ROOM.
RESERVE ROOMS BY PHONING (800) 528-1234. MENTION CHESS. RESERVE EARLY!

SEND ENTRIES TO: TOM WORLEY, 2106 ZUPPKE, URBANA, IL 61801. INFORMATION: (217) 367-4744.

CHOW, CUSI, UMEZINWA, S. BONDARI WIN MASTER CHALLENGE XII

ILLINOIS MAXI-TOUR EVENT ATTRACTS 119 PLAYERS

By Ken Marshall

Albert Chow, Ronald Cusi, George Umezina, and Siamack Bondari topped a field of 119 players to tie for first through fourth at Master Challenge XI, which took place June 23-25, 1989 at the Mohr Community Center in Forest Park. Six senior masters, 11 masters, and 28 experts participated in the eleventh edition of the Oak Park - Forest Park Chess Club's annual event, which lived up to its tradition of featuring plenty of fighting chess. The winners each took home \$371.25 by scoring 4.5-5. Chow and Cusi split the point in their last round contest. Umezina and Siamack Bondari (an Iowa resident who is the brother of Illinois master Cynus Bondari) battled to hard-fought draws with Dr. Eugene Martinovsky in rounds 4 and 5, respectively. Martinovsky finished out of the money despite essaying the "Kurt Stein Gambit": after losing on Friday night, the doctor withdrew, and then re-entered the tournament (paying another entry fee) on Saturday morning. (The Master Challenge format, which allows a player to choose either Friday night or Saturday morning for his first round, made this possible. Kurt Stein and Hugh Myers tried this

"gambit" in past years, but also failed to win prizes.)

Greg Bungo, Victor Reppert, and Bill Brock each ended up 4-1 to share the expert money. Class A honors went to Larry Cohen, Philip Shields, and Gee Leong for their 3.5-1.5 scores. Playing chess that was no laughing matter, ICB humor columnist Dave Wulatin picked up more than 100 rating points as he upset a master and two experts on his way to a 4-1 result and the \$220 Class B first prize. William Cox, Barry Bouton, Thomas Race, and Eric Blackmon all followed at 3-2. In Class C/Below, Gary Joachim earned \$160 and first place by beating two A players and drawing two others while scoring 3-2. Patricia Mendoza garnered 2.5 points to take second place in this category. Peter Dudkowski's 2.5-2.5 finish was good for the Unrated prize.

Master Challenge XI was directed by Erv Sedlock and Chris Musgrave, assisted by Ken Marshall. The tournament will be presented for the twelfth straight year in June of 1990.

RANK	PLAYER	ST	RTNO	ONE	POST					TOT
					1	2	3	4	5	
1	CHOW, ALBERT C	IL	2445	2456	W-20	M-20	M-27	M-48	D-2	4.5
2	CUSI, RONALD	IL	2486	2489	M-21	M-49	M-19	M-13	D-1	4.5
3	UMEZINWA, GEORGE D	IL	2362	2327	M-17	M-18	M-24	D-5	M-16	4.5
4	BONDARI, SIAMACK	IA	2268	2305	M-36	M-31	M-68	M-6	D-5	4.5
5	MARTINOVSKY, EUGEN	IL	2453	2454	M-32	M-18	M-65	D-3	D-4	4.0
6	COLIAR, BILLY	IN	2431	2427	M-98	M-66	M-34	L-3	M-25	4.0
7	KARLINS, ANDREW	IL	2388	2377	M-12	L-19	M-71	M-55	M-31	4.0
8	PELTS, PETER	IL	2382	2383	M-22	M-29	M-79	L-1	M-34	4.0
9	MALLACH, KENNETH T	IL	2318	2385	M-53	L-34	M-72	M-67	M-32	4.0
10	BUNGO, D GREGORY	IL	2180	2196	M-69	L-5	M-64	M-42	M-39	4.0
11	REPERT, VICTOR E	IL	2143	2158	L-97	M-57	M-83	M-42	M-47	4.0
12	BROCK, WILLIAM	IL	2060	2084	L-7	M-66	M-86	M-46	M-27	4.0
13	MULATIN, HARV D	IL	1759	1860	M-62	M-38	M-26	L-2	M-29	4.0
14	LINDOFF, HARRIS	IL	2343	2322	L-37	M-35	M-57	M-68	D-19	3.5
15	ROSTKA, HARIANO A	IL	2215	2197	M-21	D-22	M-75	L-25	M-47	3.5
16	GENSLER, KEVIN M	IL	2198	2194	D-23	M-99	D-73	M-43	D-28	3.5
17	KARLINS, ERIC	IL	2187	2094	M-42	L-3	M-88	D-68	M-54	3.5
18	HARRIS, THOMAS J	IN	2086	2121	M-78	L-7	L-2	M-58	D-14	3.5
19	BEISLEMAN, DENNIS	IN	2078	2075	L-26	M-77	M-87	M-83	D-17	3.5
20	CANNFORD, BRAD	IL	2065	2024	L-15	D-46	M-82	M-92	M-61	3.5
21	SPLINTER, JOSEPH C	IL	2022	2025	L-8	D-15	M-95	M-91	M-91	3.5
22	BYTHE, BILL	IL	2012	1997	M-38	M-98	L-3	D-49	M-49	3.5
23	COHEN, LAWRENCE S	IL	1996	1965	D-16	M-78	M-63	M-15	L-46	3.5
24	SHIELDS, PHILIP R	IL	1917	2218	M-20	L-52	L-13	M-62	M-55	3.0
25	LEONG, GEE Y	IL	1912	2183	M-39	M-37	L-1	M-41	L-12	3.0
26	CUNNINGHAM, ROBIN	IL	2247	2163	M-42	L-1	M-4	D-33	M-76	3.0
27	WACHTEL, ROBERT H	IL	2171	2126	M-19	L-8	M-74	M-76	L-13	3.0
28	ZABELL, SANDY L	IL	2162	2084	L-24	L-68	M-13	M-85	M-71	3.0
29	BATZNER, ETHELBEAT	IL	2123	2102	M-76	L-4	M-78	M-73	L-7	3.0
30	BREGORY, JAMIE	IL	2117	2077	L-3	M-59	M-84	M-79	L-9	3.0
31	SAX, ROBERT	IL	2099	2047	L-34	D-94	M-96	D-26	M-86	3.0
32	JORDAN, ROLAND V	IL	2069	2100	M-52	M-9	L-66	M-45	L-5	3.0
33	LUNDQUIST, DOUG E	IL	2069	2043	M-33	L-14	D-32	M-56	M-82	3.0
34	BURK, STEVE S	IL	2058	2035	L-4	M-75	M-82	M-77	M-72	3.0
35	MC NAMARA, JAMES	IL	2052	2041	M-14	L-65	M-91	M-86	L-18	3.0
36	READ, RHY	IL	2052	2001	M-14	L-65	M-91	M-86	L-18	3.0
37	FORRIS, ROBERT E	IL	2018	2000	M-65	L-13	M-85	M-87	M-73	3.0
38	DELRICH, TOM	IL	2016	1996	L-27	M-86	M-18	L-1	L-11	3.0
39	HARRIS, ROBERT L R	IL	2005	1985	L-45	M-47	M-81	L-16	M-79	3.0
40	STINEBA, MARCUS E	IL	1985	1977	L-66	M-89	M-11	L-27	M-78	3.0
41	WALSHOUT, PETER H	IL	1974	1932	L-16	M-48	M-86	L-11	M-63	3.0
42	EBERTON, JAMES	IL	1937	1930	L-26	M-81	M-85	L-17	M-85	3.0
43	BUTNY, WILLIAM P	IL	1925	1864	L-81	M-85	L-18	M-82	M-67	3.0
44	ROUTON, BARRY R	IL	1872	1878	L-18	M-96	M-96	L-34	M-88	3.0
45	COX, WILLIAM S	IL	1849	1788	M-64	M-21	D-23	L-12	M-74	3.0
46	RACE, THOMAS G	IL	1734	1718	M-83	L-48	M-69	M-41	L-15	3.0
47	BLACKMON, ERIC	IL	1646	1689	M-81	L-42	D-32	D-78	M-69	3.0
48	JOHNS, GARY	IL	1616	2126	M-40	L-2	M-59	D-24	D-23	2.5
49	MALLACH, CLIFF H	IL	2135	2126	L-1	M-72	M-4	D-35	D-57	2.5
50	BATTELLER, RAY DOY	IL	2072	2039	L-2	M-88	M-85	L-47	D-58	2.5
51	BOLLMAN, E O	IL	2050	2045	D-54	M-26	L-55	M-56	L-24	2.5
52	BERNAL, LUIS F	IL	2134	2048	L-9	D-55	M-12	M-94	L-1	2.5
53	SMITH, CHARLES L	AZ	2046	1978	D-52	M-85	M-94	L-16	L-18	2.5
54	ERBERT, RON	IL	1972	1960	M-15	D-53	M-52	L-7	L-26	2.5
55	DZURRY, ANTHONY A	IL	1940	1926	M-84	D-23	L-16	L-52	M-89	2.5
56	WOLF, WILLIAM P	IL	1923	1926	M-84	D-23	L-16	L-52	M-89	2.5
57	KHACH, BOB	IL	1908	1864	L-63	M-14	M-89	L-19	D-31	2.5
58	ALBERTS, WALTER A	IL	1885	1848	M-11	L-32	L-49	D-84	M-94	2.5
59	PANNER, BLENN E	IL	1825	1878	M-85	M-36	L-4	D-18	L-22	2.5
60	ENDOS, JAMES A	IN	1847							2.5

61	LA FRANK, ARTHUR	IL	1844	1847	L-94	M-4	M-54	M-90	L-21	2.5	
62	DUDKOWSKI, JIMMY	IL	1637/5	1741	L-13	D-95	M-81	L-26	M-93	2.5	
63	LULVES, JOSEPH F	IL	1638	1681	M-58	D-78	L-25	L-23	M-95	2.5	
64	MENDOZA, PATRICIA	IL	1294/5	1513	L-46	D-18	L-61	M-12	M-91	2.5	
65	SPRISMAN, STEVEN J	IL	2224	2230	M-38	M-37	L-5	M-1	M-1	2.0	
66	NUMERALE, JR FLO	IL	2161	2166	M-41	L-6	M-88	M-1	M-1	2.0	
67	CLARK, KAREL M	MI	2018	1991	L-3	M-87	M-86	L-9	L-44	2.0	
68	MARBLE, ANTHONY	IL	1952	1944	L-98	M-75	M-77	L-14	L-43	2.0	
69	EATON, JONATHAN	IL	1918	1885	L-10	M-86	L-47	M-86	L-48	2.0	
70	BURNANEY, PAUL	IL	1909	1856	L-19	D-63	M-15	D-48	L-48	2.0	
71	PELIFFERS, STAN	IL	1891/5	1890	M-10	L-16	L-7	M-1	L-36	2.0	
72	PALE, LEBEIE	IL	1886	1884	M-92	L-58	L-9	M-10	L-36	2.0	
73	FRATS, DANIEL L	IL	1871	1878	M-133	M-82	D-17	L-31	L-38	2.0	
74	BARBERSTOCK, DAN	IL	1844	1814	L-86	M-82	L-29	L-29	M-11	2.0	
75	HOLMES, JEFFREY A	IL	1841	1820	M-4	L-68	L-15	M-17	D-84	2.0	
76	JENDO, JERRILL	IL	1838	1838	L-31	M-89	M-14	L-29	L-28	2.0	
77	KIMURA, JAMES H	IL	1811	1799	M-87	L-28	L-68	L-36	M-17	2.0	
78	BROWN, TONY	IL	1809	1795	M-82	L-25	L-31	M-14	L-43	2.0	
79	FLORES, JOSEMAR	IL	1784	1806	M-83	M-86	L-12	L-32	L-40	2.0	
80	LYONS, III MARK	IL	1762	1762	M-92	M-44	L-43	L-48	L-27	M-83	2.0
81	WALSHOUT, DONALD	IL	1623	1619	L-78	M-74	M-81	M-1	L-35	2.0	
82	BOLDEN, JR CARL	IL	1622	1657	L-79	M-81	M-99	L-20	L-42	2.0	
83	EGGELIN, MARK	IL	1613	1623	L-56	L-63	M-16	D-59	D-75	2.0	
84	WINGARD, DONALD	IL	1613	1633	L-68	L-44	M-87	M-83	L-43	2.0	
85	THORNTON, THEODORE E	IL	1613	1633	L-68	L-44	M-87	M-83	L-43	2.0	
86	JOHNSON, HENDERSON J	IL	1577	1618	M-74	L-69	L-48	M-84	L-33	2.0	
87	AMIRANTE, RON L	IL	1567/8	1567	L-77	L-82	L-85	M-21	M-87	2.0	
88	CARSON, DAVID L	IL	1541	1527	L-108	L-66	L-36	M-16	M-85	2.0	
89	DAURAN, THOMAS	IL	1427	1476	M-88	L-76	L-58	M-74	L-56	2.0	
90	KAPEN, DAN	IL	2130	2107	L-66	M-117	L-61	M-1	L-5	1.5	
91	RYNES, EVAN	IL	1703	1725	M-81	M-88	L-37	L-22	L-64	1.5	
92	JUST, TIMOTHY W	IL	1718	1747	L-72	M-67	M-1	L-61	M-1	1.5	
93	SWANSON, VICTOR D	IL	1666	1664	M-25	L-117	M-15	L-62	L-15	1.5	
94	MALDON, BILL	IL	1648	1664	M-25	L-117	M-15	L-62	L-15	1.5	
95	BARTOCCI, RALPH PR	IL	1632	1615	L-85	D-23	L-54	L-53	L-59	1.5	
96	SALES, JR ROBERT J	IL	1328	1341	M-11	L-42	L-23	L-95	M-20	1.5	
97	DUNWORTH, CHRISTOP	IL	2455	2444	M-11	L-27	M-1	M-1	M-1	1.0	
98	SCHROEDER, ANTHONY	IL	2228	2196	M-68	L-24	L-45	M-1	M-1	1.0	
99	SEFCHOW, MARK W	IL	1908	1874	M-95	L-17	L-83	M-1	M-1	1.0	
100	KOJICAN, WALTER	IL	1844	1837	M-12	L-12	L-66	M-1	M-1	1.0	
101	CHLOUPEK, FRANK R	IL	1818	1784	L-48	L-83	L-68	M-18	M-1	1.0	
102	BURGESS, FRED	IL	1817	1788	L-57	M-82	L-21	L-44	M-1	1.0	
103	MEATROUR, JOHN	IL	1788	1743	L-47	M-84	L-11	L-85	L-81	1.0	
104	ROZILONSKY, GEORGE	IL	1768	1716	L-14	M-15	L-32	L-84	M-1	1.0	
105	COHEN, ARIK AARON	IL	1767	1738	M-28	L-54	L-33	L-38	L-88	1.0	
106	SALMSTEIN, WALTER	MA	1765	1747	M-17	L-39	L-57	L-69	M-1	1.0	
107	BOLICUP, KEVIN S	IL	1765	1726	M-16	L-67	L-28	L-38	L-87	1.0	
108	ALLISON, ROGER D	IL	1741	1720	M-45	L-41	L-43	M-1	M-1	1.0	
109	DUJECKI, ROGER	IL	1711	1720	M-45	L-41	L-43	M-1	M-1	1.0	
110	KOBINSKY, BARRY R	IL	1652	1632	L-71	M-16	L-29	L-72	L-74	1.0	
111	KOBINSKY, HARRISON	IL	1649	1638	L-59	M-21	L-41	L-13	M-1	1.0	
112	KOBINSKI, MICHAEL	IL	1254	1531	L-68	M-1	L-52	L-64	D-15	1.0	
113	PIRELLA, RUDY R	IL	1512	1517	L-73	L-84	L-38	M-11	L-88	1.0	
114	MONNETTI, RICHARD	IL	1418	1431	M-84	L-58	L-76	L-76	M-1	1.0	
115	ENERY, STEVE	IN	1363	1364	L-52	M-41	L-78	L-52	L-52	1.0	
116	ATELMAK, KRISTIN	IL	1321	1219	L-87	L-118	L-6	L-88	M-21	1.0	
117	POLES, THEO	IL	1296/18	1296	L-96	M-53	L-92	L-72	L-77	1.0	
118	FILDEBERG, THOMAS A	IL	1775	1771	L-46	D-64	M-1	M-1	M-1	1.0	
119	MARTINOVSKY, EUGEN	IL	2453	2425	L-28	M-1	M-1	M-1	M-1	1.0	
120	KOBE, JOSEPH K, P	IL									

GAMES FROM MASTER CHALLENGEXI

W: Billy Colias (2412) B: Dan Kamen (2126) 1.d4 Nf6 2.c4 e6 3.Nc3 d5 4.Bg5 Be7 5.e3 O-O 6.exd5 exd5 7.Bd3 h6 8.Bh4 b6 9.Nf3 Nbd7 10.Qc2 Bb7 11.O-O Rc8 12.Qa4 c5 13.Bxf6 Nxf6 14.Qxa7 Bc6 15.Ne5 Be8 16.dxc5 bxc5 17.Be2 Ra8 18.Qb7 Rb8 19.Qa6 Rxb2 20.Rfd1 Qc7 21.Nd3 Rc2 22.Rac1 Rxc1 23.Rxc1 Bc6 24.Nb5 Bxb5 25.Qxb5 Rb8 26.Qa4 c4 27.Ne1 Rb2 28.Bf3 Qb8 29.g3 Rb1 30.Qd1 Rxc1 31.Qxc1 Qb4 32.Nc2 Qc3 33.Qb1 g6 34.Nd4 Bb4 35.Nc6 Bd6 36.Kg2 Kg7 37.Qd1 Qd3 38.Qxd3 cxd3 39.a4 Ne4 40.Bxc4 dxc4 41.Kf1 Kf6 42.a5 Kg5 43.a6 Be5 44.h3 f5 45.a7 Bxa7 46.Nxa7 h5 47.Nc6 h4 48.Kc1 Kh5 49.Kd2 Kg5 50.Nb4 Kh5 51.Nd5 Kg5 52.Nf4 hxg3 53.fxg3 Kf6 54.h4 Kg7 55.Nxd3 exd3 56.Kxd3 Kf6 57.Kd4 Kc6 58.e4 Kf6 59.Kd5 fxc4 60.Kxc4 Ke6 61.Kf4 Kf6 62.Kg4 Kf7 63.Kg5 Kg7 64.g4 Kh7 65.Kf6 Kh6 66.g5+ Kh7 67.Kf7 Kh8 68.h5 Kh7 69.hxg6+ 1-0

W: Erik Karklins (2191) B: Lawrence Cohen (1973) 1.e4 e6 2.d4 d5 3.Nc3 dxc4 4.Nxe4 Nf6 5.Bg5 Be7 6.Nxf6+ Bxf6 7.Bxf6 Qxf6 8.Nf3 Bd7 9.Be2 Nc6 10.O-O O-O 11.c3 Ne7 12.Ne5 Be6 13.Nxc6 Nxc6 14.Bf3 Nd8 15.Re1 a5 16.Qa4 Ra7 17.Qd7 Qf4 18.Re5 f6 19.Rc5 e6 20.Bxc6 Qd2 21.Be4 Qxb2 22.Rb1 Qxa2 23.Rc7 Nf7 24.h3 f5 25.Bd3 Qd5 26.Qxd5 cxd5 27.Bxf5 Nd8 28.Bg4 a4 29.Ra1 Ra5 30.Rd7 a3 31.Bf3 Rxf3 32.gxf3 Ne6 33.Rxb7 Nf4 34.Kf1 a2 35.Rb2 Ra3 36.Rbxa2 Rxc3 37.Ra3 Rc4 38.Rd1 Nxb3 39.Ra7 Nf4 40.Rd7 h5 41.Re7 h4 42.Re5 Rc3 43.Re3 Rc4 44.Re5 Rc3 45.Re3 1/2-1/2

W: Chris Dunworth (2487) B: Howard Wachtel (2206) 1. d4 Nf6 2. Bg5 c5 3. Nc3 cxd4 4. Qxd4 Nc6 5. Qh4 d6 6. O-O-O Be6 7. e3 Nd7 8. e4 g6 9. Nge2 Qa5 10. Kb1 h6 11. Bd2 Bg7 12. Nd5 Qd8 13. Bc3 O-O 14. g4 Rc8 15. f4 Ne5 16. Bxg7 Kxg7 17. Nec3 a6 18. Ne3 b5 19. Bd3 Nb4 20. Rd2 Qa5 21. a3 Nbx3 22. cxd3 Nb3 23. Rg2 Rxc3 24. Nf5+ Bxf5 25. gxf5 Rc7 26. fxg6 f6 27. e5 b4 28. exf6+ Rxf6 29. Rc2 Rxc2 30. Kxc2 Nd4+ 31. Kb1 bxa3 32. bxa3 Qxa3 33. Qf2 Qxd3+ 34. Ka2 0-1

W: Ethelbert Gazman (2131) B: Peter Pelts (2390) 1. d4 Nf6 2. c4 e6 3. Nf3 c5 4. d5 exd5 5. cxd5 d6 6. Nc3 g6 7. Bf4 a6 8. a4 Bg7 9. e4 O-O 10. Nd2 Re8 11. Qc2 Nh5 12. Be3 f5 13. f3 Nd7 14. Be2 f4 15. Bf2 Qg5 16. Kf1 Ne5 17. Rb1 Nf6 18. Ne4 Nxc4 19. Bxc4 Nd7 20. Ne2 Ne5 21. b4 b6 22. bxc5 bxc5 23. Be1 Nxf3 24. h4 Qg4 25. gxf3 Qxf3+ 26. Kgl Rxe4 27. Bf2 Qg4+ 28. Kf1 f3 29. Ng3 Rxc4 30. Qd2 Bf5 31. Rd1 Be5 32. Qg5 Qxg5 33. hxg5 Be2 34. Re1 Rg4 35. Rh3 Bxa4 36. Kgl Rxg5 37. Kh1 Rf8 0-1

W: George Umezina (2289) B: Thomas Harris (2086) 1. d4 Nf6 2. c4 c5 3. d5 d6 4. Nc3 g6 5. Nf3 Bg7 6. e4 O-O 7. Be2 e6 8. Bf4 cxd5 9. cxd5 Re8 10. Nd2 a6 11. a4 Qe7 12. O-O Nbd7 13. h3 Ne5 14. a5 Rb8 15. Bh2 g5 16. f4 gxf4 17. Bxf4 Ng6 18. Bh2 Nd7 19. Ra3 Rde5 20. Na4 Bd7 21. Nb6 Bb5 22. Rb5 Bxc2 23. Qxe2 Rf8 24. Kh1 Kh8 25. Qh5 Rbe8 26. Bg3 Qd8 27. Nbc4 Nxc4 28. Nxc4 Rxe4 29. Nxd6 Rc7 30. Rb6 Be5 31. Nxb7 Qe8 32. Rxg6 Bxg3 33. Rxg3 Rxb7 34. Qg5 f6 35. Rxf6 Rb7 36. Rxf7 Qxf7 37. d6 1-0

W: Bill Smythe (2056) B: Mariano Acosta (2215) 1. d4 d5 2. e4 e6 3. Nc3 Be7 4. Bf4 Nf6 5. e3 O-O 6. g4 dxc4 7. h4 Nd5 8. Bg3 Bd6 9. Bxd6 Qxd6 10. Rc1 e5 11. dxe5 Nxc3 12. exd6 Nxd1 13. Rxd1 Bxg4 14. Rd4 Be6 15. Bg2 Nc6 16. Bxc6 bxc6 17. dxc7 Rac8 18. Nf3 Rxc7 19. Kd2 c5 20. Rd6 h6 21. Kc3 Rb8 22. Ne5 Kf8 23. Rhd1 g5 24. hxg5 hxg5 25. Nd7+ Bxd7 26. Rxd7 Re6 27. Rxa7 Rf6 28. Rd2 Re8 29. Kxc4 Re5 30. Rc7 Ref5 31. Rd8+ Kg7 32. Rxc5 Rxc5+ 33. Kxc5 Rxf2 34. b4 Rg2 35. b5 Rc2+ 36. Kb4 Rb2+ 37. Kc5 Rc2+ 38. Kb4 Rb2+ 39. Kc5 1/2-1/2

W: Mark Sefcheck (1918) B: Erik Karklins (2191) 1. d4 d5 2. c4 dxc4 3. Nc3 a6 4. a4 e5 5. d5 Bb4 6. e3 Nf6 7. Bxc4 Ne4 8. Nge2 Nxf2 9. Kxf2 Qh4+ 10. Ng3 Qxc4 11. Rf1 O-O 12. Kgl f5 13. Na2 Bd6 14. b3 Qh4 15. Qd3 g6 16. Bb2 Nd7 17. Rf2 Nf6 0-1

W: Robert Yakich (1895) B: Victor Reppert (2148) 1. Nf3 g6 2. e4 c5 3. d4 cxd4 4. Nxd4 Nf6 5. Nc3 d6 6. Be2 Bg7 7. Be3 O-O 8.

Qd2 Nc6 9. O-O-O Nxd4 10. Bxd4 Be6 11. h4 Qa5 12. Qg5 Qxg5+ 13. hxg5 Nd7 14. Nd5 Bxd5 15. exd5 Rac8 16. Bxg7 Kxg7 17. Bg4 Rc7 18. Bxd7 Rxd7 19. Rh6 Rc7 20. Rdh1 Rh8 21. R6h4 Rc5 22. Re4 Rxd5 23. Rxe7 Rxg5 24. Rxb7 Rxg2 25. Rf1 h5 26. Rxa7 h4 27. Rd7 h3 28. Rxd6 Rh4 29. b3 h2 30. Rdd1 Ra4 31. Rh1 Rxf2 32. Kb2 Rg2 33. Rc1 Re4 34. a4 g5 35. a5 g4 36. Ka3 g3 37. b4 Rc4 38. Ka4 Rgxc2 39. Rb1 Re2 40. Kb5 Rh4 41. a6 Ra2 42. Kb6 Rh6+ 43. Kb7 Rxa6 44. b5 Ragg6 45. b6 g2 0-1

W: Joe Splinter (2000) B: Thomas Race (1734) 1. f4 d5 2. b3 Nf6 3. e3 Bf5 4. Bb2 e6 5. Nf3 Be7 6. Ne5 O-O 7. Be2 h6 8. d3 Bc5 9. Qd2 Nbd7 10. O-O Nxe5 11. fxe5 Nd7 12. d4 Be7 13. c4 e6 14. Nc3 Nb6 15. Racl Rc8 16. Bd3 Bxd3 17. Qxd3 dxc4 18. bxc4 Bg5 19. Ne4 Be7 20. Qe2 Kh8 21. Qh5 Qe8 22. Nf6 Qd8 23. Ng4 Bg5 24. Rxf7 Rxf7 25. Qxf7 Qd7 26. Qxd7 Nxd7 27. Rc3 Nb6 28. Bcl c5 29. Nf2 cxd4 30. exd4 Bxc1 31. Rxc1 Nxc4 32. Ne4 b5 33. Kf2 Rd8 34. Re1 Nxe5 35. Nc5 Rd6 36. Kc2 Nc4 37. Ne4 Rd5 38. Nc3 Rg5 39. g3 Kh7 40. Kf3 Kg6 41. Ne2 Rf5+ 42. Nf4+ Kf7 43. Ke4 Nd6+ 44. Kc3 e5 45. dxe5 Rxe5+ 46. Kd4 Rf5 47. Rc1 1/2-1/2

W: Albert Chow (2449) B: Peter Pelts (2390) 1. Nf3 d5 2. d4 c5 3. c4 cxd4 4. cxd5 Qa5+ 5. Qd2 Qxd2+ 6. Bxd2 Nf6 7. Nxd4 Nxd5 8. e4 Nb6 9. Nb5 Kd8 10. Bf4 Na6 11. N1c3 e6 12. O-O-O Bd7 13. Nd6 Bxd6 14. Bxd6 Rc8 15. Rd4 Nc5 16. Kb1 a6 17. Rb4 Na8 18. Bxc5 Rxc5 19. Rxb7 Ne7 20. Rb8+ Be8 21. Na4 Rc6 22. Nb6 Nb5 23. Bxb5 axb5 24. Rc1 Rxc1+ 25. Kxc1 Kc7 26. Rxc8+ Rxc8 27. Nxc8 Kxc8 28. Kc2 Kc7 29. Kc3 Kc6 30. Kb4 f5 31. exf5 exf5 32. b3 f4 33. a4 bxa4 34. bxa4 g5 35. Kc4 1-0

W: Siamaek Bondari (2259) B: Billy Colias (2412) 1. e4 c5 2. c3 d5 3. exd5 Qxd5 4. d4 Nf6 5. Nf3 e6 6. Be2 Nc6 7. Na3 cxd4 8. Nb5 Qd7 9. Nbx4 Nxd4 10. Qxd4 Qxd4 11. Nxd4 Bd7 12. O-O Bd6 13. Rd1 O-O 14. Bg5 Bb8 15. Nb3 Be6 16. Rxd8+ Rxd8 17. Rd1 Rxd1+ 18. Bxd1 Be5 19. Be3 a6 20.

GAMES FROM MASTER CHALLENGEXI

Bd4 Nd7 21. Bc2 h6 22. Be3 Bd5
23. Nc1 Kc7 24. Bb3 Be4 25. f3 Bb1
26. g3 Kd6 27. Kf2 Nc5 28. Bd1 f5
29. Ke2 Bf6 30. Kd2 e5 31. b4 Ne6
32. c4 f4 33. Bf2 fxg3 34. hxg3 h5
35. a4 g5 36. c5+ Kc7 37. Ne2 h4
38. Ne3 e4 39. Nd5+ Kc6 40. Nxf6
hxg3 41. Bxg3 a5 42. Bb3 Nf4 43.
Bxf4 gxf4 44. Bd5+ Kc7 45. Bxe4
Ba2 46. bxa5 Bb3 47. Bc2 1-0

W: David Wulatin (1714) B:
Robin Cunningham (2216) 1. e4
e6 2. d4 d5 3. Nd2 Nf6 4. Bd3 c5 5.
e5 Nfd7 6. c3 Nc6 7. Ngf3 cxd4 8.
cxd4 Be7 9. O-O f6 10. exf6 Nxf6
11. Re1 O-O 12. Nf1 Qb6 13. Ng3
Bd7 14. b3 Rae8 15. Be3 Qc7 16.
Rc1 Qb8 17. Re2 Bd6 18. Bb5 a6
19. Bxc6 Bxc6 20. Ne5 Bb5 21. Re1
Bxe5 22. dxc5 Nd7 23. Bd4 Rc8 24.
Qg4 Rfe8 25. f4 Bd3 26. Qf3 Bg6
27. h4 h6 28. f5 Rf8 29. f6 Rxc1 30.
Rxc1 Nxe5 31. Qc3 Nc6 32. fxg7
Rf7 33. h5 Bh7 34. Ne2 Nxd4 35.
Qxd4 Rxg7 36. Qf6 Bf5 37. Qxh6
Qf8 38. Nf4?? Rxg2+ 39. Kxg2
Qxh6 40. Rc8+ Kf7 41. Rc7+ Kf6
42. Nh3 Bxh3+ 43. Kxh3 Qxh5+
44. Kg2 Qg4+ 0-1

W: Anil Gurnaney (1948) B:
Gary Jochim (1573) 1. e4 c5 2. Nf3
d6 3. d4 cxd4 4. Nxd4 Nf6 5. Nc3
a6 6. Bg5 e6 7. f4 Be7 8. Qf3 Qc7 9.
O-O-O Bd7 10. g4 Nc6 11. f5 Nxd4
12. Rxd4 d5 13. exd5 Nxd5 14.
Bxe7 Nxe7 15. f6 Bc6 16. fxg7 Rg8
17. Ne4 Rxg7 18. Bg2 f5 19. gxf5
exf5 20. Qh5+ Kf8 21. Ng5 Qe5 22.
Bxc6 Qe3+ 23. Kb1 Rxg5 24.
Qh6+ Kg8 25. Bd5+ Nxd5 26.
Rxd5 Rg1+ 27. Rxg1+ Qxg1+ 28.
Qc1 Qxc1+ 29. Kxc1 f4 30. Rf5 Rf8
31. Rg5+ Kf7 32. Rf5+ Ke7 33.
Rxf8 Kxf8 34. Kd2 Ke7 35. Kd3
Kf6 36. Ke4 Kg5 37. Kf3 Kf5 38.
a4 a5 39. c3 b6 40. b4 Ke5 41. bxa5
bxa5 42. c4 Kd4 43. Kxf4 Kxc4 44.
h4 Kb4 45. Kg5 Kxa4 46. Kh6 Kb3
47. Kxh7 a4 48. h5 a3 49. h6 a2 50.
Kg8 a1=Q 51. h7 1/2-1/2

W: Eugene Martinovsky (2443)
B: Siamack Bondari (2259) 1. e4
c5 2. d3 e6 3. g3 d5 4. Nd2 Nc6 5.
Bg2 Nf6 6. Ngf3 dxe4 7. dxe4 Be7
8. O-O O-O 9. c3 Qc7 10. Qc2 b6
11. Nc4 Ba6 12. Bf4 Qb7 13. Nfd2
Rad8 14. Rfd1 Rd7 15. Bf1 Rfd8
16. a4 h6 17. Be2 Qc8 18. f3 Nh7 19.
Nf1 Rxd1 20. Rxd1 Rxd1 21. Qxd1
Qd8 22. Qc2 Bg5 23. Bxg5 hxg5 24.
Nfe3 Nf6 25. Kf2 Qc7 26. Qd2 Bxc4

27. Nxc4 g4 28. e5 Nxe5 29. Nxe5
Qxe5 30. Qd8+ Kh7 31. Bd3+ g6
32. f4 Qd5 33. Qxf6 Qf3+ 34. Ke1
Qxd3 35. Qxf7+ Kh6 36. Qf8+ Kh7
37. Qe7+ Kh8 38. Qh4+ Kg7 39.
Qxg4 Qb1+ 40. Qd1 Qxb2 41.
Qd7+ Kh6 42. Qd2 Qa1+ 43. Kf2
Kg7 44. Qd7+ Kh6 45. Qxe6 Qxc6
46. Qh3+ Kg7 47. Qd7+ Kh6
48. Qxa7 Qd2+ 49. Kf3 Qd3+
1/2-1/2

W: Robert Forbis (2035)
B: Gregory Bungo (2179) 1. e4 g6
2. d4 Bg7 3. Nc3 c5 4. d5 d6 5. Nf3
Nf6 6. Be2 O-O 7. h3 b5 8. Bxb5
Qa5 9. Bd3 e4 10. Bxc4 Nxe4 11.
Bd2 Nxf2 12. Kxf2 Qc5+ 13. Be3
Qxc4 14. Qd2 Ba6 15. Rhe1 Nd7
16. Bd4 e5 17. dxe6 fxe6 18. Bxg7
Kxg7 19. Qxd6 Rf7 20. Qxf6
Qd4+ 21. Qc3 Qh4+ 22. Kg1 Qg3
23. Ng5 Rf1+ 0-1

W: Cliff Wallach (2155) B:
Lawrence Cohen (1973) 1. e4 e6 2.
d4 d5 3. Nc3 dxc4 4. Nxe4 Nf6 5.
Bg5 Be7 6. Bxf6 Bxf6 7. Nf3 Nc6 8.
Bh5 Bd7 9. O-O O-O 10. c3 Qe7
11. Re1 Rad8 12. Qc2 a6 13. Bd3
h6 14. a4 Na7 15. b4 Bc6 16. Nxf6+
Qxf6 17. Ne5 Be8 18. Qe2 Nc6 19.
b5 Nxe5 20. Qxe5 Qxc5 21. Rxe5
a5 22. Be4 b6 23. f4 Rd6 24. Bf3
Bd7 25. Rd1 Rd8 26. Kf2 c6 27.
bxc6 Bxc6 28. Bxc6 Rxc6 29. Re3
Rdc8 30. Rc1 Rc4 31. Rb1 R8c6 32.
Ra1 Rxc3 33. Ra2 R3c4 34. Rd3
Rc2+ 35. Rd2 Rxd2+ 36. Rxd2
Rc4 37. Ke3 Rxa4 38. Rb2 Rb4 39.
Ra2 a4 40. Kd3 b5 41. Kc3 Rb3+
42. Kc2 Kf8 43. Ra1 Ke7 44. Rf1 b4
45. f5 Rc3+ 46. Kb2 a3+ 47. Ka2
Rc2+ 0-1

W: David Wulatin (1714) - B:
Eithelbert Gazmen (2138) 1. e4 g6
2. d4 d5 3. e5 h5 4. Bd3 b6 5. Nf3
e6 6. Bg5 Be7 7. Qd2 Ba6 8. Bxe7
Qxe7 9. c3 Bxd3 10. Qxd3 Nh6 11.
Na3 Nf5 12. O-O Kf8 13. Qd2 Kg7
14. Qg5 Nd7 15. Nc2 c5 16. Ne3
Qxg5 17. Nxg5 cxd4 18. Nxf5+
gxf5 19. cxd4 Rac8 20. Rac1 Kg6
21. h4 Nb8 22. Nf3 Nc6 23. Rc3
Nb4 24. Rfc1 Rxc3 25. Rxc3 Nxa2
26. Rc7 a6 27. Ng5 Rf8 28. Rc6
Rb8 29. Rc7 Rf8 30. Rc6 Nb4 31.
Rxb6 Nd3 32. Rxa6 Nxb2 33. Ra7
Nd3 34. Kf1 Nb4 35. Rc7 Na6 36.
Ra7 Nb4 37. Rc7 Nd3 38. Ke2 Nb2
39. Rb7 Na4 40. Kd2 Rc8 41. Rxf7
Nc3 42. Rf6+ Kg7 43. Nxe6+ Kg8
44. Nc5 Nbl+ 45. Kd3 Ra8 46. Ra6

Rb8 47. Kc2 Rb4 48. Ra4 Rxa4
49. Nxa4 Na3+ 50. Kb3 Nb5 51.
Kb4 Nxd4 52. Kc5 Ne6+ 53. Kxd5
Nf4+ 54. Kd6 Nxg2 55. e6 Nxb4
56. e7 Kf7 57. Kd7 Ng6 58. e8=Q+
Kf6 59. Qd8+ Kf7 60. Qg5 f4 61.
Qxh5 Kf6 62. Kd6 Kf7 63. Nc5 1-0

W: Ray Satterlee (2147) B: Bob
Yakich (1895) 1. e4 c5 2. d4 cxd4
3. c3 d5 4. exd5 Qxd5 5. cxd4 e6 6.
Nc3 Bb4 7. Nf3 Nc6 8. Be2 Nge7 9.
O-O Qd8 10. Bf4 Bxc3 11. bxc3
O-O 12. Bd3 Nd5 13. Bd2 Nf6 14.
Bg5 h6 15. Bb4 Nb8 16. Ne5 g5 17.
Bg3 Nbd7 18. f4 Nd5 19. Qh5 Nxe5
20. fxe5 Nxc3 21. Rf6 Qxd4+ 22.
Kh1 Ne4 23. Rd1 Nxf6 24. exf6
Qxf6 25. Re1 Qc3 26. Qxb6 Qxd3
27. Be5 f6 28. Bxf6 Rxf6 29. Qxf6
Qf5 30. Qd8+ Kg7 31. Rc1 Kh6 32.
h3 b6 33. Qh8+ Qh7 34. Qf6+ Qg6
35. Qh8+ Qh7 36. Qf6+ 1/2-1/2

W: Gary Jochim (1573) B: Jon
Eaton (1940) 1. e4 e6 2. d4 d5 3.
Nd2 c5 4. c3 Nc6 5. Ngf3 cxd4 6.
cxd4 dxe4 7. Nxe4 Bb4+ 8. Bd2
Qa5 9. a3 Bxd2+ 10. Qxd2 Qxd2+
11. Nxd2 Nge7 12. Bc4 O-O 13.
O-O Rd8 14. Nb3 b6 15. Rfd1 Bb7
16. Ne5 Rac8 17. Rac1 Nxe5 18.
dxe5 Ng6 19. Rxd8+ Rxd8 20. Be2
Rc8 21. Rd1 Bd5 22. Nd4 Nxe5 23.
Nb5 Rc2 24. Nc3 Rxb2 25. Nxd5
Rxe2 26. Nc3 1-0

W: Evan Rynes (1741) B:
Patricia Mendoza (1294) 1. Nf3
d6 2. d4 Nf6 3. Nc3 g6 4. e4 Bg7 5.
Be4 Nxe4 6. Bxf7+ Kxf7 7. Nxe4
Rf8 8. h3 Kg8 9. O-O Nc6 10. Re1
e5 11. Bg5 Qe8 12. Qd2 Rxf3 13.
gxf3 Nxd4 14. Kg2 Qf7 15. Qd3
Bf5 16. c3 Ne6 17. Qc3 Rf8 18. Ng3
Nf4+ 19. Kh2 Nxb3 20. Nxf5 Qxf5
21. Kg2 Nxg5 0-1

1989 ILLINOIS OPEN
SEPTEMBER 2-4, 1989

SIGNATURE INN
PEORIA, ILLINOIS

\$2,000 GUARANTEED

2 SECTIONS:
CHAMPIONSHIP
(OPEN TO ALL)
RESERVE
(1799 AND BELOW)

ILLINOIS WELL REPRESENTED AT NATIONAL OPEN

[Editor's Note: The 1989 National Open, organized by Illinois Chess Association Metro Vice President Fred Gruenberg at the Riveria Hotel in Las Vegas on June 3-5, had many Illinois players among its 960 entrants. Gruenberg reports that the following results from some of the Illinois contingent: Open section: Eugene Martinovsky, 5-1; Dmitry Gurevich, 4.5-1.5 (3 draws); Peter Pelts, 4.5-1.5; Dan Kamen, 3-3; Reserve: Glenn Panner, 4.5-1.5; John Dotson, 4-2; Tom Fineberg, 3.5-2.5. The following games are from score sheets supplied by Gruenberg.]

W: Hisham Sunna (2177) B: Eugene Martinovsky (IL) (2443) 1.e4 e5 2.Nf3 Nf6 3.Nxe5 d6 4.Nf3 Nxe4 5.d4 d5 6.Bd3 Nc6 7.O-O Bg4 8.Re1 Be7 9.Bxe4 dxc4 10.Rxc4 Bxf3 11.gxf3 f5 12.Re2 Qxd4 13. Qf1 O-O 14.f4 Rf6 15.Re3 Qxf4 16.Rg3 Qe5 17.Nc3 f4 18.Rg4 Nd4 19.f3 Nxc2 20.Ne4 Nxa1 21.Nxf6+ Bxf6 22.Qc4+ Kh8 23.Qxf4 Qe1+ 24.Kg2 Re8 0-1

W: Peter Stein (IL) (2202) B: Anton Sildmets (2024) 1.e4 c5 2.f4 Nc6 3.Nf3 d6 4.Bb5 Bd7 5.O-O g6 6.d3 Bg7 7.Qe1 a6 8.Bxc6 Bxc6 9.Nc3 e6 10.f5 e5 11.Qg3 Qd7 12.Ne2 O-O-O 13.c4 Bh6 14. Bxb6 Nxb6 15.Qb4 Ng8 16.fxc6 fxc6 17.Ng5 Qe7 18.Rf7 Qe8 19. Rxf1 h6 20.Nh7 g5 21.Nxg5 Ne7 22.Ne6 Ng6 23.Qxd8+ Qxd8 24. Nxd8 Kxd8 25.R1f6 Ke8 26.Rg7 Nf8 27.Ng3 Bd7 28.Nf5 Kd8 29. Rxd6 1-0

W: Emil Osterman (1903) B: Ken Marshall (IL) (1641) Reserve 1.e4 d5 2.exd5 Nf6 3.Nc3 Nxd5 4.Nxd5 Qxd5 5.Qf3 Qxf3 6.Nxf3 Bf5 7.c3 a6 8.d4 e6 9.Be2 Bd6 10.O-O O-O 11.Nh4 Be4 12.Re1 Bc6 13.Nf3 Nd7 14.h3 Rfe8 15.Bc3 b5 16.Nd2 Nf6 17.Bf3 Bxf3 18.Nxf3 Nd5 19.Bd2 c5 20.dxc5 Bxc5 21.Rad1 Rad8 22.Ne5 Nb6 1/2-1/2

W: L. Becker (1763) B: Rudy Padilla (IL) (1540) Reserve 1.e4 e5 2.Nf3 Nc6 3.Bb5 Nd4 4.Bc4 Bc5 5.Nxc5 Qg5 6.Ng4 d5 7.c3 Bxg4 8.f3 Nxf3+ 9.gxf3 Qh4+ 10.Kc2 Qf2+ 11.Kd3 dxc4+ 12.Kc2 Bxf3 0-1

1989 U.S. OPEN
HYATT REGENCY O'HARE AUGUST 5-13, 1989
\$33,000 PRIZE FUND

LAKE COUNTY OPEN XII

AN ICA MINI-TOUR EVENT AN ACTION CHESS EVENT

WHEN: Saturday, September 16, 1989

WHERE: Shimer College, 445 N. Genessee, Waukegan, IL

WHAT: 5 Round Swiss TIME CONTROL: G/30

MEMBERSHIPS REQUIRED: USCF & ICA

CASH PRIZES: \$500 (Based on 50 entries and on 8 per class)

1ST: \$120 2ND: \$90 3RD: \$60

A: \$80 B: \$60 C: \$50 D/E/UNR: \$40

ENTRY FEE: \$15 in advance (by 9/13/89); \$20 at site

REGISTRATION: 8:30-9:30 a.m. ROUND TIMES: 10:00, 11:30, 1:30, 3:00, 4:30

ADVANCE ENTRIES: Kevin Bachler, c/o Shimer College, P.O. Box A500, Waukegan, IL 60079

INFORMATION: Kevin Bachler (312) 249-8778

NO SMOKING IN THE PLAYING ROOM -- NO COMPUTERS

PLEASE BRING CLOCKS -- BOARDS AND SETS SUPPLIED

1989 ILLINOIS TOUR

By Ken Marshall

Senior Master Albert Chow continues to maintain a comfortable first place margin as the 1989 Illinois Tour reaches the half way mark. With points from 10 events tabulated, 1988 Tour winner Chow leads Billy Colias by 22.5 points and Eugene Martinovsky by 26.5 points. Grandmaster Dmitry Gurevich, who has yet to become eligible for prizes by playing in the required three Tour tournaments, is in fourth place. Cyrus Bondari is closing fast, however, and will pass Gurevich when the points Bondari earned at the Peoria Action Open in early July are added to his total.

Larry Cohen has moved into a first place tie with Ron Torregrossa in the Expert class; each has 19.5 points, although Torregrossa still needs to play in another Tour event to meet the three tournament rule. Kevin Gensler (18.5 points), Brad Crawford (17.5), and Steve Surak (17) follow.

Anthony Dzurny remains atop both Class A (with 18.5 points, ahead of Barry Bouton [18] and Larry Cohen [17.5]) and Class B (with 34.5 points, ahead of David Rockwell [16], who has participated in only one Tour event.) The Class C co-leaders are Terry Terrance and Daryl Zelinski, each with 8 points. Zelinski has moved out of state, so it seems likely that Lawrence Zevnik (7.5) and Rudy Padilla (7) will pull ahead of him shortly. Robert Bales (6.5) continues to pace Class D; he and Earl Miller (2.5)

are the only players who are presently eligible for the Tour prize in their class.

Tour participants who have now compiled 5 or more Master, Expert, Class A, or Class B points, 3 or more Class C points, or 2 or more Class D points are set out below. This list is current through July 1 and reflects the following Tour events: Tim Just Winter Open, Midwest Action Chess Championship, No Bones Mini-Tour, Bradley Winter Open, Greater Peoria Open, Lincoln Land Mini-Tour Open, Prairie State Masters/Experts Invitational, Prairie State Action Under 2000, Peoria Spring Tomado, and Master Challenge XI. (Tour points from the Peoria Action Open [July 8] and the Prelude to an Open [July 15], both Mini-Tour tournaments, will be included in the September-October ICB's Tour report.)

The next scheduled Tour events are the Bradley Summer Open (Mini-Tour: August 19, Peoria), the Illinois Open (Maxi-Tour: September 2-4, Peoria), the Lake County Open (Mini-Tour: September 16, Waukegan), and the St. Charles Open (Mini-Tour: September 23-24, St. Charles).

REMEMBER: YOU MUST PLAY IN AT LEAST THREE TOUR TOURNAMENTS IN ORDER TO BE ELIGIBLE FOR TOUR PRIZES. Complete Tour rules, regulations, and prize fund were set out on page 14 of the May-June ICB.

Master Tour Points:	
CHOW Albert	66.5
COLIAS Bill	44
MARTINOVSKY Eugene	40
GUREVICH Dmitry	32 (1)
BONDARI Cyrus	27.5
ONEJIMA George	24 (2)
MALLACH Ken	24
SEFISJAK Steven	22
BONDARI Sianack	20 (2)
COHEN Larry	19.5
TORREGROSSA Ron	19.5(2)
PELIS Peter	19
GENSLER Kevin	18.5
CRAMFORD Brad	17.5
SURAK Steve	17
CUSI Ronald	16 (1)
VLASTNIK Richard	16
BOULTON Barry	15
NAFF Bill	14
BROCK Bill	13.5
KARLINS Andrew	12.5(2)
LOWMY Marc	12.5
BOLITHO Thomas	12
BUNGO Greg	12 (2)
REPERT Victor	11 (2)
SMYTHE Bill	11
ASH Robert	10.5(2)
SATTERLEE Ray Doyle	10.5(2)
MC NAMARA James	10
GRAVES Bill	9.5
SCHILLER Eric	9.5(2)
CONDROW Jim	9 (2)
SAX Robert	9
SPHAR Robert	8.5
GARDNER Bruce	8 (1)
LEVINE David	8 (1)
LUNDQUIST Doug	8
NOTE David	8 (1)
PORTER John	8 (1)
WULATIN David	8 (1)
ZELKIND Ed	8 (1)
GREGORY Jammie	7 (2)
KARLINS Erik	7 (2)
LA FRAMA Arthur	7
FABERHOLZ Steve	6.5(2)
HIERONYMUS Kent	6.5
SPLINTER Joseph	6.5(2)
VAN BUSKIRK Doug	6.5(2)
ALLISON Roger	6
HERNANDEZ Hector	6
FORBIS Robert	5.5(2)
KAMEN Dan	5.5(2)
REYES Virgilio	5.5
HERNANDEZ Hector	5.5(2)
FORBIS Robert	5.5(2)
KAMEN Dan	5.5(2)
REYES Virgilio	5.5
HARREN Jim	5.5(2)

ANDERSON Phil	5 (2)
BALE Leslie	5
BARGERSTOCK Dan	5
COX William	5 (2)
EATON Jonathan	5 (2)
FISCHER Gregory	5 (2)
HOLMES Jeffrey	5 (2)
JOCHIM Gary	5 (2)
MAYKA Tom	5 (2)
MC GOWAN Andy	5 (2)
SEFCHICK Mark	5 (2)
TAMEZ Isidro	5 (2)

Expert Tour Points:	
COHEN Larry	19.5
TORREGROSSA Ron	19.5(2)
GENSLER Kevin	18.5
CRAMFORD Brad	17.5
SURAK Steve	17
SEFISJAK Steven	16
VLASTNIK Richard	16
BOULTON Barry	15
NAFF Bill	14
BROCK Bill	13.5
BOLITHO Thomas	12
BUNGO Greg	12 (2)
REPERT Victor	11 (2)
SMYTHE Bill	11
ASH Robert	10.5(2)
SATTERLEE Ray Doyle	10.5(2)
MC NAMARA James	10
GRAVES Bill	9.5
CONDROW Jim	9 (2)
SAX Robert	9
SPHAR Robert	8.5
LUNDQUIST Doug	8
PORTER John	8 (1)
WULATIN David	8 (1)
GREGORY Jammie	7 (2)
KARLINS Erik	7 (2)
LA FRAMA Arthur	7
FABERHOLZ Steve	6.5(2)
HIERONYMUS Kent	6.5
SPLINTER Joseph	6.5(2)
VAN BUSKIRK Doug	6.5(2)
ALLISON Roger	6
HERNANDEZ Hector	6
FORBIS Robert	5.5(2)
KAMEN Dan	5.5(2)
REYES Virgilio	5.5
HARREN Jim	5.5(2)
ANDERSON Phil	5 (2)
BALE Leslie	5
BARGERSTOCK Dan	5
COX William	5 (2)

EATON Jonathan	5 (2)
FISCHER Gregory	5 (2)
HOLMES Jeffrey	5 (2)
JOCHIM Gary	5 (2)
MAYKA Tom	5 (2)
MC GOWAN Andy	5 (2)
SEFCHICK Mark	5 (2)
TAMEZ Isidro	5 (2)

Class A Tour Points:	
DZURNY Anthony	18.5
BOULTON Barry	18
COHEN Larry	17.5
MC NAMARA James	13.5
GRAVES Bill	12.5
BOLITHO Thomas	12
CRAMFORD Brad	10.5
SPHAR Robert	10.5
HERNANDEZ Hector	9.5
BALE Leslie	8.5
FULK Winton	8 (2)
PORTER John	8 (1)
WULATIN David	8 (1)
ALLISON Roger	7.5
JARRETTE Phil	7.5(2)
LA FRAMA Arthur	7
LEONG Gee	7 (2)
FLORES Joshua	6.5
HIERONYMUS Kent	6.5
COHEN Howard	6 (2)
LUNDQUIST Doug	6
FINEBERG Tom	5.5
MARTIN Don	5.5
ANDERSON Phil	5 (2)
BARGERSTOCK Dan	5
COX William	5 (2)
EATON Jonathan	5 (2)
ENGELMAN Mark	5 (2)
FISCHER Gregory	5 (2)
HOLMES Jeffrey	5 (2)
JOCHIM Gary	5 (2)
RABOVSKY Barry	5
SEFCHICK Mark	5 (2)
TAMEZ Isidro	5 (2)
TERRANCE Terry	5

CALDWELL Scott	8 (1)
GARDNER Keith C	8
PORTER John	8 (1)
TERRANCE Terry	8
WOLF William	8
WULATIN David	8 (1)
YAKOWENKO Lawrence	8 (1)
ZELINSKI Daryl	8 (1)
ZEVNIK Lawrence	7.5
PADILLA Rudy	7
HIERONYMUS Kent	6.5
LULVERS Joseph	6.5(2)
MOER Allen D	6.5(2)
BALES Robert	6
STOTLER Richard	6
OWIENSKI Roger	5.5
SPHAR Robert	5.5
ENGELMAN Mark	5 (2)
GROENBERG Fred	5
INGRAM Adrian	5 (2)
JOCHIM Gary	5 (2)
RABOVSKY Barry	5
SHAFFER Thomas	5 (2)

Class C Tour Points:	
TERRANCE Terry	8
ZELINSKI Daryl	8 (1)
ZEVNIK Lawrence	7.5
PADILLA Rudy	7
BALES Robert	6
ENGELMAN Mark	5 (2)
SHAFFER Thomas	5 (2)
LULVERS Joseph	4 (2)
TALBOT Marc	4 (1)
MILLER Earl	3.5
MOORE Rod	3.5(2)
BIEZYNSKI Stan	3 (1)
JOCHIM Gary	3 (2)
KEMPSER Robert	3 (1)

Class D Tour Points:	
BALES Robert	6
MILLER Earl	3.5
CALLENDO Anthony	2.5 (1)
KNUTSON Gerald	2.5 (1)
MENDOZA Patricia	2.5 (2)
HARRIS Barry	2.5 (2)
AMIRANTE Ron	2 (1)
COOLTER Dave	2 (2)
DUPRE Arthur	2 (2)
WALLACE Michael	2 (1)

CHACHERE ANNOTATES

[Editor's Note: The following contest took place at the 1988 Illinois Open last September. Although former ICB Games Editor Lawrence Chachere annotated the game long ago, space limitations kept it out of previous issues.]

W: Marcus Stinson (2018) B: Scott Zingheim (2276) 1.d4 Nf6 2.c4 e5 3.d5 b5 4.cxb5 a6 5.e3 g6 6.Nc3 Bg7 7.a4 O-O 8.Ra3

Nf3 is more flexible. In his book Levy mentions 8.Bd2! d6 9.Bc4 with advantage to White, but that analysis seems shallow.

8...Bb7 9.Bc4? Ne8?!

Black could probably have gotten an advantage by playing 9...axb5! If 10.axb5 Rxa3 11.bxa3 Qa5!, e.g. 12.Qd2 e6 regains the pawn. If either piece recaptures, Black can play e6 followed by Na6 and Nb4. After the text, White obtains the edge.

10.Nge2 Nd6 11.Qd3! axb5 12.axb5 Nxc4 13.Qxc4 d6 14.O-O Nd7 15.Bd2?!

This turns out to be a waste of time, since the Bishop is misplaced. Better is to omit this move and play e4 immediately, keeping an advantage.

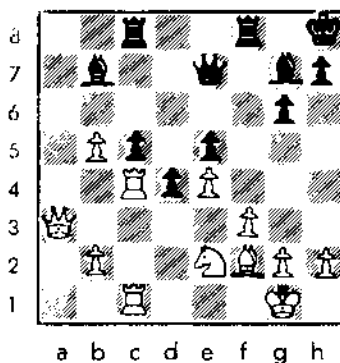
15...Nb6 16.Qa2 Qd7 17.e4 e6 18.dxe6 fxe6 19.Rd1 Rae8?!

Black had the chance to play d5 here, with unclear complications. White's next move eliminates this opportunity.

20.Be3! Qe7 21.Ra7 Nc8 22.Ra3 Kh8 23.f3 Nb6 24.Na4 Nxa4

Although White seems to benefit more from the trading of minor pieces, Black is so cramped that he does not have any better plans.

25.Rxa4 d5 26.Qa3 d4 27.Bf2 e5 28.Rc1 Rc8 29.Rac4



White should consider 29.Qd3. Both sides were now already getting very short of time.

29...Bh6 30.Rd1?

After 30.Rc2 Ra8 31.Qd3 Ra1+, Black has activity, but White should go into this line anyway.

30...Bxe4! 31.Nxd4 Qd7?

In time pressure Black misses a win with Qf7!

32.fxe4 cxd4 33.Rxc8 Rxc8 34.Qb3

34.b6! is a better try to get winning chances.

34...Rb8 35.b6 Qc6 36.Bg3 Qxe4 37.Qe6 Bg7 38.b7 h5??

38...Qxb7 creates an equal ending.

39.Qc8+ Kh7 40.Qxb8 d3 41.Qc8 Qe2 42.Rc1 d2 43.b8=Q Flag 0-1

White had two more moves to make before the first time control.

1989 ST. CHARLES OPEN

AN ICA ILLINOIS MINI-TOUR EVENT

WHEN: September 23-24, 1989

WHERE: Kane County Extension Service, 535 Randall Rd., St. Charles, IL

WHAT: 5 Round Swiss TIME CONTROL: 40/100

MEMBERSHIPS REQUIRED: USCF & ICA

CASH PRIZES: \$475 (Based on 40 entries) 1ST: \$100 2ND: \$75 EXP: \$65
Class A: \$60 Class B: \$55 Class C: \$50 Class D/E: \$40 UNR: \$35

ENTRY FEE: \$17 in advance (by 9/21/89); \$22 at door

REGISTRATION: 8-8:50 a.m. ROUND TIMES: September 23: 9-1-5; September 24: 10-3

ADVANCE ENTRIES: Dan Pradt, 654 Hillside, Glen Ellyn, IL 60134 (312) 858-7511

NO SMOKING NO COMPUTERS PLEASE BRING CLOCKS

EATON TOPS 1989 ILLINOIS HIGH SCHOOL INVITATIONAL

By Kevin Bachler

Jonathan Eaton, a senior from Chicago's St. Patrick High School, battled his way to first place in the 1989 Illinois High School Invitational Chess Championship, which took place May 13-14 at Shimer College in Waukegan. The five round Swiss system event was exciting and hard fought, with many decisive games and a much higher quality of play than last year's tournament. The competition was so close that as the final round began half of the ten player field had the opportunity to either win the event outright or tie for first.

The Invitational was to include the top ten Illinois high school players (by United States Chess Federation rating), plus the Illinois High School Association's Class AA (large school) and Class A (small school) champions. Conspicuous by their absence were the two IHSA winners. AA champion Brad Crawford, a freshman, elected to participate in the National Junior High School tournament (for which he was eligible as a ninth grader) instead, while A champion Jamal Lewis decided not to play in a tournament which "... had only one prize...", saying that he felt he had no chance of taking first. (In fact, as noted below, there were scholarship prizes for the first, second, and third place finishers.) Several other top high school players also declined to play. Some cited a concern with the weak play they felt was prevalent in most high school events; others simply had too far to travel. Still others felt the tournament lacked sufficient prestige and prize money.

The ferocity of the players who did participate became clear during the second round when several "caveman" games were played. By the end of this round there had been only one draw - and the "bloodfest" continued!

W: Fidel Serrano (1888) B: Jonathan Eaton (1940) Rd. 2, Bd. 2, French Winawer (Analysis by Kevin Bachler): 1.e4 e6 2.d4 d5 3.Nc3 Bb4 4.e5 c5 5.a3 Bxc3+ 6.Bxc3 Qc7 7.Nf3 Ne7 8.Bd3 (Moles says this is inaccurate) 8...b6 9.0-0 Ba6 10.Ng5 Bxd3 11.exd3 exd4?! (Moles, 11...h5!)= 12.exd4? (12.Qh5! g6 13.Qf3 Nec6 14.Re1 Qc7 15.c4 += Planinc-Tatai, Moles) 12...Nbc6 13.Bb2 Nf5 14.Re1 Qd7 15.Qh5 Nfxd4 16.Nxh7 Qd8 (White threatened 17.Nf6+ Ke7 18.Qxh8) 17.Bxd4 Nxd4 18.Qg4 Nf5 19.Qa4+ (19.Ng5 Rh4 +) 19...Qd7 20.Qxd7+ Kxd7 21.Ng5 Nd4 22.Rfe1 f6 (22...Rh5!?) 23.f4 f6 is also interesting) 23.Nh3 Rxh3 24.gxh3 Nf3+ 25.Kf1 Nxe1 26.Kxe1?! fxe5 27.Ke2 Rf8 28.Rg1 Rf7 29.h4 Kc6 30.Rg6 Re7 31.h5 Kb5 32.h4 Ka4 33.h6 gxh6 34.Rxh6 Kxa3 35.h5 b5 36.Kd2 b4 37.Kc2 Ka2 38.Rg6 b3+ 39.Kc3 b2 40.Rg4 Re7+ 41.Kb4 b1=Q+ 42.Ka5 Re5 0-1

Eaton beat Evan Rynes of Downers Grove South in Round 3 to take a clear lead at 3-0, a full point ahead of the rest of the field. In the next round he had White against 15 year old Arik Cohen of Elk Grove High School. Although outrated by 180 points, Cohen won handily, setting up a tense situation for the fifth and final round. (Unfortunately, the score of the Eaton-Cohen game is not available for publication.)

Cohen's victory brought himself, Eaton, Rynes, Paul Berland of Kenwood Academy, and highest rated player Matthew Crouse of Charleston High School all within a half point of each other as the last round began. First place was wide open! But Berland lost to Serrano, and Rynes and Cohen drew, bringing all the attention to the struggle on Board 1:

W: Matthew Crouse (1966) B: Jonathan Eaton (1940) Rd. 5, Bd. 1, English (Analysis by Kevin Bachler) 1.e4 e5 2.Nc3 Nc6 3.Nf3 Nf6 4.e3 d5 (Watson calls this obliging, but not disastorous) 5.exd5 Nxd5 6.Bb5 Nxc3 7.bxc3 e4? (Watson) 8.Ne5! Qd5 9.Qa4! Qxe5 (Watson gives 9...Bd7 10.Nxd7 Kxd7 11.Bc4 Qg5 12.Bxf7 Qxg2 13.Rf1 and White wins-Euwe. Black cannot meet Rb1 and/or Bd5) 10.Bxc6+! Kd8 11.Bb5? (11.Qxc4!+- 11...Qd6?? 12.Qc8#) 11...a6 12.Be2 Bd7 13.Qb3 Bb5 14.f4 (Bravery by 14.Qxf7 is interesting, but 14.a4 may be best, allowing a timely Ba3 and eyeing both f7 and b7) 14...Qf5 (14...exf3 15.Bxf3 intending d4, e4, 0-0, etc. Not 15.d4 f2+!?) 15.c4 Bc6 16.Bb2 Kd7 17.h3!? (17.g4!? Qe6?! 18.h3 Re8 19.g5) 17...h5 18.g4 Qg6 19.0-0-0 hxg6 20.Bxg4+ f5 21.Be2 Rf8 22.Rdgl Qf7 23.Rg5 Kc8 24.h4 Qd7! (White failed to break through on the first try. Now Black unties.) 25.Bc3 Rh6 26.Rh2 Rd6 27.Bd1 g6 28.h5 gxh5 29.Rgxh5 b5!? 30.Rh7 Qe6 31.Be5 bxc4 32.Bxd6? (32.Qa3!? Bh7 is complex 32...R6d7? 33.Qxa6+ Kb8 34.Ba4 looks very good for White.) 32...cxb3 33.Rxc7+ Kb8 34.Rd7+ Bxd6 35.Rxd8+ Kc7 36.Bxb3 Ba3+ 37.Kd1 Ba4 38.Rhh8 Bxb3+ 39.axb3 Qxb3+ 40.Kc1 Qe6 41.Ra8 Kh7 42.Rab8+ Kc7 43.Ra8 Bc5 44.Rh7+ Kb6 45.Rb8+ (45.Rha7 Ka5 46.Rxa6+ Qxa6 47.Rxa6 Kxa6 48.d3 and not 48...exd3? 49.Kd2 Kb6 50.Kxd3 Bd6 51.e4 =, but 48...Bxc3 49.dxe4 fxe4 50.f5 Bd4 51.Ke2 Kb6 52.f6 Kc6! 53.f7 Bg7 -) 45...Ka5 46.Rb1 Qa2 47.Rb7 Ka4 48.R7b2 Qa3 49.Rc2 Bb4 50.Rb2 Qxc3+ 51.Kd1 Qf3+ 52.Ke1 e3? 53.Ra1+ (Perhaps this move was made in time pressure; on 53.Rxb4+ Ka5 54.dxe3 Qxe3+ 55.Kf1 the result is no longer crystal clear, as on 54.R4b2 Qf2+ 55.Kd1 e2+ 56.Kc2 since on 56...e1=N+ White has 57.Kd1) 53...Kb5 54.Ra5+ Kxa5 55.Ra2+ Rh6 56.Rxa6+ Kc7 57.Ra7 Kb8 58.Rd7 Bxd2+ 0-1

By winning this game Eaton became the Illinois High School Invitational Champion and thereby earned the right to participate in the Denker Tournament of [High School] Champions, a national invitational event featuring a top high school player from each state and held concurrently with the U.S. Open.

The Invitational was directed by National Tournament Director Tim Just, Senior TD Kevin Bachler, and Local TD David Shiner. Michael Zacate helped to find names and addresses of many of Illinois' top high school players. Shimer College has hosted the event for the past two years, and will continue to offer to do so and to offer scholarships to Shimer for the top finishers. (This year the prizes included \$4,500 in renewable scholarships -- \$2,500 for first, \$1,500 for second, and \$500 for third.) The College is interested in attracting chess students of all ages, and offers additional chess scholarships which do not require participation in the high school championship tournament. (For more information on the Shimer College chess program, contact Ms. Bobbie Groth at [312] 623-8400.)

1989 Illinois High School Invitational Championship

	rank	name	rating	W	D	L	W	D	L	W	D	L	score
1	EATON Jonathan	1940	W 8	W 4	W 3	L 2	W 5						4
2	COHEN Arik Aaron	1760	L 5	W 7	W 6	W 1	D 3						3.5
3	RYNES Evan	1741	WF	W 8	L 1	W 4	D 2						3.5
4	SERRANO Fidel	1888	W 9	L 1	W 5	L 3	W 6						3
5	CROUSE Matthew	1966	W 2	D 6	L 4	W 7	L 1						2.5
6	BERLAND Paul	1894	W 7	D 5	L 2	W 9	L 4						2.5
7	SACKS David	1657	L 6	L 2	Wbye	L 5	W 9						2
8	PARAMESWARAN Prasad	1671	L 1	L 3	W 9	-	-						1
9	GELFAND Boris	1577	L 4	Wbye	L 8	L 6	L 7						1
10	GURNANEY Anil	1948	LF	-	-	-	-						0

GAMES OF ICA MEMBERS

[Editor's Note: Bob Irons contributed this correspondence game from an Anglo-Pacific tournament in 1987.]

W: Bob Irons B: Peter

Caissa (Australia) (Analysis by Bob Irons) 1.e4 e6 2.d4 d5 3.Nc3 Be7 4.Bd3?1 Nc6 5.Nf3 Nb4 6.O-O Nxd3 7.Qxd3 Nf6? (dxc) 8.e5 Nd7 9.Bf4 c5 10.Rfe1 c4? 11.Qd2 Qa5 12.Bg5! Bb4 (f6!?) 13.a3 Bxc3 14.bxc3 b5 15.Reb1!? b6 16.Bh4 Nb6 17.Rb4 a6 18.Ne1 Na4 19.f4 Qc7 20.g4 Bd7 21.Ng2 Rb8 22.Rf1 Be8 23.f5 O-O?? (Up to now Black's play has been lifeless, but this leads to a forced mate.) 24.f6 Bb7 25.fxg7 Kxg7 26.Bf6+ Kh7 27.Qxb6+! 1-0 (On 27...Kh6, the quiet 28.Rf3! seals the Black King's fate.)

[Editor's Note: David Taylor of Kankakee, long one of America's top postal chess players and the winner of the Seventh United States Correspondence Chess Championship, sent in this game from the aforesaid event, which he won with a 13.5-.5 score. Taylor notes that Illinois is strong in postal chess, and that Illinois players Marc Lonoff, Marvin Dandridge, and N. Eric Pedersen all took part in the Seventh Championship tournament.]

W: Joseph Callaway (NC) B: David Taylor (IL) (Annotated by David Taylor) 1.d4 Nf6 2.Nf3 e6 3.Bf4 c5 4.e3 Qb6 5.Nc3 d5 6.Nb5 Na6 7.b3

7.Ne3 Be7 8.a4 O-O 9.c3 c4 10.b3 cxb3 11.Qb3 Nh5 oo [Rakic-Parma, 1969]

7...Bd7 8.a4 cxd4

Here I thought long and hard about 8...e4!? The main continuation would be 9.bxc4 Bxb5 10.axb5 Bb4+ 11.Ke2 Ne4 12.Qd3 Nc3+ 13.Kd2 Nxb5+ [13...Ne4+ 14.Ke2 and Black can force a draw -- but can he do better?] 14.Kf1 dxc4 15.Qxc4 Nc3 oo [=].

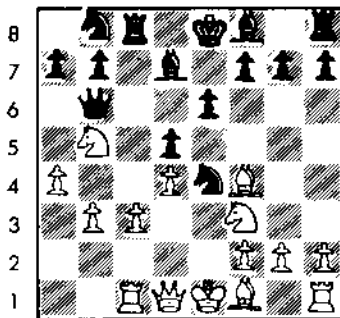
9.exd4 Ne4

Black threatens some tricky play!?

10.c3 Rc8 11.Rc1

White has to be careful here. 11.Qd3? Nxc3! 12.Nxc3 Rxc3; or 11.a5 Qd8 12.Nxa7 Rxc3 ♁ I thought he might play 11.Bd2 Nd6 12.a5 Qd8 13.Nxd6 Bxd6 =.

11...Nb8!



a b c d e f g h

I don't often make "backward" moves, but this threatens a6.

12.a5

Possibly 12.Nd2 would have given White better play.

12...Qxa5 13.Ral Qb6

Perhaps my opponent overlooked the power of this move, or my next move. 14.Nxa7 Rxc3

The main point is 15.Bxb8 Rxf3!, winning. Now White's Knight is trapped again.

15.Bd3 Na6 16.Qe2 Qxa7 17.Bxa6 Rc6 0-1

White simply had no way to save the game.


LETTER TO THE EDITOR

As many ICB readers know, I have been awarded the title of National Tournament Director. I did not achieve that honor alone. Who should I thank?

Kevin Bachler taught me the fundamentals of tournament directing. Helen Warren had faith in an untested, unknown TD as her chief assistant at the first Midwest Masters. Fred Gruenberg and Dick Verber joined Helen in allowing me to come on board for important large and national events. Walter Brown and Todd Barre were patient coworkers and teachers. By their tournament attendance the woodpushers of Illinois supported my efforts to provide the kinds of events I always wanted to play in myself.

I thank all of you!

Tim Just
Gurnee, IL



CHESS PHONE:
(312) 325-3666

DOWNSTATE
CHESS PHONE:

ICA OFFICERS/BOARD MEETING MINUTES (Abridged) HYATT REGENCY O'HARE; 7/9/89

Call to Order 12:00 Noon (The officers meeting and Board meeting were combined to facilitate taking care of all needed U.S. Open business including a tour of the playing site at 1 p.m.)

Present: H. Warren, J. Warren, T. Just, D. Grant, T. Barre, A. Sandrin, K. Marshall, B. Naff, B. Wilkinson, T. Fineberg, E. Sedlock, A. Losoff, W. Brown, H. Winston, G. Panner, L. Cohen, J. Condron, J. Brotsos, M. Acosta Observers: M. Fineberg, J. Godfrey, and others.

The minutes of the last ICA Board meeting and the Treasurer's report were submitted and approved. Reports from the ICA President, Metro VP, Downstate VP, ICB Editor, and Chess Phone were given.

REPORT HIGHLIGHTS

President Helen Warren discussed the U.S. Open, noting that local fund raising had produced some \$5000, and that some financial support had been found for daytime Action Chess events. A tour of the playing site (Hall E in the Expo Center) was then taken. Treasurer Al Losoff noted that the ICA has avoided serious financial difficulties for the last several years only because income above and beyond membership dues has been received: a share of the 1988 National Open profit, [Fred] Cramer awards for the ICB, SASP funds from the USCF, and a share of the expected 1989 U.S. Open profit. Because none of these sources can be counted on for future funding, the ICA should plan now on how to meet its budgetary obligations in the years to come. Todd Barre will be moving to Elmhurst in September, so the Chess Phone number change then. In November, the new area code (708) for the Chicago suburban area will become the Chess Phone area code. Chicago residents will be able to dial Chess Phone with area code 708 for no extra cost.

OLD BUSINESS

Only one person has expressed interest in becoming the new ICB editor. Helen Warren will talk further with this individual and then report back to the Board. The Illinois High School Chess Association "A" and "AA" individual chess champions each rejected his respective invitation to play in the tournament which determines the Illinois representative to the Denker Tournament of [High School] Champions. MOTION: THE IHSA "A" AND "AA" CHAMPIONS WILL NO LONGER BE SEEDING IN ANY COMPETITION HELD BY THE ICA TO DETERMINE THE ILLINOIS REPRESENTATIVE TO THE DENKER TOURNAMENT. By Helen Warren; seconded by Tim Just. PASSED: 16 yes, 0 no, 2 abstentions.

NEW BUSINESS

Helen Warren pointed out that not all organizers and tournament directors make good USCF chair people. For example, two Illinois TDs are still waiting (one for more than five months) to have their ANTD tests graded. The Hammond [Indiana] Chess Club has become an ICA affiliate. The USCF Policy Board has awarded Helen Warren the bid for the 1990 U.S. Masters (which will incorporate the Midwest Masters). The event, set at the Hyatt Oakbrook on March 18- 21, 1990, will have a \$15,000 prize fund. Helen is also bidding on the 1991 U.S. Masters. The Region VII Vice President race between Dennis Wasson and write in candidate Mike Nolan was discussed.

MOTION: THE MEETING WILL BE ADJOURNED. By Tim Just; seconded by Dennis Grant. PASSED UNANIMOUSLY at 2:30 p.m.

Respectfully submitted by ICA Secretary Tim Just. [Unabridged minutes available by request from Tim Just]

THE CLUB SCENE

(Editor's Note: For some reason I am no longer receiving even the little information which I used to get from at least some chess clubs. Because I have nothing from other clubs (other than a brief report from the Hammond (IN) Chess Club, a new ICA affiliate), most of this column is devoted to the activities of the 80 member Oak Park-Forest Park Chess Club. (As President of the OP-FP CC, I know what is going on there.)

Tony Schroeder and Jim McNamara each scored 4-1 to tie for first and second in the 25 player OP-FP CC Open. They will advance to the round robin Club Closed Championship (set for late August and September), along with Matthew Chen (3.5- 1.5), Tom Oelrich (3.5-1.5), Ron Amirante (3.5-1.5), John Burke (3-2), Greg Bungo (3-2), and James Kimura (3-2) Avenging last year's 12-7 loss, the OP-FP CC defeated the Hillside Chess Club 13.5-6.5 in a 20 board match on June 6. In a reversal of 1988, when the Club did well at the top but was buried at the bottom, OP-FP CC players went 11-0 on boards 10-20. This sweep overcame a 2.5-6.5 deficit on the top nine boards. (The OP-FP CC was outrated 1963 to 1958 on boards 1-10, but enjoyed a huge average rating advantage of 236 points (1606-1370) in the remaining games.) Senior Master Albert Chow spent over two hours analyzing games, answering questions, discussing study habits, etc. when he presented a group chess lesson at the Club on June 13 A June 20 speed chess tournament attracted 30 Club members; Ray Satterlee, Mariano Acosta, Greg Bungo, and Steve Surak made the round robin final round, which Satterlee won 3-0 A World Blitz Chess Association tournament was held on July 29 The OP-FP CC has donated \$100 to the U.S. Open fund.

Joe Alford (2130) scored 11-0 to win the 12 player round robin Hammond (IN) Chess Club Championship; Les Kistler (2015) and Perry Steele (1905) tied for second and third at 9-2.

CROSS TABLES

Chicago Chess Mates

Plus Score Opens May 13-14, June 3-4, July 8-9, 1989

PLUS-SCORE OPEN #1	wall chart	USCF						score
		pre/post	WF	W 7	W 3	W 4	4	
1 CHOW Albert	2443	2418/2429						4
2 BERNAL Luis	2082	2080/2095	W 9	L 3	W 7	W 8		3
3 SILLARS Tony	2147	2147/2142	D 6	W 2	L 1	W 9		2.5
4 BURKE John	2246	2226/2204	L 5	W 6	W 8	L 1		2
5 SMYTHE Bill	2056	1999/2027	W 4	-	-	W 6		2
6 LIN James	1509	1573/1597	D 3	L 4	W 9	L 5		1.5
7 MAROVITCH Mark	2242	2242/2220	W 8	L 1	L 2	-		1
8 JUTOVSKY Mark	1632	1744/1742	L 7	W 9	L 4	L 2		1
9 STROSIN John	-	- / 1486	L 2	L 0	L 6	L 3		0
10 LAWSON Kevin	2071	- / -	LF	-	-	-		0

PLUS-SCORE OPEN #2	wall chart	USCF						score
		pre/post	W 4	W 5	W 3	D 2	3.5	
1 SZPISJAK Steve	2212	2186/2209	W 4	W 5	W 3	D 2		3.5
2 CHOW Albert	2443	2429/2428	W 6	W 3	W 5	D 1		3.5
3 GREGORY Jammie	2130	2074/2073	W 5	L 2	L 1	WF		2
4 REAMES James	1526	1549/1570	L 1	W 6	-	-		1
5 SMYTHE Bill	2056	2027/2005	L 3	L 1	W 7	L 2		1
6 ROBINSON Harrison	1671	1671/1649	L 2	L 4	-	-		0
7 WEINER Howard	1709	1709/1705	-	-	L 5	-		0

PLUS-SCORE OPEN #3	wall chart	USCF						score
		pre/post	W 7	W 3	W 2	W 5	4	
1 UMEZINWA George	2289	2287/2304	W 7	W 3	W 2	W 5		4
2 CRAWFORD Brad	2018	2056/2065	W 6	W 4	L 1	W 7		3
3 MARQUEZ Anthony	2015	1934/1952	W 9	L 1	W 4	W 7		3
4 WOLF William	1855	- / -	W 5	L 2	L 3	W 8		2
5 BERNAL Luis	2082	2095/2058	L 4	W 9	W 6	L 1		2
6 KEMPNER Robert	1491	1491/1514	L 2	W 8	L 5	W 9		2
7 SMYTHE Bill	2056	2005/1984	W 8	L 1	L 2	L 3		1
8 STROSIN John	-	1486/1400	L 7	L 6	W 9	L 4		1
9 HAAS Jaime	1440	1441/1407	L 3	L 5	L 8	L 6		0

PLUS-SCORE OPEN #4	wall chart	USCF						score
		pre/post	W 6	D 2	W 5	W 4	3.5	
1 MARTIN Roger	2276	2268/2279	W 6	D 2	W 5	W 4		3.5
2 UMEZINWA George	2289	2304/2302	W 5	D 1	W 4	D 3		3
3 JORDAN Roland	2069	2077/2069	D 4	L 5	W 6	D 2		2
4 WOLF William	1855	1916/1933	D 3	W 6	L 2	L 1		1.5
5 SMYTHE Bill	2056	1984/1984	L 2	W 3	L 1	L 6		1
6 COHEN Howard	1991	1947/1933	L 1	L 4	L 3	W 5		1

PLUS-SCORE OPEN #5	wall chart					score
		W 3	W 7	W 2	W 4	
1 UMEZINWA George	2287	W 3	W 7	W 2	W 4	4
2 MARQUEZ Tony	2015	W 6	W 8	L 1	W 5	3
3 MARSHALL James	1976	L 1	W12	W 9	W 6	3
4 HOLZMUELLER Keith	2095	W10	Dbye	W 5	L 1	2.5
5 SERRANO Fidel	1857	W 8	W11	L 4	L 2	2
6 WOLF William	1870	L 2	W13	W 7	L 3	2
7 GURNANEY Anil	1909	W11	L 1	L 6	W10	2
8 SMYTHE Bill	2002	W13	L 5	L 2	W11	2
9 SCHMUCKER Vivian	1838	D12	D10	L 3	W13	2
10 FISCHER Gregory	1893	L 4	D 9	W12	L 7	1.5
11 HENDERSON Harold	1679	L 7	L 5	W13	L 8	1
12 JORDAN Roland	2077	D 9	L 3	L10	-	0.5
13 BAPPLE Edward	1747	L 8	L 6	L11	L 9	0

PLUS-SCORE OPEN #6	wall chart					score
		W 4	W 6	D 2	W 3	
1 UMEZINWA George	2287	W 4	W 6	D 2	W 3	3.5
2 JORDAN Roland	2077	W 7	W 5	D 1	W 6	3.5
3 ALLISON Roger	1754	Dbye	W 8	W 7	L 1	2.5
4 BROCK William	2050	L 1	W10	W 6	L 5	2
5 FLAGA Krzysztof	2253	L 6	L 2	W 9	W 4	2
6 SCHMUCKER Vivian	1838	W 5	L 1	L 4	L 2	1
7 BERNAL Luis	2074	W10	L 2	L 3	-	1
8 OSANYINJOBI Funsho	1654	W 9	L 3	L10	-	1
9 SMYTHE Bill	2002	L 8	W10	L 5	-	1
10 SACKS David	1659	L 7	L 4	L 9	W 8	1

Oak Park-Forest Park Chess Club Spring Open - April 29-30, 1989

PLAYER	ST	PRE RATING	POST RATING						TOT
				1	2	3	4	5	
1 HOLZMUELLER, KEITH	IL	2095	2126	W28	W36	W-9	W-9	D-2	4.5
2 HAUBRICH, SCOTT A	WJ	2070	2114	W17	W22	W-3	W20	D-1	4.5
3 STEIN, PETER	IL	2229	2221	W18	W21	L-2	W15	W-8	4.0
4 SAK, ROBERT	IL	2085	2099	W24	W15	L-9	W26	W11	4.0
5 SPALTER, JOSEPH C	IL	2000	2028	W44	W27	L-1	W16	W-9	4.0
6 SZPISJAK, STEVEN J	IL	2204	2186	D-8	W42	L12	W22	W13	3.5
7 JORDAN, ROLAND V	IL	2077	2077	L20	H-1	W44	W34	W21	3.5
8 KIMJRA, JAMES H	IL	1750	1818	D-6	W19	W41	W12	L-3	3.5
9 SATTERLEE, RAY DOY	IL	2147	2134	W16	W14	W-4	L-1	L-5	3.0
10 CRAWFORD, BRAD	IL	2069	2065	W43	W37	W11	U-1	U-1	3.0
11 SMYTHE, BILL	IL	2002	1999	W23	W26	L10	W25	L-4	3.0
12 PUKEL, BERNARD B	IL	1987	1985	H-1	W29	W-6	L-8	D14	3.0
13 BUTTAY, WILLIAM P	IL	1952	1947	D29	W34	H-1	W27	L-6	3.0
14 BEASLEY, LEONARD A	IL	1896	1896	W31	L-9	W28	D23	D12	3.0
15 LA FRANA, ARTHUR	IL	1839	1843	W41	L-4	W38	L-3	W28	3.0
16 BURGESS, FRED	IL	1806	1817	L-9	W31	W40	L-5	W26	3.0
17 ITZEN, RICHARD J	IL	1716	1727	L-2	W41	L26	W29	W27	3.0
18 RABOVSKY, BARRY R	IL	1652	1672	L-3	L33	W30	W38	W25	3.0
19 KRISHNAN, BRUCE S	IL	2091	2035	H-1	L-8	D35	D33	W29	2.5
20 BERNAL, LUIS F	IL	2074	2080	W-7	W25	H-1	L-2	U-1	2.5
21 MC NAMARA, JAMES	IL	1976	1963	W33	L-3	H-1	W35	L-7	2.5
22 ALLISON, ROGER D	IL	1754	1760	W35	L-2	H-1	L-6	W33	2.5
23 BEARD, GLENN A T	IL	1704	1738	L11	W32	W36	D14	U-1	2.5
24 SWANSON, VICTOR D	IL	1649	1660	L-4	L38	H-1	H-1	W34	2.5
25 SCHMUCKER, VIVIAN	IN	1838	1811	W38	L20	W33	L11	L18	2.0
26 HERMANN, CASEY S	WJ	1835	1816	W32	L11	W17	L-4	L16	2.0
27 GARUZ, WILFREDO C	IL	1776	1776	W39	L-5	W37	L13	L17	2.0
28 KULATIN, DAVID	IL	1785	1699	L-1	W30	L14	W31	L15	2.0
29 JOCHIM, GARY	IL	1600	1599	D13	L12	D29	W40	L19	2.0
30 CARSON, DAVID L	IL	1541	1525	L34	L28	L18	H-1	W30	2.0
31 BERKMEIER, ED	IL	1450	1466	L14	L16	W32	L28	W35	2.0
32 COLEMAN, ADOLAND	IL	1421	1422	L26	L23	L31	W41	W39	2.0
33 ISAAC, THEODORE E	IL	1600	1613	L21	W18	L25	D19	L22	1.5
34 MORALES, VICTOR J	IL	1533/17	1577	H-1	L13	W42	L-7	L24	1.5
35 SINCHETTI, RICHARD	IL	1387	1418	L22	W43	D19	L21	L31	1.5
36 FISCHER, GREGORY A	IL	1893	1877	W30	L-1	L23	U-1	U-1	1.0
37 KNIGHT, JERRY	IL	1408	1411	W48	L18	L27	U-1	U-1	1.0
38 MUNCY, ALBERTO J	IL	1340	1352	L25	W42	L15	L16	L30	1.0
39 BALES, JR ROBERT J	IL	1313	1318	L27	D44	D29	L17	L32	1.0
40 LONG, JEFFREY J	IL	1194/11	1179	L37	H-1	L16	L29	L41	1.0
41 MIRANDA, RON L	IL	8	1241	L12	L17	L-8	L32	W40	1.0
42 SHIELDS, PHILIP R	IL	1950	1917	H-1	L-4	L34	U-1	U-1	1.0
43 SHOFFER, THOMAS M	IL	1888	1581	L19	L25	H-1	U-1	U-1	1.0
44 DIET, MANUEL F	IL	1572	1559	L-5	D39	L-7	L-1	L-1	1.0

Peoria Spring Tornado June 10, 1989

PLAYER	ST	PRE RATING	POST RATING						TOT
				1	2	3	4	5	
1 COLIAS, BILLY	IN	2425	2431	W20	W23	W13	W-5	4.0	
2 MOTE, DAVID B	IL	2222	2228	W27	W-8	W11	D-3	3.5	
3 WAFF, WILLIAM A	IL	2112	2124	W19	W16	W-9	D-2	3.5	
4 BONDARI, CYRUS	IL	2211	2194	W17	L-9	W24	W16	3.0	
5 WASTNIK, RICHARD	IL	2127	2148	W25	W-7	W-6	L-1	3.0	
6 ANDERSON, PHIL	IL	1998	2016	W22	W15	L-5	W10	3.0	
7 POLITHO, THOMAS	IL	1922	1930	W37	L-5	W18	W17	3.0	
8 BOURGIERE, DENNIS	IL	1900	1916	W29	L-2	W19	W15	2.0	
9 BOUTON, BARRY A	IL	1821	1872	W33	W-4	L-3	W14	2.0	
10 ULICH, DOUGLAS A	IL	2067	2044	W18	D24	W12	L-8	2.0	
11 MC BOWEN, RANDY J	IL	2005	1998	W36	D12	L-2	W24	2.0	
12 HERDOWHUS, KENT P	IL	1780	1814	W35	D11	L10	W21	2.0	
13 SANDROTH, WILLIAM	IL	2012	2028	W21	W14	L-1	F-1	2.0	
14 VERD, CARL R	IL	1604	1796	W32	L13	W25	L-9	2.0	
15 WHEELER, STEPHAN S	IL	1790	1778	W26	L-6	W18	L-8	2.0	
16 SPARR, ROBERT L	IL	1782	1767	W30	L-5	W21	L-4	2.0	
17 INGRAM, ADRIAN	IL	1654	1700	L-4	W33	W29	L-7	2.0	
18 MARFELD, THOMAS	IL	1678	1662	L10	W31	L-7	W29	2.0	
19 CRUM, RANDY M	IL	1660	1664	L-3	W30	L-8	W38	2.0	
20 RABOVSKY, BARRY R	IL	1625	1652	L-1	L28	W26	W26	2.0	
21 TERRANCE, TERRY	IL	1633	1630	L13	W32	L16	W30	2.0	
22 ZEWNIK, LAWRENCE	IL	1541	1550	L-6	W25	L14	W27	2.0	
23 COHEN, LAWRENCE S	IL	2021	2010	W28	L-1	D25	L12	1.5	
24 BRITT, JEFFREY E	IL	1771	1776	W31	D10	L-4	L11	1.5	
25 TIMMERLE, R WAYNE	IL	1686	1685	L-5	W37	D22	L20	1.5	
26 HANING, PHIL E	IL	1280	1284	L15	W34	L20	D21	1.5	
27 STOTLER, RICHARD E	IL	1658	1616	L-2	L25	W32	L22	1.0	
28 ANDERSON, RICHARD	IL	1474	1484	L23	W20	L15	L19	1.0	
29 SANDERS, NICOLE	IL	1444/13	1435	L-8	W27	L17	L10	1.0	
30 WARREN, HARRY D	IL	1250	1257	L16	L19	W35	L21	1.0	
31 CREWEENS, MATTHEW	IL	1549	1544	L24	L18	L35	D26	1.0	
32 WESTERMAN, DAVID E	IL	1507	1518	L14	L13	L27	W32	1.0	
33 DAVIS, JOHN R	IL	1442	1452	L-9	L17	D31	U-1	1.0	
34 HAYS, THEODORE R	IL	0	880	H-1	L26	U-1	U-1	1.0	
35 HIBBS, ROBERT W	IL	1644/76	1628	L12	L22	L30	L32	1.0	
36 BROSTERMAN, KEITH	IL	1578	1575	L11	U-1	U-1	U-1	1.0	
37 MILLER, EARL	IL	1425	1417	L-7	L25	U-1	U-1	1.0	

ILLINOIS TOURNAMENT CALENDAR
(Continued)

August 19, 20: Checks for Checks, 1 day events at the Chicago Chess Center. Ray Socha: 929-7010.

August 20: Northwest Indiana Action Swiss II, at the Hammond (IN) Public Library, Howard Branch, in Hammond. Les Kistler: (219) 942-8815.

August 22, 29, September 5, 12, 19: Chicago North Shore Tuesday Swiss No. 2, at the Chicago Chess Mates. Howard Weiner: 262-9100.

August 26: Chicago-North Suburban Saturday Open, at the Chicago Chess Mates. Howard Weiner: 262-9100.

August 26, 27: Don't Hassle My Castle, 1 day events at the Chicago Chess Center. Ray Socha: 929-7010.

August 27: Game/45 Ladder, at the Illini Union in Urbana. Tom Worley: (217) 367-4744.

September 2, 3: Seven Dollar Agony, 1 day events at the Chicago Chess Center. Ray Socha: 929-7010.

September 2-4: Illinois Open and State Championship, at the Signature Inn in Peoria. AN ICA ILLINOIS MAXI-TOUR EVENT. Bill Wilkinson: (309) 673-9455. SEE FULL PAGE AD IN THIS ICB.

September 9, 10: Big Bang For 6 Bucks, 1 day events at the Chicago Chess Center. Ray Socha: 929-7010.

September 16: Lake County Open, at Shimer College in Waukegan. AN ICA ILLINOIS MINI-TOUR EVENT. Kevin Bachler: 249-8778. SEE HALF PAGE AD IN THIS ICB.

September 16: Action Swiss #3, at the Tuley Park Fieldhouse in Chicago. Tom Finberg: 721-3979.

September 17: Mt. Vernon Tournament, at the Holiday Inn in Mt. Vernon. Mark Oestreich: (618) 532-5733.

September 23: Hammond Fall Festival, at the Hammond (IN) Public Library, Howard Branch, in Hammond. Les Kistler: (219) 942-8815.

September 23-24: St. Charles Open, at the Kane County Extension Service in St. Charles. AN ICA ILLINOIS MINI-TOUR EVENT. Dan Pradt: 858-7511. SEE HALF PAGE AD IN THIS ICB.

PATRON MEMBERS
(CONTINUED)

Scott Kittsley	Shorewood, WI
Thomas Knoedler	Springfield, IL
Walter Kocjan	Northlake, IL
John Krom	Chicago, IL
Peter Kuhn	Des Plaines, IL
Marc Lonoff	Northbrook, IL
Alan Losoff	Morton Grove, IL
John Marconnet	Chicago, IL
Ken Marshall	Lombard, IL
Donald Martin	Round Lake Beach, IL
Eugene Martinovsky	Naperville, IL
James McNally	Broadview, IL
James McNamara	Hinsdale, IL
Earl Miller	El Paso, IL
Bill Naff	Peoria, IL
Peter Pelts	Chicago, IL
Mieczyslaw Piatek	Chicago, IL
John Popovich	Evergreen Park, IL
Tim Redman	Lima, OH
Frederick Rhine	Chicago, IL
Ray Satterlee	Wheaton, IL
Vivian Schmucker	Goshen, IN
Mark Sefcheck	Naperville, IL
Tom Shaffer	Chicago, IL
Tony Sillars	Chicago, IL
Arthur Sinclair	Evanston, IL
Leonard Spiegel	Naperville, IL
David Sprenkle	Knoxville, TN
Peter Stein	Naperville, IL
Miomir Stevanovic	Lincolnwood, IL
David Taylor	Kankakee, IL
William Terbell	Glen Ellyn, IL
John Vrbancic	Evanston, IL
Douglas White	Schaumburg,, IL
Harold Winston	Naperville, IL
David Wulatin	Oak Park, IL
Sandy Zabell	Chicago, IL
Max Zavanelli	Park Ridge, IL

Please send Chicago metropolitan area Tournament Clearinghouse material to:
Fred Gruenberg
Box 43336, Chicago, IL 60643
(312) 396-1984 (D) (312) 779-0306 (N)

Please send Downstate Tournament Clearinghouse material to:
Garrett Scott
202 Foster Dr., Normal, IL 61761
(309) 452-8116

CENTURY CLUB MEMBERS

Michael Belovesick	Eimhurst, IL
Tom Fineberg	Chicago, IL
Fred Gruenberg	Chicago, IL
Albert Sandrin	Chicago, IL
Angelo Sandrin	Chicago, IL
Bill Smythe	Chicago, IL
Burton Vincent	Chicago, IL
Helen Warren	Western Springs, IL
Jim Warren	Western Springs, IL
Philip Wong	Wilmette, IL

GOLD CARD MEMBERS

Faneuil Adams	New York, NY
Bill Buttny	Downers Grove, IL
Harland Hoisington	Ogden, UT
Ed Marschall	South Barrington, IL
Dante Pradt	Glen Ellyn, IL
Michael Pratts	Chicago, IL
Irwin Rothschild	Park Forest, IL
Mitchel Sweig	Evanston, IL
Don Townsend	Chicago, IL
Bill Wenz	Milwaukee, WI
Louis Werner	Evanston, IL

PATRON MEMBERS

Bob Ash	Urbana, IL
Kevin Bachler	Waukegan, IL
Todd Barre	Clarendon Hills, IL
John Barstad, Sr	Carol Stream, IL
Roy Benedek	Western Springs, IL
Timothy Bogan	Chicago, IL
Barry Bouton	Sandwich, IL
Bill Brock	Chicago, IL
Tyrone Brooks	Chicago, IL
Jim Brotsos	Chicago, IL
Walter Brown	Crest Hill, IL
Fred Burgess	Oak Forest, IL
Anthony Caliendo	Aurora, IL
Jim Condron	Downers Grove, IL
Lynn Crewse	Arlington Heights, IL
David Cromer	Iowa City, IA
John Deutsch	Chicago, IL
Leroy Dubeck	Cherry Hill, NJ
Keith Esses	Chicago, IL
Gerard Garino	Evanston, IL
Jon Gotz	West Chicago, IL
Donald Graft	Wheaton, IL
William Graves	Chicago, IL
Guy Gruenberg	Matteson, IL
Walter Henry	Naperville, IL
Charles Hicks	Naperville, IL
Keith HolzmueLLer	Evanston, IL
Jeffery Hyland	Mount Prospect, IL
Robert Irons	Chicago, IL
Tim Just	Gurnee, IL
Dan Kamen	Wheeling, IL

ICA ELECTED OFFICERS:

Helen Warren, President
P.O. Box 305 Western Springs, IL 60558
(312) 246-6665

Fred Gruenberg, Metro Vice-President
2035 W. 110th Pl., Chicago, IL 60643
(312) 779-0306

Garrett Scott, Downstate Vice-President
202 Foster Dr. Normal, IL 61761
(309) 452-8116

Tim Just, Secretary
37165 Willow Ln., Gurnee, IL 60031
(312) 244-7954

Alan Losoff, Treasurer
P.O. Box 157, Morton Grove, IL 60053
(312) 966-5579

USCF DELEGATES**by virtue of their USCF posts:**

Harold Winston, President
Todd Barre, Regional Vice-President
Tim Just, Regional Vice-President
Frank Skoff, Past President
Helen Warren, Life Voting Member

ICA APPOINTED USCF DELEGATES:

Fred Gruenberg	Alan Losoff
Ken Marshall	Tom Fineberg

ICA APPOINTED USCF VOTING MEMBERS:

Bill Naff	Dennis Grant
Walter Brown	Mike Zacate
Guy Gruenberg	Jim Warren
Garrett Scott	Bob Bain
Ery Sedlock	Tom Knoedler
Wayne Palmquist	

**ICA APPOINTED USCF
ALTERNATE VOTING MEMBERS:**

Larry Stilwell	Al Chow
Bill Smythe	John Tonkinson
Larry Cohen	Byron Pappas
Jim Condron	Chris Musgrave
Angelo Sandrin	Jim Brotsos
Bill Wilkinson	Eric Schiller
Glen Panner	Barry Fisher
John Barstad	Kevin Bachler

ILLINOIS TOURNAMENT CALENDAR

Call Chess Phone, (312) 325-3666, for recorded tournament announcements and results, often more up-to-date than CHESS LIFE or the ICB. The ICA Chess Phone voice is Todd Barre.

Unless otherwise noted, all tournaments require USCF membership. Illinois Tour events also require ICA membership. Phone numbers are area code 312 unless a different area code is listed. Announcements of ICA affiliates receive more space in the Tournament Calendar than do those of non-affiliates.

August 5 - 13: 1989 U.S. OPEN, AT THE HYATT REGENCY O'HARE IN ROSEMONT. Helen Warren: 246-6665.

August 5, 6: For the Penny-Pinching Pawn Pusher, 1 day events at the Chicago Chess Center. Ray Socha: 929-7010.

August 6 (Preliminaries), August 7 (Finals): Druke/USCF U.S. Open Speed [5 minutes/game] Championship [WBCA rated], at the Hyatt Regency O'Hare. Helen Warren: 246-6665. SEE AD FOR U.S. OPEN DAYTIME EVENTS IN THIS ICB.

August 7, 8, 9, 10, 11: 9 a.m. Tournaments at the Hyatt Regency O'Hare. Helen Warren: 246-6665. SEE AD FOR U.S. OPEN DAYTIME EVENTS IN THIS ICB.

August 9: Chicago Loves Koltanowski and Elo Wednesday Action Open, Chicago Chess Mates. Howard Weiner: 262-8556.

August 12, 13: For the Penny-Pinching Pawn Pusher, 1 day events at the Chicago Chess Center. Ray Socha: 929-7010.

August 19: Bradley Summer Open, at the Garrett Center in Peoria. AN ICA ILLINOIS MINI-TOUR EVENT. Bill Wilkinson: (309) 673-9455. SEE HALF PAGE AD IN THE MAY-JUNE ICB.

August 19: South Suburban Open, at the Hammond (IN) Public Library, Howard Branch, in Hammond. Les Kistler: (219) 942-8815.

(Continued on page 24)

1989 U.S. OPEN

HYATT REGENCY O'HARE AUGUST 5-13, 1989

\$33,000.00 PRIZE FUND

ILLINOIS CHESS BULLETIN
357 W. GROVE
LOMBARD, ILLINOIS 60148

SPEEDY DELIVERY APPRECIATED

BULK RATE
U.S. Postage Paid
Lombard, IL 60148
Permit No. 248