



ILLINOIS CHESS BULLETIN

Official Publication of the Illinois Chess Association - a U.S.C.F. Affiliate
A Not For Profit Organization

NOVEMBER-DECEMBER 1989 VOLUME XII, NO. 6 BI-MONTHLY \$2.00





EDITOR:
BILL BROCK
6830 N. Sheridan Road, #350
Chicago IL 60626

Dept. of English, Loyola University
6525 N. Sheridan Road
Chicago IL 60626

Please send non-bendable items (e.g., photos or diskettes) to my work address.

TECHNICAL EDITORS:
Claire Nicolay
John Schuchert

SUBSCRIPTIONS:
The Illinois Chess Bulletin (ICB) is published bimonthly by the Illinois Chess Association. ICA membership includes a subscription to the ICB, Century Club, Gold Card, and Patron members receive their ICB by first-class mail.

ANNUAL MEMBERSHIP RATES:

Century Club	\$100.00
Gold Card	\$50.00
Patron	\$25.00
Regular	\$10.00
Junior (under 18)	\$6.00

Subscriptions and address changes & corrections should be sent to:
Alan Losoff, ICA Membership Secretary
P. O. Box 157
Morton Grove IL 60053-0157

SUBMISSIONS:
Submit articles, photographs, crosstables, games, and other publishable materials to the Editor. Deadline for the next issue is January 9, 1990.

TABLE OF CONTENTS

FROM THE EDITOR'S DESK	3
WHERE TO PLAY CHESS: ICA CLUB AFFILIATES	4
NEWS ROUNDUP	6
FROM THE PRESIDENT <i>Helen Warren</i>	7
NAFF-CHAVEZ	8
OP-FP AUTUMN ACTION '89 <i>Ken Marshall</i>	9
PEORIA FALL TORNADO	10
MICRO RESALES CHAMPAIGN-URBANA <i>OPEN Tom Worley</i>	12
ST. CHARLES OPEN CROSSTABLE	13
COLIAS ANNOTATES	14
U.S. OPEN REDUX	15
ICA BOARD MEETING	22
PRIME-TIME PLAYERS <i>David Wulatin</i>	23
UMEZINWA WINS ILL. TOURNAMENT OF CHAMPIONS IV	24
ILLINOIS CHESS TOUR	29

CHESS PHONE: 708/832-5222

ICA AFFILIATION: Chess clubs and other organizations which promote chess activity may affiliate with the ICA. Benefits include a copy of the ICB by first-class mail, a listing under "Where to Play Chess," discounted advertising rates, three-line tournament announcements in the "Tournament Calendar," and the right to run ICA Tour Events. ICA Affiliation costs \$15; please remit to Membership Secretary.

ADVERTISING RATES:

Full page	\$80
Half page	\$50
Quarter page	\$30
Eighth page	\$20

10% discount for the same ad in consecutive issues. 1/3 discount for ICA affiliates. All ads must be camera-ready to qualify for above rates. The ICA & the ICB reserve the right to reject advertising.

FROM THE EDITOR'S DESK

Hi, folks! I'm Bill Brock, your new ICB editor. After rereading Ken Marshall's final issue, I must admit that filling his shoes won't be easy. The next time you see Ken at a tournament, be sure to thank him. For two years, he and his wife/technical editor Mary took time away from their careers and their family in order to produce this magazine. Although Ken and Mary have been extremely helpful to me, it may an issue or two before I can bring the magazine up to their standards.

I'd like to introduce myself to those ICA members who don't already know me: I'm 31, newly single, and working on a Ph.D. in English at Loyola. With your advice and cooperation, I hope that editing this magazine will be an enjoyable chore. It's also traditional for incoming editors to say a few words about the approach they plan to take to the job, their editorial "philosophy." There is only one major change that I insist on making--more annotated games! Although most masters and experts find unannotated games useful, the eyes of many lower-rated players glaze over when they see a page crammed full of games. This is especially true when there's not a single word attempting to explain *why* the players made the moves they did. Those of you who read your ICB backwards have already noted that there are several such pages in the current issue, which naturally leads me to my first request: SEND ME ANNOTATED GAMES! As I work with an extremely limited discretionary budget (currently \$100 per issue), I can't pay contributors as much as I'd like. However, I can guarantee that Masters will be paid at least \$10 for every annotated game published in the ICB; Senior Masters will be paid at least \$15 per game. Of course, "donated" annotations, whether from Masters or patzers, would be deeply appreciated.

While I'm on the subject, it should be noted that the position of Games Editor is currently vacant. I have offered this position to Senior Master Billy Colias. Although Bill is technically an Indiana resident (he lives some 800 yards east of the border), he has been part of the Illinois chess scene for many years--a sample of his work (and his play) appears elsewhere in this issue. As a chess professional, Bill has quite reasonably asked to be compensated in a professional manner for his services. Unfortunately, his proposed fee slightly exceeds the ICB's above-mentioned discretionary budget, which means that I'm not sure we'll be able to afford it. Which leads me to my second request: if you're not already a

patron of the ICA, please consider upgrading your membership. If you're already a patron and you can afford it, why don't you become a Gold Card or a Century Club Member? An increased financial commitment from its members would make it easier for the ICA to make a financial commitment to chess professionals.

To wrap up my "philosophy" shtick, I intend to take full responsibility for every word in the ICB that is not explicitly credited to someone else. I will speak my mind on issues that affect Illinois chess, but my opinion should not be taken for that of the ICA or its officers. I'm sure my inexperience will lead to errors in judgment: my final request is that you be patient with me.

I played in the Illinois Open last Labor Day weekend, and I can only second Eric Schiller's praise--hats off again to Bill Wilkinson and all the other Peorians responsible for a superbly-run tournament. Unfortunately, attendance was not quite as high as it could have been. Certainly the Labor Day weekend tournament sponsored by Chicago Chess Mates drew some potential participants away from the state championship. There is no question that an ICA affiliate has the right to compete with the Illinois Open--the Chicago Chess Center also held one-day tournaments on the same weekend, and has done so for years. However, I must question the *wisdom* of an ICA affiliate scheduling a multi-day tournament, especially one with a prize fund designed to draw masters, in conflict with our state championship. Furthermore, it wasn't appropriate for Chicago Chess Mates to send out a promotional flyer which advised players to skip Peoria, stay in Chicago, and save money.

The ICA has established Tournament Clearinghouses precisely in order to minimize scheduling conflicts. If conflicts do occur, ICA members should be urged to participate in the more important of the two tournaments. For example, the Micro Resales Champaign-Urbana Open, a Maxi-Tour tournament, was inadvertently scheduled on the same weekend as a Mini-Tour tournament in Forest Park. Both Ken Marshall in the ICB and Todd Barre on Chess Phone acted in an exemplary fashion when they urged Chicago players to make the trip Downstate. (Note that Ken was telling us *not* to play in his club's tournament!) Shouldn't ICA affiliates the same kind of support to the Illinois Open?

Where to Play Chess: ICA Club Affiliates

AMERICAN POSTAL CHESS TOURNAMENTS

sponsors postal events & sells chess books & equipment. Jim or Helen Warren, P.O. Box 305, Western Springs 60558. 708/246-6665.

AUBURN HIGH SCHOOL CHESS CLUB, 4273 Straw Lane, Roscoe 61073. James Boyer, 815/623-8148.

CENTRAL COMETS CHESS CLUB. Steger Central Junior High School, c/o D. DeVore, 19 W. 33rd St., Steger 60475.

CHAMPAIGN-URBANA CHESS LEAGUE sponsors rated tournaments in the Champaign-Urbana area. Tom Worley, 2106 Zuppke, Urbana 61801. 217/367-4744.

CENTRAL LAKE COUNTY CHESS CLUB meets Fridays, 7:15 to midnight, College of Lake County, Bldg. 1, Washington at Route 45, Grayslake. Dennis Grant, 1657 McKay, Waukegan 60087. 312/336-5188.

CHESS NORTHWEST meets the 2nd & 4th Friday eves. of each month, Schaumburg Public Library, 32 Library Lane, Schaumburg. Elmer Linden, 1325 Dennison, Hoffman Estates 60195. 312/882-2382.

CHICAGO CHESS CENTER meets for casual chess 7 days a week, 6 p.m. to 1 a.m., 2923 N. Southport, Chicago 60657. Also sponsors rated tournaments. Ray Socha, 312/929-7010.

CHICAGO CHESS MATES CLUB AND BOOKSTORE sponsors tournaments & group lessons, sells chess books & equipment weekdays 4-11 p.m., weekends 10 a.m.-9 p.m. Closed Mondays. 1261 Loyola, Chicago 60626. Richard Verber 312/262-9100 or 262-8050.

CHICAGO INDUSTRIAL CHESS LEAGUE organizes frequent competition among commercial/government teams with awards, ratings, & special events. Jim Brotsos, 312/775-5054; or Bruce McNeil, 312/742-5195.

CLOVERLINE STUDENT CHESS PROGRAM offers free chess lessons for high school & grammar school students. Tues., 3 to 6 p.m. at Revere Park Field House, 2509 W. Irving Park, Chicago 60618. Richard Verber, 312/262-8050.

DOWNERS GROVE PARK DISTRICT CHESS CLUB meets Thurs., 6:30-10 p.m., Lincoln Center, 935 Maple Ave., Downers Grove. Affiliated with USCF & ICA. George Uffner, 312/960-9382.

ELK GROVE VILLAGE CHESS CLUB meets Fri., 7-10 p.m., at the Al Hattendorf Center, 225 E. Elk Grove Blvd., Elk Grove Village. Gary Janssen, 312/894-0996 eves.

EVANSTON TOWNSHIP HIGH SCHOOL CHESS CLUB meets Fri., 3:30-6:00 p.m., Beardsley Student Center. Ken Lewandowski, 312/492-7943.

GREATER PEORIA CHESS FEDERATION meets Mon., 7-11 p.m., Garrett Center, 824 N. University, Peoria. Bill Wilkinson, 901 N. Rebecca Pl., Peoria 61606. 309/673-9455.

HAMMOND (INDIANA) CHESS CLUB meets Thursdays, 7:00 p.m. to ?, at Hammond Public Library, Howard Branch, 171st and Grand. Les Kistler, 719 E. 12th St., Hobart, IN 46342. 219/942-8815.

HILLSIDE CHESS CLUB meets Fridays, 7:30-midnight, Hillside Baptist Church, 5152 Butterfield (just east of Taft), Hillside. Larry Stilwell, 4705 Elm, Lisle 60532. 312/963-6799.

LAKE COUNTY CHESS ASSOCIATION sponsors rated tournaments in the Grayslake-Zion area. Tim Just, 37165 Willow, Gurnee 60031. 312/244-7954.

MIDWEST CHESS ASSOCIATION organizes major tournaments for masters & experts. Helen Warren, P.O. Box 305, Western Springs, 60558. 312/246-4665.

OAK PARK/FOREST PARK CHESS CLUB meets Tues., 7-midnight, Mohr Community Center, Jackson & DesPlaines, Forest Park. Ken Marshall, 357 W. Grove, Lombard 60148. 312/932-1455.

PARK FOREST CHESS CLUB meets Thursdays, 7-10:30 p.m., Freedom Hall, Orchard & Lakewood, Park Forest. Lawrence Cohen, 135 Westwood, Park Forest, 60466. 312/748-5911.

SPRINGFIELD CHESS CLUB meets Wed., 6-10 p.m., Washington Park Pavilion, Park Ave. & South Grand Ave. West, Springfield. Tom Knoedler, 217/523-7265; or James Larson, 217/529-0781.

ST. CHARLES CHESS CLUB meets Thursdays at 7 p.m., Baker Community House, 101 S. 2nd (Rte. 31), St. Charles. Erv Sedlock, 6 N. 307 Old Homestead Rd., St. Charles 60174, 312/377-7995.

TULEY PARK CHESS CLUB meets Saturdays, 1-5 p.m., Tuley Park Field House, 501 E. 90th Pl., Chicago. Thomas Fineberg, 7321 S. South Shore Dr., Chicago 60649, 312/721-3979.

TWIN CITIES CHESS CLUB meets Monday eves., Parks & Rec. Bldg., 611 S. Linden, Normal; except 1st Monday of month, Garcia's, Watterson Place. Speed tnmts., \$0.50/game. Andy McGowan, 520 E. Chestnut, Bloomington 61701, 309/827-7892.

AN ICA MAXI - TOUR TOURNAMENT

TIM JUST'S WINTER OPEN/RESERVE VII

A COLLEGE OF LAKE COUNTY EVENT

\$1700 IN PRIZES!

JANUARY 20 - JANUARY 21, 1990

College of Lake County, Building 1
19351 W. Washington at Route 45
Grayslake, Illinois 60030

ROUNDS: 5 round swiss: Saturday: 9:30 - 2:30 - 7; Sunday: 10 - 3:15

BYES: a 1/2 point bye rounds 1, 2, 3, or 4 if requested in advance

TIME CONTROLS: First = 40/90; Thereafter = Sudden Death/1

ENTRY FEE: \$32 EARLY - \$40 LATE & PHONE

SECTIONS: Open: Open to all players
Reserve: Open to players rated below 1800

PRIZES

<u>OPEN</u>		<u>Reserve</u>	
1st - 2nd	\$225 - \$150	1st - 2nd	\$225 - \$150
Expert: 1 - 2	\$125 - \$100	C: 1 - 2	\$125 - \$100
A: 1 - 2	\$125 - \$100	D/E: 1 - 2	\$125 - \$100
		UNR. 1st	\$50

NOTE: Prizes are based on 60 entries--ILLINOIS CHESS ASSOCIATION MEMBERSHIP
REQUIRED OF ILLINOIS RESIDENTS-- Other states OK

EARLY REGISTRATION AND INFO

Tim Just
37165 WILLOW LN.
GURNEE, ILLINOIS 60031
708-244-7954

LATE REGISTRATION: AT THE SITE: 1/20/90; 8 - 9 AM

NEWS ROUNDUP

CHICAGO CHESS CENTER TOURNEYS

Although the Chicago Chess Center is one of the USCF's most active affiliates, the ICB's coverage of its tournaments has been sporadic. We hope to recap CCC results regularly; thanks to Ray Socha for providing us with crosstables.

In **Potzer's Paradise** (Sept. 16-17), Ron Easter (1954) and Robert Yakich (1926) tied for 1st with 4 points out of 5. Now for the tornadoes: Al Chow (2458) blitzed **Variation in Agony #1** (Sept. 23) with a 4-0 score. Unrated Rafel Ziemacki had an auspicious debut, knocking off Experts Greg Berry and Ely Sollano. Don Townsend (1861) was the clear [!] winner of **Variation #2** with 2 1/2-1 1/2, beating Angelo Sandrin (2166) in the process. Angelo recovered quickly enough to upset Chuck Kramer (2298) and tie for first with Dusan Tutush (2088) in **Big Bang for Six Bucks #1** (Sept. 30)--both had 3 1/2 points. Sandrin also won **Big Bang #2** (Oct. 1) with a perfect score.

Marvin Dandridge (2345) blew out the field 4-0 in **Knight's-Mare's #1** (Oct. 7). Mark Jutovsky (1770) was top B with 3 points; Mike Schaeztle (1468) and Harrold Reddick Sr. (1405) tied for the C prize with an even score. Steve Szpilsjak (2230) also won 4 straight to take **Knight's Mare's #2** (Oct. 8)--unrated Edward Suarez had 2 1/2 points in only his second tournament. Angelo took yet another first with 3 1/2 in **Pawn Pusher Passion** (Oct. 14). Rafel Ziemecki (1860) upped his brand-new rating by winning four straight, including two upsets, in **Lucky Eleven Cheapo #1** (Oct. 21), while Dusan Tutush and Robert Yackich repeated their earlier successes in **Lucky Eleven #2** (Oct. 22) by tying for first with 3 1/2 points.

Angelo won two more tornadoes on Oct. 29 and Nov. 5, both times with perfect scores. Another unrated, Don Laplenis won the Oct. 28 tornado--he had a 2400+ performance rating for the event! Finally Bruce Gardner (2305) beat Sandrin and Robin Cunningham (2238) en route to victory in the Nov. 4 tornado.

GET WELL, JIM!

We were sorry to hear that Jim Warren suffered a mild heart attack while he and Helen were on vacation out East. Fortunately, he's well on his way to what we hope will be a speedy recovery.

TUSSLE IN TULEY PARK

Twenty players showed up on October 14 for the 1989 Tuley Park Action Swiss #4; five walked away with cash. George Umezina (2359), Chuck Kramer, and Best Under-2000 Edward Ross (1948) tied for first with a score of 3 1/2-1/2, taking home \$62.01 each. Best Under-1750 John Nicholson (1710) went 3-1 and won \$47.50, while the Best Under-1500/Unr. prize of \$43.54 was copped by Prakash Kamat (UNR) with an even score. Tom Fineberg directed.

DID YOU SEE...?

Garry Kasparov has been keeping chess in the U.S. media's collective conscious. Prior to his Oct. 22 mini-match with the Carnegie-Mellon computer program Deep Thought, he made an appearance on the Letterman show. The news of his 2-0 sweep made the front page of the Oct. 23 **Chicago Tribune**, which was covered with an enormous color photograph of Kasparov at work (shades of Fischermania!). In a lengthy interview with the world champion in November's **Playboy**, Garri proves that even a genius can be a sexist pig: "Some people don't like to hear this, but chess does not fit women properly. It's a fight, you know?" (Is li'l Garrik that afraid of Judith Polgar? Is he already trying to psych her out for their 2001 match?) Chauvinism aside, an article worth reading.

For adults only: read the horrifying account of 11-year-old child prodigy Jeff Sarwer's troubled family life in the November **Vanity Fair**. A Canadian emigre, Jeff is a former world under-10 champion; many, including Allen Kaufman of the American Chess Foundation, feel he has world championship potential. Unfortunately, he and his older sister are in the custody of their psychotic, abusive father. We hope they'll be helped in time--tortured geniuses we have enough of.

PLUS-SCORE UPDATE

Albert Chow and George Umezina tied for first in Plus-Score #8, held Oct. 7 at Chicago Chess Mates. Both scored 3 1/2 points. Chow also won Plus-Score #9, held Oct. 8, with the same score.

FROM THE PRESIDENT

Helen Warren, ICA President

WELCOME TO BILL BROCK...

As we mentioned in the last ICB, Bill Brock assumes the ICB's editorial reins with this issue. We can make his job much easier by getting material to him in a timely way--crosstables, games, club news, and human interest articles. We wish Bill good luck--and much stamina--as he begins his service to chess in Illinois.

And, once again, our thanks to outgoing editor Ken Marshall. His tenure saw the ICB return to stability in publication and much improved graphics. We wish Ken the best as he pursues family and career interests and shepherds the Oak Park-Forest Park Chess Club.

SPEAKING FISCALLY...

The influx of funds from the U.S. Open and, more recently, the addition of our USCF funds from the State Affiliate Support Program is keeping the wolf away from the door. It's a fact of life that ICA (and most other state associations) cannot exist on membership income at the regular rate. We rely very heavily on our Patron, Gold Card, and Century Club members to augment our association's income, underwrite the expenses of publishing the ICB, including payment to the editor, and ancillary costs of doing business.

The loss (in summary) for 1988 amounted to \$889.42 while thus far in 1989 we have managed to finish in the black by \$1861.33. One of the absolute aims of my presidency is SOLVENCY. Not an inspiring target, you say? Perhaps. But if we're broke, all the inspiration in the world won't get us anywhere.

You can help us continue the upward swing by making your next ICA renewal a rung up the ladder: if you are now a regular member at \$10 a year, how about giving chess a boost by making your new membership a Patron membership at \$25? If you're already a Patron, you can go for the gold--a Gold Card, that is, for \$50. And, if chess means a good deal to you, if chess has provided pleasure, challenge, excitement, and satisfaction to your life, then how about showing it in a really unique way--with a Century Club membership.

The ICA needs you!

BID REMINDER...

Affiliates interested in bidding on the 1990 IL OPEN and IL CLASS should prepare bids now for submission to ICA officers. Deadline for the Open, our state championship, is January 15 and deadline for the Class is March 15.

COMING EVENTS...

FEB. or MARCH 1990: The ICA Banquet, organized by Fred Gruenberg. The ICA will award tour checks at the banquet. Hope to see you there!

NON-PROFIT STATUS FOR ICA (501-C3)...

Peoria organizer BILL NAFF and attorney BOB STEELE are investigating the possibility and the process of acquiring tax-exempt status for the ICA. Such status would be a marked advantage in fund raising as well as in curtailing postage costs for mailing of the ICB. Our thanks to Bill and Bob for assuming this long-overdue task.

A PERSONAL NOTE...

While on vacation in Virginia early in October my husband Jim suffered a heart attack. I must acknowledge my thanks to Virginia chess friends Woody Harris and Allen and Helen Hinshaw whose concern and hospitality made our lengthened stay in Richmond so much more bearable. Our thanks, too, to our local chess friends for their good wishes. Jim is recovering well, still very much involved in our postal chess work and book business, and even considering an early retirement from AT&T.

LET GEORGE DO IT!

GEORGE UMEZINWA has been around too long to call him a "rising star". His performance in the ILLINOIS TOURNAMENT OF CHAMPIONS IV in late October and early November was nothing short of stellar. Although this was George's first ITC, he finished with a strong 6½-2½, ahead of ITC veteran Eugene Martinovsky (6) and perennial competitor Billy Colias (5). Congratulations to all, and personal thanks to the CHICAGO CHESS CENTER and TD RAY SOCHA for their assistance in handling the event for the Midwest Chess Association. Bill Brock will have a complete story of this strong round robin with selected games in a future issue (perhaps even in this one!)

ICA SCOLASTIC CLINIC...

ICA Secretary TIM JUST and the College of Lake County as well as Peoria organizers have expressed interest in a 1990 ICA scholastic clinic. We will need at least four or five teachers as well as volunteer staff. Masters will be paid for their services. If interested in serving on staff, contact Helen Warren (708) 246-6665.

U.S. MASTERS, March 15-18 in OAKBROOK...

If your USCF rating is or ever has been 2200 or above, or if you're a junior rated between 2150-2200, you're eligible to compete in USCF's latest addition to its national tournament calendar: the U.S. MASTERS. In addition to a \$5,000 first prize and an additional \$5,000 in place prizes, we will offer \$5,000 in REGIONAL PRIZES. Spectators invited!

Bill Naff of Peoria sends us this sharp win from a 1987 USCF Benko Gambit Thematic Tournament--Bill placed first in this section. His sportsmanlike opponent, Ruben Chavez, was so pleased with the game that he annotated it!

William A.Naff (USCF Postal 2066)--Ruben E.Chavez (USCF Postal 1993) Postal 1987-89

- | | | |
|----|------|-----|
| 1. | d4 | Nf6 |
| 2. | c4 | c5 |
| 3. | d5 | b5 |
| 4. | cxb5 | a6 |
| 5. | e3 | ... |

Secures an advantage against any Black move except...

- | | | |
|----|-----|------|
| 5. | ... | Bb7! |
|----|-----|------|

The Barclay Gallery Variation, introduced by Lev Alburt. Its purpose is to pressure g2 and eventually snag the h1 Rook.

- | | | |
|----|------|------|
| 6. | Nc3 | Qa5 |
| 7. | Bd2 | axb5 |
| 8. | Bxb5 | ... |

After 8. Nb5 Qb6, White can't protect the d-pawn.

- | | | |
|-----|-----|-----|
| 8. | ... | Qb6 |
| 9. | Qb3 | e6! |
| 10. | e4 | ... |

If 10.de Bxg2; perhaps 10.Bc4 is better and safer.

- | | | |
|-----|------|------|
| 10. | ... | Nxe4 |
| 11. | Nxe4 | Bxd5 |
| 12. | Qd3 | f5 |

In Benjamin-Alburt 1984 (Inf. 38/86), White now played 13.Ng5? Bxg2 14.Oe2 Bxh1 15.f3, cutting off the Bishop with hopes of winning it later (an immediate 15.Nxe6 would be met with 15.

...Bxe4!) White's threat of 16.Nxe6 seems to offer compensation, but Black won after 15....Ra6!!

- | | | |
|-----|------|------|
| 13. | Ng3 | Bxg2 |
| 14. | a4 | Bd6 |
| 15. | N1e2 | Bxh1 |
| 16. | Nxh1 | O-O |

If 16. ...Bxh2?? 17.Qf3 Ra7 18.Qh5+ picks up a piece; or if 17. ...Qxb5, 18.Qxa8 wins.

- | | | |
|-----|------|-----|
| 17. | Nhg3 | Be5 |
| 18. | Bc3 | ... |

White can't castle Queenside until the Bishop is eliminated.

- | | | |
|-----|--------|-------|
| 18. | ... | Bxc3+ |
| 19. | Qxc3!? | ... |

Eyeing g7 in conjunction with the Rook that will soon come to the half-open g-file. Although Black's trump is his unrestrained central pawn mass, White hopes to deny him the time to mobilize it.

- | | | |
|-----|-------|------|
| 19. | ... | d5 |
| 20. | O-O-O | Na6? |

- | | | |
|-----|------|------|
| 21. | Nh5 | Rf7 |
| 22. | Rg1 | Raa7 |
| 23. | Nef4 | Qd6! |

Prevents 24.Nxf6; 24. ...Rxf6! 25.Qxf6 Qxf4+; but not 24. ...Kh8?? 25.Ng6+ mating.

- | | | |
|-----|------|-----|
| 24. | Be8! | ... |
|-----|------|-----|

Had I put my Knight on c6, this disruptive shot wouldn't have been possible.

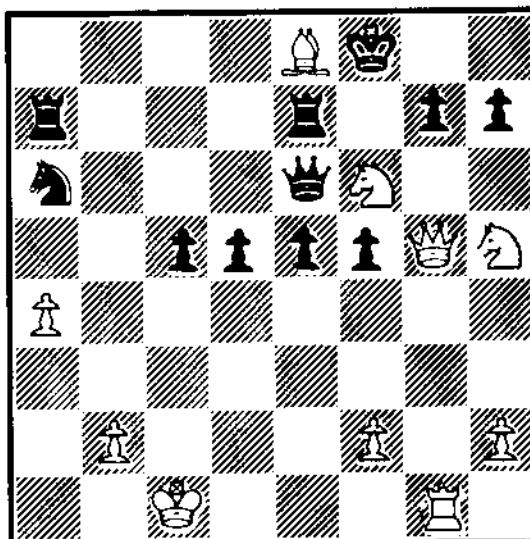
- | | | |
|-----|------|------|
| 24. | ... | Rfe7 |
| 25. | Nf6+ | Kf8 |
| 26. | Qg3 | e5 |

White's threat was 27.Ng6+. Cute is 26. ...Qc7? 27.Bd7!! g6 28.Nxh7+ Rxh7 29.Nxe6+ winning the Queen after all.

- | | | |
|-----|------|------|
| 27. | N4h5 | Qe6! |
|-----|------|------|

Gets out of the pin, stops mate on g8, and hits the Bishop a third time. Not 27. ...Rxe8?, since 28.Nxh7 Kg8 29.N5f6+ Kh8 30.Qh4 mates in 4.

- | | | |
|-----|-------|-----|
| 28. | Qg5!! | ... |
|-----|-------|-----|



The Queen supports a Knight at f6 while observing the crucial squares e7 and h6. I considered four other variations here:

A) Development with 28. ... Nb4, but 29.Bb5 h6 30.Qg6 Qf7 31.Qh7! Reb7 32.Qh8+ Ke7 33.Rxg7 wins.

B) Giving back the Exchange with 28. ...Rxe8, but after 29.Nxg7! Qf7 30.Nh7+ Kg8 31.Nf6+, White keeps the extra piece.

C) Contesting the g-file with 28. ...gxh6 29.Nxf6 Rg7, but 30.Qh6 Rae7 (with the idea of bringing the Knight into the fray) 31.Rxg7 Rxg7 32.Bh5! Nc7 33.Nxh7+ Kg8 34.Nf6+ Kf8 35.Qh8+ Rg8 36.Nxg8; 36. ...Qxg8 is answered by 37.Qf6+.

D) Keeping material: 28. ...gxf6 29.Nxf6 Re7; here the win is 30.Bc6!! Qxc6 (If the Bishop is declined with 30. ...Rc7 or 30. ...Rf7, 31.Nxh7! followed by 32.Qd8+ finishes nicely.) 31.Nxh7+ Rxh7 32.Qg8+. After realizing that I had been systematically outplayed, I decided to minimize material loss with the text:

28. ... h6
 29. Qg6 gxf6
 30. Nxf6 Rxe8
 31. Qxh6+ Ke7
 32. Rg7+ Kd8
 33. Rxa7 Nc7!
 Keeping the Rook bottled up.
 34. Qh4 Re7
 35. Qh8+ Re8
 36. Nxe8 Qxe8
 37. Qxe8+ Nxe8
 38. Ra5!?

And White won this ending in another 30 moves; instead, White's two outside passed pawns could have overworked the Black King for a quick win: 38.Ra8+ Kd7 39.Rxe8! Kxe8 40.h4 e4 41.a5 Kd7 42.h5 etc. [Annotations by Ruben Chavez; additional comments by Bill Naff]

COLIAS TOPS MINI-TOUR OP-FP CC AUTUMN ACTION '89

By Ken Marshall

Three masters and seven experts were among the 27 players competing for Illinois Tour points and \$310 in prizes at the Oak Park-Forest Park Autumn Action '89, a five-round ICA Illinois Mini-Tour event held October 21, 1989, at the Mohr Community Center in Forest Park. Bill Colias (2427) lived up to his wall chart ranking by taking first place with a 4.5-5 score, thereby earning \$110 and eight Tour points. (This was Colias's fourth first place in a Mini-Tour event since June.) George Umezina (2290), Gregory Berry (2074), and Wallace Gordon (2042) each finished 4-1 to tie for second through fourth. Umezina, who had a 1/2 point bye in Round 1, drew with Colias in a last-round battle which saw both flags hanging in a Queen and Pawn ending.

Class A honors went to Marcus Stinson (1985), one of 15 players from the OP-FP CC, with 2.5 points. OP-FP CC member Steve Hansen (1783) topped Class B with 3.5, while Scott Matthew (1599) finished with 2.5 to garner the Class C prize. Robert Bales, Jr. (1313) and OP-FP CC members Dave Coulter (1298) and Amy Brooks (UNR) each ended up with 1.5 and split

the Class D/E/Unrated money. Ken Marshall directed.

Oak Park-Forest Park CC Autumn Action '89, Tom Fineberg (1734) - Cliff Wallach (2164) King's Gambit Accepted

1.e4 e5 2.f4 exf4 3.Nf3 d5 4.exd5 Bd6! 5.d4 (Recommended by Christiansen et al. In *The King's Gambit as White.*) Nf6 (5...Ne7 may be an improvement, or perhaps 5...c6 to eliminate one of White's center pawns.) 6.c4 O-O 7.Be2 Re8 8.O-O b6 (As 9.c5 is not an immediate threat, 8. ...Bg4 may be better; however, Black's f4 pawn would still look unwell.) 9.Nc3 Nbd7 10.Nb5 Nf8 11.Nxd6 Qxd6 12.Ne5 g5 13.h4 (White occupies the center and owns the Bishop pair--now he goes to work on Black's weaknesses at f4 and f7.) h6 14.hxg5 hxg5 15.Bh5 Nxh5 (Black wants to off the killer Knight on e5, but there are tactical problems.) 16.Qxh5 Rxe5 17.dxe5 Qxe5 18.g3 (Fineberg notes that 18.Rxf4! was possible.) Ng6 19.gxf4 Qd4+ 20.Kh1 gxf4 (20. ...Qxc4!?) 21.Qf3 Ba6 22.Bxf4 Bxc4 23.Rad1 Qxb2 (23. ...Qxf4!? offers chances for salvation, but who has time to evaluate endings in Action Chess?) 24.Bxc7 (Now Black gets rolled.) Rf8 25.Rf2 Qb5 26.Bd6 Nh4 27.Qg4+ Ng6 28.Bxf8 Bxd5+ 29.Kh2 Kxf8 30.Qxg6 Bxa2 31.Rd8+ 1-0

Oak Park-Forest Park Autumn Action, October 21, 1989

1	COLIAS Bill	2427	W15	W13	W 3	W 2	D 4	4.5
2	GORDON Wallace	2042	W20	W 5	W 7	L 1	W 8	4
3	BERRY Gregory	2074	W17	W19	L 1	W18	W 7	4
4	UMEZINA George	2290	Dbye	W22	W 8	W11	D 1	4
5	HANSEN Steve	1783	W24	L 2	D13	W21	W12	3.5
6	HAUBRICH Scott	2103	Dbye	L11	W16	W15	W13	3.5
7	MC NAMARA James	2043	W21	W18	L 2	W 9	L 3	3
8	ROGAN Marvin	2041	W16	W12	L 4	W19	L 2	3
9	SURAK Steve	2100	L12	W26	W14	L 7	W18	3
10	WALLACH Cliff	2136	Dbye	L14	W27	D12	W19	3
11	WALLACH Ken	2305	D14	W 6	W22	L 4	-	2.5
12	ALLISON Roger	1741	W 9	L 8	W25	D10	L 5	2.5
13	STINSON Marcus	1985	W27	L 1	D 5	W14	L 6	2.5
14	FINEBERG Tom	1771	D11	W10	L 9	L13	W20	2.5
15	FRAATS Dan	1771	L 1	D27	W17	L 6	W23	2.5
16	MATTHEW Scott	1599	L 8	D17	L 6	W22	W24	2.5
17	ITZEN Richard	1740	L 3	D16	L15	W27	W25	2.5
18	SEFCHECK Mark	1874	W23	L 7	W20	L 3	L 9	2
19	LA FRANA Art	1847	W25	L 3	W21	L 8	L10	2
20	WINSAUER Don	1623	L 2	W24	L18	W26	L14	2
21	JOCHIM Gary	1689	L 7	W23	L19	L 5	W26	2
22	DWYER Bill	1891	D26	L 4	L11	L16	W27	1.5
23	BALES Robert	1313	L18	L21	D26	Wbye	L15	1.5
24	BROOKS Amy	-	L 5	L20	Wbye	D25	L16	1.5
25	COULTER Dave	1298	L19	Wbye	L12	D24	L17	1.5
26	HICKS Charles	1498	D22	L 9	D23	L20	L21	1
27	AMIRANTE Ron	1507	L13	D15	L10	L17	L22	0.5

THREE-WAY TIE FOR FIRST IN PEORIA

Master Cyrus Bondari tied with Experts Robert Reynolds and William Sandbothe in the Peoria Fall Tornado, an Illinois Mini-Tour event held on October 14 at the Garrett Center in Peoria. Reynolds faced the toughest opposition, but he was equal to the task, knocking off Bill Colias in Round 3 and drawing with Bondari in the final round. Sandbothe yielded a draw to Bill Naff, then knocked off upset specialist Wayne Zimmerle (1621) in Round 4. The following game comes from this event:

1989 Peoria Fall Tornado

Dennis R. Cain (1388) - Bill Wilkinson (1968) Gruenfeld Defense 1.d4 Nf6 2.c4 g6 3.Nc3 d5 4.Nf3 Bg7 5.Bf4 O-O 6.Qd2!? Nc6 (The immediate 6. ...Ne4 looks stronger.) 7.Bh6 Ne4 8.Nxe4 dxe4 9.Bxg7 Kxg7 10.d5 exf3 11.Qc3+ f6 12.dxc6 fxe2 13.Bxe2 bxc6 (Since he is able to seize the d-file with tempo and has the healthier pawn structure, White's compensation is at least adequate.) 14.Rd1 Qe8 15.O-O e5 16.c5 (Black's Bishop can now come to d5, but this move also fixes the c6 pawn on a White square.) Qf7 17.Rd2 Be6 18.Rfd1 Bd5 19.Bf3 Rfd8 20.b4 a6 (White was threatening 21.b5!) 21.Qe3 Qe6 22.a3 Rab8 23.Qe2 Bxf3 24.Qxf3 Rxd2 25.Rxd2 a5 26.bxa5!? (Better than it looks—the advanced a-pawn could be troublesome if Rooks are exchanged.) Rb1+ (26. ...Qa2 looks nice, but it doesn't mate.) 27.Rd1 Rb3 (Ditto for

27. ...Qc4.) 28.Rd3 Rb1+ 29.Rd1 Qb3 30.Qxb3 Rxb3 (Normally, a Class D player would find several ways to lose this Rook ending, but...) 31.h3 Rxa3 32.Rd7+ Kh6 33.Rxc7 Rxa5 34.Rxc6 Kg5 35.g3 f5 36.Kg2 Ra3 37.Re6 e4 38.h4+ Kg4 39.c6 Rc3 40.Re7 h6 41.c7 g5 42.Rg7 Kh5 43.hxg5 hxg5 44.Rf7 Kg6 45.Re7 Kf6 46.Rd7 f4 47.gxf4 gxf4 48.Rd4 Kf5 49.Rd7 f3+ 50.Kg3 Rc1 51.Kh3 Kf4 52.Rf7+ Ke5 53.Rd7 Rc4 54.Kg3 Kf5 55.Rf7+ Ke6 56.Rh7 Kd6 57.Kf4 Kd5 (White could now win a yawn—er, pawn—with 58.Rd7 Ke6 59.Rd4, but he couldn't even get to the Philidor position.) 1/2-1/2

Peoria Fall Tornado, October 14, 1989

1	REYNOLDS Robert	2131	W	5	W16	W	7	D	2	3.5
2	BONDARI Cyrus	2219	W13	W12	W	8	D	1	3.5	
3	SANDBOTHE William	2043	W17	W19	D	4	W	6	3.5	
4	NAFF Bill	2144	D	6	W15	D	3	W	9	3
5	GARDNER Keith C	1632	L	1	W20	W16	W	8	3	
6	ZIMMERLE Wayne	1649	D	4	W13	W10	L	3	2.5	
7	COLIAS Bill	2450	W14	D10	L	1	W12	2.5		
8	SLATER Michael	2055	W15	W	9	L	2	L	5	2
9	VERO Carl	1798	W11	L	8	W17	L	4	2	
10	COHEN Larry	1951	W18	D	7	L	6	D14	2	
11	LEALI Mike	-	L	9	W14	L12	W19	2		
12	WILKINSON Bill	1968	D19	L	2	W11	L	7	1.5	
13	WARFIELD Thomas	1721	L	2	L	6	W18	D15	1.5	
14	HIERONYMUS Kent	1749	L	7	L11	W19	D10	1.5		
15	INGRAM Randy	1605	L	8	L	4	W20	D13	1.5	
16	SPHAR Bob	1820	W20	L	1	L	5	-	1	
17	DAVIS John	1421	L	3	W18	L	9	-	1	
18	CREMEENS Matt	1384	L10	L17	L13	W20	1			
19	CAIN Dennis	1388	D12	L	3	L14	L11	0.5		
20	REMUS Ginger	1117	L16	L	5	L15	L18	0		

1990 BRADLEY ACTION OPEN AN ICA MINI-TOUR EVENT

WHEN: Saturday, January 27, 1990.

WHERE: Garrett Center, 824 N. University, Peoria 61606.

ENTRY FEE: \$11 in advance, \$13 at the site.

WHAT: Five-round Swiss System. TIME LIMIT: Game/30.

MEMBERSHIPS REQUIRED: USCF & ICA.

GUARANTEED CASH PRIZES: \$75 First, \$50 Second.

CLASS PRIZES: Classes A, B, C/under \$25 each (based on 6 entrants per class).

REGISTRATION: 8:30-9:15 a.m. ROUND TIMES: 9:30, 10:45, 12:30, 1:45, 3:00.

NO SMOKING ALLOWED IN THE BUILDING. PLEASE BRING SETS, BOARDS, AND CLOCKS.

ADVANCE ENTRIES: Bill Wilkinson, 905 N. Rebecca Place, Peoria IL 61606.

Phone: 309/673-9455.

10 NOVEMBER-DECEMBER, 1989

CLOVERLINE STUDENT CHESS PROGRAM

TUESDAY FROM 3PM TO 6PM

AT REVERE PARK FIELDHOUSE, 2509 IRVING PARK RD.
IN CHICAGO. (IRVING PARK ROAD IS 4000 NORTH).

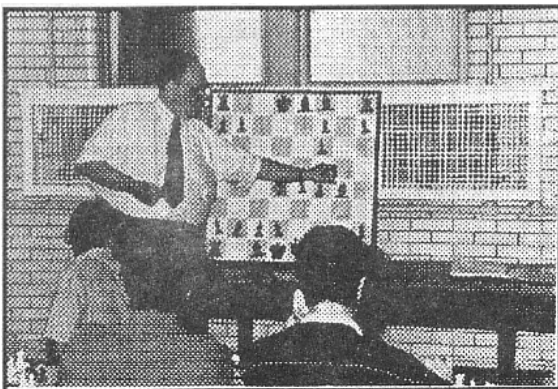
FREE CHESS LESSONS

**WITH CHESS MASTER RICHARD VERBER,
3-TIME ILLINOIS STATE CHESS CHAMPION**



Norbert Leopoldi, President
Cloverline, Inc.

The Cloverline Student Chess Program is free to Chicago area students and their teachers. Chess sets and clocks are provided for your use. Chess Master Richard Verber will give weekly chess lessons, blindfold exhibitions, and simul exhibitions, playing as many as 20 students at the same time. This new program of chess instruction for high school, junior college, and grammar school students is sponsored by Cloverline, Inc., Norbert Leopoldi - President. Mr. Leopoldi is himself a strong chess player, and the objective of this program is to foster excellence at chess. Chicago area city & suburban high schools are given special encouragement to bring their school chess teams for this program of free weekly master chess instruction.



Chess Master Richard W. Verber
conducting a group chess lesson

*For group chess lessons
or simultaneous chess
exhibitions at your school
contact:*

**Chess Master
Richard W. Verber
(312) 262-8050
for details.**

MICRO RESALES CHAMPAIGN-URBANA OPEN by Tom Worley

The Champaign-Urbana Open was revived this year, with the largest draw since the Fischer era. For the first time, we had corporate sponsorship that made an unprecedented \$1,200 prize fund possible. Special thanks are due to Glen Gratz and John Vincent, owners of Micro Resales of Urbana. (East Central Illinois players, remember Micro Resales for your hardware and software needs!)

In the Open Section, the primary beneficiary of this largesse was Waukegan expert Kevin Gensler, who won \$250 for his 4 1/2-1/2 score. Glen Gratz and Ron Torregrossa took home \$125 each for equal second. Leon Lipton of Riverdale shared the \$80 Under-1950 prize with three U of I students: Bill Wolf, Manuel Glave, and Dan Bargerstock.

The Under-1900 Section drew a healthy 29 players--Nuclear Engineering freshman Willie Stevenson scored an impressive 5 1/2-6 on his way to the \$125 first prize; unrated Prakesh Kamat from Lombard earned \$100 for clear second. Bill Walsh and Randy Ingram took the Under-1750 and Under-1600 prizes, respectively.

Che-Wei Wang, a student at University High in Urbana, dominated the Under-1500 Section by amassing a 11-1 score. Boyd Reed of Homer finished a close second with 10 1/2 points, while Brad Kibler of Homer took the Under-1500 prize.

In addition to the sponsors, thanks should go to outgoing ICB Editor Ken Marshall for plugging the tournament, as well as Fred Gruenberg for helpful advice. Dan Bargerstock's technical advice made it possible to start 22 (!) rounds on time. And thanks to Jacque Sanders for cheerfully and selflessly helping out.

OPEN SECTION

1	GENSLER Kevin	2194	W 9	W 8	W 3	D 2	3.5
2	GIERTZ Glen	2088	W 7	D 4	W 5	D 1	3
3	TORREGROSSA Ron	2211	W10	W 5	L 1	W 6	3
4	GLAVE Manuel	1887	W11	D 2	L 8	Dbye	2
5	MC GOWAN Andy	2005	W 6	L 3	L 2	W 8	2
6	BARGERSTOCK Dan	1816	L 5	W 9	W 7	L 3	2
7	WOLF William	1926	L 2	W10	L 6	W 9	2
8	LIPTEN Leon	1938	WF	L 1	W 4	L 5	2
9	MARSHALL James	1976	L 1	L 6	W10	L 7	1
10	PUKEL Bernhard	1945	L 3	L 7	L 9	Wbye	1
11	DAVIES James	2071	L 4	Dbye	-	-	0.5
12	HUTSON Terry	2046	LF	-	-	-	0

UNDER 1900 SECTION

1	STEVENSON Willie	1719	W15	W 6	W 9	W12	W 7	D 4	5.5
2	KANAT Prakesh	-	Wbye	L 7	W26	W 6	W 8	W10	5
3	INGRAM Randy	1577	D 5	W29	W27	W 9	L 4	W14	4.5
4	WALSH William	1640	W23	W10	Dbye	D 7	W 3	D 1	4.5
5	SCOTT Winfield	1763	D 3	L27	W24	W11	W18	W 7	4.5
6	INGRAM Adrian	1645	W22	L 1	W17	L 2	W20	W12	4
7	BAYER Duane	1711	W21	W 2	W28	D 4	L 1	L,5	3.5
8	WARFIELD Thomas	1717	W20	W17	L12	W13	L 2	D 9	3.5
9	CALDWELL Scott	1742	W11	W26	L 1	L 3	W15	D 8	3.5
10	WHEELER Stephen	1778	W19	L 4	D11	WF	W12	L 2	3.5
11	FULTON Steven	1568	L 9	W25	D10	L 5	W23	W13	3.5
12	Ji Chen	1803	W16	W13	W 8	L 1	L10	L 6	3
13	GARDNER Keith	1642	W25	L12	W23	L 8	W17	L11	3
14	ULATOWSKI Thomas	1827	L26	D15	D21	W27	W19	L 3	3
15	ASHER David	1561	L 1	D14	D16	W22	L 9	W27	3
16	FELTNER Cameron	1579	L12	D21	D15	L17	W27	W23	3
17	SHACKELFORD David	1503	W18	L 8	L 6	W16	L13	D19	2.5
18	WILLIAMS Mike	1715	L17	W20	W19	Dbye	L 5	-	2.5
19	HENSON Andrew	1578	L10	W22	L18	W21	L14	D17	2.5
20	LEUTHOLD Gregory	1512	L 8	L18	W25	W26	L 6	-	2
21	HIBBS Robert	1420	L 7	D16	D14	L19	W22	-	2
22	SANDERS Jacque	1420	L 6	L19	W29	L15	L21	Wbye	2
23	TIARKS Richard	1275	L 4	Wbye	L13	W24	L11	L16	2
24	HELLER Jack	1500	Dbye	L28	L 5	L23	W29	D25	2
25	HABING Brian	1414	L13	L11	L20	D29	Wbye	D24	2
26	STOVER Eric	1638	W14	L 9	L 2	L20	Dbye	-	1.5
27	PADILLA Rudy	1517	Dbye	W 5	L 3	L14	L16	L15	1.5
28	COTTLE Gregory	1652	Dbye	W24	L 7	LF	-	-	1.5
29	ANELMAN Kristin	1319	Dbye	L 3	L22	D25	L24	Dbye	1.5

UNDER 1500 SECTION

1	WANG Che-Wai	1438	W 5	D 2	W 9	W 3	W15	W12	W 6	W 8	W13	W 7	W10	D 4	11
2	REED Boyd	1441	W15	D 1	W 4	W 6	W12	W 5	W 3	W11	L 7	W 8	W14	W10	10.5
3	CHOU Peter	1427	W 9	W11	L 6	L 1	D 5	W 4	L 2	W14	W12	W13	L 7	W12	7.5
4	KIBLER Brad	1224	W16	W14	L 2	L15	W 8	L 3	Dbye	Dbye	W 5	W 6	Dbye	D 1	7
5	FULLER Bret	1440	L 1	W15	L12	W 9	D 3	L 2	L14	W16	L 4	W11	W 8	W 7	6.5
6	ROBERTSON James	1380	W13	W 8	W 3	L 2	Dbye	Dbye	L 1	W12	W11	L 4	-	-	6
7	HUNT John	1350	Dbye	Dbye	L11	L13	W16	Wbye	L12	W 9	W 2	L 1	W 3	L 5	6
8	REBELSKY Matt	1299	W12	L 6	L10	W14	L 4	W13	D11	L 1	W16	L 2	L 5	W11	5.5
9	PIERCE Linus	1432	L 3	W13	L 1	L 5	Dbye	Dbye	W16	L 7	W14	W12	Dbye	-	5.5
10	BAUMANN Paul	-	L11	W16	W 8	Dbye	Dbye	Dbye	Dbye	Dbye	Dbye	L 1	L 2	-	5.5
11	BATES John	-	W10	L 3	W 7	L12	D13	W15	D 8	L 2	L 6	L 5	W16	L 8	5
12	HILL Farrel	1286	L 8	Wbye	W 5	W11	L 2	L 1	W 7	L 6	L 3	L 9	W13	L 3	5
13	CAIN Dennis	1335	L 6	L 9	W16	W 7	D11	L 8	Dbye	Wbye	L 1	L 3	L12	W16	5
14	DUPEE Arthur	1222	Dbye	L 4	L15	L 8	Wbye	W16	W 5	L 3	L 9	W16	L 2	Dbye	5
15	CANTU Jose	1487	L 2	L 5	W14	W 4	L 1	L11	Dbye	-	-	-	-	-	2.5
16	BROOK Vincent	-	L 4	L10	L13	Wbye	L 7	L14	L 9	L 5	L 8	L14	L11	L13	1

St. Charles Open, September 23-24, 1989

1	COHEN Lawrence	2018	W15	W18	L16	W12	W11	4
2	SAX Robert	2102	D37	W12	W 7	D 3	W 9	4
3	BUTTNY Bill	1952	W38	W14	Dbye	D 2	W13	4
4	SURAK Steve	2100	W20	W25	Dbye	D 9	W10	4
5	COLIAS Bill	2427	L14	W28	W31	W27	W 6	4
6	SZPISJAK Steve	2230	W31	W11	D24	W 8	L 5	3.5
7	FIRESTONE Chris	2010	W21	W26	L 2	D10	W23	3.5
8	PUKEL Bernard	1985	Dbye	W37	W33	L 6	W17	3.5
9	EASTER Ron	1926	W43	D16	W17	D 4	L 2	3
10	BOUTON Barry	1884	W42	D24	W34	D 7	L 4	3
11	GRAVES Bill	1848	W39	L 6	W14	W18	L 1	3
12	BAYER Duane	1711	W13	L 2	W29	L 1	W30	3
13	ANTELMAN Kristen	1319	L12	W42	W41	W25	L 3	3
14	LULVES Joe	1681	W 5	L 3	L11	W35	W25	3
15	TERRANCE Terry	1567	L 1	W40	L27	W37	W26	3
16	SCHMUGGEROW Kevin	2201	W35	D 9	W 1	-	-	2.5
17	WEBER John	1762	D28	W23	L 9	W22	L 8	2.5
18	ALLISON Roger	1741	W30	L 1	W36	L11	D21	2.5
19	GONCHAROFF Nik	1830	D34	D36	D35	D23	D20	2.5
20	GIERTZ Chuck	1647	L 4	W30	L25	W32	D19	2.5
21	FULTON Steve	1568	L 7	L29	W28	W36	D18	2.5
22	LITTLE Jim	1598	L24	W42	Dbye	L17	W40	2.5

23	SCHAETZLE Mike	1468	Wbye	L17	W26	D19	L 7	2.5
24	SPLINTER Joe	2024	W22	D10	D 6	-	-	2
25	FRONEK Randy	1799	W40	L 4	W20	L13	L14	2
26	OBERWEIS Jim Sr	1730	W29	L 7	L23	W38	L15	2
27	BROWN Tony	1995	-	W38	W15	L 5	-	2
28	BALES Robert	1341	D17	L 5	L21	W29	D31	2
29	SIMS Mike	1337	L26	W21	L12	L28	W42	2
30	STAMP Paul	1367	L18	L20	W43	W40	L12	2
31	KITTELSON Guy	1670	L 6	W39	L 5	Dbye	D28	2
32	PADILLA Rudy	1517	Dbye	L33	D37	L20	W39	2
33	BALE Les	1884	D36	W32	L 8	-	-	1.5
34	CALIENDO Tony	1378	D19	W41	L10	-	-	1.5
35	SCHOFIELD Terry	1656	L16	W43	D19	L14	-	1.5
36	OBERWEIS Jim Jr	1507	D33	D19	L18	L21	D37	1.5
37	DIETRICH John	1558	D 2	L 8	D32	L15	D36	1.5
38	CARSON Dave	1557	L 3	L27	W39	L26	-	1
39	MADDEN Juel	1429	L11	L31	L38	W42	L32	1
40	WHITMAN Rick	1342	L25	L15	Wbye	L30	L22	1
41	SHAFFER Tom	1581	Dbye	L34	L13	-	-	0.5
42	ANDERSON Rick	1465	L10	L22	L13	L39	L29	0
43	HOYNE John	1531	L 9	L35	L30	-	-	0

COLIAS ANNOTATES

[Editor's note--Bill Colias, Al Chow, and Ken Wallach played in a FIDE Futurity this summer, the 1989 Minnesota Masters Cup Invitational, which Bill won. He and the other local participants would like thank TD/chief organizer Jeff Prentiss and his wife Colleen, who provided generous expense money for FIDE-rated players, prepared bulletins at the end of each round, and secured an excellent playing site, the Hotel Seville in Minneapolis. Games between Chicago-area players were played at the Chicago Chess Center, thanks to Ray Socha. Generous donations by chess patrons, including the Midwest Chess Association, helped to make this tournament possible.]

CLOSED SICILIAN

W: Ed Zelkind (2352 USCF)
 B: Bill Colias (2230 FIDE, 2435 USCF)
 1989 Minnesota Masters Cup Invitational, Rd. 4

1. e4 c5
2. Nc3 Nc6
3. g3 g6
4. d3 Bg7
5. Bg2 d6
6. Be3 e5

I usually like to play 6. ...e6, with the game Nicevski-Bukic, Yugoslavia (ch) 1981 in mind: 1.e4 c5 2.Nc3 d6 3.g3 Nc6 4.Bg2 g6 5.d3 Bg7 6.f4 e6 7.Nf3 Nge7 8.O-O O-O 9.Be3 Nd4 10.Rb1 Rb8 11.Ne2 Nxf3+ 12.Bxf3 b6 13.g4 f5 14.Ng3 Bb7 15.c3 Qd7, when Black has stopped White's Kingside play with 13. ...f5 and is challenging the White Bishop along the h1-a8 diagonal.

So why did I play 6. ...e5? For starters, I had lost a game to Ed at the 1989 Prairie State Masters/Experts Invitational that went 6. ...e6 7.Qd2 Nd4 8.Nd1 Nf6 9.c3 Nc6 10.Bh6 O-O 11.Bxg7 Kxg7

12.f4 d5 13.e5, when White had a space advantage to go along with his initiative, not to mention Black's bad Bishop. I think 6.f4 should be answered with 6. ...e6, but 6.Be3 is a bit different. White is then able to exchange the dark-square Bishops with Qd2 and Bh6; after they come off, Black's pawn on e6 restricts his remaining Bishop. On the other hand, 6. ...e5 gains firm control over the d4 square, while the hole on d5 is an illusion; Black could easily trade a White Knight off by ...Ne7xd5 or ...Be6xd5.

7. Qd2 Nge7
8. Nge2 ...

In a game at the 1989 Western Open, Colias-R. Burnett (2459), I tried 8.Bh6 O-O 9.Bxg7 (9.h4!?) Kxg7 10.Nge2 Be6 11.O-O Qd7 12.Nd5 Bxd5 13.exd5, which left Black better due to White's weak King Bishop and doubled d-pawns. Rohde-Dlugy, USA (ch) 1986, went 8.Bh6 Bxh6 9.Qxh6 Nd4 10.Rc1 Be6 11.Nf3 Qb6 12.Nd1 Qa5+ 13.c3 Nxf3+ 14.Bxf3 Qxa2 15.O-O. White went on to win in 30 moves, although I'm not really convinced that he has enough for the pawn.

8. ... Nc4
9. O-O Be6
10. Rab1 ...

This move is more common when Black's pawn is on e6 and White is worried about ...Bxb2. I thought White's idea was to undermine the Knight on d4 by playing 11.b4, so...

10. ... Rc8
11. f4 ...

11.b4 could be answered with 11. ...c4; or first 11. ...Nxe2+ 12.Nxe2, when Black can now consider 12. ...Bxa2, 12. ...cxb4, or 12. ...b6. Another variation that I considered during the game was 11.b4 cxb4 12.Rxb4 Qxa5 13.Rxb7 Rxc3 14.Nxc3 Qxc3 15.Qxc3 Ne2 16.Kh1 Nxc3. With two pieces for the Rook and pawn, I kind of like Black. White might be able to improve with 13.Rfb1, although the position is then very unclear.

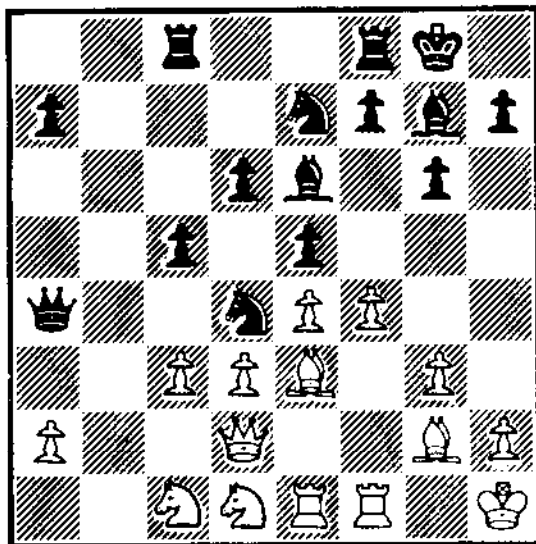
11. ... O-O
12. Kh1 Qd7

Preparing the Queenside play with b5 and connecting the Rooks.

13. Rbe1 b5
14. Nc1 ...

White's idea is to drive the Black Knight from d4 by playing c3, and he doesn't want Black to be able to play ...Nxe2.

14. ... b4
15. Nd1 Qe4
16. c3 bxc3
17. bxc3 ...



17. ... Nb5

I wanted to put as much pressure on the White position as possible; after this move, the Black Nb5, Rc8, and Bg7 all work together nicely.

18. Qf2 c4
19. Nb2 Qe3
20. f5 ...

White, seeing that Black has an initiative on the Queenside, decides to sac a pawn for some Kingside attacking chances.

20. ... gxf5
21. Nxc4 Bxc4
22. dxc4 Rxc4
23. exf5 f6
24. Qe2 Rfc8

Not 24. ...d5? 25.Bxd5 Nxd5 26.Qxc4.

25. Qh5 Nxc3

Not just taking a pawn, but also opening the c-file after ...Nxa2 and possibly swapping off Rooks. With this in mind, I think 25. ...Rxc3 would have been a better move, threatening the Bishop on e3 and keeping the pressure along the c-file. Black would have the additional option of playing ...Nd4, centralizing the Knight and putting pressure on the f5 pawn.

26. g4 Nxa2
27. Nxa2 Qxa2
28. Ra1 Qe2
29. Rxa7 Rxc4

30. Nc3 ...

The clock played a role here: with less than 5 minutes for 10 moves, White gets mated. Better was 30.Rg1, although Black would be two pawns up with ...Rc2 coming: e.g., 30. ...Kf8 31.Bh6 (31.Qxh7 Qxe3) Rxc2.

30. ... Qxe3
31. Rxe7 Qe4+
32. Resigns

[Annotated by Bill Colias]

BENKO GAMBIT

W: Curt Brasket (2305 FIDE, 2330 USCF)

B: Bill Colias (2230 FIDE, 2435 USCF)

Minnesota Masters Cup Invitational, Rd. 9

They say you need some luck to win a round-robin tournament--well, my luck came in the last round. Going into this game, I had 6 points out of 8, while Brasket had 5 1/2.

1. d4 c5

Some may argue that when you only need a draw for first and have the Black pieces, you should play solidly. However, I really didn't feel like defending a Queen's Gambit or a Slav. Besides, I believe that you should play the openings that got you to the final game.

2. d5 g6
3. e4 Bg7
4. c4 d6
5. Be2 ...

The Bishop may be misplaced on e2 if Black chooses to transpose to a Benko Gambit with 5. ...b5. In the Benko, White's Bishop usually gets exchanged for Black's Bishop on a6. Since this is usually the first move for the White Bishop, White may be losing a tempo in some variations. Perhaps White was afraid of 5.Nc3 Bxc3+ 6.bxc3, although I like White's center and his Queen's Bishop. Even if Black wins the c3 pawn with 6. ...Qa5 7.Nf3 Qxc3 8.Bxd2 Qg7, I prefer White's prospects on the dark squares.

5. ... b5
6. cxb5 Nf6
7. Nc3 a6
8. Nf3 Nbd7

I was moving too quickly here--8...Nbd7 is totally unthematic, and Black's position is never quite in synch after it. The d7 square should be preserved for the King Knight: 8. ...O-O was the correct move, with a typical Benko struggle ahead.

9. O-O axb5
10. Bxb5 Ba6

I misanalyzed the consequences of 10. ...Ba6 (see notes to White's 12th), although I don't really see a good alternative.

11. Bxa6 Rxa6
12. Qe2 ...

Only now did I realize that on the intended 12. ...Qa8 13.Nb5 Qb7 14.Nc7+ wins the Exchange.

12. ... Ra7
13. Rb1 Qb8

Trying to keep an eye on both of White's main pawn breaks: b4 and e5.

14. b3 O-O

15. Nb5 Nxe4
 16. Kxa7 ...
 White avoids 16.Qxe4 Qxb5 17.Qxe7 because of 17...Qb8 (with the idea of ...Nf6 or ...Ne5) 18.Qe2 Qa8, with a double attack on the a- and d-pawns.

16. ... Nc3
 17. Qa6 ...
 The best move. Other options for White were: 1) 17.Qc2 Qxa7 (not 17...Nxb1 18.Nc6) 18.Rb2 Nxd5; 2) 17.Qd3 Qxa7 18.Rxb2, when Black in turn has two tries: 2a) 18...Nxa2, winning the a-pawn; or 2b) 18...Nb6, going after the d-pawn.

17. ... Nxb1
 18. Nc6 Qe8
 Other Black moves are even worse. For example, after 18...Qb6 19.Nxe7+ Kh8 20.Qxb6 Nxb6 21.Bf4 Nc3 22.Bxd6 Nxa2 (d5 is poison--if 22...N(either)xd5, then 23.Nxd5 Nxd5 24.Bxf8.) 23.bxc5, White's two extra pawns would easily win. 18...Qa8 19.Nxe7+ Kh8 20.Qxd6 also gives White a winning material advantage, while 18...Qc7 19.Nxe7+ Kh8 20.Bf4 Nc3 21.Qxd6 is similar to the other variations.

19. Re1 ...
 Very strong, although White did have another move in 19.Bg5, when play might continue 19...f6 20.Rxb1 fxe5 21.Nxe5--Black might then have a resource in 21...Rf5 22.Nf3 Rxd5, as 23.Qc4 fails to 23...Nb6.

19. ... Bf6
 20. Qd3 ...
 I think this is stronger than winning the Exchange with 20.Bh6 Nc3 21.Bxf8 Kxf8, when White wouldn't be able to defend both the d5 and a2 pawns.

20. ... Nc3
 21. Bb2 c4
 (5:47) (5:50)

The clock was beginning to play a big role in the game--with only 10 minutes for the next 20 moves, Black misses a much better way to give up his Queen with 21...Nxa2 22.Bxf6 Nxf6 23.Nxe7+ Kh8 24.Nxg6+ hxe6 25.Rxe8 Rxe8. White would then have some problems to overcome, such as how to defend the d-pawn after Black plays ...Nb4.

22. bxc4 Nc5
 23. Qc2 N3e4
 24. Bxf6 Nxf6
 24...exf6? would lose the Knight after 25.Nd2 f5 26.f3.

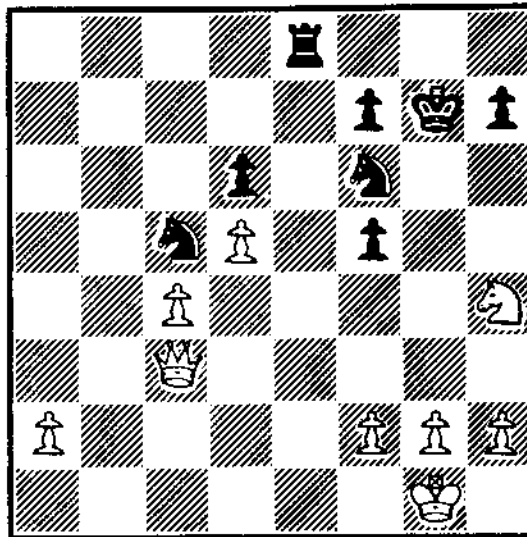
25. Nxe7+ Kh8
 26. Qc3 Kg7
 27. Nf5+ gxf5
 28. Rxe8 Rxe8
 29. Nh4 ...

(see diagram at top of next column)
 We were both moving very quickly--White had around 5 minutes to reach move 40, while I had less than 2 minutes left on the clock.

29. ... Rb8
 After taking a long look at a lost position, I now had only 30 or 40 seconds remaining.

30. Nxf5+ Kf8
 31. f3? ...
 White had blitzed off the last two moves--he should have played 31.g4 with the idea of g5 and Qh8 mate.

31. ... Rb1+
 32. Kf2 Nfe4+



(Position after 29. Nh4)

33. fxe4 Nxe4+
 34. Ke3 Nxc3
 35. Kd3 Nxa2
 36. Kc2 Rb8
 37. Nxd6 Ke7
 38. Nf5+ Kd7
 39. Kd3 Nb4+
 40. Kd4 f6
 41. c5 Nn6
 42. c6+ Kc7
 43. Kc5 ...

After this illegal move, the TD stepped in to say we had gone past move 40; White then resigned.
 [Annotated by Bill Colias]

U. S. OPEN REDUX

[The ICB concludes its coverage of the 1989 U.S. Open with a selection of regional players' games from Rounds 5-9, as well as the crosstables from the daytime events. Did we somehow skip your brilliancy? Send it in--with notes, please--and show it off!]

ROUND 5

GM Sergey Kudrin (2657) - FM Albert Chow (IL) (2440)
 1.e4 e6 2.d4 d5 3.Nd2 c5 4.Ngf3 cxd4 5.exd5 Qxd5
 6.Bc4 Qd6 7.0-0 Nf6 8.Nb3 Nc6 9.Nbxd4 Nxd4 10.Nxd4 e6
 11.Bb3 Qc7 12.Qf3 Bd6 13.h3 0-0 14.Bg5 Nd7 15.c3 b6
 16.Rad1 Bb7 17.Qe2 Nc5 18.Bc2 Bh2+ 19.Kh1 Bf4 20.Bxf4
 Qxf4 21.Rfe1 Rad8 22.f3 g6? 23.b4 Nd7 24.Nxe6! fxe6
 25.Qxe6+ Kh8? 26.Rxd7 Bc8 27.Rxh7+! 1-0

Ken Wallach (IL) (2258) - GM Arthur Bisguier (2525)
 1.d4 d5 2.c4 e6 3.Nf3 Nf6 4.g3 Nbd7 5.Bg2 Be7 6.0-0
 0-0 7.Qc2 b6 8.cxd5 Nxd5 9.Nc3 Bb7 10.Nxd5 exd5

11.Bf4 c5 12.dxc5 bxc5 13.Ne5
Nxe5 14.Bxe5 Qb6 15.e3 Rfd8
16.Rfd1 Rac8 17.b3 d4 18.Bxb7
Qxb7 19.exd4 f6 20.Qc4+ Kf8
21.Bf4 cxd4 22.Qd3 Kg8 23.Rac1
Bc5 1/2-1/2

**Bill Cornwall (2183) - Bill
Colias (IM) (2451)**

1.c4 Nf6 2.g3 g6 3.Bg2 Bg7
4.Nc3 0-0 5.d3 d6 6.e4 e5
7.Nge2 Nc6 8.0-0 Be6 9.Nc5 Nh5
10.Be3 Nd4 11.Nxd4 exd4 12.Bd2
c6 13.Nf4 Nxf4 14.Bxf4 Qd7
15.Qd2 Rfe8 16.b4 Be5 17.Bxe5
dxe5 18.f4 exf4 19.Rxf4 a5
20.bxa5 Qc7 21.Rh4 Rxa5!
22.Qh6? f6 23.Qd2 g5 24.Rh3
Bxh3 25.Bxh3 Rea8 26.Qb2 R8a6
27.Be6+ Kg7 28.Qe2 Qe7 29.Bc8
Ra8 30.Bh3 Ra3 31.Bf5 Kg8
32.c5 Rc3 33.Rf1 Rxc5 34.Qg4
Re5 35.Rf2 Qf7 36.Qe2 Rea5
37.e5 Rxe5 (0-1, 49 moves)

Laurence Chachere (IL) (2375)

- Angelo Sandrin (IL) (2184)

1.Nf3 c5 2.c4 Nf6 3.d4 g6
4.Nc3 Bg7 5.e4 cxd4 6.Nxd4 d6
7.Be2 0-0 8.0-0 Nc6 9.Be3 Bd7
10.Qd2 Nxd4 11.Bxd4 Bc6 12.f3
Nd7 13.Be3 Nc5 14.Rab1 a5
15.b3 Qc7 16.Rfc1 Rfc8 17.Bf1
Qd8 18.Rc2 Qe8 19.Qf2 Nd7
20.Rd1 Qf8 21.Nd5 Bxd5 22.Rxd5
Rc7 23.Rb5 a4 24.b4 Qc8 25.f4
Nf6 26.Bb6 Rc6 27.Qf3 Qg4
28.Be2 Qxf3 29.Bxf3 Nxe4
30.Be3 f5 31.Rxb7 Kf7 32.c5
dxc5 33.Bxe6 fxe4 34.Bxc5 Bd4+
35.Kf1 Bxc5 36.Rb5 Rb6
37.Rcxc5 Rxb5 38.Rxb5 Rc8
39.Re5 Rc1+ 40.Kf2 Rc2+ 41.Kg3
Rxa2 42.Rxe4 Rb2 43.b5 a3
44.Ra4 a2 45.b6 Rb3+ 46.Kg4
h5+ 47.Kh4 Rb4 48.Rxa2 Rxf4+
49.Kg3 Rb4 50.Ra6 g5 51.h3
Rb3+ 52.Kf2 h4 53.Ke2 Ke8
54.Ra8+ Kd7 55.Ra7+ Kd6 56.b7
Ke5 57.Ra5+ Kf4 58.Ra4+ Kf5
(White would promote after
58...Kg3? 59.Ra3) 59.Ra5+ e5
60.Ra7 Kf4 61.Kd2 e4 62.Kc2
Rb6 63.Kd2 Rb5 64.Kc3 Kg3
65.Kc4 Rb6 66.Ra3+ Kxg2 67.Rb3
Rxb7 68.Rxb7 Kxh3 69.Kd4 Kg3
70.Kxe4 h3 71.Rb5 g4 72.Rb3+
Kh4 73.Kf4 h2 74.Rb6 Kh3
75.Rb3+ Kg2 76.Rb2+ Kh3
77.Rb3+ 1/2-1/2

**Irwin Rothschild (IL) (1794) -
Jim Witkowski (2023)**

1.d4 g6 2.c3 Bg7 3.Bg5 d6 4.e3
Nf6 5.Bd3 c5 6.Nd2 Nbd7 7.f4

b6 8.Ngf3 Bb7 9.0-0 0-0 10.Qc2
Nd5 11.Rae1 h5 12.Bh4 f5
13.Bg3 Qe8 14.e4 fxe4 15.Bxe4
N7f6 16.Bxg6 Qc6 17.Nh4 Ng4
18.Bh7+ Kh8 19.Ng6+ Kxh7
20.Nxe7+ Kh8 21.Nxc6 Bxc6
22.Qg6 Nde3 23.Nf3 Rae8 24.Nh4
cxd4 25.Qxd6 Be4 26.Ng6+ Kg8
27.Nxf8 Bxf8 28.Qd7 dxc3
29.Qxe8 1-0

**Al Loooff (IL) (1854) - Glenn
Gratz (IL) (2088)**

1.e4 c5 2.d3 Nc6 3.Nf3 e5 4.g3
d6 5.Bg2 Be7 6.c3 Bg4 7.Nbd2
Qd7 8.Qc2 Nf6 9.0-0 h5 10.h4
Bh3 11.Re1 Bxg2 12.Kxg2 0-0-0
13.b4! Nh7 14.b5 Nb8 15.Nc4
Rd9 16.Qa4 b6 17.d4 f6 18.Qb3
g5 19.dxc5 bxc5 20.b6 a6
21.Rb1 gxh4 22.Nxh4 Ng5 23.Nf5
Kd8 24.Bxg5 Rxg5 25.Nce3 h4
26.Rh1 Qb7 27.Qd5 Qxd5 28.Nxd5
Nc6 29.b7 Rxf5 30.b8=+ 1-0

ROUND 6

IM Jim Rizzitano (2501) -

Peter Pelts (IL) (2364)

1.e4 c5 2.Nf3 d6 3.d4 cxd4
4.Nxd4 Nf6 5.Nc3 a6 6.Bg5 e6
7.f4 Qb6 8.Qd2 Qxb2 9.Nb3 Nc6
10.Bd3 Qa3 11.0-0 Be7 12.Rf3
h6 13.Bxf6 Bxf6 14.e5 dxe5
15.f5 Bg5 16.Qf2 exf5 17.Bxf5
Bxf5 18.Rxf5 0-0 19.Rf1 Bf4
20.g3 Ne7 21.Rh5 Qb4 22.Qf3
Rac8 23.Me4 f5 24.gxf4 fxe4
25.Qg4 Qb6+ 26.Kh1 Qg6 27.Qh3
e3 28.Rxe5 Qc6+ 29.Kg1 Ng6
30.Re6 Qxc2 31.Qxe3 Rc3 32.Qe4
Qxe4 33.Rxe4 Rc2 34.e4 b5
35.axb5 axb5 36.f5 Rc4 37.Nd4
Ne7 38.Rxe7 Rxd4 39.Re5 Rg4+
40.Kh1 Rb8 41.Rd1 b4 42.Rdd5
Kf7 43.Rb5 Rxb5 44.Rxb5 Kf6
45.h3 Rc4 46.Kg2 Rc2+ 47.Kf3
Rc4 48.Rb7 h5 49.Rb5 Rc3+
50.Ke4 Rxb3 51.Rb6+ Kf7
52.Rb7+ Kg8 53.Kf4 Rb3 54.Kg5
h4 55.Kxh4 Rb1 56.Kg5 b3
57.Kg6 Rg1+ 58.Kh5 Rb1 59.Kg6
Kf8 60.Rb8+ Ke7 61.Rb7+
1/2-1/2

FM Albert Chow (IL) (2440) -

Erik Ronneberg (IL) (2225)

1.c4 g6 2.d4 Nf6 3.Nc3 Bg7
4.e4 d6 5.f3 0-0 6.Be3 e5 7.d5
c6 8.Qd2 cxd5 9.cxd5 Nbd7
10.Bd3 Nh5 11.Nge2 f5 12.exf5
gxf5 13.0-0 Ndf6 14.Kh1 Bd7
15.Nb5 e4 16.Bc4 Qe7 17.Nxa7
exf3 18.gxf3 b5 19.Nxb5 Rac8
20.Bd3 Nxd5 21.Bh6 Bxh6
22.Qxh6 Nhf6 23.Rg1+ Kh8

24.Nxd6 Rc6 25.Nxf5 Bxf5
26.Bxf5 Ne3 27.Rg5 Nfd5 28.Qh5
Nf6 29.Qh6 Nfd5 30.Qxc6 Qxg5
31.Bh3 Qh4 32.Qd6 Rxf3 33.Qb8+
Kg7 34.Rg1+ Kh6 35.Qd6+ Rf6
36.Qg3 Qe4+ 37.Bg2 Nxxg2
38.Qxg2 Qxg2+ 39.Kxg2 Ne3+
40.Kg3 Rb6 41.b3 Ra6 42.Kf3
Nc2 43.a4 Rb6 44.Rb1 Na3 1-0

**Joel Weisblat (2206) - Howard
Cohen (IL) (1956)**

1.d4 Nf6 2.c4 g6 3.Nc3 d5
4.cxd5 Nxd5 5.e4 Nxc3 6.bxc3
c5 7.Bc4 Bg7 8.Ne2 Nc6 9.Be3
cxd4 10.cxd4 Qa5+ 11.Bd2 Qd8
12.Be3 Qa5+ 13.Bd2 Qd8 14.Bc3
0-0 15.Qd2 Qc7 16.Bd3 Rd8
17.Rc1 Qd6 18.d5 Ne5 19.f4
Nxd3+ 20.Qxd3 Qa3 21.Qd2 Qa4
22.Bxg7 Kxg7 23.Qc3+ f6 24.Nd4
Bd7 25.0-0 Rdc8 26.Qb2 b5
27.e5 Rc4 28.Rxc4 Qxc4 29.d6
exd6 30.exf6+ Kf7 31.f5! b4
32.fxg6+ hxg6 33.Rc1 Qc3
34.Nf3 Qe3+ 35.Kh1 Re8 36.h4
Rh8 37.Rc4 g5 38.Nxg5+ Qxg5
39.Qf2 Qa5 40.Qg3 Rh7 41.Qxd6
Kg8 42.Qb8+ Kf7 43.Qd6 Kg8
44.Qg3+ Kf7 45.Re4 Be6 46.Rxe6
Kxe6 47.Qg4+ Qf5 48.Qc4+ Kxf6
49.Qd4+ Qe5 50.Qd8+ Kg6
51.Qd3+ Qf5 52.Qd6+ Kh5 53.Qd4
Qe2 54.Qf4 Qg4 55.Qe5+ Kxh4
56.Qh2+ Kg5 57.Qxh7 Qh4+
58.Qxh4+ Kxh4 59.Kg1 a5 60.Kf2
a4 61.Ke3 b3 62.axb3 a3 0-1

ROUND 7

**Peter Pelts (IL) (2375) - Gata
Kamsky (2526)**

1.Nf3 Nf6 2.d4 d5 3.g3 c6
4.Bg2 g6 5.0-0 Bg7 6.c4 0-0
7.Qb3 Qb6 8.Nc3 Be6 9.Qxb6
axb6 10.Ng5 dxc4 11.Nxe6 fxe6
12.Bh3 Kf7 13.e4 Nbd7 14.Be3
b5 15.a3 Nb6 16.d5 Nbxcd5
17.exd5 exd5 18.Bd4 Nh5
19.Bxg7 Nxxg7 20.Rfe1 e6
21.Rad1 Rad8 22.f4 h6 23.Ne2
Nf5 24.Bxf5 exf5 25.Nd4 Rfe8
26.Re5 Ra8 27.Rde1 Rxe5
28.fxe5 h5 29.Kf2 c3 30.bxc3
Rxa3 31.Re3 Ra2+ 32.Kf3 Ra4
33.Ne2 Re4 34.Rxe4 dxe4+
35.Kf4 c5 36.h4 Ke6 37.Nc1 b6
38.Ne2 Kd5 39.Nc1 Ke6 40.Ne2
Kd5 41.Nc1 1/2-1/2

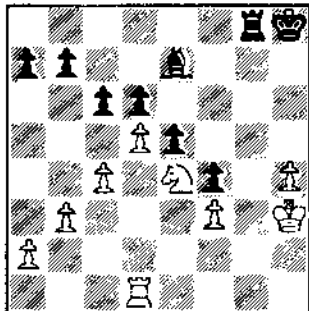
**Denis Allan (2319) - FM Albert
Chow (IL) (2418)**

1.d4 e6 2.Nf3 Nf6 3.Bg5 c5
4.e3 h6 5.Bh4 cxd4 6.exd4 b6
7.Bd3 Bb7 8.0-0 Be7 9.c4 0-0

10.Nc3 d5 11.Bxf6 Bxf6 12.cxd5
 exd5 13.Re1 Nc6 14.Bc2 Qd6
 15.a3 Na5 16.Ne5 g6 17.Qf3 Bg7
 18.Rad1 Red8 19.Nb5 Qb8 20.Qd3
 a6 21.Nc3 b5 22.Qh3 Qd6 23.b3
 Bc8 24.Qf3 Bb7 25.a4 b4 26.Na2
 Rc8 27.Qd3 Nc6 28.Nxc6 Rxc6
 29.Re2 Rfc8 30.Rde1 Kh7 31.Bb1
 a5 32.Re7 Ba6 33.Qf3 Qxe7! 0-1

GM Dmitry Gurevich (IL) (2678) - Dan Vasto (IL) (2212)
 1.d4 Nf6 2.c4 c5 3.d5 b5 4.f3
 b4 5.e4 d6 6.a3 Qa5 7.Be3 g6
 8.Nd2 Bg7 9.Nb3 Qe4 10.Bd3
 Nbd7 11.Ne2 Ne5 12.O-O O-O
 13.Ng3 Rb8 14.Be2 bxa3 15.Rxa3
 Qb4 16.Qc2 Ne8 17.f4 Ng4
 18.Bd2 Qb6 19.h3 Ngf6 20.Ba5
 Qb7 21.Bc3 e6 22.Na5 Qc7
 23.Nc6 Ra8 24.Rfa1 a6 25.Bf3
 Kh8 26.e5 Ng8 27.Ne4 Bb7
 28.exd6 Nxd6 29.Ba5 Qd7
 30.Nxc5 Qd8 31.Nxb7 Nxb7
 32.Bb4 Re8 33.d6 Nf6 34.Ne5
 Kg8 35.c5 1-0

FM Greg Defotis (IL) (2410) - Peter Yu (2223)
 1.d4 Nf6 2.g3 g6 3.Bg2 Bg7
 4.c4 O-O 5.Nc3 d6 6.e4 Nc6
 7.Nge2 e5 8.c5 Nd4 9.O-O Re8
 10.Bg5 h6 11.Be3 Nxe2+ 12.Qxe2
 Ng4 13.Bd2 f5 14.Bh3 Nf6
 15.Kg2 Nh7 16.exf5 gxf5 17.Qh5
 Ng5 18.Bxg5 hxg5 19.g4 Rf8
 20.gxf5 Bxf5 21.f3 Bxh3+
 22.Qxh3 Rf4 23.Qe6+ Kh8
 24.Rae1 Qe8 25.Qxe8+ Rxe8
 26.Re4 Ref8 27.Ne2 R4f5 28.b3
 c6 29.h3 Rc8 30.Rd1 Bf8 31.Ng3
 Rf4 32.Rxf4 gxf4 33.Ne4 Rd8
 34.h4 Be7 35.Kh3 Rg8

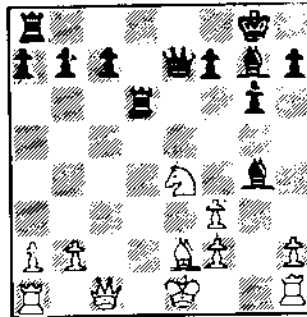


36.c5
 cxd5 37.cxd6 Bxh4 38.Rxc5 Bd8
 39.Rxe5 Kh7 40.Re7+ 1-0

FM Morris Giles (IL) (2475) -

David Southam (2221)
 1.e4 e6 2.d4 d5 3.Nc3 Bb4 4.e5
 Ne7 5.a3 Bxc3+ 6.bxc3 c5 7.Nf3
 Qa5 8.Bd2 Bd7 9.a4 c4 10.Ng5
 h6 11.Nh3 Bxe4 12.Nf4 g6 13.g3
 Na6 14.Qc1 b5 15.Bh3 Nc7
 16.O-O Qb6 17.Ra2 Qc6 18.Qa1
 O-O-O 19.Bc1 Rdg8 20.Ba3 Kd7
 21.Bc5 Nc8 22.Ng2 a5 23.Ne3 h5
 24.Bg2 Ne6 25.Nxc4 Nxc5
 26.dxc5 Qxc5 27.Nxa5 Ke7
 28.Nb3 Bxb3 29.cxb3 Kf8 30.Re1
 h4 31.b4 Qe7 32.Ra5 hxg3
 33.hxg3 Rh5 34.Rxb5 Kg7 35.Qa6
 Qg5 36.Rc5 Ne7 37.Rc7 Rgh8
 38.Qa7 Rh2 39.Rxe7 Qf5 40.Qd6
 Rxg2+ 41.Kxg2 Qh3+ 42.Kf3 Rh5
 43.Ra7 Rf5+ 44.Ke2 Qg2 45.Qe3
 g5 46.Raa1 d4 47.cxd4 Qc6
 48.Ra5 Qc4+ 49.Kd1 g4 50.Rh1
 Qc6 51.Qh6+ 1-0

Bruce Gardner (IL) (2350) - Greg Bungo (IL) (2179)
 1.c4 g6 2.Nc3 Bg7 3.d4 Nf6
 4.e4 d6 5.Be2 O-O 6.Be3 e5
 7.c5 exd4 8.Bxd4 Nc6 9.Bxf6
 Qxf6 10.cxd6 Rd8 11.Nf3 Rxd6
 12.Qc1 Bg4 13.e5 Nxe5 14.Ne4
 Nxf3+ 15.gxf3 Qe7

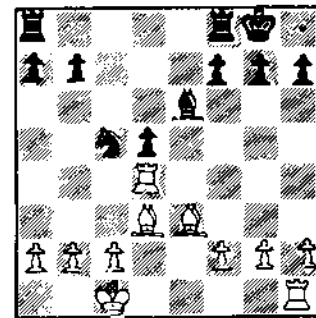


16.Qf4 Rd4
 17.Qxg4 f5 18.Qg3 Qb4+ 19.Kf1
 Qxb2 20.Rd1 Be5 21.Qh3 Re8
 22.Ng5 h5 23.f4 Bxf4 24.Rxd4
 Qxe2+ 25.Kg2 Bxg5 26.Qb3+ Kf8
 27.Rf1 Re3 28.Qxb7 Re4 29.Rxe4
 fx4 30.Qc8+ Kg7 31.Qxc7+ Kh6
 32.Qc8 Bf4 33.h4 Qf3+ 34.Kg1
 Be5 35.Qe6 Bd4 36.Qd6 Qg4+
 37.Kh1 Qxh4+ 38.Qh2 Qxh2+
 39.Kxh2 Kg5 40.Kg2 Kf4 41.Rh1
 Bf6 42.Rc1 g5 43.Rc5 g4 44.Ra5
 h4 45.Rxa7 h3+ 46.Kh2 Bh4
 47.Rf7+ Ke5 48.a4 Ke6 49.Rf4
 Bg5 50.Rxg4 Kf5 51.Kxh3 Bd2
 52.Rg8 Kf4 53.Rf8+ Ke5 54.Kg4
 Kd4 1-0

FM Eugene Martinovsky (IL)

(2429) - John Burke (IL) (2226)
 1.d4 Nf6 2.Nf3 e6 3.c4
 c5 4.Nc3 cxd4 5.Nxd4 Nc6 6.e3
 Bb4 7.Qc2 O-O 8.a3 Bxc3+
 9.Qxc3 Ne4 10.Nxc6 bxc6 11.Qc2
 f5 12.Bd3 Qh4 13.g3 Qf6 14.O-O
 a5 15.Rb1 a4 16.c5 Qe7 17.Bxe4
 fx4 18.Qxe4 Ba6 19.Rd1 Be2
 20.Rd6 Bf3 21.Qd4 e5 22.Qh4
 Qf7 23.Bd2 Bd5 24.f4 Qf5
 25.Re1 Qc2 26.Rxd5 cxd5 27.Bc3
 Rae8 28.Qh5 exf4 29.Qxd5+ Kh8
 30.Qxd7 Qg6 31.exf4 Rxe1+
 32.Bxe1 Qe4 33.Bc3 Qe3+ 34.Kf1
 Qf3+ 35.Ke1 Qh1+ 36.Kf2 Qxh2+
 37.Kf3 Qh5+ 38.Qg4 Qd5+ 39.Ke2
 Qc4+ 40.Ke1 Re8+ 41.Kd2 Rd8+
 42.Kc2 Qd3+ 43.Kc1 Qf1+ 44.Kc2
 Qf2+ 45.Kc1 Qe3+ 46.Kc2 Qe4+
 47.Kc1 Qh1+ 48.Kc2 Qg2+ 49.Kc1
 Qf1+ 50.Kc2 Qd3+ 51.Kc1 Qe3+
 1/2-1/2

Erik Karklina (IL) (2191) - Bruce Leverett (2394)
 1.e4 e5 2.Nf3 d6 3.d4 Nf6
 4.dxe5 Nxe4 5.Qd5 Nc6 6.exd6
 Qxd6 7.Nc3 Be6 8.Qxd6 Bxd6
 9.Nb5 Nc6 10.Nxd6+ cxd6 11.Be3
 O-O 12.O-O-O Ne4 13.Nd4 Nxd4
 14.Rxd4 d5 15.Bd3 Nc5



16.Bxh7+
 Kxh7 17.Rh4+ Kg8 18.Bxc5 Rfc8
 19.Bd4 Bf5 20.c3 Re8 21.Kd2 e6
 22.Re1 f6 23.Rf4 Rxe1 24.Kxe1
 Re8+ 25.Kd2 Be4 26.f3 Bb1
 27.a3 Ba2 28.Be3 b5 29.a4 Bc4
 30.a5 Kf7 31.h4 Rh8 32.Rg4 Rh5
 33.Ke1 Rh8 34.Kf2 Rh5 35.Rd4
 Rh8 36.Kg3 Re8 37.Kf2 Rh8
 38.g3 Rh5 39.Rd1 g5 40.Rh1 Kg6
 41.Bc5 f5 42.Re1 gxf4 43.gxf4
 b4 44.Bxb4 Rxf4 45.Kg3 Rh8
 46.Re6+ Kf7 47.Re7+ Kf6 48.Rd7
 Re8 49.Kf4 Re2 50.Rd6+ Re6
 51.Rb6 Bb5 52.Bd6 Bd3 53.Be5+
 Ke7 54.Rb7+ Ke8 55.b3 Rc6
 56.Ke3 Bc2 57.Kd4 Bd1 58.f4

Bf3 59.Rb8+ Kd7 60.c4 dxc4
61.bxc4 Be4 62.c5 Rg6 63.Bd6
Rg3 64.Rb6 Rd3+ 65.Ke5 Rd5+
66.Kf6 Bd3 67.Be5 Bb5 68.c6+
Bxc6 69.Rxa6 Bb5 70.Ra7+ Kc8
71.Kxf5 Rd7 72.Ra8+ Kb7
73.Rb8+ Ka6 74.Bc3 Bd3+ 75.Ke6
Rc7 76.Rb6+ Ka7 77.Bb4 Be4
78.Ke5 Bb7 79.f5 Bc6 80.Kd6
Rf7 81.Rxc6 Rxf5 82.Bc5+ Ka8
83.Kd7 Rf7+ 84.Be7 Rh7 85.a6
Rh8 86.Ke6 Rg8 87.Kd5 Rh8
88.Bc5 Rg8 89.Kc4 Rh8 90.Kb5
Rb8+ 91.Ka5 Rh8 1/2-1/2

**Ray Satterloe (IL) (2147) -
Jim McNamara (IL) (1976)**
1.e4 c5 2.Nf3 Nc6 3.d4 cxd4
4.Nxd4 g6 5.Nc3 Bg7 6.Be3 Nf6
7.Nxc6 bxc6 8.e5 Nd5 9.Nxd5
cxd5 10.Qxd5 Rb8 11.Bc4 0-0
12.0-0 Bb7 13.Qd4 Qc7 14.f4 d6
15.Bb3 dxe5 16.Qxa7 exf4
17.Bxf4 Qc6 18.Rf2 Bxb2 19.Rd1
Rbd8 20.Rd3 Rxd3 21.cxd3 Bf6
22.Rc2 Qd7 23.Be3 Rc8 24.Rxc8+
Qxc8 25.Qc5 Qg4 26.Qc2 Be5
27.Qf2 e6 28.h3 Qh5 29.d4 Bd6
30.Qf6 Qe2 31.Bf2 Qe4 32.Qf3
Qb1+ 33.Qd1 Qf5 34.Qd2 Qe4
35.Be3 Qb1+ 36.Qc1 Qe4 37.Qd2
Bb4 38.Qf2 Qb1+ 39.Qf1 Qe4
40.Qf2 Qb1+ 41.Qf1 Qe4 42.Qf2
1/2-1/2

Now for the game that "Lucky"
Losoff tried to keep out of
the ICB (and Schiller thought
my win against Chow was
cheap!)

**Al Losoff (IL) (1874) - Bob
Bain (IL) (2176)**
1.e4 e6 2.d3 d5 3.Nd2 Nf6
4.Ngf3 b6 5.g3 Bb7 6.Bg2 dxe4
7.Ng5 Nc6 8.Ndxe4 Re8 9.0-0
0-0 10.Re1 Na5 11.c3 c5 12.d4
cxd4 13.b4 Nc6 14.b5 Na5
15.cxd4 Bd5 16.Qc2 Rc8??
17.Nxf6+ 1-0

ROUND 8

**IM Alexander Fishbein (2590) -
FM Greg Defotie (IL) (2410)**
1.e4 c5 2.Nf3 d6 3.d4 cxd4
4.Nxd4 Nf6 5.Nc3 a6 6.Be2 e5
7.Nb3 Be7 8.0-0 0-0 9.Be3 Be6
10.Qd3 Nc6 11.Rfd1 Rc8 12.a3
g6 13.Bh6 Re8 14.Bg5 Kg7
15.Bxf6+ Bxf6 16.Nd5 Bg5 17.g3
Ne7 18.Nc3 Rc6 19.a4 Qc7 20.h4
Bh6 21.a5 Rd8 22.Qf3 f5 23.Bd3
d5 24.exd5 Nxd5 25.Bxf5 Nxc3
26.Rxd8 Bxf5 27.Rad1 Nxd1

28.Qxd1 Rxc2 29.Re8 Kf7 30.Re8
Qd7 31.Qe1 Qb5 32.g4 Bxg4 0-1

**Lawrence Chachere (IL) (2375) -
GM Dmitry Gurevich (IL)
(2678)**
1.d4 Nf6 2.Nf3 e6 3.Bf4 b6
4.e3 Bb7 5.h3 c5 6.Bd3 cxd4
7.exd4 Be7 8.c3 0-0 9.0-0 d6
10.Qe2 Nbd7 11.Nbd2 Re8
12.Rfe1 Nf8 13.Bb5 N8d7 14.Ng5
Bf8 15.Nde4 h6 16.Nxf6+ Nxf6
17.Bxe8 hxg5 18.Bxf7+ Kxf7
19.Qxe6+ Kg6 20.Bxg5 Kxg5
21.f4+ Kg6 22.f5+ Kh7 23.Qf7
Bd5 24.Qg6+ Kg8 25.Re3 Qd7
26.Rae1 Bxa2 27.h4 Bd5 28.Qg5
Qf7 29.g4 Rc8 30.Qf4 Ba8
31.Rg3 Qd5 32.Kh2 Ne4 (0-1, 43
moves)

ROUND 9

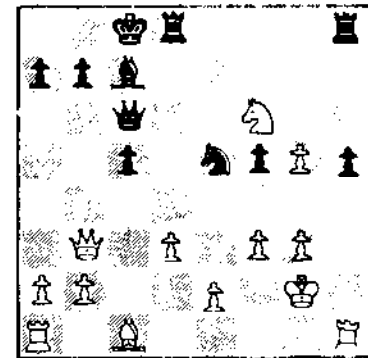
**Glenn Panner (IL) (1860) -
Luis Bernal (IL) (2027)**
1.d4 g6 2.c4 Bg7 3.e4 d6 4.Nc3
c6 5.Be2 Nd7 6.Nf3 a6 7.0-0
Ngf6 8.Rb1 0-0 9.b4 c5 10.bxc5
dxc5 11.d5 Ng4 12.Bb2 Qc7
13.h3 Nh6 14.Na4 Rb8 15.Bxg7
Kxg7 16.Nd2 Nf6 17.f4 Bd7
18.e5 Nh5 19.Bxh5 Bxa4 20.Qxa4
gxh5 21.Qc2 Qd7 22.Rb6 Nf5
23.Qc3 Nd4 24.Qd3 Rg8 25.Nf3
Kf8 26.Nxd4 cxd4 27.Rf3 Qa4
28.a3 Qa5 29.Qxd4 Qe1+ 30.Kh2
Qe2 31.Rf2 Qe1 32.c5 h4 33.c6
Rg3 34.c7 Ra8 35.d6 exd6
36.exd6 1-0

**K.A.Czerniecki (IL) (2157) -
Daniel Shapiro (2327)**
1.e4 e5 2.Nf3 Nc6 3.Bc4 Bc5
4.0-0 Nf6 5.d4 Bxd4 6.Nxd4
Nxd4 7.f4 Nc6 8.Bxf7+ Kxf7
9.fxe5 Nxe5 10.Qd5+ Ke8
11.Qxe5+ Qe7 12.Qxc7 Nxe4
13.Nc3 Qc5+ 14.Qxc5 Nxc5
15.Nb5 Ne6 16.Bf4 d5 17.Rae1
Kd8 18.Rd1 Nxf4 19.Rxf4 Be6
20.c4 Re8 21.Nd6 Re7 22.Rf8+
Kd7 23.Rxa8 Kxd6 24.cxd5 Bg4
25.Rd2 a6 26.Rd8+ Bd7 27.Rb8
Bb5 28.Rd8+ Bd7 29.b3 Rf7
30.h3 Kc7 31.Rh8 h6 32.Rg8 Kd6
33.a4 Kc5 34.Rb8 b5 35.Rb7
bxa4 36.bxa4 a5 37.d6 Kc4
38.Rc7+ Kb3 39.Rd4 Ka3 40.Ra7
Kb3 41.Rxa5 Kc3 42.Rdd5 Kb4
43.Ra7 1-0

**Albert Sandrin (IL) (2200) -
Dan Bergerstock (IL) (1818)**
1.c4 Nf6 2.Nc3 e6 3.d4 Bb4
4.e3 0-0 5.b3 c5 6.Nge2 d5

7.cxd5 cxd4 8.exd4 Nxd5 9.0-0
Nf6 10.h3 Nbd7 11.a3 Be7
12.Bf4 a6 13.Rc1 Nb6 14.Qb3
Nbd5 15.Be5 b5 16.Ne4 Bb7
17.Nc5 Bxc5 18.dxc5 Rc8 19.a4
Nd7 20.Bd6 Qg5 21.c6 Rxc6
22.Rxc6 Bxc6 23.f4 Nxf4
24.Nxf4 Rd8 25.axb5 Ba8 26.Qb4
e5 27.Be7 Qg3 28.Bxd8 exf4
29.Qd2 Ne5 30.Rxf41 Nxd3
31.Rg4 Qd6 32.Qc3 Qxd8
33.Qxg7+ 1-0

**FM Albert Chow (IL) (2418) -
Scott Zingheim (IL) (2304)**
1.c4 Nf6 2.Nf3 c5 3.g3 d5
4.Bg2 Nc6 5.0-0 e5 6.Qa4 Bd7
7.cxd5 Nxd5 8.Nxe5 Nxe5 9.Qe4
Bd6 10.Qxd5 Bc6 11.Qb3 Bxg2
12.Kxg2 h5 13.h4 Qd7 14.d3
0-0-0 15.Nc3 f6 16.Ne4 Bc7
17.f3 Qc6 18.Rh1 g5 19.hxg5 f5
20.Nf6



Rxd3! 21.Qxd3 Nxd3
22.exd3 Qd6 23.Bf4 Qxd3
24.Bxc7 Kxc7 25.Rxh5 Qe2+
26.Kh3 Rd8 27.Rh7+ Kc8 28.g6
Qxb2 29.Re1 Qxf6 30.Ree7 Qc6
31.Kg2 Rd2+ 32.Kg1 c4 33.Rh8+
Rd8 34.Rxd8+ Kxd8 35.g7 Qg6
36.Rxb7 Qxg3+ 37.Kf1 Qxf3+
38.Ke1 Qxb7 39.g8=Q+ Kc7
40.Qxc4+ Qc6 41.Qf7+ Qd7
42.Qc4+ Kd8 43.Qa6 Ke7 44.Kf2
Qc7 45.a4 Qb6+ 0-1

**Charles Maddigan (2399) -
Roger Martin (IL) (2276)**
1.c4 Nf6 2.Nc3 g6 3.g3 d6
4.Bg2 Bg7 5.e4 c5 6.Nge2 Nc6
7.0-0 0-0 8.d3 a6 9.h3 Rb8
10.a4 Bd7 11.Be3 e5 12.f4 Nd4
13.g4 exf4 14.Bxf4 Ne8 15.Nd5
Ne6 16.Bc1 b5 17.cxb5 axb5
18.a5 Bc6 19.Nb6 N8c7 20.Nc3
b4 21.Ncd5 Nd4 22.Nxc7 Qxc7
23.Bf4 Ne6 24.Bc1 Rb7 25.Ra2
Ra7 26.b3 Rb8 27.Qc2 Nd4
28.Qb1 Nb5 29.Bb2 Nc3 30.Bxc3

MIDWEST GUARDS 6

Table with columns: PLAYER, ST, PRE RTNG, POST RTNG, and TOT. Rows include BINGAMAN, JR ALBER PA, BURNETT, RONALD WA TN, WISEMAN, MICHAEL D IN, and SHANNON, PAUL D CA.

Table with columns: PLAYER, ST, PRE RTNG, POST RTNG, and TOT. Rows include WERTINGER, JOHN M IN, CLICK, RUSSELL G NY, COLLINS, CHARLES NJ, and FINEBERG, THOMAS A IL.

MIDWEST GUARDS 7

Table with columns: PLAYER, ST, PRE RTNG, POST RTNG, and TOT. Rows include JURJEVICH, JOSEPH AL, MONTGOMERY, JR PAR CA, MORGUEST, STEPHEN SD, and INMAN, BRENT H AL.

Table with columns: PLAYER, ST, PRE RTNG, POST RTNG, and TOT. Rows include MEYERSON, WAYNE FL, SCOTT, GORDON E MS, SWANWELL, GARY DEE KS, and SPITZER, RICHARD WA.

MIDWEST GUARDS 8

Table with columns: PLAYER, ST, PRE RTNG, POST RTNG, and TOT. Rows include SELTZER, ROBERT A MA, SNOW, ROBERT A FL, BOTH, ROBERT K WI, and TAKEMOTO, NAOKO SD.

Table with columns: PLAYER, ST, PRE RTNG, POST RTNG, and TOT. Rows include BOWMAN, RALPH E MS, FOX, GARY J IN, COOH, HOWARD W RI, and KITTISLEY, SCOTT L WI.

MIDWEST GUARDS 9

Table with columns: PLAYER, ST, PRE RTNG, POST RTNG, and TOT. Rows include CHEN, HARRY S VA, GOLDSTEIN, SETH MN, WENZ, WILLIAM M WI, and PEARLE, ALLEN J MO.

Table with columns: PLAYER, ST, PRE RTNG, POST RTNG, and TOT. Rows include SHARPER, TOM KS, BORTMAN, BORIS KS, KOKS, ROSEMARY J CA, and EVERS, THOMAS E IN.

MIDWEST GUARDS 10

Table with columns: PLAYER, ST, PRE RTNG, POST RTNG, and TOT. Rows include LA FRANK, ARTHUR IN, OLSEN, ROBERT NJ, WATSON, BRADLEY S IN, and CALTON, BILL J WI.

Table with columns: PLAYER, ST, PRE RTNG, POST RTNG, and TOT. Rows include HAMMOND, NYLIE E SD, BORTMAN, GEORGE KS, CALTON, BILL MI, and MOORE, A D IL.

MIDWEST GUARDS 11

Table with columns: PLAYER, ST, PRE RTNG, POST RTNG, and TOT. Rows include CLINGER, TIM MO, BELLETTI, PHILIP S MI, WALSH, JOHN ROBERT J IL, and DOREFF, ARTHUR B IL.

Table with columns: PLAYER, ST, PRE RTNG, POST RTNG, and TOT. Rows include CLINGER, TIM MO, BELLETTI, PHILIP S MI, WALSH, JOHN ROBERT J IL, and DOREFF, ARTHUR B IL.

INDY CITY CHAMPION

ROSEMONT

START DATE: 09/10/89 END DATE: 08/10/90

AFFILIATE: R5028582 FEDERATION CHESS CLUB 186 ROUTE 9W

NEW WINDSOR, NY 12550

WITH PARTICULARS COMPARATIVE

ROSEMONT

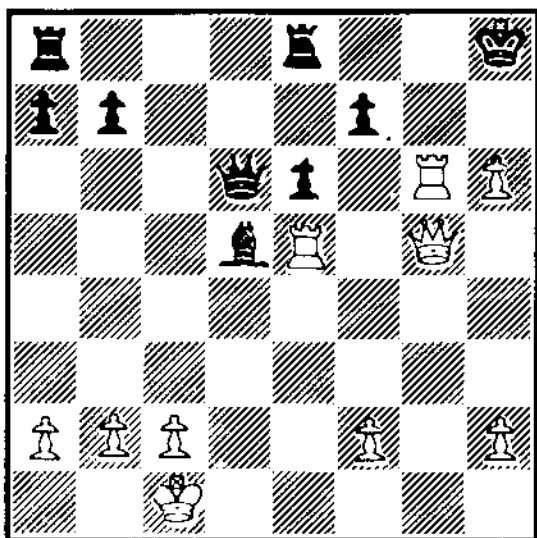
START DATE: 09/10/89 END DATE: 08/09/90

AFFILIATE: R5028582 FEDERATION CHESS CLUB 186 ROUTE 9W

NEW WINDSOR, NY 12550

Large table with columns: PLAYER, ST, PRE RTNG, POST RTNG, and TOT. Lists 36 players including MAGERANU, BELAN NY, BISBUTER, ARTHUR B NY, BRAWNSCOMBE, TOM MD, etc.

Table with columns: PLAYER, ST, PRE RTNG, POST RTNG, and TOT. Lists 25 players including WDJTKIEWICZ, ALEK IL, BURNETT, RONALD WA TN, WISLMAN, MICHAEL D IN, etc.



The above position is from an early round of the U.S. Open-- J. Hitselberger (2094) vs. our own Morris Giles (2475). What is Black's best move?

1989 DENVER TMT.

CHICAGO

START DATE: 08/06/89 END DATE: 08/10/89

AFFILIATE:

PLAYER	ST	PRE RTNG	POST RTNG	POST					TOT
				1	2	3	4	5	
1 KRARI, JESSE	NM	2186	2212	W12	W-9	W-4	W10	D-6	4.5
2 FULLMAN, JASON	MA	2156	2159	L29	W25	W22	W12	W11	4.0
3 KARASIK, VLADIMIR	CO	2147	2166	W18	W27	D11	D-6	W-9	4.0
4 PHILLIPS, JEFF	UT	2079	2107	W25	W29	L-1	W21	W10	4.0
5 SCHUYLER, JAMES	NY	2029	2032	W20	W21	F--	D11	W17	3.5
6 KARLAN, LAEL L	DC	2138	2141	D22	W-7	W13	D-3	D-1	3.5
7 MITCHELL, R D	TN	2086	2091	D28	L-6	W32	W14	W15	3.5
8 HAMILTON, SAM	OR	2094	2067	W23	L11	D18	D13	X--	3.0
9 SAILER, MIKE	ND	2058	2067	W33	L-1	W29	W16	L-3	3.0
10 GILNER, MICHAEL	GA	2035	2017	W19	X--	X--	L-1	L-4	3.0
11 MILLER, DANIEL J	AL	1993	2026	W14	W-8	D-3	D-5	L-2	3.0
12 ARWATER, PAUL	NE	1953	1983	L-1	W33	X--	L-2	W24	3.0
13 CARTER, MATT	CA	1871	1932	D16	W20	L-6	D-8	W21	3.0
14 HAMMOND, KYLE E	SD	1571	1628	L11	B--	W27	L-7	W25	3.0
15 ADAMSON, ROBBY	AZ	2280	2244	D26	W32	D16	D17	L-7	2.5
16 SIMONS, DAVID A	MD	2103	2084	D13	W26	D15	L-9	D18	2.5
17 YU, HENRY V	IN	2032	2017	L24	W19	X--	D15	L-5	2.5
18 GANDY, TED	PA	1741	1958	L-3	W30	D-8	D26	D16	2.5
19 GREEN, CHARLES J	CT	1735	1765	L10	L17	W31	D22	W29	2.5
20 MOJIZON, III HAROLD	VA	2110	2089	L-5	L13	W28	F--	W30	2.0
21 MC KENNA, ALEX	NJ	2030	2006	W31	L-5	W24	L-4	L13	2.0
22 VTELE, JAMES V	KY	1960	1967	D-6	D26	L-2	D19	D25	2.0
23 LANGRICK, TED	OH	1933	1930	L-8	W31	F--	W32	F--	2.0
24 STANCIU, KIMANI	MD	1813	1822	W17	F--	L21	X--	L12	2.0
25 JAKUBOWSKY, JEFF	MN	1802	1826	L-4	L-3	W33	D27	D22	2.0
26 MC MANUS, ANDY	CA	2128	2099	D15	D22	F--	D16	L14	1.5
27 WYBODZI, JASON RAY	MI	2088	2035	W30	L-3	L14	D25	F--	1.5
28 REINA, CARLOS W	NC	1893	1897	D-7	L16	L20	W33	F--	1.5
29 PATON, JONATHAN	IL	1866	1885	W-2	L-4	L-9	D30	L19	1.5
30 HENRIANO, WILLIAM L	FL	1555	1561	L27	L18	B--	D29	L20	1.5
31 KHALANO, DAVID N	KS	1512	1496	L21	L23	L19	B--	D32	1.5
32 IN HARR, DAVID	WI	1369	1392	B--	L15	L-7	L23	D31	1.5
33 FRALEY, GEORGE F	TX	1767	1730	L-9	L12	L25	L26	B--	1.0

JANUARY 20-21, 1990

TIM JUST

WINTER OPEN/RESERVE VII

A COLLEGE OF LAKE COUNTY EVENT

\$1700 IN PRIZES

17

ICA BOARD MEETING MINUTES (Abridged)

The ICA board met on October 22, 1989, at the Morgan Park Methodist Church. Present were H. Warren, F. Gruenberg, G. Scott, A. Losoff, H. Winston, T. Barre, K. Marshall, T. Fineberg, B. Naff, B. Smythe, L. Cohen, J. Condron, Angelo Sandrin, and J. Warren; W. Brock and D. Verber were observers.

OLD BUSINESS: Treasurer Al Losoff's financial reports were accepted unanimously. Year-to-date income for the nine months ended 9/30/89 came to \$10,320; expenditures for the same period totalled \$8,459. Therefore, the year-to-date "profit" is \$1,861. Paid membership currently stands at 525. Metro VP Fred Gruenberg and Downstate VP Garrett Scott reminded tournament organizers that they should contact the tournament clearinghouses before scheduling events. Ken Marshall reported on his last issue as ICB editor and was given a warm round of applause for his work; Bill Brock was introduced as the new ICB editor. President Helen Warren reported that the ICA is applying to the USCF for \$1,669 in SASP funds; planned uses for these funds include a scholastic clinic, a membership drive, and Chess Phone. The ICA Banquet will be held in late February or early March. Bids for the Illinois Open and Illinois Class are now being accepted. Written bids and specs for the Open should be submitted to the President by 1/15/90; those for the Class should be sent by 3/15/90. The President gave a final report on the U.S. Open; she received well-deserved applause for her work in organizing the event.

NEW BUSINESS. Tim Just observed that because the ICA cannot continually rely on receiving profits from national tournaments, a modest dues increase may be necessary in the near future. Fred Gruenberg suggested that Larry Evans' chess column in the Tribune is doing little to promote the game. John Tonkinson moved that the ICB publish each budget adopted as well as a summary of the minutes of each meeting, including verbatim transcription of bylaw changes; the motion died for lack of a second. [I am planning to do this anyway--Ed.] Garrett Scott reported on his bid for the 1990 U.S. Junior. Harold Winston urged us to participate in the USCF membership drive. Larry Stilwell is reported to be organizing a schedule for the Illinois Chess League this season--contact him if you're interested. The President moved to adjourn; seconded by all present. [Minutes were submitted by ICA Secretary Tim Just.]

ILLINOIS CHESS ASSOCIATION INCOME STATEMENT (Cash Basis) FOR THE YEAR ENDED DECEMBER 31, 1988

FUND BALANCE, DECEMBER 31, 1987	<u>\$6,222.34</u>
INCOME	
Cramer Magazine Award	600.00
Illinois Class Profit	72.00
Interest	123.59
Memberships:	
Affiliates	150.00
Century Club	300.00
Gold Card	300.00
Junior	78.00
Patron	1,125.00
Regular	2,280.00
Unclassified	<u>822.00</u>
Total Memberships	5,055.00
National Open Profits	868.00
Unclassified Income	<u>1,657.65</u>
TOTAL INCOME	<u>8,376.24</u>
EXPENSES	
Chess Phone	118.54
Illinois Chess Bulletin:	
Advertising	(240.00)
Editor's Honor'm	1,200.00
Postage & Exp.	1,260.84
Printing	<u>3,987.00</u>
Total ICB	6,207.84
Illinois Open Loss	278.69
USCF Affiliation	30.00
Office Supplies	10.45
Banking & Postage	77.13
Promoting Chess	200.00
Scholastic	150.00
Illinois Chess Tour:	
Entry Fees	(211.00)
Prizes	<u>1,980.00</u>
Total Ill. Chess Tour	1,769.00
Other Tournaments	200.00
Unclassified Expenses	<u>224.01</u>
TOTAL EXPENSES	<u>9,265.66</u>
NET PROFIT (LOSS)	<u>(889.42)</u>
FUND BALANCE, DECEMBER 31, 1988	<u>\$5,332.92</u>

PRIME-TIME PLAYERS
by David Wulatin

Despite the success of the U.S. Open, a few people are disappointed that the event did not receive greater media exposure. Some thought that at least the blitz events were ideal for television coverage. However, these people ignore a fundamental aspect of chess: it's boring.

Before you bombard my new editor with nasty letters ("Dear Bill: get rid of that chess-loathing punk"), let me explain. Compared to bowling, golf, or tennis, the object of chess is not readily apparent. To simulate how a non-chess player feels watching a chess game, grab a board and have two friends alternate pushing different little stones across the board. For four hours. Catch your breath yet?

For chess to be successful on TV, it needs the right packaging. Some fundamental changes in how the game is played may be necessary:

"Move 12, white to play, one twenty-seven and thirteen left on his clock. Anderson's d-pawn takes c, Mirov recaptures, Anderson's knight takes on e5, Mirov recaptures, Anderson's knight takes on e5, Mirov recaptures with the bishop, Rd1 check by Anderson!"

"Oh, beautiful clearance by Anderson, Pat! Watch this on the chalkboard: the d-file is congested, so Anderson decides to clear it up. First with the pawns, bam! Pow! Then he's gonna come up with the knight and bonk, bonk, then check on d1."

"John, the officials are now ruling that it wasn't a check."

"What?! Boy, that sure looked like a check to me. I think they're going to have to review that one."

"Right you are, John. There's activity in the replay booth."

That's just the beginning. The players are also going to have to start showing more emotion. You can't just sit there looking like a Rodin sculpture. Tennis has the right idea:

"What the (bleep) are you talking about?!!!"

"Quiet, please, Grandmaster McEnroe."

"That pawn promoted! It reached the eighth rank! A queen came up, and everyone in the whole (bleep)ing stadium saw it but you!"

Sure beats whining about getting the black pieces three rounds in a row, doesn't it?

Finally, throw in some costumes, colorful nicknames, a little violence, and some predetermined games (what could be easier to fix than a chess game?) and the USCF could rival the WWF. No more bland tournament names like the "World Open"; it's time for . . .

CAISSAMANIA!

"Welcome back, chess fans! Vince McMahon here with Jessie "the Body" Ventura in what promises to be a most exciting tag-team match: Gorgeous Gary Kasparov and Victor "KO" Korchnoi against King Kong Karpov and Judith "the Python" Polgar!"

"Well, for once I'll agree with you, McMahon. It should be a good match. But I like Karpov and Polgar's chances in this one. If Kasparov and Korchnoi key on Karpov, they may get pounced on by the prepubescent Polgar!"

"Referee Yasser "Stud" Seirawan has rung the bell and this match is underway! Karpov and Korchnoi come out of the corner, and it's Korchnoi on the attack early, cutting into Karpov's Caro-Kann!"

"This is a surprise, McMahon! Korchnoi usually prefers a defensive game with counterplay."

"But he's going for the throat now, Jesse! Karpov's in trouble! Korchnoi may go for a cover...oh, no! Polgar has Korchnoi's family under house arrest! What a dirty trick!"

"Says you, McMahon. Brilliant stratagem by Polgar, reminiscent of the World Championship match in '78. She distracted Korchnoi long enough for Karpov to get the upper hand."

"Indeed he does, striking blow after blow to Korchnoi's center. He needs to tag out, and soon!"

"He may not get a chance, McMahon! Karpov is ruthless!"

"Wait! Karpov overextended his position! Korchnoi has counterplay! Can he make the tag! YES! Kasparov rushes in and starts a vicious kingside attack!"

"Karpov got cocky. If he doesn't tag Polgar soon...hey, what's Polgar pulling out of that sack?"

"It's her pet python, Petrosian! She's throwing it into the ring! Kasparov scampers! Polgar tags in! Another illegal maneuver!"

"You are blatantly biased, McMahon! All's fair in love and chess, I always say."

"You would, Jesse. Kasparov refuses to go near the board with Petrosian there, and he may lose on time! But here comes Korchnoi! He's clubbing the creature with a copy of the ECO! All right!"

"Oh, sure, that's not illegal, McMahon? Korchnoi never tagged in!"

"He was justified in my opinion, Jesse. Now all four chessplayers are in the ring!"

"Seirawan better take control of this match."

"He's disqualified on both sides, but these masters are still going at it! Back with more after this!"

Granted, this isn't the type of game most chess players are used to. But if you want quiet, cerebral competition, you can always watch "American Gladiators."

UMEZINWA WINS ILLINOIS TOURNAMENT OF CHAMPIONS IV

In a major upset, Chicago master George Umezirwa won the \$500 first prize at the fourth annual Illinois Tournament of Champions, held October 27-November 5, 1989, at the Chicago Chess Center. Umezirwa's wallchart rating of 2304 was the lowest in the ten-player field (average rating: 2383), and he needed a little luck in his last-round game with FIDE Master Albert Chow to stave off FM Eugene Martinovsky's bid for first. Chow came out of the opening with a big advantage, but blundered away a piece. Umezirwa was also the beneficiary of Ed Zelkind's hallucination in Round 7. Nevertheless, Umezirwa's victory was well-deserved; in fact, his 6 1/2-2 1/2 score was the best result in T of C history. His tournament strategy was perfect for a Round Robin--solid play with the Black pieces, and a ruthlessly efficient 4 1/2-1/2 score with the White. Like Korchnoi, George may be at his best when he's defending dubious positions, as in the ending of his critical eighth-round game with FM Greg DeFotis. He has also earned a reputation as a money player, having won \$10,000 in a section of the World Open a few years ago. George's performance here and his excellent results in other recent tournaments may make him Illinois' newest Senior Master.

Dr. Martinovsky had been somewhat off his game at the U.S. Open, and his rating briefly dipped below 2400. In the T of C, however, he returned to form and played the best chess of the tournament--he handed Umezirwa his only loss, and his +3 score would have been sufficient for victory in previous years. In 1989, though, it was only good enough for the \$300 second prize. In the final round, the Doctor had a big middlegame advantage against Larry Chachere, but after a minor inaccuracy on his part (25.Bc3), Chachere's tenacious defense held the position.

Top-ranked Bill Colias of Indiana played solidly on his way to a 5-4 score, sufficient for third place and \$200. Four players split the \$150 fourth prize. Both Ed Zelkind of Minnesota and Marc Lonoff have reason to be pleased with their even score, while FM's Andrew Karklins and Greg DeFotis reached 4 1/2 by different routes. DeFotis, who was only one game away from second place in the U.S. Open, was expected by many to contend for first place. He was the only

undefeated player, but he was also unable to win a game. Perhaps he respected his formidable opponents too much, as he agreed to several short draws with the White pieces. On the other hand, Karklins' result shows the downside of enterprising play--his three wins were offset by three losses. Karklins had the satisfaction of being the only player to defeat Dr. Martinovsky. Neither Chachere nor defending champion Peter Pelts should be too dissatisfied by a -2 score in such a strong tournament.

"The last shall be first, and the first shall be last"--Albert Chow's horrendous 2 1/2--6 1/2 score is the other big story of this tournament. Chow has been a solid Senior Master for several years, yet his performances aren't always as strong as his play. In order to become a more universal player, he's been experimenting with different styles of play, and it's not surprising that his recent results have been mixed. In this tournament, however, he had some incredibly bad luck: in addition to the aforementioned game with Umezirwa, he lost on time against Karklins in Round 4 when his flag fell on move 40 in a winning position. Obviously, this is only a temporary setback for Albert.

Not surprisingly, the tournament ran smoothly, and there were no disputes to settle--Ray Socha directed; Ray also made the Chicago Chess Center available as a playing site. Marc Lonoff prepared the tournament bulletin and sent a diskette with the game scores to the ICB. For the fourth consecutive year, the Midwest Chess Association organized the tournament and guaranteed the \$1,150 prize fund--thanks to Helen Warren for her work and Helen and Jim for their financial support. Unfortunately, the future of the Illinois Tournament of Champions is in jeopardy, as the Midwest Chess Association will not be able to continue its funding. As things stand now, this will be the last T of C; however, Helen would be happy to continue organizing the tournament if sponsors can be found: the total expenses of this year's T of C were slightly over \$1,700.

ILLINOIS TOURNAMENT OF CHAMPIONS IV

	USCF	FIDE	1	2	3	4	5	6	7	8	9	10		
1	George Umezirwa	2304	----	X	0	-	-	1	1	1	1	-	1	6.5
2	Eugene Martinovsky	2429	2335	1	X	1	-	0	-	-	-	1	1	6.0
3	Bill Colias	2451	2230	-	0	X	-	1	-	-	1	-	-	5.0
4	Greg DeFotis	2410	2385	-	-	-	X	-	-	-	-	-	-	4.5
5	Andrew Karklins	2393	2310	0	1	0	-	X	-	0	-	1	1	4.5
6	Ed Zelkind	2352	----	0	-	-	-	-	X	0	1	-	1	4.5
7	Marc Lonoff	2322	----	0	-	-	-	1	1	X	0	-	-	4.5
8	Laurence Chachere	2375	2310	0	-	0	-	-	0	1	X	0	1	3.5
9	Peter Pelts	2357	2295	-	0	0	-	0	-	-	1	X	0	3.5
10	Albert Chow	2440	2360	0	0	-	-	0	0	-	0	1	X	2.5

ROUND 1

Colias-Umezirwa 1.d4 Nf6 2.c4 e6 3.Nf3 b6 4.Nc3 Bb7 5.Bg5 Bb4 6.e3 h6 7.Bh4 g5 8.Bg3 Bxc3+ 9.bxc3 d6 10.Nd2 Nbd7 11.h4 Rg8 12.hxg5 hxg5 13.Qe4 Ke7 14.f3 1/2-1/2

Martinovsky-Chow 1.d4 Nf6 2.c4 g6 3.Nc3 d5 4.Nf3 Bg7 5.Bg5 Ne4 6.cxd5 Nxc5 7.Nxc5 e6 8.Nf3 exd5 9.e3 Qd6 10.Bd3 0-0 11.0-0 c6 12.Qc2 Bg4 13.Nd2 Be6 14.Rac1 Nd7 15.Na4 f5 16.f4 Rae8 17.Nf3 Kh8 18.a3 Nf6 19.Nc5 Bc8 20.Ne5 Ng4 21.Rfe1 Nxe5 22.dxe5 Qd8 23.b4 d4 24.Rcd1 dxe3 25.Bc4 Qe7 26.Rxe3 Rd8 27.Rxd8 Rxd8 28.Rc3 a5 29.Qd2 Rxd3 30.Nxd3 axb4 31.axb4 h6 32.Qe3 Kh7 33.g3 Bf8 34.h4 Qd8 35.Kh2 Be7 36.Kh3 Kg7 37.Kh2 Qf8 38.Qd4 Qd8 39.Qc3 Kh7 40.Bb3 g5 41.Qc4 Qe8 42.fxg5 hxg5 43.hxg5 Bxc5 44.Nf4 Bxf4 45.gxf4 Qh5+ 46.Kg3 Qg4+ 47.Kf2 Kh6 48.Qd4 Qh4+ 49.Ke2 Qe7 50.Kd3 Kg6 51.Qg1+ Kh6 52.Qc5 Qd8+ 53.Kc3 Kg7 54.Qg1+ Kh6 55.Bf7 1-0

Karklins-DeFotis 1.d4 Nf6 2.Nc3 c5 3.d5 d6 4.e4 g6 5.Nf3 Bg7 6.Bc4 0-0 7.0-0 Bg4 8.h3 Bxf3 9.Qxf3 Nbd7 10.Qd1 Ne8 11.Re1 Nc7 12.Bf1 Rb8 13.a4 a6 14.a5 b5 15.axb6 Rxb6 16.Na4 Rb8 17.Ra2 Re8 18.b3 Nb5 19.Qd2 Qc8 20.Bb2 Nd4 21.Kh1 a5 22.Nc3 Qd8 23.Nd1 e6 24.dxe6 Rxe6 25.Bc4 Re8 26.c3 Nc6 27.Bxf7+ Kxf7 28.Qd5+ Kf8 29.Qxc6 Rb6 30.Qd5 Qa8 31.Qd3 1/2-1/2

Chachere-Lonoff 1.e4 e6 2.d4 d5 3.Nd2 Nf6 4.e5 Nfd7 5.Bd3 c5 6.c3 Nc6 7.Ne2 Qb6 8.Nf3 cxd4 9.cxd4 f6 10.exf6 Nxf6

11.0-0 Bd6 12.Nc3 0-0 13.Re1 Bd7 14.Bg5 Kh8 15.Na4 Qc7 16.Bh4 Nxd4 17.Nxd4 Bxh2+ 18.Kh1 Qf4 19.Nf3 Bxe4 20.b3 Bc6 21.Bg5 Qg4 22.Kxh2 Qh5+? 23.Kg1 Ng4 24.Be7! d4 25.Bxf8 Rxf8 26.Be4 Bb5 27.Qxd4 Kg8 28.Qd6 Rf6 29.Qd8+ Kf7 30.Rac1 Bc6 31.Bxc6 bxc6 32.Rxc6 Rxf3 33.Rc7+ 1-0

Pelts-E. Zelkind 1.d4 Nf6 2.c4 g6 3.Nc3 Bg7 4.e4 d6 5.Be2 0-0 6.Nf3 e5 7.0-0 Nc6 8.d5 Ne7 9.Nd2 a5 10.Rb1 Nd7 11.a3 f5 12.b4 axb4 13.axb4 Kh8 14.Nb3 Ng8 15.c5 Ndf6 16.f3 Nh5 17.g3 Nhf6 18.Bd2 f4 19.g4 g5 20.Ra1 Rxa1 21.Qxa1 h5 22.h3 c6 23.Qa5 Ne7 24.dxc6 Nxc6 25.Qxd8 Rxd8 26.b5 Nd4 27.Nxd4 exd4 28.Na4 d3 29.Bd1 dxc5 30.Nxc5 hxg4 31.hxg4 Nxc4 32.Nxb7 Bxb7 33.fxg4 Bxe4 34.Bf3 Bxf3 35.Rxf3 Bd4+ 36.Kf1 Be3 37.Ke1 Bb6 38.Bc3+ Kh7 39.Rh3+ Kg6 40.Kd1 Rd5 41.Bd2 Ba7 42.Ke1 Bb6 43.Kd1 Bf2 44.Rf3 Bb6 45.Rh3 1/2-1/2

ROUND 2

DeFotis-Pelts 1.d4 Nf6 2.g3 c5 3.d5 e5 4.dxe6 fxe6 5.c4 d5 6.Bg2 Be7 7.Nf3 0-0 8.0-0 Nc6 9.Nbd2 Qe8 10.e3 Qh5 11.b3 d4 12.exd4 cxd4 13.Nh4 Qf7 14.f4 Bd7 15.Ndf3 Qh5 16.Ng5 Qxd1 1/2-1/2

E. Zelkind-Chachere 1.d4 Nf6 2.Nc3 d5 3.Bg5 Nbd7 4.Nf3 e6 5.e4 dxe4 6.Nxe4 Be7 7.Bxf6 Nxf6 8.Bd3 0-0 9.Ne5 Qd5 10.c4 Qa5+ 11.Qd2 Bb4 12.Nc3 c5 13.dxc5 Bxc5 14.0-0 Bb4 15.Qe3 Bxc3 16.bxc3 b6 17.Rfe1 Qc5 18.Qh3 h6 19.Re3 Bb7 20.Rae1 Rfe8 21.Rg3 Kf8 22.Qh4 Rcd8 23.Ree3 Rxd3 24.Nxd3 Qa3 25.h3 Rd8 26.Rxg7 Kxg7 27.Rg3+ Kf8

28.Qxf6 Rd7 29.Ne5 1-0

Umezirwa-Karklins 1.d4 Nf6 2.c4 e6 3.Nf3 b6 4.g3 Bb6 5.b3 Bb4+ 6.Bd2 Be7 7.Nc3 0-0 8.Bg2 c6 9.e4 d5 10.Qe2 c5 11.dxc5 bxc5 12.0-0 dxc4 13.bxc4 Nc6 14.Nb5 Bb7 15.Rfd1 a6 16.Bf4 Qe5 17.Bc7 Qa4 18.Nd6 Ne8 19.Nxe8 Rfxe8 20.Rab1 Bc8 21.e5 Ra7 22.Bd6 Rd7 23.Bxe7 Rxe7 24.h4 h6 25.Rd6 Re8 26.Qe3 Qxa2 27.Rb6 Na5 28.Rxd7 Nxc4 29.Qxc5 Bxd7 30.Rb7 Bb5 31.Nd4 Na5 32.Ra7 Nb3 33.Qc7 Rf8 34.Nxe6 Qa1+ 35.Kh2 Qxe5 36.Qxe5 1-0

Chow-Colias 1.c4 Nf6 2.Nc3 g6 3.d4 c5 4.Nf3 cxd4 5.Nxd4 Bg7 6.e4 Nc6 7.Nc2 d6 8.Be2 Nd7 9.Bd2 0-0 10.0-0 a5 11.Kh1 Nc5 12.f3 f5 13.exf5 Bxf5 14.Be1 Ne5 15.Nd4 Bc3 16.b3 Qd7 17.Nd5 Rae8 18.Bc3 e6 19.Ne3 b6 20.Bxd3 Nxd3 21.Qc2 d5 22.cxd5 exd5 23.Ng4 Re7 24.Rad1 Ref7 25.Ne3 Nf4 26.g3 Nh5 27.Kg2 Re7 28.Rfe1 Rfe8 29.Qf2 Rf8 30.Qc2 Rfe8 31.Qf2 Rf8 32.Qc2 Ref7 33.Rf1 Re7 1/2-1/2

Lonoff-Martinovsky 1.c4 e5 2.g3 Nf6 3.Bg2 d5 4.cxd5 Nxd5 5.Nc3 Nb6 6.Nf3 Mc6 7.0-0 Be7 8.a3 a5 9.d3 0-0 10.Be3 f5 11.Na4 Nd5 12.Bc5 Bxc5 13.Nxc5 Qd6 14.Rc1 b6 15.Na4 Nd4 16.Nc3 Nxf3+ 17.Bxf3 c6 18.Qb3 Be6 19.Bxd5 Bxd5 20.Nxd5 cxd5 21.Rc3 f4 22.Rfc1 fxg3 23.hxg3 a4 24.Qb5 Ra5 25.Qc6 Qf6 26.Qxf6 gxf6 27.Rc7 Rf7 28.Rc8+ Kg7 29.R1c2 Rb7 30.f3 d4 31.Kf2 h5 32.Ke1 Kg6 33.Rg8+ Rg7 34.Rh8 Rh7 35.Rg8+ Kf5 36.Rc6 Rb5 37.Kf2 Rh6 38.e4+ dxe3+ 39.Kxe3 Rg6 40.g4+ hxg4 41.fxg4+ Kg5 42.Ra8 Kxg4 43.Rxa4+ Kf5

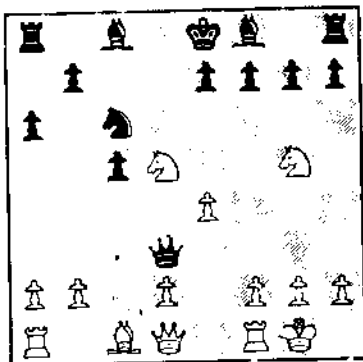
44.Rb4 Rg3+ 45.Kd2 Rg2+ 46.Kc3
Rxb4 1/2-1/2

ROUND 3

Martinowsky-E. Zelkind 1.d4
Nf6 2.c4 g6 3.Nc3 Bg7 4.Nf3 d6
5.e3 0-0 6.Be2 Nbd7 7.0-0 e5
8.b4 Re8 9.a4 a5 10.b5 exd4
11.exd4 Nf8 12.Bd3 Ne6 13.Re1
Nh5 14.Bf1 c5 15.Nd5 Nxd4
16.Rxe8+ Qxe8 17.Nxd4 Bxd4
18.Ra2 Qd8 19.Bb2 Bxb2 20.Rxb2
Ng7 21.Bd3 1/2-1/2

Karklins-Colias 1.e4 c5 2.Nf3
Nc6 3.d4 cxd4 4.Nxd4 Nf6 5.Nc3
e5 6.Ndb5 d6 7.Bg5 a6 8.Bxf6
gxf6 9.Na3 b5 10.Nd5 f5
11.exf5 Bxf5 12.Bd3 e4 13.Ne3
Bg6 14.Be2 Bg7 15.c3 0-0
16.Nac2 b4 17.cxb4 Ne5 18.Nd5
Nc3+ 19.Bxd3 exd3 20.Nce3 Bxb2
21.Rb1 Bg7 22.0-0 Qh4 23.g3
Qe4 24.Qb3 Kh8 25.Nf4 Rac8
26.Rbd1 Rc3 27.Qd5 Qxd5
28.Nexd5 Ra3 29.Rd2 Rc8
30.Rfd1 Be4 31.f3 Bd4+ 32.Kf1
Bxf3 33.Rxd3 Rxd3 0-1

Lonoff-Chow 1.c4 Nf6 2.Nc3 d5
3.cxd5 Nxd5 4.Nf3 c5 5.e4 Nb4
6.Bc4 Be6 7.Bb5+ N8c6 8.0-0 a6
9.Be2 Nd3 10.Ng5 Bc8 11.Bxd3
Qxd3 12.Nd5



1/2-1/2!? (White wins the Exchange after 12...Rb8 13.Nc7+ followed by Nf7-h8, but he wasn't sure he could extract the Knight. White did well in the post mortems, however.)

Chachere-Defotis 1.d4 Nf6
2.c4 g6 3.Nc3 Bg7 4.e4 d6
5.Nf3 0-0 6.Be2 e5 7.0-0 Nc6
8.d5 Ne7 9.Ne1 c5 10.Nd3 Nd7
11.f3 f5 12.g4 Nf6 13.Bd2 h6
14.h4 a6 15.Nf2 Rb8 16.Rb1 Bd7

17.b4 b6 18.bxc5 bxc5 19.Rxb8
Qxb8 20.Qc2 fxg4 21.fxg4 Qc8
22.Qd1 Qe8 23.Kg2 Nc8 24.Qc1
Kh7 25.Qa3 Qd8 26.Qxa6 Kh8
27.Nb5 Nh7 28.Rh1 Qe7 29.Qa3
Rf7 30.Qg3 Nb6 31.Qb3 Bf6
32.Bxh6 Bxh4 33.Be3 g5 34.Nh3
Kg7 35.Nc3 Nc8 36.Nd1 Nf8
37.Rf1 Ng6 38.Rxf7+ Kxf7 39.a4
Nf4+ 40.Bxf4 exf4 41.Ndf2 Qd8
42.Nd3 Qe8 43.Bf3 Bxe4 44.Qb7+
Kg8 45.e5 dxe5 46.Be4 Qd7
47.Qxd7 Bxd7 48.Nxe5 Nd6
49.Nxd7 Nxe4 50.Ne5 Kg7 51.Kf3
Nd6 52.Ke2 Kf6 53.Nd7+ Ke7
54.Nxc5 Nxc4 55.Ne4 Na3 56.d6+
Kd7 57.Kf3 Nc4 58.Nhxg5
1/2-1/2

Pelts-Umezirna 1.Nf3 Nf6 2.c4
b6 3.d4 e6 4.e3 Bb7 5.Be2 Bb4+
6.Nbd2 0-0 7.0-0 d5 8.a3 Be7
9.Ne5 Nbd7 10.f4 c5 11.Ndf3
Rc8 12.b3 cxd4 13.exd4 Ne4
14.Bb2 f5 15.Nxd7 Qxd7 16.Ne5
Qe8 17.Rc1 Bd6 18.Rc2 1/2-1/2

ROUND 4

Chow-Karklins 1.d4 Nf6 2.c4
g6 3.Nc3 Bg7 4.e4 d6 5.f3 Nfd7
6.Be3 e5 7.d5 Bh6 8.Qd2 Bxe3
9.Qxe3 0-0 10.Nh3 Nf6 11.Nf2
Nh5 12.0-0-0 c5 13.dxc6 Nxc6
14.Nb5 Be6 15.Rxd6 Qa5 16.Kb1
a6 17.Nc3 Nd4 18.Rxd4 exd4
19.Qxd4 b5 20.Nd5 Qe1+ 21.Kc2
Bxd5 22.exd5 Qb4 23.Ng4 f6
24.Bd3 Rac8 25.b3 bxc4 26.Bxc4
Qd6 27.Kb1 Rfe8 28.g3 Re7
29.Rc1 Rce8 30.Qd3 a5 31.Bb5
Rd8 32.Rc6 Qa3 33.Ne3 Rde8
34.Re6 Rd8 35.Rc6 Qb4 36.Nc2
Re1+ 37.Nxe1 Qxe1+ 38.Kb2 Qe5+
39.Qc3 Qb8 40.Bc4 0-1

E. Zelkind-Lonoff 1.e4 e6
2.d4 d5 3.e5 c5 4.c3 Nc6 5.Nf3
Bd7 6.dxc5 Bxc5 7.b4 Be7 8.Bd3
Qc7 9.Bf4 g5 10.Nxg5 Bxg5
11.Bxg5 Qxe5+ 12.Be3 Nxb4
13.Be2 Nc6 14.0-0 Nge7 15.Qd2
Rg8 16.f4 Qg7 17.Bf3 Nf5
18.Bf2 h5 19.Na3 Nce7 20.Rab1
Rc8 21.Rfc1 Bc6 22.Nb5 Bxb5
23.Rxb5 b6 24.Kf1 h4 25.a4 Nd6
26.Rb4 Nc4 27.Qe2 Qf6 28.g3
hxg3 29.hxg3 Nf5 30.Qe1 Kd7
31.Rd1 Nce3+ 32.Bxe3 Rxc3
33.Bd4 Rxf3+ 34.Ke2 Nxd4+
35.Rbxd4 Rfxg3 36.Qb4 Rg2+
37.Kf1 Rg1+ 38.Ke2 R8g2+
39.Kf3 Rg3+ 40.Ke2 Qf5 41.Qb5+
Ke7 42.Qb4+ Ke8 43.Rxg1 Rxg1

44.Qb3 Qg4+ 45.Kd2 Qg2+ 46.Kc3
Qf3+ 47.Rd3 Qxd3+ 0-1

Colias-Pelts 1.c4 Nf6 2.Nc3
c5 3.Nf3 Nc6 4.d4 cxd4 5.Nxd4
g6 6.e4 d6 7.Be2 Nxd4 8.Qxd4
Bg7 9.Bg5 0-0 10.Qd2 Be6
11.Rc1 Rc8 12.b3 Qa5 13.0-0
Rfe8 14.f3 a6 1/2-1/2

Umezirna-Chachere 1.d4 Nf6
2.c4 c5 3.d5 b5 4.cxb5 a6
5.bxa6 g6 6.Nc3 Bxa6 7.Nf3 d6
8.g3 Bg7 9.Bg2 Nbd7 10.h3 0-0
11.0-0 Nb6 12.Re1 Qc7 13.e4
Nfd7 14.Bf4 Nc4 15.Qc2 Qa5
16.Rac1 Rfb8 17.b3 Nce5
18.Nxe5 Nxe5 19.Bxe5 Bxe5
20.Nb1 Bb5 21.e4 Ba6 22.Nd2
Rb4 23.Bf1 Bxf1 24.Rxf1 Qa7
25.Kg2 Rab8 26.Rb1 Qb7 27.Rfe1
Bg7 28.h4 e6 29.dxe6 fxe6
30.h5 g5 31.Kg1 Bd4 32.Nc4
Rxb3 33.Nd2 Rb2 34.Rxb2 Qxb2
35.Qd1 Rf8 36.Rf1 Qc3 37.Kg2
h6 38.Nf3 Ra8 39.Qe2 Rxa4
40.Qb5 Ra2 41.Qe8+ Kg7 42.Qe7+
Kh8 43.Qxe6 Qb2 44.Qxh6+ Kg8
45.Nxg5 Bg7 46.Qh7+ Kf8 47.h6
1-0

Defotis-Martinowsky 1.e4 c6
2.d4 d5 3.e5 Bf5 4.h4 h5 5.c4
e6 6.Nc3 Be7 7.Qb3 Qb6 8.c5
Qxb3 9.axb3 Nd7 10.b4 f6 11.f4
Kf7 12.Be2 Bg4 13.Nd1 Nh6
14.Ne3 Bxe2 15.Kxe2 Nb8 16.Bd2
Rc8 17.Kd3 Na6 18.Ne2 Nc7
19.Nc3 Rf8 20.g3 a6 21.Rhf1
Kg6 22.Rae1 fxe5 23.fxe5 Nf5
24.Ne2 Nxe3 25.Bxe3 Kh7 26.Nf4
Rf5 27.Nh3 Raf8 28.Rxf5 exf5
29.Bg5 Re8 30.Bxe7 Rxe7
31.Ng5+ Kg8 32.Rf1 g6 33.Ke3
Nb5 34.Rd1 Kg7 35.Kf4 Nc7
36.Ke3 Nb5 37.Kd3 Kf8 38.Nh3
Kg7 39.Rf1 Re8 40.Ke3 Ra8
1/2-1/2

ROUND 5

Pelts-Karklins 1.d4 Nf6 2.Nf3
g6 3.c4 Bg7 4.Nc3 0-0 5.e4 d6
6.Be2 e5 7.0-0 Nh5 8.g3 exd4
9.Nxd4 Bh3 10.Bxh5 Bxf1
11.Kxf1 Bxd4 12.Qxd4 Nc6
13.Qd1 gxh5 14.Nd5 f6 15.Bh6
Rf7 16.Qxh5 Ne5 17.Ne3 Qd7
18.b3 b5 19.Rc1 Re8 20.Kg2
bxc4 21.bxc4 Ng6 22.f3 Rb8
23.Rc2 Ne5 24.Bf4 Nd3 25.Rd2
Nxf4+ 26.gxf4 Rg7+ 27.Kf2 Qf7
28.Qa5 Qg6 29.Qxa7 Qg1+ 30.Ke2
Rg2+ 31.Kd3 Rxd2+ 32.Kxd2 Rb2+
33.Kd3 Qb1+ 34.Kd4 Rd2+ 0-1

Chachere-Colias 1.c4 Nf6 2.g3
 g6 3.Bg2 Bg7 4.Nf3 0-0 5.0-0
 d6 6.Nc3 Nc6 7.Rb1 a5 8.a3 e5
 9.d3 h6 10.b4 axb4 11.axb4 Be6
 12.b5 Ne7 13.Bb2 Qd7 14.Ra1
 Rab8 15.Qb3 b6 16.Rfc1 Kh8
 17.Ra7 Nc8 18.Ra3 Ne7 19.Rca1
 Bh3 20.Ra7 Bxg2 21.Kxg2 Ne8
 22.Ne1 f5 23.Nc2 f4 24.f3 h5
 25.Nb4 g5 26.Ncd5 Nxd5 27.Nxd5
 Rf7 28.Qd1 Qe6 29.e3 fxe3
 30.Qe2 Kg8 31.Qxe3 e4 32.Bxg7
 exf3+ 33.Kf2 Qh3 34.Qxg5 Qg2+
 35.Ke3 Nxf7 36.Ra8 Qe2+ 37.Kd4
 Qb2+ 38.Ke4 Qe2+ 39.Kd4 Kh7
 40.Rxb8 Ne6+ 41.Kc3 Nxf5
 42.Raa8 Qe5+ 0-1

Lonoff-Defotis 1.c4 f5 2.g3
 Nf6 3.Bg2 g6 4.Nc3 Bg7 5.d4 c6
 6.Nf3 d6 7.0-0 0-0 8.d5 e5
 9.dxe6 Bxe6 10.b3 Na6 11.Bb2
 Qe7 12.Nd4 Bf7 13.e3 Rad8
 14.Qe2 Rfe8 15.Rfe1 Nc5
 16.Rad1 a5 17.Qc2 Qc7 18.Rd2
 Qb6 19.Red1 a4 20.Ba3 axb3
 21.axb3 Qa5 22.Ra1 Qc7 23.Rad1
 Ra8 24.Bxc5 dxc5 25.Nf3 Kh8
 26.Ng5 Bg8 27.Na4 Qe7 28.Rd6
 Ng4 29.h4 Rad8 30.Rxd8 Rxd8
 31.Rxd8 Qxd8 32.Nxc5 Qa5
 33.Nxb7 Qa1+ 34.Bf1 Ne5 35.Kg2
 h6 36.Nh3 Qa7 37.Nc6 Qd7 38.c5
 Bd5+ 39.e4 fxe4 40.Nf4 Nf3
 41.Kh1 1/2-1/2

E. Zelkind-Chow 1.d4 Nf6
 2.Nf3 g6 3.c4 Bg7 4.Nc3 d5
 5.e3 0-0 6.cxd5 Nxd5 7.Bd2 c5
 8.Qb3 Nxc3 9.bxc3 cxd4 10.cxd4
 Nc6 11.Rd1 b6 12.Be2 Be6
 13.Qa4 Qd5 14.Rc1 Bd7 15.Qc4
 Qd6 16.0-0 a6 17.Ng5 e6 18.Qb3
 Rfb8 19.Bf3 Ra7 20.Rc2 Na5
 21.Bb4 1-0

Martinovsky-Umezina 1.d4 Nf6
 2.c4 c5 3.dxc5 e6 4.Nf3 Bxc5
 5.e3 b6 6.Nc3 0-0 7.Be2 Bb7
 8.a3 Na6 9.b4 Be7 10.Bb2 Nc7
 11.0-0 d5 12.Qb3 dxc4 13.Bxc4
 Bd6 14.Rfd1 Qe7 15.Ne2 Rfd8
 16.Ned4 a6 17.b5 axb5 18.Nxb5
 Nxb5 19.Bxb5 Bxf3 20.gxf3 Nd5
 21.Rd4 Be5 22.Ra4 Qf6 23.Bxe5
 Qxe5 24.Rc1 Rac8 25.Rac4 Rxc4
 26.Bxc4 Qg5+ 27.Kh1 h6 28.Rd1
 Qf6 29.f4 Qh4 30.Bxd5 exd5
 31.Qxb6 Ra8 32.Rxd5 g6 33.Rd2
 Rc8 34.Qb1 Qg4 35.Qd1 Qh4
 36.Kg2 Rc3 37.Rd8+ Kh7 38.Rd7
 Qf6 39.Qd5 Kg8 40.e4 Rc8 41.a5
 Rf8 42.Rd6 Qe7 43.Rxg6+ Kh7
 44.Rg3 Qf6 45.Qe4+ Kh8 46.Qd4
 Qxd4 47.exd4 Rd8 48.a6 Rxd4

49.Ra3 Rd8 50.a7 Ra8 51.Kf3 f5
 52.Ke3 Kg7 53.Kd4 1-0

ROUND 6

Defotis-E. Zelkind 1.d4 Nf6
 2.c4 g6 3.Nc3 Bg7 4.e4 d6
 5.Be2 0-0 6.Bg5 Nbd7 7.Qd2 c6
 8.Nf3 Qa5 9.Rb1 e5 10.d5 Qc7
 11.h3 Nc5 12.Qe3 a5 13.g4 Na8
 14.Nh4 f6 15.Bh6 Bxh6 16.Qxh6
 Qg7 17.Qe3 Qe7 18.Qg3 Ng7
 19.Kd2 Kh8 20.f3 Bd7 21.Ng2 f5
 22.Qh4 Qxh4 23.Nxh4 fxe4
 24.Nxe4 Nxe4+ 25.fxe4 Rf4
 26.Bd3 Rf8 27.Rhf1 c5 28.Rxf4
 Rxf4 29.Ke2 1/2-1/2

Karklins-Chachere 1.d4 Nf6
 2.Nc3 d5 3.Bg5 Nbd7 4.Qd3 h6
 5.Bd2 e6 6.e4 dxe4 7.Nxe4 Be7
 8.Nf3 0-0 9.0-0-0 b6 10.Nxf6+
 Nxf6 11.Ne5 Bb7 12.Be2 c5
 13.Bf3 Qc7 14.Bxb7 Qxb7 15.Qg3
 Ne4 16.Qf3 Qd5 17.c4 Nxd2
 18.Rxd2 Qxf3 19.Nxf3 cxd4
 20.Rxd4 Rac8 21.Kb1 Bf6 22.Re4
 Rfd8 23.Rc1 Kf8 24.Re2 1/2-1/2

Colias-Martinovsky 1.d4 Nf6
 2.c4 g6 3.Nc3 d5 4.cxd5 Nxd5
 5.e4 Nxc3 6.bxc3 Bg7 7.Bc4 Nc6
 8.Nf3 0-0 9.0-0 Na5 10.Be2 c5
 11.Be3 b6 12.dxc5 Qc7 13.cxb6
 axb6 14.Rb1 Nc4 15.Bg5 Rxa2
 16.Bxe7 Qxe7 17.Bxc4 Ra3
 18.Rxb6 Rxc3 19.Bd5 Bg4 20.Rb7
 Qf6 21.e5 Qf4 22.Qd4? Rxf3
 23.Bxf7+ Rxf7 24.Qd5 Bxe5
 25.Qd8+ Rf8 26.Qd5+ Kh8 27.g3
 Qd4 0-1

Umezina-Lonoff 1.d4 Nf6 2.c4
 g6 3.Nc3 d5 4.cxd5 Nxd5 5.e4
 Nxc3 6.bxc3 Bg7 7.Bc4 c5 8.Ne2
 Nc6 9.Be3 0-0 10.0-0 Qc7
 11.Rc1 Rd8 12.Qd2 a6 13.f4 b5
 14.Bd3 f5 15.exf5 c4 16.Be4
 gxf5 17.Bf3 e6 18.Qc2 Rb8
 19.g4 Ne7 20.Ng3 Rf8 21.g5 Bb7
 22.Bxb7 Rxb7 23.Rce1 Nd5
 24.Bd2 Qc6 25.Re2 b4 26.h4
 bxc3 27.Bxc3 Qd6 28.Bd2 c3
 29.Bc1 Bxd4+ 30.Kh2 Rfb8
 31.Qd1 Bg7 32.Rfe1 Qc5 33.Rxe6
 Qf2+ 34.Kh3 Rb2 35.Re8+ Rxe8
 36.Rxe8+ Bf8 37.Qxd5+ Kg7
 38.Qe5+ Kf7 39.Qe6+ 1-0

Chow-Pelts 1.c4 Nf6 2.Nc3 e5
 3.Nf3 d6 4.d4 Nbd7 5.e4 c5
 6.dxe5 dxe5 7.g3 Be7 8.Bh3 0-0
 9.0-0 Qc7 10.Nh4 g6 11.Ng2 Nb6
 12.Bxc8 Qxc8 13.Qe2 Rd8 14.Ne3

Qh3 15.e4 Bf8 16.Qf3 Rd6 17.a5
 Nbd7 18.Ned5 Ng4 19.Qg2 Qxg2+
 20.Kxg2 Rc8 21.Rd1 Nb8 22.Nb5
 Ra6 23.h3 Nf6 24.Nxf6+ Rxf6
 25.Nxa7 Re8 26.Nb5 Rc6 27.Bd2
 f5 28.f3 Be7 29.Bc3 Na6 30.Rd7
 Bg5 31.Re1 Nb4 32.Bxb4 cxb4
 33.exf5 Rxc4 34.f4 Bf6 35.fxg6
 hxg6 36.Re2 e4 37.Nd6 Rec8
 38.Nxc4 Rxc4 39.Rxb7 1-0

ROUND 7

Martinovsky-Karklins 1.e4 e5
 2.f4 Qh4+ 3.g3 Qe7 4.d3 d5
 5.Nc3 dxe4 6.dxe4 Nf6 7.Bd3
 Nc6 8.Nf3 Bh3 9.Nxe5 Nxe5
 10.fxe5 Qxe5 11.Qe2 0-0-0
 12.Bd2 Bc5 13.Na4 Bd4 14.Bc3
 Rhe8 15.Bxd4 Rxd4 16.Nc3 Rd4
 17.Kd2 Rxb2 18.Rab1 Rb6
 19.Rxb6 axb6 20.Rb1 Bd7 21.Qf3
 Qa5 22.Rb3 Re5 23.Kc1 Be6
 24.Nd5 Nxd5 25.exd5 Bxd5
 26.Qg4+ Be7 27.Qx7 Bxb3
 28.Qf8+ Kd7 29.cxb3 Qc3+ 0-1

Defotis-Chow 1.d4 Nf6 2.g3 d5
 3.Bg2 g6 4.c4 c6 5.Nc3 dxc4
 6.a4 Bg7 7.Nf3 0-0 8.0-0 a5
 9.e4 Na6 10.Qe2 Bg4 11.Qxc4
 Nd7 12.Rd1 e5 13.d5 Nb6 14.Qe2
 cxd5 15.Nxd5 Nxd5 16.Rxd5 Qc7
 17.Be3 Nb4 18.Rc5 Nc6 19.h3
 1/2-1/2

Lonoff-Colias 1.c4 Nf6 2.g3
 g6 3.Bg2 Bg7 4.Nc3 d6 5.e4 0-0
 6.Nge2 Nc6 7.0-0 a6 8.f4 e5
 9.d3 exf4 10.gxf4 Bg4 11.h3
 Bd7 12.Ng3 Ne8 13.f5 Qh4
 14.Kh2 Be5 15.Qg4 Qxg4 16.hxg4
 Nf6 17.Bf3 Nd4 18.Kg2 Nxf3
 19.Kxf3 Bxc3 20.bxc3 Ba4
 21.Bh6 Rfe8 22.Rf2 Nd7 23.Bf4
 f6 24.Nf1 Rad8 25.Ne3 Bc6
 26.Nd5 1/2-1/2

E. Zelkind-Umezina 1.e4 e6
 2.d4 d5 3.e5 c5 4.c3 Nc6 5.Nf3
 Bd7 6.Be2 Qb6 7.dxc5 Bxc5
 8.0-0 f6 9.b4 Be7 10.Bd3 fxe5
 11.Nxe5 Nxe5 12.Qh5+ Nf7 0-1

Chachere-Pelts 1.Nf3 Nf6 2.c4
 c5 3.g3 b6 4.Bg2 Bb7 5.0-0 g6
 6.b3 Bg7 7.Bb2 0-0 8.d4 cxd4
 9.Qxd4 Nc6 10.Qd2 d5 11.cxd5
 Qxd5 12.Nd4 Ne4 13.Nxc6 Bxc6
 14.Bxg7 Kxg7 15.Qc2 Qe6 16.Nd2
 Nxd2 17.Qxd2 Bxg2 18.Kxg2 Rfd8
 19.Qb2+ Qf6 20.Qxf6+ Kxf6
 21.Rfd1 Rac8 22.Rxd8 Rxd8
 23.Rc1 Rd2 24.a3 Rxe2 25.Rc7
 a5 26.Rb7 Re6 27.Kf3 Kf5 28.h4

h5 29.Rd7 Re5 30.e4 Re4
31.Rd5+ e5 32.Rd7 f6 33.Rc7
Rd4 34.Ke3 Rb4 35.Rc3 g5
36.hxg5 fxg5 37.Kf3 h4 38.gxh4
gxh4 39.Kg2 Ke4 40.Re3+ Kd5
41.Rc3 Rd4 42.Kh3 e4 43.Re3
Rd3 44.Kxh4 Kd4 45.Rg3 Rxxg3
46.Kxg3 e3 47.f4 Kd3 0-1

ROUND 8

Umezirwa-Defotis 1.d4 f5
2.Nf3 Nf6 3.g3 g6 4.Bg2 Bg7
5.c4 d6 6.0-0 0-0 7.b3 c6
8.Bb2 Qc7 9.Nc3 e5 10.d5 Na6
11.Rc1 Bh6 12.Ra1 Bd7 13.Bc1
Bg7 14.Bb2 Rae8 15.Qd2 Nc5
16.Ne1 e4 17.Nc2 Ng4 18.h3 Ne5
19.Rad1 Rf6 20.Nd4 Qb6 21.Kh2
g5 22.dxc6 bxc6 23.f4 gxf4
24.gxf4 e3 25.Qc1 Ng6 26.Rf3
Bh6 27.Rdf1 Ne6 28.Na4 Qd8
29.Qc3 Nxxf4 30.Nc2 Re5 31.Qe1
Nxxg2 32.Kxxg2 Rfe6 33.Kh2 f4
34.Bxe5 Rxe5 35.Qd1 Qe7 36.Rg1
Kf7 37.Nc3 Ke8 38.Nd4 a6
39.Qd3 Kd8 40.c5 Rxc5 41.Na4
Ra5 42.Qc3 Rxa4 43.bxa4 c5
44.Qa5+ Ke8 45.Nc2 Qe4 46.Ne1
Qxa4 47.Qc3 Ne5 48.Qb2 Qc4
49.Rg2 Ke7 50.Qb1 Qf7 51.Qe4
Bc6 52.Qb1 c4 53.Qb6 Qe6
54.Qxa6 c3 55.Qa5 c2 56.Qc3
Be4 57.Nxc2 Qc4 58.Qxc4 Nxc4
59.Nd4 Nd2 60.Rg1 Kf6 61.Kg2
Ke5 62.Nb3 Nxf3 63.exf3 Bc6
64.Rc1 Bb5 65.Nc5 Kd4 66.Nb3+
Kd5 67.Rd1+ Ke5 68.Nd4 Bd7
69.Ne2 d5 70.Rc1 Bb5 71.Kf1
Kd6 72.Rc8 d4 73.a4 1/2-1/2

Chow-Chachere 1.d4 Nf6 2.c4
e6 3.Nf3 c5 4.d5 b5 5.dxe6
fxe6 6.cxb5 d5 7.Bf4 Bd6 8.g3
Bxf4 9.gxf4 0-0 10.e3 Bb7
11.Rg1 Ne4 12.Nc3 Qa5 13.Qa4
Qxa4 14.Nxa4 a6 15.Nc3 Nxc3
16.bxc3 axb5 17.Bxb5 Ra3 18.c4
Na6 19.Bd7 Bc8 20.Bxc8 Rxc8
21.cxd5 exd5 22.Kd2 Rb8
23.Rgc1 d4 24.Ne1 Rd8 25.e4
Rh3 26.Nd3 Rxh2 27.Rab1 Nb4
28.Nxb4 cxb4 29.Ke2 d3+ 30.Ke3
Rh3+ 31.Kd2 Rf3 32.Rf1 Ra8
33.Rb2 Ra3 34.f5 Kf7 35.Kc1
Rc3+ 36.Kb1 Rc4 37.a3 bxa3
38.Rb7+ Kf6 39.e5+ Kxe5
40.Rxxg7 Rc2 41.Ra7 Rb2+ 42.Ka1
Rfxf2 43.Ra5+ Kf6 44.Rxa3 Ra2+
0-1

Karklins-Lonoff 1.e4 e6 2.d4
d5 3.Nc3 Nf6 4.Bg5 Be7 5.exd5
exd5 6.Nf3 h6 7.Bf4 Bf5 8.Bd3
Bxd3 9.Qxd3 c6 10.0-0-0 Nbd7

11.Ne5 Nxe5 12.dxe5 Nh7 13.Qg3
Bg5 14.h4 Bxf4+ 15.Qxf4 Qe7
16.Rh3 0-0-0 17.Ne2 Nf8 18.Rb3
Ne6 19.Qg3 Rhe8 20.f4 g6
21.Ra3 a6 22.Qh3 Rd7 23.g4 Qb4
24.Qg3 g5 25.hxg5 hxg5 26.fxg5
Qc4 27.Qe3 Qxxg4 28.Rg1 Qf5
29.Qa7 Qxe5 30.Rb3 Nxxg5 31.Nd4
Rc7 32.Rd1 Qf4+ 33.Kb1 c5
34.Nf3 Nxf3 35.Qa8+ Kd7
36.Rxd5+ Ke7 37.Qa7 Nd2+
38.Kc1 Nxb3+ 39.Kd1 Qf3+ 0-1

Pelts-Martinovsky 1.c4 e5
2.Nc3 Nc6 3.g3 g6 4.Bg2 Bg7
5.e3 d6 6.Nge2 Nge7 7.0-0 0-0
8.Rb1 Bf5 9.d3 Qd7 10.b4 Bh3
11.b5 Bxxg2 12.Kxxg2 Nd8 13.e4
Ne6 14.Nd5 c6 15.Nxe7+ Qxe7
16.bxc6 bxc6 17.Be3 f5 18.f3
Qd7 19.Qd2 Rab8 20.Nc3 f4
21.Bg1 Rxb1 22.Rxb1 h5 23.Ne2
Ng5 24.gxf4 Qh3+ 25.Kf2 exf4
26.Rb7 Nxf3 27.Qa5 Ne5 0-1

Colias-E. Zelkind 1.c4 Nf6
2.Nc3 d6 3.g3 g6 4.Bg2 Bg7
5.d3 c5 6.e4 Nc6 7.Nge2 0-0
8.0-0 a6 9.h3 Rb8 10.a4 Ne8
11.Be3 Nd4 12.Bxd4 cxd4 13.Nb1
e5 14.Nd2 f5 15.b4 Nf6 16.kh2
Be6 17.Ng1 Bh6 18.exf5 gxf5
19.Re1 Nd7 20.Nb3 Bf7 21.c5
1/2-1/2

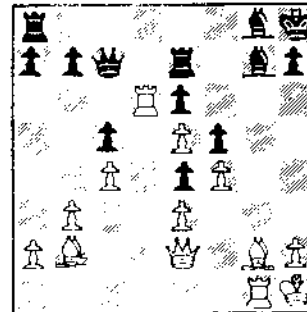
ROUND 9

Lonoff-Pelts 1.c4 c5 2.Nc3
Nc6 3.Nf3 Nf6 4.g3 g6 5.Bg2
Bg7 6.0-0 d6 7.d4 cxd4 8.Nxd4
Nxd4 9.Qxd4 1/2-1/2

Umezirwa-Chow 1.d4 Nf6 2.c4
g6 3.Nc3 d5 4.cxd5 Nxd5 5.e4
Nxc3 6.bxc3 Bg7 7.Bc4 0-0
8.Ne2 c5 9.Be3 Nc6 10.0-0 Bg4
11.f3 Na5 12.Bd3 cxd4 13.cxd4
Be6 14.Qa4 a6 15.Rac1 b5
16.Qb4 Bxa2 17.Bf4 e5 18.dxe5
Qxd3 19.Qxa5 Bc4 20.Rfe1 Qd7
21.Red1 Qe7 22.Nd4 Bxe5??
23.Bxe5 Qxe5 24.Rxc4 Rfd8
25.Rb4 1-0

Martinovsky-Chachere 1.d4 f5
2.Nf3 Nf6 3.g3 g6 4.b3 Bg7
5.Bb2 0-0 6.Bg2 Ne4 7.0-0 c6
8.Ne1 d5 9.f3 Nd6 10.Nd3 Kh8
11.Nd2 Be6 12.e3 Nd7 13.Qe2
Bg8 14.Kh1 Re8 15.Ne5 Nf7
16.f4 Nf6 17.c4 Ne4 18.Nxe4
dxe4 19.g4 Nxe5 20.dxe5 c5
21.gxf5 gxf5 22.Rg1 e6 23.Rad1

Qc7 24.Rd6 Re7



25.Bc3 Bf8
26.Bh3 Rg7 27.Rxxg7 Qxxg7 28.Qd2
Qf7 29.Rd7 Qh5 30.Bf1 b6
31.Qe2 Qe8 32.Qd1 Bf7 33.Be2
Be7 34.Rb7 Rd8 35.Qf1 Rd7
36.Rxd7 Qxd7 37.Qh3 Qd8 38.Kg2
Qg8+ 39.Kf1 Qd8 40.Be1 Kg7
41.Qg3+ Kh8 42.Bc3 h6 43.Qh3
Kh7 44.Be1 Kg7 45.Qg3+ Kh7
46.Kg2 Qg8 47.Qxxg8+ Kxxg8
48.Bg3 Kf8 49.Kh3 Kg7 50.Bh4
Bxxh4 51.Kxxh4 Be8 52.Kg3 Kf8
53.Kf2 Ke7 54.Ke1 Kd8 55.Kd2
Kc7 56.Kc3 a5 57.a3 Kb7 58.b4
Kc7 59.Bd1 Kd8 60.bxa5 bxa5
1/2-1/2

Defotis - Colias 1.d4 Nf6 2.c4
g6 3.g3 Bg7 4.Bg2 0-0 5.Nc3 d6
6.e4 Nc6 1/2-1/2

E.Zelkind - Karklins 1.Nf3 Nf6
2.g3 g6 3.c4 Bg7 4.Nc3 0-0
5.Bg2 d6 6.d4 Nbd7 7.0-0 e5
8.e4 a6 9.Re1 exd4 10.Nxd4 Ne5
11.b3 c5 12.Nc2 Ne8 13.Nd5 b5
14.Nde3 bxc4 15.bxc4 Rb8 16.a4
Be6 17.Qe2 Rb3 18.Ra3 Rxa3
19.Bxa3 Qa5 20.f4 Nc6 21.e5
Nd4 22.Nxd4 cxd4 23.Nc2 Qxa4
24.Bd5 Bf5 25.Be4 Be6 26.Bd3
dxe5 27.fxe5 Nc7 28.Bd6 Rc8
29.Nxd4 Bh3 30.g4 Qd7 31.g5
Ne8 32.c5 Nxd6 33.cxd6 Rc5
34.Nf3 Bg4 35.Qe3 Rc3 36.Qd4
Ra3 37.Nd2 Ra5 38.Qb4 Ra2
39.Qb8+ Bf8 40.Ne4 Qa4 41.Qb6
Kg7 42.Nc3 Qa5 43.Qd4 Be6
44.Re2 Rxe2 45.Bxe2 Qa1+
46.Kg2 Kg8 47.Bc4 Qb2+ 48.Kg3
Qb4 49.Nd5 Qa3+ 50.Qe3 Bxd6
51.exd6 Qxd6+ 52.Qf4 Qa3+
53.Kg2 Qb2+ 54.Kf3 Qa3+ 55.Qe3
Qxe3+ 56.Kxe3 Kg7 57.Kd4 Bxd5
1/2-1/2

1989 ILLINOIS TOUR

The race is going down to the wire--Senior Master Bill Colias has overtaken second-place Dmitry Gurevich and is now only 1.5 points behind FM Albert Chow in the race for first place in the 1989 Illinois Tour. With one event to go, the Illinois Class Championships, FM Eugene Martinovsky, Cyrus Bondari, and Kevin Gensler remain within striking distance. (Late news: Colias and Chow tied for second at the Illinois Class, half a point behind Dr. Martinovsky's 3 1/2-1/2. Therefore, the unofficial winner of the 1989 Tour is Al Chow. Unofficial congratulations! See the next ICB for the official results.)

Tour participants who have racked up 13 or more Master points, 10 or more Expert, Class A, or Class B points, 5 or more Class C points, or 3 or more Class D points are listed below. The following 19 tournaments are reflected in the point totals: Tim Just Winter Open/Reserve, Midwest Action Championship, No Bones Mini-Tour, Bradley Winter Open, Greater Peoria Open, First Lincolnland Mini-Tour, Prairie Action Under 2000, Prairie State Masters and Experts, Peoria Spring Tornado, Master Challenge XI, Peoria Action Open, Prelude to an Open, Bradley Summer Open, Illinois Open, Lake County Open, St. Charles Open, Peoria Fall Tornado, Oak Park/Forest Park Autumn Action, Micro Resales Champaign-Urbana Open. All players must have competed in at least three Tour events by year's end in order to be eligible for Tour prizes.

Be sure to get the New Year off to a good start by playing in the first two events of the 1990 Tour: Tim Just's Winter Open (Jan. 20-21), and the Bradley Action Open (Jan. 27).

Master Tour Points:

CHOW Albert	70.5
COLIAS Bill	69
GUREVICH Dmitry (2)	64
BONDARI Cyrus	59.5
GENSLER Kevin	46
MARTINOVSKY Eugene	44.5
WALLACH Ken	30.5
COHEN Larry	29
SZPISJAK Steven	29
UMEZINWA George	28
MC GOWAN Andy	27.5
TORREGROSSA Ron	27.5
CRAWFORD Brad	24.5
SURAK Steve	24
NAFF Bill	23.5
VLASTNIK Richard	23.5
BONDARI Siamack (2)	20
BOUTON Barry	20
PELTS Peter	20
BROCK Bill	18
GARDNER Bruce (2)	16
SPHAR Robert	16
GRAVES Bill	15.5
BOLITHO Thomas	15
SAX Robert	15
CONDON Jim	14.5
SATTERLEE Ray Doyle	13.5
ALLISON Roger	13
MC NAMARA James	13

Expert Tour Points:

GENSLER Kevin	46
COHEN Larry	29
MC GOWAN Andy	27.5
CRAWFORD Brad	24.5
SURAK Steve	24
NAFF Bill	23.5
VLASTNIK Richard	23.5
BOUTON Barry	20
TORREGROSSA Ron	19.5
BONDARI Cyrus	18.5
BROCK Bill	18

SPHAR Robert	16
SZPISJAK Steven	16
GRAVES Bill	15.5
BOLITHO Thomas	15
SAX Robert	15
CONDON Jim	14.5
SATTERLEE Ray Doyle	13.5
ALLISON Roger	13
MC NAMARA James	13
ANDERSON Phil	12.5
BUNGO Greg (2)	12
REYNOLDS Robert (2)	12
BARGERSTOCK Dan	11.5
REPPERT Victor (2)	11
SHYTHE Bill	11
ASH Robert (2)	10.5
LUNDQUIST Doug	10.5
SLATER Michael	10.5
HIERONYMUS Kent	10
SANDBOTHE Wm. (2)	10

Class A Tour Points:

BOUTON Barry	23
DZURNY Anthony	21.5
COHEN Larry	20.5
GRAVES Bill	18.5
SPHAR Robert	18
BOLITHO Thomas	15
ALLISON Roger	14.5
MC NAMARA James	13.5
BARGERSTOCK Dan	11.5
COHEN Howard	11.5
CRAWFORD Brad	10.5
BALE Leslie	10
HIERONYMUS Kent	10

Class B Tour Points:

DZURNY Anthony	34.5
BAYER Duane	21.5
CRUM Randy	21
WARFIELD Thomas	20
WHEELER Stephan	19.5
ALLISON Roger	16.5

GARDNER Keith C	15
PADILLA Rudy	14
INGRAM Randy	13.5
LULVES Joseph	13.5
INGRAM Adrian	13
SPHAR Robert	13
ZEVNIK Lawrence	13
BALES Robert	12.5
TERRANCE Terry	12
CALDWELL Scott (2)	11.5
MARSHALL Ken (2)	10
MOHR Allen D	10

Class C Tour Points:

PADILLA Rudy	14
ZEVNIK Lawrence	13
BALES Robert	12.5
TERRANCE Terry	12
INGRAM Randy	10
SHAFFER Thomas	9.5
ANTELMAN Kristin	8
FELTNER Cameron	6.5
KIRKPATRICK Donald	6.5
CALIENDO Anthony	6
FULTON Steve (2)	6
MC ALISTER Kelvin	5.5
MILLER Earl	5.5
ENGELEN Mark (2)	5
FENNER Charles	5
HIBBS Robert	5
WALLACE Michael	5

Class D Tour Points:

BALES Robert	12.5
ANTELMAN Kristin	8
CALIENDO Anthony	6
WALLACE Michael	5
ANDERSON William (2)	4.5
CREMEENS Matt	4.5
CATN Dennis	4
WARREN Harry	4
COULTER Dave	3.5
MILLER Earl	3.5

CENTURY CLUB MEMBERS

Michael Belovesick	Elmhurst
Tom Fineberg	Chicago
Fred Gruenberg	Chicago
Albert Sandrin	Chicago
Angelo Sandrin	Chicago
Bill Smythe	Chicago
Burton Vincent	Chicago
Helen Warren	Western Springs
Jim Warren	Western Springs
Philip Wong	Wilmette

GOLD CARD MEMBERS

Faneuil Adams	New York, NY
Bill Buttney	Downers Grove
Harland Moisington	Ogden, UT
Ed Marschall	South Barrington
Earl Miller	El Paso
Daniel Pradt	Glen Ellyn
Michael Pratts	Chicago
Irwin Rothschild	Park Forest
Mitchel Sweig	Evanston
Don Townsend	Chicago
Bill Wenz	Milwaukee
Louis Werner	Evanston

PATRON MEMBERS

Bob Ash	Urbana
Kevin Bachler	Waukegan
Todd Barre	Clarendon Hills
John Barstad, Sr.	Carol Stream
Roy Benedek	Western Springs
Timothy Bogan	Chicago
Barry Bouton	Sandwich
Bill Brock	Chicago
Tyrone Brooks	Chicago
Jim Brotsos	Chicago
Fred Burgess	Oak Forest
Anthony Caliendo	Aurora
Jim Condron	Downers Grove
Lynne Crewse	Arlington Heights
David Cromer	Iowa City, IA
John Deutsch	Chicago
Leroy Dubeck	Cherry Hill, NJ
Gerard Garino	Evanston
Jon Gotz	West Chicago
Donald Graft	Wheaton
William Graves	Chicago
Guy Gruenberg	Matteson
Walter Henry	Naperville
Charles Hicks	Naperville
Keith Holzmueller	Evanston
Richard Huttel	Itasca
Jeffrey Hyland	Mount Prospect
Robert Irons	Chicago
Tim Just	Gurnee
Dan Kamen	Wheeling
Scott Kittsley	Shorewood, WI
Thomas Knoedler	Springfield
Walter Kocjan	Northlake
John Krom	Chicago
Peter Kuhn	Des Plaines
Marc Lonoff	Northbrook

Alan Losoff	Morton Grove
John Marconnet	Chicago
Ken Marshall	Lombard
Donald Martin	Round Lake Beach
Eugene Martinovsky	Naperville
James McNally	Broadview
James McNamara	Hinsdale
Patrick Moran	Wilmette
Bill Naff	Peoria
Kenneth Palmer	Bollingbrook
Peter Pelts	Chicago
Mieczyslaw Piatek	Chicago
John Popovich	Evergreen Park
Tim Redman	Lima
Frederick Rhine	Chicago
Murrel Rhodes	Peoria
Ray Satterlee	Wheaton
Vivian Schmucker	Goshen
Mark Sefcheck	Naperville
Tom Shaffer	Chicago
Tony Sillars	Chicago
Arthur Sinclair	Evanston
Leonard Spiegel	Naperville
Peter Stein	Naperville
Miomir Stevanovic	Lincolnwood
David Taylor	Kankakee
William Terbell	Glen Ellyn
George Umezina	Chicago
John Vrbancic	Evanston
Douglas White	Schaumburg
Harold Winston	Naperville
David Mulatin	Oak Park
Sandy Zabell	Chicago
Max Zavanelli	Park Ridge

Please send Chicago metropolitan area Tournament Clearinghouse material to:

Fred Gruenberg
Box 43336, Chicago, IL 60643
(312) 396-1984 (D); (312) 779-0306 (N)

Please send Downstate Tournament Clearinghouse material to:

Garrett Scott
202 Foster Dr., Normal, IL 61761
(309) 452-8116

ICA ELECTED OFFICERS

Helen Warren, President
P.O. Box 305, Western Springs, IL 60558
(708) 246-6665

Fred Gruenberg, Metro Vice-President
2035 W. 110th Place, Chicago, IL 60643
(312) 779-0306

Garrett Scott, Downstate Vice-President
202 Foster Drive, Normal, IL 61761
(309) 452-8116

Tim Just, Secretary
37165 Willow Lane, Gurnee, IL 60031
(708) 244-7954

Alan Losoff, Treasurer
P.O. Box 157, Morton Grove, IL 60053
(312) 966-5579

USCF DELEGATES

by virtue of their USCF posts
Harold Winston, President
Todd Barre, Regional Vice-President
Tim Just, Regional Vice-President
Frank Skoff, Past President
Helen Warren, Life Voting Member

ICA-APPOINTED USCF DELEGATES

Fred Gruenberg Alan Losoff
Ken Marshall Tom Fineberg

ICA-APPOINTED USCF VOTING MEMBERS

Bill Naff Dennis Grant
Walter Brown Mike Zacate
Guy Gruenberg Jim Warren
Garrett Scott Bob Bain
Erv Sedlock Tom Knoedler
Wayne Palmquist

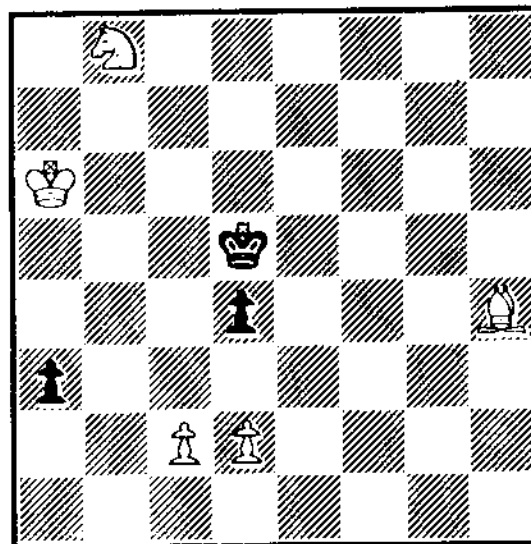
ICA-APPOINTED USCF ALTERNATE VOTING MEMBERS

Larry Stilwell AJ Chow
Bill Smythe John Tonkinson
Larry Cohen Byron Pappas
Jim Condron Chris Musgrave
Angelo Sandrin Jim Brotsos
Bill Wilkinson Eric Schiller
Glen Panner Barry Fisher
John Barstad Kevin Bachler

MOVING?

Send address changes and corrections to:

Alan Losoff
Membership Secretary
P.O. Box 157
Morton Grove, IL 60053



The first time I met the late Jules Stein, founder of the Chicago Chess Center, he showed me the above study (Kubbel, 1922). I solved it, but it took me a while. Can you solve it in less than ten minutes?

ILLINOIS TOURNAMENT CALENDAR

Call Chess Phone, (708) 832-5222, for up-to-date tournament results, as well as announcements of tournaments that may not be listed in *Chess Life* or the ICB. The ICA Chess Phone voice is Todd Barre.

Unless otherwise noted, all tournaments require USCF membership. Illinois Tour events also require ICA membership. Announcements of ICA affiliates' tournaments receive more space in the Calendar than do those of non-affiliates.

ILLINOIS TOUR EVENTS

January 20-21: Tim Just's Winter Open/Reserve VII. At the College of Lake County, Grayslake. \$1700 PRIZE FUND. AN ICA ILLINOIS MAXI-TOUR EVENT. Tim Just, 708/244-7954. SEE FULL-PAGE AD IN THIS ICB.

January 27: 1990 Bradley Action Open. At Garrett Center, 824N. University, Peoria. AN ICA ILLINOIS MINI-TOUR EVENT. Bill Wilkinson, 309/673-9455. SEE HALF-PAGE AD IN THIS ICB.

OTHER EVENTS

December 7, 14, 21, 28: Thursday Action. At Park Forest Chess Club, Orchard & Lake Blvds., Park Forest. \$200 b/20, 5/cl. EF: \$15; \$20 late: 1/2 pt. bye avail. in Rd. 1. Larry Cohen, 708/748-5911.

December 9, 10: Duffer's Delight. Two one-day events at the Chicago Chess Center, 2923 N. Southport, Chicago. Open to 1999/below. EF: \$15, REG: 9-9:45. Ray Socha: 312/929-7010.

December 16: Tuley Park Action Swiss #6. 501 E. 90th Pl., Chicago. \$350 b/24; \$200 guar. EF: \$15, REG: 11-11:30. Tom Fineberg: 312/721-3979.

December 16, 17: Point Pay-Day. One-day events at the Chicago Chess Center. EF: \$10, REG: 9-9:45. Ray Socha: 312/929-7010.

December 23: Pawns N' Pieces. Chgo. Chess Center. EF: \$11, REG: 9-9:45. 312/929-7010.

December 30: New Year's Nonsense. Chgo. Chess Center. EF: \$11, REG: 9-9:45. 312/929-7010.

January 6, 7: Lust for Sacs. One-day events at the Chgo. Chess Center. EF: \$7, REG: 9-9:45. 312/929-7010.

January 13, 14: Checks N' Stuff. One-day events at the Chicago Chess Center. EF: \$7, REG: 9-9:45. 312/929-7010.

January 27: '90 Tuley Park 1/4 k Action Swiss #1. \$350 prize fund/based on 24; \$200 guaranteed. EF: \$15, REG: 11-11:30. Tom Fineberg, 721-3979.

February 24: '90 Tuley Park 1/4 k 3SS #1. \$350 prize fund/based on 24; \$200 guaranteed. EF: \$15, REG: 10-10:30. Tom Fineberg, 721-3979.

March 15-18: U.S. Masters Championship. Oak Brook.

June 8-10: 1990 National Open. Las Vegas, Nevada.

TIM JUST'S WINTER OPEN/RESERVE VII COLLEGE OF LAKE COUNTY, GRAYSLAKE JANUARY 20-21, 1990

ILLINOIS CHESS BULLETIN
P.O. Box 305
Western Springs, IL 60558

SPEEDY DELIVERY APPRECIATED

BULK RATE
U.S. Postage Paid
Western Springs, IL
60558
Permit No. 1