



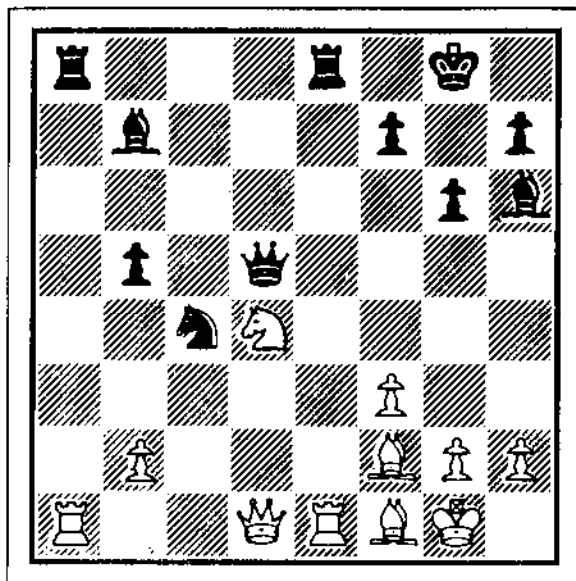
ILLINOIS CHESS BULLETIN

Official Publication of the Illinois Chess Association a U.S.C.F. Affiliate
A Not For Profit Organization

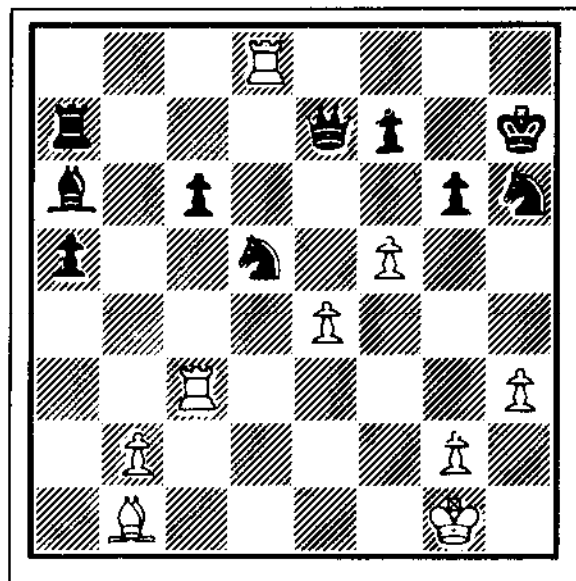
NOVEMBER-DECEMBER, 1990

VOLUME XIII, No. 6 BI-MONTHLY

\$2.95



Game 1: After 21...ab5
White to play and win



Game 2 (Analysis): After 35...Nd5?
White to play and win

KARPOV-KASPAROV QUIZ

IN THIS ISSUE:

VAN BUSKIRK SWEEPS MICRO REALES

KORNFELD, PELTS WIN TOURNAMENT OF CHAMPIONS

ANTI-SÄMISCH 6...c5!?

Table of Contents



EDITOR:

Bill Brock
1608 W. Granville Avenue, Apt. 3
Chicago IL 60660
312/274-4169

ASSISTANT EDITOR:

Claire Nicolay

GAMES EDITOR:

Bill Colias

TECHNICAL EDITOR:

John Schuchert

ICA TOUR STATISTICIAN:

Bill Smythe

POSTAL EDITOR:

Bill Naff

SUBSCRIPTIONS:

The *Illinois Chess Bulletin* (ICB) is published bimonthly by the Illinois Chess Association. ICA membership includes a subscription to the ICB. Century Club, Gold Card, and Patron members receive their ICB by first-class mail.

ANNUAL MEMBERSHIP RATES:

Century Club	\$100.00
Gold Card	\$50.00
Patron	\$25.00
Regular	\$10.00
Junior (under 18)	\$6.00

Subscriptions and address changes & corrections should be sent to:

Alan Losoff, ICA Membership Secretary
P. O. Box 157
Morton Grove IL 60053-0157

SUBMISSIONS:

Submit articles, photographs, crosstables, games, and other publishable materials to the Editor. Deadline for the next issue is January 9, 1991.

CHESS PHONE

708-832-5222

From the Editor's Desk	3
President's Page <i>Alan Losoff</i>	4
Minutes—ICA Board Meeting	4
Plus-Score Update	6
My Experience at the Match <i>Marc Losoff</i>	7
Van Buskirk Sweeps Micro Resales Champaign-Urbana Open; Tablot Wins Reserve Section <i>Mike Williams</i>	8
1990 Illinois Class Championships	10
Kornfeld, Pelts Win Lincolnwood Tournament of Champions V	12
Surprises Abound in Lake County Open XIII <i>David Shiner</i>	17
King's Indian: Anti-Sämisch 6...c5!? <i>Bill Brock & Bill Colias</i>	19
Under the Microscope <i>Howard Wachtel</i>	22
1990 Illinois Chess Association Tour Leaders <i>Bill Smythe</i>	24
Alekhine Memorial	25
Gurevich Annotates <i>GM Dmitry Gurevich</i>	26
Chess in 1990: The Months of Our Lives <i>David Wulatin</i>	28
Four Share OP-FP CC Autumn Action Crown <i>Ken Marshall</i>	28
Illinois Tour Crosstables	29

ICA AFFILIATION: Chess clubs and other organizations which promote chess activity may affiliate with the ICA. Benefits include a copy of the ICB by first-class mail, a listing under "Where to Play Chess," discounted advertising rates, three-line tournament announcements in the "Tournament Calendar," and the right to run ICA Tour Events. ICA Affiliation costs \$15; please remit to Membership Secretary.

ADVERTISING RATES:

Full page	\$80
Half page	\$50
Quarter page	\$30
Eighth page	\$20

10% discount for the same ad in consecutive issues. 1/3 discount for ICA affiliates. All ads must be camera-ready to qualify for above rates; minimum \$20 charge for layout. The ICA & the ICB reserve the right to reject advertising.

From the Editor's Desk

Bill Brock

This ICB is going to press more than a week late; sorry, folks. Unfortunately, I won't be able to edit the January-February issue, as I've got two fellowship proposals due in January and a PhD comprehensive exam on February 7th. There will probably be a guest editor for that issue, but you should still send all copy to me. I'll be back for the March-April issue—see you then!

Several ICA members sent in games and material that I didn't have time to squeeze into this issue. Special thanks to **Bill Smythe** and **Marc Lonoff** for their help.

And since we're going to press late, we want to draw your attention to the first Tour event, the **Euwe--Alekhine Anniversary Tournament** in Hammond on December 15. The final two 1990 Tour events will be held in Park Forest on the 29th and 30th. The 1991 Tour kicks off with a traditional Maxi-Tour event, the **Tim Just Winter Open** on January 19-20—don't miss it! See the calendar for other events in Rock Island and Lincolnwood as well.

We regret to report the recent closing of **Chicago Chess Mates**. For a brief period, I had three places to play chess within walking distance of my apartment: Chess Mates, Lincolnwood Chess & Games, and Chicago's best chess coffeehouse, the No Exit Cafe. (By the way, chess players are not very profitable customers for the No Exit management, so be sure to order some food when you visit.)

The **Chicago Chess Center** has also closed its North Side location: all December CCC tournaments have been cancelled. Fortunately, according to Todd Barre's Chess Phone report, the Chess Center will be opening again next month on Chicago's South Side. For many years, the Chess Center was the only place in town to play serious chess. It would be a disservice to the memory of Jules Stein if ICA members did not vigorously support the Chess Center in its new location. Lincolnwood is by far the best chess club in recent memory, but Chicago chessplayers need at least TWO clubs that are open every day.

The candidates for ICA office won in a landslide (there was only one write-in vote: Bill Naff for Downstate VP). The winners will assume their duties with the New Year: Alan Losoff will be President; Tom Fineberg, Metro VP; Garrett Scott, Downstate VP; Marc Lonoff, Treasurer; and Ken Marshall, Secretary.

No one in Illinois has done more for chess than the three outgoing ICA Officers: Fred Gruenberg, Tim Just, and Helen Warren. It's easy for chess organizers to burn out, so be sure to thank Helen, Fred, and Tim for their efforts. Let's hope they maintain their high profile on the Illinois chess scene.

The match goes on—as of December 2nd, the score remains deadlocked. Bill Colias and Al Chow were both on hand for the match; we hope to have their coverage for the next issue. Colias and Chow were working for former ICB Editor Eric Schiller, who was the pressroom chief for the New York leg. Another interesting local connection—Ted Field, sponsor of the New York half of the match, inherited his fortune from his father, Marshall Field IV. Guess this means that all the money you dropped on Frango mints and the Sun-Times in years past was well-spent.

The answers to the quiz on the cover will appear next issue.

OAK PARK-FOREST PARK CHESS CLUB NEWS

By Ken Marshall

October 2: Speed (Blitz) Tournament

This 22 player, 5 minutes/game event featured two preliminary round robins, with the first and second place finishers in each going on to the championship. Jim Kelly (10-1) and Cai Schmidt (9.5-1.5) took the top spots in the 12 man Section A, while Jim McNamara (8.5-5), Jim Warren (6-3), and Don Winsauer (6-3) were the best in Section B. (Warren was unable to stay, so Winsauer moved on without the need for a playoff.) The round robin final was won by Schmidt (3-0), followed by McNamara (2-1), Kelly (1-2), and Winsauer (0-3), with the finalists finishing in their USCF rating order.

October 26: OP-FP CC - Hillside CC Match

Although outrated on all 11 boards, the OP-FP CC camethrough with a 6.5-4.5 victory. Tom Oelrich (2028) led the way with a Board 1 upset of Kurt Stein (2263). Other OP-FPCC winners included Jim McNamara, Sven Hauptfeld, DonWinsauer, and Rich Rius (with Hauptfeld [1763] and Winsauer [1713] each defeating an opponent rated nearly 200 points higher). Mark Seftcheck, Bill Buttny, and Dan Fraats drew. (Buttny had a virtually certain win, but agreed to split the point once it was clear that a victory was not needed for his team to clinch the match.)

UPCOMING EVENT

December 18: World Blitz Chess Association Speed Tournament

This 5 minutes/game event will be rated by the WBCA. All entry fees will be returned as prizes as follows (based on at least two players per category): 1st: 35% (of all entry fees); 2nd: 25%; 3rd: 15%; 1999-1700: 15%; Below 1700: 10%. Format: double round robin (if 10 or fewer players), single round robin (if 11 to 25 players), preliminaries and finals (if more than 25 players). Entry fee: \$6 (for WBCA/OP-FP CC members), \$8 (for WBCA members who are not OP-FP CC members), \$12 for non-WBCA members). Registration: 7:15 - 7:45 p.m.; Round 1: 8:00 p.m.

President's Page

ICA President-Elect Alan Losoff

THANK YOU, HELENI

Outgoing ICA president Helen Warren is a tough act to follow. Under her stewardship the ICA has reversed the trends of declining membership and finances. She has given generously of her time and resources on behalf of Illinois Chess. That Helen cares about chess and chessplayers shows in everything she does.

A list of Helen's accomplishments, even limited to the two years of her current term, would fill this page and still not do her justice. If you must have a list, flip through the last dozen issues of ICB. In addition to the many efforts that bear her name, almost every other ICA event was a little bit better because Helen was there. Thank you, Helen, on behalf of every chessplayer in Illinois.

WHAT GOES UP?

Costs go up and so must dues. We've held the line for eight years but as of March 1, 1991 ICA Dues go up to \$14 per year. This is still a bargain for the excellent **Illinois Chess Bulletin** and participation in the Illinois Chess tour.

GUREVICH ON A ROLL

Illinois Champion GM Dmitry Gurevich is rolling up the opposition to win 6 (at last count) tournaments in a row, including the Western States Open in Reno and the Region V Championship in Detroit. Congratulations, Dmitry.

THE NATIONAL OPEN

The 1991 National Open will be in Chicago on May 31-June 2 at the Ramada O'Hare Resort Hotel. This may be the best tournament site in Chicago, and I promise to make every effort to make this the best tournament ever. I want to give Fred Gruenberg as difficult a target to shoot at in '92 as he's given me in '91.

ICA BANQUET

The annual ICA Awards Banquet will be held at the Ramada O'Hare on March 10, 1991. This is a chance to preview the site of the National Open and to help honor those with outstanding achievements in Illinois Chess, including the winners of the 1990 Illinois Chess Tour. This is one of the few chess events where non-chessplaying spouses and friends frequently participate. The **1991 Illinois Blitz Championship** will follow the banquet.

HELP WANTED - LONG HOURS, SHORT PAY

Bill Brock has turned one of the best chess magazines in the country into *the best*. (*I dunno, Al. But thanks for the compliment!*—Ed.) Now he needs help and he needs a successor. If you are interested in becoming Assistant Editor and taking over as Editor in November 1991, please contact Bill or me.

MINUTES—ILLINOIS CHESS ASSOCIATION BOARD MEETING

October 21, 1990—Lincolnwood Chess & Games, 3518 Devon Ave., Lincolnwood IL 60659.

1 p.m.: Annual membership meeting was called to order by President Helen Warren. **Present:** T. Just, A. Losoff, H. Warren, F. Gruenberg, T. Fineberg, K. Marshall, T. Barre, Garrett Scott, D. Grant, B. Naff, M. Lonoff, L. Cohen, W. Brock, J. Warren, J. Condron, L. Bale, J. Brotsos. No business was presented at the open forum. 1:01 p.m.: Annual membership meeting was adjourned.

1:02 p.m.: ICA Board Meeting was called to order by President Helen Warren. **Present:** T. Just, A. Losoff, H. Warren, F. Gruenberg, T. Fineberg, K. Marshall, T. Barre, Garrett Scott, D. Grant, B. Naff, M. Lonoff, L. Cohen, W. Brock, J. Warren, J. Condron, L. Bale, J. Brotsos.

1. Moved: The minutes of the last meeting be approved as published in the ICB (H. Warren, 2nd D. Grant)—passed unanimously.

2. Metro VP Fred Gruenberg reported on the latest clearing house calendar. He suggested that all future info be passed on to unopposed 1991-92 Metro VP candidate Tom Fineberg. A discussion with Downstate VP Garrett Scott indicated that the two clearinghouses should contact each other once a month to avoid tournaments that are Tour Events conflicting with each other. It was suggested that a long-range calendar be posted in the ICB to further facilitate

scheduling of tournaments. Helen Warren thanked Fred Gruenberg for his service as Metro VP.

3. ICA Secretary Tim Just reported on the submission of SASP funding from USCF. Just also presented the Delegate-Voting Member list for 1991. Helen Warren thanked Tim Just for his service to the ICA for the past 6 years.

4. Treasurer Al Losoff presented a financial report. We have about \$7,000 in our account. The Tour is our one outstanding debt (no site bill has yet been presented from the 1990 Illinois Open hotel). The ICA is about \$1,000 over last year's budget at this time.

5. President Helen Warren presented an agenda for the new officers to consider. A junior chess program is a must. There has been no dues increase for the last 7 years, yet costs have increased, so we need a dues increase. We need more Tour participation by members and organizers. The Illinois-Wisconsin match should be reestablished. The ICA should have 2 youth clinics per year. Banquet participation should be increased.

6. Motion (approved by acclamation): Thanks to Helen Warren for her years of service to the ICA.

7. Al Losoff led a discussion on a dues increase. It is noted that the current dues do not cover the cost of the ICB. Dues have not been raised for seven years.

8. Motion: By-laws change: **Article**

3—Dues. Each membership category shall pay annual dues to the ICA as follows: Member \$14, Junior \$8, Patron \$25, Gold Card \$50, Century \$100, and Affiliate \$25. The Patron, Gold Card, Century, and Affiliate members shall receive their ICB by 1st class mail. Effective March 1, 1991. (Todd Barre, 2nd Jim Brotsos)—Passed unanimously.

9. Motion: The ICA Executive Board shall be empowered to create special promotional ICA memberships (Todd Barre, 2nd Larry Cohen)—Passed unanimously.

10. Al Losoff, chief organizer of the 1991 National Open, reported on that event: May 31-June 2 at the Ramada-O'Hare. \$20,000 prize fund—2 sections (Open and Under 1800)—our breakeven point is reached at 450 players—ICA has the T-Shirt concession—120 Grand Prix points—format same as last year's National Open—Speed Tournament and simul are planned for the night before—food availability is excellent—room rates are \$59 single and double—17,000 sq. ft. playing area—ICA promo booth on site—Las Vegas raffles. National Open Committee: Todd Barre, 1990 ICA officers, 1991 ICA officers. All parties wishing to volunteer to help run this event: contact Al Losoff!

Meeting adjourned at 2:55 p.m.

Tim Just, Secretary

An ICA Maxi-Tour & Caveman Tour Event

TIM JUST WINTER OPEN/RESERVE VIII

A College of Lake County Event

\$1,725 IN CASH PRIZES!

JANUARY 19-20, 1991

College of Lake County, Main Building
19351 W. Washington at Route 45
Grayslake IL 60030

ROUNDS: 5-round Swiss, Saturday 9-2-7, Sunday 10-3

BYES: One ½-point available in rounds 1-4 if requested in advance.

TIME CONTROLS: 40/90, SD/1

ENTRY FEE: \$32 early, \$40 late and by phone

SECTIONS: OPEN: Open to all RESERVE: Open to below 1800

PRIZES:

OPEN SECTION		RESERVE SECTION	
1st, 2nd, & 3rd	\$225-\$150-\$100	1st, 2nd, & 3rd	\$225-\$150-\$100
Expert	\$125-\$100	Class C	\$125-\$100
Class A/below	\$125-\$100	Class D/E/Unrated	\$100

NOTE: Prizes based on 60 entries
ICA membership required of Illinois residents

NO SMOKING ON CAMPUS

EARLY REGISTRATION & INFO:

Tim Just
3716 Willow Lane
Gurnee IL 60031

(708) 244-7954

LATE REGISTRATION: at site, 8:00-8:45, Jan. 19

Plus-Score Update

Bill Smythe

The final curtain fell at Chicago Chess Mates on the weekend of November 3-4 with a pair of Tour events, the Plus-Score Mini-Tours #3 and #4. The concurrent master invitational in Lincolnwood held down the usually high median rating at these tournaments, giving Experts and Class A and B players a chance to grab some prize money and Tour points.

The Saturday event was won by Tony Marquez, whose only draw came in round 2 vs David Hater, a visitor from Ohio. Hot on Tony's heels were a horde of players with 3 and 2.5 points, with 11 of the 24 players winning prize money. Missourian Chris Castellanos (1589) had a tremendous tournament: he upset an A player and two experts, including ICB Editor Bill Brock (2173).

Sunday found Mike Williams, of Champaign-Urbana Micro Resales fame, ripping through the field early on, only to be held to a draw in the final round by Kelvin McAlister. That game threatened the midnight oil as two ghastly possibilities presented themselves: Rook and Bishop vs Rook, or Bishop and Knight vs lone King. Mercifully, Kelvin settled for the half point at 10:15 when he could find nothing better than Bishop and Knight vs Bishop.

The Plus-Score Mini-Tours proved important for the Tour aspirations not only of Marquez, Williams, and McAlister, but also of Howard Cohen, Roger Allison, Rudy Padilla, and Robert Bales, all of whom are now contenders in their rating classes. Bales is also on top of the most-active list with 15 Tour events this year, leaving Larry Cohen in the dust at 13.

Future Plus-Score tournaments will be held at Lincolnwood Chess & Games on west Devon. Four one-day Plus-Score Mini-Tours are set for January and February, 1991.

Chris Castellanos (1589)—Bill Brock (2173)

Plus-Score Mini-Tour #3

1.d4 Nf6 2.c4 g6 3.Nc3 Bg7 4.e4 d6 5.f3 O-O 6.Be3 c5 7.d5 e6 8.Qd2 ed5 9.cd5 Re8

9...a6 10.a4 Re8 is covered in the Sämisch article elsewhere this issue.

10.Be2 b6 11.g4!

Oops! I had hoped for 11.h4 h5.

11...Ba6 12.h4 Nfd7

If 12...h5, then 13.Bg5 is strong; I decided to play for a cheapo.

13.h5 Be2 14.Nge2?

White keeps a big edge with 14.Qe2.

14...Ne5! 15.Rh3 Nc4 16.Qc1 b5!

A Knight on c4 is even better than a good Bishop. Besides, the exchange would only help White coordinate his pieces.

17.Bh6 Bh8 18.hg6 fg6 19.f4 Na6?

Missing 19...b4 20.Na4 Re4.

20.f5 Re4??!

I was in a "call me Mischa" mood, but only momentarily...

21.Ne4 Bb2 22.Qb1 Nb4 23.fg6 Ba1 24.gh7

Immediately after I made my 20th move, I realized that I couldn't play 24...Kh8 because of 25.Qa1 check. Now Castellanos mops me up nicely.

24...Kf7 25.Ng5

Not as fast as 25.Rf3, but no less accurate.

25...Ke7 26.Ne6 Qa5 27.Bg5 Kd7 28.Kf2! Nd5 29.Qa1 Ne5 30.Nc5 dc5 1-0 [Annotated by Bill Brock]

Randy Zumbrunnen (2167)—Roland Jordan (2033)

Plus-Score Mini-Tour #3

1.e4 c5 2.Nc3 Nc6 3.g3 g6 4.Bg2 Bg7 5.d3 Nf6 6.f4 d6 7.Nf3 Bd7 8.O-O Qc8 9.Ne2 Bh3 10.c3 O-O 11.Be3 Bg2 12.Kg2 Ng4 13.Bg1 b6 14.h3 Nf6 15.g4 c4 16.f5 cd3 17.Qd3 Nd7 18.fg6 hg6 19.Ng5 Nce5 20.Qg3 Bf6 21.Qh4 Bg5 22.Qg5 f6 23.Qd2 Kg7 24.Nf4 Nc5 25.Qd5 e6 26.Qd6 Rd8 27.Qe7 Nf7 28.Nh5 gh5 29.Qf6 Kg8 30.Qf7 Kh8 31.Rf6 Rd2 32.Kh1 1-0

Howard Cohen (1968)—Greg Berry (2037)

Plus-Score Mini-Tour #3

1.e4 c5 2.c3 d5 3.ed5 Qd5 4.Nf3 Nf6 5.Na3 Nc6 6.Nc2 e5 7.Ne3 Qd8 8.Bc4 Bd6 9.d3 O-O 10.Nd5 Nd5 11.Bd5 Ne7 12.Bb3 Bd7 13.Ng5 Ng6 14.Qh5 h6 15.Nf7 Rf7 16.Qg6 Be8 17.Bh6 Bf8 18.h4 b5 19.Bg5 Qd7 20.Be6 Qb7 21.h5 Qg2 22.O-O-O Kh8 23.h6 gh6 24.Bf7 Bf7 25.Bf6 1-0

Plus-Score Mini-Tour #3

November 3, 1990

	rating	wall chart	score	tour
1 MARQUEZ Anthony	2088	W15 D 9 W16 W 2	3.5	8 X
2 COHEN Howard	1968	W24 W12 W 4 L 1	3	4 XA
3 CASTELLANOS Chris	1589	W19 W11 L 5 W23	3	4 XABC
4 BERRY Gregory	2037	W20 W23 L 2 W12	3	4 X
5 SMYTHE Bill	1997	W21 L 8 W 6 W 3	3	4 XA
6 ZUMBRUNNEN Randy	2167	W14 L 5 W19 W 8	3	4 X
7 MILOVANOVIC Slavko	-	L 9 W15 W23 W19	3	
8 JORDAN Roland	2033	W 5 D10 W17 L 6	2.5	2.5X
9 HATER David	1939	W 7 D 1 L10 W13	2.5	2.5XA
10 TALBOT Marc	1713	L12 D 8 W 9 W16	2.5	2.5XABC
11 BROCK Bill	2173	Dbye L 3 W20 W17	2.5	2.5X
12 READ Rhys	2014	W10 L 2 W14 L 4	2	2 X
13 MC ALISTER Kelvin	1616	W23 L16 W22 L 9	2	2 XAB
14 WOLF William	1925	L 6 W21 L12 W20	2	2 XA
15 WILLIAMS Mike	1873	L 1 L 7 W18 W21	2	2 XA
16 ALLISON Roger	1825	Dbye W13 L 1 L10	1.5	1.5XA
17 HAUPTFELD Sven	1763	Dbye W22 L 8 L11	1.5	1.5XAB
18 MAURER Pat	1313	Dbye L19 L15 W22	1.5	1.5XABCO
19 MARSHALL Jim	1981	L 3 W18 L 6 L 7	1	1 XA
20 DUDKOWSKI Zibby	1740	L 4 W24 L11 L14	1	1 XAB
21 VIGANTS Albert	1630	L 5 L14 W24 L15	1	1 XAB
22 BALES Robert	1432	Dbye L17 L13 L18	0.5	0.5XABC
23 PUKEL Bernard	1984	L13 L 4 L 7 L 3	0	
24 SOLANO Mario	1552	L 2 L20 L21 -	0	

Plus-Score Mini-Tour #4

November 4, 1990

	rating	wall chart	score	tour
1 WILLIAMS Mike	1823	W 4 W 3 W 6 D 5	3.5	8 XA
2 TALBOT Marc	1713	W13 W 7 L 5 W 6	3	4 XAB
3 MALDONADO Oscar	2181	W 8 L 1 W12 W10	3	4 X
4 GREGORY Jammie	2053	L 1 W14 W 8 W12	3	4 X
5 MC ALISTER Kelvin	1616	Dbye W11 W 2 D 1	3	4 XAB
6 MILOVANOVIC Slavko	-	W10 W12 L 1 L 2	2	
7 HATER David	1939	W14 L 2 W 9 -	2	2 XA
8 WOLF William	1925	L 3 W13 L 4 W11	2	2 XA
9 PADILLA Rudy	1524	Dbye D10 L 7 W13	2	2 XABC
10 SMYTHE Bill	1997	D12 L 6 D 9 L 3	1	1 XA
11 BALES Robert	1432	Dbye L 5 D13 L 8	1	1 XABC
12 ALLISON Roger	1825	D10 L 6 L 3 L 4	0.5	0.5XA
13 MARSHALL Jim	1981	L 2 L 8 D11 L 9	0.5	0.5XA
14 KNIGHT Jerry	1480	L 7 L 4 - -	0	

My Experience at the Match

Marc Lonoff

I had the good fortune to be in New York in early October and stayed to see the first and second games of the Kasparov-Karpov match. Since I have been playing chess seriously for most of my conscious life, attending the world championship was like a dream come true. Let me try to share my excitement.

My first excitement was pure chess excitement. Chess, usually relegated to the back pages and ignored, was drawing crowds, and press attention. As the match began, a throng of people reminiscent of world series games or the US Tennis Open jostled for tickets and admission to the Macklowe Hotel theater. Here was an event.

I saw more chess grandmasters, certainly at one time, than I had ever seen or expect to see again. A Who's Who of GM's, ranging from Patrick Wolff, the most recent American GM, born after I started playing tournament chess, to Samuel Reshevsky who was a world champion candidate before I was born, attended and freely kibitzed the match. I saw "recent" GM's including Seirawan, Fedorowicz, Mednis, Christiansen, Rohde, Dzindizichashvili, Soltis, Henley, and many others. But seeing Reshevsky, Najdorf, Geller, Byrne, and Portisch, the Fischer-era world championship candidates and the idols of my youth, topped it all.

I missed Spassky and Korchnoi and probably did not recognize lots of other luminaries. For example, I analyzed lines with one energetic young master, but I did not recognize world junior champion Ilya Gurevich until I saw his picture a week later on Inside Chess.

After the first game was two hours underway and the commotion died down, I decided to check out the theater. I had been upstairs first hearing Seirawan in the Press Room, and then wandering among three commentary rooms in which Rohde, Fedorowicz, Christiansen, and Dzindizichashvili were discussing the games. At every turn television monitors showed the game position, the stage, the board, and the expressions of Karpov and Kasparov. I went down to the theater to see the stage for myself.

In contrast to all the excitement upstairs, the theater was hushed. Was everyone was holding their breath? Headphones issued to the audience for GM commentary could be faintly heard.

Then, there they were! Large as life, just like the magazine pictures. Karpov and Kasparov seated on stage. The focal point of all the attention and activity. How could they simply be playing a game of chess?

Seeing them seated on the stage, with all the monitors,

and the activity upstairs and in the press room gave me a sense of *deja vu*. But what did this remind me of? Finally, I realized it gave me the same sense as visiting the floor of the New York Stock Exchange. The traders actions, without being self-conscious are picked up electronically, flashed on tapes and monitors and then spread all around the world. So, here was chess, elevated to electronic connectedness to the world.

Game two was special. I spent most of the five-hour game, Kasparov's only win in New York, listening to Larry Christiansen's commentary upstairs. Larry moved wooden pieces on a real chess board and his moves were electronically relayed to an analysis monitor behind him; about a dozen spectators with playing strengths ranging from 1600 to 2500 sat comfortably in front of him. Occasionally a GM would wander up and offer an opinion.

Christiansen did a spectacular job of tracking game two. He offered the assessment that white was better after Karpov's ...Ng8 and displayed the game continuation at least an hour ahead of the game. Oddly enough, Seirawan, Dzindi and DeFirmian assessed black as better for most of the game. Wolff even took Seirawan's money with a bet on Kasparov.

How can extremely strong players misunderstand or misassess a chess position so badly? Standing in front of a demonstration board and fielding questions and suggestions by players of varying strengths makes careful analysis difficult. Still, some GM's got it right. Since GM's have different playing styles and abilities they will see different plans and prospects in a position.

I also began to wonder: how far ahead did Kasparov see?. Did Kasparov look at all of the lines the commenting GM's examined? Kasparov must consider all of Karpov's resources, but could not afford to explore every branch deeply. By going deeply into a line that was actually played, I had the sensation Christiansen was leading us ahead of Kasparov. Commentators and kibitzers rarely receive credit for their efforts, so for the record, Christiansen turned in a marvelous performance.

Four weeks later the American segment of the match drew to a close with the score tied 6-6. Despite the local excitement the match failed to capture public attention. I guess chess will never be a spectator sport, even for an educated public. Certainly hope for understanding of what is really going on is futile since even the strongest GM's disagree. Most of us must understand very little about chess. As I watched Kasparov and Karpov in New York I finally realized how little.

Van Buskirk Sweeps Micro Resales Champaign-Urbana Open; Talbot Wins Reserve Section

Mike Williams

Sixty players descended on Champaign during the weekend of October 6-7 to compete in the second annual Micro Resales Champaign-Urbana Open. Soon it was evident that nobody could stop Douglas Van Buskirk, as he stormed through a strong field with a perfect 5-0 score to win first place and \$300. Van Buskirk finished one full point ahead of Glen Gratz, who took clear second place, winning \$200.

Van Buskirk, who hails from Springfield, called this his "strongest tournament victory ever," and there was plenty of proof. He demolished Jim Marshall with a dazzling knight sacrifice in the second round, a game which earned Van Buskirk the Best Game prize. In the fourth round, Van Buskirk made short work of local favorite Ron Torregrossa when Torregrossa played some unusual moves against Van Buskirk's Vienna opening. Although he only needed a draw to clinch a tie for first, Van Buskirk played solidly to defeat Ken Wallach in the final round.

There were also strong results posted by players competing for the Under-2000 prize. Four players tied at 3½, all of them either current or former University of Illinois students. Mark Brodie, Bill Wolf, Cameron Feltner, and Bill Walsh won \$25 each for their good showing.

The competition was also fierce in the 28-player Reserve section. Marc Talbot trailed leader Bret Fuller by a half-point going into the final round; Fuller had the only perfect 4-0 score at the time. Talbot was relentless; he sacrificed an exchange to gain a superior endgame. In the end it was Talbot's fleet bishop triumphing over Fuller's clumsy rook, and Talbot won \$150. Fuller, along with Charles Arnold and Keith Gardner, split \$100 among them for second place. Talbot, an Urbana resident, studies chess about 15 hours a week and plays in every tournament he can.

Other prize winners include Michael Mc Carthy, who also finished with 4 points and won the \$75 Under-1600 prize. Ken Brown of Indiana and Mauricio Lopez were the best under 1400; both scored 3 points to take home \$37.50 each.

Glen Gratz, owner of Micro Resales, along with TD Mike Williams, were the organizers of the tournament. Gratz and Williams plan to continue the annual event, and perhaps schedule it in the spring as well, making it a twice-yearly chess extravaganza. Both were extremely pleased with the turnout for the event, which featured free pizza and drinks before round 3.

BEST GAME PRIZE

Doug Van Buskirk (2195) - Jim Marshall (1981)

Round 2—Sicilian Defense

1.e4 c5 2.f4 e6 3.Nf3 Nf6 4.d3 d5 5.Nbd2 Nc6 6.g3 Be7 7.Bh3!?

White plans f4-f5 and/or g3-g4.

7...de 8.de b6

Abandoning the h3-c8 diagonal seems less than logical considering the above note.

9.O-O Bb7 10.c3 Qc7 11.Qe2 O-O 12.e5!?

More prudent may be a slow build-up to the above plan, but I smelled blood on the kingside.

12...Nd7 13.Ne4 Na5 14.b3 Re8?!

Boldly weakening f7 and e6 in hopes of 15...Nf8, but 14...Qc6 was a useful interpolation. On 15.Nfg5 Bg5 16.Bg2 Be7 17.Nf6 gf 18.Bc6 Nc6 looks slightly better for Black.

15.Nfg5!

With clearly only one intention -- best game prize! White threatens 16.Qh5.

15...h6 16.Nf7 Kf7

On 16...Be4 17.Nh6 and 18.Be6 or 17.Qe4 Kf7 18.Be6.

17.Qh5 Kg8

Black began blitzing here for no other reason than excitement. [As I recall, Van Buskirk was getting into severe time pressure. Marshall was even pacing the tournament hall, commenting on how much time White had used! -MW]

Interesting was 17...g6 (17...Kf8? 18.Be6) 18.Qh6 Nf8! (18...Be4? 19.Qh7 Kf8 20.Be6) 19.f5! (Threatening 20.gf Kg8 21.Be6) 19...ef 20.Bf5 gf 21.Rf5 Kg8 (21...Bf6 22.Nf6) 22.Nf6 Bf6 23.ef, with a strong attack.

18.Be6 Kh8 19.f5

19...Be4?

Again played quickly, much to my relief! 19...Nf8

is stubborn. 20.Bh6 gh or 20.Bf7 Qe5 achieve nothing. But 20.f6!! looks good when the complications are absolutely vicious! First of all, 20...Ne6 (On 20...Be4? 21.fg, or 20...gf 21.Qh6 Nh7 22.Bf5 Bf8 23.Qh7 and White is better) 21.Bh6! Bf6 (21...gh 22.Qh6 and 23.f7 mate; 21...g6 22.Bg7 Kg8 23.Qg6; 21...Bf8 22.Bg5) 22.Bg7 Kg7 23.ef Kf8 24.Qh8. Also 21...Be4 22.Bg7 Kg8 23.f7 is winning. That leaves 20...Bf6! 21.ef with three possible captures:

(1) 21...Be4 22.fg Qg7 23.Bh6 Qh7 24.Qe5.

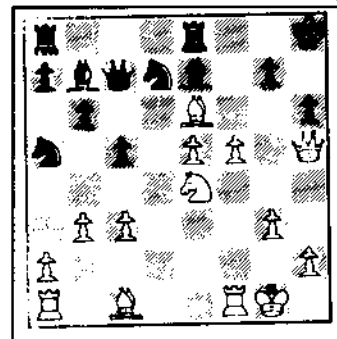
(2) 21...Ne6 22.fg Qg7 23.Bh6 Qe7 24.Nf6.

(3) 21...Re6 22.fg Kg7 23.Nf6 Rf6 24.Rf6 Kf6 25.Bh6 with a strong attack. Or 22...Qg7 23.Ng5 with ideas of 24.Rf7 or 24.Nf7 and 25.Nh6.

Wow! There may be a hole somewhere, but after a week of headaches analyzing, I'm satisfied with the effectiveness of 20.f6. Does Black have better than 19...Nf8?

20.Bh6 Nf6

Black counted on this move, which has a slight flaw... 21.ef g6 22.Bg7 mate. [Annotated by Doug Van Buskirk]



After 19.f5

Following is a collection of games, many of which were submitted as candidates for the Best Game Prize:

Doug Van Buskirk - Ken Wallach

1.e4 e6 2.d4 d5 3.e5 c5 4.b4?!

This gambit isn't in ECO—one suspects it was invented by Bill Smythe.

4...b6 5.a3 Nc6 6.c3 Bd7 7.Nf3 Qc7 8.Bd3 h6 9.O-O c4 10.Bc2 O-O 11.a4 f5 12.Na3 Nce7 13.b5 g5 14.Ra2 Ng6 15.h3 Eg7 16.Nb1 Be8 17.Nh2 Bf8 18.g3 Be7 19.f3 h5 20.Rf2 Nh6 21.Qf1 Bf7 22.Bd1 Rdg8 23.Ba3 Bd8 24.Bd6 Qb7 25.Rfb2 Be8 26.Nd2 Nf7 27.Nc4 d4 28.Qc4 Kd7 29.Bb3 Be7 30.Qe6 Kd8 31.a5 Qc8 32.ab6 ab6 33.Qc8 Kc8 34.Ra8 Kd7 35.Ra7 Kd8 36.Bc7 Kc8 37.Be6 Bd7 38.Bf7 Rg7 39.Bg6 Fg6 40.Ra8 Kc7 41.Rh8 Be6 42.Rh7 Kd7 43.g4 hg4 44.hg4 f4 45.Nf1 Rg8 46.d5 Bd5 47.Rd2 Ke6 48.Rh6 1-0

Doug Van Buskirk - Ron Torregrossa

1.e4 e5 2.Nc3 g6! 3.d4 ed4? 4.Qd4 Qf6 5.Qf6 Nf6 6.e5 Ng4

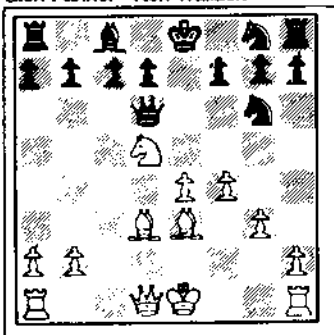
6...Ng8 7.Nd5 Kd8 8.Bg5 Be7 9.Ne7 Ne7 10.Bc4

7.Nd5 c6

7...Kd8 8.h3—Van Buskirk.

8.Nc7 Kd8 9.Na8 Ne5 10.Be3 Ng4 11.Ba7 Bb4 12.c3 Re8 13.Be2 1-0

Glen Panner - Ken Wallach



Panner-Wallach
After 13...Qd6

1.d4 Nc6 2.e4 e5 3.de5 Ne5 4.f4 Ng6 5.Nf3 Bb4 6.c3 Bd6 7.g3 Qe7 8.Bd3 Bc5 9.Nd4 Bd4 10.cd4 Qb4 11.Nc3 Qd4 12.Nd5 Qc5 13.Be3 Qd6

14.Bc5! Qc5 15.Fc1 Qa5 16.b4 Qa2 17.Nc7 Kd8 18.Na8 Qg2 19.Fc8 Kc8 20.Qc1 Kd8 21.Qc7 with a perpetual—Wallach.

14.Qc2 c6 15.Bc5 Qb8 16.e5 Ne5 17.fe5 Qe5 0-1

David Wulatin - Bill Walsh

1.e4 e5 2.Nf3 Nc6 3.Bb5 a6 4.Bc6 dc6 5.O-O Bd6 6.d4 Qe7 7.de5 Be5 8.Ne5 Qe5 9.Bd2 Nf6 10.Bc3 Qe7 11.Nd2 Be6 12.f4 O-O 13.Qe2 Kb8 14.Ra1 Rh8 15.a3 Bc8 16.Qf3 b6 17.e5 Nd5 18.Ne4 Bb7 19.Rd1 c5 20.Qe2 h6

21.Bd2 f6 22.c4 f5 23.Ng3 Nf6 24.Nf5 Qf7 25.Ne3 Ne4 26.Bc1 Rd4 27.Rd4 cd4 28.Nc2 Rd8 29.Rd1 c5 30.g3 g5 31.Qd3 Rg8 32.Rf1 Qe6 33.fg5 hg5 34.Ne1 Qh3 35.Qf3 Nd2 36.Qf7 Qh2 37.Kh2 Rh8 38.Kg1 Rh1 39.Kf2 Rf1 40.Ke2 Rf7 41.Bd2 Rf5 42.e6 Kc8 43.b4 Kc7 44.bc5 bc5 45.g4 Re5 46.Kf2 Be4 47.Nf3 Bf3 48.Kf3 Kd6 49.Ba5 Re3 0-1

Doug Lundquist - Cameron Feltner

1.e4 e5 2.Nf3 Nc6 3.Bb5 a6 4.Ba4 Nf6 5.O-O Be7 6.Re1 b5 7.Bb3 d6 8.c3 O-O 9.h3 Na5 10.Bc2 c5 11.d4 Qc7 12.Nbd2 cd4 13.cd4 Bd7 14.Bd3 Nc6 15.Nb3 Nb4 16.Be3 Nd3 17.Qd3 Rfe8 18.Rec1 Qb7 19.d5 a5 20.Nbd2 b4 21.b3 Bb5 22.Nc4 h6 23.Nfd2 Bf8 24.Re1 Nd7 25.f4 Qa6 26.Qf1 Rac8 27.Qf3 g6 28.fe5 Ne5 29.Ne5 Re5 30.Bd4 Bg7 31.Be5 Be5

As a rule of thumb, two Bishops and a Rook are roughly equivalent to two Rooks and a Knight; here, the Bishops simply dominate the board.
32.Rac1 Qa7 33.Kh1 Rc3 34.Qg4 Qf2 35.Nf3 Be2 36.Rc3 Bf3 0-1

Daniel Iovin - Eric Koester

1.e4 e5 2.Nf3 Nc6 3.Nc3 Nf6 4.Bb5 d6 5.Ba4 Be7 6.d3 Bd7 7.Be3 O-O 8.Bb3 a6 9.h3 Na5 10.Qd2 c5 11.Bd5 Be6 12.b3 Rc8 13.Qe2 b5 14.Be6 fe6 15.O-O Nc6 16.Rad1 d5 17.ed5 ed5 18.Bc1 Bd6 19.Rfe1 Re8 20.Bg5 Nd4 21.Qd2 Nf3 22.gf3 Bc7 23.Qe2 Ba5 24.Bd2 Bc7 25.Qf1 Kh8 26.Re2 Re6 27.Rde1 Qf8 28.f4 Rc8 29.f3 Qf7 30.f5 Rc6 31.f4 Nh5 32.Qf3 Qf5 33.Nd5 Rg6 34.Rg2 Rg2 35.Kg2 e4 36.de4 Qg6 37.Qg4 Bd6 38.Qg6 hg6 39.e5 Bb8 40.Kf3 g5 41.Kg4 g6 42.Kg5 Kg7 43.Nf6 Rd8 44.Nh5 gh5 45.Re2 Rh8 46.Bc3 Rf8 47.e6 Kh7 48.f5 Bd6 49.f6 1-0

Marshall - David Wulatin

1.e4 e6 2.d4 d5 3.Nc3 Bb4 4.e5 c5 5.a3 Bc3 6.bc3 Ne7 7.Qg4 Qc7 8.Qg7 Rg8 9.Qh7 cd4 10.Ne2 Nbc6 11.f4 b6 12.Qd3 dc3 13.h4 Nf5 14.Rh3 d4 15.Ng3 Nce7 16.Ne4 Nd5 17.Kf2 Rg4 18.g3 a5 19.Qf3 Rg7 20.g4 Nfe3 21.Nf6 Ke7 22.Bd3 Bb7 23.Be4 Qc4 24.Be3 de3 25.Kg1 Rd8 26.Kh2 e2 27.Bd5 Bd5 28.Qe3 Bc6 29.Kg3 Rd1 30.Kf2 Qf4 31.Qf4 e1Q 0-1

Thomas Warfield - Harold Henderson

1.d4 Nf6 2.Nf3 g6 3.e3 Bg7 4.c4 e5 5.Nc3 O-O 6.Be2 d6 7.O-O Nbd7 8.a3 b6 9.b4 Bb7 10.Bb2 Re8 11.Qb3 Rb8 12.Rad1 a6 13.Rfe1 Qc7 14.de5 dc5 15.Nd5 Nd5 16.cd5 Bb2 17.Qb2 Nf6 18.d6 Qd8 19.d7 Rf8 20.Ne5 Qc7 21.Bc4 b5 22.Bf7

Rf7 23.Nf7 Kf7 24.bc5 Qc6 25.f3 Nd7 26.Qa2 Kf8 27.Rd4 Nc5 28.Rf4 Ke8 29.Qg8 Kd7 30.Qb8 Qc8 31.Rd1 Ke6 32.Qc8 Bc8 33.Rf7 e5 34.Rf6 Be6 35.Rc1 Kd6 36.Rc5 Kc5 37.Re6 1-0

Ron Torregrossa - Lipton

1.d4 d6 2.Nf3 g6 3.e4 Bg7 4.Bd3 Nf6 5.O-O O-O 6.Re1 Bg4 7.h3 Bf3 8.Qf3 Nc6 9.c3 e5 10.d5 Ne7 11.Bg5 Nd7 12.Nd2 f6 13.Bh4 Nc5 14.Bc2 c6 15.b4 Nd7 16.dc6 bc6 17.Rad1 Qc7 18.Nf1 Kh8 19.Bb3 a5 20.Qd3 Nc8 21.Ne3 Ndb6 22.f3 Rd8 23.Ng4 Qe7 24.f4 g5 25.fg5 fg5 26.Bf2 e4 27.Bc2 Qe6 28.Bb1 Qg6 29.Ne3 Ne7 30.Nf5 Nbc8 31.c4 Nf5 32.ef5 Qf6 33.c5 d5 34.Re5 Qf7 35.Re6 Rf8 36.Rc6 Ne7 37.f6 Bh6 38.Rc7 Qg6 39.fe7 1-0

Greg Cottle - Thomas Bolitho

1.d4 Nf6 2.c4 g6 3.Nc3 Bg7 4.e4 d6 5.f4 O-O 6.Nf3 e5 7.d5 e6 8.Be2 ed5 9.od5 Re8 10.e5 Ng4 11.h3 Nh6 12.O-O Nf5 13.Bd3 Ng3 14.Re1 Bf5 15.Bf5 Nf5 16.g4 Nh4 17.e6 Nf3 18.Qf3 fe6 19.de6 Nc6 20.f5 Nd4 21.Qd5 Qe6 22.Rf1 Qh4 23.Qg2 gf5 24.gf5 Nc2 25.Bg5 Qd4 26.Kh1 Na1 27.f6 Re6 28.Qb7 Rg8 29.fg7 Rg7 30.Qc8 Rg8 31.Qe6 Rg5 32.Rf8 Kg7 33.Rg8 1-0

Micro Resales Champaign-Urbana Open October 6-7, 1990

OPEN SECTION	wall chart	score	tour
1 VAN BUSKIRK Doug	2194	W16 W25 W15 W 3 W 4	5 32 MX
2 GRATZ Glen	2153	Dbye W28 W14 W12 D 3	4 8 MX
3 TORREGROSSA Ron	2302	W 7 W15 W11 L 1 D 2	3.5 4 M
4 WALLACH Ken	2256	W21 W 9 Dbye W13 L 1	3.5 4 M
5 WOLF William	1925	W29 L13 W18 W16 D 7	3.5 4 MXA
6 WALSH Bill	1765	W24 L14 W28 D20 W17	3.5 4 MXAB
7 BRODIE Mark	1911	L 3 W27 W26 W11 D 5	3.5 4 MXA
8 FELTNER Cameron	1779	L 9 D21 W22 W23 W12	3.5 4 MXAB
9 PANNER Glenn	1998	W 8 L 4 Dbye D14 W19	3 3 MXA
10 WARFIELD Thomas	1684	L11 L17 WF W26 W21	3 3 MXAB
11 LIPTON Leon	1957	W10 W20 L 3 L 7 D14	2.5 2.5MXA
12 LUNDQUIST Doug	2054	W19 W23 Dbye L 2 L 8	2.5 2.5MX
13 GODFREY Jonathan	2065	W26 W 5 Dbye L 4 -	2.5 2.5MX
14 ASH Bob	2124	D28 W 6 L 2 D 9 D11	2.5 2.5MX
15 SAX Robert	2044	W27 L 3 L 1 W18 D16	2.5 2.5MX
16 GLAVE Manuel	1903	L 1 W22 W19 L 5 D15	2.5 2.5MXA
17 WULATIN David	1896	L20 W10 W25 Dbye L 6	2.5 2.5MXA
18 COTTLE Greg	1670	Dbye W24 L 5 L15 W23	2.5 2.5MXAB
19 JESSEPH Steve	1802	L12 W30 L16 W25 L 9	2 2 MXA
20 NAFF Bill	2150	W17 L11 Dbye D 6 -	2 2 MX
21 BOURGERIE Dennis	1905	L 4 D 8 Dbye W27 L10	2 2 MXA
22 CALDWELL Scott	1774	L25 L16 L 8 W31 W26	2 2 MXAB
23 BOLITHO Tom	1915	W30 L12 Dbye L 8 L18	1.5 1.5MXA
24 WILKINSON William	1969	L 6 L18 Dbye W32 -	1.5 1.5MXA
25 MARSHALL James	1981	W22 L 1 L17 L19 -	1 1 MXA
26 HENDERSON Harold	1824	L13 W29 L 7 L10 L22	1 1 MXA
27 SPHAR Robert	1796	L15 L 7 W29 L21 -	1 1 MXAB
28 STEVENSON Wilford	1861	D14 L 2 L 6 - -	0.5 0.5MXA
29 EIHUSEN L H	1460	L 5 L26 L27 - -	0 0
30 JOHNSON Bradley	-	L23 L19 - -	0 0
31 VLATOWSKI Thomas	1730	- - - L22 -	0 0
32 WILLIAMS Mike	1757	- - - L24 -	0 0

RESERVE SECTION	wall chart	score	tour
1 TALBOT Marc	1713	W12 W20 D 3 W 8 W 2	4.5 16 B
2 FULLER Bret	1720	W27 W18 W 6 W 4 L 1	4 8 B
3 ARNOLD Charles	1731	W26 W17 D 1 D 5 W 6	4 8 B
4 GARDNER Keith	1705	W15 W 7 WF L 2 W 9	4 8 B
5 MC CARTHY Michael	1590	Dbye W10 W11 D 3 W 7	4 8 BC
6 GUTHRIE Vincent	1654	W21 W25 L 2 W18 L 3	3 3 B
7 COX Brian	-	W22 L 4 W24 W17 L 5	3 3 B
8 LEUTHOLD Gregory	1592	W13 W11 Dbye L 1 D10	3 3 BC
9 STAFFORD Jerry	1640	L20 W27 W26 W19 L 4	3 3 B
10 LOPEZ Mauricio	1382	D14 L 5 W22 W15 D 8	3 3 BCD
11 WHEELER Stephen	1760	W23 L 8 L 5 W21 W19	3 3 B
12 BROWN Ken	1316	L 1 W28 L17 W20 W18	3 3 BCD
13 IOVIN Daniel	-	L 8 W23 L19 W26 W17	3 3 B
14 VLATOWSKI Thomas	1730	D10 W24 LF - W23	2.5 2.5B
15 KING John	1295	L 4 D22 W27 L10 W24	2.5 2.5BCD
16 MORGAN Chris	-	L17 L26 W28 Dbye WF	2.5 2.5
17 KOESTER Eric	1613	W16 L 3 W12 L 7 L13	2 2 B
18 REINERS Paul	1517	W28 L 2 W20 L 6 L12	2 2 BC
19 WAGNER Dana	1407	L25 W21 W13 L 9 L11	2 2 BC
20 HILL Farnel	1258	W 9 L 1 L18 L12 W28	2 2 BCD
21 BROOKS Charles	1287	L 6 L19 Wbye L11 W26	2 2 BCD
22 ANDERSON Richard	1500	L 7 D15 L10 L23 Wbye	1.5 1.5BC
23 MUNOZ Alberto	1396	L11 L13 Dbye W22 L14	1.5 1.5BCD
24 HELLER Jack	1383	Dbye L14 L 7 W28 L15	1.5 1.5BCD
25 LOVEN Dallas	1769	W19 L 6 - -	1 1 B
26 SANDERS Jacque	1387	L 3 W16 L 9 L13 L21	1 1 BCD
27 LIM Jae Hyung	1321	L 2 L 9 L15 Wbye LF	1 1 BCD
28 SCHNEIDER Kathy	-	L18 L12 L16 L24 L20	0 0

1990 Illinois Class Championships

Grandmasters Sergey Kudrin and Dmitry Gurevich tied for first in the top section of the just-completed Illinois Class Championships, held November 17-18 at Chicago's Morgan Park Academy. We'll have a full section of games from this premier event in the next issue.

SECTION	PLACE	NAME	RESULT	PRIZE
Master/Expert	1-2	GM Sergey Kudrin GM Dmitry Gurevich	3½-½	\$375 each
	308 & 1st Expert	Jesse Kraai, Florentino Inumerable, Len Weber, Howard Wachtel, Arnulfo Benesa, Mark Brodie	3-1	\$41.67 each
Class A	1-2	Howard Cohen, Bill Madera	3½	\$150 each
	3-6	Anthony Dzurny, Randy Fronek, Lawrence Kosiba, Allen Stewart	3-1	\$12.50 each
Class B	1	Dwayne Falls	3½-½	\$200
	2-7	Stephan Wheeler, Marc Talbot, Steve Fulton, Charles Giertz, Raymond Dixon, Michael McCarthy	3-1	\$25 each
Class C	1	Michael Uhlean	4-0	\$200
	2	Stephen Martin	3½-½	\$100
	3-5	Robert Raimo, Scott Burdick, Joe Cima	3-1	\$16.67 each
Class D	1	Daniel Iovin	4-0	\$100
	2-6	Julie Oberweis, Percival Harmon, Adam Kalai, Mike Hogan, Branislav Dudic	3-1	\$20 each

MASTER-EXPERT	wall chart	score	tour
1 GUREVICH Dmitry	2574 W11 W16 W 4 D 2	3.5	16 M
2 KUDRIN Sergey	2660 W31 W 6 W13 D 1	3.5	16 M
3 BRODIE Mark	1911 W 8 D 7 W20 D 5	3	8 MXA
4 KRAAI Jesse	2288 W28 W15 L 1 W 9	3	8 M
5 INUMERABLE Florentino	2218 W29 D 9 W12 D 3	3	8 M
6 WACHTEL Howard	2132 W14 L 2 W15 W17	3	8 MX
7 WEBER Len	2186 D19 D 3 W21 W12	3	8 MX
8 BENESA Arnulfo	2126 L 3 W29 W24 W14	3	8 MX
9 RACE Tom	1878 W18 D 5 W19 L 4	2.5	4 MXA
10 HEYER Jon	2129 D25 D17 D11 W20	2.5	4 MX
11 FAGAN James	2022 L 1 W32 D10 W19	2.5	4 MX
12 MILOVANOVIC Slavko	- W22 W23 L 5 L 7	2	
13 PELTS Peter	2405 W24 W21 L 2 -	2	2 M
14 COX Bill	1967 L 6 W18 W16 L 8	2	2 MXA
15 SAX Rob	2044 W26 L 4 L 6 W28	2	2 MX
16 MILLER Mark	2128 W32 L 1 L14 W24	2	2 MX
17 SEFCHECK Mark	1914 Dbye D10 W31 L 6	2	2 MXA
18 JAKSTAS Kazimieras	2105 L 9 L14 W30 W26	2	2 MX
19 MARSHALL James	1981 D 7 W30 L 9 L11	1.5	1.5MXA
20 DELRICH Tom	2028 D30 W25 L 3 L10	1.5	1.5MX
21 PEDRAM Mehrdad	2113 W33 L13 L 7 D22	1.5	1.5MX
22 PALS Randall	1896 L12 D31 D27 D21	1.5	1.5MXA
23 CHOW Albert	2416 W27 L12 - -	1	1 M
24 SHYTHE Bill	1997 L13 W33 L 8 L16	1	1 MXA
25 BOGAN Tim	1949 D10 L20 D26 -	1	1 MXA
26 HANSEN Steven	1865 L15 D27 D25 L18	1	1 MXA
27 PANNER Glenn	1998 L23 D26 D22 -	1	1 MXA
28 FORD Sam	2022 L 4 - W29 L15	1	1 MX
29 COHEN Larry	1982 L 5 L 8 L28 W30	1	1 MXA
30 PORTER John	1811 D20 L19 L18 L29	0.5	0.5MXA
31 KREISMAN Bruce	2052 L 2 D22 L17 -	0.5	0.5MX
32 FORRO Virgilio	1918 L16 L11 - -	0	
33 BUTTNY Bill	1911 L21 L24 - -	0	

LINCOLNWOOD CHESS & GAMES

3518 DEVON AVENUE
LINCOLNWOOD IL 60659
(708) 675-3993

STAFF: Les Bale (Prop.), Sean Bradley, Mike Cozzi, Ed and Sharon Blanco

- **OPEN PLAY:**
Mon.-Fri.: 6 p.m.-midnite
Saturday: 10 a.m.-midnite
Sunday: 10 a.m.-10 p.m.
- **USCF TOURNAMENTS EVERY WEEKEND starting at 10 a.m.**

Every Saturday: 4-SS, 40/60, G/30
Every Sunday: 3-SS, G/60
- **WBCA FIVE-MINUTE BLITZ TOURNAMENTS**
Every Friday, starting at 8 p.m. (over by 10:30)
- **GROUP CHESS LESSON EVERY WEDNESDAY NIGHT**
Only \$6.00, 7:30-9:30 p.m. Structured classes with materials provided.
- **LESSONS (GROUP/PRIVATE) WITH GM DMITRY GUREVICH**
Call Les for details.
- **BOOKS—BOOKS—BOOKS**
Over 500 titles in stock; prices you won't be able to resist.
- **SETS—BOARDS—CLOCKS**
Everything for the chess player.

CLASS A	wall chart	score	tour
1 COHEN Howard	1968 D 2 W 9 W 4 W 3	3.5	16 A
2 MADERA William	1828 D 1 W21 W14 W 8	3.5	16 A
3 DZURNY Anthony	1972 W16 W13 W 8 L 1	3	8 A
4 FROEK Randy	1835 W17 W18 L 1 W11	3	8 A
5 KOSIBA Lawrence	1823 L 8 W12 W20 W 9	3	8 A
6 STEWART Allen	1803 Dbye W15 D 7 W10	3	8 A
7 PLETT Michael	1864 L 9 W17 D 6 W14	2.5	4 A
8 HICKMAN Roger	1934 W 5 W10 L 3 L 2	2	2 A
9 JOHNSON Eric	1750 W 7 L 1 W19 L 5	2	2 AB
10 FRAATS Dan	1830 W12 L 8 W18 L 6	2	2 A
11 JOCHIM Gary	1803 D14 D20 W13 L 4	2	2 A
12 STINSON Marcus	1988 L10 L 5 W22 W15	2	2 A
13 ALLISON Roger	1825 WF L 3 L11 W20	2	2 A
14 WILLIAMS Mike	1873 D11 W22 L 2 L 7	1.5	1.5A
15 BOUTON Barry	1831 D21 L 6 W16 L12	1.5	1.5A
16 MARTIN Don	1830 L 3 D19 L15 W18	1.5	1.5A
17 BURGESS Fred	1736 L 4 L 7 Wbye D19	1.5	1.5AB
18 DWYER William	1806 W19 L 4 L10 L16	1	1 A
19 CALHAMER Allan	1902 L18 D16 L 9 D17	1	1 A
20 LULVES Joe	1877 Dbye D11 L 5 L13	1	1 A
21 ITZEN Richard	1731 D15 L 2 - -	0.5	0.5AB
22 SANDERS Robert	1804 Dbye L14 L12 - -	0.5	0.5A
23 ARLINSKY Steve	- LF - - - -	0	

CLASS B	wall chart	score	tour
1 FALLS Dwayne	1605 W20 W 6 W 2 D 3	3.5	16 B
2 GIERTZ Charles	1666 W22 W14 L 1 W10	3	8 B
3 WHEELER Stephan	1784 D 8 W 4 W10 D 1	3	8 B
4 MC CARTHY Michael	1595 W24 L 3 W20 W16	3	8 BC
5 TALBOT Marc	1713 L10 W24 W23 W 9	3	8 B
6 FULTON Steve	1696 W25 L 1 WF W13	3	8 B
7 DIXON Raymond	1656 Dbye D12 W21 W11	3	8 B
8 COX Paul	1673 D 3 L15 W17 W14	2.5	4 B
9 CRAWFORD William	1710 Dbye W18 W15 L 5	2.5	4 B
10 BANNON Joe	1621 W 5 W19 L 3 L 2	2	2 B
11 MC ALISTER Kelvin	1616 D17 D16 W12 L 7	2	2 B
12 ELLICE Wayne	1713 D15 D 7 L11 W22	2	2 B
13 ROBINSON Harrison	1641 Dbye W17 D14 L 6	2	2 B
14 GAPIZ Wilfredo	1776 W16 L 2 D13 L 8	1.5	1.5B
15 GRUENBERG Fred	1628 D12 W 8 L 9 - -	1.5	1.5B
16 REED Boyd	1794 L14 D11 W18 L 4	1.5	1.5B
17 OBERWEIS James D	1708 D11 L13 L 8 W23	1.5	1.5B
18 OBERWEIS James W	1661 D21 L 9 L16 Wbye	1.5	1.5B
19 OSANYINJOBI Funsho Toks	1731 W23 L10 LF - -	1	1 B
20 SOLOMKA Carl	1702 L 1 W22 L 4 - -	1	1 B
21 MARSHALL Ken	1726 D18 Dbye L 7 - -	1	1 B
22 GRANT Dennis	1687 L 2 L20 Wbye L12	1	1 B
23 GARDNER Keith	1661 L19 Wbye L 5 L17	1	1 B
24 CLARK Lawrence	1697 L 4 L 5 - -	0	
25 TURNER Keith	1526 L 6 - - - -	0	

CLASS C	wall chart	score	tour
1 UHLEAN Michael	1460 W 8 W 6 W 5 W 3	4	32 C
2 MARTIN Stephen	1522 W12 W15 D 4 W10	3.5	16 C
3 CIMA Joe	1416 W20 W11 W 7 L 1	3	8 C
4 RAIMO Robert	1480 W 9 W19 D 2 D 6	3	8 C
5 BURDICK Scott	1439 W13 W10 L 1 W12	3	8 C
6 LESTER Michael	1579 W17 L 1 W13 D 4	2.5	4 C
7 PALMER Ken	1487 D16 W23 L 3 W17	2.5	4 C
8 CLARK Wayne	1547 L 1 W16 W15 D 9	2.5	4 C
9 ROGERS Edward Jr	- L 4 W18 W11 D 8	2.5	
10 HICKS Charles	1541 W21 L 5 W14 L 2	2	2 C
11 WHITE David	1503 W14 L 3 L 9 W21	2	2 C
12 BALES Robert	1432 L 2 W20 W19 L 5	2	2 C
13 PADILLA Rudy	1524 L 5 W21 L 6 W16	2	2 C
14 CAIN Dennis	1411 L11 Wbye L10 W22	2	2 C
15 CARDINALE Michael	1446 W22 L 2 L 8 D18	1.5	1.5C
16 JOSEPH Steven	1328 D 7 L 8 W22 L13	1.5	1.5CD
17 BROOKS Amy	1474 L 6 D22 W23 L 7	1.5	1.5C
18 FENNER Charles	1461 L19 L 9 W20 D15	1.5	1.5C
19 PENA Waldo	1555 W18 L 4 L12 - -	1	1 C
20 SANCHEZ Ignacio	1507 L 3 L12 L18 W23	1	1 C
21 DAVIS Jeff	1455 L10 L13 Wbye L11	1	1 C
22 KEMPNER Robert	1530 L15 D17 L16 L14	0.5	0.5C
23 ANDERSON William	1458 Dbye L 7 L17 L20	0.5	0.5C

CLASSES D/E	wall chart	score	tour
1 IOVIN Daniel	- W15 W11 W 2 W 5	4	
2 HARMON Percival	1303 W 8 W13 L 1 W10	3	8 D
3 DUDIC Branislav	- W20 W 7 L 5 W12	3	
4 OBERWEIS Julie	1343 L13 W18 W16 W 6	3	8 D
5 KALAI Adam	1229 Wbye W19 W 3 L 1	3	8 D
6 HOGAN Mike	1110 Wbye W17 W10 L 4	3	8 D
7 DUDNICK Steven	1392 W18 L 3 D14 W13	2.5	4 D
8 URAM Max	- L 2 D 9 W20 W16	2.5	
9 TIARKS Richard	1288 L10 D 8 W19 W14	2.5	4 D
10 BANKHEAD Ken	- W 9 W16 L 6 L 2	2	
11 RODRIGUEZ Paul	1393 W12 L 1 D13 D18	2	2 D
12 DUPEE Arthur	1165 L11 W15 WF L 3	2	2 D
13 MURPHY William	- W 4 L 2 D11 L 7	1.5	
14 MOLES Jeff	1209 L17 W20 D 7 L 9	1.5	1.5D
15 CHENMETH Bruce	1365 L 1 L12 D18 W20	1.5	1.5D
16 FLETCHER Charles	1124 W19 L10 L 4 L 8	1	1 D
17 LOPEZ Morris	1398 W14 L 6 LF - -	1	1 D
18 GIBBS Morris	1160 L 7 L 4 D15 D11	1	1 D
19 BROOKS Tyrone	1381 L16 L 5 L 9 Wbye	1	1 D
20 SHAH Akash	1367 L 3 L14 L 8 L15	0	

What's New?

Illinois State Champion **GM Dmitry Gurevich** is continuing his winning ways. He began October by taking the \$1,000 first prize at the **Hart Plaza Open** in Detroit with a perfect 5-0 score; teenage Michigan master Vadim Tsemekhman was second with 4½. Two weeks later, he swept the field again at Omaha's **Midwest Open**, ahead of IM Michael Brooks and Ron Burnett. His biggest victory of the month came at the **Western States Open**, held October 26-28 at Reno. Gurevich's undefeated 5-1 was good for the \$1,500 first prize in a strong field; GM Walter Browne, WGM Elena Donaldson, and IMs Alexander Ivanov, Anthony Saidy, and John Donaldson tied for second.

Here are a few of Dmitry's games from these events:

Ron Burnett—GM Dmitry Gurevich

1990 Midwest Open

1.e4 c5 2.c4 Nc6 3.Nc3 g6 4.g3 Bg7 5.Bg2 d6 6.Nge2 Nf6 7.d3 O-O 8.O-O Ne8 9.Be3 Nc7 10.d4 cd4 11.Nd4 Ne6 12.Nde2 Ne5 13.b3 a5 14.Na4 Bd7 15.Nec3 Bc6 16.Rc1 Nd7 17.f4 Nec5 18.Nc5 Nc5 19.e5 Bg2 20.Kg2 Rc8 21.ed6 ed6 22.Bd4 a4 23.Bg7 Kg7 24.b4 Ne6 25.Nd5 Qe8 26.f5 gfs 27.Rf5 f6 28.Qf1 b5 29.Re1 Rc4 30.Qe2 Nc7 31.Qe7 Qe7 32.Re7 Kg6 33.Nc7 Kf5 34.Nb5 Rb4 35.Nd6 Kg6 36.a3 Rb2 37.Kh3 Rd8 38.Ne4 Rd5 39.g4 Rd3 40.Ng3 Ra3 41.Ra7 Raa2 42.Nf5 Rb3 43.Ng3 a3 44.Ra6 Rbb2 45.Nf5 Rh2 46.Kg3 h5 0-1

WGM Elena Donaldson - GM Dmitry Gurevich

1990 Western States Open

1.d4 Nf6 2.Nf3 e6 3.c4 a6 4.Nc3 c5 5.g3 cd4 6.Qd4 Nc6 7.Qd2 b5 8.cb5 ab5 9.Bg2 b4 10.Nb5 Qb6 11.Nfd4 Nd4 12.Qd4 Bc5 13.Nd6 Ke7 14.Nc4 Bd4 15.Nb6 Ra7 16.Nc8 Rc8 17.e3 Be5 18.f4 Rc1 19.Rc1 Bb2 20.Rb1 Bc3 21.Ke2 Ra2 0-1

GM Walter Browne - GM Dmitry Gurevich

1990 Western States Open

1.d4 Nf6 2.c4 e6 3.Nf3 a6 4.Nc3 c5 5.d5 b5 6.e4 b4 7.e5 bc3 8.ef6 d6 9.Bd3 e5 10.O-O gf6 11.Nh4 Rg8 12.bc3 Bg4 13.Qa4 Bd7 14.Qc2 h5 15.Nf5 Qc7 16.Rb1 Kd8 17.Be3 Ra7 18.Qe2 Rh8 19.f4 Bf5 20.Bf5 Bg7 21.Rb3 Nd7 22.Rfb1 Ke7 23.Bf2 Kd8 24.f5 Ne5 25.Rb8 Ke7 26.Rh8 Bh8 27.Qh5 Ra8 28.Qd1 Rb8 29.Rb3 Bg7 30.Qb1 Rb3 31.ab3 Bh6 32.Qa2 a5 33.h4 Kf8 34.Kh2 Bf4 35.Kh3 Kg7 36.Qe2 Qb8 37.Bc2 Qe8 38.g4 Qh8 39.Be1 Qh6 40.b4 ab4 41.cb4 cb4 42.Bb4 Bg5 43.h5 Bf4 44.Bf5 Be3 45.Bd6 Bd4 46.Kg3 Qc1 47.h6 Qh6 48.c5 Be3 49.Be5 fe5 50.Kg2 Bc5 51.Qe5 Qf6 52.Qf6 Kf6 ½-½

Kornfeld, Pelts Win Lincolnwood Tournament of Champions V

Peter Pelts (2405) and Allen Kornfeld (2271) tied for first in the fifth edition of the Illinois Tournament of Champions. The nine-round round robin invitational was held at Lincolnwood Chess & Games, which took over the sponsorship of the tournament this year from the Midwest Chess Association. Pelts has had several strong results this year, so his victory was not a surprise. Although Kornfeld had been the top player in Chicago for a brief period in the early eighties, he was relatively inactive in recent years; therefore, his rapid return to form was a pleasant surprise. Kornfeld and Pelts each won four games and lost one for a 6-3 tally.

Although more than half of the games had decisive results, only two points separated the first nine players in the field. Illinois' newest master, Jesse Kraai, scored a solid plus-two in his first Tournament of Champions—look for him to make Senior Master in the next year. Two other newcomers, Steve Szpisiak and Scott Zingheim, earned a very respectable 4-5. Both Andrew Karklins and Eugene Martinovsky had reason to be slightly disappointed, as they uncharacteristically dropped three games apiece. Marc Lonoff played more steadily, but was unable to generate enough wins. Defending champion George Umezina was simply out of form—it's not like George to draw six games. Umezina's five-move loss to Scott Zingheim may have been karmic payback for a twelve-move win in last year's TOC. Kevin Schmuiggerow, the lowest-rated player, was a last-minute addition to the field. As a result, he did not have time to prepare for the tournament. His poor play here was well below his true strength.

The average rating of the field was 2313, somewhat below that of last year. Paradoxically, the Karpov—Kasparov match must bear some of the blame, as perennial participants Bill Colias and FM Al Chow could not play because they were in New York City working for pressroom chief Eric Schiller. LC&G's Les Bale and Helen Warren of the Midwest Chess Association deserve credit for keeping this event alive. It would take relatively little additional financial support to make the TOC even stronger—we hope that Illinois masters will be given this support next year.

Games from the Tournament of Champions follow—our thanks to Marc Lonoff, who made his work available to ICB readers for the second year in a row.

Lincolnwood Chess Tournament of Champions

November 3-4 & 10-11, 1990

	USCF	1	2	3	4	5	6	7	8	9	10	Total
1 Allen Kornfeld	2271	x	½	½	1	1	1	½	½	0	1	6
2 Peter Pelts	2405	½	x	½	1	½	1	1	½	0	1	6
3 Jesse Kraai	2288	½	½	x	0	½	1	½	½	1	1	5½
4 FM Andrew Karklins	2413	0	0	1	x	0	½	1	½	1	1	5
5 Marc Lonoff	2309	0	½	½	1	x	½	0	½	1	½	4½
6 FM Eugene Martinovsky	2411	0	0	0	½	½	x	1	½	1	1	4½
7 Steve Szpisiak	2236	½	0	½	0	1	0	x	1	½	½	4
8 George Umezina	2345	½	½	½	½	½	½	0	x	0	1	4
9 Scott Zingheim	2271	1	1	0	0	0	0	½	1	x	½	4
10 Kevin Schmuiggerow	2164	0	0	0	0	½	0	½	0	½	x	1½

Lonoff—Umezina (1)

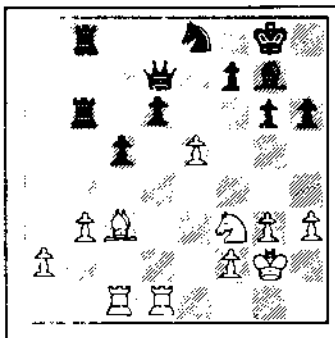
1.c4 Nf6 2.g3 e5 3.Bg2 Be7 4.Nc3 Nc6 5.e3 O-O 6.Nge2 d6 7.d4 Bg4 8.d5 Nb8 9.f3 Bd7 10.e4 a5 11.Be3 Na6 12.Qd2 Ne8 13.g4 c6 14.Ng3 cd5 15.Nd5 Nc5 16.Rd1 Bh4 17.O-O h6 18.Nf5 Bf5 19.ef5 Bg5 20.f4 ef4 21.Bf4 Nd7 22.Bg5 hg5 23.Qd4 Ne5 24.b3 Rb8 25.Rfe1 b6 26.Qe3 Nf6 27.h3 Nd5 28.Rd5 Re8 29.Qd2 Qc7 30.Rd1 a4 31.Qg5 f6 32.Qd2 ab3 33.ab3 Nf7 34.Qf2 Re7 35.R5d2 b5 36.Bd5 bc4 37.bc4 Kf8 38.Bf7 Kf7 39.Qd4 Qc5 40.Qc5 dc5 41.Rd5 Rb3 ½-½

Pelts—Szpisiak (1)

1.d4 f5 2.Bg5 h6 3.Bh4 g5 4.Bg3 Nf6 5.e3 d6 6.h4 Rg8 7.Bc4 e6 8.hg5 hg5 9.Nc3 Nc6 10.Qe2 d5 11.Bb5 Bd7 12.O-O-O Bb4 13.Bc6 Bc6 14.Nb5 Bd6 15.Be5 Kf7 16.Nf3 g4 17.Nd2 Qd7 18.Nc3 b5 19.Qe1 b4 20.Ne2 Raf8 21.f3 Ke8 22.Nf4 Kd8 23.Nb3 Ba4 24.Nc5 Bc5 25.dc5 Kc8 26.Rh6 Qe7 27.Qb4 Be8 28.Qd4 Nd7 29.Ne6 Ne5 30.Qe5 Bc6 31.Qf4 Rf7 32.Nd4 Be8 33.c6 gf3 34.gf3 Qc5 35.Rdh1 Rg2 36.R6h2 Rh2 37.Rh2 Bc6 38.Ne6 Qa5 39.c3 Kd7 40.Ng5 Rf8 41.Rh7 1-0

Kraai—Zingheim (1)

1.d4 Nf6 2.c4 c5 3.d5 b5 4.cb5 a6 5.ba6 g6 6.Nc3 Ba6 7.e4 Bf1 8.Kf1 d6 9.g3 Bg7 10.Kg2 O-O 11.Nf3 Nbd7 12.h3 Nb6 13.Qe2 Qd7 14.Rd1 Rfb8 15.e5 Ne8 16.Bf4 Na4 17.Na4 Ra4 18.b3 Rab4 19.Rac1 h6 20.Bd2 R4b7 21.Qe4 e6 22.Bc3 ed5 23.Qd5 Rb6



24.Qc5 Qf5 25.Qe3 de5 26.Be5 Be5 27.Qe5 Qe5 28.Ne5 Re6 29.Nc4 Kg7 30.Kf1 Ra6 31.Rc2 Nc7 32.Rd6 Rd6 33.Nd6 Ne6 34.Rc8

Rb6 35.Nc4 Ra6 36.a4 Nd4 37.Rb8 Rc6 38.Ne3 h5 39.a5 Rc1 40.Kg2 Ra1 41.b4 Ra4 42.Rb6 Kf8 43.a6 Ke8 44.b5 Nb5 45.Rb5 Ra6 46.Rb7 Kf8 47.Nc4 Kg7 48.Ne5 Rf6 49.f4 h4 50.Rf7 Rf7 51.Nf7 Kf7 52.g4 Kf6 53.Kf3 Ke6 54.Kg4 Kf6 55.h5 gh5 56.Kh5 Kf5 57.h4 Kf6 58.Kg4 1-0

Kornfeld—Schmuiggerow (1)

1.e4 g6 2.d4 Bg7 3.Nc3 c6 4.Nf3 d5 5.h3 b5 6.a3 de4 7.Ne4 Be6 8.Bd3 Bd4 9.Nd4 Qd4 10.Bd2 f6 11.O-O Bc4 12.Bc3 Qd5 13.Bc4 Qe4 14.Bb3 Nd7 15.Re1 Qf4 16.Qe2 e5 17.Rad1 a5 18.Rd4 Qh6 19.Red1 Nc5 20.Rd6 Nb3 21.Be5 Nc1 22.Qe4 fe5 23.Qe5 Kf8 24.Rd8 Rd8 25.Rd8 Kf7 26.Rd7 Kf8 27.Qb8 1-0

Umezina—Karklins (2)

1.d4 Nf6 2.c4 g6 3.Nc3 Bg7 4.e4 d6 5.Be2 O-O 6.Nf3 e5 7.de5 de5 8.Qd8 Rd8 9.Bg5 Na6 10.Nd5 Rd6 11.Bf6 Bf6 12.Nf6 Rf6 13.Ne5 Re6 14.Ng4 Bd7 15.e5 Kg7 16.O-O h5 17.Ne3 Re5 18.Bf3 c6 19.Rfd1 Be6 20.b3 Bb8 21.Rd2 Nc5 22.Rd4 a5 23.Rad1 Re8 24.h3 Kf6 25.Rd8 Ke7 26.Re8 Ke8 27.Rd4 Ke7 28.h4 Bf5

— four ICA Tour mini-events —



1991 Lincolnwood Plus-Score Mini-Tour Tornados



PLUS-SCORE MINI-TOUR TORNADO #1 Saturday, January 26, 1991

PLUS-SCORE MINI-TOUR TORNADO #2 Sunday, January 27, 1991

PLUS-SCORE MINI-TOUR TORNADO #3 Saturday, February 23, 1991

PLUS-SCORE MINI-TOUR TORNADO #4 Sunday, February 24, 1991

Four separate one-day tournaments, each a four-round USCF-rated Swiss awarding cash prizes and ICA Tour points according to score:

Score:	Tour Points:	Prize:
4.0	16	\$100.00
3.5	8	50.00
3.0	4	25.00
2.5	2.5	12.00
2.0	2	
1.5	1.5	
1.0	1	
0.5	0.5	



Organizer and TD: Bill Smythe

Round times: 10:00, 12:30, 3:00, 5:30 each day. Half-point bye available in round 1 or 2 (but not both) if requested before pairings are made.

Time control: 40/1, then 20/30, then 20/30.

Entry fee for each tournament: \$12.00 if postmarked by the Monday before the tournament or delivered to me in person on Friday night before the tournament. You can generally find me at the Lincolnwood club on Friday nights for the WBCA Blitz tournament.

Entry fee at the door is \$15.00. Registration close 9:30 a.m. each day. First-round half-point bye for late arrivals.

MEMBERSHIPS REQUIRED: USCF (\$30.00 per year). ICA (\$10.00 per year, juniors \$6.00). **Please note:** The \$1.50-per-round USCF tournament membership is no longer available.

Make check payable and send advance entry to: William Smythe, 6945 N. Ashland #F-3, Chicago, IL 60626. (312) 761-2455

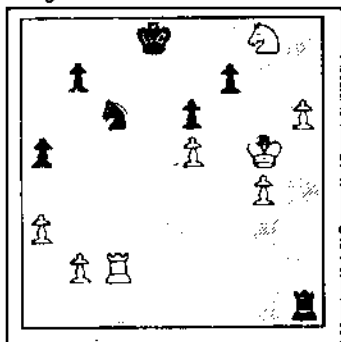
Tournament site: Lincolnwood Chess & Games, 3518 W. Devon, Lincolnwood 60659. (708) 675-3993. Exit the Edens expressway at Touhy (7200 north), then proceed east on Touhy, southeast on Lincoln, and east on Devon (6400 north). By public transportation, the 155 Devon bus operates 24 hours a day between the Loyola L stop (6550 N. Sheridan) and Devon/Kedzie (6400N/3200W), three blocks from the site.

Please **NO SMOKING** at the site during the tournament

29.Rd2 Bd7 30.g3 Re6 31.Kf1 Rd6 32.Ke2 Rd2 33.Kd2 Kf6 34.Nd1 Ke5 35.Ke3 b5 36.cb5 cb5 37.Be2 Kd6 38.f3 f5 39.Nc3 b4 40.Nb1 a4 41.ba4 Be6 42.a3 b3 43.Kd4 f4 44.gf4 b2 45.Bc4 Bf5 46.Ba2 Nd3 47.Nd2 Nf4 48.Nc4 Kc6 49.Nb2 Ng2 50.Bd5 Kb6 51.Nc4 Ka6 52.Bc6 Nh4 53.f4 Bg4 54.Ne5 Nf5 55.Kc5 Ne7 56.Bb5 Kb7 57.a5 Bf5 58.a6 Kc7 59.Nc6 Nc8 60.a7 Nb6 ½-½

Zingheim—Pelts (2)

1.e4 c5 2.c3 Nf6 3.e5 Nd5 4.d4 cd4 5.Nf3 d6 6.cd4 Nc6 7.Bc4 de5 8.de5 Ndb4 9.Qb3 e6 10.O-O Na5 11.Bb5 Bd7 12.Qa4 Bb5 13.Qb5 Nac6 14.Nc3 a6 15.Qe2 Qd3 16.Rd1 Qe2 17.Ne2 Rd8 18.Rd8 Kd8 19.Bf4 h6 20.h4 Kc7 21.Bg3 g6 22.Nf4 a5 23.a3 Na6 24.Nd3 Nc5 25.Nc5 Bc5 26.Rc1 Kb6 27.Nd2 Rd8 28.Ne4 Be7 29.f4 Kb5 30.Bf2 Ka4 31.Bc5 Rd7 32.Be7 Re7 33.Rc3 Na7 34.Kf2 Kb5 35.g4 Nc6 36.Ke3 Kb6 37.Nf6 Rc7 38.Ng8 g5 39.h5 gf4 40.Kf4 Rd7 41.Nh6 Kc7 42.Ng8 Rd2 43.h6 Rh2 44.Kg5 Kd8 45.Rc2 Rh1



After 45...Rh1

46.Rc6 bc6 47.Kf6 Rh4 48.Kf7 Rg4 49.h7 Rh4 50.Kg7 Rg4 51.Kh6 Rh4 52.Kg6 Rg4 53.Kh5 Rg2 54.Nh6 Rh2 55.Kg6 Rg2 56.Kf6 Rf2 57.Ke6 1-0

Schmuggerow—Kraai (2)

1.c4 e5 2.Nc3 Nf6 3.g3 d5 4.cd5 Nd5 5.Bg2 Nb6 6.Nf3 Nc6 7.O-O Be7 8.b3 O-O 9.Bb2 Bg4 10.a4 a5 11.Rc1 f5 12.Nb5 Bf6 13.d4 e4 14.Nh4 Bh4 15.g4 Nd5 16.Rc5 Ncb4 17.Nc3 c6 18.Nd5 Nd5 19.f3 ef3 20.ef3 Bh5 21.Qe1 Nf4 22.d5 Re8 23.Qa1 Re2 24.Rf2 Rf2 25.Kf2 Nd3 26.Kf1 Nc5 27.Bg7 Nb3 28.Qc3 Qd5 29.Qf6 Re8 30.Kf2 Qf7 0-1

Szpisjak—Lonoff (2)

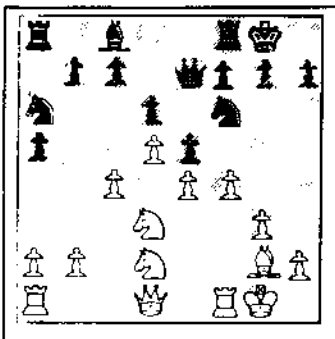
1.e4 e6 2.d4 d5 3.e5 c5 4.c3 Nc6 5.Nf3 Bd7 6.Be2 f6 7.O-O fe5 8.Ne5 Ne5 9.de5 Qc7 10.c4 d4 11.Bf4 Ne7 12.Nd2 Bc6 13.Re1 Ng6 14.Bg3 Be7 15.Bg4 Qd7 16.Bh5 O-O-O 17.Ne4 Be4 18.Re4 Nf8 19.Rf4 g6 20.Bf3 h5 21.h3 Bg5 22.Re4 Rh7 23.Qd3 Rf7 24.Rd1 Qa4 25.a3 Nd7 26.Ree1 h4 27.Qg6 Rf3 28.gf3 hg3 29.Qg5 gf2 30.Kf2 Qc4 31.Re4 Rf8 32.Red4 cd4 33.Rc1 b5

If 33...Qc7 34.Rc7 Kc7 35.Qg4 Ne5 36.Qg7 Nd7 37.Qd4 b6 (or 37...a6 38.h4 e5 39.Qc4 Kd8 40.h5) 38.Qa4. 34.Rc4 bc4 35.Qg4 Rf5 36.Qd4 Ne5 37.Qa7 Rf3 38.Kg2 Rf5 39.a4 Kd8 40.a5 Nc6 41.Qb6

Kd7 42.a6 Ra5 43.Qa5 1-0

Martinovsky—Kornfeld (2)

1.d4 Nf6 2.Nf3 e6 3.c4 Bb4 4.Bd2 Qe7 5.g3 Nc6 6.Bg2 Bd2 7.Nbd2 d6 8.O-O e5 9.d5 Nb8 10.e4 O-O 11.Ne1 a5 12.Nd3 Na6 13.f4



After 13.f4

13...Nb4 14.Nb4 ab4 15.Qb3 c5 16.dc6 bc6 17.Qb4 Ng4 18.fe5 Qa7 19.Kh1 de5 20.c5 Ne3 21.Rfc1 Ng2 22.Kg2 Qd7 23.Qc3 f5 24.Rf1 Ba6 25.Rfe1 Bd3 26.Kg1 f4 27.Nf1 f3 28.Kf2 Bf1 29.Rf1 Qh3 30.Qc4 Kh8 31.Ke3 Rad8 32.Rad1 Qh6 33.Kf2 Rd2 34.Ke1 Qe3 0-1

Kornfeld—Umezina (3)

1.e4 c5 2.Nf3 d6 3.d4 cd4 4.Nd4 Nf6 5.Nc3 e6 6.g3 Be7 7.Bg2 O-O 8.O-O a6 9.Re1 Nbd7 10.a4 Qc7 11.h3 Rd8 12.Qe2 Ne5 13.Nb3 b6 14.f4 Nc6 15.g4 Bb7 16.g5 Nd7 17.Be3 Rac8 18.h4 Nb4 19.Nd4 Bf8 20.f5 ef5 21.ef5 Re8 22.Bb7 Qb7 23.Qg2 Qg2 24.Kg2 Rc4 25.Bf2 Ne5 26.Re2 Rec8 27.Rae1 h5 28.Re4 Ng4 29.Bg1 Kh7 30.Re8 d5 31.R1e2 Re8 32.Re8 Bc5 33.Nf3 g6 34.f6 Bg1 35.Kg1 Rf4 36.Kg2 d4 37.Ne2 Ne3 38.Kf2 Nd1 39.Ke1 Rf3 40.Kd1 d3 41.cd3 Rd3 42.Ke1 Nc6 43.Nf4 Rd4 44.Ng2 Ra4 45.Kd2 Rb4 46.Ke3 Rb2 47.Nf4 Rb5 48.Ke4 Rb4 49.Kd5 Rf4 50.Kc6 b5 51.Rf8 Rh4 52.Rf7 Kg8 53.Rg7 Kf8 54.Rg6 Rf4 ½-½

Karklins—Szpisjak (3)

1.e4 c5 2.Nf3 d6 3.d4 cd4 4.Qd4 Nc6 5.Bb5 Bd7 6.Bc6 bc6 7.O-O Qb6 8.Qc3 Nf6 9.Nbd2 e5 10.b3 Be7 11.Ba3 Qa6 12.Nc4 c5 13.Nf2 Bb5 14.Bb2 O-O 15.f4 Bc4 16.Nc4 Ne4 17.Qd3 f5 18.fe5 de5 19.Rf5 Nd6 20.Re5 Nc4 21.Re7 1-0

Pelts—Kraai (3)

1.d4 Nf6 2.c4 e6 3.g3 c5 4.Nf3 cd4 5.Nd4 d5 6.Bg2 e5 7.Nf3 d4 8.O-O Nc6 9.e3 Be7 10.ed4 ed4 11.Nbd2 O-O 12.Nb3 d3 13.Be3 Be6 14.Rc1 Rc8 15.Nc5 Bc5 16.Bc5 Re8 17.b3 Ne4 18.Be3 Bg4 19.h3 Bh5 ½-½
If 19...Bf3 20.Qf3 d2 21.Rcd1 Nd4 22.Qg4 f5 23.Qh5 g6 24.Qh6 Ne2 25.Kh2 Qd3.

Martinovsky—Schmuggerow (3)

1.d4 d5 2.c4 e5 3.e3 ed4 4.ed4 Nf6 5.Nc3 Be6 6.c5 b6 7.cb6 ab6 8.Nf3 Be7 9.Bd3 c5 10.h3 O-O 11.O-O Nc6 12.Re1 Ne8 13.Ne2 g5 14.Ng3 Ng7 15.Qd2 c4 16.Bb1 Bb4 17.Qc2 f5 18.Bg5 Nd4 19.Nd4 Qg5 20.Re6 Ne6 21.Ne6 Qe7 22.Nf8 Qe1 23.Kh2 Rf8 24.Nf5 Rf6

25.Ng3 Bd6 26.Qh7 Kf8 27.Qh8 Ke7 28.Qg7 Kd8 29.Qf6 Kc7 30.Qf7 Kc6 31.a4 Qc1 32.Qe8 Kc7 33.Bf5 Bg3 34.fg3 Qa1 35.Qd7 Kb8 36.Qd6 1-0

Lonoff—Zingheim (3)

1.Nf3 c5 2.g3 g6 3.Bg2 Bg7 4.c3 e5 5.O-O d5 6.d3 Nc6 7.e4 Nge7 8.ed5 Nd5 9.d4 cd4 10.cd4 ed4 11.Re1 Nde7 12.Na3 O-O 13.Bg5 h6 14.Bf4 Be6 15.Nb5 Bc4 16.Qa4 Bb5 17.Qb5 Qb6 18.Qb6 ab6 19.Ne5 Ne5 20.Be5 Nc6 21.Bg7 Kg7 22.Red1 Rfd8 23.Rd2 Rd7 24.a3 Rad8 25.Rc1 Ne5 26.f4 Ng4 27.Bh3 f5 28.Bg4 fg4 29.Kf2 Kf6 30.Re1 Re7 31.Re7 Ke7 32.Ke2 Kf6 33.Kd3 Kf5 34.Re2 Rd5 35.Re7 g5 36.Rb7 gf4 37.Rf7 Ke5 38.Rf4 h5 39.Re4 Kf5 40.Rd4 Re5 41.Rf4 Kg5 42.Rb4 b5 43.Re4 Rf5 44.Re2 h4 45.Kd4 Kf6 46.gh4 Rh5 47.Ke4 Re5 48.Kd3 Rh5 49.Ke3 Rh4 50.Kf4 1-0

Kraai—Lonoff (4)

1.d4 Nf6 2.c4 g6 3.Nc3 d5 4.cd5 Nd5 5.e4 Nc3 6.bc3 Bg7 7.Bc4 c5 8.Ne2 Nc6 9.Be3 O-O 10.O-O Qc7 11.Rc1 Rd8 12.Qd2 a6 13.Rfd1 b5 14.Bd5 Bb7 15.Bh6 e6 16.Bg7 Kg7 17.Bb3 Qe7 18.Qe3 Rac8 19.Nf4 Na5 20.Bc2 Nc4 21.Qg3 Rd7 22.e5 Kh8 23.h4 cd4 24.h5 Ne5 25.cd4 g5 26.Nh3 f6 27.de5 Rc2 28.ef6 Rc1 29.Rc1 Qf6 30.Ng5 h6 31.Qb8 Kg7 32.Nh3 Kh7 33.Nf4 Be4 34.Rc7 Qg7 35.Ng6 Bg6 36.hg6 Kg6 37.Qe8 Rf7 38.Qe6 Qf6 39.Qg4 Kh7 40.Rf7 Qf7 ½-½

Szpisjak—Kornfeld (4)

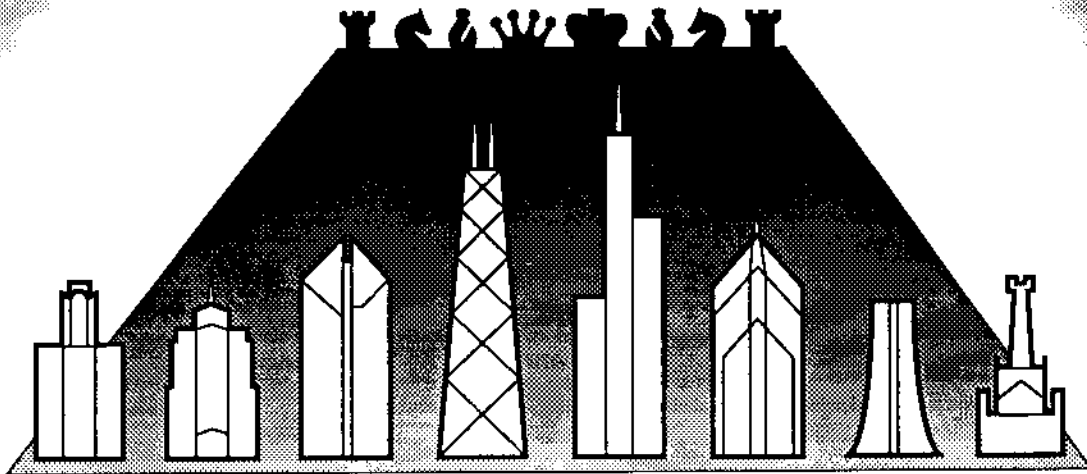
1.e4 c5 2.Nf3 d6 3.d4 cd4 4.Qd4 Nc6 5.Bb5 Bd7 6.Bc6 Bc6 7.c4 Nf6 8.Nc3 e6 9.O-O Be7 10.b4 O-O 11.b5 Bd7 12.Bb2 Qc7 13.Rac1 Rfc8 14.Ne2 e5 15.Qd3 Qb6 16.Nc3 Be6 17.Nd2 Nd7 18.Nd5 Bd5 19.Qd5 a6 20.a4 Nc5 21.Ra1 ab5 22.ab5 Ra4 23.Ra4 Na4 24.Ba3 Qa7 25.Qd3 Nc5 26.Bc5 Qc5 27.Ra1 g6 28.g3 Bd8 29.Nb3 Qb4 30.Kg2 Bb6 31.Rc1 Ra8 32.Rc2 Ra3 33.Rb2 Qe1 34.Qd6 Bb3 35.Rb3 Qf2 36.Kh3 Bd4 37.Ra3 h5 38.Ra8 Kh7 39.Qd8 Kh6 40.Qe7 Be3 41.Rh8 Kg7 42.Qf8 Kf6 43.Qd8 ½-½

Schmuggerow—Pelts (4)

1.e4 c5 2.Nf3 d6 3.d4 cd4 4.Bc4 Nf6 5.Qe2 Nc6 6.c3 Bg4 7.O-O a6 8.Rd1 Bf3 9.gf3 dc3 10.f4 Qe7 11.Nc3 e6 12.a4 Be7 13.f5 ef5 14.ef5 O-O 15.Kh1 Ne5 16.Bd5 Qd7 17.Ra3 Qf5 18.Bb7 Rab8 19.Bd5 Rb4 20.Rg1 Nd3 21.Bh6 Nf2 22.Qf2 Qf2 23.Rg7 Kh8 24.Rg2 Qf1 25.Rg1 Qg1 26.Kg1 Rg8 27.Kf1 Rb2 28.Bf7 d5 29.Ra2 Ra2 30.Na2 Rc8 31.Nc1 Ng8 32.Be3 Rf8 0-1

Zingheim—Karklins (4)

1.e4 c5 2.Nf3 Nc6 3.Bb5 e5 4.c3 g6 5.O-O Bg7 6.b4 cb4 7.cb4 Nge7 8.Bb2 O-O 9.d3 d6 10.a3 a5 11.ba5 Na5 12.Nbd2 Ncc6 13.Nc4 Na7 14.a4 Nb5 15.ab5 Be6 16.Nfd2 f5 17.ef5 gf5 18.f4 Nc4 19.Nc4 Qc7 20.Qe2 Ra1 21.Ba1 e4 22.Kh1 Ba1 23.Ra1 Rc8 24.Ne3 Qc3 25.Rd1 Bb3 26.Rg1 ed3 27.Qh5 Qf6 28.Nf5 Kh8 29.Qh3 Be6 30.Qd3 Bf5 31.Qd5 Rg8 32.Qb7 Qe6 33.Qf3 h6 34.h3 Kh7 35.Kh2 Be4



THE UNITED STATES FEDERATION AND THE ILLINOIS CHESS ASSOCIATION PROUDLY PRESENT
THE 1991 NATIONAL OPEN IN CHICAGO

May 31-June 2

\$20,000 Guaranteed Prize Fund

A GREAT TOURNAMENT COMES TO CHICAGO

The National Open at the Ramada O'Hare is THE tournament of the year. Affordable entry fees, low room rates, golf, tennis, swimming, convenient restaurants (from fast-food to gourmet), and many extras, make this more than a just a tournament—it's a chess vacation! For further information, see tournament announcements or contact Alan Losoff, PO Box 157, Morton Grove, IL 60053. (708) 966-5559.

Championship Section (Open to All)

\$4,000 - \$2250 - \$1250 - \$750 - \$500 - \$250

Under 2400: \$750 - \$400 - \$250 - \$100

Under 2200: \$750 - \$400 - \$250 - \$100

Under 2000: \$750 - \$400 - \$250 - \$100

plus 120 Grand Prix Points and the Edmundson Cup

Reserve Section (Under 1800 and unrated)

\$1500 - \$800 - \$500 - \$200 - \$100 - \$100

Under 1600: \$700 - \$350 - \$150 - \$100

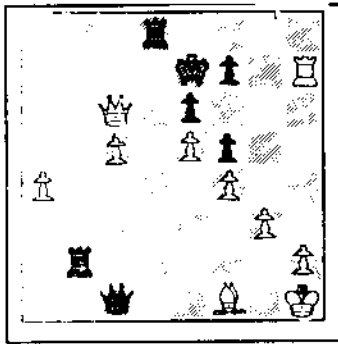
Under 1400: \$700 - \$350 - \$150 - \$100

Unrated: \$500 - \$200

36.Qe3 d5 37.b6 Qf7 38.g4 Rf8 39.Rc1 Qf4
40.Qf4 Rf4 41.Rc7 Kg6 42.Kg3 Rf3 43.Kh4
Rb3 44.Rc6 Kg7 45.Rc7 Kf6 46.Rc6 Ke7
47.Rh6 d4 48.g5 d3 49.Rf6 d2 50.Rf1 Bc2 0-1

Lonoff—Pelts (5)

1.g3 c5 2.Bg2 d5 3.Nf3 Nc6 4.d4 Nf6 5.O-O e6
6.c4 cd4 7.Nd4 Qb6 8.Nc6 bc6 9.Nc3 Bb7
10.e4 d4 11.Na4 Qb4 12.Bd2 Qc4 13.Rc1 Qb5
14.b4 Nd7 15.Re1 Rd8 16.Bf1 d3 17.Nb2 Nf6
18.a4 Qb6 19.Nd3 Be7 20.Be3 Qc7 21.Bf4
Qc8 22.Qb3 O-O 23.Nc5 Bc5 24.Rc5 Rd4
25.f3 Rfd8 26.Be3 R4d7 27.Rec1 Qb8 28.Bf4
Qa8 29.Qc3 a6 30.Bg5 Rd4 31.Bf6 gf6 32.Qe3
Kf8 33.Rh5 Qb8 34.Rh7 Ke7 35.f4 c5 36.e5 f5
37.bc5 Bc6 38.Qc3 Rd2 39.Qa5 Rb2 40.Qa6
Qb3 41.Qc6 Qe3 42.Kh1 Qc1



After 42...Qc1

43.Qc7 Rd7 44.Rf7 Kf7 45.Qd7 Kf8 46.Qd8
Kg7 47.Qf6 Kh7 ½-½

Kraal—Kornfeld (6)

1.d4 Nf6 2.c4 e6 3.Nf3 Bb4 4.Bd2 a5 5.g3 b6
6.Bg2 Bb7 7.O-O O-O 8.Bg5 Be7 9.Nc3 h6
10.Bf6 Bf6 11.Qc2 d6 12.Rad1 g6 13.e4 Na6
14.a3 Bg7 15.Rb1 Qe7 16.b4 ab4 17.ab4 c5
18.bc5 bc5 19.e5 cd4 20.ed6 Qd6 21.Nb5 Qc5
22.Nbd4 Nb4 23.Qb3 Bf3 24.Bf3 Rab8 25.Nb5
Nc6 26.Bc6 Qc6 27.Rfd1 Rfc8 28.Rbc1 Qc5
29.Qf3 Qf5 30.Qe3 Qg5 31.Qg5 hg5 32.Nd6
Rc6 33.h3 f5 34.Nb5 Bb2 35.Rb1 Be5 36.Rbc1
Rc5 37.Nd4 Rb6 38.Kf1 Kf7 39.Nf3 Bf6
40.Rd7 Ke8 41.Ra7 e5 42.Ra4 e4 43.Ne1 f4
44.Ng2 fg3 45.fg3 Bd4 46.Ra2 Rf5 47.Ke1
Rbf6 48.Re2 Rf1 49.Kd2 Rf2 50.Re1 Re2
51.Re2 Rf2 52.Rf2 Bf2 53.g4 Ke7 54.Ne3 Kd6
55.a2 Bg3 56.Nd5 Ke5 57.Ne7 Kf6 58.Nd5
Ke6 59.Ke3 Ke5 60.Ne7 Bf4 61.Ke2 Kd4
62.Ng6 Kc4 63.h4 ½-½

Pelts—Karklins (6)

1.d4 Nf6 2.c4 g6 3.Nc3 Bg7 4.e4 d6 5.Be2
O-O 6.Nf3 e5 7.O-O Nh5 8.de5 de5 9.Be3 Nc6
10.Qd8 Nd8 11.Nb5 Ne6 12.Na7 Nef4 13.Rfe1
Ne2 14.Re2 Be6 15.Rc2 c6 16.Ng5 Rfd8
17.Ne6 fe6 18.Bb6 Rd4 19.f3 Nf6 20.a4 Nd7
21.c5 Nb8 22.Kf2 Na6 23.Ke2 Bh6 24.Nb5
Nb4 25.Nd4 ed4 26.Rc4 d3 27.Kd1 Nc2
28.Rc2 dc2 29.Kc2 Bf4 30.g3 Be5 31.Ra3 g5
32.b4 Kf7 33.Kd3 Ke7 34.Kc4 h5 35.b5 h4
36.bc6 bc6 37.g4 gh4 38.h3 Rg8 39.a5 Kd7
40.a6 Kc8 41.Rd3 Re8 42.Rd8 Rd8 43.Bd8
Bg3 44.Be7 1-0

Martinovsky—Kraal (6)

1.e4 c5 2.f4 g6 3.Nf3 Bg7 4.Bc4 Nc6 5.O-O e6
6.Qe1 Nge7 7.Nc3 O-O 8.d3 a6 9.a4 d5
10.Bb3 Na5 11.Ba2 d4 12.Ne2 Nac6 13.Ng3
Kh8 14.e5 b5 15.Ne4 Qb6 16.Kh1 Bb7 17.Qh4
Nf5 18.Qh3 Nb4 19.Bb1 Nd5 20.Re1 c4
21.Nfg5 h6 22.Nf3 Rac8 23.ab5 ab5 24.Bd2 c3
25.bc3 dc3 26.Bc1 Ra8 27.Ra8 Ra8 28.g4 Nd4
29.f5 ef5 30.Nd4 fg4 31.Qh4 Qd4 32.Nd6 Ne3
33.Kg1 Ng2 34.Be3 Qd5 35.Qe7 Ne1 36.Nf7
Kh7 37.Kf2 Qf3 38.Ke1 Qe3 39.Kf1 Ra1
40.Ng5 hg5 0-1

Zingheim—Martinovsky (6)

1.e4 e5 2.Nf3 Nc6 3.d4 ed4 4.c3 dc3 5.Bc4 d6
6.Nc3 Nf6 7.Qb3 Qd7 8.Ng5 Ne5 9.Bb5 c6
10.f4 Neg4 11.Be2 h6 12.Nf3 h5 13.Ng5 g6
14.h3 Nh6 15.Be3 Qe7 16.O-O-O Be6 17.Ne6
fe6 18.g4 Nf7 19.g5 Ng8 20.Bc4 Nd8 21.f5 gf5
22.ef5 d5 23.Bd3 Qb4 24.Qb4 Bb4 25.Bd4
Rh7 26.f6 Rd7 27.Bg6 Kf8 28.Bh5 Rh7 29.Bg4
Bd6 30.Rhf1 Rh4 31.Rf3 Nf7 32.Bf2 Rg4
33.hg4 Ng5 34.Rfd3 Nf6 35.Bh4 Bf4 36.Kc2
Kg7 37.Rf1 Rh8 38.Rf4 Rh4 39.Rg3 Rh2
40.Kb3 c5 41.a4 d4 42.Nb5 Nfe4 43.Rd3 Nd2
44.Ka2 Nc4 45.Rb3 Na5 46.Rd3 Nc6 47.Rg3
Nb4 48.Ka3 Nc2 49.Kb3 Ne3 50.Nd4 cd4
51.Rd4 Nd5 52.Rc4 Kf6 53.Rc8 Ke5 54.Ra8
Ne4 55.Rg1 Nd2 56.Ka3 Nc4 57.Kb3 Rh3
58.Ka2 Nb4 59.Ka1 Rh2 60.Re1 Kd6 61.Rd1
Kc7 62.Rb1 Kb6 63.g5 Rg2 64.Rg8 Ka5
65.Ra8 a6 66.Rc8 Nd2 67.Rd1 Rg5 68.Rc7
Rd5 69.Rh1 Rd4 70.b3 Nb3 71.Kb2 Ka4
72.Rb7 Rd2 73.Kb1 Ka3 0-1

Szplisjak—Umezina (6)

1.e4 c5 2.Nf3 d6 3.d4 cd4 4.Nd4 Nf6 5.Nc3 e6
6.g4 h6 7.h4 Nc6 8.Be3 Nd4 9.Qd4 e5 10.Qa4
Bd7 11.Bb5 Be7 12.f3 a6 13.Bd7 Nd7
14.O-O-O b5 15.Qb3 Rc8 16.g5 Nc5 17.Qa3
O-O 18.g6 g6 19.Bc5 Rc5 20.Qa6 b4 21.Nd5
b3 22.ab3 Bh4 23.b4 Rc8 24.Kb1 Bf2 25.Qb7
Rb8 26.Qe7 Kh8 27.Qd8 Rfd8 28.c3 Rb7
29.Kc2 f5 30.Rd2 Ba7 31.Rg2 Rg8 32.h7
Rgg7 33.Rh6 fe4 34.fe4 Bb8 35.Rhg6 Rg6
36.Rg6 Kh7 37.Rg3 Ba7 38.Kd3 Kh6 39.b3
Bb8 40.Kc4 Ba7 41.Rg8 Bb8 42.Nf6 Ba7
43.Kd5 Rc7 44.c4 Be3 45.Ke6 Bg5 46.Kf5 Bf6
47.Kf6 Kh7 48.Rg3 Rb7 49.b5 Rb6 50.Ke7
Kh6 51.Kd7 1-0

Schmuggerow—Lonoff (6)

1.e4 e6 2.d4 d5 3.Nc3 Bb4 4.e5 c5 5.Bd2 cd4
6.Nb5 Be7 7.Nf3 Nc6 8.Nbd4 f5 9.Bd3 Bd7
10.O-O Nd4 11.Nd4 Qc7 12.Qe2 Qb6 13.Nb3
a6 14.c4 dc4 15.Bc4 Bb5 16.Rfc1 Bc4 17.Qc4
Kf7 18.Nd4 Rd8 19.Nb3 Rd5 20.Be3 Qb5
21.Qb5 Rb5 22.Bc5 Bc5 23.Rc5 Ne7 24.Rac1
Rc5 25.Rc5 Rd8 26.f4 Rd1 27.Kf2 Nd5 28.Rc2
b6 29.g3 a5 30.Rc1 Rc1 31.Nc1 Ke7 32.Ke2
h6 33.Kd3 Kd7 34.a3 Kc6 35.Nb3 ½-½

Karklins—Lonoff (7)

1.e4 e6 2.d4 d5 3.Nc3 Bb4 4.Ne2 de4 5.a3
Be7 6.Ne4 Nf6 7.N2g3 Nc6 8.Bb5 Ne4 9.Ne4
Qd5 10.Qd3 Bd7 11.Bf4 a6 12.Bc4 Qd4
13.Qd4 Nd4 14.O-O-O Nf5 15.Rhe1 O-O-O
16.g4 Nh4 17.Bg3 Bc6 18.Rd8 Rd8 19.f4 Nf3
20.Re3 Be4 21.Re4 Nd2 22.Be6 fe6 23.Re6

Rd7 24.Re7 Nb3 25.cb3 Re7 26.Kd2 Kd7
27.Kd3 Kd6 28.Bf2 Kd5 29.h4 g6 30.b4 Rf7
31.Be3 h5 32.g5 Rf8 33.Bd2 Ke6 34.Ke4 Rd8
35.Bc3 Rd1 36.Be5 c6 37.Bd4 Re1 38.Be3
Re2 39.f5 gf5 40.Kf4 Rb2 41.Bb6 Rg2 42.Kf3
Ra2 43.Kf4 Ra3 0-1

Kornfeld—Pelts (7)

1.e4 c5 2.Nf3 d6 3.d4 cd4 4.Nd4 Nf6 5.Nc3 a6
6.g3 e5 7.Nde2 Be7 8.Bg2 b5 9.a4 Bb7 10.ab5
ab5 11.Ra8 Ba8 12.O-O b4 13.Nd5 Nd5
14.ed5 O-O 15.Be3 Nd7 16.Qd2 Qa5 17.Nc1
Nf6 18.Bg5 Rb8 19.Nb3 Qa2 20.Bf6 Bf6
21.Qc1 Bb7 22.Qa1 Ra8 23.Qa2 Ra2 24.Ra1
Ra1 25.Na1 e4 26.Be4 Bb2 27.Nb3 Ba6 28.f4
g6 29.Kf2 f5 30.Bf3 Kf7 31.Be2 Bb7 32.Bc4
Kf6 33.Na5 Bd4 34.Kf3 Bc8 35.Nc6 Bc5
36.Bd3 Bd7 37.Bc4 Be8 38.h3 Bf7 39.Nd8 Be8
40.Nc6 h6 41.Bd3 Bf7 42.Bc4 g5 43.g4 Bg6
44.Bb3 h5 45.Nd8 hg4 46.hg4 fg4 47.Kg4 Bf5
48.Kg3 g4 49.Nc6 Bd7 50.Bc4 Bf5 51.Bb3
Kg7 52.Ne7 Bd7 53.Nc6 Kh6 54.Nd8 Bf5
55.Nb7 Kg6 56.Ba4 Kf6 57.Bb3 Bc8 58.Nd8
Kf5 59.Ne6 Be3 60.Bc4 Ke4 61.Bb3 Bd2
62.Bc4 Bd7 63.Bb3 Be3 64.Bc4 Ba4 65.Bd3
Kd5 66.f5 Ke5 67.Kg4 Bc6 68.Ng5 Bd5 69.Nf3
Kf6 70.Nh2 Ba2 71.Kf3 Bg1 72.Ng4 Kg5
73.Ne3 d5 74.Nf1 Kf6 75.Nd2 Ke5 76.Ke2 Bb6
77.Nb3 Bd8 78.Ba6 Bf6 79.Kd3 Kf5 80.Bc8
Ke5 81.Bd7 Kd6 82.Be8 Bc3 83.Bh5 Bb1
84.Be8 Ke5 85.Bh5 Kf4 86.Be8 Kf3 87.Bh5 ½-
½

Umezina—Zingheim (7)

1.d4 d6 2.c4 e5 3.Nf3 e4 4.Ng5 f5 5.e3 Qg5
0-1

Kraal—Umezina (8)

1.d4 Nf6 2.c4 e6 3.Nf3 b6 4.g3 Ba6 5.Qa4 Bb7
6.Bg2 Be7 7.O-O O-O 8.Nc3 d6 9.Qc2 c5
10.d5 ed5 11.Nh4 Re8 12.Nf5 Bf8 13.Bg5 Na6
14.cd5 h6 15.Bf4 Nc7 16.e4 b5 17.Rfe1 b4
18.Na4 Ng4 19.b3 g6 20.Ne3 Ne3 21.Be3 Bg7
22.Rac1 Nb5 23.Nb2 Nc3 24.Nc4 Ba6 25.Bf4
Bc4 26.bc4 a5 27.Bd2 ½-½

Zingheim—Szplisjak (8)

1.e4 e5 2.Nf3 Nf6 3.Ne5 d6 4.Nf3 Ne4 5.d4 d5
6.Bd3 Nc6 7.O-O Bg4 8.c4 Be7 9.Nc3 Nf6
10.cd5 Nd5 11.h3 Be6 12.a3 Bf6 13.Re1 O-O
14.Be3 Ne3 15.fe3 g6 16.Qc2 Bg7 17.Rad1
Qe7 18.Bb5 Rad8 19.Qa4 Bd7 20.e4 a6
21.Bc6 Bc6 22.Qc4 Qd7 23.d5 Bb5 24.Qb3 c5
25.a4 c4 26.Qb4 Bc3 27.Qc3 Ba4 28.Rd4 f6
29.Rc4 Rc8 30.Rc1 Rc4 31.Qc4 Bb5 32.Qc5
Re8 33.d6 Re6 34.Qc8 Qc8 35.Rc8 Re8
36.Rc7 Rd8 37.e5 fe5 38.Ne5 ½-½

Schmuggerow—Karklins (8)

1.e4 c5 2.Nf3 Nc6 3.d4 cd4 4.c3 dc3 5.Nc3 e6
6.Bc4 Nge7 7.Bg5 f6 8.Bh4 Ng6 9.Bg3 Nce5
10.Bb3 b5 11.Rc1 Ba6 12.O-O b4 13.Ne2 Nf3
14.gf3 Ne5 15.Be6 Be2 16.Qe2 de6 17.Be5
fe5 18.Rfd1 Qg5 19.Kh1 Be7 20.Qb5 Kf7
21.Rg1 Qf4 22.Qe2 Rac8 23.Rc8 Rc8 24.Rg4
Qc1 25.Rg1 Rc2 26.Qd3 Qb2 27.Qd7 Rc1 0-1

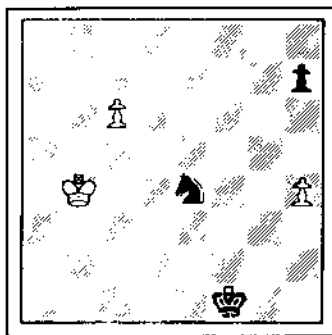
Pelts—Martinovsky (8)

1.c4 Nf6 2.Nc3 d5 3.cd5 Nd5 4.g3 g6 5.Bg2

Nc3 b.c3 Bg7 7.Rb1 Nd7 8.Nf3 c5 9.O-O O-O
 10.c4 Qc7 11.d3 Rb8 12.Bb2 b6 13.Qd2 Bb7
 14.a4 Bc6 15.Bg7 Kg7 16.Ra1 a6 17.Rfb1 h6
 18.Ne1 Ne5 19.Rb2 Rfd8 20.Qc3 Kh7 21.Nc2
 Bg2 22.Kg2 Nc6 23.Rab1 a5 24.Ne3 Nb4
 25.Kg1 Qd6 26.Rf1 Qd4 27.Qd4 Rd4 28.f4 f5
 29.Nd1 e5 30.fe5 Re8 31.Nc3 Re5 32.Rd2 Rd7
 33.Kf2 Re8 34.Rb1 Re6 35.Rbd1 Rde7 36.Rb1
 h5 37.Rbd1 Kh6 38.h4 Re8 39.Rh1 Nc6
 40.Nd5 Rb8 41.Re1 Rf8 42.Nb6 f4 43.Nd5 fg3
 44.Kg3 Ne7 45.e4 Nf5 46.Kh3 Nd4 47.Re3
 Ree8 48.Rg3 Rf1 49.Kg2 Ref8 50.Ne7 Rf6
 51.Rb2 Nf3 52.Kh3 Ne5 53.Kg2 Ng4 54.Re2
 Rf2 55.Rf2 Rf2 56.Kg1 Ra2 57.d4 cd4 58.c5
 Ra4 59.c6 Rc4 60.Rb3 Ne5 61.Rb7 g5 62.c7
 d3 63.Rb6 Kg7 64.c8Q Rc8 65.Nc8 d2 66.Rb1
 Nc4 67.Ne7 gh4 68.Nf5 Kf6 69.Kf2 h3 70.Ke2
 h2 71.Ne3 Nd6 72.Rh1 Ne4 73.Rh2 a4 74.Rh4
 Ng3 75.Kd2 a3 76.Ra4 Kg5 77.Ke1 h4 78.Kf2
 a2 79.Ra2 Ne4 80.Kg2 Kf4 81.Nf1 1-0

Lonoff—Kornfeld (8)

1.d4 c5 2.Nf3 cd4 3.Nd4 g6 4.g3 Bg7 5.Bg2
 Nc6 6.Nc6 bc6 7.O-O Rb8 8.Nd2 Nf6 9.c4 e5
 10.Qc2 O-O 11.b3 d6 12.Bb2 Bf5 13.e4 Bd7
 14.Rad1 Qb6 15.e5 Bf5 16.Qc1 de5 17.Be5
 Rbd8 18.Nb1 Bb1 19.Qb1 a5 20.Rd8 Rd8
 21.Rd1 Ne8 22.Bg7 Ng7 23.Rd8 Qd8 24.Bh3
 e6 25.Qe1 Ne8 26.Bg2 Qc7 27.Bf3 Nd6
 28.Qe5 Nb5 29.Qc7 Nc7 30.Kf1 f5 31.Ke1 e5
 32.Bb7 Kf7 33.Kd2 Kf6 34.Kc3 e4 35.a3 Ke5
 36.f4 ef3 37.Bf3 g5 38.Bb7 f4 39.gf4 gf4 40.b4
 ab4 41.ab4 cb4 42.Kb4 Kd4 43.h4 Ne6 44.Bc8
 Nc5 45.Bg4 Ne4 46.Bh5 Ke3 47.c5 f3 48.Bg4
 f2 49.Bh3 Ke2 50.c6 f1Q 51.Bf1 Kf1



After 51...Kf1

52.c7

Since the King doesn't arrive on the Kingside in time in the game continuation, perhaps 52.Kc4! is an improvement. Readers?—Ed.

52...Nd6 53.Kc5 Nc8 54.h5 Kg2 55.Kc6 Kg3
 56.Kd7 Na7 57.h6

If 57.c8Q Nc8 58.Kc8 Kh4 59.h6 Kh5
 60.Kd7 Kh6 61.Ke6 Kg5 62.Ke5 Kg4 63.Ke4 Kg3
 64.Ke3 h5 65.Ke2 Kg2.

57...Kg4 58.Ke6 Kg5 59.Kf7 Kh6 60.Kf6 Nc8
 61.Kf5 Kg7 62.Kg5 h6 63.Kg4 Kg6 64.Kh4 h5
 65.Kh3 Kg5 66.Kg3 Nd6 67.Kh3 h4 68.Kh2
 Kg4 69.Kg2 h3 70.Kh2 Kh4 71.Kg1 Kg3
 72.Kh1 Ne4 73.c8Q Nf2 0-1

Because of 74.Kg1 h2 75.Kf1 h1Q 76.Ke2
 Qd1 77.Ke3 Qd3.

Martinovsky—Lonoff (9)

1.d4 Nf6 2.c4 g6 3.Nc3 d5 4.cd5 Nd5 5.e4 Nc3
 6.bc3 Bg7 7.Bc4 c5 8.Ne2 Nc6 9.Be3 O-O

10.O-O cd4 11.cd4 Na5 12.Bd3 Nc6 13.Bc4
 Na5 14.Bd3 Nc6 ½-½

Szpisjak—Kraai (9)

1.e4 c5 2.Nf3 d6 3.d4 cd4 4.Nd4 Nf6 5.Nc3 a6
 6.f4 Qc7 7.Bd3 Nc6 8.Nc6 Qc6 9.O-O e6
 10.Qe2 Be7 11.e5 de5 12.fe5 Nd7 13.Kh1 O-O
 14.Bf4 Nc5 15.Ne4 Nd3 16.cd3 Bd7 17.Rac1
 Qd5 18.Rc7 Bb5 19.Nc3 Qd3 20.Qd3 Bd3
 21.Rd1 Bd8 22.Rb7 Bg6 23.Rdd7 Rc8 24.Ne2
 Be4 25.Ra7 Rc2 26.Rd2 Rd2 27.Bd2 Bd3
 28.Nf4 Bb5 29.a4 Ba4 30.Ra6 Bb5 31.Ra7 h6
 32.h3 Bg5 33.Rb7 Bc6 34.Rc7 Rd8 35.Ne6
 Bg2 36.Kg1 Rd2 37.Rc8 Kh7 38.Nf8 Kh8
 39.Ne6 Kh7 40.Nf8 Kg8 41.Ne6 ½-½

Umezina—Pelts (9)

1.d4 Nf6 2.c4 g6 3.Nc3 Bg7 4.e4 d6 5.Nf3 O-O
 6.Be2 e5 7.de5 de5 8.Qd8 Rd8 ½-½

Kornfeld—Karklins (9)

1.e4 c5 2.Nf3 Nc6 3.d4 cd4 4.Nd4 Nf6 5.Nc3
 d6 6.g3 Bd7 7.Bg2 g6 8.O-O Bg7 9.Nc6 bc6
 10.Na4 h5 11.h3 Qc8 12.Kh2 Qa6 13.Nc3 Rb8
 14.Qd3 Qa5 15.Bd2 Qc7 16.f4 Rb2 17.Rae1
 d5 18.Bc1 Rb8 19.ed5 cd5 20.Nd5 Nd5
 21.Qd5 Bf6 22.f5 g5 23.Ba3 Kf8 24.Qe4 Re8
 25.Qb7 Qb7 26.Bb7 Rb8 27.Bd5 Rb5 28.Bc4
 Re5 29.Re5 Be5 30.f6 Ke8 31.fe7 f6 32.Rd1
 a6 33.Ba6 Bc6 34.Rd8 Kf7 35.Rh8 h4 36.e8Q
 Be8 37.Bc4 1-0

VO 15.4 Zingheim—Schmuggerow (9)

1.d4 d5 2.c4 e5 3.de5 d4 4.Nf3 Nc6 5.g3 Bg4
 6.Bg2 Qd7 7.O-O O-O-O 8.Qa4 Bh3 9.e6 Be6
 10.b4 Bb4 ½-½

Surprises Abound in Lake County Open XIII

David Shiner

The thirteenth annual Lake County Open was held at Shimer College on the weekend of October 6-7, 1990. Like its predecessors, it was a hard-fought event, with none of the prize winners decided until the final round. Thirty chess addicts fought for eleven prizes, which accounted for 92% of the total entry fees. The excellent prize fund, one of the best in Lake County history, may have had something to do with the quality of play and unexpectedness of the results.

In the first round of the Open Section, for example, Tim Just (1669), upset Larry Cohen (1996). Just, the lowest-rated competitor in the Open Section, went on to draw with sometime master Kevin Bachler (2189) and beat Bill Dwyer (1830) in the final round to finish a mere half-point out of first place! For Just, a Lake County tournament veteran, this was the best tournament result of his life.

The honor of scoring the tournament's biggest upset, however, belonged to Howard Cohen (1935), who knocked new Shimer student Jesse Kraai (2312) off first board with a fourth-round victory. As a result, Kraai had hope that Wallace Gordon (2038) could beat Howard in the last round. Gordon was indeed victorious; he and Kraai tied for first with

4-1 scores. Howard Cohen and Just tied for third with 3½ each.

The Reserve Section was similarly hard-fought. By the end of the second round, there were only two perfect scores: Shimer student Boyd Reed (1794) and Dennis Grant (1647). By the end of the third round, there were none. Going into the last round, Grant and Scott Kittsley (1618) were tied for first with 3½; Reed and the surprising David Paulsen (1559) were half a point back. Grant and Kittsley opted for a short draw on board one, so Reed was able to join them by defeating Wayne Clark (1596). Paulsen drew his final game to win the 1st Class C prize, with Waldo Pena (1550) and Rudy Padilla (1484) one-half point behind. Bryan Moles scored two points to cop the D/E/Unrated prize.

If there was a disappointment in the tournament, it was the lack of turnout from local players, especially masters. Shimer College has held several Illinois High School championships in addition to regular Monday-night tournaments, and plans to hold more weekend tournaments in the future. Prize funds for these tournaments will be very competitive.

David Shiner directed, with Reed and Bachler assisting. Selected games from the event follow.

In Round 1, Bob Parsons played an impressive double-Knight sacrifice against the youngest player in the event:
Bob Parsons (1717) - Taylor Wilhour (1441)
 1.e4 e5 2.Nf3 Nf6 3.Nc3 Bb4 4.Bc4 d6 5.Ng5 O-O 6.Qe2 Qe7 7.a3 Bc5 8.d3 Ng4 9.f3 Nh6 10.Nd5 Qd7 11.Qd2 c6 12.Nf6 gf6 13.Nh7 Kh7 14.Qh6 Kg8 15.Qg6 Kh8 16.Qf6 Kh7 17.Qh6 Kg8 18.Bg5 Be3 19.Qg6+ 1-0

The eventual winners of the Open Section drew their Round 2 game:

Wallace Gordon (2038) - Jesse Kraai (2312)
 1.e4 c5 2.Nf3 e6 3.d4 cd4 4.Nd4 Nf6 5.Nc3 d6 6.Be3 Be7 7.Bc4 a6 8.a4 Qc7 9.Qe2 Nc6 10.O-O O-O 11.Rad1 Bd7 12.f3 Rac8 13.Nc6 Bc6 14.Bb3 Rb8 15.Qf2 b5 16.ab5 ab5 17.Ne2 Rfc8 18.Nf4 Kh8 19.Qg3 Bf8 20.Nd3 b4 21.Rfe1 Qb7 22.Qf2 Ra8 23.Ra1 d5 24.e5 Nd7 25.Bd4 Bb5 26.Ra8 Qa8 27.Qd2 Bc4 28.Nb4 Bb3 29.cb3 Qb7 30.Nd3 Qb3 31.Rc1 Rc4 32.Rc4 Qc4 33.Qc3 Kg8 34.Kf2 f6 35.f4 Qc3 36.bc3 Kf7 37.Ke3 Be7 38.g3 f5 39.h3 h6

39...Ke8 40.Ba7 Kd8 41.Kd4 Kc7 42.c4 dc4 43.Kc4 Kc6 might be a microscopic improvement for Black.

40.Ba7 g5 41.Kd4 Nf8 42.c4 dc4 43.Kc4 Ng6 44.Bc5 Bd8 45.Kb5 gf4 1/2-1/2

Black should hold after 46.gf4 Bh4 47.Kc6 Bg3.

This Round 3 encounter was probably the best-played game of the tournament:

Jesse Kraai (2312) - Kevin Bachler (2189)
 1.d4 Nf6 2.c4 g6 3.Nc3 Bg7 4.e4 d6 5.Nf3 O-O 6.Be2 e5 7.O-O Nbd7 8.Re1 c6 9.Bf1 a5 10.de5 de5 11.Na4 Qc7 12.Qc2 Re8 13.h3 Nb6 14.Nb6 Qb6 15.c5 Qc7 16.Be3 Nd7 17.Rad1 Nf8 18.Rd2 Ne6 19.Red1 Qe7 20.b3 Bf8 21.Rc1 Qf6 22.Qd1 Nf4 23.Kh2 g5 24.Ng1 Be7 25.g3 Kh8 26.Nf3 Bh3 27.Bh3 Nh3 28.Ne5 Rad8 29.Ng4 Qe6 30.Kh3 h5 31.Qf3 Kg7 32.Qf5 hg4 33.Kg4 Qh6 34.Rd8 Rd8 35.Bg5 Bg5 36.Qg5+ Qg5 37.Kg5 Rd2 38.f4 Ra2 39.g4 Rd2 40.Rh1 Rd4 41.Kf5 (1-0, 55 moves)

This Round 4 game decided the Reserve Section, as Kittsley smoothly outplays Fraats:

Dan Fraats (1785) - Scott Kittsley (1618)
 1.e4 d5 2.ed5 Qd5 3.Nc3 Qd6 4.Nf3 c6 5.Bc4 Bf5 6.O-O Nf6 7.d4 e6 8.Ne5 Qc7 9.Bf4 Bd6 10.Qf3 Nbd7 11.Rfe1 O-O 12.Bd3 Bd3 13.cd3? Rad8 14.Rac1 a6 15.Ne4 Nd5 16.Bg3 Ne5 17.de5 Be5 18.Ng5 Bg3 19.hg3 Nf6 20.Rc4 h6 21.Nh3 Qa5 22.Re2 Qd5 23.Nf4 Qf3 24.gf3 Rd7 25.Rd2 Rfd8 26.Rc3 e5 27.Ng2 e4 28.Ne1 ed3 29.Rcd3 Rd3 30.Rd3 Rd3 31.Nd3 Nd7 32.Kf1 Kf8 33.Ke2 Ke7 34.Kd2 Kd6 35.Kc3 Nb6 36.Kb4 Nd5 37.Ka5 c5 38.a3 c4 39.Nb4 Nb4 40.ab4 Kc6 41.f4 g6 42.f5 gf5 43.f3 h5 44.f4 f6 45.Ka4 b6 46.b5 ab5 47.Kb4 Kd5 48.Kb5 Ke4 0-1

Just plays the best of his several sparkling games in the

last round, defeating Dwyer with a long and accurately-calculated combination to conclude his outstanding tournament:

Bill Dwyer (1830) - Tim Just (1669)

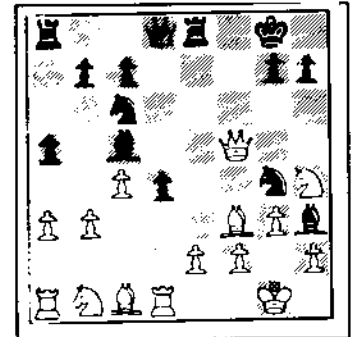
1.d4 d5 2.c4 e5 3.de5 d4 4.Nf3 Nc6 5.a3 a5 6.b3 f6 7.ef6 Nf6 8.g3 Bc5 9.Bg2 Bf5 10.O-O O-O 11.Nh4 Bg4 12.Qc2 Re8 13.Bf3 Bh3 14.Rd1 Ng4 15.Qf5

15...Nf2 16.Bd5 Kh8 17.Qf2 Re2 18.Qe2 d3 19.Qe3 Be3 20.Be3 Qf6 21.Nc3?

Sacrificial shock? Although Black's combination was very attractive, White has a lot of wood for the Queen; he should be for choice after 21.Nd2—Ed.

21...Qc3 22.Bd2 Qd4 23.Kh1 Rf8 24.Rac1 Qf2

25.Bf4 Rf4 26.gf4 Qh4 27.Rd3 g6 28.Rcd1 Bf5 29.Re3 Qf4 30.Rde1 Qd6 31.h4 Qa3 32.h5 gh5 33.Rg1 Bg6 34.Be4 Be4 35.Re4 Qf8 36.Re3 h6 37.Rge1 Qf7 38.Re8 Kh7 39.R8e3 h4 40.Kh2 Qf2 41.Kh3 h5 0-1



After 15.Qf5

Lake County Open XIII

October 6-7, 1990

OPEN SECTION	wall chart	score	tour
1 KRAAI Jesse	2312 W 7 D 2 W 6 L 3 W 9	3.5	4 M
2 GORDON Wallace	2038 W 5 D 1 L 7 W 4 W 3	3.5	4 MX
3 COHEN Howard	1935 D 6 W 9 Dbye W 1 L 2	3	3 MXA
4 JUST Timothy	1669 W 9 D 6 Dbye L 2 W 5	3	3 MXAB
5 DWYER William	1830 L 2 W 7 Dbye D 9 L 4	2	2 MXA
6 BACHLER Kevin	2189 D 3 D 4 L 1 - -	1	1 MX
7 LORING Steve	1985 L 1 L 5 W 2 L 8 -	1	1 MXA
8 SHINER David	1773 - - - W 7 -	1	1 MXAB
9 COHEN Lawrence	1996 L 4 L 3 Dbye D 5 L 1	1	1 MXA

RESERVE SECTION	wall chart	score	tour
1 REED Boyd	1794 W 4 W13 L 5 W 8 W11	4	8 B
2 GRANT Dennis	1647 W16 W 7 Dbye W11 D 3	4	8 B
3 KITTSLY Scott	1618 W17 Dbye W10 W 5 D 2	4	8 B
4 PAULSEN David	1559 L 1 W16 W 7 W13 D 5	3.5	4 BC
5 FRAATS Daniel	1785 W 9 D 6 W 1 L 3 D 4	3	3 B
6 FULTON Steven	1631 W20 D 5 L11 D10 W15	3	3 B
7 PARSONS Robert	1717 W19 L 2 L 4 W12 W14	3	3 B
8 PADILLA Rudy	1484 Dbye W21 W18 L 1 D10	3	3 BC
9 PENA Waldo	1550 L 5 D12 Dbye W19 W13	3	3 BC
10 MC ALISTER Kelvin	1676 D15 W14 L 3 D 6 D 8	2.5	2.5B
11 CLARK Wayne	1596 Dbye W15 W 6 L 2 L 1	2.5	2.5BC
12 COLLARD Michael	1420 L13 D 9 W17 L 7 W20	2.5	2.5BC
13 GORDON Steve	1667 W12 L 1 W14 L 4 L 9	2	2 B
14 LESTER Michael	1531 W18 L10 L13 W17 L 7	2	2 BC
15 CAIN Dennis	1440 D10 L11 Dbye W16 L 6	2	2 BC
16 MOLES Bryan	1183 L 2 L 4 W20 L15 W21	2	2 BCD
17 GALLETTO Robert	- L 3 W19 L12 L14 -	1	1
18 HAUPTFELD Sven	1763 L14 W20 L 8 - -	1	1 B
19 WILHOUR Taylor	1441 L 7 L17 W21 L 9 -	1	1 BC
20 GIBBS Morris	1160 L 6 L18 L16 W21 L12	1	1 BCD
21 BALES Robert	1397 Dbye L 8 L19 L20 L16	0.5	0.5BCD

King's Indian: Anti-Sämisch 6...c5!?

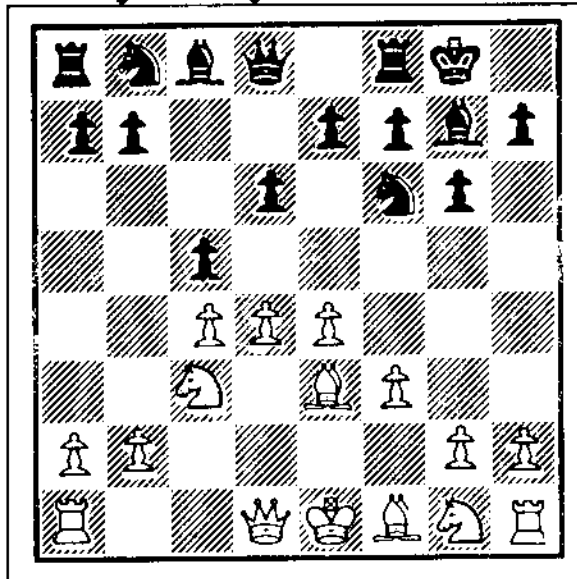
Bill Brock & Bill Colias

In the spirit of Kevin Bachler's "Byrne the Sämisch," the ICB offers yet another weapon to readers who detest the Sämisch Variation of the King's Indian Defense. The 6...c5 gambit against the Sämisch has been around for decades, but it only became respectable recently. Several top GM's have taken it up, including the young Soviet star Shirov, World Cup participants Khalifman and Speelman, and Boris Gelfand, the number three player in the world.

What's the point of the sacrifice? It creates good squares for the Black Knights, as well as two open files for the Black Rooks and an open diagonal for the g7 Bishop. As a result, Black is able to hit weak squares on White's Queenside (e.g., c4, c3, b2). Just as in the Benko Gambit, Black's initiative often carries over into the endgame.

Few of the games below have been published in U.S. magazines, so 6...c5! should be an excellent surprise weapon. For a gambit, it's relatively safe: Black still has excellent chances to equalize against a well-prepared opponent. We offer a collation of recent master games, following the stem game Gheorghiu-Gelfand, Palma de Mallorca 1989.

1.d4 Nf6 2.c4 g6 3.Nc3 Bg7 4.e4 d6 5.f3 O-O 6.Be3 c5



7.dc5

Besides the game continuation, there are two sensible ways to decline the gambit:

A) 7.Nge2 B) 7.d5 C) 7.dc5

A) White can maintain the central tension with 7.Nge2 Nc6 8.Qd2. (Polugaevsky-Dzindzichashvili, USSR 1974, went 8.dc5 dc5 9.Bc5 Qa5 10.Be3 Rd8 11.Qc1 Nh5 12.Ng3 Ng3 13.hg3 Be6, = according to ECO; alternatively, Dlugy-Z. Polgar, New York 1985, went 8.d5 Ne5 9.Ng3 a6 10.f4 Neg4 11.Bd2 e5 12.de6 fe6 13.h3 Nh6 14.Be3 += —Dlugy in *Informant* 40. The Dlugy-Polgar game is one of only two games quoted in

BCO 2—page 146, note 11—so don't be surprised if someone chooses this line against you.) After 8.Qd2 which Black has chosen from two replies:

A1) 8...a6 A2) 8...b6

A1) 8...a6. Probably not best, as White has used three responses with success:

A11) 9.Rd1 A12) 9.dc5 A13) 9.O-O-O

A11) 9.Rd1 Kuprejck - Smirmin, Sverdlovsk 1987, continued 9...Qa5 10.d5 (If 10.dc5 dc5 11.Nd5 Qd2 12.Rd2 Nd7 = Kuprejck) 10...Ne5 11.Nc1 b5 12.cb5 ab5 13.Bb5 Ba6 14.Ba6 Ra6 15.Qe2 Rb6 16.O-O Rfb8 17.Rd2 Qb4 18.Rc2 R6b7 19.Rd1 Qa5 20.h3 Ned7 21.Kh2 Ne8 22.Nd3 Nc7 23.f4 Na6 24.a3 Rb3 25.Nc1 R3b7 26.Nd3 Rb3 27.Bf2 Bc3 28.Rc3 Rb2 29.Nb2 Qc3 30.Nc4 Nb6 31.Ne3 Nc7 32.e5 de5 33.fe5 Rd8 34.d6 ed6 35.ed6 Ne6 36.Ng4 Nc4 37.Be1 Qb3 38.d7 Nb6 39.Bh4 1-0

A12) 9.dc5 dc5 10.Qd8 Rd8 11.Bc5 Nd7 12.Be3 b5 (or 12...Nde5 13.Nf4 Nb4 14.Rc1 g5 15.Nfd5 Nbd3 16.Bd3 Nd3 17.Ke2 Nc1 18.Rc1 ± Shirov) 13.O-O-O bc4 14.Nf4 ± was Alterman-Shirov 1988 47/(714).

A13) After 9.O-O-O, Gheorghiu-M. Piket, Lugano 1989, went 9...Qa5 10.Kb1 e6 11.Bh6 (Gheorghiu likes Black's chances after either 11.dc5 dc5 12.Qd6 Nd7 or 11.d5 ed5 12.Nd5 Nd5 13.Qa5 Na5 14.cd5 Nc4) 11...b5 12.Bg7 Kg7 13.cd5 b4! 14.Nd5! and 1-0 in 33 moves—Inf. 47/714.

A2) Gheorghiu-Shirov, Moscow 1989 went 8...b6! (Shirov) 9.Rd1 (9.d5 Ne5 10.Ng3 h5 11.Be2 h4 12.Nf1 a6 was Timoshchenko-Lanka, USSR 1988—in *Informant* 48, Shirov evaluates the position as unclear after 13.Bh6) 9...e6 10.g3 Ba6 11.b3 Re8 12.Kf2 (12.dc5 dc5 13.Bg2=) Black had the strong break 12...d5; he went on to win after 13.e5 cd4 14.Bd4 Nd7 15.cd5 Nce5 16.Nf4 Bb7 17.Be2 ed5 18.Nfd5 Nf6 19.Nf4 Qe7 20.Rhe1 Rad8 21.Qc1 g5 22.Bb5 Rd4 23.Rd4 Nfg4 24.Kf1 Nh2 25.Kg2 Nh3 26.Nfd5 Nd4 27.Be8 Qe6 28.Qe3 Nc2 0-1.

B) 7.d5 leads to Benoni-type positions in which Black's idea of h5-h4 has been scoring well. For example, Timman - Speelman, London m(3) 1989, continued 7...e6 8.Qd2 ed5 9.cd5 a6 10.a4 Re8 11.Nge2 Nbd7 12.Ng3 h5 13.Be2 h4 14.Nf1 Ne5 15.Bg5 h3 16.g4 Qa5 with chances for both sides; the game was drawn in 47 moves. (This same idea for counterplay was used in a slightly different position in Seirawan-Kasparov, Skelleftea 1989: 1.d4 Nf6 2.c4 g6 3.Nc3 Bg7 4.e4 d6 5.Be2 O-O 6.Bg5 c5 7.d5 h6 8.Be3 e6 9.Qd2 ed5 10.cd5 Re8 11.f3 h5 12.a4 a6 13.a5 Nh7 14.Bd1 Nd7 15.Nge2 Ne5 16.b3 Qh4 17.Bf2 Qf6 18.Qe3 h4, and Black had the initiative.)

7...dc5 8.Qd8

Again, White has two major alternatives to the game continuation:

C1) 8.Bc5 C2) 8.e5 C3) 8.Qd8

C1) USCF President Max Dlugy likes to grab the pawn without exchanging Queens: 8.Bc5 Nc6 9.Be3 Nd7 10.Nge2 (10.Rc1 Qa5 11.Nh3 Rd8 12.Nf2 Nc5 was great for Black in Dlugy-Gelfand 1989) 10...Nde5 11.Nf4 Na5 12.Qa4 g5 13.Nh5 Nd3 14.Bd3 Qd3 15.Nd5 Nc4 16.Rd1 Nb2 17.Rd3 Na4 18.Ng7 Kg7 19.Nc7 (\pm Soltis) Dlugy-Lein, New York Open 1990. Black must have something better than Lein's continuation.

C2) In his game against Gelfand at Linares 1990, Lajos Portisch declined the gambit pawn with the cramping 8.e5! (the exclamation is Gelfand's) 8...Nfd7 (8...Qd1 9.Rd1 Nfd7 10.f4 f6 11.e6 Nb6 12.Bc5 Be6 13.b3 +=) 9.f4 f6 10.ef6 (10.e6 Nb6 11.Bc5 Be6 is unclear) 10...ef6 (10...Nf6 11.Qd8 Rd8 12.Bc5 Nc6 13.Nf3 \pm) 11.Be2 (11.Nf3 Re8 12.Qd2 +=) 11...Nc6 (A possible improvement is 11...Re8!? After 12.Bf2 f5, Gelfand analyzes two possibilities:

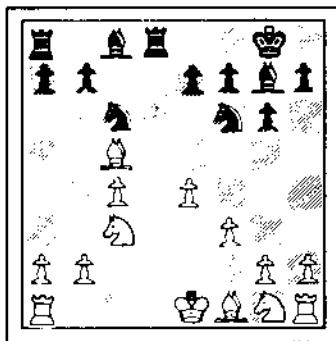
13.Nf3 is met by 13...Bc3 14.bc3 Qe7 15.Rb1 (not 15.Qd5? Kh8 16.O-O Nf6 winning material) 15...Nc6 16.Rb2 Nf6 17.O-O unclear. Alternatively, 13.Rc1 Nc6 14.Nf3 is +=.) Portisch-Gelfand continued 12.Nf3 Re8 13.Bf2 Nb6?! 14.Qd8 Nd8 15.Bc5 Nc4 16.O-O-O! Be6 17.Nd4 Bf7 18.Ndb5 Rc8 19.Bc4 Rc5 20.Bf7 Nf7 21.Rd7 f5 22.Rb7 a6 23.Nc7 Rc8 24.Na6? Ra5 25.Nb4 Nd6 26.Rd7 Ne4 27.Nd5 Bc3!! 28.Ne7 Kh8 29.Nc8 Ra2! 30.bc3 Ra1 31.Kc2 Rh1 32.Nd6! Rh2 33.Ne4 fe4 34.Rd2 Rh4 35.Rf2 Kg7 36.Kd2 Kf6 37.Ke3 Kf5 38.c4 Rg4 39.Rc2 Rg3 40.Kf2 Kf4 41.c5 Rd3 42.c6 Rd8 43.c7 Rc8 44.Rc5 h5 45.g3 Kg4 46.Rc4 Kf5 47.Ke3 Kg4 48.Kf2 Kf5 49.Ke3 $\frac{1}{2}$ - $\frac{1}{2}$; see Gelfand's annotations in **Informant 49**.

8...Rd8 9.Bc5 Nc6

10.Nd5

White has played five different moves in this position:

C231) 10.Rd1 C232) 10.Nge2
C233) 10.Ba3 C234) 10.Be2
C235) 10.Nd5



After 9...Nc6

C231) 10.Rd1. Now Black must decide whether to exchange Rooks:

C2311) 10...Nd7 C2312) 10...Rd1

C2311) 10...Nd7 11.Ba3 b6 12.Nge2 (12.Nd5 e6 13.Ne7 Ne7 14.Be7Re8 15.Ba3 Nc5 unclear—Khalifman and Nesis) 12...Bb7 13.Nd5 Nde5 14.Nc1 e6 15.Ne7 Ne7 16.Be7 (if 16.Rd8 Rd8 17.Be7 Re8 18.Bd6 Nc4! 19.Bc4 Rc8, Black grabs the initiative.) 16...Rd1 17.Kd1 Re8 18.Bg5 f5 19.ef5 Nf3 20.f6 Ng5 21.fg7 Nh3 22.Nd3 Kg7 23.Ke1 Rd8 24.Ne5 g5 25.Ng4 h5 26.Ne3 g4 27.Be2 Nf4 28.Rg1 Rd4 29.Bf1 Ng6 30.Be2 Nf4 31.Bf1 Be4 32.a3 e5 33.g3 Nd3

34.Bd3 Rd3 35.Nd1 Bf3 36.Nc3 e4 37.Nd5 e3 0-1, Arlandi-Khalifman, Groningen jr. 1985.

C2312) 10...Rd1 11.Nd1 (11.Kd1 Nd7 12.Ba3 Bc3 13.bc3 Nde5 =+) 11...Be6 12.Ne3 Nd7 13.Ba3 a5 (13...Nb6 intending 14...Na4 is unclear) 14.Ne2 Nb4 15.Nc3 Bd4 16.Kd2 Rd8 17.Ned5 Bd5 18.cd5 Nb6 19.Bb5 e6 20.de6 fe6 was Murey-Belov, Moscow 1989; White could now have played 21.Ke2 Rc8 22.Bb4 ab4 23.Na4 Na4 24.Ba4 Bb2 25.Bb3 Kf7 26.Rd1 Ke7 27.f4 += Belov.

C232) 10.Nge2 b6 (ECO quotes Zaid-Ubavila, USSR 1974, Inf. 18/650: 10...Nd7 11.Be3 Nde5 12.Nf4 Nb4 13.Rb1 Nc2 14.Kf2 Ne3 15.Ke3 Nc6 =. In R. Gunawan-Gelfand, Minsk 1986, White diverged at move 13: 13.Kf2 Be6 14.Ncd5 Bd5 15.Nd5 Nc2 16.Rc1 Ne3 17.Ke3 e6 18.Nc3 Bh6 19.f4 g5 20.g3 Ng6 21.Rc2 gf4 22.gf4 Bf4 23.Kf3 Rd2 24.Rd2 Bd2 25.Nb1 Ne5 26.Kf2 Bf4 27.Be2 Rd8 28.b3 Rd4 29.h4 Re4 30.h5 Be3 31.Kg2 Bd4 32.Bf3 Nf3 33.Kf3 Re3 34.Kf4 Re2 35.Rd1 e5 36.Kf5 Rh2 0-1) 11.Ba3 e6 12.Nb5 (for 12.Rd1 see Inf. 45/(730)) 12...Ne8 (12...a6 13.Nd6 Nd7 14.O-O-O Nc5 15.g3 Ne5 16.Bc5 bc5 Zak) 13.Nc1 Bb7 (13...a6 14.Nc3 Nd4 15.Bd3 b5!? unclear) 14.Nb3 a5 15.Be2 Nb4 16.Kf2 Nc2 17.Rad1 a4 18.Na1 Na3 19.ba3 Bc6 20.Nc2 Bb5 21.cb5 Rdc8! and Black has compensation, Arbakov-Glek, Belgorod 89, Inf. 47/(714).

C233) 10.Ba3 is probably the most reliable way for White to play. Since the Bishop will have to retreat at some time, White does so immediately—the idea is to delay the deployment of other pieces until Black is committed to a particular plan. While **BCO 2** gives this move an exclamation, Gelfand thinks that Black is OK:

C2331) 10...a5 C2332) 10...Nd7 C2333) 10...b6

C2331) 10...a5 is the newest of Black's choices, played in Knaak - Wojtkiewics, Stara Zagora 1990. The game continued 11.Bc5 Nd7 12.Be3 (12.Bf2!? Knaak) 12...a4 13.O-O-O a3 14.Nge2 ab2 15.Kb2 b6 16.Kb1 Ba6 17.Nd4 Na5 18.Nd5 and now 18...Nc5 is unclear—Knaak.

C2332) 10...Nd7 11.O-O-O Bc3 12.bc3 b6 13.Ne2 e5 (if 13...Ba6 14.Nd4 Nce5 15.Be7 Re8 16.Bb4 Bc4 17.Bc4 Nc4 18.Nc6 Nde5 19.Ne5 Ne5 20.Rd4 Rac8 21.Kc2 +/- Vogt; or if 13...Nc5 14.Rd5 e6 [14...Be6 15.Bc5] 15.Nd4) 14.Kc2 Ba6 15.Nc1 \pm Knaak; Knaak-Vogt, DDR (ch) 1986, continued 15...Nf8 16.Rd8 Rd8 17.Bf8 Kf8 18.c5! White reached a winning ending after 18...Bf1 19.Rf1 b5 (not 19...bc5 20.Nb3 c4 21.Nd2 Na5 22.Rb1 +/-) 20.Nd3 a5 21.Rb1 Rb8 22.a4 b4 23.cb4 ab4 24.Nc1 Nd4 25.Kb2 Ke7 26.Nb3 Ne6 27.Rd1 Rc8 28.a5 Rd8 29.Rd8 Kd8 30.Kc2 Kc7 31.Kd3 Nf4 32.Kc4 Ng2 33.a6 Ne1 34.Na5 Kb8 35.c6 1-0.

C2333) 10...b6 11.Nge2 leads to another critical choice:

C23331) 11...Ba6 C23332) 11...e6

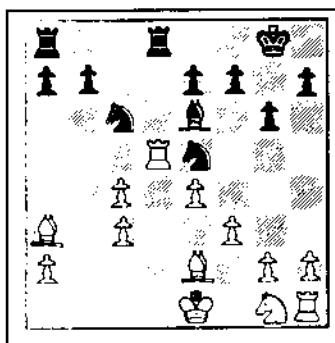
C23331) 11...Ba6 12.Nb5 is \pm —Knaak. Beliavsky - Grigorian, Minsk 1983, continued 12...Bb5 13.cb5

Ne5 14.Nc3 e6 15.Be2 Bf8 16.Bf8 Kf8 17.Rd1 (White has retained the extra pawn without allowing Black active play) 17...Rdc8 18.Kf2 g5 19.Rd4 Rc7 20.h4 gh4 21.Rh4 h5 22.Rh1 Ke7 23.a4 Rd8 24.Rd8 Kd8 25.f4 Ng6 26.e5 Ng4 27.Kf3 Nh6 28.Rh5 Nf5 29.g3 1-0.

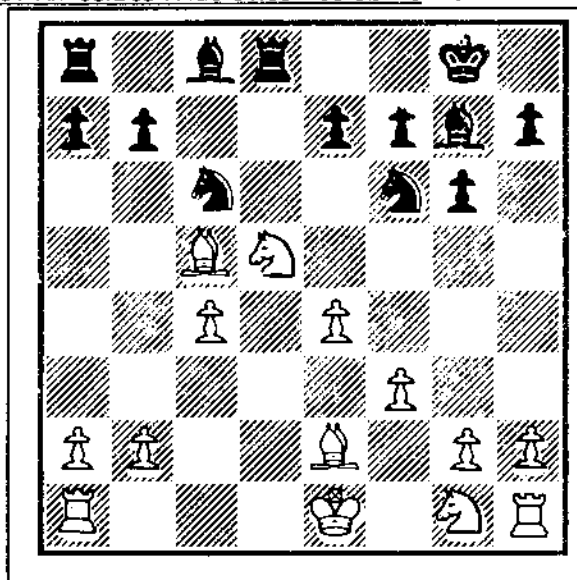
C23332) 11...e6 is Gelfand's improvement. Brenninkmeijer-Gelfand, Arnhem 87/88, continued 12.Rd1 Nd7 13.b3 Bb7 14.g3 Nde5 15.Bg2 Nd3 16.Kf1 a6 17.f4 b5 18.Bc1 bc4 19.bc4 f6 (19...Na5 20.e5 Bg2 21.Kg2 Nc4 22.Ne4 =) 20.Be3? (20.f5 e5 21.Nd5 unclear) 20...Na5! and Black is better—Gelfand and Kapengut.

C234) 10.Be2!? was first played in Christiansen-Wilder, 1986 U.S. Championship. The game continued 10...Nd7 11.Ba3 Bc3 12.bc3 Nde5 13.Rd1 Be6? Here, Black could have cast serious doubts on White's plan with 13...Rd1 14.Kd1 Be6 15.Nh3 (15.f4 Nc4 16.f5 gf5 17.ef5 Bd5) 15...Nc4 with the initiative. 14.Rd5!

14...Kf8 Black obviously didn't care for either 14...Bd5 15.cd5 Na5 16.Be7; or 14...f5, which looks good at first, but fails to 15.Be7. After 14...Kf8, White is able to improve his position at the expense of the Black Knight on e5. 15.f4 Ng4 16.Nf3 Ne3 17.Kf2 Ng4 18.Kg3 Nf6 19.Nd2 White



has improved his position in the last five moves by firming his control on the center, clearing his King off the back rank, and activating the King Rook. On the other hand, Black has only moved his Knight from e5 to f6. 19...Bd5 20.cd5 Nd5 21.ed5 Rd5 22.Nb3 Rc8 23.Re1 Rc7 24.c4 Rd8 25.Kf2 By keeping his King in the center, White prevents the enemy Rooks from reaching the seventh rank. 25...Nd4 26.Nd4 Rd4 27.Ke3 Rcd7 28.Bb4 Controlling the d2 square: Black's Rooks are effectively tied up by the two Bishops. 28...f6 29.Rc1 Kf7 30.Bc3 R4d6 31.c5 Re6 32.Kf3 1-0



10...Nd7

This move, which is the only one that allows Black to maintain active piece play, revitalized the variation in the 1980's. In the 1970's, Black had tried the first two of the following moves:

C2351) 10...e6?! C2352) 10...Nd5
C2353) 10...Rd7 C2354) 10...Nd7

C2351) 10...e6?! allowed White to keep his extra pawn after 11.Ne7 Ne7 12.Be7 Rd7 13.Ba3 b6 14.Nh3 Ba6 15.Nf2 Rc8 16.Rc1 Bh6 17.Rc2 Rdc7 18.b3 ± ECO, Moiseyev-Chekov, USSR 1975.

C2352) 10...Nd5 11.cd5 b6 (11...Bb2 12.Rb1 Bc3 13.Kf2 b6 14.Ba3 Ne5 15.Ne2 Bd2 16.Be7 Re8 17.Bf6 Nd3 18.Kg3 Karpov-Barle, Ljubljana-Portoroz 1975. White has a big advantage due to his strong center and extra pawn; Black's pieces don't work together at all.) 12.Ba3 (12.Be3 Bb2 13.Rb1 Bd4 14.Bd4 Nd4 15.Kd2 += Karpov) 12...Nd4 13.O-O-O e6 14.Ne2 Nb5 15.Be7 Rd7 16.Bh4 ed5 17.Nf4 (attacking both the Nd5 and the Pd5) 17...Nc7 18.Nd5 ± ECO Bronstein-Dvorecki, Vilnius 1975.

C2353) A more recent try is 10...Rd7 11.O-O-O e6 12.Nf6 Bf6 13.Bd6 b6 Christiansen-Ivanovic, Lucern 1989.

11.Be7

Yet another parting of the ways:

C23541) 11.Ne7?! C23542) 11.Ba3 C23543) 11.Be7

C23541) 11.Ne7?! Ne7 12.Be7 Bb2= Khalifman & Nesis. White's King walked into trouble in Gil-Howell, Gausdal 1986: 13.Rb1 Bc3 14.Kf2 Bd4 15.Kg3 Re8 16.Bg5 Nf6 17.Nh3 Nh5 18.Kh4 Kg7 19.g4 h6 20.Bh6 Kh6 21.gh5 f5 22.Kg3 fe4 23.Bg2 gh5 24.f4 Rg8 25.Ng5 h4 0-1

C23542) 11.Ba3 e6 12.Nc7 (Dorfman evaluates 12.Nc3 Bc3 13.bc3 b6 as better for Black) 12...Rb8 13.O-O-O and now:

either 13...a6 (13...Bh6 14.Kb1 b6 15.Ne2 Bb7 16.Nc3 Nc5 17.Be2 Bf4 18.N7b5 a6 19.b4 ± was Belyavsky-Chekov USSR ch. 1980-81, Inf. 30/713) 14.f4 Bf8 15.Bf8 Kf8 16.Nf3 Ke7 17.Re1 Na7 18.b4 Kd6 19.Nd5 ed5 20.ed5 b5!? (Not 20...Nf6? 21.c5 + -Petursson-Mortensen, Espoo 1989).

or 13...b6 14.Ne2 Bb7 15.Bd6 Nc5 16.Nb5 Rbc8 17.Nec3 a6 18.Na3 f5 19.ef5 gf5 20.Kb1 Nd4 with active play for the pawn, Petursson-Sax, Biel interzonal 1985.

11...Ne7 12.Ne7 Kf8 13.Nd5

If 13.Nc8, then 13...Bb2 14.Rb1 Bc3 15.Kf2 Bd4 16.Ke1 Rac8—Gelfand.

13...Bb2 14.Rb1 Bg7 15.Ne2 Nc5 16.Nc1 Be6 17.Nd3 Rac8 18.Be2

Or 18.Nc5 Rc5 19.Rb3 b5 20.Rb5 Rb5 21.cb5 Bd5 22.ed5 Rd5 =—Gelfand.

18...Na4 19.N3f4 g5 20.Nh5 Bc3 21.Kf1 Bd4 22.h4 Bd5 23.ed5?

Here White had to try 23.cd5: see Gelfand's analysis in Informant 48.

23...Nc3 24.Rb7 Rb8 25.Rb3 Na2 26.Rd3 Rb1 27.Bd1 Bb6 28.Nf6 Nb4 29.Ke2 Nd3 30.Kd3 a5 31.hg5 a4 32.Ne4 a3 33.Nc3 Ra1 34.Kc2 Bd4 35.Nb5 a2 36.Kb3 Ra8 0-1

UNDER THE MICROSCOPE

by Howard Wachtel

After catching our collective breath from the tactical skirmish in the previous issue, let's examine a more positional struggle in this month's column, which is my only victory to date over an internationally titled player.

**Howard Wachtel--IM Leonid Basin
Master Challenge, June 1990**

**1.d4 Nf6 2.Nf3 g6 3.c4 Bg7 4.Nc3 O-O 5.e4 d6 6.Be2 e5
7.de5 de5 8.Qxd8 Rxd8**

A line advocated by GM Edmar Mednis, which is nonetheless considered to give Black little difficulty in equalizing. Not much else I have tried has been successful against the explosive King's Indian, however.

**9.Bg5 Na6 10.Nd5 Rd6 11.Bxf6 Bxf6 12.Nxf6+ Rxf6
13.Nxe5 Re6**

Black will regain the e-pawn; it remains for White to find the most promising manner in which to return it.

14.f4 Nc5

This seems logical, but after the game Basin criticized this move, suggesting 14...f6 instead as preferable, or at least good enough for a draw. The idea is that (after 15 Ng4 h5 16 Nf2) Black will recover the KP by piling on with ...Nc5, Bc8-d7-c6, and Ra8-e8. It doesn't seem that simple, however. Perhaps this will all be covered by opening theory eventually, but anyway here is my analysis of the position after 14...f6 15 Ng4 h5 (not 15...Nc5 16 e5 ±) 16 Nf2:

a) 16...Nc5 17 g4! (Timid is 17 Bf3 Nxe4! 18 Nxe4 f5 =, and less accurate is 17 f5!? gf5 18 ef5 Re5 [Δ...Bxf5, ...Rae8] 19 Kf1 [19 g4!?] Rxf5 20 Bf3 Be6 and Black has nearly equalized) hg4 (17...Nxe4 18 gh5 Nxf2 19 Kxf2 ±) 18 f5 gf5 (if 18...Rb6 19 O-O-O Na4 20 Rd8+ Kg7 21 b3! Nc3 22 Bxg4 and Black is in trouble after either 22...Nxa2+ 23 Kb2 Nb4 24 fg6, or 22...Rd6 23 Rxd6 cd6 24 Kb2, or 22...Ra6 23 Kb2 Rxa2+ 24 Kxc3 Rxf2 25 fg6) 19 ef5 Rb6 (19...Re5? 20 Nxc4 +-) 20 O-O-O Bxf5 (20...Na4 21 Rd8+ Kf7 22 b3 [Also good is 22 Nd1] Nc3 23 Bxg4 [Δ 24 Rh1-e1-e8] ±) 21 Rd5 (21 Bxg4 +=) Re8 (21...Be4 22 Rxc5 Bxh1 23 Nxh1 Re8 24 Ng3 ±) 22 Bxg4 (22 Rxc5 Rxe2 23 Rxf5 Rxb2 draws for Black) Bxg4 (forced--if 22...Be4? 23 Re1 Bxd5 24 Rxe8+ Kf7 25 Bh5+ wins) 23 Nxc4 (I feel that this is better than 23 Rxc5 Bf3! 24 Rg1+ Kf8 25 Rxc7 Re2 26 Nd3 Rxh2 and Black has counterplay) Ne4 24 Rg1 (Less effective are 24 h4 Kf7 25 h5 Rd6 or 24 Rd7 f5 25 Ne3 Nf6) Kf8 25 Nh6 intending Rd7 ±.

b) 16...Bd7 17 O-O-O (17 Rd1 Bc6 18 Bf3 Nc5 19 Rd4 Rae8 20 f5 gf5 21 Bxh5 R8e7 22 Rd8+ Kg7 with unclear complications favoring Black) Bc6 (also interesting is 17...Nc5 18 f3 [not 18 b4? Nxe4=] Bc6 19 Rhe1 Rae8 20 Rd4 a5! [to stop 21 b4] after which White holds the pawn but Black's central pressure makes it difficult for White to make further progress) 18 Rhe1 Nc5 (after 18 ...Bxe4 19 Bxh5 Rae8 20 Nxe4 Rxe4 21 Rxe4 Rxe4 22 Bxg6 Rxc4+ 23 Kd2! Rxf4 24 Ke3 with the better endgame for White) 19

15 gf5 (19...Re5 20 fg6 Kg7 21 b4!? [21 g4 is also adequate to maintain an advantage] Nxe4 22 Nd3 Re8 [22...Rg5 23 b5 Be8 24 Nf4 Nc3 25 Rd2 Re5 26 Nxe5+ Kxg6 27 Nf4+ Kg5 28 Nd3 ±] 23 b5 Nc3 24 bc6 Rxe2 25 Rxe2 Nxe2+ 26 Kd2 Nd4 27 cb7 Rb8 28 Rb1 with a winning endgame; 20 ef5 Re5 and now: b1) 21 Bxh5 Rxf5 22 Ng4 (the only way to meet the double attack on h5 and f2) Kf8! 23 Bf7 Kxf7 24 Nh6+ Kg6 25 Nxf5 Kxf5 is equal; b2) 21 g4 Rae8 22 Kd2 Rd8+ 23 Kc2 Rde8 24 Rd2!? (24 Kd2 draws) Bf3 25 Bxf3 Rxe1 26 gh5 ∞ with compensation for the Exchange.
15 O-O-O Re8

Black retreats to cover his first rank, but other moves are playable, such as 15...Nxe4 16 Rd8+ Kg7 17 Rd1 (threat 18 R1d7) Rd6 18 R1xd6 cd6 19 Nd3 +=, or 15...f6 16 Rd8+ Kg7 17 b4!? (17 Ng4) Nxe4! 18 Bg4 f5 19 Bf3 Rd6 +=.

16 Rhe1

White can provoke ...f6 by 16 Bf3 f6 17 Nd3 Nxe4 18 Rhe1 Nd6 (not 18...Bf5? 19 g4 nor 18...f5 19 Nc5) 19 Rxe8+ Nxe8 20 Kc2 +=.

16...Nxe4

Or 16...f6 17 Nd3 Nxe4 18 Bf3 transposing into the previous note.

17 Bf3 Nf2 18 Rd2 Ng4 19 h3 Nf6

If Black isn't going to exchange Knights on e5 here, then why give White extra tempi by the excursion beginning with Black's 17th move? He could have played his Knight to f6 then. However, White would remain on top here after 19...Nxe5 20 Rxe5 Rxe5 21 Rd8+ Kg7 22 fe5.

20 Red1 c6?!

Slightly weakening, and inviting a sacrifice on this square. Probably 20...Rb8 would be better first.

21 g4

I should have given more consideration to capturing the c-pawn here, as the ending after 21 Nxc6! bc6 22 Bxc6 Bf5 23 Bxa8 Rxa8 24 Rd8+ Rxd8 25 Rxd8+ Kg7 is quite difficult for Black to defend.

21...h6

If 21...Be6 22 g5 Nh5 23 Bxh5 gh5 24 Nd7! Re7 25 Nf6+ Kg7 26 Re2 ± (Δ h4, Re5). But the text move still allows White to sac on c6.

22 b4?!

Again White should play 22 Nxc6 with advantage similar to the note to White's 21st.

22...g5

Better is 22...Be6 or 22...a5 with only a small advantage for White. After the text, White could still play 23 fg5 hg5 24 Nxc6 as mentioned above, with a more substantial plus.

23 Rd8 Kf8

Also playable is 23...Rxd8, but not 23...gf4 24 Rxe8+ Nxe8 25 Rd8 Kf8 26 Nxc6! ±

24 f5

More forcing would be 24 fg5 hg5 25 Rxe8+ Nxe8 (not 25...Kxe8 26 Nxc6!) 26 Rd8 (or 26 Nxc6 bc6 27 Bxc6 f6 b8 28 Rd8 Bb7! 29 Rxb8 Bxc6 reaches an ending similar to the note to White's 21st move, but with slightly more counterplay for Black) a5! (not 26...Ke7? 27 Nxc6+! bc6 28

Rxe8+ Kd6 [28...Kxe8 29 Bxc6+ wins] 29 c5+ Kd7 30 Rf8 +-) 27 ba5 (Also adequate for an advantage is 27 Nxc6 ab4 28 Nxb4 Ke7 29 Rd2 Ra3 30 Nd5+ Kf8 31 Bg2) Rxa5 (leaving the Bishop unprotected but attacking the Knight on 5) 28 Nxc6 Ra3 29 Ne5 Be6 30 Bxb7 ± as Black will regain only one of the two pawns, for example 30...Ke7 (White threatened 31 Bc6) 31 Nc6+ Kf8 32 Kb2 Rxh3 33 Ne5.

A possible improvement on the above would be the immediate 24 Rxe8+ Nxe8 25 Rd8 (i.e. without first exchanging pawns on g5), so that 25...a5 now would be pointless as after 26 ba5 Black cannot retake on a5 because the White N at e5 is now protected. Then if 25...gf4 26 Nxc6! (threat Nxa7) a6 27 Ne5 White seems to have a greater advantage than in the preceding paragraph. **24...h5**

Or 24...a5 25 Rxe8+ Nxe8 26 b5 cb5 27 cb5 Nc7 (27...Ke7 meets the same reply) 28 Nc4 with strong threats of Nb6 or Nd6. **25 b5?**

White can better keep up the pressure with 25 Rxe8+ Nxe8 26 Rd8 (or 26 gh5!? Bxf5 27 Bg4! Bxg4 [27...Ng7? 28 h6, or 27...Be4 28 Rd7 is very strong] 28 hg4 Nf6 +=) hg4 27 hg4 (Δ Nxc6) with a big edge, e.g. 27...a5 28 ba5 Rxa5 29 Nxc6 Ra3 30 Ne5 ±. The text move 25 b5 allows Black to ease the pressure a bit. **25...cb5 26 cb5 Ke7 27 R8d4!?**

White makes little progress with 27 Rxe8+ Nxe8 (not 27...Kxe8? 28 gh5 with a big plus; if 28...Bxf5? 29 Bxb7 Rd8 [29...Rb8 30 Nc6+-] 30 Rf1 Be4 31 Nxf7! +-) 28 gh5!? (Probably better is the simple 28 Kb2 Nd6 29 a4) Nd6 (not 28...Bxf5?? 29 Bxb7 +-) ∞; if 29 Rxd6?! Kxd6 30 Nxf7+ Ke7 31 Nxc5 Kf6=.

27...Rb8 28 Nc4 hg4 Bd7 30 Nd6 Rh8

Certainly not 30...Rf8? 31 Bxb7 Bxb5? 32 Re1+ +-.

31 a4!

The threat against b7 makes life difficult for Black, but I missed the fact that the text move also threatens 32 Ne4! attacking d7, f6, and g5 (thus winning the g-pawn).

31...b6?!

Relatively best is 31...a6 (31...Bc8 is ugly) 32 Ne4! Rhc8+! (32...Be8 33 ba6 ba6 34 Nxc5 ±) 33 Kb1 Be8 34 Nxc5 ab5 35 Re1+ Kf8 36 Rd6 Kg7 37 ab5 Bxb5 38 Re7 Bc4 39 Rb6! (39 Ne6+ Kg8) ±.

32 Rc4

Both players overlooked 32 Ne4! winning the g5-pawn (32...Nxe4?? 33 Rxd7+ followed by 34 Bxe4 wins a piece).

32...Rh3

Or 32...Rh2 33 Rc7 (threats Rxa7, Bc6) Ra2 34 Rd4 (Not 34 Rxa7?? Ra1+ 35 Kc2 Rxd1 36 Kxd1 Kxd6 +-) Rf2 35 Bc6 ±. But the text is no bargain either; the next few moves are forced, and White picks up the a7-pawn. Does Black have better?

33 Bc6 Rd8 34 Bxd7

34 Nb7 Rc8 accomplishes nothing.

34...Rxd7 35 Nc8+ Kf8 36 Rxd7 Nxd7 37 Nxa7 Ne5

Both sides were moving quickly as the time control approached; here 37...Nc5 deserves consideration also:

a) 38 f6!? (Pinning the Knight against the back rank threatens a4-a5, which cannot be played immediately because of ...Nb3+) Ra3 (Perhaps 38...Re3!?, but not 38...Rf3 39 a5!) 39 Rd4 (Δ Rd8#) Rd3 (39...Nb3+ 40 Kc2) 40 Rxd3 Nxd3+ 41 Kd2 Nc5 42 Ke3 and Black has difficulty holding this delicate Knight ending.

b) 38 Kb2 Rh2+ 39 Kc3 (to avoid repitition) Ra2 (39...Rh3+ 40 Kd4 transposes to the actual game) 40 Nc8 Ra3+ (40...Nxa4?? 41 Kb3 +-) 41 Kb2 Rxa4 42 Nxb6 with a winning endgame.

38 Re4 Nd3+ 39 Kc2 Nc5 40 Rc4

40 Rd4 is a bit better, but at this stage White's task is still difficult, e.g. 40 Rd4 Ra3 41 f6 Ke8 (also playable is 41...Kg8 42 Nc6 [42 Rd5!?] Rxa4! 43 Ne7+ Kh7 44 Rxa4 Nxa4) 42 Nc8 (or 42 Nc6 Ne6 43 Re4 Rf3) Ra2+ 43 Nxb1 Rxa4 and Black has plenty of fight left.

40...Rh2+?

After this, Black's position becomes unglued. Black hopes to force a perpetual, but actually chases the White monarch through the center of the board where it can do maximum damage. Instead, after 40...Ra3! 41 Nc8 Nxa4 White's win would be very much in doubt. For example 42 f6!? (trying to put Black in zugzwang) Ra1 43 Kb3 Nc5+ 44 Kb2 Ra5=.

41 Kc3 Rh3+

Now 41...Ra2 fails to 42 Nc8 Ra3+ (42...Nxa4?? 43 Kb3) 43 Kb2 Rxa4 44 Nxb6.

42 Kd4 Rd3+

Here Black offered me a draw! Too late. Another try here is 42...Ra3 43 f6! (so that if 43...Nxa4?? 44 Rc8# or 43...Rxa4 44 Rxa4 Nxa4 45 Ke4 followed by Kf5xg5 and White wins the ending) Rd3+ 44 Ke5 Rd2 (to prepare ...Nd7+; not immediately 44...Nd7+?? 45 Ke4 attacks the Rook and threatens mate) 45 Nc8 (Black hoped for 45 Kf5?? Rd5#) Nd7+ 46 Ke4 Nxf6+ (or 46...Rf2 47 Rd4 F4+ [not 47...Nxf6+? 48 Ke5 followed by 49 Nxb6] 48 Ke3 Rd4 49 Kxd4 Nxf6 50 Nxb6 Nxc4 51 a5 +-) 47 Ke3 Rg2 48 Kf3 Nd5 (forced--if 48...Rg1 49 Nxb6 should win) 49 Ke4! 49 Kxc2? Ne3+, or 49 Ne7!? Rd2 ∞) Ne7 (49...Rd2 50 Rc6, or 49...Nf4 50 Kf5 attacking both NP's) 50 Nxb6 (50 Kf3 Nd5 repeats the position) Rxc4+ 51 Ke5 and White's superior King and advanced pawns give him good winning chances.

43 Ke5 Nd7+

43...Re3+ (if 43...Ra3 44 Kf6) 44 Kd5 (not 44 Kf6? Ne4+) Ra3 45 Nc8 Nxa4 46 Kc6 ±.

44 Ke4 Rg3 45 Kd5 Nf6+?

Deserting the Queenside allows White to walk in and mop up. Black could offer more resistance with 45...Rd3+ 46 Rd4 (46 Ke4 Rg3 repeats the position) Nf6+ 47 Kc4 Rg3 (47...Rxd4+ 48 Kxd4 Nxc4 49 Nc8 Nh6 50 Ke4 Kg7 51 Nxb6 with a winning endgame) 48 Nc8 Nxc4 49 Nxb6 Ne3+ 50 Kc5 Nxf5 51 Re4 Rc3+ 52 Nc4.

46 Kc6 Nxc4 47 Kxb6 Ne3 48 Rc5 Rf3 49 Kc7 Nxf5 50 b6 Nd4 51 b7 Ne6+ 52 Kb6, and Black resigned.

1990 Illinois Chess Association Tour Leaders

Bill Smythe

This list reflects the following tournaments: Tim Just Winter Open (Maxi-Tour), Bradley Action, Greater Peoria Open (Maxi-Tour), Peoria Tornado, Pillsbury Memorial, Master Challenge XII (Maxi-Tour), Plus-Score Mini-Tours #1, #2, #3, & #4, Twin City Open (Maxi-Tour), Bradley Summer Open, Illinois Open (Maxi-Tour), Blackhawk Tornado, Alekhine Memorial, St. Charles Open, Micro Resales C-U Open (Maxi-Tour), Lake County Open XIII (Maxi-Tour), Under 2000 Fall Classic, OP-FP Autumn Action, Bradley Action Open, and Illinois Class (Maxi-Tour).

Those who have played in fewer than three events have the number of tournaments entered (1 or 2) following their names. All players must have played in at least three Tour events by year's end in order to be eligible for Tour prizes.

Class B players should note one major adjustment to the standings: Kenneth Gurley has been "posthumously" awarded 32 Tour points for his victory in the Reserve Section of Illinois Open, as his most recent published rating (per the 1981 annual list) was 1770.

<u>Master Tour Points:</u>		GRATZ Glen	13½	PADILLA Rudy	10	SWANSON Victor	12	BURDICK Scott	8 /2	
GUREVICH Dmitry	104	TALBOT Marc	12½	PLETT Michael	10	GARDNER Keith C	11½	CIMA Joe	8 /1	
SZPISJAK Steven	51	BOLITHO Thomas	12	CAIN Dennis	9½	CALDWELL Scott	11	TURNER Keith	8 /2	
CHOW Albert	41	COOKE Paul	12 /2	HERNANDEZ Hector	9½	PARSONS Bob	11 /2	ZEVNIK Lawrence	7	
KARKLINS Andrew	40 /2	HALBRICH Scott	12 /2	WHEELER Stephan	9½	KEMPNER Robert	10	BROOKS Amy	6½	
TORREGROSSA Ron	36 /2	NAFF Bill	12	BUTTNY Bill	9	MADERA Bill	10	FULTON Steve	6½	
VAN BUSKIRK Doug	32 /1	STINSON Marcus	12	LEALI Michael	9	OWIECKI Roger	10 /2	ANDERSON Richard	6	
UMEZINWA George	30	BALES Robert	11½	SCOTT Winfield	9	ENGELN Mark	9½ /2	KIRKPATRICK Donald	6	
COHEN Larry	28	SEFCHECK Mark	11½	SMYTHE Bill	9	LEALI Michael	9	MARSHALL Ed	6	
KRAAI Jesse	27½	BENESA Arnulfo	11 /2	SPHAR Robert	9	SPHAR Robert	9	MAURER Patrick	6	
CHACHERE Lawrence	24½	CALDWELL Scott	11	ALBERTS Walter	8½	FELTNER Cameron	8½	BENNETT Bradley	5 /2	
TRUONG Hoaithan	23½	MC ALISTER Kelvin	11	FELTNER Cameron	8½	PALMER Ken	8½	LOPEZ Mauricio	5	
MILICEVIC Predrag	23	STEIN Peter	11	FRENCH Kevin	8 /1	ARNOLD Charles	8 /1	CASTELLANOS Chris	4 /1	
SAX Robert	22	WULATIN David	11	KOSIBA Lawrence	8 /1	DIXON Raymond	8 /1	DONNELLY Kevin	4 /1	
BRODIE Mark	16	WALHOUT Peter	10½	COX William	7½	ROBINSON Harrison	8	LEBO Steven	4 /2	
KUDRIN Sergey	16 /1	ROGAN Marvin	10	FULTON Steve	7½	TURNER Keith	8 /2	PAULSEN David	4 /1	
WHEELER Jerry	16 /1	SPLINTER Joseph	10	STAFFORD Jerry	7½	MARSHALL Ken	7½	SANCHEZ Ignacio	4 /2	
WACHTEL Howard	15½	VERO Carl	9½	JANKAUSKAS Kazys	7 /2	OBERWEIS Jim D Sr	7½	JOSEPHS Steve	3½ /2	
BOLTON Barry	15	WARFIELD Thomas	9½	JOCHIM Gary	7	PENA Waldo	7½	TAYLOR Franklin	3½ /2	
COLIAS Bill	14½	BUTTNY Bill	9	RACE Thomas	7	COX Paul	7 /2	WAGNER Dana	3½ /2	
MARQUEZ Anthony	14½	GORDON Wallace	9	SUKCHAROENPHON Thavo	7	MICHALAK Philip	7 /2	BARTOCCI Mario	3 /1	
ALLISON Roger	14	LEALI Michael	9	BALE Leslie	6½ /2	OBERWEIS Jim W Jr	7	BERKHEIMER Ed	3 /2	
BROCK Bill	14	SPHAR Robert	9	INGRAM Randy	6½	SINGER Robby	7 /2	BROWN Dean	3 /1	
PELTS Peter	14	DWYER Bill	8½	LPTIEN Leon	6½ /2	ZEVNIK Lawrence	7	BROWN Ken	3 /2	
ASH Robert	13½	FELTNER Cameron	8½	BRUEMMER Don	6 /2	CLARK Wayne	6½	DUDNICK Steven	3	
GRATZ Glen	13½	JAKSTAS Kazimieras	8½	GIERTZ Charles	6	HICKS Charles	6½	FULLER Bret	3	
BACHLER Kevin	13	ANDERSON Phil	8	BLAIR Charles	5½ /2	ANDERSON Richard	6	KERR H L	3 /1	
HALBRICH Scott	12 /2	KUJOTH Richard	8 /1	FULLER Bret	5½	CLARK Lawrence	6	LEUTHOLD Gregory	3 /1	
NAFF Bill	12	SANDRIN Angelo	8 /1	GRAVES Bill	5½ /2	JOHNSON Eric	6	MUNOZ Alberto	3 /2	
WALLACH Ken	12	SCHMIDT Cai	8 /2	WALHOUT Peter	5½	KIRKPATRICK Donald	6	RASMUSSEN Kirk	3 /1	
SEFCHECK Mark	11½	WEBER Len	8 /1	WALSH Bill	5½	MARSHALL Ed	6	REED Boyd	3	
SMYTHE Bill	11½	<u>Class A Tour Points:</u>			ZEVNIK Lawrence	5½	MAURER Patrick	6	STOTLER Richard	3 /2
WOLF William	11½	COHEN Larry	46	BARGERSTOCK Dan	5 /2	SOLOMKA Carl	6	WALLER Ronald	3 /1	
BENESA Arnulfo	11 /2	COHEN Howard	41	DUDKOWSKI Peter Zibb	5 /2	VIGANTS Albert	6	WINDROW Valet	3 /1	
STEIN Peter	11	BOLTON Barry	28	LULVES Joseph	5	HIERONYMUS Kent	5½ /2	<u>Class D Tour Points:</u>		
WULATIN David	11	ALLISON Roger	27	<u>Class B Tour Points:</u>			ITZEN Richard	5½	BALES Robert	13½
COHEN Howard	10½	WILLIAMS Mike	22½	TALBOT Marc	43½	BANNON Joseph	5	OBERWEIS Julie	10 /2	
WALHOUT Peter	10½	JESSEPH Steve	20½	MC ALISTER Kelvin	35	BENNETT Bradley	5 /2	HARMON Percival	8 /1	
MC GOWAN Andy	10	MADERA Bill	20½	GURLEY Kenneth	32 /1	BROOKS Amy	5	HOGAN Mike	8 /1	
ROGAN Marvin	10	FRAATS Daniel	17	FRAATS Daniel	31	DUDKOWSKI Peter Zibb	5 /2	KALAI Adam	8 /1	
<u>Expert Tour Points:</u>		BOLITHO Thomas	16	HALPTFELD Sven	25½	LOPEZ Mauricio	5	DUDNICK Steven	7	
COHEN Larry	54	BRODIE Mark	16	FULTON Steve	24½	STOTLER Richard	5 /2	LOPEZ Mauricio	6	
VAN BUSKIRK Doug	32 /1	FRONEK Randy	16	BALES Robert	21½	BURGESS Fred	4½	MAURER Patrick	6	
REYNOLDS Robert	26	MARSHALL James	16	PADILLA Rudy	20	COTTLE Gregory	4½ /2	TIARKS Richard	5 /2	
MARQUEZ Anthony	22½	BALES Robert	15½	WILLIAMS Mike	19	GAPUZ Wilfredo	4½ /2	CAIN Dennis	4	
SAX Robert	22	WOLF William	15½	WHEELER Stephan	18½	RAIMO Robert	4½	JOSEPHS Steve	3½ /2	
WILLIAMS Mike	21	BOURGERIE Dennis	15	WARFIELD Thomas	18	WINSALER Don	4½ /2	TAYLOR Franklin	3½ /2	
ALLISON Roger	19½	MC ALISTER Kelvin	15	REED Boyd	16½	<u>Class C Tour Points:</u>				
COHEN Howard	18	PANNER Glenn	15	FALLS Dwayne	16 /1	UHLEAN Mike	35 /2	BROWN Ken	3 /2	
MC GOWAN Andy	18	INGRAM Adrian	14½	INGRAM Randy	16	BALES Robert	23½	GIBBS Morris	3	
BROCK Bill	16½	STINSON Marcus	14	MC CARTHY Michael	16	PADILLA Rudy	22	MUNOZ Alberto	3 /2	
JESSEPH Steve	16½	DZURNY Anthony	13	GIERTZ Charles	14	LESTER Michael	16½	KING John	2½ /1	
SMYTHE Bill	16½	DWYER Bill	12½	FULLER Bret	13½	MARTIN Steve	16 /2	MOLES Jeff	2½ /2	
BOLTON Barry	16	TALBOT Marc	12½	GRANT Dennis	13½	MC CARTHY Michael	16	WHITMAN Rich	2½ /2	
BRODIE Mark	16	VERO Carl	12½	STAFFORD Jerry	13½	CAIN Dennis	15	BARBIER Mark	2 /2	
MARSHALL James	16	STEWART Allen	12 /2	WALSH Bill	13½	PALMER Ken	12½	BROOKS Charles	2 /1	
WACHTEL Howard	15½	WARFIELD Thomas	12	CAIN Dennis	13	RAIMO Robert	12½	DUPEE Arthur	2 /1	
WOLF William	15½	WILKINSON Bill	12	SCOTT Winfield	13	CLARK Wayne	10½	HILL Farrel	2 /1	
BOURGERIE Dennis	15	SEFCHECK Mark	11½	CRUM Randy	12½	KEMPNER Robert	10½	INGLE Patrick	2 /1	
INGRAM Adrian	14	CALDWELL Scott	11	KITTSLEY Scott	12½	HICKS Charles	8½	MOLES Bryan	2 /1	
ASH Robert	13½	WULATIN David	11	LESTER Michael	12½	PENA Waldo	8½	RODRIGUEZ Paul	2 /1	

Alekhine Memorial

September 22-23, 1990

Steve Szpisiak (2235) and Lawrence Chachere (2306) split \$275 by tying for first at the Alekhine Memorial, an ICA Mini-Tour event held at Lincolnwood Chess and Games. Each player dropped one point in the five-round event: Szpisiak knocked off Jesse Kraai (2312) and Peter Pelts (2413) before losing to Chachere in the last round; Chachere lost only to Kraai in round 3. Thavorn Sukcharoenphon (1906) won the \$75 Under 2000 prize with a 3-2 score. There were some notable upsets in the first round: Bill Smythe (2040) beat Pelts, and Rhys Read (2028) knocked off Al Chow (2386).

Kelvin McAlister (1676) dominated the Reserve Section with a 4½-½ score. Harrison Robinson (1641) took clear second with 3½ points.

Peter Pelts (2413)—Bill Smythe (2040)

1.d4 c5 2.d5 b5

The Polish Benko, aiming at Benko-like Queenside pressure without sacking a Pawn.

3.e4 Ba6 4.Nf3

4 a4 right away is not that great: 4...Qa5+ 5.Bd2 b4. But the text doesn't give Black as many problems as 4 f4.

4...g6 5.a4 Qa5+ 6.Nbd2

6 Bd2 seems better; now Black will get tied down on the Queenside.

6...Bg7 7.Be2 Nf6 8.O-O c4

A rare accomplishment in this opening. Usually the b- and c-Pawns end up on the Black squares.

9.c3 O-O 10.Qc2 Rc8 11.Nd4 b4 12.cxb4 Qxb4 13.N2f3 c3 14.b3 d6

A reluctant weakening of c6 to activate the Queenside.

15.Nc6 Qb7 16.Bxa6 Nxa6 17.Ba3 Kf8 18.Rfe1 Nb8 19.Nfd4 Nfd7 20.b4 Ne5 21.b5 a6 22.Qxc3

Though Peter doubted it even after the game, it seemed to me that this capture gave me tremendous counterplay on both the long diagonal and the c-file.

22...axb5 23.axb5 Ra4 24.Qh3 Nc4 25.Qb3 Qa8 26.Bb2

26 Bb4 might be better.

26...Nxb2 27.Qxb2 Nxc6 28.dxc6 Bxd4 29.Qxd4 Rxd4 30.Rxa8 Rxa8

Obviously, I will have to give back a Rook for the two Pawns. I just hope I can get into a Rook ending with enough extra Pawns to win.

31.b6 Rxe4

This one should help.

32.Kf1

Not 32 Rc1 Rc4.

32...Rc4 33.b7 Re8

The natural-looking 33...Rb8 loses to 34 Ra1.

34.Rb1 Rxc6 35.b8=Q Rc1+

Hoping to keep his Rook off my back rank, but to no avail.

36.Ke2 Rxb8 37.Rxb8+ Kg7 38.Re8 Kf6 39.h4 d5 40.h5 gxh5 41.f4 Rc3 42.Rg8 h4 43.Rg5 Rg3 44.Rxd5 Rxd5 45.Kf3 Rg3+ 46.Kf2 Kg6 47.Rd8 e6 48.Rd7 Kf6 49.Rb7 h5

50.Rb5 Rg4 51.Kf3 Kg6 52.Ra5

I was expecting 52...f5+. If it's hard to win with one f- and one h-Pawn, can two of each be much easier?

52...f6 53.Rb5 h3 54.Rb1 Kf5 55.Rb5+ e5 56.fxe5 fxe5 57.Rb1 h4 58.Kf2 h2 59.Rh1 h3

Go ahead, take the Pawn -- make my day!

60.Kf3 Rg2

A cruel zugzwang polishes things off.

61.Ke3 Kg4 62.Ke4 Kg3 63.0-1

[Annotated by Bill Smythe]

		USCF												score	tour
OPEN SECTION	pre/post														
1 SZPISJAK Steven	2238/2270	W 6	W10	W12	W 3	L 2	4	4	4	M					
2 CHACHERE Lawrence	2353/2358	W 9	W 8	L 3	W 5	W 1	4	4	4	M					
3 KRAAI Jesse	2319/2328	W14	W 5	W 2	L 1	D 4	3.5	3.5M							
4 CHOW Albert	2428/2414	L11	W 6	W10	W 9	D 3	3.5	3.5M							
5 KINNAIRD Rodney	2086/2104	W 7	L 3	W11	L 2	W10	3	3	MX						
6 SUKCHAROENPHON T	1906/1950	L 1	L 4	W13	W10	W 8	3	3	MXA						
7 BALE Leslie	1916/1920	L 5	W14	Dbye	L 8	W13	2.5	2.5MXA							
8 SAX Robert	2044/2044	W13	L 2	L 9	W 7	L 6	2	2	MX						
9 COX Bill	1967/1987	L 2	W13	W 8	L 4	-	2	2	MXA						
10 SMYTHE Bill	1984/1984	W12	L 1	L 4	L 6	L 5	1	1	MX						
11 READ Rhys	1997/1990	W 4	L12	L 5	L13	-	1	1	MX						
12 PELTS Peter	2431/2405	L10	W11	L 1	-	-	1	1	M						
13 BLANCO Richard	- /1726	L 8	L 9	L 6	W11	L 7	1								
14 LEIGHTON George	1903/1885	L 3	L 7	-	-	-	0								

		USCF												score	tour
RESERVE SECTION	pre/post														
1 MC ALISTER Kelvin	1684/1714	W 5	D 4	W 8	W 3	W 2	4.5	8	B						
2 ROBINSON Harrison	1641/1661	W 6	W 5	D 3	W 4	L 1	3.5	3.5B							
3 KEMPNER Robert	1530/1567	W 6	W 7	D 2	L 1	D 4	3	3	BC						
4 LESTER Michael	1586/1596	W 8	D 1	W 7	L 2	D 3	3	3	BC						
5 MARSCHALL Ed	1471/1491	L 1	L 2	W 6	W 9	D 7	2.5	2.5BC							
6 GRANT Dennis	1678/1627	L 3	L 2	L 5	W 7	W 9	2	2	B						
7 PENA Waldo	1550/1510	W 9	L 3	L 4	L 6	D 5	1.5	1.5BC							
8 BROWN Ken	1379/1379	L 4	W 9	L 1	-	-	1								
9 WHITMAN Rich	1285/1256	L 7	L 8	Wbye	L 5	L 6	1	1	BCD						

**TIM JUST
WINTER OPEN**

JANUARY 19-20

COLLEGE OF LAKE COUNTY

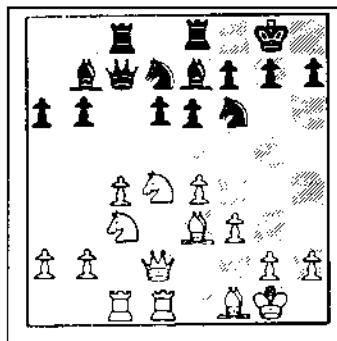
\$1725 IN CASH PRIZES

Gurevich Annotates

GM Dmitry Gurevich

Peter Pelts—GM Dmitry Gurevich
1990 Illinois Open

1.d4 Nf6 2.c4 c5 3.Nf3 cd4 4.Nd4 b6 5.f3 Bb7 6.e4 d6
7.Be2 e6 8.O-O Be7 9.Nc3 O-O 10.Be3 Nbd7 11.Qd2 a6
12.Rfd1 Re8 13.Bf1 Qc7 14.Rac1 Rac8



After 14...Rac8

A well-known "tabiya" in the Hedgehog; players have reached this position many times.

15.b3

More common is 15.Qf2.

15...Qb8 16.Nde2

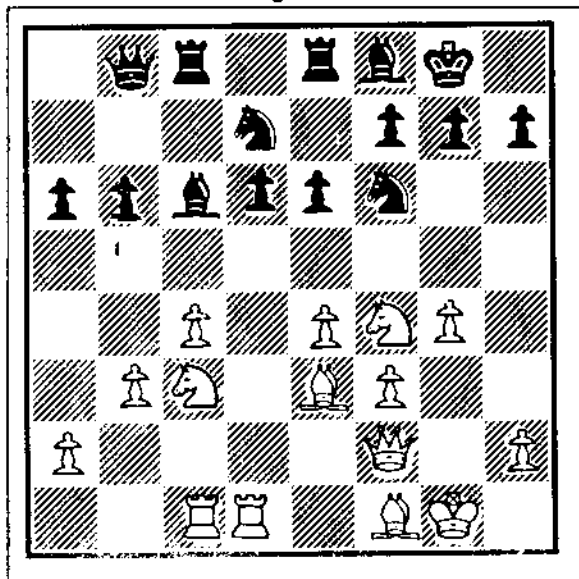
It's interesting that a week or so before this game, Peter and I reached this position in a speed tournament at the

Lincolnwood Chess & Games club. In that game, I transferred the Black Bishop from e7 to c7 and later got an advantage by playing ...d6-d5. (For those who want to find out more about this plan, I recommend the game Strauss—D. Gurevich in *Informant* 39.) In the present game, therefore, Peter plays Nd4-e2, which prevents Be7-d8 altogether. I should mention here that the Bishop maneuver e7-d8-c7 is not universally accepted—I remember that when I analyzed this position with John Fedorowicz in 1984, he laughed at it!

16...Ba8

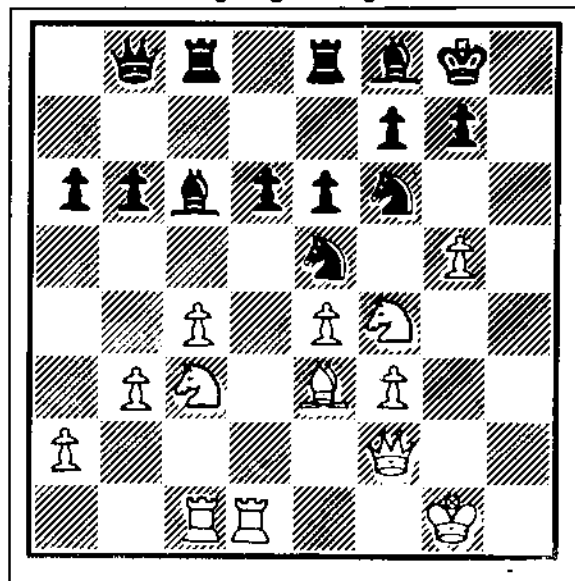
17...Bd8? 18.Bf4 ± (not 18.Qd6? Bc7).

17.Nf4 Bf8 18.Qf2 Bc6 19.g4!?



After 19.g4!?

The opponents had different opinions about this plan. While Peter thought that he would eventually destroy Black's Kingside, I was sure that he was doing my job for me.
19...h6 20.h4 Ne5 21.g5 hg5 22.hg5



After 22.hg5

The first difficult decision for Black. I was looking for awhile at 22...Nfg4!? 23.fg4 Ng4 24.Qg3 (24.Qh4? isn't sufficient because of 24...Ne3 25.g6 fg6 26.Ng6 d5!) 24...Ne3 25.Qe3 d5. The only good choice for White is 26.e5 Bc5 27.Rd4. This position is unclear: Black has compensation, but I liked the game continuation even more!

22...Nh7 23.Nd3

If 23.Nh3, then 23...b5!?

23...Be7 24.Ne5 de5 25.Bb6

25.g6?! would only open the f-line for Black.

25...Ng5 26.Be3

White has a pawn majority on the Queenside; Black has one on the Kingside. Besides the fact that Black's target is more valuable, he also starts first.

26...f5 27.Bg2 Rf8 28.Qd2 Rcd8 29.Qe2 Qb7

29...Qa8 deserved attention.

30.Rd8 Bd8 31.Rd1!

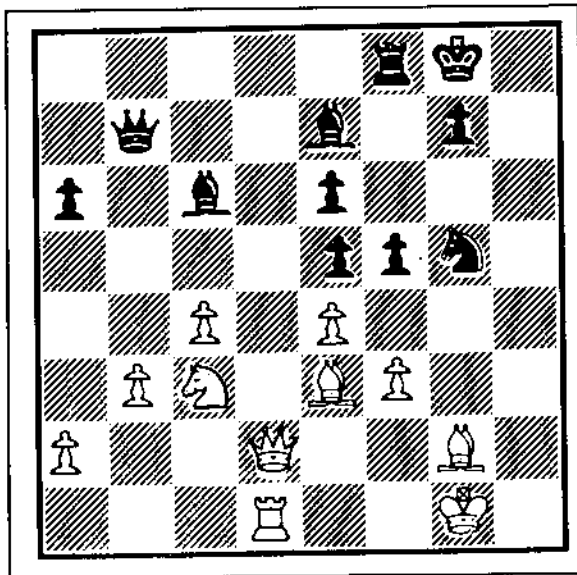
If Black's Queen were on a8, it would have been possible to take on e4. But in this position, it would be risky: 31...fe4 32.Rd8 Rd8 33.Bg5 ef3 34.Qe5. Therefore, Black has to waste a tempo.

31...Be7 32.Qd2

See diagram next page

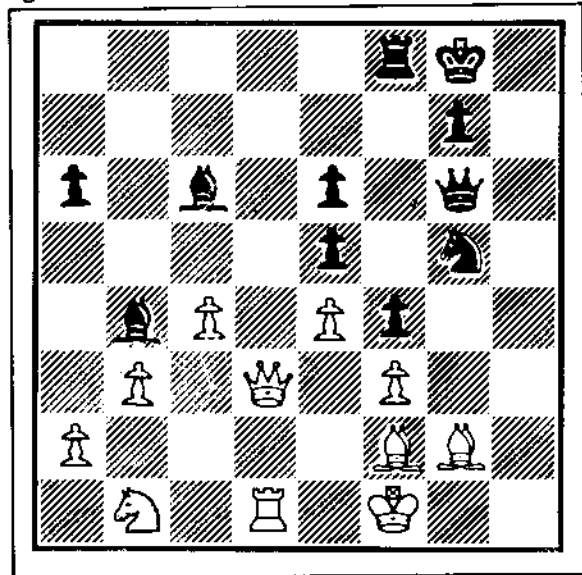
32...f4!

A crucial moment. Black couldn't have sacrificed a piece: 32...fe4? 33.Bg5 ef3 34.Bh3!. But closing the pawn structure now means a piece sacrifice in the very near future is inevitable.



After 32.Qd2

35...Qg6! 36.Kf1



After 36.Kf1

33.Bf2 Bb4! 34.Qd3

If 34.Bh4, then 34.Qe7!? 35.Kf1 Qf6 followed by Qh6.

34...Qf7!

Heading for the right square—g6. Again it was too early to play 34...Bc3? 35.Qc3 Be4 because of 36.fxe4 f3 37.Qe5!

35.Nb1

35.a3 probably was necessary.

36...Be4!

It's about time.

37.fxe4 f3

White was in time pressure here, which of course couldn't help. Now if 38.Bh1 Qh5 39.Kg1 Nh3 40.Kf1 Nf2 -+.

38.a3 fg2 39.Kg2 Ne4 40.Bg3 Rf2 41.Kg1 Bc5 0-1

EUWE-ALEKHINE ANNIVERSARY TOURNAMENT

An ICA Mini-Tour and Grand Prix Event (GPP: 5)

WHEN: Saturday, December 15, 1990

WHAT: 4 Round Swiss

WHERE: Hammond Chess Club: Hammond Public Library, Howard Branch
171st and Grand Avenue, Hammond, Indiana (only 10 min from IL-IN border)

ENTRY FEE: \$15 if rec. by 12/12, \$20 at site (\$3 off to HCC members)

REGISTRATION: 8:00 - 8:30 a.m.

ROUND TIMES: 9:00, 12:00, 3:30, 7:00

TIME CONTROL: 30/60, 15/30, SD/30

1/2 pt. bye in 1st round if requested

PRIZES: \$675 GUARANTEED - 1st \$150, 2nd \$100, 3rd \$50, Class A \$50/\$25, B \$45/\$20, C \$35/\$15, D/E/Unr \$25/\$10 Top junior \$25, Biggest upset \$25.

There will be an additional \$100 prize split between all perfect 4.0 scores.

ADV. ENTRIES/INFO: Jim Enochs, 6436 Jefferson Ave., Hammond, IN 46324 (219) 932-1437

NO SMOKING

NO COMPUTERS ALLOWED

ICA MEMBERSHIP required for all IL residents

DIRECTIONS: I-80/94 to Cline Ave. (4 mi. east of IL-IN border). Cline north 1 mi. to 169th. 169th 1/2 mi. west to Grand. Grand south 1/4 mi. to site.
From I-90: Exit at Cline Ave., then 2 mi. south to 169th and as above.

Chess in 1990: The Months of Our Lives

David Wulatin

For the final issue of 1990, I needed something new, something groundbreaking, like...a year in review column!

JANUARY I lose three games in Tim Just's tournament. In a shocking backstabbing action, ICB Editor Bill Brock publishes one of those games. I vow to take action.

FEBRUARY My lawyers tell me I have no grounds for a lawsuit. Congressional ban on imported semi-automatic rifles frustrates plan B.

MARCH ICA banquet held at Greek Islands. The flow of wine does much to loosen up the normally uptight woodpushers, culminating in the declaration, "You wanna talk about Nimzo and passed pawns? I'll show you something that lusts to expand!"

APRIL Another Soviet wins big money at the New York Open. Justice is served when he is mugged seconds after picking up prize.

MAY Personal highlight: my first piece of hate mail! Contemplated having it bronzed, but was worried that it would smear the crayon.

JUNE For the second year in a row, a scheduling conflict with a heavyweight fight limits hotel space available to National Open participants. This year: Foreman vs. Barr, wrestling in Crisco. (Also known as the "Lardy, lard lard" fight.)

JULY At the World Open, the Soviets do extremely well again, taking a large chunk of the prize money. When will the USSR reciprocate with big-money baseball tournaments?

AUGUST On the global chessboard, Iraq invades Kuwait. Now Grandmaster Bush wants to play. Let's hope he remembers that there are no pawn promotions in real life; sacrificed pieces can never come back.

SEPTEMBER I came out of the Illinois Open with a perfect record—at the dartboard in the Hyatt-Oak Brook bar. Bullseye!

OCTOBER I began coverage of the World Chess Championship on Jonathon Brandmeier's morning show (WLUP, FM 98/AM 1000). Topics have ranged from predicting what openings will be played ("So Dave, you think we'll see a lot of pawn to king fours?") to tips for youngsters, like "Some pieces are well sacrificed, but no pieces are well hung." Broadcasts continued through December.

NOVEMBER The winners of the A, B, C, and D sections of the Illinois Class scramble to find two more Mini-Tour events to qualify for the prizes.

DECEMBER Hard to recap a month that hasn't happened yet. Will ratings fall like snowflakes or skyrocket like suicide rates? Still, I'll give it a try. Gary Kasparov retained his World Championship title. If I'm wrong, I'll play a forty-board simul for charity.

Four Share OP-FP CC Autumn Action Crown

By Ken Marshall

Twenty three players competed in the "1/4 K" Oak Park-Forest Park Chess Club Autumn Action tournament, a "Game/30" Illinois Chess Association mini-tour event held on October 20, 1990 at the Mohr Community Center in Forest Park. OP-FPCC members Cai Schmidt and Mark Sefcheck each scored 4-1 to tie for first along with David Schmidt (Cai's brother, visiting from Iowa) and "Plus Score Open" organizer Bill Smythe. Sefcheck won the Class A prize, while Todd Clark (3-2) and Wilfredo Gapuz (3-2) shared Class B honors. The Class C and Class D/E/Unrated money was taken home by OP-FP CC members Amy Brooks (2-3) and Steve Josephs (2-3), respectively. Ken Marshall directed.

Oak Park Forest Park Autumn Action October 20, 1990

	rank	name	rating	W	D	L	W	D	L	score	tour
1	SCHMIDT David	2080	W11	W13	W7	W6	L2	4	4	4	MX
2	SCHMIDT Cai	2160	W9	W14	L6	W5	W1	4	4	4	MX
3	SMYTHE Bill	2040	W17	W4	L5	W10	W6	4	4	4	MX
4	SEFCHECK Mark	1864	W21	L3	W20	W7	W5	4	4	4	MXA
5	BOGAN Tim	1946	W19	W8	W3	L2	L4	3	3	3	MXA
6	ROGAN Marvin	2030	W18	W22	W2	L1	L3	3	3	3	MX
7	MC NAMARA Jim	1973	W23	W15	L1	L4	W9	3	3	3	MXA
8	ACOSTA Mariano	2203	W16	L5	W11	W13	-	3	3	3	M
9	JOCHIM Gary	1819	L2	W12	W22	W16	L7	3	3	3	MXA
10	CAMPOLLO Nole	1881	L15	W18	W21	L3	W19	3	3	3	MXA
11	GAPUZ Wilfredo	1776	L1	W19	L8	W20	W15	3	3	3	MXAB
12	CLARK Todd	1627	L14	L9	W18	W21	W13	3	3	3	MXAB
13	WULATIN David	1933	W20	L1	W15	L8	L12	2	2	2	MXA
14	SUZUKI Wesley	1966	W12	L2	W16	-	-	2	2	2	MXA
15	JOSEPHS Steve	1328	W10	L7	L13	W17	L11	2	2	2	MXABCD
16	DWYER Bill	1830	L8	W23	L14	L9	W20	2	2	2	MXA
17	ITZEN Richard	1713	L3	L20	W23	L15	W22	2	2	2	MXAB
18	WINSALUER Don	1681	L6	L10	L12	W23	W21	2	2	2	MXAB
19	BROOKS Amy	1510	L5	L11	Wbye	W22	L10	2	2	2	MXABC
20	BALES Robert	1397	L13	W17	L4	L11	L16	1	1	1	MXABCD
21	MAURER Pat	1313	L4	Wbye	L10	L12	L18	1	1	1	MXABCD
22	TAKI Sonia	1078	Wbye	L6	L9	L19	L17	1	1	1	MXABCD
23	VIGANTS Albert	1630	L7	L16	L17	L18	Wbye	1	1	1	MXAB

Bradley Action Open

October 20, 1990

	wall chart	score	tour
1 COHEN Larry	1996 W19 W15 W 2 W 6 W 4 5	16	XA
2 SCOTT Winfield	1750 W21 W 9 L 1 W14 W 8 4	4	XAB
3 LIPTEN Leon	1957 L10 W 5 W23 W12 W 6 4	4	XA
4 INGRAM Adrian	1852 W11 W10 D12 W 7 L 1 3.5	3.5	3.5XA
5 TALBOT Marc	1713 W13 L 3 W18 D 9 W12 3.5	3.5	3.5XAB
6 VERO Carl	1815 W14 W18 W 7 L 1 L 3 3	3	XA
7 REYNOLDS Robert	2083 W22 W17 L 6 L 4 W19 3	3	X
8 ANDERSON Phil	2010 W23 L12 W22 W13 L 2 3	3	X
9 BOURGERIE Dennis	1916 W16 L 2 W19 D 5 D10 3	3	XA
10 SCOTT Garrett	1620 W 3 L 4 D17 W20 D 9 3	3	XAB
11 KIRKPATRICK Don	1491 L 4 L13 W21 W23 W17 3	3	XABC
12 CALDWELL Scott	1767 W25 W 8 D 4 L 3 L 5 2.5	2.5	2.5XAB
13 FELTNER Cameron	1779 L 5 W11 W16 L 8 D14 2.5	2.5	2.5XAB
14 ZEVNIK Larry	1473 L 6 W20 W15 L 2 D13 2.5	2.5	2.5XABC
15 WILLIAMS Mike	1757 W26 L 1 L14 D17 W18 2.5	2.5	2.5XAB
16 DREBENSTEDT James	1620 L 9 W26 L13 D22 W23 2.5	2.5	2.5XAB
17 JESSEPH Steve	1802 W24 L 7 D10 D15 L11 2	2	XA
18 PICKETT Andrew	- W20 L 6 L 5 W25 L15 2	2	
19 INGRAM Randy	1633 L 1 W21 L 9 W24 L 7 2	2	XAB
20 ZIMMERLE Wayne	1725 L18 L14 W25 L10 W22 2	2	XAB
21 INGLE Patrick	1217 L 2 L19 L11 W26 W24 2	2	XABCD
22 GARDNER Keith	1705 L 7 W24 L 8 D16 L20 1.5	1.5	1.5XAB
23 FULLER Bret	1651 L 8 W25 L 3 L11 L16 1	1	XAB
24 HOGAN Luke	1381 L17 L22 W26 L19 L21 1	1	XABCD
25 WALLACE Mike	1324 L12 L23 L20 L18 W26 1	1	XABCD
26 HAIG Ted	1078 L15 L16 L24 L21 L25 0	0	

Under 2000 Fall Classic

October 13, 1990

	wall chart	score	tour
1 BOUTON Barry	1845 Dbye W26 W24 W15 W 2 4.5	8	A
2 COHEN Howard	1939 W19 W16 W15 W 3 L 1 4	4	A
3 BALE Leslie	1885 W21 W 9 W 4 L 2 W 8 4	4	A
4 SUKCHARONPHON T	1906 W13 W17 L 3 W18 W 6 4	4	A
5 COOPER William	1770 W27 L15 W 9 W14 W10 4	4	AB
6 DWYER William	1830 W25 L 7 W19 W16 L 4 3	3	A
7 ARLINSKY Steve	- W18 W 6 L11 L 8 W16 3	3	
8 ALBERTS Walter	1824 L 9 W13 W17 W 7 L 3 3	3	A
9 SANCHEZ Ignacio	1489 W 8 L 3 L 5 W19 W17 3	3	ABC
10 IOVIN Daniel	- L16 W28 D22 W23 L 5 2.5	2.5	
11 MALDONADO Oscar	1999 Dbye W23 W 7 - - 2.5	2.5	
12 PLETT Michael	1924 L17 W24 L16 W20 D13 2.5	2.5	2.5A
13 ROBINSON Harrison	1641 L 4 L 8 W26 W22 D12 2.5	2.5	2.5AB
14 ALLISON Roger	1889 Dbye L20 W25 L 5 W23 2.5	2.5	2.5A
15 LORING Steve	1985 W22 W 5 L 2 L 1 - 2	2	A
16 VIGANTS Albert	1682 W10 L 2 W12 L 6 L 7 2	2	AB
17 CLARK Lawrence	1674 W12 L 4 L 8 W24 L 9 2	2	AB
18 LIM Virgilio	1770 L 7 W21 W20 L 4 - 2	2	AB
19 MC ALISTER Kelvin	1676 L 2 W27 L 6 L 9 W25 2	2	AB
20 BALES Robert	1397 Dbye W14 L18 L12 D22 2	2	ABCD
21 MARSCHALL Ed	1525 L 3 L18 L23 W27 W26 2	2	ABC
22 GIERTZ Charles	1678 L15 D25 D10 L13 D20 1.5	1.5	1.5AB
23 PADILLA Rudy	1484 Dbye L11 W21 L10 L14 1.5	1.5	1.5ABC
24 PENA Waldo	1550 Dbye L12 L 1 L17 W27 1.5	1.5	1.5ABC
25 KEMPNER Robert	1513 L 6 D22 L14 D26 L19 1	1	ABC
26 HUDETZ John	- Dbye L 1 L13 D25 L21 1	1	
27 CAIN Dennis	1440 L 5 L19 Dbye L21 L24 0.5	0.5	0.5ABC
28 TINKER David	1270 - L10 - - - 0	0	

St Charles Open

September 22-23, 1990

	wall chart	score	tour
1 COHEN Larry	1996 W18 W 7 W10 D 2 D 4 4	4	XA
2 SPLINTER Joe	2000 W17 W15 W 5 D 1 D 3 4	4	X
3 MEYERS Steve	1988 W14 W 8 Dbye W 6 D 2 4	4	XA
4 BUTTNY William	1931 W32 W21 Dbye W13 D 1 4	4	XA
5 ALLISON Roger	1889 W20 W31 L 2 W11 D 8 3.5	3.5	3.5XA
6 MARSHALL James	1981 W12 D11 W26 L 3 W16 3.5	3.5	3.5XA
7 PLETT Michael	1887 W22 L 1 W17 W14 D 9 3.5	3.5	3.5XA
8 LUKOR Greg	1782 W28 L 3 W21 W12 D 5 3.5	3.5	3.5XAB
9 COHEN Howard	1964 D26 W20 D11 W10 D 7 3.5	3.5	3.5XA
10 WILLIAMS Mike	1757 W24 W13 L 1 L 9 W20 3	3	XAB
11 GONCHAROFF Nik	1768 W30 D 6 D 9 L 5 W23 3	3	XAB
12 FULTON Steve	1631 L 6 W30 W15 L 8 W19 3	3	XAB
13 SHEEHAN Francis	1977 W23 L10 W22 L 4 D17 2.5	2.5	2.5XA
14 GIERTZ Chuck	1678 L 3 W28 W19 L 7 D15 2.5	2.5	2.5XAB
15 ALBERTS Walter	1824 W27 L 2 L12 W26 D14 2.5	2.5	2.5XA
16 SOLODKA Carl	1702 D31 L22 W24 W18 L 6 2.5	2.5	2.5XAB
17 TALBOT Marc	1713 L 2 W27 L 7 W10 D13 2.5	2.5	2.5XAB
18 LITTLE Jim	1690 L 1 W32 Dbye L16 W26 2.5	2.5	2.5XAB
19 PRADT Daniel	1782 L21 W25 L14 W22 L12 2	2	XAB
20 MORRISON Brian	1486 L 5 L 9 W29 W24 L10 2	2	XABC
21 CAIN Dennis	1440 W19 L 4 L 8 L17 Wbye 2	2	XABC
22 PADILLA Rudy	1484 L 7 W16 L13 L19 W27 2	2	XABC
23 ANDERSON Richard	1512 L13 L24 W25 W27 L11 2	2	XABC
24 IOVIN Daniel	- L10 W23 L16 L20 W29 2	2	
25 BALES Robert	1397 Dbye L19 L23 D29 W30 2	2	XABCD
26 HICKS Charles	1541 D 9 W29 L 6 L15 L18 1.5	1.5	1.5XABC
27 EDWARDS Stan	1468 L15 L17 W30 L23 L22 1	1	XABC
28 MAURER Pat	1313 L 8 L14 W32 - - 1	1	XABCD
29 CALIENDO Anthony	1452 Dbye L26 L20 D25 L24 1	1	XABC
30 FISHER Dale	1244 L11 L12 L27 Wbye L25 1	1	XABCD
31 LUNDQUIST Doug	2054 D16 L 5 - - - 0.5	0.5	0.5X
32 CARSON David	1507 L 4 L18 L28 - - - 0	0	

Blackhawk Tornado

September 15, 1990

	wall chart	score	tour
1 KUJOTH Richard	2127 W 9 W 8 D 4 W 2 3.5	8	MX
2 SZPISJAK Steven	2235 W 6 W16 W 3 L 1 3	4	M
3 REYNOLDS Robert	2083 W 7 W15 L 2 W10 3	4	MX
4 NAFF William	2150 W10 D 5 D 1 W 8 3	4	MX
5 SANDBOTHE William	2078 W18 D 4 W12 - - 2.5	2.5	2.5MX
6 SEAHOLM Robert	1879 L 2 D 7 W14 W 9 2.5	2.5	2.5MXA
7 CRAWFORD Fidale	1788 L 3 D 6 W18 W12 2.5	2.5	2.5MXAB
8 BRUENNER Don	1881 W13 L 1 W15 L 4 2	2	MXA
9 SCOTT Winfield	1795 L 1 W13 W11 L 6 2	2	MXAB
10 SPHAR Robert	1798 L 4 W17 W16 L 3 2	2	MXAB
11 HOLL Paul	1919 L15 W18 L 9 W17 2	2	MXA
12 BALES Robert	1397 Dbye W14 L 5 L 7 1.5	1.5	1.5MXABCD
13 NIXON Andrew	1248 L 8 L 9 D17 W18 1.5	1.5	1.5MXABCD
14 CAIN Dennis	1331 Dbye L12 L 6 W15 1.5	1.5	1.5MXABCD
15 DICKSON Jeffery	1500 W11 L 3 L 8 L14 1	1	MXABC
16 SLATER Michael	2042 W17 L 2 L10 - 1	1	MX
17 BOYD Bruce	1566 L16 L10 D13 L11 0.5	0.5	0.5MXABC
18 SCHULTZE Russell	1700 L 5 L11 L 7 L13 0	0	

NOUS ADOUBONS

In the last issue, there were some errors in our article on the 1990 Illinois Open. First, Dennis Grant was the TD of the Reserve Section; Tim Just assisted. Second, K. Brian Gurley's last published rating of 1770 was located by the USCF; therefore, he has been awarded 32 Class B Tour points for his victory. On page 15, Andrew Karklins played Black against Ken Wallach, not George Umezina.

Illinois Chess Association Patrons

CENTURY CLUB MEMBERS

Michael Belovesick	Elmhurst	Albert Sandrin	Chicago	Helen Warren	Western Springs
Bill Brock	Chicago	Angelo Sandrin	Chicago	Jim Warren	Western Springs
Tom Fineberg	Chicago	Bill Smythe	Chicago	Bill Wenz	Milwaukee, WI
Fred Gruenberg	Chicago	Burton Vincent	Chicago	Philip Wong	Wilmette

GOLD CARD MEMBERS

Tyrone Brooks	Chicago	Ken Marshall	Lombard	Michael Pratts	Chicago
Bill Buttney	Downers Grove	Jova Mihajlovic	Bensenville	Marvin Rogan	Chicago
Donald Graft	Wheaton	William Naff	Peoria	Irwin Rothschild	Park Forest
Harland Hoisington	Ogden, UT	Peter Pelts	Chicago	Mitchel Sweig	Evanston
Alan Losoff	Morton Grove	Daniel Pradt	Glen Ellyn	Terry Terrence	Schaumburg
Ed Marschall	South Barrington			Louis Werner	Evanston

PATRON MEMBERS

Faneuil Adams	New York, NY	Guy Gruenberg	Matteson	Kenneth Palmer	Bollingbrook
Bob Ash	Urbana	Steve Hansen	Indian Head Park	Alex Pehas	Downers Grove
Kevin Bachler	Waukegan	Walter Henry	Naperville	Mieczyslaw Piatek	Chicago
Todd Barre	Elmhurst	Charles Hicks	Naperville	Frederick Rhine	Chicago
John Barstad, Sr.	Carol Stream	Keith Holzmüller	Evanston	Murrel Rhodes	Peoria
Roy Benedek	Western Springs	Richard Huttel	Itasca	Jacque Sanders	Champaign
Roger Blaine	Elkhart, IN	Jeffrey Hyland	Mount Prospect	Ray Satterlee	Wheaton
Edward Blanco, Jr.	Chicago	Randy Ingram	Bloomington	Mark Sefcheck	Naperville
Barry Bouton	Newark	Robert Irons	Chicago	Tom Shaffer	Chicago
Jim Brotsos	Chicago	Gary Jochim	Chicago	Tony Sillars	Huntington, MA
Gregory Bungo	Elmhurst	Tim Just	Gurnee	Arthur Sinclair	Evanston
Fred Burgess	Oak Forest	Dan Kamen	Wheeling	Leonard Spiegel	Oakbrook Terrace
Anthony Caliendo	Aurora	Scott Kittsley	Shorewood, WI	Joe Splinter	Glen Ellyn
Lawrence Cohen	Villa Park	Thomas Knoedler	Springfield	Peter Stein	Naperville
Jim Condrón	Westmont	Walter Kocjan	Northlake	Robert Stoltz	River Forest
Lynne Crewse	Arlington Heights	Peter Kuhn	Des Plaines	James Tanaka	Chicago
John Deutsch	Chicago	Marc Lonoff	Northbrook	John Tums	Oak Park
Leroy Dubeck	Cherry Hill, NJ	Harry Lyman	Boston, MA	George Umezina	Chicago
William Dwyer	Worth	John Marconnet	Chicago	John Vrbancic	Evanston
Keith Esses	Chicago	Eugene Martinovsky	Naperville	Jeff Weimar	Moline
Kalman Farkas	Milwaukee, WI	Thomas Mayka	Wheeling	Douglas White	Schaumburg
Michael Flynn	Aurora	Michael McIlhany	Springfield	Don Winsauer	Forest Park
Martin Fronck	Oak Lawn	James McNally	Broadview	Harold Winston	Naperville
Gerard Garino	Evanston	James McNamara	Hinsdale	David Wulatin	River Forest
Jon Gotz	West Chicago	Earl Miller	El Paso	Sandy Zabell	Chicago
William Graves	Chicago	Patrick Moran	Wilmette	Max Zavanelli	Park Ridge

ICA ELECTED OFFICERS

Helen Warren, President
P.O. Box 305, Western Springs, IL 60558
(708) 246-6665
Fred Gruenberg, Metro Vice-President
2035 W. 110th Place, Chicago, IL 60643
(312) 779-0306
Garrett Scott, Downstate Vice-President
202 Foster Drive, Normal, IL 61761
(309) 452-8116
Tim Just, Secretary
37165 Willow Lane, Gurnee, IL 60031
(708) 244-7954
Alan Losoff, Treasurer
P.O. Box 157, Morton Grove, IL 60053
(708) 966-5559

USCF DELEGATES

by virtue of their USCF posts	
Harold Winston, President	
Al Losoff, Regional Vice-President	
Tim Just, Regional Vice-President	
Frank Skoff, Past President	
Helen Warren, Life Voting Member	

ICA-APPOINTED USCF DELEGATES

Fred Gruenberg	Tom Fineberg
Ken Marshall	Todd Barre

ICA-APPOINTED USCF VOTING MEMBERS

Jim Warren	Dennis Grant
Bill Naff	Tom Knoedler
Larry Cohen	Garrett Scott
Jim Condrón	Marc Lonoff
Bill Smythe	William Brock
Erv Sedlock	

ICA-APPOINTED USCF

ALTERNATE VOTING MEMBERS

Bill Wilkinson	John S. Barstad
Leslie Bale	Angelo Sandrin
Ray Socha	Glen Panner
Jim Brotsos	Steve Foust
Walter Brown	Dave Shiner
James Enochs	Guy Gruenberg
Kevin Bachler	Larry Stilwell
Murrel Rhodes	

Tournament Calendar

Continued from back cover

February 23-24: 1991 Lincolnwood Plus-Score Mini-Tour Tornado #3 and #4. Two-one day events. 4-SS, 40/1, 20/30. Lincolnwood Chess & Games, 3518 Devon Ave., Lincolnwood IL 60659; 708/675-3993. EF: \$12 by Feb. 18, \$15 at site. Prizes according to score: 4-0 wins \$100, 3½ wins \$50, 3 wins \$25, 2½ wins \$12. REG: 9:00-9:30 a.m. RDS: 10-12:30-3-5:30. ENT: Bill Smytha, 6945 N. Ashland #F-3, Chicago 60626; 312/761-2455. NS, W.

OTHER EVENTS

December 15: Euwe-Alekhine Anniversary Tournament. See Illinois Tour listing.

December 15-16: Lincolnwood Quads. Two one-day events. 3-RR, 40/90, 15/30, Lincolnwood Chess & Games, 3518 Devon Ave., Lincolnwood IL 60659. EF: \$12 by 12/7, \$13 at site. \$\$G 30 to 1st each quad. REG: 8:30-9:30 a.m., Round 1 begins at 10 a.m. ENT: address above, Attn: Les Bale; 708/675-3993. LS, NC.

December 22-23: Lincolnwood's December Swiss. 5-SS, 40/90, 25/60, Lincolnwood Chess & Games, 3518 Devon Ave., Lincolnwood IL 60659. EF: \$25 by 12/14, \$27 at site. \$\$ (500 b/30): 175-100. X 75, A 60, B 50, C/below 40. REG: 8:30-9:30 a.m., Round 1 begins at 10 a.m. ENT: address above, Attn: Les Bale; 708/675-3993. LS, NC.

December 29: R.F. McCormick Memorial ¼K (Mini-Tour). See Illinois Tour listings.

December 29-30: Lincolnwood's Last Chance for 1990. 3-SS, 40/90, 15/30, Lincolnwood Chess & Games, 3518 Devon Ave., Lincolnwood IL 60659. EF: \$16 by 12/22, \$18 at site. \$\$ (300 b/25): 100-70-50, A, B/below each 40. REG: 8:30-9:30 a.m., Round 1 begins at 10 a.m. ENT: address above, Attn: Les Bale; 708/675-3993. LS, NC.

December 30: Charles "Chuck" Landry Memorial Open ¼K (Mini-Tour). See Illinois Tour listings.

January 1: Chess '91. 3-SS, 40/90, 30/60, St. Paul United Church of Christ, Locust & St. Paul Sts., Columbia IL (2 blocks west of Main St.). EF: \$9. \$\$ (240 b/36): \$60 first, \$60 to first in each six-player section. REG: 10-10:45 a.m. Rds. 11-2:30-6. ENT: Russell Day, Box A126, Columbia IL 62236. 618/231-5283. NS, NC.

January 5-6: Lincolnwood's New Year Swiss. 5-SS, 40/100, 25/60, Lincolnwood Chess & Games, 3518 Devon Ave., Lincolnwood IL 60659. EF: \$20 by 12/28, \$24 at site. \$\$ (400 b/30): 125-90-70, A 50, B 40, C/below 25. REG: 8:30-9:30 a.m., Round 1 begins at 10 a.m. ENT: address above, Attn: Les Bale; 708/675-3993. LS, NC.

January 5-6: Naperville January Open. No info available at press time; see Chess Life.

January 12: FVCC Swiss. 4-SS, G/30, McCullough Park, Lake St. & Illinois Ave., Aurora IL. EF: \$5, FVCC members \$2.50. REG: 10-10:30 a.m. Rds. 11-12:30-3-4.

January 12-13: FVCC Championship. 5-SS, 40/100, 30/60, McCullough Park, Lake St. & Illinois Ave., Aurora IL. Open to those rated over 1800 or with plus score in FVCC Semi-Final. EF: \$32.50 by 1/7, \$37.50 thereafter, FVCC members \$2.50 less. \$\$G 250-150-100, U2100 (based on 10/class) 140-70-35. REG: 8:30-9:15 a.m. Rds.: 10-2:30-7, 10-2:30. HR: Saratoga, 311 Lincoln Way, North Aurora IL 60542; 708/355-4913. ENT: Steve Meyers, 1516 Ada Lane, Naperville IL 60540.

January 12-13: January Quads at Lincolnwood. Two one-day events. 3-RR, 40/90, 15/30, Lincolnwood Chess & Games, 3518 Devon Ave., Lincolnwood IL 60659. EF: \$12 by 1/4, \$14 at site. \$\$G 30 to 1st each quad. REG: 8:30-9:30 a.m., Round 1 begins at 10 a.m. ENT: address above, Attn: Les Bale; 708/675-3993. LS, NC.

January 13: FVCC Quads. 3-RR, G/90, McCullough Park, Lake St. & Illinois Ave., Aurora IL. EF: \$12.50, FVCC members \$10. \$\$ 30 to 1st. REG: 10-10:30 a.m. Rds. 11-12:30-3-4.

January 19: Lincolnwood Scholastic. 5-SS, G/30, Lincolnwood Chess & Games, 3518 Devon Ave., Lincolnwood IL 60659. Two sections: **High School:** Open to Grades 9-12. **Middle School:** Open to Grades 8 and below. EF: \$6 by Jan. 11, \$8 at site. Trophies to top 5 individuals and top two schools in each section. REG: 8:30-9:30 a.m., 1st round, 10:00. Les Bale, 708/675-3993.

January 19-20: Tim Just Winter Open/Reserve VIII (Maxi-Tour). See Illinois Tour listing.

January 19-20: Rock Island. See Illinois Tour listing.

January 26-27: 1991 Lincolnwood Plus-Score Mini-Tour Tornado #1 and #2. See Illinois Tour Listing.

February 2-3: Lincolnwood WBCA Championship. Round-robin, G/5, Lincolnwood Chess & Games, 3518 Devon Ave., Lincolnwood IL 60659. Two sections: Open & Reserve (open to under 2000). EF: \$10, \$14 non-WBCA. \$\$ 70% of EF returned as prizes. REG: 9:00 a.m.-12:30 p.m., 1st round, 1:00. Les Bale, 708/675-3993. LS.

February 2-3: Lincolnwood Sicilian Weekend. Two one-day events. 3-SS, 40/90, SD/30, Lincolnwood Chess & Games, 3518 Devon Ave., Lincolnwood IL 60659. **All games begin 1.e4 c5.** EF: \$15 by 2/25, \$18 at site. \$\$ (300 b/30) 100-70, A, B, & C 35 each, D/below 25. REG: 8:30-9:30 a.m., 1st round, 10:00. Les Bale,

708/675-3993. LS.

February 2-3: Lincolnwood. 3-SS, G/60, Lincolnwood Chess & Games, 3518 Devon Ave., Lincolnwood IL 60659. EF: \$15 by 1/25, \$17 at site. \$\$ (300 b/30) 100-70, A, B, & C each 35, D/below 25. REG: 8:30-9:30 a.m., 1st round, 10:00. Les Bale, 708/675-3993. LS.

February 9-10: Lincolnwood Mini-Tour. See Tour listings.

February 16-17: Lincolnwood's U-2000 #2. 5-SS, 40/90, G/30. Lincolnwood Chess & Games, 3518 Devon Ave., Lincolnwood IL 60659. Details in next ICB. Les Bale, 708/675-3993. LS.

February 23-24: 1991 Lincolnwood Plus-Score Mini-Tour Tornado #3 and #4. See Illinois Tour listing.

March 2-3: Naperville March Open. Naperville. Organizer: Steve Meyers.

March 9: Lincolnwood's Trophies Only. 4-SS, G/60, Lincolnwood Chess & Games, 3518 Devon Ave., Lincolnwood IL 60659. EF: \$7 by 3/1, \$10 at site. Trophies to 1st, 2nd, 3rd. REG: 8:30-9:30 a.m., 1st round, 10:00. Les Bale, 708/675-3993. LS.

March 10: Illinois Chess Association Awards Banquet. Ramada O'Hare, 6600 N Mannheim Rd, Rosemont. 1 p.m., social hour at noon. Donation: \$17 in advance, \$20 at the door. Alan Losoff, Box 157, Morton Grove, IL 60053. 708/966-5559.

March 10: Illinois Chess Association Speed Championship. Ramada O'Hare, 6600 N Mannheim Rd, Rosemont. Details in next ICB

April 6-7: Naperville April Open. Naperville. Organizer: Steve Meyers.

May 31-June 2

1991
NATIONAL
OPEN

See National Events

Illinois Tournament Calendar

Call Chess Phone, (708) 832-5222, for up-to-date tournament results, as well as announcements of tournaments that may not be listed in **Chess Life** or the **ICB**. The ICA Chess Phone voice is Todd Barre. Unless otherwise noted, all tournaments require USCF membership. Illinois Tour events also require ICA membership. Announcements of ICA affiliates' tournaments receive more space in the Calendar than do those of non-affiliates.

NATIONAL EVENTS

May 31-June 2: **1991 National Open**. 6-SS, 45/2, 15/30. The Ramada O'Hare Resort Hotel, 6600 N Mannheim, Rosedale IL 60018. 708/228-2828. \$\$G: 20,000. In 2 sections: **Championship**, open to all. EF \$68, free to GMs. \$\$G: 4000-2250-1250-750-500-250, winner receives replica of Edmondson Cup, Master (below 2400) 750-400-250-100, X 750-400-250-100, A 750-400-250-100. **Reserve**, open to Under 1800. EF \$64. \$\$G: 1500-800-500-250-50-100, C 700-350-150-100, D/E 700-350-150-100, Unr. \$500-200. **Special Prizes and Raffles TBA**. HR: \$59 single or double; reservations 708/827-5131. **Special airfare**: American Airlines 800/433-1790, ask for STAR file no. 0151BZ. Full details in April CL. Organizer: Alan Losoff, PO Box 157, Morton Grove IL 60053; 708/966-5559. ENT: USCF, National Open Entries, 186 Rt. 9W, New Windsor, NY 12553; 914/562-8350.

ILLINOIS TOUR EVENTS

December 15: Euwe-Alekhine Anniversary Tournament. 4-SS, 30/1, 15/30, SD/30. Hammond Chess Club, Hammond Public Library, Howard Branch, 171st & Grand Avenue, Hammond, Indiana. EF: \$20 at site, \$3 off to Hammond CC members. **\$675 guaranteed**: 150-100-50, A 50-25, B 45-20, C 35-15, D/E/Unr 25-10, Top jr. 25, upset 25. Additional \$100 split between all perfect 4-0 scores. REG: 8-8:30 a.m. RDS: 9:00, 12:00, 3:30, 7:00. ENT: Jim Enochs, 6436 Jefferson Ave., Hammond IN 46324; 219/932-1437.

December 29: R.F. McCormick Memorial 1/4K (Mini-Tour). 3-SS, G/90. Freedom Hall, Lakewood at Orchard Blvd., Park Forest. EF: \$12 by 12/22, \$15 at site. \$\$ (260 b/30): 70-45-25, A, B, C/below each 30. REG: 9:30-10:15 a.m. Rds. 10:30-2-5:30. ENT: Park Forest Chess Club, c/o Lawrence Cohen, 231 S. Villa Ave., Villa Park IL 60181; 708/834-CHSS. NS, NC.

December 30: Charles "Chuck" Landry Memorial Open 1/4K (Mini-Tour). 4-SS, G/30, Freedom Hall, Lakewood at Orchard Blvd., Park Forest. EF: \$8 by 12/22, \$10 at site. \$\$ (100 b/20): 30-25, A, B, C/below each 15. REG: 12:30-1 p.m. Rds. 1:15-2:30-3:45-5. ENT: Park Forest Chess Club, c/o Lawrence Cohen, 231 S. Villa Ave., Villa Park IL 60181; 708/834-CHSS. NS, NC.

January 19-20: Tim Just Winter Open/Reserve VIII (Maxi-Tour). 5-SS, 40/90, SD/1. College of Lake County, Main Building, 19351 W. Washington at Route 45, Grayslake IL 60030. EF: \$32 by mail, \$40 late and by phone. **\$1,725 in cash prizes (based on 60 entries)!** Open: 225-150-100, Expert 125-100, Under 2000 125-100. **Reserve** (open to under 1800) 225-150-100, C 125-100, D/E/Unr 100. RDS: Sat. 9-2-7, Sun. 10-3. 1/2-point bye available in Round 1, 2, 3, or 4. REG: 8:00-8:45 a.m., Jan. 19. Tim Just, 3716 Willow Lane, Gurnee 60031. 708/244-7954. NS.

January 19-20: Rock Island. No info available at press time. Steve Foust, 309/675-3993.

January 26-27: 1991 Lincolnwood Plus-Score Mini-Tour Tornado #1 and #2. Two-one day events. 4-SS, 40/1, 20/30. Lincolnwood Chess & Games, 3518 Devon Ave., Lincolnwood IL 60659; 708/675-3993. EF: \$12 by Jan. 21, \$15 at site. Prizes according to score: 4-0 wins \$100, 3 1/2 wins \$50, 3 wins \$25, 2 1/2 wins \$12. REG: 9:00-9:30 a.m. RDS: 10-12:30-3-5:30. ENT: Bill Smythe, 6945 N. Ashland #F-3, Chicago 60626; 312/761-2455. NS, W.

February 9-10: Lincolnwood Mini-Tour. Two one-day events. 3-SS, G/75, Lincolnwood Chess & Games, 3518 Devon Ave., Lincolnwood IL 60659. EF: \$16 by 2/1, \$18 at site. \$\$ (300 b/30) 100-70, A, B, & C each 35, D/below 25. REG: 8:30-9:30 a.m., 1st round, 10:00. Les Bale, 708/675-3993. LS.

TIM JUST WINTER OPEN — JANUARY 19-20

ILLINOIS CHESS BULLETIN

P.O. Box 268408

Chicago, IL 60626

SPEEDY DELIVERY APPRECIATED

ADDRESS CORRECTION REQUESTED