



ILLINOIS CHESS BULLETIN

Official Publication of the Illinois Chess Association, a U.S.C.F. Affiliate
A Not For Profit Organization

July-August 1992 Volume XV, No. 4 Bi-monthly \$2.95

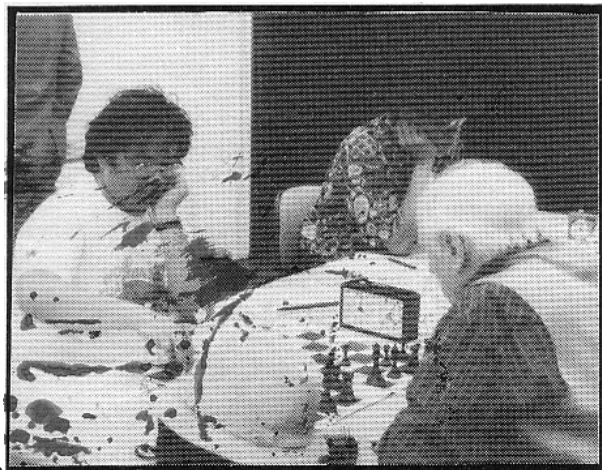
CHICAGO INDUSTRIAL CHESS LEAGUE



(L) BILL FRIESEMA (CRT)
(R) EDWIN BOLDINGH (UOP)



(L) ED BUERGER (UOP)
(R) ALAN LOSOFF (CRT)



(L) B. GAZMAN (FRANKLIN-WATTS)
(R) ROMAN GOLLA (SEARS)



(L) TONY JASAITIS (CRT)
(R) M. STEVANOVIC (UOP)

**UOP
(North)
Sweeps
Play-offs
3-0
& Sets
CICL
Record**





ILLINOIS CHESS BULLETIN

Editor **Warren Kreckler**
Calendar Editor **Bob Renaut**
Tour Statistician **Bill Smythe**
Games Editor **Tom Cooper**

MEMBERSHIP AND SUBSCRIPTIONS

The Illinois Chess Bulletin (ICB) is published bimonthly by the Illinois Chess Association. ICA membership includes a subscription to the ICB. Century Club, Gold Card, and Patron members receive their ICB by first-class mail.

ANNUAL MEMBERSHIP RATES

Century Club \$100.00
 Gold Card \$50.00
 Patron \$25.00
 Regular \$14.00
 Junior (under 18) \$8.00

Subscriptions and address corrections should be sent to:

ICA Membership Secretary
 P. O. Box 2534
 Northbrook, IL 60065-2534

SUBMISSIONS

The deadline for submissions in the September-October 1992 issue is August 1, 1992.

Send tournament announcements to: **Bob Renaut**
 Send tournament crosstables to: **Bill Smythe**
 Send games for publication to: **Tom Cooper**
 Send articles, ads, comments, info to: **Warren Kreckler**

ICA AFFILIATION

Chess clubs and other organizations which promote chess activity may affiliate with the ICA. Benefits include a copy of the ICB by first class mail, a listing under "Where to Play Chess," discounted advertising rates, three-line tournament announcements in the "Tournament Calendar," and the right to run ICA Tour Events. ICA Affiliation costs \$25; please remit to Membership Secretary.

ADVERTISING RATES

Full page \$90
 Half page \$54
 Quarter page \$36
 Eighth page \$24

10% discount for the same ad in consecutive issues. 1/3 discount for ICA affiliates. All ads must be camera-ready to qualify for above rates; minimum \$20 charge for layout. Payment must accompany ad. The ICA & the ICB reserve the right to reject advertising.

TABLE OF CONTENTS

President's Report	3
<i>by Alan Losoff</i>	
Editor's Comments	3
<i>by NM Warren Kreckler</i>	
Chicago Industrial Chess League	4
<i>by Tony Jasaitis</i>	
ICA Launches Junior Chess Program	6
<i>by SM Richard Verber</i>	
Mather H.S. Wins Chicago H.S. Championship	7
<i>by SM Richard Verber</i>	
Auburn H.S. Repeats as IL Class AA Champs	8
<i>by SM Richard Verber</i>	
Life-Size Chess Game	10
<i>by NM Warren Kreckler</i>	
Important Info	11
<i>by Randy Pals</i>	
Oak Park - River Forest Chess Club News	12
<i>by Ken Marshall</i>	
Jim Marshall Wins OPRF Spring Open	13
<i>by Ken Marshall</i>	
Kraal Wins Shimer College Championship	14
<i>by David Shiner</i>	
Chess On The Fox	15
<i>by Bob Renaut</i>	
Chicago International	16
<i>by Howard Wachtel</i>	
In the beginning there was the endgame	28
<i>by NM Brian Schuman</i>	
Illinois Tournament Crosstables	30
<i>by Bill Smythe</i>	
ICA Tour Standings	35
<i>by Bill Smythe</i>	
Tournament Calendar	36
<i>by Bob Renaut</i>	
ICA Patrons	38
Where to Play Chess	39
ICA Club Affiliates	

Industrial Chess League Photos: Alan Losoff
 Chicago International Photos: Dennis Bourgerie
 Life-Size Chess Photos: Lee Wenzbauer
 High School Chess Photos: Richard Verber
 Original Artwork: E. Stuparitz

President's Report

by Alan Losoff

I want to encourage everyone to support the new junior chess program described elsewhere in these pages. Started by Helen Warren, this program pays chess masters for one-on-one lessons to gifted Illinois juniors. The ratings of all of the students who participated fully have gone up significantly.

The original program was funded by the ICA and Helen Warren's Midwest Chess Association, and administered by Helen. At the June ICA Board Meeting, on a motion by Richard Verber, the board agreed unanimously to expand the program and invited Helen to continue as coordinator. (Proving that the reward for a job well done is a bigger job.) She not only agreed, but offered to match the ICA's initial donation, giving us a big head start towards our fund-raising goal of \$10,000.

In addition to providing private lessons to any Illinois junior who makes a national "top 50" list, increased funding will also be used to bring masters into Illinois schools. Our goal is also to make master instruction available to players who have not (yet) made a top-50 list.

I would also like to thank the masters (Richard Verber, Tom Cooper, Rodney Kinnard, Ron Torregrossa and Alan Watson). Their dedication to their students has produced results beyond anything we expected.



Editor's Comments

by Warren Kreckler

I have been receiving publication material in the mail which should not be directed to the ICB editor. The following information will help to resolve this problem.

Send tournament announcements to:
(Calendar Editor) Bob Renaut
1255 Oakton Lane
Naperville, IL 60540

Send tournament crosstables to:
(Tour Statistician) Bill Smythe
7445 N. Greenview
Chicago, IL 60626

Send games for publication to:
(Games Editor) Tom Cooper
401 Pershing
Wheaton, IL 60187

Send articles, ads, comments, info, etc. to:
(ICB Editor) Warren Kreckler
6146 N. Greenview
Chicago, IL 60659

Les Bale was unable to submit an article on junior chess for this issue. Special thanks to SM Richard Verber who came to the rescue with his articles on the two most important high school events of the year - the city and state championships. Dick made a 110 mile trip to Bloomington-Normal to report on the state competition. For the next issue of the ICB, Dick has promised us an interview with the two top Illinois H.S. players, Steve Arlinsky and Serge Minin.

A reminder that the Illinois-Wisconsin match will be held on Sunday, July 26 at Shimer College, 438 N. Sheridan Rd., Waukegan, IL. Look for details on this event in the May-June ICB (page 15). Your editor will be there playing for the home team. **Come join me and support the Illinois team!**

CHICAGO INDUSTRIAL CHESS LEAGUE

by Tony Jasaitis

The Chicago Industrial Chess League (CICL) finished its season in May, with the UOP team sweeping the play-off swiss 3-0 and setting a record for the most game points scored in the play-offs (15 out of 18). The play-offs are comprised the top two teams from each of the four geographical divisions. The results of the play-offs were:

Place	Team/Division	Points
1	UOP (North)	3
2	Franklin-Watts (North)	2
3	Argonne Knights (West)	2
4	Chicago Research & Trading (East)	1.5
5	Sears (East)	1.5
6	Fermilab (Far West)	1
7	AT&T Chargers (West)	1
8	AT&T Tyros (Far West)	0

On the individual scale, of particular note was the performance of CRT's Bill Friesema, who was 12-0 on boards 2 and 3 before finally losing to UOP's Edwin Boldingh in the last round of the play-offs. Also noteworthy was the performance of Reuben Reyes (Sears), who was undefeated on board 1 with 8 wins and 5 draws. The most improved player was William Howard (Post Office), with a gain of 137 rating points during the regular season.

A brief summary of the CICL: Companies enter six-player teams to play matches in a relaxed setting at each other's home sites once every two to three weeks after working hours. Travel is kept light as the league is divided into four geographical

divisions. Team and individual prizes are awarded at a banquet at the end of the season in June. The league maintains a rating system similar to the USCF.

If you don't think you know enough chess players at work, put a notice in the company newsletter. You may be surprised how many chess players are lurking out there. Although the matches are played with clocks, USCF experience is not required. **Are you good enough for the league? Absolutely!** Ratings in the league range from Class E to Senior Master. Several teams have a Class B player on first board, yet Masters & Experts will have plenty of their own kind to contend with.

A new season will begin in September. If you think that you can enter a team, or for further information, call league president Tony Jasaitis at 312-431-2966 by the middle of August. ■



UOP Winning Team

(Standing L-R)

M. Stevanovic, Ed Buerger, E. Sahl

(Sitting L-R)

E. Boldingh, Frank Micklich, Pat Sajbel

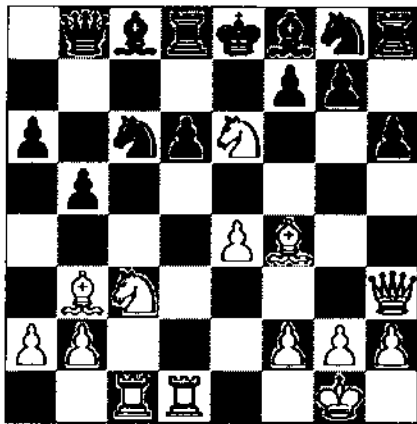
CHICAGO INDUSTRIAL CHESS LEAGUE

1992 PLAY-OFFS

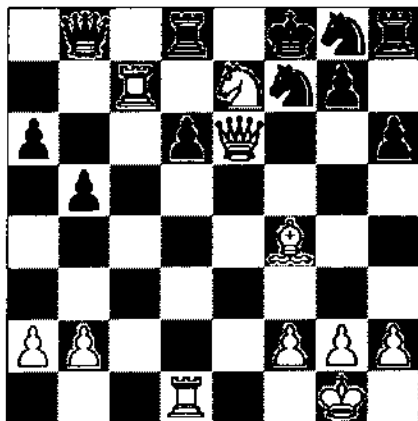
Bill Friesema - A. Benesa

Industrial Chess League Play-off, 1992

1.e4 c5 2.d4 cxd4 3.c3 dxc3 4.♖xc3 d6 5.♗c4 e6 6.♘f3 a6 7.0-0 b5 8.♗b3 ♗b7 9.♞e2 ♘c6 10.♞d1 ♞c8 11.♗f4 ♞c7 12.♞ac1 ♞d8 13.♞e3 ♞b8 14.♘g5 h6 15.♞h3 ♗c8 16.♘xe6!



♗xe6 17.♗xe6 fxe6 18.♞xe6+ ♗e7 19.e5 ♘xe5 20.♘d5 ♗f8 21.♞c7 ♘f7

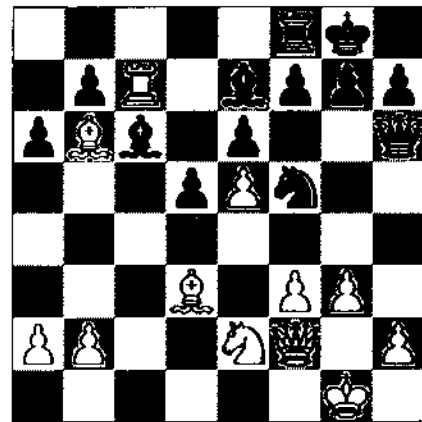


22.♘xe7 1-0

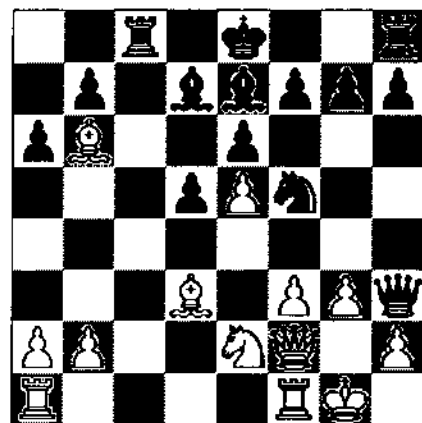
Edwin Boldingh - Bill Friesema

Industrial Chess League Play-off, 1992

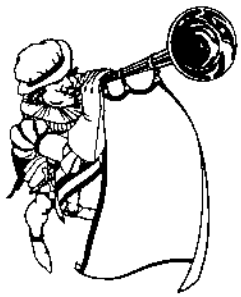
1.e4 e6 2.d4 d5 3.e5 c5 4.c3 ♘c6 5.♘f3 ♞b6 6.♗d3 cxd4 7.cxd4 ♗d7 8.♘c3 ♘xd4 9.♘xd4 ♞xd4 10.0-0 a6 11.♞e2 ♞h4 12.♗e3 ♘h6 13.f3 ♞c8 14.g3 ♞h3 15.♞f2 ♘f5 16.♗b6 ♗e7 17.♘e2



♞h6 18.♞ac1 ♞xc1 19.♞xc1 0-0 20.♞c7 ♗c6



21.♗xf5 exf5 22.♞xe7 ♞d2 23.♘d4 ♞c1+ 24.♗g2 ♞c8 25.♞c2 ♞e3 26.♞e2 ♞g5 27.♘xc6 bxc6 28.♞xa6 ♞f8 29.♞b7 ♞d2+ 30.♗f2 c5 31.e6 ♞g5 32.exf7+ 1-0



ICA LAUNCHES AMBITIOUS \$10,000 JUNIOR CHESS PROGRAM

The largest state chess project ever attempted in the U.S.

by SM Richard Verber

The **BIG NEWS** from the Sunday, June 14th Meeting of the Illinois Chess Association is the new \$10,000 Fund-Raising Drive in Illinois aimed at providing master chess lessons for our state's most talented high school and grammar school chess players. In addition to chess lessons for kids on the USCF Top-50 "Age- Categories Lists", the new program will send chess masters to teach at promising high schools and grammar schools. Helen Warren has agreed to serve as coordinator of the ICA Junior Chess Program. She will soon be contacting both schools and high-rated children to arrange for master lessons.

Although Illinois can boast only one name on the USCF Top-50 Adult List (GM Dimitry Gurevich), we do extremely well on most of the kids lists, especially on the grammar school lists. When it comes to grammar school chess, Illinois competes successfully with the likes of New York and California. The question is: What has been happening to our Illinois Chess Kids that they rarely, if ever, continue to develop their skills to become masters, senior masters, or grandmasters??

Part of the problem is that too few of the children go on to play in adult tournaments. While segregation by age makes good sense at the grammar school level, it is having a very negative consequence at the high school level. Many high school chess players simply drop out of chess when they graduate high school. They have never played in an adult tournament before graduation and most do not receive **CHESS LIFE** or the **ILLINOIS CHESS BULLETIN**. Few know how or where to join adult events. I would hate to speculate on what percentage of the 580 high school chess players who competed in the 1992 IHSA Chess Championship held

in Normal, Illinois during March might drop out of chess at graduation.

WE MUST DO SOMETHING TO REVERSE THIS TREND.

Thanks largely to Helen Warren's article in the ICB last Winter, the ICA officers and directors have become much more aware of the situation and now fully realize that our great junior chess potential needs help to mature. Chess master lessons is the first step. ICA sponsoring large junior tournaments is the second step. ICA working to get the 580 high school chess players mentioned in the last paragraph to play in adult tournaments is the third step. Fortunately, ICA is taking the important **FIRST STEP**.

Congratulations and thanks are due Jim and Helen Warren for their \$500 donation to get the new Junior Program started. ICA matched the Warren's contribution with its own \$500. Any help **YOU** can give to promote Junior Chess in Illinois will also receive congratulations and thanks. Please send your generous contribution to Helen Warren, 5333 S. Woodland, Western Springs, IL 60558 (Phone: 708-246-6665). Please make your check payable to ICA Junior Chess Program. Helen Warren is giving not only \$500 of her own money out of love for our game of chess and the kids who play chess -- but also many of her hours, weeks, and months. Do your part to help by taking the time to write a check. If you know of a business or foundation that might help fund our chess education program, please put them in touch with Helen Warren or ICA President Al Losoff.

**IF YOU CAN HELP WITH
CORPORATE FUND RAISING
PHONE HELEN AT 708- 246-6665**

MATHER HIGH SCHOOL EDGES ORR ACADEMY ON TIE-BREAK TO WIN 1992 CHICAGO PUBLIC HIGH SCHOOL CHESS CHAMPIONSHIP

16 Chicago Teams Compete March 11, 12, 13 at the Chicago Board of Education Building at 1819 West Pershing Road in Chicago

by SM Richard Verber

FINAL RESULTS

1st & 2nd Place Tie with 3½ - ½

Mather H.S. & Orr Academy H.S.

They drew in the final round.

3rd & 4th Place Tie with 3 - 1

Carver H.S. & Chicago Agricultural H.S.

5th Place with 2½ - 1½

Kenwood H.S.

6-10th Place with 2-2

Clemente H.S. • Lane Tech. H.S.

Schurtz H.S. • Von Stueben H.S.

Hyde Park H.S.

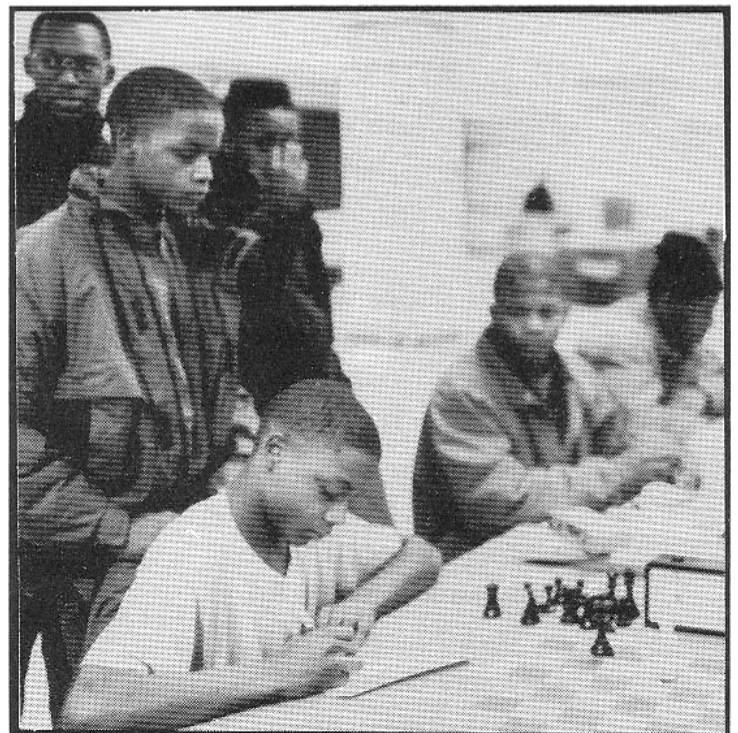
Even though it has been a number of years now since Tom Fineberg retired as a Chicago Public High School teacher, I suggest we should grant Tom the title of "Dean of Chicago High School Chess." Once again this year, Tom did a wonderful job directing the High School Championship at the Board of Education Building on the South-Side of Chicago. I remember my surprise at how quietly and orderly the tournament was running when I arrived Thursday afternoon, March 12. Hats off to Tom Fineberg and Co-Director Marvin Johnson: They do a 1st Class job!

Going into this year's Championship a real horse-race was expected. No one, including myself, was too confident about predicting this year's results. Defending Champion Orr and Mather were given the best chances. Carver, Chicago Ag, Kenwood, and Lane were thought to be plausible Dark-horses. THE news this year was the ALL SOVIET MATHER TEAM. I can tell you from experience that one or two Soviets on a high school team usually makes a huge difference. BUT FIVE!! Mather High is located in Chicago near Petersen and California, the center of the Russian and Ukrainian immigration of recent years. I must confess my fear beforehand that my inner-city Orr H.S. kids (whom I've been teaching chess on a regular basis since 1990) might be eaten alive by their Russian

opponents. Oh Richard, Ye of little Faith! I was proud of the Orr kids last year when they beat Mather, Kenwood, and Whitney Young to win the 1991 Championship. The Orr kids deserve even more credit this year for their fine result versus the new and improved Mather Team. Much of the credit for the Orr success story of recent years belongs to their coach Tom Larson and Orr Principal Dr. Kenneth Van Spankeren.

The 16 Chicago high school teams competing in the finals this year were each composed of 5 team members. The Mather team was headed by Stanley Moreyno and Igor Visotsky. Jermaine Bush and Fred Tolliver were their counterparts at Orr High School.

Symptomatic of the problems with high school chess in Illinois, this important Chicago City High School Championship was not USCF-rated. Unfortunately, some of the Mather students do not have USCF ratings. Many of the best high school chess players in Illinois do not have USCF ratings . . .



ORR ACADEMY H.S. OF CHICAGO AT THE PAN AMERICAN HIGH SCHOOL TOURNAMENT LAST DECEMBER

AUBURN HIGH SCHOOL OF ROCKFORD REPEATS AGAIN THIS YEAR AS ILLINOIS CLASS AA STATE CHAMPIONS

**580 High School Chess Players compete March 27-28-29
at Normal, Illinois Campus of Illinois State University**

by SM Richard Verber

FINAL RESULTS

1st Place with 7 - 0

Auburn H.S. (Rockford)

2nd Place with 6 - 1

Glenbard West H.S. (Glen Ellyn)

3rd Place with 5½ - 1½

Belleville East H.S. (Belleville)

4th Place with 5 - 2

Jefferson H.S. (Rockford)

5th Place with 5 - 2

Illinois Math & Science Academy (Aurora)

6th Place with 5 - 2

Mather H.S. (Chicago)

7th Place with 5 - 2

Mattoon H.S. (Mattoon)

8th Place WITH 5 - 2

Bloom Trail H.S. (Chicago Heights)

9th Place with 5 - 2

Evanston H.S. (Evanston)

10th Place with 5 - 2

Carver H.S. (Chicago)

11th Place with 5 - 2

St. Rita H.S. (Chicago)

12th Place with 5 - 2

Urbana H.S. (Urbana)

13th Place with 4½ - 2½

New Trier H.S. (Winnetka)

14th Place with 4 - 3

Morton H.S. (Berwyn-Cicero)

15th Place with 4 - 3

Olympia H.S. (Stanford)

16th Place with 4 - 3

Downers Grove South H.S.

17th Place with 4 - 3

Niles North H.S. (Skokie)

For the past 5 years Rockford high schools have dominated Illinois competition and 1992 proved to be no exception. Perhaps the main difference this time was the wide margin by which Auburn High out-gunned all of its rivals. Auburn faced its toughest competitors and defeated them resoundingly. Even Jefferson H.S. of Rockford was no match for Auburn this year.

The IHSA sponsors of this annual event have outdone themselves this time in finding a beautiful site in Bloomington-Normal at the Campus of Illinois State University. Conditions were perfect and the high school kids had a first-hand look at life on a college campus. It is likely that Normal will become the permanent site for this largest of all Illinois high school tournaments. Ola Bundy of IHSA (no relation to ICA) and Mike Zacate deserve the credit for the Normal, IL tournament site. Although the state-wide event was USCF-rated this time, that too is threatened for 1993. CHESS LIFE and THE ILLINOIS CHESS BULLETIN are so much over the heads of the majority of the kids that they refuse to shell out the money to become USCF or ICA members. Someone might want to bring up the subject of the possibility of the failure of education in Illinois schools or declining values, or some such explanation. I do not know the solution here, but I certainly do not think that the high school chess coaches should be expected to reach into their own pockets to pay for 580 USCF and ICA memberships. However, something needs to be done. A declining percentage of Illinois high school players are finding their way into USCF.

This year's tournament was very ably run, thanks largely to behind-the-scenes handling by Mike Zacate, whose 20 years as a veteran NTD was apparent in the details. 1992 marks Mike Zacate's retirement after many years as the President of the Illinois High School Chess Coaches Association. He will be missed. Mike has of necessity limited his activities since his 1990 heart-attack.

The final round of the tournament saw some surprising upsets which demonstrate the inconsistency of younger chess players (some older ones too). Mather and Illinois Math and Science Academy were in my opinion the best teams after Auburn of Rockford, but they made amazing blunders in round 7 -- throwing away wins versus lesser teams. In chess the game is not won until you win it.

Thanks to Jim Oberweis and the American Chess Foundation I have moved to Aurora, Illinois and have begun teaching chess in 4 Aurora schools: Aurora West H.S., Illinois Math & Science Academy (IMSA), Marmion Academy H.S., and Holy Angels Grammar School. Likewise, I am continuing to teach chess at Orr H.S. in Chicago. My new phone number is 708-978-1380.

Before closing this article I would like to introduce you to two of the best Illinois high school players, Steve Arlinsky and Serge Minin -- both of whom are 16-years old and born in the former Soviet Union. Steve's rating is approaching 2160 after beating and drawing masters at the Mid America Class Championships in March at the Ramada Hotel. Serge Minin also did well at the Ramada and his rating is now over 2060. I have been teaching Steve and Serge since January. I estimate they will be-

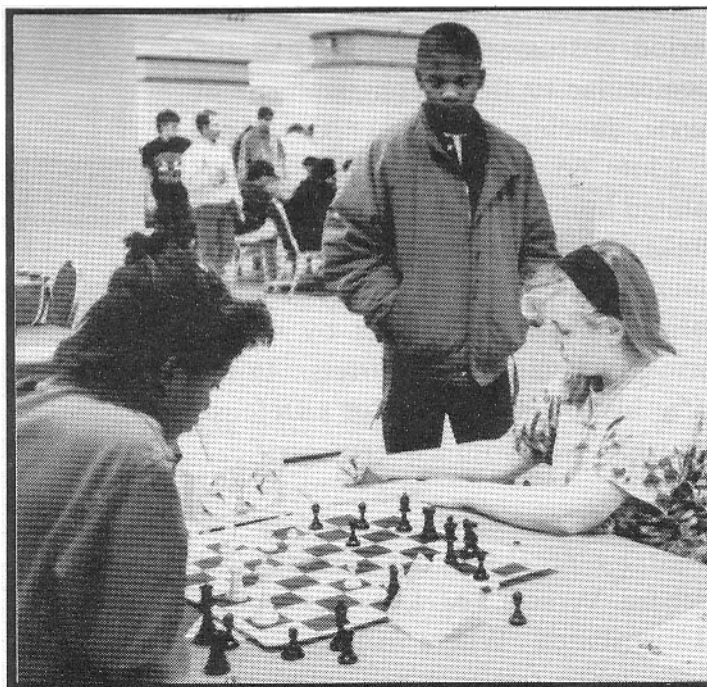
come Masters within the next year. I hope to interview Steve and Serge in a future issue of the ILLINOIS CHESS BULLETIN.

Other high school players who deserve congratulations for excellent performances in the IHSA Championships are: Julius Brown who scored 7-0 at Board 2 for Carver H.S.; Boyd Reed, 7-0 for East St. Louis; Mickey Jacobsen with 5 points for Glenbard West at Board 2; Cory Schanes who scored 6-1 at board 1 for Jefferson of Rockford; Adam Kalai with 6 at board 1 for New Trier H.S.; Julie Oberweis with 5-2 at bd. 1 for Aurora West; Mike Liu with 6-1 at board 2 for Illinois Math and Science; Steve Arlinsky 7-0 at board 1 for Niles North; Brad Stevens with 4 at board 1 for Auburn of Rockford; Stanley Moreyno with 5-2 at board 1 for Mather; Soren Dayton with 5-2 at board 2 for Evanston H.S.; Bart Cifone with 5-2 at board 1 for Glenbard West. Many other kids deserve mention. I hope they will all join ICA and protest their exclusion.

If ICB readers would like further information regarding high school chess in the Chicago metropolitan area, I would refer you to Ken Lewandowski, the very knowledgeable and intelligent chess coach at Evanston H.S. Ken's phone number is 708-869-8246.



Steve Arlinsky with World Champion Gary Kasparov, receives trophy for 8th place finish in National Student Competition in Kentucky.



Latasha Jones (ORR H.S.) vs. Judy Oberweis (Aurora West H.S.) at Pan American High School Tournament.

LIFE-SIZE CHESS GAME

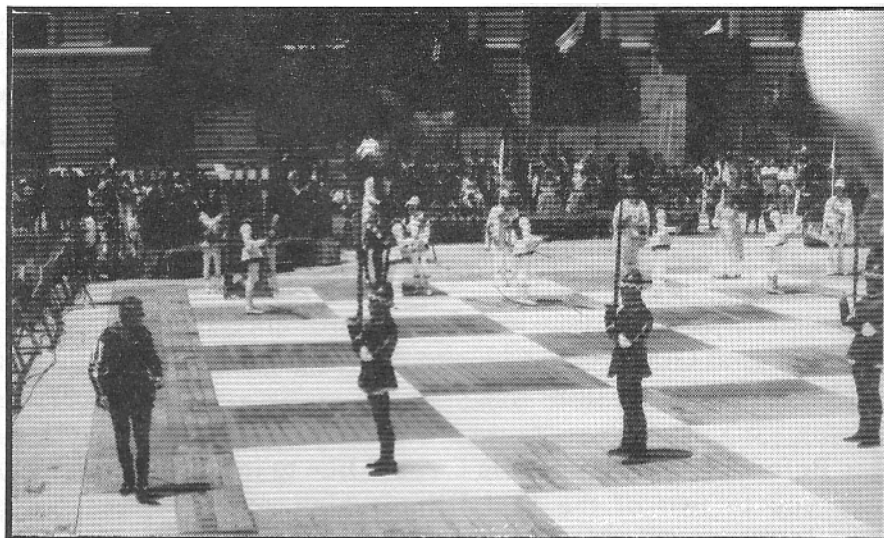
by Warren Kreckler

The Italian Cultural Institute and Chicago's Department of Cultural Affairs presented the Living Chess Game from Marostica, Italy at Daley Center Plaza on Thursday, June 18 at noon, and Friday, June 19 at 7 p.m. The event was offered as a tribute to Italian Americans and as a quin-centennial celebration of the voyage of Christopher Columbus to America.

This celebration of Renaissance arts is staged every two years in Marostica, Italy and has become a major tourist attraction. The theatrical production re-creates a 1454 contest between two noblemen (a chess game, since dueling was forbidden) for the hand of the daughter of Lord Marostica.

170 performers wearing elaborate period costumes participated in the spectacular to the accompaniment of music, dancing, and fireworks. A red & white 66 sq. ft. chess board was painted in the plaza for the event. The chess knights were played by four mounted Cook County Forest Preserve policemen and the rooks by 4 performers wheeling mini-turrets. In the game black played Philidor's Defense and white won with a queen sacrifice.

The ICA was represented at the event by president Al Losoff, SM Richard Verber, and Lee Wenzbauer. Al distributed "Where to Play Chess" flyers, while Lee took several photos. Al and Lee were both mentioned in the front page Sun-Times article of June 18, final edition. ■



Important INFO

by Randy Pals

Announcing – A New Chess Entity in Northwest Indiana The Chessterton Chess Center

The **Chessterton Chess Center** is not so much a club as an entity that will run USCF rated tournaments. It will be an affiliate of the USCF, the Illinois Chess Association, and the Indiana Chess Association. Tournaments will be run at least monthly, perhaps more often. Initially, the tournament format will be a four round Swiss with 30/60, SD/30 time control.

The tournament site will be:

**Westchester Public Library
210 W. Indiana
Chessterton, Indiana 46304**

The town of Chesterton is just south of I-94 at Route 49 (exit for the Indiana Dunes), and a few miles north of the I-80/90 (tollway) exit for Route 49. It is approximately 30 minutes from the Illinois/Indiana border.

All correspondence with the Chessterton Chess Center should be directed to:

**Chessterton Chess Center
c/o Randy Pals
16526 Ellis Ave.
South Holland, IL 60473-2425**

**Info:
Randy Pals 708-339-4247
Harold Henderson 219-324-2620**

Tournament directors will be Joe Alford & Harold Henderson.

Tournament Schedule (All Saturdays)

June 13	Chessterton June Open
July 25	Chessterton July Open
August 22	Chessterton August Open
September 12	Chessterton September Open
October 24	Chessterton October Open
November 14	Chessterton November Open
December 12	Chessterton December Open

Registration: 8-8:45 a.m.

Round Times: 9:00, 12:00, 3:00, 6:00

Entry Fee: \$15 Adults, \$10 for Juniors
(High School or below)

Prizes: 1st \$100, 2nd \$60, 3rd \$45

Class Prizes: A \$35, B \$30, C \$20
D, E & Unrated \$15

Top Junior: \$10

Upset Prize: \$10

(All prizes based on 30 entrants)

NS, NC

Advance entries & Info:

Randy Pals
16526 Ellis Ave.
South Holland, IL 60473-2425
(708) 339-4247

Only **paid entries** will be paired for the first round if they are not present.

CHESS CLUB NEWS

OAK PARK - RIVER FOREST

by Ken Marshall

February 11 and February 18: WRC Tournament. This four round, "game/30" event, sanctioned and rated by the Grandmaster Yasser Seirawan's International Chess Federation (FIDE)-affiliated World Rapid [Action] Chess organization, attracted 12 players. Art Zacher and Peter Dudkowski (who drew their Round 3 game) each scored 3.5-5 to finish tied for first and second. Julian Bratton, Jim Kelly, and Bill Buttny (all 2-2) shared third place honors. Mark Stamatakos (2.5-1.5) took home the 1999-1700 money. (Stamatakos' prize in this category was larger than the third place prize he would otherwise have won.) Topping the 1699-Below entrants were Steve Josephs and Robert Johnson (each 2-2).

February 25: Albert Chow Group Chess Lesson. This event drew 19 people; each got more than his \$5 worth as Senior Master Chow spent more than two hours going over training and study methods and analyzing Grandmaster games, asking and answering questions as he went along.

March 3: Team Speed Tournament. Six three-man teams competed in this single round robin "game/5" tournament. Four teams ended up tied at 3-2, with Art Zacher, Marty Ptacek, and Gary Janssen winning on tie-break over Jim McNamara, Bill Barker, and Butch Allen; Tom Oelrich, Craig Borri, and Steve Josephs; and Mark Sefcheck, Don Winsauer, and Rick Lutzke.

March 17: Grandmaster Alexander Ivanov Simultaneous Exhibition. A 22 player field faced GM Ivanov at the "simul". In three and a half hours, the GM scored 16 wins, one loss, and five draws. Veteran Club member Ray Satterlee handed GM Ivanov his only defeat, while members Dave Wulatin, Craig Borri, Ken Marshall, and Mark Stamatakos, and non member Larry Cohen, posted draws.

March 24 and 31: USCF Action Tournament. David Wulatin defeated Les Bale in the final round

to finish clear first at 3.5-1.5 in this 12 player "game/30" event. Art Zacher, Peter Dudkowski, and Bale each scored 3-1 to share the second place, third place, and 1999-1700 prizes. Below 1700 honors were taken by Rick Lutzke with a 1-3 result.

April 14: Annual Membership Meeting and Elections. All incumbent officers who were willing to serve again were re-elected: Ken Marshall, President; Don Winsauer, Vice President; and Greg Minnis, Treasurer. Andy Schiller was elected Secretary in place of Tom Oelrich, and Art Zacher was elected Member at Large in place of Don Haley.

April 21: World Blitz Chess Association Tournament. Losing only two games (to Les Bale and Guy Kittelsen, respectively), Albert Chow scored 12-2 to top an eight man field in this double round robin, "game/5" tournament, which was sanctioned and rated by Grandmaster Walter Browne's World Blitz Chess Association. Jim McNamara (10.5-3.5) finished second and Les Bale (9.5-4.5) third. The 1999-1700 prize was won by Guy Kittelsen (7-7), while Rick Lutzke (4.5-9.5) garnered the Below 1700 money.

Club Library: Long time OP-RF CC members remember Tom Anderson, who joined the Club while in high school in the late 1970s. Tom, a solid Class B player, had congenital heart problems which resulted in his death at age 19 in 1982. Tom's family has moved, and his father, Robert Anderson, has donated Tom's 50 book chess library to the Club. The books range from game collections (e.g., Alexander Alekhine's two volume *My Best Games of Chess*) and tournament reports (e.g., David Bronstein's *Zurich International Chess Tournament 1953*) to end game treatises (e.g., Paul Keres' *Practical Chess Endings*) and histories (e.g., Fred Reinfeld's *The Treasury of Chess Lore*). This collection will form the basis of the Tom Anderson Memorial Library of the OP-RF CC. ■

JIM MARSHALL WINS OAK PARK-RIVER FOREST CHESS CLUB SPRING OPEN

by Ken Marshall

Jim Marshall scored 4.5-.5 to take home the \$100 first prize at the Oak Park-River Forest Chess Club Spring Open, held May 16-17, 1992, at the Dominican Conference Center in River Forest. The highest rated entrant, Marshall (2047) topped a field of 27 which included two experts and seven Class A players. After a first round draw with Cory Schanes (1685), Marshall's four wins included a final game victory over Thavron Sukcharoenphon (1914), who needed only a draw to clinch clear first. Sukcharoenphon's 4-1 result earned him second place and \$50.

Four players tied for third with 3.5-1.5 scores: Rhys Read (2002), Dave Wulatin (1878), Todd Clark (1791), and Schanes. Wulatin garnered the Class A prize, while Clark and Schanes shared Class B honors. (Fourteenth on the wall chart, Schanes was the tournament "giant killer", drawing with top ranked Marshall and second ranked Read, and beating third ranked Bill Buttny (1951).) Rowland Cordero and Amy Brooks both ended up 2-3 to divide the Class C money, while Martin Wauck's 2.5-2.5 finish was best in the Class D/E/Unrated category. Ken Marshall directed.

Here are two games from the tournament.

Round 1

W: Jim Marshall (2047)

B: Cory Schanes (1685)

1.e4 c6 2.d4 d5 3.Nd2 dxe4 4.Nxe4 Nd7 5.Ng5 Ngf6 6.Bc4 Nd5 7.N1f3 e6 8.Qe2 Be7 9.Bd2 N7f6 10.Ne5 O-O 11.O-O-O Qb6 12.c3 c5 13.dxc5 Bxc5 14.Be1 Bd6 15.Rd4 Qc7 16.Ngf3 Bd7 17.g4 Bc5 18.Rd1 Bc6 19.b4 Nf4 20.Qd2 Bxf3 21.Nxf3 Bxb4 22.Bb3 Ne4 23.Qc2 Nxc3 24.Bxc3 Qxc3 25.Qxc3 Bxc3 26.Rd7 Rac8 27.Kb1 a5 28.Rhd1 b5 29.Rb7 b4 30.Rdd7 Rcd8 31.Ng5 Rxd7 32.Rxd7 h6 33.Ne4 Rc8 34.Nd6 Rf8 35.Nc4 f6 36.Ne3 Rf7 37.Rd8+ Kh7 38.Bc2+ g6 39.h4 h5 40.Ra8 Rd7 41.gxh5 Nxh5 42.Rxa5 Kg7 43.Ba4 Rc7 44.Bb3 Nf4 45.Rb5 Bd2 46.Nc2 f5 47.Nxb4 Bxb4 48.Rxb4 Nd3 49.Rc4

Rxc4 50. Bxc4 Nc5 51.f4 Kf6 52.Kc2 e5 53.fxe5+ Kxe5 54.Kc3 f4 55.Kb4 Kd4 56.Bf1 f3 57.Kb5 Ne4 58.Kc6 g5 59.hxg5 Nxg5 60.a4 Ne6 61. a5 Nc5 62.Bb5 Nd3 63.a6 f2 64.Bxd3 Kxd3 65.a7 f1=Q 66.Kc7 1/2-1/2

Round 5

W: Thavron Sukcharoenphon (1914)

B: Jim Marshall (2047)

(Analysis by Marshall)

1.e4 Nc6 2.Nf3 e5 3.Bb5 a6 4.Ba4 Nf6 5.O-O Be7 6.Re1 b5 7.Bb3 d6 8.c3 O-O 9.d4 Bg4 10.d5 Nb8 11.h3 Bh5 12.Nbd2 Nbd7 13.Nf1 Bg6 14.Bc2 Nc5 15.N1d2? Qd7 16.Kh2 a5 17.b3? b4! 18.Bb2 Nh5 19.g3 f5 20.exf5 Bxf5 21.g4? Bxg4!? 22.hxg4 Qxg4 23.Rg1 Qf4+ 24.Kg2 e4 25.cxb4 exf3+ 26.Kf1 axb4 27.Nc4? (Nxf3!) Bf6 28.Bxf6 Rxf6 29.Ne3 Re8 30.Qd2 Qh2 31.Qd4 Re5! (31...Nf4? 32.Rxg7+ Kxg7 33.Qxf6+ Kxf6 34.Ng4+) 32.Bf5 Rxf5 0-1

Name	Rating	R1	R2	R3	R4	R5	Score
01. Marshall, Jim	2038	D14	W6	W12	W4	W5	4½
02. Read, Rhys	2002	W15	W10	W8	L8	D14	3½
03. Buttny, Bill	1951	D16	D14	-	-	-	½
04. Pukel, Bernard	1915	D17	W16	BYE	L1	W15	3
05. Sukcharoenphon, T.	1914	W18	W13	W11	W2	L1	4
06. Marema, Dave	1895	BYE	L1	D14	-	-	½
07. Rydberg, Steve	1886	W19	L12	D14	-	-	1½
08. Wulatin, Dave	1878	W20	W21	L2	W11	D10	3½
09. Lulves, Joseph	1853	L21	W23	BYE	D17	W26	3
10. Clark, Todd	1791	W22	L2	W21	W13	D8	3½
11. Friedman, Jeff	1764	W23	W3A	L5	L8	W18	3
12. Kittilsen, Guy	1715	W25	W7	L1	L14	L17	2
13. Allen, Hence	1709	W26	L5	W19	L10	W24	3
14. Schanes, Cory	1685	D1	W3	D7	W12	D2	3½
15. Raimo, Robert	1659	L2	W22	D26	W20	L4	2½
16. Swanson, Vic	1634	D3	L4	BYE	L26	W20	2
17. Rozman, Alex	1615	D4	L20	W22	D9	W12	3
18. Schiller, Andy	1601	L5	D25	BYE	W19	L11	2
19. Johnson, Henderson	1540	L7	W24	L13	L18	L23	1
20. Kostecka, Keith	1525	L8	W17	BYE	L15	L16	1½
21. Cordero, Rowland	1508	W9	L8	L10	L23	W22	2
22. Dudnick, Steve	1482	L10	L15	L17	W25F	L21	1
23. Brooks, Amy	1459	L11	L9	L24	W21	W19	2
24. Schindler, Mark	1250	L3A	L19	W23	BYE	L13	2
25. Ahmer, Craig	UNR	L12	D18	BYE	L22F	-	1
26. Wauck, Martin	UNR	L13	BYE	D15	W16	L9	2½
3A. Pradzinski, Tim	1936	W24	L11	-	-	-	1

KRAAI WINS

SHIMER COLLEGE CHESS CHAMPIONSHIP

by David Shiner

Jesse Kraai again won the Shimer College Chess Championship, which was held on Monday nights during April and May. Kraai, a sophomore at Shimer, was never seriously threatened. His win over Expert Wallace Gordon in Round 4 assured him of the crown with a round still remaining.

The Shimer Championship has been held for the past four consecutive springs, since the rejuvenated Shimer Chess Club restarted. This year, ten local chess players tried their skill for prizes which were characteristically double the entry fees. Yes, that's right: 200% of entry fees were returned in prizes.

After Kraai came Gordon, who won the remainder of his games. At the bottom end, Bill Reinthaler defeated Isaac Sanchez in their individual game to take the D/E/Unr prize. The middle six players, rated 1806 to 1651, competed for the A/B prizes, with Wayne Clark, Dennis Grant, Ignacio Sancez, and David Shiner achieving even scores to share these prizes.

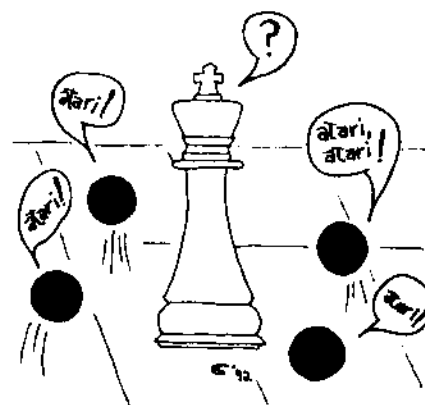
Despite the even caliber of play among the middle group of entrants, the fighting nature of the participants was evident throughout the tournament. None of the games ended in draws. The following game was typical. It came in the last round, when only a win would do for either player.

Wayne Clark (1806) - David Burian (1698)

1 Nf3 c5 2 e4 Nc6 3 g3 g6 4 Bg2 Bg7 5 c3 d6 6 O-O Nf6 7 d3 O-O 8 Ng5 Qb6 9 Qc2 Bg4 10 Be3 Rac8 11 h3 Bd7 12 f4 e5 13 Nd2 ef 14 Nc4 Qc7 15 Bf4 Ne5 Ne3 Qd8 17 Nf3 Nh5 18 Nd5 Nf4 19 Nf4 Rc6 20 Nd5 Re8 21 Rad1 c4 22 d4 Nf3+ 23 Rf3 Qc8 24 Rdf1 Be6 25 Nf4 Rc7 26 Kh2 Rce7 27 Ne6 Qe6 28 d5 Qe4 29 Qe4 Re4 30 Rf7 R4e7 31 R7f2 Re2 (The game is about even, but Black is in desparate time trouble) 32 h4 b5 33 Bh3 b4 34 Be6+ R2e6 35 fe bc 36 bc Bc2 37 Rc2 Be5 38 Rc4 Re3 39 Rc8+ Kg7 40 Rc7+ Kh3 (The time trouble is over, but so is the game) 41 Rff7 g5 42 Rh7+ Kg6 43 h5+ Kf5 44 Rhf7+ Kg4 45 Rc4+ Bf4 46 gf d5 47 f5+ dc 48 fe, Black resigns.

Player	R1	R2	R3	R4	R5	Score
01. Jesse Kraai	W8	W3	W7	W2	W5	5
02. Wallace Gordon	W7	BYE	W9	L1	W6	3.5
03. Wayne Clark	W6	L1	BYE	F	W8	2.5
04. David Shiner	W10	BYE	L8	F	W9	2.5
05. Ignacio Sanchez	W9	BYE	F	W7	L1	2.5
06. Dennis Grant	L3	W10	BYE	WF	L2	2.5
07. James Gray	L2	W9	L1	L5	W10	2
08. David Burian	L1	BYE	W4	F	L3	1.5
09. Bill Reinthaler	L5	L7	L2	W10	L4	1
10. Isaac Sanchez	L4	L6	BYE	L9	L7	0.5

Wrong Games Dept. II



CHESS ON THE FOX

by Bob Renaut

5 Tie for 1st in Weekly Swiss

Chris McMackin took first place on tie breaks in the March Weekly Rated Swiss tournament. The rated section drew 13 players. Chris was tied with four other players, Rudy Padilla, Mike Flynn, Kyle Thomas and Pat McMillen for the top spot.

Joe Moore 1st in Unrated Weekly Swiss

Joe Moore swept the competition taking a clear first with a perfect 3.0 score in the March Weekly Swiss Tournament. The unrated section drew 13 players. Frank Krohn, Brook Marrquardt, Dan Miller and Kevin Connolly tied for second.

April Quicky Quads Draws 20

Twenty club members participated in the Quicky Quad Tournament held April 6. These quads were warm ups for the up coming USCF Quick chess rated tournaments to be held later this year. The Quad Winners were, Quad 1 - Jim Oberweis (3-0), Quad 2 - Mike Helegson (3-0), Quad 3 Mike Mann, Peter Mueller and Pat McMillian tied with 2-1 scores, Quad 4 - Steve Hensley (3-0) and Quad 5 - Dan Hensley (3-0).

Dzindzi 17-4-1 in Simul

Grandmaster Roman Dzindzichashvili (former U.S. Champion) played 23 enthusiastic chess players Monday night April 13 and scored 20-3. Roman agreed to a game/60 clock simul (game/30 for under 16). Roman lost four games on time (all in winning positions). Winners, Rudy Padilla, Greg Cisko, Barry Raboasky (SP) and John Jelen, one non-club member drew. Winners were offered autographed vinyl chess boards. Roman's comments on the simul was that one person deserved to win and the games he lost were the result of the difficult time limit. The game Roman felt he deserved to lose but didn't is shown below.

Dzindzichashvili, R. - Renaut, R. FVCC Simul, 1992

1.e4 g6 2.d4 Bg7 3.Nc3 c6 4.Nf3 d5 5.h3 Nf6 6.e5 Ne4 7.Bd3 Nxc3 8.bxc3 e6 8...c5 is the normal continuation, but playing in one of Roman's favorite opening's, I thought slowly building up the break in the center was preferable. 9.0-0 b6 10.Bg5 Qc7 11.c4 0-0 12.Qd2 Bb7 13.Qf4 Nd7 14.Qh4 dxc4 15.Bxc4 c5 16.Be7 Bxf3 ZBlack sac's the exchange to cripple White's center and activating the rest of Black's pieces. 17.Bxf8 Rxf8 18.gxf3 cxd4 19.Bd3 Bxe5 20.Rfe1 Bf6 21.Qe4 Nc5 22.Qe2 Qf4 23.Kg2 e5 24.Rad1 Qh4?! Wrong move order. 25.Bc4 Bg7 26.Bb3 Rd8 27.Qc4 Ne6 28.Re4 Nf4+ 29.Rxf4 Qxf4 Trying to force a win on the K-side...safer would be f5 and redeploying to the Q-side via d7. This gives white much to activity....remember simplify and go into the won end-game. 30.Re1 (Black has less than 30 seconds, White over 5 minutes on the clock) 30...h5?! 31.Re4 Qf6 32.Qc7 a6 33.f4 Rf8 34.fxe5 Qg5+ 35.Kf1 Qf5 36.Bd5 Qxh3+ 37.Ke2 Qf5 38.Qd6 g5 Trying to force winning pawns on the K-side...getting out of the pin would have been better [38...Kh7 39.e6] 39.e6 Bf6 40.e7 Bxe7 41.Rxe7 Qxc2+ 42.Kf3 Qf5+ 43.Kg2 h4 44.Be4 Black' flag fell.

Jim Oberweis tops 22 in Blitz Tourny

Jim Oberweis scored 4.5 points to take a clear 1st place in the April 20 Blitz Tournament. Jim's escaped with a draw in the 4th round against his daughter, Julie. Julie missed a forced mate and she settled for a draw by repetition. Julie Oberweis and Paul Evans tied for 2nd place with 4-1 scores. Twenty two players participated in the 5 minute blitz tournament, which was directed by Paul Turcany and Bob Renaut.

May Quicky Quads Draws 16

Sixteen club members participated in the May Quicky Quad Tournament held May 18. These quads were the last warm ups for the up coming USCF Quick chess rated tournaments to be held in June, July and August. The Quad Winners were, Quad 1 - Greg Cisko (3-0), Quad 2 - Cliff Anderson (3-0), Quad 3 Mark McGee and Quad 4 - Al Svolba.

CHICAGO INTERNATIONAL

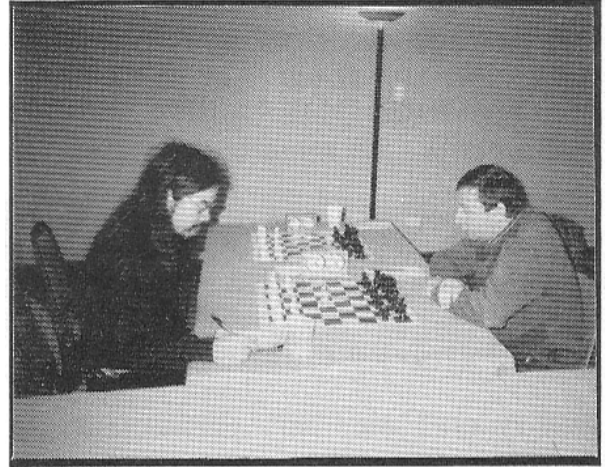
by Howard Wachtel

The 1992 Chicago International was held at the Ramada O'Hare in Rosemont, Illinois from April 4-12, 1992. 30 players participated including 4 GM's and 7 IM's. IM Igor Ivanov took clear first place with 7 out of 9, capturing the \$3000 first prize. Tied for 2nd-3rd with 6.5 points were Ukrainian GM Saymion

Palatnik and IM Ilya Gurevich, each winning \$1250. GM Roman Dzindzichashvili and IM Jay Bonin tied for 4th-5th with 6 points and earned \$750 each. Ivanov and Ilya Gurevich earned GM norms. A complete crosstable appears below. Ratings in bold-italics are USCF ratings, others are FIDE ratings. ■



IM Alex Sherzer – IM Ilya Gurevich



FM Albert Chow – GM Saymion Palatnik

Player	Rtng.	R1	R2	R3	R4	R5	R6	R7	R8	R9	Total
01. IM Igor Ivanov	2465	D14	W16	W22	W13	W7	W3	D2	D4	D8	7.0
02. GM Saymion Palatnik	2510	D22	W18	D17	W21	W6	bye	D1	W12	D3	6.5
03. IM Ilya Gurevich	2475	W9	L12	W18	W14	W4	L1	W6	W7	D2	6.5
04. GM R. Dzindzichashvili	2560	W11	W15	D7	D6	L3	W12	D5	D1	W13	6.0
05. IM Jay Bonin	2400	L12	W23	D20	D22	W28	W16	D4	D13	W15	6.0
06. GM Dmitry Gurevich	2560	W28	W13	D12	D4	L2	W15	L3	W16	D7	5.5
07. IM Alex Panchenko	2470	W19	W21	D4	W12	L1	W9	Dbye	L3	D6	5.5
08. IM Byron Nickoloff	2430	Dbye	Dbye	W11	D17	D16	W22	L12	W21	D1	5.5
09. IM Timothy Taylor	2455	L3	W10	D15	W11	W17	L7	L13	D14	W12	5.0
10. FM Andrew Karklins	2320	D17	L9	W24	L16	D20	W28	W18	L15	W22	5.0
11. Josh Manion	2274	L4	W25	L8	L9	W23	D14	W28	D17	W21	5.0
12. IM Alex Sherzer	2460	W5	W3	D6	L7	W14	L4	W8	L2	L9	4.5
13. GM Andrew Soltis	2420	W20	L6	W19	L1	D15	D18	W9	D5	L4	4.5
14. FM Ray Stone	2355	D1	W27	Dbye	L3	L12	D11	W19	D9	D17	4.5
15. FM Larry Remlinger	2340	W23	L4	D9	W20	D13	L6	D17	W10	L5	4.5
16. Marc Lonoff	2335	D24	L1	W29	W10	D8	L5	W22	L6	D18	4.5
17. FM Albert Chow	2295	D10	W29	D2	D8	L9	D24	D15	D11	D14	4.5
18. Peter Pelts	2270	W26	L2	L3	Dbye	W19	D13	L10	W24	D16	4.5
19. Erik Karklins	2182	L7	W26	L13	D23	L18	W27	L14	W28	W29	4.5
20. Howard Wachtel	2166	L13	W28	D5	L15	D10	L21	D23	W25	W26	4.5
21. FM E. Martinovsky	2335	W25	L7	W27	L2	L22	W20	W24	L8	L11	4.0
22. Bill Colias	2265	D2	W24	L1	D5	W21	L8	L16	W26	L10	4.0
23. Robert Ash	2100	L15	L5	W26	D19	L11	D25	D20	W29	D24	4.0
24. Marc Giovanetti	2056	D16	L22	L10	W29	W25	D17	L21	L18	D23	3.5
25. Mark Kende	1998	L21	L11	L28	W26	L24	D23	W29	L20	W27	3.5
26. John Cerminaro	unr	L18	L19	L23	L25	Wbye	W29	W27	L22	L20	3.0
27. M. Waliullah	unr	Dbye	L14	L21	L28	W29	L19	L26	W30	L25	2.5
28. F. Inumerable	2219	L6	L20	W25	W27	L5	L10	L11	L19	-	2.0
29. Marcy Soltis	1714	Wbye	L17	L16	L24	L27	L26	L25	L23	L19	1.0
30. Leslie Bale	1835	-	-	-	-	-	-	-	L27	-	0.0

CHICAGO INTERNATIONAL

Colias-Palatnik Ch Intl (1), 1992

1.d4 Nf6 2.c4 c5 3.d5 b5 4.cxb5 a6 5.f3 g6 6.e4 d6
7.Na3 Bg7 8.Ne2 0-0 9.Nc3 axb5 10.Naxb5 Na6 11.Be2
Nc7 12.a4 Nxb5 13.Nxb5 Ne8 14.0-0 Nc7 15.Rb1 Bd7
16.Nxc7 Qxc7 17.b3 Rfb8 18.Bd2 e6 19.Bc4 exd5
20.Bxd5 Bd4+ 21.Kh1 Bc6 22.Bxc6 Qxc6 23.Qc2 d5
24.exd5 Qxd5 25.b4 1/2-1/2

Giovannetti-Lonoff Ch Intl (1), 1992

1.e4 e6 2.d4 d5 3.e5 c5 4.c3 Nc6 5.Nf3 Bd7 6.a3 f6
7.Bd3 Qb6 8.0-0 c4 9.Bc2 f5 10.Nbd2 Na5 11.Rb1 Rc8
12.Ng5 g6 13.h4 Be7 14.g3 Nh6 15.b3 Qd8 16.b4 Nc6
17.Ndf3 Nf7 18.Nxf7 Kxf7 19.Bg5 h6 20.Bxe7 Qxe7
21.Qd2 Rcg8 22.Kg2 Ke8 23.Rh1 Kd8 1/2-1/2

Karklins-Chow Ch Intl (1), 1992

1.e4 e6 2.d4 d5 3.Nc3 Nf6 4.Bg5 Be7 5.exd5 exd5 6.Qf3
Bg4 7.Qg3 Bf5 8.Bxf6 Bxf6 9.0-0-0 0-0 10.h4 c5 11.dxc5
d4 12.Bc4 Nc6 13.Nd5 Be5 14.f4 Be6 15.fxe5 Bxd5



IM Tim Taylor – FM Andrew Karklins

Martinovsky-Kende Ch Intl (1), 1992

1.e4 c5 2.Nc3 Nc6 3.f4 g6 4.Nf3 Bg7 5.a3 e6 6.b4 d6
7.bxc5 dxc5 8.e5 Nge7 9.Ne4 0-0 10.Nxc5 Qd5 11.d4
Nf5 12.c3 b6 13.Nd3 h5 14.Nb4 Nxb4 15.axb4 Qe4+
16.Kf2 Qc6 17.Bd2 f6 18.exf6 Bxf6 19.Bd3 Bh4+ 20.g3
Bf6 21.Re1 Qc7 22.Be4 Rb8 23.b5 Qg7 24.h4 Nh6
25.Qc2 Nf5 26.Ra4 Kh8 27.Rea1 Rf7 28.Bc6 Rc7
29.Ne5 Bxe5 30.fxe5 Ne7 31.Rxa7 Nxc6 32.Rxc7 Qxc7
33.Qxg6 Ne7 34.Qxh5+ Kg8 35.Kg1 Nf5 36.g4 Qg7
37.Qe8+ Kh7 38.Bg5 Nh6 39.Rf1 Rb7 40.Qxc8 Rf7
41.Qxe6 Rxf1+ 42.Kxf1 Nxc4 43.Qxg4 Qf7+ 44.Bf6
Qc4+ 45.Kg1 Qf7 46.Qf5+ Kg8 47.e6 1-0

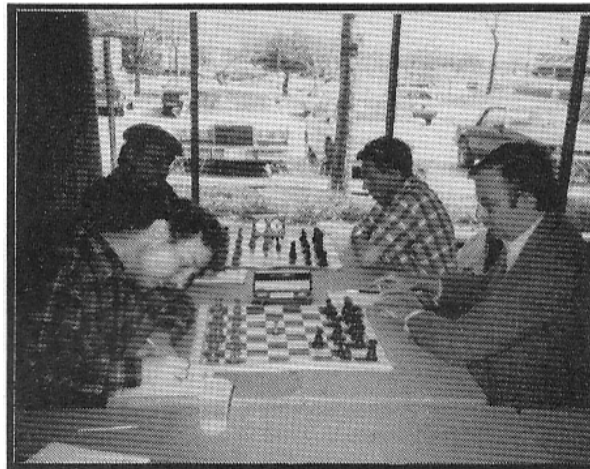
Remlinger-Ash Ch Intl (1), 1992

1.d4 Nf6 2.c4 g6 3.Nc3 d5 4.cxd5 Nxd5 5.e4 Nxc3

16.Bb3 Bxb3 17.Qxb3 Qe7 18.Nf3 Qxc5 19.e6 fxe6
20.Ng5 Qd5 21.Nxe6 Qxb3 22.axb3 Rf2 23.Rd2 Rxd2
24.Kxd2 Re8 25.Ng5 h6 26.Nf3 Re4 27.Re1 Rg4
28.Re2 Kf7 29.Ke1 d3 30.cxd3 Rb4 31.Kd2 Rxb3
32.Kc2 Rb5 33.d4 Rf5 34.Kc3 a5 35.Kd3 g5 36.hxg5
hxg5 37.Ke4 Ke6 38.Rc2 Rf4+ 39.Ke3 Rf5 40.Rc5 Rxc5
41.dxc5 g4 42.Nd4+ Ke5 43.Ne2 Kd5 44.Kf4 Kxc5
45.Kxg4 Kc4 46.Nc1 b5 47.Kf5 a4 48.g4 Nd4+ 49.Kf6
Nf3 50.g5 Nh4 51.g6 Nxg6 52.Kxg6 b4 53.Kf5 a3
54.bxa3 bxa3 1/2-1/2

Wachtel-Soltis, A Ch Intl (1), 1992

1.d4 Nf6 2.Nf3 g6 3.c4 Bg7 4.Nc3 0-0 5.e4 d6 6.Be2
Na6 7.0-0 e5 8.d5 Nc5 9.Qc2 a5 10.Be3 Ng4 11.Bg5 f6
12.Bd2 f5 13.Bg5 Nf6 14.Nd2 Bd7 15.b3 h6 16.Bxf6
Qxf6 17.a3 Na6 18.Rab1 c5 19.dxc6 bxc6 20.b4 axb4
21.axb4 Rfb8 22.b5 Nc5 23.Bf3 f4 24.Rfd1 Ne6 25.bxc6
Bxc6 26.Nb3 Ng5 27.Qd3 Ra3 28.Nd2 Rba8 29.Rb6
Rc8 30.Rdb1 Time 0-1



Howard Wachtel – GM Andrew Soltis

6.bxc3 Bg7 7.Bc4 c5 8.Ne2 Nc6 9.Be3 0-0 10.Rc1 cxd4
11.cxd4 Qa5+ 12.Kf1 Bd7 13.h4 Rfc8 14.h5 e5 15.Bd2
Qb6 16.Rb1 Qc7 17.dxe5 Nxe5 18.Bd5 Bc6 19.Nc3 Qd7
20.f3 Bxd5 21.Nxd5 Nc4 22.hxg6 hxg6 23.Bg5 Qe6
24.Kg1 f6 25.Bh6 b6 26.Qe1 g5 27.Qg3 Kf7 28.Bxg7
Kxg7 29.Qh2 Rh8 30.Qc7+ Qf7 31.Qxc4 Rac8 32.Qd4
Rxh1+ 33.Kxh1 Qh5+ 34.Kg1 Qh6 35.Ne3 1-0

Gurevich,I-Taylor Ch Intl (1), 1992

1.e4 c5 2.Nf3 Nc6 3.d4 cxd4 4.Nxd4 g6 5.c4 Bg7 6.Be3
Nf6 7.Nc3 0-0 8.Be2 Nxd4 9.Bxd4 d6 10.0-0 Bd7
11.Qd2 a6 12.Qe3 Qb8 13.Rfd1 Bc6 14.Rac1 b5 15.Nd5
Re8 16.cxb5 Bxd5 17.exd5 axb5 18.Qb3 b4 19.Rc4 Qb5
20.a3 Nxd5 21.Bxg7 Kxg7 22.Rc2 Qb8 23.Rxd5 bxa3
24.Qc3+ Kg8 25.bxa3 Qa7 26.Rd3 Rab8 27.h4 Rb1+
28.Rc1 Qb6 29.h5 Rb2 30.h6 Rxe2 31.Qg7+ 1-0

CHICAGO INTERNATIONAL

Manion-Dzindzichashvili Ch Intl (1), 1992

1.e4 c5 2.Nf3 Nc6 3.d4 cxd4 4.Nxd4 g6 5.c4 Nf6 6.Nc3 d6 7.Be2 Nxd4 8.Qxd4 Bg7 9.Bg5 0-0 10.Qd2 Be6 11.Rc1 a6 12.b3 Qa5 13.0-0 Rab8 14.f3 Rfc8 15.Nd5 Qxd2 16.Bxd2 Nxd5 17.cxd5 Bd4+ 18.Kh1 Bd7 19.Rxc8+ Rxc8 20.Rc1 Rxc1+ 21.Bxc1 f5 22.g4 Kf7 23.Bg5 b5 24.Kg2 e6 25.dxe6+ Bxe6 26.gxf5 gxf5 27.Bd3 Kg6 28.Bf4 Be5 29.Kg3 Kf6 30.h4 h6 31.Be2 Bd7 32.Bd3 a5 33.exf5 b4 34.Bxe5+ Kxe5 35.Kg4 d5 36.Bc2 d4 37.Bd3 Bc8 38.Bc2 Ba6 39.Kh5 Be2 40.Kg6 d3 41.f4+ Kxf4 42.Bd1 Bxd1 43.f6 Bh5+ 44.Kxh5 d2 45.f7 d1Q+ 46.Kxh6 Qd6+ 47.Kg7 Qd7 48.Kg8 Qg4+ 0-1

Bonin-Sherzer Ch Intl (1), 1992

1.d4 Nf6 2.c4 g6 3.Nc3 Bg7 4.Nf3 0-0 5.e4 d6 6.Be2 e5 7.0-0 Nc6 8.d5 Ne7 9.Bg5 Nh5 10.Ne1 Nf4 11.Nd3 Nxe2+ 12.Qxe2 h6 13.Be3 f5 14.f3 f4 15.Bf2 g5 16.c5 Ng6 17.Rac1 g4 18.Kh1 Rf7 19.Nb5 Bd7 20.c6 bxc6 21.dxc6 Be6 22.Nb4 g3 23.Bg1 Nh4 24.Rc2 a6 25.Nc3 Bh3

26.Qc4 Qg5 27.Nbd5 Nxe2 28.Rxe2 Bxe2+ 29.Kxe2 gxe2+ 30.Kxh2 Kh8 31.Qe2 Qh5+ 32.Kg2 Rg8 33.Bh2 Bf6+ 34.Kh1 Bh4 35.Nb1 Rfg7 36.Nd2 Bd8 37.Nc4 Qh3 38.Nce3 fxe3 39.Nxe3 h5 40.b4 Bh4 41.a4 Bg3 42.b5 axb5 43.axb5 Bf4 0-1

Pelts-Cerminaro Ch Intl (1), 1992

1.c4 Nf6 2.Nc3 e6 3.d4 Bb4 4.Qb3 Bxc3+ 5.Qxc3 0-0 6.Bg5 h6 7.Bh4 d5 8.Nf3 b6 9.e3 Ba6 10.Ne5 c5 11.0-0-0 g5 12.Bg3 Ne4 13.Qc2 Nxe3 14.hxe3 Kg7 15.Be2 Qf6 16.Ng4 Qf5 17.Qxf5 exf5 18.Nxe6 Nd7 19.Nxf5+ Kf6 20.Rh6+ Kxf5 21.g4+ 1-0

Panchenko-Karklins,E Ch Intl (1), 1992

1.d4 d5 2.c4 dxc4 3.e3 Nf6 4.Bxc4 e6 5.Nc3 a6 6.a4 Nc6 7.Nf3 Bd6 8.e4 e5 9.dxe5 Nxe5 10.Nxe5 Bxe5 11.Qxd8+ Kxd8 12.Bxf7 Bxc3+ 13.bxc3 Nxe4 14.Ba3 Nd6 15.0-0-0 Rf8 16.Bd5 Rb8 17.Rd2 Bd7 18.Bb3 Rf6 19.Rhd1 Ke7 20.Bc5 Bc6 21.Bd4 Rg6 22.g3 Rf8 23.Be5 Ne4 24.Rd4 Rc8 25.Bc2 Re6 26.f4 Nf6 27.Bf5 1-0



J.P. Cerminaro – FM Peter Pelts



GM Roman Dzindzichashvili – NM Josh Manion

Gurevich,D-Innumerable Ch Intl (1), 1992

1.d4 d5 2.c4 e6 3.Nf3 Nf6 4.g3 Bb4+ 5.Nbd2 0-0 6.Bg2 c6 7.0-0 Nbd7 8.Qc2 Re8 9.e4 Bxd2 10.Nxd2 e5 11.exd5 cxd5 12.cxd5 Nb6 13.dxe5 Rxe5 14.Nc4 Bf5 15.Qb3 Nxc4 16.Qxc4 Be4 17.Bxe4 Rxe4 18.Qd3 Qxd5 19.Qxd5 Nxd5 20.Rd1 Rd8 21.Be3 b6 22.Rd3 Re7 23.a4 Red7 24.a5 Nxe3 25.Rxd7 Rxd7 26.axb6 a5 27.fxe3 g6 28.b4 a4 29.Rxa4 Rb7 30.Ra6 Kg7 31.Kf2 Kf6 32.e4 Ke6 33.Ke3 Kd6 34.Kd4 f6 35.b5 h6 36.Ra7 Rxb6 37.Ra6 Kc7 38.Rxb6 Kxb6 39.e5 fxe5+ 40.Kxe5 1-0

Chow-Soltis,M Ch Intl (2), 1992

1.d4 d5 2.c4 e6 3.Nc3 Nf6 4.Nf3 c6 5.e3 Bd6 6.Bd3 Nbd7 7.0-0 0-0 8.e4 dxc4 9.Bxc4 e5 10.Bg5 Re8 11.Be2 Qe7 12.dxe5 Nxe5 13.Nd4 h6 14.Bd2 Ng6 15.Nf5 Bxf5 16.exf5 Qe5 17.g3 Qxf5 18.Bxh6 Rad8 19.Bd2 Ne5 20.Kg2 Bc5 21.f3 Re7 22.Rc1 Red7 23.Rc2 Nd3 24.a3 a5 25.Nb1 Bb6 26.Bxd3 Rxd3 27.Rc3 Nd5 28.Rxd3 Qxd3 29.Qe1 Ne3+ 30.Bxe3 Bxe3 31.h4 Kf8 32.Nc3 Qd2+ 33.Kh3 Qd7+ 34.g4

Bf4 35.Rf2 Re8 36.Re2 Rxe2 37.Nxe2 Qd2 38.Qxd2 Bxd2 39.b3 Ke7 40.f4 g6 41.h5 gxe5 42.gxe5 Kf6 43.Kg4 Kg7 44.Kg5 f6+ 45.Kf5 Be1 46.Nd4 Bc3 47.Ne6+ Kh6 48.Nd8 b6 49.Nxc6 Kxh5 50.Ne7 Bb2 51.a4 Bd4 52.Nd5 Kh6 53.Nxf6 Kg7 54.Nd5 Kf7 55.Ke4 1-0

Soltis,A-Gurevich,D Ch Intl (2), 1992

1.e4 c5 2.Nf3 d6 3.d4 cxd4 4.Nxd4 Nf6 5.Nc3 Nc6 6.Bc4 e6 7.Bb3 Be7 8.Be3 0-0 9.Qe2 d5 10.0-0 dxe4 11.Nxc6 bxc6 12.Bf4 Nd5 13.Qxe4 Bf6 14.Rfd1 Qa5 15.Bg3 Nxc3 16.bxc3 Qxc3 17.Rab1 Ba6 18.Rd7 Rad8 19.Rxa7 Bc8 20.Bh4 g5 21.Bg3 h5 22.Ra4 Rd4 23.Rxd4 Qxd4 24.Qxd4 Bxd4 25.Ba4 e5 26.h4 gxe4 27.Bxe4 Bf5 28.Rb7 Be6 29.Bxc6 Rc8 30.Be4 f5 31.Bf3 Bf7 32.Bd1 Ra8 33.Bf6 Rxa2 34.Kh2 Ra6 35.Rb8+ Kh7 36.Bh4 e4 37.Rb7 Kg6 38.Bg3 Be6 39.Rc7 h4 40.Bf4 Bxf2 41.Be2 Ra3 42.Rc6 Kf7 43.Rc7+ Kf6 44.Rc6 Bg3+ 45.Bxe3 hxe3+ 46.Kh3 Ke5 47.Kh4 Re3 48.Bc4 Bxc4 49.Rxc4 Kf4 50.Rc5 Re2 51.Kh5 Rxe2 52.Kg6 Kg4 0-1



1992 U.S. OPEN

August 2-14

Hyatt Regency Hotel • Dearborn, Michigan

Southfield Expy. (M-39) at Ford Rd. (US-12), 48126 • (313) 593-1234.

12-SS, 50/150, 20/60, GPP: 200

\$\$\$G: 33,300

(\$5,000 and Fidelity Cup donated by Fidelity International): 5000-3000-2500-2000-1500-1400-1300-1200-1100, A 800-600-400-300-100, B 700-500-400-200-100, C 600-400-300-200-100, D 500-300-200-100-100, E 300-200-100-100, Unr. 200-100-100-50, Best Game 100-60-40.


EF: \$80 if received by 7/15, \$90 later. **Reg.** 12-8 pm Sat. 8/1 or 12-4 pm Sun. 8/2; 12-4 pm Sun. 8/9 for Busy Person Special. **Rds.** 7 pm each day except 8/8. ½-pt. bye available any one round of rounds 1-6, with advance notification only; if requesting a ½-point bye for round 1, add 50 cents entry fee.

Busy Person Special: Play only rounds 7-12 (8/9-8/14): Over 2399 start with 4 points, M with 3, X with 3, A with 2, B with 2, C with 1, D with 1, E with . Sets and boards provided; bring a clock if possible. **HR:** \$75 for 1-4 in room until 7/2, also thereafter if space is available.

Call (800) 228-9000 for reservations: mention chess tournament to get this special rate. Free parking at site! **Travel:** For best rates, call American Express Travel (800) 528-0290 or fax (602) 894-2136, mention chess tournament to get special rates.

Extra Events: Free lectures and simuls by GMs and IMs every day the first week; daytime tournaments every day; Denker Tournament of High School Champions 8/10-8/14; U.S. Open Speed Championship 8/8; USCF Annual Convention 8/5-8/9; book and equipment sales by Lindsay's Chess Supplies; see a Tigers baseball game; tour an auto plant; visit historic Greenfield Village and Henry Ford Museum; adjacent to the largest shopping mall in Michigan.

Info: Dan Burg, 30290 W. 12 Mile Rd. No. E103, Farmington Hills, MI 48334; (313) 932-0833. **Ent:** USCF, 186 Route 9W, New Windsor, NY 12553; (914) 562-8350. **NS.** W. FIDE.



CHICAGO INTERNATIONAL

Dzindzichasvili-Remlinger Ch Intl (2), 1992

1.c4 g6 2.d4 Bg7 3.e4 d6 4.Nc3 Nf6 5.Be2 0-0 6.Bg5 Na6 7.Nf3 h6 8.Be3 Bg4 9.0-0 Nd7 10.Qd2 Bxf3 11.Bxf3 Kh7 12.Be2 e5 13.d5 Qe7 14.Rab1 Rfd8 15.b4 Nf6 16.c5 dxc5 17.Bxa6 cxb4 18.Na4 bxa6 19.Qxb4 Qxb4 20.Rxb4 a5 21.Rc4 Ne8 22.f3 Rdb8 23.Rfc1 Bf8 24.Nc5 Bd6 25.Nd3 Rb5 26.g3 f5 27.Kg2 a6 28.R1c2 fxe4 29.fxe4 Rd8 30.Nc5 Bxc5 31.Bxc5 Rd7 32.Ba3 Rf7 33.Rc6 Rb6 34.Rxb6 cxb6 35.Rc6 Rb7 36.Bb2 Kg7 37.Bxe5+ Kf7 38.Bd4 b5 39.e5 a4 40.e6+ Ke7 41.Bc5+ Kf6 42.Rc8 Ng7 43.Bd4+ 1-0

Inumerable-Wachtel Ch Intl (2), 1992

1.d4 Nf6 2.c4 e6 3.Nf3 b6 4.g3 Ba6 5.b3 d5 6.Bg2 dxc4 7.Ne5 Bb4+ 8.Kf1 Bd6 9.Nxc4 Nd5 10.e4 Ne7 11.Kg1 c6 12.Nxd6+ Qxd6 13.Ba3 Qd7 14.Nc3 0-0 15.d5 Re8 16.dxc6 Nexc6 17.Qxd7 Nxd7 18.e5 Rac8 19.Ne4 Nd4 20.h3 Nc2 21.Rd1 Nxe5 22.Bd6 Ng6 23.Kh2 Red8 24.Rd2 h6 25.Rc1 f5 26.Rcxc2 Rxc2 27.Rxc2 fxe4 28.Ba3 Time 0-1

Lonoff-Ivanov Ch Intl (2), 1992

1.c4 c5 2.g3 Nf6 3.Bg2 d5 4.cxd5 Nxd5 5.Nc3 Nc7 6.f4 g6 7.Nf3 Bg7 8.0-0 0-0 9.d3 Nc6 10.Kh1 Rb8 11.Be3 b6 12.Bg1 Bb7 13.e4? Ne6 14.a3 Ned4 15.Rb1 Nxf3 16.Qxf3 Qd7 17.Ne2 Rfd8 18.Rfd1 a5 19.Rd2 e6 20.Qf1 Nd4 21.b4 cxb4 22.axb4 a4 23.Nxd4 Bxd4 24.Bxd4 Qxd4 25.b5 Rbc8 26.Qg1 Rc3 27.Ra1 a3 28.Rda2 Qxd3 29.Qxb6 Bxe4 30.Rxa3 Rxa3 0-1

Giovannetti-Colias Ch Intl (2), 1992

1.e4 c5 2.Nf3 Nc6 3.d4 cxd4 4.Nxd4 Nf6 5.Nc3 d6 6.Be3 e6 7.Be2 Be7 8.0-0 a6 9.f4 Qc7 10.Kh1 0-0 11.Qe1 Na5 12.Qg3 Kh8 13.e5 Nd7 14.exd6 Bxd6 15.Ne4 Be7 16.Ng5 Nf6 17.Bd3 Nc4 18.Bc1 g6 19.b3 Qb6 20.Ndxe6 Nh5 21.Qe1 Bxe6 22.Nxe6 Bb4 23.c3 Qxe6 24.Qxe6 fxe6 25.cxb4 Nb6 26.Bb2+ Kg8 27.g3 Rad8 28.Rad1 Nd5 29.Rfe1 Nxb4 30.Bc4 Ng7 31.a3 b5 32.axb4 bxc4 33.bxc4 Rb8 34.Rd7 Rf7 35.Red1 Nf5 36.g4 Ne3 37.Rd8+ Rf8 38.Rxb8 Rxb8 39.Be5 Rxb4 40.Rd8+ Kf7 41.h3 Nxc4 42.Bc7 a5 43.Rd7+ Ke8 44.Rxh7 Rb7 45.Rh8+ Kd7 Time 0-1



IM Ilya Gurevich – IM Tim Taylor



IM Alex Sherzer – IM Jay Bonin

Martinovsky-Panchenko Ch Intl (2), 1992

1.d4 d6 2.c4 f5 3.Nc3 Nf6 4.Bg5 Nbd7 5.f4 g6 6.Nf3 Bg7 7.e3 0-0 8.Be2 c6 9.0-0 Qe8 10.Qb3 Kh8 11.Qa3 b6 12.Rfe1 Bb7 13.Bh4 h6 14.b4 e5 15.b5 Ne4 16.Nxe4 fxe4 17.Qxd6 exf3 18.Bxf3 e4 19.bxc6 exf3 20.cxb7 Rb8 21.gxf3 Rxb7 22.Qe7 Qxe7 23.Bxe7 Rc8 24.Rac1 Nc5 25.Bxc5 bxc5 26.d5 Rb2 27.e4 Bd4+ 28.Kh1 Rf8 29.d6 Rxf4 30.d7 Bf6 31.Rb1 Rb6 32.Kg2 Bd8 33.Rb5 Rxb5 34.cxb5 Rf7 35.Rd1 c4 36.e5 c3 37.a4 c2 38.Rc1 Rxd7 39.Rxc2 Kg7 40.Rc6 Bb6 41.Rc8 Rd4 42.Rb8 Rxa4 43.Rb7+ Kf8 44.Kg3 Rb4 45.e6 Rxb5 46.Rf7+ Ke8 47.f4 Rf5 48.Rg7 Rf6 49.e7 Be3 50.Kf3 Bxf4 51.Ke4 a5 0-1

Palatnik-Pelts Ch Intl (2), 1992

1.c4 c5 2.Nf3 g6 3.d4 cxd4 4.Nxd4 Bg7 5.e4 Nc6 6.Be3 Nf6 7.Nc3 0-0 8.Be2 Nxd4 9.Bxd4 d6 10.0-0 a6 11.Qd2 Qa5 12.Qe3 Be6 13.b4 Qc7 14.Rac1 Rfc8 15.h3 Nd7 16.Bxg7 Kxg7 17.Nd5

Bxd5 18.exd5 a5 19.a3 Nf6 20.Bf3 b6 21.Rfe1 Ra7 22.g4 h6 23.h4 Nd7 24.g5 hxg5 25.hxg5 Ne5 26.Be2 axb4 27.axb4 Qd7 28.f4 Ng4 29.Qh3 f5 30.Bxg4 Rh8 31.Qc3+ Kg8 32.Bf3 e5 33.dxe6 Qh7 34.Rc2 Qh4 35.e7 1-0

Karklins,E-Cerminaro Ch Intl (2), 1992

1.e4 d5 2.exd5 Qxd5 3.Nc3 Qa5 4.d4 e5 5.Nf3 Bg4 6.dxe5 Bb4 7.Bd2 Nc6 8.a3 Bxf3 9.Qxf3 Qxe5+ 10.Be2 Nd4 11.Qxb7 Rd8 12.axb4 Nxc2+ 13.Kd1 Nxa1 14.Bc4 Rxd2+ 15.Kxd2 Qd4+ 16.Bd3 Qf4+ 17.Ke2 Qe5+ 18.Qe4 Qxe4+ 19.Bxe4 Nb3 20.Bc6+ Ke7 21.Rd1 Nf6 22.Ba4 Rb8 23.Bxb3 Rxb4 24.Nd5+ Nxd5 25.Bxd5 Rxb2+ 26.Rd2 Rxd2+ 27.Kxd2 f6 28.Bg8 h6 29.Kd3 Kd6 30.Kc4 Kc6 31.Bd5+ Kb6 32.Be4 a5 33.Bg6 Kc6 34.Be8+ Kb6 35.Kd5 h5 36.Bxh5 Kb5 37.Be8+ Kb4 38.Kc6 a4 39.Kxc7 a3 40.Bf7 Kc5 41.Kd7 Kd4 42.Ke7 Ke5 43.Kf8 g6 44.Kg7 g5 45.Kg6 g4 46.h4 gxh3 47.gxh3 Kf4 48.h4 Kf3 49.h5 Kxf2 50.h6 1-0

CHICAGO INTERNATIONAL

Taylor-Karklins, A Ch Intl (2), 1992

1.d4 Nf6 2.c4 g6 3.Nc3 Bg7 4.e4 d6 5.Nf3 0-0 6.Be2 e5 7.0-0 Nh5 8.dxe5 dxe5 9.Qxd8 Rxd8 10.Bg5 Rd7 11.g3 Nc6 12.Nd5 h6 13.Bd2 Kh7 14.Rfe1 Nf6 15.Bf1 Ne8 16.Rad1 Rd8 17.h3 Be6 18.b4 g5 19.b5 Nd4 20.Nxd4 exd4 21.f4 c6 22.bxc6 bxc6 23.Nb4 gxf4 24.gxf4 Bd7 25.Na6 Bc8 26.Nc5 a5 27.e5 Bf5 28.Nb7 Rdb8 29.Nxa5 Rb2 30.Nxc6 Raxa2 31.Nxd4 Rxd2 32.Rxd2 Rxd2 33.Nxf5 Bf8 34.Re2 Bc5+ 35.Kh2 Rd1 36.Bg2 Bg1+ 37.Kg3 Ng7 38.Nxg7 Kxg7 39.Be4 Bd4 40.Kg4 Rf1 41.Kf5 Bc5 42.Bd5 Ba3 43.e6 fxe6+ 44.Rxe6 Bc1 45.Re7+ Kf8 46.Re4 Ba3 47.Ke6 Rf3 48.h4 h5 49.f5 Kg7 50.Re2 Rf1 51.Rg2+ Kh6 52.f6 Rf4 53.Ra2 Bb4 54.Ra8 Rxh4 55.Kf5 Kh7 56.Bg8+ 1-0

Sherzer-Gurevich, I Ch Intl (2), 1992

1.e4 c5 2.Nf3 d6 3.d4 cxd4 4.Nxd4 Nf6 5.Nc3 a6 6.Be2 e5 7.Nb3 Be7 8.a4 Nc6 9.Be3 b6 10.Nd5 Nxd5 11.exd5 Nb8 12.a5 b5 13.Bb6 Qd7 14.c4 bxc4 15.Nd2 0-0 16.Nxc4 Bb7 17.0-0 f5

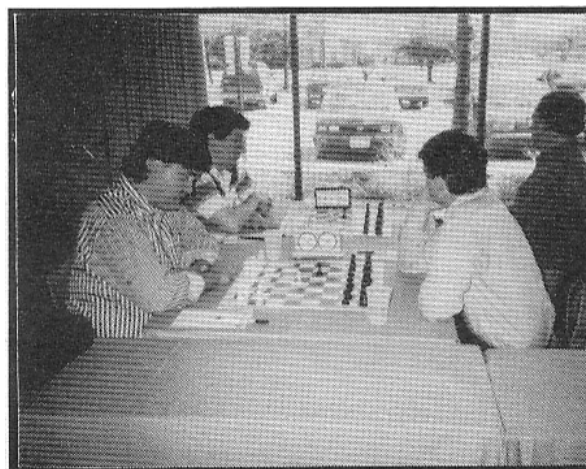
18.Ra3 Qe8 19.Rb3 Qf7 20.Ne3 Nd7 21.Nxf5 Qxf5 22.Bg4 Qe4 23.Be6+ Kh8 24.Re3 Qc4 25.Rc3 Qb5 26.Bxd7 Qxd5 27.Qxd5 Bxd5 28.Rd1 Bg8 29.Rc7 Rab8 30.Ra7 Bc4 31.Ba4 Bg5 32.Rxd6 e4 33.Rd1 Bf6 34.b3 Bd3 35.Bc6 Bc3 36.Bb7 Rf6 37.Rc1 Bd2 38.Rc6 Rxc6 39.Bxc6 Rc8 40.Bd4 Bh6 41.g4 Kg8 42.Bd5+ Kf8 43.Kg2 Rc1 44.h4 Bd2 45.Rxg7 Ke8 46.Bf6 Bf4 47.Re7+ Kf8 48.Rf7+ Ke8 49.Re7+ Kf8 50.Bxe4 Bd6 51.Re6 Bf1+ 52.Kf3 Bb4 53.g5 Re1 54.Rb6 Bxa5 55.Rb8+ Kf7 56.Rb7+ Kf8 57.b4 Rxe4 58.Kxe4 1-0

Kende-Manion Ch Intl (2), 1992

1.Nf3 g6 2.g3 Bg7 3.Bg2 c5 4.0-0 Nc6 5.d3 d6 6.e4 e5 7.Nbd2 Nge7 8.c3 0-0 9.a4 h6 10.Nc4 Be6 11.Ne1 f5 12.Ne3 f4 13.Nd5 g5 14.Nc2 Qd7 15.gxf4 exf4 16.Nxe7+ Nxe7 17.f3-Ng6 18.Qe2 Nh4 19.Ne1 Rf7 20.Bh1 Raf8 21.Ng2 Ng6 22.Qf2 h5 23.h4 g4 24.fxg4 hxg4 25.h5 g3 26.Qe1 f3 27.Qxg3 f2+ 28.Kh2 Rf3 29.Qxg6 Rh3+ 0-1



GM Saymion Palatnik – FM Peter Pelts



Mark Giovanetti – FM Bill Colias

Ash-Bonin Ch Intl (2), 1992

1.e4 e6 2.d4 d5 3.Nc3 Nf6 4.Bg5 Be7 5.e5 Nfd7 6.Bxe7 Qxe7 7.f4 a6 8.Nf3 c5 9.g3 Nc6 10.Bg2 Nb6 11.b3 cxd4 12.Ne2 f6 13.exf6 gxf6 14.0-0 e5 15.Re1 Bg4 16.h3 Bxf3 17.Bxf3 0-0 18.Kh2 Qg7 19.g4 Kh8 20.Ng3 Rac8 21.Nf5 Qc7 22.Ng3 Nd8 23.Rc1 Ne6 24.c3 e4 0-1

Waliullah-Martinovsky Ch Intl (3), 1992

1.d4 Nf6 2.c4 g6 3.Nc3 d5 4.cxd5 Nxd5 5.e4 Nxc3 6.bxc3 Bg7 7.Bc4 0-0 8.h3 c5 9.Nf3 Nc6 10.Be3 Qa5 11.0-0 Qxc3 12.Rc1 Qa5 13.Bd5 Nxd4 14.Nxd4 cxd4 15.Bxd4 e6 16.Bxg7 Kxg7 17.Qd4+ Kg8 18.Rc5 Qd8 19.Qe5 exd5 20.Rxd5 Qe8 21.Qf4 Be6 22.Rh5 f6 23.Qg3 g5 24.Qf3 Bf7 25.Rh6 Bg6 26.e5 Kg7 27.Rxg6+ Qxg6 28.Qxb7+ Kh8 29.e6 Rae8 30.f4 gxf4 31.Qb4 Rg8 32.Qb2 Rxe6 33.Rxf4 Rb6 34.Qf2 Qg3 35.Qf1 Rb1 0-1

Karklins, A-Giovanetti Ch Intl (3), 1992

1.e4 c5 2.Nf3 d6 3.Bb5+ Nd7 4.c3 a6 5.Ba4 g6 6.0-0 Bg7 7.d4 b5 8.Bc2 Qc7 9.a4 Bb7 10.axb5 axb5 11.Rxa8+ Bxa8 12.Na3 b4 13.cxb4 cxb4 14.Nb5 Qb6 15.Qe2 Bc6 16.Bd3 Ngf6 17.e5 dxe5 18.dxe5 Nd5 19.Rd1 0-0 20.e6 Nc5 21.exf7+ Rxf7 22.Bc4 e6 23.Nbd4 Bxd4 24.Nxd4 Nf4 25.Bxf4 Rxf4 26.Nxe6 Nxe6 27.Qxe6+ Kg7 28.Rd7+ 1-0

Gurevich, I-Pelts Ch Intl (3), 1992

1.e4 c5 2.Nf3 d6 3.d4 cxd4 4.Nxd4 Nf6 5.Nc3 a6 6.a4 e6 7.Be2 Be7 8.0-0 0-0 9.f4 Nc6 10.Be3 Qc7 11.Kh1 Bd7 12.Nb3 Na5 13.e5 Ne8 14.Nxa5 Qxa5 15.Qd2 Rc8 16.Bf3 Qc7 17.a5 Bc6 18.Bb6 Qb8 19.Bd4 g6 20.Rad1 Rd8 21.Qe2 Ng7 22.Bxc6 bxc6 23.Bb6 Rc8 24.exd6 Bxd6 25.Ne4 Be7 26.Rd7 Rfe8 27.Qxa6 f5 28.Rb7 Qa8 29.Qxa8 Rxa8 30.Nd2 Bf6 31.Nc4 e5 32.fxe5 Bd8 33.Ra1 Bxb6 34.Nxb6 Ra6 35.Nd7 Re7 36.Rb8+ 1-0

CHICAGO INTERNATIONAL

Ivanov-Colias Ch Intl (3), 1992

1.Nf3 Nf6 2.c4 g6 3.Nc3 Bg7 4.e4 d6 5.d4 0-0 6.Be2 e5 7.d5 a5 8.Bg5 h6 9.Bh4 Na6 10.0-0 Qe8 11.Ne1 Nc5 12.f3 Nh7 13.Nb5 Qd7 14.Nd3 Nxd3 15.Bxd3 c5 16.a3 b6 17.Bc2 Bf6 18.Bxf6 Nxf6 19.Qd2 g5 20.f4 gxf4 21.g3 Kh7 22.Rxf4 exf4 23.e5+ Kh8 24.exf6 Qg4 25.Rf1 Bf5 26.Rxf4 Qg5 27.Bxf5 Qxf6 28.Bc2 1-0

Panchenko-Dzindzichashvili Ch Intl (3), 1992

1.Nf3 d6 2.d4 Nf6 3.g3 g6 4.b3 c5 5.Bb2 cxd4 6.Nxd4 Nc6 7.Bg2 Bd7 8.c4 Bg7 9.Nc3 0-0 10.0-0 Qa5 11.e3 a6 12.Re1 Rfc8 13.Rc1 Rab8 14.a3 Bg4 15.Qd2 Qh5 16.Nd5 Nxd5 17.Bxd5 Nxd4 18.Bxd4 Bf3 19.Bxf3 Qxf3 20.Qd1 Qxd1 21.Rexd1 b5 22.Bxg7 Kxg7 23.cxb5 Rxc1 24.Rxc1 Rxb5 25.b4 a5 26.Rb1 Kf6 27.Kf1 axb4 28.axb4 Ke6 29.Ke2 Kd5 30.Kd3 Rb7 31.e4+ Kc6 32.Kc4 Ra7 33.Kb3 Kb5 34.Rd1 f6 35.h4 h5 1/2-1/2

Chow-Palatnik Ch Intl (3), 1992

1.d4 f5 2.c4 Nf6 3.Nc3 g6 4.g3 Bg7 5.Bg2 0-0 6.Nh3 d6 7.d5 c6 8.Nf4 e5 9.dxe6 Re8 10.0-0 Bxe6 11.Nxe6 Rxe6 12.Qc2 Qe7 13.Bg5 Nbd7 14.Rad1 a5 15.e4 fxe4 16.Bh3 Re5 17.Bf4 Nc5 18.Bxe5 Qxe5 19.Rfe1 Re8 20.Bg2 Qe6 21.Re2 b6 22.Qd2 Rd8 23.b3 d5 24.cxd5 cxd5 25.f3 d4 26.Nxe4 Nfxe4 27.fxe4 d3 28.Kh1



GM Roman Dzindzichashvili – FM Larry Remlinger

Gurevich,D-Sherzer Ch Intl (3), 1992

1.d4 Nf6 2.c4 g6 3.Nc3 Bg7 4.e4 d6 5.Be2 0-0 6.Nf3 e5 7.dxe5 dxe5 8.Qxd8 Rxd8 9.Bg5 Nbd7 10.Nd5 c6 11.Nxf6+ Nxf6 12.Nd2 h6 13.Be3 Ng4 14.Bxg4 Bxg4 15.f3 Be6 16.Ke2 f5 17.Rhc1 Rd7 18.Rc2 Bf8 19.a3 f4 20.Bf2 g5 21.b4 a5 22.Rb1 axb4 23.axb4 Ra3 24.b5 c5 25.b6 Bd6 26.Rb5 Ra6 27.Nb3 Ra2 28.Rxa2 Bxc4+ 29.Ke1 Bxb5 30.Ra8+ Kg7 Illegible moves 31-33. 31.Nxc5 Rf7 1/2-1/2

Cerminaro-Ash Ch Intl (3), 1992

1.b3 d5 2.Bb2 Nf6 3.e3 c6 4.c4 Bg4 5.Nf3 e6 6.h3 Bh5 7.Be2 Nbd7 8.cxd5 exd5 9.0-0 Bd6 10.d3 Qe7 11.a3 0-0 12.Nbd2 h6 13.Re1 Bg6 14.Qc2 Ne5 15.Nxe5 Bxe5 16.Bxe5 Qxe5 17.Nf3 Qd6 18.b4 Nd7 19.Rec1 a5 20.Rab1 axb4 21.axb4 Ra7 22.Ra1

Bd4 29.Ree1 Qe5 30.Rc1 Rf8 31.Rxc5 bxc5 32.Qxd3 Rf2 33.Rf1 Qf6 34.a4 Kg7 35.Bf3 Rxf1+ 36.Qxf1 Qg5 37.Qe1 Qe3 38.Qxe3 Bxe3 39.e5 Bd4 40.e6 Kf6 41.Bd5 g5 42.g4 Be5 43.Kg2 Bd6 44.h3 Ke5 45.Bc4 h6 46.Kf3 Kd4 47.Bf1 1/2-1/2

Softis,M-Lonoff Ch Intl (3), 1992

1.e4 e6 2.d3 c5 3.Nf3 Nc6 4.g3 g6 5.Bg2 Bg7 6.0-0 Nge7 7.c3 0-0 8.d4 cxd4 9.cxd4 d5 10.e5 Nf5 11.Nc3 f6 12.exf6 Bxf6 13.Ne2 Qb6 14.Be3 Qxb2 15.g4 Nd6 16.Bh6 Rf7 17.Qd3 Qb5 18.Qd1 Qa5 19.Qb3 Nc4 20.Rfd1 Qb6 21.Qc3 Qd8 22.Rab1 a6 23.a4 Qd6 24.h4 Qa3 25.Qxa3 Nxa3 26.Rbc1 Nc4 27.Nc3 Nd6 28.Rc2 Bd7 29.Re2 Rc8 30.g5 Bh8 31.Rc2 Rxf3 32.Nxd5 Rf7 33.Nb6 Nxd4 34.Nxc8 Bxc8 35.Rcd2 Rf4 36.h5 Kf7 0-1

Kende-Innumerable Ch Intl (3), 1992

1.e4 c5 2.Nf3 Nc6 3.d4 cxd4 4.Nxd4 Nf6 5.Nc3 d6 6.Be2 e6 7.0-0 Be7 8.Be3 0-0 9.f4 Bd7 10.Qe1 Qc7 11.f5 Ne5 12.Qg3 Kh8 13.fxe6 fxe6 14.Bb5 Neg4 15.Bxd7 Qxd7 16.Bg5 Rae8 17.Qh3 Bd8 18.Bxf6 Nxf6 19.Kh1 Bb6 20.Nde2 Kg8 21.Rad1 Qc6 22.Ng3 Ba5 23.Rf3 Bxc3 24.bxc3 Nxe4 25.Rxf8+ Kxf8 26.Nxe4 Qxe4 27.Rf1+ Kg8 28.Qd3 Qc6 29.Re1 e5 30.Re3 a6 31.Rh3 e4 32.Qe2 Rf8 33.c4 Qb6 34.Rb3 Qd4 35.c3 Qd2 0-1



IM Jay Bonin – Howard Wachtel

Rxa1 23.Rxa1 Qxb4 24.Rb1 Qc5 25.Qb2 Rb8 26.Ra1 b5 27.Rc1 Qd6 28.d4 f6 29.Ra1 Nb6 30.Qc1 Nc4 31.Ra7 Qd8 32.Qa1 b4 33.Ne5 fxe5 34.dxe5 b3 35.Bxc4 b2 36.Rxg7+ Kxg7 37.Qa7+ Kg8 38.Ba2 Ra8 39.Qb7 Rxa2 40.e6 b1Q+ 41.Kh2 Qxb7 0-1

Karklins,E-Soltis Ch Intl (3), 1992

1.e4 d5 2.exd5 Qxd5 3.Nc3 Qa5 4.Qf3 Nf6 5.Bb5+ c6 6.Ba4 g6 7.a3 Bg7 8.b4 Qd8 9.Bb3 0-0 10.Rb1 a5 11.Nge2 axb4 12.axb4 Na6 13.Ba2 Nc7 14.Bc4 e5 15.0-0 e4 16.Qe3 Re8 17.h3 Nfd5 18.Qg3 Be5 19.f4 Bg7 20.Nd1 Qd6 21.c3 f5 22.Ne3 Be6 23.Bb3 Nxe3 24.Bxe6+ Rxe6 25.Qxe3 Nd5 26.Qg3 Nb6 27.Kh2 Nc4 28.Rd1 Rd8 29.Kh1 b5 30.Kh2 Qe7 31.d4 exd3 32.Nd4 Bxd4 33.cxd4 Ne3 34.Bb2 Nxd1 0-1



WANTED!

**YOUR
DONATION
TO THE
\$10,000
ICA
JUNIOR
CHESS
PROGRAM**

Please make your check payable to:
ICA JUNIOR CHESS PROGRAM
And mail to: Helen Warren
5333 S. Woodland, Western Springs, IL 60558
708-246-6665

CHICAGO INTERNATIONAL

Lonoff-Karklins,A Ch Intl (4), 1992

1.c4 Nf6 2.Nc3 g6 3.g3 Bg7 4.Bg2 0-0 5.e4 c5 6.Nge2 Nc6 7.0-0 a6 8.f4 b5 9.e5 Nc8 10.Nxb5 Bb7 11.Nbc3 d6 12.d4 cxd4 13.Nxd4 Nxd4 14.Bxb7 Ne2+ 15.Qxe2 Qb6+ 16.Qe3 Qxb7 17.b3 dxe5 18.fxe5 Nc7 19.Ba3 Rfe8 20.Rad1 f5 21.Rd7 Qc6 22.Rxe7 Rxe7 23.Bxe7 Qe6 24.Bd6 Ne8 25.Qf3 Rd8 26.Qd5 Qxd5 27.Nxd5 Nxd6 28.exd6 Rxd6 29.Re1 Kf8 30.Re2 Rc6 31.Rc2 Ke8 32.Re2+ Kd8 33.Re7 Bd4+ 34.Kf1 h5 35.Ke2 Bc5 36.Rf7 Re6+ 37.Kf1 a5 38.Rf6 Rxf6 39.Nxf6 h4 40.gxh4 Be7 41.Nd5 Bxh4 42.Nf4 Be7 43.Nxg6 Bd6 44.Nh4 Bxh2 45.Nxf5 Kd7 46.Ke2 Bg1 47.Kd3 Kc6 48.Nd4+ Kc5 49.a3 Bh2 50.b4+ Kb6 51.c5+ Kb7 52.b5 a4 53.Kc4 Bf4 54.Kb4 Be3 55.Ne6 1-0

Inumerable-Waliullah Ch Intl (4), 1992

1.d4 f5 2.c4 Nf6 3.Nf3 b6 4.g3 Bb7 5.Bg2 e6 6.0-0 Bb4 7.a3 Be7 8.Nc3 0-0 9.d5 Ne4 10.Nxe4 fxe4 11.Ne1 exd5 12.cxd5 Qe8 13.Bxe4 Qh5 14.Bf3 Rxf3 15.Nxf3 Bxd5 16.Bf4 Nc6 17.Ne5 Be4 18.f3 Bf5 19.Kg2 Nxe5 20.Bxe5 Re8 21.b4 Be6 Moves illegible 1-0

Ash-Karklins,E Ch Intl (4), 1992

1.e4 e5 2.Nf3 Nc6 3.d4 exd4 4.Nxd4 Bc5 5.Be3 Qf6 6.c3 Nge7 7.Bc4 0-0 8.0-0 Bb6 9.f4 d5 10.Bxd5 Nxd5 11.exd5 Nxd4 12.Bxd4 Rd8 13.Bxb6 Qxb6+ 14.Rf2 Qc5 15.Qd4 Qxd4 16.cxd4 Rxd5 17.Rd2 Be6 18.Nc3 Rd7 19.Kf2 Rad8 20.Rad1 Kf8 21.h3 c6 22.Ke3 h5 23.b3 Re8 24.Kf2 b5 25.d5 Bxd5 26.Nxd5 Red8 27.Ke3 cxd5 28.Rc1 Re8+ 29.Kf3 a6 30.Rcd1 Red8 31.Rc1 Ke7 32.Re1+ Kf6 33.Re5 g6 34.g4 hxg4+ 35.hxg4 Rd6 36.g5+ Kg7 37.Kg4 R8d7 38.Re8 Re6 39.Rc8 Re3 40.Rc6 d4 41.Rxa6 d3 42.a4 Re2 43.Rd1 d2 44.axb5 Re1 45.Raa1 Re3 46.Rab1 Rdd3 47.Rg1 Rxb3 48.Rxb3 Rxb3 49.Rd1 1/2-1/2

Soltis,M-Giovannetti Ch Intl (4), 1992

1.e4 c5 2.Nf3 e6 3.d3 Nc6 4.g3 d5 5.Nbd2 g6 6.Bg2 Bg7 7.0-0 Nge7 8.Re1 h6 9.c3 b6 10.Qc2 a5 11.a4 Ra7 12.Nh4 d4 13.Nc4 dxc3 14.bxc3 Nb4 15.cxb4 Bxa1 16.bxc5 bxc5 17.Be3 Bd4 18.e5 g5 19.Nd6+ Kf8 20.Nf3 Bxe3 21.fxe3 Kg7 22.Qxc5 Qc7 23.Qa3 Bd7 24.Rc1 Qb6 25.Nc4 Qb4 26.Qxb4 axb4 27.Nb6 Nd5 28.Nxd5 exd5 29.Nd4 Be6 30.Rc6 Rb8 31.Rc1 b3 32.Rb1 b2 0-1

Cerminaro-Kende Ch Intl (4), 1992

1.a3 e5 2.d4 exd4 3.Qxd4 Nc6 4.Qa4 d5 5.e4 Nf6 6.Bg5 Be7 7.Bb5 0-0 8.Nc3 Nxe4 9.Nxe4 Bxg5 10.Nxg5 Qxg5 11.Ne2 Bd7 12.0-0 a6 13.Bd3 Ne5 14.Qb4 Nxd3 15.cxd3 Bb5 16.Rfd1 Qg6 17.Rac1 Rac8 18.a4 Bc6 19.Nd4 Bd7 20.Qe7 Bxa4 21.b3 Rfe8 22.Qb4 Bc6 23.h3 Rb8 24.Qa5 b6 25.Qc3 Bd7 26.Kh2 c5 27.Nf3 Qd6+ 28.Kg1 Re2 29.Qa1 Bb5 30.b4 Rbe8 31.bxc5 bxc5 32.Qa3 Qg6 33.Rxc5 Bd7 34.Rxd5 Bxh3 35.Rg5 Qf6 36.d4 Bf5 37.Qa4 Bc2 38.Qd7 Bxd1 39.Rf5 Qe6 0-1

Gurevich,I-Dzindzichashvili Ch Intl (5), 1992

1.e4 d6 2.d4 Nf6 3.Nc3 g6 4.Be2 Bg7 5.Nf3 0-0 6.0-0 c6 7.h3 Qc7 8.Bg5 Nbd7 9.Qd2 b5 10.a3 Bb7 11.Rfe1 e5 12.Rad1 Rfe8 13.d5 cxd5 14.Nxb5 Qb6 15.exd5 e4 16.Be3 exf3 17.Bxb6 Rxe2 18.Rxe2 fxe2 19.Qxe2 Nxb6 20.c4 Bf8 21.Qf3 Nfd7 22.Qf4 Ne5 23.c5 Nxd5 24.Rxd5 Bxd5 25.Nc7 Bxg2 26.Kxg2 Rc8 27.Na6 Nd3 28.Qg4 Rc6 29.Qa4 Rc8 30.c6 Ne5 31.c7 1-0

Guervich,D-Palatnik Ch Intl (5), 1992

1.Nf3 f5 2.d4 Nf6 3.g3 g6 4.Bg2 Bg7 5.0-0 0-0 6.b3 Ne4 7.Bb2 c6 8.c4 d5 9.Nbd2 Be6 10.cxd5 cxd5 11.Ne5 Nd7 12.Nd3 Qb6 13.e3 Rfc8 14.Rc1 Qa5 15.b4 Rxc1 16.bxa5 Rxd1 17.Rxd1 b6 18.a6 Rc8 19.Nb4 Ndf6 20.Nxe4 fxe4 21.Rc1 Rxc1+ 22.Bxc1 Bd7 23.f3 exf3 24.Bxf3 e6 25.h4 Bb5 26.g4 Bf8 27.Bd2 Ne4 28.Bxe4 dxe4 29.d5 Kf7 30.dxe6+

Kxe6 31.Bc3 h5 32.Kf2 Be7 33.g5 Bd6 34.a3 Kf5 35.Kg2 Kg4 36.Be1 Bc5 37.Bg3 Bxe3 38.Bb8 Bc1 39.Bxa7 Bxa3 40.Nd5 Bxa6 41.Bxb6 Kxh4 42.Be3 Kg4 43.Kf2 Bd6 44.Bd2 Bc5+ 0-1

Chow-Taylor Ch Intl (5), 1992

1.e4 c5 2.Nf3 Nc6 3.d4 cxd4 4.Nxd4 g6 5.c4 Bg7 6.Be3 Nf6 7.Nc3 0-0 8.Be2 b6 9.0-0 Bb7 10.f3 Rc8 11.Qd2 Nh5 12.Rfd1 Ne5 13.b3 f5 14.exf5 gxf5 15.a4 Qe8 16.a5 Qg6 17.Ncb5 a6 18.Nc3 e6 19.axb6 Kh8 20.c5 f4 21.Bf2 Rg8 22.c6 Bf6 23.Bf1 Rxc6 24.Ne4 Nxf3+ 25.Nxf3 Qxe4 26.Qxd7 Rc2 27.Bd3 Rxg2+ 28.Kh1 Rxh2+ 29.Kxh2 Rxf2+ 30.Kg1 Rg2+ 0-1

Lonoff-Nickoloff Ch Intl (5), 1992

1.c4 g6 2.g3 Bg7 3.Bg2 c5 4.Nc3 Nc6 5.a3 a6 6.Rb1 Rb8 7.b4 cxb4 8.axb4 b5 9.cxb5 axb5 10.e3 e6 11.d4 d5 12.Nge2 Nge7 13.0-0 0-0 14.Qb3 Nf5 15.Rd1 Qb6 16.Nf4 Rd8 17.Bf1 1/2-1/2

Sherzer-Stone Ch Intl (5), 1992

1.e4 c5 2.Nf3 Nc6 3.d4 cxd4 4.Nxd4 e6 5.Nc3 Qc7 6.Be2 a6 7.0-0 Nf6 8.Be3 Be7 9.f4 d6 10.a4 0-0 11.Kh1 Rd8 12.Qe1 Nxd4 13.Bxd4 e5 14.Bg1 exf4 15.a5 Re8 16.Bb6 Qb8 17.Bd3 Be6 18.Rxf4 Nd7 19.Bd4 Ne5 20.Qg3 Bf8 21.Raf1 g6 22.h4 Bg7 23.h5 Qc7 24.Nd5 Bxd5 25.exd5 Rf8 26.b4 Rae8 27.c4 Nd7 28.Bxg7 Kxg7 29.c5 Ne5 30.Bb1 dxc5 31.Qc3 c4 32.Rf6 Kg8 33.h6 Ng4 34.d6 Qd7 35.Bf5 1-0

Remlinger-Soltis Ch Intl (5), 1992

1.d4 d5 2.c4 Bf5 3.cxd5 Bxb1 4.Qa4+ c6 5.Rxb1 Qxd5 6.Nf3 Nd7 7.a3 Ngf6 8.e3 e6 9.Be2 a5 10.0-0 Bd6 11.Nd2 Bc7 12.Bf3 Qd6 13.g3 0-0 14.Qc2 Rfe8 15.Nc4 Qe7 16.e4 b5 17.Ne3 Bb6 18.e5 Nd5 19.Qxc6 Bxd4 20.Nxd5 exd5 21.Qxb5 Nxe5 22.Bxd5 Rab8 23.Qxa5 Qd3 24.Bg2 Nd3 25.Be3 Bxe3 26.fxe3 Rxe3 27.Rbd1 Re2 28.Bd5 Qh7 29.Rxf7 Qxh2+ 30.Kf1 Kh8 31.Rxd3 Rbe8 32.Rd1 Qh3+ 33.Kg1 Qxg3+ 34.Kf1 Qh3+ 35.Kg1 Qg4+ 36.Kf1 R2e3 37.Qd2 Rg3 38.Bg2 Qh4 39.Kg1 Rh3 Moves after 34 illegible. 1/2-1/2

Bonin-Innumerable Ch Intl (5), 1992

1.d4 Nf6 2.c4 e6 3.Nf3 d5 4.g3 c6 5.Qc2 Bd6 6.Nbd2 Nbd7 7.Bg2 0-0 8.0-0 Re8 9.b3 e5 10.dxe5 Nxe5 11.Bb2 Nxf3+ 12.Nxf3 dxc4 13.bxc4 Qe7 14.Rad1 Bg4 15.Nd4 Bc5 16.Bf3 Bh3 17.Rfe1 Ng4 18.e3 Ne5 19.Bg2 Bxg2 20.Kxg2 f6 21.f4 Nd7 22.e4 g6 23.h4 Qf7 24.h5 Bxd4 25.hxg6 hxg6 26.Bxd4 Re7 27.Rh1 Rae8 28.Rde1 c5 29.Ba1 Nf8 30.Kf3 Nh7 31.Kg2 Qe6 32.Rh6 Nf8 33.e5 f5 34.Rd1 Rd7 35.Rxd7 Nxd7 36.g4 Kg7 37.gxf5 Qc6+ 38.Kg3 Kxh6 39.Qh2+ Kg7 40.f6+ Nxf6 41.exf6+ Kf7 42.Qh7+ Ke6 43.Qxg6 Kd7 44.Qg7+ Kd8 45.Be5 Qd7 46.f7 Qd3+ 47.Kg4 Moves illegible. 1-0

Martinovsky-Colias Ch Intl (5), 1992

1.e4 c5 2.Nc3 Nc6 3.f4 g6 4.Nf3 Bg7 5.a3 e6 6.b4 b6 7.bxc5 bxc5 8.e5 d6 9.Bb5 Nge7 10.Bb2 0-0 11.Ne4 dxe5 12.Bxc6 Nxc6 13.fxe5 Rb8 14.Bc3 Qd5 15.Nf6+ Bxf6 16.exf6 e5 17.d3 Nd4 18.0-0 Bg4 19.Qd2 Bxf3 20.Bxd4 Qxd4+ 21.Kh1 Bxg2+ 22.Kxg2 Rb6 23.Rae1 Qg4+ 24.Kh1 Qh4 25.Re4 Qh5 26.Qf2 Rfb8 27.Qxc5 Rxf6 28.Ree1 Rxf1+ 29.Rxf1 Qe2 30.Kg1 Qg4+ 31.Kh1 Qe2 32.Kg1 Qg4+ 33.Kh1 Qd4 34.Qc6 Rd8 35.Rb1 Qd5+ 36.Qxd5 Rxd5 37.Rb4 a5 38.Rc4 Rd4 39.Rc5 e4 40.dxe4 Ra4 41.Kg2 Rxa3 42.c3 a4 43.Kf3 Ra2 44.h4 Rh2 45.Kg3 Rc2 46.h5 gxh5 47.Kh4 a3 48.e5 Rc1 49.Ra5 Ra1 50.Kg3 Kf8 51.Ra7 a2 52.Kg2 Ke8 53.c4 Kd8 54.c5 Kc8 55.c6 Kb8 56.c7+ Kc8 57.Kh2 h4 58.Kg2 h3+ 59.Kh2 h6 60.Ra5 Kxc7 61.Ra6 Kb7 62.Ra3 Kc6 63.Ra5 Kd7 64.Ra6 Ke7 65.Ra5 Ke6 66.Ra6+ Kxe5 67.Ra5+ Kd4 68.Ra8 f5 69.Ra4+ Kc5 70.Ra5+ Kb6 71.Ra3 0-1

CHICAGO INTERNATIONAL

Karklins,A-Wachtel Ch Intl (5), 1992

1.e4 c5 2.Nf3 d6 3.Bb5+ Bd7 4.Bc4 Nc6 5.c3 e6 6.0-0 Nf6 7.Re1 Be7 8.Bb3 0-0 9.d4 e5 10.dxc5 dxc5 11.Nbd2 b5 12.Nf1 c4 13.Bc2 Bc5 14.h3 Qb6 15.Qe2 h6 16.g4 Nh7 17.Ne3 Rfe8 18.Nd5 Qb7 19.b4 Bd6 20.a4 a6 21.Be3 Be6 22.Red1 Rad8 23.Rd2 Bb8 24.Rad1 Ba7 25.Nh4 Rd7 26.Nf5 Red8 27.h4 f6 28.Bc5 Nf8 29.Bxa7 Qxa7 30.axb5 axb5 31.Nxh6+ gxh6 32.Nxf6+ Kh8 33.Nxd7 Rxd7 34.Rxd7 Bxd7 35.Rd6 Qa1+ 36.Qd1 Qxc3 37.Rxh6+ Kg7 38.Qd6 Be6 39.Rxe6 Nxe6 40.Qxe6 Nxb4 41.Qd7+ Kf8 42.Qd8+ Kg7 43.Qe7+ Kg8 44.Qg5+ Kf7 45.Qf5+ Ke7 46.Qg5+ Kf7 47.Qf5+ Ke7 48.Qh7+ Kd6 49.Qh6+ Kd7 50.Qg7+ Kd6 51.Qf6+ 1/2-1/2

Pelts-Karklins,E Ch Intl (5), 1992

1.c4 f5 2.Nc3 Nf6 3.g3 e6 4.Bg2 Be7 5.d4 d6 6.Bg5 0-0 7.Bxf6 Bxf6 8.Nh3 c6 9.0-0 Qb6 10.Na4 Qxd4 11.Qxd4 Bxd4 12.Rad1 e5 13.b4 a5 14.b5 Be6 15.e3 Bc5 16.Rc1 Bxc4 17.Rxc4 cxb5 18.Nxc5 bxc4 19.Bd5+ Kh8 20.Nxb7 c3 Time 1-0

Ivanov-Panchenko Ch Intl (5), 1992

1.d4 Nf6 2.c4 e6 3.Nf3 Bb4+ 4.Nbd2 d5 5.e3 0-0 6.Bd3 c5 7.a3 Bxd2+ 8.Bxd2 cxd4 9.exd4 dxc4 10.Bxc4 h6 11.0-0 Nc6 12.Bf4 b6 13.Qd3 Bb7 14.Rad1 Na5 15.b3 Be4 16.Qe3 Bd5 17.Ne5 Rc8 18.Bd3 Nd7 19.Qg3 Nxe5 20.dxe5 Kh8 21.Bb1 Qe7 22.Rd4 Rg8 23.Qh3 f5 24.exf6 Qxf6 25.Qd3 g6 26.Bxh6 Rc7 27.Rf4 Qe5 28.Rh4 Rh7 29.Qh3 Nc6 30.b4 Nd4 31.Be3 Ne2+ 32.Kh1 Rxh4 33.Qxh4+ Qh5 34.Qxh5+ gxh5 35.f3 e5 36.Re1 Nf4 37.Bxf4 exf4 38.h4 Kg7 39.Re5 Bf7 40.Rg5+ Kh8 41.Kh2 Rc8 42.Bg6 Bxg6 43.Rxg6 Rc3 44.Rg5 Rxa3 45.Rxh5+ Kg7 46.Rg5+ Kf6 47.Rg4 Kf5 48.h5 Rc3 49.h6 Rc8 50.b5 Rh8 51.Rh4 Rh7 52.Kh3 Kg5 53.g3 fxg3 54.Kxg3 Kg6 55.Kg4 Kf7 56.Kg5 Kg8 57.Kg6 Rd7 58.Rf4 Rd8 59.Rf7 Kh8 60.f4 Rd6+ 61.Kg5 Rd1 62.Rxa7 Rg1+ 63.Kf5 Rh1 64.Rc7 Rxh6 65.Rc6 Rh1 66.Kg6 Rg1+ 67.Kf6 Kh7 68.f5 Rh1 69.Ke7 Rf1 70.f6 Ra1 71.f7 Ra7+ 72.Kf6 1-0

Ivanov-Gurevich,I Ch Intl (6), 1992

1.d4 Nf6 2.c4 g6 3.Nf3 Bg7 4.g3 c6 5.Bg2 d5 6.cxd5 cxd5 7.Nc3 0-0 8.Ne5 e6 9.0-0 Nfd7 10.Nf3 Nc6 11.Bf4 Nf6 12.Rc1 Bd7 13.Bd6 Re8 14.e3 Qa5 15.Ne5 Rec8 16.Nd3 Qd8 17.Nc5 Na5 18.Be5 Be8 19.b4 Nc4 20.Nxb7 Qe7 21.Bxf6 Qxf6 22.Nc5 Rab8 23.a4 Qd8 24.b5 Qa5 25.Qd3 Nb2 26.Qc2 Nc4 27.Rfd1 Nd6 28.Bf1 h5 29.Qd2 Qd8 30.Ne2 h4 31.Nf4 hxg3 32.hxg3 Qg5 33.Bg2 Nf5 34.Na6 Rxc1 35.Rxc1 Rd8 36.Nc7 Bd7 37.a5 Rb8 38.b6 Rb7 39.Ncxd5 exd5 40.Bxd5 Nxg3 41.fxg3 Qxg3+ 42.Ng2 Bf8 43.Qf2 1-0

Soltis,A-Pelts Ch Intl (6), 1992

1.e4 c5 2.Nf3 Nc6 3.Bb5 g6 4.0-0 Bg7 5.c3 Nf6 6.Re1 0-0 7.d4 cxd4 8.cxd4 d5 9.e5 Ne4 10.Nc3 Nxc3 11.bxc3 Bg4 12.h3 Bxf3 13.Qxf3 Rc8 14.a4 Na5 15.Rb1 a6 16.Bf1 Qd7 17.Bf4 Rc6 18.h4 Rfc8 19.Rec1 h5 20.g3 e6 21.Bh3 Qc7 22.Qd1 Qe7 23.Kg2 Qa3 24.g4 Rxc3 25.gxh5 gxh5 26.Rxc3 Rxc3 27.Qxh5 Kf8 28.Qg4 Qxa4 29.Bg5 Qc2 30.Rc1 Qd3 31.Rxc3 Qxc3 32.h5 Qd3 33.h6 Bh8 34.Bf6 Qh7 35.Bxh8 Qxh8 36.Qf3 Kg8 37.Qg3+ Kh7 38.Qd3+ Kg8 39.Qg3+ 1/2-1/2

Dzindzichashvili-Sherzer Ch Intl (6), 1992

1.Nf3 Nf6 2.g3 g6 3.Bg2 Bg7 4.0-0 0-0 5.c4 d6 6.Nc3 e5 7.d3 c6 8.e4 Bg4 9.h3 Bxf3 10.Qxf3 h6 11.Qe2 c5 12.f4 Nh5 13.Qf2 exf4 14.gxf4 Nc6 15.Be3 f5 16.Bf3 Nxf4 17.Qg3 Nxd3 18.exf5 g5 19.Bd5+ Kh8 20.Ne4 Be5 21.Qf3 Bf4 22.Bxc6 bxc6 23.Rad1 Ne5 24.Qe2 Rxf5 25.Rxd6 Qe7 26.Bxc5 Qg7 27.Bd4 Raf8 28.Kg2 Kg8 29.Ng3 c5 30.Nxf5 Qb7+ 31.Kg1 Rxf5 32.Rd8+ Kh7 33.Qc2 Bh2+ 34.Kxh2 Nf3+ 35.Rxf3 Qxf3 36.Bxc5 1-0

Panchenko-Taylor Ch Intl (6), 1992

1.d4 d5 2.c4 e6 3.cxd5 exd5 4.Nc3 c6 5.Nf3 Bf5 6.Bg5 Be7 7.Bxe7 Qxe7 8.g3 Nd7 9.Bg2 Ngf6 10.0-0 0-0 11.a3 Ne4 12.Nh4 Bg4 13.Re1 f5 14.f3 Nxc3 15.bxc3 Qe3+ 16.Kh1 g5 17.fxg4 gxh4 18.gxf5 Rxf5 19.Qd3 Qxd3 20.exd3 hxg3 21.Bh3 Rf2 22.Bxd7 Rxh2+ 23.Kg1 h5 24.Re5 h4 25.Rf1 Kg7 26.Rf4 Rd8 27.Be8 Rd6 28.Rg5+ Kh6 29.Rfg4 Kh7 30.Rh5+ Rh6 31.Bg6+ Kg7 32.Be4+ 1-0

Remlinger-Gurevich,D Ch Intl (6), 1992

1.d4 Nf6 2.c4 e6 3.Nc3 Bb4 4.Qc2 c5 5.dxc5 Bxc5 6.Nf3 Qb6 7.e3 Qc7 8.Bd2 a6 9.Bd3 Be7 10.0-0-0 b6 11.Nd4 Bb7 12.f3 Nc6 13.Nxc6 Bxc6 14.e4 d6 15.Kb1 Rc8 16.Rc1 Qb8 17.Be3 Nd7 18.Qf2 0-0 19.Bd4 Ne5 20.Be2 b5 21.cxb5 axb5 22.f4 b4 23.fxe5 dxe5 24.Ba6 exd4 25.Ne2 Bxe4+ 26.Ka1 Rcd8 27.Ng3 Bd5 28.Bc4 Qb7 29.Rhe1 Bg5 30.Bxd5 Qxd5 31.Rc7 Ra8 1-0

Nickoloff-Colias Ch Intl (6), 1992

1.d4 Nf6 2.c4 e6 3.Nf3 Bb4+ 4.Bd2 Qe7 5.g3 Nc6 6.Nc3 d6 7.d5 Bxc3 8.Bxc3 Nb8 9.Bg2 e5 10.c5 0-0 11.cxd6 cxd6 12.Nd2 Bg4 13.0-0 Nbd7 14.f3 Nxd5 15.fxg4 Ne3 16.Qe1 d5 17.Nb3 Qe6 18.Qd2 Nxf1 19.Rxf1 d4 20.Bb4 Rfe8 21.e3 Rad8 22.exd4 exd4 23.Nxd4 Qxg4 24.Bc3 Nc5 25.Qf2 f6 26.Nf5 b6 27.Nh6+ gxh6 28.Qxf6 1-0

Bonin-Lonoff Ch Intl (6), 1992

1.d4 Nf6 2.c4 g6 3.Nc3 d5 4.cxd5 Nxd5 5.e4 Nxc3 6.bxc3 Bg7 7.Nf3 c5 8.Bb5+ Bd7 9.Bxd7+ Qxd7 10.0-0 0-0 11.Rb1 cxd4 12.cxd4 b6 13.Bb2 Qb7 14.d5 Nd7 15.Bxg7 Kxg7 16.Qd4+ Kg8 17.e5 Rac8 18.Rbd1 Rc5 19.Rfe1 f6 20.e6 Nb8 21.h4 Rd8 22.d6 Nc6 23.Qe4 Kg7 24.d7 Rb8 25.Nd4 Nd8 26.Qf4 Qc7 27.Qxc7 Rxc7 28.Nb5 Rc2 29.Rc1 Rxc1 30.Rxc1 Nxe6 31.Rc8 Rb7 32.Nc7 Kf7 33.Rf8+ Kxf8 34.Nxe6+ Kf7 35.Nd8+ 1-0

Stone-Manion Ch Intl (6), 1992

1.d4 Nf6 2.c4 c5 3.d5 b5 4.Nf3 g6 5.cxb5 a6 6.e3 axb5 7.Bxb5 Qa5+ 8.Nc3 Ba6 9.Bxa6 Qxa6 10.Qe2 Bg7 11.e4 d6 12.Nd2 0-0 13.Nc4 Nbd7 14.Bd2 Rfb8 15.Rc1 Nb6 16.Nxb6 Rxb6 17.Qxa6 Raxa6 18.Rc2 Nd7 19.Ke2 Rb8 20.b3 Rba8 21.a4 Rb8 22.Nb5 Nb6 23.Nc7 Ra7 24.Nb5 Ra6 25.Be3 Rb7 26.Kd3 Nd7 27.Bf4 Nb6 28.Rb1 h5 29.Bd2 Nd7 30.Bc3 Bxc3 31.Kxc3 Kg7 32.Re2 1/2-1/2

Wachtel-Martinovsky Ch Intl (6), 1992

1.d4 Nf6 2.c4 g6 3.Nc3 d5 4.Nf3 Bg7 5.Qb3 dxc4 6.Qxc4 0-0 7.e4 Nfd7 8.Be3 Nc6 9.Rd1 Nb6 10.Qb3 Bg4 11.d5 Ne5 12.Be2 Nxf3+ 13.gxf3 Bh5 14.Rg1 Qd7 15.a4 a5 16.Nb5 Nc8 17.Rc1 c6 18.dxc6 bxc6 19.Nc3 Nd6 20.Rd1 Rab8 21.Qa3 Qe6 22.Bd4 Bxd4 23.Rxd4 Qe5 24.Rd1 Qxh2 25.Rg3 Rb4 26.Na2 Nc4 27.Bxc4 Rxc4 28.Nc3 Rb4 29.Na2 Rxe4+ 30.fxe4 Qh1+ 31.Kd2 Qxd1+ 32.Kc3 Qe1+ 33.Kd4 Qxf2+ 34.Re3 Qd2+ 35.Kc5 Rd8 36.Qc3 Qd6+ 37.Kc4 Bg4 38.Kb3 Be6+ 39.Kc2 Qd1+ 0-1

Innumerable-Karklins,A Ch Intl (6), 1992

1.d4 Nf6 2.c4 g6 3.Nc3 Bg7 4.e4 d6 5.Nf3 0-0 6.Be2 e5 7.0-0 Nh5 8.dxe5 dxe5 9.Qxd8 Rxd8 10.Bg5 Rd7 11.Rfd1 Nf4 12.Rxd7 Nxd7 13.Rd1 c6 14.Be7 Bf8 15.Bd6 Bxd6 16.Rxd6 Kf8 17.Ne1 Ke7 18.Rd2 Nc5 19.f3 a5 20.b3 Bd7 21.Bf1 Rf8 22.Kf2 Nfe6 23.Nc2 f5 24.exf5 gxf5 25.Ke3 Be8 26.g3 f4+ 27.gxf4 Rxf4 28.Ne2 Rf6 29.Ng3 Bg6 30.Ne1 Nd4 31.Bg2 Rf4 32.Ne2 Nf5+ 33.Kf2 Ne4+ 34.Kg1 Nxd2 35.Nxf4 exf4 36.Nd3 Nh4 37.Nxf4 Ndxif3+ 38.Kf2 Nxg2 39.Nxg2 Nd4 40.Ke3 Nc2+ 41.Kd2 Nb4 42.a3 Nc2 43.Nf4 Nxa3 44.Nxg6+ hxg6 45.Kc1 Nxc4 0-1

CHICAGO INTERNATIONAL

Sherzer-Nickoloff Ch Intl (7), 1992

1.e4 e5 2.Nf3 Nc6 3.Bb5 a6 4.Ba4 Nf6 5.0-0 b5 6.Bb3 Bb7 7.c3 Nxe4 8.d4 Na5 9.Nxe5 Nxb3 10.Qxb3 Qf6 11.f3 Nc5 12.Ng4 Nxb3 13.Nxf6+ Ke7 14.axb3 Kxf6 15.c4 d5 16.cxb5 axb5 17.Rxa8 Bxa8 18.Nc3 Bd6 19.Bd2 Bc6 20.Ra1 Ke6 21.Kf2 Bb4 22.Ra7 Bxc3 23.bxc3 Ra8 24.Rxc7 Be8 25.g4 Ra2 26.Ke3 Ra3 27.b4 Ra8 28.Be1 Bd7 29.Rb7 Bc6 30.Rc7 Bd7 31.Kd3 Rc2 32.Ra7 Kd6 33.Bg3+ Kc6 34.Be5 g6 35.Ra6+ Kb7 36.Rf6 Be8 37.Rd6 Bc6 38.h4 Ra8 39.h5 Ra1 40.Rd8 gxf5 41.gxf5 Rh1 42.Rf8 Rxf7+ Kb6 44.Bc7+ Ka6 45.Re7 Bb7 46.Bb8 Kb6 47.Bc7+ Ka6 48.Ke3 Bc8 49.Ba5 Bf5 50.Kf4 Bg6 51.Re5 Bf7 52.Re7 Bg6 53.Re6+ Kb7 54.Rb6+ Ka7 55.Rxb5 Rf5+ 56.Ke3 Bh5 57.f4 Be8 58.Rc5 Ka6 59.c4 Bd7 60.Rc7 Be8 61.Re7 Bf7 62.c5 Rf6 63.Re5 Kb5 64.f5 Rh6 65.Re7 Rf6 66.Kf4 Bg6 67.Re5 Bf7 68.Kg5 Rc6 69.Re7 h6+ 70.Kf4 Bh5 71.Ke5 Kc4 72.f6 Rc8 73.f7 Ra8 74.c6 1-0

Taylor-Stone Ch Intl (8), 1992

1.d4 Nf6 2.c4 g6 3.Nc3 d5 4.Nf3 Bg7 5.e3 0-0 6.Be2 c5 7.0-0 cxd4 8.exd4 Nc6 9.Re1 Be6 10.Ng5 Bf5 11.Be3 dxc4 12.Bxc4 Na5 13.Bf1 Nd5 14.g4 Nxe3 15.Rxe3 Bc8 16.d5 e6 17.Nxf7 Rxf7 18.dxe6 Bxe6 19.Qxd8+ Rxd8 20.Rxe6 Rd2 21.Re2 Rxb2 22.Rxb2 Bxc3 23.Rab1 Bxb2 24.Rxb2 b6 25.Rc2 g5 26.Bd3 Kg7 27.Kg2 Nb7 28.Rc6 Nd8 29.Rc8 Ne6 30.Bc4 Nf4+ 31.Kg3 Rd7 32.h4 h6 33.Kf3 Re7 34.Bb3 Ng6 35.Rg8+ Kf6 36.hxg5+ hxg5 37.Bc2 Ne5+ 38.Kg3 Rg7 39.Rh8 Ke6 40.Rf8 Ng6 41.Rf5 Ne7 42.Bb3+ Kd6 43.Rf6+ Ke5 44.Re6+ Kd4 45.Bc2 Nd5 46.Bf5 Nc3 47.a3 b5 48.Rd6+ Kc5 49.Rd2 a5 50.f4 gxf4+ 51.Kxf4 Nd5+ 52.Kf3 1-0

Karklins,A-Remlinger Ch Intl (8), 1992

1.e4 e6 2.d4 d5 3.Nc3 Bb4 4.Nge2 dxe4 5.a3 Bxc3+ 6.Nxc3 Nc6 7.Bf4 Nge7 8.Qd2 e5 9.Bxe5 Nxe5 10.dxe5 Qxd2+ 11.Kxd2 Bf5 12.Re1 0-0-0+ 13.Kc1 Rd4 14.e6 Bxe6 15.Nxe4 Ng6 16.h4 Bd5 17.Nc3 Bc6 18.h5 Nf4 19.Rh2 a6 20.g3 Ne6 21.Bh3 Bd7 22.f4 Rd8 23.h6 g6 24.Ne4 Nf8 25.Bxd7+ R4xd7 26.Rhe2 b6 27.Ng5 f6 28.Ne4 Rf7 29.Nf2 a5 30.Re7 Rxe7 31.Rxe7 Rd7 32.Re8+ Rd8 33.Re3 Rd6 34.Ng4 Kd7 35.b4 axb4 36.axb4 Re6 37.Ra3 Ke7 38.Ra7 Rc6 39.Ra8 Rd6 40.Rc8 Ne6 41.Rh8 Nf8 42.Rg8 Ne6 43.Ra8 Rd8 44.Ra7 Rd7 45.Kb2 Nd4 46.Ra8 Nf5 47.Ra3 Kf7 48.Rc3 Re7 49.Rc6 Nd6 50.c4 g5 51.f5 Ne8 52.b5 Re4 53.Nxf6 Nxf6 54.Rxc7+ Re7 55.Rc6 Nd7 56.Kc3 Re3+ 57.Kd4 Rxc7 58.Rc7 Ke8 59.Rc8+ Ke7 60.Rg8 Kd6 61.Rg7 Nc5 0-1

Nickoloff-Martinovsky Ch Intl (8), 1992

1.d4 Nf6 2.c4 g6 3.Nc3 d5 4.cxd5 Nxd5 5.e4 Nxc3 6.bxc3 Bg7 7.Bc4 0-0 8.Ba3 Nd7 9.Nf3 c5 10.0-0 Qa5 11.Qb3 b5 12.Bd5 Rb8 13.dxc5 Qxc3 14.Qxc3 Bxc3 15.Rac1 b4 16.Rxc3 bxc3 17.c6 Nf6 18.Bxe7 Ba6 19.Rc1 Nxd5 20.exd5 c2 21.Nd2 Rf8 22.d6 Rxe7 23.dxe7 Bd3 24.Nb3 f6 25.Nc5 Bf5 26.Nd7 Rc8 27.Nxf6+ Kf7 28.e8Q+ Rxe8 29.Nxe8 Kxe8 30.f3 g5 31.Kf2 Kd8 32.Ke3 Kc7 33.g4 Bg6 34.h4 h6 35.Kd2 Kxc6 36.f4 gxh4 37.Rh1 Kd5 38.Rxh4 h5 39.f5 Bf7 40.gxf5 Bg8 41.h6 Bh7 42.Ra4 1-0

Manion-Chow Ch Intl (8), 1992

1.e4 e5 2.Nf3 Nf6 3.Nxe5 d6 4.Nf3 Nxe4 5.d4 d5 6.Bd3 Bd6 7.0-0 0-0 8.c4 c6 9.Nc3 Nxc3 10.bxc3 dxc4 11.Bxc4 Bg4 12.Re1 Nd7 13.Qd3 Bh5 14.Bg5 Qc7 15.Be7 Bg6 16.Qe2 Bxe7 17.Qxe7 Qd8 18.Ng5 h6 19.Nh3 Re8 20.Qxd8 Raxd8 21.Nf4 Bf5 22.f3 g5 23.Nh5 Bg6 24.Ng3 c5 25.Bb5 Rxe1+ 26.Rxe1 cxd4 27.cxd4 Kf8 28.Rc1 a6 29.Be2 Nf6 30.Rc7 Rd7 31.Rxd7 Nxd7 32.Ne4 Ke7 33.Kf2 b5 34.Ke3 f5 35.Nc3 f4+ 36.Kd2 Kd6 37.a3 Nb6 38.g3 fxg3 39.hxg3 h5 40.Ne4+ Bxe4 41.fxe4 h4 42.gxf4 gxh4 43.Ke1 Na4 44.Kf2 Nc3 45.Bd3 a5 46.Kf3 b4 47.axb4 axb4 48.Bc4 Nb1 49.Kg4 Nd2 50.Bd5 b3 51.Bxb3 Nxb3 52.Kxh4 Nxd4 1/2-1/2

Gurevich,I-Panchenko Ch Intl (8), 1992

1.e4 Nf6 2.e5 Nd5 3.d4 d6 4.Nf3 Bg4 5.Be2 c6 6.0-0 Bxf3 7.Bxf3 dxe5

8.dxe5 e6 9.Nd2 Nd7 10.Nc4 b5 11.Nd6+ Bxd6 12.exd6 0-0 13.Re1 N7b6 14.Bxd5 Nxd5 15.Qg4 Qd7 16.Bf4 Rae8 17.a4 b4 18.c4 bxc3 19.bxc3 c5 20.Bd2 f5 21.Qg3 f4 22.Qd3 c4 23.Qxc4 Qxd6 24.Rad1 Qb8 25.Qe4 a5 26.c4 Nb4 27.Bc3 Qc7 28.Be5 Qc6 29.Bxf4 Qxa4 30.Bd6 Rf6 31.Be5 Rf7 32.Rd2 Qc6 33.Qg4 a4 34.Re3 Qb7 35.Rb2 Qe7 36.Qe4 Qc5 37.Bc3 Nc6 38.Rb5 Qd6 39.Rd3 Qc7 40.Rh5 Qf4 41.Qxh7+ Kf8 42.f3 Qxc4 43.Qg6 e5 44.Rh8+ 1-0

Palatnik-Sherzer Ch Intl (8), 1992

1.Nf3 Nf6 2.g3 d5 3.Bg2 Bf5 4.c4 e6 5.0-0 c6 6.b3 Nbd7 7.Bb2 Be7 8.d3 0-0 9.Nbd2 a5 10.a3 h6 11.Rc1 Bh7 12.Rc2 Ne8 13.Qa1 Bf6 14.Rfc1 Bxb2 15.Qxb2 Qf6 16.b4 Qxb2 17.Rxb2 axb4 18.axb4 Nd6 19.Nd4 dxc4 20.dxc4 Rfd8 21.c5 Nf5 22.Nxf5 Bxf5 23.Nc4 Ra7 24.e4 Bg6 25.Rd2 Ra4 26.Nb6 Rxb4 27.Rxd7 Rxd7 28.Nxd7 Bxe4 29.Bxe4 Rxe4 30.Rb1 1-0

Soltis,A-Bonin Ch Intl (8), 1992

1.e4 c5 2.Nc3 Nc6 3.Nge2 g6 4.d4 cxd4 5.Nxd4 Bg7 6.Be3 d6 7.Bc4 Nf6 8.f3 0-0 9.Qd2 Bd7 10.0-0-0 Ne5 11.Bb3 Rc8 12.h4 h5 13.Bg5 Rc5 14.f4 Neg4 15.Rhe1 Nh7 16.f5 Nng5 17.hxg5 Kh7 18.Kb1 b5 19.Qe2 Be5 20.Rf1 Kg7 21.Nd5 a5 22.a3 Bxd4 23.Rxd4 e6 24.f6+ Kh7 25.Ne3 Rfg5 26.Rxd6 Qc7 1/2-1/2

Pelts-Gionnetti Ch Intl (8), 1992

1.c4 Nf6 2.Nc3 e6 3.d4 c5 4.Nf3 cxd4 5.Nxd4 Be7 6.g3 0-0 7.Bg2 Nc6 8.0-0 a6 9.b3 Qc7 10.Bb2 Rb8 11.Rc1 b6 12.Nd5 exd5 13.cxd5 Nxd5 14.Bxd5 Bb7 15.Nf5 Bf6 16.Bxf6 gxf6 17.Bxc6 Bxc6 18.Qd4 1-0

Ivanov-Dzindzichashvili Ch Intl (8), 1992

1.e4 c5 2.Nf3 e6 3.Nc3 Nc6 4.d4 cxd4 5.Nxd4 d6 6.Be2 Nf6 7.0-0 Be7 8.Be3 0-0 9.Qe1 a6 10.Rd1 Qc7 11.f4 Nxd4 1/2-1/2

Innumerable-Karklins,E Ch Intl (8), 1992

1.d4 d5 2.c4 dxc4 3.Nc3 a6 4.a4 e5 5.e3 Nc6 6.Nf3 exd4 7.exd4 Na5 8.Ne5 c5 9.Be3 cxd4 10.Bxd4 Be6 11.Nf3 Nb3 12.Ra2 Nxd4 13.Nxd4 Rc8 14.Nxe6 Qxd1+ 15.Kxd1 fxe6 16.Be2 Nf6 17.Bf3 Rc7 18.Re1 Kf7 19.Ra1 Bb4 20.Kc2 Rd8 21.Re2 Rd4 22.Rae1 Re7 23.g3 b6 24.Bg2 g5 25.h3 h6 26.Re3 Red7 27.Rxe6 Rd2+ 28.Kc1 Rxf2 29.R6e2 Bxc3 30.bxc3 Rxe2 31.Rxe2 Rd3 32.Kc2 Rxc3 33.a5 bxa5 34.Kb2 Rd3 35.Ka3 Rxc3+ 36.Ka4 Rd3 0-1

Lonoff-Gurevich,D Ch Intl (8), 1992

1.c4 g6 2.g3 Bg7 3.Bg2 e5 4.Nc3 d6 5.e4 f5 6.d3 Nc6 7.Nge2 Nf6 8.Nd5 Be6 9.Bg5 0-0 10.Qd2 Qd7 11.Nxf6+ Bxf6 12.Bxf6 Rxf6 13.f4 fxe4 14.Bxe4 d5 15.cxd5 Bxd5 16.Nc3 Bxe4 17.Nxe4 Rf7 18.0-0 Rf8 19.Qc3 exf4 20.Ng5 Nd4 21.Rae1 Rf5 22.Re4 fxg3 23.Rxf5 gxh2+ 24.Kxh2 Nxf5 25.Qc4+ Kh8 26.Qc3+ Kg8 27.Qc4+ Kh8 28.Qc3+ Ng7 29.Ne6 Rg8 30.Qf6 Qd6+ 31.Re5 h6 32.d4 Kh7 33.Qf7 c5 34.Kg2 cxd4 0-1

Lonoff-Pelts Ch Intl (9), 1992

1.e4 c5 2.d4 cxd4 3.c3 dxc3 4.Nxc3 Nc6 5.Bc4 d6 6.Nf3 e6 7.0-0 Nf6 8.Qe2 a6 9.Rd1 Qc7 10.Bg5 Be7 11.Rac1 0-0 12.a4 Qb8 13.h3 Ne5 14.Bb3 Nxf3+ 15.gxf3 b6 16.Qe3 b5 17.axb5 axb5 18.Kh1 Kh8 19.Rg1 b4 20.Ne2 Qa7 21.Nd4 Bd7 22.f4 Rfc8 23.e5 Rxc1 24.Rxc1 dxe5 25.fxe5 Ng8 26.Rg1 g6 27.Qf4 Bxg5 28.Rxg5 Qc5 29.Rg1 Ra5 30.Rd1 Kg7 31.Kg1 Qxe5 32.Qxe5+ Rxe5 33.Nf3 Rf5 34.Rxd7 Rxf3 35.Bxe6 Nh6 36.Kg2 Rf4 37.b3 Rf6 38.Bc4 Rb6 39.Kf3 g5 40.Ke4 Rf6 41.Ke3 Nf5+ 42.Ke2 Nd6 43.Bd3 Re6+ 44.Kf1 h5 45.Rd8 Rf6 46.Kg2 Nf5 47.Bxf5 Rxf5 48.Rd4 Rb5 49.Rc4 Kg6 50.Kg3 f6 51.Rd4 Kf5 52.Rc4 h4+ 53.Kf3 Kg6 54.Kg2 Kh5 55.Rd4 f5 56.Rc4 g4 57.Rd4 Kg5 58.Rc4 gxh3+ 59.Kxh3 Rd5 60.Rxb4 Rd3+ 61.Kg2 h3+ 62.Kh2 f4 63.Rb8 Kg4 64.b4 Kf3 65.b5 Kxf2 66.b6 Rg3 67.Rf8 1/2-1/2

CHICAGO INTERNATIONAL

Martinovsky-Manion Ch Intl (9), 1992

1.d4 Nf6 2.Nf3 g6 3.g3 Bg7 4.Bg2 0-0 5.0-0 d6 6.Nc3 Nbd7 7.e4 e5
8.Re1 c6 9.a4 Ne8 10.a5 h6 11.dxe5 dxe5 12.Be3 Nc7 13.Qd6 Re8
14.Red1 Bf8 15.Qd2 Kh7 16.Na4 Qe7 17.c3 c5 18.c4 Ne6 19.Nc3 Nd4
20.Nd5 Qd8 21.Qd3 Nf6 22.Nxd4 cxd4 23.Bd2 Nxd5 24.cxd5 Bd7
25.Rdc1 Bd6 26.f4 f6 27.f5 gxf5 28.exf5 Qe7 29.Be4 Rac8 30.a6 b6
31.Qf1 Bb4 32.Rd1 Bxd2 33.Rxd2 Qb4 34.Rg2 Rc5 35.g4 Bb5 36.Qf3
Rec8 37.Rd1 Rc1 38.d6 d3 39.Bb7 Qd4+ 40.Kh1 e4 41.Qf1 d2 42.d7
Rxd1 43.Qxd1 Rc1 0-1

Panchenko-Gurevich, D Ch Intl (9), 1992

1.Nf3 Nf6 2.g3 g6 3.Bg2 Bg7 4.c4 c6 5.d4 d5 6.cxd5 cxd5 7.Ne5 Ne4
8.Nd2 Nxd2 9.Bxd2 Nd7 10.Nf3 1/2-1/2

Dzindzichashvili-Soltis, A Ch Intl (9), 1992

1.c4 Nf6 2.Nc3 d6 3.d4 Nbd7 4.Nf3 g6 5.e4 e5 6.Be2 Bg7 7.0-0 0-0

8.Re1 c6 9.Bf1 a6 10.d5 c5 11.Rb1 Kh8 12.Bd2 Qe7 13.a3 Ng8 14.b4
b6 15.bxc5 bxc5 16.Qa4 Bh6 17.Qc6 Ra7 18.Rb2 f5 19.Bxh6 Nxh6
20.Nd2 Nf7 21.Reb1 Ng5 22.g3 Nf6 23.Rb6 Nfxe4 24.Ndx4 Nxe4
25.Nxe4 fxe4 26.Qxd6 Qxd6 27.Rxd6 Raf7 28.Rc6 Rxf2 29.Rxc8 Rxf1+
30.Rxf1 Rxc8 31.Kf2 Rb8 32.Ke3 Kg7 33.Kxe4 Rb2 34.Kxe5 Rxh2
35.Kd6 Rg2 36.Rf3 g5 37.Kc7 g4 38.Rd3 1-0

Bonin-Remlinger Ch Intl (9), 1992

1.d4 Nf6 2.c4 g6 3.Nc3 Bg7 4.e4 d6 5.Nf3 0-0 6.Be2 e5 7.0-0 exd4
8.Nxd4 Re8 9.f3 c6 10.Kh1 Nbd7 11.Bg5 h6 12.Be3 a6 13.Qd2 h5
14.Nb3 Ne5 15.Rfd1 Be6 16.Qxd6 Qxd6 17.Rxd6 Bxc4 18.Na5 Bxe2
19.Nxe2 Red8 20.Rad1 Rxd6 21.Rxd6 Ne8 22.Rd1 b5 23.b3 Bf6 24.h3
Rd8 25.Rxd8 Bxd8 26.Nb7 Be7 27.Bc5 Kf8 28.Nd4 g5 29.Nf5 Bxc5
30.Nxc5 Nc7 31.h4 f6 32.Kg1 Ng6 33.b4 Kf7 34.Kf2 gxh4 35.Ke3 Nf8
36.Nd4 Ke8 37.Nxc6 Nd7 38.Nxd7 Kxd7 39.Nd4 Na8 40.Nf5 Nb6
41.Nxh4 Ke6 42.Nf5 Kf7 43.Kd4 Na4 44.Nd6+ Ke7 45.Nb7 1-0

ANNOUNCING NEW ANNOTATED NICBASE DATA™ COLLECTIONS

All NICBASE DATA openings, players, yearbooks, and annotated tournament collections are priced the same and may be combined for the maximum price advantage. NICBASE 3 software is required to use the data.

25 collections (save 47%) \$250.00
 10 collections (save 34%) \$125.00

5 collections (save 21%) \$ 75.00
 1 collection \$ 19.00

Ask for a complete list of over 100 NICBASE DATA collections available now for immediate shipment.

The annotations on these disks are mainly based on NIC publications in print, where notes appropriately are made by a top-rated player or other authority. The notes summarize the often extensive analyses published in the magazine, yearbooks, or other books. Each game record indicates the source and name of annotator for further reference. Within each Opening file, the games are sorted chronologically, offering a survey of the development of the variations from the early 1980s to the present.

NEW ANNOTATED OPENINGS DATA COLLECTIONS

- KI 1-7 King's Indian Classical Main Line. 192 games
- FR 8-13 French Winawer. 192 games
- SO Scotch. All variations. 160 games

- American Express
- JCB
- MS-DOS computer
- ATARI ST computer

NEW ANNOTATED TOURNAMENTS DATA.

All games complete. Approx. 50% annotated

- Tilburg 1990; Wijk aan Zee 1991; Amsterdam 1991
- Munich 1991; Linares 1991
- Reykjavic 1991; Candidates 1991
- Tilburg 1991; Reggio Emilia 1991/92; Wijk aan Zee 1992

- VISA
- Mastercard
- 3.5 inch disk
- 5.25 inch disk

CHESS COMBINATION INC. 2423 Noble Station, Bridgeport CT 06608

FAX: 203-380-1703

USAT: CHESSCOM

Internet: 70244.1532@compuserve.com

Exclusive North American Distributors of NICBASE and NICBASE DATA

SEND GAMES FOR PUBLICATION TO:

(ICB Games Editor) Tom Cooper

401 Pershing • Wheaton, IL 60187 • 708-690-9503

In the beginning there was the endgame

by Brian Schuman

Solution to last problem study: White (Kb6, c6) Black (Ka1, Rd5), 1. c7 Rd6ch 2. Kb5! Rd5ch 3. Kb4 Rd4ch 4. Kb3 Rd3ch 5. Kc2! Rd4!! 6. c8-R!!! Ra4 7. Kb3 threatens rook or mate. (Irving Chernev "Practical Chess Endings", Problem 101). Take only half credit for finding the method of crossing the c-file but not seeing the underpromotion.

DISCUSSION OF PROBLEM:

LEARNING

The study can represent an example of the following:

1. The power of an advanced pawn.
2. The difficulties a rook has reaching home rank when it is on an adjacent file to an enemy pawn on the seventh rank.
3. The resource the rook has in the form of an x-ray attack or skewer (attacking a piece, which if moved, exposes a lesser unguarded piece).
4. Bridge building- the technique of crossing the c-file at a time when the rook cannot skewer the king from behind.
5. Underpromotion to avoid stalemate.
6. The misfortune of a misplaced king.
7. The king's role in double attacks.
And last of all:
8. The advantage of a "never say die attitude" which I learned the hard way from Ed Vano.

BETTING

What a wonderful problem to take to a local club, coffee house or pub. I would bet that 99% of chess players would not see the stalemate and unusual underpromotion from the outset of the problem (unless alerted that there is a surprise). I would think the key to solving the problem would be to reflect on the unusually poor position of black's

king. You can show someone the problem, tell them to study it and if they think they have found the solution, you bet they haven't. All that is required is that the "bettee" move immediately in response to your moves, he is honest about not seeing the problem and has sufficient ego to wager a small sum of money for a learning experience.

ANALYSIS

The first move is obvious as any move other than c7 allows Rc5, capturing the pawn. Black's first move Rd6ch is forced otherwise the pawn promotes (except for special positions a queen will win against a rook (perhaps a future article)). White second move requires more thought. The white king cannot go to the a-file without the black rook playing behind the pawn and capturing it. The white king cannot go to b7 without the black rook pinning the pawn then capturing it. This leaves white b5 and c5 for his king, the latter allowing the rook to play to Rd1 followed by an x-ray at c1 if the white pawn queens. Hence Kb5 must be played with the plan of crossing the c-file at c2, when white will no longer have the skewer on c1. Black's second move must be Rd5ch or white queens. White should continue with his plan and play 3. Kb4, all explanations are as before except Kb6 instead of allowing a pin, allows repetition of position. Self-explanatory are 3...Rd4ch; 4. Kb3 (Kc3, Rd1 4. Kc2 is equivalent), Rd3ch; 5. Kc2 and black is lost. Or is he? 5...Rd4!! saves the game, if white queens, 6...Rc4ch! and black either captures the queen or is stalemated. So is it a draw after all? I certainly hope not as that would clearly be anti-thematic and waste time. Instead of queening white must "rook it", threatening mate along the file by Ra8ch. The poor position of the black king makes this possible. After black defends with Ra4 white continues with Kb3, now threatening mate along the rank and also attacking black's rook.

BEAUTY

I realize my following comments are subjective, but since I am the beholder, I will make them anyway. One point of beauty is the irony of the true complexity which lies hidden in the apparent simplicity of such few pieces. Another point is the surprise underpromotion which shakes one from the doldrums of routine thinking, rooks don't win against rooks, queens win against rooks. Simply put, the problem amazes me.

THE OPPOSITION

Last issue we began discussing opposition and said that the king with the opposition could attack any square on the board and occupy at least one of any two non-contiguous squares. I must rephrase this as-

The king with opposition can:

1. Attack any square on the board except those squares on the left and right edge of the board on line or behind the black king. An example would explain this better: Consider the white king with the opposition on d4 and the black king with the move on d6. White may attack all squares except a6, a7, a8, h6, h7, h8.
2. Occupy at least one of any 2 squares which are separated by at least one file (or rank if one is considering horizontal opposition). Again an example might clarify this concept. Consider previous position (wKd4,bKd6), white may occupy any one of two chosen squares on the 5th, 6th, 7th, or 8th rank as long as at least one file separates these 2 squares.

What is the procedure for *attacking* (coming in contact with but not occupying) a square? With the kings as before (wKd4,bKd6), let us say that white wishes to attack b7. Black to move must play Kc6, white follows with Kc4, black continues Kb6 and white again follows Kb4. At this point with the black king directly in front of white's desired square, he must give way to the left, right or rear. If black plays to the left (Ka6) white plays Kc5, when black must play Kb7 (else white immediately attacks b7) allowing white to play K-b5 and white will attack g7 next move. Black play to the right or rear is obviously the same, considering the symmetry. If white wishes to attack a7(a6,a8) this procedure will not work since there is no corresponding file to the left of the a-file for white to outflank (pass by the opponent's king on the side opposite to which the opponent's king moves) his opponent when black plays k(a6)-b6.

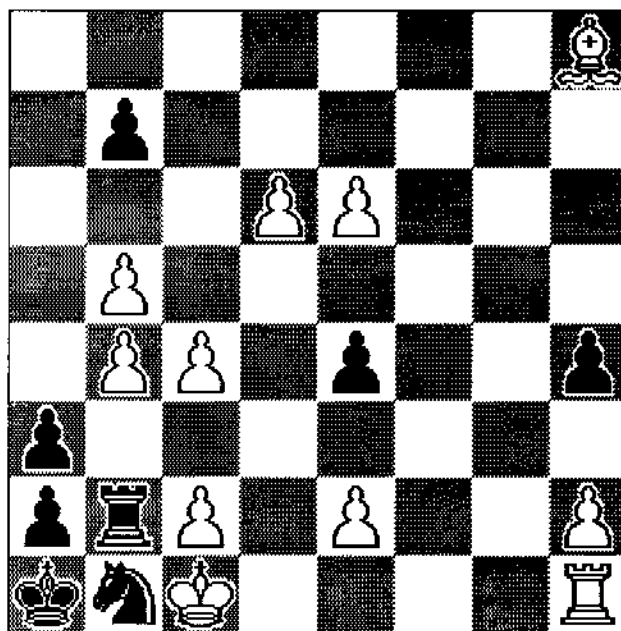
The procedure to *occupy* 1 of 2 chosen squares is similar to attacking a given square. Again, consider the kings as before (wKd4, bKd6), but now white wishes to occupy f7 or h7. Black to move must play Ke6 (moving toward the f and g-files) to at-

tempt to prevent this, and white follows the black king by playing to Ke4. This continues until the white king is on g4 and the black king is on g6. At this point the black king must give way by playing h6 or f6, allowing the white king f5 or h5 respectively. Black may now take the horizontal opposition with h5 or f5 respectively and prevent white from occupying one of the desired squares but not the other. Or black can play g2 when white regains the opposition with g5. Black must then again give way until white reaches either h7 or f7. There must be at least one file separating the 2 squares for white to be successful. Let's see what happens if white tries to occupy f7 or g7 from the same initial position (wKd4,bKd6). Black again plays K-e6 and white again follows with K-e4 (K-c5 allows K-e4 and it is black who has the horizontal opposition). Black plays K-f6 and white follows with K-f4, black plays Kg6 and white follows with K-g4 (what else?). Black simply alternates between f6 and g6 until white attempts to outflank him at which point black takes the horizontal opposition and white can make no further progress. Next issue, distant opposition and direct opposition will be discussed followed by the addition of a pawn or two.

PROBLEM 2

White to move and mate in 5. Solution next issue.

White: Kc1, Bh8, Rh1, b4, b5, c2, c4, d6, e2, e6, h2
Black: Ka1, Nb1, Rb2, a2, a3, b7, e4, h4





ILLINOIS



Tournament Crosstables by Bill Smythe

Chicago Amateur – April 3-5, 1992 (Under 2200)

Player	rating	r1	r2	r3	r4	r5	score	tour
01. Scott Gene	IL 2083	W4	W8	W2	W5	D3	4.5	16
02. Gordon Wallace	IL 2144	H	W3	L1	W4	D6	3	3
03. Smythe Bill	IL 1980	W5	L2	D4	W7	D1	3	3
04. Eaton Jonathan	IL 1978	L1	W6	D3	L2	W7	2.5	2.5
05. Washington R.	IL 2016	L3	W7	W6	L1	-	2	2
06. Richmond M. B.	IL 1916	D8	L4	L7	B	D2	2	2
07. Cohen Lawrence	IL 2031	H	L5	W6	L3	L4	1.5	1.5
08. Fagan James	IL 2031	D6	L1	L5	-	-	0.5	0.5

Chicago Amateur – April 3-5, 1992 (Under 2000)

Player	rating	r1	r2	r3	r4	r5	score	tour
01. Pradzinski Tim	IL 1936	W5	W2	W8	W6	L3	4	8
02. Rydberg Steeve	IL 1886	W11	L1	W12	W9	W6	4	8
03. Egerton James	IL 1895	W10	L8	D4	W7	W1	3.5	4
04. Decman Stephen	IL 1800	H	D12	D3	X10	W9	3.5	4
05. Brown Tony	IL 1819	L1	L11	B	W12	W10	3	3
06. Dobrovolny C.	IL 1804	W13	D14	W9	L1	L2	2.5	2.5
07. Miller Tom	IL H	L9	W14	L3	W11	2.5	2.5	2.5
08. Connelly Kevin	IL 1844	W14	W3	L1	-	-	2	2
09. Bale Leslie	IL 1835	X	W7	L6	L2	L4	2	2
10. Armstrong N.	KY 1820	L3	W13	W11	F4	L5	2	2
11. Gray James	IL 1689	L2	W5	L10	W13	L7	2	2
12. Morton Bruce	IL 1639	H	D4	L2	L5	W15	2	2
13. Bourgerie Dennis	IL 1866	L6	L10	H	L11	-	0.5	0.5
14. Burgess Fred	IL 1705	L8	D6	L7	-	-	0.5	0.5
15. Wong Brian	IL 1412	-	-	-	-	L12	0	0

Chicago Amateur – April 3-5, 1992 (Under 1800)

Player	rating	r1	r2	r3	r4	r5	score	tour
01. Doss Jason	IN 1789	W7	W13	W8	D5	W3	4.5	16
02. Raimo Robert	IL 1659	D12	W16	D9	W13	W5	4	8
03. Cima Joe	IL 1666	W9	W10	D5	W8	L1	3.5	4
04. Lutzke Ricky	IL 1649	L5	H	W16	W17	W9	3.5	4
05. Howell Thomas	IL 1742	W4	W11	D3	D1	L2	3	3
06. Giertz Charles	IL 1693	L11	W19	L14	X18	W13	3	3
07. Engelen Mark	IL 1689	L1	L18	W12	W16	W11	3	3
08. Kittilsen Guy	IL 1674	W14	W15	L1	L3	W13	3	3
09. Stilling Martin	NH 1755	L3	W12	D2	W14	L4	2.5	2.5
10. Ditsworth Todd	IL 1703	W17	L3	H	L11	W14	2.5	2.5
11. Padilla Rudy	IL 1635	W6	L5	H	W10	L7	2.5	2.5
12. Mainous Tyler	KY 1627	D2	L9	L7	X	W17	2.5	2.5
13. Schultz Andrew	IL 1696	W18	L1	W15	L2	L8	2	2
14. Amirante Ron	IL 1605	L8	B	W6	L9	L10	2	2
15. Stafford Jerry	IL 1600	W19	L8	L13	W20	L8	2	2
16. Silverman Scott	IL 1548	W20	L2	L4	L7	W18	2	2
17. Grant Dennis	IL 1651	L10	W20	D18	L4	L12	1.5	1.5
18. Kopper Eric	KY 1603	L13	W7	D17	F6	L16	1.5	1.5
19. Clark Lawrence	IL 1673	L15	L8	W20	-	-	1	1
20. Wong Brian	IL 1412	L16	L17	L19	L15	B	1	1

Chicago Amateur – April 3-5, 1992 (Under 1600)

Player	rating	r1	r2	r3	r4	r5	score	tour
01. Van Krogh Chris	IL 1404	W2	L2	W3	X4	W4	4	8
02. Collins Darrell	MI 1505	L1	W1	D4	W3	-	2.5	2.5
03. Zelinski Daryl	IL 1525	W4	L4	L1	L2	B	2	2
04. Anderson Cliff	IL 1541	L3	W3	D2	F1	L1	1.5	1.5

Chicago Amateur – April 3-5, 1992 (Under 1400)

Player	rating	r1	r2	r3	r4	r5	score	tour
01. Bales Robert	IL 1359	W7	D2	W6	W5	W8	4.5	16
02. Jenkins Mike	IL 1343	W8	D1	H	W4	W5	4	8
03. Wickham M.	IL 1234	L4	W4	L5	W8	W7	3	3
04. Fioroni Stanley	IL 1168	W3	L3	D7	L2	W6	2.5	2.5
05. Baltazar Mark	IL 1053	B	D7	W3	L1	L2	2.5	2.5
06. Canzoneri Peter	IL H	H	W8	L1	D7	L4	2	2
07. Wickham M.J.	IL 1227	L1	D5	D4	D6	L3	1.5	1.5
08. Wickham Paul	IL 1197	L2	L6	W9	L3	L1	1	1
09. Ridgway Joey	IL	-	-	L8	-	-	0	0

Midwest Amateur – April 10-12, 1992 (Under 2200)

Player	rating	r1	r2	r3	r4	r5	score	tour
01. Scott Gene	IL 2083	W7	W8	W4	L2	W5	4	8
02. Hodina James	IL 2006	D9	W7	W5	W1	L4	3.5	4
03. Washington R.	IL 2016	L4	W6	W8	L5	W9	3	3
04. Eaton Jonathan	IL 1978	W3	W9	L1	L6	W2	3	3
05. Hurchalla David	IL 2053	W6	D8	L2	W3	L1	2.5	2.5
06. Rogan Marvin	IL 2017	L5	L3	W9	W4	D7	2.5	2.5
07. Stinson Marcus	IL 2000	L1	L2	W10	H	D6	2	2
08. Smythe Bill	IL 1988	D5	L1	L3	L9	B	1.5	1.5
09. Richmond M.B.	IL 1818	D2	L4	L6	W8	L3	1.5	1.5
10. Waliullah M.	-	-	L7	-	-	0	0	0

Midwest Amateur – April 10-12, 1992 (Under 2000)

Player	rating	r1	r2	r3	r4	r5	score	tour
01. Diaz Pablo	IL 1963	D6	W10	W2	W5	W7	4.5	16
02. McCarthy M.	IL 1820	W4	W9	L1	W8	D3	3.5	4
03. Lyon Mark	IL 1908	H	W11	L5	W4	D2	3	3
04. Rydberg Steeve	IL 1886	L2	W7	W9	L3	W8	3	3
05. Pradzinski Tim	IL 1936	D11	W6	W3	L1	-	2.5	2.5
06. Luves Joseph	IL 1853	D1	L5	L7	W9	W12	2.5	2.5
07. Plett Michael	IL 1973	L9	L4	W6	W10	L1	2	2
08. Bale Leslie	IL 1835	H	H	W10	L2	L4	2	2
09. Allison Roger	IL 1868	W7	L2	L4	L6	D10	1.5	1.5
10. Burgess Fred	IL 1705	B	L1	L8	L7	D8	1.5	1.5
11. McAlister Kelvin	IL 1830	D5	L3	-	-	-	0.5	0.5
12. Reinthaler W.	IL	-	-	-	-	L6	0	0

Midwest Amateur – April 10-12, 1992 (Under 1800)

Player	rating	r1	r2	r3	r4	r5	score	tour
01. Engelen Mark	IL 1689	W10	W8	W9	W6	L2	4	8
02. Nelson Patrick	TX 1625	L3	W13	W8	W9	W1	4	8
03. Kittilsen Guy	IL 1674	W2	L9	D4	W5	W8	3.5	4
04. Victorino C.	IL H	L6	W12	D3	W8	W9	3.5	4
05. Raimo Robert	IL 1659	W7	W11	L6	L3	W10	3	3
06. Lutzke Ricky	IL 1649	W4	H	W5	L1	L3	2.5	2.5
07. Sanchez Ignacio	IL 1742	L5	L10	W12	W11	L8	2	2
08. Ratner Jacob	IL 1713	W11	L1	L2	L4	W7	2	2
09. Giertz Charles	IL 1683	W12	W3	L1	L2	L4	2	2
10. Silverman Scott	IL 1508	L1	W7	L11	W12	L5	2	2
11. Nahrwald Andy	IN 1648	L8	L5	W10	L7	-	1	1
12. Padilla Rudy	IL 1635	L9	L4	L7	L10	B	1	1
13. Barniak Carl	IN	-	L2	-	-	-	0	0

Midwest Amateur – April 10-12, 1992 (Under 1600)

Player	rating	r1	r2	r3	r4	r5	score	tour
01. Van Krogh Chris	IL 1404	W3	W9	W2	W4	W7	5	32
02. Desguin Jon	IL 1516	W9	W8	L1	W5	W4	4	8
03. Durrant Larry	IL 1494	L1	W10	W7	H	D6	3	3
04. Hicks Charles	IL 1550	W7	D5	W6	L1	L2	2.5	2.5
05. Anderson Cliff	IL 1541	L8	D4	W10	L2	W9	2.5	2.5
06. Wong Brian	IL 1412	W5	L7	L4	W9	D3	2.5	2.5
07. Smith Floyd	IN 1448	L4	W6	L3	X	L1	2	2
08. Toribio Roy	IL	W10	L2	H	-	-	1.5	1.5
09. Martin John	IL 1419	L2	L1	B	L8	L5	1	1
10. Johnson Tarrell	IL 1473	L8	L3	L5	-	-	0	0

Midwest Amateur – April 10-12, 1992 (Under 1400)

Player	rating	r1	r2	r3	r4	r5	score	tour
01. Reinthaler W.	IL	B	W3	W5	W2	H	4.5	16
02. Manzello Samuel	IL 1319	D6	W6	W4	L1	D5	3	3
03. Martin Brian	IL 1259	D5	L1	W6	L4	B	2.5	2.5
04. Hart Dan	IL 1107	B	L5	L2	W3	D6	2.5	2.5
05. Bales Robert	IL 1359	D3	W4	L1	L8	D2	2	2
06. De Leon R.	IL	D2	L2	L3	W5	D4	2	2

Greater Peoria Open – May 2-3, 1992 (Open)

Player	rating	r1	r2	r3	r4	r5	score	tour
01. Chow Albert	2364	W9	W13	L3	W4	W2	4	8
02. Olesen Martin	2380	W12	D4	W11	W3	L1	3.5	4



ILLINOIS



Tournament Crosstables by Bill Smythe

03. Eckert Doug	2356	W18	W15	W1	L2	D6	3.5	4	14. Chow Albert	IL	2340	W51	W54	L8	W56	D33	W29	L4	4.5	4.5
04. Schmidt Ulrich	2193	W22	D2	W16	L1	W11	3.5	4	15. Carlin Alfred	LA	2340	W52	L8	D36	W35	D5	D34	W37	4.5	4.5
05. Dzurny Anthony	2075	L13	D9	W18	W15	W12	3.5	4	16. Eckert Doug	MO	2329	W67	D11	L3	D47	W44	D17	W36	4.5	4.5
06. Sax Robert	2000	L15	W18	W19	W7	D3	3.5	4	17. Morris Matthew	NY	2278	W74	W39	L2	L29	W24	D16	W31	4.5	4.5
07. McLaughlin Jim	2351	D19	W20	D8	L6	W14	3	3	18. Wheeler Jerry	TN	2234	W21	W43	D9	L4	D40	D20	W32	4.5	4.5
08. Underwood Wesley	2045	D10	W14	D7	D12	D9	3	3	19. Dougherty Michael	CN	2204	W41	L10	W25	W42	D29	W12	L5	4.5	4.5
09. Beelman Robert	1881	L1	D5	W17	W13	D8	3	3	20. Young Angelo	NY	2448	W36	W33	L6	D43	L28	D18	W39	4	4
10. Caldwell Scott	1820	D8	L16	H	W21	W15	3	3	21. Karklins Andrew	IL	2414	L18	W53	W57	L33	L37	W62	W43	4	4
11. Anderson Phil	1941	W21	H	L2	W16	L4	2.5	2.5	22. Burnett Kevin	IA	2348	L39	W74	D45	W38	W55	L4	D25	4	4
12. Sajkowski Daniel	1890	L2	W22	W21	D8	L5	2.5	2.5	23. Martinovsky E.	IL	2344	W56	L7	W4	D55	W50	L3	D28	4	4
13. Bourgerie Dennis	1866	W5	L1	H	L9	W19	2.5	2.5	24. Lonoff Marc	IL	2327	L65	W49	D54	D48	L17	W47	W50	4	4
14. Lulves Joseph	1853	H	L8	W22	W19	L7	2.5	2.5	25. Olesen Martin	IA	2308	L5	W37	L19	W60	W47	D11	D22	4	4
15. Lealk Michael	1783	W6	L3	W20	L5	L10	2	2	26. Ginsburg Jeffrey	OH	2299	L7	L55	W59	W51	D48	D50	W52	4	4
16. Scholt Paul	1994	H	W10	L4	L11	D17	2	2	27. Greanias Steve	VA	2290	L1	W59	L56	W58	W41	W40	L9	4	4
17. McCarthy Michael	1820	H	L19	L9	W20	D16	2	2	28. Levit Roman	WI	2269	L8	W58	W30	D12	W20	L13	D23	4	4
18. Jessephe Steve	1877	L3	L6	L5	W22	D20	1.5	1.5	29. Pelts Peter	IL	2407	D46	W35	D50	W17	D19	L14	-	3.5	3.5
19. Bolitho Thomas	1869	D7	W17	L6	L14	L13	1.5	1.5	30. Kraai Jesse	IL	2373	W49	L6	L28	L46	W53	W56	D38	3.5	3.5
20. Hieronymus Kent	1716	W23	L7	L15	L17	D18	1.5	1.5	31. Umezima George	IL	2341	W59	L1	D38	L54	W35	W48	L17	3.5	3.5
21. Decman Stephen	1800	L11	B	L12	L10	-	1	1	32. Simms Gary	TX	2311	W62	L9	L55	W49	W46	D37	L18	3.5	3.5
22. Vero Carl	1867	L4	L12	L14	L18	-	0	0	33. Kapstan Aron	CAN	2293	W75	L20	W60	W21	D14	L10	L11	3.5	3.5
23. Belle John	1373	L20	-	-	-	-	0	0	34. Belakovskaia Anj	FOR	2288	L9	W62	L23	W63	W42	D15	L12	3.5	3.5

Greater Peoria Open - May 2-3, 1992 (Reserve)

Player	rating	r1	r2	r3	r4	r5	score	tour
01. Creemans Matt	1497	W9	D8	W12	W4	W3	4.5	16
02. Kittlsen Guy	1715	W10	L3	W9	W5	W4	4	8
03. Warfield Thomas	1784	W13	W2	L4	W6	L1	3	3
04. Sphar Robert	1764	W8	W7	W3	L1	L2	3	3
05. Crum Randy	1721	W14	D12	H	L2	W9	3	3
06. Belle John	1373	-	W15	W8	L3	W12	3	3
07. Stafford Jerry	1600	W11	L4	H	W13	-	2.5	2.5
08. Moore Ron	1514	L4	D1	L6	W11	W13	2.5	2.5
09. Mohr Allen D	1756	L1	W11	L2	W12	L5	2	2
10. Cain Dennis	1357	L2	L13	H	D14	W15	2	2
11. Rodgers Paul	1350	L7	L9	W15	L8	B	2	2
12. Paimer Kenneth	1546	W15	D5	L1	L9	L6	1.5	1.5
13. Kirkpatrick Donald	1519	L3	W10	H	L7	L8	1.5	1.5
14. Miller Earl	1432	L5	-	H	D10	-	1	1
15. Brown Jason	L12	L6	L11	B	L10	1	-	-

Chess Center Plus-Score Bonanza - May 9, 1992

Player	rating	r1	r2	r3	r4	score	tour
01. Read Rhys	2002	W16	W14	W4	D3	3.5	8
02. Scott Gene	2098	W5	L4	W9	W7	3	4
03. Sukcharoenphon T.	1914	W13	D9	W15	D1	3	4
04. Smythe Bill	1980	W12	W2	L1	D5	2.5	2.5
05. Johnson Frank	1526	L2	W12	W14	D4	2.5	2.5
06. Flores Joshua	1737	H	W7	-	W8	2.5	2.5
07. Raimo Robert	1659	W8	L6	W13	L2	2	2
08. Griesmeyer Walter	1362	L7	W16	W10	L6	2	2
09. Fagan James	2031	W11	D3	L2	-	1.5	1.5
10. Reddick Harold Sr	1464	H	L15	L8	W11	1.5	1.5
11. Dudnick Steven	1482	L9	L13	W12	L10	1	1
12. Uram Max	1460	L4	L5	L11	W13	1	1
13. Fenner Charles	1453	L3	W11	L7	L12	1	1
14. Coleman George	1741	W15	L1	L5	-	1	1
15. Baugh Chris	2005	L14	W10	L3	-	1	1
16. Johnson Tarrell	1473	L1	L8	-	-	0	0

Chicago Open - May 22-25, 1992 (Open)

Player	rating	r1	r2	r3	r4	r5	r6	r7	score	tour
01. Kaidanov G.	KY 2623	W27	W31	W12	W7	D2	W8	D6	6	8
02. Gurevich Dmitry	IL 2603	W44	W64	W17	W5	D1	W6	D7	6	8
03. Odendahl Steven	MD 2533	D57	W63	W16	W40	L6	W23	W13	5.5	5.5
04. Taylor Tim	NC 2484	D35	W48	W47	W18	L7	W22	W14	5.5	5.5
05. Yermolinsky Alex	NJ 2692	W25	W42	D10	L2	D15	W43	W19	5	5
06. Ivanov Alexander	MA 2678	W69	W30	W20	D8	W3	L2	D1	5	5
07. Kudrin Sergey	CT 2669	W26	W23	W13	L1	W4	D9	D2	5	5
08. Ivanov Igor	CA 2616	W28	W15	W14	D8	W9	L1	D10	5	5
09. Rao Vivek	IL 2562	W34	W32	D18	W10	L8	D7	W27	5	5
10. Tate Emory Jr	IN 2427	W37	W19	D5	L9	W36	W33	D8	5	5
11. Brooks Michael	MO 2600	W45	D16	L40	W57	D43	D25	W33	4.5	4.5
12. Yoos John	MN 2406	X71	W38	L1	D28	W54	L19	W34	4.5	4.5
13. Colias Bill	IN 2385	W55	W65	L7	D50	W39	W28	L3	4.5	4.5

Chicago Open - May 22-25, 1992 (Under 2200)

Player	rating	r1	r2	r3	r4	r5	r6	r7	score	tour
01. Zelensky Eugene	IN 2137	W45	W37	W27	W14	W13	W8	W10	7	32
02. Ward Tom	MI 2133	W41	D6	W18	D8	D12	W27	W13	5.5	5.5
03. Kreitner Ilan	NY 2185	W49	L27	D40	W18	W25	D17	W19	5	5
04. Urquhart Donald	IN 2161	W48	L14	L20	W28	W31	W22	W15	5	5
05. Seaward Dennis	NY 2125	D28	W11	D22	W20	W14	D10	D6	5	5
06. Sheaf Michael	OH 2095	W58	D2	W23	W43	D10	D15	D5	5	5
07. Brodie Mark A	IL 2194	W30	D26	D39	L21	W29	W12	D8	4.5	4.5



ILLINOIS



Tournament Crosstables by Bill Smythe

77.	Reinthal William	IL	1463	L25	L29	L78	L71	D70	L72	B	1.5	1.5
78.	Stelzer Paul	IL	1306	L8	L39	W77	D44	L61	L37	L60	1.5	1.5
79.	Reddick Harold Sr	IL	1436	L76	L49	W73	L51	L65	L57	L70	1	1
80.	Jenkins Mike	IL	1358	L28	X84	L39	L69	L64	L71	-	1	1
81.	Johnson Tarrell	IL	1342	W39	L27	L9	L42	L73	-	-	1	1
82.	Dunlap Tony	IL	1505	L6	L66	D62	-	-	-	-	0.5	0.5
83.	Jazcar Orlando		1558	F18	-	-	-	-	-	-	0	0
84.	Martin Michael	KY	1550	L56	F80	-	-	-	-	-	0	0
85.	Zyluk Dan	CAN	1375	F48	-	-	-	-	-	-	0	0
86.	Milovanovic Mirko	IL	1369	L36	F24	-	-	-	-	-	0	0
87.	Laing R Scott	FL	1273	F50	-	-	-	-	-	-	0	0

Chicago Open - May 23-24, 1992 (Under 1200)

Player	rating	r1	r2	r3	r4	r5	r6	r7	score	tour	
01. Raczkiewicz Mark	IL	1169	W21	W20	W3	W8	L5	W11	D2	5.5	5.5
02. Maas Stephen	MN	1097	W31	W11	L5	D24	W22	W10	D1	5	5
03. Davenport Felix	IL	1000	W15	W24	L1	W6	W8	W5	L4	5	5
04. Gyori Victoria	OH	953	W14	L6	L23	W27	W17	W12	W3	5	5
05. Mansour Khaled	MI		W17	W9	W2	W10	W1	L3	L6	5	5
06. Martin Keith	IL		W19	W4	L10	L3	W26	W8	W5	5	5
07. Naviamos William			B	L10	H	H	W32	W20	W11	5	5
08. Hart Dan G		1134	W13	W30	W12	L1	L3	L6	W22	4	4
09. Van der Wyst Tony		1106	W27	L5	D17	W23	L12	W16	D10	4	4
10. Hauger Christopher	IL	1095	D16	W7	W6	L5	W24	2	D9	4	4
11. Steiner C G	KS		W18	L2	W20	W14	W19	L1	L7	4	4
12. Nikitin Nick	IL		W29	W26	L8	D19	W9	L4	D15	4	4
13. Eickelberg Henry P	IL		L8	D18	W16	L22	W23	D24	W20	4	4
14. O'hara John			L4	W29	W15	L11	L20	W28	W19	4	4
15. Weingest Rob	IA	1139	L3	W28	L14	L17	W18	W23	D12	3.5	3
16. Phillips Jason	IL		D10	L19	L13	W21	W25	L9	W24	3.5	3.5
17. Carpenter Richard			L5	W31	D9	W15	L4	H	H	3.5	3.5
18. De Leon Ramesses			L11	D13	L24	W31	L15	W21	W27	3.5	3.5
19. Yeates Nick	IL	1179	L6	W16	W27	D12	L11	D22	L14	3	3
20. Ellingson Eric	IL	479	W28	L1	L11	B	W14	L7	L13	3	3
21. McCoy Damon	IL		L1	L23	W28	L16	W27	L18	W26	3	3
22. Herbert Dino	OH		H	H	H	W13	L2	D19	L8	3	3
23. Van Der Wyst John			L30	W21	W4	L9	L13	L15	B	3	3
24. Mitchell Brad R			X33	L3	W18	D2	L10	D13	L16	3	3
25. Shiklas Shaun			L26	L27	D31	W28	L16	H	H	2.5	2.5
26. Drendel Tyler	IL	945	W25	L12	W30	-	L6	L14	L21	2	2
27. Eickelberg Henry D	IL		L9	W25	L19	L4	L21	B	L18	2	2
28. Carpenter Eric			L20	L15	L21	L25	X31	H	H	2	2
29. Holmes Christopher	IL	1148	L12	L14	B	-	-	-	-	1	1
30. Holmes Bruce	IL		W23	L8	L26	-	-	-	-	1	1
31. Ridgway Joe	IL		L2	L17	D25	L18	F28	-	-	0.5	0.5
32. Takl Sonia		1183	-	-	-	-	L7	-	-	0	0
33. Herr Steve	IL		F24	-	-	-	-	-	-	0	0

Summer Knights Action - June 13, 1992

01. Van Buskirk Douglas	2211	W8	W7	W2	W3					4	16
02. Reynolds Robert	2164	W4	W5	L1	W8					3	4
03. Bourgerie Dennis	1800	W11	W8	W7	L1					3	4
04. Sphar Robert	1783	L2	W6	W5	W9					3	4
05. Johnson Chris	1825	W6	L2	L4	W11					2	2
06. Belle John	1491	L5	L4	W11	D10					1.5	1.5
07. Kujoth Richard	2160	W9	L1	L3	-					1	1
08. Boswell Larry	1793	L1	L3	W9	L2					1	1
09. Larson James	1596	L7	W11	L8	L4					1	1
10. Knoedler Thomas	1726	-	-	-	D6					0.5	0.5
11. Brown Jason		L3	L9	L6	L5					0	0

CHESS SET COLLECTORS
 Selling 5" Aztec-Spaniards
 Chess Set w/Board-Case \$200
 NM Brian Schuman 312-262-0816

Paintings, Drawing
 Music Lessons &
 The Stuparitz
 artz
 Drawing
 Music Lessons &
 Theory, Piano, Doodl
 Oil Paintings, Drawi
 Piano & Music theory
 for Mathminds, Arts
 Contact I.C.B. @

**GRANDMASTER
 DIMITRY GUREVICH**

AVAILABLE FOR:
 PRIVATE LESSONS
 SIMULTANEOUS EXHIBITIONS
 LECTURES
 CALL: 312-486-8051

Send Tournament Crosstables to
 Tour Statistician
 Bill Smythe
 7445 N. Greenview, #311
 Chicago, IL 60626
 Deadline for submissions in
 September-October issue: August 1, 1992



ILLINOIS



ICA Tour Standings by Bill Smythe

Note: Because of several recent and upcoming Tour events with under-1200 sections, we are now calculating Class E tour points. This change is retroactive to January 1, 1992.

This list reflects the following events:

Jan 11-12		
Tim Just Winter Open, Grayslake	MAXI	
Jan 25-26		
Fox Valley Championship, Aurora	MAXI	
Mar 13-15		
Mid-America Class, O'Hare	MAXI	
Mar 21		
Normal Redbird Open, Normal	Mini	
Apr 3-5		
Chicago Amateur, O'Hare	MAXI	
Apr 10-12		
Midwest Amateur, O'Hare	MAXI	
May 2-3		
Greater Peoria Open	MAXI	
May 9		
Chess Center Bonanza Plus-Score	Mini	
May 22-25		
Chicago Open, O'Hare	MAXI	
June 13		
Summer Knights Action, Springfield	Mini	

Upcoming 1992 Tour events:

Jun 27-28		
Maurice Irvin Open, Bloomington	MAXI	
Jul 11-12		
Oberweis Dairy Class, Aurora	MAXI	
Jul 17-19		
Midwest Class, O'Hare	MAXI	
Sep 5-7		
Illinois Open	MAXI	
Oct 10		
Springfield Action	Mini	
Nov 22-23		
Illinois Class	MAXI	

More events will be added as the year progresses. A player must compete in at least three Tour events during 1992 to be eligible for year-end Tour prizes.

Master Tour Points:

CHOW Albert	27
COLIAS Bill	23.5
IVANOV Alexander	(2) 21
COOPER Thomas	20
BOCK Dale	(1) 16
COOKE Paul	(1) 16
DZINDZICHASHVILI	(1) 16
VAN BUSKIRK Doug	(1) 16
MARTINOVSKY Eugene	14.5
LONOFF Marc	13
LEVIT Roman	(2) 12
KRAAI Jesse	(2) 11.5
GUREVICH Dmitry	(2) 11
MARQUEZ Tony	(2) 11
MARSHALL James	11

Expert Tour Points:

ERNST Edward	(2) 36
ZELENSKY Eugene	(2) 36
SCOTT Gene	33.5
WARD Tom	(2) 21.5
BOCK Dale	(1) 16
MARSHALL James	13.5
BRODIE Mark	(2) 12.5
JOHNSON Leonard	(2) 12.5
SCHMIDT Ulrich	11.5
DZURNY Anthony	11
MARQUEZ Tony	(2) 11
CHONG David	10
COHEN Larry	10
SAX Robert	10
HEYER Jon Paul	(2) 8.5
WASHINGTON Ronald	8.5

Class A Tour Points:

JASAITIS Anthony	(2) 35.5
PRADZINSKI Tim	26.5
DIAZ Pablo	(2) 18.5
BOCK Dale	(1) 16
RYDBERG Steeve	16
STOLTZ Robert	(1) 16
CHONG David	15.5
LULVES Joseph	14.5
MC CARTHY Mike	14.5
COHEN Howard	9
BALE Les	8.5
DECMAN Steve	8.5
EATON Jonathan	8.5
HERNANDEZ Hector	(2) 8.5
MC ALISTER Kelvin	8.5

Class B Tour Points:

PAPHITIS Alexander	51
GRAY James Jr	37.5
KITTILSEN Guy	30.5
SANCHEZ Ignacio	28.5
ENGELN Mark	20
RAIMO Robert	18.5
CREEMENS Matt	(1) 16

DOSS Jason	(1) 16
PEREZ Ronald S	(1) 16
REED Boyd	(2) 16
SMITH Brian	(1) 16
WILLIAMS Kent	16
LUTZKE Rick	13
WEINER Howard	(2) 13
MORTON Bruce	12

Class C Tour Points:

VAN KROGH Chris	44
JOHNSON Frank	23.5
JOSEPHS Steve	21.5
SILVERMAN Scott	16.5
CREEMENS Matt	(1) 16
JOHNSON Arlando	(1) 16
SCHULTZ Dan	(1) 16
CRAGGS Tommy	13.5
SLAGLE Steve	(2) 12.5
AMIRANTE Ron	10.5
DURRANT Larry	10
IOVIN Daniel	10
YBARRA Ruben	(2) 10
HILLMAN Bruce	9.5
WIRTH Mike	9

Class D Tour Points:

BALES Robert	24
CRAGGS Tommy	13.5
JENKINS Mike	11.5
WIRTH Mike	9
MANZELLO Samuel	(2) 5.5
BELLE John	5
RETHEMEYER Dougl	(1) 5
HILLMAN Bruce	4.5
KASPER Douglas	(1) 4.5
MEDVEDUK Sergey	(1) 4.5
ZYLUK Dan	(1) 4.5
CATHCART Daniel	(2) 4
VERNON Ken	(1) 4
WOOLLEY Scott	(2) 4
BOND Scott	(1) 3.5
FREEDLUND Eric	(1) 3.5

Class E Tour Points:

HART Dan	(2) 6.5
RACZKIEWYCZ Mark	(1) 5.5
DAVENPORT Felix	(1) 5
GYORI Victoria	(1) 5
MAAS Stephen	(1) 5
HAUGER Christoph	(1) 4
VAN DER WYST Ton	(1) 4
WEINGEIST Rob	(1) 3.5
ELLINGSON Eric	(1) 3
YEATES Nick	(1) 3
BALTAZAR Mark	(1) 2.5
BAUMGARTNER Chri	(1) 2.5
FIORONI Stanley	(1) 2.5
DRENDEL Tyler	(1) 2
HIGHTOWER Dean	(1) 2

Tournament Calendar

Call Chess Phone, (708) 832-5222, for up-to-date tournament results, as well as announcements of tournaments that may not be listed in Chess Life or the ICB. The ICA Chess Phone voice is Todd Barre. Unless otherwise noted, all tournaments require USCF membership. Illinois Tour events also require ICA membership.

June 27-28

2nd Annual Maurice Irvin Open Bloomington, IL

5-SS, 40/100, SD/30.

Illinois Wesleyan University, Memorial Union, Bloomington, IL. \$\$G 2,430. 2 Sections: Open, EF \$30 if rec'd by 6/23, \$40 later, \$\$1000-500-250-150-100.

Reserve: Open to U2000. EF: \$25 if rec'd by 6/23, \$35 later, \$\$150 plus trophy to 1st B,C, D/E each plus 60 plus trophy, Unr. 60 plus trophy (if 3 or more). Both ICA membership req'd, OSA. Reg: 8-8:45 am Rds: 9:30, 2, 6:30, 9, 1:30, HR: Dorm rate (by 6/20) \$20 single, \$35 double: Ent: Garret Scott, 202 Foster Dr., Normal, IL 61761, (309)-452-8116.

July 4-5

Fred Cramer Memorial 36th Western Open - Milwaukee, WI

6-SS, 45/2, SD/1. The Grand Milwaukee Hotel, 4747 S. Howell Ave. (Mitchell Airport), Milwaukee, WI 53207. EF: \$35 if rec'd by 6/30, \$42 at site. \$\$G 1000: 300-200-120, X 110, A 90, B 70, C 60, D 50. Reg 10:00-11:15 am. Rds. 12-7,11-6,10-5. Byes 1-3, max 2 (Rd 1 2200/above - full bye) in advance. HR: \$69, 1-4, mention tournament, (800) 558-3862. Ent: Milwaukee Chess Foundation, P.O. Box 11843, Milwaukee, WI 53211 (no phone). NS. NC. W.

July 11-12

Oberweis Dairy Class Championship - Aurora, IL

3 Sections: Open 40/100 20/40 SD/15 - 4-SS, Class A/B 45/90 SD/30 - 5-SS, Class C/D/E 45/90 SD/15 - 5-SS, Site-Prisco Community Center, Lake St. and Illinois Ave, Aurora, Open: Open to all over 2000. , Rds - Sat. 9:30, 2:30 Sun. 9:30, 2:30 - Prize Fund (b10)- \$100, \$50, Top U2200 \$60, \$30, Class A/B - Open to A/B., Rds - Sat 9:00, 1:00, 5:00, Sun 9:30, 1:30 - Prize Fund (b20) - Top A \$80, \$40, Top B \$80, \$40, Class C/D/E/unr. - Open to C/D/E/unr. Rds - Sat 9:00, 1:00, 5:00 Sun 9:30, 1:30 - Prize Fund (b20) - Top C \$60, \$30, Top D \$60, \$30, Top E \$60, \$30, Top Unr - Trophy. Reg: Saturday 8:00 - 8:30 A.M. Entry Fee: \$20 if rec'd by 7/7/92, \$30.00 at site, unrated free (not eligible for cash prize), \$3 off to FVCC members. ICA membership req'd. Make checks payable to the Fox Valley Chess Club. For info: Bob Renaut at 708-983-0934, Entries to: R. Renaut, 1255 Oakton Lane, Naperville, IL 60540.

MAXI

July 17-19

Midwest Class Championship Chicago., IL

\$5,000 PF. See ad. **MAXI**

July 22: Fox Valley Chess Club Speedy Four - Aurora, IL

4-SS, G/15 (Quick Chess). Site-Prisco Community Center, Lake St. and Illinois Ave, Aurora. EF: \$2, \$\$ 5 to 1st. Reg. 6:30-7:05. Rds 7:15, 7:50, 8:25, 9:00 pm. Cks. payable to Fox Valley Chess Club. Ent: R. Renaut, 1255 Oakton Lane, Naperville, IL. 60540, (708) 983-0934, NS, NC, W.

July 26

Illinois-Wisconsin Match

August 2-14

US Open - Dearborn MI.

August 8

Springfield Sauna Open

August 15

Second Barb City Tornado DeKalb, IL

4-SS, 30/60, SD/30, EF: \$15 if received before 8/14, site \$20, Barb City Manor, 680 Hais Blvd, Dekalb, IL (down First st.), For info: Bill Reed, 815-758-1027. Entries to: 1460 North 14th, Dekalb IL, 60115.

August 17

Fox Valley Chess Club Speedy Four - Aurora, IL

4-SS, G/15 (Quick Chess). Site-Prisco Community Center, Lake St. and Illinois Ave, Aurora. EF: \$2, \$\$ 5 to 1st. Reg. 6:30-7:05. Rds 7:15, 7:50, 8:25, 9:00 pm. Cks. payable to Fox Valley Chess Club. Ent: R. Renaut, 1255 Oakton Lane, Naperville, IL. 60540, (708) 983-0934, NS, NC, W.

August 22-23

Oberweis Dairy Open St. Charles, IL

5-SS, 2 Sections, 40/100 25/60, EF all: \$25 if rec'd by 8/8 or \$30 at site. Reg. 8:00-8:30 Rds - Sat. 9:00, 2:00, 7:00 Sun. 9:00, 2:00 Site- Baker Community House, 101 S. 2nd (Rte 31), St. Charles, IL., NC., NS., Open: Open to all, - Prize Fund (\$G) \$300, \$200, Top Expert & Class A - \$100, \$80, Reserve - Open to u1800, Prize Fund (\$G) - \$100, \$80, Top C - \$70, \$50, D/under \$60, \$40. ICA membership req'd. Make checks payable to the St. Charles Chess Club. For info: Erv Sedlock at 708-377-7995. Entries to: E. Sedlock, 6N307 Old Homestead Rd, St. Charles, IL. 60540. **MAXI**

Tournament Calendar

September 5-7 Illinois Open (State Championship)

6-SS 40/2 25/1 SD/1. Ramada O'Hare Hotel, 6600 N. Mannheim, Rosemont IL 60018. \$\$G 3050. In 2 sections: Open: \$\$ 750-450-200-100, X 200-100, U2000 200-100. Reserve: Open to U1800 and Unrated \$\$ 300-200-100, C 100-50, D/E 100-50, and Unr 50. EF for both: \$35 by 8/24 \$7 more at site. ICA membership required \$14 (\$8 under 18) OSA. Unrated may only win the unrated prize in the reserve or top prizes in the open. Reg 9-10 AM. Rds 11-6, 10-5, 10-5. 1/2 point bye available in one of the first 4 rounds if requested in advance. HR: \$49 1-2. (708) 827-5131. Special upset prizes for Ramada Hotel guests. Int: Alan Losoff, PO Box 157, Morton Grove, IL 60053. (708) 966-5559. NS. W. **MAXI**

September 26 September NU Plus Score Mini Tour - Evanston, IL

4-SS, 40/60, SD/30, Norris Center, Northwestern University, 1999 Sheridan Road, Room 2-G, Evanston, IL. Entry Fee: \$12 if rec'd by 9/20, \$15 at site. Prize Fund Guaranteed, 4pts=\$100, 3.5=\$50, 3.0=\$25, 2.5=\$12. Reg: 8:45-9:30, Rds= 10:00, 12:30, 3:00, 5:30. 1/2 bye available for first three rounds if requested in advance, cafeteria on site, free close parking, ICA membership req'd. Entries: Barratt Moy, 210 Florence Ave., Evanston, IL 60202. **Mini**

October 10 Lake County Open Grayslake, IL **Mini**

October 10 Springfield Action **MINI**

October 17 Third Barb City Tornado DeKalb, IL

4-SS, 30/60, SD/30, EF: \$15 if received before 10/14, site \$20, Barb City Manor, 680 Hais Blvd, Dekalb, IL (down First st.). For info: Bill Reed, 815-758-1027. Entries to: 1460 North 14th, Dekalb IL, 60115.

October 18 ICA Membership Meeting

October 24 October NU Plus Score Mini Tour Evanston, IL

4-SS, 40/60, SD/30, Norris Center, Northwestern University, 1999 Sheridan Road, Room 2-G, Evanston, IL. Entry Fee: \$12 if rec'd by 10/24, \$15 at site. Prize Fund Guaranteed - 4pts=\$100, 3.5=\$50, 3.0=\$25, 2.5=\$12. Reg: 8:45-9:30, Rds= 10:00, 12:30, 3:00, 5:30. 1/2 bye available for first three rounds if requested in advance, cafeteria on site, free close parking, ICA membership req'd. Entries: Barratt Moy, 210 Florence Ave., Evanston, IL. 60202. **Mini**

October 25 Homewood

November 7 Fox Valley Scholastic Championship - Aurora, IL

November 22-23 Illinois Class Championships **MAXI**

December 5 Fox Valley High School Championship - Aurora, IL

March 12-14 Mid America Class Championship Chicago, IL

April 9-11 National High School Championship - Dallas, TX

April 16-18 National Junior High School Championship - Chicago

April 23-25 National Elementary Championship - Charlotte, NC

May 28-30 Chicago Open - Chicago, IL

June 6-8 National Open - Las Vegas, NV

July 16-18 Midwest Class Championship Chicago, IL

August 7-15 U. S. Open Philadelphia, PA

1994

August 7-19 U. S. Open - Chicago

Send Tournament
Announcements To
Calendar Editor
Bob Renaut
1255 Oakton Ln.
Naperville, IL 60540
(708) 983-0934

The DEADLINE for
submissions in the
September-October
issue is
AUGUST 1, 1992

1993

ILLINOIS CHESS ASSOCIATION PATRONS

Century Club Members

Michael Belovesick Sr. Elmhurst
 Thomas Fineberg Chicago
 Fred Gruenberg Chicago
 Marc Lonoff Northbrook
 Michael McIlhany Springfield
 Robert Raimo Blue Island
 Albert Sandrin Chicago
 Angelo Sandrin Chicago
 Bill Smythe Chicago
 Burton Vincent Chicago
 Helen Warren Western Springs
 Jim Warren Western Springs
 Bill Wenz Milwaukee WI
 Philip Wong Wilmette

Gold Card Members

Tyrone Brooks Chicago
 William Dwyer Worth
 Donald Graft Wheaton
 Harland S. Hoisington Ogden UT
 Alan Losoff Morton Grove
 Kenneth Marshall Lombard
 William Naff Peoria
 Peter Pelts Niles
 Daniel Pradt Glen Ellyn
 Michael Pratts Chicago
 Irwin Rothschild Park Forest
 Markus Stinson Singapore
 Mitchel Sweig Evanston
 George Umezawa Chicago
 Louis Werner Evanston
 Sandy Zabell Chicago

Patron Members

Faneull Adams New York NY
 Fred Allsbrook Downers Grove
 Bob Ash Urbana
 Kevin Bachler Waukegan
 Ken Bankhead Country Club Hills
 Todd Barre Elmhurst
 Roy Benedek Western Springs
 Edward J. Blanco Chicago
 Timothy Bogan Chicago
 Dennis Bourgerie Normal
 Bill Brock Chicago
 Jim Brotsos Chicago
 Gregory Bungo Elmhurst
 Fred Burgess Oak Forest
 Bill Buttny Downers Grove
 Anthony Caliendo Aurora
 Lawrence Cohen Villa Park
 Jim Condron Westmont
 Kevin Connelly Villa Park
 Paul Cox Hazel Crest
 Mike Cronin Evergreen Park
 Greg De Fotis Chicago
 John Deutsch Chicago
 Leroy Dubeck Cherry Hill NJ
 Kalman Farkas Milwaukee WI
 Charles Fenner Chicago
 Michael Flynn Aurora
 Jon Gotz West Chicago
 William Graves Chicago
 Steve Hansen Indian Head Park
 Walter Henry Naperville
 Steven Herr Chicago
 Charles Hicks Naperville
 Keith Holzmueeller Evanston
 Jeffery Hyland Mount Prospect
 Toshio Imai East Lansing
 Randy Ingram Bloomington
 Robert Irons Chicago
 Gary Jochim Chicago
 Gersharn Johnson Chicago
 Stephen Josephs Hinsdale
 Tim Just Gurnee
 Dan Kamen Buffalo Grove

Scott Kittsley Shorewood WI
 Thomas Knoedler Springfield
 Walter Kocjan Northlake
 Warren Kreckler Chicago
 Peter Kuhn Des Plaines
 Richard Lang Evanston
 Michael Lester Chicago
 Harry Lyman Boston MA
 John Marconnet Clarendon Hills
 Mark Marovitch Cicero
 Anthony Marquez Chicago
 Ed Marschall Barrington
 Eugene Martinovsky Naperville
 Patrick Maurer Glen Ellyn
 Thomas Mayka Wheeling
 James McNamara Hinsdale
 Fred Meyers Morrison
 Earl Miller El Paso
 Ken Palmer Bolingbrook
 Randall Pals South Holland
 Alex Pehas Downers Grove
 Waldo Pena Chicago
 Mieczyslaw Platek Skokie
 Michael Plett Wheaton
 Rhys Read Evanston
 Frederick S. Rhine Chicago
 Murrel Rhodes Peoria
 Marvin Rogan Chicago
 Ray Satterlee Wheaton
 Mark Secheck Naperville
 David Shane Illinois
 Anthony Sillars Huntington MA
 Richard Simonetti Elmwood Park
 Arthur Sinclair Evanston
 Leonard Spiegel St. Charles
 Joe Splinter Glen Ellyn
 Peter Stein Wheaton
 Robert Stoltz River Forest
 James Tanaka Chicago
 Marc E. Thomas Normal
 Richard Verber Chicago
 Jeff Weimar Moline
 Douglas White Schaumburg
 Don Winsauer Forest Park
 Harold Winston Naperville
 Max Zavanelli Park Ridge

ICA Elected Officers

Alan Losoff, President
 P.O. Box 157, Morton Grove, IL 60053
 (708) 966-5559
 Garrett Scott, First Vice-President
 202 Foster Drive, Normal, IL 61761
 (309) 452-8116
 Tom Fineberg, Metro Vice-President
 7321 S. South Shore Dr. Chicago, IL
 60649-3597 (312) 721-3979
 Ken Marshall, Secretary
 357 W. Grove, Lombard IL 60148
 (708) 932-1455
 Marc Lonoff, Treasurer
 900 Appletree Court, Northbrook IL 60062
 (708) 564-2346

USCF Delegates

by virtue of their USCF posts

Alan Losoff Regional Vice-President
 Fred Gruenberg Regional Vice-President
 Frank Skoff Life Voting Member
 Helen Warren Life Voting Member
 Harold Winston Life Voting Member

by ICA-appointment

Tom Fineberg
 Tim Just
 Ken Marshall
 Todd Barre

USCF Voting Members

ICA appointed

Marc Lonoff
 Garrett Scott
 Jim Warren
 Bill Naff
 Larry Cohen
 Jim Condron
 Bill Smythe
 Erv Sedlock
 Dennis Grant
 Tom Knoedler
 Les Bale
 Bill Wilkinson

ICA appointed alternates

Jim W Oberweis
 Howard Wachtel
 Angelo Sandrin
 Ray Socha
 Jim Brotsos
 James Enochs
 Murrell Rhodes
 John Barstad
 William Brock
 Glen Panner
 Steve Foust
 Dave Shiner



Where to Play Chess ICA Club Affiliates



ABCDEU sponsors tournaments and other chess events. Ed Blanco, Box 579181, Chicago IL 60657-9181.

AMERICAN POSTAL CHESS TOURNAMENTS sponsors postal events & sells chess books & equipment. Jim or Helen Warren, P.O. Box 305, Western Springs 60558. 708/246-6665.

CENTRAL LAKE COUNTY CHESS CLUB meets Fridays, 7:15 to 12:00AM College of Lake County, Bldg. 1, Washington at Route 45, Grayslake. Dennis Grant, 1657 McKay, Waukegan 60087. 708/336-5188.

CHAMPAIGN CHESS CLUB 706 Kenwood Road, Champaign IL 61821.

CHESSTERTON CHESS CENTER c/o Randy Pals, 16526 Ellis Ave., South Holland, IL 60473-2425, Info: Randy Pals 708-339-4247, Harold Henderson 219-324-2620.

CHICAGO CHESS CENTER meets for casual chess 7 days a week 6:00 p.m. 1:00 a.m. \$2 charge. 1921 W. 47th St., Chicago 60609. Also sponsors rated tournaments Thurs.-Sun. Ray Socha, 312/376-5678.

CHICAGO INDUSTRIAL CHESS LEAGUE organizes frequent competition among commercial/government teams with awards, ratings, & special events. Tony Jasaitas 312/431-2966.

CONTINENTAL CHESS ASSOCIATION, 450 Prospect Ave. Mt Vernon NY 10553. Bill Goichberg.

DOWNERS GROVE PARK DISTRICT CHESS CLUB meets Thurs., 6:30-10 p.m., Lincoln Center, 935 Maple Ave., Downers Grove. Affiliated with USCF & ICA. George Uffner, 708/960-9382.

EVANSTON TOWNSHIP HIGH SCHOOL CHESS CLUB Ken Lewandowski 1600 Dodge Avenue, Evanston IL 60204.

FOX VALLEY CHESS CLUB meets Monday evenings, 7 p.m.-?, Prisco Community Center, Lake St. & Illinois Ave., Aurora IL. Bob Renaut, 708/983-0934.

GREATER PEORIA CHESS FEDERATION meets Mon., 7-11 p.m., Garrett Center, 824 N. University, Peoria. Bill Wilkinson, 901 N. Rebecca Pl., Peoria 61606. 309/673-9455.

HAMMOND (INDIANA) CHESS CLUB meets Thursdays, 7:00 p.m. to ?, at Hammond Public Library, Howard Branch, 171st and Grand. Jim Enochs, 6346 Jefferson Ave., Hammond, IN 46324. 219/932-1437.

ILLOWA CHESS CLUB meets Tues., 6:30-10 p.m., Hauberg Civic Center, 1300 24th St., Rock Island. Bob Ratcliff, 2336 25th St., Rock Island IL 61202; 309/786-8104.

LAKE COUNTY CHESS ASSOCIATION sponsors rated tournaments

in the Grayslake-Zion area. Tim Just, 37165 Willow, Gurnee 60031. 708/244-7954.

MATTOON AREA CHESS CLUB meets Monday, 7-9 p.m., 2608 Richmond Ave., Mattoon IL 61938. Bret R. Fuller.

MIDWEST CHESS ASSOCIATION organizes major tournaments for masters & experts. Helen Warren, P.O. Box 305, Western Springs, 60558. 708/246-6665.

NORTHWESTERN UNIVERSITY c/o M.B. Henroid, 2245 Sheridan Rd., Room 222, Evanston, IL 60201.

OAK PARK/RIVER FOREST CHESS CLUB meets Tues., 7 midnight, Dominican Conference Center, 7200 W. Division, River Forest. Ken Marshall, 357 W. Grove, Lombard 60148. 708/932-1455.

ORLAND PARK CHESS CLUB meets every Friday night, 7:30-11, at the George Brown Commons, 15045 West Ave. (1 block w. of Lagrange Rt. 45 96th Ave.), Orland Park. No membership fee is required. Glenn Panner, 708/460-3111.

PARK FOREST CHESS CLUB meets Thursdays, 7-10:00 p.m., Freedom Hall, Orchard & Lakewood, Park Forest. Lawrence Cohen, 135 Westwood, Park Forest, 60466. 708/748-5911.

QUAD CITIES CHESS CLUB, Steven J. Foust, 9500 14th St. W., Apt. C2-B, Rock Island, 61202. 309/787-5198.

RUDY LOZANO LIBRARY CHESS CLUB, 1805 S. Loomis, Chicago, 60608. Hector Hernandez, Head Librarian. 312/733 4329.

SHIMER COLLEGE CHESS CLUB meets Mondays, 7 p.m. to ?, Koko House, Shimer College, corner of Genessee and Cory in Waukegan. David Shiner, P.O. Box A500, Waukegan 60079. 708/623-8400.

SMYTHE DAKOTA COMPETITIONS is the sponsor of the monthly Plus-Score Mini-Tours in the Chicago area. Bill Smythe, 6945 N. Ashland #F-3, Chicago 60626. 312/761-2455.

SPRINGFIELD CHESS CLUB meets Wed., 6-10 p.m., Washington Park Pavilion, Park Ave. & South Grand Ave. West, Springfield. Tom Knoedler, 217/523-7265; or James Larson, 217/529 0781. ST.

ST. CHARLES CHESS CLUB meets Thursdays at 7 p.m., Baker Community House, 101 S. 2nd (Rte. 31), St. Charles. Erv Sedlock, 6 N. 307 Old Homestead Rd., St. Charles 60174, 708/377-7995.

TULEY PARK CHESS CLUB meets Saturdays, 1-5 p.m., Tuley Park Field House, 501 E. 90th Pl., Chicago. Thomas Fineberg, 7321 S. South Shore Dr., Chicago 60649, 312/721-3979.

Join the Illinois Chess Association and receive six issues of the Illinois Chess Bulletin. In addition, you'll qualify to enter over two dozen tournaments on the Illinois Chess Tour. Every game you win or draw in a tour event earns you "tour points" that can add up to cash prizes at year-end. Finally, you'll be supporting the activities of the Illinois Chess Association. Every year, the ICA organizes major tournaments like the Illinois Open and the Illinois Class Championships; the ICA has

bid for the National Open, the US Open and the US Class Championships to be held in Illinois. In addition, the ICA sponsors scholastic clinics, runs a tournament clearinghouse, and promotes and publicizes chess activity statewide. If you would like to show increased support for Illinois chess, please consider renewing as a Century Club, Gold Card, or Patron member. Patrons are acknowledged in each issue of the ICB and receive their magazines by first-class mail.

Mail To: ICA MEMBERSHIP SECRETARY
PO BOX 2534
NORTHBROOK IL 60065-2534

(Your mailing label is on the other side; note corrections below)

Name _____
Address _____
City _____ State _____ Zip _____

ICA Membership Renewal

Check membership type:

<input type="checkbox"/> Century	\$100.00	<input type="checkbox"/> Gold Card	\$50.00
<input type="checkbox"/> Patron	\$25.00	<input type="checkbox"/> Regular	\$14.00
<input type="checkbox"/> Junior	\$8.00	<input type="checkbox"/> Affiliate	\$25.00



THE OBERWEIS DAIRY OPEN

AUGUST 22 & 23

**AN ILLINOIS TOUR MAXI EVENT
Hosted by the St. Charles Chess Club**

Two Sections • 5 Round Swiss • Time Control 40/100, 25/60

\$1,260 IN GUARANTEED PRIZES

★ OPEN SECTION: \$860 (Open to all) ★

1st \$300 – 2nd \$200

Expert & Class A \$100 & \$80 each

★ RESERVE SECTION: \$400 (Under 1800) ★

1st \$100 – 2nd \$80

Class C \$70, \$50 – Class D/Under \$60, \$40

Entry Fee: \$25.00 if postmarked by 8/8, \$30 if postmarked by 8/20, \$35 at the site.
Make checks payable to St. Charles Chess Club

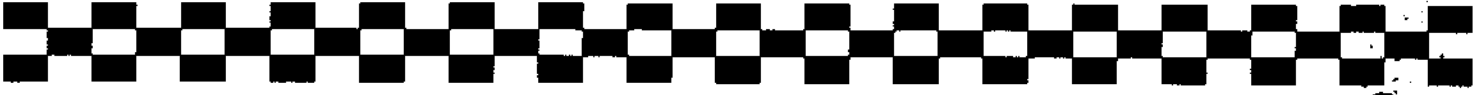
Memberships: ICA Membership Required - Regular \$14.00, Junior \$8.00

Registration: Saturday, August 22, 8-8:30 a.m.

Rounds: Saturday, 8/22 9-2-7, Sunday 8/23 9-2

Entries To: Erv Sedlock, 6N307 Old Homestead Rd., St. Charles, IL 60175

Tournament Site: Baker Community House, 101 S. 2nd (Rte. 31), St. Charles, IL



Illinois Chess Association
P.O. Box 2534
Northbrook, IL 60065-2534

Time Value Material

Address Correction Requested