



# ILLINOIS CHESS BULLETIN

Official Publication of the Illinois Chess Association, a U.S.C.F. Affiliate  
A Not For Profit Organization

September-October 1992 Volume XV, No. 5 Bi-monthly \$2.95

## ILLINOIS BEATS WISCONSIN 29.5-10.5

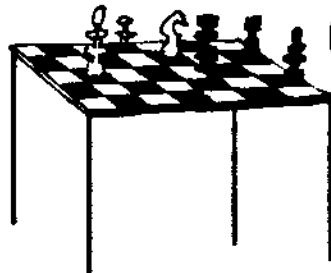
In Illinois-Wisconsin Chess Match Held At Shimer College On July 26



(IL) Greg DeFotis (2442) vs. (WI) Josh Manlon (2340)  
on Board 1



(WI) Peter Webster (2314) vs. (IL) Richard Verber (2417)  
on Board 2





# TABLE OF CONTENTS

**Editor**.....**Warren Kreckler**  
**Calendar Editor**.....**Bob Renaut**  
**Tour Statistician**.....**Bill Smythe**  
**Games Editor**.....**Tom Cooper**

## MEMBERSHIP AND SUBSCRIPTIONS

The Illinois Chess Bulletin (ICB) is published bimonthly by the Illinois Chess Association. ICA membership includes a subscription to the ICB. Century Club, Gold Card, and Patron members receive their ICB by first-class mail.

### ANNUAL MEMBERSHIP RATES

Century Club .....\$100.00  
 Gold Card .....\$50.00  
 Patron .....\$25.00  
 Regular .....\$14.00  
 Junior (under 18) .....\$8.00

Subscriptions and address corrections should be sent to:

ICA Membership Secretary  
 P. O. Box 2534  
 Northbrook, IL 60065-2534

### SUBMISSIONS

The deadline for submissions in the November-December 1992 issue is OCTOBER 1, 1992.

Send tournament announcements to: Bob Renaut  
 Send tournament crosstables to: Bill Smythe  
 Send games for publication to: Tom Cooper  
 Send articles, ads, comments, info to: Warren Kreckler

### ICA AFFILIATION

Chess clubs and other organizations which promote chess activity may affiliate with the ICA. Benefits include a copy of the ICB by first class mail, a listing under "Where to Play Chess," discounted advertising rates, three-line tournament announcements in the "Tournament Calendar," and the right to run ICA Tour Events. ICA Affiliation costs \$25; please remit to Membership Secretary.

### ADVERTISING RATES

Full page .....\$90  
 Half page .....\$54  
 Quarter page .....\$36  
 Eighth page .....\$24

10% discount for the same ad in consecutive issues. 1/3 discount for ICA affiliates. All ads must be camera-ready to qualify for above rates; minimum \$20 charge for layout. Payment must accompany ad. The ICA & the ICB reserve the right to reject advertising.

**President's Page** .....3  
*by Alan Losoff*

**Editor's Comments** .....3  
*by NM Warren Kreckler*

**Illinois Routs Wisconsin In IL-WI Match**.....4  
*by Howard Wachtel*

**Games From The Illinois-Wisconsin Match**.....6  
*by NM Tom Cooper*

**Chess Is Alive And Well At The No Exit Cafe**.....12  
*by Lee Wenzbauer*

**Fund Raising For The ICA/Warren Junior Program In Progress**.....14  
*by Helen Warren*

**Annotations** .....16  
*by Senior Master Bill Cozas*

**Can You Find The Best Move?** .....19  
*by David Taylor*

**Chess On The Fox**.....20  
*by Bob Renaut*

**Chess Tech-Talk** .....22  
*by NM Marc Lonoff*

**Midwest Class Draws 150**.....24  
*by Bill Smythe*

**Adam Kalai Wins ICA Junior Invitational High School Championship** .....26  
*by Alan Losoff*

**Mayor Richard M. Daley's City-Wide Summer Chess Tournament**.....28  
*by Senior Master Richard Verber*

**High School Chess Annotations** .....30  
*by Senior Master Richard Verber*

**Improving Your Chess** .....32  
*by NM Tom Cooper*

**ICA Tour Standings** .....34  
*by Bill Smythe*

**Tournament Calendar** .....36  
*by Bob Renaut*

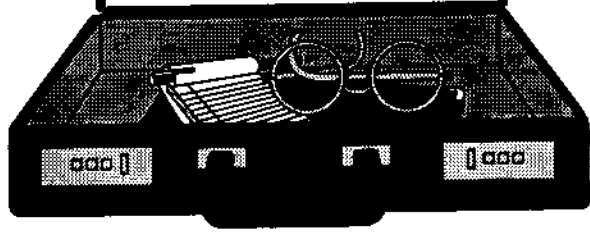
**ICA Patrons** .....38

**Where to Play Chess ICA Club Affiliates** .....39

Photos: Marvin Rogan  
 Alan Losoff  
 Warren Kreckler

# President's Page

by Alan Losoff



## ILLINOIS OPEN

This year's Illinois Open will be held at the Ramada O'Hare, September 5-7. By now most of you know the Ramada is one of the best sites ever, and the special ICA room rate is lower than usual. Tim Just will be the chief TD and we expect this to be a great tournament. There will also be a book concession this year. (By the way, if you're into baseball cards and the like, one of the Midwest's largest shows will be going on at the same time.)

## SHOW YOUR SUPPORT

The ICA could not exist without the generous support of our patrons, gold card and century members listed in this and every issue of the ICB. If you are not already a patron member, consider the benefits of upgrading the next time you renew. In ad

## THIS IS YOUR MAGAZINE

Organizers, send in those tournament reports. Players, send in those games and anecdotes. The ICB doesn't have a staff of reporters to cover the major tournaments of the state, so we depend on you to keep us informed.

## SUPPORT THE TOUR

Show your support of the ICA and affiliates by playing in Illinois Chess Tour events. Besides showing support, you also win tour points which could add up to prizes at year-end. Tour standings are printed in every issue of ICB.

# Editor's Comments

by Warren Kreckler

I enjoyed playing in the Illinois-Wisconsin match on July 26th at Shimer College and was very pleased to see a terrific turnout. In the match, I was paired against Shelly Gelbart, a former Chicago master (now living in Wisconsin), whom I haven't seen for many years.

Will Bobby Fischer play Boris Spassky for a \$5 million dollar pot in war-torn Yugoslavia starting in September 1992? Your guess is as good as mine. One thing is for certain: If the match actually takes place it will mean an avalanche of publicity for chess. Even World Champion Kasparov wants to get into the act, proposing a world title match against Fischer. USCF membership is now at an all-time high (65,000) and there is even more good news on the horizon for American Chess.

Pay special attention to ICA's new Junior Chess Program and Helen Warren's inaugural article on page 14. Please be generous in your support of Junior Chess.

Congratulations are in order for Adam Kalai of New Trier High School in Wilmette - our Illinois representative to the recent Denker Tournament of High School Champions. Although Adam is rated in the low 1900's he held his own against 2150 players and masters in Dearborn, Michigan. We'll have a report on Adam Kalai's success in the next ICB.

Our hats are off to Mayor Daley of Chicago and his Department of Human Services Department Summertime Chess Tournaments for high school and grammar school kids. To our knowledge, this is the first time that Chicago city government has ever sponsored city-wide chess events in Chicago.

**Please take note that my new address is:**

**6146 N. Oakley, #2F  
Chicago, IL 60659  
(312) 764-2807**

# Illinois Routs Wisconsin in War of the Roses

by Howard Wachtel

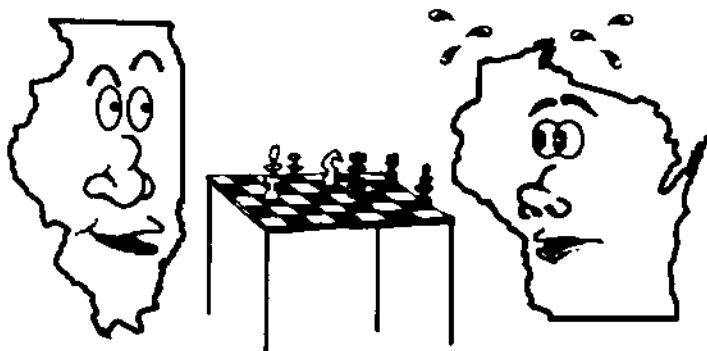
The 1992 Illinois-Wisconsin chess match took place at Shimer College in Waukegan on Sunday, July 26, 1992. This year the home team was well represented by 40 players, while only 20 players made the trip for the Wisconsin team. Naturally this gave Illinois a much more formidable team, with an average rating edge of more than 200 points over Wisconsin. The Illinois team overpowered the Wisconsin team by a 29.5 to 10.5 score in this 20-board, 2-round match. A complete results table and some games from the event follow.

Special thanks to Dick Verber for actively recruiting strong players for the Illinois team, and to David Shtner for securing the playing site.

A side tournament was held to accommodate the Illinois players who could not play in the match due to the lower turnout

from Wisconsin. Our deepest apologies go out to those players and we hope that they will not be discouraged from participating in future events. (The side tournament was won by James Lahvic.)

Next year when Wisconsin hosts the match again, it might not be at the Milwaukee Rose Festival as was the 1991 match; the Wisconsin people are considering a site on I-90 such as Beloit or Janesville. Stay tuned to the ICB for news about the 1993 match.



(IL) Marc Lonoff (2327) vs. (WI) Roman Levit (2301)  
on Board 3



(WI) Bill Williams (2285) vs. (IL) Tom Cooper (2259)  
on Board 5

# Illinois/Wisconsin Match Results

(1st Player, Illinois - 2nd Player, Wisconsin)

B#	Players	Rating	Rd. 1	Rd. 2	B#	Players	Rating	Rd. 1	Rd. 2
01.	Greg DeFotis Josh Manion	(2441) (2340)	.5 .5	.5 .5	11.	Dan Kamen Guy Hoffman	(2068) (1971)	.5 .5	1 0
02.	Dick Verber Peter Webster	(2427) (2314)	1 0	0 1	12.	Serge Minin Wayne Meier	(2068) (1841)	1 0	.5 .5
03.	Marc Lonoff Roman Levit	(2327) (2301)	1 0	1 0	13.	Ron Washington Nghia Tran	(2027) (1806)	.5 .5	1 0
04.	Warren Kreckler Sheldon Gelbart	(2291) (2300)	1 0	.5 .5	14.	Jim McNamara Paul Kaesberg	(2020) (1770)	.5 .5	0 1
05.	Tom Cooper Bill Williams	(2259) (2285)	0 1	1 0	15.	Tony Jasaitis David Granik	(2008) (1671)	0 1	1 0
06.	Mariano Acosta Dale Sharp	(2240) (2175)	1 0	1 0	16.	Bill Smythe Scott Kittsley	(1964) (1605)	1 0	1 0
07.	Alan Watson Alex Betaneli	(2235) (2118)	0 1	1 0	17.	James Fagan Ronald Waller	(1964) (1573)	.5 .5	.5 .5
08.	Ray Satterlee Thomas Hofinger	(2146) (2061)	1 0	1 0	18.	Howard Cohen Don Hwang	(1952) (1458)	1 0	1 0
09.	Rodney Kinnaird Bill Olk	(2104) (1990)	1 0	1 0	19.	Larry Cohen Jerry Noel	(1944) (1428)	1 0	1 0
10.	David Garrett John Becker	(2092) (1988)	1 0	0 1	20.	Fidel Serrano Geoff Gibson	(1940) (1332)	1 0	1 0



(IL) Mariano Acosta (2240) vs. (WI) Dale Sharp (2175)  
on Board 6



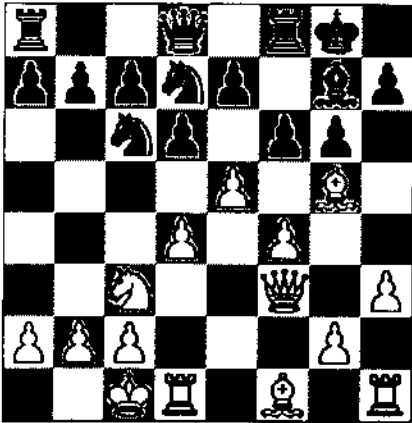
(WI) Wayne Meier (1841) vs. (IL) Serge Minin (2068)  
on Board 12

# Games from the ILLINOIS/WISCONSIN MATCH

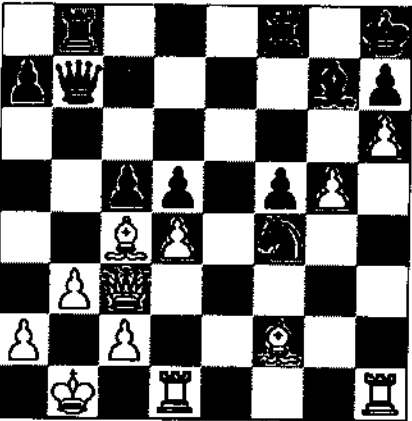
by NM Tom Cooper

## Verber-Webster Illinois-Wisconsin Match, 1992

1.e4 d6 2.d4 ♘f6 3.♗c3 g6 4.♖g5  
♗g7 5.f4 0-0 6.♗f3 ♗g4 7.h3 ♗xf3  
8.♗xf3 ♗c6 9.0-0-0 ♗d7 10.e5 f6



11.exf6 exf6 12.♗h4 ♗b6 13.f5 ♗d7  
14.g4 ♖ae8 15.♗b1 ♗h8 16.♗f2 ♗e7  
17.fxg6 ♗xg6 18.♗xb7 ♖b8 19.♗f3  
♗a4 20.b3 f5 21.g5 ♗xc3+ 22.♗xc3  
c5 23.h4 ♗b7 24.♗c4 d5 25.h5 ♗f4  
26.h6

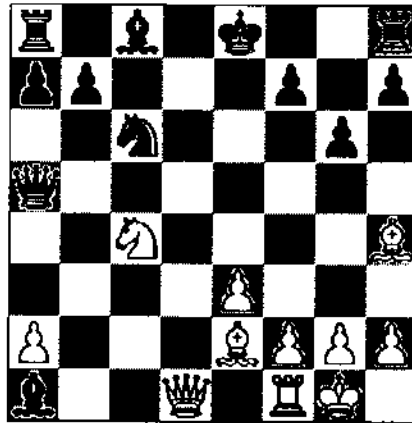


dxc4 27.hxg7+ ♗xg7 28.♗xc4 ♗g8  
29.d5 ♗xg5 30.♗e3 ♖b4 31.♗xc5  
♖fb8 32.♗d4+ ♗g8 33.♖dg1 ♗g2  
34.♖h2 1-0

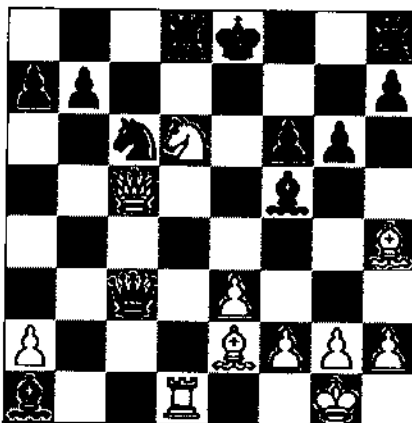
## Levit-Lonoff Illinois-Wisconsin Match, 1992

1.d4 ♗f6 2.c4 g6 3.♗c3 d5 4.♗g5  
♗e4 5.♗h4 ♗xc3 6.bxc3 ♗g7 7.e3 c5

8.cxd5 ♗xd5 9.♗f3 ♗c6 10.♗e2 cxd4  
11.cxd4 ♗a5+ 12.♗d2 (Better is  
12.Qd2 Be6 13.Qa5 Na5 14.00 Bc4=  
ECO) 12...e5 13.dxe5 ♗xe5 14.0-0  
♗xa1 15.♗c4



♗c3 16.♗d6 f6 17.♖d1 ♗f5 18.♗c5  
♖d8 19.♗d6+



♗f8 20.♗d5 ♖d7 21.g4 ♗e5 22.♗d2  
♗c3 23.♗c1 ♖xd6 24.♖xd6 ♗xd6  
25.♗xc3 ♗d7 26.♗xf6 ♖g8 27.g5  
♗f7 28.♗b3+ ♗e6 29.♗xb7+ ♗d7  
30.♗a6 ♖b8 31.♗a4 ♖b1+ 32.♗g2  
♗h3+ 33.♗g3 ♖b4 34.♗c4+ ♗f8 0-1

## Gelbart-Kreckler Illinois-Wisconsin Match, 1992

1.d4 e6 2.e4 d5 3.♗d2 ♗f6 4.e5 ♗f7  
5.f4 c5 6.c3 ♗c6 7.♗f3 ♗b6 8.g3 f6  
9.♗h3 fxe5 10.fxe5 cxd4 11.cxd4  
♗b4+ 12.♗f1 ♗f8?!)



(Risky. Current theory gives 12...00  
13.Kg2 Nde5 14.de Ne5 with:  
a)15.Qb3 Bc5 16.Qb6 Bb6 17.Bf4 Nd3  
18.Bd6 Rf7 19.Rf1 e5! Smagin-  
Rosiak,Skopje 1987;or b) 15.Qe2 Nc4  
16.b3 Bc3 17.Rb1 e5 (...Nd6  
Knaack)Krieger-Maier,Bundesliga  
1987.) 13.♗g2 ♗g6 14.♗e2 0-0  
15.♗f4?!



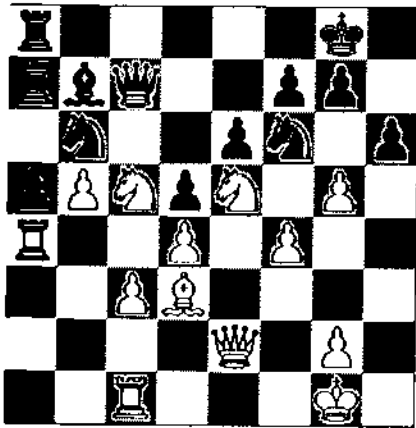
(Correct is 15.Bg4 Bd7 16.h4 which  
led to a clear positional advantage  
for White in Portisch-Tal, Ober-  
hausen 1961.) 15...♗xf4+ 16.♗xf4  
♗d7 17.♗d3 ♗e7 18.♗d2 ♖ac8  
19.♖hc1 ♗a5 20.b3 ♗a3 21.♖xc8 ♖-♖

## Kreckler-Gelbart Illinois-Wisconsin Match, 1992

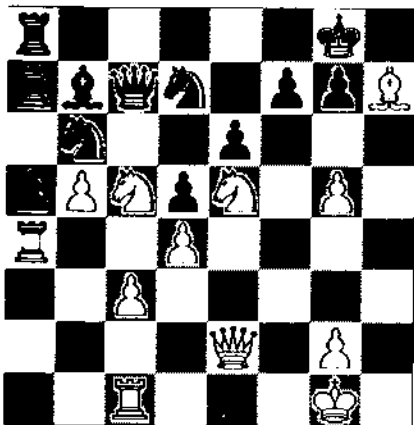
1.d4 ♗f6 2.♗f3 e6 3.♗f4 c5 4.c3 d5  
5.♗bd2 ♗c6 6.e3 cxd4 7.exd4 ♗d6

# Games from the ILLINOIS/WISCONSIN MATCH

8.♠g3 ♖c7 9.♗d3 a6 10.0-0 ♗xg3  
 11.hxg3 0-0 12.♞e1 b5 13.a3 ♞b8 14.b4  
 ♞e8 15.♞e2 ♗b7 16.a4 bxa4 17.♞xa4  
 a5 18.b5 ♖e7 19.♞c1 ♞a8 20.♖b3  
 ♞a7 21.♖e5 ♞ea8 22.♖c5 ♖c8 23.g4  
 ♞b6 24.f4 ♖b6 25.g5



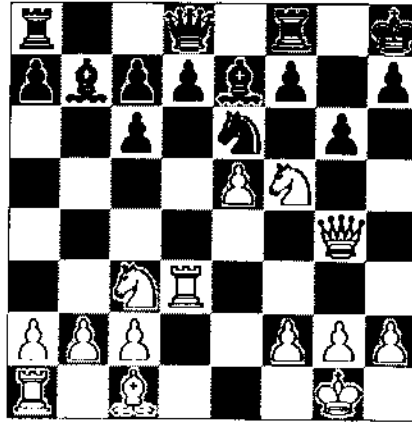
♞g5 26.fxg5 ♖fd7 27.♗h7+



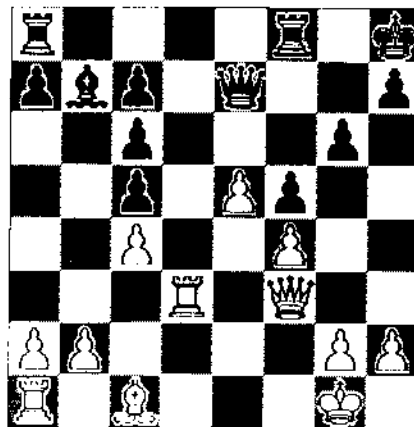
♞f8 28.♖g6+ ♗e8 29.♖xe6 fxe6  
 30.♞xe6+ ♗d8 31.♞g8+ ♖f8  
 32.♞xf8+ ♗d7 33.♞xg7+ 1-0

## Cooper-Williams Illinois-Wisconsin Match, 1992

1.e4 e5 2.♖f3 ♖c6 3.♗b5 ♖f6 4.0-0  
 ♗xe4 5.d4 ♗e7 6.♞e2 ♖d6 7.♗xc6  
 cxc6 8.dxe5 ♖b7 9.♖c3 0-0 10.♖d4  
 ♗c5 11.♞d1 ♗b7 12.♞g4 ♗h8 13.♖f5  
 ♗e6 14.♞d3 g6



15.♖xe7 (15.Rh3!) 15...♞xe7 16.♖e4  
 d6 17.f4 ♖c5 18.♖xc5 f5 19.♞f3 dxc5  
 20.c4



♞ad8 21.♞xd8 ♞xd8 22.b3 ♞d7  
 23.♗b2 ♞d2 24.♗c3 ♞c2 25.e6+  
 ♗g8 26.♞e1 ♞xa2 27.e7 ♞e8 28.♞e3  
 ♗c8 29.♞e5 1-0

## Williams-Cooper Illinois-Wisconsin Match, 1992

1.e4 c6 2.♖c3 d5 3.♖f3 ♗g4 4.h3  
 ♗h5 5.exd5 cxd5 6.d4 ♖c6 7.♗e3 e6  
 8.♗e2 ♗b4 9.0-0 ♖f6 10.♖a4 0-0  
 11.a3 ♗d6 12.♖c5 ♞e7 13.♖e5 ♗xe2  
 14.♖xc6 bxc6 15.♞xe2 e5 16.♞fe1  
 ♞fe8 17.♞f1 a5 18.b4 h6 19.c3 e4  
 20.c4 ♗c7 21.b5 cxb5 22.cxb5 ♞d6  
 23.g3 ♖h5 24.♞e2 g6 25.♖a6  
 (25.Bh6 e3!) 25...♗b6 26.♞ac1 ♞ac8  
 27.a4 ♞xc1 28.♞xc1 ♖xg3 29.♞g4  
 ♖f5 30.♞c6 ♞d8 31.♖c5 ♗xc5

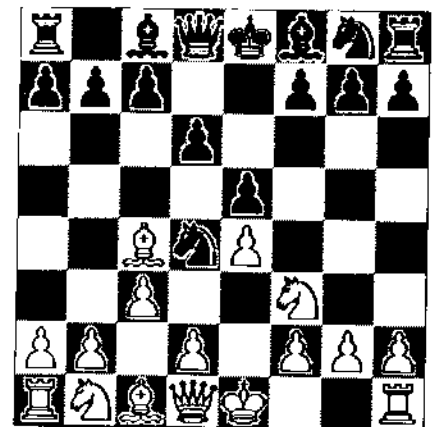
32.dxc5 d4 33.♗d2 e3 34.fxe3 dxe3  
 35.♗c3 ♗h7 36.♞f6 e2?? (36...Qd5  
 winning) 37.♞xf7+ 1-0

## Betaneli-A. Watson Illinois-Wisconsin Match, 1992

1.c4 g6 2.g3 ♗g7 3.♗g2 f5 4.♖f3 ♖f6  
 5.0-0 0-0 6.♖c3 d6 7.♞b1 a5 8.a3 e5  
 9.d3 ♖c6 10.♖d2 ♗e6 11.♖d5 ♞b8  
 12.b4 axb4 13.axb4 ♖e7 14.♖xf6+  
 ♗xf6 15.e4 ♞d7 16.♞e2 ♗g7 17.♗b2  
 h6 18.f4 ♖c6 19.b5 ♖d4 20.♗xd4  
 exd4 21.♖b3 c5 22.e5 ♞fe8 23.♞c2  
 ♞c7 24.exd6 ♞xd6 25.♞a1 ♞e7  
 26.♖a5 ♗f7 27.♞fe1 ♞xe1+ 28.♞xe1  
 ♞c7 29.♖xb7 ♞xb7 30.♗xb7 ♞xb7  
 31.♞g2 ♞a7 32.♞c6 ♞a5 33.♞d1  
 ♞a4 34.♞f3 ♞b3 35.♞ff1 ♗f8 36.♞b1  
 ♞a4 37.b6 ♗d6 38.b7 ♞e8 39.♞f3  
 ♗b8 40.♞a1 ♗e6 41.♗f2 ♗f7 42.♞a6  
 ♗d7 43.♞a8 ♗e6 44.♞e2 ♗e7  
 45.♞e5 1-0

## Minin-Meier Illinois-Wisconsin Match, 1992

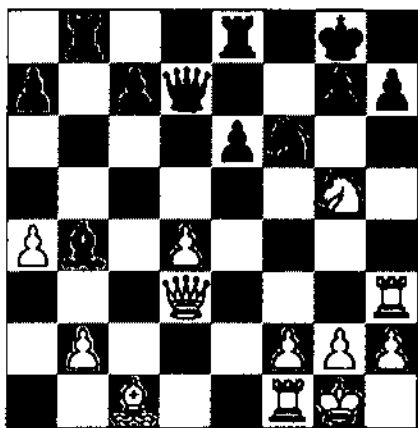
1.e4 e5 2.♖f3 ♖c6 3.♗b5 ♖d4 4.♗c4  
 d6 (Solid but passive) 5.c3



(5.Nd4 ed 6.00 Nf6 7.c3 Be7 (7...Ne4  
 8.Qh5) 8.Re1 is better for White as in  
 Geller-Makagonov, Leningrad 1949)  
 5...♖xf3+ 6.♞xf3 ♞f6 7.♞e2 ♗e6  
 8.♗xe6 fxe6 9.♞b5+ ♗f7 10.♞xb7  
 ♞d8 11.d3 ♖f6 12.♖d2 ♗e7 13.0-0  
 ♞d7 14.♞b3 ♞ab8 15.♞d1 ♞hf8  
 16.♖f3 ♗g8 17.♞e2 ♞b5 18.a4 ♞b7

# Games from the ILLINOIS/WISCONSIN MATCH

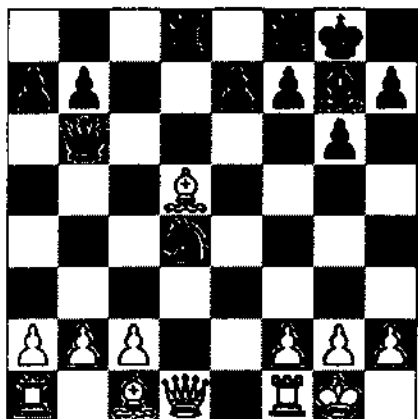
19. d5 g5 c8 20. d4 exd4 21. cxd4 e8  
22. a3 d5 23. h3 dxh4 24. exh4  
d7 25. g5 b4 26. d3



g6 27. b3 e7 28. f3 c5 29. e5 d5  
30. h6 bb7 31. f3 cxd4 32. xf6  
ec7 33. c4 c3 34. f8+ 1-0

## Meier-Minln Illinois-Wisconsin Match, 1992

1. e4 g6 2. d4 g7 3. f3 c6 4. c4 d5  
5. exd5 cxd5 6. b5+ c6 7. e5  
b6 8. c3 f6 9. 0-0 0-0 10. f3 g4  
11. e2 xf3 12. xf3 dxd4 13. dxd5  
dxd5 14. xd5 ad8

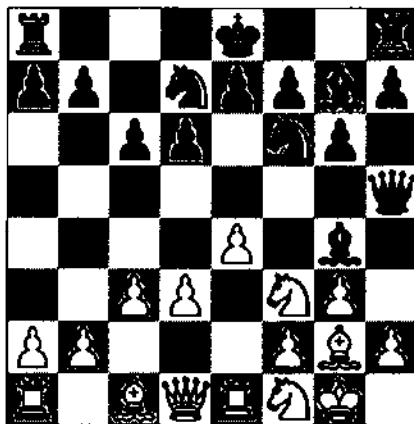


15. c4 e6 16. e4 c7 17. d3 d7  
18. g4 c6 19. c2 e5 20. f4  
xc4 21. xc4 dxc4 22. b1 d2  
23. d1 fd8 24. xd2 xd2 25. b3  
f6 26. xd2 xd2 27. e4 b6 28. a4  
d4 29. f1 xf2 30. c1 c5 31. c3  
f2+ 32. e1 f4 33. c4 a5 34. g3  
f2 35. xc5 xh2 36. b5 h3

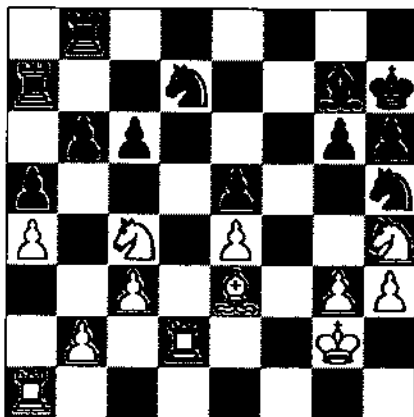
37. f2 h5 38. xb6 e5 39. d3  
g7 40. b5 f6 41. f3 h5 42. e4  
g5 43. e3 xb5 44. axb5 e5 45. b6  
d6 46. b7 c7 47. d4 f6 48. c6  
b8 49. c5 c7 50. g2 h4 51. gxh4  
gxh4 52. b8+ xb8 53. d6 a7  
54. xe6 b6 x-x

## Hwang-H. Cohen Illinois-Wisconsin Match, 1992

1. e4 d6 2. f3 f6 3. d3 g6 4. g3 g7  
5. g2 c6 6. bd2 a5 7. 0-0 h5  
8. e1 h3 9. f1 d7 10. c3 g4



11. e3 h3 12. xh3 xh3 13. g5  
h5 14. g2 e5 15. f4 xd1 16. xd1  
ed7 17. h3 h6 18. f3 e5 19. a4 a5  
20. fe5 dxh5 21. e3 0-0 22. c4 h5  
23. g2 f5 24. h4 h7 25. d6 fe4  
26. dxh4 a7 27. e3 b6 28. c4 b8  
29. d2

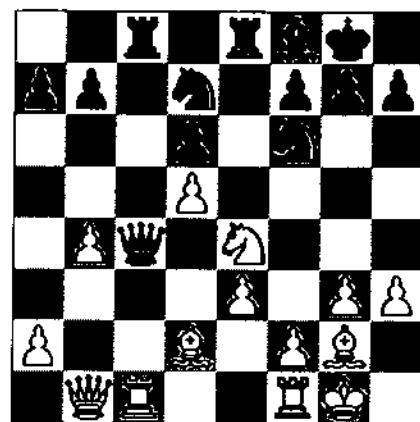


(29. Rd6) 29... hf6 30. ad1 f6  
31. f3 c5 32. fxe5 dxe5 33. dxe5

e8 34. g4 (34. Nd7 Ne4 35. Nf8 Rf8  
36. Rd7 Rf7; 34. Nc6 Ne4 35. Rd8 Rd8  
36. Rd8 Rc7 37. Rf8 Rc6 38. Re8 with  
the idea of 39. Re7 and Bh6)  
34... d4 35. hxg4 36. xd7+  
xd7 37. xd7+ g8 38. f3 xa4  
39. b7 a2 40. xb6 f7 41. b7+  
e6 42. b8 (42. Rb6) 42... d6  
43. b6 d5 44. xh6 a4 45. f4 e7  
46. g5 c4 47. e4 d8 48. b8 a5  
49. d6 a1 50. e5 xc3+ 51. bxc3  
a3 52. c8? a2 53. xc5+ d3  
54. f6? f1+ 55. f4 a1 56. xg6  
a6+ 57. f5 e1 58. e5 f1+  
59. f4 d6 60. e5 xc3 0-1

## Watson-Betanili Illinois-Wisconsin Match, 1992

1. d4 d6 2. f3 g4 3. c4 c6 4. e3 f6  
5. e2 e6 6. b3 c7 7. c3 d7  
8. h3 xf3 9. xf3 e7 10. d2 0-0  
11. 0-0 fe8 12. g3 f8 13. g2 e5 14. d5  
c5 15. c2 e4?! 16. b4 d7 17. ac1  
cxd5 18. cxd5 ac8 19. b1 c4  
20. exh4



b5 21. c3 b6 22. e4 c4 23. a4  
b5 24. xc4 xc4 25. e1 e5  
26. b2 d4 27. d1 c4 28. xc4  
xc4 29. c1 b5 30. c2 g6 31. a4  
b6 32. a5 b5 33. c3 c8 34. b2  
h6 35. d2 xc1+ 36. xc1 xd2  
37. xd2 c4 38. f3 d7 39. f2 e5  
40. f1 b3 41. e2 f6 42. d4 c2  
43. xa7 d3+ 44. e3 c1+  
45. xd3 b1+ 46. c4 c2+  
47. b5 xe2+ 48. b6 c4  
49. b8+ g7 50. c7+ 1-0



★ ICA Mini-Tour Event ★

# TIM JUST (Lake County) OPEN/RESERVE XV

OCTOBER 10, 1992

A COLLEGE OF LAKE COUNTY ACTION EVENT

## \$500 IN PRIZES!

OPEN: \$100-\$50, Exp: \$50, A & Below: \$50  
RESERVE (below 1800): \$100-\$50, G: \$50, D/E/UNR: \$50

(Prizes based on 30 entries)

ROUNDS: 9:30-11:00-1:00-2:30 REG: 8:30-9:15 TIME: Game/30

College of Lake County, Washington & Rt. 45, Grayslake, IL, Main Bldg.  
Early EF: \$20 Mail to: Tim Just, 37165 Willow, Gurnee, IL 60031, 708-244-7954  
Late Entry (received after 10/6) \$25

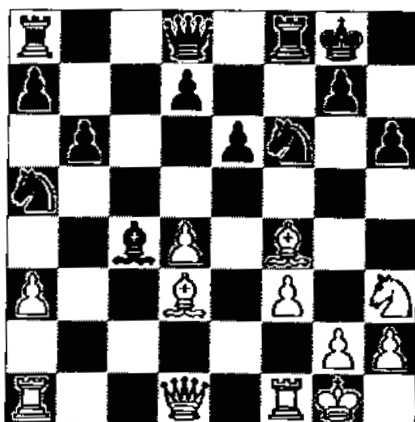
### U.Schmidt-Chow Peoria Open, 1992

1.d4 ♘f6 2.c4 e6 3.♗c3 ♖b4 4.a3  
♜xc3+ 5.bxc3 0-0 6.f3 ♘e8



(Lower rated players are often puzzled by this retreat. It is directed against Bg5, clears the way for f5, and allows Nd6 attacking c4. The dark side is that Black's central influence is diminished and Q-side development is delayed.) 7.♗h3 b6 8.e4 ♖a6 9.♖d3 (White should consider 9.e5 Nc6 10.Bg5 [If 10.Qa4 Na5 11.Be3 f6 12.Bd3 fe5 13.Bg5 Qc8 14.de h6 15.Be3 d5 Black has the initiative] f6 11.ef Nf6

12.Bd3 with a complicated position and chances for both sides.) 9...c5 10.0-0 (Most plans with K-side castling have the N on e2 where White plays for f4, Ng3 and a K-side attack, i.e., Moves 1-6 as in the game, then 7.e4 b6 8.Bd3 Ba6 9.Ne2 Nc6 10.00 Na5 11.f4 Bc4 12.Bc4 Nc4 13.Ng3 f5 14.Qd3 and 15.e5 (ECO) 10...♗c6 11.e5 ♘a5 12.♗g5 (As the game continuation shows the Nh3 is misplaced and has a difficult time getting back into the game.) 12... f5 13.exf6 ♗xf6 14.♖f4 h6 15.♗h3 cxd4 16.cxd4 ♖xc4



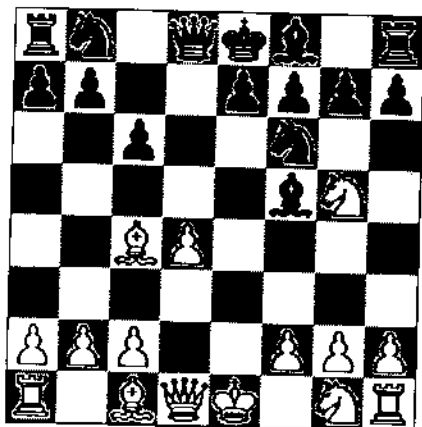
(Now it's just a pawn more for Black. White might try to generate play on the weakened White squares around the Black K, but this requires the preservation of the Bd3 at the cost of more material; not a happy alternative.) 17.♖d6 ♜f7 18.♜e1 ♖xd3! 19.♗xd3 ♜c8 20.♜ac1 ♜c6 21.♖b4 ♜xc1 22.♜xc1 ♗c6 23.♖d6 ♗d5 24.♗e4 ♗f6 25.♖e5 ♗e7 26.♗d3 (Both players are in time trouble here) 26... ♜f5 27.♜e1 ♗xe5 28.dxe5 ♗c5+ 29.♗h1 b5 30.g3 ♗b6 31.♗g2 (31.f4 Qd5ch 32.Qd5 Nd5 with ...Rf8 and the Q-side rolls) 31... ♜xe5 32.♜xe5 ♗xe5 33.♗f4 a6 34.♗g6 ♗f6 0-1

### Eckert-Olesen Peoria Open, 1992

1.d4 ♘f6 2.c4 g6 3.♗c3 ♖g7 4.e4 d6 5.♗f3 0-0 6.♖e2 e5 7.0-0 ♗c6 8.d5 ♗e7 9.b4 ♗h5 10.c5 h6 11.♖c4 ♗h8 12.♜e1 f5 13.♗h4 ♗f4 14.♖xf4 exf4 15.e5 dxe5 16.d6 cxd6 17.cxd6 ♗h7 18.dxe7 ♗xe7 19.♗xg6 ♗xg6 20.♗d5 ♗h4 21.♜c1 ♖e6 22.♗c7 ♖xc4 23.♗xa8 ♜d8 24.♜xc4 ♜xd1 25.♜xd1 e4 26.♗c7 ♖e5 27.f3 e3 28.g3 e2 29.♜e1 ♗d8 30.♗e6 ♗d2 31.♜cc1 fxg3 32.f4 ♗e3+ 0-1

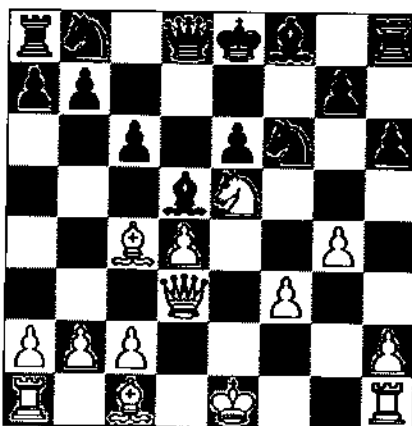
**Dzurny-Jesseph  
Peoria Open, 1992**

1.e4 c6 2.d4 d5 3.♟d2 dxe4 4.♟xe4  
♟f6 5.♟g5 ♟f5 6.♟c4



(Theory gives 6.Ne2 h6 7.Nf3 e6  
8.Ng3 Bh7 9.Bd3 Bd3 10.Qd3 Bd6  
11.Bd2 Nbd7=. White's 6.Bc4 is  
based on a tactical trick known from  
the 4...Nd7 5.Ng5 line.) 6...e6 7.♟f3  
h6? (Simply 7...Bd6 before kicking  
the Knight and Black has a very good

position.) 8.♟xf7 ♟xf7 9.♟e5+ ♟e8  
10.g4 ♟e4 11.f3 ♟d5 12.♟d3



♟b6 13.♟g6+ ♟d8 14.♟f7+ ♟c7  
15.♟f4+ ♟c8 16.♟xd5 ♟xd5  
17.♟xe6+ ♟d7 18.♟e8+ 1-0

**Warfield-Cremeens  
Peoria Open, 1992**

1.e4 d6 2.d4 ♟f6 3.♟c3 g6 4.♟c4  
♟g7 5.♟e2 0-0? (5...c6; 5...Nc6 6.e5  
Nd4 7.ef Ne2 8.fg Rg8 9.Nge2 Rg7  
10.Bh6 Rg8 11.000 Be6 unclear.) 6.e5

dxe5 7.dxe5 ♟g4 8.e6 ♟e5 9.exf7+  
♟xf7 10.♟f3 (10.Bg5!) 10...♟h8 11.♟f4  
♟d6 12.♟e5 ♟xe5 13.♟xe5+ ♟f6  
14.0-0-0 ♟c6 15.♟g3 ♟f8 16.♟b3 ♟e6  
17.♟d5 ♟xd5 18.♟xd5 ♟f5 19.♟h4  
♟f4 20.♟h3 ♟c8 21.♟h6 ♟f8 22.♟g5  
♟f6 23.♟xf6+ exf6 24.♟e1 ♟e8  
25.♟xe8+ ♟xe8 26.♟d7 ♟e4 27.♟f7  
♟d6 28.♟xc7 ♟e2 29.♟d5 ♟xf2  
30.♟d7 ♟f5 31.♟xb7 ♟cd4 32.♟xd4  
♟xd4 33.♟c7 ♟e2+ 34.♟d1 ♟f4  
35.♟e1 ♟xd5 36.♟xf2? ♟xc7  
37.♟e3 ♟d5+ 38.♟d4 ♟b4 39.c4  
♟g7 40.♟c5 ♟d3+ 41.♟d5 ♟xb2  
42.c5 ♟a4 43.♟d6 ♟xc5 44.♟xc5 f5  
45.♟b5 g5 46.♟a6 f4 47.♟xa7 g4  
48.a4 f3 0-1

**Send Games For  
Publication To:  
(ICB Games Editor)  
Tom Cooper**

**401 Pershing  
Wheaton, IL 60187  
708-690-9503**

# Harvest Times Action Chess Open

**OCTOBER 10, 1992**

**4 ROUND SWISS • SD/30 • ICA Mini-Tour Event**

**\$100 First Place Prize Guaranteed**

(Other prizes based on entries)

**Round Times:** 9:40, 11:00, 1:00, 2:20 **Registration:** 8:15-9:15

**Tournament Site:** Washington Park Pavilion (North of Intersection of Park  
Ave. South Grand Ave., West: Springfield, IL

**Entry Fee:** \$16, Springfield Chess Club Members \$14  
ICA membership required, other states accepted.

**Advance Entries:** Thomas B. Knoedler, 2104 South Fourth St., Springfield, IL  
62703, Call (217) 523-7265, after 6:00 p.m.

## TOP 50 PLAYERS IN ILLINOIS

<i>Name</i>	<i>Rating</i>
01. DIMITRY GUREVICH	2608
02. VIVEK RAO	2566
03. GREG DEFOTIS	2441
04. RICHARD VERBER	2427
05. PETER PELTS	2401
06. EUGENE MARTINOVSKY	2380
07. LEO KAUSHANSKY	2379
08. ANDREW KARKLINS	2378
09. JESSE KRAAI	2351
10. ALBERT CHOW	2342
11. ALLEN KORNFELD	2339
12. GEORGE UMEZINWA	2336
13. MARC LONOFF	2313
14. STEVEN TENNANT	2311
15. ANTHONY DEMPSEY	2310
16. SCOTT ZINGHEIM	2298
17. WARREN KRECKLER	2291
18. RON TORREGROSSA	2271
19. THOMAS COOPER	2261
20. KENNETH WALLACH	2253
21. DAVID LEVINE	2241
22. KEVIN BACHLER	2236
23. PAUL COOKE	2235
24. ALAN WATSON	2235
25. WILLIAM MADDEX	2231
26. BERTRAND WILSON	2230
27. LEN WEBER	2227
28. FLOYD MOOSE	2224
29. STEVEN SZPISJAK	2224
30. DOUGLAS VAN BUSKIRK	2216
31. MARK BRODIE	2214
32. BERT GAZMEN	2212
33. ERIC SCHILLER	2200
34. MARK BOHANNON	2192
35. GLEN GRATZ	2187
36. NICOLAS ARSENAULT	2186
37. VINCE BERRY	2186
38. ERIK KARKLINS	2186
39. PETER STEIN	2182
40. ULRICH SCHMIDT	2164
41. GERALD SEIDLER	2161
42. GENE SCOTT	2160
43. JOHN MARCONNET	2158
44. KRZYSZTOF FLAGA	2157
45. KEITH HOLZMUELLER	2156
46. FLORENTINO INUMERABLE	2154
47. RICHARD KUJOTH	2150
48. TIMOTHY KRAS	2149
49. MAZIAR BADI	2146
50. RAY SATTERLEE	2146

## TOP 50 JUNIORS IN ILLINOIS

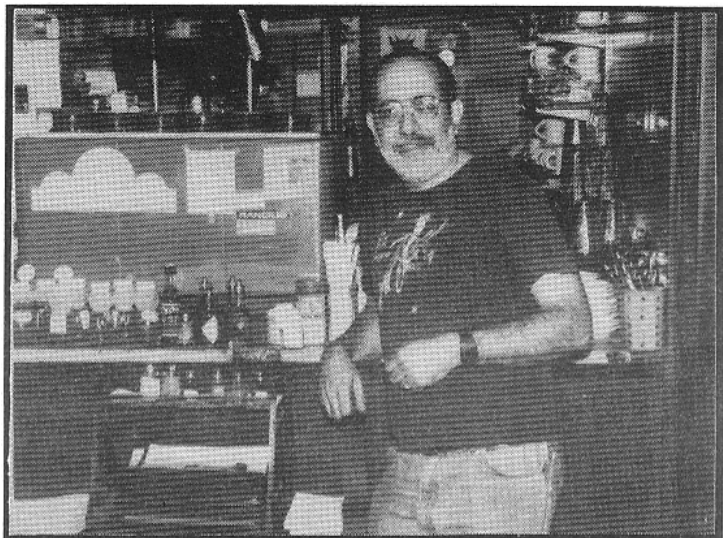
<i>Name</i>	<i>Age</i>	<i>Rating</i>
01. STEVE ARLINSKY	17	2136
02. SERGE MININ	16	2048
03. DOUG HERNANDEZ	9	1992
04. ANIL GURNANEY	19	1919
05. KEVIN CONNELLY	18	1892
06. BOYD REED	18	1838
07. ANDREW SCHULTZ	17	1825
08. MATTHEW TOM	16	1824
09. CHE-WEI WANG	18	1787
10. CORY SCHANES	17	1767
11. ALEX ROZMAN	18	1735
12. JEFF CORLEY	14	1733
13. BRET FULLER	19	1733
14. MARC MONROY	19	1722
15. MARK STAMATAKOS	18	1708
16. CHRIS VON KROG	16	1696
17. WILLIAM COOPER	10	1692
18. COREY HOCHMAN	17	1665
19. FRANK KOFRON	19	1661
20. STANLEY MOREYNO	17	1654
21. JAMES OBERWEIS	18	1645
22. GABRIEL MOY	17	1637
23. DAVID LORBER	19	1633
24. MARTIN WAUCK	13	1631
25. NATHAN HOFFMAN	19	1619
26. JEFF FLORO	14	1600
27. EMILY SHOEMAKER	10	1596
28. RICKY FRAZIER	18	1592
29. MATTHEW KRUSACK	14	1587
30. CHRIS NIELSON	18	1581
31. TOMMY CRAGGS	13	1576
32. MICHAEL NICHOLS	15	1576
33. RONALD WEAVER	17	1573
34. CHRIS DAYAGDAG	16	1572
35. BRAD STEVENS	18	1566
36. GENNADY GERTSMAN	14	1565
37. JOSEPH LIU	16	1565
38. LARRY STRAIN	18	1557
39. CHRIS CORDOVA	16	1556
40. DANA WAGNER	16	1554
41. TAYLOR WILLOUR	19	1548
42. PAUL SMITH	16	1542
43. SCOTT RHODES	18	1540
44. JUSTIN SADAUSKAS	12	1540
45. PETER CHOU	16	1539
46. CHUCK CADMAN	15	1538
47. CHUNG-HAY POON	19	1532
48. MATTHEW CREMEENS	18	1530
49. JULIE OBERWEIS	15	1528
50. FILIP DUDIC	11	1527

# CHESS

is alive  
and well  
at the

# NO-EXIT CAFE

by Lee Wenzbauer



BRIAN KOZIN, current proprietor of the No Exit Cafe

## Chess & Coffee

in the West share a history that dates from the time when both were introduced to Europe by Arab traders. It was only natural that establishments appeared where one could sharpen one's wits with caffeinated beverages and do intellectual battle with friends and rivals across the chessboard.

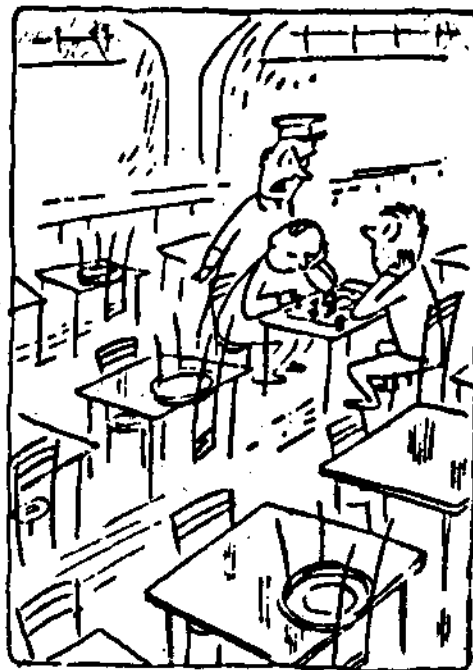
The tradition continues strongly to this day. Make no mistake: Coffeehouse chess is not the same as tournament or match chess, these last being distinguished by some amount of analysis or study beforehand and a certain unwillingness to deviate from either the opening book or accepted strategic and tactical paradigms. Chess in a coffeehouse, on the other hand, is prone to be very experimental and, in some cases, fanciful. A popular computer chess program, ChessMaster 2000, even has a setting for "coffeehouse style".

The **No Exit Cafe** is the oldest coffeehouse in Chicago and, as such, has had an intimate and often colorful association with chess and chess players in the 35 years of its existence. Originally located in Evanston and owned by Joe Moore, it held Tuesday night speed chess tournaments with all of the entry fees returned to the players as prizes.

In 1968, the establishment (which had by then been purchased by Peter Steinberg) moved to Rogers Park, where the weekly speed chess tournaments continued and in addition, regular USCF-rated tournaments were held from time to time. There was even a Chicago-Dallas radio match, which was won handily by the Chicago players.

In 1973 the tournaments were discontinued and chess action was slow until the cafe was sold to Brian Kozin, the present proprietor. Brian reinstated the Tuesday night tournaments but later discontinued them when interest declined.

The coffeehouse moved again in 1976 and is now located at 6970 Glenwood, less than a block down the street from its previous location and at the previous site of the Uptown Bridge Club. Here, opposite the elevated tracks of the North-South line, it enjoys a certain amount of seclusion from the busy scene on Morse Avenue. Tuesday night no longer sees chess tournaments, but the evening is still reserved for chess, go, and other games.



"Gentleman, it's time to go home. The tournament ended on Sunday, three days ago."

# CHESS

is alive  
and well  
at the

# NO-EXIT CAFE

David Oshana has been playing at the No Exit since 1962 and recalls several amusing stories concerning the chess players there, not a few of them involving fights. One incident involved "The Rooster" Grumbacher, a man who had the unnerving habit of impersonating a chicken at inappropriate times, and "Wild Man" Wenzel, a biker who played at master strength. The Rooster was in a lost position and began sacrificing pawns. As the third pawn was grabbed from the board, it became apparent to Wild Man that his position had been destroyed, but the Rooster had planned ahead and was up and running.

After a chase that went a number of times around the cafe and out into the street, the Wild Man cornered the Rooster in the L station -- cornered because he didn't have 25 cents for the fare. Seeking a way out of the untenable situation, Grumbacher diffidently produced a copy of a German chess journal and stammered, "Schach Echo for a quarter." Wild Man paused for a moment, then said, "You're not worth the trouble" and stalked away.



SOPHIA GATES, during her chess vigil at the No Exit Cafe

Sophia Gates has been a patron of the No Exit for several years. Since she began playing chess two years ago she has been a familiar figure here. Also a dancer and artist, she says she plays chess to get rid of stress from work. Extremely devoted to the game,

she has made an intense study of openings, in particular the Dragon Sicilian.



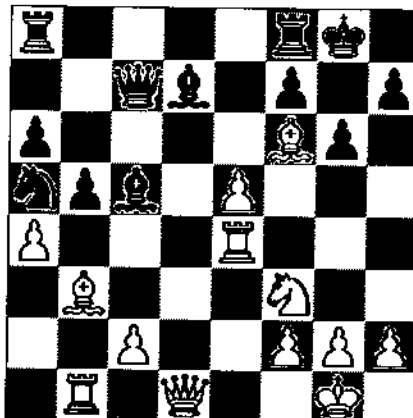
MARK DALTON, one of the "regulars" at the No Exit Cafe

Several masters & experts appear regularly at the No Exit, including Brian Schuman, Ron Washington, Bill Smythe, Warren Kreckler, and even grandmaster Dimitry Gurevich. So while chess activity at the cafe has lost its regularity, its strength has not been much affected.

Next time you're in the area, stop in for a cappuccino and chess. After all, it's not only a Chicago tradition but also a tradition in the world of chess.

The following game is typical of coffeehouse play:

### Brian Schuman vs. Sophia Gates No Exit Cafe, 1992



- 1...bxa4
2. ♖c1 ♜fc8
3. ♖h6 ♙f8
4. ♖xh7+ ♜xh7
5. ♜h4+ ♙h6
6. ♙g5+ ♜g8
7. ♜xh6 1-0

# FUND RAISING FOR THE ICA/WARREN JUNIOR PROGRAM IN PROGRESS

by Helen Warren

## A RETROSPECTIVE

The last issue of the ICB briefly outlined ICA's financial commitment to a far-reaching and dual-purpose junior chess program. In this issue I'd like to discuss additional details of our project, and in the spirit of the pastor who begs for funds for the always-leaking church roof, pass the collection basket, presume on your wisdom and generosity, and start the temperature rising in our fund-raising thermometer.

A generation of chess talent has been stolen from Illinois. From the mid-seventies to the present, youngsters with promise have been chessically kid-napped, crunched in the turbine of neglect or boxed in the sugar-coated sham of scholastic 'programs' where lack of competition and lack of integration into the 'open' chess scene has stunted them.

This program is an attempt to reverse that trend. This past year we took some small first steps in the right direction: Eleven of seventeen eligible youngsters from Illinois listed on USCF's Top Fifty Rated Lists by age category accepted invitations for tutorial instruction with Illinois masters. Ten finished their program; nine of the ten improved their ratings. Many of them for the first time in their young chess careers played in an "open", non-scholastic tournament. This program was a major success--but it was still only a small first step.

Continuation, improvement, and expansion of the junior program in Illinois will depend in large measure on ICA's continued commitment and our own ability to raise funds to underwrite costs as new youngsters qualify for the program and "old" participants continue our own substantial contributions in the form of money, instructional material, time, and administrative work as long as we see a corresponding willingness to support the program from 1) ICA members, 2) ICA affiliates, 3) schools benefiting from the program, and 4) parents. Yes, parents. The first batch of youngsters enjoyed free instruction; we will ask that parents contribute to their kids' second round in the amount of 25% of the cost of six lessons--a modest \$25. The contribution of our Illinois masters has been--and I know will continue to be--extraordinary. The token

payment they receive for their time and knowledge doesn't begin to compensate them professionally.

## THE SECOND ARM OF THE PROGRAM

This fall we will add a second arm to the junior program: Saturday seminars by masters in high schools. We expect these seminars to be at least four hours in length. They will be non-restricted, available free of charge to juniors attending selected high schools. Should a school want a second master visit, it will also be free of charge, BUT, students involved must be or become USCF members. Lev Alburt's Comprehensive Chess Course, Vol I & II (revised edition now in preparation) will be required for some or all of the instruction for students rated under 2000. Class size is expected to be held to ten or less.



**Interested High Schools Are Invited To  
Contact Helen Warren (708) 246-6665**

## WHO'S WHO

Individual tutoring will, of course, continue. Following are Illinois juniors eligible for the program through their inclusion on USCF's Top Fifty Age Lists in the June and/or August rating supplements. An asterisk indicates a junior who participated in the program this past year.

# FUND RAISING FOR THE ICA/WARREN JUNIOR PROGRAM IN PROGRESS

JUNIOR	RATING	AGE
* Steve Arlinsky, Niles, IL	2136	17
* Serge Minin, Vernon Hills, IL	2048	17
Matthew Tom, Chicago	1883	16
William Cooper, Chicago	1696	9
Tommy Craggs, Urbana, IL	1576	12
* Kyle Thomas, Batavia, IL	1544	11
Justin Sadauskas, W. Chicago, IL	1540	12
Filip Dudic, Darien, IL	1527	12
Akash Shah, ?	1501	12
Nicholas Kuyakanon, Moline, IL	1494	11
* Andrew Chambers, Bloomington, IL	1443	11
* Craig Cochran, Crystal Lake, IL	1429	10
Neal Allers, St. Anne, IL	1402	10
* Brian Wong, Glen Ellyn, IL	1384	9
Steven Salzmann, Glen Ellyn, IL	1385	10
Steven Ratcliff, Rock Island, IL	1383	10
David Watson, Glen Ellyn, IL	1369	9
Michael Septhavee, Moline, IL	1364	6
Andy Septhavee, Moline, IL	1362	8
* Matthew Koch, Bloomington, IL	1316	8
Jamie Herr, Moline, IL	1337	8
* Adam Cook, Bloomington, IL	1198	8
Colin Sommers, Moline, IL	1242	8
Adam Ellis, Moline, IL	1256	8
Greg Sill, Moline, IL	1257	7

Note, there are NO Illinois juniors on USCF's Top Fifty Lists between ages 12 and 16! This is one of our problems!

In coming weeks we will write letters of invitation to eligible juniors listed above outlining requirements. In late September we will implement plans for visits by masters to high schools. Continuing USCF membership will be required for eligibility.

Another requirement for juniors receiving tutorials will be participation in at least ONE OPEN (non-scholastic) event in the course of the year.

## NOW HERE COMES THE HARD SELL

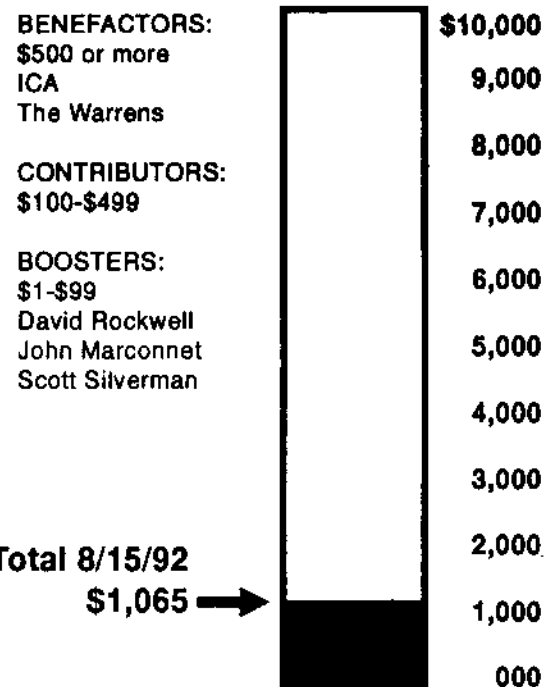
Raising funds for this project will be an on-going effort. We already have made a good start: ICA got the ball rolling with \$500; Jim and I have matched this amount. Other contributions have come in from John Marconnet, Scott Silverman, and David Rockwell. With each issue of the ICB we will raise the level in our chess thermometer to reflect our progress toward the \$10,000 goal. We hope to reach it by the end of 1993. We have established a checking account as a depository for funds. Periodic report of contributions and expenditures will be made to ICA officers.

Can we count on your support?

The discovery, nurturing, and recognition of chess talent in Illinois WILL happen! Be a part of it! Today's youngster is tomorrow's champion!

**WATCH FUTURE ICBs FOR FEATURE STORIES ON INDIVIDUAL KIDS AND SCHOOLS INVOLVED IN THE ICA/WARREN JUNIOR PROGRAM**

We're not just fixing a leaky roof; we're putting on our hard hats and pouring a strong foundation for a brand new edifice.



**ILLINOIS MASTERS INTERESTED IN TEACHING ASSIGNMENTS SHOULD CONTACT HELEN WARREN**

# ANNOTATIONS

by Bill Colias

The Chicago International, held from April 4-12, offered something very special: A chance for International norms, although only 30 players participated, including 4 Grandmasters and 6 International Masters, in the \$10,000 guaranteed prize fund and 200 Grand Prix points awarded.

The tournament must be considered a big success as 2 players made GM norms. These 2 players were Igor Ivanov and Ilya Gurevich. Igor had your typical outstanding tournament going undefeated in the process of winning 5 games and drawing 4, his effort was rewarded by 1st place and \$3,000. Ilya took the hard way, losing in round 2 against Alex Sherzer, then battling back to end with 6 wins, 2 losses and only 1 draw. For the complete crosstable please see the July-August ICB p.16.

A few words should be said about the low turnout. I believe this was primarily caused by the round times - every game for 9 days started in the afternoon. Certainly, a 7:00 p.m. round time would draw many more participants, as the 1989 U.S. Open in Chicago showed. However, even though the tournament lost money, Goichberg's commitment to chess showed when he stated the tournament will return next year.

**Bill Colias (2409) vs. Saymion Palatnik (2602)  
Chicago International, April, 1992**

1.d4 ♖f6 2.c4 c5 3.d5 b5 4.cxb5 a6 5.f3

Opening fashions change rapidly. A few years ago, 5 e3 was being played. Now 5 f3 or 5 b6 are preferred.

5...g6

Since I only know enough theory to get into trouble, I was happy to see this move. Totally insane is 5...e6 6 e4 exd5 7 e5 Qe7 8 Qe2 Ng8 9 Nc3 Bb7 with a mess.

6.e4 d6 7.♗a3

The idea behind 7 Na3 is to save the c3 square for the king knight, although 7 a4 may be more accurate.

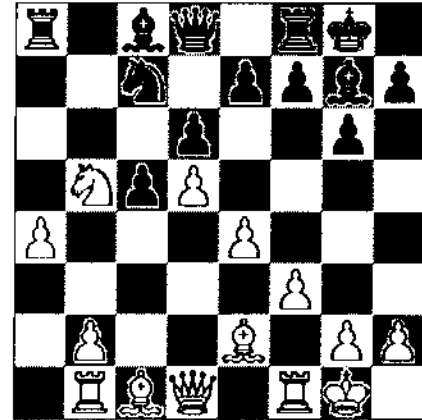
7...♗g7 8.♗e2 0-0 9.♗c3 axb5

Because White didn't play 7 a4 I think Black should keep the tension and play either 9...Ne8 or 9...Re8.

10.♗axb5 ♗a6 11.♗e2 ♗c7 12.a4

After the game Dimitri Gurevich said white stands better in these types of Benko's if he can exchange off the knights, which makes a lot of sense. As the game goes Black gets no counterplay.

12...♗xb5 13.♗xb5 ♗e8 14.0-0 ♗c7 15.♖b1



(I was proud to find this quiet move. The idea is simply to play b3 and consolidate the extra pawn.)

15...♗d7 16.♗xc7 ♖xc7 17.b3 ♖fb8 18.♗d2

It's very important to realize that White doesn't want to exchange the dark squared bishops which would give Black control of the b4 square for his major pieces.

18...e6

During the game I was more worried about Bc8, Ba6 getting rid of the light squared bishops, which would weaken White's control of the c4 square. Having played these types of Benko's with Black, I thought the above position was a draw, which explains the following listless play.

19.♗c4 exd5 20.♗xd5 ♗d4+ 21.♖h1 ♗c6 22.♗xc6 ♖xc6 23.♖c2 d5 24.exd5 ♖xd5 25.b4

25 b4 is a big mistake. White would have serious winning chances after 25 a5 and 26 Qc4 as Palatnik showed. Here I confess I offered a draw after panicking when I saw 25...cxb4 26 Rxb4 Rxb4 27 Bxb4 Rb8 28 Qd2 Qc4 29 Rb1 Bc3.

½-½

The DEADLINE on submissions for the November-December ICB will be

**OCTOBER 1st, 1992**

Mail to: WARREN KRECKLER (EDITOR)  
6146 N. OAKLEY, #2F  
CHICAGO, IL 60659



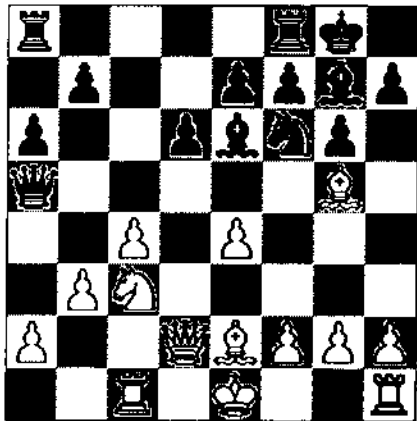
# ANNOTATIONS

**Josh Manion 2274 vs. R. Dzindzichashvili 2654**  
Chicago International April, 1992

1.e4 c5 2.♘f3 ♘c6 3.d4 cxd4 4.♘xd4 g6 5.c4

5 c4 is played with the idea of building up a strong pawn center and an obvious space advantage.

5...♘f6 6.♘c3 d6 7.♗e2 ♘xd4 8.♖xd4 ♗g7 9.♗g5 0-0  
10.♖d2 ♗e6 11.♞c1 a6 12.b3 ♖a5



Black can also play an interesting pawn sac with 12...b5 13 cxb5 axb5 14 Bxb5 Qa5 15 O-O Rac8 (Black has a very good understanding of the position. Since after capturing on e4 with 17...Nxe4 18 Bxe4 the rook on a8 will not be attacked.) 16 Bd3 Rxc3 17 Rxc3 (Perhaps 17 Qxc3 would be better since 17...Qxc3 18 Rxc3 Nxe4 19 Bxe4 Bxc3 20 Bxe7 is winning for White. Therefore, 17 Qxc3 would be met with 17...Qxg5 when the position is very unbalanced with Black having two pieces for a rook and pawn. However, White has the passed a and b pawns.) 17...Nxe4 18 Bxe4 Bxc3 19 Qe3 d5 20 Bxe7 dxe4 21 Bxf8 Kxf8 22 Qxe4 Qxa2 and with two pieces for the rook. Black was better but ½-½ in 50 moves. V. Lukov 2560 - O. Brendel 2560, Krumbacher 1991.

13. 0-0

Although it's hard to call this natural move a mistake, White could improve a lot on the game continuation by playing 13. f3 Rab8 there would follow 14. Nd5 Qxd2+ 15. Kxd2 Bxd5 16. cxd5 Rfc8 17. Rxc8+ Rxc8 18. Rc1 Rxc1 19. Kxc1 is the same ending Josh gets into, but Black would have a bishop and knight instead of two bishops and White's king is better placed in the ending.

13...♞ab8 14. f3

White is correct to protect the e-pawn first as J. Juhasz 2235 - J. Laszlo 2285 1992 showed 14 Nd5 Qxd2 15 Nxe7+ Kh8 16 Bxd2 Rfe8 17 Nd5 Bxd5 18 cxd5 Nxe4 19 Bb4 Bd4 20 Bf3 Bc5 21 Rc4 (Better was 21 Bxe4 Bxb4 when Black is a tiny bit better due too, to his more active bishop.) 21...Bxb4 22 Rxb4 Nd2.

14...♞fc8 15.♘d5 ♖xd2 16.♗xd2 ♘xd5 17.cxd5 ♗d4+ 18.♘h1 ♗d7 19.♞xc8+ ♞xc8 20.♞c1 ♞xc1+ 21.♗xc1 f5 22.g4

White would have serious trouble activating his king after 22 g3 fxe4 23 fxe4 Bh3. Black now slowly outplays White til it's 0-1.

22...♘f7 23.♗g5

White desperately tries to keep the Black king out of the game.

23...b5 24.♘g2 e6 25.dxe6+ ♗xe6 26.gxf5 gxf5 27.♗d3

27 a4 could be answered with 27...Bxb3 28 axb5 a5 and Black's a pawn is off and queening.

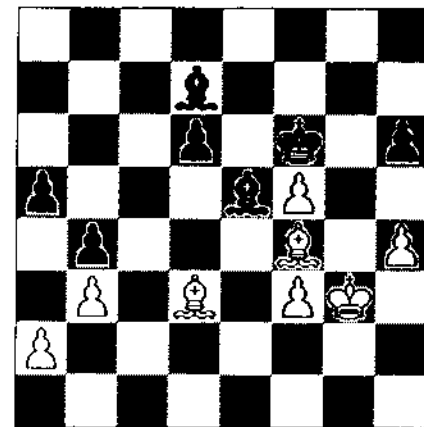
27...♘g6 28.♗f4 ♗e5 29.♘g3

Although probably not losing after 29 Kg3, he certainly should not walk into the pin, tying down his pieces. Better was 29 Bd2 keeping the bishop active on both the e1-a5 and c1-h6 diagonals.

29... ♘f6 30.h4 h6 31.♗e2 ♗d7

White has some serious problems due to his dark squared bishop and king position, while exchanging bishops would activate the Black king.

32.♗d3 a5 33.exf5 b4



A nice pawn sac which not only fixes the White queenside pawns but more importantly opens the a6-f1 diagonal for the Black bishop.

34.♗xe5+ ♘xe5 35.♘g4 d5 36.♗c2 d4 37.♗d3 ♗c8

Black now gains entry with the bishop since the White bishop is overworked 1) protecting the f-pawn 2) stopping the d-pawn 3) keeping the Black bishop off the a6-f1 diagonal.

38.♗c2 ♗a6 39.♘h5 ♗e2 40.♘g6 d3 41.f4+ ♘xf4 42.♗d1 ♗xd1 43.f6 ♗h5+

Allowing Black to queen the d-pawn with check.

44.♘h5 d2 45.f7 d1♖+ 46.♘h6 ♖d6+ 47.♘g7 ♖d7 48.♘g8 ♖g4+ 0-1

# ANNOTATIONS

Igor Ivanov 2616 - Gregory Kaidanov 2623  
Chicago Open, April, 1992

1.e4

A surprise as Igor usually opens with 1 d4.

1...e5 2. d3 c6 3. b5 a6 4. a4 f6 5. 0-0

If White plays 5 Qe2 Black could post his bishop more actively with 5...Bc5.

5...a7 6. e2

One idea behind 6 Qe2 is to free the d1 square for the king rook to help support the center with c3 and d4.

6...b5 7. b3 0-0 8. c3

If White wishes to avoid the resulting Marshall type positions he should play 8 d4 and after 8...exd4 9 e5 Ne8 10 c3 it's White who gambits a pawn for the initiative.

8...d5 9. d3 h6



Black was also fine in Hubner-Geller, Palma de Mallorca 1970 after 9...Bb7 10 Rd1 Re8 11 Nbd2 Bf8 12 Nf1 Na5 13 Bc2 c5 14 Bg5 h6 15 Bd2 Qc7 16 Ng3 Rad8 with chances for both sides.

10. exd5 dxd5 11. dxe5 dxe5 12. e5 e6

The main difference between a regular Marshall gambit and this position is that White's queen is standing on the e-file instead of his rook. who does this favor? I think it favors Black since the White queen is going to allow the Black pieces to develop with tempi or else White's pieces will walk into pins on the e-file trying to cover the queen.

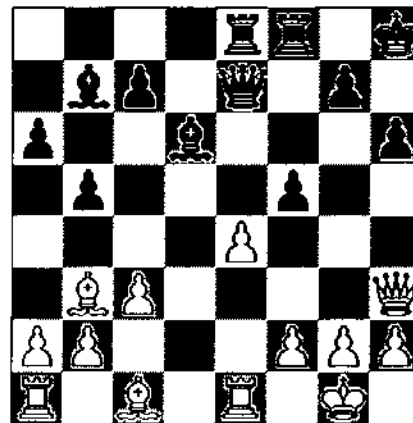
13. d2 13. d6 14. e2 b7

Black didn't play 14...Re8 since both rooks will enter the attack after Rae8 and f5.

15. e4 dxe4 16. dxe4 e7 17. e1 ae8 18. g4

18 Qg4 wastes time while improving Black's pieces but what else is White to play? 18 f3 Black would still continue with Kh8, f5, with a winning initiative.

18...h8 19. h3 f5



A dream position for Marshall players. Every one of Black's pieces are active and White's extra pawn is in trouble.

20. e5

White is now threatening 21 Bxh6 gxh6 22 Qxh6+ Qh7 23 Qxh7+ Kxh7 24 exd6 as well as 21 f4 which not only creates a protected passed pawn but more importantly would set up a barrier to the Black pieces.

20...f4 21. c2 g5 22. e6 f6 23. b3

White could also get his remaining pieces in play with 22 Bd2 although this would give back the pawn after 23...Rfxe6 because of the mate threat on g2.

23...g6 24. f3 c5+ 25. f1

White has no choice as 25 Kh1 would be met by 25...Qf2 26 Rd1 Rxd2 27 Qxg2 Bxf3.

25...g5

Threatening 26...Rh5 and 27...Rxf2.

26. h4 xf3

Black winds up the game with a nice king hunt in which every remaining piece participates in the kill.

27. gxf3 g1+ 28. e2 g2+ 29. d3

The king must walk up the board as 29 Kg1 allows 29...Qg1 mate.

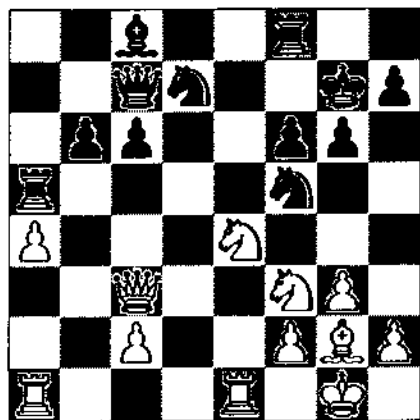
29...a7 30. h3 h8+ 31. e4 c6+ 32. xf4 f8+ 33. e3 c5+ 0-1

White resigned as 34 Kd3 Rd8+ 35 Bd5 Qxd5 is mate.

Senior Master BILL COLIAS is available  
for LESSONS, LECTURES, SIMULS  
Call (219) 836-7938

# Can You Find The Best Move?

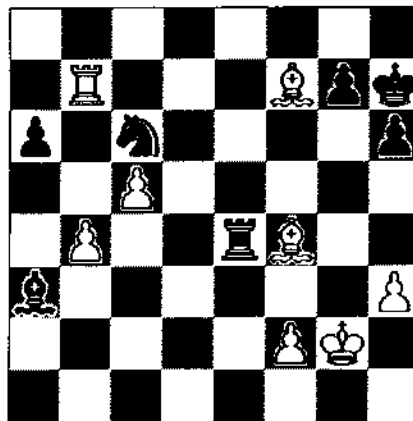
David Taylor vs. Jim Warren  
Illinois Chess Association Postal Finals, 1980



g4 d6 if 19. ... d h6 then 20. g5 leads to a win 20. dfg5!  
e5 [20... d c5 21. dxf6! fxf6 22. dxh7 with an attack]  
dxf6 fxf6 22. fxe5 fxe5 23. gxe5 Black resigned as he  
s going to lose more material due to the pin on his rook  
d knight. 1-0

Annotations by David Taylor

David Taylor vs. Ralph Hawkins  
Courier Postal Chess Club Championship 1969



36. dxh6! dxb4 [36... f xh6 37. f b6 is very strong]  
[36... gxh6 37. d d5+ e e7 38. dxc6 fxb7 39. dxb7 dx b4  
40. c6 d d6 41. dxa6 and wins] [36... d d8 37. d d5 wins  
easily] 37. dxg7! d c6! this gives White a chance to make a  
mistake 38. f f8! [38. d d5?? e e7 39. dxc6 f xg7+  
40. f xg7+ f xg7 41. d b7 dxc5 42. dxa6 and Black can  
trade his Bishop for the White f-pawn and draw!!] 38... d d8  
39. d d5+ dxb7 40. dxe4+ g g8 41. dxb7 fxf8 42. c6 d d6  
43. dxa6 Black resigned. 1-0

## ANNOUNCING NEW UNANNOTATED NICBASE DATA™ COLLECTIONS

Approx. 600 games on each set authoritatively compiled from the New in Chess/NICBASE database.  
(The letter 'B' indicates another unduplicated collection was issued earlier. Ask for a complete list of NICBASE DATA collections.)

### 4 new SICILIAN collections

- SI 26 A Velimirovic Attack
- SI 29-30 A Rauzer with 7...a6
- SI 34-36 A Four Knights, Lasker and Pelikan
- SI 48 B Morra Gambit and 2.f4

### 2 new SEMI-OPEN GAMES collections

- FR 6-7 A French: Classical and Rubenstein
- CK 3 A Caro-Kann: Panov

### 6 new OPEN GAMES AND VARIOUS collections

- RL 1-6 B Ruy Lopez all lines except 3...a6 and 3...Nf6
- RL 9-11 A Ruy Lopez 3...a6. 4.Ba4 except 4...Nf6
- IG 3-5 A Italian Game. Evans Gambit, Bishop's Opening, others
- KG 1-3 A King's Gambit Accepted
- VO 4-6 + 20 A 1.e4 Nc6 and 1.d4 Nc6
- VO 12 A Van Geet Opening 1.Nc3 (380 games)

### 2 new CLOSED GAMES collections

- QO 1-7 A 5.Bf4 and Tartakower 7.Rc1
- CA 4-5 B Catalan: 3...d5 4.Bg2 Be7 5.Nf3

- American Express
- MS-DOS computer
- ATARI ST computer
- JCB

### 2 new INDIAN OPENINGS collections

- KI 23-27 A King's Indian: Averbakh
- BI 35-37 A Modern Benoni 6.e4 without 7.f4

### 8 new OTHER 1.d4 AND FLANK OPENINGS collections

- QP 4-5 A Queen's Pawn: Torre & London Systems
- HD 1-5 B Dutch: Stonewall and Old Dutch
- HD 6-10 B Dutch: Leningrad and 2.c4
- EO 1-12 B English: 1.c4 e5 2.Nc3 Nf6
- EO 21-25 A English: 1.c4 e5 and others
- EO 29-31 A English: 1.c4 e5 wth g3 and g6 (without d4) without 5.Nf3
- EO 36-38 A English: 1.c4 c5 2.Nc3 incl. Reversed Dragon
- EO 44-46 A English: 1.c4 c5 2.Nf3 Nf6 3.d4 cd4 4.Nd4

### 2 new PLAYERS collections

- Petrosian A 1942-1960
- Rubenstein A 1903-1931

4 new YEARBOOK NICBASE DATA files including all games cited, complete. Over 1,000 games per yearbook. unannotated. Yearbooks 19-22.

- VISA
- Mastercard
- 3.5 inch disk
- 5.25 inch disk

All NICBASE DATA openings, players, yearbooks, and annotated tournament collections are priced the same and may be combined for the maximum price advantage. NICBASE 3 software is required to use the data.

- 25 collections (save 47%) \$250.00
- 10 collections (save 34%) \$125.00
- 5 collections (save 21%) \$75.00
- 1 collection \$19.00

Ask for a complete list of over 100 NICBASE DATA collections available now for immediate shipment.

**CHESS COMBINATION INC.** 2423 Noble Station, Bridgeport CT 06608  
FAX: 203-380-1703 USAT: CHESSCOM Internet: 70244.1532@compuserve.com  
Exclusive North American Distributors of NICBASE and NICBASE DATA

# CHESS on the FOX

by Bob Renaut

## CLUB MEMBERS SHINE IN OBERWEIS DAIRY CLASS CHAMPIONSHIP

The Oberweis Dairy Class Championship held on July 11-12 drew 32 players. The tournament was an Illinois Chess Association Maxi Tour Event. A delay in the publishing of the Illinois Chess Bulletin and a missing ad for the event contributed to the poor turnout. Despite the poor draw, Fox Valley Club members took home much of the prize fund. The Oberweis Dairy ensured that everyone had fun and went home a winner by, providing 12 ounce samples of Oberweis Gourmet Ice Cream. Thanks to everyone for attending.

In the Expert/A/B Class Section Jim Marshall took top honors in the Expert Class winning \$35.00 for his efforts. Jim and Bernard Pukel tied for first overall in this section. Marvin Rogan and E. Sollano tied for 2nd Expert and won \$10.00 each. Jim Oberweis Sr. took the 2nd A prize \$20.00, while B. Pukel won the Top A prize of \$40.00. The Top Class B prize was split between D. Loven and Jeff Friedman. They each won \$30.00

In the C/D/E section, FVCC members, occupied the first four positions. Greg Cisco took a clear first, winning \$54.00 for his efforts, as the Top C player. Julie Oberweis won \$27.00 for 2nd place by drawing with Greg in the last round in a very exciting game. Each player missing winning moves in a complicated position. Danny Veske and John Koski tied for 3rd place. Danny missed a chance in the fourth round to prevent Greg Cisco from going undefeated when he showed up 62 minutes late for the round and forfeited the point.

Joshua Boorstein defeated club member Dave Carson in the last round to win the top D prize of \$54.00. Mark McGee won the 2nd D prize of \$27 by defeating Anthony Scantlen in the last round. Arthur Dupee of Chicago earned the Top E prize.

The tournament was directed by Bob Renaut with assistance from Bill Reed. We look forward to holding the third annual Oberweis Dairy Class Championship next year. See you there.



JIM OBERWEIS, SR.  
President of the Fox Valley-Aurora Chess Club

## Oberweis Dairy Class Championship Master/Expert/Class A/B - July 11-12

name	rating	rd-1	rd-2	rd-3	rd-4	rd-5	score	tour
01. Marshall James	2000	W8	W6	H	W2	D3	4	8
02. Pukel Bernard	1923	W9	W5	W4	L1	W8	4	8
03. Rogan Marvin	2079	H	W11	D10	D8	D1	3	3
04. Sollano Ely	2052	W7	D10	L2	D9	W12	3	3
05. Oberweis J.D. Sr.	1839	W13	L2	L8	W11	W9	3	3
06. Kabelac Jiri	1872	W14	L1	L9	D12	W13	2.5	2.5
07. Reed Bill T	1805	L4	L12	W14	D13	B	2.5	2.5
08. Friedman J N	1764	L1	W14	W5	D3	L2	2.5	2.5
09. Loven Dallas	1751	L2	W13	W6	D4	L5	2.5	2.5
10. Sajkowski Daniel	1878	W12	D4	D3	-	-	2	2
11. Decman Steve	1800	H	L3	D12	L5	W14	2	2
12. Oberweis J.W. Jr.	1645	L10	W7	D11	D6	L4	2	2
13. Padilla Rudy	1610	L5	L9	B	D7	L6	1.5	1.5
14. Flynn Michael W.	1635	L6	L8	L7	B	L11	1	1

## Oberweis Dairy Class Championship Class C/D/E/unr - July 11-12

name	rating	rd-1	rd-2	rd-3	rd-4	rd-5	score	tour
01. Cisco Gregory	1476	W13	W8	W4	X3	D2	4.5	10
02. Oberweis Julie	1530	W9	D15	W14	W10	D1	4	8
03. Venske Danny	1555	D5	W7	W15	F1	W8	3.5	4
04. Koski John	1480	X18	W10	L1	W12	H	3.5	4
05. Boorstein Joshua	1396	D3	W9	L8	W15	W10	3.5	4

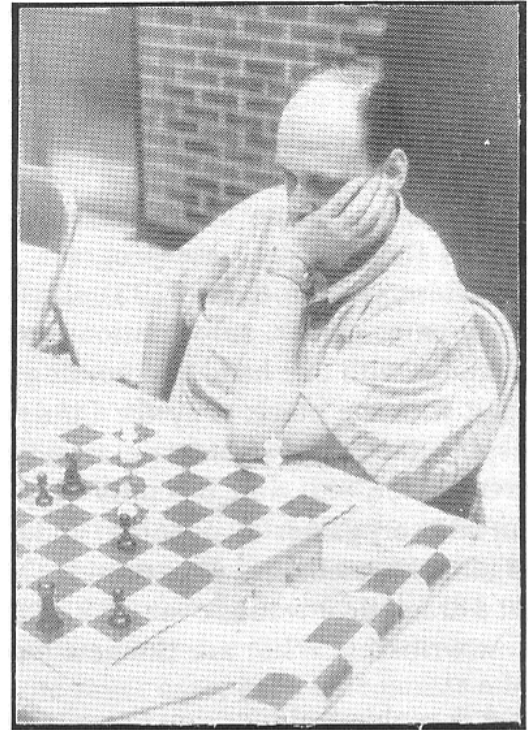
# CHESS on the FOX

06. Lazar Willard	1402	W17	L14	L10	B	W12	3	3
07. Mc Gee Mark	1384	D14	L3	H	W11	W15	3	3
08. Anderson Cliff	1502	W12	L1	W5	H	L3	2.5	2.5
09. Jenkins Mike	1381	L2	L5	H	W17	W16	2.5	2.5
10. Carson David	1506	W11	L4	W6	L2	L5	2	2
11. Oberweis Joseph	1232	L10	D17	B	L7	D13	2	2
12. DuPee Arthur	1182	L8	W13	W16	L4	L6	2	2
13. Jablonski Roy		L1	L12	W17	D16	D11	2	
14. Hicks Charles	1531	D7	W6	L2	-	-	1.5	1.5
15. Scantlen Anthony	1500	W16	D2	L3	L5	L7	1.5	1.5
16. Baltazar Mark	1072	L15	B	L12	D13	L9	1.5	1.5
17. Naviamos William		L6	D11	L13	L9	B	1.5	
18. Dizadji Paul		F4	-	-	-	-	0	

## WATSON SWEEPS JULY SPEEDY FOUR TOURNAMENT

The July Speedy Four - Quick Chess Tournament drew 26 players, including one Senior Master, two Masters, and two Experts! Alan Watson took 1st place by scoring a perfect 4.0 score. Tom Cooper and Dick Verber tied for 2nd. The upset of the tournament occurred in the second round when Greg Cisko (1478) crushed Bob Renaut (2128). The club holds a Quick chess tournament the third Monday of every month. The final standings were:

Name	rtng	rd 1	rd 2	rd 3	rd 4	TOT
01. Watson, Alan	2235	W13	W9	W11	W7	4.0
02. Verber, Richard	2427	W12	W19	W7	D3	3.5
03. Cooper, Thomas L.	2259	W21	W6	W5	D2	3.5
04. Renaut, Robert	2128	W15	L11	W20	W9	3.0
05. Oberweis, James D.	1820	W22	W10	L3	W11	3.0
06. Reed, Bill T.	1805	W23	L3	W13	W12	3.0
07. Stein, Peter	2182	W14	W8	L2	L1	2.0
08. Jelen, John L.	1585	W25	L7	W14	L10	2.0
09. Oberweis, Julie	1521	W26	L1	W22	L4	2.0
10. Anderson, Cliff J.	1502	W17	L5	W15	W8	3.0
11. Cisko, Gregory G.	1476	W18	W4	L1	L5	2.0
12. Mohline, Johnson	1387	L2	W24	W16	L6	2.0
13. Moore, Joeseeph K.	1376	L1	W26	L6	W21	2.0
14. Dougherty, Andy	1342	L7	W25	L8	W23	2.0
15. Oberweis, Joseph S.	1287	L4	W18	L10	W16	2.0
16. Simek, Peter D.	626	B-	W20	L12	L15	2.0
17. Manker, Brian C.	unr.	L10	L22	W24	L25	1.0
18. Dizadji, Paul	unr.	L11	L15	W25	W22	2.0
19. Harris, Robert M.	1729	W24	L2	D21	L20	1.5
20. Flynn, Michael W.	1635	H-	L16	L4	W19	1.5
21. McGee, Mark	1384	L3	W23	D19	L13	1.5
22. Mueller, Peter L.	1232	L5	W17	L9	L18	1.0
23. Hulke, Brad T.	1177	L6	L21	W26	L14	1.0
24. Simek, Phillipe	1035	L19	L12	L17	W26	1.0
25. Simek, Thomas P.	894	L8	L14	L18	W17	1.0
26. Sigwart, Julia	unr.	L9	L13	L23	L24	0.0



Senior Master RICHARD VERBER

Senior Master Dick Verber has moved to the western suburbs! Dick now resides in Aurora and has become a regular at the Fox Valley Chess Club. Want to improve your chess? Dick is available for private lessons. Dick is very active in teaching all levels of chess students. For more information just stop by the club or call him at 708-978-1380. The Fox Valley Chess Club membership has climbed to over 60 players. Come join Dick Verber (Senior Master), Tom Cooper, (Master), Alan Watson (Master), Peter Stein (near Master), Bob Renaut (old expert) and Jim Marshall (Expert) for some exciting chess competition.

The Fox Valley Chess Club meets on Monday night at 6:45 till 10:00 P.M. in the Prisco Community Center (McCullough Park Building), located on the corner of Illinois and Lake Street (Rte 31) in Aurora. We are 2 miles south off of the East-West tollway (I-88). Club dues are \$12.00 per year. For information call Bob Renaut at 708-983-0934 or Jim Oberweis 708-897-7100.

# CHESS TECH-TALK



by NM Marc Lonoff

## Two Programs of Note

### ChessBase marches on!

ChessBase has made some useful improvements to its flagship database program. Recall that ChessBase version three (CB3) allowed you to: quickly enter games, subvariations and notes using a mouse with one hand and holding a chess book open with the other; buy the Informant on disk, display the text of a game, point and click at any move in the text and instantly leap to the position; and sort games by opening, middlegame and endgame keys among other things. CB3 represented a dramatic advance over CB2. CB4 adds a few new wrinkles, **What are the new features?**

1) A "revolver" allows you to examine eight games simultaneously, flipping from one to another and resuming where you left off. You can see the analysis position on all eight boards and a quick click selects the game to pursue.

2) The clipboard can be used to process large files.

3) Knightstalker, a master strength program, can be called up to evaluate a positions from within CB. A single keystroke allows you to use KS without leaving CB4. You can add or remove moves and KS quickly switches to evaluate the new position. When you are satisfied with KS's review, a single click restores the original game file.

4) Opening classifications such as the ECO code can be embedded in the database and displayed in lists of games. Ranges of codes can now also be identified in the search mask. In one sweep you can find Kasparov's wins with the Gruenfeld from 1988 to 1992 against FIDE rated players over 2550 that lasted less than 40 moves.

5) Some advanced memory management features have been added. CB4 automatically caches the opening keys into extended memory and vastly speeds up game classification.

While you might quibble with the numbering of this upgrade as 4.0 (rather than 3.1) looking at the program and recent related efforts by ChessBase there can be no question that the ChessBase complex (CB4, Motiv, CBTree, Finale, Knightstalker, and "Gamma") is the way to go in processing chess information.

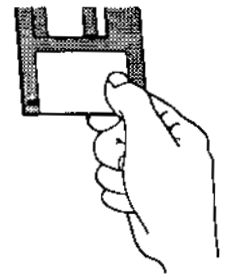
### ChessNet Club Edition

A few issues back I reviewed a neat piece of software called ChessNet. You may recall it ran in Windows and allowed you to play chess via modem directly against any opponent that also had ChessNet. The program is a snap to learn and use, as are the award winning Blackjack and Video-poker programs produced by Masque Publishing.

**Masque has done it again!** ChessNet has become ChessNet Club edition. This nifty piece of software will allow an eight board match to be handled via a single direct modem connection. The interface is silky smooth and anticipates many problems of telephone matches. (Remember the National Chess League ?) **Let me explain.**

First, the transmission is silent. This allows the players to be arrayed in a semi-circle around the computer. A single operator can conceivably handle sending/receiving and executing moves on the boards. Each of the eight boards is numbered and color coded in the computer. The names of the players appear on the screen. One board is displayed at a time. When a move comes in on board six, a colored rectangle with a six in it blinks on the screen. Clicking on the rectangle pops up board six. A sliding piece shows the

# CHESS TECH-TALK



move. The operator turns and plays the move on the physical board six and starts the physical clock. After a time delay (that can be adjusted by the user) the computer will show your clock running at both ends. The colored rectangle will continue to blink but the number six will stop blinking indicating your clock six is running. When the player on board six makes a move he will of course punch his clock. The attentive operator will transmit the move (perhaps he will need some help after all) by clicking the rectangle and clicking the move on board six, thereby causing the rectangle to go blank, stopping the clock, and starting the rectangle on the opponents screen to blink indicating an incoming move.

Obviously, there are some logistical wrinkles to iron out. The main problem will doubtless be between the operator and the runners to the boards. If an incorrect move is transmitted it can be quickly corrected and retracted. Hopefully, someone will notice! If a move is retracted, the computer automatically turns back the clock. Of course, illegal moves are screened by the computer. The operator can also send a revised clock time with each move if he desires. Thus, you can keep the computer clock and the actual local time in fairly close synchrony. The programs authors considered another problem. Any break in communication causes everything to be saved at both ends. A restart is a cinch. To split the phone bill, you can disconnect and reconnect in the middle of the match. In another nice touch, time controls can be preset in three stages and include sudden death as an option at any stage.

Since all it takes to run this program is an IBM compatible 386SX with DOS 5.0, Windows 3.1, a modem and a small hard-drive, the software and computer can be had for under \$1000 with a nice color monitor.

Hopefully, many chess clubs, schools, and state chess associations will already have the computers. The obvious application for this program is to allow matches between clubs, schools, states and countries. A secondary application would allow chess teachers to offer instruction (there is a chat screen for typing messages during play) and play simultaneous exhibitions at schools without lengthy travel.

**Now what's the big deal?** If two schools wanted to play a telephone match they could use a voice connection. That is true, but consider some further advantages. The authors include instructions on how to run the program using both direct connection where one side calls the other and connection over a network such as CompuServ. In the latter case, each side makes a local call into a *worldwide computer network at a cost of \$6.00 per hour* and the ChessNet software takes over once the connection is made. Thus, for \$12/hour total cost Chicago could play a match with London or Hamburg or Sydney (if CompuServ reaches Australia). The authors also include information on a special deal Sprint offers for up to thirty hours of data communications for a flat rate of \$30 per month between more than 50 gateway cities in the United States. That's the advantage of the computer: no language barriers and cheaper communications rates.

**The software lists for \$129.95 and is available from Masque Publishing at 303-290-9853 and should soon be available from local distributors such as CompUSA.**

**Send articles, ads, comments,  
info, etc. to:  
(ICB Editor) Warren Kreckler  
6146 N. Oakley, Chicago, IL 60659  
312-764-2807**

# Midwest Class Draws 150

by Bill Smythe



GM Gregory Kaidanov & GM Sergey Kudrin

***Kudrin  
and  
Kaidanov  
tie for  
1st***

The Continental Chess Association tournaments in Chicago continue to draw well at the ends of the rating spectrum. The latest example, the Midwest Class on July 17-19, 1992 at the Ramada O'Hare, drew three grandmasters, all from far-away states. Also included in the 150-player total were eight other players over 2300.

Sergey Kudrin of Connecticut and Gregory Kaidanov of Kentucky agreed to a quick draw in the final round and won \$750.00 each for their first-place tie. Kudrin was held to a draw in round 1 by Indiana senior master Bill Colias. In an attempt to recoup, Kudrin withdrew and re-entered, taking advantage of a common CCA option that has also been seen in Forest Park at the Master Challenge, first tried there by Kurt Stein and Eugene Martinovsky. For Kudrin, the attempt failed, as he draw again in round 1 of his re-incarnation, this time against Chicagoan George Umezina. Kaidanov also was held to an early draw, in round 3 against fellow grandmaster Alexander Ivanov of Massachusetts, who tied for third with Umezina. George won the under-2400 prize; Colias and Roman Levit split second under-2400 and fourth overall.

At the other end of the scale, thirteen D, six E, an fifteen unrated players proved that the low-rate players, the future of chess, can be drawn into tournament play with suitably designed class section and prizes. In the bread-and-butter range Expert through C, class A drew the most with 31 players.

The tournament was organized by Bill Goichber and directed by Bill Smythe and Joshua Flores, with assistance at registration (and other times) from Sonia Taki.



GM Gregory Kaidanov vs. Bill Colias



## Prize winners:

### Master:

1st-2nd:	Sergey Kudrin	750.00
1st-2nd:	Gregory Kaidanov	750.00
3rd:	Alexander Ivanov	300.00
4th	Bill Colias	200.00
1st U-2400:	George Umezina	400.00
2nd U-2400:	Roman Levit	200.00



Roman Levit vs. Angelo Young

### Expert:

4.5:	William Fuller	250.00
4.0:	Erik Karklins	150.00
3.5:	Gene Scott	100.00
3.0:	Howard Wachtel	50.00
	Arnulfo Benesa	50.00
	Dale Gustafson	50.00
	James Hodina	50.00
	Rob Sax	50.00



Emory Tate vs. Albert Chow

### Class A:

4.5:	Larry Cohen	200.00
4.0:	David Franklin	120.00
3.5:	Alex Yarmunick	80.00
	David Marema	80.00

	Peter Kunn	80.00
	Toks Osanyinjobi	80.00
	Joseph Lulves	80.00
	Chris von Krogh	80.00
3.0:	Timothy Bogan	40.00
	Kelvin McAlister	40.00
	Larry Marshall	40.00
	Roger Allison	40.00

### Class B:

4.5:	Alexander Paphitis	200.00
4.0:	Jacob Ratner	120.00
	Brad Goral	120.00
3.5:	James Gray Jr	80.00
	Michael Belovesick Jr	80.00
3.0:	Ed Peters	40.00
	George Trbojevic	40.00
	Robert Van Sant	40.00
	Kim Pindak	40.00
	Leon Dollison	40.00
	Rudy Padilla	40.00

### Class C:

5.0:	David Vakil	300.00
4.0:	Danny Venske	90.00
	Jerry Knight	90.00
3.5:	Ron Amirante	60.00
	Bruce Hillman	60.00
3.0:	Philip Woodruff	30.00
	Frank Leben	30.00
	Daniel Iovin	30.00
	Keith Kostecka	30.00



Philip Laren vs. Adam Kalai

### Class D:

4.5:	Craig Ahmer	100.00
4.0:	Brian Wong	60.00
3.0:	Jens Heilskov	20.00
	Mike Wirth	20.00
	Terrell Johnson	20.00
	Richard Robison	20.00

### Class E:

4.0:	Chris Baumgartner	45.00
	Mark Baltazar	45.00

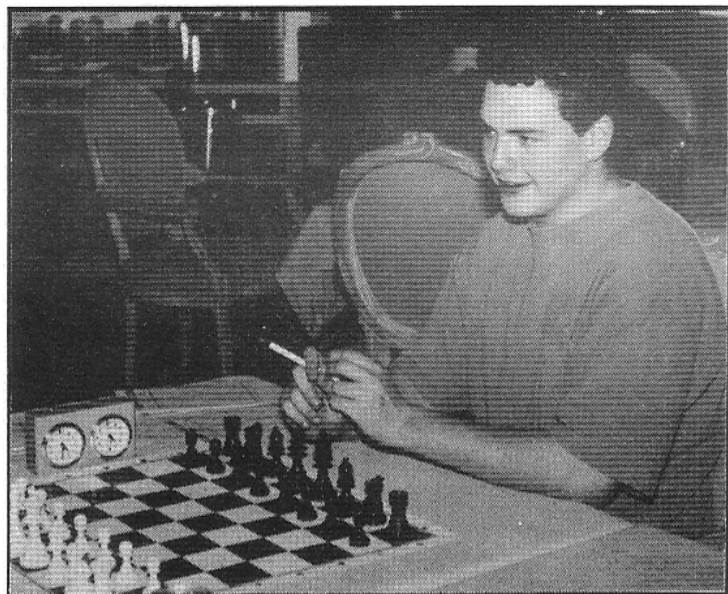
### Unrated:

5.0:	K. Sukcharoenphon	100.00
4.0:	Keith Martin	30.00
3.5:	Thomas Abraham	20.00
	David Hunter	20.00

# ADAM KALAI WINS

## ICA JUNIOR INVITATIONAL HIGH SCHOOL CHAMPIONSHIP

by Alan Losoff, ICA President



Adam Kalai  
ICA Junior Invitational High School Champion

Nine of the top-rated high school students in Illinois battled it out on June 28-29 at the Ramada Inn O'hare to see which would walk away with the title of ICA High School Champion. At the end of the 5 round event, Adam Kalai, a senior from New Trier HS, and Cory Schanes, a Junior from Rockford-Jefferson HS, were tied at 3½. Top-rated Steve Arlinsky, a Junior at Niles North and the current IHSA AA champion, finished third with a disappointing score of 3-2.

Adam beat Cory in a game/30 playoff game to clinch the title and the invitation to the Denker Tournament of HS Champions to be held in Dearborn Michigan in August. But all 9 players deserve congratulations for a hard fought effort.

The tournament was organized by Richard Verber on behalf of the Illinois Chess Association and he and Al Losoff shared the directing duties. Chess book prizes for all the players were donated by Helen Warren. Adam's travel expenses will be subsidized by the ICA thanks in part to a donation of \$200 by Fred Gruenberg. Thanks to Dick, Fred, & Helen for contributing their time and money on this worthwhile project.

### ICA High School Invitational Standings June 27-28, 1992

Name	ratng	rd 1	rd 2	rd 3	rd 4	rd 5	TOT
01. Kalai, Adam (New Trier)	1930	W9	W2	D5	L3	W4	3.5
02. Schanes, Cory (Rkfrd-Jefferson)	1692	W7	L1	D4	W5	W3	3.5
03. Arlinski, Steve (Niles North)	2131	L4	W7	W6	W1	L2	3.0
04. Rozman, Alex (Rkfrd Auburn)	1673	W3	L5	D2	W9	L1	2.5
05. Connelly, Kevin (Willowbrook)	1862	W8	W4	D1	L2	U--	2.5
06. Elliff, Jason (Moline)	1498	D9	W8	L3	L7	W9	2.5
07. Murphy, William (Chicago AG)	1500	L2	L3	B--	W6	L8	2.0
08. Floro, Jeff (St Kath/St Mark)	1600	L5	L6	L9	B--	W7	2.0
09. Gertsman, Gennady (Niles North)	1565	L1	D6	W8	L4	L6	1.5



Cory Schanes vs. Steve Arlinsky  
ICA Junior Invitational High School Championship

Senior Master RICHARD VERBER  
is available for  
PRIVATE & GROUP CHESS LESSONS  
Call: 708-978-1380

# ICA Plus-Score Mini-Tours

*at Northwestern University*

**September 26 & October 24**

**4-SS • 40/60 • SD/30**

## **GUARANTEED PRIZES**

SCORE	PRIZE	TOUR POINTS
4.0	\$100	16
3.5	\$50	8
3.0	\$25	4
2.5	\$12	

**Entry Fee: \$12 (by Monday before: 9/21 or 10/19), \$15 at the site**  
**Registration: 8:30-9:30 a.m. Rounds: 10, 12:30, 3, 5:30**

**ICA MEMBERSHIP REQUIRED \$14/YEAR**

**Half-Point Byes Available, Rounds 1-3**

**Free Parking • Cafeteria On Site**

**Wheelchair Accessible**

**No Computers**

**SITE: Norris Center, Room 2E**

**1999 Sheridan Road**

**Evanston, IL 60202**

### **ENTRIES:**

**Michael B. Henroid • 2245 Sheridan Rd., #228**

**Evanston, IL 60201 • Tel: 708-332-9168**

# MAYOR RICHARD M. DALEY'S CITY-WIDE SUMMER CHESS TOURNAMENT JULY 27-30 AND AUGUST 6, 1992

by Dick Verber, Senior Master

## 368 CHICAGO HIGH SCHOOL AND GRAMMAR SCHOOL STUDENTS COMPETE IN CITY'S 1ST OFFICIAL INDIVIDUAL KIDS CHESS CHAMPIONSHIP

It was little more than 2 months ago in mid-June that Mayor Daley's Department of Human Services first contacted Tom Fineberg and myself for help in setting up the City's first annual kid's chess tournament. For many years the Department of Human Services has provided summer-time athletic activities for Chicago youths. 1992 marks the beginning of the City's new program to develop intellectual activities like chess. In large measure we have the Mayor himself and Tim Mitchell of the Department of Human Services (Tim is an avid chess player) to thank for the City's new interest in chess.



The Department of Human Services did a rush-job of publicizing the City-Wide chess Tournament at local libraries, Park District Fieldhouses, and the sixteen Human Services Branch Offices. Had the tournament been announced while school was still in session, attendance might have topped one thousand! Even without the benefit of help from the school chess coaches, a very respectable attendance of 368 kids

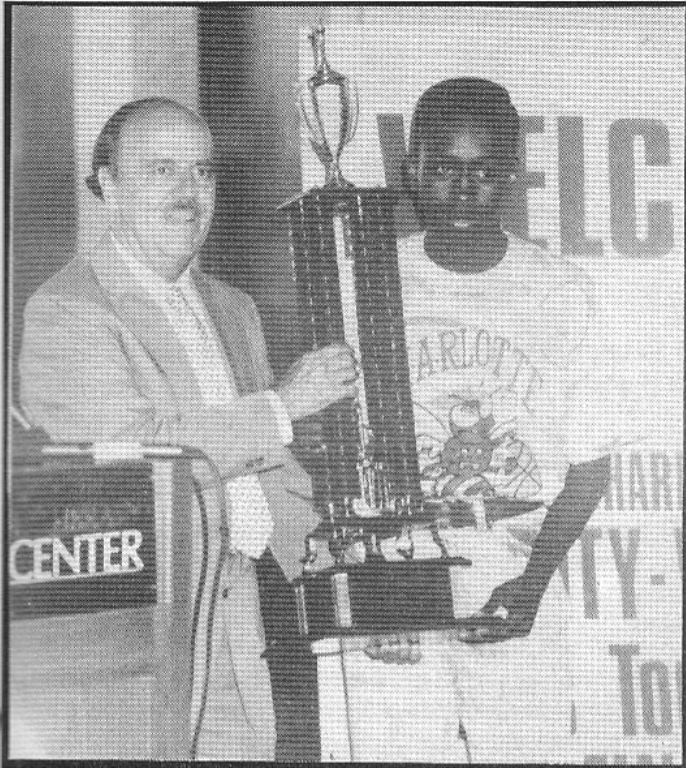
turned out for the preliminaries held July 27-30 at twelve locations throughout the city.



Finalists from the Grammar School and High School sections met Thursday, August 6th at the beautiful Preston Bradley Hall of the Chicago Cultural Center to fight it out for top honors. No chess clocks were used, and games averaged 20 minutes to a half-hour. Impressive three-foot tall wood and marble trophies were awarded to six winners by Commissioner Alvarez of the Department of Human Services. Orr High student Mike Williams captured first place in the High School Championship and little 12-year old Alex Burda (who arrived in Chicago only 3 months ago from the Ukraines!) dominated the Grammar School competition. From my perspective as a Senior Chess Master, ALEX BURDA seemed the most exceptionally talented participant in either section.

Thanks are due to Tom Fineberg, Josh Flores, Larry Stilwell, and Ed Blanco, who helped me to direct the preliminary tournaments. The CHICAGO SUN-TIMES and the CHICAGO TRIBUNE provided intelligent coverage of the finals at the Chicago Cultural Center. The Department of Human Services plans to repeat this successful event next year, probably during May.

# MAYOR RICHARD M. DALEY'S CITY-WIDE SUMMER CHESS TOURNAMENT JULY 27-30 AND AUGUST 6, 1992



Commissioner Alvarez of the Dept. of Human Services congratulates MICHAEL WILLIAMS of ORR High School for his 1st place finish



12-year old Grammar School student ALEX BURDA, a recent arrival from the Ukraine, receives his 1st place trophy



Commissioner Alvarez of the Dept. of Human Services presents 2nd place trophy to FELIX DAVENPORT of Lane Tech High School



12-year old SON NGUXEN accepts the impressively large 2nd place trophy. His only loss was against Alex Burda

# HIGH SCHOOL CHESS

ANNOTATIONS BY SENIOR MASTER RICHARD VERBER

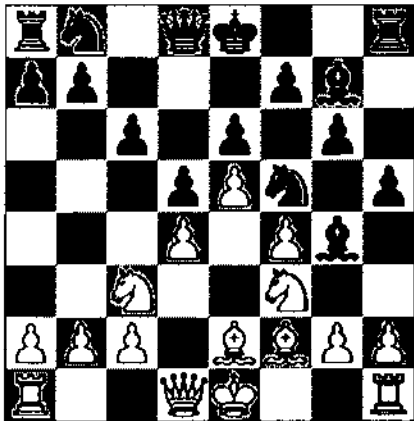
Adam Kalai (1930) vs. Steve Arlinsky (2131), 1992

24... ♖xc3 25. ♗xc3 ♠xc3 26. ♖e2 ♠c7 27. ♗b6 ♠c6  
28. ♗a5 ♖f5

1.e4 g6 2.d4 ♗g7 3. ♖c3 c6 4.f4 d5

This is the Gurgendize Pirc, which might well be thought of as a crossbreed between the traditional Pirc Defense and a French Defense. During the past year that I have been coaching Steve Arlinsky, he has begun to adopt my Gurgendize with increasing frequency. The Gurgendize fits Steve's style: He has a good sense of how to exploit pawn structure weaknesses.

5.e5 ♖h6 6. ♖f3 ♗g4 7. ♗e3 ♖f5 8. ♗f2 e6 9. ♗e2 h5



10. ♖g1

Not a bad idea. In a closed position like this White's king knight will be more valuable than the king bishop.

10... ♗xe2 11. ♖gxe2 ♖d7 12. ♗d3 ♗b6?

Inaccurate. The Queen is better placed at a5 or back at home on d8. Now Black has greater trouble achieving the thematic c5.

13. b3 ♠c8 14. 0-0 0-0

In the 4. f4 variations of the Gurgendize, Black frequently keeps his king in the center or castles queenside. But here castling kingside makes good sense.

15. ♖g3 ♖h6

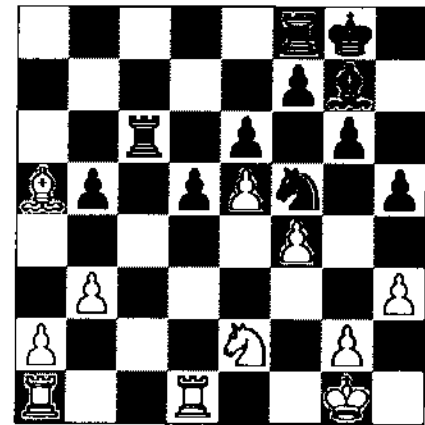
Nxg3 is also good.

16. ♠f1 ♖g4 17. ♗e1 c5

This attack against the White center pawns, which is reminiscent of the French Defence, threatens to liquidate or weaken the White center and open the c-file to Black's advantage.

18. ♖a4 ♗c6 19. h3 ♖h6 20. c3 b5 21. ♖xc5 ♖xc5 22. dxc5 ♗xc5+ 23. ♗f2 ♗c6 24. ♗xa7?

This is a bad idea. Instead White should try Rac1 with a reasonable game. Adam Kalai probably overestimated the weakness of Black's b-pawn following Bxa7, but now the Black counterplay arrives too quickly.



The key position. The Black pieces are becoming active and threats like g5, f6, Ra8, and Rc2 are in the air. Rdc1 may be White's best try here, but the defence is not easy.

29. ♖d4

It is logical to eliminate the strong Black knight, but now the Pirc fianchetto bishop will demonstrate its power.

29... ♖xd4 30. ♠xd4 g5!

f6 immediately is also strong.

31. g3 gxf4 32. gxf4 f6!

The threat to pin the 2 white rooks will cost White his important e5-pawn.

33. ♠e1 fxg5 34. fxg5 ♠f5

With the loss of the e5-pawn White's game collapses rapidly.

35. ♠b4 ♗xe5 36. ♠xb5 ♠c2 37. ♗b6 ♗h2+ 38. ♖h1 ♗g3!

Suddenly White's problems include worries of possible Black mating nets on the 7th rank.

39. ♠d1 ♠xa2 40. ♠c1 ♠h2+ 41. ♖g1 h4 42. ♗d4 ♠xh3 43. ♠c2 ♗f4 44. ♠b7 ♠g5+ 45. ♖f1 ♠h1+ 46. ♖e2 ♠h2+ 47. ♗f2 ♠f5 48. ♠c8+ ♠f8 49. ♠xf8+ ♖xf8 50. ♖f3 ♗d6 51. ♠b6? ♠xf2+! White Resigns 0-1

The Deadline for Submissions in the  
NOVEMBER-DECEMBER ICB is  
OCTOBER 1, 1992  
Contact the editor at:  
312-764-2807

# HIGH SCHOOL CHESS

ANNOTATIONS BY SENIOR MASTER RICHARD VERBER

Cory Schanes (1692) vs. Adam Kalai (1930) , 1992

1.d4 2.f6 2.c4 e5! 3.dxe5 4.g4 4.f3 5.c6 5.f4 6.b4+  
6.b2d2 7.e7 7.e3 8.gxe5 8.fxe5 9.a3

Be2 is also good, and it avoids the combination that follows.

9...f6 10.f4

Bg3 is better, since it protects White's Queen Bishop from the cheap-shot Nd3ch!

10...f3+! 11.fxd3 12.f4 12.0-0?

White overlooks that Black can uncork another little "cheapo" featuring Bxh2 ch and Qd6 ch winning back the piece with a pawn advantage.

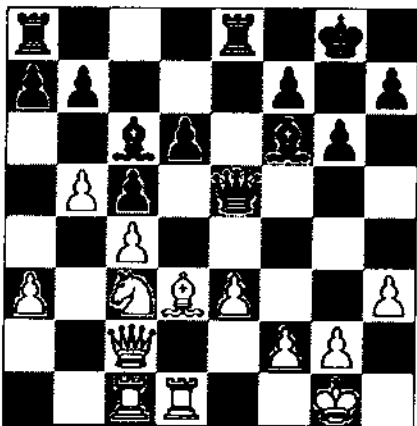
13.f5? 13.c2 d6 14.f3 15.f6 15.h3 g6 16.f1d1 17.d7  
17.f4 c5?!

This looks sharp, but it unnecessarily weakens Black's d6 pawn. O-O was more prudent.

18.f2

Exactly the right way to begin to exploit the weak pawn on d6. Cory Schane's following build-up during the next 20 moves is a masterly example of tightening the noose on weak squares and weak pawns. It looks like a lesson straight out of Nimzowitch's My System or Hans Knoch's Pawn Power In Chess.

18...f6 19.f3 0-0 20.b4 21.f5 21.f1a1 22.f8 22.b5

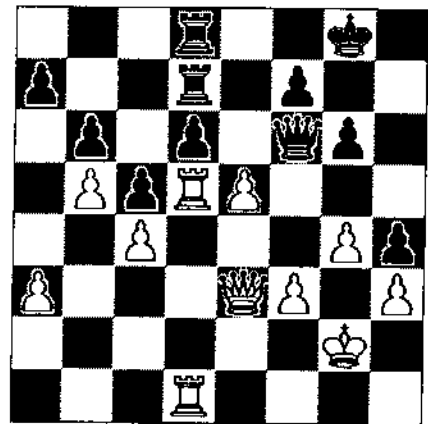


23.f4 23.f5 23.f1a1 24.f6+! 25.f6 25.f4 b6 26.f2  
27.g5 27.h1 28.f5 28.f3 29.f8 29.cd1 30.f5 30.f2  
31.f5 31.f7 32.f3

Another good approach is a4 and a5! opening up the queenside, but Cory's method is just as good and may offer less counterplay.

2...h5 33.f3 34.f6 34.g4 35.fxd5 35.fxd5 36.fg2 h4  
37.e4 38.cd7 38.f3 39.f6 39.e5!

The culmination of Cory's build-up since move 18. white is winning. g5! would also have been strong.



39...f6 40.f4?

A time-pressure blunder throwing away all of the hard work! Qd3! was correct, with f4 and f5 to follow.

40...f6 41.fxe5 42.fxd5 42.fxd5 43.fxd5?

Another time-scramble blunder, throwing away the other half of the point.

43...f2+ 44.fg1 45.f1+ 45.fg2 46.f2+ 46.fg1 47.f1+  
47.fg2 48.fg3+ 48.f1 49.fh3+ 49.fg2 50.f3+

Qxa3 would have been even easier, but the text also wins. Congratulations, Adam. Condolences, Cory. Since Cory is entering his Senior year of High School, he can look forward to much success in this next year.

White resigned shortly 0-1

Send games for publication to:  
(Games Editor) Tom Cooper  
401 Pershing  
Wheaton, IL60187

Send tournament announcements  
to: (Calendar Editor) Bob Renaut  
1255 Oakton Lane  
Naperville, IL 60540

Send articles, ads, info, etc to:  
(ICB Editor) Warren Kreckler  
6146 N. Oakley, #2F  
Chicago, IL 60659

# IMPROVING YOUR CHESS

by Tom Cooper



NM Tom Cooper

I have often been asked by students to suggest methods that can be used to improve their chess. My response rarely fails to elicit one of these two reactions from the now astonished pupils: "You're kidding!" or, with a pleading tone, "What about the 35 chess books in my library?" Well, I'm not kidding and we'll get to the books later. What is this

method that most chess players are either too busy or too lazy to utilize? It involves that old adage of "know thyself"; in this case you must know yourself through the study and annotating of your own chess games.

How many times have you finished a game and briefly looked at it before tossing it aside? You saw a mistake on move twenty that caused the problems and led to the blunder later in the game, right? Besides, you played the opening correctly and that's what counts at your level because everyone makes mistakes all through the middle game and who plays endgames? If you recognize yourself in these lines then you have something in common with your humble games editor and 99% of the chess players in the world. For years I wallowed and wailed in misery in a self imposed Life Expert category because of this approach to my games. Finally, one day when I had returned to chess after quitting out of frustration for the umpteenth time, I read some advice of Botvinnik in which he advised that players should write about their own games and publish their analysis to improve their chess. If it was good enough for a world champion it was good enough for me. Incidentally, this book with Botvinnik's advice had been in my library for several years. Every time I reached for it in the bookshelf an opening book jumped into my hand first; I have no luck in chess but that's another article for a future issue. I dug up every game I played as an expert

and began to dissect them. When I checked my perfect opening play against the books, I found that I rarely made it through the opening without mistakes. By reviewing my mistakes I found several interesting lines that I never knew existed; lines that were more suitable to my style. My middle game play revealed numerous lines that I never even considered during the game. It was amazing to me that the process of writing down the variations while analyzing the game could yield so many opportunities that were previously overlooked. Ideas seemed to flow from the pen. The same held true for the endgame. I can hear the reader screaming "O.K. But did it work?" The answer is YES! In approximately one year I made it to Master and haven't looked back. (I'm now a Life Master) This approach can work for every class of chess player. If you are stuck in a rut this is a sure fire way to jump start your chess.

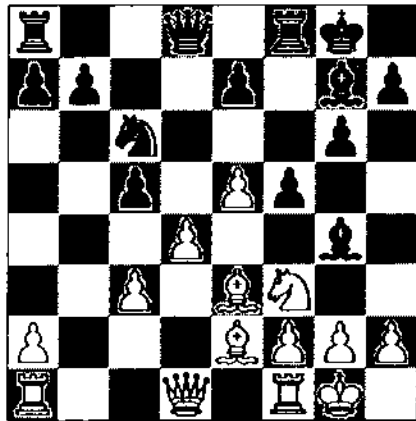
I know several of you are wondering what the catalyst was that caused old Cooper to wax ecstatically over a simple method of self improvement in chess. It was a rare event that has never occurred before in my role as games editor of the ICB. Someone has sent me a game with commentary and decent notes for publication! The method that I have described above was used by Dr. Kevin Kukla of Tinley Park. By scrutinizing his play and asking questions he revealed insight into the game that goes beyond the scope of most 1500 rated players. Botvinnik is right. Notes by Dr. Kukla are in parentheses. My notes are in brackets. The following game was played by me at the Midwest Class Championship held in Chicago over July 17-19. This game has special value to me because it was my highest rated win. I am only provisionally rated at 1500, while Ignacio Sanchez tied for 2nd in class B at the recent Chicago Open. Ignacio, it appears, was a little bit rusty by allowing me to build up a two pawn advantage by the end of the middle game. However, this had only slight impact on the relentless kingside attack that ensued. It is quite instructional in its own right, even though both sides missed some better moves. The game starts out as a Grunfeld Defense: Exchange Variation, and goes as follows:



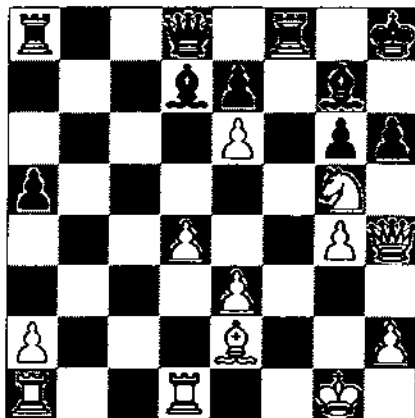
# IMPROVING YOUR CHESS

## Kukla (1509) vs Sanchez (1743)

1.d4 Nf6 2.c4 g6 3.Nc3 d5 4.cd Nd5 5.e4 Nc3 6.bc Bg7 7.Nf3 00 8.Be2 c5 9.00 Nc6 (...b6 would have been better, in retrospect) [actually this is an acceptable line for Black and his mistake comes later] 10.Be3 Bg4 11.e5 f5? (counter a central push with one on the flank, not this time)



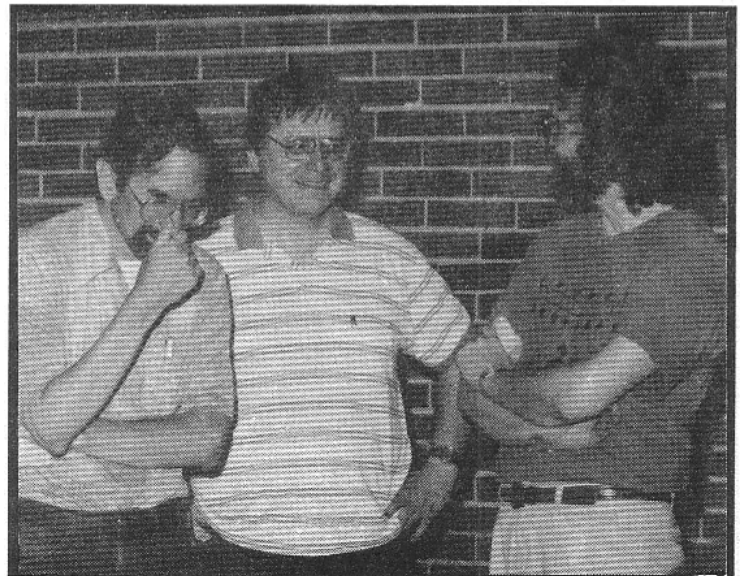
[correct is 11...cd 12.cd Qd7 13.Qd2 Rfd8 14.Rfd1 Rac8= Smejkal-Sax, 1979] 12.Qb3ch Kh8 13.Qb7 Na5 (is ...cd better?) 14.Qa6 f4 15.Bc1 (Bd2 was probably better) cd 16.cd Bc8 17.Qd3 Nc6? (...Bg4/f5 is definitely better) 18.Rd1 a5? (ditto) 19.Qe4 (Hey, we both missed this one) 19...Bd7 20.Bf4 (safer was e6?) [no] Nb4 21.Be3 (maybe Bg5 was better, but I wanted to clear the way for Qh4) Bf5 (Bc6 would have allowed capture on f3) 22.Qh4 Nc2 (...e6 is better) [I disagree as 23.Bg5 Qb6 24.Be7 is still terrible for Black] 23.Ng5 h6 24.g4 (Rac1 better?) [no as Black must eliminate the dangerous bishop] Ne3 25.fe Bd7 26.e6



Ba4 27.Rf1 [27.Nf7ch Rf7 28.ef Bd1 29.Rd1 Qf8 30.Rf1 Bf6 31.Rf6 ef 32.Qf6ch Qg7 33.Qc6 and if Qf8 34.Bd3] 27...Qc7 28.Nf7 Rf7? (Kh7 holds?) [No, White has 29.Bd3 with the idea of Qh5 or 29.Nh6 and 30.g5] 29.Rf7 g5? (...Qc3 was paramount) 30.Qh5? (here I needed Qf2 to prevent...Qc3) Be8 31.Raf1 [I can't resist pointing out 31.Qg6 Qc3 32. Bd3! this theme hangs over the position] ...Bf7 32.Rf7 Qc1ch 33. Kf2 Rf8? 34. Rf8ch Bf8 35. Qe8 Qc2 36.Qf8ch Kh7 37.Qe7ch Kh8 38.Qf8ch Kh7 39.Qf7 Kh8 40.e7 1-0



Shelly Gelbart (2300) vs. Warren Kreckler (2281) at the Illinois-Wisconsin match



Shelly Gelbart, Tony Jasaitis & Warren Kreckler share a moment of joviality at the Illinois-Wisconsin match

# ICA TOUR STANDINGS

by Bill Smythe

Note: Because of several recent and upcoming Tour events with under-1200 sections, we are now calculating Class E tour points. This change is retroactive to January 1, 1992.

**This list reflects the following events:**

Jan 11-12		
Tim Just Winter Open, Grayslake	<b>MAXI</b>	
Jan 25-26		
Fox Valley Championship, Aurora	<b>MAXI</b>	
Mar 13-15		
Mid-America Class, O'Hare	<b>MAXI</b>	
Mar 21		
Normal Redbird Open, Normal	<b>Mini</b>	
Apr 3-5		
Chicago Amateur, O'Hare	<b>MAXI</b>	
Apr 10-12		
Midwest Amateur, O'Hare	<b>MAXI</b>	
May 2-3		
Greater Peoria Open	<b>MAXI</b>	
May 9		
Chess Center Bonanza Plus-Score	<b>Mini</b>	
May 22-25		
Chicago Open, O'Hare	<b>MAXI</b>	
Jun 13		
Summer Knights Action, Springfield	<b>Mini</b>	
Jul 11-12		
Oberweis Dairy Class, Aurora	<b>MAXI</b>	
Jul 17-19		
Midwest Class, O'Hare	<b>MAXI</b>	
Aug 8-9		
Chess Center Plus-Score, Chicago	<b>Mini</b>	
Jun 27-28		
Maurice Irvin Open, Bloomington	<b>MAXI</b>	

Not included in these standings  
(crosstable not yet received):

Other events may still be added to this year's Tour. A player must compete in at least three Tour events during 1992 to be eligible for year-end Tour prizes.

**Send Tournament Crosstables to**

**Tour Statistician  
Bill Smythe**

**7445 N. Greenview, #311  
Chicago, IL 60626**

**Deadline for submissions in**

**November-December issue: October 1, 1992**

**Master Tour Points:**

COLIAS Bill	58.5
CHOW Albert	29
IVANOV Alexander	25
COOPER Tom	20.5
BOCK Dale	(1) 16
COOKE Paul	(1) 16
DZINDZICHASHVILI	(1) 16
KAIDANOV Gregory	(2) 16
VAN BUSKIRK Doug	(1) 16
LEVIT Roman	15
MARTINOVSKY Eugene	14.5
KUDRIN Sergey	(2) 13
LONOFF Marc	13
KRAAI Jesse	(2) 11.5

**Expert Tour Points:**

SCOTT Gene	37.5
ERNST Edward	(2) 36
ZELENSKY Eugene	(2) 36
MARSHALL James	22.5
WARD Tom	(2) 21.5
BOCK Dale	(1) 16
FULLER William	(1) 16
KARKLINS Erik	16
SAX Rob	13
BRODIE Mark	(2) 12.5
JOHNSON Leonard	(2) 12.5
SCHMIDT Ulrich	11.5
DZURNY Anthony	11
MARQUEZ Tony	(2) 11
ROGAN Marvin	10.5
SMYTHE Bill	10.5

**Class A Tour Points:**

JASAITIS Anthony	(2) 35.5
PRADZINSKI Tim	27.5
DIAZ Pablo	(2) 18.5
LULVES Joseph	18.5
BOCK Dale	(1) 16
COHEN Larry	16
PUKEL Bernard	16
RYDBERG Steeve	16
STOLTZ Robert	(1) 16
CHONG David	15.5
MC CARTHY Mike	14.5
COHEN Howard	11.5
MC ALISTER Kelvin	11.5
DECMAN Steve	10.5
SMYTHE Bill	10.5

**Class B Tour Points:**

PAPHITIS Alexander	67
GRAY James Jr	41.5
KITTILSEN Guy	33
SANCHEZ Ignacio	29.5
ENGELEN Mark	20
RAIMO Robert	18.5
WILLIAMS Kent	18

CREEMENS Matt	(1) 16
DOSS Jason	(1) 16
PEREZ Ronald S	(1) 16
REED Boyd	(2) 16
SMITH Brian	(1) 16
RATNER Jacob	15.5
PADILLA Rudy	15
MORTON Bruce	14

**Class C Tour Points:**

VAN KROGH Chris	44
VAKIL David	(2) 35
JOHNSON Frank	23.5
JOSEPHS Steve	21.5
GISKO Greg	20.5
SILVERMAN Scott	18.5
CREEMENS Matt	(1) 16
JOHNSON Arlando	(1) 16
SCHULTZ Dan	(1) 16
AMIRANTE Ron	14.5
OBERWEIS Julie	14
CRAGGS Tommy	13.5
HILLMAN Bruce	13.5
IOVIN Daniel	13
SLAGLE Steve	(2) 12.5

**Class D Tour Points:**

BALES Robert Jr	25
AHMER Craig	(1) 16
JENKINS Mike	14
CRAGGS Tommy	13.5
WIRTH Mike	12
WONG Brian	8
MANZELLO Samuel	(2) 5.5
BELLE John	5
RETHEMEYER Dougl	(1) 5
GRIESMEYER Walte	(2) 4.5
HILLMAN Bruce	4.5
KASPER Douglas	(1) 4.5
MEDVEDUK Sergey	(1) 4.5
SANCHEZ Isaac	4.5
ZYLUK Dan	(1) 4.5

**Class E Tour Points:**

BALTAZAR Mark	12
BAUMGARTNER Chri	(2) 10.5
HART Dan	9
DAVENPORT Felix	(2) 7.5
RACZKIEWYCZ Mark	(1) 5.5
GYORI Victoria	(1) 5
MAAS Stephen	(1) 5
ELLINGSON Eric	(2) 4
HAUGER Christoph	(1) 4
VAN DER WYST Ton	(1) 4
WEINGEIST Rob	(1) 3.5
DUPEE Arthur	(2) 3
YEATES Nick	(1) 3
FIORONI Stanley	(1) 2.5
DRENDEL Tyler	(1) 2

# HIGH SCHOOL CHESS

ANNOTATIONS BY SENIOR MASTER RICHARD VERBER

**Cory Schanes (1692) vs.  
Steve Arlinsky (2131), 1992**

At the start of this game let me issue a word of caution about Cory Schanes' rating. Cory has been improving rapidly this year and he is now the strongest of the very talented Rockford High School players. His real strength is closer to 2000 than 1700. Adults, watch out!

1.d4 g6 2.c4 ♗g7 3.♖c3 c5 4.♗f3 cxd4 5.♖xd4 ♖c6!

Strong. White is now forced to trade the knight which would improve the Black pawn-structure, lose a tempo retreating the knight, or block his Queen bishop with Pawn to e3.

6.e3

The least objectionable choice, but Black has already equalized.

6...d6

It is more flexible to omit d6 in order to retain the possibility of a timely d5.

7.♗e2 ♖f6 8.0-0 0-0 9.b3 ♗d7

A reasonable alternative is Nxd4 followed by d5, or even d5 immediately. The text is also good.

10.♗b2 ♜c8

This is O.K., but in such positions Black usually prefers to have the rook on b8 in order to support an eventual a6 and b5 with Queenside counterplay.

11.♗f3 ♜e8 12.♜e1 ♜b6 13.♗xc6

Unusual. This trade could lead to a weakening of the white squares. Rc1 or h3 look better.

13...bxc6 14.e4 ♖g4

c5 also looks good, but the text is most forcing.

15.♖a4 ♜a5

I prefer Qc7 here, threatening both d5 and c5. There are many interesting possibilities which might follow after Qc7. For example: 16. h3 c5!? 17. hxg4 cxd 18. Bxd4 Bxd4 19. Qxd4 Bxa4 20. bxa Qxc4 (Qd7 is also good) 21. Qxa7 Ra8.

16.♗c3 ♜e5?

A blunder. Qc7 was still good. Now Black loses a pawn by force.

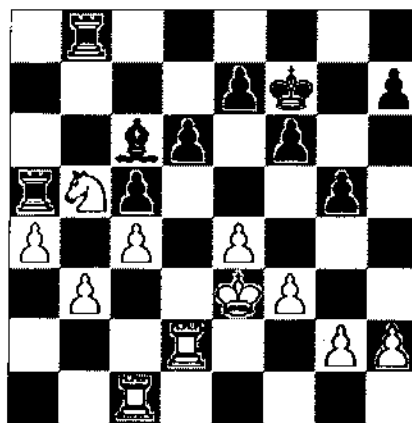
17.♖f3 ♜h5 18.♗xg7 ♜xg7 19.♜d4+ ♖e5 20.♖xe5 ♜xe5 21.♜xa7 ♗e6 22.♜e3 g5 23.♜c3

This endgame is won.

23...♜xc3 24.♖xc3 f6 25.f3 ♜a8 26.♖a4 ♜a5 27.♜ac1 c5

Forced, since Black must not allow White to play c5 himself.

28.♜e2 ♜b8 29.♖c3 ♜f7 30.♖b5 ♗d7 31.a4 ♗e6 32.♜f2 ♗d7 33.♜d2 ♗c6 34.♜e3



34...♗d7?

A better defensive try is Rg8 to take control of the g-file in preparation for the opening of the kingside. In this case Black would have some realistic counterplay. The Black bishop is better off on c6 than anywhere else

35.g3 ♜c8 M 36.f4 gxf4+ 37.gxf4 ♜e6 38.♜g1 ♗xb5 39.axb5 ♜a3 40.♜b2 ♜f7 41.♜d3 e6 42.♜c3 O 42...♜g8 43.♜xg8 ♜xg8 44.♜d2  
**Black Resigns 1-0**

## 39th North Central Open William Martz Memorial November 26-29, 1992

\$2,900 Prize Fund is Guaranteed! — 7/SS with a TL of 45/2. Double Rooms are \$59 (1-4 persons). — \$1,400 to the Top 4. \$1,500 to Classes in 100-point Groups. — A Full-point Bye to Masters in Round 1. — Site is the Grand Hotel, Milwaukee. Complete Details in the NOVEMBER/DECEMBER Issues of Chess Life.

# TOURNAMENT CALENDAR

Call Chess Phone, (708) 832-5222, for up-to-date tournament results, as well as announcements of tournaments that may not be listed in Chess Life or the ICB. The ICA Chess Phone voice is Todd Barre. Unless otherwise noted, all tournaments require USCF membership. Illinois Tour events also require ICA membership.

Organizers - remember it is ICA policy that an event must be published in the ICA bulletin in order to be a tour event. Please send your tournament notices to: Bob Renaut, 1255 Oakton Lane, Naperville, IL 60540-0310 or call at 708-983-0934.

## September 5-7 - Illinois Open (State Championship) Chicago, IL

6-SS 40/2 25/1 SD/1. Ramada O'Hare Hotel, 6600 N. Mannheim, Rosemont IL 60018. \$\$G 3050. In 2 sections: **Open:** \$\$ 750-450-200-100, X 200-100, U2000 200-100. **Reserve:** Open to U1800 and Unrated \$\$ 300-200-100, C 100-50, D/E 100-50, and Unr 50. EF for both: \$35 by 8/24 \$7 more at site. ICA membership required \$14 (\$8 under 18) OSA. Unrated may only win the unrated prize in the reserve or top prizes in the open. Reg 9-10 AM. Rds 11-6, 10-5, 10-5. 1/2 point bye available in one of the first 4 rounds if requested in advance. HR: \$49 1-2. (708) 827-5131. Special upset prizes for Ramada Hotel guests. Ent: Alan Losoff, PO Box 157, Morton Grove, IL 60053. (708) 966-5559. NS. W. **MAXI**

## September 12 LaSalle Swiss #1 - Peru, IL,

4-SS, 35/60, SD/30, Faith Assembly of God, 800 Wenzel Road (36th St.), Peru, IL., EF:\$18 if rec'd by 9/17, \$22 at site. \$\$70%. Reg. 8-9 AM, Rd. 1 at 9, Ent: Byron Pappas, 432 Creve Coeur, LaSalle, IL. 61301, (815)-224-2869, NS, NC, W.

## September 19 Normal Mapleleaf Open Normal, IL

4-SS, 30/60, SD/30. Ash Park Pool and Recreation Center, Normal, IL, (lo-

cated approx. at the 500 block of East College Ave.). \$\$G 565. Open: Open to all, EF: \$13 if rec'd by 9/16, \$16 at site, \$12 students, Prizes: \$150, \$100, Top A \$70, Top B \$60, trophy to 1st, A, B, and unr. Reserve: Open to all under 1600. EF: \$13 if rec'd by 9/16, \$15 at site, \$12 students. Prizes \$80, \$50, Top D/E \$50, trophy to 1st, 2nd, D, E, and unr. Both: ICA membership required, Reg: 8-8:45 A.M., Rounds 9-12-3-6. One 1/2 bye any round, round 4 bye must be committed to by start of round 2, more than 1 bye ineligible for any prize. Entries to: Dennis Bourgerie, 1621 N. School St., Normal, IL 61761, 309-454-3842, NS, NC, W. **Mini**

## September 19 92 Tuley Park G/30 #2 Tuley Park, IL

4-SS, G/30, Tuley Park Field House, 501 E. 90th Pl., Chicago, IL. 60619. Open: EF: \$12, \$\$40%, 20%, best from bottom half by rating 20%. Novice: EF \$2, trophy to 1st. Both: Reg: 11-11:45 AM, Rd 1 at 12: Info: 721-3979. Ent: Thomas A. Fineberg, 7321 South Shore Drive, Chicago, IL. 60649.

## September 21 Fox Valley Chess Club Speedy Four - Aurora, IL

4-SS, G/15 (Quick Chess). Site-Prisco Community Center, Lake St. and Illinois Ave, Aurora. EF: \$2, \$\$ 5 to 1st. Reg. 6:30-7:05. Rds 7:15, 7:50, 8:25, 9:00 pm. Cks. payable to Fox Valley Chess Club. Ent: R. Renaut, 1255 Oakton Lane, Naperville, IL. 60540, (708) 983-0934, NS, NC, W.

## September 26 September NU Plus Score Mini Tour - Evanston IL

4-SS, 40/60, SD/30, Norris Center, Northwestern University, 1999 Sheridan Road, Room 2-G, Evanston, IL, Entry Fee: \$12 if rec'd by 9/20, \$15 at site. Prize Fund Guaranteed, 4pts= \$100, 3.5=\$50, 3.0=\$25, 2.5= \$12. Reg: 8:45-9:30, Rds= 10:00, 12:30, 3:00, 5:30. 1/2 bye available for first three rounds if requested in advance, cafeteria on site, free close parking, ICA membership req'd. Entries: Barratt Moy, 210 Florence Ave., Evanston, IL 60202. **Mini**

## October 10 Tim Just - Lake County Open/Reserve XV - Action Chess Grayslake, IL

4-SS, G/30, College of Lake County (main building), 19351 W. Washington (at Rt. 45), Grayslake, IL 60030. Entry Fee (both sections) \$20 if received by 10/6, \$25 at site. ICA membership required. Reg 8:30-9:15, Rds 9:30, 11:00, 1:00 and 2:30. Total Prize Fund \$500 (b30). Open (open to over 1800) \$100, \$50 X=\$50, A&below=\$50. Reserve (open to 1799 and below) \$100, \$50, C=\$50 D/E/Unr=\$50. Entries: Tim Just 37165 Willow Lane, Gurnee, IL. 60031, 708-244-7954. **Mini**

## October 10 Micro Resales C-U Open 4 Urbana, IL

5-SS, 40/100, 25/60, SD/60, Busy person schd (rds 1-2, G/60), Howard Johnson, I-74 & US 45, Urbana, IL., \$\$ (1050, b/60). Open \$\$825: 300-200, U2000 125, Reserve: open to u1800, \$\$425: 175-100, u1600, u1400 each 75. Both: EF: \$27 (\$27.01 for busy person schd) if rec'd by 10/5, \$31 at site, ICA membr req'd. Reg: 8-9:15 A.M. Rds: 9:30, 2:30, 7:30, 9:30, 2:30 (Busy person Reg 1-2:15 PM, Rd 1 2:30, Rd 2 5:00 and then same) One 1/2 bye avail rds 1-4 if notified before rd 2. Unrs eligible for all prizes except u1400. Free pizza before rd 3. Ent: Micro Resales, 130 W. Main, Urbana, IL. 61801, NS, NC, W. **MAXI**

## October 10 Harvest Times Action Chess & ICA Mini-Tour Open Springfield, IL

4-SS, G/30, Washington Park Pavilion, North of intersection of Park Ave. and South Grand Ave., West; Springfield, IL. EF: \$16, \$14 Springfield CC mbrs., ICA membr req'd, \$\$G 100, other prizes based on entries. Reg: 8:15-9:15, Rds 9:40-11-1-2:20, Chks payable to Springfield Chess Club, Info: (217)-523-7265 after 6 PM. Ent: Thomas B. Knoedler, 2104 South Fourth St., Springfield, IL., 62703, NS. NC. **Mini**

## October 10 Rated Beginners Open Urbana, IL

# TOURNAMENT CALENDAR

5-SS, G/45, Howard Johnson, I-74 & US 45, Urbana, IL. Open to u1200/unr. EF: \$6, \$2 if joining USCF 1st time, trophies to 1st & 2nd. Reg: 8-9:15 AM, Rds 9:30-11-1-2:30,4. Ent: Micro Resales, 130 W. Main, Urbana, IL. 61801, NS,NC,W.

## October 17

### Third Barb City Tornado DeKalb, IL

4-SS, 30/60, SD/30, EF: \$15 if received before 10/14, site \$20, Barb City Manor, 680 Haish Blvd, Dekalb, IL (down First st.), For info: Bill Reed, 815-758-1027. Entries to: 1460 North 14th, Dekalb IL, 60115.

## October 18

### ICA Membership Meeting Chicago, IL

## October 19

### Fox Valley Chess Club Speedy Four - Aurora, IL

4-SS, G/15 (Quick Chess). Site-Prisco Community Center, Lake St. and Illinois Ave, Aurora. EF: \$2, \$\$ 5 to 1st. Reg. 6:30-7:05. Rds 7:15, 7:50, 8:25, 9:00 pm. Cks. payable to Fox Valley Chess Club. Ent: R. Renaut, 1255 Oakton Lane, Naperville, IL. 60540, (708) 983-0934, NS, NC, W.

## October 24

### Proviso West Scholastic Chess Clinic - Hillside, IL

3 Masters will conduct workshop, 3 sessions 9-9:50 a.m., 10-10:50 a.m., 11-12 p.m., Lunch 12 -1 p.m. Simul, Adult Octagon, Student Speed Tourney, Action Chess Tourney. EF: Tourney \$5, entire clinic \$8. Registration 8-9 a.m. Call George Marino 708-420-8152 or Ken Lewandowski 708-492-7815 for advance entry and further info. Wolf & Harrison, Hillside, IL 60162

## October 24

### NU Plus Score Mini Tour Evanston, IL

4-SS, 40/60, SD/30, Norris Center, Northwestern University, 1999 Sheridan Road, Room 2-G, Evanston, IL, Entry Fee: \$12 if rec'd by 10/18, \$15 at site. Prize Fund Guaranteed Apts= \$100, 3.5=\$50, 3.0=\$25, 2.5=\$12. Reg: 8:45-9:30, Rds= 10:00, 12:30, 3:00, 5:30. 1/2 bye available for first three rounds if requested in advance,

cafeteria on site, free close parking, ICA membership req'd. Entries: M. Henroid, 2245 Sheridan Rd., #228, Evanston, IL. 60201. **Mini**

## October 25 Homewood

## November 7

### Fox Valley Scholastic Team Championship - Aurora, IL

4-SS, Site-Prisco Community Center, Lake St. and Illinois Ave, Aurora. EF: \$6, if rec'd by 11/1, \$10 at site. Entries limited to first 150. 6-8 Section - open to all in grades 6-8, G/45, 4-5 Section - open to all in grades 4-5, G/30, K-3 open to all in grades K-3, G/30. Reg. 8:00-8:30. Scholastic tournament - USCF membership required. Cks. payable to Fox Valley Chess Club. Ent: R. Renaut, 1255 Oakton Lane, Naperville, IL. 60540, (708) 983-0934, NS, NC, W.

## November 14-15

### Barb City Open - DeKalb, IL

5-SS, 40/2 20/1 SD/30, Entry Fee: \$25 if rec'd by 11/13, \$30 at site. Barb City Manor, 680 Haish Blvd, Dekalb, IL (down First st.), For info: Bill Reed, 815-758-1027. Entries to: 1460 North 14th, Dekalb IL, 60115.

## November 21-22

### Illinois Class Championships MAXI

## December 5

### Fox Valley High School Championship - Aurora, IL

4-SS, G/45, 4 board team format. Site-Prisco Community Center, Lake St. and Illinois Ave, Aurora. EF: \$25, if rec'd by 12/1, \$30 at site. Reg. 8:15-8:45, Rd 1 at 9:15. Scholastic tourney - USCF membership required. Trophies to top three teams and top individual at each board. Cks. payable to Fox Valley Chess Club. Ent: R. Renaut, 1255 Oakton Lane, Naperville, IL. 60540, (708) 983-0934, NS, NC, W.

## 1993

### Jan 9-10

### Tim Just Winter Open/Reserve Grayslake, IL.

5-SS, 40/90 then SD/60. College of Lake County (main building), 19351 W. Washington (at Rt. 45), Grayslake, IL 60030. EF: \$32 if rec'd by 1/6/93, \$40

at site. Reg: 8-8:45, Rds 9 - 2 - 7, 1/10 10 - 3. Prizes (b60) Open \$225 - \$150 - \$100; EX: \$125 - \$100; A & Below: \$125 - \$100. Reserve: \$225 - \$150 - \$100; C: \$125 - \$100; D/E/Unr \$100, Entries: Tim Just 37165 Willow Lane, Gurnee, IL. 60031, 708-244-7954. **MAXI**

## Jan 23-24

### 3rd Annual Fox Valley Championship- \$1500 (GS) Aurora, IL

4/5-SS, Site-Prisco Community Center, Lake St. and Illinois Ave, Aurora. Open Section - 4-SS 40/100, SD/60. Open to all. EF: \$32 if rec'd by 1/17, \$40 at site. Reg: 8:00-8:45. Rds 9:15, 3:00 both days, Prizes (Guaranteed) Open \$300, \$150, \$75, EX: \$150-\$75, A&Below \$150-\$75. Reserve: Open to all u1800, 5-SS, 45/90, SD/30. EF: \$28 if rec'd by 1/17, \$35 at site. Reg: 8:00-8:45. Rds 9:00, 1:30, 5:45, Sun 9:15, 1:00. Prizes (Guaranteed): \$200-\$100; C: \$100, \$50, D/E/Unr \$75. ICA membership req'd. Entries: R. Renaut, 1255 Oakton Lane, Naperville, IL. 60540, (708) 983-0934, NS, NC, W. **MAXI**

## March 12-14

### Mid America Class Championship - Chicago, IL

## April 9-11

### National High School Championship - Dallas, TX

## April 16-18

### National Junior High School Championship - Chicago, IL

## April 23-25

### National Elementary Championship - Charlotte, NC

## May 28-30

### Chicago Open - Chicago, IL

## June 11-13

### National Open - Las Vegas, NV

## July 16-18

### Midwest Class Championship Chicago, IL

## August 7-15

### U. S. Open - Philadelphia, PA

## 1994

## August 7-19

### U. S. Open - Chicago, IL

# ILLINOIS CHESS ASSOCIATION PATRONS

## Century Club Members

Michael Belovesick Sr. . . . . Elmhurst  
 Thomas Fineberg . . . . . Chicago  
 Fred Gruenberg . . . . . Chicago  
 Marc Lonoff . . . . . Northbrook  
 Michael McIlhany . . . . . Springfield  
 Robert Raimo . . . . . Blue Island  
 Albert Sandrin . . . . . Chicago  
 Angelo Sandrin . . . . . Chicago  
 Bill Smythe . . . . . Chicago  
 Burton Vincent . . . . . Chicago  
 Helen Warren . . . . . Western Springs  
 Jim Warren . . . . . Western Springs  
 Bill Wenz . . . . . Milwaukee WI  
 Philip Wong . . . . . Wilmette

## Gold Card Members

Tyrone Brooks . . . . . Chicago  
 William Dwyer . . . . . Worth  
 Donald Graft . . . . . Wheaton  
 Harland S. Hoisington . . . . . Ogden UT  
 Alan Losoff . . . . . Morton Grove  
 Kenneth Marshall . . . . . Lombard  
 William Naff . . . . . Peoria  
 Peter Pelts . . . . . Niles  
 Daniel Pradt . . . . . Glen Ellyn  
 Michael Pratts . . . . . Chicago  
 Irwin Rothschild . . . . . Park Forest  
 Markus Stinson . . . . . Singapore  
 Mitchel Schweig . . . . . Evanston  
 George Umezina . . . . . Chicago  
 Louis Werner . . . . . Evanston  
 Sandy Zabell . . . . . Chicago

## Patron Members

Faneuil Adams . . . . . New York NY  
 Fred Allsbrook . . . . . Downers Grove  
 Bob Ash . . . . . Urbana  
 Kevin Bachler . . . . . Waukegan  
 Ken Bankhead . . . . . Country Club Hills  
 Todd Barre . . . . . Elmhurst  
 Roy Benedek . . . . . Western Springs  
 Edward J. Blanco . . . . . Chicago  
 Timothy Bogan . . . . . Chicago  
 Dennis Bourgerie . . . . . Normal  
 Bill Brock . . . . . Chicago  
 Jim Brotsos . . . . . Chicago  
 Gregory Bungo . . . . . Elmhurst  
 Fred Burgess . . . . . Oak Forest  
 Bill Buttny . . . . . Downers Grove  
 Anthony Caliendo . . . . . Aurora  
 Lawrence Cohen . . . . . Villa Park  
 Jim Condron . . . . . Westmont  
 Kevin Connelly . . . . . Villa Park  
 Paul Cox . . . . . Hazel Crest  
 Mike Cronin . . . . . Evergreen Park  
 Greg De Fotis . . . . . Chicago  
 John Deutsch . . . . . Chicago  
 Leroy Dubeck . . . . . Cherry Hill NJ  
 Kalman Farkas . . . . . Milwaukee WI  
 Charles Fenner . . . . . Chicago  
 Michael Flynn . . . . . Aurora  
 Jon Gotz . . . . . West Chicago  
 William Graves . . . . . Chicago  
 Steve Hansen . . . . . Indian Head Park  
 Walter Henry . . . . . Naperville  
 Steven Herr . . . . . Chicago  
 Charles Hicks . . . . . Naperville  
 Keith Holzmüller . . . . . Evanston  
 Jeffery Hyland . . . . . Mount Prospect  
 Toshio Imai . . . . . East Lansing  
 Randy Ingram . . . . . Bloomington  
 Robert Irons . . . . . Chicago  
 Gary Jochim . . . . . Chicago  
 Gersham Johnson . . . . . Chicago  
 Stephen Josephs . . . . . Hinsdale  
 Tim Just . . . . . Gurnee  
 Dan Kamen . . . . . Buffalo Grove

Scott Kittsley . . . . . Shorewood WI  
 Thomas Knoedler . . . . . Springfield  
 Walter Kocjan . . . . . Northlak  
 Warren Kreckler . . . . . Chicago  
 Peter Kuhn . . . . . Des Plaines  
 Richard Lang . . . . . Evanston  
 Michael Lester . . . . . Chicago  
 Harry Lyman . . . . . Boston MA  
 John Marconnet . . . . . Clarendon Hills  
 Mark Marovitch . . . . . Cicero  
 Anthony Marquez . . . . . Chicago  
 Ed Marschall . . . . . Barrington  
 Eugene Martinovsky . . . . . Naperville  
 Patrick Maurer . . . . . Glen Ellyn  
 Thomas Mayka . . . . . Wheeling  
 James McNamara . . . . . Hinsdale  
 Fred Meyers . . . . . Morrison  
 Earl Miller . . . . . El Paso  
 Ken Palmer . . . . . Bolingbrook  
 Randall Pals . . . . . South Holland  
 Alex Pehas . . . . . Downers Grove  
 Waldo Pena . . . . . Chicago  
 Mięczyński Platek . . . . . Skokie  
 Michael Plett . . . . . Wheaton  
 Rhys Read . . . . . Evanston  
 Frederick S. Rhine . . . . . Chicago  
 Murrell Rhodes . . . . . Peoria  
 Marvin Rogan . . . . . Chicago  
 Ray Satterlee . . . . . Wheaton  
 Mark Sefcheck . . . . . Naperville  
 David Shane . . . . . Illinois  
 Anthony Sillars . . . . . Huntington MA  
 Richard Simonetti . . . . . Elmwood Park  
 Arthur Sincialr . . . . . Evanston  
 Leonard Spiegel . . . . . St. Charles  
 Joe Splinter . . . . . Glen Ellyn  
 Peter Stein . . . . . Wheaton  
 Robert Stoltz . . . . . River Forest  
 James Tanaka . . . . . Chicago  
 Marc E. Thomas . . . . . Normal  
 Richard Verber . . . . . Aurora  
 Jeff Weimar . . . . . Moline  
 Douglas White . . . . . Schaumburg  
 Don Winsauer . . . . . Forest Park  
 Harold Winston . . . . . Naperville  
 Max Zavanelli . . . . . Park Ridge

## ICA Elected Officers

Alan Losoff, President  
 P.O. Box 157, Morton Grove, IL 60053  
 (708) 966-5559  
 Garrett Scott, First Vice-President  
 202 Foster Drive, Normal, IL 61761  
 (309) 452-8116  
 Tom Fineberg, Metro Vice-President  
 7321 S. South Shore Dr. Chicago, IL  
 60649-3597 (312) 721-3979  
 Ken Marshall, Secretary  
 357 W. Grove, Lombard IL 60148  
 (708) 932-1455  
 Marc Lonoff, Treasurer  
 900 Appletree Court, Northbrook IL 60062  
 (708) 564-2346

## USCF Delegates

by virtue of their USCF posts

Alan Losoff . . . . . Regional Vice-President  
 Fred Gruenberg . . . . . Regional Vice-President  
 Frank Skoff . . . . . Life Voting Member  
 Helen Warren . . . . . Life Voting Member  
 Harold Winston . . . . . Life Voting Member

by ICA-appointment

Tom Fineberg  
 Tim Just  
 Ken Marshall  
 Todd Barre

## USCF Voting Members

ICA appointed

Marc Lonoff	Bill Smythe
Garrett Scott	Erv Sedlock
Jim Warren	Dennis Grant
Bill Naff	Tom Knoedler
Larry Cohen	Les Bale
Jim Condron	Bill Wilkinson

ICA appointed alternates

Jim W Oberweis	Murrell Rhodes
Howard Wachtel	John Barstad
Angelo Sandrin	William Brock
Ray Socha	Glen Panner
Jim Brotsos	Steve Foust
James Enochs	Dave Shiner



# Where to Play Chess

## ICA Club Affiliates



**ABCDEU** sponsors tournaments and other chess events. Ed Blanco, Box 579181, Chicago IL 60657-9181.

**AMERICAN POSTAL CHESS TOURNAMENTS** sponsors postal events & sells chess books & equipment. Jim or Helen Warren, P.O. Box 305, Western Springs 60558. 708/246-6665.

**CENTRAL LAKE COUNTY CHESS CLUB** meets Fridays, 7:15 to 12:00AM College of Lake County, Bldg. 1, Washington at Route 45, Grayslake. Dennis Grant, 1657 McKay, Waukegan 80087. 708/336-5188.

**CHAMPAIGN CHESS CLUB** 706 Kenwood Road, Champaign IL 61821.

**CHESSTERTON CHESS CENTER** c/o Randy Pals, 16526 Ellis Ave., South Holland, IL 60473-2425, info: Randy Pals 708-339-4247, Harold Henderson 219-324-2620.

**CHICAGO CHESS CENTER** meets for casual chess 7 days a week 6:00 p.m. 1:00 a.m. \$2 charge 1921 W. 47th St., Chicago 60609. Also sponsors rated tournaments Thurs.-Sun. Ray Socha, 312/376-5678.

**CHICAGO INDUSTRIAL CHESS LEAGUE** organizes frequent competition among commercial government teams with awards, ratings, & special events. Tony Jasatas 312/431-2966.

**CONTINENTAL CHESS ASSOCIATION**, 450 Prospect Ave. Mt Vernon NY 10553. Bill Goldberg

**DOWNERS GROVE PARK DISTRICT CHESS CLUB** meets Thurs., 6:30-10 p.m. Lincoln Center, 935 Maple Ave., Downers Grove. Affiliated with ABCDEU & ICA. George Uffner, 708/960-9382.

**EVANSTON TOWNSHIP HIGH SCHOOL CHESS CLUB** Ken Lewandowski 1600 Dodge Avenue, Evanston IL 60204.

**FOX VALLEY CHESS CLUB** meets Monday evenings, 7 p.m.-?, Prisco Community Center, Lake St. & Lincoln Ave., Aurora IL. Bob Renaut, 708/983-0934

**GREATER PEORIA CHESS FEDERATION** meets Mon., 7-11 p.m., Garrett Center, 824 North Lincoln, Peoria, IL Wilkinson, 901 N. Rebecca Pl., Peoria 61606. 309-673-9455

**ILLOWA CHESS CLUB** meets Tues. 6:30-10 p.m. Hauberg Civic Center, 1300 24th St., Rock Island. Bob Ratch, 2336 25th St., Rock Island IL 61202; 309/786-8134

**LAKE COUNTY CHESS ASSOCIATION** sponsors rated tournaments in the Grayslake-Zion area. Tim Just, 37165 Willow, Gurnee 60031. 708/244-7954.

**MATTOON AREA CHESS CLUB** meets Monday, 7-9 p.m., 2608 Richmond Ave., Mattoon IL 61938. Bret R. Fuller.

**MIDWEST CHESS ASSOCIATION** organizes major tournaments for masters & experts. Helen Warren, P.O. Box 305, Western Springs, 60558. 708/246-6665.

**NORTHWESTERN UNIVERSITY** c/o M.B. Henroid, 2245 Sheridan Rd., Room 222, Evanston, IL 60201.

**OAK PARK/RIVER FOREST CHESS CLUB** meets Tues., 7 mid-night, Dominican Conference Center, 7200 W. Division, River Forest. Ken Marshall, 357 W. Grove, Lombard 60148. 708/932-1455.

**ORLAND PARK CHESS CLUB** meets every Friday night, 7:30-11, at the George Brown Commons, 15045 West Ave. (1 block w. of Lagrange Rt. 45 96th Ave.), Orland Park. No membership fee is required. Glenn Panner, 708/460-3111.

**PARK FOREST CHESS CLUB** meets Thursdays, 7-10:00 p.m., Freedom Hall, Orchard & Lakewood, Park Forest. Lawrence Cohen, 135 Westwood, Park Forest, 60466. 708/748-5911.

**QUAD CITIES CHESS CLUB**, Steven J. Foust, 9500 14th St. W., Apt. C2-B, Rock Island, 61202. 309/787-5198.

**RUDY LOZANO LIBRARY CHESS CLUB**, 1805 S. Loomis, Chicago, 60608. Hector Hernandez, Head Librarian. 312/733 4329.

**SHIMER COLLEGE CHESS CLUB** meets Mondays, 7 p.m. to ?, Koko House, Shimer College, corner of Genessee and Cory in Waukegan. David Shiner, P.O. Box A500, Waukegan 60079. 708/623-8400.

**SMYTHE DAKOTA COMPETITIONS** is the sponsor of the monthly Plus-Score Mini-Tours in the Chicago area. Bill Smythe, 6945 N. Ashland #F-3, Chicago 60626. 312/761-2455.

**SPRINGFIELD CHESS CLUB** meets Wed., 6-10 p.m., Washington Park Pavilion, Park Ave. & South Grand Ave. West, Springfield. Tom Knoedler, 217/523-7265; or James Larson, 217/529 0781. ST.

**ST. CHARLES CHESS CLUB** meets Thursdays at 7 p.m., Baker Community House, 101 S. 2nd (Rte. 31), St. Charles. Erv Sedlock, 6 N. 307 Old Homestead Rd., St. Charles 60174, 708/377-7995.

**TULEY PARK CHESS CLUB** meets Saturdays, 1-5 p.m., Tuley Park Field House, 501 E. 90th Pl., Chicago. Thomas Fineberg, 7321 S. South Shore Dr., Chicago 60649, 312/721-3979.

Join the Illinois Chess Association and receive six issues of the Illinois Chess Bulletin. In addition, you'll qualify to enter over two dozen tournaments on the Illinois Chess Tour. Every game you win or draw in a tour event earns you "tour points" that can add up to cash prizes at year-end. Finally, you'll be supporting the activities of the Illinois Chess Association. Every year, the ICA organizes major tournaments like the Illinois Open and the Illinois Class

Championships; the ICA has bid for the National Open, the US Open and the US Class Championships to be held in Illinois. In addition, the ICA sponsors scholastic clinics, runs a tournament clearinghouse, and promotes and publicizes chess activity statewide. If you would like to show increased support for Illinois chess, please consider renewing as a Century Club, Gold Card, or Patron member. Patrons are acknowledged in each issue of the

**Mail To: ICA MEMBERSHIP SECRETARY**  
**PO BOX 2534**  
**NORTHBROOK IL 60065-2534**

### ICA Membership Renewal

Check membership type:

(Your mailing label is on the other side; note corrections below)

Name \_\_\_\_\_

Address \_\_\_\_\_

City \_\_\_\_\_ State \_\_\_\_\_ Zip \_\_\_\_\_

___Century	\$100.00	___Gold Card	\$50.00
___Patron	\$25.00	___Regular	\$14.00
___Junior	\$8.00	___Affiliate	\$25.00



# **1992 ILLINOIS OPEN**

***State Chess Championship***

**SEPTEMBER 5-6-7**

***An Illinois Maxi-Tour Event!***

**\$3,050 GUARANTEED PRIZE FUND**

**OPEN SECTION (Open to All)**

**1st: \$750 2nd: \$450 3rd: \$200 4th: \$100**

**Expert 1st: \$200 2nd: \$100 Under 2000 1st: \$200 2nd: \$100**

**RESERVE SECTION (Open to Under 1800)**

**1st: \$300 2nd: \$200 3rd: \$100**

**Class C 1st: \$100 2nd: \$50 D/E 1st: 100 2nd: \$50 Unr. \$50**


***Special Upset Prize in each section  
will be donated by the Ramada Hotel!***

**RAMADA HOTEL O'HARE**

**6600 N. Mannheim Rosemont, IL 60018 (708) 827-5131**

**ENTRIES & INFO:**

**Call Alan Losoff (708) 966-5559**



Illinois Chess Association  
P.O. Box 2534  
Northbrook, IL 60065-2534

**Time Value Material**

**BULK RATE**  
U.S. Postage Paid  
Chicago, IL  
Permit No. 4720

Address Correction Requested