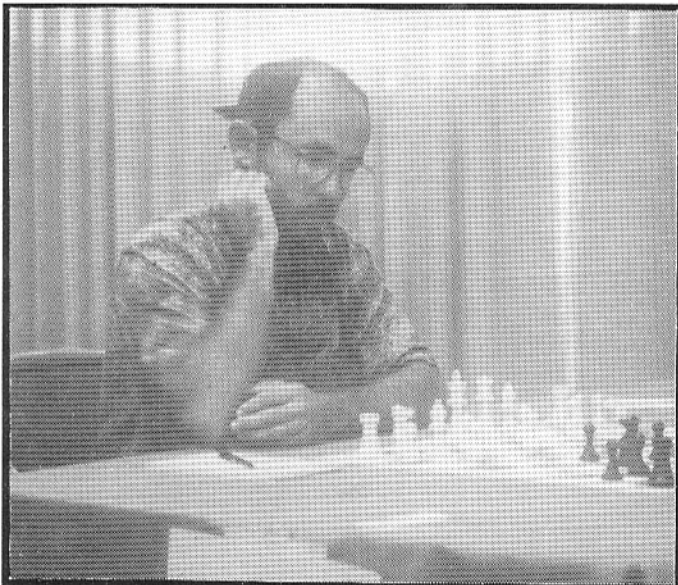


NOVEMBER-DECEMBER 1992 VOL. XV, NO. 6

ILLINOIS CHESS BULLETIN


AN ICA BI-MONTHLY PUBLICATION - \$2.95



Peter Pelts (2401)



Bill Colias (2391)



**ILLINOIS OPEN DRAWS 156
PELTS & COLIAS TIE**





ILLINOIS CHESS BULLETIN

Editor **Warren Kreckler**
6146 N. Oakley • Chicago, IL 60659 • 312-764-2807

Junior Chess Editor **Richard Verber**
1790 Tall Oaks Drive #3A • Aurora, IL 60505 • 708-978-1380

Calendar Editor **Bob Renaut**
1255 Oakton Lane • Naperville, IL 60540 • 708-983-0934

Tour Statistician **Bill Smythe**
7445 N. Greenview • Chicago, IL 60626 • 312-761-2455

MEMBERSHIP AND SUBSCRIPTIONS

The Illinois Chess Bulletin (ICB) is published bimonthly by the Illinois Chess Association. ICA membership includes a subscription to the ICB. Century Club, Gold Card, and Patron members receive their ICB by first-class mail.

ANNUAL MEMBERSHIP RATES

Century Club	\$100.00
Gold Card	\$50.00
Patron	\$25.00
Regular	\$14.00
Junior (under 18)	\$8.00

Subscriptions and address corrections should be sent to:

ICA Membership Secretary
P. O. Box 2534
Northbrook, IL 60065-2534

SUBMISSION DEADLINE

The deadline for submissions in the January-February 1993 issue is **NOVEMBER 21, 1992**.

ICA AFFILIATION

Chess clubs and other organizations which promote chess activity may affiliate with the ICA. Benefits include a copy of the ICB by first class mail, a listing under "Where to Play Chess," discounted advertising rates, three-line tournament announcements in the "Tournament Calendar," and the right to run ICA Tour Events. ICA Affiliation costs \$25; please remit to Membership Secretary.

ADVERTISING RATES

Full page	\$90
Half page	\$54
Quarter page	\$36
Eighth page	\$24

10% discount for the same ad in consecutive issues. 1/3 discount for ICA affiliates. All ads must be camera-ready to qualify for above rates; minimum \$20 charge for layout. Payment must accompany ad. The ICA & the ICB reserve the right to reject advertising.

Copyright © 1992 Illinois Chess Association

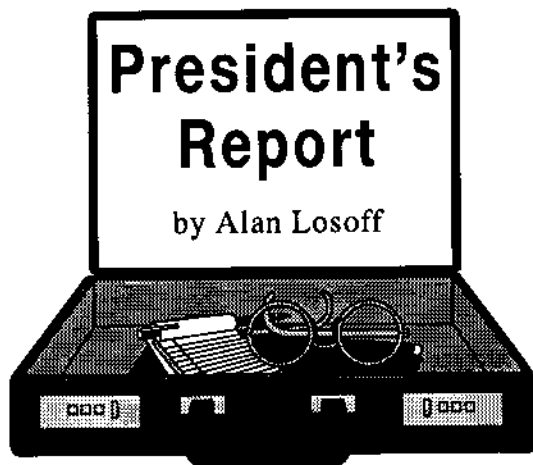
TABLE OF CONTENTS

President's Report	3
<i>by Alan Losoff</i>	
Editor's Comments	3
<i>by Warren Kreckler</i>	
Fox Valley Chess Club Brings U.S. Amateur Team Championship to Chicago	4
<i>by Senior Master Dick Verber</i>	
Normal Mapleleaf Open	4
<i>by Dennis Bourgerie</i>	
Peter Pelts Triumphs as 1992 IL State Champ.	5
<i>by National Master Warren Kreckler</i>	
Annotations from the Illinois Open	6
<i>by Senior Master Bill Collas</i>	
Annotated Games from recent events	8
<i>by National Master Tom Cooper</i>	
ICA/Warren Junior Chess Program Progress Report	10
<i>by Helen Warren</i>	
Chess on the Fox	12
<i>by Bob Renaut</i>	
ICA Tour Standings	13
<i>by Bill Smythe</i>	
Fischer Returns: How strong is he?	16
<i>by Senior Master Dick Verber</i>	
Norbert Leopoldi Celebrates 80th Birthday	19
<i>by Senior Master Dick Verber</i>	
Fred Gruenberg announces Candidacy for USCF Vice-President	21
<i>by Senior Master Dick Verber</i>	
Chow, Martinovsky share first at N.U. Plus Score Open	21
<i>by Michael Henroid</i>	
Oak Park - River Forest Chess Club News	23
<i>by Ken Marshall</i>	
Illinois Tournament Crosstables	25
<i>by Bill Smythe</i>	
Tournament Calendar	28
<i>by Bob Renaut</i>	
ICA Patrons	30
Where to Play Chess	31
ICA Club Affiliates	

ICA ELECTION BALLOT

Instructions: (1.) Vote for one candidate for each office.
(2.) Mail your ballot, postmarked by November 15, 1992
to: ICA Secretary, Ken Marshall, 357 W. Grove, Lombard,
IL 60148. Winning Candidates will serve as ICA officers
from January 1, 1993 through December 31, 1994.

President	___ Alan Losoff
Metro Vice-President	___ Robert Renaut
Downstate Vice-President	___ Dennis Bourgerie
Secretary	___ Kenneth Marshall
Treasurer	___ Todd Barre



CONGRATULATIONS!

Peter Pelts is the new Illinois Champion. There's plenty of coverage elsewhere in this issue, but I wanted to add my personal congratulations to Peter, and to reserve champion Dan Venske and all the other winners.

ILLINOIS CLASS CHAMPIONSHIPS

The Illinois Class Championships is a particularly good event for players chasing tour points. Once again this event will be held at Morgan Park Academy the weekend before Thanksgiving. This is always one of the best tournaments of the year.

CALL FOR BIDS

ICA affiliates which wish to submit bids for the 1993 Illinois Open, Illinois Class, Junior Invitational Championship or other Illinois Championship Events should do so before January 1, 1992. Write to me at PO Box 157, Morton Grove, IL 60053.

USCF COMMITTEES

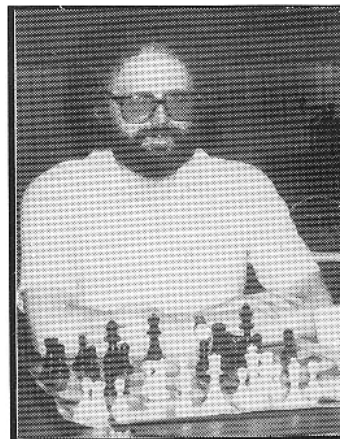
Once again, Illinois is well represented on USCF standing committees. Committee chairmen from Illinois include Harold Winston (Bylaws), Eric Schiller (Computer Chess), Max Zavenelli (Correspondence), Todd Barre (Finance), Marc Lonoff (Master Development) and Tim Just (TD Certification). Several other Illinois residents serve as members of these and other committees.

YOUR GENEROSITY IS APPRECIATED

The response to Helen Warren's outstanding junior chess program has been very encouraging. Both on the fund raising side, and in the response from students and chess coaches. This Program Works! If you have not yet contributed, please consider doing so now.

PLAN YOUR TEAMS NOW!

Plan to attend the U.S. Amateur Team Championship Midwest on February 13-15. This event is sponsored by the Oberweis Dairy and the Fox Valley Chess Club, Aurora, Illinois.



by Warren Kreckle

It is important to local chess organizers that the ICB is produced on time. Many of the submissions for past issues of the ICB have come in past the submission deadline. I ask contributors to please cooperate with me by submitting their articles on time. There will be stricter enforcement of the deadline for future issues. **THE DEADLINE FOR SUBMISSIONS TO THE JANUARY-FEBRUARY ISSUE WILL BE NOVEMBER 21, 1992.** Mail your contributions to: Warren Kreckler, 6146 N. Oakley, #2F, Chicago, IL 60659, 312-764-2807. Please call to arrange for modem or fax transmissions.

We have a new ICB Junior Chess Editor!

We welcome Senior Master Dick Verber as the new Junior Chess Editor. Dick has contributed several articles on junior chess for past issues and is involved in junior chess instruction. Thanks to Les Bale (Former Junior Chess Editor) for his efforts.

Thanks Tom!

This is National Master Tom Cooper's last issue as ICB Games Editor. Tom has been annotating games for the ICB for the past two years. Many thanks to Tom for his generous donation of time & effort as Games Editor.

Renew now!

ICA Patron membership dues have been raised from \$2. to \$35 as of January 1, 1992 (see page 30). **RENEW NOW** for one year at the old rate of \$25.

Cast your vote!

If you would like to cast your vote in the ICA Elections fill out the ballot on the inside front cover and mail it (postmarked by November 15, 1992) to Ken Marshal (ICA Secretary).

Bravo Fred!

Good luck to Fred Gruenberg (see page 21) in his candidacy for U.S.C.F. Vice-President.

Sad, but true?!

Unfortunately, all future issues of the ICB must be maximum of 32 pages. Articles & games submitted by Marc Lonoff, Garrett Scott, David Taylor and others will appear in the January-February issue. **THANKS!**

FOX VALLEY CHESS CLUB BRINGS THE U.S. AMATEUR TEAM CHAMPIONSHIP TO CHICAGO!

by Senior Master Dick Verber

The beautiful Oak Brook Hyatt Hotel will be the site for a major USCF National Tournament "President's Weekend", February 13-15, 1993. Now is the time to talk to your friends about forming 4-man teams to participate in USCF's biggest National Team championship. Many of our local Chicago-area chess clubs will want to enter 3 or 4 separate teams: A first team composed of masters and experts, a second with A and B players, and a third with C and D players. Although the top place trophies will go to the teams with an average rating near the 2200 mark, there will also be numerous awards for teams rated below 2000, 1800, and 1600. No one is too strong or too weak to play on a team, and the bargain entry fee is only \$80 per team -- a relatively painless \$20 per person. This is the least expensive of USCF's major national tournaments, an event dedicated to camaraderie and team spirit! Where else can you have 3 days of this much chess fun for only \$20?

Thanks to Jim Oberweiss and Bob Renaut, the last

two years have seen the Fox Valley Aurora Chess Club emerge as one of the largest and most active chess clubs in Illinois. Elsewhere in this issue of the Illinois Chess Bulletin you will see the club's advertisement for their \$1500 January 23-24 tournament and the U.S. Team championship Midwest, co-sponsored with USCF, is the most ambitious project so far. Jim Oberweiss has spared no

expense to make this a great tournament! The prize fund is bigger than ever before and the tournament conditions at the Hyatt Oakbrook are in an entirely different league from the Ramada Hotel. For information regarding this great new Chicago area event consult your December Chess Life or phone me at 708-978-1380.

P.S. Bring your wife or girl-friend to the plush Oakbrook shopping mall adjacent to the Hyatt Hotel. There's plenty to do in Oakbrook and the hotel is only three blocks from the convenient expressway exit of I88 at Spring Road.



Jim Oberweiss, Sr.

Normal Mapleleaf Open

by Dennis Bourgerie

51 players from Indiana, Illinois and Iowa attended the Mapleleaf Open September 19th, 1992. Senior Master Bill Colias (2405) stomped into town and roughed up his opponents to win the Open Section with a 4-0 score. Bill Naff (2155) scored 3.5-0.5 to take 2nd place. Experts Mark Bohannon (2192), Brian Lilly (2125) and Robert Reynolds scored 3-1, Bohannon and Lilly losing their only games to Colias.

Bob Beelman, Greg Cottle and Michael McCarthy scored 3-1 to tie for the A prize. Tom Warfield did 2.5 - 1.5 to take the B prize. Vlad Sorokin, who is from Vladimir, Russia took the unrated prize with 2.5 - 1.5 and earned a provisional rating of 2092.

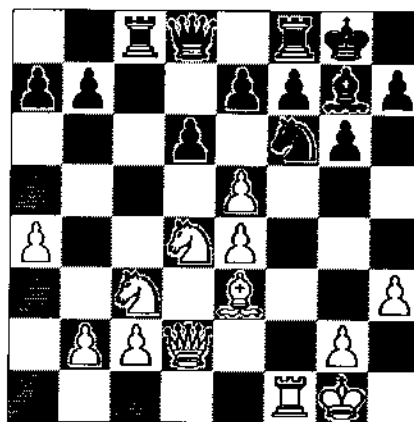
Dan Patterson (1598) played steady chess to take the Under 1600 Reserve Section with 4-0. John Belle, Bruce Hillman and Rod Moore followed closely behind at 3-1 to tie for 2nd place; Belle and Moore suffered their only losses to Patterson. Paul Rodgers won the D prize with 3-1; Mark Raczkiewicz took the E prize with a 2-2 score and Tim Taylor won the unrated prize with a 2.5 - 1.5 score.

Dennis Bourgerie directed, with assistance from Garrett Scott. Tom Warfield and Irene Bourgerie assisted at registration.

Here is one of the games from the Mapleleaf Open:

Brian Lilly (2125) vs. Bill Colias (2391) Sicilian Dragon

1.e4 c5 2.Nf3 d6 3.Bb5+ Nc6 4.d4 cxd4 5.Nxd4 Bd7 6.0-0 Nf6 7.Nc3 g6 8.h3 Bg7 9.Be3 0-0 10.a4 Rc8 11.Qd2 Ne5 12.f4 Bxb5 13.fxg5 (black's knight is a desperado piece) 13...Nxe4! 14.Nxe4 Bxf1 15.Rxf1



(Now if black captures the right way, he wins the c-pawn with a very active rook.) 15...dxg5 16.Nb5 Qxd2 17.Bxd2 Rxc2 18.Bc3 a6 19.Na3 Re2 20.Nc5 e4 21.Nxb7 [21.Bxg7 Kxg7 22.Nxb7 Rb8 23.Na5 Bxb2] 21...Bxc3 22.bxc3 Rc8 23.Na5 Rxc3 0-1

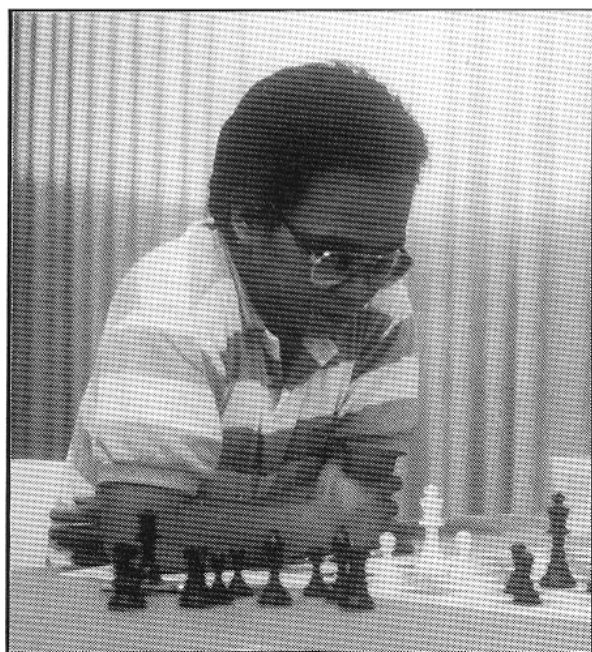
PETER PELTS TRIUMPHS AS 1992 ILLINOIS STATE CHAMPION

The Illinois Open (State Championship) was held on September 5-7 at the Ramada Hotel O'Hare. The tournament drew 156 entrants, 90 in the open section and 66 in the reserve section. The tournament was organized by Alan Losoff (ICA president) and directed by Tim Just. In the open section Peter Pelts (2401) and Bill Colias (2391) tied for first place at 5.5 points each. The title of Illinois State Champion went to Peter Pelts, as Bill Colias is an Indiana resident. Pelts' title was well deserved in that he played the stronger opposition winning against Albert Chow (2342) and Andrew Karklins (2378), while drawing with Angelo Young (2446).



Peter Pelts (Illinois State Champion)

In second place at 5 points each were Angelo Young (2446), Andrew Karklins (2378) & Eric Karklins (2186).



Angelo Young (2446)



Danny Venske (Reserve Section Champ)

In the reserve section Danny Venske (1501) took first place with a score of 5.5 points. Venske won all of his games except for a bye in the 4th round. In second place a 5 points each were Michael Henroid (1731) and Jacob Ratner (1703).

Cooper (2261) vs. Schultz (1825) 1992 Illinois Open

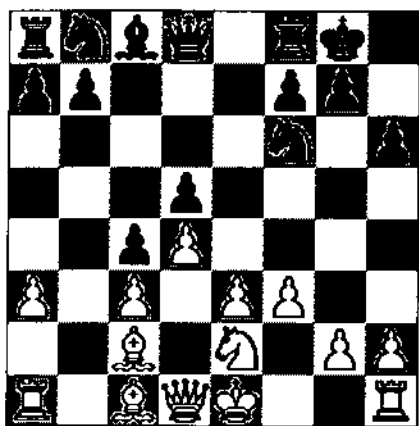
1.e4 e6 2.d4 d5 3.Nc3 Nf6 4.Bg5 Be7 5.e5 Nfd7 6.Be7 Qe7 7.f4 a6?! (This move, which prevents N or Bb5, is now considered a waste of time and inferior to 7...00 when White's "threat" of 8.Nb5 can be met by 8...Nb6 9.c3 a6 10.Na3 f6 11.Nf3 c5 12.Bd3 Nc6 13.00 cd 14.cd Nb4 15.Bb1 Bd7 16.Qd2 a5 with a slight advantage to Black. Perlis-Spielmann, 1912.) 8.Nf3 c5 9.dc Nc6 (Best. The alternatives are: a) 9...Nc5?! 10.Bd3 Nc6 11.Qd2 Bd7 12.00 with pressure on the dark squares. b) 9...Qc5 10.Qd2 Nc6 11.000 b5 12.Ne2 b4 13.Ned4 Nd4 14.Nd4 00 15.Kb1 a5 16.h4 and White had the better chances in Rodriguez-Moskalenko, Holquin 1989; note in this line that 9...Qc5 10.Qd4 Qd4? 11.Nd4 Nc6 12.Nce2 Nd4 13.Nd4 Nb8 14.Kf2 Nc6 15.Ke3 Nd4 16.Kd4 leads to the type of endgame Black must constantly avoid in this variation.) 10.Qd2?! (Inaccurate. With the exact 10.Bd3! White gives Black the opportunity to commit suicide with 10...Nc5 11.00 00? 12.Bh7+ Kh7 13.Ng5+ Kg6 14.Qg4 f6 15.Nd5 Qd7 16.f5 ef 17.Nf4 resigns. Vasilev-Grimalauskas, 1978.) 10...Nc5 (The old move. Current theory prefers 10...Qc5.) 11.Bd3 00 12.00 Nd3 13.cd Bd7 (If we examine the structure of this position we see that all the plusses are in White's favor: The idea of Nce-e2-d4 produces a good Nbad Bishop endgame and any wholesale trade of pieces allows the White King-f2-e3-d4-c5 etc. Black must look for counterplay by breaking in the center and trying to attack. If he had played 10...Qc5 he could have avoided this structure.) 14.Rac1 f6 (If 14...Qc5+ 15.Qf2 heads for that good NBad B endgame.) 15.ef Qf6 16.g3 Be8 (Trying to go after the N is too slow, but good advice for Black is hard to give here. Maybe he should just curl up around the e-pawn and hope to defend.) 17.Rfe1 Bh5 18.Ne5 Ne5 19.Re5 Bg4 20.Rce1 b5 (20...Rae8 21.Nd5) 21.Ne2 Be2 (loses a pawn but allowing 22.Nd4 would be devastating.) 22.Qe2 Rac8 23.Re6 Qd4+ 24.Kh1 g5 (burning his bridges) 25.Re7 gf 26.Qg4+?! (Not 26.Qh5 Qd3; but 26.Qe6+ Kh8 27.Qh6 is quicker) 26...Kh8 27.Qh5 resigns. (If 27...Qd3 28.Qe5+)

ANNOTATIONS

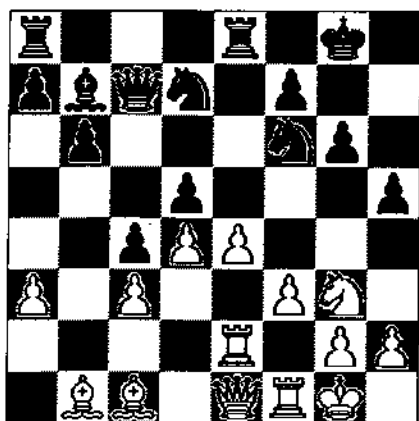
from the **ILLINOIS OPEN** by *Bill Colias*

Bill Colias (2391) vs. Jim Warren (2054) Illinois Open 1992

1.d4 ♖f6 2.c4 e6 3.♗c3 ♖b4 4.f3 d5 Tony Miles has stated that 4...d5 is best since the position is a Queen's Gambit where f3 has no place. 5.a3 ♖xc3+ 6.bxc3 h6 I think Black should challenge the White center with an immediate c5. While 6...h6 does prevent ♖g5 it has the disadvantage of creating kingside weaknesses. 7.cxd5 exd5 8.e3 0-0 9.♗d3 White stands much better due to the two bishops and center, i.e. eventual pawn e4. Black's main problem is no active counterplay. White's center keeps the Black knights out of the game. 9...c5 10.♗e2 c4 11.♗c2 Perhaps better is ♖b1 with the idea of lifting the rook ♖a1-a2-e2.



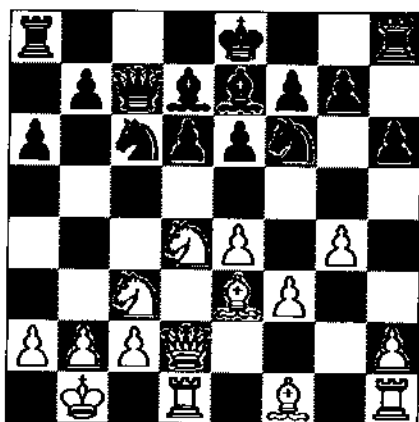
The following moves are all geared towards White trying to play e4 and Black preventing it. 11...♖e8 12.0-0 b6 13.♗g3 ♖b7 14.♖a2 ♗bd7 15.♖b1 ♗c7 16.♖e2 h5 17.♗e1 g6 18.e4



White has accomplished the first step of playing e4. Now what to do? White's plan is to drive back the Black pieces with e5 and then use his space advantage to launch a kingside attack. 18...♗f8 19.e5 ♗6h7 20.f4 ♖ad8 21.f5 h4 22.♗h1 g5 23.f6 White's pawns act as a wall not allowing the Black pieces to defend the king. 23...♗c8 24.♖xg5 ♗xg5 25.♗xh4 Black Resigned. Black has no defense to ♗h6-g7 mate or a rook lift, i.e. 25...♗ge6 26.♖e3, ♖h3, ♗h8 mate. 1-0

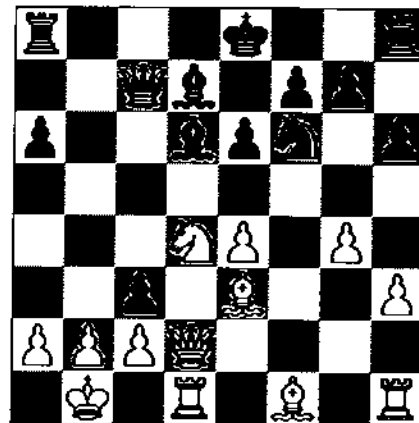
Tom Cooper (2261) vs. Bill Colias (2391) Illinois Open 1992

1.e4 c5 2.♗f3 d6 3.d4 cxd4 4.♗xd4 ♗f6 5.♗c3 ♗c6 6.♖g5 The Richter-Rauzer variation. White intends to develop quickly with ♗d2 and O-O-O. When Black has to be careful about his d6-pawn and the possibility of White doubling the f-pawns with ♖xf6. 6...e6 7.♗d2 a6 It's important for Black to stop a future ♗db5. 8.0-0-0 h6 8...h6 has the disadvantage of creating kingside weaknesses. However, it does put the question to the bishop as 9 ♖f4 drops a pawn after 9...♗xe4 10 ♗xe4 11 ♗xc6 ♗xe4. 9.♖e3 ♖d7 10.f3 ♖e7 11.♗b1 ♗c7 11...b5 would be a mistake as after 12 ♖xb5 axb5 13 O-O 14 ♗xd6 White would have strong play down the d-file and three passed pawns for the piece. 12.g4



12...♗e5 Black accomplishes two things with ♗e5. 1. Threatens to gain the two bishops after ♗c4. 2. The bishop on d7 will help Black start his queenside play with b5.

13.h3 White's idea is to play f4 gaining a tempo on the Black knight. However, during the game I was more afraid of h4, ♖g1 and g5. 13...b5 14.f4 Now if white sacrifices a piece on b5 he would only get two pawns since 14 ♖xb5 axb5 15.♗dxb5 ♗b7 (threatens the knight) 16 ♗xd6+ ♖xd6



17 ♗xd6 ♗c4 Black would threaten mate on b2 and the queen on d6. 14...b4 15.fxe5 Forced as the knight can't really move 15 ♗ce2 ♗xe4. 15...bxc3 16.exd6 ♖xd6 17.♗xe6 A miscalculation which costs White a piece. 17...cxd2 18.♗xc7+ ♖xc7 White Resigned. 0-1

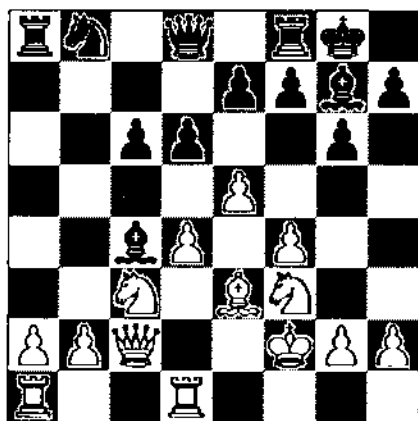
Al Chow (2342) vs. Peter Pelts (2401) Illinois Open 1992

1.d4 ♖f6 2.c4 g6 3.♗c3 ♖g7 4.e4 d6 5.f3 The Saemich Kings Indian, which has been played in both the last two World Chess Championship matches, i.e., Karpov-Kasparov and Spassky-Fischer. 5...c6 The Byrne variation, named after the American Grandmaster Robert Byrne. A key idea of this system is that Black often delays castling in favour of play on the queenside. 6.♖e3 a6 7.♖d3 b5 The move order in this variation is very flexible. Karpov-Kasparov Wch New York 1990 continued by transposition with 7... O-O 8 ♗ge2 b5 9 O-O ♗bd7. 8.e5 8 ♗ge2 O-O would transpose to Karpov-Kasparov above. 8 e5 is a very aggressive attempt to gain the advantage. White believes his center will be strong and Black will try and attack it. 8...♗fd7 9.f4 bxc4 Also having been played is 9...♖b7 in Portisch-Lehman Las Pal-

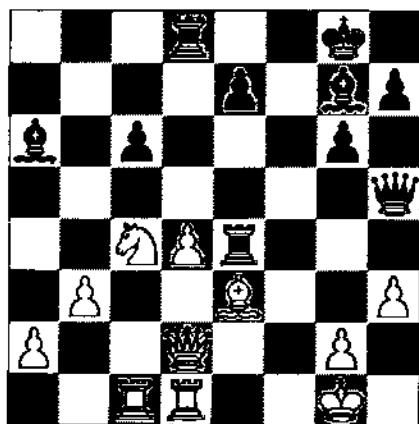
ANNOTATIONS

from the ILLINOIS OPEN by Bill Colias

mas 1972. However, Pelts' move does make a lot of sense, i.e. opens up the b-file and the ♖ will go to b6 with tempo. 10. ♖xc4 ♖b6 11. ♖b3 a5 Very creative. Black is prepared to sacrifice a pawn with a4. 12. ♖f3 a4 13. ♖xa4 Perhaps better is 13 ♖xa4 trying to keep White's light-squared ♖ on the board. 13... ♖xa4 14. ♖xa4 ♖a6 15. ♖f2 0-0 16. ♖c2 ♖b5 17. ♖c3 ♖c4 18. ♖hd1...



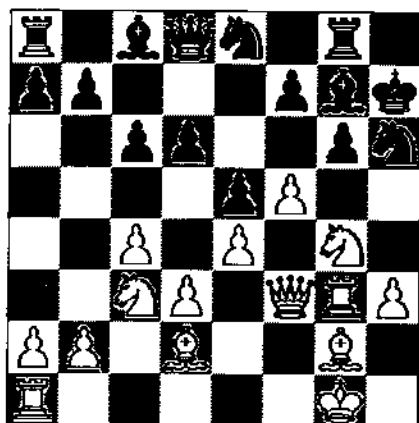
18... ♖d7 Position is similar to a Benko Gambit. I like Black's chances. 1. Black will have play on the a and b files. 2. In a normal Benko Black rarely has a light squared ♖ that is uncontested. I really don't understand where White's play is 19. f5 ♖b8 20. b3 ♖a6 21. exd6 ♖xd6 22. ♖e4 A mistake which gives Black back his pawn or else opens up the f-file for Black's rooks. Although, it's hard to suggest a straightforward plan for White especially in time trouble. 22... ♖d5 23. fxg6 fxg6 24. ♖ac1 ♖f6 25. ♖xf6+ ♖xf6 26. ♖g1 ♖af8 27. ♖e5 ♖e6 28. ♖c4 ♖e4 29. ♖d2 ♖d8 30. h3 ♖h5



It's pretty how Pelts has played on the whole board queenside, center and now kingside. The game finished with... 31. ♖f2 ♖xd4 32. ♖h1 ♖e2 33. ♖a5 ♖xa5 34. ♖xa5 ♖xf2 35. ♖xc6 ♖c8 0-1

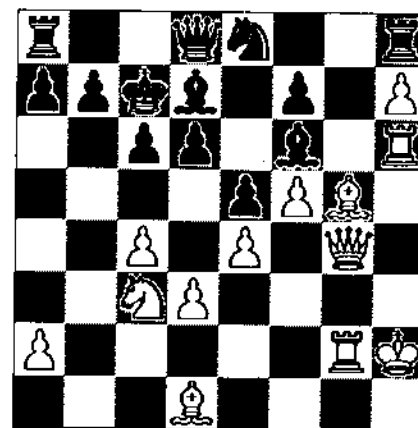
Peter Pelts (2401) vs. Andrew Karklins (2378) Illinois Open 1992

1. c4 ♖f6 2. ♖c3 g6 3. g3 ♖g7 4. ♖g2 0-0 5. d3 d6 6. e3 e5 7. ♖ge2 ♖c6 8. 0-0 The above position is a Closed Sicilian with White playing Black a tempo up. 8... h5 If this attack works against white's position a tempo up, the Sicilian Defense would be unplayable. Black also ran into problems in Tal-Gulko, USSR Championship 1974 after 8... ♖b8 9 ♖b1 a6 10 b4 ♖e7 11 a4 d5 12 cxd5 ♖fxd5 13 b5 axb5 14 axb5 ♖a8 15 ♖c2 ♖e6 16 ♖e4 ♖g4 17 ♖g3 when White covered his weak d-pawn and prepared for queenside action with ♖c5 or ♖a3. However, Black had a good idea of playing in the center. Better is either Tal's suggestion of 8... ♖e6 or Watson's ♖e7. 9. ♖d5 ♖g4 10. ♖ec3 ♖b8 A little strange going backwards but Black is trying to get back the important d5 square 11. h3 ♖h6 12. e4 ♖a6 13. f4 c6 14. ♖e3 O.K. granted Karklins would beat 9 out of 10 players from Black's position. However, moving his knights to a6 and h6 can't be correct chess. 14... h4 15. f5 A temporary pawn sacrifice, which allows White's major pieces into the kingside attack. 15... hxg3 16. ♖f3 ♖h7 17. ♖xg3 ♖g8 18. ♖f3 ♖c7 19. ♖d2 ♖e8 20. ♖g4



If Black just sits, white's initiative will

play itself. The only chance Black has is to grab the pawn and hope White does not find the win in time trouble. White has 10 minutes to get to move 40. 20... ♖b6+ 21. ♖h2 ♖xb2 22. ♖d1 ♖xg4+ 23. ♖xg4 Also tempting is 23 hxg4 with the idea of playing down the h-file and pawn storm with g5 and f6. 23... ♖f6 24. ♖f3 ♖g7 25. ♖g2 White's play is very impressive. The threat is ♖h6+ winning the Black queen. After the Black queen retreats this will free up the d1 rook to participate in the attack. While his counterpart on a8 is out of the game. 25... ♖b6 26. ♖g3 ♖f8 27. ♖f1 g5 28. h4 g4 White has 4 minutes left. 29. ♖xg4 ♖h8 30. h5 ♖d8 31. ♖d1 ♖h4 32. ♖g4 ♖f6 33. h6 ♖e7 34. ♖f3 ♖d7 35. ♖h3 ♖c7 36. h7 ♖g7 37. ♖g5 ♖e8 38. ♖h6 ♖d7



39. ♖xf6 ♖xf6 40. ♖g7 ♖xh7 The time control has been reached and White is going to be a piece up. Although he still had a few problems in winning, the game concluded with... 41. ♖xh7 ♖xh7 42. ♖xh7 ♖f6 43. ♖g1 ♖h8 44. ♖g7 ♖h4 45. ♖g3 ♖h1+ 46. ♖f2 ♖h3 47. ♖g1 ♖xg3 48. ♖xh1 ♖xd3 49. ♖c2 d5 50. cxd5 cxd5 51. ♖c2 ♖a3 52. ♖b3 dxe4 53. ♖h7 ♖xf5 54. ♖xf7+ ♖d7 55. ♖c3 ♖c6 56. ♖a4+ ♖c5 57. ♖xd7 ♖xc3 58. ♖xb7 e3+ 59. ♖e2 ♖a3 60. ♖b3 a5 61. ♖e7 ♖b4 62. ♖xe5 a4 63. ♖e4+ ♖b5 64. ♖e6 ♖c3 65. ♖d7+ ♖c5 66. ♖xa4 ♖c1 67. ♖b3 ♖a1 68. ♖xe3 ♖h1 69. ♖d3 and Black Resigned 1-0

ANNOTATED

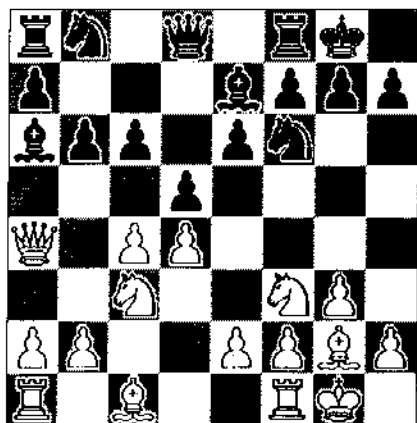
GAMES

from Recent Events

by Tom Cooper

Umezina (2336)-Brodie (2214) Illinois Open, 1992

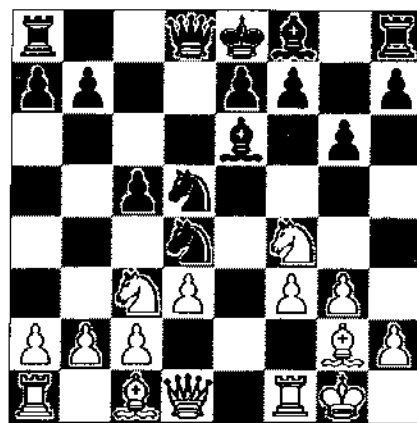
1.d4 ♘f6 2.c4 e6 3.♗f3 b6 4.g3 ♖a6
5.♞a4 ♗e7 6.♗g2 0-0 7.0-0 c6 8.♗c3
d5



9.cxd5 b5 10.♞c2 cxd5 11.♗e5 ♞b6
12.♞d1 ♗bd7 13.♗g5 ♞ae8 14.c4
♗xe5 15.dxc5 ♗xe4 16.♗xe4 dxc4
17.♗xc7 ♞xc7 18.♗xc4?! (18.Rd6!)
18...♞c7 19.♗xh7+ ♗h8 20.♞e4 ♞c4
21.♞d6 ♞c5?! (21...Re4 22.Rb6
Ra4!) 22.♞e2 ♗xh7 23.♞xa6 ♞c2
24.♞e1 ♞xb2 25.♞c1 ♞d4 26.♞d1
♞c5 27.♞b1 ♞xb1 28.♞xb1+ ♗g8
29.♞a5 ♞xe5 30.♞xb5 ♞d4 31.♞h5
♞d8 32.♞b5 ♗-♗

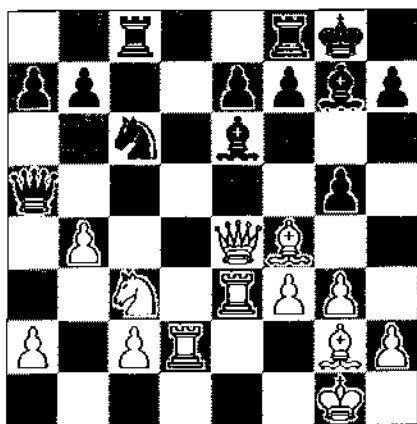
Running (2033)-A.Karklins (2378) Illinois Open, 1992

1.e4 c5 2.♗c3 ♗c6 3.♗ge2 ♗f6 4.g3 d5
5.exd5 ♗d4 6.♗g2 ♗g4 7.0-0 ♗xd5
8.f3 ♗e6 9.d3 g6 10.♗f4?! (Better is
10.Nd4



cd 11.Nd5 with 12.f4) 10...♗xf4
11.♗xf4 ♗g7 12.♞d2 0-0 13.♞ael c4
14.♞f2 cxd3 15.♞xd3 ♞c8 16.♞d2

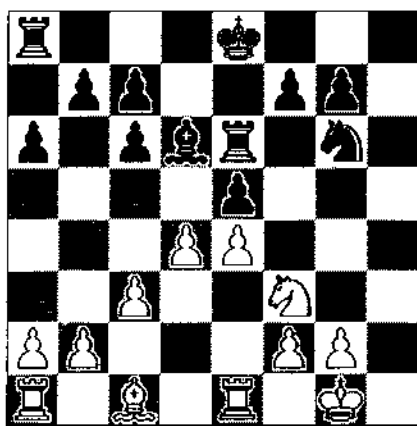
♞a5 17.♞e4 ♗c6 18.♞e3 g5 19.b4



19...♞xb4 20.♗xg5 ♗xc3 21.♞xb4
♗xb4 0-1

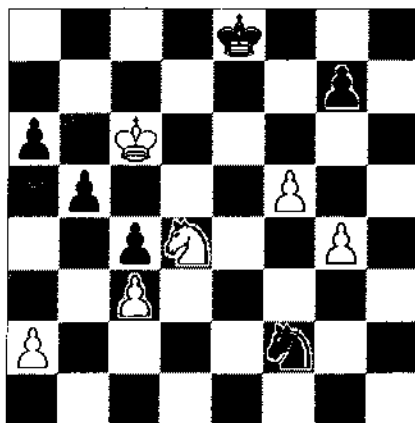
Brodie (2214)-Diaz (1995) Illinois Open, 1992

1.e4 c5 2.♗f3 ♗c6 3.♗b5 a6 4.♗xc6
dxc6 5.0-0 ♗g4 6.h3 h5 7.d3 ♞f6
8.♗bd2 ♗e7 9.♞e1 ♗g6 10.d4 ♗d6
11.hxg4 hxg4 12.♗h2 ♞xh2 13.♞xg4
♞h4 14.♞f5 ♞f4 15.♞xf6 ♞xf6
16.♗f3 ♞e6 17.c3?! (This is still
theory. Now 17.de Ne5 18.Ne5 Be5
19.c3 000 20.Be3 f6 21.f3 is a very
favorable ending for White as played
in Nurmi-Henao,1975.)



17...c5 18.dxc5 ♗xe5 19.♗e3 b6
20.♞ad1 ♗f4 21.♗xf4 ♗xf4 22.g3 ♗g6
23.♞d2 ♞d6 24.e5 ♞xd2 25.♗xd2
♞d8 26.♞e2 ♗f8 27.f4 ♗e6 28.♗f2
♞d5 29.♗f3 ♗d8 30.♞d2 ♞d7
31.♞xd7 ♗xd7 32.♗e3 ♗c6 33.f5 ♗a5
34.♗e4 c6 35.g4 b5 36.b3 c4 37.b4
♗b7 38.♗d4 c5 39.bxc5 ♗xc5+

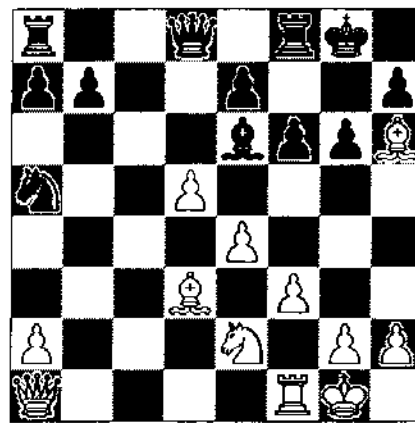
40.♗d5 ♗a4 41.e6+ ♗e8 42.♗e2
fxe6+ 43.♗xe6 ♗c5+ 44.♗d5 ♗d3
45.♗d4 ♗f2 46.♗c6



46...♗xg4 47.♗b6 ♗c3 48.♗xa6 b4
49.cxb4 c3 50.♗b5 ♗xf5 51.♗e2 c2
52.♗c4 g5 53.♗d3 ♗d7 54.♗xc2 ♗c6
55.a4 g4 56.♗d3 g3 57.♗e4 ♗d6+
58.♗f3 ♗c4 59.♗d4+ ♗b6 60.♗xg3
♗b2 ♗-♗

Fagan (1952)-Benesa (2100) Illinois Open, 1992

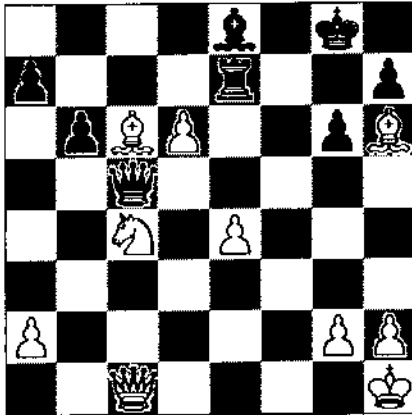
1.d4 ♗f6 2.c4 g6 3.♗c3 d5 4.cxd5 ♗xd5
5.e4 ♗xc3 6.bxc3 ♗g7 7.♗c4 0-0 8.♗e2
c5 9.♗e3 ♗c6 10.0-0 ♗g4 11.f3 ♗a5
12.♗d3 cxd4 13.cxd4 ♗e6 14.d5 ♗xa1
15.♞xa1 f6 16.♗h6 (Current theory
prefers 16.Rb1 as the most promising
way to fight for an advantage.)



16...♞e8 17.♗f4 ♗f7 18.♗h1 ♞d6?!
19.♞c3 b6 20.♞c1 ♗b7 21.♗b5 ♞cd8
22.♗c6 ♞ac8 23.♗d3 e5 24.f4 ♞e8
25.♞b2 ♞e7 26.♗xb7 ♞xc1+

from Recent Events

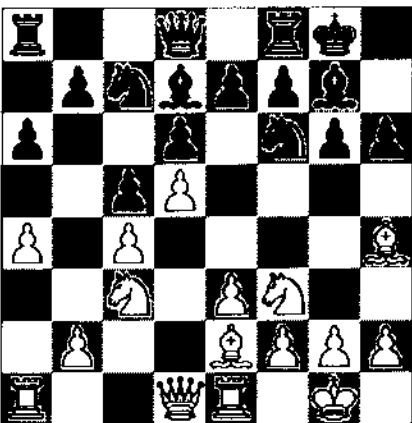
27. ♖xc1 ♜c7 28. ♗c6 ♕e8 29. fxe5 fxe5 30. ♖xe5 ♜e7 31. ♖c4 ♖c5 32. d6



32... ♗xc6 33. dxe7 ♖xe7 34. ♖xb6 ♗xe4 35. ♖c4+ 1-0

Venske (1501)-Craggs (1576) Illinois Open-Reserve, 1992

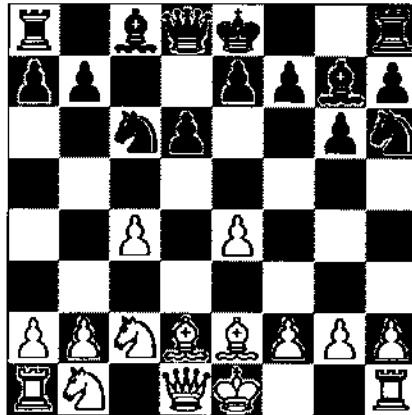
1. d4 ♖f6 2. ♖f3 g6 3. c4 ♗g7 4. ♖c3 0-0 5. ♗g5 d6 6. e3 h6 7. ♗h4 c5 8. d5 ♖a6 9. ♗e2 ♗d7 10. 0-0 ♖c7 11. ♜e1 a6 12. a4



12... ♜b8? (Black misses his chance to grab the initiative with 12...g5 13. Bg3 b5!) 13. a5 b5 14. axb6 ♜xb6 15. b3 g5 16. ♗g3 ♖h5 17. ♖c2 ♖xg3 18. hxg3 e6 (18...Bf5? 19. Qf5 Bc3 20. Bd3) 19. e4 exd5 20. exd5 ♖f6 21. ♜ac1 ♜fb8 22. ♖c4 ♖g6?! (22...Qb2) 23. ♖fd2 f5 24. ♖c3 ♖f6 25. ♗d3 ♜f8 26. ♜e3 f4 27. gxh4 gxh4 28. ♜ee1 ♖h4 29. ♖f3 ♖d8 30. ♜e2 ♗g4 31. ♗e4 h5 32. ♜ce1 h4 33. ♗h7+ ♖h8 34. ♜e7 ♗f6 35. ♗g8! 1-0

Tate (2464)-Kende(1946) Oberweis Dairy Open, 1992

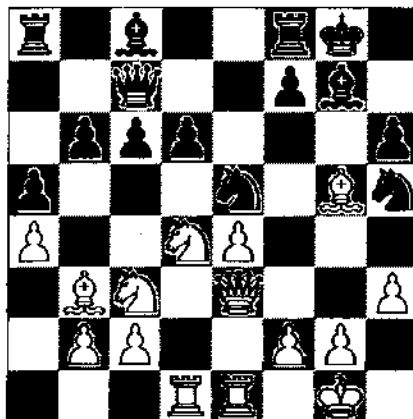
1. e4 c5 2. ♖f3 ♖c6 3. d4 cxd4 4. ♖xd4 g6 5. c4 ♗g7 6. ♖c2 d6 7. ♗e2 ♖h6 8. ♗d2 (8.g4! Qa5+ [8...f6 9. h4 00 10. h5 g5 11. Nc3 e6 12. Rg1 and Black is very cramped] 9. Bd2 Qe5 10. Nc3 f5 11. f4 Qe6 12. ef



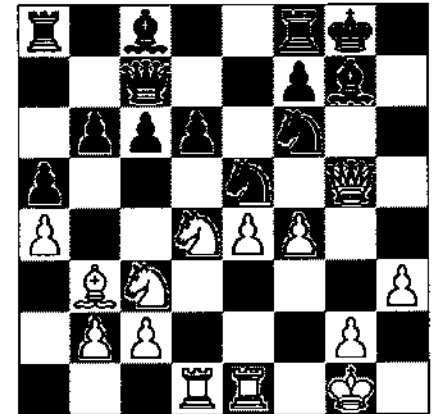
12...gf 13. g5 Nf7 with a clear advantage to White in ECO.) 8...0-0 (8...f5! 9. Qc1 Nf7 10. Bc3 e5 11. Nd2 Qg5 is better for Black.) 9. ♖c1 ♖g4 10. ♖c3 ♗e6 11. ♗xg4 ♗xg4 12. ♗h6 ♖e5 13. 0-0 ♖xc4 14. ♗xg7 ♖xg7 15. b3 ♖e5 16. f4 ♜c8 17. fxe5 ♜xc3 18. ♖b2 ♖b6+ 19. ♖h1 ♜fc8 20. exd6 exd6 21. ♜f4 ♖g8 ♗-♗

Cooper (2259)-Jim Oberweis (1827) Oberweis Dairy Open, 1992

1. e4 g6 2. d4 ♗g7 3. ♖c3 c6 4. ♗c4 d6 5. ♖f3 e6 6. ♖ge2 ♖d7 7. ♗b3 ♖gf6 8. 0-0 e5 9. ♗g5 h6 10. ♗h4 exd4 11. ♖xd4 ♖e5 12. ♖e2 0-0 13. ♜ad1 a5 14. a4 b6 15. ♜fe1 ♖c7 16. h3 ♖h5 17. ♖e3 g5 18. ♗xg5



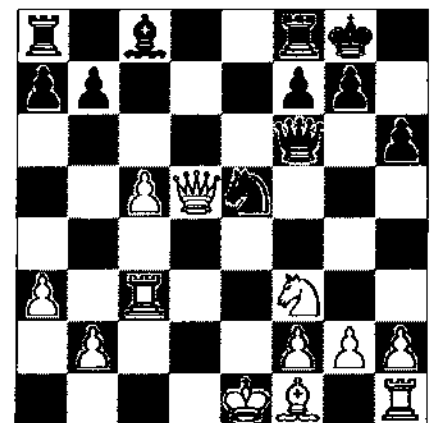
18...hxg5 19. ♖xg5 ♖f6 20. f4



20... ♖g6 (21. Ned2 Nf5 22. Ne8 Ne7+) 21. ♖xg6 d5 22. ♖g5 dxe4 23. ♖xe4 ♖xe4 24. ♜xe4 ♖h7 25. ♖f5 f6 26. ♖h5+ 1-0

Brodie (2214)-Warren J. (2054) Illinois Open, 1992

1. e4 c6 2. d4 d5 3. exd5 cxd5 4. c4 ♖f6 5. ♖c3 e6 6. ♗g5 ♗b4 7. ♜c1 0-0 8. ♖f3 ♖c6 9. a3 ♗xc3+ 10. ♜xc3 h6 11. ♗xf6 ♖xf6 12. c5 e5 13. dxe5 ♖xe5 14. ♖xd5?! (14. Be2 Nf3 15. Bf3 Re1+ 16. Be2 should allow White to consolidate and keep the advantage. The queen pawn won't run away.)



14... ♗g4 15. ♗e2 ♖xf3+ 16. gxh3 ♜ad8 17. ♖b3 ♗h3 18. ♜g1 ♖f4 19. ♜d3 ♗f5 20. ♖c3 g6 21. ♜xd8 ♜xd8 22. ♜g3 h5 23. ♖e3 ♖h4 (23. Qa4 avoids the Queen trade) 24. ♖g5 ♖xg5 25. ♜xg5 ♗-♗

ICA/WARREN JUNIOR CHESS PROGRAM PROGRESS REPORT

by Helen Warren

MAKING THE NEWS...

The Thursday, October 2nd edition of the Chicago Tribune (Chicagoland Section) carried an extensive article about chess in the metropolitan area. What a coup this was for junior chess! If you haven't seen it, it's certainly worth a trip to your library for a look-see.

The ICA-Warren Junior Chess Program was prominently mentioned in columnist's Michael Lev's comments about the role of chess in our schools and in the lives of our youngsters. We're delighted to give you a progress report on our fund raising efforts, acknowledge the generosity of our many supporters, applaud the teachers and coaches who are a part of this effort, and hope we can convince you to become booster, contributor, or benefactor.

First let's look at our fund raising thermometer after only eight weeks of promotion:

BENEFACTORS:

\$500 or more

ICA
Jim & Helen Warren
Fred Gruenberg
ACF-Fan Adams
anonymous

CONTRIBUTORS:

\$100-\$499

George Leighton	Bill Smythe
Irwin Rothschild	The Craggs Family*
NM Tom Cooper*	SM Richard Verber
NM Peter Pelts	NM Eugene Martinovsky
James Tanaka	Steve Hansen
Al Losoff	Lou Werner
Crawford Labs	

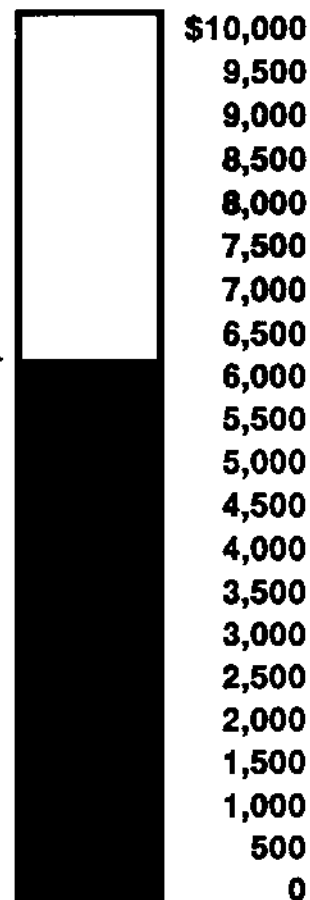
BOOSTERS:

\$1-\$99

Paul Cox	Jim McNamara
Todd Barre	NM Marc Lonoff
Tim Just	Scott Silverman
Tim Bogan	Harold Winston
Jack Wong*	Tony Sillars
Boris Minin*	Valery Gertsman*
Leonid Burda*	David Watson*
Marc Thomas*	Steve Arlinsky*
Salzmann Family*	Karen Cochran*
Marvin Rogan	Tony Jasaitis
John Marconnet	David Rockwell
William Dwyer	Pat Maurer
Steven Josephs	David Watson*
Fred Allsbrook	Roy Benedek
Anonymous	

*Indicates student (or family) or teacher in the program.

TOTAL: \$6,225.47
as of 10/18/92 →



ICA/WARREN JUNIOR CHESS PROGRAM PROGRESS REPORT

WHO'S WHO...

Of the twenty-five listed juniors eligible for master instruction, fifteen responded "yes!", one has moved out of state, and another is not a junior. (The USCF listed a forty-year old incorrectly as a junior! Wish I could take off twenty-two years that easily!) Individual lessons are already under way with many of the kids; some will start in late October.

Following are teachers involved in individual tutoring: SM Richard Verber, NM Tom Cooper, Rodney Kinnaird, and SM Vivek Rao.

Teachers involved in the second arm of the program--at high schools and community centers--include SM Richard Verber, SM Bill Colias, NM Eric Schiller, NM Kevin Bachler, NM Albert Chow, NM Tom Cooper, and NM Ron Torregrossa.

The following schools and community centers are participating (or will shortly begin) in group lessons:

Moline High School, Moline
Ariel Community Center/Hyde Park
Orr High School, Chicago
Clemente High School, Chicago
IL Math & Science Academy, Lisle
Glenbard West High School, Glen Ellyn
Evanston High School
Buffalo Grove High School
Auburn High School, Rockford
Jefferson High School, Rockford
U of C Lab High School, Chicago

The Illinois Open over Labor Day boasted the greatest number of juniors in recent memory--a wonderful sight to see. Take note of the Illinois Class this November in Morgan Park! I predict you'll see several DOZEN juniors sitting at the boards.

We have made a bold, new first step with half the fund raising in place to carry us through 1992 and well into 1993. The concept of matching or contributory funding by the schools and parents of kids in the tutorial program is integral to continued success. And it's been happening.

Some considerations for the future:

- 1) A structured program of enlisting juniors in the ICA so they are able to receive the ICB, see themselves and their schools featured, and mainline into the open tournament experience.
- 2) Introduction of reduced entry fees for juniors in our open events.
- 3) A workshop for teachers, school coaches, and administrators to streamline procedures, discuss objectives, and broaden program scope.
- 4) How do we make the critical breakthrough of broad based financial support from area business and school districts? Is the "Adopt A School" concept good for us?
- 5) Should we consider a structured curriculum approach as in the New York City program?
- 6) A Scholarship Program for the Yasser Seirawan Summer Camp for Children under 16 in June, 1993: should this program send a youngster?

Meanwhile, the next step is yours, dear reader. The list of 47 donors should grow to 70 by the next issue of the ICB; we should have reached the \$7500 mark by year's end. It's up to you to translate your love of chess into practical expression. How about it?



My PO Box is a big one! Let me hear from you.
Helen Warren, PO Box 305, Western Springs, IL 60558.

Chess on the Fox

by Bob Renaut

AUGUST OPEN BLITZ TOURNAMENT

Two double round robin blitz tournaments were held in August. Master Tom Cooper and Expert Peter Stein tied for 1st in one and Tom Cooper took clear 1st in the other. The tournament was directed by Bob Renaut.

Player	Rtng.	1	2	3	4	5	6	Tot
01 Cooper, Tom	2259	D2	W2	W3	L3	W4	W4	4.5
02 Stein, Peter	2189	D1	L1	W4	W4	W3	W3	4.5
03 Watson, Alan	2231	W4	W4	L1	W1	L2	L2	3.0
04 Renaut, Bob	2128	L3	L3	L2	L2	L1	L1	0.0

Player	Rtng.	1	2	3	4	5	6	Tot
01 Cooper, Tom	2281	W4	W4	W2	W2	W3	L3	5.0
02 Stein, Peter	2225	W3	W3	L1	L1	L4	W4	3.0
03 Watson, Alan	2227	L2	L2	L4	W4	L1	W1	2.0
04 Renaut, Bob	2074	L1	L1	W3	L3	W2	L2	2.0

AUGUST SPEEDY FOUR DRAWS 18

The Speedy Four Quick Chess tournament held on August 17, drew 18 players and was directed by Bob Renaut. The tournament was held in two sections, Open and Reserve. The Reserve Section was won by Greg Cisko with a perfect 4.0 score! Greg won \$5 for his clean sweep. Joe Moore earned 2nd place with a 3-1 score. The crosstable for the event is shown below:

Player	Pre Post		1	2	3	4	Total
	Pre	Post					
01 Cisko, Gregory S.	1476	1528	W8	W2	W5	W4	4
02 Moore, Joe	1368	1422	W4	L1	W6	W5	3
03 Flynn, Michael W.	1635	1596	L6	W7	L4	W8	2
04 Turcany, Paul A.	1578	1553	L2	W8	W3	L1	2
05 Oberweis, Julie	1521	1497	W7	W6	L1	L2	2
06 McGee, Mark	1384	1364	W3	L5	L2	L7	1
07 Oberweis, Joseph	1311	1292	L5	L3	L8	W6	1
08 Westcott, Michael	1010	1031	L1	L4	W7	L3	1

The Open Section drew ten players; 3 masters, 3 experts, 3 Class A and 1 Class B player. Dr. Martinovsky, Alan Watson and Tom Cooper tied for 1st place. Dr. Martinovsky missed an opportunity to sweep the field when he lost to Tom Cooper in the last round. Dr. Martinovsky earned 1st place on tie-breaks. The upset award went to Steve Decman who defeated experts Bob Renaut and Jim Marshall in rounds 1 & 2! Great job Steve! The crosstable for this event is shown below:

Player	Pre	Post	1	2	3	4	Total
01 Martinovsky, Euge	2380	2381	W9	W4	W3	L2	3
02 Cooper, Thomas	2259	2266	W10	L3	W7	W1	3

03 Watson, Alan	2235	2253	W5	W2	L1	W4	3
04 Stein, Peter	2182	2178	W6	L1	W8	L3	2
05 Oberwels, James	1820	1855	L3	L8	W10	W9	2
06 Reed, Bill	1805	1829	L4	W10	L9	W7	2
07 Decman, Stephan	1789	1827	W8	W9	L2	L6	2
08 Renaut, Robert	2128	2080	L7	W5	L4	L10	1
09 Marshall, James	2073	2021	L1	L7	W6	L5	1
10 Illosvay, Paul	1839	1828	L2	L6	L5	W8	1

SEPTEMBER SPEEDY FOUR WON BY PETER STEIN

The September Speed Four Quick Chess tournament drew 15 players and was directed by Bill Reed. Peter Stein (2182) swept the field with a perfect score of 4 points. Four players tied for 2nd, Dr. Martinovsky (2368), Alan Watson (2235), Jeff Friedman (1804) and T. Schofield. The players and their scores are shown below:

Peter Stein	(2182)	4.0
Alan Watson	(2235)	3.0
Eugene Martinovsky	(2368)	3.0
Jeff Friedman	(1804)	3.0
T. Schofield	(1653)	3.0
Robert Harris	(1729)	2.0
D. Whelchel	(1648)	2.0
Pat McMillian	(1354)	2.0
Mike Westcott	(1010)	2.0
Cliff Anderson	(1467)	1.5
Mark McGee	(1418)	1.5
Rudy Padilla	(1600)	1.0
Joe Moore	(1376)	1.0
Mike Mann	(unr)	1.0
Charles Hicks	(1531)	0.0

Szpisjak (2224) -Vakil (1806) - 1992 Illinois Open Annotated by NM Tom Cooper

1.e4 Nf6 2.e5 Nd5 3.c4 Nb6 4.c5 Nd5 5.Bc4 e6 6.Nc3 (Many players worry about the sharpness of the 4-pawn attack and spend little study time on rarer variations. This line, where White offers the c-pawn for quick development and a K-side attack, is as dangerous as anything the 4-pawn attack has to offer.) 6...Nc3 7.dc Bc5? (If Black intends to take the c-pawn it would be safer to play 7...Nc6 8.Bf4 Bc5; then, 9.Qg4 g5 10.Bg5 Rg8 [not 10...Ne5? 11.Qh5] leads to an unclear position where both sides must play exactly.) 8.Qg4 Bf8? (Asking for it. Black should try either: a) 8...Qe7 9.Qg7 Qf8 and hope for 10.Qf6 Be7 11.Qf3 Nc6 12.Bf4 d5 13.Bd3 Bd7 14.Ne2 000 which allowed gradual equality in Prachov-Slavov, postal 1960. Though here simply 10.Qf8 Bf8 11.Nf3 Nc6 12.Bf4 gives White a nice lead in development. Or b) 8...g6 9.h4 Nc6 10.Nf3 h5 11.Qg3 d5 12.Bd3 Be7 13.Bg5 with White better. Or, finally c) 8...Kf8 9.Bf4 d5 10.000 Nd7 [10...Bf2 11.Nh3] 11.Bd3 Be7 12.h4 c5 13.Rh3 and White has the advantage.) 9.Bg5 f6 (9...Be7 10.Be7 Qe7 11.Qg7 is positionally bankrupt but avoids the following quick knockout.) 10.ef gf 11.Qh5+ Ke7 12.Bf6+! resigns.

1992 ICA TOUR STANDINGS

Master Tour Points:

COLIAS Bill	110.5
CHOW Albert	53
MARTINOVSKY Eugene	38.5
YOUNG Angelo	34.5
COOPER Tom	28.5
IVANOV Alexander	25
PELTS Peter	23.5
GUREVICH Dmitry	19
BOCK Dale	18
LEVIT Roman	18

Expert Tour Points:

SCOTT Gene	41.5
ERNST Edward(2)	36
ZELENSKY Eugene(2)	36
MARSHALL James	25
KARKLINS Erik	24
WARD Tom(2)	21.5
ROGAN Marvin	18.5
SAX Rob	18.5
BOCK Dale	18
NAFF Bill	18

Class A Tour Points:

WARFIELD Tom	42.5
JASAITIS Anthony(2)	35.5

PRADZINSKI Tim	27.5
PUKEL Bernard	23.5
MC CARTHY Mike	22
COHEN Larry	21.5
DIAZ Pablo	21.5
BOCK Dale	21
LULVES Joseph	21
SPHAR Robert	17.5

Class B Tour Points:

PAPHITIS Alexander	71.5
KITTILSEN Guy	42.5
GRAY James Jr	41.5
WILLIAMS Kent	30
SANCHEZ Ignacio	29.5
RAIMO Robert	24.5
CRAGGS Tom	24
RATNER Jacob	23.5
PADILLA Rudy	22
SPHAR Robert	20.5

Class C Tour Points:

VON KROGH Chris	44
VAKIL David (2)	35
VENSKE Danny	28
CRAGGS Tom	26.5
JOHNSON Frank	23.5
CISKO Greg	22.5

JOSEPHS Steve	21.5
AMIRANTE Ron	20
CREEMENS Matt (2)	20
SILVERMAN Scott	19.5

Class D Tour Points:

BALES Robert Jr	27
AHMER Craig (1)	16
JENKINS Mike	16
WIRTH Mike	15
CRAGGS Tom	13.5
RODGERS Paul	12
MANZELLO Samuel	8.5
WONG Brian	8
HIGHTOWER Dean	7
GRIESMEYER Walter	6

Class E Tour Points:

BAUMGARTNER Chris	13.5
BALTAZAR Mark	12
HART Dan	10.5
RACZKIEWYCZ Mark (2)	8.5
DAVENPORT Felix(2)	7.5
ELLINGSON Eric	5
GYORI Victoria(1)	5
MAAS Stephen(1)	5
HAUGER Christoph (1)	4
LEALI Matt	4

This list reflects the following events:

Tim Just Winter Open, Grayslake	MAXI	Jan 11-12
Fox Valley Championship, Aurora	MAXI	Jan 25-26
Mid-America Class, O'Hare	MAXI	Mar 13-15
Normal Redbird Open, Normal	mini	Mar 21
Chicago Amateur, O'Hare	MAXI	Apr 3-5
Midwest Amateur, O'Hare	MAXI	Apr 10-12
Greater Peoria Open	MAXI	May 2-3
Chess Center Bonanza Plus-Score	mini	May 9
Chicago Open, O'Hare	MAXI	May 22-25
Summer Knights Action, Springfield	mini	Jun 13
Maurice Irvin Open, Bloomington	MAXI	Jun 27-28
Oberweis Dairy Class, Aurora	MAXI	Jul 11-12
Midwest Class, O'Hare	MAXI	Jul 17-19
Chess Center Plus-Score, Chicago	mini	Aug 8-9
Bradley Summer Open, Peoria	mini	Aug 15

Oberweis Dairy Open, St Charles	MAXI	Aug 22-23
Illinois Open, O'Hare	MAXI	Sep 5-7
Normal Mapleleaf Open, Normal	mini	Sep 19
Northwestern Plus-Score, Evanston	mini	Sep 28

Upcoming 1992 Tour events:

Harvest Times Action, Springfield	mini	Oct 10
Lake County Action, Grayslake	mini	Oct 10
Micro Resales Open, Urbana	MAXI	Oct 10-11
Northwestern Plus-Score, Evanston	mini	Oct 24
Illinois Class	MAXI	Nov 22-23

For players with fewer than three 1992 Tour events, the number of events (1 or 2) is shown in parentheses. A player must compete in at least three Tour events during 1992 to be eligible

CHESSCO'S

CELEBRATING

25 YEARS

1967-1992

Ask for our FREE chess book and equipment catalog!

The price in bold print is the price you pay!!

Everyday Low Prices • No Memberships • No B.S. • Orders in by Noon out Same Day!

CHESS PLAYERS

- 200 Open Games: Bronstein** \$6.95/**5.95**
The Games of José Raúl Capablanca: Caparrós **\$25.00**
Bobby Fischer Profile of a Prodigy: Brady **\$8.95/7.50**
My 60 Memorable Games: Fischer **\$10.95/\$9.25**
Bobby Fischer Complete Games of the American World Chess Champion: Hays **\$19.95/\$17.50**
Notes of a Soviet Master: Ilyin-Genevsky **\$17.50h**
Child of Change: Kasparov **\$17.95/\$15.25h**
Grandmaster at Work: Kotov **\$16.95/\$14.50**
Aron Nimzowitsch Master of Planning: Keene **\$19.95/17.50**
***CJS Purdy's Fine Art of Chess Annotation and Other Thoughts: Tykodi** **\$16.95**
Nigel Short: Chess Prodigy: Short **\$9.95/\$8.50**
***Confessions of a Chess Grandmaster: Soltis** **\$25.95**

ENTERTAINMENT

- Winning with Chess Psychology: Benko & Hochberg** **\$13.00/10.95**
Impact of Genius: Fauber (390 pages—new) **\$19.95/\$17.50**

CORRESPONDENCE

- *Complete Guide to Correspondence Chess: Dunne** . **\$14.95**

TREATISES

- *How to Become a Candidate Master: Dunne** **\$18.95**
Secrets of Chess Training: Dvoretsky **\$15.95/12.75**
From Beginner to Expert in 40 Lessons: Kostyev **\$12.95/10.95**
Chess Middlegame Planning: Romanovsky **\$17.95/14.50**
***How to Reassess Your Chess 2nd Ed.: Silman** **\$16.95**

ENDGAME

- Chess Endgame Lessons: Benko** **\$19.95/18.95**
A Guide to Chess Endings: Euwe & Hooper **\$5.95/4.95**

OPENINGS

- The Complete Benko Gambit: Fedorowicz** **\$17.50/14.75**
Play the Benko Gambit: Ravikumar **\$15.00/12.75**
***Blackmar-Diemer gambit keybook: Sawyer** **\$21.95**
New Ideas in the Caro-Kann Defense: Speelman **\$14.95/12.75**
The Classical French: Harding (rev. ed.) **\$16.95/14.25**
Winning with the Giuoco Piano and the Max Lange Attack: Soltis **\$16.50/13.95**
King's Indian Defence Sämisch Variation: Tirabassi, Falchetta, Curtacci (brand new) **\$20.00/18.00**
Secret Weapons: Martin **\$19.95/16.95**

All English and flexible bound unless noted (h).

Please add \$4.50 or 5% of your order for UPS (whichever is greater) except for books marked with an *.



**P.O. BOX 8
 DAVENPORT
 IOWA
 52805
 order
 TOLL FREE
 1-800-397-7117**



BIG SAVINGS!
3.5" KING—heavily felted and weighted—manufactured once again. New retail is \$47⁰⁰ but our price is a very attractive
shipping paid \$39⁰⁰



AN ICA MAXI-TOUR
TOURNAMENT

TIM JUST'S WINTER OPEN/RESERVE X

A COLLEGE OF LAKE COUNTY EVENT

\$1725 IN PRIZES!

JANUARY 9-10, 1993

College of Lake County, Main Building
19351 W. Washington at Route 45
Grayslake, Illinois 60030

OPEN Open to all players

1st/2nd/3rd	\$225/150/100
Expert	\$125/100
A & Below	\$125/100

RESERVE Open to all under 1800

1st/2nd/3rd	\$225/150/100
C 1st/2nd	\$125/100
D/E/UNR	\$100

5 Round Swiss - Rounds: Saturday at 9, 2, 7; Sunday at 10, 3. A 1/2 point bye is available for rounds 1,2,3, or 4 if requested in advance.

Time Controls: First = 40/90; Thereafter = Sudden Death/1

NOTE: Prizes are based on 60 entries - ILLINOIS CHESS ASSOCIATION MEMBERSHIP REQUIRED OF ILLINOIS RESIDENTS - Other states, OK; NO SMOKING ON CAMPUS

ENTRY FEE: \$32 EARLY - \$40 LATE & PHONE

EARLY REGISTRATION AND INFO:

Tim Just
37165 Willow Ln.
Gurnee, Illinois 60031
708-244-7954

LATE REGISTRATION:

AT THE SITE: 1/9/93; 8-8:45 a.m.

FISCHER

How strong is he?

Returns

by Senior Master Richard Verber

World's Top 10

FIDE list of July 1, 1973

1. Robert Fischer 2780
2. Anatoly Karpov 2660
3. Mikhail Tal 2660
4. Boris Spassky 2655
5. Victor Korchnoi 2650
6. Laslo Portisch 2650
7. Tigran Petrosian 2640
8. Mikhail Botvinnik 2630
9. Lev Poluaevsky 2625
10. Bent Larsen 2620

That Fischer is beating Spassky should surprise no one. That Fischer is winning so decisively is a pleasant surprise.

Before the start of the match in Yugoslavia many masters expected that Fischer - Spassky 1992 could go either way. It was reasoned that Fischer's absence from competitive chess for 20 years would just about be balanced by Spassky's non-aggressive attitude and his current FIDE rating near 2600. Some authorities even speculated that Spassky might not want to beat his friend Fischer, lest he drive Fischer out of chess for another 20 years! (Over the past two decades both Boris Spassky and many-time Yugoslav champion Svetozar Gligorich have made numerous trips to see Fischer in Pasadena, California to try to talk him into a world class match in Europe. At one point about 10 years ago, Gligorich even considered running for the post of FIDE president as a way of coaxing Fischer back into chess).

Now that we have the first 18 games to help us form a judgement, we should be able to agree that Fischer is much stronger than Spassky. Fischer's score of 7 wins, 3 losses, and 8 draws gives him a performance rating over 2700. Such a rating would place Fischer lower than world champion Kasparov (2780), but in the same league with championship contenders Ivanchuk,

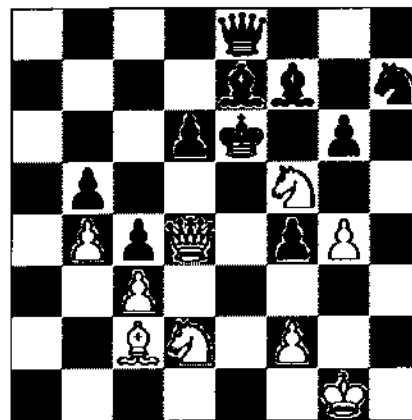
Karpov, Anand, Yusapov, Gelfand, Short and Timman. As Fischer continues to improve with practice, his play will get even better. Despite Fischer's genius for chess, it remains unlikely that his age would permit him to defeat Kasparov. But, boy, what a match that would be!

Fischer fans will want to pay special attention to match games number 1, 9, 11, and 16. Fischer's game number 11, a Guimard variation versus the Sicilian, is my personal favorite game of the match, one of the nicest games of his career. Game number one is also quite impressive. Should you prefer to see Fischer taking it on the nose, look at games 5 and 12.

It is a pity that Fischer is still so goofy, that he continues with comments that are anti-Semitic, anti-American, anti-Soviet, anti-USCF, anti-Kasparov, anti-Karpov, etc. I doubt that Fischer will be able to return to the U.S. any time soon. But with his \$3.5 million match winnings, an Hungarian girlfriend, and many friends in Eastern Europe, he may decide to stay in Yugoslavia or Hungary.

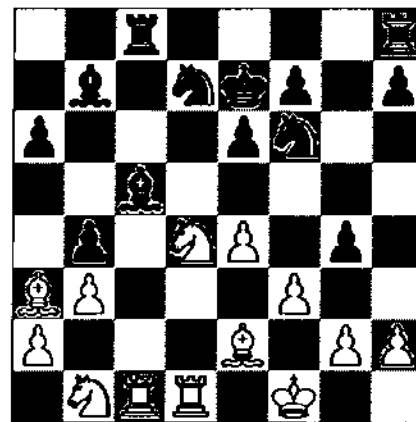
Fischer-Spassky Game 1, 1992
 1.e4 e5 2.f3 d6 3.♖b5 a6 4.♗a4 d6 5.0-0 ♗e7 6.♞e1 b5 7.♗b3 0-0 8.c3 d6 9.h3 d6 The Breyer Variation, where Black sacrifices a tempo in order to re-deploy his Queen Knight. Spassky is the world authority on this variation. 10.d4 d6 11.d6 12.♗c2 ♞e8 13.d1 ♗f8 14.d3 g6 15.♗g5 h6 16.♗d2 ♗g7 17.a4 c5 18.d5 c4 19.b4! In order to prevent d5 19...d7? Most commentators preferred 19...cb e.p. d7 grants White a significant queenside initiative. 20.♗e3 h5 21.♞d2 ♞f8 22.♞a3 d6 23.♞ea1 ♞d7 24.♞1a2 ♞fc8 25.♞c1 ♗f8 26.♞a1 ♞e8 27.d1 ♗e7 28.d1d2 ♗g7 29.d1 ♗xe4 30.♗xe4 f5 31.♗c2 ♗xd5 32.axb5 axb5 33.♞a7 ♗f6 34.d6 35.♞xa7 ♞a8 36.g4 hxg4 37.hxg4 ♞xa7 38.♞xa7 f4 39.♗xf4 exf4 40.dh4 ♗f7 41.♞d4+ ♗e6

42.♗f5! Beautiful and surprising.



42...♗f8 43.♞xf4 ♗d7 44.♗d4 ♞e1+ 45.♗g2 ♗d5+ 46.♗e4 ♗xe4+ 47.♗xe4 ♗e7 48.♗xb5 d7 49.♗bxd6 d6 50.♞e5 1-0

Spassky-Fischer Game 4, 1992
 1.d4 d5 2.c4 dxc4 3.d3 d6 4.e3 e6 5.♗xc4 c5 6.0-0 a6 7.dxc5 ♞xd1 8.♞xd1 ♗xc5 9.b3 d6 10.♗b2 b6 11.d3 ♗b7 12.♞ac1 ♗e7 13.d4 ♞c8 14.f3 b5 15.♗e2 ♗c5 16.♗f1 ♗e7 17.e4 g5 18.d1 g4 19.♗a3 b4

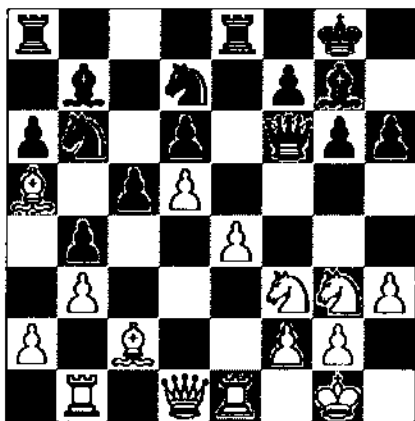


20.♞xc5! dxc5 21.♗xb4 ♞hd8 22.d3 gxf3 23.gxf3 d7 24.d4 ♗a8 25.♗f2 ♞g8 26.h4 ♞c7 27.d2 ♞b8 28.♗a3 h5 29.♞g1 ♗f6 30.♗e3 a5 31.♞g5 a4 32.b4 d7 33.b5 d6 34.d4 e5 35.dxe5 dxe5 36.♞f5+ ♗g7 37.♞xe5 dxe4 38.♗d3 ♞c3 39.♗b4 ♞xd3+ 40.♗xd3 d6 41.♗d6 ♞c8 42.♞g5+ ♗h7 43.♗e5 d8 44.♞xh5+ ♗g6 45.♞g5+ ♗h7 46.♗f4 f6 47.♞f5 ♗g6 48.b6 ♞d8 49.♞a5 ♗xf3 50.h5+ 1-0

FISCHER

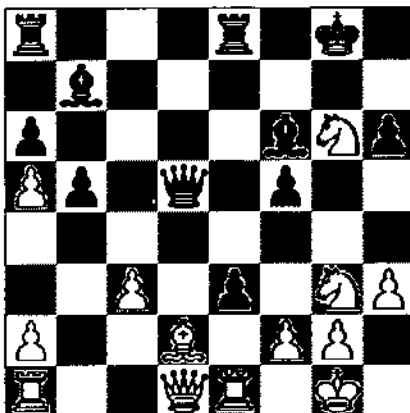
Returns

Fischer-Spassky Game 5, 1992
 1.e4 e5 2.♟f3 ♞c6 3.♙b5 a6 4.♙a4
 ♞f6 5.0-0 ♙e7 6.♞e1 b5 7.♙b3 d6
 8.c3 0-0 9.h3 ♞b8 10.d4 ♞bd7
 11.♞bd2 ♙b7 12.♙c2 ♞e8 13.♞f1
 ♙f8 14.♞g3 g6 15.♙g5 h6 16.♙d2
 exd4 17.cxd4 c5 18.d5 ♞b6 19.♙a5
 ♞fd7 20.b3 ♙g7 21.♞c1 ♟f6
 22.♞b1 b4! Black's pieces are
 very actively placed.



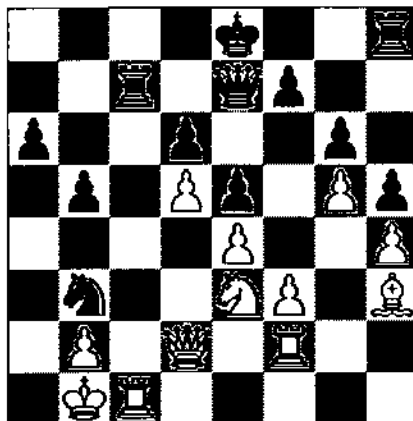
23.♞e2 ♟e7 24.a3 bxa3 25.♙c3 f5
 26.♙xg7 ♟xg7 27.♞f4 fxe4
 28.♞h4 g5 29.♞e6 ♟f6 30.♟g4
 ♞xd5! 31.♞xg5 hxg5 32.♟xd7
 ♞b4 33.♟xb7 ♞xc2 34.♞xe4 a2
 35.♞f1 ♞b4 36.♞g4 a1♟ 37.♞xa1
 ♟xa1+ 38.♟h2 ♟g7 39.♟f3 ♟e5+
 40.g3 ♞f8 41.♟g2 ♟f6 42.f4 ♞a7
 43.♞xg5+ ♞g7 44.♞h5 ♟e6
 45.g4 ♞xf4 0-1

Fischer-Spassky Game 7, 1992
 1.e4 e5 2.♟f3 ♞c6 3.♙b5 a6 4.♙a4 ♞f6
 5.0-0 ♙e7 6.♞e1 b5 7.♙b3 d6 8.c3
 0-0 9.d3 ♞a5 10.♙c2 c5 11.♞bd2
 ♞e8 12.h3 ♙f8 13.♞f1 ♙b7 14.♞g3
 g6 15.♙g5 h6 16.♙d2 d5?! This is
 the correct break in such posi-
 tions, but it looks premature here.
 ♞c6 protecting the e5 pawn and
 still threatening 17.... d5 was bet-
 ter. 17.exd5 c4 18.b4 cxd3 19.♙xd3
 ♟xd5 20.♙e4! A very strong move
 that wins a piece. Spassky probab-
 ly missed this on move 16.... d5.
 20... ♞xe4 21.♞xe4 ♙g7 22.bxa5 f5
 23.♞g3 e4 24.♞h4 ♙f6? A better
 try was 24.... ♞ad8 25. ♙e3 ♟f7!
 25.♞xg6 e3?! This allows Fischer to
 go into a winning endgame, but
 nothing else works any better.
 Spassky is lost.



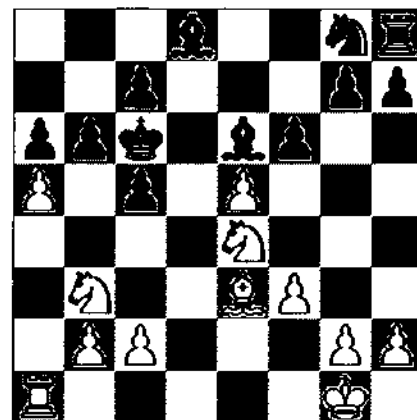
26.♞f4 ♟xd2 27.♞xe3 ♟xd1+
 28.♞xd1 ♞xe3 29.fxe3 ♞d8
 30.♞xd8+ ♙xd8 31.♞xf5 ♙xa5
 32.♞d5?! Flashy, but not best.
 Correct was 32. ♞e7+ ♟f7 33.
 ♞7d5 with an easy win. 32... ♟f8
 33.e4 ♙xd5 34.exd5 h5 35.♟f2
 ♙xc3 36.♟e3 ♟f7 37.♟d3 ♙b2
 38.g4 hxg4 39.hxg4 ♟f6 40.d6
 ♟e6 41.g5 a5 42.g6 ♙f6 43.g7 ♟f7
 44.d7 1-0

Spassky-Fischer Game 8, 1992
 1.d4 ♞f6 2.c4 g6 3.♞c3 ♙g7 4.e4
 d6 5.f3 0-0 6.♙e3 ♞c6 7.♞ge2 a6
 8.♟d2 ♞b8 9.h4 h5 10.♙h6 e5
 11.♙xg7 ♟xg7 12.d5 ♞e7 13.♞g3
 c6 14.dxc6 ♞xc6 15.0-0-0 ♙e6
 16.♟b1 ♞e8 17.♞d5 b5 18.♞e3
 ♞h8 19.♞c1 ♟b6 20.♙d3 ♞d4
 21.d5 ♟a7 22.♞f1 ♞f6 23.♞fe3
 ♙xd5 24.cxd5 ♞bc8 25.♞cf1! ♟e7
 26.g4! White has a dangerous
 kingside initiative. 26... ♞d7 27.g5
 ♟f8? ♞cf8 was better. 28.♞f2
 ♟e8 29.♙f1 ♞c5 30.♙h3 ♞c7
 31.♞c1 ♞cb3 32.axb3 ♞xb3



33.♞c6? The computer Deep
 Thought gave ♟c3!! as a win for
 Spassky! After ♞c6? Fischer wins
 effortlessly. 33... ♞xd2+ 34.♞xd2
 ♟f8 35.♞xa6 ♞a7 36.♞c6 ♟g7
 37.♙f1 ♞a1+ 38.♟xa1 ♟a7+
 39.♟b1 ♟xe3 40.♟c2 b4 0-1

Fischer-Spassky Game 9, 1992
 1.e4 e5 2.♟f3 ♞c6 3.♙b5 a6
 4.♙xc6 dxc6 5.0-0 f6 6.d4 exd4
 7.♞xd4 c5 8.♞b3 ♟xd1 9.♞xd1
 ♙g4 10.f3 ♙e6 11.♞c3 ♙d6 12.♙e3
 b6 13.a4 0-0-0? Theory regards
 ♟f7 as a better position for the
 Black King. 14.a5 ♟b7 15.e5! ♙e7
 16.♞xd8 ♙xd8 17.♞e4 ♟c6?

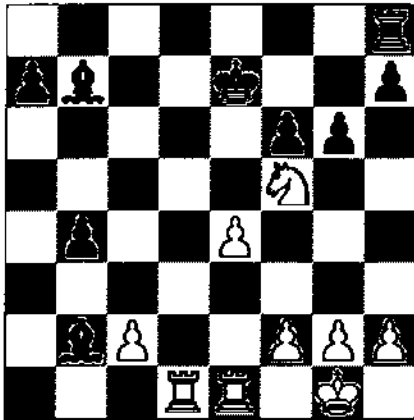


The losing move. 17.... ♙d5 was
 probably Spassky's best try. ♙b3
 was another possibility. 18.axb6
 cxb6 19.♞bxc5 ♙c8 20.♞xa6 fxe5
 21.♞b4+ 1-0

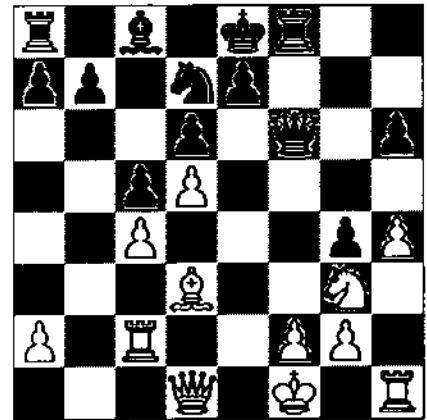
Fischer-Spassky Game 11, 1992
 1.e4 c5 2.♟f3 ♞c6 3.♙b5 g6
 4.♙xc6 bxc6 5.0-0 ♙g7 6.♞e1 e5
 7.b4! Opening the game before
 Black has a chance to con-
 solidate. This is reminiscent of
 Fischer at his best, ala 1968-72!
 7... cxb4 8.a3 c5 9.axb4 cxb4 10.d4
 exd4 11.♙b2 d6 12.♞xd4 ♟d7?
 Spassky thought afterwards that
 ♟b6 was better. 13.♞d2 ♙b7
 14.♞c4 ♞h6 15.♞f5! ♙xb2
 16.♞cxd6+ ♟f8 17.♞xh6! f6
 18.♞df7! ♟xd1 19.♞axd1 ♟e7
 20.♞xh8 ♞xh8 21.♞f5+! It's not
 often that the same knight has a
 chance to offer to sacrifice itself
 on the same square twice in the
 same game! this time it must be
 taken.

FISCHER

Returns

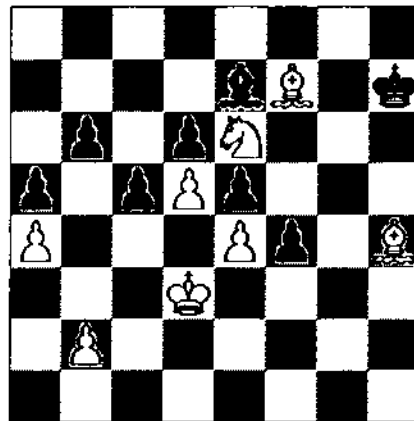
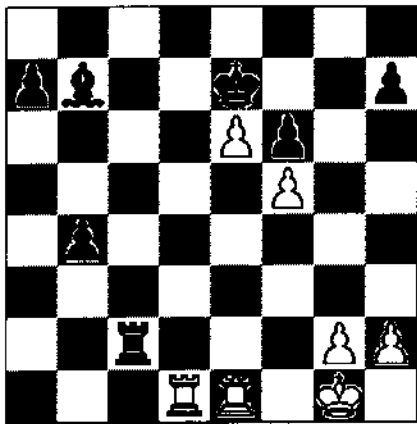


White stands better. 16.0-0-0 b6 17.♖dg1 ♖h7 18.♗b5 ♕h8 19.g4 hxg4 20.fxg4 f4 21.♗d2 g5?! This is already desperation. 22.hxg5 ♖g6 23.♞h5! Black would be O.K. if he could win the g5 pawn. But how? White plans to win with a gradual build-up on the h-file. 23...♞f7 24.♞gh1 ♗f8 25.♖b3 ♞b8 26.♖h3 ♞bb7 27.♖d3 ♕g8 28.♖e1 ♞g7 29.♖f3 ♞bf7 30.♞h6 ♖d7 31.♖h5 ♖xg4 32.♞xg6 ♖xh5 33.♞xg7+ ♞xg7 34.♞xh5 ♗g4 35.♞h4 ♗xf3 36.♗xf3 ♖xg5 37.♗g4 ♞h7 38.♞xh7 ♕xh7 39.♕c2 ♗e7 40.♖d3 ♕g6 41.♖c7 ♕f7 42.♖e6 ♖h7 43.♗h5+ ♕g8 44.♗e1 ♖f6 45.♗h4 ♕h7 46.♗f7 ♖xd5 47.cxd5! This creates entry squares via c4 for the White King.



21...gxh5 22.exh5+ ♗e5 23.f4 ♞c8 24.fxe5! It takes a very strong player to even consider sacrificing the c2 pawn. 24...♞xc2 25.e6!! The best move of the game. Fischer knows that Black's ♞g2+ loses to ♕f1! when Black cannot meet the threat of ♞d7+ without losing a piece.

Fischer gives back the pawn in order to complete his development. 19.♖xg4 ♖e5 20.♖e4 ♗d7 21.♕g1 0-0-0 22.♗f1 ♞g8 23.f4 ♖xc4 24.♖h5 ♖f7 25.♖xc4 ♖xh5 26.♞b2 ♞g3 27.♗e2 ♖f7 28.♗f3 ♞dg8 29.♖b3 b6 30.♖e3 ♖f6 31.♞e2 ♗b5 32.♞d2 e5! This clever shot ends all resistance. 33.dxe6 ♗c6 34.♕f1 ♗xf3 0-1



25... ♗c6 26.♞c1! Once again Black cannot play ♞g2+. 26...♞xc1 27.♞xc1 ♕d6 28.♞d1+ ♕e5 29.e7 a5 30.♞c1 ♗d7 31.♞c5+ ♕d4 32.♞xa5 b3 33.♞a7 ♗e8 34.♞b7 ♕c3 35.♕f2 b2 36.♕e3 ♗f7 37.g4 ♕c2 38.♕d4 b1♖ 39.♞xb1 ♕xb1 40.♕c5 ♕c2 41.♕d6 1-0

47...♗xh4 48.♗h5 ♕h6 49.♗e2 ♗f2 50.♕c4 ♗d4 51.b3 ♕g6 52.♕b5 ♕f6 53.♕c6 ♕e7 54.♖g7 1-0

Fischer now leads the match with a score of eight wins to four.

Spassky-Fischer Game 16, 1992 1.d4 ♖f6 2.c4 c5 3.d5 d6 This is safer than e6, which is called the Modern Benoni. The idea behind d6 is to defer opening the kingfile with e6 until after Black has castled into safety. 4.♖c3 g6 5.e4 ♗g7 6.♗g5 h6 7.♗h4 g5 8.♗g3 ♖a5 9.♗d3 ♖xe4! Black hopes to win a number of pawns for the piece - and then win the g3 ♗ as well. 10.♗xe4 ♗xc3+ 11.bxc3 ♖xc3+ 12.♕f1f5! 13.♞c1 ♖f6 14.h4 g4 15.♗d3 f4 16.♖e2 fxg3 17.♖xg3 ♞f8 18.♞c2 ♖d7!

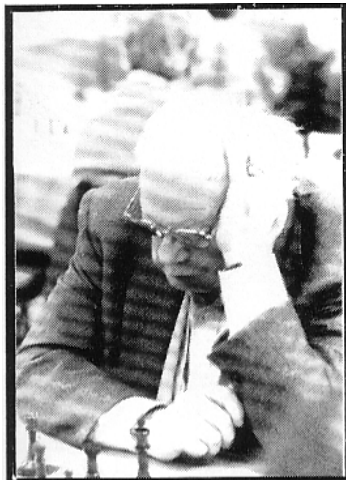
The deadline for submissions to the January-February issue of the Illinois Chess Bulletin is **November 21**

Send submissions to the editor:
Warren Kreckler
 6146 N. Oakley
 Chicago, IL 60659
 312-764-2807

Norbert Leopoldi Celebrates 80th BIRTHDAY

with a generous contribution to Mayor Daley's Kids Chess Program!

by Senior Master Dick Verber



Norbert Leopoldi

On Saturday, September 26th more than 95 of Norbert Leopoldi's friends and family held a surprise 80th birthday party at the Marriott Suites Hotel in Deerfield. Instead of bringing presents for Norbert, guests had been asked to join Norbert in contributing to Mayor Daley's new summertime chess program for grammar school and high school

kids -- a tournament specifically crafted to help disadvantaged inner city children.

Even at 80 years of age, Norbert Leopoldi still plays an excellent game of chess! Presently Norbert's strength is strong A or low expert (in the early 1970s his rating reached 2196).

For over 3 decades Norbert Leopoldi has been one of the most prominent chess players in Chicago.

Over those decades there have been few people who have contributed so generously for chess in Chicago. From 1964 to 1966 he served as president of the Chicago Chess Club. In 1982 he spent more than \$10,000 to produce the Cloverline International Tournament in Chicago, which featured Grandmasters Korchnoi, Huebner, Browne, Dzinziachsvilli, and Lein -- plus Wisconsin Champion Bill Martz. From 1989 to 1990 Norbert funded the Cloverline Chess Program of free weekly chess instruction for Chicago area kids. Chess education for inner-city kids had long been of interest to Norbert Leopoldi. The Cloverline Program of 1989-1990 played a major role in preparing Orr High School to win the City Public High School Championship in 1991. A long time friend of Mayor Daley, Norbert Leopoldi is obviously delighted that the Chicago Department of Human Services has inaugurated its new summertime chess program for kids.

On behalf of the entire Illinois chess community I salute Norbert Leopoldi for his dedicated support of Chicago chess.



Winners of Mayor Daley's City-Wide Chess Tournament receive their trophy along side the Mayor and Commissioner Alvarez.

1992 PAN AMERICAN CHESS FESTIVAL

INTERCOLLEGIATE
& HIGHSCHOOL
TEAM CHESS
CHAMPIONSHIPS

December 27-30, 1992

Holiday Inn Fairlane
Detroit, Michigan

Entries & Info:

Peter C. Nixon

27519 East River Road

Grosse Ile, Michigan 48138-1946

Phone: 313-676-2985

U.S. Amateur Team Championship Midwest

**6-Round Swiss, February 13-15 at the
Hyatt Regency Oakbrook Hotel,
Oakbrook, Illinois**

6-SS, 50/2, 15/30, Hyatt Regency Oakbrook Hotel, 1909 Spring Rd., Oakbrook, IL. Open to 4-player teams with average rating under 2000. Each team allowed one alternate player.

ENTRY FEE: \$80/team if received by 2/5/93, otherwise \$90 at the site. Special half price entry to high school and grammar school teams. Entry fee for individuals who wish to be assigned to city or state teams by TD, \$20 if received by 2/5/93, \$25 at site.

PRIZES: Plaque plus 4 Master Quartz clocks to top team; plaque plus 4 BHB clocks to 2nd and 3rd place teams. Master Quartz clock awarded to top player each board. Trophies to top teams with average rating below 2000, 1800 and 1600, top company team, top college team, top 3 high school teams, top high school Fresh-Soph team, top elementary school team, best team name, team travelling greatest distance, and top teams from the following states; MI, OH, IN, IL, MN, WI, IA, MO, NE, KS, KY, TN.

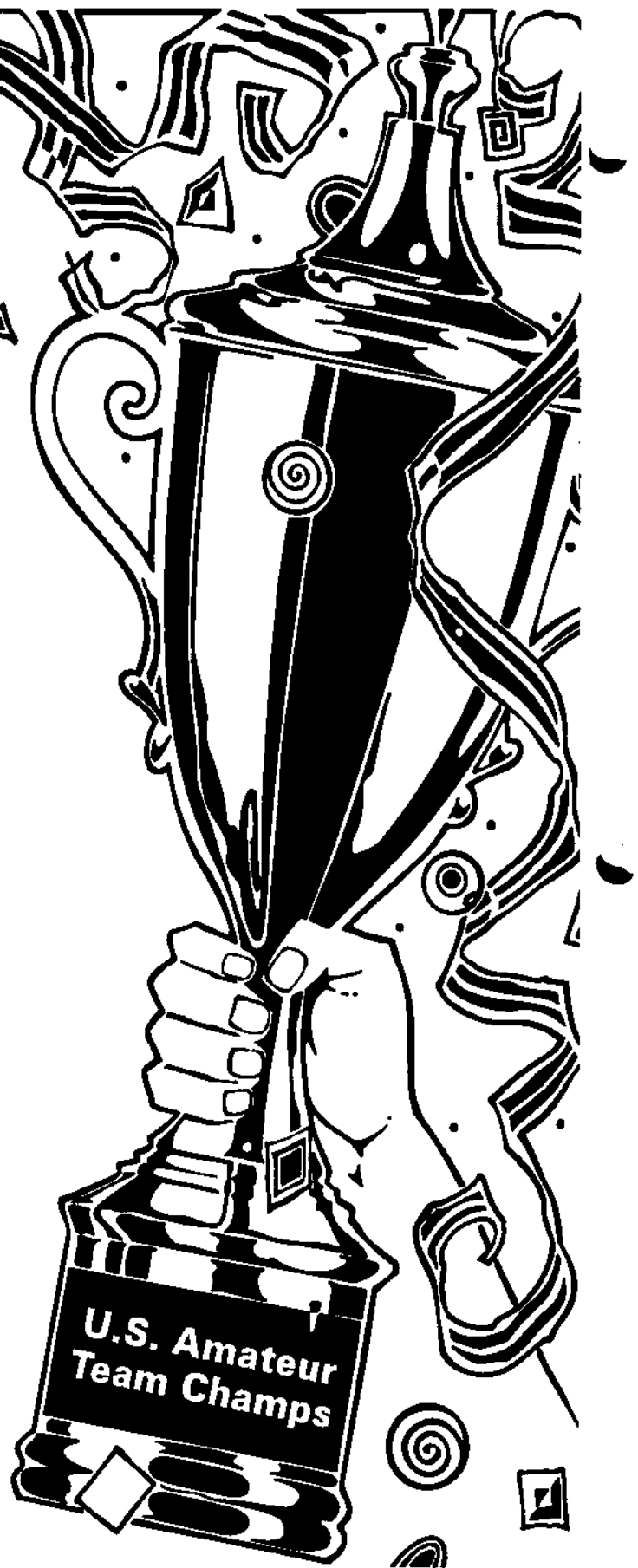
REGISTRATION: 8 a.m. - 12 Noon Saturday. Rounds: 2-7, 10-5, 9-3. up to two half-point BYES allowed. Can't play Monday? Take two byes (must request byes before start of tournament).

HOTEL RATES: \$60 single, \$70 double or twin. Phone Hyatt Hotel 708-573-1234 before 2/5/93 to make room reservations. Mention "chess tournament" to receive special discount room rates. Hotel is close to major shopping malls, theaters and numerous restaurants.

INFORMATION: For help in forming teams contact Chief Organizer Senior Master Richard Verber, 1970 Tall Oaks Drive, Apt 3-A, Aurora, IL, 60505, or 708-978-1380.

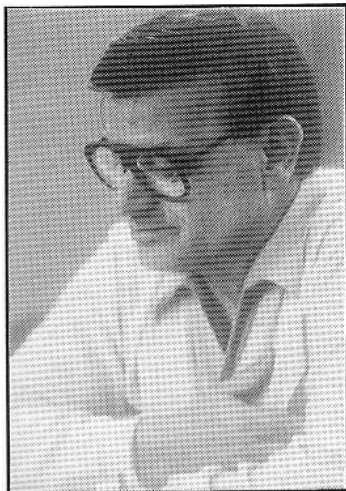
ENTRIES: U.S. Chess Federation, 186 Route 9-W, New Windsor, NY 1255S, Attention: U.S. Amateur Team Midwest. (914-582-8350), No smoking. No computers.

SPONSORED BY: The Oberweiss Dairy and the Fox Valley Chess Club, Aurora, Illinois.



**TALK TO YOUR CHESS FRIENDS
TODAY TO PLAN YOUR 4-MAN TEAM!**

Fred Gruenberg Announces Candidacy for USCF Vice-President



Chicago Organizer
Fred Gruenberg

At the annual USCF business meetings held during August in Dearborn, Michigan, Chicagoan Fred Gruenberg threw his hat in the ring for the post of USCF Vice-President. Fred has the support of the entire Illinois delegation and he also has wide support throughout the U.S. The USCF elections will be conducted during July of 1993.

Fred's experience as a successful businessman is expected to be a big help to the new USCF policy board in its effort to improve services in the USCF business office at New Windsor, New York. Fred will continue to live in the Chicago area, but will make occasional trips to New Windsor.

Fred Gruenberg is best known as the organizer (since 1982) of the USCF's highly successful National Open Championships held each June in Las Vegas. Many chess players regard Fred's National Open as the best run and most enjoyable of all the big U.S. tournaments. As the popularity of the National Open has continued to grow from year to year, it has come to surpass the USCF's U.S. Open Tournament and the National Open attendance often tops 1000 - double the U.S. Open.

Best wishes to Fred Gruenberg in his upcoming campaign.

Chow, Martinovsky Share First at N.U. Plus-Score Open

by Michael Henroid

The first ICA tournament kicking off the new school year was held at Northwestern University's Norris Center on September 26th. A healthy turnout of 4 entrants competed for the guaranteed prize offered all plus-scorers. Masters Albert Chow (2342) and Dr. Eugene Martinovsky (2344) took top honors with 4-0 scores. Each earned \$100. Also of note were the performances of Kent Williams (1781) and Henderson Johnson (1500). Williams took clear third with 3.5 points, drawing Steve Arlinsky (2136) and beating Rhys Rea (2060). Johnson also performed well above his rating, scoring victories against Andrew Schultz (1825) and Ernest Honan (1763) en route to his 3-1 score.

Tournament participants commented positively about the site, noting its beautiful view from the tournament room at Northwestern's landscaping and fountain in the foreground of Lake Michigan. In all, 7 USCF and 9 ICA memberships were sold, including 4 new tournament players. N.U. Chess Club President Michael Henroid organized and directed. A special thanks to Bill Smythe and Barratt Moy for their assistance.

Chicago Midwest Amateur 15-Minute Championship ■ February 13

7-SS, USCF Rated G/15 Chess, Hyatt Regency Oakbrook Hotel, 1909 Spring Rd., Oakbrook, IL 60521. EF:\$16 if rec'd by 2/8/92 or \$20 at site. REG: 8:30-9:15. First round 9:30 A.M. sharp. \$1200 Guaranteed: \$125, 75, 60, 50, 40, EX: 90-60-40, A: 90-60-40, B: 80-50-30, C& below: 80-50-30. Trophy and \$50 to top unrated. Make check payable to Fox Valley Chess Club. ENT and INFO: Mr. Richard Verber, 1790 Tall Oaks Drive, Apt 3-A, Aurora, IL, 60505, or 708-978-1380. Chess sets are provided - bring chess clocks.

LARGEST PRIZE FUND EVER OFFERED IN CHICAGO FOR A 15-MINUTE TOURNAMENT!

REVIEWERS' CHOICE: NICBASE!

"The database that Joe Friday would have preferred is NICbase. It is a straightforward, no nonsense program that is first and foremost, a database. . . . Simplicity. All of the Commands for NICbase are available from the menus. You don't have to learn a lot of tricky techniques. . . . Simplicity is very important in the design of a database program. Tricky programming techniques can be very effective, but can also have surprising and devastating effects at times. I get the feeling that NICbase has a stronger foundation. . . . two advantages that are built into the NIC key. One is the use of two-letter mnemonics to represent openings rather than numbers. The other is expandability, which allows popular openings to be further subdivided when the need arises. . . . 'Theme Selection' is provided as a part of the basic package, rather than as an additional utility. With it patterns, positions or moves can be made part of the search criteria. . . . NICbase is a straightforward, user-friendly program."

"Pure database features are where NICbase excels, and for the creation and maintenance of a personalized database, there is nothing like NICtools. . . . NICbase is solid and sturdy. It takes no risks, and never promises what it cannot deliver."

— Rick Bauer, in *CHESS HORIZONS*. July August 1992.

"NIC3 is now #1 in databases for ease of use/features . . ."

— Al Tomalty in *EN PASSANT* (Canadian Chess Federation). April 1992.

"The NIC series offers more extensive analysis than Informants, and a system of classification more detailed (and therefore more useful) than the ECO system. The NicBase program provides all of these materials on computer disks (IBM compatible, 3.5" and 5.25" available), plus the sophisticated sorting and searching capabilities that allow access to these games. The only limits are the limits of your imagination. . . . The Nicbase program has every whistle and bell a player needs for an electronic chess library."

— NM Tom Dorsch in *CALIFORNIA CHESS JOURNAL*. Feb/March 1992

"This is one great product. Whether you are on the cutting edge of opening theory, enjoy playing through the games

of the modern giants or the legends of chess history, NICBASE 3.0 is easy to use and a pleasure to experience."

— Hanon W. Russell, in *USAT CHESS PERSPECTIVES*. Nov. 13, 1991

"NICBASE is a solid program that works, and works the way you want it to."

— Jonathan Berry, in *CHECK!* (Can. Correspondence Chess Assn). Mar/Apr

"NICBASE 2.0 is excellent as a database but it positively blows the competition out of the water in the area of service. . . . Graphics B+, User Interface A, User Support A+, Versatility A, Documentation A, Value for Cost A+ "

— David Burris, in *ATLANTIC CHESS NEWS* Jan/Feb 1991

"For the advanced chess player and experienced computer user I think that the NIC-Base program comes out well on top. It is . . . far superior in price and performance. It takes some time to get used to, but is an exceptional program. This is the one that I have chosen to use."

— Rick Bauer, in *CHESS HORIZONS*. Vol. 22, no. 5, S/O 1990.

"In my opinion, the best buy is NICBASE 2.0"

— Al Tomalty, in *EN PASSANT* (Can. Chess Federation). August, 1990.

"NICB already offers sufficient storage, retrieval, and search capabilities to revolutionize postal chess. . . . The postal player without NICB will soon be at a competitive disadvantage. . . ."

— Marc Lonoff, in *CHESS INTERNATIONAL*. Sept 1990.

"An excellent teaching tool . . . annotation facilities in NICbase are far superior . . ."

— Eric Schiller, in *CHESS LIFE*. Sept 1990.

"NIC-BASE is like a breath of fresh air. . . ."

— GMC Jonathan Berry, in *INSIDE CHESS*. Nov. 6, 1989.

NICBASE 3 with 2000 world champion games incl. Pattern Recognition and ASCII reader	\$175.00
DATA SUPPLEMENT NiC YB 1-18 + NIC KEY	130.00
TOURNAMENT UPDATE 1988-90 33,400 games	410.00

All three above items incl.
50,000 unduplicated games
at a savings of 20%,
free shipping

\$595.00

NICTOOLS enhanced utilities package	125.00
GAMECONV converts CB3 to NB3 data includes illegal move checker	24.00
NIC KEY 3 classifies over 14,600 positions	24.00

Over 100 opening / player / yearbook **NICBASE DATA** collections available. Ask about **NICBASE DATA** services available on subscription **exclusively** from the publishers of **NEW IN CHESS YEARBOOK** and **MAGAZINE**. Ask about **NICPUBLISH**.

System Requirements:
MS-DOS ver. 2.0 or higher; 512 RAM; mouse; graphics
ATARI ST 520; monochrome monitor; DS-DD drive
Hard disk needed for KEY, large databases.



Order From:

Exclusive North American distributors of NICBASE/NEW IN CHESS:

CHESS COMBINATION INC.

2423 NOBLE STATION, BRIDGEPORT CT 06608

messages: 800-354-4083 fax: 203-380-1703

Internet: 70244.1532@compuserve.com USAT LINC: CHESSCOM

OAK PARK-RIVER FOREST CHESS CLUB NEWS

by Ken Marshall

May 5: USCF "Game/15" Tournament. Fourteen players took part in the Club's first event using the United States Chess Federation's new separate "Quick Play" rating system for tournaments with 15 minute/game and 10 minute/game time controls. Les Bale won the five round Swiss with a perfect 5-0 score. Art Zacher (4-1) was second, followed by Jim Lahvic, Bob Stoltz, and Bill Barker (all 3-2).

May 12-June 9: OP-RF CC Open Championship. Greg Bungo and Rodney Kinnaird (who did not play each other) both finished 4-1 to tie for first and second in this 19 player five round Swiss and become the 1992 Club Open Co-Champions. They advanced to the Club Closed Championship along with Peter Dudkowski, Art Zacher, and Tom Oelrich (each 3.5-1.5) and Bill Barker (3-2). Peter Kuhn also scored 3-2, but lost out to Barker on tiebreak.

June 23: Hillside CC - OP-RF CC Match. The OP-RF CC won this fifth annual confrontation for the fourth straight year, finishing the 13 board match on June 23 with a 7.5 - 5.5 score. Outrated on every board, Hillside fought hard and kept the outcome of the match in doubt until the final games ended. OP-RF CC winners included Rodney Kinnaird (Board 1), Peter Dudkowski (4), Art Zacher (6), Don Winsauer (10), Witold Dobrzynski (11), Chuck Collins (12), and Mario Solano (13). Tom Oelrich (3) drew.

July 7: Speed Tournament. Fred Allsbrook scored 6.5- .5 to win the eight player round robin final of this 5 minutes/game event ahead of Jim Lahvic and Jim McNamara (each 4.5-2.5). (The finalists consisted of the top four finishers in each of two 8 player preliminary sections.)

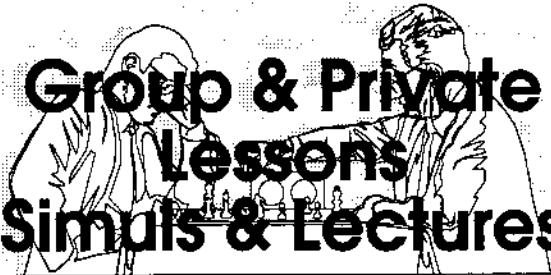
July 28: WBCA Tournament. Twenty players competed in this 5 minutes/game tourney, which was sanctioned and rated by Grandmaster Walter Browne's World Blitz Chess Association. OP-RF CC members who won prizes included Al Chow (tied for first and second) and Chuck Collins (top 1699/below). Don Winsauer directed.

August 11: USCF "Game/10" Tournament. Rodney Kinnaird, Jim Lahvic, and Jim McNamara shared first through third with scores of 4-1 in this 14 player event. Brad Crawford, Erv Sedlock, Craig Borri, Marty Ptacek, and Jim Kelly all were next at 3-2.

August 18 - September 15: Club Closed and Club Summer Open. Greg Bungo and Rodney Kinnaird each scored 4.5-.5 to become OP-RF CC Closed Co-Champions. The winners, who drew their individual game, outpaced Art Zacher, Tom Oelrich, and Bill Barker in this round robin tournament. (Peter Dudkowski had qualified for the event, but was unable to compete.) In the concurrent 11 player Summer Open, Mark Kende finished first at 4-1, ahead of Peter Kuhn (3.5-1.5) and Mark Stamatakos (3-2). Don Winsauer directed both tourneys.

September 29: USCF "Game/15" Tournament. This event, which drew 16 entrants, was won by Al Chow (4.5-.5). Second place went to Mark Stamatakos (4-1), whose play belied his 1708 rating and his 13th place ranking on the wall chart. Rodney Kinnaird (who drew Chow and lost to Stamatakos), Chris Baugh, and Craig Borri (each 3.5-1.5) tied for third.

Grandmaster
DIMITRY GUREVICH
is available for:



Group & Private
Lessons
Simuls & Lectures

312-486-8051



3rd Annual
FOX VALLEY CHAMPIONSHIP

January 23-24
Prisco Community Center, Aurora
ICA Maxi Tour Event

\$1500 Prize Fund Guaranteed

OPEN SECTION

(Open to all)

4-SS - 40/100, 15/30, SD/30

EF: \$32 by 1/17, \$40 at site

Registration 8-8:45 a.m.

Rounds: 1/23 9:15, 3:00
1/24 9:15, 3:00

Prizes

\$300, \$150, \$75

Ex \$150-\$75, A/below \$150-\$75

RESERVE SECTION

(Open to under 1800)

5-SS - 45/90, SD/30

EF: \$28 if by 1/17, \$35 at site

Registration 8-8:45 a.m.

Rounds: 1/23 9, 1:30, 5:45
1/24 9:15, 1

Prizes

\$200, \$100

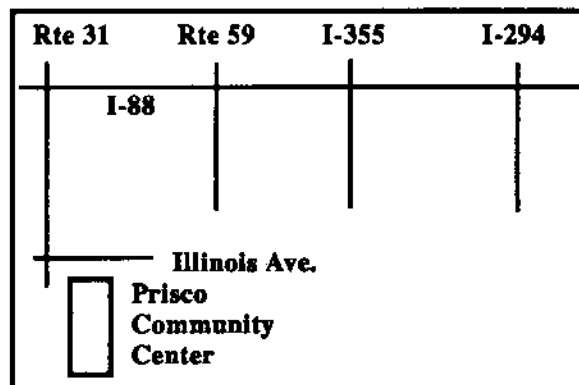
C \$100-\$50, D/E/Unr \$75

Half point byes available in rounds 1-3 if requested at registration.

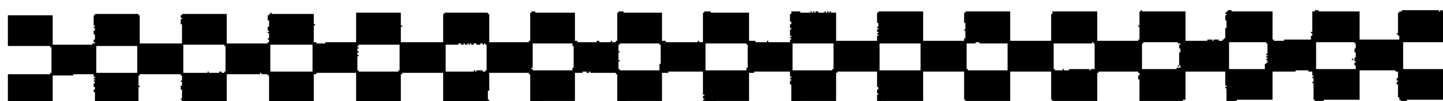
All players must be USCF and ICA members. Memberships may be purchased at the site.

Please make checks payable to "Fox Valley Chess Club" and advance entries should be sent to: Bob Renaut, 1255 Oakton Lane, Naperville, IL 60540-0310.

For more information you can call Bob at 708-983-0934.



Close to Chicago. Easy to get to. Free parking. Fast food chains within walking distance. Wheel chair accessible. No Computers.



ILLINOIS TOURNAMENT CROSSTABLES

by Bill Smythe

Chess Center Plus-Score - August 8, 1992

	Rtng.	rd-1	rd-2	rd-3	rd-4	Score	Tour
01 COLIAS Bill	2391	W 3	W 8	W 2	W 5	4	16
02 STEWART Allen	1821	W12	W 7	L 1	D 3	2.5	2.5
03 JOHNSON Eric	1792	L 1	W 5	W 4	D 2	2.5	2.5
04 SMYTHE Bill	1963	L 5	W 6	L 3	W 8	2	2
05 WILLIAMS Kent	1781	W 4	L 3	W 8	L 1	2	2
06 WALLACE Andrew	1356	L 8	L 4	W 9	D11	1.5	1.5
07 FAGAN James	1952	W 9	L 2	-	-	1	1
08 WHITE Joe	1907	W 6	L 1	L 5	L 4	1	1
09 JOHNSON Frank	1671	L 7	W12	L 6	L10	1	1
10 SOCHA Ray	2046	-	-	-	W 9	1	1
11 FLORES Joshua	1805	-	-	-	D 6	0.5	0.5
12 JOHNSON Tarrell	1349	L 2	L 9	-	-	0	0

Chess Center Plus-Score - August 9, 1992

	Rtng.	rd-1	rd-2	rd-3	rd-4	Score	Tour
01 COLIAS Bill	2391	W5	W3	W2	W4	4	16
02 YAKICH Bob	2005	W3	D4	L1	D3	2	2
03 SMYTHE Bill	1963	L2	L1	W4	D2	1.5	1.5
04 MADERA Bill	2000	H	D2	L3	L1	1	1
05 FLORES Joshua	1805	L1	-	-	-	0	0

Bradley Summer Open - August 15, 1992

	Rtng.	rd-1	rd-2	rd-3	rd-4	Score	Tour
01 COLIAS Bill	2391	W15	W13	W11	W 3	4	16
02 NAFF William	2141	W16	L 9	W15	W 8	3	4
03 SANDBOTHE William	2093	W20	W 5	W12	L 1	3	4
04 REYNOLDS Robert	2069	L 7	W19	W13	W 9	3	4
05 SPHAR Robert	1776	W24	L 3	W21	W14	3	4
06 WARFIELD Thomas	1771	W18	L 8	W17	W11	3	4
07 CRAGGS Tommy	1576	W 4	L11	W16	W12	3	4
08 COTTLE Gregory	1887	W21	W 6	D 9	L 2	2.5	2.5
09 CALDWELL Scott	1843	W26	W 2	D 8	L 4	2.5	2.5
10 ZARZOPOULOS Santl	1504	D19	L15	W26	W21	2.5	2.5
11 HENDERSON Harold	1876	W25	W 7	L 1	L 6	2	2
12 VERO Carl	1847	W22	W14	L 3	L 7	2	2
13 LEALI Michael	1819	W23	L 1	L 4	W19	2	2
14 SCOTT Winfield	1810	W17	L12	W20	L 5	2	2
15 DREBENSTEDT James	1713	L 1	W10	L 2	W20	2	2
16 CRUM Randy	1679	L 2	W26	L 7	W22	2	2
17 KELLY James R		L14	W22	L 6	W26	2	2
18 LEALI Matthew	953	L 6	W25	L19	W24	2	2
19 BOURGERIE Dennis	1885	D10	L 4	W18	L13	1.5	1.5
20 GROVES John	1629	L 3	W23	L14	L15	1	1
21 PATTERSON Dan	1575	L 8	W24	L 5	L10	1	1
22 RODGERS Paul	1373	L12	L17	W23	L16	1	1
23 MARTIN Steven	1148	L13	L20	L22	B	1	1
24 RASTOGI Aditya	969	L 5	L21	B	L18	1	1
25 DAVIS John R	1403	L11	L18	-	-	0	0
26 CATLETT Roger	1201	L 9	L16	L10	L17	0	0

Oberweis Dairy Open - Aug 22-23, 1992

	Rtng.	rd-1	rd-2	rd-3	rd-4	rd-5	Score	Tour
01 YOUNG Angelo	2446	W27	W 8	W 2	D 3	W 4	4.5	16
02 MARTINOVSKY E	2380	W24	W15	L 1	W 5	W 3	4	8
03 COLIAS Bill	2391	W16	W 6	W 7	D 1	L 2	3.5	4
04 CHOW Albert	2342	H	W20	W13	W11	L 1	3.5	4
05 COOPER Thomas	2259	D20	W21	W17	L 2	W 7	3.5	4
06 LILLY Bryan	2125	W23	L 3	W19	D14	W12	3.5	4
07 ACOSTA Mariano	2240	W22	W30	L 3	W 8	L 5	3	3
08 BENESA Arnulfo	2100	W28	L 1	W27	L 7	W19	3	3
09 SPLINTER Joseph	2051	L29	W26	W16	L12	W20	3	3
10 KENDE Mark	1946	D11	L19	W25	D21	W22	3	3
11 TATE Emory	2464	D10	W29	W12	L 4	-	2.5	2.5
12 SATTERLEE Ray D	2146	D17	W18	L11	W 9	L 6	2.5	2.5
13 MARSHALL James	2073	D19	W25	L 4	W24	L 8	2.5	2.5
14 SOLLANO Ely	2052	H	L17	W29	D 8	D16	2.5	2.5
15 ROGAN Marvin	2025	D30	L 2	W18	W19	-	2.5	2.5
16 COHEN Lawrence	1921	L 3	W22	L 9	W28	D14	2.5	2.5
17 OBERWEIS J D Sr	1827	D12	W14	L 5	L20	W21	2.5	2.5

18 RACE Thomas	1803	H	L12	L15	W30	W24	2.5	2.5
19 FRIEDMAN Jeffrey	1785	D13	W10	L 6	L15	W25	2.5	2.5
20 BUTTNY William	1900	D 5	L 4	H	W17	L 9	2	2
21 FULTON Steven	1885	H	L 5	W30	D10	L17	2	2
22 SEFCHECK Mark	1865	L 7	L16	W26	W29	L10	2	2
23 LINDQUIST Daniel	1825	L 6	L24	L28	B	W29	2	2
24 PUKEL Bernard	1903	L 2	W23	H	L13	L16	1.5	1.5
25 DECMAN Stephen	1800	H	L13	L10	W26	L19	1.5	1.5
26 AMIRANTE Ron	1500	H	L 9	L22	L25	W30	1.5	1.5
27 PLETT Michael	1921	L 1	W28	L 8	-	-	1	1
28 ALLISON Roger	1800	L 8	L27	W23	L16	-	1	1
29 CLARK Wayne	1741	W 9	L11	L14	L22	L23	1	1
30 GIERTZ Charles	1679	D15	L 7	L21	L18	L26	0.5	0.5

Oberweis Dairy Open - Aug 22-23, 1992

	Rtng.	rd-1	rd-2	rd-3	rd-4	rd-5	Score	Tour
01 PRADT Daniel	1791	W11	D14	W 8	W 6	D 2	4	8
02 LITTLE James	1646	W17	W19	D 6	W 4	D 1	4	8
03 FLYNN Michael	1611	L 6	W21	W23	W 5	W 8	4	8
04 LEBEN Frank	1567	W20	D 9	W14	L 2	W12	3.5	4
05 HARRIS Robert	1729	W16	L 6	W22	L 3	W19	3	3
06 MITCHELL Gary	1443	W 3	W 5	D 2	L 1	D10	3	3
07 NAVIAMOS William	1353	L 8	L12	W20	W15	W17	3	3
08 HIGHTOWER Dean	1221	W 7	W13	L 1	W14	L 3	3	3
09 MARSHALL Kenneth	1735	W12	D 4	H	D11	-	2.5	2.5
10 GRANT Dennis	1600	L19	D16	D15	W23	D 6	2.5	2.5
11 OBERWEIS Julie	1528	L 1	W24	W18	D 9	-	2.5	2.5
12 SCANTLEN Anthony	1500	L 9	W 7	H	X22	L 4	2.5	2.5
13 RAIMO Robert	1697	H	L 8	W16	D17	-	2	2
14 PADILLA Rudy	1600	W24	D 1	L 4	L 8	D16	2	2
15 HICKS Charles	1531	D21	L22	D10	L 7	B	2	2
16 BERKHEIMER Ed	1487	L 5	D10	L13	W24	D14	2	2
17 CISKO Greg	1476	L 2	W20	D19	D13	L 7	2	2
18 DUDNICK Steven	1417	H	D23	L11	W21	-	2	2
19 LAZAR Willard	1402	W10	L 2	D17	H	L 5	2	2
20 FORDE Norris	1393	L 4	L17	L 7	B	W23	2	2
21 JENKINS Mike	1288	D15	L 3	H	L18	W24	2	2
22 CALIENDO Anthony	1421	H	W15	L 5	F12	-	1.5	1.5
23 MAURER Patrick	1469	H	D18	L 3	L10	L20	1	1
24 WONG Brian	1405	L14	L11	H	L16	L21	0.5	0.5

Illinois Open - September 5-7, 1992

	State	Rtng.	rd-1	rd-2	rd-3	rd-4	rd-5	rd-6	Score	To
01 PELTS Peter	IL	2401	W84	W60	W 5	W12	W 4	D 3	5.5	16
02 COLIAS Bill	IN	2391	W41	W25	W30	D10	W13	W 7	5.5	16
03 YOUNG Angelo	IL	2446	D51	W20	W49	W47	W10	D 1	5	8
04 KARKLINS Andrew	IL	2378	W74	W50	W40	W31	L 1	W16	5	8
05 KARKLINS Eric	IL	2186	W55	W39	L 1	W19	W27	W17	5	8
06 MANION Josh	WI	2361	W63	W19	L31	W56	D23	W21	4.5	4.5
07 RONNEBERG Erik	IL	2267	W52	W27	D56	W30	W 8	L 2	4.5	4.5
08 SZPISJAK Steven J	IL	2224	W65	H	W38	W35	L 7	W24	4.5	4.5
09 BRODIE Mark	IL	2214	W53	D36	W45	D36	D25	W23	4.5	4.5
10 SCHILLER Eric	IL	2200	W54	W29	W71	D 2	L 3	W25	4.5	4.5
11 INUMERABLE F.	IL	2154	W78	L31	W39	W50	W40	D13	4.5	4.5
12 CHOW Albert C	IL	2342	W42	W61	W44	L 1	L16	W35	4	4
13 COOPER Thomas L	IL	2261	D32	W51	W26	W34	L 2	D11	4	4
14 STEIN Peter	IL	2182	W43	L40	L29	W70	W33	W37	4	4
15 SCOTT Gene	IL	2160	W66	L30	W62	L27	W39	W38	4	4
16 WACHTEL Howard	IL	2142	L58	W88	W42	W28	W12	L 4	4	4
17 GORDON Wallace	IL	2120	X	L44	W52	W29	W36	L 5	4	4
18 HARRIS Thomas J	IN	2070	L34	W78	L55	W53	W41	W40	4	4
19 KAMEN Dan	IL	2050	W59	L 6	W69	L 5	W42	W44	4	4
20 VON KROGH Chris	IL	1896	W28	L 3	W61	L22	W62	W50	4	4
21 FLAGA Krzysztof	IL	2157	L44	D81	W83	W73	W31	L 6	3.5	3.5
22 SUNNA Hisham	IL	2129	W67	D45	L35	W20	D34	D30	3.5	3.5
23 GARRETT David	IL	2050	W33	L34	W63	W55	D 6	L 9	3.5	3.5
24 DAMOCLES Job	IL	2074	W75	L71	W43	D44	W56	L 8	3.5	3.5
25 WARREN James E	IL	2054	W79	L 2	W80	W71	D 9	L10	3.5	3.5
26 SAX Robert D	IL	2041	D35	W57	L13	D54	W63	D31	3.5	3.5
27 MADERA Bill	IL	2000	W69	L 7	W81	W15	L 5	D34	3.5	3.5
28 EATON Jonathon A	IL	1979	L20	W67	W77	L16	D55	W54	3.5	3.5
29 FREEMAN David A	IL	1969	Z	L10	W14	L17	W66	W56	3.5	3.5

ILLINOIS TOURNAMENT CROSSTABLES

0 MAREMA David B	IL	1954	W77	W15	L2	L7	W48	D22	3.5	3.5
1 KENDE Mark	IL	1946	W83	W11	W6	L4	L21	D26	3.5	3.5
2 LEIGHTON George	IL	1908	D13	L47	W78	W49	L35	W58	3.5	3.5
3 MC CARTHY Mike	IL	1843	L23	W84	W60	H	L14	W52	3.5	3.5
4 SCHULTZ Andrew	IL	1825	W18	W23	D36	L13	D22	D27	3.5	3.5
5 VAKIL Behrooz	IL	1806	D26	W73	W22	L8	W32	L12	3.5	3.5
6 UMEZIWA George	IL	2336	W64	W37	D34	D9	L17	-	3	3
7 HERNANDEZ H.	IL	2000	W68	L36	D70	W45	H	L14	3	3
8 DIAZ Pablo	IL	1995	W70	D9	L8	W59	D44	L15	3	3
9 LAHVIC Jim	IL	1955	W82	L5	L11	W43	L15	W68	3	3
0 FAGAN James	IL	1952	W90	W14	L4	W48	L11	L18	3	3
1 COHEN Lawrence S	IL	1921	L2	L80	W88	W46	L18	W70	3	3
2 KALAI Adam	IL	1913	L12	W46	L16	W77	L19	W71	3	3
3 RIUS Richard	IL	1899	L14	W90	L24	L39	X83	W60	3	3
4 COTTLE Greg	IL	1887	W21	W17	L12	D24	D38	L19	3	3
5 HANSEN Steven	IL	1866	X87	D22	L9	L37	D70	W62	3	3
6 FLORES Joshua	IL	1812	L49	L42	W89	L41	W64	W65	3	3
7 MOTE David	IL	2217	H	W32	W72	L3	-	-	2.5	2.5
8 BENESA Arnulfo	IL	2100	W88	L56	W65	L40	L30	D53	2.5	2.5
9 KREISMAN Bruce	IL	2043	W46	H	L9	L32	W71	-	2.5	2.5
0 RUNNING Jeff	WI	2033	W85	L4	W58	L11	D54	L20	2.5	2.5
1 GUNTHER Donald	IN	1945	D3	L13	L54	W83	L59	W74	2.5	2.5
2 RICHMOND M B	IL	1908	L7	W85	L17	H	W76	L33	2.5	2.5
3 CARROLL William	IL	1903	L9	L69	W67	L18	W77	D48	2.5	2.5
4 BUTTNY William P	IL	1901	L10	H	W51	D26	D50	L28	2.5	2.5
5 BOGAN Timothy J	IL	1900	L5	W82	W18	L23	D28	-	2.5	2.5
6 WAGNER Steven J	IL	1881	W16	W48	D7	L6	L24	L29	2.5	2.5
7 LULVES Joseph	IL	1873	H	L26	L73	W85	W61	-	2.5	2.5
8 DWYER William T	IL	1817	L60	W74	L50	D61	X73	L32	2.5	2.5
9 FORRO Virgilio	IL	1816	L19	H	W84	L38	W51	-	2.5	2.5
0 SPLINTER Joe	IL	2051	W58	L1	L33	L66	W68	L43	2	2
1 SOLLANO Ely	IL	2022	W76	L12	L20	D58	L57	D67	2	2
2 SMYTHE Bill	IL	1963	L71	W75	L15	W65	L20	L45	2	2
3 MC KENNA John V	IN	1916	L6	W68	L23	W80	L26	-	2	2
4 WHITE Joe	IL	1909	L36	L70	H	D79	L46	W75	2	2
5 PUKEL Bernard B	IL	1903	L8	W76	L48	L62	W82	L46	2	2
6 CONNELLY Kevin	IL	1892	L15	L83	W90	W60	L29	L39	2	2
7 LOSOFF Alan R	IL	1880	L22	L28	L53	W88	D74	D61	2	2
8 JOHNSON Eric	IL	1792	L37	L63	H	H	L60	W82	2	2
9 CLARK Wayne	IL	1741	L27	W53	L19	W74	-	-	2	2
0 HARRIS Robert	IL	1729	L38	W64	D37	L14	D45	L41	2	2
1 GIERTZ Charles E	IL	1679	W62	W24	L10	L25	L49	L42	2	2
2 ROGAN Marvin	IL	2025	W80	H	L47	-	-	-	1.5	1.5
3 LORING Steven	IL	1946	H	L35	W57	L21	F58	-	1.5	1.5
4 PLETT Michael	IL	1921	L4	L58	W78	L69	D67	L51	1.5	1.5
5 SCHUSCHEL Hans	IL	1840	L24	L62	H	L76	W90	L64	1.5	1.5
6 DECMAN Steve	IL	1800	L61	L85	H	W75	L52	-	1.5	1.5
7 VIGANTS Alberts	IL	1500	L30	D88	L28	L42	L53	W90	1.5	1.5
8 BREWSTER L	IL	1882	L11	L16	L74	W90	-	-	1	1
9 SANCHEZ Ignacio	IL	1822	L25	H	L32	D64	-	-	1	1
0 ALLISON Roger	IL	1800	L72	W41	L25	L63	-	-	1	1
1 PINDAK Kim	IL	1726	H	D21	L27	-	-	-	1	1
2 SILVERMAN Scott A	IL	1576	L39	L55	H	D84	L65	L88	1	1
3 VICTORINO C L	IL	L31	W66	L21	L51	F43	-	-	1	1
4 COHEN Howard	IL	1933	L1	L33	L59	D82	-	-	0.5	0.5
5 RACE Thomas C	IL	1803	L50	L52	H	L57	-	-	0.5	0.5
6 WARREN Helen	IL	1564	-	D77	-	-	-	-	0.5	0.5
7 GODFREY J	IL	2102	F45	-	-	-	-	-	0	0
8 SEFCHECK Mark	IL	1865	L48	L16	L41	L67	-	-	0	0
9 ELLINGSON Eric	IL	725	-	L46	-	-	-	-	0	0
0 HUNTER Dave	IL	-	L40	L43	L66	L78	L75	L77	0	0

ilinois Open - September 5-7, 1992

ESERVE	State	Rtng.	rd-1	rd-2	rd-3	rd-4	rd-5	rd-6	score	tour
1 VENSKE Danny	IL	1501	W7	W11	W48	H	W21	W6	5.5	16
2 HENROID Michael B	IL	1731	W30	W42	W27	W19	L6	W9	5	8
3 RATNER Jacob	IL	1703	W33	L21	W51	W42	W25	W10	5	8
4 PAPHITIS Alexander	IL	1689	L45	W38	W50	D43	W33	W21	4.5	4.5
5 JOSEPHS Steven	IL	1666	W46	D35	H	D7	W37	W20	4.5	4.5
6 CRAGGS Tommy	IL	1576	W55	W8	D37	W14	W2	L1	4.5	4.5
7 WILLIAMS Kent M	IL	1781	L1	W53	W49	D5	W27	D14	4	4
8 ALLEN Hence	IL	1712	W17	L6	L15	W47	W29	W28	4	4

09 MC CLELLAN Arthur	IL	1700	W60	L16	W29	W37	W28	L2	4	4
10 RAIMO Robert M	IL	1687	W34	D43	W44	D16	W17	L3	4	4
11 JOHNSON Frank	IL	1871	W53	L1	W34	D27	D15	W28	4	4
12 SOLODKA Carl Jr	IL	1666	H	W54	D43	D45	W44	D16	4	4
13 GORAL Brad	IL	1660	W54	L37	L17	W60	W51	W30	4	4
14 PADILLA Rudy R	IL	1600	W58	D19	W35	L6	W45	D7	4	4
15 HALLEY Dennis	IL	1538	W65	L20	W8	H	D11	W24	4	4
16 CREMEENS Matt	IL	1530	W66	W9	D40	D10	D20	D12	4	4
17 AMIRANTE Ronald	IL	1500	L8	W63	W13	W48	L10	W25	4	4
18 OSANYINJOBI F	IL	1796	H	L38	W22	-	W39	W45	3.5	3.5
19 HAVENS J Lee	IN	1790	W29	D14	W38	L2	W43	-	3.5	3.5
20 HIERONYMUS Kent P	IL	1706	W32	W15	D21	D28	D16	L5	3.5	3.5
21 SADAUSKAS Justin	IL	1540	W56	W3	D20	W40	L1	L4	3.5	3.5
22 BLUM Larry W	IL	1373	H	L28	L18	W57	W46	W42	3.5	3.5
23 HUANG John	IL	-	L43	L34	W61	W32	D42	W44	3.5	3.5
24 STAMATAKOS Mark	IL	1708	W51	L27	W30	L25	W36	L15	3	3
25 PARNABY Mark S	IL	1594	L38	W58	W60	W24	L3	L17	3	3
26 SCHILLER Andrew	IL	1593	W61	L40	L45	W34	W38	L8	3	3
27 HAVENS Frank J	IL	1567	W63	W24	L2	D11	L7	D35	3	3
28 WONG Felix	IL	1527	D47	W22	W52	D20	L9	L11	3	3
29 ZORZOPULOS Santil	IL	1504	L19	W61	L9	W53	L8	W52	3	3
30 JOHNSON Henderson	IL	1500	L2	W62	L24	W54	X48	L13	3	3
31 WALLACE Mark D	IL	1484	H	L52	D46	L39	W54	W47	3	3
32 CRANE John R	IL	1473	L20	L39	W55	L23	W62	W53	3	3
33 MAURER Patrick	IL	1469	L3	W66	H	W35	L4	D37	3	3
34 MITCHEL Gary	IL	1443	L10	W23	L11	L26	W56	W55	3	3
35 RODGERS Paul C	IL	1373	W64	D5	L14	L33	W58	D27	3	3
36 WIRTH Mike	IL	1365	L48	L4	W62	W49	L24	W50	3	3
37 MANZELLO Samuel L	IL	1319	B	W13	D6	L9	L5	D33	3	3
38 RACZKIEWYCZ Mark	IL	1163	W25	W18	L19	L41	L26	W51	3	3
39 SEARS Michael W	IL	-	L59	W32	L42	W31	L18	W57	3	3
40 KITTILSEN Guy	IL	1755	W50	W26	D16	L21	-	-	2.5	2.5
41 GRUENBERG Phred	IL	1600	H	W57	-	W38	-	-	2.5	2.5
42 DAVIS Jeff	IL	1592	W62	L2	W39	L3	D23	L22	2.5	2.5
43 GASIECKI Alan F	IL	1508	W23	D10	D12	D4	L19	-	2.5	2.5
44 HENDERSON Dale	IL	1418	H	W47	L10	W52	L12	L23	2.5	2.5
45 WONG Brian M	IL	1405	W4	L48	W26	D12	L14	L18	2.5	2.5
46 MARTIN Keith	IL	1239	L5	D64	D31	H	L22	W58	2.5	2.5
47 CHEN Xi	IL	-	D28	L44	W57	L8	W49	L31	2.5	2.5
48 COLMAN George Jr	IL	1673	W36	W45	L1	L17	F30	-	2	2
49 JELEN John L	IL	1545	H	H	L7	L36	L47	W62	2	2
50 BURDA Alex	IL	-	L40	W55	L4	D56	D52	L38	2	2
51 BERKHEIMER Ed	IL	1487	L24	W56	L3	W63	L13	L38	2	2
52 BALES Robert J Jr	IL	1371	H	W31	L28	L44	D50	L29	2	2
53 SANDERS Fred C	IL	1345	L11	L7	W56	L29	W63	L32	2	2
54 RIDDELL Joshua	IL	1194	L13	L12	W65	L30	L31	W63	2	2
55 HIERONYMUS J	IL	850	L6	L50	L32	W66	X60	L34	2	2
56 MONTOYA Fernando	IL	-	L21	L51	L53	W61	L34	W65	2	2
57 GRIESMEYER Walter	IL	1390	H	L41	L47	L22	W61	L39	1.5	1.5
58 BAUMGARTNER C	IL	1174	L14	L25	W66	D50	L35	L46	1.5	1.5
59 WARREN Helen	IL	1584	W39	-	-	-	-	-	1	1
60 TORIBIO Alexander	IL	1460	L9	W65	L25	L13	F55	-	1	1
61 CROUCH William H	OK	1126	L26	L29	L23	L56	L57	W66	1	1
62 MC COY Damon	IL	896	L42	L30	L36	W65	L32	L48	1	1
63 ELLINGSON Eric	IL	725	L27	L17	B	L51	L53	L54	1	1
64 DOLLISON Leon Jr	IL	1674	L35	D46	-	-	-	-	0.5	0.5
65 SIMENTAL Isidro	IL	-	L15	L60	L54	L62	D66	L56	0.5	0.5
66 CAMARGO Miguel	IL	-	L16	L33	L58	L55	D65	L61	0.5	0.5

Normal Mapleleaf Open - September 19, 1992

OPEN	State	Rtng.	rd-1	rd-2	rd-3	rd-4	Score	Tour
01 COLIAS Bill	IN	2391	W15	W14	W4	W3	4	16
02 NAFF Bill	IL	2155	W11	W27	W17	H	3.5	8
03 BOHANNON Mark	IL	2192	W30	W25	W5	L1	3	4
04 LILLY Brian	IL	2125	W21	W7	L1	W12	3	4
05 REYNOLDS Robert	IL	2069	W16	W26	L3	W14	3	4
06 COTTLE Greg	IL	1867	D22	W23	D8	W18	3	4
07 BEELMAN Robert	IA	1865	W19	L4	W20	W16	3	4
08 MC CARTHY Michael	IL	1843	D12	W29	D6	W13	3	4
09 ANDERSON Phil	IL	1910	W18	L17	D11	W22	2.5	2.5
10 CALDWELL Scott	IL	1843	D23	W22	L12	W27	2.5	2.5
11 WARFIELD Thomas	IL	1776	L2	W31	D9	W24	2.5	2.5

ILLINOIS TOURNAMENT CROSSTABLES

12 SOROKIN Vlad	IL		D 8	W24	W10	L 4	2.5	2.5
13 CHONG David	IA	2056	L17	W28	W21	L 8	2	2
14 BOCK Dale	IL	1861	W20	L 1	W27	L 5	2	2
15 LEALI Mike	IL	1819	L 1	L18	W28	W29	2	2
16 KIMME Duane	IL	1759	L 5	W30	W25	L 7	2	2
17 KITTILSEN Guy	IL	1755	W13	W 9	L 2	-	2	2
18 SCULLEY David	IL	1858	L 9	W15	W26	L 6	2	2
19 GROVES John	IL	1829	L 7	L21	W30	W25	2	2
20 ZEVNIK Larry	IL	1625	L14	B	L 7	X26	2	2
21 SPHAR Robert	IL	1771	L 4	W19	L13	H	1.5	1.5
22 FARLEY Curtis	IN	1636	D 6	L10	W29	L 9	1.5	1.5
23 CRAGGS Tom	IL	1576	D10	L 6	L24	W30	1.5	1.5
24 BARNARD Tom	IL	1970	L27	L12	W23	L11	1	1
25 BOLITHO Tom	IL	1905	W28	L 3	L16	L19	1	1
26 VERO Carl	IL	1847	W31	L 5	L18	F20	1	1
27 MECHEM Paul	IA	1743	W24	L 2	L14	L10	1	1
28 ZIMMERLE Wayne	IL	1718	L25	L13	L15	B	1	1
29 ZORZOPULOS Santl	IL	1360	B	L 8	L22	L15	1	1
30 SCOTT Winfield	IL	1810	L 3	L16	L19	L23	0	0
31 THOMAS Marc	IL	1432	L28	L11	-	-	0	0

07 Shelby, Montsho	IL	Unr	W 3	W 5	L 1	L 2	2.0	2.0
08 Whitten, Derrhun	IL	Unr	L 4	W12	L 5	W 6	2.0	2.0
09 Vancina, David	IL	Unr	W 6	L 4	L 3	W11	2.0	2.0
10 Marshall, Mattie	IL	Unr	L 1	L 3	L11	W12	1.0	1.0
11 Blackwell, Pharda	IL	Unr	L 2	L 6	W10	L 9	1.0	1.0
12 Robinson, Marie	IL	Unr	L 5	L 8	L 6	L10	0.0	0.0

Northwestern Plus-Score - September 26, 1992

	Rtnq.	rd-1	rd-2	rd-3	rd-4	Score	Tour
01 MARTINOVSKY E.	2344	B	W19	W18	W 6	4	16
02 CHOW Albert	2342	W25	W13	W17	W 4	4	16
03 WILLIAMS Kent	1781	W28	D11	W15	W16	3.5	8
04 HURCHALLA David	2027	W10	W 9	W20	L 2	3	4
05 ROGAN Marvin	2025	H	H	W26	W11	3	4
06 LAHVIC Jim	1955	W35	W21	W16	L 1	3	4
07 FRISKE Tom	1903	L26	W36	W23	W22	3	4
08 KITTILSEN Guy	1755	W39	L16	W34	W17	3	4
09 CHAN Kheong Sann	1743	W40	L 4	W33	W18	3	4
10 JOHNSON Henderson	1500	L 4	W40	W19	W20	3	4
11 ARLINSKY Steve	2136	W32	D 3	W12	L 5	2.5	2.5
12 HALL Jeffrey	1862	W27	D26	L11	W30	2.5	2.5
13 FRIEDMAN J N	1785	W20	L 2	W24	D14	2.5	2.5
14 CIMA Joe	1731	W38	L17	W28	D13	2.5	2.5
15 WONG Brian	1405	H	W30	L 3	W28	2.5	2.5
16 READ Rhys	2080	W24	W 8	L 6	L 3	2	2
17 MAYKA Tom	2012	W33	W14	L 2	L 8	2	2
18 SMYTHE BILL	1983	W34	W22	L 1	L 9	2	2
19 SCHULTZ Andrew	1825	W36	L 1	L10	W35	2	2
20 HONG Ernest	1763	W37	W31	L 4	L10	2	2
21 HENROID Michael	1731	D30	L 6	H	W37	2	2
22 COLEMAN George	1673	W41	L18	W38	L 7	2	2
23 LOMONT Chris	1557	L31	W37	L 7	W32	2	2
24 MOY Barratt	1538	L16	W29	L13	W38	2	2
25 JOHNSON Frank	1671	L 2	D27	L32	W33	1.5	1.5
26 MARTIN Keith	1239	W 7	D12	L 5	L15	1.5	1.5
27 BAUMGARTNER Chris	1174	L12	D25	L30	W41	1.5	1.5
28 HART Dan	1138	L13	W32	L14	D29	1.5	1.5
29 MC COY Damon	836	L 3	L24	W40	D28	1.5	1.5
30 WELTON James		D21	L15	W27	L12	1.5	1.5
31 JORDAN Roland	2088	W23	L20	-	-	1	1
32 PADILLA Rudy	1600	L11	L28	W25	L23	1	1
33 BACKSTROM Orn	1471	L17	W39	L 9	L25	1	1
34 MILLER Michael	1458	L18	W41	L 8	-	1	1
35 SOLANO Marlo	1438	L 6	L38	W41	L19	1	1
36 PHILLIPS Jason	1150	L19	L 7	L37	W40	1	1
37 BURDA Alex		L20	L23	W36	L21	1	1
38 MARTHAKIS Ted		L14	W35	L22	L24	1	1
39 GRONDWALSKI Chris		L 8	L33	-	-	0	0
40 HAMER Phil		L 9	L10	L29	L36	0	0
41 OBIAL Joan		L22	L34	L35	L27	0	0

Normal Mapleleaf Open - September 19, 1992

RESERVE	State	Rtnq.	rd-1	rd-2	rd-3	rd-4	Score	Tour
01 PATTERSON Dan	IL	1598	W10	W 8	W 3	W 4	4	16
02 HILLMAN Bruce	IA	1582	W20	W 5	L 4	W 9	3	4
03 MOORE Rod	IL	1517	W15	W17	L 1	W12	3	4
04 BELLE John	IL	1502	W11	W16	W 2	L 1	3	4
05 RODGERS Paul	IL	1373	W19	L 2	W17	W 8	3	4
06 TAYLOR Tim	IL		L18	W20	W14	H	2.5	
07 WETZEL David	MI	1572	W14	L 9	D15	D13	2	2
08 COX Randy	IL	1478	W12	L 1	W 9	L 5	2	2
09 EARLEY Bob	IL	1428	W18	W 7	L 8	L 2	2	2
10 WHITE Michael	IL	1339	L 1	L12	W18	W15	2	2
11 HIGHTOWER Dean J.	IL	1221	L 4	L13	W19	W17	2	2
12 AUCZKIEWYCZ Mark	IL	1163	L 8	W10	W13	L 3	2	2
13 ANDERSON Richard	IL	1422	L17	W11	L12	D 7	1.5	1.5
14 GOODWIN Kim	IL	1335	L 7	W18	L 6	H	1.5	1.5
15 BAER Michael	IL	1250	L 3	W19	D 7	L10	1.5	1.5
16 DAVIS John	IL	1349	W 6	L 4	-	-	1	1
17 MARTIN Steven	IL	1148	W13	L 3	L 5	L11	1	1
18 LEALI Matt	IL	953	L 9	L14	L10	B	1	1
19 PETERS Kevin	IL	904	L 5	L15	L11	H	0.5	0.5
20 JHAVERI Sway	IL	1319	L 2	L 6	-	-	0	0

'92 Tuley Park G/30 #2 - September 19, 1992

	State	Rtnq.	rd-1	rd-2	rd-3	rd-4	Score
01 Madera, Bill	IL	2012	W14	D 6	W 8	W 2	3.5
02 Chow, Albert C	IL	2336	W 9	W 5	W 4	L 1	3.0
03 Rubin, David E	IL	2275	L 6	W14	W 9	W 8	3.0
04 Scott, Gene G.	IL	2170	W13	W 7	L 2	W 8	3.0
05 Baugh, Christopher	WI	1918	W16	L 2	W11	W10	3.0
06 Williams, Kent M	IL	1786	W 3	D 1	W12	L 4	2.5
07 Michalik, Philip	IL	1890	W11	L 4	L10	W14	2.0
08 Singer, Robby R.	IL	1876	W15	W12	L 1	L 3	2.0
09 Carter, John	IL	1786	L 2	W16	L 3	W13	2.0
10 Davis, Jeff	IL	1548	L12	W15	W 7	L 5	2.0
11 Rogers, Truman	IL	Unr	L 7	W13	L 5	W16	2.0
12 Lee, Tyrone D.	CA	2140	W10	L 8	L 6	U	1.0
13 Clark, Lawrence	IL	1625	L 4	L11	W16	L 8	1.0
14 Smith, Orlan B.	IL	1500	L 1	L 3	W15	L 7	1.0
15 Johnson, Tarrell	IL	1359	L 8	L10	L14	B	1.0
16 Stubblefield, Bill	IL	1493	L 5	L 9	L13	L11	0.0

'92 Tuley Park G/30 #2 - September 19, 1992

	State	Rtnq.	rd-1	rd-2	rd-3	rd-4	Score
01 Beamon, Lumumba	IL	Unr	W 10	W 2	W 7	W 4	4.0
02 Cummins, Edwin T.	IL	1247	W 11	L 1	W 4	W 7	3.0
03 Williams, Michael	IL	1118	L 7	W10	W 9	W 5	3.0
04 Wilson, Lorenzo A.	IL	1221	W 8	W 9	L 2	L 1	2.0
05 Moll, Rob	IL	844	W12	L 7	W 8	L 3	2.0
06 Brown, Rodney	IL	Unr	L 9	W11	W12	L 8	2.0

Harper Ct. Scholastic Tournament - Oct. 10, 1992

	Rtnq.	rd-1	rd-2	rd-3	rd-4	rd-5	Score
01 Tom, Matthew A.	1863	W 9	W11	W 4	W13	L15	4.0
02 Shroth, Kevin	1499	L10	W 7	L14	W12	L 3	2.0
03 Jordan, Matthew	1471	L11	W 8	L13	W 7	W 2	3.0
04 Chen, Andrew	1219	W12	W14	L 1	L18	L 9	2.0
05 Kahana, Amir	967	D13	L 9	L16	W10	W 6	2.5
06 Ye, Sign	UNR	L14	L12	L 7	W17	L 5	1.0
07 Vachanastienkul, M.	UNR	L15	L 2	W 8	L 3	W14	2.0
08 Blander, Ben	UNR	W16	L 3	W10	W 9	W16	4.0
09 Levin, Michael	UNR	L 1	W 5	W12	L 8	W 4	3.0
10 Williamson, Omar	UNR	W 2	L15	L 8	L 5	WTHD	1.0
11 Leong, So	UNR	W 3	L 1	W17	W18	L13	3.0
12 Moss, Joshua M.	UNR	L 4	W 6	L 9	L 2	W17	2.0
13 Chan, Derek	UNR	D 5	W17	W 3	L 1	W11	3.5
14 Tang, Michael H.	UNR	W 8	L 4	W 2	L15	L 7	2.0
15 Samuels, Joseph	UNR	W 7	W10	D18	W14	W 1	4.5
16 Cook, David B.	UNR	L 8	D17	L18	W 5	L11	1.5
17 Mueller, John H.	UNR	D16	L13	L11	L 6	L12	0.5
18 Disterhort, Jason	1503	BYE	W16	D15	W 4	L 8	3.0

Tournament Calendar

Call Chess Phone, (708) 832-5222, for up-to-date tournament results, as well as announcements of tournaments that may not be listed in Chess Life or the ICB. The ICA Chess Phone voice is Todd Barre. Unless otherwise noted, all tournaments require USCF membership. Illinois Tour events also require ICA membership.

Organizers - remember it is ICA policy that an event must be published in the ICA bulletin in order to be a tour event. Please send your tournament notices to: Bob Renaut, 1255 Oakton Lane, Naperville, IL 60540-0310 or call at 708-983-0934.

"The Basement" 1800+ Weekly quads, Buffalo Grove, IL

Advance registration (1 week) only. Limited to 2 quads per week. Fully rated, G-30. Inquiries: 1121 Highland, Buffalo Grove, IL 60089. Dan Kamen (708-394-3530).

October 31

92 Tuley Park G/15 #3, Tuley Park, IL

5-SS, 501 E 90th Pl., Tuley Park. EF:\$12, 1st 40%, 2nd 20%, best from bottom half 20%. Reg: 11:15-12:00, Rds: 12:15, 1:00, 1:45, 2:30, and 3:15. For info call Tom Fineberg 312-721-3979.

November 7

Fox Valley Scholastic Team Championship, Aurora, IL

4-SS, Site-Prisco Community Center, Lake St. and Illinois Ave, Aurora. EF: \$6, if rec'd by 11/1, \$10 at site. Entries limited to first 150. 6-8 Section - open to all in grades 6-8, G/45, 4-5 Section - open to all in grades 4-5, G/30, K-3 open to all in grades K-3, G/30. Reg: 8:00-8:30. Scholastic tournament - USCF membership required. Cks. payable to Fox Valley Chess Club. Ent: R. Renaut, 1255 Oakton Lane, Naperville, IL. 60540, (708) 983-0934, NS, NC, W.

November 7

Quick Chess '92 Tuley Park G/15 #3

501 E. 90th Pl. Entry fee = \$12. 1st place = 40%, 2nd = 20%, best from bottom half = 20%. 5 round swiss, Reg: 11:15-12:00. Rounds: 12:15, 1:00, 1:45, 2:30, 3:15. For info call Tom Fineberg @ 312-721-3979.

November 14-15

1st Barb City Open, DeKalb, IL

5-SS, 40/2 20/1 SD/30, Entry Fee: \$25 if rec'd by 11/13, \$30 at site. Barb City Manor, 680 Haish Blvd, DeKalb, IL (down First St.), For info: Bill Reed, 815-758-1027. Entries to: 1460 North 14th, DeKalb IL, 60115.

November 21-22

Illinois Class Championships. MAXI Morgan Park Academy, Chicago, IL

4 round swiss, 5 sections. \$2,250 prize fund: Master/Expert \$500, \$250, \$100, Class A \$200,

\$100, \$50, Class B \$200, \$100, \$50, Class C \$200, \$100, \$50, Class D/E/Unr \$100, \$60, \$40. Free snacks and soft drinks. Site: Morgan Park Academy - Alumni Hall, 2153 West 111th Street, Chicago, IL. USCF and State mem. req'd. EF: MX \$35, A-B-C \$30, D/E/Unr \$25 by 11/14, \$6 more at the site. Mail entries to Todd Barre, 136 Evergreen, Elmhurst, IL 60126. For entries & info: Todd Barre (708) 834-0862.

December 5

Fox Valley High School Championship, Aurora, IL

4-SS, G/45, 4 board team format. Site-Prisco Community Center, Lake St. and Illinois Ave, Aurora. EF: \$25, if rec'd by 12/1, \$30 at site. Reg: 8:15-8:45, Rd 1 at 9:15. Scholastic tournament - USCF membership required. Trophies to top three teams and top individual at each board. Cks. payable to Fox Valley Chess Club. Ent: R. Renaut, 1255 Oakton Lane, Naperville, IL. 60540, (708) 983-0934, NS, NC, W.

December 5

Fox Valley Chess Club Super Quad, Aurora, IL

Double RR, G/15, Site-Prisco Community Center, Lake St. and Illinois Ave, Aurora. EF: \$5, if rec'd by 11/25, \$8 at site. Reg: 11:15-11:59, Rd 1 at 12:20, other rounds as posted. USCF membership required. 1st - \$12 in each quad. Cks. payable to Fox Valley Chess Club. Ent: R. Renaut, 1255 Oakton Ln, Naperville, IL. 60540, (708) 983-0934, NS, NC, W.

December 5

Fox Valley Chess Club Hurricane, Aurora, IL

3-SS, G/10, Site-Prisco Community Center, Lake St. and Illinois Ave, Aurora. EF: \$3, if rec'd by 11/25, \$5 at site. Reg: 3:45-4:15 PM, Rd 1 at 4:30, other rounds as posted. USCF membership required. 1st - \$15. Cks. payable to Fox Valley Chess Club. Ent: Bob Renaut, 1255 Oakton Lane, Naperville, IL. 60540, (708) 983-0934, NS, NC, W.

December 5

Barb City Holiday Tornado, DeKalb, IL

4-SS, 30/60, SD/30, Home Student Center, N.I.U., EF: \$10, \$\$ (based on 20) 50-30, B \$20, C \$20, D/E \$20, Unr \$20, Reg: 8:00-8:30, 1st Rd at 9:00. For info: Bill Reed, 815-758-1027. Entries to: 1460 North 14th, DeKalb IL, 60115.

December 19

Crossroads of Opportunity Christmas Open Effingham, IL

4-round Swiss, G-80, EF: \$11.00 in advance, \$15 at site, Rounds: 10-12-2-4, Prizes: \$50 per 5 player group, Reg: Sat. 9-9:45 a.m., Site: Village Square Shopping Mall near State Rt. 45 south of Effingham. Send entries to Mike J. Verady, P.O. Box 8, Effingham, IL 60240-0008. Make checks payable to Mattoon Area Chess Club. Inq: 217-347-5117.

1993

January 9-10

Tim Just Winter Open/Reserve X, Grayslake, IL

5-SS, 40/90 then SD/60. College of Lake County (main building), 19351 W. Washington (at Rt. 45), Grayslake, IL 60030. EF: \$32 if rec'd by 1/6/93, \$40 at site. Reg: 8-8:45, Rds 9 - 2 - 7, 1/10 10 - 3. Prizes (b60) Open \$225-\$150-\$100; EX: \$125-\$100; A&Below: \$125 - \$100. Reserve: \$225-\$150-\$100; C: \$125-\$100; D/E/Unr \$100. Entries: Tim Just 37165 Willow Lane, Gurnee, IL. 60031, 708-244-7954. MAXI.

January 23-24

3rd Annual Fox Valley Championship- \$1500 (GS), Aurora, IL

4/5-SS, Site-Prisco Community Center, Lake St. and Illinois Ave, Aurora. Open Section - 4-SS 40/100, 15/30, SD/30. Open to all. EF: \$32 if rec'd by 1/17, \$40 at site. Reg: 8:00-8:45. Rds 9:15, 3:00 both days, Prizes (Guaranteed) Open \$300, \$150, \$75, EX: \$150-\$75, A&Below \$150-\$75. Reserve: Open to all u1800, 5-SS, 45/90, SD/30. EF: \$28 if rec'd by 1/17, \$35 at site. Reg: 8:00-8:45. Rds 9:00, 1:30, 5:45, Sun 9:15, 1:00. Prizes (Guaranteed): \$200-\$100; C: \$100, \$50, D/E/Unr \$75. ICA membership req'd. Entries: R. Renaut, 1255 Oakton Lane, Naperville, IL. 60540, (708) 983-0934, NS, NC, W. MAXI.

January 23

Springfield Winter Open, Springfield, IL

Octagonal Swiss Format, Washington Park Pavilion, North of intersection of Park Ave. and South Grand Ave., West; Springfield, IL. Info: (217)-523-7265 after 6 PM. Ent: Thomas B. Knoedler, 2104 South Fourth St., Springfield, IL., 62703, NS, NC.

January 30

Superbowl Tornado, DeKalb, IL

4-SS, 30/60, SD/30, Home Student Center, N.I.U., EF: \$10, \$\$ (based on 20) 50-30, B \$20, C \$20, D/E \$20, Unr \$20, Reg: 8:00-8:30, 1st Rd at 9:00. For info: Bill Reed, 815-758-1027. Entries to: 1460 North 14th, DeKalb IL, 60115.

February 7

ICA Board Meeting (site to be determined)

February 13-15

U.S. Amateur Team Championship, Midwest, Oakbrook, IL

6-SS, 50/2, 15/30, Hyatt Regency Oakbrook Hotel, 1909 Spring Rd., Oakbrook, IL 60521. Open to 4-player teams with average rating under 2200. Each team allowed one alternate player. EF: \$80/team if rec'd by 2/5/93, \$90 at site. Special half price entry to high school and grammar school teams (\$40/\$45). EF for individuals who wish to be assigned to city or state teams by TD, \$20 if rec'd by 2/5/93, \$25 at site. \$\$ Plaque plus 4 Master Quartz clocks to top team; plaque plus 4 BHB clocks to 2nd

Tournament Calendar

and 3rd place teams. Master Quartz clock awarded to top player each board. Trophies to top teams with average rating below 2000, 1800 and 1600, top company team, top college team, top 3 high school teams, top H.S. Fresh-Soph team, top elementary school team, best team name, team travelling greatest distance, and top teams from the following states; MI, OH, IN, IL, MN, WI, IA, MO, NE, KS, KY, TN. REG: 9 A.M. - 12 noon Saturday. Rds: 2-7, 10-5, 9-3. Up to two half-point BYES allowed. Can't play Monday take two byes (must request byes before start of tournament). HR: \$60 sigle, \$70 double or twin. Phone Hyatt Hotel 708-573-1234 before 2/5/93 to make room reservations, mention "CHESS TOURNAMENT" to receive special discount room rates. For help in forming teams contact Chief Organizer Senior Master Richard Verber, 1790 Tall Oaks Drive, Apt 3-A, Aurora, IL, 60505, or 708-978-1380. ENTRIES: U.S. Chess Federation, 186 Route 9-W, New Windsor, NY 12553, ATTN: U.S. Amateur Team Midwest. (914-562-8350), NS. NC.

February 13
Chicago Midwest Amateur 15-Minute Championship, Oakbrook, IL

7-SS, USCF Rated G/15 Chess, Hyatt Regency Oakbrook Hotel, 1909 Spring Rd., Oakbrook, IL 60521. EF:\$16 if rec'd by 2/8/92 or \$20 at site. REG: 8:30-9:15. First round 9:30 A.M. sharp. \$\$ 1200 Guaranteed: \$125, 75, 60, 50, 40, EX: 90-60-40, A: 90-60-40, B: 80-50-30, C& below: 80-50-30. Trophy and \$50 to top unrated. Make check payable to Fox Valley Chess Club. ENT and INFO: Mr. Richard Verber, 1790 Tall Oaks Drive, Apt 3-A, Aurora, IL, 60505, or 708-978-1380. Chess sets are provided - bring chess clocks.

February 27
4th Barb City Tornado, DeKalb, IL

4-SS, 30/60, SD/30, EF: \$17 if received before 2/26, site \$22, Barb City Manor, 680 Haish Blvd, Dekalb, IL (down First St.), Food provided. For info: Bill Reed, 815-758-1027. Entries to: 1460 North 14th, DeKalb IL, 60115.

February 28
ICA Banquet, Westmont, IL

March 12-14
Mid America Class Championship, Chicago, IL

March 20
Springfield Spring Thaw Open, Springfield, IL

Octagonal Swiss Format, Washington Park Pavilion, North of intersection of Park Ave. and South Grand Ave., West; Springfield, IL. Info: (217)-523-7265 after 6 PM. Ent: Thomas B. Knoedler, 2104 South Fourth St., Springfield, IL., 62703, NS. NC.

March 20
Ides of March Tornado, DeKalb, IL

4-SS, 30/60, SD/30, Home Student Center, N.I.U., EF: \$10, \$\$ (based on 20) 50-30, B \$20, C \$20, D/E \$20, Unr \$20, Reg: 8:00-8:30, 1st Rd at 9:00. For info: Bill Reed, 815-758-1027. Entries to: 1460 North 14th, DeKalb IL, 60115.

April 9-11
National High School Championship, Dallas, TX

April 16-18
National Junior High School Championship - Chicago

April 23-25
National Elementary Championship, Charlotte, NC

April 24
DeKalb, IL

4-SS, 30/60, SD/30, EF: \$17 if received before 2/20, site \$22, Barb City Manor, 680 Haish Blvd, Dekalb, IL (down First St.), Food provided. For info: Bill Reed, 815-758-1027. Entries to: 1460 North 14th, Dekalb IL, 60115.

May 22
Springtime in the Park Open, Springfield, IL

Octagonal Swiss Format, Washington Park Pavilion, North of intersection of Park Ave. and South Grand Ave., West; Springfield, IL. Info: (217)-523-7265 after 6 PM. Ent: Thomas B. Knoedler, 2104 South Fourth St., Springfield, IL., 62703, NS. NC.

May 28-30
Chicago Open, Chicago, IL

June 11-13
National Open. Las Vegas, NV

June 19
6th Barb City Tornado, DeKalb, IL

4-SS, 30/60, SD/30, EF: \$17 if received before 6/18, site \$22, Barb City Manor, 680 Haish Blvd, Dekalb, IL (down First St.), Food provided. For info: Bill Reed, 815-758-1027. Entries to: 1460 North 14th, DeKalb IL, 60115.

July 16-18
Midwest Class Champlonship, Chicago, IL

July 24
Springfield Sauna Open, Springfield, IL

Octagonal Swiss Format, Washington Park Pavilion, North of intersection of Park Ave. and South Grand Ave., West; Springfield, IL. Info: (217)-523-7265 after 6 PM. Ent: Thomas B. Knoedler, 2104 South Fourth St., Springfield, IL., 62703, NS. NC.

August 7-15
U. S. Open. Philadelphia, PA

August 21
7th Barb City Tornado, DeKalb, IL

4-SS, 30/60, SD/30, EF: \$17 if received before 8/20, site \$22, Barb City Manor, 680 Haish Blvd, Dekalb, IL (down First St.), Food provided. For info: Bill Reed, 815-758-1027. Entries to: 1460 North 14th, DeKalb IL, 60115.

September 25
Harvest Time Open, Springfield IL

Octagonal Swiss Format, Washington Park Pavilion, North of intersection of Park Ave. and South Grand Ave., West; Springfield, IL. Info: (217)-523-7265 after 6 PM. Ent: Thomas B. Knoedler, 2104 South Fourth St., Springfield, IL., 62703, NS. NC.

October 16
8th Barb City Tornado, DeKalb, IL

4-SS, 30/60, SD/30, EF: \$17 if received before 10/15, site \$22, Barb City Manor, 680 Haish Blvd, Dekalb, IL (down First St.), Food provided. For info: Bill Reed, 815-758-1027. Entries to: 1460 North 14th, DeKalb IL, 60115.

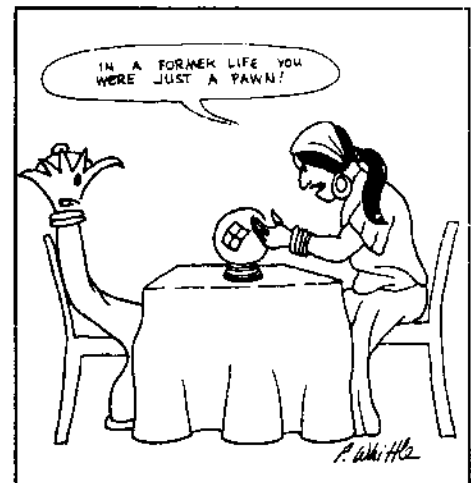
November 13
Holiday Prelude Open, Springfield, IL

Octagonal Swiss Format, Washington Park Pavilion, North of intersection of Park Ave. and South Grand Ave., West; Springfield, IL. Info: (217)-523-7265 after 6 PM. Ent: Thomas B. Knoedler, 2104 South Fourth St., Springfield, IL., 62703, NS. NC.

1994

August 7-19: U. S. Open - Chicago

Send tournament
 announcements to:
 (Calendar Editor)
Bob Renaut
 1255 Oakton Lane
 Naperville, IL 60540



ILLINOIS CHESS ASSOCIATION PATRONS

Century Club Members

Michael Belovesick Sr. Addison
 Thomas Fineberg Chicago
 Fred Gruenberg Palos Heights
 Marc Lonoff Northbrook
 Michael McIlhany Springfield
 Robert Raimo Blue Island
 Albert Sandrin Chicago
 Bill Smythe Chicago
 Burton Vincent Chicago
 Helen Warren Western Springs
 Jim Warren Western Springs
 Bill Wenz Milwaukee WI
 Philip Wong Wilmette

Gold Card Members

Tyrone Brooks Chicago
 William Dwyer Worth
 Harland S. Hoisington Ogden UT
 Alan Losoff Morton Grove
 Kenneth Marshall Lombard
 William Naff Peoria
 Peter Pelts Niles
 Daniel Pradt Glen Ellyn
 Michael Pratts Chicago
 Irwin Rothschild Park Forest
 Markus Stinson Singapore
 Mitchel Sweig Evanston
 George Umezina Chicago
 Louis Werner Evanston
 Sandy Zabell Chicago

Patron Members

Fred Allsbrook Downers Grove
 Bob Ash Urbana
 Ken Bankhead Country Club Hills
 Todd Barre Elmhurst
 Roy Benedek Western Springs
 Edward J. Bianco Chicago
 Dennis Bourgerie Normal
 Bill Brock Chicago
 Jim Brotsos Chicago
 Gregory Bungo Elmhurst
 Fred Burgess Oak Forest
 Bill Buttny Darien
 Anthony Caliendo Aurora
 Lawrence Cohen Villa Park
 Kevin Connelly Villa Park
 Tom Cooper Wheaton
 Paul Cox Chicago
 Mike Cronin Evergreen Park
 Greg De Fotis Lincolnwood
 John Deutsch Chicago
 Leroy Dubeck Cherry Hill NJ
 Kalman Farkas Milwaukee WI
 Charles Fenner Chicago
 Michael Flynn Aurora
 Jon Gotz West Chicago
 William Graves Chicago
 Steve Hansen Chicago
 Steven Herr Chicago
 Charles Hicks Naperville
 Dean Hightower DeKalb
 Keith Holzmueller Evanston
 Jeffery Hyland Mount Prospect
 Toshio Imai East Lansing
 Randy Ingram Bloomington
 Robert Irons Chicago
 Gary Jochim Chicago
 Gersham Johnson Chicago
 Stephen Josephs Hinsdale
 Tim Just Gurnee
 Dan Kamen Buffalo Grove
 Scott Kiltsley Shorewood WI
 Thomas Knoedler Springfield
 Walter Kocjan Northlake

Warren Kreckler Chicago
 Peter Kuhn Des Plaines
 Dr. Kevin Kukla Tinley Park
 Richard Lang Evanston
 Harry Lyman Boston MA
 John Marconnet Clarendon Hills
 Mark Marovitch Cicero
 Anthony Marquez Chicago
 Ed Marschall So. Barrington
 Eugene Martinovsky Naperville
 Patrick Maurer Glen Ellyn
 Thomas Mayka Wheeling
 James McNamara Hinsdale
 Fred Meyers Sterling
 Earl Miller Anna
 Ken Palmer Bolingbrook
 Randall Pals South Holland
 Alex Pehas Downers Grove
 Mieczyslaw Piatek Skokie
 Michael Plett Wheaton
 Frederick S. Rhine Chicago
 Marvin Rogan Chicago
 Ray Satterlee Wheaton
 Mark Sefcheck Naperville
 David Shane Macomb
 Anthony Sillars Northampton MA
 Scott Silverman Elk Grove Village
 Richard Simonetti Elmwood Park
 Arthur Sinclair Evanston
 Leonard Spiegel St. Charles
 Peter Stein Naperville
 Robert Stoltz River Forest
 James Tanaka Chicago
 Mike Varady Effingham
 Richard Verber Aurora
 Jeff Weimar Moline
 Don Winsauer West Dundee
 Harold Winston Naperville

**Effective January 1st, 1993
 Patron dues will increase
 from \$25 to \$35.**

RENEW NOW!
 at the old rate for 1 year.

ICA Elected Officers

Alan Losoff, President
 P.O. Box 157, Morton Grove, IL 60053
 (708) 966-5559

Garrett Scott, First Vice-President
 202 Foster Drive, Normal, IL 61781
 (309) 452-8116

Tom Fineberg, Metro Vice-President
 7321 S. South Shore Dr. Chicago, IL
 60649-3597 (312) 721-3979

Ken Marshall, Secretary
 357 W. Grove, Lombard IL 60148
 (708) 932-1455

Marc Lonoff, Treasurer
 900 Appletree Court, Northbrook IL 60062
 (708) 564-2348

USCF Delegates

by virtue of their USCF posts

Alan Losoff Regional Vice-President
 Fred Gruenberg Regional Vice-President
 Frank Skoff Life Voting Member
 Helen Warren Life Voting Member
 Harold Winston Life Voting Member

by ICA-appointment

Tom Fineberg
 Tim Just
 Ken Marshall
 Todd Barre

USCF Voting Members

ICA appointed

Marc Lonoff
 Garrett Scott
 Jim Warren
 Bill Naff
 Larry Cohen
 Jim Condron

Bill Smythe
 Erv Sedlock
 Dennis Grant
 Tom Knoedler
 Les Bale
 Bill Wilkinson

ICA appointed alternates

Jim W Oberweis
 Howard Wachtel
 Angelo Sandrin
 Ray Socha
 Jim Brotsos
 James Enochs

Murrell Rhodes
 John Barstad
 William Brock
 Glen Panner
 Steve Foust
 Dave Shiner



Where to Play Chess ICA Club Affiliates



ABCDEU sponsors tournaments and other chess events. Ed Bianco, Box 579181, Chicago IL 60657-9181.

AMERICAN POSTAL CHESS TOURNAMENTS sponsors postal events & sells chess books & equipment. Jim or Helen Warren, P.O. Box 305, Western Springs 60558. 708/246-6665.

CENTRAL LAKE COUNTY CHESS CLUB meets Fridays, 7:15 to 12:00AM College of Lake County, Bldg. 1, Washington at Route 45, Grayslake. Dennis Grant, 1657 McKay, Waukegan 60087. 708/336-5188.

CHAMPAIGN CHESS CLUB 706 Kenwood Road, Champaign IL 61821.

CHESSTERTON CHESS CENTER c/o Randy Pals, 16526 Ellis Ave., South Holland, IL 60473-2425, Info: Randy Pals 708-339-4247, Harold Henderson 219-324-2620.

CHICAGO CHESS CENTER meets for casual chess 7 days a week 6:00 p.m. 1:00 a.m. \$2 charge. 1921 W. 47th St., Chicago 60609. Also sponsors rated tournaments Thurs.-Sun. Ray Socha, 312/376-5678.

CHICAGO INDUSTRIAL CHESS LEAGUE organizes frequent competition among commercial/government teams with awards, ratings, & special events. Tony Jasaitas 312/431-2966.

CONTINENTAL CHESS ASSOCIATION, 450 Prospect Ave. Mt Vernon NY 10553. Bill Goichberg.

DOWNERS GROVE PARK DISTRICT CHESS CLUB meets Thurs., 6:30-10 p.m., Lincoln Center, 935 Maple Ave., Downers Grove. Affiliated with USCF & ICA. George Uffner, 708/960-9382.

EVANSTON TOWNSHIP HIGH SCHOOL CHESS CLUB Ken Lewandowski 1600 Dodge Avenue, Evanston IL 60204.

FOX VALLEY CHESS CLUB meets Monday evenings, 7 p.m.-?, Prisco Community Center, Lake St. & Illinois Ave., Aurora IL. Bob Renaut, 98/983-0934.

GREATER PEORIA CHESS FEDERATION meets Mon., 7-11 p.m., Garrett Center, 824 N. University, Peoria. Bill Wilkinson, 901 N. Rebecca Pl., Peoria 61606. 309/873-9455.

HAMMOND CHESS CLUB c/o Jim Enochs, 6436 Jefferson Avenue, Hammond, IN, 46324

IOWA CHESS CLUB meets Tues., 6:30-10 p.m., Hauberg Civic Center, 1300 24th St., Rock Island. Bob Ratcliff, 2336 25th St., Rock Island IL 61202; 309/786-8104.

ROBERT KJELLANDER 405 Clipper Boulevard, Springfield, IL 62707

LAKE COUNTY CHESS ASSOCIATION sponsors rated tournaments in the Grayslake-Zion area. Tim Just, 37165 Willow, Gurnee 60031. 708/244-7954.

MATTOON AREA CHESS CLUB meets Monday, 7-9 p.m., 2608 Richmond Ave., Mattoon IL 61938. Bret R. Fuller.

MIDWEST CHESS ASSOCIATION organizes major tournaments for masters & experts. Helen Warren, P.O. Box 305, Western Springs, 60558. 708/246-6665.

NORTHWESTERN UNIVERSITY c/o M.B. Henroid, 2245 Sheridan Rd., Room 222, Evanston, IL 60201.

OAK PARK/RIVER FOREST CHESS CLUB meets Tues., 7 midnight, Dominican Conference Center, 7200 W. Division, River Forest. Ken Marshall, 357 W. Grove, Lombard 60148. 708/932-1455.

ORLAND PARK CHESS CLUB meets every Friday night, 7:30-11, at the George Brown Commons, 15045 West Ave. (1 block w. of Lagrange Rt. 45 96th Ave.), Orland Park. No membership fee is required. Glenn Panter, 708/460-3111.

PARK FOREST CHESS CLUB meets Thursdays, 7-10:00 p.m., Freedom Hall, Orchard & Lakewood, Park Forest. Lawrence Cohen, 135 Westwood, Park Forest, 60466. 708/748-5911.

QUAD CITIES CHESS CLUB, Steven J. Foust, 9500 14th St. W., Apt. C2-B, Rock Island, 61202. 309/787-5198.

PAUL RODGERS' CHESS TOURNAMENTS 810 Peach Tree, Urbana, IL 61801

RUDY LOZANO LIBRARY CHESS CLUB, 1805 S. Loomis, Chicago, 60608. Hector Hernandez, Head Librarian. 312/733 4329.

SHIMER COLLEGE CHESS CLUB meets Mondays, 7 p.m. to ?, Koko House, Shimer College, corner of Genesee and Cory in Waukegan. David Shiner, P.O. Box A500, Waukegan 60079. 708/623-8400.

SMYTHE DAKOTA COMPETITIONS is the sponsor of the monthly Plus-Score Mini-Tours in the Chicago area. Bill Smythe, 6945 N. Ashland #F-3, Chicago 60626. 312/761-2455.

SPRINGFIELD CHESS CLUB meets Wed., 6-10 p.m., Washington Park Pavilion, Park Ave. & South Grand Ave. West, Springfield. Tom Knoedler, 217/523-7265; or James Larson, 217/529 0781. ST.

ST. CHARLES CHESS CLUB meets Thursdays at 7 p.m., Baker Community House, 101 S. 2nd (Rte. 31), St. Charles. Erv Sedlock, 6 N. 307 Old Homestead Rd., St. Charles 60174, 708/377-7995.

TULEY PARK CHESS CLUB meets Saturdays, 1-5 p.m., Tuley Park Field House, 501 E. 90th Pl., Chicago. Thomas Fineberg, 7321 S. South Shore Dr., Chicago 60649, 312/721-3979.

Join the Illinois Chess Association and receive six issues of the Illinois Chess Bulletin. In addition, you'll qualify to enter over two dozen tournaments on the Illinois Chess Tour. Every game you win or draw in a tour event earns you "tour points" that can add up to cash prizes at year-end. Finally, you'll be supporting the activities of the Illinois Chess Association. Every year, the ICA organizes major tournaments like the Illinois Open and the Illinois Class Championships; the ICA has

bid for the National Open, the US Open and the US Class Championships to be held in Illinois. In addition, the ICA sponsors scholastic clinics, runs a tournament clearinghouse, and promotes and publicizes chess activity statewide. If you would like to show increased support for Illinois chess, please consider renewing as a Century Club, Gold Card, or Patron member. Patrons are acknowledged in each issue of the ICB and receive their magazines by first-class mail.

**Mail To: ICA MEMBERSHIP SECRETARY
PO BOX 2534
NORTHBROOK IL 60065-2534**

(Your mailing label is on the other side; note corrections below)

Name _____
Address _____
City _____ State _____ Zip _____

ICA Membership Renewal

Check membership type:

___Century	\$100.00	___Gold Card	\$50.00
___Patron	\$25.00	___Regular	\$14.00
___Junior	\$8.00	___Affiliate	\$25.00



1992 ILLINOIS CLASS CHESS CHAMPIONSHIPS



NOVEMBER 21-22 ■ 4 ROUND SWISS ■ 5 SECTIONS

An Illinois Maxi-Tour Event!

\$2,250 PRIZE FUND

MASTER/EXPERT

1st: \$500 2nd: \$250 3rd: \$100 Expert \$150

CLASS A

1st: \$200 2nd: \$100 3rd: \$50

CLASS B

1st: \$200 2nd: \$100 3rd: \$50

CLASS C

1st: \$200 2nd: \$100 3rd: \$50

CLASS D/E/UNR


1st: \$100 2nd: \$60 3rd: \$40

FREE SNACKS & SOFT DRINKS

Morgan Park Academy - Alumni Hall

2153 West 111th Street, Chicago, IL (Just behind the Beverly Art Center)

ENTRIES & INFO: Todd Barre (708) 834-0862



Illinois Chess Association
P.O. Box 2534
Northbrook, IL 60065-2534

Time Value Material

BULK RATE
U.S. Postage Paid
Chicago, IL
Permit No. 4720

Address Correction Requested