

# ILLINOIS CHESS BULLETIN

MAY - JUNE 1994 VOL. XVII NO. 3

AN ICA BI-MONTHLY PUBLICATION - \$2.95

## MID-AMERICA CLASS WINNERS

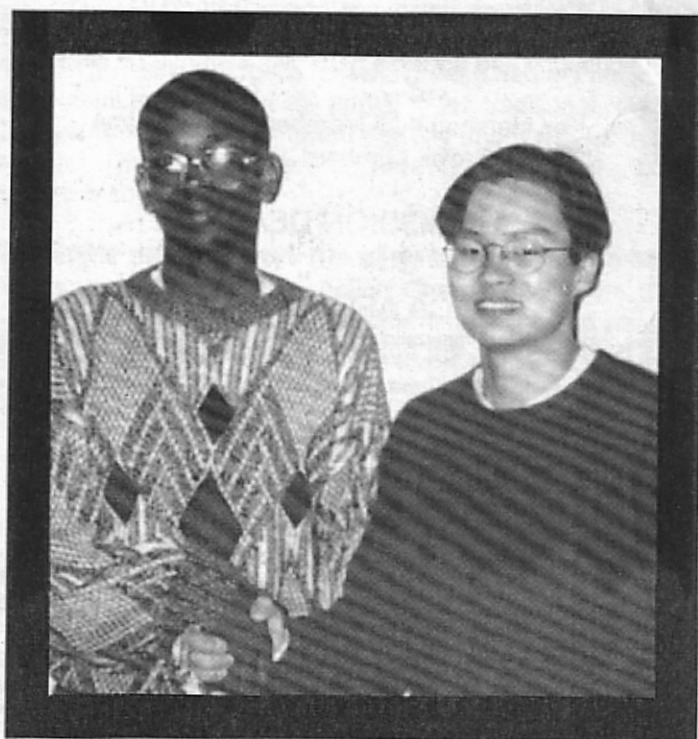
### Master Section



**Alexander  
Shabolov**

**Anthony  
Miles**

### Class A Section



**James  
Fagan**

**Jason  
Koh**



# TABLE OF CONTENTS

Editor **Bob Renaut**  
 1255 Oakton Lane, Naperville, IL, 60540, 708-983-0934  
 Games Archivist **Alan Watson**  
 161 Oakwood Drive, Bolingbrook, IL, 60440, 708-759-7757  
 Games Editor **Alan Watson**  
 161 Oakwood Drive, Bolingbrook, IL, 60440, 708-759-7757  
 Calendar Editor **Bob Renaut**  
 1255 Oakton Lane, Naperville, IL, 60540, 708-983-0934  
 Tour Statistician **Bill Smythe**  
 7445 N. Greenview, Chicago, IL, 60626, 312-761-2455

## MEMBERSHIP AND SUBSCRIPTIONS

The Illinois Chess Bulletin (ICB) is published bimonthly by the Illinois Chess Association. ICA membership includes a subscription to ICB. Century Club, Gold Card, and Patron members receive their ICB by first-class mail.

## ANNUAL MEMBERSHIP RATES

Century Club	\$100.00
Gold Card	\$50.00
Patron	\$35.00
Regular	\$14.00
Junior (under 18)	\$8.00

Subscriptions and address corrections should be sent to:

Ken Marshall (ICA Membership Secretary)  
 357 W. Grove, Lombard, IL 60148

## SUBMISSION DEADLINE

The deadline for submissions to the July - August 1994 issue is May 31.

## ICA AFFILIATION

Chess clubs and other organizations which promote chess activity may affiliate with the ICA. Benefits include a copy of the ICB by first class mail, a listing under "Where to Play Chess," discounted advertising rates, free event advertising on Chess Phone and the right to run ICA Tour Events. ICA Affiliation costs \$25; please remit to the Membership Secretary.

## ADVERTISING RATES

Full page	\$90
Half page	\$54
Quarter page	\$36
Eighth page	\$24

10% discount for the same ad in consecutive issues. 1/3 discount for ICA affiliates. All ads must be camera-ready to qualify for above rates; minimum \$20 charge for layout. Payment must accompany ad. The ICA & ICB reserve the right to reject advertising.

Copyright© 1994 Illinois Chess Association

President's Podium by Alan Losoff	3
Editor's Corner by Bob Renaut	3
ICA Tour Standings by Bill Smythe	4
Midwest Amateur Team Championship by Bob Renaut with annotations by Alan Watson	5
Levit Levels the Field by Bob Renaut	14
Guy Kittilsen Wins Low Cost Open #1 by Bob Renaut	16
Auburn High School Assaults the Pinnacle by James Boyer	16
Reader's Showcase by you the reader!	17
Reader's Retort by you the player!	20
Warren Junior Program Caps Another Successful Year by Helen Warren	21
Mote Makes it a Moot Point in Greater Peoria Open by Bill Wilkinson	22
Illinois Scholastic Championship by Dan Pradt	26
Mid-America Class Championship Draws 336 by Bob Renaut	27
Annotated Games from the Mid-America Class Championship by National Master Alan Watson	30
U.S. Chess Federation's Official Rules of Chess by Dan Burg	39
Chess Tactics for Students by Alan Watson	40
Illinois Tour Crosstables	41
Tournament Calendar	44
Local Chess Club News	45
Illinois Chess Association Patrons	46
Where to Play Chess	47

Need the latest chess tournament info?  
 Call Chess Phone 708-832-5222

## EDITOR'S CORNER

By  
Bob Renaut



This is my fifth issue and my efforts to improve the look, feel and content of your Illinois Chess Bulletin continue. You will note a couple new features have been added for your enjoyment: "READER'S RETORT" and "READER'S SHOWCASE".

These features are your chance to shine. "READER'S RETORT" will feature diagramed positions from local games with the "What's the best move or what's the shot" theme. "READER'S SHOWCASE" will be games contributed by you, the reader, with your annotations and thoughts. The ICA games editor has agreed to overlay his thoughts as well to round out the column. This is your chance to show off your best games. Your rating doesn't matter. Just send your favorite wins, losses and best positions to the ICA GAMES EDITOR.

Speaking of the Games Editor, Tom Cooper has turned in his typewriter. Tom agreed to be the editor for a one year period and he has completed his tour of duty. If this were the military he would certainly have earned his "Meritorious Service Medal" for outstanding service. I personally, would like to thank Tom for the countless hours he spent annotating games and preparing articles for the ICB; without him many of the pages in this magazine would be blank! Tom, thank you for a job well done.

Stepping into the breach as the new Games Editor is National Master Alan Watson. Alan will have a tough time following in the steps of Tom Cooper. Alan has been a frequent contributor of feature articles to the ICB and I know he will do a great job. Please join me in welcoming Alan to the staff.

Check out the article "Mote Makes it Moot..." This article was written using the ICA's new chess publishing software called CC Publish. Do you like the figurine chess notation? Drop me a short note letting me know one way or another.

Thanks to the four or five readers that took the time to read last month's Editor's Corner column on apathy. I appreciate the games, photographs and stories that you contributed. We are still looking for more involvement from our readers. I need a new scholastic editor, proof readers and regular columnists. Drop me a note or give me a call if you are interested.

**SEND YOUR COMMENTS TO:**

**Bob Renaut**  
**1255 Oakton Lane**  
**Naperville, IL 60540-0310**

## PRESIDENT'S PODIUM

By Al Losoff



Support the ICA Tour. There are more tour events than ever. Big ones like the recently completed Mid-America Class Championships or the upcoming Chicago Open and smaller ones like the Fox Valley Low Cost Opens. Play in the tour and win! The more you play, the more tour points you accumulate.

One upcoming tour event that's somewhat special is the Billy Colias Memorial Tournament, May 14-15 in Palos Heights. See the full page ad elsewhere in this issue.

Billy was one of the favorite teachers in the Helen Warren Junior Chess Program. Please consider sending a donation to the program in honor of Billy. Help us to continue the fine work with our future masters.

Speaking of future masters, invitations to the Illinois Junior Championship will be mailed soon to all Illinois High School Age (and below) players rated 1300 or above. The winner will represent Illinois in the Arnold Denker Tournament of Champions which is held along with the U.S. Open.

The U.S. Open in Chicago is coming up quickly (August 7-19). This is the first 2-week U.S. Open in Chicago since 1979. The last U.S. Open here was great (I had my personal best result ever) but I'm still partial to the traditional relaxed 2-week format with one game per day and a day off in the middle. I'm glad to have been able to bring it back. Let's show our support.

There will also be a number of other National events in Illinois, including the U.S. Action Championship, the U.S. Game/10 and the U.S. Game/15 Championships and several invitational Championships. Watch the ICA calendar and Chess Life for details.

US Chess ILLINOIS

Make your plans now for the

**95th Annual**

**U.S. OPEN**

---

August 7-19

**1994 IN CHICAGO**

Send a large self-addressed stamped (52 cents) envelope to U.S. Open INFO, P.O. Box 157, Morton Grove, IL 60053 for more information on Chicago or the host hotel. You will also receive an early copy of the tournament announcement in spring.

# ILLINOIS TOUR STATUS

By Bill Symthe

This list reflects the following 1994  
Tour events:

Tim Just Winter Open/Reserve X,  
Grayslake MAXI Jan 8-9  
Peoria Winter Tornado, Peoria  
mini Jan 15  
2nd Annual MCAC Plus-Score,  
Evanston mini Jan 15  
Fox Valley Low Cost Open #1, Aurora  
mini Mar 12  
Mid-America Class Championship,  
O'Hare MAXI Mar 25-27

Not included in the standings  
(crosstable not yet received):

2nd Annual MCAC Plus-Score,  
Evanston mini Jan 15

For players with fewer than three 1993  
Tour events, the number of events (1 or  
2) is shown in parentheses. A player  
must have played in at least three Tour  
events during 1993 to be eligible for  
year-end Tour prizes.

## UPCOMING TOUR EVENTS

Chicago Open, Oak Brook  
MAXI . . . . . May 27-30  
Fox Valley Low Cost Open #4, Aurora  
mini . . . . . Jun 11  
Midwest Class Championship, Oak  
Brook. . . . . MAXI Oct 28-30

Other events will be added as the  
year progresses. Watch for  
announcements in the Illinois Chess  
Bulletin and Chess Life.

## Master Tour Points:

MILES Anthony J	(1)	19
MOTE David	(1)	19
RASTENIS Gedimin	(1)	19
SHABALOV Alexand	(1)	19
KITTILSEN Guy		15.5
FRISKE Thomas	(2)	13.5
CHOW Albert	(2)	13

SAX Robert		13
SZPISJAK Steve		13
FAGAN James		12.5
IVANOV Alexander	(1)	12
IVANOV Igor	(1)	12
VON KROGH Christ	(1)	12

## Expert Tour Points:

SZPISJAK Steve		32
SAX Robert		20
KARKLINS Erik	(1)	19
KITTILSEN Guy		15.5
FRISKE Thomas	(2)	13.5
FAGAN James		12.5
BENJAMIN Richard	(1)	12
GORDON Wallace J	(1)	12
MC CARTHY Mike	(2)	12
SATTERLEE Ray Do	(1)	12
VON KROGH Christ	(1)	12

## Class A Tour Points:

FAGAN James		31.5
KITTILSEN Guy		20.5
KOH Jason	(1)	19
FRISKE Thomas	(2)	13.5
HONG Ernest	(1)	12
LANDRUM Stephen	(1)	12
MARSHALL Larry G	(1)	12
RAMAS Casimir	(1)	12
MC NAMARA James	(2)	8
SERRANO Fidel Jr	(2)	8
ANDERSON Phil	(2)	7.5

## Class B Tour Points:

MIEL James		42
CLAY Harry	(2)	38
BELLE John	(1)	19
STOUDEMIRE James	(1)	19
HENROID Mike		18
ISRAELSEN Kirk		16.5
MITCHELL Gary		14
SIMS Mike		13
BACKSTROM Orn	(1)	12
CRUM Randy	(1)	12
DELAY Joe		12
HOSCH William L	(1)	12
LYNCH Mark O	(1)	12
PADILLA Rudy		12
PEDERSEN Ken		12

## Class C Tour Points:

SIMS Mike		45
ISRAELSEN Kirk		23.5
MONTEBON Anthony	(1)	19
DELAY Joe		17
PEDERSEN Ken		16
BONWELL Jonathan	(1)	14
GROEGER Andrew	(2)	14
MITCHELL Gary		14
BACKSTROM Orn	(1)	12
CHOINIÈRE Benoit	(1)	12
GORDIN Vladimir	(2)	12
HUANG John	(1)	12
MILLIGAN Lando M	(1)	12
TORIBIO Alexande	(1)	12
TURNER Keith	(1)	12

## Class D Tour Points:

GETZ Barney	(1)	32
MARTIN William H	(1)	32
BONWELL Jonathan	(1)	14
ROUSTAN Pierre	(2)	12.5
GORDIN Vladimir	(2)	12
MARSHALL Kraig	(2)	12
STAPLES Carl	(1)	12
STEVENS Joseph M	(1)	12
WOOLLEY Scott	(1)	12
FRANK Randy	(2)	11
BALES Robert	(2)	9
RAHR Kenneth		9

## Class E Tour Points:

MARTIN William H	(1)	32
BASSETT Daniel S	(1)	6
LYNCH Brandon	(1)	6
FISHER Timothy M	(1)	5
HAYES Mike	(1)	5
TUURI Adam M	(1)	5
ABRAM Lawrence	(1)	4
DONNA Dan	(1)	4
GIAMPA Michael A	(1)	4
HENDRICKSON Will	(1)	4
HORNOR Richard	(1)	4
KINGREY Chaene	(1)	4
KYSER Robert A	(1)	4
PEDERSEN John H	(1)	4

# MIDWEST AMATEUR TEAM CHAMPIONSHIP

By Bob Renaut with game annotations by National Master Alan Watson

The 1994 Midwest Team Championship returned to the Hyatt Oakbrook and set a new record for attendance by drawing 48 teams and 196 players. The saying "it ain't over to the fat lady sings" rang true in this year's event. The winners weren't determined until the final game in the tournament hall on board 4 at table one was completed.

## ROUND ONE

The first round was an uneventful one with the top twenty rated teams all winning their matches. The first top rated team to fall in an upset was "St. Charles a Few Good Knights" (1826) losing a close match to a scholastic team "Lane Indians" (1156)!

The first round games were a warm up for the things to come. Here are a few highlights from the top teams.

### Hill, Jeremy-Myers, Hugh US Amateur Team Midwest

1.e4 Nc6 2.Nf3 d5 3.exd5 Qxd5 4.Nc3 Qa5 5.Bc4 Nf6 6.0-0 Bg4 7.h3 h5 8.d4 e6 9.Bd2 Qf5 10.hxg4 hxg4 11.Ng5 Bd6 12.d5 Qg6 13.f4 Bc5+ 14.Rf2 g3 15.Be1 0-0-0 16.Bd3 Qh6 17.Nh3 Nxd5 18.Nxd5 Rxd5 19.Qf3 gxf2+ 20.Bxf2 Qh5 21.Qe4

Rd6 22.a3 Bxf2+ 23.Kxf2 Qc5+ 24.Ke2 Nd4+ 25.Kf1 Nf5 26.Qf3 Ne3+ 27.Ke1 Nxc2+ 28.Bxc2 Qxc2 29.Qc3 Qxg2 30.Nf2 Qg1+ 31.Ke2 Qxa1 32.Qxg7 Rhd8 33.Qxf7 Qxb2+ 34.Kf3 Qxa3+ 35.Kg2 Qc5 36.Kf3 Qd5+ 37.Ke2 Ra6 38.Qg7 Ra2+ 0-1

### Smith, Mike-Brodie, Mark US Amateur Team Midwest

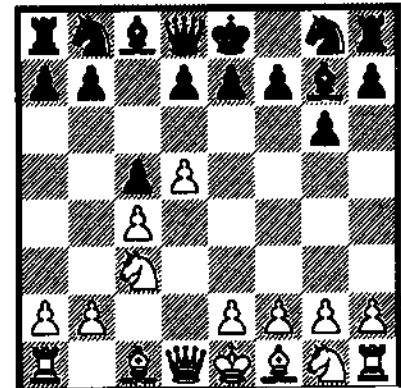
1.e4 c6 2.d4 d5 3.exd5 cxd5 4.c4 Nf6 5.Nc3 e6 6.Bg5 Be7 7.Nf3 0-0 8.c5 Nc6 9.Bb5 Qa5 10.0-0 Ne4 11.Nxe4 Qxb5 12.Bxe7 Nxe7 13.Nd6 Qxb2 14.Qd3 Qb4 15.Rfb1 Qa4 16.Nxc8 Rfxc8 17.Rxb7 Nc6 18.Ng5 g6 19.Qf3 Rf8 20.Qh3 h5 21.Nxe6 Rfe8 22.Nc7 Qxd4 23.R Qxc5 24.Rc1 Qd6 25.Nxa8 Rxa8 26.Qg3 Qxg3 27.fxg3 Ne5 28.Rc7 Rd8 29.Kf2 d4 30.Rd1 Ng4+ 31.Kf3 Nxe2+ 32.Ke4 f5+ 33.Kf4 Ng4 34.Kg5 Nf2 35.Rf1 d3 36.Rxf2 d2 37.Rxd2 Rxd2 38.Kxg6 Kf8 39.Kf6 Ke8 40.Rxa7 Rxc7 41.Ra3 f4 42.gxf4 h4 43.f5 Rg3 44.Ra8+ Kd7 45.Rh8 Ra3 46.Rxh4 Rxa2 47.Kf7 Rd2 48.f6 Rd1 49.Re4 Kd8 50.Re8+ Kd7 51.Re7+ Kd8 52.Re4 Kd7 53.Kg8 Rg1+ 54.Kf8 Rd1 55.f7 Rg1 56.Rd4+ Kc7 57.Ke7 Re1+ 58.Kf6 Rf1+ 59.Kg6 Kc6 60.Rd8 1-0

## ROUND TWO

The competition in round two got a little tougher when two more of the top twenty ranked teams fell victims to upset minded players. "Weakness" (1774) showed their strength by defeating Brothers (2058). The team "Nordic Declined" (1997) lost to "Caveman Affirmation" (1888) and moved their score to 2.0. Meanwhile "Slayer" (1992) drew with "Ashanti-Chicago" (2157).

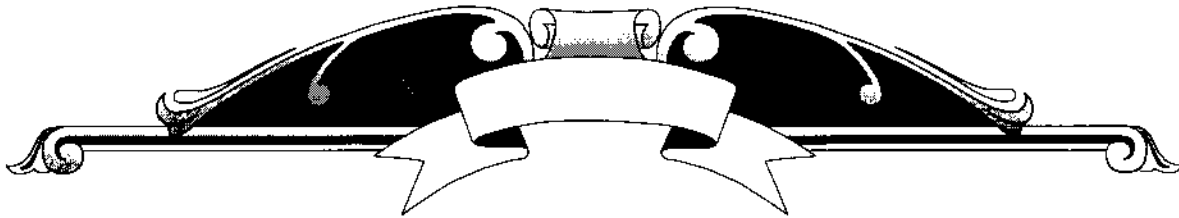
### Hong, Ernest-Burnett, Kevin US Amateur Team Midwest

1.c4 g6 2.Nc3 Bg7 3.d4 c5 4.d5 d6



After 4.d5

Dzindzichashvili used to play here an immediate 4...Bxc3+ 6.bxc3 f5, but the antidote 7.e4! fxe4 8.h4, h5 has been giving Black fits. Burnett and Olesen have further refined this system by delaying



## **U.S. AMATEUR TEAM MIDWEST - WINNERS LIST**

### **1ST PLACE**

#### **Fear Itself**

2411 Olesen, Martin  
2353 Burnett, Kevin R  
2164 Myers, Hugh E  
1824 Wahl-Jorgensen, Karin

### **2ND PLACE**

#### **Shimer College**

2399 Kraai, Jesse  
2307 Zingheim, Scott  
2070 Meltzer, Jonathan  
1972 Lahvic, James R

### **3RD PLACE**

#### **Midwest Schach Express**

2430 Martinovsky, Eugene  
2246 Watson, Alan L  
2188 Stein, Peter  
1927 Egerton, James

### **4TH PLACE**

#### **Pin Doctors**

2205 Dejmek, Mark W  
2188 Brodie, Mark A  
2166 Logunov, Ilya  
2114 Ash, Robert B  
2006 Ikeuchi, Curtis

#### **Board Prizes**

1st Board - Jessi Kraai 5 1/2  
2nd Board - Kevin Burnett - 6  
3rd Board - Peter Stein - 6  
4th Board - James Lahvic - 5

#### **TOP under 2000**

##### **The Nordic Declince - 4 1/2**

2129 Merli, Christopher  
2054 Wagner, Steven J  
1931 Wolf, William P  
1874 Feltner, Cameron

#### **TOP under 1800**

##### **Weakness - 4**

2067 Leone, Phillip r  
1939 Figueredo, Ivan  
1579 Lahlum, Robert  
1575 Swanson, Randall L

#### **1ST College team**

##### **Ruthless Sons of Bishops**

2261 Bereolos, Peter  
1592 Wargel, Stephen  
1584 Hill, Jeremy  
1533 Huston, Shawn

#### **TOP under 1600 - Victory through Glare**

1712 Ritter, Howard T  
1629 Zorzopulos, Santi  
1514 Scott, Jay J P  
1301 Ku, Dennis C

#### **1st Wisconsin Team**

##### **Heir of the Dogs**

2363 Penkalski, David G  
2220 Breider, Jon P  
2129 La Budde, Michael  
2075 Becker, John R

#### **1st Indiana Team**

##### **Slayer**

2074 Doss, Jason R  
1981 Dean, Aaron  
1918 Dean, Jim H  
1716 Savage, Chris B

#### **1st Michigan Team**

##### **We'd Rather be Playing...**

2044 Kamberi, Sonny  
1882 Smith, Mike A

1714 Singh, Buxees T

1259 Harrison, Tim

#### **1st Illinois Team**

##### **Pin Doctors**

2205 Dejmek, Mark W  
2188 Brodie, Mark A  
2166 Logunov, Ilya  
2114 Ash, Robert B  
2006 Ikeuchi, Curtis

#### **1st High School**

##### **Rufus King**

1748 Singh, Aman D  
1583 Koczela, Roy J  
1551 Coles, Peter  
1513 Cervera, Edmundo J

#### **2nd High School-**

##### **Niles North**

2131 Arlinsky, Steve  
1692 Gertsman, Gennady  
1269 Berkovich, Eugene  
1215 Rachitsky, Yuri

#### **1st 8th Grade and under**

##### **Holy Angles Junior High**

1306 Oberweis, Joseph S  
1297 Hulke, Brad T  
1015 Moreno, Ricky  
992 Mc Donald, Matthew

#### **2nd 8th Grade and under**

##### **Holy Angles Elementary**

836 Shaw, John S  
734 Faupl, Adam J  
821 Booth, Gregory H  
811 Bell, Nathaniel



Bxc3+ and playing for e5 instead.

**5.e4 Bxc3+!? 6.bxc3 e5**

Kevin Burnett's interesting idea. By striving to close the position, Black denies activity to the White bishop pair and prepares for either the assault against the double c-pawns or kingside play.

**7.Bd3 Nd7 8.Be3 Ngf6 9.f3 Nh5 10.Ne2 g5!**

Establishing an important outpost at f4.

**11.h4 Nf4 12.Nxf4 exf4**

This correct recapture establishes a new outpost at e5 from where a piece can never be driven away.

**13.Bf2 Qf6 14.Qd2 h6 15.hxg5 hxg5 16.Rxh8+ Qxh8 17.0-0-0**

White's two bishops are poor compensation for his position, as Black holds every other triumph there is to offer, i.e. control of the only open file, better pawn structure, safer king, more active pieces. etc.

**17...Ne5 18.Be2 Qh2 19.Rg1 b6 20.Qd1 Kd8 21.Qf1 Qh8 22.Rh1 Qf6 23.Kd2 Kc7 24.g4 Ba6 25.Kc2 Rh8 26.Kb3 Rh6!**

Preparing to regain control of the file with 27...Qh8.

**27.Qg2 Qh8 28.Rxh6 Qxh6 29.Be1 f6**

For the next 10-15 moves Black pursues a strategy Nimzivitch called "tacking" whereby a player maneuvers so as to test the other's reactions and find the best way to breach the defenses. I would have preferred to reserve f6.

**30.Bf2 Nf7 31.Bg1 Nd8 32.Bf2 Nb7 33.Qf1 Na5+ 34.Ka3 Qh2 35.Be1 Kd8 36.Bd3 Ke7 37.Be2 Qh8 38.Bd3 Kf7 39.Bd2 Qh2 40.Be1 Kg7 41.Be2 Qh8 42.Bd3 Qe8 43.Bd2 Bc8 44.Qh3 Qh8 45.Qf1 Bd7 46.Be1 a6 47.Bd2 Qh2 48.Be1 Ba4!? 49.Qe2 Qxe2 50.Bxe2 Bd7 51.Kb2 Nb7 52.Bd2 Nd8 53.Be1 Nf7 54.Kb3 Ne5 55.a3 a5!**

Black has firmly decided upon a winning plan in which he has placed his full confidence, otherwise he would not have allowed White to close the position.

**56.a4 Bc8 57.Bf2 Kf7 58.Be1 Ke7 59.BfKd8 60.Be1 Ba6 61.Bf2 Kc7 62.Bg1 Bxc4+!**

Well-timed, for if 63.Bxc4 Nxf3! when White's pawns are broken and he must lose one of his bishops due to the threat of 64...Nd2+.

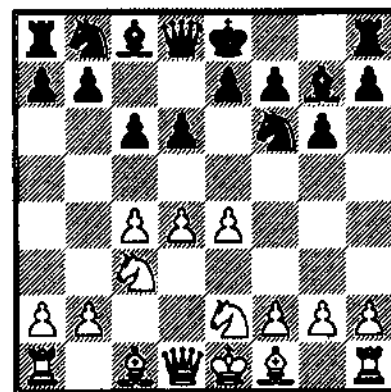
**63.Bxc4 Nxf3 64.Bxc5 bxc5 65.Be2 Nh2 0-1**

### ROUND THREE

The real fun started in round three. "Pin Doctors" (2168) operated on the second ranked "Heir of the Dog" (2192) and cut out their hearts. "Ruthless Sons of Bishops" added "Brothers" to their list of victims.

**Burnett, Kevin-Figueroa, I.  
US Amateur Team Midwest**

**1.d4 Nf6 2.c4 g6 3.Nc3 Bg7 4.e4 d6 5.Nge2 c6!?**



After 5...c6

An unusual response to White's system. Most commonly seen is 6...e5 7.d5 when Black may continue with either 7...c6, 7...a5, or 7...Nbd7 with interesting play.

**6.Ng3 a6 7.a4 Nbd7 8.a5 b5 9.axb6 Qxb6**

Black's insistence on playing b5 has allowed White to gain advantages in pawn structure and central influence.

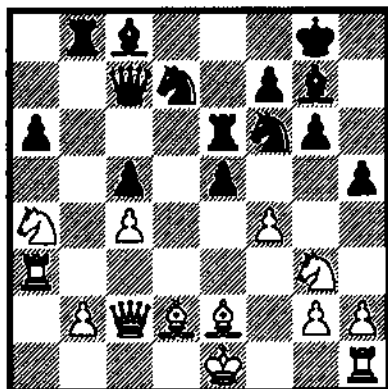
**10.Na4 Qc7 11.Bd2 0-0 12.Be2 c5 13.d5 h5?!**

A weakening of the g6 square. Black continues to snipe at White's position from the wings without paying sufficient attention to the center. Logical would appear 13...e6 to open the e-file for rooks.

**14.Qc2 Rb8 15.Ra3 Re8  
16.f4!**

With this move, White makes final preparations for a deadly assault. Though he doesn't realize it yet, Mr. Figueredo's position is at great peril.

**16...e6 17.dxe6 Rxe6  
18.e5! dxe5**



After 18... dxe5

**19.f5!**

Only now is Black rudely awakened and shown the shady side of his earlier 13...h5?! His kingside will shortly be stripped of defenders and ravaged by the active White pieces.

**19... Rd6 20.fxg6 fxg6  
21.Qxg6 Nf8 22.Qc2 Ne6  
23.Nf5 Nd4 24.Nxd4 cxd4**

**25.c5 Be6 26.0-0**

Notice how White has for so long reserved the tempo used for castling in order to play moves which were more immediately necessary. Harry Pillsbury once said castle if you like or must, but not because you can!"

**26...Rc6 27.Rxf6!**

An unexpected sacrifice whose real purpose is revealed by the next move.

**27...Bxf6 28.Bf3! Bf7 29.b4  
a5 30.bxa5 Rxc5 31.Nxc5  
Rb5 32.Bxh5!**

White is ever tactically alert. If now 32...Bxh5 33.Qc4+ picks off Black's rook in broad daylight.

**32...Qxc5 33.Rg3+!**

An excellent zwischenzug to determine the position of Black's King. If now A) 33...Kf8 34.Qxc5 Rxc5 35.Bb4 or B) 33...Kh8 34.Qf5 or C) 33...Bg7 34.Bxf7+ Kxf7 35.Qf5+ with wins for White in each case.

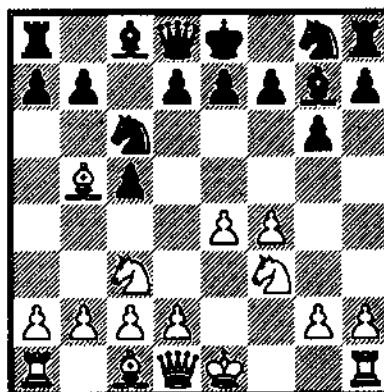
**33...Kf8 34.Qxc5+ Rxc5  
35.Bb4 Bxh5 36.Bxc5+  
Be7 37.Bxe7+ Kxe7 38.a6  
Bf7 39.Rg7 d3 40.Kf2 1-0**

**Penkalski,D.-Dejmek,MW  
US Amateur Team Midwest**

**1.e4 c5 2.Nc3 Nc6 3.f4**

The move 3.f4 introduces the modern way of playing the Grand Prix Attack of the Sicilian Defense and is designed to prevent Tal's sacrifice 1.e4 c5 2.f4 d5!? 3.exd5 Nf6.

**3...g6 4.Nf3 Bg7 5.Bb5**



After 5.Bb5

**5. ... e6?**

A weak move which allows White to disrupt Black's pawn structure. Theory gives as the most accurate 5...Nd4! when White has already developed his knight to c3.

**6.Bxc6! bxc6 7.e5 d5  
8.exd6 Qxd6 9.Ne4! Qxf4  
10.d3 Qb8 11.Be3!**

An excellent sacrifice which is designed to prevent the Black king from castling.

**11...Qxb2 12.Rb1 Qxa2  
13.Bxc5**

Black is temporarily two pawns up, but his position is riddled with holes and it is not clear how he can coordinate



his pieces and provide for his King's safety.

**13...Ne7 14.Nd6+ Kf8  
15.0-0 Qd5 16.d4 Ba6  
17.c4!**

White seeks to strengthen his attack by gaining b7 for the rook. If instead of 17...Bxc4 18.Nxc4 Qxc4 19.Rb7 Black tries 17...Qh5, the reply 18.Qa4 Bc8 19xc8 Rxc8 20.Rb7 does the trick.

**17...Bxc4 18.Nxc4 Qxc4  
19.Rb7 Re8 20.Qe1 Kg8**

Seeing no way to prevent the ultimate loss of a piece, the Black King immediately runs for shelter and he strives for complications. Unfortunately for him, however, White's technique is good and he gains no compensation.

**21.Bxe7 e5 22.Bc5 h6  
23.Qe3 e4 24.Rxa7 f5  
25.Ne5 Bxe5 26.dxe5 Rh7  
27.Bd6 c5 28.Rxh7 Kxh7  
29.Rd1 Qc2 30.Rc1 Qd3  
31.Qxd3 exd3 32.Rxc5 Ra8  
33.Rd5 Ra1+ 34.Kf2 Ra2+  
35.Kf3 Rd2 36.e6 Kg8  
37.e7 Kf7 38.Re5 Ke8  
39.Rb5 Re2 40.Rb8+ Kd7  
41.Rd8+ Kc6 42.e8Q+  
Rxe8 43.Rxe8 d2 44.Ke2  
1-0**

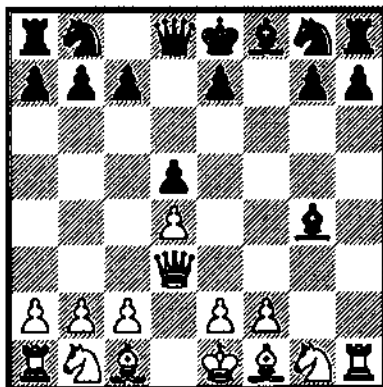
**Watson, Alan-Jasaitis, A.  
US Amateur Team Midwest**

**1.d4 f5 2.h3**

2.h3!? was first played by

Victor Korchnoi against Kanel at Biel in 1979. Its purpose is to enter the sharp attack after 1.d4 f5 2.g4 fxc4 3.h3 without allowing the reply 3...g3! sealing up lines White wants opened.

**2...d5 3.g4 fxc4 4.hxc4  
Bxc4 5.Qd3**



After 5.Qd3

This reply was first suggested by Paul Schmidt in 1934 (After the different move order 1.d4 f5 2.g4 fxc4 3.h3 d5 4.hxc4 Bxc4 5.Qd3) and today remains the strongest move in this position.

**5...Qd7 6.Bh3**

White disallows the reply 6...Bf5 contesting the important b1-h7 diagonal and threatens at his convenience to exchange bishops weakening Black's central light squares.

**6...Nf6 7.Nc3 Nc6 8.Bf4**

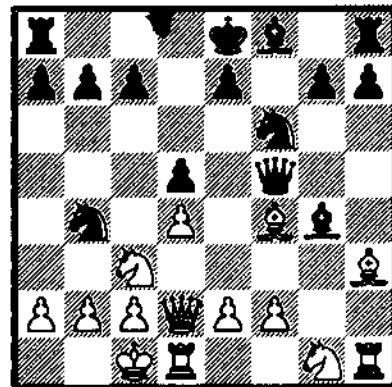
The text, as you shall soon see is dangerous, but I was in no mood for compromises

and half measures.

**8...Nb4 9.Qd2 Qf5**

What is White to do now? 10.Rc1 is much too passive and 10.0-0-0 loses a pawn after 10...Nxc2, or does it?

**10.0-0-0**



After 10.0-0-0

Of course, castle anyway! The resource White planned is 10...Nxc2 11.f3! Bxh3 12.Nxh3 Nb4 13.e4! dxe4 14.fx4 Nxe4 15.Nxe4 Nxa2+ 16.Kb1 Qxe4+ 17.Kxa2 when White has won a piece for four pawns in a still unclear position.

**10...c6?!**

Black declines the offer, but this may be his best choice.

**11.f3! Bxh3 12.Nxh3 h6**

A second passive move after which the dynamic power in White's position unleashes like a coiled spring to overwhelm the Black pieces.

13.e4! dxe4 14.fxe4 Qa5

14...Nxe4 15.Nxe4 introduces yet another discovered attack on the Nb4.

15.a3

Certainly not 15.Kb1?? Nxe4! when the tables are rapidly turned!

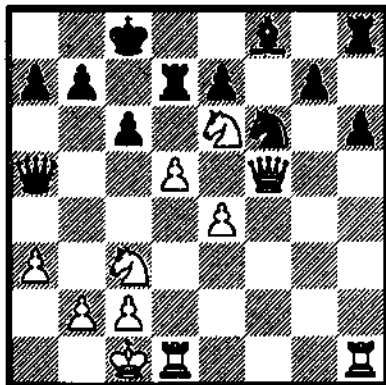
15...Na6 16.d5!

White must open up lines for his active pieces.

16... 0-0-0 17.Qf2!

A subtle yet powerful move which illustrates how precarious the Black monarch's new residence is.

17...Nc7 18.Bxc7 Kxc7  
19.Nf4 Rd7 20.Ne6+ Kc8  
21.Qf5



After 21.Qf5

An insidious move threatening 22.dxc6 Rxd1+ (22...Qxf5 23.cxd7+ +-)  
23.Rxd1 Qxf5 24.Rd8  
Checkmate! Black now decides to pitch a pawn so

as to rouse his Kingside pieces from their slumber and divert the White queen.

21...g6 22.Qxg6 h5 23.Nxf8

A difficult decision as the Knight was extremely powerful on e6, but White didn't want to allow Black any activity after 23...Bh6+.

23...Rxf8 24.Qf5 Qd8  
25.dxc6 bxc6 26.Qe6! Kc7  
27.Qc4 Kb7 28.e5!?

While the text is sufficient and has been accurately calculated by White, simpler was the direct 28.Na4 with dangerous threats.

28...Ng4 29.Rxd7+ Qxd7  
30.Ne4! Qd5 31.Nc5+!

By threats of checkmate or of knight forks on e6, White elbows the Black King to worst possible square in preparation for the coming ending.

31...Ka8 32.Qxd5 cxd5  
33.Rxh5 a5 34.Nd3 Kb7  
35.Rh7 Re8 36.Kd2 Kc6?

Black fails to appreciate the precarious position of his knight and plays a careless move, for after 37.Rg7! the knight is no longer able to retreat into relative safety (37...Nh6 38.Rg6+) but must move into greater jeopardy.

37.Rg7! Nh2 38.Ke2 Kd7  
39.Rh7 Ng4 40.Kf3 Rg8

41.Rh4 Nxe5+ 42.Nxe5+  
Kd6 43.Nd3 e5 44.Rh6+  
1-0

#### ROUND FOUR

Competition in Chicago can be keen. In Round four ninth ranked "Tonya's Terrible Teammate: If We Can't Beat'em, We'll Beat'em" was paired against sixth ranked "Ashanti-Chicago" both teams having 2 1/2 match points after three rounds. After the top two board split 1-1 and board 4 drew, all eyes focused on the game between Jim Oberweis (1876) and Richard Lang (2108). Jim's chess lessons with SM Richard Verber paid dividends as he cleanly defeated Richard. The defeat was so devastating for the members of "Ashanti-Chicago" they withdrew from the event knowing their dreams for a first place finish were just that, a dream... Meanwhile top ranked "Midwest Schach Express" (2198) drew with Shimer College (2187) to setup a showdown in round 6.

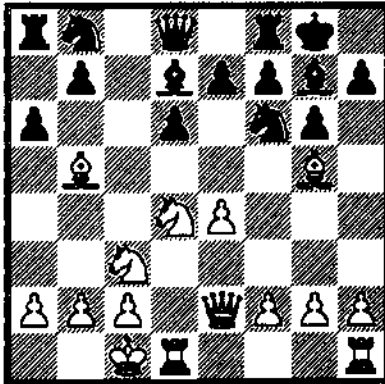


Olesen, Martin-Dejmek, M  
US Amateur Team Midwest

1.e4 c5 2.Nf3 d6 3.d4 cxd4  
4.Nxd4 Nf6 5.Nc3 g6 6.Bg5

It is interesting to note that Olesen, a Dragon practitioner himself resorts to this offbeat but dangerous line when faced with "his" own defense.

**6...Bg7 7.Bb5+ Bd7 8.Qe2 0-0 9.0-0-0 a6 10.Bc4!?**



After 9. ... a6

To avoid further loss of time White normally continues here 10.Bxd7 Nbx7 11.f4 Qc7 12.Nf3 Nb6 when 13.Rhe1 is suggested by Sapi and Schneider as yielding a slight advantage. The text offers Black tempos for his attack.

**10. ... Nc6 !? 11. Nxc6 bxc6 12. h3 Qa5**

Black prepares to initiate his own dangerous counter-attack against the White King.

**13.e5 Nd5**

Not 13...dxe5? 14.Bxf6 Bxf6 15.Rxd7 losing a piece.

**14.Bxd5 cxd5 15.Bxe7 Rfc8 16.Bxd6 Bh6+ 17.Kb1**

**Rxc3!?**

This move initiates what appears to be a very dangerous attack. In reality , however, White has foreseen all and with extremely accurate moves repulses all threats and transposes into a winning ending.

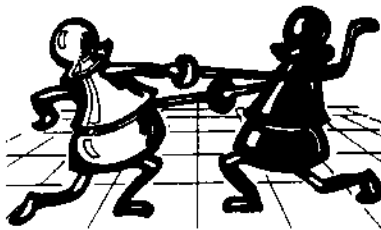
**18.bxc3 Bb5**

This move seeks to place the bishop on c4 but fails to accurate play by White. Black's best opportunity appears to have been the immediate exchange of the Bd6 by 18...Bf8. That bishop is the glue that holds White's position together.

**19.Rxd5! Qa4 20.Rxb5!! axb5 21.a3!**

This queenside barricade forms an important link in White's defensive plan. If only Black can eliminate the powerful d6 bishop perhaps he can make progress!?

**21...Bf8 22.Qg4! b4 23.Qxb4! Qa7 24.Rd1! Bxd6 25.exd6 Rb8 26.d7! 1-0**



**ROUND FIVE**

Round five sees "Fear Itself" paired against "Shimer College" and "Midwest Schach Express" paired against "Tonynya's Terrible Teammates". The heat is turned up!

**Dejmek,MW-Urquhart,D  
US Amateur Team Midwest**

**1.e4 c5 2.Nf3 d6 3.d4 cxd4 4.Nxd4 Nf6 5.Nc3 a6 6.Bg5 e6 7.f4 Be7 8.Qf3 Qc7 9.0-0-0 Nbd7**

This variation the Najdorf demonstrates that both players are prepared for an uncompromising struggle for supremacy!

**10.g4 b5 11.Bxf6 Nxf6 12.g5 Nd7 13.a3!?**

This idea of attempting to slow down the Black attack had been in great favor back in the 1970's but eventually became discarded as the sharper and more forceful alternatives involving 13.f5! were fully explored.

**13...Rb8 14.Bh3 Nc5!**

A couple of traps here are 14...0-0? 15.g6! hxg6 16.Ne6 +- and 14...Qc4!? 15.Nb3! Bb7 16.Rhg1 g6 17.qe3 h6?! 18.gxh6 Nf6 19.e5 dxe5 20.Qxe5 Rc8 21.Na5 Qc7 22.Nxb7 Qxb7 23.Nd5!! +- Sevechek-Gudim, USSR 1967.

## 15.Rhe1

More popular is the alternative development 15.Rhg1 when interesting attacking prospects may present themselves.

## 15...0-0 16.Qh5!?

Practice has seen only 16.Qg3 b4 17.axb4 Rxb4 18.f5 Qb6 19.f6 Bd8 20.fxg7 Re8 21.Nf5!? exf5 22.Nd5 Qa5 23.Nb4 f4! 24.Qf3 Qa1! Planinc-Bukic, Novi Travnik 1969.

## 16...b4 17.axb4 g6?

Totally unnecessary and sowing the seeds of a rapid defeat. Black is advised in these positions to leave the pawns in front of his king untouched for as long as possible, and concentrate only on advancing his own attack.

## 18.Qh6 Rxb4 19.Nf5!!

An excellent move highlighting the weakness of Black's castled position. There is no way he can prevent a rapid checkmate.

## 19...gxf5 20.Bxf5!

A well-calculated follow-up ensuring the squares d5 and f6 for his remaining knight.

## 20..exf5 21.Nd5 Nb3+ 22.Kb1 Ra4 23.cxb3 1-0



## ROUND SIX

The final round saw "Midwest Schach Express" and "Fear Itself" tied for the tournament lead with 4 1/2 out of 5 points. This was going to be a tough match since "Fear Itself" tied for first in the 1993 event, but lost on tie breaks. Martin Olesen, Kevin Burnett, Hugh Meyers and Kari Wahl-Jorgensen didn't want to end up a bridesmaid again. A win by either team gives them a clear first place. The first seed "Midwest Schach Express" fell behind early in the match when top boards Eugene Martinovsky and Alan Watson lost to Martin Olesen and Kevin Burnett. Peter Stein broke through and scored a point for the "MSE" and secured his position as first place on board 3 with a 6 - 0 score.

The scene now switched to board 4 where James Egerton and Kari Wahl-Jorgensen were locked in mortal combat. If Kari could

draw or win, "Fear Itself" wins the match and the title... but the game draws on and remaining games in the tournament hall were completed. Two teams Shimer College and Pin Doctors won their final matches and finished with 5 match points. All eyes were on Kari and James. If James could win, then four teams end up with 5 match points. As the chess Gods and everyone else watched on... James ground out a win over Kari and the match ended in a draw. The groans from the "Fear Itself" team can be heard across the room. The tournament winner for the second year in a row would be determined by tie breaks. When all the tie breaks were calculated and double checked the final results were: 1st Place - Fear Itself, 2nd Place - Shimer College, 3rd Place - Midwest Schach Express and 4th Place - Pin Doctors. So Martin Olesen, Keven Burnett, Hugh Myers and Kari Wahl-Jorgensen were not denied for the second year in a row. They finished up as the bride not the bridesmaid!

Here are two of the critical games from the final match on board one and two. The final game on board four can be found later in this magazine under "**READER'S SHOWCASE**".

---

**Martinovsky,E-Olesen,M  
US Amateur Team Midwest**

**1.d4 Nf6 2.c4 c5 3.Nf3  
cxd4 4.Nxd4 e5!?**

Nothing could be more appropriate for a last round game with first place still up for grabs! 4...e5 introduces a temporary pawn sacrifice whereby Black strives to imbalance the game and seize the initiative.

**5.Nb5 d5 6.cxd5 Bc5 7.e3  
0-0 8.N5c3 e4 9.Nd2**

White's most serious try for an advantage in this variation as 9.Be2 has not held up well in practice.

**9...Re8 10.Bb5!?**

A novelty of uncertain value. Recent practice has seen instead 10.a3 Bf5 11.Nb3!/? (Formerly popular was the continuation 11.b4 Bf8 12.Nc4 Nbd7 13.Bb2 a6 14.Qb3 b5 15.Na5 Nc5! 16.bc Qxa5 17.d6 Rac8 18.Qb4 Qd8=) Bf8 12.Be2 Bg6 +=

**10...Bd7 11.Be2 Na6  
12.Nb3 Bd6 13.Nd4 Nc7  
14.Qb3 Qe7 15.Bd2 a6  
16.f4!?**

Already the White position is uncomfortable, so he seeks eliminate the e4 pawn or stabilize the kingside before deciding where to castle. This choice, though, proves

insufficient to stem Blacks activity and only creates new weaknesses

**16...exf3 17.gxf3 Be5!  
18.0-0-0**

As the kingside and center appear equally dangerous, what is White to do about the safety of his king?

**18...Bxd4 19.exd4 Ncxd5!  
20.Nxd5 Nxd5 21.Bc4 Rac8  
22.Kb1 Bf5+ 23.Ka1 Nf6  
24.d5 Qc5 25.Rc1 Qd4  
26.Bg5 b5 27.Bxf6 gxf6  
28.Bxb5 axb5 29.Rxc8  
Rxc8 30.Qxb5 Rd8 31.d6  
Bg6 32.Re1 Kg7 33.a3  
Qxd6 34.h4 Qg3 35.Qa5  
Qxh4 36.Rc1 Qd4 37.Qb5  
h5 0-1**

---

**Burnett,Kevin-Watson,Alan  
US Amateur Team Midwest**

1.d4 f5 2.g3 Nf6 3.Bg2 g6  
4.Nf3 Bg7 5.c4 d6 6.d5 c6  
7.Nc3 0-0 8.0-0 e5 9.dxe6  
Bxe6 10.Qd3 Na6 11.Ng5  
Qe7 12.Bf4 Rad8 13.Rad1  
Ng4 14.Nxe6 Qxe6 15.b3  
Qf6 16.Bd2 Rfe8 17.Qb1  
Ne5 18.Qc1 Nf7 19.Qa3 Bf8  
20.b4 d5 21.cxd5 Bxb4  
22.Qb3 c5 23.a3 c4 24.Qc2  
Ba5 25.Ne4 fxe4 26.Bxa5 b6  
27.Bc3 Qf5 28.Bb2 Nc5  
29.Qxc4 h6 30.d6 Kh7  
31.Bh3 Ne5 32.Bxe5 Qxe5  
33.Rd5 Qf6 34.f3 e3 35.Rfd1  
Kg7 36.R1d4 Rf8 37.Kg2 h5  
38.d7 g5 39.Bf5 Ne6  
40.Bxe6 1-0

The competition for the best

team name continued to be tough and this year was no exception. "Ruthless Sons of Bishops" manned by Pete Bereolos, Stephen Wargel, Jeremy Hill and Shawn Huston were awarded best team name trophy and they claimed the top College Team prize. The runner up for the best team name "Searching for Bobbitt's P\*ss\*r" protested loudly, claiming they only lost because Chess Life wouldn't print their name. Chief Tournament Director Alan Losoff handled this delicate situation and calm was restored. Other names which received votes: "Four Horsemen", "Tonya's Terrible Teammates: If We Can't Beat'em, We'll Beat'em" and "64 Square Dancing Knights".

Thanks to the efforts of SM Richard Verber this years event saw an increase to 9 scholastic teams participating for the top prize. The top High School Prize went to "Rufus King" from Wisconsin with a score of 4.0 points. Congratulations to Aman Singh, Roy Koczela, Peter



Coles and Edmundo Cervera for their outstanding efforts as they defeated the "Niles North" in head to head competition in round 3 to claim the top spot. "Niles North" took home the second place trophy for the High School Competiton. The top under 8th grade award went to "Holy Angels Junior High", while " Holy Angels Elementary took the second place trophy.

The tournament was organized by SM Richard Verber for the Fox Valley Chess Club. Al Losoff did an outstanding job as Chief Tournament Director and he was assisted by Bob Renaut and Walter Browne. The Fox Valley Chess Club looks forward to hosting the event next year and wants to thank all of the players that participated in the 1994 event. We hope to see you all back in 1995...□

**LEVIT LEVELS THE FIELD**

Roman Levit (2323) trotted to the head of the field with a score of 5.5 points in the quick chess event held in conjunction with the Midwest Amateur Team Championship. 96 players used the quick chess event to tune up for the main event. Twelve masters and nine experts along with 29 other players filled out the

Championship section and 47 joined in the fun by playing in the Booster section. The event was sponsored by the Fox Valley Chess Club and the tournament was directed by Bob Renaut.

The first round saw top seeded Jesse Kraai (2399) lose to Greg Barry (2002). The sparks really flew in the fourth round when Roman Levit defeated Peter Pelts (2378), and Al Chow (2364) used his defensive skills to shut down George Umezina (2354). Roman Levit continued his winning ways in round 5 by defeating Al Chow and Peter Pelts also won. In the final round Roman's winning streak was slowed when Jesse Kraai held him to a draw!

Roman Levit's 5.5 points earned him \$200 for first place, while Al Chow and George Unmezina shared 2nd/3rd place money of \$100 each. Camilo Pangan earned \$100 as the top master below 2300. The Top Expert prize was split between Glen Gratz, Philip Leone, James Hodina and Brian Ruggiero. They each earned \$50. The Top A prize of \$120 was claimed by

Roger Pedersen who defeated Marc Lonoff (2305) along the was to a score of 4.0 and Jason Koh took 2nd A and claimed the \$80 prize.

The Booster section competiton was no less fierce. Joshua Flores, Frank Johnson, Howard Ritter and Jacob Ratner all tied for 1st place and earned \$62.50 for their hard earned efforts. The TOP C prize was also hottly contested. No less than five players tied for this honor. Brian Wong, Kenneth Paradise, Charles Walker, Charlie Wolfe and Cliff Anderson each won \$30 for sharing this prize. Brian Wong's performance also earned him the Top Grammer School Trophy, while Charlie Wolf claimed the Top High School Trophy.

The TOP D & under prize was dominated by junior players from Aurora's West High School. The winners included Chris Morgan, Peter Mueller, Neil Pollack, Aaron Mc Cann, Chris Worden, Jamie Perkins and Jacob Frank. They each earned \$19 for this honor...□

**BULLWINKEL PARTNERS, LTD.**

ERIC S. WACHSPRESS

Attorneys Counselors

19 South LaSalle Street Chicago, Illinois 60603-1493  
312.201.0777 fax 312.201.0737

# Billy Colias Memorial Tournament



MAY 14 - 15 in PALOS HEIGHTS

\$2500 Guaranteed Cash Prizes!

## OPEN

\$500 - \$300 - \$200  
Top Master u2300 - \$150  
Expert - \$150 - \$100  
Class A - \$150 - \$100

## UNDER 1800

\$200 - \$150 - \$100  
Class C - \$150 - \$100  
Class D - \$150 - \$100  
JUNIOR PRIZES!



Come pay your  
respects to Billy Colias

## TOURNAMENT INFORMATION

5-SS, 40/90 SD/30 40/2 SD/60,  
Palos Heights Community  
Center, 6601 West 127th Street,  
Palos Heights. EF\$ \$20 or \$10  
if received by May 7.

REGISTRATION: 8:30 - 9:30

ROUNDS: 10-2:30-7 &  
10-4:30

## ENTRIES & INFO:

Richard Verber  
1970 Tall Oaks Drive #3A,  
Aurora, IL 60505  
(708) 978-1380

## **GUY KITILSEN WINS LOW COST OPEN #1**

By Bob Renaut

The Fox Valley Chess Club hosted the first in a new series of monthly chess tournaments. These tournaments feature low entry fees, a one day 4-SS G/60 format, ICA mini tour points and a good playing location. The first event held on March 12, 1993 drew 38 players including one master, three experts and six class A players and twelve junior players. The event was directed by Bob Renaut and food services were provided by James Miel and his companion Cathy.

Competition was hot and heavy when in the first round Master Lev Strelchin (2215) was upset by S. Henderson (1693) and Expert Ed Thomas (2031) was also defeated by Malcolm Knox (1678) and James Fagan (1963) drew with Michael Flynn (1600)! This set the tone for the rest of the tournament. In the second round Joe Cima (1984) was upset by Fox Valley Chess Club member Gary Mitchell (1513).

Three players entered the fourth round with a chance for first place; Guy Kittilsen (1801), S.E. Henderson (1693) and Thomas Friske (1808). S. Henderson, 3-0 was paired against James Fagan 2 1/2 - 1/2, while Guy Kittilsen, 3-0 was paired against Thomas Friske, 3-0 on board 1. James Fagan ended Henderson's chance for a first place tie by defeating him

soundly. The Kittilsen-Friske match went down to the wire, when in a rook endgame Friske erred giving the game to Kittilsen and the first place prize money of \$60. James Fagan took a clear second place and \$30 home.

The TOP Class A prize of \$20 was split between Joe Cima and Thomas Friske. TOP Class B prize was split three ways with James Miel, Malcolm Knox and S. E. Henderson. The Class C prize of \$20 was captured by Fox Valley Chess Club member Kirk Israelsen. The \$20 D/E/UNR prize was earned by new comer Devagna Mody...□

## **AUBURN HIGH SCHOOL ASSAULTS THE PINNACLE**

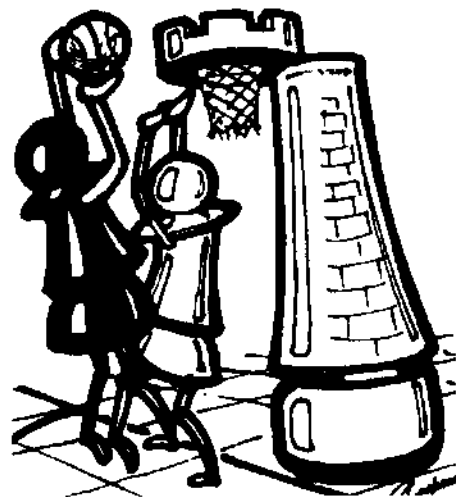
By James Boyer

The Seventh Annual Auburn "Pinnacle" Team Chess Tournament was won by the host team Auburn High School. Four top contenders for this year's Illinois State Championship - Auburn and Jefferson from Rockford along with Lane Tech of Chicago and Moline where among the fourteen high school teams competing in this event. The event is held as an eight board team effort in a four round swiss game in 70 format.

Jefferson just escaped from an upset in the first round by North Boone - last year's A State Champion. Moline was surprised by Lane Tech in the second round

and Auburn survived a tough third round match with Lane Tech to set up the championship match between state powers Jefferson and Auburn. The match was fought to a 34 - 34 draw with Auburn winning on tie breaks. Lane Tech, playing without two of their top five boards, finished third with Moline fourth.

The tournament was very capably directed by Jim Oberweis of Aurora, Illinois. At the same time the team competition was taking place, a five round game /45 swiss was played between 26 additional players from the same schools. Four of the first five places were captured by Auburn players - Brian Bushaw (1st), Lori Rifkin (2nd), Ryan Ignacio (3rd) and John Penny (5th). Tashasi Maye from Waukegan took 4th place..□



**DON'T MISS THE  
95th U.S. OPEN  
August 7-19, 1994  
Chicago, Illinois**

**For info: P.O. Box 157  
Morton Grove, IL 60053**



# READER'S SHOWCASE

## EVERYBODY COUNTS ON A TEAM

By Alan Watson

When forming a team of four players comprising a Senior Master, Master, high Expert, and a 1977 player it is not often thought that the most important person of the group is the fourth board. However, in the recently concluded US Amateur Team Midwest, that is exactly what happened to Mid West Schach Express.

Going into the last round, "Fear Itself" and "Midwest Schach Express" were tied with two other teams at 4 1/2 points, and a win by either would give them good chances of winning first place. All the marbles were on the table for this critical match and the drama was set. This was a high-pressure situation for all involved.

Things did not look good for us after several hours of play. Boards one and two were in inferior if not lost positions, board three was a pawn ahead, and board four was unclear. Within a short period of time board one lost, board three won, and board two lost, leaving only board four remaining. With the big guns silenced the result of the entire match and tournament was to be decided by what happened between two "A" players! All everyone else could do is wait and watch! I present to you what may very well have been the most important game of the tournament!

**US Amateur Team Midwest,  
Round 6, Board 4  
White: Karin Wahl-Jorgensen  
(Fear Itself)**

**Black: Jim Egerton  
(Midwest Schach Express)  
Annotations by Jim Egerton unless  
otherwise noted by ALW**

Opening: D59 Queen's Gambit  
Declined, Tartakower Variation

**1.d4 Nf6 2.Nf3 e6 3.Bg5 d5 4.e3  
Be7 5.c4 0-0 6.Nc3 h6 7.Bh4 b6  
8.cxd5**

From a Torre Attack, the opening has transposed into a Queen's Gambit Declined Tartakower Variation. Some feel it is better to delay this capture until the Black bishop is developed to b7 where it will be blocked by its own pawns.

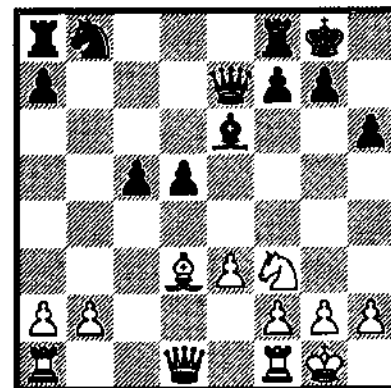
**8...Nxd5 9.Bxe7 Qxe7 10.Nxd5  
exd5 11.Bd3**

The text is inaccurate. Better is 11.Rc1 which moves the rook to an active square while deferring development of the Bf1 until Black's plans are made clear. White need not fear the exchange of Queens after 11...Qb4+?! 12.Qd2 Qxd2+ 13.Kxd2 as this yields him the better ending. (ALW)

**11...Be6 12.0-0 c5**

Setting up a "Hanging Pawn" formation which will dictate the appropriate strategy to each player for the rest of the game.

**13.dxc5 bxc5**



Position after Black's 13th move

**14.Rc1**

To fix or break up the pawns, Filip has suggested 14.e4!? Rfd8 [14...d4 15.Nd2 Nd7 16.f4 f6 17.b3 Nb6 18.Rc1 += Simagin] 15.exd5 Bxd5 16.Qe2 Qf6 17.Rfd1 Nc6 18.Be4 Nd4 19.Nxd4 cxd4 = (ALW)

**14...Nd7 15.Qe2 Rfd8 16.Rfd1  
Rab8 17.Rd2 Rb6 18.Bb1**

While setting up a mate threat on h7, this bishop actually contributes little to the position on b1. Perhaps possible was 18.Bb5 intending to exchange off one of the pieces defending the central pawns and thereby weaken d5 and c5.

**18... Rdb8 19.Qd3 g6**

I didn't want to weaken my kingside pawn formation, but the knight on d7 is needed to guard c5 and e5.

**20.Qa3**

White sets up a diagonal pin on the c-pawn similar to Fischer - Spassky 1972 but the queen accomplishes little from here. Already, it is the White position which is uncomfortable.

**20... Qf6 21.Rc3**

Another awkward move, leaving the first rank vulnerable in the event of 21...Rb4 22.Qxa7? Qxc3!

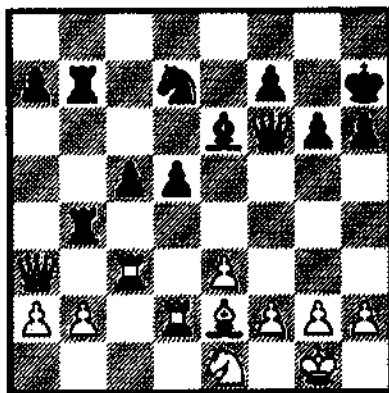
**21... Rb4 22.Bd3 R8b7 23.Be2 Kh7**

After spending considerable time up till now, I had only 20 minutes left for my next 27 moves. In middlegame complications that's not good!

**24.Ne1 Qh4**

Threatening 25...Ra4 trapping the wayward White queen.

**25.Nf3 Qf6 26.Ne1 Qh4 27.Nf3 Qf6 28.Ne1**



Position after Whites' 28th move

Here White offered a draw Because their team was winning on boards 1 and 2. Actually I miscalculated and there could've been a draw by repetition!

**28... d4!?**

Opening up the center with so little time was probably hazardous, but I couldn't see any other way to

make progress because the Ne1 was heading to d3 to kick my rook. By now my opponent had less than 30 minutes left for her next 22 moves and I had 20 minutes.

**29.exd4 cxd4 30.Rf3 Qg5 31.Rc2 Bd5 32.Rg3 Qf6 33.Nd3 R4b6 34.Bf3?! Ra6**

The queen is toast. Unfortunately my opponent grabs an equivalent amount of material and I'm down to 9 minutes left for 15 moves.

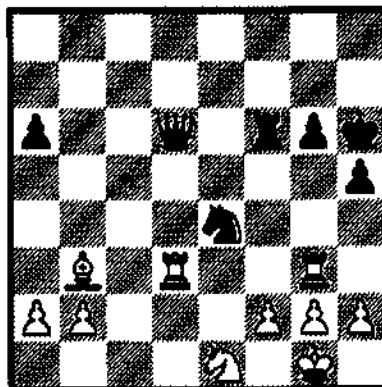
**35.Qxa6 Qxa6 36.Bxd5 Rb6 37.Bxf7?!**

37.Rc7 or 37.Rxf7+ Kh8 may have been better. ALW

**37... Rf6 38.Bb3 Qd6 39.Kf1 h5 40.Kg1 a6 41.Re2 Kh8 42.Ne1 Nc5 43.Rc2 d3?! 44.Rd2 Ne4?**

I had now less than one minute left for 6 more moves and had stopped keeping score. My opponent was getting about every other move recorded.

**45.Rdxd3**



Position after Whites' 45th move

**45. ... Qc5 46.Rgf3 Rxf3?**

The diabolical 46...Nxf2! wins material, but all that I could see was that two pieces were hanging. If 47.Rxf6 Nxd3+ 48.Kf1 Nxe1 49.Rf2 -+ or 47.Rc3 Nh3++ 48.Kf1 Qg1+ 49.Ke2 Nf4+ -+

**47.Rxf3 Qc1 48.Re3 Ng5 49.Re2 a5 50.Re3 Qc5 51.Nd3 Qd4**

By now neither player was keeping score and I claimed that time control had been met. During this break, I learned that although winning board 3, we had lost on 1 and 2. If we lost the match "Fear Itself" would win the tournament outright, while if I won there would be a four way tie for first and the victor would be decided by tie breaks. I now had to win my game if our team was to have any chance winning the tournament!

**52.a3 Ne4 53.h3 Nd2 54.Ba2 Qa4! 55.Kh1 Qd1+ 56.Re1 Qc2 57.Re3 Nf1! 58.Rf3 Qd1 0-1**

The White King is entombed by its own pieces and Black sets up a fatal discovered check. This was the last game of the tournament to finish and threw the tournament into a four way tie for first.



Here are a few more games submitted by our readers:

**White: Schultz(1929)  
Black: Shea(1316)  
NU Plus-Score (01/15/94), 1994**

**1.e4 d6 2.d4 Nf6 3.Nc3 g6 4.f4**

This move initiates the Austrian Attack of the Pirc Defense which has as its primary aim a sharp attack against the Black kingside.

**4... Bg7 5.Nf3 0-0 6.Bd3 c5?**

Current theory has come to regard this move with skepticism. Much better are 6...Nc6! and 6...Na6!? which prepare the pawn-breaks e5 and c5 respectively.

**7.e5!?**

Better is 7.dxc5! dxc5 8.Qe2 (Interesting are both 8.e5 and 8.Be3) Nc6 9.e5 Nd5 10.Nxd5 Qxd5 11.Be4! Qd7 12.c3 h6 13.0-0 Bb7 14.Rfd1 as in Lewin- Tukmakov, USSR 1963.

**7... Nfd7 8.ed6 ed6 9.0-0?!**

White senses danger to his king and castles in the mistaken belief that the d4 pawn will be regained without trouble. The lesser evil at this point was 9.d5 Re8+ 10.Ne2 although Black would still stand better.

**9... cd4 10.Ne2 Nc6 11.b3 Nc5 12.Bb2 Nd3 13.cd3?!**

13.Qxd3! Bf5 14.Qd2 would have kept the d-file open and allowed White to apply the additional pressure to the sensitive d4 pawn.

**13... Bg4**

An excellent move which exchanges a useless bishop for one of the knights pressuring d4.

**14.h3 Bf3 15.Rf3 f5 16.Qc2 Rc8 17.Qc4 d5 18.Qa4?! a6 19.Rb1 Re8 20.Nd4??**

The final error, after which a piece will be lost due to the pin on the a7/g1 diagonal.

**20... Qb6 0-1**

**White: Urquhart, Donald(2175)  
Black: Cima, Joe(1984)  
US Amateur Team, Midwest**

**1.e4 e5 2.Nf3 Nc6 3.Bb5 a6 4.Bc6 dc6 5.0-0 Bg4 6.h3 Bf3?!**

More interesting is the stubborn 6...h5 when the bishop cannot immediately be taken because of the open h-file.

**7.Qf3 Bc5 8.Qg3 Qf6 9.d3 Ne7 10.Nd2 Ng6 11.Nf3**

This position is considered by M. Thomas who consider White's chances to be superior due to the threat of 12.h4-h5.

**11... h6 12.h4 0-0 13.Bh6!?**

Although this move looks good, White fails to anticipate Black's unexpected resource on move 14. Better was 13.h5 Nf4 14.Qg4 followed by g3. Joe suggests 13.Kh1 Rae8 14.Bxh6 gxh6 15.h5 Qf4 16.hxg6 Qxg3 17.gxf7+ Rxf7 18.fxg3 unclear.

**13... gh6 14.h5 Qf4 15.d4 Qg3 16.fg3 Bd4 17.Nd4 ed4 18.hg6 fg6 19.Rf3 Rae8 20.Raf1 Kg7 21.R1f2 c5 22.Kf1 c4 23.g4 c5 24.Re2 b5 25.Ke1 Re6 26.Kd2 Rfe8 27.Ra3 Re4 28.Re4 Re4 29.Ra6 Rg4 30.Ra5 Rg2 31.Kd1 h5 32.Rb5 h4 33.Rb7 Kh6 34.Rb8**

34...Kg5 is noted by Joe as better, for if 35.Ra8 Kg4 36.a4 h3 37.a5 h2 38.a6 Rg1+ 39.Kd2 h1/Q 40.Rxh1 Rxh1 41.a7 Ra1.

**34... g5 35.a4 g4 36.a5 h3 37.a6 h2?**

This pawn need not be given away. By continuing 37...Rg8+ 38.Kd2 Ra1 the Black king can assist promoting his own pawns while the rook stops White's.

**38.Rh8 Kg5 39.a7 Rg1 40.Kd2**

**Ra1 41.Rh2 Ra7 42.Rh8 Re7**

A good move which cuts off the White king from Black's passed pawn.

**43.Rg8 Kf4 44.Rf8 Kg3 45.Rf5 Re3?!**

45...Rg7 followed by moving his King and advancing the g-pawn would be more direct, but the text is not bad..

**46.Rc5 c3 47.bc3 Rc3 48.Rd5 Rc4 49.Kd3 Ra4 50.Ke2 Kg2 51.Rg5 g3 52.Rg8 Ra3 53.Rd8 Re3 54.Kd2 Re4 55.Kd3 Rf4 56.Ke2 Kh2 57.Rh8 Kg1 58.Rd8 g2 59.Rd7 Kh2 60.Rh7 Kg3**

The end is near, for if 61.Rg8+ Rg4 62.Rxg4 Kxg4 63.Kf2 Kh3 64.Kg1 Kg3 65.c3 d3! with mate to follow.

**0-1**

## READER'S SHOWCASE CONTRIBUTIONS

Have you got a favorite game? Why not show it off! Send the game and your comments to:

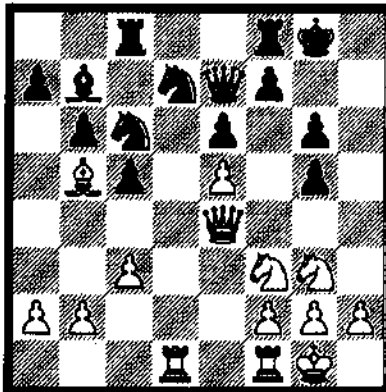
**ALAN WATSON  
161 OAKWOOD DRIVE  
BOLINGBROOK, IL 60440**

National Master Alan Watson will add his annotations and just like that you'll be in the Illinois Chess Bulletin...A Star!

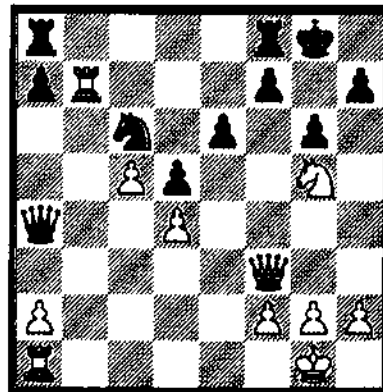
# READERS RETORTS

Here is your chance to experience the heat of competition, the thrill of victory or the agony of defeat! These positions have been selected from recent games contributed by you, the reader. Send your "RETORTS" to Alan Watson or Bob Renaut for inclusion in the next issue.

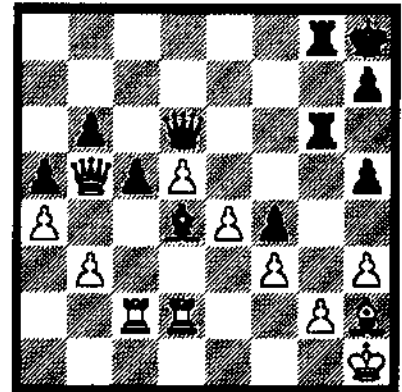
Can you find the "RETORT?"



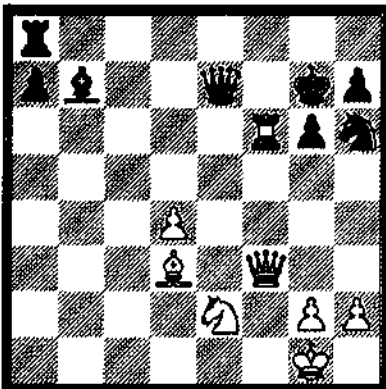
(1) White to move -  
J. Kraai vs Paul Ilosvay



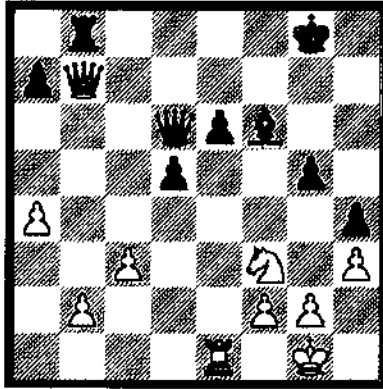
(2) White to move -  
Mike Smith - Mark Brodie



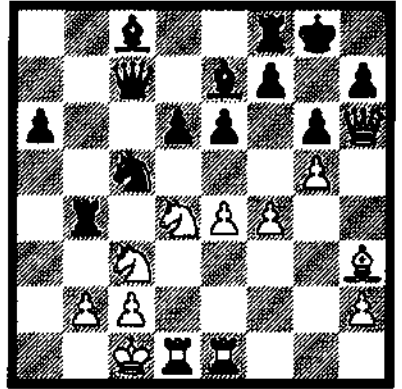
(3) White to move -  
Alan Watson-B. Ruggerio



(4) White to move -  
P. Bossaers - A. Watson



(5) White to move -  
Martin Olesen - S. Zabell



(6) White to move -  
MW Dejmek - D. Urguhart

## RETORTS REVEALED

- (1) 1. Nxc5! Qxc5 2. Rxd7
- (2) 1. Qh3! h5 2. Nxe6 Rf8-e8 (not 2....fxe6 then 3. Qxe6 + with mate following)
- (3) 1. Rxd4! cxd4 2. Bg1 Qe5 3. Qd3 R6g7 4. Bxd4 Qg5 5. d6 Qg6 6. d7.
- (4) 1. Re6! 1/2- 1/2
- (5) 1. Rxe6! Rxb7 2. Rxd6 Kg7 3. Rxd5
- (6) 1. Nf5!! gxf5 2. Bxf5 exf5 3. Nd5 Nb3 + 4. Kb1 Ra4 5. cxb3 1-0

# WARREN JUNIOR PROGRAM CAPS ANOTHER SUCCESSFUL YEAR



by Helen Warren

Financially and chessically the 1993-94 academic year spelled **S-U-C-C-E-S-S** all the way around. We reached our fund raising goal thanks to contributions from ICA members, matching funds from parents and schools, and special fund raisers.

Special thanks to Erv Sedlock who once again provided a substantial boost to our efforts. His policy of donating \$.50 per kid per tournament netted the Warren Program \$1,105 near year's end and means a solid foundation for the coming academic year. Cheers all around for Erv and his St. Charles C.C.!

Once again, the junior program will donate two half-scholarships to chess camps for summer study; one to a high school

youngster and the other to an elementary school chess student.

We raised a total of \$9,888.00 this year. Our thanks to all who make this program possible.

We have established an annual award recognizing excellence in teaching in honor of SM Billy Colias who died in November last year. This annual grant will be announced in January, 1995 and thereafter at yearly intervals.

Please note participating schools and family names of students participating in the program in the donor list below.

We take great pride in the success of our junior program, especially as it translates into mainlining kids into real

tournament play. By providing books as well as instruction we get them off to a running start.

We should mention that the Moline area had eight kids on the USCF Top Fifty list for their age groups (their very young 7-9 year old age groups!) We will begin a series of workshops in the Moline area in the coming academic year.

We hope you'll keep a close eye on the progress of our youngsters in coming months. Their improvement is exciting! There are good days ahead for Illinois chess; the gifted youngsters in our state are products of strong leadership in recognizing talent, cultivating promise, and rewarding their commitment to our great game...□

Let's bring you up-to-date on donors and recap all who have been such an integral part of the total effort:

## **BENEFACTOR (\$500 & up)**

Jim & Helen Warren  
St. Charles C.C. (Erv Sedlock)  
Illinois Chess Association  
Bill Smythe  
Fred Gruenberg  
Fox Valley C.C.

## **CONTRIBUTOR (\$100-499)**

SM Richard Verber  
NM Tom Cooper  
NM Mitch Sweig  
NM Peter Pelts  
Jack Wong  
Craggs Family  
Tom Friske  
Lou Werner

Tom Knoedler  
Al Losoff  
South Suburban C.C.  
Ben Franklin School  
James Tanaka  
L W Blum, MD  
Steve Hansen  
Todd Barre  
Irwin Rothschild

Dan Pradt  
IL Math & Science Academy  
Clemente High School  
Chinese American Service League  
American Postal Chess Tournaments  
Lane Tech High School  
Bill Brock

Waukegan High School  
Jay School  
Jim Oberweis

## **BOOSTERS (\$1-99)**

SM Leo Kaushansky  
SM Eugene Martinovsky  
NM Mariano Acosta  
NM Keith Esses  
Leonard Spiegel  
Tim Just  
Steve Hoisington  
Michael Plett  
Dennis Bourgerie  
Jim McNamara  
Gertsman Family  
Arlinsky Family  
Burda Family

Leali Family  
Don Walhout  
Paul Cox  
Lou Spitznagel  
Art Sinclair  
Tom Fineberg  
Tom Mayka  
Harold Winston  
Tony Jasaitis  
P. Kuhn  
Boylston C.S. (Boston)  
Winton Fulk  
Peoria C.C.  
Hayes Family  
Riddell Family  
Weier Family

# MOTE MAKES IT A MOOT POINT IN GREATER PEORIA OPEN

By Bill Wilkinson

Craig Townsend the unknown master heading the Open section had earned his rating by scoring wins over B, A, and Expert players in his first tournament, a 3 round Iowa affair. His second tournament demonstrated how fragile a provisional rating can be when he lost his first four games.

David Mote is a true master (albeit by only 10 points), and he showed the difference between a master and an expert winning by a full point over his closest rival. His end game against Rhodes and tactical battle with Sax reflected well on the losers as well as the winner.

Steve Szpisjak came in with a cluster of off-beat openings (2.b4 against the Sicilian, for example), and went undefeated. The half-point he got from Mote allowed him to separate himself from a large group of three-pointers and finish alone in second place.

Of that group, Phil Anderson deserves mention for going undefeated (and for parlaying a win, a bye, and three draws into a tie for third place). More noteworthy was Tom Friske, who came into the tournament seeking lost rating points. He certainly found some by playing up for all five games and losing only to Mote. He defeated Naff and drew with Szpisjak.

**PROBLEM WITH YOUR  
SUBSCRIPTION?  
CONTACT:  
KES MARSHALL  
(708) 932-1455**

The three-point group split the Third Place and under 2000 prizes.

John Belle of Normal, starting near the bottom of the B class, won the Reserve section going away. He defeated the top and third-rated players and probably could have won his final round game against fourth-ranked Randy Crum if he had needed it. Crum of Peoria and Mike Sims of North Aurora tied for second with 4 points, splitting the second and Top C prizes. Kirk Israelsen from Aurora was second in Class C.

The D prize was split by three players with 2 points; Mike Wishner of Morton Grove, Matt Kriegel of Toledo, Iowa, and Wes Kriegel of Chelsea, Iowa.

There were 43 entries, 16 in the Open section and 27 in Reserve. This was only 3 more than last year, when we lost a pot full of money. We only lost a cupful this year, thanks to the fact that the cost of the tournament room was based on the number of hotel rooms rented. Many thanks to all the players who stayed at the site.

I had predicted that this year would be the last for the Greater Peoria Open, but the restructuring of prizes and expenses is encouraging. I expect we'll try it one more year. Hope to see you there.

Here are a few games from this event.

**White: Mote, David (2209)  
Black: Smit, Tom (1906)  
Greater Peoria Open (1), 1994**

1.e4 c5 2.♘f3 a6 3.c4 ♘c6 4.d4 cxd4 5.♗xd4 d6 6.♘c3 ♗f6 7.♗e2 g6 8.O-O ♗g7 9.♗e3 O-O 10.♞c1 ♗d7 11.h3 ♗e8 12.♗d2 ♞c8 13.♞fd1 e5 14.♗b3 f5 15.♗g5 ♗f6 16.♗h6 ♗g7 17.c5 ♗e6 18.♗xg7 ♗xg7 19.cxd6 ♗f6 20.♗c5 ♗d4 21.♗xd4 exd4 22.♗xe6+ ♗h6 23.♗xd8 dxc3 24.♗e6 cxb2 25.♞b1 ♞fe8 26.exf5 gxf5 27.♗d4 1-0

**White: Sax, Robert (2127)  
Black: Bolitho, Thomas (1870)  
Greater Peoria Open (1), 1994**

1.e4 e6 2.d4 d5 3.♗d2 ♗f6 4.e5 ♗fd7 5.♗d3 c5 6.c3 ♗c6 7.♗e2 cxd4 8.cxd4 f6 9.♗f4 ♗dxe5 10.dxe5 ♗xe5 11.♗h5+ ♗f7 12.♗b5+ ♗d7 13.♗xe6 ♗e7 14.♗e2 ♞c8 15.♗xd7+ ♗xd7 16.♗xf8+ ♗xf8 17.♗b5+ ♗c7 18.O-O ♗d6 19.♗b3 ♗b8 20.♗e3 ♗e5 21.♗a4 b6 22.♗d4 ♞c4 23.♗a6 ♗g4 24.♗xa7+ ♗c8 25.g3 ♗xe3 26.fxc3 ♞e8 27.♗f5 ♗c6 28.♗e7+ ♞xe7 29.♗xe7 d4 30.♗f8+ ♗b7 31.♗xg7+ ♗a6 32.♗xf6 ♗c5 33.exd4 ♞xd4 34.♗f2 1-0

**White: Rhodes, Murrell (2059)  
Black: Kittilsen, Guy (1801)  
Greater Peoria Open (1), 1994**

1.e4 c5 2.♗f3 ♗c6 3.♗c4 ♗c5 4.c3 ♗f6 5.d3 a6 6.♗g5 d6 7.♗bd2 O-O 8.h3 ♗c7 9.♗f1 ♗e6 10.♗b3 ♞fd8 11.♗e2 b5 12.♗g3 h6 13.♗h4 ♗xb3 14.axb3 ♗e6 15.♗f5 ♗c7 16.g4 ♗g6 17.♗g3 ♗xb3 18.g5 hxg5 19.♗xg5 d5 20.h4 dxe4 21.dxe4 ♗f4 22.♗xf4 exf4 23.♞g1 ♗f8 24.f3 ♞d7 25.♗d4 ♗c4 26.♗xc4 bxc4 27.♗c6 ♗e8 28.♗e5 ♞c7 29.♗xc4 ♗d6 30.♗xd6 cxd6 31.♞a5 ♞b8 32.♞g2 ♞b6 33.♞c2 ♞e5 34.♞d5 ♞b3 35.♗h3 ♗e7 36.♗xf4 ♗xh4+ 37.♗e2 ♗g5 38.♗h3 ♗e7 39.♗d3 ♞b5 40.c4 ♞b3+ 41.♗e2 f6 42.♗f4 ♗f7 43.♗d3 ♞e6 44.♞a5 ♞b6 45.b4 ♞c6 46.♗d2 g5 47.♗f2 ♗d8 48.♞f5 ♗b6 49.♗g4 ♗d4 50.♗d3 ♗e5 51.♗e3 ♞e8 52.♗d5 ♞h8 53.♞g2 ♞hl 54.♞g5 ♞dl+ 55.♗e2 ♞bl 56.♞h5 ♞xc4 57.♞h7+ ♗g8 58.♞fh5 ♞c2+ 59.♗d3 ♞g2 60.♞h8+ ♗f7 61.♞5h7+ ♞g7 62.f4 ♗al 63.♞xg7+ ♗xg7 64.♞a8 ♞dl+ 65.♗e2 ♞d4

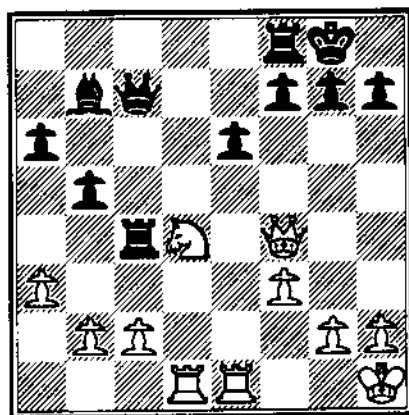
66. ♖e3 f5 67. ♖xa6 ♖xe4+  
68. ♜f3 ♖e6 69. ♖xa1 1-0

**White: Rhodes, Murrell (2059)**

**Black: Mote, David (2209)**

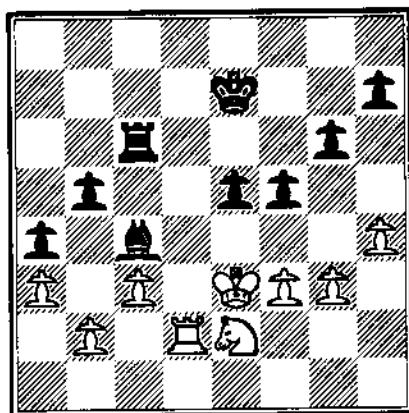
All notes are by David Mote

1. e4 c5 2. ♖f3 d6 3. d4 cxd4  
4. ♖xd4 ♖f6 5. ♖c3 a6 6. ♖g5 e6  
7. ♖e2 ♖e7 8. O-O O-O 9. ♜h1 b5  
10. ♖d3 ♖b7 11. f3 ♖bd7 12. a3 ♖c8  
13. ♜d2 ♖e5 14. ♖fel ♖c4 15. ♖xc4  
♖xc4 16. ♖ad1 ♜c7 17. ♖ce2 d5  
18. exd5 ♖xd5 19. ♖xe7 ♜xe7  
20. ♖f4 ♖xf4 21. ♜xf4 ♜c7



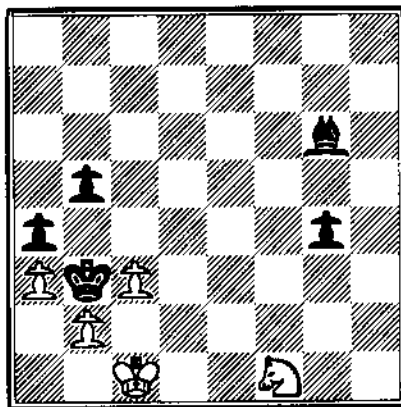
Challenging White's initiative.

22. ♜xc7 ♖xc7 23. c3 ♖fc8 24. ♖e2  
♜f8 25. ♖d6 ♖c6 26. ♖d7 ♖6c7  
27. ♖ed1 ♖d5 28. ♖xc7 ♖xc7  
29. ♜g1 ♖e7 30. ♜f2 ♖c4 31. ♖e3  
e5 32. ♖g3 g6 33. ♖d2 f5 34. ♖e2  
a5 35. g3 a4 36. h4 ♖c6!



To bring the king to d6 rather than d7 on the exchange of rooks.

37. ♖g1 ♖d6 38. ♖h3 h6 39. ♖xd6  
♜xd6 40. ♖f2 ♖d5 41. ♖d1 g5  
42. hxg5 hxg5 43. ♖f2 ♖f1 44. g4  
fxg4 45. ♖xg4 ♖h3 46. ♖f6+ ♖c4  
47. ♖d2 ♖b3 48. ♖cl ♖f5 49. ♖d5  
e4 50. fxe4 ♖xe4 51. ♖e3 ♖f3  
52. ♖f1 g4 53. ♖d2+ ♖a2 54. ♖f1  
♖e2 55. ♖g3 ♖d3 56. ♖h5 ♖b3  
57. ♖g3 ♖g6 58. ♖f1

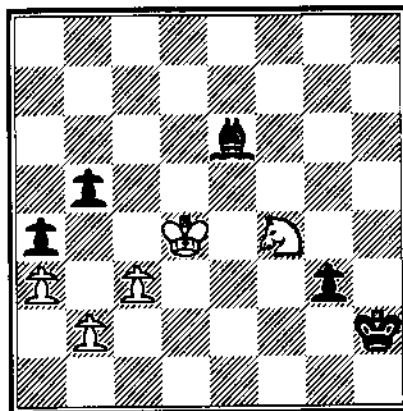


Not 58...Nc4? 59. Be3+!

58... ♖f7 59. ♖d2+ ♖a2 60. ♖f1  
♖e8 61. ♖g3 ♖c6 62. ♖f1 ♖e4  
63. ♖g3 ♖d3!

Cutting off the knight's route to d2 in order to bring out the black king.

64. ♖h5 ♖b3 65. ♖g3 ♖c4  
66. ♖d2 ♖g6 67. ♖f1 ♖c5 68. ♖g3  
♖d5 69. ♖e3 ♖e5 70. ♖f1 ♖f5  
71. ♖g3+ ♖g5 72. ♖f1 ♖h4  
73. ♖f4 ♖h3 74. ♖g3 ♖e8 75. ♖e2  
♖d7 76. ♖e3 g3 77. ♖f4+ ♖h2  
78. ♖d4 ♖e6!



After...g2 79. Nxc2 Kxc2, White has drawing chances; for example: 80 Kc5 Kf3 81. Kb4 Ke4 82. b3 axb3 83. Kxb3 Bd5 84. a4! and Black is left with the wrong rook pawn.

79. ♖e3 g2 80. ♖xc6

Now 80. Nxc2 Kxc2 81. Kd4 Bc4 is hopeless for White.

80...g1 ♜+ 81. ♖d2 ♜g2+ 82. ♖cl ♜f1+ 83. ♖d2 ♜f2+ 0-1

**White: Szpisjak, Steve (2139)**

**Black: Anderson, Phil (1931)**

**Greater Peoria Open, 1994**

1. e4 ♖f6 2. ♖c3 d5 3. e5 ♖e4  
4. ♖f3 ♖f5 5. ♖b5+ e6 6. ♖e2 e6  
7. O-O ♖e7 8. d3 ♖xc3 9. bxc3 e5  
10. ♖el ♖c6 11. ♖f1 O-O 12. ♖f4 d4  
13. cxd4 cxd4 14. h3 ♜d5 15. g4  
♖g6 16. ♖g2 ♖ac8 17. ♖d2 ♜d7  
18. a3 f6 19. exf6 ♖xf6 20. ♖g3  
♖ce8 21. ♜bl ♖d8 22. ♖e4 ♖b6  
23. ♖d6 ♖e7 24. ♖c4 ♖c7 25. ♜b5  
♖xg3 26. fxc3 ♜c7 27. ♖e5 ♖xc5  
28. ♜xe5 ♜xe5 29. ♖xe5 ♖c8  
30. ♖e2 ♖e8 31. ♖bl ♖c6 32. ♖xc6  
♖xc6 33. ♖g2 ♖ec7 34. ♖b2 1-0

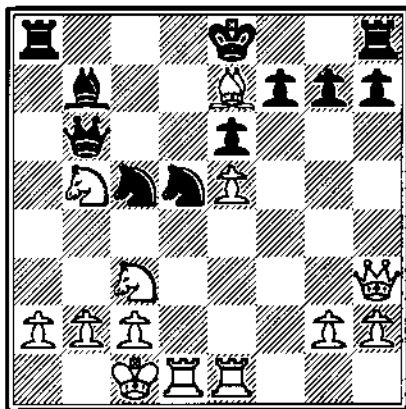
**White: Sax, Robert (2127)**

**Black: Mote, David (2209)**

**Greater Peoria Open (3), 1994**

Annotations are by David Mote unless marked ALW.

1. e4 c5 2. ♖f3 d6 3. d4 cxd4  
4. ♖xd4 ♖f6 5. ♖c3 a6 6. ♖g5 e6  
7. f4 ♜c7 8. ♜f3 ♖bd7 9. O-O O b5  
10. ♖d3 ♖b7 11. ♖hel ♖e7 12. ♜h3  
♖c5 13. e5 dxe5 14. ♖xb5+ axb5  
15. ♖dxb5 ♜b6 16. fxe5 ♖d5  
17. ♖xe7



At the time I played the sacrifice on move 14, I had foreseen this position and expected 17...Nxe7 18.Nd6+ Kf8 19.Rf1 with a strong attack, but Black has better.

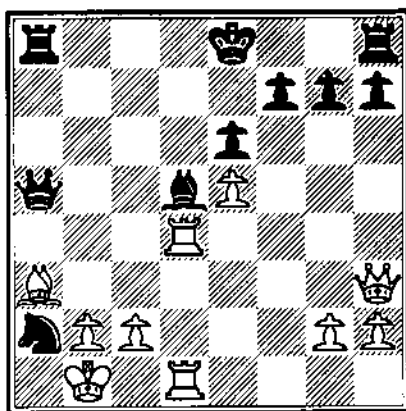
17...Qxc3 18.Qxc5! Qxe7

Leaves Black on top, so White looks for a way to keep Black on the defensive.

18...Qxa2+ 19.Qb1 Qxb5 20.Qa3 Qd5

On the immediate 20...Nb4 21.Qb3 may get uncomfortable for black. 21.Bd4 blocking the black knight's exit.

21...Qa5 22.Bcd1



Not 22.Rh4 g5 23.Rg3 Nc3+ 24.Nxc3 Nxc3 25.bxc3 Nxa3.

22...Bb8

After White's 22.Red1, Nc3+ fails to 24.Qc3 Qc3 25.bxc3 Rxa3 26.c4 when the weakness at d8 costs black his bishop. Now, black is again threatening

23...Qc3! 23.Qa1

White has nothing better.

23...Qb4 24.Qb1

Offering interesting chances of salvation is the temporary sacrifice 24.Rxb4 Rxb4 25.Rxd5. ALW.

4...Qc6 25.Bxd5!

Other moves leave White down a piece with little to show for it. White now plays for the attack at all costs. At this point I have less than 8 minutes to reach time control on move 40!

25...cxd5 26.c6 f6 27.Qh5+ g6 28.Qf3 f5 29.Bxd5 Qe1+ 30.Bd1

I'm now down to about six minutes, but my opponent has joined me in time pressure. 30...Qxe6? better is 30...Re4. The open e-file becomes an avenue for new threats.

31.Qc3! Qf7 32.Bd6 Qe5 33.Bd7+! Qf6 34.Qxc6+ Qg5

At this point, we are in a true time scramble as both flags are already rising with six moves to go!

35.Qf3 Qe1+ 36.Bd1 Qe4 37.Qg3+ Qg4 38.Qe3+ Qh5

If 38...Rf4? 39.Qe7+ Kg4 40.Rh3 Mate!

39.Bd4 Qxg2 40.b3 Qf1+

A time pressure check that simply strenghtens White's attack.

41.Qcl h6 42.Bf4 Qg2 43.Bf3 g5 44.Bh3+ Qg6 45.Qe6+ Qg7

46.Qb2+ Qf8 47.Qf6+ 0-1

**Goodman, Mark(1730)  
Kriegel, Matthew(1327)  
Greater Peoria Open , 1994**  
Annotations by NM Alan Watson

1.c4 e5 2.f4 Qc5 3.Qf3 d6 4.Qc4 Qf6 5.Qc3 O-O 6.d3 Qg4 7.Qa4 Qb6 8.a3 Qc6 9.c3 exf4 10.Qxf4 d5!

This opening of the center is very dangerous for the uncastled White King.

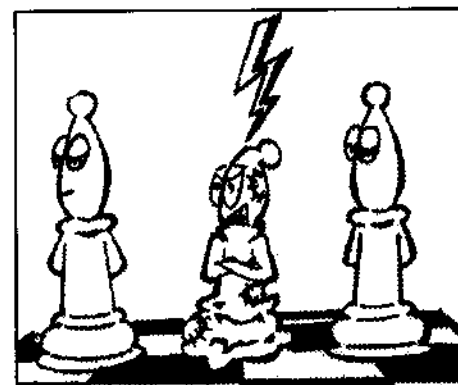
11.Qxb6 axb6 12.exd5 Qe8+! 13.Qf2 Qxd5 14.Qd2 Qe5!

This excellent move ensures that the White Kingside pawns will be fractured.

15.Bf1 Qxf3 16.gxf3 Qxc4 17.dxc4 Qh4+! 18.Qg1 Qxc4 19.Bf2 Qad8 20.Qc2 Qe3 21.Qxe3 Qxe3 22.Bd1 Qde8 23.Bd4 Qe1+ 24.Qg2 Qc6 25.Qd2 Qg6+ 26.Qh3 Qe6+ 27.Qg3 Qe2

Up till this point, Matt has played an extremely good game that he should be quite proud of. However, this one careless move turns a win into a loss! 28...h6 or 28...h5 were the best ways to safeguard the black advantage.

28.Qxe2 Qxe2 29.Qxe2 1-0...□





# **Kingside Enterprises, Inc.**

**ELECTRICAL & COMMUNICATIONS CONTRACTING**

**COMMERCIAL  
RESIDENTIAL  
INDUSTRIAL  
FARM**

***Always Safe  
Quality Craftsmanship  
Guaranteed!***

**REGISTERED  
LICENSED  
BONDED  
INSURED**

**24 HOUR - 7 DAYS EMERGENCY SERVICE**

Service Upgrades  
Kitchen Rewiring  
110v Smoke Detectors  
Recessed Lighting  
Security Lighting  
1 Phase - 3 Phase  
High Voltage  
Low Voltage  
Remodeling  
New Construction  
Additions/Moves  
Code violations Fixed  
Electrical Maintenance  
Design/Build  
Horns & Sirens  
Fire Detection Systems  
Landscape Lighting

***Free Estimates***

**NO TRAVEL CHARGES**

**No Higher 1st Hour Rates**

**Senior Discounts**

**Service/Integrity**

**5 Year Guarantee\***

**Quality Products**

Computer Power & Grounding  
Standby/Backup Power  
Surge Protection Devices  
Ground-fault Devices  
Business Automation  
Energy Management  
Telecommunications  
Data Cabling/Networking  
CATV, CCTV, PA Systems  
Remote Access Stations  
Video Conferencing  
Software/Hardware  
Data Security Products  
Network Management  
Lighting Controls  
Relamping Programs

**PROUDLY SERVING  
NORTHERN ILLINOIS**

**DEKALB**

**(815) 748-5959  
FAX (815) 748-2585**

*(\* Some exclusions apply)*

**ADDISON**

**(708) 530-2212  
FAX (708) 530-9440**

# ILLINOIS SCHOLASTIC CHAMPIONSHIPS

By Dan Pradt

The Illinois championships in grades K through 8 were held in Rockford the weekend of March 5 and 6. This 10th annual statewide competition, held this year at the Clock Tower Inn in Rockford, set a new attendance record of 604 entrants, easily surpassing the record of 539 set at Olympia High in Normal two years ago. Many National Scholastic events do not reach this total.

Organized by Ralph Sullens and staffed by volunteers of the Rockford West High School, the tournament ran smoothly from start to finish. The spacious grounds of the Clock Tower Inn proved to be a perfect place to hold a tournament. The only glitch occurred when a competitor had to be pried from the swimming pool to make the next round.

The tournament was directed, efficiently as usual, by Erv Sedlock, assisted by Jeff Wiewel.

Oakton of Evanston came in first in the 46 team Primary (grades K-8) section. Oakton's 21.5 points were scored by Tyler Drendel (6), Jesse Wolfson (5.5), Christopher Holmes (5), and Zachary Kern (5). Glen Elementary of Normal and Stevenson of Bloomington came in second and third respectively, with 21 each.

Matthew Leali of St. Thomas in Peoria came in first

individually in the 193 player primary section, beating out Brian Egerton of Parkview, Glen Ellyn on tie break. Both had 6.5 points as they drew their final round game with each other. Michael Saphavee of Moline took third with 6. Others with 6 points were Eric Dawson, Anne Marie Hardy, Tyler Drendel, Gene Lowry, Kevin Wong, and Joshua Hieronymus.

Oakland of Bloomington came in first ahead of 46 other teams in the Elementary (grades 5-6) section, with 22.5 points. Scoring for Oakton were Greg Weber and Eric Haberer with 6 points, Matthew Koch with 5.5, and Tom Lewis with 5. Ben Franklin of Glen Ellyn was second with 21.5, and MacArthur of Hoffman Estates third on tie break over Benjamin of West Chicago with 21.

Brian Wong of Ben Franklin repeated his perfect 7 of last year for first place individually in the 227 player Elementary section. Christopher Hayes of Lake Forest Deerpath and Andy Septhavee of Moline took second and third on tie break with 6. Also scoring 6 points were Greg Weber, Eric Haberer, Michael Giampa, Matt McDonald, Christopher Hardy, and Jesse Salazar.

The Benjamin (West Chicago) steamroller repeated as champions in the 32 team Junior High section, with 23

out of a possible 28 points. Leading Benjamin were Blair Machaj, Justin Sadauskas, and Kevin Brewer with 6 points, and Eddie Patel with 5. Holy Angels of Aurora took second with 20.5, and Glenside of Glendale Heights took third on tie break over Metcalf of Normal.

Benjamin players had an advantage in that they did not have to play each other. However, they did have to meet Kimberly Goodwin of Metcalf. Unimpressed by the Benjamin lineup, Kim defeated Sadauskas in round 6 and Machaj in round 7 enroute to a perfect 7 and first place in the 183 player field. Machaj took second and Sadauskas third on tie breaks, 6 points each. Others scoring 6 were Andy Dougherty, Peter Stroyan, Keith Middleton, and Kevin Brewer.

216 team and individual trophies were awarded. Our congratulations to all winners. The Scholastic tournaments are definitely not beginner's contests. The top players in all sections, even primary, are regular entrants in adult tournaments, where they meet, and defeat, players of class A strength and higher...□

---

**SUPPORT ICA  
AFFILIATES PLAY IN  
THEIR TOURNAMENTS!**

# MID-AMERICA CLASS DRAWS 336

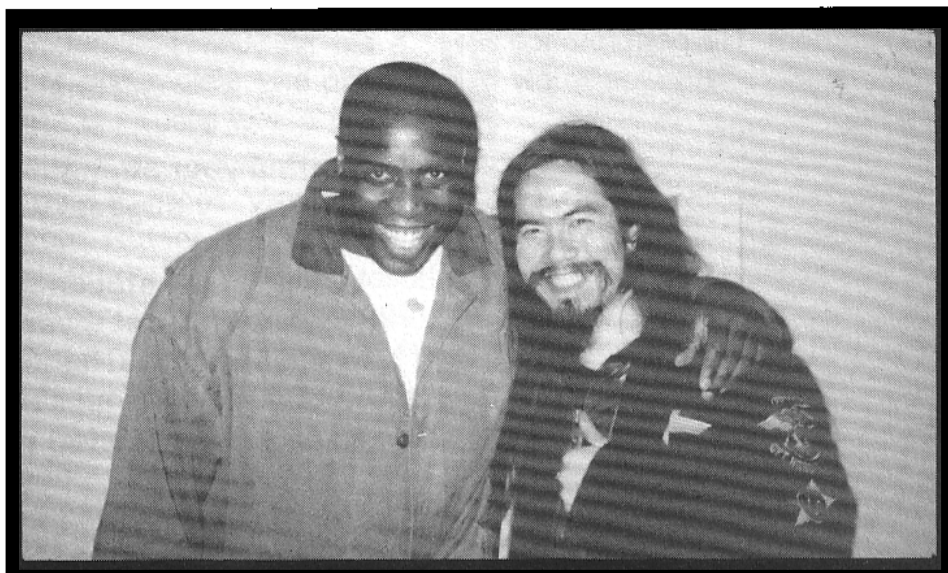
By Bob Renaut

The 1994 Mid-America Class Championship, one of Chicago's premier tournaments, drew 336 players-down from 378 in 1993. According to Fred Gruenberg, the organizer, it was tough to compete against Passover, Palm Sunday and a High School Championship in Normal.

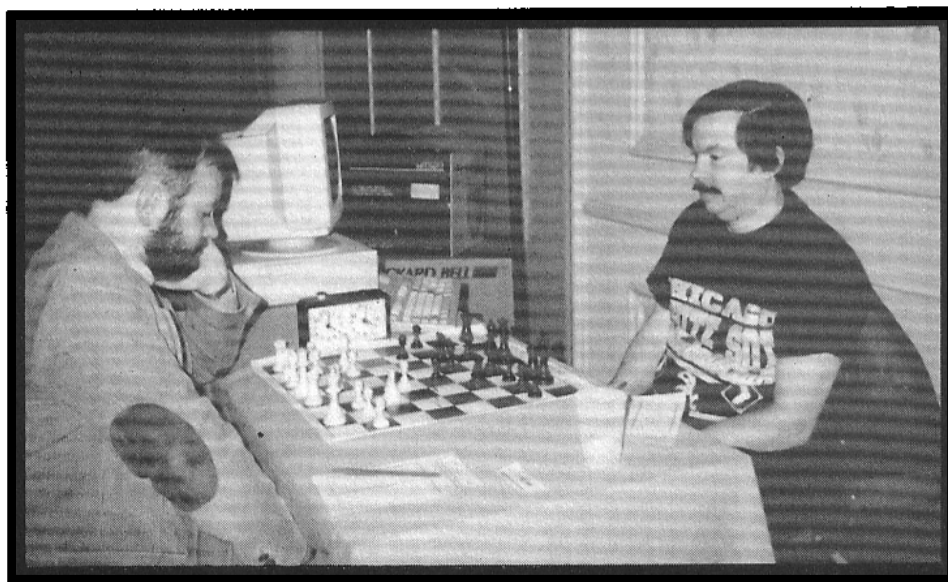
It seems the raffle and other prizes have become a tradition in major tournaments organized by Fred and this year's MID-AMERICA CLASS was no different. Prize categories included; Oldest and youngest players, who drove the farthest. Some of the prizes were; chess books and clocks (donated by APCT) and the FREE National Open airfare, room and free entry. The latter was won by Dr. Mark Lynch from Terre Haute, Indiana.

Chief TD Todd Barre, Josh Flores, Bill Smythe, Walter Brown and Tim Just ensured that all rounds started on time and one of the smoothest run tournaments in a long time. Steve (I never take a break) Monti manned the demo board for the entire event.

38 players competed in the Master Section including 10 Grandmasters, thanks to Fred organizing efforts. The Master section saw Tony Miles (2643)



The Top Master under 2400 prize was split between Marvin Dandridge (left) and Al Chow (right).



Grandmaster Alexander Ivanov contemplates how to defeat BP (a chess playing computer rated 2260) during round 4. BP ended up beating Arthur Bisquier (2447), Andrew Karklins (2453) and Robert Ash (2098). Check all of these games out in the game section of this article.

and Alexander Shabalov (2739) tie for 1st place with 4.5 points each.

Tony Miles came in from England. He's been on a whirlwind tour - Calcutta, India, Switzerland, Germany and France. He was playing with jet lag and intestinal problems. Spending Wednesday night

before the tournament in the hospital and bedridden until one hour before the tournament. He played with a 105 fever and frequent trips to the bathroom. His performance at the chess board was truly amazing.

Alexander Shabalov started the tournament with his chess boat in rocky shoals. He drew his first round game against unrated Harald Herndl (but FIDE 2315). This swiss gambit paid dividends as he won his next four games to claim his share of 1st place. The tie for first place earned each Grandmaster \$1625.

Alexander Ivanov (2657) and Igor Ivanov (2593) tied for 3rd and 4th place with 4.0 points and each won \$450. Alexander Ivanov's loss in the third round to Nick DeFirmian (2663) cost him a chance at a clear first place. Igor Ivanov the only undefeated player going into the last round, lost his head to head match with Alexander Shabalov to finish tied for 3rd-4th.

Grandmasters, Alexander Yermolinsky, Gregory Kaidanov and IM Georgi Orlov all scored 3.5-1.5 to share in the 5th place tie. These players tied for 5th-6th won \$166 each.

The Top Master under 2400 prize also ended in a tie between Al Chow and Marvin Dandridge (sounds like a theme doesn't it). Dandridge

## **CHESS LESSONS by SM RICHARD VERBER**

**3 hour lesson cost \$70 (\$10 discount if held at my location)  
1970 Tall Oaks Drive, Apt 3A, Aurora, IL (708) 978-1380**

☆☆☆☆

**I will analyze your games**

☆☆☆☆

**find your strengths and weaknesses and  
suggest ways to improve**

☆☆☆☆

**My students excel at chess!**

**Check out these successful students**

**Steve Arlinsky (Highest rated Junior in Illinois),  
Julie Oberweis (Illinois Junior H.S. Champion),  
Bob Renaut (near Master) and Jim Oberweis (near Expert)**

☆☆☆☆

**My proven training method works with young and old. Give  
me a call and you too can be on your way to playing better  
chess.**



Grandmaster Yehuda Gruenfeld (left) traveled all the way from Isreal to compete. Here he is playing his 5th round game against GM Alexander Ivanov (2657). He lost and ended up with a 3-2 score.

(2330) scored 3.0 points losing only to Grandmaster Dmitry Gurevich (2682) in round one and IM Georgi Orlov in round three. Al earned his three points by defeating Robert Loncarevic (unr), Camilo Pangan (2251) and Thomas Fischer (2294).

The Expert Section had 41 competitors and it ended in what else...a tie. Steven Szpisjak (2139) and Erik Karklins (2126) split \$1500 for their efforts. Steve got off to a slow start in round one and drew with Adil Skuka (2000) but came on strong winning the next four games to earn his 4.5 points. Erik won his first two games and then Michael McCarthy (2020) held him to a draw in round three.

There was a three way tie (again!) for third place between Wallace Gordon (2145), Richard Benjamin (2144) and Ray Satterlee (2135) each scoring 4-1 in the event.

The Class A Section was not to be out done as sixty players competed and..it too ended in a tie! James Fagan (1963) and Jason Koh (1944) slugged it out and scored 4.5 points to finish in a tie for first and split \$1500. James was held to a draw in round three by Mark Sefcheck (1849), while Jason stubbed his toe in the first round by drawing with Robby Singer (1842).

Stephen Landrum (1982), Casimir Ramas (1910), Ernest Hong (1907) and Larry Marshall (1889) tied for 3rd-6th by scoring 4-1 and earned \$150 each.

The Class B Section didn't follow the traditon set in the higher classes. Sixty-eight players did battle and a clear

winner, Fox Valley Chess Club member James Miel (1668) emerged with the sole perfect 5.0 score! Jim earned a \$1000.00 and demonstated that the "Killer Grob" is alive and well.

Second place and a check for \$500 went to James Stoudemire (1783) for his 4.5 score and a clear 2nd place in Class B. There was a log jam that caused a six way tie for 3rd place. Behrooz Vakil (1785), Jacob Ratner (1723), Mark Lynch (1717), William Hosch (1699), Dan Venske (1699), and Mark Stamatakos (1641) each scored 4-1 to earn \$100.

Another clear winner was crowned in Class C! Sixty-four players started with 0 points and only Mike Sims (1532) ended with 5 points. Mike was undefeated going into the final round when he was paired against undefeated Lando Milligan (1559). Mike overcame all the odds and he will be enjoying the \$1000 first place prize for a long time to come.

Second place in Class C went to Anthony Montebon (1500). Anthony went undefeated and missed first place only by the bye he took in round one! Anthony earned a clean \$500 for his chess prowess.

Two players rose out of the initial pile of sixty-five Class D players to claim a tie for first place. Barney Getz (1319) and William Marin (1084) each earned a perfect 5-0 score and \$400.

Another tie for 3rd place occurred when six players all went 4-1. Scott Wolley (1372), Pierre Roustan (1319), Joseph Stevens (1317), Carl Staples (1288), and Kraig Marshall (1216) each earned \$40. Ron Salamanca took the top unrated prize of \$150 while Jack Bishop earned the 2nd place unrated prize of \$100.

*Note: Photographs by Al Losoff and provided by Fred Gruenberg.*



Grandmaster Arthur Bisguier.



ICA Secretary Ken Marshall tries his hand at a game of chess..

# GAMES FROM THE MID-AMERICA CLASS CHAMPIONSHIPS

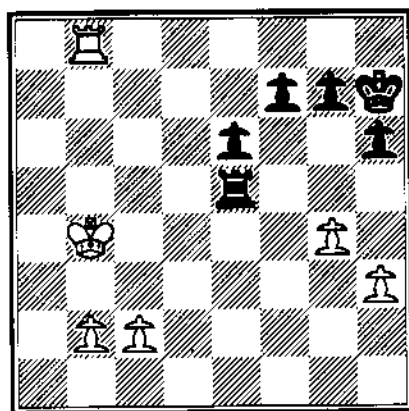
Annotated by National Master Alan Watson



Chess playing software is becoming more and more difficult to beat. Check these games out as BP nails an Expert, a Grandmaster and a Senior Master.

**White: BP Computer (2260)**  
**Black: Ash, Bob (2038)**  
**Mid-America Class, Chicago,**

1.e4 c5 2.♖f3 ♘c6 3.d4 cxd4  
 4.♗xd4 ♖f6 5.♘c3 d6 6.♙g5 e6  
 7.♗d2 a6 8.O-O-O h6 9.♙e3 ♙e7  
 10.f4 ♗xd4 11.♗xd4 b5 12.♗d3  
 ♙b7 13.♗b1 ♙c8 14.e5 dxe5  
 15.fxe5 ♗d5 16.♙hfl ♗xc3+  
 17.♗xc3 O-O 18.♗f2 ♗c7 19.♙del  
 ♙d5 20.g3 ♙c4 21.♗xc4 ♗xc4  
 22.♗b6 ♗c6 23.♗xc6 ♙xc6  
 24.♙e4 ♙c7 25.a4 ♙d7 26.♗a2  
 ♙b8 27.axb5 axb5 28.♗b3 ♙a8  
 29.♙d4 ♙xd4 30.♗xd4 ♙d8  
 31.♙c3 ♙d5 32.h3 ♙c5 33.g4 ♗f8  
 34.♙al ♗g8 35.♙a8+ ♗h7  
 36.♙b8 b4 37.♙xb4 ♙xb4  
 38.♗xb4 ♙xc5

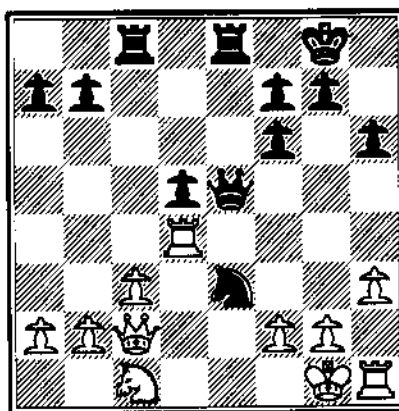


39.c4 f5 40.c5 fxc4 41.hxc4 ♙e2  
 42.♗c3 ♙el 43.♗d2 ♙e4 44.♗d3  
 ♙el 45.♙b3 ♙dl+ 46.♗c4 ♗g6

47.c6 ♙d8 48.♗c5 ♗g5 49.c7 ♙c8  
 50.♗d6 ♗xg4 51.♗d7 ♙xc7+  
 52.♗xc7 e5 53.♙a3 e4 54.b4 ♗f4  
 55.b5 e3 56.b6 e2 57.♙al ♗f3  
 58.b7 ♗f2 59.b8 ♗g5 60.♗f8+  
 ♗g2 61.♙el h5 62.♙xc2+ ♗g3  
 63.♗f2+ ♗g4 64.♙c3 h4  
 65.♗f3# 1-0

**White: Bisguler, Arthur (2448)**  
**Black: BP Computer (2260)**  
**Mid-America Class, Chicago**

1.d4 d5 2.♙g5 h6 3.♙h4 c5 4.dxc5  
 ♗f6 5.♙xf6 exf6 6.♗d2 ♙xc5  
 7.♗b3 ♙d6 8.c3 ♙e6 9.e3 ♗c6  
 10.♗f3 O-O 11.♙e2 ♗e5 12.♗c2  
 ♗c7 13.♗fd4 ♗c4 14.♗b5 ♗b6  
 15.♗xd6 ♗xd6 16.♙dl ♗e5  
 17.♙d4 ♙f5 18.♙d3 ♙xd3  
 19.♙xd3 ♗f5 20.♗cl ♗g6 21.♗fl  
 ♗f5 22.♗gl ♙ac8 23.h3 ♙fe8  
 24.♙d2 ♗e5 25.♙d4 ♗xe3!



26.♗b3

Not 26.fxc3 ♗xc3+ 27.♗h2 ♗xd4!  
 winning the exchange.

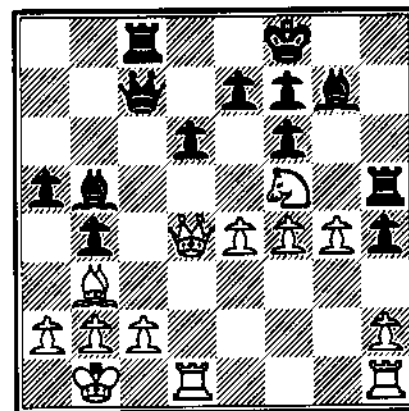
26...♗f5 27.♙dl d4 28.♗d3 ♗e4  
 29.c4 ♗h4 30.♗el ♙e6 31.♗d3 ♗xd3

32.♗xd3 ♙xc4 33.♗h2 ♙c2 34.♗g3  
 g5 35.♗h2 ♗h7 36.♙hfl ♙ee2 37.a4  
 f5 38.b4 f4 39.♗gl ♙c3 40.a5 b6  
 41.axb6 axb6 42.b5 ♗f5 43.♙fel  
 ♙xd3 0-1

Watch how SM Andrew Karklin's tactics  
 just fall short in this game.

**White: BP Computer (2260)**  
**Black: Karlins, Andrew (2453)**  
**Mid-America Class, Chicago**

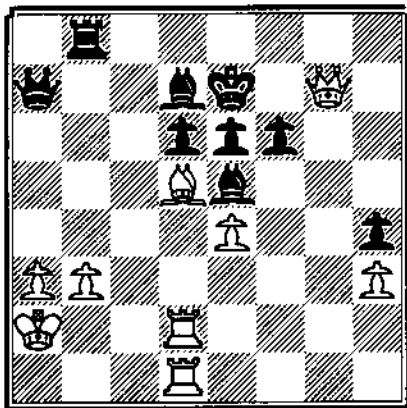
1.e4 c5 2.♗f3 ♘c6 3.d4 cxd4  
 4.♗xd4 ♖f6 5.♘c3 d6 6.♙g5 h6  
 7.♙xf6 gxf6 8.♗d2 h5 9.f4 ♗xd4  
 10.♗xd4 ♙h6 11.g3 ♙g8 12.♗d5  
 h4 13.♙b5+ ♗f8 14.♗h5 ♙g7  
 15.O-O-O ♙h8 16.♗f3 a6 17.♙c4  
 ♙d7 18.♗d3 ♙c8 19.♙b3 b5  
 20.♗bl b4 21.♗d5 ♙b5 22.♗d4  
 a5 23.♗c3 ♙h5 24.♗f5 ♗c7 25.g4



25...♙xf5 26.gxf5 a4 27.♙d5  
 ♗xc2+ 28.♗al ♙h6 29.♗xb4  
 ♙e2 30.♙bl ♙xf4 31.h3 ♙e5  
 32.a3 ♙d3 33.♙bd1 ♙a6 34.♙d2  
 ♗c5 35.♗xa4 ♙b5 36.♗b3 ♙e8  
 37.♗a2 ♗a7 38.♗f3 ♙b8 39.♙hdl  
 ♙a4 40.b3 ♙d7 41.♗h5 e6  
 42.fxc6 fxc6 43.♗h6+ ♗e7  
 44.♗g7+



28. ♖h6 ♕g8 29. ♖e7 ♗a8  
30. ♖xg8 ♗xg8 31. ♖ab1 1-0



**White: Brock, Bill (2035)**  
**Black: Karklins, Andrew (2453)**  
**Mid-America Class, Chicago**

1. e4 c5 2. ♖f3 ♖c6 3. d4 cxd4  
4. ♖xd4 ♖f6 5. ♖c3 d6 6. ♖g5 h6  
7. ♖h4? e6 8. ♖d2?

**White: Fagan, James (1963)**  
**Black: Brewster, Leonard (1868)**  
**Mid-America Class, Chicago**

1. d4 ♖f6 2. c4 e6 3. ♖f3 b6 4. g3  
♖b7 5. ♖g2 ♖e7 6. O-O O-O  
7. ♖c3 d5 8. ♖e5

We have now reached a position which may have arisen from the Queen's Indian Defense after 1. d4 Nf6 2. c4 e6 3. Nf3 b6 4. g3 Bb7 5. Bg2 Be7 6. O-O O-O 7. Nc3 d5 8. Ne5.

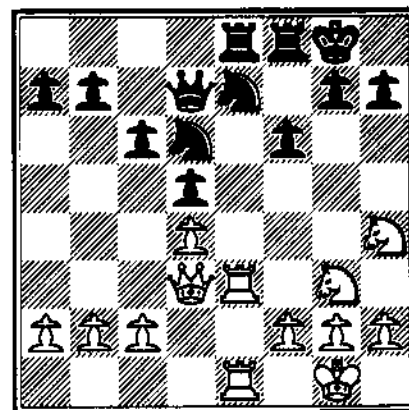
8... ♖bd7? 9. ♖c2?

Normal is 9. cxd5 Nxd5 (9. cxd5? 10. ♖a4 +=) 10. Nxd5 Bxd5 11. e4 Bb7 12. Nxd7 ♖xd7 13. Be3 with a slight advantage for White according to Bonsch.

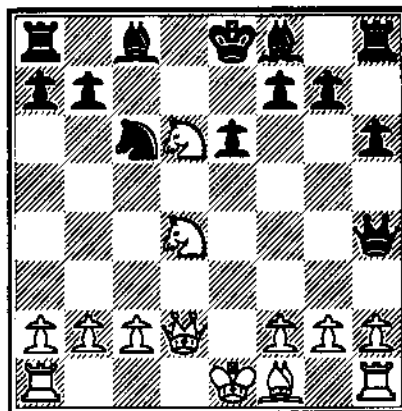
9... ♖xe5?? 10. dxe5 ♖d7 11. cxd5 ♖xe5 12. d6!! ♖xg2 13. dxe7 ♗xe7 14. ♖xg2 1-0

**White: Porter, John (1931)**  
**Black: Zabell, Sandy (2132)**

1. e4 e6 2. d4 d5 3. exd5 exd5 4. ♖f3 ♖d6 5. ♖d3 ♖e7 6. O-O O-O 7. ♖e1 ♖f5 8. ♖g5 f6 9. ♖h4 ♖d7 10. ♖c3 c6 11. ♖e2 ♖xd3 12. ♗xd3 ♖a6 13. ♖g3 ♖xg3 14. ♖xg3 ♖c7 15. ♖h4 ♖b5 16. ♖e3 ♖ae8 17. ♖ae1 ♖d6



A careless move allowing Black a pawn grabbing combination typical of this opening. 8... ♖xe4! 9. ♖xe4 ♗xh4 10. ♖xd6+??



44... ♖d8 45. ♖xe6 ♖xe6  
46. ♗xa7 0-1



GM Alexander Ivanov

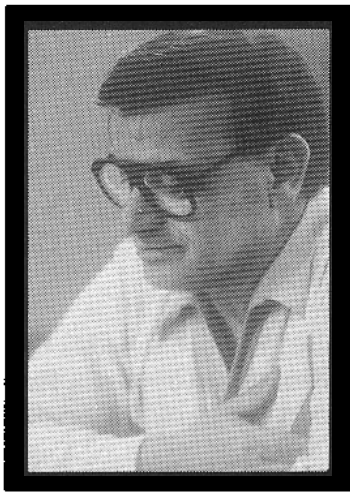
Grandmaster Alexander Ivanov demonstrates how to beat a chess computer. Follow his 4th round match against BP.

**White: Ivanov, Alexander (2657)**  
**Black: BP Computer (2260)**  
**Mid-America Class, Chicago**

1. e4 e5 2. ♖f3 ♖c6 3. ♖b5 a6  
4. ♖a4 ♖f6 5. O-O ♖e7 6. ♖e1 b5  
7. ♖b3 d6 8. c3 O-O 9. a4 ♖g4  
10. d3 ♖a5 11. ♖c2 c5 12. ♖bd2 ♗c7  
13. h3 ♖d7 14. ♖f1 b4 15. ♖g5 ♖fb8  
16. ♖e3 ♗c8 17. d4 bxc3 18. bxc3  
exd4 19. cxd4 cxd4 20. ♖xd4 ♖d5  
21. ♖xe7 ♖xe7 22. ♖df5 ♖xf5  
23. exf5 ♗c6 24. f6 g6 25. ♗d2 ♖b3  
26. ♖xb3 ♖xb3 27. ♖d5 ♗h8

From bad to worse! White calculates that 10... ♖xd6 11. Nxc6 bxc6 12. ♖xd6 will regain his piece and pawn, but misses the zwischenzug 11... ♖e4+! 12. Be2 ♖xc6 which guards the Bd6.

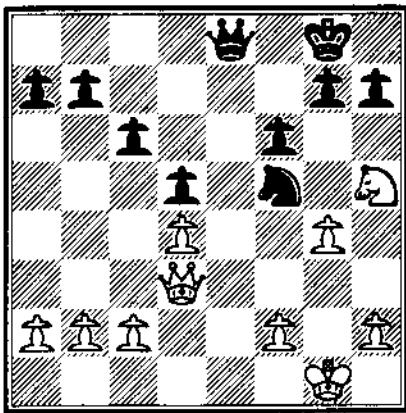
10... ♖xd6 0-1



Chicago Organizer  
Fred Gruenberg

It's been a long journey, but this knight has finally reached an effective square.

18. ♖h5 ♕ef5! 19. ♕xf5 ♖xf5  
20. ♖xc8?! ♖xc8 21. ♖xc8+?  
♗xc8 22. g4?



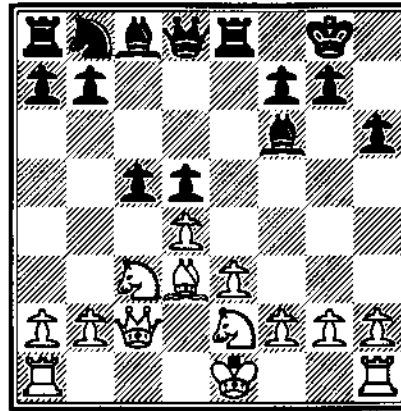
White must have banked on this reply which both guards his knight and offers his King an escape square; however, Black's further moves illustrate the White did not look far enough ahead.

22... ♗cl+ 23. ♖g2 ♖h4+!  
24. ♖g3 ♗g1+! 25. ♖xh4 ♗xh2+  
0-1

Local Senior Master Dr. Eugene Martinovsky holds Grandmaster Alexander Yermolinsky to a draw in the next contest.

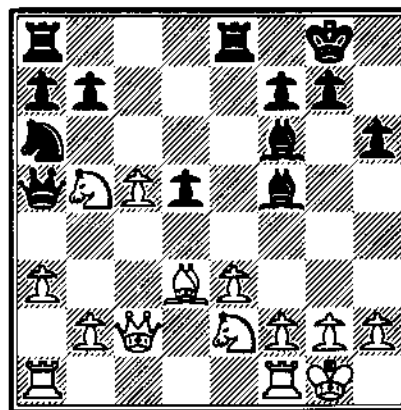
**White: Yermolinsky, A. (2751)**  
**Black: Martinovsky, E. (2409)**  
**Mid-America Class, Chicago**

1. d4 d5 2. c4 e6 3. ♖c3 ♖f6  
4. cxd5 exd5 5. ♖g5 ♖e7 6. e3 O-O  
7. ♖d3 ♖e8 8. ♗c2 h6 9. ♖xf6  
♖xf6 10. ♖ge2 c5?!



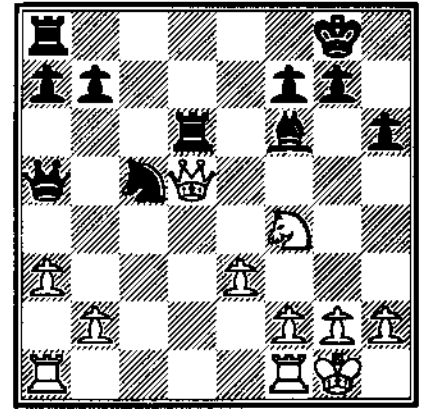
This natural thrust is premature. Better was first 10... ♖e6 followed by 11... ♖bd7 and then perhaps c5.

11. dxc5 ♗a5 12. O-O ♖e6 13. ♖b5  
♖a6 14. a3 ♖f5!!



An extremely crafty move preventing the natural 15. b4 because of 15... ♖xb5! Black's calculations for the next 4-5 moves have been extremely meticulous and illustrate several nice finesses.

15. ♖d6 ♖xd3 16. ♗xd3 ♖xc5!  
17. ♗xd5 ♖e6!! 18. ♖f4 ♖xd6!



This amazing move and its follow-up had to be foreseen way back on move 14! Black now traps the White queen and forces transposition into an equal ending.

19. ♗xd6 ♖d8 20. b4 ♖xd6 21. bxa5  
♖xa1 22. ♖xa1 ♖b3 23. ♖bl ♖xa5  
24. g4 b6?!

Better chances were offered by an immediate 24... ♖f8!

25. ♖cl ♖c6 26. ♖f1 ♖f8 27. ♖e2  
♖e7 28. e4 ♖d4+ 29. ♖e3 ♖c6!  
30. ♖d5+ ♖e6 31. ♖xc6+ ♖xc6  
32. f4 g5! 33. h3 ♖a5 34. ♖d3 gxf4  
35. ♖xf4+ ♖e5 36. ♖d5 ♖b7  
37. ♖e7 ♖c5+ 38. ♖e3 a5 39. ♖c6+  
♖f6 40. h4 ♖e6 41. ♖d4+ ♖e5  
42. ♖f3+ ♖d6 43. e5+ ♖e6!

Black must keep White's potentially passed h-pawn under a watchful eye.

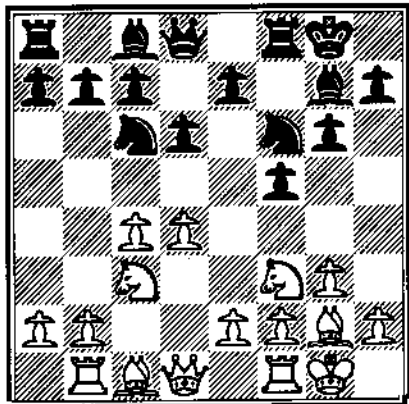
44. h5 f6! 45. exf6 ♖d7! 46. ♖d4+  
♖xf6 47. ♖f4 ♖c5 48. ♖f5 ♖e6+  
49. ♖e4 ♖g5 50. ♖d5 ♖f4+!  
51. ♖c6 ♖xg4 52. ♖xh6+ ♖xh5  
53. ♖f5 ♖e2! 54. ♖xb6 a4! ½-½

**White: Bolton, Richard (2047)**  
**Black: Splinter, Joe (2135)**  
**Mid-America Class, Chicago**

1. d4 f5 2. g3 g6 3. ♖g2 ♖f6 4. c4

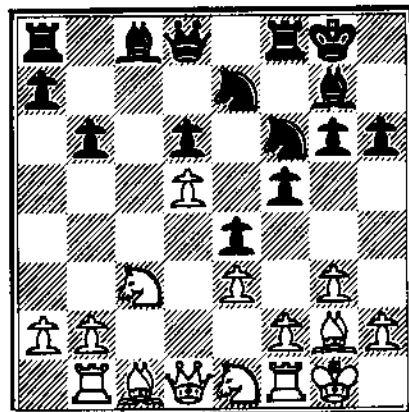


2.g7 5.♖c3 O-O 6.♟f3 d6 7.O-O  
♞c6 8.♞b1?



This initiates a very ineffective manner of meeting this variation of the Leningrad Dutch. Best was 8.d5 Ne5 9.Nxe5 dxe5 10.♙b3 with an interesting game.

8...e5 9.d5 ♞e7 10.e3 h6 11.c5 e4  
12.cxd6 cxd6 13.♞el b6?



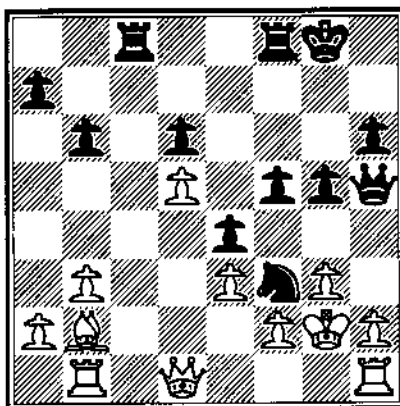
As Black's light-squared bishop has much better prospects than its opposite number, it was better to retain it while initiating immediate play on the Kingside by 13...g5.

14.♞c2 ♞a6 15.♞el ♞d3 16.♞f1  
♞xf1 17.♞xf1 ♞d7 18.♞d4 ♞xd4

Now forced because of the weakness on the light-squares.

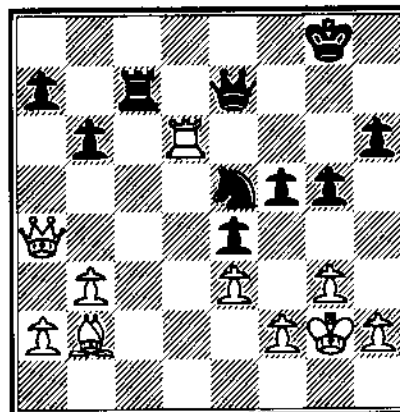
19.♞xd4 ♞e5 20.♞dl ♟f3+  
21.♞g2 g5 22.♞e2 ♟g6 23.♞d4

♞xd4 24.♞xd4 ♞e5 25.b3 ♟f3  
26.♞dl ♞e8 27.♞b2 ♞h5 28.♞h1  
♞ac8?



28..Rf7! was more precise. While he should be preparing f4, Black now appears to be struggling for a plan.

29.♞cl ♞g6 30.♞c6 ♞fd8 31.♞cl  
♞e8 32.♞c3 ♞e5 33.♞cl ♞xc6  
34.dxc6 ♞c8 35.♞d4 ♞xc6 36.♞dl  
♞e6 37.♞a4! ♞c7 38.♞xd6!! ♞e7?



Note that 38...♙xd6? meets up with 39.♙e8+ Kh7 40.Bxe5 ♙e7 41.♙h8+ Kg6 42.♙g8+ Kh5 43.Bxc7 ♙xc7 44.♙e8+ Kg4 45.h3 mate!

39.♞d4!

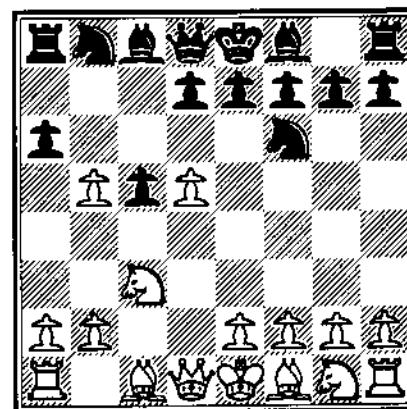
The White pieces are well-coordinated and shortly force a decisive penetration.

39...♞c5 40.b4 ♞c4 41.♞d5+ ♟f7  
42.♞g6+ 1-0

This next game was the surprise of the last round when unrated Harold Herndl (he holds a 2300 FIDE rating we now understand) holds Patrick Wolff to a draw.

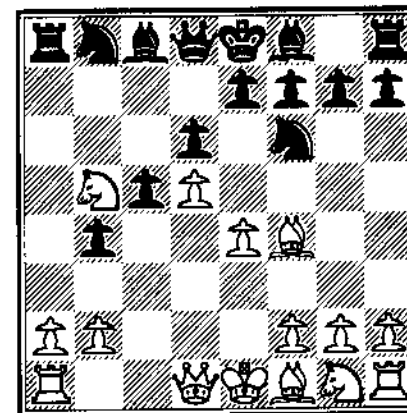
**White: Herndl, Harold (unr)**  
**Black: Wolff, Patrick (2651)**  
**Mid-America Class, Chicago**

1.d4 ♟f6 2.c4 e5 3.d5 b5 4.cxb5 a6  
5.♞c3!



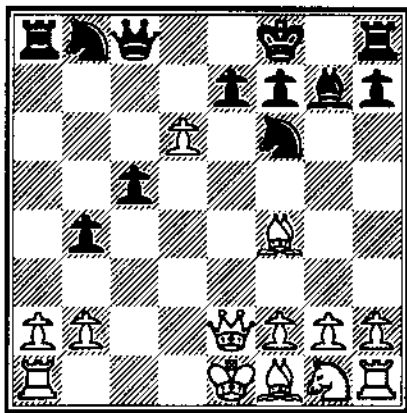
This move introduces the Zaitsev Variation, and is perhaps the most aggressive way of meeting the Benko Gambit.

5...axb5 6.e4 b4 7.♞b5 d6 8.♞f4!?



Also possible are 8.Nf3 and 8.Bc4. The move 8.Bf4! has gotten a bad reputation because of Black's next move.

8...g5! 9.♞xg5 ♞xc4 10.♞f4 ♞g7  
11.♞e2 ♟f6 12.♞xd6+ ♞f8  
13.♞xc8 ♞xc8 14.d6!?



This move is not considered in Fedorowicz's "The Complete Benko Gambit," but has recently been investigated. Previous theory judged Black to have slightly better chances here.

14...e6 15.♖f3 ♕c6!

This move is a novelty. Previously played was 15...Nbd7. 16.♗d2 To be considered also were ideas involving either 16.g3, Bg2, O-O or 16.♕c2.

16...e5!?

Anchoring d4 as an outpost because of this pawn being immune from capture.

17.♗h6 ♖f5 18.♗b5 ♕d4 19.♕xd4 exd4 20.O-O ♖d8 21.a3 ♕e4 22.♗xg7+ ♗xg7 23.♗c2 ♕xd6 24.♗xf5 ♕xf5 25.axb4 ♕d6 1/2- 1/2

**White: Bisguier, Arthur (2447)**  
**Black: Cohen, Larry (2011)**  
**Mid-America Class, Chicago**

1.d4 ♖f6 2.c4 d6 3.♕c3 g6 4.♗g5 ♗g7 5.e4 ♕bd7 6.♗d3 c5 7.d5 ♕e5 8.♗e2 ♗g4? 9.♗xf6 ♗xe2 10.♗a4+! b5 11.♗xb5+ ♖f8 12.♗xg7+ ♗xg7 13.♕ge2 ♖b8 14.♗a6 ♕d3+ 15.♗f1 ♕xb2 16.h4 ♗b6 17.♗xb6 axb6 18.♕b5 ♕xc4 19.♕ec3 ♖a8 20.♗e2 ♕a3 21.♗d3

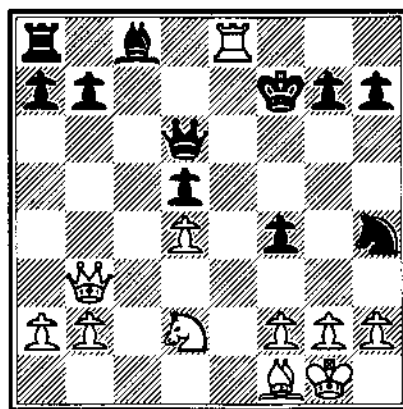
c4+ 22.♗d2 ♕xb5 23.♕xb5 ♖a5 24.♖hb1 ♖ha8 25.♕c3 ♖5a6 26.♖b4 ♖c8 27.♖ab1 f5 28.exf5 gxf5 29.♖xb6 ♖a3 30.♖c6 ♖ca8 31.♖xc4 ♖8a5 32.♖b3 1-0

**White: Vasto, Dan (2175)**  
**Black: Gregory, J (2101)**  
**Mid-America Class, Chicago**

1.e4 c5 2.♖f3 ♕c6 3.d4 cxd4 4.♕xd4 ♖f6 5.♕c3 g6 6.♕xc6 bxc6 7.e5 ♕g8 8.♗c4 ♗a5 9.f4 f6 10.♗xg8 ♖xg8 11.exf6 exf6 12.♗e2+ ♖f7 13.♗c4+ ♗g7 14.♗d2 ♗a6 15.♗e4 ♗h5! 16.♗f3 ♖e8+ 17.♗d1 ♗xf3+ 18.gxf3 d5 19.a3 f5 20.♖e1 ♗d6 21.♕e2 c5 22.b4 d4 23.bxc5 ♗xc5 24.♗b4 ♗b6 25.a4 d3 26.♗c3+ ♗h6 27.cxd3 ♖e3 28.♕cl ♖xf3 29.♗c2 ♖c8 30.♖e7 ♗d4 31.♖a3 ♗c5 0-1

**White: Ivanov, Alexander (2657)**  
**Black: Bisguier, Arthur (2447)**  
**Mid-America Class, Chicago**

1.e4 e5 2.♖f3 ♕c6 3.♗b5 ♖f6 4.O-O ♕xe4 5.♖e1 ♕d6 6.♕xe5 ♗e7 7.♗f1 ♕xe5 8.♖xe5 O-O 9.d4 ♗f6 10.♖e1 ♖f5 11.c3 d5 12.♗f4 c6 13.♕d2 ♕h4 14.♗b3 ♗g5 15.♗xg5 ♗xg5 16.♖e3 f5 17.♖ael f4 18.♖e8 ♗f6 19.c4 ♗d6 20.cxd5 cxd5 21.♖le5 ♖xe8 22.♖xc8+ ♖f7



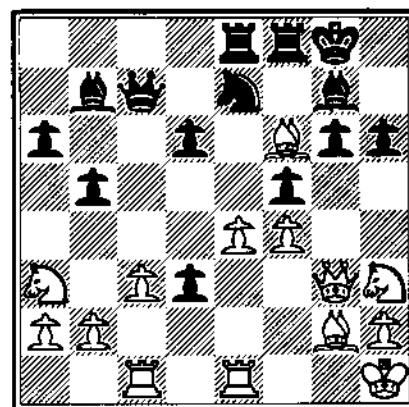
23.♕e4! ♗g6 24.♖xc8! 1-0

**White: Cohen, Larry (2011)**  
**Black: Zingheim, Scott (2311)**  
**Mid-America Class, Chicago**

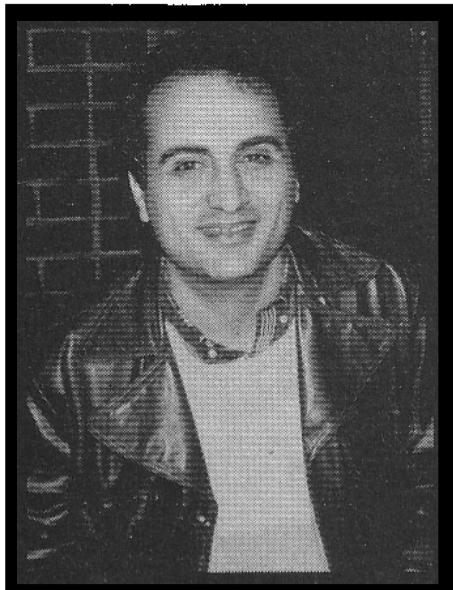
1.c4 e5 2.g3 d6 3.♕c3 g6 4.♗g2 ♗g7 5.b4 f5 6.e3 ♖f6 7.d4 O-O 8.♕ge2 c6 9.O-O ♗e6 10.d5 cxd5 11.cxd5 ♗f7 12.e4 ♕a6 13.♖bl h6 14.♗e3 ♕c7 15.♗d2 ♕g4 16.♖bd1 ♕e8 17.♗d3 ♕xe3 18.fxe3 fxe4 19.♗xc4 ♗g5 20.♗g2 h5 21.h4 ♗h6 22.♗f3 ♖f6 23.♕e4 ♕xe4 24.♗xe4 ♗e8 25.♖xf8+ ♗xf8 26.♖cl ♗g7 27.♕gl a5 28.b5 a4 29.b6 ♖d8 30.♖f3 ♗e7 31.♖c7 ♖d7 32.♗c2 g5 33.hxg5 ♗xg5 34.♗f5 ♖e7 35.♗e6+ ♗h8 36.♕xg5 ♗xg5 37.♗f5 ♗g7 38.♖c8 ♗h6 39.♗d7 ♗g7 40.♖xe8 ♖f7 41.♗e4 ♖xd7 42.♖e6 ♗g5 43.♗xa4 ♖f7 44.♗e4 ♖d7 45.♗h4 1-0

**White: DeFotis, Greg (2465)**  
**Black: DeFirmian, Nick (2663)**  
**Mid-America Class, Chicago,**

1.g3 c5 2.♗g2 g6 3.f4 ♗g7 4.♖f3 ♕c6 5.d3 d6 6.e4 c6 7.c3 ♕ge7 8.♗e3 O-O 9.♕a3 b5 10.♖cl a6 11.O-O ♗b7 12.♖e1 ♖c8 13.♗d2 ♕b8 14.♗f2 ♕d7 15.♕h4 ♗c7 16.g4 f5 17.♗g3 ♖ce8 18.♖f3 ♖f6 19.♕g5 ♗c8 20.gxf5 exf5 21.♗hl h6 22.♕h3 ♗b7 23.♗gl c4 24.♗d4 cxd3 25.♗xf6



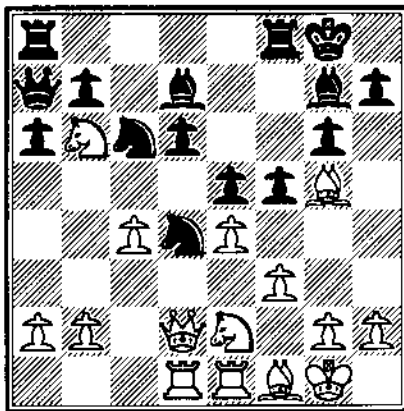
25...d2! 26.♗xg7 ♗xg7 27.c4 b4 28.♕c2 dxcl ♗ 29.♖xcl 0-1



GM Dmitry Gurevich

**White: Gurevich, Dmitry (2682)**  
**Black: Tate, Emory (2463)**  
**Mid-America Class, Chicago**

1.d4 ♖f6 2.♗f3 g6 3.c4 e5 4.♗c3  
 ♗g7 5.c4 O-O 6.♗c2 ♗a6 7.O-O  
 d6 8.♗c1 cxd4 9.♗xd4 ♗g4  
 10.♗dh5 ♗c5 11.♗c3 ♗c6 12.♗d5  
 ♗c5 13.f3 ♗c6 14.♗d2 a6  
 15.♗bc3 ♗d7 16.♗ad1 ♗c6 17.♗f1  
 ♗ed4 18.♗c2 e5 19.♗g5 f6  
 20.♗c3 f5 21.♗g5 ♗b8 22.♗b6  
 ♗a7

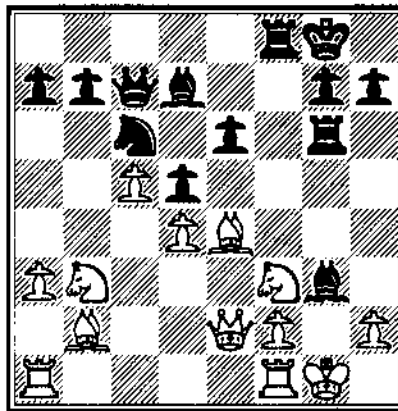


23.c5! dxc5 24.♗xd7 ♗fd8  
 25.♗xd4 ♗xd4 26.♗f6+ ♗xf6  
 27.♗xf6 ♗xf3+ 28.gxf3 ♗xd2  
 29.♗c4+! ♗f8 30.♗x12 b5 31.♗d5  
 c4+ 32.♗g2 ♗e8 33.♗g5 ♗c7  
 34.♗h6+ ♗e7 35.♗de2 ♗f6 36.h4  
 f4 37.♗d1 ♗a5 38.♗ed2 ♗d8

39.b4 ♗b6 40.a4 ♗d7 41.♗f8  
 ♗d8 42.♗c5 ♗g7 43.♗f2 a5  
 44.bxa5 b4 45.a6 b3 46.♗xc4  
 ♗xd2 47.♗x12 ♗xd2 48.♗xb3 1-0

**White: Jankauskas, Kazys (2061)**  
**Black: Murray, William (2150)**  
**Mid-America Class, Chicago**

1.e4 e6 2.d4 d5 3.e5 c5 4.c3 ♗c6  
 5.♗f3 ♗d7 6.a3 c4 7.♗bd2 f6  
 8.cxf6 ♗xf6 9.♗e2 ♗d6 10.O-O  
 ♗c7 11.b3 cxb3 12.♗xb3 O-O  
 13.♗b2 ♗e4 14.c4 ♗f6 15.c5 ♗f4  
 16.g3 ♗g6 17.♗d3 ♗f8 18.♗e2  
 ♗xg3 19.♗xe4

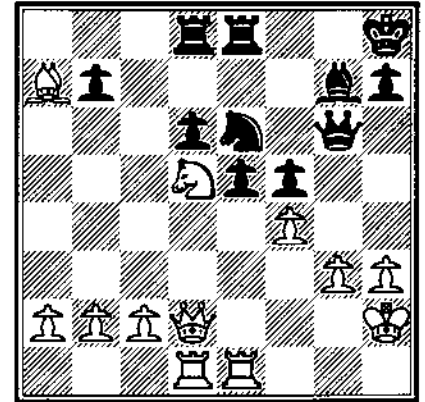


19...♗xh2+! 20.♗h1 ♗h6 21.♗e1  
 ♗f4+ 22.♗g2 dxe4 23.♗fd2 ♗xd2  
 24.♗xd2 ♗h2# 0-1

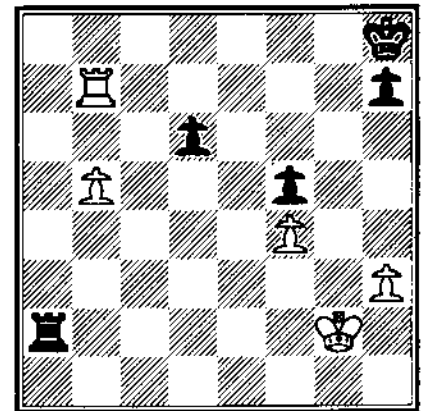
**White: Martinovsky, Eugene (2409)**  
**Black: Chudnovsky, Jacob (2163)**  
**Mid-America Class, Chicago**

1.d4 ♗f6 2.♗f3 g6 3.g3 ♗g7  
 4.♗g2 O-O 5.O-O d6 6.♗c3 ♗a6  
 7.e4 c5 8.♗e1 cxd4 9.♗xd4 ♗c5  
 10.h3 ♗d7 11.♗d5 e5 12.♗xf6+  
 ♗xf6 13.♗e2 ♗c6 14.♗c3 ♗c6  
 15.♗c3 ♗g7 16.♗d2 f5 17.cxf5  
 ♗xg2 18.♗xg2 gxf5 19.♗ad1 ♗f6  
 20.f4 ♗ad8 21.♗xa7 ♗g6 22.♗h2  
 ♗h8 23.♗d5 ♗fe8

**Support ICA Affiliates!**  
**Play in ICA Tour Events!**



24.b4!? ♗c8! 25.♗c3 cxf4 26.gxf4  
 ♗c4 27.♗gl ♗f7 28.c3 ♗c4  
 29.♗g3 ♗c7 30.♗xc7 ♗xc7  
 31.♗dgl ♗xc3 32.♗xg7 ♗xe3  
 33.♗xc3 ♗xc3 34.♗xb7 ♗e2+  
 35.♗g2 ♗xg2+ 36.♗xg2 ♗a3  
 37.b5 ♗xa2+



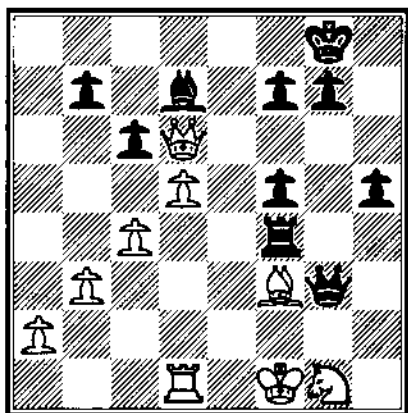
This is an instructive endgame. Watch how White penetrates Black's position

38.♗g3! ♗b2 39.♗h4 d5 40.♗g5  
 d4 41.♗f6! h5 42.♗g6 ♗g2+  
 43.♗xf5 d3 44.♗d7 ♗b2 45.♗g6!  
 ♗g2+ 46.♗xh5 ♗b2 47.♗g6!  
 ♗g2+ 48.♗h6! d2 49.♗d8+ ♗g8  
 50.♗xd2 1-0

**White: Shikhman, Max (2073)**  
**Black: Dandridge, Marvin (2330)**  
**Mid-America Class, Chicago**

1.e4 c6 2.d4 d5 3.♗d2 dxe4  
 4.♗xe4 ♗f6 5.♗xf6+ exf6 6.c3  
 ♗d6 7.♗d3 O-O 8.♗e2 ♗e8 9.O-O

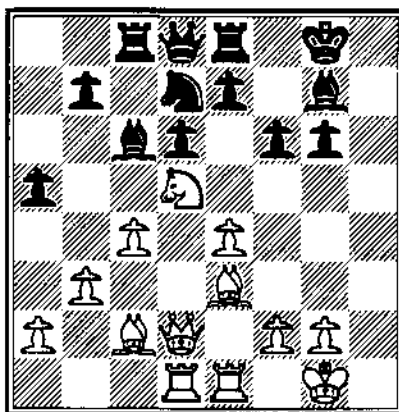
d7 10.Ke1 Qf8 11.Qe3 Wc7  
 12.h3 f5 13.Wd2 Qg6 14.f4 Qd7  
 15.g3 Ke7 16.Qf1 Eae8 17.Qf2  
 Wa5 18.b3 Qd5 19.Qgl Wh1  
 20.Qe2 Wh2 21.Qf3 Ke4 22.Ead1  
 Qe6 23.c4 a5 24.Wxa5 h5 25.h4  
 Qxf4 26.gxf4 Exf4 27.Wc3 Qxh4  
 28.Qxh4 Wxh4 29.d5 Qd7  
 30.Exe8+ Qxe8 31.We5 Qd7  
 32.Qd6 Wg3



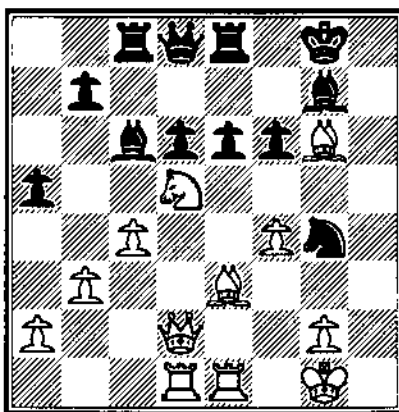
33. Ee3?? Exf3+! 0-1

**White: Kaidanov, Gregory (2696)**  
**Black: Karklins, Andrew (2453)**  
**Mid-America Class, Chicago**

1.d4 Qf6 2.c4 g6 3.Qc3 Qg7 4.e4  
 d6 5.Qe2 O-O 6.Qg5 Qc6 7.d5  
 Qe5 8.Qf3 Qxf3+ 9.Qxf3 Qd7  
 10.Wd2 Ee8 11.O-O c6 12.Eac1 a5  
 13.b3 cxd5 14.Qxd5 Qc5 15.Efel  
 Qe5 16.Qd1 Qd7 17.Qe2 Qc6  
 18.Ecd1 Qd7 19.h4 Qg7 20.h5 f6  
 21.Qe3 Ee8 22.hxg6 hxg6



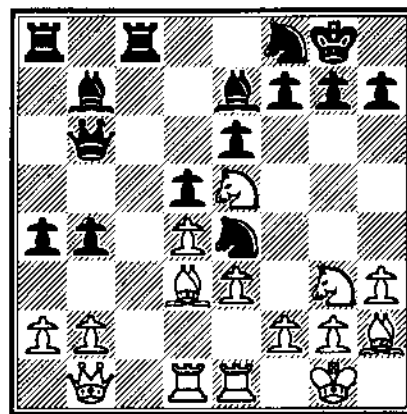
23.e5! Qxe5 24.f4 Qg4 25.Qxg6  
 e6



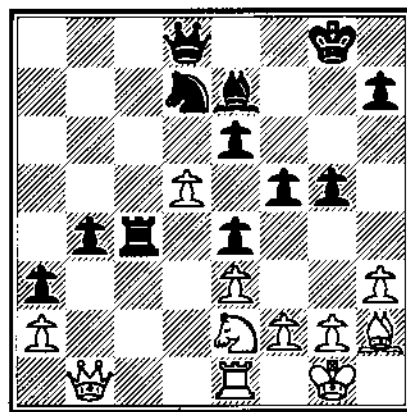
26.Qb6! Qd7 27.Qxe8 Wxe8  
 28.Qe3 Wh5 29.Qxg4 Wxg4  
 30.We2 Wg6 31.Wxe6+ Qh7  
 32.Wh3+ 1-0

**White: Miles, Anthony (2643)**  
**Black: Martinovsky, Eugene (2409)**  
**Mid-America Class, Chicago**

1.d4 Qf6 2.Qf3 d5 3.c4 e6 4.Qc3  
 Qe7 5.Wc2 Qbd7 6.Qf4 a6 7.e3  
 O-O 8.Edl c6 9.h3 Wa5 10.Qd2  
 b5! 11.cxd5 cxd5 12.Qd3 Qb7  
 13.O-O Efc8 14.Wbl b4 15.Qe2  
 Wb6 16.Qf3 Qe4 17.Qe5 Qf8  
 18.Qh2 a5 19.Efel a4 20.Qg3



20...a3! 21.Qxc4 dxc4 22.b3 f5  
 23.Qc4 Qd8 24.Qf1 Ea6 25.Ecl  
 Qd7 26.Qg3 Eac6 27.Qe2 Qa6  
 28.Qf4 g5 29.Qe2 Qxc4 30.bxc4  
 Exc4 31.Exc4 Exc4 32.d5!

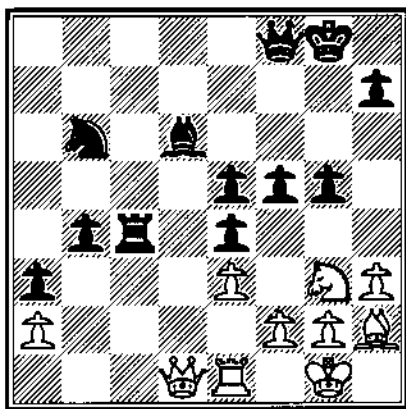


32...e5?! 33.Qg3! Qf8 34.d6!  
 Qxd6 35.Wd1 Qb6

**DON'T MISS IT!**  
**THE CHICAGO CHESS CLUB**  
**(312) 761-5050**

**SEND YOUR GAMES TO:**  
**Mr. Alan Watson**  
**161 Oakwood Drive**  
**Bolingbrook, IL 60440**

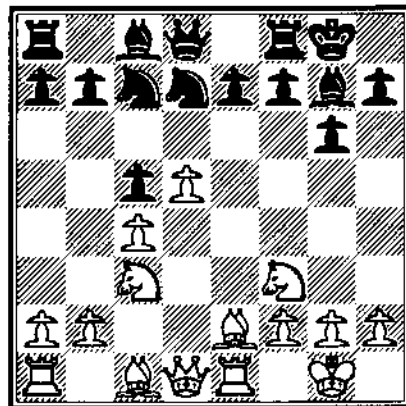
**Chicago Chess Club**  
**Now open for chess.**  
**1149 W. Lunt, Chicago**  
**Call Al Chow - (312) 761-5050**



14. ♖xh6!! g6 15. ♗d3! ♕f8  
 16. ♗xc4 ♗d7 17. ♖f4 ♖xd5  
 18. ♖xh6+ ♖xh6 19. ♗xh6 ♖xc3  
 20. ♗g5+ ♖h7 21. ♗h4+ ♖g8  
 22. ♗g3+ ♖h7 23. ♗xc3 ♖xel+  
 24. ♖xel ♖e8 25. ♖xe8 ♗xe8 26. h4  
 ♗e4 27. a3 ♗f4 28. g3 ♗d6 29. ♗f3  
 1-0

**White: DeFirmian, Nick (2663)**  
**Black: Miles, Anthony (2643)**  
**Mid-America Class, Chicago**

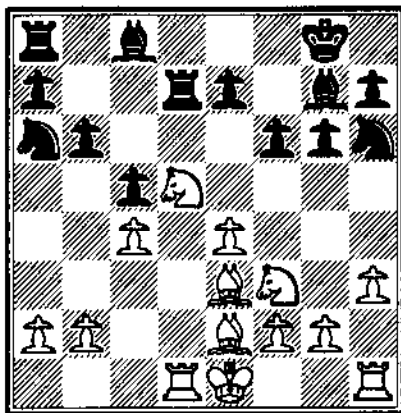
1. e4 ♖f6 2. e5 ♖d5 3. d4 d6 4. ♖f3  
 c6 5. ♗e2 dxc5 6. ♖xc5 ♖d7 7. c4  
 ♖c7 8. ♖f3 g6 9. O-O ♗g7 10. ♖c3  
 O-O 11. ♖el c5 12. d5



**White: Fagan, James (1963)**  
**Black: Steshenko, Vladimir (1931)**  
**Mid-America Class, Chicago**

1. d4 ♖f6 2. c4 g6 3. ♖c3 ♗g7 4. e4  
 d6 5. ♖f3 O-O 6. ♗e3 ♖g4 7. ♗g5  
 f6 8. ♗cl c5 9. dxc5 dxc5 10. ♗xd8  
 ♖xd8 11. ♖d5 ♖d7 12. h3 ♖h6  
 13. ♗c3 ♖a6 14. ♗e2 b6 15. ♖dl

12...b5! 13. cxb5 ♖b6 14. ♗e3  
 ♖cxd5 15. ♖xd5 ♖xd5 16. ♗xc5  
 ♖xb2 17. ♗c4 ♖b7 18. ♖bl ♖f6  
 19. ♗d4 e6 20. ♖xf6 ♗xf6 21. ♗a4  
 ♖fc8 22. ♖bel ♗e7 23. h4 ♖c5  
 24. ♗e5 ♖ac8 25. ♖d3 ♖5c7  
 26. ♖b3 ♖c3 27. ♗g4 ♗d6 28. ♖f4  
 e5 0-1



36. ♖xf5! ♗xf5 37. ♗xd6 ♖c2  
 38. ♗g3 ♖c4 39. ♗xb4 ♗e6  
 40. ♖dl ♖b2 41. ♖d8+ ♖g7  
 42. ♗f8+ ♖g6 43. ♗h8 ♗f7  
 44. ♗h2! ♖d2 45. ♗xc5 ♖f1+  
 46. ♖gl ♖xg3 47. ♗xg3 ♖bl+  
 48. ♖h2 ♖b6 49. ♖d6+ ♖xd6  
 50. ♗xd6+ ♖g7 51. ♗xa3 ♗xf2  
 52. ♗c7+ ♖h6 53. a4 ♗f5 54. a5  
 ♖g6 55. a6 g4 56. ♗d6+ ♖g5 57. a7  
 ♗a5 58. ♗b8 1-0

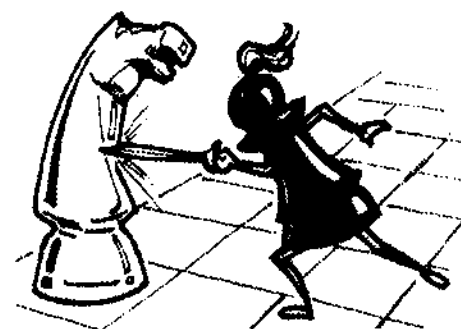
**White: Wolff, Patrick (2651)**  
**Black: Formanek, Edward (2422)**  
**Mid-America Class, Chicago**

1. e4 c6 2. d4 d5 3. exd5 exd5 4. c4  
 ♖f6 5. ♖c3 ♗e7 6. ♗d3 dxc4  
 7. ♗xc4 O-O 8. ♖ge2 ♖c6 9. O-O  
 h6 10. ♖el ♖f5 11. d5 ♖a5 12. ♖g3  
 ♖xc4 13. ♖xf5 ♖e8

15...♖b7?? 16. ♖xf6+ 1-0

**White: Karklins, Andrew (2453)**  
**Black: Herndl, Harold (unr)**  
**Mid-America Class, Chicago**

1. e4 ♖f6 2. e5 ♖d5 3. d4 d6 4. ♖f3  
 g6 5. ♗c4 c6 6. ♗xd5 cxd5 7. ♖f4  
 dxe5 8. ♗xe5 f6 9. ♗g3 ♗g7  
 10. O-O O-O 11. c4 ♗e6 12. ♖el ♖f7  
 13. cxd5 ♗xd5 14. ♖xb8 ♖xb8  
 15. ♖c3 ♖f7 16. d5 ♗d7 17. ♗b3 b5  
 18. ♖ad1 b4 19. ♖e4 ♖b5 20. ♗a4  
 ♖d8 21. d6 e5 22. ♖cl ♗b7 23. ♖c7  
 ♗b6 24. ♖xa7 ♗d5 25. ♖cl ♖xe4  
 26. ♖cc7 ♖f8 27. ♖xh7 ♖a5!  
 28. ♗b3+ ♗d5 29. ♗c2 ♖xa7  
 30. ♗xg6+ ♖g7 0-1



**SEE YOU AT NEXT  
 YEAR'S MID-AMERICA  
 CLASS CHAMPIONSHIP.  
 DON'T MISS IT!**

# NEW!

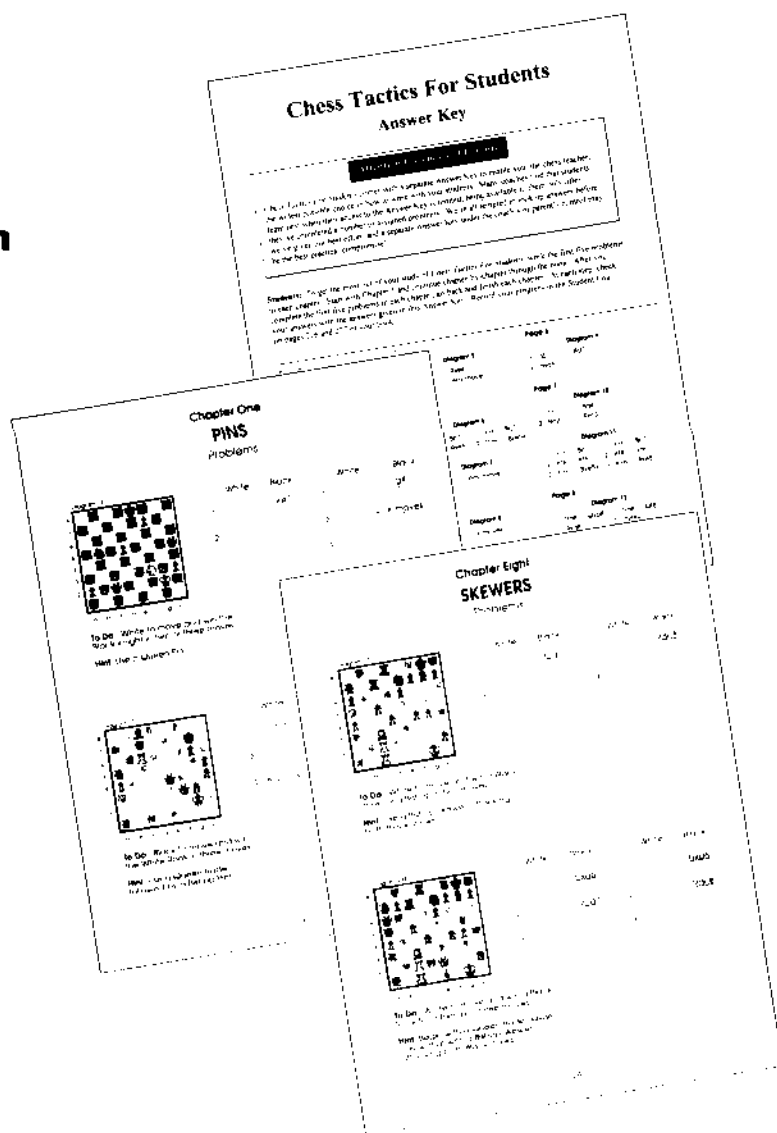
**An instructional workbook on tactics designed for classroom instruction and for follow-up independent study!**

## **CHess TACTICS FOR STUDENTS**

- ▶ A one-of-a-kind instructional workbook designed to help beginners acquire the skills of strong intermediate players
- ▶ Field-tested over a four-year period with elementary, middle-school, and high-school students
- ▶ Ideal for classroom and chess club instruction, and for independent study

### HIGHLIGHTS

- ▶ 224 pages of full-size worksheets
- ▶ 434 carefully selected problems
- ▶ 13 tactics covered, one per chapter
- ▶ Instruction sequenced in order of increasing difficulty
- ▶ Chapters arranged in order of most frequently encountered tactics
- ▶ Separate Answer Key designed for easy use
- ▶ Available Teacher's Edition with detailed course goals and objectives, and filled-in answers on actual-size student worksheets.



**Written by John Bain, M.S., educator, USCF certified tournament director, and chess coach.**

### ***Chess Tactics For Students Order Form\****

Name \_\_\_\_\_ Ph: \_\_\_\_\_

Address \_\_\_\_\_ Apt: \_\_\_\_\_

City \_\_\_\_\_ State \_\_\_\_\_ Zip Code \_\_\_\_\_

**Price: \$14.95 plus \$2.50 S & H**

- Free Answer Key with each student book.
- \$1 per book S & H for orders of 5 or more.
- Free Teacher's Edition for orders of 10 or more.
- Money-back satisfaction guarantee.

**Send check or money order to:**

**Learning Plus, Inc.  
P.O. Box 713  
Corvallis, Oregon 97339-0713**

Order sent day after receipt of order form. Call 503-757-7049 for information on school discounts.



# **U.S. Chess Federation's Official Rules of Chess, Fourth Edition**

Edited by Bill Goichberg, Carol Jarecki, and Ira Lee Riddle

Reviewed by Dan Burg

"The new rule book is here!" The last time we heard that cry was 1987. What has changed about the rules in the last seven years to warrant a new edition? How do the new rules compare to the old? How does the new book compare to the old?

The first difference that meets the eye is the new book's size. This is a BIG book, 370 pages big as opposed to 196 pages for the 1987 book (and 121 and 122 pages for the 1975 and 1978 books, respectively). The pages are smaller, the type appears slightly smaller, and the paper is a bit less white than the 1987 book, but the overwhelming change is the length. There aren't 88% more rules than in 1987, so why the increased length?

The first answer is that the new book has much more than just rules. The 1987 book included Ratings, Tournament Director (TD) Checklist, and About the USCF chapters in addition to USCF and FIDE rules and regulations. The new book has all of these, plus The Well-Run Tournament, TD Certification, How to Read and Write Chess (in addition to Chess Notation), Ten Tips to Winning Chess, World and National Champions, and A Historical Crosstable of the USCF. USCF seems to have designed the book to contain all the information it wants to disseminate to members and potential members, not just rules. While there is nothing inherently wrong with this idea, perhaps a title such as "USCF's Official Rules of Chess and Guidebook" or ". . . and Handbook" or some such might have been more descriptive.

The second answer to the book's length is the great expansion of the first two chapters, Official Rules of Chess and Tournament Regulations and Guidelines. These chapters incorporate the Sudden Death, Computer Chess, and Handicapped Player chapters from the 1987 book, but the main reason for their increased length are a multitude of examples, explanatory materials, and advice to aid the novice tournament

director and player. Incorporating the special-purpose rules will probably lead to confusion at first, but once TDs get used to the incorporation, having all the rules about the end of the game in one place should improve quick ease of reference. Visually, these chapters are much more attractive and usable than the corresponding ones in the 1987 book. A four-level rule numbering system, e.g. 21J4b, makes rules, sub-rules, and variations easy to identify, and boldface titles for each numbered section make it easy to find a desired rule by scanning a page. The rule numbers continue consecutively across chapters, another nice feature the 1987 book lacked. Adding an expanded Table of Contents with the high-order rule titles would have improved usability even more, but this is a minor quibble.

The explanations, examples, and advice run the gamut from defining the word "piece" three ways to tips on what to do to avoid cheating by unrated foreigners. Some of these are useful only to a narrow slice of the chess community, for instance absolute beginners or TDs at huge opens with large prizes. Others are useful throughout the tournament world, for instance tips on what to do about unsolicited advice or what to do about long-running games before the penultimate round. The explanation of a "completed move" -- the player has released the piece and has punched his clock -- versus a "determined" move -- the player has released the piece but has not punched his clock -- should be useful to players and TDs on all levels.

Make no mistake about it, there are a lot of examples, explanations, and advice in this book. The examples and advice are derived primarily from editor Goichberg's experience running tournaments for his Continental Chess Association, as is the "Well-Run Tournament" chapter. These have led some wags to call this the "CCA rule book." While that assessment is a bit harsh, as well as unfair to co-editors Jarecki and Riddle, the book is certainly

flavored by Goichberg's experience. At times it is hard to see where rules stop and opinion begins. USCF saw a groundswell of support for the idea of a "how-to" guide for novice TDs since announcing in 1991 that a new rule book would be written, and this book certainly fills that request.

On to the rules themselves. A very useful feature is provided in the Introduction: a list of all the rules changes in this book from the 1987 book. Some areas are new in this book, such as Quick Chess and the Allegro clock. Others are greatly expanded, such as the discussion of insufficient losing chances in sudden death time controls. Several changes adopted by USCF between the 1987 rule book and this one have been included, such as a player being allowed to call his own flag down in order to prevent his opponent from filling in missing moves before making a claim. Special Referees, defined as highly experienced tournament directors who make themselves available for phone consultations, may be used in certain circumstances rather than an on-site appeals committee. And, in perhaps the major rules change from the previous book, penalties for various infractions have been made consistent. Rather than having five minutes taken off a player's clock in one situation, five minutes taken off a player's clock unless it would cause him to overstep the time control in another situation, and two minutes added to his opponent's clock in a third situation, most time-related penalties have been standardized to add two (unused) minutes to the opponent's clock.

As stated above, most of the rules changes adopted since the 1987 book was published have been incorporated in this book. This reviewer's pet peeve about this book, however, is a 1990 change that was not adopted, at least not in full and not in the same language.

Shortly after the 1987 book took effect, the rule regarding "Colors in a

Series" became highly controversial when Grandmaster Walter Browne was assigned his third successive Black in the eleventh round of the twelve-round 1987 U.S. Open. The 1987 book states flatly, "Under no circumstances should a player be assigned the same color in three successive rounds." This was changed in 1990 to, "No player shall be assigned the same color three times in a row, unless there is no other way to pair the score group or unless necessary to equalize colors. Variation A: Except for the last round, when it may be necessary to pair the tournament or class leaders, players shall not be assigned the same color in three successive rounds. Variation B: Under no circumstances should a player be assigned the same color in three successive rounds." The 1990 mainline rule and two variations seemed to cover all the possibilities in clear and simple language.

So, did this language remain unchanged in the new book? No. Compare the following: "Unless all other possible ways to pair the players in the score group against each other would cause one or more pairings of players who had already faced each other, no player should be assigned the following: a. The same color in more than two successive rounds. b. Black in the final round when the player has already played more Blacks than Whites. Variation A: Except for the last round, when it may be necessary to pair the tournament or class leaders, players shall not be assigned the same color in three successive rounds. [Variation B: There is no Variation B.]" Huh? This differs from the 1990 language in three important respects: 1. It is murky at best and un-understandable at worst. 2. Variation B, which was the mainline rule in the 1987 book, has disappeared completely. 3. The worst divergence, in this reviewer's opinion, is that it distinguishes the rule for three successive Blacks from that for three successive Whites. This dichotomy is also reflected in the rule on transpositions and interchanges. From the standpoint of player complaints, three successive Blacks is

probably worse. From the standpoint of rules, there should be no difference between them.

Two additional points cannot be allowed to pass without brief comments. The first is that this book, as was inevitable, is already obsolete in at least one respect: FIDE has changed some of the regulations that appear in Chapters 21 and 22. As USCF changes rules, as it may do yearly, more sections of the book will be rendered obsolete. These changes will all be published in the Rating Lists, of course, but these are not as widely disseminated as the rule book itself.

The second regards USCF's use of the book as a marketing vehicle. In the chapter on Equipment Standards, each picture of equipment is accompanied by a plug for USCF's sales department. More sales plugs appear in the About the USCF chapter, where they are perhaps more appropriate. But in this reviewer's opinion, a chapter on rules should be a chapter on rules; leave the marketing info for another vehicle.

So, what do I think of this book? First, it is long overdue. The changes since 1987 have been overwhelming: Quick Chess, the huge expansion of Sudden Death time controls, and USCF's new guidelines on assigning temporary ratings to unrated players alone would justify a new book, let alone all the other changes. Second, the organization and format are much clearer than those in past editions. Third, the explanations and advice can be very useful. They might not be everyone's cup of tea, but they do provide one tested method of dealing with most tournament situations. Fourth, several chapters seem marginally useful to the average tournament player. Fifth, I find the plugs for USCF's sales department in the Equipment Standards chapter highly inappropriate. Finally, another new rule book will be needed in a few years; no rule book can last forever...□

---

*Dan Burg is a National Tournament Director, member of the USCF Rules and TD Certification Committees, and is acknowledged in the new rule book for his help during its development.*

---

## **Chess Tactics For Students**

**Author: John A. Bain**

**Price: \$14.95 USA**

Reviewed by Alan L. Watson

The last several years have seen a dramatic growth and interest in the area of scholastic chess as witnessed by the fact that the Illinois Scholastic State Championship recently concluded in Rockford, Illinois drew over 600 players.

The book "Chess Tactics For Students" is intended to introduce these young players to the elements comprising chess tactics by separating them into themes for their study and using a quiz-type format.

Each of the first 13 chapters focuses on a single element such as pins, skewers, or double threats, and then progresses thru exercises of increasing difficulty; ranging from an introduction illustrating the tactic, to instruction where help and the answer are given, to lastly 26 problems that the student must solve and write in the answer. A final chapter offers 30 additional problems for for which the identify the tactics used in addition to the solution must be noted.

Although the author states that this book was "field-tested extensively over a four-year period with elementary, middle-school, and high-school students," I found when introducing this to my students that it is best suited for those learning players in the USCF rating range of 700-1300. For others rated above this, the help and hints with each problem are so extensive as to give the answer easily away and cause a rapid loss of interest. This book is heartily recommended, and a welcome addition to the chess libraries of both scholastic clubs and their coaches...□



# ILLINOIS TOUR CROSSTABLES

## Fox Valley Low Cost #1

March 12, 1994

		score								tour
1	FAGAN James	IL	1963	D24	W10	W11	W 7	3.5	7.5	MKA
2	FRISKE Thomas	IL	1808	W38	W21	W 8	D 3	3.5	7.5	MKA
3	KITTILSEN Guy	IL	1801	W15	W34	W16	D 2	3.5	7.5	MKA
4	STRELCHIN Lev	IL	2215	L 7	W26	W25	W12	3	4	M
5	THOMAS Ed	GA	2031	L 8	W31	W20	W16	3	4	M
6	CIMA Joe	IL	1984	W 9	L16	W34	W15	3	4	MKA
7	HENDERSON S E	IL	1693	W 4	W23	W14	L 1	3	4	MKAB
8	KNOX Malcolm	IL	1678	W 5	W22	L 2	W17	3	4	MKAB
9	MIEL James	IL	1668	L 6	W18	W21	W22	3	4	MKAB
10	MODY Devagna			W20	L 1	W32	W24	3	4	M
11	ISRAELSEN Kirk	IL	1546	W37	D25	L 1	W26	2.5	2.5	MKABCD
12	APEL Geoffrey	IL	1329	D26	W27	W24	L 4	2.5	2.5	MKABCD
13	ROGAN Marvin	IL	2000	-	-	W37	W25	2	2	M
14	MC NAMARA James	IL	1944	W29	W32	L 7	-	2	2	MKA
15	JACOBSEN Ruth	IL	1579	L 3	W33	W23	L 6	2	2	MKABC
16	MITCHELL Gary	IL	1513	W31	W 6	L 3	L 5	2	2	MKABC
17	DOUGHERTY Andy	IL	1493	L34	W37	W35	L 8	2	2	MKABC
18	HICKS Charles	IL	1478	L22	L 9	W39	W33	2	2	MKABC
19	BRADLEY Scott	IL	1423	L23	L29	W31	W34	2	2	MKABC
20	FENTON Dean	IL	1380	L10	W38	L 5	W35	2	2	MKABCD
21	WELTON James	IL	1313	W39	L 2	L 9	W30	2	2	MKABCD
22	CONCEPCION Cesar	IL	1185	W18	L 8	W30	L 9	2	2	MKABCD
23	SUNOSTROM Matthew	IL	1181	W19	L 7	L15	W32	2	2	MKABCD
24	FLYNN Michael	IL	1600	D 1	W36	L12	L10	1.5	1.5	MKAB
25	WRZOSEK Bob	IL	676	W30	D11	L 4	L13	1.5	1.5	MKABCD
26	GORDIN Vladimir			D12	L 4	W36	L11	1.5	1.5	M
27	HEPNER Troy			D36	L12	L33	W39	1.5	1.5	M
28	RENAUT Robert	IL	2182	W33	-	-	-	1	1	MKAB
29	SMITH Orlan	IL	1585	L14	W19	-	-	1	1	MKABC
30	SIMS Mike	IL	1532	L25	W39	L22	L21	1	1	MKABC
31	JACOBSEN Mickey	IL	1500	L16	L 5	L19	B 1	1	1	MKABC
32	JENKINS Mike	IL	1388	W35	L14	L10	L23	1	1	MKABCD
33	RAHR Kenneth	IL	1295	L28	L15	W27	L18	1	1	MKABCD
34	DICKS William	IL	1222	W17	L 3	L 6	L19	1	1	MKABCD
35	MORENO Ricky	IL	1015	L37	B 1	L17	L20	1	1	MKABCD
36	ROUSTAN Pierre	IL	1319	D27	L24	L26	-	0.5	0.5	MKABCD
37	DECMAN Stephen	IL	1800	L11	L17	L13	-	0	0	M
38	LESTER Michael	IL	1580	L 2	L20	-	-	0	0	M
39	KNOX Roscoe	IL		L21	L30	L18	L27	0	0	M

## Mid-America Class

March 25-27, 1994

		score								tour
1	SHABALOV Alexander	PA	2739	D13	W23	W17	W10	W 4	4.5	19 M
2	MILES Anthony J	FO	2643	W33	D18	W19	W 6	W 9	4.5	19 M
3	IVANOV Alexander	MA	2657	W22	W27	L 9	W16	W11	4	12 M
4	IVANOV Igor	UT	2593	W16	W20	W 8	W 9	L 1	4	12 M
5	VERMOLINSKY Alex	NJ	2751	D19	W13	D11	D 7	W12	3.5	7 M
6	K Aidanov Gregory	KY	2696	W14	D11	W26	L 2	W17	3.5	7 M
7	ORLOV Georgi	WA	2618	L20	W28	W15	D 5	W18	3.5	7 M
8	GUREVICH Dmitry	IL	2682	W15	W12	L 4	L11	W21	3	6 M
9	DE FIRMIAN Nick E	CA	2663	W21	W32	W 3	L 4	L 2	3	6 M
10	WOLFF Patrick G	MA	2651	W38	D26	W18	L 1	D13	3	6 M
11	GRUBENFELD Yehuda	NJ	2566	W28	D 6	D 5	W 8	L 3	3	6 M
12	TATE Emory A	IN	2463	W29	L 8	W21	W14	L 5	3	6 M
13	HERNDL Harold	IN		D 1	L 5	W24	W26	D10	3	6 M
14	CHOW Albert C	IL	2392	L 6	W38	W33	L12	W23	3	6 M
15	DANDRIDGE Marvin	IL	2330	L 8	W29	L 7	W33	W25	3	6 M
16	COMPUTER Bp	IL	2260	L 4	W34	W27	L 3	W26	3	6 M
17	BURNETT Ronald Wa	TN	2494	D24	W35	L 1	W19	L 6	2.5	5 M
18	FORMANEK Edward W	PA	2422	W31	D 2	L10	W20	L 7	2.5	5 M
19	MARTINOVSKI Eugene	IL	2409	D 5	W24	L 2	L17	W30	2.5	5 M
20	TAYLOR Steven A	WI	2200	W 7	L 4	D23	L18	W31	2.5	5 M
21	BURNETT Kevin R	IA	2320	L 9	W25	L12	W30	L 8	2	4 M
22	ZINGHEIM Francis	IL	2311	L 3	L30	W35	L25	W38	2	4 M
23	FISCHER Thomas F	MN	2294	H 1	L 1	D20	W27	L14	2	4 M
24	CHUDNOVSKY Jacob	OH	2169	D17	L19	L13	D29	W38	2	4 M
25	BROCK William	IL	2035	L26	L21	W38	W22	L15	2	4 M
26	KARKLINS Andrew	IL	2453	W25	D10	L 6	L13	L16	1.5	3 M
27	BISGUIER Arthur B	NY	2447	W10	L 3	L16	L23	D28	1.5	3 M
28	SHARMA Arun	IN	2171	L11	L 7	D29	D31	D27	1.5	3 M
29	SHIKHMAN Max	WI	2073	L12	L15	D28	D24	D36	1.5	3 M
30	COHEN Lawrence S	IL	2011	L27	W22	H 1	L21	L19	1.5	3 M
31	MAYKA Tom R	IL	2007	L18	L33	W34	D28	L20	1.5	3 M
32	DE FOTIS Greg S	IL	2465	W34	L 9	-	-	-	1	2 M
33	PANGAN Camilo C	IL	2251	L 2	W31	L14	L15	-	1	2 M
34	ASH Robert B	IL	2098	L32	L16	L31	W38	L22	1	2 M
35	WHEELER Jerry T	TN	2200	D37	L17	L22	-	-	0.5	1 M
36	HERNANDEZ Hector	IL	2167	-	-	-	-	D29	0.5	M
37	PANNER Glenn E	IL	2109	D35	-	-	-	-	0.5	3 M
38	LONCAREVIC Robert	IL		L10	L14	L25	L34	L24	0	M

## Greater Peoria Open

March 5-6, 1994

OPEN		score								tour
1	MOTE David	2209	W16	W10	W 3	W 8	D 2	4.5	19 M	
2	SZPISJAK Steven	2139	W 6	D 5	D 8	W13	D 1	3.5	7 M	
3	SAX Robert	2127	W 7	W12	L 1	D 5	D 4	3	6 M	
4	NAFF William	2125	W15	L 8	H 1	W 7	D 3	3	6 M	
5	ANDERSON Phil	1931	W14	D 2	H 1	D 3	D 8	3	6 MKA	
6	BARNARD Thomas	1904	L 2	W14	D13	D10	W11	3	6 MKA	
7	BOLITHO Thomas	1870	L 3	W16	W11	L 4	W12	3	6 MKA	
8	FRISKE Thomas	1808	W11	W 4	D 2	L 1	D 5	3	6 MKA	
9	AHMER Craig	1613	H 1	L13	W14	L11	W15	2.5	5 MKAB	
10	RHODES Murrell	2059	W12	L 1	H 1	D 6	-	2	4 M	
11	SERRANO Fidel Jr	1988	L 8	W15	L 7	W 9	L 6	2	4 MKA	
12	KITTILSEN Guy	1801	L10	L 3	W15	W16	L 7	2	4 MKA	
13	BELLMAN Robert	1919	H 1	W 9	D 6	L 2	-	2	4 MKA	
14	TOWNSEND Chester	2327	L 5	L 6	L 9	L15	B 1	2	M	
15	VERO Carl	1822	L 4	L11	L12	W14	L 9	1	2 MKA	
16	SMIT Tom	1906	L 1	L 7	H 1	L12	-	0.5	1 MKA	
RESERVE		score								tour
1	BELLE John	1611	W23	W22	W 4	W 5	D 2	4.5	19 B	
2	CRUM Randy	1718	W18	H 1	W12	W13	D 1	4	12 B	
3	SIMS Mike	1532	W24	L 5	W21	W 9	W10	4	12 BC	
4	SPHAR Robert	1767	W14	W 6	L 1	W11	D 5	3.5	7 B	
5	HENROID Michael	1719	W17	W 3	W10	L 1	D 4	3.5	7 B	
6	ISRAELSEN Kirk	1546	W26	L 4	W23	D 8	W13	3.5	7 BC	
7	GOODMAN Mark	1730	D12	L18	W20	W15	D 8	3	6 B	
8	SCULLEY David	1612	W20	L10	W18	D 6	D 7	3	6 B	
9	PADILLA Rudy	1605	W12	L11	W19	L 3	W17	3	6 B	
10	STOTLER Richard	1586	W25	W 8	L 5	W17	L 3	3	6 BC	
11	DELAY Joe	1566	W27	W 9	D13	L 4	D14	3	6 BC	
12	PEDERSEN Ken	1524	D 7	W14	L 2	D16	W18	3	6 BC	
13	KEMPER Robert	1630	W19	W15	D11	L 2	L 6	2.5	5 B	
14	MITCHELL Gary	1536	L 4	L12	W26	W24	D11	2.5	5 BC	
15	KELLY James	1421	W28	L13	H 1	L 7	W19	2.5	5 BC	
16	STAFFORD Jerry	1646	L22	H 1	B 1	D12	-	2	4 B	
17	DOBOS Gordon	1510	L 5	W26	W25	L10	L 9	2	4 BC	
18	MOORE Rod	1491	L 2	W 7	L 8	W21	L12	2	4 BC	
19	WISHNER Michael	1358	L13	B 1	L 9	W25	L15	2	4 BCD	
20	KRIEDEL Matthew	1327	L 8	L23	L 7	W27	W25	2	4 BCD	
21	MC GREW Wesley	1279	L 9	W27	L 3	L18	W24	2	4 BCD	
22	MAXWELL Charles	1410	W16	L 1	H 1	-	-	1.5	3 BC	
23	CRUISE Donald	1309	L 1	W20	L 6	-	-	1	2 BCD	
24	RAHR Kenneth	1295	L 3	L25	W27	L14	L21	1	2 BCD	
25	BATH Cheney	1117	L10	W24	L17	L19	L20	1	2 BCDE	
26	KNOTHE Gerhard		L 6	L17	L14	B 1	-	1	M	

## EXPERT

		score								tour
1	SZPISJAK Steven J	IL	2139	D27	W34	W35	W10	W 9	4.5	19 X
2	KARKLINS Erik	IL	2126	W16	W28	D22	W14	W 7	4.5	19 X
3	GORDON Wallace J	IL	2145	W33	L 9	W28	W26	W11	4	12 X
4	BENJAMIN Richard	GA	2144	D23	W41	D20	W25	W14	4	12 X
5	SATTERLEE Ray Doyle	IL	2135	W38	W25	L 9	W23	W13	4	12 X
6	DZEGILENKO Fedor	OH	2175	D10	L22	W41	W27	W21	3.5	7 X
7	ZABELL Sandy L	IL	2132	W39	W15	W26	D 9	L 2	3.5	7 X
8	SAX Robert D	IL	2127	D35	W27	L10	W16	W22	3.5	7 X
9	KOWALSKY Kyle	MD	2112	W29	W 3	W 5	D 7	L 1	3.5	7 X
10	PORTER Ryan W	MO	2094	D 6	W18	W 8	L 1	W19	3.5	7 X
11	FLAGA Krzysztof	IL	2173	L25	W38	W15	W20	L 3	3	6 X
12	INUMERABLE Florentino	IL	2171	L26	L33	W39	W38	W25	3	6 X
13	SHEAF Mike A	OH	2162	L15	W39	W33	W22	L 5	3	6 X
14	GREGORY Jamie	IL	2101	W17	W31	W19	L 2	L 4	3	6 X
15	BOLTON Richard	OK	2047	W13	L 7	L11	W40	W24	3	6 X
16	SCOTT Gene G	IL	2194	L 2	W37	D31	L 8	W30	2.5	5 X
17	VASTO Daniel	IA	2175	L14	L35	D32	W41	W33	2.5	5 X
18	STRUGACH Alex	MI	2157	H 1	L10	L27	W34	W35	2.5	5 X
19	MURRAY William J	MN	2150	D41	W21	L14	W35	L10	2.5	5 X
20	TUMS John M	IL	2099	H 1	W36	D 4	L11	D23	2.5</	

# ILLINOIS TOUR CROSSSTABLES

## CLASS A

													score	tour
1 FAGAN James B	IL	1963	W55	W36	D12	W14	W 8	4.5	19	A				
2 KOH Jason	NY	1944	D57	W39	W11	W37	W 9	4.5	19	A				
3 LANDRUM Stephen R	MO	1982	D24	D41	W38	W33	W13	4	12	A				
4 RAMAS Casimir	MI	1910	X	L 7	W20	W30	W14	4	12	A				
5 HONG Ernest	IL	1907	D22	W27	D32	W31	W15	4	12	A				
6 MARSHALL Larry G	MI	1889	W52	W49	L 9	W32	W16	4	12	A				
7 SHARMA Upma	IN	1974	W37	W 4	D17	L13	W24	3.5	7	A				
8 HOODINA James D	IL	1971	W38	W33	W35	D 9	L 1	3.5	7	A				
9 LUBKA Reuben N	WI	1970	W49	W34	W 6	D 8	L 2	3.5	7	A				
10 MC ALISTER Kelvin	IL	1924	H	D20	W41	W28	D12	3.5	7	A				
11 SCOTT Bertram A	NY	1866	H	W46	L 2	W29	W28	3.5	7	A				
12 SEFCHECK Mark M	IL	1849	W31	W30	D 1	H	D10	3.5	7	A				
13 VLASAK Frank	OH	1837	H	W53	X	W 7	L 3	3.5	7	A				
14 STESHENKO Vladimir	NY	1951	W56	W19	W21	L 1	L 4	3	6	A				
15 MC NAMARA James	IL	1944	W40	L21	W19	W35	L 5	3	6	A				
16 RYDBERG Steeve A	IL	1932	L21	W56	W26	W42	L 6	3	6	A				
17 EGETON James	IL	1927	W50	W28	D 7	L 2	D21	3	6	A				
18 TRIPLETT Thomas L	MI	1919	D42	W43	F	D21	W39	3	6	A				
19 KUHN Peter B	IL	1866	W58	L14	L15	W43	W34	3	6	A				
20 BUKY John P	IL	1834	D53	D10	L 4	W49	W38	3	6	A				
21 WILLARD Gary D	IL	1829	W16	W15	L14	D18	D17	3	6	A				
22 LULOVES Joseph F	IL	1800	D 5	X	L28	D34	W37	3	6	A				
23 SCHCHAROENPHON T.	IL	1900	L28	L40	W51	X	H	2.5	5	A				
24 MADEY Paul W	IL	1886	D 3	D42	D29	W46	L 7	2.5	5	A				
25 TAYLOR Eric D	MI	1867	L29	W45	L31	D27	W46	2.5	5	A				
26 MARCONKA Robert	IL	1861	L48	W58	L16	D44	W47	2.5	5	A				
27 KITTILSEN Guy O	IL	1801	D54	L 5	D37	D25	W45	2.5	5	A				
28 MAREMA David B	IL	1990	W23	L17	W22	L10	L11	2	4	A				
29 SIWEK Mark S	IL	1969	W25	L35	D24	L11	D44	2	4	A				
30 LORING Steve W	IL	1954	W59	L12	W49	L 4	-	2	4	A				
31 MORGAN William G	MO	1945	L12	W59	W25	L 5	-	2	4	A				
32 ALEXANDER Walter	KY	1945	D39	W57	D 5	L 6	-	2	4	A				
33 CERMINARO J P	IL	1921	W51	L 8	W40	L 3	-	2	4	A				
34 FLEMING William C	MI	1902	W44	L 9	D47	D22	L19	2	4	A				
35 DESHPANDE Aniruddha	IN	1902	W45	W29	L 8	L15	-	2	4	A				
36 MENGENIS Anis	IL	1900	W47	L 1	L42	L39	W41	2	4	A				
37 OSANYINOBI Funsho	IL	1886	L 7	D50	D27	W47	D22	2	4	A				
38 STOLTZ Robert M	IL	1884	L 8	W51	L 3	W40	L20	2	4	A				
39 SCHUSCHEL Hans	IL	1847	D32	L 2	D43	W36	L18	2	4	A				
40 MAMMEN William H	IN	1844	L15	W23	L33	L38	W50	2	4	A				
41 STEWART Allen	IL	1840	H	D 7	L10	F	W49	2	4	A				
42 SCHCHAROENPHON K	IL	1804	D18	D24	W46	L16	-	2	4	A				
43 ZACKS Naum	MI	1800	H	L18	D39	L19	W56	2	4	A				
44 HENROID Michael B	IL	1719	L34	L49	W56	D26	D29	2	4	AB				
45 WHITAKER Keith T	WI	1692	L35	L25	W59	D23	L27	1.5	3	AB				
46 WONG Brian	IL	1682	H	L11	W50	L54	L25	1.5	3	AB				
47 NAVARRO Modesto E	IL	1659	L36	W60	D34	L37	L26	1.5	3	AB				
48 BLAIR Ellis	OH	1960	W26	L 6	-	-	-	1	2	A				
49 FRAUSE Paul	IL	1876	L 9	W44	L30	L20	-	1	2	A				
50 TURNER Bill A	OH	1828	L17	D37	L46	D45	L40	1	2	A				
51 GANT Thomas A	IL	1817	L33	L38	L23	W50	L36	1	2	A				
52 MICHALIK Philip	IL	1886	L 6	D55	-	-	-	0.5	1	A				
53 RUST Larry F	OH	1942	D20	L13	-	-	-	0.5	1	A				
54 GURNANEY Anil	IL	1919	D27	F	-	-	-	0.5	1	A				
55 BERNSTER Leonard	IL	1865	L 1	D52	-	-	-	0.5	1	A				
56 PULLIAM Steven P	IL	1856	L14	L16	L44	H	L43	0.5	1	A				
57 SINGER Robby R	IL	1842	D 2	L32	-	-	-	0.5	1	A				
58 EMANUEL Edward	OH	1965	L19	L26	-	-	-	0						
59 BERLAND Paul	MA	1858	L30	L37	L45	L51	L41	0						
60 JOHNSON Eric L	IL	1807	-	L47	-	-	-	0						

## CLASS B

													score	tour
1 MIEL James H	IL	1668	W25	W26	W17	W 5	W 6	5	37	B				
2 STOUDEMIRE James	OH	1783	W31	W39	D10	W13	W12	4.5	19	B				
3 VAKIL Behrooz M	MO	1785	W19	L 5	W43	W40	W10	4	12	B				
4 RATNER Jacob M	WI	1723	W 8	W43	L 6	W21	W15	4	12	B				
5 LYNCH Mark O	IN	1717	W44	W 3	W40	L 1	W23	4	12	B				
6 BOSCH William L	IN	1699	W53	W15	W 4	W16	L 1	4	12	B				
7 VENSKE Dan	IL	1699	D35	W52	W22	W11	H	4	12	B				
8 STAMATAKOS Mark	IL	1641	L 4	W31	W14	W39	W16	4	12	B				
9 JOSEPHS Steven W	IL	1717	H	W51	L12	W49	W25	3.5	7	B				
10 GAPUZ Wilfredo C	IL	1700	W23	W46	D 2	W33	L 3	3.5	7	B				
11 AROND Dean	IL	1686	W14	D28	W24	L 7	W27	3.5	7	B				
12 NAVIAMS William	IL	1654	H	W55	W 9	W28	L 2	3.5	7	B				
13 BUTERMAN Alexandr	IL	1642	W18	D17	W37	L 2	W36	3.5	7	B				
14 RUNDLE David G	OK	1781	L11	W64	L 8	W59	W40	3	6	B				
15 NAPOLI Carmelo	IL	1765	W50	L 6	W57	W42	L 4	3	6	B				
16 JOHNSTON Rowland	MI	1745	W54	W56	W38	L 6	L 8	3	6	B				
17 IMAJ Toshio	MI	1732	W57	D13	L 1	W48	D20	3	6	B				
18 CLAY Harry	IL	1727	L13	W44	L34	W43	W42	3	6	B				
19 HENDERSON S E	IL	1693	L 3	D45	W35	D22	W37	3	6	B				
20 FROELICH Jim	IL	1653	L28	D62	W47	W34	D17	3	6	B				
21 HAYES Will	IL	1635	W52	L24	W54	L 4	W39	3	6	B				
22 KITTSLY Scott L	WI	1600	H	W29	L 7	D30	W46	3	6	B				
23 BARTOCCI Mario Pr	IL	1600	L10	W41	W36	W38	L 5	3	6	B				
24 PRIESENDOR Carl	IL	1777	D49	W21	L11	L20	W50	2.5	5	B				
25 LEALI Michael E	IL	1774	L 1	D35	W51	W34	L 9	2.5	5	B				
26 PETERS Edward J	IL	1744	W65	L 1	L42	W44	D32	2.5	5	B				
27 RAMIREZ Rafael E	IL	1741	L43	W65	W53	H	L11	2.5	5	B				
28 SANDERS Robert L	IL	1728	W20	D11	W49	L12	-	2.5	5	B				
29 SCHMIDT Corey L	OH	1710	D33	L22	L45	W52	W49	2.5	5	B				
30 DUFFY James W	IL	1700	D52	W32	L33	D22	D34	2.5	5	B				

31 PORTER Edward J	WI	1691	L 2	L 8	W64	D53	W51	2.5	5	B
32 DELPHIN Fred	IL	1614	D37	L30	X	D19	D20	2.5	5	B
33 AMHER Craig P	IL	1613	D29	W48	W30	L10	-	2.5	5	B
34 ENGELEN Mark	IL	1600	L56	W58	W18	L25	D30	2.5	5	B
35 GOODWIN Kimberly	IL	1490	D 7	D25	L19	W66	H	2.5	5	BC
36 WALLACE James S	IL	1752	W42	L40	L23	W41	L13	2	4	B
37 CHEN Xi M	IL	1712	D32	W59	L13	D45	L19	2	4	B
38 WOJFE Ron	IL	1703	W45	W54	L16	L23	-	2	4	B
39 JOHNSON Frank	IL	1701	W61	L 2	W46	L 8	L21	2	4	B
40 KRAVCHUK Alex	OH	1696	W63	W36	L 5	L 3	L14	2	4	B
41 GRUMAN Feb	IL	1685	L46	L23	W65	L36	W53	2	4	B
42 LAHLUM Robert	IL	1662	L36	W63	W26	L15	L18	2	4	B
43 SWANSON Randall L	IL	1657	W27	L 4	L 3	L18	W56	2	4	B

54	MARSCHALL Ed	IL	1434	L11	L15	X	L38	L34	1	2	C
55	RODRIGUEZ Marco	MI	1422	W15	L 1	L 5	-	-	1	2	C
56	SERWATOWSKI Felix	MI	1406	L36	L45	D60	D57	-	1	2	C
57	SCOTT George A	IL	1400	D 4	L 2	L39	D56	L48	1	2	C
58	ZELINSKI Daryl R	IL	1500	D24	L22	L44	-	-	0.5	1	C
59	FENNER Charles E	IL	1407	H	L 4	L27	-	-	0.5	1	C
60	WALLACE Mark D	IL	1400	-	-	D56	-	-	0.5	-	-
61	TUNNELL Donald S	IL	-	L20	D27	L52	L34	L50	0.5	-	-
62	DIAZ Manuel F	IL	1590	L 6	L 7	-	-	-	0	-	-
63	SHAFFER Thomas M	IL	1545	L47	L31	F	-	-	0	-	-
64	KNIGHT Jerry	IL	1530	L 8	L23	-	-	-	0	-	-

26	KILIAN Philip	NE	-	W49	L34	L24	W56	W33	3	-	-
27	TUURI Adam M	WI	1171	W31	L 4	D 9	W51	-	2.5	5	DE
28	FISHER Timothy M	IL	1109	L 9	W46	L15	D29	W51	2.5	5	DE
29	HAYES Mike	IL	942	L21	L 5	W49	D28	W50	2.5	5	DE
30	REID Carl	IL	-	D33	W38	W50	L 8	L 9	2.5	-	-
31	OPANASYUK Bogdan	NE	-	L27	W41	D19	L18	W54	2.5	-	-
32	PEEKS Aaron	NE	-	L37	D43	W64	W50	L16	2.5	-	-
33	RAJA Huzefa Moham	IL	1269	D30	D45	L13	W57	L26	2	4	D
34	LEBALI Matthew	IL	1224	W46	W26	L 3	L13	L22	2	4	D
35	FARRELL Mike	IL	1208	W62	L 3	W47	L10	L15	2	4	D
36	MUELLER Michael D	WI	1204	L 8	W65	W45	L 5	-	2	4	D
37	ABRAM Lawrence	IL	1170	W32	W18	L 1	L11	L19	2	4	DE
38	KINGREY Chaene	OH	1142	H	L30	L43	W64	D44	2	4	DE
39	HENDRICKSON William	IL	1103	L 3	W59	L10	L45	W58	2	4	DE
40	GIAMPA Michael A	IL	1096	W15	L 1	W18	L 6	L20	2	4	DE
41	PEDERSEN John H	IL	1089	L16	L31	W65	W58	-	2	4	DE
42	KYSER Robert A	MZ	1084	L18	L52	W46	W47	L21	2	4	DE
43	SANSONE Ward S	MZ	1066	L 1	D32	W38	D22	L18	2	4	DE
44	HORNOR Richard	IL	1017	W 5	L21	D48	L 9	D38	2	4	JK
45	KENDZOR Derek	IL	-	D22	D33	L36	W39	L25	2	-	-
46	HARRER William	IL	-	L34	L28	L42	W59	W56	2	-	-
47	SHEILL Peter	MI	-	L 7	W49	L35	L42	W57	2	-	-
48	DIXON Brian	IL	1300	W57	L 2	D44	-	-	1.5	3	D
49	MONTOYA Jose J	IL	1144	L26	L47	L29	D62	W65	1.5	3	DE
50	WONG Kevin D	IL	1114	H	W19	L30	L32	L29	1.5	3	DE
51	SAWYER Christophe	NY	925	L11	W64	D22	L27	L28	1.5	3	DE
52	POLLACK Neal	WI	-	L24	W42	H	-	-	1.5	-	-
53	CAMARGO Miguel	IL	1321	-	-	-	-	W64	1	-	-
54	MONTOYA Fernando	IL	1110	L14	W62	L16	L25	L31	1	2	DE
55	POULAKOS Niko	IA	1071	W10	L20	L 5	L19	-	1	2	DE
56	ADAMS Martha E W	OH	1059	L 4	L15	W62	L26	L46	1	2	DE
57	LYNCH Rebecca	IN	999	L48	L10	W59	L33	L47	1	2	DE
58	PETTY Dan	IL	-	W64	L11	L 7	L41	L39	1	-	-
59	MELVIN Dorene M	MI	-	L12	L39	L57	L46	W62	1	-	-
60	WILLARD Gary W	IL	-	-	-	-	W65	-	1	-	-
61	GUTEN Gary	WI	1084	L17	L13	H	-	-	0.5	1	DE
62	PYATT Nikhil	IL	-	L35	L54	L56	D49	L59	0.5	-	-
63	MILLER Donald	IL	1335	F	-	-	-	-	0	-	-
64	JOHNSON Nancy S	IL	1245	L58	L51	L32	L38	L53	0	-	-
65	LYNCH Nicholas	IN	804	L 6	L36	L41	L60	L49	0	-	-

CLASSES D-E-UNRATED											
				score		tour					
1	GETZ Barney	IL	1319	W43	W40	W37	W14	W 8	5	32	D
2	MARTIN William H	IL	1084	X	W48	W20	W17	W 3	5	32	DE
3	WOOLLEY Scott	IL	1372	W39	W35	W34	W 4	L 2	4	12	D
4	ROUSTAN Pierre	IL	1319	W56	W27	W12	L 3	W23	4	12	D
5	STEVENS Joseph M	IL	1317	L44	W29	W55	W36	W24	4	12	D
6	STAPLES Carl	IL	1288	W65	L 8	W25	W40	W14	4	12	D
7	MARSHALL Kraig	IL	1216	W47	L14	W58	W16	W17	4	12	D
8	SALAMANCA Ron	IL	-	W36	W 6	W21	W30	L 1	4	-	-
9	EBERLE Kevin M	IN	1388	W28	L23	D27	W44	W30	3.5	7	D
10	MURADIAN Sevan A	IL	1321	L55	W57	W39	W35	D12	3.5	7	D
11	HAMILTON Lloyd T	IL	1289	W51	W58	L14	W37	D13	3.5	7	D
12	LEE Briant Hamor	OH	1203	W59	W16	L 4	W20	D10	3.5	7	D
13	BISHOP Jack	-	-	L23	W61	W33	W34	D11	3.5	-	-
14	WILLIAMS Ron	OH	1394	W54	W 7	W11	L 1	L 6	3	6	D
15	HAYES Christopher	IL	1368	L40	W56	W28	L23	W35	3	6	D
16	BREWER Kevin P	IL	1347	W41	L12	W54	L 7	W32	3	6	D
17	WIRTH Mike	IL	1340	W61	W24	W23	L 2	L 7	3	6	D
18	FRANK Randy	IL	1331	W42	L37	L40	W31	W43	3	6	D
19	KUNHART Jeff	IL	1301	H	L50	D31	W55	W37	3	6	D
20	RAHR Kenneth A	IL	1295	X	W55	L 2	L22	W40	3	6	D
21	CAMPBELL Daniel	IL	1293	W29	W44	L 8	L24	W42	3	6	D
22	BALES Robert J	IL	1274	D45	D25	D51	D43	W34	3	6	D
23	HAMER Philip	IL	1215	W13	W 9	L17	W25	L 4	3	6	D
24	LYNCH Brandon	IN	1196	W52	L17	W26	W21	L 5	3	6	DE
25	RASSETT Daniel S	WI	943	H	D22	L 6	W54	W45	3	6	DE

## ICA Awards Banquet

Over 60 friends of Illinois Chess came to the ICA Awards Banquet on March 13th at the Ramada Hotel. After an excellent luncheon, we were able to honor a number of players, organizers and volunteers.

After presentations to the winners of the Illinois Chess Tour, HelenWarren, as chair of the ICA awards committee, took over as MC (without the need of a microphone) to present the following Service Awards:

- Most Active Players:** Rudy Padilla, Albert Chow, Guy Kittleson.
- Chess City of the Year:** Bloomington/Normal.
- Player, Patron and Volunteer:** Bill Smythe.
- Service to ICA:** Todd Barre (Treasurer).
- Service to the Community:** Hector Hernandez, Bill Naff.
- Service to the Chess Club:** Larry Stilwell (Hillside).
- Service to Chess in the High School:** Les Bale (Lane Tech), Mike Pratts (Clemente), Keith Martin (Clemente).
- Service to Chess in the Junior High & Elementary School:** Jerry Esposito (Albright), Erv Sedlock (St. Charles).

Helen then announced the creation of the Billy Colias Excellence in Teaching Award and we presented a certificate commemorating the award to Billy's parents.

Afterwards, we watched a tape of the recent Nightline program on Chess. (This tape is available to ICA affiliates.) I'd like to thank everyone who attended this event...□

# Chicago Open, May 28-30,

Hyatt Regency Oakbrook.

\$30,000 projected prize fund,  
**\$20,000 Guaranteed**

7-SS in 4 sections. . See Chess  
Life for details.

**MAXI-TOUR.**

# TOURNAMENT CALENDAR

Call Chess Phone, (708) 832-5222, for up-to-date tournament results, and announcements of tournaments that may not be listed in Chess Life or the ICB. The ICA Chess Phone voice is Todd Barre. Unless otherwise noted, all tournaments require USCF membership. Illinois Tour events also require ICA membership.

Organizers - remember it is ICA policy that an event must be published in the ICA bulletin and marked as a tour event in order to be a tour event. Please send your tournament notices to: Bob Renaut, 1255 Oakton Lane, Naperville, IL 60540-0310 or call 708-983-0934.

**May 14-15,**  
**Billy Colias Memorial Tournament,** Palos Heights, IL  
5-SS, 2 sections (OPEN & UNDER 1800), 40/90 SD/30 40/2 SD 60. Palos Heights Community Center, 6601 West 127th Street, Palos Heights. EF: \$20 / \$10 if by 5/18, \$5 more at site. Reg: 8:30-9:30. RDS 10-2:30-7, 10-4:30. \$\$G: CHAMPIONSHIP SECTION \$500-300-200, \$150 to top master under 2300, EXPERT - \$150-100, CLASS A - \$150-100. UNDER 1800 \$200-\$150-\$100, CLASS C \$150-100, CLASS D & Below \$150-100, SPECIAL JUNIOR PRIZES, Entries/Info: Richard Verber, 1970 Tall Oaks Drive #3A, Aurora, IL 60505, (708) 978-1380.

**May 21,**  
**94 Tuley Park G/20 #3,** Chicago, IL  
5-SS, 501 E, 90th Place, EF: \$12, under 19 \$8. Reg. 11:00-11:45, Rds: 12, 12:50, 1:40, 2:30 and 3:20. Prizes if 16 or less 1st 35%, 2nd 25% best from lower half 20%, if 18 or more 1st 30%, 2nd 20%, middle 3rd 16% lowest 3rd 14%. Info: Tom Fineberg 721-3979.

**May 21-22, Illinois Junior Invitational,** Chicago, IL  
Illinois High School students rated 1300 or above will be invited. The winner will represent Illinois in the National Arnold Denker Tournament of Champions, August 15-19 in Chicago. Eligible players who do not receive invitations by

April 21 should contact Alan Losoff, PO Box 157, Morton Grove, IL 60053, (708) 966-5559.

**May 22,**  
**Chicago Chess Club Action #1,**  
4-SS, G/30, See Chess Life or Call Albert Chow for details (312) 761-5050

**May 28-30, Chicago Open,** Oakbrook,

**June 4, MCAC Mini Tour,**  
See Chess Life

**June 4,**  
**94 Tuley Park G/20 #4,** Chicago, IL  
5-SS, 501 E, 90th Place, EF: \$12, under 19 \$8. Reg. 11:00-11:45, Rds: 12, 12:50, 1:40, 2:30 and 3:20. Prizes if 16 or less 1st 35%, 2nd 25% best from lower half 20%, if 18 or more 1st 30%, 2nd 20%, middle 3rd 16% lowest 3rd 14%. Info: Tom Fineberg 721-3979.

**June 11,**  
**Fox Valley Low Cost Open #3,** Aurora,  
4-SS, G/60, Church of God at the corner of Galena Blvd and Lancaster, Aurora, IL, 60505. EF: \$12, \$7 juniors, (\$2.00 off to FVCC members), Reg: 8:00-8:30 am, Rounds 8:45, 11, 1:30, 3:45, Prizes (b20) 1st-\$50, 2nd-\$25, Top A,B,C \$15 each, Top D/E/unr \$15. For info call: Bob Renaut, 708-983-0934, 1255 Oakton Lane, Naperville, IL 60540. mini

**June 11-12,**  
**CCC Summer Open,** Chicago, IL  
4-SS, 40/60/ SD30, Call Albert Chow (312) 761-5050 for details, mini

**June 12,**  
**ICA Board Meeting,** Chicago, IL  
Ramada O-Hare, 1 pm.

**June 18,**  
**Barb City Late Spring Open,** DeKalb  
See Chess Life for details

**June 25,**  
**94 Tuley Park G/20 #6,** Chicago, IL  
5-SS, 501 E, 90th Place, EF: \$12, under 19 \$8. Reg. 11:00-11:45, Rds: 12, 12:50, 1:40, 2:30 and 3:20. Prizes if

16 or less 1st 35%, 2nd 25% best from lower half 20%, if 18 or more 1st 30%, 2nd 20%, middle 3rd 16% lowest 3rd 14%. Info: Tom Fineberg 721-3979.

**July 16,**  
**94 Tuley Park G/20 #6,** Chicago, IL  
5-SS, 501 E, 90th Place, EF: \$12, under 19 \$8. Reg. 11:00-11:45, Rds: 12, 12:50, 1:40, 2:30 and 3:20. Prizes if 16 or less 1st 35%, 2nd 25% best from lower half 20%, if 18 or more 1st 30%, 2nd 20%, middle 3rd 16% lowest 3rd 14%. Info: Tom Fineberg 721-3979.

**July 26-August 5, Bloomington**  
**U. S. Junior Championship,**  
**U. S. Women's Championship,**  
**U.S. Action Championship,**  
**U. S. Game 10 Championship,**

**August 7-19,**  
**U. S. Open,** Chicago, IL,  
95th Annual U.S. Open. 12-SS, 50/2-1/2, 20/1. Ramada O'Hare Hotel, 6600 North Mannheim Road, Rosemont, IL 60018. \$30,000 Guaranteed Prize Fund: 5000 - 3000 - 2500 - 2000 - 1500 - 1400 - 1200 - 1000, 2200 - 2399 1000 - 800 - 600 - 400 - 200, Expert 900 - 700 - 500 - 300 - 100, A 800 - 600 - 400 - 200 - 100, B 700 - 500 - 300 - 100, C 600 - 400 - 200 - 100, D 500 - 300 - 100 - 50, E 300 - 200 - 100, Unrated 200 - 100 - 50. Three convenient playing schedules - Traditional: rounds at 7 pm each evening 8/7-12 and 8/14-19, Split: rounds 1-6 at 1 pm (8/7-12), rounds 7-12 at 7 pm (8/14-19) and Busy Player Special: start with appropriate score for rating (over 2399 4, M 3-1/2, X 3, A 2-1/2, B 2, C 1-1/2, D 1, E 1/2 unrated 1/2) and play only rounds 7-12 (8/14-19) at 7 pm each evening. 1/2 point byes available in any round if requested by the day before the round, except that the total number of 1/2 point byes may not exceed your busy player percentage and byes for rounds 8-12 must be requested before the start of round 7 and may not be revoked. EF \$77 traditional, \$78 split, \$79 busy player by 7/29, ALL \$95 on site.

Advance entry \$25 less for juniors under 19. REG: 6-8 pm 8/6, 9-11 am 8/7, 2-5 pm 8/7, 2-5 pm 8/14. You must register 2 hours before the first round you play. Sets and boards provided, bring a clock if possible. HR 65-65-75-75. (708) 827-5131. Reserve by 7/29. Free Parking, free shuttle from airport and public transportation. INFO: Alan Losoff, PO Box 157, Morton Grove, IL 60053, (708) 966-5559 (evenings), internet: alanl@mcs.net. ENT: U.S. Chess: Attention U.S. Open Entries, 186 Rt 9W, New Windsor, NY 12553. (800) 388-KING [5464] or (914) 562-8350. NS W FIDE

**August 20.**  
**U.S. G/15 Championship.** Rosemont.

**August 27,**  
**94 Tuley Park G/20 #7,** Chicago, IL  
5-SS, 501 E, 90th Place, EF: \$12,  
under 19 \$8. Reg. 11:00-11:45, Rds:  
12, 12:50, 1:40, 2:30 and 3:20. Prizes if  
16 or less 1st 35%, 2nd 25% best from  
lower half 20%, if 18 or more 1st 30%,  
2nd 20%, middle 3rd 16% lowest 3rd  
14%. Info: Tom Fineberg 721-3979.

**September 2-4**  
**Illinois Open,** Chicago, IL

**Oct 28-30, Midwest Class**  
**Championship,** Oakbrook, IL

**Nov 19-20, Illinois Class**  
**Championship,** Chicago, IL

**Dec 10-11, Oak Park River Forest**  
**Winter Open,** Oak Park River Forest, IL  
**MAXI**

1995

**Feb 11-13, US Amateur Team**  
**Championships Midwest,** Oakbrook,

**March 24-26, Mid-America Class**  
**Championship,** Chicago, IL.

**April 7-9, National H.S.**  
**Championship,** Chicago, IL.

**April 7-9, National Elementary**  
**Championship,** Little Rock, AR.

**April 21-24, Chicago International,**  
Oakbrook, IL.

**May 12-14, National Junior High,**  
Dearborn, MI.

**May 19-21, National Open,** Las Vegas,

**May 28-30, Chicago Open,** Oakbrook,

**June 14-16, U.S. Junior Chess**  
**Congress - Midwest,** Chicago, IL.

**August 6-18, U.S. Open,**

**September 1-3, Illinois Open,**  
Chicago, IL.

**October 29-31, Midwest Class**  
**Championship,** Oakbrook, IL.

**November 18-19, Illinois Class**  
**Championship,** Chicago, IL.

---

## OAK PARK - RIVER FOREST CC NEWS

Jan 25: Albert Chow Group Chess Lesson. This even attracted 17 people; each got more than his \$5 worth as SM Chow spent more than two hours analyzing recent Grandmaster games and going over training and study aids.

Feb 15: USCF G/10 Tournament. OP-RF CC "Quick Play King" Jim Marshall having moved to Arizona, Bob Hansen, Wlad Boguslawicz, and S.E. Hendersen each made a claim as Marshall's successor by scoring 4-1 to lead 14 players in this five round tournament.

Feb 22: Team Speed Tournament. Three three-man team competed in this double round robin G/5 tourney. Jonathan Meltzer, Chuck Collins, and Damon McCoy scored 3.5-0.5 to beat out Marty Ptacek, Craig Ahmer, and Butch Thomas (2.5-1.5).

March 8 & 15: USCF Action Chess Tournament. Marty Ptacek, Bill Barker, Mark Stamatakos, and Craig Ahmer each ended up 3-1 and shared top honors in the 16 man field...□

## ST. CHARLES CHESS CLUB NEWS

By Dan Pradt

Ray Satterlee (2124) won the Club championship, a six round Swiss, drawing Jim Oberweis (1920) in the last round to finish at 5-1. Roy also drew Joe Splinter (2135) in the fourth round. Tied for second were Oberweis, Splinter, and Rudy Padilla (1605) at 4.5. Rudy drew Splinter, Bill Buttny (1933), and Mike Spiegel (1950). His 2100 performance is his best tournament result ever.

No player had a perfect result after the fourth round, and upsets, mostly by juniors, were common: Brent Lashinsky (1378) drew Mike Plett (1941) and Chuck Giertz (1676); Kevin Brewer (1347) beat Roger Allison (1800) and Erv Sedlock (1904); Blair Machaj (1480) drew Splinter; Mickey Jacobsen (1500) beat Plett; and Justin Saudauskas (1609) beat Buttny and drew Plett...□

---

## CHESS ON THE

Sixteen players competed in the Fox Valley Chess Club's March Monday Night Rated Quick Chess Tournament. The club holds a rated tournament on the third Monday night of every month.

There is an old saying "it is better to be lucky than good." This couldn't have been truer for Bob Renaut during this tournament. While ending up 4-0 and winning the \$20 1st place prize, Bob could have been easily 1-3, having lost positions in all of his first three games. In round one he dropped a piece on the 4th move to Ricky Moreno against Ricky's "Killer Grob". Mike Flynn lost his won endgame on time against Bob. It seemed like Bob could get going until his position was in deep trouble.

The top junior prize was split between Brad Hulke and Ricky Moreno...□

# ILLINOIS CHESS ASSOCIATION

## Century Club Members

Michael Belovesick Sr . . . . . Addison  
 Larry W. Blum . . . . . Rockford  
 Thomas Fineberg . . . . . Chicago  
 Fred Gruenberg . . . . . Palos Heights  
 Albert Sandrin . . . . . Chicago  
 Angelo Sandrin . . . . . Chicago  
 Bill Smythe . . . . . Chicago  
 Burton Vincent . . . . . Chicago  
 Helen Warren . . . . . Western Springs  
 Jim Warren . . . . . Western Springs  
 William Wentz . . . . . Milwaukee

## Gold Card Members

Todd Barre . . . . . Elmhurst  
 Tyrone Brooks . . . . . Chicago  
 Harland S. Hoisington . . . . . Ogden UT  
 Alan Losoff . . . . . Morton Grove  
 Kenneth Marshall . . . . . Lombard  
 Fred Meyers . . . . . Sterling  
 William Naff . . . . . Peoria  
 Peter Pelts . . . . . Niles  
 Daniel Pradt . . . . . Glen Ellyn  
 Michael Pratts . . . . . Chicago  
 Bob Renaut . . . . . Naperville  
 Irwin Rothschild . . . . . Park Forest  
 Arthur Sinclair . . . . . Evanston  
 Marcus Stinson . . . . . Singapore  
 Mitchel Sweig . . . . . Evanston  
 Richard Verber . . . . . Aurora  
 Louis Werner . . . . . Evanston  
 Sandy Zabell . . . . . Evanston

## Patron Members

Bob Ash . . . . . Urbana  
 Roy Benedek . . . . . Western Springs  
 Edward J. Blanco . . . . . Chicago  
 Dennis Bourgerie . . . . . Normal  
 Bill Brock . . . . . Chicago  
 Jim Brotsos . . . . . Chicago  
 Walter Brown, Jr. . . . . Crest Hill  
 Gregory Bungo . . . . . Eimhurst  
 Fred Burgess . . . . . Oak Forest  
 Anthony Callendo . . . . . Aurora  
 James Clark . . . . . Streator  
 Lawrence Cohen . . . . . Villa Park  
 Tom Cooper . . . . . Wheaton  
 Paul Cox . . . . . Chicago  
 Greg De Fotis . . . . . Lincolnwood  
 Joe Delay . . . . . Schamburg  
 Leroy Dubeck . . . . . Cherry Hill NJ  
 Kalman Farkas . . . . . Milwaukee WI  
 William Graves . . . . . Chicago  
 Steve Hansen . . . . . Chicago  
 Steven Herr . . . . . Chicago  
 Charles Hicks . . . . . Naperville  
 Dean Hightower . . . . . DeKalb  
 Thomas Howell . . . . . Evanston  
 Jeffery Hyland . . . . . Mount Prospect  
 Toshio Imai . . . . . East Lansing, MI  
 Kazys Janauskas . . . . . Darien  
 Mike Jenkins . . . . . Cary  
 Gersham Johnson . . . . . Hinsdale  
 Stephen Josephs . . . . . Hinsdale  
 Tim Just . . . . . Gurnee  
 Dan Kamen . . . . . Buffalo Grove  
 Leo Kaushansky . . . . . Wilmette

Scott Kitsley . . . . . Shorewood WI  
 Thomas Knoedler . . . . . Springfield  
 Walter Kocjan . . . . . Northlake  
 Warren Kreckler . . . . . Chicago  
 Peter Kuhn . . . . . Des Plaines  
 Dr. Kevin Kukla . . . . . Hanover Park  
 Stephen Lauger . . . . . DeKalb  
 Michael Lester . . . . . Chicago  
 Marc Lonoff . . . . . Northbrook  
 Ed Marschall . . . . . So. Barrington  
 Eugene Martinovsky . . . . . Naperville  
 Patrick Maurer . . . . . Glen Ellyn  
 Thomas Mayka . . . . . Wheeling  
 Patrick McMillen . . . . . Aurora  
 Steve Monti . . . . . Chicago  
 William Naviamos . . . . . Chicago  
 Alex Pehas . . . . . Darien  
 Marvin Rogan . . . . . Chicago  
 Steve Rydberg, Jr. . . . . Mokena  
 Ray Satterlee . . . . . Wheaton  
 Andrew Schultz . . . . . Evanston  
 Mark Sefcheck . . . . . Naperville  
 Anthony Sillars . . . . . Northampton MA  
 Richard Simonetti . . . . . Elmwood Park  
 Leonard Spiegel . . . . . St. Charles  
 Joe Splinter . . . . . Hanover Park  
 Robert Stoitz . . . . . River Forest  
 Sonia Taki . . . . . Chicago  
 James Tanaka . . . . . Chicago  
 George Umezawa . . . . . Chicago  
 Mike Varady . . . . . Effingham  
 James Welton . . . . . Wildwood  
 Douglas White . . . . . Schaumburg  
 Don Winsauer . . . . . West Dundee  
 Harold Winston . . . . . Naperville  
 Philip Wong . . . . . Wilmette  
 David Wulatin . . . . . River Forest

## ICA ELECTED OFFICERS

Aian Losoff, President  
 9402 N. Octavia, Morton Grove, IL 60053  
 (708) 966-5559 or Internet aian@mcs.net

Bob Renaut, Metro Vice-President  
 1255 Oakton Lane, Naperville, IL 60540  
 (708) 983-0934 or Internet brenaut@mcs.net

Dennis Bourgerie, Downstate Vice-President  
 1621 N. School St., Normal, IL 61761  
 (309) 454-3842

Ken Marshall, Secretary  
 357 W. Grove, Lombard, IL 60148  
 (708) 932-1455

Todd Barre, Treasurer  
 136 Evergreen Elmhurst, IL 60126  
 (708) 834-0862

## USCF Delegates

by virtue of their USCF position

Fred Gruenberg . . . . . Vice-President  
 Tim Just . . . . . Regional Vice-President  
 Garrett Scott . . . . . Regional Vice-President  
 Frank Skoff . . . . . Life Voting Member  
 Helen Warren . . . . . Life Voting Member  
 Harold Winston . . . . . Life Voting Member

by ICA-appointment

Alan Losoff  
 Todd Barre  
 Kenneth Marshall  
 Bob Renaut  
 Richard Verber

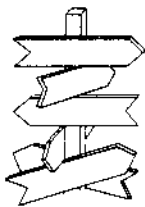
## USCF Voting Members

ICA appointed

Bill Naff . . . . . Jim D. Oberweis  
 Erv Sedlock . . . . . Jim Warren  
 Dennis Bourgerie . . . . . Larry Cohen  
 Bill Symthe . . . . . Ken Lewandowski  
 Dennis Grant . . . . . Walter Brown Jr.

ICA appointed alternates

Bill Wilkinson . . . . . Hector Hernandez  
 Tom Cooper . . . . . George Marino  
 Chris Baumgartner . . . . . Keith Martin  
 Ed Blanco . . . . . Glenn Panner  
 Jim Brotsos . . . . . Bill Reed  
 Glen Gratz . . . . . Angelo Sandrin  
 Albert Chow . . . . . Howard Wachtel



# Where to Play Chess

## ICA Club Affiliates



**AMERICAN POSTAL CHESS TOURNAMENTS** sponsors postal events & sells chess books & equipment. Jim or Helen Warren, P.O. Box 305, Western Springs 60558. (708) 246-6665.

**"THE BASEMENT"**, Daniel Kamen, 1121 Highland Grove Drive, Buffalo Grove, IL 60089, (708) 537-4956.

**CENTRAL LAKE COUNTY CHESS CLUB** meets Fridays, 7:15 to 12:00AM College of Lake County, Bldg. 1, Washington at Rte 45, Grayslake. Dennis Grant, 1657 McKay, Waukegan 60087. (708) 336-5188.

**CHAMPAIGN CHESS CLUB** meets Tuesdays at 7 p.m. at the Springer Recreation Center, 301 N. Randolph, Champaign, IL 61820. c/o Duane Kimme, 401 N. Prairie Rd., Champaign, IL 61820. (217) 359-0421.

**THE CHESS BOARD BBS** is a computer chess club. Use your computer, modem and phone to play electronic postal chess, exchange international messages, download chess related files. SysOp: James Reames, Chicago, IL. MODEM (312) 784-3019 (1200-14400 bps)

**CHICAGO INDUSTRIAL CHESS LEAGUE** organizes frequent competition among commercial/government teams with awards, ratings, & special events. Tony Jasaitis (312) 406-6420.

**CONTINENTAL CHESS ASSOCIATION**, P.O. Box 249, Salisbury Mills, NY 12577. Bill Golchberg.

**DOWNERS GROVE PARK DISTRICT CHESS CLUB** meets Thurs., 6:30-10 p.m., Lincoln Center, 935 Maple Ave., Downers Grove. Affiliated with USCF & ICA. George Uffner, (708) 960-9382.

**DUBOIS ELEMENTARY SCHOOL CHESS CLUB**, c/o Andrew Skaar, 308 So. Douglas, Springfield, IL 62704.

**EVANSTON TOWNSHIP HIGH SCHOOL CHESS CLUB** Ken Lewandowski 1600 Dodge Avenue, Evanston IL 60204.

**EWALT CHESS ENTERPRISE**, P.O. BOX 672, St. Ann, MO 63074

**FOX VALLEY CHESS CLUB** meets Monday evenings, 6:30 p.m. to 11:30, Church of God, corner of Galena Blvd and Lancaster, Aurora, IL, Bob Renaut, (708) 983-0934 or Dick Verber (708) 978-1380.

**GREATER PEORIA CHESS FEDERATION** meets Mon., 7-11 p.m., Garrett Center, 824 N. University, Peoria. Bill Wilkinson, 901 N. Rebecca Pl., Peoria 61606. (309) 673-9455.

**HILLSIDE CHESS CLUB** meets Fridays 7-11:30 p.m. at Hillside Baptist Church, 5152 Butterfield Road, Hillside, (708) 449-8717, Larry Stilwell (708) 963-8799.

**HOLY TRINITY NORTHSORE CHESS CLUB** meets Tuesday 7-10 pm at Holy Trinity Church, 2328 Central (at Shermer), Glenview, IL. Dale Hurst, P.O. Box 248, Glenview, IL. 60025. (708) 729-9000.

**LAKE COUNTY CHESS ASSOCIATION** sponsors rated tournaments in the Grayslake-Zion area. Tim Just, 37165 Willow, Gurnee 60031. (708) 244-7954.

**MIDWESTERN CHESS ADVENTURES (MCAC)** 3924 N. Hermitage, 2nd floor, Chicago, IL 60613, (312) 871-2148. Attn: Christopher Baumgartner.

**OAK PARK/RIVER FOREST CHESS CLUB** meets Tues., 7 midnight, Dominican Conference Center, 7200 W. Division, River Forest. Ken Marshall, 357 W. Grove, Lombard 60148. (708) 932-1455.

**PARK FOREST CHESS CLUB** meets Thursdays, 7-10:00 p.m., Freedom Hall, Orchard & Lakewood, Park Forest. Lawrence Cohen, 135 Westwood, Park Forest, 60466. (708) 748-5911.

**PAUL RODGERS' CHESS TOURNAMENTS** 810 Peach Tree, Urbana, IL 61801.

**RUDY LOZANO LIBRARY CHESS CLUB**, 1805 So. Loomis, St., Chicago, 60608. Hector Hernandez (312) 733-4329.

**SMYTHE DAKOTA COMPETITIONS** encourages and offers financial support for Plus-Score Mini-Tours at sites in Chicago and suburbs. Bill Smythe, 7445 N. Greenview #311, Chicago, IL 60626, (312) 761-2455.

**ST. CHARLES CHESS CLUB** meets Thursday at 7 p.m., Baker Community House, 101 S. 2nd (Rte. 31), St. Charles. Erv Sedlock, 6 N. 307 Old Homestead Rd., St. Charles, IL 60174. (708) 377-7995.

**THE SOUTH SUBURBAN CHESS CLUB OF GREATER CHICAGO** meets Friday from 7p.m. to 12a.m. at Palos Heights Recreational Center, 6601 W. 127th St., Palos Heights, IL.: Fred Gruenberg, (708) 489-5800.

**TULEY PARK CHESS CLUB** hold frequent Saturday tournaments, Tuley Park Field House, 501 E. 90th Pl., Chicago. Thomas Fineberg, 7321 S. South Shore Dr., Chicago 60649, (312) 721-3979.

**TWIN CITIES CHESS CLUB** meets Tuesdays at 7 p.m. Lincoln Leisure Center, Bloomington. Dennis Bourgerie, 1621 N. School St., Normal, IL 61761. (309) 454-3842.

Join the Illinois Chess Association and receive six issues of the Illinois Chess Bulletin. In addition you'll qualify to enter over two dozen tournaments on the Illinois Chess Tour. Every game you win or draw in a tour event earns you "tour points" that can add up to cash prizes at year-end. Finally, you'll be supporting the activities of the Illinois Chess Association. Every year, the ICA organizes major tournaments like the Illinois Open and Illinois Class Championships; the ICA has bid for the National Open, the US Open and the US Class Championships to be held in Illinois. In addition, the ICA sponsors scholastic clinics, runs a tournament clearinghouse, and promotes and publicizes chess activity statewide. If you would like to show increased support for Illinois chess, please consider renewing as a Century Club, Gold Club, or Patron member. Patrons are acknowledged in each issue of the ICB and receive their magazines by first-class mail.

Mail To: Ken Marshall, ICA Membership Secretary  
357 W. Grove  
Lombard, IL 60148

### ICA MEMBERSHIP RENEWAL

NAME \_\_\_\_\_  
ADDRESS \_\_\_\_\_  
CITY \_\_\_\_\_ STATE \_\_\_\_\_ ZIP \_\_\_\_\_

	Circle Membership Type	
CENTURY	\$100	GOLD \$50
PATRON	\$35	REGULAR \$14
JUNIOR	\$8	AFFILIATE \$25

# FOX VALLEY CHESS CLUB'S LOW COST OPEN #3

**JUNE 11, 1994**  
**ICA MINI TOUR**

4- \$\$ G/60 format

1st - \$50

Class B: \$15

2nd - \$25

Class C: \$15

Class A: \$15

Class D/E/unr: \$15

EF \$ 12 Adults - \$7 Juniors (\$2 off for FVCC members).

Registration - 8:00 - 8:30

Rounds - 8:45 - 11:00 - 1:30 - 3:45

Prizes based on 20 entries

**Church of God**  
**Corner of Galena Blvd and Lancaster**  
**Aurora, Illinois**



**ILLINOIS**

**CHESS ASSOCIATION**

c/o Ken Marshall  
357 W. Grove  
Lombard, IL 60148

Address correction  
requested

FIRST-CLASS MAIL  
U.S. POSTAGE  
PAID  
ASTORIA, IL  
PERMIT NO. 9

Time Value Material