

ILLINOIS CHESS BULLETIN

JANUARY - FEBRUARY 1995 VOL. XVIII NO. 1

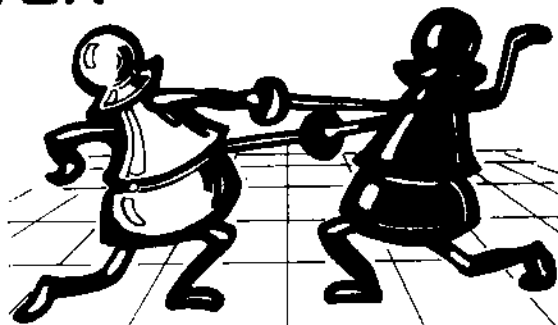
AN ICA BI-MONTHLY PUBLICATION - \$2.95

MIDWEST CLASS WINNERS

**DMITRY GUREVICH
RAYMOND GARRISON
JACOB RATNER
CRAIG COCHRAN
ERSAN JASAREVIC
WILLIAM RIESER
DEVAGNA MODY
SEVAN MURADIAN
ROBERT SHOUSE
GREGORY WITEK**

ILLINOIS CLASS WINNERS

**DMITRY GUREVICH
JAMES D. OBERWEIS
GEE LEONG
KEN WHITENER
JOSH BOORSTEIN
DALE HENDERSON**





Editor
1255 Oakton Lane, Naperville, IL, 60540, 708-983-0934

Games Archivist
161 Oakwood Drive, Bolingbrook, IL, 60440, 708-759-7757

Games Editor
161 Oakwood Drive, Bolingbrook, IL, 60440, 708-759-7757

Scholastic Editor
654 Hillside, Glen Ellyn, IL 60137, 708-858-7511

Calendar Editor
1255 Oakton Lane, Naperville, IL, 60540, 708-983-0934

Tour Statistician
7445 N. Greenview, Chicago, IL, 60626, 312-761-2455

Bob Renaut
708-983-0934

Alan Watson
708-759-7757

Alan Watson
708-759-7757

Daniel Pradt
708-858-7511

Bob Renaut
708-983-0934

Bill Smythe
312-761-2455

MEMBERSHIP AND SUBSCRIPTIONS

The Illinois Chess Bulletin (ICB) is published bimonthly by the Illinois Chess Association. ICA membership includes a subscription to ICB. Century Club, Gold Card, and Patron members receive their ICB by first-class mail.

ANNUAL MEMBERSHIP RATES

Century Club	\$100.00
Gold Card	\$50.00
Patron	\$35.00
Regular	\$14.00
Junior (under 18)	\$8.00

Send your subscriptions and address corrections to:
Alan Losoff (ICA Membership Secretary)
9402 N Octavia, Morton Grove, IL 60053

SUBMISSION DEADLINE

The deadline for submissions to the March - April 1995 issue is January 30, 1995.

ICA AFFILIATION

Chess clubs and other organizations which promote chess activity may affiliate with the ICA. Benefits include a copy of the ICB by first class mail, a listing under "Where to Play Chess," discounted advertising rates, free event advertising on Chess Phone and the right to run ICA Tour Events. ICA Affiliation costs \$25; please remit to the Membership Secretary.

ADVERTISING RATES

Full page	\$90
Half page	\$54
Quarter page	\$36
Eighth page	\$24

10% discount for the same ad in consecutive issues. 1/3 discount for ICA affiliates. All ads must be camera-ready to qualify for above rates; minimum \$20 charge for layout. Payment must accompany ad. The ICA & ICB reserve the right to reject advertising.

Copyright© 1995 Illinois Chess Association

TABLE OF CONTENTS

Editor's Corner.....	3
President's Podium.....	3
ICA Tour Standings	4
GM Gurevich's Corner.....	5
Annotated Games from the Midwest Class	8
ICA - Warren Junior Program Update.....	15
Hillside Storms Oak Park.....	15
Annual Proviso West Chess Clinic	16
Reader's Retort	17
Deja Vu - A Review	18
Dmitry Gurevich wins Illinois Class.....	18
\$10,000 Grant for Master Life Achievement.....	19
A Few Good Men	19
Computers in Chess	20
Rule Book Tactics.....	22
Illinois Top 50	24
Time Controls a Third Look	25
Reader's Showcase.....	27
A Winning Team	29
2nd Annual Latio Chess Championship	30
Chess on the Fox	31
Illinois Tour Crosstables	33
Tournament Calendar.....	34
Oak Park - River Forest Chess Club News	35
Illinois Chess Association Patrons.....	38
Where to Play Chess.....	39

**Need the latest chess tournament info?
Call Chess Phone 708-832-5222**

EDITOR'S CORNER



The editor's corner will resume with next issue as I step aside to make room for the outgoing ICA presidential remarks.

OUTGOING PRESIDENT'S PODIUM

I'd like to end my term as president of ICA with a thank you for some of the many people who make the ICA a successful chess organization.

Ken Marshall has served several terms as Secretary, and with his latest term took on the huge job of membership secretary. Ken has done an outstanding job of keeping the membership list up-to-date and mailing membership cards promptly.

Bob Renaut is retiring after one term as Metro Vice President, but continues as editor of the Illinois Chess Bulletin. Under Bob's stewardship, the award winning ICB continues to improve.

Dennis Bourgerie and Todd Barre have been elected to their second terms as Downstate Vice President and Treasurer, respectively. I'm sure they will be as much help to the new ICA president, Jim Oberweis, as they have been to me.

Many others have contributed to the growth and success of ICA. There isn't room to list them all, but every one of them has my heartfelt thanks.

Don't forget the U.S. Amateur Team - Midwest, February 18-19 at the Hyatt Oakbrook. This is the 3rd year at this site, and this year the ICA is co-sponsoring the event with the USCF. If you need help forming teams, give me a call (evenings) at (708) 966-5559.

And mark your calendar for the ICA awards Banquet, March 12th at Harvey's Prime Rib, 331 E Ogden Av, Westmont 60559. Watch your mail for an invitation.

-Al Losoff

NEW PRESIDENT'S PODIUM



It is with great pleasure and a sense of responsibility that I look forward to serving you for the next two years as president. I have a few ideas, but I would very much like to hear yours. Chris Baumgartner and others suggested receipts for ICA memberships. Al Losoff and Ken Marshall have already implemented that suggestion. I'd like to hear your ideas! You can reach me at Oberweis Asset Management 708 801-4766.

I do have one request. Chess players by nature are very competitive people. None of us like to lose. In fact, many of us play other games, none of which are as exhilarating to win, not as deflating to lose. After all, if we lose at golf it was because of an unlucky roll of the ball. If we lose at bridge or poker, it was because of bad cards - the "luck of the draw". But when we lose at chess, some one just out thought us. What could be more irritating? Of course when we win, we out-thought our opponent and what could be more exhilarating?

Unfortunately our competitive spirit sometimes gets carried too far in non-game settings. We're sometimes quick to criticize tournament directors or organizers because they do something differently than we might. We're quick to criticize student development programs and the people that make them happen. And we're quick to criticize the USCF for many of its efforts.

My request is this - before you criticize a chess player or organization, find five good things to mention about that player or organization. This is merely good management technique applied to chess. One of the first lessons MBA candidates learn in graduate school is the importance of finding good things that employees do rather than just negatives to criticize. In well run companies or organizations, managers will always find at least five positive things to comment on for each negative one they might discuss. Let's be sure we're a good organization, not just a group of competitive players!

-Jim Oberweis

ILLINOIS TOUR STATUS

This list reflects the following
1994 Tour events:

Tim Just Winter Open/Reserve X
Peoria Winter Tornado
2nd Annual MCAC Plus-Score
Greater Peoria Open, Peoria
Fox Valley Low Cost Open #1
Mid-America Class Championship
Peoria Spring Tornado (OPEN only)
Fox Valley Low Cost Open #2
Chicago International/Amateur
Chicago Open
MCAC at DePaul
Fox Valley Low Cost Open #3
Fox Valley Low Cost Open #4
Bradley Summer Open
Fox Valley Low Cost Open #5
Chicago Chess Club Plus-Score
Chicago Chess Club Plus-Score
Peoria Tornado
Chicago Chess Club Plus-Score G/30
Tim Just Lake County Open
Midwest Class Championship
Micro Resales, Champaign
Chicago Chess Club Plus-Score G/60
Fox Valley Low Cost Open #7
Illinois Class

For players with fewer than three 1994
Tour events, the number of events (1 or
2) is shown in parentheses. A player
must have played in at least three Tour
events during 1994 to be eligible for
year-end Tour prizes.

NOTE: ICA membership is required for all
Illinois residents playing in ICA Tour events.
Residents of other states are not required to join
ICA if they are members of their home state
chess associations. However, Tour points earned
by out-of-staters do not count unless they are ICA
members.

We have attempted to remove the names of out-
of-state non-members from the following list.
Because the membership records are separate
from the Tour records, the names of some non-
members may remain. Membership checks will
be performed at year-end to determine prize
eligibility.

Master Tour Points:

CHOW Albert	106.5
GUREVICH Dmitry	97
MARTINOVSKY Eugene	59
PANGAN Camilo	55.5
MANION Josh	51
MOTE David	39
KITTILSEN Guy	35.5
ZIANE Nouredine	33
KARKLINS Andrew	32
ZINYTCH Miron	31.5
TYEHIMBA Bem (2)	31
STEIN Peter	30

Expert Tour Points:

SZPISJAK Steve	48
HERNANDEZ Hector	38
SMYTHE Bill	37.5
KITTILSEN Guy	35.5
KARKLINS Erik	35
OBERWEIS James D Sr	34.5
FLAGA Krzysztof	34
SAX Robert	33
CONDON James	31.5
MC CARTHY Mike	31
FAGAN James	30.5
INUMERABLE Florentin	30
TUMS John	30
VON KROGH Christophe	29.5
NAFF Bill	29

Class A Tour Points:

OBERWEIS James D Sr	62.5
KITTILSEN Guy	50.5
SMYTHE Bill	37.5
FAGAN James	36.5
SUKCHAROENPHON Thavo	35.5
LORING Steve	33
SUKCHAROENPHON Kenga	30
ANDERSON Phil	29.5
BOLITHO Tom	29.5
FRISKE Thomas	28.5
WILLIAMS Kent	27.5

Class B Tour Points:

ISRAELSEN Kirk	73.5
CLAY Harry	65
PADILLA Rudy	65

MIEL James	61.5
RATNER Jacob	49
HENDERSON S E	42
ENGELEN Mark	39
PRATTS Michael	35
MC COY Damon	34
OBERWEIS Julie (2)	33.5
COVIC Mehmed	30.5
DELAY Joe	29.5
GAPUZ Wilfredo	29
SADAUSKAS Justin	29
SWANSON Randall	28

Class C Tour Points:

SIMS Mike	89
DELAY Joe	47.5
JASAREVIC Ersan	46
RIESER William	44.5
BOORSTEIN Josh L (2)	40
MC COY Damon	38
PRATTS Michael	38
GROEGER Andrew	36
PEDERSEN Ken	35.5
MITCHELL Gary	33
COCHRAN Craig (2)	31
GORDIN Vladimir	31
BACKSTROM Orn	30

Class D Tour Points:

ROUSTAN Pierre	48.5
STEVENS Joe	46
GETZ Barney	44
HENDERSON Dale	40
HORNOR Richard	38
MURADIAN Sevan	37
HAMILTON Lloyd	35
MARTIN William H (2)	34
BALES Robert Jr	32

Class E Tour Points:

MARTIN William H (2)	32
HENDRICKSON William	27
ROBLEDO Mark Jr	24.5
SHOUSE Robert (1)	19
JOHNSON Nancy	17
MC CULLEY Matthew	14
WHEELER Jason (1)	12
RABINOVICH Yevge (2)	11

GM GUREVICH'S CORNER

by GM Dmitry Gurevich

Boris Gulko wins the US Championship!

Boris Gulko's victory in the United States Championship was very convincing. Note also that it was a fantastic comeback after last years disaster (1993 - 4 loses, 1994 - 6 wins and no loses!). Boris had a bad position in only his game against GM Nick deFirmian. Here are the examples for the new champion's impressive play in the opening (vs Shabalov), middle game (vs Kaidanov, Kreiman, Browne) and the endgame (vs Yermolinsky and myself). Gulko's powerful play against Yermolinsky gives us an exception to the rule "Put your pawns on the square opposite the color of your bishop diagonals".

Gulko, Boris - Browne, Walter U.S. Championship (01), 1994

1.c4 e5 2.♖c3 ♘c6 3.♗f3 f5 4.g3 ♗f6 5.d4 e4 6.♗h4 g6 7.♙g5 ♙g7 8.♙d2 O-O 9.♙g2 ♗e7 10.f3 exf3 11.♙xf3 c6 12.♙g2 d6 13.O-O ♙e6 14.d5 cxd5 15.cxd5 ♙f7 16.♙h1 ♙d7 17.a4 ♙ae8 18.♙e3 ♘c8 19.♙d4 ♙h8 20.♗f4 ♙g8 21.b3 ♙e7 22.♙a1 a6 23.e4 ♙fe8 24.♙g2 ♗g4 25.♙h3 ♙xd4 26.♙xd4+ ♙g7 27.exf5 gxf5 28.♗h5 ♙e5 29.♗xg7 ♙xg7 30.♙xg4 fxc4 31.♙c1 ♗e7 32.♙xe5 dxe5 33.♙e4 h5 34.d6 ♗c6 1-0

Yermolinsky, Alexander-Gulko, Boris 1994 U.S. Championship (02), 1994

1.e4 c6 2.d4 d5 3.e5 ♙f5 4.♗f3 e6 5.♙e2 c5 6.O-O ♗e7 7.c4 ♗bc6 8.♗c3 a6 9.cxd5 ♗xd5 10.♙g5 ♗xc3 11.bxc3 ♙e7 12.♙e3 O-O 13.dxc5 ♙c7 14.♙d4 ♗a5 15.♙d3 ♙xd3 16.♙xd3 ♙fd8 17.♙fd1 h6 18.♙e3 ♙d5 19.♗d2 ♙ad8 20.♙g3

♗c6 21.♗b3 ♙xe5 22.♙xe5 ♗xc5 23.♙f1 ♗c4 24.♙e2 e5 25.♙e3 f5 26.♙xd5 ♙xd5 27.f3 ♗xe3 28.♙xe3 ♙xc5+ 29.♙e2 ♙e7 30.c4 ♙d7 31.♙d1 ♙xd1 32.♙xd1 ♙f7 33.♙e2 ♙e6 34.♙d3 h5 35.a4 ♙b4 36.♗c1 ♙d6 37.♗b3 ♙c5 38.h3 h4 39.♗a5 b6 40.♗b3 ♙f2 41.♙e2 ♙g1 42.♙d3 a5 43.♙e2 c4 44.fxe4 fxe4 45.♙d2 ♙e5 46.♗c1 ♙c5 47.♗e2 ♙e7 48.♙c3 ♙b4+ 49.♙c2 g5 50.♙d1 e3 51.♙c1 ♙d2+ 52.♙c2 0-1

deFirmian, Nick - Gulko, Boris U.S. Championship (03), 1994

1.e4 c6 2.d4 d5 3.♗c3 dxc4 4.♗xe4 ♗d7 5.♙d3 ♗g6 6.♗g5 e6 7.♗f3 ♙d6 8.♙e2 h6 9.♗e4 ♗xe4 10.♙xc4 ♙c7 11.♙g4 ♙f8 12.O-O c5 13.♙el c4 14.♙f1 b5 15.a4 b4 16.b3 c3 17.♗e5 ♗xe5 18.dxc5 ♙e7 19.♙e3 ♙b7 20.♙ad1 g6 21.h4 h5 22.♙f4 ♙g7 23.♙d6 ♙d5 24.♙xb4 ♙hd8 25.♙d4 ♙g8 26.♙xd8+ ♙xd8 27.g3 a5 28.♙g2 ♙xg2 29.♙xg2 ♙c6+ 30.f3 ♙e7 31.♙d1 ♙d8 32.♙xd8+ ♙xd8 33.♙xd8+ ♙h7 34.♙g5 ♙a6 35.♙d3 ♙c6 36.♙f6 g5 37.♙xg5 ♙c5 38.♙f4 ♙g6 39.g4 ♙b4 40.♙g3 ♙c5 41.♙d1 ♙b6 42.♙g5 ♙c5 43.♙f4 1/2 - 1/2

Gulko, Boris - Orlov, Georgy U.S. Championship (04), 1994

1.d4 e6 2.c4 d5 3.♗c3 c6 4.e3 f5 5.f4 ♗f6 6.♗f3 ♙e7 7.♙e2 O-O 8.O-O ♗e4 9.♙d2 ♗d7 10.♙c1 ♗d6 11.♗e5 ♙d6 12.a3 ♗xc3 13.♙xc3 ♙xe5 14.dxc5 ♗e4 15.cxd5 exd5 16.♙b4 ♙f7 17.♙d4 ♙e6 18.♙fd1 1/2 - 1/2

Ivanov, Alexander - Gulko, Boris 1994 U.S. Championship, (05), 1994

1.e4 e6 2.d4 d5 3.♗d2 c5 4.exd5 ♙xd5 5.♗g3 cxd4 6.♙c4 ♙d6 7.O-O ♗f6 8.♗b3 ♗c6 9.♙e2 ♙e7 10.♙g5 O-O 11.♙fel a6 12.♙ad1 b5 13.♙d3 ♙b7 14.c3 ♙ac8 15.♙bl ♙fd8 16.♗bxd4 ♗xd4 17.♗xd4 ♙c5 18.♙e3 ♙c7 19.a3 ♗d5 20.♙c1 ♙c5 1/2

Gulko, Boris - Gurevich, Dmitry U.S. Championship, (06), 1994

1.c4 c5 2.♗f3 ♗f6 3.♗c3 b6 4.e4 d6 5.d4 cxd4 6.♗xd4 ♙b7 7.♙e2 g6 8.g3 ♙g7 9.♙g2 O-O 10.O-O ♗c6 11.♗xc6 ♙xc6 12.♙d1 ♗d7 13.♗d5 ♙e8 14.♙g5 h6 15.♙e3 ♙c8 16.♙a1 ♗b7 17.♙d2 ♙h7 18.♙d4 ♗f6 19.♗xf6+ exf6 20.f3 h5 21.b3 ♙h6 22.♙e3 ♙xe3+ 23.♙xe3 f5 24.♙f4 ♙e5 25.exf5 ♙xf5 26.♙xd6 ♙xd6 27.♙xd6 ♙xf3 28.♙xf3 ♙xf3 29.♙d7 a6 30.♙d6 ♙b8 31.♙f1 ♙xf1+ 32.♙xf1 ♙g7 33.♙e2 ♙f8 34.♙d7 ♙g7 35.b4 h4 36.gxh4 ♙h8 37.♙d4 g5 38.♙d3 gxh4 39.♙d6 ♙b8 40.a4 h3 41.b5 axb5 42.axb5 ♙a8 43.♙xb6 ♙a2 44.c5 ♙xh2 45.c6 ♙c2 46.♙xc2 h2 47.c7 h1♙ 48.c8♙ ♙e4+ 49.♙c3 ♙e3+ 50.♙b4 ♙xb6 51.♙c5 ♙e6 52.b6 ♙e4+ 53.♙c4 ♙bl+ 54.♙c5 ♙f5+ 55.♙d5 ♙c8+ 56.♙b5 ♙e8+ 57.♙a6 ♙a4+ 58.♙b7 f6 59.♙b8 ♙f4+ 60.♙c8 ♙cl+ 61.♙d8 ♙f4 62.b7 ♙b8+ 63.♙d7 ♙g6 64.♙e4+ ♙g5 65.♙e3+ ♙g4 66.♙d4+ ♙g5 67.♙c5+ 1-0

Finegold, Ben - Gulko, Boris U.S. Championship(07), 1994

1.d4 e6 2.e4 d5 3.exd5 exd5 4.♗f3 ♗f6 5.♙d3 ♙e7 6.O-O ♙g4 7.h3 ♙h5 8.♙f4 O-O 9.♗bd2 c5 10.dxc5 ♙xc5 11.c3 ♗c6 12.♙b3 ♙d7 1/2

Gulko, Boris - Kaidanov, Gregory
U.S. Championship, (08), 1994

1.c4 c6 2.e4 d5 3.exd5 ♖f6 4.d4
 cxd5 5.♗c3 e6 6.♗f3 ♗e7 7.cxd5
 ♗xd5 8.♗d3 ♗c6 9.O-O O-O
 10.♗e1 ♗f6 11.a3 ♗d7 12.♗c2 ♗c8
 13.♗e4 ♗e7 14.♗d3 g6 15.♗d2
 ♗b6 16.b4 ♗fd8 17.♗b3 ♗e8
 18.♗a1 a6 19.h4 ♗a7 20.♗c5 ♗c6
 21.h5 ♗a7 22.hxg6 hxg6 23.♗xe6
 fxe6 24.♗xe6 ♗f7 25.♗xg6+ ♗f8
 26.♗h6 ♗e8 27.♗e1 1-0

Christiansen, Larry - Gulko, Boris
U.S. Championship, (09), 1994

1.c4 ♗f6 2.♗c3 e6 3.e4 d5 4.e5 d4
 5.exf6 dxc3 6.bxc3 ♗xf6 7.d4 e5
 8.♗f3 exd4 9.♗g5 ♗e6+ 10.♗e2
 f6 11.♗xd4 ♗f7 12.♗h4 ♗c5
 13.♗h5 g6 14.♗e2+ ♗f8 15.♗f3
 ♗g7 16.O-O ♗e8 17.♗d2 c6
 18.♗fel ♗e7 19.♗abl ♗a6 20.♗g3
 ♗c5 21.h4 ♗d7 22.h5 ♗f8 23.hxg6
 hxg6 24.♗ed1 ♗ac8 25.♗f4 ♗g8
 1/2

Gulko, Boris - Seirawan, Yasser
1994 U.S. Championship (10), 1994

1.c4 c5 2.♗f3 g6 3.d4 cxd4 4.♗xd4
 ♗g7 5.e4 ♗c6 6.♗e3 ♗f6 7.♗c3
 ♗g4 8.♗xg4 ♗xd4 9.♗d1 e5
 10.♗d3 O-O 11.O-O d6 12.♗cl ♗e6
 13.b3 a6 14.♗bl b5 15.cxb5 ♗xb5
 16.♗xb5 axb5 17.♗c6 d5 18.exd5
 1/2

Kreiman, Boris - Gulko, Boris
U.S. Championship (11), 1994

1.e4 c6 2.d4 d5 3.e5 ♗f5 4.♗f3 e6
 5.♗e2 c5 6.O-O ♗e7 7.dxc5 ♗ec6
 8.c3 ♗xc5 9.b4 ♗b6 10.b5 ♗e7
 11.♗bd2 ♗d7 12.c4 O-O 13.♗b2
 ♗c5 14.♗d4 ♗c8 15.a4 ♗d3
 16.♗xb6 ♗xb6 17.cxd5 ♗xd5
 18.♗c4 ♗xc4 19.♗xd3 ♗xd3
 20.♗xd3 ♗c3 21.♗bl h6 22.a5 ♗c5
 23.♗d2 ♗d4 24.♗f3 ♗c4 25.♗d2
 ♗f4 26.♗e1 ♗c2 27.♗f3 ♗fc8
 28.♗d1 ♗b2 29.g3 ♗b4 30.♗d4
 ♗xd4 31.♗xd4 ♗c4 32.♗fd1 ♗c3
 33.♗d3 ♗e4 34.♗f1 ♗d2 35.♗d1
 ♗xf2 36.♗e3 ♗d2 37.♗xd2 ♗xd2

38.♗b3 ♗xb3 39.♗xb3 ♗a4 40.b6
 ♗xa5 41.bxa7 ♗xa7 Time used:
 White 2:00; Black 1:52 0-1

Gulko, Boris - Shabalov, Alexander
U.S. Championship, (12), 1994

1.c4 e6 2.♗f3 b6 3.g3 ♗b7 4.♗g2
 c5 5.O-O ♗f6 6.♗c3 ♗e7 7.♗e1 d5
 8.cxd5 exd5 9.d4 O-O 10.♗f4
 ♗bd7 11.dxc5 bxc5 12.♗h4 ♗h5
 13.♗f5 ♗xf4 14.gxf4 ♗b6 15.♗xd5
 ♗xd5 16.♗xd5 ♗xd5 17.♗xd5 ♗f6
 18.♗ad1 ♗a5 19.♗d6 ♗ad8 20.e4
 ♗xb2 21.e5 ♗d4 22.e6 ♗c7
 23.exf7+ ♗xf7 24.♗xf7+ ♗xf7
 25.♗xf7 ♗xf7 26.♗g2 ♗d6 27.♗e2
 ♗a6 28.♗bl ♗g6 29.♗b7 ♗a3
 30.♗b3 ♗a4 31.♗g3 c4 32.♗b5
 ♗f6 33.♗c5 c3 34.♗e6 ♗a3 35.f3
 h5 36.f5+ ♗h7 37.♗e8 ♗a4 38.f4
 ♗xa2 39.♗cc8 g6 40.♗e6 h4+
 41.♗h3 Time used: White 1:50;
 Black 2:03 1-0

Benjamin, Joel - Gulko, Boris
U.S. Championship, (13), 1994

1.e4 e6 2.d4 d5 3.e5 c5 4.c3 ♗c6
 5.♗f3 ♗d7 6.♗e2 ♗ge7 7.♗a3
 cxd4 8.cxd4 ♗f5 9.♗c2 ♗b6 10.O-O
 ♗c8 11.♗d3 ♗b4 12.♗xb4 ♗xb4
 13.a3 ♗e7 14.♗xf5 exf5 15.♗g5
 ♗xg5 16.♗xg5 O-O 17.♗d2 ♗c4
 18.♗f3 ♗fc8 19.♗a1 ♗c7 20.♗xc4
 1/2

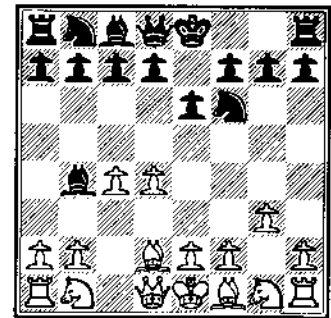
*Editors Note: The above games were
 downloaded from Compuserve's
 chess forum. Compuserve and a
 variety of Internet FTP sites do
 contain many current games.*

*Remember you can reach the ICB
 editor on both Compuserve
 (76356,3003) or on Internet at brenaut
 @mcs.net*

My best game was my win against GM
 Walter Browne which I would like to
 present to the readers of the ICB.

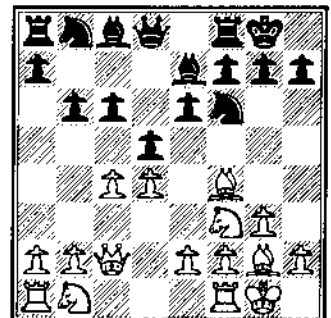
Gurevich, Dmitry - Browne, Walter
U. S. Championship, (05), 1994

1.d4 ♗f6 2.c4 e6 3.g3 ♗b4+
 4.♗d2



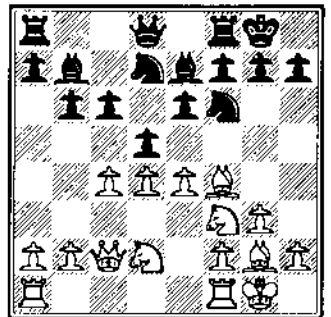
4. ♗d2 is a popular alternative.

4... ♗e7 5. ♗g2 d5 6. ♗f3 O-O
 7.O-O c6 8. ♗c2 b6 9. ♗f4



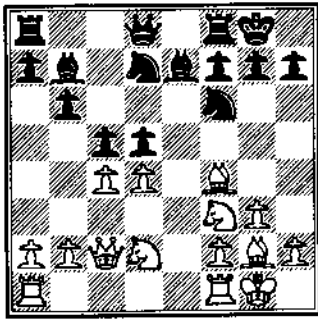
The only logical move. If the
 bishop were still on c1 White
 would have an important choice
 to put it on b2 instead of now f4.
 That is why the Black player
 plays 3... ♗b4+.

9... ♗b7 10. ♗bd2 ♗bd7 11.e4



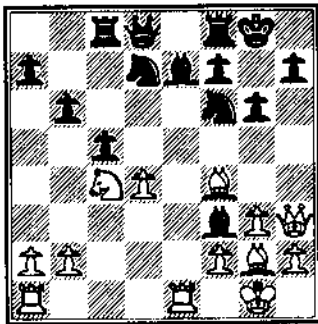
White keeps the upper hand in
 case of 11... ♗xe4 12. ♗xe4 dxe4
 13. ♗xe4 ♗f6 14. ♗e2 c5 15. ♗ad1
 cxd4 16. ♗xd4 ♗xg2 17. ♗xg2 ♗c8
 18. b3 ♗b7+ 19. ♗f3! ♗xf3+
 20. ♗xf3±

11. ... c5 12.exd5! exd5!



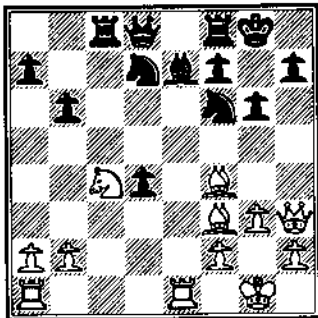
I already played this position against Alexander Invanov in Durango, 1992 US Championship. There I made a mistake 12. ♖ad1? hoping for 12...dxe4 13. ♗g5 or 13...dxe5 with unclear play, but Alexander opted for 12...dxc4! with the advantage

13. ♖fe1 ♖c8 14. ♜f5 dxc4
15. ♗xc4 g6 16. ♜h3 ♗xf3



I don't think Black should exchange the White square bishop so eagerly. Maybe instead he should take on d4 right away [16...cxd4? 17. ♗d6 ♗xd6 18. ♗xd6 ♖e8 19. ♗xd4 ♗xg2 20. ♜xg2 ♗c5=]

17. ♗xf3 cxd4



White sacrificed a pawn and his knight on c4 is hanging. Now he was the choice of lines.

[18. ♗d6 ♗xd6 19. ♗xd6 ♖e8 20. ♖ed1 [20...♗b7 ♖c7] 20...dxe5 21. ♗xe5 ♖xe5 22. ♖xd4 ♗xd4 23. ♗xc8+ =]

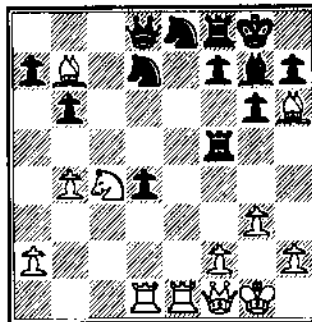
[18. ♖acl This is possible but White much rather have his rook on d1.]

[18. b3 This weakens the important c3 square and makes it convenient location for the Black rook, knight or bishop in the near future.]

18. ♜f1? ♗e8

Another alternative was [18...dxc5? 19. ♗e5 ♗d6 (19...dxe6? 20. ♗h6 ♖e8 21. ♗c6 Losing the exchange.) 20. ♖ad1 (20...dxc6? ♖xc6 21. ♗xc6 ♗xf4 22. gxf4 ♗d6+) 20...dxe6 21. ♗h6 ♗xe5 22. ♗xf8 ♗xg3 23. hxg3 ♗xf8 24. ♗g2±]

19. ♖ad1 ♗f6 20. ♗b7 ♖c5 21. b4 ♖f5 22. ♗h6 ♗g7

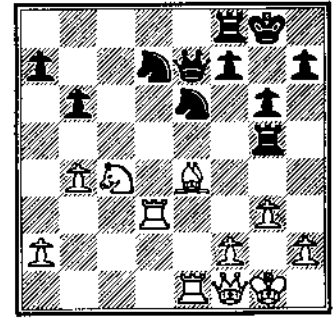


During the game I was more concerned about [22...dxc7 23. g4 ♖b5 24. ♗d2 ♗e5 25. a4 ♗xc4 26. axb5 ♗xd2 27. ♖xd2 ♗e6=] but it looks like White could improve this line with 25. g5! or 24. a3? ♗e5 25. g5 ♖d5? 26. gxf6 ♗f3 27. ♗h1 +-]

23. ♗xg7 ♗xg7 24. ♖xd4 ♗e6 25. ♖d3!

White has a substantial advantage.

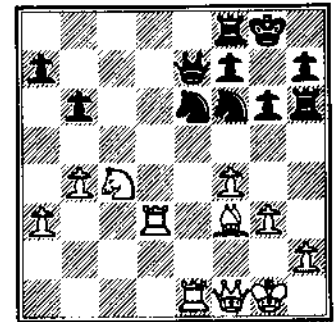
25... ♗e7 26. ♗e4 ♖g5?



A time pressure mistake which gives White an important tempo. It was better to go to h5 at once.

27. f4! ♖b5 28. a3! ♗f6 29. ♗c6 ♖h5 30. ♗f3 ♖h6

If 30... ♖f5? then 31. ♗d6 +-



Black's position looks very bad due to the misplacement of his rook on h6. Besides he had less than 1 minute on his clock! If you think that guarantees a sure win for White then you don't know Walter Browne!

31. ♗e5 a5!? 32. ♗c6 ♗c7 33. ♖e2

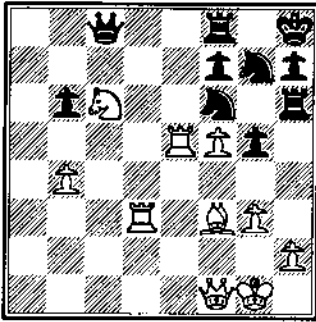
White has to be careful 33. h4? ♗xf4 34. gxf4 ♗xg4 is unclear.

33... axb4 34. axb4 g5!

An excellent chance. I missed this move.

35. f5 ♗g7 36. ♖e7 ♗c8 37. ♖e5 ♗h8!

**DON'T MISS THE MIDWEST
AMATEUR TEAM
CHAMPIONSHIP FEB 18-19. GET
YOUR TEAM TOGETHER**

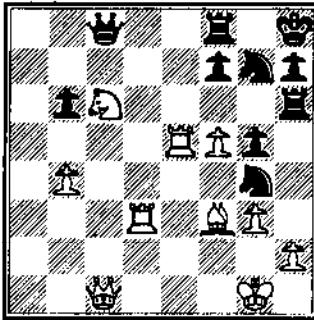


If 37...♖c7 then 38.♗c1! with the double threat of 39.♕e7+ or 39.♗xg5.

38.♗c1

38.g4? would be missing the point of 38.♕xg4!

38...♕g4!



The position doesn't seem to be so clear any more!

39.♖b5!

If 39.♕e2 ♗xf5 or if 39.♕xg4 ♖xc6.

39...♕xh2 40.♕c4 ♖h5?

Walter had just a few seconds on his clock for the last time control move and he made a final mistake. His position is still playable after [40...♕e8 41.♗xg5 ♖xc6 42.f6 (Not 42.♗xh2 f6!) 42...♖c1+ 43.♗xh2 ♖c2+ I still think White has the upper hand with exact play. 44.♗g1 ♖c1+ 45.♗g2 ♖c2+ 46.♗f3 ♕e6 47.♗h6]

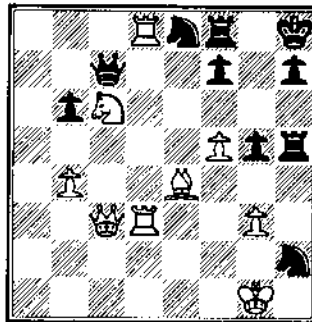
41.♖bd5 ♕e8 42.♖d8!

Move order is still important. If 42.♗c3? f6 43.♖d8 ♗b7! 44.♖3d7 ♗a6 and White has to watch out for the f1 square!

42...♗c7

[42...♗b7 43.♗a1! f6 44.♖3d7+!] 42...♗a6 43.♗c3+ f6 44.♖xe8 and mate in a couple of moves (can you find it?).]

43.♗c3+



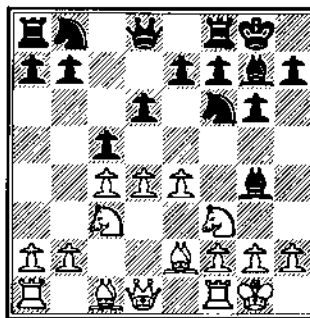
Covering the g3 square. The next move is ♖3d7 winning the queen so Black resigns. 1-0

GAMES FROM THE MIDWEST CLASS

By National Master Alan Watson

Finegold, B - Pangan, C
Midwest Class (1), 1994

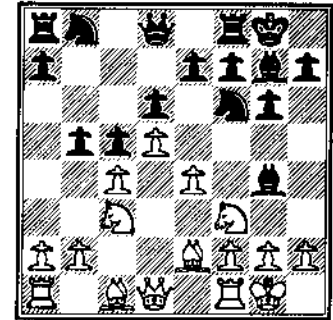
1.d4 ♖f6 2.c4 g6 3.♕c3 ♖g7
4.e4 O-O 5.♕e2 c5 6.♖f3 d6
7.O-O ♖g4



This attack forces White to clarify the central tension since 8.♕e3? ♖xf3 9.♕xf3 cxd4

10.♕xd4 ♕c6 presents no problems to the second player.

8.d5 b5?!

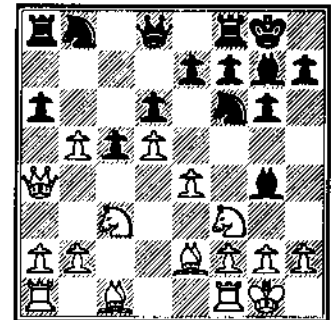


Black chooses an aggressive path in the fashion of the Benko Gambit. More conservative is 8...a6 transposing into the Benoni Defense as in the game Gurevich-Ivanov, Cleveland 1987.

9.cxb5

Orso-Markotic, Budapest 1987 continued instead with the interesting 9.e5!? dxe5 10.♕xe5 ♕xe2 11.♗xe2 b4 12.♕a4 ♖fd7 13.♖f4 with a good game.

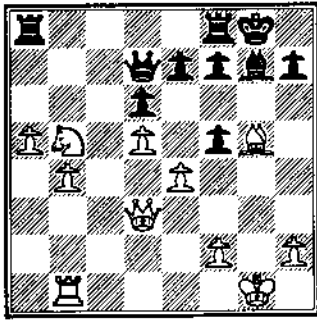
9...a6 10.♗a4



Finegold discovers a new move! Normal has been 10.a4 when after the possible continuation axb4 11.♖xb5 ♕a6 12.h3 ♖d7 13.e5 dxe5 14.♕xe5 it was believed that White possessed a slight advantage.

10...♖fd7 11.♕g5 ♖b6 12.♗b3 axb5 13.♖xb5 ♕a6 14.a4 c4 15.♗c2 ♖b4 16.♗d2 ♖xf3 17.gxf3 ♖d3 18.a5 ♖d7 19.♖fb1 ♖7c5 20.b4 ♖b3

21. Hxb3 Qxa1 22. Hb1 Qe5
 23. Qxd3 cxd3 24. Qxd3 Qd7
 25. f4 Qg7 26. f5 gxf5?

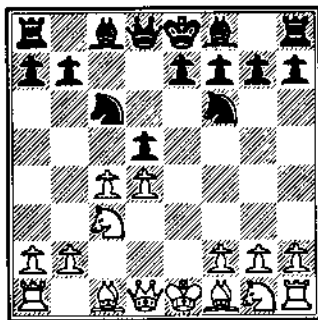


Pangan needlessly weakens his own structure in the mistaken belief that his aggressive intentions on the kingside will prove difficult to meet. 26... Hfb8 27. Qd4 Qxd4! 28. Qxd4 f6 was better.

27. exf5 Hfb8 28. Qd4 Qxd4
 29. Qxd4 Qxf5 30. Hb3! f6
 31. Qd2 Qf7 32. b5 Hg8+ 33. Qf1
 Hg4 34. Qd3 Qh5 35. h3 Ha4
 36. Qf3 Ha1+ 37. Qe2 Qg6
 38. b6 Qc2 39. Qd3 Qd1+
 40. Qe3 Qh5 41. b7 Qxb3+
 42. Qd4 Ha4+ 43. Qc3 Qxd3+
 44. Qxd3 Hb8 45. Hb6 Qe8
 46. a6 Qd7 47. Qb4 h5 48. Qc4
 h4 49. Qb5 Ha1 50. Qa5 Hb1+
 51. Qc4 Hxb6 52. Qxb6 h3
 53. a7 Hh8 1-0

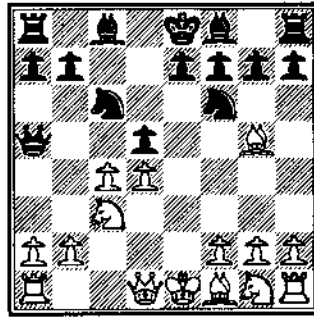
Pangan, C - Mayka, T
 Midwest Class (2), 1994

1. e4 c6 2. d4 d5 3. exd5 cxd5
 4. c4 Qf6 5. Qc3 Qc6?



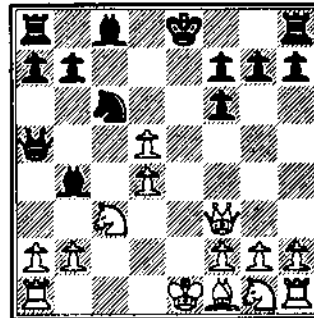
This older but extremely sharp continuation has become very fashionable in recent years and breaks the monotony of 5...e6.

6. Qg5 Qa5



This, in contrast to 6...e6, 6...dxc4, and 6...Qe6 is a great move against unwary opponents, but the disadvantage for stronger players is that White can force a draw in one of the main lines!

7. Qxf6 exf6 8. cxd5 Qb4 9. Qf3?



White shows himself theoretically unprepared. Where as 9. dxc6 Qxc3+ 10. bxc3 Qxc3+ 11. Qe2 O-O 12. f3 He8+ 13. Qf2 Qe3+ would force a draw, White could keep good play against his lower-rated opponent by continuing 9. Qd2 Qe7 10. Qb5+.

9... Qg4!

An excellent reply highlighting the exposed position of White's queen on f3. 9... Qxd4? is clearly bad because of 10. Qe4+ Qxd4 while if now 10. Qe4+ Qd8! makes White even more uncomfortable.

10. Qxg4 Qxc3+ 11. Qd1 Qa4+!
 12. b3 Qxd4+ 13. Qxd4 Qxd4
 14. Qc1 Qa5 15. Qc4 Qb6
 16. Qe2 Qf5 17. Hf4 Qd6
 18. Qc3 O-O-O 19. Qc2 Qb8

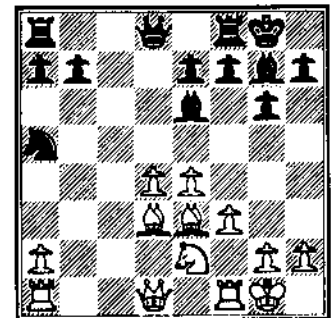
20. Qd3 h6 21. h4 h5 22. Qb2
 Qc7 23. Ha4 Qc8 24. f4 Hhe8
 25. Hf1 He3 26. Qe4 Qd6
 27. Qc2 Hde8 28. Hd4 Hxc3!

Simplifying into a won ending.

29. Qxc3 Qb5+ 30. Qc4 Qxd4
 31. Qxd4 He2 32. Qe4? Qb6 0-1

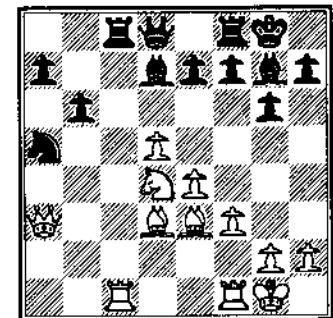
Manion, J - Chudnovsky, J
 Midwest Class (2), 1994

1. d4 Qf6 2. c4 g6 3. Qc3 d5
 4. cxd5 Qxd5 5. e4 Qxc3 6. bxc3
 Qg7 7. Qc4 c5 8. Qe2 Qc6
 9. Qe3 O-O 10. O-O Qg4 11. f3
 Qa5 12. Qd3 cxd4 13. cxd4 Qe6



This is perhaps the most interesting theoretical position in the Gruenfeld Defense, as the only path to a White advantage lies in a sacrificing material. Instead of the popular 14. d5, White chooses another complex continuation.

14. Qc1? Qxa2 15. Qa4 Qe6
 16. d5 Qd7 17. Qa3 b6 18. Qd4
 Qc8?



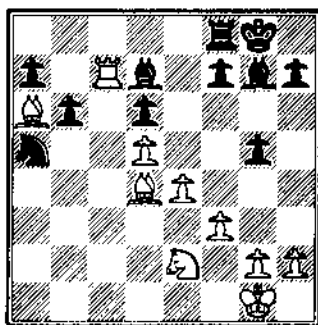
Black's reluctance to challenge White's central dominance leaves him with a difficult game. Lilienthal-Jankovec, Decin 1977

continued 18...e6! 19.d6 ♖b7 20.f4 e5 21.♖f3 exf4 22.♗xf4 ♖c5 23.e5 with complicated play.

19.♗a6!

This natural move securing control of the valuable c-line clearly highlights the inappropriate development of Black's rook. Black's game is becoming increasingly difficult despite his extra pawn to the good!

19...♞c7 20.♞xc7 ♗xc7 21.♞c1 ♗e5 22.♖e2 g5 23.♗d4 ♗d6 24.♗xd6 exd6 25.♞c7



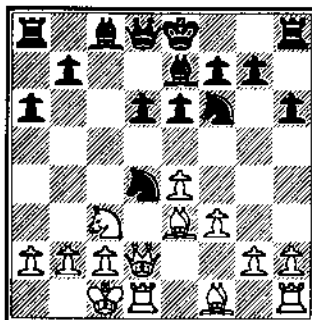
White thusly restores the material equilibrium while maintaining dominance over the position.

25...♗a4 26.♞xa7 ♞b8 27.♗xg7 ♗xg7 28.♖d4 ♗f6 29.♗f2 ♞d8 30.♗b5 ♗xb5 31.♖xb5 ♖c4 32.♞c7 ♖e5 33.g3 ♞a8 34.f4 ♖g4+ 35.♗e2 ♞a2+ 36.♗e1 gxf4 37.gxf4 ♖f2 38.♖xd6 ♖d3+ 39.♗d1 ♖xf4 40.♖c4 ♖d3 41.♞c6+ ♗e7 42.d6+ ♗e6 43.♞c7 ♖b2+ 44.♖xb2 ♞xb2 45.e5 ♞b5 46.♞e7+ ♗f5 47.♗c2 ♞d5 48.d7 h5 49.♗c3 b5 50.♗b4 ♗e4 51.♗a5 h4 52.♗b6 b4 53.♗c6 b3 54.♞e8 b2 55.♞b8 ♗xe5 56.♞xb2 ♞d1 57.♞e2+ ♗f4 58.♞e8 ♗g4 59.d8 ♗ ♞xd8 60.♞xd8 f5 61.♗d5 ♗h3 62.♗e5 ♗xh2 63.♗xf5 h3 64.♗g4

Manion has demonstrated an excellent understanding of this endgame and created a composition worthy of our study. 1-0

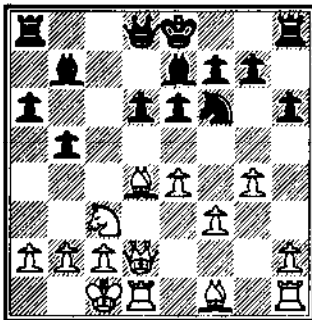
**Ronneberg, E - Ash, B
Midwest Class (3), 1994**

1.e4 c5 2.♖f3 ♖c6 3.d4 cxd4 4.♖xd4 ♖f6 5.♖c3 d6 6.♗g5 e6 7.♗d2 a6 8.O-O-O h6 9.♗e3 ♗e7 10.f3 ♖xd4



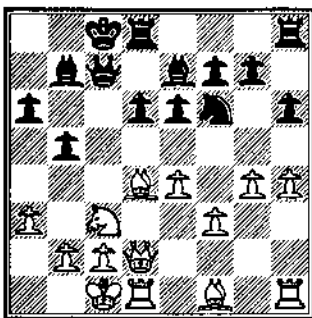
Dolmatov gives 10...d5 as equalizing in ECO B66, but this has not been tested extensively in practice.

11.♖xd4 b5 12.g4 ♗b7



Also unsuccessful was 12...b4 13.♖a4 ♞b8 14.b3 ♗d7 15.♖b2 ♗c6 16.♗e1 ♗c7 17.♖c4 Chiburdanidze-Makarycev, USSR 1961, when White had a vastly superior game.

13.a3 ♗c7 14.h4 O-O-O



Black considers that he has castled away from the deadliest portion of White's attack but is now awakened by an enterprising sacrifice on the opposite wing.

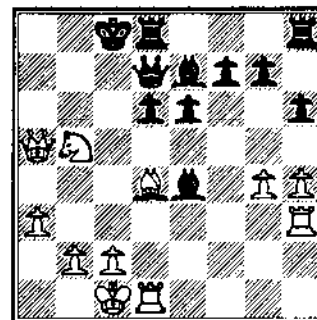
15.♖xb5! axb5 16.♖xb5 ♗d7?

Better defensive chances were offered by 16...♗c4 vacating d7 for the rook, but even here White would have excellent play by continuing 17.♗a5 ♞d7 18.♞d3

17.♗a5?

White also errs by missing the faster 17.♗c3+! ♗b8 [17...♗c6 18.♖a7+ ♗b7 19.♗b4+] 19.♖a7+ ♗a8 20.♗a5 ♗e8 21.♖b6+ ♗b8 22.♖xd8, but is rewarded by a blunder from Black which allows the 3rd rank to be opened.

17...♖xe4? 18.fxe4 ♗xc4 19.♞h3!



The killer move. Learning players should carefully study the power of "rook lifts" as a means of rapidly activating one's heavy pieces.

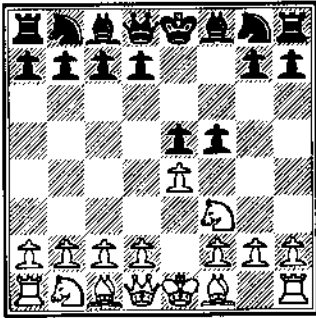
19...♗b8 20.♞b3 1-0

If the defender is forced to give up the center, then every possible attack follows almost of itself.
- Tarrasch

*Don't forget - Feb 18-19
U.S. Amateur Team
Championship - Chicago.*

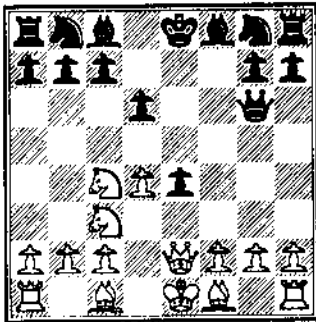
Tate, E - Karklins, A
Midwest Class (3), 1994

1. e4 e5 2. d3 f5?



The Latvian Gambit is an amazing opening choice against such an aggressive player as Emory Tate. This game is to be a tremendous battle from the very first move until the end.

3. dxe5 wf6 4. d4 d6 5. dc4 fxe4
6. dc3 wg6 7. we2?

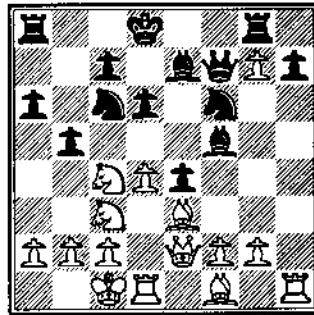


An innovation of somewhat dubious merit. Instead of the normal 7. d4 or 7. f3 White opts for immediate pressure on e4 and rapid queenside castling. The disadvantage is that White's kingside pieces are locked in; but watch his idea.

7... df6 8. h4?

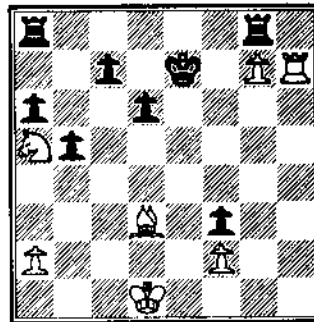
Surely this antipositional move is excessive; note how Andrew simply ignores it to gain an advantage in development!

8... de7 9. h5 wf7 10. h6 dc6
11. hxg7 hg8 12. db5 fd8
13. de3 df5 14. O-O-O a6
15. dc3 b5



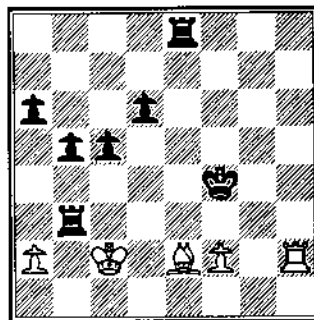
The black monarch is safe in the closed center, and sharp thrusts place the disorganized White position on the brink of collapse.

16. d5 db4 17. da5 dxf6
18. dxh6 dxh6 19. ah6 df6
20. g4 axb2+! 21. fxb2 wf6+
22. c3 dxc3 23. ag5 dxd1+
24. fc2 wxg5 25. gxf5 wxf5
26. fxd1 wf3 27. fxh7 ce7
28. wxf3 exf3 29. ad3



White's two pieces against a rook are unable to compensate for the numerous pawns.

29... f6 30. de4 Mac8 31. Hh6+
fg7 32. Hh7+ f6 33. dxf3
Hg1+ 34. fd2 Hf1 35. Hh6+ fg5
36. Hh2 c5 37. db3 f4 38. de2
Hb1 39. fc2 Hxb3!

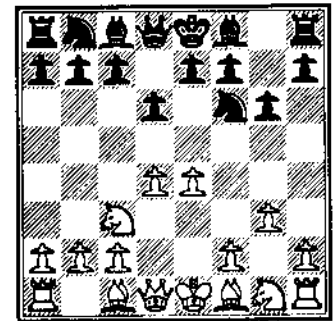


Part of the road to Mastership lies in knowing how and when to trade one advantage for another of superior quality. Here, Black trades a rook for two White pieces to reduce counterplay and head for a more easily won ending.

40. axb3 Hxe2+ 41. fd3 He6
42. Hh5 a5 0-1

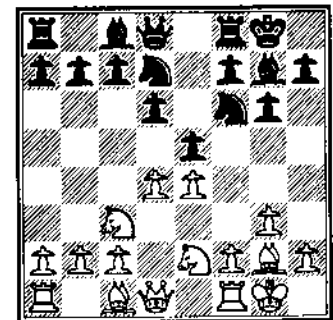
Kaushansky, L - Gurevich, D
Midwest Class (3), 1994

1. e4 d6 2. d4 df6 3. dc3 g6
4. g3?



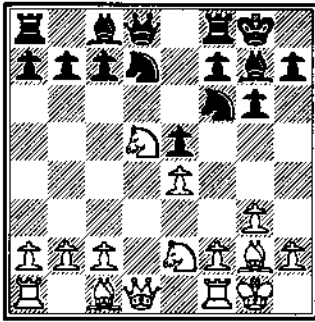
Not an unusual move for Lenoid, who as White seems to fianchetto his King's bishop against any defense played against him!

4... ag7 5. ag2 O-O 6. dge2
dbd7 7. O-O e5!



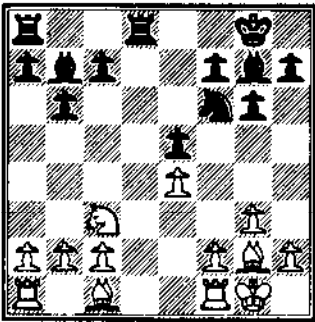
An instructive choice. Many would be inclined to strike at the White center with c5, but Dmitry instinctively realizes that while this does limit his own ag7, the restrictions it places on White's dg2 and de2 are more important.

8. dxe5 dxe5 9. dd5



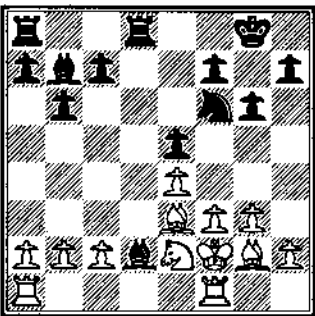
Given the previous note, this move is intended to grant freedom of movement to the Qe2. However, the loss of tempi prove a serious disadvantage, and being unable to find improvements, I must conclude that Black's chances are better.

9...b6 10.Qxf6+ Qxf6 11.Qxd8 Qxd8 12.Qc3 Qb7



Despite the symmetrical pawn structure, White stands much worse in this position because of Black's persistent initiative and control of the d-file. Watch how these increase in importance in the hands of a true grandmaster.

13.f3 Qf8 14.Qc3 Qb4 15.Qc2 Qd2! 16.Qf2



Virtually forced since 16.Qxd2 Qxd2 and 16.Qf2 Qa6 are clearly bad for White, but who would notice the following combination present in this innocent-looking position?

16...Qxc3+ 17.Qxc3 Qxc4!!

Bang! White's remaining two pieces are no serious challenge to Black's rook and two pawns. The rest, as they say, is just technique ... watch and learn!

18.fxc4 Qg4+ 19.Qf3 Qxh2+ 20.Qe3 Qxf1+ 21.Qxf1 h5 22.Qc3 c6! 23.b4 b5

Notice how Dmitry utilizes his flexible pawns to hamper the mobility of White's minor pieces before even contemplating active play with his own rooks.

24.a4 a6 25.Bb1 Qg7 26.Qd3 Bh8 27.Qf3 Qf6 28.Qe2 Qg5 29.c4?

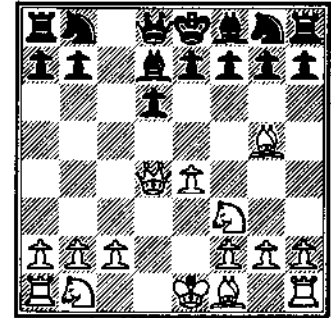
Lenold grows impatient of passive defense but seriously weakens his blockade of the d-file. Dmitry now has an avenue with which his rooks can penetrate the White position.

29...Bhd8 30.Qe3 f5 31.cxb5 cxb5 32.axb5 axb5 33.Qxb5 Ba3+ 34.Qf2 fxc4 35.Qc4 Bf3+ 36.Qg2 Bc8 37.Qd5 Qd3 38.Qb3 Qd6 39.b5 Bc5 40.b6 Bxb6 41.Qf2 Bcb5 42.Qc1 Bf6+ 43.Qg2 Bf3 44.Qc2 Bxb1 45.Qxb1 Qg4 46.Qc2 c3 47.Qd3 Bf2+ 48.Qg1 Qf3 49.Qc3 e2

A truly masterful performance by Illinois' resident Grandmaster against a very powerful opponent. 0-1

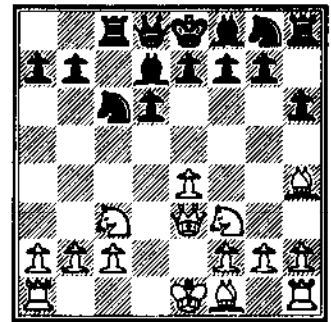
Karklins, A - Brooks, M
Midwest Class (4), 1994

1.e4 c5 2.Qf3 d6 3.d4 cxd4 4.Qxd4 Qd7 5.Qg5?



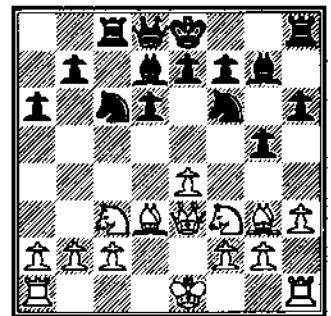
As is typical with such creative players as Karklins and Brooks, the game rapidly takes a highly original course. White's plan encourages Black to accept a weakened pawn structure with either h6.g5 or 5...Qf6 6.Qxf6 gxf6.

5...h6 6.Qh4 Qc6 7.Qe3 Bc8 8.Qc3?



More frequently played has been 8.c3? which serves the dual purpose of restricting both Black's Qg7 as well as Bc8, but Karklins prefers a more active course.

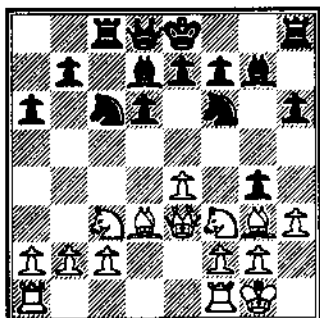
8...g5 9.Qg3 Qg7 10.Qd3 Qf6 11.h3 a6



Tseitlin-Lukov, Moscow 1989
continued here 11...Qa5 12.O-O

Qh5 13. Qh2 Qxc3 14. bxc3 Qe5
15. Qxe5 dxe5 16. Bb8 Qc7 17. Qb5
[1-0, 47]. Brooks intent is purely
to wait and see where Andrew will
put his king.

12. O-O g4?

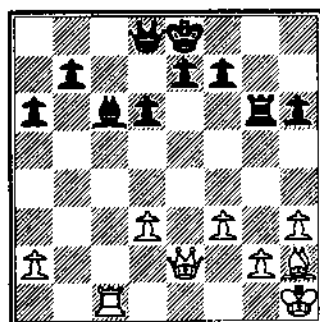


Never one to dawdle, Brooks
begins a Ranger-like assault
against the White king-position
while leaving his own monarch
securely ensconced in the center.
Compensating factors are e5 and
the awkward placement of White's
pieces.

13. e5

Tit for tat! White, in the
traditional defensive philosophy
meets a flanking blow with one
directed at the opposing center.

13... Qh5 14. Qh2 gxf3 15. Qxf3
Qxe5 16. Qxh5 Qxd3 17. cxd3
Bc5 18. Qe2 Qxc3 19. bxc3 Bg8
20. Qh1 Bxc3 21. Bae1 Qc6
22. f3 Bxc1 23. Bxc1 Bg6



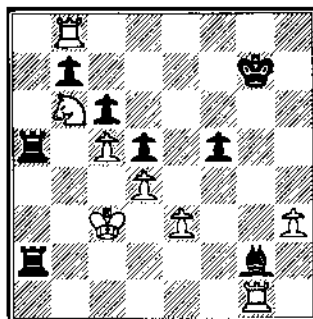
Although a position with
opposite colored bishops has
arisen, Black has an indisputable
advantage due to the latent power
of his prelate compared to the

helplessness of its opposing
member.

24. Qb2 Qa5 25. Bg1 Qd7
26. Qb6 Qf5 27. Qe2 Bxg2!!
28. Qxg2 Qg5+ 29. Qh2 Qxc1
30. Qe3 Qc3 31. Qxh6 Qf6
32. Qe3 Qxf3 33. Bg5 Qc5+
34. Qxc5 dxc5 35. Qe3 f5 36. d4
f4 37. Qf2 exd4 38. Qxd4 Qe6
39. Qb6 Qf5 40. Qg1 e5 41. a4
e4 42. a5 e3 43. Qd8 Qe2 0-1

Pelts, P - Martinovsky, E
Midwest Class (4), 1994

1. c4 e5 2. g3 Qc6 3. Bg2 d6
4. Qc3 Qe6 5. d3 Qd7 6. Bb1 g6
7. b4 Bg7 8. b5 Qd8 9. a4 Qe7
10. Qd5 O-O 11. e3 f5 12. Qe2 g5
13. f4 gxf4 14. Qxe7+ Qxe7
15. gxf4? exf4 16. Qxf4 Qh4+
17. Qf1 Qf7 18. Qb2 Qxb2
19. Bxb2 Qf6 20. Bg1 Qh8
21. Qa1? a6 22. Qf2 axb5
23. Bxb5 Qxa1 24. Bxa1 Qe8
25. Bb4 Ba7 26. a5 Qc6 27. Bb2
Qd7 28. Bxb1 Bb8 29. Qd5 Qe5
30. Qe2 c6 31. Qb6 Qe8 32. d4
Qh5+ 33. Qd2 Qf3+ 34. Qxf3
Qxf3 35. Ba1 Bg8 36. Qd3 Qe4+
37. Qc3 Qe8 38. Qb4 Qf3
39. Ba3 h5 40. Bf2 Qe4 41. c5 d5
42. Ba1 Bg8 43. Qe1 Bg7
44. Ba1 Qh7 45. Qc3 h4 46. Bf4
Bf4 47. h3 Bg3 48. Bxh4+ Qg7
49. Qb4 Bg2 50. Bb5 Qg6
51. Bb8 Qg7 52. Bc8 Bb2+
53. Qc3 Qc2+ 54. Qb3 Qe2
55. Bg1+ Bg2! 56. Qb4 Bb2+
57. Qc3 Ba2 58. Bb8 B7xa5



An old saying goes that when a
bad bishop becomes good it
becomes very good. From what
happens now, we will have to say
the same thing about bad rooks!

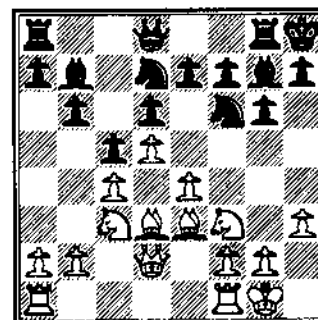
59. Bxb7+ Qh6 60. Qd7 Qe2
61. Bb3 Bxe3+ 62. Qb2 Qc2+
63. Qc1 Qe4 64. Qd1 Bb2
65. Bc3 Ba1+ 66. Bc1 Qf3+ 0-1

Chow, A - Anonymous
Midwest Class (4), 1994

1. c4

This game is intended for pure
amusement only, and the name
of the Black player is
intentionally withheld to protect
any shred of dignity he may have
left. A warning to all youngsters
... don't play like this!!

1... b6 2. Qc3 g6 3. d4 Bg7 4. e4
Bb7 5. Qe3 d6 6. Qd3 c5 7. d5
Qf6 8. h3 O-O 9. Qf3 Qbd7 10. O-
O Qh8 11. Qd2 Bg8?



This surpasses even Nimzovitch's
criteria for "mysterious rook
moves!" What on earth is this
piece planning to do here?

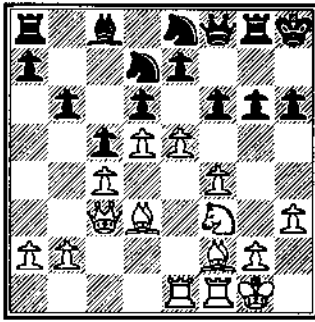
12. Bg5 Qf8

Now add self-immobilization as
well!

13. f4 h6 14. Qf3 Qe8 15. Bae1
Qc8 16. Qf2 Qxc3 17. Qxc3+ f6
18. e5!

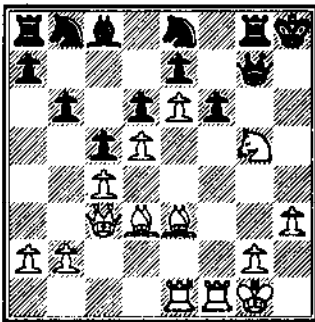
Let ICB advertisers know
you saw their ad in the ICB
when you purchase their
goods.

US AMATEUR TEAM
CHAMPIONSHIP - BE THERE!



Compare the position of White's pieces to those of Black and all but the blind can see the value of centralization and greater space. With such powerful advantages on White's side, a decisive moment is not far way.

18...g5 19.e6 ♖b8 20.fxg5 hxg5
21.♗e3 ♜g7 22.♖xg5!



An excellent sham sacrifice whose point is that 22...fxg5 23.♖f7! ♜xc3 24.♖h7 is checkmate! The last remnants of Black's defensive barricade are now breached, and there is no defense to the marauding White attackers.

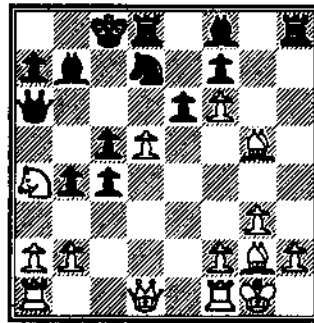
22...♖f8 23.♖f3 ♖a6 24.♖ef1
♖b4 25.♖b1 ♖a6 26.♜c1 ♖xd5
27.♜h4+ ♜g8 28.♖h7+ ♜h8
29.♖g6+ ♜g8 30.♖f7+ ♖xf7
31.♖xf7+ ♜f8 32.♖e6+ 1-0

Finegold, B - Gurevich, D
Midwest Class (5), 1994

1.d4 d5 2.c4 c6 3.♖c3 ♖f6
4.♖f3 e6 5.♖g5 dxc4 6.e4 b5
7.e5 h6 8.♖h4 g5 9.♖xg5 hxg5
10.♖xg5 ♖bd7 11.♖xf6 ♜b6
12.g3 c5 13.d5

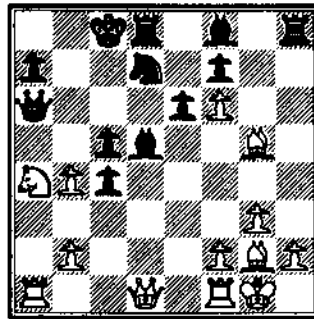


♖b7 14.♖g2 0-0-0 15.0-0 b4
16.♖a4 ♜a6?



A Gurevich specialty which is regarded as somewhat dubious. 17...♜b5 is the main battleground for this highly complex theoretical position.

17.a3! ♖xd5 18.axb4



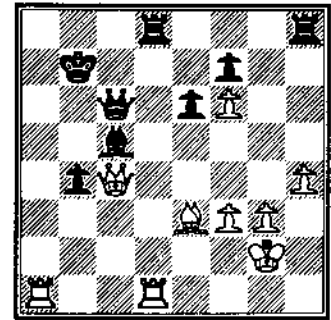
This seems clearly superior to the plan chosen by Josh Manion against Dmitry at the 1993 Illinois Class, which continued 18.♖xd5 ♖e5 19.♖xc5 ♖xc5 20.axb4 ♖xf2+ 21.♖xf2 ♖xd5 23.♜c1 ♜c6 with an advantage for Black.

18...♖xg2 19.♜xg2 ♜c6+ 20.f3
cxb4 21.♜c2 ♖d6 22.h4 ♜b7

23.♖fd1 ♖b6 24.♖xb6 axb6
25.b3 b5 26.♖e3 ♖c5 27.bxc4?

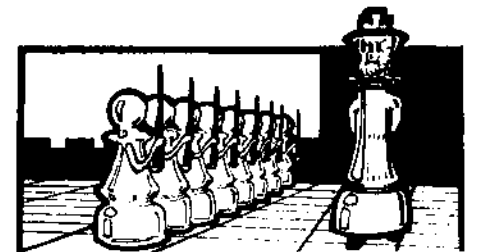
Dmitry felt that this exchange was unnecessary.

27...bxc4 28.♜xc4?



This piece sacrifice is fully unjustified and spoils a critical last round game. Analysis by the players after the game focused on 28.♖a5!, after which play remains highly unclear.

28...♖xd1 29.♖xd1 ♖xe3
30.♜xb4+ ♖b6 31.♜e7+ ♖c7
32.♜b4+ ♜c8 33.♖d4 ♜c2+
34.♖d2 ♜g6 35.g4 ♜xf6
36.♜a3 ♜e5 37.♜a8+ ♖b8
38.♜c6+ ♜c7 39.♜a6+ ♜b7
40.♜d3 ♖e5 41.♜h3 ♖c7
42.♜c3 ♖d8 43.♖c2 ♖d4 44.h5
♜b6 45.♜a3 ♖d1 46.♜h4 f8
47.♜f8+ ♜b7 48.♖xc7+ ♜xc7
49.♜xf6 ♖d5 50.♜b2+ ♜c8
51.♜c2 ♜e7+ 52.♜h3 ♜f8
53.♜e4 ♜d7 54.♜h7+ ♜e8
55.♜e4 ♜f8 56.♜c3 ♜g7
57.♜a7+ ♜g8 58.♜b8+ ♖d8
59.♜b3 ♖f8 60.♜g2 ♖f7
61.♜d3 e5 62.♜e4 ♜f4 63.♜d5
e4 64.♜xe4 ♜xe4 65.fxe4 ♖f4
66.♜g3 ♖xe4 0-1



ICA-WARREN JUNIOR PROGRAM UPDATE

By Helen Warren

This has been an active and exciting period in Illinois junior chess. The second annual All-Grade tournament, held in Aurora this November, was a smashing success with over 500 youngsters competing. Congratulations to SM Richard Verber, organizer, and his staff of directors! When chief TD Ery Sedlock suffered a car accident just a few days before the event, veteran Mike Zacate, along with Jeff Weiwei and Al Losoff, ably assisted by Joe Oberweis, filled the gap. Especially satisfying was the performance of youngsters in the ICA Junior Program. Many of the kids on the USCF's Top Fifty lists competed--and won their divisions; dozens of kids who attend schools participating in the program likewise played. Outstanding!

Our fund raising efforts continue; we're looking good! Thus far this academic year we have raised over \$7,000 toward our \$10,000 goal. Additional schools have come on board. (See the last *ICB* for participating schools to October 1.) Following are schools who have come into the program since that listing:

Jay Middle School-- Carol Stream--NM John Burke
Naperville No. H.S.--Naperville--SM R. Verber
Hinsdale So H.S.--Darien--SM Richard Verber
Arbor View School--Glen Ellyn--NM Tom Cooper
Maine Twp. H.S.--DesPlaines--Les Bale
Holy Angels Elementary--Aurora--SM R. Verber
Senn H.S.-- Chicago--Les Bale (pending)

So we now have a total of eighteen schools or community centers participating in the program with ten masters and several non-master teachers. Our special thanks to Tom Fineberg, Charlie Fenner, and Les Bale who helped us when we needed them! I must make special mention of Mike Pratts. Mike has been a volunteer teacher and benefactor at Clemente High School, supplying chess equipment and books for the Clemente kids. More than that, Mike has been unstinting in giving his time as a teacher volunteer. How do we get a dozen more like him?

Following is a complete and updated list of our contributors for 1994-1995. A round of applause to these generous chess lovers!

\$500 and above

Jim & Helen Warren
Illinois Chess Association
U.S. Charitable Trust
Bill Smythe

\$100-\$499

Baker Demonstration School	Tom Knoedler
Pine Ave Community Center	SM Greg DeFotis
Holy Angels Elementary School	Franklin School
Maine Central H.S.	Arbor View School PTA
Hinsdale So. H.S.	Jay Stream Middle School
Peoria Chess Tornado	Mike Pratts
Lou Werner	James Tanaka
Todd Barre	Larry Cohen
Jack Wong	Tom Friske
Jim Cox	The Goodwin Family
Sandy Zabell	Irwin Rothschild
NM Mitchel Sweig	George Leighton
Dan Pradt	

\$1-\$99

SM Leo Kaushansky	Tim Just	Paul Cox
Lake Co. Chess Club	Mike Hayes	George Delay
Sadauskas Family	Chuck Warren	Tom Maykav
Dennis Bourgerie	Tom Fineberg	Leonard Spiegel
Peter Kuhn	Steve Josephs	

Of special interest is the considerable donation from the USCF Charitable Trust. Our thanks to USCF Exec. Director Al Lawrence and former USCF President Steve Doyle for their assistance in securing this grant.

HILLSIDE STORMS ON OAK PARK

By Alan Watson

Buoyed by vastly superior ratings in a home match, the Hillside Chess Club rampaged ahead of Oak Park to extract their revenge for a loss during the previous encounter. Despite the stiff competition, however, 3 players from Oak Park managed to gain a split in the two 30 minute games while 2 others actually swept their much higher-rated opponents. Hillside's esteemed spiritual leader Larry Stillwell made a rare appearance to personally direct his troupes, and actually seemed much healthier than this author

affected by a raging cold. A couple of games from the top boards appear below:

**Crawford,B - Martinovsky,E
Hillside vs. Oak Park, G/30, 1994**

1.c4 e5 2.g3 ♖c6 3.♗g2 d6 4.♖c3 ♗e6 5.d3 ♜d7 6.e4 g6 7.♗ge2 ♗g7 8.O-O ♗h3 9.f4 h5 10.f5 ♗xg2 11.♗xg2 O-O-O 12.♖b1 ♖ce7 13.b4 gxf5 14.b5 h4 15.♖a4 ♖b8 16.b6 cxb6 17.♗xd7 ♖xd7 18.exf5 ♖f6 19.♗g5 hxg3 20.♖xg3 d5 21.♖bel dxc4 22.dxc4 ♖c8 23.♖ce4 ♖eg8 24.♖c1 ♖xe4 25.♖xe4 ♖d4 26.♖fel f6 27.♗h4 ♖cxc4 28.♖xc4 ♖xc4 29.♖e2 ♖e7 30.♗xf6 ♖xe4 31.♖xe4 ♗xf6 And Black went on to win in mutual time pressure. 0-1

**Satterlee,R - Watson,A
Hillside vs Oak Park, G/30, 1994**

1.e4 g6 2.d4 ♗g7 3.♖f3 c6 4.c4 d5 5.cxd5 cxd5 6.e5 ♖c6 7.♗e2 ♗g4 8.♖c3 ♗xf3 9.♗xf3 e6 10.♗e3 ♖ge7 11.g4 f6 12.exf6 ♗xf6 13.O-O O-O 14.♖e2 ♗g7 15.♗g2 ♖c8 16.♖c1 ♗d6 17.♗d2 a6 18.a3 ♖f7 19.♖c2 ♖cf8 20.♖fel ♖c8 21.f4 ♖b6 22.♗f2 g5! 23.f5 exf5 24.gxf5 ♖xf5 25.♗g3 ♗d8 26.♗h3 ♖5f6 27.♗e5 ♖xe5 28.dxe5 ♖f2 29.e6 ♗d6 30.♗g2 ♗xe6 31.♗d3 ♗e5 32.♖g3 ♖xc2 33.♗xc2 ♗d4+ 34.♖h1 ♖f2 35.♗d1 ♗xb2 36.♗xd5+ ♖h8 37.♖f1 ♖xd5 38.♖c8+ ♗f8 0-1

Oak Park/River Forest Vs. Hillside					
Rd	Oak Park	Res	Hillside	Res	
1	Crawford, B	2225	0-0	Martinovsky, E	2378 1-1
2	Satterlee, R	2149	0-0	Watson, A	2269 1-1
3	Marshall, K	1620	0-0	Marema, D	2013 1-1
4	Boguslowers, W	1600	1-1	Szustowski, P	2012 0-0
5	Thomas, B	1478	0-0	Cohen, L	2006 1-1
6	Wallin, S	UNR	0-1	Egerton, J	1909 1-0
7	O'Neil, G	1400	0-0	Iloway, P	1865 1-1
8	Nyberry, D	1373	1-0	Dowse, J	1766 0-1
9	Fenton, D	1350	0-0	McAuliffe, T	1632 1-1
10	Hornon	1346	1-1	Gapuz, W	1762 0-0
11	Nyberry, R	1208	0-	Joseph, M	UNR -1
			-1	Sadgro, T	1675 0-
12	Pygan, J	1150	0-	Bhargava, V	1678 -1
			-0	DiMarco, R	1709 1-
13	Guerrero, B	UNR	0-0	Biro, R	UNR 1-1
		7 Points			19 points

ANNUAL PROVISO WEST CHESS CLINIC

On November 5, 1994 Proviso West High School hosted the Annual Proviso West Chess Clinic. This unique half-for-teaching, half-for-competing event was a concept of Ken Lewandowski from Evanston High School. It is financially supported by the Illinois Chess Association and the Illinois Chess Coaches Association

and run by George Marino and Jeff Szymusiak from Proviso West.

The morning of the event featured four chess masters who interacted with students in a variety of ways. Al Chow lectured on "How to Analyze a Position", Marvin Dandridge conducted a "Teaching Simul." He simultaneously played individual games with over 30 students, walking from board to board, making his moves as well as talking to the students about the games. Richard Verber analyzed "The Fried Liver Attack and the Italian Game," and Alan Watson spoke of "Planning in Chess".

Students were also introduced to Shogi, Japanese Chess, a unique form of chess in which captured pieces may be dropped back on to the board. George Fernandez from the Washington D.C. Shogi Club flew to Illinois to participate in the Chess Clinic's Shogi Tournament and run a demonstration Shogi Simul. Two Shogi players from Ohio drove to Illinois for this event.

Another morning option was the 5-minute speed tournament. Each player had just five minutes on his clock win the game.

The afternoon brought three separate tournaments; Grade School, High School, and a USCF rated adult tournament. The largest event was the Game in 30 High School Tournament which consisted of 17 teams and 107 individuals. Five team trophies and five individual trophies were awarded as follows:

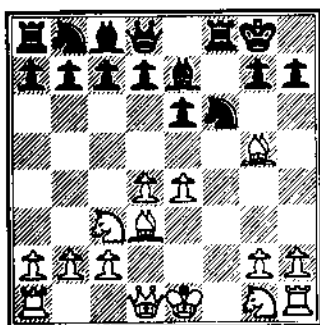
	TEAM
1st Place	Naperville North
2nd Place	Proviso West
3rd Place	Rockford-Auburn
4th Place	Bloom Trail
5th Place	Clemente

	INDIVIDUAL
1st Place	Damon McCoy - Clemente
2nd Place	Mike Massey - Ottawa
3rd Place	Corey Glodek - Proviso West
4th Place	Joe Emole - Bloom Trail
5th Place	Pat Maugham-Naperville North

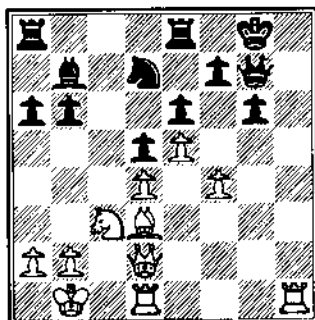
READERS' RETORT

Here is your chance to experience the heat of competition, the thrill of victory or the agony of defeat! These positions have been selected from recent games contributed by you, the reader. Send your "RETORTS" to Alan Watson or Bob Renaut for inclusion in the next issue. Can you find the "RETORT?"

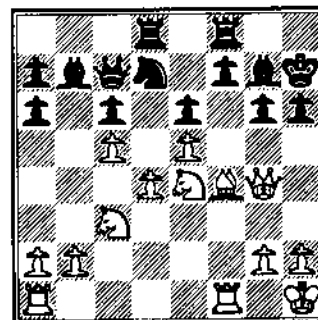
1) Brodie, M - Blaeser, T.
Belleville Open, 1994
White to move



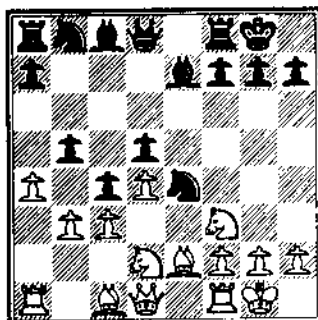
3) Finegold, G - Anderson, M
US Open Chicago, 1994
White to move



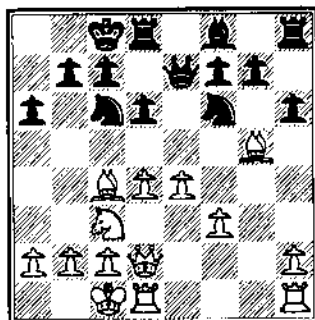
5) Bungo, G - Gapuz, W
US Open Chicago, 1994
White to move



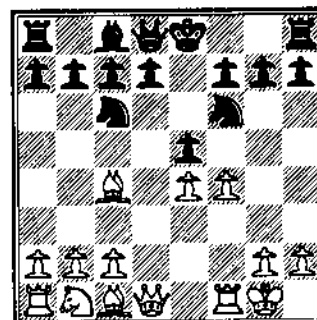
2) Morris, M - Fischer, G
US Open Chicago, 1994
White to move



4) Gratz, G - Duffy, J
US Open Chicago, 1994
White to move



6) Stein, P - Winsauer, D
US Open Chicago, 1994
White to move



Retorts Revealed

- 1) 1. e5 d5 2. Wh5! g6 3. Qxg6 hxg6 4. Wxg6+ Ch8 5. Wh5+ [5. Ah6? Eg8 6. Wh5 We8 7. Wh3 Eg6] 5... Qg8 6. Ah6 And Black is lost!
- 2) 11. Qxe4 dxe4 12. axb5 Ab7 13. Qe5 cxb3 14. Wxb3
- 3) 21. f5 exf5 22. Qxf5 Qxe5 23. Wf4 Qc4 24. Ed3 Wf6 25. Wh6 Qd6
- 4) 12. Qd5 Wd7 13. Qxf6 Wh3 14. Qf1 Wxf3 15. Qg2 Wxd1+ 16. Wxd1 hxg5 17. Wg4+
- 5) 18. Qf6+ Qxf6 19. exf6 Qxf6 20. Qxc7 Qxg4 21. Qxd8 Qg7 22. Qe7
- 6) 8. Qxf7+ Qe7 [8... Qxf7 9. fxe5 Qxe5 10. Wd5+ Qf8 11. Qxe5+] 9. fxe5 Qxe5 10. Qb3 h6 11. Qc3

DEJA VU...A REVIEW

By Bob Renaut

Deja vu is Chessworks entry into the chess database arena and it works on PC's (Windows required) or MACs and best of all it comes with over 350,000 games. No you haven't been here before! Deja vu is unique... no proprietary data structure, no limits to database size and no waiting forever on searches. If you are Joe average chess player or Grandmaster potential Deja vu could be the program for you. You can't buy 350,000 games at a lower price and many of these games are not included in standard ChessBase or Chess Assistant game collections, similar game collections from these companys cost more than \$1000. For example, there are over 1000 Blackmar Diemar Gambit games in this collection.

Deja vu is not another ChessBase or Chess Assistant. Deja vu works with virtually all the existing "database programs". For example; the file formats it supports include, Kasporov Gambit, Bookup, Chessmaster, PGN and ASC II to name a few. So if you currently own Fritz, Knight-stalker, Mchess Pro you can access the games in Deja vu...no need to purchase a ChessBase or Chess Assistant program. What Deja vu isn't is a program that allows you to enter games directly (via the keyboard) into Deja vu. It relies on your existing chess playing software.

Deja vu excels at searching your database. Want to see games where Black wins in less than 16 moves in the Latvian Gambit and the White player's rating is greater than 2300? Can't be done in ChessBase

or Chess Assisant. This type of search is childs play on Deja vu! Why...because Deja vu is based on Microsoft Foxpro database engine, the fastest search engine in the industry. Deja vu supports the complete SQL query language if the standard searches provided don't meet your needs.

Deja vu does have some weak points. First, you must be an owner of a CD rom unit in your computer. Eric Schiller's position on this weakness was..."the user should take the money he is saving on our game collection and buy a decent CD Rom unit which cost less than \$300." He does have a point and you can use the CD Rom for other games too!

Secondly, Deja vu only imports files in the PGN format. This limitation can be rather easily overcome for the computer literate with the availability of many file format converters offered on Compuserve, Internet or AOL. Chessworks would be doing its users a big favor by including "filters".

Finally Deja vu's biggest weakness is its inability to search for specific positions, unless you are satisfied with a specific move order (no transpositions). This is the most glaring shortcoming I could find for the average player. It is not all that often I am looking for a position that arrived by exactly the same 10 or so moves. In conversations with FM Eric Schiller he assured me that the next release will correct this short coming.

Installation of the software was a breeze. Insert the installation disk ,run the install file, and that's it. The Windows Deja vu icon pops up

on your screen and you are ready to go. simple as 1-2-3 (no not the program). There is no manual with this program, but fear not. Help is but a click a way. The built in help file is all you need. However, as easy as this program is to operate you may never need to try the online help feature.

Technical support via "Internet" has been fantastic. My questions have always been answered in less than 24 hours! Telephone support is available but I haven't found a reason to try it!

DMITRY GUREVICH WINS ILLINOIS CLASS

105 players competed in this annual event which was directed by Todd Barre.

Dmitry Gurevich swept the master- expert section with a perfect 4-0 score. Dr. Eugene Martinovsky (2378) earned a clear 2nd place with a 3 1/2 score drawing only with Yuliy Kleban (2031) in round one.

The Class A section ended in a tie between Jim Oberweis (1938) and Gee Y Leong (1800). Jim defeated Howard Cohen (1954), the third place finisher in the last round.

Ken Whitener (1779), 4-0., took 1st place in the Class B section, Josh Boorstein, 4-0, earned 1st in Class C, while Dale Henderson's 4-0 score gave him first in Class D.

Your team can't win if it doesn't enter the US Amateur Midwest Team Championship - Feb 18-19 in Chicago.

\$10,000 GRANT FOR MASTER LIFE ACHIEVEMENT

By Helen Warren

Ms. Natalie Broughton of Evanston has known chess players for decades, ever since her days at the old Rogers Park Chess Club, long ago disbanded. Ms. Broughton attended the USCF Awards Banquet at the U.S. Open this past August to applaud her long-time friend Albert Sandrin who received USCF's newest award: Ambassador of Chess. At several time U.S. Blind Champion and 1949 U.S. Open champion, had participated in several overseas blind championships and had made a lasting and positive impression on his foreign hosts.

About a month ago, Ms. Broughton called me. We chatted about the colorful "old timers", many of whose names mean nothing to contemporary chess players: the eccentric, playful Walter Grombacher, cigarette-puffing Sam Cohen, Eva and Ninus Aronson--several others. "I would like to do something for the old-timers who have given so much to chess and to whom chess has meant so much," Ms. Broughton said.

It took me very little time to understand where Ms. Broughton was heading: an acknowledgement of life-

achievement in chess. The criteria were few and simple and the form for such a program took shape in my head quickly.

"I would like to do something for the old-timers who have given so much to chess and to whom chess has meant so much,"

Ms. Broughton has contributed \$10,000 to a fund which annually will award a grant of \$1,000 to an individual in Illinois, over the age of fifty, who has exhibited a life-long devotion to chess and whose contribution of quality play at a high level over a prolonged and steady period serves as a model for youth.

It is hoped that future contributions to the Broughton Fund will increase the grant itself. Incoming ICA President Jim Oberweis, ICA Treasurer Todd Barre, and I will constitute an oversight committee for the fund. The

first Broughton Award will be presented at the ICA Awards Banquet on March 12th at Harvey's Prime Rib. In addition to the cash grant of \$1,000, an engraved chess board will be presented to the recipient. A plaque will hold the names of annual recipients for display at the Illinois Open.

ICA members are cordially invited to participate in the festivities at the Awards banquet at which time Illinois Tour winners will be acknowledged, the first Billy Colias Excellence in Teaching Award will be presented, and additional service awards honoring chess volunteers will be given.

Our appreciation to Ms. Natalie Broughton for her generosity and tribute to quality chess in our state. This award shall be called the Natalie Broughton Life Achievement Award.

A FEW GOOD MEN ATTEND LAKE COUNTY OPEN VII

By Tim Just

Eighteen wood pushers battled for five rounds in two sections

to make the seventeenth Lake County Open on October 22, 1994 an exacting event.

Bruce Kreisman (2025) with a score of 4-1 was crowned the top gun of the six player round robin Open section. His victories over Brian Rugeiro (1970), Kevin Bachler (2187), Glen Panner (2069), and Josh Riddell (1878) netted him the \$100 Expert prize.

Long time Lake County player Gee Leong (1800) was the only fly in Kreisman's ointment. Leong posted wins against Kreisman and Rugeiro. He mustered up a half-point in his contests against Bachler and Panner. His only goose egg came in the last round at the hands of Josh Riddell. It was Riddell's only point in five rounds. Gee picked up a \$100 pay check for his first place 3-2 effort as the best A player at the event.

William Rieser (1482) took some time off from postal chess to have a perfect over the board day in the Reserve section. His victories over Harry Clay (1700), Mark Engelen (1694), Orn Backstrom (1534), Dennis Grant (1613), and Mike Dennis (1700) let him post a 5-0 total on the wall chart. He also picked up the \$100 first place Reserve section prize. His OTB rating should increase dramatically after his winning ways in Aurora, Oak Brook and in Lake County are tabulated in New Windsor.

The \$50 Class C prize was claimed by Caveman Daryl Zelinski with three wins and two losses. The first place \$50 money went to the 3-1, 974 rated youngster Matt Mc Culley in the D/E division. Matt, playing the black pieces, scored a huge success over 1700 rated Harry Clay in round 4.

The tournament was hosted by the CLC "Caveman" chess club. Tim Just directed while Dennis Grant and Orn Backstrom gave a helping hand.

The club looks forward to hosting the January 7-8, 1995, \$1725 Tim Just Winter Open/Reserve.

Here are a few games from this event:

Panner,G - Bachler,K
Lake County Open G/30, 1994

1.d4 ♖f6 2.c4 ♘6 3.♗c3 ♙g7 4.e4 d6 5.♙e2 O-O 6.♖f3 ♗bd7 7.O-O e5 8.d5 ♗c5 9.♗d2 a5 10.♙b1 ♙h6 11.f3 ♙e3+ 12.♙h1 ♗h5 13.♗b3 ♙xel 14.♙xel ♗xb3 15.♙xb3 ♙h4 16.♙g1 ♖f4 17.♙d1 ♙g5 18.g3 ♙h3 19.♙f2 ♙d7 20.♙f1 f5 21.♙h1 ♗h3 22.f4 exf4 23.gxf4 ♖xf4 24.♙g1 ♙h4 25.♙e1 ♙xel 26.♙xel fxe4 27.♗xe4 ♙ae8 28.♗c3 ♗h3 29.♙g1 ♖f4 30.♙d1 ♙xel 31.♙xel ♗d3 32.♙e7 ♙h3 33.♙e2 ♖f4 34.♙d1 ♗xd5 0-1

Kreisman,B - Panner,G
Lake County Open G/30, 1994

1.d4 ♗c6 2.d5 ♗e5 3.f4 ♗g6 4.e4 d6 5.♖f3 e6 6.♙b5+ ♙d7 7.♙xd7+ ♙xd7 8.O-O ♖f6 9.dxe6 fxe6 10.♙e2 O-O-O 11.c4 e5 12.f5 ♗e7 13.♗c3 ♘6 14.♗g5 ♗eg8 15.♗e6 ♙e8 16.♙e3 b6 17.♗b5 ♙xe6 18.fxe6 ♙xe6 19.b3 ♙b7 20.a4

♙d7 21.a5 a6 22.axb6 ♗xb6 23.♗c3 d5 24.♙d2 d4 25.♗d5 ♙g7 26.♙a2 a5 27.♗xb6 ♙c6 28.♗d5 ♗xd5 29.exd5 1-0

Panner,G - Leong,G
Lake County Open G/30, 1994

1.d4 ♖f6 2.c4 d5 3.cxd5 ♗xd5 4.e4 ♗b6 5.♗c3 ♘6 6.a4 a5 7.♙e2 ♙g7 8.♙e3 ♗c6 9.♖f3 O-O 10.O-O e6 11.♙d2 ♙d7 12.♙b5 ♙d8 13.♙f1 ♙e7 14.♙g5 f6 15.♙e3 ♗b4 16.♙c1 ♙d7 17.♙h6 ♙xb5 18.♗xb5 c6 19.♗c3 ♙ac8 20.♙xg7 ♙xg7 21.e5 f5 22.♙d2 ♙d7 23.♙ac1 ♗4d5 24.g3 ♙b4 1/2

COMPUTERS IN TOURNAMENTS:

Should silicon implants be banned?

By David Wulatin

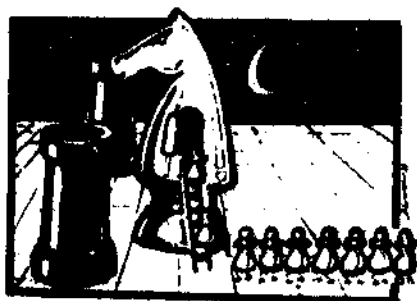
In the wake of the 1994 Illinois Open, the BP Comp chess computer has been accused of everything from picking the pockets of human players to blaspheming a treasured state tournament. Before it becomes implicated in the murder of the Smith children, it's time for an objective discussion of the pros and cons of computer participation in tournaments.

First, let's recap what happened. In the last round of the tournament, BP Comp mistakenly believed that it had run out of time and refused to move in a dead drawn position.

As a result, instead of five

players splitting the third through fifth place prize money, four players split only the fourth and fifth prizes.

As a result, many people are calling for computers to be banned from future state tournaments. Alan Watson wrote that this "travesty" can't be allowed to happen again." These people are proposing an arguably correct premise for the wrong reasons.



There are several reasons computers should not be allowed to play in tournaments.

The least persuasive reason is that a computer's memory gives it, in effect, the opportunity to consult chess opening books. While I don't believe that any human can equal a computer's ability in this regard, it still has to correctly evaluate the positions that result from it, just as any human would. And that's assuming that the lists of openings in its memory banks are sound. On my old Chessmaster 2000 program, this was its standard response when it chose to defend with the Caro-Kann: 1. e4 c6 2. d4 d5 3. Nc3 de 4. Nxe4 Qxd4??? 5. Qxd4 1-0. An extreme example,

but it shows how computers are still dependent on human input.

A stronger argument against computers is the rule that allows tournaments players to sign a sheet stating that they do not wish to be paired against the computer before the tournament begins. This can violate the whole idea of the Swiss pairing system, which is to play opponents who have approximately the same score as you do. Imagine a computer in a sixteen player section of a five round tournament where half of the players sign the "no computer" sheet. In the first round, the computer would have seven potential opponents with the same score. Let's assume the computer wins each round. In the second round, it will only have three or four eligible opponents with the same score. By the final round, the tournament director could be forced to pair it against an opponent with a score a full point and a half below it!

If a computer is allowed to play in a tournament, players should not be allowed to say, "I won't play it and you can't make me."

God knows I would like to sign a sheet that would keep me from being paired against some of the more defective personalities that I've come up against in tournaments, but if the guy paid his entry fee, I have to take my chances. If you object to this, don't play in the tournament. If enough players feel the way you do, attendance

will drop, and tournament directors will pull the plug on the whole idea.

Interestingly, no one seems to have noticed what I most object to about computers in tournaments: the role of the computer operator. As far as I can tell, the operator has four essential functions: physically moving the pieces, hitting the clock, entering the moves into the computer, and taking notation. These are the same functions that assistants to physically disabled players are allowed to do. Why, then, was BP operator Bob Cullum allowed to request Assistant Tournament Director Walter Browne...to declare the game a draw under the 'no losing chances rule' applicable in 'sudden death' play? Surely an assistant to a disabled player would not be allowed to do this unless the request came from the player himself. If a computer cannot be programmed to convey such a request in certain positions, then that strikes me as one of the few equalizers in the battle of machine versus man.

What if BP had been a human who, in the heat of battle, forgot that the last time control was sudden death and lost on time? Would you castigate that player? Try to ban him from future tournaments? Of course not.

But what is happening is that players are trying to ban

computers, not because of their innate advantages, but because they can malfunction. Or, more precisely, because a human programming error can cause it to malfunction. Did this affect the outcome of the Illinois Open? Yes, just as every mistake by every player in every game did, too. We're unable to achieve perfection, but if our computers can't either, we want them to pack up their chips and go home.

RULE BOOK TACTICS

By NTD Tim Just

The OFFICIAL RULES OF CHESS contains no regulation that allows players to claim a draw by "perpetual check" or "repetition of moves". All such draw claims are improper and may be denied by the TD; however, a half-point can be netted by the proper use of rule 14C (page 32) "Triple occurrence of position."

When a position occurs for the third time it often happens because of a "perpetual check" or a "repetition of moves". The idea here is to allow for the claim of a draw anytime the same position is about to appear or has appeared on the board for the third time, even if there have been intervening moves between the positions.

NOTE: The three positions can be judged to be the same if each

separate position has all the same pieces of both players on the same squares each time; further, each piece must have all the same possible moves in each of the three positions, including the right to capture en passant and castle. For example, if a king has the right to castle in the first position, that same king needs to also have that right in the next two positions for the triple repetition claim to be upheld.

EXAMPLE 1

Let us examine the following partial game score in a regular time control period:

- 33. Kb3 Rb6+
- 34. Kc2 Ra6
- 35. Kb3 Rb6+
- 36. Ka4 Rh6
- 37. Kb3 Rb6+

Notice how moves 33, 35, and 37 all repeat the position with some moves made in between. For black to score a half-point under 14C: (1) it must be black's move, (2) the move 37. ... Rb6+ needs to be recorded on an adequate score sheet, (3) the move should not be made on the chess board, (4) the clocks should be stopped, and (5) black should state the irrevocable claim of a draw because the position is about to be repeated for the third time.

If black had made move 37 ... Rb6+ on the board, the claim of a triple position repetition can still be made by black as long as the clocks are stopped. If black

makes move 37 and presses the button down starting white's time, black forfeits his chance to claim a triple repetition draw for that move (37) only. Black can still make the proper draw claim if the position repeats itself on future moves.

EXAMPLE 2

Let us look at a more difficult partial game score in a regular time control period:

- 40. ... Ra7
- 41. Kh1 Ba6
- 42. Kh2 Ra8
- 43. Kh1 Ra7
- 44. Kh2 Bb7
- 45. Kh1 Ba6

In this instance, it is white's turn to move and black has just repeated the position for the third time with the move 45. ... Ba6. Because of the intervening moves and multiple piece maneuvers, black may not have realized that moves 41, 43, and 45 have made the position a threepete. White, with a reliable score sheet can make an irrevocable draw claim under rule 14C by: (1) making no move, (2) stopping the clocks, and (3) claiming a draw by triple repetition.

If a claim for a draw is denied by a TD, your opponent will be awarded two extra minutes on his or her clock. You will also have to transfer to the game board any piece move you may have written (ala EXAMPLE 1) on your score sheet.

TIM JUST'S WINTER OPEN/RESERVE X JANUARY 7-8, 1995

*College Of Lake County (Main Bldg.)
19351 W. Washington at Route 45
Grayslake, Illinois 60030*

\$1725

based on 60

OPEN	RESERVE (U1800)
\$225-\$150-\$100	\$225-\$150-\$100
Expert: \$125-\$100	Class C: \$125-\$100
Class A /Below: \$125-\$100	Class D/E/UN: \$100

ENTRY:

\$32 by 1/4/95; \$40 site/phone; \$5 discount to Juniors

REGISTRATION:

1/7/95, 8-8:40 AM

ROUNDS:

Saturday: 9-1:30-6

Sunday: 10-2:30

TIME:

40/90, G/30

ILLINOIS MAXI TOUR EVENT

(ICA membership required for Illinois residents)

Chess books will be on sale at this event!

*Tim Just,
37165 Willow,
Gurnee, IL 60031
708-244-7954*

ILLINOIS TOP 50 PLAYERS

1. GUREVICH,DMITRY	2651	18. COMPX,B P	2303	35. BURKE,JOHN	2228
2. RAO,VIVEK	2561	19. DANDRIDGE,MARVIN	2292	36. MARTIN,ROGER	2224
3. RASTENIS,GEDIMA	2473	20. ZINGHEIM,FRANCIS	2290	37. KOLMAN,GENE	2219
4. DE FOTIS,GREG	2462	21. ZHU,LI PING	2288	38. KRAS,TIMOTHY	2217
5. PELTS,PETER	2450	22. KRECKLER,WARREN	2271	39. WALLACH,KENNETH	2217
6. BONO,GIROMES	2439	23. WATSON,ALAN	2269	40. BERRY,VINCE WILLIAM	2214
7. KAUSHANSKY,LEO	2427	24. TRUONG,HOAINHAN	2267	41. KLUG,STEPHEN	2211
8. VERBER,RICHARD	2423	25. SCHUMAN,BRIAN	2267	42. MILLS,PAUL	2207
9. KRAAI,JESSE	2420	26. RUBIN,DAVID	2267	43. WACHTEL,HOWARD	2205
10. CHOW,ALBERT	2419	27. LONOFF,MARC	2262	44. WEBER,LEN	2202
11. CHACHERE,L.	2415	28. TORREGROSSA,RON	2261	45. VAN BUSKIRK,DOUG	2200
12. MARTINOVSKY,E.	2378	29. FRIEDMAN,EDWARD	2248	46. CRAWFORD,BRAD	2198
13. KORNFELD,ALLEN	2339	30. MOTE,DAVID	2244	47. JAKSTAS,KAZIMIERA	2197
14. UMEZINWA,GEORGE	2338	31. RENAUT, ROBERT R.	2242	48. STEIN,PETER	2197
15. KARKLINS,ANDREW	2323	32. BOHANNON,MARK	2240	49. COOPER,THOMAS	2196
16. DEMPSEY,ANTHONY	2310	33. COOKE,PAUL	2235	50. MADDEX,WILLIAM	2196
17. TENNANT,STEVEN	2308	34. LEVINE,DAVID	2233		

NICBASE3™ + REBEL 6.0™ = HOT!

Ed Schröder's new **REBEL 6.0** chessplaying program includes **NICBASE3** compatibility features for analysis of databases. It reads **NICBASE3** data including **Electronic Chessbooks**. It provides overviews, searches for positions, moves or text. It analyzes a database overnight with results delivered on screen or in a text file. Compared to Gideon Pro, **REBEL 6.0** offers playing strength estimated at 50 more ELO points, second player analysis, 3 speeds for replaying games, 5 playing styles, a chess tutor, and many other new features. **REBEL 6.0** was rated best (ELO 2461) at the AEGON 1994 tournament. Requires 386+, hard drive, 2 MB RAM, VGA graphics.

SAVE AND ORDER NOW -- shipping FREE for a limited time!

REBEL 6.0 + NICBASE3 + NIC KEY 3.6 + 20,000 recent games
REBEL 6.0

\$349.00
123.00

ALSO AVAILABLE -- **NEW ELECTRONIC CHESSBOOKS™** -- Book with theoretical introduction and disk with hundreds of games, many annotated. No extra software needed.

1994 Releases:

Van Geet Opening 1.Nf3 by Van Geet.
King's Indian Classical, by Sosonko. 2d.
Slav Defense: Meran Var., by Kuljf. 2d ed.
Vienna Game, by R. Kuljf.
Scotch Opening, by Timman. 2 ed.

1993 Releases:

Budapest Gambit, by van der Tak.
Sicilian 2.f4, by Langeweg.
French Advance Var., by Nikolic.
Ruy Lopez Arkhangelsk, by van der Tak.

SYSTEM REQUIREMENTS: IBM-compatible: mouse, 512K RAM, MS-DOS 2.1+, 3.5" drive, graphics: ATARI ST: monochrome monitor

Available with 3.5" disk only -- each \$25.00 + \$3.50 shipping

1995 NEW IN CHESS YEARBOOKS cover Opening Theory with database analyses and authoritative theoretical articles on important variations - 4 times a year. Supplementing NEW IN CHESS MAGAZINE

vols. 35-38 (\$33.00 each) hardcover \$119.00
 vols. 35-38 softcover \$2.00
 NICBASE3 disks (only with yearbook subscription) add \$50.00
 Vols. 2-26, 31-34 available in hardcover only at \$32.00 + 3.50 shipping each.

1995 PROFESSIONAL PACKAGE - 6 shipments a year

Over 16,000 games on disk with NIC Yearbook vols. 35-38 and disks
 hardcover yearbooks with disks \$295.00
 softcover yearbooks with disks 268.00

1995 NICBASE3 database update service

Over 16,000 games on disk including disks for NIC vols. 35-38
 QUICK service - six shipments a year \$195.00
 SUPER QUICK service - 20 shipments a year 260.00

All orders, renewals and payments to: Al Henderson, President

NICBASE3™ is the Mark of Quality

CHESS COMBINATION INC., 2423 NOBLE STATION, BRIDGEPORT CT 06608-0423
 Messages: 800-354-4083 Fax: 203-380-1703 Internet: 70244.1532@compuserve.com. USAT LINC: CHESSCOM

Exclusive North American distributors of NEW IN CHESS and NICBASE products

TIME CONTROLS - A THIRD LOOK

By Randy Pals



My article on time controls which appeared in the Sept.-Oct. 1994 ICB was originally written for the Internet (USENET) chess bulletin board. Time control discussions/ debates frequently arise there, and everyone presents lots of anecdotal evidence to support their opinions, but there was never any DATA presented on what time controls in the U.S. actually are or have been in the past. This prompted me to survey Chess Life going back over 20 years to get said data. I wasn't on some crusade for or against fast time controls and/or sudden death, which I personally find to be a mixed blessing. Al Losoff spotted the write-up I posted to the chess group, and suggested I submit it to the ICB.

Howard Wachtel's response stated the metrics I used (minutes per move, "M/M" and hours of chess per day, "HCPD") were arbitrary, and that it would make more sense to survey a large sample of tournament games, recording number of moves and time used, and base the metrics on those results. I agree that this would be better. However, that data obviously doesn't exist for games in the past. Even gathering it in the present would be a laborious task, as clock times normally don't show up on scoresheets. So, we are left with devising an arbitrary metric from the time controls. If you don't like mine - fine, choose another! The trends in the data will remain the same no matter what metric is used.

Howard also states that "hours of chess per day" is no measure of how exhausting a tournament is, and as anecdotal evidence cites his experience in the U.S. Open. In fact, the Open is one of the few tournaments in which that is true - when your game is finished, you go home (1 round per day). But put 30 or 40 players together in a 4 round, 1 day tournament of 30/60 uniform (which would measure 16 HCPD), and see what happens. YOUR game may end soon, but there will usually

be at least one or two games per round that go much longer. Everybody waits for these to end before the next round can begin (or for the adjournments to be played out before the last round begins). Whether you are playing the entire time or not, the tournament itself drags out. The HCPD metric was intended to measure this, if not in an absolute, then in a relative manner and I stand by it as accomplishing just that.

In his response, Howard asks "why is 30/60, then SD/60 a 'slow' TC"? In fact, it isn't! (by the definition I used). The article states that only time controls of longer than 2 M/M were considered "slow". Theoretically, this doesn't make much difference, but practically it makes a big difference. There were many tournaments in recent years that had a M/M measure of exactly 2, and therefore didn't qualify as "slow". The most common measures that did qualify as "slow" in recent years were 40/90, SD/60 (2.25 M/M) and 40/120, SD/60 (3 M/M).

Finally, Howard states that he "cannot understand how any reasonable observer could say that there are more choices of tournaments available now than in the past." It seems to me this is because Howard's implied definition of "reasonable observer" is someone who lumps all tournaments using any sudden death time control together. If you accept that definition, then certainly choices are dwindling. However, if you, as I, see a difference between taking a half hour for a whole game of chess (G/15) and taking four hours (30/60, SD/60), or think that six hours (40/120, SD/60) or eight hours (40/120, 30/60, SD/60) is enough time for "a legitimate conclusion to take place" even for an important game, then the conclusion that there are more tournament choices available now than in the past is inescapable.

1995 GREATER PEORIA OPEN

March 4 - 5, 1995

Signature Inn
4112 N. Brandywine Dr.
Peoria, IL 61614
309 685-2556

\$1100 Prize Fund

OPEN SECTION

1st: \$300 2nd: \$150 3rd: \$100
Top under 2000: \$100, \$50

RESERVE SECTION (U1800)

1st: \$150 2nd: \$75
Class C: \$70, \$45
Class D & under: \$70, \$40

Entry Fee: \$30 if by 2/22
\$35 if by 2/28
\$40 at site

An Illinois Maxi-Tour Event!

Format 5 round swiss in 2 sections.

Time Control Game in 125 minutes.

Rounds Saturday 10 am, 2:30, 7. Sunday 9:30 a.m. & 2 p.m.

Advance Entries: Bill Wilkinson, 905 N. Rebecca Place, Peoria, IL, 61606. (309) 673-9455.

Registration Saturday, March 4, 8:30 - 9:30 a.m. Entry fee is \$40 at the door.

1/2 point bye in any one round, but must be requested before round 2.

Illinois Chess Association Membership at \$14/year (\$8 juniors under 19) is required for Illinois residents. Others must join ICA only if they wish to be eligible for ICA Tour points.

Signature Inn hotel rooms available. \$46 single; \$53 double, triple or quad. Specify "Chess Tournament Rate" when registering. Take I-74 to War Memorial Drive (East) exit.

Complimentary coffee, sofa and other treats. A complimentary USCF crosstable will be mailed to you at your request.

All Class prizes are based on 6 per class.

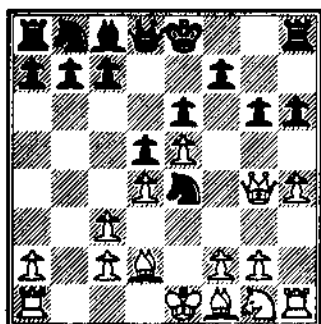
READER'S SHOWCASE

Weeramantry,S (2339) -
Mayka,T (2037)
US Open Action Grand Prix (5), 1994

1.e4

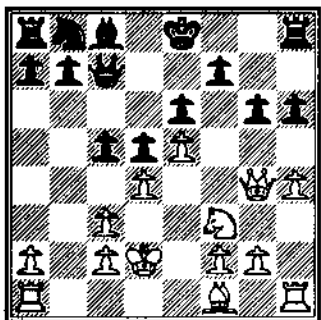
All annotations are those of Mr. Mayka. This game was played at the recent US Open and features my first ever over a 2300 player, Sunil Weeramantry, who is a former New York State champion.

1...e6 2.d4 d5 3.♘c3 ♖f6 4.♗g5 ♗b4 5.e5 h6 6.♗d2 ♗xc3 7.bxc3 ♗e4 8.♖g4 g6 9.h4



White varies from Fischer-Rossolimo, US Champ. 1965-66, where Bobby played 9.♗d3.

9...♗xd2 10.♖xd2 c5 11.♗f3 ♖c7



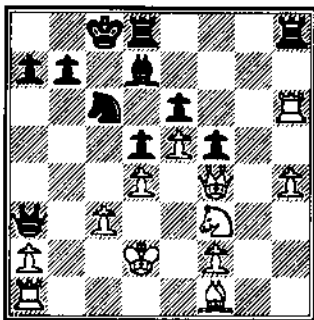
It is debatable whether Black should wait and play 11...♖a5 later, but the text has a point. 12.♖f4 f5! White was headed for

f6, but now 13.exf6 hangs White's queen.

13.g4 ♗c6 14.gxf5 gxf5 15.♗g1 cxd4 16.cxd4 ♗d7 17.♗g6 O-O 18.♗xh6?

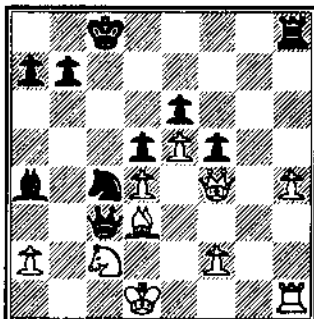
There is no hurry to take this pawn.

18...♖a5+ 19.c3 ♖a3



Black has the initiative after this move. The threat is simply 20...♖b2+ picking up the rook.

20.♗e1 ♗a5 21.♗c2 ♖b2 22.♗xh8 ♗xh8 23.♗d3 ♗a4 24.♗h1? ♗c4+ 25.♗d1 ♖xc3!



The winning move. Black threatens 26...♖xd3 and 26...♖b2+, and the White queen must remain on its diagonal to prevent 26...♖d2 mate!

26.♗xc4?

This loses immediately, but White is busted anyway. In time pressure, Sunil momentarily forgot his bishop was the only thing holding the knight.

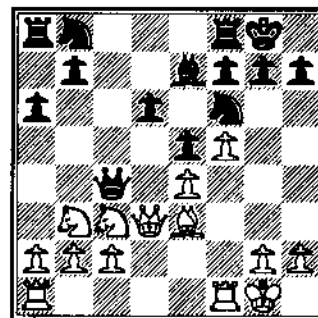
26...♖xc2+ 27.♖e1 ♖d1# 0-1

Delay,Joe(1513) - Sax, Robert(2067)
US Open (02), 1994

1.e4

All annotations are by Joe Delay

1...c5 2.♗f3 d6 3.d4 cxd4 4.♗xd4 ♗f6 5.♗c3 a6 6.♗e2 e5 7.♗b3 ♗e7 8.O-O ♗e6 9.♗c3 O-O 10.f4 ♖c7 11.f5 ♗c4. 12.♗xc4 ♖xc4 13.♖d3

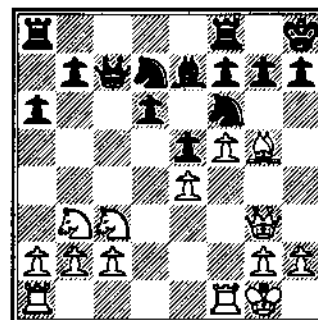


I considered 13.♖f3, but decided to try for simplification and felt my pawns would be in good shape after a queen trade. Once again, though, 13.♗d2 may have been better.

13...♖c7 14.♗g5 ♗bd7

Forcing his knight away from the c6 square where it would have been stronger

15.♖g3 ♖h8

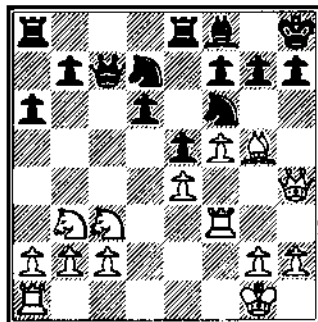


I had upset my first round 2072 opponent, and playing my second expert in a row had planned to play solid and respectable. However, here I decided to go for the attack - I had nothing to lose. Better was 15...♗h5 and ♖b6+.

16. ♖h4!

This move accomplishes several objectives, moving the queen out of the way for an eventual rook lift, strengthening the h4-e7 diagonal, keeping Black's minor pieces locked in, preventing ♖h5, and rendering h6 ineffective.

16... ♖f8 17. ♖f3 ♖f8



Played to strengthen h6, but the f6 square becomes weak and h6 was still ineffective later.

18. g4 ♖c4 19. ♖xf6 ♖xf6

Robert and I looked at 19... ♖xf6, but after 20. ♖h3 and 21. g5 the attack still looks strong.

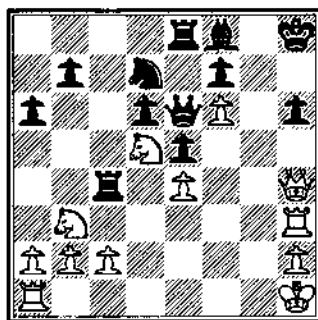
20. g5 ♖d7 21. ♖h3 h6 22. ♖xb6 ♖xb6

22... g6 23. ♖xg6 ♖xg6 24. ♖f1 leaves White a pawn up and still attacking.

23. ♖f6 ♖e6 24. ♖d5

This corrals the Black queen, protects f6 & threatens 25. ♖c7.

24... ♖ac8 25. ♖h1 ♖c4



If 25... ♖xf6, then 26. ♖f6, 27. ♖g1; or if 25... ♖k7, then 26. ♖g1, 27. ♖g5.

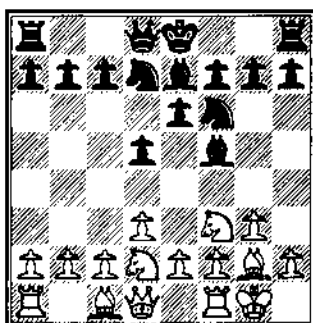
26. ♖xh6+

Black now resigned because 26... ♖xh6 27. ♖xh6+ ♖g8 28. ♖g1+ ♖g4 29. ♖g4+ ♖f8 30. ♖h8 mate.

Pratts, M(1573) - Venske, D(1749)
Illinois Open (4), 1994

All notes are by M. Pratts.

1. ♖f3 d5 2. g3 ♖f6 3. ♖g2 ♖f5
4. O-O ♖bd7 5. d3 e6 6. ♖bd2 ♖e7



Black is playing the London system against White's King's Indian Attack.

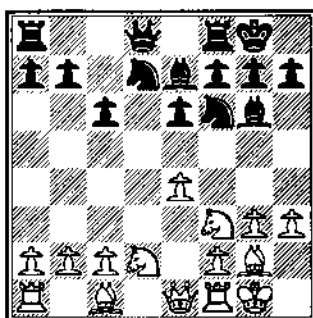
7. ♖e1

I want to push e2-e4, f2-f4 and leave my rook on f1 where it supports the f-pawn.

7... O-O 8. e4 dxe4 9. dxe4 ♖g6 10. h3

This move prepares f2-f4.

10... c6



Black wants to hit White on the dark squares around the king. Black should also consider 10... e5 restraining White's kingside expansion and 10... h6 opening an escape square for the bishop.

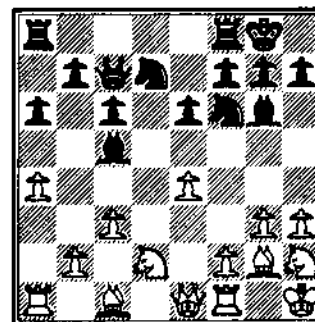
11. ♖h2?

Perhaps better is 11. ♖h4 and White has the bishop pair.

11... ♖c5

Pinning the f-pawn and threatening ♖c7, ♖xg3.

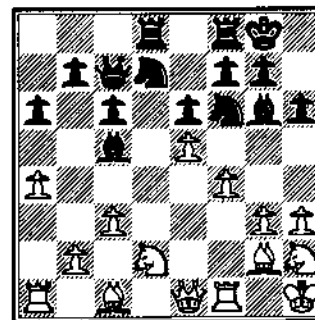
12. ♖h1 ♖c7 13. a4 a6 14. c3



Getting the pawn off the weak c2 square and preparing b2-b4. Also playable is 11. ♖h4 with f2-f4 or ♖f4 to follow.

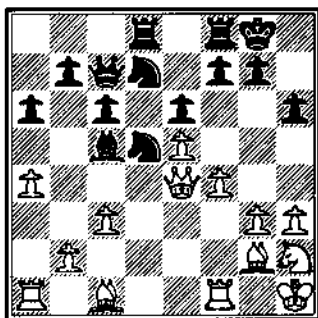
14... ♖ad8 15. ♖f4! h6

Now Black can't play 15... e5, else the bishop gets trapped. 16. e5



Establishing a strong pawn on e5 is a primary objective in the King's Indian Attack.

16... ♖d5 17. ♖e4 ♖xc4 18. ♖xe4

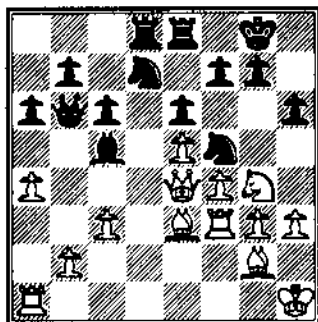


18. ♖xe4 with the idea of ♖b1 leaves the king a little bare and blocks the rook on a1.

18... ♠f8 19. ♔g4 ♖e7 20. ♖e3! ♖f5

Threatening to win the bishop and forking the king and queen.

21. ♠f3 ♖b6



Here I expected 21... h5 22. ♖xc5 ♖xc5 23. ♖c4 hxg4 24. hxg4 ♔g3+ 25. ♠xg3 ♖d7 26. ♠h3 and White has a strong kingside attack.

22. b4 ♖xe3 23. ♖xe3 ♖xe3 24. ♠xe3 ♖f8 25. ♠d3

Both sides fight for the open d-file.

25... ♠xd3 26. ♖xd3 ♠d8 27. ♖e2 ♔g6 28. ♠d1 ♠xd1+ 29. ♖xd1 ♖e3 30. ♖f3 ♖xf3

Trading queens eases White's task, although Black should draw the game with accurate play.

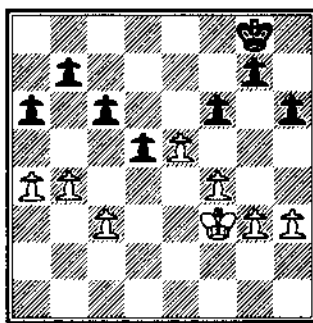
31. ♖xf3 ♖e7 32. ♔g2 ♖d5 33. ♖xd5 exd5?

33...exd5 is better as it still permits Black too draw.

34. ♔f3?

Centralizing the King as quickly as possible is the key in endgames, but 34.a5! is correct t as it immobilizes Black's queenside pawn majority.

34...f6??



A horrible move which loses outright. This move allows White to isolate Black's two remaining kingside pawns and immobilize his queenside majority.

35. cxf6 gxf6 36. a5 ♔g7 37. ♔g4 ♔g6 38. f5+ ♔g7 39. ♔h5 ♔h7 40. h4 ♔g7 41. g4 ♔h7 42. g5 hxg5 43. hxg5 fxg5 44. ♔xg5 ♔g7 45. f6+ ♔f7 46. ♔f5 ♔f8 47. ♔e6 ♔e8 48. f7+ ♔f8 49. ♔f6 d4 50. cxd4 c5 51. bxc5 b6 52. axb6 1-0

A Winning Team

By Hector R. Hernandez

We sometimes hear about urban youth and the less than positive activities they may be involved in. However, we don't often hear about youngsters who are involved in more positive and rewarding endeavors. It is with these ideas in mind that I write this brief narrative about the Montoya brothers: Juan (17), Jose (15), Fernando (14) and Gerardo (11). These boys live in the Near West Side community of Chicago known

as Pilsen. The three older Montoyas are students at Benito Juarez High School; Juan is a Senior, enrolled in honors courses, Jose is a Sophomore, and Fernando is a Freshman. Gerardo is in 6th grade at the Manuel Perez Elementary school. All of them consistently earn above average grades in school, and are frequent participants in programs offered by the Rudy Lozano branch of the Chicago Public Library.

One of the programs offered by the library is the chess club where newcomers are always welcomed and encouraged to learn the strategy and tactics of the game. The Montoyas joined the chess club about four years ago. Since that time, Jose and Fernando have become members of the Illinois Chess Association and the United States Chess Federation and participated in a number of scholastic as well as open tournaments over the last two years. They have won numerous trophies and prizes in city as well as other events. Fernando, who can display great tenacity and perseverance, came in second place in last year's Illinois Class Championships, and fifth among 11th graders in this year's All Grades State Scholastic Championships. Tournament experience for Juan and Gerardo has come, mainly, by way of the two Chicago Latino Chess Tournaments (1993 and 1994) hosted by the library. Juan's involvement with the club has been as a player and volunteer in charge when the coach is away.

Participating in tourneys has enabled these boys to travel outside their community, see other environments and interact with children of other cultural



Juan Carlos (17), Gerardo (11), Jose de Jesus (15), and Fernando (14) Montoya are pictured with Rudy Lozano Branch Library chess coach Hector R. Hernandez. All four boys won prizes at the Second Annual Chicago Latino Chess Championship. They are active participants in library activities and programs.

backgrounds for mutual enrichment. Education is a key issue in the Mexican community. Competitions are at times offered by, or at, educational institutions such as Morgan Park Academy- previously-, College of Lake County, Dominican University, and the University of Illinois to name a few. Events held at these institutions offer these young children a positive and valuable first contact-even if limited- with the academic world.

All four of the Montoya children won I.C.A./Warren Junior Chess Program prizes at the recently concluded Second Annual Chicago Latino Chess Championship. It is unfortunate that Benito Juarez High School does not have a chess club or team to compete with other high schools because they would have a ready-made team with Juan, Jose, and Fernando.

I thank the I.C.A. and Helen Warren for their support of our program and we will continue to encourage other "family teams" to participate in scholastic and open chess tournaments.

SECOND ANNUAL CHICAGO LATINO CHESS CHAMPIONSHIP

By Hector R. Hernandez

The Chicago Public Library's Rudy Lozano Branch hosted the 2nd Annual Chicago Latino Chess Championship on October 1, 1994, as part of the city-wide Hispanic Heritage Month festivities. 30 players - including 24 under the age of 19, 2 girls and 1 woman - showed up to compete for the 10

trophies, donated by 25th Ward Alderman Ambrosio Medrano. There were extra prizes for junior players: The I.C.A./Helen Warren Junior Chess Program contributed 5 books, as well as a clock for a perfect score and gift certificates for those scoring 3 of 4 points. The event was directed by Joshua Flores. I avail myself of this opportunity to thank Mr. Medrano, the I.C.A., Helen Warren, and Mr. Flores for their generosity which contributed greatly to the success of this tournament.

There were 20 participants in Section I, open to players 15 years of age and older; and 10 in Section II, open to players 14 and younger. After three rounds Section I had two players with perfect scores: Isidro Tamez, a Bell Labs Computer Science Engineer who was last year's winner and Ed Suarez. These two squared off in round 4 for first place honors, but their game ended in a draw. Suarez won the ensuing play-off match by a 1.5-.5 score and took home the first place trophy. Isidro had to settle for second place this time. Miguel Camargo, Sergio Saucedo, Manuel Vazquez and Marco Escalante had 3-1 scores. They played a round robin mini-tournament, G/5 per game, to determine 3rd - 5th places. Camargo, a sophomore at Benito Juarez High School, beat his three opponents and took 3rd place. Vazquez, a Kelly High School student secured 4th place with two play-off points. Saucedo, top board on the Kelly H.S. team, had to settle for 5th place since he lost to both Miguel and Manuel while defeating Marco Escalante. Marco is a young Peruvian poet who took time to build solid positions, but frequently lost his way in time



Front Row: (from left to right): Joshua Flores, -TD, Sergio Saucedo, Manuel Vazquez, Jorge Reyes, Miguel Camargo, Tony Rodriguez, Angelica Aguinaga, Hector R. Hernandez - Head Librarian.

Back Row: Fernando Montyoya, Isidoro, Ed Suarez and Alderman Ambrosio Medrano, Not pictured: Alexis Aprim.

trouble. Besides their trophies, Miguel, Manuel and Sergio also collected I.C.A./Warren Junior Program certificates; while Juan and Jose Montoya, and Gerardo Alcantar won books.

Jorge Reyes, 13, had a perfect score of four points to take the first place trophy, and a chess clock. Along the way he encountered and defeated Fernando Montoya, 14, who has two years of U.S.C.F./I.C.A. tournament experience. Jorge is a very disciplined player and going from 5th place last year to 1st this year is noteworthy, albeit without Miguel Carmargo and Jose Montoya in this Section. Fernando had to be content with second place, as was the case a year ago when he had to beat his brother Jose in a play-off to claim that honor. Angelica Aguinaga,

12, took 3rd place after defeating 5 year old Tony Rodriguez in a play-off match. Tony, who is a great promoter of chess among his preschool classmates, ended up in 4th place; while Alexis Aprim, 10, earned 5th place.

The awards ceremony was conducted by Hector R. Hernandez, Alderman Medrano and Joshua Flores. Prior to the ceremony, Alderman Medrano spoke briefly, encouraging everyone to keep up and move ahead with their academic studies.

After all presentations were made, Sergio Saucedo thanked the library personnel on behalf of the Kelly High School chess team and Coach Neil Suwe, all of whom played in the tournament.

Everyone had fun and we are all looking forward to the third

edition of this tournament in October, 1995.

PEORIA FALL TORNAO

By Bill Naff

Doug Van Buskirk and I tied for first prize, each winning \$62.50. Chess book class prizes were won by Cameron Feltner (A), Bob Sphar (B), David Bononi (C), and Eddie Patel (D/under).

Central Illinois will soon have another Expert, as Reynaldo Limbergo of the LaSalle-Peru Chess Club, currently rated 1921, rapidly improving. In round 3, I dropped a piece to Reynaldo and had to fight hard to survive into the end game. At the finish with both flags hanging, Reynaldo had the misfortune to time forfeit in sudden death. He ended up a rook, bishop, and king against king and pawn.

The 32 entrants was Peoria's best one-day turnout of the year, and generated a large contribution for the Warren Junior Chess program. Four more Tornadoes are planned for 1995.

CHES ON THE 

STEIN & CONDRON TIE IN LOW COST #6

The Fox Valley Chess Club sponsored the 6th of a continuing series of ICA Tour Events aimed at providing cost-effective entertainment for the local chess player.

Twenty four players including one master and three experts turned out for the event held on October 15th. The tournament was directed by Joe and Jim Oberweis.

Larry Petroff (1952) was the only player undefeated after three rounds and only had to defeat past champion Peter Stein to claim the top prize. Jim Condron, Larry Cohen, Jim Oberweis had a chance to win or share top honors going into the last round only if Peter Stein over came Larry. When the dusk settled Peter Stein prevailed and Jim Condron defeated Larry Cohen to share the top spot. Jim Oberweis was held to a draw by Joshua Flores.

The Top A prize and 3rd place was split between Jim Oberweis and Larry Petroff. Jeff Friedman and Joshua Flores split the Top B prize. FVCC club member Richard Anderson earned the Top Class C prize. Zena Weber, William Harrer and Bob Wzosek shared in the Top Class D/E/unr prize.

ALL GRADES CHAMPIONSHIP DRAWS OVER 550

The Fox Valley Chess Club sponsored the Illinois All Grades Championship. The tournament was organized by Senior Master Richard Verber and held at the Walbonsie Valley High School.

Several club players scored well in this event. Julie Oberweis tied for 1st in the 12 grade section, Mike Garcia tied for 1st in the 10 grade section, Chanh Sayouthasad placed 4th in the same section. Matt McDonald took 1st place in the 5 grade section, while William Shaw

took 3rd in the Kindergarten section. Congratulations to all these chess players.

Two local teams also scored well. Holy Angeles earned 2nd place in the 5th grade section and 3rd place in the Kindergarten section, while Aurora East earned 2nd place in the 10th grade section.

VERBER TOPS DOUBLE G/10

Sixteen players participated in the November double game in ten tournament (each player plays 2 games against their opponent). Dick Verber scored a perfect 8 - 0 on his way to earning the top prize of \$10! Jim Oberweis and Jeff Friedman tied for second with 5 1/2 - 1 1/2 scores, but only after Jeff lost his game round game against Jim. Poor Jeff came unglued in a winning position and gave the victory to Jim. Jim took the 2nd place prize money of \$5 on tie breaks. Bob Renaut, Gennady Ioffe and TV Weber tied for 4-6th place. TV upset Bob in round one but latter lost two games to Jeff Friedman in round 3. Bob Renaut had a chance to earn 2nd place but collapsed in a winning position against Dick in the final round.

STOLZ & FRIEDMAN TIE IN LOW COST #7

Two new players, Jeffrey Friedman (1780) and Robert Stoltz (1886) break through to the winners circle in the 7th Fox Valley Low Cost Open by scoring 3 1/2 - 1/2. Top seeded Larry Cohen (2006) was defeated by Jeff Friedman, while Robert Stolz defeated Howard Cohen (1954) to

claim the top spot. Other upsets in this tournament included Marvin Rogan (2003) drawing with Gary Mitchell (1654).

The \$15 Top A prize was won by Howard Cohen with a 3-1 score. The Class B prize, \$15, was earned by Gary Mitchell by drawing with Marvin in the last round. Chris Baumgartner (1466) earned \$15 by winning the Class C prize with his defeat of Kirk Israelsen (1700).

Eighteen players competed in the event. The tournament was directed by Steve Decman.

JIM OBERWEIS WINS THIRD CLOSED CLUB CHAMPIONSHIP

In a strange turn of event Jim Oberweis was crowned Club Champion for the third year in a row when Kirk Israelsen forfeited his last round game! Kirk and Jim were tied entering the final round at 5-1, but Kirk had defeated Jim in their head to head match. Kirk (1700) would have had to defeat Cliff Anderson (1500) in the last round to earn the top place. But by failing to show up or call to make other arrangements he lost his last round game.

Other participants in the closed Championship included, Joe Moore, Ted Craig, Mike Flynn, Joe DeCort and Dave Carson. Congratulations to all of the participants in this event. They qualified for the event by finishing in the top eight positions on the clubs year long ladder tournament.

ILLINOIS TOUR CROSSTABLES

Illinois Class November 19-20, 1994

MASTER-EXPERT		score		tour	
1	GUREVICH Dmitry	IL	2651	W12	W 7 W 3 W 6 4 28 M
2	MARTINOVSKY Eugene	IL	2378	D19	W23 W11 W 8 3.5 15 M
3	CHOW Albert C	IL	2419	W17	W 5 L 1 W 9 3 8 M
4	RONNEBERG Erik F	MN	2226	W25	W10 L 6 W15 3 8 M
5	INUMERABLE Florentino	IL	2100	W26	L 3 W24 W10 3 8 MX
6	MANION Josh	WI	2418	W18	D 8 W 4 L 1 2.5 5 M
7	WALLACH Kenneth T	IL	2217	W20	L 1 D13 W18 2.5 5 M
8	MAROVITCH Mark	IL	2189	W14	D 6 W15 L 2 2.5 5 MX
9	BROOKS Michael A	MO	2558	H	D19 W12 L 3 2 4 M
10	YOUNG Angelo	NY	2494	W13	L 4 W19 L 5 2 4 M
11	HERNANDEZ Hector	IL	2069	W22	D15 L 2 D13 2 4 MX
12	PANNER Glenn E	IL	2069	L 1	W20 L 9 W24 2 4 MX
13	PEDERSEN N Eric	IL	2047	L10	W25 D 7 D11 2 4 MX
14	WULATIN David J	IL	1951	L 8	D18 W26 D16 2 4 MXA
15	ZIANE Nouredine	NY	2253	W24	D11 L 8 L 4 1.5 3 M
16	GORE Jan	IL		L21	L24 W25 D14 1.5 3 M
17	FAGAN James B	IL	2044	L 3	D26 D22 D20 1.5 3 MX
18	SAX Robert D	IL	2039	L 6	D14 W23 L 7 1.5 3 MX
19	KLEBAN Yuliy	IL	2031	D 2	D 9 L10 D22 1.5 3 MX
20	COX William G	IL	1996	L 7	L12 W27 D17 1.5 3 MXA
21	RICHMOND M Barrie	IL	1927	W16	H - - 1.5 3 MXA
22	HOSCH William L	IN	1815	L11	H D17 D19 1.5 3 MXA
23	HUGHES Robert	IL	1811	B	L 2 L18 D26 1.5 3 MXA
24	JORDAN Roland V	IL	2028	L15	W16 L 5 L12 1 2 MX
25	COHEN Lawrence S	IL	2006	L 4	L13 L16 W28 1 2 MX
26	BOGAN Timothy J	IL	1937	L 5	D17 L14 D23 1 2 MXA
27	FLORES Joshua	IL	1778	-	- L20 - 0
28	MIEL James H	IL	1751	-	- L25 0

CLASS A		score		tour	
1	OBERWEIS James D	IL	1938	W18	H W 7 W 3 3.5 15 A
2	LEONG Gee Y	IL	1800	D 7	W17 W 9 W 8 3.5 15 A
3	COHEN Howard	IL	1954	W 6	W13 W 8 L 1 3 8 A
4	SUKCHAROENPHON Thavorn	IL	1900	W14	L 8 W12 W 9 3 8 A
5	MC ALISTER Kelvin	IL	1941	L 9	W14 D 6 W10 2.5 5 A
6	PRONEK Randy J	IL	1838	L 3	W15 D 5 W11 2.5 5 A
7	KITTILSEN Guy O	IL	1877	D 2	W11 L 1 D12 2 4 A
8	KOSTBA Lawrence A	IL	1861	W10	W 4 L 3 L 2 2 4 A
9	ROSHAL Michael	IL	1823	W 5	X16 L 2 L 4 2 4 A
10	DAYTON Soren	IL	1688	L 8	W18 W13 L 5 2 4 AB
11	DWYER William T	IL	1867	H	L 7 W14 L 6 1.5 3 A
12	DECMAN Stephen J	IL	1800	D17	H L 4 D 7 1.5 3 A
13	CERINARO J P	IL	1875	W15	L 3 L10 - 1 2 A
14	FRAUSE Paul	IL	1800	L 4	L 5 L11 W15 1 2 A
15	STEIGMAN A J	FL	1713	L13	L 6 X18 L14 1 2 AB
16	FORD Samuel M	IL	1962	H	P 9 - - 0.5
17	BUTTNY William P	IL	1900	D12	L 2 - - 0.5 1 A
18	UNLEAN Michael Th	IL	1818	L 1	L10 F15 - 0

CLASS B		score		tour	
1	WHITENER Ken E	IN	1779	W11	W 6 W 2 W 4 4 28 B
2	KAMBER George	IN	1784	W20	W 3 L 1 W 7 3 8 B
3	LAHUM Robert	IL	1686	W13	L 2 W16 W12 3 8 B
4	MONG Brian	IL	1609	W19	W 5 W 8 L 1 3 8 B
5	PARAGON Erman	IL	1707	W17	L 4 D13 W15 2.5 5 B
6	KNOX Malcolm	IL	1671	W18	L 1 D17 W16 2.5 5 B
7	BISHOP Jack	IL	1629	H	W14 W 9 L 2 2.5 5 B
8	SADAUSKAS Justin	IL	1764	H	W12 L 4 D11 2 4 B
9	GAPUZ Wilfredo C	IL	1762	D16	W15 L 7 D10 2 4 B
10	PADILLA Frank	IL	1670	H	L16 W14 D 9 2 4 B
11	ISRAELSEN Kirk	IL	1665	L 1	D21 W19 D 8 2 4 B
12	PADILLA Rudy R	IL	1600	W21	L 8 W18 L 3 2 4 B
13	DELAJ Joe	IL	1584	L 3	W20 D 5 D18 2 4 BC
14	ELLICE R Wayne	IL	1763	D15	L 7 L10 W21 1.5 3 B
15	KOGUT Kenneth	IL	1614	D14	L 9 W21 L 5 1.5 3 B
16	GRANT Dennis S	IL	1613	D 9	W10 L 3 L 6 1.5 3 B
17	HALE Bob Lloyd	IL	1600	L 5	W19 D 6 - 1.5 3 B
18	ROBISON Jason	IL	1491	L 6	B L12 D13 1.5 3 BC
19	MIEL James H	IL	1751	L 4	L17 L11 B 1 2 B
20	COVIC Mehmed	IL	1668	L 2	L13 B - 1 2 B
21	HAUPTFELD Sven	IL	1726	L12	D11 L15 L14 0.5 1 B

CLASS C		score		tour	
1	BOORSTEIN Josh L	IL	1440	W16	W 7 W 2 W 5 4 28 C
2	GROEGER Andrew	IL	1580	W13	W 3 L 1 W 8 3 8 C
3	RIESER William A	IL	1482	W14	L 2 W 7 W 6 3 8 C
4	BREWER Kevin P	IL	1492	H	W11 L 6 W10 2.5 5 C
5	HAYES Christopher	IL	1359	W 6	W10 D 8 L 1 2.5 5 CD
6	MICKLICH Frank T	IL	1540	L 5	W14 W 4 L 3 2 4 C
7	JOHNSON Henderson	IL	1514	W 9	L 1 L 3 W11 2 4 C
8	MC COY Damon	IL	1484	D11	W12 D 5 L 2 2 4 C
9	RUEPPEL John S	IL	1272	L 7	W16 L10 W13 2 4 CD
10	DUDNICK Steven L	IL	1514	H	L 5 W 9 L 4 1.5 3 C
11	ROBLEDO Mark	IL	1157	D 8	L 4 W14 L 7 1.5 3 CDE
12	WILHELM John H	IL	1524	D15	L 8 D13 - 1 2 C
13	HOSCH Brandon	IN		L 2	H D12 L 9 1 2 C
14	GOLDMAN Bruce L	NC	1099	L 3	L 6 L11 B 1 2 CDE
15	KENNEDY Matthew R	IL	1317	D12	- - - 0.5

16 KEMPNER Robert H IL 1594 L 1 L 9 - - 0

CLASSES D-E		score		tour	
1	HENDERSON Dale	IL	1371	W18	W15 X 8 W 5 4 28 D
2	PATEL Eddie	IL	1314	H	W20 W 7 W 6 3.5 15 D
3	STEVENS Joseph M	IL	1398	L15	W17 W11 W10 3 8 D
4	WISHNER Michael	IL	1328	L13	W14 W18 W12 3 8 D
5	ADDUCI Thomas A	IL	1359	W19	W10 D 6 L 1 2.5 5 D
6	BALTAZAR Mark A	IL	1277	W22	W13 D 5 L 2 2.5 5 D
7	MODY Devagna	IL	1371	L12	W19 L 2 W15 2 4 D
8	YOUNGBERG Michael	IL	1342	W16	W12 F 1 - 2 4 D
9	KENNEDY Matthew R	IL	1317	H	D11 L12 W16 2 4 D
10	MORGAN Christopher	IL	1247	W14	L 5 W13 L 3 2 4 D
11	HAYES Michael J	IL	1193	D20	D 9 L 3 W19 2 4 DE
12	JOHNSON Nancy S	IL	1112	W 7	L 8 W 9 L 4 2 4 DE
13	WIMMER Jeremy	IL	886	W 4	L 6 L10 W21 2 4 DE
14	LEWIS Richard	IL		L10	L 4 W22 W18 2 4 DE
15	MONTOYA Fernando	IL	1210	W 3	L 1 D16 L 7 1.5 3 D
16	SCHWARTZ Josh	IL	938	L 8	B D15 L 9 1.5 3 DE
17	DWYER Bill	IL	568	H	L 3 L19 W22 1.5 3 DE
18	MONTOYA Jose J	IL	1121	L 1	W22 L 4 W14 1 2 DE
19	WIMMER John R	IL	980	L 5	L 7 L17 L11 1 2 DE
20	ROUSTAN Pierre	IL	1389	D11	L 2 - - 0.5 1 D
21	GOLDMAN Bruce L	NJ	1099	-	- - L13 0
22	CITARI Stephen	IL		L 6	L18 L14 L17 0

Micro Resales Open		score		tour	
OPEN					
1	RAO Vivek	2561	W17	W 7 W 9 W 2 D 4 4.5 19 M	
2	TYRIMBA Bem	2271	W14	W16 W11 L 1 W 7 4 12 M	
3	VAN BUSKIRK Douglas	2200	W21	D10 D 4 W11 W 9 4 12 M	
4	BRODIE Mark	2191	D 5	W 8 D 3 W14 D 1 3.5 7 MX	
5	MANNIE Kiran	1762	D 4	L14 W21 W16 W13 3.5 7 MXAB	
6	LEALI Michael	1730	L 9	W22 D16 X18 D10 3 6 MXAB	
7	ZIANE Nouredine	2294	W18	L 1 W10 D 9 L 2 2.5 5 M	
8	RAPP Raif		L12	L 4 D15 W22 W16 2.5 5 M	
9	BOUSUM Joshua	2162	W 6	W12 L 1 D 7 L 3 2.5 5 MX	
10	CADMAN Chuck	1970	W15	D 3 L 7 D13 D 6 2.5 5 MXA	
11	FELTNER Cameron	1874	W19	W13 L 2 L 3 D15 2.5 5 MXA	
12	BOLITHO Tom	1857	W 8	L 9 L13 D15 W14 2.5 5 MXA	
13	COXER David	1512	W24	L11 W12 D10 L 5 2.5 5 MXABC	
14	MEYERS Phillip	1818	L 2	W 5 W17 L 4 L12 2 4 MXA	
15	RITTER Tim	1713	L10	D21 D 8 D12 D11 2 4 MXAB	
16	CAMPARD Kyle	1909	W22	L 2 D 6 L 5 L 8 1.5 3 MXA	
17	BOURGERIE Dennis	1926	L 1	W18 L14 - - 1 2 MXA	
18	HENDON Andrew	1894	L 7	L17 W22 F 6 - 1 2 MXA	
19	GODDWIN Kimberly	1679	L11	W23 - - - 1 2 MXAB	
20	GRATZ Glen	2177	-	- - W22 1	
21	GOLUBRAN Nader	1829	L 3	D15 L 5 - - 0.5 1 MXA	
22	LAHLUM Robert	1686	L16	L 6 L18 L 8 L20 0	
23	GASUNAS Anthony	1208	-	L19 - - - 0	
24	PETTY Dan	976	L13	- - - - 0	

RESERVE		score		tour	
1	WHITENER Ken	1779	L 8	W10 W 6 W11 W 5 4 12 B	
2	KAMBER George	1784	W13	L 5 W 4 W 8 D 3 3.5 7 B	
3	GETZ Barney	1460	W 9	W 8 W12 L 5 D 2 3.5 7 BC	
4	HEIDREBER Steve	1439	W 6	D12 L 2 W 7 W 8 3.5 7 BC	
5	WILDMAN Eric	1406	W11	W 2 H W 3 L 1 3.5 7 BC	
6	ROYCHOWDHURY Amber		L 4	W 7 L 1 D13 W10 2.5	
7	LEALI Matthew	1310	L12	L 6 W13 L 4 W11 2 4 BCD	
8	CHENG Guanyao	1260	W 1	L 3 W10 L 2 L 4 2 4 BCD	
9	GASUNAS Anthony	1208	L 3	B L11 L10 X13 2 4 BCD	
10	PETTY Dan	976	B	L 1 L 8 W 9 L 6 2 4 BCDE	
11	LITTLE Kendra		L 5	W13 W 9 L 1 L 7 2	
12	MITCHELL Gary	1654	W 7	D 4 L 3 - - 1.5 3 B	
13	BUCKLEY Eric	1332	L 2	L11 L 7 D 6 F 9 0.5 1 BCD	

Chicago CC November Plus-Score November 5-6, 1994

Chicago CC November Plus-Score		score		tour	
1	ZINYTCH Miron	2266	W17	W 8 W 5 W 3 W 6 5 16 M	
2	FALLS Dwayne	1899	L 4	W12 W17 W 5 W 7 4 6 MXA	
3	SUKCHAROENPHON Thavorn	1900	W13	D 9 W 4 L 1 W11 3.5 3.5MXA	
4	LUU Hung		W 2	D 7 L 3 W15 W 9 3.5 3.5M	
5	JASAREVIC Ersan	1557	W14	W16 L 1 L 2 W13 3 3 XABC	
6	CHOW Albert	2420	H	W18 H W 7 L 1 3 3 M	
7	GATES Sophia	1894	W19	D 4 W 9 L 6 L 2 2.5 2.5MXA	
8	ISRAELSEN Kirk	1740	W11	L 1 D15 L 9 W17 2.5 2.5MXAB	
9	COVIC Mehmed	1638	W15	D 3 L 7 W 8 L 4 2.5 2.5MXAB	
10	SMYTHE Bill	1915	H	R H W11 - - 2	
11	PADILLA Rudy	1600	L 8	W13 L10 W14 L 3 2 2 MXAB	
12	AZIZOV Eldar		L16	L 2 L14 W19 W15 2 2 M	
13	XHOTIMSKY Igor		L 3	L11 W19 W17 L 5 2 2 M	
14	STEVENS Joe	1398	L 5	W15 W12 L11 W19 2 2MXABCD	
15	PHILLIPS Steve		L 9	W14 D 8 L 4 L12 1.5 1.5M	
16	SUKCHAROENPHON Kengkai	1976	W12	L 5 - - - 1 1 MXA	
17	GLAWE Chris	1464	L 1	W19 L 2 L13 L 8 1 1 MXABC	
18	FUERSTMAN Leland	2100	H	L 6 - - - 0.5 0.5MX	
19	PHILLIPS Joseph		L 7	L17 L13 L12 L14 0	

TOURNAMENT CALENDAR

Call Chess Phone, (708) 832-5222, for up-to-date tournament results, and announcements of tournaments that may not be listed in Chess Life or the ICB. The ICA Chess Phone voice is Todd Barre. Unless otherwise noted, all tournaments require USCF membership. Illinois Tour events also require ICA membership.

Organizers - remember it is ICA policy that an event must be published in the ICA bulletin and Chess Life marked as a tour event in order to be a tour event. Please send your tournament notices to: Bob Renaut, 1255 Oakton Lane, Naperville, IL 60540-0310 or call 708-983-0934.

1995

Jan 7-8, Tim Just Open, Grayslake, IL
5-SS, 40/90, G/30, College of Lake County Main Bldg, 19351 W. W. Washington, Grayslake, IL 60030.
EF\$: \$32 if by 1/4/95, \$40 at site, \$5 discount to juniors. USCF and ICA membership req'd. Reg: 8-8:40, Rds 9, 1:30, 6, 10, 2:30. Open: \$225-\$150-\$100, X \$125-\$100, A & under \$125-\$100. Reserve (below 1800), \$225-\$150-\$100, C - \$125-\$100, D/E/unr - \$100. Info: Tim Just, 37165 Willow Gurnee, IL 60031, 708 244-7954. **MAXI**

Jan 15, 1995 Peoria Tornado
4-SS, G/80, Garrett Center, 824 N. Duryea Place, Peoria. EF \$11 in advance, \$15 at site. Reg: 8:00-8:45, Rds 9, 12, 2:45, 5:30. Entries: Bill Naff, 212 W. Vail Ct., Peoria, IL 309 691-4624. **Mini**

Jan 19
CCC Quad, G/30

Jan 21 Tuley Park Quick Chess #1, Chicago, IL 5-SS, 501 E, 90th Place, EF: \$12, under 19 \$6. Reg. 11:00-11:45, 1st Rd at 12. Prizes if 16 or less 1st 35%, 2nd 25% best from lower half 20% Info: Tom Fineberg 721-3979.

Jan 22
CCC, 4-SS, G/45

Jan 25
Oberweis Dairy Quick Chess, Aurora
4-SS, G/15, Oberweis Dairy, 945 N. Lake Street, Aurora, IL, EF: \$5, PF= 60% of entries, Reg: 7-7:20 pm, Rds 7:30, 8, 8:30, 9 pm. Free ice cream to the winner. Info: Jim Oberweis, 3 Buckingham Dr, Aurora, IL 60506 708 466-4886.

Jan 28, Chessterton Chess
4-SS, G/90, Westchester Public Library, 200 W. Indiana, Chesterton, Indiana 46304. EF\$: \$15, \$10 for High School or below Reg: 8:30 - 9:15 a.m. (all time is Chicago time!), Rds: 9:30, 12:00, 3:00, 6:00, Prizes (b30): 1st \$100, 2nd \$60, A \$45, B \$40, C \$35, DEU \$30, NS,NC Advance entry, information: Randy Pals, 1233 Morningside Dr., Chesterton, IN 46304. 219-926-2266.

Jan 28-29
CCC, 4-SS, 40/90, SD/30

Feb 1
Oberweis Dairy Quick Chess, Glen Ellyn, IL 4-SS, G/15, Oberweis Dairy, 651 Roosevelt, Rd, Glen Ellyn, IL, EF: \$5, PF= 60% of entries, Reg: 7-7:20 pm, Rds 7:30, 8, 8:30, 9 pm. Free ice cream to the winner. Info: Jim Oberweis, 3 Buckingham Dr, Aurora, IL 60506 708 466-4886.

Feb 2
CCC, 4-SS, G/20

Feb 8
Oberweis Dairy Quick Chess, Rolling Meadows, IL 4-SS, G/15, Oberweis Dairy, 1735 Algoquin Rd, Rolling Meadows, IL, EF: \$5, PF= 60% of entries, Reg: 7-7:20 pm, Rds 7:30, 8, 8:30, 9 pm. Free ice cream to the winner Info: Jim Oberweis, 3 Buckingham Dr, Aurora, IL 60506 708 466-4886.

Feb 9
CCC, 4-SS, G/10

Feb 12
ICA Board Meeting, Chicag Chess Club

Feb 18-19, US Amateur Team Championships Midwest, Oakbrook, See Chess Life for details

Feb 25 Tuley Park Quick Chess #2, Chicago, IL 5-SS, Rds 1&2 G/15, Rds 3,4, &5 G/25, 501 E, 90th Place, EF: \$12, under 19 \$6. Reg. 11:00-11:45, 1st Rd at 12. Prizes if 16 or less 1st 35%, 2nd 25% best from lower half 20%, Info: Tom Fineberg 721-3979.

Mar 4, Chessterton Chess
4-SS, G/90, Westchester Public Library, 200 W. Indiana, Chesterton, Indiana 46304. EF\$: \$15, \$10 for High School or below Reg: 8:30 - 9:15 a.m. (all time is Chicago time!), Rds: 9:30, 12:00, 3:00, 6:00, Prizes (b30): 1st \$100, 2nd \$60, A \$45, B \$40, C \$35, DEU \$30, NS,NC Advance entry, information: Randy Pals, 1233 Morningside Dr., Chesterton, IN 46304. 219-926-2266.

Mar 4-5, Greater Peoria Open
5/SS, G/125, Signature Inn, 4112 N. Brandywine Dr, Peoria, IL, EF\$ 40 at site, \$30 if by 2/22, \$25 if by 2/28. Two sections, OPEN and Reserve (u1800). See Ad on page 27 for prizes and entry info., **MAXI**

Mar 11 Tuley Park Quick Chess #3, Chicago, IL 5-SS, Rds 1&2 G/15, Rds 3,4, &5 G/25, 501 E, 90th Place, EF: \$12, under 19 \$6. Reg. 11:00-11:45, 1st Rd at 12. Prizes if 16 or less 1st 35%, 2nd 25% best from lower half 20% Info: Tom Fineberg 721-3979.

Mar 12
ICA Awards Banquet, Harvey's Prime Rib on Ogden Ave in Westmont.

Mar 24-26, Mid-America Class Championship, Chicago, IL. See Chess Life for details.

Apr 1 Tuley Park QUICK CHESS #4, Chicago, IL 5-SS, Rds 1&2 G/15, Rds 3,4, &5 G/25, 501 E, 90th Place, EF: \$12, under 19 \$6. Reg. 11:00-11:45, 1st Rd at 12. Prizes if 16 or less 1st 35%, 2nd 25% best from lower half 20% Info: Tom Fineberg 721-3979.

Apr 1, Chessterton Chess
5-SS, G/60, Westchester Public Library,
200 W. Indiana, Chesterton, Indiana
46304. EF\$: \$15, \$10 for High School or
below Reg: 8:30 - 9:15 a.m. (all time is
Chicago time!), Rds: 9:30, 11:30, 2:00,
4:00, 6:30, Prizes (b30): 1st \$100, 2nd
\$60, A \$45, B \$40, C \$35, DEU \$30,
NS,NC Advance entry, information:
Randy Pals, 1233 Morningside Dr.,
Chesterton, IN 46304. 219-926-2266.

Apr 7-9, National H.S. Championship,
Chicago, IL.

Apr 7-9, National Elementary
Championship, Little Rock, AR.

Apr 29 95 Tuley Park G/7 #3, Chicago

Apr 29, Chessterton Chess
4-SS, G/90, Westchester Public Library,
200 W. Indiana, Chesterton, Indiana
46304. EF\$: \$15, \$10 for High School or
below Reg: 8:30 - 9:15 a.m. (all time is
Chicago time!), Rds: 9:30, 12:00, 3:00,
6:00, Prizes (b30): 1st \$100, 2nd \$60, A
\$45, B \$40, C \$35, DEU \$30, NS,NC
Advance entry, information: Randy Pals,
1233 Morningside Dr., Chesterton, IN
46304. 219-926-2266.

May 5-7, National Open, Las Vegas,

May 12-14, National Junior High,
Dearborn, MI.

May 20 95 Tuley Park G/15-25 #3,

May 27, Chessterton Chess
4-SS, G/90, Westchester Public Library,
200 W. Indiana, Chesterton, Indiana
46304. EF\$: \$15, \$10 for High School or
below Reg: 8:30 - 9:15 a.m. (all time is
Chicago time!), Rds: 9:30, 12:00, 3:00,
6:00, Prizes (b30): 1st \$100, 2nd \$60, A
\$45, B \$40, C \$35, DEU \$30, NS,NC
Advance entry, information: Randy Pals,
1233 Morningside Dr., Chesterton, IN
46304. 219-926-2266.

May 28-30, Chicago Open, Oakbrook,

Jun 10, Tuley Park Quick Chess,
Chicago, IL

Jun 14-16, U.S. Junior Chess
Congress - Midwest, Chicago, IL.

Jun 24, Chessterton Chess
5-SS, G/60, Westchester Public Library,
200 W. Indiana, Chesterton, Indiana
46304. EF\$: \$15, \$10 for High School or

below Reg: 8:30 - 9:15 a.m. (all time is
Chicago time!), Rds: 9:30, 11:30, 2:00,
4:00, 6:30, Prizes (b30): 1st \$100, 2nd
\$60, A \$45, B \$40, C \$35, DEU \$30,
NS,NC Advance entry, information:
Randy Pals, 1233 Morningside Dr.,
Chesterton, IN 46304. 219-926-2266.

Jul 22-23,
Midway Amateur Class Champion-
ships, Oaklawn Hilton Inn, 94th and
Cicero Ave.

Jul 29, Chessterton Chess
4-SS, G/90, Westchester Public Library,
200 W. Indiana, Chesterton, Indiana
46304. EF\$: \$15, \$10 for High School or
below Reg: 8:30 - 9:15 a.m. (all time is
Chicago time!), Rds: 9:30, 12:00, 3:00,
6:00, Prizes (b30): 1st \$100, 2nd \$60, A
\$45, B \$40, C \$35, DEU \$30, NS,NC
Advance entry, information: Randy Pals,
1233 Morningside Dr., Chesterton, IN
46304. 219-926-2266.

Aug 6-18, U.S. Open,

Aug 26, Chessterton Chess
4-SS, G/90, Westchester Public Library,
200 W. Indiana, Chesterton, Indiana
46304. EF\$: \$15, \$10 for High School or
below Reg: 8:30 - 9:15 a.m. (all time is
Chicago time!), Rds: 9:30, 12:00, 3:00,
6:00, Prizes (b30): 1st \$100, 2nd \$60, A
\$45, B \$40, C \$35, DEU \$30, NS,NC
Advance entry, information: Randy Pals,
1233 Morningside Dr., Chesterton, IN
46304. 219-926-2266.

Sep 1-3, Illinois Open, Chicago,

Sep 2, Chessterton Chess
5-SS, G/60, Westchester Public Library,
200 W. Indiana, Chesterton, Indiana
46304. EF\$: \$15, \$10 for High School or
below Reg: 8:30 - 9:15 a.m. (all time is
Chicago time!), Rds: 9:30, 11:30, 2:00,
4:00, 6:30, Prizes (b30): 1st \$100, 2nd
\$60, A \$45, B \$40, C \$35, DEU \$30,
NS,NC Advance entry, information:
Randy Pals, 1233 Morningside Dr.,
Chesterton, IN 46304. 219-926-2266.

Oct 28, Chessterton Chess

Oct 29-31, Midwest Class
Championship, Oakbrook, IL.

Nov 18-19, Illinois Class
Championship,

Nov 25, Chessterton Chess

Dec 23, Chessterton Chess
4-SS, G/90, Westchester Public Library,
200 W. Indiana, Chesterton, Indiana
46304. EF\$: \$15, \$10 for High School or
below Reg: 8:30 - 9:15 a.m. (all time is
Chicago time!), Rds: 9:30, 12:00, 3:00,
6:00, Prizes (b30): 1st \$100, 2nd \$60, A
\$45, B \$40, C \$35, DEU \$30, NS,NC
Advance entry, information: Randy Pals,
1233 Morningside Dr., Chesterton, IN
46304. 219-926-2266.

OAK PARK - RIVER FOREST **CHESS CLUB NEWS**

By Ken Marshall

USCF "Game/15" Tournament: Bob
Hansen won this 18 player, five round
Swiss System tourney on October 4 with
a 4.5-.5 score. Hansen defeated second
place finisher Ray Satterlee (4-1) in the
last round. Dave Wulatin, Mark
Stamatakos, and Damon McCoy (each
3.5-1.5) tied for third, with Stamatakos
and McCoy sharing the Under 1800
honors.

USCF "Game/10" Tournament: Posting
4-1 results, Tony Schroeder and Brad
Crawford shared first and second in this
October 18 Swiss, which had 11 players.
Marty Ptacek (3.51.5) was third.
Because Ptacek won a place prize, Bill
Barker (3-2) was awarded the Under
1800 money.

Speed/Blitz Speed Championship: Ray
Satterlee, who recently won the 1994 St.
Charles Chess Club Blitz/Speed
Championship, scored 10-1 to become
the 1994 OP-RF CC Blitz/Speed Chess
Champion on November 1. Satterlee
went undefeated, but drew with Don May
and Tony Schroeder in the 11 player
round robin event "Game/5" event.
Losing to Satterlee and drawing with Eric
Ortega, Bob Hansen (9.5-1.5) was a
close second, while Schroeder (7-4)
finished third. Club Vice President Don
Winsauer (6.5-4.5) took home the Under
1800 prize.

USCF "Game/15"
Tournament: Drawing only with each
other, Ray Satterlee and Catalino Reyes
both ended up 4.5-.5 to tie for the top
two places in this November 15, 13
player Swiss. Tony Schroeder (3.5-1.5)
came in third. Best Under 1800 were
Marty Ptacek and Richard Hornor (each
3-2).

1995 ILLINOIS TOUR RULES

By Bill Smythe, ICA Tour statistician

The Illinois Chess Association Tour is an annual, year-long series of USCF-rated tournaments offering Tour points to participants and year-end cash prizes to the top performers in each of several rating classes. There are two types of Tour events, maxi- and mini-. Major tournaments such as the Tim Just Winter Open, Illinois Open, and Illinois Class are likely to be maxi-events, while others will be mini-events. Tour points are awarded in seven rating classes: Master (2200 and up), Expert (2000-2199), Class A (1800-1999), Class B (1600-1799), Class C (1400-1599), Class D (1200-1399) and Class E (below 1200).

Players earn Tour points according to score. Maxi-events award twice as many points as mini-events. For a perfect score in a maxi, the award varies from 28 in a four-round tournament to 40 in a seven-rounder. For each half-point below a perfect score, the award is cut by a factor which varies from .50 to .70 depending on the number of rounds. When this cutting would result in the Tour award being too low, points are awarded in direct proportion to the score. No Tour points are awarded for a score of zero.

The tables at three right is used for awarding Tour points in maxi- and mini-events of three, four, five, six, and seven rounds.

Each Tour tournament, or section thereof, awards Tour points in any given rating class ONLY if: (1)

- SEVEN ROUNDS -			- SIX ROUNDS -			- FIVE ROUNDS -		
score	MAXI	mini	score	MAXI	mini	score	MAXI	mini
7	40	20	6	36	18	5	32	16
6.5	28	14	5.5	23	11.5	4.5	19	9.5
6	20	10	5	15	7.5	4	12	6
5.5	14	7	4.5	10	5	3.5	7	3.5
5	10	5	4	8	4	3	6	3
4.5	9	4.5	3.5	7	3.5	2.5	5	2.5
4	8	4	3	6	3	2	4	2
3.5	7	3.5	2.5	5	2.5	1.5	3	1.5
3	6	3	2	4	2	1	2	1
2.5	5	2.5	1.5	3	1.5	0.5	1	0.5
2	4	2	1	2	1	0	0	0
1.5	3	1.5	0.5	1	0.5			
1	2	1	0	0	0			
0.5	1	0.5						
0	0	0						

- FOUR ROUNDS -			- THREE ROUNDS -		
score	MAXI	mini	score	MAXI	mini
4	28	14	3	-	12
3.5	15	7.5	2.5	-	6
3	8	4	2	-	3
2.5	5	2.5	1.5	-	1.5
2	4	2	1	-	1
1.5	3	1.5	0.5	-	0.5
1	2	1	0	-	0
0.5	1	0.5			
0	0	0			

the tournament or section is open to ALL players in that class, and (2) at least one player in that class, or in a higher class, actually plays in the tournament or section. Each player in a Tour event can earn points only in his own rating class and those above.

EXAMPLES:

1. Kathy Knight, an A player, scores 4-1 in a five-round maxi-event. According to the chart, she has earned twelve Tour points. The tournament is a single-section event, open to all, and at least one Master actually participates. Kathy's twelve Tour points are awarded in all classes A through Master..

2. Benjamin Bishop, a B player, scores 4.5-0.5 in a five-round maxi-event. The chart shows that he has earned 19 Tour points. But he has chosen to play in the

under-2000 section, so his Tour points are awarded only in classes A and B.

All Illinois residents playing in Illinois Tour events must be Illinois Chess Association members. Out-of-staters who are members of their home state chess associations need not join ICA, but their Tour points will not count at year-end unless they were ICA members when they played in each of their Tour events. At the end of the year, cash prizes are awarded to those ICA members who have accumulated the greatest Tour point totals in each class. The 1995 Illinois Tour prizes are as follows:

Master: 1st: \$350 2nd: \$250 3rd: \$150

the year, cash prizes are awarded to those ICA members who have accumulated the greatest Tour point totals in each class. The 1995 Illinois Tour prizes are as follows:

Master:	1st: \$350	2nd: \$250	3rd: \$150
Expert:	\$160	\$80	
Class A:	\$130	\$65	
Class B:	\$100	\$50	
Class C:	\$70	\$35	
Class D:	\$40	\$20	
Class E:	\$25		

Cash prizes will be awarded only to those players who play in at least three Tour events during 1995. Prizes which would have been won by players with only one or two events will be distributed to those next in line.

Unrated players can accumulate Tour points only in the Master class, and then only if they play in a tournament or section open to all Masters and in which at least one Master actually participates. Unrateds in all Tour events, however, will have their events counted towards the three-event minimum; this will help them later in the year when they become rated.

ORGANIZERS: Putting your tournaments on the ICA Tour will enhance their prestige and increase attendance. Players have come to expect that major events, especially, will be ICA Tour events. It is easy to sponsor a Tour event, but there are several rules which must be followed. A Tour event must be a weekend Swiss of at least three rounds, and it must be listed in the Tournament Life section of Chess Life. The Chess Life announcement must include the phrase "ICA membership required" along with the dollar amount of ICA dues. The

statement "an ICA Tour mini-event" or "an ICA Tour maxi-event" should also be included. A Tour event must also be listed in the Calendar published bi-monthly in the Illinois Chess Bulletin. The ICB announcement must mention that the tournament is a Tour event (maxi- or mini-). Be sure to observe the ICB's published deadlines, and keep in close contact with ICB editor Bob Renault so you won't be left out.

For maxi-events, there are some additional rules. A Tour maxi-event must be a two-day (or more) event of at least four rounds, and there must be a guaranteed prize fund of at least \$500.00. A based-on prize fund of at least \$1000.00 is fine too, since USCF requires that at least half of such projected prize funds actually be paid. A Tour event should be set up in such a way that Tour points can be awarded fairly. Section cut-offs, if any, should be at 2200, 2000, 1800, 1600, 1400, and/or 1200. The following are examples of recommended Tour formats:

- (1) 1 section, open to all.
- (2) 2 sections, open and under-1800.
- (3) 3 sections, 1600-&-over, under-2000, and under-1400.

An example of an inadvisable tour format would be an under-1900 section. Such a section could not award Tour points to A players because it would not be open to ALL class A players. Another inadvisable format would be the quad or the octagon -- four- or eight-player sections grouped by rating. Such an event almost certainly would, for example, split the B players across two sections, neither of which could award B points because neither would be open to ALL players in class B.

The fee for running a Tour event is \$1.00 per player. For maxi-events, there is a \$50.00 minimum and a \$100.00 maximum. For mini-events, there is no minimum, and the maximum is \$50.00. In addition, your organization must affiliate with ICA at \$25.00 per year. Past experience suggests that these fees repay the organizer many times over in added entry fees, as having an event on the Tour increases its appeal to most players. A maxi-event is entitled to a free full-page ICB ad. A mini-event gets a free half-page ad. But to take advantage, you must submit your ad camera-ready to the ICB editor by the published deadline. The ICA officers reserve the right to reject the Tour status of any tournament. To avoid conflicts, the officers will be scrutinizing the schedule carefully.

At the end of the year, cash prizes are awarded to those ICA members who have accumulated the greatest Tour point totals in each class. The 1995 Illinois Tour prizes are listed below. Note that these are the year-end prizes, which are distinct from any prizes offered by organizers in individual Tour events.

Master:	1st: \$350	2nd: \$250	3rd: \$150
Expert:	1st: \$160	2nd: \$80	
Class A:	1st: \$130	2nd: \$65	
Class B:	1st: \$100	2nd: \$50	
Class C:	1st: \$70	2nd: \$35	
Class D:	1st: \$40	2nd: \$20	
Class E:	1st: \$25		

Cash prizes will be awarded only to those players who play in at least three Tour events during 1995. Prizes which would have been won by players with only one or two events will be distributed to those next in line. No player may win a prize in more than one class.

ILLINOIS CHESS ASSOCIATION PATRONS

Century Club Members

Michael Belovesick Sr Addison
 Larry W. Blum Rockford
 Thomas Fineberg Chicago
 Thomas Friske Des Plaines
 Fred Gruenberg Palos Heights
 Bill Smythe Chicago
 Helen Warren Western Springs
 Jim Warren Western Springs

Gold Card Members

Todd Barre Elmhurst
 Kurt Bridgham Crawfordsville, IN
 Tyrone Brooks Chicago
 Paul Cox Chicago
 Hector Hernandez Chicago
 Steven Holsington Ogden, UT
 Alan Losoff Morton Grove
 Kenneth Marshall Lombard
 Fred Meyers Sterling
 William Naff Peoria
 Samuel Naylor VI Carthage
 Jim Oberweis Aurora
 Peter Pelts Niles
 Daniel Pradt Glen Ellyn
 Michael Pratts Chicago
 Irwin Rothschild Park Forest
 Arthur Sinclair Evanston
 Mitchel Sweig Evanston
 Richard Verber Aurora
 Louis Werner Evanston
 Sandy Zabell Evanston

Patron Members

Bob Ash Urbana
 Edward J. Bianco Chicago
 Timothy Bogan Chicago
 Dennis Bourgerie Normal
 Bill Brock Chicago
 Jim Brotsos Chicago
 Walter Brown, Jr. Crest Hill
 Gregory Bungo Elmhurst
 Anthony Caliendo Aurora
 James Clark Streator
 Lawrence Cohen Villa Park
 Audrey Lynn Colletti Phoenix, AZ
 Greg De Fotis Lincolnwood
 Joe Delay Schamburg
 Leroy Dubeck Cherry Hill NJ
 William Dwyer Chicago Ridge
 William Graves Chicago
 Steve Hansen Chicago
 Charles Hicks Naperville
 Dean Hightower DeKalb
 Jeffery Hyland Mount Prospect
 Toshio Imai East Lansing, MI
 Kazys Jankauskas Darien
 Mike Jenkins Cary
 Gersham Johnson Hinsdale
 Stephen Josephs Hinsdale
 Tim Just Gurnee

Dan Kamen Buffalo Grove
 Leo Kaushansky Wilmette
 Scott Kittsley Shorewood WI
 Thomas Knoedler Springfield
 Walter Kocjan Northlake
 Peter Kuhn Des Plaines
 Dr. Kevin Kukla Hanover Park
 Stephen Lauger DeKalb
 Michael Lester Chicago
 Marc Lonoff Northbrook
 Ed Marshall So. Barrington
 Eugene Martinovsky Naperville
 Patrick Maurer Glen Ellyn
 Thomas Mayka Wheeling
 Steve Monti Chicago
 Sergio Moreno Cicero
 John Omims Joliet
 Alex Pehas Darien
 Marvin Rogan Chicago
 Steve Rydberg, Jr. Mokena
 Ray Satterlee Wheaton
 Andrew Schultz Evanston
 Mark Sefcheck Naperville
 Anthony Sillars Northampton MA
 Scott Silverman Elk Grove Village
 Anthony Sodaro Lyons
 Leonard Spiegel St. Charles
 Joe Splinter Hanover Park
 Robert Stoltz River Forest
 Sonia Taki Chicago
 James Tanaka Chicago
 Mike Varady Effingham
 James Welton Wildwood
 Douglas White Schaumburg
 Don Winsauer West Dundee
 Harold Winston Naperville
 Philip Wong Wimetite
 Philip Woodruff Graylake
 John Zimmerman Libertyville

ICA ELECTED OFFICERS

James D. Oberweis, President
 3 Buckingham Dr, Aurora, IL 60506
 (708) 466-4886

Helen E. Warren, Metro Vice-President
 Box 147, Western Springs, IL 60558
 (708) 663-0688

Dennis Bourgerie, Downstate Vice-President
 1621 N. School St., Normal, IL 61761
 (309) 454-3842

Alan R. Losoff, Membership Secretary
 9402 N. Octavia, Morton Grove, IL 60053
 (708) 966-5559 or Internet alantl@mcs.net

Todd Barre, Treasurer
 418 Poplar Ave. Elmhurst, IL 60126-4012

USCF Delegates

by virtue of their USCF position

Fred Gruenberg	Vice-President
Tim Just	Regional Vice-President
Garrett Scott	Regional Vice-President
Frank Skoff	Life Voting Member
Helen Warren	Life Voting Member
Harold Winston	Life Voting Member

by ICA-appointment

James D. Oberweis
 Alan R. Losoff
 Todd J. Barre
 Dennis Bourgerie
 Richard Verber

USCF Voting Members

ICA appointed

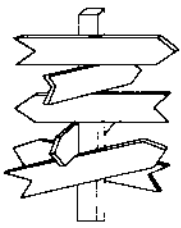
Erv Sedlock	Ken Marshall
Jim Warren	Bill Naff
Bob Renaut	Bill Symthe
Walter Brown	Dennis Grant
Thomas Fineberg	Albert Chow
Hector Hernandez	Larry Cohen.

ICA appointed alternates

Joshua Flores	Ken Lewandowski
Les Bale	Keith Martin
Chris Baumgartner	Paul Mills
Ed Blanco	Glenn Panner
Jim Brotsos	Michael Pratts
Tom Copper	Bill Reed
Bill Cox	Howard Wachtel
Bill Wilkinston	Marvin Dandridge
Tom Knoedler	Michael Zacate

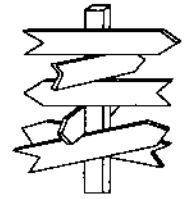
**U.S. AMATEUR TEAM
 MIDWEST FEBRUARY 18-19
 AT THE HYATT OAKBROOK**

**IF YOU NEED HELP
 FORMING TEAMS CALL AL
 LOSOFF IN THE EVENINGS
 AT (708) 966-5559.**



Where to Play Chess

ICA Club Affiliates



AMERICAN POSTAL CHESS TOURNAMENTS sponsors postal events & sells chess books & equipment. Jim or Helen Warren, P.O. Box 305, Western Springs 60558. (708) 663-0688.

"THE BASEMENT", Daniel Kamen, 1121 Highland Grove Drive, Buffalo Grove, IL 60089. (708) 537-4956.

CENTRAL LAKE COUNTY CHESS CLUB meets Fridays, 7:15 to 12:00AM College of Lake County, Bldg. 1, Washington at Rte 45, Grayslake. Dennis Grant, 1657 McKay, Waukegan 60087. (708) 336-5188.

CHESTERTON CHESS CLUB is located Westchester Public Library, 200 W. Indiana, Chesterton, IN. For info call Randy Pals (219) 926-2266.

CHICAGO CHESS CLUB is located at 1149 W. Lunt, Chicago, IL. 60626 and is open from 5-11 pm Wednesday - Sunday. For info call Albert Chow (312) 761-5050.

THE CHESS BOARD BBS is a computer chess club. Use your computer, modem and phone to play electronic postal chess, exchange international messages, download chess related files. SysOp: James Reames, Chicago, IL. MODEM (312) 784-3019 (1200-14400 bps)

CHICAGO INDUSTRIAL CHESS LEAGUE organizes frequent competition among commercial/government teams with awards, ratings, & special events. Tony Jasaitis (708) 406-6420.

CONTINENTAL CHESS ASSOCIATION, P.O. Box 249, Salisbury Mills, NY 12577. Bill Goichberg.

DOWNERS GROVE PARK DISTRICT CHESS CLUB meets Thurs., 6:30-10 p.m., Lincoln Center, 935 Maple Ave., Downers Grove. Affiliated with USCF & ICA. George Uffner, (708) 960-9382.

DUBOIS ELEMENTARY SCHOOL CHESS CLUB, c/o Andrew Skaar, 308 So. Douglas, Springfield, IL. 62704.

FOX VALLEY CHESS CLUB meets Monday evenings, 6:30 p.m. to 10:30, Church of God, corner of Galena Blvd and Lancaster, Aurora, IL. Bob Renaut, (708) 983-0934 or Dick Verber (708) 978-1380.

GREATER PEORIA CHESS FEDERATION meets Mon., 7-11 p.m., Garrett Center, 824 N. University, Peoria. Bill Wilkinson, 901 N. Rebecca Pl., Peoria 61606. (309) 673-9455.

Join the Illinois Chess Association and receive six issues of the Illinois Chess Bulletin. In addition you'll qualify to enter over two dozen tournaments on the Illinois Chess Tour. Every game you win or draw in a tour event earns you "tour points" that can add up to cash prizes at year-end. Finally, you'll be supporting the activities of the Illinois Chess Association. Every year, the ICA organizes major tournaments like the Illinois Open and Illinois Class Championships; the ICA has bid for the National Open, the US Open and the US Class Championships to be held in Illinois. In addition, the ICA sponsors scholastic clinics, runs a tournament clearinghouse, and promotes and publicizes chess activity statewide. If you would like to show increased support for Illinois chess, please consider renewing as a Century Club, Gold Club, or Patron member. Patrons are acknowledged in each issue of the ICB and receive their magazines by first-class mail.

HILLSIDE CHESS CLUB meets Fridays 7-11:30 at Hillside Baptist Church, 5152 Butterfield Rd, Hillside. Larry Stilwell (708) 963-6799.

HOLY TRINITY NORTHSORE CHESS CLUB meets Tuesday 7-10 pm at Holy Trinity Church, 2328 Central (at Shermer), Glenview, IL. Dale Hurst, P.O. Box 284, Glenview, IL. 60025. (708) 729-9000.

LAKE COUNTY CHESS ASSOCIATION sponsors rated tournaments in the Grayslake-Zion area. Tim Just, 37165 Willow, Gurnee 60031. (708) 244-7954.

MIDWESTERN CHESS ADVENTURES (MCAC) 3924 N. Hermitage, 2nd floor, Chicago, IL 60613, (312) 871-2148. Attn: Christopher Baumgartner.

OAK PARK/RIVER FOREST CHESS CLUB meets Tues., 7 midnight, Dominican Conference Center, 7200 W. Division, River Forest. Ken Marshall, 357 W. Grove, Lombard 60148. (708) 932-1455.

PARK FOREST CHESS CLUB meets Thursdays, 7-10:00 p.m., Freedom Hall, Orchard & Lakewood, Park Forest. Lawrence Cohen, 135 Westwood, Park Forest, 60466. (708) 748-5911 or 834-2477.

PAUL RODGERS' CHESS TOURNAMENTS 810 Peach Tree, Urbana, IL 61801.

RUDY LOZANO LIBRARY CHESS CLUB, 1805 So. Loomis, St., Chicago, 60608. Hector Hernandez (312) 746-4329.

SMYTHE DAKOTA COMPETITIONS encourages and offers financial support for Plus-Score Mini-Tours at sites in Chicago and suburbs. Bill Smythe, 7445 N. Greenview #311, Chicago, IL 60626, (312) 761-2455.

ST. CHARLES CHESS CLUB meets Thursday at 7 p.m., Baker Community House, 101 S. 2nd (Rte. 31), St. Charles. Erv Sedlock, 6 N. 307 Old Homestead Rd., St. Charles, IL 60174. (708) 377-7995.

TROY CHESS CLUB, c/o Salah Chehayeb, P.O. Box 99432, Troy, MI.

TULEY PARK CHESS CLUB hold frequent Saturday tournaments, Tuley Park Field House, 501 E. 90th Pl., Chicago. Thomas Fineberg, 7321 S. South Shore Dr., Chicago 60649, (312) 721-3979.

VILLA PARK JUNIOR CHESS CLUB (for players ages 7-18) meets on Saturday from 10:00 am to noon, Iowa Community Center, 338 N. Iowa Ave., Villa Park, IL.; Richard Horner (708) 832-7427.

Mail To:	Alan Losoff, ICA Membership Secretary 9402 N Octavia Morton Grove, IL 60053	ICA MEMBERSHIP RENEWAL		
NAME _____	CENTURY	Circle Membership Type	\$100	GOLD \$50
ADDRESS _____	PATRON	\$35	REGULAR	\$14
CITY _____	STATE _____ ZIP _____	JUNIOR	\$8	AFFILIATE \$25

1995 PEORIA TORNAO

JANUARY 15

4 Round Swiss

An Illinois Mini-Tour Event!
BENEFITING THE HELEN WARREN JUNIOR CHESS PROGRAM

\$125 Prize Fund

1st - \$75

2nd - \$50

Chess Books
to A, B, C, D

Entry Fee \$ 11 If by 1/13, \$15 at site.

Registration - 8:00 - 8:45

Rounds - 9 - 12 - 2:45 - 5:30

GARRETT CENTER
824 N Duryea Pl, Peoria, Illinois

Entries: Bill Naff, 212 Vail Ct, Peoria, IL 61614 309 691-4624



ILLINOIS

CHESS ASSOCIATION

c/o Alan R. Losoff
9402 N. Octvia
Morton Grove, IL 60053

Address correction
requested

FIRST-CLASS MAIL
U.S. POSTAGE
PAID
ASTORIA IL
PERMIT NO. 9

Time Value Material