

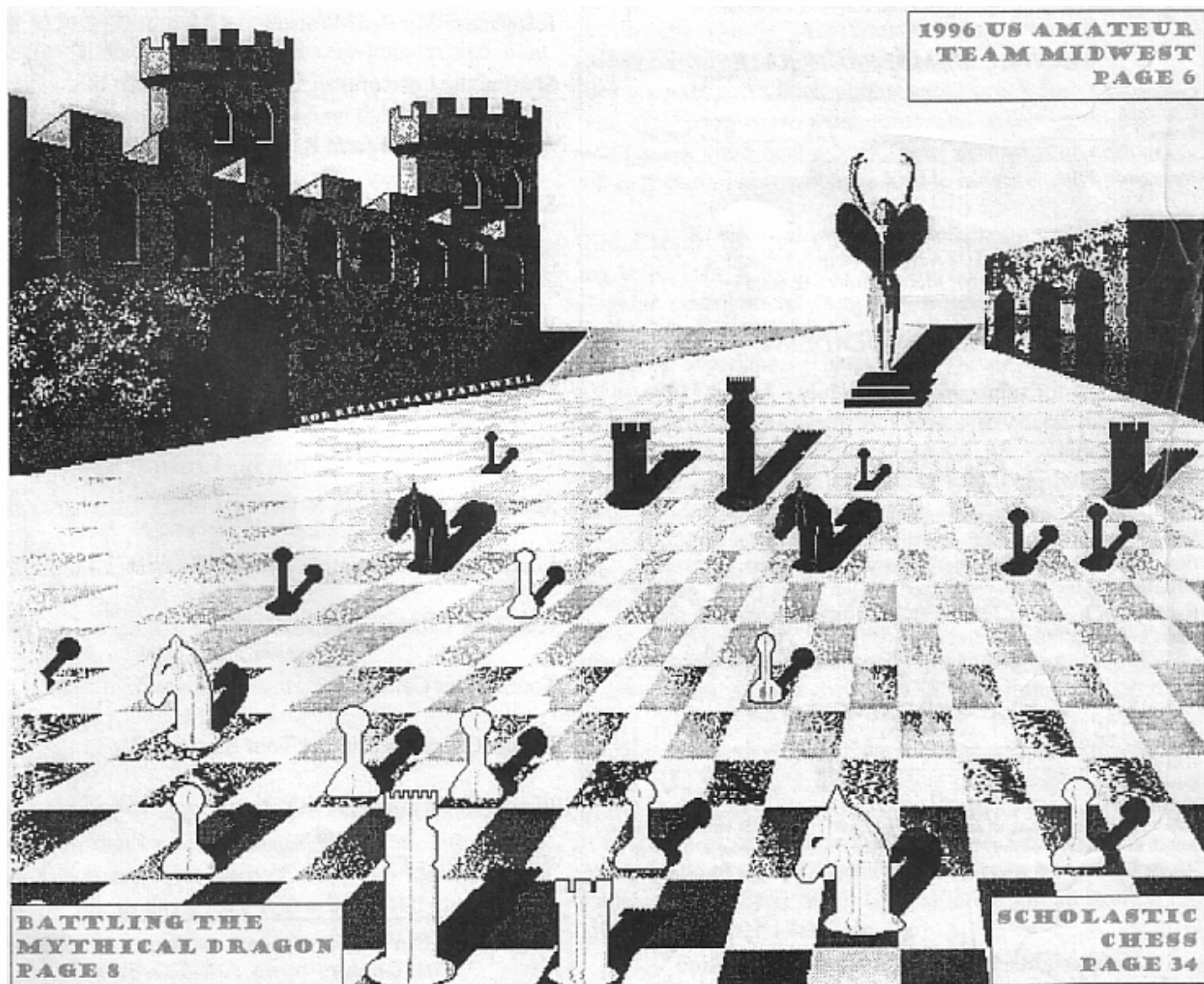
AWARD WINNING

OFFICIAL PUBLICATION OF THE ILLINOIS CHESS ASSOCIATION - A U.S.C.F. AFFILIATE - A NOT FOR PROFIT ORGANIZATION

ILLINOIS CHESS BULLETIN

MAY - JUNE 1996 VOL. XIX NO. 3

AN ICA BI-MONTHLY PUBLICATION - \$2.95



**1996 US AMATEUR
TEAM MIDWEST
PAGE 6**

**BATTLING THE
MYTHICAL DRAGON
PAGE 8**

**SCHOLASTIC
CHESS
PAGE 34**



Editor 1255 Oakton Lane, Naperville, IL, 60540,	Bob Renaut 708-983-0934
Games Archivist 161 Oakwood Drive, Bolingbrook, IL, 60440,	Alan Watson 708-759-7757
Games Editor 161 Oakwood Drive, Bolingbrook, IL, 60440,	Alan Watson 708-759-7757
Scholastic Editor 1600 Dodge, Evanston, IL 60204	Ken Lewandowski 847-869-82461
Calendar Editor 1255 Oakton Lane, Naperville, IL, 60540,	Bob Renaut 708-983-0934
Tour Statistician 7445 N. Greenview, Chicago, IL, 60626,	Bill Smythe 312-761-2455

MEMBERSHIP AND SUBSCRIPTIONS

The Illinois Chess Bulletin (ICB) is published bimonthly by the Illinois Chess Association. ICA membership includes a subscription to ICB. Century Club, Gold Card, and Patron members receive their ICB by first-class mail.

ANNUAL MEMBERSHIP RATES

Century Club	\$100.00
Gold Card	\$50.00
Patron	\$35.00
Regular	\$14.00
Junior (under 20).....	\$8.00

Send your subscriptions and address corrections to
 Alan Losoff (ICA Membership Secretary)
 P.O. Box 157, Morton Grove, IL 60053

SUBMISSION DEADLINE

The deadline for submissions to the July - August 1996 issue is May 25, 1996.

ICA AFFILIATION

Chess clubs and other organizations which promote chess activity may affiliate with the ICA. Benefits include a copy of the ICB by first class mail, a listing under "Where to Play Chess," discounted advertising rates, free event advertising on Chess Phone and the right to run ICA Tour Events. ICA Affiliation costs \$25; please remit to the Membership Secretary.

ADVERTISING RATES

Full page	\$90
Half page	\$54
Quarter page	\$36
Eighth page	\$24

10% discount for the same ad in consecutive issues. 1/3 discount for ICA affiliates. All ads must be camera-ready to qualify for above rates; minimum \$20 charge for layout. Payment must accompany ad. The ICA & ICB reserve the right to reject advertising.

Copyright © 1996 Illinois Chess Association

TABLE OF CONTENTS

Dmitry Gurevich Sweeps U.S. Masters.....	3
Editor's Corner	3
Kevin Bachler Top Cayman at Winter Open	5
Weight Lifters ... Take Heart.....	5
Tommy Morrison's Deadly Knights Win	6
Battling the Mythical Dragon	8
Elementary My Dear Watson	11
Sharing the Love of the Game	13
Annotated Games from Recent Events	15
Scholastic News.....	24
Grade School verses High School Chess	26
West Chicago / IMSA Co-Champions at State.....	26
Oak Park - River Forest Chess Club News	30
Unusual Tactical Ideas.....	30
St Charles Chess Club News	31
Illinois Chess Association Awards Banquet	31
ICA Tour Cross Tables	32
Tournament Calendar.....	35
Illinois Chess Association Tour Standings	37
Illinois Chess Association Patrons	38
Where to Play Chess	39

**Need the latest chess tournament info?
 Call Chess Phone 708-832-5222**

Dmitry Gurevich Sweeps U.S. Masters

Eighty-three former masters, masters and above attended the 1996 U.S. Masters held in Chicago. The field included 15 Grandmasters and 7 International masters. The event was made possible through the efforts of Helen and Jim Warren and a \$10,000 grant from the USCF. Played with the theme "Homecoming of the American Master", any individual that ever held the title of National Master was eligible to play. Joining this elite group were six special juniors under 2200 who each aspire to achieve the lofty master ranking. National Master Alan Watson passed up the opportunity to compete in this event in order to provide round by round coverage with his event bulletin. These bulletins proved very popular and Alan routinely sold out. Alan has demonstrated quite a flair for chess bulletin publishing having done the National Open, the World Open and now the U.S. Masters. Way to go Alan!

Chicago's own Dmitry Gurevich proved a tough competitor on this home turf. Dmitry earned the top prize money of \$5,000 by achieving a perfect 7-0 score, which just goes to prove that the Bulls are not the only championship caliber players in town!

A partial list of winners are

1 st	Dmitry Gurevich	\$5,000
2 nd -5 th	Arthur Yusupov	\$1,700
	Alexander Yermolinsky	
	Walter Browne	
	Boris Kreiman	
6 th -11 th	Nick DeFirmian	\$150
	John Fedorowicz	
	Gregory Serper	
	Nigel Davies	
	Jim Dean	

The next issue (I assume, since I will not be the editor, and I know that National Master Alan Watson the games editor has already put a lot of work into annotating the key games from this event) will provide full coverage of this event.

— *Bob Renaud*

EDITOR'S CORNER

The time has come the walrus said to speak of many things, of shoes and ships and sealing wax, of cabbages and kings, and why the sea is boiling hot and whether pigs have wings. As I end the chapter of my life as editor of the Illinois Chess Bulletin, I start a new chapter, or put another way "one door closes - one door opens."

I hope you have enjoyed the magazine during my tenure. Countless hours and numerous diet Cokes have gone into producing each and every issue. Fortunately, I never had to go it alone. There have been many contributors I would like to thank. National Master Alan Watson has been a constant source of guidance, support and articles. Clearly without Alan's help the quality of this magazine would suffer greatly. Alan could always be counted on to deliver. I will miss working with you, Alan and best of luck on your chess book publishing efforts. Few people will ever know how much time and effort goes into writing and publishing a book, but I do and your efforts are first class. I now will have time to read them!

Tom Cooper, the games editor prior to Alan, was also a big help. Tom, I hope you are still reading this, thanks. Regular contributions from Dr. Eugene Martinovsky's worldwide travels provided insights to chess many of us will never experience. Thank you, Eugene

Other contributors included Tim Just, Ken Marshall, Ken Lewandowski and Dan Pradt, thank you all. Grandmaster Dmitry Gurevich's monthly column would not have been possible without the help of Fred Gruenberg. Thanks Fred for your efforts to make that possible. Dmitry Gurevich, thank you for never missing a deadline, even while you were traveling around the world competing in chess events. Your columns added credibility to our magazine and were also a good source of chess insight. Dmitry, thank you and good luck in your future events.

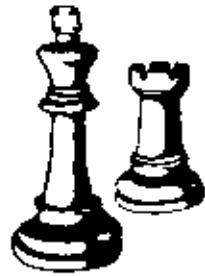
Finally, to the members of the Chicago Chess Club and others who didn't get their articles published. I never held a grudge against anyone. I printed all the articles I received on or before my deadline, never after. In three years, I never missed a deadline. that was a commitment I made to the officers of the ICA...after all I am a man of my word. Farewell to one and all.

— *Bob Renaud*

5th annual



CHICAGO OPEN



May 24-27, 25-27 or 26-27

7 rounds, 8 sections, Memorial Day weekend,
at luxurious Hyatt Regency Oak Brook

You play only those in your section.

\$100,000 GUARANTEED PRIZES!

7-SS, 40/2, SD/1. 3-day option, round 1 C/60. 2-day option, rounds 1-4 C/45. Hyatt Regency, 1909 Spring Road (near I-88 Cermak Rd exit), Oak Brook.

A top-flight luxury hotel with \$69 special chess rates for 1-4 in room, across the street from Oak Brook Center with over 100 stores. Free parking.

Free analysis of your games by GM Michael Robde! All are invited to submit games or ask questions.

\$100,000 GUARANTEED PRIZES! Only the World Open has a larger prize fund.

OPEN: \$10000-5000-2500-1200-700-600-400-400-300-300. U2400/Unr \$2000-1000-500-600-400. FIDE rated, 200 Grand Prix Points.

UNDER 2200 (no unrated): \$7000-3000-1500-1000-700-500-400-400-300-300.

UNDER 2000 (no unrated): \$7000-3000-1500-1000-700-500-400-400-300-300.

UNDER 1800 (no unrated): \$7000-3000-1500-1000-700-500-400-400-300-300.

UNDER 1600 (no unrated): \$6000-3000-1500-1000-700-500-400-400-300-300.

UNDER 1400 (no unrated): \$4000-2000-1000-700-500-400-300-300-200-200.

UNDER 1200 (no unrated): \$1000-500-300-200-100-100-100.

UNRATED: \$1000-500-300-200-100-100-100. Non-US citizens may not win over \$300. All players obtain ratings. Provisionally rated players are not unrated.

Non-US citizens must have established rating (20 or more games) on 12/95 or prior list or acceptable foreign rating to win over \$1500 in U2200, \$1000 U2000, \$700 U1800, \$500 U1600, \$300 U1400, \$150 U1200.

Entry fee: 4-day \$196, 3-day \$195, 2-day \$194 if check mailed by 3/20, 4-day \$206, 3-day \$205, 2-day \$204 if check mailed by 5/16, all \$220 at site. No checks at site.

Credit card entry fee: \$200 by 3-20, \$210 by 5/22, \$220 at site. Call 914-496-9658 (entries or questions) weekdays 3/5-5/22 or 406-994-9634 (no questions) 24 hours daily to 5/22. No phone entries after 5/22.

EF discounts (deduct either or both from fee): \$60 less to juniors under 18 who are rated below 1500, unrated, or play up. Callers must request discount, or will be charged full fee. Re-entry: \$100.

ICA membership (\$14, under 19 \$8) required for IL residents; an ICA Maxi-Tour event.

Foreign player ratings: CFC OK, 50 points added to FIDE, 100 to FQE, 200 or more to most other foreign. Highest of multiple ratings used.

US player ratings: April list used (usually same as May CHESS LIFE label); FIDE ratings not used.

4-day schedule: Entries end Fri 7 pm, rds. Fri 8 pm, Sat & Sun 1 & 7:15, Mon 10 & 4:15.

3-day schedule: Late entries end Sat 9 am, rd 1 Sat 10 am (Game/60), then merges with 4-day.

2-day schedule: Late entries end Sun 9 am; rds. Sun 10, 12, 2, 4, 7:15, Mon 10 am & 4:15 pm. Rounds 1-4 are Game/45. Merges with other schedules after round 4.

All schedules compete for same prizes.

Hotel rates: \$69 for 1-4/room, 705-573-1234, ask for chess rate. Reservation by 3/20 recommended; last year hotel sold out despite much smaller prizes.

Travel: 5% off lowest fare on US Air; call Jetport Travel (800-688-4521, 914-561-5283); refer to Guild File 36530379.

Car rentals: Avis (800-331-1600), use AWD number D657633, ask for chess tournament rate.

All: 1/2-pt byes OK all; rds 4-7 must commit before rd 3. No smoking. Bring sets, boards, clocks if possible - none supplied.

► Continental Chess Association entry form- use for any CCA tournament- photocopy if desired ◄

Name _____ Tournament _____ Section _____
 Number of days _____ USCF ID _____ Rating _____ Entry fee _____ Membr. dues _____
 Address _____

Send to Continental Chess, PO Box 249, Salisbury Mills, NY 12577. Checks payable to same. Use of form is optional- you can enter any CCA event by sending name, tournament, section, number of days, USCF ID, rating, & fee.

KEVIN BACHLER TOP CAVEMAN AT WINTER OPEN

By Tim Just

He's baaack. The inspiration for Caveman Chess, Kevin Bachler (2191), scored 4 1/2 - 1/2 to top the 21 player Open section on Super Bowl weekend at the College of Lake County's Tim Just Winter Open. Bachler's tactical weapons added zeros to the final scores of Kevin Schmuggerow (2100), John Porter (1856), Steve Szpisjak (2269), and Paul Yavari (2091). Only fellow Caveman Ken Wallach's (2235) defenses held Bachler to his lone half-point. Caveman Kevin Bachler's tactical club has netted him a string of undefeated games starting with his 4-0 performance in December at the College's "Beat Your Norm" event. His Winter Open performance was rewarded with a \$225 payday.

He anointed Kevin Bachler a Caveman. He is a fixture at Lake County chess tournaments. Albert Chow posted a 4-1 score to claim clear second place without losing a contest. His draws against Gene Scott (2150) and Ronald Washington (2006) held his winnings to \$157.50.

Robert Sax (2047) wins a prize each time he does battle in Lake County. His first place Expert performance of 3 1/2 - 1/2 was enough to also secure him a piece of the third place funds he shared with Caveman Ken Wallach. Those combined prizes netted each wood pusher \$123.75. The second place Expert currency of \$90 was divided three ways among 3-2 scoring Caveman Rodney Kinnaird (2119), Kevin Schmuggerow, and, from St. Louis, Paul Yavari.



Wisconsin's Keith Whitaker's (1761) decision to play up netted him a score of 3-2, \$112.50, plus the "A/Below" crown. In clear second place (\$90) in that division with a record of 2.5-2.5 was William Graves (1836).

The Reserve section monarch, Mark Engelen (1713), earned 4 1/2 points to top a field of 44 players, including a scholastic team coached by Bachler and Wallach. Engelen's victories came at the expense of Fernando Montoya (1387), Caveman Orr Backstrom (1598), Tom Wachter (1468), and Randy Byrnes (1773). Only Stephen Lauger (1529) squeaked a half-point out of the Reserve top dog. Mark made a profit of \$225 for his five round effort.

Multiple tallies of 4-1 each accounted for the massive traffic jam of five competitors sharing second place, third place, and the 1-2 spot in class "C". Tony Brown (1750), Will Hayes (1663), Chris Baumgartner (1588), Robert Shockley (1583), plus Junior player Caveman Christopher

Hayes (1535) were all \$99 richer after splitting the combined multiple prize funds.

Two Cavemen, Eric Rose (1347) and Junior player Matt McCulley (1169) put \$56.25 each in their pockets for their 3-2 class D/E 1-2 prize winning effort.

Two more brand new Cavemen faced off in the last round of the event to determine which neanderthal would lay claim to the \$75 Unrated reward. Grade schooler Steve Napoli bested Mike Mallory to post a 2-3 score in his first chess event ever.

The tournament was organized and directed by Tim Just with help from Dennis Grant and Wayne Clark. The College of Lake County chess club hosted the players in their hotel-like conference rooms. The appearance of many new hotels and restaurants in the area added to the player's delight with a tournament that drew the second highest number of wood pushers in Lake County history.

Weight Lifters... Take Heart

By Raymond Dixon

The recent Kasparov vs. Big Blue match prompted one newspaper writer to speculate that when a computer eventually wins a match against the world chess champion, "... the game of chess will be emptied of any meaning."

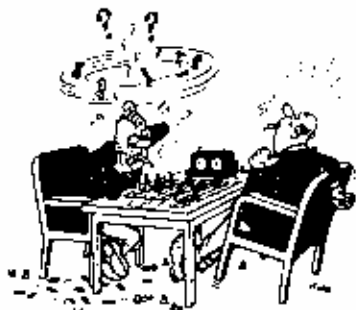
When I think about this situation, I compare it to the invention of the hydraulic jack. There's no doubt that the hydraulic jack can lift

more than a man. But this fact has not stopped weight lifters from participating in their sport.

The game of chess is an intellectual delight. It is a combination of sport and art that satisfies a deep inner need to engage in conflict and at the same time, produce something which is beautiful.

Chess may look like a lifeless and boring activity to the outsider, but those who play the game know it is a social activity requiring an intimate interaction between opponents. The fact that a computer may be able to beat most humans doesn't have anything to do with the meaning of the game. Two human opponents invest the game with meaning and derive satisfaction from it. The computer is not a factor. The world weight lifting champion has never given a moment's thought to the power of hydraulic jacks.

It is also important to remember that the computer was not really Kasparov's opponent in this recent match. The computer is merely the sum of the efforts of thousands of brilliant scientists, who have worked for decades to develop this chess playing machine. In these terms, the question is, "Can Garry Kasparov beat the combined efforts of thousands of other brilliant individuals?" I'm pleased that he was successful in this match. He may lose future matches with Big Blue, but it doesn't detract in any way from the meaning of the game and the enjoyment that all chess players derive from it.



Tommy Morrison's Deadly Knights Win 1996 Amateur Team Midwest

By National Master Alan Watson

For the fourth year in a row, the 1996 US Amateur Team Midwest continued to establish new records for the number of teams and players competing. 298 players representing 71 teams assembled at the Clarion Hotel near O'Hare International Airport to play chess for the honor of securing the top trophy. This was the first time the Clarion Hotel has been used as a chess playing site.

Last year's powerful Wisconsin team had failed to make a return appearance and thus thrown wide open aspirations for this year's title among a number of hungry eyed scavengers and predators. Top ranked MWSE "THE NEAT GENERATION," runners up for the 1994 title, held down the top seed on board one throughout the first day with 11.5 of 12.0 possible points, but could do no better than draw against *A LITTLE KNIGHT MUSIC* in round four. They stormed back in the last round to defeat the previously unbeaten *DISTANT OPPOSITION* and finished with a respectable 4.5 points. Despite impressive personal performances by Eugene Martinovsky (5.0) and Curtis Ikeuchi (4.5), all they could then do was pace the floor and keep watch over their vacated seats on board one for the result of this critical match.

TOMMY MORRISON's DEADLY KNIGHTS combined two Ohio and two Indiana players of near-

equal strength. In fact, with a 2214 rating on top board and 2124 on bottom, all team members were rated within a remarkable 90 points of each other! Team members John Langreck, John Chutter, Jim Dean, and Jason Doss persistently fought their way through match after match until seated at the first table against the unbeaten *QRNBP MATING.NET!* in the final round. Being outranked on three of the four boards didn't phase their optimism in the least, and in record time they finished with three wins and a lone draw. Not a single game in this decisive match had lasted more than twenty-five moves! Congratulations to the new champions, for their determination has certainly earned them the right to proudly represent all Midwesterners in the upcoming regional playoffs.

There was no lack of excitement both inside and outside of the tournament hall during this event. At the beginning of the first round, Wisconsinite Guy Hoffman and his team *HOFFMAN'S BIERHAUS* hit upon an interesting promotional theme which may well have been overzealously implemented. Striding in and sitting down against their diminutive school-aged opponents, each clopped down in front of themselves large steins filled with real beer. At the protest of the children's parents and in deference to Illinois State law, TD Al Losoff asked the team remove the drinks from the tournament hall and consume their adult beverages out in the lobby. The Team protested, but this matter was

then taken out of the TD's hands by representatives of hotel security who insisted that beer would have to leave either with or without the players. After pouring about a gallon down the drain, the (sober and teary-eyed) Bierhaus team exacted revenge by sweeping their youthful opponents then withdrawing from the tournament. If they couldn't have their beer at the table, so they said, there was no point in staying.

This year the event also featured the Illinois Quick Chess Championship which was played on Friday. Peter Pelts won the title as top Illinois player, but had to share first prize with Wisconsinite Aleksander Betanelli who also posted a hard-fought 5-1 score.

The electronic age took a step forward in Illinois chess at this event, when TD's Al Losoff and Walter Brown set up a monitor in the lobby so that everyone could watch "live" Internet coverage of the final Kasparov-Dcep Blue game. This was a super touch! Additional demonstrations were given of the USCF and ICA's Web pages as well as a bit of the new USCF Online BBS.

As 1997 promises to be even better, it is recommended that each team captain start planning their rosters now!



1996 U.S. Amateur Team Midwest Winners

- 1st Team: Tommy Morrison's Deadly Knights (2163)
(John Langreck, John Chutter, Jim Dean, Jason Doss)
- 2nd Team: MWSE "The Next Generation" (2198)
(Eugene Martinovsky, Alan Watson, Peter Stein, Curtis Ikeuchi)
- 3rd Team: Judgement Day (2193)
(Bem Tyehimba, Eric Chapa, Mark Brodie, Steven Wagner)
- U2000: Four Of A Perfect Pair (1871)
(Phil Bossaers, Kiran Manne, Nader Goubran, Howard Ritter)
- U1800: University Of Chicago (1765)
(Chuck Cadman, Shannon Clark, Mark Young, Christopher Noble)
- U1600: The Unstoppable Losers (1421)
(Gennady Ioffe, Allen Lee, Asher Kach, Douglas Strain)
- U1400: Patel/Krachinski/Martin/Morgan (12257)
(Cary Krachinski, Hitesh Patel, Matthew Morgan, Gary Martin)
- U1200: The Good, The Bad, The Ugly, The Kibitzer, And Mr. "Can I Take That Back" (1097)
(Mike Clark, Brett Koonce, Allister Finley, Jason Schuemann, Jose Perez)
- Company: Formula 1A (2168)
(Kevin Burnett, Starnack Bondari, Randy Bauer, Jonathan Narcisse)
- College: Swiss Gambit (1996)
(Glen Gratz, Christopher Merli, Cameron Feltner, Scott Merritt)
- Wisconsin: Alekhine's Guns (1770)
(Lawrence Butler, Don Hwang, David Granik, Patrick Clare)
- Indiana: Slaughterhouse 4 (1934)
(Glenn Snow, Thomas Harris, Jay Carr, John Easter)
- 1st Junior: Fork You (1524)
(Blair Machaj, Kevin Brewer, Craig Cochran, Bryan Gast)
- 1st Middle School: The Fighting Four (1362)
(Mikhail Kirzhner, Gregory Divinsky, Vlad Vilenchik, Aaron Weiss)
- 1st High School: Foreman High School (1139)
(Lukasz Matuszczyk, Ghassan Sati, Juliusz Brewczyk, Mark Ange Peralta)
- 1st Family Team: The Plunkett Family Knight Out (1275)
(Chris Plunkett, Robert Plunkett, Tonie Meiners, Freya Plunkett)
- Best Team Name: Not Reti A' Tal (1911)
(Sam Sheynin, Robert Hill, Stephen Deeman, Edward Soares)
- Board Winners: (1) Eugene Martinovsky
(2) Eric Chapa
(3) Cameron Feltner
(4) Bryan Gast



Battling the Mythical Dragon

By N.M. Alan L. Watson

In the minds on many middle and lower-level players, Albert Chow's strength and consistency render him almost invincible to their blows. Similar sentiments must have been felt by the knights of old as they strode into battle against enormous mythical dragons possessing wings, huge claws, and fiery breath. These beasts symbolized evil, destruction, and death.

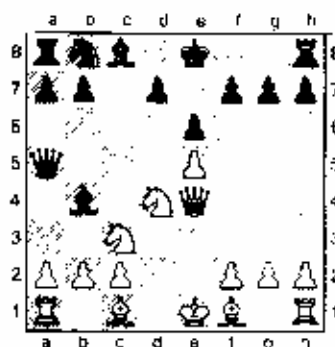
Kevin Smuggrow displays no fear in the following encounter as he madly dashes into battle brandishing a little-studied and aggressive opening as his mighty sword. Unfortunately for the underdogs, however, the dragon triumphs once again, and another victim is laid to rest. David Mote and Steven Szpisjak have also experimented with this dangerous opening and have only mixed results to show for their daring.

*Chow, Albert
Schmuggerow, Kevin
Tim Just Winter Open (3), 1996*

1.e4 e6 2.d4 c5 3.f3 exd4 4.exd4 f6 5.c3 b4!? [With this risky pin, Kevin seeks to unsettle his opponent with a trappy opening and win material at the expense of his

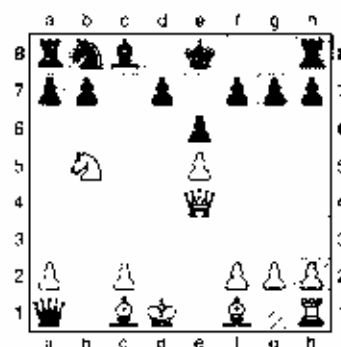
development. Black's results in this "Pin Variation" or "Sicilian Counterattack" have been so poor that it is little seen now-a-days.]

6.e5 f4 [An attempted improvement upon the better known 6...d5!? 7.d2! which leaves White with a strong advantage according to modern theory. After the further 7...xc3 8.bxc3 e7 9.g4 0-0 10.h6 g6 11.xf8 xf8 "home-town" boy Ray Satterlee defeated Black's stock sacrifice which was intended to secure his King and gain powerful counterplay along the dark squares. Satterlee-Mondragon, US Senior Open, 1991] 7.g4 [An unusual idea was tested in the game Porter-Szpisjak, Mid America Class, 1994 after 7.d5!? f5 8.d4 xc3 9.bxc3 e7 10.d3 e6 11.g4 g6 12.0-0 a6 13.d6! xd6 14.exd4 xc3 +=] 7...a5 [7...xc3 is featured in Illustrative Game #1] 8.f4



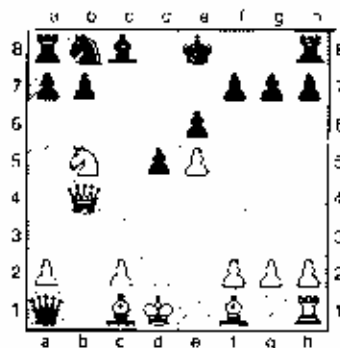
[8.f4 xc3+ 9.bxc3 xc3+ 10.c2 b6! (10...e6 11.b5 d4+ 12.exd4 b6 13.e3 xa1 14.f4 h8! e7 15.f7+-) 11.f4 h8- e7 12.a3+! d6 13.e6+! xc6 14.exd6+ d7 15.f2 +- Fuchs-Kander, Leipzig 1950] 8...xc3+ 9.hxc3 [9.d1 xd4 10.f4 d4 e6 11.g4 xc5 -> Mote-

Szpisjak, Greater Peoria Open, 1994 and Singer-Mote, Colias Memorial, 1994. My guess is David found the Black pieces easier to play since that is the game he won!] 9...xc3+ 10.d1 [Also played is 10.e2 e6 (10...xa1 11.a3 xa2 12.b5 d8 13.f4+ f6 14.f6 xc2+ 15.e3 f3+ 16.d3 1-0 Makarov-Gulko/1963) 11.b5 xc2+ 12.e1 d5 13.f4 h8+ d7 14.f4 h7 f4+ 15.d1 a6 16.d3 axb5 17.e4 dxe4 18.f4 a4 19.e2 c5 20.b2 b4 21.d2+ d5 22.c1 c4 23.h4 e8 24.h5 e3+ 25.e2 f5 26.f4 d1 f8 27.f8+ g7 28.f6- e7 29.f7+ 1-0 Shianovsky,V-Korelov,A /URS-ch 1962] 11...xa1 11.f5



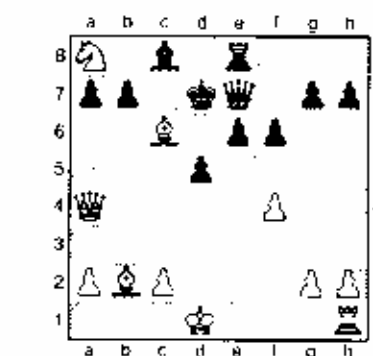
[Black's fatal weakness on the dark squares is finally revealed, but it still requires good technique from White to bring home the point. Less accurate is 11.d3 e6 (11...a6 12.e1 e6 1/2-1/2 Parmentier,X-Mercier,JP/FRA-ch B 1989) 12.e6 dxe6 13.c1 d7 14.e2 xa2 15.f1 d5 16.f4 c5 17.g5 e6 18.f3 d4 19.g3 c4 20.c3 c3 21.f7 0-0-0 22.f4 a5 23.f7 d7 24.f6 e5 25.f5 f4 h7 26.e6 xc6 27.c5+ e8 28.f4+ e8 29.e5 f4 30.f4; 11.b3 c3 12.d2 f5 13.f4 c7 14.b4

15. Qd6 ♖d8 16. ♖e2 ♖e7 17. h4
 0-0 18. h5 a5 19. ♖f3 ♖a6 20. ♖h3 ♖f7
 21. a4 ♖a7 22. ♖b8 ♖a6 23. ♖d6 ♖c6
 24. ♖g3 ♖h8 25. h6 g6 26. ♖c2 ♖a8
 27. ♖c5 ♖b6 28. ♖b5 ♖b4 29. ♖g5 ♖c6
 30. ♖xc6 ♖b1+ 31. ♖d2 ♖b4+ 32. ♖c1
 ♖e1+ 33. ♖b2 ♖b4+ 34. ♖h3 ♖d4+
 35. ♖a2 ♖f8 36. ♖xf8 ♖d2 37. ♖f6+ 1-
 0 Diaz, J-Drill, F/Hessen Darmstadt
 1991] 11...d5 [11...♖c6 12. ♖c7+
 ♖d8 13. ♖xa8 ♖xe5 14. ♖xc5 ♖xc5
 15. ♖a3 d5 16. ♖d6 ♖g4 17. ♖c1 ♖d7
 18. ♖c7 a6 19. ♖a8 ♖a4 20. ♖b6 ♖xc2
 21. f3 ♖f6 22. ♖d2 ♖f5 23. ♖e2 ♖d7
 24. ♖c1 ♖xb6 25. ♖c7- ♖d7 26. ♖xb6
 ♖c8 27. ♖xc8 ♖xc8 28. ♖c3 ♖d7 29. f4
 ♖c4 30. g4 f6 31. ♖d4 ♖c6 32. ♖a5 g5
 33. ♖d8 gxf4 34. ♖xf6 f3 35. ♖f1 a5
 36. a3 Krogius, N-Korelov, A/URS-
 ch 1962/1-0 (51)] 12. ♖b4



[Another of Steve Spisjak's games
 from 1994 continued instead
 12. ♖d6+ ♖d7 13. ♖f4 f5 14. ♖b5+ ♖c6
 15. ♖e1 a6 16. ♖xc6+ ♖xc6 17. ♖a4+
 ♖c7 18. ♖c3 with an unclear position.
 Schultz Spisjak, US Open, 1994.
 The less effective 12. exd6 is
 examined in Illustrative Game #2]
 12...♖xe5 [Two alternatives have
 been seen in practice: (A) 12...♖a6
 13. ♖d6+ ♖d7 14. ♖xa6 bxa6 15. ♖xf7
 ♖g8 16. ♖d2 d4 17. ♖b2 ♖xa2 18. ♖a1
 ♖d5 19. ♖a5+- Euwe (B) 12...♖c6TN
 13. ♖c7- (13. ♖d6+ ♖d7 14. ♖xa6
 bxa6 15. ♖xf7 ♖g8 16. ♖d2 d4 17. ♖b2
 ♖xa2 18. ♖a1 ♖d5 19. ♖a5± Euwe)
 13...♖d8 14. ♖d6+ ♖d7 15. ♖xa8 ♖xc5
 16. ♖a3! (16. ♖xe5 ♖xe5-) 16...♖d4+
 (16...♖xd6 17. ♖xd6+) 17. ♖c1 ♖a1+
 18. ♖d2 ♖d4+ 19. ♖d3 ♖xf2+ 20. ♖d1!
 ♖xg2 21. ♖c7- ♖c8 22. ♖f1 e5
 23. ♖xb7 f6 24. ♖c5?! (24. ♖c7+ ♖f7
 25. ♖e6! ♖b8 26. ♖f8!+-) 24...♖e5
 25. h3 ♖h5+ 26. ♖c1 ♖xh3 27. ♖b1 ♖f7

28. ♖d6 ♖c6 29. ♖c7 ♖c8 30. ♖f5 ♖xf5
 31. ♖xf5 ♖xa8+- 32. ♖b5 ♖c7 33. ♖f1
 ♖c8 34. ♖xe5 ♖c6 35. ♖d3 ♖c4 36. ♖h3
 ♖xc2+ 37. ♖a1 ♖e4 38. ♖b2 0-1
 Berg, K-Johnsen, Sv/Gausdal Int
 1993] 13. f4 [13. ♖b2 ♖c6 14. ♖a3 ♖f4
 f5. g3 ♖b4 16. ♖xb4 ♖xb4 17. ♖xg7
 ♖g8 18. ♖c3 ♖a6 19. ♖d3 f5 20. ♖e1
 ♖d7 21. ♖e5 b6 22. ♖d4 ♖c5 23. ♖h5+
 ♖e7 24. ♖c6+ ♖f7 25. ♖e2 ♖e4
 26. ♖h5+ ♖f8 27. f3 ♖g5 28. ♖d6- ♖g7
 29. ♖e5+ ♖f8 30. ♖d6- ♖g7 31. ♖e5-
 ♖h6 32. g4 ♖xf3 33. ♖f4+ ♖g7 34. g5
 ♖e1 35. ♖e5+ ♖f8 36. ♖d6+ ♖g7
 37. ♖e5+ ½-½ Boudre-Mercier/Val
 Maubuec 1988] 13...♖f6 [13...♖c6
 14. ♖xe5 ♖xb4 15. ♖c7+ ♖d8 (15...♖d7
 16. ♖xa8 ♖c6 17. ♖b5 b6 18. ♖f1 f5
 19. exf6 g6 20. f7 1-0 Gollub-
 Stetson/Phoenix 1975) 16. ♖xa8 b6
 17. ♖a3 ♖xa2 18. ♖d6 ♖c3+ 19. ♖c1
 ♖b7 20. ♖c7 ♖e4 21. ♖b5 ♖xd6
 22. exd6 a6 23. ♖f1 (23. ♖xa6 ♖xa6
 24. ♖xa6 ♖d7!) 23...axb5 24. ♖xf7
 ♖c8 25. ♖a8 1-0 Primavera-
 Palmiotto/cr-ITA 1966] 14. ♖c7+
 ♖d7 15. ♖xa8 ♖c8 16. ♖b5+ ♖c6
 17. ♖b2 ♖e7 18. ♖a4 f6 19. ♖xc6+

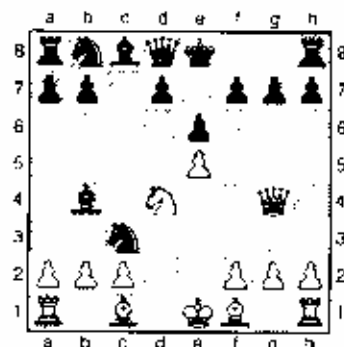


1-0

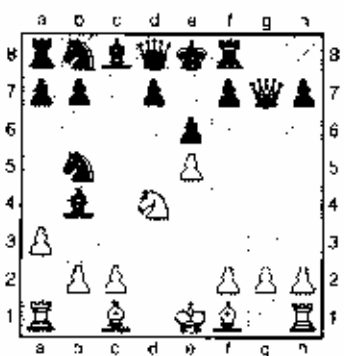
Illustrative Game #1

Szabo, L
 Mikenas
 Kemerli-Riga tt, 1939

1. e4 c5 2. f3 e6 3. d4 cxd4 4. ♖xd4
 ♖f6 5. ♖c3 ♖b4 6. e5 ♖e4 7. ♖g4 ♖xc3

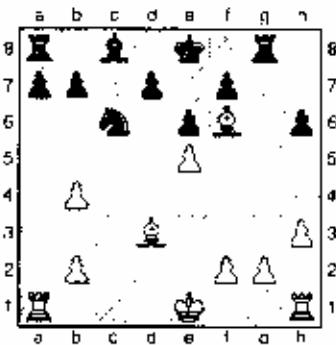


8. ♖xg7 [8. a3 ♖f8 (8...♖b5+ 9. axb4
 ♖xd4 10. ♖xd4 ♖c6 11. ♖g4 ♖e7 12. c3
 f5 13. ♖g3 h6 14. ♖e2 ♖h7 15. ♖h5-
 g6 16. ♖f3 0-0 17. h4 ♖g7 18. ♖g5 f4
 19. ♖xf4 d6 20. exd6 e5 21. ♖e3 ♖ad8
 22. ♖d1 ♖f8 23. ♖d5+ ♖h8 24. ♖c4
 ♖d4 25. 0-0 ♖f5 26. ♖g4 ♖xd6
 27. ♖xd6 ♖xd6 28. ♖b3 ♖f5 29. ♖g5 h6
 30. ♖c1 ♖f6 31. h5 gxf5 32. ♖xh5 ♖e7
 33. ♖d1 ♖g7 34. ♖d5 ♖c8 35. ♖c8-
 ♖h7 36. ♖xc8 ♖d6 37. ♖e6 1-0 Ruiz-
 Saenz/Alicante 6 1989) 9. bxc3 ♖a5
 10. ♖g3 a6 11. ♖d2 ♖c6 12. ♖xc6 dxc6
 13. ♖d3 ♖d7 14. ♖e4 ♖a4 15. ♖f3 ♖c8
 16. 0-0 ♖c7 17. ♖g4 g6 18. ♖h6 ♖d8
 19. ♖fd1 ♖c7 20. ♖f3 ♖e8 21. ♖d4 ♖a5
 22. ♖b1 ♖c5 23. ♖c3! ♖b8 24. ♖db4
 ♖xb4 25. exb4 ♖c7 26. c4 ♖d8 27. a4
 ♖d7 28. h3 h5 29. b5 axb5 30. axb5
 exb5 31. ♖b6 ♖c8 32. ♖a3 1-0
 Tomas, J-Kus, K/Greater Chicago
 Amateur 1980] 8...♖f8 9. a3 ♖h5+



[Several other moves have been
 tried, also without success: A)
 9...♖a5 10. ♖h6 ♖c7 11. ♖b3 b6
 12. ♖xa5 1-0 Valvo-Burkett/Indiana
 1963; B) 9...♖a5 10. ♖b3 ♖d5+
 11. axb4 ♖xb4+ 12. ♖d1 d6 13. ♖h6
 ♖d7 14. ♖xh7 ♖g4+ 15. ♖c1 ♖g8
 16. exd6 ♖f7f6 17. ♖d3 ♖d7 18. ♖a4
 ♖h5 19. ♖d2 ♖c8 20. c4 ♖b6 21. ♖a5

f5 22. e2c5+ 1-0 Kovassy, x-
Anesin, x/corr [Brinckmann 1965;
C) 9... e2c6 10. e1xc6 dxc6 11. e2d2 ♖a5
12. e1d1 ♖xa3 13. ♖xc3 ♖b4 14. ♖xb4
♗xb4+ 15. c3 ♗e4+ 16. ♖e2 ♗g6
17. ♖d8- ♗xd8 18. ♗xf8+ ♗d7 19. 0-0
b6 20. ♖d6+ ♗c8 21. ♗xc6+ 1-0
Ramis-Layes/Buenos Aires BCA
(03) 1989] 10. axb4 ♠xd4 11. ♖g5
♗b6 12. ♖h6 [12. e2d3 e1f5 13. ♖xf5
exf5 14. ♖h6 ♗xb4+ 15. c3 ♗e7 16. 0-0
0-0 e2c6 17. ♖he1 e1d8 18. ♗xh7 ♠c6
19. ♖xf8 ♗g5+ 20. ♖e3 e1xf8 21. ♗h8
b6 22. g3 ♖b7 23. f4 ♗e7 24. ♖d6 0-0-0
25. ♗f6 ♖c8 26. ♗xf5 e1e6 27. b4 ♗c7
28. h4 ♖c6 29. h5 f6 30. ♖xc6+ ♗xc6
31. exf6 ♗f7 32. ♗g6 ♖f8 33. f5 e1d8
34. ♗xf7 e1xf7 35. g4 e1g5 36. ♖e7
♖xf6 37. ♖g7 e1c4 38. ♖g6 ♗d5 39. h6
♖f8 40. ♖g7 e1xc3 41. h7 ♖h8 42. f6
e1c4 43. f7 e1d6 44. g5 1-0 Bauer, P
Seeger, W/WÜRT-ch Moglingen
(03) 1989] 12... ♗xb4+ 13. c3 e1f5
14. xb4 e1xg7 15. ♖xg7 ♖g8 16. ♖f6
e1c6 17. ♖d3 [17. ♖a3 e1xb4 18. ♖h3
e1d5 19. ♖xh7 d6 20. ♖b5+ ♗f8 21. h4
a6 22. ♖c2 ♖d7 23. ♖h5 ♖e8 24. ♖h3
dxc5 25. ♖xc5 ♗e7 26. ♖f3 ♖xg2
27. ♗f1 ♖g8 28. ♖xf7 ♖b5+ 29. ♗e1
♖g1+ 30. ♗d2 e1f6 31. ♖xf6- ♗d6
32. ♖e3 ♖c4 33. ♖c7+ ♗c6 34. ♖c3 ♗b5
35. ♖h5- ♖d5 36. ♖xe6 1-0
Kawaciukova, Z-Samardzic, J/Praha
BOH-W (10) 1990] 17... h6 18. h3



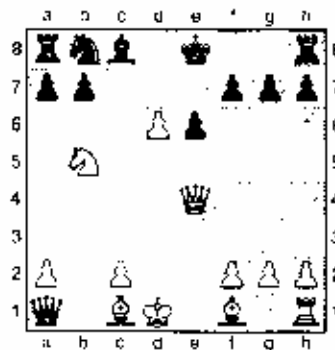
[18. b5 e1e7 19. 0-0 e1d5 20. f4 e1xf6
21. exf6 b6 22. ♖fc1 ♗d8 23. ♖c2 ♖b7
24. ♖ac1 h5 25. ♖c7 ♖xg2+ 26. ♗f1
♖xh2 27. ♖e3 ♖c6 28. ♖3xc6 dxc6
29. ♖xf7 ♖b4 30. ♖f8+ ♗c7 31. ♖xa8
♖xf4+ 32. ♗g2 ♖xf6 33. hxc6 ♗xc6
34. ♖xa7 ♖f4 35. ♖h7 ♖d4 36. ♖c2 ♖d2
37. ♗f1 ♖xb2 38. ♖xh5 ♗d6 39. ♖b5
♖xb5 40. ♖xb5 ♗c5 41. ♖d3 b5 42. ♗c2
b4 43. ♗d2 ♗d4 44. ♖c2 ♗c4 45. ♗e3

1/2-1/2 Fajardo, G- Shinis, M / Thessa-
loniki Olm 1988] 18... e1xb4 19. ♖h7
♖xg2 20. ♗f1 ♖g6 21. ♖xg6 ♖xg6
22. ♖g1 ♗f7 23. ♖a4 e1d5 24. ♖ag4 g5
25. ♖xg5 h1xg5 26. ♖xg5 ♠e7 27. ♖g7+
♗f8 28. ♖h7 b6 29. ♗e1 a5 30. h4 a4
31. h5 a3 32. h6 e1f5 33. ♖h8+ ♗f7
34. h7 axh2 35. ♖f8+ ♗e7 36. ♗d2
♖a2 37. ♗c2 ♖b7 38. h8 ♖ 1-0

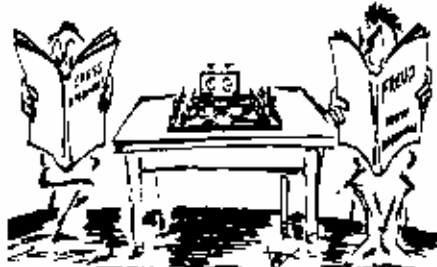
Illustrative Game #2

*Ciric, Dragoljub
Kelecevic, N
Sarajevo 1968*

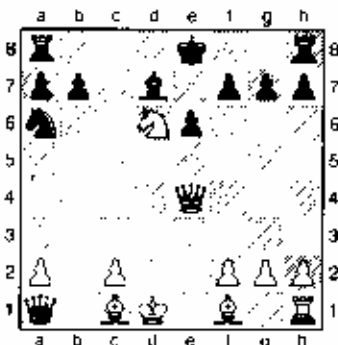
1. e4 c5 2. e1f3 e6 3. d4 cxd4 4. e1xd4
e1f6 5. e1c3 ♖b4 6. e5 e4 7. ♗g4 ♖a5
8. ♗xe4 8... ♖xc3+ 9. hxc3 ♗xc3+
10. ♗d1 ♖xa1 11. e1b5 d5 12. exd6?!



12... ♠a6 13. d7+! ♖xd7 [13... ♗xd7
14. ♖c4 ♖d8 15. ♗c2 ♗e8 16. ♖e1 ♗f6
17. ♗xh7 b6 18. ♖a3 ♖b7 19. ♠d6+
♖xd6 20. ♖xd6 ♗g5 21. ♗d3 e1c5
22. ♖b5+ e1d7 23. c4 ♗xg2 24. ♖c7 ♖c6
25. ♖g1 1-0 Judovitch-
Strom/Moscow 1961]



14. e1d6+



14. ♗xb7 0 0 (14... ♖d8 15. e1d6+ ♗e7
16. ♖xa6 ♖c8 17. ♖xa7+ ♖d7 18. ♗c5
♖xd6+ 19. ♖d3 ♖hd8 20. ♗e2 ♖xa2
21. ♖f4 ♖d5 22. ♖xd6+ ♗xd6
23. ♗xd6+ ♖d6 1/2-1/2 Roeberg, F-
Drill, F/Hessen qual (05) 1990] 15. ♗xa6
♖ab8 16. a4 ♖fd8 17. ♖d3
♖b6 0-1 Artiushikhin-Koifman/
Moscow 1961] 14... ♗e7 15. ♖xa6
♖c6 16. e1f5+ ♗e8 17. ♗b4 ♖d8+
18. e1d6+ ♗e7 19. ♗e2 ♗e5+ 20. e1e4+
♗e8 21. ♖xb7 ♖xb7 22. ♗xb7 f5
23. ♖g5 ♗xe4+ 24. ♗xe4 fxe4
25. ♖xd8 ♗xd8 26. ♖b1 ♗c7 27. ♖b4
♗d6 [27... ♖d8 28. ♖a4 ♗b6 29. ♖xe4
♖d6 30. ♖h4 h6 31. ♖g4 ♖d7 32. ♖g6
♖c7 33. ♗c3 ♗c5 34. ♗e4 ♗b4 35. ♖g3
a5 36. ♖b3- ♗c4 37. a4 ♖d7 38. ♖b5
♖d5 39. ♖b6 ♖d2 40. ♖c6+ ♗b4
41. ♗c3 ♖d7 42. ♖xe6 ♗xa4 43. ♖b6
♖e7+ 44. ♗d3 ♖d7+ 45. ♗c3 ♖c7+
46. ♗d2 ♖d7+ 47. ♗c1 ♖c7 48. ♗b2
♖e2 49. ♖g6 ♖xf2 50. ♖xg7 ♖f6
51. ♖b7 h5 52. g3 Klundt-Taeger/DM
Oberursel 1972: 1-0 (68)] 28. ♖b7
♖c8 29. ♗d2 ♖f8 30. ♗e3 [30. ♗e3 ♖c8
31. ♖xg7 ♖xc2 32. ♖xa7 h5 33. ♖a4 e5
34. h4 ♗d5 35. ♖a5+ ♗e6 36. ♖a8 ♖c3+
37. ♗d2 ♖c4 38. g3 ♖d4+ 39. ♗e3 ♗d5
40. ♖a5+ ♗e6 41. ♖a8 ♗d5 42. ♖a3 ♗e6
43. ♖a7 ♗d5 44. ♖d7+ ♗c4 45. ♖h7
♗d5 46. ♖xh5 ♖d3+ 47. ♗e2 ♖a3
48. ♖f5 ♗d4 49. h5 e3 50. fxe3+ ♗e4
51. ♖f6 ♖xa2+ 52. ♗f1 ♖h2 53. h6
♗xe3 54. ♗g1 ♖h5 55. ♗g2 e4 56. ♖a6
♗d2 57. g4 1-0 Ciric-Kelecevic
/Sarajevo 1968] 30... ♖c8 31. ♖xg7
♖xc2 32. ♖xa7 h5 33. ♖a4 e5 34. h4
♗d5 35. ♖a5+ ♗e6 36. ♖a8 ♖c3+
37. ♗d2 ♖c4 38. g3 ♖d4+ 1-0 (63)

Listed on the card to the right is the most famous phrase never actually uttered by a character that never had life yet will never die. Sherlock Holmes did say "Elementary" and "My Dear Watson" in the original Conan Doyle tales but never both together; this phrase was used exclusively in the movies. One of my favorite Holmes quotes goes "Amberly excelled at chess - one mark, Watson, of a scheming mind."



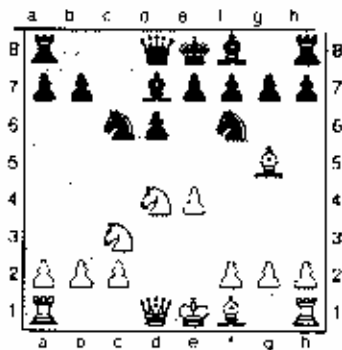
Elementary, My Dear Watson!

By National Master Alan L. Watson

The purpose of this article is to demonstrate the importance of time, force, and pawn structure in two tremendously different games from the same tournament. The first game features a sacrifice seldom seen and even more infrequently accepted! Play is razor-sharp and Black's work is to be done by pieces alone; those pawns representing a hindrance are rapidly cast aside for open lines and diagonals.

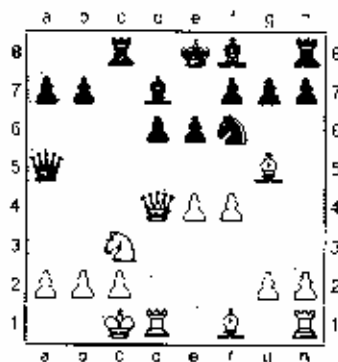
McCarthy, J
Watson, A
Nost AC F92-00, 1995

1.e4 c5 2.♘f3 ♘e6 3.d4 cxd4 4.♘xd4
♙f6 5.♗e3 d6 6.♗g5 ♘d7

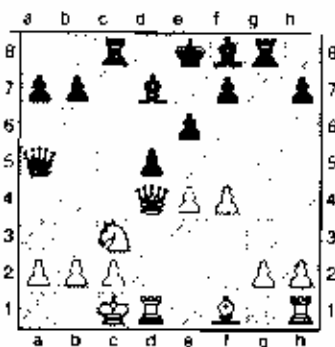


[The complicated Modern Rauzer. 6...♘d7 is a somewhat recent development by which Black plans a rapid Queenside mobilization and

avoids the typical lines following 6...e6 in which the d-pawn often proves weak. A great deal of its popularity was established in the late 1960's and early 1970's through the efforts of such notable players as Averbakh, Larsen, Stein, and Tal.] 7.♙d2 ♗c8 8.0-0-0 ♘xd4 [Exchanging knights is intended to free Black's game somewhat and open the c-file for active play.] 9.♙xd4 ♖a5 10.f4 e6!?

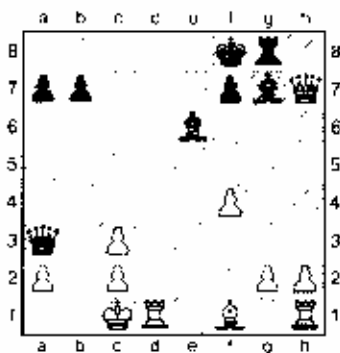


[This is a line that I had come across during earlier study and was quite eager to try out. Grandmaster praxis has continued 11.c5 dxe5 12.fxe5 ♗xc3! (12...♗c6?! 13.♘xf6 gxf6 14.Ne4 +/-) 13.♘d2 ♙xa2 14.♘xc3 g6! 15.♗d2 ♗c5 with an exciting game, but nobody seemed to ever accept the pawn sacrifice with 11.♘xf6!?! gxf6 12.♙xf6. When my opponents card came, I carefully opened it while drawing my breath ... he had indeed continued trustily and now the real work was to begin!] 11.♘xf6 gxf6 12.♙xf6?! [This is indeed dangerous, but also the only justification for White's decision to part with his dark-squared bishop.] 12...♗g8 13.♙d4 d5!?



[Holmes once called for his faithful chronicler, Watson "Come if convenient. If inconvenient, come all the same!" This additional sacrifice seems necessary in order to institute counterplay as rapidly as possible before White can complete development and consolidate his defenses. The White king is my quarry now, and material considerations are secondary.] 14.exd5 [14.f5!? ♗b4 15.fxc6 fxc6 16.exd5 ♗xc3! 17.dxe6 ♗c6 18.e7 ♗c5 19.♗c4 ♗xc4 20.♙d8+ ♔f7 21.♗h1+ ♕g7 22.♗f8 ♖g5+ 23.♕b1 ♕h8 24.e8♙ ♗xe8 25.♙xg5 ♘xf8 26.♙d5 b5 27.c3 ♗g7 28.♗f3 b4 Fiorito-Maliangkay, Cr. ch NL 1991] 14...♗g7 15.♙d3 ♗xc3! [A bolt from the blue! This rook unhesitatingly throws itself upon the sword of sacrifice in order to rupture the pawn shield in front of White's king and press home the attack along the insufficiently guarded dark squares. The final price for White's disrespectful exchange ♗g5xf6 is to strengthen its opposite number and allow the a1/c8 diagonal to be the roadway into the very heart of his own camp.] 16.♙xh7 [Fleeing from the impending doom?] 16...♕f8 17.dxe6?! [Black is rapidly outstripping his opponent in

development and gladly welcomes these additional lines with which to press his attack. With twenty units of force aimed at the queenside (♖♗♘♙) with no defenders capable of opposing them ... there must be a decisive continuation for me here somewhere.] 17...♙e6 18.hxc3 ♖a3+!

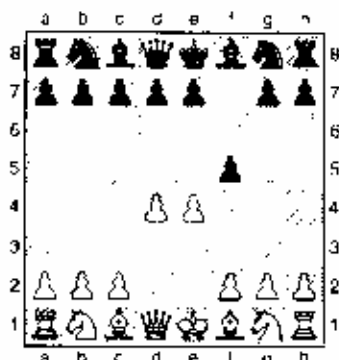


[My esteemed opponent missed this fine point in his calculations, for now Black maintains the initiative and is able to drive the White monarch away from his shelter and into the jaws of the pursuing hounds.] 19.♔d2 ♕xc3+ 20.♔e2 [20.♔e3 ♖c5+ 21.♔e4 ♖h8 22.♗d8+ ♔e7 23.♗xh8 ♕d5+ 24.♔d3 ♖d4+ 25.♔e2 ♖d2#] 20...♕g4+ 0-1

This second game is completely different from the first and emphasizes the importance of integrating both piece activity and pawn-structure in devising strategy. Just as a healthy body requires bones and muscles working in conjunction with each other, so must chess players take both elements into consideration. From the early middlegame forward, Black spies a minor defect in White's structure but must first gradually diminish the dynamism and activity of his opponent's forces before it can be exploited. All that finally remains is a king and pawn ending revealing several nice finesses. "It is, of course, a trifle, but there is nothing so important as trifles... it is my business to know what other people don't know." Holmes

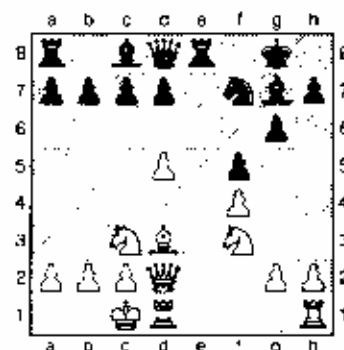
Smyth, F(2279)
Watson, A(2220)
Nost AC F92-00, 1995

1.d4 f5 2.e4!?

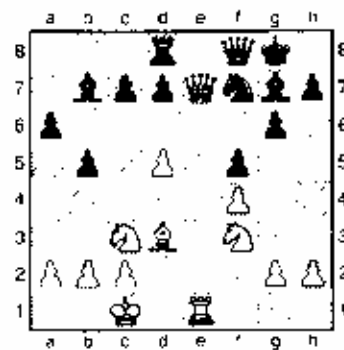


[As recently as 1931, Dr. Siegbert Tarrasch considered the Dutch Defense not wholly correct and regarded the Staunton Gambit as White's strongest reply. How times have changed, for now the Dutch is highly-considered and this gambit viewed suspiciously! Another historical anomaly is that this opening is so-named despite the fact that Staunton had the black pieces in the original encounter Saint Amant-Staunton, 1843. This should rightly be called the Saint Amant Attack!] 2...fxe4 3.♗c3 ♖f6 4.♕g5 ♗e6 5.d5 ♗e5 6.♗d4 ♖f7 7.♕xf6 exf6 8.♗xe4 f5 9.♗c3!?! [In place of the standard 9.♕g3, this unusual move had successfully been championed by Smyth on a previous occasion and is given an exclamation point by Lim Kok Ann in the December 1995 issue of Florida Chess.] 9...g6 10.0-0 [10.h4 ♕h6 11.h5 ♖e7+ 12.♗e2 b6 13.hxg6 hxg6 14.f4= Lim Kok Ann] 10...♕h6+ 11.f4! [The author mentioned above notes that his home preparation demonstrates this move is necessary prior to h4/h5 and actually saves a tempo. For instance: 11.♔b1 0-0 12.d6 (If instead 12.♗d3 ♕g7, or 12.♗e4 ♖d6 13.h4 ♕g7 14.♗d3 ♖f6 15.h5 ♗e4) 12...♗xd6 13.h4 ♕g7 14.♗d5+ ♖f7 15.♔f3 h6 16.♗e5 ♕xe5 17.♖xe5 ♖e7 18.♖f4 unc.] 11...0-0 12.♔f3 ♕g7 [12...c5!? 13.dxc6 bxc6?! 14.♗c4 d5 15.♗b3

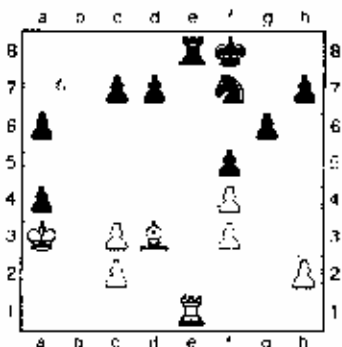
♖b6 16.♗d2 ♖b4 17.♔g5 ♗d8?! 18.h4 ♕g7 19.h5 ♕xc3 20.bxc3 ♖a3+ 21.♔b1 ♕xg5 22.fxg5 f4?! 23.hxg6 hxg6 24.♗d4 ♕f5 25.♖h8+ ♔f7 26.♖h7+ ♔e6 27.♖e1+ ♔d6 28.♖e5+ ♔c5 29.♖c7+ 1-0 Lim, KA-Fox, M British Veterans-5, 1995] 13.♗d2 ♖e8 [13...♗d6?! [This unusual move fails to impress me by releasing control over the key squares e5 and g5.] 14.♗c5 b5 15.♗d3 ♖b8 16.♖he1 b4 17.♔a4 a5 18.♖f2 ♕b7 19.♗c5 ♖f7 20.♔xf7 ♖xf7 21.♖e5 ♕c8 22.g4 fxg4 23.♗d1 ♖f6 24.♗e4 ♕xe4 25.♖1xe4 d6 26.♖e7+ ♔f8 27.♖c8+ Smyth, F-Riggs, B National Correspondence Team Championship 1992] 14.♗d3



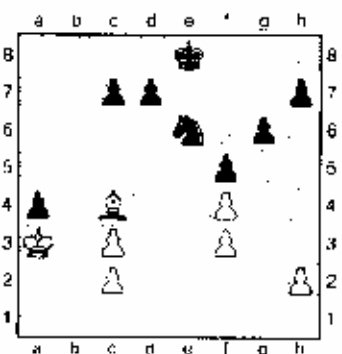
[14.♗c4 ♗d6 15.♗b3 b5, a5 would only serve accelerate Black's queenside counterplay. Much time was spent here contemplating the various options available in order to devise the proper plan of action. I eventually decided that the retreat of White's knight's to c3 precluded bolstering the defense of d5 with c4, and I should therefore attempt to further isolate it by encirclement.] 14...a6 15.♗d1 b5 16.♖xe8+ ♖xe8 17.♖e1 ♖f8 18.♖c3 ♕b7 19.♖e7 ♗d8!?



[The time is not yet ripe for decisive action as the continuation 19...♖xc3 20.bxc3 ♗xd5 is not fully conclusive despite its attractive appearance. A further point is that each piece trade reduces White's activity and brings Black closer to a favorable ending.] 20.♗xf8+ ♕xf8 21.a4 ♖xc3! 22.bxc3 bxa4 23.♖h2 [Smyth must dash after this pawn immediately with his king or risk allowing the Black pieces greater activity by 23...c6 and 23...Re8 23...♗xd5 24.♖a3 ♗xf3 25.gxf3 ♗e8!

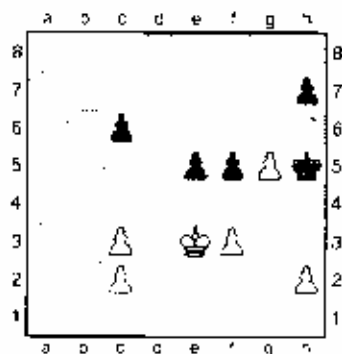


[This follow-up is consistent with the exchange on move 23 and demonstrates Black's strategy of steering the game into a bishop vs. knight ending where his superior minor piece and solid pawn structure would be extremely advantageous.] 26.♗xe8+ ♕xe8 27.♖xa6 ♖d8! 28.♗c4 ♖e6



29.♗e6 [White is oblivious to the dangers confronting him and plays directly into a subtle but forced loss. His only opportunity for defense was to retain minor pieces even at the expense of a pawn deficit. The bishop's maneuverability and range would then provide certain technical

problems I would have had to successfully cope with. As an exercise of their own technique, I suggest the reader cover the remainder of the game from this point forward and commit their analysis to paper before proceeding.] 29...dxe6 30.♖xa4 g5! [Black strikes a blow on the king's wing while the opposing monarch is stranded on the opposite flank. Who, in fact would guess at this point that the real target is h2!? Such play, however, would not have been possible without the subtle and diabolically clever 33...c6!] 31.fxg5 e5 32.♖b4 ♖f7 33.♖c4 c6! [White is prevented from approaching the pawns via d5 and does not have the option of an end-around with e5/d6 because there would be no one protecting his goal.] 34.♖d3 ♖g6 35.♖e3 ♖h5!



[Avoiding White's final trick of 35...♖xg5 36.f4+ which would hold drawing chances. Possible continuation from this point might be 36.f4 e4 37.♖f2 ♖h4 38.♖g2 ♖g4 and 36.♖f2 ♖xg5 37.♖g3 f4+ 38.♖f2 ♖f5 39.♖c2 e4! with extended but certain wins for Black in either case.] 0-1

Sharing the Love of the Game

By Raymond Dixon

Have you gotten something worthwhile from chess? Would you like to provide the opportunity for someone you know to be introduced

to the game and enjoy a lifetime of play? Read on, and perhaps you can help me find the next Bobby Fischer.

Giving Something Back

As a chess competitor I have made good friends, enjoyed the ups and downs of rivalries, witnessed the beauty of the game and gained an increased measure of self esteem from my modest successes over the board.

As the coach of the Overland Trail Middle School team, I have seen children apply themselves in an intense intellectual effort, develop as chess players and mature as competitors. Tournament play has provided them with a valuable opportunity to experience some of the genuine joys of life as well as the harsh realities of living in a competitive world. They've experienced individual victories as well as the camaraderie and satisfaction of winning as a team. They've also suffered when, despite a long sustained effort, they've lost. Those two extremes have been spiced up with come from behind swindles, last minute stalemates, unexpected tactical shots, and the air hockey pressure of a clock bashing blitz ending.

Each of you reading this article has the ability to provide a satisfying chess experience to some young person in your life. Don't pass it up. You'll enjoy yourself and you'll give something back to the game that has served us all so well.

I will make it easy for you. In this three part series, I'll explain some simple steps that I have developed to build chess players from scratch, organize a team and win a state championship. You can follow each of these steps as far as you want. The next Bobby Fischer is

there, waiting for you to find him or her

How to Make a Chess Player

This is the easiest step. If you play a game of chess in the presence of children, it won't be long before they ask to play. At this moment, you will have the opportunity to make or break a chess player. It is important to provide the interested novice with a worthwhile chess experience the very first time they touch the pieces. How do you do that, when the ability level between you and a first time player is so great? It is very hard to play down to the level of a beginner. Here's a few simple techniques that work.

Quick Overview

The first thing you have to do is to provide a very quick overview of how the pieces move. Don't worry if the student calls the knight a horse, or a pawn a soldier. It doesn't matter. Just be sure not to overwhelm the beginner with too much talk.

It is important to briefly cover the concept of checkmate. To illustrate the point, I teach beginners how to mate with a King & Queen against a lone King. I suggest teaching the simplest possible technique.

Here's how it works.

The opponent is never put into check until the last move of the mating attack. The Queen maneuvers the opponent's King into a corner so that he only has two possible moves, back and forth. This is a good time to cover the concept of stalemate. Once the opponent's King is in jail, then the opposing King is brought over to assist in the checkmate. Let the student practice this checkmate against you a few times

This is not the most efficient or elegant checkmate process. It is the simplest possible method of achieving checkmate. Once the student learns this, then the strategic possibilities of queening a pawn become apparent throughout the game and the student begins to plan ahead. Teaching this method early also helps the student avoid the embarrassment of getting a draw when he is a Queen ahead.

After you've covered these few basic points, it's time to play.

Make Up Genuinely Challenging Odds

Sometimes I think we've forgotten a little bit of the history of the game and the role that odds games have played. Morphy, Capablanca and Alekhine regularly gave odds to lesser players. There's nothing wrong with playing an odds game, it provides both players with a genuine challenge. Odds games are the answer to playing a first time player.

King & 4 Pawns vs. the World

When I first taught my oldest son to play, I took black with a King and four pawns. That's it. No queen, rooks, knights or bishops. My initial goal was to avoid checkmate as long as possible. Throughout the game I provided attacking tips.

Get your pieces out early. Develop with a threat. Make your pieces work together. Wipe out my pawns. Force my king into a checkmate position.

OK. That was good. Let's do it again, and again. Now the goal is to encourage the novice to find the shortest possible route to checkmate. This can occupy 10 games.

When this effort becomes tiresome, then the stronger player begins to make a genuine effort to win. Queening a pawn becomes the goal. It won't take the novice long to learn the value of material and the threat of a pawn on the seventh.

When the novice has gained enough strength to hold off the King and four pawns, the stronger player can gradually add pieces to his side. This is a wonderful exercise for the weaker player and a grand challenge for the stronger player. Can you beat someone with 20 games of experience when all you have is eight pawns and two knights? Two bishops?

The odds gradually diminish as the novice's strength increases. Finally, the student reaches a point where the stronger player can offer what has been historically been recognized as the biggest odds in chess, the capped pawn.

Capped Pawn Odds

In this game, the student selects one of your pawns and marks it with a piece of string, tape or a rubber band. This pawn is now capped.

Here's the challenge. You must checkmate your opponent with this pawn. If the pawn leaves the board, you've lost the game. You cannot queen the pawn to achieve checkmate. The mate must come from a combination that culminates with the advance of the pawn giving check and mate.

My 9 year old son, who has only a mild interest in chess, can beat a 20 year veteran with these odds.

The Results

After a few years of playing odds games with my 12 year, we have

reached the point where I can give him rook odds and he wins about half of the games. When he begins to win more than half of the games then we will progress to Knight odds and then to pawn odds and finally to even, head to head play.

It's Your Move

You have what you need to get started. In Part II of this series, I'll explain how to form a team (it takes less time and effort than you think), how to get financing for equipment (I made one phone call and got \$300 for equipment) and how to win a State Championship.

This sounds like a lot, but all chess players who think strategically are accustomed to thinking big. Chess is not for the timid or short sighted.

Good luck with your students. I hope meet to you sometime at a scholastic tournament.

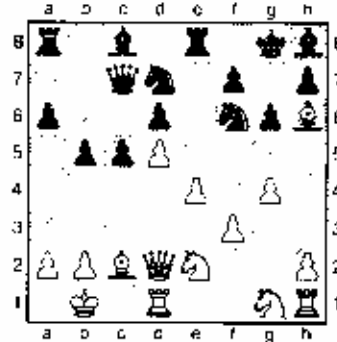


Annotated Games from Recent Events

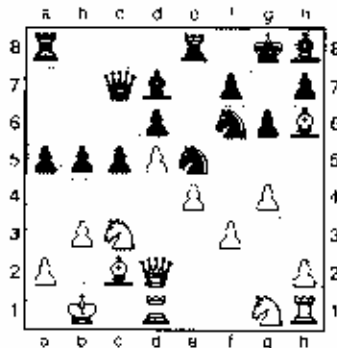
Smythe, B(1918) - Marshall, J
CCC 12/17 Plus Score Mini Tour,
1995
 [Alan Watson]

1.d4 ♟f6 2.c4 e6 3.♗c3 c5 4.d5 exd5
 5.exd5 d6 6.e4 g6 7.f3 ♖g7 8.♗e3 0-0
 9.♖d2 ♗e8 10.0-0-0 ♖a5 11.♙b1
 a6 12.♗d3 b5 13.♗c2 ♗bd7 14.♗ce2

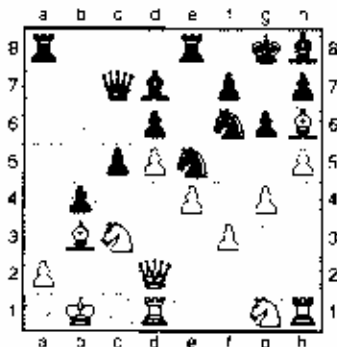
♗c7 15.♗h6 ♗h8 16.g4!?



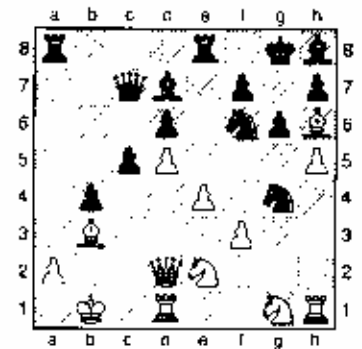
[A dangerous move for both players! White could instead minimize the risk in this position by continuing with 16.♗e1 and a subtle regrouping of his forces.] 16...♗e5 17.b3 a5 18.♗c3 ♗d7?!



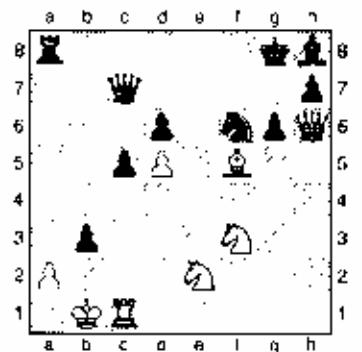
[Much too slow in such a dynamic position with opposite-wing attacks. 18...b4! and 19...a4! would have been much more to the point.] 19.h4 a4 20.h5 axh3 21.♗xb3 b4?!



[21...c4! 22.♗c2 b4 23.♗cc2 ♖a5 24.♗c1 b3!?] 22.♗cc2 ♗exg4?!



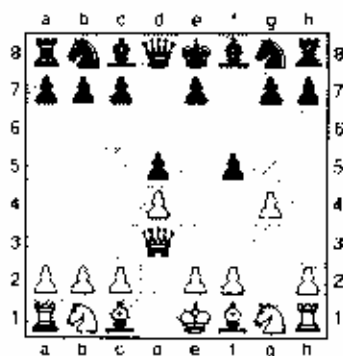
[Jim is correct in realizing the precariousness of White's ominous-looking phalanx of pawns but opts for the wrong capture! Practical wisdom decrees that destroying the BASE of a structure will weaken its entire foundation, and thus superior was 22...♗x13! 23.♗x13 ♗xg4 after which the Black pieces would display amazing strength and cohesion.] 23.hxg6 fxg6 24.♗e1 ♗f2?! [This and the next move demonstrate Black's persistent determination to destroy the pawn barricade. The simpler 24...♗xh6 25.♗xh6 ♗g7 would have removed any danger to Black's king.] 25.♗h4 ♟2xe4 26.fxe4 ♗xe4 27.♗13 ♗f5 28.♗c2 ♗xh4 [28...♖a7!+] 29.♗xf5 ♗xh6 30.♖xh6 h3??



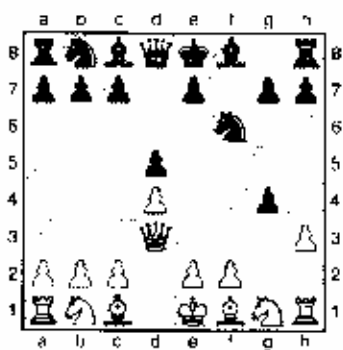
[30...gxh5! 31.♗g1+ ♗g4 32.♗e6+ ♖f7 33.♖xd6 ♗e8 34.♗f4 ♖g7+] 31.♗e6++ ♖f7 32.axb3 ♖xe6 33.dxe6 ♗g4 34.♖f4 ♗a1+ 35.♗c2 ♗a2+ 36.♗d3 ♟f2+ 37.♗e4 d5+ 38.♗xd5 ♗a7 39.♖h8+ 1-0

Smythe, B(1918) - Scott, G(2150)
CCC 12/17 Plus Score Mini Tour,
 1995
 [Alan Watson]

1.d4 f5 2.♖d3 [This move, which is attributed to Alapin, considers that the attack on the Δf5 will either allow White to open up the game by playing e4, or in the event of 2...d5 create a dark-square weakness in Black's camp. Only in fairly modern times have player experimented with the "spike" idea Bill is planning.] 2...d5 3.g4!?

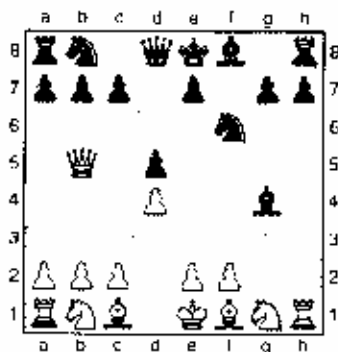


[This unexpected thrust is intended to open lines against Black's weakened kingside and accelerate White's development; all at the meagre cost of a pawn.] 3...fxg4 4.h3 ♖f6?!

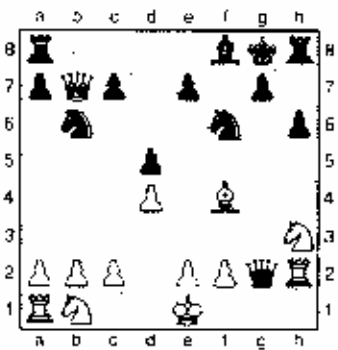


[Modern theory regards 4...g3! as much safer, after which play may continue 5.fxg3 (To be considered is 5.♖xg3 instead of 5.f4?! ♖f6 6.♖xg3 ♖f5 7.c3 ♖e4 as in Sexhiller, E-Lombardy, W US Open 1972.) 5...♖f6 6.♖f4 c5! 7.c3 ♖b6 8.♖a3 ♖xb 22.♖b5 ♖xb5 10.♖xb5 ♖a6

11.♖f3 ♖d7 12.c3 ♖c4! =/+ Quigley, L-Defotis, G Midwest Masters Inv. (1) 1985] 5.hxg4 ♖xg4 6.♖b5+?!

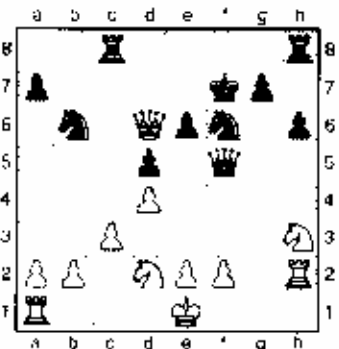


[6.♖h3! is regarded as best in order to exchange light-squared bishops and weaken the squares e5, g6, and h7, but 6.♖f3, 6.f3, and 6.♖c3 have all been seen as well. Bill's move equalizes material, but the loss of time and misplacement of his queen should give Black an easy game.] 6...♖bd7 7.♖xb7 ♖f7 [Pardon my asking, but just where does his guy think he's going?] 8.♖h3! [The proper response, preparing a jump into g5 to further harass the confused Black monarch. Another important point is that Black dare not play 8...♖xh3? because of the dangerous weakening to his light squares.] 8...♖b6 9.♖g5+ [Here or on the next move White should consider ♖f4 developing with gain of tempo.] [9.♖f4!] 9...♖g8 10.♖h3 ♖d7 11.♖f4 h6 12.♖xg4 ♖xg4 13.♖h3 ♖g2 14.♖h2

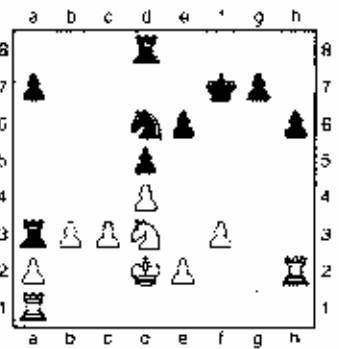


[An odd position, but none-the-less a comfortable defense. Black continues to have greater difficulty

than White in completing his development and coordinating his forces.] 14...♖e4 15.♖c6 e6 16.♖e5 [16.♖d2! ♖f5 (16...♖xd4? 17.♖xe6+ ♖h7 18.♖f3 ♖b4 19.♖f1 ♖xb2 20.♖hg5+ ♖g6 21.♖h4- ♖h3 22.♖f7+ ♖g4 23.♖g2+ ♖xh4 24.♖f3+ ♖h3 25.♖g3#) 17.c3=] 16...♖d6 17.♖d2 ♖f5 18.♖xd6 cxd6 19.♖xd6 ♖c8 20.c3 ♖f7



[This beleaguered king can't seem to figure out just what he should be doing, and by personally defending the Δc6 draws the white knights to e5 and g5 just as a moth seeks light.] 21.♖f3! ♖hd8 22.♖f4 ♖c2 23.♖e5+ ♖g8 24.♖d2 ♖e4 25.♖d3 ♖c4 26.♖xe4 ♖xe4 27.♖xc4 ♖xc4 28.f3 ♖d6 29.♖f4 ♖f7 30.♖d3 ♖a4 31.h3 ♖a3 32.♖d2!?

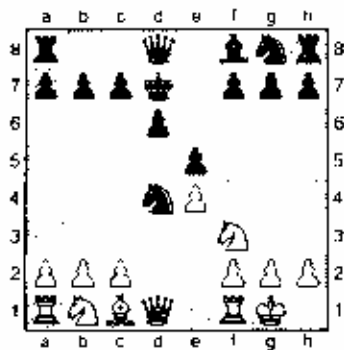


[The White king takes matters into his own hands in expelling the annoying rook from a3, but perhaps even simpler was 32.c3 followed by 33.0-0-0.] 32...♖f6 33.♖c2 ♖b8 34.♖c5 ♖b5 35.♖hh1 [Finally realizing there is nothing to be gained by 35.♖b2 ♖c4.] 35...e5 36.dxe5+ [Bill] could also have continued with 36.♖d7+ ♖e6

37.♗xc5 but perhaps didn't want to let the ♖a3 escape.] 36...♗xe5 37.♞h5+! g5 38.♖d3+ ♔f5 39.♞xh6 ♞h6 40.♞hh1 [40.♖c5! ♖f7 41.e4+ dxc4 42.fxc4+ ♔f4 43.♞f1- ♔g3 44.♞xb6 axb6 45.♞xf7 bxc5 46.♔b2+-] 40...a5 41.♗c5 ♞b5 42.♖a4 ♔f4 43.♞hg1 ♖f7 44.♔h2 ♞xa4 45.♞g4+ 1-0

Amundsen, S - Endler
CCC 01/10 Plus Score Mini Tour, 1996
 [Alan Watson]

1.e4 e5 2.♖f3 ♖c6 3.♗b5 d6 4.d4 ♖d7 5.0-0 ♖xd4 6.♗xd7+ ♖xd7



[This game serves as a perfect illustration of the multitude of dangers involved with an exposed king. The model plan White now initiates is comprised of the following elements: a) Decline exchanges b) Develop rapidly c) Keep the opposing king trapped in the center, and d) Open up the game!] 7.♖xd4 exd4 8.♗xd4 ♖f6 9.♖a4+! c6 10.c4 a6 11.♖c3 ♖e5 12.♗e3 ♗e7 13.f4 ♖h5 14.e5!? h5? [14...dxe5 15.♖d1+ (15.♞ad1+- is not clear.) 15...♖xd1 16.♞axd1+ ♔c8 17.fxc5+] 15.cxb5 cxb5 16.♗xb5 ♖h6 17.♖xd6+ ♔e6? [Not having learned his lesson, the Black king rushes towards his executioners.] 18.f5+ ♖xf5 19.♖xf5 1-0

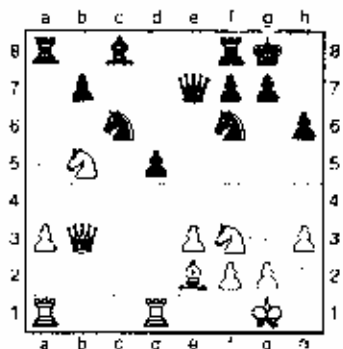
Jordan, R(2000) - Rovenskiy
CCC 11/26 Plus Score Open, 1995
 [Alan Watson]

1.c4 ♖f6 2.♖c3 e6 3.♖f3 d5 4.e3 c5

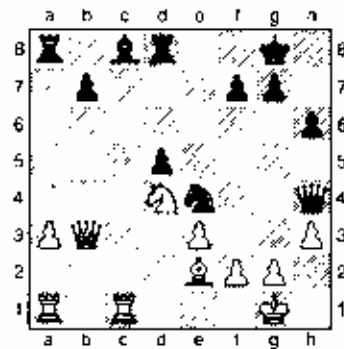
5.cxd5 exd5 6.d4 ♖c6 7.♗e2 ♗d6 8.a3 a6 9.dxc5 ♗xc5 10.h4 ♗e7 11.b5!?



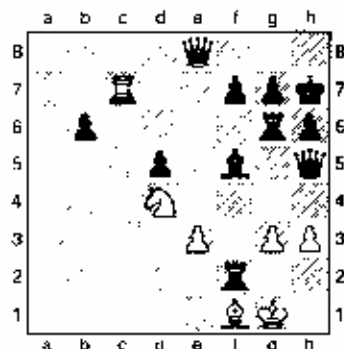
[White has gained an advantage in pawn structure and now must coordinate his forces for maximum effect. This overly committal move should be prefaced by 11.♗b2 and 12.0-0 completing development while reserving options. Many mid-level players and some masters err by feeling they always have to be doing something active; the result is often a spoiled position.] 11...axb5 12.♖xb5 0-0 13.0-0 ♖c4 14.♗b2 ♗f6 15.♗xf6?! ♗xf6 16.♖h3 ♖e7 17.♞fd1 h6 18.h3!?



[This and White's next move indicate that he has lost his bearings in the position and is desperately casting about for a plan. Whereas this is merely a loss of time, 19.♖bd4 retreats an already well-placed piece supporting the weakness at a3. Superior was ♗fd4 with thoughts of ♞a1 and perhaps even ♗f3.] 18...♞d8 19.♖bd4 ♖e4 20.♞dc1 ♗xd4 21.♗xd4 ♖h4



[Winning material.] 22.♞f1 ♖d2 23.♖b6 ♖xf1 24.♗xf1 ♖e7 25.a4 ♞d6 26.♖c5 ♖d8 [26...♗xb3! 27.gxh3 ♞g6+-+] 27.♖b5 ♞g6 28.♔h2 h6 29.♖c2 ♖g5 30.g3 ♖h5 31.♗f1 ♖d7 32.♖c7 ♞xa4?! [32...♗g4 33.♖b7 ♞c8T] 33.♖d8+ ♔h7 34.♞c1? [34.♞xa4 ♞xa4 35.♗d3] 34...♗f5 35.♖e8 ♞a2 36.♞c7 ♞xf2+ 37.♔g1

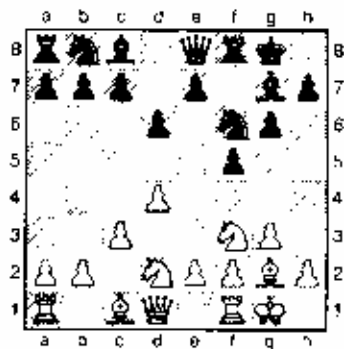


37...♞xf1+! [This well-considered sacrifice destroy White's last kingside defender and forces the king amidst a horde of hungry beady-eyed aggressors.] 38.♔xf1 ♖xh3+ 39.♔e1 ♖xg3+ 40.♔d2 ♖h2+ 41.♔c3 ♖xc7+ 0-1

Janus, C - Korneld, A
CCC 12/30 Plus Score Open, 1995
 [Alan Watson]

1.d4 g6 2.♖f3 ♗g7 3.c3 [Tame moves such as this are not sufficiently challenging to the Leningrad variation of the Dutch defense. More severe yet, however, is that such an early declaration of White's strategy allows Black a wide variety of possible responses.] 3...f5 4.g3 ♖f6 5.♗g2 0-0 6.0-0 d6 7.♖bd2

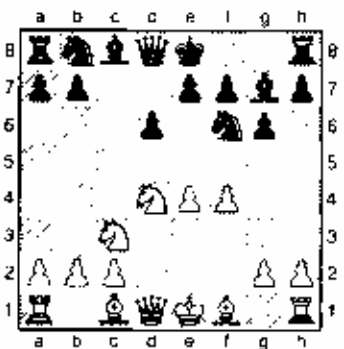
♖e8



[7...♗c6 8.♖e1 e5 9.dxe5 ♗xe5!? 10.♗xe5 dxe5 11.e4 f4 12.♗c4 fxg3 13.hxg3 ♖e7 14.b3 ♗c8 15.♗a3 ♖f7 16.♖c2 a5 17.♗c3 ♗e6= Kaplun Gurevich, M USSR 1983] 8.♗e1 e5 9.e4 f4 10.d5 ♗bd7 11.h4 h6 12.a4 g5 13.c4 ♖h5 14.♗f1 a5 15.♗a3 h6 16.h5 ♗e5 17.♗xc5 dxc5 18.♗xe5 ♗g4 19.h3? [19.♗xg4 ♗xg4 20.f3 ♗xa1 21.fxg4 ♗d4+ 22.♖xd4 cxd4 23.gxh5 f3 24.♗d1 fxg2 25.♗xg2 ♗g7-] 19...♗xe5 20.hxg4 ♗xg4 21.f3? [White selects a short death instead of the sane 21.♖b1 ♗xa1 22.♖xa1 ♗ad8 which would have prolonged the game but offered few swindling chances.] 21...♗d4+ 0-1

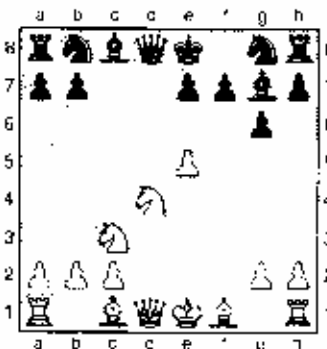
Pangan, C - Jordan, R
CCC 11/12 Plus Score Open, 1995
[Alan Watson]

1.e4 e5 2.♗f3 d6 3.d4 exd4 4.♗xd4 ♗f6 5.♗c3 g6 6.f4 ♗g7!?

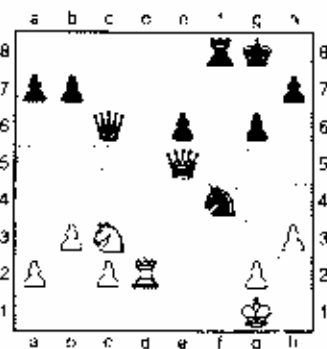


[Black dares confront White with the very response that the Levenfish Attack was designed to refute. This line has experienced varying fortunes in the past ten years and is now

regarded as playable yet dangerous if 7.e5 is followed by 7...♗h5!?! Modern theory tends towards 6...♗c6.] 7.e5 dxe5 [7...♗h5!?! 8.♗b5+ ♗d7 9.e6 fxc6 10.♗xc6 ♗xc3+ 11.bxc3 ♖c8! 12.♗d3 ♗xb5 13.♖xb5+ ♗c6 14.♗g5 h6 15.♗f3 ♖f5 16.♖xb7 ♖e4+ 17.♗f2 ♖b8! = Trifunovic] 8.fxe5 ♗g8?



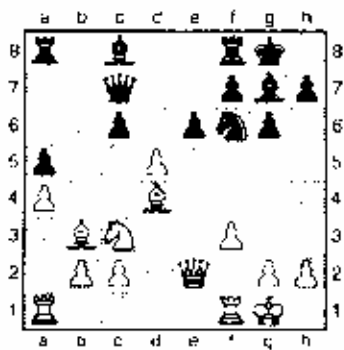
[While all knight retreats encounter the same refutation, only 8...♗f7 provides any opportunity of resisting. [8...♗f7 9.e6 ♗c5 10.♗b5- ♗bc6 11.exf7+ ♗xf7 12.0-0+ ♗f6 13.♗xc6 bxc6 14.♖xd8 ♗xd8 15.♗a4 = Boleslavsky] 9.♗h5+ ♗d7 10.e6 ♗xb5 11.exf7+ [11.♗cxb5 ♗f6 12.♖f3 ♖b6 13.exf7+ ♗xf7 14.♗b3+ e6 15.♗c7! ♖xc7 16.♖xc6+ ♗f8 17.♖xf6+! ♗xf6 18.♗e6 = Vlagsma-Wind, Rotterdam 1946] 11...♗xf7 12.♖f3+ ♗f6 13.♗dxb5 [13.♗cxb5!?! would grant additional chances by threatening 14.♖b3-] 13...♗c6 14.♗f4 ♗d4 15.♗xd4 ♖xd4 16.♗d1 ♖c4 17.♗f2 ♗hd8 18.♗he1 ♗xd1 19.♗xd1 ♗g8 20.♗g1 ♗f8 21.b3 ♖a6 22.♗e5 ♗h5 23.♖d5+ e6 24.♖d4 ♖c6 25.h3 ♗f4 26.♗d2 ♗xc5 27.♖xe5



27...a6? [This one lackadaisical move spoils Black's fine defensive effort following an inferior opening. The White queen stands powerfully in the center of the board and must immediately be driven away with 7...♖f5, after which the game remains balanced.] 28.♗e4± ♖b6+ 29.♗h2 ♗d5 30.♗d6 ♖f5?? [30...♗c7 31.♗c4 ♗e8 32.♗g5±] 31.♖xe6+ ♗g7 32.♗xf5+ gxfs 1-0

Dobrovolny, C (1824) -
Chow, A (2375)
CCC 12/10 Plus Score Open, 1995

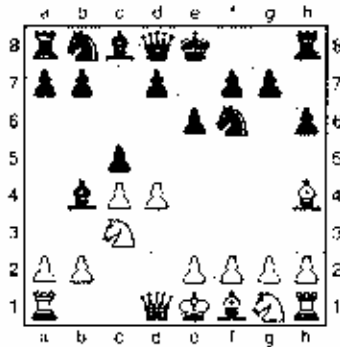
1.e4 e5 2.♗f3 d6 3.♗c4 ♗f6 4.♗c3 ♗c6 5.d4 exd4 6.♗xd4 ♖b6 7.♗xc6 bxc6 8.0-0 g6 9.♗b3 ♗g7 10.♗e3 ♗c7 11.♖e2 0-0 12.f3 a5 13.a4 e6 14.♗d4 d5 15.exd5



15...♗g4! 16.d6 ♖xd6 17.fxg4 ♖xd4+ 18.♖f2 ♗a6 19.♗fe1 ♖xg4 20.♗e4 ♖g5 21.♖b6 ♖fh8 22.♖f2 ♗d8 23.♗f4 ♗e5 24.♗e4 ♗d2 25.♖xe5 ♖d8 26.♖f3 e5 27.♗b5 ♖b8 28.♗f1 ♖d7 29.♗e2 ♖xe2 30.♖xe2 ♗xb5 31.axb5 ♖d4+ 32.♖f2 ♖xb5 33.♖xd4 exd4 34.♗d1 e5 35.♗f1 ♖b7 36.♗e1 ½-½

Smythe, B(1918) - Chow, A(2375)
CCC 12/09 Plus Score Open, 1995

1.d4 ♘f6 2.c4 e6 3.♗c3 ♖h4 4.♙g5
 h6 5.♗h4 e5



6.♗f3 exd4 7.♗xd4 ♗c6 8.♗xf6 ♗xd4
 9.♗xd8 ♗xf3+ 10.gxf3 ♗xe3+
 11.hxc3 ♗xd8 12.f4 h6 13.e3 ♗a6
 14.♞g1 g6 15.0-0-0 ♗c8 16.♗d4 ♗e7
 17.♗b2 ♗c5 18.♗b3 ♗hc8 19.♗b4
 ♗b7 20.♗e2 a5+ 21.♗h3 d5 22.e4
 dxe4 23.♞gd1 ♗c6 24.a4 ♗f5
 25.♞f1d2 ♗xf4 26.f3 e5 27.♗d6 exf3
 28.♗f1 e4 0-1

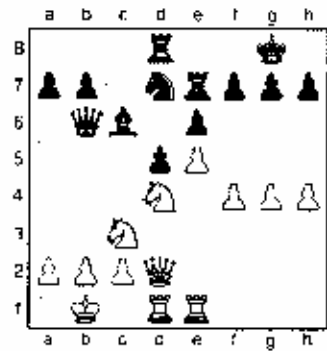
Oberweis, J(1910) - Dubos, G(1534)
CCC 12/17 Plus Score Mini Tour, 1995

1.e4 e5 2.♗f3 ♗c6 3.♗e4 ♗c5 4.c3
 ♗e7 5.0-0 ♗f6 6.d4 ♗b6 7.♗g5 d6
 8.h3 h6 9.♗xf6 gxf6 10.♗h4 exd4
 11.♗f5 ♗e5 12.♞e1 dxc3 13.♗xc3
 ♗c5 14.♗e2 ♗e5 15.♗b3 ♗xf5
 16.exf5 0-0-0 17.♗ac1 ♗d3 18.♗xd3
 ♗xf2+ 19.♗h1 ♞hg8 20.♗e2 ♗f4
 21.♗c2 ♗g3 22.♗d5 ♗h4 23.♗xb6+
 1-0

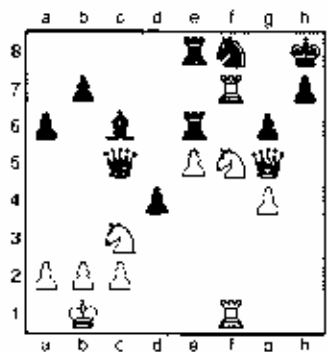
Chutter, J(2174) - Bondari, S(2330)
US Amateur Team Midwest (4), 1996
 [Alan L. Watson]

1.e4 c5 2.♗f3 d6 3.d4 exd4 4.♗xd4
 ♗c6 5.♗b5 ♗d7 6.♗xc6 ♗xc6 7.♗c3
 e6 8.♗g5 ♗f6 9.0-0-0 ♗e7 10.♗he1
 0-0 11.♗b1 ♗a5 12.♗d2 ♗b6 13.♗d4
 ♗fe8 14.g4 ♗ad8 15.h4 d5 16.e5

♗d7 17.♗xe7 ♗xe7 18.f4



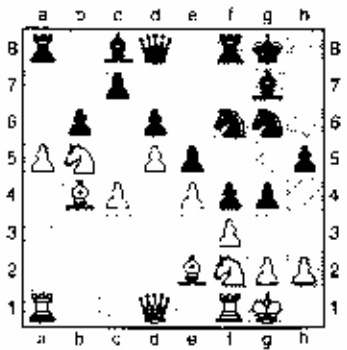
[There's a strong storm brewing in the East, and Bondari had better start locking the shutters. Unfortunately, his poorly coordinated forces are no match for the powerful and spectacular lightning strokes White is preparing to introduce!] 18...a6 19.f5 exf5 20.♗xf5! ♗e6 [There is little choice at this point, for if [20...♗xe5! 21.♗g5 g6 22.♗xc5 ♗xc5 23.♗e7+ ♗g7 24.♗exd5 ♗xd5 25.♗xe5(+)] 21.♗g5 g6 22.h5!? [White is not interested in the material gain which could be had by continuing 22.♗e7+ and 23.♗xd5, but instead seeks to overwhelm his beleaguered opponent with brute force.] 22...♗de8 23.hxg6 fvg6 24.♗h1 ♗f8?! 25.♗h6+ ♗g7 26.♗hfl d4 27.♗f7+ ♗h8 28.♗dfl ♗e5 29.♗f5



[This move represents the crowning jewel to White's inspired play, after which the fury of his attacking storm reaches a crescendo to destroy that which is in its path.] 29...♗xe5 30.♗h6 ♗f6 31.♗xf6 1-0

Watson, A(2283) - Tennant, S(2315)
US Amateur Team Midwest (4), 1996
 [Alan L. Watson]

1.d4 ♗f6 2.c4 g6 3.♗c3 ♗g7 4.e4 d6
 5.♗f3 0-0 6.♗e2 e5 7.0-0 ♗x6 8.d5
 ♗e7 9.♗e1 ♗d7 10.♗e3 f5 11.f3 f4
 12.♗f2 g5 13.a4 a5 14.♗d3 h6
 15.♗e1 ♗f6 16.♗f2 ♗g6 17.♗b5 h5
 18.h4 [18.h3!?!] 18...axb4 19.♗xb4
 g4 20.a5?



[20.fvg4! hvg4 21.♗xg4 ♗xg4 22.♗xg4 ♗g5 23.h3±] 20...g3 21.♗d3 [21.hxg3 fvg3 22.♗h1 ♗h6 23.♗b3 ♗f4×] 21...♗xd5! 22.cxd5 ♗h4 23.h3 ♗xh3 24.gxh3 ♗xh3 25.♗f2 gxh2+ 26.♗xf2 ♗g3+ 27.♗fl ♗h4 28.♗e1 ♗h3+ 29.♗f2 ♗h2+ 30.♗fl ♗f6 31.♗c2 ♗g6 32.♗e1 ♗g1+?! 33.♗d2 ♗xh3+ 0-1





HAMPTON INN JUNE OPEN

JUNE 22, 1996

SPRINGFIELD, ILLINOIS

SITE: Hampton Inn
Corner of Dirksen Parkway and Stevenson Drive,
Immediately west of Stevenson Drive exit from I-55

PRIZES: First Place \$75
Second Place \$50
Third Place \$25

Top Scorer (1599 to 1200) \$25
Top Scorer (under 1200) \$20

FORMAT: Four (4) round Swiss

ROUNDS: 9 - 12 - 3 - 6

REGISTRATION: 7:30 AM to 8:30 AM

ENTRY FEE: \$12, if rec'd by 6/15/96
\$15, at the door
\$10, Youth/Scholastic

No Smoking Permitted

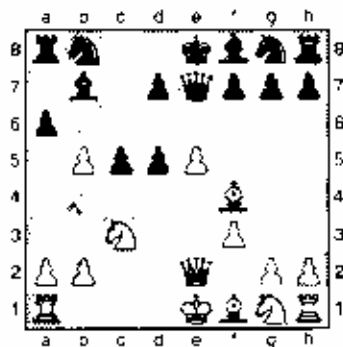
No Computers

Wheelchair Accessible

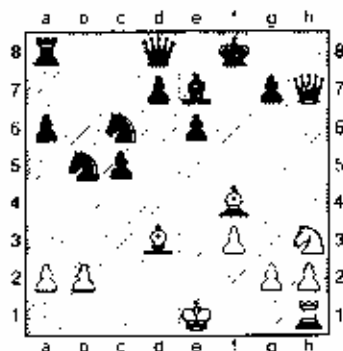
Contact: Thomas B. Knoedler
2104 South Fourth Street
Springfield, Illinois 62703
(217) 786-6549, M - F, 9 AM to 5 PM
(217) 523-7265, after 6:30 PM, except Wednesday
E-mail: knoedler.tom@uis.edu

Doss, J(2124) - Pecora(2070)
US Amateur Team Midwest (5),
 1996
 [Alan L. Watson]

1.d4 ♖f6 2.c4 c5 3.d5 b5 4.exb5 a6
 5.f3 e6 6.e4 exd5 7.e5 ♖e7 8.♗e2
 ♖g8 9.♗c3 ♗h7 10.♗f4!?



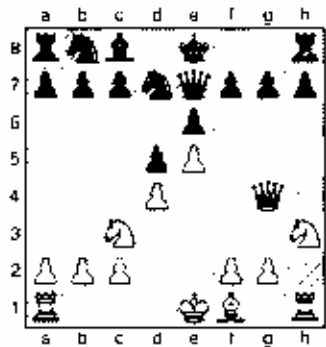
[10.♗h3 is currently regarded as more precise in order to reserve f4 for the king's knight, thereby applying greater pressure against d5.]
 10...♗d8 11.♗h3 ♖e7 12.♗d1 ♖f5
 13.♗xd5 ♗xd5 14.♗xd5 ♖d4 15.♗e4
 ♖xb5 16.♗d3 ♖e7 17.e6 fxe6 18.♗h5
 ♖c6 19.♗g6+ ♖f8 20.♗xh7 ♗xh7
 21.♗xh7



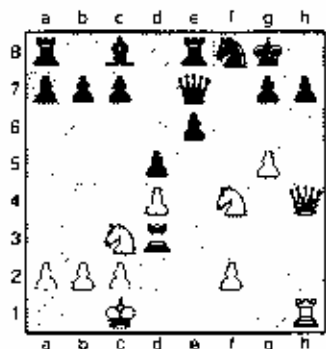
[A somewhat premature end since Black clearly still has play, but the match and tournament had already been decided in favor of Doss's team and Pecora reasoned there was no point in continuing.] 1-0

Stein, P(2166) - Schneider, C
US Amateur Team Midwest (1),
 1996
 [Alan L. Watson]

1.e4 e6 2.d4 d5 3.♗c3 ♗f6 4.♗g5 ♖e7
 5.e5 ♖fd7 6.h4 ♗xg5 7.hxg5 ♗xg5
 8.♗h3 ♗e7 9.♗g4

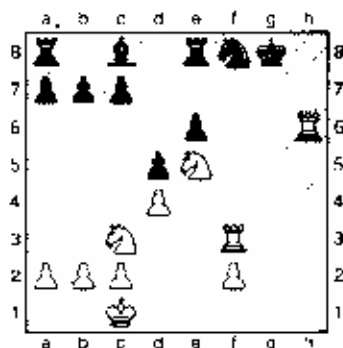


[Stein plays a little-investigated sideline of the Alekhine-Chattard Attack in place of the standard 9.♗f4. This aggressive idea gained widespread recognition only after the famous game, Alekhine-Fahrni, Mannheim 1914 which continued 9...♗f8?! 10.Qg4 f5 11.exf6 gxf6 12.0 0 0 c6 13.♗e1 +/- with a large advantage for White.] 9...0-0?!
 [9...f5! 10.♗h5+ ♗f7 11.♗x17+ ♖xf7
 12.♗g5+ ♖e7 13.♗xh7 ♗xh7 14.♗xh7
 a6 15.♗c2 c5 16.f4 ♗c6
 Schuermans, R-Gomez
 Baillo, J/Thessaloniki olm 1988]
 10.♗d3 f5 11.exf6 ♖xf6 12.♗h4 ♖c6
 13.0-0-0 ♗e8 14.g4 ♖b4 15.g5
 ♖xd3+ 16.♗xd3 ♖d7 17.♗f4 ♖f8



[Black now appears to have temporarily covered all his weak

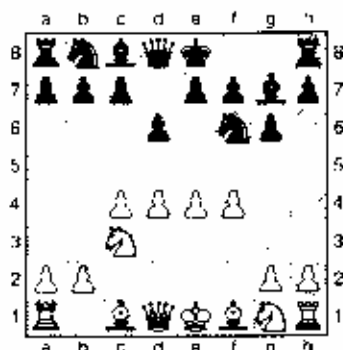
points, right? Nope, just look at White's clever conception!] 18.♗g6!
 ♗f7 19.♗e5 ♗e7 20.♗f3 h6?! 21.gxh6
 ♗xh4 22.♗xh4 gxh6 23.♗xh6



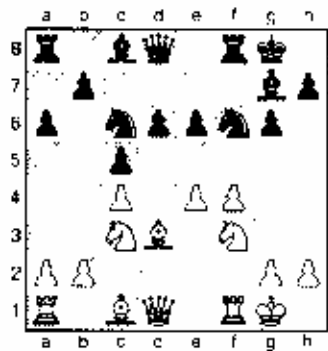
[23.♗g4+! ♖h7 (23...♖h8?! 24.♗f7+
 ♖h7 25.♗/g3+-) 24.♗f7+ ♖h8
 25.♗f7+-] 23...♗e7 24.♗e2 ♗d7
 25.♗f4 ♖g7 26.♗h4 ♖g8 27.♗h5 1-0

Adams, N(2285) - Manion, J
US Amateur Team Midwest (2),
 1996
 [Alan L. Watson]

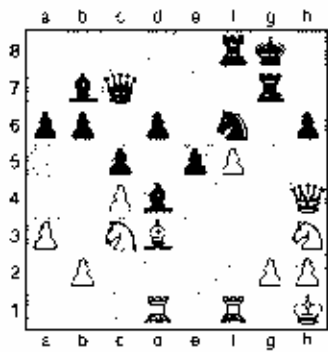
1.d4 ♗f6 2.c4 g6 3.♗c3 ♗g7 4.e4 d6
 5.f4



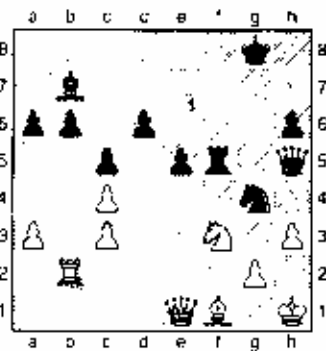
[Once disparaged, the Four Pawns Attack against the King's Indian Defense is making a strong comeback in Indiana chess due to the efforts of two young Masters, Nick Adams and Peter Berecolos.] 5...0-0
 6.♗f3 c5 7.d5 e6 8.dxe6!? fxe6
 9.♗d3 ♖c6 10.0-0 a6



[Kasparov played 10...d4! in the game Christiansen-Kasparov, Moscow [Z 1982 and secured better play after the further 11.g5?! e5! 12.f5 h6 13.h3 gxf5 14.exf5 b5! =+] 11.♖e1 h6 [With this move, Josh reveals his intention of utilizing the 7th rank to usher his ♖a8 into the defense of his kingside. Though time consuming, there doesn't seem to be much White can do to prevent Black's novel idea.] 12.g5 ♖a7 13.♖h4 h6 14.♗h3 ♗h5 15.♖g4 ♗d4+ 16.♗h1 ♖g7 17.♗d2 ♗h4 18.♗e2 ♖c7 19.a3 ♗c2 20.♖ac1 ♗e3 21.♗xe3 ♗xe3 22.♖cd1 ♗d4 23.♗d3 e5 24.f5 ♗f6 25.♖h4 gxf5 26.exf5 ♗b7



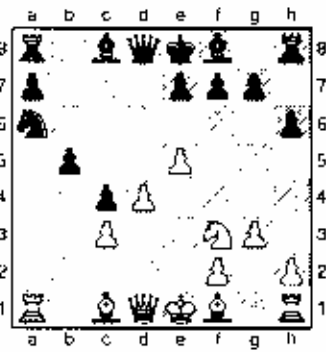
27.♗d2 ♖ff7 28.♖e2 ♖g4 29.♖e1?! [Courage may well have been the better part of valor, for after 29.♖xh6 White would at least have had some material to console himself for the worsening position.] 29...♗xc3 30.bxc3 ♖fg7 31.♖ff2 ♖f7 [31...♖h4!?] 32.♖h2 ♖h5 33.♗g1 ♖7g5 34.h3 ♖g3 35.♗f1 ♗g4 36.♖f3 ♖xf3 37.♗xf3 ♖xf5



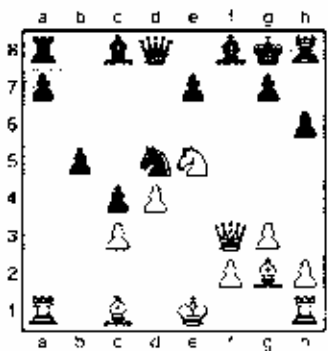
[Perhaps time played a factor in both players agreeing to a draw at this point, for White appears to hold the better game no matter how Black proceeds.] 38.♖g3 ½-½

*Chapa, F.(2239) - Harris, T
US Amateur Team Midwest (2),
1996
[Alan L. Watson]*

1.d4 d5 2.♗f3 ♗f6 3.e4 dxc4 4.♗c3 c6 5.e4 b5 6.e5 ♗d5 7.a4 h6 [Black expends a tempo to eliminate White's dangerous maneuver ♗g5.] 8.axb5 ♗xc3 9.bxc3 cxb5 10.g3 ♗a6?!



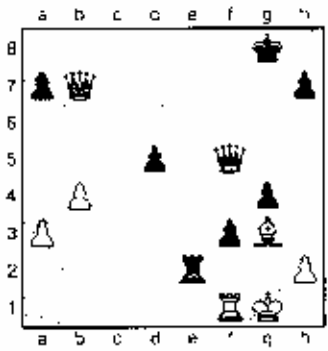
11.e6! [A cunning thrust which shows the disadvantageous nature of two separate elements within Black's position a) 10...♗a6?! overworking the ♗c8, and b) 7...h6 weakening an entire complex of light squares. White now has very strong play.] 11...♗c7 12.exf7+ ♗xf7 13.♗e5+ ♗g8 14.♗g2 ♗d5 15.♖f3!



[This double attack against both f7 and along the sensitive a8-h1 diagonal presents the second player with insoluble problems.] 15...♗e6 16.♖a6 ♗b6 17.♖xb6 ♗xb6 18.♖xa8 ♖a5 19.0-0 ♖xc3 20.♗g6 1-0

*Burnett, K.(2349) - Bossaers, P.(2114)
US Amateur Team Midwest (2),
1996*

1.d4 d6 2.e4 ♗f6 3.f3 g6 4.c4 ♗g7 5.♗e3 0-0 6.♗e2 ♗hd7 7.♗ec3 e5 8.d5 ♗h5 9.♗d2 f5 10.h4 f4 11.♗f2 g5 12.c5 ♗df6 13.♗e2 ♖f7 14.♖c1 ♗f8 15.♗c4 ♖g7 16.cxd6 ♗xd6 17.a3 g4 18.♗h4 ♖f8 19.♗h5 ♗xe4 20.fxe4 f3 21.g3 fxe2 22.♖xe2 ♗d7 23.♗exd6 exd6 24.♖f1 ♗f4 25.gxf4 exf4 26.♗d4 ♖e8 27.♖c7 f3 28.♖e3 ♖f7 29.♗e6 ♖h5 30.♗g3 ♗xe6 31.♖xg7+ ♗xg7 32.♖c3+ ♗g8 33.dxe6 ♖xe6 34.♖c4 d5 35.♖c8+ ♖e8 36.♖xb7 ♖xe4+ 37.♗f2 ♖e2+ 38.♗g1 ♖f5

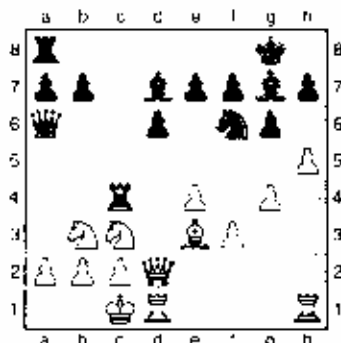


[38...♖h3 39.♖xd5+ ♗g7 40.♗e5+ ♗f8 41.♖d6- ♗c8 42.♖e6+ ♗f8 43.♗d6+ ♗g7 44.♗f8+!] 39.♖b8+ ♗f7 40.♖xa7+ ♗g6 41.♖h6+ ♗h5 42.♖d4 ♖e4 43.♖d2 ♖e2 44.♖f4 ♖c2 45.♖f7+

♙g5 46.♟f4+ ♘h5 47.♟f7+ ♙g5
48.♙f4+ ♘h4 49.♟f6+ 1-0

Tyehimba, B(2311) - Middleton, D
US Amateur Team Midwest (3),
1996
[Alan L. Watson]

1.e4 e5 2.♟f3 d6 3.d4 cxd4 4.♟xd4
♙f6 5.♙c3 g6 6.♙c3 ♙g7 7.f3 0-0
8.♙d2 ♙c6 9.♙e4 ♙d7 10.0-0-0 ♙e5
11.♙h3 ♟a5 12.g4 ♟fc8 13.h4 ♟c4
14.♙xc4 ♟xc4 15.♙b3 ♟a6 16.h5



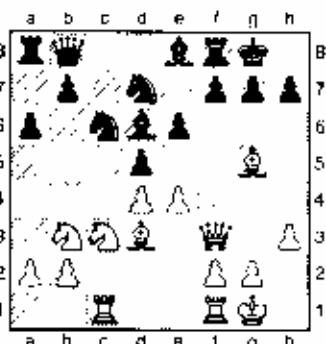
[16.e5 ♙c8 17.♙c5! dxc5 18.♟xd7
♙xc5 19.♙d2 ♙f6 20.♙d3 e6 21.h5 g5
22.h6 b5 23.♙b1 In the game

Garcia-Valvo, New York 1979, White had a lasting initiative for his minor investment of a pawn.]
16...♟a8 17.♙b1 ♟xc3 18.hxc3
♙g4 19.hxg6 hxg6 20.♟g2 ♟xc3
21.♙d4 ♙xf3 22.♙h3 ♟xb3+ 23.axb3
♙g4 24.♟e3 ♙xd1 25.♟xd1 ♙g4
26.♙c3 ♙xd4 27.♟xd4 ♙e5 28.♙e8+
♙g7 29.♟a4 ♟b6 30.♙e8 ♙c6 31.♟c4
a6 32.♙c8 ♙a5 33.♟e7 ♟xb3 34.cxb3
♟xb3+ 35.♙e1 ♟e3+ 36.♙b2 ♟xe4
37.♟xb7 a5 38.♙c3+ ♟e5 39.♟xe5+
dxe5 40.♟xe7 ♙f6 41.♟a7 g5 42.♙c3
♙g6 43.♙d3 f6 44.♙e4 g4 45.♟xa5
♙g5 46.♟a8 ♙h4 47.♟g8 ♙h3
48.♟h8+ ♙g2 49.♟f8 g3 50.♟xf6 ♙h2
51.♟h6+ ♙g1 52.♙f3 g2 53.♟a6 e4+
54.♙xc4 ♙f2 55.♟f6+ ♙e2 1-0

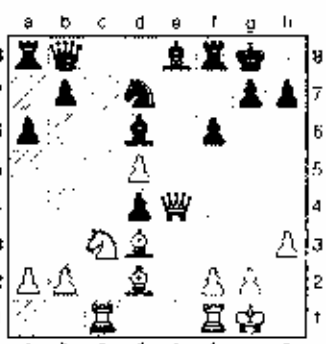
Martinovsky, E(2340) -
Dandridge, M(2342)
US Amateur Team Midwest (5), 96
[Alan L. Watson]

1.d4 d5 2.e4 e6 3.♙f3 ♟f6 4.cxd5

exd5 5.♙c3 ♙c6 6.♙f4 e6 [By
electing not to develop his ♙c8
outside the pawn chain, Black
indicates his willingness to accept a
cramped position in exchange for
greater solidity.] 7.e3 ♙e7 8.♙d3 0-
0 9.h3 a6 10.♟c1 ♙d7?! [British IM
David Strauss regularly favors 9...a6,
but follows it up the more aggressive
10...b5 and development of his
light-squared bishop to b7.] 11.0-0
♟a5 12.♙d2 ♟d8 13.♙e2 ♙e8 14.♟h3
♙d6 15.♟f3 ♟b8 16.♙g5 ♙d7 17.e4!

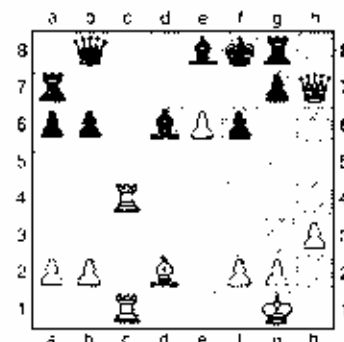


[Black's passive central play has
granted White the necessary time to
reposition his pieces for this
powerful central thrust. The next
series of defensive moves are well
played well to reach a murky
position in which White is forced to
sacrifice or risk losing any advantage
he may have acquired.] 17...f6 18.♙d2
e5 19.exd5 ♙xd4 20.♟xd4 exd4
21.♙e4!?

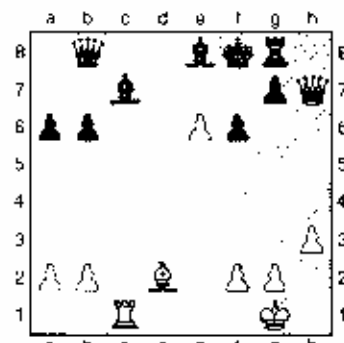


[The normally mild-mannered
Martinovsky has had enough of his
opponent's overly passive and
taunting play, and now bounds over
a series of shrubs to take a bite out of
Black's king position and throw up

the game into combinative disarray.]
21...dxc3 22.♟xb7+ ♙f7 23.♙xc3
[23.♙h6? or perhaps even 23.♙g6+
♙c7 24.♟xg7+ ♙d8 25.♙xc3 may
have been better, but White reasons
that it is extremely difficult for Black
to coordinate his slumbering forces
and thus prefers to strengthen his
game.] 23...♟g8 24.♙f5 ♟f8 25.♙e6+
♙xe6 26.dxe6+ ♙f8 27.♟f1 ♙e7
28.♙a5 [28.♙d2!] 28...b6 29.♙d2
♟a7 30.♟c4 ♙d6 31.♟ec1



[White's play since the sacrifice on
move 21 has developed slowly but
surely, and he now threatens to
invade the last rank with 32.♟c8.
31...♟e7 would hold some hope for
the defense, but Black instead
reasons that it's better to exchange at
least a pair of rooks or is it?]
31...♟c7 32.♟xc7 ♙xc7



33.♟xc7! 1-0

SCHOLASTIC NEWS

Evanston Community Chess is now On-Line on the World Wide Web. The pages list the activities of Evanston area school clubs. They also include some instructional ideas and puzzles designed for beginning students. Chess in Evanston has grown rapidly recently. Nearly every elementary school has a club and they have joined together to offer quarterly tournaments for their players. The page is supported by the Evanston Public Library which also provides space for a chess club meeting on the first Tuesday of every month for beginning players.

<http://www.evanston.lib.il.us/organizations/cccc/home.html>

East Central Illinois Chess League (as of 2/22/96 thanks to Charlie Graul)

	W-L-D
Uni-High Normal	12-1-1
Urbana	8-4-0
Danville	7-6-1
Charleston	7-7-0
Uni-High Urbana	6-8-0
Georgetown-Ridge Farm	6-8-0
Mattoon	6-8-0
Olympia	5-7-0
Bismark Henning	4-10-0

Although individual scores were not given for the matches, the overall records show a well balanced league.

Results from Illini Classic Chess Tournament, January 20, Urbana, IL

Using the 8-board format of the IHSA, this tournament is hosted through the schools of the East Central Illinois Chess League. Each year they are able to draw teams from all over Illinois to give the local teams more exposure. Scheduling of First Semester Final Exams prevents some schools from attending or there would be an even better cross section of the state.

1. Auburn (Rockford)
2. Uni-High Normal
3. Uni-High Urbana
4. Lincoln Way
5. Springfield Luthern
6. Danville
7. Moline
8. Urbana

9. Mattoon
10. Bradley Bourbonas
11. Rock Island
12. Georgetown-Ridge Farm
13. Bismark-Henning
14. Jefferson (Rockford)
15. Olympia
16. Ottawa

Division Standings:

	W	X	D	Pct
South	4	0	0	1.000
West	7	2	2	.727
East	5	5	0	.500
North	2	6	2	.300

West Division

	W	X	D	pts
Oak Forest	3	0	0	233
Bremen	2	2	0	217
Rich South	0	1	0	200
Hillorest	0	4	0	167

North Division

Oak Lawn	4	0	0	284
Eisenhower	2	2	0	273
Richards	0	2	0	264
Shepard	0	4	0	105

East Division

T F South	3	2	0	291
Thornwood	3	1	0	290
Thornton	3	2	0	270
T F North	0	4	0	049

South Division

Bloom Trail	4	1	0	367
Brad-Bourbon	4	2	0	397
Homewood Flo	3	3	0	359
Sandburg	2	4	0	306
Lincoln-Way	1	4	0	225

The following was reported by Dan Pradt.

Three major scholastic tournaments showed that the teams to watch in the upcoming State Tournament are Mac Arthur of Hoffman Estates in the Junior High Division and Franklin of Park Ridge in the Elementary and Primary sections. Mac Arthur has taken two first place and one second place team trophies, while Franklin has taken two firsts and a third in Primary and Elementary competition in the two tournaments it has entered.

Glen Ellyn Fall Classic

Over 450 players showed up for the Hadley fall Classic Nov. 18 in Glen Ellyn. Mac Arthur of Hoffman Estates won the Jr. High section, scoring 18 of 20 possible points with it's 5 man team. Alan Rose, Matt McCulley, Jeff Busca, and Glenn Moore scored 4-0 for Mac Arthur, while Jennifer Minucci added 2 points. Evanston came in second with 15, and Glenside of Glendale Heights third with 15, on tie breaks.

Six players scored 4-0. On tie breaks the places were: 1 Alan Rose 2 Matt McCulley 3 David Summerhays, 4 Jeff Busca 5 Glenn Moore 6 Eric Strand. Franklin of Park Ridge ran away with the Elementary Section, scoring 19-6 on it's top 5 boards. Bob Rassmussen, Daniel Leung, Robert Riddle, and John Piergalski scored 4-1 for the "cavemen" while Mark Rokita scored 3. Oakton of Evanston, Lincoln of Glen Ellyn, and Parkside of Glen Ellyn shared 2nd through 4th with 17.5.

Daniel Schaefer (Oakland Bloomington) took first with a 5-0 score. Following with 4.5-0.5 scores were Brian Edgerton, Johnny Wier, Jesse Wolfson, and Kevin Wong. Mac Arthur and Lincoln of Evanston both scored 18-7. Mac Arthur squeaking by on tie breaks to claim first, 54.5 to 54.0. Top guns for MacArthur were Matt Thomas, 4-1; Ian Martin, 4-1; Bryan Rose, 4-1; Jonathan Buesa, 3-2, and Tony Raio, 3-2. For Lincoln, Matt Levin, 4-1, Matt Brenner, 4-1, Alex Burt, 4-1, Derrick Johnson, 3-2, and Robert Flax, 3-2, led the way. Michael Page and Patrick Frank came in first and second with 5-0 scores. Zach Yarnoff, Greg Richardson, and Mark Dikopf followed with 4.5.

Benjamin Tournament

Benjamin Middle School held its annual limited enrollment (only 260 players) tournament on Dec. 2. The host school's four man team was edged out by Mac Arthur's team, which scored 13-3 to Benjamin's 12-4. Lincoln Cultural Center of Kankakee, 12-4, was third on tie breaks. Alan Rose scored 4-0, and Jeff Bausch, Glenn More, and Matt McCulley 3-1 for MacArthur. Individual honors were shared by Craig Cochran, Alan Rose, and Solomon Jones, each with 4-0.

Avery Coonly of Downers Grove took first in the elementary section, with a total of 13 wins. Lincoln of Glen Ellyn and Avoca West were second and third with 12. Michelle Lopez, 4-0, and Dan Haeger, Natasha Krol and Trey Koziol, 3-1, anchored the Avery Coonly team.

Individual winners were Johnny Wier, Michelle Lopez, and Ben Hudson, all with 4-0.

The winner in the 20 team primary section was Avoca west, 15-5. Lincoln of Glen Ellyn was second with 14.5, and Avery Coonly third with 14.0. Avoca West was led to victory by Tim Cobia, 5-0. Doug Hickey, 4-1, and Keven Hoobler and David Saed, 3-1. Individual champions were Michael Page, Tim Cobia, and John Martin, with 5-0 scores.

Northwest Scholastic-MacArthur

MacArthur's second annual tournament attracted 410 entrants. Returning the favor of the Benjamin sponsored tournament, Benjamin of West Chicago edged out the host school, 16-4 to Mac Arthur's 15.5-4.5. Mac Arthur was ahead going into the final round, but their top five boards finished 2-3 in the last round, while Benjamin went 4--1. Avery Coonly of Downers Grove was third with 15, Hadley of Glen Ellyn Fourth with 14.5, and Glen side of Glendale Heights fifth with 14. 29 teams competed in the Junior High section. Top scores for Benjamin were Tyler Belding, 4-0, Kevin McCarthy, 3.5-0.5; Dennis Janek, and Ryan Begy, 3-1, and Janita Patel, 2.5-1.5. Five individuals finished with perfect 4-0 scores. In order of tie breaks the first to fifth place trophy winners were Glenn Moore, Gabriel Lerner, Matt McDonald, Tyler Belding, and Alan Rose.

The "Cavemen" of Franklin in Park Ridge and Parkview in Glen Ellyn tied for first with 20-9 scores, in the 32 team Elementary section. Park Ridge taking first on tie-break. Avoca West of Glenview and Oakton of Evanston were third and fourth on tiebreak with 16-9, and Mac Arthur fifth with 15.5. Franklin was led by Bob Riddle, 4.5; Mark Rokita and Bob Rassmussen, 4.0; and William Bielski and John Piergalski, 3.5. Tyler Drendel and Andrew Hubbard were first and second individually with 5-0 scores. Bob Riddle, Ben Wall, and Brian Edgerton followed with 4.5.

Avoca West was the champion of the Primary section, 19-6, followed by Oakton of Evanston, 18.5, Franklin of Park Ridge and Avery Coonly of Downers Grove, 18.0 and Dwyer of Evanston 17.5. Avoca West was led by Tim Cobia, 5.0; Kevin Hoobler and Douglas Hickey, 4.0; and Oleg Moncash and David Saed, 3.0. Individually, three players had perfect 5-0 scores: Alex Burt, Justin Sandler, and Tim Cobia. Zack Yarnoff and John Saran followed with 4.5.

Grade School vs High School Chess

By Ken Lewandowski

After working with High School Chess for 10 years I finally got around to helping at the Illinois Grade School Championship held March 2/3 in Schamburg. There are interesting comparisons between the two programs and many things each could learn from the other. These pages in the ICB will hopefully provide a forum for both programs to report on their results and learn from each other.

The issue of USCF membership and ratings has arisen many time at high school coaches meetings and I am now aware that there are hundreds of young players who know no other way to play and expect tournaments to be rated. We can not require USCF for the State Team tournament yet due to IHSA rules. I can now see no reason why more of the Saturday tournaments shouldn't require USCF and ratings

The message I leave for the Grade School coaches is to consider some sort of team format occasionally. Most of my team prefer having their team mates next to them during competition. This encourages peer coaching because no one 'great player' can win a team match alone.

West Chicago/IMSA Co Champions at State Tourney

Two teams finished with perfect scores 6-0 at the state championship this year, West Chicago and the Illinois Math and Science Academy. The winners weren't decided until the critical final round, when Evanston (5-0) was paired against West Chicago (5-0) and IMSA (5-0) played Belleville East (4-1). The Evanston - West Chicago match ended with each team winning 4 games. West Chicago won the match by winning more games on the upper boards which are worth more points. Evanston took a clear 3rd place with 3750 tie break points, while Auburn earned 4th place.

Comparisons

Grade School Chess

Individual format
(top 4 scores count as team total individuals move based only on their score)

All players play all rounds
Individuals may drop out
3 sections, by grade
(K-3, 4/5, 6-8)

Mostly run by parents/volunteers

Tournament granted by bid

First Weekend in March

No spectators in playing area

All players USCF Rated

Many Team, individual and grade trophies

*Unofficial, i.e., no school related authorizing body

Follows USCF

Just starting a coach's committee for suggestions and comments.

Time controls G40- G60

Known ratings 400-1600

More females players, especially in Primary

High School Chess

8 player weighted team format
Team moves together
board 1 =12 pts. 2=11 etc
68 point match)

All teams play all rounds
Substitutions by board only.
1 section

Run by school coaches

Held at Normal, IL

3rd Weekend in March

Spectators/coaches allowed but all communication is through stewards

USCF not required

3 team trophies only
Medals to players on teams

Run through the offices of the Illinois High School Association

Follows USCF as modified by IHSA and the advisory board

Coaches meet twice a year

Time controls G/60

Known ratings 400-2100

More conflicts with other activities, less overall interest

Frosh / Soph Board Results

Board 1	Name	USCF (if known)	Grade	School	Score
	Kim Goodwin	1783	10	Uni High (Normal)	4-0-0
	Todd Freitag		10	Sandburg	4-0-0
	Justin Sadauskus	1847	10	West Chicago	3-1-0
	Mike Kaiser	1034	10	Evanston	3-1-0
	Adam Mibelich		10	Lincoln-Way	3-1-0
Board 2					
	Blair Machaj	1625	10	West Chicago	3-0-1
	Peter Strogan	1296	9	Uni High Normal	3-0-1
	Greg Burke	1218	9	Bradley Bourbonnais	3-1-0
	Matt Thomas	1525	10	Evanston	3-1-0
	Kris Keeter	1283	10	Auburn (Rockford)	3-1-0
Board 3					
	Kevin Brewer	1612	10	West Chicago	4-0-0
	Dan Edeus		9	Sandburg	4-0-0
	John Zuhone		10	Mattoon	3-1-0
	Andrew Lamonica	1038	10	Uni High Normal	3-1-0
	Ben Allen	1131	10	Evanston	3-1-0
Board 4					
	Eddie Patel	1493	10	West Chicago	3-1-1
	Jason Kozmic		9	Sandburg	3-1-1
	Will Graham	1086	10	Evanston	3-1-1
	Chikuan Wu	799	10	Downers Grove North	3-1-0
	Lannen Weber	1011	9	Uni High Normal	3-1-0
Board 5					
	Dan Janek	1136	10	West Chicago	4-0-0
	Jeremy Clough		9	Mattoon	4-0-0
	Jonathon Higgins		9	St Rita	4-0-0
	Luke Herman			Downers Grove North	3-0-1
	Scott McQueen	1076	9	West Chicago	3-1-0

WEST CHICAGO TAKES 1st in State Frosh / Soph Tourney

Each Saturday Tournament for high school chess is slightly different. This gives coaches and players a variety of experiences during the course of the chess season. The Annual Frosh Soph Tournament is held as a team medley event. West Chicago earned the 1st place trophy, while Uni High (Normal) took 2nd and Evanston High 3rd place. This is a 5 player team event but the players do not complete as a group or as a team. The school determines its top 4 9/10 grade players and registers. The players on each board then play a Swiss tournament. All the remaining players can play on board 5 with only the top core from each school counting. For this tournament, the boards are weighted by making Board 1 worth 10 points, Board 2 is worth 9 and so on. Each school could earn up to 40 points per round and 160 maximum points. Plaques are awarded to the top 5 teams and players on each board.

1996 FROSH-SOPH ILLINOIS TEAM CHESS CHAMPIONSHIP
FEB 10, 1996 BLOOM TRAIL HIGH SCHOOL
TOTAL POINTS SCORED BY BOARD

Place	Team	1.0	2.0	3.0	4.0	5.0	TOTAL	
1	WEST CHICAGO	30.0	31.5	32.0	24.5	24.0	142.0	
2	UNI HIGH (NORMAL)	40.0	31.5	24.0	21.0	18.0	134.5	
3	EVANSTON	30.0	27.0	24.0	24.5	12.0	117.5	
4	SANDBURG (ORLAND PARK)	40.0	18.0	32.0	24.5	-----	114.5	
5	AUBURN (ROCKFORD)	25.0	27.0	24.0	17.5	18.0	111.5	
6	BRADLEY-BOURBONNAIS	25.0	27.0	24.0	14.0	18.0	108.0	
7	ST. RITA (CHICAGO)	30.0	27.0	16.0	7.0	24.0	104.0	
8	MATTOON	15.0	18.0	24.0	21.0	24.0	102.0	
9	LINCOLN-WAY (NEW LENOX)	30.0	22.5	16.0	14.0	18.0	100.5	
10	ST. IGNATIUS (CHICAGO)	25.0	18.0	24.0	14.0	15.0	96.0	
11	GEORGETOWN-RIDGE FARM	20.0	22.5	16.0	14.0	18.0	90.5	
12	DOWNERS GROVE NORTH	20.0	18.0	8.0	21.0	21.0	88.0	
13	FOREMAN (CHICAGO)	20.0	27.0	16.0	10.5	12.0	85.5	
14	OTTAWA	20.0	13.5	20.0	14.0	12.0	79.5	
15	BISMARCK-HENNING	20.0	27.0	16.0	3.5	6.0	74.5	
16	MAINE SOUTH (PARK RIDGE)		20.0	27.0	16.0	3.5	6.0	
17	NILES NORTH (SKOKIE)	20.0	18.0	16.0	10.5	-----	64.5	
18	UNI OF CHICAGO LAB	20.0	18.0	16.0	-----	-----	54.0	
19	BUFFALO GROVE	30.0	0.0	8.0	14.0	-----	52.0	
20	BOWEN (CHICAGO)	10.0	18.0	8.0	7.0	0.0	43.0	
21	MOLINE	10.0	18.0	4.0	7.0	-----	39.0	
22	CARVER (CHICAGO)		15.0	22.5	-----	-----	37.5	
23	MUNDELEIN	10.0	9.0	8.0	7.0	3.0	37.0	
24	HINSDALE SOUTH (DARIEN)	10.0	9.0	16.0	-----	-----	35.0	
25	EISENHOWER (BLUE ISLAND)		15.0	9.0	4.0	0.0	5.0	
26	JEFFERSON (ROCKFORD)	15.0	9.0	-----	-----	-----	24.0	
27	HILLCREST (COUNTRY CLUB HILLS)	0.0	9.0	8.0	-----	-----	-----	
28	RICH SOUTH (RICHTON PARK)	-----	-----	-----	-----	-----	15	





Co-Champions - West Chicago

Sitting (L-R), Kevin Brewer, Blair Machaj, Justin Sadauskas, Eddie Patel

Standing (L-R), Steven Lehman (Coach), Dan Janek, Tim Martin, Sarah McQueen, Alfredo Muhlberger, Scott McQueen



Co-Champions - Illinois Science and Math Academy

Sitting (L-R), Asher Kach, Bryan Gran, Allen Lee, Doug Stram

Standing (L-R), Jeff Kaliner (Coach), Mike Massey, Ajay Ladsario, Thomas Johnson, Mike Liu, David Zacarias, Tim Borch (Coach)



3rd Place Finishers - Evanston

Standing (L-R), Ken Lewandowski (Coach), Sheena Madan, Isaac Greenspan, Ben Allen, Sam Sibley (asst Coach), David Sacks (asst Coach)

Sitting (L-R), Clair Launay, Yovan Fernandez, Miguel Santana, Mike Kaiser, Matt Thomas and Phil Colas

UNDER THE BLACK SUN

A new novel by Eric Woro

former Books Editor of International Chess Enterprises, Inc.

"I like book!"

—*International Grandmaster Eduard Gufeld*

"Packed with action, intellectually absorbing, this matchup of a Dionysiac Dracula and an erotic Alekhine is a Grandmasterly performance!"

—*William Dunlop, Professor of English, University of Washington*



Martin Fairchild, a young chess prodigy who begins to come into his own in 1992, does not suspect that his problems are linked to those of Bobby Fischer. When he goes to work as a copy editor for *Caissa Times*, an international chess magazine published in La Jolla, California, he does not know that his own schizophrenia, as well as his complicated array of metaphysical questions, are linked to Bobby Fischer, who returned to active play in 1992 after a 20-year absence.

R.D. Laing, renowned psychologist, once described the primary fear of schizophrenics as "fear of implosion," or invasion and possession by others.

There is a curse on the men of the Fairchild family, and the curse is paranoid schizophrenia. Martin is unaware of this, just as he is unaware of the fact that his personality is gradually being invaded and overtaken.

Enter the vampire Monique.

ERIC WORO was Managing Editor of *The Arts Journal* (Asheville, NC) from 1982-1986, during which time he published numerous articles on a variety of subjects, including chess, literature, and the arts. He obtained a B.A. with Distinction in Literature from UNC-Asheville in 1988 and won the prestigious Bryan Award for Best Senior Thesis. He then moved to Seattle on a recruitment fellowship to the University of Washington, earned his M.A. in English in 1989 and did three more years of postgraduate study. Following his informal interest in chess, he went to work as Copy Editor for *Inside Chess* magazine in 1992, and soon became Books Editor for International Chess Enterprises, Inc., where he worked until late 1994. *Under the Black Sun* is his first novel. 1st edition 11/95, paperbound, 392 pp., ISBN 1-887096-00-0.

SPECIAL OFFER!!

Order today and receive *free of charge* Grandmaster Gufeld's analysis of two critical chess games from *Under the Black Sun*. Martin's victory over a senior master using a system Gufeld successfully employed against World Champion Smyslov in Moscow 1967; and Martin's victory over the vampire Monique in a 2-minute blitz game!

To order: Send check or money order for \$8.95 + \$2.50 shipping and handling (Can. \$11.95 + \$3.50) to Axiom Books, P.O. Box 77788, Seattle, WA 98177. Please allow approx. 3 weeks for delivery.

Name

Address

Oak Park - River Forest Chess Club News

By Ken Marshall

USCF "Game/10" Tournament Paul Prause and Marty Ptacek each scored 4-1 to share first and second places in this seven player January 16 five round Swiss System tourney. Wlad Boguslowicz was third at 3.5-1.5. Roger Birkeland and Butch Thomas split the Under 1800 money for their respective 2-3 results.

Albert Chow Group Chess Lesson: This January 23 event attracted 16 people; each got more than his \$5 worth as Senior Master Chow spent more than three hours analyzing several games from the 1995 U.S. Championship, asking and answering questions as he went along.

Chess Books and Equipment "Swap/Sale" Night. Members who came to the Club on January 30 had the opportunity to buy, sell, and trade books, sets, boards, clocks, and computers. Another "Swap/Sale" night is scheduled for July 23.

Team Speed Tournament: On February 13 four three-man teams competed in this "Game/5" double round robin. Jim McNamara, Bill Barker, and Jerome Downey went 6-0 to beat out Mariano Acosta, Paul Prause, and Warren Kretzer (3-3), Tim Williams, Marty Ptacek, and Roger Birkeland (2-4), and Bob Hansen, Andy Schiller, and Butch Thomas (1-5).

World Blitz Chess Association Tournament: Five players competed in this February 27 "Game/5", double round robin, WBCA-rated event.

Alan Watson took first with an 8-0 result. Bob Hansen and Paul Madey tied for second and third at 5-3 apiece. Wlad Boguslowicz (2-6) won the 1999-1700 prize.

Grandmaster Joel Benjamin Simultaneous Exhibition: Following a brief talk about his role as a consultant with IBM for the recent DEEP BLUE computer - Garry Kasparov match, Benjamin faced a field of 27 at the March 12 "simul". The GM played relatively quickly, taking less than 2-1/2 hours to finish with 25 wins and 2 draws. Marvin Rogan accepted a draw offer in a complicated position; later Will Hayes proposed a draw, only to realize after Benjamin accepted the offer that the GM's position was almost certainly lost. If Hayes had won, he would have been the first to defeat Benjamin at the OP-RF CC. The GM's record after three "simuls" at the Club (30 games in 1987, 31 games in 1991, and 27 games in 1996) is a phenomenal 83 wins, 5 draws and 0 losses

Here are the Rogan and Hayes games:

W: GM Joel Benjamin B: Marvin Rogan 1.d4 e6 2. c4 Nf6 3. Nf3 d5 4. Nc3 e6 5. e3 Nbd7 6. Qc2 Bd6 7. b3 0-0 8. Be2 Re8 9. 0-0 e5 10. exd5 exd5 11. Nb5 Bb8 12. Ba3 e4 13. Nd2 Nf8 14. Rac1 Ne6 15. f4 a6 16. Nc3 Bd6 17. Bxd6 Qxd6 18. Na4 Bd7 19. Qb2 Bb5 20. Bxb5 axb5 21. Nc5 b6 22. Nxe6 fxe6 23. h3 Qa3 24. Qxa3 Rxa3 25. Re2 Re1 26. Ral h5 27. Kf2 h4 28. Kc2 Nh5 29. Rb2 Ng3+ 30. Kf2 1/2-1/2

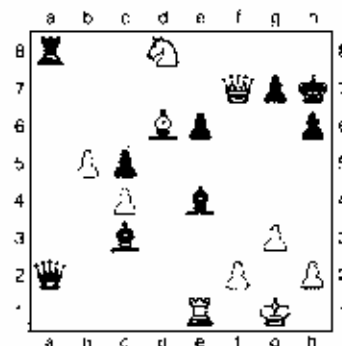
W: GM Joel Benjamin B: Will Hayes 1. e4 g6 2. d4 Bg7 3. Nf3 d6 4. Be2 Nf6 5. Nc3 0-0 6. 0-0 e6 7. h3 Nbd7 8. e5 Ne8 9. Re1 Nc7 10. Bf1 b5 11. exd6 exd6 12. Bg5 Nf6 13. a4 b+ 14. Ne4 Ne6 15. Bh4 a5 16. e3 bxc3 17. bxc3

Ba6 18. Bxa6 Rxa6 19. Rb1 d5 20. Nxf6 Bxf6 21. Bxf6 Qxf6 22. Ne5 Qe7 23. Re3 Qc7 24. Qc2 Ra7 25. h4 Kg7 26. Re1 Rb7 27. Qg4 h5 28. Qg3 c5 29. Nxc6 Qxc3 30. Rxc3 fxc6 31. Rxe6 Rf6 32. Rxf6 Rb1+ 33. Kh2 Kxf6 34. dxc5 Ral 35. Rf3+ Ke5 36. Rc3+ Kf6 37. e4 d4 38. Rd3 Ke5 39. e6 Rxa4 1/2-1/2



UNUSUAL TACTICAL IDEAS

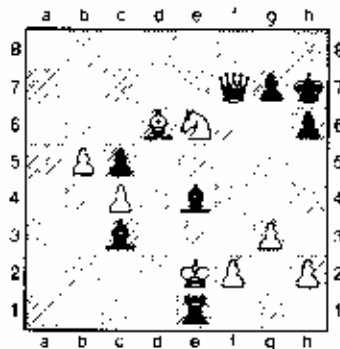
By Grandmaster Dmitry Gurevich



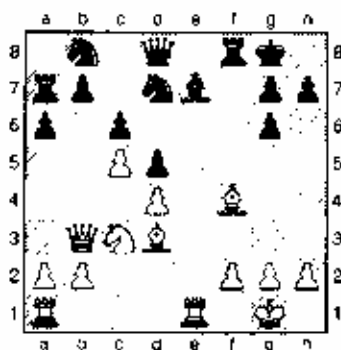
White to move

Korchnoi played 1. ♖xe6 [it is bad to play ♖xe4 ♖b1-!!] Black's reply was 1. ... ♗g6! achieving a winning position despite being two pawns down.

During the game I thought that 1. ♖xe6 was the strongest move, what I failed to see (and what Korchnoi probably saw) was a checkmate later shown by GM Andrei Sokolov [2. ♖xe4 ♖b1+!!; 2. ♖xe6 ♖a1 3. ♗f1 ♖xf1+!! 4. ♖xf1 ♗a1+ 5. ♖e2 ♗e1#



In the next unusual position, a Black rook on a7 could have made possible a nice tactical shot in the game.



White to move

1. ♖g3? This gives me a better position. What I didn't see was a tactical solution which starts with... 1... ♖xb8!! Commenting on his game with Yurtaev (1981) Gary Kasparov once said: "It is very difficult in a practical game to give up a good bishop for knight. His 16th move in that game ♖f4xb8 gave him a big strategic advantage). 1... ♖xb8 2. ♖b6! This wins because the bishop on e7 is hanging. For example 2... ♖h4 3.g3 ♖a8 4. ♖xb7! ♖f6 5. ♖c2+-

It is interesting to mention that my game with Hodgson won a brilliancy prize for a piece sacrifice which led to an unclear position one move after I played 1. ♖g3? It proves once again that chess is complicated sometimes and it's hard to see without serious study what is going on in someone else's games.

St. Charles Chess Club News

June: Jeff Wiewel won the club 5 minute championship, 7-0 Ray Satterlee came in second at 5-2

Nov.-Dec. The Knights' cup Squires' Cup, and Auxiliary tournaments were held. Once again we had enough participants to fill four eight-man round robins. Jeff Wiewel won the Knights' with an impressive 7-0 score, the first time in many years this tournament has had the winner come in with a perfect score. The crucial game when Jeff faced Ray Satterlee, and managed to win a pawn-down ending that appeared to be lost.

In the Squires' cup, Jim Marshall defeated Kevin Schmuggerow in their individual encounter, and took first with 6.5-0.5 We would like to welcome both Jim and Kevin back to the club after a years' absence for both. Steve Laughter, 5.5, and Lee Forde, 6.0 won their respective auxiliary tournaments

Complete Results

Knights

Jeff Wiewel	2055	7.0-0.0
Ray Satterlee	2116	5.5-1.5
Steve Fulton	1834	4.0-3.0
Erv Sedlock	1954	3.5-3/5
Bill Buttny	1932	3.5-3.5
Jim Oberweiss	1920	3.0-4.0
Walter Alberts	1800	1.0-6.0
Charles Giertz	1619	0.5-6.5

Squires'

Jim Marshall	2120	6.5-0.5
K. Schmuggerow	2100	5.0-2.0
Jim Little	1628	4.5-2.5
Blair Machaj	1570	4.0-3.0
Mike Robledo	1556	3.5-3.5
Mike Flynn	1637	2.0-5.0
Rudy Padilla	1600	2.0-5.0
Carl Staples	1282	0.5-6.5

A-1

Steve Laughter	1531	5.5-1.5
Steve Amundson	1977	5.0-2.0
Jay Coch	1738	4.0-3.0
Kevin Brewer	1558	4.0-3.0
Eddie Patel	1498	3.0-4.0
Gerry Novy	1471	2.0-5.0
Mike Giampa	1422	2.0-5.0
T Ditsworth	1714	1.0-6.0

A-2

Lee Forde	1296	6.0-1.0
Tom Segretto	1237	6.0-1.0
Greg Hultberg	UNR	5.0-2.0
Chris Rack	1138	4.0-3.0
Wayne Ma	1019	3.0-4.0
Emily Zeissler	968	3.0-4.0
Andy Cappigati	901	1.0-6.0
Dan Rack	850	0.0-7.0

March 14 Grandmaster Walter Browne gave a lecture followed by a 28 board simul Mr. Browne was in his usual good form, winning on all 28 boards. We almost witnessed the upset of the century as 13 year old Wayne Ma, rated 1019, had Walter on the ropes with a brutal attack, and was two moves away from a forced mate. Probably affected by the excitement, Wayne missed the winning move, and allowed the Grandmaster to slip out. Last to fall were expert Jeff Wiewel and Senior Master Al Chow. Playing 10 minute sudden death on the last three boards, Browne spent little time in converting an extra pawn into a win against Wiewel, and using a simplifying series of exchanges and an clever pawn sacrifice to win an approximately even end game against Chow. State Junior High champion Barney Getz, Elementary Champion Matt Leali, and Primary champion Andrew Hubbard were other victims of the Grandmaster

ILLINOIS CHESS ASSOCIATION 1996 AWARDS BANQUET

The 1996 banquet was held on February 25 at the Buckingham Steak House in Willowbrook. The annual banquet is a celebration to recognize the individuals that made special contributions to Illinois chess and the ICA tour winners

(continued-bottom right of page 36)

ILLINOIS TOUR CROSS TABLES

Chicago Chess Club Plus-Score

January 20, 1996

	score	tour
1 ZINNYCH Mirco	2000	W15 W33 W 5 W 4 4 14 M
2 CHOW Albert	2375	W10 W10 D 6 W 9 3.5 7.5M
3 ROWLAND Todd	2165	W28 W23 W16 W17 2.5 7.5MX
4 CADMAN Chuck	2134	W29 W24 W 7 L 1 3 4 MX
5 BROCK Bill	2057	W26 W19 L 1 W21 3 4 MX
6 FAGAN James B	2053	W20 W35 D 2 D 8 3 4 MX
7 SAK Bob	2047	W21 W13 L 4 W28 3 4 MX
8 JOGSON Roland	2009	W41 W13 D 3 D 6 3 4 MX
9 SHEYNIN Sam	2126	W14 W11 D 8 L 2 2.5 2.5MX
10 MARKOVIC Arandel	1983	W36 L 2 W29 D13 2.5 2.5MXA
11 DOBROVOLNY Charles F	1924	W27 L 3 W20 D15 2.5 2.5MXA
12 CLARK Wayne	1759	L 2 W36 W33 H 2.5 2.5MXAB
13 MUIRHEAD Andrew L	1732	W16 L 8 W34 D10 2.5 2.5MXAB
14 GENCHANCK Yefim	1729	L 9 D35 W39 W23 2.5 2.5MXAB
15 BAUMFARTNER Chris	1580	L 1 W28 W19 D11 2.5 2.5MXABC
16 SCOTT Gene	2150	L13 W34 L 3 W28 2 2 MX
17 WASHINGTON Ron	2006	L30 W41 W23 L 3 2 2 MX
18 FISCHER Gregory A	1490	W27 L 5 W30 L 7 2 2 MXA
19 WERTNER Ken	1797	W37 L 7 L15 W32 2 2 MXAB
20 HAYES Will	1663	L 6 W17 L11 W33 2 2 MXAB
21 KNOX Terrance	1660	L 7 W22 W25 L 5 2 2 MXAB
22 YOUNG Mark	1418	L18 L20 W41 X30 2 2 MXABCBDE
23 SMYTHE Bill	1919	W35 D 3 L17 L14 1.5 1.5MXA
24 BRAUNE Paul	1827	W33 L 4 D26 1.5 1.5MXA
25 MUTOVSKY Mark	1802	W32 L 6 L21 D27 1.5 1.5MXA
26 HORN Ben	1677	L 5 W27 D24 L26 1.5 1.5MXAB
27 WISHNFF Mike	1281	L11 L26 B D25 1.5 1.5MXABCD
28 TITUS Frank	1772	L 3 L15 L14 W34 1 1 MXAB
29 FELD Ral van	1725	L 4 W32 L10 1 1 MXAB
30 COVIC Mehmed	1697	W17 L 1 L19 D22 1 1 MXAB
31 SPRINGER Andrew	1636	L 8 L17 L22 W37 1 1 MXAB
32 WACHLER Thomas	1468	L25 L29 W37 L27 1 1 MXABCD
33 WOLFSON Jesse	1222	L24 B L12 L20 1 1 MXABCD
34 CASONAS Anthony	1119	B L16 L13 L28 1 1 MXABCD
35 GAST Bryan	1475	L23 L14 0 0.5 0.5MXABCD
36 SHEKELY Robert	1584	L10 L12 0 0
37 ANNETT Bob	1270	L20 L20 L22 L21 0 0

22 COVIC Mehmed	1730	W35 W26 L 2 L 8 0 2 MXAB
23 WALKER Charles	1716	L 2 W28 W34 L14 2 2 MXAB
24 KNOX Terrance	1660	L16 W33 L 6 W34 2 2 MXAB
25 PETRAITIS Anton	1620	L27 W37 W29 2 2 M
26 ZINNYCH Mirco	2030	H L22 D25 D27 1.5 1.5MX
27 STEVENS Joe	1441	D37 W25 D11 D26 1.5 1.5MXABC
28 WONG Kevin	1178	L10 L23 W35 E 1.5 1.5MXABCBDE
29 BUKJAN David	1670	H L14 D26 D25 1 1 MXAB
30 PADILLA Rudy	1630	L 5 W38 L 7 L16 1 1 MXAB
31 MENENDEZ Cipriano	1530	L 3 L34 W55 L17 1 1 MXABCD
32 WOLFSON Jesse	1213	L 6 D35 D19 L21 1 1 MXABCD
33 FERGUSON Joan	1119	L 9 L24 W39 L1F 1 1 M
34 NADAREVIC Hana	1119	W31 L23 L24 1 1 M
35 SILNENKY Jesse	813	L22 D42 L31 0.5 0.5MXABCBDE
36 SHOCKLEY Robert	1617	L 4 - - 0 0
37 VIEREGG Craig	1120	L 7 L12 L25 F38 0 0
38 LOPEZ Ken	1111	L30 L28 F37 0 0
39 SILNENKY Beth	879	D21 D13 L33 0 0

Chicago Chess Club Plus-Score

February 10, 1996

	score	tour
1 TATE Henry	2447	W24 W17 W10 W 3 4 14 M
2 CHOW Albert	2368	W17 D 6 W10 W 2 3.5 7.5M
3 ROSENFIELD Allen	W23 W 7 W 5 L 1 3 4 M	
4 AVOSTA Mariano	W11 W15 D 9 E 3 4 M	
5 BACHLER Kevin	W24 W20 L 3 W19 3 4 MX	
6 SHEYNIN Sam	W34 D 2 W19 D10 3 4 MX	
7 MAQUENZ Anthony	W11 L 3 W18 W14 3 4 MX	
8 WACHLER Thomas	W10 L 9 W29 W16 3 4 MX	
9 DANDELING Marvin	W19 W 8 D 4 D 2 2.5 2.5M	
10 SPRINGER Andrew	W20 W14 L 1 D 6 2.5 2.5M	
11 COVIC Mehmed	L 4 H W32 W31 2.5 2.5MXAB	
12 BAUMFARTNER Chris	L 7 D17 W33 W24 2.5 2.5MXAB	
13 SPRINGER Peter	W20 L 4 W32 L 5 2 2 MAA	
14 ROZAVICH Bill	W33 L10 W19 L 7 2 2 MKA	
15 GATES Sophia	B37 W25 L 8 D19 2 2 MKA	
16 GOODMAN Ted	W31 W21 L 2 L 8 2 2 MKA	
17 LYON Mark	L 1 D12 W25 D15 2 2 MKA	
18 FISCHER Gregory	L 7 W14 L 7 W20 2 2 MKA	
19 JOHNSON Douglas	L 8 L19 W31 W27 2 2 MXABCD	
20 SCOTT Gene	L13 L23 W35 W32 2 2 HEAD	
21 DOBROVOLNY Charles	D21 D16 W36 L11 1.5 1.5MXA	
22 KAMBEK George	W26 L 5 L13 L24 1.5 1.5MXA	
23 BRAUNE Paul	L 2 W20 L12 H 1.5 1.5MXA	
24 KNOX Terrance	L 5 L20 W33 D27 1.5 1.5MXAB	
25 HERRMAN James	D21 D15 L17 W34 L25 1.5M	
26 CASONAS Anthony	L27 W24 L21 H 1.5 1.5MXABCD	
27 FAGAN James	W20 L 1 - - 1 1 M	
28 SMYTHE Gregory	L 1 W32 L 9 L10 1 1 MAA	
29 MUIRHEAD Andrew L	L10 W34 - - 1 1 MXAB	
30 PADILLA Rudy	L27 W33 L14 L19 1 1 MAB	
31 PETRAITIS Anton T	L26 L30 L13 W33 1 1 M	
32 STEVENS Joseph M	D24 L20 L11 L30 2.5 2.5MXABCD	
33 KIDDLE Robert	L24 L12 L28 L31 3 3	
34 NADAREVIC Hana H	L 8 L29 L29 L25 0 0	

Chicago Chess Club Plus-Score

January 21, 1996

	score	tour
1 CHOW Albert	2375	W13 W11 W 4 W 3 4 14 M
2 DANDELING Marvin	2342	W19 L 8 W13 W11 3 4 M
3 BROCK Bill	2057	W14 W12 W 8 L 1 3 4 MX
4 FAGAN James B	2054	W15 W18 L 1 W12 3 4 MX
5 WASHINGTON Ron	2006	H W 8 W16 D 8 3 4 MX
6 MARKOVIC Arandel	1986	W22 D16 W 7 D 5 3 4 MXA
7 SCOTT Gene	2150	D 9 W10 L 6 W14 2.5 2.5MX
8 FISCHER Charles	2006	W31 W 2 L 3 H 2.5 2.5MXA
9 HAYES Will	1664	D 7 L 5 W15 W19 2.5 2.5MXAB
10 COVIC Mehmed	1697	H L 7 W21 W14 2.5 2.5MXAB
11 ZINNYCH Mirco	2000	W17 L 1 W19 L 2 2 2 MX
12 SMYTHE Bill	1919	W33 L 3 W20 L 4 2 2 MXA
13 FISCHER Gregory A	1498	L 1 W17 L 7 W17 2 2 MXA
14 SHEKELY Robert	1583	L 3 W23 W18 L 7 2 2 MXABCD
15 WEBB James	1242	L 4 W24 L 9 W23 2 2 MXABCD
16 MAQUENZ Anthony	2068	W20 D 6 L 5 L10 1.5 1.5MX
17 CASONAS Anthony	1119	L11 L14 W24 H 1.5 1.5MXABCD
18 DOBROVOLNY Charles	1924	W24 L 4 L14 L 8 1 1 MXA
19 HORN Ben	1677	L 2 W21 L11 - - 1 1 MXAB
20 PADILLA Rudy	1637	L16 W32 L12 L15 1 1 MXAB
21 WOLFSON Jesse	1222	L 9 L19 L10 W33 1 1 MXABCD
22 PETRAK Sarah	791	L 6 L20 B D12 1 1 MXABCD
23 BLANDIN Mike	L12 L14 L17 L21 0 0	
24 HAKKINEN Peter A	L19 L15 - - 0 0	

Chicago Chess Club Plus-Score

February 4, 1996

	score	tour
1 DANDELING Marvin	2353	W12 W 6 W10 W 5 4 14 M
2 CHOW Albert	2360	W20 D 3 W22 W 4 3.5 7.5M
3 MARQUEZ Tony	2050	W41 D13 W14 W15 2.5 7.5MX
4 STERN Howard	2071	W36 W 7 W 9 L 2 3 4 MX
5 BROCK Bill	2059	W30 W11 W23 L 1 3 4 MX
6 FAGAN James	2037	W32 L 1 W24 W 9 3 4 MX
7 STEWAKI Al	1991	W37 L 4 W30 W20 3 4 MXA
8 SMYTHE Bill	1973	W33 W16 L 4 W22 3 4 MXA
9 JOELAN Roland	2042	W13 D 3 W19 L 6 2.5 2.5MX
10 WASHINGTON Ron	2006	W28 W21 L 1 D11 2.5 2.5MX
11 GATES Sophia	1964	W19 L 5 W27 D10 2.5 2.5MXA
12 WONG Brian	1661	L 1 W37 W17 H 2.5 2.5MXAB
13 WEBB James	1347	L 3 W39 W21 H 2.5 2.5MXABCD
14 HERRMAN James	D19 W29 L 3 W23 2.5 2.5M	
15 KICHVIN Igor	H W18 W16 L 3 2.5 2.5M	
16 SCOTT Gene	2122	W24 L 8 L15 W30 2 2 MX
17 SAK Bob	2047	W27 L20 L12 W31 2 2 MX
18 KOZOVIC William	1980	D14 L15 D32 W32 2 2 MXA
19 DOBROVOLNY Charles	1928	W34 D 3 L 9 H 2 2 MXA
20 BALE Abe	1854	W25 W17 L 5 L 7 2 2 MXA
21 FISCHER Greg	1830	W39 L10 L13 W32 2 2 MXAB

Greater Peoria Open

March 2-3, 1996

	score	tour
1 SPINERAK Steven J	2275	W 4 W 7 W 1 W 5 L 1 4 12 M
2 MOYE David B	2270	W12 W 4 L 3 W 8 W 5 L 4 12 M
3 VAN RUSEKIN Douglas	2233	W16 L 5 W19 W 6 W 1 4 12 M
4 KRISKE Thomas G	1947	L 1 D24 E W 4 W 8 3.5 7 ZA
5 HERNANDEZ Hector	2009	W10 W 3 W 9 L 1 L 2 3 6 MX
6 YAVAKI Paul	2136	W19 L 2 W15 L 3 W10 3 6 MX
7 HAYE William A	2142	W14 L 1 W10 L 2 H 2 6 5 MX
8 FOX William G	1951	D18 W10 L 5 W14 L 4 2.5 5MKA
9 SAK Robert D	2060	L11 D19 W11 L 9 W13 2.5 5 MX
10 FLORES Joshua	1794	W 5 L 8 L 7 W15 L 8 2 4MKA
11 MOSHER Michael J	1674	L 5 W13 L 9 D15 D14 2 4MKA
12 ANDERSON Phil	1921	L 2 D11 H D18 W15 2 4MKA
13 VEKO Carl M	1990	L 6 W16 L 3 D17 L 3 1.5 3MKA
14 POLITHO Thomas G	1600	L 7 D 4 H L 0 D11 1.5 3MKA
15 BARTHEL Jim	1651	D 8 D 9 L 6 L10 L12 1 2MKA
16 ROUGERIE Dennis	1908	L 3 D13 H D12 - 1 2MKA

Greater Peoria Open

March 2-3, 1996

	score	tour
1 GAST Bryan	1445	W 3 W 7 D 1 W12 W 8 4.5 19 BC
2 DITTSWORTH Todd F	1663	W11 W18 D 1 W 6 W 8 4.5 19 B
3 TOWNSEND Chester	1739	L 1 D10 W25 W14 W 9 3.5 7 B
4 GREGGER Andrew	1640	W27 D18 D 3 W16 D 5 3.5 7 B
5 FLANNAGAN Kevin	1823	L25 W21 W15 W26 D 4 3.5 7 P
6 MEYER William L	1731	W15 W19 W20 L 2 D 1 3 6 E
7 FROELICH Tim	1827	W13 L 1 W13 L 9 W12 3 6 E
8 ZIMMERLE R Wayne	1691	W13 L20 W16 W19 L 2 3 6 B
9 SPRINGER Vincent	1494	W29 D12 D 4 W 7 L 3 3 6 BC
10 SCHRAMMER Ted C	1269	L 7 D 3 W29 D17 W19 3 6 BCD
11 SMUTNIAK James	1394	L 2 W26 L14 W20 W19 3 6 BCD
12 SHOCKLEY Robert	1617	W21 D 3 W14 L 1 L 7 2.5 5 E
13 MOORE Rod	1417	L 8 W22 L 7 W21 D15 2.5 5 BC

ILLINOIS TOUR CROSS TABLES

14 KELLY James R	1349	D17	W23	L12	L 3	W26	2.5	5	BCD
15 SALAZAR Jose	1489	L 6	W24	L 5	W25	D13	2.5	5	BC
16 WILHELM John H	1509	W28	D 4	L 9	W23	-	2.5	5	BC
17 DELAY Joe	1859	D14	W25	L13	D10	H	2.5	5	B
18 STOTLER Richard E	1585	W26	L 2	W11	L 4	L10	2	4	BC
19 WILDMAN Eric	1611	W24	L 6	W17	L 8	L11	2	4	B
20 GORDON Patrick F	1554	W22	W 8	L 6	L 5	-	2	4	BC
21 WISHNER Michael	1243	L12	L 5	W28	L15	W27	2	4	BCD
22 CASTRO Alexandra	1071	L20	L13	W28	L11	W29	2	4	BCDE
23 GASUNAS Anthony C	1109	H	L14	W27	L16	D25	2	4	BCDE
24 BATH Cheney	1233	L19	L15	L26	B	W28	2	4	BCD
25 PATTON Terry W	1277	W 5	L17	L 3	L15	D23	1.5	3	BCD
26 CASTRO Natalia	1135	L18	L11	W24	D27	L14	1.5	3	BCDE
27 HELLER Jack	1304	L 4	D29	L23	D26	L21	1	2	BCD
28 FLATT Eric Lynn	1066	L16	L21	L22	W29	L24	1	2	BCDE
29 FARRELL Stewart	-	L 9	D27	L10	L29	L22	0.5	-	-

16 ROSE Eric J	-	L 3	W32	D10	W35	D17	3	6	BCD
17 CLAY Harry	-	W22	L 4	W14	L 6	D16	2.5	5	B
18 GORDON Patrick	-	W25	D20	W21	L 2	-	2.5	5	B
19 GRANT Dennis S	-	W28	L 2	W12	L13	D25	2.5	5	B
20 WACHTER Tom W	-	W44	D18	W35	L 1	L 7	2.5	5	BC
21 STEVENS Joseph M	-	D 7	W34	L18	L24	W36	2.5	5	BC
22 FERGUSON William	-	W17	W36	H	L10	W37	2.5	5	BC
23 ZEIDMAN Martin	-	L39	D26	W29	W34	L 9	2.5	5	BCD
24 SHELLHAMER Ted C	-	D34	L 6	W27	W21	L10	2.5	5	BCD
25 HUBBARD Dave	-	L18	W44	W40	L 5	D19	2.5	5	BCDE
26 HUBBARD Andrew	-	L 4	D23	W43	L14	W35	2.5	5	BCDE
27 PIERGALSKI John Garrett	-	L 2	L26	L24	B	W38	2	4	BC
28 MC CULLEY Matthew	-	L19	W27	L11	W31	L15	2	4	BCDE
29 DONNA Daniel	-	L40	D43	L23	D44	B	2	4	BCDE
30 HULTBERG Gary	-	L 5	L15	W46	W33	L14	2	4	BCDE
31 GASUNAS Anthony C	-	W 6	L 7	L 5	L28	W42	2	4	BCDE
32 BIELSKI Matthew J	-	L35	L16	B	W42	-	2	4	BCDE
33 NAPOLI Steven	-	L24	W46	L 6	L30	W44	2	4	BCD
34 ZELINSKI Barry F	-	D24	L21	W47	L23	-	1.5	3	B
35 RASMUSSEN Robert	-	W30	H	L20	L16	L26	1.5	3	BC
36 STEAUTE Erin	-	L11	L23	W44	D37	L21	1.5	3	BCDE
37 MC BALLY Michael	-	L12	B	L34	D46	L22	1.5	3	BCDE
38 HELGER Cliff	-	L13	L42	H	W43	L27	1.5	3	BCDE
39 PORTER Edward J	-	W23	L12	L15	-	-	1	2	B
40 BORTAN David M	-	W29	L 8	L25	-	-	1	2	B
41 SILVERMAN Scott A	-	W45	-	-	-	-	1	2	BC
42 ENDLER James	-	L10	W38	L13	L32	L31	1	2	BCD
43 BIELSKI William	-	L 4	D29	L26	L38	-	0.5	1	BC
44 MACLEARY Michael	-	L20	L25	L36	D29	L43	0.5	-	-
45 JUST Timothy W	-	L41	-	-	-	-	-	-	-
46 WISHNER Michael	-	L 9	L33	L39	-	-	0	-	-

Peoria Tornado

January 27, 1996

	score	tour						
1 ALSBERRY Melvin	2157	W23	W12	W 4	W 5	4	14	MX
2 ZIMMERLE R Wayne	1691	W17	W 3	W 9	D 6	3.5	7.5	MXAB
3 VAN BUSKIRK Douglas	2236	W11	L 2	W20	W13	3	4	B
4 HITCH Douglas A	2039	W20	W10	L 1	W14	3	4	MX
5 VERO Carl M	1890	W16	W14	W 7	L 1	3	4	MXA
6 GETZ Barney	1954	W26	D 9	W19	D 2	4	4	MXAB
7 YAVARI Paul	2091	W19	W13	L 5	D10	2.5	2.5	MXA
8 ANDERSON Phil	1921	L15	W21	D11	W11	1.5	1.5	MXA
9 BOLLITO Thomas G	1853	W24	D 6	L 2	W19	2.5	2.5	MXA
10 MOSHER Michael J	1677	W27	L 4	W15	D 7	1.5	2.5	MXAB
11 BEALI Matthew	1530	L 3	W27	D 9	W21	2.5	2.5	MXAB
12 WONG Brian	1642	W25	L 1	W16	L 3	2	2	MXAB
13 WILDMAN Eric	1603	W22	L 7	W17	L 8	2	2	MXAB
14 STOTLER Richard E	1585	W28	L 5	W22	L 4	2	2	MXAB
15 BONWELL Jonathan	1510	W 8	L19	L10	W26	2	2	MXAB
16 KELLY James R	1349	L 5	W18	L12	W29	2	2	MXAB
17 WEBER Greg	1307	L 2	W26	L13	W23	2	2	MXAB
18 BLACK Douglas	-	L 7	L16	W27	W29	2	2	B
19 BOURGERIE Dennis	1305	D21	W15	L 6	L 7	1.5	1.5	MXA
20 TRAHAN Justin P	1511	L 4	W28	L 3	D27	1.5	1.5	MXAB
21 MOORE Rod	1417	D19	L 8	W25	L11	1.5	1.5	MXAB
22 CASTRO Natalia	-	L13	W24	L14	D29	1.5	1.5	B
23 WEBER Terry W	1923	L 1	L25	W29	D12	1	1	MXAB
24 ANDERSON Richard	1400	L 9	L27	L26	W27	1	1	MXAB
25 GODLEY Jonathan	1014	L12	W23	L21	L14	1	1	MXAB
26 SCHULTE Bill	-	L 6	L17	W24	L15	1	1	B
27 CASTRO Alexandra	-	L19	L11	L18	L24	0	0	-
28 UMIRNA Judith	-	L14	L20	L23	L18	0	0	-

Tim Just Winter Open

January 27-28, 1996

	score	tour						
1 BACHLER Kevin L	W15	W 7	D 4	W 5	W 8	4.5	13	MX
2 CHOW Albert C	D13	W17	D10	W 7	W 3	4	12	M
3 WALLACH Kenneth T	W14	W 8	D 1	W16	L 2	3.5	7	M
4 SAX Robert D	W23	D 6	L 5	W14	W19	3.5	7	MX
5 SZPINSIAK Steven J	D11	W13	W 4	L 1	D 9	3	6	M
6 KINNAIRD Rodney	W 9	D 4	L 7	W11	D 5	3	6	MX
7 SCHMIGGEROW Kevin	W14	L 1	W 6	L 2	W15	3	6	MX
8 YAVARI Paul	W29	L 3	W 9	W15	L 1	3	6	MX
9 WHITAKER Keith T	L 6	W23	L 8	W17	W13	3	6	MXAB
10 SCOTT Gene G	W12	W16	D 2	L 3	L 4	2.5	5	MX
11 HERNANDEZ Hector	D 5	L14	W23	L 6	W26	2.5	5	MX
12 GRAVES William E	L10	L29	W21	D16	W10	2.5	5	MXA
13 WASHINGTON Ronald	D 2	L 5	D17	W20	L 9	2	4	MX
14 RIDDELL Joshua S	L 3	W11	D20	L 4	D16	2	4	MXA
15 PORTER John	L 1	W19	W16	L 8	L 7	2	4	MXA
16 SILVERMAN Scott A	B	L10	L15	D12	D14	2	4	MXAB
17 BOURGERIE Dennis	H	L 2	D13	L 9	B	1.5	3	MXA
18 CLARK Wayne D	L 7	L15	H	W23	L12	1.5	3	MXAB
19 JUST Timothy W	-	-	H	W22	-	1.5	3	MXAB
20 WONG Brian	L 8	W12	D14	L13	L11	1.5	3	MXAB
21 BIELSKI Matthew J	-	-	L12	B	-	1	2	BC
22 PIERGALSKI John Garrett	-	-	-	L19	-	0	-	-
23 VEINOT Russ	L 4	L 9	L11	L19	-	0	-	-

Tim Just Winter Open

January 27-28, 1996

	score	tour						
1 ENGELEN Mark	W15	W11	D12	W20	W 8	4.5	13	B
2 BROWN Tony	W27	W19	D 9	W18	D 4	4	12	B
3 HAYES Will	W16	W 5	W13	L 8	W12	4	12	B
4 BAUMGARTNER Chris	W26	W17	D 8	W 9	D 2	4	12	BC
5 SHOCKLEY Robert	W30	L 3	W31	W25	W13	4	12	BC
6 HAYES Christopher	L31	W24	W35	W19	W11	4	12	BC
7 HOWELL Thomas W	D21	W31	H	D12	W20	3.5	7	B
8 BYRNES Randy Mich	W43	W40	D 4	W 3	L 1	3.5	7	B
9 DELAY Joe	W46	W14	D 2	L 4	W23	3.5	7	B
10 GROEGER Andrew	W42	L13	D16	W22	W24	3.5	7	B
11 BACKSTROM Osn U	W36	L 1	W29	W15	L 6	3	6	BC
12 LAUGER Stephen C	W37	W39	D 1	D 7	L 3	3	6	BC
13 NAPOLI Mike	W38	W10	L 3	W19	L 5	3	6	BC
14 KIDDLE Robert	W33	L 9	L17	W26	W30	3	6	BC
15 MONTOYA Fernando	L 1	W30	W35	L11	W28	3	6	BCD

NOW AVAILABLE

Billy Colias: Midwest Master

BILLY COLIAS was one of the most remarkable players to come out of the Midwest. He overcame many obstacles to become one of the area's top players, and earned the title of FIDE Master before his untimely death in 1993. This book details his life and games, including thrilling victories against both amateur and professional opposition in the Midwest, throughout the United States, and in Europe.

This volume contains 101 games played by Billy Colias, including 15 he annotated himself. Most of the games have never been published elsewhere and the reader will find them not only enjoyable, but also instructive and filled with original opening ideas. You will become acquainted with a true Midwest Master, and become a better player in the process. List price: \$12.95; APCT price: \$12.30 post-paid; UPS delivery, add \$2.00.

Order from:

APCT, P.O. Box 305, Western Springs IL
60558-0305; or Phone: (708)663-0688; FAX:
(708)663-0689 (24 Hrs.); Internet: apct@aol.com

1996 Peoria Tornado

ICA Mini Tour Quick Chess Event

June 29, 1996

5-SS

G/29

**Garrett Center, 824 N. Duryea
Place, Peoria 61625**

1st - \$75 2nd - \$50

A,B,C,D & under - chess book

EF: \$11 if or \$15 at site

Registration: 8 - 8:45

Rounds: 9 - 10:15 - 12 - 1:15 - 2:30

**Entries: Bill Naff, 212 Vail Court,
Peoria, IL 61614, (309) 691-4624**

**Please bring sets, boards and
clocks. There is no smoking
allowed in the building.**

NOTICE

Send your articles, complaints, suggestions, submissions and advertisements to the new editor of the Illinois Chess Bulletin:

Mr. Tim Williams
16W472 Honeysuckle Rose, Apt 114
Hinsdale, IL 60521
H(708) 325-5748 R(708) 887-3706
email: lostloop@big10.mctrobbs.com

Note: the deadline for submissions for the next issue.



Do you know this new International Master?

Congratulations to Illinois' newest
International Master Josh Manion

TOURNAMENT CALENDAR

Call Chess Phone, (708) 832-5222, for up-to-date tournament results, and announcements of tournaments that may not be listed in Chess Life or the ICB. The ICA Chess Phone voice is Todd Barre. Unless otherwise noted, all tournaments require USCF membership. Illinois Tour events also require ICA membership

Organizers - remember it is ICA policy that an event must be published in the ICA bulletin and Chess Life marked as a tour event in order to be a tour event. Please send your tournament notices to: Bob Renaut, 1255 Oakton Lane, Naperville, IL 60540-0310 or call 708-983-0934

May 4 Tuley Park QC#6, Chicago, IL. 501 E. 90th Place, EF: \$12, under 19 \$6 Reg. 11:00-11:50, 1st Rd at 12. Prizes \$200 (b24) \$120G, \$60-\$40-\$30 best from middle 3rd \$40, best from lowest 3rd \$30. Time controls: If 14 or less, 4SS, G/25, if 14 to 20: 5SS Rds 1&2 G/15, rds 3,4,5 G/25 If 22 players or more: 6SS, rds 1-3: G/15, rds 4-6: G20. Info: Tom Fineberg 721-3979

May 25, Chessterton Chess, Westchester Public Library, 200 W. Indiana, Chesterton, IN. 3-SS in 8-12 person sections by rating, time controls 25/60, SD/60. Prizes \$60-30 each section; increased in large sections. Rds: 9:30, 1:30. Info: Randy Pals, 1233 Morningside Dr., Chesterton, IN 46304 219-926-2266.

May 24-27, Chicago Open, Oak Brook, IL, see ad. MAXI

Jun 1, 96 Tuley Park BIG QC#1, Chicago, IL. 501 E. 90th Place, EF:

\$12, under 19 \$6 Reg. 11:00-11:50, 1st Rd at 12. Prizes \$300 (b22) \$100, \$60-\$40 best from middle 3rd \$60, best from lowest 3rd \$40. Time controls: If 13 or less: 4SS, G/25, if 14 to 20: 5SS Rds 1&2 G/15, rds 3,4,5 G/25. If 22 players or more: 6SS, rds 1-3 G/15, rds 4-6: G20. Info: Tom Fineberg 721-3979

Jun 22, 96 Tuley Park QC#8, Chicago, IL. 501 E. 90th Place, EF: \$12, under 19 \$6, Reg. 11:00-11:50, 1st Rd at 12. Prizes \$200 (b24) \$120G, \$60-\$40-\$30 best from middle 3rd \$40, best from lowest 3rd \$30. Time controls: If 14 or less, 4SS, G/25, if 14 to 20: 5SS Rds 1&2 G/15, rds 3,4,5 G/25 If 22 players or more: 6SS, rds 1-3: G/15, rds 4-6: G20. Info: Tom Fineberg 721-3979

Jun 21-23, Master Challenge, St. Charles, IL. 5-SS, 40/100, 25/60. Bake Community Center, 101 S. Second St., St. Charles, IL, EFS \$0 or \$20 for jrs, \$40 at site PFS \$2500, \$600-400-200, X \$175-\$150, A \$175-150, B \$150-125, C \$125-100, D/E \$100, Unr \$50 Reg 6/21 6-7pm or 6/22 8-8:30. Rds 6/21 7 pm 6/22 9 am, 1 30 6, 9, 2 (note split first rd - your choice). ICA membership required. Info: Erv Sedlock, 6N 307 Old Homestead Rd, St. Charles, IL 60175, 708-377-7995, NS, MAXI.

Jun 22 Chessterton Chess, Westchester Public Library, 200 W. Indiana, Chesterton, IN. 4-SS, G/90, PFS: \$310 based on 30 entries: \$100, \$50, U2000 \$45, U1800 \$40, U1600 \$35, U1400 \$25, U1200 \$15. Rds: 9:30, 12:00, 3:00, 6:00, Reg 8:30-9:15 a.m. (all time is Chicago time!). EFS: \$15, \$10 for High School or below. Info: Randy

Pals, 1233 Morningside Dr., Chesterton, IN 46304, 219-926-2266.

Jun 29, Peoria Tornado, Peoria, IL. See Ad, mini

Jul 6-7, All American Class Championship, Burr Ridge, IL. 5-SS, 40/90, SD/1, Best Western Inn of Burr Ridge, 300 S. Frontage Road \$5000G (in 6 sections). M/X 700-500-300, U2300 150, U2200 250-200 A 250-200-100, B 250-200-100, C 250-200-100, D 250-200-100, E/U 200-150-100, Unr 90-60. Unrated may play in any section but not win more than \$90. EFS \$43 if by 6/30, \$50 at site. GM's and IM's free. Jr. \$10 off Add \$15 to play up 1 section. 1/2 pt bye available on any rd (max 2) if requested at reg. ICA membership required. Free Raffle. REG 8-8:45 am Rds 9-2-7, 10-3 15 Info: Lawrence Cohen, P.O. Box 6632 Villa Park, IL 60181 (708) 834-2477, NS, NC, W, MAXI

Jul 27 Chessterton Chess, Westchester Public Library, 200 W. Indiana, Chesterton, IN. 4-SS, G/90 PFS: \$310 based on 30 entries \$100, \$50, U2000 \$45, U1800 \$40, U1600 \$35, U1400 \$25, U1200 \$15. Rds: 9:30, 12:00, 3:00, 6:00, Reg 8:30-9:15 a.m. (all time is Chicago time!). EFS: \$15, \$10 for High School or below. Info: Randy Pals, 1233 Morningside Dr., Chesterton, IN 46304, 219-926-2266.

Jul 13, 96 Tuley Park QC#9, Chicago, IL. 501 E. 90th Place, EF: \$12, under 19 \$6, Reg. 11:00-11:50, 1st Rd at 12. Prizes \$200 (b24) \$120G, \$60-\$40-\$30 best from middle 3rd \$40, best from lowest 3rd \$30. Time

controls: If 14 or less: 4SS, G/25, if 14 to 20: 5SS Rds 1&2 G/15, rds 3,4,5 G/25. If 22 players or more: 6SS, rds 1-3: G/15, rds 4-6: G20, Info: Tom Fineberg 721-3979

Jul 27, 96 Tuley Park QC#10, Chicago, 501 E, 90th Place, EF: \$12, under 19 \$6. Reg. 11:00-11:50, 1st Rd at 12. Prizes \$200 (b24) \$120G, \$60-\$40-\$30 best from middle 3rd \$40, best from lowest 3rd \$30. Time controls: If 14 or less: 4SS, G/25, if 14 to 20: 5SS Rds 1&2 G/15, rds 3,4,5 G/25. If 22 players or more: 6SS, rds 1-3: G/15, rds 4-6: G20, Info: Tom Fineberg 721-3979

Aug 3-4, 1996 Midway Amateur Class Championships, MAXI

Aug 4-16, 1996 U.S. Open, Alexandria, VA

Aug 24, 96 Tuley Park Big QC#2, Chicago, 501 E, 90th Place, EF: \$12, under 19 \$6. Reg. 11:00-11:50, 1st Rd at 12. Prizes \$300 (b22) \$100, \$60-\$40 best from middle 3rd \$60, best from lowest 3rd \$40. Time controls: If 13 or less: 4SS, G/25, if 14 to 20: 5SS Rds 1&2 G/15, rds 3,4,5 G/25. If 22 players or more: 6SS, rds 1-3 G/15, rds 4-6: G20, Info: Tom Fineberg 721-3979

Aug 31-Sep 2, Illinois Open, MAXI

Sep 21, 96 Tuley Park QC#12, Chicago, 501 E, 90th Place, EF: \$12, under 19 \$6. Reg. 11:00-11:50, 1st Rd at 12. Prizes \$200 (b24) \$120G, \$60-\$40-\$30 best from middle 3rd \$40, best from lowest 3rd \$30. Time controls: If 14 or less: 4SS, G/25, if 14 to 20: 5SS Rds 1&2 G/15, rds 3,4,5 G/25. If 22 players or more: 6SS, rds 1-3: G/15, rds 4-6: G20, Info: Tom Fineberg 721-3979

Sep 28 Chessterton Chess, Westchester Public Library, 200 W. Indiana, Chesterton, IN, 4-SS,

G/90. PFS: \$310 based on 30 entries: \$100, \$50, U2000 \$45, U1800 \$40, U1600 \$35, U1400 \$25, U1200 \$15, Rds: 9:30, 12:00, 3:00, 6:00, Reg: 8:30-9:15 a.m. (all time is Chicago time!), EFS: \$15, \$10 for High School or below. Info: Randy Pals, 1233 Morningside Dr., Chesterton, IN 46304, 219-926-2266.

Oct 19, 96 Tuley Park QC#13, Chicago, 501 E, 90th Place, EF: \$12, under 19 \$6. Reg. 11:00-11:50, 1st Rd at 12. Prizes \$200 (b24) \$120G, \$60-\$40-\$30 best from middle 3rd \$40, best from lowest 3rd \$30. Time controls: If 14 or less: 4SS, G/25, if 14 to 20: 5SS Rds 1&2 G/15, rds 3,4,5 G/25. If 22 players or more: 6SS, rds 1-3: G/15, rds 4-6: G20, Info: Tom Fineberg 721-3979

Oct 26 Chessterton Chess, IN, Westchester Public Library, 200 W. Indiana, Chesterton, IN, 4-SS, G/90. PFS: \$310 based on 30 entries: \$100, \$50, U2000 \$45, U1800 \$40, U1600 \$35, U1400 \$25, U1200 \$15, Rds: 9:30, 12:00, 3:00, 6:00, Reg: 8:30-9:15 a.m. (all time is Chicago time!), EFS: \$15, \$10 for High School or below. Info: Randy Pals, 1233 Morningside Dr., Chesterton, IN 46304, 219-926-2266.

Nov 9, Tuley Park Action Micro Tour, Chicago, 501 E, 90th Place, 5-SS, G/25 EF: \$20, under 19 \$10. Reg 9:40-10:20, 1st Rd at 10:30. Prizes \$400 (b24) \$120, \$80-\$60 best from middle 3rd \$80, best from lowest 3rd \$60. Time controls: G/30, Info: Tom Fineberg 721-3979

Nov 22-24, 1996 U.S. Class Championships (incorporating the Illinois Class Championships), Rosemont, is Class Championships, MAXI

Nov 23, Chessterton Chess, Westchester Public Library, 200 W

Indiana, Chesterton, IN, 3-SS in 8-12 person sections by rating, time controls 25/60, SD/60. Prizes \$60-30 each section: increased in large sections. Rds: 9:30, 1:30, Info: Randy Pals, 1233 Morningside Dr., Chesterton, IN 46304, 219-926-2266.

Dec 7, Tuley Park Quick Chess #14, Chicago, 501 E, 90th Place, EF: \$12, under 19 \$6. Reg. 11:00-11:50, 1st Rd at 12. Prizes \$200 (b24) \$120G, \$60-\$40-\$30 best from middle 3rd \$40, best from lowest 3rd \$30. Time controls: If 14 or less: 4SS, G/25, if 14 to 20: 5SS Rds 1&2 G/15, rds 3,4,5 G/25. If 22 players or more: 6SS, rds 1-3: G/15, rds 4-6: G20. Info: Tom Fineberg 721-3979

Dec 13-15, USCF National K-12 Scholastic Grade Championships, Columbus, OH

Dec 28 Chessterton Chess, IN, Westchester Public Library, 200 W. Indiana, Chesterton, IN, 4-SS, G/90. EFS: \$15, \$10 for High School or below. Info: Randy Pals, 1233 Morningside Dr., Chesterton, IN 46304, 219-926-2266.

ICA Banquet continued from pg 31

This years awards were: Most active player - Joseph Stevens. Service to the ICA - Al Losoff. Service to the Community - NM Tom Cooper. Service to the Chess Club - Tim Just and Tom Knoedler. Service to Scholastic Chess - Kevin Bachler and Mike Zacate. The Billy Colias Excellence in Teaching Award was given to NM Nouredine Ziane. Erik Karklins won the Natale Broughton Life Achievement Award.

Hector Hernandez, ICA Metro-VP presented the tour awards while Helen Warren presented the special awards.

ILLINOIS CHESS ASSOCIATION TOUR STANDINGS

This list reflects all 1996 Tour events:

Peoria Tornado mini Jan 20
 Chicago Chess Club Plus-Score mini Jan 20
 Chicago Chess Club Plus-Score mini Jan 21
 Tim Just Winter Open, Grayslake MAXI Jan 27-28
 Chicago Chess Club Plus-Score mini Feb 4
 Chicago Chess Club Plus-Score mini Feb 10
 Greater Peoria Open MAXI Mar 2-3

Upcoming 1996 Tour events:

Chicago Open, Oak Brook MAXI May 24-27
 Master Challenge, St Charles MAXI Jun 21-23
 All American Class MAXI JuL 6-7
 Midway Amateur Class, Oak Lawn MAXI Aug 3-4
 Illinois Open, O'Hare MAXI Aug 31-Sep 2
 Midwest Class Championship, Oak Brook MAXI Oct 25-27
 Tuley Park Quick, Chicago micro Nov 9
 U.S. Class, O'Hare MAXI Nov 22-24

For players with fewer than three 1996 Tour events, the number of events (1 or 2) is shown in parentheses. A player must have played in at least three Tour events during 1996 to be eligible for year-end Tour prizes.

NOTE: ICA membership is required for all Illinois residents playing in ICA Tour events. Residents of other states are not required to join ICA if they are members of their home state chess associations. However, Tour points earned by out-of-staters do not count unless they are ICA members.

We have attempted to remove the names of out-of-state non-members from the following

list. Because the membership records are separate from the Tour records, the names of some non-members may remain. Membership checks will be performed at year-end to determine prize eligibility.

Master Tour Points:

CHOW Albert C	48.5
BACHLER Kevin L (2)	23
DANDRIDGE Marvin	20.5
SZPISJAK Steven J	20.5
SAX Robert D	18
ZINYTCH Miron	17.5
WASHINGTON Ronald	16.5
VAN BUSKIRK Doug (2)	16
ALSBERRY Melvin (1)	14
FAGAN James B	13
MARQUEZ Anthony	13

Expert Tour Points:

BACHLER Kevin L (2)	23
SAX Robert D	18
ZINYTCH Miron	17.5
WASHINGTON Ronald	16.5
ALSBERRY Melvin (1)	14
FAGAN James B	13
MARQUEZ Anthony	13
BROCK Bill	12
SCOTT Gene G	11.5
HERNANDEZ Hector (2)	11
COVIC Mehmed	8
FISCHER Gregory A	8

Class A Tour Points:

COVIC Mehmed	8
FISCHER Gregory A	8
SMYTHE Bill	7.5
WONG Brian	7.5
ZIMMERLE R Wayne (2)	7.5
DOBROVOLNY Charles R	7
FRISKE Thomas G (1)	7
VERO Carl M (2)	7
ANDERSON Phil (2)	6.5
BOURGERIE Dennis	6.5
MARKOVIC Arandel (2)	6.5
MOSHER Michael J (2)	6.5

Class B Tour Points:

GAST Bryan (2)	19.5
DITTSWORTH Todd (1)	19
ENGELEN Mark (1)	19
SHOCKLEY Robert	19
BAUMGARTNER Chris	17
HAYES Will	16.5

GROEGER Andrew	15
ZIMMERLE R Wayne (2)	13.5
BROWN Tony (1)	12
DELAY Joe (2)	12
GASUNAS Anthony C	12
HAYES Christophe (1)	12
SHELLHAMER Ted C (2)	11
GORDON Patrick F (2)	9
COVIC Mehmed	8

Class C Tour Points:

GAST Bryan (2)	19.5
BAUMGARTNER Chris	17
SHOCKLEY Robert	14
GASUNAS Anthony C	12
HAYES Christophe (1)	12
SHELLHAMER Ted C (2)	11
KELLY James R (2)	7
STEVENS Joseph M	7
MOORE Rod (2)	6.5
BACKSTROM Orn U (1)	6
LAUGER Stephen C (1)	6
MONTOYA Fernando (1)	6
NAPOLI Mike (1)	6
RIDDLE Robert (2)	6
ROSE Eric J (1)	6
SILVERMAN Scott (2)	6

Class D Tour Points:

GASUNAS Anthony C	12
SHELLHAMER Ted C (2)	11
KELLY James R (2)	7
MONTOYA Fernando (1)	6
ROSE Eric J (1)	6
SMUTNIAK James (1)	6
WISHNER Michael	5.5
HUBBARD Andrew (1)	5
HUBBARD Dave (1)	5
ZEIDMAN Martin (1)	5
WEBB James (2)	4.5
BATH Cheney (1)	4
BIELSKI Matthew (1)	4
CASTRO Alexandra (2)	4

Class E Tour Points:

GASUNAS Anthony C	12
HUBBARD Andrew (1)	5
HUBBARD Dave (1)	5
BIELSKI Matthew (1)	4
CASTRO Alexandra (2)	4
DONNA Daniel (1)	4
HULTBERG Gary (1)	4
MC CULLEY Matthe (1)	4
CASTRO Natalia (2)	3
HELPER Cliff (1)	3
MC NALLY Michael (1)	3
STRAUTS Erin (1)	3

ILLINOIS CHESS PATRONS

Century Club Members

Michael Belovesick Sr.	Addison
Larry W. Blum	Rockford
Thomas Fineberg	Chicago
Joshua Flores	Chicago
Fred Gruenberg	Palos Heights
James Hilton	Flossmoor
Samuel Naylor, VI	Carthage
Pete Roche	Winnetka
Scott Silverman	Elk Grove
Bill Smythe	Chicago
Burton Vincent	Chicago
Helen Warren	Western Springs
Jim Warren	Western Springs
Jim Zimmerman	Libertyville

Gold Card Members

Todd Barre	Elmhurst
Kurt P. Bridgham	Crawfordsville, IN
Tom Cooper	Wheaton
William Dwyer	Chicago Ridge
Hector Hernandez	Chicago
H. Steven Hoisington	Ogden, UT
Thomas Howell	Evanston
Toshio Imai	East Lansing, MI
Stephen C. Lauger	DeKalb
Alan Losoff	Morton Grove
Kenneth Marshall	Lombard
Fred Meyers	Sterling
William Naff	Peoria
James D. Oberweis	Aurora
Peter Pelts	Niles
Daniel Pradt	Glen Ellyn
Michael Pratts	Chicago
Irwin Rothschild	Park Forest
Arthur Sinclair	Evanston
Mitchel Sweig	Evanston
James Tanaka	Chicago
Louis Werner	Evanston
Philip Wong	Wilmette
Sandy Zabell	Evanston

Patron Members

Bob Ash	Urbana
Mark Baltazar	Matteson
Brian Bannon	Gurnee
Edward J. Bilanco, Jr	Chicago
Timothy Bogan	Chicago
Dennis Bourgerie	Normal
Bill Brock	Chicago
Jim Brotsos	Chicago
Walter Brown, Jr	Crest Hill
Gregory Dungo	Elmhurst
Anthony Caliendo	Aurora
Lawrence Cohen	Villa Park
B. P.	Prospect Heights
Paul H Cox	Chicago
Joe Delay	Schaumburg

Leroy Dubeck
Robert Elliot, Jr.
David Garrett
Nik Goncharoff
William Graves
Charles Hicks
Kazys Jankauskas
Anthony Jasaitis
Steven Joseph
Tim Just
Dan Kamen
Leo Kaushansky
Scott Katsley
Steffan Klug
Thomas Knoedler
Walter Kocjan
Peter Kuhn
Kevin L. Kukla
Michael Loblaco
Anthony Marquez
Gary J. Martul
Eugene Martinovsky
Patrick Maurer
Thomas Mayka
John Ormins
Alex Pehas
Larry Petroff
Catalino Reyes
Marvin Rogan
Steve Rydberg Jr.
Ray Satterlee
Garrett Scott
Anthony Sodaro
Leonard Spiegel
Joe Splinter
Daniel C. Swanson
William Terbell
John Tums
Douglas White
Harold Winston
Philip Woodruff

Cherry Hill, NJ
Wilmette
Chicago
Hoffman Estates
Chicago
Naperville
Darien
Bedford Park
Hinsdale
Gurnee
Buffalo Grove
Wheeling
Shorewood, WI
Lombard
Springfield
Northlake
Des Plaines
Hanover Park
Park Ridge
Chicago
Park Ridge
Naperville
Glen Ellyn
Phoenix, AZ
Joliet
Darien
Naperville
Addison
Chicago
Mokena
Wheaton
Normal
Lyons
St. Charles
Hanover Park
Chicago
Glen Ellyn
Oak Park
Schauuburg
Naperville
Grayslake

ICA Elected Officers

James D. Oberweis, President
3 Buckingham Dr., Aurora, IL 60506
(708) 466-4886

Hector Hernandez, Metro Vice-President
6210 S. Melvina Ave., Chicago, IL 60638
(312) 586-3950

Dennis Bourgerie, Downstate Vice-President
1621 N. School St., Normal, IL 61761
(309) 454-3842

Alan R. Losoff, Secretary
9402 N. Octavia, Morton Grove, IL 60053
(847) 966-5559 email: alanl@mcs.net

Todd Barre, Treasurer
418 Poplar Ave Elmhurst, IL 60126
(708) 834-0862

USCF Delegates

by virtue of their USCF position

Fred Gruenberg	Vice-President
Tim Just	Regional Vice-President
Garrett Scott	Regional Vice-President
Frank Skoff	Life Voting Member
Helen Warren	Life Voting Member
Harold Winston	Life Voting Member

ICA appointed

James D. Oberweis
Alan R. Losoff
Todd J. Barre
Dennis Bourgerie
Richard Verber

USCF Voting Members

ICA appointed

Bob Renaut	Thomas Fineberg
Erv Sedlock	Dennis Grant
Jim Warren	Larry Cohen
Walter Brown, Jr	Alan Watson
Bill Symthe	Michael Zaccato
Bill Naff	Marvin Dandridge
Hector Hernandez	Tom Knoedler
Ken Marshall	Josh Flores

ICA appointed alternates

Les Bate	Ken Lewandowski
Kevin Bachler	Keith Martin
Chris Baumgartner	Paul Mills
Ed Blanco	Glenn Panner
Jim Brotsos	Michael Pratts
Al Chow	Bill Reed
Bill Cox	Bill Wilkinson



Where to Play Chess

ICA Club Affiliates

American Postal Chess Tournaments sponsors postal events and sells chess books & equipment. Jim or Helen Warren, PO Box 305, Western Springs 60558. (708) 663-0688. apct@aol.com.

Avery Coonley School Chess Club 1400 W Maple Avenue, Downers Grove 60515.

Central Lake County Chess Club meets Fridays 7:15 p.m. to midnight at College of Lake County, Bldg. 1, Washington at Rt. 45, Grayslake. Dennis Grant, 1657 McKay, Waukegan 60087. (847) 336-5188.

The Chess Board BBS is a computer chess club. Use your computer, modem and phone to play electronic postal chess, exchange international messages, download chess related files. James Reames, Chicago. *Modem* (312) 784-3019, 1200-14400 bps.

Chesterton Chess Club meets at Westchester Public Library, 200 W. Indiana, Chesterton, IN. Randy Pals, (219) 926-2266.

The Chicago Chess Club is located at 1149 W. Lunt, Chicago, 60626 and is open from 3 to 11 p.m. Wednesday to Sunday. (312) 761-5050.

Chicago Industrial Chess League organizes frequent competition among commercial or government teams with awards, ratings, and special events. W. K. Underwood, 207 S. Dorchester Av., Wheaton. (708) 462-0393

Continental Chess Association PO Box 249, Salisbury Mills, NY 12577. Bill Gouchberg

Crossroads Chess Club meets Tuesdays at 6 p.m. at K Square Mall Food Court off I-57/I-70 exit 160 Effingham. Cameron Feltner (217) 844-2645

Downers Grove Park District Chess Club meets Thursdays 6:30-10 p.m., Lincoln Center, 935 Maple Av., Downers Grove. George Uffner, (708) 960-9382.

Evanston Township High School Chess Club 1600 Dodge. Evanston, 60204 Ken Lewandowski, (847) 492-7932.

Fox Valley Chess Club meets Mondays 6:30 to 10:30 p.m., Church of God, corner of Galena Blvd. and Lancaster, Aurora. Bob Renaut, (708) 983-0934 brenaut@ams.net

Franklin Chess Club meets Fridays 5:30 p.m. to 7:30 p.m. at Franklin Elementary School. Open to students at Franklin and other Park Ridge grade schools. Sponsors tournaments in Park Ridge area. Kevin

Hachler, 2719 W DeCook Av, Park Ridge, IL 60068 (847) 698-93765. KHachler@aol.com.

Greater Peoria Chess Federation meets Mondays 7 at Bradley Epworth United Methodist Church, 1314 W. Columbia Terrace, Peoria. Bill Wilkinson, 905 N. Rebecca Place, Peoria 61606. (309) 673-9455.

Illini Chess Club meets Wednesdays 7-10 p.m. in the Lucy Ellis Lounge, Foreign Languages Building, 707 S. Matthews Av., Urbana. Kyle Camarda, (217) 367-3816. kyle@turing.scs.uiuc.edu

Illinois Chess Coaches Association is an organization open to scholastic chess coaches in Illinois. For further information contact Mike Zacate. (708) 479-9380.

Lake County Chess Association sponsors rated tournaments in the Grayslake-Zion area. Tim Just, 37165 Willow, Gurnee 60031. (847) 244-7954.

Mid-America Chess Association sponsors the Mid-America Class Championships and brings national tournaments to the Chicago area. 811 Elrose Ct, Crest Hill, IL 60435

Midway Chess Enterprises PO Box 388765, Chicago, IL 60638.

North Avenue Beach Lake Fish for Quick Blitz Action bring sets and clocks to Harper Court or North Avenue Chess Pavillion. Weather Permitting. Souma Taki.

Oak Park/River Forest Chess Club meets Tuesdays 7 p.m. to midnight, Dominican Conference Center, 7200 W. Division, River Forest. Ken Marshall, 357 W Grove, Lombard 60148. (708) 932-1455.

Park Forest Chess Club meets Thursdays 7 to 10 p.m., Freedom Hall, Orchard & Lakewood, Park Forest. Lawrence Cohen, 135 Westwood, Park Forest 60466. (708) 834-2477.

Rudy Lozano Library Chess Club 1805 S Loomis, Chicago, 60608. Hector Hernandez (312) 746-4329.

St. Charles Chess Club meets Thursdays 7 p.m. at Baker Community House, 101 S. 2nd (Rt. 31), St. Charles. Erv Sedlock, 6 N. 307 Old Homestead Rd., St. Charles 60174. (708) 377-7995

Smythe Dakota Competitions encourages and offers financial support for Plus-Score Mini-Tours at sites in Chicago and suburbs.

Bill Smythe, 7445 N. Greenview #311 Chicago 60626, (312) 761-2455.

The South Suburban Chess Club Of Greater Chicago meets Fridays 7 p.m. to midnight at Lutheran Church, 5100 W. 115th Street, Alsip. Joe Hannon, (312) 445-0631

Springfield Chess Club Tom Knoedler, 2104 S Fourth St, Springfield. (217) 523-7265.

Tuley Park Chess Club holds frequent Saturday tournaments at Tuley Park Field House, 501 E. 90th Pl., Chicago. Tom Finenberg, 7321 S South Shore Dr., Chicago 60649, (312) 721-3979.

Join the Illinois Chess Association

and receive six issues of the award winning Illinois Chess Bulletin. In addition, you'll qualify to enter dozens of tournaments on the *Illinois Chess Tour*. Every game you win or draw in a tour event earns you tour points that can add up to cash prizes at yearend.

Each year the ICA organizes major tournaments like the Illinois Open and the Illinois Class Championships and helps bring tournaments like the U.S. Class Championships to Illinois. The ICA also sponsors a scholastic clinic, maintains the *tournament clearing house* and promotes and publicizes chess activity statewide.

Membership is only \$14 per year (\$8 juniors; under 20) but you can *show increased support for Illinois Chess* by joining as a Patron, Gold Card, or Century Club member. These members are acknowledged in each issue of the ICB and receive their magazines by first class mail.

Join now ICA Membership Secretary, PO Box 157, Morton Grove, IL 60053

- Century Club \$100
 Gold Card \$50
 Patron \$35
 Adult \$14
 ICCA Chess Coach \$15
 Junior under 20. \$8 (birth date _____)

Name _____

Address _____

uscf id _____ phone _____

ALL AMERICAN CLASS CHAMPIONSHIPS

JULY 6-7

BEST WESTERN INN

Burr Ridge, IL

5-SS ICA MAXI TOUR EVENT

\$5,000 Prize Fund Guaranteed

A / B / C / D

Sections

\$250-\$200-\$100

Master/Expert

Section

\$700-\$500-\$300

U2300 \$150

U2200 \$250-\$200

E / U Section

\$200-\$150-\$100

Unr \$90 - \$60

Entry Fee: \$43 if by 6/30
\$50 at the site, Jrs. \$10 off
IM's and GM's Free
\$15 to play up 1 section

Reg: 8:00 - 8:45
Rds: 9 - 2 - 7
10 - 3:15

Info: Lawrence Cohen
P.O. Box 6632
Villa Park, IL 60181
(708) 834-2477



ILLINOIS

CHESS ASSOCIATION

c/o Alan R. Losoff
P.O. Box 157
Morton Grove, IL 60053

BULK RATE
U.S. Postage Paid
Astoria IL, 61501
Permit No. 9

Time Value Material