

# Illinois Chess Bulletin

Volume 24, Issue 4

September/October 2001



## Master Challenge draws Large, Strong! Field

---

### INSIDE THIS ISSUE

- 10** Master Challenge
- 17** Zhe Quan
- 19** Bobby Fisher 1964 Simultaneous

## *What they are saying about CHESSDON!*



The Boston Globe by Harold Dondis: "CHESSDON recounts Schultz's experiences in the chess world and is the best chronicle of international chess that we have encountered." Syndicated columnist, Grandmaster Larry Evans: "This memoir is a valuable and accurate rendition of tempestuous events that shaped chess history in the last half of the 20th century." Dr. Frank Brady, former Chess Life editor and author of Bobby Fischer, Profile of a Prodigy: "One of the most interesting chess books ever written." Grandmaster Pal Benko, twice candidate for the World Championship: "From start to finish—a riveting and exciting book." International Master Walter Shipman: "CHESSDON is both entertaining and a valuable historical work." Phil Haley, Delegate to FIDE from Canada: "A one of a kind book that will capture and hold the attention of not only chess enthusiasts but the entire reading world." Egon Ditt, President German Chess Federation: "A great book and a great contribution to chess!" Arthur Kobese, President Chess South Africa: "This book is well researched, full of useful information and very much enjoyable to read. It serves as an inspiration to me, to one day write a book about my own experience in chess in this country." Robert Tanner, U.S. Organizer & International Arbiter: "One of the most enjoyable chess books I've read since Edward Lasker's old books. A very nice addition to my library." CHESS HORIZONS by Tom Zuppa: "Schultz offers the most complete look ever about Campomanes who appears as a mercurial politician of fluid ethics—"I will deal with Satan himself if it will help chess," Campo said on more than one occasion. Bill Cornwall, chess columnist of The Ft. Lauderdale Sun-Sentinel: "If you enjoy reading the inside stories about the lives of chess people, then CHESSDON was written for you." Grandmaster Arthur Dake: "A remarkable book! So many facts and humor too. I could not stop reading all the episodes." Alexey Root, former US Women's Champion: "You will enjoy the 28 games engagingly annotated by Grandmaster Gabriel Schwartzman." Tim Redman, President of the United States Chess Federation 1981-1984, 2000-2001: "CHESSDON, as an eyewitness account and historical document, will be read and pondered for years to come." Charles Pote, award winning national chess journalist: "Simply put, the best chess book I have ever read!" International Journalist, Sam Sloan: "It can be said for certain that CHESSDON will be devoured by chess politicians, organizers and administrators around the world. It covers material and events which are not dealt with in any other book." Grandmaster Murray Chandler, British Chess Magazine: "Although self-published, the presentation is good, and includes a 16-page photo spread in the centre." John Elburg, Netherlands leading reviewer of chess books: "I found here a lot of previously unpublished material. Highly recommended - Five Stars!!!" Internet book reviewer, Steve A. Lopez: "CHESSDON is a good read and I recommend it!" Roy Frye, Editor Illinois Chess Bulletin, "As I read the section covering Don's first hand account of the World Championship in Iceland, I noted that this chapter alone would have been well worth the book's price." Florida Time-Union by Daren Dillinger: "CHESSDON excels in exciting games and grandmaster commentary, and cold war intrigue played out on the canvas of international chess." Almog Burstein (Israel), International Chess Arbiter: "Thrilling and enjoyable, humoristic and serious, sensitive and trenchant—all in one cover." Dr. Frances Lipp, Colorado: "I especially liked reading the accounts of people such as Bobby Fischer, Garry Kasparov, Carol Jarecki, Florencio Campomanes, Frank Camaratta, etc., whose names are familiar to me." Bob Persante, President of Florida Chess Association: "For a fascinating, full treatment of chess organization struggles and successes in scholastic and adult chess throughout the world, read Don Schultz's CHESSDON. Rachel Crotto, Former US Women's Champion and Member US Olympiad Team: "It is so great! I cannot tell you how exciting it was for me to read it. I couldn't put it down."

To order your copy of CHESSDON send check for \$10.95 to: CHESSDON Publishing, P.O. Box 417, Boca Raton, Florida.

# Table of Contents



<b>Master Challenge</b> .....	<b>10</b>
-------------------------------	-----------

## Features

### The Readers Write

• Napoli -- <i>Carmelo Napoli</i> .....	7
• Just say no to chess in the Olympics <i>Vincent J. Hart</i> .....	8
Master Challenge --.....	10
Zhe Quan Result.....	18
Bobby Fisher Simultaneous 1964.....	19
ICA Tour .....	34

## Games

Master Challenge -- <i>Albert Chow</i> .....	12
--	----

## Just for Fun

Chess from the Middle .....	23
-----------------------------	----

## Chess Clubs

Peoria Chess News .....	25
Springfield News Letter.....	26
Twin City Chess.....	30
St. Charles .....	30
Knights Moves Chess.....	31

## Letters

President's Podium.....	5
-------------------------	---

## ICA Support

Supporting Members and Businesses .....	39
---	----

## Where to Play

Tournament Calendar .....	42
Affiliate Listing.....	37

### The ICA Needs You!

Following the September 11<sup>th</sup> attack, ICA could use your support. Please:

- Play chess
- Support your local organizer
- Have fun
- Treat your fellow chessplayers respectfully

Chess needs you. Come out and play.

**Illinois Chess Bulletin**

Published six times per year

Copyright © 2001 Illinois Chess Association

**Next Deadline: October 15**

**Submissions**

Send contributions to:

Colley Kitson  
P.O.Box 632  
Minier, IL  
61759

E-mail: [colley.e.kitson.giak@statefarm.com](mailto:colley.e.kitson.giak@statefarm.com)

**Electronic submissions are preferred.** Preferred formats for articles, stories or advertisements are Microsoft Word or RTF (rich text format). An MS-Word template is available at [www.illinoischess.org/icb.htm](http://www.illinoischess.org/icb.htm).

**Game submissions are also preferred in electronic format.** Games should be submitted in ChessBase archive format (.cbv) or in pgn. ChessBase 8 will automatically send archive format if you e-mail from ChessBase 8. In earlier versions of ChessBase you may archive a database to create a single file to e-mail. See your help materials.

Most chess databases will also produce text files in pgn format as will many chess playing programs. If you need a simple program to create pgn files, we recommend the freeware **PGN Viewer** by KenChess, available at [www.illinoischess.org/icb.htm](http://www.illinoischess.org/icb.htm). The main font for the ICB is Arial, and also using the Figurine Aries font and the US Diagram font from ChessBase.

**Editorial Staff**

Interim Managing Editor:	Kevin L. Bachler
Technical Editor:	Colley Kitson
Assistant Technical Editor:	Albert Chow
Assistant Technical Editor:	Bill Brock
Volunteer Asst. Tech Editor:	Open
Games Editor:	Albert Chow
Assistant Games Editor:	Blair Machaj
High School Managing Editor:	Open
K-8 Managing Editor:	Open
Tour and Crosstables Editor:	Bill Smythe

**Contributors**

Bill Brock  
Tom Doan  
Tim Just  
Mike LoBraco  
Bill Smythe  
Ron Suarez  
Colley Kitson

**Advertising Rates**

Back Cover:	\$125
Inside Front:	\$115
Full Page:	\$100
1/2 Page:	\$65
1/3 Page:	\$50
1/4 Page:	\$40
1/8 Page:	\$25

There is a \$20 design charge for ads that are not camera-ready. Allow 7 days for design. Allow additional time if ad proofing is required. ICA affiliates receive a discount and ads that appear in consecutive issues receive a 10% discount. Payment must accompany the ad. The ICA and the ICB reserve the right to refuse any specific advertisement.

**Membership Information**

The Illinois Chess Bulletin (ICB) is published by the Illinois Chess Association (ICA). ICA membership includes a subscription to the ICB. Memberships marked 1<sup>st</sup> receive their magazine first class. Memberships marked P also receive a plaque. Affiliates also receive discounted advertising rates, event advertising on Chess Phone and the ICA website, and the right to run Tour events.

Corporate Organization	\$500	1 <sup>st</sup> Class & Plaque
Business	\$200	1 <sup>st</sup> Class & Plaque
Century Club	\$200	1 <sup>st</sup> Class & Plaque
Gold Card	\$100	1 <sup>st</sup> Class
Patron	\$50	1 <sup>st</sup> Class
Affiliate	\$35	1 <sup>st</sup> Class
Regular	\$25	Affiliate benefits
Junior	\$18	
Family	\$10	
ICCAs Coach	\$6	No magazine
Cochess	\$19	Also a member of ICCA
	\$19	Also a member of Cochess

## President's Podium



### Continuing to Improve

Chess is alive and well in Illinois. The Illinois Open drew 250 players, we believe the largest number ever. We have started receiving regular updates from more chess clubs downstate – and frankly many of them appear to be in fine shape. There is something about the rural club that gets more community support. Libraries, park districts and schools all seem more supportive of chess clubs downstate than locally.

Speaking of downstate, we expect to launch some programs soon to help build ICA interest downstate. Watch for these in the next ICB.

The ICB is getting closer to where it should be. This issue looks much better than the last one, but lost perhaps a little time. One thing that contributors can do to help us is to use the electronic formats provided online at [www.illinoishchess.org](http://www.illinoishchess.org) under ICB Write! By using these templates, you can cut down our formatting time.

Deadline for the next ICB is October 22<sup>nd</sup>. This ICB will cover the Illinois Open. Please send your Illinois Open stories right away! Contributions should be sent to:

Colley Kitson  
P.O.Box 632  
Minier, IL 61759

E-mail: [colley.e.kitson.giak@statefarm.com](mailto:colley.e.kitson.giak@statefarm.com)

The ICA could continue to use more volunteers. Specifically, we could use some additional help in the bookkeeping arena. If you can assist us, please e-mail both me and Treasurer Rhys Read.

The next ICA meeting is October 7<sup>th</sup> at the Oakbrook Hyatt. The meeting begins at 1:00.

There are a number of chess tournaments this fall including the Illinois Class. We look forward to seeing you there.

Yours in chess...

Caveman

#### President

Kevin Bachler  
2144 Manor Lane  
Park Ridge, IL 60068  
Home: (847) 698-9365  
Mobile: (847) 922-2993  
Work: (847) 374-1000  
Fax: (847) 318-9288  
[kbachler@cavemanchess.com](mailto:kbachler@cavemanchess.com)

#### Metro Vice President

Tim Just  
37165 Willow Lane  
Gurnee, IL 60031  
(847) 244-7954  
[timjust@Lnd.com](mailto:timjust@Lnd.com)

#### Downstate Vice President

Garrett Scott  
202 Foster Dr.  
Normal, IL 61761  
(309) 452-8116  
[scottg@district87.org](mailto:scottg@district87.org)

#### Secretary

Roger Birkeland  
712 S. Harvard Av.  
Addison, IL 60101  
(630) 832-1754  
[rogerb@elmhurst.edu](mailto:rogerb@elmhurst.edu)

#### Treasurer

Rhys Read  
175 Lancaster Lane  
Des Plaines, IL 60018-1208  
(847) 827-4397  
[rhysread@aol.com](mailto:rhysread@aol.com)

#### ICA Tour Statistician Membership Secretary & Calendar

Bill Smythe  
7042 N. Greenview Avenue 1-S  
Chicago, IL 60626-2833  
(773) 761-2455  
[chichess@enteract.com](mailto:chichess@enteract.com)

#### Helen Warren

Junior Chess Program  
PO Box 305  
Western Springs, IL 60558-0305  
[ajc1@aol.com](mailto:ajc1@aol.com)

#### CHESS PHONE

Chess results & announcements  
(630) 832-5222

#### WORLD WIDE WEB

<http://www.illinoishchess.org>

#### Past President

Fred Gruenberg  
6513 W. 126<sup>th</sup> Place  
Palos Heights, IL 60463  
(708) 489-5800  
(708) 774-5006  
[Fred@64.com](mailto:Fred@64.com)

## Commentary and Letters

*View expressed letters are not necessarily those of the ICA and we welcome opposing views.*



**By Carmelo Napoli**

The Napoli family is known in chess tournaments, especially in Lake County, as the family that plays that unorthodox opening of 1. b3. The Napoli Opening (I mean the Larsen) was revived back in our family about five years ago when my Uncle Mike started using it at the Caveman Chess Club Championship. I had received a phone call from my uncle and he told me that he wanted to try something different. Something his father (my grandfather) used to play 1. b3. My uncle had success and many comments with that opening.

Something was telling me to study this opening, so I grabbed an old book that I purchased when I lived in Sicily about Irregular Openings and started to read about the Larsen. As time went by I started playing it against my chess computer, learning it together with my cousins and getting more convinced that it was a good strategic opening: it's bold, different and will drive several opponents "out of their lines!" White avoids committing the central pawns too early and avoids prepared theoretical variations much analyzed in modern opening theory.

In March '96 I played in the Mid-America Class Championship and won all three games with white playing 1. b3. From that day on my uncle, Mike Napoli, and my two cousins, Anthony and Steven Napoli, and I decided to always play the Larsen in memory of my grandfather, Carmelo Napoli. Nowadays we are teased by chess players and told that we are playing an inferior opening and that it is not "real chess". But in many games we have proved them wrong! I have lost only two out of 25 games playing with the Larsen's opening.

If grandmasters like Bent Larsen (the Danish Grandmaster of his opening), Bobby Fischer (that played one game against Tukmakov in Buenos Aires in 1970 with success during his rise to World Champion),

Tigran Petrosian, Vassily Smyslov, Ulf Andersson, Lubomir Ljubojevic, Mark Taimanov and Jan Timman played the b3 opening, then why shouldn't we play it at our levels?

Our chance finally to win big with the Larsen was at the Tim Just Winter Open 2001. My cousin Anthony and I had a very tough fourth match and we were both sitting next to each other on the first two boards in which we had to defend our reputation of playing the "Napoli Opening." We found out that our opponents studied all night to bust our opening, but we won! The final round was then between Anthony and I, the only two players with four points. It was kind of fun playing against a family member to decide the title. We made about 28 moves and smiling to each other, we drew. There was no need to play for the "kill", to see who is the best in the family. We normally decide this when our family gets together for New Years Eve.

It was exciting to share 1st place with my cousin Anthony. Some players tell us that we should play "REAL" chess openings for our own good. But like my Uncle Mike says, "We play chess for the fun of it and 1.b3 is a fun opening."

In conclusion, by playing 1.b3, we believe that Bent Larsen, Bobby Fischer and my grandfather wanted to leave a message to all chess players. That it is not how good an opening is, but it is how good the opening is played.

## *Just Say No to Chess in the Olympics*

Vincent J. Hart

The easiest way to see the folly in the USCF and FIDE's misguided attempt to introduce chess into the Olympic games is to consider the arguments offered in favor of the move like Jim Eade's commentary in the September 2001 Chess Life. Eade has shown that the movement to put chess in the Olympics disregards the interests of the dues-paying majority of USCF members who have shown their willingness to support the game of chess by spending their own money. In his view, the mission of the USCF is to reach people who have little or no present interest in the game and to develop elite players. The chess hobbyist does not matter.

Policies are being set by people like Eade who think that most USCF members are irrelevant. Look at what guides the decision making process: "I summarize our mission with two expressions: chess literacy and chess excellence. Chess literacy is the ability to read and write chess notation and to know the basic rules of the game. Chess excellence is the ability to compete at the highest levels and advance the art of the game." Eade's mission statement expressly ignores the vast majority of members who are long past literacy, but will never reach excellence.

Why does Eade think that the players who actually put money into the game are irrelevant? In the last five years, I have bought more than one hundred and fifty chess books, four clocks, and half-dozen sets. I have played in four or five big Swiss tournaments per year including two trips to the World Open as well as dozens of small club tournaments. Including some lessons I took, I have spent more than \$1000.00 per year on chess even after counting the prizes I have won. Nevertheless, according to Eade, the USCF's mission does not include me.

Eade thinks that the USCF should stop "glorifying high entry fee/high prize fund tournaments" even though this is where a large number of chess players have shown a willingness to spend their money. He thinks that over-the-board play is unworthy of the USCF's

attention other than competitions for the elite players like the U.S. and World Championships and the Olympics. He thinks that the USCF should be trying to develop players who will achieve that level of excellence rather than focusing on the rank and file who pay the bills.

It is odd that Eade applauds FIDE's efforts to "commercialize" chess while on the other hand denigrating the big-prize tournaments that actually show a profit. No doubt Eade supports the USCF's misguided attempt to get out the business of selling books and equipment. It is not exactly clear what Eade means by "commercial," but it apparently does not include the practice of figuring out who the paying customers are and then trying to service that market. Eade advocates a radical shift in the "organizational soul" of the USCF because "it is plausible to speculate" that financing will be easier to obtain if chess becomes part of the Olympic games. What responsible business makes decisions so capriciously?

Do people honestly believe that having chess in the Olympics is going to significantly increase its popularity in the United States? How many curling competitions has anyone attended lately? Does anyone know who holds the world record in that combination of rifle shooting and cross-country skiing known as the biathlon? How many people follow synchronized swimming, handball, orienteering, dressage, archery or rowing? As wonderful as any of those sports might be, their status as Olympic events has not broadened their appeal or created any great "commercial" opportunities for their participants.

It is difficult to believe that inadequate promotion has deterred American young people from striving to reach the upper echelons of chess. Rather, the problem is the influx of chess players from former Iron Curtain countries that has made the career of a chess professional more difficult than ever. Prior to the fall of the Soviet Union, the laws of supply and demand in the United States produced about as many professional players as the game could support, which was never all that many. In the Soviet Union, on the other hand, the government heavily subsidized the game in an effort to prove the superiority of the communist system thus producing many chess professionals who might otherwise have chosen some other career. With the

## Letters

fall of the USSR, the west has been forced to absorb more chess professionals than the popularity of the game can support. Given the glut of professional players, it would be irresponsible to provide any incentives for young people to "go for the gold" other than their inner love for the game.

We must recognize that the Soviet system raised the bar on chess excellence to a level that we cannot in good conscience recommend as a goal to our young people. Chess should be an enriching experience for young people as part of an otherwise well rounded life. The choice to pursue excellence in chess should be made freely in light of the wide range of choices available. The USSR, on the other hand, encouraged a single-minded devotion to chess among young people who showed potential. Russia's subsidy of chess professionals as well as the lack of other opportunities created an incentive for young people to dedicate their lives to chess at an early age to the exclusion of other activities. This is not something we want to duplicate.

The simple fact is that the upper echelons of American chess are going to be dominated by products of the Soviet system and by the current crop of American Grandmasters for some time to come. There may be a few young Americans who challenge, but not very many. It would be the same situation if the Soviet Union had subsidized an unreasonably large number of doctors who then came west: we would expect far fewer young people to choose medicine as a career. Eventually, however, the playing strength of the current grandmasters will decline and there will be more room at the top for young people who never knew chess as simply another front in the Cold War. Perhaps we will see a time again when there are non-professional players in the US Championship. In the mean time, the USCF can still promote the game and serve the hobbyists who actually love and support the game.

Chess is still a wonderful game, but the USCF and FIDE are never going to return chess to what it was when one of the most powerful nations on earth chose to subsidize the game at a level out of all proportion to its inherent appeal and significance. I sympathize with GMs and IMs who devoted their lives to the game and find it difficult to make a living now, but I think I do my part by buying books that they write and paying large

entry fees to subsidize their prizes at tournaments. I believe that some portion of my dues should be to promote the interests of the elite players. Nevertheless, I will never fill up a cup to play in a tournament just because the USCF dreams of finding sources of funding that will better enable it to ignore my interests as a player.

My objection to drug testing is simply a matter of my desire for privacy. Only my physician and my wife have any legitimate interest in knowing what prescribed medications I take and the conditions for which I take them. Why should I have to disclose this information to enjoy my hobby? I do not have to submit a urine sample to build a model railroad. I do not have to prove that I am clean to collect stamps. I will not do so in order to play chess.

I would like to point out a couple of the arguments in favor of mandatory drug testing that seem particularly un-American to me. In the same issue of Chess Life that contains Eade's commentary, Tim Redman asserts that we should be willing to take drug tests in order to prove that we are clean. I always thought that Americans are not required to prove their innocence. Even more insidious is Dr. Press who concludes that people must be using performance-enhancing drugs from the very fact that they object to giving urine samples. Is there anything more offensive than Eade, Redman and Press claiming to occupy the high moral ground as they seek to commercialize chess by introducing it into the scandal-ridden Olympics games?

Eade notes that the USCF has "recently struggled for both solvency and relevancy." I would submit that the reason the USCF is insolvent is because too many officials think that most of the members are irrelevant. If the USCF would focus on who presently pays the bills rather than going on wild goose chases for new money, its future would be much more secure.

Vincent J. Hart

Mount Prospect IL

USCF 1839



### *Another View*

**Kevin L. Bachler**

***(These views do not necessarily represent the views of the Illinois Chess Association.)***

Mr. Hart makes some very interesting comments regarding chess, money, the Olympics, etc. I think, though, that these are complex arguments, and it is a dis-service to the chess public not to provide some information on alternative points of view. I should not that in some instances I am not necessarily advocating a position below – but in many cases am just giving another perspective.

Let's start by considering the Olympics.

I used to start this argument by saying that we should consider why sponsorship is important because it seemed obvious to me that no one really wants drug testing in chess. It turns out, though, that this "obvious" statement is wrong. There are actually many people who want drug testing in chess. Although not a position that I advocate, some people have expressed the opinion that drug testing is a good thing because it will help to clean up chess tournaments. These people have noted that chessplayers seem to revel in the unseedy environment depicted in movies like *Searching for Bobby Fischer*. I do not advocate this point, but I do concede that *there is* a point.

Most chessplayers are more interested in the concept of sponsorship. I had the good fortune a year ago to be the guest of a corporate sponsor of the Olympics in Sydney, Australia. During the games, I had the opportunity to talk to many of the people involved in this sponsorship, and asked whether chess might be able to tap into that sponsorship.

The answer was a flat out no – ***unless chess was part of the Olympics***. In talking to a couple of other sponsors, I found the same attitude. In a way, the Olympics are the "United Way" of sponsorship. Corporations don't want to have to do separate research on equestrian, and swimming, and track, and hockey and iceskating and chess groups that all need money. In spite of the recent planning scandals, the IOC member nations and sports are "safe bets" for sponsorship dollars. If you aren't in IOC it is much more difficult to get considered.

Whether or not we believe that the Olympics might increase the popularity or the dollars available to chess, the simple fact is that if we do not try it, we will not know. And, contrary to Mr. Hart's statements, other sports typically have broadened their appeal and found dollars in the Olympics. Has the Olympics put archery on par with NBA basketball? Of course not! But other than the Olympics, how often are many of these sports seen on TV, or how often do they get sponsorship dollars?

On another front, Mr. Hart notes that "the USCF is insolvent because too many officials think that most the members are irrelevant. If the USCF would focus on who present pays the bills rather than going on wild goose chases for new money, it's future would be much more secure." Well, unfortunately, the bills aren't getting paid. Poor management in prior administrations created significant debt, and stern measures were necessary to keep USCF afloat at all.

As former Chair of the USCF Finance Committee, I suspect most people do not understand how close to bankruptcy we are. New sources of revenue and "profit" ARE needed, whether we like that or not. Without new sources of money, USCF would need to continue very austere programs to have any chance to survive. In fact, without new sources of revenue, our future will be less secure, not more secure. The Olympics may or may not be the right way to get new revenue, but new revenue is needed.

Along this line, at the delegates meeting in August, delegates elected by YOU, the USCF members, endorsed a concept proposed by GM Benjamin to focus on requiring drug testing for only for tournaments that bear a direct relationship to Olympic qualification. This is recognition of Mr. Hart's point. Whether the IOC will be flexible on this issue is not yet clear.

On most issues in chess (even whether USCF should sell a broad range of books and equipment) the issues are not clear. B&E numbers are actually better since narrowing the selection. Is this the right philosophy? Are members willing to subsidize this portion of USCF so that it can offer a broader range of B&E? These are tough questions, and they generally do not have simple answers. In a time of austerity, many decisions must be made to focus on the bottom line, to keep the organization alive for one more day.

## *Master Challenge Draws Large, Strong! Field*



This year's edition of Master Challenge, held at Elmhurst College June 22-24, drew the largest and strongest field in the long history of the tournament. Three of the top ten Grandmasters in the country, Alexander Goldin (2704), Alek Wojtkiewicz (2702) and U. S. co-champion Joel Benjamin (2664) joined IMs Osman Palos, Dominik Pedzich, Angelo Young and 150 other players to make the tournament a smashing success.



Master Challenge, after being abandoned for several years by its last organizer, was resurrected last year (June, 2000) under the co-sponsorship of the Elmhurst Chess Club and the St. Charles Chess Club. Last year's tournament drew 102 players over Father's Day weekend, but this year the combination of the reputation of the excellent Frick Center site, a non-holiday weekend, a larger prize fund, player-friendly round times (no morning rounds), a faster time control

(30/90, SD/60), free food and an early commitment by GM Benjamin brought about a 50% increase in attendance. Tournament directors Jeff Wiewel, Blair Machaj and Roger Birkeland had their hands full with the larger than anticipated crowd, but everything went quite smoothly. This was the first time we used both the upper and lower levels of the Frick Center for a tournament, and the extra space proved very nice. Almost every board was on a separate table, and the luxurious high-backed leather chairs provided for the top 24 boards were a favorite of many players—especially GM Benjamin, who said the conditions were the finest he had seen for an "open" tournament.

Accelerated pairings, traditionally used in the first two rounds of Master Challenge, got the action off to a quick start, and upsets were frequent from the first round on. One of highlights of the tournament was the play of 11 year old Zhe Quan. Fresh off an excellent result in the Chicago Open, Zhe (2008) defeated powerful Aleksandar Stannov (2311) in the second round, then drew GM Wojtkiewicz in round three before losing to IM Palos (2349) in the last round.



Due to the large turnout we raised the advertised \$4500 prize fund to \$5500, and were proud to award the first prize of \$800 to GM Goldin, the only participant with a perfect score of 5-0. Close behind at 4.5-5 were GM Wojtkiewicz, GM



## Master Challenge

Benjamin (who took a half point bye in round one after giving a big simul on Friday night), IM Palos and IM Pedzich. Bill Brock and Bryan Gast, both with an excellent 4-1, took home \$240 apiece for best in the Expert class. Stan Ilic, Dexter Cavitt and Yakov Lazebnik, also with 4-1, split the \$630 prize money in Class A. Another score of 4-1 gave Boyd Reed clear first and \$280 in Class B. Fabian Ramos also took home \$280 as the best in Class C with 3.5-1.5. Juniors Mike Sullivan and Ben Wallenberg were best in Class D, and Wallenberg also took the upset prize with a win over Arnulfo Beresa (2030). Eric Lindner's score of 3-2 was good for clear first in the under 1200 group.



Chess players certainly know what to do with free food, as the participants consumed more than 25 cases of soda pop, 45 bags of cookies and 36 pounds of apples. The organizers enjoyed very much putting on this tournament for you, the chess players of Illinois, and we hope to be able to give you an even better tournament next year.

**Goldin,A (2684) – Gorlin,A (2005) [D37]**  
Master Challenge (3), 23.06.2001  
*[Albert Chow]*

1.d4 e6 2.c4 d5 3.Nf3 Nf6 4.Nc3 Be7 5.Bf4 c6

An active alternative is 5...0-0 6.e3 c5!

6.e3 Nbd7 7.Qc2 b6 8.cxd5 exd5 9.Bd3 Bb7 10.0-0 0-0 11.Rad1 Re8 12.Ne5 g6 13.h3 Bf8 14.a3 Nxe5 15.Bxe5 Nd7 16.Bf4 a5 17.e4 Rc8

White's piece activity after 17...dxe4 18.Nxe4 compensates for the isolation of the d4 pawn.

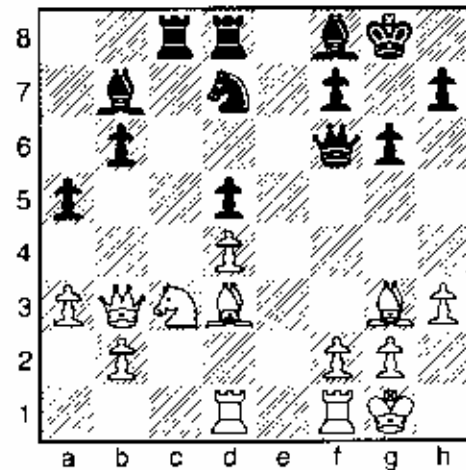
18.exd5!

It is important to find the best central pawn pressure. If 18.e5 f6!

18...cxd5 19.Qb3 Qf6

More solid was 19...Nf6.

20.Bg3 Red8



21.Be2!

Not 21.Nxd5? Qe6! 22.Bc4 Rxc4! 23.Qxc4 Bxd5!

21...Bg7 22.Bf3 Nf8 23.Bg4 Rc4 24.Be5 Qc6 25.Bxg7 Kxg7 26.Rd2 Ne6 27.Qd1 Qe8?!

Better was 27...Qd6.

28.Re1! Rc7?

Better was 28...Rd6!

29.Bxe6! fxe6 30.Qg4 Re7 31.Re5± Qd7 32.Rde2 Rde8 33.h4! Ba6 34.R2e3 Bc4 35.h5 Bb3 36.hxg6 hxg6 37.Rg3 Rf7 38.Qxg6+ Kf8 39.Rh5 Qd6 40.Qg5 Black resigns 1-0

**Brock,B (2040) – Goldin,A (2685) [E58]**  
Master Challenge (2), 22.06.2001  
*[Albert Chow]*

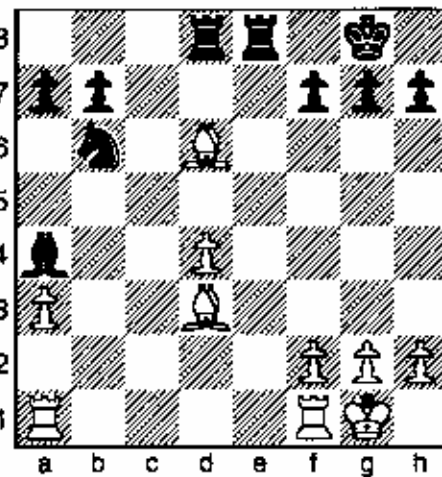
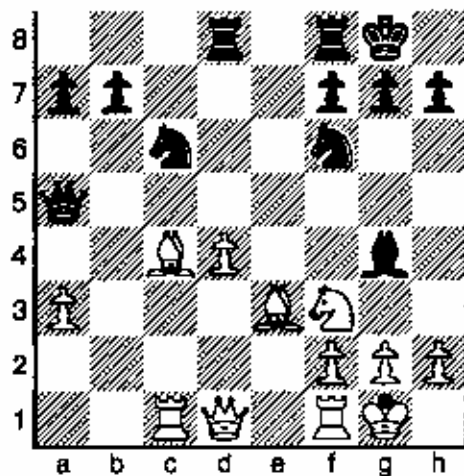
1.d4 Nf6 2.c4 e6 3.Nc3 Bb4 4.Nf3 c5 5.e3 Nc6 6.Bd3

d5 7.0-0 0-0 8.a3 Bxc3 9.bxc3 Qc7 10.cxd5 exd5 11.c4?

Book theory gives 11.Nh4.

11...dxc4 12.Bxc4 cxd4 13.exd4 Bg4 14.Be3 Rad8 15.Rc1 Qa5

23...Rad8



16.Qb3??

Better was 16.h3! Bxf3 17.Qxf3 Nxd4 18 Qxb7 Qxa3 19.Rfd1 with active compensation.

16...Bxf3 17.gxf3 Nxd4 18.Qxb7 Rd7 19.Qb4 Nxf3+ 20.Kg2 Qh5 21.Rh1 Qg4+ 22.Kf1 Qh3+ 23.Ke2 Re8 24.Rhd1 Rxe3+ 25.Kxe3 Ng1+

White resigns 0-1

Chow, A (2272) – Goldin, A (2685) [E59]  
Master Challenge (4), 24.06 2001  
[Albert Chow]

1.d4 Nf6 2.c4 e6 3.Nc3 Bb4 4.e3 c5 5.Bd3 Nc6 6.Nf3 d5 7.0-0 0-0 8.a3 Bxc3 9.bxc3 Qc7

An important tabia in the Rubinstein Nimzo-Indian.

10.Qc2 dxc4 11.Bxc4 e5 12.Bd3 Re8 13.e4 c4!

Goldin shows his high class of theoretical understanding by avoiding the poisonous complications of 13...exd4 14.cxd4 Bg4 15 Qxc5 (Or 15.e5!? Bxf3 16.exf6 Nxd4 17 Bxh7+ Kh8 18.fxg7+ Kxg7 19.Bb2 unclear) 15...Bxf3 (15...Nxe4) 16 gxf3 Qd7 17.Be3 (17.d5!) 17...Nxe4! 18 Bxe4 Rxe4 19.fxe4 Qg4+ 20.Kh1 Qf3+ 21.Kg1 Qg4+= draw by perpetual check.

14.Bxc4 exd4 15.cxd4 Na5 16.Bd3 Qxc2 17.Bxc2 Nxe4

White has the Bishop pair but Black's blockading Knights find strength due to White's isolated a- and d-pawns.

18.Ne5

Or 18.Re1 Bf5.

18...Nd6 19.Bd2 Nac4 20.Bf4

Also playable was 20.Nxc4 Nxc4 21.Bf4 Bd7.

20...Nb6 21.Nd7!? Bxd7 22.Bxd6 Ba4 23.Bd3

Also playable was 23.Bxa4 Nxa4 24.Rab1.

24.Bc7?

Best was 24.Bc5! Nc8 25.Rfe1 b6 26.Bb4 Rxd4 27.Rxe8+ Bxe8 28.Ba6 with enough activity for the pawn and good drawing chances as pointed out after the game by Mr. Goldin.

24...Rxd4 25.Bxb6 axb6 26.Bf5 g6 27.Bh3 b5

Better was 27...Bc6!?

28.g3 Re7 29.Rfb1 Re5 30.Rb2 Kf8 31.Bf1 Red5 32.f4 Ke7 33.Rab1 Rd1 34.Rxd1 Rxd1 35.Kf2 Rd5 36.Bg2 Rd3 37.Bxb7

A better defence might be 37.Re2+!? Kd8 (37...Kd6 38.Re3 Rxe3 39.Kxe3 b6 40.Kd4=) 38.Re3 Rd7 with good drawing chances.

37...Kd6!

Not 37...Rxa3 38.Ba6!= removing all queenside pawns for the easy draw.

38.Ra2 Kc5 39.Be4 Rc3 40.Ke2 Bb3

The time control has been made but the pressure is still on White.

41.Kd2 Kd4

Also good was 41...Rxc3 42.hxc3 Bxa2 43.Kc3

42.Rb2 Bc4 43.Bc6 Rd3+

The GM technique avoids false temptation. If 43...Rxa3 44.Bxb5 Bxb5 45.Rxb5 Ra2+ 46.Ke1 Rxh2 47.Re5! with hope to draw.

44.Kc2 Re3 45.a4 b4! 46.Bd7

Or 46.Rxb4 Kc5! 47.Rxc4+ Kxc4?

46...b3+ -+ 47.Kd2 Re2+ 48.Kc1 Kc3 49.Rxe2 Bxe2 50.Bb5 Bf3 White resigns 0-1

Wojtkiewicz, A (2692) – Quan, Z (2008) [E69]  
Master Challenge (3), 22.06.2001  
[Albert Chow]

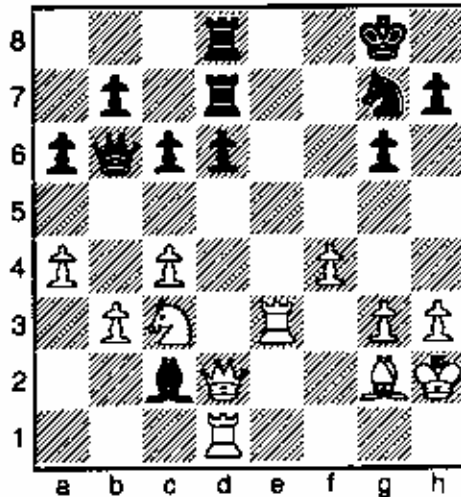
1.Nf3 g6 2.d4 Bg7 3.c4 Nf6 4.g3 0-0 5.Bg2 d6 6.0-0

## Master Challenge

Nbd7 7.Nc3 c6 8.e4 Qc7 9.h3 e5 10.Be3 Re8 11.Re1  
exd4 12.Nxd4 Nc5 13.Qc2 Ne6 14.Rad1

Exchanges are avoided by 14.Nde2

14...Nxd4 15.Bxd4 Nh5 16.Bxg7 Nxe7 17.Re3 Be6  
18.b3 Rad8 19.Red3 Rd7 20.Qd2 Red8 21.Kh2 a6  
22.a4 Qb6 23.f4 f5 24.exf5 Bxf5 25.Re3 Bc2?



26.Rc1 Bxb3 27.Qb2! Nf5 28.Rd3 Qb4 29.Rb1 Qxc4  
30.Qxb3 Qxb3 31.Rxb3± d5 32.a5 Re7 33.Ne4 Kf7  
34.g4 Nd6 35.Nxd6+

Better was 35.Nc5

35...Rxd6 36.Kg3 Rc7 37.Rb2 Rdd7 38.h4?

Better was blockade by 38.Rd4!

38...d4! 39.Be4 c5 40.Rdb3 c4 41.Rxb7 d3 42.Rxc7  
Rxc7 43.Rb1?

Better was 43.Rb6!+-.

43...Rc5 44.Ra1?

The active 44.Rb7+! was best.

44...c3 45.Bxd3 c2 46.Bxc2

Or 46.Rc1 Rc3 47.Rxc2 Rxd3+

46...Rxc2

The danger has passed into a drawish ending.

47.Re1 Rc3+ 48.Kf2 Rc5 49.Ra1 Kf6 50.Kf3 h5  
51.Ra3 hxg4+ 52.Kxg4 Rb5 53.Ra4 draw agreed. ½-½

Wojtkiewicz,A (2692) – Aramil,W (2030) [E69]

Master Challenge (5), 24.06.2001

[Albert Chow]

1.Nf3 Nf6 2.c4 g6 3.g3 Bg7 4.Bg2 0-0 5.d4 d6 6.0-0  
Nbd7 7.Nc3 e5 8.e4 c6

Another classic variation of the King's Indian.

9.Rb1 a5 10.h3 Re8 11.Re1 Qc7 12.Be3 exd4  
13.Nxd4 Nc5 14.Qc2 Be6?

Better was 14...a4!?

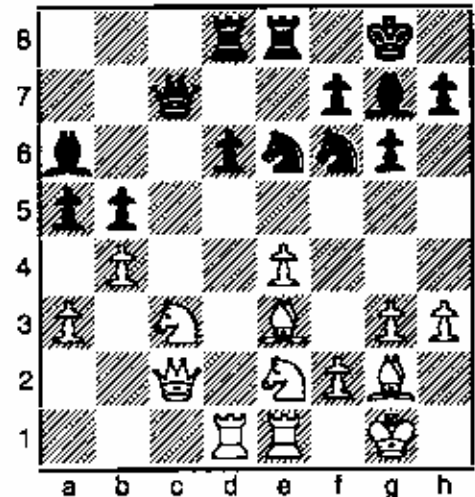
15.b3 Rad8 16.a3 Bc8 17.Rbd1 Ne6 18.Nde2!

Wojto avoids equalizing exchanges.

18...b5

Aramil lunges out on the flank causing fresh weaknesses.

19.cxb5 cxb5 20.b4! Ba6



21.Qd2 axb4 22.axb4 Qc4?! 23.Rb1! Bb7 24.Rec1!  
d5?! 25.exd5 Bxd5 26.Nxd5 Rxd5 27.Bxd5 Qxd5  
28.Qxd5 Nxd5 29.Bd2±

The grandmaster now demonstrates his winning endgame technique.

29...Nb6 30.Bc3 Bf8 31.Nd4

A fork forces more trades.

31...Nxd4 32.Bxd4 Nc4 33.Bc5 Bg7 34.Re1 Rc8  
35.Rbd1 Bc3 36.Re7 Ne5 37.Rb7 Nf3+ 38.Kg2 Ne1+  
39.Kf1 Nc2 40.Rxb5 Re8 41.Rb7 f5 42.Rc1 Black  
resigns 1-0

Aramil,W (2030) – Pedzich,D [A46]

Master Challenge (4), 23.06.2001

[Albert Chow]

1.d4 d6 2.Nf3 Nf6 3.g3 Nbd7 4.Bg2 e5 5.0-0 Be7  
6.b3 c6 7.c4 0-0 8.Qc2 Re8 9.Nc3 a6

Pedzich uses the solid Old Indian defence.

10.Rd1 Bf8 11.dxe5 dxe5

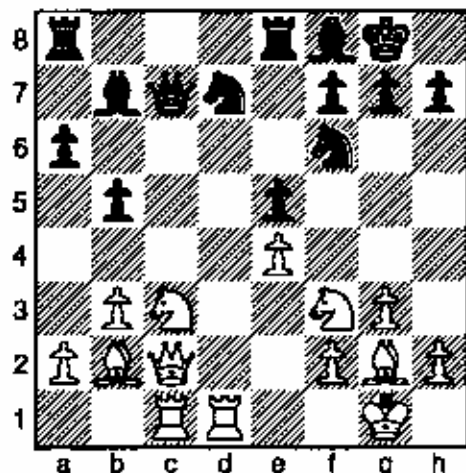
An equalizing exchange.

12.e4 Qc7 13.Bb2 b5 14.cxb5 cxb5

Aramil is able to force more exchanges on the higher rated IM.

Not 14...axb5? 15.Nxb5.

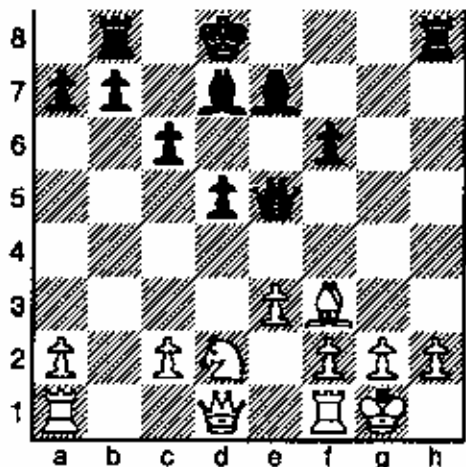
15.Rac1 Bb7



16.Nd5 Qxc2 17.Rxc2 Rac8 18.Rxc8 Rxc8 19.Nxe5 Rc2 20.Nxd7 Nxd7 21.Ne7+ Bxe7 22.Rxd7 Bf8 23.Be5 Rc1+ 24.Bf1 Bxe4 25.Rd8 Bf5 26.Bd6 Rc8 27.Rxf8+ Rxf8 28.Bxf8 Kxf8 29.f4 Ke7 30.Kf2 Kd6 31.b4 Kd5 draw agreed 1/2-1/2

Quan,Z (2008) - Stannov,A (2311) [D02]  
Master Challenge (2), 22.07.2001  
*[Albert Chow]*

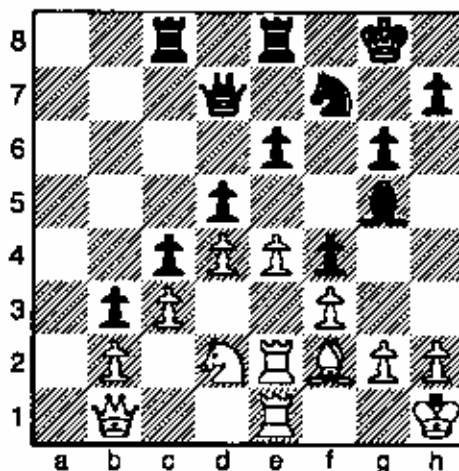
1.d4 d5 2.Nf3 Nf6 3.Bf4 c6 4.e3 Qb6 5.Qc1 Nh5!  
Solid is 5...Bf5  
6.Bxb8!? Rxb8 7.Bd3 e6 8.0-0 Be7 9.Ne5 f6??  
Solid was 9...0-0 or 9...Nf6.  
10.Qd1! g6 11.Nxg6! hxg6 12.Bxg6+ Kd8 13.Bxh5 Bd7?  
Better 13...Qxb2!  
14.Bf3  
White is up two pawns after 14.b3!±  
14...Qxb2 15.Nd2 e5 16.dxe5 Qxe5



17.g3 Qf5 18.Bg2 Qh7 19.h4 Kc7 20.c4! dxc4 21.Nxc4 Bf5 22.Qf3 Rbd8 23.Rfc1! Rd7 24.Qf4+ Kc8 25.a4! Rhd8 26.a5! Rc7 27.a6! b5 28.Nb6+!! axb6  
Or 28...Kb8 29.Rxc6  
29.a7 Kb7 30.a8Q+ Rxa8 31.Rxa8 Bb4 32.Bxc6+! Rxc6 33.Qb8# 1-0

Quan,Z (2010) - Palos,O (2350) [D03]  
Master Challenge (5), 24.06.2001  
*[Albert Chow]*

1.d4 Nf6 2.Nf3 e6 3.Bg5  
The Torre attack.  
3...c5 4.e3 Qb6! 5.Qc1 Ne4! 6.Bf4 Nc6 7.Bd3 d5 8.c3 Bd7 9.0-0 Be7 10.Nbd2 f5!  
The Black pawn structure transposes to the Stonewall formation of the Dutch defence.  
11.Ne5 Nxe5 12.Bxe5 0-0 13.f3 Nd6! 14.Kh1 Nf7 15.Bg3 Rac8 16.Qc2 Bb5!  
Trading off the bad Dutch Bishop.  
17.Bxb5 Qxb5 18.Nb3 Qa4 19.Qe2 c4! 20.Nd2 Qc2 21.Rab1 Bg5 22.Rfc1 Qa4 23.a3 Qd7 24.Re1 b5 25.e4 f4! 26.Bf2 Rfe8 27.Qd1 a5 28.Qc2 Be7 29.Re2 b4! 30.axb4 axb4 31.Rbe1 b3! 32.Qc1 Bg5 33.Qb1 g6!



34.exd5 exd5 35.Rxe8+ Rxe8 36.Rxe8+ Qxe8 37.Qe1 Qxe1+ 38.Bxe1 Be7  
The ending is good for Black thanks to his advanced pawn chain.  
39.Nb1 Bd6 40.Bd2 Kg7 41.Kg1 Kf6 42.Kf2 Kf5 43.Bc1 h5 44.Nd2 g5 45.Ke2 Nh8 46.Nf1 Ng6 47.Nd2 Ne7 48.Kf2 Nc8 49.Ke2 Nb6 50.Kf2 Na4 51.Nb1 g4 52.Ke2 Nb6 53.Nd2 Na8 54.Nb1 Nc7 55.Nd2 Ne6 56.Kf2 Be7 57.Kf1 Bf6 58.Kf2 g3+! 59.Kg1  
If 59.hxg3 fxg3+ 60.Kxg3 Nf4  
59...Nxd4! 60.cxd4 Bxd4+ 61.Kh1 Be3 62.hxg3 Bxd2 63.Bxd2 d4 64.Bc1 c3 White resigns 0-1

## Master Challenge

**Pedzich,D (2345) – Gorlin,G (1930) [B09]**  
 Master Challenge (5), 24.06.2001  
*[Albert Chow]*

1.e4 d6 2.d4 Nf6 3.Nc3 g6 4.f4 c6?

More active in this Austrian attack vs. the Pirc defence is 4...Bg7 5.Nf3 c5! 6.dxc5 Qa5 7.Bd3 Qxc5 as in Spassky-Fischer, game 17, of the 1972 Championship match.

5.Nf3 Bg4 6.Be3 Bg7 7.h3 Bxf3 8.Qxf3 Nfd7 9.e5 d5 10.g4 Qb6 11.0-0-0 Na6 12.f5 Nc7 13.h4 h5?

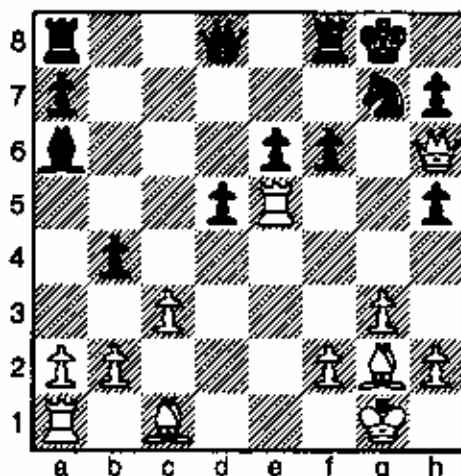
More solid was 13...0-0-0, 14.fxg6 fxg6 15.Bd3 Nf8 16.gxh5 0-0-0 Or 16...gxh5 17.Rhg1 with attack. 17.hxg6 Nfe6 18.Bf5 Rdf8 19.Qg4 Kd7 20.Na4 Qa5 21.Nc5+ Ke8 22.Bxe6 Nxe6 23.Nxe6 Black resigns 1-0

**Palos,O (2350) – Chen,A (1995) [B06]**  
 Master Challenge (4), 24.06.2001  
*[Albert Chow]*

1.e4 g6 2.d4 Bg7 3.Nc3 c6 4.g3 d5 5.exd5 cxd5 6.Bg2 e6 7.Nf3 Nc6 8.0-0 Nge7 9.Ne2 0-0 10.c3 b6 11.Nf4 Ba6 12.Re1 Nf5 13.Qa4 Qc8 14.Ne5 Bxe5?!

A better exchange was 14...Nxe5 15.dxe5.

15.dxe5 b5 16.Qd1 b4 17.Qg4 Qc7 18.Nh5 Nxe5 19.Qf4 gxh5 20.Rxe5 Ng7 21.Qf6 Qd8 22.Qh6 f6



23.Re1 bxc3 24.bxc3 Rc8 25.Bd2 Bd3 26.Qe3 Bg6 27.Qxa7 Rf7 28.Qe3 e5 29.Qe2 Nf5 30.Bh3 Rc4 31.a4 Ra7 32.Qf3 Ng7 33.Qd1 Be8 34.a5 Rxa5 35.Rxa5 Qxa5 36.Qf3 Rc6 37.Rb1 Qa2 38.Qd1 Ra6 39.Bh6 Bc6 40.Bf1 Ra8 41.Rb6 Rc8??

A blunder after time control. The best defence was 41...Qa4!

42.Ra6! Qb2 43.Rxc6! Rxc6 44.Qxd5+ Re6 45.Qd7!

Black resigns 1-0

**Daw,P (1997) – Palos,O (2350) [B23]**  
 Master Challenge (3), 23.06.2001  
*[Albert Chow]*

1.e4 c5 2.f4 Nc6 3.Nc3 d6 4.Nf3 Nf6 5.Bb5 a6?

A better way to avoid doubled pawns is 5...Bd7!

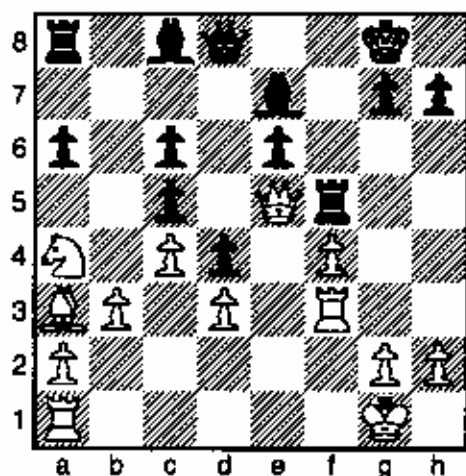
6.Bxc6+ bxc6 7.0-0 e6 8.d3 d5 9.e5 Ng8

The alternative 9...Nd7 guards c5.

10.b3! Ne7 11.Na4! Nf5 12.c4! Be7 13.Qe1! Nd4 14.Rf2 Nxf3+ 15.Rxf3 0-0 16.Ba3 f6 17.Bb2

Also good was 17.Rf2.

17...d4 18.Ba3 fxe5 19.Qxe5 Rf5



20.Qe4± h5 21.Qxc6 Bd7 22.Qe4 Rc8 23.Re1 Bd6 24.g3 Qc7 25.Rff1 Rcf8 26.Bc1 R8f6 27.Qa8+ Kh7 28.Qxa6 e5 29.Nb6 Qc6 30.Qa4 Qxb6 31.Qxd7 exf4 32.Re6 Qb8 33.Re8 Qb6 34.Qc8 Rf8 35.Rxf8

Also good was 35.Bxf4!

35...Rxf8 36.Qh3 fxf3 37.Qxh5+ Kg8 38.Qd5+ Kh8 39.Rxf8+ Bxf8

Draw by perpetual check; White could have worked for more. 1/2-1/2

**Benjamin,J (2650) – Duncan,J (1810) [C05]**  
 Master Challenge (3), 23.06.2001  
*[Albert Chow]*

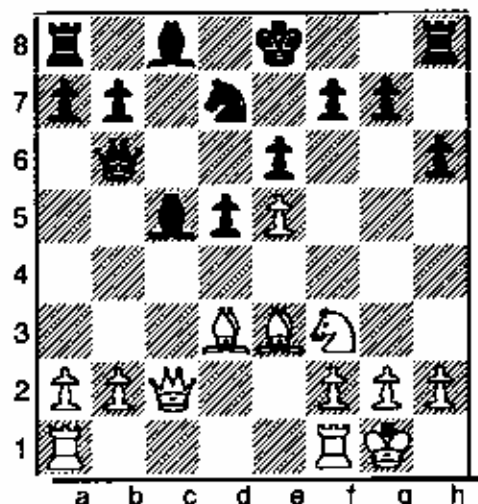
1.e4 e6 2.d4 d5 3.Nd2 Nf6 4.Bd3 c5 5.e5 Nfd7 6.c3 Nc6 7.Ng3!?

A solid alternative is 7.Ne2

7...Qb6 8.0-0 cxd4 9.cxd4 Nxd4 10.Nxd4 Qxd4 11.Nf3 Qb6 12.Qc2 h6 13.Be3

In exchange for a gambit pawn, lines are opened with gain of tempo for development. 13...Bc5

## Master Challenge



14.Bd2! 0-0 15.Rac1 Re8 16.Qa4 Qd8 17.Rc2 Be7  
18.Qg4! Bg5?

The best defence was 18...Kh8!

19.Bxg5 hxg5 20.Qh5 Nf8 21.Nxg5+- g6 22.Qh6  
Qe7 23.Bb5 Bd7 24.Bxd7 Qxd7 25.Rc3 Black resigns  
1-0

Benjamin,J (2650) - Gast,B (2040) [C88]

Master Challenge (4), 24.06.2001

[Albert Chow]

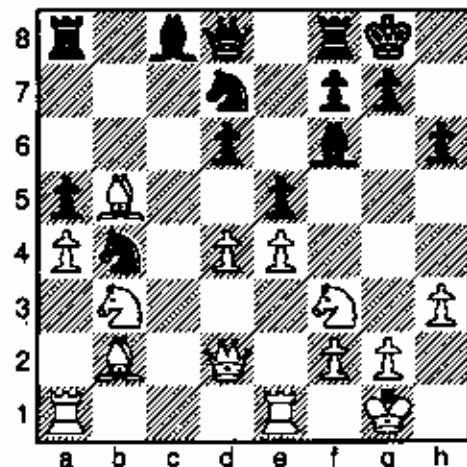
1.e4 e5 2.Nf3 Nc6 3.Bb5 a6 4.Ba4 Nf6 5.0-0 Be7  
6.Re1 b5 7.Bb3 0-0 8.a4 b4

Alternatives are 8...Bb7 and 8...Rb8.

9.d3 d6 10.Nbd2 h6 11.c3 bxc3 12.bxc3 Na5 13.Bc2  
c5 14.d4 cxd4 15.cxd4 Nc6 16.h3 Re8

An active try is 16...exd4! 17.Bb2 d5.

17.Nb3 a5 18.Bb2 Nd7 19.Bd3 Bf6 20.Bb5 Nb4  
21.Qd2 Rf8



22.Nxa5! Qxa5 23.Bc3 exd4 24.Bxb4 Qb6 25.Bxd7!  
Bxd7 26.e5! Bxe5

White is also clearly better if 26...Be7 27.a5 Qa6  
28.exd6 Bxd6 29.Bxd6 Qxd6 30.Qxd4 Qxd4 31.Nxd4.

27.Nxe5 dxe5 28.Bxf8 Kxf8 29.Rxe5 Rxa4 30.Rxa4  
Bxa4 31.Rd5 Bc6 32.Rxd4+-

Once again the GM winning technique in the ending is  
clear and logical.

32...Qb1+ 33.Kh2 Kg8 34.Rd8+ Kh7 35.Qd3+! Qxd3  
36.Rxd3 g6 37.Rd6 Ba4 38.Kg3 Kg7 39.Kf4 Bb3  
40.Ke5 Bc4 41.f4 Bf1 42.Rd2 Ba6 43.g4 Bf1 44.Rh2  
Bc4 45.Rf2 f6+ 46.Kd6 Kf7 47.Rc2 Bf1 48.Rc7+ Kg8  
49.Ke6 g5 50.f5 Bxh3 51.Kxf6 Bxg4 52.Kg6 Kf8  
53.Rc8+ Ke7 54.f6+ Ke6 55.Re8+ Black resigns 1-0

Sullivan,M (1270) - Jahedi,S (1705) [A08]

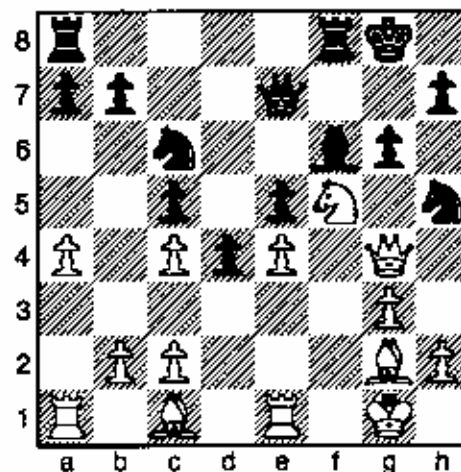
Master Challenge (2), 23.06.2001

[Albert Chow]

1.Nf3 Nf6 2.g3 g6 3.Bg2 Bg7 4.0-0 0-0 5.d3 d5  
6.Nbd2 c5 7.e4 Nc6

A well-known King's Indian set-up with the colors  
reversed.

8.Re1 d4 9.a4 e5 10.Nc4 Qc7 11.Nh4 Be6 12.f4 Bxc4  
13.dxc4 Nh5 14.f5 Bf6 15.Qg4 Qe7 16.fxg6 fxg6  
17.Nf5



17...Qf7??

Correct was 17...Qc7=

18.Nh6+ Kg7 19.Nxf7 Rxf7 20.Rf1 Raf8 21.Bg5 Nb4  
22.Bxf6+ Nxf6 23.Qe2 Nc6 24.Bh3 Nd8 25.Rab1 a5  
26.c3 Nc6 27.Be6 Re7 28.Bd5 Rfe8 29.Bxc6 bxc6  
30.b4 Rd7 31.Rfd1 Red8 32.bxc5 dxc3 33.Rxd7+  
Rxd7 34.Rd1 Rxd1+ 35.Qxd1 Nxe4 36.Qc2 Nxc5  
37.Qxc3 Nxa4 38.Qxe5+ Kh6 39.Qxa5 Nb2 40.Qd2+  
g5 41.Qxb2 g4 42.Qf6+ Kh5 43.Qf5+ Black resigns.  
1-0



## Master Challenge

Sullivan,M (1270) – Covic,M (1800) [A07]  
 Master Challenge (4), 24.06.2001  
 [Albert Chow]

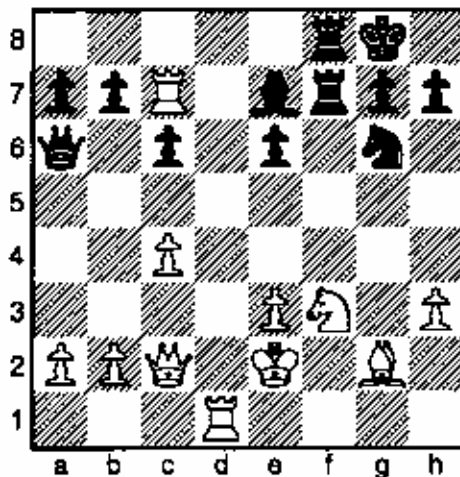
1.Nf3 d5 2.g3 Bf5 3.Bg2 e6 4.0-0 Nf6 5.d3 Bg6?!  
 6.Nbd2 Bd6 7.Re1 Nbd7 8.e4 Bh5 9.c3 dxe4 10.dxe4  
 0-0 11.Qc2 Bc5 12.e5

Better was 12.b4!?

12...Ng4 13.Ne4 Bg6 14.Re2 Ndx e5 15.Nh4 Be7  
 16.Nxg6 Nxg6 17.h3 N4e5 18.Be3 c6 19.Rd1 Qc7  
 20.Red2 Nc4

Also good was 20...Rfd8

21.Rd7 Nxe3 22.fxe3 Qb6 23.Kf2 f5 24.Nd2 f4  
 25.gxf4 Rxf4+ 26.Ke2 Qa6+ 27.c4 Rf7 28.Nf3 Raf8  
 29.Rc7



29...Ne5?

Solid was 29...Bf6.

30.Rxe7!

Not 30.Nxe5?? Rf2+.

30...Rf5??

Correct was 30...Rxe7! 31.Nxe5 Qxa2! with Rook plus  
 two pawns vs. Bishop and Knight.

31.Qc3+- Nf7 32.Rdd7 Rc5 33.Ne5 Rxe5 34.Qxe5!  
 Qxc4+ 35.Kd2 Qh4

The amusing 35...Qd3+!? 36.Rxd3 Nxe5 37.Rb3 is still  
 winning for White.

36.Qf4 Qh5 37.Rxf7 Qa5+ 38.Ke2 Qb5+ 39.Kf3 Qh5+  
 40.Kg3 Qg6+ 41.Kh2 Qxf7 42.Rxf7 Rxf7 43.Qb8+  
 Rf8 44.Qxb7 Rf2 45.Qxc6 Black resigns 1-0

Tanner,R (2115) – Sullivan,M (1270) [B18]  
 Master Challenge (5), 24.06.2001  
 [Albert Chow]

1.e4 c6 2.d4 d5 3.Nc3 dxe4 4.Nxe4 Bf5 5.Ng3 Bg6  
 6.Nf3 h6?

Best is 6...Nd7

7.Bd3

Also good was 7.Ne5 Bh7 8.Bc4 e6.

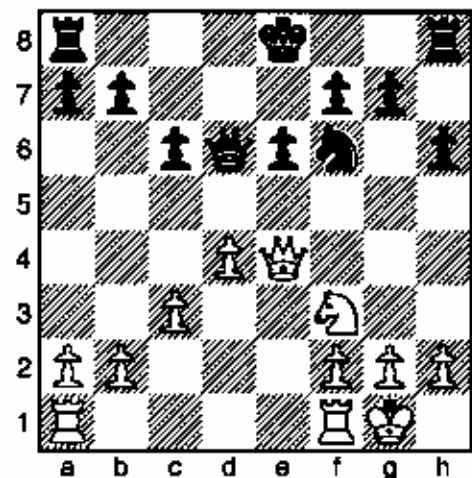
7...Bxd3 8.Qxd3 e6 9.Bf4

Exchanges could be avoided by 9.Bd2

9...Bd6 10.Bxd6 Qxd6 11.0-0

Also good was 11.0-0-0!

11...Nf6 12.Ne4 Nxe4 13.Qxe4 Nd7 14.c3 Nf6



15.Qe5?!

Better was 15.Qe2.

15...Qxe5 16.dxe5 Nd7 17.Rfd1 0-0-0 18.Kf1 Nb6  
 19.Ke2 Kc7 20.Rxd8 Rxd8 21.Rd1 Rxd1 22.Kxd1 c5  
 draw agreed. ½-½

## *Zhe Quan Result at Continental Open*

Eleven-year-old Zhe Quan continued his string of impressive results by tying for first in the Expert Section of the 31<sup>st</sup> Continental Open in Las Vegas, with a score of five wins and one loss. Zhe won \$2,500 for his efforts!

**Quan,Z (2008) - Price,R (1897) [A48]**  
Continental open Las Vegas (2), 27.07.2001  
*[Albert Chow and Zhe Quan]*

1.d4 Nf6 2.Nf3 g6 3.Bg5 Bg7 4.Nbd2 d6 5.c3 Nbd7  
6.e4 c5 7.Bd3 a6?

Best is 7...0-0.

8.0-0 b5?! 9.a4! c4 10.Bc2 Bb7 11.Qe2 e5?

Too many pawn moves instead of the obvious 11...0-0!

12.axb5 axb5 13.dxe5 dxe5 14.b3! cxb3 15.Bxb3 Bc6  
16.Bd5! Rxa1 17.Rxa1 Qc8 18.c4! b4 19.Rb1 Qb7  
20.Bxc6 Qxc6 21.Rxb4 0-0± 22.g3 h6 23.Bxf6 Bxf6  
24.Rb2 Nc5 25.Rb5 Kg7 26.Qe3 Rc8 27.h4 Qd6  
28.Kg2 Bd8 29.Nb3 Bb6 30.Nxc5 Bxc5 31.Qe2 Ra8  
32.Rb2 Qe6 33.Qd3 Ra4 34.Rc2 f6 35.Qd5 Qe7  
36.Rb2 Ra7 37.Rb8 h5 38.Qg8+ Kh6 39.Qh8+ Qh7  
40.Qxf6 Rf7 41.Qg5+ Kg7 42.Qxe5+ Black resigns 1-0

**Quan,Z (2008) - Navarro,N (2128) [D03]**  
Continental open Las Vegas (5), 29.07.2001  
*[Albert Chow and Zhe Quan]*

1.d4 Nf6 2.Nf3 e6 3.Bg5 Be7 4.Nbd2 d5 5.e3 h6  
6.Bh4 c5 7.c3 Nc6 8.Bd3 Bd7 9.0-0 cxd4 10.exd4  
Qc7 11.Re1 Bd6

More solid was 11...0-0 12.Ne5 Rab8

12.a4 g5

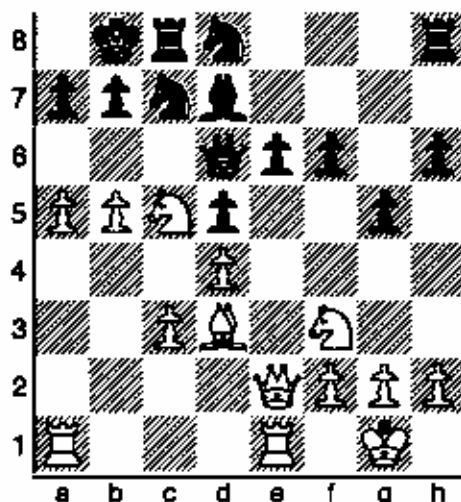
Also 12...Nh5!?

13.Bg3 0-0-0

Or 13...Bxg3 14.hxg3

14.Bxd6 Qxd6 15.b4 Kb8 16.Nb3 Rc8 17.a5 Ne8  
18.Nc5 f6 19.Qe2 Nc7 20.b5 Nd8

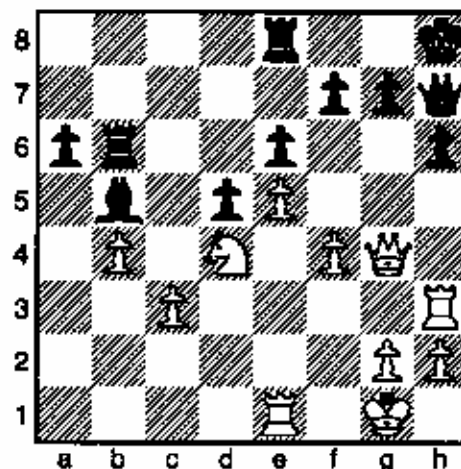
White is happy to push a powerful attack.



21.b6! Na8 22.a6! Nxb6 23.axb7 Rxc5 24.dxc5 Qxc5  
25.Qa2 Nxb7 26.Qxa7+ Kc7 27.Qa2 Ra8 28.Qd2  
Rxa1 29.Rxa1 e5 30.Ne1 Na4 31.Rc1 Na5 32.Qc2 e4  
33.Be2 Nb6 34.Qb2 Bc6 35.Rb1 Nb7 36.Qb4 Na4  
37.Rc1 Qxb4 38.cxb4 Kd6 39.Ba6 d4 40.b5 Bd5  
41.Bxb7 Bxb7 42.Rc4 d3 43.Rxa4 Kc5 44.Ra2 Bd5  
45.Rb2 Kd4 46.b6 Kc3 47.b7 Bxb7 48.Rxb7 d2  
49.Rb1 f5 50.Kf1 Black resigns 1-0

**Quan,Z (2008) - Jorge,F (2135) [D03]**  
Continental open Las Vegas (6), 29.07.2001  
*[Albert Chow and Zhe Quan]*

1.d4 Nf6 2.Nf3 e6 3.Bg5 d5 4.e3 Nbd7 5.Bd3 h6  
6.Bh4 Bd6 7.Nbd2 c5 8.c3 cxd4 9.exd4 Qc7 10.0-0  
b6 11.a4 Bb7 12.Qe2 0-0 13.Rfe1 Rfe8 14.Ne5 Bxe5  
15.dxe5 Nh7 16.f4 Nhf8 17.Qg4 Kh8 18.Re3 Qc5  
19.Rae1 Nh7 20.Nb3 Qf8 21.Bb5 Bc8 22.Bc6 Rb8  
23.Nd4 a6 24.b4 Qg8 25.Nb3 Nhf8 26.a5 Bb7  
27.Bxd7 Nxd7 28.Rh3 Qh7 29.Bf2 bxa5 30.Nxa5 Ba8  
31.Bd4 Nb6 32.Bxb6 Rxb6 33.Nb3 Bc6 34.Nd4 Bb5



(Continued on page 24)

***Bobby Fischer's 1964  
simultaneous exhibitions at  
Chicago's Edgewater  
Beach Hotel***

We belatedly conclude our reprint of the ICB's coverage of Bobby Fischer's 1964 simultaneous exhibitions at Chicago's Edgewater Beach Hotel. The George Dibert game (annotated by Dick Verber) was played at the same Sunday, March 22, simul featured in the May-June 2001 issue. All of the other games were played on Monday, March 23.

Perhaps Fischer was tired on Monday; perhaps the losers were reluctant to turn in their scoresheets. Or perhaps our local players were also underrated 37 years ago. For coverage of a later simul in Cicero (including the second of Jim Warren's draws against Fischer), pick up a copy of John Donaldson's 1994 book *A Legend on the Road: Bobby Fischer's 1964 Simul Tour*.

This article originally appeared in the July 1964 *Illinois Chess Bulletin*. Special thanks to Frank Skoff!—Bill Brock

**Fischer, R - Dibert, George C. [C19]**  
Simul, Edgewater Beach Hotel, 22.03.1964  
*[Dick Verber]*

1.e4 e6 2.d4 d5 3.Nc3 Bb4 4.e5 c5 5.a3 Bxc3+  
6.bxc3 Ne7 7.a4

Fischer's pet line against the Winawer; also good is 7.Qg4.

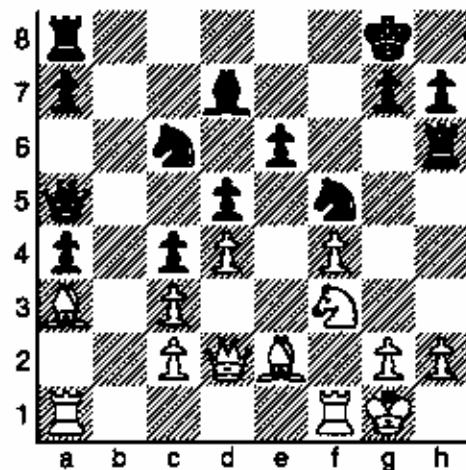
7...Nbc6 8.Nf3 Bd7 9.Bd3 Qa5 10.Qd2 c4 11.Be2 b5  
12.Ba3 bxa4 13.0-0 0-0 14.Nh4!

White plans a Kingside attack and his prospects are well worth a pawn, since he stands better in this position.

14...f6! 15.exf6 Rxf6 16.f4

Prevents Black from breaking in the center with ...e5.

16...Nf5! 17.Nf3 Rh6!?



Black is to be congratulated for his energetic play; passive play will allow White to gradually develop an overwhelming attack.

**18.Rab1?**

Here Fischer understandably falters in the grind of the simul. His best is probably the extremely risky 18.g4 instead, after which 18...Nh4 19.g5! Nxf3+ 20.Rxf3! Rh4 21.Qe1 Rg4+ 22.Kh1 appears to win material via the threat to win the Rook with 23.h3! 22...e5 (If 22...Qc7, then 23.Qf2 maintains the threat) 23.dxe5 Nxe5 24.fxex5 Rxe5 (If 24...d4 25.Bxc4+ Kh8 26.cxd4 Bc6!! 27.d5!! manages to hold for White.) 25.Qf2 and White will win.

18...Qd8! 19.g3 Qe8 20.Rf2 Rb8 21.Re1

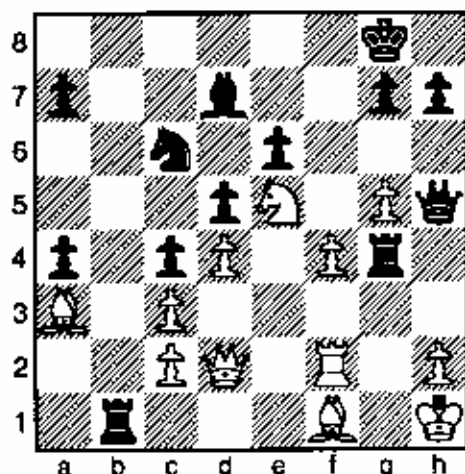
To some degree this move suggests that Fischer hopes for a blunder as the only means to salvation. It is now difficult for White to develop a constructive plan.

21...Qg6 22.Re1 Rb7 23.Ne5 Qe8 24.g4 Nf7 25.g5 Rh4 26.Nf3 Rh3 27.Kg2 Qh5! 28.Kh1 Nf5! 29.Kg1 Ng3!

Black is pressing his advantage nicely and now has an easy win.

30.Ne5 Nxf1 31.Bxf1 Rh4 32.Nf3 Rg4+ 33.Kh1 Rb1!  
34.Ne5

## Bobby Fisher 1964 Simultaneous



34...Rh4!! 35.Nf3

If 35.Nxd7 Rxh2+ 36.Rxh2 Rxf1+ 37.Kg2 Qf3# I am amazed that someone less than a top-notch Master played this game for Black.

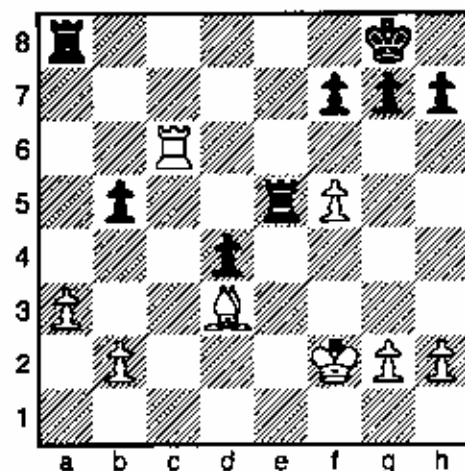
35...Rh3 36.Qe3 e5 37.fxe5 Bf5 38.e6 Be4 39.e7 Rxf3 0-1

Fischer,R - Thornell,G [B02]

Simul, Edgewater Beach Hotel, 23.03.1964  
[Frank Skoff]

Excellent defensive play earns a point for Gary, as White, from his opening move, speculated too rashly in an endeavor to steamroll the opposition. But Black found all the answers!

1.e4 Nf6 2.Nf3 Nxe4 3.d4 d5 4.Bd3 c5 5.0-0 e6 6.c4 Nf6 7.Nc3 dxc4 8.Bxc4 cxd4 9.Nxd4 Be7 10.Be3 0-0 11.Qe2 Nd5 12.Nxd5 exd5 13.Bd3 Nc6 14.Rac1 Nxd4 15.Bxd4 Bf6 16.Qe3 Bxd4 17.Qxd4 Be6 18.f4 Qb6 19.Qxb6 axb6 20.f5 Bd7 21.Rc7 Bc6 22.a3 Rfe8 23.Rd1 b5 24.Kf2 Re5 25.Rc1 d4 26.R1xc6 bxc6 27.Rxc6



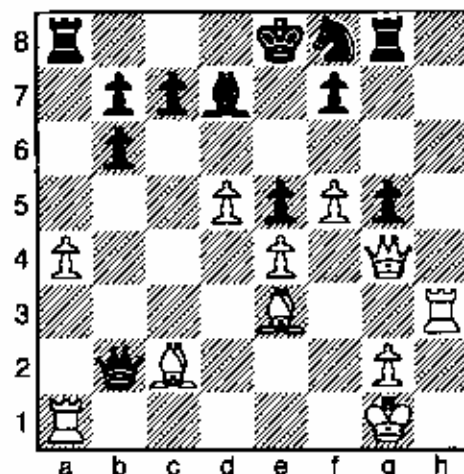
27...Re3 28.Bxb5 Rb3! 29.Bc4 Rxb2+ 30.Kf3 Rd8 31.Ke4 Rxc2 32.Rc7 Rxh2 33.Rxf7 Kh8 34.Kd3 Rh3+ 35.Kd2 d3 36.Be6 Rh2+ 37.Kd1 d2 38.Bd7 Kg8 0-1

Fischer,R - Garwin,C [C51]

Simul, Edgewater Beach Hotel, 23.03.1964  
[Frank Skoff]

The Evans always leads to a cut-and-thrust game, and this one proves no exception. Black counterattacks beautifully.

1.e4 e5 2.Nf3 Nc6 3.Bc4 Bc5 4.b4 Bxb4 5.c3 Ba5 6.d4 exd4 7.0-0 Bb6 8.cxd4 d6 9.Nc3 Na5 10.Bg5 Qd7 11.Bd3 h6 12.Be3 Ne7 13.Na4 Nac6 14.Nxb6 axb6 15.d5 Ne5 16.Nxe5 dxe5 17.f4 Ng6 18.f5 Nf8 19.a4 Qd6 20.Qg4 g5 21.h4 Rg8 22.hxg5 hxg5 23.Rf3 Bd7 24.Bc2 Qb4 25.Rh3 Qb2



26.Rc1 0-0-0 27.Rh6 Ng6 28.Bd3 Rh8 29.Qxg5 Rxh6 30.Qxh6 Nf4 31.Bxf4 exf4 32.Qxf4 Qd4+ 33.Qf2 Qxd3 34.Qxb6 Qd1+ 35.Rxd1 cxb6 36.Kf2 Bxa4 37.Rd4 b5 38.g4 Re8 39.g5 Rg8 40.Kf3 Rxc5 41.Kf4 Rg1 42.Ke5 Rd1 43.Rb4 Kd7 44.Kf6 Ke8 45.Rb2 Rd4 46.e5 Rxd5 47.Rh2 b4 48.Rh4 Rb5 49.e6 fxe6 50.fxe6 Kd8 51.e7+ Kc7 52.e8Q Rb6+ 53.Qe6 Rxe6+ 54.Kxe6 Bd7+ 55.Ke5 ½-½

Fischer,R - Kral,G [C10]

Simul, Edgewater Beach Hotel, 23.03.2001  
[Frank Skoff]

Defensive play managed to hold the draw, though it is likely that White mishandled the Rock and Pawn ending.

1.e4 e6 2.d4 d5 3.Nc3 dxe4 4.Nxe4 Nf6 5.Nxf6+ Qxf6 6.Nf3 h6 7.Bd3 Bd6 8.0-0 0-0 9.b3 Nd7 10.Bb2 Re8 11.Re1 b6 12.c4 Bb7 13.Be4 Bxe4 14.Rxe4 Qf5 15.Re2 Nf6 16.Qc2 Qxc2 17.Rxc2 Nd7 18.Rac1 c5 19.Rd1 Rad8 20.g3 f6 21.Rcd2 Bc7 22.Ba3 cxd4

## Bobby Fisher 1964 Simultaneous

23.Nxd4 Nc5 24.Nb5 Rxd2 25.Rxd2 Bb8 26.Bxc5  
 bxc5 27.Rd7 a5 28.Nd6 Bxd6 29.Rxd6 a4 30.Rb6  
 axb3 31.axb3 e5 32.Kf1 Rc8 33.Ke2 Rc7 34.Ke3 f5  
 35.f3 Kf7 36.h4 g6 37.h5 gxh5 38.Rxh6 Kg7 39.Re6  
 f4+ 40.gxf4 h4 41.Rxe5 Kg6 42.Rg5+ Kh6 43.Kf2  
 Rb7 44.Rxc5 Rxb3 45.Kg2 Rc3 46.Kh3 Rxf3+  
 47.Kxh4 Rxf4+ 48.Kg3 Rd4 49.Kf3 Kg6 50.Ke3 Rd1  
 51.Rd5 Rxd5 52.cxd5 Kf6 53.Ke4 Ke7 54.Ke5 Kd7  
 ½-½

**Wagenhals,W – Fischer,R [B09]**

Simul, Edgewater Beach Hotel, 23.03.1964

I had to write Bill Wagenhals to straighten out the last ten moves of this one, which he did so, and added: "I was lucky!"

1.e4 d6 2.d4 Nf6 3.Nc3 g6 4.f4 Bg7 5.Nf3 0-0 6.Bd3  
 a6 7.0-0 Bg4 8.h3 Bxf3 9.Qxf3 c6 10.Be3 Nbd7 11.e5  
 Ne8 12.g4 e6 13.Ne4 Qe7 14.g5 h6 15.Nf6+ Ndxg6  
 16.exf6 Nxf6 17.gxf6 Qxf6 18.c3 Qd8 19.Rf2 f5  
 20.Rg2 Kh7 21.Kh2 Bf6 22.Rag1 Rg8 23.c4 d5 24.b4  
 Rg7 25.a4 Qb6 26.b5 axb5 27.axb5 Bxd4 28.Bxd4  
 Qxd4 29.cxd5 cxd5 30.Bb1 Ra4 31.Re1 Qb4  
 32.Rge2 Ra3 33.Qf2 Rb3 34.Bc2 Rc3 35.Rxe6 d4  
 36.Rxg6 Rxg6 37.Bxf5 Kg7 38.Bxg6 Kxg6 39.Qg2+  
 Kf6 40.Rg1 Qf8 41.Qg6+ Ke7 42.Qh7+ Kd6 43.Qg6+  
 Kc5 ½-½

**Fischer,R – Wolf,P [A43]**

Simul, Edgewater Beach Hotel, 23.03.1964

[Frank Skoff]

Here Black gets counterplay just in time:

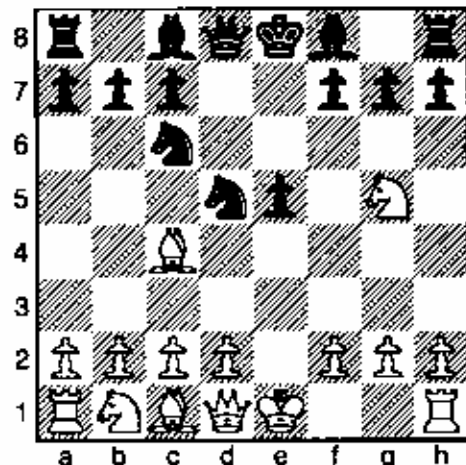
1.e4 e6 2.d4 c5 3.d5 exd5 4.exd5 d6 5.Nc3 Nf6 6.h3  
 g6 7.g4 Bg7 8.Bg2 0-0 9.Nge2 b6 10.0-0 Ba6 11.a4  
 Nbd7 12.Bf4 Ne8 13.Re1 f5 14.g5 Ne5 15.Nb5 Nc7  
 16.Nec3 Re8 17.h4 Nxb5 18.axb5 Bb7 19.Bf1 Re7  
 20.Re3 Ng4 21.Rf3 h6 22.gxh6 Bxh6 23.Bxh6 Nxh6  
 24.Qd2 Rh7 25.Qg5 Qxg5+ 26.hxg5 Ng4 27.Rh3  
 Rxh3 28.Bxh3 Ne5 29.Kg2 a6 30.bxa6 Rxa6 31.Re1  
 b5 32.f4 b4 33.Nb5 Bxd5+ 34.Kf2 Bc4 35.Nc7 Ra7  
 36.Ne8 Nf7 37.Nf6+ Kg7 38.Re8 Nh6 39.Rd8 Ng4+  
 40.Bxg4 f4 41.Rxd6 Ra2 42.Nxg4 Rxb2 43.Ne5  
 Rxc2+ 44.Kf3 b3 45.Rxg6+ Kf8 46.Rb6 Bd5+ 47.Kg4  
 b2 48.Nd3 c4 49.Nxb2 c3 50.Nd3 Be4 51.Ne1 Rc1 ½-  
 ½

**Fischer,R – Gruenberg,F [C57]**

Simul, Edgewater Beach Hotel, 22.03.1964

Now for a few razzle-dazzle quickies in which Fischer wins fast. (Kids, you may run into teenage delinquents who try to convince you that 5...Nxd5 is "natural" and "playable": look at these games, then just say no!—BB)

1.e4 e5 2.Nf3 Nc6 3.Bc4 Nf6 4.Ng5 d5 5.exd5 Nxd5



6.d4 Be7 7.Nxf7 Kxf7 8.Qf3+ Ke6 9.Nc3 Bb4?  
 10.Bxd5+ Kd6 11.Bxc6 Bxc3+ 12.bxc3 bxc6  
 13.Ba3+ Ke6 14.0-0 Qd5 15.Qh5 e4 16.Qh4 g5  
 17.Qh5 Qf5 18.f3 Qg6 19.Qg4+ Qf5 20.Qxf5+ Kxf5  
 21.fxe4+ Kxe4 22.Rae1+ Kd5 23.Re5+ 1-0

**Fischer,R – Rouse [C57]**

Simul, Edgewater Beach Hotel, 23.03.1964

[Frank Skoff]

This old trappy line worked even better in the following game: 1.e4 e5 2.Nf3 Nc6 3.Bc4 Nf6 4.Ng5 d5 5.exd5 Nxd5 6.d4 exd4 7.0-0 Be7 8.Nxf7 Kxf7 9.Qf3+ Ke6 10.Re1+ Ne5 11.Bf4 Bf6 12.Nc3 c6 13.Rxe5+ Kf7 14.Nxd5 Be6 15.Rxe6 Kxe6 16.Nxf6+ Ke7 17.Re1+ Kf8 18.Qa3+ 1-0

**Fischer,R – Kuhn,J [C57]**

Simul, Edgewater Beach Hotel, 23.03.1964

[Frank Skoff]

Other players varied their defenses on the sixth move in the Two Knights, with a line that Humphrey Bogart tried against Koltanowski in an exhibition some years ago:

1.e4 e5 2.Nf3 Nc6 3.Bc4 Nf6 4.Ng5 d5 5.exd5 Nxd5  
 6.d4 f6 7.dxe5 Nxe5 8.Bxd5 f4 9.0-0 Bd7 10.Re1  
 Qf6 11.Qh5+ Qg6 12.Rxe5+ and White won in 22  
 moves 1-0

**Fischer,R – Redman,L [C57]**

Simul, Edgewater Beach Hotel, 23.03.1964

[Frank Skoff]

1.e4 e5 2.Nf3 Nc6 3.Bc4 Nf6 4.Ng5 d5 5.exd5 Nxd5  
 6.d4 f6 7.dxe5 Nxe5 8.Bxd5 c6 9.Ne6 Qa5+ 10.Bd2  
 Qb6 [Black suddenly realized that 10...Qxd5 loses to  
 11.Nc7+ ; down a piece, he fought on until his 34th  
 move.] 1-0

## Bobby Fisher 1964 Simultaneous

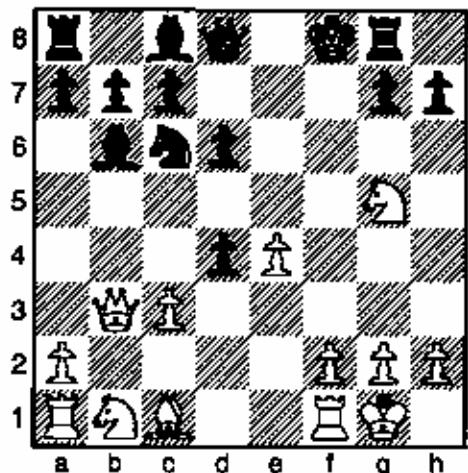
Fischer,R - Sugerman,P [C52]

Simul, Edgewater Beach Hotel, 23.03.1964

(Frank Skoff)

Fischer played the whole gamut of Kingside openings, including the ancient Ponziani, but perhaps the Evans produced more quick wins:

1.e4 e5 2.Nf3 Nc6 3.Bc4 Bc5 4.b4 Bxb4 5.c3 Ba5 6.d4 exd4 7.0-0 d6 8.Qb3 Bb6 9.Bxf7+ Kf8 10.Bxg8 Rxd8 11.Ng5



11...Ne5

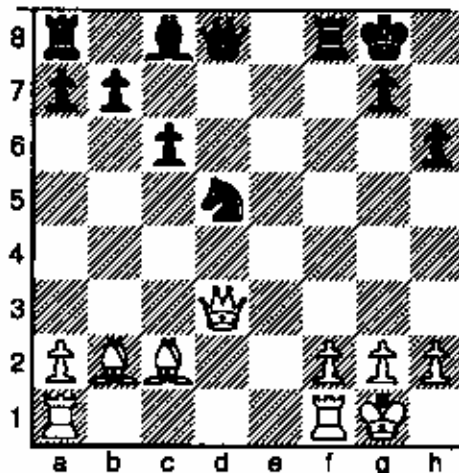
(Better 11...Qe8—BB)

12.Nxh7+ 1-0

Fischer,R - Lococo,A [C52]

Simul, Edgewater Beach Hotel, 23.03.1964

1.e4 e5 2.Nf3 Nc6 3.Bc4 Bc5 4.b4 Bxb4 5.c3 Ba5 6.d4 exd4 7.0-0 Nge7 8.Ng5 d5 9.exd5 Ne5 10.Bb3 0-0 11.Nxf7 Kxf7 12.Qh5+ Kg8 13.Qxe5 dxc3 14.Nxc3 Bxc3 15.Qxc3 Nxd5 16.Qd3 c6 17.Bb2 h6 18.Bc2



18...Be6

(Fritz thinks this is the losing move, and prefers Black after 18...Bf5—BB.)

19.Qg6 Nf4 20.Qe4 Qd6 21.Bc1 Nd5 22.Qh7+ Kf7 23.Bg6+ Ke7 24.Qxg7+ Kd8 25.Qxb7 Rb8 26.Qxa7 Rh8 27.g3 Rf8 28.Ba3 1-0

### *Chess From the Middle*

Ron Suarez

#### **Politics, Shot Puts And Chess**

Greetings my fine feathered friends. In this installment of Chess From the Middle I want to comment on some things about our present chess world.

To begin with, I want to talk about politics in chess. As I write this, the US Open just finished, along with the annual USCF delegates meeting with the election of Executive Board members. As you are most likely aware, our own Helen Warren is presently midterm on the USCF Executive Board. There was an election that replaced the majority of the board just last week. The newly elected board members include John McCrary, Steve Schutt, Frank Brady and Frank Camaratta. With two Franks on the board can we now say this board will be very frank? I believe that the remaining members now include Helen Warren, Bob Smith and Doris Barry.

From what I have gathered, there are already a number of changes that this new board is implementing. The Tournament Life Announcement pricing is going to go back to the pricing schedule of 1999 with the exception of adding a \$1.00 charge per line when these ads are submitted in printed form to the USCF offices. I think this is a good move that enables more tournament advertising.

In my opinion, the biggest change that is going to happen is the way our Executive Board is now elected. Instead of going with the voting/delegate members, the USCF will have a "One Member One Vote" policy. This means that EVERY paid USCF member aged 16 and older will have a vote for our leaders. There are differing opinions whether this is good or bad. My opinion is that it now just is, so we will find out how this new system works no matter what we think of it.

Another issue that was dealt with, sort of, was drug testing in chess competition. Oh boy, this is where I get started. FIDE, in its attempt to get chess in the Olympics, has now instituted drug testing. It (they) wants the USCF to do the same. The way I understand it, the delegates sort of agreed to do this and sort of did not. The USCF will only test the players that will be competing internationally under the auspices of FIDE. There will be no drug testing at local U.S. tournaments. This keeps FIDE from attacking the USCF as non-compliant while keeping the drug-testing scourge out of our land. I think this is all absurd.

Let's start by discussing the need to get into the Olympics. Why does chess need to be part of the Olympics? Could it be that we need more recognition and publicity? Or is it that we, as a chess group, need to qualify chess as being on a par with other activities? Or, maybe it is just that organizers can make more money by getting chess into the Olympic rings. Bowling is not an Olympic sport.

The eternal question of whether Chess is sport, art, science or whatever is still hotly debated around this planet. By my Middle observations, I see the activities that are in the Olympics as primarily physical activities. What do I mean by that? I mean that every sport in the Olympics is physical in its basic competitive form. The human body is used to move either itself or an object in competition to the opponent's motion. Every one of these activities falls under the category of athletics. Yes, even pistol shooting is more "athletic" than chess. Now, don't get me wrong. I know that a chess player needs to be in good physical shape to play a strong match. I also know that the game can be very physically taxing. But, the activity itself is not athletic. It is intellectual. You can disagree with me if you want.

## Chess from the Middle

But, go up to a stranger on the street or in a mall and tell them chess is an athletic endeavor and watch their response. Chess is a great activity that I enjoy immensely, but it is not athletic.

The biggest argument for not having drug testing in chess is that chess in itself decries drug use. If a person wants to be good at chess, drug use will only hamper their success. I totally agree with this. Any drug, yes, ANY DRUG that a person takes to change their mental status will make mental acuity worse. Sure, taking amphetamines will give a surge in energy, but it will definitely alter the mental processes such that mental awareness and performance is worsened not bettered. The psychiatrists that talk about chemical imbalances have no actual physical evidence that what they say is true. It is all theory and conjecture. Yes, when psychotropic drugs are ingested, a person's behavior changes. But, there is no solid, real proof that it is for the better of the person himself.

With that said, there is no reason to ever test for drug use in chess players. The activity of chess itself will drop out the drug user. Sure, there are rumors of Russian or German scientists that have found a wonder drug that will enhance mental performance. Hogwash! The fact is that if you ever dealt with anyone taking any of these drugs (I have), you would realize, they are "out of it" and will not be a long-term threat over the chessboard.

I applaud the USCF delegates for not bowing to the pressure of FIDE by implementing drug testing in our land. The drug testing done by the Olympic people is done because these drugs do make the body perform better physically, not mentally. Hmmm, maybe that is why chess should not be in the Olympics, because we are a mental sport. But, I am now repeating myself.

In the meantime, in the Middle, I will continue to play chess, live life and laugh at the comedy that presents itself.

You my friend should keep playing chess and enjoy life.

### *Zhe Quan Result at Continental Open(Cont.)*

35.Qf3 Bc4 36.Qh5 Qg6 37.Qxg6 fxg6 38.g4 Kg8 39.f5 gxf5 40.gxf5 exf5 41.Nxf5 Rg6+ 42.Rg3 Kf7 43.Kf2 Rxc3 44.Kxc3 Re6 45.Nd4 Rg6+ 46.Kf4 Bd3 47.e6+ Ke7 48.Nc6+ Kd6 49.e7 Rf6+ 50.Kg3 Bg6 51.Nb8 Re6 52.Rxe6+ Kxe6 53.Nxa6 Kxe7 54.Kf4 Kd6 55.Nc5 Bc2 56.Ke3 g5 57.Nd3 Bb1 58.Nf2 Bf5 59.Kf3 h5 60.Ke3 Ke5 61.Nd3+ Kd6 62.Nf2 Ke5 63.Nd3+ Kd6 64.Nf2 h4 65.Kf3 Kc6 66.Ng4 Kb5 67.Ne5 Be6 68.Ke3 Ka4??

Best was 68...g4!

69.Nf3 Black resigns 1-0

### **Gonzales Cuerto,J (2159) – Quan,Z (2008) [A47]**

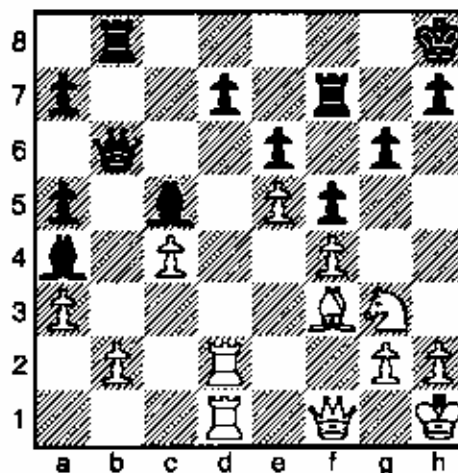
Continental open Las Vegas (4), 28.07.2001

[Albert Chow and Zhe Quan]

1.d4 c5 2.e3 Nf6 3.Nf3 e6 4.Bd3 b6 5.Nbd2 Bb7 6.0-0 Be7 7.c3 cxd4 8.exd4 0-0

The Colle system vs. Queen's Indian defence.

9.Qe2 Nc6 10.Re1 Nd5! 11.Ne4 f5! 12.Ng3 Bd6 13.Ne5 Nxe5 14.dxe5 Be7 15.Bd2 Kh8 16.c4 Nb4 17.Bb1 Nc6 18.Bc3 Qc7 19.a3 Na5! 20.Bxa5 bxa5 21.Bd3 Bc5 22.Kh1 Qb6 23.f4 Rab8 24.Rad1 Qc6 25.Rd2 g6 26.Rad1 Rf7 27.Qf1 Qb6 28.Be2 Bc6 29.Bf3 Ba4



30.b3?

Better was 30.Re1! Be3 31.Rd6 Qc5 32.Bd1.

30...Qxb3 31.Be2 Qxa3 32.Ra1 Qb4 33.Rda2 Bc6 34.Rxa5 Bd4 35.R1a3 Qb1 36.Rxa7 Bxa7 37.Rxa7 Rff8 38.Kg1 Qxf1+ 39.Kxf1 Rb1+ 40.Kf2 Ra8 41.Rxa8+ Bxa8 42.Nf1 Kg7 43.g3 Kf7 44.Nd2 Rb2 45.Ke3 Ke7 46.Nf3 Bxf3 47.Kxf3 Rb3+ 48.Kf2 Kd8 49.h4 h5 50.Kg2 Kc7 51.Kf2 Kc6 52.Bf1 Kc5 53.Be2 Kd4 54.Bf1 Rc3 55.Be2 Ke4 56.Bf1 Rf3+ 57.Kg2 Rxf1! 58.Kxf1 Kf3 White resigns 0-1



## *News From Peoria*

Wayne Zimmerman

### **Bradley Summer Open**

When was the last time you went to a tournament and they raised the advertised prizes? Peoria seems to be getting into the habit of that lately. The guarantee for the BSO was \$250 dollars, but due to the turnout of 39 players \$425 dollars was awarded. The good news is that starting in January with the assistance of the Greater Peoria Chess Foundation LTD the Peoria club is going to be able to guarantee a prize fund of \$400 dollars going in.

Tie this in with Peoria's new tournament site at Lakeview Museum and hopefully we will be seeing even larger gatherings of Chess Players in Central Illinois



**Josh Flores Co-Winner 3.5 Out of 4**

Josh Flores and Raheem-Muhammad Ali both scored 3 ½ to tie for first place. Paul Mechem, Jim Barthel and David Long all tied for the Class A prize with 3 points. Konrad Klinkner, Kyle Miles and Jose Rodriguez all tied for the Class B prize with 3 points. Class C was won t by

Chris Baumgartner and Randy Ryner with 3 points each. Jeffery Somerfield took the D and under prize with a mere 2 ½ points. Jeffery also won the cumulative upset prize while Kanyway Chuang won the individual upset prize.

Here is one of Jeff Somerfield's upsets of the day against Wayne Zimmerle who played as houseman to even out round 2. Note the nice way that Jeff sidesteps the threat of stalemate at the end to finish off his higher rated opponent.



**Raheem-Muhammad Ali Co-Winner  
3.5 out of 4**

[White "Wayne Zimmerle 1517"]

[Black "Jeff Somerville1167"]

1. b4 e6 2. Bb2 d5 3. e3 Nf6 4. a3 g6 5. c4 Bg7 6. cxd5 exd5( 6. e5) 7. Nf3 0-0 8. Nc3 Ne4 9. Qc2 Bf5 10. Bd3 Re8 11. Ne2 Bxb2 12. Qxb2 Nxf2 13. Kxf2 Bxd3 14. Nf4 Be4 15. h4 Nc6( 15. ... Qc8)16. h5 Bxf3 17. hxg6 fxe6 18. gxf3 Ne5 19. Rag1 Qf6 20. d4 Nc4 21. Qb1 Rxe3 22. Rxe3+ hxg6 23. Qxe3+ Qxe3 24. Nxe3 Kg7 25. Nf4 c6 26. a4 Rb3 27. b5 Rb2+ 28. Kg3 cxb5 29. Nxd5 bxa4 30. Ra1 a3 31. f4 Rf8 32. Nc7 Rg8 33. f5 Kf6+ 34. Kf4( 34. Kf3) 34. ... Rf2+ 35. Ke4 Rxf5 36. Nd5+ Ke6 37. Nc7+ Kd7 38. Kxf5 Kxc7 39. Ke4 a6 40. Kd3 b5 41. Kc3 Kd6 42. d5 Kxd5 43. Kb4 Rg4 44. Kb3 Kd4 45. Rd1+ Ke3 46. Ka2 Rg2+ 47. Kb1 Rb2+ 48. Ka1 b4

49. Rd3+ Kf2 50. Rf3· Ke2 51. Re3· Kd1 52.  
Re1+ Kc2 53. Rc1· Kb3 54. Rc3+ Ka4 55. Rxc4  
Rh2 56. Rg4(56. Rh4) 56. ... a5 57. Kg3 Rc2 58.  
Kb1 Rc3 59. Rg2 b3 60. Rg1 a2+ Ka1 Ka3 62.  
Rb1 axb1=Q+ 63. Kxb1 Rh3 64. Ke1 Ka2 65.  
Kd2 b2 66.Ke2 b1=Q 67. Kd2 Qb2- 68. Kd1 Rh1-  
0-1

## **Springfield Chess Club**



### **Meetings**

The SCC meets Wednesday nights, 6 to 10 p.m., at the American Legion Post 32, between 5th and 6th Streets, half a block south of Capitol Ave., downtown. On the second Friday of each month, we meet from 6 to 10 p.m. at Barnes and Noble, near the corner of Route 4 and Wabash Ave.

### **Final Hampton Tourney Won By Mote, Gu**

43 chess players attended the last tournament the SCC will hold at the Hampton Inn. The tournament was won by David Mote of Springfield and Keqin Gu of Edwardsville, each of whom scored a perfect 4-0. As-yet-unrated Genius Runyowa of Grinnell, Iowa, had a very strong showing by going 3-1, bumping off Dr. Kujoth before falling to Gu in the final round. He took home the unrated prize.

At around 8:30, during registration, a major

crisis in the form of a broken computer keyboard threatened to ruin the tournament, but tournament directors Tom Knoedler and David Long were more than up to the task of running the tournament by hand. None of the four rounds was more than five minutes late. Complete results from the tournament can be found on page 5.

### **Tourneys Going to Signature Inn**

Tom Knoedler found a new site to hold tournaments, the Signature Inn on Stevenson Drive near 31st St. (Dirksen Pkwy), diagonally opposite the Hampton Inn and next to Exit 94 off I-55/72.

We expect playing conditions to be much better here than at the old site, the Hampton Inn. We will all be playing in one room, which will be larger than both of our old rooms combined. We will also have a skittles room, taking potential crowds out of the lobby.

June 16 was the last tournament held at the Hampton Inn, which has hosted our tournaments since 1994.

### **MATCH NEWS Springfield Defeats Jacksonville**

On Sunday, June 3, we had our long-awaited return match Against the Jacksonville chess club, this one held in Springfield, at our leader, Tom's place. Springfield won, 6 to 3. Springfield won five games, drew two, and lost two. For complete results of the match, see below. Special thanks to Tom and Garald, who set up the sandwiches we ate immediately before the match. And special thanks to Randy Ryner, who showed up as a potential 10th player, for whom there was no opponent. It is possible we might have another set of matches against them sometime over the summer.

**Springfield vs. Bloomington-Normal**

The Twin Cities Chess Club, led by Dennis Bourgerie, has agreed to play the Springfield club one or more matches, if details can be ironed out. This could be the first step of re-starting the central Illinois chess leagues, which died out several years ago.

Bloomington-Normal has two chess clubs: Dennis's TCCC, plus the State Farm Chess Club. The two clubs are in the habit of playing friendly matches against each other. If we play them, we will probably face the two teams combined.

The Springfield and Bloomington-Normal clubs also agreed to exchange each other's newsletters. A copy of the most recent newsletter from their club will be available for inspection at SCC meetings.

In 1999, Ron Suarez of Pekin attempted to start the Central Illinois Chess Circuit, which was supposed to get some more activity, and some rivalries, going in the clubs of the area, but it folded before it was six months old, mainly because of lack of interest among and support from area chess players

**A Visit from the ICA**

During the month of June, the SCC had a visit from Bill Brock, interim editor of the *Illinois Chess Bulletin*. It seems that, at least for the present, the ICB has solved its chronic lateness problems (keep those fingers crossed); he brought a stack of surplus May-June ICB issues to distribute to club members. There are still a few left, and they are available for free upon request.

We also discussed the state of Illinois championship tournaments, such as the Illinois Open and the Illinois Class, which always go to Chicago - or suburban Chicago. Similarly, the ICB is too often 55 pages of Chicago news and

2 pages of downstate - if we're lucky. Bill said the ICA is as concerned about this as we are.

Ideas were floated around at this discussion, including the possibility of holding major tournaments downstate, maybe even in Springfield. Bill said that the ICA would probably be willing to support a "downstate Illinois championship", open to all but awarding the title only to chess players from zip codes 61000 through 62999, and it would be more than willing to support bids from downstate clubs (Peoria, Bloomington, even Springfield) to hold the Illinois Open. Watch the newsletter for anything that might develop about bringing state tournaments to Springfield.

**LADDER NEWS Rule Changes**

At the May 23 SCC meeting, the club cleared up some gray areas and potential trouble spots in the ladder rules by voting in some changes. The club voted 6-0 to make the rule that any challenge made after 8 p.m. may be deferred without penalty to the following week. If either of the players do not show up the following week, they lose by default. The club voted 4-3 to modify the rule that says a player may challenge one or two rungs up, if those players are available. The new rule is that a player may only challenge ONE rung up. If that player is unavailable, he may then challenge two rungs up, and so on, until he reaches an available player. This bypass procedure may only be used after 7 p.m., giving players time to get to the meeting.

However, a problem could arise if all of the players above the would-be challenger are absent. In that case, the would-be challenger advances past all of them - to the top rung! This means players near the top of the ladder must keep showing up, to defend their positions. This motion was carried 4-1.

*Exception!* If a player is present but unavailable to play (he is already playing someone else, for example, or he is a club officer conducting club business) he cannot be bumped from the top in this manner. The would-be challenger must wait for that player (or another) to become available, and challenge him then, subject to the 8 p.m. deferral rule.

Club VP Gerald Bumgardner's motion to base ladder standings on gross number of wins was *defeated* 4-2, with 1 abstention.

### Out of Town

Springfield was represented by David Long in the Bloomington tournament of May 19 and the Mt. Vernon tournament of May 20. He scored 3-for-4 in Bloomington and 2.5-far-3 in Mt. Vernon. Randy Ryner represented Springfield at the Quincy tournament on May 20, going 2.5-far-4.

### Farewells

Jonathan "F.B." Hoffsuemmer has been accepted to Washington University in St. Louis and will be departing for there in mid-August. Steve Mc Neil has accepted a job in Chicago and, by the time you read this newsletter, he will already be there.

The SCC will miss both of these chess players, and wishes them best of luck.

## Downstate Chess News

We are very pleased to be receiving more chess news from down state, and look forward to regular reports from Springfield.

We hope that other downstate organizations – Mt. Vernon, Highland, and others, will also provide regular reports to the Illinois Chess Bulletin. Of course, space can sometimes be an issue, but we will always attempt to provide coverage of downstate events.

Downstaters can help us in this effort by providing material in an electronic format whenever possible. The design and layout of the ICB takes considerable time, and if information can be provided in the standard ICB format, it would really be helpful.

We look forward to continued and increased support for the Illinois Chess Bulletin from downstate Illinois.

Thank you!

## Results from Springfield vs. Jacksonville

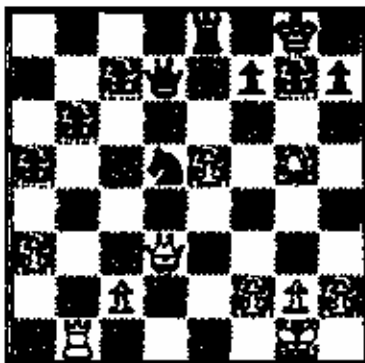
Board	SPRINGFIELD			JACKSONVILLE
1	Doug Van Buskirk	.5	.5	Richard Kujoth
2	Garald Bumgardner	1	0	Greg Moses
3	David Long	1	0	Collin Mizeur
4	Tom Knoedler	.5	.5	Bob Cockrell
5	Dave Sculley	1	0	Al Darr
6	Jonathan Hoffsuemmer	1	0	Fred Ohles
7	Jim Barnes	0	1	Joe Boyd
a	Mike Shores	0	1	Larry Coulter
9	David Braunfeld	1	0	Dave Eitering
TOTAL		6	3	

## Area Tournament Schedule

Date	QtV	Reg End	Contact	Phone
July 14	Belleville, Ill.	9:45	Cesareo Rodriguez	(618) 234-6972
July 15	Mt. Vernon, Ill	9:15	Mark Oestreich	(618) 532-5733
July 21	Normal Ill	8:45	Dennis Bourgerie	) 454-3842
July 21	Edwardsville, Ill.	8:45	Paul Holland	(618) 288-4117
July 29	Quincy, Ill.	11:50	Gary B	(x17) 223-8762
August 18	Peoria, Ill.	8:45	Fred Malcome	(309) 369-4833
August 25	Springfield Ill. a	TBD	David Long	(217) 522-0489
October 27	Springfield Ill.	8:45	Tom Knoedler	(217) 523-7265
November 3	Normal, Ill.	8:45	Dennis Bourgerie	(309) 454-3842

### Take On +Garald's Computer IV by Garald Bumgardner

My computer is playing itself. Try to figure out the next few moves in this position. It is White's move.



#### Solution

Black's best move is 49...P-K6ch!! There follows 50. KxP RxRch 51. KxR K-K5!, creating zugzwang - the white king must retreat and let the black king in one way or another. This was what really happened in the game. If White declines the pawn, for examine 50. K-Ki or K-B1, Black can play 50...RxR, with or without check; White must play 51. KxR and Black obtains the opposition anyways with 51...K-K5.

## Results -June 16, 2001

RANK	NAME	Rating	RD 1	RD 2	RD 3	RD 4	Total
1	David Mote	2283	W-22	W-35	W-15	W--5	4.0
2	Keqin Gu	1816	W-36	W--6	W-16	W--7	4.0
3	Andy Mc Gowan	1958	W-23	L-11	W-18	W-19	3.0
4	Pete Karagianis	1718	W-31	W-37	L--5	W-11	3.0
5	Vernon Smith	1561	W-42	W-27	W--4	L--1	3.0
6	Byron Pappas	1500	W-44	L--2	W-36	W-22	3.0
7	Genius Runyowa	UNR	W-21	W--9	W--8	L--2	3.0
8	Richard Kujoth	1900	W-29	D-18	L--7	W-27	2.5
9	Kevin French	1855	D-24	L--7	W-42	W-29	2.5
10	Clark Guo	1753	W-30	W-12	D-11	----	2.5
11	Ramamoorthy Shankar	1528	W-26	W--3	D-10	L--4	2.5
12	James Webb	1450	W-45	L-10	W-37	D-13	2.5
13	Bob J-uranek	12202	L-14	W-45	W-35	D-12	2.5
14(H)	Stacy Warren	1724	W-13	W-20	----	----	2.0
15	Dennis Bourgerie	1703	W-38	W-39	L--1	----	2.0
16	Gary Blickhan	1605	W-43	W-25	L--2	----	2.0
17	David Sculley	1575	L-25	W-26	W-24	----	2.0
18	Randy Rynar	1482	W-41	D--8	L--3	D-23	2.0
19	Jonathan Hoffsuemmer	1347	L-27	W-43	W-39	L--3	2.0
20	Larry Van Ryn	1345	W-32	L-14	W-25	----	2.0
21	James Hodge	1314	L--7	W-40	L-27	W-39	2.0
22	Seth Chiles	1294	L--1	W-41	W-34	L--6	2.0
23	Robert Parker	1279	L--3	W-44	D-28	D-18	2.0
24	Krishna Shankar	1204	D--9	D-30	L-17	W-38	2.0
25	Larry Griffin	1076	W-17	L-16	L-20	W-34	2.0
26	Siyao Gu	1056	L-11	L-17	W-45	W-36	2.0
27	Derek Sparks	UNR	W-19	L--5	W-21	L--8	2.0
28(H)	Tom Knodler	1571	HALF	HALF	D-23	----	1.5
29	Bill Wright	1452	L--8	D-42	W-30	L--9	1.5
30	Adam Kalata	1186	L-10	D-24	L-29	W-42	1.5
31	Josh Rohrscheib	1133	L--4	L-33	W-41	D-32	1.5
32	Josh Johnson	UNR	L-20	L-36	W-40	D-31	1.5
33	Torn Barnard	1756	L-37	W-31	----	----	1.0
34	John Eaton	1697	L-39	W-38	L-22	L-25	1.0
35	Dave Bononi	1502	W-40	L--1	L-13	----	1.0
36	Jerry Bennett	1196	L--2	W-32	L--6	L-26	1.0
37	Kevin Guo	1182	W-33	L--4	L-12	----	1.0
38	Larry Coulter	1108	L-15	L-34	W-44	L-24	1.0
39	Danny Griffin	1089	W-34	L-15	L-19	L-21	1.0
40	Joey Oscepinisky	1007	L-35	L-21	L-32	W-44	1.0
41	Justin Fieser	914	L-18	L-22	L-31	W-45	1.0
42	Joseph Earl	1075	L--5	D-29	L--9	L-30	0.5
43	Michael Shores	1082	L-16	L-19	----	----	0.0
44	Patrick Gu	947	L--6	L-23	L-38	L-40	0.0
45	Dylan Canavan	UNR	L-12	L-13	L-26	L-41	0.0

2 tied for 1st-2nd: David Mote, Keqin Gu.

2 tied for 1st Class A & B: Andy Mc Gowan, Pete Karagianis.

2 tied for 1st Class C & D: Vernon Smith, Byron Pappas.

2 tied for 1st Class E & under: Larry Griffin, Siyao Gu.

1st Unrated: Genius Runyowa.

## Stein wins Normal, IL Tournament

Pete Stein (2146) of Naperville, IL won the 2001 Normal July Open with a 4-0 score. Mike Leali (1893) of Peoria, IL scored 3.5-0.5 to tie for 2<sup>nd</sup>.

In the final round, with 12 seconds remaining on his clock, Larry Cohen (1935) found a checkmating continuation against Daniel Leung (1798) and thereby tied for 2<sup>nd</sup> with Leali at 3.5-0.5.



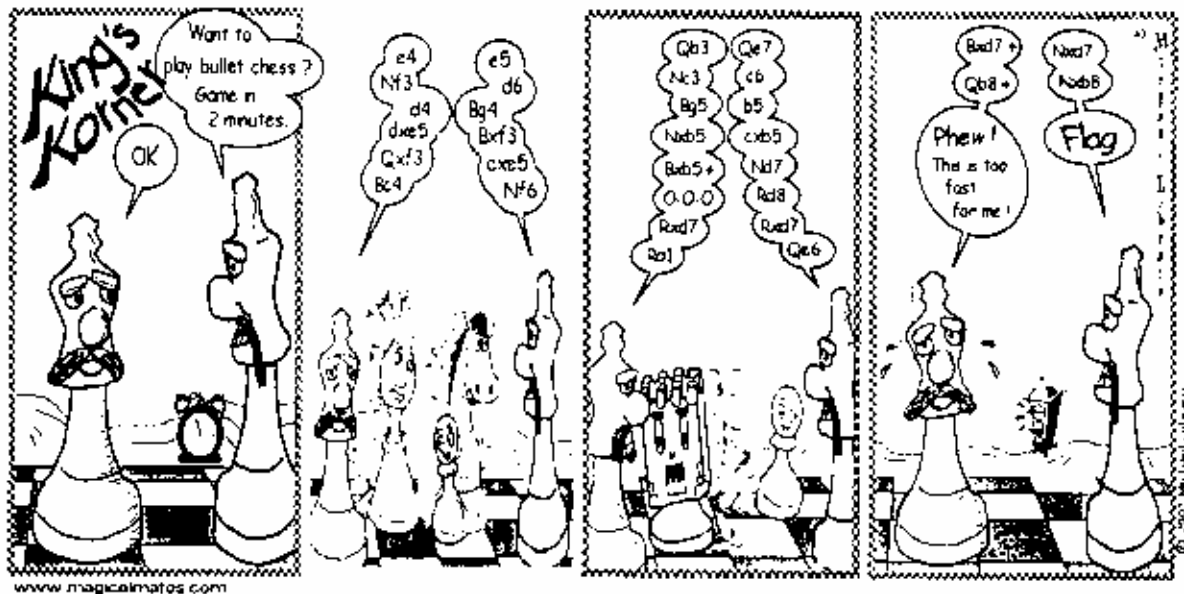
## St. Charles Chess News

by Dan Pradt

June 14. Mariano Acosta(QR2103) sailed through the ten minute Club championship with a 5-0 score. Mariano beat Jeff Wiewel(2002), Jim Oberweiss(1722) and Justin Saudaskas(1694) in the last three rounds. Mike Aaron, Ray Satterlee(1887) and Jason Duncan(1493) shared second with 4-1. Sadauskas was fifth with 3.5

July 12 Our second theme night featured the Albin Counter Gambit. 1. d4, d5 2. c4, e5. Theoretically Black sacs a pawn in order to insure a lost game. In practice the gambit is irritating and trappy and gives reasonable chances. White and Black came out about even in our 14 board spread, with white slightly superior on the top boards.

August 9 Displaying mature positional play combined with an eye for tactics, 15 year old Paul Friedel won the Ten Minute Club championship, 5-0. Paul beat Jeff Wiewel, Ray Satterlee, and Mike Aaron in the final three rounds. Aaron and Andrew Hubbard(1543), who upset Wiewel in the final round, tied for second with 4-1. Marcus Stinson(1881) was fourth with 3.5.



*Knights Moves Chess Club News*

by Hector R. Hernandez

The Rudy Lozano Branch of the Chicago Public Library held its KMCC Summer Open tournament in July. Thirty players participated, including twelve adults. Master Vince Berry showed up to play on his birthday and took first place with a perfect 5-0 score. Everyone enjoyed some birthday cake, courtesy of Cindy Mislak. Vince generously donated his first place ICA membership prize to the next player in line, David Nordahl. The following children earned ICA memberships through their performance: Josi A. Rodrmguez, David Ohlhausen, Will Kaplan and Peter D. Kauss.

The following games were played in recent tournaments by some of our club members. Josi R. Rodrmguez, annotates a game he played at the Western Open in Milwaukee. Prior to the final round he was in clear second place with a score of 3.5 points. He then lost to a Master, but still managed to tied for 1st place in his section and 3rd place overall. Josi also played in this year's Mexican National Junior Olympics in Mexico City. He scored 4 of 6 points in the regular tournament and 4 of 5 in the speed tournament that followed. Here he defeated one of the two players he had lost to in the regular tournament. It was the second time Josi was a participant in Josh Manion's University of Wisconsin Summer Chess Camp. He won first place in his Sectional Tournament which included a number of very strong junior players such as Jason Duncan, Andrew Hubbard and Bennett Joseph. Duncan and Hubbard are roven "U.S. Top Fifty" list players. It was the second time he played in this Mexican National Event.

Cristian Peqa, age 7, earned first place among first-graders in Co-chess' Grand Prix, year-long competition for 2000-2001. Like Josi Rodrmguez, Cristian also went to Mexico City, Mexico this year to compete the State Champions. He played fifth-grader

Jacob Davis In a recent tournament. Jacob lost an important pawn in a knight versus bishop ending allowing Cristian to create a strong passed pawn which eventually became a queen. David Ohlhausen likes competing in Open/adult tournaments. He is a relatively consistent player who has made steady progress over the last two years. During that time his rating has gone from 641 to 1340. David managed to win a game against a strong and well-known scholastic player, Steven Klink. The game was somewhat of a see-saw battle. On move 17, White missed winning a piece by capturing with a pawn on e5. Later, Black failed to play 29. ... e5 gaining a strong advantage.

All three KMCC children did well in the 2001 Illinois State Grade School K-8 Chess Championships. David took clear third place in the 4th-5th grade Division. Josi, playing in the 6th-8th grade Division, had a chance to tie for first place but managed to get only a draw in the last round. He tied for 5th instead, and ended up with the 6th place trophy on tie-breaks. Cristian brought home the 10th place overall trophy in the K-3rd Division.

Finally I include one of my games from the Master Challenge tournament. I had 3 of 4 points going into the last round and had the White pieces against Master Stamnov. The game was sort of interesting up until the late middle game. Perhaps one of the ICB readers can provide concrete analysis and determine the outcome of the game after 36. Nxd4.

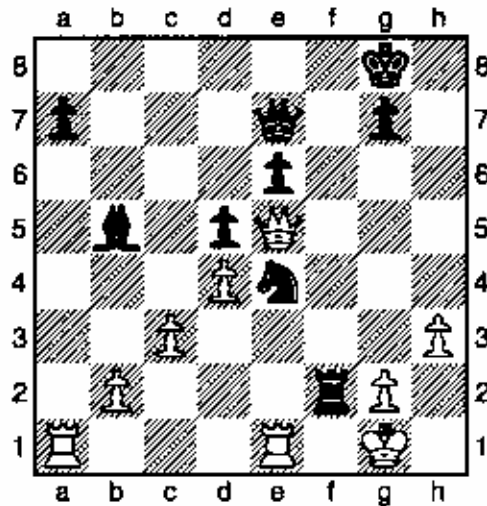
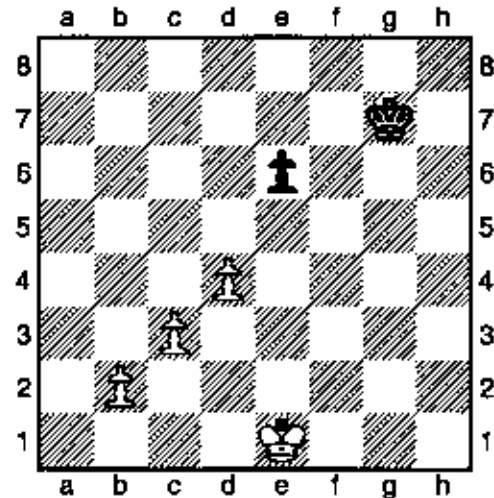
This year's Latino Chess Championship will take place on Saturday October 6, at the Rudy Lozano Branch Library, 1805 S. Loomis in Chicago's Pilsen community. Our chess club meets on Mondays from 6 p.m. to 8 p.m. All are welcome to attend.



(5) Ohlhausen, D (1179) – Klink, S (1490) [D02]  
2001 Masters Challenge Elmhurst College (4), 2  
4.06.2001

[Hector]

1.d4 d5 2.Nf3 e6 3.Bf4 Nf6 4.h3 e6 5.e3 Qb6 6.  
Qc1 Be7 7.c3 Nbd7 8.Nbd2 h6 9.Bd3 c5 10.0-0  
Bd6 11.Bxd6 Qxd6 12.Re1 exd4 13.exd4 0-0 1  
4.Qc2 Re8 15.Qb3 Nb6 16.Ne5 Nbd7 17.Nd3  
Nxe5 White misses the win of a piece for a pawn  
at this point. 18.Nxe5 [18.dxe5 Qb6 19.Qxb6 ax  
b6 20.exf6 gxf6] 18...Nd7 19.Bb5 Rb8 20.Qa4  
Nb6 21.Nxf7 Qc7 22.Qc2 Qxf7 23.Bxe8 Qxe8 2  
4.a4 Qd8 25.Re3 Nc4 26.Rg3 Nd6 27.Qg6 Qe7  
28.Qxb6 Ne4 29.Qf4 Ra8 [29...e5 30.dxe5 Nsg3  
31.Qxg3 White has three pawns for the minor pi  
eces, but there is a lot of play left in this position.  
Who is better here? ] 30.Re3 Bd7 31.Re2 b5 32.  
axb5 Bxb5 33.Ree1 Rf8 34.Qe5 Rxf2



This move appears a bit hasty, Black will lose m  
aterial. 35.Rxe4 Rxf2+ 36.Kxg2 dxe4 37.Qxb5  
Qf7 38.Qf1 Qg6+ 39.Kh1 e3 40.Qg2 Qh6 41.R  
xa7 e2 42.Qxe2 [42.Qa8+ Kh7 43.Qe4+ Kg8 +  
Kh2 e1Q 45.Qxe1 Qf4+ 46.Kg2 Qg5+ 47.Qg3] 4  
2...Qxh3+ 43.Kg1 Qg3+ 44.Kf1 Qh3+ 45.Ke1  
Qg3+ 46.Qf2 Qg5 47.Qf7+ Kh8 [47...Kh7] 48.  
Qxg7+ [48.Ra8+ Kh7 49.Qg8+ Kh6 50.Qxe6- Q  
f6 51.Qh3-] 48...Qxg7 49.Rxg7 Kxg7

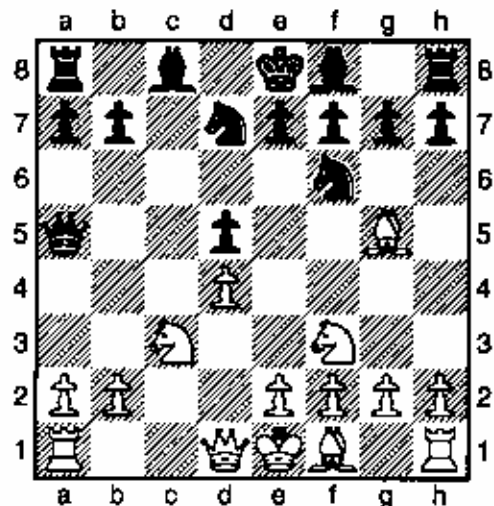
The game has now become a king and pawn end  
ing with a definite advantage to white. 50.Ke2 K  
f6 51.b4 Ke7 52.e4 Kd6 53.Ke3 Ke6 54.Ke4 K  
d7 55.b5 Ke7 56.e5 Kd7 57.d5 [57.Ke5 Kd8 58.  
Kxe6 Kc8 59.d5 Kd8 60.b6 Kc8 61.c6 Kd8 62.K  
f6 Kc8 63.d6 Kd8 64.b7 Ke8 65.b8Q#] 57...exd5  
+ 58.Kxd5 Ke7 59.b6+ Kd8 60.e6 Kc8 61.Kd6  
Kb8 62.Kd7 Ka8 63.e7 Kb7 64.c8Q+ Kxb6 65.  
Qc4 Kb7 66.Qb5+ Ka8 67.Kc7 Ka7 68.Qb7# 1  
-0

(49) Rodriguez, J (1795) – Hoffman, G (1950)  
[D10]

Western Open (2), 07.07.2001

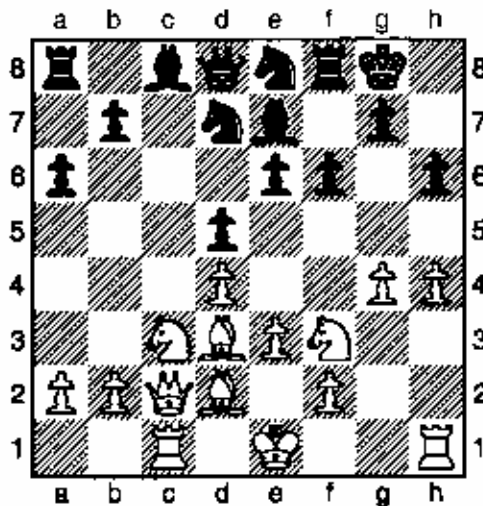
[Jose Rodriguez Jr.]

1.d4 d5 2.c4 e6 3.Nc3 Nf6 4.Bg5 Nbd7 5.Nf3 Q  
a5 6.exd5 [6.Nd2 dxc4 7.Bxf6 Nxf6 8.Nxc4 Qc7  
] 6...exd5

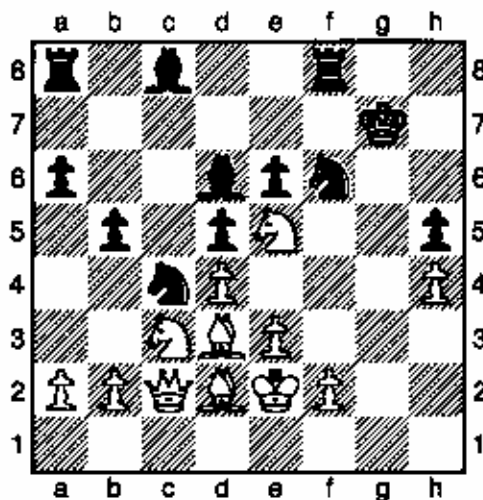


## Knights Moves chess club

[6...Nxd5!? Maybe better than exd5.] 7.Bd2 e6 8.e3 Be7 9.Rc1 0-0 10.Bd3 a6 11.Qc2 Qd8 12.h3 h6 13.g4?! Probably gives up the small advantage White has. 13...Ne8 14.h4 f6?!

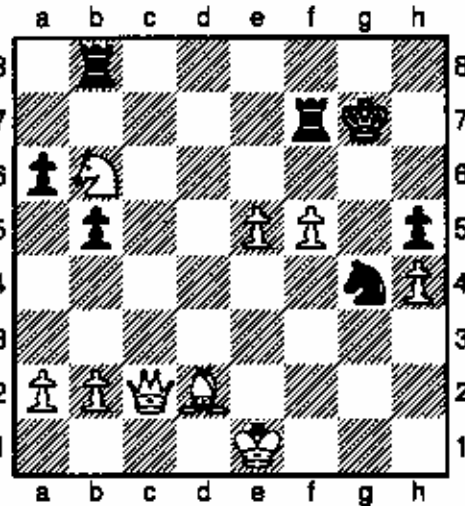


f6 seems very passive, Black should probably try to support a central pawn push. 15.Ke2?! May be not the best, perhaps Nd2 first is better. 15...h5 16.Reg1 Nb6 17.g5 h5 18.gxf6 Nxf6 19.Ne5 Now it may be too late for Black. 19...Bd6 20.Rg5! Ne4 21.Rhg1 Qc7 22.Rxg7+ Qxg7 23.Rxg7+ Kxg7



24.Bxc4! 24...Bxc5! 25.dxe5 Ng4 26.Bxd5! Black is probably lost at this point. 26...Rxf2+ 27.Ke1 exd5 28.Nxd5 With the threat of Qc6 Rb8, Qc7+ winning a rook. 28...Rf7 [28...Bf5 29.Qc7+ Kg8 30.Nf6- Kh8 31.Nxh5 Rg8 32.e6 Rxd2 33.Kxd2 Bxc6 34.Qc7+]-] 29.Nb6 Bf5 [29...Be6!

? 30.Qc6 Bc4 31.Nxc4 Raf8 32.Bc3 Rf1+ 33.Kd2 R8f2+ 34.Kd3 bxc4+ 35.Qxc4+-] 30.e4 Rb8 [30...Re8 31.exf5 Rxe5+ This variation is better than Rb8 for black] 31.exf5!



Now Black is totally lost. 31...Rxb6 32.f6+! Nxf6 doesn't work because of exf6 Rxf6, Bf3! 32...Kg8 [32...Kh8 33.Qc8+ Kh7 34.Qf5+ Kh8 35.Qxh5+ Kg8 (35...Rh7 36.Qe8#) 36.Qg6+ ] 33.Qg6+ Kf8 34.Bb4+! Ke8 35.Qg8+ 1-0

<b>ICA Tour</b>
-----------------

**2001 ICA TOUR LEADERS**

by Bill Smythe

NOTE: The 2001 ICA Tour has been extended to fifteen months, ending March 31, 2002. Future years' Tours will revert to twelve months, but will run from April 1 through March 31.

---

These standings reflect the following 2001 Tour events:

January 5-7, 2001	MAXI	Mid-America Class, Rosemont
January 13, 2001	mini	Peoria Tornado
January 14, 2001	mini	Elmhurst Game/60
January 20-21, 2001	MAXI	Tim Just Winter Open, Grayslake
March 17-18, 2001	MAXI	Elmhurst Class
April 7-8, 2001	MAXI	Greater Peoria Open
May 19, 2001	micro	Wicker Quicker, Chicago
May 25-28, 2001	MAXI	Chicago Open, Oak Brook
June 16, 2001	micro	Wicker Quicker, Chicago
June 22-24, 2001	MAXI	Master Challenge, Elmhurst
June 30, 2001	mini	Peoria Tornado
August 18, 2001	mini	Bradley Summer Open

---

Not included (tournament held after press deadline):

September 1-3, 2001	MAXI	Illinois Open
September 15, 2001	micro	Wicker Quicker, Chicago
September 15, 2001	mini	Illinois Valley Tornado, Oglesby

---

Scheduled or probable future 2001 Tour events:

October 12-14, 2001	MAXI	Midwest Class, Oak Brook
October 20, 2001	mini	Peoria Tornado
October 27, 2001	micro	Wicker Quicker, Chicago
November 3, 2001	mini	Normal November Mini-Tour
November 18, 2001	micro	Wicker Quicker, Chicago
December 1-2, 2001	MAXI	Illinois Class
December 15, 2001	micro	Wicker Quicker, Chicago
January 5-6, 2002	MAXI	Tim Just Winter Open, Grayslake

---

Other Tour events will be added as the year progresses. Check Chess Life, the Illinois Chess Bulletin, ChessPhone (630-832-5222) or the web ([www.illinoischess.org](http://www.illinoischess.org)) for details.

For players with fewer than three 2001 Tour events, the number of events (1 or 2) is shown in parentheses. A player must have played in at least three Tour events during the Tour year (1-1-01 thru 3-31-02) to be eligible for year-end Tour prizes.

NOTE: ICA membership is required for all Illinois residents playing in ICA Tour events. Residents of other states are not required to join ICA if they are members of their home state chess associations. However, Tour points earned by out-of-staters do not count unless they are ICA members.

# ICA Tour

Master Tour Points:		RASO Paul J	(2)	15	NAPOLI Anthony	(1)	19
STAMINOV Aleksandar	107	FLORES Joshua		14.5	NAPOLI Carmelo	(1)	19
GOLDIN Alexander	59	KARAGIANIS Pete D		14.5	PADILLA Rudy R		19
YOUNG Angelo	39	DAMOCLES Job C	(2)	14	DUEKER John T		18
SZPISJAK Steven J	38	MC CONAGHIE Pete	(2)	14	BOURGERIE Dennis		17.5
PALOS Osman	33	NGUYEN Tam Duomi	(2)	14	JAHEDI Salar		17.5
GORLIN Andrey	31	REYNOLDS Robert	(1)	14	LEUNG Daniel Y	(2)	17
BROCK William	28	LEAU Michael E	(2)	13.5	LUNG Richard		17
ILIC Stanimir M	26	NORDAHL David		13	NYBERG Darwin V		17
ARAMIL William J	20	Class A Tour Points:			BLACKMAN William		16.5
CHOW Albert C	20	LAZEBNIK Yakov		44	FISCHER Gregory A		15.5
LONCAREVIC Robert	20	ILIC Stanimir M		38	KARAGIANIS Pete D		14.5
MAROVITCH Mark	19	QUAN Zhe	(1)	36	GIERTZ Charles E	(2)	14
PEDZICH Dominik	(1)	GORLIN Gennady		32	GROEGER Andrew	(2)	14
QUAN Zhe	18	FRIDMAN Viktor		31	MC CONAGHIE Pete	(2)	14
LAZEBNIK Yakov	17	MODES Daniel R		31	EASTON Richard Dw		13
GORLIN Gennady	16	ODVIC Mehmed		27	KREPICH Daniel S		13
GORLIN Yelena	16	HOSCH Yahshua	(2)	27	LUTZKE Rick W	(2)	13
GUREVOCH Dmitry	(2)	LONCAREVIC Robert		24	ENGELEN Mark S		12.5
AARON Michael E	15	RODRIGUEZ Jose A		23.5	Class C Tour Points:		
KARKLINS Andrew	(2)	DUNCAN Jason		22.5	BAUMGARTNER Christop		48
STEVANOVIC Mionir	15	AROND Dean		21	LUKASIK Michael		45
MC CONAGHIE Pete	(2)	FORD Samuel M	(2)	19	WITEK Gregory A		43
NGUYEN Tam Duomi	(2)	CAVITT Dexter	(2)	18	DUPUIS Erik G		35
JAHEDI Salar	12.5	KORIN Mark		18	PADILLA Rudy R		30
AROND Dean	12	BOURGERIE Dennis		17.5	NIENART Christopher		27
CAVITT Dexter	(2)	KUHN Peter B		16	ENGELEN Mark S		23
GAST Bryan	(1)	NORDAHL David		16	PEKOVIC Jusuf		23
LEAU Michael E	(2)	PULLIN Matthew	(2)	15	RAMAMOORTHY Shankar		21
REED Boyd M	(2)	RASO Paul J	(2)	15	KANNIAH Suresh		20
DUNCAN Jason	11.5	FLORES Joshua		14.5	KOPULA Suryaprak	(1)	20
HORNOR Richard R	11.5	KARAGIANIS Pete D		14.5	ROGERS Nathaniel		20
Expert Tour Points:		MARKOVIC Arandel		14	MORAN Philip D		19
GORLIN Andrey	36	MC CONAGHIE Pete	(2)	14	NAPOLI Anthony	(1)	19
ARAMIL William J	30	REYNOLDS Robert	(1)	14	BURNETT Jim		18
BROCK William	28	WILLIAMS Kent M	(1)	14	DUEKER John T		18
ILIC Stanimir M	26	COHEN Lawrence S		13.5	LEWIS Otis		18
STEVANOVIC Mionir	25.8	LEAU Michael E	(2)	13.5	LOBRACO Michael J		18
LONCAREVIC Robert	24	HAYHURST William	(2)	13	DICKEY Douglas E		17
NAFF William A	22.5	HERNANDEZ Hector	(2)	13	PRUIC Abdulah		17
ZINYTCH Miron	22	LYON Mark A	(2)	13	WALLENBERG Ben	(2)	17
AARON Michael E	21	Class B Tour Points:			BLACKMAN William		16.5
AROND Dean	21	BAUMGARTNER Christop		40	KARAGIANIS Pete D		16
FAGAN James B	20	DUPUIS Erik G		35.5	EASTON Richard Dw		15
MAROVITCH Mark	19	GANDHI Rajen C	(2)	29	PETTYE Isaiah		15
BENESA Arnulfo	18	WITEK Gregory A		29	POTTS Kevin J		14.5
QUAN Zhe	18	ZAZOVSKY Viorik		27	KASSIN David		14
BOURGERIE Dennis	17.5	FLORES Joshua		26	VONDRUSKA Richar	(1)	14
LAZEBNIK Yakov	17	RODRIGUEZ Jose A		23.5	KREPICH Daniel S		13
SCOTT Gene G	(2)	REED Boyd M	(2)	21	SETHI Rishi		12.5
GORLIN Gennady	16	STOLTZ Robert M		21	Class D Tour Points:		
GORLIN Yelena	16	KANNIAH Suresh		20	JENKINS Drake B	(2)	32
KARKLINS Erik	(2)	NIENART Christopher		20	PEKOVIC Jusuf		32
INUMERABLE Flore	(2)						

LOPEZ Philip	29	ABRAMS Scott	(2)	15	GONZALES Alfred	(1)	5
POTTS Kevin J	28.5	KASIURAK Zach		14.5	TOWNSEND Amelia	(1)	5
KASSIN David	27	MONAHAN Sean P	(1)	14	WALNY Yair	(2)	5
BLOCK Joe	(2) 26	MUHS Adam E	(1)	14	ZHENG Jeff	(1)	5
DUEKER John T	24	VON HATTEN Jerem	(2)	14			
SETHI Rishi	23.5	POTTS Kevin J		13.5	Class G Tour Points:		
KREPICH Daniel S	22	DE LA MORA Salvador		13	LYON Derek		21
GORODETSKIY Steve	21	DIAMOND William	(2)	13	SHANKAR Krishna		20
SEIBEL Dennis	21	GARVEY John G	(2)	13	GRIFFIN Danny L		11
ORIBELLO Avelino	(1) 20	LAGOUROS Basil	(2)	13	CRUM Jeremy J	(2)	7
LEWIS Otis	18	LEWIS Richard	(2)	13	KREPICH Daniel S		7
OHILHAUSEN David B	18	LOPEZ Eugene C		13	LERMAN Ben	(1)	6
WISHNER Michael	18	PAUL Gabriel S	(2)	13	PAUL Gabriel S	(2)	6
HORNOR Richard R	17.5	DUJPUIS Brian M		12.5	VON HATTEN Jerem	(2)	6
WALLENBERG Ben	(2) 17	CHEN Byron		12	WASHINGTON Andre	(1)	6
HIERONYMUS April M	16	MEISTER Mark		12	DUBIN Joshua	(1)	5
ECK Frederick A	(2) 15				JONKE Matthew	(1)	4
SUGOWSKI Scott	15	Class F Tour Points:			TILTON Noah K		4
KASH Paul J	(2) 14	LYON Derek		24	GARVEY John G	(2)	3
MORAN Philip D	14	SHANKAR Krishna		20	GORDON Ross S	(2)	3
BIALER Gershon	(2) 13	GARVEY John G	(2)	13	LERMAN Jeff	(1)	3
CHENG Derrick W	(2) 13	PAUL Gabriel S	(2)	13	LERMAN Joe	(1)	3
DICKEY Douglas E	13	GRIFFIN Danny L		11	LEWANDOWSKI Nath	(1)	3
GASUNAS Anthony C	13	GORDON Ross S	(2)	10	NOGULICH Nicolau	(1)	3
JURGENSEN Alan	13	PAUL Barry S	(2)	10	CARNEY-SOLTYS An	(1)	2
LOPEZ Eugene C	13	CRUM Jeremy J	(2)	9	CHUANG Kangway V	(1)	2
PETTYE Isaiah	13	NASH James	(1)	9	FLAXMAN Seth R	(1)	2
SULLIVAN Michael	13	DAVIS Jacob H	(2)	8	WALNY Yair	(2)	2
WRONSKI Edmond	(2) 13	WINIECKI Robert	(1)	8	JACONETTE Steven	(1)	1
		BIALER Jacob	(1)	7	LUCKOW Patrick	(1)	1
		JEEVANADAM Vines	(1)	7	MILLER Ronnie	(1)	1
Class E Tour Points:		KREPICH Daniel S		7	MILLER Timothy	(1)	1
LU Henry	43	SUMMERS Todd	(1)	7			
YARNOFF Zach D	(2) 40	THOMPSON Charles		7	Class H Tour Points:		
SLIGOWSKI Scott	29	KASIURAK Zach		6.5	LERMAN Ben	(1)	6
GASUNAS Anthony C	26	TILTON Noah K		6.5	VON HATTEN Jerem	(2)	6
LYON Derek	24	ABRAMS Scott	(2)	6	LERMAN Joe	(1)	3
CARROLL Sean	(1) 20	BANZHAF Alexande	(1)	6	NOGULICH Nicolau	(1)	3
SHANKAR Krishna	20	DONNA Daniel A	(2)	6	JACONETTE Steven	(1)	1
CHODAK David N	(2) 19	EDELSTEIN Sam	(1)	6	MILLER Ronnie	(1)	1
SMITH Derek E	(2) 19	GONZALEZ Marcos	(1)	6	MILLER Timothy	(1)	1
ILIC Lazar S	18.5	LERMAN Ben	(1)	6			
LAWRENCE Danyul	18	VON HATTEN Jerem	(2)	6	Class I Tour Points:		
OHILHAUSEN David B	18	WASHINGTON Andre	(1)	6	JACONETTE Steven	(1)	1
VAN RYIN Larry	17	CURTICE Mark D	(1)	5	MILLER Timothy	(1)	1
SETHI Rishi	16.5	DUBIN Joshua	(1)	5			
KREPICH Daniel S	16						

### ICA Club Affiliates

**Organizations wishing to be listed here** should mail an affiliation fee of \$25.00 for one year (check payable to Illinois Chess Association) to the ICA membership secretary, Bill Smythe, 7042 N Greenview Av #1-S, Chicago 60626-2833. Include a short paragraph, similar to those below, listing your club's activities.

---

**Addison Trail High School**, Dupage HS District 88, 101 W Highridge Rd, Villa Park 60181.

**Alternative Group**, Peter Pelts, 7135 Greenleaf Av, Niles 60714. 847-965-6469.

**American Postal Chess Tournaments** sponsors postal events and sells chess books & equipment. Jim or Helen Warren, PO Box 305, Western Springs 60558. 630-663-0688, [apct@aol.com](mailto:apct@aol.com). Organizers of the U.S. Masters.

**Avery Coonley School Chess Club**, 1400 W Maple Av, Downers Grove 60515.

**Central Lake County Chess Club** meets Fridays 7:15 pm to midnight, College of Lake County, Bldg 1, Washington at Rt 45, Grayslake. Dennis Grant, 1657 McKay, Waukegan 60087. 847-336-5188.

**Chess Central** sponsors rated tournaments in the Grayslake / Zion area. Tim Just, 37165 Willow, Gurnee 60031. 847-244-7954, [timjust@Lnd.com](mailto:timjust@Lnd.com).

**Chess Utopia** sponsors rated tournaments in the Lake County area, Fridays 6 pm. Frank Swindell, 847-816-0869, [Swinchess@aol.com](mailto:Swinchess@aol.com), [www.ChessUtopia.org](http://www.ChessUtopia.org).

**Chessterton Chess Club** meets at Westchester Public Library, 200 W Indiana, Chessterton IN. Randy Pals, 219-926-2266, [rpals@home.com](mailto:rpals@home.com).

**Chicago Industrial Chess League** organizes frequent competition among commercial or government teams with awards, ratings, and special events. Pat Sajbel, 847-391-2134.

**FIDE Master Albert Chow** gives private lessons by appointment. 3513 N Seminary, Chicago 60657. 773-248-4846, [ChowMasterAl@yahoo.com](mailto:ChowMasterAl@yahoo.com).

**Concordia Community Chess Club** meets Tuesdays 7 pm to midnight, Concordia University, SW corner Division & Bonne Brae, River Forest. Ken Marshall, 357 W Grove, Lombard 60148. 630-932-1455.

**Continental Chess Association** runs major tournaments nationwide, including the annual World

Open in Philadelphia and the Chicago Open in late May each year. PO Box 249, Salisbury Mills NY 12577. Bill Goichberg, [www.chesstour.com](http://www.chesstour.com).

**Crossroads Chess Club** meets Tuesdays 6 pm, K Square Mall Food court, I-57 / I-70 exit 160, Effingham. Cameron Feltner, 217-844-2645

**DesPlaines Community Chess Club**, 1072 Lee St, DesPlaines.

**Downers Grove Park District Chess Club** meets Thursdays 6:30-10 pm, Lincoln Center, 935 Maple Av, Downers Grove. George Uffner, 630-960-9382.

**Elmhurst Chess Club** meets, and holds frequent USCF events, Sundays 6 pm (7 pm in the summer) to 11 pm, Room 021, North Hall, Elmhurst College, 190 Prospect, Elmhurst. Roger Birkeland, 630-832-1754. [rogerb@ielmhurst.edu](mailto:rogerb@ielmhurst.edu).

**Emerald Knight Chess Club**, Fountainedale Public Library, 300 W Briarcliff Rd, Bolingbrook. Patrick Flynn, 630-759-7128. [patrickjf@hotmail.com](mailto:patrickjf@hotmail.com).

**Evanston Township High School Chess Club**, 1600 Dodge Av, Evanston 60204. Ken Lewandowski, 847-492-7932.

**Fox Valley Chess Club** meets Mondays 7-10 pm, Oberweis Dairy, 2nd floor training center, 951 Icc Cream Dr, Aurora. Bob Renaut, 630-983-0934.

**Greater Peoria Chess Federation** meets Mondays 7 pm. Site information Wayne Zimmerle, 514 W Loucks Av. Peoria 61604. 309-692-4480 (day), 309-686-0192 (evenings), [erlah@tlunk.com](mailto:erlah@tlunk.com).

**Hammond Chess Club**, Charles Higgins, 116 Crestview St, Crown Point IN 46307. 219-663-8938.

**Holy Trinity Northshore Chess Club** meets Tuesdays 7-10 pm, Holy Trinity Church, 2828 Central Rd at Shermer, Glenview. Drop-ins welcome. Dale Hurst, PO Box 284, Glenview 60025. 847-729-9000. [NSChess@aol.com](mailto:NSChess@aol.com)

**House of Chess** meets Saturdays 4:30 pm, 1st Baptist Church, 146 S Main St, Glen Carbon 62034. Paul Holland, 618-288-4117, [members.aol.com/housechess](http://members.aol.com/housechess).

**Illini Chess Club** meets Wednesdays 7-10 pm, Loomis Lab room E39, Green & Goodwin (summer, Education room 33, 6th & Pennsylvania), Urbana. [www.uiuc.edu/rc/chess](http://www.uiuc.edu/rc/chess).

**Illinois Chess Coaches Association** is open to scholastic chess coaches in Illinois. Mike Zacate, 708-479-9380, [miczacate@aol.com](mailto:miczacate@aol.com).

**Illinois Valley Chess Association** organizes rated tournaments in the LaSalle-Peru area. Bill Schulte, 520 First St, LaSalle 61301. 815-223-1505. [bill.schulte@juno.com](mailto:bill.schulte@juno.com).

**Le Echecs Connoisseur** is a clearinghouse for chess study partners. Contact Walter Griesmeyer, 773-379-5756, and an attempt will be made to match you with a study partner.

**Mahomet-Seymour High School Chess Club**, Dan Pirtle, 302 W State, Mahomet 61853. 217-586-4962. [dpirt@ms.k12.il.us](mailto:dpirt@ms.k12.il.us).

**Mid-America Chess Association** sponsors the U.S. Amateur Team Championships Midwest ([www.64.com/usatmw](http://www.64.com/usatmw)), sponsors the popular website at [www.64.com](http://www.64.com), and brings national tournaments to the Chicago area. [nudam@64.com](mailto:nudam@64.com).

**Midway Chess Enterprises**, PO Box 388765, Chicago 60638. [whizline@home.com](mailto:whizline@home.com).

**Orland Hills Chess Club** meets most Fridays 6:30-10:00 pm, Orland Hills Village Hall, 16033 S 94th Av, Orland Hills 60477. Glenn Bilina, 708-349-7211, or Len Weber, [shri33@aol.com](mailto:shri33@aol.com). The club is looking forward to a permanent home in the fall at the Orland Hills Community Center. Childrens' classes available.

**Park Forest Chess Club** meets Thursdays 7-10 pm, Freedom Hall (next to the library), Lakewood Blvd just west of Orchard, Park Forest. Larry Cohen, 630-834-2477.

**Rudy Lozano Library Chess Club**, 1805 S Loomis, Chicago 60608. Hector Hernandez, 312-746-4329. [whizline@home.com](mailto:whizline@home.com).

**Smythe Dakota Competitions** encourages and offers financial support for Plus-Score Mini-Tours at sites in Chicago and adjoining suburbs. Bill Smythe, [ebichess@enteract.com](mailto:ebichess@enteract.com).

**St Charles Chess Club** meets Thursdays 7-11 pm, Baker Community House, 101 S 2nd (Rt 31), St Charles. Jeff Wiewel, 1931 Dunhill Ct, Arlington Heights 60004. 847-818-8913. [jwiewel@ntmusa.com](mailto:jwiewel@ntmusa.com).

**The South Suburban Chess Club of Greater Chicago** meets Fridays 7-11 pm, Oak View Recreation Center, 110th & Kilpatrick, Oak Lawn. Joe Bannon, 773-445-0631.

**Springfield Chess Club**, David Long, 2021-1/2 S Fourth St, Springfield 62703. 217-793-3426.

**SquareHopper, Joshua Flores, Chess Professional.** Available for any chess-related activity at reasonable rates. Specialties are tournament directing/organizing, coaching and teaching. Willing to travel. 630-430-CHES(s) anytime.

**Tuley Park Chess Club** holds frequent Saturday tournaments at Tuley Park Field House, 501 E 90th Pl, Chicago. Tom Fineberg, 7321 S South Shore Dr, Chicago 60649. 773-721-3979.

**Twin City Chess Club** meets Tuesdays 7-10 pm. Lincoln Leisure Center, 1206 S Lee St, Bloomington 61701. Dennis Bourgeric, PO Box 157, Normal 61761. 309-454-3842. [schoolstreeter@msn.com](mailto:schoolstreeter@msn.com).

Senior Master **Richard Verber**, 2418 USCF, 2350 FIDE, offers private or group chess lessons in the western suburbs at 10 S Oak Av, Westmont 60559. \$75 for 3 hours. 630-435-0049.

**West Middle School Chess Club**, 1900 N Rocktoon Av, Rockford 61103. Ralph Sullons, 815-966-3220.

**Wicker Park Chess Club** meets Wednesdays 7 pm to 1 am, Myopic Books, 1468 N Milwaukee Av, Chicago. Pat Jones, 773-772-1369, [pjones@artic.edu](mailto:pjones@artic.edu).

**Wild Onion Chess Club** is open Thursday & Friday from 6:00 pm to 12:00 pm & Saturday and Sunday 10:00 am. tournament schedule. 6136 N. clark chicago IL 60660 tel: (773) 262-1328 or (773) 274 4043 Ask for Tom Kirk Or Angelo Young for more info.

**Windy City Chess Club (VBCM)**, PO Box 340, Worth 60482. [VWBerry@aol.com](mailto:VWBerry@aol.com).

**Woodfield Country Chess Club**, Carl Troyer, 723 N Main, Eureka 62530. 309-467-6055.

## ICA Patrons

### Business Patrons:

American Chess Equipment  
American Postal Chess  
Tournaments  
Squarehopper

Anheim, CA  
Western Springs  
  
Naperville

### Organization Patrons:

Continental Chess  
Mid-America Chess Assn

Salisbury Mills, NY  
Morton Grove

### Life Patron Members:

Warren, Helen E  
Warren, Jim

Western Springs  
Western Springs

### Century Club Patron Members:

Bachler, Kevin L  
Bale, Leslie  
Brook, Bill  
Cook, David A  
Frieberg, Thomas A  
Flores, Joshua  
Friske, Thomas G  
Grunberg, Fred  
Naylor, Samuel M  
Pradt, Daniel J  
Read, Rhys  
Sindair, Arthur  
Smythe, Bill  
Wong, Philip

Park Ridge  
Des Plaines  
Chicago  
Hinsdale  
Chicago  
Naperville  
Des Plaines  
Palms Heights  
Carriage  
Glen Elyn  
Des Plaines  
Evanston  
Chicago  
Winnetka

### Gold Card Patron Members:

Aramil, William  
Barre, Todd J  
Bogan, Timothy  
Brosios, Jim  
Brown, Walter M, Jr  
Burgess, Frederick B  
Chen, Aaron  
Delay, Joseph D  
Ducker, John T  
Duffy, James W, Jr  
Groeger, Andrew  
Hart, Vincent J  
Hernandez, Hector  
Marovich, Mark  
McConaghie, Peter J  
Novotny, James J  
Ormins, John C  
Pehras, Alex  
Reyes, Catalino B  
Rhino, Frederick S  
Rhodes, Murel  
Salem, Mohamed Medhat  
Shockey, Robert  
Sherman, Scott  
Swag, Michel J  
Tanaka, James  
Terbal, William  
Verber, Richard  
Woodruff, Philip K  
Zabel, Sandy

Winnetka  
Elmhurst  
Chicago  
Chicago  
Joliet  
Park Forest  
Oak Brook  
Schaumburg  
Lockport  
Bloomington  
Chicago  
Mount Prospect  
Chicago  
Ozero  
Dunkap  
Schaumburg  
Joliet  
Darien  
Addison  
Park Ridge  
Pocah  
Chicago  
Madison Park  
Elk Grove Village  
Evanston  
Chicago  
Glen Elyn  
Westmont  
Graylake  
Evanston

### Patron Members:

Burzdok, Roy  
Birkland, Roger

Bishop, Jack  
Boone, Foster L, Jr  
Burgo, Gregory  
Callett, Roger R  
Chua, Johnson E  
Cohen, Lawrence S  
Cunin, Mike  
Cury, Eileen E W  
Duncan, Tom  
Ferner, Charles E  
Gortz, Charles E, Sr  
Haneen, Steven  
Henderson, S E, Jr  
Henderson, Scott L  
Hubbard, David R  
Ivins, Daniel G  
Jankauskas, Kazys  
Just, Tim  
Kirk, Steven, Sr  
Kroessler, Thomas  
Kras, Tim  
Kuhn, Peter B  
Lang, Richard S  
Lechnok, William Jay  
Lester, Michael  
Lewis, Richard  
Lindsay, Candace  
Lobacco, Michael  
Marshall, Kenneth N  
Martin, Gary J  
Martin, Richard R, Jr  
Moore, Daniel R  
Moore, Clarence J  
Moore, Marlene  
Oberweis, James D, Sr  
Pratt, Michael  
Ragonnet, Allen C, Jr  
Reule, Robert  
Rose, Eric  
Ryner, Randall L  
Sallorico, Ray Doyle  
Scott, Garrett  
Skiba, Thomas J  
Suleau, Ely O  
Sowa, Walter  
Spiegel, Leonard G  
Suarez, Ronald J  
Wanzong, Robert C  
Waring, Robert W  
Williams, Brian  
Zacale, Michael E

Western Springs  
Auburn  
  
Chicago  
Lynwood  
Elmhurst  
Arlingwood  
Gurnee  
Villa Park  
Arlingwood  
Freeland, MI  
Naperville  
Chicago  
Harvester Park  
Chicago  
Bolingbrook  
Antioch  
Glen Elyn  
Chicago  
Darien  
Gurnee  
Glen Elyn  
Springfield  
Oak Lawn  
Palatine  
Evanston  
Streamwood  
Lake in the Hills  
Harvey  
Chicago  
Roca  
Lombard  
Park Ridge  
Trenton  
 Bensenville  
Oak Park  
Chicago  
Aurora  
Chicago  
Franklin Square, NY  
Park Ridge  
Antioch  
Springfield  
Wheaton  
Normal  
Crystal Lake  
Chicago  
Harwood Heights  
Geneva  
Pocah  
Fullerton, CA  
Park Ridge  
Wheaton  
Mokena



## Tournament & Events Calendar

### Tournament & Events Calendar

All tournaments are USCF-rated, unless otherwise noted (Quick-rated if game/29 or faster) and require USCF membership. ICA Tour events also require ICA membership. Memberships may be purchased at most tournaments. Scholastic events are marked with a (S). Most tournaments prohibit smoking in the playing rooms.

ICA Tour events are generally listed as such in Chess Life and in the Calendar below. Players are responsible for checking both Chess Life and the Illinois Chess Bulletin to determine which events are Tour events. Call ChessPhone (630-832-5222) a few days before any tournament to verify its Tour status, or check the web at [www.illinoischess.org](http://www.illinoischess.org).

Organizers: Please clear your events through the ICA Tournament Calendar. **Calendar coordinator is Bill Smythe**, 7042 N Greenview Av #1-S, Chicago 60626-2833, 773-761-2455, [chichess@enteract.com](mailto:chichess@enteract.com). **Do not send calendar entries to the ICB editor.** If you are running a Tour event, make sure it is listed as such in both Chess Life and the ICB. Deadlines for ICB calendar submissions are as follows:

Event starting date:	Deadline:	To appear in:
Jan 15 - Mar 14	Nov 5	Jan-Feb issue
Mar 15 - May 14	Jan 5	Mar-Apr issue
May 15 - Jul 14	Mar 5	May-Jun issue
Jul 15 - Sep 14	May 5	Jul-Aug issue
Sep 15 - Nov 14	Jul 5	Sep-Oct issue
Nov 15 - Jan 14	Sep 5	Nov-Dec issue

**October 20, 2001, Tukey Park Quick #13.** 5-SS, game/20, d/3 (game/22 if d/0). 501 E 90th Pl, Chicago. EF \$12, u19 \$6, \$1 off before 11:30. \$\$250 b/24, kids count half. Reg 11-11:50, rd 1 at 12. Tom Fineberg, 7321 S South Shore Dr #6-D, Chicago 60649. 773-721-3979.

**October 20, 2001, Peoria Fall Tornado.** 4-SS, game/80. Lakeview Museum, 1125 W Lake Av, Peoria 61614. EF \$14 by 10/15, \$17 at site. \$\$G 250: \$75-50; A,B,C,D/below each \$25; upset \$25. Reg 8-8:45, rds 9-12-2:45-5:30. Fred Malcome, 810 W Progress, Metamora 61548. 309-369-4833, [imalcome@bwsys.net](mailto:imalcome@bwsys.net). **An ICA Tour mini-event.** ICA membership required.

**October 27, 2001, Springfield Autumn Open.** 4-SS, game/80. Signature Inn, Dirksen Pkwy & Stevenson Dr (just west of I-55 Stevenson exit), Springfield. EF \$12 by 10/21, \$15 at site. \$\$300 b/40: \$100-60, 1600-1999 \$50, 1200-

1599 \$40, u1200 \$30, unr \$20. Reg 7:30-8:30, rds 9-12-3-6. Thomas Knoedler, 2104 S 4th, Springfield 62703. 217-206-6056 day, 217-523-7265 nite, [tknoel@uis.edu](mailto:tknoel@uis.edu).

**(S) October 27, 2001, Illinois State All-Grade (K-12) Scholastic** (tentative). Interstate Center, Bloomington/Normal. Doug Hillary, 309-378-2696, [dhillary@us.ibm.com](mailto:dhillary@us.ibm.com).

**October 27, 2001, Wicker Quicker Micro-Tour.** 5-SS, game/29. Wicker Park Chess Club, Myopic Books, 1468 N Milwaukee Av, Chicago. EF \$20 by 10/22, \$25 at site. Prizes by score: 5-0 \$100, 4.5 \$55, 4-1 \$30, 3.5 \$15, 3-2 \$6. Reg ends 10 am, rd 1 at 10:30. Wicker Park Chess Club, PO Box 2349, Chicago 60690. Patrick Jones, 773-772-1369, [pjones@artic.edu](mailto:pjones@artic.edu). **An ICA Tour micro-event.** ICA membership required.

**October 28, 2001, Solar System Open.** 4-SS, game/90. Wild Onion Chess Club, 6136 N Clark, Chicago. 773-262-1328. FF \$20. \$\$225 b/15: \$100-60, bottom 63% \$40-25. Reg ends 11:30, rd 1 at 12.

**November 3, 2001, Normal November Mini-Tour.** 4-SS, game/80. Fairfield Inn, 202 Landmark Dr, Normal. EF \$17, students \$10, free to players rated 2100+. \$\$160-100, u2000 \$80, u1600 \$80, u1200 \$80. Trophies to 1st,A,B,C,D,E.u1000,unr. Reg 8-8:45, rds 9-12-3-6. Dennis Bourgerie, Box 157, Normal 61761. 309-454-3842, [Schoolstreet@msn.com](mailto:Schoolstreet@msn.com). **An ICA Tour mini-event.** ICA membership required.

**November 4, 2001, November Cheap Quads.** 3-RR, game/90. Wild Onion Chess Club, 6136 N Clark, Chicago. 773-262-1328. EF \$7. No prizes. Reg ends 11:30, rd 1 at 12.

**(S) November 10-11, 2001, National Youth Action Championship.** 9-SS, game/30. Best Western Clock Tower, 7801 E State St, Rockford, hotel rooms \$89-89-89-89, 800-358-7666, [www.ClockTowerResort.com](http://www.ClockTowerResort.com). EF \$30 by 10/12, \$60 by 10/26, \$90 later or at site. Four sections: **HIGH SCHOOL (K-12), JUNIOR HIGH (K-9), ELEMENTARY (K-6), PRIMARY (K-3).** ALL: Trophies to top 25 individuals and 25 teams in each section. Rds 10-11:45-2-3:30-5, 10-11:45-2-3:30. U.S. Chess Federation, 3054 U.S. Route 9-W, New Windsor NY 12553, Attn "National Youth Action Championships", [www.uschess.org/tournaments/YouthAction](http://www.uschess.org/tournaments/YouthAction).

**November 17, 2001, Tukey Park Quick #14 (Big #5).** 5-SS, game/20, d/3 (game/22 if d/0). 501 E 90th Pl, Chicago. EF \$15, u19 \$8, \$1 off before 11:30. \$\$350 b/24, kids count half. Reg 11-11:50, rd 1 at 12. Tom Fineberg, 7321 S South Shore Dr #6-D, Chicago 60649. 773-721-3979.

**November 18, 2001, Wicker Quicker Micro-Tour.** 5-SS, game/29. Wicker Park Chess Club, Myopic Books, 1468 N Milwaukee Av, Chicago. EF \$20 by 11/19, \$25 at site.

Prizes by score: 5-0 \$100, 4.5 \$55, 4-1 \$30, 3.5 \$15, 3-2 \$6. Reg ends 10 am, rd 1 at 10:30. Wicker Park Chess Club, PO Box 2349, Chicago 60690. Patrick Jones, 773-772-1369, [pjones@artic.edu](mailto:pjones@artic.edu). An ICA Tour micro-event. ICA membership required.

**November 24-25, 2001** (note corrected dates), **Illinois Class Championships**. An ICA Tour MAXI-event. ICA membership required.

**December 2, 2001, Milky Way Open**. 4-SS, game/60. Wild Onion Chess Club, 6136 N Clark, Chicago. 773-262-1328. EF \$20. \$\$225 b/15: \$100-60, bottom 63% \$40-25. Reg ends 11:30, rds 12-2:15-4:30-6:45.

**December 8, 2001, Tuley Park Quick #15**. 5-SS, game/20, d/3 (game/22 if d/0). 501 E 90th Pl, Chicago. EF \$12, u19 \$6, \$1 off before 11:30. \$\$250 b/24, kids count half. Reg 11-11:50, rd 1 at 12. Tom Fineberg, 7321 S South Shore Dr #6-D, Chicago 60649. 773-721-3979.

(S) **December 8, 2001, West Chicago HS Team Invitational** (tentative). For 8-player teams. West Chicago. EF \$50/team. Joe Splinter, 630-213-9523.

(S) **December 8, 2001, North Boone HS Invitational** (tentative). Not USCF-rated. Poplar Grove. Don Ward, 815-765-2850.

**December 9, 2001, December Cheap Quads**. 3-RR, game/90. Wild Onion Chess Club, 6136 N Clark, Chicago. 773-262-1328. EF \$7. No prizes. Reg ends 11:30, rd 1 at 12.

(S) **December 14-16, 2001, National Scholastic K-12 Championships**. Dallas TX. [www.uschess.org](http://www.uschess.org).

**December 15, 2001, Springfield Holiday Open**. Thomas Knoedler, 2104 S Fourth, Springfield 62703. 217-523-7265, [tknoel@uis.edu](mailto:tknoel@uis.edu).

**December 15, 2001, Wicker Quicker Micro-Tour**. 5-SS, game/29. Wicker Park Chess Club, Myopic Books, 1468 N Milwaukee Av, Chicago. EF \$20 by 12/10, \$25 at site. Prizes by score: 5-0 \$100, 4.5 \$55, 4-1 \$30, 3.5 \$15, 3-2 \$6. Reg ends 10 am, rd 1 at 10:30. Wicker Park Chess Club, PO Box 2349, Chicago 60690. Patrick Jones, 773-772-1369, [pjones@artic.edu](mailto:pjones@artic.edu). An ICA Tour micro-event. ICA membership required.

**December 26-29, 2001, Pan-American Intercollegiate**. For college teams. Providence RI.

**December 29, 2001, Gambit Tournament**. Game/29, rds & format to be determined. Wild Onion Chess Club, 6136 N Clark, Chicago. 773-262-1328. Randomly assigned gambit openings. Listed posted at Wild Onion after 12/1/01, or TomKirke@uic.edu. EF \$7. No prizes. Reg ends 11:30, rd 1 at 12.

**January 5-6, 2002, Tim Just's Winter Open** (tentative). Grayslake. [TimJust@Lnd.com](mailto:TimJust@Lnd.com). An ICA Tour MAXI-event. ICA membership required.

**January 12, 2002, Tuley Park Quick #1**. Chicago.

**January 19, 2002, Local Group Open**. Chicago.

**January 26, 2002, January Cheap Quads**. Chicago.

**February 2, 2002, Tuley Park Quick #2 (Big #1)**. Chicago.

**February 9, 2002, Vostok \$20 Quads**. 3-RR, game/90. Chicago.

**February 17, 2002, Central Tuneup Quads**. Chicago.

**February 23-24, 2002, Central States Commemorative Class**. Larry Cohen, 231 S Villa Av #3-B, Villa Park 60181. 630-834-2477.

**February 28 - March 3, 2002, Eugene Martinovsky Memorial U.S. Masters**. 7-SS, 40/120, then SD/60. Hyatt Regency, 1909 Spring Rd, Oak Brook. Hotel rooms \$94-94, 630-573-1234, reserve by 2/15, mention tournament. Open only to masters, published former masters, and invited junior experts. EF \$85 by 2/20, \$100 by 2/25. No on-site entries. GMs/IMs free but must confirm in writing by 2/20. \$\$G 22,000: \$6000-4000-2500-1500-1000-700, 2400-2499 \$600-350-150, 2300-2399 \$600-350-150, 2200-2299 \$500-250-100, u2200 \$500-250-100, top non-Master junior \$400. \$1500 in point-pool prizes to non-winners of above. Best game \$200, best endgame \$150, best combo \$150. Rds 8, 10:30-5, 10:30-5, 9:30-4. Checks to Midwest Chess Assn. Helen Warren, PO Box 305, Western Springs 60558. 630-663-0688, fax 630-663-0689, [apct@aol.com](mailto:apct@aol.com). A USCF National Event.

**March 2, 2002, Tuley Park Quick #3**. Chicago.

**March 8-10, 2002, National Open**. Las Vegas NV. A USCF National Event. Also: Simuls and WBCA Blitz.

(S) **April 12-14, 2002, National High School**. Louisville KY. [www.uschess.org](http://www.uschess.org).

(S) **April 26-28, 2002, National Elementary Championship**. Portland OR. [www.uschess.org](http://www.uschess.org).

(S) **May 10-12, 2002, National Junior High Championship**. Milwaukee, WI. [www.uschess.org](http://www.uschess.org).

**May 24-27 or 25-27 or 26-27, 2002, 11th Annual Chicago Open**. Oak Brook. An ICA Tour MAXI-event. ICA membership required.

**July 3-7, 2002, 30th Annual World Open**. Philadelphia PA.

**July 27 - August 4, 2002, U.S. Open**. Cherry Hill NJ. A USCF National Event.



## 2002 U.S. MASTERS

THE LM EUGENE MARTINOVSKY MEMORIAL TOURNAMENT

*The Homecoming of the American Master*

Incorporating the Midwest Masters XII

Organized by Helen Warren, the Midwest Chess Association, and the  
Illinois Chess Association

Hyatt Regency, Oak Brook, IL Feb. 28, March 1-3

7 Round Swiss 40/2 SD/1

200 Grand Prix Points FIDE Rated

**\$22,000 Prize Fund - Guaranteed**

1st: \$6,000 2nd: \$4,000 3rd: \$2,500 4th: \$1,500

5th: \$1,000 6th: \$700

2400-2499: \$600 - \$350 - \$150

2300-2399: \$600 - \$350 - \$150

2200-2299: \$500 - \$250 - \$100

U2200: \$500 - \$250 - \$100

Top Non-Master Jr.: \$400

\$1,500 distributed in *point pool* prizes to *non-winners* of above prizes

**Games Prizes: Best Game \$200; Best Endgame \$150; Best Combination \$150**

Open to players rated 2200 or over, or whoever have been so rated, plus invited juniors rated over 2000

1/2 pt. bye available in Rd. 1 (Thursday evening) or Rd. 2 (Friday morning) if requested with entry

Rd. 1 (Thurs.) 8:00 PM Rds. 2 & 3 (Fri.) 10:30 AM & 5:00 PM

Rds. 4 & 5 (Sat.) 10:30 AM 5:00 PM Rds. 6 & 7 (Sun.) 9:30 AM & 4:00 PM

Sets and boards provided

**Entry Fee:** \$85 if received by 2/20; \$100 thereafter until 2/26. VISA or MasterCard welcome. NO at door entries. Make checks payable to Midwest Chess Association. Complimentary entry for GMs & IMs who confirm *in writing* by 2/20 intent to play.

Entries & info to:

Helen Warren, Midwest Chess Association

P O Box 305, Western springs, IL 60558

Phone: (630)663-0688

FAX: (630)663-0689 (24 hours)

Internet: [mpet@aol.com](mailto:mpet@aol.com)

Hyatt Regency Oak Brook

1909 Spring Rd., Oak Brook, IL 60521

(630)573-1234

(15 minutes from O'Hare) SGL/DRL \$94

Adjacent to Oak Brook Shopping Center with theaters, shopping, dozens of restaurants, transportation to Chicago Loop.

Free Parking.

Plus how to play in this great event!

You must mention U.S. Masters to secure chess rates by Feb. 14.

# *Illinois All Grade Scholastic Championships*

October 27<sup>th</sup>, 2001

*Bloomington Interstate Center*

## *13 Sections by Grade*

Trophies will be given to top 10 individuals and to the top 3 teams in each of the grades 1 - 12, top 5 individuals and top 3 teams in Kindergarten.

Any number of players from a school may enter, the top 3 scored in each grade are the team score.

Grades K-3:	5 - SS, G/30	RDS 9:00 - 10:30 - 12:00 - 1:30 - 3:00	Awards ASAP
Grades 4 - 6:	5 - SS, G/40	RDS 9:00 - 11:00 - 12:45 - 2:30 - 4:15	Awards ASAP
Grades 7 - 12:	4 - SS, G/50	RDS 9:00 - 11:30 - 1:45 - 4:00	Awards ASAP

**ALL:** Entry Fee's \$20.00 post marked by 10/20/01, \$35.00 entries after 10/20, pay on site. **NO** entries received after 10/25 will be accepted. **NO entries Saturday morning.** Roster changes are considered new entries. Players must reside in Illinois or attend an Illinois school.

Free Parking, lunch is available on site.

**ENTRIES:** All entries to be made online at [www.tri-valley.k12.il.us/isagee](http://www.tri-valley.k12.il.us/isagee) Include with payment, player name, USCF id and grade. Send payment to Illinois All Grade, c/o Doug Hillary, 115 N. Gadwall Drive, Downs, Illinois, 61736, (309)378-2697.

## Directions to the INTERSTATE CENTER

### From Madison, WI:

Take I-90/94 South to I-39 at Rockford, IL. Take I-39 South to I-55 at Bloomington-Normal; take I-55 South to Exit 160-B, West on Route 9 (Market Street). ; go 3/4 mile; turn right into the Interstate Center.

### From St. Louis, MO:

Take I-55 North to Bloomington-Normal, IL; take Exit 160-B West on IL Route 9 for ¼ of a mile; turn right into the Interstate Center.

### From Des Moines, IA:

Take I-80 East to I-74 at Moline, IL. Take I-74 East to I-55, go South to Exit 160-B, Route 9(Market Street). Go West ¼ mile; turn right into the Interstate Center

### From Indianapolis, IN:

Take I-74 West to Bloomington-Normal, IL and meet I-55 North; take I-55/74 to Exit 160-B; go West on IL Route 9 for ¾ of a mile; turn right into Interstate Center

### From Chicago:

Take I-55 South to Bloomington-Normal; take Exit 160-B West on IL Route 9 (Market Street) for ¾ of a mile; turn right into Interstate Center

If you have addition questions regarding the INTERSTATE CENTER please visit their website at: [www.exposition.org](http://www.exposition.org)

### **Motels** within 2 miles of the Bloomington Interstate Center

Days Inn	1707 West Market	(309)829-6292
Best Inn	1905 West Market Street	(309)827-5333
Comfort Inn	400 Brock Drive	(309)828-6000
Econo Lodge	403 Brock Drive	(309)829-3100
Hawthorn Suites	1 Lyon Court	(309)829-8111
Quality Inn	401 Brock Drive	(309)829-7602

### Motels within 1 mile of the Bloomington Interstate Center

Hampton Inn	906 Maple Hill Road	(309)829-3700
Country Inn & Suites	923 Maple Hill Road	(309)828-7177
Microtel	919 Maple Hill Road	(309)828-0900
Wingate Inn	1031 Wylie Drive	(309)820-9990

For additional motels in the Bloomington-Normal area please visit the Bloomington Normal Visitors Center website at: [www.visitbn.org](http://www.visitbn.org)

## BRAND NEW CHESS BOOKS from THINKERS' PRESS

		cover	pages	Retail
C.J.S. Purdy's Fine Art of Annotation Vol 2 (Sep) .....	Purdy	soft	253	22.50
Grandmaster Secrets: Openings (Nov) .....	Soltis	soft	200+	24.95
Leonid Stein Master of Risk Strategy .....	Gufeld & Lazarev	hard	253	50.00
Leonid Stein Master of Risk Strategy .....	Gufeld & Lazarev	soft	253	26.95
Opening for White according to Kramnik .....	Khalifman	soft	239	29.95
Opening Repertoire for Black according to Karpov .....	Khalifman	soft	191	29.95
Purdy on the Endgame (Oct) .....	Purdy & Hutchings	soft	240	22.50



## RETURNED CHESS TITLES



When we sell titles to a major chain such as Borders or Barnes & Noble, they have negotiated the right to return anything they no longer sell. Some of these returned titles may be a little worn around the edges of the covers, or have labels on the back cover, etc. They are no longer "NEW" as far as we are concerned and we offer most of these "shopworn" titles at a sizable discount off of our regular retail price. If you want to save even more, buy at least (3) titles from this ad at the **bold print price** and we will sell you any additional titles (the lesser value) from the "returns" list at **ONE HALF of Retail!** "As is," no returns except for defectives.

THINKERS' PRESS TITLES	Author(s)	Retail	Pages	Discount
Action Chess, Purdy's 24 Hours Opening Repertoire*	Purdy	22.50	192	15.75
Alapin French .....	Sawyer	13.95	89	8.37
Answer Guide To How To Become A Candidate Master .....	Dunne	4.95	26	3.47
Big Book of Combinations, The .....	Schiller	17.95	263	12.57
Chess Analyst, The* .....	Edwards	19.95	160	13.97
Chess Master... at any age .....	Wetzell	25.00	309	17.50
Chess of Bobby Fischer, The* .....	Burger	24.95	345	24.95
Extreme Chess* .....	Purdy	25.00	251	17.50
Everyone's 2nd Chess Book .....	Heisman	14.95	127	10.46
French Defense: New and Forgotten Ideas 2* .....	Minev	19.95	336	13.97
Grandmaster Secrets: Endings .....	Soltis	20.00	214	14.00
Great Evans Gambit Debate, The .....	Pohde	15.95	86	11.17
Guide to Good Chess* .....	Purdy	16.95	143	11.87
How Purdy Won .....	Purdy, Hutchings, Harrison	18.00	176	12.60
How to Create Combinations* .....	Pafnutieff	17.95	206	12.57
King's Gambit As White 3rd ed, The .....	Raingruber & Maser	22.95	212	16.07
LDL Sicilian, The .....	Dunne	5.00	32	3.50
Modern Chess Brilliances* .....	Evans	19.95	287	13.97
Practical Chess Analysis (rev.) .....	Buckley	19.95	189	13.97
Richter-Veresov Chameleon Chess Repertoire .....	Gufeld & Stetsko	22.00	175	15.40
Search for Chess Perfection .....	Purdy	22.00	315	15.40
Soltis Variation of the Yugoslav Attack, The .....	Mayer	19.95	333	13.97
Strategical Themes .....	Unger	13.95	104	9.77
Super Nezh, Chess Assassin* .....	Pishkin	22.50	224	15.75
Thinkers' Chess .....	Gerzadowicz	17.95	158	12.57
Unconventional King's Indian, The* .....	Watson	17.95	218	12.57
Win at Chess! .....	Curry	20.00	271	14.00
Winning with Reverse Chess Strategy .....	Reuter	19.95	150	11.97

### EXTRA INFORMATION

Some titles are in a very limited supply [we've indicated those with an asterisk (\*)], please list alternates in the event we are out of a specific request. Visa and Master Card are accepted (number and exp. date are required). You may also phone your order in FREE at 1-800-397-7117. Shipping & handling is a flat \$5.00 for this special, and will be shipped via US Post Office "Media Mail." This sale is good through November 2001. Checks and money orders are also accepted.

CHESSCO • Dept. I • P.O. Box 8 • Davenport, IA 52805 USA  
the retail division of Thinkers' Press, Inc.

# 2001 National Youth Action Championships

November 9-11, 2001

Best Western Clock Tower Resort and Conference Center: 7801 East State St. Rockford, IL 61125  
Reservations: Special \$89 Rate • www.ClockTowerResort.com • 1-800-358-7666 (mention chess)

## Main Event:

Saturday November 10, 2001		Sunday November 11, 2001	
Rounds	Time	Rounds	Time
1	10:00 am	6	10:00 am
2	11:45 am	7	11:45 am
3	2:00 pm	8	2:00 pm
4	3:30 pm	9	3:30 pm
5	5:00 pm		

Team rooms are limited. To reserve a team room contact Diane Reese at [walitalo@uschess.org](mailto:walitalo@uschess.org) or call 845-562-8350, ext. 181.

## Special Events:

Friday November 9	Blitz
	Instructional Lectures: GM Gurevich & GM Goldin
Saturday November 10	Simuls with GM D. Gurevich and GM A. Goldin
Saturday November 11	Coaches Seminar

## Awards:

Trophies in each section of the National Youth Action Championship:  
Top 25 Individuals in each section and Top 25 Teams

Simul: Wins: \$40 USCF Gift Certificate  
Draws: \$20 USCF Gift Certificate

Onsite registration will be available, but not guaranteed, on November 9, 2001. Space is limited and it will be on a first come first served basis.



## ENTRY FORM for 2001 National Youth Action Championships

Last Name	First Name	Date of Birth	Email Address
Address		City	State
		Zip Code	Phone Number
Grade	School Name	City & State of School	Rating
Coach's Name	Team Code if known	USCF Member ID	Exp. Date

USCF Membership is required in order to play in U.S. tournaments.

I am not a USCF member, but I want to sign up for Membership: \$13 Scholastic (age 14 & under) \$20 Youth (age 19 & under)

### ENTRY FEES

Main Tournament:

- \$30/participant (Postmarked by 10/12/01)
- \$60/participant (Postmarked after 10/12/01)
- \$90/participant (Postmarked after 10/26/01 or onsite)

Blitz: \$10 (Postmarked by 10/12/01)  
\$20 (Postmarked thereafter or onsite)

Simuls: \$10 (Postmarked by 10/12/01)  
\$20 (Postmarked thereafter or onsite)

### MAIN TOURNAMENT (Please check correct section):

Primary: K-3 Elementary: K-6  
Junior High: K-9 High School: K-12

### SIDE EVENTS (Please check correct section):

Blitz  
... K-12 ... K-6  
Simuls  
... GM Gurevich ... GM Goldin

Please make all checks payable to the U.S. Chess Federation (USCF), and send to: National Youth Action Championship, USCF, 3054 US Route 9W, New Windsor, NY 12553 or fax with credit card information to (845) 541-2427 or more information contact Joan Brown-Scumble at (845) 562-8350, ext. 110 or Michelle Roberts at ext. 128, e-mail [scholastic@uschess.org](mailto:scholastic@uschess.org) or [clubs@uschess.org](mailto:clubs@uschess.org). You can register online at [www.uschess.org](http://www.uschess.org).



**ILLINOIS**

**CHESS ASSOCIATION**

C/O Bill Smythe

7042 North Greenview Avenue #1-S

Chicago, IL 60626-2833

NON-PROFIT ORG.

US POSTAGE PAID

ASTORIA, IL 61501

PERMIT #9

ADDRESS CORRECTION REQUESTED