

The Illinois Chess Bulletin

Volume 26, Issue 5

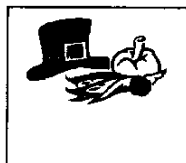
September/October 2003



*GM Garry Kasparov
visits to Chicago*

INSIDE THIS ISSUE

- 7** GM Kasparov Challenges 20 players
- 8** Russian Chess King visits Chicago
- 24** Master Challenge



**THANKSGIVING SEMI CLASS
CHESS FESTIVAL AND BUFFET**
A Wayne Clark, Tim Just, and Kevin Bachler event
AN ICA MINI-TOUR EVENT



\$9000

Projected total festival prize funds 3 Days—2 Scholastic Events—2 Open Events—Bookseller—
\$5 Buffet Lunch Each Day

THANKSGIVING SEMI CLASS

November 28—November 30, 2003 **OR** November 29—November 30, 2003, **ICA Mini Tour Event**
Adam's Mark Northbrook, 2875 N. Milwaukee, Northbrook 60062-6103

3 Sections-2 Playing Schedules-\$5 All You Can Eat Buffet Each Day!!

\$7500

b/60 per section

OPEN: \$750-450-225-125-100, U2200: 400-225-125-100.

RESERVE: under 2000 \$750-450-225-125-100, U1800: 400-225-125-100.

BOOSTER: under 1600 \$750-450-225-125, U1400: 400-225-125, U1200: 100, UN: 100.

½ pt bye any rd, \$1 fee (adv requests-pay with EF), rd 5 bye only if requested before rd 1, unretractable after rd 3 start. **Re-entry**, with single ½ pt bye available, \$40, (max single ½ pt bye including re-entry byes) **UNR. may only win** Booster Unrated prize or Open place prizes

3 Day Schedule: Fri. 8 PM; Sat. 12-6:30, Sun. 10-3:30; **40/120, G/30; EF \$79 by 11/23, \$90 later**
2 Day Schedule: Sat. 10-1:30-6:30, 10-3:30, **Rnds. 1-2 G/90; Rnds 3-5, same as 3 Day; EF \$79 by 11/23, \$90 later. 3 Day registration 11/28, 6-7:30 pm; 2 Day Registration 11/29, 8-9:30 AM; Re-entry \$40 for all. Late entries may be assigned bye for Rnd 1. Schedules merge round 3.**

BRING SETS, BOARDS, AND CLOCKS \$5 BUFFET LUNCH (\$15 VALUE!!) FOR ALL PLAYERS ON SATURDAY-SUNDAY

**ILLINOIS SCHOLASTIC BLITZ &
BUGHOUSE CHAMPIONSHIPS**

Daytime, November 28, 2003

Event and Entry info:

www.ilchess.org/bug.htm

G/20 QUICK CHESS

PM, November 28, 2003

\$1500 b/70

5SS, \$35 early, \$5 more late see:

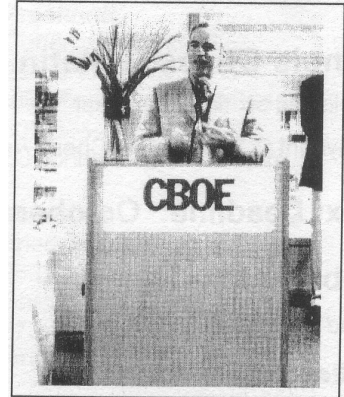
www.ilchess.org/calendar.html or

Chess Life for more info

HOTEL: single-double-triple-quad = \$69! By 11/14 ; 847-298-2525

EARLY EF for G/20 and Semi-Class EVENTS (11/23): , Info: Wayne Clark 847-546-8511 or heartlandchessfestival03@yahoo.com. Cks. Payable CHESS FOR LIFE LLC. Mail to: Chess For Life LLC, PO Box 789, Lake Villa, IL 60046. NS, NC, W

Table of Contents



Russian Chess King Visits Chicago 7

GM Garry Kasparov came to Chicago and played a 20 person Chess Simul.

Features

GM Kasparov Challenges 20 players7
 Russian Chess King visits Chicago8

ICB Games

Games by Albert Chow FIDE Master12
 Games By Angelo Young IM20

Chess Clubs

ILLINI Summer Open22
 Elmhurst Chess Club News23
 Master Challenge24
 Master Challenge Crosstables25
 Peoria Summer Open Tornado Crosstables27
 Bradley Summer Open Crosstables27
 Springfield Championship Crosstables28
 St. Charles Chess Club29
 FIDE Master Chow Bloomington Simul29
 Springfield CC News letter31

Letters

President's Podium5
 Editor's Page6

ICA Support

Supporting Members and Businesses30

Where to Play

Affiliate Listing36
 Tournament Calendar41

ICA Tour

ICA Tour39

Illinois Chess Bulletin

Published six times per year

Copyright © 2003 Illinois Chess Association

Next Deadline: October 15th.

Submissions

Send contributions to:

Colley Kitson
428 N Grant Street
Clinton, IL
61727

ICB@mchsi.com

Home Phone: 217-935-1265

Cell Phone: 309-824-5701

Electronic submissions are preferred. Preferred formats for articles, stories or advertisements are Microsoft Word or RTF (rich text format). An MS-Word template is available at www.illinoischess.org/icb.htm.

Game submissions must be in electronic format.

Games must be submitted in ChessBase archive format (.cbv) or in pgn. ChessBase 8 will automatically send archive format if you e-mail from ChessBase 8. In earlier versions of ChessBase you may archive a database to create a single file to e-mail. See your help materials.

Most chess databases will also produce text files in pgn format, as will many chess playing programs. If you need a simple program to create pgn files, we recommend the freeware **PGN Viewer** by KenChess, available at www.illinoischess.org/icb.htm. The main font for the ICB is Arial, and also using the Figurine Aries font and the US Diagram font from ChessBase.

Editorial Staff

Managing Editor: Colley Kitson
Games Editor: Albert Chow
Assistant Games Editor: Angelo Young
Tour and Crosstables Editor: Bill Smythe

Contributors

Bill Smythe
Albert Chow
Angelo Young
Dennis Bourgerie
Larry Cohen
David Long
Vince Hart

Advertising Rates

Back Cover:	\$125
Inside Front:	\$115
Full Page:	\$100
1/2 Page:	\$65
1/3 Page:	\$50
1/4 Page:	\$40
1/8 Page:	\$25

There is a \$20 design charge for ads that are not camera-ready. Allow 7 days for design. Allow additional time if ad proofing is required. ICA affiliates receive a 1/3 discount and ads that appear in consecutive issues receive a 10% discount. Payment must accompany the ad. The ICA and the ICB reserve the right to refuse any specific advertisement.

Membership Information

The Illinois Chess Bulletin (ICB) is published by the Illinois Chess Association (ICA). ICA membership includes a subscription to the ICB. Memberships marked 1st receive their magazine first class. Memberships marked P also receive a plaque. Affiliates also receive discounted advertising rates, event advertising on Chess Phone and the ICA website, and the right to run Tour events.

Corporate Organization	\$500	1 st Class & Plaque
Business	\$200	1 st Class & Plaque
Century Club	\$200	1 st Class & Plaque
Gold Card	\$100	1 st Class
Patron	\$50	1 st Class
Affiliate	\$35	1 st Class
Regular	\$25	Affiliate benefits
Junior	\$18	
Family	\$12	No magazine
ICCA Coach	\$6	No magazine
Cochess	\$19	Also a member of ICCA
	\$19	Also a member of Cochess

President's Podium

By the time you receive this many of you will have played in this years Illinois Open over Labor Day weekend. There are more tournaments to come: Rockford, Springfield, Peoria, Normal, and the Chicago area. One thing to remember is that the more ICA tour events you play in the better your chances for a tour prize.

I am happy to announce that our representative at the Denker High School tournament of champions was very successful. William Aramil ended up in a first place tie with 5 points out of 5 with no losses! He was awarded the UTD scholarship that goes to the top finisher(s) of the Denker tournament. Not since Florin Felecan (with a 2550 rating) in 1998 has Illinois had the Denker winner. Who knows, maybe Will can be the first ever to repeat as US Denker champion. I hope that next issue we will get to see some of his games.

Mentioning the Denker & Labor Day means that school is now back in session. This is another new season for scholastic chess. Both the National Youth Action and the National K-12 Championships are to be looked forward to for Illinois scholastic players. I hope you will support our players in their endeavors. Willing volunteers can always be useful at a scholastic tournament. Better yet, you can help promote the royal game to the younger set with a donation to the ICA/Warren Junior Program. This is a tax deductible contribution.

As always feel free to stop and chat with me at anytime. Likely I'll see you at one of the many ICA Tour events or maybe at a scholastic tournament. If you want you can come out to the ICA board meeting on Sunday October 26. As they use to say in the TV series The Prisoner "I'll be seeing you".

Best "Chess" Regards,

Larry Cohen

President:

Cohen, Lawrence S
231 S Villa Ave #3-B
Villa Park IL 60181-2941
630-834-2477
LSCohen60@yahoo.com

Metro VP:

Fried, Howard
2635 N New England Av
Chicago IL 60707
773-889-8553
hfried1@sbcglobal.net

Downstate VP:

Bourgerie, Dennis
PO Box 157
Normal IL 61761-0157
309-454-3842
Schoolstreater@msn.com

Secretary:

Hart, Vincent J
1204 W Green Acres Ln
Mount Prospect IL 60056-4017
vinnyjh@hotmail.com

Treasurer:

Cohen, Howard
10482 Anne Ct #2-E
Rosemont IL 60018-3520
847-803-0941
ChessNehoc@aol.com

**ICA Tour Statistician
Membership Secretary &
Calendar**

Bill Smythe
7042 N. Greenview Avenue 1-S
Chicago, IL 60626-2833
(773) 761-2455
chichess@rcn.com

**Helen Warren
Junior Chess Program**

PO Box 305
Western Springs, IL 60558-0305
apct@aol.com

CHESS PHONE

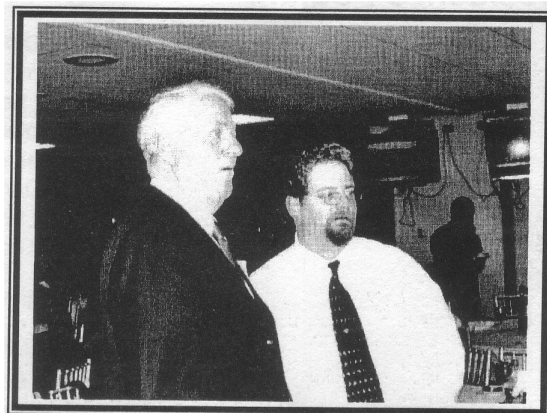
Chess results & announcements
(630) 832-5222

WORLD WIDE WEB

<http://www.illinoischess.org>



*Colley Kitson, Owen William & Garry Kasparov
Garry is signing an old copy of the ICB.*



Owen Williams and Colley Kitson

Greetings,

I hope this issue finds you well.

This September October issue marks two years that I have been the editor for the ICB. It has been a lot of fun working on this magazine.

This issue also marks the first and only visit to Chicago by Garry Kasparov.

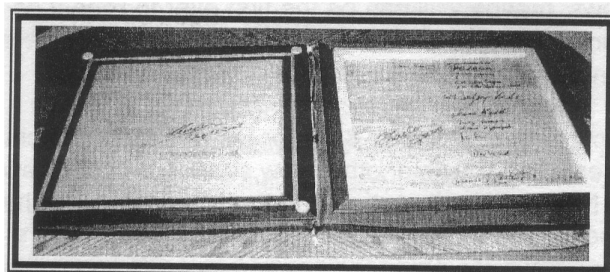
There are two articles in this issue describing the event. First is the story that was found on the Chicago Board of Options Exchange Web site. It describes the nature of his visit.

The second is from Dennis Bourgerie who along with a few others attended the event. Dennis gave his new camera a work out.

I would like to briefly describe how I was invited. I was sent a Email from Garry's agent Owen Williams inquiring if I was interested in attending and if I could forward the names of four others on to get proper clearance to the event. The people attending from this invitation were my choice only, not the ICA. I asked both the current and past presidents of the ICA Larry Cohen and Kevin Bachler. I also invited my two closest chess friends Dennis Bourgerie and Ron Suarez.

This was a private function and we were the guest of Belzberg Technologies Inc. They treated us great and I offer my sincere thanks.

I had a chance to meet Garry and have him sign my Woodworking LTD chessboards. We talked for about a minute while he signed my chess board. He admired my boards studying the signatures already on the boards from other chess professionals.



My Chess Boards signed by Garry Kasparov

He also told me of a chessboard he signed in Europe that was signed by every world champion all the back to Capablanca. I would like to see that board.

I also a had chance to talk to Garry's Agent Owen Williams and were I was able to connect him with my friends from Woodworking LTD (The makers of my chess Board).

CK

Garry Kasparov, World's Strongest Chess Player, Challenges 20

Players to Simultaneous Match at CBOE
Thursday, July 17



Garry Kasparov Playing Vince Hart in Simul.

The Chicago Board Options Exchange (CBOE) and Belzberg Technologies Inc. announced that on Thursday, July 17, 2003, Garry Kasparov, the No. 1 ranked chess player in the world since 1984, will challenge 20 participants to a chess match to be played simultaneously. The tournament, sponsored by CBOE and Belzberg Technologies, Inc., will be held at the CBOE, after trading hours.

Garry Kasparov, 40, born in Azerbaijan, began playing chess at age five, became the Soviet Junior Champion at age 12, and the youngest world champion in 1985 at age 21. He has been ranked the No. 1 chess player in the world for 19 consecutive years, since 1984. In 1990, he moved past Bobby Fischer's best ever point rating of 2785 and was then the first player to break the 2800-point barrier. In 1999, after winning the three major

events of that year, he created a new milestone by topping the 2850 ELO ratings mark, again, the only player to ever do so.

Also at the event, CBOE and Belzberg Technologies will showcase new trading technology, including demonstrations of the CBOE Hybrid Trading System (HyTS) Terminal. Introduced in March, the CBOE HyTS Terminal provides CBOE customers with point-and-click, electronic access to CBOE, as well as order routing to other options, futures, and stock exchanges, and complete access to market data, real-time quotes and order management -- all on a single screen. The HyTS Terminals serve as the main portal to the recently launched CBOE Hybrid Trading System, CBOE direct HyTS.

For more information about CBOEdirect HyTS, the Hybrid Trading System, or the HyTS Terminals, visit the CBOE website at www.cboe.com. CBOE, regulated by the Securities and Exchange Commission (SEC), is the creator of listed options, and the world's largest options marketplace.

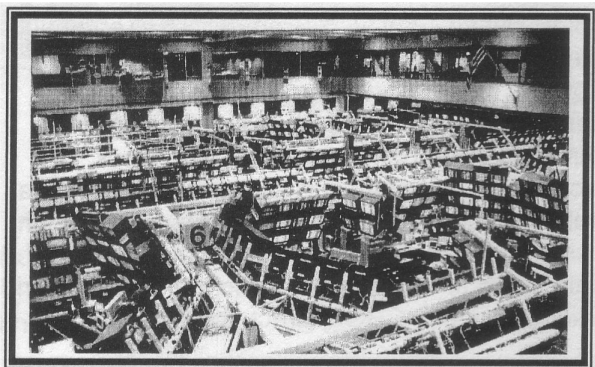
Belzberg Technologies provides the software and networks that enable global, direct access routing and execution of trades for financial institutions in the United States, Canada and Europe. Additional information about the company is available at www.belzberg.com.



RUSSIAN CHESS KING VISITS CHICAGO, ILLINOIS

By Dennis Bourgerie

Garry Kasparov the world's #1 ranked chessplayer came to the Chicago Board Options Exchange on LaSalle Street, Chicago, Illinois on July 17, 2003.



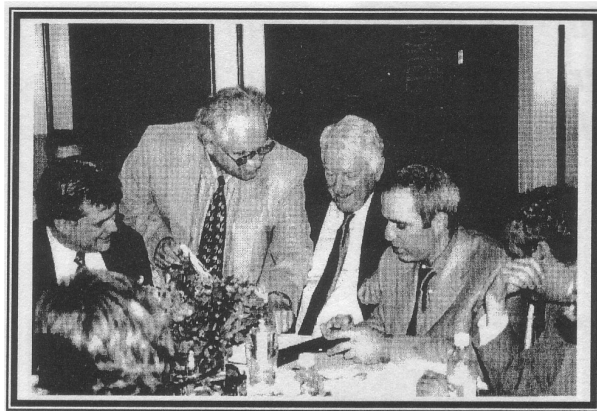
Chicago Board Options Exchange

It was an invitational event hosted by CBOE and Belzberg Technologies on the 4th floor in the members lounge. It began at 4 p.m. and featured autograph and picture opportunities with the 13th World Champion, a 24 board simultaneous exhibition and a demonstration of the Chicago Board Options Exchange Hybrid Trading System which provides CBOE customers with point-and-click, electronic access to CBOE, as well as order routing to other options, futures and stock exchanges, and complete access to market data, real-time quotes and order management-all on a single screen.

In my mind this event was a confluence of Capitalism, Technology and Chess.

Some of the Illinois chessplayers in attendance were Grandmaster Dmitry Gurevich, Illinois Chess Association President Larry Cohen, Illinois Chess Bulletin editor Colley Kitson, ICA Secretary Vince Hart, Leonid Bondar, Ron Suarez, National Master Kevin Bachler and myself the Downstate VP.

Hardcover copies of the book *Kasparov vs. The World* were available to all attendees. The former World Champion was animated and generous with his autographs and to those who wanted to be photographed with him.



Dennis Bourgerie getting his book signed by Garry Kasparov

A luxuriant catered buffet, desserts and drinks were available to all throughout the evening.

After about 30 minutes of autographs and pictures the structure of the event changed. Bill Brodsky, chairman of the CBOE spoke and then Alicia Belzberg introduced the honored guest, Garry Kasparov.

Garry spoke for about 15 minutes. He talked briefly about his upcoming matches with FIDE Champion Ruslan Ponomarev and X3D Fritz. Garry expects a difficult contest with Ponomarev. When he became champion in 1984, Kasparov was the youngest champion ever. Now he is 40 years old and will be playing an opponent who is half his age, which is a psychological switch of roles.

X3D Fritz will project a virtual chess board and pieces into mid-air. No mouse will be necessary, the move-recorder and clock will be built into the software and moves will be transmitted by voice. Garry also talked about chess, its role in society and his role in chess history.

The man has charisma with a capital "C"! You can't go to Wal-Mart and buy this kind of charisma. You can't order it from the internet. You've either got it or you don't.

When Garry speaks, a tremendous spiritual energy emanates from within his being. I sensed something that is greater than his physical image or his worldwide chess accomplishments. This man knows his place in time, in society and in culture. He is not a 1-trick pony or a chess nerd, but a fully-involved human being concerned about chess and its role in

Russian Chess King Visits Chicago Illinois

culture and society. Somehow he manages to connect with you in a very special human manner.

At 5 p.m. Garry started a 24 board simultaneous exhibition. Some of his opponents were Mark Cavanaugh, Dominic Salvino, Joey Fishman, Samuel Edelstein, Joey Papontsis, Barton Bargman, Phillip Bohan, Arwin Lijs, Mark Majd, Vlad Karpels, Sid Belzberg, Lyle Hayhurst and Vince Hart.



The Simul playing area consisted of four tables arranged in a square. The opponents were seated on the perimeter of the square facing Garry. Garry was in the inside ready to move from board from board. Spectators crowded around the players. This was a delightful "chess party" with lots of enjoyment, not a "must-win" competition. People were allowed to take pictures using their flash cameras. And surprisingly, cellphones rang demanding the attention of invited guests. Some were talking to one another as the exhibition continued. Garry was unfazed for more than two hours duration. At 7:45 p.m. Kasparov received a big round of applause. He had won against all opponents resulting in 24 wins, no draws and no losses.



Alicia Belzberg, Sid Belzberg, GM Garry Kasparov and GM Dmitry Gurevich

After this, Garry joined Alicia Belzberg, Sid Belzberg, his world-wide manager Owen Williams, Grandmaster Dmitry Gurevich and others at their dinner table. Even then, Garry graciously consented to more requests for autographs.

With that the evening began to draw to a close. People said their good-bye's and began to slowly exit in a random manner.

It was the first time in my life that I had the opportunity to meet Garry Kasparov and it probably will not occur again. I had a great time and it was an evening that will stay in my memory as a shining jewel.

A thank-you and appreciation are extended to Sid and Alicia Belzberg, Belzberg Technologies and the Chicago Board Options Exchange for bringing Garry Kasparov to Chicago and for hosting this unforgettable event.

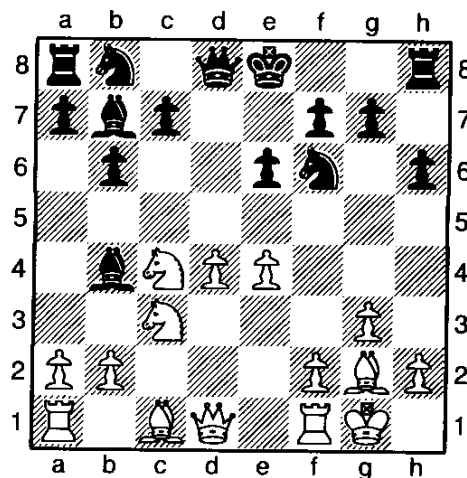
Belzberg Technologies provides software and networks that enable global, direct access routing and execution of trades for financial institutions in the United States, Canada and Europe

Here are some of the games from the Kasparov simultaneous:

(192) Kasparov, Garry - Lijs, Arwin [A40]

Belzberg-CBOE Kasparov simul Chicago, IL, 17.07.2003

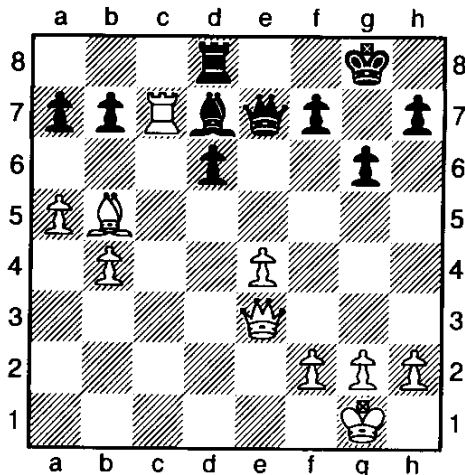
1.d4 e6 2.g3 d5 3.Bg2 b6 4.Nf3 h6 5.0-0 Nf6 6.c4 dxc4 7.Ne5 Nd5 8.e4 Nf6 9.Nxc4 Bb7 10.Nc3 Bb4
Diagram



Now Black is in trouble. 11.Qa4+ Nc6 12.d5 exd5 13.exd5 Qd7 14.dxc6 Bxc6 15.Bxc6 0-0 16.Bxd7 and White went on to win. 1-0

Kasparov,G- Fishman,Joey [B50]

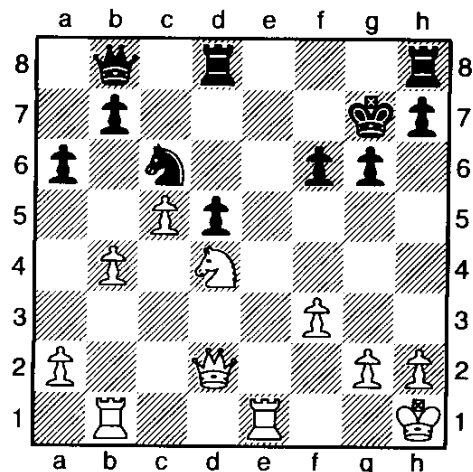
Belzberg-CBOE Kasparov simul Chicago, IL,
 Black plays well for a long time until he loses his a and b pawns which result in a lost game. 1.e4 c5 2.Nf3 d6 3.c3 g6 4.d4 cxd4 5.cxd4 Bg7 6.Nc3 Nc6 7.Be2 Nf6 8.0-0 0-0 9.d5 Nb8 10.Be3 Nbd7 11.a4 Ng4 12.Bd4 Nge5 13.Nxe5 Bxe5 14.a5 Bxd4 15.Qxd4 Nc5 16.Ra3 e5 17.dxe6 Nxe6 18.Qe3 Qe7 19.Nd5 Qd8 20.b4 Nc7 21.Nxc7 Qxc7 22.Rc1 Qe7 23.Rac3 Bd7 24.Rc7 Rfc8 25.Bb5 Rxc7 26.Rxc7 Rd8 Diagram



27.h3 Qe8 28.Bd3 Bc6 29.Qxa7 Ra8 30.Qb6 Qd8 31.b5 Be8 32.Rxb7 Qf6 33.Rb8 Qa1+ 34.Bf1 Rxb8 35.Qxb8 Qe5 36.a6 Kg7 and White won. 1-0

Kasparov,Garry - Bohan,Phillip [C07]

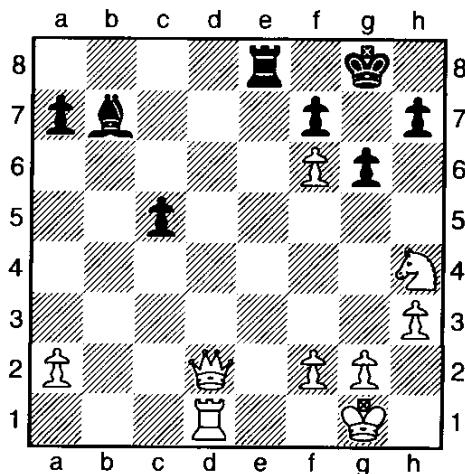
Belzberg-CBOE Kasparov Simul Chicago, IL,
 1.e4 e6 2.d4 d5 3.Nd2 c5 4.Ngf3 Nc6 5.Bb5 Bd7 6.exd5 exd5 7.0-0 Nxd4 8.Nxd4 cxd4 9.Qe2+ Be7 10.Nb3 Nf6 11.Re1 Ne4 12.f3 Nd6 13.Bxd7+ Qxd7 14.Nxd4 f6 15.Bf4 Kf7 16.Qd3 Rae8 17.c3 g6 18.Red1 Nc4 19.Rab1 Bd6 20.Bxd6 Qxd6 21.Nc2 Qc5+ 22.Kh1 Rd8 23.b3 Ne5 24.Qd2 Nc6 25.b4 Qd6 26.c4 Ne7 27.c5 For now White gains space on the queenside...later on the queen pawn will fall. 27...Qc6 28.Nd4 Qc7 29.Nb5 Qb8 30.Nd6+ Kg7 31.Re1 Nc6 32.Nb5 a6 33.Nd4 Now if Black trades knights some of the checkmating threats against the Black king could be lessened.



33...Kf7 [33...Nxd4 34.Qxd4 Qc7 35.Re2 Qf7 36.Rbe1 Rhe8 and Black is not losing major material or getting checkmated. 37.h3] 34.Ne6 Rde8 35.Qxd5 Ne7 36.Ng5+ Kg7 37.Qf7+ Kh6 38.Qxf6 Rhf8 39.Nf7+ Rxf7 [39...Kh5 and White will checkmate with 40.g4#] 40.Qxf7 Qd8 41.Qf4+ Kg7 42.Qd6 Kf7 43.Rbd1 Qxd6 44.Rxd6 Nc8 45.Rd7+ Kf8 46.Rxe8+ Kxe8 47.Rxb7 h5 48.a4 Kd8 49.b5 axb5 50.axb5 Ke8 51.b6 Kd8 52.Rh7 and Black resigned here. 1-0

Kasparov,Garry - Majd,Mark [C54]

1.e4 e5 2.Nf3 Nc6 3.Bc4 Bc5 4.c3 Nf6 5.d3 0-0 6.0-0 b6 7.b4 Bxb4 It's better that Black not give up a piece. [7...Bd6 8.a4 a6 9.Ba2 Qe8 10.Bg5 Be7 11.b5 axb5 12.axb5 Na5 13.Nxe5] 8.cxb4 Bb7 9.Nc3 Re8 10.Bg5 Nxb4 11.Qb3 d5 12.Qxb4 dxc4 13.Qxc4 c6 14.Rad1 Qd6 15.d4 b5 16.Qb3 b4 17.dxe5 Qxd1 18.Rxd1 bxc3 19.exf6 g6 20.Qxc3 Rxe4 21.Qd2 Rae8 22.h3 c5 23.Bh4 Rxh4 24.Nxh4 Diagram

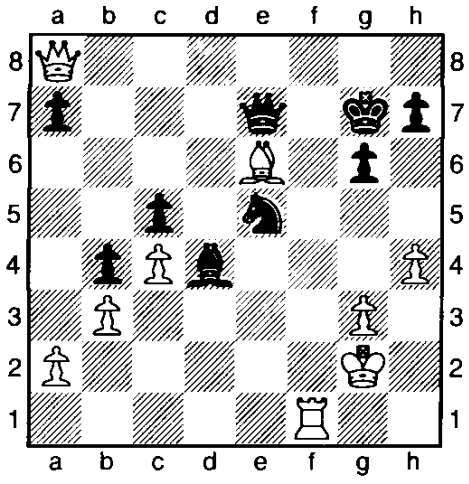


and White resigns. The finish would be like this: 24...Kh8 25.Qh6 Rg8 26.Rd8 Rxd8 [26...c4 27.Qg7#] 27.Qg7# 1-0

Kasparov, Garry - Hayhurst, Lyle [B50]

Belzberg-CBOE Kasparov Simul Chicago, IL, 17.07.2003

1.e4 c5 2.Nf3 d6 3.c3 Nf6 4.Bd3 Nc6 5.Bc2 g6 6.0-0 Qc7 7.d4 Bg4 8.d5 Ne5 9.Nbd2 Bg7 10.h3 Bxf3 11.Nxf3 Nxf3+ 12.Qxf3 0-0 13.Bg5 Nd7 The e7 pawn is indirectly protected. 14.Qe2 [14.Bxe7? Ne5 15.Qe2 Qxe7] 14...Rae8 15.Rad1 White believes that sooner or later, Black will have to move the e-pawn to free himself and when that happens, White will capture dxe6 and his rook will have a half-open d-file. 15...Qa5 16.Bb1 b5 17.Kh1 b4 18.c4 Qc7 19.f4 e6 20.dxe6 fxe6 21.b3 Nb8 22.Qd2 Bd4 23.Bh6 Nc6 [23...Rf7] 24.Bxf8 Rxf8 25.e5 dxe5 26.fxe5 Rxf1+ 27.Rxf1 Nxe5 28.Qf4 Qg7 29.Qe4 Qe7 30.Qa8+ Kg7 31.g3 Nf7 32.Be4 Ne5 33.Kg2 Nf7 34.h4 Ne5 It looks as if Black is close to setting up a fortress position with the ...Nf7 to e5 and back to f7 moves, against which it is hard for White to make progress 35.Bf3 Nf7 36.Be2 Ne5 37.Qe4 Nf7 38.Bg4 Ne5 39.Bh3 Bc3 40.Qa8 Bd4 [40...Nf7] 41.Bxe6! Diagram



Now if Black re-captures on e6, then he is checkmated on f8. 41...Bc3 [41...Qxe6? 42.Qf8#] 42.g4 h6 43.Qg8# 1-0

Time to renew the ICA?

The mailing label on the back cover of your Illinois Chess Bulletin shows the expiration date of your ICA membership. You may renew, or join for the first time, by filling out the form below (photocopy OK). Make check payable to Illinois Chess Association and mail to ICA Membership, Bill Smythe, 7042 N Greenview Av #1-S, Chicago IL 60626-2833.

Name _____
 USCF ID _____
 Address _____
 City-State-Zip _____
 Phone _____
 Email _____

- Membership type:
- Century Club Patron \$100 (a)
 - Gold Card Patron \$50 (a)
 - Patron \$35 (a)
 - Regular adult \$18
 - Junior (under 20) \$10
 - Additional family member \$6 (b)
 - ICA-affiliated club \$25 (a) (c)

Birth date (required if Junior) _____

- (a) Receives ICB by first-class mail.
- (b) No magazine. Must be related, and living at same address, as a Regular (or higher) ICA member.
- (c) For chess clubs and other chess-related organizations. Includes the right to run ICA Tour events. No membership privileges

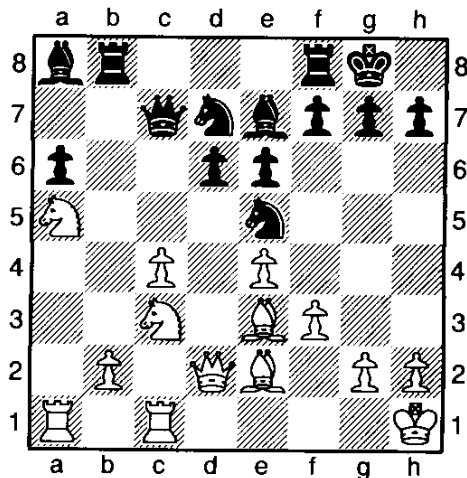
(1) Gurevich, D (2541) – Andrews, T (2332)

[A31]

Chicago open (6), 26.05.2003

[Albert Chow]

1.Nf3 c5 2.c4 Nf6 3.Nc3 b6 4.d4 cxd4 5.Nxd4 Bb7 6.f3 d6 7.e4 e6 8.Be3 Be7 9.Be2 0-0 10.0-0 a6 11.Kh1 Nbd7 D.Gurevich has great experience with this English Hedgehog structure, and he knows it's strong and weak points. 12.a4 Qc7 13.a5! bxa5 14.Nb3! Rab8 15.Nxa5 Ba8 16.Qd2 Ne5 17.Rfc1 Nfd7



18.b4! f5 [18...Rxb4? 19.Nb5! axb5 20.cxb5! Qb8 21.Qxb4+-] 19.exf5! Rxf5 20.Ne4 Ng6 21.Ng3 Rf7 22.Nb3! Nde5 [22...Bb7 23.Nd4 Ngf8 is a solid but passive defence.] 23.Nd4 Nh4? [23...Qc8! may cover the a6 + e6 weaknesses.] 24.Rxa6 [24.Nxe6 Qc8 25.Nf4 also looks good.] 24...Qc8 25.b5 h6 26.Ne4 Qd7 27.Rca1 Bb7 28.Ra7 g5 29.c5! dxc5 30.Nc6! Qxd2 31.Nxe7+ Rxe7 32.Bxd2 g4 33.Bc3 Nexf3 34.Nxc5! Ng5 35.Bf1 Nf5?? 36.Be5! Black let his time run out before losing a piece. 1-0

(2) Cusi, R (2384) – Wojtkiewics, A (2617)

[A36]

Chicago open (2), 25.05.2003

[Al Chow]

1.c4 c5 2.g3 g6 3.Bg2 Bg7 4.Nc3 Nc6 English symmetrical. 5.a3 b6 6.d3 Bb7 7.Bd2 Nf6 8.Qc1 h6 9.Rb1 d6 10.b4 Qd7 11.e4 Ne5 12.Qc2 0-0 13.f4 Nc6 14.Nge2 Ne8! 15.0-0 f5 16.Be3 Nd4 17.Qd2 Nc7 18.Bf2 Nce6 Equal, but hard to win for the higher rated. 19.Rfe1 Rae8 20.Nxd4 Nxd4 21.Ne2 e5 22.bxc5 dxc5 23.Nxd4 cxd4 24.exf5 Bxg2 25.Kxg2

exf4 26.Qxf4 Rxf5 27.Rxe8+ Qxe8 28.Qd2 Qa4 29.Qb2 Bf8 draw agreed. 1/2-1/2

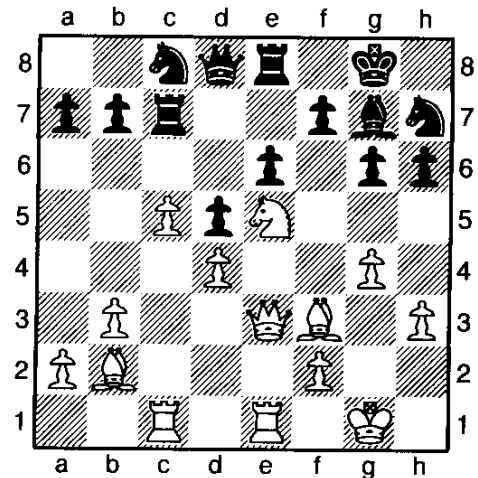
(3) Finegold, B (2636) – Young, A (2395)

[A41]

Chicago open (6), 26.05.2003

[Al Chow]

1.d4 d6 2.Nf3 g6 3.c4 Bg4 4.Nbd2 Bg7 5.e3 c5 6.Be2 Nf6 7.0-0 0-0 8.b3 Nc6 9.Bb2 Nd7 10.h3! cxd4! 11.exd4 [11.hxg4 d3! 12.Bxg7 dxe2 13.Qxe2 Kxg7 is only equal.] 11...Bxf3 12.Nxf3 d5!? 13.Qd2 Nf6 14.Qe3 e6 15.Ne5 Rc8 16.Bf3 Re8 17.Rfd1 Rc7 18.Rac1 Ne7 19.g4! h6 20.Re1 Nc8 21.c5! Nh7 With more space and bishop pair, Finegold maintains lasting pressure.



22.b4 Qh4 23.Bg2 h5 24.Nf3 Qd8 25.b5 hxg4 26.hxg4 Nf6 27.Ne5 Nd7 28.Nd3 Qh4 29.Qf4 Qd8 30.Bxd5! g5 31.Qg3 Ne7 32.Bb3 Nf6 33.Qe3 Bh6 34.Qf3 Ned5 35.Kg2 Bg7 36.Re2 Rd7 37.Rh1 Nh7 38.Re4 Nf8 39.Ne5 Nf6 40.Nxd7 down material, black also ran out of time on the clock. 1-0

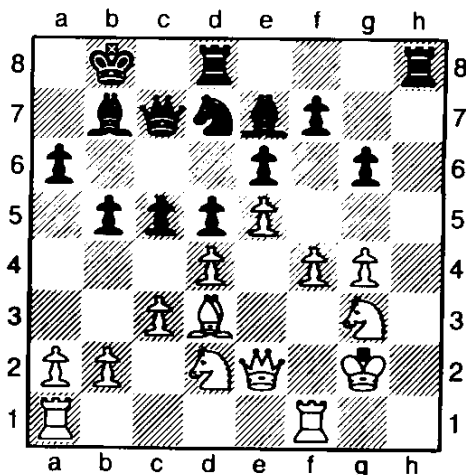
(4) Nagel, S (2326) – Blatney, P (2558) [A46]

Chicago open (6), 26.05.2003

[FM Al Chow]

1.d4 Nf6 2.Nf3 d6 3.Bg5 Nbd7 4.Nbd2 h6 [4...e5 pushing a center pawn two squares, is perhaps too normal for Blatney's un- orthodox style.] 5.Bxf6 Nxf6 6.e4 e6 7.Bd3 Be7 8.Qe2 Nd7 9.c3 a6 White is taking the center while black edges his wing pawns to the extreme. 10.0-0 b6 11.e5! Bb7 12.Ne4 d5 13.Ng3 h5 14.Nd2 h4 15.Nh1 c5 A pawn structure familiar from the French defence. 16.f4 g6 17.g4! hxg3 18.hxg3 Qc7 19.g4! b5 20.Ng3 0-0-0 21.Kg2 Kb8 Nagel

handles white's space advantage on the kingside in textbook fashion.



22.Rh1 Rhf8? 23.Rh7 Nb6 24.f5! gxf5 25.gxf5 c4 26.Bc2 exf5 27.Rf1 Rh8 28.Qh5 Rhg8 29.Rxf5 Rde8 30.Rxf7 Qd8 31.Qh6 Ka8 32.Bf5 Nd7 33.Nf3 b4 34.Kf2 bxc3 35.bxc3 Nb8 36.Bc2 Nc6 37.Ba4 Qb6 38.Bxc6 Qb2+ 39.Qd2 Qxd2+ 40.Nxd2 Bxc6 41.Rxe7 Ref8+ 42.Rhf7 White has made the forty move time control a piece up, so GM Blatney resigned. 1-0

(5) Yermolinsky,A (2622) – Dimitrijevic,D (2279) [A60]

Chicago open (3), 24.05.2003

[A.C. F.I.D.E. master]

1.d4 Nf6 2.c4 e6 3.Nf3 c5 4.d5 exd5 5.cxd5 Bd6!?

The Snake variation. [5...d6 6.Nc3 g6 is the Modern Benoni defence.] 6.Nc3 0-0 [6...Bc7 may be better, so if 7.Bg5 d6 or 7.d6 Ba5.] 7.Bg5 Re8 8.e3 a6? [8...Bc7 again may be best.] 9.Bd3 h6? 10.Bxf6! Qxf6 11.Ne4 Qe7 12.Rc1 b5 13.Bb1 c4 14.0-0 g6? Black moved too many pawns, except the central d pawn to d6. White to move and win easy snakeskin! 15.Qd4! black resigns. 1-0

(6) Betaneli,A (2263) – Shabalov,A (2676) [A42]

Chicago open (1), 23.05.2003

[A.C.]

1.c4 c6 2.e4 g6 3.Nc3 Bg7 4.d4 d6 5.Nge2 Nf6 6.Ng3 0-0 Back to the King's Indian after transposition. 7.Be2 a6 8.Rb1 b5 9.cxb5 axb5 10.b4 h5!? 11.0-0 h4 12.Nh1 h3 13.g3 d5!? 14.e5 Ne4 15.Nxe4 dxe4

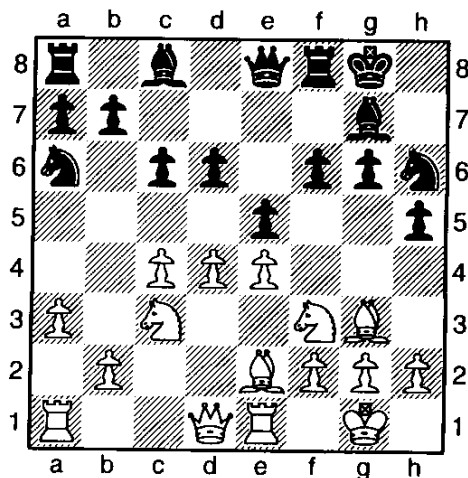
16.Rb2 Be6 17.Bg4 Bxa2 18.Re1 Bd5 19.Bf4 Nd7 20.Bxh3 e6 21.Qg4 Ra4 22.Bg2 c5!! 23.Bg5 Qa8 24.Be7 cxd4! 25.Bxf8 Nxe5 26.Qh4 Bxf8 A winning exchange sacrifice, typical of Shabalov's dynamic style. 27.Bxe4 Bxe4 28.Qxe4 Nf3+ 29.Kf1 Nxe1 white resigns 0-1

(7) Shulman,Y (2615) – Bereolos,P (2356) [E92]

Chicago open (2), 24.05.2003

[A.C.]

1.d4 Nf6 2.c4 g6 3.Nc3 Bg7 4.e4 d6 5.Nf3 0-0 6.Be2 e5 7.Be3 Na6 A complex Classical King's Indian. 8.0-0 Ng4 9.Bg5 f6 [9...Qe8 is more accurate, and if 10. h3 h6.] 10.Bh4 Qe8 11.Re1 c6 12.a3 h5 13.Bg3 Nh6 GM Shulman opens attacking lines while black's knights are sidelined.



14.c5!? exd4! 15.Bxa6 [15.Na4±] 15...dxc3 [15...bxa6 16.Qxd4!+-] 16.Bc4+ Be6 17.Bxe6+ Qxe6 18.cxd6 cxb2 19.Rb1 Nf7 [19...g5] 20.Rxb2 b6 21.Rd2± Qd7 22.Nh4 g5? [22...Kh7 23.Qc2±] 23.Nf5+- h4 24.Ne7+ Kh7 25.e5! fxe5 [25...hxg3 26.e6! gx2+ 27.Kxf2 Qe8 28.Qc2+ Kh8 29.Ng6+ Kg8 30.d7 Qb8 31.Nxf8+- and the passed pawns decide.] 26.Qh5+ Nh6 27.Qg6+ Kh8 28.Bxe5 Black resigned. Line

(8) Cusi,R (2384) – Yermolinsky,A (2622) [D80]

Chicago open (4), 24.05.2003

[Illinois champ Chow]

1.d4 Nf6 2.c4 g6 3.Nc3 d5 4.e3 Bg7 5.Bd2 0-0 This system is not a threat to the Grunfeld. 6.Rc1 c5! 7.dxc5 Na6! 8.cxd5 Nxc5 9.Bc4 Bf5 A promising gambit. 10.Nge2 Bd3 11.Bb3 Ba6 12.0-0 Rc8 13.Rb1 Qd6 14.a3 Ng4! 15.g3 Nxb3 16.Qxb3 Bxc3 17.Nxc3 Bxf1 18.Rxf1 Ne5 Already advantage...to black.

Games From FIDE Master Albert Chow ICB Games Editor

19.Kg2 Qf6 20.f4 Nc4 21.Bc1 Qb6 22.Qxb6 axb6 A matter of technique. 23.a4 f5 24.Rd1 Nd6 25.Rd4 Rc4 26.Rd3 Ne4 27.Bd2 Rfc8 28.Be1 Nc5 29.Rd1 Rb4 30.Rd2 Nxa4 31.Nxa4 Rxa4 32.d6 Rd8 33.dxe7 Rxd2+ 34.Bxd2 Kf7 35.Bc3 Kxe7 36.Kf3 Ke6 37.g4 Kd5 38.gxf5 gxf5 39.h4 h5 40.Bf6 Ra1 41.Bd8 Rf1+ 42.Ke2 Rb1 43.Bf6 Ke4 white resigned a lost endgame. 0-1

(9) Novikov, I (2686) – Zaremba, A (2389)

[D93]

Chicago open (2), 24.05.2003

[A.C.]

1.d4 d5 2.c4 c6 3.Nf3 Nf6 4.Qc2 g6 5.Bf4 Bg7 6.e3 0-0 7.Nc3 Bf5 8.Qb3 Qb6 9.c5 Qxb3 10.axb3 Nbd7 Black seems to have equalized this Slav–Grunfeld. 11.h3 h6 12.b4 a6 13.Rg1 g5 14.Bh2 Rfe8 15.g4 Be4 16.Nd2 e5! 17.0-0-0 exd4 18.exd4 a5 19.b5 a4 20.Rg3 Bg6 21.Re3 Rec8 22.b4 Nh7 23.Nf3 a3 24.Bd3 Bxd3 25.Rexd3 Nh8 26.Kb1 Ne6 27.Ka2 Rf8 28.Bd6 Rfe8 29.Re3 Bf6 30.b6 Rad8 31.Bg3 Ra8 32.b5 Nexc5! 33.bxc6 bxc6 34.dxc5 Rxe3 35.fxe3 Bxc3 36.Bc7 Re8 This game was played at a quick time control, which may explain the following blunders... 37.Rxd5? Nb8? [37...cxd5! was better for black.] 38.Bxb8 Rxb8 39.Rd7 Kf8 40.Rc7 black resigned 1-0

(10) Browne, W (2556) – Peric, S (2327)

[D10]

Chicago open (3), 25.05.2003

[Al Chow]

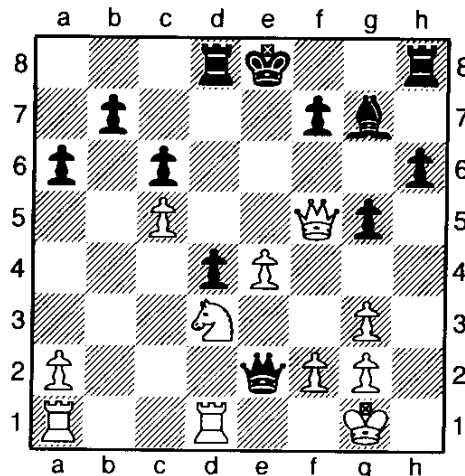
1.d4 d5 2.c4 c6 3.Nc3 Nf6 4.e3 a6 The early ...a6 Slav defence was popular and was seen often in the top class at the Chicago open. 5.Nf3 Bg4 6.Be2 e6 7.0-0 Nbd7 [7...Bxf3!? 8.gxf3 is unclear.] 8.b3 Bd6 9.Bb2 0-0 10.h3 Bh5 11.g4 Bg6 12.Nh4 Ne4 13.Nxg6 Nxc3 14.Bxc3 hxg6 15.f4 g5! 16.Bd3 gxf4 17.exf4 g5 18.fxg5 Qxg5 19.Kh1 Kg7 20.Qf3 f6 21.Rae1 Rae8 22.Re2 Rh8 23.Bd2 Qh4 24.Re3 Kf7 25.g5 Qh5 26.gxf6 Qxf3+ 27.Rexf3 Reg8 28.Rg1 Rxg1+ 29.Kxg1 e5! 30.cxd5 cxd5 31.dxe5 Nxe5 32.Rg3 Kxf6= 33.Bb1 d4 34.Kg2 Ke6 35.Be4 b6 36.Rg7 Rh4 37.Bb7 a5 38.Bg5 Rh8 39.h4 Kf5 40.Kf2 d3 41.Ke3 Bc5+ 42.Kd2 Re8 43.Bg2 Bb4+ 44.Ke3 Bc5+ 45.Kd2 Bb4+ draw by repetition agreed. After the game the players enjoyed a spirited debate as to whom stood better, and I left them late at night working away, whilst I was feeling exhausted. ½-½

(11) Chow, A (2217) – Cusi, R (2384) [D15]

Chicago Open (6), 26.05.2003

[Albert Chow.]

1.Nf3 d5 2.d4 Nf6 3.c4 c6 4.Nc3 a6 5.c5 Bf5 6.Bf4 Nbd7 7.e3 Nh5 [7...e6 is more orthodox.] 8.Bg5 [8.Be5! Nxe5 9.Nxe5 Nf6 10.g4! is also tempting] 8...h6 9.Bh4 g5 10.Bg3 Nxg3 11.hxg3 Bg7 [11...e5 12.Nxe5 Nxe5 13.dxe5 Bxc5 14.Bd3 seems unclear.] 12.Bd3 Bxd3 13.Qxd3 e5 14.Nxe5! Nxe5 Or the other unclear capture: [14...Bxe5 15.dxe5 Nxe5 (15...Nxc5)] 15.dxe5 Bxe5 16.0-0 Qa5 17.Qf5! Bg7 [17...Bxc3 18.bxc3 Taking the gambit gives white strong play: 18...Qxc3 (18...Qxc5 19.Qe5+ Kd7 20.Qf5+ Kc7 (20...Ke7 21.Qe5+=) 21.Qxf7+ Kb8 22.Rab1 b5) 19.Rfc1 Qg7 20.Rab1] 18.e4! d4 [18...Qxc5 19.exd5 0-0 20.Rfd1 Bxc3 21.Rac1! also could be good (for white)] 19.Ne2 Qb5 20.Nc1! Rd8 21.Rd1! Qxb2 22.Nd3 Qe2 The ideal outpost knight d3 earns respect from a bad bishop g7.



23.e5! 0-0 24.Re1 Qd2 25.Rab1 Qxa2 26.Rxb7 Qd5 27.Ra7! Rfe8 28.Rxa6 Re6 29.Ra7 Rf8 30.Qe4! Qc4 31.Rd7! Rfe8 32.Rxd4 Qc3 33.f4 gxf4 34.gxf4 Rg6 35.Rd6! Rg3? 36.Kh2 Rg4 37.Qf5 Rg6 38.Rxg6 fxg6 39.Qxg6 Rd8 40.Re3 Qd4 41.Rg3 Rd7 42.f5 Under big pressure, black resigned. 1-0

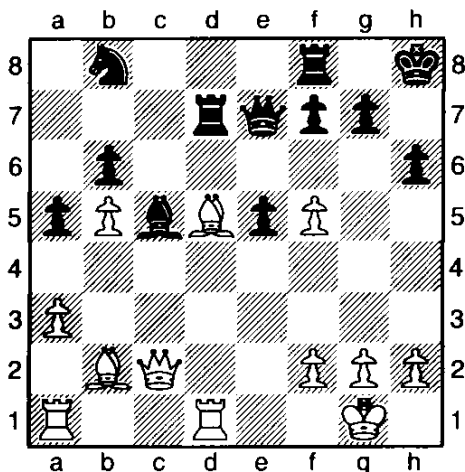
(12) Ginsburg, M (2432) – Stannov, A (2238)

[D45]

Chicago open (3), 25.05.2003

[A.Chow]

1.c4 c6 2.d4 d5 3.Nf3 Nf6 4.e3 e6 5.Nc3 Nbd7 6.Qc2 Bd6 A modern variation of the Semi Slav QGD. 7.Be2 0-0 8.0-0 Qe7 9.a3 h6?! 10.Rd1 b6 11.b4 dxc4?! [11...Bb7 developing is solid.] 12.e4! e5 13.Nh4! Nb8 ugly. 14.Bxc4 Kh8 15.d5 a5 16.b5 cxd5 [16...c5 is also good for white.] 17.Nxd5 Nxd5 18.Bxd5 Ra7 19.Nf5! Bxf5 20.exf5 Bc5 21.Bb2 Rd7 The bishop pair gains long term advantage on the open diagonals.



22.Rd3 Rfd8 23.Be4 Rxd3 24.Bxd3 Nd7 25.Re1 Qd6 [25...Bxa3 26.Bxa3 Qxa3 27.Qc7 Qe7 28.Rxe5! strongly favors white.] 26.Bc4 f6 27.Bc1 Nf8 28.Qb3 Nh7 29.h4 Qd4 30.Be3 Qe4 [30...Qxh4 31.Bxc5 bxc5 32.b6 shows the b pawn is faster than the h pawn.] 31.Be6 Rd3 32.Qc4 Qxc4 33.Bxc4 Rd6 34.Bxc5 bxc5 The Knight on the rim, is grim. 35.f4! Rd8 36.b6 Rb8 37.Rd1 Nf8 38.Rd6 exf4 39.h5 Nh7 40.Bd5 Ng5 41.b7 c4 42.Rc6! black resigns 1-0

(13) Browne,W (2556) – Shabalov,A (2676)

[D46]

Chicago open (3), 25.05.2003

[A.C.]

1.d4 d5 2.c4 c6 3.Nf3 Nf6 4.Nc3 e6 5.e3 Nbd7 6.Qc2 Bd6 7.Bd3 0-0 8.0-0 dxc4 9.Bxc4 a6 10.Rd1 Qc7 11.e4 e5 12.g3 b5 A Meran variation in the Semi Slav, giving black active play. 13.Be2 Re8 14.dxe5 Nxe5 15.Bg5 Nfg4 16.Nxe5 Bxe5 17.h3 h6 18.Bxg4 hxg5 19.Rd3 Bxg4 20.hxg4 Qc8 21.Qe2 Qe6 22.a3 Rad8 23.Rad1 Rxd3 24.Rxd3 a5 25.Kg2 Qc4 26.Qe3 c5 27.b3 draw agreed 1/2-1/2

(14) Nagel,S (2326) – Gurevich,D (2541)

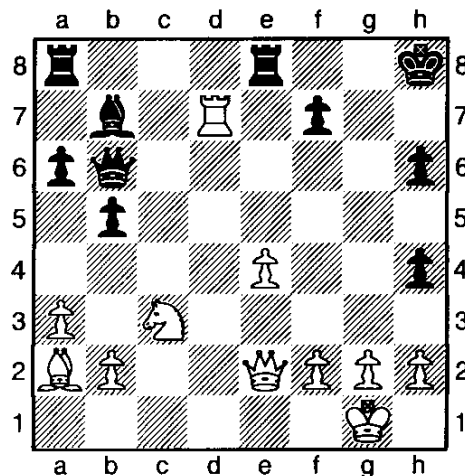
[D40]

Chicago open (7), 26.05.2003

[Illinois state champion Albert Chow]

1.d4 Nf6 2.c4 e6 3.Nf3 a6! 4.Nc3 c5 5.e3 d5 6.a3 dxc4 7.Bxc4 b5 After a transposition of moves, the opening becomes a Queen's Gambit Accepted. 8.Ba2 cxd4 9.Nxd4 Bb7 10.0-0 Nbd7 [10...Nc6 with equalizing exchanges may be correct.] 11.Qe2 e5 12.Nf3 Bc5 13.e4 0-0 14.Bg5 h6 15.Bh4 Re8 16.Rfd1

Qb6 17.Rd2! Bd4?? An mistake giving advantage only to white. Black was solid with [17...Rac8 or; 17...Bc6] 18.Rad1!± g5 19.Nxd4! [19.Bg3 Nc5 20.Nxd4 exd4 21.Rxd4 Ncxe4 22.Nxe4 Nxe4 23.Qh5+- also looks good.] 19...exd4 20.Rxd4! gxh4 21.Rxd7 Nxd7 22.Rxd7 Kh8 White's troops swarm the enemy hideout, leading to a justified attacking victory.



23.Qh5! Bxe4 24.Bxf7! Bf5 25.Rd1 Re5 26.Nd5! Qd6 27.f4! Bc2 28.fxe5 Bxd1 29.exd6 Bxh5 30.Bxh5 Rd8 31.h3 Rxd6 32.Bf3 Rc6 White's winning technique is easy due to the weak doubled h pawns. 33.Nc3 Rc5 34.Kf2 a5 35.Ke3 b4 36.axb4 axb4 37.Nd5 Rc2 38.Nxb4 Rxb2 39.Nd5 Kg7 40.Kf4 Rd2 41.Kg4 Rd4+ 42.Kh5 Rc4 43.Ne3 Rf4 44.Bg4 black resigned 1-0

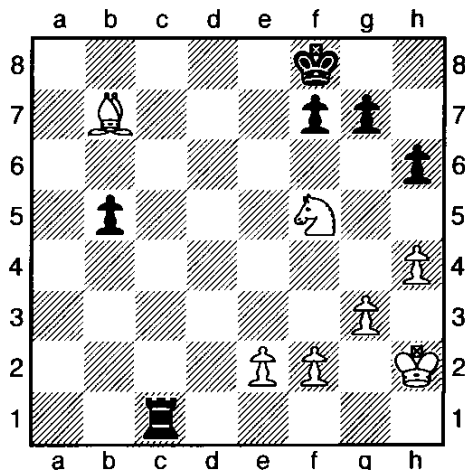
(15) Gurevich,D (2541) – Bluvshstein,M (2611) [D34]

Chicago open (4), 26.05.2003

[Al Chow]

1.d4 Nf6 2.c4 e6 3.g3 c5 4.Nf3 d5 5.cxd5 exd5 6.Bg2 Nc6 7.0-0 Be7 8.Nc3 0-0 The Tarrasch defence. 9.b3 Ne4 10.Bb2 Bf6 11.Na4 b6 12.Rc1 Ba6 13.dxc5 Bxb2 14.Nxb2 bxc5 15.Na4 Re8 16.Re1 c4 17.Nd2 cxb3!? [17...Qf6!? is another active idea.] 18.Rxc6 Bb5! 19.Nxe4 Bxc6 20.Nec3 bxa2 21.Nxa2 Qa5 22.N4c3 Rab8 Rook plus pawn vs. two knights. 23.Qd4 Rb2 24.Rc1 Bb7 25.h4 h6 26.Bf3 Rc8 27.Nxd5 Rxc1+ 28.Nxc1 Rb1 29.Ne7+ Kf8 30.Bxb7 Rxc1+ 31.Kh2 Qb6! [31...Kxe7?? 32.Qe3+ fork.] 32.Qxb6 axb6 33.Nf5 b5=

Games From FIDE Master Albert Chow ICB Games Editor



34.Nd4 b4 35.Bd5 h5 36.e3 g6 37.Kg2 Rd1 38.Kf3 Rd2 39.Bc4 Kg7 40.Nb3 Rc2 41.Bd5 f5 42.Nd4 Rd2 43.Kg2 Rd1 44.Bb3 Rb1 45.Bc2 Ra1 46.Kf3 Ra2 47.Kf4 b3! 48.Bxb3 Rxf2+ 49.Ke5 Rg2 50.Ne6+ Kh8 51.Kf4 Kh7 52.Bd5 Rd2 53.Bc6 Kh6 54.Nd4 Rd1 55.Nf3 Rc1 56.Bd5 Kg7 57.Ke5 Rc3 58.Kd4 Rc1 59.Ke5 Rc3 60.Kf4 Rc1 61.e4 fxe4 62.Bxe4 Kf6 63.Bd3 Rc5 64.Nd2 Ra5 65.Ne4+ Kg7 66.Ke3 Rd5 67.Ng5 Ra5 68.Ne6+ Kh6 69.Kf4 Rd5 70.Be4 Ra5 71.Bd3 Ra4+ 72.Ke3 Ra5 73.Kf3 Ra3 draw agreed 1/2-1/2

(16) Goldin,A (2683) – Mc Laughlin,J (2287) [D35]

Chicago open (1), 25.05.2003

[FM A.Chow]

1.d4 d5 2.c4 e6 3.Nc3 Be7 4.cxd5 exd5 5.Bf4 Nf6 6.e3 0-0 7.Nf3 c5 [7...Bf5!? may be critical in this move order.; 7...c6 8.Bd3 Bg4 also seems playable.] 8.dxc5 Bxc5 9.Be2 Nc6 10.0-0 Be6 11.Rc1 Rc8 In typical super-grandmaster style, Goldin enjoys pressure against the Tarrasch pawn weaknesses. 12.a3 Qe7 13.b4 Bb6 14.Na4! Bc7 15.Bxc7 Rxc7 16.Nd4! Ne4 17.Nxc6 Rxc6 18.Rxc6 bxc6 Mr. Goldin makes the win look easy, thanks to isolated a7 and backward c6. 19.Qd4! Rc8 20.Ba6 Rc7 21.Rc1 Qg5 22.Nc5 Nxc5 23.Qxc5! Bh3 24.Bf1 h5 25.Qd6! Rc8 26.Rxc6 Rd8 27.Qg3 Qxg3 28.hxg3 Be6 29.Bd3 d4 30.e4! Kf8 31.Kf1 Ke7 32.Ke2 Kd7 33.Ra6 Ra8 34.Bb5+ Kc7 35.Rc6+ Kb7 36.Rd6 Rc8? 37.Ba6+ black resigned 1-0

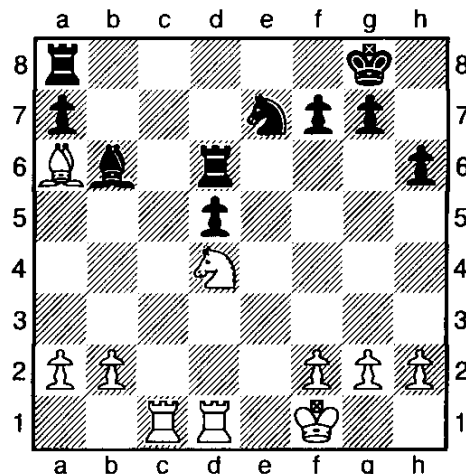
(17) Shulman,Y (2615) – Goldin,A (2683)

[D38]

Chicago open (4), 25.05.2003

[Albert Chow]

1.d4 Nf6 2.c4 e6 3.Nf3 d5 4.Nc3 Bb4 A hybrid Nimzo QGD. 5.Bg5 h6 6.Bxf6 Qxf6 7.e3 0-0 8.Rc1 dxc4 9.Bxc4 c5 10.0-0 cxd4 11.exd4 Rd8 12.Ne4 Qe7 13.Qe2 Nc6 14.Rfd1 Ba5 15.Bb5 Bd7 16.Nc5 Be8 17.d5 exd5 18.Qxe7 Nxe7 19.Nxb7 Rdb8 20.Ba6 Bb6 21.Nd6 Rd8 22.Nxe8 Rxe8 23.Kf1 Red8 24.Nd4 Rd6



25.Be2 Rf6 26.Bf3 Rd8 27.Rc2 g5 28.h3 Kg7 29.Rcd2 Rc8 30.a3 Rc4 31.Ne2 Ba5!? 32.Bxd5 Bxd2 33.Bxc4 Be3! 34.f3 Nf5 control of dark squares and opposite color bishops seem to give black enough counterplay. 35.Rd7 Bb6 36.Bb3 Ne3+ 37.Kg1 Kf8 38.Kh1 Nf5 39.Bc2 Re6 40.Be4 Nd6 41.g4 Nxe4 42.fxe4 Rxe4 43.Ng3 Rf4 44.Rd2 Ke7 45.Kg2 Ke6 46.Nf5 Re4 47.Nxh6 Re3 48.Nf5 draw agreed 1/2-1/2

(18) Gurevich,D (2541) – Belarusov,M (2352) [E20]

Chicago open (2), 24.05.2003

[A.C.]

1.d4 e6 2.Nf3 d5 3.c4 Nf6 4.g3 Bb4+ 5.Nc3 dxc4 6.Bg2 c5 7.0-0 0-0 8.dxc5 Bxc5 9.Qa4 Bd7 10.Qxc4 Qc7 11.Qh4 Bc6 12.Bg5 Nbd7 13.Rac1 h6 14.Bd2 Rfd8 15.b4 Be7 16.a4 Qd6 17.Nb5 Bxb5 18.axb5 Nd5 19.Qh3 Ne5 20.Rfd1 Nxf3+ 21.Bxf3 Qb6 22.Be4 Bf8 23.g4 Qxb5 24.Bd3 Qb6 25.b5 Qd4 26.Bxh6! f5 [26...gxh6? 27.Bh7+ Kxh7 28.Rxd4] 27.Bxf5 Qe5 And not wanting to risk a blunder a draw was agreed with a handshake! A good moment for the defender to offer peace. It looks like white may drop a bishop, but in fact deeper calculation shows white is clearly better after: 28.Bh7+! Kf7 29.Qf3+ Qf6 30.Qxf6+ Nxf6 31.Rc7+! Be7 32.Rxd8 Rxd8 33.Bg5! Time pressure may have been a factor. 1/2-1/2

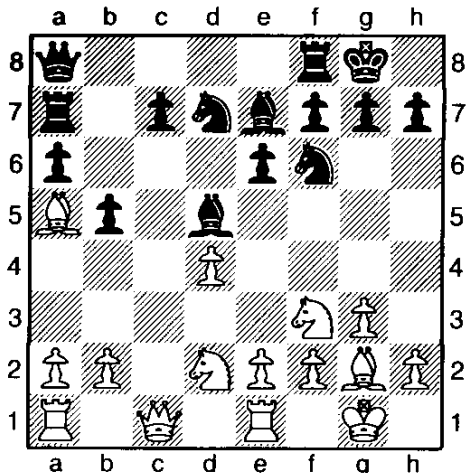
(19) Kaidanov,G (2743) – Bick,J (2264)

[E05]

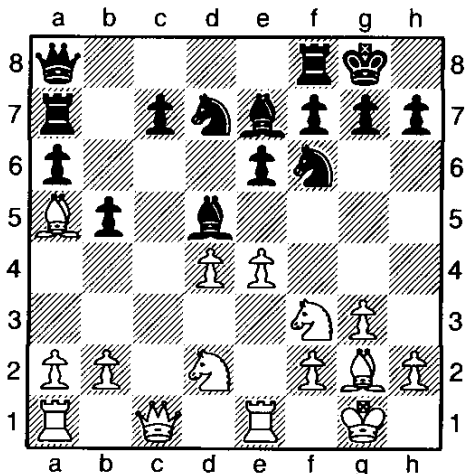
Chicago open (1), 25.05.2003

[Albert Chow]

1.d4 Nf6 2.Nf3 e6 3.g3 Be7 4.Bg2 0-0 5.0-0 d5 6.c4 dxc4 7.Qc2 a6 8.Qxc4 b5 9.Qc2 Bb7 GM Kaidanov knows the Catalan backwards and forwards with either color, and here he gives us yet another lesson showing his skill and technique. 10.Bd2 Be4 11.Qc1 Nbd7 12.Ba5! Ra7 13.Nbd2 Bd5 14.Re1! Qa8



15.e4! Diagram



The move black hoped to prevent.15...Bb7 [15...Nxe4? 16.Nxe4 Bxe4 17.Rxe4! Qxe4 18.Ne5! Qxd4 19.Nc6! Qc5 20.b4!± and white wins material.] 16.b4 e5? Unsound. [16...Rc8 was more solid.] 17.Nxe5 Nxe5 18.dxe5 Nd7 19.Qb2 c5 20.Rad1 cxb4 21.Nf1 Bc6 22.Ne3 Re8 [22...Bxe4? 23.Bxe4 Qxe4

24.Nd5+--] 23.Nd5 Bd8? [23...Nxe5!± was the last chance.] 24.Bxd8 Qxd8 25.Nxb4 Qb6 26.Rd6! Nxe5 27.Qc3 Rc7 28.Nd5! 28...Bxd5 29.Qxe5! exploits the 8th rank so black resigned. 1-0

(20) Lein,A (2464) – Shulman,Y (2615)

[E00]

Chicago open (3), 24.05.2003

[A.C.]

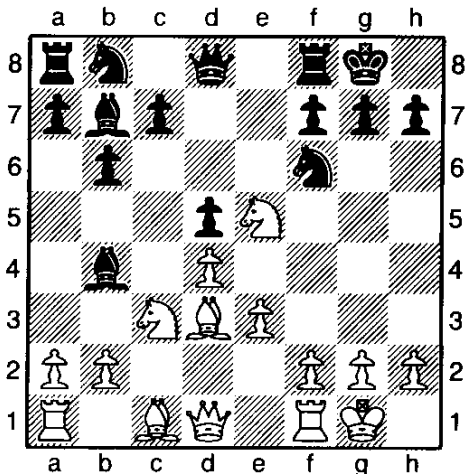
1.d4 d5 2.c4 e6 3.Nf3 Nf6 4.g3 a6!? 5.c5 b6 6.cxb6 cxb6 7.Bg2 Be7 8.0-0 0-0 9.Bg5 Nc6 10.Nc3 Bb7 11.e3 h6 12.Bxf6 Bxf6 13.Qe2 a5 14.Rfd1 Ba6 15.Qd2 Qd7 16.e4 Rac8 17.Bh3 Nb4 18.exd5 Nxd5 19.Ne5 Qd8 20.Nxd5 Qxd5 21.Bg2 Qd6 22.Ng4 Bg5 23.f4 Be7 24.Qf2 Rfd8 25.Ne5 Bf6 26.h4 Rc7 27.Kh2 Bb7 28.Bh3 Qd5 29.Rd2 Bxe5 30.fxe5 Rcd7 31.Qe3 a4 32.Bg2 Qb5 33.Bxb7 Rxb7 34.Rad1 Rc7 35.g4 Qd5 36.h5 Rdc8 37.g5 hxg5 38.Qxg5 f6 39.Qg3 fxe5 40.dxe5 Rc2 41.Qe3 Rxd2+ 42.Rxd2 The remaining moves are not recorded, but black somehow eventually won, although it seems even now to me. (A.C.) 0-1

(21) Kaidanov,G (2743) – Yermolinsky,A (2622) [E52]

Chicago open (7), 26.05.2003

[Al Chow]

1.d4 Nf6 2.c4 e6 3.Nc3 Bb4 4.e3 0-0 5.Bd3 d5 6.Nf3 b6 7.0-0 Bb7 8.cxd5 exd5 This super solid Rubinstein Nimzo combines elements of the Queen's Indian and Exchange QGD! 9.Ne5 Diagram



9...c5 10.Ne2 cxd4 11.exd4 Nbd7 12.Ng3 Ne4 13.Nf5 Nxe5 14.dxe5 Bc8 15.Nd4 Bc5 16.Be3 Qh4 17.Be2 Qe7 18.Nc6 Qc7 19.Qxd5 Bb7 20.Qxe4 Bxc6 21.Qf4 Rae8 22.Bxc5 bxc5 23.Rfc1 Qxe5 24.Qxe5 Rxe5=

Games From FIDE Master Albert Chow ICB Games Editor

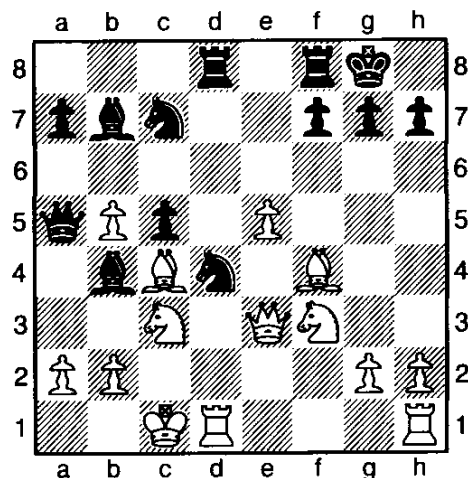
25.Rc2 Be4 26.Rd2 Rd5 27.Rxd5 Bxd5 28.f3 a5
29.b3 Rc8 30.Rc1 Kf8 31.Bc4 Bxc4 32.Rxc4 Ke7
33.Kf2 Kd6 34.Ke3 Kc6 35.Re4 Rc7 36.Kd3 Rd7+
37.Kc3 Rd1 38.Re7 Rc1+ 39.Kd3 Rg1 40.g4 Rd1+
41.Kc3 Rc1+ 42.Kd3 Rd1+ 43.Kc3 Rc1+ draw by
triple repetition. ½-½

(22) Bluvshstein, M (2611) - Ibragimov, I (2667) [E20]

Chicago open (6), 27.05.2003

[Albert Chow]

1.d4 Nf6 2.c4 e6 3.Nc3 Bb4 4.f3 0-0 5.e4 c5 6.d5
b5!? A Nimzo - Benoni - Benko !? 7.e5 Ne8 8.f4 d6
9.Nf3 dxe5 10.fxe5 exd5 11.Qxd5 Qc7 12.Bf4 Bb7
13.Qd2 Nc6 14.cxb5 Rd8 15.Qe3 Nd4 16.0-0 Qa5
17.Bc4 Nc7



18.Ng5! Nce6 19.Nxe6 Nxe6 20.Rxd8 Rxd8 21.Rd1
Bxc3 22.Rxd8+ Qxd8 23.bxc3 Bd5 24.Bg5! Qa8
[24...Nxc5!? was critical, with possible complications:
25.Qd3! (25.Qd2 Ne4 26.Qxd5 Qxd5 27.Bxd5 Nxc3
28.Bc4 Kf8; 25.Bxd5 Qxd5 26.Qxg5 f6=) 25...Nf3
26.Qxd5 Qxd5 27.Bxd5 Nxe5 (27...Nxc2 28.a4 Ng4
29.e6±) 28.a4±] 25.Bd3! Bxg2 [25...Bxa2!?] 26.Be7!
Qc8 27.Bc4 h6 28.Bd6 Qd8 29.Qg3 [29.Bxe6 fxe6
30.Qxc5+-] 29...Bb7 30.Qg4 Qa5 [30...Bc8!] 31.Kb2
Kh8? [31...Bc8!] 32.Qf5! Qa4 33.Bd3! Ng5 [33...g6
34.Qxf7+-] 34.e6! fxe6? [34...Be4 35.exf7+- (35.e7+-
)] 35.Qf8# 1-0

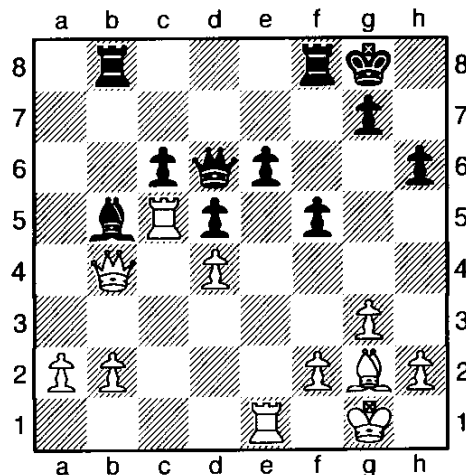
(23) Goldin, A (2683) - De Firman, N (2555) [A90]

Chicago open (5), 26.05.2003

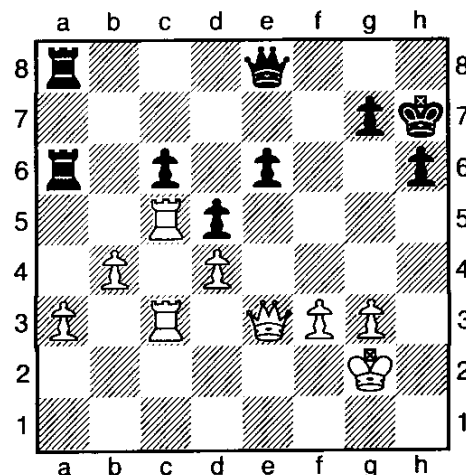
[Illinois champ. Chow]

1.d4 e6 2.c4 f5 3.g3 Nf6 4.Bg2 c6 5.Qc2!? d5 The
Dutch Stonewall. 6.Nh3!? Bd6 7.Bf4 Be7! 8.Nd2 0-0
9.0-0 Nh5! 10.Nf3 Nd7 11.Rad1 h6 12.Bc1 Bd6

13.Ne1 Qe7 14.Nd3 b6! 15.Nhf4 Nxf4 16.Bxf4 Bb7
17.Rc1 Rac8 Firman shows his understanding by
completing queenside development, equalizing against
Goldin's positional style. 18.Qa4 a5 19.c5! bxc5
20.Bxd6 Qxd6 21.Nxc5 Nxc5 22.Rxc5 Ba6! An active
"bad bishop". 23.Qxa5 Bxe2 24.Re1 Bb5 25.Qb4 Rb8



26.Qc3 Ra8 27.a3 Ra6 28.Bf1 Bxf1 29.Kxf1 f4!
Counterplay. 30.Rc1 Qb8 31.Kg1 Kh8 32.Qd2 Rb6
33.b4 Qa8 34.R1c3 Qe8 35.Qe1 Ra6 36.f3 fxc3
37.hxc3 Qg6 38.Kg2 Rfa8 39.Qc1 Kh7 40.Qe3
[40.Rxc6 Rxc6 41.Rxc6 Qd3! with counterplay.]
40...Qe8 Diagram



41.Qc1 e5 42.Rxc6 Rxc6 43.Rxc6 e4! 44.Rc3 exf3+
45.Rxf3 Qe2+ 46.Rf2 Qe4+ 47.Kh2 Qxd4 48.Qc2+
Kg8 49.Re2 Qc4 50.Qxc4 dxc4 51.Rc2 draw agreed.
½-½

Thought of the Month:



“ Be ready when opportunity comes...luck is the time when preparation and opportunity meet” – Roy D. Chapin Jr.

IM Angelo Young - a well known Chess Instructor and one of few International Master in Illinois is offering you or your child:

A chance to improve your game drastically
Beginning to understand all the Basic Chess Principles
Learn the 5 Elements in Chess

Evaluating and Assessing Chess Positions
Tournament Preparation
Opening Repertoire
Endgame Study

Angelo_young@hotmail.com to set up a time. (Available for group & individual Chess lesson, Chess Simuls, Chess Clinic or School Chess Adviser.

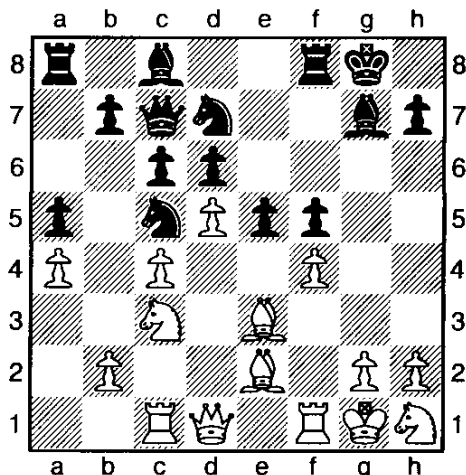
Note: Send your games for Free analysis or for a Full detailed analysis (\$10/game & return address) games are to be submitted to Illinois Chess Bulletin at (games only or games & check) to 5920 N. Clark apt. 305 Chicago Illinois 60660 - c/o. (773) 627-2759

IM Angelo Young

(3) Dexter ,C – IM Young,A [A53]

Master Challenge 2003

1.d4 Nf6 2.c4 d6 3.Nc3 c6 4.e4 Nbd7 5.Nge2 g6 6.Ng3 Bg7 Kings Indian by transposition 7.Be2 0-0 8.0-0 Δa6 b5 idea. 9.a4 e5 10.d5 Qc7 11.Be3 a5 b4 must be stopped. Limiting white space on the queenside. 12.Rc1 Nc5 13.f3 Nfd7 Protecting the knight on c5 and prepares f5 advance 14.Nh1 f5 15.exf5 gxf5 16.f4? Diagram



I prefer Nf2 with the idea of Nd3 removing the black Knight posted on c5. 16...exf4 17.Bd4 [17.Bxf4 Qb6 18.Nf2 Qxb2] 17...Bxd4+ 18.Qxd4 Nb3! White missed this simple move! 19.Qxf4 Nxc1 20.Qxc1 Ne5 21.Ng3 Qe7 22.Nh5 Bd7 23.Qh6 Kh8 24.Rd1 c5 25.Rf1 Rf7 26.Nf4 Rg8 27.Nb5 Rf6 28.Qh3 Ng6 29.Nh5 Rf7 30.Qc3+ Ne5 31.Qxa5 f4 32.Qc3 Qg5 33.Rf2 Bxb5! 34.axb5 f3! 35.Ng3 fxe2 36.Rxf7 e1Q+

My congratulation!! to my following students:
Zhe Quan - Gaining his first IM norm in Canada;
William Aramil- winning the Denker tournament in California;
Drake Jenkins - FIDE Expert (Budapest Hungary)

Solution on last issue: 1. White to play and draw 1.Qxd6 + Kxd6 2. g6 fg6 3. Ne4 + Nxe4 4. Bxe4 white will make a fortress with Kf3. 2. Black to move: 1... Nxe4 2. Qf3 Qxf2! 3. Qxf2 Nxf2 4. Nxd6+ exd6 5. 0-0 Be6 6. Bxe6 fxe6 7. Rxf2 d5 8. Kh1 Bc5 9. Re2 Nd4 white will lose more material. 3. White to move: 1. Qb3! h6 2. Bh4 g5 3. Bg3 Bxg3 4. hg3 b6 5. Ne5 Ne4 6. Rc1 Rc8 7. Nb5 Qf6 8. Qf3 a6 9. Nc7 Re7 ?? 10. Nxd5 1-0. White to play 1. Qxb4 axb4 2. Bc4+ Kh8 3. Bf4! b5 4. Bb3 Bb7 5. Rc1 Rc8 6. Ke2 Rxc1 7. Rxc1 Rc8 8. Kd2 1-0 Black is in Zugzwang position.

(2) Elezaj,E – GM Julio,B [C42]

Missouri (Open) 2003

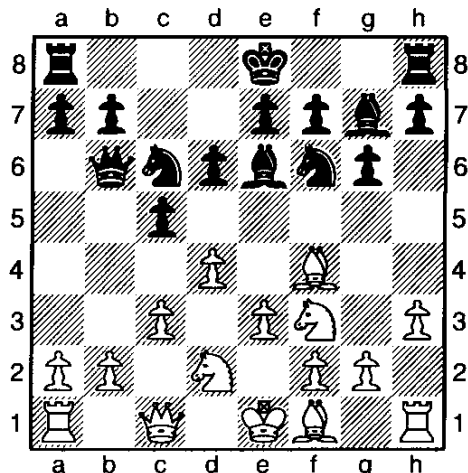
1.e4 e5 2.Nf3 Nf6 3.Nxe5 d6 4.Nf3 Nxe4 5.d4 d5 6.Bd3 Bd6 7.0-0 0-0 8.c4 c6 9.Nc3 Nxc3 10.bxc3 Bg4 11.c5 Diagram # [11.cxd5 cxd5 12.Rb1 b6 13.Rb5 Bc7 14.c4 Qd6 15.Re1 Bxf3 16.Qxf3 Qxh2+ 17.Kf1 Nc6 18.Rxd5 Rae8 19.Be3 g6 20.a3 Qh1+ 21.Ke2 Qh4 22.g4 f5 23.Rd7 f4 24.Rh1 Qf6 25.Qd5+ Re6 26.g5 Nxd4+ 27.Kd1 1-0 GM Nigel Short – GM Valery Salov] 11...Bc7 12.Be2 [12.h3 Bh5 13.g4 Bg6 14.Bg5 f6 15.Be3 with a good game for white] 12...Nd7 13.Qd3?! [13.Bg5 Qc8 14.Nh4 Bxe2 15.Qxe2 h6 16.Bd2 Nf6 17.Qd3 With ideas like f3,g4-g5,Nf5,Rae1.] 13...Qc8 14.Bg5 Re8 15.Rfe1 Nf8 16.Nh4 Be6 17.Qc2 h6 18.Bd2 Bd8 19.Nf3 Bf5 20.Bd3= Bxd3 21.Qxd3 Bf6 22.Rxe8 Qxe8 23.Re1 Qd7 24.Qb1 Ng6 25.h3 Qc8 26.Qb3 b6 27.cxb6 axb6 28.Qxb6 Rxa2 29.Qb3 Ra8 30.Rb1 Qf5 31.Re1 Qd7 32.Rb1 Ra7 33.Qc2 Ra8 Esad is our newest master in town. He is available for Private or group lesson at reasonable rate . Please call me at 773-627-2759 cell for his temporary contact. 1/2-1/2

(4) IM Young, A – GM Golden, A [A48]

Chicago Open 2003

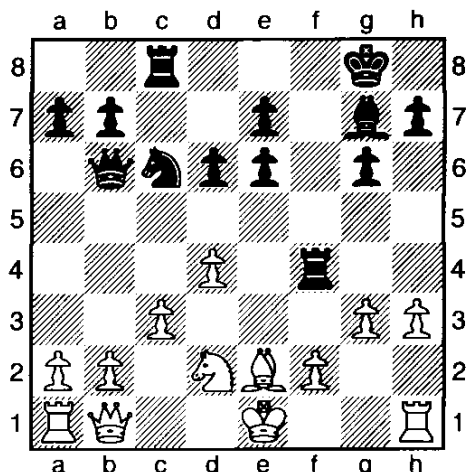
[,BRENT]

1.d4 Nf6 2.Nf3 g6 3.Bf4 (London System vs. Kings Indian setup) 3...d6 4.e3 Bg7 5.h3 c5 6.c3 Qb6 7.Qc1 [7.Qb3 Be6 8.Qc2 Nc6 9.Be2 Rc8 Just similar to the game but I don't like my Queen on c2 and give Black 1 tempo Be6.] 7...Nc6 8.Nbd2 Be6 Diagram



9.Ng5! The Critical moment of the game ! White will spend time chasing the Bishop . if 9... Bd7 then Bc4 and 0-0. 9...cxd4 10.Nxe6 An in-between move before taking the pawn. Black will weakens his position

10...fxe6 11.exd4 0-0 White have a good Pawn structure to Black leads in Development. 12.Be2 Rac8 13.Qb1 Nd5 14.Bg3 Nf4 15.Bxf4 Rxf4 16.g3!?



Exclam! for I made the GM think for 35 mins and Question Mark for the risk factor. Simply 0-0 is good enough . (If you want to see the whole analysis please contact me , one page is not enough for this little move.) 16...Rff8 Time : White 35 mins - Black 7 mins . 17.Bg4 Nd8 18.0-0± White is diffinetely better . What a relieved if he takes the pawn on d4 on move 18 18...Rc7 19.a4 e5 20.d5 Kh8 21.Ne4 Rc4? 22.b3 Rc7 23.h4 h6 24.h5?? this is the culprit that made this turn around to his favor. c4, Ra2, Kg2, c4 -Qd3 , a5 are some decent continuation. 24...gxh5 25.Bxh5 after this move (Bxh5) I have to struggle to regain my advantage and cost me a lot of time for my carelessness. 25...e6 26.c4 exd5 27.cxd5 a5 28.Qd3 Nf7 29.Bg4 Qd4 the rest of moves is played in time scrambled.. 30.Rad1 Ng5 31.Qxd4 exd4 32.Nxd6 Rc3 33.Nxb7 Rxb3 34.Nxa5 Rb4 35.Nc6 Rxa4 36.d6 Nf7 37.d7 Nd8 38.Nxd8 Rxd8 39.Rfe1 Bf6 40.Re8+ Kg7 41.Rc1 [41.Bf5] 41...d3 42.Bf5 d2 43.Rd1 Rd4 44.g4 Kf7 45.Rxd8 Bxd8 46.Kf1 Ba5 47.Ra1 Rd5 48.Ke2 Re5+ Resign Re1 is next. I'm sure this game will make you cry. 0-1

PEORIA FALL TORNADO AN ICA MINI-TOUR & EX- URBAN EVENT

WHEN: Saturday, November 1, 2003

WHERE: Lakeview Museum, 1125 W. Lake Ave., Peoria IL 61614

ENTRY FEE: \$14 by Oct. 30th, \$17 at the site, free to players rated 2200 or over

WHAT: 4 Round Swiss

TIME CONTROL: Game/80

SECTIONS: Open to all

MEMBERSHIPS REQUIRED: USCF & ICA (other states honored)

PRIZES: 75% of EF's distributed as follows: 25% First, 15% Second. 10% each to under 2000, under 1600, under 1200. Upset: 5%

REGISTRATION: 8:00-8:45 AM

ROUND TIMES: 9, 12, 2:45, 5:30

NOTE: A limit of one "1/2 point" bye is available in any Rd, but Rds. 3 or 4 must be elected by the end of Rd. 2.

NO SMOKING.

BRING SETS, BOARDS, & CLOCKS.

ADVANCE ENTRIES: Fred Malcome, 810 W. Progress, Metamora IL 61548

(309) 367-4833 e-mail:

flmalcome@bwsys.net

Illini Summer Open

By Phil Bossaers



Jeff Davis

while Marshall took home a chess computer(!) generously donated to the prize fund by tournament director Chris Merli.



Nyle Sullivan & George Kuan

The Illini Summer Open, held June 21st at the Urbana Holiday Inn, is the inaugural event sponsored by the fledgling Illini Chess Foundation, an organization formed to promote chess in central Illinois. The tournament featured an open section with 49 players and a beginner (unrated) section with 11 participants.

The tournament ran smoothly and the Holiday Inn location was attractive and convenient, making this a truly enjoyable chess experience for all. Special thanks to ICF board members Chris Merli, Matthew Klahn, and Jeff Davis, whose efforts were instrumental in bringing this tournament to fruition. Thanks also to David Kaplan, who provided valuable assistance to TD Chris Merli during the tournament.



Doug VanBuskirk & Alex Starnov

Here is a crucial 4th round games from the tournament, annotated by yours truly:

[White "Howard Cohen (1880)"]

[Black "Jeremy Griffith (1515)"]

[Result "1-0"]

[Opening "Pirc"]

1. e4 d6 2. d4 Nf6 3. Nc3 g6 4. f4 Bg7 5. Nf3 O-O 6.

Bc4?! {Allows black to equalize immediately by

6...Nxe4. Correct is 6.Bd3.} 6... c6

7. O-O b5 8. Bd3 Qb6 9. e5 dxe5 10. fxe5 Ng4?

{Best is 10...Nd5 11.Nxd5 cxd5 with white holding only

a nominal space advantage. Now black's pieces get

kicked around a bit.} 11. Kh1 a6 12. Ne4 Nd7 13. h3

Nh6 14. c3 Nf5? {Black needs to get his central

counterplay rolling. Best was 14...c5.} 15. g4

Nh6 16. e6 fxe6 17. Qb3 Nf6?

{Now white develops an irresistable attack. Interesting

is 17...Kh8! with 18.Qxe6? losing material to

18...Ne5.} 18. Nc5 Nd5 19. Qc2 Nf7 20. Bxg6!?

{An enterprising sacrifice, certainly justified considering

black's backward development.}

20... hxg6 21. Qxg6 Qc7??

{The losing move. Black is still in the game with

21...Nh8. Now white wins by force.}

22. Bh6!! Nxh6 23. Ng5 Nf6 24. Ncxe6 Bxe6 25. Nxe6

Qh2+ 26. Kxh2 Nhxg4+ 27.

hxg4 1-0

(Another Game on Page 30)

In the open section, expert Doug VanBuskirk (2122) took clear first with a perfect 4-0 score, while Larry Cohen (2014), David Long (1884), and Jeff Davis (1750) tied for second, each with 3.5 points. Jeff Davis deserves special recognition for his result, beating A player Hector Hernandez in round 2 and drawing master Alex Starnov in round 4. The other prize winners: Eric Wildman (1479) and Brad Goral (1552) split the under 1600 prize, and Ian Wanda (1170) was best in the under 1400 category.

In the beginner section, John Acker, Adrian Bettridge, and Ian Marshall tied for first with 3-1 scores. Acker and Bettridge won USCF memberships for their efforts,

Elmhurst Chess Club News

By Vince Hart

From April 6 to May 4, twenty-four players vied for the Elmhurst Chess Club Championship in a four-round Swiss played at G120. After being denied last year by a final-round loss, Peter Kuhn swept to first this year with 4-0. Second place went to your correspondent at 3.5-.5 while third place at 3-1 was shared by Sam Edelstein, Mike Delgado and Joe Cygan

After the leisurely Club Championship, the ECC hit the accelerator for a G5 Blitz tournament on May 11. Jacob Moreno displayed his usual blitz dominance to top the field of twelve with 10.5-.5 followed by Albert Chow with 8.5-2.5 and Stan Ilic with 8-3. Dan Dugovic and Vladimir Djordevic lead the U1700 crowd with 7-4 and 6-5 respectively. May 18 saw twenty-two players butt heads in a five-round G15 Swiss which ended with a four-way tie for first at 4-1 between Armando Garcia, Robert Loncaravic, Vince Hart and Jusuf Pekovic who leap-frogged fourteen higher rated players on the wall chart.

Congratulations to ECC regular Jacobo Moreno who enjoyed a very pleasant Memorial Day Weekend as he took first place in the U2000 at the Chicago Open with a score of 6.5-.5. Since joining ECC two years ago, Jacobo has dominated at the short time controls although he has sometimes struggled to make effective use of the extra time in regular rated events. Perhaps correspondence chess is next.

Twenty-six players pushed the wood in a G5 Blitz on June 22 played in two sections. Steve Tennant took the top section with 9.5-2.5 followed by Fred Allsbrook with 9-3 and Dexter Cavitt with 8.5-3.5. George Fu took the lower section with 9-3 followed by a tie for second at 8-4 between Rishi Sethi, Erik Heiser and Byron Chen.

On June 29, twenty-six players came out for G29 Quads. First place in the top quad was shared by Fred Allsbrook and Steve Tennant at 2.5-.5. Richard Lung took the second quad with 2-1 while Chris Nienart took the third with 2.5-.5. Jonathan Lung produced a perfect 3-0 score to take the fourth quad with Aaron Anderson winning the fifth at 2.5-.5. The bottom section was played as a six-man Swiss with first place going to Kevin Taylor who made his first appearance at the club and his return to rated play after a multi-year layoff. Also making his first appearance at the club was Brandon Lung who will no doubt soon start helping himself to prizes as his father and older brother do.

On July 27, fourteen players competed in a G10 tournament where the top six players played a double round robin and the bottom eight played a single round robin. Chris Nienart was moved to the top section by virtue of a regular rating that exceeds his quick rating by several hundred points, and he did his best bring his quick rating into line by taking first place 7.5-2.5. Larry Cohen took second at 7-3 with Miomir Stevanovic taking third at 6.5-3.5. In the lower section, Ramakrishna Yalavarthi took first place with 6.5-.5 which completed a nice month for him which started with taking the U1200 prize at the Master Challenge. Second place went to Sam Edelstein with 4.5-1.5 who bounced back from his loss to Gary Kasparov in a simul the previous week and third place went to Roy Nyberg at 4.5-2.5. Seventeen players turned out on July 20 for a G15 Swiss that Bradley Watts won with a score of 4.5 with Paul Rasso finishing second at 4-1.

The Club will be beginning its eighth season with a Member's Appreciation Simul on the Sunday after the Illinois Open. Dues are still only \$10 per year.

Master Challenge

By Vince Hart

On July 11-14, the annual Master Challenge returned to the Elmhurst Chess Club. This year's attendance exactly matched last year's with a field of 138 including one Grandmaster, three International Masters and two FIDE Masters. The five-round Swiss was played at G120 with accelerated pairings. The tournament offered a two-day option and a prize fund of \$4500. Among the top performers were both long-time residents and international players who have recently made Illinois their home.

Four players wound up tied for first place with scores of 4.5-5. Three of the players are well known figures on the local chess scene, GM Dmitry Gurevich, FM Albert Chow and NM Steve Szpisjak. The fourth player was a newcomer both to the United States and to the Chicago area who has already made a big splash on the national chess scene, twenty year old IM Nazar Firman from the Ukraine. The young IM's appetite for chess apparently had not been sated a week earlier at the World Open where he finished in a ten-way tie for first. As the only IM to share first place in Philadelphia, Firman's 7-2 result included victories over GM's Lein and Shulman. His victory in Elmhurst included wins over IM Osmand Palos and local legend Bill Brock, as well as a gentlemanly last round draw with GM Gurevich

Second place was shared by thirteen players at 4-1 including IM's Angelo Young and Osmand Palos and Dutch FM Jan Van De Mortel who has been making Chicago his home for the last year. Joining them were Aleksandar Stamnov, Fred Allsbrook, Bryan Gast, James Marshall, Bill Brock, Jason Duncan and Pete Karagianis. The only A player to penetrate this select group was Bennet Joseph, but two C players managed to do so by virtue of impressive upsets with Kenneth Velazquez knocking off Larry Cohen and David Chodak pulling off the upset of the tournament by beating Stamnov.

While it took four points to earn the honors in A Class and C Class, B Class went to Adam Widelka with 3.5-1.5. U1400 saw another logjam with Alex Gorodetsky, Dan Gannon, Mark

Hamilton, Danny Griffin, and Roman Bailey finishing 3-0 with Gannon and Bailey pulling off nice upsets of Yakov Lazebnik and Erik Dupuis respectively. First place U1200 was taken solely Ramakrishna Yalavarthi with a 3-0 score. Yalavarthi has been regularly honing his skills at the Elmhurst Chess Club since beginning USCF play earlier this year and has seen his rating rise by about four hundred points.

**November 22. Normal, IL
Northbridge Baptist Church
Open. 4SS, G/70.** Northbridge Baptist Church, 2413 Ziebarth Road, Normal, IL 61761. Located 1900 North and 1700 East in the country. Dir: From the intersection of Main Street and Raab Road (in north Normal), proceed east to Linden Avenue (approx. 1 mile), then proceed north to Ziebarth Road (approx. 2 miles), then proceed east again to Northbridge Baptist Church (approx. 2 miles) EF: \$17. \$\$400 b/30: \$145, U2000 \$85, U1600 \$85, U1200 \$85. Bye 1-4. Reg: 8:30-9:30, Rds: 10-12:30-3-5:30. Dennis Bourgerie, Box 157, Normal, IL 61761. 309-454-3842, cell: 309-531-1723,

Master Challenge

July 11-13, 2003

											score	tour
1	GUREVICH Dmitry	GM	IL	2552	W61	W35	W14	W 6	D 2		4.5	19 M
2	FIRMAN Nazar	IM	IL	2540	W76	W24	W12	W 7	D 1		4.5	19 M
3	CHOW Albert C	FM	IL	2217	D131	W78	W93	W23	W19		4.5	19 M
4	SZPISJAK Steven J		IL	2200	W34	D 59	W67	W25	W18		4.5	19 M
5	VAN DE MORTEL Jan	FM	IL	2399	W40	W73	H	D 18	W22		4	12 M
6	YOUNG Angelo	IM	IL	2395	W41	W118	W30	L 1	W32		4	12 M
7	PALOS Osmand	IM	IL	2384	W77	W26	W33	L 2	W31		4	12 M
8	STAMNOV Aleksanda		IL	2257	W58	W13	L 17	W41	W33		4	12 M
9	ALLSBROOK Fred S		IL	2161	W36	D 29	W108	D 43	W35		4	12 MX
10	MARSHALL James A		IL	2144	L 59	W62	W68	W42	W34		4	12 MX
11	GAST Bryan D		IL	2097	D 43	W107	W109	D 27	W36		4	12 MX
12	BROCK William		IL	2063	W138	W81	L 2	W40	W38		4	12 MX
13	DUNCAN Jason T		IL	2023	W37	L 8	W50	W80	W39		4	12 MX
14	KARAGIANIS Pete D		IL	2019	W79	W47	L 1	W64	W43		4	12 MX
15	JOSEPH Bennett		IL	1809	B	L 18	W112	W55	W29		4	12 MXA
16	VELAZQUEZ Kevin J		IL	1543	B	L 33	W72	W58	W30		4	12 MXABC
17	CHODAK David N		IL	1457	W101	X	W 8	H	H		4	12 MXABC
18	TSYGANOV Igor M		IL	2219	W132	W15	W57	D 5	L 4		3.5	7 M
19	VASTO Daniel	IA	IL	2092	H	W42	W69	W59	L 3		3.5	7 MX
20	STEVANOVIC Miomir		IL	2005	D 45	W60	H	W83	D 27		3.5	7 MX
21	NORDAHL David		IL	1972	L 81	D108	W128	W100	W61		3.5	7 MXA
22	HART Vincent J		IL	1959	H	W45	W111	W56	L 5		3.5	7 MXA
23	SOLLANO Ely O		IL	1943	B	D 85	W95	L 3	W60		3.5	7 MXA
24	MONATELLI David		IL	1865	W64	L 2	H	W67	W66		3.5	7 MXA
25	COVIC Mehmed		IL	1800	H	W63	W71	L 4	W69		3.5	7 MXA
26	WIDELKA Adam B		IL	1792	W48	L 7	H	W108	W71		3.5	7 MXAB
27	GORAL Bradley D		IL	1552	W96	D 56	W115	D 11	D 20		3.5	7 MXABC
28	OHLHAUSEN David B		IL	1505	D 60	W32	L 56	W115	W59		3.5	7 MXABC
29	LONCAREVIC Robert		IL	2040	W75	D 9	D 89	W79	L 15		3	6 MX
30	COHEN Lawrence S		IL	2014	W80	W44	L 6	W81	L 16		3	6 MX
31	MAROVITCH Mark		IL	2000	D 62	D 39	W70	W47	L 7		3	6 MX
32	CAVITT Dexter		IL	1965	W44	L 28	W90	W51	L 6		3	6 MXA
33	HERNANDEZ Hector		IL	1943	W133	W16	L 7	W85	L 8		3	6 MXA
34	AARON Michael E		IL	1942	L 4	W51	W91	W93	L 10		3	6 MXA
35	HUBBARD Andrew D		IL	1935	W82	L 1	W52	W89	L 9		3	6 MXA
36	AMUNDSEN Steven A		IL	1892	L 9	W66	W92	W53	L 11		3	6 MXA
37	GROEGER Andrew T		IL	1741	L 13	W120	H	D 49	W89		3	6 MXAB
38	GORODETSKIY Eugen		IL	1727	L 85	W70	W120	W99	L 12		3	6 MXAB
39	STOLTZ Robert M		IL	1700	H	D 31	W96	W57	L 13		3	6 MXAB
40	COHN Zachary H	NY	IL	1678	L 5	W52	W113	L 12	W90		3	6 MXAB
41	EASTON Richard Dw		IL	1676	L 6	W68	W121	L 8	W88		3	6 MXAB
42	ENGELN Mark S		IL	1665	W137	L 19	W97	L 10	W91		3	6 MXAB
43	WALNY Yair		IL	1662	D 11	W46	W54	D 9	L 14		3	6 MXAB
44	LENG Yize		IL	1595	L 32	L 30	W124	W113	W99		3	6 MXABC
45	LYON Derek H		IL	1595	D 20	L 22	W103	D104	W93		3	6 MXABC
46	SWINDELL Frankie		IL	1581	H	L 43	D116	W97	W94		3	6 MXABC
47	LEVINE Gary T		IL	1520	W74	L 14	W123	L 31	W100		3	6 MXABC
48	VOSS Andy S		IL	1509	L 26	W121	H	D 54	W84		3	6 MXABC
49	DUBIN Joshua		IL	1421	D134	L100	W78	D 37	W74		3	6 MXABC
50	DELGADO Michael		IL	1401	W102	L 79	L 13	W101	W75		3	6 MXABC
51	BAILEY Roman Davi	IN	IL	1321	W103	L 34	W118	L 32	W79		3	6 MXABCD
52	GORODETSKY Alex		IL	1321	W125	L 40	L 35	W105	W77		3	6 MXABCD
53	GANNON Dan I		IL	1297	W128	L 80	W73	L 36	W81		3	6 MXABCD
54	HAMILTON Mark P		IL	1224	D 67	W87	L 43	D 48	W80		3	6 MXABCD
55	GRIFFIN Danny L		IL	1221	L 69	W126	W82	L 15	W85		3	6 MXABCD
56	YALAVARTHI Ramaki		IL	1120	W110	D 27	W28	L 22	D 58		3	6 MXABCDE
57	BLOCK Michael		IL	-	W117	W84	L 18	L 39	W86		3	6 M
58	NIENART Christoph		IL	1967	L 8	W90	W88	L 16	D 56		2.5	5 MXA
59	EASTER John L	IN	IL	1833	W10	D 4	W94	L 19	L 28		2.5	5 MXA
60	GORODETSKIY Steve		IL	1789	D 28	L 20	W63	W109	L 23		2.5	5 MXAB
61	WIJETUNGE Ivan	TX	IL	1719	L 1	D 89	W87	W95	L 21		2.5	5 MXAB
62	LUTHER John Richa		IL	1648	D 31	L 10	W134	L 71	W104		2.5	5 MXAB
63	KASIURAK Zach		IL	1579	D 94	L 25	L 60	W135	W115		2.5	5 MXABC
64	ANDERSON Aaron J		IL	1564	L 24	W106	B	L 14	D 65		2.5	5 MXABC
65	AILES Tim S		IL	1553	L 95	D 97	D 74	W98	D 64		2.5	5 MXABC
66	GIERTZ Charles E		IL	1503	W114	L 36	D104	W117	L 24		2.5	5 MXABC
67	CHU Michael C		IL	1491	D 54	W134	L 4	L 24	W116		2.5	5 MXABC

Master Challenge

68	HEISER Eric A	IL	1472	W99	L 41	L 10	D114	W73	2.5	5	MXABC
69	LINDNER Eric J	IL	1472	W55	D 74	L 19	X	L 25	2.5	5	MXABC
70	COMERFORD Sean N	IL	1394	W123	L 38	L 31	D116	W117	2.5	5	MXABCD
71	SUMMERS Todd M	IL	1265	H	W116	L 25	W62	L 26	2.5	5	MXABCD
72	BRUNK Chris	IL	-	B	L111	L 16	D112	W108	2.5	5	M
73	LAZEBNIK Yakov	IL	1857	W83	L 5	L 53	W92	L 68	2	4	MXA
74	RODRIGUEZ Jose A	IL	1830	L 47	D 69	D 65	W120	L 49	2	4	MXA
75	POTTS Kevin J	IL	1770	L 29	L 93	W136	W96	L 50	2	4	MXAB
76	ALLISON Roger D	IL	1700	L 2	D109	W110	D 94	-	2	4	MXAB
77	CYGAN Joseph	IL	1674	L 7	W92	L 99	W121	L 52	2	4	MXAB
78	BLACKMAN William	IL	1654	D130	L 3	L 49	W134	D 95	2	4	MXAB
79	BIELTVEDT Arnor G	IL	1643	L 14	W50	W98	L 29	L 51	2	4	MXAB
80	DZANANOVIC Muhame	IL	1630	L 30	W53	W101	L 13	L 54	2	4	MXAB
81	PEKOVIC Jusuf	IL	1612	W21	L 12	W106	L 30	L 53	2	4	MXAB
82	KASSIN David	IL	1567	L 35	W91	L 55	H	H	2	4	MXABC
83	KREPICH Daniel S	IL	1559	L 73	W112	W114	L 20	-	2	4	MXABC
84	FISHMAN Joey D	IL	1515	L118	L 57	W126	W102	L 48	2	4	MXABC
85	CHEN Byron H	IL	1504	W38	D 23	D100	L 33	L 55	2	4	MXABC
86	PRIJIC Abdulah	IL	1483	H	H	-	W127	L 57	2	4	MXABC
87	ZHENG Xida	IL	1469	D100	L 54	L 61	D103	W114	2	4	MXABC
88	CHIEN Jason W	IL	1393	L115	W136	L 58	W129	L 41	2	4	MXABCD
89	COLLINS Jeremy D	IL	1382	W135	D 61	D 29	L 35	L 37	2	4	MXABCD
90	CUMMINGS Michael	IL	1382	B	L 58	L 32	W123	L 40	2	4	MXABCD
91	FENG Justin L	IL	1373	W124	L 82	L 34	W106	L 42	2	4	MXABCD
92	GARVEY John G	IL	1313	W105	L 77	L 36	L 73	W123	2	4	MXABCD
93	HU Yaodi	IL	1287	W127	W75	L 3	L 34	L 45	2	4	MXABCD
94	GASUNAS Anthony C	IL	1283	D 63	B	L 59	D 76	L 46	2	4	MXABCD
95	CEN Kent Y	IL	1275	W65	D119	L 23	L 61	D 78	2	4	MXABCD
96	KOSTERIS Dimitrio	IL	1275	L 27	B	L 39	L 75	W124	2	4	MXABCD
97	KAZI Kabiral	IL	1266	D119	D 65	L 42	L 46	W126	2	4	MXABCD
98	GORA Maximilian	IL	1260	L106	W124	L 79	L 65	W112	2	4	MXABCD
99	SENNO Aref	IL	1216	L 68	W125	W77	L 38	L 44	2	4	MXABCD
100	FAZEKAS Joshua	IL	1205	D 87	W49	D 85	L 21	L 47	2	4	MXABCD
101	BARBIAN Matthew R	IL	1183	L 17	W105	L 80	L 50	W129	2	4	MXABCDE
102	BOHAN Phillip Kem	IL	1177	L 50	L128	W125	L 84	W122	2	4	MXABCDE
103	LAUGER Lloyd	IL	1115	L 51	D110	L 45	D 87	W120	2	4	MXABCDE
104	SONG Charles	IL	1113	L120	W122	D 66	D 45	L 62	2	4	MXABCDE
105	O'BRIEN Brian R	IL	995	L 92	L101	W122	L 52	W121	2	4	MXABCDE
106	BUNTON Edmond	IL	-	W98	L 64	L 81	L 91	W134	2	4	M
107	LACEY Patrick M	IL	1841	H	L 11	W133	F	-	1.5	3	MXA
108	PADILLA Rudy R	IL	1503	W122	D 21	L 9	L 26	L 72	1.5	3	MXABC
109	WASHBURN David R	IN	1475	W113	D 76	L 11	L 60	-	1.5	3	MXABC
110	MAGNESS Trevor S	IL	1386	L 56	D103	L 76	L126	W135	1.5	3	MXABCD
111	HASS Matthew Y	IL	1321	D116	W72	L 22	-	-	1.5	3	MXABCD
112	ZHOU Fengyee	IN	1313	W126	L 83	L 15	D 72	L 98	1.5	3	MXABCD
113	DUPUIS Brian M	IL	1223	L109	W135	L 40	L 44	H	1.5	3	MXABCD
114	QIN David	IL	1161	L 66	W127	L 83	D 68	L 87	1.5	3	MXABCDE
115	KIRSCH Leo E	IL	1118	W88	D133	L 27	L 28	L 63	1.5	3	MXABCDE
116	PATURI Atchut	IL	1083	D111	L 71	D 46	D 70	L 67	1.5	3	MXABCDE
117	TRYKALL David Z	IN	808	L 57	B	H	L 66	L 70	1.5	3	MXABCDE
118	DUPUIS Erik G	IL	1822	W84	L 6	L 51	-	-	1	2	MXA
119	DJORDJEVIC Vladim	IL	1531	D 97	D 95	-	-	-	1	2	MXABC
120	CEN Yueqin	IL	1288	W104	L 37	L 38	L 74	L103	1	2	MXABCD
121	SCHAEFFER John D	IL	1274	W129	L 48	L 41	L 77	L105	1	2	MXABCD
122	MEDURI Aakaash	IL	1163	L108	L104	L105	W136	L102	1	2	MXABCDE
123	GRIFFIN Larry	IL	1153	L 70	W129	L 47	L 90	L 92	1	2	MXABCDE
124	KARANDE Kevin O	IL	1102	L 91	L 98	L 44	W125	L 96	1	2	MXABCDE
125	HUBBARD Mark J	IL	1073	L 52	L 99	L102	L124	W136	1	2	MXABCDE
126	BARKER Gary F	IL	1014	L112	L 55	L 84	W110	L 97	1	2	MXABCDE
127	WIRTZ Rob	IL	988	L 93	L114	D135	L 86	H	1	2	MXABCDE
128	FISHMAN Isak N	IL	818	L 53	W102	L 21	-	-	1	2	MXABCDE
129	PINEDA Cuillahuac	IL	811	L121	L123	B	L 88	L101	1	2	MXABCDE
130	STEVANOVIC Miomir	IL	2005	D 78	-	-	-	-	0.5	-	-
131	HART Vincent J	IL	1959	D 3	-	-	-	-	0.5	-	-
132	VENUSO Michael A	IL	1667	L 18	F	H	-	-	0.5	1	MXAB
133	CHANG Alex	IL	1570	L 33	D115	L107	-	-	0.5	1	MXABC
134	SPITZIG Mark C	IL	1182	D 49	L 67	L 62	L 78	L106	0.5	1	MXABCDE
135	VAUGHAN Benjamin	IL	1116	L 89	L113	D127	L 63	L110	0.5	1	MXABCDE
136	HERRERA Juan M	IL	771	H	L 88	L 75	L122	L125	0.5	1	MXABCDE
137	COHEN Lawrence S	IL	2014	L 42	-	-	-	-	0	-	-
138	COVIC Mehmed	IL	1800	L 12	-	-	-	-	0	-	-

Peoria Summer Tornado

June 28, 2003

						score	tour			
1	VAN BUSKIRK Dougl	IL	2122	W18	W11	W13	W 8	4	14	MX
2	STAMNOV Aleksanda	IL	2257	W20	W15	W 9	D 3	3.5	7.5	M
3	KARAGIANIS Pete D	IL	2019	W12	W14	W 7	D 2	3.5	7.5	MX
4	LONG David	IL	1884	W25	W23	D 8	W10	3.5	7.5	MXA
5	BAUMGARTNER Chris	IL	1717	W28	L 8	W24	W19	3	4	MXAB
6	VOSS Andy S	IL	1509	W29	L 13	W25	W15	3	4	MXABC
7	NUNEZ Cesar R	IL	1504	W30	W22	L 3	W13	3	4	MXABC
8	SZPISJAK Steven J	IL	2200	W17	W 5	D 4	L 1	2.5	2.5	M
9	NAFF William A	IL	2016	W24	W19	L 2	H	2.5	2.5	MX
10	MALONEY Michael A	IL	1900	H	W16	W14	L 4	2.5	2.5	MXA
11	FRANEK Martin J	IL	1700	W32	L 1	W27	D 12	2.5	2.5	MXAB
12	BONZON Roman	IL	1361	L 3	W28	W30	D 11	2.5	2.5	MXABCD
13	JARRETTE Phil	IL	1807	W26	W 6	L 1	L 7	2	2	MXA
14	GORODETSKIY Steve	IL	1789	W31	L 3	L 10	W24	2	2	MXAB
15	MILES Kyle J	IL	1727	W27	L 2	W26	L 6	2	2	MXAB
16	GORAL Bradley D	IL	1552	L 19	L 10	W31	W25	2	2	MXABC
17	CHIEN Jason W	IL	1393	L 8	W31	L 19	W30	2	2	MXABCD
18	MAGNESS Trevor S	IL	1386	L 1	L 27	W32	W26	2	2	MXABCD
19	WILBER Martin W		-	W16	L 9	W17	L 5	2	2	M
20	WILDMAN Eric F	IL	1479	L 2	L 26	W28	D 21	1.5	1.5	MXABC
21	KELLY James R	IL	1341	L 22	L 30	W29	D 20	1.5	1.5	MXABCD
22	STEVANOVIC Miomir	IL	2005	W21	L 7	-	-	1	1	MX
23	ZIMMERLE R Wayne	IL	1580	B	L 4	-	-	1		
24	SMITH Jeffrey L	IL	1304	L 9	W32	L 5	L 14	1	1	MXABCD
25	WILBER Matthew K	IL	1238	L 4	W29	L 6	L 16	1	1	MXABCD
26	KENNELL Earl L	IL	1224	L 13	W20	L 15	L 18	1	1	MXABCD
27	WANDA Ian	NH	1170	L 15	W18	L 11	L 28	1	1	MXABCDE
28	WILBER Karen M	IL	807	L 5	L 12	L 20	W27	1	1	MXABCDEF
29	LEAVIH Bryan N		-	L 6	L 25	L 21	W32	1	1	M
30	DANALEWICH Matthew R		-	L 7	W21	L 12	L 17	1	1	M
31	RUTH James	IL	1072	L 14	L 17	L 16	H	0.5	0.5	MXABCDE
32	WILBER Allison R	IL	460	L 11	L 24	L 18	L 29	0		

Bradley Summer Open

August 16, 2003

						score	tour			
1	STAMNOV Aleksand	IL	2238	W16	W 4	W 8	W 6	4	14	M
2	LONG David	IL	1904	W18	D 15	W12	W 7	3.5	7.5	MXA
3	CAO Tony	MO	1769	H	W14	W15	W 9	3.5	7.5	MXAB
4	BAUMGARTNER Chns	IL	1797	W19	L 1	W21	W13	3	4	MXAB
5	KANNIAH Suresh	IL	1731	W27	L 7	W17	W18	3	4	MXAB
6	MC ENTEE Tim R	IA	2168	W21	W10	D 7	L 1	2.5	2.5	MX
7	KARAGIANIS Pete	IL	2022	W17	W 5	D 6	L 2	2.5	2.5	MX
8	NAFF William A	IL	2011	W22	W13	L 1	H	2.5	2.5	MX
9	LEALI Michael E	IL	1943	W24	D 12	W11	L 3	2.5	2.5	MXA
10	HERNANDEZ Hector	IL	1900	W23	L 6	W16	H	2.5	2.5	MXA
11	BOURGERIE Dennis	IL	1703	W29	H	L 9	W20	2.5	2.5	MXAB
12	WILBER Martin	IL	1689	W25	D 9	L 2	W21	2.5	2.5	MXAB
13	LEALI Matthew A	IL	1613	W28	L 8	W26	L 4	2	2	MXAB
14	GORAL Bradley D	IL	1552	W20	L 3	L 18	W26	2	2	MXABC
15	VOSS Andy S	IL	1548	W26	D 2	L 3	H	2	2	MXABC
16	ZIMMERLE R Wayne	IL	1537	L 1	W19	L 10	W23	2	2	MXABC
17	PADILLA Rudy R	IL	1507	L 7	W25	L 5	W24	2	2	MXABC
18	DREESSEN Robert	IL	1438	L 2	W29	W14	L 5	2	2	MXABC
19	WILBER Matthew K	IL	1229	L 4	L 16	W22	W27	2	2	MXABCD
20	WILBER Karen M	IL	915	L 14	W23	W28	L 11	2	2	MXABCDEF
21	SUAREZ Ronald J	IL	1515	L 6	W24	L 4	L 12	1	1	MXABC
22	CHIEN Jason W	IL	1422	L 8	L 26	L 19	W29	1	1	MXABC
23	KELLY James R	IL	1298	L 10	L 20	W29	L 16	1	1	MXABCD
24	GRIFFIN Danny L	IL	1240	L 9	L 21	W25	L 17	1	1	MXABCD
25	LEALI Dominick C	IL	1098	L 12	L 17	L 24	W28	1	1	MXABCDE
26	WINKS Matthew J	IL	-	L 15	W22	L 13	L 14	1	1	M
27	MALCOMME Freddie L	IL	1436	L 5	D 28	-	L 19	0.5	0.5	MXABC
28	SU Alexander C	IL	966	L 13	D 27	L 20	L 25	0.5	0.5	MXABCDEF
29	GRIESMEYER Walter	IL	1115	L 11	L 18	L 23	L 22	0		

Springfield Championship

Springfield Championship

August 23, 2003

							score	tour
1	VAN BUSKIRK Douglas	2122	W 5	W10	W 6	W 3	4	14 X
2	NAFF William	2011	H	W13	D 9	W10	3	4 X
3	KUJOTH Richard	1942	W14	W12	W11	L 1	3	4 XA
4	GUO Kevin	1579	W17	L 6	W19	W 9	3	4 XABC
5	CREASEY Brian	1461	L 1	W22	W12	W11	3	4 XABC
6	BOURGERIE Dennis	1703	W18	W 4	L 1	D 7	2.5	2.5 XAB
7	KNOEDLER Thomas	1509	H	H	W21	D 6	2.5	2.5 XABC
8	MOSES Greg	1505	W15	L 11	D 17	W16	2.5	2.5 XABC
9	ANDERSON Phil	1805	H	W16	D 2	L 4	2	2 XA
10	BONWELL Jonathan	1691	W19	L 1	W13	L 2	2	2 XAB
11	WILBER Martin	1689	W20	W 8	L 3	L 5	2	2 XAB
12	RYNER Randy	1519	W21	L 3	L 5	W17	2	2 XABC
13	WILDMAN Eric	1479	W23	L 2	L 10	W21	2	2 XABC
14	BURKETT Bruce	1336	L 3	L 21	W20	W19	2	2 XABCD
15	LEVEQUE Christopher	1179	L 8	W23	L 16	W18	2	2 XABCDE
16	BONONI David	1500	D 22	L 9	W15	L 8	1.5	1.5 XABC
17	WILBER Matthew	1229	L 4	W20	D 8	L 12	1.5	1.5 XABCD
18	OHLES Frederik	1298	L 6	L 19	W23	L 15	1	1 XABCD
19	CLARK Wayne	1292	L 10	W18	L 4	L 14	1	1 XABCD
20	COULTER Larry	1279	L 11	L 17	L 14	W23	1	1 XABCD
21	TUTTLE Dan	1221	L 12	W14	L 7	L 13	1	1 XABCD
22	RUTH James	1086	D 16	L 5	-	-	0.5	0.5 XABCDE
23	DOROSHEFF Evan	598	L 13	L 15	L 18	L 20	0	

Own A Legend

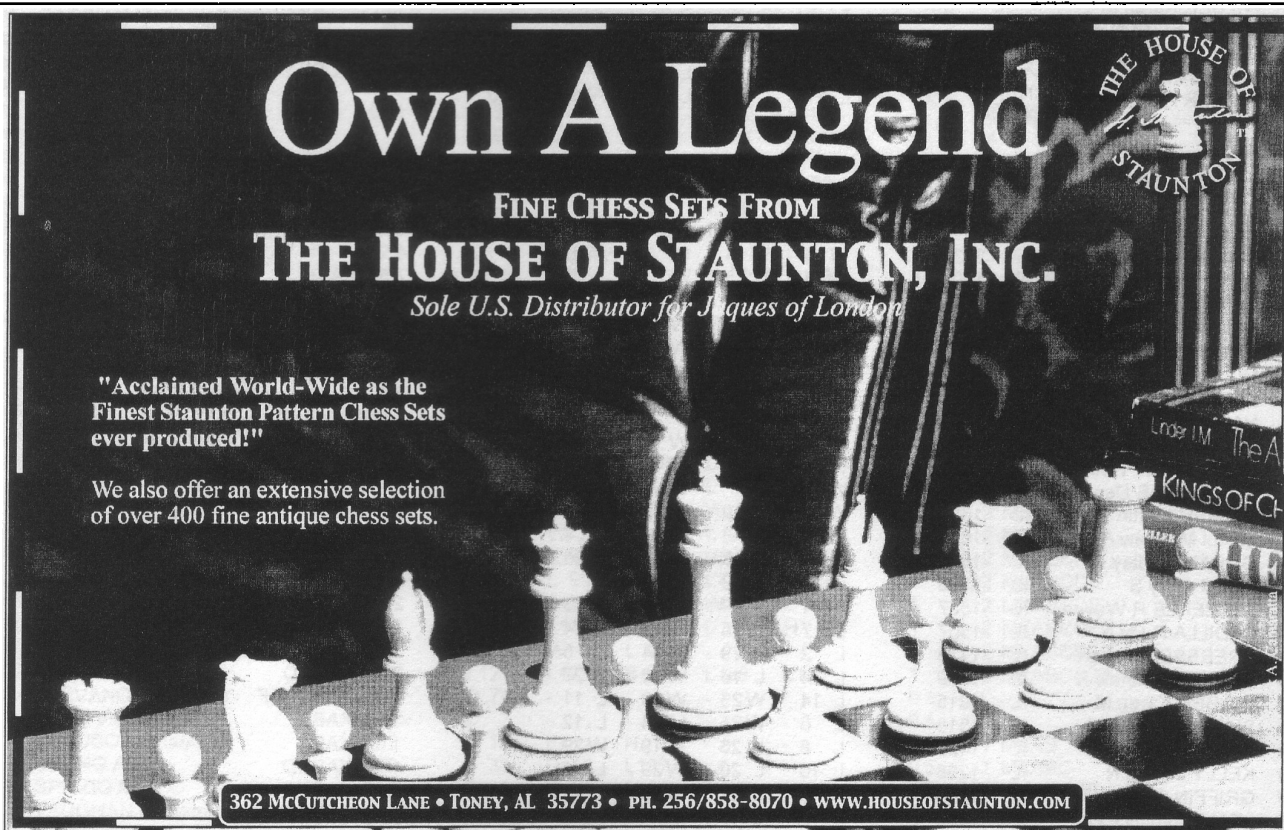
FINE CHESS SETS FROM
THE HOUSE OF STAUNTON, INC.

Sole U.S. Distributor for Jiques of London

"Acclaimed World-Wide as the
 Finest Staunton Pattern Chess Sets
 ever produced!"

We also offer an extensive selection
 of over 400 fine antique chess sets.

362 McCUTCHEON LANE • TONEY, AL 35773 • PH. 256/858-8070 • WWW.HOUSEOFSTAUNTON.COM



St. Charles Chess Club

by Dan Pradt

April 10 Our first theme night of the year.

The Kings Gambit was chosen, 1.e4,e5 @.f4. Black avoided the more complicated lines in most cases. There were only a few quick knockouts. White won 6-3 on the top 9 boards, and Black was 5-4 on the bottom 9

April 10 Officers were elected for the coming

year **Jeff Wiewel** President; **Dennis Freidel** Vice President; **Jim Little**, Treasurer; **Dan Pradt** Secretary, and **Paul Freidel**, Member-at Large (pairings master). All Officers are repeating except for Paul Freidel, who replaces Blair Machaj. Blair has done a fine job for the St. Charles Club, As tournament Director and as an officer of the club, but his duties as student teacher, and as a chess instructor will keep him away from the club most of the time.

May 1 The junior tag team of 16 year olds

Jesse and Jeramiah Freidel came in 1-2 in the 10 minute Championship. Jeramiah ran interference for four rounds, beating top seed Jeff Wiewel in the second round, and knocking off second-rated Marcus Stinson in the Third. Jeramiah was a half point ahead of Jesse when they met in the fifth round, with 4.5 out of 5, but Jesse took this meeting. Both won the Last round. Final standings: Jesse Freidel 5.5-0.5, Jeramiah Freidel 5-1, and at 4-2 were Wiewel, Stinson, Paul Freidel, Bo Meissen, Matt Pivovitz, and John Suits.

June 5 Our second theme night was the center

counter defense, 1.e4,d5, sometimes called the Scandinavian Defense when Bent Larson was fond of it. Not the best way to achieve equality? Black came out on top for the night, 10-8.

July 3 Jeff Wiewel won the 15 Minute

Championship with a score of 4-0. After 3 rounds Blair Macag (Qr 2131), Wiewel (QR1994), and Paul Freidel (QR 1589) were tied at 3-0. Blair left after the third round (10:30 curfew?) and Jeff Beat Paul in the final round. Also tied for second with Paul and Blair was Jesse Freidel (Qr1404)

FIDE Master Albert Chow comes to Bloomington, IL for a lecture and Simul

by Dennis Bourgerie



Albert Chow Playing Alex Nieman

as his Dad Tadd looks on.

Albert Chow arrived at the headquarters of State Farm Insurance Company on Saturday, July 26th to give a lecture and Simul attended mainly by Bloomington-Normal area chessplayers.

The format of a lecture and Simul compliment each other nicely because it gives us a insight on how a strong chessplayer thinks about the intricacies of winning a game.

In the morning FM Chow gave a lecture covering some of the games played during the recent 2003 Master Challenge tournament. A laptop computer, Chessbase and a video projector made the presentation easy to follow.

He discussed in particular depth, the game Chow-Vasto from that tournament. Albur explained that your best chance of winning was to use main line openings and variations because they have stood the test of many master games.

Approximately 18 people attended the morning's lecture.

In the afternoon FM Chow gave a 12 board Simul, winning 11 and losing 1 to Victor Mata, an actuary with State Farm Insurance. The game on page 38.

The Blommington-Normal chessplayers are grateful to FM Chow, Colley Kitson and the State Farm Chess Club who organized the event.

ICA Supporters

Life Patron Members:

Warren, Helen E Western Springs
 Warren, James E Western Springs

Century Club Patron Members:

Bachler, Kevin L Park Ridge
 Brock, Bill Chicago
 Cohen, Lawrence S Villa Park
 Dwyer, William T Worth
 Fineberg, Thomas A Chicago
 Friske, Thomas G Des Plaines
 Naylor, Samuel, VI Carthage
 Novotny, James J Schaumburg
 Panner, Glenn E Frankfort
 Pradt, Daniel J Glen Ellyn
 Ryner, Randall L Springfield
 Schmidt, Frederick W, Jr Bloomington
 Sethi, Pradip Barrington Hills
 Smythe, Bill Chicago
 Stein, Kurt W Clarendon Hills
 Wong, Philip Wilmette

Gold Card Patron Members:

Barre, Todd J Elmhurst
 Blanke, Clyde H Matteson
 Bogan, Timothy Chicago
 Bossaers, Phil J Champaign
 Brotsos, Jim Chicago
 Chen, Aaron Oak Brook
 Cook, David A Burr Ridge
 Delay, Joseph D Schaumburg
 Dueker, John T Lockport
 Fried, Howard Chicago
 Gruenberg, Fred Palos Heights
 Hart, Vincent J Mount Prospect
 Heiser, Eric Andrew Wauconda
 Klink, Steven L, Jr Glen Ellyn
 Lang, Richard S Evanston
 Marovitch, Mark Cicero
 Pehas, Alex Darien
 Rose, Keith C Woodridge
 Splinter, Joseph C Hanover Park
 Sweig, Mitchel J Evanston
 Tanaka, James G Chicago
 Widing, Robert W Park Ridge

Patron Members:

Aaron, Michael E St Charles
 Adwar, Bacil Alexy Skokie
 Amodei, Dominic M Chicago
 Benedek, Roy Western Springs
 Birkeland, Roger Addison
 Bishop, Jack Chicago
 Boone, Foster L, Jr Lynwood
 Carlton, Robert J Naperville
 Cronin, Mike A Alsip
 Duncan, Tom Naperville
 Dupuis, Brian M Lake Bluff
 Fenner, Charles E Chicago
 Fischer, Gregory A Elk Grove Village
 Fulk, Shizuko Fukuhara Skokie
 Gasiiecki, Alan F Vernon Hills

Gerber, David F
 Griesmeyer, Walter J
 Hansen, Steven E
 Harvey, Frank
 Henderson, S E, Jr
 Hernandez, Hector
 Iovin, Daniel G
 Just, Timothy W
 Karpes, Richard A
 Klink, Steven, Sr
 Knoedler, Thomas B
 Lewis, Richard
 Lobraco, Michael J
 Marshall, Kenneth N
 Martin, Gary J
 Modes, Daniel R
 Moore, Clarence J
 Mote, David B
 Rhymer, Cecil
 Rose, Eric J
 Satterlee, Ray Doyle
 Scott, Garrett H
 Shekhawat, Jai
 Sollano, Ely O
 Sowa, Walter B
 Suarez, Ronald J
 Tums, John M
 Wakerly, Ralph T
 Zacate, Michael E

Mundelein
 Momence
 LaGrange
 Wheeling
 Bolingbrook
 Chicago
 Elmwood Park
 Gurnee
 Des Plaines
 Glen Ellyn
 Springfield
 Harvey
 Itasca
 Lombard
 Park Ridge
 Bensenville
 Villa Park
 Springfield
 Summit
 Antioch
 Wheaton
 Normal
 Naperville
 Chicago
 Harwood Heights
 Peoria
 Oak Park
 Downers Grove
 Mokena

Illni Summer Open

Game

[White "Derek Sparks (1786)"]
 [Black "Doug VanBuskirk (2122)"]
 [Result "0-1"]
 [Opening "Ruy Lopez"]

1. e4 e5 2. Nf3 Nc6 3. Bb5 a6 4.
 Ba4 Nf6 5. O-O Be7 6. Re1 b5 7.
 Bb3 d6 8. c3 h6
 9. h3 g5?!
 {A dubious idea. Correct is 9...0-0,
 transposing into the Smyslov
 Variation of the Ruy Lopez.}
 10. d4 g4 11. dxe5 dxe5 12.
 Qxd8+ Nxd8 13. hxd4?
 {Better is 13.Nxe5 gxh3 14.g3
 Be6 15.Nbd2 with white a little
 better.} 13...
 Nxd4 14. Nh2?
 {14.a4 leaves white with a slight
 edge. Now black seizes the
 initiative.} 14...
 h5 15. Nxd4 hxd4 16. Nd2 a5 17.
 Nf1 a4 18. Bc2 Ra6 19. Ng3 Ne6
 20. Nf5 Nf4 21.
 g3 Bxf5 22. exf5 Rah6 23. gxf4
 Rh1+ 24. Kg2 Rxe1 0-1

U.S. soldiers from the 101st Airborne
 Division play chess Friday at a base
 near Mosul before leaving for a patrol.





Chess Club Observer

Newsletter of the Springfield Chess Club

September-October 2003 Vol. 6, No. 5

President: Tom Knoedler
 Vice President: Michael Shores
 Secretary: Garald Bumgardner
 Treasurer: David Long
 Publicity: James Ruth

Editor: David Long
 2021 1/2 S. 4th St.
 Springfield, Ill. 62703

Club Champion: Doug Van Buskirk

Doug Van Buskirk Is City Chess Champion!

The August 23 tournament doubled as the Springfield Chess Club championship tournament. The total attendance matched the date - 23.

Doug Van Buskirk, of Springfield, won the tournament with a perfect score of 4-0. Doug now has the title of club champion.

Four people tied for second overall, first A-B, and first C-D. They are Bill Naff, of Peoria; Brian Creasey, of Springfield; Richard Kujoth, of Jacksonville; and Kevin Guo, of Chesterfield, Mo. They each scored 3 points. By virtue of being club members, Brian Creasey and Richard Kujoth share the title of runner-up for the club championship.

Chris Leveque, of Jacksonville, scored 2 points and took the class E and under prize. No unrateds participated.

For complete results, including a short history of the club championship, see page 4.

Leptoman Birthday Tourney October 11

Our next regular tournament will be held Saturday, October 11, at the Signature Inn. Besides playing chess, we will also be celebrating David "Leptoman" Braunfeld's birthday! All tournament details are the same as usual: registration ends at 8:45, first round at 9, entry fee \$15 in advance or \$18 at the door, \$2 more for non-SCC members.

Illinois Class Approaches

We need volunteers to help out at the tournament. Mostly we just need a few "gofers" but some guards would also be useful. See Tom or David if you are interested in volunteering. Volunteers will still be eligible to play in the tournament (assuming they meet all other eligibility requirements).

Correction: The May-June newsletter, announcing the tournament for the first time, incorrectly numbered the sections. There will be six sections. Unrateds may play in any section but may not win more than \$50 except in the top section.

September 10: Special Meeting

Tentative 2004 Schedule

At the September 10 board meeting, a 2004 schedule was drafted. It features six regular tournaments, a stand-alone club championship, and one quick tournament. Dates are as follows (subject to change):

February 21	April 17	June 12
August 21	October 9	December 11
Quick tournament: March 20		
Club championship: September 18		

Blitz Continues, Thematics Changed

Turnout at monthly blitz tournaments has increased from an average of 5.4 in 2002 to 8.7 this year, and average revenue at each blitz tournament has increased from \$5.40 to \$17.43. For this reason, the club voted 9-0 to continue blitz tournaments without change next year.

Thematics, however, have been stagnant (5.4 in 2002, 5.9 in 2003), with only a modest increase in revenue (\$5.38 in 2002 to \$8.63 in 2003). The club voted 7-0 to continue the thematics six months out of next year, interspersed with a new proposal initiated by SCC board member Garald Bumgardner.

Garald's proposal involves starting the games from some position in a master game, lengthening the time control to 15 minutes, and playing in the form of a three-round Swiss instead of a round robin, which hurries the games a little too much. Perhaps we could also analyze the actual master game on our demo board, before (or after) the tournament had started (or finished).

The motion which passed was to continue the thematics "as is" during the even months of 2004 and try Garald's tournaments in the odd months. We will see how club response goes.

Ladder Discontinued

The club ladder was discontinued at the special meeting, by a vote of 8-0, for lack of interest. The last ladder game played was on March 26, and the last game before that was last November.

Meetings Upstairs Until Further Notice

The American Legion has restarted its restaurant in the evenings, which means that chess club will now be meeting in room 207 (upstairs) every week. A few members have **proposed moving the club** to another meeting site because the room is so small (and loud!) If anything develops, it will be in the newsletter. In the meantime, club members are asked to keep the noise level down as much as possible. (We do not need, or want, museum-like hush but neither do we want a cacophony.)

Minor Event News

All minor events will begin at 7:30 p.m. unless otherwise specified.

Date	Event	Entry Fee
September 17	English Opening Thematic	\$3
October 15	Blitz Tournament, Part 8	\$2
October 22	Caro Kann Defense Thematic	\$3
November 12	Blitz Tournament, Part 9	\$2
November 19	Alapin Opening Thematic	\$3

Pl#	Name	July 16 Blitz								Month	Year
		1	2	3	4	5	6	7	8		
1	James Ruth	x	L	L	W	L	L	W	W	3.0	24.0
2	Daunte Carter	W	x	L	W	L	W	W	D	4.5	17.5
3	Matt Cremeens	W	W	x	W	L	W	W	W	6.0	17.0
4	David Braunfeld	L	L	L	x	L	W	W	W	3.0	10.0
5	Tom Knoedler	W	W	W	W	x	W	W	W	7.0	35.5
6	Cole Taylor	W	L	L	L	L	x	W	W	3.0	14.0
7	John Taylor	L	L	L	L	L	L	x	W	1.0	4.5
8	Kyle Churchill	L	D	L	L	L	L	L	L	0.5	5.5

August 13 Blitz

Pl#	Name	1	2	3	4	5	6	7	8	9	10	11	12	Month	Year
1	David Braunfeld	x	W	L	L	D	W	W	W	L	L	L	L	4.5	14.5
2	Michael Shores	L	x	L	L	L	W	L	W	L	L	L	L	2.5	8.0
3	James Ruth	W	W	x	L	W	W	D	W	L	W	W	W	8.5	32.5
4	Matt Cremeens	W	W	W	x	L	W	W	W	W	W	W	W	10.0	27.0
5	Evan Dorosheff	D	W	L	W	x	W	W	W	L	L	L	W	6.5	11.5
6	John Taylor	L	L	L	L	x	L	L	L	L	L	L	L	0.0	4.5
7	Cole Taylor	L	W	D	L	L	W	x	W	L	L	L	L	3.5	17.5
8	Kyle Churchill	L	L	L	L	L	W	L	x	L	L	L	L	1.0	6.5
9	Daunte Carter	W	W	W	L	W	W	W	x	W	W	L		9.0	26.5
10	Tom Knoedler	W	W	L	L	W	W	W	W	L	x	W	W	8.0	43.5
11	Garald Bumgardner	W	D	L	L	W	W	W	W	L	L	x	W	6.5	17.0
12	David Long	W	W	L	L	L	W	W	W	W	L	L	x	6.0	32.0

Cumulative Blitz Standings

1	Tom Knoedler	43.5	(54)	80.6	9	Evan Dorosheff	11.5	(22)	52.3
2	James Ruth	32.5	(54)	60.2	10	Josh Rohrscheib	11.0	(18)	61.1
3	David Long	32.0	(42)	76.2	11	Michael Shores	8.0	(25)	32.0
4	Matt Cremeens	27.0	(36)	75.0	12	Kyle Churchill	6.5	(50)	13.0
5	Daunte Carter	26.5	(36)	73.6	13	John Taylor	4.5	(43)	10.5
6	Cole Taylor	17.5	(50)	35.0	14	Barney Bruzetti	3.0	(20)	15.0
7	Garald Bumgardner	17.0	(22)	77.3	15	Michael Grounds	2.0	(9)	22.2
8	David Braunfeld	14.5	(27)	53.7	16	Gaylon Richards Sr.	1.0	(4)	25.0

Obituary

The SCC offers its condolences to David Bononi, who lost his son Timothy, on September 4.

July 23 - Alekhine Defense Thematic

Pl#	Name	1	2	3	4	5	6	7	8	Total	Victories
1	James Ruth	x	D	L	W	L	W	L	L	2.5	by Color:
2	Evan Dorosheff	D	x	L	L	L	L	L	L	0.5	White: 16
3	Daunte Carter	W	W	x	L	L	W	L	L	3.0	Black: 11
4	Matt Cremeens	L	W	W	x	L	W	W	W	5.0	Draws: 1
5	Tom Knoedler	W	W	W	W	x	W	W	L	6.0	
6	David Levesque	L	W	L	L	L	x	L	L	1.0	
7	Jonathan Hoffsuemmer	W	W	W	L	L	W	x	L	4.0	
8	David Long	W	W	W	L	W	W	W	x	6.0	

August 20 - Orangutan Opening Thematic

Pl#	Name	1	2	3	4	5	6	7	8	Total	Victories
1	Cole Taylor	x	W	L	L	W	L	L	-	2.0	by Color:
2	Kyle Churchill	L	x	L	L	L	L	L	-	0.0	White: 12
3	James Ruth	W	W	x	L	L	W	L	-	3.0	Black: 9
4	Garald Bumgardner	W	W	W	x	W	W	W	W	6.0*	
5	Evan Dorosheff	L	W	W	L	x	L	L	-	2.0	
6	Tom Knoedler	W	W	L	L	W	x	W	-	4.0	
7	David Braunfeld	W	W	W	L	W	L	x	-	4.0	
8	Michael Shores*	-	-	-	L	-	-	-	x	-	

* Michael Shores's game does not count because he withdrew before half of the games were completed.

Games

White: Doug Van Buskirk (2122)
Black: Dennis Bourgerie (1703)
 Springfield, Ill., August 23, 2003
 Opening: [272] Advance French

1. P-K4 P-K3 2. P-Q4 P-Q4 3. P-K5 P-QB4 4. N-KB3 Q-N3 5. B-Q3 N-QB3
 6. PxP BxP 7. 0-0 N-K2 8. N-B3 Q-B2 9. N-QR4 B-N3 10. NxB QxN 11.
 R-K1 B-Q2 12. P-QN4 QxP White sacrifices a pawn to start making things
 happen. See diagram. 13. P-QR4 N-R4 14. B-R3 Q-N3 15. R-N1 Q-B2 16. N-
 N5 N-N4 17. B-Q6 Q-Q1 18. Q-R5 BxP 19. R-N4 Q-Q2
 20. NxKP PxN 21. BxNch K-Q1 22. Q-R4ch K-B1 The king is trapped in the center! 23. RxB N-B5 24. RxNch
 PxR 25. QxBPch K-Q1 26. R-Q1 PxB 27. B-B7ch K-K1 28. RxQ KxR 29. Q-B5 KR-K1 30. Q-Q6ch K-B1
 31. B-R5 P-N3 32. Q-B6ch K-N1 33. B-N4 R-Q1 White doesn't need to take the rook. The black king has no
 escape. 34. B-Q6ch RxB 35. PxR P-R4 36. Q-B7, checkmate.

September Quick Canceled

September 20's quick chess tournament has been canceled. Next year will feature only one quick tournament.

Welcome New Members

David Levesque, and Nancy Ganguli, both of Springfield, have joined the Springfield Chess Club. Welcome to the club!

Long-lost Doug Van Buskirk, of Springfield, has also rejoined. He kicked off his return to organized chess with consecutive 4-0 tournaments in Urbana and Peoria in June.

Membership total is now 46.

Complete Results, August 23, 2003

1st place: Doug Van Buskirk
 2nd, 1st A-B, 1st C-D: Richard Kujoth, Bill Naff, Kevin Guo, Brian Creasey
 1st E&under: Chris Leveque

Rank	Name	Rating	Rd 1	Rd 2	Rd 3	Rd 4	Total
1	Doug Van Buskirk	2122		W-5	W-10	W-6	W-3 4.0
2	Bill Naff	2011		HALF	W-13	D--9	W-10 3.0
3	Richard Kujoth	1942		W-14	W-12	W-11	L--1 3.0
4	Kevin Guo	1579		W-17	L--6	W-20	W--9 3.0
5	Brian Creasey	1461		L--1	W-22	W-12	W-11 3.0
6	Dennis Bourgerie	1703		W-19	W--4	L--1	D--7 2.5
7	Tom Knoedler	1509		HALF	HALF	W-21	D--6 2.5
8	Greg Moses	1505		W-15	L-11	D-17	W-16 2.5
9	Phil Anderson	1805		HALF	W-16	D--2	L--4 2.0
10	Jonathan Bonwell	1691		W-20	L--1	W-13	L--2 2.0
11	Martin Wilber	1689		W-18	W--8	L--3	L--5 2.0
12	Randy Ryner	1519		W-21	L--3	L--5	W-17 2.0
13	Eric Wildman	1479		W-23	L--2	L-10	W-21 2.0
14	Bruce Burkett	1336		L--3	L-21	W-18	W-20 2.0
15	Chris Leveque	1179		L--8	W-23	L-16	W-19 2.0
16	David Bononi	1500		D-22	L--9	W-15	L--8 1.5
17	Matt Wilber	1229		L--4	W-18	D--8	L-12 1.5

18	Larry Coulter	1479	L-11	L-17	L-14	W-23	1.0
19	Fred Ohles	1298	L-6	L-20	W-23	L-15	1.0
20	Wayne Clark	1292	L-10	W-19	L-4	L-14	1.0
21	Dan Tuttle	1221	L-12	W-14	L-7	L-13	1.0
22	James Ruth	1086	D-16	L-5	---	---	0.5
23	Evan Dorosheff	598	L-13	L-15	L-19	L-18	0.0

Club members in bold

Club Champions

1993-1994: David Mote

1999-2001: (vacant)

1994-1998: David Mote

2001-2003: David Mote

1998-1999: Doug Van Buskirk

2003- : Doug Van Buskirk

Does anyone know about the club championship before 1993? If so, please see David to add old tournament records to club archives.

More Games

White: David Bononi (1500)

Black: James Ruth (1086)

Springfield, Ill. August 23, 2003

Opening: [195] Austrian Defense

1. P-Q4 P-Q4 2. P-QB4 P-QB4 The Austrian Defense to the Queen's Gambit, a somewhat offbeat line. 3. N-QB3 N-KB3 4. B-N5 P-K3 5. N-B3 P-KR3 6. B-R4 N-B3 7. BPxP KPxP 8. P-K4 B-K2 9. BxN BxB 10. KPxP NxP 11. NxN BxN 12. B-N5ch B-Q2 13. Q-K2ch Q-K2 14. QxQch KxQ 15. BxB KxB Pieces are coming off the board fast. 16. 0-0 K-Q3 17. N-N5ch K-Q2 18. NxB PxN 19. KR-Q1 QR-QB1 20. RxP K-Q3 Down to a rook ending, with white up one pawn. See diagram. 21. P-QN4 P-QN3 22. P-KR3 P-QN4 23. P-QR4 P-R3 24. P-B4 R-R1 25. PxP PxP 26. RxR RxR 27. K-B2 R-R7ch 28. K-B3 P-B4, drawn.

Meetings

The SCC meets **Wednesday** nights, 6 to 10 p.m., at the American Legion Post 32, between 5th and 6th Streets, half a block south of Capitol Ave., downtown. **Every week until further notice**, we will be meeting in room 207, upstairs (not the room we have usually used.)

On the second Friday of each month, we meet from 6 to 10 p.m. at Barnes and Noble, near the corner of Route 4 and Wabash Ave.

ICA Club Affiliates

Organizations wishing to be listed here should mail an affiliation fee of \$25.00 for one year (check payable to Illinois Chess Association) to the ICA membership secretary, Bill Smythe, 7042 N Greenview Av #1-S, Chicago 60626-2833. Include a short paragraph, similar to those below, listing your club's activities.

Alternativa Group, Peter Pelts, 7135 Greenleaf Av, Niles 60714. 847-965-6469.

American Postal Chess Tournaments sponsors postal events and sells chess books and equipment. Jim or Helen Warren, PO Box 305, Western Springs 60558. 630-663-0688, apct@aol.com. Organizers of the U.S. Masters.

The **Center Chess Club** meets 3rd Saturday of each month, 7-10 pm, Crystal Lake Park District, One East Crystal Lake Av (intersection of Walkup), Crystal Lake 60014. Also rated tournaments on most of these same dates, 4 rounds, game/60, register by 8:45 am, round 1 at 9 am. Jeff Buchman, 815-455-5288, buchadolph@aol.com.

Chess Central sponsors rated tournaments in the Grayslake / Zion area. Tim Just, 37165 Willow, Gurnee 60031. 847-244-7954, timjust@Lnd.com.

Chess in Chicago is dedicated to developing and promoting chess in Chicago, and scholastic players are the priority. Lamarr Wilson, email@chessinchiago.org, www.chessinchiago.org.

Chess Utopia sponsors rated tournaments in the Lake County area, Fridays 6 pm. Frank Swindell, 847-816-0869, Swinchess@aol.com, www.ChessUtopia.org.

Chessterton Chess Club meets at Westchester Public Library, 200 W Indiana, Chesterton IN. Joe Alford, Joe.Alford@Kemper.com.

Chicago Industrial Chess League organizes frequent competition among commercial or government teams with awards, ratings, and special events. Pat Sajbel, 847-391-2134.

Chicagoland Community Chess Club (formerly Concordia) meets Tuesdays 6-11 pm, Border's (Cafe Espresso), 7100 Forest Preserve Dr, Norridge. Howard Fried, 773-889-8553, hfried1@sbcglobal.net, or Robert Loncarevic, 773-282-5148, TLSchgo@speedsite.com.

FIDE Master **Albert Chow** gives private lessons by appointment. 3513 N Seminary, Chicago 60657. 773-248-4846, ChowMasterAl@yahoo.com.

Continental Chess Association runs major tournaments nationwide, including the annual World Open in Philadelphia and the Chicago Open in late May each year. PO Box 249, Salisbury Mills NY 12577. Bill Goichberg, www.chesstour.com.

Crossroads Chess Club meets Tuesdays 6 pm, K Square Mall Food court, I-57 / I-70 exit 160, Effingham. Cameron Feltner, 217-844-2645.

Elmhurst Chess Club meets, and holds frequent USCF events, Sundays 6:30 to 11 pm, Room 18, Hammerschmidt Chapel, Elmhurst College, 190 Prospect, Elmhurst. Roger Birkeland, 630-832-1754, rogerdb9@earthlink.net, ElmhurstChess@aol.com.

Evanston Township High School Chess Club, 1600 Dodge Av, Evanston 60204. Ken Lewandowski, 847-492-7932.

Greater Peoria Chess Federation meets Mondays 7 pm, Lakeview Museum, 1125 W Lake Av, Peoria 61614. Wayne Zimmerle, 514 W Loucks Av #2, Peoria 61604. 309-692-4480 (day), 309-686-0192 (evenings), wzim@bwsys.net.

ICA Club Affiliates

Hammond Chess Club, Charles Higgins, 116 **Crestview St**, Crown Point IN 46307. 219-663-8938.

Happy Squares offers group and private lessons, **sets/books/clocks**, as well as rated and unrated **tournaments**. Open to all ages Tuesdays 6-11 pm. Kids only Fridays 6-11 pm, Saturday afternoons 1-6 pm, and Saturday evenings 6-11 pm. 66 Gordon, Elk Grove Village 60007 (3 blocks east of Arlington Heights Rd off of Higgins). 866-KING-680 (866-546-4680). Les Bale, owner.

Highland Park High School Chess Team, 433 Vine Av, Highland Park 60035. Tesc Schultz, tschultz@d113.lake.k12.il.us.

House of Chess meets Saturdays 4:30 pm, 1st Baptist Church, 146 S Main St, Glen Carbon 62034. Paul Holland, 618-288-4117, <http://members.aol.com/houseofchess>.

Illini Chess Club meets Thursdays 7-10 pm, College of Education Building, Room 37, 6th & Pennsylvania), Urbana. www.uiuc.edu/ro/uichess. Jeff Davis.

Illinois Chess Coaches Association is open to scholastic chess coaches in Illinois. Mike Zacate, 708-479-9380, mezacate@aol.com.

Illinois Valley Chess Association meets Thursdays 7-10 pm, Illinois Valley YMCA, Adult Lounge, 300 Walnut St, Peru 61354. Bill Schulte, 520 First St, LaSalle 61301. 815-223-1505, bschulte@rivalins.com.

Illowa Chess Club meets Tuesdays 6:30-10 pm, St Ambrose University, Davenport IA. Matt Nemmers, qcchess@mchsi.com, www.quadcitychess.com.

Joliet Junior College Chess Club meets Thursdays 6:30 pm, Joliet Junior College, Building J, cafeteria, 1215 Houbolt Rd (I-80 exit 127), Joliet. Maps www.jjc.edu/maps/maincampus.html. Tim Owens, c/o JJC-IET, 214 N Ottawa St, Joliet

60432. 815-280-1513, towens@jjc.edu. Or Steve Decman, 1418 Devonshire Dr, Joliet 60435. 815-744-5272, www.jjc.edu/clubs/chess.

Lakeview Cuyler Chess Club meets Wednesdays 7-10 pm, Cuyler Covenant Church, Fellowship Hall, 3901 N Marshfield Av (corner of Byron St), Chicago 60613. Drew Morissee, 1614 W Byron St, Chicago 60613. 312-494-1300 x12, WindyCityKnight@yahoo.com, <http://LakeviewCuylerChess.tripod.com>.

Mahomet-Seymour High School Chess Club, Dan Pirtle, 302 W State, Mahomet 61853. 217-586-4962, dpirt@ms.k12.il.us.

Mid-America Chess Association sponsors the popular website at www.64.com, and brings national tournaments to the Chicago area. midam@64.com.

Midway Chess Enterprises, PO Box 388765, Chicago 60638, whizline@home.com.

Murphysboro Chess Club, Murphysboro 62966. <http://mysite.verizon.net/res0bz47/>.

New Lenox Chess Club, c/o Vince Berry & Cindy Misiak, 815-463-9975, leave message. VWBerry@aol.com.

Park Forest Chess Club meets Thursdays 7-10 pm, Freedom Hall (next to the library), Lakewood Blvd just west of Orchard, Park Forest. Larry Cohen, 630-834-2477. www.tuxdomain.com/pfcc_club.html.

Rudy Lozano Library Chess Club, 1805 S Loomis, Chicago 60608. Hector Hernandez, 312-746-4329, hernande@chipublib.org.

Smythe Dakota Competitions encourages and offers financial support for Plus-Score Mini-Tours at sites in Chicago and adjoining suburbs. Bill Smythe, chichess@rcn.com.

St Charles Chess Club meets Thursdays 7-11 pm, Baker Community House, 101 S 2nd (Rt 31),

St Charles. Jeff Wiewel, 1931 Dunhill Ct, Arlington Heights 60004. 847-818-8913, jwiewel@ntnusa.com.

The South Suburban Chess Club of Greater Chicago meets Fridays 7-11 pm, Oak View Recreation Center, 110th & Kilpatrick, Oak Lawn. Joe Bannon, 773-445-0631.

Springfield Chess Club meets Wednesdays 6-10 pm, American Legion Post 32, 5th & Capitol, Springfield. Thomas Knoedler, 2104 S Fourth St, Springfield 62703. 217-523-7265.

SquareHopper, Joshua Flores, Chess Professional. Available for any chess-related activity at reasonable rates. Specialties are tournament directing/organizing, coaching and teaching. Willing to travel. 630-430-CHES(s) anytime.

State Farm Employee Activities Chess Club 1 State Farm Plaza Corp. HQ C-4 Bloomington, IL, 60701 Colley Kitson 309-766-9493

Tuley Park Chess Club holds frequent Saturday tournaments at Tuley Park Field House, 501 E 90th Pl, Chicago. Tom Fineberg, 7321 S South Shore Dr, Chicago 60649. 773-721-3979, www.home.earthlink.net/~maxine57.

Twin City Chess Club meets Tuesdays 7-10 pm, Lincoln Leisure Center, 1206 S Lee St, Bloomington 61701. Dennis Bourgerie, PO Box 157, Normal 61761. 309-454-3842, schoolstreeter@msn.com.

West Middle School Chess Club, 1900 N Rocktoon Av, Rockford 61103. Ralph Sullons, 815-966-3220.

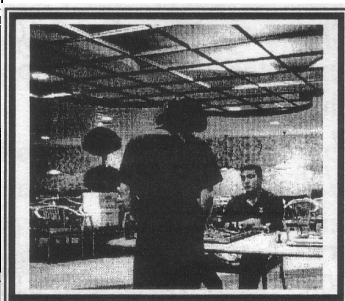
Wicker Park Chess Club meets Wednesdays 7 pm to 1 am, Myopic Books, 1468 N Milwaukee Av, Chicago. Pat Jones, 773-772-1369, pjones@artic.edu.

Woodfield Country Chess Club, Carl Troyer, 723 N Main, Eureka 62530. 309-467-6055.

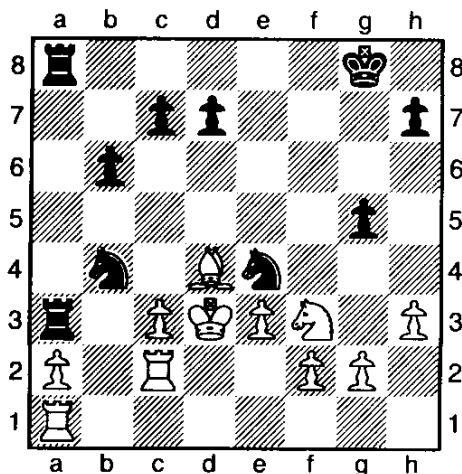
FM Albert Chow 2243 – Victor Mata 1749 0-1

SFEA CC Simul,

1.d4 Nf6 2.c4 e5 3.dxe5 Ng4 4.Bf4 Nc6 5.Nf3 Bb4+ 6.Nc3 Bxc3+ 7.bxc3 Qe7 8.Qd5 Qa3 9.Rc1 f6 10.exf6 Nxf6 11.Qd2 Qc5 12.Qe3+ Qxe3 13.Bxe3 0-0 14.c5 b6 15.Bd4 Ne4 16.cxb6 axb6 17.Rc2 Ra4 18.e3 Ba6 19.Bxa6 Rxa6 20.Ke2 g5 21.h3 Rfa8 22.Ra1 Ra3 23.Kd3 Nb4+!! Diagram



Albert Playing Victor



24.Kxe4 Nxc2 25.Rf1 R8a4 26.Kf5 Ra5+ 27.Kf6 d6 28.Ke6 h6 29.Bf6 Rxa2 30.e4 Na3 31.e5 Nc4 32.exd6 Nxd6 33.Kd7 Ne4 34.Bd8 Rd5+ 35.Kxc7 Ra8 36.Be7 Nxc3 37.Kxb6 Rb5+ 38.Kc7 Ra7+ 39.Kd6 Ra6+ 40.Kd7 Rb7+ 41.Ke8 Ra8+ 42.Bd8 Rbb8 White resigns 0-1

2003-4 ICA Tour Leaders

2003-4 ICA TOUR LEADERS

by Bill Smythe

NOTE: The 2003-4 ICA Tour began April 1, 2003 and will run through March 31, 2004.

These standings reflect the following 2003-4 Tour events:

April 26, 2003	mini	Peoria Spring Tornado (XU)
Apr 26-27, 2003	MAXI	Ranko Loncarevic Memorial, Niles
May 3, 2003	mini	Rockford Spring Open (XU)
June 28, 2003	mini	Peoria Summer Tornado (XU)
July 11-13, 2003	MAXI	Master Challenge, Elmhurst
August 16, 2003	mini	Bradley Summer Open, Peoria (XU)
August 23, 2003	mini	Springfield Championship (XU)

Not included (crosstable not yet received from organizer):

May 23-26, 2003	MAXI	12th Annual Chicago Open, Oakbrook
June 21, 2003	mini	Illini Summer Open, Urbana (XU)
July 26, 2003	mini	Officers' Appreciation #1
August 10, 2003	mini	Chicagoland Summer Open, Niles

Not included (tournament held after press deadline):

Aug 29 - Sep 1, 2003	MAXI	Illinois Open, Arlington Heights
September 6, 2003	mini	Illini Fall Sections (XU)

Scheduled or probable future 2003-4 Tour events:

September 27-28, 2003	MAXI	Forest City Championships, Rockford (XU)
October 4, 2003	mini	Normal October Mini-Tour (XU)
October 10-12, 2003	MAXI	Midwest Class, Oakbrook
November 1, 2003	mini	Peoria Fall Tornado (XU)
December 6-7, 2003	MAXI	Chicagoland Maxi-Tour, Niles (tentative)

Other Tour events will be added as the year progresses. Check Chess Life, the Illinois Chess Bulletin, ChessPhone (630-832-5222) or the web (www.illinoischess.org) for details.

For players with fewer than three 2003-4 Tour events, the number of events (1 or 2) is shown in parentheses. A player must have played in at least three Tour events during the Tour year (4-1-03 thru 3-31-04) to be eligible for year-end Tour prizes.

NOTE: ICA membership is required for all Illinois residents playing in ICA Tour events. Residents of other states are not required to join ICA if they are members of their home state chess associations. However, Tour points earned by out-of-staters do not count unless they are ICA members.

Master Tour Points:

STAMNOV Aleksandar	48
CHOW Albert C	32.5
SZPISJAK Steven J	27.5
PALOS Osmand (2)	24
YOUNG Angelo (2)	24
KARAGIANIS Pete D	22
FIRMAN Nazar (1)	19
GUREVICH Dmitry (1)	19
LONG David	15
STEVANOVIĆ Miomir	14
TSYGANOV Igor M (2)	14
VAN BUSKIRK Doug (2)	14

Expert Tour Points:

VAN BUSKIRK Doug (2)	28
KARAGIANIS Pete D	22
LONG David	19
STEVANOVIĆ Miomir	14
VOSS Andy S	14
NAFF William A	13

Class A Tour Points:

LONG David	19
VOSS Andy S	14
BAUMGARTNER Chris	12
CHODAK David N (1)	12
COVIC Mehmed	12
JOSEPH Bennett (1)	12
VELAZQUEZ Kevin (1)	12
GORAL Bradley D	11
HERNANDEZ Hector	11
ENGELN Mark S	10
NIENART Christop (2)	10

Class B Tour Points:

BAUMGARTNER Chris	18
ENGELN Mark S	17
KREPICH Daniel S (2)	16
LAGUMBAY Charles (2)	16
OHLHAUSEN David (2)	14
VOSS Andy S	14
CHODAK David N (1)	12
NAPOLI Steven (1)	12
VELAZQUEZ Kevin (1)	12
DUBIN Joshua (2)	11
GORAL Bradley D	11
HEISER Eric A (2)	10
PADILLA Rudy R	9
DZANANOVIC Muham (2)	8
GRIFFIN Danny L	8

Class C Tour Points:

KREPICH Daniel S (2)	16
LAGUMBAY Charles (2)	16
OHLHAUSEN David (2)	14
VOSS Andy S	14
CHODAK David N (1)	12
VELAZQUEZ Kevin (1)	12
DUBIN Joshua (2)	11
GORAL Bradley D	11

HEISER Eric A (2)	10
PADILLA Rudy R	9
GRIFFIN Danny L	8
CHIEN Jason W	7
DJORDJEVIC Vladi (2)	7
LOBRACO Mike (1)	7

Class D Tour Points:

DE LA MORA Salva (1)	19
LAMBERT Gwayne (1)	19
GRIFFIN Danny L	14
GRIFFIN Lawrence	7
AUGER Mike (1)	6
CHIEN Jason W	6
CUNNINGHAM Rober (2)	6
FENG Justin L (2)	6
GANNON Dan I (1)	6
GORODETSKY Alex (1)	6
HAMILTON Mark P (1)	6
YALAVARTHI Ramak (1)	6

Class E Tour Points:

GRIFFIN Lawrence	7
AUGER Mike (1)	6
YALAVARTHI Ramak (1)	6
LOPEZ Eugene (1)	5
PAUL Barry (1)	5
BARBIAN Matthew (1)	4
BOHAN Phillip Ke (1)	4
LAUGER Lloyd (1)	4
O'BRIEN Brian R (1)	4
SONG Charles (1)	4

Class F Tour Points:

O'BRIEN Brian R (1)	4
TRYKALL David Z (1)	3
WILBER Karen M (2)	3

Class G Tour Points:

HERRERA Juan M (2)	1.5
--------------------	-----

Master Ex-Urban Points:

STAMNOV Aleksandar	29
LONG David	15
VAN BUSKIRK Doug (2)	14
BAUMGARTNER Chris	12
KARAGIANIS Pete (2)	10
CHOW Albert C (1)	7.5
PARKER Robert W (1)	7.5
VOSS Andy S	6
NAFF William A	5
WILBER Martin W	4.5

Expert Ex-Urban Points:

VAN BUSKIRK Doug (2)	28
LONG David	19
NAFF William A	13
BAUMGARTNER Chris	12
KARAGIANIS Pete (2)	10
VOSS Andy S	8

PARKER Robert W (1)	7.5
BOURGERIE Dennis	6.5
KANNIAH Suresh (2)	6.5
HERNANDEZ Hector (2)	5

Class A Ex-Urban Points:

LONG David	19
BAUMGARTNER Chris	12
VOSS Andy S	8
PARKER Robert W (1)	7.5
BOURGERIE Dennis	6.5
KANNIAH Suresh (2)	6.5
HERNANDEZ Hector (2)	5
WILBER Martin W	4.5
WILBER Matthew K	4.5

Class B Ex-Urban Points:

BAUMGARTNER Chris	12
VOSS Andy S	8
PARKER Robert W (1)	7.5
BOURGERIE Dennis	6.5
KANNIAH Suresh (2)	6.5
WILBER Martin W	4.5
WILBER Matthew K	4.5

Class C Ex-Urban Points:

VOSS Andy S	8
WILBER Matthew K	4.5
CREASEY Brian (1)	4
GORAL Bradley D (2)	4
GUO Kevin (1)	4
LAGUMBAY Charles (1)	4
NUNEZ Cesar R (1)	4
TSE Boris (2)	4
BURKETT Bruce (2)	3.5
DRESSEN Robert (2)	3.5
WILDMAN Eric F (2)	3.5

Class D Ex-Urban Points:

WILBER Matthew K	4.5
TSE Boris (2)	4
BURKETT Bruce (2)	3.5
KELLY James R	3
WILBER Karen M (2)	3
BONZON Roman (1)	2.5

Class E Ex-Urban Points:

WILBER Karen M (2)	3
LEVEQUE Christop (1)	2
MORGAN Les (1)	2
CHERTOK Elina (1)	1.5

Class F Ex-Urban Points:

WILBER Karen M (2)	3
BARNES Toby (1)	1

Class G Ex-Urban Points:

HERRERA Juan M (1)	0.5
--------------------	-----

Tournament & Events Calendar

All tournaments are USCF-rated, unless otherwise noted (Quick-rated if game 29 or faster) and require USCF membership. ICA Tour events also require ICA membership. Memberships may be purchased at most tournaments. Scholastic events are marked (Scho). Most tournaments prohibit smoking in the playing rooms.

ICA Tour events are generally listed as such in Chess Life and in the Calendar below. Players are responsible for checking both Chess Life and the Illinois Chess Bulletin to determine which events are Tour events. Call ChessPhone (630-832-5222) a few days before any tournament to verify its Tour status, or check the web at www.illinoischess.org.

Organizers: Please clear your events through the ICA Tournament Calendar. **Calendar coordinator is Bill Smythe**, 7042 N Greenview Av #1-S, Chicago 60626-2833, 773-761-2455, chichess@rcn.com. **Do not send calendar entries to the ICB editor.** If you are running a Tour event, make sure it is listed as such in both Chess Life and the ICB. **Deadlines for ICB calendar submissions are as follows:**

Event starting date:	Deadline:	To appear in:
Jan 15 - Mar 14	Nov 5	Jan-Feb issue
Mar 15 - May 14	Jan 5	Mar-Apr issue
May 15 - Jul 14	Mar 5	May-Jun issue
Jul 15 - Sep 14	May 5	Jul-Aug issue
Sep 15 - Nov 14	Jul 5	Sep-Oct issue
Nov 15 - Jan 14	Sep 5	Nov-Dec issue

September 20, 2003, Autumnal Equinox Quick Open. Game/10 or game/15, format and site to be determined, Springfield. Thomas Knoedler, 2104 S Fourth St, Springfield 62703. 217-206-6056 day, 217-523-7265 nite, knoedler.thomas@uis.edu.

September 21,28, October 5, 2003, Elmhurst Fall Swiss. 3-SS, accelerated pairings, game/120. Room 18, Hammerschmidt Chapel, Elmhurst College, 190 Prospect, Elmhurst 60126. EF \$20, ECC members \$15. \$\$ to 1st, 2nd, u1800, u1600, u1400, 90% of EFs returned. Reg 6:30-6:55 on 9/21 (and 9/28 with rd 1 half-point bye), rds at 7 each Sunday. Roger Birkeland, 630-832-1754, rogerdb9@earthlink.net, ElmhurstChess@aol.com.

September 27, 2003, Quad City Open. 4-SS, game/60. Bettendorf Holiday Inn, 909 Middle Road, Bettendorf IA. EF: \$25 by 9/25, \$30 at site. \$\$435 b/25: \$100-\$85, Class A \$70, Class B \$60, Class C \$50, Class D \$40, Classes E/below \$30. Reg 8:30-9:30 am, rds 9:45-12-2:15-4:30. Matt Nemmers, 32-A Gillespie Circle, Rock Island 61201. www.quadcitychess.com, qcchess@mchsi.com.

September 27, 2003, Lakeview-Cuyler Prize Quads. 3-RR in 4-player sections, game/60. Lakeview Cuyler Chess Club, 3901 N Marshfield (1634 west), Chicago 60613. EF \$10. \$\$20-10 in each quad. Reg ends 11:45 am, rd 1 at 12. John Renze, jrenze@yahoo.com. Directions 773-525-2803 (morning of 9/27 only).

September 27, 2003, Lakeview-Cuyler Unrated Quads (not USCF-rated). 3-round double RR in 4-player sections (6 games total), game/30. Lakeview Cuyler Chess Club, 3901 N Marshfield (1634 west), Chicago 60613. EF \$5. No prizes. Reg ends 11:45 am, rd 1 at 12. John Renze, jrenze@yahoo.com. Directions 773-525-2803 (morning of 9/27 only).

September 27-28, 2003, The Forest City Championships. 6-SS, game/75. Sweden House, 4605 E State St, Rockford 61108. Hotel rooms \$57, bus service from O'Hare. EF \$50 (jrs \$40) by 9/27, both \$70 at site. GMs/IMs free. \$\$4800 b/128 adults: \$1000-800, u2000 \$650, u1800 \$650, u1600 \$550, u1400 \$550, u1200 \$300, u1000 \$150, unr \$150. Reg 8:30-9:30 am, rds 10-1-3:30 each day. Please check in; arrivals after 9:30 must take round 1 half-point bye. Checks

payable Rockford Chess Assn. Gary Noel Sargent, 2764 Panorama Dr, Rockford 61109. 815-397-9186. www.rockfordchess.org. **An ICA Tour and Ex-Urban Tour MAXI-event.** ICA membership required.

October 4, 2003, Normal October Mini-Tour. 4-SS, game/80. Fairfield Inn, 202 Landmark Dr, Normal 61761, phone at site 309-454-6600. EF \$17, free to players rated 2020+. \$\$405 b/30: \$\$150, u2000 \$85, u1600 \$85, u1200 \$85. Reg 8-8:45, rds 9-12-3-6. Dennis Bourgerie, Box 157, Normal 61761. 309-454-3842, Schoolstreeter@msn.com. **An ICA Tour and Ex-Urban Tour mini-event.** ICA membership required.

October 4, 2003, Tuley Park Quick #12 (Medium). 6-SS, rds 1-2 game/8, d/3 (game/10 if d/0), rds 3-6 game/20, d/3 (game/22 if d/0). 501 E 90th Pl, Chicago 60619. EF \$14, u19 \$7, \$1 off before 11:30. \$\$G 300: \$70-45-30, u1900 \$35, u1700 \$30, u1500 \$25, u1300 \$20, u1100 \$15, u900 \$15, unr \$15. Reg 11-11:50, rd 1 at 12. Tom Fineberg, 7321 S South Shore Dr #6-D, Chicago 60649. 773-721-3979, www.home.earthlink.net/~maxine57.

October 4, 2003, Tim Just's Lake County Open XXV. 4-SS, game/55. College of Lake County, 195351 W Washington at Rt 45, Grayslake 60030. EF \$15 by 9/27, \$5 more at site. \$\$ by score: 4-0 \$100, 3.5 \$60, 3-1 \$30, 2.5 \$15. Reg 9-9:40, rds 10-12-2-4. Tim Just, 37165 Willow, Gurnee 60031. 847-244-7954, timjust@Lnd.com.

October 10-12 or 11-12, 2003, 12th Annual Midwest Class. Oak Brook. Continental Chess, PO Box 249, Salisbury Mills NY 12577. www.chesstour.com. **An ICA Tour MAXI-event.** ICA membership required.

October 11, 2003, David Braunfeld's Birthday Open. 4-SS, game/80. Signature Inn, Dirksen Pkwy & Stevenson Dr (just west of I-55 Stevenson exit), Springfield. EF \$17 by 10/03, \$20 at site. \$\$ 300 b/40: \$100-55, 1600-1999 \$50, 1200-1599 \$40, u1200 \$30, unr \$25. Reg

7:30-8:30 am, rds 9-12-3-6. Thomas Knoedler, 2104 S Fourth St, Springfield 62703. 217-206-6056 day, 217-523-7265 nite, knoedler.thomas@uis.edu.

October 19, 2003, Elmhurst Team Match with Chicagoland Community Chess Club. Not USCF-rated. Game/45 (each player two games with same opponent). Room 18, Hammerschmidt Chapel, Elmhurst College, 190 Prospect, Elmhurst 60126. Please arrive by 6:45 pm. Roger Birkeland, 630-832-1754, rogerdb9@earthlink.net, ElmhurstChess@aol.com.

October 25, 2003, Tuley Park Quick #13 (Medium). 6-SS, rds 1-2 game/8, d/3 (game/10 if d/0), rds 3-6 game/20, d/3 (game/22 if d/0). 501 E 90th Pl, Chicago 60619. EF \$14, u19 \$7, \$1 off before 11:30. \$\$G 300: \$70-45-30, u1900 \$35, u1700 \$30, u1500 \$25, u1300 \$20, u1100 \$15, u900 \$15, unr \$15. Reg 11-11:50, rd 1 at 12. Tom Fineberg, 7321 S South Shore Dr #6-D, Chicago 60649. 773-721-3979, www.home.earthlink.net/~maxine57.

October 26, 2003, Elmhurst Game/20. 4-SS. Room 18, Hammerschmidt Chapel, Elmhurst College, 190 Prospect, Elmhurst 60126. EF \$15, ECC members \$10. \$\$ to 1st, 2nd, u1800, u1600, u1400, 85% of EFs returned. Reg 6:30-6:55 pm, rd 1 at 7. Roger Birkeland, 630-832-1754, rogerdb9@earthlink.net, ElmhurstChess@aol.com.

November 1, 2003, Peoria Fall Tornado. 4-SS, game/80. Lakeview Museum, 1125 W Lake Av, Peoria 61614. EF \$14 by 10/30, \$17 at site, free to players rated 2200+. 75% of EFs returned as prizes: 25%-15%; u2000, u1600, u1200 each. 10%; upset 5%. Reg 8-8:45, rds 9-12-2:45-5:30. Fred Malcome, 810 W Progress, Metamora 61548. 309-367-4833, flmalcome@bwsys.net. **An ICA Tour and Ex-Urban Tour mini-event.** ICA membership required.

Tournament & Calendar

November 29, 2003, Elmhurst Game/45. 4-SS. Room 18, Hammerschmidt Chapel, Elmhurst College, 190 Prospect, Elmhurst 60126. EF \$17, ECC members \$12. \$\$ to 1st, 2nd, u1800, u1600, u1400, 85% of EFs returned. Reg 6:30-6:55 on 10/27, two rounds at 7 each Sunday. Roger Birkeland, 630-832-1754, rogerdb9@earthlink.net, ElmhurstChess@aol.com.

(Scho) **November 14-16, 2003, National Youth Action Championship.** 9-SS, game/30. Best Western Clock Tower, 7801 E State St, Rockford 61108. Four sections: **HIGH SCHOOL** (K-12), **JUNIOR HIGH** (K-9), **ELEMENTARY** (K-6), **PRIMARY** (K-3). CRBeach@aol.com.

November 15, 2003, Collinsville November Swiss. 3-SS, game/90. First Baptist Church, 723 St Louis Rd, Collinsville 62234. EF \$20. Two sections: **OPEN:** \$\$280 b/20: \$100, MX \$60, A \$60, B \$60. **RESERVE** (u1600): \$\$205 b/24: C \$60, D \$60, E/below \$60, unr \$25. Reg 8-8:45 am, rds 9-12:30-3:30. Paul Holland, 204 Sierra Point, Glen Carbon 62034. 618-288-4117. Paul@paulholland.us.

November 15, 2003, Lakeview-Cuyler Plus-Score. 4-SS, game/60. Lakeview Cuyler Chess Club, 3901 N Marshfield (1634 west), Chicago 60613. EF \$20. Prizes by score: 4-0 \$100, 3.5 \$50, 3-1 \$25, 2.5 \$10. Reg ends 11:30 am, rd 1 at 12. John Renze, jrenze@yahoo.com. Directions 773-525-2803 (morning of 11/15 only).

November 16, 2003, Elmhurst Game/15. 5-SS. Room 18, Hammerschmidt Chapel, Elmhurst College, 190 Prospect, Elmhurst 60126. EF \$15, ECC members \$10. \$\$ to 1st, 2nd, u1800, u1600, u1400, 85% of EFs returned. Reg 6:30-6:55 pm, rd 1 at 7. Roger Birkeland, 630-832-1754, rogerdb9@earthlink.net, ElmhurstChess@aol.com.

November 22, 2003, Tuley Park Quick #14 (Tury). 6-SS. rds 1-2 game/8, d/3 (game/10 if d/0), rds 3-6 game 20. d/3 (game/22 if d/0). 501 E 90th Pl. Chicago 60619. EF \$10, u19 \$5, \$1 off

before 11:30. \$\$G 210: \$40-30-25, u1800 \$25, u1550 \$25, u1300 \$20, u1050 \$15, u800 \$15, unr \$15. Reg 11-11:50, rd 1 at 12. Tom Fineberg, 7321 S South Shore Dr #6-D, Chicago 60649. 773-721-3979, www.home.earthlink.net/~maxine57.

November 22. Normal, IL Northbridge Baptist Church Open. 4SS, G/70. Northbridge Baptist Church, 2413 Ziebarth Road, Normal, IL 61761. Located 1900 North and 1700 East in the country. Dir: From the intersection of Main Street and Raab Road (in north Normal), proceed east to Linden Avenue (approx. 1 mile), then proceed north to Ziebarth Road (approx. 2 miles), then proceed east again to Northbridge Baptist Church (approx. 2 miles) EF: \$17. \$\$400 b/30: \$145, U2000 \$85, U1600 \$85, U1200 \$85. Bye 1-4. Reg: 8:30-9:30, Rds: 10-12:30-3-5:30. Dennis Bourgerie, Box 157, Normal, IL 61761. 309-454-3842, cell: 309-531-1723, Schoolstreeter@msn.com

November 23, 2003, Elmhurst Game/12. 6-SS. Room 18, Hammerschmidt Chapel, Elmhurst College, 190 Prospect, Elmhurst 60126. EF \$15, ECC members \$10. \$\$ to 1st, 2nd, u1800, u1600, u1400, 85% of EFs returned. Reg 6:30-6:55 pm, rd 1 at 7. Roger Birkeland, 630-832-1754, rogerdb9@earthlink.net, ElmhurstChess@aol.com.

November 28, 2003, Illinois Scholastic Blitz and Bughouse. Not USCF-rated. Adam's Mark Northbrook, 2875 N Milwaukee Av, Northbrook 60062. <http://illinoischess.org/bug.htm>.

November 28, 2003, Thanksgiving Game/20 Quick. 5-SS, game/20. Adam's Mark Northbrook, 2875 N Milwaukee Av, Northbrook 60062. EF: \$30 if postmarked by 11/23 AND if USCF membership is current or enclosed with entry, \$40 later or otherwise. Add \$1 for each half-point bye requested, limit 1, must request 1 hr before round. Rd 5 bye must be requested before rd 1, non-retractable after rd 3 start. Re-entry with single half-point bye \$20 (max 1 bye including re-entry bye). \$\$ 250-150-100; X,A,B,C each \$120-

100, D-below \$100. Unrated max \$100. Reg Fri 5-7 pm, rds 7:30-8:30-9:30-10:30-11:30. Checks payable Chess For Life LLC, PO Box 789, Lake Villa 60046. Wayne Clark, 847-546-8511, heartlandchessfestival03@yahoo.com.

November 28-30 or 29-30, 2003, Thanksgiving Semi-Class. 5-SS, 40/120, then SD/30 (2-day option rds 1-2 game/90). Adam's Mark Northbrook, 2875 N Milwaukee Av (1/2 mile south of Willow/Palatine Rd), Northbrook 60062-6103. Hotel rates \$69-69-69-69, ask for chess rate, reserve by 11/14, 847-298-2525 or 800-444-ADAM. EF: \$79 if postmarked by 11/23 AND if ICA and USCF memberships are current or enclosed with entry AND if schedule (3-day or 2-day) is stated with entry, all \$90 later or otherwise. Add \$1 for each half-point bye requested, limit 1 (including any re-entry byes), must request 1 hr before round. Rd 5 bye must be requested before rd 1, non-retractable after rd 3 start. Re-entry \$40. \$\$7500 b/60 per section. Three sections: **OPEN:** \$750-450-225-125-100, u2200 \$400-225-125-100. **RESERVE** (under-2000): \$750-450-225-125-100, u1800 \$400-225-125-100. **BOOSTER** (under-1600): \$750-450-225-125, u1400 \$400-225-125, u1200 \$100, unrated \$100. **ALL:** Unrated may win only top prizes in Open or unrated prize in Booster. \$5 buffet lunch (\$15 value) available to entrants Sat and Sun. 3-day reg Fri 6-7:45 pm, rds 8, 12-6:30, 10-3:30. 2-day reg Sat 8-9:30 am, rds 10-1:30-6:30, 10-3:30 (merge after 2 rds). Checks payable Chess For Life LLC, PO Box 789, Lake Villa 60046. Wayne Clark, 847-546-8511, heartlandchessfestival03@yahoo.com. **An ICA Tour mini-event.** ICA membership required.

November 29-30, 2003, Illinois Class. Springfield. Thomas Knoedler, 2104 S Fourth St, Springfield 62703. 217-206-6056 day, 217-523-7265 nite, knoedler.thomas@uis.edu. **An ICA Tour MAXI-event.** ICA membership required.

November 30, 2003, Elmhurst Game/30 Quad. 3-RR in 4-player sections. Room 18, Hammerschmidt Chapel, Elmhurst College, 190 Prospect, Elmhurst 60126. EF \$17, ECC

members \$12. \$\$30-10 in each quad. Reg 6:30-6:55 pm, rd 1 at 7. Roger Birkeland, 630-832-1754, rogerdb9@earthlink.net, ElmhurstChess@aol.com.

December 6-7, 2003, Chicagoland Maxi-Tour. Niles. Robert Loncarevic, 773-282-5148. **An ICA Tour MAXI-event.** ICA membership required.

December 7, 2003, Elmhurst Game/5 Blitz. Not USCF-rated. RR in 1 or 2 sections depending on entries. Room 18, Hammerschmidt Chapel, Elmhurst College, 190 Prospect, Elmhurst 60126. EF: \$15, ECC members \$10. 90% of EFs returned as prizes. Reg 6:30-6:55 pm, rd 1 at 7. Roger Birkeland, 630-832-1754, rogerdb9@earthlink.net, ElmhurstChess@aol.com.

(Scho) **December 12-14, 2003, National K-12 Scholastic.** Rosemont.

December 13, 2003, Springfield Holiday Open. 4-SS, game/80. Signature Inn, Dirksen Pkwy & Stevenson Dr (just west of I-55 Stevenson exit), Springfield. EF \$17 by 12/05, \$20 at site. \$\$ 300 b/40: \$100-55, 1600-1999 \$50, 1200-1599 \$40, u1200 \$30, unr \$25. Reg 7:30-8:30 am, rds 9-12-3-6. Thomas Knoedler, 2104 S Fourth St, Springfield 62703. 217-206-6056 day, 217-523-7265 nite, knoedler.thomas@uis.edu.

December 20, 2003, Tuley Park Quick #15 (Bigger). 6-SS, rds 1-2 game/8, d/3 (game/10 if d/0), rds 3-6 game/20, d/3 (game/22 if d/0). 501 E 90th Pl, Chicago 60619. EF \$18, u19 \$9, \$1 off before 11:30. \$\$G 435: \$125-80-40, u1900 \$40, u1700 \$35, u1500 \$30, u1300 \$25, u1100 \$25, u900 \$20, unr \$15. Reg 11-11:50, rd 1 at 12. Tom Fineberg, 7321 S South Shore Dr #6-D, Chicago 60649. 773-721-3979, www.home.earthlink.net/~maxine57.

(Scho) **December 27, 2003, Northern Illinois K-8 Open.** Christian Life Center School, 5950 Spring Creek Rd, Rockford 61114. For scholastic players K-8. EF \$20 by 12/21, \$35 at site. Three

sections: **CHAMPIONSHIP** (K-8): 5-SS, game 45. **Trophies to top 4**, top 2 grades 6,7,8, top 3 teams. **ELEMENTARY** (K-5): 6-SS, game 30. **Trophies to top 4**, top 2 grades 4,5, top 3 teams. **PRIMARY** (K-3): 6-SS, game/30. **Trophies to top 3**, top 2 grades K,1,2,3, top 3 teams. **ALL**: Reg 7-8:30 am, rd 1 at 9. Arrivals after 8:30 must take round 1 half-point bye. Section changes not allowed after 8:30. Checks payable Rockford Chess Assn, mail to Gary Noel Sargent, 2764 Panorama Dr, Rockford 61109. Info Joe Guth, 815-399-4303, ChessXPert_2000@yahoo.com, www.rockfordchess.org.

January 3, 2004, Normal January Open. 4-SS, game/80. Fairfield Inn, 202 Landmark Dr, Normal 61761, phone at site 309-454-6600. EF \$17, free to players rated 2020+. \$\$380 b/30: \$\$140, u2000 \$80, u1600 \$80, u1200 \$80. Reg 8-8:45, rds 9-12-3-6. Dennis Bourgerie, Box 157, Normal 61761. 309-454-3842, Schoolstreeter@msn.com.

January 10, 2004, Tuley Park Quick #1 (Medium). 6-SS, rds 1-2 game/8, d/3 (game/10 if d/0), rds 3-6 game/20, d/3 (game/22 if d/0). 501 E 90th Pl, Chicago 60619. EF \$14, u19 \$7, \$1 off before 11:30. \$\$G 300: \$70-45-30, u1900 \$35, u1700 \$30, u1500 \$25, u1300 \$20, u1100 \$15, u900 \$15, unr \$15. Reg 11-11:50, rd 1 at 12. Tom Fineberg, 7321 S South Shore Dr #6-D, Chicago 60649. 773-721-3979, www.home.earthlink.net/~maxine57.

(Scho) **January 17, 2004, Latin School Scholastic.** Navy Pier, Chicago. EF \$15 by 1/10, no entries thereafter. Four divisions: **K-3, K-6, K-9, K-12.** Zack Fishman, 312-972-4290. zackfish@aol.com. <http://Chessteachers.org>.

January 31, 2004, Tuley Park Quick #2 (Bigger). Chicago.

February 21, 2004, Collinsville February Swiss. Collinsville.

February 21, 2004, Tuley Park Quick #3 (Medium). Chicago.

February 28-29, 2004, Greater Peoria Open. Wayne Zimmerle, wzim@bwsys.net, www.gpcf.net. **An ICA Tour and Ex-Urban Tour MAXI-event.** ICA membership required.

March 20, 2004, Tuley Park Quick #4 (Tiny). Chicago.

April 10, 2004, Tuley Park Quick #5 (Medium). Chicago.

May 1, 2004, Tuley Park Quick #6 (Bigger). Chicago.

May 29, 2004, Tuley Park Quick #7 (Medium). Chicago.

June 19, 2004, Tuley Park Quick #8 (Tiny). Chicago.

July 1-5, 2004, 32nd Annual World Open. Philadelphia PA.

Members can
access the ICA
website at either

www.illinoischess.org
or www.ilchess.org



In the northwest suburbs of Chicago for more than three years, the chess club "Kings and Queens" has been teaching children of all ages and levels. The director of this club is the infamous professor of chess and International Arbiter as well as chess coach, Leonid Bondar. Throughout his extensive professional career in the United States and in Belarus, he has taught as well as helped create award winning and world-renowned chess players.

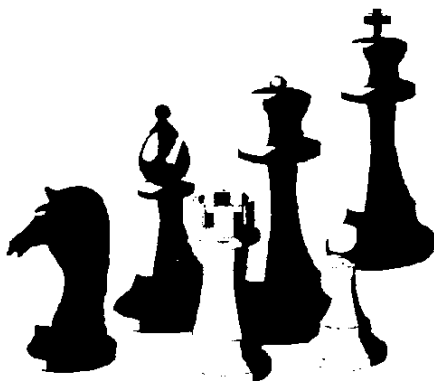
Mr. Bondar was the head of Chess Department, Academy of Physical Education and Sports of Republic Belarus. Under his guidance and personal supervision many prominent chess players achieved impressive results. A lot of strong chess players, including Women World Champion Zsuzsa Polgar (USA), Boris Gelfand (Israel), Ilya Smirin (Israel), Alexander Rustemov (Russia), and Yuri Shulman (champion of Texas) have been studied there.

All of his students fall in love with chess and many of them also began to show outstanding results such as Sam Edelstein, a 12-year-old boy that's already National Champion in his age group. At this present time, "Kings and Queen" is opening their doors to a new location in Buffalo Grove, Illinois. These chess lessons will be held in the office of the "Tutoring Center of Mathematics and Science", which is located at 830 South Buffalo Grove Road, Suite 108. In this place, lessons will be taught by Leonid Bondar for children and adults who want to learn how to play chess or for those who love to play chess with friends in warm and inviting atmosphere consisting of those that possess the same passion and love of chess as they do.

Please call (847) 279-8548 or (847) 212 7676 for any questions related to the membership of this club or email at leonbondar@mail.ru or rivtisa@aol.com.

On Sundays "Kings and Queens" is happy to invite children to improve chess level with Leonid Bondar in BH JCC, 3003 W. Touhy, Chicago. You can obtain further information by calling these numbers: (847)763-3624 or (847) 657-9686

The Springfield Chess Club
is pleased to present to you



Illinois Class Championship

November 28, 29, and 30, 2003

An ICA Maxi-Tour and Ex-Urban Tour event.

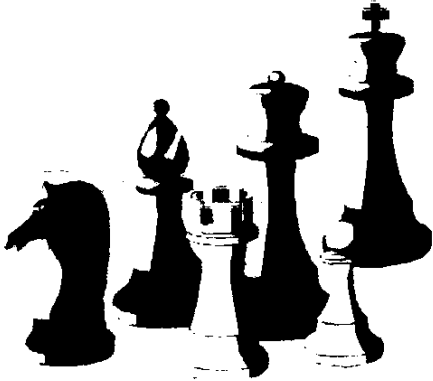
5-SS, G/2, \$4000 b/100. 6 sections: Master/Expert 500-300-200; Class A, B, C, D, and E & under each 300-200-100. Unrateds may play in any section but may not win more than \$50 except in master/expert section. EF: \$49 if received by 11/22, \$69 thereafter. Play up one section for \$5 extra. ICA membership required, \$18, OSA.

Signature Inn, 3090 Stevenson Drive (immed. West of I-55, exit 94), Springfield. Reservations, (217) 529-6611. . HR: \$62 + tax, must mention chess tournament, must reserve by 11/22.

Schedule: Registration Friday 1-4 p.m. Rounds Friday 5 p.m., Saturday 8:30- 1:15- 6:00, Sunday 10 a.m. Awards at 2:30 p.m. One half-point bye available any round except 5th

Ent/Info: Thomas Knoedler, 2104 S. 4th St., Springfield 62703. (217) 206-6056 days. (217) 523-7265 evenings, except Wednesday. Info only David Long, (217) 522-0489. Bring Boards, sets, and clocks—none provided. NS/NC/W.

The Springfield Chess Club
is pleased to present to you



Illinois Class Championship

November 28, 29, and 30, 2003
An ICA Maxi-Tour and Ex-Urban Tour event.

More Information Inside back cover

Time Value Material



ILLINOIS
CHESS ASSOCIATION

C/O Bill Smythe
7042 North Greenview Avenue #1-S
Chicago, IL 60626-2833

ADDRESS SERVICE REQUESTED

PRESORTED
STANDARD
U.S. POSTAGE PAID
Astoria, IL
Permit No. 9