

The Illinois Chess Bulletin

Volume 27 Issue 3

May June 2004



INSIDE THIS ISSUE

- 6** ICB Games
- 14** Twin City Chess Club Championship
- 17** South Maine Team at the IL State High School Championship

Grand Opening

The B-Town Chess House is having a grand opening tournament. There will be 3 sections. You can play in the Open, reserve (under 1400), or the junior section. You must be a member of the USCF and ICA. Registration is from 8am-9am. The first round is at 9:30. Rounds will be played once their division is done with their games. Trophies will be awarded.

When: Saturday May 22, 2004

Where: 1201 E. Bell St. Suite #201
Bloomington, IL 61701

Who: Players of all ages are welcome to participate

Parking will be available in the parking lot before noon and also on the street.

Entry Fee is \$15.00 before 5/17/04 or \$20 at the site.

If you have any questions please call 829-5954

You can go to www.btownchess.com for directions.

Name: _____

Division (please circle one): Open Reserve Junior

USCF Number: _____ Member of ICA (please circle): Yes No

Players must be a member of the USCF and ICA (Illinois Chess Association).

Payments can be check or cash. No credit cards will be accepted. There will not be concessions. Make Check Payable to B-Town Chess House. Please send payment to:

B-Town Chess House
1201 E. Bell St. Suite #201
Bloomington, IL
61701

Table of Contents

On The Cover: South Maine goes for its 8th Championship Page 17



Letters

President's Podium5

Features

ILL State High School Team Championship.....17

ICB Games

Games by FIDE Master Albert Chow6

Games by IM Angelo Young13

Articles

Twin City Chess Championship..... 14

Chess Clubs

St Charles Chess Club News27

Springfield Observer.....38

Where to Play

Affiliate Listing46

Tournament Calendar31

ICA Tour

ICA Tour.....28

ICA Support

Supporting Members36

The ICA would like to thank:

Nathan Jones for the great job he did covering the South Maine Team at the Il State High School Team Championships.

Eric Strauts for sending some excellent pictures of the event.

About the Illinois Chess Bulletin and the Illinois Chess Association

Illinois Chess Bulletin

Published six times per year

Copyright © 2004 Illinois Chess Association

Next Deadline: June 15th.

Submissions

Send contributions to:

Colley Kitson
428 N Grant Street
Clinton, IL
61727

icb@mchsi.com

Home Phone: 217-935-1265
Cell Phone: 309-824-5701

Games for the ICB can be sent to:

Albert Chow 3513 N Seminary, Chicago 60657.
773-248-4846, ChowMasterAl@yahoo.com.

Electronic submissions are preferred. Preferred formats for articles, stories or advertisements are Microsoft Word or RTF (rich text format)

Game submissions must be in electronic format.

Games must be submitted in ChessBase archive format (.cbv) or in pgn. ChessBase 8 will automatically send archive format if you e-mail from ChessBase 8. In earlier versions of ChessBase you may archive a database to create a single file to e-mail. See your help materials.

Most chess databases will also produce text files in pgn format, as will many chess playing programs. The main font for the ICB is Arial, and also using the Figurine Aries font and the Fritz Diagram font from ChessBase.

Editorial Staff

Managing Editor: Colley Kitson
Games Editor: Albert Chow
Assistant Games Editor: Angelo Young
Tour and Crosstables Editor: Mark Engelen

Contributors

Dennis Bourgerie
Larry Cohen
David Long
Howard Fried
Nathan Jones
Albert Chow
Angelo Young
Eric Strauts

Advertising Rates

Back Cover: \$125
Inside Front: \$115
Full Page: \$100
1/2 Page: \$65
1/3 Page: \$50
1/4 Page: \$40
1/8 Page: \$25

There is a \$20 design charge for ads that are not camera-ready. Allow 7 days for design. Allow additional time if ad proofing is required. ICA affiliates receive a 1/3 discount and ads that appear in consecutive issues receive a 10% discount. Payment must accompany the ad. The ICA and the ICB reserve the right to refuse any specific advertisement.

Membership Information

The Illinois Chess Bulletin (ICB) is published by the Illinois Chess Association (ICA). ICA membership includes a subscription to the ICB. Memberships marked 1st receive their magazine first class. Memberships marked P also receive a plaque. Affiliates also receive discounted advertising rates, event advertising on Chess Phone and the ICA website, and the right to run Tour events.

Corporate	\$500	1 st Class & Plaque
Organization	\$200	1 st Class & Plaque
Business	\$200	1 st Class & Plaque
Century Club	\$100	1 st Class
Gold Card	\$50	1 st Class
Patron	\$35	1 st Class
Affiliate	\$25	Affiliate benefits
Regular	\$18	
Junior	\$14	
Family	\$6	No magazine
ICCA Coach	\$19	Also a member of ICCA
Cochess	\$19	Also a member of Cochess

President's Podium

May is here and as usual that means The Chicago Open. It is time at the very end of the month. I expect I will see quite a few of you there. Another event this May is the First Annual All-Girls National Chess Championships. This is being held May 14-16 at the Adler Planetarium. Susan Polgar has put her support behind this event, and she is also behind the Polgar Tournament of Champions [for girls under age 21] in August at the U.S. Open. She will be giving a simul against participants on Friday, May 14 at the Palmer House. On Thursday, May 13 she will give a simul at the Joliet Junior College, which is open to all, but limited to 40 players. The JJC chess club has received a grant from the college, so the simul fee is only \$10. Contact the JJC chess club at (815) 280-1513 to reserve a space at the lecture and simul.

By now many of you have heard of the troubles at the Elmhurst Chess Club. As a result all of the Sunday events for April and May have been cancelled. The problem (as usual for a club) is the site. The college has become a little obstinate about all the weekend events that were run. It is hoped that some sort of understanding can be reached to reinstate the club at the college. I am sure the Elmhurst club will keep people informed as to developments. For those of you concerned about the Master Challenge, do not fear. Remember this is a joint effort of the Elmhurst and St. Charles chess clubs. This event will still be held.

I want to remind everyone to vote in the upcoming USCF election. Not only do your representatives from Illinois get elected, but there is a special election for 2 executive board positions. This can have an important impact on the direction the USCF takes, so please vote. Also, you may want to start thinking about the upcoming ICA elections this October. Now might be a good time to gather (10 ICA) member signatures and become an active part of the ICA.

Finally, I want to congratulate all the tour winners. I have noticed over the past few years that constant and frequent play often result in tour winnings. So check the ICB or the web site and plan on playing in some more tour events this time around.

Best "Chess" Regards,
Larry S. Cohen

President:

Cohen, Lawrence S
231 S Villa Ave #3-B
Villa Park, IL 60181-2941
630-834-2477
LSCohen60@yahoo.com

Metro VP:

Fried, Howard
440 N. Main Street
Wauconda, IL
60084-2635
hfried1@sbcglobal.net

Downstate VP:

Bourgerie, Dennis
PO Box 157
Normal, IL 61761-0157
309-454-3842
Dennis9942@wmconnect.com

Secretary:

Robert Loncarevic,
(773) 282-5148
tlschgo@speedsite.com

Treasurer:

Cohen, Howard
10482 Anne Ct #2-E
Rosemont IL 60018-3520
847-803-0941
ChessNehoc@aol.com

ICA Tour Statistician

Sheila Heiser
847-526-9025
skeystone@aol.com

ICA Membership Secretary

Chris Baumgartner
107 S. Maple Lane
Prospect Hts, IL 60070
treegrower4@aol.com
846-749-2573

**Helen Warren
Junior Chess Program**

PO Box 305
Western Springs, IL 60558-0305
apct@aol.com

CHESS PHONE

Chess results & announcements
(630) 832-5222

WORLD WIDE WEB

<http://www.illinoischess.org>

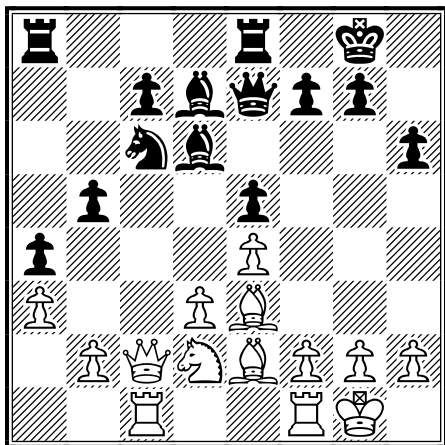
ICB Games From FIDE Master Albert Chow

(1) Peter, P (2410) - Palos, O (2450) [A28]

Midwest class (4), 12.10.2001

[Albert Chow]

1.c4 e5 2.Nc3 Nf6 3.Nf3 Nc6 4.d3 h6!? 5.e3 [Another typical English development is 5.g3 Bc5 6.Bg2 d6] 5...Bb4 6.Bd2 0-0 7.Be2 [Also good was 7.a3] 7...Re8 8.0-0 Bf8!? 9.a3 d5 10.cxd5 Nxd5 Play has transposed to an the Schevenigen variation of the Sicilian with colors reversed! 11.Qc2 Nb6 12.Rac1 [This was a good chance to push 12.b4!] 12...a5! 13.Na4 Nxa4 14.Qxa4 Bd7 15.Qc2 a4! 16.e4 Bd6! 17.Be3 Qe7 18.Nd2 b5!?



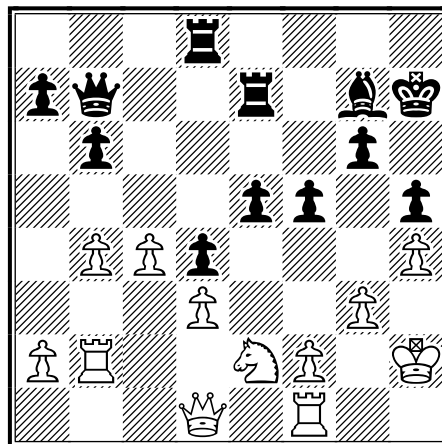
19.Bg4? Nb4! 20.axb4 Bxg4 21.Bc5 Qg5 22.Be3 [Better was 22.Kh1] 22...Qg6 23.f3 Bh3 24.Nb1 Bxb4 25.Kh1 Bd7 26.Qxc7 Qe6 27.d4 exd4 28.Bxd4 Bd6 29.Qc3 b4! Palos pushes his bishops and queenside pawn majority for advantage over the sidelined horse on b1. 30.Qe3 Rec8 31.Nd2 Bb5! 32.Rfd1 Rxc1 33.Rxc1 Rc8! 34.Rd1 Rc2 35.f4? Qg4! Unable to defend the tactical threats, white resigns. 0-1

(2) Palos, O - Gurevich, D [A36]

Illinois Open (6), 03.09.2001

[Albert Chow]

1.c4 c5 2.g3 g6 3.Bg2 Bg7 4.Nc3 Nc6 5.e3 e6 6.Nge2 Nge7 A symmetrical English. 7.d3 0-0 8.0-0 d5! 9.Rb1 b6 10.b3 Bb7 11.Bb2 Qd7 12.Na4 e5! 13.Nac3? [Better was the Hedgehog like 13.cxd5! Nxd5 14.a3 Rfd8 15.Qc2 Rac8 16.Rfd1 etc.] 13...d4 14.exd4? Giving the GM a central pawn majority. [Better was 14.Nd5!] 14...cxd4 15.Nd5 Nxd5 16.Bxd5 Ne7 17.Bxb7 Qxb7 18.Ba3 Rfe8 19.Bxe7 Rxe7 20.b4 h5 21.h4 Rd8 22.Kh2 f5 23.Rb2 Kh7



24.Ng1 e4 25.Re2 Rde8 26.Nh3 Bh6 27.f4? [A better defence was 27.dxe4! Rxe4 28.Rfe1] 27...exf3! en passant! 28.Rxe7+ Qxe7 29.Qxf3 Qxb4-+ 30.Qd5 Re2+ 31.Kh1 Qe7 32.Qxd4 Qb7+ 33.Qd5 Qxd5+ 34.cxd5 Re5 35.d6 Re6 36.Rd1 Rxd6 37.d4 Kg7 38.Kg2 Kf6 39.Kf3 Ke6 40.Nf4+ Bxf4 41.Kxf4 Kd5 42.a4 a6 43.Rd2 Re6 44.Kg5 b5 45.axb5 axb5 46.Rb2 Kc4 black resigns. 0-1

(3) Krasenkow, M (2615) - Palos, O (2365)

[A40]

NY Open Manhattan, New York City (5), 04.04.1997

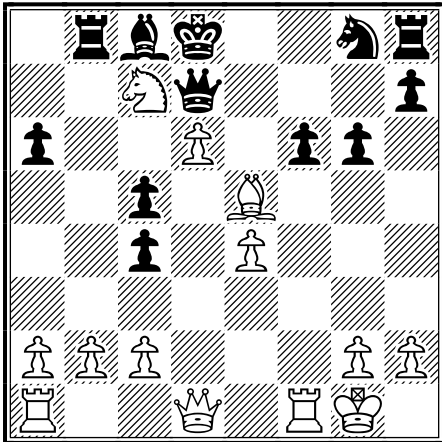
1.c4 Nc6 2.d4 e5 3.d5 Nce7 4.g3 Ng6 5.h4 Bb4+ 6.Nd2 h6 7.a3 Bxd2+ 8.Bxd2 d6 9.e4 Nf6 10.Bd3 a5 11.f3 Nh5 12.Ne2 Qf6 13.Kf2 Qe7 14.Qc2 a4 15.Nc3 Bd7 16.Nd1 Nf8 17.Qc3 Bc8 18.Ne3 Nd7 19.Nf5 Qf8 20.g4 Nhf6 21.Ng3 Nc5 22.g5 hxg5 23.hxg5 Nfd7 24.Bc2 Rg8 25.Nf5 g6 26.Nh6 Rh8 27.f4 f6 28.Kg2 Qe7 29.f5 Qg7 30.Qg3 Nf8 31.gxf6 black resigned 1-0

(4) Palos, O - Quan, Z [A44]

Midwest class (3), 11.10.2001

[Albert Chow]

1.d4 c5 2.d5 d6 3.e4 e5 4.Nc3 g6 5.f4! This Kings gambit busts black's blockade Benoni. 5...Nd7 6.Nf3 Bg7 7.Nb5 Ndf6? [The best developing defence was 7...Qb6!] 8.fxe5 dxe5 9.d6! Kf8 10.Nxe5 Nd7 [White has strong pressure after 10...Nxe4 11.Qd5! Bxe5 12.Qxe5+-] 11.Nf3 a6 12.Nc7 Rb8 13.Bc4 Ne5 14.Bg5! Qd7 15.Nxe5 Bxe5 16.0-0 f6 17.Ne6+ Ke8 18.Bf4 b5 19.Bxe5! bxc4 20.Nc7+ Kd8

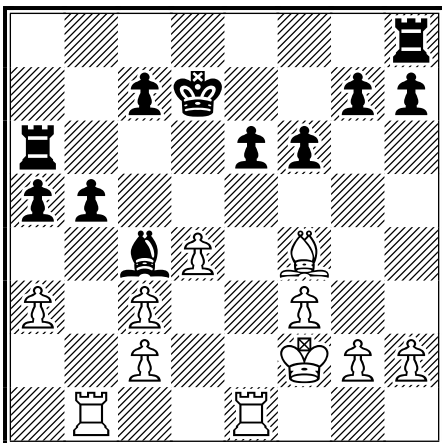


21.Rxf6! Qg7 22.d7! Bxd7 23.Qd6 [Also winning was 23.Ne6+! Kc8 24.Qd6! Bxe6 (or 24...Rb7 25.Rf8+ Qxf8 26.Qxf8+ Be8 27.Qxe8#) 25.Rf8+ Kb7 26.Rxb8+ Ka7 27.Qxc5#] 23...Nxf6 [No better was 23...Qxf6 24.Bxf6+ Nxf6 25.Ne6+ Ke8 26.Qxb8+ Ke7 27.Qxh8+ -] 24.Ne6+! Ke8 25.Qxb8+ [Also 25.Nxg7+ Kd8 26.Ne6+ Ke8 27.Bxf6 Kf7 28.Qe7+ Kg8 29.Qg7#] 25...Kf7 [If 25...Ke7 26.Qd6+ Kf7 27.Bxf6!+ -] 26.Ng5+ Ke7 27.Bd6# 1-0

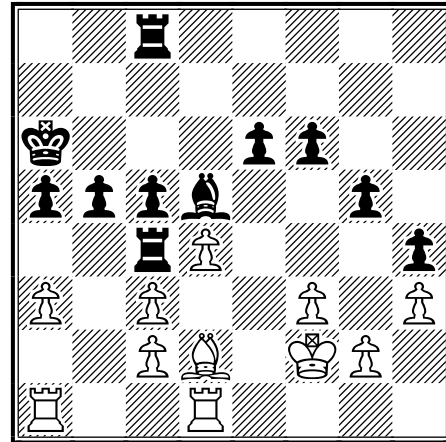
(5) Gorlin,A - Palos,O [B00]

Elmhurst class m/x, 23.03.2003 [A.Chow]

1.e4 e6 2.d4 b6!? 3.Nf3 Bb7 4.Nc3 Bb4 5.Bd3 Nf6 6.Qe2 d5 A delayed French! 7.exd5 Qxd5 8.0-0 [8.Bd2 would avoid doubled c pawns.] 8...Bxc3 9.bxc3 Qh5 10.Ne5 Qxe2 11.Bxe2 Nbd7 12.Bb5? a6 13.Bxd7+ Nxd7 14.Nxd7 Kxd7 Perhaps white thought to draw due to opposite color bishops, but Palos shows great imagination, technique, and will to win, making the maximum of his chances. 15.Re1 Bd5! 16.f3 a5 17.Kf2 b5 18.a3 f6 19.Rb1 Bc4 20.Bf4 Ra6



21.Ke3 Rc8 22.Red1 Kc6 23.Kf2 Rd8 24.Rd2 Rd5 25.Re1 Kd7 26.Red1 Rc6 27.Bg3 Kc8 28.h3 Kb7 29.Bh2 Rd7 30.Ke1 Bd5 31.Rd3 Rc4 32.Bf4 Rd8 33.Bd2 Rc8 34.Be3 Ka6 35.Ra1 g5! 36.Kf2 Rg8 37.Bd2 h5 38.Re3 h4! 39.Ree1 Rc8 40.Red1 c5!

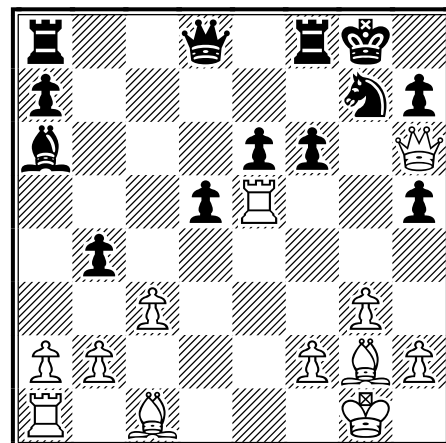


41.dxc5 R8xc5 42.Re1 Rc6 43.Re3 Rc8 44.Rd3 Ra4 45.Be1 Kb7 46.Rdd1 f5 47.Bd2 f4! 48.Re1 Kc6 49.Re5 Rg8 50.Ree1 Kd6 51.Reb1 Rb8 52.Bc1 e5 53.Bb2 e4! 54.fxe4 Rxe4 55.Re1 Rbe8 56.Rxe4 Rxe4 57.Rd1 Ke6 58.Rd2 Bc4 59.Bc1 Kf5 60.a4 bxa4 white soon blundered and lost. 0-1

(6) Palos,O (2350) - Chen,A (1995) [B06]

Master Challenge (4), 24.06.2001 [Albert Chow]

1.e4 g6 2.d4 Bg7 3.Nc3 c6 4.g3 d5 5.exd5 cxd5 6.Bg2 e6 7.Nf3 Nc6 8.0-0 Nge7 9.Ne2 0-0 10.c3 b6 11.Nf4 Ba6 12.Re1 Nf5 13.Qa4 Qc8 14.Ne5 Bxe5?! [A better exchange was 14...Nxe5 15.dxe5] 15.dxe5 b5 16.Qd1 b4 17.Qg4 Qc7 18.Nh5 Nxe5 19.Qf4 gxh5 20.Rxe5 Ng7 21.Qf6 Qd8 22.Qh6 f6



ICB Games From FIDE Master Albert Chow

23.Re1 bxc3 24.bxc3 Rc8 25.Bd2 Bd3 26.Qe3 Bg6 27.Qxa7 Rf7 28.Qe3 e5 29.Qe2 Nf5 30.Bh3 Rc4 31.a4 Ra7 32.Qf3 Ng7 33.Qd1 Be8 34.a5 Rxa5 35.Rxa5 Qxa5 36.Qf3 Rc6 37.Rb1 Qa2 38.Qd1 Ra6 39.Bh6 Bc6 40.Bf1 Ra8 41.Rb6 Rc8?? A blunder after time control. [Best defence was 41...Qa4!] 42.Ra6! Qb2 43.Rxc6! Rxc6 44.Qxd5+ Re6 45.Qd7! black resigns 1-0

(7) Stannov,A (2250) - Palos,O (2425)

[B22]

Loncarevic memorial. (3), 26.04.2003

[A.C]

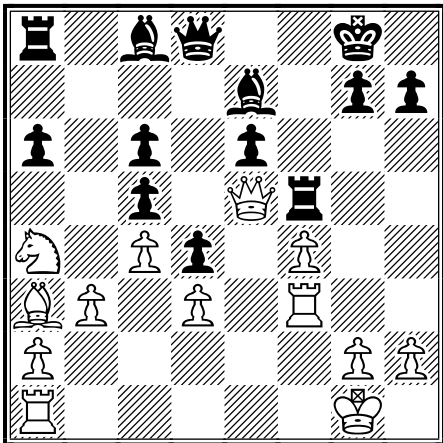
1.e4 c5 2.c3 e6 3.d4 d5 4.exd5 Qxd5 5.Nf3 Nc6 6.Na3 cxd4?! Palos offered a draw and Stannov accepted, although he could have played 7. Nb5! with good chances. ½-½

(8) Daw,P - Palos,O (2350) [B23]

Master Challenge (3), 23.06.2001

[Albert Chow]

1.e4 c5 2.f4 Nc6 3.Nc3 d6 4.Nf3 Nf6 5.Bb5 a6? [A better way to avoid doubled pawns is 5...Bd7!] 6.Bxc6+ bxc6 7.0-0 e6 8.d3 d5 9.e5 Ng8 [The alternative 9...Nd7 guards c5.] 10.b3! Ne7 11.Na4! Nf5 12.c4! Be7 13.Qe1! Nd4 14.Rf2 Nxf3+ 15.Rxf3 0-0 16.Ba3 f6 17.Bb2 [Also good was 17.Rf2] 17...d4 18.Ba3 fxe5 19.Qxe5 Rf5



20.Qe4± h5 21.Qxc6 Bd7 22.Qe4 Rc8 23.Re1 Bd6 24.g3 Qc7 25.Rff1 Rcf8 26.Bc1 R8f6 27.Qa8+ Kh7 28.Qxa6 e5 29.Nb6 Qc6 30.Qa4 Qxb6 31.Qxd7 exf4 32.Re6 Qb8 33.Re8 Qb6 34.Qc8 Rf8 35.Rxf8 [Also good was 35.Bxf4!] 35...Rxf8 36.Qh3 fxc3 37.Qxh5+ Kg8 38.Qd5+ Kh8 39.Rxf8+ Bxf8 Draw by perpetual check, white could have worked for more. ½-½

(9) Palos,O (2480) - McLaughlin,J [B30]

11th Chicago Open Oak Brook, IL (5), 05.2002

[Albert Chow]

1.e4 c5 2.Nf3 e6 3.Nc3 Nc6 4.Bb5 Nge7 5.0-0 a6 6.Bxc6 Nxc6 7.Re1 d6 8.d4 cxd4 9.Nxd4 Be7 10.Nxc6 bxc6 11.Qg4 0-0 12.Bh6 Bf6 13.e5! dxe5 14.Rad1 Qe7 15.Ne4! Kh8 16.Be3! Rg8 17.Bc5 Qc7 18.Bd6 Qb7 19.Nxf6 gxf6 20.Qh4 Rg6 21.Bc5 Bd7 22.Be7! Kg7 23.Rd3! c5 [23...Re8] 24.Rg3! Qb4 25.Bxf6+ Kg8 [25...Kf8] 26.Re4 c4 [26...Qd2! 27.h3+] 27.Qxh7+! Kxh7 [27...Kf8 28.Qh8+ Rg8 29.Rxg8#] 28.Rh4+! Rh6 [28...Kg8 29.Rh8#] 29.Rg7+ Kh8 30.Rxh6# 1-0

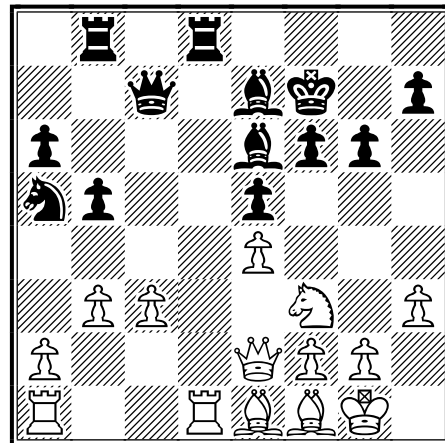
(10) Palos,O (2350) - Rohrbaugl,T (2000)

[B31]

Illinois Open (3), 02.09.2001

[Albert Chow]

1.e4 c5 2.Nf3 Nc6 3.Bb5 g6 4.0-0 Bg7 5.Re1 Qc7 [A good alternative is 5...Nf6] 6.c3 d6 7.h3 Bd7 8.d4 b6? [It is correct to develop the kingside and castle for example: 8...Nf6!] 9.Bf1 e5 10.Na3 a6 11.dxc5 dxc5 12.Nc4 b5 13.Ne3 [Not 13.Nd6+? Ke7 trapping the Nd6.] 13...Nge7 14.Nd5! Qb7 15.Bg5! Be6 16.Nxe7! [Not 16.Nf6+ Kf8! threatening h6.] 16...Nxe7 17.Qd6! Nc6 18.Qxc5± f6 19.Be3 Bf8 20.Qb6 Qc8 21.Bd2 Rb8 22.Qe3 Na5 23.b3! Kf7 24.Qe2 Be7 25.Red1 Rd8 26.Be1 Qc7 Osman is very accurate in maintaining his advantage by preventing black from any active counterplay.



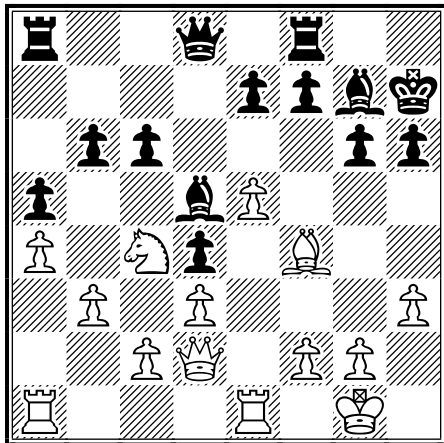
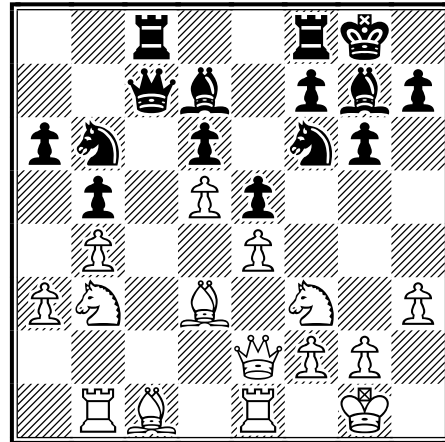
27.Rxd8 Rxd8 28.Rd1 Rxd1 29.Qxd1 Nc6 30.Bd3 Bc5 31.Qe2 Qb6 32.Nh2 Nd8 33.Ng4 Bxg4 34.Qxg4 Ne6 35.g3! h5 36.Qe2 Ng5 37.h4 Ne6 38.b4! Bd6 39.a4! Nc7 40.Qa2+ Kf8 41.Bd2 Qc6 42.axb5 axb5 43.Bb1 Be7 44.Qb3 Kg7 45.Ba2 Qe8 46.Be3 g5 47.Kf1 Qf8 48.Ke2 Kg6 49.f3 Ne8 50.hxg5 fxc3 51.Qd5 g4 52.fxc3 hxg4 53.Qe6+ Nf6 54.Qxe5 Nh5 55.Qe6+ black resigns 1-0

(11) Palos,O - Tsyganov,I [B31]

Elmhurst class m/x (4), 23.03.2003

[A.Chow]

1.e4 c5 2.Nf3 Nc6 3.Bb5 g6 4.0-0 Bg7 5.Re1 Nf6 6.Nc3 0-0 7.e5 Ng4 8.Bxc6 dxc6! 9.h3 Nh6 10.d3 Nf5! 11.Bf4 Nd4 12.Ne4 b6 13.a4 a5 With a half point lead on the field going into the last round, Tsyganov demonstrates thematic opening moves to obtain a solid middlegame. 14.Ned2 h6 15.Nc4 Be6 16.b3 Bd5 17.Nxd4 cxd4 18.Qd2 Kh7 White could stay solid and maintain the balance, but Osmand wanted more and took the risky decision to weaken the pawn structure.



19.b4? Bxc4! 20.dxc4 axb4 21.Qxb4 Ra5 22.Rab1 c5 23.Qb3 [23.Qxb6 Qxb6 24.Rxb6 Rxa4 and Rxc4 favors black.] 23...Qc7 24.Bd2 Ra7 25.e6 Qc6! 26.a5 bxa5 27.Qa3 fxe6 28.Rb5 a4 29.Rxc5 Qd6 30.Bb4 Qf4! 31.Rf1 Qe4! Centralization. 32.Qa2 Qe2 Threatening 33...d3 33.Qa3 Qxc2 34.Rc6 Qe4 35.Rb6 d3! 36.c5 Qe2 37.Qc1 Bd4! 38.Be1 a3 39.Rb4 a2 40.Bc3 Bxc3 41.Qxc3 Qxf1+! With this win over an IM, Igor gained clear first prize and confirmed his status as a Master. Congratulations! 0-1

(12) Palos,O (2346) - Riddell,J (2061) [B50]

Illinois Open (5), 03.09.2001

[Albert Chow]

1.e4 c5 2.Nf3 d6 3.c3 Nf6 4.h3 g6 [Not 4...Nxe4?? 5.Qa4+] 5.Bd3!? Bg7 6.0-0 Nc6 7.Bc2 0-0 8.a3 [Avoiding 8.d4 cxd4 9.cxd4 Nb4!] 8...Qc7 9.d4 cxd4 10.cxd4 e5! 11.d5 Na5 12.Bd3 Bd7 13.Nbd2 b5 14.Re1 Rac8 Black has equalized from the opening and gains counterplay in the style of Chigorin's variation of the Ruy Lopez. 15.Qe2 a6 16.b4 Nc4 17.Rb1 Nb6 18.Nb3

18...Nbx5! 19.exd5 e4! 20.Bb2 [If 20.Bxe4 Nxe4 21.Qxe4 Bf5 skewer.] 20...exd3 21.Qf1 Nxd5 22.Bxg7 Kxg7 23.Qxd3 Qc4 24.Qd2 Nc3 25.Qb2 Kg8 26.Rbc1 Na4 27.Qb1 Nc3 28.Qb2 Na4 29.Qb1 Nc3= Black, the lower rated player, in effect offers a draw by three time repetition. 30.Qc2 Bf5 31.Qb2 Na4 32.Qa2 Nc3 33.Rxc3? [Correct was 33.Qb2 going for repetition.] 33...Qxc3 34.Nbd4 Qc4 35.Qd2 Bd7 36.Qf4 Rfe8 Black offered a draw with a big material advantage. 1/2-1/2

(13) Palos,O (2450) - Aramil,W (2100) [B51]

Loncarevic memorial. (2), 26.04.2003

[A.C.]

1.e4 c5 2.Nf3 d6 3.Bb5+ Nd7 4.d4 Ngf6 5.Bxd7+ [5.Nc3 is good.] 5...Bxd7 6.e5 Nd5 7.dxc5 Qa5+ 8.c3 Qxc5 9.0-0 e6 10.Na3 b5 11.Nc2 Rd8 12.Qe2 a5 13.Re1 Be7 14.Ncd4 dxe5 15.Nxe5 b4 16.Nb3 Qc7 17.c4 Nf6 18.Bf4 Qa7 19.Rad1 0-0 20.Nd4 Qb6 21.Ndf3 Bc8 22.b3 h6 23.Be3 Qc7 24.Bd4 Bb7 25.Qe3 Qc8 26.h3 Ne4 27.Bb6 Bc5 28.Bxc5 Qxc5 29.Rd4 Rxd4 30.Qxd4 Qxd4 31.Nxd4 Ra8 the remaining moves were not recorded due to both players blitzing near the end of the game 90 time control. White eventually won. 1-0

(14) Loncarevic,R - Palos,O [C06]

Elmhurst class m/x (1), 22.03.2003

[Chow]

1.e4 e6 2.d4 d5 3.Nd2 Nf6 4.e5 Nfd7 5.Bd3 c5 6.c3 Nc6 7.Ne2 cxd4 8.cxd4 Qb6 9.Nf3 f6 10.exf6 Nxf6 11.0-0 Bd6 12.Re1 0-0 13.Nf4 Re8 Afraid of moves like 14.Ng5 or 14.Nxd5!?, International master Osmand Palos offered a draw , and white accepted. 1/2-1/2

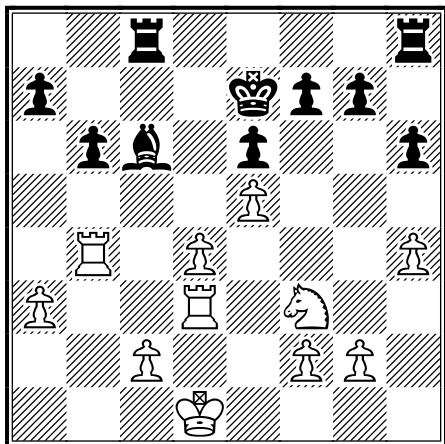
ICB Games From FIDE Master Albert Chow

(15) Gratz,G (2170) - Palos,O (2380) [C18]

U.S.Masters (3), 01.03.2002

[Albert Chow]

1.e4 e6 2.d4 d5 3.Nc3 Bb4 4.e5 c5 5.a3 Bxc3+
6.bxc3 Ne7 The main line of the Winawer variation of
the French defence. 7.h4!? Nbc6 8.Qg4 Qa5 9.Bd2
Qa4 10.Nf3 [Gratz decides to play it safe against the
veteran IM rather than risk a bloody war with 10.Qxg7!
Rg8 11.Qxh7 cxd4 12.Nf3] 10...Kf8 11.Kd1 Both kings
diplomatically agree to forfeit their right to castle,
bravely guarding pawns against the enemy queen.
11...Bd7 12.Qf4 h6 13.Bd3 Na5 [Better was the solid
13...b6!?] 14.dxc5! Qc6 15.Be3 Nc4 16.Bxc4 dxc4
17.Qxc4 Nd5 18.Qd4 Rc8 19.Re1 Ke8 20.Re2 [Better
was 20.Rb1!] 20...Nxe3+ 21.Rxe3 Qxc5 22.Rb1 b6
23.Rb4 Ke7 24.Rd3 Qxd4 25.cxd4 Bc6



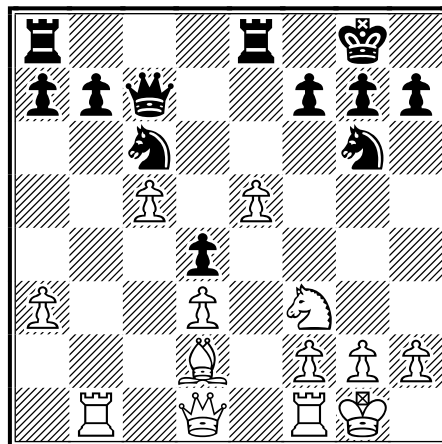
26.Kd2? [After 26.Nd2! white maintains his extra
pawn.] 26...Be4! 27.Rc3 Rxc3 28.Kxc3 Rc8+ 29.Rc4
Rxc4+ 30.Kxc4 Bxc2= Equalizing the endgame.
31.Kb5 Bd3+ 32.Kc6 Be4+ 33.Kb5 Bb7 34.Nd2 Kd7
35.f3 Kc7 36.Nc4 a6+ 37.Kb4 Bc6 38.Ne3 Bd7 39.g4
Bc6 40.f4 Be4 41.Nc4 a5+ 42.Kc3 Bf3 43.g5 hxg5
44.fxg5 Bh5 45.Ne3 Kc6 46.Ng2 Bf3 47.Nf4 g6
48.Kc4 b5+ 49.Kc3 Bg4 50.Kb3 draw agreed. 1/2-1/2

(16) Firman,N - Palos,O [C19]

Master Challenge (4), 13.07.2003

[Albert Chow]

1.e4 e6 2.d4 d5 3.Nc3 Bb4 4.e5 c5 5.a3 Bxc3+
6.bxc3 Ne7 7.Nf3 Qa5 8.Bd2 Nbc6 9.c4!? Qc7
10.dxc5!? 0-0 [10...Nxe5 11.Bc3] 11.cxd5 exd5
12.Be2 Ng6 [12...Nxe5 13.Nxe5 Qxe5 14.0-0] 13.0-0
Bf5 [13...Ngxe5] 14.Rb1 d4 15.Bd3 Bxd3 16.cxd3
Rfe8



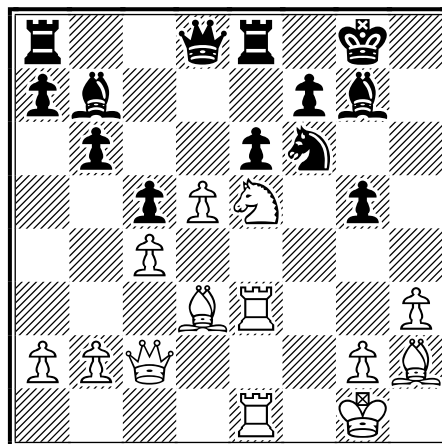
17.Re1 Nf8? [17...Ncxe5] 18.Qb3 Rab8 19.Ng5 Ne6?
[19...Rxe5! =] 20.Nxe6 fxe6 21.f4 Qf7± 22.Qc4 Rbd8
23.Re4 Rd5 24.Qb5 Re7 25.Rf1 Rc7 26.f5 exf5 27.e6
Qe7 28.Qb3 fxe4 29.Qxd5 e3 30.Be1 Rc8 31.Bh4! e2
[31...Qxh4 32.e7+ Kh8 33.Rf8+ Rxf8 34.exf8Q#]
32.Bxe7 exf1Q+ 33.Kxf1 Nxe7 34.Qxb7 Kf8?
35.Qf3+ black resigned. 1-0

(17) Palos,O (2358) - Quan,Z (2145) [D00]

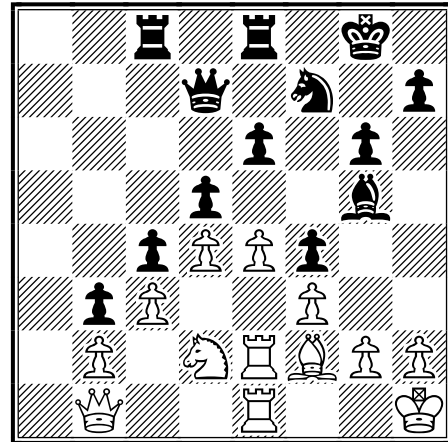
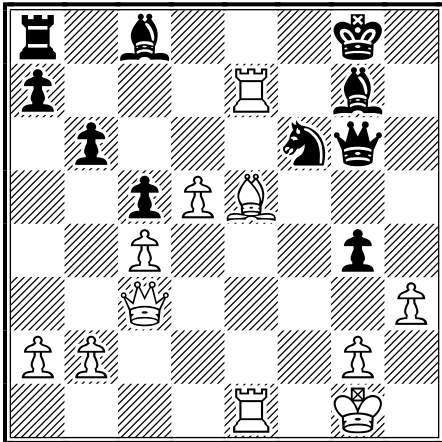
Illinois open (7), 02.09.2002

[Albert Chow]

1.d4 Nf6 2.Nf3 g6 3.Nc3 d5 4.Bf4 c6 5.Qd2 h6 6.e3
Bg7 7.h3 Nbd7 8.Bd3 0-0 9.0-0 Kh7 10.Rfe1 b6
11.e4! dxe4 12.Nxe4 Bb7 13.c4 Nxe4 14.Rxe4 c5
15.d5 Nf6 16.Re3 Nh5 17.Bh2 Re8 18.Rae1 Kg8
19.Qc2 g5 20.Ne5 Nf6 21.f4! e6 22.fxg5 hxg5



23.Nxf7! Kxf7 24.Bg6+ Kg8 25.Bxe8 Qxe8 26.Rxe6
Qh5 27.Re7 Bc8 28.Be5! g4 29.Qc3 Qg6



30.Rxg7+! Kxg7 31.Rf1 gxh3! 32.Bxf6+ Kh7 33.Rf2 Bd7 34.g3 Re8 35.Kh2 Bg4 36.d6 Re2 37.Rxe2 Bxe2 38.Qe5 Bg4 39.Qe7+ Kg8 40.Qd8+ Kf7 41.Qc7+ Kf8 [Not 41...Kxf6? 42.Qe7+ Kf5 43.d7+!] 42.Qb8+ Qe8 43.Be7+ Kf7 44.Qb7 Qd7 45.Qa8 Qc8 46.Qd5+ Qe6 47.Qd2 Ke8 48.Qc2 Qf5 49.Qd2 Kd7 50.Bg5 a6 51.Bf4 Qe4 52.b3 Be2 53.Qd5 Qxd5 54.cxd5 Bg4 55.Be5 b5 Zhe has done an excellent job of defence, earning him a hard fought draw agreed due to opposite color bishops. ½–½

34.exd5 exd5 35.Rxe8+ Rxe8 36.Rxe8+ Qxe8 37.Qe1 Qxe1+ 38.Bxe1 Be7 The ending is good for black thanks to his advanced pawn chain. 39.Nb1 Bd6 40.Bd2 Kg7 41.Kg1 Kf6 42.Kf2 Kf5 43.Bc1 h5 44.Nd2 g5 45.Ke2 Nh8 46.Nf1 Ng6 47.Nd2 Ne7 48.Kf2 Nc8 49.Ke2 Nb6 50.Kf2 Na4 51.Nb1 g4 52.Ke2 Nb6 53.Nd2 Na8 54.Nb1 Nc7 55.Nd2 Ne6 56.Kf2 Be7 57.Kf1 Bf6 58.Kf2 g3+! 59.Kg1 [If 59.hxg3 fxg3+ 60.Kxg3 Nf4] 59...Nxd4! 60.cxd4 Bxd4+ 61.Kh1 Be3 62.hxg3 Bxd2 63.Bxd2 d4 64.Bc1 c3 white resigns 0–1

(18) Quan,Z (2010) - Palos,O (2350) [D03]

Master Challenge (5), 24.06.2001

[Albert Chow]

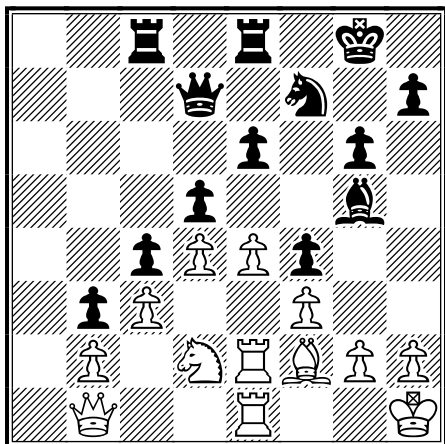
1.d4 Nf6 2.Nf3 e6 3.Bg5 The Torre attack. 3...c5 4.e3 Qb6! 5.Qc1 Ne4! 6.Bf4 Nc6 7.Bd3 d5 8.c3 Bd7 9.0–0 Be7 10.Nbd2 f5! The black pawn structure transposes to the Stonewall formation of the Dutch defence. 11.Ne5 Nxe5 12.Bxe5 0–0 13.f3 Nd6! 14.Kh1 Nf7 15.Bg3 Rac8 16.Qc2 Bb5! Trading off the bad Dutch bishop. 17.Bxb5 Qxb5 18.Nb3 Qa4 19.Qe2 c4! 20.Nd2 Qc2 21.Rab1 Bg5 22.Rfc1 Qa4 23.a3 Qd7 24.Re1 b5 25.e4 f4! 26.Bf2 Rfe8 27.Qd1 a5 28.Qc2 Be7 29.Re2 b4! 30.axb4 axb4 31.Rbe1 b3! 32.Qc1 Bg5 33.Qb1 g6!

(19) Quan,Z (2010) - Palos,O (2350) [D03]

Master Challenge (5), 24.06.2001

[Albert Chow]

1.d4 Nf6 2.Nf3 e6 3.Bg5 The Torre attack. 3...c5 4.e3 Qb6! 5.Qc1 Ne4! 6.Bf4 Nc6 7.Bd3 d5 8.c3 Bd7 9.0–0 Be7 10.Nbd2 f5! The black pawn structure transposes to the Stonewall formation of the Dutch defence. 11.Ne5 Nxe5 12.Bxe5 0–0 13.f3 Nd6! 14.Kh1 Nf7 15.Bg3 Rac8 16.Qc2 Bb5! Trading off the bad Dutch bishop. 17.Bxb5 Qxb5 18.Nb3 Qa4 19.Qe2 c4! 20.Nd2 Qc2 21.Rab1 Bg5 22.Rfc1 Qa4 23.a3 Qd7 24.Re1 b5 25.e4 f4! 26.Bf2 Rfe8 27.Qd1 a5 28.Qc2 Be7 29.Re2 b4! 30.axb4 axb4 31.Rbe1 b3! 32.Qc1 Bg5 33.Qb1 g6!



34.exd5 exd5 35.Rxe8+ Rxe8 36.Rxe8+ Qxe8
 37.Qe1 Qxe1+ 38.Bxe1 Be7 The ending is good for
 black thanks to his advanced pawn chain. 39.Nb1 Bd6
 40.Bd2 Kg7 41.Kg1 Kf6 42.Kf2 Kf5 43.Bc1 h5
 44.Nd2 g5 45.Ke2 Nh8 46.Nf1 Ng6 47.Nd2 Ne7
 48.Kf2 Nc8 49.Ke2 Nb6 50.Kf2 Na4 51.Nb1 g4
 52.Ke2 Nb6 53.Nd2 Na8 54.Nb1 Nc7 55.Nd2 Ne6
 56.Kf2 Be7 57.Kf1 Bf6 58.Kf2 g3+! 59.Kg1 [If
 59.hxg3 fxg3+ 60.Kxg3 Nf4] 59...Nxd4! 60.cxd4
 Bxd4+ 61.Kh1 Be3 62.hxg3 Bxd2 63.Bxd2 d4
 64.Bc1 c3 white resigns 0-1

(20) Dean, J - Palos, O [D37]

Midwest class (4), 20.10.2002

[Albert Chow]

1.d4 Nf6 2.c4 e6 3.Nc3 d5 4.Nf3 Be7 5.Bf4 c6 6.e3
 Nbd7 7.c5 Nh5 8.Bd3 Nxf4 9.exf4 h6 10.0-0 b6
 11.b4 bxc5 12.bxc5 Qa5 13.Qd2 Qc7 14.Rfe1 0-0
 15.Bc2 Re8 16.Ne5 Nf8? 17.Nxc6! Bf6 [17...Qxc6?
 18.Ba4 White has the material advantage, but Osmand
 the IM also has some tricks up his sleeve and never
 goes down without a fight!] 18.Ne5 Ba6 19.Rab1 Reb8
 20.Bd3 Bxd3 21.Qxd3 Bxe5 22.fxe5 Qa5 23.g3 Ng6!
 24.Nb5 Ne7! 25.Nd6 Nc6 26.Qf3 Rf8 27.Red1 Qxa2
 28.Rb7 Nd8 29.Rdb1? Nxb7 30.Rxb7 Qa1+ 31.Kg2
 Qxd4 and black won. 0-1

(21) Quan, Z (2145) - Palos, O (2358) [E10]

Master challenge (5), 14.07.2002

1.d4 Nf6 2.c4 e6 3.Nf3 c5 4.d5 b5 The Blumenfeld
 gambit. 5.dxe6 fxe6 6.cxb5 d5 7.e3 Bd6 8.Be2 0-0
 9.0-0 Bb7 10.Nbd2 Qe7 11.Qc2 Nbd7 12.b3 e5
 13.e4! Nxe4 14.Nxe4 dxe4 15.Bg5 Nf6 16.Nd2 Kh8
 17.Bc4 Qe8 18.Bxf6 gxf6 19.Nxe4 Qg6 20.f3 Be7
 21.Bd3 f5 22.Ng3 Bc8 23.Rae1 Bd6 24.Qb2 c4
 25.bxc4 Bc5+ 26.Kh1 Bd4 27.Qb4 Be6 28.Qe7 Rf6
 29.Nh5 Rf7 30.Qd6 Rg8 31.Nf4 Qg5 32.Qxe6 exf4
 33.Re2 Rf6 34.Qd5 Be3 35.Qe5 Rd8 36.Bc2 Qg7
 37.Bb1 Qf7 With both players in time pressure, the

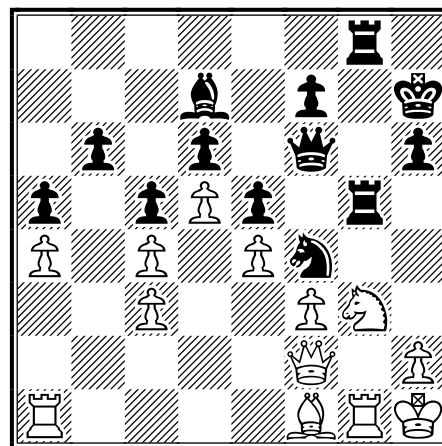
remaining moves were not recorded, but white translated his advantage into a win. 1-0

(22) Aramil, W - Palos, O [E32]

Illinois Open (4), 02.09.2001

[Albert Chow]

1.d4 Nf6 2.c4 e6 3.Nc3 Bb4 4.Qc2 b6!? 5.e4 Bb7
 6.Bd3 Bxc3+! 7.bxc3 d6 8.Nf3 [Maybe white should
 launch a four pawn attack with 8.f4!?] 8...Nbd7 9.Bg5
 h6 10.Bh4 e5 11.0-0 Qe7 12.Nd2 g5 13.Bg3 Nh5
 14.Rfe1 c5 15.Nb3 Nf4 16.a4 a5 17.Bf1 Nf6 18.Bxf4
 gxf4 19.f3 0-0 20.Qf2 Kh7 21.Nd2 Bc6 22.Reb1
 Rab8 23.Bd3 Rg8 24.Kh1 Rg5 25.Rg1 Rbg8 26.Nf1
 Nh5 27.g4 fxg3 28.Nxg3 [If 28.hxg3 Nf4!] 28...Nf4
 29.Bf1 Qf6 30.d5 Bd7

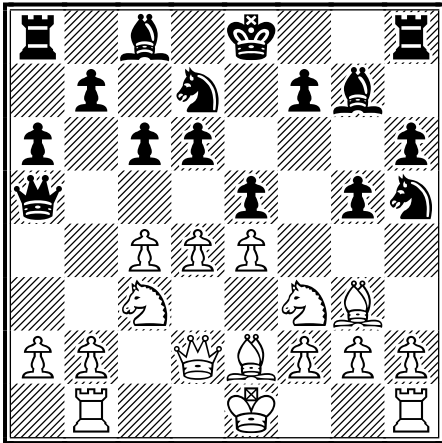


31.Qe3 h5 32.Ne2 Rxc1+ 33.Nxc1 h4 34.Ne2 Ng6
 35.Ng1 Nf4 36.Ne2 Nh5 37.Ng1 Qg6 38.Nh3 Kh8
 39.Ra2 Qf6 40.Ra1 Rg6 41.Rb1 Qd8 42.Ra1 Kg7
 43.Ra2 Qc8 44.Nf2 h3 45.Rb2 Nf4 46.Nd3 Nxd3
 47.Qxd3 Qd8 48.f4 exf4 49.Bxh3 Qh4 50.Bf1 Bxa4
 51.Rg2 Bd7 52.Rxc6+ fxg6 53.Qe2 Qf6 54.Qb2 Qd8
 55.Qe2 Qe8 56.Bg2 Qe5 57.Qb2 Bg4 58.Qxb6 f3
 59.Qc7+ Kh6 60.Bf1 Qxe4 white resigns 0-1

! (1) Fagan, J - IM Young, A [A53]

Amateur team 2004, 2004 [Young]

1.d4 Nf6 2.c4 d6 3.Nf3 c6 4.Nc3 Nbd7 Old Indian
5.Bg5 h6 6.Bh4 [if 6.Bxf6 Nxf6 7.e4 Qa5 8.Bd3 e5
9.0-0 Bg4 10.dxe5 dxe5 11.h3 Bh5³] 6...g5 7.Bg3 Bg7
8.e4 Qa5 with Nxe4 idea 9.Qd2 Nh5 opening my dark
square Bishop and attacking the bishop. 10.Be2 a6 a
waiting move and to prepare b5 break. 11.Rb1 e5

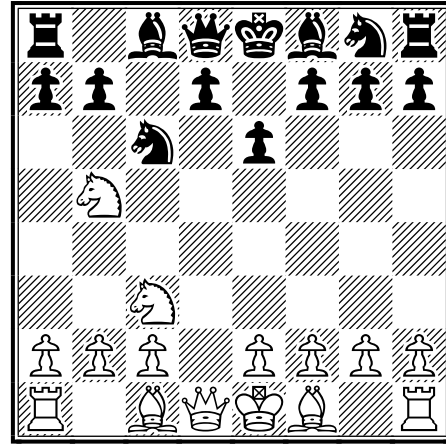


Fighting for the center control d4 & f4. 12.b4 Qd8?
[12...Qc7 if 13.c5 Nxg3 14.hxg3 exd4 15.Nxd4 dxc5
16.Nf5 Be5 17.Rxh6 Rxh6 18.Nxh6 cxb4 19.Rxb4
Qa5³] 13.d5 c5 14.b5 Nf4 15.Kf1 a5^μ 16.Ne1 Nb6
17.Nc2 f5 18.Bxf4 exf4 19.Bh5+ Kf8 20.Be2 Be5
21.Bd3 Qf6 22.Rb3 Kg7 23.f3 Re8 24.Na3 a4 0-1
wins the knight or rook so white resigns. 0-1

(1) Stevanovic, M - Hernandez, H

[A00] Peoria Open 2004, 2004 [Young]

1.Nc3 Vangeet -Stevanovic 1...c5 2.Nf3 e6 3.d4 cxd4
4.Nxd4 Nc6 5.Ndb5!



5...d6 [if 5...a6 6.Nd6+ Bxd6 7.Qxd6 Qe7 8.Qg3 f6
9.Bf4 d5 10.Bd6 Qf7 11.e3 white is slightly better]
6.Bf4 e5 7.Nd5 [another good try would be 7.Bg5 Be7
8.Bxe7 Ngxe7 9.Nxd6+-] 7...Qa5+?? loses a piece
black must accept the Bishop to stay in the game.
8.Bd2 Qd8 9.Nbc7+ Kd7 10.Nxa8 Nf6 11.Nac7 Be7
12.Nxf6+ gxf6 13.Nd5 Rg8 14.g3 Ke8 15.Bc3 Bg4
16.Qd2 Qd7 17.0-0-0 a6 18.Bg2 Qf5 19.Nxe7 Nxe7
20.Qxd6 1-0 1-0

FIDE Master Albert Chow
Accepting games for the ICB
games can be sent to:

Albert Chow
3513 N Seminary, Chicago 60657. 773-248-4846,
ChowMasterAl@yahoo.com.

2004 Twin City Chess Championship

Stroyan & Elder Win 2004 Bloomington-Normal Chess Championship;

Alexander Su Wins Junior Title

by Dennis Bourgerie

Peter Stroyan, a student at Illinois State University and Dale Elder, a realtor from Bloomington, IL, each scored 5-0 to take joint 1st place in the 2004 Twin City Chess Club Championship held in January and February of this year. Eric Meier of Normal finished 3rd with 4 wins and 1 loss. Don Robinson and Luke Nayak had 3 points, which was the top score for players rated under 1200. Luke Davis had the best score for an unrated player with 2 points. The competition was a series of 6 games, played on successive Tuesdays in January and February, with the best 5 scores counting as the final result.



Peter Stroyan

Peter had previously been a member of the 1999 University High School of Normal State Championship chess team. In that 1999 tournament, he scored 7 wins and 0 losses, playing 3rd board for U High. In the 2004 Amateur Team Championship, he scored 5-0, playing 3rd board for his team.



Dale Elder

This was the 2nd championship tie in a row for Dale, as in 2003 he also scored 5-0 to tie for first place honors.



Above from left: Kent Frantz, Jo-Jo Feng, Alex Su, Yang-Yang Feng and Max Nelson.

Alexander Su Scored 5-0 for the top result among the junior players. Tied for 2nd place were Aaron LeBow and Krishna Kallakuri, each with 4 wins and 1 loss.

The winners in some of the previous years were: 2003 Adult Championship; Dale Elder and Jason Chien of Bloomington, each with 5-0;

2003 Junior Championship; Matt May of Normal, and Tim Foote from Carlock, each with 8 wins and 2 losses;

2002 Adult Championships; Colley Kitson of Clinton, IL, Suresh Kanniah from Bloomington, IL and Reverend William Barton of Bloomington, IL each with 4 points.

The 2004 adult tournament had 43 participants; the junior division had 38 participants. Garrett Scott of Normal, IL and myself directed both tournaments, with assistance from Don Robinson, Marc LeBow and Charles Su.

2004 Twin City Chess Championship

Here are a couple of the crucial games from the competition:

Stroyan, Peter (1349)- Chien, Jason (1413) [B76]

2004 Twin City Chess Club Championship
Bloomington, IL, 02.2004

Jason was K-3, National Youth Action champion in Rockford, IL in 2002 with a score of 8.5-0.5 and was TCCC co-champion in 2003.

**1.e2-e4 c7-c5 2.Ng1-f3 Nb8-c6 3.d2-d4 c5xd4
4.Nf3xd4 Ng8-f6 5.Nb1-c3 d7-d6 6.f2-f3 g7-g6
7.Bc1-e3 Bf8-g7 8.Qd1-d2 0-0 9.g2-g4**

[9.Bf1-c4 Bc8-d7 would be the Yugoslav attack against the Sicilian Dragon.]

9...Qd8-a5 10.h2-h4 Qa5-b4

Black puts extra pressure on the d4 knight and on the b2 pawn.

11.Nd4-b3

[11.h4-h5? would be a mistake for White as the Dragon bishop comes to life. 11...Nf6xg4! 12.f3xg4 Nc6xd4 13.Be3xd4 Bg7xd4]

11...Nc6-e5 12.Bf1-e2 Ne5-c4 13.Qd2-d4 Nc4xe3

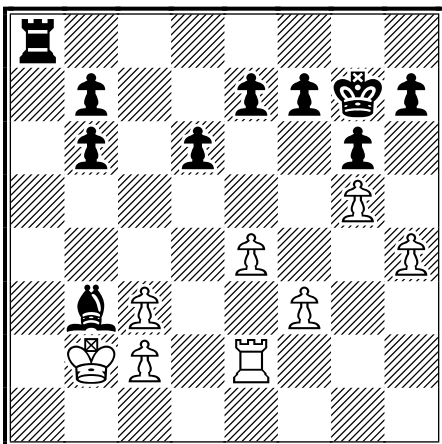
[Fritz says that Black has a tactical shot here. 13...Nf6xg4 14.Qd4xc4 Qb4xc4 15.Be2xc4 Ng4xe3 16.Bc4-d3 Ne3-g2+ 17.Ke1-d2 Bc8-e6]

14.Qd4xe3 Qb4-b6 15.Qe3xb6 a7xb6 16.g4-g5 Nf6-h5 17.a2-a3 Bc8-e6 18.0-0-0 Bg7xc3 Black

now wins the a3 pawn.

19.b2xc3 Nh5-g3 20.Rh1-h2 Ng3xe2+ 21.Rh2xe2 Ra8xa3 22.Kc1-b2 Rf8-a8 23.Rd1-a1 Ra3xa1 24.Nb3xa1 Kg8-g7 25.Na1-b3 Be6xb3

This trade of pieces looks suspicious, because it makes the white pawns on the c-file healthy.

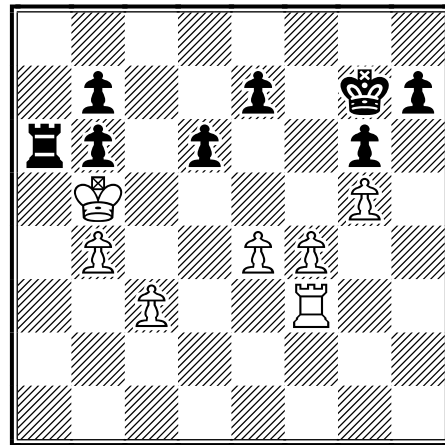


**26.c2xb3 f7-f6 27.b3-b4 f6xg5 28.h4xg5 Ra8-f8
29.Re2-f2 Rf8-f4 30.Kb2-b3 Rf4-h4**

[30...b6-b5, denying the White king access to a4 and c4 might be better for Black.]

31.Kb3-a4 Rh4-h1 32.f3-f4 Rh1-c1 33.Rf2-f3 Rc1-a1+ 34.Ka4-b5 Ra1-a6

The White rook is active and the black rook is passive and that is White's advantage despite having 1 pawn less.



**35.Rf3-d3 Kg7-f7 36.e4-e5 d6xe5 37.f4xe5 Kf7-e6
38.Rd3-h3 Ke6xe5 39.Rh3xh7 Ke5-e6 40.Rh7-g7
Ke6-f5 41.Rg7xe7 Kf5xg5 42.Re7xb7 Ra6-a3
43.Rb7-c7 Kg5-h5 44.Kb5xb6 g6-g5 45.c3-c4 g5-g4
46.b4-b5 g4-g3 47.Rc7-g7 Kh5-h4 48.c4-c5**

The connected White pawns will carry the day.

48...Kh4-h3 49.Kb6-b7 g3-g2 50.c5-c6

[50 Rg7xg2 will also win for White as the 2 connected passed pawns are too much for Black to stop. 50...Kh3xg2 51.c5-c6 Kg2-f3 52.c6-c7 Ra3-c3 53.c7-c8Q Rc3xc8 54.Kb7xc8]

**50...Ra3-g3 51.Rg7xg3+ Kh3xg3 52.c6-c7 g2-g1Q
53.c7-c8Q Qg1-g2+ 54.Qc8-c6 Qg2-b2 55.b5-b6
Qb2-g7+ 56.Qc6-c7+**

Crosscheck and wins.

56...Qg7xc7+ 57.b6xc7 and Black resigned. 1-0

Cather, Evan (1409) - Elder, Dale (1559) [B33]

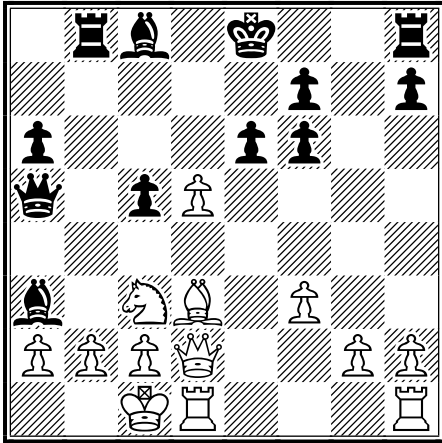
2004 Twin City Chess Club Championship Normal, IL
(3), 01.2004

Evan is a strong scholastic chess player and has won several Junior High School tournaments.

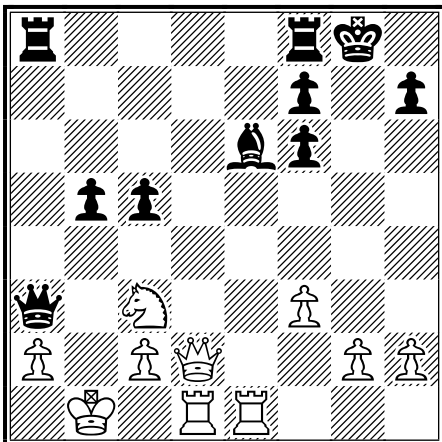
**1.e2-e4 c7-c5 2.Ng1-f3 Nb8-c6 3.d2-d4 c5xd4
4.Nf3xd4 Ng8-f6 5.Nb1-c3 a7-a6 6.Bc1-e3 e7-e6
7.Qd1-d2 Bf8-b4 8.f2-f3 d7-d5 9.Nd4xc6 b7xc6**

If White castles queenside the half-open b-file will give Black counterplay.

**10.0-0-0 Qd8-a5 11.Bf1-d3 Ra8-b8 12.Be3-d4 c6-c5
13.Bd4xf6 g7xf6 14.e4xd5 Bb4-a3!** If White captures the bishop, he is checkmated.



15.Bd3-b5+ 16.b2xa3 Qa5xa3+ 17.Kc1-b1 Rb8-a8
 The Black attack shifts to the a2 pawn. 18.d5xe6
Bc8xe6 19.Rh1-e1 [According to Fritz, 19.Qd2-d6
 gives White some needed counterplay. 19...Qa3-b4+
 (19...Be6xa2+ 20.Nc3xa2 Qa3xa2+ 21.Kb1-c1 Qa2-
 a1+ 22.Kc1-d2 Qa1-e5 23.Rh1-e1 Ra8-d8
 24.Re1xe5+ f6xe5 25.Qd6xd8+ Ke8xd8) 20.Kb1-c1
 Qb4xc3 21.Qd6-c6+ Ke8-f8 22.Qc6xa8+ Kf8-g7
 23.Qa8-e4 Qc3-a3+ 24.Kc1-d2 Rh8-e8 25.Qe4-d3]
19...0-0



20.Re1xe6 f7xe6 21.Qd2-d7 Qa3-b4+ 22.Kb1-c1
 Qb4xc3 23.Qd7xe6+ Kg8-h8 24.Rd1-d7 Qc3-a1+
 25.Kc1-d2 Rf8-d8
 Stops any White counterplay cold.
 26.Kd2-e3 Rd8-e8 27.Rd7-e7 Qa1-c3+ 28.Ke3-f2
 Qc3xc2+ 29.Kf2-f1 Qc2-d1+ 30.Kf1-f2 Qd1-d4+
 It is helpful for Black to guard the f6 pawn. 31.Kf2-
 f1 Re8xe7 32.Qe6xe7 Ra8-d8 33.Qe7-b7 Qd4-c4+
 34.Kf1-g1 Rd8-d2 And Black has a large material
 advantage and went on to win the game. 0-1

Time to renew the ICA?

The mailing label on the back cover of your Illinois Chess Bulletin shows the expiration date of your ICA membership. You may renew, or join for the first time, by filling out the form below (photocopy OK). Make check payable to Illinois Chess Association and mail to ICA Membership,

Chris Baumgartner
 107 S. Maple Lane
 Prospect Hts, IL
 60070

Name _____
 USCF ID _____
 Address _____
 City-State-Zip _____
 Phone _____
 Email _____

Membership type:

- Century Club Patron \$100 (a)
- Gold Card Patron \$50 (a)
- Patron \$35 (a)
- Regular adult \$18
- Junior (under 20) \$14
- Additional family member \$6 (b)
- ICA-affiliated club \$25 (a) (c)

Birth date (required if Junior) _____

(a) Receives ICB by first-class mail.

(b) No magazine. Must be related, and living at same address, as a Regular (or higher) ICA member.

(c) For chess clubs and other chess-related organizations. Includes the right to run ICA Tour events. No membership privileges

2004 Illinois State High School Team Championship

The ICB covers the Maine South Chess Team as they compete for an 8th State Title

Article By: Nathan Jones

Pictures By: Eric Strauts



**Saturday, 2/13/2003
12:30pm**

As I looked for the Maine South team among the thousands of people there, I was reminded that chess truly is a game for every race and creed. Among the sea of teenagers I found everyone from your typical chess nerd with disheveled hair and mismatched clothes to one particular young man with too many piercings to count, combat boots, and a leather skirt.

After searching in vain for the team in the 2 large skittles rooms, I finally found them in the tournament room. All the games were played in a huge room that looked like an empty warehouse, which held over 50 twenty-four foot tables. In the back of the room, tables 1 through 4 were roped off and set apart from the rest. I figured I would

find the Maine South team over there. Making my way back to the top tables, I spotted the Maine South team on table 3. Pre-tournament parings had seeded the teams, and I later learned from Kevin that Maine South's #3 seeding was due to a lack of activity during the tournament season.

As I surveyed the tournament room, I found that each team had to have a team symbol or mascot to represent them. Whatever it was, it had to be placed next to board one at the head of whatever table that team was playing at. Some had small, professional-looking placards, or huge stuffed animals. Maine South's team mascot was a bone with the school name painted on it. I asked a couple of the players what it meant, but couldn't get any immediate answers.

2004 Illinois State High School Championship



The Maine South team members were already seated, and the board numbers were as follows:

- Board 1: Robert Rasmussen
- Board 2: Robert Riddle
- Board 3: John-Garett Piergalski
- Board 4: Bill Bielski
- Board 5: Mark Rokita
- Board 6: Daniel Widing
- Board 7: Ed Mueller
- Board 8: Stephanie Strauts

I saw mostly blank faces as I wondered how the first round went. A few of the guys messed with portable CD players. Once the round started my education about high school team chess began. Almost every table had additional players around it from other teams. The Maine South team had several Naperville North (the tournament's top seed) players recording their every move. I asked Kevin about this as we walked back to the skittles room. He said they were scouts. The teams scout one another to see if particular players will use odd openings, judge that players playing strength, or to see if the team's tactics are sound overall. There was a laptop back in the skittles room, and the games would be entered into chessbase. The sophistication was a bit overwhelming at first – I

thought the teams would just be playing chess and maybe goofing off.

After Kevin and I made our way back to the Maine South camp in the skittles room, I asked Kevin how the first round went. He said it was fine, mostly wins. I got the feeling things were proceeding as scheduled – the team was winning another tournament. I asked him why they picked a bone for a team mascot, and he said it was to honor their beginnings as the Caveman Chess Club.

2:00pm

After receiving some additional education from Kevin on high school chess tournaments, I made my way back to the tournament room. Round 2 was in full swing, and an icy stillness had fallen over the tournament room. Dozens of IHSA stewards roamed the tournament in their orange vests, silencing anyone who dared speak over a whisper. I checked the Maine South boards, and it appeared everything was fine. An hour into the 2nd round, Robert Rasmussen had used only 10 minutes of his time, and his opponent on board 1 wouldn't resign a totally lost position. Before making the final move, Robert slowly annotated the last move, writing 1-0 on his score sheet before pronouncing mate. By 2:30 Daniel was up

2004 Illinois State High School Championship

two pieces on board 6, and another rout was starting to materialize.



3:27pm

Everyone was back at camp in the skittles room by this time. Cell phones abounded, food was everywhere, and Robert Rasmussen was thumping Mark with the team bone. 2 laptops were in active use, one for chessbase and one for a remarkably unsophisticated-looking video game called Snood. At 3:45 Kevin gathered everyone around for an announcement. Naperville North had been accused of passing notes and sending text messages during play. He told the team to avoid any hint of impropriety and keep the cell phones out of sight.

Mrs. Sochu, the ever-lauded team "Mother" (and Kevin's wife), went on a food run, and bought for anyone who wanted anything. This seemed as natural as the anything else, and I wondered how much she had spent over the last 10 years on food for the team. She arrived shortly with burgers, hot-dogs and nachos. I asked Ed if light-lunches were ever in order, and he said no way: grease was the team's energy-food. I reminisced for a moment about how nice it was to have a high-school metabolism.

3:45pm

Building up to round 3. The team remained a little quiet and slightly up-tight. Kevin had told them they were still the tournament leaders, and I wondered what it was like for them, having been in this situation almost every tournament for the last 10 years. The goal seemed to be, at this point, to play well against

the teams they knew they could beat, knowing the real games wouldn't start till tomorrow. Due to the accelerated pairings, round 3 should be the team's easiest game, but Kevin explained that really wasn't the right mindset. They just needed to continue to do their best. I sensed a hint of exhaustion in the air as some of the players closed their eyes before departing for the tournament room again. As "easy" as the team scores made it seem, they would soon begin their 5th hour of chess today.



4:30pm

Round 3 was in full swing, and Maine South's opponents were dropping like flies. I decided to track down Mrs. Sochu and dig up some information on the team's younger days.

Deborah Sochee was back at camp, holding a large book and talking to Mrs. Bielski, Bill's mother. I asked Deborah what it had been like, year after year, sitting in these tournaments. She said it had been wonderful, but could not believe how big everyone had gotten. This was something I had noticed also. Maine South's team had 6 seniors, and several of them were over 6 foot tall, towering over most of the other participants. Deborah went on for a while about how little they all were, and how they used to cry a lot in elementary school – particularly Robert Riddle, Ed Mueller, and Bill Bielski. One of her primary functions used to be comforting distraught 3rd graders. She and Mrs. Bielski said Bill used to throw up before matches, either because he was nervous or because he obtained some chocolate, which he's allergic to. Thankfully, the tears and vomiting curtailed by junior high.

2004 Illinois State High School Championship

Reminiscing finally brought a few tears to Deborah's eyes, and I could tell she cared about each of the players very deeply.

Deborah told me how the team got started. Robert Riddle, her son, had asked Kevin (his step-dad) to start a chess club at Franklin Park Elementary School. Kevin and Deborah decided to try it, and Kevin told her he knew how things would go: about 10 kids would show up. He told her to make sure to get their names, and 10 dollars for IHSA membership dues. As it turned out about 150 kids showed up. They were lined up out of the classroom and down the hall. Each week the kids would get to become different types of dinosaurs based on different packets of chess material they completed. Deborah said many of the kids attended at the behest of their parents, mostly for babysitting purposes, but that didn't deter from the quality of the instruction. After awhile teachers began goading parents to enroll some of their ADHD kids in the club, seeking to tire students overactive minds with the complications of chess. It was from that initial club, started almost 10 years ago, that the current Maine South team, now destroying another competitor, was formed.

At this point the guys (and Stephanie) started slowly streaming back into the skittles room. Deborah would see each from a distance, evaluating whether they won or lost to determine what her function would be. We saw Robert Riddle first. As soon as their eyes met he flashed a muted smile. She let out a sigh and the tension in her posture eased a bit. There were 7 more to go. The same scenario was repeated as the other players returned, each one looking for Mrs. Sochu's eyes, reassuring her that they had done well. I asked her if the sacrifice was difficult, spending so much time at so many tournaments over the years; her brow furrowed, and she finally shook her head and said it was no sacrifice. I could tell at this point what kept her coming back: it was an honor, to her, to serve her son and his friends, and to watch them grow into young men. The winning part was just extra.

6:15pm

I finished talking with Mrs. Sochu; walking back to the tournament room I found myself wishing she were my mom, too. Everyone but Ed had finished their games, and looking at his board I wasn't sure what was wrong. He had a clearly



won endgame with Kings and pawns, but didn't seem sure what to do. Round three had been the teams best of the tournament so far, winning on 7 boards to this point. I decided Ed's brain must be fried, and wondered how the other players were doing mentally. With Kevin, others and myself looking on Ed ended up drawing. Before Ed could get up from the table, we all descended on his board. Kevin gave him a quick refresher on counting squares rather than moving the pieces in your head. I followed Ed back to the Maine South camp.

It seemed at this point that the pressure of the tournament had taken its toll on the team, and the situation at the camp in the skittles room verified my suspicion. Robby Rasmussen was playing some of the freshman, King Live, his clock set for 30 seconds while his opponents had 3 minutes. He was mostly winning. Mark, Robert Riddle, Dan, and John were gathered around the board throwing macadamia nut shells at the players and each other. Robert and his various opponents moved so fast their hands were just blurs. I thought they might pound the clock through the table if they hit it any harder. There were nuts and shells all over the board. The team bone had come back out and was assaulting someone. Finally, I thought, guys were finally acting like they were in high school. Everyone seemed to be finally enjoying themselves, and the mood was rather giddy. I think the pressure of "what could happen" was passing. The fourth round would start soon, the last one before the "money rounds" five, six, and seven the next day. There had been no early catastrophes. The dream of going out on top was still alive and well.



Round 4 was quickly approaching and Kevin knew the guy's needed a quick mental check. He told the guy's to clear the nuts off the board, sat down as white, and went through Ed's endgame. Just count squares, guys. It was time for a pep talk. He again told the team they were leading in points. Everything was going fine. He didn't think Naperville North was playing all that well. He spoke very positively, told them not to forget the basics. And just in case you're wondering, he said, Maine South is the best team here. The team then departed for round 6, calmed and collected for another round of domination. I left for the day, starting to feel overwhelmed at the thought of how I could possibly capture the richness and quality of the people I had met and talked with.

Sunday, 2/14/2003
12:20pm

As I drove back to the Civic Center, I was getting excited. Who doesn't want to go out on top of their game, finishing their career as the best of the best, hands down? I couldn't wait to see the looks on their faces at the awards ceremony. Lucky for me, the Maine South camp was in the same spot, so I didn't have trouble finding them. There was a business-as-usual

sense in the air as Dan told me that round 5 had gone fine, no problems; this is just what they did: win tournaments. There were no late night shenanigans to report either, although a couple players had to be roused out of bed to make the start of the round 5. Things were pretty relaxed and quiet as the players all departed for round 6. I had stayed back to get my camera and notebook situated, and I noticed Robert Rasmussen still at the table in the skittles room. Not knowing what on earth could be holding him up, asked him if he was playing this round. It turned out he was finishing a game of solitaire. I decided I wanted nerves like his someday.

I spent a lot of time at the boards during round 6. I wondered if I was crossing some invisible journalistic line by secretly rooting the team on in my head. I tried figuring out where the guys would move, but their positional-style of play left me quite puzzled most of the time. This was something I noticed earlier in the tournament. I had asked the players if they had a strategy for winning, and all of them said no. But when I started going through their biographies, almost everyone said they liked the English opening, which I found odd. Almost every round the entire team (as white) played either the English or the Kings Indian Attack. I asked Kevin about this, and he said the team started doing it on their own.



As the tournament progressed, this began to make more and more sense to me.

The Maine South team looked distinctively different than the other teams, in that they all appear to be normal. I have found that you can tell when chess is the *only* thing a person does, because it starts to cram tactics and positions and opening strategy into the portions of the brain normally reserved for personal and social development. We've all seen people who have lost all possibility of being normal because they can't tear themselves away from the board long enough to do anything else.

This was not the case with these guys. Chess was something they learned when they were young, and used to do a lot more. This was reflected in Maine South's tournament participation the last two years. Last year, when they won their 7th State Championship in 9 years, the team tournament record was 27 and 1. This year, it was 8 and 2, almost two-thirds less. These were champions in their twilight, busy with college applications and other extra-curricula's that they chose to participate in. The English and KI offered a solid opening with little theory, saving them valuable time. It also meant their opponents

would be forced to just play, rather than count on book memorization for subtle advantages.

The 6th round ended like the previous 5, and it seemed like everyone was confident and excited. There was a lot of jabbering at the camp, and the team seemed on top of everything.

3:00pm

At this point Mrs. Sochu pulled me aside and told me to look around. She said hardly anyone does what Kevin was doing now. Having put so much time and effort in already, taking the last few moments available to give them everything he possibly could. Like a true Father, he wanted them to win more than they did.

3:30pm

The clocks had begun ticking in the final round of the State Championship. Despite the critical hour, the atmosphere was strangely subdued. The scouts had done their duty, and I didn't see any of them in the tournament room.

The stark difference between the two



teams really caught my eye. Naperville North all wore matching orange and blue tie-die shirts, none of them actually filling them out. They were all much shorter and younger than the Maine South team. This was definitely experience vs. talent, and I wondered who had the upper hand.

The play was much slower this last round, so I went back to the camp to see what the support staff were up to. The freshman were playing poker for pieces, having split up 4 chess sets to gamble with. I didn't approve of such a base use of the game of Kings, but decided since they were just freshman they didn't know any better. The parents were all quiet, not sure what to do and not able to do anything as their children passed through yet another phase of growing up. I wanted to talk to Mrs. Sochu but I was afraid she would cry if I said anything, so I just went back to the boards.

4:30pm

A small crowd started gathering around table one in the tournament room. Younger players from other teams watched the games, whispering of winning moves, confident they knew

everything, all the while oblivious to the fact that there was a reason they were not playing on table one, but watching. As I moved around the table keeping tabs on the games, the crowd continued to swell. All positions seemed unclear or equal, and the championship was still up for grabs.

Throughout the tournament, the freshman had rotated on board 8. Stephanie was playing the last round, and unfortunately gave the first ground. While deflecting a check, she pinned her queen, and instantly found herself in a lost position. Bill, on board 4, soon went down a minor piece. On board 5, Mark's opponent had spent 50 minutes on one move deciding whether to go down a bishop/pawn exchange and smoke out Mark's King. He went for it.

5:00pm

By this time Stephanie and Bill had resigned, and Naperville North was up two games to none. Mark's hand was making repeated grabbing gestures as he tried to decide whether to castle Kingside or Queenside. I couldn't tell if he was bobbing his head to his CD player or deciding against the plan-at-hand. There was a gleam in the eye of Naperville North's coach as he handed out energy drinks and power bars to his players. Panic started to set in (in me, that is),



and I quickly scanned the remaining boards, looking for some hope. I didn't have a clue how I could finish this story if Maine South didn't win.

5:30pm

It was becoming harder and harder to see the boards, which were now completely surrounded by the crowd. People began gathering chairs to stand on, forming a second row of spectators around the boards. I had found some consolation in the remaining games. On board one Robert Rasmussen had exchanged 3 pawns for a minor piece, and Ed was up a rook on board 7. Mark's opponent apparently didn't examine the tactics long enough on board 5 Mark managed to castle kingside keeping the exchange and was now controlling the board. I couldn't tell what was going on with Robert Riddle and John on 2 and 3, but had a feeling that was where the tournament would be won or lost.

6:01pm

The feeling in the tournament room was sheer exhilaration. The clocks were low, hands were flying, and buttons slamming. The pressure on the top boards seemed enormous. Robert Rasmussen's opponent on board one was trying to queen his extra pawns, but was down to 5 seconds (with 5 second increment). Mark and Dan had both won by now, but now boards 2 and 3 appeared lost for Maine South. Despite a rousing, crowd pleasing blitz finish on board one, a sense of shock came over the team as the King's on boards 2 and 3 ran out of space. Maine South's wish to go out on top with an 8th State Championship went unfulfilled. The situation was not helped by some un-sportsmanlike, classless conduct on the part of a Naperville North player. Naperville North's coach had to instruct his talented but immature team to "stay positive."

6:15pm

We had made our way back to camp. I hadn't even considered speaking to anyone; I just watched and wondered how this could have happened. In the two days I spent with the team and parents, I had genuinely grown to like them



all, and wished things hadn't turned out this way. Kevin spoke to the team, keeping his bearing, and thanking them for not reacting to the incident earlier. As I looked at the 6 seniors, I was reminded of the feeling in the locker room after my last high school football game. We were all in shock that it was over, some of us crying in disbelief, knowing we'd never play another down of high school football. But there were no tears today, at least not among the players. Bill had to leave for a hockey game before the awards ceremony, and as the remainder of us made our way to the tournament room, I began to see the end of this story.

During my earlier conversation with Mrs. Sochu, she mentioned that several of the players had written about chess in their college application essays. They said that chess, with its many complications and difficulties, had taught them about life, and to live it more fully. I realized that chess was again teaching these young men about life.

As we get older, and the responsibilities of life increase, we must make choices. The six seniors on the team were not exclusive chess players. Robert Riddle had missed his last team swim-meet to come to this tournament, and Bill

was a Captain on his hockey team. Over the years the guys had been involved in a myriad of activities, and had excelled at chess anyway. They refused to miss out on what life had to offer, but instead indulged it to its fullest. I have no doubt that had they committed more time to the game, they would have won this tournament and any other they played in. But for these players life was more than 64 squares, no matter how much the game taught them about it. In the end the players paid a relatively small price for their indulgence. A State Runner Up trophy is no small accomplishment, and even now is probably growing sweeter to the Maine South team. They did very well.

The tournament came down to boards 2, 3 and 4, and it occurred to me that behind those boards sat the busiest player on the team. But I don't think Robbert Rasmussen or Mark, who had perfect scores this tournament, regretted for a moment that their friends and teammates had stretched themselves so thin. There is a deep sense of respect for each other among the teammates. I saw this most clearly as everyone who received an individual award removed it from around their neck before walking back and sitting down with the team again.

2004 Illinois State High School Championship

I heard that Fischer once said that all he could do was play chess. This will not be the fate of the players on the Maine South Chess Team. Instead, they will say that while growing up, playing varsity baseball, hockey, swimming, and excelling as students, they also played on a chess team that won 7 State Championships and 3 National Championships - and made friendships that will last long after trophies and medals have faded away

Here is a game that I, Ed Mueller, played in the 1999 National championships. Everyone on the team says that it's the highlight of my chess career, and they are probably right.

White: Ed Mueller, 1072
Black: Seth Rokasky, 1785

e4 c5 2. Nf3 d6 3. d4 exd4 4. Nxd4 Nf6 5. Nc3 a6 6. Bc4 e6 7. 0-0 b5 8. Bb3 b4 9. Ne2 Nxe4 10. Re1 Nc5 11. Nf4 Nxb3 12. Nxb3 Be7 13. Qf3 d5 14. Qg3 0-0 15. Nh5 g6 16. Bb6 Bh4 17. Qe5 f6 18. Qd4 Rf7 19. Qxh4 gxh5 20. Qxh5 gxh5 21. Qf3 e4 22. Qg3+ Kh8 23. f3 Qb6+ 24. Be3 Qc7 25. Bf4 Qb6+ 26. Be3 Qd8 27. fXe4 dxe4 28. Rad1 Rd7 29. Bh6 Qg8 30. Qf4 Qg6 31. Rxd7 Bxd7 32. Rxe4 Bc6 33. Qd2 Nd7 34. Rxb4 Rg8 35. g3 Ne5 36. Qc1 (Afraid of the fork--It's moves like these that reveal my true rating) Nf3 37. Kf2 Nxb2 38. Bf4 Qh5 39. Rb8 Rcb8 40. Bxb8 Qf3 41. Ke1 Bb5 (completely missing Qg2, threatening Nf3) 42. c4 Qf1+ 43. Kd2 Qxc4 44. Qxc4 Bxc4 45. Kc3 Be6 Here, I stopped my notation as time pressure became a big factor. With the second chance I got from Rokasky, I went on to win this in the end game.



The club Swiss championship finished in Feb. Twenty-eight players competed. Jeff Wiewel(2023) cruised through 5 rounds and and took a fairly quick draw with Paul Freidel(1839) in the last round to finish clear first with 5.5. Paul took clear second with 4.5, and won the prize for top junior, just ahead of Jeremiah Freidel (1667) and Eric Lindner (1535), both with 4.5. Junior Jesse Freidel (1684) finished with 3.0. Other juniors scored some upsets-Chandola Ankit (1504- just arrived from Texas) over Wally Alberts (1700). and Greg Kelly (711) over Mark Mcgee (1506), but the majority of the 13 juniors competing just gained experience.

Jeff met the no. 2,3,4,6,7,and 9 competitors in the standings, ducking no-one evidently. The biggest upset in the tournament was the first round looss of Paul Freide to Rudy Padilla(1501)

NO.	NAME	Rating	Rd1	Rd.2	Rd.3	Rd.4	Rd5	Rd6	SCORE
1.	Jeff Wiewel	2023	W4	W3	W6	W7	W9	D2	5.5
2.	Paul Freidel	1839	L11	W24	W13	W17	W6	D1	4.5
3.	Jeremiah Freidel	1667	W19	L1	D11	W16	W17	D5	4.0
4.	Eric Lindner	1535	L1	H	W19	W11	D7	W14	4.0
5.	Walter Alberts	1700	W13	L17	W12	L6	W18	D3	3.5
6.	Jesse Freidel	1684	W18	W11	L1	W5	L2	D7	3.5
7.	Clive Hutchby	1670	W26	D9	X	L1	D4	D6	3.5
8.	Kabirul Kazi	1356	H	N	W26	W15	N	W17	3.5
9.	Marcus Stinson	1792	W12	D7	W15	H	L1	N	3.0
10.	Mark McGee	1506	H	L19	W22	N	W25	D11	3.0
11.	Rudy Padilla	1501	W2	L6	D3	L4	W16	D10	3.0
12.	Dennis Freidel	1441	L9	W18	L5	L13	W15	W19	3.0
13.	Aivaras Stoskus	1255	L5	W27	L2	W12	L14	W18	3.0
14.	Bowen Meissen	1708	H	N	N	W22	W13	L4	2.5
15.	Ralph McGraw	1611	H	W22	L9	L8	L12	W25	2.5
16.	Nathan McCoy	1532	L20	W26	H	L3	L11	W22	2.5
17.	Ankit Chandola	1504	W27	W5	H	L2	L3	L8	2.5
18.	Lloyd Lauger	1113	L6	L12	W27	W19	L5	L5	2.0
19.	Greg Kelly	711	L3	W10	L4	L18	W27	L12	2.0
20.	Paul Raso	1971	W16	H	F	N	N	N	1.5
21.	Michael Buerger	1095	H	n	n	W28	N	U	1.5
22.	Kyle Smith	1076	H	L15	L10	L14	W28	L16	1.5
23.	James Burke	670	H	N	N	N	W26	U	1.5
24.	Jubal Ali	Unr	H	L2	N	W26	N	N	1.5
25.	Nick Petrobon	Unr	H	N	N	W27	L10	L15	1.5
26.	Michael Freidel	758	L7	L16	L8	L24	L23	D27	0.5
27.	Timothy Freidel	736	L17	L13	L18	L25	L19	D26	0.5
28.	Greg Luebker	731	H	N	N	L21	L22	U	0.5

2003-2004 ICA Tour Events

These standings reflect the following 2003-4 Tour Events:

April 26, 2003	mini Peoria Spring Tornado (XU)
April 27, 2003	MAXI Ranko Loncarevic Memorial, Niles
May 3, 2003	mini Rockford Spring Open (XU)
May 26, 2003	MAXI 12th Annual Chicago Open, Oakbrook
June 21, 2003	mini Illini Summer Open, Urbana (XU)
June 28, 2003	mini Peoria Summer Tornado (XU)
July 13, 2003	MAXI Master Challenge, Elmhurst
July 26, 2003	mini ICA Officer's Appreciation #1
August 10, 2003	mini Chicagoland Mini-Tour, Niles
August 16, 2003	mini Bradley Summer Open, Peoria (XU)
August 23, 2003	mini Springfield Championship (XU)
September 1, 2003	MAXI Illinois Open, Arlington Heights
September 6, 2003	mini Illini Fall Sections, Urbana (XU)
September 28, 2003	MAXI Forest City Championship, Rockford (XU)
October 4, 2003	mini Normal October Open (XU)
October 11, 2003	mini David Braunfeld's Birthday Open, Springfield (XU)
October 12, 2003	MAXI Midwest Class Championships, Oakbrook
November 1, 2003	mini Peoria Fall Tornado (XU)
November 28, 2003	MAXI Illinois Class Championship, Springfield (XU)
December 13, 2003	mini Springfield Holiday Open (XU)
January 4, 2004	MAXI Tim Just Winter Open/Reserve, Grayslake
January 24, 2004	mini Peoria January Tornado (XU)
January 25, 2004	MAXI Elmhurst Classic Maxi-Tour
February 21, 2004	mini David Mote Memorial Open (XU)
February 29, 2004	MAXI Greater Peoria Open (XU)
March 29, 2004	MAXI Elmhurst Amateur Class

MASTER TOUR POINTS:

STAMNOV, ALEKSANDAR	102.0
FIRMAN, NAZAR	83.0
CHOW, ALBERT C	66.5
YOUNG, ANGELO	65.0
GUREVICH, DMITRY	51.0
TSYGANOV, IGOR M	50.0
PALOS, OSMAND	39.0
STEVANOVIC, MIOMIR	39.0
COHEN, LAWRENCE S	32.5
SZPISJAK, STEVEN J	32.5

EXPERT TOUR POINTS:

VAN BUSKIRK, DOUGLAS	84.0
STEVANOVIC, MIOMIR	72.0
COHEN, LAWRENCE S	59.0
HERNANDEZ, HECTOR R	49.0
LONG, DAVID	44.0
NIENART, CHRISTOPHER	34.0
DUNCAN, JASON T	33.0
LONCAREVIC, ROBERT	31.0
NAFF, WILLIAM A	30.5
LEALI, MICHAEL E	26.0

CLASS A TOUR POINTS:

HERNANDEZ, HECTOR R	70.0
LONG, DAVID	44.0
CAVITT, DEXTER	40.5
MIDDLETON, DOUGLAS	39.0
MORENO, JACOBO	38.0
MC DONALD, JORDAN M	34.0
NIENART, CHRISTOPHER	34.0
WIDELKA, ADAM B	34.0
COVIC, MEHMED	31.0
HART, VINCENT J	27.0

CLASS B TOUR POINTS:

KASSIN, DAVID	61.0
ENGELN, MARK S	60.0
EASTON, RICHARD DWIGHT	47.0
BARCLAY, KAYIN	43.0
BARBIN, JOSEPH	42.0
DZANANOVIC, MUHAMED	40.0
CHEN, BYRON H	39.0
DUBIN, JOSHUA	39.0
SETHI, RISHI	39.0
PADILLA, RUDY R	38.5

CLASER TOUR POINTS:

STAMNOV, ALEKSANDAR	55.5
VAN BUSKIRK, DOUGLAS	40.0
LONG, DAVID	39.0
KRIFMICH, NAZAR S	36.0
LEVINE, ROYALD E	36.0
ROSEN, GARTNER, CHRISTOPHER	34.0
DIABINE, JOSEPHAL	32.0
HERNANDEZ, HECTOR R	(1) 32.0
KASSIN, DAVID G	30.0
STACUM, DANIEL S P	28.0

EXPERT TOUR POINTS:

LAMBERT, KEVIN DOUGLAS	42.5
LONG, DAVID	(2) 38.0
MATHENE, WALTER RICHES	37.0
CHEN, VUQUAM A	(2) 34.0
ROSEN, MICHAEL E	34.0
HERNANDEZ, HECTOR R	32.0
SENE, KENTWYC, MIOMIR	31.0
ROSEN, GARTNER, CHRISTOPHER	30.0
GRUBER, DENNIS A	30.0
WIDELKA, MICHAEL J	28.0

CLASS A EX-URBAN TOUR POINTS:

SCHEMIA, KEVIN A	29.0
JACKSON, HECTOR R	(1) 28.0
CHANG, RITNER, CHRISTOPHER	22.0
BURGER, MATTHEWS A	21.0
JACKSON, NATHAN J	(1) 20.0
MEROL, CRUDYAR	20.0
SPITZ, MARK D	19.0
AVIGRON, MICHAEL RYAN M	18.0
ILLICK, ARTHUR D	17.0
SONG, CHARLES	16.0

CLASS B TOUR POINTS:

BONN, ISIDOR NATHAN J	13.0
FAFARI, AMAN D	(2) 12.0
ROSEN, DEAN JAMES	9.0
ROSEN, GARTNER, CHRISTOPHER	(2) 9.0
STADIA, RUDMIRAR	(1) 9.0
WISS, ROBY S	(2) 9.0
WOLBER, NATHANIEL	(2) 9.0
MERS, KYLE ILAN	8.0
BAMBERG, RAYANE	(1) 7.0
BRONNER, BENJAMIN G	

ICA EX-Urban Tour Standings

MASTER EX-URBAN TOUR POINTS:

STAMNOV, ALEKSANDAR	41
VAN BUSKIRK, DOUGLAS	28
LONG, DAVID	26
FIRMAN, NAZAR	15
LUNG, RICHARD E	-2 15
BAUMGARTNER, CHRISTOPHER	15
JARRETTE, PHIL	13
HERNANDEZ, HECTOR R	12
DUPUIS, ERIK G	-2 10
LAGUMBAY, CHARLES P	10

EXPERT EX-URBAN TOUR POINTS:

VAN BUSKIRK, DOUGLAS	84
LONG, DAVID	44
COHEN, LAWRENCE S	33
NAFF, WILLIAM A	31
LEALI, MICHAEL E	26
HERNANDEZ, HECTOR R	26
STEVANOVIC, MIOMIR	21
BAUMGARTNER, CHRISTOPHER	21
BOURGERIE, DENNIS A	20
BONWELL, JONATHAN J	18

CLASS A EX-URBAN TOUR POINTS:

LONG, DAVID	44
LEALI, MICHAEL E	26
HERNANDEZ, HECTOR R	26
BAUMGARTNER, CHRISTOPHER	21
BOURGERIE, DENNIS A	20
BONWELL, JONATHAN J	18
PADILLA, RUDY R	18
COHEN, HOWARD	16
MC DONALD, JORDAN M	16
LUNG, RICHARD E	-2 15

CLASS B EX-URBAN TOUR POINTS:

BONWELL, JONATHAN J	30
HEALY, JAMES D	26

BOURGERIE, DENNIS A	25
BAUMGARTNER, CHRISTOPHER	21
PADILLA, RUDY R	18
VOSS, ANDY S	15
WILBER, MARTIN W	14
MILES, KYLE J	14
ZIMMERLE, R WAYNE	13
BRONNER, BENJAMIN G	12

CLASS C EX-URBAN TOUR POINTS:

CREASEY, BRIAN J	23
PADILLA, RUDY R	18
KLAHN, MATTHEW S	-2 16
GRIFFIN, DANNY L	13
ZIMMERLE, R WAYNE	13
VOSS, ANDY S	12
DREESSEN, ROBERT A	11
CHIEN, JASON W	10
KNOEDLER, THOMAS B	9.5
SUAREZ, RONALD J	9.5

CLASS D EX-URBAN TOUR POINTS:

HELLER, JACK G	-2 14
GRIFFIN, DANNY L	13
RUTH, JAMES	10
WILBER, MATTHEW K	9.5
DOROSHEFF, EVAN JAMES	9
PATTON, TERRY W	9
CUNNINGHAM, ROBERT E	8
KELLY, JAMES R	8
BURKETT, BRUCE	7.5
WANDA, IAN E	7.5

CLASS E EX-URBAN TOUR POINTS:

HELLER, JACK G	-2 14
RUTH, JAMES	10
DOROSHEFF, EVAN JAMES	9
WANDA, IAN E	7.5
GRIFFIN, LARRY	6

All tournaments are USCF-rated, unless otherwise noted (Quick-rated if game/29 or faster) and require USCF membership. ICA Tour events also require ICA membership. Memberships may be purchased at most tournaments. Most tournaments prohibit smoking in the playing rooms.

ICA Tour events are generally listed as such in Chess Life and in the calendar below. Players are responsible for checking both Chess Life and the Illinois Chess Bulletin to determine which events are Tour events. Call ChessPhone (630-832-5222) a few days before any tournament to verify its Tour status, or check the web at www.illinoischess.org.

Organizers: Please clear your events through the ICA Tournament Calendar. Calendar coordinator is Howard Fried, 440 N. Main St. #E405, Wauconda, ILL. 60084, hfried1@sbcglobal.net. Do not send calendar entries to the ICB editor. If you are running a Tour event, make sure it is listed as such in both Chess Life and the ICB. Deadlines for ICB calendar submissions are as follows:

Event starting date:	Deadline:	To appear in:
Jan 15 - Mar 14	Dec 10	Jan-Feb issue
Mar 15 - May 14	Feb 10	Mar-Apr issue
May 15 - Jul 14	Apr 10	May-Jun issue
Jul 15 - Sep 14	Jun 10	Jul-Aug issue
Sep 15 - Nov 14	Aug 10	Sep-Oct issue
Nov 15 - Jan 14	Oct 10	Nov-Dec issue

May 1, 2004, Tuley Park Quick #6 (Bigger). 6-SS, rds 1-2 game/8, d/3 (game/10 if d/0), rds 3-6 game/20, d/3 (game/22 if d/0). 501 E 90th Pl, Chicago 60619. EF \$18, u19 \$9, \$1 off before 11:30. \$\$G 435: \$125-80-40, u1900 \$40, u1700 \$35, u1500 \$30, u1300 \$25, u1100 \$25, u900 \$20, unr \$15. Reg 11-11:50, rd 1 at 12. Tom Fineberg, 7321 S South Shore Dr #6-D, Chicago 60649. 773-721-3979, www.home.earthlink.net/~maxine57.

May 22, 2004 Lakeview-Cuyler Plus Score. 4SS, G/60. Lakeview Cuyler Chess Club, 3901 N. Marshfield (Church at corner, 1634 west) Chicago, 60613. EF: \$20. Prizes by score: 4.0 \$100, 3.5 \$50, 3.0 \$25, 2.5 \$10. Registration

ends 11:30 am, 1st rd. at 12 noon. Info: Charles Whipple (773) 508-0605

May 29, 2004, Tuley Park Quick #7 (Medium). 6-SS, rds 1-2 game/8, d/3 (game/10 if d/0), rds 3-6 game/20, d/3 (game/22 if d/0). 501 E 90th Pl, Chicago 60619. EF \$14, u19 \$7, \$1 off before 11:30. \$\$G 300: \$70-45-30, u1900 \$35, u1700 \$30, u1500 \$25, u1300 \$20, u1100 \$15, u900 \$15, unr \$15. Reg 11-11:50, rd 1 at 12. Tom Fineberg, 7321 S South Shore Dr #6-D, Chicago 60649. 773-721-3979, www.home.earthlink.net/~maxine57.

June 12, 2004 Springfield Summer. An ICA mini-tour and ex-urban tour event. 4SS, G/80. Signature Inn, corner of Dirksen Pkwy & Stevenson Dr. (immed. W of I-55 Stevenson exit). \$(b/40) \$300: \$100-55; 1999-1600 \$50; 1599-1200 \$40; u1200 \$30; unr \$25. ICA membership req'd, OSA. EF: \$17 if rec'd by 06/06, \$20 at site. Reg: 7:30-8:30am. Rds: 9-12-3-6. TD reserves right to accelerate pairings if conditions warrant. Ent: Thomas B. Knoedler, 2104 S. 4th, Springfield, IL. 62703. Info: 217-206-6056, M-F 9-5; 217-523-7265 after 6:30, exc. Wed. NS, NC, W.

June 19, 2004, Tuley Park Quick #8 (Tiny). 6-SS, rds 1-2 game/8, d/3 (game/10 if d/0), rds 3-6 game/20, d/3 (game/22 if d/0). 501 E 90th Pl, Chicago 60619. EF \$10, u19 \$5, \$1 off before 11:30. \$\$G 210: \$40-30-25, u1800 \$25, u1550 \$25, u1300 \$20, u1050 \$15, u800 \$15, unr \$15. Reg 11-11:50, rd 1 at 12. Tom Fineberg, 7321 S South Shore Dr #6-D, Chicago 60649. 773-721-3979, www.home.earthlink.net/~maxine57.

July 1-5, 2004, 32nd Annual World Open. Philadelphia PA.

July 17, 2004, Tuley Park Quick #9 (Medium). 6-SS, rds 1-2 game/8, d/3 (game/10 if d/0), rds 3-6 game/20, d/3 (game/22 if d/0). 501 E 90th Pl, Chicago 60619. EF \$14, u19 \$7, \$1 off before 11:30. \$\$G 300: \$70-45-30, u1900 \$35, u1700 \$30, u1500 \$25, u1300 \$20, u1100 \$15, u900 \$15, unr \$15. Reg 11-11:50, rd 1 at 12. Tom Fineberg, 7321 S South Shore Dr #6-D, Chicago 60649. 773-721-3979, www.home.earthlink.net/~maxine57.

ICA Calendar

August 1, 2004 Summer Open. 4/SS. Robert Loncarevic 773-510-2162

August 21, 2004 Springfield August Open

September 4-6, 2004, Illinois Open. An ICA Tour MAXI-event. ICA membership required.

September 18, 2004 Springfield IL Chess Club Championship

October 9, 2004 Springfield Autumn Open

December 4-5, 2004, Winter Open. Robert Loncarevic, 773-510-2162

December 11, 2004 Springfield Holiday Open

April 7-10, 2005, SuperNationals III Nash, TN.

September 3-5, 2005, Illinois Open. An ICA Tour MAXI-event. ICA membership required.

Maintained by Howard Fried
Last Modified 4/10/2004

US Chess Live

InfamousCarlos (1948) ColleyChess (1640)

GCS GCS, 11.02.2004

1.d4 g6 2.e3 Bg7 3.Bd3 c6 4.c3 d5 5.Nd2 a6 6.f4 Nf6 7.Ngf3 Bg4 8.0-0 0-0 9.Qe1 e6 10.Ne5 Bf5 11.e4 Bxe4 12.Nxe4 dxe4 13.Bxe4 Nxe4 14.Qxe4 Nd7 15.Rf3 Nxe5 16.fxe5 Qd5 17.Qg4 Rae8 18.Bg5 h6 19.Bh4 h5 20.Qg3 Qe4 21.Re1 Qc2 22.Rf2 Qa4 23.b3 Qb5 24.c4 Qb4 25.Rfe2 Rd8 26.Bxd8 Rxd8 27.Qg5 Rxd4 28.h3 Qc5 29.g4 Rxc4+ 30.Kh2 Rxc5 31.h4 Bxe5+ 32.Kh3 Rg3+ 33.Kh2 Re3+ 34.Kg2 Rxe2+ 35.Rxe2 Bf4 36.Kf3 Qd4 37.Re4 Qd3+ 38.Kxf4 f5 39.Rxe6 Kf7 40.Re3 Qd2 41.Kf3 Qxa2 42.Rd3 Qb2 43.Rd7+ Ke6 44.Rxb7 Qc3+ 45.Kf4 Qd4+ 46.Kg5 Qg4+ 47.Kh6 Qxh4 48.Rb6 Kd6 49.Rxa6 f4 50.b4 f3 51.b5 Kc5 52.Rxc6+ Kb4 53.Rxc6 f2 54.b6 f1Q 55.b7 Qff4+ 56.Kh7 Qe7+ 57.Rg7 Qf5+ 58.Kh8 Qef8+ 59.Rg8 Q5f6+ 60.Kh7 Q8h6# 0-1

(1) ColleyChess (1658) - quidspaz (1511)

GCS GCS, 07.02.2004

1.e4 c5 2.Nf3 Nc6 3.d4 cxd4 4.Nxd4 Nf6 5.Nc3 d6 6.Be3 e6 7.f3 Be7 8.Qd2 0-0 9.0-0-0 Bd7 10.g4 Rc8 11.h4 e5 12.Nf5 a5 13.Nxc7 Kxc7 14.Bh6+ Kg8 15.Qg5+ 1-0

Yuri Shulman (GM) - Eric Heiser (1813)
01.31.2004, King's Indian Defense (E92)

Comments by R Gandhi

1.d4 Nf6 2.c4 g6 3.Nc3 Bg7 4.e4 d6 5.Nf3 0-0 6.Be2 e5 [6...c5 7.0-0?] 7.Be3 [7.dxe5 dxe5 8.Qxd8 Rxd8?] 7...Ng4 8.Bg5 f6 9.Bh4 Nc6 10. d5 White gets more space 10...Ne7 11.Nd2 Nh6 12.f3 Secures g4 12...g5 13.Bf2 f5 The typical lever 14.c5 g4 15.fxc4 Nxc4 16.Bxc4 fxc4 17.0-0 h5 [17...b6 18.cxd6 cxd6 19.Qa4?] 18.Be3 Ng6 19.Nc4 [19.Rxf8+ Bxf8 20.cxd6 cxd6±] 19...Nf4 [19...dxc5!? looks like a viable alternative 20.Bxc5 Rxf1+ 21.Qxf1 h4?] 20.cxd6+ cxd6 21.Nb5 g3 22.hxc3 [22.Bxf4!? is noteworthy 22...exf4 23.hxc3± (23.Ncxd6 Bg4 24.Qc1 a6 25.Rxf4 axb5 26.Rxf8+ Qxf8+ (26...Kxf8?! 27.Qf4+ Qf6 28.Qxc3 Qd4+ 29.Kh1µ; <26...Bxf8 27.Nf5-+))] 22...Bg4= Menacing 23.Qd2 Ne2+ 24.Kh2 Rxf1 25.Rxf1 h4 Threatening mate: hxc3 26.Bg5?? gives the opponent counterplay [26.Bf2 and White can hope to live 26...Qe8 27.Qg5 Qxb5 28.Nxd6?] 26...hxc3+→27.Kh1.Qe8! Threatening mate 28.Bh4 Qxb5 29.Nxd6 Qa6 30.Be7? [30.Qg5 Nf4 31.Re1-+] 30...Nf4 [30...Qxa2 is a bad alternative 31.Qg5 Nf4 32.Qxc4 Qxb2 33.Qxc3+] 31.Rc1 [31.Rxf4 exf4 32.Qxf4-+] 31...Re8! Black has to consider giving back material 32.Nf5 [32.Nxe8 Qh6+] 32...Bxf5 33.d6 Bxe4 34.Qe3 Rxe7! Annihilates a defender: e7 35.Rc8+ [35.dxe7 Qh6+] 35...Kf7 [35...Kf7 36.Qb3+ Re6-+] 0-1

Excellent game, Eric. You are soon going to be an expert player.

PEORIA SUMMER TORNADO

AN ICA MINI-TOUR & EX-URBAN
EVENT

WHEN: Saturday, June 26, 2004

WHERE: Lakeview Museum, 1125 W. Lake
Ave., Peoria, IL 61614

ENTRY FEE: \$14 by June 24, \$17 at the site,
free to players rated 2200
or over

WHAT: 4 Round Swiss

TIME CONTROL: Game/80

SECTIONS: Open to all

MEMBERSHIPS REQUIRED: USCF & ICA
(other states honored)

PRIZES: 75% of EF's distributed as follows:
25% First, 15% Second.
10% each to A/B, C/D, under 1200
5% to biggest Upset

REGISTRATION: 8:00-8:45 AM

ROUND TIMES: 9, 12, 2:45, 5:30

NOTE: A limit of one "1/2 point" bye is
available in any Rd., but Rds. 3
or 4 must be elected by the end of Rd. 2

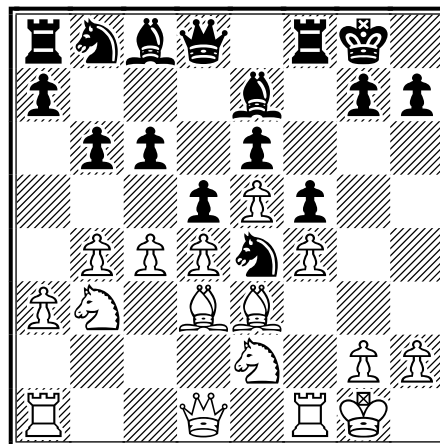
NO SMOKING. BRING SETS, BOARDS &
CLOCKS.

ADVANCE ENTRIES: Fred Malcome, 810
W. Progress, Metamora, IL 61548
(309) 367-4833 e-mail:
flmalcome@bwsys.net

[1] FM Chow, A - IM Young, A [B07]

Elmhurst OPEN 2004 [Young]

1.e4 d6 2.d4 Nf6 3.Nc3 c6 Pribyl Defense 4.f4 Qa5
5.Bd3 d5N [A Novelty normal would be 5...e5 6.Nf3 Bg4
7.dxe5 dxe5 8.fxe5 Nfd7 9.0-0=] 6.e5 Ne4 7.Nge2
[7.Bxe4 dxe4 8.Qe2 Na6 9.Qxe4 g6 10.Qe2 Nb4 11.Nf3
Bf5?] 7...f5 8.Be3 [8.0-0 e6 9.Be3 Be7 10.Qe1 Qc7
11.Bxe4 dxe4 12.Qg3 0-0=] 8...e6 9.0-0 Bd7 10.a3
Be7 11.b4 Qd8 12.Na4 0-0? [Better was 12...b6
13.c3 0-0 14.Nb2 a5 15.Qb3 with equal chances]
13.Nc5 Bc8 14.c4 b6 15.Nb3+- Diagram



15...Rf7 16.Qc2 white can start controlling the open C-
file 16...Bb7 need to develop somehow 17.Rfc1 Nd7
18.cxd5? [18.c5 Bf8 19.a4 h6+- white have a big plus
on the queenside] 18...cxd5 19.Qc7 Rb8 20.Qxd8+
Bxd8 21.Rc2 Rc8 22.Rxc8 Bxc8 23.Rc1 Bb7 24.b5
Nf8 25.a4 h6 with g5 idea up to this moment FM
Chow was on his usual time trouble so i decided to try
my luck in continuing the game. 26.Rc2 g5 27.g3 Ng6
28.Nbc1 Rd7 29.Kf1 Kf7 30.Nb3 Nh8 31.Bc1 Ng6
32.Be3 h5!? looking for some complication. 33.Nc3
h4 34.Nxe4 dxe4 35.Bc4 Ne7 36.Kf2 Bd5 37.Bxd5
Nxd5 38.Nd2 white runs out of time 0-1 . the finished
would be 38... hg3+ 39. hg3 gxf4 40. gxf4 Be7- Bf8 -
Bh6 Black will win. 0-1



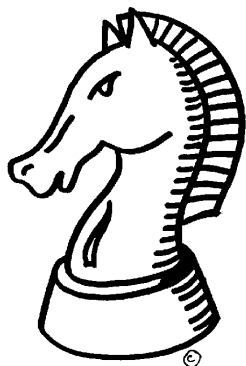
CHESS CLASSES

For Beginners and Advanced Players
Learn to be a Champ from a Champ

by

Rajen Gandhi, Ph.D.

CLC Club Champion (2002, 2003)
Lake County Champion (2001,2002)
U.S. Chess Federation Certified Coach
Barrington High School Coach
Hough Street Elementary School Coach
Sprague Elementary School



P1. Call (847) 219-9173
for more information



2004 SANTA MONICA INVITATIONAL MAY 11-19

GM Leonid Yudasin
GM Victor Mikhalevski
GM Julio Becerra
IM Enrico Sevillano
IM Andranik Matikozian
IM John Donaldson
IM Jesse Kraai
IM Angelo Young
FM David Pruess
FM Alan Stein

Average FIDE rating: 2457, Category IX

Score required for IM norm: 4.5

Score required for GM norm: 6.5

Schedule: Rounds daily at 4:00 P.M.

Time control: 40/2, SD/1

Location: Los Angeles Chess Club
11514 Santa Monica Blvd., 2nd floor
(between Colby and Butler, same location as the Bridge Club)
Los Angeles, CA 90025
(4 blocks west of the 405 Freeway)

Tournament Director: T.B.D. (John Hillery)

Organizers: Alan Stein and David Pruess

Sponsor: Alan Stein

Entry fees: None

Prizes: 1st place: \$1,000 US

Contact information:

Alan Stein

home: (310) 392-3967

cell: (917) 312-7199

alanst@earthlink.net

David Pruess

cell: (917) 860-4784

dpruess@uclink.berkeley.edu

John Hillery

rfeditor@westernchess.com

ICA Supporters

ICA Supporters

Life Patron Members:

Warren, Helen E Western Springs
Warren, James E Western Springs

Century Club Patron

Members:

Bachler, Kevin L Park Ridge
Brock, Bill Chicago
Cohen, Lawrence S Villa Park
Dwyer, William T Worth
Fineberg, Thomas A Chicago
Friske, Thomas G Des Plaines
Naylor, Samuel, VI Carthage
Novotny, James J Schaumburg
Panner, Glenn E Frankfort
Pradt, Daniel J Glen Ellyn
Ryner, Randall L Springfield
Schmidt, Frederick W, Jr Bloomington
Sethi, Pradip Barrington Hills
Smythe, Bill Chicago
Stein, Kurt W Clarendon Hills
Wong, Philip Wilmette

Gold Card Patron Members:

Barre, Todd J Elmhurst
Blanke, Clyde H Matteson
Jim Brotsos Chicago
Bossars, Phil J Champaign

Chen, Aaron
Cook, David A
Delay, Joseph D
Dueker, John T
Gruenberg, Fred
Hart, Vincent J
Klink, Steven L, Jr
Lang, Richard S
Marovitch, Mark
Pehas, Alex
Splinter, Joseph C
Sweig, Mitchel J
Tanaka, James G
Widing, Robert W

Patron Members:

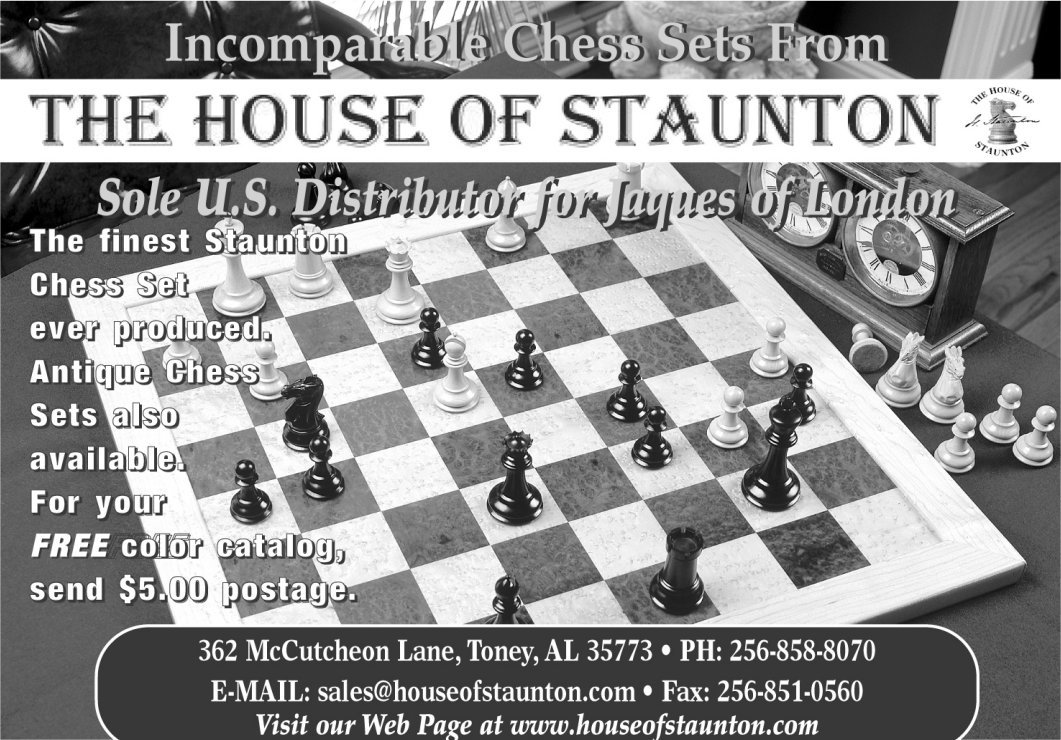
Aaron, Michael E
Adwar, Bacil Alexy
Amodei, Dominic M
Benedek, Roy
Birkeland, Roger
Bishop, Jack
Boone, Foster L, Jr
Carlton, Robert J
Cronin, Mike A
Duncan, Tom
Dupuis, Brian M
Fenner, Charles E
Fischer, Gregory A
Fulk, Shizuko Fukuhara

Oak Brook
Burr Ridge
Schaumburg
Lockport
Palos Heights
Mount Prospect
Glen Ellyn
Evanston
Cicero
Darien
Hanover Park
Evanston
Chicago
Park Ridge

St Charles
Skokie
Chicago
Western Springs
Addison
Chicago
Lynwood
Naperville
Alsip
Naperville
Lake Bluff
Chicago
Elk Grove Village
Skokie

Gasiecki, Alan F
Gerber, David F
Griesmeyer, Walter J
Hansen, Steven E
Harvey, Frank
Henderson, S E, Jr
Hernandez, Hector
Iovin, Daniel G
Just, Timothy W
Karpes, Richard A
Klink, Steven, Sr
Knoedler, Thomas B
Lewis, Richard
Lobraco, Michael J
Marshall, Kenneth N
Martin, Gary J
Modes, Daniel R
Moore, Clarence J
Mote, David B
Rhymer, Cecil
Rose, Eric J
Rose, Keith C
Satterlee, Ray Doyle
Scott, Garrett H
Sollano, Ely O
Sowa, Walter B
Suarez, Ronald J
Tums, John M
Zacate, Michael E

Vernon Hills
Mundelein
Momence
LaGrange
Wheeling
Bolingbrook
Chicago
Elmwood Park
Gurnee
Des Plaines
Glen Ellyn
Springfield
Harvey
Itasca
Lombard
Park Ridge
Bensenville
Villa Park
Springfield
Summit
Antioch
Woodridge
Wheaton
Normal
Chicago
Harwood Heights
Peoria
Oak Park
Mokena



Incomparable Chess Sets From
THE HOUSE OF STAUNTON
Sole U.S. Distributor for Jaques of London
The finest Staunton
Chess Set
ever produced.
Antique Chess
Sets also
available.
For your
FREE color catalog,
send \$5.00 postage.

362 McCutcheon Lane, Toney, AL 35773 • PH: 256-858-8070
E-MAIL: sales@houseofstaunton.com • Fax: 256-851-0560
Visit our Web Page at www.houseofstaunton.com

47th Western Open - Fred Cramer Memorial

July 3-4
 Four Points Sheraton
 Milwaukee WI

Open Section — Top Prizes Guaranteed
 Rankin is a confirmed participant for all rounds!

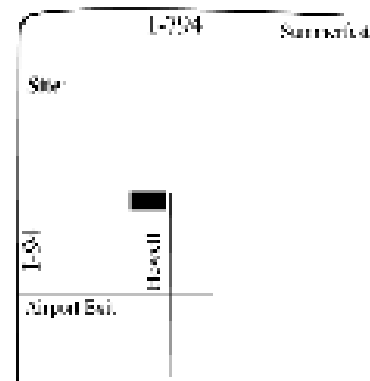
1st \$450
 2nd \$350
 3rd \$275

Open Section — Class Prizes b/40

Expert \$225
 Under 2000 1st - \$120 2nd - \$80

Reserve Section (under 1800) — All Prizes b/40

1st \$200
 2nd \$150
 C 1st - \$120 2nd - \$80 3rd - \$50
 D 1st - \$120 2nd - \$80
 E/Under 1st - \$80 2nd - \$50
 Junior \$60



The Four Points Sheraton is at 4747 S Howell, Milwaukee WI 53207-5989. Hotel phone number is (800) 558-3862. Room rates for the Western are \$84. Make your reservations early. If any difficulties in finding rooms, contact chessorg@wi.rr.com or (414)358-3052 for some assistance (the mailbox is checked daily and responses will be prompt, and there is voicemail on the phone number).

The Tournament

The tournament is a five-round swiss starting Saturday morning, July 3. On-site registration is from 8:30 to 9:30, July 3. Open Entry Fee is \$50, Reserve Entry Fee is \$45 (\$7 discount for USCF Juniors) and \$10 more if received after 6/28 or during on-site registration. Comp EF available for USCF 2200+, contact organizer for details. Rounds are 10/2:30/7:30 on Saturday and 10/3:30 on Sunday. Byes are available if requested with entry (max 1 point in Byes, and Sunday byes are irrevocable). Time controls are 40/90 followed by 50/60.

A Wisconsin Chess Tour Event
 A Milwaukee Jubilee Event

Mail Entries To:

Milwaukee Chess Foundation
 Arlon Walker
 8000 W Beechwood Ave
 Milwaukee WI 53228

Name _____

Address _____ City _____ State _____ Zip _____

USCF ID# _____ Expires _____ Rating _____

Request Bye in Rd 1 2 3 4 5



Chess Club Observer

Newsletter of the Springfield Chess Club

March-April 2004

Vol. 7, No.2

President: Tom Knoedler
Vice President: Michael Shores
Secretary: Garald Bumgardner
Treasurer: David Long
Publicity: Matt Cremeens

Editor: David Long
2021 1/2 S. 4th St.
Springfield, Ill. 62703

Club Champion: Doug Van Buskirk

Tourney Turnout Continues To Decline

A near-record low of nine chess players, plus a houseman, played in the February 21 tournament. James Healy, of Springfield, and Greg Moses, of Jacksonville, each scored 3.5 points out of 4 to tie for first. First in class A-B was William Meyer, of Decatur. He scored 2.5 points. Matt Cremeens, of Springfield, scored 2 points to take first place in class C-D, and Evan Dorosheff, also of Springfield, scored 2.5 points and won first class E and below. No unrateds participated.

The turnout news is not all bad; attendance at club meetings has rebounded lately, and enough SCC members heeded the call to participate to make Springfieldians a majority at the tournament, for the first time in many years. However, at the next meeting, the SCC Board of Directors may vote to **cancel some tournaments** to stop the club from going broke!

Complete results are on page 6.

Quick Chess Tournament March 20

The SCC will hold a quick-rated tournament on Saturday, March 20, at Lincoln Library's West Branch, 1251 W. Washington St.

Since the club's last few quick tournaments of G/10 drew abysmal turnout, we are trying a different formula this time. There will be four games at G/29, the longest quick-rated time control. Registration ends at 10:45, rounds at 11, 1, 2, and 3, with a lunch break from 12 to 1.

Next Regular Tournament April 17

Our next regular tournament will be held Saturday, April 17, at the Signature Inn. All tournament details are the same as usual: registration ends at 8:45, the first round begins at 9, entry fee \$15 in advance or \$18 at the door, \$2 more for non-SCC members.

SPECIAL MEETING MARCH 24 - See insert

Inside: "In Memory of the Life of David B. Mote", Pages 4-5

Special Meeting March 24

The Springfield Chess Club will hold a **special called meeting** on Wednesday, March 24, 2004, at **Shakey's Pizza & Buffet**, Town & Country

Shopping Center, Springfield. Dinner costs \$8.75 per person. (There will be no meeting at the Legion Hall that night.) See insert for details.

Please return your surveys by March 20

If they arrive too late, they may not be processed in time.

Thanks

...to the several SCC members who have made donations to the club these last few months, helping the club through its current financial crisis. Making contributions to the club treasury were **Tom Knoedler, Garald Bumgardner, James Barnes, and James Ruth.**

Coming & Going

Larry Washington and Mark Maisenbacher, both of Springfield, recently joined the Springfield Chess Club. Welcome to the club! Membership total is now 32.

Daunte Carter took a job in Chicago and moved there in February. He was a regular participant in the Wednesday night mini-tournaments, and got his first regular tournament experience in Springfield tournaments (including the Illinois Class Championships). We will miss him!

Cumulative Blitz Standings

1 Evan Dorosheff	8.5 (12)	70.8	7	John Taylor	1.5 (7)	21.4
2 Daunte Carter	7.5 (12)	62.5	8	Kyle Churchill	1.5 (7)	21.4
3 Tom Knoedler	7.0 (7)	100.0	9	Larry Grammer	1.0 (5)	20.0
4 James Ruth	7.0 (12)	58.3	10	David Braunfeld	0.5 (5)	10.0
5 David Long	5.0 (7)	71.4	11	Cole Taylor	0.5 (7)	7.1
6 Matt Cremeens	3.0 (5)	60.0				

Minor Event News

All minor events will begin at 7:30 p.m. unless otherwise specified.

<u>Date</u>	<u>Event</u>	<u>Entry Fee</u>
March 10	Blitz, Part 3	\$2
March 17	3-Round Swiss Thematic	\$3
April 14	Blitz, Part 4	\$2
April 21	3-Round Swiss	\$3
May 12	Blitz, Part 5	\$2

January 14 Blitz

<u>Pl#</u>	<u>Name</u>	<u>1</u>	<u>2</u>	<u>3</u>	<u>4</u>	<u>5</u>	<u>6</u>	<u>7</u>	<u>8</u>	<u>Month</u>	<u>Year</u>
1	James Ruth	x	L	W	W	W	L	L	L	3.0	3.0
2	Evan Dorosheff	W	x	W	D	W	W	L	L	4.5	4.5
3	Kyle Churchill	L	L	x	W	D	L	L	L	1.5	1.5
4	John Taylor	L	D	L	x	W	L	L	L	1.5	1.5
5	Cole Taylor	L	L	D	L	x	L	L	L	0.5	0.5
6	Daunte Carter	W	L	W	W	W	x	L	W	5.0	5.0
7	Tom Knoedler	W	W	W	W	W	W	x	W	7.0	7.0
8	David Long	W	W	W	W	W	L	L	x	5.0	5.0

Springfield Chess Club Observer

February 11 Blitz

Pl#	Name	1	2	3	4	5	6	Month	Year
1	Evan Dorosheff	x	L	W	W	W	W	4.0	8.5
2	James Ruth	W	x	L	W	W	W	4.0	7.0
3	Daunte Carter	L	W	x	L	W	D	2.5	7.5
4	Matt Cremeens	L	L	W	x	W	W	3.0	3.0
5	Larry Grammer	L	L	L	L	x	W	1.0	1.0
6	David Braunfeld	L	L	D	L	L	x	0.5	0.5

January 21 - Garald's 3-Round Swiss Thematic No. 1

Rank	Name	Rating	Rd 1	Rd 2	Rd 3	Total	
1	Matt Cremeens	1570	W--3	W--6	W--5	3.0	Victories
2	Tom Knoedler	1526	L--5	W--7	W--4	2.0	by Color:
3	Cole Taylor	676	L--1	W--8	W--6	2.0	White - 8
4	Daunte Carter	1200~	W--7	D--5	L--2	1.5	Black - 3
5	Evan Dorosheff	648	W--2	D--4	L--1	1.5	Draws - 1
6	James Ruth	1091	W--8	L--1	L--3	1.0	
7	John Taylor	274	L--4	L--2	W--8	1.0	
8	Kyle Churchill	unr.	L--6	L--3	L--7	0.0	

February 18 - 3-Round Swiss

Rank	Name	Rating	Rd 1	Rd 2	Rd 3	Total
1	David Long	1969	W--6	W--2	W--3	3.0
2	Tom Knoedler	1517	W--5	L--1	W--4	2.0
3	Daunte Carter	1382	D--4	W--6	L--1	1.5
4	Larry Grammer	unr.	D--3	W--5	L--2	1.5
5	Evan Dorosheff	935	L--2	L--4	W--6	1.0
6	James Ruth	1107	L--1	L--3	L--5	0.0

Complete Results, February 21, 2004

Rank	Name	Rating	Rd 1	Rd 2	Rd 3	Rd 4	Total
1	James Healy	1731	W--8	W--5	D--2	W--6	3.5
2	Greg Moses	1645	W--9	W--3	D--1	W--5	3.5
3	William Meyer	1629	W--4	L--2	D--6	W--9	2.5
4	Evan Dorosheff	935	L--3	D--9	W-10	W--8	2.5
5	Matt Cremeens	1565	W-10	L--1	W--8	L--2	2.0
6	Tom Knoedler	1517	HALF	W--7	D--3	L--1	2.0
7	James Ruth	1107	HALF	L--6	D--9	W-10	2.0
8	Jerry Bennett	1506	L--1	W-10	L--5	L--4	1.0
9	Collyn Fike	1112	L--2	D--4	D--7	L--3	1.0
10	Cody Fike	690	L--5	L--8	L--4	L--7	0.0

Meetings

The SCC meets Wednesday nights, 6 to 10 p.m., at the American Legion Post 32, between 5th and 6th Streets, half a block south of Capitol Ave., downtown. **Every week until further notice**, we will be meeting in room 207, upstairs (not the room we have usually used.)

On the second Friday of each month, we meet from 6 to 10 p.m. at Barnes and Noble, near the corner of Route 4 and Wabash Ave.

B-Town Chess House Chess Camp

Where: Bloomington; 1201 E. Bell St., Bloomington, IL 61701

When: June 14th - June 18th
10 am – 5 pm

Contact: Peter Stroyan at 827-0106 or email at btownchess@yahoo.com (Please put Chess Camp in subject)
We will be making a camp brochure available, please send email if would like detailed agenda

B-Town Chess Camp

Are you tired of spending hundreds of dollars and traveling many miles for good chess instruction? Look no further. We are bringing good chess instruction to Central Illinois. The B-Town Chess Club would like chess to grow in this community. It is run by two individuals who have played scholastic chess and are currently playing as adults. They traveled to places like Wisconsin, Indiana, and Kentucky for chess camps. There were not any available here locally. We are trying to change that by holding one for kids and parents whose schedules will not allow the travel time.

Agenda

- We will be giving group instruction with a 10:1 Ratio (There will be a 60 student participation limit)
- We will be going over white and black opening repertoire
- We will be doing some game analysis
- We will learn chess strategy and learn some tactics
- We will learn some key ideas and concepts in the endgame
- We will have fun chess time (Bughouse, Blitz, Simul, etc.)

▪ Instructors

Angelo Young: IM Young is an International Master. His current USCF rating is 2411. He currently teaches kids and adults in Illinois and Indiana.

Jonathon Bonwell: Jonathon Bonwell's current USCF rating is 1736. He has very good opening repertoire. He is a current tournament player who plays at expert level (over 2000 rating).

Peter Stroyan: Peter Stroyan's current unofficial USCF rating is 1625. He is the current chess coach for Metcalf. He is very sharp with tactics.

Other instructors: TBA

Registration

I would like to sign _____ child (ren) up for the June 14th-June 18th Chess Camp.

Enclosed is \$ _____ for _____ child (ren): please include child's name, grade, school, and rating

1 student is \$100 dollars before 5/14: _____ \$115 dollars from 5/14-6/7: _____ \$125 at site

Families of two or more will receive \$10.00 off per child

Please bring a lunch, a snack will be provided

Please make checks payable to Btown Chess House, may send to
Peter Stroyan
112 Eisenhower Apt D-9
Bloomington IL 61701

13th annual CHICAGO OPEN

May 28-31, 29-31 or 30-31, 2004 - Memorial Day weekend

\$100,000 PRIZE FUND UNCONDITIONALLY GUARANTEED!

**An American Classic
A US Championship Qualifier**

May 28-31, 29-31 or 30-31

GPP: 150

Illinois

13th annual Chicago Open. 7SS, 40/2, SD/1 (3-day option, rds 1-2 G/75; 2-day option, rds. 1-4 G/45), Hyatt Regency Oak Brook, 1909 Spring Rd (near I-88 Cermak Rd exit), Oak Brook IL 60521. Free parking. \$100,000 GUARANTEED PRIZES. Free analysis of your games by IM John Donaldson. Unrated must enter Open or Unrated Sections. In 8 sections:

Open Section: \$10000-5000-2500-1200-800-600-500-500-400-400, clear winner bonus \$300, 2300-2449/Unr \$2000-1000, Under 2300 \$2000-1000. If tie for first, top 2 on tiebreak play speed game 5/31 10:30 pm (white 7 minutes, black 5 minutes & gets draw odds) for title & bonus prize. Top 4 eligible players and top eligible woman not already qualified qualify for 2004 US Championship; optional qualifier fee \$75.

Under 2200 Section, Under 2000 Section, Under 1800 Section: each \$5000-3000-2000-1000-600-500-400-400-300-300.

Under 1600 Section: \$4000-2500-1500-800-600-500-400-400-300-300.

Under 1400 Section: \$3000-2000-1200-900-600-500-400-400-300-300.

Under 1200 Section: \$2000-1200-800-600-500-400-300-300-300-300, top Under 1000 \$800-400. Under 1000s play for both U1000 & U1200 prizes; receive larger if winning both. If 1400/over after 12/99, prize limit \$500 in U1200 Section.

Unrated Section: \$1000-600-400-300-200; players without US Social Security ID may not win over \$400.

Prize limits for players with under 10 games played as of 4/04 list: U1200 \$1000, U1400 through U2200 \$2000. Games rated too late for 4/04 list not counted. Balance of prize goes to next player(s) in line.

ICC membership prizes: 1 year ICC membership to top Under 2300, Under 2100, Under 1900, Under 1700, Under 1500, Under 1300, Under 1100, 800-899, 700-799, Under 700. All sections eligible- if players in different sections tie, the one in the highest section is the winner.

Mailed entry fee: 4-day \$199, 3-day \$198, 2-day \$197 if mailed by 3/19; 4-day \$219, 3-day \$218, 2-day \$217 mailed by 5/18; all \$250 at site. No checks at site, credit cards OK.

ONLINE entry fee at chesstour.com: \$195 by 3/19, \$215 by 5/25, \$250 after 5/25 until 2 hours before round 1.

Phoned entry fee at 406-896-2038: \$205 by 3/19, \$225 by 5/25 (entry only, no questions). No phone entry after 5/25.

Chicago Open

ICA membership (\$18, under 19 \$14) required for Illinois residents. A maxi-tour event.

Special entry fee: \$30 less to rated juniors under 18 or rated seniors over 65. Re-entry \$100; not available in Open Section. GMs free; \$180 deducted from prize. WGMs \$130; \$50 deducted from prize.

Unrated Section entry fee: 4-day \$49, 3-day \$48, 2-day \$47 mailed by 5/19; all \$45 online at chesstour.com by 5/25, \$50 phoned to 406-896-2038 by 5/20 (entry only, no questions), \$60 at site.

USCF membership required.

Advance entry fee is \$10 less if paid with \$49 adult USCF dues.

\$20 fee for switching section or schedule after 5/25.

4-day schedule: Reg. ends Fri 6:30 pm, Rds. Fri 7:30 pm, Sat 12 & 7, Sun 12 & 7, Mon 10 & 4:30. **3-day schedule:** Reg. ends Sat 11 am, Rds. Sat 12, 3, & 7, Sun 12 & 7, Mon 10 & 4:30.

2-day schedule: Reg. ends Sun 9 am, Rds. Sun 10-12-2-4-7, Mon 10 & 4:30.

All schedules merge & compete for same prizes.

Half point byes: all, limit 2; rds 4-7 byes must commit before rd 3.

Hotel rates: \$85-85-85-85, 800-233-1234, 630-573-1234. Reserve by 5/9 or rate may increase.

Car rentals: Avis, 800-331-1600, AWD #D657633, or reserve car online through chesstour.com.

Foreign player ratings: 100 points added to FIDE, 100 to FQE, 200/more to most other foreign, no pts added to CFC. Highest of multiple ratings used.

US player ratings: April list used (same as May Chess Life label). If otherwise unrated, June list used.

Entries: Continental Chess, Box 249, Salisbury Mills, NY 12577.

Questions: 845-496-9658, www.chesstour.com, chesstour@aol.comno

CHESS DAY CAMP

WHEN: August 2-August 6, 2004 9:00 A.M.-2:30 P.M.

WHERE: North Bridge Baptist Church
2413 E. Ziebarth Road
Normal, IL 61761

WHO: Beginner to advance players are welcome from ages 6-14.

COST: \$105.00/per person--Please make checks payable to North Bridge Baptist Church.

TENTATIVE SCHEDULE:

- 9:00-9-10 Greetings/Warm-Up
- 9:10- 10:10 Class /Workshop
- 10:10-10:30 Break
- 10:30-11:30 Class/Workshop
- 11:30-11:40 A Biblical Thought
- 11:40-12:30 Lunch and Play Time
- 12:30-1:30 Tournament Game/Review Tournament Game w/Instructor
- 1:30-1:40 Break/Review tournament games
- 1:40-2:30 Class/Workshop

LUNCH:

Please bring a sack lunch Monday-Thursday. Drinks will be provided. We will have a pizza party on Friday. The pizza party is included in the registration fee.

REGISTRATION:

Please mail the registration form and fee by June 30 to Bill Barton at 2413 E. Ziebarth Road in Normal 61761. The camp will be limited to the first 50 registrations. For more information please contact Bill Barton at (309)664-1774 or 825-4852 or by way of e-mail at billbarton@Juno.com.

SCHEDULED TEACHERS: IM Angelo Young, Expert Chris Merli, Dennis Bourgerie, Bill Barton and others.

CHESS DAY CAMP REGISTRATION FORM

Name: _____ Age: _____

Address: _____

Telephone Number: _____

Emergency Telephone Number: _____

E-mail Address: _____

School Grade This Fall: _____ USCF Rating: _____

Is there interest in taking private lessons with International Master Angelo Young? The cost is \$35.00 per hour. _____

ICA Club Affiliation

ICA Club Affiliates

Organizations wishing to be listed here should mail an affiliation fee of \$25.00 for one year (check payable to Illinois Chess Association) to the ICA membership secretary, Chris Baumgartner
107 S. Maple Lane, Prospect Points Hts, IL 60070.
Include a short paragraph, similar to those below, listing your club's activities.

Alternativa Group, Peter Pelts, 7135 Greenleaf Av, Niles 60714. 847-965-6469.

American Postal Chess Tournaments sponsors postal events and sells chess books and equipment. Jim or Helen Warren, PO Box 305, Western Springs 60558. 630-663-0688, apct@aol.com. Organizers of the U.S. Masters.

The **Center Chess Club** meets 3rd Saturday of each month, 7-10 pm, Crystal Lake Park District, One East Crystal Lake Av (intersection of Walkup), Crystal Lake 60014. Also rated tournaments on most of these same dates, 4 rounds, game/60, register by 8:45 am, round 1 at 9 am. Jeff Buchman, 815-455-5288, buchadolph@aol.com.

Chess Central sponsors rated tournaments in the Grayslake / Zion area. Tim Just, 37165 Willow, Gurnee 60031. 847-244-7954, timjust@Lnd.com.

Chess in Chicago is dedicated to developing and promoting chess in Chicago, and scholastic players are the priority. Lamarr Wilson, email@chessinchicago.org, www.chessinchicago.org.

Chess Utopia sponsors rated tournaments in the Lake County area, Fridays 6 pm. Frank Swindell, 847-816-0869, Swinchess@aol.com, www.ChessUtopia.org.

Chessterton Chess Club meets at Westchester Public Library, 200 W Indiana, Chesterton IN. Joe Alford, Joe.Alford@Kemper.com.

Chicago Industrial Chess League organizes frequent competition among commercial or government teams with awards, ratings, and special events. Pat Sajbel, 847-391-2134.

Chicagoland Community Chess Club (formerly Concordia) meets Tuesdays 6-11 pm, Border's (Cafe Espresso), 7100 Forest Preserve Dr, Norridge. Howard Fried, 773-889-8553, hfried1@sbcglobal.net, or Robert Loncarevic, 773-282-5148, TLSchgo@speedsite.com.

FIDE Master **Albert Chow** gives private lessons by

appointment. 3513 N Seminary, Chicago 60657. 773-248-4846, ChowMasterAl@yahoo.com.

Continental Chess Association runs major tournaments nationwide, including the annual World Open in Philadelphia and the Chicago Open in late May each year. PO Box 249, Salisbury Mills NY 12577. Bill Goichberg. www.chesttour.com.

Crossroads Chess Club meets Tuesdays 6 pm, K Square Mall Food court, I-57 / I-70 exit 160, Effingham. Cameron Feltner, 217-844-2645.

Elmhurst Chess Club meets, and holds frequent USCF events, Sundays 6:30 to 11 pm, Room 18, Hammerschmidt Chapel, Elmhurst College, 190 Prospect, Elmhurst. Roger Birkeland, 630-832-1754, rogerdb9@earthlink.net, ElmhurstChess@aol.com.

Evanston Township High School Chess Club, 1600 Dodge Av, Evanston 60204. Ken Lewandowski, 847-492-7932.

Greater Peoria Chess Federation meets Mondays 7 pm, Lakeview Museum, 1125 W Lake Av, Peoria 61614. Wayne Zimmerle, 514 W Loucks Av #2, Peoria 61604. 309-692-4480 (day), 309-686-0192 (evenings), wzim@bwsys.net.

Hammond Chess Club, Charles Higgins, 116 Crestview St, Crown Point IN 46307. 219-663-8938.

Highland Park High School Chess Team, 433 Vine Av, Highland Park 60035. Tesc Schultz, tschultz@d113.lake.k12.il.us.

House of Chess meets Saturdays 4:30 pm, 1st Baptist Church, 146 S Main St, Glen Carbon 62034. Paul Holland, 618-288-4117, <http://members.aol.com/houseofchess>.

Illini Chess Club meets Thursdays 7-10 pm, College of Education Building, Room 37, 6th & Pennsylvania), Urbana. www.uiuc.edu/ro/uichess. Jeff Davis.

Illinois Chess Coaches Association is open to scholastic chess coaches in Illinois. Mike Zacate, 708-479-9380, mezacate@aol.com.

Illinois Valley Chess Association meets Thursdays 7-10 pm, Illinois Valley YMCA, Adult Lounge, 300 Walnut St, Peru 61354. Bill Schulte, 520 First St, LaSalle 61301. 815-223-1505, bschulte@rivalins.com.

Illowa Chess Club meets Tuesdays 6:30-10 pm, St Ambrose University, Davenport IA. Matt Nemmers, gcchess@mchsi.com, www.quadcitychess.com.

Joliet Junior College Chess Club meets Thursdays 6:30 pm, Joliet Junior College, Building J, cafeteria, 1215 Houbolt Rd (I-80 exit 127), Joliet. Maps www.jjc.edu/maps/maincampus.html. Tim Owens, c/o JJC-IET, 214 N Ottawa St, Joliet 60432. 815-280-1513, towens@jjc.edu. Or Steve Decman, 1418 Devonshire Dr, Joliet 60435. 815-744-5272, www.jjc.edu/clubs/chess.

Lakeview Cuyler Chess Club meets Wednesdays 7-10 pm, Cuyler Covenant Church, Fellowship Hall, 3901 N Marshfield Av (corner of Byron St), Chicago 60613. Drew Morissee, 1614 W Byron St, Chicago 60613. 312-494-1300 x12, WindyCityKnight@yahoo.com, <http://LakeviewCuylerChess.tripod.com>.

Mahomet-Seymour High School Chess Club, Dan Pirtle, 302 W State, Mahomet 61853. 217-586-4962, dpirt@ms.k12.il.us.

Mid-America Chess Association sponsors the popular website at www.64.com, and brings national tournaments to the Chicago area. midam@64.com.

Midway Chess Enterprises, PO Box 388765, Chicago 60638, whizline@home.com.

Murphysboro Chess Club, Murphysboro 62966. <http://mysite.verizon.net/res0bz47/>.

New Lenox Chess Club, c/o Vince Berry & Cindy Misiak, 815-463-9975, leave message. VWBerry@aol.com.

Park Forest Chess Club meets Thursdays 7-10 pm, Freedom Hall (next to the library), Lakewood Blvd just west of Orchard, Park Forest. Larry Cohen, 630-834-2477. www.tuxdomain.com/pfcc_club.html.

Rudy Lozano Library Chess Club, 1805 S Loomis, Chicago 60608. Hector Hernandez, 312-746-4329, hernande@chipublib.org.

Smythe Dakota Competitions encourages and offers financial support for Plus-Score Mini-Tours at sites in Chicago and adjoining suburbs. Bill Smythe, chichess@rcn.com.

St Charles Chess Club meets Thursdays 7-11 pm, Baker Community House, 101 S 2nd (Rt 31), St Charles. Jeff Wiewel, 1931 Dunhill Ct, Arlington Heights 60004. 847-818-8913, jwiewel@ntnusa.com.

The South Suburban Chess Club of Greater Chicago meets Fridays 7-11 pm, Oak View Recreation Center, 110th & Kilpatrick, Oak Lawn. Joe Bannon, 773-445-0631.

Springfield Chess Club meets Wednesdays 6-10 pm, American Legion Post 32, 5th & Capitol, Springfield. Thomas Knoedler, 2104 S Fourth St, Springfield 62703. 217-523-7265.

SquareHopper, Joshua Flores, Chess Professional. Available for any chess-related activity at reasonable rates. Specialties are tournament directing/organizing, coaching and teaching. Willing to travel. 630-430-CHES(s)

State Farm Employee Activities Chess Club 1 State Farm Plaza Corp. HQ C-4 Bloomington, IL, 60701 Colley Kitson 309-766-9493.

Tuley Park Chess Club holds frequent Saturday tournaments at Tuley Park Field House, 501 E 90th Pl, Chicago. Tom Fineberg, 7321 S South Shore Dr, Chicago 60649. 773-721-3979, www.home.earthlink.net/~maxine57.

Twin City Chess Club meets Tuesdays 7-10 pm, Lincoln Leisure Center, 1206 S Lee St, Bloomington 61701. Dennis Bourgerie, PO Box 157, Normal 61761. 309-454-3842 Dennis9942@wmconnect.com

West Middle School Chess Club, 1900 N Rocktoon Av, Rockford 61103. Ralph Sullons, 815-966-3220.

Wicker Park Chess Club meets Wednesdays 7 pm to 1 am, Myopic Books, 1468 N Milwaukee Av, Chicago. Pat Jones, 773-772-1369, pjones@artic.edu.

Woodfield Country Chess Club, Carl Troyer, 723 N Main, Eureka 62530. 309-467-6055.

ICA MEETING
SATURDAY JUNE 5th.

Officers meeting at 12:05pm,
General meeting 1:15pm
At the LaGrange YMCA 31 E. Ogden Avenue
in LaGrange, IL 60525.
Just east of LaGrange rd. (Rt 45).

Time Value Material

ADDRESS CORRECTION REQUESTED

Chris Baumgartner
107 S. Maple Lane
Prospect Hts, IL
60070

PRESORTED
STANDARD
US POSTAGE PAID
ASTORIA, IL
PERMIT #9