

# Illinois Chess Bulletin

Volume 28, Issue 2

March April 2005

## Illinois Youth Shine at Nationals



### INSIDE THIS ISSUE

- 7 Ill youth shine at Nationals
- 24 2005 IHSA Championship
- 26 Boris Spassky makes appearance out west

# **2005 Illinois Amateur Championships**

**Lincolnwood, IL (immediately north of Chicago)**

**5-round Swiss, March 19-20, 2005**

**\$4,000 Projected Prizes (b/125), \$2,000 minimum Guaranteed.**

**5-SS, 40/90 SD/30. Sat: 9:30, 2, 6:30. Sun: 12, 4:30.**

**Location:** Purple Hotel, 4500 W. Touhy Ave. (1 mile east of I-94), Lincolnwood, IL 60712.

**Prizes:** \$4,000 based on 125 paid entries (special EF counts as ½ entry).

**In 6 sections** – you face only those in your section.

**Class A (1800-1999):** \$400, \$300, \$200, \$100

**Class B (1600-1799):** \$400, \$300, \$200, \$100

**Class C (1400-1599):** \$300, \$200, \$100, \$50

**Class D (1200-1399):** \$300, \$200, \$100, \$50

**Class E/F (1199 and below):** \$200, \$100, \$50, \$50

**Unrated:** \$150, \$100, \$50

**Registration:** Reg. ends 9am SHARP! Entries after 9am must take 1<sup>st</sup> round ½ bye.

**EF:** Adults - \$60 mailed by 3/1/05; Juniors (18-20) \$55 mailed by 3/1/05; All \$70 onsite.

**Special EF:** Scholastic Players under the age of 18 receive a free 1 year membership to the ICA or a \$14 discount off of the Junior Early EF (if they are already ICA members) either mailed entry or onsite.

**All:** USCF membership required. ICA membership required for IL players. Byes available in all rounds. Max 2 byes; Commit to byes by start of Rd2; 1 class up for \$5 extra; D/E/F can play 2 classes up for \$5 extra. Re-entry: \$50 after Rd 1 only (you take ½ bye in Round 1). Max 2 byes. No smoking. Bring sets, boards, and clocks – none supplied. Feb supplement used. Unrated plays only in Unrated section. Provisional players are NOT unrated.

**Hotel Rates:** \$75 single/double, 847.677.1234. Mention chess tournament. Reserve by 3/1/05

**Entries:** Sevan A. Muradian 5119 N. Kenneth Ave. Chicago, IL 60630. [sevanmuradian@hotmail.com](mailto:sevanmuradian@hotmail.com) or 847.919.0431 with questions. No Checks onsite. **Credit card thru PayPal only BEFORE 3/17/05**

**Table of Contents**

**On the Cover**

**Trevor Magness and Eric Rosen take home some well earned trophies from the National tournament....7**

President's Podium .....5  
 Recap of the Illinois Class.....6  
 IllYouth Shine at Nationals .....7  
 ICB Games / FM Chow.....12  
 ICB Games / IM Young.....22  
 2005 IHSA Chess Championship.....24  
 Boris Spassky makes appearance out west.....26  
 Road Warrior.....30  
 Tactics (Pawn Promotion).....32  
 Winter Open XIX.....35  
 Northbridge Baptist Open 2005 final result.....36  
 Simple or not? You decide .....42  
 Book Review (Chess Exam & Training).....45

**ICA News**

ICA Tour & ICA Ex Urban Tour.....37  
 ICA Meeting Minutes.....40  
 ICA Supporters.....53

**Where to Play**

Tournament Calendar .....47  
 Affiliate Listing .....51

**President**

Bill Brock  
 205 W. Randolph, Suite 400  
 Chicago, IL 60606  
 (312) 252-1300, x12  
[billbrock@billbrock.net](mailto:billbrock@billbrock.net)

**Metro Vice-President**

Les Bale  
 2121 Halsey Drive  
 Des Plaines, IL 60018  
 (847) 813-1956  
[christianundertake@sbcglobal.net](mailto:christianundertake@sbcglobal.net)

**Downstate Vice-President**

Chris Merli  
 1206 Watersedge Road  
 Champaign, IL 61822-8100  
 (217) 778-3334  
[clmerli@insightbb.net](mailto:clmerli@insightbb.net)

**Secretary**

Richard Easton

**Treasurer**

Mike Maloney  
 PO Box 8664  
 Waukegan, IL 60079  
 (847) 599-0344  
[mike.maloney@sbcglobal.net](mailto:mike.maloney@sbcglobal.net)

**Immediate Past President**

Lawrence S. Cohen  
 231 S. Villa Ave #3-B  
 Villa Park, IL 60181-2941  
 (630) 834-2477  
[lscohen60@yahoo.com](mailto:lscohen60@yahoo.com)

**Membership Secretary**

Jeff Smith  
 19439 Lakeside Lane  
 Bloomington, IL 61704  
 309-378-2078  
[icamembership@msn.com](mailto:icamembership@msn.com)

**ICA Tour Statistician**

Mark Engelen  
[marksengelen@hotmail.com](mailto:marksengelen@hotmail.com)

**CHESS PHONE**

Chess results & announcements  
 (630) 832-5222

**WORLD WIDE WEB**

<http://www.illinoischess.org>

## About the Illinois Chess Bulletin and the Illinois Chess Association

### Illinois Chess Bulletin

Published six times per year

Copyright © 2005 Illinois Chess Association

**Next Deadline: April 15<sup>th</sup> 2005**

### Submissions

Send contributions to:

Colley Kitson  
428 N Grant  
Clinton, IL  
61727

ICB@mchsi.com

**Electronic submissions are preferred.** Preferred format for articles, stories or advertisements is Microsoft Word.

**Game submissions are also preferred in electronic format.** Games should be submitted in ChessBase archive format (.cbv) or in pgn. ChessBase 8 will automatically send archive format if you e-mail from ChessBase 8. In earlier versions of ChessBase you may archive a database to create a single file to e-mail. See your help materials.

If you need a simple program to create pgn files most chess databases will also produce text files in pgn format, as will many chess playing programs. The main font for the ICB is Arial, as well as the Figurine Aries font and the US Diagram font from ChessBase.

### Editorial Staff

Managing Editor: Colley Kitson  
Games Editor: Albert Chow  
Assistant Games Editor: Angelo Young

### Contributors

FM Albert Chow, Mark Engelen, Pete Karagianis, Ilya Korzhenevich, Dennis Bourgerie, Bill Brock, Brad Rosen, Chris Merli, Sevan Muradin, Don Aldrich, Igor Khmel'nitsky

### Advertising Rates

Back Cover:	\$125
Inside Front:	\$115
Full Page:	\$100
1/2 Page:	\$65
1/3 Page:	\$50
1/4 Page:	\$40
1/8 Page:	\$25

There is a \$20 design charge for ads that are not camera-ready. Allow 7 days for design. Allow additional time if ad proofing is required. ICA affiliates receive a 1/3 discount and ads that appear in consecutive issues receive a 10% discount. Payment must accompany the ad. The ICA and the ICB reserve the right to refuse any specific advertisement.

### Membership Information

The Illinois Chess Bulletin (ICB) is published by the Illinois Chess Association (ICA). ICA membership includes a subscription to the ICB. Memberships marked 1<sup>st</sup> receive their magazine first class. Memberships marked P also receive a plaque. Affiliates also receive discounted advertising rates, event advertising on Chess Phone and the ICA website, and the right to run Tour events.

Corporate	\$500	1 <sup>st</sup> Class & Plaque
Organization	\$200	1 <sup>st</sup> Class & Plaque
Business	\$200	1 <sup>st</sup> Class & Plaque
Century Club	\$100	1 <sup>st</sup> Class
Gold Card	\$50	1 <sup>st</sup> Class
Patron	\$35	1 <sup>st</sup> Class
Affiliate	\$25	Affiliate benefits
Regular	\$18	
Junior	\$14	
Family	\$6	No magazine

FIDE Master **Albert Chow**  
Accepting games for the ICB  
Games can be sent to:

Albert Chow  
3513 N Seminary, Chicago 60657. 773-248-  
4846, [ChowMasterAl@yahoo.com](mailto:ChowMasterAl@yahoo.com).

## President's Podium

If I were a priest, I might open with a prayer. But I'm not. So how about a game of chess instead?

### Al Chow – Bill Brock [E04]

Chicago Chess Center, 1985

**1.d4 Nf6 2.c4 e6 3.g3 d5 4.Nf3 dxc4 5.Bg2 c5 6.0-0 Nc6 7.Qa4 Bd7 8.Qxc4 cxd4 9.Nxd4 Rc8 10.Nc3 Nxd4 11.Qxd4 Bc5 12.Qh4 Bc6 13.Rd1 Qb6 14.Bh6!**

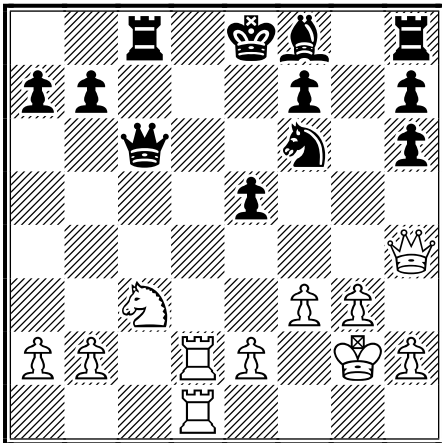
Not too long before we played, Al and Bill Colias had done some research for an Eric Schiller book on the Catalan, from which Al now benefits.

### 14...Bf8

Maybe the Fritzy 14...Bxf2+ is better; if 15.Kh1 Ng4 16.Qxg4 gxh6 17.Rac1 and now 17...Be3?! (17...Ke7!?; 17...Bc5!? 18.Na4 Bxg2+ 19.Kxg2 Qc6+ 20.Kh3™=) would be met by 18.Nd5!± ]

**15.Rd2 Bxg2 16.Kxg2 Qc6+ 17.f3 e5 18.Rad1 gxh6**

Now Al thought for an hour or so: the idea is easy to see, but visualizing the outcome is harder.



### 19.Rd6!! Bxd6 20.Qxf6 0-0

Played instantaneously; I pragmatically figured that I had to connect my Rooks. After 20...Rg8, 21.Rxd6 Qc4 22.Nd5 Qxe2+ 23.Kh3 Qf1+ 24.Kh4 Rc4+ 25.f4 brings home the bacon.

### 21.Rxd6 Qc4 22.Nd5 Rfe8

I can't escape with 22...Qxe2+ because of the beautiful line 23.Kh3 Qf1+ 24.Kh4 Rce8 25.Rd8! Qc4+ 26.Kh5.

### 23.Rd7 Qxe2+ 24.Kh3 Qf1+ 25.Kh4

Shades of Botvinnik-Capablanca.

### 25...Rc4+ 26.f4 Rxf4+ 27.Nxf4 Qc4 28.b3! 1-0

On the rare occasions you lose, gentle reader, I hope your defeats are equally enjoyable....

And now if I may ascend the soapbox. We've allocated a significant percentage of our scarce resources to pay for a dedicated server. (I was only able to get a very rough draft of the *ICB Online* up before tax season; I thank all those who contributed material, and give special thanks to Jon Buckley for the spiffy design.) We'd now like to go one step further, and have much more content online, more *up-to-date* content.

It's obvious that a fair percentage of the website needs to be devoted to organizational matters and other "meta-chess" content. We need more volunteers to make sure this content is kept current. But wouldn't it be cool to have significant **chess** content on the ICA website—you know, that game played with 32 pieces on an 64-square board?

Yet another step: it would be good to aim a large portion of this content at young and developing players, simply because the Web allows material to be covered in detail that generally isn't economically feasible for print publication.

The resources are there. But to make full use of them, we need *you* to volunteer, perhaps as writer, perhaps as HTML editor, perhaps in adding chess content to the website, perhaps as a general website editor. Helping others can be fun.

Upcoming events! Fred Gruenberg would use exclamation points, so I will too!

- Come play in the Illinois Amateur Championships at the Purple Hotel in Lincolnwood on March 19-20!
- Mark your calendars for the ICA Banquet, noon, Sunday, May 1<sup>st</sup>! Vince's Italian Restaurant, 4747 N. Harlem (Harlem and Lawrence Avenues), Harwood Heights! Food! Fun! Special events! Tour prizes!
- Special thanks to the Rockford Chess Association for sponsoring the Second Saturday Open and ICA Membership Drive on May 14<sup>th</sup>!
- Although some of us may be playing in Maurice Ashley's Minneapolis extravaganza, I wouldn't dream of missing the Chicago Open this Memorial Day weekend, with a **guaranteed (!) prize fund of \$100,000!!**

## ***Recap of the 2004 Illinois Class Championship***

**By Sevan A. Muradian**

Well, the 2004 Illinois Class Championship tournament had some problems getting started up, But, from this organizer's perspective, once it was up and running it went without a hitch.

A total of 95 players showed up to the event even though it was held the weekend before Christmas. The complete prize fund was distributed (\$3500). A tie occurred for first place between IM Angelo Young and IM Stan Smetankin. Since IM Young is an Illinois resident and IM Smetankin is not, IM Young walks away with the title!

This year the event was held at Oakton Community College in Des Plaines, IL. The accommodations in general were very nice. Players had ample playing space, lighting was great, and a nice big skittles area. Some downsides were that the cafeteria was not open because school was not in session, if you were not familiar with the college you may have ended up at the opposite end of campus, and, of course, the weather was horrid (but that is not the college's fault).

The winners by section were:

- ✓ IM Angelo Young – M/X
- ✓ Dexter Cavitt – Class A
- ✓ Ilan Meerovich – Class B
- ✓ Muhamed Dzananovic – Class C
- ✓ Amrit Kashyap – Class D
- ✓ Andy Soukal – Class E/F
- ✓ James Greer – Unrated

In financial terms the event made a modest \$52! However keep in mind that traditionally this event has between a 90-125 player turnout and normally this event operates either at no profit or at a loss. Where you see the excellence in the tournament was how the Chief TD, Tim Just, and the Assistant TD, Wayne Clark handled their TD

responsibilities. Outside of Round 1, which started 15 minutes late, all other rounds started on time. Wall charts were posted in a timely manner. Issues were resolved with haste and accuracy, and their assistance with registration was stellar. I was very happy that they agreed to be the TD's for my event and I look forward to working with them in the future.

From a membership standpoint, if my memory serves correctly, we had 26 new members sign up. About a half dozen scholastic players took me up on the offer of giving them a 1 year free ICA membership in return for playing. 2 new Century Club members joined the ranks of ICA membership.

In sum, I believe the 2004 Illinois Class Championships was a successful tournament in all respects and I am glad I had the opportunity to organize it and work with such a great team.

*Until next time!*

### **William H. Brock, Ltd.**

Certified Public Accountant  
205 W. Randolph, Suite 400  
Chicago, IL 60606

- Corporate & personal taxation
- Small business auditing
- QuickBooks Professional Advisor

voice 312.252.1300 fax 312.252.1301  
billbrock@billbrock.net  
www.billbrock.net

### *Illinois Youth Shine at National Championships in Orlando*

By Brad Rosen

Many young people from throughout Illinois were part of the 1,632 chesskids who competed at the National K-12 /Collegiate Championships back in December of last year. In this tournament each school grade was its own division. Each participant played 7 rounds of chess. The group of kids from Illinois generally performed very well and brought home their fair share of trophies.

Trevor Magness of Bolingbrook had a breakout tournament finishing in 4th place in Grade 6, with 6 points (6 wins, 1 loss). Trevor entered the tournament rated 1456, but along the way he defeated players rated 1728, 1667, 1605, and 1668. Trevor receives internet-based instruction from his coach Robert Snyder, who runs the Chess for Juniors program out of Fort Collins, Colorado. See the companion article and analysis of Trevor's game against Jonathan Liu (rated 1728).

Finishing in 1<sup>st</sup> place in the Collegiate Division was 2003 High School Denker Champion, Master William Aramil. William graduated from New Trier High School last year and now attends the University of Texas at Dallas where he is part of that school's prestigious chess program.

The following recaps the top performances in Orlando by players from the Land of Lincoln.

Kindergarten: Zach Holocek of Lincolnshire and Bryce McClanahan of Glenview both had great tournaments, each scoring 5 points and finishing in 4<sup>th</sup> and 6<sup>th</sup> places respectively. Ian and Joshua Gilchrist each scored 4 points, leading Lincoln School of Marion to a 3rd place finish.

1st Grade: Niresh Kuganeshwaren of Peoria finished in 16th place scoring 5 points.

2nd Grade: Gavin McClanahan of Glenview finished in 4<sup>th</sup> place with 6 points. Steven Medina of Evanston and Eddie McDougal each scored 5 points tying for 15th place.

3rd Grade: Sam Schmakel of Chicago finished in 19th place and Jonathan Kogen of Deerfield finished in 21st place, each scoring 5 points.

4th Grade: Adele Padgett of Lincolnshire tied for 20th place scoring 5 points.

5th Grade: Eric Rosen of Skokie scored 6 points and finished in 5<sup>th</sup> place. Josh Dubin of Buffalo Grove and Paul Duncan of Evanston tied for 20th place each scoring 5 points.

6th Grade: James Medina of Evanston won a class award for U1200 scoring 4.5 points.

7th Grade: Mudrekh Goderya won a class award for U1400 scoring 4.5 points.

8th Grade: Sam Edelstein finished in 8th place scoring 5.5 points.

10th Grade: Dan Gannon finished in 6th place scoring 5.5 points.

11th Grade: Nick Berry of Evanston came in 2nd place in that section with 6 points. Andy Applebaum finished in 9th place scoring 5 points.

12th Grade: David Harbage tied for 10th place scoring 4 points; and

College: Tenzing Shaw finished in 3rd place scoring 5 points.

Hats also go off to Evanston Township High School's 11th and 12th Grade teams for coming in first in their respective divisions. Evanston's 10th graders also had a fine showing coming in 3rd place.

So all in all, the kids (and young adults) from Illinois fared quite well against tough national competition. And that's the way it was from Orlando, Florida.

Please join us for **FOOD AND FUN AT the Illinois Chess Association Awards Banquet**  
Sunday, May 1<sup>st</sup> Noon till 3:30 p.m

Vince's Italian Restaurant  
4747 N. Harlem Avenue  
(just south of Lawrence Avenue)  
Harwood Heights, Illinois  
RESTAURANT 708.867.7770  
WWW.VINCESONHARLEM.COM

FOR MORE INFO:  
LES BALE 847.813.1956

## Recap of the 2004 Illinois Class

### EVEN WILD HORSES WILL NOT HOLD TREVOR MAGNESS BACK By Robert M. Snyder (Elo: 2405)



### National School Grade Championships (6<sup>th</sup> Grade Division): Orlando, Florida December 2004 Opening: Ruy Lopez, Keres Variation White: Jonathan Liu (Elo: 1728) vs. Trevor Magness (Elo: 1456)

I started training twelve-year-old Trevor Magness of Bolingbrook, IL in April 2004 with weekly internet lessons. Trevor is a talented and dedicated student who doesn't mind putting in time to study. To my amazement one of my other talented students, Jonathan Liu of Minnesota, was paired against Trevor at the Nationals in Orlando! Trevor was up against a considerably higher rated opponent.

Obviously, when Trevor won his game, he was excited and brought the game over to me to have it analyzed (I was doing the game analysis table and book signings for my "Chess for Juniors" series). Here are some brief notes to this game. For extensive analysis on the main line of the Ruy Lopez and the Keres Variations see my book "Unbeatable Chess Lessons for Juniors" and my book to be released on May 10, "More Unbeatable Chess for Juniors".

1 e4 e5 2 Nf3 Nc6 3 Bb5

I recommend the Ruy Lopez from either the White or Black side to my students. It is part of a well rounded opening system that provides a variety of important tactics and positional play for the developing student.

3...a6 4 Ba4 Nf6 5 0-0 Be7 6 Re1 b5 7 Bb3 d6 8 c3 0-0  
9 h3 Na5 10 Bc2 c5 11 d4 Nd7

This is known as the Keres Variation. It is a good and dynamic alternative way of defending Black's "e" Pawn to the usual 11...Qc7.

12 Be3?

The direct development of this Bishop is inaccurate. It becomes a target on "e3" and removes the defense of White's Pawn on "b2".

12...Nc4

Trevor is quick to take advantage of White's inaccuracy by attacking the Bishop on "e3" and Pawn on "b2".

13 b3?

This encourages Black to continue with his plan of capturing on "e" and obtaining the Bishop Pair. Better was to retreat with 13 Bc1.

13...Nxe3 14 Rxe3 exd4?

It was not wise to make this exchange at this time. It opens "c3" for use by White's Knight. Also, unless there is a good reason exchanging a center Pawn (on "e5") for a flank Pawn (on "c3") isn't to be recommended. More prudent was 14...Qc7 with a slight edge for Black.

15 cxd4 Bf6 16 Nc3

The weakness behind Black's 14<sup>th</sup> move becomes more obvious now that White's Knight has entered the good "c3" post.

16...cxd4

There was no need to centralize White's Knight. Here continuing to develop with 16...Bb7 was better.

17 Nxd4 Qb6

It would have still been more accurate to continue to develop with 17...Bb7.

18 Nf5 Qa5 19 Nd4?

White had a much better way of taking care of the threat on his Knight on "c3" by playing 19 b4! Qxb4 20 Nd5 and White stands slightly better.

21...Bb7 20 a3 Rac8 21 b4 Qb6 22 Nce2?



White moves the wrong Knight. He should have removed his Knight which became a target on "d4" with 22 Nde2. This will become apparent after Black's next move.

22...Rc4! 23 Rd3

What else? The Knight on "d4" is attacked 3 times and pinned. Black now wins material.

23...Bxe4 24 Rd2 Bxc2 25 Nxc2 Bxa1 26 Rxd6 Qb8

Another winning alternative was 26...Qxd6 27 Qxd6 Rxc2.

27 Rxd7 Rc7?

Black should have kept his material advantage with 27...Bf6.

28 Rxc7 Qxc7 29 Nxa1 h6 30 Nb3 Rd8 31 Ned4 Rd6 32 Qd2 Rg6?

This results in a loss of time. Black has no real attack on the Kingside so the Rook is misdirected there. A good alternative was for Black to try and keep up the pressure with 32...Qc4.

33 Nc5 Qe5 34 Qe3 Qd5 35 g3

Better was 35 Qe8+ Kh7 36 Qe4.

35...Rd6 36 Nf3 Qf5 37 Kg2 Kh7 38 Qe4?

White tosses almost everything away with this move (as will soon be demonstrated). He should have played 38 Qe5!

39 Nxe4 Rd3 40 Nc5?

White takes the wrong post with the wrong Knight. White should have played 40 Ne5 planning to meet 40...Rxa6 with 41 Nc6 preventing Black from moving his Pawn to "a5".

40...Rxa3 41 Ne5 f6?

This only should have driven White's Knight to a better post on "c6" preventing the advance of Black's "a" Pawn. The immediate 41...a6 was called for.

42 Ned7?

As pointed out previously, White should have prevented the advance of Black's "a" Pawn with 42 Nc6.

42...a5 43 bxa5 Rxa5 44 Nb3 Ra3 45 Ndc5 Kg6 46 Kf3 Kf5 47 h4?

This move loses time and makes White's Pawns down the line into easier targets on the Kingside. Better was to continue to move the King toward the Queenside with 47 Ke3.

47...Ke5 48 Ke3 Kd5 49 Kd3 Ra2?

Better was 49...b4 keeping White's Knight pinned and covering "c3". This would have provoked White to weaken further on the Kingside while attempting to create a zugzwang situation with the idea of Black's King being able to penetrate. In reality the situation would have then been approximately equal.

50 Ne4 b4 51 Ned2 g6 52 g4 Ke5 53 Ke3 Rc2 54 Nf3+?

More accurate was 54 Ne4.

54...Kd5 55 Nfd4??

White makes a fatal blunder that Black quickly punishes. White's best chance of survival at this point was 55 Nfd2.

55...Rc3+ 56 Kf4 Kc4 57 Ke4 Rxb3 58 Nxb3 Kxb3 59 f4 Kc3 60 g5 hxg5 61 f5 gxf5+ 62 Kxf5 gxh4 63 Kg4 b3 64 0-1

*About the writer: Robert M. Snyder is a full time professional chess teacher who lives in Fort Collins, Colorado. He founded the "Chess for Juniors" club in 1983 which currently provides a complete training program for youth with Private Internet Lessons, coaching at most major nationals and a series of books which include the top two best selling chess books in the country, "Chess for Juniors" and "Unbeatable Chess Lessons for Juniors".. Mr. Snyder's website is at: [www.chessforjuniors.com](http://www.chessforjuniors.com)*

### Guadalupe, Francisco (2058) - Gannon, Dan (1739) 10th Grade National Championships Orlando, Florida, 11.12.2004

By Dan Gannon

Going into the game I was in a very interesting position. I had started the tournament very rough by blundering a won position into a draw against a 1224 in the very first round. After winning the second round easily, I found myself facing a strong 2070 named Eric Rodriguez of Florida. Eric had beaten me the year before also in the third round (Eric tied for first in that event and I placed 9th, missing a win in the last round that would have allowed me a tie for first). We played a semi-interesting game and he once again beat me. I beat a 1340 in 24 moves in round 4. Which brought me here. Anybody who has played in this event before knows that because they only give away 10 trophies, the fight for points is brutal. 5 out of 7 will only be good enough if your tie breaks are good enough. After drawing the first round, it became clear that my tie breaks would be bad so my only hope was to play for a win every game. My opponent here, Francisco Guadalupe (2058) is a very strong 2000 who has even been known to finish some tournaments with a 2400 performance rating. We had also played once before at a side event of the North American Open where he tore me apart. I was not at all thinking about past results and was ready to go in for complications, take my time, and bring him down. It was clear I needed to win the rest of my games to place in the top 10, drawing is not an option...

**1.e4 c5 2.Nf3 d6 3.d4** I was very happy to see not just because of the complications that often arise from the open Sicilian, but also because to this day my score with the black side of the open Sicilian in tournament play remains 100%!

**3...cxd4 4.Nxd4 Nf6 5.Nc3 g6 6.Be2** White avoids the Yugoslav, somewhat of a disappointment...

**6...Bg7 7.Be3 0-0 8.0-0 Nc6 9.a3?!** Shredder 8 has eight different 9th moves for White. Some not as good as others, but none are this. I really don't understand the point. The main line is 9.Nb3 which my opponent played in the last round (Gregory Kimmel 1888). I tend to think the plan involving ...Be6, ...Na5, ...Rc8, and many times even ...Rxc3! give Black a lot of play. 9.Qd2 is also very common.

**9...Bd7?!** I had not thought too much about 9.a3 and went right along with my normal development moves. However, right after I played this I realized I could have equalized instantly with 9...d5!

**10.f4** [10.Rb1 Rc8 11.h3 a6 12.Nf3 Na7?? 13.e5 dxe5 14.Nxe5? (14.Bxa7 is just up a piece.) 14...Nc6 15.Nxd7 Nxd7 led to a draw in Baird,D-

Tennenwurzle,E, New York 1911.] **10...Qb6** 10...Qa5 seem safer but I'm playing for complications. **11.Nf5** [11.Qd3 Qa5+/- (11...Qxb2?? 12.Rfb1)]

**11...Qxb2!** Guadalupe had played 11.Nf5 very quickly which showed that he didn't think hard about this entire idea. It seems he only calculated his next move. Hey, his queen gets trapped, I must be winning. Remember everybody, queens are not unmatchable in material!

**12.Na4 Qxa1 13.Qxa1 gxf5** We have reached one of the most complicated material imbalances, a R, N, and P against a Q. The question of which is more important will be highly determined by piece activity.

**14.Qb1** [White gets his queen out of the corner and out of range of my dark squared bishop. Over the board I was expecting 14.e5!? Ne4 15.Qb1 with a complicated position with chances for both sides.]

**14...fxe4** choosing between 14...fxe4 and 14...Nxe4 is a very difficult decision. The knight would sure look pretty on e4 while the pawn would be playing for an eventual push in the center. In the end I chose ...fx in order to avoid the possibilities of [14...Nxe4 being met by 15.Qxb7 attacking my light squared bishop.]

**15.Nc3** [Now 15.Qxb7? is met by 15...Rfb8 16.Qa6 Nd5 with a dominating, and in fact winning, position for Black. Guadalupe understands the importance of piece activity and chooses not to grab the pawn; but instead to get his knight out of range of my bishop.]

**15...a6** I spent a long time on this move. Pushes like 15...d5 are always considerations. I chose this move for a few reasons. The first is I secure the b5 square. I'm also preparing to play ...b5 myself. Finally, and just as important was for physiological reasons; the move after he moved his knight away from a4, he now wishes it was still on a4 so he could play Nb6. As you can see, this urge gets the better of him in a couple moves.

**16.h3?!** [These types of positions are very difficult to play and the correct plan is often hard to come up with. The idea behind h3 makes sense; it stops any piece from coming in to g4 and he also may be planning to play g4 and start an attack on the kingside. However, this turns out to be too slow. 16.Qxb7? Rfb8 17.Qc7 Rc8 18.Qb6 Ne8! 19.Qb7 (19.Nd1 Rcb8; 19.Qb3 Nd4+-) 19...Nc7 20.Qb3 Be6+-; 16.Qd1 is probably the best move. Shredder 8 calls this position equal but I seriously think Black must be better.]

**16...Rfc8** [16...b5 is probably even stronger but I was still using the idea of his knight wishing it was back on a4 by making c3 look as scary as possible. This turns out to be just the nudge that pushed him.]

**17.Na4??** It is amazing how fast you can become completely lost in positions like this without really hanging anything. Part of this was Guadalupe was clearly underestimating me. He was using very little time throughout the game and played Na4 almost instantly. This is in contrast with our last game when it was reversed. He was the one using a lot of time while I was moving very quickly. After our first game his father

came up to me and told me his son used to have the same problem that I did of moving too fast. It is ironic that in this game it was him that was moving too fast. [17.Qd1 is still safest.]

**17...Nd5** Obvious, strong, and winning...

**18.Nb6** Other moves are: [18.Qxb7 Be8 19.Ba7 (...Rcb8 was threatened) 19...Nc7 and Black wins.; 18.Bf2 e3 19.Be1 Nd4 and wins.]

**18...Nxe3** My opponent was completely shocked by this move. He was still moving fast and it wasn't until now when he finally started thinking.

**19.Nxa8** The other moves are: [19.Nxc8 Bxc8 20.Re1 Bd4 21.Kh2 Bc3 22.Rc1 Nd4 I stopped calculating here, White is clearly lost. Feel free to work out the moves on your computer.; 19.Nxd7 Nxf1 20.Kxf1 (20.Bxf1 b5 followed by grabbing his knight since 21.Nb6 is met by 21...Bd4+) 20...Rc7 21.Nb6 Rb8 and it will only take a couple of moves to untangle my pieces when I will be winning.; 19.Re1 Bd4 20.Nxd7 (20.Nxa8 Nxc2+ 21.Kh1 Nxe1 22.Qxb7 Rd8 with a fairly easy win.) 20...Nxc2+ 21.Kh1 Nxe1 22.Qxe1 Rc7 is winning easily.]

**19...Rxa8 20.Qxb7 Ra7** My opponent missed this move and now finally realized he was lost.

**21.Qb1 Nxf1 22.Kxf1 Bc8 23.Bc4 Rb7 24.Qa2** [24.Qe1 there is nothing better in the position 24...Nd4 25.Qxe4+] ]

**24...e6 25.Bxa6 Rb2 26.Qc4 Bxa6 27.Qxa6 Rxc2**

**28.a4 e3** There is no better feeling than that one you get when you get that final calculation to the end of the game.

**29.Qc8+** White must pin Black's bishop otherwise 29...e2+ 30.Ke1 Bc3+ will end the game. [29.Qa8+ Bf8 doesn't change anything: 30.a5 e2+ 31.Kf2 Nd4 followed by ...Rc1.]

**29...Bf8 30.a5 e2+ 31.Kf2 Rc1** Because 32.Kxe2 is met by 32...Nd4+, my opponent had no choice but to resign. The reader might find it interesting that I had to play a 2070 in round 3 with only 1.5/2 and then a 2058 in round 5 with only 2.5/4. As it turned out, a 1700 player who had finished one place ahead of me the year before had drawn Rodriguez in round 2 and had beaten Guadalupe in round 4, and of course, luck sent them to me. In round 5 that 1700 lost to a 1600 from a completely winning position and we were due to play next. He is a dragon player but watched my game against Guadalupe and became worried that I knew the dragon well and suddenly decided to switch over to the Najdorf. Choosing not to play the dragon against me was a good idea, but we all know you can't just suddenly choose to play a system as sharp as the Najdorf. In affect he found himself completely lost within the first 13 moves. Finally I had one more game to go. I was up against a strong 1888 named Gregory Kimmel. This is the last round, and it was clear my tie breaks were the worst. Only a win will help. Our game took almost the entire 4 hours. At the end he only had a few seconds left while I had about 10 minutes left. In the end I did manage to pull a win out of an extremely complicated game. This win allowed me to finish in a tie for 3-6. Of course, my tie breaks were bad and I finished in 6th overall. However, I was still very happy with my overall performance and play. Being able to come back from that bad start by winning the last 4 rounds takes a good frame of mind and is a very important part of being a competitive player. **0-1**

## Albert Chows Games

FM Al Chow had a good reason for withdrawing from the 2004 Illinois Class, even though he was one of the leaders of the tournament. On his way to Round 4, he was in an accident that totaled his car. But a concussion did not keep our intrepid Games Editor from playing a few weeks later in the nineteenth Tim Just's Winter Open, or from providing notes to the following games from both events.

### Steve Szpisjak (2200) - Larry Cohen (2020) [A29]

Tim Just's Winter Open XIX (5), 05.01.2005

1.c4 Nf6 2.Nc3 e5 3.g3 Nc6 4.Bg2 Bb4 5.Nf3 0-0 6.0-0 Re8 7.d3 h6 8.a3 Bf8?

8...Bxc3 9.bxc3 d6 seems best.

9.b4 d6 10.Bb2 a6 11.e3 Ne7 12.d4! exd4 13.Nxd4 c6 14.e4 c5 15.Nc2 Nc6 16.b5 Ne5 17.Ne3 Be6 18.Ncd5 axb5 19.cxb5 Ned7 20.Nf4 Nb6 21.a4 Nc4 22.Nxc4 Bxc4 23.Re1 Be6? 24.Nxe6! fxe6 25.e5! d5?

25...dxe5 26.Bxb7 is also good for White.

26.exf6 gxf6 27.Qg4+

Black resigned. 1-0

### Miomir Stevanovic (2048) - Mehmed Pasalic (2372) [A00]

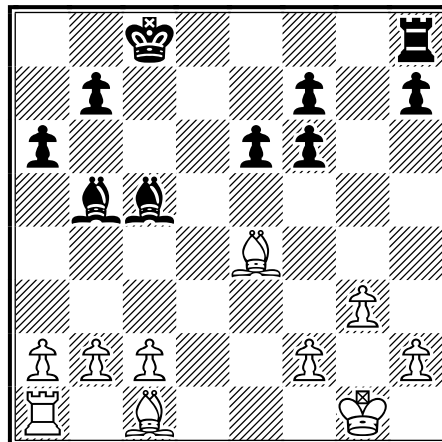
Tim Just's Winter Open XIX (2), 08.01.2005

1.Nc3 c5 2.Nf3 Nf6 3.d4 cxd4 4.Nxd4 Nc6 5.Bg5 d6 6.g3 Bd7 7.Bg2 a6 8.0-0 e6 9.Ne4 d5 10.Nxf6+ gxf6 11.Bc1

11.Bh4!? stays developed.

11...Rc8 12.e4 Nxd4 13.Qxd4 Bb5 14.Rd1 Bc5 15.Qd2 dxe4 16.Qxd8+ Rxd8 17.Rxd8+ Kxd8 18.Bxe4 Kc8=

This ending should be equal.



19.a4 Bd7 20.Bh6 f5 21.Bf3 Bf8!? 22.Bxf8 Rxf8 23.Ra3

23.a5! was good.

23...Rd8 24.Rc3+ Kb8 25.Rb3

25.Rd3!? may hold the d-file.

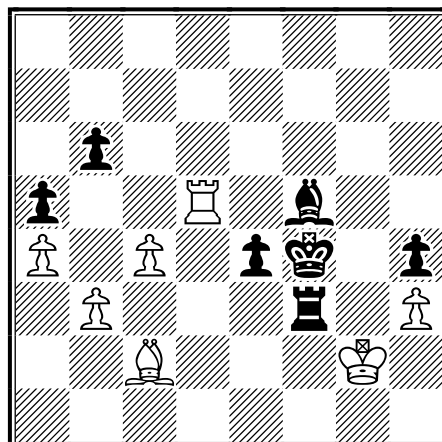
25...Bc8 26.Kf1 Rd4! 27.Ra3 a5! 28.Ke1 e5! 29.b3 f4! 30.Ra1 Bf5!

Black pushes an initiative.

31.Rc1 Bg6 32.c3 Rd6

The threat of 33...Rb6 is strong.

33.gxf4 Rf6! 34.Kf1 Rxf4 35.Kg2 h6 36.Kg3 b6! 37.Bd5 h5 38.f3 h4+ 39.Kg2 Bh5 40.Re1 f6 41.Re3 Kc7 42.h3 Bg6 43.Be4 f5! 44.Bc2 e4! 45.fxe4 fxe4 46.Re2 Kd6 47.Rd2+ Ke5 48.Rd7 Rf3! 49.c4 Bf5! 50.Rd5+ Kf4



51.Bd1 Rg3+ 52.Kf2 Rxh3 53.c5 e3+  
54.Kg1 Be4!

White resigned. 0-1

Steve Szpisjak (2200) - Dr. M. Barrie  
Richmond (1772) [A45]

Tim Just's Winter Open XIX (1), 08.01.2005

1.d4 Nf6 2.Bg5 Ne4 3.Bf4 c5 4.d5 Qa5+  
5.c3 d6 6.f3 Nf6 7.e4 Nbd7 8.Nh3! g6 9.Be2  
Bg7 10.0-0 0-0 11.Na3! a6 12.Nc4 Qc7  
13.a4 Nb6 14.Nf2 Nxc4 15.Bxc4 Bd7

A Trompovski Benoni-Indian.

16.Qe2 Bxa4?! 17.Rxa4 b5 18.Ra2 bxc4  
19.Qxc4 a5 20.Rfa1 Nd7 21.Qe2 c4 22.Nd1!  
Ne5 23.Bxe5! Bxe5 24.Ne3! Qc5 25.Kh1  
Rfc8 26.Ra4! Qb5 27.Nxc4 Rc5 28.Qf1!  
Rxc4?! 29.Qxc4 Qxb2 30.R4a3 Rb8  
31.R3a2 Qb1+ 32.Qf1 Qxf1+ 33.Rxf1 Bxc3  
34.Rc1 Rb3 35.Kg1 Bb4 36.Kf1 Kg7 37.Ke2  
Kf6 38.Rc7 Rb1 39.Rb7 Rg1 40.Kd3 Bc5  
41.Kc4 a4 42.Rxa4 Rxd2 43.Ra8 Rf2 44.Re8  
Rxf3 45.Rexd7 Kg7 46.e5! Rf4+ 47.Kb5  
Rb4+ 48.Kc6 Rxb7 49.Rxb7

Black resigned. 1-0

Larry Cohen (2015) - Igor Tsyganov (2264)  
[E61]

Illinois Class Championships (2), 18.12.2004

1.c4 c5 2.Nc3 Nf6 3.g3 g6 4.Bg2 Bg7 5.e3  
0-0 6.Nge2 d6 7.0-0 Nc6 8.d4 Bd7

An English with links to the Sicilian and Benoni.

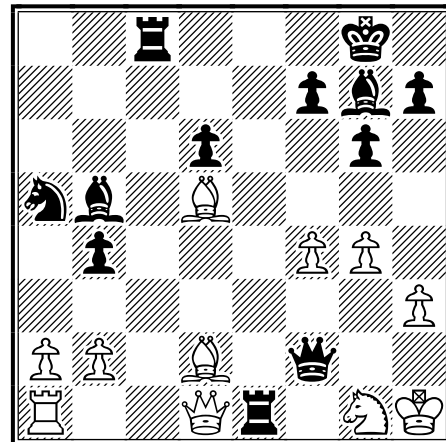
9.f4?

9.b3 Rb8 10.Bb2 a6 is good.

9...cxd4 10.Nxd4 Rc8 11.Nde2 Re8 12.h3  
a6 13.e4 b5! 14.cxb5 axb5 15.Kh2

15.Nxb5? Qb6+ -+.

15...b4 16.Nd5 Nxd5 17.exd5 Na5 18.g4  
Bb5 19.Re1 e5!? 20.dxe6 Rxe6 21.Bd5 Re7  
22.Bd2 Qb6! 23.Ng1 Qf2+ 24.Kh1 Rxe1



25.Bxe1?

25.Qxe1! was better.

25...Qxf4 26.Rb1 Be5 27.Nf3 Nc4 28.Nxe5  
dxe5 29.Qf3 Ne3 30.Bg3 Qxf3+ 31.Bxf3 f6  
32.Bf2 Nc2 33.Rc1 Bc6 34.Bxc6 Rxc6  
35.Rd1 Kf7 36.Rd7+ Ke6 37.Rxh7 e4  
38.Rh8 Ke5 39.Bg3+ Kd4 40.h4 e3 41.h5  
gxh5 42.gxh5 f5 43.Kg2 Kd3 44.Rd8+ Ke2  
45.Re8 Rh6 46.Bf4 Rxh5 47.a4 bxa3  
48.bxa3 Rh4 49.Bg3 Ra4 50.Rf8 Ra5 51.Bf4  
Ne1+ 52.Kg3 Nd3 53.Bg5 f4+ 54.Bxf4 Nxf4  
55.Rxf4 Rxa3

Black wins this rook and pawn endgame. 0-1

GM Dmitry Gurevich (2571) - FM Albert Chow  
(2252) [A80]

Tim Just's Winter Open XIX (3), 08.01.2005

1.d4 f5 2.Nf3 Nf6 3.Bg5 e6 4.Nbd2 Be7  
4...d5 is the Stonewall Dutch.

5.Bxf6! Bxf6 6.e4! 0-0

6...fxe4 7.Nxe4 or; 6...d5 may be better.

7.e5! Be7 8.Bc4! Nc6 9.Nb3! d5 10.exd6!

En passant.

10...cxd6 11.0-0

11.Qe2! was strong.

11...Bf6 12.Re1 Re8! 13.c3 g6 14.d5 Ne5!  
15.Bb5 Re7 16.dxe6 Bxe6 17.Nbd4 Bf7  
18.Ba4 a6 19.Qc2 Qc7 20.Bb3 Nc4!  
21.Rxe7 Qxe7 22.Re1 Qd7 23.h4 Re8  
24.Rd1 Kg7 25.Ne2 Qc6 26.Ng3 d5 27.Nd4  
Qc7

## ICB Games From FM Albert Chow

Black has obtained a very playable position with good counterchances: unfortunately, solving the theoretical problems from the opening cost a different price; time on the clock. I failed to make the time control and lost by flag fall. 1–0

### GM Dmitry Gurevich (2571) – Erik Dupuis (1875) [A80]

Tim Just's Winter Open XIX (1), 09.01.2005

1.d4 f5 2.Nf3 Nf6 3.Bg5

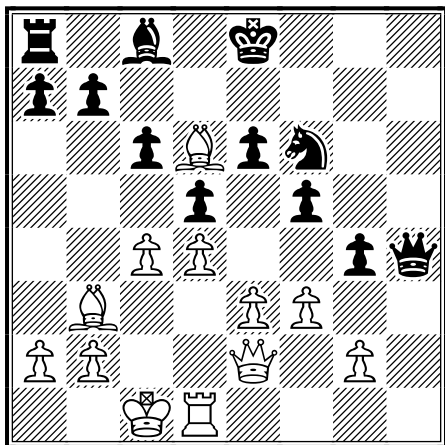
A Torre- Trompowski attack against the Dutch.

3...Ne4 4.Bf4 d6 5.e3 g6 6.Nbd2 Nxd2 7.Qxd2 Bg7 8.Bc4! d5 9.Bb3!? c6 10.c4! e6

Passive. 10...Be6!? seems playable.

11.h4! h6 12.Ne5! g5 13.hxg5 hxg5 14.Rxh8+ Bxh8 15.Qe2! g4 16.0–0–0! Qh4 17.f3! Bxe5 18.Bxe5 Nd7 19.Bd6 Nf6

The weakness of the dark squares d6–e5–f4 is a problem for the Stonewall defense.



20.c5 Bd7 21.Qd2 Kf7 22.Bc2 Rg8 23.Rf1 g3?

Now it is easy to target the defence with tactics.

23...gxf3 24.gxf3 Qh3 is better.

24.a4 a6 25.Kb1 Rh8 26.Qe1 Qg5 27.Bf4 Qg6 28.Rg1! Nh5 29.Be5 Rg8 30.Rh1! Qg5 31.Rh3! Be8 32.Qb4! Kg6 33.Qxb7 Qxe3 34.Rxh5! Kxh5 35.Qh7+ Qh6 36.Qxg8

White wins. 1–0

### IM Stan Smetankin (2535) - Geoff Caveney (2081) [A65]

Tim Just's Winter Open XIX (2), 08.01.2005

1.c4 Nf6 2.Nc3 g6 3.e4 d6 4.d4 Bg7 5.f3 0–0 6.Be3 c5 7.d5 e6 8.Qd2 exd5 9.cxd5 a6 10.a4 Nbd7 11.Nh3!? Rb8 12.Nf2 Re8 13.Be2 Qe7 14.0–0 h5 15.Rfe1 Nh7 16.f4 b6 17.Rab1 Bb7 18.Bc4 Rbc8 19.Qd3 Ra8 20.Rbd1 Qf8 21.Qc2 Bf6 22.Nb1 Qg7 23.b3 Kh8 24.Be2 Rad8 25.Na3 Rg8 26.Nc4 Qf8 27.Rb1 Rb8 28.b4 Ba8 29.bxc5 bxc5 30.a5 Qe7 31.Bd3 Rge8 32.Bd2 Bd4 33.Bc3 Bxc3 34.Qxc3+ Kg8 35.Rbd1 Rb4 36.Bf1 Qh4? 37.Nxd6 Reb8 38.g3 Qe7 39.e5

Black lost on time forfeit in a losing position. 1–0

### Ilya Kogan (2217) - Andrew Hubbard (1942) [C07]

Tim Just's Winter Open XIX (2), 08.01.2005

1.e4 e6 2.d4 d5 3.Nd2 c5 4.dxc5?! Bxc5 5.Nb3 Bd6 6.exd5 exd5 7.Nf3 Nc6 8.c3 Nge7

Black enjoys excellent activity in this Tarrasch French.

9.Be2 0–0 10.0–0 Be6 11.Be3 Nf5! 12.Bc5 Bxc5 13.Nxc5 Qb6! 14.Nb3?!

14.Nxe6 fxe6 15.Qb3=

14...d4! 15.Nbxd4 Ncxd4 16.Nxd4 Rfd8 17.Bf3 Qxb2! 18.Qe2 Qxe2 19.Nxe2 Bd5! 20.Bg4 Nh6 21.Bf3 Bxf3 22.gxf3 Rd3 23.f4 b6 24.Rfd1 Rad8 25.Rxd3 Rxd3 26.a4! Nf5 27.a5! b5 28.Rb1 Nd6 29.c4! a6 30.cxb5 Nxb5 31.Rc1! Kf8 32.Rc6! Rd6 33.Rxd6 Nxd6 34.Nd4 Nb7 35.Nc6 Ke8 36.Nb4! Nc5

Black is better, but White finds enough counterplay to draw.

37.Kg2 Kd7 38.Kf3 Kc7 39.f5! Kb7 40.Kf4 f6 41.Ke3! Nb3 42.Ke4! Nxa5 43.Kd5! Nb3 44.Ke6 Nd4+ 45.Kf7 Nxf5 46.Kg8! a5 47.Nd3 Kc6

47...h5 48.Kf7 Kc6 49.Kg6 also generates counterplay.

48.Kxh7 Kd5 49.Kg6 Ke4 50.Nc5+ Kf4 51.Nd3+ Ke4 52.Nc5+ Kf4 53.Nd3+ Ke4

Draw by repetition. ½–½

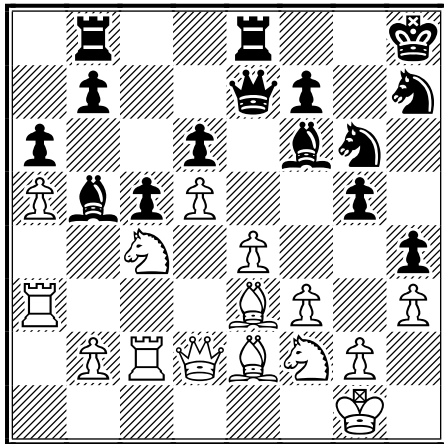
**Steve Szpisjak (2200) - IM Stan Smetankin (2533) [A65]**

Tim Just's Winter Open XIX (3), 08.01.2005

1.d4 Nf6 2.c4 c5 3.d5 e6 4.Nc3 exd5 5.cxd5 d6 6.e4 g6 7.Nge2 Bg7 8.f3 0-0 9.Ng3 a6 10.a4 Nbd7 11.Be2 h5 12.0-0 Re8 13.Bg5 Qc7 14.Qd2 Rb8

A sharp Saemisch system against a Modern Benoni.

15.Rfc1!? Nh7 16.Bh6 Bf6 17.Rc2! Ne5 18.a5 Qe7 19.Be3 Bd7 20.h3 h4! 21.Nh1 g5! 22.Nf2 Ng6 23.Na4 Bb5 24.Nb6 Ne5 25.Nc4 Ng6 26.Ra3! Kh8



27.b4! cxb4 28.Qxb4 Rbd8 29.Ng4 Bg7 30.Bb6 Nf4?! 30...Rd7 or; 30...Rc8! are playable.  
31.Bxd8 Rxd8 32.Bf1 f5 33.Nf2 33.exf5 Nxd5 34.Qd2 Nf4 35.Re3 also looks good.  
33...fxe4 34.fxe4 Bd4

Black had extra "compensation" for the Exchange, White was behind on the clock. So when Black asked for a draw, it was accepted. Another possible choice was 35. Ne3!? 1/2-1/2

**Ilan Meerovich (1927) - Geoff Caveney (2081) [E94]**

Tim Just's Winter Open XIX (5), 09.01.2005

1.d4 Nf6 2.c4 g6 3.Nc3 Bg7 4.e4 d6 5.Be2 0-0 6.Nf3 Na6!? 7.0-0 e5 8.d5 Nc5 9.Nd2 a5 10.Qc2 Kh8!? 11.Rb1 Ng8 12.a3?

12.b3 is a better way to go for a3 and b4.

12...f5 13.f3 a4! 14.b4 axb3

En passant!

15.Nxb3 Nxb3 16.Rxb3 b6 17.Be3 Bh6!

An idea behind 11...Ng8.

18.Bf2 Bd7

An example of Black's strength in the King's Indian. Caveney shows all the best moves and is ready take over on tactics.

19.Rfb1?! fxe4! 20.fxe4 Rxf2! 21.Kxf2 Qh4+ 22.Kg1 Be3+ 23.Kh1 Bf4 24.g3 Bxg3! 25.Bf3 Nf6

The White rooks are unable to defend their king as Black pushes the next wave of a crushing storm.

26.Rg1 Bf4 27.Qe2 g5! 28.Qc2 g4 29.Bd1 g3! 30.Bf3 gxh2 31.Rd1?! Ng4! 32.Bxg4 Bxg4 33.Rf1? Bf3+! 34.Rxf3 Qe1+

Forcing checkmate, so White resigned. 0-1

**Esad Elezaj (2200) - Steve Szpisjak (2200) [D74]**

Tim Just's Winter Open XIX (4), 09.01.2005

1.d4 Nf6 2.c4 g6 3.Nc3 d5 4.g3 Bg7 5.cxd5 Nxd5 6.Bg2 Nb6 7.Nf3 0-0 8.0-0 c6

8...Nc6 is a sharp Grünfeld option.

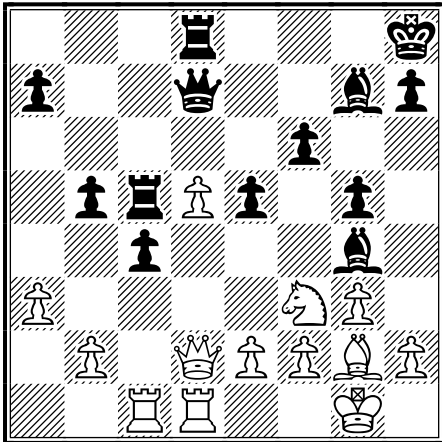
9.Qc2 Bg4 10.Rd1 Qc8 11.Bg5 f6

11...Re8 was solid.

12.Bf4 Na6 13.Rac1 Qf5 14.Qb3+ Kh8 15.d5 c5 16.Na4 Nxa4 17.Qxa4 Qd7 18.Qc2 Rac8 19.Ne1 g5 20.Be3 b5 21.a3 c4 22.Bd4 Nc5 23.Bxc5 Rxc5 24.Nf3 e5

24...Rxd5 25.Nxg5!

25.Qd2 Rd8



**26.Qe3! Bf8**

26...Rxd5 27.Rxd5 Qxd5 28.Nxg5!

**27.Nd2! Bf5 28.Be4! Bd6 29.Qf3! Bg4  
30.Qxf6+ Kg8 31.Qxg5+ Kh8 32.Bxh7!  
Kxh7 33.Ne4! Rf8?**

33...Be7 34.Qxe5 Rf8 was better, but White has four pawns for a piece.

**34.Nxd6 Qxd6 35.Qxg4 Qf6 36.Qe4+ Kh8  
37.Qe3 Rc7 38.Rd2 Rcf7 39.f3 Rh7 40.d6**

Black resigned. 1-0

**Igor Tsyganov (2264) – Mark Robledo, Jr (2026) [E12]**

Illinois Class Championships (3), 18.12.2004

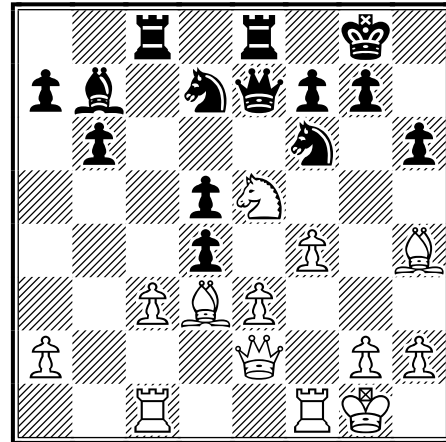
**1.d4 Nf6 2.Nf3 b6 3.c4 Bb7 4.Nc3 e6 5.Bg5  
Bb4 6.e3 Bxc3+ 7.bxc3 d6 8.Bd3 Nbd7 9.0-0  
c5 10.Nd2 h6 11.Bh4 0-0**

If White can open the center by exchanging off doubled c-pawns, then the bishop pair becomes good in the Nimzo-Indian.

**12.f4!? d5?! 13.Qe2 Qc7 14.Rac1 Rac8  
15.Bg3 Qd8 16.cxd5 exd5 17.Bh4 Re8**

17...Qc7! threatens 18...cxd4!

**18.Nf3! Qe7 19.Ne5 cxd4**



**20.Bb5!**

20.cxd4 Qa3 is not bad.

**20...d3 21.Qxd3 Nc5 22.Qd4 Red8 23.Ng4!  
Nce4 24.Bd3! Qe6 25.Bxe4 dxe4**

25...Nxg4!? 26.Bxd8 Qxe4 27.Qxe4 dxe4 with some counterplay as compensation.

**26.Nxf6+ gxf6 27.Qxf6 Qxf6 28.Bxf6 Rd2  
29.Rf2 Rd3?**

29...Rxf2! 30.Kxf2 Exchanges help the defense towards a draw.

**30.Bd4 Rc4 31.Rb2 Ra4 32.Ra1 Bd5 33.a3  
Rc4?! 34.a4! Bc6 35.a5! bxa5 36.Rxa5 Kh7  
37.Rxa7 Kg6 38.Ra6 Kf5 39.h3 h5 40.Rbb6  
Rd1+ 41.Kh2**

The Bc6 is lost and dare not move: otherwise, Rf6 is mate. So Black resigned. 1-0

**Dr. Rajen Gandhi (2020) - GM Dmitry Gurevich (2571) [E38]**

Tim Just's Winter Open XIX (2), 08.01.2005

**1.d4 Nf6 2.c4 e6 3.Nc3 Bb4 4.Qc2 c5 5.e3?!  
5.dxc5 is better.**

**5...Nc6 6.Nf3 cxd4 7.exd4 d5 8.c5?! b6  
9.Bb5 Bd7 10.Bxc6 Bxc6 11.0-0? bxc5**

Grandmaster Gurevich is glad to receive an extra pawn that will be useful later in the endgame.

**12.Ne5 Rc8 13.Nxc6 Rxc6 14.Qa4 Qd7  
15.Ne2 Rc8 16.Qxd7+ Nxd7 17.a3 Ba5  
18.dxc5 Nxc5 19.b4 Nb3 20.Rb1 Nxc1  
21.Rfxc1 Bc7 22.Rc5 Kd7 23.Rbc1 Bb6  
24.Rxc8 Rxc8 25.Rxc8 Kxc8+ 26.Kf1 Kd7**



27.Nf4 Kd6 28.Nd3 e5 29.f3 f5 30.Ke2 e4  
31.Nc1 d4 32.a4 Kd5 33.fxe4+ fxe4 34.Nb3  
d3+ 35.Kd1 e3 36.a5 e2+ 37.Ke1 Bd4

White resigned. 0-1

Steve Gorodetskiy (1789) - FM-elect Alex  
Stamnov (2316) [D13]

Tim Just's Winter Open XIX (1), 08.01.2005

1.c4 c6 2.Nc3 d5 3.cxd5 cxd5 4.d4 Nf6  
5.Nf3 Nc6 6.Bg5 e6 7.e3 Be7 8.Bxf6 Bxf6  
9.Bd3 a6 10.a3 b5

A higher-rated master is able to risk going for  
a win from the Black side of the Exchange Slav.

11.0-0 0-0?

11...Bd7 was solid.

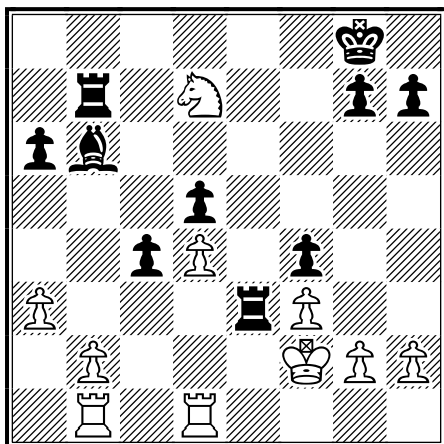
12.Rc1?

12.Qc2! h6 13.Nxb5! was possible.

12...Bd7 13.Ne2 Na5! 14.Nd2 Nc4! 15.Nxc4  
bxc4 16.Bc2 Be7 17.Ba4 Rb8

Stamnov has strong pressure down the b-file  
against the backward b2 pawn.

18.Rb1 Bd6 19.Nc3 f5 20.Bxd7 Qxd7 21.f3  
Rb3 22.Qd2 Rfb8 23.e4 Bc7 24.exf5 exf5  
25.Rfd1 Ba5 26.Qc2 Qb7 27.Na4 Qc8  
28.Nc5 Re3 29.Qa4 Bb6 30.Kf2 f4 31.Qd7  
Qxd7 32.Nxd7 Rb7



33.Ne5??

33.Nc5 was better.

33...Rxe5 34.Kf1 Re3 35.Rd2 Ba5 36.Re2  
Bc3 37.Rd1 Rxe2 38.Kxe2 Rxb2+ 39.Kf1

Bd2 40.g3 g5 41.gxf4 gxf4 42.h4 Be3  
43.Ra1 c3

White resigned. 0-1

FM Albert Chow (2252) - IM Angelo  
Young(2489) [D35]

Illinois Class Championships (2), 18.12.2004

1.Nf3 Nf6 2.c4 e6 3.Nc3 d5 4.d4 c6 5.cxd5  
exd5 6.Bg5 Be7 7.e3 0-0 8.Bd3 Nbd7

An early draw was agreed in an equal  
Exchange QGD. 1/2-1/2

GM Dmitry Gurevich (2571) - FM-elect Alex  
Stamnov (2316) [D30]

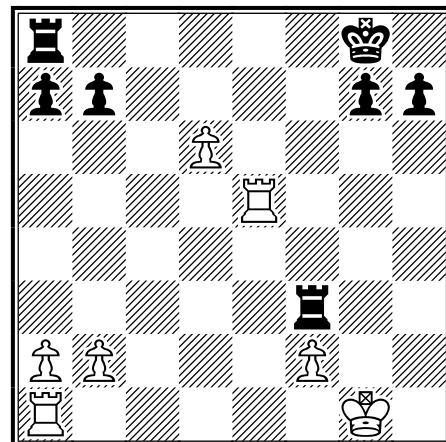
Tim Just's Winter Open XIX (5), 09.01.2005

1.d4 d5 2.c4 c6 3.e3 Nf6 4.Nf3 e6 5.Bd3  
Nbd7 6.Nbd2!? Bd6 7.0-0 0-0 8.e4 e5!  
9.cxd5 cxd5 10.exd5 exd4

Symmetrical Semi-Slav.

11.Nc4 Nb6 12.Nxd4 Nxc4 13.Bxc4 Bxh2+  
14.Kxh2 Qc7+ 15.d6 Qxc4 16.Bf4 Bd7  
17.Bg5 Qc5 18.Nf3 Qf5 19.Qd4 Ng4+  
20.Kg1 f6 21.Bf4 Bc6 22.Rfe1 Bxf3 23.gxf3  
Ne5 24.Qd5+ Rf7 25.Bxe5 fxe5 26.Rxe5  
Qxf3 27.Qxf3 Rxf3

It is important for good players to make the  
most from the endgame.



28.Rc1 Rd3 29.Rc7 Rxd6 30.Rg5 g6 31.Re5  
Rd1+ 32.Kg2 Rd2 33.Ree7 Rxb2 34.Rg7+  
Kf8??

## ICB Games From FM Albert Chow

34...Kh8 35.Rxh7+ Kg8 36.Rcg7+ Kf8 looks like good drawing chances.

**35.Rcf7+! Ke8 36.Rf3!**

Wins a rook, so Black resigns. 1-0

**Geoff Caveney (2081) – Josh Dubin (1731)**  
[E94]

Tim Just's Winter Open XIX (1), 08.01.2005

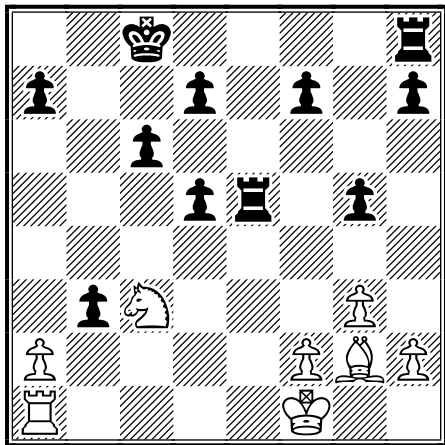
1.d4 Nf6 2.c4 g6 3.Nc3 Bg7 4.e4 d6 5.Nf3 Nbd7 6.Be2 0-0 7.0-0 e5 8.Be3 Ne8? 9.dxe5! Nxe5 10.Nxe5 Bxe5 11.f4 Bg7 12.Qd2 f5 13.e5! Be6 14.Rfd1 Qe7 15.Nd5! Qd8 16.Qb4! b6 17.Bf3 Rb8 18.Qa3 Rf7 19.Nb4! Bd7 20.Bd5! a5 21.e6! Bxe6 22.Nc6! Qc8 23.Bxe6 Qxe6 24.Nxb8 Bxb2 25.Qxb2 Qxe3+ 26.Qf2 Qe4 27.Re1

Skewering the queen on e4 and knight on e8, so Black resigns. 1-0

**Chris Nienart (2098) – Bill Brock (2030)**  
[C45]

Illinois Class Championships (5), 19.12.2004

1.e4 e5 2.Nf3 Nc6 3.d4 exd4 4.Nxd4 Nf6 5.Nxc6 bxc6 6.e5 Qe7 7.Qe2 Nd5 8.c4 Ba6 9.g3 0-0-0 10.b3 g5 11.Bb2 Bg7 12.Bg2 Rde8 13.0-0 Bxe5!? 14.Qxe5 Qxe5 15.Bxe5 Rxe5 16.cxd5 Bxf1 17.Kxf1 cxd5 18.Nc3 c6 Bishop plus knight against rook and two doubled d-pawns is an interesting endgame from a critical variation of the Scotch.



19.Rd1 Rhe8 20.Bf3 Kc7 21.b4 Rf8 22.Rd4 f5 23.h3 f4 24.g4 Rfe8 25.Rd1 Rb8 26.a3 h6 27.Na4 Kd6 28.Nb2 Re6 29.Rd2 Ke7 30.Nd3 a5! 31.Nc5 axb4!? 32.Rb2!

32.Nxe6!? bxa3!? (32...dxe6!?) 33.Nd4 Rb2! is unclear.

32...Rf6 33.axb4 Kd6 34.Nd3 Re6 35.Ra2 Ree8 36.Ra5 Ra8 37.Rxa8 Rxa8 38.Ke2 Ra2+ 39.Kd1 Kc7 40.Ke1 Kb6 41.Kd1 d6 42.Ke1 Kb5 43.Be2 Kb6 44.Bf3 Ra4 45.Kd2 Ra3 46.Kc2 d4 47.Kd2 Ra2+ 48.Kd1 Kb5 49.Be2 Kb6 50.Bf3 Ra7 [?-Brock; 50...c5!?] 51.Kc2 c5 52.Kb3 Ra1 53.Kc4 Ra3 54.bxc5+ dxc5 55.Be4 Rc3+ 56.Kd5 Kb5 57.Bf5 Kb6 58.Be4 Ra3 59.Kc4 Ra4+ 60.Kb3 Ra7

Neither player can break the blockade. After all, a draw was agreed. ½-½

**Alex Chang (1673) - Geoff Caveney (2081)**  
[B63]

Tim Just's Winter Open XIX (3), 08.01.2005

1.e4 c5 2.Nf3 d6 3.d4 Nf6 4.Nc3 cxd4 5.Nxd4 Nc6 6.Bg5 e6 7.Qd2 Be7 8.0-0-0 0-0 Opposite-wing castling in the Richter-Rauzer Sicilian.

9.f3 d5!? 10.exd5 Nxd5 11.Nxc6

11.Bxe7 is good.

11...bxc6 12.Ne4 f5 13.Bxe7 Qxe7 14.c4? fxe4 15.cxd5 exd5 16.fxe4 Be6 17.exd5 Bxd5 18.Kb1 Rad8 19.Bd3 Qh4! 20.Rhe1 Rf2

20...Bxg2!? 21.Qxg2 Rxd3! 22.Qxc6 Rxd1+ 23.Rxd1 Qxh2! favors Black.

21.Re2 Rxe2 22.Qxe2 Qxh2

Black has played better.

23.Bc4 Qd6! 24.a3 Kh8 25.Bd3 Bc4! 26.Kc2 Bxd3+ 27.Rxd3 Qxd3+ 28.Qxd3 Rxd3 29.Kxd3 h5 30.Kd4 g5 31.Kc5

31.Ke5 Kg7 32.Kf5 Kh6

31...h4 32.Kxc6 g4 33.Kb7 h3 34.gxh3 gxh3 35.Kxa7 h2 36.b4 h1Q 37.b5 Qa1 38.b6 Qxa3+ 39.Kb8 Qd6+ 40.Ka7 Qc5! 41.Ka6 Qa3+ 42.Kb7 Kg7 43.Kc6 Kf7 44.b7 Qg3 45.Kb6 Qb8

White resigned. 0-1

**Dexter Cavitt (1974) - Steve Szpisjak (2200) [B10]**

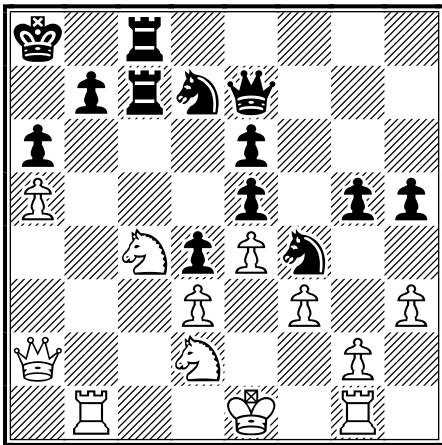
Tim Just's Winter Open XIX (2), 08.01.2005  
 1.e4 c6 2.Nc3 d5 3.Qf3?! d4! 4.Nce2 e5  
 5.Ng3 Nf6 6.h3 Bd6 7.Bc4 Be6 8.Bxe6  
 8.Bb3 was good.

**8...fxe6**

Covering f5. White's weird Qf3 Caro-Kann has given Black a central space advantage.

9.Qb3?! Qe7 10.d3 Na6! 11.a3 Nc5 12.Qa2  
 0-0-0 13.Nf3 h6 14.Bd2 g5 15.Bb4 Ncd7  
 16.Bxd6 Qxd6 17.Nd2 Nf8! 18.Nc4 Qc7  
 19.b4 N6d7 20.a4 Ng6 21.b5 Nf4 22.Rg1  
 Rdf8 23.bxc6 Qxc6 24.Qa3 Kb8 25.Rb1 Qc7  
 26.Kd1 Rc8 27.Nf1 Qc5 28.Qb2 Rc7 29.Nfd2  
 Ka8 30.Qa2 a6 31.a5 Rhc8 32.Ke1 h5 33.f3  
 Qe7

Threatening 34...g4!



34.Qa3 Qxa3 35.Nxa3 Rxc2! 36.Nxc2 Rxc2  
 37.Kd1 Ra2 38.Nc4 Nxd3 39.Nb6+ Nxb6  
 40.axb6 Kb8

The Black knight on d3 dominates both white rooks.

41.h4 gxh4 42.g4 hxg4 43.fxg4 h3 44.Rf1  
 Nf2+ 45.Ke1 h2 White resigned. 0-1

**Andrew Hubbard (1942) - FM Albert Chow (2236) [A65]**

Illinois Class Championships (1), 18.12.2004  
 1.d4 Nf6 2.c4 g6 3.Nc3 Bg7 4.e4 d6 5.f3 0-0  
 6.Be3 c5 7.d5 e6 8.Qd2 exd5 9.cxd5 Re8

10.Nge2 Nbd7 11.h4 a6 12.Bh6 b5 13.Bxg7  
 Kxg7 14.h5 Nxh5! 15.g4 Nhf6 16.Qh6+ Kg8  
 17.Nf4 Nf8! 18.0-0-0 N6d7 19.g5 Ne5  
 20.Bg2 f6 21.Nh5? gxh5 22.gxf6 Ra7!  
 23.Rdg1 Nfg6 24.Bh3 Qxf6 25.f4 Nd3+  
 26.Kb1 Ndx4 27.Bxc8 Rxc8

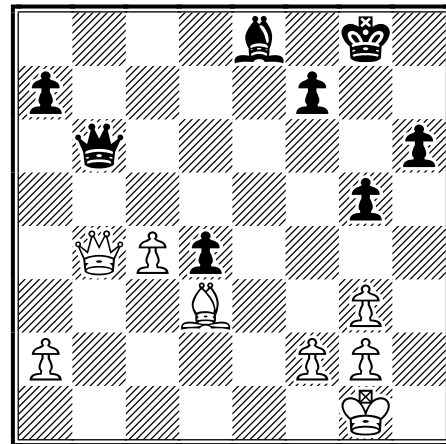
Black has an extra knight, so White resigned. 0-1

**FM-elect Alex Stannov - Mehmed Pasalic [C47]**

Tim Just's Winter Open XIX (4), 09.01.2005  
 1.e4 e5 2.Nf3 Nc6 3.d4 exd4 4.Nxd4 Nf6  
 5.Nxc6 bxc6 6.Nc3 Bb4 7.Bd3 d5 8.exd5 cxd5  
 9.0-0 0-0 10.Bg5 c6

Problems in the Scotch Four Knights.

11.Na4!? h6 12.Bh4 Bd6 13.Re1 Rb8 14.c4!  
 Bd7 15.b3! c5 16.Nc3 g5 17.Bg3 Bxg3  
 18.hxg3 d4 19.Nd5 Be6 20.Nxf6+ Qxf6  
 21.Qd2 Bd7 22.Rab1! Rfe8 23.Rxe8+ Bxe8  
 24.b4! cxb4 25.Rxb4 Rxb4 26.Qxb4 Qb6



27.Qe7! Qe6 28.Qd8 Qe5 29.Kf1 Kg7  
 30.Qa8 Qe7 31.Qd5 Qf6 32.Be4! Qb6  
 33.Qe5+! Kf8 34.Kg1± Qb2 35.Qh8+ Ke7  
 36.Qxh6 Qd2 37.c5 Qe1+ 38.Kh2 f6  
 39.Qh7+ Kd8 40.Qf5 Ke7 41.Qd5 Bd7  
 42.Bf3 Qxf2 43.Qd6+ Ke8 44.Bh5+ Kd8  
 45.c6

Black resigned. 1-0

**FM-elect Alex Stannov (2328) - FM Albert Chow (2239) [B22]**

Illinois Class Championships (3), 18.12.2004  
 1.e4 c5 2.c3 Nf6 3.e5 Nd5 4.d4 cxd4 5.Qxd4

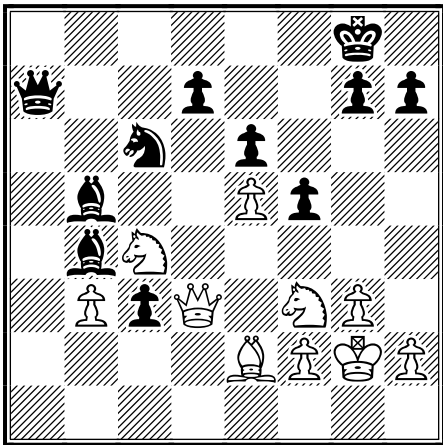
## ICB Games From FM Albert Chow

e6 6.Nf3 Nc6 7.Qe4 f5 8.Qe2 Qc7 9.g3 b5!  
10.Bg2 a5 11.0-0 Ba6

Black has obtained good Sicilian counterplay.

12.Re1 Bc5 13.b3 0-0 14.Bb2 Ra7 15.Nbd2  
Nxc3! 16.Bxc3 b4 17.Nc4 bxc3 18.Qd3 a4  
19.Rab1 axb3 20.axb3 Bb4 21.Re2 Rc8  
22.Bf1 Bb5 23.Qe3 Rca8 24.Rc2 Ra1  
25.Rcc1 Rxb1 26.Rxb1 Ra2 27.Be2 Qa7  
28.Qd3 Ra1 29.Rxa1 Qxa1+ 30.Kg2 Qa7

The pressure is building, but White cracks first!



31.g4!? fxg4 32.Ng5 g6 33.Ne4?

33.Bxg4! was a better try for tactical complications.

33...Nxe5! 34.Nf6+ Kg7 35.Qg3 Nxc4  
36.Qh4 Bc6+! 37.Kg1 Qa1+! 38.Bf1 Nd2!  
39.Nh5+ gxh5 40.Qg5+ Kf7 41.Qxh5+ Kf8  
42.Qh6+ Ke8

White resigned. 0-1

**FM Albert Chow (2253) - Larry Cohen (2020) [B32]**

Tim Just's Winter Open XIX (4), 09.01.2005

1.e4 c5 2.Nf3 Nc6 3.d4 cxd4 4.Nxd4 Nxd4?  
5.Qxd4 e6 6.Nc3 a6 7.Bf4! Ne7 8.Be2! Nc6  
9.Qe3! Bb4 10.0-0 e5?! 11.Bg3 Bxc3?

11...d6 12.Nd5 Bc5 was better.

12.Qxc3 Qe7 13.Rad1 0-0 14.Qd2 b5 15.c3  
f6 16.f3 Rf7 17.Bf2 Bb7

The bishop pair target weaknesses in Black's camp.

18.a4! Na7

18...bxa4 19.Bc4! favors White.

19.axb5 axb5 20.Ra1 Nc6 21.Rxa8+ Bxa8  
22.Bxb5 Rf8 23.Rd1 f5 24.exf5 Rd8 25.Qd6  
Qxd6 26.Rxd6 Kf7 27.b4 Ke8 28.Bc5 Ne7?  
29.Re6!

Black resigned. 1-0

**Alex Chang (1673) - Geoff Caveney (2081) [B63]**

Tim Just's Winter Open XIX (3), 08.01.2005

1.e4 c5 2.Nf3 d6 3.d4 Nf6 4.Nc3 cxd4  
5.Nxd4 Nc6 6.Bg5 e6 7.Qd2 Be7 8.0-0-0 0-0

Opposite-wing castling in the Richter-Rauzer Sicilian.

9.f3 d5!? 10.exd5 Nxd5 11.Nxc6

11.Bxe7 is good.

11...bxc6 12.Ne4 f5 13.Bxe7 Qxe7 14.c4?  
fxe4 15.cxd5 exd5 16.fxe4 Be6 17.exd5  
Bxd5 18.Kb1 Rad8 19.Bd3 Qh4! 20.Rhe1  
Rf2

20...Bxg2!? 21.Qxg2 Rxd3! 22.Qxc6 Rxd1+  
23.Rxd1 Qxh2! favors Black.

21.Re2 Rxe2 22.Qxe2 Qxh2

Black has played better.

23.Bc4 Qd6! 24.a3 Kh8 25.Bd3 Bc4! 26.Kc2  
Bxd3+ 27.Rxd3 Qxd3+ 28.Qxd3 Rxd3  
29.Kxd3 h5 30.Kd4 g5 31.Kc5

31.Ke5 Kg7 32.Kf5 Kh6

31...h4 32.Kxc6 g4 33.Kb7 h3 34.gxh3 gxh3  
35.Kxa7 h2 36.b4 h1Q 37.b5 Qa1 38.b6  
Qxa3+ 39.Kb8 Qd6+ 40.Ka7 Qc5! 41.Ka6  
Qa3+ 42.Kb7 Kg7 43.Kc6 Kf7 44.b7 Qg3  
45.Kb6 Qb8

White resigned. 0-1

**Robert Loncarevic (2000) - FM Albert Chow (2236) [B88]**

Tim Just's Winter Open XIX (2), 08.01.2005

1.e4 c5 2.Nf3 Nc6 3.d4 cxd4 4.Nxd4 Nf6  
5.Nc3 d6 6.Bc4 e6 7.Bb3 Be7 8.Be3 0-0

White deploys a Sozin-Fischer system against the Sicilian Scheveningen.

9.f4 Na5 10.0-0 b6!? 11.e5 Ne8

11...dxe5 12.fxe5 Ne8 was better, but we

sometimes forget, transpose our moves, and so fail to gain best advantage.

**12.Ba4?! Bb7 13.Qe2 dxe5! 14.fxe5 Qc7**

Targeting the fixed weakness at e5.

**15.Bf2 a6! 16.Rad1 b5!**

Gaining tempo.

**17.Bb3 Nxb3 18.axb3 g6!? 19.Rd3 Ng7**

A rare Knight fianchetto was the best chance.

**20.Kh1 Rad8 21.Rfd1 Nh5!**

Threatening ...Nf4!

**22.Qe3 b4!**

**23.Na4 Rd5!**

**24.Nf3?**

24.Re1! was a more solid defense.

**24...Qxc2**

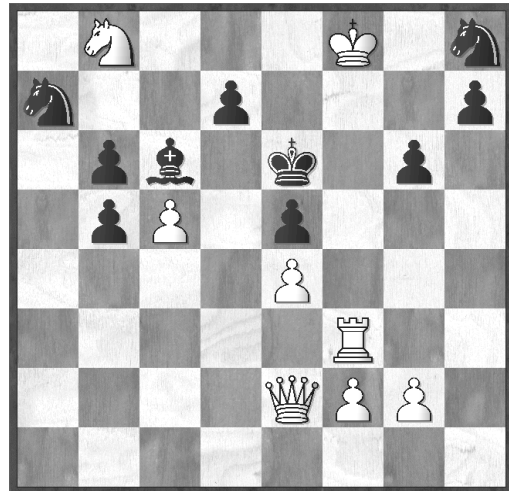
Pressure down the c-file pays off.

**25.Rxd5 Bxd5 26.Rd3 Qb1+! 27.Bg1 Rc8!**

**28.Nb6?? Bc5! 29.Qh6 Bxf3**

White resigned. 0–1

## Mate in 3 – Dedicated to Bill Brock in his Presidency of the ICA



Original by James Rynd

PLEASE JOIN US FOR  
FOOD AND FUN AT THE  
ILLINOIS CHESS ASSOCIATION  
AWARDS BANQUET  
SUNDAY, MAY 1<sup>ST</sup>  
NOON TILL 3:30 P.M  
VINCE'S ITALIAN RESTAURANT  
4747 N. HARLEM AVENUE  
(JUST SOUTH OF LAWRENCE  
AVENUE)  
HARWOOD HEIGHTS, ILLINOIS  
RESTAURANT 708.867.7770  
WWW.VINCESONHARLEM.COM

FOR MORE INFO:  
LES BALE 847.813.1956

Solution:

1. Rd3! → idea of Rd6 mate

1. ... bxc5; d5; Nc8, all defenses against the mate fail to:

2. Qg4+ Kf6

3. Rf3#

The well-known switchback theme; the rook switches back to its original square to deliver the mate. Done in honor of Bill's efforts to "bring back" the ICA!

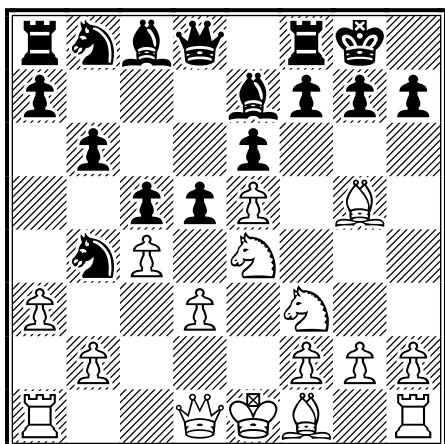
## ICB Games

By IM Angelo Young

### (1) Burgess,J - IM Young,A [C00]

2004 Midwest class championship, 08.10.2004

**1.e4 e6 2.d3 c5 3.Nd2** King's Indian Attack **3...Nf6 4.Ngf3 b6 5.e5!?** I was shocked when i saw this move, I thought I made a big mistake. [5.g3 Bb7 6.Bg2 d5 7.0-0 Qc7 8.exd5 Bxd5 9.Nc4 Be7 10.Bf4 Qd8 11.Nce5 0-0 12.c4 Bb7 13.d4 Nc6 14.Ng5 Rc8 15.Nexf7 Rxf7 16.Nxe6 Qd7 17.d5 Mlroshnichenko, E - GM Nisipeanu, L ( Bucharest 1998 ) 1-0] **5...Nd5 6.Ne4 Be7** I considered 6...h6 but was'nt sure if it will give me some initiative. **7.c4 Nb4** 7... Nc7 is too lame ,when Nd6+ my knight on c7 will be enprise. **8.Bg5! 0-0 9.a3 d5!** Diagram

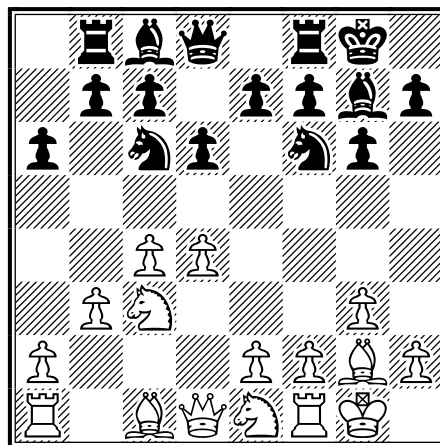


[9...N4c6 10.h4 h6 11.Bf4 Bb7 12.Qd2 White with a strong attack.] **10.exd6 Bxg5 11.axb4** [11.Nexg5 N4c6 12.d4 Qxd6=; 11.Nfxg5 N4c6 12.Be2 f5!] **11...Bf4 12.bxc5 f5** An important move! **13.Nc3 bxc5 14.Nb5 Nc6** [14...Bxd6 15.d4 cxd4 16.Nxd6 Qxd6 17.Qxd4?] **15.d4 Bxd6 16.d5 Nb4 17.dxe6 Be7 18.Be2 Qb6 19.0-0 Bxe6 20.Re1 Bf6 21.Bf1 Rad8 22.Qb3 a6 23.Nc3 Bc8 24.Rad1 Bb7 25.Na4 Qa5** [25...Qc7 26.Qe3 Nc2 27.Qe6+ Kh8 28.Rxd8 Qxd8 29.Rc1 Too complicated] **26.Ra1 Qc7 27.Rac1 Be4 28.Nc3 Bxf3 29.gxf3 Qf4 30.Nd5 Nxd5 31.cxd5 Bd4 32.Rc2 a5 33.Re6 Kh8 34.Rce2 Rb8 35.Rb6 Rbd8 36.Rbe6 a4 37.Qb6 Qg5+ 38.Kh1 h6 39.d6 Rb8 40.Qc6 a3 41.bxa3 Rb1 42.Re1 Bxf2 0-1**

### (2) IM Young,A - FM Muhammad,S [E63]

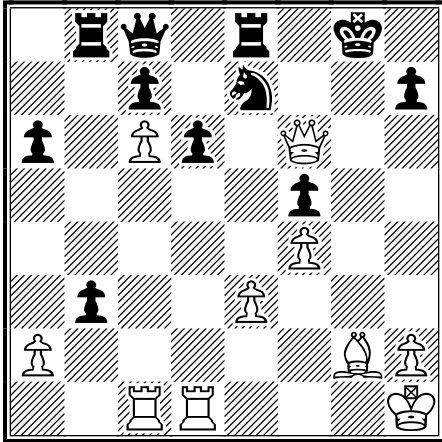
Midwest Class Copenhagen (5), 31.10.2004

**1.Nf3** The highlight of my tournament, I need to win this against a very strong IM from California to tie for first with GM's D. Gurevich, A. Wojkiewicz and IM S. Smetankin and a play - off match with GM D. Gurevich to determine the over all champion. (Unfortunately I loss the play-off) **1...Nf6 2.c4 g6 3.Nc3 Bg7 4.g3** You are following one of the rare line to combat the King's Indian Defense (The g3 System). **4...0-0 5.Bg2 d6 6.d4 Nc6 7.0-0 a6!** This move 7. a6 was first used against me by GM Fedorowicz. The idea is simply to push b5 pawn after Rb8 gaining some play on the queenside. **8.b3!** A Prophylactic move. White anticipates black next move, there by securing the queenside. **8...Rb8 9.Ne1!**IN Diagram

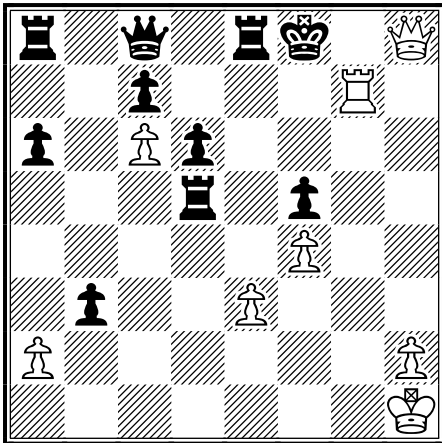


A Novelty! I have been preparing this move and my analysis ever since I was 15 years old and it took many years for me to use it. [9.Nd5 Nh5 10.Bb2 e6 11.Nc3 b5 12.d5 Ne7 13.dxe6 fxe6 14.c5 dxc5 15.Qc2 Bb7 16.Nd1 Qd6 17.Bxg7 Nxg7 18.Rc1 Nef5 19.Qxc5 Bxf3 20.Bxf3 Nd4 21.Ne3 Ne8 22.Rfd1 Nxf3+ 23.exf3 Qxc5 24.Rxc5 Rxf3 25.Rc6 a5 26.Rxe6 a4 27.bxa4 bxa4 28.Ng4+- GM Karpov,A - GM Shirov ,A ( Amber 1999 )] **9...Nd7** Here's a Secret!! if [9...Bd7 10.Nc2 b5 11.cxb5 axb5 12.d5 Na5 13.Nb4 Nxd5 14.Nbxd5 b4 15.Bg5 f6 (15...bxc3 16.Nxe7+ Kh8 17.Nxg6+ hxg6 18.Bxd8 Rfxd8 19.Rc1?) 16.Bd2 bxc3 17.Bxc3 White is better due to his queenside passed pawn .] **10.e3 e5 11.Nc2 Ne7 12.Bb2 f5 13.dxe5 Nxe5 14.Qe2 Re8 15.Rfd1 Bd7 16.Nb4 Qc8 17.Rac1 g5 18.f4! gxf4 19.gxf4 N5c6 20.Nbd5 Be6 21.Na4 Bxd5 22.cxd5**

**Bxb2 23.Qxb2 b5** [23...Na5 24.Qf6 Ng6 25.Nb6 Qd8 26.Qxd8 Rbxd8 27.Rxc7+; 23...Na7 24.Qf6 Ng6 25.Nb6 Qd8 26.Qxd8 Rbxd8 27.Rxc7; 23...Nd8 24.Qf6 Ng6 25.Nb6 Queen is Trapped] **24.dxc6 bxa4 25.Qf6†** Black is Zugzwang. **25...axb3 26.Kh1!** Diagram



I work of art !!**26...Rb5** Too Late!! to stop my plan Black is finished. The rest is history . **27.Bd5+ Rxd5 28.Rg1+ Ng6 29.Rxg6+ hxg6 30.Qxg6+** Black resigned **30...Kh8 31.Qh6+ Kg8 32.Rg1+ Kf7 33.Rg7+ Kf8 34.Qh8#** Diagram



1-0

## May 14, 2005 Bloomington, IL May Open

Sponsored with the State Farm Employees Activities Association. An ICA Mini-Tour and Ex-Urban Tour Event.

4SS, G/70. State Farm Headquarters, 1 State Farm Plaza, Bloomington, IL 61701. Located on the east side of Bloomington, just off of Veterans' Parkway, north of Oakland Ave. and south of Washington St. Enter the building from the south.

EF \$14 if rec'd by 5/11, \$18 at site. Free entry to 2020+, must register in advance.

\$480 b/30: 1<sup>st</sup> \$150, 2<sup>nd</sup> \$90, U2000 \$90, U1600 \$80, U1200 \$70. Bye 1-4. ICA mbrship req'd. OSA. Reg: 8:30-9:30, Rds: 10-12:45-3:30-6:15.

Ent: Advance entries must include name, address, and telephone number. Dennis Bourgerie, Box 157, Normal, IL 61761. 309-454-3842. Cell: 309-531-1723.

## 2005 IHSA Championships

By Chris Merli

Over 1300 players and 150 coaches comprising 118 teams arrived on a cool February 10 morning at the Peoria Civic Center for the State High School Chess Championship. From Chicago area giants with enrollments of over 4500 to tiny Ohio with a total enrollment of 55 students, each school selected their 8 best players and sent them off for two days of battle for the state crown. Increased incentive was provided by the Illinois High School Association who are now issuing the same quality trophy to the state chess tournament as they do to any sport.

Seeding for the state tournament was set nearly two weeks before the event by representatives of each high school conference using their knowledge, experience and a healthy dose of gut instinct. Despite the fact that some felt seeding was accomplished with a magic eight ball, the first three rounds saw all top 7 teams go undefeated. The rest of the early rounds went relatively smoothly from the organizational side as well. This year the IHSA generated team rosters for each match providing a simple reporting sheet. Although the number of changes to team rosters in the first round made round 2 start about 45 minutes late there were no further delays on day one and teams approached the twilight round unaware of the coming storm.

In round 4 the 12 remaining undefeated teams met. All but the surprising 78<sup>th</sup> seeded Lake Forest team were originally placed in the top 15. The matches were close and hard fought with the margin of victory small enough that any match would have changed results with the equivalent of the losing team converting a loss on board 1 into a win. The big surprise was that half of the games resulted in upsets including the top seed and defending champion Naperville (North) who was the victim of 10 ranked Glen Ellyn (GlenBard West).

The surviving top ranked teams gathered themselves overnight for a fresh assault in the morning. As a reward for knocking of the top seed Glen Ellyn (GlenBard West) faced number 2 seed Evanston Township but was unable to duplicate its previous night's feat. Evanston held draws on the top three boards and used its' great depth winning the bottom 5 boards. In round 6 Evanston showed that it was a complete team when it managed only a single draw on the bottom boards but swept the top 4 against Winnetka (New Trier). Meanwhile Lincolnshire (Stevenson) turned back the persistent Naperville (North) squad leaving only 2 perfect scores headed into round 7. In the final round Evanston started quickly with 3 wins and then dug in and refused to give back any ground. Eventually they earned another win

and 4 draws to secure the 2005 IHSA State Championship.

But all of the stories from the state tournament were not found on the top boards. This year the Illinois Chess Coaches Association provided trophies to the teams tied for third who did not get one of the IHSA big trophies and trophies to the top schools by school enrollment. This meant that despite the fact that the small schools battled as equals against opponent's that may be 50 times their size they still had a chance to level the playing field. In class 1A (schools under 750) Chicago (Quigley Prep) with 5 points won on tiebreaks over Urbana (University). Despite their enrollments being under 250 both of these schools finished in the top 13. The 2A (750-1199) crown went to Highland who also finished with 5 points. The top class 3A (1200-1799) team with 4 points was Lake Forest. In class 4A (1800-2499) Chicago (Young) finished ahead of the pack of 5 pointers. Among the 5A (over 2500) schools who did not already win a trophy, Chicago (Lane) was best on tiebreaks.

Finally it is important to be reminded that this competition was not just about winning, losing and trophies. Richton Park (Rich South) finished in 97<sup>th</sup> place and their 8<sup>th</sup> board is a senior named Yulanders Lewis. He has played for the last 4 years as a member of the Rich South team and this was the first year he had ever won a game at state. This year he won 2. His team mates did not care as the alternates subbed in and out on 7<sup>th</sup> board in each round leaving him to man the final position. Yulanders is a part of team, perhaps the heart of the team, despite the fact that he has difficulty controlling his own muscles. His coordination at times in the past was so bad that he had to wear a helmet to avoid injuries. But this year Yulanders was the eighth board for Richton Park (Rich South). This team provided an important lesson that might have been missed if players did not look beyond the 64 squares.

### 1) Joshua Stapleton (Whitney Youn - Roger Wang (New Trier) [B71]

IHSA State Championship 2005

**1.e4 c5 2.Nf3 d6 3.d4 cxd4 4.Nxd4 Nf6 5.Nc3 g6 6.f4 Nc6 7.Bb5 Bd7 8.0-0 Bg7 9.Nxc6 bxc6** not a good idea for white to allow black to bring another pawn toward the center **10.Be2 0-0 11.f5 Qa5 12.g4 Qb4** white engages in an all-out attack on the king, but exposes his own king in the process **13.a3 Qc5+ 14.Kh1 h6 15.Qe1 g5 16.h4 Nh7** white continues with the all-out pawn storm, but his own king security is questionable **17.hxg5 hxg5 18.Rf2 Be5 19.Rf3 Kg7** white wastes a tempo in his attack **20.Be3 Bd4 21.Bxd4+ Qxd4 22.Rd1 Qe5 23.Rh3 Nf6 24.Qd2 Nxe4 25.Nxe4 Qxe4+ 26.Bf3 Qf4 27.Qc3+ f6 28.Rd4 Qc1+ 29.Rd1 Qf4 30.Rd4 Qc1+ 31.Bd1 Rh8 32.Kg2 Rxb3 33.Kxh3 Rh8+ 34.Kg2 c5 35.Rd2 Bc6+ 36.Kg2**



Rh1 37.Qe3 Kf8 38.Bf3 Rg1+ 39.Kh2 Bxf3 40.Qxg1 Qxd2+ 0-1

**(2) Daniel Cohen (Stevenson) - Rob Flax (Evanston) [E70]**

IHSA State Championship 2005

This game was the deciding victory against Stevenson. Upon winning my game, we had officially won State. In the game, I go down a pawn relatively early but play aggressively and use time to offset the material disadvantage. **1.d4 Nf6 2.c4 g6 3.Nc3 Bg7 4.e4 d6 5.Bg5** This is an interesting line. I dive headfirst into something that's probably worse. **5...0-0 6.Qd2 Nc6 7.f3 e5 8.d5 Nd4 9.Rd1 c5 10.dxc6 bxc6 11.Nge2 Qb6** Here it is, my little gambit. **12.Nxd4 exd4 13.Qxd4 Qxd4 14.Rxd4 Ne8** That move was rather important in holding together my defense. I don't know if it truly deserves an exclamation, but what the heck, I'm annotating this. **15.Rd3 f5 16.Be7 fxe4 17.fxe4 Rf4 18.Re3 ?** With this move, I was instantly winning. I was immediately able to capitalize. More correct would have been [18.Bxd6] **18...Bd4 19.Re2 Bg4 20.Bg5 Rf7 21.Rc2 Rb8 22.b3 Nf6 23.Bxf6 Rxf6 24.Be2 Rf2 25.Nd1 Rxd2 26.Bd3 Bf3 27.Rf1 Rg1 28.Nf2 Rxf1+ 29.Kxf1 Re8 30.Ke1 Re5 31.a4 Rg5 32.Nh3 Rg4 33.Nf2 Rg1+ 34.Bf1 Bg2 35.Rd2 Rxf1+ 36.Ke2 Rxf2+ 37.Kd3 Rxd2+ 38.Kxd2 Bxe4** From her it's all over and white resigned in 30 more^013^010 moves. **Line**

**(3) Elliot Damashek (Evanston) - Andrew Hubbard (Glenbard West [A46])**

IHSA State Championship 2005

**1.d4 Nf6 2.Nf3 e6 3.Bf4 b6 4.h3 Bb7 5.e3 Ne4 6.Be2 d6 7.Nbd2 Nxd2 8.Qxd2 Nd7 9.0-0 Nf6 10.Bg5 Be7 11.Bxf6 Bxf6 12.c3 Qe7 13.Nh2 0-0-0 14.b4 h5 15.a4 Kb8 16.a5 Rh6 17.axb6 cxb6 18.Ra3 Bc6 19.Rfa1 Rd7 20.Qa2 g5 21.Ra6 Rb7 22.b5 Be4 23.Bf3 Bxf3 24.Nxf3 g4 25.hxg4 hxg4 26.Nd2 Bg7 27.Nc4 d5** **Line**

**(4) Berry,N - Wong,N [A08]**

IHSA State Championship 2005

**1.e4 e6 2.d3 d5 3.Nd2 Nf6 4.Ngf3 Be7 5.g3 c5 6.Bg2 0-0 7.0-0 Nc6 8.e5 Nd7 9.Re1** The King's Indian Attack v. the French Defense, white attacks the king while black attempts a queenside breakthrough, major sacrifices of material are commonplace here **9...Qc7 10.Qe2 b5 11.Nf1 a5 12.h4 b4 13.N1h2 Ba6 14.Ng4** This game reminded me of a game between Fischer and^013^010 Myagmarsuran **14...c4 15.Bg5 b3 16.Qd2 Bc5** not noticing the necessity of defending the critical f6 square on which KIA breakthroughs are common **17.Bf6 gxf6** probably the best continuation, the threat of Qg5 comes with such speed it is difficult

to parry **18.exf6 Kh8 19.Qh6** clearing h6 and defending g3 **19...Rg8 20.Ng5 Rxd5 21.hxg5 Rg8 22.Qh4 Bf8** to protect the clearly weak h6 square, however, the square may have been more useful to a knight **23.Be4** seeing the forced rook sack for 2 pawns to come, as well as an unending initiative **23...dxe4 24.Kg2** a classic idea in the KIA shifting the rook with due haste under the king **24...Bc5** clearing f8 for the ever important knight **25.Rh1 Nf8 26.Rh2 Bxf2** to draw the king out or to allow the queen in via e5 and %04f5 **27.Nxf2 Qe5 28.Rah1 Qf5 29.Nxe4 cxd3 30.g6 Qxg6 31.Ng5 Rg7** forced, all other replies are unsatisfactory **32.fxd3** ironically, the first and only check of the game **32...Kxg7 33.Nxh7** better was cxb3 containing the deadly queenside **33...Bb7 !** unleashing various nasty looking moves, all of which were difficult to comprehend in an ultra tactical game in the last round of a rather fast paced seven round event **34.Kg1 ?!** black was in serious time trouble here, he had blitzed the first 13 moves, while white had almost blitzed the majority of the game, black barely had more than a few minutes here **34...bxc2 !** unleashing some rather nauseating tactics **35.Qf4 Ne7 36.Nxf8** black had grabbed his queen planning ....Qxg3+ queening the next move only to discover in extreme time trouble that 38. Qxg3 would, in fact, be met by 38. Qxg3+...with only about ten seconds left on his clock in a still tactical position. **Line**

**May 14 Rockford Second Saturday Open & ICA Membership Drive Sweden House Lodge - Rockford**

Trophies to:  
1st and 2nd Place Overall

Medals to top:  
Class A (1800-1999) Class B (1600-1799)  
Class C (1400-1599) Class D (1200-1399)  
Class E/F (1199 and below) and Un-rated  
EF: \$25 post marked by 5/7; Juniors under 18  
\$20 post marked by 5/7; Add \$5 at site

**All Illinois residents participating will have their ICA membership extended one year**

Hosted by: The Rockford Chess Association Bus Service from O'Hare to the Tournament Site

## Boris Spassky makes appearance out West

### 10<sup>th</sup> World Champion Boris Spassky makes appearance out West!

*(Excerpts from an article found in entirety on [www.Chess-Now.com](http://www.Chess-Now.com))*

Chess players in the western region of the country were treated to an amazing 5 days of being with former World Champion Boris Spassky during the Western States Open Chess Tournament in Reno, Nevada in October.

#### *An Evening with Boris Spassky*

The festivities started with a special "Evening with Boris" dinner presentation at the Sands Regency Hotel where, Boris was feted by a host of chess dignitaries, players and aficionados.

The culmination of Boris Spassky's chess career was becoming the 10<sup>th</sup> World Champion in 1969 (when "World Champion" meant something, his words) after beating Tigran Petrosian in a second attempt at the crown.

IM Anthony Saidy was the Master of Ceremonies and he brought many interesting stories to the microphone during the evening. GM Larry Evans a longtime Reno, NV resident followed Dr. Saidy to the podium and reminisced about the 1972 dealings and preparation for the match. It was interesting to note that Larry had not seen Boris Spassky since the 1972 match in Iceland, yet one felt from watching their discussions that they were long lost friends. Larry presented Boris with the now famous Chess Life & Review magazine that had on the cover a cartoon with Russian officials asking Boris in a practice session, "**But Boris, what if he doesn't play P-K4 ?**". Larry found that particularly appropriate since he had helped Bobby prepare other opening systems for the championship match.

After all the dignitaries had roasted the featured guest, it was time to let Boris have his say. He started by rolling up the sleeves of his white shirt and getting down to business. Now that he is '**retired**' Boris admitted to being more mellow (if that's possible). He is the consummate gentleman that now wants to return something to the game that has done so much for him. About 7 times a year he returns to Moscow to help write and edit a weekly chess publication. He talked about why he has never published a compilation of his games. He talked about the letter he wrote to President Bush asking for leniency in the Bobby Fischer situation in Japan. He said, "**If Bobby Fischer**

**is in jail, then I should be too, since I played the match in Yugoslavia. Lock Bobby and me up in a jail cell and give us a chess set and we'll be fine."** To which Fischer is quoted as saying, "what is he trying to do, make me look like a freak, I want to be locked up with a chick." He is a 'frenemy' which is something like a friendly-enemy.

Boris then went over a famous game of his that was used with a slight modification in the movie "From Russia with Love" the James Bond thriller. It was based on his 1960 King's Gambit encounter with David Bronstein in the USSR Championship. The moves are listed below with comments from game 24 in Modern Chess Brilliances by Larry Evans, Hypermodern Press 1994 and from Game 37 Spassky's 100 Best Games by Bernard Cafferty, MacMillan Company 1972.

Spassky-Bronstein  
USSR Championship 1960  
King's Gambit

**1.e4 e5 2.f4** somewhat of a surprise in modern tournaments, **exf4 3.Nf3 d5** Spassky- Fischer 1960 Mar del Plata went 3...g5 3.h4 g4 5.Ne5 Nf6 6.d4 d6 7.Nd3 Nxe4 8.Bxf4 Bg7 and Black with an extra pawn, has every reason to be content (Larry Evans). **4.exd5 Bd6 5.Nc3 Ne7 6.d4 0-0 7.Bd3 Nd7** A rather timid move. More enterprising is to exchange White's Bishop by 7...Bf5 with less fear of an attack (Bernard Cafferty) **8.0-0 h6** intended to prevent 9.Ng5 but the loss of tempo and weakening of the K side are more important factors. Spassky likes 8...Nf6 9.Ne5 Nxd5 10.Nxd5 Nxd5 11.Qh5 g6 12.Qh6 Qf6 with not bad play for black.(BS/LE). **9.Ne4!** Quite happy to give up his forward d pawn so as to achieve an attacking position on the b1/h7 diagonal (BC). **9...Nxd5 10.c4 Ne3 11.Bxe3 fxe3 12.c5 Be7** If 12...Bf4 13.g3 Bg5 (or 13...f5 14 Nc3 Bg5 15.h4 Be7 16.Nd5 with a strong attack) 14.Nfxg5 hxg5 15.Qh5 with a winning attack (LE) **13.Bc2** White could win the e pawn by 13.Qe2 but then Black would complete his development by 13...Nf6 14.Nxf6+ Bxf6 15.Qxe3 Re8 or 14.Qxe3 Nd5 White has few attacking prospects. After the text White achieves a pickup of the e pawn by Rae1 concentrating all his forces on the best squares (BC). **13...Re8** the position is difficult to assess after 13...Nf6 14.Qd3 Nxe4 15 Qxe4 g6 16.Qxe3 Kg7 (LE) **14.Qd3 e2 15.Nd6!?** Capablanca would have played 15.Rf2 and the game would run a normal course after 15...Nf8. Spassky gambled everything on one trap. He admits that he was carried away with the concept, but Bronstein had left himself with only 20 minutes for the next 26 moves. (LE) Now Black's h7 & f7 are both under attack. Black was shocked by the fact that White was prepared to give up a whole rook for the attack and must have analyzed the position with the thought

nagging at the back of his mind that Spassky had found a forced win in all variations. (BC)

- He has since been happily married to his wife Marina for 30 years!
- He once played a game against his son who started the White side with h3 & Rh2 and Boris told him jokingly to "never play a game of chess again".
- Paul Morphy is a chess hero to him and how Morphy's life is so similar to Fischer's fate.
- As a closing inspiration he said as chess players we must follow the principle of finding the 'best' move. That is where the truth comes out.

*See accompanying picture of Boris explaining the position to the audience.*

**15...Nf8** Correct is 15...exf1Q+ 16.Rxf1 Bxd6 17.Qh7+ Kf8 18.cxd6 cxd6 19.Qh8+ Ke7 20.Re1+ Ne5 21.Qxg7 Rg8 22.Qxh6 Qb6 23.Kh1 Be6 24.dxe5 d5 25.Qf6+ Kd7 after which the king reaches safety with a probable draw (LE). Postponing a decision about taking the rook and hoping White will still be deterred by the cheeky Black pawn in his midst. For Black to go wrong in the circumstances already described is far from surprising. After Black is finally able to safeguard his king, the game would then probably end in a draw. As White has a pawn for the exchange and can still trouble Black by attacking the d pawn, while Black has Qf2 in the offing to tie White down to the defense of g2. It is hardly surprising that Bronstein opted to defend his king in the orthodox way rather than be driven about the board in this undignified manner. (BC) **16 Nxf7! exf1=Q+** "A dying man can eat anything" (BC). **17.Rxf1 Bf5** Not 17...Kxf7? 18.Ne5+ Kg8 19 Qh7+ Nxf7 20.Bb3+ and mates. The only defense is 17...Qd5 18.Bb3 Qxb3 (if 18...Qxf7 19.Bxf7+ Kxf7 20.Qc4+ Kg6 21.Qg8 Bf6 22.Nh4+ Bxh4 23 Qf7+ Kh7 24.Qxe8 with the Black pieces congested) 19.Qxb3 (if 19.axb3 Kxf7 is safe) Be6 20.Nxh6+ gxh6 21 Qe3 White keeps the initiative, but the outcome of the game is in doubt (LE). **18.Qxf5 Qd7 19.Qf4 Bf6** closing the f file but White has more than enough pressure to force a win (BC). **20.N3e5 Qe7 21.Bb3 Bxe5** if 21...Ne6 22.Qg4 **22.Nxe5+ Kh7 23.Qe4+ 1-0** On 23...Kh8 24.Rxf8+ Rxf8 25.Ng6+ is decisive (LE). The fine finish of this game was adapted for use in the famous, if implausible, opening scene of the James Bond film "From Russia with Love". Strangely enough however in the 'Kronsteen-McAdams game' the White pawns at d4 and c5 were omitted (BC).

Boris then concluded his session with some little masterpieces of how:

*International Masters Anthony Saidy and John Donaldson along with Grandmaster Sergey Kudrin conclude the evening activities with World Champion Boris Spassky.*

### *Grandmaster Larry Evans Lecture*

Before the tournament GM and longtime friend and second of Bobby Fischer, Larry Evans also gave a presentation on current affairs in chess. The Bobby Fischer situation was covered when Larry played a tape of a CNN News story where he and Donald Schultz from the USCF talked about alternatives to having Bobby locked up in a jail cell in Japan. The point of the discussion was that Lothar Schmidt had no problem returning to Germany after the match and that Boris Spassky had no problem returning to France after the 1992 match yet Bobby was not allowed to play, but did anyway, and has since had troubles.

Other topics brought up at the session revealed the following:

- Fischer is a father of a baby girl with a lady in the Philippines (per Larry Evans).
- He is attempting to marry a Japanese woman so he would be able to stay in Japan and waive his US citizenship.

## Boris Spassky makes appearance out West

- In the 1963/4 US Championship, all the players were hoping Anthony Saidy would draw with Fischer in the last round so it wouldn't be a shutout and appear as a route.
- Larry related that when Bobby stayed with him for a period of time at his home in Virginia City that neither of his 2 dogs liked him and that he had a healthy sense of paranoia about traveling in the family car.
- One time while doing an exhibition at the Pasadena Jailhouse that Fischer was considering doing a walk out during the event to see if the guards would stop or shoot him. Later the warden told him that force would not have been used.
- Larry felt that after 1972 that Bobby even though he said he was going to be an active champion would drift off into the wilderness years. He said, **"It was ironic that the more you got to know about him, the less you wanted to find him."**
- In answer to how Bobby ranked in the chess world today compared to his era, it was felt that there was more of a gap between him and his generation of players than exists with Karpov/Kasparov today and their contemporaries.

### **Boris Spassky Simultaneous Exhibition**

Boris Spassky conducted a 26 board simultaneous exhibition in the tournament hall. See pictures of the games in progress.

The final result was 21 wins for Spassky and 5 draws including one draw against tournament organizer Jerry Weikel !

### **Clash of the Titans**

On Sunday the final day of the tournament, the concluding event was a special showing of a BBC documentary called "Clash of the Titans". The film had not been previously shown in the United States. It showed some very unique footage of the 1972 World Championship match preparation and interviews of various parties that were involved with that event. In particular the film showed:

- The height of the '**Cold War**' was the pretext of the entire event.
- Robert Byrne discussed how previous instances of collusion and cheating by the Russians didn't help relieve the tensions of having to play against Fischer.
- The film showed the prematch preparation each player undertook including showing Bobby Fischer working out with Jack Lalane on his television, while Boris was showing off his tennis playing ability.
- The match started 10 days late after the opening ceremony was cancelled and Fischer finally showed up.
- The **Russian contingent wanted Spassky to pull out of the match** but he insisted on staying and playing.
- After Fischer forfeited game 2 of the match, the US contingent was sure that Fischer would want to leave and return to the US. Robert Byrne related that to prevent that from happening Father William Lombardy went out to Fischer's car and ripped out the starter so there would be no way to get to the airport. Later when Fischer and Lombardy were in the car trying to leave and it wouldn't start (Byrne said "of course Fischer didn't know anything about cars") Lombardy said "**well I guess we'll have to stay and continue the match**".
- Prior to the 3<sup>rd</sup> game, Spassky protested the conditions of playing in the back room but consented to play anyway. It was at that point that Boris felt he lost the match psychologically. Each game Fischer continued to get stronger and Boris was not able to hold onto his advantage. His admiration for Fischer's play was demonstrated after game 6 when he too stood on stage and applauded Fischer's effort. Later Fischer told Larry Evans he couldn't believe that Spassky did that.

### Boris and Larry Evans answering questions

- When asked if he was prepared for Fischer playing something other than e4 he said yes that he was. His opening preparation was superior to Fischer's except he couldn't capitalize on the middlegame positions that arose.
- Boris then commented on his matches with Petrosian, the state of current affairs in the world chess championships, Garry Kasparov's abilities, the status of his relationship with Anatoly Karpov and had comments about the 1992 match with Fischer.
- In closing Boris related the analogy that between the two players, his space for playing chess is very broad, but unfortunately for Bobby his space is very **LIMITED**.
- With that Boris bid us all well and told us to save our energy to 'fight' in the last round of the tournament.

What can be said about having spent 5 days with an ex-World Chess Champion? One conclusion is inescapable. The world of chess is truly fortunate that Boris Spassky is the person he is. As Robert Byrne said in the film Clash of the Titans, "**he is truly a classic gentleman**". The fact that Fischer had Boris as an opponent in his matches, left all of us in the chess community richer because of the many memories, games and historic events that add to the legacy of the game. As one person in the audience commented to Boris during the discussion, "**Thirty-two years ago you and your play inspired me to take up the game of chess which has since provided me with years of enjoyment. For that I say thank you**". That immediately generated a heartfelt round of applause from the captivated audience.

Thank you Boris Spassky for being a King of Chess and the King of class.

### Illinois Player Activities at the Tournament

Even though Boris Spassky was the highlight of the chess related activities, there also was a well run

tournament where the three (3) players from Illinois did very well. GM Hikaru Nakamura won the Open tournament outright with 5.5/6 defeating several strong GM opponents along the way. GM Dmitry Gurevich from Chicago finished with 4 ½ tied for 2<sup>nd</sup> with 6 other players. Also playing up in the Open Section was Eric Heiser from Wauconda. Rated 1975 going into the event Eric finished with 2.5 points(!) which included victories against a 2361 & 2206 and a draw with a 2225. Look for Eric to be moving up with those results. Jim Egerton finished with 4.5 tied for 5<sup>th</sup> against 78 other players in the A section.

The tournament had over 432 players in class sections. There was free coffee and Danish during the rounds, lapel pins presented to each participant and an autograph from the World Champion when you registered. During the rounds all of the playing tables had a small state flag from the state that you represented next to your board when you were playing. One thing that was different was that there was no sudden death time control. It was 40/2, 20/1 then 20/30 then 20/20 repeatedly until the finish. There were several adjournments and programming the Kronos clocks for the 4<sup>th</sup> time control was a challenge. It was different to see the game come to a natural conclusion instead of the time scrambles that can occur in sudden death.

There are 2 strong tournaments a year in Reno, the Far West Open next March and the Western States Open every year in October. Between all the other Nevada events, (i.e. National Open, North American Open etc.), it's easy to overlook the fun that can be had playing in other more local events. You certainly will play against players you're not familiar with. This was a tournament to be recommended, but then again topping an event where a World Champion was present is going to be hard to do.

A complete article and more pictures dealing with Boris Spassky's visit to Reno can be found on [www.chess-now.com](http://www.chess-now.com). There are more stories about Tal, Petrosian, Fischer, Karpov, Kasparov, current state of chess as related by Boris Spassky on the website. There is even a chess position challenge of the continuation of a wild game played during the simul by Spassky.

Jim Egerton is the President of Chess-Now Ltd. a training and development company that teaches chess to build skills we use in our complex daily lives. More information and a complete description of available programs are located on the company website at [www.chess-now.com](http://www.chess-now.com).

### Road Warrior

by Pete Karagianis

Ladies and gentlemen, boys and girls, children of all ages, this installment of Road Warrior involves chess in grand scale indeed; from Las Vegas to Colorado, Chicago to Ames, my apartment to... well, my friend's apartment.

Because, it seems, that's just how these things happen.

Let me set the scene in the present tense: it is Friday night in a college town and I am listening to "Ooby Dooby" by The Creedence Clearwater Revival and reading *My System* by Aaron Nimzovitch. I am, it would seem, the epitome of the modern *cool*.

I have been working with a student, let's call him Jones, for several months. He has showed slow but steady progress but still hasn't quite managed to make the one breakthrough that every class player waits for.

At this moment in time, he is twelve hours away from playing in the high school qualifying tournament the next day and he has politely asked me for a last-minute review session.

I say sure, come on over, and look to my bookshelf.

In a recent article, Femi Oyekan of New Orleans, a long time chess player and essayist postulated that chess itself is a form (much like the Platonic "form" of a bed [Phaedra]), and within the form the game itself can vary vastly. In other words, the level of play and the players involved could make one game of chess totally unlike another, much as the art of Picasso is different than scribbles of a child on paper. As Oyekan himself writes,

*"I do not mean simply different individual games of chess but literally different games, the way that Monopoly is different from say, Clue."*

In the same vein, teaching chess can be vastly different from student to student. Recently, I was asked to give a brief lecture to a grade school group during a school fair designed to give the children "life lessons," or, as I understood it, expose them to as many creative venues as possible. Paging through past material, I quickly rejected previous lectures given both online or to local clubs, picturing the blank look on so many 5<sup>th</sup>-graders faces as I began, "Theoretical Novelties in the Shliemann Defence: Tactical Shots and Awareness."

So, I sit instead on the brink of the weekend and flip through pages upon pages of Nimzovitch, looking for a particular chapter I had read a long time ago in a land far, far away (also known as high school in Peoria when I was a 1600 myself), and finally come

upon the segment I have in mind, namely, that on "restraint." However, it was not precisely as I recalled.

In an online lecture recently, I started with the following position:

[white to move]  
(Karagianis-Anka. National Open. Las Vegas, 2004.)



The concept I was working at was something along the lines of Nimzovitch's idea of restraint, though in a far more rudimentary sense. In this particular game (replay-able with analysis online at <http://iowachess.org/games/jun2004/karank.htm>), white sacrificed a pawn early to restrain black's piece development, and, ultimately, capability to move. However, what I really wanted to convey to the twenty or so members of the international audience was the simple notion of patience. In the above position, white continued R:g5+. Not surprisingly, this was also the audience's favorite move. Even after explaining the merits of the simple, calm Bc6! instead, the majority of the members reinforced my theory that all chess players are closet romantics, and refused to accept that anything could be "better" than R:g5.

Often my student, Jones, will take a similar stance.

When observing an online game, or after watching a tournament game of mine, he will, without fail, ask, "Why didn't you sacrifice your rook on move nineteen?" or "Why didn't you take the free pawn on move twenty-three?" or any number of questions of the same ilk. While each question is worthy in its own sense, perhaps the sacrifice was there or the pawn was available, my answer, I have realized over time, is always the same.

"Because after the text move, he still can't do anything about it."



Conversely, there are also many times when quickness is just as important, when delaying a strike or missing a blow would cause the game to spiral in an equally unwanted manner. Take, for example the following:

[white to move]

(Karagianis – Gossell. Lindsborg FIDE Open, 2004)



Here, the immediate Nxd6! is mandatory. Black's king in limbo and cramped queenside pieces demand immediate action in the center. However, it is the constant balancing act between restraint and audacity that makes either one on its own difficult to instruct fully.

In *The Art of the Middle Game* by Keres and Kotov there is an entire chapter on defending a difficult position. The two grandmasters explain, very candidly, that when in a bad position it is hard to play it. This simple fact, which seems so utterly obvious, is, in my humble opinion, consistently overlooked by the average over-the-board woodpusher. Often, I choose moves not because they are objectively best, but because they force my opponent to come up with something when there is simply nothing to come up with- in other words, they force him to play precisely that difficult position discussed above.

To get back to our story, this is the information I need to give to Jones; it is what I have been trying to convey to him for some time, in one way or another. But the question is this: how to relate the material. Of course, this is the problem most chess teachers, well, why stop there, most teachers in general, of any subject, continually face.

Recently, I read an analysis of Sokolov's game against Morozevich from the Corus tournament this year, written by National Master Brian Wall, of Colorado. He

compared the play by Morozevich to one of Mozart's symphonies, employing continual references to the film *Amadeus*. To me, the article was simply brilliant, and far better than the official report on chessbase.com. Perhaps that is because I have always connected chess to the real world, or perhaps it is because I love music in all its forms. Whatever the answer, the analysis simply worked – it connected the reader to the material.

As I wait for Jones, I remember a brief session I gave at a high school club a few months ago. After having one player fall asleep, and others dreamily glancing around the room, I put down my notes on the topic they had asked me to cover (endgames) and, exasperated, leaned forward and stated simply, and loud enough to wake up the dormant fellow in the back, "Alright, look. Pawns in the ending are kind of like girlfriends, you have advanced, connected, isolated, or backwards..."

I had their attention for the rest of the lecture. Once, at Jones' place, I remember seeing an old Nintendo system lying around, with, seemingly, every Mario game ever invented scattered on the floor in front of it. Being born in the 80s I think, "Perhaps this is my ticket." I quickly set up the board and run through it in my head. Jones arrives and sits across from me. "OK," I say, "you know how when you're doing the levels in Super Mario Bros 2 and you can't just fly onto things sometimes... you have to throw a few fireballs or jump on a turkey shell, or maybe power up with a mushroom?"

He stops and looks at me funny for a moment. Then, "Ooooh... you mean like at Bowser's palace!" I turn off the CCR, and begin, "Yeah, just like that."

Pete Karagianis is a columnist for *En Passant*, *The Illinois Chess Bulletin*, and *The Chess Underground*. He can be reached for comments and questions at [Karagianis@gmail.com](mailto:Karagianis@gmail.com) or through his website at <http://transplant.dyndns.org/pc/>

## NM Pete Karagianis

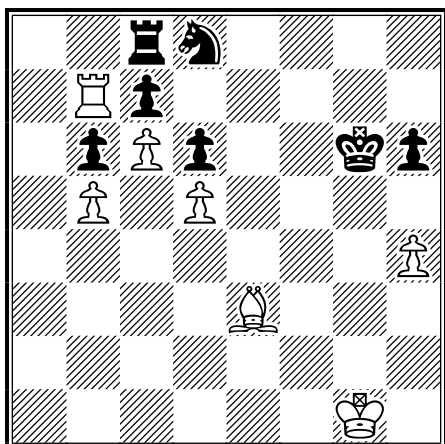
Accepting games for the ICB  
Games can be sent to:

Pete Karagianis  
921 SE Chaparal Drive,  
Ankeny, IA. 50021  
[dmitri@iastate.edu](mailto:dmitri@iastate.edu)

## Pawn Promotion

By Ilya Korzhenevich

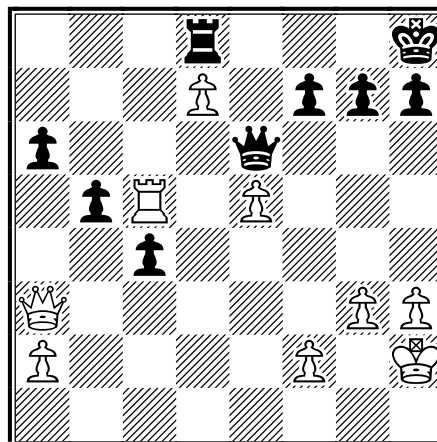
As every chess player knows, pawn promotion is a very powerful weapon. The humble pawn turns into the most powerful piece on the board, usually creating a decisive material advantage. To achieve this end, players are often willing to sacrifice material, as they know that they will get it back with interest after the promotion. The following is a good example of such a combination:



Plater-Sliwa, 1947. White to move.

In this endgame position, White's pawns are far advanced, but, unfortunately, the fence made up of Black pawns stops them from marching on. What is the solution? Blow the fence up, even if it involves a sacrifice! Indeed, Plater played **1.Rxc7 Rxc7 2.Bxb6 Rc8 3.Bxd8 Rxd8**. Now, after **4.b6**, the pawns are unstoppable.

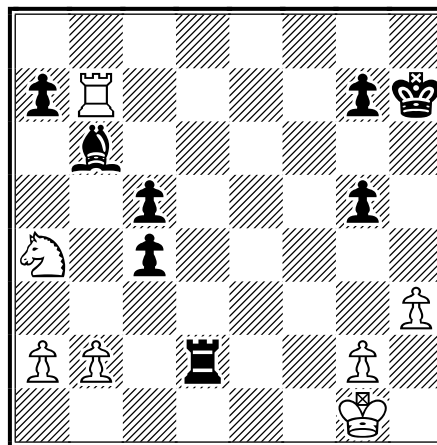
Pawn promotion combinations are sometimes combined with the threat of a back rank mate, as in the following example:



Alekhine-Nestor, 1939. White to move.

In the position above, the fourth World Champion played **1.Rc8!**. It is easy to see that **1...Qxd7** loses due to **2. Qf8+**, but what about **2...Rxc8**? Does not White lose the passed d-pawn, the pride of his position? Everything became clear when Alekhine had played **2.Qe7!!** (deflection!), making either the queening or the bank rank mate inevitable.

While the two previous combinations are rather straightforward, our next example has some unexpected turns and features one of the most beautiful pawn promotion combinations in the history of chess:

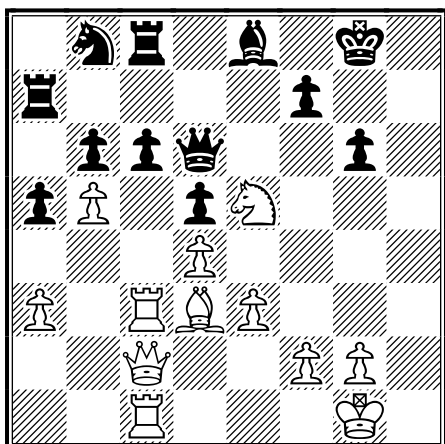


Oruetta-Sanz, 1934. Black to move.



In this position, Black played **1...Rxb2!**  
**2.Nxb2 c3**. Now if White plays **3.Nd3**, **3...c4+**  
 wins the game after **4.Kf1 cxd3**. But Oruetta  
 played **3.Rxb6!** instead. It would seem that Sanz  
 had miscalculated: after **3...axb6** **4.Nd3** White  
 stops the pawns and is up a Knight. However,  
 Black had the last word. Instead of playing  
**3...axb6**, Sanz came up with an astounding  
**3...c4!** and, after White's forced response **4.Rb4**,  
 he played **4...a5!!** A fantastic position: three  
 isolated pawns overcome the combined powers of  
 a Knight and a Rook! White resigned after **5.Na4**  
**axb4**.

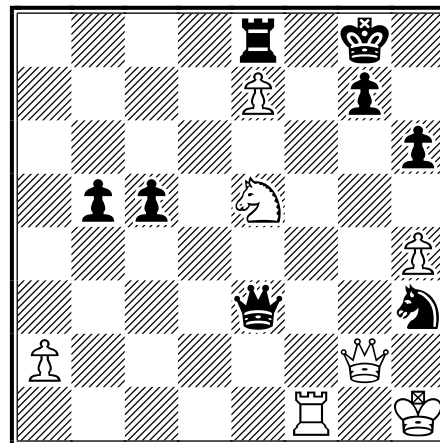
Here is another very beautiful queening  
 combination, this time in a middlegame position:



Kotov-Ragozin, 1949. Black to move.

Kotov had just played **1.b5**. Ragozin had  
 been intending to play **1...c5**, counting on his  
 pawn on c5 being safe due to the hanging Knight  
 on e5. Indeed, it seems that **2.dxc5 Qxe5** **3. cxb6**  
**Rxc3** **4.Qxc3 Qxc3** **5.Rxc3 Rb7** leaves Black a  
 piece up. However, at the last moment, Ragozin  
 changed his mind and played **1...Rac7**, losing a  
 pawn and, eventually, the game. Why? Because  
 he had spotted a beautiful combination for his  
 opponent: instead of **4.Qxc3** in the line above,  
 White could play **4.bxa7!!** (Queen sacrifice!) **Rxc2**  
**5.Rxc2**, and White queens the pawn on the next  
 move, ending up the Exchange and a pawn to the  
 good.

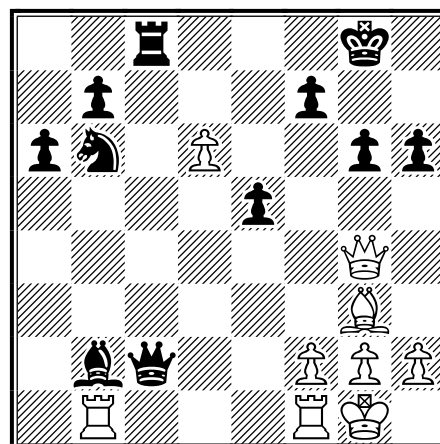
In conclusion, let's take a look at a  
 combination with the so-called underpromotion –  
 the promotion into a piece other than a Queen:

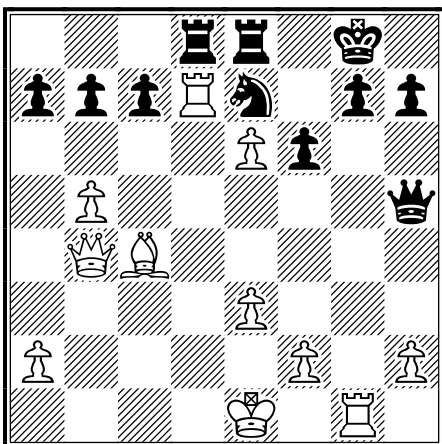
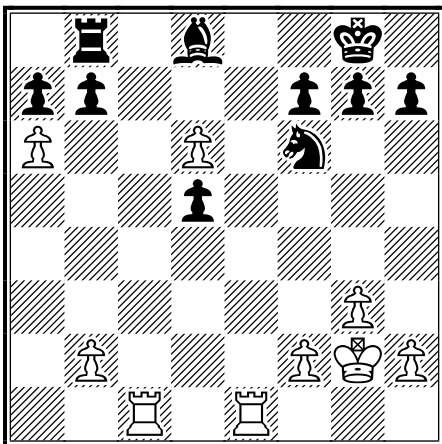
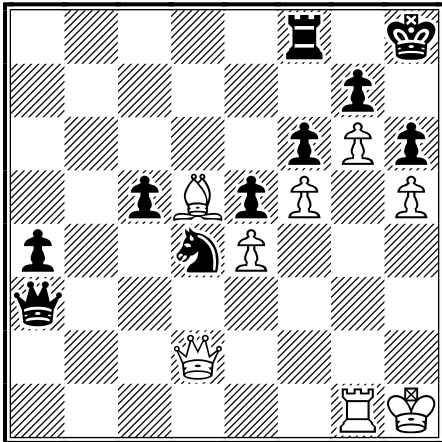


Gulko-Grigorian, 1971. White to move.

It's not hard to find the moves **1.Rf8+ Rxf8**  
**2.Qd5+ Kh7**, but what should White do now?  
 White can't play **3.exf8Q** because of **3...Qg1#**.  
 The solution is to promote the pawn into a Knight,  
 since that would come with a check: **3.exf8N+!**  
**Kh8** **4.Neg6#**

Now it is your turn to improve the lot of a  
 humble pawn. In the positions below, White is to  
 move and either to checkmate or to gain a  
 decisive material advantage.





## Solutions to the problems in the last issue:

**Problem 1:** 1.Bg4! Qxg4 (forced) 2.Nh6+ and 3.Nxg4

**Problem 2:** 1.Qa8+!! Kxa8 2.Bc6++ Kb8 3.Ra8#

**Problem 3:** 1.Nc7! Qxc7 2.Qxb5 cxb5 3. Rxc7

If you have any questions or comments about this article, or if you would like to see a specific tactical theme covered in future issues, please feel free to email me at

[ilya@ChessScholars.com](mailto:ilya@ChessScholars.com).

Chess Scholars is dedicated to providing **professional group and individual chess instruction** to children, teenagers, and adults in Chicago and the suburbs.

- Best instructional staff in the Chicago land.
- Trained several scholastic State and National Champions.
- **Programs for schools, churches, and chess clubs.**
- Will travel to any location in Chicago or suburbs.
- Train Chess Players of all levels. Beginners-Intermediate-Advanced.
- Chess Camps and Tournaments.
- Seminars, simuls, and blindfolded exhibitions available.

Please contact Ilya Korzhenevich, Director, at [ilya@ChessScholars.com](mailto:ilya@ChessScholars.com) or at 773-286-2941. Additional information is available at [www.ChessScholars.com](http://www.ChessScholars.com).

## *Winter Open XIX, A Moving Experience*

By Tim Just

The traditional weekend for the Open stayed the same, January 8-9, 2005. The site moved south from the College of Lake County to the Renaissance hotel. 91 woodpushers came to compete. And at the end of five rounds three section champions stood on top of their mountains without a loss among them. GM Dmitry Gurevich sported a final score of 4.5-.5 in the *Open* section, while Mark Meister in the *Reserve* section and Bobby Phipps (playing in his first event since 1997!?) in the *Booster* section both totaled a perfect 5-0.

The *Open* section saw second place shared by IM Stan Smetanlin and the Under 2200 champion Geoffrey Caveney, each scoring 4-1. Third place and various other Under prizes went to the logjam caused by the 3.5-1.5 scoring Mehmed Pasalic, Aleksanda Stannov, Al Chow, Steve Szpisjak, and Esao Elezaj. Jusuf Pekovic also tied for third place; however, he picked up more cash as the lone second place Under 2200 winner. A massive tie for first and second place in the Under 2000 category was created by Robert Loncarevic, Andrew Hubbard, Zach Kasiurak, Ilan Meerovich, and Dan Mc Nally.

The *Reserve* section doled out all of its remaining second place, third place and Under prize funds to the 4-1 totals of Ivan Wijetunge, Mark Hamilton, Muhame Dzananovic, and Max Friedmann.

Sole possession of second place in the *Booster* section was claimed by Michael Granata's 4-1 total. The third place money went to Anthony Gasunas and his 3-2 effort; however, also sporting a 3-2 score was Adem Music who claimed the larger first place prize in

the Under 1200 class. Second place in that same class went to Maurico Gutierrez.

For a complete list of the final standings log onto: <http://www.geocities.com/mrjust/WinterOpencrosstables.htm>

Thanks to the Renaissance Chess Club and IM Smetankin for their efforts towards raising money for the tsunami relief fund with a simul after round 5 on Sunday. We were glad to donate the space for such a worthy cause.

Wayne Clark and I organized and directed the event. We were really pleased with the larger than usual turnout in the Open section! We have plans to improve the tournament for the future by toying with the format, prize fund distribution, and entry fees. Many players let us know how much they like the convenience of the hotel site.

Players have come to expect this traditional tournament to be held at the College of Lake County; however, the College was not able to release the dates we requested in time for the ads to appear in Chess Life and the ICB. Thanks to the efforts of Rajen Gandhi, new ICA Treasurer Mike Maloney and Wayne Clark the club jumped through some new hoops in order to continue using the site on Friday nights; however, the weekend tournament picture at the College is not as clear. It is getting more difficult for all organizers to find good inexpensive sites to enjoy the royal game. Unfortunately that translates into higher EFs for the players?!

The U.S. Open returns to Chicago!

August 5-13, 2006

Hyatt Regency

Oak Brook

**2005 NORTHBRIDGE BAPTIST JANUARY OPEN -  
FINAL STANDINGS****Held on January 8, 2005 in Normal, Illinois**

No.	Name	Rate	Pts	Rnd1	Rnd2	Rnd3	Rnd4
1	LONG, DAVID	1975	3.5	W21	W8	W6	D2
2	BURGESS, JON L	2286	3.5	W12	W11	W7	D1
3	DONDON, JOSITO C	2026	3.5	W20	D10	W5	W13
4	BOURGERIE, Dennis	1710	3.5	W23	W22	D16	W21
5	BARTON, AARON	1361	2.5	W9	W24	L3	D7
6	BARTON, WILLIAM J	1718	2.5	W16	W18	L1	D9
7	WATTS, BRADLEY S	1813	2.5	W17	W14	L2	D5
8	CHILES, SETH D	1420	2.5	W24	L1	D12	W14
9	PARKER, ROBERT W	1742	2.5	L5	W21	W20	D6
10	RUAN, GORDON J	1686	2.5	W22	D3	D11	-H-
11	JARRETTE, PHIL	1800	2.0	W19	L2	D10	D12
12	KANNIAH, SURESH	1611	2.0	L2	W23	D8	D11
13	KOPULA, SURYApraka	1728	2.0	L14	W17	W15	L3
14	EATON, THOMAS	1325	1.5	W13	L7	D21	L8
15	PHALKE, HARSHAL S.	1559	1.5	L18	W16	L13	D17
16	KRISHNAMOORTHY, SABREESH	1087	1.5	L6	L15	D4	W22
17	NUNEZ, CESAR R	1519	1.5	L7	L13	W23	D15
18	NAFF, WILLIAM	2002	1.5	W15	L6	-U-	-H-
19	WENDLING, KENNETH	1467	1.5	L11	L20	W22	-H-
20	CHIEN, JASON W	1581	1.0	L3	W19	L9	-N-
21	SEIBEL, DENNIS	1530	0.5	L1	L9	D14	L4
22	ZIMMERMAN, JASON D	962	0.0	L10	L4	L19	L16
23	NASZODI, LASZLO J.	1395	0.0	L4	L12	L17	-N-
24	FRENCH, J KEVIN	1800	0.0	L8	L5	-U-	-U-

Dennis Bourgerie played as houseman in this event and thus had much easier pairings than would have been normal.

## ICA Tour Points

By Mark Engelen ICA Statistician

These standings reflect the following 2004-2005 Tour Events:

4/17/2004	Mini	James Ruth Birthday Open, Springfield (XU)
4/24/2004	Mini	Peoria Spring Tornado (XU)
5/31/2004	MAXI	13th Annual Chicago Open, Oakbrook
6/12/2004	Mini	Springfield Summer (XU)
6/26/2004	Mini	Peoria Summer Tornado (XU)
8/21/2004	Mini	Springfield August Open (XU)
9/5/2004	MAXI	2004 Illinois Open State Championship, Lake Villa
10/9/2004	Mini	First Annual David Mote Memorial Open, Springfield (XU)
10/10/2004	MAXI	13th Annual Midwest Class Championship, Oak Brook
10/23/2004	Mini	Northbridge Baptist Church October Open, Normal (XU)
10/30/2004	Mini	Peoria Fall Tornado(XU)
12/11/2004	Mini	Springfield Holiday Open (XU)
12/19/2004	MAXI	Illinois Class Championships
1/9/2005	MAXI	Tim Just's Winter Open/Reserve XIX

2004-2005 Tour Events not including (and future events):

1/8/2005	Mini	Northbridge Baptist Church January Open, Normal (XU)
1/29/2005	Mini	Peoria Winter Tornado (XU)
2/19/2005	Mini	Almost President's Day Open, Springfield (XU)
2/27/2005	Mini	Greater Peoria Open (XU)
3/20/2005	MAXI	Illinois Amateur Championship (XU)
5/14/2005	Mini	Bloomington - May Open

**MASTER TOUR POINTS:**

1 SMETANKIN, STANISLAV	55.0
2 YOUNG, ANGELO	45.5
3 BURGESS, JON L	41.0
4 GUREVICH, DMITRY	40.0
5 PASALIC, MEHMED	32.0
6 STAMNOV, ALEKSANDAR	31.0
7 CHOW, ALBERT C	29.0
8 ELEZAJ, ESAO	28.0
9 COHEN, LAWRENCE S	26.5
10 DUNCAN, JASON T	21.0

**MASTER EX-URBAN TOUR POINTS:**

1 BURGESS, JON L	14.0
2 COHEN, LAWRENCE S	7.5
3 NAFF, WILLIAM A	7.5
4 BONWELL, JONATHAN J	4.0
5 WATTS, BRADLEY S	(2) 4.0
6 WILBER, MARTIN W	4.0
7 BARTON, AARON	(1) 2.5
8 CHILES, SETH D	2.5
9 DONDON, JOSITO C	2.5
10 FETT, RODDNEY	(1) 2.5

**EXPERT TOUR POINTS:**

1 COHEN, LAWRENCE S	34.0
2 LEALI, MICHAEL E	31.0
3 CAVENEY, GEOFFREY	30.0
4 NIENART, CHRISTOPHER	27.0
5 NAFF, WILLIAM A	22.5
6 DUNCAN, JASON T	21.0
7 HUBBARD, ANDREW D	21.0
8 DONDON, JOSITO C	20.5

**EXPERT EX-URBAN TOUR POINTS:**

1 LEALI, MICHAEL E	31.0
2 NAFF, WILLIAM A	22.5
3 DONDON, JOSITO C	20.5
4 COHEN, LAWRENCE S	15.0
5 SCHMIDT, SCOTT	(1) 14.0
6 BOURGERIE, DENNIS A	13.0
7 KNOEDLER, THOMAS B	12.0
8 MILES, KYLE J	12.0

## ICA Tour

9 REDDIVARI, DUSHYANTH	19.5	9 RENZE, JOHN D	10.5
10 LUNG, RICHARD E	19.0	10 VAN BUSKIRK, DOUGLAS	(2) 10.0

### CLASS A TOUR POINTS:

1 PEKOVIC, JUSUF	36.0
2 LEALI, MICHAEL E	31.0
3 MALONEY, MICHAEL A	28.0
4 CAVITT, DEXTER	26.0
5 KASIURAK, ZACHARY	23.0
6 HERNANDEZ, HECTOR R	22.5
7 HILL, ROBERT N	(2) 21.0
8 HUBBARD, ANDREW D	21.0
9 DONIS, CAMERON L	(1) 20.0
10 MC DONALD, JORDAN M	19.5

### CLASS A EX-URBAN TOUR POINTS:

1 LEALI, MICHAEL E	31.0
2 BOURGERIE, DENNIS A	18.0
3 KNOEDLER, THOMAS B	15.0
4 MCGOWAN, ANDREW	(1) 14.0
5 SCHMIDT, SCOTT	(1) 14.0
6 SPARKS, DEREK	13.5
7 MILES, KYLE J	12.0
8 RENZE, JOHN D	11.5
9 BLICKHAN, GARY L	11.0
10 ZIMMERLE, R WAYNE	10.5

### CLASS B TOUR POINTS:

1 MEEROVICH, ILAN	53.0
2 MEISTER, MARK	(2) 41.0
3 MC NALLY, DANIEL M	36.0
4 GANNON, DAN I	31.0
5 BONWELL, JONATHAN J	30.0
6 KASIURAK, ZACHARY	30.0
7 HAMILTON, MARK P	29.0
8 BARBIN, JOSEPH	28.0
9 LAGUMBAY, CHARLES P	28.0
10 CHIEN, JASON W	25.5

### CLASS B EX-URBAN TOUR POINTS:

1 BOURGERIE, DENNIS A	18.0
2 KNOEDLER, THOMAS B	15.0
3 SCHMIDT, SCOTT	(1) 14.0
4 MILES, KYLE J	12.0
5 RENZE, JOHN D	11.5
6 BLICKHAN, GARY L	11.0
7 ZIMMERLE, R WAYNE	10.5
8 CREMEENS, MATTHEW K	10.0
9 BONWELL, JONATHAN J	9.0
10 RUAN, GORDON J	8.5

### CLASS C TOUR POINTS:

1 DZANANOVIC, MUHAMED	31.0
2 MC NALLY, DANIEL M	31.0
3 LAUGER, JUDD E	29.0
4 FENG, JUSTIN L	26.0
5 CHIEN, JASON W	25.5
6 AUGER, MICHAEL W	23.0
7 FRIEDMANN, MAX I	23.0
8 MEDURI, AKAASH	23.0
9 JAYAKUMAR, ADARSH	22.0
10 RUAN, GORDON J	21.5

### CLASS C EX-URBAN TOUR POINTS:

1 KNOEDLER, THOMAS B	15.0
2 SCHMIDT, SCOTT	(1) 10.0
3 CREMEENS, MATTHEW K	8.0
4 RUAN, GORDON J	6.5
5 ZIMMERLE, R WAYNE	6.5
6 NASZODI, LASZLO	6.0
7 CHILES, SETH D	5.0
8 DOROSHEFF, EVAN JAMES	4.5
9 RENZE, JOHN D	4.5
10 AYLER, PETER W	(2) 4.0

### CLASS D TOUR POINTS:

1 WISHNER, MICHAEL	33.0
2 GIRARDO, CHRISTOPHER	33.0
3 PHIPPS, BOBBY V	(1) 32.0
4 HELLER, MICHAEL L	22.0
5 JAYAKUMAR, ADARSH	22.0
6 KIRSCH, LEO E	22.0
7 BARBIAN, MATTHEW R	21.0
8 BIALER, GERSHON	(1) 20.0
9 BOSKEY, CRAIG A	20.0

### CLASS D EX-URBAN TOUR POINTS:

1 NASZODI, LASZLO	8.0
2 DOROSHEFF, EVAN JAMES	6.5
3 AYLER, PETER W	(2) 6.0
4 RUTH, JAMES	5.0
5 CHILES, SETH D	4.5
6 KRISHNAMOORTHY, SABAREESH	(2) 4.0
7 SCARLETT, TODD M	(1) 4.0
8 WINKS, MATTHEW	(1) 4.0
9 LEALI, DOMINICK CHRISTIAN	(2) 3.0

10 KACZYNSKI, THOMAS	20.0	10 BARTON, AARON	(1)	2.5
----------------------	------	------------------	-----	-----

**CLASS E TOUR POINTS:**

1 DICKINSON, TRAVIS	38.0
2 HARVEY, FRANK J	33.0
3 ABAUNZA, ADRIAN	(1) 32.0
4 GAUDINO, STEVEN J	(1) 28.0
5 MEDURI, VISHAAL	26.0
6 MEDINA, STEVEN A	21.0
7 GARIVALDIS, ALEXA	(1) 20.0
8 KWAN, RANDY G	(1) 20.0
9 LANGE, RICHARD C	20.0
10 METZ, VERONICA	20.0

**CLASS E EX-URBAN TOUR POINTS:**

1 AYLER, PETER W	(2)	6.0
2 DOROSHEFF, EVAN JAMES		5.5
3 RUTH, JAMES		5.0
4 SCARLETT, TODD M	(1)	4.0
5 KIBLER, MICHAEL E	(2)	2.5
6 TERLIZZI, CALVIN J		2.5
7 CANAVAN, DYLAN P	(2)	2.0
8 KRISHNAMOORTHY, SABAREESH	(2)	2.0
9 LEBOW, AARRON BENJAMIN	(2)	2.0
10 TSAO, FELIX	(1)	1.5

**CLASS F TOUR POINTS:**

1 DICKINSON, TRAVIS	38.0
2 ABAUNZA, ADRIAN	(1) 32.0
3 GAUDINO, STEVEN J	(1) 28.0
4 MEDURI, VISHAAL	26.0
5 SOUKAL, ANDY P	(2) 18.0
6 BRONFELD, JORDAN	(1) 16.0
7 KUMAR, PREVIN	(2) 15.0
8 LAURILA, DANIEL J	(1) 10.0
9 HU, YAODI	(2) 9.0
10 PANN, CARTER	(1) 9.0

**CLASS F EX-URBAN TOUR POINTS:**

1 SCARLETT, TODD M	(1)	4.0
2 CODDING, DOUG L	(2)	1.0
3 GAYAM, SAJJAN	(1)	1.0
4 GUHA, PRASHANT S	(1)	1.0
5 KIBLER, MICHAEL E	(2)	1.0
6 PARUPALLI, ASHWIN N	(1)	1.0
7 SCHUCK, JASON	(1)	1.0
8 STRICKLAND, WILLIAM A	(1)	1.0
9 KITSON, MICHAELA M	(1)	0.5
10 NOOKALA, PARTHA R	(1)	0.5

**FOR SALE!****The James E. Warren Chess Book Collection**

Comprised of 4,491 books, organized into twenty-one categories, and completely computerized

If you are seriously interested I will be happy to provide the following:

- 1) Four-page description of the information stored for each book in the collection data base, including a list of the contents of the files on the floppy disks.
- 2) Summary page of chess book collection totals by category of pages, games, and breakdown by notation.
- 3) Summary page of chess book collection totals by category and breakdown by casing.
- 4) Two 3.5" floppy disks with book collection files.
- 5) In person tour and inspection of the total collection if desired.

Contact: Jim Warren, P O Box 305, Western Springs, IL 60558-0305 (630)663-0688

# Illinois Chess Association Meeting 2/6/1005 Minutes Officers meeting

- 1) Banquet – are there established guidelines? No there was no banquet last year.
- 2) Illinois Open – proposal from Sevan

### General meeting

- 1) Certify election – unanimous
- 2) October 17. 2004 minutes – posted – accepted
- 3) Recognition of previous officers
- 4) Roger Birkeland resigned – Richard Easton replaced him as secretary
- 5) Bill Brock officer's report –
  - a) 2004 Illinois Open was held
  - b) 2006 US Open will be held in Chicago
  - c) Retrieval of Rosemont volunteer monies – was retrieved from the USCF
  - d) Stillborn ICA Online – need someone with diverse skills
  - e) Prospective sponsor for Denker/Polgar qualifier – Harris Bank? Rotary might be a possibility
  - f) Warren Junior Program – will try to get this back later this year.
- 6) Les Bale officer's report – Metro VP
  - a) Banquet – only possible date is May 1. May 8 is Mother's day. May 22 is the tournament in Minneapolis.. Has checked out two restaurants with Sunday brunches. Fixed cost – no ICA exposure. Has always been called an awards banquet.. Combine with a simul. May 1 is the date.
  - b) Membership – need to go through the old list. Currently can join through Pay Pal – increase exposure on web site
- 7) Chris Merli – Downstate VP – have all events listed – McHenry Co. chess
- 8) Mike Maloney – treasurer
  - a) 2004 dues money was down significantly - 2,000 loss. Have had no dues increase in five years. Proposed budget has us \$800 in the black – aggressive. Membership drive is important. Anticipate upgrades in membership. Web sponsorship. FIDE money is in and out. Illinois – finance mailing. Tour fees – increase. Added 1647 in expense for the web site. Not included are miscellaneous expenses. Are likely to exceed it. Have not printed additional cards for a while
  - b) Frustrations with the bank – need two signers for anything over \$600.
  - c) Currently have 3200 in bank account. 2400 in general fund.. 1300 has not been deposited. Printer is owed 1000. Other – net is about 100-250.
  - d) Discussion about the Denker and Polgar prizes. Difficulty in not having much unrestricted funds.
  - e) Budget was accepted.
- 9) Warren Junior program was accepted
- 10) Membership report was accepted
- 11) ICB – serious delay by printer over photos. 56 versus 64 pages.
- 12) Motion to appoint education coordinator/scholastic coordinator
- 13) Motion to set the number and name the members of the board of directors – is it constitutional. We are allowed to add people. Can we remove people? The constitution sets a minimum; certain people are listed. Must be at least three people on the board of directors. Revised to set the number and name additional members. The motion passes.
- 14) Motion to name the delegates – there is a slate but we don't name them - tabled – moot
- 15) Co-chess is recognized as a separate entity.
- 16) Illinois Open Chess bid from Sevan – question of the fee from side events – just ask that they be four events – 2 year bid.- what is defined as profit? The bookseller will probably be a wash. Should we include it? \$1 per entry paid to the ICA? Sevan gets the bid for 05-06. Tim and Wayne get the right to first refusal for 07-08.



Should we limit the mailing to those who are rated 1000 and over? Motion to accept Sevan's proposal and the executive board to negotiate the final details – it passed.

- 17) Illinois Class bid – allow the executive board to negotiate it – to be concluded by 3/31. – it passed.
- 18) Motion to authorize expenditure of \$129 per month as of January 2005. It's in the budget. Accepted
- 19) Motion to replace the scholastic committee as a youth committee with Chris Merli as chairman – accepted.  
Include a regular column in the ICB written by Brad Rosen
- 20) Discussion to form a Banquet committee – Les Bale.
- 21) Motion - set rules for posting of tournaments - passed
- 22) Chess phone – motion to discontinue – voted down unanimously. Letter to thank him should be sent.
- 23) Constitutional amendment – add a class – nine now – passed
- 24) Constitutional amendment – Article 3, Sec 2 except family – passed
- 25) Constitutional amendment – Article 5, Sec 8 – delete - passed
- 26) Constitutional amendment – Article 10, Sec 1 – certificates of membership no longer must be signed by the President- passed.
- 27) Officers and Director's insurance – tabled to June.
- 28) Need a mechanism for dealing with ethics issues. Do we need an ethics committee? The USCF has one. Perhaps we should look to them for guidance. Table it until June and have Larry investigate it.
- 29) Want to have all chess events included in the calendar. Do we want to limit it to ICA events? Have full listing for ICA events plus contact information only for non-ICA events? Want to encourage affiliation.
- 30) Chess festival next weekend at the Chess Festival 2/12 – should the ICA have a table there?
- 31) HB Global Chess Challenge
- 32) Motion to have the next meeting on June 5 at Bloomington Normal at State Farm. (provisionally there) - agreed

# Simple or not? You decide!

By Igor Khmel'nitsky

With 100s of Opening books flooding the market chess players are often get caught in the "opening frenzy" and forget about the basics. Examples below should remind you that knowing basic positions and ideas in Endgame can prove to be a crucial on any level, up to grandmaster. How devastating can this be - you are playing well for 60+ moves and 4-5 hours only to blow everything just moments before the game should reach a well-deserved outcome? The knowledge of Basic endgames is one of the 12 critical skills tested in my book on comprehensive evaluation and training - "Chess Exam and Training Guide".

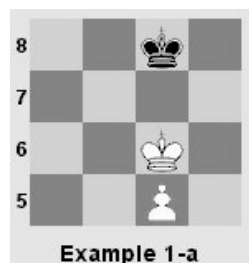
Today's examples taken from the games of grandmasters from regular (not rapid!) tournaments.

First, a little warm up from Sarajevo Super-GM-Tournament:



**What result do you expect? How should Black continue? Take 5-7 minutes before reading further.** First, note how you should answer the questions - the outcome is likely to depend on the move, thus you need to start with the 2d question before going back to the 1st one. In more complex static positions, the opposite is true; you best move will depend on your evaluation and the plan you select.

Back to the game. With Black to move, White has **Opposition** and Black Pc6 is doomed.

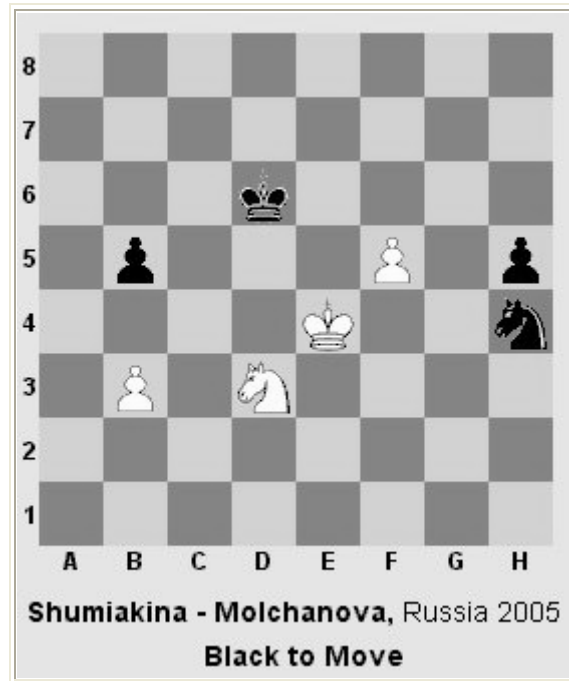


We also know that White wins the following position (Example 1-a)- no matter whose move it is.

However, the win would be much simpler win if it is Black to move - 1... Kd8(b8) 2.Kb7 (d7) and the pawn c marches through. With White to move, it is a "nail biter" - 1.Kd6 Kd8 2.c6 Kc8 3.c7 (*zugzwang*) Kb7 4.Kd7 etc... Now add the pawns a6 and a7 (as in the starting diagram) and you see that in the second line Black K doesn't have b7, thus it is stalemate.

So, Black should be aiming at either defending the pawn or at least gaining the opposition. And White can't prevent the latter. The best line **1...Kd7! 2.Kf6 Kd8!** (diagonal opposition) **3.Ke6 Ke8 4.Kd6 Kd8 5.Kxc6 Kc8 6.Kd6 Kd8 7.c6 Kc8** (I hope you know how White wins if the a-pawns shifted 1 row up - a5-a6, but this is a subject for different discussion) **8.c7 =**. Remarkably, in the game Black played 1...Ke8 and after 2.Ke6 resigned as White gets both - the pawn and the opposition.

Our second example is a Knight endgame from Russian Women's Championship:



**What result do you expect? How should Black continue? Take 5-7 minutes before reading further.**

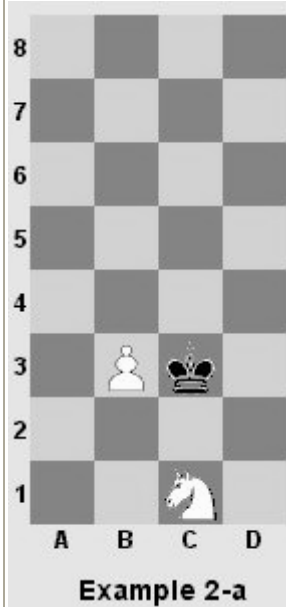
Well, Black is worse, but the result depends on her immediate strategy and, specifically, the next move. White has more active King and better-placed Knight. However, Black has an outside pass pawn and, with only 2 pawns left, needs to find a correct moment to trade his N for them. Black has two reasonable ideas leading to two moves candidates. The first one is to activate the N and combine pressure on White P's with a distraction of advancing pawn h. The second one is more blatant - to sacrifice the N, distract the K with pawn h and send Black King to fight for the pawn-b with the clumsy Knight.

If you missed either of the two options you have an issue to work on. If you missed 1...Ng2 - you probably were too pre-occupied with 1...Nxf5 idea and forgot that **no great move except for checkmate in 1 deserves to be played as soon as you see it**. There is always a chance for a better alternative. Work on your move selection process. If you missed 1...Nxf5 - you missed a common tactical idea and need to work on Endgame tactics, specifically - sacrificing to trade down.

Once you identify moves candidates, next you need to combine calculation, knowledge of standard ideas and judgment. After **1...Ng2 2. Kf3** (2.Nf4?? Nxf4 3.Kf4 h4 and Black is winning, thanks to the outside pass pawn) **Nh4+! 3.Kf4 Ng2+ 4.Kg5 h4** White can't manage to control the pawn h, defend the pawn on f5 and make progress. Black should send his K toward the pawn f (Ke7) and sit and wait. This conclusion is based on judgment based on some knowledge of these endgames. Study this position in greater detail or better yet practice against the computer.

Tactical idea **1...Nxf5** is more definitive and thus might be more attractive to defender, however the clumsy N might be not as clumsy as it looks.

## Simple or Not? You decide!



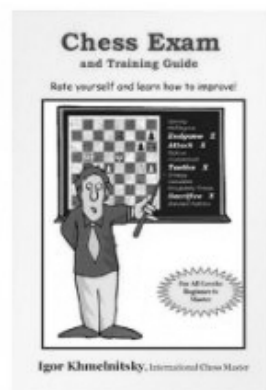
Now, standard ideas - with his K "absent" the N has difficulty defending a pawn from the opponent's K. One of the best-known defensive setup is on the left (Example 2-a). When the N is placed behind the P, it is untouchable otherwise the K won't catch the P.

Add black pawn on b4 (Example 2) and the strategy changes dramatically - now the best square for the N is a5! After Kd4-c5-b5, White plays Nc4. And Black can't make any progress. Thus White can find as much time as needed to get his K back into the actions.

The next step is to calculate to see if White can indeed reach this winning setup. Black either didn't know the setup or miscalculated as she went for tactical 1...Nxf5 and the game continued 2.Kxf5 Kd5 3.Nb4+! Kc5 4.Nc2! Kd5 5.Kg5 (finally K makes a little step!) Ke4 6.Nb4 Kd4 7.Na6 (planning 8.b4) b4 8.Kxh5 Kc3 9.Nc5 Kd4 10.Nb7! Kc3 11.Na5 - the winning setup is reached!



Conclusions - study basic endgame ideas and positions well before you study more complex endgames.



### “Chess Exam and Training Guide: Rate Yourself and Learn How to Improve” by IM Igor Khmelnsky

“... is a delightful surprise.” - Lubomir Kavalek, *Washington Post* (2/14/05)

“...I am happy to add my endorsement ... there is a huge demand for this type of thing and Khmelnsky meets it much better than most” - Jonatahn Rowson, *New in Chess* (#1, 2005)

“...Until now there was no diagnostic tool, but IM Igor Khmelnsky has filled this gap with his new book” - John Donaldson

Please visit [www.lamCoach.com](http://www.lamCoach.com) or check your favorite vendor. Quantity discounts (3+ copies).

## Book Reviews

### Chess Exam and Training

by Don Aldrich

Source [www.ChessToday.net](http://www.ChessToday.net)

Guide, Igor Khmelnsky (Iamcoach Press, 2004) 318pp, \$24.95

The last several years have seen a flood of 'test yourself' chess books. Most consist of a series of problems, you keep score, and then at the end, you get a 'rating'. Some seem accurate, some not, but when you are done, that is pretty much it. Khmelnsky takes on a broader task - he not only professes to assess your strength by rating, but also to pinpoint areas that need work, such as strategy, tactics, endgames, opening, etc. The question is, does it work? In a word, yes.

Khmelnsky is yet another trainer from the Ukraine and is 'only' an IM. So is Mark Dvoretzky. There is a school of thought that says people like them have spent more time learning how to teach than how to play. At any rate, he has a very nice website at [www.iamcoach.com](http://www.iamcoach.com) where you can read more about him.

The book is based on his long career as a trainer with 'special problems'. Like most books of this ilk, it starts with a series of puzzles for the reader to solve. There are 100 total in 10 chapters. In a very nice layout, each puzzle is on the right hand page, with the solution on the overleaf. Included with the solution is an explanation of the correct answers, and why, along with a table showing how people of various classes of strength have answered the questions - e.g., what percentage of GMs, Experts, A players etc. answered A, B, C, D. Each problem has two questions, usually an overall assessment of the position - White is winning, White is better, Black is better - and the second question is "what is the best move?" giving four possibilities. Now, multiple choice questions have definite

drawbacks, but some of that is addressed by penalties for really bad choices, and the use of multiple choice is what allows Khmelnsky to give those percentages, and what allows him to proceed to the second part of the book, the scoring. Again, like most books, one ends up with a raw score. The 100 problems are each worth 10 points, each of the two questions are worth 5 points, giving a total of 1000 points, so the score is easily expressed as a percentage, and one can calculate one's rating. So far, so unremarkable. But, here is the kicker - there are 12 categories of scoring. There is a second set of tables use to rate performance in each of these 12 categories. Each of the 100 problems is classified in one to three categories. For instance, the score achieved in an endgame problem would count towards endings, but it also may count towards calculation, sacrifice, attack, etc, depending on what the problem required for solution. There is a worksheet where the score for each problem, and then added up score in the twelve categories. You again receive a 'rating' for each category, but more importantly, you see where you are weakest, strongest, in the middle, and how you performed against others of different strengths. This strikes me as a quite useful exercise. For it to have any value, the test must have been given to enough people to form a useful database of measurement, and according to Khmelnsky, he has given it to hundreds of players over his twenty year coaching career.

In my case, it confirmed some of what I knew, and surprised me with other takes on my play. I have been playing tournament chess for over forty years. I have always been a very tactical player, considered myself good at tactics and calculation, and strong in the endgame. My current USCF is 1977, down from 2198; my FIDE 2188, down from 2222. Some of the drop is age, and the difference between USCF and FIDE is mostly due to time controls - I play better at slower controls. According to the book, I am 2150. Certainly in the ballpark. More interesting is that I scored over 2300 at attack and sacrifice, but only 1950 at calculation. This surprised me, and tells me I need

## Book Review

to work at that. I also scored lower in strategy and openings, which I expected, but really low at counter-attack (!) which I certainly didn't expect. I did well in recognizing threats - but that is somewhat tactical. Oh, yeah, I almost broke the scale in endings and 'standard positions' which is a subset of endgame knowledge .

The book concludes with about fifty pages of training tips. It mostly consists of a description of the area of knowledge, ways to work on improvement, and recommendations for further reading and work. There is nothing really deep or earth shattering here, and I heartily agree with the works he is recommending – mostly classics such as My System, Zurich 1953 and the best of modern work such as books by Dvoretsky, Fundamental Chess Endings and the like. He also recommends playing positions against the computer, and technique I have only recently tumbled to.

Finally, he of course recommends personal training, and offers to fill that void through courses on his website. In the overall context, this is not offensive in the least, and after going through the book, I am tempted to take him up on that. I would be remiss if I did not mention that at the end of each chapter of problems, there is a 'take a break' problem which is more of a humorous logical exercise rather than a real chess puzzle. It neatly serves the purpose of giving you a 'break' and then you can score the prior ten puzzles and see how you are doing.

In terms of time, I found that I was able to go through each section in 30 - 40 minutes, and spent a total of maybe six hours doing the exercises.

Conclusion: This book seems very well researched, and delivers on its promise. It will do a good job of judging your chess strength, and more importantly, pinpoint areas where you need improvement. Recommended

## PEORIA SPRING TORNADO

AN ICA MINI-TOUR & EX-URBAN  
EVENT

WHEN: Saturday, April 30, 2005

WHERE: Lakeview Museum, 1125 W. Lake  
Ave., Peoria, IL 61614

ENTRY FEE: \$14 by April 28, \$17 at the  
site, free if rated 2200 or over

WHAT: 4 round Swiss

TIME CONTROL: Game/80 (5 second time  
delay allowed)

SECTIONS: One--open to all

MEMBERSHIPS REQUIRED: USCF & ICA  
(other states honored)

PRIZES: 75% of EF's distributed as follows:  
25% First, 15% Second,  
10% each to A/B, C/D, under 1200  
5% to biggest upset

REGISTRATION: 8:00-8:45 AM

ROUND TIMES: 9, 12, 2:45, 5:30

NOTE: A limit of one "1/2 point" bye is  
available in any Rd., but Rds. 3 or 4 must be  
elected by the end of Rd. 2

NO SMOKING. BRING SETS, BOARDS &  
CLOCKS

ADVANCE ENTRIES: Fred Malcome, 1200  
E. Partridge St., Unit 56A, Metamora,  
IL 61548, (309) 367-4833 e-mail:  
[fmalcome@bwsys.net](mailto:fmalcome@bwsys.net)

All tournaments are USCF-rated, unless otherwise noted (Quick-rated if game/29 or faster) and require USCF membership.

ICA Tour events also require ICA membership. Memberships may be purchased at most tournaments. Most tournaments prohibit smoking in the playing rooms.

**March 13, 2005. Renaissance Knights Community Chess Club.** 5SS, G/29. Renaissance Chicago North Shore Hotel 933 Skokie Blvd. Northbrook, IL. 60062. Registration, 4:00 - 4:45 pm. Round 1 at 5:00 pm. EF: \$15 members, \$20 nonmembers. \$5 late fee after 4:45 pm. 80% of EF returned as prizes. USCF membership required. Info: WWW.RKNIGHTS.ORG or E-mail RKNIGHTSCCC@AOL.COM

**March 19, 2005 Tuley Park Quick #4 (Bigger).** 6-SS, rds 1-2 game/8, d/3 (game/10 if d/0), rds 3-6 game/20, d/3 (game/22 if d/0). 501 E 90th Pl, Chicago 60619. EF \$18, u19 \$9, \$1 off before 11:30. \$\$G 450: \$125-80-50, 1899-1650 \$45, 1649-1400 \$40, 1399-1150 \$35, 1149-900 \$30, 899-100 \$25, unr \$20. Reg 11-11:50, rd 1 at 12. Tom Fineberg, 7321 S South Shore Dr #6-D, Chicago 60649. 773-721-3979, Tuley Park Club website <http://www.home.earthlink.net/~maxine57>

**March 19-20, 2005. Illinois Amateur Championships.** 5SS, 40/90, SD/30. The Purple Hotel, 4500 W Touhy Ave, Lincolnwood, IL 60712. Free parking. \$\$4,000/b125 paid entries (special EF count as 1/2 entry) in 6 sections. Class A (1800-1999): \$400-300-200-100. Class B (1600-1799): \$400-300-200-100. Class C (1400-1599): \$300-200-100-50. Class D (1200-1399): \$300-200-100-50. Class E/F (1199 and below): \$200-100-50-50. Unrated: \$150-100-50. A/B/C players may play up one class for \$5 extra. D/E/F may play 2 classes up for \$5 extra. Unrated only in Unrated section. Provisional players are NOT unrated. Feb Rating Supp Used. EF: Adults \$60 post marked by 3/1; Juniors 18-20 \$55 post marked by 3/1; All \$70 at site; Special EF: Scholastic players (under 18) receive free ICA mbrshp or if member \$14 off Junior Early EF. Re-Entry: \$50 after Rd 1 only - you take 1/2 pt Rd 1 bye. No Re-entries after Rd 2 starts. USCF membership required. ICA memb. (\$18, jrs \$14) required for IL residents. IL MAXI-TOUR event. Schedule: Reg. Sat. 8-9am STRICT. ANY reg. after 9am must take 1/2 point bye in 1st rd. Rds. Sat 9:30, 2, 6:30 Sun 12-4:30. Bye: 1/2 pt avail all rds - max 2 byes, rds 3-5 must commit before rd 2. Ent: (Check Payable to) Sevan Muradian 5119 N.

Kenneth Ave. Chicago, IL 60630. Questions: 847-919-0431. No Phone entries. Email: [sevanmuradian@hotmail.com](mailto:sevanmuradian@hotmail.com) Advance entries posted at the ICA discussion forums on 3/12. BRING PIECES, BOARDS, & CLOCKS - NONE PROVIDED. NO SMOKING. Hotel Rates: \$75 single/double, 847.677.1234. Mention chess tournament. Reserve by 3/1/05

**March 19-20, 2005. ICA Denker Qualifier.** Open to the top 16 high school students in Illinois by invitation or qualification only. To choose the Illinois representative to the 2005 Denker Tournament of High School Champions during the 2005 U.S. Open (August 7-12, Arizona Biltmore Resort and Spa, Phoenix, AZ). Top 10 from December 2004 rating list; 3 to be determined by ICCA HS Individual Championship 2/26/05; 3 wild card TBD by ICA President. Up to three junior high players not eligible to represent ICA in the Denker may be invited hors concours; pairings would be modified accordingly. The Purple Hotel, 4500 W. Touhy Ave., Lincolnwood, IL 60712. 40/90, SD/30 (5-second increment from move one). Rounds: Sat. 9:30, 2, 6:30; Sun. 12, 4:30. Prizes: First, \$500 expense reimbursement for representing Illinois at the 2005 Denker, trophy; other prizes TBA. By accepting his or her invitation, each participant agrees to be the Illinois representative in Phoenix if he or she wins the event. Entry fee: No entry fee is required; however, a \$50 forfeiture deposit is required; this money will be returned to participants upon completion of their full tournament schedule. (A postdated check is sufficient.) All invitees must be members of the Illinois Chess Association and the United States Chess Federation by March 4, 2005. Potential invitees who have not joined because of financial need should contact the organizers immediately; limited assistance is available. The Illinois Chess Association believes in promoting excellence within a framework of sportsmanship, mutual respect, and good citizenship, and expects its representatives to adhere to these values. Organizers: Illinois Chess Association and Larry Cohen. Info: [billbrock@billbrock.net](mailto:billbrock@billbrock.net), 205 W. Randolph, Suite 400, Chicago, IL 60606. (312) 252-1300.

**March 19-20, 2005. ICA Polgar Qualifier** Tournament to choose the Illinois representative to the 2005 Susan Polgar National Invitation for Girls during the 2005 U.S. Open (August 7-12, Arizona Biltmore Resort and Spa, Phoenix, AZ). The Purple Hotel, 4500 W. Touhy Ave., Lincolnwood, IL 60712. 40/90, SD/30 (with 5-second increment from move one). Field limited to twenty-four participants. Open to first twenty girls under age 19 and currently enrolled in an Illinois school (or home-schooled) who register by March 12, 2004; plus four wild cards. Prizes: First, \$500 reimbursement for representing Illinois at the 2005 Polgar, trophy. By accepting her invitation, each participant agrees to be



## ICA Calender

the Illinois representative in Phoenix if she wins the event. Rounds: Sat. 9:30, 2, 6:30; Sun. 12, 4:30. Entry fee: No entry fee is required; however, a \$50 forfeiture deposit is required; this money will be returned to participants upon completion of their full tournament schedule. (A postdated check is sufficient.) All invitees must be members of the Illinois Chess Association and the United States Chess Federation by March 4, 2005. Potential invitees who have not joined because of financial need should contact the organizers immediately; limited assistance is available. The Illinois Chess Association believes in promoting excellence within a framework of sportsmanship, mutual respect, and good citizenship, and expects its representatives to adhere to these values. Organizers: Illinois Chess Association and TBA. Info: billbrock@billbrock.net, 205 W. Randolph, Suite 400, Chicago, IL 60606. (312) 252-1300.

**March 20, 2005. Renaissance Knights Community Chess Club.** G/15 RR Max 8 players per section. Renaissance Chicago North Shore Hotel 933 Skokie Blvd. Northbrook, IL. 60062. Registration, 4:00 - 4:45 pm. Round 1 at 5:00 pm. EF: \$15 members, \$20 nonmembers. \$5 late fee after 4:45 pm. 80% of EF returned as prizes. USCF membership required. Info: WWW.RKNIGHTS.ORG or E-mail RKNIGHTSCCC@AOL.COM

**March 24, 2005 JJC Quick Chess Open.** 4SS, G/15, Joliet Jr. College, Bldg. J. 1215 Houlbolt Rd. (exit 127 off I-80), Joliet, IL. Prizes based on 30 entries & 4 per group. \$60-45, U2000 \$30, U1700 \$30, U1400 \$30, UNR. \$30. EF: \$10 by 3/21, \$15 at site. One half pt. bye available any rd. Must inform TD 15 minutes before rd. Reg: 6:30-6:45 pm. Rd: 7, 7:45, 8:30, 9:15. Ent/Info: Checks payable to: Stephen Decman, 1418 Devonshire Dr. Joliet, IL 60435. (815)744-5272.

**March 26, 2005 TTCCOM March Quick Open** 5SS, Game/15. Reg: 2:30-3:00, Rd. 1 at 3:15. Sheraton Chicago Northwest, 3400 W. Euclid, Arlington Heights, IL. EF: \$20. Prizes: based/26, 1st \$100, 2nd \$50, U2000 \$60, U1800 \$55, U1600 \$50, U1400 \$45, U1200 \$40. Enter at site. See front desk clerk or doorman for directions to tournament. Info: 815-467-2775 or contact Bradley Watts BradleySWatts@aol.com

**March 27 & April 3, 2005. Renaissance Knights Community Chess Club - Surely you Joust Tournament.** 4SS, G/90. Renaissance Chicago North Shore Hotel 933 Skokie Blvd. Northbrook, IL. 60062. Registration Mar. 27, 3:00 - 4:45 pm. Round 1 at 5:00 pm. Round 3 at 4:00 pm on Apr. 03. EF = \$30 members, \$35 nonmembers. \$5 late fee after 4:45 pm.

80% of EF returned as prizes. USCF membership required. Info: WWW.RKNIGHTS.ORG or E-mail RKNIGHTSCCC@AOL.COM

**April 10, 2005. Renaissance Knights Community Chess Club.** 5SS, G/25. Renaissance Chicago North Shore Hotel 933 Skokie Blvd. Northbrook, IL. 60062. Registration, 4:00 - 4:45 pm. Round 1 at 5:00 pm. EF: \$15 members, \$20 nonmembers. \$5 late fee after 4:45 pm. 80% of EF returned as prizes. USCF membership required. Info: WWW.RKNIGHTS.ORG or E-mail RKNIGHTSCCC@AOL.COM

**April 16, 2005. Tuley Park Quick #5 (Medium).** 6-SS, rds 1-2 game/8, d/3 (game/10 if d/0), rds 3-6 game/20, d/3 (game/22 if d/0). 501 E 90th Pl, Chicago 60619. EF \$14, u19 \$7, \$1 off before 11:30. \$\$G 330: \$80-50-35, 1899-1650 \$40, 1649-1400 \$35, 1399-1150 \$30, 1149-900 \$25, 899-100 \$20, Unrated \$15. Reg 11-11:50, rd 1 at 12. Tom Fineberg, 7321 S South Shore Dr #6-D, Chicago 60649. 773-721-3979, Tuley Park Club website <http://www.home.earthlink.net/~maxine57>

**April 16, 2005. Tax Relief Open. An ICA Mini-Tour and Ex-Urban Tour Event.** 4SS, G/80. Signature Inn, corner of Dirksen Pkwy & Stevenson Dr. (immediately W of I-55 Stevenson exit). Springfield, IL 62703. \$\$ (b/40) \$300: \$100-55; 1999-1600 \$50; 1599-1200 \$40; U1200 \$30; Unr \$25. ICA mbrship req'd, OSA.EF: \$17 if rec'd by 04/10, \$20 at site. Reg: 7:30-8:30am. Rds: 9-12-3-6. TD reserves right to accelerate pairings if conditions warrant. Ent: Thomas B. Knoedler, 2104 S. 4th, Springfield, IL 62703. Info: 217-206-6056, M-F 9-5; 217-523-7265 after 6:30, exc. Wed email [knoedler.thomas@uis.edu](mailto:knoedler.thomas@uis.edu). NS,NC,W.

**April 17, 2005. Renaissance Knights Community Chess Club.** 3:30 - 5:00 pm Group lesson by a local master TBA, Free to club members, \$10 nonmembers. 5:30pm 5SS, G/15. Renaissance Chicago North Shore Hotel 933 Skokie Blvd. Northbrook, IL. 60062. Registration, 5:00 - 5:15 pm. Round 1 at 5:30 pm. EF: \$15 members, \$20 nonmembers. \$5 late fee after 5:15 pm. 80% of EF returned as prizes. USCF membership required. Info: WWW.RKNIGHTS.ORG or E-mail RKNIGHTSCCC@AOL.COM

**April 22-24 or April 23-24, 2005. 1st Annual Illinois Classic. ICA Maxi-Tour Event** 6SS, 3-day 30/90, SD/30; 2-day Rd 1-3 G/75 then merge with 3-day in Rd 4; The Purple Hotel, 4500 W Touhy Ave, Lincolnwood, IL 60712. Free parking. \$\$20,000/b300 paid entries (special EF count as partially paid entry) in 8 sections. Open (above 2200) \$2000-1600-1200-800-400. Expert (2000-2199): \$1600-1200-800-400-200. Class A (1800-1999): \$1200-800-400-200-100. Class B (1600-1799): \$1200-800-400-200-100. Class C (1400-1599):



\$600-400-200-100-40. Class D (1200-1399): \$600-400-200-100-40. Class E/F (1199 and below): \$400-200-100-40-20. Unrated: \$200-100-40-20-20. A/B/C players may play up one class for \$5 extra. D/E/F may play 2 classes up for \$5 extra. All (except Unrated) may play up in Open Section for \$5 extra. Unrated only in Unrated section. Provisional players are NOT unrated. April Rating Supp Used. EF: Adults \$125 post marked by 4/1; Juniors 18-20 \$100 post marked by 4/1; All \$150 at site; Special EF: Scholastic players (under 18) receive free ICA mbrshp or if member \$14 off Junior Early EF. Free Entry to FIDE TITLED PLAYERS - \$150 deducted from any prizes won. Re-Entry: \$75 for Adults, \$50 for Juniors/Scholastic. Re-enter in new schedule and play Rd 1 or re-enter current schedule with ½ bye in Rd 1. USCF memb required. ICA memb. (\$18, jrs \$14) required for IL residents. IL MAXI-TOUR event. Schedule: Reg. Fri 5:30-6:30 and Sat. 8-9am STRICT. ANY reg. after 6:30pm or 9am must take 1/2 point bye in 1st rd. 3 day schedule - Fri: 7pm; Sat: 9:30, 2, 6:30; Sun: 12, 4:30. 2 day schedule - Sat: 9:30, 12:30, 3:30 then merge with 3 day in Rd 4 Bye: 1/2 pt avail all rds - max 2 byes, rds 3-5 must commit before rd 2. Ent: (Check Payable to) Sevan Muradian 5119 N. Kenneth Ave. Chicago, IL 60630. Questions: 847-919-0431. No Phone entries. Email: sevanmuradian@hotmail.com. Advance entries posted at the ICA discussion forums on 4/12. BRING PIECES, BOARDS, & CLOCKS - NONE PROVIDED. NO SMOKING. Hotel Rates: \$75 single/double, 847.677.1234. Mention chess tournament. Reserve by 4/1/05

**April 30, 2005. 5th Annual April Open.** 4SS, G/70. Joliet Jr. College, Bldg J. 1215 Houbolt Rd. (exit 127 off I-80), Joliet, IL \$490 b/35, \$120-70, A,B,C,D,E/F,Unr. each \$50. Top Jr: book, EF: \$16 by 4/25, \$20 at site, two 1/2 pt. byes max. Reg: 9:30-10. Rds: 10:30-1:30-4-7, Ent/Info: Checks payable to: Stephen Decman, 1418 Devonshire Dr. Joliet, IL 60435. 815-744-5272. More info: www.jjc.edu/clubs/chess

**April 30, 2005. Des Plaines Open. ICA Mini-Tour Event** 4-SS, G/60. DoubleTree Hotel 1450 E. Touhy Avenue Des Plaines, IL 60018. At the corner of Mannheim (IL Rt 45) & Touhy Ave [1 mile W. of I-294 on Touhy. 2 miles N. of I-190 on Mannheim]. FREE hotel shuttle from O'hare "EI" train line or airport. (847) 677-1234. \$800G in 2 sections. **Open** 175-125, U2100 100, upset 40. **Reserve** (Open to U1800 & Unr) 130-100, U1500 90, upset 40 [Unr=1200]. All: EF \$32 if by 4/23, \$40 at site. . ICA memb. [18, jr. 14] required for IL residents. OSA. Reg: 8:40-9:10am. Rounds: 9:30-12-2:15-4:30. Ent: Lawrence Cohen P.O. Box 6632 Villa Park, IL 60181. (630) 834-2477. Iscohen60@yahoo.com NS, NC.

**April 30, 2005. April Last Fast.** 5-SS, G/10. DoubleTree 1450 E. Touhy Ave. Des Plaines, IL 60018. EF:\$11, Jr (U18) \$9 if by 4/22, \$1 off if w/entry to Des Plaines Open (same date), All \$15 at site. Prizes (\$150, b/20): 40-24, 1800-1999 23, 1600-1799 22, 1400-1599 21, U1400/U \$20. Reg: 7:30-8pm. Rounds: 8:15-8:45-9:15-9:45-10:15. Ent: Lawrence Cohen P.O. Box 6632 Villa Park, IL 60181. (630) 834-2477 Iscohen60@yahoo.com.

**April 30, 2005. Peoria Spring Tornado ICA Mini-Tour and Ex-Urban Event** Lakeview Museum, 1125 W. Lake Ave., Peoria, IL 61614 Entry fee \$14 by April 28, \$17 at the site, free if rated 2200 or over 4 Rd SS Game/80 (5 second time delay allowed) USCF and ICA required (other states honored) Prizes: 75% of EF's 25% First, 15% Second, 10% each to A/B, C/D, under 1200 5% to biggest upset. Registration 8:00-8:45 am Rounds: 9, 12, 2:45, 5:30 A limit of one "1/2 point" bye is available in any Rd., but Rds. 3 or 4 must be elected by the end of Rd. 2 Advanced entries: Fred Malcome, 1200 E. Partridge St., Unit 56A, Metamora, IL 61548, (309) 367-4833 fimalcome@bwsys.net

**May 1, 2005. ICA Awards Banquet**

**May 7, 2005. Tuley Park Quick #6 (Medium).** 6-SS, rds 1-2 game/8, d/3 (game/10 if d/0), rds 3-6 game/20, d/3 (game/22 if d/0). 501 E 90th Pl, Chicago 60619. EF \$14, u19 \$7, \$1 off before 11:30. \$\$G 330: \$80-50-35, 1899-1650 \$40, 1649-1400 \$35, 1399-1150 \$30, 1149-900 \$25, 899-100 \$20, Unrated \$15. Reg 11-11:50, rd 1 at 12. Tom Fineberg, 7321 S South Shore Dr #6-D, Chicago 60649. 773-721-3979, Tuley Park Club website <http://www.home.earthlink.net/~maxine57>

**May 13-15, 2005. 2nd Annual All Girls Chess Championships.** Side event entries limited to girls May 13 5:30PM Blitz Tournament Entry fee: \$10 if p/m by May 1, \$20 on site May 13 7:30PM Bughouse Tournament Entry fee: \$20 per team, on site only. Main event May 14 6 rds SS g/60 Entries limited to females 18 years or younger. Saturday, May 14: Rounds 1 - 4; 9:30-11:30 AM; 12:00-2:00 PM; 3:00-5:00 PM; 5:30-7:30 PM Sunday, May 15: Rounds 5 - 6; 9:00-11:00 AM; 11:30 AM-1:30 PM Sunday, May 15: Closing Ceremony: 2:30 PM EF \$40 through May 1 and \$60 after or on site. Make Check payable to Chess Wizards, 2402 W. Mclean Avenue, Suite 2F, Chicago, IL 60647 Tel. 773-326-2311, Fax 847-557-9178. For more information or to register online <http://www.chesswizards.com>.

**May 14, 2005. Rockford Second Saturday Open and ICA Membership Drive. An ICA Mini-Tour and Ex-Urban Tour Event.** 4SS, G/80, Sweden House Lodge, 4605 E State Street, Rockford 61108. Free parking in

## ICA Calender

Parking Lot. Trophies to 1st and 2nd Place Overall. Medals to top: Class A (1800-1999), Class B (1600-1799), Class C (1400-1599), Class D (1200-1399), Class E/F (1199 and below), and Unrated. EF: \$25 post marked by 5/7; Juniors under 18 \$20 post marked by 5/7; Add \$5 at site. NO CHECKS AT SITE. USCF memb required. **All Illinois residents participating will have their ICA membership extended one year.** Out of state players require home state membership or must join ICA. Schedule: Reg. Sat. 8:30-9:30am STRICT. ANY reg. after 9:30am must take 1/2 point bye in 1st rd. Rds. Sat 10:00,1,3:30,6:30 Bye: 1/2 pt avail in rds 1-3 - max 1 bye. Ent: (Check Payable to) Rockford Chess Association 3708 Florida Drive, Rockford, IL 61108. [www.ROCKFORDCHESS.org](http://www.ROCKFORDCHESS.org). Questions: 815-399-4303. Email: ChessXpert\_2000@Yahoo.Com . Advance entries posted at the ICA Discussion Forums . BRING CLOCKS - NONE PROVIDED. NO SMOKING. Bus Service from O'Hare to Tournament Site. TD Gary Sargent.

**May 14, 2005. Bloomington May Open An ICA Mini-Tour and Ex-Urban Tour Event.** Bloomington, IL sponsored with the State Farm Employees Activities Association. 4SS, G/70. State Farm Headquarters, 1 State Farm Plaza, Bloomington, IL 61701. Located on the east side of Bloomington, northwest from the intersection of Oakland Ave. and Veteran's Parkway. Enter the building from the south. Check through Security and go to the food court area. EF \$14 if rec'd by 5/11, \$18 at site. Free entry to 2020+, must register in advance. \$480 b/30: 1st \$150, 2nd \$90, U2000 \$90, U1600 \$80, U1200 \$70. Bye 1-4. ICA membership req'd. Adults \$18, Jrs. \$14, OSA. Reg: 8:30-9:30, Rds: 10-12:45-3:30-6:00. Ent: Dennis Bourgerie, Box 157, Normal, IL 61761. 309-454-3842. Cell: 309-531-1723. [Schoolstreeter@msn.com](mailto:Schoolstreeter@msn.com)

**May 27-30, 28-30 or 29-20, 2005. 14th Annual Chicago Open.** 7SS, 40/2, SD/1 (3-day option, rds 1-2 G/75; 2-day option, rds. 1-4 G/45), Hyatt Regency Oak Brook, 1909 Spring Rd (near I-88 Cermak Rd exit), Oak Brook 60521. Free parking. \$\$G 100,000. Free analysis of your games by IM John Donaldson. Unr must enter Open or Unr Sections. 8 sections: Open: \$10000-5000-2500-1200-800-600-500-400-300-300, clear winner bonus \$300, 2300-2449/Unr \$2000-1000, Under 2300 \$2000-1000. If tie for first, top 2 on tiebreak play speed game (white 7 minutes, black 5 minutes & gets draw odds) for title & bonus prize. Qualifier for US Championship; details later. Under 2200, Under 2000, Under 1800: each \$6000-3000-1500-800-500-400-400-300-300-300. Under 1600: \$5000-2500-1200-800-500-400-400-300-300-300. Under 1400: \$4000-2000-1000-700-500-400-400-300-300. Under 1200: \$2000-1000-700-500-400-400-300-300-300, top Under 1000 \$800-400. Under

1000s play for both U1000 & U1200 prizes; receive larger if winning both. If 1400/over after 12/00, prize limit \$500 in U1200 Section. Unrated: \$1000-600-400-300-200; players without US Social Security ID may not win over \$400. Prize limits: Players who have won \$2000 or over in U2200 or below in any 2005 tournament may not win over \$1000 in same class. Limits for players with under 10 games played as of 4/05 list: U1200 \$1000, U1400 through U2200 \$2000. Games rated too late for 4/05 list not counted. Balance of prize goes to next player(s) in line. Trophy to top college team & top scholastic team, all sections count equally, top 4 scores same school added to give team score. Mailed EF: 4-day \$189, 3-day \$188, 2-day \$187 mailed by 3/15; 4-day \$219, 3-day \$218, 2-day \$217 mailed by 5/18; all \$250 at site. No checks at site, credit cards OK. Online EF at [chesstour.com](http://chesstour.com): \$185 by 3/15, \$215 by 5/24, \$250 after 5/24 until 2 hours before rd 1. Phoned EF at 406-896-2038: \$195 by 3/15, \$225 by 5/24 (entry only, no questions). No phone entry after 5/24. ICA memb. (\$18, under 18 \$14) req. for Illinois residents. No free entries: GMs \$150, WGMs after 3/15 \$200. Special EF: \$30 less to rated juniors under 18 or rated seniors over 65. Re-entry \$100; not available in Open Section. Unrated Section EF: 4-day \$49, 3-day \$48, 2-day \$47 mailed by 5/19; all \$45 online at <http://www.chesstour.com/> by 5/24, \$50 phoned to 406-896-2038 by 5/24 (entry only, no questions), \$60 at site. Advance EF \$10 less if paid with \$49 USCF dues. Advance EF minus \$5 service charge refunded for withdrawals who give notice at least 1 hour before first rd (no service charge if fee applied to future CCA tmts). \$20 fee for switching section or schedule after 5/24. 4-day schedule: Reg. ends Fri 6:30 pm, Rds. Fri 7:30 pm, Sat 12 & 7, Sun 12 & 7, Mon 10 & 4:30. 3-day schedule: Reg. ends Sat 11 am, Rds. Sat 12, 3, & 7, Sun 12 & 7, Mon 10 & 4:30. 2-day schedule: Reg. ends Sun 9 am, Rds. Sun 10-12-2-4-7, Mon 10 & 4:30. All schedules merge & compete for same prizes. Byes: all, limit 2; rds 5-7 byes must commit before rd 4. HR: \$85-85-85-85, 800-233-1234, 630-573-1234. Reserve by 5/8 or rate may increase. Car rentals: Avis, 800-331-1600, AWD #D657633, or reserve car online through <http://www.chesstour.com/>. Foreign player ratings: 100 points added to FIDE, 100 to FQE, 200/more to most other foreign, no pts added to CFC. Highest of multiple ratings used. US player ratings: April list used. If otherwise unrated, June list used. Ent: Continental Chess, Box 249, Salisbury Mills, NY 12577. Questions: 845-496-9658, <http://www.chesstour.com/> Invitation requests: [go@chess.us](mailto:go@chess.us). You may request "lowest possible section" if April rating unknown. Advance entries will be posted at <http://www.chesstour.com/> 5/26.

## Club Affiliates

**Organizations wishing to be listed here** should mail an affiliation fee of \$25.00 for one year (check payable to Illinois Chess Association) to the ICA membership secretary, Jeff Smith: 202 South Adelaide St, Normal, IL 61761 [ICAMembership@msn.com](mailto:ICAMembership@msn.com)

Include a short paragraph, similar to those below, listing your club's activities.

---

**Alternativa Group**, Peter Pelts, 7135 Greenleaf Av, Niles 60714. 847-965-6469.

**American Postal Chess Tournaments** sponsors postal events. Jim or Helen Warren, PO Box 305, Western Springs 60558. 630-663-0688, [apct@aol.com](mailto:apct@aol.com). Organizers of the U.S. Masters.

The **Center Chess Club** meets 3rd Saturday of each month, 7-10 pm, Crystal Lake Park District, One East Crystal Lake Av (intersection of Walkup), Crystal Lake 60014. Also rated tournaments on most of these same dates, 4 rounds, game/60, register by 8:45 am, round 1 at 9 am. Jeff Buchman, 815-455-5288, [buchadolph@aol.com](mailto:buchadolph@aol.com).

**Chess Central** sponsors rated tournaments in the Grayslake / Zion area. Tim Just, 37165 Willow, Gurnee 60031. 847-244-7954, [timjust@Lnd.com](mailto:timjust@Lnd.com).

**Chess-Now Ltd.** Is a training and development company that provides customized chess experiences for business, education and recreational clients. 551 Roosevelt Road #129 Glen Ellyn, IL 60137. 630-209-5072. Information about our activities can be found at [www.Chess-Now.com](http://www.Chess-Now.com)

**Chess in Chicago** is dedicated to developing and promoting chess in Chicago, and scholastic players are the priority. Lamarr Wilson, [email@chessinchiago.org](mailto:email@chessinchiago.org), [www.chessinchiago.org](http://www.chessinchiago.org).

**Chess Scholars** offers professional individual, group, and school chess instruction at reasonable rates. We will travel to any location in the Chicago area. Ilya Korzhenevich, Director, 4310 1/2 N. Keystone Av. #1D, Chicago 60641, 773-286-2941, [ilya@ChessScholars.com](mailto:ilya@ChessScholars.com), [www.ChessScholars.com](http://www.ChessScholars.com).

**Chess Utopia** sponsors rated tournaments in the Lake County area, Fridays 6 pm. Frank Swindell, 847-816-

0869, [Swinchess@aol.com](mailto:Swinchess@aol.com), [www.ChessUtopia.org](http://www.ChessUtopia.org).

**Chessterton Chess Club** meets at Westchester Public Library, 200 W Indiana, Chesterton IN. Joe Alford, [Joe.Alford@Kemper.com](mailto:Joe.Alford@Kemper.com).

**Chicago Industrial Chess League** organizes frequent competition among commercial or government teams with awards, ratings, and special events. Pat Sajbel, 847-391-2134.

**Chicagoland Community Chess Club** (formerly Concordia) meets Tuesdays 6-11 pm, Border's (Cafe Espresso), 7100 Forest Preserve Dr, Norridge. Howard Fried, 773-889-8553, [hfried1@sbcglobal.net](mailto:hfried1@sbcglobal.net), or Robert Loncarevic, 773-282-5148, [TLSchgo@speedsite.com](mailto:TLSchgo@speedsite.com).

FIDE Master **Albert Chow** gives private lessons by appointment. 3513 N Seminary, Chicago 60657. 773-248-4846, [ChowMasterAl@yahoo.com](mailto:ChowMasterAl@yahoo.com).

**Continental Chess Association** runs major tournaments nationwide, including the annual World Open in Philadelphia and the Chicago Open in late May each year. PO Box 249, Salisbury Mills NY 12577. Bill Goichberg. [www.chesstour.com](http://www.chesstour.com).

**Crossroads Chess Club** meets Tuesdays 6 pm, K Square Mall Food court, I-57 / I-70 exit 160, Effingham. Cameron Feltner, 217-844-2645.

**Elmhurst Chess Club** meets, and holds frequent USCF events, Sundays 6:30 to 11 pm, Room 18, Hammerschmidt Chapel, Elmhurst College, 190 Prospect, Elmhurst. Roger Birkeland, 630-832-1754, [rogerdb9@earthlink.net](mailto:rogerdb9@earthlink.net), [ElmhurstChess@aol.com](mailto:ElmhurstChess@aol.com).

**Evanston Township High School Chess Club**, 1600 Dodge Av, Evanston 60204. Ken Lewandowski, 847-492-7932.

**Greater Peoria Chess Federation** meets Mondays 7 pm, Lakeview Museum, 1125 W Lake Av, Peoria 61614. Wayne Zimmerle, 514 W Loucks Av #2, Peoria 61604. 309-692-4480 (day), 309-686-0192 (evenings), [wzim@sbcglobal.net](mailto:wzim@sbcglobal.net)

**Hammond Chess Club**, Charles Higgins, 116 Crestview St, Crown Point IN 46307. 219-663-8938.

**Highland Park High School Chess Team**, 433 Vine Av, Highland Park 60035. Tesc Schultz, [tschultz@d113.lake.k12.il.us](mailto:tschultz@d113.lake.k12.il.us).

## ICA Affiliates

**House of Chess** meets Saturdays 4:30 pm, 1st Baptist Church, 146 S Main St, Glen Carbon 62034. Paul Holland, 618-288-4117, <http://members.aol.com/houseofchess>.

**Illini Chess Club** meets Thursdays 7-10 pm, College of Education Building, Room 37, 6th & Pennsylvania), Urbana. [www.uiuc.edu/ro/uichess](http://www.uiuc.edu/ro/uichess). Jeff Davis.

**Illinois Chess Coaches Association** is open to scholastic chess coaches in Illinois. Mike Zacate, 708-479-9380, [mezacate@aol.com](mailto:mezacate@aol.com).

**Illinois Valley Chess Association** meets Thursdays 7-10 pm, Illinois Valley YMCA, Adult Lounge, 300 Walnut St, Peru 61354. Bill Schulte, 520 First St, LaSalle 61301. 815-223-1505, [bschulte@rivalins.com](mailto:bschulte@rivalins.com).

**Illowa Chess Club** meets Tuesdays 6:30-10 pm, St Ambrose University, Davenport IA. Matt Nemmers, [qcchess@mchsi.com](mailto:qcchess@mchsi.com), [www.quadcitychess.com](http://www.quadcitychess.com).

**Joliet Junior College Chess Club** meets Thursdays 6:30 pm, Joliet Junior College, Building J, cafeteria, 1215 Houbolt Rd (I-80 exit 127), Joliet. Maps [www.jjc.edu/maps/maincampus.html](http://www.jjc.edu/maps/maincampus.html). Tim Owens, c/o JJC-IET, 214 N Ottawa St, Joliet 60432. 815-280-1513, [towens@jjc.edu](mailto:towens@jjc.edu). Or Steve Decman, 1418 Devonshire Dr, Joliet 60435. 815-744-5272, [www.jjc.edu/clubs/chess](http://www.jjc.edu/clubs/chess).

**Renaissance Knights Community Chess Club** meets Sundays 3:30 to 11 pm at the Renaissance Chicago North Shore Hotel, 933 Skokie Blvd, Northbrook. Weekly rated tournaments. The club mission is to promote, stimulate and encourage the study and play of the game of chess as a means of intellectual and social development. Visit our web site [www.RenaissanceKnights.org](http://www.RenaissanceKnights.org). Sheila Heiser 847-526-9025.

**Lakeview Cuyler Chess Club** meets Wednesdays 7-10 pm, Cuyler Covenant Church, Fellowship Hall, 3901 N Marshfield Av (corner of Byron St), Chicago 60613. Drew Morissee, 1614 W Byron St, Chicago 60613. 312-494-1300 x12, [WindyCityKnight@yahoo.com](mailto:WindyCityKnight@yahoo.com), <http://LakeviewCuylerChess.tripod.com>.

**Mahomet-Seymour High School Chess Club**, Dan Pirtle, 302 W State, Mahomet 61853. 217-586-4962, [dpirt@ms.k12.il.us](mailto:dpirt@ms.k12.il.us).

**Metcalf School Chess Club**, Meeting in Metcalf School Library, Illinois State University, Tuesday's 3:00 - 4:30 pm

**Mid-America Chess Association** sponsors the popular website at [www.64.com](http://www.64.com), and brings national tournaments to the Chicago area. [midam@64.com](mailto:midam@64.com)

**Midway Chess Enterprises**, PO Box 388765, Chicago 60638, [whizline@home.com](mailto:whizline@home.com).

**Murphysboro Chess Club**, Murphysboro 62966.

<http://mysite.verizon.net/res0bz47/>.

**New Lenox Chess Club**, c/o Vince Berry & Cindy Misiak, 815-463-9975, leave message. [VWBerry@aol.com](mailto:VWBerry@aol.com).

**Park Forest Chess Club** meets Thursdays 7-10 pm, Freedom Hall (next to the library), Lakewood Blvd just west of Orchard, Park Forest. Larry Cohen, 630-834-2477. [www.tuxdomain.com/pfcc\\_club.html](http://www.tuxdomain.com/pfcc_club.html).

**Rudy Lozano Library Chess Club**, 1805 S Loomis, Chicago 60608. Hector Hernandez, 312-746-4329, [hernande@chipublib.org](mailto:hernande@chipublib.org).

**Smythe Dakota Competitions** encourages and offers financial support for Plus-Score Mini-Tours at sites in Chicago and adjoining suburbs. Bill Smythe, [chichess@rcn.com](mailto:chichess@rcn.com).

**St Charles Chess Club** meets Thursdays 7-11 pm, Baker Community House, 101 S 2nd (Rt 31), St Charles. Jeff Wiewel, 1931 Dunhill Ct, Arlington Heights 60004. 847-818-8913, [jwiewel@ntnusa.com](mailto:jwiewel@ntnusa.com).

**The South Suburban Chess Club of Greater Chicago** meets Fridays 7-11 pm, Oak View Recreation Center, 110th & Kilpatrick, Oak Lawn. Joe Bannon, 773-445-0631.

**Springfield Chess Club** meets Wednesdays 6-10 pm, American Legion Post 32, 5th & Capitol, Springfield. Thomas Knoedler, 2104 S Fourth St, Springfield 62703. 217-523-7265.

**SquareHopper, Joshua Flores, Chess Professional.** Available for any chess-related activity at reasonable rates. Specialties are tournament directing/organizing, coaching and teaching. Willing to travel. 630-430-CHES(s)

**State Farm Employee Activities Chess Club** 1 State Farm Plaza Corp. HQ C-4 Bloomington, IL, 60701 Colley Kitson 309-766-9493.

**Tuley Park Chess Club** holds frequent Saturday tournaments at Tuley Park Field House, 501 E 90th Pl, Chicago. Tom Fineberg, 7321 S South Shore Dr, Chicago 60649. 773-721-3979, [www.home.earthlink.net/~maxine57](http://www.home.earthlink.net/~maxine57).

**Twin City Chess Club** meets Tuesdays 7-10 pm, Lincoln Leisure Center, 1206 S Lee St, Bloomington 61701. Dennis Bourgerie, PO Box 157, Normal 61761. 309-454-3842 [Dennis9942@wmconnect.com](mailto:Dennis9942@wmconnect.com)

**West Middle School Chess Club**, 1900 N Rocktoon Av, Rockford 61103. Ralph Sullons, 815-966-3220.

**Wicker Park Chess Club** meets Wednesdays 7 pm to 1 am, Myopic Books, 1468 N Milwaukee Av, Chicago. Pat Jones, 773-772-1369, [pjones@artic.edu](mailto:pjones@artic.edu).

## ICA Supporters

## Life Patron Members:

Warren, Helen E                   Western Springs  
Warren, James E                 Western Springs

## Century Club Patron

## Members:

Aaron, Michael E                 Chicago  
Bachler, Kevin L                 Park Ridge  
Brock, Bill                         Chicago  
Cohen, Lawrence S               Villa Park  
Dwyer, William T                 Worth  
Fineberg, Thomas A              Chicago  
Friske, Thomas G                 Des Plaines  
Naylor, Samuel, VI               Carthage  
Novotny, James J                 Schaumburg  
Panner, Glenn E                 Frankfort  
Pradt, Daniel J                   Glen Ellyn  
Ryner, Randall L                 Springfield  
Schmidt, Frederick W, Jr       Bloomington  
Sethi, Pradip                     Barrington Hills  
Silverman, Scott                 Chicago  
Smythe, Bill                       Chicago  
Stein, Kurt W                     Clarendon Hills  
Wong, Philip                      Wilmette

## Gold Card Patron Members:

Barre, Todd J                     Elmhurst  
Blanke, Clyde H                 Matteson

Brotsos, Jim  
Bossars, Phil J  
Chen, Aaron  
Chess-Now Ltd.  
Cook, David A  
Delay, Joseph D  
Dueker, John T  
Gruenberg, Fred  
Heis, David  
Hart, Vincent J  
Klink, Steven L, Jr  
Lang, Richard S  
Marovitch, Mark  
Nibbelin, Mark  
Pehas, Alex  
Splinter, Joseph C  
Sweig, Mitchel J  
Tanaka, James G  
Widing, Robert W

## Patron Members:

Adwar, Bacil Alexy  
Amodei, Dominic M  
Benedek, Roy  
Birkeland, Roger  
Bishop, Jack  
Boone, Foster L, Jr  
Carlton, Robert J  
Cronin, Mike A  
Duncan, Tom  
Dupuis, Brian M  
Fenner, Charles E

Chicago  
Champaign  
Oak Brook  
Glen Ellyn  
Burr Ridge  
Schaumburg  
Lockport  
Palos Heights  
  
Mount Prospect  
Glen Ellyn  
Evanston  
Cicero  
Normal  
Darien  
Hanover Park  
Evanston  
Chicago  
Park Ridge

Skokie  
Chicago  
Western Springs  
Addison  
Chicago  
Lynwood  
Naperville  
Alsip  
Naperville  
Lake Bluff  
Chicago

Fischer, Gregory A  
Fulk, Shizuko Fukuhara  
Gasiecki, Alan F  
Gerber, David F  
Griesmeyer, Walter J  
Hansen, Steven E  
Harvey, Frank  
Henderson, S E, Jr  
Hernandez, Hector  
Iovin, Daniel G  
Just, Timothy W  
Karpes, Richard A  
Klink, Steven,  
Knoedler, Thomas B  
Lewis, Richard  
Lobracco, Michael J  
Marshall, Kenneth N  
Martin, Gary J  
Modes, Daniel R  
Moore, Clarence J  
Mote, David B  
Rhymer, Cecil  
Rose, Eric J  
Rose, Keith C  
Satterlee, Ray Doyle  
Scott, Garrett H  
Sollano, Ely O  
Sowa, Walter B  
Suarez, Ronald J  
Tums, John M  
Zacate, Michael E

Elk Grove Village  
Skokie  
Vernon Hills  
Mundelein  
Momence  
LaGrange  
Wheeling  
Bolingbrook  
Chicago  
Elmwood Park  
Gurnee  
Des Plaines  
SrGlen Ellyn  
Springfield  
Harvey  
Itasca  
Lombard  
Park Ridge  
Bensenville  
Villa Park  
Springfield  
Summit  
Antioch  
Woodridge  
Wheaton  
Normal  
Chicago  
Harwood Heights  
Peoria  
Oak Park  
Mokena

**April 16, 2005. Tax Relief Open. An ICA Mini-Tour and Ex-Urban Tour Event.** 4SS, G/80. Signature Inn, corner of Dirksen Pkwy & Stevenson Dr. (immediately W of I-55 Stevenson exit). Springfield, IL 62703 \$\$ (b/40) \$300: \$100-55; 1999-1600 \$50; 1599-1200 \$40; U1200 \$30; Unr \$25. ICA mbrship req'd, OSA.EF: \$17 if rec'd by 04/10, \$20 at site. Reg: 7:30-8:30am. Rds: 9-12-3-6. TD reserves right to accelerate pairings if conditions warrant. Ent: Thomas B. Knoedler, 2104 S. 4th, Springfield, IL 62703. Info: 217-206-6056, M-F 9-5; 217-523-7265 after 6:30, exc. Wed email [knoedler.thomas@uis.edu](mailto:knoedler.thomas@uis.edu). NS,NC,W.



**GREAT LAKES OPEN CHESS CHAMPIONSHIP**

(April 30-May 1, 2005)

**Site: McCamly Plaza Hotel**

50 Capital Avenue, SW  
Battle Creek, MI 48017

**Directions:** Located in Downtown Battle Creek next to Cereal City and across from Full Blast Water Park

**Format: 5-SS. 3 SECTIONS: OPEN, Under-1800, and Under-1400/Unrated.**  
Unrated players may only play in the OPEN or Under-1400 section. All prizes are 70% GUARANTEED. Re-Entries available with 1/2-point byes for past rounds. No Re-Entries in Open section.

This fabulous AAA Four-Diamond hotel, McCamly Plaza Hotel, is located in the middle of Downtown Battle Creek next to Cereal City and across from Full Blast Water Park. Go online at <http://www.mccamlyplazahtel.com> or call Toll-Free for reservations at 1-888-622-2659. Ask for the Great Lakes Open chess rate of \$89 per night. (Call by April 7 to guarantee this great rate!) Covered lot parking is \$5 for overnight (unlimited in and out privileges) or free on weekends on the street, at the Water Park or at the Post Office across the street.

**Time Control:** Rounds 1-3: 30/1 hour, SD45;  
Rounds 4-5: 40/2 hours, SD 1 hour

**Rounds:** Same for all Sections: SAT., April 30: 10:30 AM, 3:00 PM, 7:30 PM. SUN., May 1: 10:00 AM, 4:30 PM

**Entry Fee:** \$70 by March 1;  
\$80 by April 1;  
\$90 after April 1 or On Site.  
All Re-Entries with 1/2-pt byes are \$40.

**Registration:** SAT., APRIL 30, 8:00 AM - 10:00 AM

**Prizes: \$8,000 PRIZE FUND (b/150) –**  
All prizes 70% GUARANTEED!  
**OPEN SECTION:** 1st \$1,500; 2nd \$800; 3rd \$500;  
1st, 2nd U2200 \$300, \$150;  
1st, 2nd U2000 \$300, \$150;  
1st, 2nd U1800/UNR \$200, \$100.

**U1800 SECTION:** 1st \$800; 2nd \$500; 3rd \$300; 4th \$200; 1st, 2nd U1600 \$175, \$100; 1st, 2nd U1400 \$150, \$75.

**U1400 SECTION:** 1st \$600; 2nd \$400; 3rd \$275; 4th \$175; 1st, 2nd U1200/UNR \$150, \$100.

**Entries/Info:** Stan Beckwith, 84 Bond Street, Battle Creek, MI 49017-1907, PHONE (269) 964-2927

**Directors:** Senior TD, Ben Finegold; Local TD, Ed Mandell

# 1<sup>st</sup> Annual ILLINOIS CLASSIC

*Tune Up for the HB Global Chess Challenge & the Chicago Open!!!*

**Lincolnwood, IL (immediately north of Chicago)**

**6-round Swiss, April 22-24 or 23-24, 2005**

**\$20,000 Projected Prizes (b/300), \$10,000 minimum Guaranteed.**

**6R-SS – 30/90 SD/30 in 3-day schedule; Rds 1-3 G/75 for 2 day then merge with 3 day**

**Location:** Purple Hotel, 4500 W. Touhy Ave. (1 mile east of I-94), Lincolnwood, IL 60712.

**Prizes:** \$20,000 based on 300 paid entries (special EF counts as partially paid).

**In 8 sections – you face only those in your section.**

**Open (above 2200): \$2000, \$1600, \$1200, \$800, \$400**

**Expert (2000-2199): \$1600, \$1200, \$800, \$400, \$200**

**Class A (1800-1999): \$1200, \$800, \$400, \$200, \$100**

**Class B (1600-1799): \$1200, \$800, \$400, \$200, \$100**

**Class C (1400-1599): \$600, \$400, \$200, \$100, \$40**

**Class D (1200-1399): \$600, \$400, \$200, \$100, \$40**

**E/F (1199 and below): \$400, \$200, \$100, \$40, \$20**

**Unrated: \$200, \$100, \$40, \$20, \$20**

**Registration:** Fri Reg. 5:30-6:30pm STRICT! Sat Reg. 8-9am STRICT. Entries after 6:30pm or 9am must take 1<sup>st</sup> round ½ bye. NO EXCEPTIONS.

**3 day schedule - Fri: 7pm; Sat: 9:30, 2, 6:30; Sun: 12, 4:30**

**2 day schedule - Sat: 9:30, 12:30, 3:30 then merge with 3 day in Rd 4**

**EF:** Adults - \$125 mailed by 4/1/05; Juniors (18-20) \$100 mailed by 4/1/05; All \$150 onsite.

**Special EF:** Scholastic Players under the age of 18 receive a free 1 year membership to the ICA or a \$14 discount off of the Junior Early EF (if you are already an ICA member) either mailed entry or onsite. Free Entry to FIDE TITLED PLAYERS - \$150 deducted from any prizes won.

**All:** USCF membership required. ICA membership required for IL players. Byes available in all rounds. Max 2 byes; Commit to byes by end of Rd2; 1 class up for \$5 extra; D/E/F can play 2 classes up for \$5 extra. Re-entry: \$75 for Adults, \$50 for Juniors/Scholastic. Re-enter in new schedule and play Rd 1 or re-enter current schedule with ½ bye in Rd 1. Max 2 byes. No smoking. Bring sets, boards, and clocks – none supplied. April supplement used. Unrated plays only in Unrated section. Provisional players are not unrated (April supplement used)!

**Hotel Rates:** \$75 single/double, 847.677.1234. Mention chess tournament. Reserve by 4/1/05

**Entries:** Sevan A. Muradian 5119 N. Kenneth Ave. Chicago, IL 60630. [sevanmuradian@hotmail.com](mailto:sevanmuradian@hotmail.com) or 847.919.0431 with questions. Checks and cash accepted onsite. **Credit card thru PayPal only BEFORE 4/17/05.**

# 1<sup>st</sup> Annual ILLINOIS CLASSIC

*Tune Up for the  
HB Global Chess Challenge*

**&**

*The Chicago Open!!!*

**Lincolnwood, IL (immediately north of Chicago)**

**6-round Swiss, April 22-24 or 23-24, 2005**

**\$20,000 Projected Prizes (b/300), \$10,000 minimum Guaranteed.**

**6R-SS – 30/90 SD/30 in 3-day schedule; Rds 1-3 G/75 for 2 day  
then merge with 3 day**

**Location:** Purple Hotel, 4500 W. Touhy Ave. (1 mile east of I-94),  
Lincolnwood, IL 60712.

(More information inside back cover)

Time Value Material

ADDRESS CORRECTION REQUESTED

Jeff Smith  
19439 Lakeside Lane  
Bloomington, IL  
61704

PRESORTED  
STANDARD  
U.S. POSTAGE PAID  
ASTORIA, IL  
PERMIT No. 9

ADDRESS CORRECTION REQUESTED

---