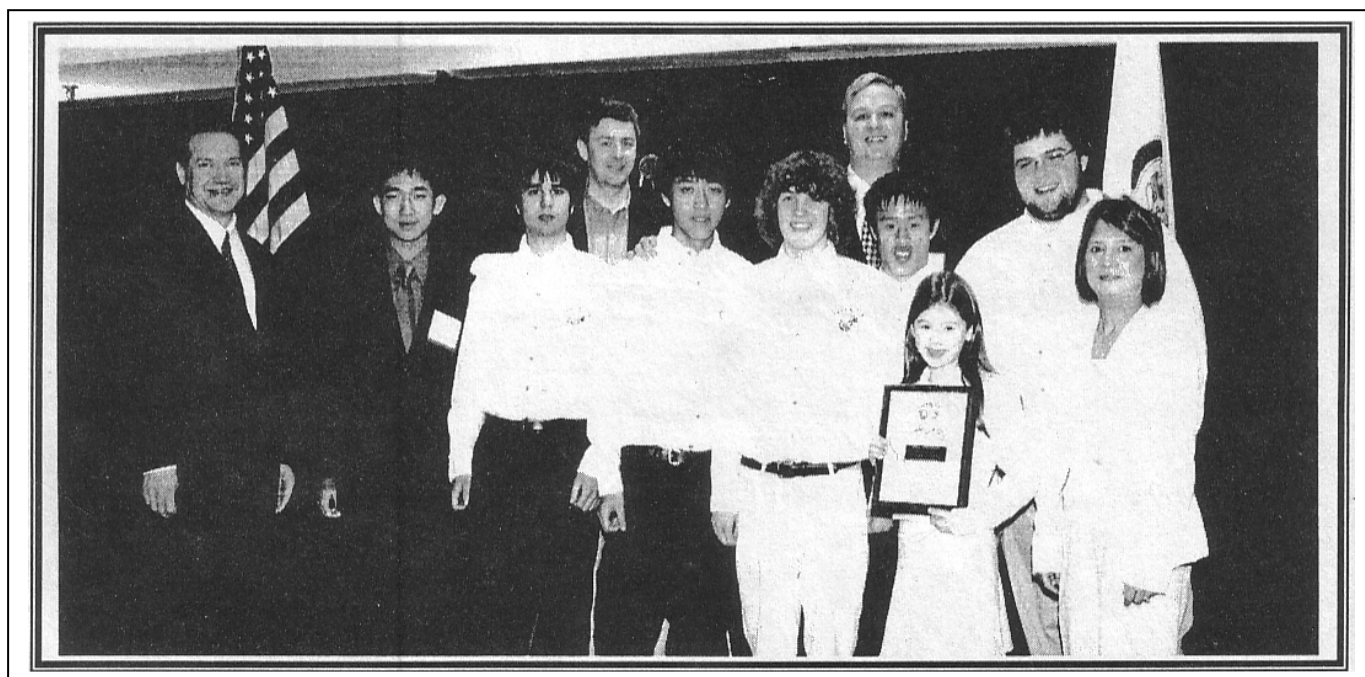


Illinois Chess Bulletin

Volume 29, Issue 1

January February 2006

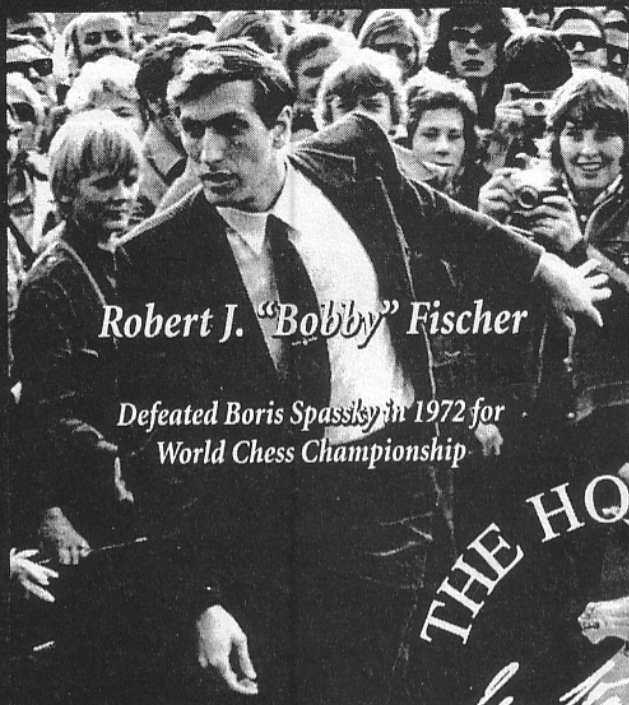
**BARRINGTON CHESS PROGRAM IS
A FINALIST FOR THE ILLINOIS
GOVERNOR'S AWARD FOR 2005**



INSIDE THIS ISSUE

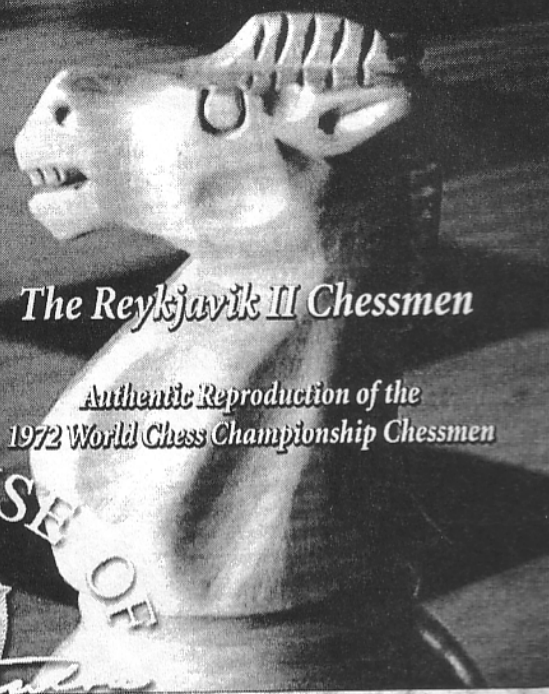
- 7 **Barrington Chess Program**
- 21 **Historical Chess The Albin Counter Gambit**
- 25 **Semi – Normal Open**

Own a Piece of Chess History!



Robert J. "Bobby" Fischer

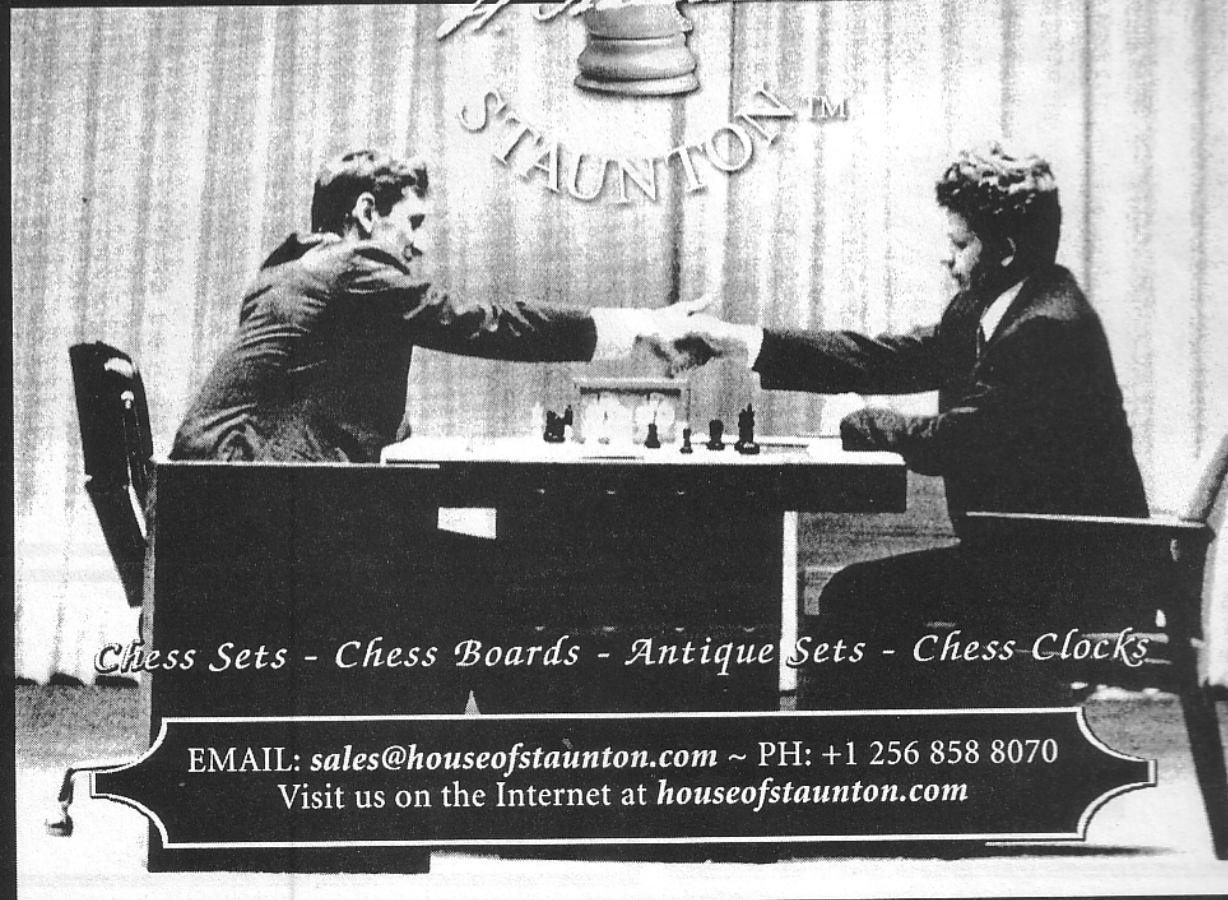
*Defeated Boris Spassky in 1972 for
World Chess Championship*



The Reykjavik II Chessmen

*Authentic Reproduction of the
1972 World Chess Championship Chessmen*

THE HOUSE OF
H. Staunton
STAUNTON™



Chess Sets - Chess Boards - Antique Sets - Chess Clocks

EMAIL: sales@houseofstaunton.com ~ PH: +1 256 858 8070
Visit us on the Internet at houseofstaunton.com

Table of Contents

On the Cover The Barrington Chess Program from Barrington, Illinois, has been awarded the prestigious Governor's Home Town award for 2005. Read about on page 7

President's Podium5
 Illinois Youth Chess.....7
 ICB Games / FM Chow.....9
 ICB Games / IM Young.....18
 Road Warrior.....19
 Historical Chess The Albin Counter Gambit.....21
 Semi – Normal Open25
 Springfield CC26
 Knights Move CC.....27
 St Charles CC.....30

ICA News

ICA Tour & ICA Ex Urban Tour.....31
 ICA Supporters.....33
 Affiliate Listing36

Where to Play

Tournament Calendar33

President
 Illinois Chess Association
 Bill Brock, President
new address:
 230 W. Monroe, Suite 330
 Chicago, IL 60606
 (312) 252-1300, x12
billbrock@billbrock.net

Metro Vice-President
 Les Bale
 2121 Halsey Drive
 Des Plaines, IL 60018
 (847) 813-1956
christianundertake@sbcglobal.net

Downstate Vice-President
 Chris Merli
 1206 Watersedge Road
 Champaign, IL 61822-8100
 (217) 778-3334
clmerli@insightbb.net

Secretary
 Richard Easton
 915 Elm St
 Winnetka, IL 60093
richard.easton@us.aonwarranty.com

Treasurer
Vacant

Membership Secretary
 Jeff Smith
 19439 Lakeside Lane
 Bloomington, IL 61704
 309-378-2078
icamembership@msn.com

ICA Tour Statistician
 Vince Hart
vinnyjh@hotmail.com

WORLD WIDE WEB
<http://www.illinoischess.org>

Illinois Chess Association board meeting
Sunday, February 5, from 1:30 to 4:00 p.m. at Ravid & Bernstein LLP,
 230 W. Monroe, Suite 330, Chicago.

About the Illinois Chess Bulletin and the Illinois Chess Association

Illinois Chess Bulletin

Published six times per year

Copyright © 2006 Illinois Chess Association

Next Deadline: February 1st 2006

Submissions

Send contributions to:

Colley Kitson
428 N. Grant
Clinton, IL 61727

ICB@mchsi.com

Electronic submissions are preferred. Preferred format for articles, stories or advertisements is Microsoft Word.

Game submissions are also preferred in electronic format. Games should be submitted in ChessBase archive format (.cbv) or in pgn. ChessBase 8 will automatically send archive format if you e-mail from ChessBase 8. In earlier versions of ChessBase you may archive a database to create a single file to e-mail. See your help materials.

If you need a simple program to create pgn files most chess databases will also produce text files in pgn format, as will many chess playing programs. The main font for the ICB is Arial, as well as the Figurine Aries font and the US Diagram font from ChessBase.

Editorial Staff

Managing Editor: Colley Kitson
Games Editor: Albert Chow
Assistant Games Editor: Angelo Young

Contributors

FM Albert Chow, Vince Hart, Pete Karagianis, Bill Brock, Chris Merli, Vince Hart, IM Angelo Young, NM Jon L Burgess, Dan Pradt.

Advertising Rates

Back Cover:	\$125
Inside Front:	\$115
Full Page:	\$100
1/2 Page:	\$65
1/3 Page:	\$50
1/4 Page:	\$40
1/8 Page:	\$25

There is a \$20 design charge for ads that are not camera-ready. Allow 7 days for design. Allow additional time if ad proofing is required. ICA affiliates receive a 1/3 discount and ads that appear in consecutive issues receive a 10% discount. Payment must accompany the ad. The ICA and the ICB reserve the right to refuse any specific advertisement.

Membership Information

The Illinois Chess Bulletin (ICB) is published by the Illinois Chess Association (ICA). ICA membership includes a subscription to the ICB. Memberships marked 1st receive their magazine first class. Memberships marked P also receive a plaque. Affiliates also receive discounted advertising rates, event advertising on Chess Phone and the ICA website, and the right to run Tour events.

Corporate	\$500	1 st Class & Plaque
Organization	\$200	1 st Class & Plaque
Business	\$200	1 st Class & Plaque
Century Club	\$100	1 st Class
Gold Card	\$50	1 st Class
Patron	\$35	1 st Class
Affiliate	\$25	Affiliate benefits
Regular	\$18	
Junior	\$14	
Family	\$6	No magazine

FIDE Master **Albert Chow**
Accepting games for the ICB
Games can be sent to:

Albert Chow
3513 N Seminary, Chicago, IL 60657
773-248-4846, ChowMasterAl@yahoo.com.

President's Podium

Bill Brock

Most of us think of **Helen Warren** as the emeritus heart and soul of the Illinois Chess Association. Back in 1961, Helen Hendricks was one of the signers of our Articles of Incorporation (along with our respected friends **Jim Brotsos** and **Frank Skoff**, future U.S. Women's Champion **Eva Aronson**, and **Peter Wolf**). Along the way (after marrying **Jim Warren**, an Expert who drew Fischer twice on his 1963 simul tour), she organized umpteen Midwest Masters, the 1989 U.S. Open, a couple of the best U.S. Masters ever, and other events too numerous to mention, she brought World Championship Candidates **Viktor Korchnoi** and **Roberat Hübner** to Chicago for the 1982 Cloverline International, she founded the wonderful American Postal Chess Tournaments, served for decades in various USCF leadership positions, edited the *Illinois Chess Bulletin*, and, not least (my apologies for the unavoidable runon sentence) she was the voice of the ICA, even in those years when she didn't officially have the title of President. Even today, on the many occasions that ICA has a problem that I'm not sure how to handle, I call Helen for her wise counsel.

You may not realize that Helen also loves to *play* chess, and is pretty good at the game., as I discovered at the



Life's simple pleasures: blitz chess and beer

Helen Warren vs. Ed Radavicius

1973 Chicago Industrial Chess League Banquet

Blitz Championship

inaugural Master Challenge in 1979. Even though the wallchart said my rating was about 450 points higher, I was the one on the run:

Bill Brock—Helen Warren

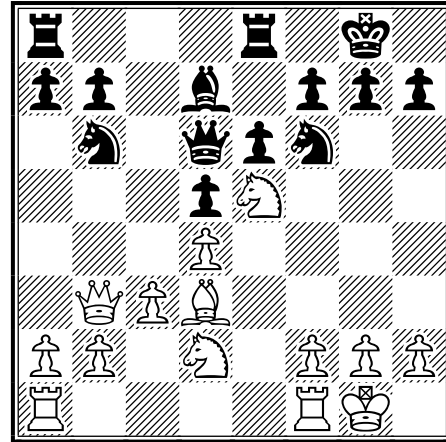
1. e4 c6 2. d4 d5 3. exd5 cxd5 4. Bd3 Nf6 5. c3

Almost a decade after the famous Fischer-Petrosian game in Belgrade, everyone in Illinois from senior master

to patzer was still playing this line against the Caro-Kann. Larry Chachere and Allen Kornfeld were among its partisans in the early 1980s, while Dr. Eugene Martinovsky never hesitated to defend the line. Kornfeld beat the good Doctor in a 1981 Palmer House battle royal after 5...Nc6 6.Bf4 Bg4 7.Qb3 Qd7. Then-current theory said that 7...Qc8 was a better choice, but fashions change.....

5...e6 6. Bf4 Bd6 7. Bxd6 Qxd6 8. Nf3 O-O 9. Nbd2 Nbd7 10. O-O Re8 11. Qa4 Nb6 12. Qb3 Bd7 13. Ne5?!

Threatening to tickle the Nb6 with 13. a4 would have been better.



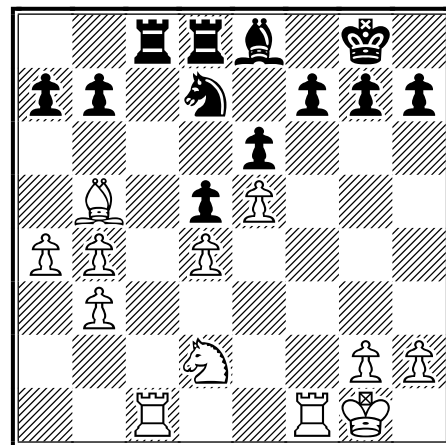
13...Ba4!

Bam! Fritz thinks the position is equal, but I think this is one of those positions that humans understand better than Fritz.... Helen looked both happy and determined.

14. Qb4 Qxb4 15. cxb4 Rac8 16. Rac1 Red8 17. b3

Maybe I should have played 17.b5 here, but Black looks good after 17...Ne4. Jim Warren's visits to the board were becoming more frequent, and I was getting nervous.

17... Be8 18. a4 Nbd7 19. f4 Nxe5 20. fxe5 Nd7 21. Bb5



Black to play—how to keep a slight pull?
21...a6?!

President's Podium

Not bad, but Black had better with 21...Nb8! 22.Bxe8 Rxe8 23.Nf3 a6! .

I relievedly played **22.Bxd7** and ground out a slightly superior ending. After Helen resigned, I started to explain her missed opportunity, but she cut me off quickly: "Good knight against bad bishop, I understand what I did wrong."

Attentive readers may have figured out that I omitted one of Helen's biggest accomplishments. She saw that Illinois had many talented junior players who were stalling at a critical level in their development because they weren't getting the training that the top youngsters from New York and California (let alone the Soviet Union) were getting.

So she did something about it by starting the **ICA Warren Junior Chess Program**. Its mission is simple: to identify nationally ranked Illinois boys and girls, and to offer merit-based financial assistance to these students for individual and small group instruction with masters and grandmasters. The goal of the program is to nurture the highest-potential Illinois students so they can be competitive on a national and international stage.

Currently, Illinois has more than twenty boys and girls who are nationally ranked in their age group. As talented as our teens are, I'm even more excited about our crop of young players. Success in chess requires a combination of innate talent and hard work. Intensive mentoring at a young age can propel our talented students to the very top levels of success.

I believe that the children who are chosen to participate in the Warren Junior Program will benefit not only in their chess skills, but be successful in other professional endeavors later in their lives. The intensive study offered by this program will foster the kind of discipline, hard work and perseverance that will propel these students to contribute to society at the highest levels as adults.

The program works, as evidenced by the results of Warren Junior Chess Program alumni:

- Yelena Gorlin finished 7th in the 2000 U.S. Women's Invitational Championship;
- William Aramil won the 2001 Denker Tournament of High School Champions (and a four-year college scholarship);
- Ex-Chicagoan Zhe Quan finished 12th in the 2004 World Juniors (open to players under 19). He was only 14 years old!

I thank those of you who have given generously to the ICA Warren Junior Program in past years.

This year, we are resuming the program after a one-year hiatus—now more than ever, **we need your gen-**

erous contribution. If you would like more information about activities planned for 2006—how the young players will be selected and how the money will be used—please contact the **new Warren Junior Program Director, Andrea Rosen**, at andirosen@hotmail.com. (As you probably know, Andi and her husband Brad are the proud parents of one of our nationally-ranked juniors—Andi graciously offered to forego applying for funding for *individual* lessons to avoid potential conflicts of interest.) Also, you'll so be able to visit us online at www.ilchess.org/warrenprogram

Bear in mind, as the Illinois Chess Association is a 501(c)(3) nonprofit organization, your contribution will generally be tax-deductible! Please consult your tax advisor.

Please clip the form below (or a copy) with a check made payable to the **Illinois Chess Association—Warren Junior Program** and kindly send to:

**Andrea Rosen,
Director, ICA Warren Junior Program,
8214 Keystone Ave.
Skokie, IL 60076**

YES, I would like to help support top Illinois junior players in their efforts to become world-class chess players. Enclosed is my contribution of (circle one):

\$25 \$50 \$100 \$250 Other \$ _____

Name:

Street Address:

City, State, ZIP:

email (optional)

You may use my name on a public list of Warren Junior Program Sponsors. YES NO

**PLEASE MAKE CHECKS PAYABLE TO:
"Illinois Chess Association—Warren Junior Program"**

Continued on Page26

**BARRINGTON CHESS PROGRAM IS
FINALIST FOR THE ILLINOIS
GOVERNOR'S AWARD FOR 2005**

The Barrington Chess Program from Barrington, Illinois, has been awarded the prestigious Governor's Home Town award for 2005. The Governor's Home Town Awards Program formally recognizes community improvement efforts, which depend upon the voluntary commitment of community residents and organizations. On November 10th 2005 the Governor of Illinois hosted a special banquet for the winners in Springfield, Illinois. The Barrington Chess Program received a perfect score from the Judges and was declared a Finalist for the award at the banquet.

The selection was made because of the Barrington Chess Program's rich educational value, its unique alliance between education and philanthropy and its innovative methods of promoting leadership among children. The program has been successful in attracting nationally renowned chess Grandmaster Yury Shulman to the state of Illinois. Grandmaster Shulman interacts directly with the students in Barrington and the surrounding area.

The Home Town award exemplifies the continued hard work and dedication of parents, teachers, administration and students who have volunteered to make the program develop life long learners while simultaneously making a positive impact on the community. Dr. Cindy Kalogeropolous, the Principal of Grove Avenue Elementary School in Barrington and Rishi Sethi founded the program, when he was a 4TH grade student at Grove Avenue Elementary School back in 1998. Rishi Sethi has been a member of the USCF since 1998. Rishi was inspired to pursue chess ever since he joined the US Chess Federation. He has tirelessly and tenaciously promoted chess in the area. Since its inception the Barrington Chess Program has incorporated a strong sense of social responsibility into

its programs. Each chess event regularly donates a portion of its profits to a local, national or international charity. Chess sets have been donated to educationally impoverished schools in the world so that they can start chess clubs. Rishi Sethi introduced GM Shulman to the area two years prior to his move into the area.

The Barrington Chess Program is honored to have GM Yury Shulman work with the Chess Program since this October 2005. As a result of this, hundreds of students and parents and businesses are actively engaged and contribute to the promotion of chess. GM Shulman has provided the community with an environment of excellence with his gifted skills as a teacher and chess player. The community has responded warmly to embracing chess with all its trappings.

Barrington High School chess coach Jeff Doles has been affiliated with the program for the past three years. The BHS Chess Team is the repeating mid-suburban league champion and placed ninth in Illinois out of one hundred twenty-five teams competing last year.

The program has engaged hundreds of youth in Barrington and the surrounding areas. Local area businesses have also become involved in hosting and supporting chess. Barrington chess students have acquired new skills in learning and working in chess clubs and serving as tournament directors. Recently several of the Barrington chess students were awarded the Presidential Award for volunteering over 100 hours working to develop chess. GM Shulman and his students volunteer once a month teaching chess at Lloyd School in Chicago. At a recent chess tournament held at Barrington High School in November of this year several students from Lloyd School had the opportunity to play in their 1st chess tournament with all expenses paid by businesses in the area, such as Alexian Brothers Hospital Network, Bertacchi Builders and Nexus Office Systems.

Chess students have consistently scored higher in academic tests and have gone on to become National Merit Scholars.

The community and his students were delighted to have GM Shulman represent the US at the world championship cup 2005 in Russia recently. The presence of GM Shulman in the area has attracted more students to the magical world of chess.

For questions about the program call GM Shulman at 847-381-1312 or Jeff Doles the Barrington high School Chess Coach at 847 381 1400. You can also visit www.shulmanchess.com.

Kiran Frey M.D.

Illinois State Scholastic Chess Championships

2/24/06 thru 2/26/06:

Illinois State Scholastic Chess Championships

Organizer's Name: Latin School of Chicago

Address Location: Navy Pier, Chicago, Illinois

Sections: K-1, 2-3, 4-5, 6-8.

Time Controls: Game 30 for K-1, Game 60 for all other divisions

Rounds: Seven rounds: Four rounds on Saturday at 10:00, 1:00, 3:30 and 6:00. Three rounds on Sunday, 9:00, 12:00 and 2:30.

Start Time: Check begins Saturday morning at 8:00 am.

Entry Fee: Entry fee is \$40 per player. School teams with fifty percent of players on the hot lunch program will pay a maximum of \$100 per divisional team. The entry deadline is February 20, 2006.

Payable To: Online payment and printable mail in entry forms are available at www.chessteachers.org

Web Page: www.chessteachers.org

Contact Email: chessteachers@aol.com

Contact Other: Zack Fishman: 312-927-4290

Entry Limit: No limit

Prizes: Commemorative prizes for all players. Individual trophies for the top 25 individuals in each section, and the top 10 teams in each division.

Additional Info: Bug house will be Friday evening beginning at 7:00. There will be the same divisions as in the main event. All Players must have a valid and current membership in the United States Chess Federation. Please bring proof of membership if the participant is a new member. Memberships can be purchased on site.

Food Service: Available onsite as well as in the Navy Pier food court

Chess Vendor: Chess Utopia

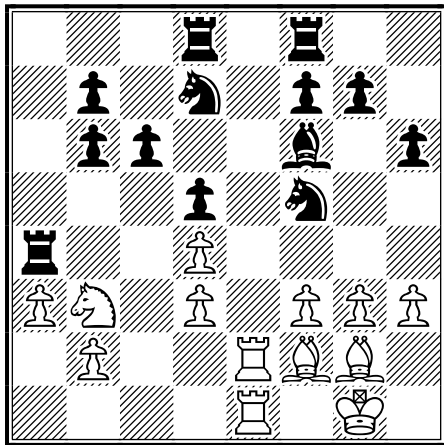
(1) Benesa,A (2034) - Gurevich,D (2600)

[A07]

Illinois open. (3), 04.09.2005

[Albert Chow]

1.Nf3 Nf6 2.g3 d5 3.Bg2 c6 4.0-0 Bf5 5.h3 h6 6.d4 e6 7.Nbd2 Nbd7 8.c4 Be7 9.Qb3 Qb6 10.Qxb6 axb6 The Catalan vs. London system. 11.Ne1? [11.b3 0-0 12.Bb2 solid development is best against a GM.] 11...0-0 12.f3 Bb4! 13.cxd5 exd5 14.Nd3? Bxd3! 15.exd3 Ra4 16.Nb3 Ne8! 17.Be3 Be7! 18.a3 Nd6 19.Rae1 Nf5 20.Bf2 Bf6 21.Re2 Rd8! 22.Rfe1 Kf8! Diagram



The doubled d4 pawn falls without any counterplay. 23.h4 Nxd4 24.Nxd4 Bxd4 25.Bh3 Nc5 26.Rd1 Re8 27.Rxe8+ Kxe8 28.Bc8 Kd8 29.Bh3 Bxb2 30.Bxc5 bxc5 31.Rb1 Bd4+ 32.Kf1 b5 33.Rb3 c4 34.dxc4 dxc4 35.Rb1 Rxa3 36.Rd1 Rxf3+ white resigned. 0-1

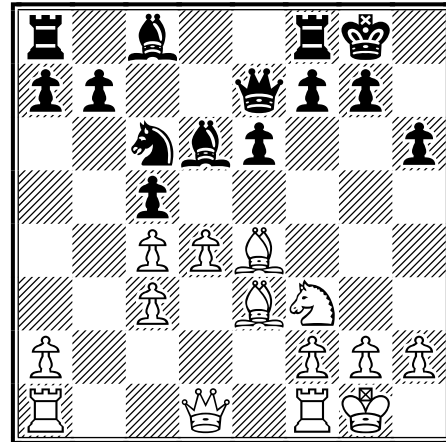
(2) Heiser,E (2034) - Karklins,A (2295)

[A18]

Midwest class Oakbrook (3), 15.10.2005

[Albert Chow]

1.c4 Nf6 2.Nc3 e6 3.e4 d5 4.e5 d4 5.exf6 dxc3 6.bxc3 [6.fxg7 cxd2+ 7.Qxd2 Qxd2+ 8.Bxd2 Bxg7 9.0-0 equalizing exchanges.] 6...Qxf6 7.d4 c5 8.Nf3 h6!? 9.Bd3 Nc6 [9...cxd4 10.cxd4 Bb4+ an alternative development.] 10.Be4 Bd6 11.0-0 0-0 12.Be3 Qe7



13.Ne1? [13.Re1 was better.] 13...cxd4 14.cxd4 Bxh2+! 15.Kxh2 Qh4+ 16.Kg1 Qxe4 17.Nc2 Rd8 18.Re1 Qg6 19.Rb1 b6 20.f3 Bb7 21.Bf2 Na5 22.Ne3 Rac8 23.Rc1 Qg5 24.Kf1 Ba6! 25.Qd3 Qf4 26.Red1 e5 27.Nf5 Rxc4 down two pawns and under tactical threat, white resigned. 0-1

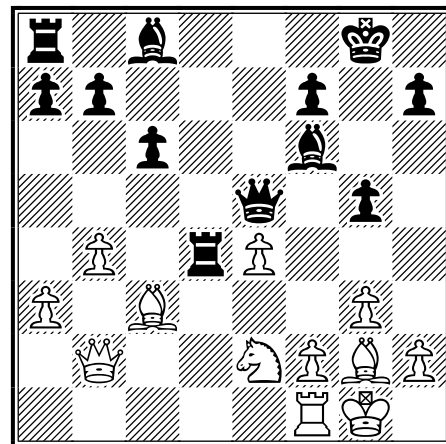
(3) Georgiev,V (2588) - Kleiman,J (2277)

[A20]

Illinois open. (5), 05.09.2005

[Albert Chow]

1.c4 e5 2.g3 c6 3.d4 exd4 4.Qxd4 d5 Now white's standard moves are 5. Bg2 or 5. Nf3. 5.Nh3!? Nf6 6.Nf4 dxc4 7.Qxc4 Be7 8.Bg2 0-0 9.0-0 Qb6 10.Qc2 Na6 11.a3 Nc5 12.Nd2 Rd8 [12...a5!? preventing pawn push.] 13.b4 Ne6 14.Nc4 Qc7 15.e4 Nd4 16.Qb2! Ng4 17.Bd2! Ne5 18.Nxe5 Qxe5 19.Bc3! g5?! 20.Rad1! Bf6? 21.Rxd4! Rxd4 22.Ne2 Diagram



pinning and winning a piece, so black resigned. 1-0

ICB Games from FM Chow

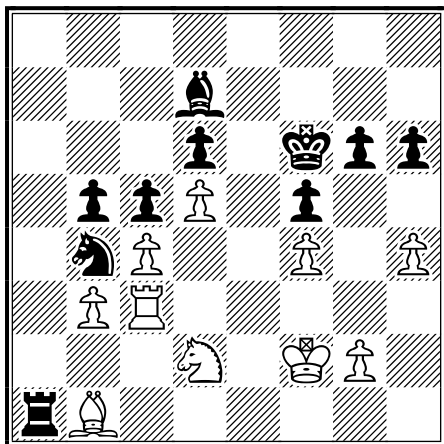
(4) Szpisjak,S (2200) - Smetanken,S (2538)

[A35]

Illinois open. (5), 05.09.2005

[Albert Chow]

1.c4 c5 2.Nc3 Nc6 3.Nf3 e5 4.e3 f5 5.d4 e4 6.d5 Nb8
7.Nd2 Nf6 8.Qc2 d6 9.f3 exf3 10.Nxf3 g6 11.Bd3 Bg7
After transposition from the English, a kind of Lenin-
grad Dutch - Benoni. 12.0-0 Nh5!? 13.Ne2 0-0 14.Nf4
Nxf4 15.exf4 Na6 16.a3 Nc7 17.Bd2 Bd7 18.a4 Na6
19.Bc3 Re8 20.Bxg7 Kxg7 21.b3 Nb4 22.Qd2 Qf6
23.Rae1 b6 24.Rxe8 Rxe8 25.Bb1 h6 26.h4 a6
27.Rf2 [27.Re1 equalizing exchanges.] 27...Kf7
28.Qb2 [28.Re2 Rxe2 29.Qxe2 Qc3 30.Nd2 b5
31.axb5 axb5 32.Kh2 may hold.] 28...Re3! 29.Qxf6+
Kxf6 30.Nd2 b5! 31.axb5 axb5 Black is only slightly
better. 32.Rf3 Re8 33.Kf2 Ra8 34.Rc3 Ra1



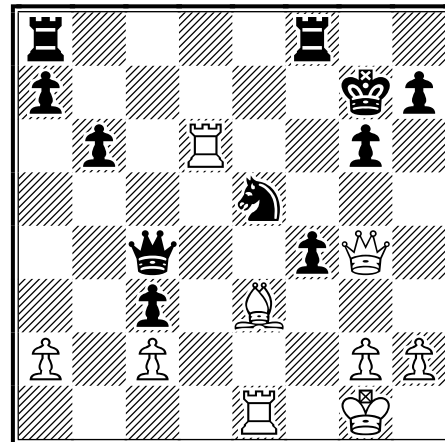
35.Ke3? [35.Re3 was solid.] 35...Ra3! 36.Bd3 bxc4!
37.Bxc4 Bc8!-+ 38.Nb1 Ra2 39.Nd2 Bb7 40.g3 Bxd5
41.Rc1 Bc6 42.Bd3 Rb2 43.Ra1 d5 44.Ra5 d4+
45.Ke2 Bf3+ 46.Kxf3 Rxd2 47.Bc4 Nc2! 48.Ra6+
Kg7 49.Ra7+ Kf8 50.Ra8+ Ke7 51.Ra7+ Kd8 52.Ra8+
Kc7 53.Ra7+ Kb6 54.Ra6+ Kb7 55.Re6 d3 56.Re5 h5
white resigned. 0-1

(5) Hamilton,M (1783) - Lin,D (1564) [B09]

Illinois open. (5), 06.09.2005

[Albert Chow]

1.e4 d6 2.d4 Nf6 3.Nc3 g6 4.f4 Bg7 5.Nf3 c5 6.Bb5+
Bd7 7.e5 Ng4 8.e6! fxe6 9.Ng5! Bxb5 A crazy line in
the Austrian attack Pirc. 10.Nxb5 Qa5+ 11.Nc3?
[11.c3! Qxb5 12.Qxg4 Good tactical chances.]
11...cxd4 12.Nxe6 dxc3 13.Nxg7+ Kf7 14.b4! Qxb4
15.Qxg4 Qe4+ 16.Kd1 Kxg7 17.Re1 Qd5+ 18.Ke2
Nc6 Black has a two pawn advantage that should be
good. 19.Kf1 Rhf8 20.Rb1 b6 21.Be3 e5 [21...Qxa2!?
hungry for more.] 22.Rbd1 Qc4+ 23.Kg1 exf4
[23...Rad8! solid.] 24.Rxd6 Ne5



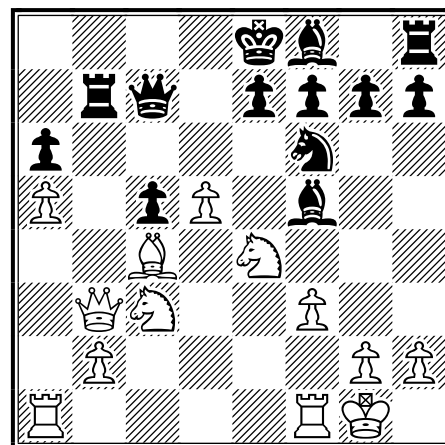
25.Qg5 Rae8?? [25...Rf5! 26.Qe7+ Qf7! 27.Qxf7+
Nxf7 28.Bd4+ Kh6 is better for black.] 26.Bd4! f3
27.Bxe5+ Kg8 28.Rxg6+! forced checkmate. 1-0

(6) Georgiev,V (2588) - Schmakel,S (1610) [B10]

Illinois open. (1), 05.09.2005

[Albert Chow]

1.c4 c6 2.e4 d5 3.exd5 cxd5 4.cxd5 Qxd5 [4...Nf6 is
better.] 5.Nc3 Qd6 6.d4 a6 7.Bd3 Nf6 8.Nge2 Bg4?
9.f3 Bh5 10.Bf4 Qd8 11.Qb3! Ra7 12.d5! Nbd7
13.Be3 b6 14.a4 Nc5 15.Bxc5 bxc5 16.a5 [16.Bxa6
Looks good.] 16...Bg6 17.Bc4 Bf5 18.Ng3 Qc8
19.Nge4 Qc7 20.0-0 Rb7 Grandmaster Georgiev dis-
plays his attacking skills.



21.d6! exd6 22.Nxf6+ gxf6 23.Nd5! Qb8 24.Rfe1+
Kd8 25.Qc3 Bg7 26.f4 Be6 27.Qg3 Bf8 28.f5 Bxd5
29.Bxd5 Rxb2 30.Qh4 Be7 31.Rxe7! Kxe7 32.Re1+
Kd7 33.Qxf6 Rb1 34.Qxf7+ Kd8 35.Qe7+ Kc8
36.Be6# 1-0

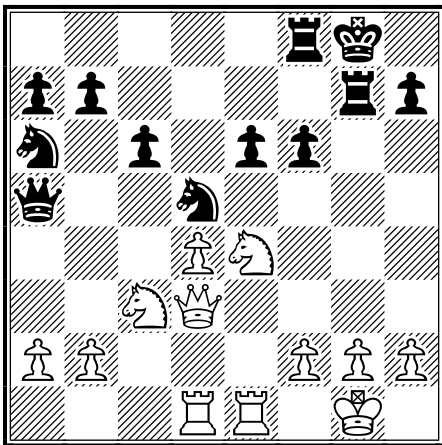
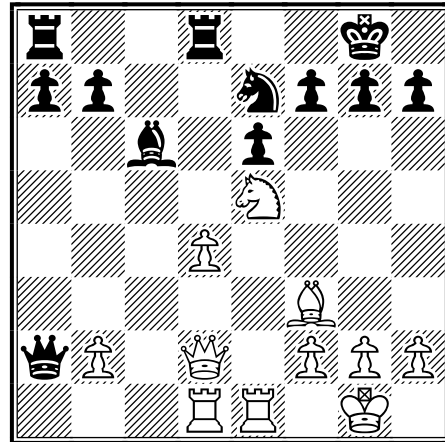
(7) Mitkov,N (2612) - Karklins,E (2049)

[B12]

Illinois open. (3), 04.09.2005

[Al Chow]

1.e4 c6 2.d4 d5 3.e5 Bf5 4.c4 e6 5.Nc3 Ne7 6.Nge2!? dxc4 7.Ng3 Bd3 8.Bxd3 cxd3 9.Be3 Nd5 10.Qxd3 Be7 11.0-0 0-0 Tension in the Advance Caro Kann. 12.Rad1 Qa5 [12...Nxc3!? followed by Nd7.] 13.Nge4 Na6? [13...Nd7 seems better centralized and Nf8 defending h7 is good.] 14.Bg5! Rfe8 15.Bxe7 Rxe7 16.Ng5! f5 [16...g6 17.Qh3 h5 weakens black's king-side.] 17.exf6 en passant. 17...gxf6 18.Nge4 Rf8 19.Rfe1 Rg7



20.Ng3 Nf4? [20...Nac7 A more stable defence.] 21.Qd2 Qg5 22.Re4! e5 23.Nce2! Nxe2+ 24.Qxe2 exd4 25.Rdxd4 f5 26.f4 Qh4 27.Qc4+ black resigned before white could Nxf5! 1-0

(8) Seannell,S - Florian,A [B22]

Midwest class Oakbrook (4), 16.10.2005

[Albert Chow]

1.e4 c5 2.c3 d5 3.exd5 Qxd5 4.d4 e6 5.Nf3 Nf6 6.Be2 Nc6 7.0-0 cxd4 8.cxd4 Be7 9.Nc3 Qd6 10.Bg5 0-0 11.Qd2 Rd8 12.Rad1 Nd5 13.Rfe1 Bd7! 14.Nxd5?! [14.Bc4! The focus over the central d5 square was important.] 14...Qxd5 15.Bxe7 Nxe7 16.Ne5? [16.b3 was solid.] 16...Bc6! 17.Bf3 Qxa2 Pressure against the pawns structure.

18.Qb4 Nd5 19.Qc5 Qxb2 20.Bxd5? [20.Nxc6 bxc6 21.Qxc6 was better defence.] 20...Rxd5 21.Qe7 Be8! A two pawn advantage for the I.M. 22.Re4 Qb6 23.Rf4 f5 24.Nc4 Qc6 25.Ne3 Rd7 26.Qg5 h6! 27.Qg3 g5! 28.h4 Rg7 29.hxg5 hxg5 30.Nxf5 exf5 31.Rxf5 Qc2! 32.Qf3 Bc6! 33.d5 g4! 34.Qd3 Ba4! white lost more material and resigned. 0-1

(9) Mitkov,N (2612) - Shabalov,A [B23]

Midwest class Oakbrook (1), 15.10.2005

[Albert Chow]

1.e4 c5 2.Nc3 g6 3.Nf3 Bg7 4.d4 cxd4 5.Nxd4 d6 6.Bc4 Nf6 7.0-0 0-0 8.Bb3 Nc6 9.h3 Nxd4 10.Qxd4 Be6 11.Qd3 Nd7 12.Bg5 Rc8 13.Rfe1 Re8 14.Rad1 Qa5 15.Nd5 Nc5 16.Qd2 Qxd2 17.Rxd2 Kf8 18.c3 b5 19.Bc2 a5 20.a3 Nd7 21.Bd3 Bxd5 22.exd5 Rb8 23.Bf1 Nc5 24.Be3 Nb3 25.Rde2 Rb7 26.Bg5 h6 27.Bf4 Rc8 28.h4 b4 [28...h5 is solid.] 29.cxb4 axb4 30.Re3! Nd4? [30...Nc5! was better.] 31.Ba6! Rcb8 32.Bxb7 Rxb7 33.Bxd6! Bf6! 34.Bxb4 Nc2! 35.R1e2 Nxe3 36.fxe3 Bxh4 37.Bc5 Rb3 38.a4 Bf6 39.a5 Bxb2 40.a6 Be5 41.Ra2 [41.a7 Rb1+ 42.Kf2 Ra1 43.Re1! Ra2+ 44.Kf3 Kg7 45.Rb1! and Rb8 wins.] 41...Rb8 42.a7 Ra8 43.Kf2 Ke8 44.Kf3 Kd7 45.Ke4 A draw agreed. 1/2-1/2

(10) Florean,A - Shabalov,A [B30]

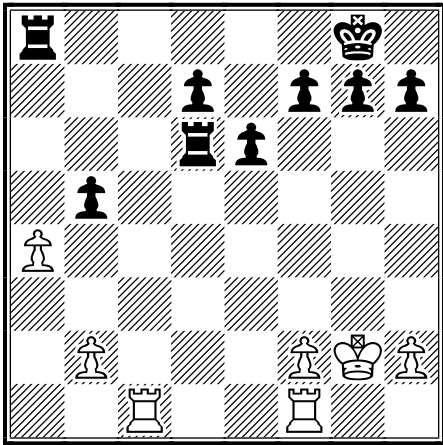
Midwest class Oakbrook (5), 16.10.2005

[Albert Chow]

1.e4 c5 2.Nf3 Nc6 3.Bb5 e6 4.0-0 Nge7 5.c3 a6 6.Bxc6 bxc6!? 7.d4 Ng6 8.Be3 cxd4 9.cxd4 Be7 10.d5?! [10.Nc3 0-0 11.Rc1 is better, not opening lines yet for the light square bishop.] 10...cxd5 11.exd5 0-0 12.d6 Bf6 13.Nc3 Bb7 14.Na4 Qa5 15.Nc5 Bc6 Long diagonal pressure from the bishop pair. 16.Qd2 Qb5! 17.Rab1 Bxf3! 18.gxf3 Nh4! 19.Qd3? [19.Qd1! holds f3 defence.] 19...Nxf3+ 20.Kg2 Ne5 21.Qxb5 axb5 22.Bd4 Rfc8! 23.Rbc1

ICB Games from FM Chow

Nc4! 24.Bxf6 Rxc5! 25.Be7 Rd5 26.a4 Nxd6 27.Bxd6 Rxd6 Down two pawns in the ending white is lost.



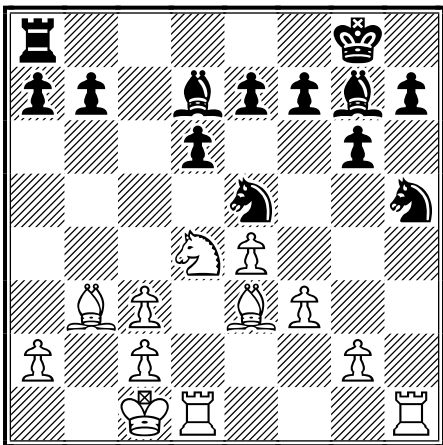
28.a5 Kf8 29.b4 Rd4 30.Rb1 Rc4 31.Rfc1 d5 32.Kf3 Ke7 33.Ke3 Kd6 34.Rxc4 dxc4 35.h4 Rd8 36.Rg1 g6 37.Rg5 e5 38.f4 exf4+ 39.Kxf4 Rc8 40.a6 c3 41.a7 c2 42.Rc5 Rxc5 43.bxc5+ Kc7 44.a8Q c1Q+ 45.Kg3 Qxc5 46.Qe8 Qd6+ 47.Kf2 Qb6+ 48.Kg3 b4 49.Qa4 Qd6+ 50.Kf2 Qc5+ 51.Kg2 h5 52.Qe8 Qc4 white resigned. **53.Kf2 0-1**

(11) Rothschild,B (1706) - Szpisjak,S (2200) [B79]

Illinois open. (6), 05.09.2005

[Al Chow]

1.e4 c5 2.Nf3 d6 3.d4 cxd4 4.Nxd4 Nf6 5.Nc3 g6 6.Be3 Bg7 7.f3 0-0 8.Qd2 Nc6 9.Bc4 Bd7 10.0-0-0 Qa5 11.Bb3 Rfc8 12.h4 Ne5 13.h5 Rxc3 14.Qxc3 Qxc3 15.bxc3 Nxe5 Compensation for the exchange in the Dragon.



16.g4 Nf6 17.Bh6 Bh8 18.Rhg1 Rc8 19.Nf5 Bxf5 20.gxf5 Bg7 21.Bxg7 Kxg7 22.fxg6 hxg6 23.f4 Ned7 24.Rge1 Rc5! [24...Rxc3? 25.e5! helps white big time.] 25.Kb2 Kf8 26.Rd4 Rh5 27.Rc4 Nc5 28.e5 Ne8

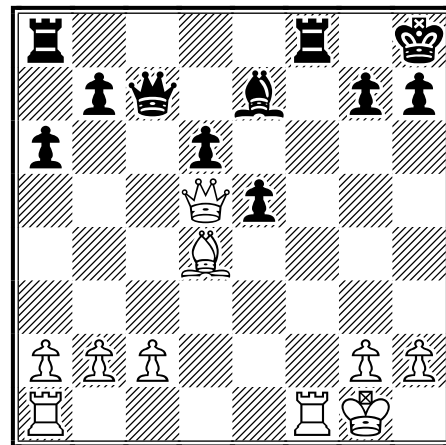
29.Rd4 Rf5 30.Rh1 Kg7 31.Re1 Kf8 32.Rh1 Kg7 The draw by repetition. $\frac{1}{2}$ - $\frac{1}{2}$

(12) Mitkov,N (2612) - Chow,A (2227) [B89]

Illinois open (5), 05.09.2005

[FM Albert Chow]

1.e4 c5 2.Nc3 Nc6 3.Nf3 d6 4.d4 cxd4 5.Nxd4 Nf6 6.Bc4 e6 7.Be3 Be7 8.Bb3 0-0 9.Qe2 a6 Now 10. 000 is the Famous Velimirovic attack, but instead GM Mitkov offers a gambit. **10.f4 Qc7 11.f5!? Nxd4 12.Bxd4 exf5! 13.0-0 fxe4 [13...Nxe4? 14.Nd5! Qd8 15.Bb6 Qd7 16.Rxf5!+-] 14.Nd5 [14.Nxe4 Ng4! favors black.] 14...Nxd5 15.Bxd5 Be6 16.Bxe6 fxe6 17.Qxe4 e5 18.Qd5+ Kh8**



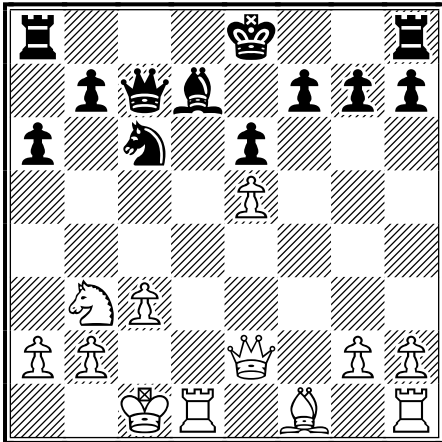
19.Be3 Rxf1+ Black had other tempting options such as [19...Qc6 or; 19...Qxc2 20.Qxb7] **20.Rxf1 Rf8 21.Rxf8+ Bxf8 22.c4 h6 23.h3 Be7 24.b4 Bf6 [24...Bg5!?] 25.a4 Qe7 26.b5 [26.Qe4! Bg5 27.Bf2! was white's best chance.] 26...Bg5 27.Bxg5 Qxg5 28.Qxb7 Qc1+ 29.Kh2 Qf4+ 30.g3 Qxc4 31.bxa6** The GM offered me a draw! In veiw of **31...Qe2+ 32. Kh1 Qf1+ 33.Kh2 Qe2+** with perpetual check, I agreed with a handshake. $\frac{1}{2}$ - $\frac{1}{2}$

(13) Kleiman,J (2277) - Hart,V (1949) [B96]

Illinois open. (3), 04.09.2005

[Albert Chow]

1.e4 c5 2.Nf3 d6 3.d4 cxd4 4.Nxd4 Nf6 5.Nc3 a6 6.Bg5 e6 7.f4 Bd7!? 8.e5 dxe5 9.fxe5 Qa5! 10.Qe2 Nd5 11.Bd2 Nxc3 12.Bxc3 Bb4 13.Bxb4 Qxb4+ 14.c3 Qa5 15.Nb3 Qc7 16.0-0-0 Nc6 At first glance it seems black has escaped from an experimental variation of the Najdorf Sicilian with a playable game. But the black king soon falls under heavy attack from white's active pieces.



(15) Mitkov,N (2612) - Shulman,Y (2617) [C18]

Midwest class Oakbrook (5), 16.10.2005

[Albert Chow]

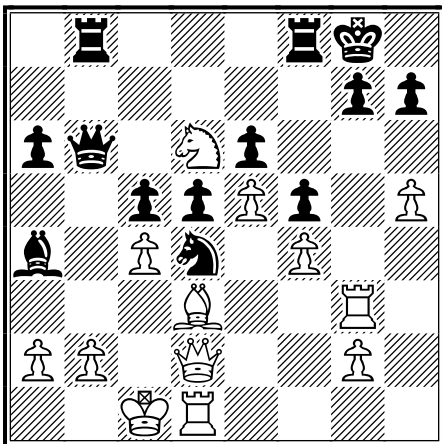
1.e4 e6 2.d4 d5 3.Nc3 Bb4 4.e5 c5 5.a3 Bxc3+ 6.bxc3 Ne7 7.Qg4 cxd4 8.Qxg7 Rg8 9.Qxh7 Qc7 10.Ne2 Nbc6 11.f4 Bd7 12.Qd3 dxc3 A Poison Pawn gambit variation in the Winawer French. 13.Rb1 0-0-0 14.Nxc3 Na5 15.Rg1! Kb8 16.g4 d4!? Looking for counterplay. 17.Nb5 [17.Qxd4!? Ba4 18.Qxa4 Qxc3+ 19.Kf2 seems good for white.] 17...Bxb5 18.Rxb5 Nd5 19.Bd2 Nc6 [19...Nc3!? is active.] 20.h3 a6

17.Re1 0-0 18.Qe4! b5 19.Bd3! g6 20.h4! Ne7 21.h5 Nf5 22.Qf4! f6? [22...Bc6 was a better chance, planning f7xg6.] 23.hxg6 fxe5 24.Qh2 Be8 25.g4 Rd8 26.gxf5 Rxd3 27.Nc5! Rd6 28.gxh7+ Kh8 29.Qxe5+ Qg7 30.Qxd6 Qg5+ 31.Kb1 Qxf5+ 32.Ka1 black resigned. 1-0

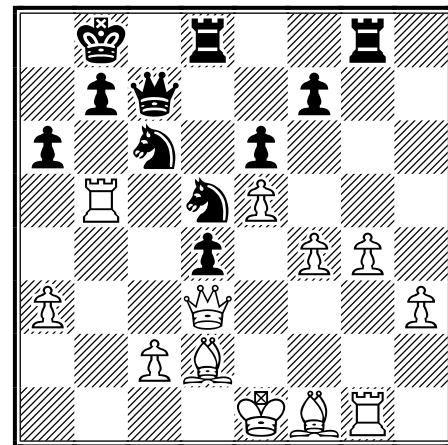
(14) Tate,E (2392) - Shulman,Y (2617) [C17]

Illinois open. (5), 05.09.2005 [Albert Chow]

1.e4 e6 2.d4 d5 3.Nc3 Bb4 4.e5 c5 5.Bd2 Ne7 6.Nb5 Bxd2+ 7.Qxd2 0-0 8.f4 a6 9.Nd6 cxd4 10.Nf3 Nbc6 11.Nxd4 Bd7 Black gained counterplay in this variation of the Winawer. 12.Nxc6 bxc6! 13.Bd3 Qb6 14.c4 Rab8 15.0-0-0 c5 16.h4 Nc6! 17.Rh3 Nd4! 18.Rg3 f5! 19.h5 Ba4! The bad French bishop becomes a strong tactical threat.



20.Re1 Bb3! 21.Bb1 [21.Kb1?? Bc2+! wins.] 21...Bxc4 22.Rg5 Qb4 23.Qxb4 Rxb4 24.b3 h6 25.bxc4 hxg5 26.cxd5 Rfb8 27.Bd3 c4 28.Nxc4 Rc8! 29.Kd2 Rbx4 30.Bxc4 Rxc4 31.Kd3 exd5 32.e6 Nc6 33.e7 Nxe7 34.Rxe7 Rxf4 35.Re5 Kh7 36.Rxd5 Kh6 37.Ra5 Kxh5 38.Rxa6 Rf2 39.a4 Rxg2 40.Rc6 Ra2 41.Rc4 g4 black won. 0-1



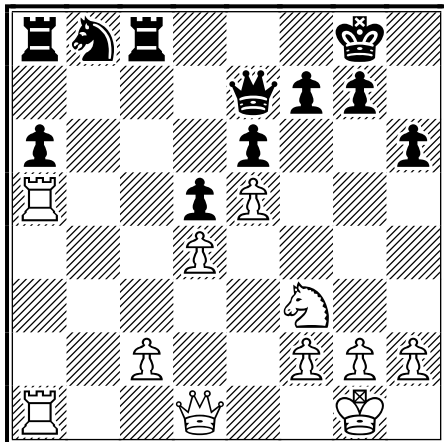
21.Rb2 f6 [21...Ka8 was more solid.] 22.Qxa6! fxe5 23.Rg3! Ne3 [23...Rg7 24.Rgb3+-] 24.Bxe3 dxe3 25.Rxe3 White has a winning attack. 25...Rd4 26.Rxb7+!? Qxb7 27.Rb3! Nb4 28.Qxb7+ Kxb7 29.fxe5! Re4+ 30.Kd2 Rf8 31.Bd3 Rf2+ 32.Kc3 Rxe5 33.Rxb4+ Kc7 34.h4! Re3 35.g5 Rg2 36.a4 e5 37.a5 e4 38.Rxe4 Rxe4 39.Bxe4 Rg4 40.Kd4! Rxh4 41.Ke5 A pawn will queen, so black resigned. 1-0

(16) Miller,S (2050) - Shulman,Y (2617) [C19]

Illinois open. (3), 04.09.2005

[Albert Chow]

1.e4 e6 2.d4 d5 3.Nc3 Bb4 4.e5 c5 5.a3 Bxc3+ 6.bxc3 Ne7 7.Nf3 Bd7 8.a4 Qa5 9.Bd2 Nbc6 10.Bb5 Qc7 11.0-0 0-0 12.Re1 b6 13.Bc1 h6 14.Ba3 Nb8!? 15.c4 Bxb5 16.cxb5 a6 17.a5!? bxa5 18.b6 Qxb6 19.Bxc5 Qd8 20.Re3 Nd7 21.Bxe7 Qxe7 22.Rea3 Rfc8 23.Rxa5 Nb8



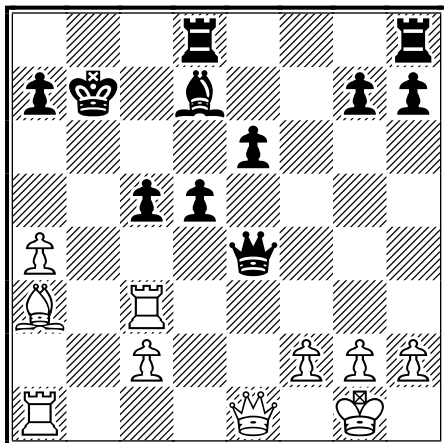
24.Ne1 Qb4 25.R5a4 Qb5 26.Nd3 Nd7 27.Qd2 Rc4
28.Ra5 Qb7 29.c3 Rac8 30.R5a3 Qc7 31.Rc1 a5
32.g3 Nb6 33.Nc5? [33.Rxa5! Rxc3 34.Rc5! looks
equal.] 33...Rxc5! 34.dxc5 Nc4! 35.Qa2 Nxa3
36.Qxa3 Qxc5 37.Ra1 Qc7 38.f4 Qb6+ 39.Kg2 Rc5
40.Rd1 Rb5 41.Rd2 Rb1 42.Ra2 Rg1+ 43.Kh3 Qb1
44.Qxa5 Qf5+ 45.Kh4 g5+ 46.fxg5 Qxg5+ 47.Kh3
Qh5# 0-1

(17) Vishnuvardhan,A (2190) - Fred,A

(2124) [C19] Midwest class Oakbrook, 16.10.2005

[Albert chow]

1.e4 e6 2.d4 d5 3.Nc3 Bb4 4.e5 Ne7 5.a3 Bxc3+
6.bxc3 c5 7.a4 Qa5 8.Bd2 Nbc6 9.Nf3 Bd7 A
Winawer French variation. 10.Bb5 Qc7 11.0-0 f6
12.Re1 0-0-0 13.Bc1!? fxg5 14.Bxc6! Nxc6 15.Nxe5
Nxe5 16.Rxe5 Qa5 17.Ba3! b6 [17...c4 18.Bb4 Qc7
19.a5 also favors white.] 18.dxc5 bxc5 19.c4! Qc3
20.Re3 Qxc4 21.Qe1! Kb7 22.Rc3 Qe4



23.Rb3+ Ka8? [23...Ka6! was a good defence.]
24.Qa5! Qxa4 25.Bxc5! Qxa5 26.Rxa5 Bb5 27.Rxa7+
Kb8 28.Rxb5+ Kc8 29.Rbb7 black resigned. 1-0

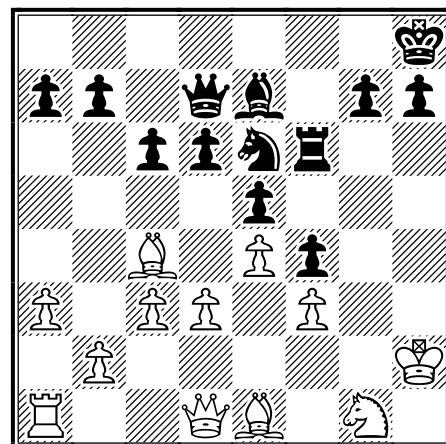
(18) Karklins,A (2295) - Mitkov,N (2612)

[C55]

Midwest class Oakbrook (4), 16.10.2005

[Albert Chow]

1.e4 e5 2.Nf3 Nc6 3.Bc4 Nf6 4.d3 Be7 5.Nc3 d6 6.a3
0-0 7.0-0 Bg4 8.h3 Bh5 9.g4!? [9.Be3 was solid.]
9...Nxg4!? 10.hxg4 Bxg4 11.Be3 Kh8! 12.Kg2 f5!
13.Rh1 [13.Be6!? maybe better.] 13...Qe8 [13...fxe4!?
14.Ng5! Bf3+! (14...Bxg5? 15.Qxg4 Bxe3 16.fxe3+)-
15.Nxf3 exf3+ 16.Kf1 Bg5©] 14.Qg1! f4 [14...fxe4!?
15.Nd2 exd3 16.Bxd3 Bf5©] 15.Bd2 Bxf3+ 16.Kxf3
Nd4+! 17.Kg2 Rf6 [17...Qg6+ 18.Kf1 Qxg1+ 19.Rxg1
Nf3 20.Ke2 Nxg1+ 21.Rxg1©] 18.Qd1 Qd7 19.Rh2 c6!
20.Kh1 Raf8 21.f3 Rg6 22.Be1 Rg3! 23.Ne2 [23.Bxg3
fxg3 wins for black attack.] 23...Rh3 24.Ng1 [24.Nxd4!
exd4 25.Bd2 may defend.] 24...Rxh2+ 25.Kxh2 Rf6
26.c3 Ne6



27.d4 exd4 28.Bxe6? [28.cxd4! was better.] 28...Qxe6
29.Qxd4 Rh6+ 30.Kg2 Qg6+! 31.Kf1 Rh2! the black
attack breaks thru. 32.Bf2 c5 33.Qd2 Qg2+ 34.Ke1
Bh4! 35.Kd1 Qf1+ white resigned. 0-1

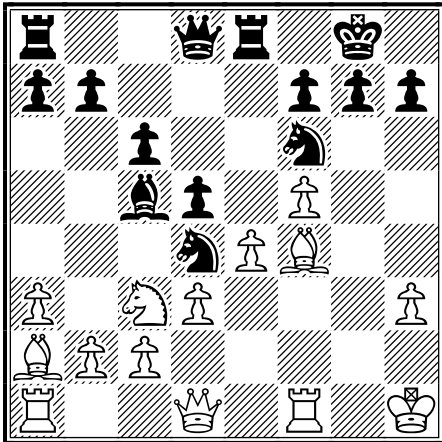
(19) Karklins,A (2295) - Parnaby,M (1599)

[C55]

Illinois open. (1), 04.09.2005

[Albert Chow]

1.e4 e5 2.Nf3 Nc6 3.Bc4 Nf6 4.d3 Be7 5.Nc3 0-0
6.0-0 d6 7.a3 Bg4 The Italian vs. Philador's defence.
8.h3 Bh5 9.g4 Bg6 10.Nh4! Nd4 11.f4! exf4 12.Bxf4
c6! 13.Nf5 Bxf5 14.gxf5 d5 15.Ba2 Bc5 16.Kh1 Re8
Enterprising tactical play.



17.Rg1!? [17.Bg5!?, 17.exd5!?] 17...dxe4 18.dxe4 Bf8?? [18...Nxe4! 19.Nxe4 Rxe4 20.Qh5! Kh8! 21.Qxf7 Qf8 good play for black.] 19.e5! Nd7 20.Qxd4 Bc5 21.Qc4 Bxg1 22.Qxf7+ Kh8 23.Rxg1 Re7 24.Qh5 Nxe5 Master Karklins shows his power with super bishops. 25.Rxg7! Rxg7 [25...Kxg7 26.f6+! cuts open a checkmate.] 26.Bxe5 Qf8 27.f6 Rg6 28.f7+ Rg7 29.Qg5 threatening to push the h pawn to h6. 29...Rd8 30.Bxg7+ mate in two, so black resigned. 1-0

(20) Shabalov,A (2600) - Georgiev,V (2588) [C78]

Midwest class Oakbrook (3), 16.10.2005

[Albert Chow]

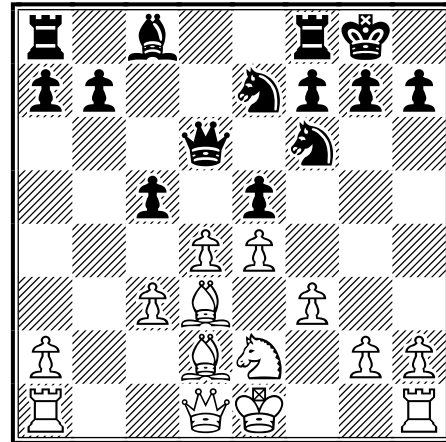
1.e4 e5 2.Nf3 Nc6 3.Bb5 a6 4.Ba4 Nf6 5.0-0 b5 6.Bb3 Bc5 7.c3 d6 8.a4 Bg4 9.h3 Bxf3 10.Qxf3 b4 11.a5 0-0 12.d3 Rb8 13.Nd2 Na7 14.Bc4 Nb5 15.Nb3 bxc3 16.bxc3 Ba7 17.Bxb5 a short draw was agreed. 1/2-1/2

(21) Shulman,Y (2617) - Calton,B [D07]

Midwest class Oakbrook (4), 16.10.2005

[Albert Chow]

1.d4 d5 2.c4 Nc6 3.cxd5 Qxd5 4.e3 e5 5.Nc3 Bb4 6.Bd2 Bxc3 7.bxc3 Nf6 8.f3! Qd6 9.Bd3 0-0 10.Ne2 Ne7 [10...b6!? Morozovich.] 11.e4 c5 The Chigorin is under fire as white's bishops and central pawns chase black's exposed queen with gain of tempo.



12.f4! cxd4 Maybe black had to try 12...Qc6 or 12...Nd7, but it all looks better for white. 13.fxe5! Qxe5 14.cxd4 Qe6 15.0-0! Nxe4 16.Nf4! Qd6 17.Bxe4 Qxd4+ 18.Kh1 Qxe4 19.Re1! skewer. 19...Qd4 20.Rxe7 Bg4 21.Qe1 Rad8 22.Ba5 b6 23.Re4 black resigned. 1-0

(22) Shulman,Y (2617) - Georgiev,V (2588) [D15]

Illinois open. (6), 05.09.2005

[A.Chow]

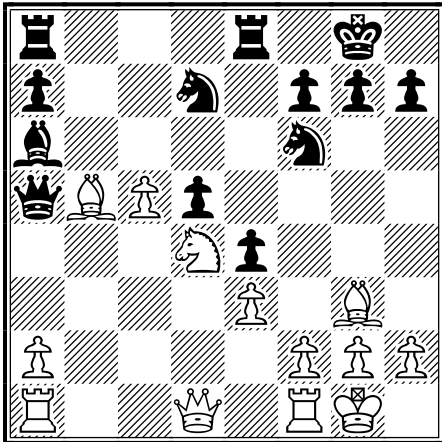
1.d4 d5 2.c4 c6 3.Nf3 Nf6 4.Nc3 a6 5.c5 Nbd7 6.Bf4 Nh5 7.e3 b6 8.cxb6 Qxb6 9.Bd3 Nxf4 10.exf4 Qxb2 11.Rc1 g6 12.0-0 Bh6 13.g3 0-0 An early draw was agreed. 1/2-1/2

(23) Gurevich,D (2600) - Duncan,J (2144) [D37]

Illinois open. (6), 06.09.2005

[Albert Chow]

1.d4 e6 2.Nf3 Nf6 3.c4 d5 4.Nc3 Be7 5.Bf4 0-0 6.e3 Nbd7 7.c5 c6 8.Bd3 Re8 9.b4 b6 10.0-0 bxc5 11.bxc5 Bxc5? [11...Qa5 12.Qc2 Ba6 is more solid.; 11...Nh5!? is better before white plays h3 and Bh2.] 12.dxc5 e5! 13.Bg3 e4 14.Nd4! Qa5 [14...exd3?? 15.Nxc6 wins black's queen.] 15.Ncb5! cxb5 16.Bxb5 Ba6



17.a4 Nxc5! 18.Bxe8 Rxe8 [18...Bxf1? 19.Bc6!+-] 19.Nb5 Nd3 20.Qb3 Nc5 21.Qa3 Qxa4 22.Qxa4 Nxa4 23.Nc7! Bxf1 24.Kxf1 Nb6 25.Nxe8 Nxe8 26.Rxa7+- Kf8 27.Be5 Nc4 28.Bd4 Ned6 29.Ra8+ Ke7 30.Bxg7 black resigned. 1-0

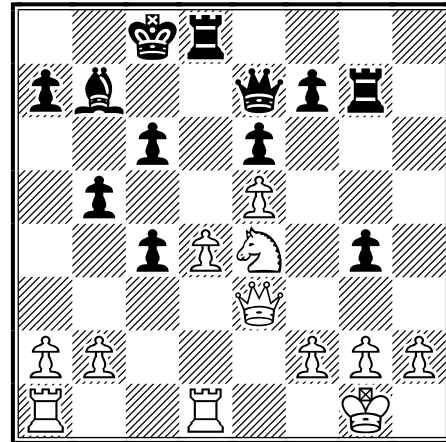
(24) Finegold,B (2600) - Gurevich,D (2600)
[D41]

Midwest class Oakbrook (1), 15.10.2005
[A.Chow]

1.Nf3 d5 2.d4 Nf6 3.c4 e6 4.Nc3 c5 5.cxd5 Nxd5 6.e4 Nxc3 7.bxc3 cxd4 8.cxd4 Nc6 9.Bc4 b5 10.Be2 Bb4+ 11.Bd2 Qa5 12.Rb1 [12.d5! Looking for the best Semi Tarrasch variation.] 12...Bxd2+ 13.Qxd2 a6 14.Qxa5 Nxa5 15.Kd2 Bb7 Early exchanges and a draw was agreed. ½-½

(25) Shabalov,A (2600) - Kleiman,J (2277)
[D43]

Midwest class Oakbrook (4), 16.10.2005 [Albert Chow]
1.d4 d5 2.c4 c6 3.Nc3 Nf6 4.Nf3 e6 5.Bg5 h6 6.Bh4 dxc4 7.e4 g5 8.Bg3 b5 9.Be2 Bb7 10.0-0 Nbd7 A Queen's gambit, Semi Slav, Anti Moscow variation! 11.Ne5!? h5? [11...Nxe5 12.Bxe5 Bg7 is solid.] 12.Nxd7! Qxd7 13.Be5! Bg7 14.Qc1! Rh6 [14...g4? 15.Qg5! wins a piece.] 15.Qxg5 Rg6 16.Qe3 Ng4 17.Bxg4 hxg4 18.Rfd1 Qe7 19.Bxg7 Rxg7 20.e5! 0-0 21.Ne4! Good Knight over bad bishop.

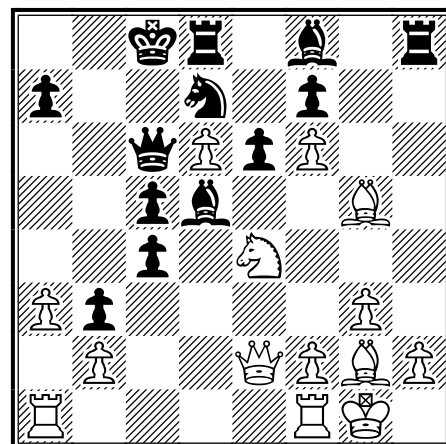


21...Qh4 22.Nf6! Rg6 23.b3! Rh8 24.Qg3 Qxg3 25.fxg3! cxb3 26.axb3 a6 27.Rf1! Rd8 28.Rf4 c5 29.Rc1! c4 30.bxc4 bxc4 31.Rxc4+ Kb8 32.Nxg4 Ka7 33.Nf2! Rd7 34.Nd3! Bd5 35.Ra4 Bc6 36.Ra2 Bb5 37.Nc5 Rc7 38.g4 Kb6 39.h3 a5 40.Rf3! Ra7 41.Rb3 Kc6 42.Rc2! Black resigned. 1-0

(26) Shulman,Y (2617) - Shabalov,A (2600)
[D44]

Midwest class Oakbrook (2), 16.10.2005
[FM Albert Chow]

1.d4 d5 2.c4 c6 3.Nf3 Nf6 4.Nc3 e6 5.Bg5 dxc4 6.e4 b5 7.e5 h6 8.Bh4 g5 9.Nxg5 hxg5 10.Bxg5 Nbd7 11.g3 Bb7 12.Bg2 Qc7!? 13.exf6 c5 14.d5 b4 15.d6! Qb6 16.Ne4 [16.Na4 Qb5 with counterplay.] 16...0-0 17.0-0 Bd5 [17...Bxe4 18.Bxe4 Bxd6 was possible.] 18.a3 Qc6 19.Qe2 b3 More problems in the Botvinnik gambit.



20.Rfd1 Nb6 21.a4 Bxd6 22.a5 Na8 23.Rdc1 [23.Nxd6+ Rxd6 24.Bf4 Rd7 Not clear but equal.] 23...Nc7 24.Rxc4!? Bxc4 25.Qxc4 Qb5 26.Qc3?! [26.Qxb5 Nxb5 27.Rc1! gains a pawn as compensation for the exchange.] 26...Nd5 27.Qf3 Rd7 28.Rc1 Rhd8

29.Be3 Rc7! 30.h4 c4 31.Bd4 Nb4 32.Nc3?! Qxa5
 33.Ne4 Qd5 34.Bc3?! [34.Nxd6+ Rxd6 35.Qxd5 exd5
 36.Be5 Ra6 favors black also.] 34...Nd3 35.Ra1 Bb4 A
 real black advantage. 36.Qe2 Bxc3 37.Nxc3 Qe5
 38.Qf3 Nxb2 39.h5 Nd3 40.Ra6 Nb4 41.Qa8+ Kd7
 42.Qf3 Nxa6 white resigned. 0-1

(27) Georgiev,V (2588) - Middleton,D (1966)
[D47]

Illinois open. (3), 04.09.2005

[A.Chow]

1.d4 d5 2.c4 c6 3.e3 Nf6 4.Nc3 e6 5.Nf3 Nbd7 6.Bd3
 dxc4 7.Bxc4 b5 8.Be2 Bb7 9.0-0 a6 10.e4 Be7?!
 [10...c5! The Meran must create counterplay.] 11.e5!
 Nd5 12.Nxd5 cxd5 13.Bd3 h6 14.Bd2 Qb6 15.Be3 a5
 16.Ne1 Nf8?! 17.Rc1 Kd8?! 18.f4 g6 19.g4 f5 20.exf6
 Bxf6 21.Nf3 Rc8 22.Rc5 Ba6 23.Ne5 Rg8 24.Nf7+
 Ke7 25.Nxh6 Rh8 26.g5 Bg7 27.Ng4 Rh3 28.Qe2
 Rxe3 29.Qxe3 Bxd4 30.Qxd4 Qxc5 31.Qxc5+ Rxc5
 32.Ne5 Rc8 33.h4 Nd7 34.Nxg6+ Kd6 35.h5 Nc5
 36.Be2 Ne4 37.h6 Rc7 38.Bd3 Nc5 39.Rd1 Nxd3
 40.Rxd3 b4 41.Rd2 Bb5 42.Ne5 Be8 43.Rh2 black
 resigned. 1-0

(28) Finegold,B (2600) - Karklins,A (2295)
[E33]

Midwest class Oakbrook (5), 16.10.2005

[Albert Chow]

1.d4 Nf6 2.c4 e6 3.Nc3 Bb4 4.Qc2 Nc6 5.Nf3 d6
 6.Bg5 h6 7.Bd2 e5 8.d5 Bxc3 9.Bxc3 Ne7 10.e4 Nh5!
 11.g3 f5! 12.exf5 Bxf5 13.Qd1 Nf6 14.Nh4 Bh7
 15.f4!? 0-0!? 16.fxe5 Ne4 17.e6! c6! 18.Qd4 Nxc3
 19.bxc3 19...g5 [19...Qa5! This natural idea gains
 counterplay.] 20.Ng2 Rf5 21.Ne3 Re5 22.Be2 White
 consolidates an extra pawn advantage. 22...h5 23.Rf1!
 Qe8 24.Rf7 Bg6 25.Rf6 cxd5 26.cxd5 Rc8 27.Rd1
 Rc5 28.c4 Ra5 29.Rd2 Ra3 30.Nd1 Qd8 31.Qb2 Qa5
 32.Kf1! Kg7 33.Rf3 Rxf3+ 34.Bxf3 Kh6 35.Nf2 Qa6
 36.Qc3 Qb6 37.Re2 Rf5 38.Qh8+ Bh7 39.Be4! black
 lost on time before dropping material. 1-0

Time to renew with the ICA?

The mailing label on the back cover of your Illinois Chess Bulletin shows the expiration date of your ICA membership. You may renew, or join for the first time, by filling out the form below (photocopy OK). Make check payable to Illinois Chess Association and mail to ICA Membership,

Jeff Smith
 19439 Lakeside Lane
 Bloomington, IL 61704
 309-378-2078
icamembership@msn.com

Name _____
 USCF ID _____
 Address _____
 City-State-Zip _____
 Phone _____
 Email _____

Membership type:

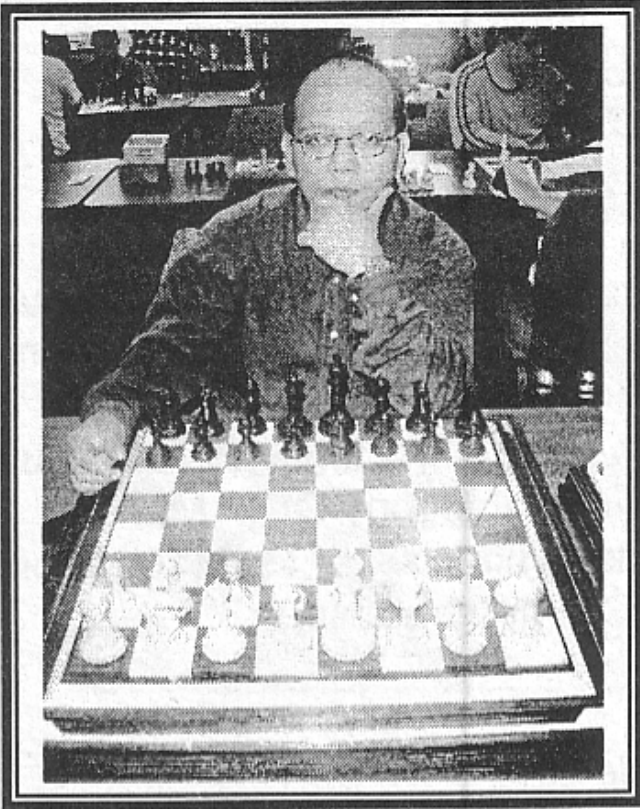
- Century Club Patron \$100 (a)
- Gold Card Patron \$50 (a)
- Patron \$35 (a)
- Regular adult \$18
- Junior (under 20) \$14
- Additional family member \$6 (b)
- ICA-affiliated club \$25 (a) (c)

Birth date (required if Junior) _____

(a) Receives ICB by first-class mail.

(b) No magazine. Must be related, and living at same address, as a Regular (or higher) ICA member.

(c) For chess clubs and other chess-related organizations. Includes the right to run ICA Tour events. No membership privileges

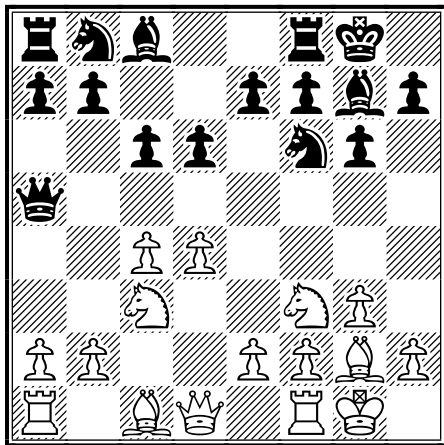


Games By IM Young

(1) IM Young,A - GM Zapata,A [E62]

Miami International, 2005

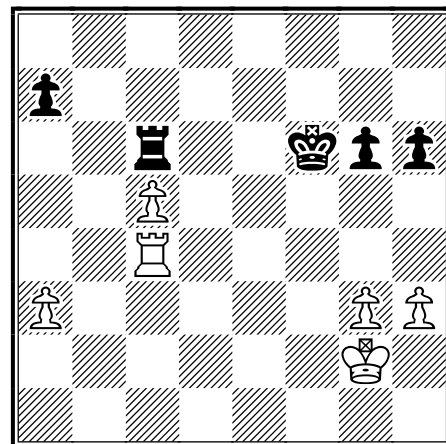
1.d4 Nf6 2.c4 g6 3.Nf3 Bg7 4.g3 Kings Indian (g3 System) 4...d6 5.Nc3 0-0 6.Bg2 c6 7.0-0 Qa5 Diagram



I also used this line as black. The ideas is to spring the queen to king side via h5 and trade off the black light squared bishop on h3,softening white kingside defense.8.e4 other try [8.h3!? Qh5 9.Ng5 h6 10.g4

Qh4 11.Nf3 Trapping the queen] 8...Qh5 9.Ng5 h6 [9...Qxd1 10.Rxd1 e5 11.d5 h6 12.Nf3 c5 13.h3 Nbd7 14.Be3 a6 15.Bf1 Nh5 16.Nh4 Kh7 17.Be2 Bf6 18.Ng2 Ng7 19.a3 Be7 20.b4 b6= Z. Polgar - M. Klinova

(Moscow OLW)] 10.Qxh5 Nxh5 11.Nf3 Na6N Novelty! [11...Be6 12.d5 cxd5 13.cxd5 Bd7 14.Be3 Na6 15.Bd4 Rfc8 16.Bxg7 Kxg7 17.e5 Nc5 18.Rad1 Kf8 19.Rfe1 Ng7=] 12.h3! A prophylactic move ! anticipating Nf6 - Ng4 and also stopping Bg4 where it will put pressure white d pawn. 12...e5 13.Rd1 Avoiding [13.Be3 f5 14.dxe5 dxe5 15.Rad1 f4 16.gxf4 Nxf4μ] 13...Re8 14.Rb1 Away from the long diagonal a1- h8 and also served as a waiting move. 14...Nf6 15.dxe5! Time to take the pawn to relieve the pressure in the center. 15...dxe5 16.b4 I'm happy with my position, white controls more spaces. 16...Be6 17.Bf1 Nd7 18.Nd2? [18.Be3 might a better choice here.] 18...Nc7 19.Nb3 b6 20.Be3 Bf8 21.a3+- White has a slight advantage due to blacks cramped position. 21...Red8 22.f4? Too early! better would be [22.Rd2 Nf6 23.Rbd1 Rxd2 24.Rxd2 Kg7 25.f4 Nd7 26.Nd5 cxd5 27.cxd5] 22...Bg7! I overlooked this simple move. 23.Rbc1 Nf6 24.fxe5 Rxd1 25.Rxd1 Nd7 26.Nd5 The rest of the moves were played in time trouble. 26...cxd5 27.exd5 Bf5 28.Nd4 Be4 29.e6 fxe6 30.d6 Ne8 31.Nxe6 Nef6 32.c5 bxc5 33.bxc5 Ne5 34.Bg2 Bxg2 35.Kxg2 Nfd7 36.Bd4 Bf6 37.Bxe5! Nxe5 38.d7 Kf7 39.d8Q Bxd8 40.Nxd8+ Ke7 41.Rd5 Rxd8 42.Rxe5+ Kf6 43.Re2 Rc8 44.Rc2 Rc6 I think I missed my chances somewhere in the endgame. 45.Rc4 Diagram



45...Ke5 46.Ra4 a6 47.Rh4 g5 48.Ra4 h5 49.Kf3 Kd5 50.Ra5 Kd4 1/2-1/2



Road Warrior
by Pete Karagianis

This transcription of the *Road Warrior* is delivered fresh and neatly packaged, just in time for Christmas, by a scratchy radio near you- a location otherwise and erstwhile known as Joliet, the town of the confusing first vowel.

Friday evening, I drove in from the bitter northern tundra of Ames, Iowa, to lecture and give a simultaneous exhibition against the hearty winter adventurers of the Joliet Junior College Chess Club. I had played in Joliet previously- almost five years ago now- and remembered vaguely the playing site, which was as enjoyable as I remembered it, much more so, notably, than many of the exotic or remote locales at which I have previously competed.

Now, don't get me wrong, I should clarify that I love a good tournament in Vegas as much as the next guy- casinos, flashing lights, 24/7 everything, a few other unmentionables, and, most importantly, the good chance every round that your opponent may accept your offer of an open tab at the nearest hotel spirits provider. But there is something outstanding about the quiet, subdued tournament atmosphere- something relaxing and therapeutic at the same time.

The Joliet club offers such an atmosphere. The campus itself is relatively scenic. The entrance drive winds around through snow-filled woods and a bridge to the building that hosts the playing site (creatively named "Building J"), which itself borders an open hall overlooking a body of water. Ultimately, and most importantly when considering prospective tournaments, it is an environment conducive to chess, and I am a firm believer that conditions can produce great play.

That said, I will leave you not with further elaboration on the pleasure of the weekend, but instead with two of my games from the event, both of which involve excellent ideas from both sides.

**Karagianis, Pete (2218) -
Karklins, Andrew (2291) [E11]**

IL Class Championships 2005 (3), 11.12.2005

[Karagianis]

192MB, Fritz8.ctg, ACROPOLIS **1.d4 Nf6 2.c4 e6 3.Nf3 Bb4+ 4.Bd2 a5 5.g3 Ne4** This is the same variation that we played during the Second Annual Billy Colias Master Invitational. At this point in that game, I believe I played Bg2 and continued on normally, and ended up with a win. However, over the board at Colias, I came up with the following idea: what if I just take the bishop and play for faster development? The idea came from a study I'd done on the Bogo-Indian, although in what I looked at, it was the c-pawn on b4 instead of the a-pawn. The difference is which file will be open- c or a... I was very interested to see the difference. **6.Bxb4 axb4 7.Qd3 d5 8.Nbd2 Nxd2 9.Nxd2 0-0 10.Bg2 Nc6 11.e3 Qd7** ! A very solid move that I underestimated. At the time of the game, I thought it simply gave me even more time to complete development and attack, but actually this is one of the deepest moves I've seen in awhile. **12.0-0 b6 13.Rfc1 Bb7 14.cxd5 exd5 15.Qb3 Ra5 16.Rc2** I had nice pressure to this point, but I started to lose the thread a bit... it's not clear how white should continue. one possibility may be 16. a4... with the idea of further locking things down, or allowing my a1 rook to get into the game, which was the idea behind Rc2. **16...Rfa8 17.Rac1** the a2 pawn is immune because of d5. **17...Qd6 18.Nb1 R8a7 19.a3 Ba8 20.h3 g6 21.Rd2 bxa3 22.Nxa3 Nb4** I was in significant time pressure here and erred with e4, thinking de4 was not possible thanks to the Nc4 fork. Naturally I missed the reply Bd5. Perhaps white can try Bf1 here, realistically, or Qd1. **23.e4 dxe4 24.Nc4 Bd5 25.Nxd6 Bxb3 26.Nxe4 Ra1 27.Rxa1 Rxa1+ 28.Kh2 Rd1** The d2 rook defended all, and so exchanging the final pair makes sense. **29.Rxd1 Bxd1 30.Nc3 Bb3** Whew. In a flurry of time pressure I reached what I felt to be an inferior ending. my pawns are scattered and hard to defend. I spent a good deal of time on this move and came up with a simple but powerful defensive idea. **31.g4** ! the point is that if Nd3 then Bd5 takes control of the important d5 square, and in exchange for b2 I get to split up black's c7 and b6 pawns, netting one in the process. Of course, there were more passive ideas as well, such as Nb5 and Bf1. g4, however, also allows the white king to enter via the dark squares, and gives a quick avenue to the center of the board. **31...Nd3 32.Bd5 Bxd5 33.Nxd5** knight vs. knight endgames are usually wins for somebody. However, king activity is of the utmost importance, and , in this case, even compensates for an outside passed pawn. **33...Nxb2 34.Nxc7 Nc4 35.Kg3 Kf8 36.Nd5** the knight will keep the king at home... an

Road Warrior

exit is prevented by the threat Nf6+ or, after b5, Nc7+ 36...b5 37.Kf4 h6 38.h4 seeing no way to improve my own position, and having shown a plan to stop the b-pawn, I offered a draw and black accepted. ½-½

McDonald, Jordan (1868) - Karagianis, Pete (2218) [C70]

Il Class 2005, 12.12.2005

[Karagianis]

1.e4 e5 2.Nf3 Nc6 3.Bb5 a6 4.Ba4 f5 5.Nc3 b5 6.Bb3 b4 7.Bxg8 Rxg8 8.Nd5 fxe4 9.Ng1 d4 was interesting here but probably not enough play for the piece after black makes simple moves. Now, however, there is only one move for black to keep the advantage... can you see it? 9...Qg5 ! I actually got this idea from a game I played in the Normal October open- the position was slightly different, but the concept was the same- give up c7 and a8 for g2. 10.Kf1 [10.Nxc7+ Kd8 11.Nxa8 Qxg2 looks like the end for black, hard to suggest a move...] 10...Bd6 11.d3 Qg6 12.h4 not a bad try, allows the later rh3. 12...exd3 13.cxd3 Bb7 14.Nf3 Nd4 good to get this in before Be3 15.Nxd4 Bxd5 16.Nf3 h6 to prevent either minor from reaching g5 17.Be3 Rf8 18.d4 Ne1 or Rh3 was required... now... 18...Rxf3 ! A nice sac that exposes the king to the middle of the board. 19.gxf3 Bc4+ 20.Ke1 I thought I was mating, but I missed a nice defense by white. 20...Qg2 21.Kd2 exd4 22.Qe1 ! the only move to prevent immediate loss... Bxd4? would have failed to Bf4+ Kc2 (Be3? Qxf2) and Qg6 22...0-0-0 [22...Qxf3 23.Bxd4+ Kf8 was superior, but nerves reached me] 23.Bxd4 Qxf3 24.Rd1 again accurate defense by white. 24...Qd5 idea is Kc1 Bxa2 25.b3 Qxd4+ 26.Kc2 Qc5 27.bxc4 Qxc4+ 28.Kb2 Qb5 29.Qd2 Be5+ 30.Kb1 c6 31.Qe3 Bf6 32.f4 d5 33.h5 Rd7 34.Rhe1 Kc7 35.Qa7+ Qb7 36.Qe3 Qb6 37.Qg3 Qc5 38.Rd3 Re7 39.f5+ Kb7 40.Rxe7+ Qxe7 41.Re3 Qc7 42.Qg4 a5 43.a3 Qh2 44.Re2 Qh1+ 45.Kc2 Qa1 46.axb4 Qb2+ 47.Kd1 Qb1+ 48.Kd2 Bg5+ ? after all the maneuvering, this is a silly mistake. I thought it won and liquidated material, but instead it serves as a good lesson to always play the simple win. Qxb4+ was easy. 49.Kc3 d4+ 50.Qxd4 Bf6 51.Re7+ Kc8 52.Re8+ Kc7 53.Re7+ Bxe7 54.Qa7+ Kd8 55.Qa8+ Kd7 56.Qb7+ Kd6 57.Qb8+ Kd5 58.Qg8+ Ke4 59.Qe6+ Kf4 the bishop is immune because of Qxb4 with a won king and pawn ending. Still, black made it much harder than it should have been. The remaining moves were lost to a time scramble. 0-1

Pete Karagianis is a columnist for *En Passant*, *The Illinois Chess Bulletin*, *The Oklahoma Chess Quarterly*, and *The Chess Underground*. He can be reached for comments and questions at Karagianis@gmail.com or through his website at <http://transplant.dyndns.org/pc/>

PEORIA WINTER TORNADO

AN ICA MINI-TOUR & EX-URBAN EVENT

WHEN: Saturday, January 28, 2006

WHERE: Lakeview Museum, 1125 W. Lake Ave., Peoria, IL 61614

ENTRY FEE: \$14 by January 26, \$17 at the site, free if rated 2200 or over

WHAT: 4 round Swiss

TIME CONTROL: Game/80 (5 second time delay allowed)

SECTIONS: One--open to all

MEMBERSHIPS REQUIRED: USCF & ICA (other states honored)

PRIZES: 75% of EF's distributed as follows:
25% First, 15% Second,
10% each to A/B, C/D, under 1200
5% to biggest upset

REGISTRATION: 8:00-8:45 AM

ROUND TIMES: 9, 12, 2:45, 5:30

NOTE: A limit of one "1/2 point" bye is available in any Rd., but a bye in Rds. 3 or 4 must be elected by the end of Rd. 2

NO SMOKING. BRING SETS, BOARDS & CLOCKS

ADVANCE ENTRIES: Fred Malcome, 1000 Lilac Lane, Metamora, IL 61548
(309) 367-4833 e-mail:
malcomef@mtco.com

Historical Chess: The Albin Counter Gambit

NM Jon L. Burgess

The Albin Counter Gambit was first used by Adolf Albin against Emanuel Lasker in 1893.

This is the starting position for the Albin Counter-Gambit.

ECO Code D08-D09

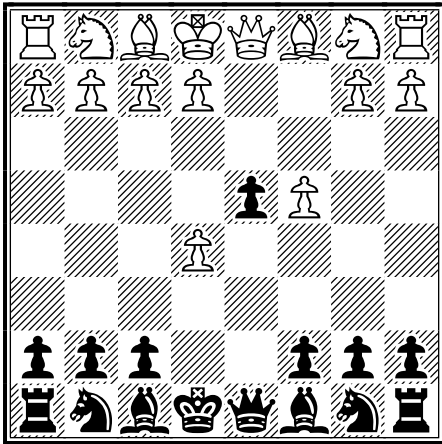


Diagram 1

The following is a game that Adolf Albin played in 1893 against world champion Emanuel Lasker. White dominated the game by strong positional moves.

Emanuel Lasker – Adolf Albin

1.d4 d5 2.c4 e5

Black challenges the center immediately offering White the chance to play 3.dxe5 winning the pawn.

3.dxe5 d4 4.Nf3 Nc6 5.a3

This move seems very passive; however it does prevent Black from ever playing ...Bb4+ or ...Nb4 after ...Bf5. For example, 5.g3 Bf5 6.Bg2 Nb4 7.Nxd4 Qxd4 8.Qxd4 Nc2+ 9.Kd1 Nxd4—in this variation Black emerges a piece ahead. White must be very careful of taking the pawn on d4 when the Black Knight is on b4 ready to make a Fork on the c2 square.]

Idea

The idea of the Albin Counter Gambit is to give up a pawn in the middle of the board while Black rapidly develops his pieces.

5...Bg4

The Black Bishop goes to g4 where he threatens to take the White Knight on f3 followed by Nxe5.

6.h3

This move by White encourages Black to take the Knight on f3. We call this wasting a move. Other moves include 6.Qb3 or 6.Nbd2.

6...Bxf3 7.gxf3 Nxe5 8.f4 Nc6 9.Bg2 Qd7 10.b4 a6 11.Bb2 Rd8 12.Nd2 Nge7 13.Nb3

Notice that White now has 3 pieces attacking the Black pawn on d4 but it also has 3 Black pieces defending it.

13...Nf5

Notice how Black tries to hold on to his weak d-pawn.

14.Qd3 Be7 15.Be4

Opening Statistics 1893-2005

Number of Games: 2911

White Wins: 48 %

Draws: 20 %

Black Wins: 42 %

So from this we can tell that both sides did pretty well in general.

This move Be4 is a skewer since it attacks both the Knight on f5 and the Pawn on h7 at the same time.

15...Nd6 16.Nc5

16.Bxh7 It is possible here for White to steal the h7 pawn, but then Black can play 16...Nxc4 17.Qxc4 Rxh7—Black attacks the h3 pawn twice with Queen and Rook.]

16...Qc8 17.Bf3 0–0 18.Rg1 Ne8 19.Nb3 Qd7

Instead of 19...Qd7 what if Black had played 19...Qxh3 stealing a pawn? 20.Rh1 The crunch move! Notice that once the Black Queen moves away mate will come quickly on h7. 20...Qd7 21.Qxh7# game over.

20.0–0–0 Qd6

The Black Queen eyes the weak f4 pawn.

21.Kb1

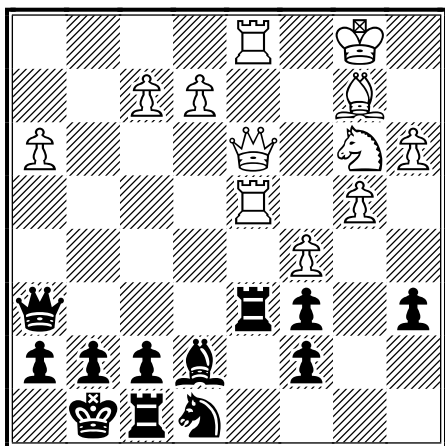
White decides to let the pawn go for the chance to get some activity

Historical Chess: The Albin Counter Gambit

21...Qxf4 22.Rg4 Qh6 23.Bxc6 bxc6 24.Rxd4 Rd6 This move is weak by Black. Better was RxD4. 25.c5 (Diagram 2).

Diagram 2 Quick Analysis

- 25.c5 created a double attack. The Black Rook on d6 is attacked, as is the Black pawn on d6. White's position is superb.
- Black's pieces are uncoordinated. The Black Rook is stuck on f8 and the Knight on e8 doesn't do much.
- White is starting to attack the uncoordinated pieces as well as thinking of attacking the Black King.
- If 25...Rxd4, then White can play 26.Nxd4 followed by Nf5 with many strong follow-up plans.



25...Re6 26.Qxa6 So now the position is clearly better for White. He has more activity and right now is a pawn ahead. Both sides have weak pawn structures.

26...Qxh3 27.R4d3 Qg2 28.Nd4 It is very hard here to find a decent move for Black. White has very active pieces aiming at the Black King.

28...Rf6 29.Re3 Bd8 30.Nc2 This is called a discovered attack. Both the Black Rook on f6 and the Black Bishop on d8 are attacked by White's pieces. Notice there is nowhere for the Black Bishop to go without being captured by one of the White Rooks.

30...Rxf2 31.Rxd8 A blunder by Black spoils the game. White played well developing his pieces and getting activity when he wanted it. Black was stealing pawns and trying to hold on to them, which didn't work well at all. 1-0

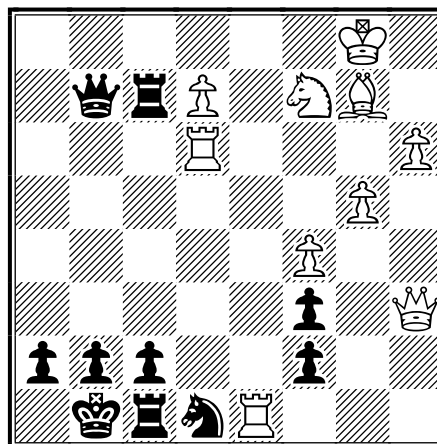


Diagram 3

The Albin In Modern Play

Igor Khenkin [2603] - Alexander Morozevich [2707]

1.d4 d5 2.c4 e5 3.dxe5 d4 4.Nf3 Nc6 5.g3

This is the main line of the Albin

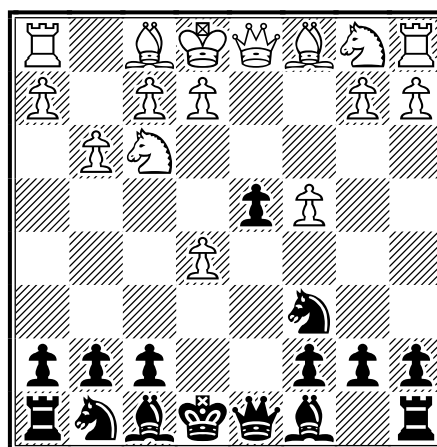


Diagram 4

Diagram 4 Quick Analysis

- White is a pawn ahead
- Black is attacking the e5 pawn while trying to defend his pawn on d4
- White is getting ready to develop his Bishop on the g2 diagonal

5...Nge7

White has a weak pawn on e5 that Black will target by playing 6...Ng6.

6.Bg2 Ng6 7.Qa4

Pins the Black Knight on c6 to the King so that Black can't play 7...Ng6xe5.

7...Bb4+

If 7...Ngxe5 8.Nxe5! Also in this variation Black will lose more material since the Knight on C6 is attacked 3 times and only defended once.

8.Nbd2

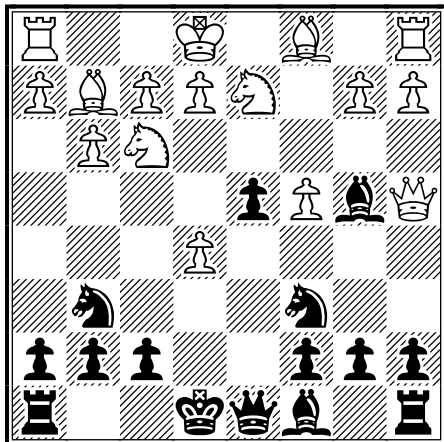


Diagram 5 Quick Analysis

- White pins the Black knight on c6 to the king
- Both sides are ready to castle
- If Black plays ...Ngxe5 then White will play Nf3xe5 winning a Knight

Tactical Alert! Pins

- White queen pins Black knight on c6
- Black bishop pins White knight on d2

8...0-0 9.0-0 a5

With 9...a5, Black anticipates that White will play 10.a3 and try to expand on the Queenside with b4.

10.a3 Be7

11.b4 is now possible for White since if Black plays ...axb4 then White has Qxa8 winning a Rook.

11.Rd1

With this move White is trying to pressure the Black pawn on d4.

11...Ncxe5 12.Nxe5 Nxe5

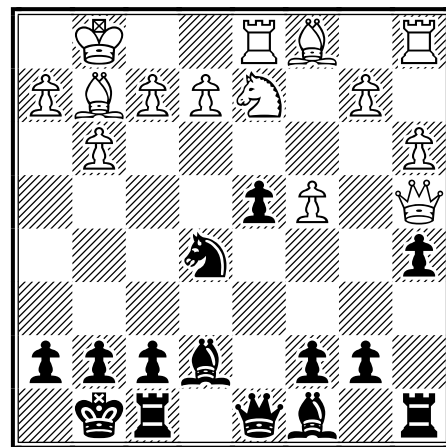


Diagram 6 Quick Analysis

- Both sides have castled
- Black has won back his pawn
- White's queen is on a bad square
- White has a strong Bishop on g2

Ideas

Black will continue throughout the game to pressure the e5 pawn, while White will be trying to pressure the d4 pawn.

13.Nf3 Nxf3+ 14.Bxf3 Bf6

Instead of this move C5 was possible for Black supporting the pawn on D4 but it leaves the White squares very weak.

15.c5 Qe7 16.Bf4 g5

It was possible for Black to play 16...Qxc5, but that's not a good move. After 17.Rac1 Qf5

Historical Chess: The Albin Counter Gambit

18.Rxc7, White has more activity and is threatening to win the b7 pawn.

17.Bd2 c6 18.Qc2 a4 19.e3 Be6

This is a strong move threatening 20...Bb3 skewering the White Queen and Rook.

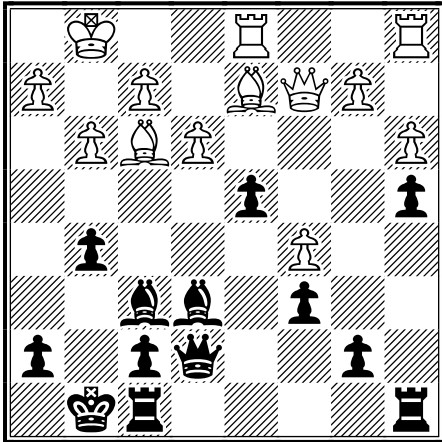


Diagram 7 Quick Analysis

- Black has very strong Bishop on e6 ready to go to b3 and skewer the White Queen and Rook
- The White bishop isn't so strong now
- Whites pieces are not coordinated
- In Diagram 6 White looked better, but now Black does

20.Re1

If 20.Kg2 Bb3 21.Qc1 Bxd1 22.Qxd1 Black would win the Exchange.

20...d3

A strong move: if White takes the pawn then the White pawn on b2 vanishes along with White's position. If White doesn't take the pawn on d3 then he has an even more cramped position.

21.Qxd3 Bxb2

Attacking both the rook on a1 and pawn on a3, which White can't defend.

22.Rab1 Rfd8 23.Qc2 Bxa3 24.Bc3 Bxc5

Two pawns ahead, Black is coasting to victory.

25.Ba1 Rd7 26.Red1 Rxd1+ 27.Bxd1 b6 28.Bf3 Bd5 29.Bxd5 cxd5 30.Qf5 Qe4 31.Qf6

Now mate is threatened at both g7 and h8: how Black will stop it?

31...Qxb1+ 32.Kg2 d4

A stunning move. White resigned. Now there are some final variations possible. If 33.Qxg5+ then 33...Qg6. If 33.exd4, then 33...Qg6 is possible again. A superb game by Black. White seemed to be one step behind the whole game. **0-1**

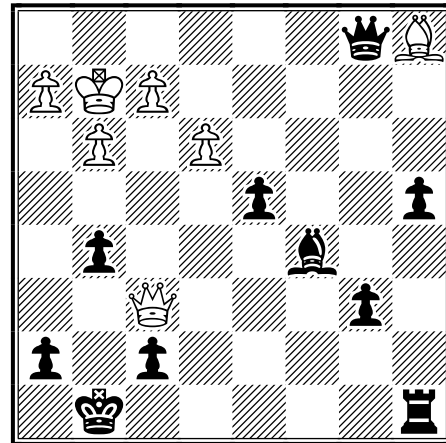


Diagram 8 Quick Analysis

- Black is a Rook ahead
- Whites pieces are uncoordinated
- White has a passed a-pawn
- If White checks Black with Qxg5 then Black plays Qg6

The Albin Counter Gambit has improved over the years as the above games show. White has found that by playing g3 he can create a strong Bishop on g2. However Black has also discovered that by playing ...c6 he can weaken the g2 Bishop.

Notice that Albin was outplayed because he put his pieces on passive squares and had very weak pawns. Morozovich relied more on pins, tactics and strong positional moves to wear his strong opponent down. Both games show that the Albin Counter Gambit is very playable but know that if you play it you should play strong positional moves and look out for the pins and tactics that might become available to you.

NORMAL RESULTS AT SEMI-NORMAL G/60 OPEN

By Larry Cohen

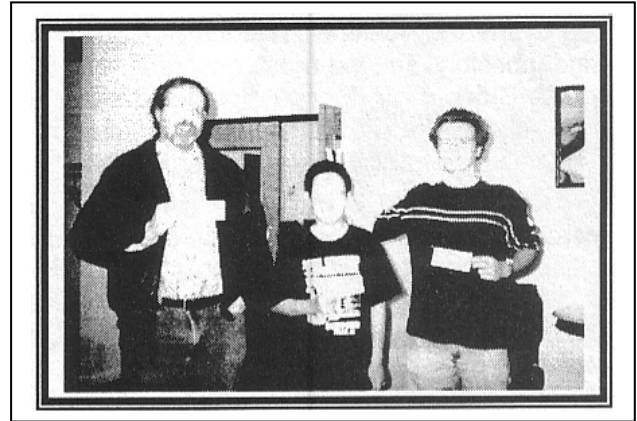
The results of the Semi-Normal G/60 Open were pretty much what you might have expected. In the Open section top rated Master Aleksandar Stamnov took first place with 3.5 points. Tied for second place (and Expert and Class A) were the next three highest rated players: David Long, Vince Hart, and Gordon Ruan. Vince drew with both David and Gordon, as well as drawing with Stamnov in the final round, which earned him the upset prize. Both David and Gordon had a loss to Stamnov. Tied for the U1800 prize were Dennis Bourgerie and Jason Chien.

In the Reserve section Lazlo Naszodi arranged for a last round bye at the start of the tournament. He then proceeded to win his first three games and finish at the top of the field with 3.5 points. Tying for second were Robert Hollenhorst and Paul Hanke. The top class D player was George Ruan with 2.0 points. The top u1000 player was Matt Willis with 2.0 points, which included a 338 point upset win for the upset prize. The top player under age 10 was Edward Sun with 2.0 points. Here is the decisive round 3 game between Hanke and Naszodi.

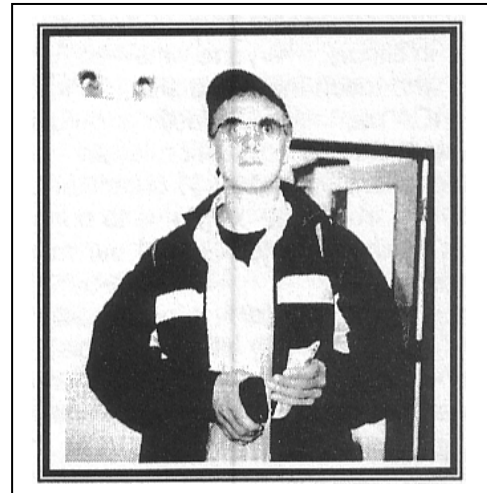
1. e4 c5 2.Nf3 d6 3.d4 cxd4 4.Nxd4 Nc6
 5.Nc3 Nf6 6.Be2 Bd7 7.Be3 g6 8.Qd2 Ng4
 9.Nxc6 bxc6 10.Bxg4 Bxg4 11.Bd4 e5
 12.Be3 h5 13.f3 Be6 14.Rd1 Qc7 15.0-0
 Rd8 16.b3 Be7 17.f4 Bg4 18.Rde1 Bh4
 19.g3 Bh3 20.Rf2 (maybe 20.gxh4 Bxf1 21.Rxf1
 would be better) Be7 21.Kh1 h4 22.f5 hxg3
 23.hxg3 Bxf5 dis ch 24.Rh2 Rxh2 ch 25.Qxh2
 Be6 (at this point White is getting into time trouble)
 26.Rf1 Kd7 27.Qh7 Kc8 (now White has only 2
 minutes for the rest of the game.) 28.Rxf7 Bxf7
 29.Qxf7 d5 30.exd5 Bb4 31.Qe6 ch Kb7
 32.dxc6 ch Qxc6 ch 0-1 White resigns as the
 Queens are traded off.



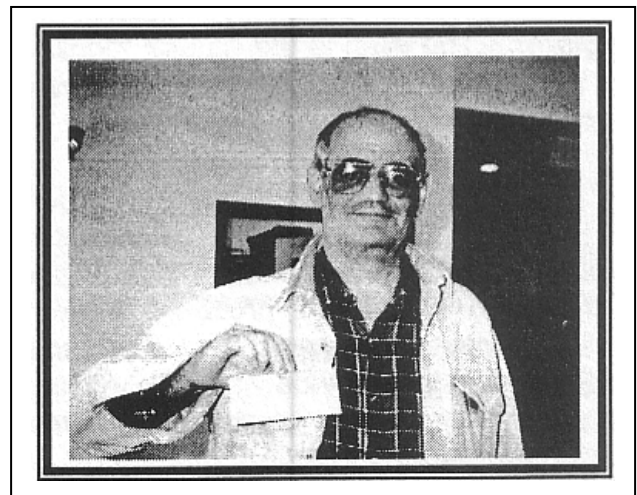
Last round, with Stamnov playing Hart and Ruan playing Jason Chien.



Vince Hart, Gordon Ruan, and David Long



Stamnov with his winnings.



Reserve section winner Laszlo Naszodi

President's Podium Cont.

It seems that I can't write a column without making factual errors. There were at least two whoppers in my November-December column:

- Hyde Park resident **Regina Fischer** may have lived very close to Billings Hospital in 1943, but both **Fred Rhine** and **Patrick Michael O'Brien** pointed out to me that Iceland's second most famous citizen (and possibly second-most eccentric, though here he gives **Björk** a run for the money), **Baby Boy Bobby**, was actually born at **Michael Reese Hospital**.
- The sentence that began, "*Bill Brock said it couldn't be done [...]*" should have been completed with "*and Bill Brock was right.*" We shall omit the details.

The more folks pitch in, the more ICA can get done. All ICA members and chessfriends in the general public are invited to come to the next **Illinois Chess Association board meeting, Sunday, February 5, from 1:30 to 4:00 p.m.** at Ravid & Bernstein LLP, 230 W. Monroe, Suite 330, Chicago.

After the regular board meeting adjourns, I'd like to invite all **scholastic chess organizers** (for-profit and nonprofit) to attend an *informal* meeting (4:15 to 6 p.m.) in which they can air their grievances (happy Festivus!) and find shared interests. If we can grow the "chess pie" in Illinois, everyone wins—both the kids and the adults who teach them. I'd also like to explore ways in which ICA can help scholastic organizers in a manner consistent with its nonprofit mission. Keeping in mind that donations to 501(c)(3) organizations are tax-deductible, can we create programs to bring chess to schools that normally couldn't afford our many fine private instructors? Check out www.chessintheschools.org (a fine organization serving children in New York City public schools). Then ask yourself why, if New York kids can get \$3,500,000/year of contributions for chess instruction, Illinois kids don't deserve the benefits to be derived from (say) \$350,000.

Attention, Luddites! The March/April issue of the **Illinois Chess Bulletin** will be a whopping *four* pages—we will mail the tournament calendar to current members. In its place, look for a full issue of the **March/April ICB Online**, edited by National Master **Pete Karagianis**. The Web is the natural medium for chess—it's fun to play through annotated games on a Java viewer.

We realize that not everyone is a computer person, and will be limiting the online issues to twice a year for

now. In the future, we'd like to move the entire publication to the Web—but that's probably some time away. While budgetary concerns drive this decision, we're delighted with the service and the reasonable prices offered by our current printer, **K.K. Stevens Publishing Co.** of Astoria.

Finally, congratulations to our own **Yury Shulman** for a great result at the **2005 FIDE World Cup**, held in the Siberian city of Khanty-Mansiysk. Shulman beat 1999 FIDE World Champion **Alexander Khalifman** in a nerve-wracking playoff to make to the final 32, then took Russian phenom **Alexander Grischuk** (the thinking woman's Brad Pitt) to tiebreaks before being eliminated.

Here's another reason we need the Warren Junior Program: we are now fortunate enough to have four resident grandmasters: Shulman, **Dmitry Gurevich**, **Vladimir Georgiev** and **Nikola Mitkov**, and other wonderful teachers like **IM Jan Van de Mortel**, **FM Al Chow**, and **Tamara Golovey**. Chess professionals need to eat—they can't afford to give their services away. But some of our most talented students can't afford the full cost of lessons (I received a plaintive email from a parent on a budget just a few hours ago). Happy New Year!

Springfield CC

Andy Mc Gowan Wins One For Late Colleague

The Second Annual David Mote Memorial tournament drew just eight players, the second-lowest number ever for the SCC, to town on October 15. David's longtime friend and colleague, Andy Mc Gowan, of Peoria, went 4-0 and won the tournament. Greg Moses, of Jacksonville, went 3-1 and took second place. The first A-B prize was shared by Gary Blickhan, of Quincy, and Bruce Michel, of Stonington. Each had two points. Dan Tuttle, of St. Louis, won the Class C-D prize with 1½ points, and James Ruth, of Buffalo (Ill.) scored 2 points and won Class E.

Complete results are on page 4.

Evan Dorosheff Wins City Championship

Six chess players attended the 2005 Springfield city chess championship, held on November 5 at Lincoln Library. Evan Dorosheff, of Greenview, swept the tournament with a perfect score of 3-0, including an upset win over Tom Knoedler. Tom and defending champion Matt Cremeens finished tied for second with 2-1 scores.

Knight Moves Chess Club Update

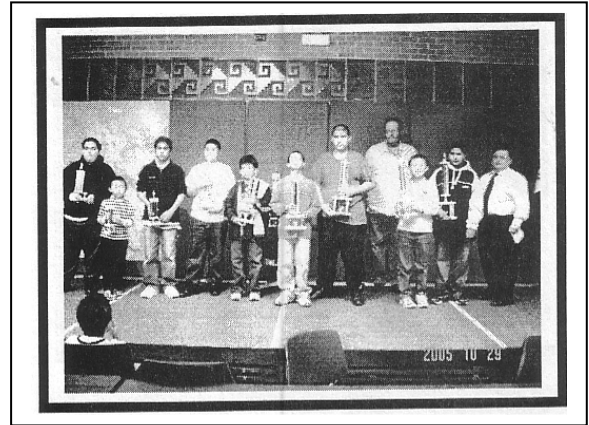


by Hector R. Hernandez

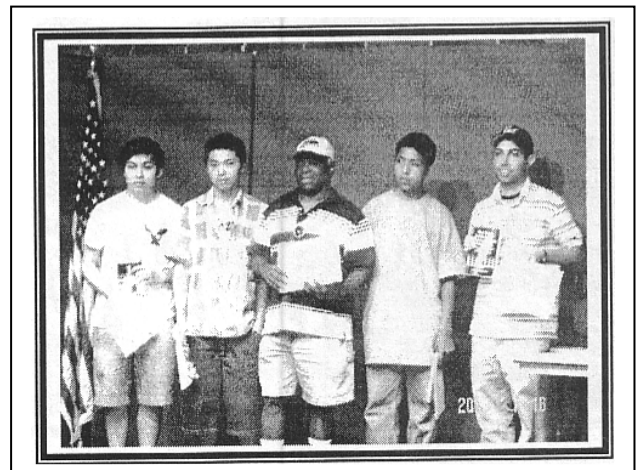


Our library hosted two tournaments during the month of October.

First was the Columbus Day/Día de la Raza Open, which took place on Monday, October 10. Forty-four players participated, mainly children and young adults. Illinois Chess Association memberships were awarded to the winners. Mr. Daniel Gutiérrez, of Nuevo León Restaurant on 18th St. in Pilsen, generously donated the prizes. Juan Pablo Avalos, from Benito Juárez Community Academy, won all his games and came in first place in the High School/ Adult Section. David Kaehler, from Whitney Young Magnet High School, lost only to the winner and took second place. There were 3 undefeated players in the age 14 and Under Section: Valentín Urbina and Guadalupe Martínez, who drew each other and shared first and second place; and 10 year-old Alejandro Landeros, with 4 points. Also with 4 points was Allen Jiang; half a point behind him were Christian Peña, and Antonio Martínez. Josh Flores directed this event.



The second tournament of the month was the 13th yearly Chicago Latino Chess Championship, held on October 29, 2005. Twenty trophies were awarded, ten in each of two sections. Attendance was 39 players, somewhat low for this event. Fabian Ramos took the first place trophy and \$100 cash prize in the Adult Section. Winners in the Children's Section were Valentín Urbina, Jim Li, Guadalupe Martínez. Martínez missed a draw in the last round against Valentín. These two had shared first and second places in the last 3 tournaments held here at the Rudy Lozano Branch. This time Guadalupe had to settle for 3rd place, as Jim Li took second on tie-breaks. Unable to play this year were José A. Rodríguez, father and son, who had played in the previous 11 editions, having missed only the very first championship in 1993. Vince and Cindy Berry did an excellent job in directing this competition



Benefactors of our chess club, in addition to Mr. Gutierrez, are: Ernie Whittemore and Lucy Mancilla- On Site Promotions, Inc., Carmen Morales-La Cocina Restaurant, Paul Rontos, Professor Jacob Sznajder-Northwestern University, and Margarita Villa-Illinois Health Education Consortium / AHEC.

Knights Moves Chess Update



The Knight Moves Chess Club meets at the Rudy Lozano Branch of the Chicago Public Library every Tuesday at 6 p.m. Classes for children and beginners are offered every Friday, at 3 p.m. For more information, please call (312) 746-4329

Héctor R. Hernández
Branch Manager
Chicago Public Library
Rudy Lozano Branch
1805 S. Loomis St.
Chicago, IL 60608

Phone: 312.746.4329
Fax: 312.746.4324
hernande@chipublib.org

Great Lakes Open (April 29-30, 2006)

Site: McCamly Plaza Hotel
50 Capital Avenue
Battle Creek, MI 49017

Format: 5 Round Swiss. 2 Sections (Open and U 1800).

SATURDAY NIGHT: 9PM, Simultaneous Exhibition by GM BEN FINEGOLD, \$10.

SUNDAY MORNING: 9:30AM, Lecture by GM BEN FINEGOLD, \$10.

Time Control: ROUNDS 1-3 G/90. ROUNDS 4-5 30/90, SD/60.

Rounds: SATURDAY 10AM-2PM-6PM. SUNDAY 11AM-4:30PM.

Entry Fee: \$60 by March 1. \$65 by April 1. \$70 by April 20. \$80 on site.

Registration: SATURDAY 9-9:45AM.

Prizes: \$5000 PRIZE FUND BASED ON 100 PAID ENTRIES.
50% GUARANTEED

OPEN SECTION:

1st \$1250, 2nd \$900, 3rd \$500.
1st U2200 \$300, 2nd U2200 \$200.
1st U2000 \$225, 2nd U2000 \$125.
1st U1800/UNR \$125.

RESERVE SECTION (U1800):

1st \$400, 2nd \$250, 3rd \$200.
1st U1600 \$125, 2nd U1600 \$100.
1st U1400 \$125, 2nd U1400 \$75.
1st U1200/UNR \$100.

Entries/Info: Stan Beckwith
84 Bond Street
Battle Creek, MI
49017-1907
(269) 964-2927

St. Charles Chess Club

by Dan Pratt

Our Knights and Squires tournaments ended in December. Both tournaments were extremely close, and both were decided by make-up games a week after the scheduled tournament close.

In the Knights Cup, Jeff Weiwel needed a draw with Paul Freidel to clinch his fifth Knights trophy. Jeff managed this, to win with 5-2, Ahead of three others with 4.5-2.5. The Knights Cup has not had a clear winner with a score as low as 5 wins since 1995.

In the Squires, Wally Alberts needed a draw to clinch the cup for the second year in a row. Wally had a promising position against Nathan McCoy, with Q for R and B, but finally succumbed to a two R and P King side attack. This gave John Suits first place on tiebreak over Aivras Stoskus, both with 4.5-2.5. The Squires cup has never had a winning score less than 5-2 before this, in its 12 year history .

Andrew Wang (1711) won the concurrent Swiss, 4-1, ahead of Jon Buckley. (1320) 3.5-1.5. Maurici Gutierrez (1368), and Curtis Van Petten(1251), finished with 3-2.

KNIGHTS CUP

PLACE	RATING	SCORE
1. Jeff Weiwel	1988	5.0
2. Jim Marshall	2097	4.5
3. Paul Freidel	1854	4.5
4. Matt Pivovitz	1691	4.5
5. Jeremiah Freidel	1709	3.5
6. Jesse Freidel	1753	3.0
7. Gary Janssen	1529	3.0
8. Marcus Stinson	1800	0.0

SQUIRES CUP

PLACE	RATING	SCORE
1. John Suits	1401	4.5
2. Aivras Stoskas	1370	4.5
3. Wally alberts	1700	4.0
4.Bo Meissen	1693	4.0
5.Rudy padilla	1572	3.5
6.Nathan McCoy	1604	3.5
7. Mark McGee	1497	2.5
8. Robert Bales	1407	1.5

St. Charles has entered two teams in the Chicago Industrial Chess League this year, of equal strength, evidently as they have drawn their first individual match. Both teams have perfect scores against the rest of league, however neither team has played the powerful Lucent dragons yet.

Partial standings in the West Division:

	W	L	T
St. Charles	4	0	1
Lucent	4	0	0
St. Chas Baker	3	0	0

Tour Standings

The following tournaments are included in these Tour Standings: Tax Relief Open, 1st Annual Illinois Classic April 23-24, Des Plaines Open April 30, Rockford 2nd Saturday Open May 14, Chicago Open May 27-30, Springfield Summer Open June 11, Peoria June Tor-nado June 25, Forest City Open July 31, Land of Lin-coln Open August 15, Illinois Open September 4-6 Illinois Open Side G20, Bradley Summer Open Sep-tember 10, Rockford 2nd Saturday Open September 10, Bradley October Open, Midwest Class Champion-ship, Peoria October Open October 8, Rockford 2nd Saturday Open October 22, David Mote Memorial Oc-tober 15 Rockford 2nd Saturday Open November 12, Illinois Class Championship December 10-11, Spring-field Holiday Open December 10.

Please note that only ICA members are eligible for Tour Prizes and Tour Points. Complete membership data was not available at the time these calculations were made. Any points calculated for players who were not ICA members at the time of the tournament will not be included when Prizes are awarded.

Questions may be directed to Tour Statistician Vince Hart, VinnyJH@hotmail.com.

MASTER TOUR POINTS:

68.0	KARAGIANIS, PETE DEMETRIOS
45.5	YOUNG, ANGELO
39.0	MITKOV, NIKOLA
38.0	GEORGIEV, VLADIMIR
36.0	STAMNOV, ALEKSANDA
33.0	KARKLINS, ANDREW
29.0	SHULMAN, YURY (2)
23.0	TSYGANOV, IGOR M (2)
22.5	SZPISJAK, STEVEN J
21.0	BURGESS, JON L

EXPERT TOUR POINTS:

42.0	KARAGIANIS, PETE DEMETRIOS
28.0	NIENART, CHRISTOPH
27.5	CHIEN, JASON W
25.0	LONG, DAVID
24.5	ALLSBROOK, FRED S
24.0	PEKOVIC, JUSUF
22.0	KARKLINS, ERIK
22.0	MC DONALD, JORDAN
22.0	ZIMMERLE, R WAYNE
20.5	BOURGERIE, DENNIS

CLASS A TOUR POINTS:

45.0	MEEROVICH, ILAN
35.0	CHIEN, JASON W
34.5	CAVITT, DEXTER
32.0	LONG, DAVID
32.0	MALONEY, MICHAEL A
28.0	RUAN, GORDON J
27.0	KASIURAK, ZACH
24.5	BOURGERIE, DENNIS
24.0	ZIMMERLE, R WAYNE
23.0	BUKY, JOHN P

CLASS B TOUR POINTS:

45.5	MAGNESS, TREVOR S
40.0	CEN, KENT Y
35.0	CHIEN, JASON W
31.0	KANNIAH, SURESH
31.0	MEDURI, AAKAASH
30.0	CHEN, BYRON H
29.0	DUBIN, JOSHUA
28.0	CHANG, ALEX (1)
26.5	MC NALLY, DANIEL M
26.0	GANNON, DAN I (2)
25.0	APPLEBAUM, ANDY F

CLASS C TOUR POINTS:

43.0	DOS SANTOS, NICOLA
33.0	DJORDJEVIC, VLADIM
25.0	BARBIAN, MATTHEW R (2)
25.0	SEJKO, TEME (2)
24.0	VELA, JOHNNY
23.0	KOSTERIS, DIMITRIO
23.0	PADILLA, RUDY R
22.0	BONZON, ROMAN
21.0	DIXON, JEFF S (2)
21.0	WANG, YIMING

CLASS D TOUR POINTS:

29.0	MCNALLY, MICHAEL N
27.0	GASUNAS, ANTHONY C
26.0	CHARLESTON, NEAL J
21.5	MEDINA, JAMES M
21.0	DATLA, SAMEER S V
21.0	MEDINA, STEVEN A
21.0	MUSIC, ADEM
20.0	MC CLANAHAN, GAVIN
18.0	DATLA, SIDDARTH S
17.0	KASHYAP, AMRIT

CLASS E TOUR POINTS:

29.0 MCNALLY, MICHAEL N
 28.0 CONNELLY, BRYAN (1)
 22.0 HARVEY, FRANK J
 20.0 WANG, ROGER R (1)
 19.0 FAIRBANK, TOM (1)
 19.0 VILLAFLO, ELIZABE (1)
 16.0 DICKINSON, TRAVIS (2)
 15.5 MEDINA, JAMES M
 14.0 AVALOS, JUAN P (2)
 14.0 KAEHLER, DAVID (1)

MASTER EX-URBAN POINTS:

60.0 KARAGIANIS, PETE DEMETRIOS
 15.5 ZIMMERLE, R WAYNE
 13.5 STAMNOV, ALEKSANDA
 11.0 CHIEN, JASON W
 11.0 LONG, DAVID
 8.0 BONWELL, JONATHAN
 8.0 STROYAN, PETER E (2)
 7.5 JARRETTE, PHIL (1)
 7.5 SMETANKIN, STANISL (2)
 7.5 YOUNG, ANGELO

EXPERT EX-URBAN POINTS:

42.0 KARAGIANIS, PETE DEMETRIOS
 25.5 CHIEN, JASON W
 25.0 LONG, DAVID
 22.0 ZIMMERLE, R WAYNE
 20.5 BOURGERIE, DENNIS
 14.0 MC GOWAN, ANDY J (1)
 11.5 CREMEENS, MATTHEW
 11.5 KNOEDLER, THOMAS B
 11.5 KOPULA, SURYAPRAKA
 9.5 LEALI, MICHAEL E

CLASS A EX-URBAN POINTS:

33.0 CHIEN, JASON W
 24.5 BOURGERIE, DENNIS
 24.0 ZIMMERLE, R WAYNE
 18.0 KANNIAH, SURESH
 14.0 KNOEDLER, THOMAS B
 14.0 MC GOWAN, ANDY J (1)
 13.0 NASZODI, LASZLO
 12.0 LONG, DAVID
 11.5 CREMEENS, MATTHEW
 11.5 KOPULA, SURYAPRAKA

CLASS B EX-URBAN POINTS:

33.0 CHIEN, JASON W
 24.5 BOURGERIE, DENNIS
 24.0 ZIMMERLE, R WAYNE
 18.0 KANNIAH, SURESH
 16.0 HEALY, JAMES D
 14.0 KNOEDLER, THOMAS B
 14.0 WANG, YIMING
 13.0 NASZODI, LASZLO
 11.5 BOWMAN, COREY
 11.5 CREMEENS, MATTHEW
 11.5 KOPULA, SURYAPRAKA

CLASS C EX-URBAN POINTS:

14.0 WANG, YIMING
 13.0 NASZODI, LASZLO
 9.5 BRIGHTUP, ROBERT C (2)
 8.5 RUAN, GEORGE J
 8.0 DOROSHEFF, EVAN J
 7.5 BLACK, DAVID E (1)
 7.5 BOWMAN, COREY
 7.5 LUTZKE, RICK W
 7.0 TERLIZZI, CALVIN J (2)

CLASS D EX-URBAN POINTS:

9.5 BRIGHTUP, ROBERT C (2)
 8.5 RUAN, GEORGE J
 8.0 DOROSHEFF, EVAN J
 7.5 BLACK, DAVID E (1)
 6.5 COULTER, LARRY
 6.0 BECK, GEOFFREY (2)
 5.5 LEALI, DOMINICK CH
 5.0 NIKOLOPOULOS, CHRI
 4.5 HELLER, MICHAEL L
 4.5 REYES SR, DONALD

CLASS E EX-URBAN POINTS:

7.5 BRIGHTUP, ROBERT C (2)
 6.5 COULTER, LARRY
 6.0 BECK, GEOFFREY (2)
 6.0 RUAN, GEORGE J
 4.0 MCNALLY, MICHAEL N
 4.0 WILLIS, MATTHEW J
 3.0 HOUSE, PEYTON RUSS
 3.0 NIBBELIN, MARK L (2)
 3.0 SARGENT, GARY NOEL

January 7-8, 2006. Tim Just's Winter Open/Reserve XX ICA Maxi tour, a heritage event. Join Us In Celebrating 20 Years Of Serving The Illinois Chess Community. 5SS, 40/90, SD/30. Renaissance Chicago North Shore, 933 Skokie Blvd., Northbrook 60062. Free parking. \$\$ (5,000 b/175 pd players, \$2500 guaranteed). 2 Sections: Open: open to all. \$\$ 875-400-250; U2200, 375-200; U2000 \$350-175; Unr. can win top three only. Reserve: open to U1800. \$600-325-200; U1600 = \$250-175; U1400. \$250-150; U1200, 200-125; Unr = \$100, Unr. qualify for Unr. Prize only. Open, Early EF: Adults, \$66 early, Juniors \$61 with name, ID #, e-mail, phone #, to current/renewing USCF and ICA members if rec'd by 1/4; Reserve, Early EF: Adults \$65, Juniors \$60 with name, ID #, e-mail, phone #, to current/renewing USCF and ICA members if rec'd by 1/4, All \$75, 8-8:30 AM; \$80, 8:30-8:45 AM; \$10 to play up from Reserve to Open section. NO FREE ENTRIES. ICA memb. Reqrd, other states OK. Reg: 8-8:45am. Rds: 9-1:30-6; 10-2:30. Re-Entry \$40 with 1/2 pt Bye round 1, Byes Rnds 1-4, unretractable rnd 5 at Registration, Bring sets, boards, clocks none provided, Book dealer scheduled to be on site. HR: \$84-\$84, 847-498-6500, <http://www.mpoint.com/psn/directlink.asp?id=161> 20. Ent: Chess For Life, LLC, PO Box 789, Lake Villa, IL 60046 (847) 546-8511. e-mail info: wayneclark@chessforlife.com, Checks payable to Chess For Life, LLC, info/pre entry list: www.chessforlife.com NS, NC, W.

January 15, 2006. Renaissance Knights Community Chess Club 6 SS, G/15. Renaissance Chicago North Shore Hotel 933 Skokie Blvd. Northbrook, IL. 60062. Registration 4:00 - 4:45 pm. Round 1 at 5:00 pm. EF = \$15 members, \$20 nonmembers. \$5 late fee after 4:45 pm. 75% of EF returned as prizes. USCF membership required. Info:www.RKnights.org

January 16, 2006. MLK Tournament ISU Bone Student Center Contact: [Mark Nibbelin](mailto:MarkNibbelin) marknibb@verizon.net

January 21, 2006. Tuley Park Quick (Bigger) 6-SS, rds 1-6 G/18 (or G/16+3sec). 501 E 90th Pl, Chicago 60619. EF \$14, u19 \$7, \$1 off before 11:30. \$\$G 330: \$80-50-35, 1899-1700 \$40, 1649-1400 \$35, 1399-1150 \$30, 1199-900 \$25, 899-100 \$20, Unrated \$15. Reg 11-11:50, rd 1 at 12. Tom Fineberg, 7321 S South Shore Dr #6D, Chicago 60649. 773-721-3979, [Tuley Chess Website http://www.home.earthlink.net/~maxine57](http://www.home.earthlink.net/~maxine57)

January 22, 2006. Renaissance Knights Community Chess Club 5 SS, G/20. Renaissance Chicago North Shore Hotel 933 Skokie Blvd. Northbrook, IL. 60062. Registration 4:00 - 4:45 pm. Round 1 at 5:00 pm. EF = \$15 members, \$20 nonmembers. \$5 late fee after 4:45 pm. 75% of EF returned as prizes. USCF membership required. Info:www.RKnights.org

January 28, 2006. Peoria Winter Tornado 4 ss Game/80 Lakeview Museum; 1125 W. Lake; Peoria, IL 61614. 75% of EF's = Prize Fund 25% First, 15% Second, 10% each to A/B, C/D, under 1200 5% to biggest upset. USCF & ICA (other states honored) Entry Fee: \$14 by January 26, \$17 at the site, free if rated 2200 or over. Registration 8:00-8:45 AM Rounds: 9, 12, 2:45, 5:30 NOTE: A limit of one "1/2 point" bye is available in any Rd., but a bye in Rds. 3 or 4 must be elected by the end of Rd. 2. For entries and more information Fred Malcome malcomef@mtco.com, 1000 Lilac Lane, Metamora, IL 61548 phone (309) 367-4833 . [Http://www.gpcf.net/](http://www.gpcf.net/) or Fred Malcome malcomef@mtco.com NS, NC, W.

January 29, 2006. Renaissance Knights Quest Tournament. 4 SS, Game/30. Reg. 12:00 to 12:30 PM, Rounds at 1:00, 2:15, 3:30, and 4:45 PM. USCF Rated. 2 Sections: Open and Reserve (U1000/unrated Juniors). Renaissance Chicago North Shore Hotel 933 Skokie Blvd. Northbrook, IL. 60062. Awards: Trophies top 5 each section (B/50) participation prize to all. EF: \$20 post-marked by Jan. 20, \$25 postmarked by Jan. 25. Rknights club members get \$5 discount. For more information:www.RKnights.org

ICA Calendar

February 4, 2006. Tuley Park Quick (Medium). 6-SS, rds 1-6 G/18 (or G/16+3sec). 501 E 90th Pl, Chicago 60619. EF \$14, u19 \$7, \$1 off before 11:30. \$\$G 330: \$80-50-35, 1899-1700 \$40, 1649-1400 \$35, 1399-1150 \$30, 1199-900 \$25, 899-100 \$20, Unrated \$15. Reg 11-11:50, rd 1 at 12. Tom Fineberg, 7321 S South Shore Dr #6D, Chicago 60649. 773-721-3979, Tuley Chess Website <http://www.home.earthlink.net/~maxine57>

February 4, 2006. Colene Hoose Normal, IL
Contact: Charlie Bates **February 05, 2006. Renaissance Knights Community Chess Club** 5 SS, G/25. Renaissance Chicago North Shore Hotel 933 Skokie Blvd. Northbrook, IL. 60062. Registration 4:00 - 4:45 pm. Round 1 at 5:00 pm. EF = \$15 members, \$20 nonmembers. \$5 late fee after 4:45 pm. 75% of EF returned as prizes. USCF membership required. Info:www.RKnights.org

February 12, 2006 Renaissance Knights Community Chess Club 6 SS, G/15. Renaissance Chicago North Shore Hotel 933 Skokie Blvd. Northbrook, IL. 60062. Registration 4:00 - 4:45 pm. Round 1 at 5:00 pm. EF = \$15 members, \$20 nonmembers. \$5 late fee after 4:45 pm. 75% of EF returned as prizes. USCF membership required. Info:www.RKnights.org

February 18-19, 2006. 2006 Midwest Amateur Team 5-SS. G/130, Scholastic section G/60. Doubletree Oakbrook Hotel [formerly Hyatt] 1900 Spring Rd Oakbrook, IL 60523. Amateur Section, open to 4-player teams with one optional alternate. Average rating of 4 highest players must be under 2200. Prizes to top 4 teams and top 3 teams with an average under 2000. 4 Chronos clocks to First place team. 4 GameTimer II clocks to Second place team and First place team under 2000. 4 Bonus Timer clocks to third and fourth place teams & second and third place teams under 2000. Reserve Section, open to 4-player teams with one optional alternate. Average rating of 4 highest players must be under 1800. Prizes to top 3 teams, top 2 teams with an average rating 1400-1599, top team with an average under 1400. 4 Chronos clocks to First place team. 4 GameTimer II clocks to top team with an average rating 1400-1599. 4 Bonus Timer

clocks to Second and Third place teams, Second team with an average rating 1400-1599, & top team with an average rating under 1400. BOTH: Board prize of GameTimer II clock for board 1-4, and for alternate. [Note: for alternate to be eligible for board prize the other 4 team members must each have played at least 2 games!] A score of 5-0 will win at least a Bonus Timer clock. EF: \$124, \$116 (for Junior teams where all players are under 18) if received by 1/31/06; \$132, \$124 (for all Junior team under 18) with credit card if by 2/12/06; All \$140 at site. Individual entries [teams formed at site, but no guarantee of section or board. Show up at 9:30 am 2/18/06] \$35, \$30 (for junior under 18) if by 1/31/06, all \$40 at site. 4 books to best team from Indiana, 4 books to best team from Wisconsin, 4 books to best multi-state or non-WI/IN/IL team. Rounds 10-2:45-8, 9:30-2:30. Scholastic Section, open to 4-player teams with one optional alternate all from the same school [but may be different grades]. Trophy to top 5 teams. Trophy to top 3 teams K-6. Trophy to top individual on each board. Rounds 10-12:30-2:45-5-7:45; no games Sunday. EF: \$110 if by 1/31/06, \$120 with credit card if by 2/12/06, \$140 at site. ALL

February 19, 2006. Renaissance Knights Quest Tournament 4 SS, Game/30. Reg. Renaissance Chicago North Shore Hotel 933 Skokie Blvd. Northbrook, IL. Info:www.RKnights.org

February 25, 2006. Tuley Park Quick (Tiny). 6-SS, rds 1-6 G/18 (or G/16+3sec). 501 E 90th Pl, Chicago 60619. EF \$10, u19 \$5, \$1 off before 11:30. \$\$G 210: \$50-35-25, 1799-1500 \$25, 1499-1200 \$25, 1199-900 \$20, 899-100 \$15, Unrated \$15. Reg 11-11:50, rd 1 at 12. Tom Fineberg, 7321 S South Shore Dr #6D, Chicago 60649. 773-721-3979, Tuley Chess Website <http://www.home.earthlink.net/~maxine57>

February 26, 2006. Renaissance Knights Community Chess Club 5 SS, G/20. Renaissance Chicago North Shore Hotel 933 Skokie Blvd. Northbrook, IL. 60062. Registration 4:00 - 4:45 pm. Round 1 at 5:00 pm. EF = \$15 members, \$20 nonmembers. \$5 late fee after 4:45 pm. 75% of EF

returned as prizes. USCF membership required.
Info: www.RKnights.org

March 4-5, 2006. Greater Peoria Open An ICA Maxi-Tour and Ex-Urban Tour Event

USCF Heritage Event 5ss Game/120 Lakeview Museum; 1125 W. Lake; Peoria, IL 61614. 80% of EF's = Prize Fund, with \$500 minimum guaranteed 1st Place = 15% of Prize Fund 2nd Place = 10% of Prize Fund 1st Expert, A, B, C, D/under = 7% of Prize Fund 2nd Expert, A, B, C, D/under = 3% of Prize Fund Best Unrated = 2% of Prize Fund Best Individual Upset & Best Cumulative Upset = 1.5% of Prize Fund. USCF & ICA (other states honored) Entry Fee: \$35 in advance (if received by February 27, 2006), \$45 at the site, \$20 if unrated & joining the USCF to play in this tournament. Players rated 2200 or over play for free. Registration 8:30-9:30 AM Saturday morning Rounds: Saturday 9:45, 2:15, 6:30; Sunday 9:30, 2:00 NOTE: A limit of one "1/2 point bye" is available in Rounds 1 to 4, if requested in advance. For entries and more information Wayne Zimmerle; 514 W. Loucks, #2; Peoria, IL 61604. Days: 309-692-4480. Nights: 309-686-0192. <http://www.gpcf.net/> or Wayne Zimmerle wzim@sbcglobal.net NS, NC, W.

March 11, 2006. Springfield Cabin Fever Open An ICA Mini-Tour and Ex-Urban Tour Event.

Game/80, 4 round Swiss. More Information: Thomas B Knoedler tknoel@uis.edu

March 17-19, 2006. 3rd Annual All-Girls Open National Championships

Palmer House Hilton, Chicago, IL.

March 18, 2006. Tuley Park Quick (Medium)

6-SS, rds 1-6 G/18 (or G/16+3sec). 501 E 90th Pl, Chicago 60619. EF \$14, u19 \$7, \$1 off before 11:30. \$\$G 330: \$80-50-35, 1899-1700 \$40, 1649-1400 \$35, 1399-1150 \$30, 1199-900 \$25, 899-100 \$20, Unrated \$15. Reg 11-11:50, rd 1 at 12. Tom Fineberg, 7321 S South Shore Dr #6D, Chicago 60649. 773-721-3979, [Tuley Chess Website http://www.home.earthlink.net/~maxine57](http://www.home.earthlink.net/~maxine57)

March 19, 2006. Heartland Quick Chess

Championship ICA Maxi-Tour 7SS, SD/25, Marriott SCHAUMBURG, 50 N. Martingale Road, SCHAUMBURG, IL 60173, <http://schaumburgmarriott.com>, Free Parking, \$10,000 b/225 paid entries, \$5000 guaranteed (re-entry = 1/2 entry), In 2 sections, Open (1800 & above) \$1500-1200-800, U2200: 450-250 U2000: 450-250, Unrated limited to first 3 prizes. Reserve (Below 1800), U1800, 1250-1000-800, U1600, 450-250, U1400, 400-200, U1200, 400-200, UN, 150. UN limited to \$150 Un prize. EF: Open Early: Adults \$81, Juniors \$71. Reserve Early: Adults \$80, Juniors \$70. Both: name, ID #, e-mail, phone #, postmarked by 3/13 to current USCF & ICA members, no phone entries, receipt of USCF on-line membership required, \$10 to play up from Reserve into Open, All \$100 from 8-9 AM, \$110 from 9:01-9:30 AM. NO FREE ENTRIES. Re-Entry \$60 with single 1/2 point bye after rnd 1 or two 1/2 point byes after round 2. Byes: two 1/2 pts rnds. 1-6, unretractable rnd 7 at registration. ICA Maxi Tour Event, ICA memb. Required (\$18 adults, \$14 Jr.). Reg. Sunday 3/19, 8 AM-9:30 AM. Schedule: 10-11:15-1:15-2:30-3:45-5:45-7 (food breaks between rnds 2-3 & rnds 5-6). Ent. payable to: Chess Central, 37165 N. Willow, Gurnee, IL 60031 (Checks payable to: Chess Central) Postmarked by 3/13/06, Info: 847-244-7954 (Before 6 PM), www.chessforlife.com or Tim Just, BOOK DEALER SCHEDULED TO BE ON SITE, e-mail us/more info/pre-entry list: info/pre-entry list: www.chessforlife.com. NS, NC, W. BRING PIECES, BOARDS, CLOCKS, NONE PROVIDED, ns,w,nc. Chess For Life LLC (Wayne Clark, Organizer) and Chess Central (Tim Just, President).

March 26, 2006. Renaissance Knights Community Chess Club

5 SS, G/25. Renaissance Chicago North Shore Hotel 933 Skokie Blvd. Northbrook, IL. 60062. Registration 4:00 - 4:45 pm. Round 1 at 5:00 pm. EF = \$15 members, \$20 nonmembers. \$5 late fee after 4:45 pm. 75% of EF returned as prizes. USCF membership required. Info: www.RKnights.org

Club Affiliates

Organizations wishing to be listed here should mail an affiliation fee of \$25.00 for one year (check payable to Illinois Chess Association) to the ICA membership secretary, Jeff Smith: **19439 Lakeside Lane Bloomington, IL 61704 , 309-378-2078**

ICAMembership@msn.com

Include a short paragraph, similar to those below, listing your club's activities.

Alternativa Group, Peter Pelts, 7135 Greenleaf Av, Niles 60714. 847-965-6469.

The **Center Chess Club** meets 3rd Saturday of each month, 7-10 pm, Crystal Lake Park District, One East Crystal Lake Av (intersection of Walkup), Crystal Lake 60014. Also rated tournaments on most of these same dates, 4 rounds, game/60, register by 8:45 am, round 1 at 9 am. Jeff Buchman, 815-455-5288, buchadolph@aol.com.

Chess Central sponsors rated tournaments in the Grayslake / Zion area. Tim Just, 37165 Willow, Gurnee 60031. 847-244-7954, mrjust@yahoo.com.

Chess-Now Ltd. Is a training and development company that provides customized chess experiences for business, education and recreational clients. 551 Roosevelt Road #129 Glen Ellyn, IL 60137. 630-209-5072. Information about our activities can be found at www.Chess-Now.com

Chess in Chicago is dedicated to developing and promoting chess in Chicago, and scholastic players are the priority. Zack Fishman. www.chessinchicago.org.

Chess Scholars offers professional individual, group, and school chess instruction at reasonable rates. We will travel to any location in the Chicago area. Ilya Korzhenevich, Director, 4310 1/2 N. Keystone Av. #1D, Chicago 60641, 773-286-2941, ilya@ChessScholars.com, www.ChessScholars.com.

Chess Utopia sponsors rated tournaments in the Lake County area, Fridays 6 pm. Frank Swindell, 847-816-0869, Swinchess@aol.com, www.ChessUtopia.org.

Chessterton Chess Club meets at Westchester Public Library, 200 W Indiana, Chesterton IN. Joe Alford, Joe.Alford@Kemper.com.

Chicago Industrial Chess League (CICL) organizes team competition among companies, chess clubs, colleges, government agencies, and other organizations

in the greater Chicago-area (downtown and suburban) with awards, ratings, and special events. Brian Smith, 630-983-9316, publicity@chicagochessleague.org website: www.chicagochessleague.org

Chicagoland Community Chess Club (formerly Concordia) meets Tuesdays 6-11 pm, Border's (Cafe Espresso), 7100 Forest Preserve Dr, Norridge. Howard Fried, 773-889-8553, hfried1@sbcglobal.net, or Robert Loncarevic, 773-282-5148, TLSchgo@speedsite.com.

FIDE Master **Albert Chow** gives private lessons by appointment. 3513 N Seminary, Chicago 60657. 773-248-4846, ChowMasterAl@yahoo.com.

Continental Chess Association runs major tournaments nationwide, including the annual World Open in Philadelphia and the Chicago Open in late May each year. PO Box 249, Salisbury Mills NY 12577. Bill Goichberg. www.chesstour.com.

Crossroads Chess Club meets Tuesdays 6 pm, K Square Mall Food court, I-57 / I-70 exit 160, Effingham. Cameron Feltner, 217-844-2645.

Elmhurst Chess Club meets, and holds frequent USCF events, Sundays 6:30 to 11 pm, Room 18, Hammerschmidt Chapel, Elmhurst College, 190 Prospect, Elmhurst. Roger Birkeland, 630-832-1754, rogerdb9@earthlink.net, ElmhurstChess@aol.com.

Evanston Township High School Chess Club, 1600 Dodge Av, Evanston 60204. Ken Lewandowski, 847-492-7932.

Greater Peoria Chess Federation meets Mondays 7 pm, Lakeview Museum, 1125 W Lake Av, Peoria 61614. Wayne Zimmerle, 514 W Loucks Av #2, Peoria 61604. 309-692-4480 (day), 309-686-0192 (evenings), wzim@sbcglobal.net

Hammond Chess Club, Charles Higgins, 116 Crestview St, Crown Point IN 46307. 219-663-8938.

Highland Park High School Chess Team, 433 Vine Av, Highland Park 60035. Tesc Schultz, tschultz@d113.lake.k12.il.us.

House of Chess meets Saturdays 4:30 pm, 1st Baptist Church, 146 S Main St, Glen Carbon 62034. Paul Holland, 618-288-4117, <http://members.aol.com/houseofchess>.

Illini Chess Club meets Thursdays 7-10 pm, College of Education Building, Room 37, 6th & Pennsylvania), Urbana. www.uiuc.edu/ro/uichess. Jeff Davis.

Illinois Chess Coaches Association is open to scholastic chess coaches in Illinois. Mike Zacate, 708-479-9380, mezacate@aol.com.

Illinois Valley Chess Association meets Thursdays 7-10 pm, Illinois Valley YMCA, Adult Lounge, 300 Walnut St, Peru 61354. Bill Schulte, 520 First St, LaSalle 61301. 815-223-1505, bschulte@rivalins.com.

Illowa Chess Club meets Tuesdays 6:30-10 pm, St Ambrose University, Davenport IA. Matt Nemmers, qcchess@mchsi.com, www.quadcitychess.com.

Joliet Junior College Chess Club meets Thursdays 6:30 pm, Joliet Junior College, Building J, cafeteria, 1215 Houbolt Rd (I-80 exit 127), Joliet. Maps www.jjc.edu/maps/maincampus.html. Tim Owens, c/o JJC-IET, 214 N Ottawa St, Joliet 60432. 815-280-1513, towens@jjc.edu. Or Steve Decman, 1418 Devonshire Dr, Joliet 60435. 815-744-5272, www.jjc.edu/clubs/chess.

Lakeview Cuyler Chess Club meets Wednesdays 7-10 pm, Cuyler Covenant Church, Fellowship Hall, 3901 N Marshfield Av (corner of Byron St), Chicago 60613. Drew Morissee, 1614 W Byron St, Chicago 60613. 312-494-1300 x12, WindyCityKnight@yahoo.com, <http://LakeviewCuylerChess.tripod.com>.

Mahomet-Seymour High School Chess Club, Dan Pirtle, 302 W State, Mahomet 61853. 217-586-4962, dpirt@ms.k12.il.us.

Metcalf School Chess Club, Meeting in Metcalf School Library, Illinois State University, Tuesday's 3:00 - 4:30 pm

Mid-America Chess Association sponsors the popular website at www.64.com, and brings national tournaments to the Chicago area. midam@64.com

Midway Chess Enterprises, PO Box 388765, Chicago 60638, whizline@home.com.

Murphysboro Chess Club, Murphysboro 62966. <http://mysite.verizon.net/res0bz47/>.

New Lenox Chess Club, c/o Vince Berry & Cindy Misiak, 815-463-9975, leave message. VWBerry@aol.com.

Park Forest Chess Club meets Thursdays 7-10 pm, Freedom Hall (next to the library), Lakewood Blvd just west of Orchard, Park Forest. Larry Cohen, 630-834-2477. www.tuxdomain.com/pfcc_club.html.

Renaissance Knights Community Chess Club meets Sundays 3:30 to 11 pm at the Renaissance Chicago North Shore Hotel, 933 Skokie Blvd, Northbrook. Weekly rated tournaments. The club mission is to promote, stimulate and encourage the study and play of the game of chess as a means of intellectual and social development. Visit our web site www.RenaissanceKnights.org. Sheila Heiser 847-526-9025.

Rudy Lozano Library Chess Club, 1805 S Loomis, Chicago 60608. Hector Hernandez, 312-746-4329, hermande@chipublib.org.

Smythe Dakota Competitions encourages and offers financial support for Plus-Score Mini-Tours at sites in Chicago and adjoining suburbs. Bill Smythe, chichess@rcn.com.

St Charles Chess Club meets Thursdays 7-11 pm, Baker Community House, 101 S 2nd (Rt 31), St Charles. Jeff Wiewel, 1931 Dunhill Ct, Arlington Heights 60004. 847-818-8913, jwiewel@ntnusa.com.

The South Suburban Chess Club of Greater Chicago meets Fridays 7-11 pm, Oak View Recreation Center, 110th & Kilpatrick, Oak Lawn. Joe Bannon, 773-445-0631.

Springfield Chess Club meets Wednesdays 6-10 pm, American Legion Post 32, 5th & Capitol, Springfield. Thomas Knoedler, 2104 S Fourth St, Springfield 62703. 217-523-7265.

SquareHopper, Joshua Flores, Chess Professional. Available for any chess-related activity at reasonable rates. Specialties are tournament directing/organizing, coaching and teaching. Willing to travel. 630-430-CHES(s)

State Farm Employee Activities Chess Club 1 State Farm Plaza Corp. HQ C-4 Bloomington, IL, 60701 Colley Kitson 309-766-9493.

Tuley Park Chess Club holds frequent Saturday tournaments at Tuley Park Field House, 501 E 90th Pl, Chicago. Tom Fineberg, 7321 S South Shore Dr, Chicago 60649. 773-721-3979, www.home.earthlink.net/~maxine57.

TTCCOM sponsors 5 Round, Game/15 tournaments frequently at the Sheraton Hotel, 3400 W. Euclid Ave., in Arlington Heights. \$20 EF, 80% returned as prizes. Check Chess Life, the ICB, USCF and/or ICA Websites for upcoming schedule. Contact BradleySWatts@sbcglobal.net or 815-467-2775 for more information.

Twin City Chess Club meets Tuesdays 7-10 pm, Lincoln Leisure Center, 1206 S Lee St, Bloomington 61701. Dennis Bourgerie, PO Box 157, Normal 61761. 309-454-3842 Schoolstreeter@msn.com

West Middle School Chess Club, 1900 N Rocktoon Av, Rockford 61103. Ralph Sullons, 815-966-3220.

Wicker Park Chess Club meets Wednesdays 7 pm to 1 am, Myopic Books, 1468 N Milwaukee Av, Chicago. Pat Jones, 773-772-1369, pjones@artic.edu.

The 64 Square Jungle
<http://chessdad64.journalspace.com>

ICA Supporters

ICA Supporters

Life Patron Members:

Warren, Helen E Western Springs
Warren, James E Western Springs
Todd Barre

Century Club Patron Members:

Aaron, Michael E Chicago
Bachler, Kevin L Park Ridge
Brock, Bill Chicago
Cohen, Lawrence S Villa Park
Djordjevic, Vladimir Chicago
Dwyer, William T Worth
In memory of Victor George

Fineberg, Thomas A Chicago
Friske, Thomas G Des Plaines
Naylor, Samuel, VI Carthage
Novotny, James J Schaumburg
Panner, Glenn E Frankfort
Pradt, Daniel J Glen Ellyn
Ryner, Randall L Springfield
Schmidt, Frederick W, Jr Bloomington
Sethi, Pradip Barrington Hills
Silverman, Scott
Smythe, Bill Chicago
Stein, Kurt W Clarendon Hills
Wong, Philip Wilmette

Gold Card Patron Members:

Barre, Todd J Elmhurst
Blanke, Clyde H Matteson
Brotsos, Jim Chicago
Bossars, Phil J Champaign
Chen, Aaron Oak Brook
Chess-Now Ltd. Glen Ellyn
Cook, David A Burr Ridge
Delay, Joseph D Schaumburg
Dueker, John T Lockport
Gruenberg, Fred Palos Heights
Heis, David
Hart, Vincent J Mount Prospect
Klink, Steven L, Jr Glen Ellyn
Lang, Richard S Evanston
Marovitch, Mark Cicero
Nibbelin, Mark Normal
Pehas, Alex Darien
Splinter, Joseph C Hanover Park
Sweig, Mitchel J Evanston
Tanaka, James G Chicago
Widing, Robert W Park Ridge

Patron Members:

Adwar, Bacil Alexy Skokie
Amodei, Dominic M Chicago
Benedek, Roy Western Springs
Birkeland, Roger Addison
Bishop, Jack Chicago
Boone, Foster L, Jr Lynwood
Bourgerie, Dennis Normal
Carlton, Robert J Naperville
Cronin, Mike A Alsip
Duncan, Tom Naperville

Dupuis, Brian M Lake Bluff
Fenner, Charles E Chicago
Fischer, Gregory A Elk Grove Village
Fulk, Shizuko Fukuhara Skokie
Gasiecki, Alan F Vernon Hills
Gerber, David F Mundelein
Griesmeyer, Walter J Momence
Hansen, Steven E LaGrange
Harvey, Frank Wheeling
Henderson, S E, Jr Bolingbrook
Hernandez, Hector Chicago
Iovin, Daniel G Elmwood Park
Just, Timothy W Gurnee
Karpes, Michael A Des Plaines
Klink, Steven, SrGlen Ellyn
Knoder, Thomas B Springfield
Lewis, Richard Harvey
Lobraco, Michael J Itasca
Marshall, Kenneth N Lombard
Martin, Gary J Park Ridge
Modes, Daniel R Bensenville
Moore, Clarence J Villa Park
Mote, David B Springfield
Rhymer, Cecil Summit
Rose, Eric J Antioch
Rose, Keith C Woodridge
Satterlee, Ray Doyle Wheaton
Scott, Garrett H Normal
Sollano, Ely O Chicago
Sowa, Walter B Harwood Heights
Suarez, Ronald J Peoria
Tums, John M Oak Park
Zacate, Michael E Mokena

March 4-5, 2006. Greater Peoria Open An ICA Maxi-Tour and Ex-Urban Tour Event

USCF Heritage Event 5ss Game/120 Lakeview Museum; 1125 W. Lake; Peoria, IL 61614. 80% of EF's = Prize Fund, with \$500 minimum guaranteed 1st Place = 15% of Prize Fund 2nd Place = 10% of Prize Fund 1st Expert, A, B, C, D/under = 7% of Prize Fund 2nd Expert, A, B, C, D/under = 3% of Prize Fund Best Unrated = 2% of Prize Fund Best Individual Upset & Best Cumulative Upset = 1.5% of Prize Fund. USCF & ICA (other states honored) Entry Fee: \$35 in advance (if received by February 27, 2006), \$45 at the site, \$20 if unrated & joining the USCF to play in this tournament. Players rated 2200 or over play for free. Registration 8:30-9:30 AM Saturday morning Rounds: Saturday 9:45, 2:15, 6:30; Sunday 9:30, 2:00 NOTE: A limit of one "1/2 point bye" is available in Rounds 1 to 4, if requested in advance. For entries and more information Wayne Zimmerle; 514 W. Loucks, #2; Peoria, IL 61604. Days: 309-692-4480. Nights: 309-686-0192. <http://www.gpcf.net/> or Wayne Zimmerle wzim@sbcglobal.net NS, NC, W.



Village of Roselle Sister Cities Open Chess Tournament

When: Saturday, February 25 & Sunday, February 26, 2006

Location: American Legion Post 1084
344 E Maple Ave.
Roselle, IL. 60172
(1 Block West of the Roselle Metra Train Station)

Prizes: \$ 2,300 Projected Payout based on 100 Paid Entries
Sponsor Prizes

Games: 5SS Half Point Byes OK all (Limit 2)
Game # 1, # 2, & # 3 G/60
Game # 4, & # 5 G/90

Bring your own Chess Set, Board, & Clock. (None will be supplied)

Sections:	Open	(1600/up)	\$500, \$250, \$150, & \$100
	U1600	(1100/up)	\$300, \$200, \$150, & \$100
	U1100	(Below 1099)	\$200, \$150, & \$100

Unrated Players may enter Open Section (prize limit \$100) or U1100

Registration: 9:00 to 10:00 am on Saturday, February 25, 2006

Entrance Fee:	Pre-registrations before February 16, 2006	\$ 45.00
	Registration at door on day of Tournament	\$ 50.00 (Cash Only)
	Children Kindergarten thru 8 th grade	\$ 20.00

Advance Registration: Village of Roselle
31 S. Prospect
Roselle, IL 60172
Attn: Mary Ann Allivato

Checks Payable: Village of Roselle

Round Times: Saturday – February 25, 2006 10:15 am - 1:00 pm - 3:45 pm
Sunday – February 26, 2006 10:00 am - 1:00 pm

More Information: Contact Adam Widelka at (630) 295-9509 (before 9 pm)

February 18-19, 2006. 2006 Midwest Amateur Team

5-SS. G/130, Scholastic section G/60. Doubletree Oakbrook Hotel [formerly Hyatt] 1900 Spring Rd Oakbrook, IL 60523. Amateur Section, open to 4-player teams with one optional alternate. Average rating of 4 highest players must be under 2200. Prizes to top 4 teams and top 3 teams with an average under 2000. 4 Chronos clocks to First place team. 4 GameTimer II clocks to Second place team and First place team under 2000. 4 Bonus Timer clocks to third and fourth place teams & second and third place teams under 2000. Reserve Section, open to 4-player teams with one optional alternate. Average rating of 4 highest players must be under 1800. Prizes to top 3 teams, top 2 teams with an average rating 1400-1599, top team with an average under 1400. 4 Chronos clocks to First place team. 4 GameTimer II clocks to top team with an average rating 1400-1599. 4 Bonus Timer clocks to Second and Third place teams, Second team with an average rating 1400-1599, & top team with an average rating under 1400. BOTH: Board prize of GameTimer II clock for board 1-4, and for alternate. [Note: for alternate to be eligible for board prize the other 4 team members must each have played at least 2 games!] A score of 5-0 will win at least a Bonus Timer clock. EF: \$124, \$116 (for Junior teams where all players are under 18) if received by 1/31/06; \$132, \$124 (for all Junior team under 18) with credit card if by 2/12/06; All \$140 at site. Individual entries [teams formed at site, but no guarantee of section or board. Show up at 9:30 am 2/18/06] \$35, \$30 (for junior under 18) if by 1/31/06, all \$40 at site. 4 books to best team from Indiana, 4 books to best team from Wisconsin, 4 books to best multi-state or non-WI/IN/IL team. Rounds 10-2:45-8, 9:30-2:30. Scholastic Section, open to 4-player teams with one optional alternate all from the same school [but may be different grades]. Trophy to top 5 teams. Trophy to top 3 teams K-6. Trophy to top individual on each board. Rounds 10-12:30-2:45-5-7:45; no games Sunday. EF: \$110 if by 1/31/06, \$120 with credit card if by 2/12/06, \$140 at site.

Time Value Material

ADDRESS CORRECTION REQUESTED

Jeff Smith
19439 Lakeside Lane
Bloomington, IL
61704

ADDRESS CORRECTION REQUESTED

NONPROFIT ORG

U.S. POSTAGE

PAID

ASTORIA, IL

PERMIT NO. 9