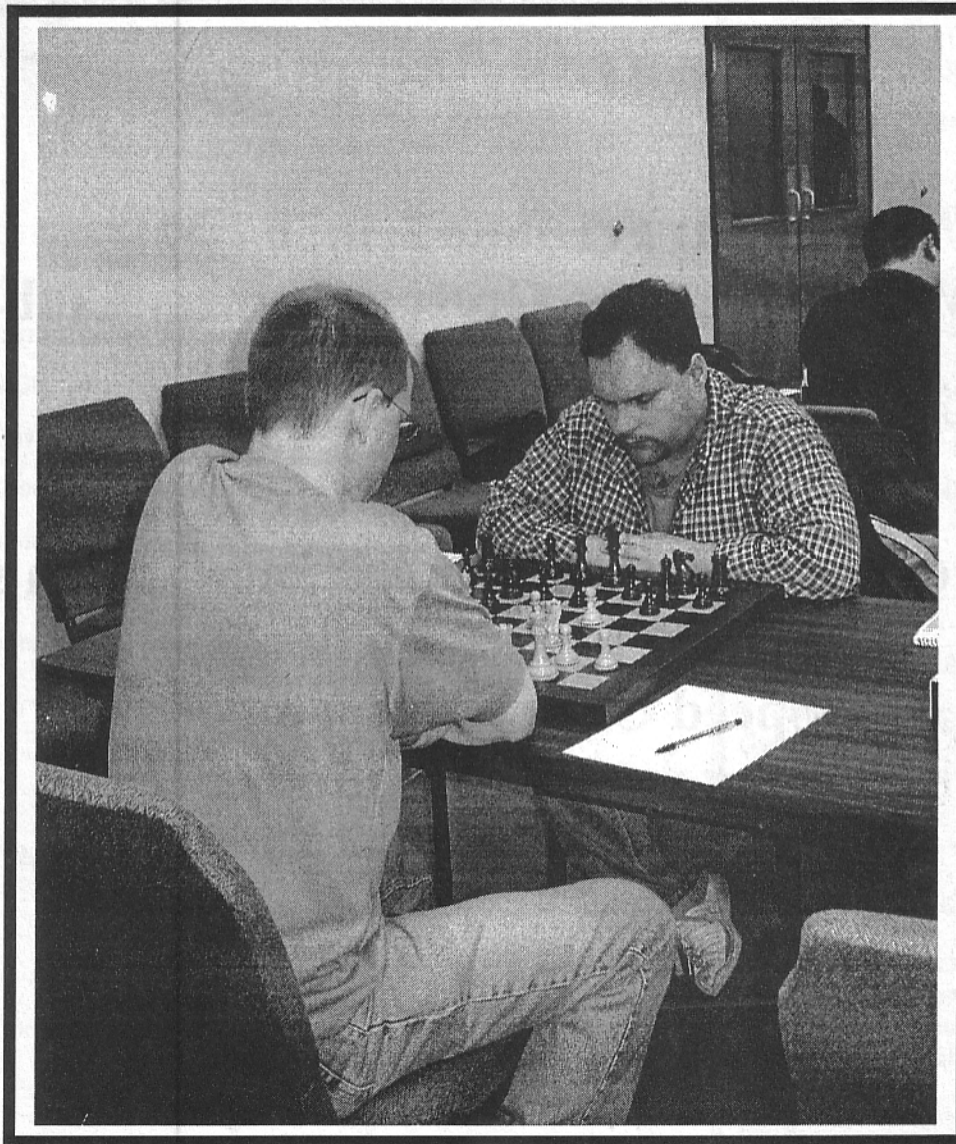


# Illinois Chess Bulletin

Volume 29, Issue 3

May June 2006

## James Marshall Wins the Normal April Open



### INSIDE THIS ISSUE

- 7 IHSA Championship
- 9 ICCA High School Invitational
- 24 TWCC Championship
- 27 Normal April Open

**Illinois Chess Association  
&  
Chicago Industrial Chess League  
Awards Banquet**

**When: Fri June 2, 6:30 PM  
Where: Carriage Greens Country Club  
8700 Carriage Greens Drive  
Darien, IL**

**The cost per person is \$23 Advance \$25 on site.  
GM or IM lecture/Dinner/Raffle  
Speed Chess Tournament  
Bring your own equipment!**

Advance Registrations to:  
Paul Freidel 3N861 Babson Ln.  
St. Charles, IL 60175  
Please make Checks Payable to CICL  
Also indicate if you are a ICA or CICL member.

For more information contact:  
Tony Jasaitis, cell # 708-903-6423 [tony@trdlnk.com](mailto:tony@trdlnk.com)

## Table of Contents

### On the Cover

James Marshall Wins  
the April Normal Open  
read about it on page.... 27



President's Podium .....	5
A Saturday Afternoon with Garry .....	6
Illinois High School Championship.....	7
ICCA High School Invitational.....	9
ICB Games / FM Chow.....	14
Chicago Open Information.....	18
Road Warrior.....	20
2006 Twin City Championship.....	24
Normal April Open .....	27
Springfield CC .....	31
St Charles CC.....	31
US Open Information.....	39

### ICA News

ICA Tour & ICA Ex Urban Tour.....	32
Affiliate Listing .....	33
ICA Supporters.....	38

### Where to Play

Tournament Calendar .....	35
---------------------------	----

### Illinois Chess Association Officers

#### President

Bill Brock, President  
*new address:*  
230 W. Monroe, Suite 330  
Chicago, IL 60606  
(312) 252-1300, x12  
[billbrock@billbrock.net](mailto:billbrock@billbrock.net)

#### Metro Vice-President

Les Bale  
2121 Halsey Drive  
Des Plaines, IL 60018  
(847) 813-1956  
[christianundertake@sbcglobal.net](mailto:christianundertake@sbcglobal.net)

#### Downstate Vice-President

Chris Merli  
1206 Watersedge Road  
Champaign, IL 61822-8100  
(217) 778-3334  
[clmerli@insightbb.net](mailto:clmerli@insightbb.net)

#### Secretary

Richard Easton  
915 Elm St  
Winnetka, IL 60093  
[richard.easton@us.aonwarranty.com](mailto:richard.easton@us.aonwarranty.com)

#### Treasurer

Carl Dolson  
6021 N. Wickwood Road  
Peoria, IL 61614  
309-691-5154  
309-258-2861 cell  
[carl.dolson@rsmi.com](mailto:carl.dolson@rsmi.com)

#### Membership Secretary

Jeff Smith  
19439 Lakeside Lane  
Bloomington, IL 61704  
309-378-2078  
[icamembership@msn.com](mailto:icamembership@msn.com)

#### ICA Tour Statistician

Vince Hart  
[vinnyjh@hotmail.com](mailto:vinnyjh@hotmail.com)

#### WORLD WIDE WEB

<http://www.illinoischess.org>

## About the Illinois Chess Bulletin and the Illinois Chess Association

### Illinois Chess Bulletin

Published six times per year

Copyright © 2006 Illinois Chess Association

**Next Deadline: June 1<sup>st</sup> 2006**

### Submissions

Send contributions to:

Colley Kitson  
428 N. Grant Street  
Clinton, IL 61727

ICB@mchsi.com

**Electronic submissions are preferred.** Preferred format for articles, stories or advertisements is Microsoft Word.

**Game submissions are also preferred in electronic format.** Games should be submitted in ChessBase archive format (.cbv) or in pgn. ChessBase 8 will automatically send archive format if you e-mail from ChessBase 8. In earlier versions of ChessBase you may archive a database to create a single file to e-mail. See your help materials.

If you need a simple program to create pgn files most chess databases will also produce text files in pgn format, as will many chess playing programs. The main font for the ICB is Arial, as well as the Figurine Aries font and the US Diagram font from ChessBase.

### Editorial Staff

Managing Editor: Colley Kitson  
Games Editor: Albert Chow  
Assistant Games Editor: Angelo Young

### Contributors

FM Albert Chow, Vince Hart, NM Pete Karagianis, Bill Brock, Chris Merli, Dan Pradt, David Long, Dennis Bourgerie, Colley Kitson, and Brad Rosen.

### Advertising Rates

Back Cover:	\$125
Inside Front:	\$115
Full Page:	\$100
1/2 Page:	\$65
1/3 Page:	\$50
1/4 Page:	\$40
1/8 Page:	\$25

There is a \$20 design charge for ads that are not camera-ready. Allow 7 days for design. Allow additional time if ad proofing is required. ICA affiliates receive a 1/2 discount and ads that appear in consecutive issues receive a 10% discount. Payment must accompany the ad. The ICA and the ICB reserve the right to refuse any specific advertisement.

### Membership Information

The Illinois Chess Bulletin (ICB) is published by the Illinois Chess Association (ICA). ICA membership includes a subscription to the ICB. Memberships marked 1<sup>st</sup> receive their magazine first class. Memberships marked P also receive a plaque. Affiliates also receive discounted advertising rates, event advertising on Chess Phone and the ICA website, and the right to run Tour events.

Corporate	\$500	1 <sup>st</sup> Class & Plaque
Organization	\$200	1 <sup>st</sup> Class & Plaque
Business	\$200	1 <sup>st</sup> Class & Plaque
Century Club	\$100	1 <sup>st</sup> Class
Gold Card	\$50	1 <sup>st</sup> Class
Patron	\$35	1 <sup>st</sup> Class
Affiliate	\$25	Affiliate benefits
Regular	\$18	
Junior	\$14	
Family	\$6	No magazine

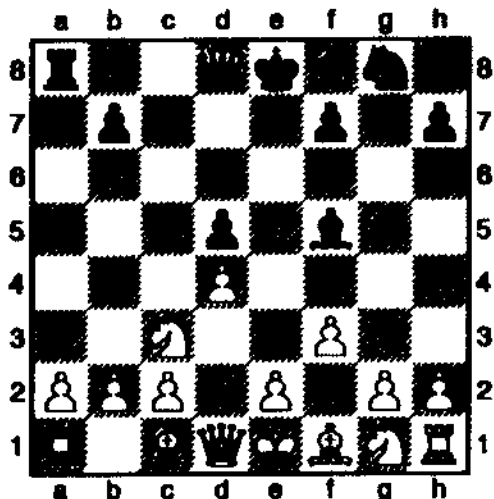
FIDE Master **Albert Chow**  
Accepting games for the ICB  
Games can be sent to:

Albert Chow  
3513 N Seminary, Chicago, IL 60657  
773-248-4846, [ChowMasterAl@yahoo.com](mailto:ChowMasterAl@yahoo.com).

President's Podium

Bill Brock

Chess is hard! Here's a relatively obscure theoretical position that 2005 and 2006 Illinois High School Invitational Champion **Kayin Barclay** had to face recently after 1.d4 d5 2.Nc3 Bf5!? 3.f3:



**Atakan Sirin-Kayin Barclay  
2006 National HS (K-12) Champ., Milwaukee**

The adventurous Kayin played 3...e5!?: what do you think Black's best move is? Please send your thoughts (subject header: Best Move) to [billbrock@billbrock.net](mailto:billbrock@billbrock.net). Congratulations to Kayin, who repeats as our representative to the Denker Tournament of High School Champions, and to **Cheryl Liu**, our 2006 Girls' Invitational Champion and Illinois Polgar Qualifier. Look for extensive coverage of both events in our next issue!

\*\*\*

Our friends at the **Chicago Industrial Chess League** were kind and gracious enough to invite the Illinois Chess Association to co-host their annual banquet. Thank you, CICL! We hope to see all our Illinois chess friends on Friday, June 2, at 6:45 p.m. The site is the Carriage Greens Country Club, 8700 Carriage Greens Drive in Darien (near I-55). The cost per person is extremely reasonable (\$23 Advance, \$25 at the door), and includes a **lecture by one of our top local players, dinner, a raffle, and blitz chess!** ICA will be awarding Tour prizes at this event. Please send advance registrations, payable to "CICL", to Lenny Spiegel, 807 Wood Ave, Geneva, IL 60134.

\*\*\*

It's going to be a big summer for chess in Chicago! The **Chicago Open** returns to the Doubletree in Oak Brook, but with a twist. This year, the tournament is a 6-round Swiss, May 25-28: one game Thursday evening, one game Friday evening, and two games on Saturday and Sunday. Most local players won't have to take time off from work!, and you'll have Memorial Day for rest and relaxation.

The U.S. Open returns to Chicago! Plan now to play in the **107<sup>th</sup> Annual U.S. Open**, August 5 to 13, also at the Doubletree in Oak Brook.

As we go to press, the ICA has not yet finalized arrangements for the **Illinois Open**, to be held September 2-4 (Labor Day weekend). Please check our website, [www.ilchess.org](http://www.ilchess.org), after May 10<sup>th</sup>. And there will be great events in Chicago, Peoria, Rockford, and Bloomington this summer as well—see the tournament calendar in this issue, or the updated list online at [www.ilchess.org/events.htm](http://www.ilchess.org/events.htm).

\*\*\*

Congratulations to **International Master Jan van de Mortel**, who was recently awarded the title by FIDE; his final norm was earned in a Lincolnwood event organized by **Sevan Muradlan** and **Glenn Panner**. And congratulations again to Canada's newest Grandmaster, GM Pascal Charbonneau, who earned his final norm in a January 2006 event organized by Sevan. In May 2006, Sevan's ominously-named new organization, the **North American Chess Association**, successfully completed three FIDE round-robin events in Schaumburg. **FM Mehmed Pasalic** of Chicago scored his first IM norm, and teenager **IM Giorgi Margvelashvili** of the Republic of Georgia scored his first GM norm. Again, look for coverage of the NACA events next issue.

Ambitious and competent FIDE organizers (like Sevan, Glenn, and superstar new arrival **Mikhail Korenman**, featured in this month's **National Geographic**) need our support! This support has already led to opportunities (and soon, we hope, more Grandmaster titles) for our local players.

\*\*\*

You're welcome to join us in **Peoria** for our next ICA board meeting! The date is Sunday, June 11; the time, 1:30 to 4 p.m. (Officers will have a brief meeting beginning at 1 p.m.) The meeting will be held at the offices of **RSM McGladrey, Inc.**, 401 Main St., Suite 1200, in Peoria.

### A Saturday Afternoon with Garry

By Brad Rosen

I had the pleasure and privilege to visit the Garry Kasparov 3rd Annual All Girls Chess Championship held at the Palmer House Hotel, one of Chicago's old time classic hotels in the heart of the city's downtown. Upon arrival, I took in some of the sights and sounds of the tournament. After that, I joined many of Illinois' chess dignitaries (and others from across the country) at luncheon sponsored by the Kasparov Chess Foundation in conjunction with Chicago-based Chess Wizards. The keynote speaker was none other than former World Champion Garry Kasparov himself. To follow are a few of my observations about the girls' chess scene, as well a recap of Kasparov's vision for the future of chess and America's youth.

#### Girls Chess

The setting for this all girls event was magnificent. The 8 year old and 10 year old divisions were held in the beautiful and ornate Adams Ball Room. I arrived during the second round of play and spent a bit of time in the tourney room. I was struck that the atmosphere, both inside and out of the tournament room, was a little more civilized and a little less manic than a typical national scholastic championship event, of which I have been to many. Maybe this had to do with the participants, maybe the venue, or perhaps a bit of both.

As the parent to a 12-year-old boy chess enthusiast, I have harbored some ambivalence for these girls' only tourneys in the past. In fact, some in the chess community are outright hostile towards these events as a form of "gender apartheid". However, yesterday I had the opportunity to speak to a number of parents of tournament participants. The overwhelming consensus is that a smattering of girl only tournaments will keep girls involved in the game longer and foster a stronger connection with the game. To echo the words of Illinois Chess Association President Bill "Kumbayah" Brock, "if something is good for kids and good for chess, it's good enough for me."

#### The Garry Kasparov Keynote

A diverse cross-section of Illinois chess luminaries, including chess politicians, organizers, educators, GM's and other top local players, parent volunteers, and perhaps even a chess blogger or two, gathered to hear Garry Kasparov share his vision for future of chess as it relates to our nations young people. While I have followed Kasparov's career, both on and off the chessboard over the years, in person I was impressed with the force of his personality and a commanding presence that filled the room. And Kasparov certainly has no fear challenging the status quo, as his recent

"post-retirement" run-ins with the Kremlin and Vladimir Putin demonstrate. So when Garry Kasparov speaks, at the very least, people listen. Here is a summary of a few of Kasparov's comments from his keynote and the Q&A that followed:

\*\* There is no question of the benefits that chess can bring to young people. What is missing is unified blueprint to convince educational policy makers that chess should be part the curriculum of all schools, public and private. The Kasparov Chess Foundation is working on creating such a blueprint.

\*\* The key in bringing chess into the schools, is to "teach the teachers" how to teach chess. The Kasparov Chess Foundation will be publishing a chess instruction manual for teachers that will be available free of charge for the nations teachers. That should be released sometime this summer.

\*\* A full and comprehensive university level study demonstrating the value and benefits of chess education is need. The Kasparov Chess Foundation will be supporting such a study.

\*\* The educational system in the US needs to change to address global competition and new technologies. Chess education offers perhaps the best return on investment and is a means to add value to the educational infrastructure.

\*\* Chess suffers from a serious image problem and that must change. There are many chess supporters in the "closet" including the governor of a state who insists his children learn chess. The chess community needs to be more aggressive in communicating its message--- "stories don't need to be invented, just tell the truth."

Kasparov himself admits that taking these ideas from concept to implementation will be very tough. Nonetheless, the fact the Kasparov has made these issues part of his own personal agenda could well lead to significant changes on the scholastic chess landscape in the US. The conversation will continue here in Illinois and nationwide. Note, a Chess in Education Workshop will take place on August 7 and 8 during the US Open here in the Chicagoland area..

Lastly, Chess Wizards' Valentina Likhova deserves special mention and recognition for her hard work in making the 3rd Annual All Girls Chess Championship a success.

And from Chicago's Loop, that's the way it was...  
Best chess regards,  
Chessdad64

## *IHSA State Chess Championships*

By Chris Merli

More than 1300 players representing 122 schools poured into the Peoria Civic Center on February 10 and 11 for the 2005-06 IHSA State Chess Championships. The huge field was the largest ever to gather at the state tournament and may be the largest for any team versus team tournament in the country. Teams from schools of every size and description, teams came to compete for the coveted state championship title. It has been said by more than one coach that winning the Illinois State Championship is even more difficult than winning the National Championship. The teams had 7 rounds to determine if they were up to the challenge.

In this competition teams are paired as team versus team with 8 players from each school comprising a team. The winner of each match is based on a board weighted system. A win on first board is worth 12 points and each lower board is worth one less point. A team needs to score more than 34 points to win a match.

Two weeks before the state championship representatives from most of the high school chess conferences met to set the seeding. Teams are arranged in order based on their play during league seasons and in tournaments between the teams. There is room for second guessing the seeding, but one seed garnered universal agreement - Niles North was the odds on favorite to win the event.

The early rounds typically match strong teams against weaker ones, however, in the second round 3<sup>rd</sup> seeded Palatine was upset by Lincolnshire (Stevenson). The first true tests for the top teams came in round 4. Two of the smallest schools were left among the undefeated lost. 4<sup>th</sup> seed Urbana University fell to the very deep 10<sup>th</sup> seed and eventual second place finisher Evanston. Meanwhile 6<sup>th</sup> seed Quigley prep was beaten by another 1A school, the surprising Normal University. The first day ended with 7 perfect scores. With the next round scheduled for Saturday morning most teams had time to gather themselves overnight and prepare for the final assault on the top three places in the morning.

The big news in round 5 was not that Niles North beat Illinois Math Science Academy, but the margin of victory. By this time most matches were being settled by a single game or two, but Niles North crushed IMSA 68-0. Even among the remaining perfect scores, many teams had to now consider if they were playing for second place. In the other matches, Urbana University drew the short straw and was paired up into the odd number of perfect scores. They recovered from the 4<sup>th</sup> round loss to knock off previously unbeaten Lincoln Way Central. Meanwhile, Evanston claimed its second highly ranked victim when they beat 2<sup>nd</sup> ranked Chicago Young losing only one game and allowing a draw in another.

Finally Barrington narrowly ended Normal University's Cinderella run with a 38-30 victory. Round 6 saw the top two undefeated teams Barrington and Niles North meet. For the first time in the tournament Niles was pushed to the limit but found enough points to win 37.5 to 30.5. Meanwhile Evanston continued to beat higher ranked teams when it knocked off Quigley prep. This set up a final round battle between Evanston and Niles North. However the match for the championship did not live up to its billing as Niles North destroyed Evanston 63-5.

Despite the final round loss, Evanston did acquire enough tiebreaker points to finish second ahead of several other 6-1 teams. In tiebreak order the other teams were; Chicago Young, Urbana University, Highland Park, Lincolnshire (Stevenson) and Park Ridge (Maine South). Chicago Young won the final IHSA trophy while the remaining teams in the group were presented with plaques from the Illinois Chess Coaches Association

(ICCA) commemorating their third place tie. The ICCA also presented plaques to the top schools based on school size who had not already won one of the top three spots.

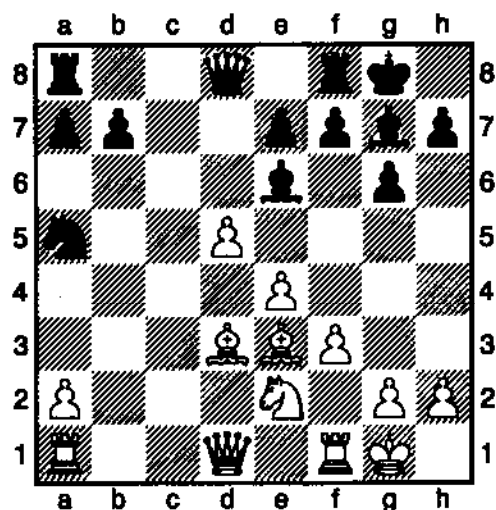
## IHSA State Chess Championship

All of these schools finished with 5 points proving how the small can compete with the mighty. For the second straight year Quigley Prep took home the top 1A school award. IMSA was the top 2A school. Glenbard South won top 3A school award. Wheaton Warren scored the 4A award and Barrington won the 5A prize. Below are two games from that event. The first is the second board match in the critical sixth round battle between Nilus North and Barrington.

### Strunk,A - Ruan,G [D89]

IHSA State Championship 2006

1.d4 Nf6 2.c4 g6 3.Nc3 d5 4.cxd5 Nxd5 5.e4 Nxc3 6.bxc3 Bg7 7.Bc4 0-0 8.Ne2 c5 9.0-0 Nc6 10.Be3 Bg4 11.f3 Na5 12.Bd3 cxd4 13.cxd4 Be6 14.d5 Diagram



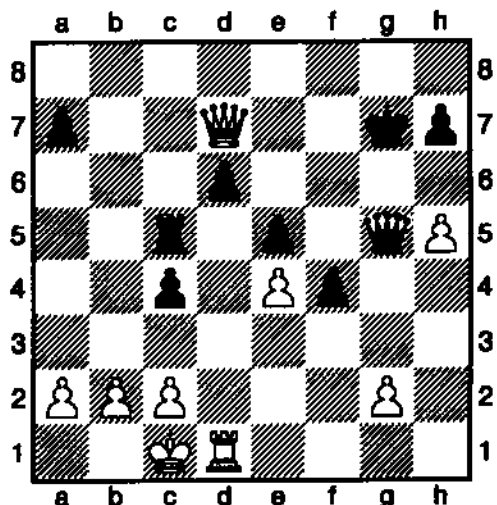
This is very deep opening knowledge. White can sacrifice the exchange since it creates a serious weakness in the black kingside. 14...Bxa1 15.Qxa1 f6 [15...Bd7 16.Bh6 This recovers the exchange and white has a nice advantage.] 16.Bh6 Re8 17.Kh1 a6 White must continue his super sharp play and force open the kingside otherwise he will find himself down the exchange. 18.Nd4 ? White blocks the critical diagonal.[18.Nf4 Bd7 19.e5]

18...Bf7 19.f4 Rc8 20.f5 Nc4 The black forces rally to the kingside. 21.Bxc4 The trade will ease black's defense but the knight is too important a defender to let him reach the kingside. 21...Rxc4 22.Rd1 Qd6 23.Re1 Qe5 24.Be3 Qxe4 25.Ne6 Qxd5 26.fxg6 hxg6 [26...Bxe6 Actually black can safely take this pawn.] 27.Nf4 Qd6 28.Qb1 Rxf4 29.Bxf4 Qxf4 30.Qxb7 0-1

### Rothschild,B - Wang,B [B78]

IHSA Team Championships

1.e4 c5 2.Nf3 d6 3.d4 cxd4 4.Nxd4 Nf6 5.Nc3 g6 6.Be3 Bg7 7.f3 0-0 8.Qd2 Nc6 9.Bc4 Bd7 10.0-0 Rb8 11.Bb3 Na5 12.Bh6 b5 13.h4 Nc4 14.Qg5 Bxh6 15.Qxh6 e5 16.Nde2 Be6 17.h5 Qc7 18.Qg5 Nd7 19.f4 f6 20.Qg3 g5 21.fxg5 f5 22.Nd5 Bxd5 23.Rxd5 f4 24.Qc3 Kh8 25.Bxc4 bxc4 26.Rhd1 Rb6 27.Qa5 Rc8 28.Nc3 Qb8 29.Rb5 Rc5 30.Rxb6 Nxb6 31.Qa3 Qc7 32.Qb4 Qe7 33.Na4 Nxa4 34.Qxa4 Qxg5 35.Qe8+ Kg7 36.Qd7+ Diagram



At this point in the match a draw would give our team a win. A loss would cost our team the match. I realized that I could force a three - fold repetition so I offered the draw. Later examination revealed that white could win. 36...Kh8 37.Qe8+ Kg7 38.Rxd6 f3+ 39.Kb1 fxg2 [39...Rc7 40.h6+ Qxh6 41.Qxe5+ Kg8 42.Qg3+] 40.h6+ Qxh6 41.Qe7+ Kg8 42.Rd8+ ½-½



## 2006 ICCA High School Invitational

By Chris Merli

The Illinois Chess Coaches Association hosted an invitational tournament for some of the top high school players in the state on February 25 at Lincoln Way Central High School in New Lenox. These 18 players were those that qualified by rating or by their finish at the state team tournament. The prize was two qualification positions for the ICA Invitational Championship and a stipend to the top player to defray costs of playing in that event. This is the type of event that makes tournament directing a joy. With such a small group of knowledgeable players the event was easy to manage, and I could sit back and watch the mayhem on the board rather than worrying about mayhem off the board.

In case any players were not clear that this was going to be a battle for survival, the first round was a rude reminder. 4th seed Andy Applebaum was slowly putting the screws to Leo Kirsch, a 350 point underdog, when suddenly Leo discovered a surprising mating combination.

At the end of the tournament, each of the 4 rounds contained at least one significant upset. By round 2 the top players were already on a collision course. Dan McNally missed a chance to draw fellow freshman Ilan Meerovich in a knight and pawn ending. First round hero Kirsch was trying to hold a slightly inferior ending when Gordon Ruan unleashed a mating combination. Meanwhile Jason Duncan won an exchange against Ben Rothschild in a complex and unusual middle game, and then mercilessly converted the advantage in the endgame. Finally Adam Strunk demonstrated technical mastery of the black side of the Gruenfeld against Jose Rodriguez. In round 3 Strunk seemed to have an edge over Duncan but Jason again demonstrated his grasp of unusual positions and brought home the point. On Board 2 Meerovich and Ruan battled into an ending but neither could find a flaw in his opponent's position and the game ended in a draw. This left Duncan as the only perfect score headed into the final round with Meerovich given the unenviable task of trying to end the winning streak. The game was nearly equal up to the point that Meerovich seemed to penetrate along the c-file, but the strike unleashed Duncan's dangerous e-pawn and Duncan remained perfect. On second board Ruan was steadily outplaying Strunk but in a complex position could not find the winning move and offered a draw.

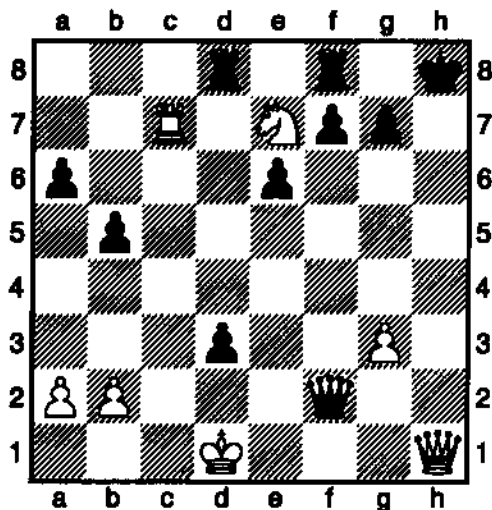
Jason Duncan won the event and the chance to represent the ICCA in the ICA qualifying event. 7<sup>th</sup> place Alex Zhai, as the next highest finishing player who had not already qualified by rating, also qualified. As part of the tournament each player submitted their score-sheets and the games were entered into a database. At some point a complete set of the games should be available on the ICA website.

Here are some of the games:

### Kirsch,L - Applebaum,A [C14]

ICCA Individual Championships (1)

1.e4 e6 2.d4 d5 3.Nc3 Nf6 4.Bg5 Be7 5.e5 Nfd7  
6.Bxe7 Qxe7 7.Bd3 a6 8.Nce2 c5 9.c3 Nc6 10.f4  
cxd4 11.cxd4 Nxd4 12.Nxd4 Qb4+ 13.Qd2 Qxd4  
14.Nf3 Qa7 15.Qc2 b5 16.Rc1 Bb7 17.Bxh7 Qe3+  
18.Kd1 Qxf4 19.Bg6 d4 20.Rf1 Nxe5 21.Qc7 Nxc6  
22.Qxb7 0-0 23.Rc7 Ne5 24.g3 Qg4 25.h3 Qxh3  
26.Nxe5 Qxf1+ 27.Kd2 Qf2+ 28.Kd1 Rad8 29.Ng6 d3  
30.Ne7+ Kh8 31.Qh1+ Diagram



31...Qh2 32.Qxh2# 1-0

## 2006 ICCA High School Invitational

### Meerovich,I – Tian,J [E01]

ICCA Individual Championships (1)

1.d4 d5 2.c4 e6 3.Nf3 Nf6 4.g3 c5 5.e3 Nc6 6.cxd5  
Nxd5 7.Nc3 Nf6 8.Bg2 cxd4 9.Nxd4 Nxd4 10.exd4  
Be7 11.0-0 0-0 12.Bf4 Bd6 13.Be5 a6 14.Qb3 Qe7  
15.Na4 Nd7 16.Nb6 Nxb6 17.Qxb6 Rd8 18.Rac1 f6  
19.Bxd6 Qxd6 20.Qxd6 Rxd6 21.Rfd1 Bd7 22.Bxb7  
Rb8 23.Rc7 Bb5 24.d5 Be2 25.Re1 Bf3 26.dxe6  
Bxb7 27.e7 Bc6 28.Rxc6 Rxc6 29.e8Q+ Rxe8  
30.Rxe8+ Kf7 31.Rb8 h6 32.a4 Ke6 33.Kg2 g6  
34.Kf3 Kf5 35.a5 Rc5 36.b4 Rc3+ 37.Kg2 Rb3  
38.Rb6 Kg5 39.Kf1 Kf5 40.Ke2 Rb2+ 41.Ke3 Rb3+  
42.Kd4 Rb2 43.f3 Rxh2 44.Rxa6 Rh3 45.b5 Rxc3  
46.b6 Rxf3 47.b7 Rb3 48.Rb6 Ra3 49.b8Q Rxa5  
50.Qc8+ Kg5 51.Qc1+ 1-0

### Ruan,G – Klink,S [C01]

ICCA Individual Championships (1)

1.e4 e6 2.d4 d5 3.exd5 exd5 4.Nf3 Bd6 5.c4 dxc4  
6.Bxc4 Nf6 7.0-0 0-0 8.Nc3 h6 [8...Bg4 9.h3 Bh5  
10.g4 Bg6 11.Ne5 c5 12.Nxg6 hxg6 13.dxc5 Bxc5  
14.Bxf7+ Kxf7 15.Qb3+ Ke8 16.Re1+ Be7 17.Bf4]  
9.Ne5 c5 10.Qb3 Qe7 11.Ng6 Qd8 12.Nxf8 Bxh2+  
13.Kxh2 Ng4+ 14.Kg1 Qh4 15.Bxf7+ Kxf8 16.Bf4  
Qe7 17.Rae1 1-0

### Zatvornitsky,A – Rodriguez,J [B19]

ICCA Individual Championships (1)

1.e4 c6 2.d4 d5 3.Nc3 dxe4 4.Nxe4 Bf5 5.Ng3 Bg6  
6.h4 h6 7.Nf3 Nd7 8.Bd3 Bxd3 9.Qxd3 Ngf6 10.c4 e6  
11.Bf4 Qa5+ 12.Nd2 0-0-0 13.0-0 Nh5 14.Be3 Nxg3  
15.fxc3 Nf6 16.a4 Bd6 17.Ne4 Nxe4 18.Qxe4 Qh5  
19.Qf3 Qxf3 20.Rxf3 Rd7 21.Rd1 Rhd8 22.c5 Bxc5  
23.Rdf1 Bxd4 24.Bxd4 Rxd4 25.Rxf7 R8d7 26.Rxd7  
Rxd7 27.Re1 Rd6 28.Kf2 Rd2+ 29.Kf3 Kd7 30.b3  
Rd3+ 31.Re3 Rxe3+ 32.Kxe3 Kd6 33.Ke4 b5 34.axb5  
cxb5 35.b4 h5 36.g4 hxg4 37.Kf4 e5+ 38.Kxg4 a5  
39.bxa5 b4 0-1

### Strunk,A – Granata,M [D15]

ICCA Individual Championships (1)

1.d4 d5 2.c4 c6 3.Nf3 Nf6 4.Nc3 Bg4 5.Ne5 Bf5  
6.cxd5 Nxd5 7.Qb3 Qb6 8.Nxd5 cxd5 9.Qxd5 Be6  
10.Qc5 Qxc5 11.dxc5 Nd7 12.Nxd7 Bxd7 13.e4 e5  
14.Be3 Rc8 15.Rc1 Be7 16.Be2 0-0 17.0-0 f5 18.exf5  
Bxf5 19.Bc4+ Kh8 20.Bd5 Rc7 21.b4 Rfc8 22.f4 Bd3  
23.Rfd1 e4 24.Bd4 Rd8 25.Be5 Rcd7 26.Be6 Rd4  
27.Bxd4 Rxd4 28.b5 e3 29.Bf5 Bxf5 30.Rxd4 e2  
31.Kf2 Bf6 32.Rd2 g5 33.Rxe2 Bd4+ 34.Ke1 gxf4  
35.c6 bxc6 36.bxc6 Be3 37.Rxe3 fxe3 38.c7 Bc8  
39.Rd1 Kg7 40.Rd8 1-0

### Rothschild,B – Meier,E [C53]

ICCA Individual Championships (1)

1.e4 e5 2.Nf3 Nc6 3.Bc4 Bc5 4.c3 d6 5.d4 Bb6  
6.dxe5 Nxe5 7.Nxe5 dxe5 8.Bxf7+ Ke7 9.Qxd8+  
Kxd8 10.Bg5+ Nf6 11.Na3 Ke7 12.Bb3 h6 13.Bxf6+  
gxf6 14.Nc4 Rf8 15.Nxb6 cxb6 16.0-0-0 Be6 17.Bxe6  
Kxe6 18.Rd5 Rad8 19.Rhd1 Rxd5 20.exd5+ Kd6  
21.Kc2 f5 22.a4 e4 23.Rd4 Re8 24.b4 f4 25.Kd2 h5  
26.g3 fxg3 27.hxg3 Rf8 28.Ke2 Rf3 29.c4 Rb3  
30.Rxe4 Rxb4 31.Kd3 Rb3+ 32.Kd4 Rf3 33.Re6+  
Kd7 34.Rh6 Rxf2 35.Rxh5 Rf7 36.Re5 Rg7 37.Re3  
Kd6 38.Rd3 Rg4+ 39.Kc3 Rg7 40.Kb4 a6 41.Rf3 Kd7  
42.Rf6 Rxc3 43.Rxb6 Kc7 44.a5 Rd3 45.Rh6 Rg3  
46.Rh7+ Kc8 47.Kc5 Rg6 48.Re7 Rh6 49.Re6 Rh7  
50.Kb6 Rh4 51.Kc5 Rh7 52.Rg6 Rc7+ 53.Kd6 Rd7+  
54.Ke6 Kc7 55.c5 Rh7 56.Rf6 Rh8 57.Ke7 Rh5  
58.d6+ Kb8 59.d7 Rh7+ 60.Rf7 Rh6 61.d8Q+ Ka7  
62.Qb6+ Rxb6 63.cxb6+ Kb8 64.Rf8# 1-0

### Granata,M – Meier,E [C44]

ICCA Individual Championships (2)

1.e4 e5 2.d4 exd4 3.Nf3 Nc6 4.c3 dxc3 5.Nxc3 d6  
6.Bc4 Be7 7.Qb3 Na5 8.Bxf7+ Kf8 9.Qa4 Kxf7  
10.Qxa5 c5 11.Qxd8 Bxd8 12.Bf4 Ke7 13.Nd5+ Kd7  
14.0-0 Nf6 15.Nxf6+ Bxf6 16.Rfd1 Ke8 17.Rxd6  
Bxb2 18.Rb1 Bf6 19.e5 Be7 20.Rd3 Bf5 21.Rdb3  
Bxb1 22.Rxb1 b6 23.g4 h6 24.Nd2 g5 25.Bg3 Kf7  
26.Re1 Rad8 27.e6+ Ke8 28.Nc4 Rf8 29.Ne5 Bd6  
30.Ng6 Rf6 31.e7 Rd7 32.Nf8 Rxe7 33.Rxe7+ Kxe7  
34.Nh7 Bxg3 35.Nxf6 Bxf2+ 36.Kxf2 Kxf6 37.Ke3  
Ke5 38.Kf3 b5 39.Ke3 a5 40.h3 c4 0-1

### Wu,L – McNally,D [A25]

ICCA Individual Championships (1)

1.c4 e5 2.Nc3 Nc6 3.g3 d6 4.Bg2 g6 5.a3 Bg7 6.Rb1  
f5 7.d3 Nf6 8.Bg5 Ne7 9.b4 h6 10.Bd2 0-0 11.e3 f4  
12.exf4 exf4 13.Bxf4 Ng4 14.Ne4 g5 15.Bd2 c6 16.h3  
d5 17.hxg4 dxe4 18.Bxe4 Qd7 19.f3 Qd6 20.Ne2  
Ng6 21.c5 Qe6 22.Qb3 Ne5 23.Qxe6+ Bxe6 24.Rf1  
Rad8 25.Nc1 Bd5 26.Bxd5+ Rxd5 27.Ke2 Re8  
28.Kd1 0-1

### Tian,J – Wu,L [E13]

ICCA Individual Championships (2)

1.d4 Nf6 2.c4 e6 3.Nc3 b6 4.Bg5 h6 5.Bh4 Bb4 6.Nf3  
Bb7 7.e3 d5 8.a3 Bxc3+ 9.bxc3 Nbd7 10.cxd5 exd5  
11.Bb5 c6 12.Ba4 Qc7 13.0-0 0-0 14.Bg3 Qc8 15.Rc1  
Ne4 16.c4 Nxg3 17.hxg3 Qd8 18.cxd5 cxd5 19.Bxd7  
Qxd7 20.Ne5 Qe7 21.Qb3 Rfc8 22.Nd3 Ba6 23.Rfd1  
Bc4 24.Qc3 Rc7 25.Qb4 Qxb4 26.Nxb4 Rac8 27.Rd2  
a5 28.Nd3 Bxd3 29.Rxc7 Rxc7 30.Rxd3 Kf8 31.Rb3  
Rb7 32.Rb5 Ke7 33.Rxd5 b5 34.Rc5 b4 35.axb4  
axb4 36.Rc2 Kd6 37.Kf1 b3 38.Rb2 Kd5 39.Ke1 Kc4  
40.Kd1 Ra7 41.Kc1 Ra1+ 42.Rb1 Ra2 43.d5 Kc3  
44.d6 b2+ 45.Kd1 Ra1 46.Ke2 Rxb1 47.d7 Re1+  
48.Kf3 Rd1 0-1

**Kirsch,L – Ruan,G [C18]**

ICCA Individual Championships (2)

1.e4 e6 2.d4 d5 3.Nc3 Bb4 4.e5 c5 5.a3 Bxc3+ 6.bxc3 Qc7 7.Qg4 f5 8.Bb5+ Kf8 9.Qh5 Qf7 10.Qh4 Ne7 11.Be2 h6 12.Nh3 Nbc6 13.Bg5 Ng6 14.Bh5 Nxb4 15.Bxf7 Kxf7 16.Bxb4 g5 17.Bxg5 hxg5 18.Nxg5+ Ke7 19.Nf3 cxd4 20.cxd4 Bd7 21.Ke2 Rac8 22.Ra2 Na5 23.Nd2 Ba4 24.Kd3 Bb5+ 25.Ke3 Rc3+ 26.Kf4 Rh4+ 27.Kg5 Rg4+ 28.Kh5 Rc8 0-1

**Applebaum,A – Zheng,X [B85]**

ICCA Individual Championships (2)

1.e4 c5 2.Nf3 Nc6 3.d4 cxd4 4.Nxd4 Nf6 5.Nc3 d6 6.Be2 e6 7.0-0 Be7 8.Be3 0-0 9.Kh1 a6 10.f4 Qc7 11.Qe1 b5 12.a3 Bb7 13.Bf3 Rac8 14.Qg3 Rfe8 15.f5 Nxd4 16.Bxd4 Qc4 17.e5 Ne4 18.Bxe4 d5 19.f6 g6 20.fxe7 Qxd4 21.Bd3 Rxe7 22.Qg5 Rd7 23.h4 h5 24.Rf4 Qe3 25.Raf1 d4 26.Ne4 Bxe4 27.Bxe4 Rcc7 28.Bxg6 fxg6 29.Qxg6+ 1-0

**Rodriguez,J – Strunk,A [D85]**

ICCA Individual Championships (2)

1.d4 Nf6 2.c4 g6 3.Nc3 d5 4.cxd5 Nxd5 5.e4 Nxc3 6.bxc3 Bg7 7.Nf3 c5 8.Bb5+ Bd7 9.Qa4 Nc6 10.Be3 a6 11.Bxc6 Bxc6 12.Qc2 cxd4 13.Nxd4 Qc7 14.0-0 0-0 15.Nxc6 Qxc6 16.Rac1 Rac8 17.Qb1 b5 18.Bd4 e5 19.Be3 Rfd8 20.f4 exf4 21.Bd4 Bxd4+ 22.cxd4 Qb6 23.Rxc8 Qxd4+ 24.Kh1 Rxc8 25.Rxf4 Qd2 26.Rf1 Rc2 27.Rg1 Rxa2 28.Qb3 Rc2 29.Qa3 a5 30.Qe7 Rc8 31.Qb7 Qd8 32.Qxb5 Ra8 33.Qa4 Qe8 34.Qc4 a4 35.Re1 a3 36.Qa2 Qb5 37.Rf1 0-1

**Granata,M – Tian,J [B21]**

ICCA Individual Championships (3)

1.e4 c5 2.d4 cxd4 3.c3 dxc3 4.Nxc3 Nf6 5.Nf3 d6 6.Bc4 Nc6 7.Qe2 Bg4 8.Bf4 g6 9.0-0 Bg7 10.Rfd1 e5 11.Bg5 Nd4 12.Bb5+ Kf8 13.Qd3 Bxf3 14.gxf3 h6 15.Be3 Nxf3+ 16.Kh1 Ke7 17.Rac1 a6 18.Ba4 b5 19.Bb3 Qd7 20.Nd5+ Nxd5 21.Qxd5 Rhf8 22.Bb6 Rac8 23.Rxc8 Qxc8 24.Qxd6+ Ke8 25.Bd5 f6 26.Be6 1-0

**Meier,E – McNally,D [B34]**

ICCA Individual Championships (3)

1.e4 c5 2.Nf3 Nc6 3.d4 cxd4 4.Nxd4 g6 5.Bc4 Bg7 6.Nxc6 bxc6 7.0-0 e6 8.Re1 Ne7 9.Bf4 d5 10.exd5 cxd5 11.Bb5+ Bd7 12.Bxd7+ Qxd7 13.c3 0-0 14.Qc2 Rfc8 15.Nd2 Qb7 16.Nf3 d4 17.Rab1 Nd5 18.Qe4 dxc3 19.bxc3 Qa6 20.Be5 Nxc3 21.Bxc3 Bxc3 22.Rec1 Bg7 23.Rxc8+ Rxc8 24.h3 Qxa2 25.Ng5 Rf8 26.Rb7 h6 27.Nf3 e5 28.Nh4 Kh7 29.Qe3 a5 30.Ra7 Rc8 31.Nf3 a4 32.Nxe5 Qa1+ 33.Kh2 Qxe5+ 34.Qxe5 Bxe5+ 35.g3 Rc4 36.Rxf7+ Kg8 37.Rb7 a3 38.Ra7 Bb2 39.Ra8+ Kf7 40.Ra7+ Ke6 41.Ra6+ Kd5 42.Rxg6 a2 43.Rxh6 a1Q 44.Rh5+ Be5 45.Rf5 Ke6 46.Rf8 Rc2 47.h4 Qf1 48.h5 Rxf2+ 49.Rxf2 Qxf2+ 50.Kh1 Bxg3 51.h6 Qf1# 0-1

**McNally,D – Meerovich,I [E81]**

ICCA Individual Championships (2)

1.d4 Nf6 2.c4 g6 3.Nc3 Bg7 4.e4 d6 5.f3 0-0 6.Be3 c6 7.Qd2 Nbd7 8.0-0-0 a6 9.e5 dxe5 10.dxe5 Ne8 11.e6 fxe6 12.Ne4 Qc7 13.Ng5 Ndf6 14.Ne2 h6 15.Ne4 Nxe4 16.fxe4 Kh7 17.h4 Nd6 18.Qc2 e5 19.h5 g5 20.b3 b5 21.c5 Nf7 22.Nc3 Bg4 23.Be2 Bxe2 24.Nxe2 Rad8 25.Ng3 e6 26.Rxd8 Nxd8 27.Rd1 Nb7 28.Rd3 a5 29.Qd2 Rd8 30.Rxd8 Qxd8 31.Qxd8 Nxd8 32.Ne2 Bf8 33.a4 bxa4 34.bxa4 Nb7 35.Kd2 Bxc5 36.Kd3 Bxe3 37.Kxe3 Nc5 38.Nc1 g4 39.Nd3 Nxa4 40.Nxe5 c5 41.Nc4 Kg7 42.e5 Nc3 43.Nxa5 Nd5+ 44.Ke4 Kf7 45.Nc4 Ke8 46.Nd6+ Ke7 47.Nc4 Kd7 48.Nd6 Nf6+ 49.Kf4 Nxb5+ 50.Kxg4 Nf6+ 51.Kf4 Nd5+ 52.Ke4 h5 53.g3 Kc6 54.Kd3 Ne7 55.Ke4 Nd5 56.Kd3 Kb6 57.Kc4 Ne3+ 58.Kd3 Nf5 59.Ne4 Kb5 60.Ng5 Nd4 61.Kc3 0-1

**Zhai,A – Damore,J [B02]**

ICCA Individual Championships (2)

1.e4 Nf6 2.Nc3 d5 3.exd5 Nxd5 4.Be2 Nc6 5.Nf3 Bf5 6.a3 e5 7.Nxd5 Qxd5 8.d3 Be7 9.0-0 0-0 10.b4 a5 11.b5 Nd4 12.Nxd4 exd4 13.a4 c6 14.Bf3 Qd7 15.bxc6 bxc6 16.Ba3 Bxa3 17.Rxa3 Be6 18.Qd2 Rfb8 19.Raa1 Rb4 20.Rfb1 Rab8 21.Rxb4 axb4 22.Qg5 Qd6 23.Qg3 Qxg3 24.hxg3 Bd7 25.a5 Kf8 26.Kf1 Ke7 27.a6 Kd6 28.Ra4 Kc5 29.a7 Ra8 30.Ke2 Kb5 31.Ra1 Bc8 32.Kd2 Bb7 33.Kc1 Kb6 34.Ra4 c5 0-1

**Klink,S – Zhai,A [B24]**

ICCA Individual Championships (3)

1.e4 c5 2.Nc3 Nc6 3.g3 g6 4.Bg2 Bg7 5.Nge2 Nf6 6.d3 0-0 7.Be3 d6 8.h3 Qc7 9.Qd2 b6 10.0-0 Bb7 11.Kh2 e6 12.f4 Ne7 13.g4 d5 14.e5 Ne8 15.d4 cxd4 16.Nxd4 Nc6 17.Ncb5 Qd7 18.Nxc6 Bxc6 19.Nd4 Bb7 20.Qe2 Nc7 21.Bd2 Ba6 22.Qf2 Bxf1 23.Rxf1 Rac8 24.c4 Rfd8 25.cxd5 Nxd5 26.Nb3 Rc2 27.Kh1 Rxb2 28.f5 exf5 29.gxf5 Bxe5 0-1

**Zhai,A – Zheng,X [A43]**

ICCA Individual Championships (1)

1.d4 Nf6 2.Nf3 c5 3.d5 b5 4.a4 Bb7 5.d6 exd6 6.axb5 d5 7.e3 Be7 8.Be2 a6 9.0-0 0-0 10.b3 axb5 11.Rxa8 Bxa8 12.Bxb5 Qb6 13.Be2 Ne4 14.Nfd2 Bf6 15.f3 Ng5 16.c3 Re8 17.Qc2 Nc6 18.Bd3 h6 19.Re1 d4 20.Nc4 Qc7 21.e4 d5 22.Ncd2 dxc3 23.Nf1 Nd4 24.Qd1 ½-½

**Klink,S – Zatvornitsky,A [B07]**

IHSA Team Championships (2)

1.e4 d6 2.d4 Nf6 3.Nc3 g6 4.Be3 c6 5.Qd2 b5 6.a3 a5 7.Bd3 Bb7 8.Nf3 Nbd7 9.Bh6 Bxb6 10.Qxh6 b4 11.Ne2 e5 12.dxe5 Nxe5 13.Nxe5 dxe5 14.Bc4 Qe7 15.Ng3 0-0-0 16.0-0 c5 17.axb4 cxb4 18.Qe3 Rd4 19.Bd3 Rhd8 20.Ne2 R4d6 21.Qc5+ Kd7 22.Bb5+ Bc6 23.Bxc6+ Rxc6 24.Rfd1+ Rd6 25.Qxa5 Ke8

## 2006 ICCA High School Invitational

26.Rxd6 Qxd6 27.f3 Qd2 28.Kf2 Nd7 29.Ra4 Rb8  
30.c3 b3 31.Qd5 Qxb2 32.Ra7 Rd8 33.Rb7 Qa1  
34.Qxb3 Qa6 35.Qd5 Qa3 36.c4 Qc5+ 37.Qxc5 Nxc5  
½-½

### Rothschild,B – Kirsch,L [B90]

IHSA Team Championships (3)

1.e4 c5 2.Nf3 d6 3.d4 cxd4 4.Nxd4 Nf6 5.Nc3 a6  
6.Bc4 g6 7.Bb3 Bg7 8.f3 0-0 9.Be3 b5 10.Qd2 Re8  
11.0-0-0 Nbd7 12.h4 Nb6 13.Bh6 Bh8 14.h5 Nc4  
15.hxg6 hxg6 16.Qg5 e5 17.Nf5 Bxf5 18.exf5 Nh7  
19.Qxd8 Raxd8 20.fxg6 fxg6 21.Bxc4+ bxc4 22.Rd2  
Bf6 23.Ne4 d5 24.Nxf6+ Nxf6 25.Bg5 Re6 26.c3 Kg7  
27.Rhd1 Red6 28.Re2 Re6 29.Kc2 Rd7 30.b3 cxb3+  
31.axb3 Kf7 32.Rh1 Kg7 33.Rhe1 Rde7 34.Rd1 Rd7  
35.g4 Kf7 36.Rh1 d4 37.Rd1 Red6 38.cxd4 exd4  
39.Red2 Incomplete 0-1

### Damore,J – Duncan,J [B03]

IHSA Team Championships (1)

1.e4 Nf6 2.e5 Nd5 3.c4 Nb6 4.d4 d6 5.exd6 cxd6  
6.Nc3 g6 7.Be3 Bg7 8.Rc1 0-0 9.b3 e5 10.Nf3 Nc6  
11.Be2 f5 12.dxe5 dxe5 13.Qxd8 Rxd8 14.c5 Nd7  
15.Bc4+ Kf8 16.Ng5 Nf6 17.Nb5 Ke7 18.Nc7 Rb8  
19.Nge6 f4 20.Nxd8 Kxd8 21.Nb5 fxe3 22.fxe3 Ke7  
23.h3 Be6 24.Bxe6 Kxe6 25.Nc3 Nb4 26.Ke2 Bh6  
27.Rhd1 Rc8 28.Rd6+ Ke7 29.a3 Nc6 30.Rf1 Nh5  
31.Rf3 Rf8 32.Nd5+ Ke8 33.g4 Rxf3 34.Kxf3 Bf8  
35.Nc7+ Kf7 36.Rd7+ Kf6 37.gxh5 Bxc5 38.Rxh7  
gxh5 39.b4 Kg6 40.Rd7 Bb6 41.Nd5 Kf5 42.Nxb6  
axb6 43.Rxb7 e4+ 44.Ke2 Kg5 45.Rxb6 Ne7 46.Re6  
Nd5 47.Re5+ 0-1

### Duncan,J – Rothschild,B [C00]

ICCA Individual Championships (2)

1.e4 e6 2.Qe2 c5 3.Nf3 Nc6 4.g3 g6 5.Bg2 Bg7 6.0-0  
Nge7 7.d3 d6 8.c3 0-0 9.Rd1 e5 10.a3 a5 11.a4 Be6  
12.Ng5 Bb3 13.Re1 h6 14.Nd2 Bxa4 15.Nxf7 Rxf7  
16.Rxa4 Qd7 17.Ra1 Raf8 18.Rf1 b5 19.h4 b4  
20.Nc4 Qc7 21.Be3 Rb8 22.Ra4 Nc8 23.Bh3 Kh7  
24.h5 g5 25.f4 gxf4 26.gxf4 bxc3 27.bxc3 exf4  
28.Bxf4 Qe7 29.Qg2 Nd8 30.Bxc8 Rxc8 31.Nxd6  
Rxf4 32.Qg6+ Kh8 33.Rxf4 Rc6 34.Qe8+ Qxe8  
35.Nxe8 Bxc3 36.Rf8+ Kh7 37.Kf1 Ne6 38.Rf5 Nd4  
39.Rf7+ Kg8 40.Rc7 Rxc7 41.Nxc7 Kf7 42.Rc4 Bb4  
43.Na6 Ne6 44.d4 Nxd4 45.Nxc5 Nf3 46.Kg2 Nd2  
47.Rc2 Kf6 48.Kh3 Bxc5 49.Rxc5 Nxe4 50.Rxa5  
Ng5+ 51.Kg4 1-0

### Strunk,A – Duncan,J [D36]

IHSA Team Championships (3)

1.d4 e6 2.c4 Nf6 3.Nf3 d5 4.Nc3 Be7 5.cxd5 exd5  
6.Bg5 0-0 7.e3 c6 8.Bd3 Nbd7 9.Qc2 Re8 10.0-0 Nf8  
11.Rab1 Bd6 12.b4 a6 13.a4 Ng6 14.b5 a5 15.e4 Be7  
16.e5 Nh5 17.Bxe7 Qxe7 18.bxc6 bxc6 19.Ne2 Bg4  
20.Kh1 Bxf3 21.gxf3 Qh4 22.Bxg6 hxg6 23.Qxc6 Nf4  
24.Nxf4 Qxf4 25.Qc3 f6 26.Qe3 Qf5 27.f4 g5 28.Qf3

gxf4 29.Qxd5+ Kh8 30.Rb3 Rad8 31.Qxa5 Rxd4  
32.Qb5 Rxe5 33.Qb8+ Kh7 34.Rb7 Qh3 35.Rbb1  
Qf3+ 36.Kg1 Rg5# 0-1

### Meerovich,I – Ruan,G [D85]

ICCA Individual Championships (3)

1.d4 Nf6 2.c4 g6 3.Nc3 d5 4.cxd5 Nxd5 5.e4 Nxc3  
6.bxc3 Bg7 7.Nf3 c5 8.Rb1 Nc6 9.d5 Ne5 10.Nxe5  
Bxe5 11.Qd2 0-0 12.f4 Bg7 13.Bd3 b6 14.c4 e6  
15.Bb2 Bxb2 16.Qxb2 exd5 17.exd5 Re8+ 18.Kf2  
Qd6 19.g3 Bd7 20.Rhe1 b5 21.Rxe8+ Rxe8 22.Re1  
Rxe1 23.Kxe1 bxc4 24.Bxc4 Qb6 25.Qc3 a5 26.Kd2  
Qb4 27.a3 Qxc3+ 28.Kxc3 Kf8 29.d6 Ke8 30.Ba6  
Be6 31.Bb5+ Kd8 32.Kd3 f5 33.d7 Kc7 34.a4 Bxd7  
35.Kc4 Bxb5+ 36.Kxb5 Kd6 37.Kxa5 Kc6 38.h3 h6  
39.g4 fxg4 40.hxg4 h5 41.f5 gxf5 42.gxh5 f4 43.h6 f3  
44.h7 f2 45.h8Q f1Q 46.Qc8+ Kd6 47.Qb8+ Kc6  
48.Qb6+ Kd5 49.Qd8+ Kc6 50.Qe8+ Kd6 51.Qg6+  
Kd5 52.Kb6 c4 53.a5 Qf2+ 54.Kb7 Qb2+ 55.Kc7 c3  
56.Qd6+ Ke4 ½-½

### Damore,J – Applebaum,A [E06]

ICCA Individual Championships (3)

1.c4 e6 2.g3 d5 3.Bg2 Nf6 4.Nf3 c6 5.d4 Be7 6.0-0-0  
0 7.Nc3 b6 8.Ne5 Bb7 9.e4 Nbd7 10.Nxd7 Qxd7  
11.e5 Ne8 12.cxd5 exd5 13.Be3 Nc7 14.Qb3 Rab8  
15.Qa4 Rfd8 16.Rfd1 a5 17.a3 Ba6 18.b4 axb4  
19.axb4 Bc4 20.Qa3 Ra8 21.Qb2 Na6 22.Na2 Bxa2  
23.Qxa2 Bxb4 24.Qb3 Ba5 25.Qb2 Nc7 26.Rdc1 Ne6  
27.f4 Nf8 28.Qc2 0-1

### Wu,L – Rodriguez,J [B13]

ICCA Individual Championships (3)

1.e4 c6 2.d4 d5 3.exd5 cxd5 4.c3 Nc6 5.Nf3 Bg4  
6.h3 Bh5 7.Be2 Qc7 8.Be3 e6 9.Nbd2 Bd6 10.g4 Bg6  
11.Nh4 Nf6 12.Nxg6 hxg6 13.Qb3 Rb8 14.a4 Bh2  
15.g5 Nh5 16.Nf3 Bf4 17.Rg1 Bxe3 18.fxe3 Ng3  
19.h4 Nf5 20.Kd2 Nxh4 21.Nxh4 Rxh4 22.Raf1 a6  
23.Qd1 Ne7 24.Rh1 Rh2 25.Rxh2 Qxh2 26.Rh1 Qd6  
27.a5 Nf5 28.Rh8+ Ke7 29.Rxb8 Qxb8 30.Qb3 Qc7  
31.Qb4+ Nd6 32.Bd1 Qxa5 33.Qb3 Qb5 34.Qa3 Qf1  
35.Be2 Qg1 36.Qa5 Ne4+ 37.Kd3 Qb1# 0-1

### Zheng,X – Zatvornitsky,A [B38]

ICCA Individual Championships (3)

1.d4 Nf6 2.Nf3 d6 3.c4 g6 4.Nc3 Bg7 5.e4 0-0 6.Be2  
c5 7.0-0 cxd4 8.Nxd4 b6 9.Be3 Bb7 10.f3 Nbd7  
11.Qd2 Re8 12.g4 Rc8 13.b3 Nc5 14.Rad1 a6 15.b4  
Ncd7 16.g5 Nh5 17.Nb3 Qc7 18.Nd5 Bxd5 19.Qxd5  
Ne5 20.Rc1 e6 21.Qd2 Qb8 22.f4 Nd7 23.e5 d5  
24.cxd5 Rxc1 25.Rxc1 exd5 26.Qxd5 Rd8 27.Rd1  
Qa7 28.Bc4 Nf8 29.Qxd8 Nxf4 30.Qxb6 Qxb6  
31.Bxb6 Bxe5 32.h4 N4e6 33.Nd4 Bg3 34.Nxe6  
Nxe6 35.Bxe6 fxe6 36.Bf2 Be5 1-0

**Duncan,J – Meerovich,I [A08]**

ICCA Individual Championships (4)

1.e4 c5 2.Nf3 g6 3.d3 Bg7 4.g3 e6 5.Bg2 d5 6.Nbd2  
 Ne7 7.0-0 Nbc6 8.Re1 0-0 9.Nf1 b6 10.e5 Bb7 11.Bf4  
 d4 12.Qd2 Re8 13.h4 Nd5 14.Bh6 Bh8 15.N1h2 Qc7  
 16.Ng4 Nde7 17.Bf4 Nf5 18.Nh6+ Nxb6 19.Bxb6  
 Rad8 20.Re2 Ba6 21.Rae1 Rd7 22.Re4 Bb7 23.Rg4  
 Ne7 24.Bf4 c4 25.h5 Nf5 26.hxg6 fxc6 27.Nh4 Bxc2  
 28.Kxg2 Qc6+ 29.Kg1 Rc8 30.Nxf5 exf5 31.Rh4  
 cxd3 32.cxd3 Qc2 33.Qb4 Qc5 34.Qb3+ Qd5 35.e6  
 Qxb3 36.exd7 Rf8 37.axb3 Bf6 38.Re8 Bd8 39.Bd6  
 1-0

**Ruan,G – Strunk,A [B92]**

ICCA Individual Championships (4)

1.e4 c5 2.Nf3 d6 3.d4 cxd4 4.Nxd4 Nf6 5.Nc3 a6  
 6.Be2 e5 7.Nb3 Be7 8.0-0 0-0 9.f4 b5 10.Bf3 Bb7  
 11.f5 Nbd7 12.Qe2 b4 13.Nd5 Nxd5 14.exd5 Rc8  
 15.Be3 Qc7 16.Rac1 Nf6 17.Qd3 a5 18.c3 Qd8  
 19.Nd2 Ra8 20.g4 bxc3 21.bxc3 Ba6 22.c4 Nd7  
 23.Ne4 Rc8 24.g5 Kh8 25.Be2 Nb6 26.f6 gxf6  
 27.gxf6 Rg8+ 28.Kh1 Bxc4 29.Rxc4 Nxc4 30.fxe7  
 Qxe7 31.Nf6 Rg6 32.Ng4 [32.Bg5] 1/2-1/2

**Applebaum,A – Rothschild,B [C01]**

ICCA Individual Championships (4)

1.e4 e6 2.d4 d5 3.exd5 exd5 4.Bd3 Bd6 5.Ne2 Ne7  
 6.Be3 Nbc6 7.Nbc3 Be6 8.Qd2 Qd7 9.0-0-0 0-0-0  
 10.a3 a6 11.Nf4 Bxf4 12.Bxf4 Nxd4 13.Bxa6 Nec6  
 14.Bb5 Nxb5 15.Nxb5 d4 16.Bxc7 Bc4 17.Bxd8  
 Rxd8 18.a4 Bxb5 19.axb5 Ne5 20.Qa5 Qd5 21.Rhe1  
 Nc4 22.Qb4 d3 23.cxd3 Ne5 24.Qc3+ 1-0

**McNally,D – Rodriguez,J [B18]**

ICCA Individual Championships (4)

1.e4 c6 2.d4 d5 3.Nc3 dxe4 4.Nxe4 Bf5 5.Ng3 Bg6  
 6.h4 h6 7.Nh3 e5 8.dxe5 Qa5+ 9.c3 Qxe5+ 10.Be2  
 Be7 11.Bf4 Qc5 12.Be3 Qd6 13.Qxd6 Bxd6 14.Nf4  
 Bc2 15.Rc1 Bh7 16.Rd1 Be7 17.Nfh5 g6 18.Bd4 f6  
 19.Nf4 Nd7 20.Bd3 Nf8 21.h5 gxh5 22.Bxb7 Rxh7  
 23.Rxh5 Bd6 24.Be3 0-0-0 25.Nf5 Bb8 26.Rxd8+  
 Kxd8 27.Ke2 b6 28.Nd3 Ke8 29.Nxb6 Ne7 30.Ng4  
 Kf7 31.Rxh7+ Nxb7 32.Kf3 c5 33.c4 Nf8 34.g3 Ne6  
 35.Nh2 Nf8 36.Nf1 Nfg6 37.Nd2 Nf5 38.Ne4 Nxe3  
 39.Kxe3 Ke6 40.Nc3 Ne7 41.Nf4+ Kf5 42.Nfd5 Nc6  
 43.g4+ Kxg4 44.Nxf6+ Kf5 45.Nfd5 Ne5 46.b3 Ng4+  
 47.Ke2 Ne5 48.Nb5 Nc6 49.f3 Be5 50.Nbc3 Nd4+  
 51.Kf2 Nc6 52.Ne3+ Ke6 53.Ncd5 Bd4 54.f4 Ne7  
 55.Nxe7 Kxe7 56.Kf3 Kf6 57.Ke4 Ke6 58.Nd5 Kd6  
 59.Kf5 Kc6 60.Ke6 a6 61.f5 b5 62.f6 bxc4 63.bxc4  
 Bxf6 64.Kxf6 Kd6 65.a3 a5 66.a4 Kd7 67.Ke5 Kc6  
 68.Ke6 Kb7 69.Kd6 1-0

**Zhai,A – Granata,M [B78]**

ICCA Individual Championships (4)

1.e4 c5 2.Nf3 Nc6 3.d4 cxd4 4.Nxd4 g6 5.Nc3 Bg7  
 6.Be3 d6 7.Bc4 Nf6 8.f3 Bd7 9.Qd2 0-0 10.0-0-0 Rc8  
 11.Bb3 Qc7 12.g4 Ne5 13.h4 Nc4 14.Bxc4 Qxc4  
 15.h5 b5 16.Kb1 b4 17.Nce2 e5 18.Nb3 Bb5 19.Ng3  
 Rfd8 20.Bh6 d5 21.Bxc7 dxe4 22.Qxd8+ Rxd8  
 23.Rxd8+ Kxg7 24.h6# 1-0

**Damore,J – Zheng,X [E62]**

ICCA Individual Championships (4)

1.c4 Nf6 2.g3 g6 3.Bg2 Bg7 4.Nc3 0-0 5.Nf3 d6 6.0-0  
 Nc6 7.d4 Bf5 8.Re1 Ne4 9.Nh4 Nxc3 10.bxc3 Bd7  
 11.Rb1 Rb8 12.e4 Na5 13.Qd3 c5 14.Bg5 h6 15.Bd2  
 Qc7 16.Bf1 b6 17.d5 Bc8 18.Ng2 f5 19.Nf4 fxe4  
 20.Rxe4 Bf5 21.Ne6 Qd7 22.Nxf8 Rxf8 23.g4 Bxe4  
 24.Qxe4 Rf6 25.Re1 g5 26.h3 Rf7 27.Qe6 Qxe6  
 28.Rxe6 Nb7 29.Kg2 Nd8 30.Rg6 Rf6 31.Bd3 Rxc6  
 32.Bxc6 Be5 33.Kf3 Kg7 34.Bf5 Kf6 35.Ke4 Nf7  
 36.h4 Bh2 37.hxg5+ hxg5 38.f4 gxf4 39.Bxf4 Bxf4  
 40.Kxf4 Ne5 41.g5+ Kg7 42.Be4 Nd7 43.Kf3 Nf8 1/2-1/2

**Kirsch,L – Wu,L [B03]**

ICCA Individual Championships (4)

1.e4 Nf6 2.e5 Nd5 3.d4 d6 4.c4 Nb6 5.exd6 cxd6  
 6.Nc3 Nc6 7.Be3 g6 8.d5 Ne5 9.Bd4 f6 10.Bxe5 fxe5  
 11.a4 Bg7 12.a5 Nd7 13.Nf3 0-0 14.Bd3 Nc5 15.Bc2  
 Bg4 16.Be4 Rf4 17.h3 Nxe4 18.hxg4 Nxc3 19.bxc3  
 Rxc4 20.Qd2 Rxc4 21.Ng5 e4 22.Ra3 Qf8 23.Rh2  
 Qc8 24.Rh3 Qc5 25.Rb3 Ra4 26.Rb4 Qxa5 27.Rxa4  
 Qxa4 28.Ne6 Qa1+ 29.Ke2 h5 30.Rg3 Qa6+ 31.Ke1  
 Qa1+ 32.Ke2 Qa6+ 33.Kd1 Qa1+ 34.Qc1 Qxc1+  
 35.Kxc1 Kf7 36.Ng5+ Kg8 37.Ne6 Kh7 38.Ng5+ Kh8  
 39.Ne6 Kh7 40.Ng5+ Kh8 41.Ne6 Rc8 42.Rxc6 Bxc3  
 43.Rh6+ Kg8 44.Kd1 a5 45.Rxh5 b5 46.Rg5+ Kf7  
 47.Rf5+ Bf6 48.g4 a4 49.g5 Kg6 50.Rf4 Be5 51.Rh4  
 a3 52.Rh6+ Kf5 53.Rh7 a2 54.Rf7+ Kg4 55.f3+ exf3  
 56.g6 a1Q+ 57.Kd2 Qa2+ 0-1

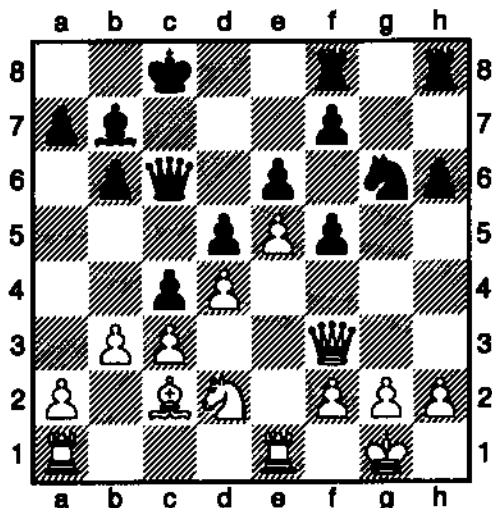
**Meier,E – Klink,S [C00]**

ICCA Individual Championships (4)

1.e4 e6 2.Nf3 d5 3.exd5 exd5 4.d4 Bd6 5.Nc3 Ne7  
 6.Bd3 Nbc6 7.h3 Be6 8.Be3 Qd7 9.Qd2 a6 10.a3 f6  
 11.Ne2 0-0-0 12.b4 Bf5 13.b5 axb5 14.Bxb5 Be4  
 15.Nf4 g5 16.Nd3 g4 17.Nh4 gxh3 18.f3 hxg2 19.Rg1  
 Bg3+ 20.Bf2 Bxd3 21.cxd3 Qe6+ 22.Kd1 Bxb4  
 23.Bxb4 Qh3 24.Qf2 Rhg8 25.Bxf6 Rdf8 26.Bxc6  
 Nxc6 27.Ra2 Rxf6 28.Rxc2 Rxc2 29.Qxc2 Qxf3+  
 30.Qxf3 Rxf3 31.Rh2 Nxd4 32.Rxh7 Rxd3+ 33.Kc1  
 Rxa3 34.Rh4 c5 35.Rh5 Ne2+ 36.Kd2 Nf4 37.Rf5 Rf3  
 38.Rf8+ Kc7 39.Rf7+ Kb6 40.Rf6+ Kb5 41.Rh6 Kc4  
 42.Rh4 b5 43.Rg4 b4 44.Kc2 d4 45.Kc1 Rf2 46.Rg3  
 Ne2+ 0-1

**Karagianis,P – Stefanovic,M [B00]**

Illinois Class Championship. Joliet (1), 10.12.2005  
 1.d4 b6 2.e4 Bb7 3.Bd3 g6 4.Ne2 Bg7 5.0-0 Now  
 maybe black should go d6, e6, Nd7, Ne7. The Hippo.  
 defence. 5...d5 6.e5 e6 7.Nd2 Ne7 8.c3 Nd7 9.Nf3 c5  
 10.Ng3 Qc7 White has a superior Advance French.  
 11.Re1 c4 12.Bc2 0-0-0 13.b3! Nf5 14.Nxf5 gxf5  
 15.Ng5 Nf8 16.Ba3! h6 17.Bd6 Qd7 18.Nf3 Ng6  
 19.Nd2 Qc6 20.Qf3 Bf8 21.Bxf8 Rdx8 Diagram



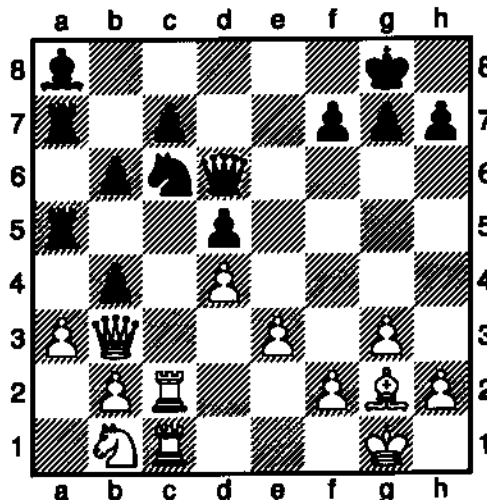
Now Pete prevents all black's attacking ideas with  
 some good positional moves. 22.g3! Rfg8 23.Kf1  
 Qd7 24.a4! h5 25.h4! Qe7 26.a5 b5 27.a6! Bc6  
 28.bxc4 bxc4 29.Ba4! Qd7 30.Bxc6 Qxc6 31.Reb1  
 Ne7 32.Rb7 Re8 33.Rxa7 Kb8 34.Rb7+ Ka8 35.Rab1  
 Qxa6 36.R7b6 Qa4 37.R6b4 Qa7 38.Qd1! Nc6  
 39.Ra4 black resigned. 1-0

**McEntee,T – Karagianis,P [A50]**

Illinois Class Championship. Joliet (2), 10.12.2005  
 1.d4 Nf6 2.c4 b6 3.Nc3 Bb7 4.Bg5 h6! [4...e6 is  
 normal.] 5.Bxf6 exf6 6.Nf3 Bb4 7.e3 0-0 8.Bd3  
 Bxc3+ 9.bxc3 Qe7 10.0-0 Be4 11.Bxe4 Qxe4 Dia-  
 gram Draw agreed. 1/2-1/2

**Karagianis,P – Karklins,A [E11]**

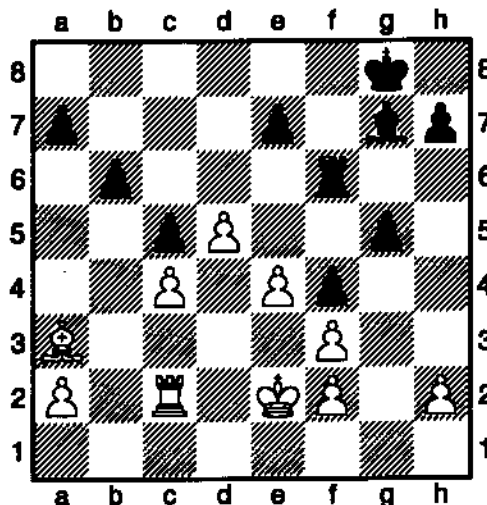
Illinois Class Championship. Joliet (3), 11.12.2005  
 [Albert Chow]  
 1.d4 Nf8 2.c4 e6 3.Nf3 Bb4+ 4.Bd2 a5 5.g3 Ne4!  
 6.Bxb4 axb4 Piece exchanges in this Bogo Indian give  
 black an open a file. 7.Qd3 d5 8.Nbd2 Nxd2 9.Nxd2  
 0-0 10.Bg2 Nc6 11.e3 Qd7! 12.0-0 b6! 13.Rfc1 Bb7  
 14.cxd5 exd5 15.Qb3 Ra5! 16.Rc2 Rfa8 17.Rac1  
 Qd6 18.Nb1 R8a7 19.a3 Ba8 Diagram



20.h3 g6 21.Rd2 bxa3 22.Nxa3 Nb4 23.e4 dxe4!  
 24.Nc4 Bd5! 25.Nxd6 Bxb3 26.Nxe4 Ra1 27.Rxa1  
 Rxa1+ 28.Kh2 Rd1 29.Rxd1 Bxd1 30.Nc3 Bb3 31.g4  
 Nd3 32.Bd5 Bxd5 33.Nxd5 Nxb2 34.Nxc7 Nc4  
 35.Kg3 Kf8 36.Nd5 b5 37.Kf4 h6 38.h4 a draw  
 agreed. 1/2-1/2

**Brock,W – McEntee,T [D85]**

Illinois Class Championship. Joliet, 12.2005  
 [Albert Chow]  
 1.Nf3 Nf6 2.c4 g6 3.Nc3 d5 4.cxd5 Nxd5 5.e4 Nxc3  
 6.bxc3 Bg7 7.d4 0-0 8.Be3 c5 9.Qd2 Qa5 10.Rc1  
 Bg4 Grunfeld counter play in the Exchange variation.  
 11.Be2 [11.Ng5!? idea h3 next, may be better.]  
 11...Nc6 12.d5 Rad8 13.Qc2 Bxf3 14.gxf3 Nd4!  
 15.Qd2 Nxe2 16.Kxe2 Rd6! 17.c4 Ra6 18.Qxa5 Rxa5  
 19.Rc2 f5! 20.Rb1 b6 21.Rb3 f4! 22.Bc1 g5 23.Ra3  
 Rxa3 24.Bxa3 Rf6! Diagram

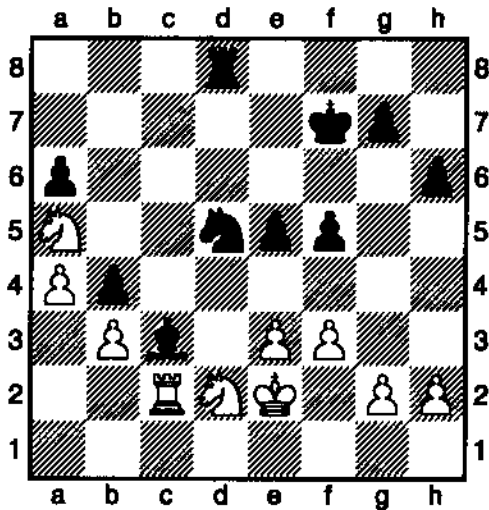


25.e5? [25.Kf1! Rh6 26.Kg2 Kf7 should be equal.]  
 25...Rh6 26.e6 Be5! 27.Bb2 Bd6 28.a4 a5 29.Kd3  
 Rxh2 30.Ke4 Rh1 31.Kf5 Rg1 32.Bc3 h5! 33.Rb2  
 Bc7 34.Bxa5 bxa5 35.Rb7 Bd6 36.Kg6 g4! 37.Rd7  
 gxf3+ 38.Kh6 Kh8! 39.Rd8+ Rg8 40.Rd7 h4 The h  
 pawn promotes and checkmate, so white resigned. 0-1

**Brock,W – Weber [D27]**

Illinois Class Championship. Joliet (4), 11.12.2005  
 [Albert Chow]

1.Nf3 d5 2.d4 Nf6 3.c4 dxc4 4.e3 e6 5.Bxc4 c5 6.0-0  
 a6 7.dxc5 Qxd1 8.Rxd1 Bxc5 This exchange variation  
 of the Queen's Gambit Accepted seems like a solid  
 and drawish variation. 9.Nbd2 b5 10.Be2 Bb7 11.b3  
 Nbd7 12.Bb2 0-0! [12...Ke7 was possible, but weak-  
 ens g7.] 13.Rac1 Rac8 The opening chances seem  
 equal. 14.Ng5 Bb4 15.Bf3 Bxf3 16.Ngxf3 Nd5 17.Ne4  
 h6! 18.a3 Be7 19.Kf1 f5! 20.Nc3 N5b6 21.a4 b4  
 22.Nb1 Nd5 23.Nd4 Rxc1 24.Rxc1 Nc5 25.Nc6 Bd6  
 [25...Nxb3! was good.] 26.Na5 Rd8 27.Nd2 Nd3!  
 28.Rc2 Nxb2 29.Rxb2 Be5 30.Rc2 Bc3 31.Ke2 Kf7  
 32.f3 e5 Diagram

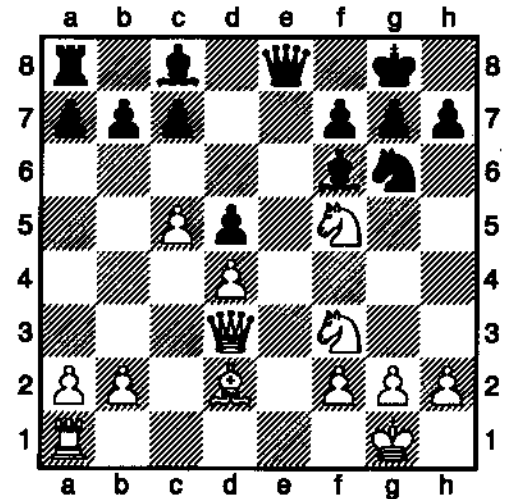


33.e4?? [33.Ndc4 Ke6 was better, with equal  
 chances..] 33...Nf4+-+ 34.Ke1 Nxb2+ 35.Kf2 Nf4  
 36.Ndc4 fxe4 37.fxe4 Kf6 38.Nb7 Rd3 39.Nc5? Bd4+  
 A fork wins for black. 0-1

**Pekovic – McEntee,T [C01]**

Illinois Class Championship. Joliet (1), 10.12.2005  
 [Albert Chow]

1.e4 e6 2.d4 d5 3.exd5 exd5 4.Bd3 Nc6 Black often  
 wins in the Exchange French! 5.Ne2 [5.c3 is solid.]  
 5...Bd6 6.c4 Nb4 7.c5 Nxd3+ 8.Qxd3 Be7 9.0-0 Nf6  
 10.Ng3 0-0 11.Nd2 Nd7 12.Nf3 Re8 13.Re1 Nf8  
 14.Bd2 Ng6 15.Nf5 Bf6 16.Rxe8+ Qxe8 Diagram

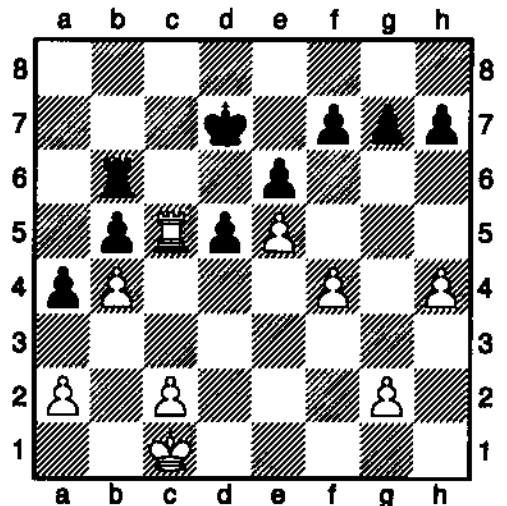


17.h4?? [17.Re1 was like obviously better.] 17...Qe4!  
 Black wins a piece. 18.Nh6+ gxh6 19.Qb5 c6 20.Qb3  
 Nxb4 21.Nxb4 Qxb4 22.Re1 Bf5 23.Qxb7 Rf8  
 24.Qxc6 Bxd4 25.g3 Qxg3+ white has to resign or be  
 crushed. 0-1

**Karklins,A – McDonald,J [C14]**

Illinois Class Championship. Joliet (2), 10.12.2005  
 [Albert Chow]

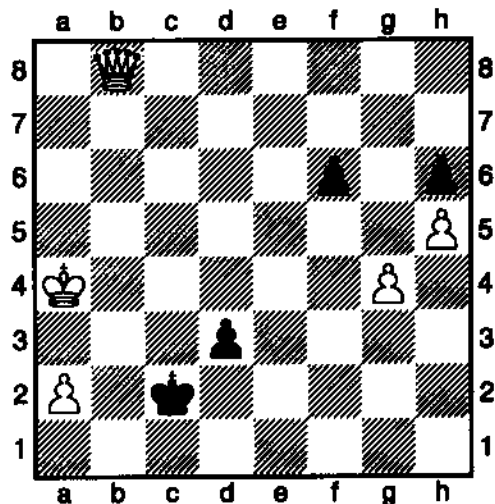
1.e4 e6 2.d4 d5 3.Nc3 Nf6 4.Bg5 Be7 5.e5 Nfd7  
 6.Bxe7 Qxe7 7.f4 a6 8.Nf3 c5 9.dxc5 Qxc5 10.Qd2  
 Nc6 11.0-0-0 b5 A. Karklins soon transposes this  
 Classical French into an endgame advantage! 12.Nd4  
 Nxd4 13.Qxd4 Bb7 14.Qxc5 Nxc5 15.b4!? Na4?!  
 [15...Nd7 was solid.] 16.Nxa4 bxa4 17.h4! Bc6  
 18.Rh3! Bb5 19.Bxb5+ axb5 20.Rc3 Kd7 21.Rc5!  
 Rab8 22.Rd3! Rbc8 23.Rdc3 Rxc5 24.Rxc5 Rb6  
 Diagram



25.Kd2 Rb7 26.h5! h6 27.g4 Rb6 28.Ke3 Rc6??  
 [28...Rb8 black may defend.] 29.Rxc6 Kxc6 30.f5 The  
 pawn structure favors white. 30...f6 31.exf6 gxf6

## ICB Games from FM Chow

32.fxe6 Kd6 33.Kd4 Kxe6 34.Kc5 Ke5 35.Kxb5 Kd4  
36.Kxa4 Kc3 37.b5 Kxc2 38.b6 d4 39.b7 d3 40.b8Q  
Diagram

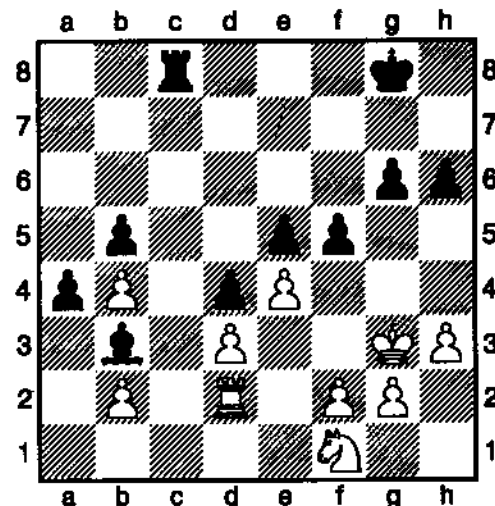


black resigned. 1-0

### Miller,S (2065) – Karklins,A (2295) [C77]

Illinois Class Championship. Joliet (1), 12.2005  
[Albert Chow]

1.e4 e5 2.Nf3 Nc6 3.Bb5 a6 4.Ba4 Nf6 5.d3 d6 A  
Steinitz variation. 6.c3 g6! 7.0-0 Bg7 8.Re1 0-0  
9.Nbd2 b5 10.Bb3 Na5 11.Bc2 c5 12.Nf1 Nc6 13.h3  
d5! Taking initiative aiming for advantage. 14.Bg5 h6  
15.Bh4 d4!? [15...dxe4 16.dxe4 Qxd1 17.Raxd1 Be6  
may only equalize.] 16.cxd4 cxd4 17.Bb3 Qd6 18.Rc1  
Bd7 19.Qc2 Nh5 20.Qc5 Qxc5 21.Rxc5 Nf4 22.Rd1  
Rfe8 23.Bg3 Ne2+ 24.Kh2 Nxc3 25.Kxg3! Bf8  
26.Rcc1 Bd6 27.Bd5 Rac8 28.Ne1 [28.a3 is solid.]  
28...Nb4 29.Bb3 a5 30.a3 a4 31.Bc2 Nxc2 32.Nxc2  
Be6 33.Nb4 Bxb4 34.axb4 Bb3 35.Rxc8 Rxc8  
36.Rd2 f5 Diagram

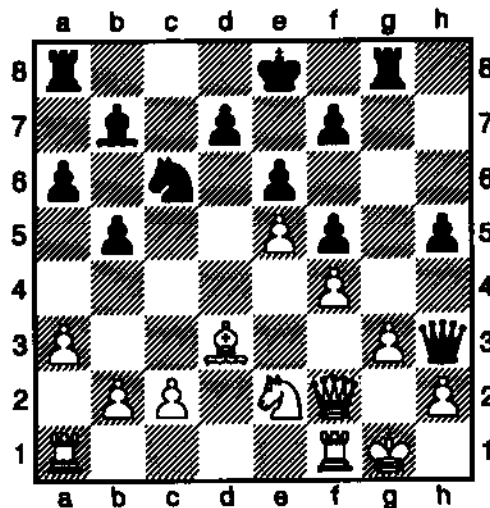


37.f4?! [37.exf5! gxf5 38.f4! is best.] 37...fxe4 38.dxe4  
exf4+ 39.Kf3! Rc4 [39...Rd8! is better for black.]  
40.Kxf4 Rxb4 41.Ke5 Bf7 42.Nh2! Kg7 43.Nf3 d3  
44.Nd4! Rc4!? 45.Rxd3 b4 46.Kd6 Rc8 [46...a3! was  
good for black!] 47.e5 a3 48.bxa3 bxa3 49.e6 a2  
50.Ra3 Rd8+ 51.Ke5 Rxd4! 52.Kxd4 Bxe6 the game  
ended a draw., but it looks like 53. Ke5 followed by 54.  
Ra7 favors white. 1/2-1/2

### McDonald,J – Pecovic,J [B45]

Illinois Class Championship. Joliet (3), 11.12.2005  
[Albert Chow]

1.e4 c5 2.Nf3 Nc6 3.d4 cxd4 4.Nxd4 Nf6 5.Nc3 e6  
6.Ndb5 Bb4 Sicilian Four Knights Pin variation.  
7.Bg5! Qa5 8.Bxf6 gxf6 9.a3 Bxc3+ 10.Nxc3 a6  
11.Bd3 Qg5 12.0-0 Rg8 13.g3 b5 14.e5!? [14.f4 the  
solid alternative..] 14...f5!? [14...fxe5!? risk eating a  
poison pawn, for fun.] 15.f4 Qh4 16.Ne2 Bb7 17.Qe1  
Qh3 18.Qf2 h5! Diagram



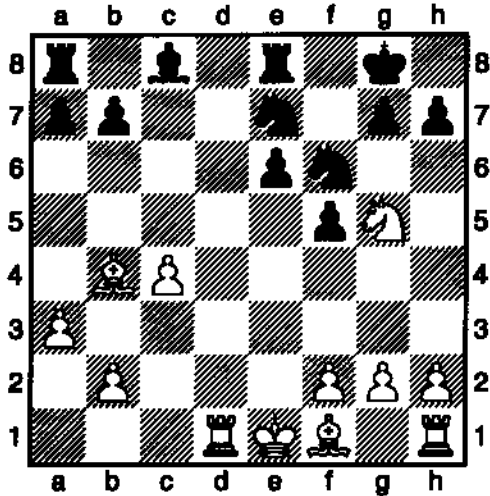
19.Qb6 Rb8 20.Qc7 h4 21.Rf2 hxg3 22.Nxc3 Rxc3+  
23.hxc3 Nd8 24.Rd2 Rc8? [24...Qh1+ 25.Kf2 Qg2+  
26.Ke1 Qxc3+ 27.Rf2 Rc8 28.Qd6±; 24...Qxc3+!  
25.Kf1 Rc8 26.Qd6 Qxf4+ 27.Rf2 unclear counter-  
play..] 25.Qxd7+! Kxd7 26.Bf1+ Ke7 27.Bxh3 Be4  
28.Rad1 Nb7 29.c3 Nc5 30.Bg2 white won. 1-0

### Karklins,A (2295) – Pekovic,J [B45]

Illinois Class Championship. Joliet (4), 11.12.2005  
[Albert Chow]

1.e4 c5 2.Nf3 Nc6 3.d4 cxd4 4.Nxd4 Nf6 5.Nc3 e6  
6.Ndb5 Bb4 7.a3 Bxc3+ 8.Nxc3 d5 9.exd5 Nxd5  
[9...exd5! could be better.] 10.Bd2 Nce7? 11.Ne4 0-0  
12.c4 f5 13.Ng5! Nf6 14.Bb4! Qxd1+ 15.Rxd1 Re8  
Diagram





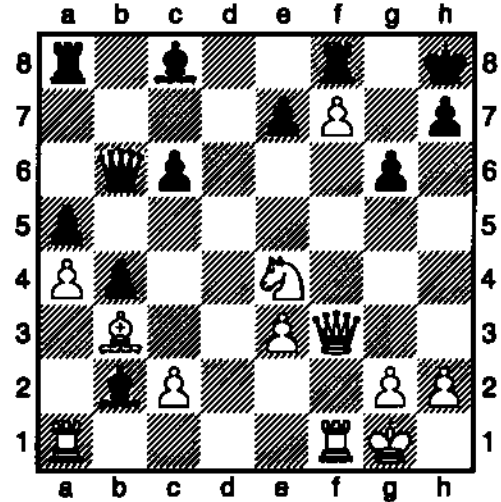
A.Karklins continues to win by force endgame advantage. 16.Bxe7! Rxe7 17.Rd8+ Re8 18.Rxe8+ Nxe8 19.c5! Activates the queenside pawn majority. 19...Nc7 20.Bc4 a5 21.Ke2! The uncastled king is happy to take center stage with queens off the board. 21...h6 22.Nf3 Kf7 23.Rd1 Ke7 24.Ne5 Nd5 25.Bxd5 exd5 26.Ke3! Be6 27.Kd4 g5 28.Rd3! a4 29.Rh3! Ra5 30.Rxh6 Rb5 31.Nd3 Rb3 32.f4 g4 33.c6! b6 34.Rh7+ Kd6 35.Ra7 b5 36.h4! gxh3 37.gxh3 Kxc6 38.Ra6+ black resigned. 1-0

**Menon,G – Gregory,J [B35]**

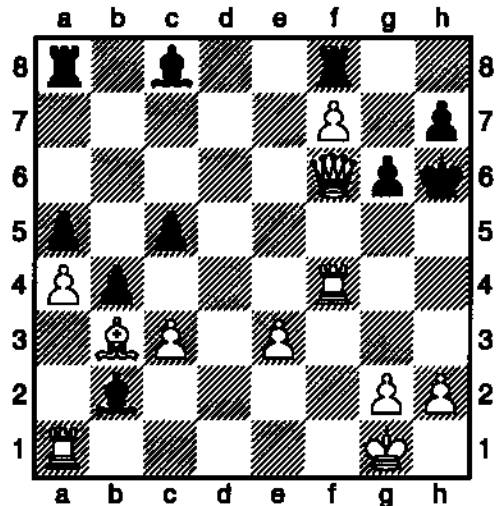
Illinois Class Championship, Joliet, 11.12.2005

[Albert Chow]

1.e4 c5 2.Nf3 Nc6 3.d4 cxd4 4.Nxd4 Nf6 5.Nc3 g6 6.Be3 Bg7 7.Bc4 Qb6?! 8.Ndb5 Qa5 9.0-0 a6 10.Nd4 b5 11.Nxc6 dxc6 12.Bb3 0-0 13.e5 Ng4 14.e6! Nxe3 15.exf7+ Kh8 16.fxex3 Qb6 [16...Bxc3 17.bxc3 Qxc3 was better.] 17.Qf3 a5 18.a4 b4 19.Ne4 Bxb2 Diagram



20.Qf4! c5? [20...Bg7! may defend.] 21.c3! Kg7 22.Qe5+ Kh6 23.Rf4! Qf6 24.Nxf6 exf6 25.Qxf6 Diagram



black resigned. 1-0

**Chess Instruction**  
**Andrew Karklins**  
**USCF Life Senior Master**  
**FIDE Master**  
**Twice Participant in U.S. Championship.**

Available for lessons  
 and /or analysis  
 (By mail or in person)

\$25 per hour  
 Call or write

Andrew Karklins  
 432W. Wellington #503  
 Chicago, Il 60657  
 773-327-0862

**15th annual  
CHICAGO OPEN**

**May 25-28, 26-28 or 27-28, 2006**  
**Memorial Day weekend- note new dates!**  
**No play Monday, now 6-round Swiss.**

*An American Classic - A US Championship Qualifier - An ACP Qualifier*

**May 25-28, 26-28 or 27-28 (new dates) GPP: 200Illinois**

**15th annual Chicago Open.** 6SS, 40/2, SD/1 (2-day option, rds. 1-3 G/60). Doubletree Chicago/Oak Brook, Rt 2, 1909 Spring Rd (I-88 to Cermak Rd exit), Oak Brook IL 60521. Free parking. Free GM lecture Saturday 9:30 am.

**Prizes \$150,000 based on 800 paid entries;** else proportional, minimum \$100,000 (2/3 of each prize) guaranteed. Unrated players, re-entries, GMs count as 1/2 entry toward prize fund. In 7 sections:

**Open Section:** \$15000-8000-4000-2500-1500-1000-800-600-500-500, clear winner bonus \$300, 2300-2499 \$3000-1500-700, Under 2300/Unr \$3000-1500-700. If tie for first, top 2 on tiebreak play speed game (white 7 minutes, black 5 minutes & gets draw odds) for title & bonus prize. A US Championship Qualifier; details later. FIDE rated.

**Under 2200 Section:** \$8000-4000-2500-1500-1000-800-700-600-500-500.

**Under 2000 Section:** \$8000-4000-2500-1500-1000-800-700-600-500-500.

**Under 1800 Section:** \$8000-4000-2500-1500-1000-800-700-600-500-500.

**Under 1600 Section:** \$7000-4000-2500-1500-1000-800-700-600-500-500.

**Under 1400 Section:** \$5000-2500-1500-1200-1000-800-700-600-500-500.

**Under 1200 Section:** \$3000-1500-1000-800-700-600-500-500-400-400, top Under 1000 \$1200-600. Under 1000s play for both U1000 & U1200 prizes; receive larger if winning both.

**Unrated** may enter any section, but may not win over \$200 in U1200, \$300 U1400, \$400 U1600, \$500 U1800, \$600 U2000, or \$700 U2200.

**Prize limits:** 1) Players with under 26 games played as of 4/06 list may not win over \$1000 U1200, \$2000 U1400, \$3000 U1600 through U2200. Games rated too late for 4/06 list not counted. 2) If more than 100 pts over section maximum on any list 12/04 or after, prize limit \$1000. 3) If 1400/over established after 12/01, Under 1200 prize limit \$500. 4) Balance of any limited prize goes to next player(s) in line.

**Mailed entry fee:** 4-day \$244, 3-day \$243, 2-day \$242 if mailed by 5/18, all \$280 at site. No checks at site, credit cards OK.

**ONLINE entry fee at [chesstour.com](http://chesstour.com):** \$241 by 5/23, \$280 after 5/23 until 2 hours before rd 1.

**Phone entry fee at 406-896-2038 (entry only, no questions, note change):** \$250 by 5/23. No phone entry after 5/23.

**Special entry fee:** Under 1200 Section, all \$30 less. Seniors over 65 in U1400 Section or above, \$30 less. \$10 less if advance EF paid with \$49 USCF dues. Re-entry \$120; not available in Open Section. GMs free; \$180 deducted from prize.

**Entry fee to Unrated:** 4-day \$74, 3-day \$73, 2-day \$72 mailed by 5/18; all \$71 online at [chesstour.com](http://chesstour.com) by 5/23, \$80 phoned to 406-896-2038 by 5/23, \$100 at site.

Advance entry fee minus \$10 service charge refunded for withdrawals who give notice at least 1 hour before rd 1 (no service charge if fee applied to future CCA trnts).

**4-day schedule:** Reg. ends Thu 6 pm, rds. Thu 7 pm, Fri 7, Sat 11-6, Sun 10-4:30.

**3-day schedule:** Reg. ends Fri 11 am, rds Fri 12-7, Sat 11-6, Sun 10-4:30.

**2-day schedule:** Reg. ends Sat 9 am, rds Sat 10-12:45-3-6, Sun 10-4:30.

All: 4-day & 3-day schedules merge after round 1; 2-day merges after rd 3; all compete for same prizes.

Byes: all; limit 3, Open must commit before rd 2, lower sections must commit before rd 4.

**Hotel rates:** \$87-87-87-87, 800-528-0444, 630-472-6000, request chess rate, reserve by 5/7 or rate may increase.

**Car rentals:** Avis, 800-331-1600, use AWD #D657633 or [reserve car online at chesstour.com](http://reservecaronline.chesstour.com).

**Foreign player ratings:** 100 points added to FIDE, 100 to FQE, 200/more to most other foreign, no pts added to CFC or Jamaica. Most foreign ratings other than CFC, FQE or Jamaica not accepted for Under 1800 or below. Highest of multiple ratings used.

**Entry:** Continental Chess, Box 249, Salisbury Mills NY 12577. Questions: 845-496-9658, [www.chesstour.com](http://www.chesstour.com). Invitation requests: [go@chess.us](mailto:go@chess.us). You may request "lowest possible section" if April rating unknown. Advance entries posted at [chesstour.com](http://chesstour.com).





### Road Warrior

by NM Pete Karagianis

I've always wanted to be an impressionist.

---

It's not often I break out the soap box.

I remember it was sometime between the spinach anchovy salad and the mango strawberry cheesecake when I suddenly had the startling realization that it was all wrong.

All wrong!

At the podium near the front of the banquet hall of the downtown Chicago Hilton, Garry Kimovich discussed different ideas to improve the image of chess, which is nice and all, but I had the sneaking suspicion- you know, that gaseous feeling in your stomach that some describe as gut instinct- that a vital point was being missed.

---

"Look," I tell Bryon, "the rest of it doesn't matter. These pawns I have?" I hold up the pawns he gave me for free some moves earlier in the opening. "They don't mean anything. This rook in no man's land?" I clear it off the board. "Nothing. That bishop that I've left hanging for five moves? Nothing." I take it off the board and add it to his stack of pieces.

I point to his king, the black king, on b4, around the 16<sup>th</sup> move of the game. "All that matters is your king is on b4 and I've still got a queen, three minors, and a rook to play with... and they're all coming to getcha."

---

I was misquoted. Again.

I opened the student newspaper to find the article written on the local chess club for Friday's expanded edition, "Chess Makes Its Move on Campus." The night before I'd spoken to the reporter for a good half an hour, fifteen minutes of which were spent on a single question regarding chess stereotypes. I'd gone on some diatribe or another about how, in my college experience, chess stereotypes simply did not apply and, though I wouldn't recommend using *any* chess-related sentence as a pickup line, I've found members of the opposite sex to often ask me to teach them the game or to at least be impressed that someone at a college bar chooses to use their spare time to think every once in awhile.

---

"I can't draw faces right now," Campbell tells me. He has an art degree. He gets paid to do posters, flyers, ads, paintings of fancy, murals, hell... you name it. I've watched him work, sitting next to him at the Student Union. He can draw a satirical rendition of a semi-nude Gustav Klimt "Beethoven's Frieze" reference and make it look actually damn good in five minutes flat.

"It's like having writer's block, I guess... but with art," he says. "It's just for right now."

He smokes a cigarette.

"Maybe I'm just tired."

---

On Saturdays I play soccer with a bunch of Argentinians who are faster, more skilled, and in better shape than I am. I know each week that I am improving. That if I keep showing up, I will get better. I will get back into shape. Soon, my shot will no longer arch 5 feet over the top bar of the goal but instead float softly in the back corner of the net. But for the moment, I think that these Saturday informal games must be what it is like for Bryon to play blitz with us.

---

You see, Kasparov had spent the whole time talking about scholastic chess- about chess in the schools, about how *bad* things were down there and how uncoordinated it all was and how we really needed to get chess in *every* school and really bring the game to the forefront of society to improve its image across the board.

Sure. Great. grand. Wonderful.

In truth, he said all good things. I agreed with his message. I wanted to stand and applaud long before we actually did. But Garry, Sunil Weeramant, who made several comments during the question and answer session, and many others who spoke up that same day were missing a very vital point. The symptom of chess- at a scholastic level and elsewhere- the

## Road Warrior

cause for the Chess Image Sickness was the state of the game in the adult world.

What do kids have to look forward to in the game? People look for a job or an education with a future... why should the same not be true of a hobby or a passion? People want an end result in sight: a goal, a purpose to continue their current endeavor.

You grow up. You learn the moves from a relative. You beat some kids at school and get a free bag of Doritos. You go to the Denker. you play on your high school chess team. You go to the city club at the local coffee shop.

Then, you go to a tournament with a poor turnout, high entry fee, bickering organizers, and a very small number of strong players who can and more importantly *are willing to help you improve your game.*

I make sweeping generalizations herein. I apologize. I abhor generalizations. This does not happen everywhere. There are some great places and people and wonderful experiences to be had.

But I am on a soapbox and you are listening.

---

"[Karagianis] said he felt ashamed when telling his girlfriend about being in the chess club." There it was. In Print. Misquoted again.

Reading on, I was not surprised. There was a text box with "basic chess strategies" just below the article and one of the bullet points listed stale mate as a type of position where both kings were in check.

---

This semester, I started learning a new game: Go. It's a territory game that is wildly popular in Asia and terribly complicated. I am a hobbyist: I learned it to pass the time, to enjoy the mental exercise, but what struck me the most was the organization of the American Go Association.

Our Iowa State club, the Cyclone Go Club, became an affiliate of the AGA and for a 35\$ affiliate fee we obtained full membership as well as a bushel-full of free boards, books, and equipment to give away to promote the club, including CD-Roms on basic Go rules and strategies.

I actually took it far enough to attend a tournament, which truly stressed the difference. The Go players- and every Go player I have met has exemplified this spirit- view the experience of playing Go as a sort of "community of knowledge and appreciation." I played a few games online- they are all long time controls, say twenty minutes minimum, and every opponent that proves stronger than you offers to review the game and illuminate your mistakes. It is unlike chess, where, especially in an online forum, but equally in a club setting, blitz and victory rule out. The attitude is

contagious. After a few months, I found myself reviewing mistakes of absolute beginners.

At the tournament I actually witnessed experienced Go veterans pausing the clock and explaining to weaker opponents why they should not continue as they did, before allowing a takeback and restarting the timer.

Madness!

Yet two weeks after the tourney, I found myself sitting in the Go club booth at Spring Clubfest right next to the chess club, handing out interactive computer software, free Go sets, beginner and intro Go books and other various equipment while simulating people who had just taken a few beginner lessons from the Go club president.

The chess club had only brought a few boards to their Clubfest table and were reduced to first playing each other and later teaming up against me as I shouted blindfold moves from booth to booth.

---

One Saturday I had to sit out early. I was breathing heavily while trying to maintain my role as a midfielder when, in a battle for the ball with my habitual nemesis, a speedy opposing striker named Juan, I suddenly found myself coughing uncontrollably.

It is a scary thing to be unable to breathe. I lay prone on the sideline grass with my hands above my head and grasping for air. My eyes blurred and I leaned forwards slightly to observe the game, which, thanks to my absence being non-crucial, was still on-going. The players were in coordinated motion. I thought about watching the English Premier League on the Fox Soccer Channel on Direct TV and how the British announcers loved to refer to the strategy of the managers as a chess game and how, until that moment, I had abhorred the reference.

Each team was a unit- a mass of action.

The colored shirts spread too far on the offensive and soon a counterattack was organized and Mostafa, who by coincidence had also listened to Kasparov's ideas on the image of chess, had soon punished the dark jerseys with a goal of his own.

A good lesson for Bryon, I thought.

*Cough. Don't... Wheeze ...overextend.*

---

Campbell puts out his cigarette and I follow him back inside.

He moves the canvas he has been working with from the easel and sits in his cracked wooden chair and begins to eat a slice of bread.

Campbell just joined the army and hopes boot camp won't make him rusty.

"I already can't even draw faces," he says again.

## Road Warrior

He has been drawing as long as I've been playing chess. Maybe longer.

"So," he says, "you ever gonna tell me what you were all worked up about the other day?"

I look at him, confused. Sometimes, things blur together and mix too closely, sometimes they have to blend before you can tell them apart, before you can recognize a cognizant whole.

"You know, about 'finally seeing it in parts' or whatever... about that impression essay you were gonna do."

I remember how everything coalesces into a theme, how everything must culminate, how there must be a goal, a purpose, a visible end... and the focus cannot be too narrow, the symptom cannot be overlooked.

Saturday, April 8<sup>th</sup>, Bryon played in his first rated tournament. I watched one of his opponents move a pinned knight from f6 to d5, allowing bishop g5 takes queen d8, with no compensation. I wanted to lean in and stop the clocks and explain what was wrong with the move and have them start over from the previous position.

But I didn't.

Maybe I should have.

Maybe I was Cacciato's target when he carved into the wooden latrine.

Maybe I couldn't see the forest for the trees.

Pete Karagianis is a columnist for *En Passant*, *The Illinois Chess Bulletin*, *The Oklahoma Chess Quarterly*, and *The Underground Review*. He can be reached for comments and questions at [Karagianis@gmail.com](mailto:Karagianis@gmail.com) or through his website at [www.chessunderground.org](http://www.chessunderground.org)

### 3 Games By Pete:

(3) Karagianis,P (2200) - Georgiev,V (2500) [A00] Heartland Quick G/25 GCS (4), 20.03.2006  
[Karagianis,Pete]

Before the round I was discussing what opening I should play with Glenn Panner, the TD. I didn't want to reveal my preparation by playing 1. d4. Moreover, in a quick event, I didn't want to try a mainline where I had less experience. I decided to play the Polish, Wayne Zimmerle-Style. Glenn then joked that he would make sure to come watch the first move to make sure I did and to see the look on Georgiev's face. As it happened, I gained 3 minutes or so on the clock by playing the opening quickly, and in a G/25 that is a lot.

**1.b4 e5** OK. The Wayne Zimmerle Polish Attack has a few basic principles that MUST be followed. 1) Maintain the

Polish Pawn at all costs. In other words, you can never give up the b-pawn for any reason. 2) Never move your d-pawn. 3) Pawn structure, general strategy, the queenside of the board, and square weaknesses mean absolutely nothing. White is trying to checkmate. 4) Never castle. 5) The sooner you can pawn storm the castled black king, the better.

**2.a3** principle one: maintain the Polish Pawn. Vlad looked at Glenn in surprise.

**2...a5 3.b5** principle one: maintain the Polish Pawn. A few more observers had gathered. Vlad continued to look at them in surprise.

**3...d5 4.Bb2 Bd6 5.e3 Nf6 6.Nf3 0-0 7.Be2 Qe7 8.c4 dxc4 9.Bxc4 Bg4** Look at the pretty white bishops aiming at the black king. Oh boy!

**10.h3 Bh5 11.g4** principle five: attack the king with a ridiculous pawn storm.

**11...Bg6 12.Nc3 e4 13.Nd4** Note that white has a light square weakness. Also note that white does not care. Sure, I could play "regular chess", but this is more fun, and leads to the type of wild positions that I enjoy. Also possible here was 13. Nh5, with the idea of Nxc6, h4, h5, etc.

**13...Be5 14.h4 Bxd4** Now I debated between h5 and exd4. They look roughly equally. exd4 has two advantages: 1) he can no longer oppose the polish bishop. 2) it slows down the Nd7-e5-d3 (or f3) plan.

**15.exd4 h5 16.g5 Ng4 17.Nd5 Qd6** forced, to stop Nf4, and also to reply to Ne3 with Qf4

**18.Ne3 Qf4 19.Nxc4 hxc4 20.h5** perhaps not the best move, but an entertaining one. Also, allowing Bh5 is silly.

**20...g3 21.Qe2 g2** Now, Fritz actually gives me an advantage! I was under 3 minutes over the board and knew I had to sac the rook, but didn't see how.

**22.0-0-0** principle four: never castle. Note, as soon as I castled, and violated the Wayne principles, I lost. The correct way was Rg1!! [22.Rg1 Qh2 23.Rxc2 Qxc2 24.hxc6 Qg1+ 25.Qf1 Qxf1+ 26.Kxf1 Nd7 27.Bxf7+ Rxf7 28.gxf7+ Kxf7 29.Ke2 ]

**22...gxh1 23.Rxh1 Bf5 24.g6** white does not have enough for the rook.

**24...Be6 25.d5 Bg4 26.Qf1 Nd7 27.h6 gxh6** I played a few more moves in a time scramble, but soon resigned. 0-1

## Road Warrior

4) Karagianis,P (2200) - Rosen,E (1860) [E09]  
Heartland Quick G/25 (1), 19.03.2006  
[Karagianis]

192MB, Fritz8.ctg, ACROPOLIS

1.d4 d5 2.c4 e6 3.g3 Pre-Tournament I decided I'd just sit down and play. Not much analysis as to what type of opening to choose-- just play freely and as things come to mind. So in round one it is a Catalan.

3...Nf6 4.Bg2 c6 5.Nf3 Be7 6.0-0 0-0 7.Qc2 b6 8.Nbd2 Bb7 9.e4 Nbd7 10.e5 I don't recall offhand but this looks very similar to a game of Eric's that I analyzed for the last ICB. In that article I recommended to capture on e4 and not allow e5. Now we get to put it to the test, I suppose.

10...Ne8 11.cxd5 exd5 [11...exd5 12.Qf5 (12.Bh3 White has plenty of good options now--- even Re1) ]

12.a3 a5 13.Nb1 Whenever I get stuck I just try to put my piece on a better square.

13...Ba6 14.Re1 Rc8 15.Nc3 b5 16.Bf1 Qb6 17.Bg5 The development of the last piece and the beginning of a king-side attack.

17...Bxg5 18.Nxg5 g6 19.Qd2 Fritz's number one. Black has a dark square weakness... Let's attack it!

19...Ng7 20.g4 P-KN4! As Tim McEntee and I have decided--- any time you can play this move effectively in a game you must be winning!

20...Nb8 21.Rad1 Nc6 22.Re3 A rook lift to use the major piece on the queenside.

22...Qd8 23.Rh3 ■ 24.Bxb5 Bxb5 25.Nxb5 Rb8 26.Nd6 Nxd4 Unfortunately- a faulty tactic. Now the rest is easy.

27.Ndx7 Rx7 28.Nxf7 Kxf7 29.Qxd4 And I stopped taking notation to finish the game in adequate time. 1-0

5) Mitkov,N (2500) - Karagianis,P (2200) [C24]  
Heartland Quick G/25 (2), 19.03.2006  
[Karagianis]

192MB, Fritz8.ctg, ACROPOLIS

1.e4 e5 2.Bc4 The bishop's opening- a favorite of Iowan Wesley Ferguson.

2...Nf6 3.d3 c6 4.Bb3 Be7 5.Nc3 d6 6.f4 A transposition to a Vienna setup

6...Nbd7 7.Nf3 Qc7 8.0-0 Nc5 9.Kh1 Nxb3 10.axb3 Bg4

11.Qe1 Nh5 Fritz's best. I liked it because it prevented Qg3 and Qh4 while also threatening Nxf4 or ef4 or etc.

12.f5 Nf6 13.Nd2 d5 14.h3 h5 I had seen this idea before playing Nf6... I still don't know what kind of evaluation to give the concept... but I like black's position. To win the bishop, white will have to accept inactive pieces. Black, meanwhile, closes the center and gets white's king in range of his pieces. Fritz gives white a +.72 edge. Considering I am giving up a piece, I view this eval as indicating black's sacrifice is playable. If it was not, then you would simply subtract material points. For example: if the sacrifice is bad, and I get one pawn for the bishop, white should have a +2 edge. Instead it is +.72, which means I have a full 2.28 point compensation for the pawn. But, forget numbers. White isn't using the d2 knight yet, nor his c1 bishop, and his king and my rook are on the same file... oh... and we're playing a rapid game.

15.Qf2 And the aggressive play pays off. Now I can even save the bishop. [15.hxg4 hxg4+ 16.Kg1 Bc5+ ]

15...d4 16.Ncb1 h4 !! Now the bishop can be saved because of the black knight hopping in to e3.

17.Nc4 [17.hxg4 Nxg4 18.Qe2 Ne3 19.Rf3 Nxc2 20.Ra2 Nb4 ]

17...b5 18.Na5 Bh5 19.Bd2 Nd7 Here Fritz was clamoring for 19. ...g5!! [19...g5 20.fxg6 (20.Bxg5 Nxe4 ) 20...Bxg6 with the idea of Nh5-g3]

20.b4 c5 21.bxc5 Nxc5 22.b4 Na4 23.Rc1 Qd7 played very quickly. I saw most of the ideas behind Nb2 already. Playing Qd7 as fast as I did also gained me time on the clock. Mitkov had a 9 minute to five minute advantage. He spent 4 and a half minutes on the next move.

24.c4 Time well spent! c3 is impossible due to Nb2 and dc3... c4! forces the issue.

24...dxc3 25.Nxc3 Nb2 26.Nd5 The idea of c4. White has a monster on d5.

26...Nxd3 27.Qe3 Nxc1 28.Rxc1 Bd6 29.Qg5 f6 Time pressure for both now.

30.Oxh4 Kf7 31.Og3 Rhc8 32.Re1 Rc2 ?? we each had around a minute, but this is the end.

33.Qb3 Rc4 34.Nxc4 bxc4 35.Qxc4 And I played a few more moves but soon resigned. I now have no compensation for the knight on d5. 1-0

## Two Tie for Bloomington-Normal Chess Championship

By Dennis Bourgerie

Bret Helm of Normal and Colley Kitson of Clinton each won 5 games and lost 1 to tie for first place in the 2006 Twin City Chess Club Championship.

This was the first premier finish for Mr. Helm and the second time Mr. Kitson was champion or co-champion. (Mr. Kitson was 2002 co-champion). By the conclusion of the tournament Mr. Helm had raised his rating to 1648. In an informal calculation Bret has raised his rating 329 points in the last 2 years.

Dennis Bourgerie of Normal was third with 4 wins, a draw and a loss and Jason Chien of Bloomington and Rodney Fett of Clinton tied for fourth with 4 wins and 2 losses.

Malcolm Wadia of Bloomington was the top Junior player with 3 wins, 1 draw and 1 loss.

44 people competed in the 6 round tournament that was held at Lincoln Leisure Center in Bloomington during January, February and March this year.

### *These were some of the winners from previous years:*

2005-Jason Chien

2004-Dale Elder and Peter Stroyan;

2003-Dale Elder and Jason Chien;

2002-Colley Kitson, Reverend William Barton and Suresh Kanniah;

2001-Jason Shive and Dennis Bourgerie.

Here are 2 games from the tournament:



**Rodney Fett and Brett Helm**

### **Fett,Rodney (1553) – Helm,Bret (1568)**

2006 Twin City CC Championship Bloomington, IL (4), 02.2006

1.e4 d5 2.exd5 Nf6 3.Bb5+ Bd7 4.Bc4 Bg4 5.f3 Bf5 6.Nc3 Nbd7 7.Nge2 Nb6 8.Bb5+ Bd7 9.Bxd7+ Qxd7 10.d4 Nbx d5 11.Nxd5 Qxd5 12.0-0 0-0-0 13.Bf4 e6

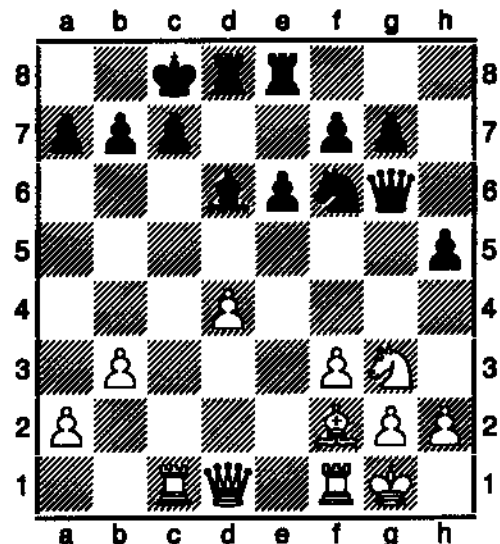
The position is about equal. Black has less space, but only 2 minor pieces and so is not cramped.

14.b3

[White can use tactics to advance the c-pawn. 14.c4 Qxc4? 15.Rc1 Qxa2 16.Rxc7+ Kb8 17.Nc3 Qxb2 18.Nb5 Qxb5 19.Rc5+ Bd6 20.Bxd6+ Rxd6 21.Rxb5 and White is better.]

14...Bd6 15.c4 Qf5 16.Be3 Rhe8 17.c5? loses a pawn because of the pin on the d-file. Black is better.

17...Bxc5 18.Ng3 Qg6 19.Rc1 Bd6 20.Bf2 h5





The h-pawn is going to cause trouble for White.

**21.Re1 h4 22.Ne4 Bf4 23.Rc4**

[23.Bxh4 sacrifices an exchange but could give White practical chances to save the game. 23...Bxc1 24.Qxc1 Rxd4?! 25.Qc5 Rd5 26.Qxa7 Nxe4 27.fxe4 Rd2 28.Qa8+ Kd7 29.Qa4+ c6 30.Bf2 Qf6?! 31.Qa7 and White is close to dynamic equality.]

**23...h3 24.g3** The pawn on h3 creates mating opportunities for Black on the g2 square.

**24...Nd5 25.Kh1 f5 26.Nc3 Nxc3 27.Rxc3 e5 28.d5 e4 29.fxe4 fxe4 30.Bxa7 e3 31.Bxe3**

[31.Qf3 guarding the g2 square is necessary.]

**31...Qe4+** and White resigned because of mate in 2 moves. 0-1



Colley Kitson & Jason Kitson (Son)

**Kitson, Colley (1491) – Bourgerie, Dennis (1703) [A45]**

Twin City Chess Club 2006 Champ. Bloomington, IL (2), 31.01.2006

**1.d4 Nf6 2.e3 g6 3.f4 Bg7 4.Nf3 d6 5.c4 0-0 6.Bd3 Nbd7 7.0-0 e5 8.Qc2 Re8**

[8...exf4 is a reasonable alternative for Black. 9.exf4 c5 10.d5 b5 11.cxb5 Nxd5]

**9.Nc3 c6 10.f5 a6 11.fxg6 hxg6 12.Ng5** This over-achieving knight will cause some grief to the Black position.

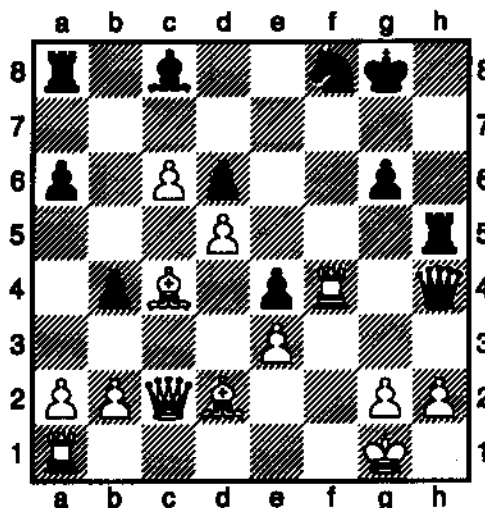
**12...Nf8 13.d5** Now the spirit of confusion rushes in upon Black.

**13...b5? 14.dxc6 b4 15.Nd5 Nxd5 16.Nxf7 Qh4 17.cxd5 e4 18.Bc4 Be5 19.Nxe5 Rxe5 20.Bd2** gives Black a chance to cause some temporary discomfort for White.

[20.Qf2! stops any Black initiative by forcing a trade of queens.]

**20...Rh5** Colley took a long think at this point. White has some good defenses and some moves that lose or draw.

**21.Rf4** Diagram



keeps the advantage for White, except for 1 variation.

[21.h3 is a valid defense for White. 21...Bxh3 22.Be1 Qg5 23.Qf2+-;

21.Qd1? loses for White. 21...Qxh2+ 22.Kf2 Rf5+ 23.Ke1 Qg3+ 24.Ke2 Qxg2+ 25.Ke1 Rxf1+ 26.Bxf1 Qg3+ 27.Ke2 Bg4#]

**21...Qxh2+ 22.Kf2 Bf5**

[22...g5 a move found by the chess engine Rybka--- during the game, I did not consider this move.

The White rook is well-placed at f4, defending the f-file and the 4th rank. 22...g5 forces it to desert either rank or file.

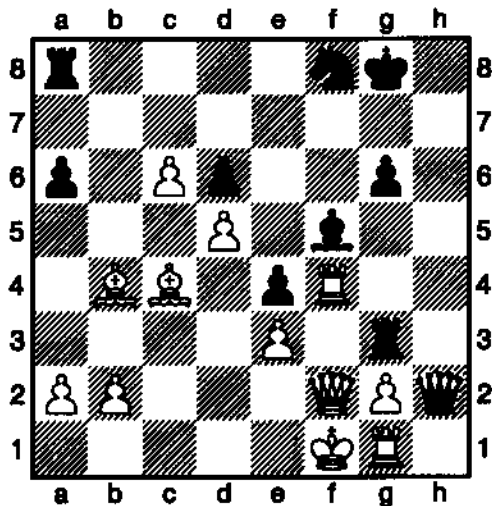
**23.Rxe4 Bf5 24.Bd3 Ng6 25.Rf1 Nh4 26.Ke1 Qxg2 27.Rxh4 Bxd3 28.Qxd3 gxh4** with a slight advantage for Black.]

**23.Bxb4 Rg5**

## 2006 TWCC Championship

[23...Qxf4+ 24.exf4 e3+ 25.Kxe3 Bxc2 26.Bxd6+-  
White has too many pawns, especially the advanced  
passers on d5 and c6.]

24.Rg1 Qg3+ 25.Ke2 Qh2 26.Kf1 Rg3 27.Qf2 Dia-  
gram



White has consolidated and he has a winning position.  
Black has 1 minute or less on his clock at this point.

27...Qh4? 28.Rxh4 and Black resigned at this point.  
1-0



Seth Chiles & Jason Chien

## *Bloomington, IL June Open At State Farm Headquarters*

**When:** June 17, 2006

**What:** ICA Mini-Tour and Ex-  
Urban Tour Event. 4SS, G/70.  
Sponsored with the State Farm Em-  
ployees Activities Association.

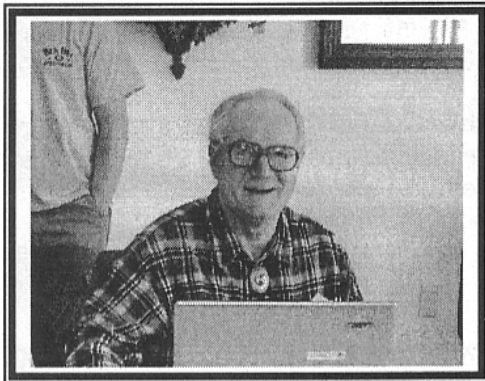
**Where:** State Farm Headquarters, 1  
State Farm Plaza, Bloomington, IL.  
Located on the east side of Bloom-  
ington, northwest from the intersec-  
tion of Oakland Ave. and Veteran's  
Parkway. Enter the building from  
the south. Check through security  
and go to the food court area.

EF: \$15 if rec'd by 6/14, \$19 at site.  
Free entry to 2020+, must register  
in advance. \$520 b/30: 1<sup>st</sup> \$160,  
2<sup>nd</sup> \$100, U2000 \$100, U1600 \$85,  
U1200 \$75. Bye 1-4. ICA mber-  
ship req'd. Adults \$18, Jrs. \$14.  
OSA. Reg: 8:30-9:30, Rds: 10-  
12:45-3:30-6. Ent: Dennis Bour-  
gerie, Box 157, Normal, IL 61761.  
309-454-3842. Cell: 309-531-1723.

Schoolstreeter@msn.com NS, NC.

## James Marshall wins 2006 Normal April Open; Hector Hernandez, Kyle Miles finish 2<sup>nd</sup>

by Dennis Bourgerie



**Tournament Director  
Dennis Bourgerie**

James Marshall ((2076) of St. Charles, Illinois won the Normal tournament with a 4-0 score. Jim defeated Lazlo Nazodi (1456), Seth Chiles (1631), Jeff Davis (1798) and David Long (2000) for an undisputed first place.

Hector Hernandez (1900) of Chicago, IL and Kyle Miles (1753) of Mattoon, IL tied for 2nd with 3 wins and a draw. They split the 2nd and Under 2000 prizes. Kyle won an exciting 2 bishop versus 2 knights endgame against Bradley Watts in round 4.

Rodney Fett (1553) of Clinton, IL and John Suits (1543) of Elgin, IL won the Under 1600 prize with 3 wins and 1 loss.

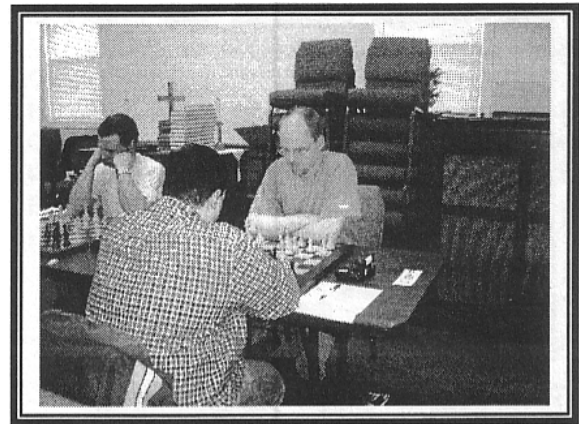
Valentin Urbina (1189) of Chicago, IL won the Under 1200 prize with 1 wins, 2 draws and 1 loss.

40 players attended. The tournament was directed by Dennis Bourgerie with assistance from Seth Chiles.

Many thanks are due Reverend William Barton and the members of Northbridge Baptist Church for generously letting us use their church for the tournament.

As TD, I saw many spirited contests during the day, but unfortunately I had run out of carbon copy scoresheets and so received few game sheets.

Here are 2 games played by the tournament winner:



**James Marshall & Jeff Davis**

### Davis, Jeff (1798) – Marshall, James (2076) [B23]

2006 Normal, IL April Open Bloomington, IL (3),  
01.04.2006

Game in 70 minutes, 5 second delay. **1.e4 c5 2.Nc3 d6 3.f4 Nc6 4.Nf3 g6 5.Bc4 Bg7 6.0-0 e6 7.f5** A dangerous gambit that yields White good results (58% in my opening tree) in practical play.

#### 7...gxf5

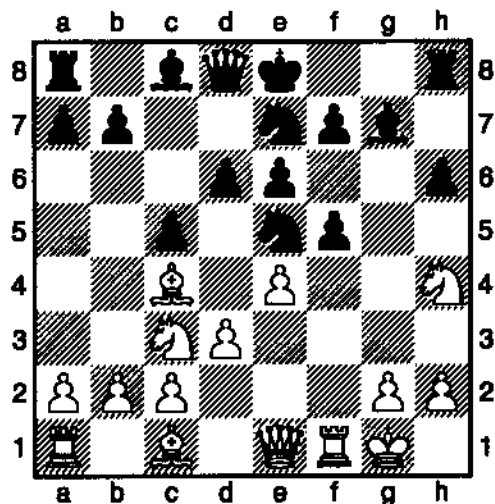
[The following game is a short example of how Black can let the game slip away. 7...Nf6 8.d3 0-0 9.Qe1 exf5 10.Qh4 Ne5 11.Bg5 Neg4 12.h3 h6 13.hxg4 hxg5 14.Nxg5 Re8 15.gxf5 Nh5 16.fxg6 Bd4+ 17.Kh1 Black resigned here. 17...Nf6 18.Qh6 Re7 19.Bxf7+ Rxf7 20.gxf7# 1-0 Szell,L (2345)-Christen,P (2200) /Luxembourg 1982/EXT 2001]

**8.d3** Mr. Marshall said he took a long think around here because he realized that Black needs to be careful or he could be quickly overwhelmed by a White attack.

**8...h6** This move takes away some of White's attacking ideas in this opening. **9.Qe1 Nge7 10.Nh4 Ne5**

## Normal April Open

Diagram



...10 Ne5 reduces the pinning effect of the White queen on e1. I passed by the game around this point and White had used 1 minute and Black 32 minutes. [10...b6? 11.exf5 exf5?! 12.Nxf5 Bxf5 13.Rxf5]

11.exf5 Nxf5 12.Nxf5 exf5 13.Bb5+ Kf8 14.Bf4 Be6 15.Rd1 Ng6 16.Be3 Qb6 17.Bc4 Re8 White has to be careful of the rook's influence along the e-file now.

18.Qg3

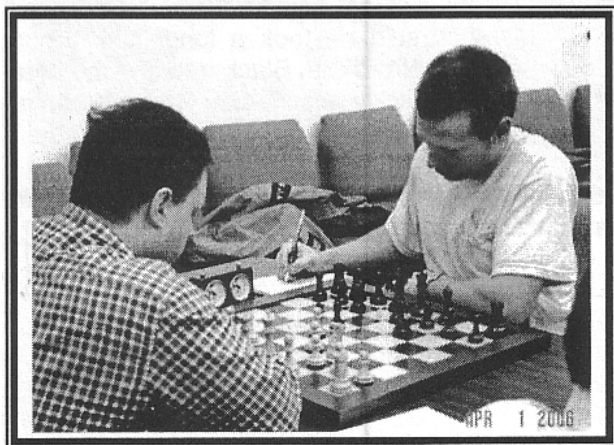
[18.Bb3? Bxb3 19.axb3 Rxe3 20.Qxe3 Bd4+]

18...Qxb2

[18...Bxc4 is an interesting possibility for Black here. 19.dxc4

(19.Na4 Qc6 20.dxc4 Qxa4)

19...Rxe3 20.Qxe3 Bd4 21.Rxd4 cxd4 22.Qf2 dxc3 23.Qxb6 axb6 24.b3 with Black having the advantage.]



James Marshall & David Long

### Marshall, James (2076) – Long, David (2000) [D04]

2006 Normal April Open Bloomington, IL (4), 01.04.2006

1.d4 d5 2.Nf3 Nf6 3.e3 Bg4 4.Qd3 an interesting way to be out of book and creating dynamic possibilities

4...c6

[4...Bxf3 5.Qb5+ Nbd7 6.gxf3 Qb8 and an asymmetrical position has arisen on the chessboard. ]

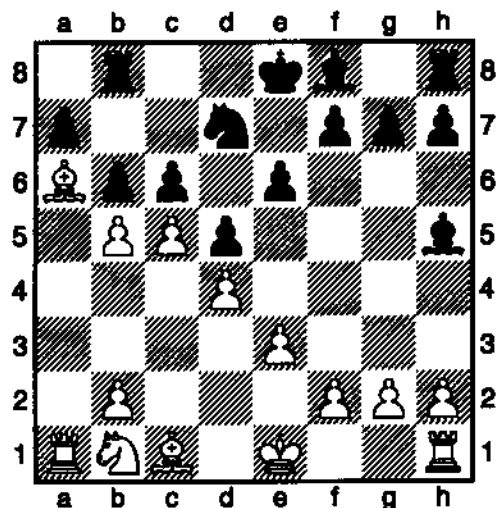
5.Ne5 Bh5 6.c4 e6 7.Qb3 Qb6 8.c5 a common (and usually effective) pawn push when queens oppose each other at b3 and b6.

8...Qxb3 9.axb3 Nfd7 10.Nxd7 Nxd7 11.b4 b6?! [11...e5]

12.Ba6 with the threat of Bb7 and winning the c6 pawn.

12...Rb8 Now the weakened c6 square will be the target.

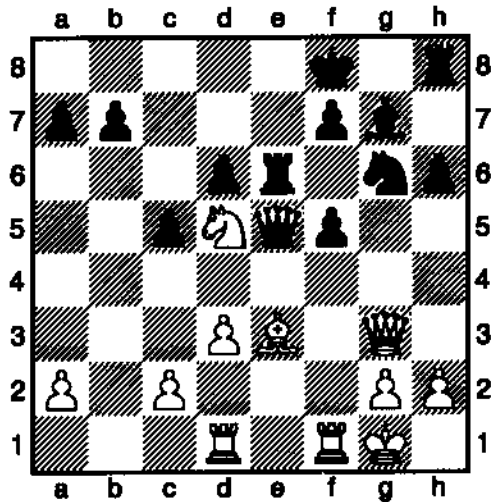
13.b5 Diagram



13...cxb5 14.c6 Bb4+ 15.Bd2 Bxd2+ 16.Nxd2 Nf6 17.c7 and Black resigns.

17...Ra8 18.c8Q+ Rxc8 19.Bxc8 a5 and White is a rook for two pawns ahead with a winning advantage. 1-0

19.Bxe6 Rxe6 20.Nd5 Qe5 Diagram

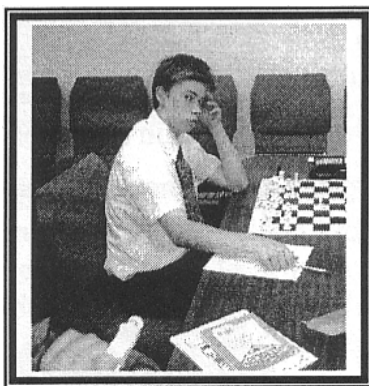


21.Nc7 Qxe3+ 22.Qxe3 Rxe3 Black has control of the game now, minus a blunder.

23.Rxf5 Bd4 24.Kh1 White needs to remove himself from the discovered check. [24.Rdf1 Re7+ 25.Kh1 Rxc7-+]

24...Kg7 25.Rdf1 Rf8 26.c3 Bxc3 27.h4 Re5 28.R5f2 Bd4 29.Rf3 Nxh4 30.Rg3+ Rg5 31.Rh3 Nxc2 32.Rhf3 Ne3 33.Ne6+ fxe6 34.Rxf8 Nxf1 35.Rxf1 Rg1+ and White resigned.

36.Rxg1+ Bxg1 37.Kxg1 b5 and Black wins the king and pawns endgame. 0-1



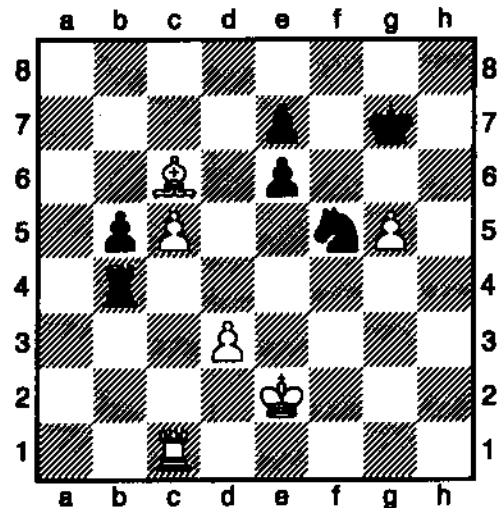
Alexander Zaitzeff  
With a nice upset

Game added by ICB Editor

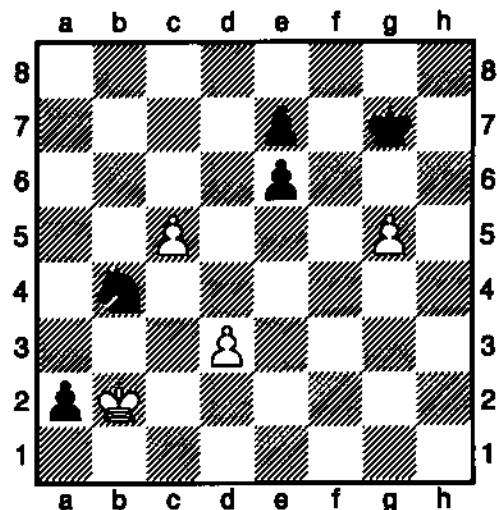
**WAYNE ZIMMERLE (1756),  
ALEXANDER J ZAITZEFF (1172)**

Normal open ,

1.b4 d5 2.e3 g6 3.Bb2 Nf6 4.c4 c6 5.Nf3 Bg4 6.h3 Bxf3 7.Qxf3 Bg7 8.Nc3 0-0 9.g4 Ne4 10.h4 Nxc3 11.Bxc3 d4 12.exd4 Bxd4 13.Be2 Bxc3 14.Qxc3 h6 15.Qe3 Kg7 16.h5 Qd6 17.hxg6 Qxg6 18.f4 Qf6 19.Rd1 Rh8 20.g5 hxg5 21.Rxh8 Kxh8 22.fxg5 Qe6 23.Qxe6 fxe6 24.Bg4 Na6 25.a3 Nc7 26.Ke2 Kg7 27.Rg1 a5 28.Bf3 axb4 29.axb4 Ra4 30.d3 Rxb4 31.Be4 Ne8 32.Rh1 b5 33.Bxc6 Nd6 34.c5 Nf5 35.Rc1 Diagram



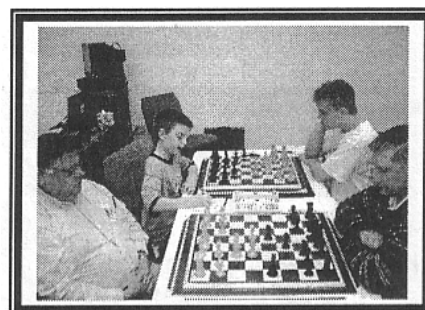
35...Nd4+ 36.Ke3 Nxc6 37.Ra1 Ra4 38.Rxa4 bxa4 39.Kd2 a3 40.Kc2 a2 41.Kb2 Nb4 Diagram



42.d4 Kg6 43.c6 Nxc6 44.Kxa2 Nxd4 0-1

*2006 Normal, IL April Open*

No.	Name	Rate	Pts	Rnd1	Rnd2	Rnd3	Rnd4
1	Marshall, James A	2076	4.0	W28	W15	W5	W4
2	Hernandez, Hector	1900	3.5	W36	W6	D3	W12
3	Miles, Kyle J	1753	3.5	W30	W33	D2	W11
4	Long, David	2000	3.0	W13	W17	W7	L1
5	Davis, Jeffrey E.	1798	3.0	W20	W25	L1	W24
6	Fett, Roddney D	1553	3.0	W39	L2	W25	W17
7	Chien, Jason W	1764	3.0	W29	W32	L4	W19
8	Thomas, Brian		3.0	W21	W18	D11	-H-
9	Suits, John R	1543	3.0	W35	L11	W31	W15
10	Parker, Robert W	1615	3.0	-H-	W31	D12	W16
11	Watts, Bradley S	1840	2.5	W22	W9	D8	L3
12	Simpson, Tobias Ga	1538	2.5	W40	W16	D10	L2
13	Riddle, Matthew L	1432	2.5	L4	W27	D18	W26
14	Crum, Randy M	1500	2.5	L31	W30	W33	-H-
15	Chiles, Seth D	1631	2.0	W37	L1	W22	L9
16	Jarrette, Phil	1823	2.0	W23	L12	W21	L10
17	Barton, William J	1713	2.0	W27	L4	W28	L6
18	Healy, James D	1748	2.0	W34	L8	D13	D20
19	Barton, Aaron	1556	2.0	L32	W29	W23	L7
20	Urbina, Valentin	1189	2.0	L5	D26	W36	D18
21	Kitson, Colley Eri	1491	2.0	L8	W34	L16	W32
22	Ruth, James	1220	2.0	L11	W38	L15	W31
23	Milligan, Jeremy L	1202	2.0	L16	W40	L19	W33
24	Suarez, Ronald J	1614	2.0	-U-	-B-	W32	L5
25	Zaitzeff, Alexande	1142	1.5	W26	L5	L6	-H-
26	Zimmerle, R Wayne	1762	1.5	L25	D20	W35	L13
27	Kitson, Jason E	1053	1.5	L17	L13	D34	W38
28	Naszodi, Laszlo	1456	1.5	L1	W37	L17	-H-
29	Frank, Brian	1157	1.5	L7	L19	W37	-H-
30	Frank, Cole B	1113	1.5	L3	L14	W40	-H-
31	Perry, Stephen D	485	1.0	W14	L10	L9	L22
32	Martinez, Guadalup	1012	1.0	W19	L7	L24	L21
33	Karra, Karthik	688	1.0	W38	L3	L14	L23
34	Coulter, Larry	1083	1.0	L18	L21	D27	D35
35	Landeros, Alejandr	764	1.0	L9	D36	L26	D34
36	Giridharan, Durgas	1233	1.0	L2	D35	L20	-H-
37	Patil, Karthik V	1047	1.0	L15	L28	L29	W40
38	Escobedo, Juan C	361	1.0	L33	L22	-B-	L27
39	Frank, Cassia K	865	0.5	L6	-U-	-U-	-H-
40	Kitson, Michaela M	636	0.0	L12	L23	L30	L37



Hector Hernandez & Rodd Fett



Bill Barton & David Long



Sachin & Victor Mata



Kyle Miles

*St. Charles Chess Club News*

by Dan Pradt

Feb. 23 The six round club championship had 37 entrants. Jim Marshall (2075) had a 1 point lead on the field going into round 5, but lost a complicated end game, in time pressure, to Jeff Wiewel (1980)(How many times has that happened?). This left Wiewel and Marshall tied with 4 points, just ahead of a group of six with 3.5. Marshall won his final game, with Tam Nguyen (2100), while Jeff could only draw with Jesse Freidel (1743).

Final results were Marshall 5-1, Wiewel, Wally Alberts (1708), and Ed Powers(1569) 4.5-1.5, Jesse and Jeremiah(1717) Freidel 4-2. Major upsets included Philip Freidel(499) over ted Voight(1158), Micheal Freidel(951)over Aivras Stoskus(1514), Vladimir Djordjevic(1470) over Andrew Wang(1695), and John suits spectacular mating attack over Wiewel.

Full crosstables are available at [www.uscf.org\msa-](http://www.uscf.org\msa-) search for SAINT CHARLES CLUB.

The club has entered two teams in the CICAL this year, Baker, and SCCC. Currently Baker, captained by Paul Freidel, is in second place in the West Division at 7.5-1.5, and SCCC, captained by Jeff Wiewel, is in Fourth, at 7--2. Both teams should be in the playoffs.

April 3 The club re-elected Jeff Wiewel and Gary Janssen as President and Member-at Large, respectively. Aivras Stoskus has replaced Dennis Freidel as Vice President, and Nathan McCoy will replace me as Secretary. Good luck to the new members.

*Springfield Chess Club**March Tournament  
Breaks Even!*

By David Long

Nineteen chess players came to town on March 11 for a tournament that had been moved out of February because of large losses in the past. Expenses were lower than expected, and there was just enough turnout for the club to just break even, the first time it has done so in over a year. Thanks, everyone, for showing up and playing!

James Healy, of Springfield, and James Marshall, hometown unavailable, score 3½ points out of 4, and shared first and second place. Greg Moses, of Jacksonville, won Class A-B with 2 points. John Suits, hometown unavailable, scored 3 points and claimed the C-D prize.

Larry Coulter, of Mount Sterling, and Will Kerns, of Franklin, drew each other in the final round, to give themselves each 1½ points and half of the Class E prize. Finally, unrated Brian Thomas scored an impressive 3 points, toppling two Class C and one Class A players before falling to Marshall in the final round. He earned an upper Class A rating in his first tournament, and won the unrated prize.

## ICA Final Tour Standings

### Tour Standings

These are the final tour point totals. This list does not necessarily reflect tour winners as there are still a couple of membership issues that need to be resolved.

Winners will be announced soon.

#### MASTER TOUR POINTS:

89.5	KARAGIANIS, PETE
68.5	STAMNOV, ALEKSANDA
67.0	MITKOV, NIKOLA
66.0	GEORGIEV, VLADIMIR
45.5	YOUNG, ANGELO
33.0	BURGESS, JON L
33.0	KARKLINS, ANDREW
29.0	SHULMAN, YURY (2)
27.0	CAVENEY, GEOFFREY
27.0	PASALIC, MEHMED (2)

#### EXPERT TOUR POINTS:

51.0	KARAGIANIS, PETE
40.0	LONG, DAVID
33.5	CHIEN, JASON W
32.0	ZIMMERLE, R WAYNE
28.0	MC DONALD, JORDAN
28.0	NIENART, CHRISTOPH
27.0	CAVENEY, GEOFFREY
26.5	BOURGERIE, DENNIS
26.0	BARCLAY, KAYIN
24.5	ALLSBROOK, FRED S
24.0	PEKOVIC, JUSUF

#### CLASS A TOUR POINTS:

51.0	MEEROVICH, ILAN
41.5	CAVITT, DEXTER
41.0	CHIEN, JASON W
34.0	RUAN, GORDON J
34.0	ZIMMERLE, R WAYNE
32.0	LONG, DAVID
32.0	MALONEY, MICHAEL A
32.0	MENON, GOPAL S
30.5	BOURGERIE, DENNIS
28.5	MC NALLY, DANIEL M

#### CLASS B TOUR POINTS:

55.0	CEN, KENT Y
49.0	DUBIN, JOSHUA
45.5	MAGNESS, TREVOR S
41.0	CHIEN, JASON W
38.0	MEDURI, AAKAASH
37.0	SCHMAKEL, SAM A
36.0	AUGER, MICHAEL W

35.5	MC NALLY, DANIEL M
34.0	ZIMMERLE, R WAYNE
33.0	HERNANDEZ, JUAN (2)
33.0	LAMBERT JR, GWAYNE

#### CLASS C TOUR POINTS:

48.0	DOS SANTOS, NICOLA
39.0	DJORDJEVIC, VLADIM
38.0	VELA, JOHNNY
33.5	PADILLA, RUDY R
33.0	PAYKIN, JEFF S
28.0	BONZON, ROMAN
27.0	KOSTERIS, DIMITRIO
26.0	MENON, GOPAL S
25.0	BARBIAN, MATTHEW R
25.0	SEJKO, TEME

#### CLASS D TOUR POINTS:

37.0	MCNALLY, MICHAEL N
32.0	DATLA, SAMEER S V
30.0	GASUNAS, ANTHONY C
28.0	CHARLESTON, NEAL J
28.0	MUSIC, ADEM
23.0	MEDINA, STEVEN A
21.5	MEDINA, JAMES M
21.0	DATLA, SIDDARTH S
20.0	MC CLANAHAN, GAVIN
19.0	PATEL, RASESH R

#### MASTER EX-URBAN TOUR POINTS:

72.5	KARAGIANIS, PETE
40.0	STAMNOV, ALEKSANDA
25.5	ZIMMERLE, R WAYNE
25.0	LONG, DAVID
17.0	CHIEN, JASON W
14.5	BURGESS, JON L
14.5	DAVIS, JEFFREY E.
12.0	BOURGERIE, DENNIS
12.0	CAVENEY, GEOFFREY
12.0	FRISKE, THOMAS

#### EXPERT EX-URBAN TOUR POINTS:

42.0	KARAGIANIS, PETE
40.0	LONG, DAVID
32.0	ZIMMERLE, R WAYNE
31.5	CHIEN, JASON W
26.5	BOURGERIE, DENNIS
18.0	LEALI, MICHAEL E
17.0	NAFF, WILLIAM A
14.5	DAVIS, JEFFREY E. (2)
14.0	MC GOWAN, ANDY J (1)
13.5	HEALY, JAMES D
13.5	VOSS, ANDY S



**CLASS A EX-URBAN TOUR POINTS:**

39.0	CHIEN, JASON W
34.0	ZIMMERLE, R WAYNE
30.5	BOURGERIE, DENNIS
19.0	LEALI, MICHAEL E
18.0	KANNIAH, SURESH
17.0	NASZODI, LASZLO
16.0	HEALY, JAMES D
14.5	DAVIS, JEFFREY E
14.0	KNOEDLER, THOMAS B
14.0	MC GOWAN, ANDY J

**CLASS B EX-URBAN TOUR POINTS:**

39.0	CHIEN, JASON W
34.0	ZIMMERLE, R WAYNE
30.5	BOURGERIE, DENNIS
23.5	HEALY, JAMES D
18.0	KANNIAH, SURESH
17.0	NASZODI, LASZLO
14.0	KNOEDLER, THOMAS B
14.0	WANG, YIMING
13.5	VOSS, ANDY S
12.5	RUAN, GEORGE J
12.0	MILES, KYLE J

**CLASS C EX-URBAN TOUR POINTS:**

17.0	NASZODI, LASZLO
14.0	WANG, YIMING
12.5	RUAN, GEORGE J
11.0	SUAREZ, RONALD J
10.0	LEALI, DOMINICK
9.5	BRIGHTUP, ROBERT C
9.0	PADILLA, RUDY R
9.0	WILLIS, MATTHEW
8.0	COULTER, LARRY
8.0	DOROSHEFF, EVAN J

**CLASS D EX-URBAN TOUR POINTS:**

12.5	RUAN, GEORGE J
10.0	LEALI, DOMINICK
9.5	BRIGHTUP, ROBERT C
9.0	WILLIS, MATTHEW
8.0	COULTER, LARRY
8.0	DOROSHEFF, EVAN J
7.5	BLACK, DAVID E
6.0	BECK, GEOFFREY
5.0	NIKOLOPOULOS, CHRI
5.0	RUTH, JAMES

## Time to renew with the ICA?

The mailing label on the back cover of your Illinois Chess Bulletin shows the expiration date of your ICA membership. You may renew, or join for the first time, by filling out the form below (photocopy OK). Make check payable to Illinois Chess Association and mail to ICA Membership,

Jeff Smith  
19439 Lakeside Lane  
Bloomington, IL 61704  
309-378-2078  
[icamembership@msn.com](mailto:icamembership@msn.com)

Name \_\_\_\_\_  
USCF ID \_\_\_\_\_  
Address \_\_\_\_\_  
City-State-Zip \_\_\_\_\_  
Phone \_\_\_\_\_  
Email \_\_\_\_\_

**Membership type:**

- Century Club Patron \$100 (a)  
 Gold Card Patron \$50 (a)  
 Patron \$35 (a)  
 Regular adult \$18  
 Junior (under 20) \$14  
 Additional family member \$6 (b)  
 ICA-affiliated club \$25 (a) (c)

Birth date (required if Junior) \_\_\_\_\_

(a) Receives ICB by first-class mail.

(b) No magazine. Must be related, and living at same address, as a Regular (or higher) ICA member.

(c) For chess clubs and other chess-related organizations. Includes the right to run ICA Tour events. No membership privileges

Authentic Staunton Style Chess Men

THE HOUSE OF  
STAUNTON  
STAUNTON



THE HOUSE OF  
H. Staunton  
STAUNTON™

*Chess Sets - Chess Boards - Antique Sets - Chess Clocks*

EMAIL: [sales@houseofstaunton.com](mailto:sales@houseofstaunton.com) ~ PH: (256) 858-8070

Visit us on the Internet at [www.houseofstaunton.com](http://www.houseofstaunton.com)

**May 7, 2006. Renaissance Knights Quest Tournament.** 4 Round Swiss, Game 30. Two sections: Open (Adults and Juniors) and Reserve (Juniors U1000/unrated). EF: \$20 if postmarked by Apr. 29, \$25 postmarked by May 3. Limited to: 50 first entries received. \$5 discount to Renaissance Knights Club members. Awards: Trophies top five each section, all others participation prize. Check-in 2:00-2:30 PM, round 1 at 3:00 PM, rest ASAP. Mail entries to: PO Box 1074, Northbrook, IL 60065-1074. Tournament Flyer Info: [www.RKnights.org](http://www.RKnights.org) or [email](mailto:email)

**May 12-14, 2006. National Elementary (K6) Championship.** Denver, CO For more information: [www.uschess.org](http://www.uschess.org).

**May 13, 2006. Springtime Open An ICA Mini-Tour and Ex-Urban Tour Event.** Game/80, 4 round Swiss. More Information: [Thomas B Knoedler](mailto:Thomas B Knoedler)

**May 14, 2006. Renaissance Knights Community Chess Club 5 SS, G/25.** Renaissance Chicago North Shore Hotel 933 Skokie Blvd. Northbrook, IL. 60062. Registration 4:00 - 4:45 pm. Round 1 at 5:00 pm. EF = \$15 members, \$20 nonmembers. \$5 late fee after 4:45 pm. 75% of EF returned as prizes. USCF membership required. Info: [www.RKnights.org](http://www.RKnights.org) or [email](mailto:email)

**May 20-21, 2006. USCF National G/60 Tournament** Joliet Junior College For more information: [Dennis Doyle](mailto:Dennis Doyle)

**May 28, 2006. Renaissance Knights Community Chess Club 5 SS, G/15.** Renaissance Chicago North Shore Hotel 933 Skokie Blvd. Northbrook, IL. 60062. Registration 4:00 - 4:45 pm. Round 1 at 5:00 pm. EF = \$15 members, \$20 nonmembers. \$5 late fee after 4:45 pm. 75% of EF returned as prizes. USCF membership required. Info: [www.RKnights.org](http://www.RKnights.org) or [email](mailto:email)

**May 25-28, 26-28 or 27-28**  
**15th Annual Chicago Open GPP: 200 Illinois**

NOTE NEW DATES AND OTHER CHANGES. NO PLAY ON MONDAY, MEMORIAL DAY!

6SS, 40/2, SD/1 (2-day option rds. 1-3 G/60), Doubletree Chicago/Oak Brook, Rt 2, 1909 Spring Rd (I-88 to Cermak Rd exit), Oak Brook IL 60521. Free parking. Prizes \$150,000 based on 800 paid entries; else proportional, minimum \$100,000 (2/3 of each prize) guaranteed. Unrated Section players, re-entries, GMs count as 1/2 entry toward prize fund. Unrated must enter Unr or Open section. Free GM lecture Saturday 9:30 am. 7 sections: Open: \$15000-8000-4000-2500-1500-1000-800-600-500-500, clear winner bonus \$300, 2300-2499 \$3000-1500-700, Under 2300/Unr

\$3000-1500-700. If tie for first, top 2 on tiebreak play speed game (white 7 minutes, black 5 minutes & gets draw odds) for title & bonus prize. A US Championship Qualifier; details later. FIDE rated. Under 2200, Under 2000, Under 1800: each \$8000-4000-2500-1500-1000-800-700-600-500-500. Under 1600: \$7000-4000-2500-1500-1000-800-700-600-500-500. Under 1400: \$5000-2500-1500-1200-1000-800-700-600-500-500. Under 1200: \$3000-1500-1000-800-700-600-500-400-400, top Under 1000 \$1200-600. Under 1000s play for both U1000 & U1200 prizes; receive larger if winning both. Unrated may enter any section, but may not win over \$200 in U1200, \$300 U1400, \$400 U1600, \$500 U1800, \$600 U2000, or \$700 U2200. Prize limits: 1) Players with under 26 games played as of 4/06 list may not win over \$1000 U1200, \$2000 U1400, \$3000 U1600 through U2200. Games rated too late for 4/06 list not counted. 2) If more than 100 pts over section maximum on any list 12/04 or after, prize limit \$1000. 3) Balance of any limited prize goes to next player(s) in line. Mailed EF: 4-day \$244, 3-day \$243, 2-day \$242 if mailed by 5/18, all \$280 at site. No checks at site, credit cards OK. Online EF at [chesstour.com](http://chesstour.com): \$241 by 5/23, \$280 after 5/23 until 2 hours before rd 1. Phone EF at 406-896-2038 (entry only, no questions): \$250 by 5/23. No phone entry after 5/23. Special EF: Under 1200 Section, all \$30 less. Seniors over 65 in U1400 Section or above, \$30 less. \$10 less if advance EF paid with \$49 USCF dues. Re-entry \$120; not available in Open Section. GMs free; \$180 deducted from prize. EF to Unrated: 4-day \$74, 3-day \$73, 2-day \$72 mailed by 5/18; all \$71 online at [chesstour.com](http://chesstour.com) by 5/23, \$80 phoned to 406-896-2038 by 5/23, \$100 at site. Advance EF minus \$10 service charge refunded for withdrawals who give notice at least 1 hour before rd 1 (no service charge if fee applied to future CCA tmts). 4-day schedule: Reg. ends Thu 6 pm, rds. Thu 7 pm, Fri 7 pm, Sat 11-6, Sun 10-4:30. 3-day schedule: Reg. ends Fri 11 am, rds Fri 12-7, Sat 11-6, Sun 10-4:30. 2-day schedule: Reg. ends Sat. 9 am, rds Sat 10-12:45-3-6, Sun 10-4:30. Merge: 4-day & 3-day schedules merge after round 1, 2-day merges after rd 3; all compete for same prizes. Byes: all; limit 3, Open must commit before rd 2, lower sections must commit before rd 4. HR: 87-87-87-87, 800-528-0444, 630-472-6000, request chess rate, reserve by 5/7 or rate may increase. Car rentals: Avis, 800-331-1600, use AWD #D657633 or reserve car online at [chesstour.com](http://chesstour.com). Foreign player ratings: Most foreign ratings other than CFC, FQE or Jamaica not accepted for U1800 or below. Highest of multiple ratings used. Ent: Continental Chess, Box 249, Salisbury Mills NY 12577. Questions: 845-496-9658, [www.chesstour.com](http://www.chesstour.com). Invitation requests: [go@chess.us](mailto:go@chess.us). You may request "lowest possible section" if Apr rating unknown. Advance entries posted at [chesstour.com](http://chesstour.com).

## ICA Calendar

**June 2, 2006 Illinois Chess Association & Chicago Industrial Chess League Awards Banquet**  
See details on inside front cover or page 38

**June 3, 2006. Tuley Park Quick (Huge) 6-SS, rds 1-6 G/18 (or G/16+3sec).** 501 E 90th Pl, Chicago 60619. EF \$22, u19 \$11, \$1 off before 11:30. Prizes based on 32 players 570: \$160-100-65, 1899-1700 \$50, 1699-1500 \$45, 1499-1300 \$40, 1299-1100 \$35, 1099-900 \$30, 899-100 \$25, Unrated \$25. Reg 11-11:50, rd 1 at 12. Tom Fineberg, 7321 S South Shore Dr #6D, Chicago 60649. 773-721-3979, [Tuley Chess Website](#)

**June 17, 2006 Bloomington, IL June Open.** Sponsored with the State Farm Employees Activities Association. An ICA Mini-Tour and Ex-Urban Tour Event. 4SS, G/70. State Farm Headquarters, 1 State Farm Plaza, Bloomington, IL. Located on the east side of Bloomington, northwest from the intersection of Oakland Ave. and Veteran's Parkway. Enter the building from the south. Check through security and go to the food court area. EF: \$15 if rec'd by 6/14, \$19 at site. Free entry to 2020+, must register in advance. \$520 b/30: 1st \$160, 2nd \$100, U2000 \$100, U1600 \$85, U1200 \$75. Bye 1-4. ICA mbership req'd. Adults \$18, Jrs. \$14. OSA. Reg: 8:30-9:30, Rds: 10-12:45-3:30-6. Ent: Dennis Bourgerie, Box 157, Normal, IL 61761. 309-454-3842. Cell: 309-531-1723. [Schoolstreeter@msn.com](mailto:Schoolstreeter@msn.com)

**June 24, 2006. Tuley Park Quick (Medium) 6-SS, rds 1-6 G/18 (or G/16+3sec).** 501 E 90th Pl, Chicago 60619. EF \$14, u19 \$7, \$1 off before 11:30. \$\$G 330: \$80-50-35, 1899-1700 \$40, 1649-1400 \$35, 1399-1150 \$30, 1199-900 \$25, 899-100 \$20, Unrated \$15. Reg 11-11:50, rd 1 at 12. Tom Fineberg, 7321 S South Shore Dr #6D, Chicago 60649. 773-721-3979, [Tuley Chess Website](#)

**June 24-25, 2006. USCF National G/15 and G/30 Tournament** Joliet Junior College For more information: [Dennis Doyle](#)

**July 1, 2006. Peoria Summer Tornado An ICA Mini-Tour and Ex-Urban Tour Event** Lakeview Museum, 1125 W. Lake Ave., Peoria, IL 61614 \$14 by June 28, \$17 at the site, free if rated 2200 or over. 4 round Swiss. Time Control: Game/80 75% of EF's, distributed as follows: 25% First, 15% Second, 10% each to A/B, C/D, under 1200, 5% to biggest upset. REGISTRATION: 8:00-8:45 AM. ROUND TIMES: 9, 12, 2:45, 5:30. NOTE: A limit of one "1/2 point" bye is available in any one Rd., but a bye in Rds. 3 or 4 must be elected by the end of Rd. 2 NO SMOKING. BRING SETS, BOARDS & CLOCKS ADVANCE ENTRIES: [Fred Malcome](#), 1000 Lilac Lane, Metamora, IL 61548 (309) 367-4833

**July 22, 2006. Tuley Park Quick (Medium) 6-SS, rds 1-6 G/18 (or G/16+3sec).** 501 E 90th Pl, Chicago 60619. EF \$14, u19 \$7, \$1 off before 11:30. Prizes based on 32 players 330: \$80-50-35, 1899-1700 \$40, 1649-1400 \$35, 1399-1150 \$30, 1199-900 \$25, 899-100 \$20, Unrated \$15. Reg 11-11:50, rd 1 at 12. Tom Fineberg, 7321 S South Shore Dr #6D, Chicago 60649. 773-721-3979, [Tuley Chess Website](#)

**July 29-30, 2006. Forest City Open**

**August 5-13, 2006. U.S. Open.** Oak Brook, IL

**A Heritage Event!**

**A U.S. Championship Qualifier!**

**Aug. 5-13, 8-13, 9-13 107th Annual U.S. Open**

**GPP: 200 Enhanced Illinois**

9SS, 40/2, SD/1 (5 day option, rds 1-5 G/60), Doubletree Oak Brook, 1909 Spring Road, Oak Brook, IL 60523, free parking. Phone: 630-472-6000. HR: \$89, single/quad. \$40,000 guaranteed prize fund. A one-section tournament with class prizes. Many side events, including U.S. Blitz Championship 8/12. USCF Delegates Meeting, workshops, USCF awards luncheon 8/12 noon. U.S. Championship Qualifier; (details later). Choice of Three Schedules: Traditional: 40/2, SD/1. One round daily at 7pm, except round 9 8/13 at 3pm. 6-day option: 8/8 to 8/10 at 12 noon & 7pm, 8/11 & 8/12 at 7pm, 8/13 at 3pm. 5-day option: 8/9 6pm & 8:30pm, 8/10 10, 1, 3:30 & 7, 8/11 & 8/12 7pm, 8/13 3pm. All schedules merge after round 5. Top places: \$6000-3000-2000-1000-600-400-300-200. Class Prizes: Top Master (2200 - 2399) \$2000 - 1000- 600 - 400. Top Expert \$2000 -1000-600-400. Top A \$2000 - 1000 - 600 - 400. Top B \$2000 - 1000 - 600 - 400. Top C \$2000 - 1000 - 600 - 400. Top D \$1500 - 700 - 500 - 300. Top E and below \$1200 - 600 - 400 - 200. Top Unrated: \$600 - 300 - 200. Half Point Byes: must commit before round 4; up to 3 byes allowed for 2200/up, 2 byes for 1600-2199, one bye for Under 1600/Unr. Zero point byes are always available. EF: \$125 if register online by 7/2 (\$130 mail or phone entry), \$155 register online by 7/16 (\$160 mail or phone), \$175 online up to 8/4 (\$180 onsite), GMs free. August USCF rating supplement used. CCA ratings will be used. Ent: U.S. Chess Federation, P.O. Box 3967 Crossville, TN, 38557 Tournament website: <http://www.uschess.org/tournaments/2006/usopen/>. FIDE, no cell phones. Bring clocks- none supplied. Sets/boards provided for tournament but not for skittles.

**Organizations wishing to be listed here** should mail an affiliation fee of \$25.00 for one year (check payable to Illinois Chess Association) to the ICA membership secretary.

**Jeff Smith: 19439 Lakeside Lane Bloomington, IL 61704 , 309-378-2078**

[ICAMembership@msn.com](mailto:ICAMembership@msn.com)

Include a short paragraph, similar to those below, listing your club's activities.

**Chess-Now Ltd.** Is a training and development company that provides customized chess experiences for business, education and recreational clients. 551 Roosevelt Road #129 Glen Ellyn, IL 60137. 630-209-5072. Information about our activities can be found at [www.Chess-Now.com](http://www.Chess-Now.com)

**Chess Scholars** offers professional individual, group, and school chess instruction at reasonable rates. We will travel to any location in the Chicago area. Ilya Korzhenevich, Director, 4310 1/2 N. Keystone Av. #1D, Chicago 60641, 773-286-2941, [ilya@ChessScholars.com](mailto:ilya@ChessScholars.com), [www.ChessScholars.com](http://www.ChessScholars.com).

**Chicago Industrial Chess League (CICL)** organizes team competition among companies, chess clubs, colleges, government agencies, and other organizations in the greater Chicago-area (downtown and suburban) with awards, ratings, and special events. Brian Smith, 630-983-9316, [publicity@chicagochessleague.org](mailto:publicity@chicagochessleague.org) website: [www.chicagochessleague.org](http://www.chicagochessleague.org) FIDE Master **Albert Chow** gives private lessons by appointment. 3513 N Seminary, Chicago 60657. 773-248-4846, [ChowMasterAl@yahoo.com](mailto:ChowMasterAl@yahoo.com).

**Greater Peoria Chess Federation** meets Mondays 6:45 pm, Lakeview Museum, 1125 W Lake Av, Peoria 61614. Details at [www.gpcf.net](http://www.gpcf.net) or Wayne Zimmerle, 514 W Loucks Av #2, Peoria 61604. 309-692-4480 (day), 309-686-0192 (evenings), [wzim@sbcglobal.net](mailto:wzim@sbcglobal.net)

**Illinois College Chess Club** - Illinois College Chess Club meets regularly during the college academic year. Illinois College, 1101 West College Ave, Jacksonville, IL 62650 James P. Marshall, (217)245-3432, [jmarshall@ic.edu](mailto:jmarshall@ic.edu)

**Joliet Junior College Chess Club** meets Thursdays 6:30 pm, Joliet Junior College, Building J, cafeteria, 1215 Houbolt Rd (I-80 exit 127), Joliet. Tim Owens, c/o JJC-IET, 214 N Ottawa St, Joliet 60432. 815-280-1513, [towens@jjc.edu](mailto:towens@jjc.edu). Or Steve Decman, 1418 Devonshire Dr, Joliet 60435. 815-744-5272, [www.jjc.edu/clubs/chess](http://www.jjc.edu/clubs/chess).

**Metcalf School Chess Club**, Meeting in Metcalf School Library, Illinois State University, Tuesday's 3:00 - 4:30 pm

**New Lenox Chess Club**, c/o Vince Berry & Cindy Misiak, 815-463-9975, leave message.

[VWBerry@aol.com](mailto:VWBerry@aol.com).

**Park Forest Chess Club** meets Thursdays 7-10 pm, Freedom Hall (next to the library), Lakewood Blvd just west of Orchard, Park Forest. Larry Cohen, 630-834-2477. [www.tuxdomain.com/pfcc\\_club.html](http://www.tuxdomain.com/pfcc_club.html).

**Renaissance Knights Chess Club** - meets at the Renaissance Chicago North Shore Hotel, 933 Skokie Blvd. Northbrook, IL. 60062. We meet on Sundays from 3:30 PM. We offer casual play, run USCF Rated tournaments, hold beginner and intermediate lessons, and more. All ages and beginners welcomed. Contact Sheila or David Heiser, [RKnightCC@aol.com](mailto:RKnightCC@aol.com). [www.rknights.org](http://www.rknights.org)

**Rudy Lozano Library Chess Club**, 1805 S Loomis, Chicago 60608. Hector Hernandez, 312-746-4329, [hernande@chipublib.org](mailto:hernande@chipublib.org).

**St Charles Chess Club** meets Thursdays 7-11 pm, Baker Community House, 101 S 2nd (Rt 31), St Charles. Jeff Wiewel, 1931 Dunhill Ct, Arlington Heights 60004. 847-818-8913, [jwiewel@ntnusa.com](mailto:jwiewel@ntnusa.com).

**The South Suburban Chess Club of Greater Chicago** meets Fridays 7-11 pm, Oak View Recreation Center, 110th & Kilpatrick, Oak Lawn. Joe Bannon, 773-445-0631.

**Springfield Chess Club** meets Wednesdays 6-10 pm, American Legion Post 32, 5th & Capitol, Springfield. Thomas Knoedler, 2104 S Fourth St, Springfield 62703. 217-523-7265.

**State Farm Employee Activities Chess Club**  
Colley Kitson 309-824-5701

**Tuley Park Chess Club** holds frequent Saturday tournaments at Tuley Park Field House, 501 E 90th Pl, Chicago. Tom Fineberg, 7321 S South Shore Dr, Chicago 60649. 773-721-3979, [www.home.earthlink.net/~maxine57](http://www.home.earthlink.net/~maxine57).

**Twin City Chess Club** meets Tuesdays 7-10 pm, Lincoln Leisure Center, 1206 S Lee St, Bloomington 61701. Dennis Bourgerie, PO Box 157, Normal 61761. 309-454-3842 [Schoolstreeter@msn.com](mailto:Schoolstreeter@msn.com)

**The 64 Square Jungle**  
<http://chessdad64.journalspace.com>

## ICA Supporters

### ICA Supporters

#### Life Patron Members:

Warren, Helen E           Western Springs  
 Warren, James E        Western Springs  
 Todd Barre

#### Century Club Patron Members:

Aaron, Michael E           Chicago  
 Bachler, Kevin L         Park Ridge  
 Brock, Bill                Chicago  
 Cohen, Lawrence S        Villa Park  
 Djordjevic, Vladimir     Chicago  
 Dwyer, William T         Worth  
 In memory of Victor George

Fineberg, Thomas A       Chicago  
 Friske, Thomas G         Des Plaines  
 Naylor, Samuel, VI        Carthage  
 Novotny, James J         Schaumburg  
 Panner, Glenn E         Frankfort  
 Pradt, Daniel J           Glen Ellyn  
 Ryner, Randall L         Springfield  
 Schmidt, Frederick W, Jr   Bloomington  
 Sethi, Pradip             Barrington Hills  
 Silverman, Scott  
 Smythe, Bill               Chicago  
 Stein, Kurt W             Clarendon Hills  
 Wong, Philip              Wilmette

#### Gold Card Patron Members:

Barre, Todd J             Elmhurst  
 Blanke, Clyde H         Matteson  
 Brotsos, Jim             Chicago  
 Bossaers, Phil J         Champaign  
 Chen, Aaron             Oak Brook  
 Chess-Now Ltd.         Glen Ellyn  
 Cook, David A           Burr Ridge  
 Delay, Joseph D         Schaumburg  
 Dueker, John T         Lockport  
 Gruenberg, Fred        Palos Heights  
 Heis, David  
 Hart, Vincent J         Mount Prospect  
 Klink, Steven L, Jr     Glen Ellyn  
 Lang, Richard S         Evanston  
 Marovitch, Mark        Cicero  
 Nibbelin, Mark         Normal  
 Pehas, Alex             Darien  
 Splinter, Joseph C     Hanover Park  
 Sweig, Mitchel J       Evanston  
 Tanaka, James G        Chicago  
 Widing, Robert W      Park Ridge

#### Patron Members:

Adwar, Bacil Alexy       Skokie  
 Amodel, Dominic M      Chicago  
 Benedek, Roy            Western Springs  
 Birkeland, Roger        Addison  
 Bishop, Jack             Chicago  
 Boone, Foster L, Jr     Lynwood  
 Bourgerie, Dennis      Normal  
 Carlton, Robert J      Naperville  
 Cronin, Mike A         Alsip  
 Duncan, Tom             Naperville

Dupuis, Brian M         Lake Bluff  
 Fenner, Charles E       Chicago  
 Fischer, Gregory A     Elk Grove Village  
 Fulk, Shizuko Fukuhara   Skokie  
 Gasiiecki, Alan F       Vernon Hills  
 Gerber, David F         Mundelein  
 Griesmeyer, Walter J    Mormene  
 Hansen, Steven E        LaGrange  
 Harvey, Frank            Wheeling  
 Henderson, S E, Jr      Bolingbrook  
 Hernandez, Hector      Chicago  
 Iovin, Daniel G         Elmwood Park  
 Just, Timothy W         Gurnee  
 Karpes, Richard A       Des Plaines  
 Klink, Steven            SrGlen Ellyn  
 Knoedler, Thomas B     Springfield  
 Lewis, Richard          Harvey  
 Loblaco, Michael J      Itasca  
 Marshall, Kenneth N     Lombard  
 Martin, Gary J          Park Ridge  
 Modes, Daniel R         Bensenville  
 Moore, Clarence J       Villa Park  
 Mote, David B           Springfield  
 Rhymer, Cecil           Summit  
 Rose, Eric J             Antioch  
 Rose, Keith C           Woodridge  
 Satterlee, Ray Doyle    Wheaton  
 Scott, Garrett H         Normal  
 Sollano, Ely O          Chicago  
 Sowa, Walter B          Harwood Heights  
 Suarez, Ronald J         Peoria  
 Tums, John M            Oak Park  
 Zacate, Michael E      Mokena

## Illinois Chess Association & Chicago Industrial Chess League Awards Banquet

**When: Fri June 2, 6:30 PM**  
**Where: Carriage Greens Country Club**  
**8700 Carriage Greens Drive**  
**Darien, IL**

**The cost per person is \$23 Advance \$25 on site.**  
**GM or IM lecture/Dinner/Raffle**  
**Speed Chess Tournament**  
**Bring your own equipment!**

Advance Registrations to:  
 Paul Freidel 3N861 Babson Ln.  
 St. Charles, IL 60175

Please make Checks Payable to CICL  
 also indicate if you are a ICA or CICL member  
 For more information contact: Tony Jasaitis, cell # 708-903-6423 [tony@trdlnk.com](mailto:tony@trdlnk.com)

**August 5-13, 2006**

**U.S. Open.**

Oak Brook, IL

*A Heritage Event!*

*A U.S. Championship Qualifier!*

*Aug. 5-13, 8-13, 9-13*

**107th Annual U.S. Open GPP: 200 Enhanced**

9SS, 40/2, SD/1 (5 day option, rds 1-5 G/60), Doubletree Oak Brook, 1909 Spring Road, Oak Brook, IL 60523, free parking. Phone: 630-472-6000. HR: \$89, single/quad. \$40,000 guaranteed prize fund. A one-section tournament with class prizes. Many side events, including U.S. Blitz Championship 8/12. USCF Delegates Meeting, workshops, USCF awards luncheon 8/12 noon. U.S. Championship Qualifier; (details later). Choice of Three Schedules: Traditional: 40/2, SD/1. One round daily at 7pm, except round 9 8/13 at 3pm. 6-day option: 8/8 to 8/10 at 12 noon & 7pm, 8/11 & 8/12 at 7pm, 8/13 at 3pm. 5-day option: 8/9 6pm & 8:30pm, 8/10 10, 1, 3:30 & 7, 8/11 & 8/12 7pm, 8/13 3pm. All schedules merge after round 5.

Top places: \$6000-3000-2000-1000-600-400-300-200. Class Prizes: Top Master (2200 - 2399) \$2000 - 1000- 600 - 400. Top Expert \$2000 -1000-600-400. Top A \$2000 - 1000 - 600 - 400. Top B \$2000 - 1000 - 600 - 400. Top C \$2000 - 1000 - 600 - 400. Top D \$1500 - 700 - 500 - 300. Top E and below \$1200 - 600 - 400 - 200. Top Unrated: \$600 - 300 - 200. Half Point Byes: must commit before round 4; up to 3 byes allowed for 2200/up, 2 byes for 1600-2199, one bye for Under 1600/Unr. Zero point byes are always available. EF: \$125 if register online by 7/2 (\$130 mail or phone entry), \$155 register online by 7/16 (\$160 mail or phone), \$175 online up to 8/4 (\$180 onsite), GMs free. August USCF rating supplement used. CCA ratings will be used. Foreign player ratings: 100 pts added to FIDE, 100 to FQE, 200+ to most foreign, no pts added to CFC. Highest of multiple ratings generally used. Ent: U.S. Chess Federation, P.O. Box 3967 Crossville TN 38557 or online at: <https://secure.uschess.org/webstore/index.php>. 1-800-903-8723. Tournament website: <http://www.uschess.org/tournaments/2006/usopen/>. FIDE, no cell phones. Bring clocks- none supplied. Sets/boards provided for tournament but not for skittles.

**August 5-13, 2006**

**U.S. Open.**

Oak Brook, IL

*A Heritage Event!*

*A U.S. Championship Qualifier!*

*Aug. 5-13, 8-13, 9-13*

**107th Annual U.S. Open**

More Information on the inside back cover

Time Value Material

Jeff Smith  
19439 Lakeside Lane  
Bloomington, IL 61704  
ADDRESS SERVICES REQUESTED

NONPROFIT ORG  
U.S. POSTAGE  
PAID  
ASTORIA, IL  
PERMIT NO. 9